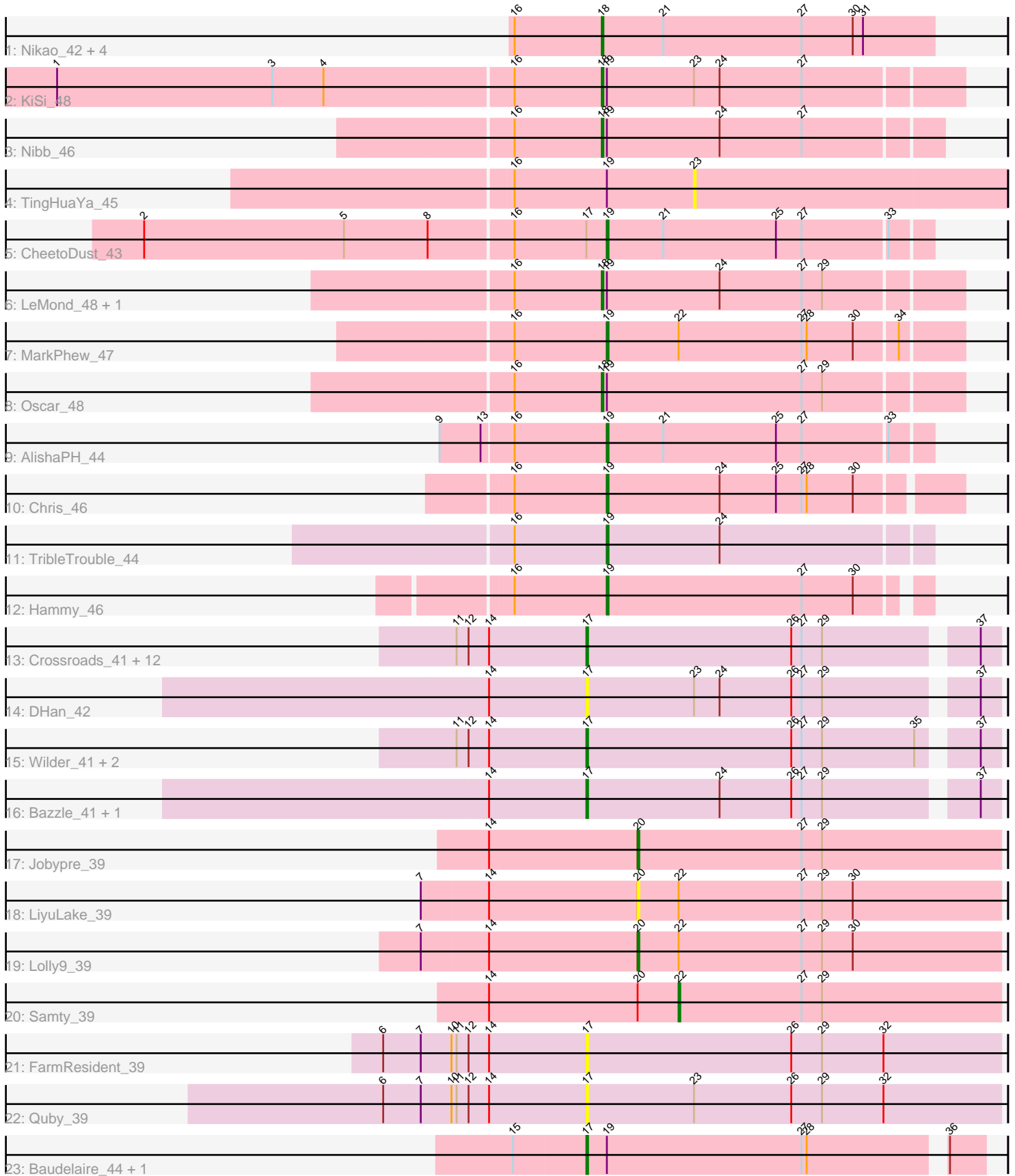


Pham 214406



Note: Tracks are now grouped by subcluster and scaled. Switching in subcluster is indicated by changes in track color. Track scale is now set by default to display the region 30 bp upstream of start 1 to 30 bp downstream of the last possible start. If this default region is judged to be packed too tightly with annotated starts, the track will be further scaled to only show that region of the ORF with annotated starts. This action will be indicated by adding "Zoomed" to the title. For starts, yellow indicates the location of called starts comprised solely of Glimmer/GeneMark auto-annotations, green indicates the location of called starts with at least 1 manual gene annotation.

Pham 214406 Report

This analysis was run 02/22/25 on database version 588.

Pham number 214406 has 44 members, 11 are drafts.

Phages represented in each track:

- Track 1 : Nikao_42, Teejan_42, SgtBeansprout_39, Enkosi_42, Torres_42
- Track 2 : KiSi_48
- Track 3 : Nibb_46
- Track 4 : TingHuaYa_45
- Track 5 : CheetoDust_43
- Track 6 : LeMond_48, Scarlett_48
- Track 7 : MarkPhew_47
- Track 8 : Oscar_48
- Track 9 : AlishaPH_44
- Track 10 : Chris_46
- Track 11 : TribbleTrouble_44
- Track 12 : Hammy_46
- Track 13 : Crossroads_41, Itos_40, BigCheese_41, Finemlucis_41, GuuelaD_41, Gardann_41, Netyap_41, BobsGarage_41, Miley16_41, Gabriela_41, SoJulia_42, Underpass_41, Zakai_41
- Track 14 : DHan_42
- Track 15 : Wilder_41, Hafay_41, Soap141_41
- Track 16 : Bazzle_41, Archie_41
- Track 17 : Jobypre_39
- Track 18 : LiyuLake_39
- Track 19 : Lolly9_39
- Track 20 : Samty_39
- Track 21 : FarmResident_39
- Track 22 : Quby_39
- Track 23 : Baudelaire_44, Aegeus_44

Summary of Final Annotations (See graph section above for start numbers):

The start number called the most often in the published annotations is 17, it was called in 16 of the 33 non-draft genes in the pham.

Genes that call this "Most Annotated" start:

- Aegeus_44, Archie_41, Baudelaire_44, Bazzle_41, BigCheese_41, BobsGarage_41, Crossroads_41, DHan_42, FarmResident_39, Finemlucis_41,

Gabriela_41, Gardann_41, GuuelaD_41, Hafay_41, Itos_40, Miley16_41, Netyap_41, Quby_39, SoJulia_42, Soap141_41, Underpass_41, Wilder_41, Zakai_41,

Genes that have the "Most Annotated" start but do not call it:

- CheetoDust_43,

Genes that do not have the "Most Annotated" start:

- AlishaPH_44, Chris_46, Enkosi_42, Hammy_46, Jobypre_39, KiSi_48, LeMond_48, LiyuLake_39, Lolly9_39, MarkPhew_47, Nibb_46, Nikao_42, Oscar_48, Samty_39, Scarlett_48, SgtBeansprout_39, Teejan_42, TingHuaYa_45, Torres_42, TribbleTrouble_44,

Summary by start number:

Start 17:

- Found in 24 of 44 (54.5%) of genes in pham
- Manual Annotations of this start: 16 of 33
- Called 95.8% of time when present
- Phage (with cluster) where this start called: Aegeus_44 (L5), Archie_41 (L2), Baudelaire_44 (L5), Bazzle_41 (L2), BigCheese_41 (L2), BobsGarage_41 (L2), Crossroads_41 (L2), DHan_42 (L2), FarmResident_39 (L4), Finemlucis_41 (L2), Gabriela_41 (L2), Gardann_41 (L2), GuuelaD_41 (L2), Hafay_41 (L2), Itos_40 (L2), Miley16_41 (L2), Netyap_41 (L2), Quby_39 (L4), SoJulia_42 (L2), Soap141_41 (L2), Underpass_41 (L2), Wilder_41 (L2), Zakai_41 (L2),

Start 18:

- Found in 10 of 44 (22.7%) of genes in pham
- Manual Annotations of this start: 8 of 33
- Called 100.0% of time when present
- Phage (with cluster) where this start called: Enkosi_42 (K1), KiSi_48 (K1), LeMond_48 (K1), Nibb_46 (K1), Nikao_42 (K1), Oscar_48 (K1), Scarlett_48 (K1), SgtBeansprout_39 (K1), Teejan_42 (K1), Torres_42 (K1),

Start 19:

- Found in 14 of 44 (31.8%) of genes in pham
- Manual Annotations of this start: 6 of 33
- Called 42.9% of time when present
- Phage (with cluster) where this start called: AlishaPH_44 (K1), CheetoDust_43 (K1), Chris_46 (K1), Hammy_46 (K6), MarkPhew_47 (K1), TribbleTrouble_44 (K3),

Start 20:

- Found in 4 of 44 (9.1%) of genes in pham
- Manual Annotations of this start: 2 of 33
- Called 75.0% of time when present
- Phage (with cluster) where this start called: Jobypre_39 (L3), LiyuLake_39 (L3), Lolly9_39 (L3),

Start 22:

- Found in 4 of 44 (9.1%) of genes in pham
- Manual Annotations of this start: 1 of 33
- Called 25.0% of time when present
- Phage (with cluster) where this start called: Samty_39 (L3),

Start 23:

- Found in 4 of 44 (9.1%) of genes in pham
- No Manual Annotations of this start.
- Called 25.0% of time when present
- Phage (with cluster) where this start called: TingHuaYa_45 (K1),

Summary by clusters:

There are 7 clusters represented in this pham: L4, K3, K1, L5, L2, K6, L3,

Info for manual annotations of cluster K1:

- Start number 18 was manually annotated 8 times for cluster K1.
- Start number 19 was manually annotated 4 times for cluster K1.

Info for manual annotations of cluster K3:

- Start number 19 was manually annotated 1 time for cluster K3.

Info for manual annotations of cluster K6:

- Start number 19 was manually annotated 1 time for cluster K6.

Info for manual annotations of cluster L2:

- Start number 17 was manually annotated 14 times for cluster L2.

Info for manual annotations of cluster L3:

- Start number 20 was manually annotated 2 times for cluster L3.
- Start number 22 was manually annotated 1 time for cluster L3.

Info for manual annotations of cluster L5:

- Start number 17 was manually annotated 2 times for cluster L5.

Gene Information:

Gene: Aegeus_44 Start: 36838, Stop: 37059, Start Num: 17

Candidate Starts for Aegeus_44:

(15, 36796), (Start: 17 @36838 has 16 MA's), (Start: 19 @36850 has 6 MA's), (27, 36964), (28, 36967), (36, 37039),

Gene: AlishaPH_44 Start: 35486, Stop: 35671, Start Num: 19

Candidate Starts for AlishaPH_44:

(9, 35390), (13, 35414), (16, 35432), (Start: 19 @35486 has 6 MA's), (21, 35519), (25, 35585), (27, 35600), (33, 35648),

Gene: Archie_41 Start: 34671, Stop: 34901, Start Num: 17

Candidate Starts for Archie_41:

(14, 34614), (Start: 17 @34671 has 16 MA's), (24, 34749), (26, 34791), (27, 34797), (29, 34809), (37, 34890),

Gene: Baudelaire_44 Start: 36838, Stop: 37059, Start Num: 17

Candidate Starts for Baudelaire_44:

(15, 36796), (Start: 17 @36838 has 16 MA's), (Start: 19 @36850 has 6 MA's), (27, 36964), (28, 36967), (36, 37039),

Gene: Bazzle_41 Start: 34703, Stop: 34933, Start Num: 17

Candidate Starts for Bazzle_41:

(14, 34646), (Start: 17 @34703 has 16 MA's), (24, 34781), (26, 34823), (27, 34829), (29, 34841), (37, 34922),

Gene: BigCheese_41 Start: 34467, Stop: 34697, Start Num: 17

Candidate Starts for BigCheese_41:

(11, 34392), (12, 34398), (14, 34410), (Start: 17 @34467 has 16 MA's), (26, 34587), (27, 34593), (29, 34605), (37, 34686),

Gene: BobsGarage_41 Start: 34467, Stop: 34697, Start Num: 17

Candidate Starts for BobsGarage_41:

(11, 34392), (12, 34398), (14, 34410), (Start: 17 @34467 has 16 MA's), (26, 34587), (27, 34593), (29, 34605), (37, 34686),

Gene: CheetoDust_43 Start: 34700, Stop: 34885, Start Num: 19

Candidate Starts for CheetoDust_43:

(2, 34433), (5, 34550), (8, 34598), (16, 34646), (Start: 17 @34688 has 16 MA's), (Start: 19 @34700 has 6 MA's), (21, 34733), (25, 34799), (27, 34814), (33, 34862),

Gene: Chris_46 Start: 35995, Stop: 36195, Start Num: 19

Candidate Starts for Chris_46:

(16, 35941), (Start: 19 @35995 has 6 MA's), (24, 36061), (25, 36094), (27, 36109), (28, 36112), (30, 36139),

Gene: Crossroads_41 Start: 34469, Stop: 34699, Start Num: 17

Candidate Starts for Crossroads_41:

(11, 34394), (12, 34400), (14, 34412), (Start: 17 @34469 has 16 MA's), (26, 34589), (27, 34595), (29, 34607), (37, 34688),

Gene: DHan_42 Start: 34427, Stop: 34657, Start Num: 17

Candidate Starts for DHan_42:

(14, 34370), (Start: 17 @34427 has 16 MA's), (23, 34490), (24, 34505), (26, 34547), (27, 34553), (29, 34565), (37, 34646),

Gene: Enkosi_42 Start: 37403, Stop: 37597, Start Num: 18

Candidate Starts for Enkosi_42:

(16, 37352), (Start: 18 @37403 has 8 MA's), (21, 37439), (27, 37520), (30, 37550), (31, 37556),

Gene: FarmResident_39 Start: 33175, Stop: 33417, Start Num: 17

Candidate Starts for FarmResident_39:

(6, 33058), (7, 33079), (10, 33097), (11, 33100), (12, 33106), (14, 33118), (Start: 17 @33175 has 16 MA's), (26, 33295), (29, 33313), (32, 33349),

Gene: Finemlucis_41 Start: 34743, Stop: 34973, Start Num: 17

Candidate Starts for Finemlucis_41:

(11, 34668), (12, 34674), (14, 34686), (Start: 17 @34743 has 16 MA's), (26, 34863), (27, 34869), (29, 34881), (37, 34962),

Gene: Gabriela_41 Start: 34729, Stop: 34959, Start Num: 17

Candidate Starts for Gabriela_41:

(11, 34654), (12, 34660), (14, 34672), (Start: 17 @34729 has 16 MA's), (26, 34849), (27, 34855), (29, 34867), (37, 34948),

Gene: Gardann_41 Start: 34468, Stop: 34698, Start Num: 17

Candidate Starts for Gardann_41:

(11, 34393), (12, 34399), (14, 34411), (Start: 17 @34468 has 16 MA's), (26, 34588), (27, 34594), (29, 34606), (37, 34687),

Gene: GuuelaD_41 Start: 34506, Stop: 34736, Start Num: 17

Candidate Starts for GuuelaD_41:

(11, 34431), (12, 34437), (14, 34449), (Start: 17 @34506 has 16 MA's), (26, 34626), (27, 34632), (29, 34644), (37, 34725),

Gene: Hafay_41 Start: 34501, Stop: 34731, Start Num: 17

Candidate Starts for Hafay_41:

(11, 34426), (12, 34432), (14, 34444), (Start: 17 @34501 has 16 MA's), (26, 34621), (27, 34627), (29, 34639), (35, 34693), (37, 34720),

Gene: Hammy_46 Start: 36187, Stop: 36366, Start Num: 19

Candidate Starts for Hammy_46:

(16, 36133), (Start: 19 @36187 has 6 MA's), (27, 36301), (30, 36331),

Gene: Itos_40 Start: 33373, Stop: 33603, Start Num: 17

Candidate Starts for Itos_40:

(11, 33298), (12, 33304), (14, 33316), (Start: 17 @33373 has 16 MA's), (26, 33493), (27, 33499), (29, 33511), (37, 33592),

Gene: Jobypre_39 Start: 34742, Stop: 34954, Start Num: 20

Candidate Starts for Jobypre_39:

(14, 34655), (Start: 20 @34742 has 2 MA's), (27, 34838), (29, 34850),

Gene: KiSi_48 Start: 36394, Stop: 36600, Start Num: 18

Candidate Starts for KiSi_48:

(1, 36079), (3, 36205), (4, 36235), (16, 36343), (Start: 18 @36394 has 8 MA's), (Start: 19 @36397 has 6 MA's), (23, 36448), (24, 36463), (27, 36511),

Gene: LeMond_48 Start: 36378, Stop: 36584, Start Num: 18

Candidate Starts for LeMond_48:

(16, 36327), (Start: 18 @36378 has 8 MA's), (Start: 19 @36381 has 6 MA's), (24, 36447), (27, 36495), (29, 36507),

Gene: LiyuLake_39 Start: 34726, Stop: 34938, Start Num: 20

Candidate Starts for LiyuLake_39:

(7, 34600), (14, 34639), (Start: 20 @34726 has 2 MA's), (Start: 22 @34750 has 1 MA's), (27, 34822), (29, 34834), (30, 34852),

Gene: Lolly9_39 Start: 34550, Stop: 34762, Start Num: 20

Candidate Starts for Lolly9_39:

(7, 34424), (14, 34463), (Start: 20 @34550 has 2 MA's), (Start: 22 @34574 has 1 MA's), (27, 34646), (29, 34658), (30, 34676),

Gene: MarkPhew_47 Start: 35823, Stop: 36026, Start Num: 19

Candidate Starts for MarkPhew_47:

(16, 35769), (Start: 19 @35823 has 6 MA's), (Start: 22 @35865 has 1 MA's), (27, 35937), (28, 35940), (30, 35967), (34, 35991),

Gene: Miley16_41 Start: 34467, Stop: 34697, Start Num: 17

Candidate Starts for Miley16_41:

(11, 34392), (12, 34398), (14, 34410), (Start: 17 @34467 has 16 MA's), (26, 34587), (27, 34593), (29, 34605), (37, 34686),

Gene: Netyap_41 Start: 34467, Stop: 34697, Start Num: 17

Candidate Starts for Netyap_41:

(11, 34392), (12, 34398), (14, 34410), (Start: 17 @34467 has 16 MA's), (26, 34587), (27, 34593), (29, 34605), (37, 34686),

Gene: Nibb_46 Start: 35544, Stop: 35738, Start Num: 18

Candidate Starts for Nibb_46:

(16, 35493), (Start: 18 @35544 has 8 MA's), (Start: 19 @35547 has 6 MA's), (24, 35613), (27, 35661),

Gene: Nikao_42 Start: 37403, Stop: 37597, Start Num: 18

Candidate Starts for Nikao_42:

(16, 37352), (Start: 18 @37403 has 8 MA's), (21, 37439), (27, 37520), (30, 37550), (31, 37556),

Gene: Oscar_48 Start: 36280, Stop: 36486, Start Num: 18

Candidate Starts for Oscar_48:

(16, 36229), (Start: 18 @36280 has 8 MA's), (Start: 19 @36283 has 6 MA's), (27, 36397), (29, 36409),

Gene: Quby_39 Start: 33131, Stop: 33373, Start Num: 17

Candidate Starts for Quby_39:

(6, 33014), (7, 33035), (10, 33053), (11, 33056), (12, 33062), (14, 33074), (Start: 17 @33131 has 16 MA's), (23, 33194), (26, 33251), (29, 33269), (32, 33305),

Gene: Samty_39 Start: 34767, Stop: 34955, Start Num: 22

Candidate Starts for Samty_39:

(14, 34656), (Start: 20 @34743 has 2 MA's), (Start: 22 @34767 has 1 MA's), (27, 34839), (29, 34851),

Gene: Scarlett_48 Start: 36272, Stop: 36478, Start Num: 18

Candidate Starts for Scarlett_48:

(16, 36221), (Start: 18 @36272 has 8 MA's), (Start: 19 @36275 has 6 MA's), (24, 36341), (27, 36389), (29, 36401),

Gene: SgtBeansprout_39 Start: 34790, Stop: 34984, Start Num: 18

Candidate Starts for SgtBeansprout_39:

(16, 34739), (Start: 18 @34790 has 8 MA's), (21, 34826), (27, 34907), (30, 34937), (31, 34943),

Gene: SoJulia_42 Start: 34727, Stop: 34957, Start Num: 17

Candidate Starts for SoJulia_42:

(11, 34652), (12, 34658), (14, 34670), (Start: 17 @34727 has 16 MA's), (26, 34847), (27, 34853), (29, 34865), (37, 34946),

Gene: Soap141_41 Start: 34501, Stop: 34731, Start Num: 17

Candidate Starts for Soap141_41:

(11, 34426), (12, 34432), (14, 34444), (Start: 17 @34501 has 16 MA's), (26, 34621), (27, 34627), (29, 34639), (35, 34693), (37, 34720),

Gene: Teejan_42 Start: 37403, Stop: 37597, Start Num: 18

Candidate Starts for Teejan_42:

(16, 37352), (Start: 18 @37403 has 8 MA's), (21, 37439), (27, 37520), (30, 37550), (31, 37556),

Gene: TingHuaYa_45 Start: 34549, Stop: 34731, Start Num: 23

Candidate Starts for TingHuaYa_45:

(16, 34444), (Start: 19 @34498 has 6 MA's), (23, 34549),

Gene: Torres_42 Start: 37404, Stop: 37598, Start Num: 18

Candidate Starts for Torres_42:

(16, 37353), (Start: 18 @37404 has 8 MA's), (21, 37440), (27, 37521), (30, 37551), (31, 37557),

Gene: TribelTrouble_44 Start: 35315, Stop: 35500, Start Num: 19

Candidate Starts for TribelTrouble_44:

(16, 35261), (Start: 19 @35315 has 6 MA's), (24, 35381),

Gene: Underpass_41 Start: 34468, Stop: 34698, Start Num: 17

Candidate Starts for Underpass_41:

(11, 34393), (12, 34399), (14, 34411), (Start: 17 @34468 has 16 MA's), (26, 34588), (27, 34594), (29, 34606), (37, 34687),

Gene: Wilder_41 Start: 34473, Stop: 34703, Start Num: 17

Candidate Starts for Wilder_41:

(11, 34398), (12, 34404), (14, 34416), (Start: 17 @34473 has 16 MA's), (26, 34593), (27, 34599), (29, 34611), (35, 34665), (37, 34692),

Gene: Zakai_41 Start: 34725, Stop: 34955, Start Num: 17

Candidate Starts for Zakai_41:

(11, 34650), (12, 34656), (14, 34668), (Start: 17 @34725 has 16 MA's), (26, 34845), (27, 34851), (29, 34863), (37, 34944),