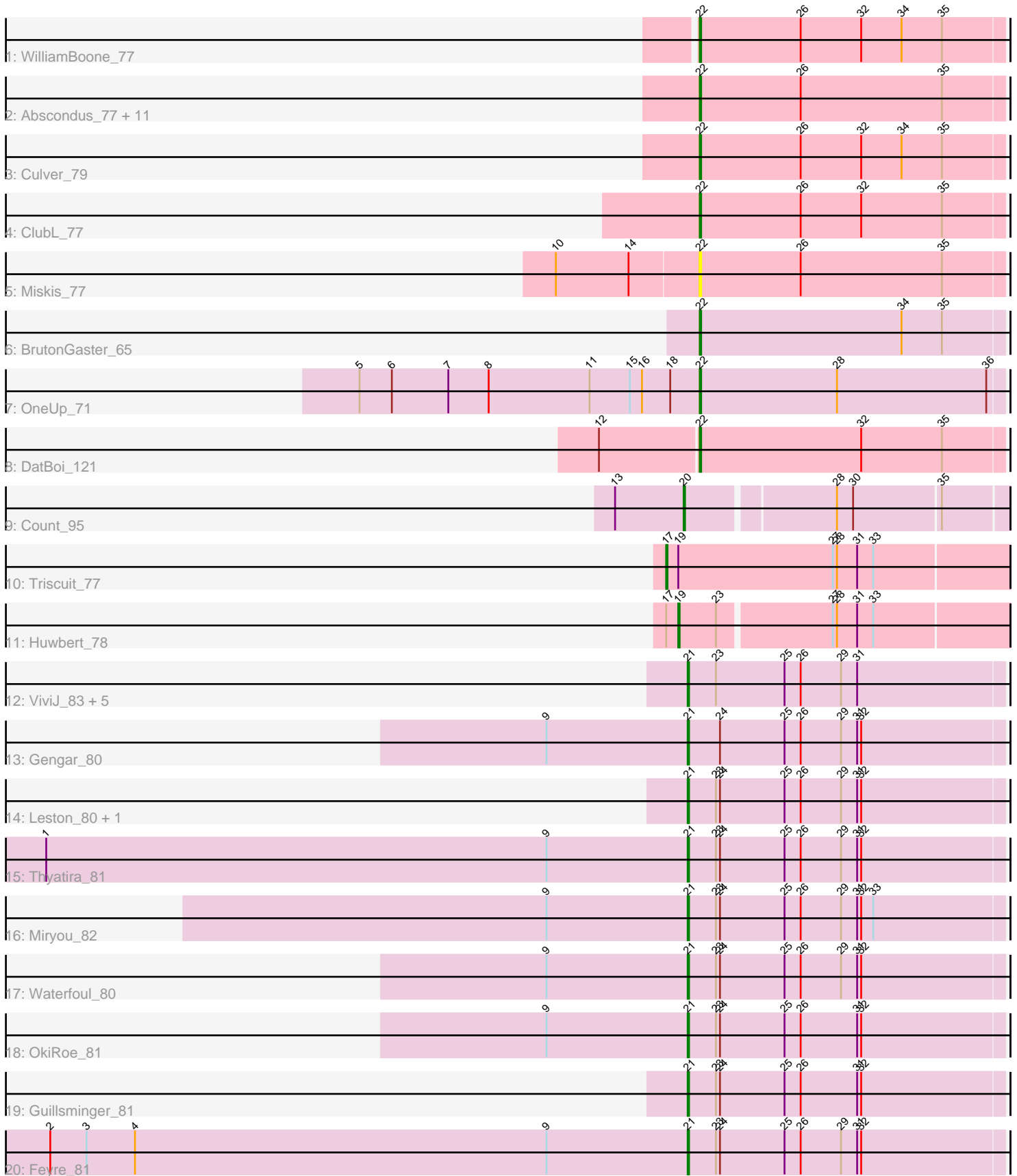


Pham 214455



Note: Tracks are now grouped by subcluster and scaled. Switching in subcluster is indicated by changes in track color. Track scale is now set by default to display the region 30 bp upstream of start 1 to 30 bp downstream of the last possible start. If this default region is judged to be packed too tightly with annotated starts, the track will be further scaled to only show that region of the ORF with annotated starts. This action will be indicated by adding "Zoomed" to the title. For starts, yellow indicates the location of called starts comprised solely of Glimmer/GeneMark auto-annotations, green indicates the location of called starts with at least 1 manual gene annotation.

## Pham 214455 Report

This analysis was run 02/22/25 on database version 588.

Pham number 214455 has 37 members, 5 are drafts.

Phages represented in each track:

- Track 1 : WilliamBoone\_77
- Track 2 : Abscondus\_77, Aphelion\_77, Toniann\_78, Bachita\_79, Lozinak\_78, Norvs\_78, Geeche\_76, Smoothie\_79, Cucurbita\_79, PhinkBoden\_77, Dusty\_74, Engineer\_79
- Track 3 : Culver\_79
- Track 4 : ClubL\_77
- Track 5 : Miskis\_77
- Track 6 : BrutonGaster\_65
- Track 7 : OneUp\_71
- Track 8 : DatBoi\_121
- Track 9 : Count\_95
- Track 10 : Triscuit\_77
- Track 11 : Huwbert\_78
- Track 12 : ViviJ\_83, InvictusManeo\_76, SoSeph\_78, Collard\_76, Heftyboy\_78, Agent47\_78
- Track 13 : Gengar\_80
- Track 14 : Leston\_80, Paola\_80
- Track 15 : Thyatira\_81
- Track 16 : Miryou\_82
- Track 17 : Waterfoul\_80
- Track 18 : OkiRoe\_81
- Track 19 : Guillsminger\_81
- Track 20 : Feyre\_81

### ***Summary of Final Annotations (See graph section above for start numbers):***

The start number called the most often in the published annotations is 22, it was called in 15 of the 32 non-draft genes in the pham.

Genes that call this "Most Annotated" start:

- Abscondus\_77, Aphelion\_77, Bachita\_79, BrutonGaster\_65, ClubL\_77, Cucurbita\_79, Culver\_79, DatBoi\_121, Dusty\_74, Engineer\_79, Geeche\_76, Lozinak\_78, Miskis\_77, Norvs\_78, OneUp\_71, PhinkBoden\_77, Smoothie\_79, Toniann\_78, WilliamBoone\_77,

Genes that have the "Most Annotated" start but do not call it:

- 

Genes that do not have the "Most Annotated" start:

- Agent47\_78, Collard\_76, Count\_95, Feyre\_81, Gengar\_80, Guillsminger\_81, Heftyboy\_78, Huwbert\_78, InvictusManeo\_76, Leston\_80, Miryou\_82, OkiRoe\_81, Paola\_80, SoSeph\_78, Thyatira\_81, Triscuit\_77, ViviJ\_83, Waterfoul\_80,

### Summary by start number:

Start 17:

- Found in 2 of 37 ( 5.4% ) of genes in pham
- Manual Annotations of this start: 1 of 32
- Called 50.0% of time when present
- Phage (with cluster) where this start called: Triscuit\_77 (GG),

Start 19:

- Found in 2 of 37 ( 5.4% ) of genes in pham
- Manual Annotations of this start: 1 of 32
- Called 50.0% of time when present
- Phage (with cluster) where this start called: Huwbert\_78 (GG),

Start 20:

- Found in 1 of 37 ( 2.7% ) of genes in pham
- Manual Annotations of this start: 1 of 32
- Called 100.0% of time when present
- Phage (with cluster) where this start called: Count\_95 (EL),

Start 21:

- Found in 15 of 37 ( 40.5% ) of genes in pham
- Manual Annotations of this start: 14 of 32
- Called 100.0% of time when present
- Phage (with cluster) where this start called: Agent47\_78 (K5), Collard\_76 (K5), Feyre\_81 (K5), Gengar\_80 (K5), Guillsminger\_81 (K5), Heftyboy\_78 (K5), InvictusManeo\_76 (K5), Leston\_80 (K5), Miryou\_82 (K5), OkiRoe\_81 (K5), Paola\_80 (K5), SoSeph\_78 (K5), Thyatira\_81 (K5), ViviJ\_83 (K5), Waterfoul\_80 (K5),

Start 22:

- Found in 19 of 37 ( 51.4% ) of genes in pham
- Manual Annotations of this start: 15 of 32
- Called 100.0% of time when present
- Phage (with cluster) where this start called: Abscondus\_77 (CQ1), Aphelion\_77 (CQ1), Bachita\_79 (CQ1), BrutonGaster\_65 (CQ2), ClubL\_77 (CQ1), Cucurbita\_79 (CQ1), Culver\_79 (CQ1), DatBoi\_121 (DL), Dusty\_74 (CQ1), Engineer\_79 (CQ1), Geeche\_76 (CQ1), Lozinak\_78 (CQ1), Miskis\_77 (CQ1), Norvs\_78 (CQ1), OneUp\_71 (CQ2), PhinkBoden\_77 (CQ1), Smoothie\_79 (CQ1), Toniann\_78 (CQ1), WilliamBoone\_77 (CQ1),

### Summary by clusters:

There are 6 clusters represented in this pham: EL, DL, GG, K5, CQ2, CQ1,

Info for manual annotations of cluster CQ1:

- Start number 22 was manually annotated 12 times for cluster CQ1.

Info for manual annotations of cluster CQ2:

- Start number 22 was manually annotated 2 times for cluster CQ2.

Info for manual annotations of cluster DL:

- Start number 22 was manually annotated 1 time for cluster DL.

Info for manual annotations of cluster EL:

- Start number 20 was manually annotated 1 time for cluster EL.

Info for manual annotations of cluster GG:

- Start number 17 was manually annotated 1 time for cluster GG.
- Start number 19 was manually annotated 1 time for cluster GG.

Info for manual annotations of cluster K5:

- Start number 21 was manually annotated 14 times for cluster K5.

### ***Gene Information:***

Gene: Abscondus\_77 Start: 49287, Stop: 49511, Start Num: 22

Candidate Starts for Abscondus\_77:

(Start: 22 @49287 has 15 MA's), (26, 49362), (35, 49467),

Gene: Agent47\_78 Start: 51521, Stop: 51754, Start Num: 21

Candidate Starts for Agent47\_78:

(Start: 21 @51521 has 14 MA's), (23, 51542), (25, 51593), (26, 51605), (29, 51635), (31, 51647),

Gene: Aphelion\_77 Start: 49909, Stop: 50133, Start Num: 22

Candidate Starts for Aphelion\_77:

(Start: 22 @49909 has 15 MA's), (26, 49984), (35, 50089),

Gene: Bachita\_79 Start: 50334, Stop: 50558, Start Num: 22

Candidate Starts for Bachita\_79:

(Start: 22 @50334 has 15 MA's), (26, 50409), (35, 50514),

Gene: BrutonGaster\_65 Start: 46510, Stop: 46734, Start Num: 22

Candidate Starts for BrutonGaster\_65:

(Start: 22 @46510 has 15 MA's), (34, 46660), (35, 46690),

Gene: ClubL\_77 Start: 49022, Stop: 49246, Start Num: 22

Candidate Starts for ClubL\_77:

(Start: 22 @49022 has 15 MA's), (26, 49097), (32, 49142), (35, 49202),

Gene: Collard\_76 Start: 51485, Stop: 51718, Start Num: 21

Candidate Starts for Collard\_76:

(Start: 21 @51485 has 14 MA's), (23, 51506), (25, 51557), (26, 51569), (29, 51599), (31, 51611),

Gene: Count\_95 Start: 61678, Stop: 61905, Start Num: 20

Candidate Starts for Count\_95:

(13, 61627), (Start: 20 @61678 has 1 MA's), (28, 61783), (30, 61795), (35, 61858),

Gene: Cucurbita\_79 Start: 50841, Stop: 51065, Start Num: 22

Candidate Starts for Cucurbita\_79:

(Start: 22 @50841 has 15 MA's), (26, 50916), (35, 51021),

Gene: Culver\_79 Start: 48945, Stop: 49169, Start Num: 22

Candidate Starts for Culver\_79:

(Start: 22 @48945 has 15 MA's), (26, 49020), (32, 49065), (34, 49095), (35, 49125),

Gene: DatBoi\_121 Start: 74737, Stop: 74961, Start Num: 22

Candidate Starts for DatBoi\_121:

(12, 74665), (Start: 22 @74737 has 15 MA's), (32, 74857), (35, 74917),

Gene: Dusty\_74 Start: 48534, Stop: 48758, Start Num: 22

Candidate Starts for Dusty\_74:

(Start: 22 @48534 has 15 MA's), (26, 48609), (35, 48714),

Gene: Engineer\_79 Start: 50307, Stop: 50531, Start Num: 22

Candidate Starts for Engineer\_79:

(Start: 22 @50307 has 15 MA's), (26, 50382), (35, 50487),

Gene: Feyre\_81 Start: 55182, Stop: 55415, Start Num: 21

Candidate Starts for Feyre\_81:

(2, 54708), (3, 54735), (4, 54771), (9, 55077), (Start: 21 @55182 has 14 MA's), (23, 55203), (24, 55206), (25, 55254), (26, 55266), (29, 55296), (31, 55308), (32, 55311),

Gene: Geeche\_76 Start: 49371, Stop: 49595, Start Num: 22

Candidate Starts for Geeche\_76:

(Start: 22 @49371 has 15 MA's), (26, 49446), (35, 49551),

Gene: Gengar\_80 Start: 53997, Stop: 54230, Start Num: 21

Candidate Starts for Gengar\_80:

(9, 53892), (Start: 21 @53997 has 14 MA's), (24, 54021), (25, 54069), (26, 54081), (29, 54111), (31, 54123), (32, 54126),

Gene: Guillsminger\_81 Start: 53845, Stop: 54078, Start Num: 21

Candidate Starts for Guillsminger\_81:

(Start: 21 @53845 has 14 MA's), (23, 53866), (24, 53869), (25, 53917), (26, 53929), (31, 53971), (32, 53974),

Gene: Heftyboy\_78 Start: 53212, Stop: 53445, Start Num: 21

Candidate Starts for Heftyboy\_78:

(Start: 21 @53212 has 14 MA's), (23, 53233), (25, 53284), (26, 53296), (29, 53326), (31, 53338),

Gene: Huwbert\_78 Start: 48165, Stop: 48401, Start Num: 19

Candidate Starts for Huwbert\_78:

(Start: 17 @48156 has 1 MA's), (Start: 19 @48165 has 1 MA's), (23, 48192), (27, 48273), (28, 48276), (31, 48291), (33, 48303),

Gene: InvictusManeo\_76 Start: 51525, Stop: 51758, Start Num: 21

Candidate Starts for InvictusManeo\_76:

(Start: 21 @51525 has 14 MA's), (23, 51546), (25, 51597), (26, 51609), (29, 51639), (31, 51651),

Gene: Leston\_80 Start: 53962, Stop: 54195, Start Num: 21

Candidate Starts for Leston\_80:

(Start: 21 @53962 has 14 MA's), (23, 53983), (24, 53986), (25, 54034), (26, 54046), (29, 54076), (31, 54088), (32, 54091),

Gene: Lozinak\_78 Start: 50145, Stop: 50369, Start Num: 22

Candidate Starts for Lozinak\_78:

(Start: 22 @50145 has 15 MA's), (26, 50220), (35, 50325),

Gene: Miryou\_82 Start: 55820, Stop: 56053, Start Num: 21

Candidate Starts for Miryou\_82:

(9, 55715), (Start: 21 @55820 has 14 MA's), (23, 55841), (24, 55844), (25, 55892), (26, 55904), (29, 55934), (31, 55946), (32, 55949), (33, 55958),

Gene: Miskis\_77 Start: 48618, Stop: 48842, Start Num: 22

Candidate Starts for Miskis\_77:

(10, 48513), (14, 48567), (Start: 22 @48618 has 15 MA's), (26, 48693), (35, 48798),

Gene: Norvs\_78 Start: 49554, Stop: 49778, Start Num: 22

Candidate Starts for Norvs\_78:

(Start: 22 @49554 has 15 MA's), (26, 49629), (35, 49734),

Gene: OkiRoe\_81 Start: 54960, Stop: 55193, Start Num: 21

Candidate Starts for OkiRoe\_81:

(9, 54855), (Start: 21 @54960 has 14 MA's), (23, 54981), (24, 54984), (25, 55032), (26, 55044), (31, 55086), (32, 55089),

Gene: OneUp\_71 Start: 48247, Stop: 48471, Start Num: 22

Candidate Starts for OneUp\_71:

(5, 48001), (6, 48025), (7, 48067), (8, 48097), (11, 48172), (15, 48202), (16, 48211), (18, 48232), (Start: 22 @48247 has 15 MA's), (28, 48349), (36, 48460),

Gene: Paola\_80 Start: 53845, Stop: 54078, Start Num: 21

Candidate Starts for Paola\_80:

(Start: 21 @53845 has 14 MA's), (23, 53866), (24, 53869), (25, 53917), (26, 53929), (29, 53959), (31, 53971), (32, 53974),

Gene: PhinkBoden\_77 Start: 49935, Stop: 50159, Start Num: 22

Candidate Starts for PhinkBoden\_77:

(Start: 22 @49935 has 15 MA's), (26, 50010), (35, 50115),

Gene: Smoothie\_79 Start: 50145, Stop: 50369, Start Num: 22

Candidate Starts for Smoothie\_79:

(Start: 22 @50145 has 15 MA's), (26, 50220), (35, 50325),

Gene: SoSeph\_78 Start: 53212, Stop: 53445, Start Num: 21

Candidate Starts for SoSeph\_78:

(Start: 21 @53212 has 14 MA's), (23, 53233), (25, 53284), (26, 53296), (29, 53326), (31, 53338),

Gene: Thyatira\_81 Start: 55557, Stop: 55790, Start Num: 21

Candidate Starts for Thyatira\_81:

(1, 55080), (9, 55452), (Start: 21 @55557 has 14 MA's), (23, 55578), (24, 55581), (25, 55629), (26, 55641), (29, 55671), (31, 55683), (32, 55686),

Gene: Toniann\_78 Start: 49497, Stop: 49721, Start Num: 22

Candidate Starts for Toniann\_78:

(Start: 22 @49497 has 15 MA's), (26, 49572), (35, 49677),

Gene: Triscuit\_77 Start: 48116, Stop: 48367, Start Num: 17

Candidate Starts for Triscuit\_77:

(Start: 17 @48116 has 1 MA's), (Start: 19 @48125 has 1 MA's), (27, 48239), (28, 48242), (31, 48257), (33, 48269),

Gene: ViviJ\_83 Start: 53574, Stop: 53807, Start Num: 21

Candidate Starts for ViviJ\_83:

(Start: 21 @53574 has 14 MA's), (23, 53595), (25, 53646), (26, 53658), (29, 53688), (31, 53700),

Gene: Waterfoul\_80 Start: 53627, Stop: 53860, Start Num: 21

Candidate Starts for Waterfoul\_80:

(9, 53522), (Start: 21 @53627 has 14 MA's), (23, 53648), (24, 53651), (25, 53699), (26, 53711), (29, 53741), (31, 53753), (32, 53756),

Gene: WilliamBoone\_77 Start: 48245, Stop: 48469, Start Num: 22

Candidate Starts for WilliamBoone\_77:

(Start: 22 @48245 has 15 MA's), (26, 48320), (32, 48365), (34, 48395), (35, 48425),