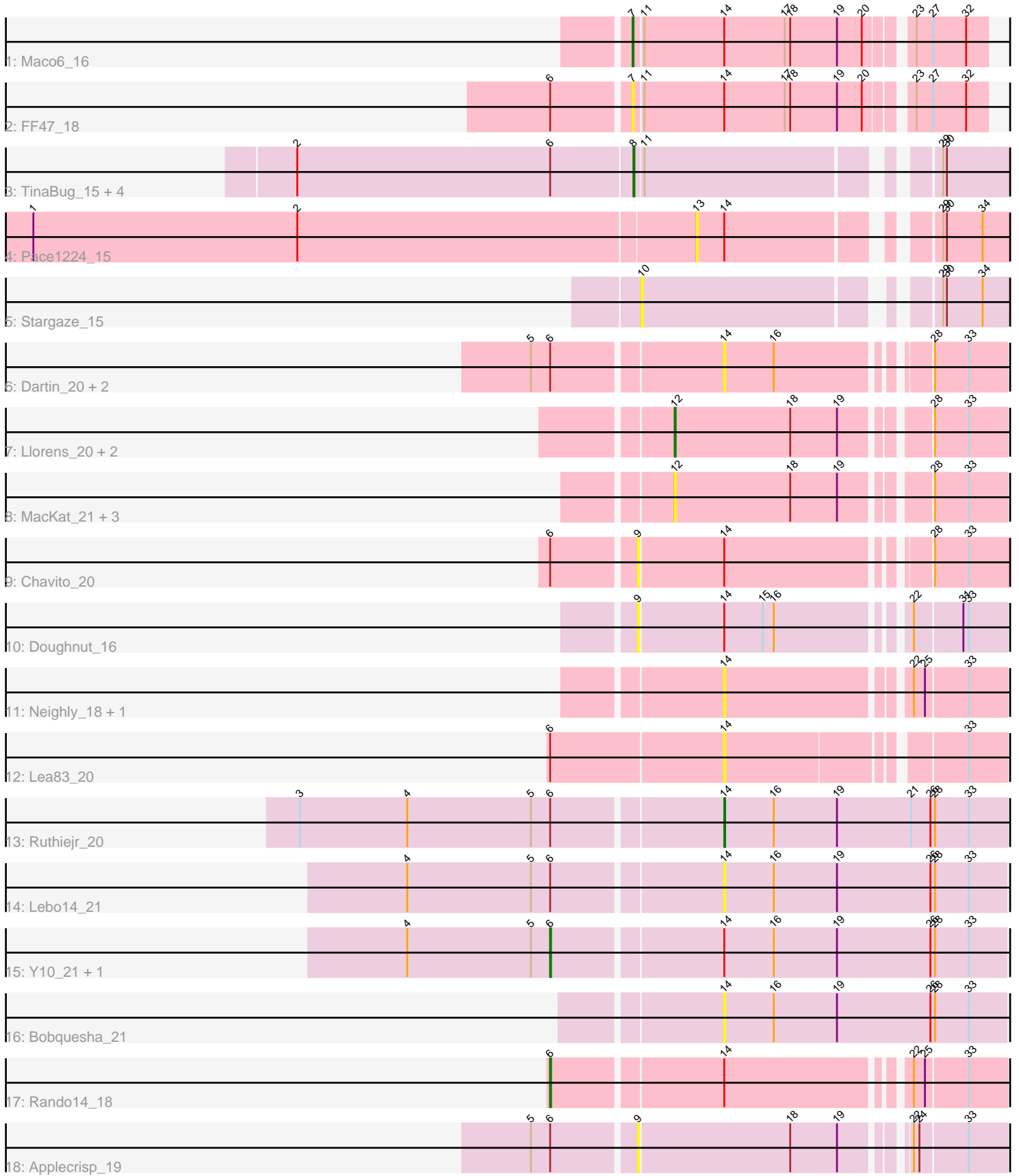


Pham 214512



Note: Tracks are now grouped by subcluster and scaled. Switching in subcluster is indicated by changes in track color. Track scale is now set by default to display the region 30 bp upstream of start 1 to 30 bp downstream of the last possible start. If this default region is judged to be packed too tightly with annotated starts, the track will be further scaled to only show that region of the ORF with annotated starts. This action will be indicated by adding "Zoomed" to the title. For starts, yellow indicates the location of called starts comprised solely of Glimmer/GeneMark auto-annotations, green indicates the location of called starts with at least 1 manual gene annotation.

Pham 214512 Report

This analysis was run 02/22/25 on database version 588.

Pham number 214512 has 31 members, 24 are drafts.

Phages represented in each track:

- Track 1 : Maco6_16
- Track 2 : FF47_18
- Track 3 : TinaBug_15, Wendigo_15, DNAlll_0015, Maliketh_15, AzulaCat_15
- Track 4 : Pace1224_15
- Track 5 : Stargaze_15
- Track 6 : Dartin_20, Richo_20, McMater_20
- Track 7 : Llorens_20, TaiwanKao_21, CallaLilly_21
- Track 8 : MacKat_21, Clipper_22, Teejan_16, Torres_16
- Track 9 : Chavito_20
- Track 10 : Doughnut_16
- Track 11 : Neighly_18, ViviJ_17
- Track 12 : Lea83_20
- Track 13 : Ruthiejr_20
- Track 14 : Lebo14_21
- Track 15 : Y10_21, Y2_21
- Track 16 : Bobquesha_21
- Track 17 : Rando14_18
- Track 18 : Applecrisp_19

Summary of Final Annotations (See graph section above for start numbers):

The start number called the most often in the published annotations is 6, it was called in 3 of the 7 non-draft genes in the pham.

Genes that call this "Most Annotated" start:

- Rando14_18, Y10_21, Y2_21,

Genes that have the "Most Annotated" start but do not call it:

- Applecrisp_19, AzulaCat_15, Chavito_20, DNAlll_0015, Dartin_20, FF47_18, Lea83_20, Lebo14_21, Maliketh_15, McMater_20, Richo_20, Ruthiejr_20, TinaBug_15, Wendigo_15,

Genes that do not have the "Most Annotated" start:

- Bobquesha_21, CallaLilly_21, Clipper_22, Doughnut_16, Llorens_20, MacKat_21, Maco6_16, Neighly_18, Pace1224_15, Stargaze_15, TaiwanKao_21, Teejan_16, Torres_16, ViviJ_17,

Summary by start number:

Start 6:

- Found in 17 of 31 (54.8%) of genes in pham
- Manual Annotations of this start: 3 of 7
- Called 17.6% of time when present
- Phage (with cluster) where this start called: Rando14_18 (K5), Y10_21 (K4), Y2_21 (K4),

Start 7:

- Found in 2 of 31 (6.5%) of genes in pham
- Manual Annotations of this start: 1 of 7
- Called 100.0% of time when present
- Phage (with cluster) where this start called: FF47_18 (AB), Maco6_16 (AB),

Start 8:

- Found in 5 of 31 (16.1%) of genes in pham
- Manual Annotations of this start: 1 of 7
- Called 100.0% of time when present
- Phage (with cluster) where this start called: AzulaCat_15 (G1), DNAllI_0015 (G1), Maliketh_15 (G1), TinaBug_15 (G1), Wendigo_15 (G1),

Start 9:

- Found in 3 of 31 (9.7%) of genes in pham
- No Manual Annotations of this start.
- Called 100.0% of time when present
- Phage (with cluster) where this start called: Applecrisp_19 (K6), Chavito_20 (K1), Doughnut_16 (K2),

Start 10:

- Found in 1 of 31 (3.2%) of genes in pham
- No Manual Annotations of this start.
- Called 100.0% of time when present
- Phage (with cluster) where this start called: Stargaze_15 (G5),

Start 12:

- Found in 7 of 31 (22.6%) of genes in pham
- Manual Annotations of this start: 1 of 7
- Called 100.0% of time when present
- Phage (with cluster) where this start called: CallaLilly_21 (K1), Clipper_22 (K1), Llorens_20 (K1), MacKat_21 (K1), TaiwanKao_21 (K1), Teejan_16 (K1), Torres_16 (K1),

Start 13:

- Found in 1 of 31 (3.2%) of genes in pham
- No Manual Annotations of this start.
- Called 100.0% of time when present
- Phage (with cluster) where this start called: Pace1224_15 (G2),

Start 14:

- Found in 17 of 31 (54.8%) of genes in pham
- Manual Annotations of this start: 1 of 7
- Called 52.9% of time when present
- Phage (with cluster) where this start called: Bobquesha_21 (K4), Dartin_20 (K1), Lea83_20 (K3), Lebo14_21 (K4), McMater_20 (K1), Neighly_18 (K3), Richo_20 (K1), Ruthiejr_20 (K4), ViviJ_17 (K5),

Summary by clusters:

There are 10 clusters represented in this pham: G5, AB, G2, G1, K3, K2, K1, K6, K5, K4,

Info for manual annotations of cluster AB:

- Start number 7 was manually annotated 1 time for cluster AB.

Info for manual annotations of cluster G1:

- Start number 8 was manually annotated 1 time for cluster G1.

Info for manual annotations of cluster K1:

- Start number 12 was manually annotated 1 time for cluster K1.

Info for manual annotations of cluster K4:

- Start number 6 was manually annotated 2 times for cluster K4.
- Start number 14 was manually annotated 1 time for cluster K4.

Info for manual annotations of cluster K5:

- Start number 6 was manually annotated 1 time for cluster K5.

Gene Information:

Gene: Applecrisp_19 Start: 11887, Stop: 12273, Start Num: 9

Candidate Starts for Applecrisp_19:

(5, 11779), (Start: 6 @11800 has 3 MA's), (9, 11887), (18, 12049), (19, 12100), (22, 12157), (24, 12163), (33, 12211),

Gene: AzulaCat_15 Start: 11087, Stop: 11464, Start Num: 8

Candidate Starts for AzulaCat_15:

(2, 10724), (Start: 6 @11000 has 3 MA's), (Start: 8 @11087 has 1 MA's), (11, 11096), (29, 11375), (30, 11378),

Gene: Bobquesha_21 Start: 12744, Stop: 13064, Start Num: 14

Candidate Starts for Bobquesha_21:

(Start: 14 @12744 has 1 MA's), (16, 12798), (19, 12867), (26, 12969), (28, 12972), (33, 13008),

Gene: CallaLilly_21 Start: 11686, Stop: 12039, Start Num: 12

Candidate Starts for CallaLilly_21:

(Start: 12 @11686 has 1 MA's), (18, 11812), (19, 11863), (28, 11941), (33, 11977),

Gene: Chavito_20 Start: 10746, Stop: 11138, Start Num: 9

Candidate Starts for Chavito_20:

(Start: 6 @10659 has 3 MA's), (9, 10746), (Start: 14 @10836 has 1 MA's), (28, 11031), (33, 11067),

Gene: Clipper_22 Start: 11740, Stop: 12093, Start Num: 12

Candidate Starts for Clipper_22:

(Start: 12 @11740 has 1 MA's), (18, 11866), (19, 11917), (28, 11995), (33, 12031),

Gene: DNAIII_0015 Start: 11096, Stop: 11473, Start Num: 8

Candidate Starts for DNAIII_0015:

(2, 10733), (Start: 6 @11009 has 3 MA's), (Start: 8 @11096 has 1 MA's), (11, 11105), (29, 11384), (30, 11387),

Gene: Dartin_20 Start: 10832, Stop: 11128, Start Num: 14

Candidate Starts for Dartin_20:

(5, 10634), (Start: 6 @10655 has 3 MA's), (Start: 14 @10832 has 1 MA's), (16, 10886), (28, 11027), (33, 11063),

Gene: Doughnut_16 Start: 9754, Stop: 10137, Start Num: 9

Candidate Starts for Doughnut_16:

(9, 9754), (Start: 14 @9844 has 1 MA's), (15, 9886), (16, 9898), (22, 10024), (31, 10072), (33, 10078),

Gene: FF47_18 Start: 11043, Stop: 11405, Start Num: 7

Candidate Starts for FF47_18:

(Start: 6 @10962 has 3 MA's), (Start: 7 @11043 has 1 MA's), (11, 11052), (Start: 14 @11139 has 1 MA's), (17, 11205), (18, 11211), (19, 11262), (20, 11289), (23, 11328), (27, 11346), (32, 11382),

Gene: Lea83_20 Start: 11903, Stop: 12193, Start Num: 14

Candidate Starts for Lea83_20:

(Start: 6 @11717 has 3 MA's), (Start: 14 @11903 has 1 MA's), (33, 12137),

Gene: Lebo14_21 Start: 13004, Stop: 13324, Start Num: 14

Candidate Starts for Lebo14_21:

(4, 12671), (5, 12806), (Start: 6 @12827 has 3 MA's), (Start: 14 @13004 has 1 MA's), (16, 13058), (19, 13127), (26, 13229), (28, 13232), (33, 13268),

Gene: Llorens_20 Start: 11763, Stop: 12116, Start Num: 12

Candidate Starts for Llorens_20:

(Start: 12 @11763 has 1 MA's), (18, 11889), (19, 11940), (28, 12018), (33, 12054),

Gene: MacKat_21 Start: 11740, Stop: 12093, Start Num: 12

Candidate Starts for MacKat_21:

(Start: 12 @11740 has 1 MA's), (18, 11866), (19, 11917), (28, 11995), (33, 12031),

Gene: Maco6_16 Start: 10335, Stop: 10697, Start Num: 7

Candidate Starts for Maco6_16:

(Start: 7 @10335 has 1 MA's), (11, 10344), (Start: 14 @10431 has 1 MA's), (17, 10497), (18, 10503), (19, 10554), (20, 10581), (23, 10620), (27, 10638), (32, 10674),

Gene: Maliketh_15 Start: 11087, Stop: 11464, Start Num: 8

Candidate Starts for Maliketh_15:

(2, 10724), (Start: 6 @11000 has 3 MA's), (Start: 8 @11087 has 1 MA's), (11, 11096), (29, 11375), (30, 11378),

Gene: McMater_20 Start: 10832, Stop: 11128, Start Num: 14

Candidate Starts for McMater_20:

(5, 10634), (Start: 6 @10655 has 3 MA's), (Start: 14 @10832 has 1 MA's), (16, 10886), (28, 11027), (33, 11063),

Gene: Neighly_18 Start: 11677, Stop: 11961, Start Num: 14

Candidate Starts for Neighly_18:

(Start: 14 @11677 has 1 MA's), (22, 11860), (25, 11872), (33, 11914),

Gene: Pace1224_15 Start: 11290, Stop: 11628, Start Num: 13

Candidate Starts for Pace1224_15:

(1, 10573), (2, 10861), (13, 11290), (Start: 14 @11320 has 1 MA's), (29, 11512), (30, 11515), (34, 11554),

Gene: Rando14_18 Start: 10595, Stop: 11053, Start Num: 6

Candidate Starts for Rando14_18:

(Start: 6 @10595 has 3 MA's), (Start: 14 @10772 has 1 MA's), (22, 10952), (25, 10964), (33, 11006),

Gene: Richo_20 Start: 10832, Stop: 11128, Start Num: 14

Candidate Starts for Richo_20:

(5, 10634), (Start: 6 @10655 has 3 MA's), (Start: 14 @10832 has 1 MA's), (16, 10886), (28, 11027), (33, 11063),

Gene: Ruthiejr_20 Start: 12597, Stop: 12920, Start Num: 14

Candidate Starts for Ruthiejr_20:

(3, 12147), (4, 12264), (5, 12399), (Start: 6 @12420 has 3 MA's), (Start: 14 @12597 has 1 MA's), (16, 12651), (19, 12720), (21, 12801), (26, 12822), (28, 12825), (33, 12861),

Gene: Stargaze_15 Start: 11389, Stop: 11766, Start Num: 10

Candidate Starts for Stargaze_15:

(10, 11389), (29, 11668), (30, 11671), (34, 11710),

Gene: TaiwanKao_21 Start: 11699, Stop: 12052, Start Num: 12

Candidate Starts for TaiwanKao_21:

(Start: 12 @11699 has 1 MA's), (18, 11825), (19, 11876), (28, 11954), (33, 11990),

Gene: Teejan_16 Start: 10977, Stop: 11327, Start Num: 12

Candidate Starts for Teejan_16:

(Start: 12 @10977 has 1 MA's), (18, 11103), (19, 11154), (28, 11229), (33, 11265),

Gene: TinaBug_15 Start: 11082, Stop: 11459, Start Num: 8

Candidate Starts for TinaBug_15:

(2, 10719), (Start: 6 @10995 has 3 MA's), (Start: 8 @11082 has 1 MA's), (11, 11091), (29, 11370), (30, 11373),

Gene: Torres_16 Start: 10977, Stop: 11327, Start Num: 12

Candidate Starts for Torres_16:

(Start: 12 @10977 has 1 MA's), (18, 11103), (19, 11154), (28, 11229), (33, 11265),

Gene: ViviJ_17 Start: 11695, Stop: 11979, Start Num: 14

Candidate Starts for ViviJ_17:

(Start: 14 @11695 has 1 MA's), (22, 11878), (25, 11890), (33, 11932),

Gene: Wendigo_15 Start: 11087, Stop: 11464, Start Num: 8

Candidate Starts for Wendigo_15:

(2, 10724), (Start: 6 @11000 has 3 MA's), (Start: 8 @11087 has 1 MA's), (11, 11096), (29, 11375), (30, 11378),

Gene: Y10_21 Start: 12813, Stop: 13310, Start Num: 6

Candidate Starts for Y10_21:

(4, 12657), (5, 12792), (Start: 6 @12813 has 3 MA's), (Start: 14 @12990 has 1 MA's), (16, 13044), (19, 13113), (26, 13215), (28, 13218), (33, 13254),

Gene: Y2_21 Start: 12813, Stop: 13310, Start Num: 6

Candidate Starts for Y2_21:

(4, 12657), (5, 12792), (Start: 6 @12813 has 3 MA's), (Start: 14 @12990 has 1 MA's), (16, 13044), (19, 13113), (26, 13215), (28, 13218), (33, 13254),