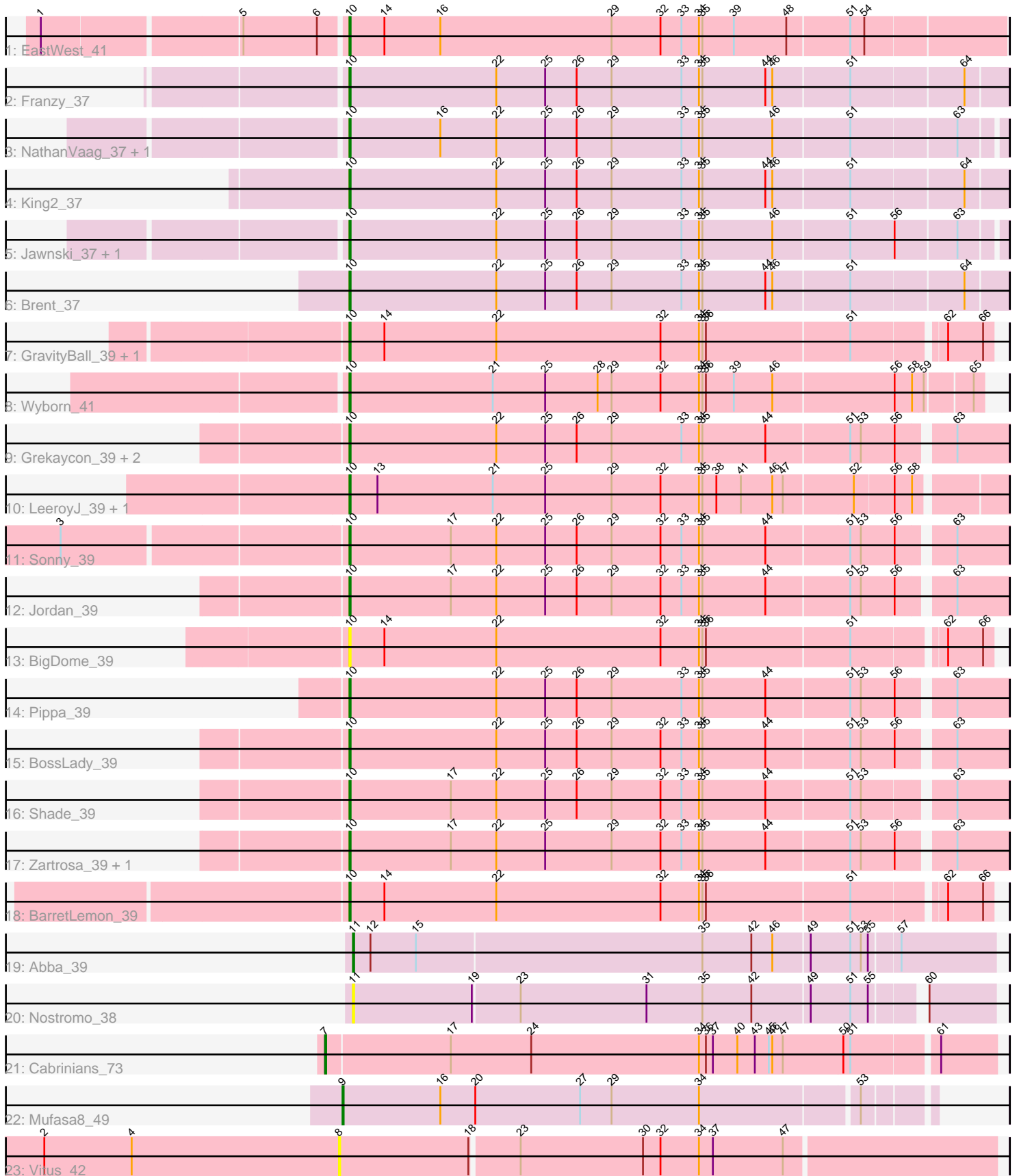


Pham 214523



Note: Tracks are now grouped by subcluster and scaled. Switching in subcluster is indicated by changes in track color. Track scale is now set by default to display the region 30 bp upstream of start 1 to 30 bp downstream of the last possible start. If this default region is judged to be packed too tightly with annotated starts, the track will be further scaled to only show that region of the ORF with annotated starts. This action will be indicated by adding "Zoomed" to the title. For starts, yellow indicates the location of called starts comprised solely of Glimmer/GeneMark auto-annotations, green indicates the location of called starts with at least 1 manual gene annotation.

## Pham 214523 Report

This analysis was run 02/22/25 on database version 588.

Pham number 214523 has 30 members, 3 are drafts.

Phages represented in each track:

- Track 1 : EastWest\_41
- Track 2 : Franzy\_37
- Track 3 : NathanVaag\_37, Piccoletto\_37
- Track 4 : King2\_37
- Track 5 : Jawnski\_37, Beans\_37
- Track 6 : Brent\_37
- Track 7 : GravityBall\_39, StevieBAY\_39
- Track 8 : Wyborn\_41
- Track 9 : Grekaycon\_39, Martha\_39, TaeYoung\_39
- Track 10 : LeeroyJ\_39, Timinator\_39
- Track 11 : Sonny\_39
- Track 12 : Jordan\_39
- Track 13 : BigDome\_39
- Track 14 : Pippa\_39
- Track 15 : BossLady\_39
- Track 16 : Shade\_39
- Track 17 : Zartrosa\_39, JKerns\_39
- Track 18 : BarretLemon\_39
- Track 19 : Abba\_39
- Track 20 : Nostromo\_38
- Track 21 : Cabrinians\_73
- Track 22 : Mufasa8\_49
- Track 23 : Vitus\_42

### ***Summary of Final Annotations (See graph section above for start numbers):***

The start number called the most often in the published annotations is 10, it was called in 24 of the 27 non-draft genes in the pham.

Genes that call this "Most Annotated" start:

- BarretLemon\_39, Beans\_37, BigDome\_39, BossLady\_39, Brent\_37, EastWest\_41, Franzy\_37, GravityBall\_39, Grekaycon\_39, JKerns\_39, Jawnski\_37, Jordan\_39, King2\_37, LeeroyJ\_39, Martha\_39, NathanVaag\_37, Piccoletto\_37, Pippa\_39, Shade\_39, Sonny\_39, StevieBAY\_39, TaeYoung\_39, Timinator\_39, Wyborn\_41,

Zartrosa\_39,

Genes that have the "Most Annotated" start but do not call it:

- 

Genes that do not have the "Most Annotated" start:

- Abba\_39, Cabrinians\_73, Mufasa8\_49, Nostromo\_38, Vitus\_42,

### Summary by start number:

Start 7:

- Found in 1 of 30 ( 3.3% ) of genes in pham
- Manual Annotations of this start: 1 of 27
- Called 100.0% of time when present
- Phage (with cluster) where this start called: Cabrinians\_73 (F1),

Start 8:

- Found in 1 of 30 ( 3.3% ) of genes in pham
- No Manual Annotations of this start.
- Called 100.0% of time when present
- Phage (with cluster) where this start called: Vitus\_42 (FL),

Start 9:

- Found in 1 of 30 ( 3.3% ) of genes in pham
- Manual Annotations of this start: 1 of 27
- Called 100.0% of time when present
- Phage (with cluster) where this start called: Mufasa8\_49 (FG),

Start 10:

- Found in 25 of 30 ( 83.3% ) of genes in pham
- Manual Annotations of this start: 24 of 27
- Called 100.0% of time when present
- Phage (with cluster) where this start called: BarretLemon\_39 (AO2), Beans\_37 (AO1), BigDome\_39 (AO2), BossLady\_39 (AO2), Brent\_37 (AO1), EastWest\_41 (AO), Franzy\_37 (AO1), GravityBall\_39 (AO2), Grekaycon\_39 (AO2), JKerns\_39 (AO2), Jawnski\_37 (AO1), Jordan\_39 (AO2), King2\_37 (AO1), LeeroyJ\_39 (AO2), Martha\_39 (AO2), NathanVaag\_37 (AO1), Piccoletto\_37 (AO1), Pippa\_39 (AO2), Shade\_39 (AO2), Sonny\_39 (AO2), StevieBAY\_39 (AO2), TaeYoung\_39 (AO2), Timinator\_39 (AO2), Wyborn\_41 (AO2), Zartrosa\_39 (AO2),

Start 11:

- Found in 2 of 30 ( 6.7% ) of genes in pham
- Manual Annotations of this start: 1 of 27
- Called 100.0% of time when present
- Phage (with cluster) where this start called: Abba\_39 (AO3), Nostromo\_38 (AO3),

### Summary by clusters:

There are 7 clusters represented in this pham: F1, AO, AO3, AO2, AO1, FG, FL,

Info for manual annotations of cluster AO:

- Start number 10 was manually annotated 1 time for cluster AO.

Info for manual annotations of cluster AO1:

- Start number 10 was manually annotated 7 times for cluster AO1.

Info for manual annotations of cluster AO2:

- Start number 10 was manually annotated 16 times for cluster AO2.

Info for manual annotations of cluster AO3:

- Start number 11 was manually annotated 1 time for cluster AO3.

Info for manual annotations of cluster F1:

- Start number 7 was manually annotated 1 time for cluster F1.

Info for manual annotations of cluster FG:

- Start number 9 was manually annotated 1 time for cluster FG.

### ***Gene Information:***

Gene: Abba\_39 Start: 30600, Stop: 31139, Start Num: 11

Candidate Starts for Abba\_39:

(Start: 11 @30600 has 1 MA's), (12, 30615), (15, 30654), (35, 30897), (42, 30939), (46, 30957), (49, 30987), (51, 31020), (53, 31029), (55, 31035), (57, 31059),

Gene: BarretLemon\_39 Start: 31855, Stop: 32391, Start Num: 10

Candidate Starts for BarretLemon\_39:

(Start: 10 @31855 has 24 MA's), (14, 31885), (22, 31981), (32, 32122), (34, 32155), (35, 32158), (36, 32161), (51, 32281), (62, 32353), (66, 32383),

Gene: Beans\_37 Start: 31641, Stop: 32189, Start Num: 10

Candidate Starts for Beans\_37:

(Start: 10 @31641 has 24 MA's), (22, 31767), (25, 31809), (26, 31836), (29, 31866), (33, 31926), (34, 31941), (35, 31944), (46, 32004), (51, 32067), (56, 32103), (63, 32154),

Gene: BigDome\_39 Start: 31861, Stop: 32397, Start Num: 10

Candidate Starts for BigDome\_39:

(Start: 10 @31861 has 24 MA's), (14, 31891), (22, 31987), (32, 32128), (34, 32161), (35, 32164), (36, 32167), (51, 32287), (62, 32359), (66, 32389),

Gene: BossLady\_39 Start: 31863, Stop: 32411, Start Num: 10

Candidate Starts for BossLady\_39:

(Start: 10 @31863 has 24 MA's), (22, 31989), (25, 32031), (26, 32058), (29, 32088), (32, 32130), (33, 32148), (34, 32163), (35, 32166), (44, 32220), (51, 32289), (53, 32298), (56, 32325), (63, 32367),

Gene: Brent\_37 Start: 31595, Stop: 32149, Start Num: 10

Candidate Starts for Brent\_37:

(Start: 10 @31595 has 24 MA's), (22, 31721), (25, 31763), (26, 31790), (29, 31820), (33, 31880), (34, 31895), (35, 31898), (44, 31952), (46, 31958), (51, 32021), (64, 32114),

Gene: Cabrinians\_73 Start: 46340, Stop: 46903, Start Num: 7

Candidate Starts for Cabrinians\_73:

(Start: 7 @46340 has 1 MA's), (17, 46445), (24, 46514), (34, 46658), (36, 46664), (37, 46670), (40, 46691), (43, 46706), (45, 46718), (46, 46721), (47, 46730), (50, 46781), (51, 46787), (61, 46856),

Gene: EastWest\_41 Start: 31527, Stop: 32081, Start Num: 10

Candidate Starts for EastWest\_41:

(1, 31281), (5, 31443), (6, 31506), (Start: 10 @31527 has 24 MA's), (14, 31557), (16, 31605), (29, 31752), (32, 31794), (33, 31812), (34, 31827), (35, 31830), (39, 31857), (48, 31902), (51, 31953), (54, 31965),

Gene: Franzy\_37 Start: 31611, Stop: 32165, Start Num: 10

Candidate Starts for Franzy\_37:

(Start: 10 @31611 has 24 MA's), (22, 31737), (25, 31779), (26, 31806), (29, 31836), (33, 31896), (34, 31911), (35, 31914), (44, 31968), (46, 31974), (51, 32037), (64, 32130),

Gene: GravityBall\_39 Start: 31885, Stop: 32421, Start Num: 10

Candidate Starts for GravityBall\_39:

(Start: 10 @31885 has 24 MA's), (14, 31915), (22, 32011), (32, 32152), (34, 32185), (35, 32188), (36, 32191), (51, 32311), (62, 32383), (66, 32413),

Gene: Grekaycon\_39 Start: 31809, Stop: 32357, Start Num: 10

Candidate Starts for Grekaycon\_39:

(Start: 10 @31809 has 24 MA's), (22, 31935), (25, 31977), (26, 32004), (29, 32034), (33, 32094), (34, 32109), (35, 32112), (44, 32166), (51, 32235), (53, 32244), (56, 32271), (63, 32313),

Gene: JKerns\_39 Start: 31869, Stop: 32417, Start Num: 10

Candidate Starts for JKerns\_39:

(Start: 10 @31869 has 24 MA's), (17, 31956), (22, 31995), (25, 32037), (29, 32094), (32, 32136), (33, 32154), (34, 32169), (35, 32172), (44, 32226), (51, 32295), (53, 32304), (56, 32331), (63, 32373),

Gene: Jawnski\_37 Start: 31599, Stop: 32147, Start Num: 10

Candidate Starts for Jawnski\_37:

(Start: 10 @31599 has 24 MA's), (22, 31725), (25, 31767), (26, 31794), (29, 31824), (33, 31884), (34, 31899), (35, 31902), (46, 31962), (51, 32025), (56, 32061), (63, 32112),

Gene: Jordan\_39 Start: 31918, Stop: 32466, Start Num: 10

Candidate Starts for Jordan\_39:

(Start: 10 @31918 has 24 MA's), (17, 32005), (22, 32044), (25, 32086), (26, 32113), (29, 32143), (32, 32185), (33, 32203), (34, 32218), (35, 32221), (44, 32275), (51, 32344), (53, 32353), (56, 32380), (63, 32422),

Gene: King2\_37 Start: 31589, Stop: 32143, Start Num: 10

Candidate Starts for King2\_37:

(Start: 10 @31589 has 24 MA's), (22, 31715), (25, 31757), (26, 31784), (29, 31814), (33, 31874), (34, 31889), (35, 31892), (44, 31946), (46, 31952), (51, 32015), (64, 32108),

Gene: LeeroyJ\_39 Start: 31877, Stop: 32422, Start Num: 10

Candidate Starts for LeeroyJ\_39:

(Start: 10 @31877 has 24 MA's), (13, 31901), (21, 32000), (25, 32045), (29, 32102), (32, 32144), (34, 32177), (35, 32180), (38, 32192), (41, 32213), (46, 32240), (47, 32249), (52, 32306), (56, 32336), (58, 32351),

Gene: Martha\_39 Start: 31810, Stop: 32358, Start Num: 10

Candidate Starts for Martha\_39:

(Start: 10 @31810 has 24 MA's), (22, 31936), (25, 31978), (26, 32005), (29, 32035), (33, 32095), (34, 32110), (35, 32113), (44, 32167), (51, 32236), (53, 32245), (56, 32272), (63, 32314),

Gene: Mufasa8\_49 Start: 36868, Stop: 37356, Start Num: 9

Candidate Starts for Mufasa8\_49:

(Start: 9 @36868 has 1 MA's), (16, 36952), (20, 36982), (27, 37072), (29, 37099), (34, 37174), (53, 37303),

Gene: NathanVaag\_37 Start: 31617, Stop: 32165, Start Num: 10

Candidate Starts for NathanVaag\_37:

(Start: 10 @31617 has 24 MA's), (16, 31695), (22, 31743), (25, 31785), (26, 31812), (29, 31842), (33, 31902), (34, 31917), (35, 31920), (46, 31980), (51, 32043), (63, 32130),

Gene: Nostromo\_38 Start: 30676, Stop: 31203, Start Num: 11

Candidate Starts for Nostromo\_38:

(Start: 11 @30676 has 1 MA's), (19, 30778), (23, 30817), (31, 30925), (35, 30973), (42, 31015), (49, 31063), (51, 31096), (55, 31111), (60, 31147),

Gene: Piccoletto\_37 Start: 31615, Stop: 32163, Start Num: 10

Candidate Starts for Piccoletto\_37:

(Start: 10 @31615 has 24 MA's), (16, 31693), (22, 31741), (25, 31783), (26, 31810), (29, 31840), (33, 31900), (34, 31915), (35, 31918), (46, 31978), (51, 32041), (63, 32128),

Gene: Pippa\_39 Start: 31965, Stop: 32513, Start Num: 10

Candidate Starts for Pippa\_39:

(Start: 10 @31965 has 24 MA's), (22, 32091), (25, 32133), (26, 32160), (29, 32190), (33, 32250), (34, 32265), (35, 32268), (44, 32322), (51, 32391), (53, 32400), (56, 32427), (63, 32469),

Gene: Shade\_39 Start: 31892, Stop: 32440, Start Num: 10

Candidate Starts for Shade\_39:

(Start: 10 @31892 has 24 MA's), (17, 31979), (22, 32018), (25, 32060), (26, 32087), (29, 32117), (32, 32159), (33, 32177), (34, 32192), (35, 32195), (44, 32249), (51, 32318), (53, 32327), (63, 32396),

Gene: Sonny\_39 Start: 31915, Stop: 32463, Start Num: 10

Candidate Starts for Sonny\_39:

(3, 31681), (Start: 10 @31915 has 24 MA's), (17, 32002), (22, 32041), (25, 32083), (26, 32110), (29, 32140), (32, 32182), (33, 32200), (34, 32215), (35, 32218), (44, 32272), (51, 32341), (53, 32350), (56, 32377), (63, 32419),

Gene: StevieBAY\_39 Start: 31885, Stop: 32421, Start Num: 10

Candidate Starts for StevieBAY\_39:

(Start: 10 @31885 has 24 MA's), (14, 31915), (22, 32011), (32, 32152), (34, 32185), (35, 32188), (36, 32191), (51, 32311), (62, 32383), (66, 32413),

Gene: TaeYoung\_39 Start: 31810, Stop: 32358, Start Num: 10

Candidate Starts for TaeYoung\_39:

(Start: 10 @31810 has 24 MA's), (22, 31936), (25, 31978), (26, 32005), (29, 32035), (33, 32095), (34, 32110), (35, 32113), (44, 32167), (51, 32236), (53, 32245), (56, 32272), (63, 32314),

Gene: Timinator\_39 Start: 31877, Stop: 32422, Start Num: 10

Candidate Starts for Timinator\_39:

(Start: 10 @31877 has 24 MA's), (13, 31901), (21, 32000), (25, 32045), (29, 32102), (32, 32144), (34, 32177), (35, 32180), (38, 32192), (41, 32213), (46, 32240), (47, 32249), (52, 32306), (56, 32336), (58,

32351),

Gene: Vitus\_42 Start: 33109, Stop: 33660, Start Num: 8

Candidate Starts for Vitus\_42:

(2, 32857), (4, 32932), (8, 33109), (18, 33220), (23, 33259), (30, 33364), (32, 33379), (34, 33412), (37, 33424), (47, 33484),

Gene: Wyborn\_41 Start: 32362, Stop: 32892, Start Num: 10

Candidate Starts for Wyborn\_41:

(Start: 10 @32362 has 24 MA's), (21, 32485), (25, 32530), (28, 32575), (29, 32587), (32, 32629), (34, 32662), (35, 32665), (36, 32668), (39, 32692), (46, 32725), (56, 32824), (58, 32839), (59, 32848), (65, 32884),

Gene: Zartrosa\_39 Start: 31822, Stop: 32370, Start Num: 10

Candidate Starts for Zartrosa\_39:

(Start: 10 @31822 has 24 MA's), (17, 31909), (22, 31948), (25, 31990), (29, 32047), (32, 32089), (33, 32107), (34, 32122), (35, 32125), (44, 32179), (51, 32248), (53, 32257), (56, 32284), (63, 32326),