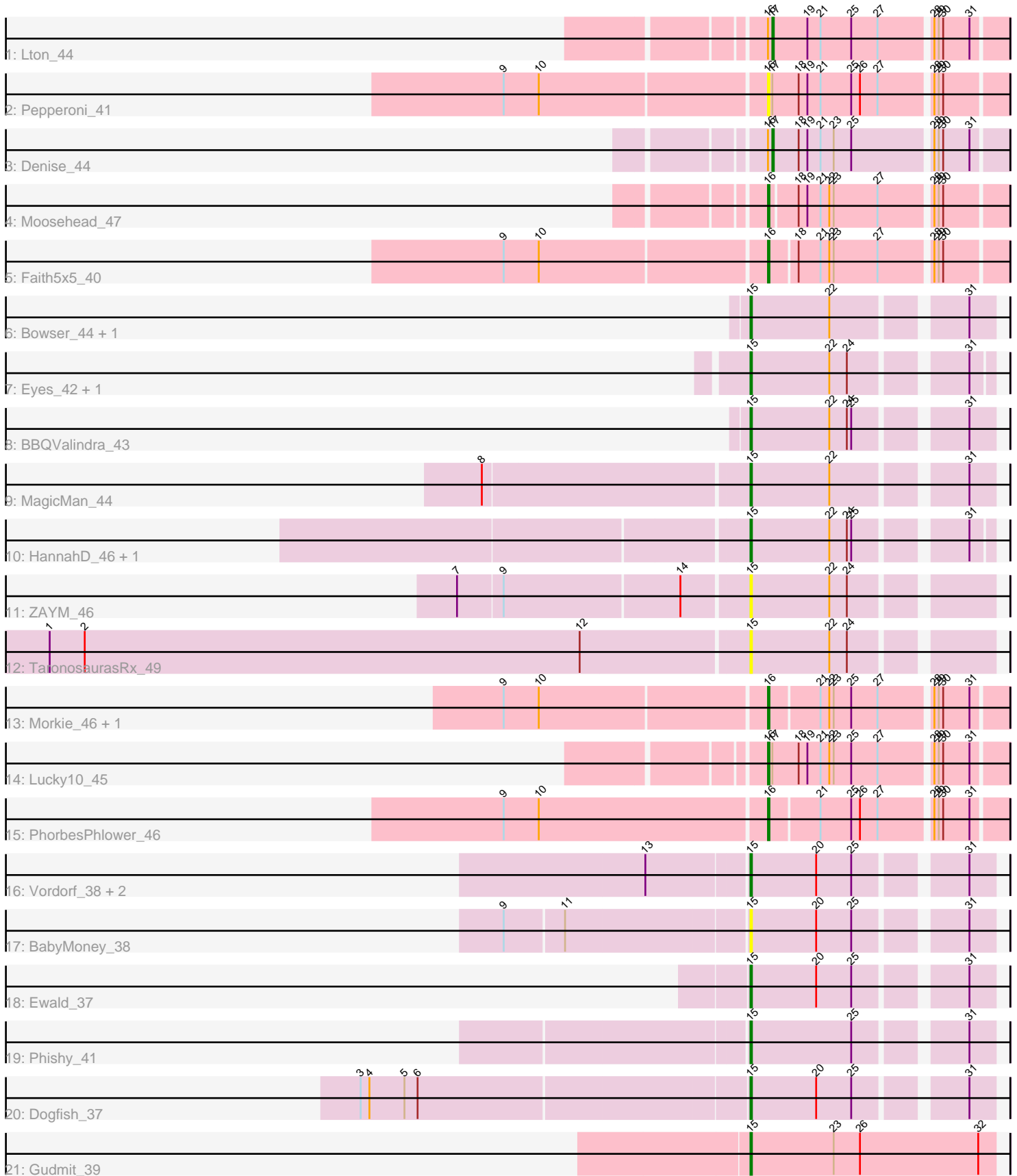


Pham 214555



Note: Tracks are now grouped by subcluster and scaled. Switching in subcluster is indicated by changes in track color. Track scale is now set by default to display the region 30 bp upstream of start 1 to 30 bp downstream of the last possible start. If this default region is judged to be packed too tightly with annotated starts, the track will be further scaled to only show that region of the ORF with annotated starts. This action will be indicated by adding "Zoomed" to the title. For starts, yellow indicates the location of called starts comprised solely of Glimmer/GeneMark auto-annotations, green indicates the location of called starts with at least 1 manual gene annotation.

Pham 214555 Report

This analysis was run 02/22/25 on database version 588.

Pham number 214555 has 27 members, 5 are drafts.

Phages represented in each track:

- Track 1 : Lton_44
- Track 2 : Pepperoni_41
- Track 3 : Denise_44
- Track 4 : Moosehead_47
- Track 5 : Faith5x5_40
- Track 6 : Bowser_44, Schnabeltier_45
- Track 7 : Eyes_42, Opie_47
- Track 8 : BBQValindra_43
- Track 9 : MagicMan_44
- Track 10 : HannahD_46, GEazy_49
- Track 11 : ZAYM_46
- Track 12 : TaronosaurusRx_49
- Track 13 : Morkie_46, OneDirection_41
- Track 14 : Lucky10_45
- Track 15 : PhorbesPhlower_46
- Track 16 : Vordorf_38, Meyran_37, Nyceirae_41
- Track 17 : BabyMoney_38
- Track 18 : Ewald_37
- Track 19 : Phishy_41
- Track 20 : Dogfish_37
- Track 21 : Gudmit_39

Summary of Final Annotations (See graph section above for start numbers):

The start number called the most often in the published annotations is 15, it was called in 14 of the 22 non-draft genes in the pham.

Genes that call this "Most Annotated" start:

- BBQValindra_43, BabyMoney_38, Bowser_44, Dogfish_37, Ewald_37, Eyes_42, GEazy_49, Gudmit_39, HannahD_46, MagicMan_44, Meyran_37, Nyceirae_41, Opie_47, Phishy_41, Schnabeltier_45, TaronosaurusRx_49, Vordorf_38, ZAYM_46,

Genes that have the "Most Annotated" start but do not call it:

-

Genes that do not have the "Most Annotated" start:

- Denise_44, Faith5x5_40, Lton_44, Lucky10_45, Moosehead_47, Morkie_46, OneDirection_41, Pepperoni_41, PhorbesPhlower_46,

Summary by start number:

Start 15:

- Found in 18 of 27 (66.7%) of genes in pham
- Manual Annotations of this start: 14 of 22
- Called 100.0% of time when present
- Phage (with cluster) where this start called: BBQValindra_43 (DB), BabyMoney_38 (DT), Bowser_44 (DB), Dogfish_37 (DT), Ewald_37 (DT), Eyes_42 (DB), GEazy_49 (DB), Gudmit_39 (singleton), HannahD_46 (DB), MagicMan_44 (DB), Meyran_37 (DT), Nyceirae_41 (DT), Opie_47 (DB), Phishy_41 (DT), Schnabeltier_45 (DB), TaronosaurusRx_49 (DB), Vordorf_38 (DT), ZAYM_46 (DB),

Start 16:

- Found in 9 of 27 (33.3%) of genes in pham
- Manual Annotations of this start: 6 of 22
- Called 77.8% of time when present
- Phage (with cluster) where this start called: Faith5x5_40 (CZ6), Lucky10_45 (DH), Moosehead_47 (CZ6), Morkie_46 (DH), OneDirection_41 (CZ6), Pepperoni_41 (CZ), PhorbesPhlower_46 (DH),

Start 17:

- Found in 4 of 27 (14.8%) of genes in pham
- Manual Annotations of this start: 2 of 22
- Called 50.0% of time when present
- Phage (with cluster) where this start called: Denise_44 (CZ5), Lton_44 (CZ),

Summary by clusters:

There are 7 clusters represented in this pham: singleton, DH, DB, CZ6, CZ5, CZ, DT,

Info for manual annotations of cluster CZ:

- Start number 17 was manually annotated 1 time for cluster CZ.

Info for manual annotations of cluster CZ5:

- Start number 17 was manually annotated 1 time for cluster CZ5.

Info for manual annotations of cluster CZ6:

- Start number 16 was manually annotated 3 times for cluster CZ6.

Info for manual annotations of cluster DB:

- Start number 15 was manually annotated 8 times for cluster DB.

Info for manual annotations of cluster DH:

- Start number 16 was manually annotated 3 times for cluster DH.

Info for manual annotations of cluster DT:

- Start number 15 was manually annotated 5 times for cluster DT.

Gene Information:

Gene: BBQValindra_43 Start: 34125, Stop: 34277, Start Num: 15

Candidate Starts for BBQValindra_43:

(Start: 15 @34125 has 14 MA's), (22, 34179), (24, 34191), (25, 34194), (31, 34260),

Gene: BabyMoney_38 Start: 31354, Stop: 31506, Start Num: 15

Candidate Starts for BabyMoney_38:

(9, 31195), (11, 31234), (Start: 15 @31354 has 14 MA's), (20, 31399), (25, 31423), (31, 31489),

Gene: Bowser_44 Start: 33934, Stop: 34086, Start Num: 15

Candidate Starts for Bowser_44:

(Start: 15 @33934 has 14 MA's), (22, 33988), (31, 34069),

Gene: Denise_44 Start: 32315, Stop: 32467, Start Num: 17

Candidate Starts for Denise_44:

(Start: 16 @32312 has 6 MA's), (Start: 17 @32315 has 2 MA's), (18, 32333), (19, 32339), (21, 32348), (23, 32357), (25, 32369), (28, 32420), (29, 32423), (30, 32426), (31, 32444),

Gene: Dogfish_37 Start: 30784, Stop: 30936, Start Num: 15

Candidate Starts for Dogfish_37:

(3, 30526), (4, 30532), (5, 30556), (6, 30565), (Start: 15 @30784 has 14 MA's), (20, 30829), (25, 30853), (31, 30919),

Gene: Ewald_37 Start: 30602, Stop: 30754, Start Num: 15

Candidate Starts for Ewald_37:

(Start: 15 @30602 has 14 MA's), (20, 30647), (25, 30671), (31, 30737),

Gene: Eyes_42 Start: 33981, Stop: 34130, Start Num: 15

Candidate Starts for Eyes_42:

(Start: 15 @33981 has 14 MA's), (22, 34035), (24, 34047), (31, 34116),

Gene: Faith5x5_40 Start: 29956, Stop: 30108, Start Num: 16

Candidate Starts for Faith5x5_40:

(9, 29782), (10, 29806), (Start: 16 @29956 has 6 MA's), (18, 29974), (21, 29989), (22, 29995), (23, 29998), (27, 30028), (28, 30061), (29, 30064), (30, 30067),

Gene: GEazy_49 Start: 34256, Stop: 34405, Start Num: 15

Candidate Starts for GEazy_49:

(Start: 15 @34256 has 14 MA's), (22, 34310), (24, 34322), (25, 34325), (31, 34391),

Gene: Gudmit_39 Start: 27962, Stop: 28129, Start Num: 15

Candidate Starts for Gudmit_39:

(Start: 15 @27962 has 14 MA's), (23, 28019), (26, 28037), (32, 28118),

Gene: HannahD_46 Start: 33623, Stop: 33772, Start Num: 15

Candidate Starts for HannahD_46:

(Start: 15 @33623 has 14 MA's), (22, 33677), (24, 33689), (25, 33692), (31, 33758),

Gene: Lton_44 Start: 29999, Stop: 30151, Start Num: 17

Candidate Starts for Lton_44:

(Start: 16 @29996 has 6 MA's), (Start: 17 @29999 has 2 MA's), (19, 30023), (21, 30032), (25, 30053), (27, 30071), (28, 30104), (29, 30107), (30, 30110), (31, 30128),

Gene: Lucky10_45 Start: 32714, Stop: 32869, Start Num: 16

Candidate Starts for Lucky10_45:

(Start: 16 @32714 has 6 MA's), (Start: 17 @32717 has 2 MA's), (18, 32735), (19, 32741), (21, 32750), (22, 32756), (23, 32759), (25, 32771), (27, 32789), (28, 32822), (29, 32825), (30, 32828), (31, 32846),

Gene: MagicMan_44 Start: 33860, Stop: 34012, Start Num: 15

Candidate Starts for MagicMan_44:

(8, 33686), (Start: 15 @33860 has 14 MA's), (22, 33914), (31, 33995),

Gene: Meyran_37 Start: 31676, Stop: 31828, Start Num: 15

Candidate Starts for Meyran_37:

(13, 31610), (Start: 15 @31676 has 14 MA's), (20, 31721), (25, 31745), (31, 31811),

Gene: Moosehead_47 Start: 30929, Stop: 31081, Start Num: 16

Candidate Starts for Moosehead_47:

(Start: 16 @30929 has 6 MA's), (18, 30947), (19, 30953), (21, 30962), (22, 30968), (23, 30971), (27, 31001), (28, 31034), (29, 31037), (30, 31040),

Gene: Morkie_46 Start: 31833, Stop: 31985, Start Num: 16

Candidate Starts for Morkie_46:

(9, 31659), (10, 31683), (Start: 16 @31833 has 6 MA's), (21, 31866), (22, 31872), (23, 31875), (25, 31887), (27, 31905), (28, 31938), (29, 31941), (30, 31944), (31, 31962),

Gene: Nyceirae_41 Start: 31490, Stop: 31639, Start Num: 15

Candidate Starts for Nyceirae_41:

(13, 31421), (Start: 15 @31490 has 14 MA's), (20, 31535), (25, 31559), (31, 31625),

Gene: OneDirection_41 Start: 29447, Stop: 29599, Start Num: 16

Candidate Starts for OneDirection_41:

(9, 29273), (10, 29297), (Start: 16 @29447 has 6 MA's), (21, 29480), (22, 29486), (23, 29489), (25, 29501), (27, 29519), (28, 29552), (29, 29555), (30, 29558), (31, 29576),

Gene: Opie_47 Start: 34808, Stop: 34957, Start Num: 15

Candidate Starts for Opie_47:

(Start: 15 @34808 has 14 MA's), (22, 34862), (24, 34874), (31, 34943),

Gene: Pepperoni_41 Start: 31009, Stop: 31164, Start Num: 16

Candidate Starts for Pepperoni_41:

(9, 30835), (10, 30859), (Start: 16 @31009 has 6 MA's), (Start: 17 @31012 has 2 MA's), (18, 31030), (19, 31036), (21, 31045), (25, 31066), (26, 31072), (27, 31084), (28, 31117), (29, 31120), (30, 31123),

Gene: Phishy_41 Start: 32661, Stop: 32813, Start Num: 15

Candidate Starts for Phishy_41:

(Start: 15 @32661 has 14 MA's), (25, 32730), (31, 32796),

Gene: PhorbesPhlower_46 Start: 31203, Stop: 31355, Start Num: 16

Candidate Starts for PhorbesPhlower_46:

(9, 31026), (10, 31050), (Start: 16 @31203 has 6 MA's), (21, 31236), (25, 31257), (26, 31263), (27, 31275), (28, 31308), (29, 31311), (30, 31314), (31, 31332),

Gene: Schnabeltier_45 Start: 34053, Stop: 34205, Start Num: 15

Candidate Starts for Schnabeltier_45:

(Start: 15 @34053 has 14 MA's), (22, 34107), (31, 34188),

Gene: TaronosaurusRx_49 Start: 33378, Stop: 33530, Start Num: 15

Candidate Starts for TaronosaurusRx_49:

(1, 32904), (2, 32928), (12, 33267), (Start: 15 @33378 has 14 MA's), (22, 33432), (24, 33444),

Gene: Vordorf_38 Start: 30951, Stop: 31103, Start Num: 15

Candidate Starts for Vordorf_38:

(13, 30885), (Start: 15 @30951 has 14 MA's), (20, 30996), (25, 31020), (31, 31086),

Gene: ZAYM_46 Start: 33126, Stop: 33278, Start Num: 15

Candidate Starts for ZAYM_46:

(7, 32937), (9, 32967), (14, 33084), (Start: 15 @33126 has 14 MA's), (22, 33180), (24, 33192),