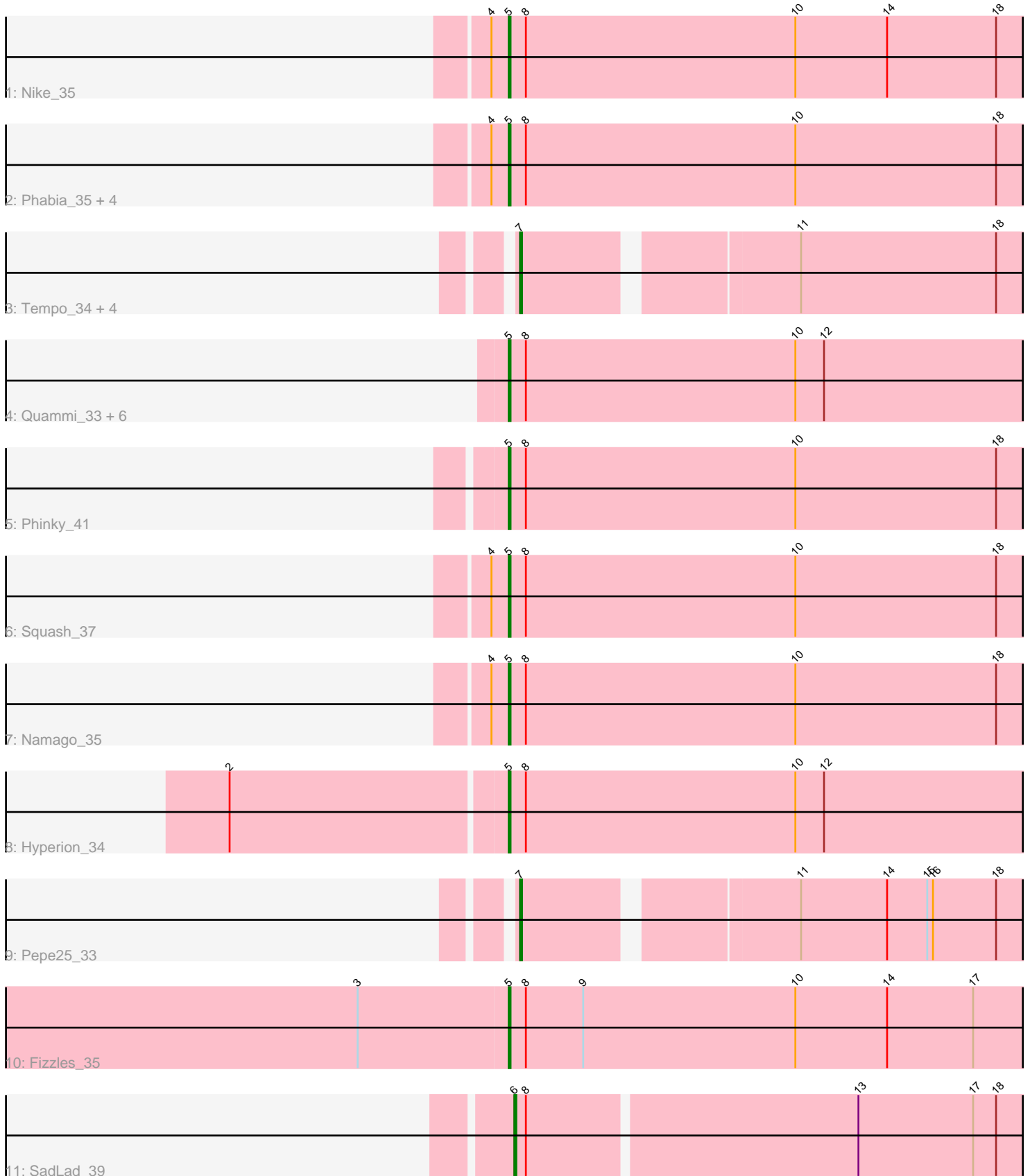


Zoomed Pham 214585



Note: Tracks are now grouped by subcluster and scaled. Switching in subcluster is indicated by changes in track color. Track scale is now set by default to display the region 30 bp upstream of start 1 to 30 bp downstream of the last possible start. If this default region is judged to be packed too tightly with annotated starts, the track will be further scaled to only show that region of the ORF with annotated starts. This action will be indicated by adding "Zoomed" to the title. For starts, yellow indicates the location of called starts comprised solely of Glimmer/GeneMark auto-annotations, green indicates the location of called starts with at least 1 manual gene annotation.

Pham 214585 Report

This analysis was run 02/22/25 on database version 588.

Pham number 214585 has 25 members, 0 are drafts.

Phages represented in each track:

- Track 1 : Nike_35
- Track 2 : Phabia_35, Judebell_37, Casend_36, Jehoshaphat_37, Teehee_36
- Track 3 : Tempo_34, OneinaGillian_34, Kelcole_33, RobinRose_36, CandC_33
- Track 4 : Quammi_33, Rudy_33, Mashley_33, Blab_33, AluminumJesus_33, StrawberryJamm_37, Rowlf_31
- Track 5 : Phinky_41
- Track 6 : Squash_37
- Track 7 : Namago_35
- Track 8 : Hyperion_34
- Track 9 : Pepe25_33
- Track 10 : Fizzles_35
- Track 11 : SadLad_39

Summary of Final Annotations (See graph section above for start numbers):

The start number called the most often in the published annotations is 5, it was called in 18 of the 25 non-draft genes in the pham.

Genes that call this "Most Annotated" start:

- AluminumJesus_33, Blab_33, Casend_36, Fizzles_35, Hyperion_34, Jehoshaphat_37, Judebell_37, Mashley_33, Namago_35, Nike_35, Phabia_35, Phinky_41, Quammi_33, Rowlf_31, Rudy_33, Squash_37, StrawberryJamm_37, Teehee_36,

Genes that have the "Most Annotated" start but do not call it:

-

Genes that do not have the "Most Annotated" start:

- CandC_33, Kelcole_33, OneinaGillian_34, Pepe25_33, RobinRose_36, SadLad_39, Tempo_34,

Summary by start number:

Start 5:

- Found in 18 of 25 (72.0%) of genes in pham
- Manual Annotations of this start: 18 of 25
- Called 100.0% of time when present
- Phage (with cluster) where this start called: AluminumJesus_33 (EG), Blab_33 (EG), Casend_36 (EG), Fizzles_35 (EG), Hyperion_34 (EG), Jehoshaphat_37 (EG), Judebell_37 (EG), Mashley_33 (EG), Namago_35 (EG), Nike_35 (EG), Phabia_35 (EG), Phinky_41 (EG), Quammi_33 (EG), Rowlf_31 (EG), Rudy_33 (EG), Squash_37 (EG), StrawberryJamm_37 (EG), Teehee_36 (EG),

Start 6:

- Found in 1 of 25 (4.0%) of genes in pham
- Manual Annotations of this start: 1 of 25
- Called 100.0% of time when present
- Phage (with cluster) where this start called: SadLad_39 (EG),

Start 7:

- Found in 6 of 25 (24.0%) of genes in pham
- Manual Annotations of this start: 6 of 25
- Called 100.0% of time when present
- Phage (with cluster) where this start called: CandC_33 (EG), Kelcole_33 (EG), OneinaGillian_34 (EG), Pepe25_33 (EG), RobinRose_36 (EG), Tempo_34 (EG),

Summary by clusters:

There is one cluster represented in this pham: EG

Info for manual annotations of cluster EG:

- Start number 5 was manually annotated 18 times for cluster EG.
- Start number 6 was manually annotated 1 time for cluster EG.
- Start number 7 was manually annotated 6 times for cluster EG.

Gene Information:

Gene: AluminumJesus_33 Start: 22382, Stop: 23034, Start Num: 5

Candidate Starts for AluminumJesus_33:

(Start: 5 @22382 has 18 MA's), (8, 22391), (10, 22532), (12, 22547), (20, 22670), (26, 22898),

Gene: Blab_33 Start: 22307, Stop: 22959, Start Num: 5

Candidate Starts for Blab_33:

(Start: 5 @22307 has 18 MA's), (8, 22316), (10, 22457), (12, 22472), (20, 22595), (26, 22823),

Gene: CandC_33 Start: 20958, Stop: 21577, Start Num: 7

Candidate Starts for CandC_33:

(Start: 7 @20958 has 6 MA's), (11, 21090), (18, 21192), (19, 21222), (21, 21261), (30, 21480), (31, 21495), (32, 21516),

Gene: Casend_36 Start: 23045, Stop: 23697, Start Num: 5

Candidate Starts for Casend_36:

(4, 23036), (Start: 5 @23045 has 18 MA's), (8, 23054), (10, 23195), (18, 23300),

Gene: Fizzles_35 Start: 22106, Stop: 22761, Start Num: 5

Candidate Starts for Fizzles_35:

(1, 21728), (3, 22028), (Start: 5 @22106 has 18 MA's), (8, 22115), (9, 22145), (10, 22256), (14, 22304), (17, 22349), (27, 22628),

Gene: Hyperion_34 Start: 22801, Stop: 23453, Start Num: 5

Candidate Starts for Hyperion_34:

(2, 22660), (Start: 5 @22801 has 18 MA's), (8, 22810), (10, 22951), (12, 22966), (20, 23089), (26, 23317),

Gene: Jehoshaphat_37 Start: 23310, Stop: 23962, Start Num: 5

Candidate Starts for Jehoshaphat_37:

(4, 23301), (Start: 5 @23310 has 18 MA's), (8, 23319), (10, 23460), (18, 23565),

Gene: Judebell_37 Start: 22816, Stop: 23468, Start Num: 5

Candidate Starts for Judebell_37:

(4, 22807), (Start: 5 @22816 has 18 MA's), (8, 22825), (10, 22966), (18, 23071),

Gene: Kelcole_33 Start: 21410, Stop: 22029, Start Num: 7

Candidate Starts for Kelcole_33:

(Start: 7 @21410 has 6 MA's), (11, 21542), (18, 21644), (19, 21674), (21, 21713), (30, 21932), (31, 21947), (32, 21968),

Gene: Mashley_33 Start: 22617, Stop: 23269, Start Num: 5

Candidate Starts for Mashley_33:

(Start: 5 @22617 has 18 MA's), (8, 22626), (10, 22767), (12, 22782), (20, 22905), (26, 23133),

Gene: Namago_35 Start: 22185, Stop: 22837, Start Num: 5

Candidate Starts for Namago_35:

(4, 22176), (Start: 5 @22185 has 18 MA's), (8, 22194), (10, 22335), (18, 22440), (23, 22587), (24, 22680),

Gene: Nike_35 Start: 23137, Stop: 23789, Start Num: 5

Candidate Starts for Nike_35:

(4, 23128), (Start: 5 @23137 has 18 MA's), (8, 23146), (10, 23287), (14, 23335), (18, 23392), (23, 23539), (24, 23632),

Gene: OneinaGillian_34 Start: 21057, Stop: 21676, Start Num: 7

Candidate Starts for OneinaGillian_34:

(Start: 7 @21057 has 6 MA's), (11, 21189), (18, 21291), (19, 21321), (21, 21360), (30, 21579), (31, 21594), (32, 21615),

Gene: Pepe25_33 Start: 21275, Stop: 21894, Start Num: 7

Candidate Starts for Pepe25_33:

(Start: 7 @21275 has 6 MA's), (11, 21407), (14, 21452), (15, 21473), (16, 21476), (18, 21509), (21, 21578), (25, 21761), (30, 21797),

Gene: Phabia_35 Start: 22504, Stop: 23156, Start Num: 5

Candidate Starts for Phabia_35:

(4, 22495), (Start: 5 @22504 has 18 MA's), (8, 22513), (10, 22654), (18, 22759),

Gene: Phinky_41 Start: 23684, Stop: 24336, Start Num: 5

Candidate Starts for Phinky_41:

(Start: 5 @23684 has 18 MA's), (8, 23693), (10, 23834), (18, 23939), (20, 23972), (22, 24029),

Gene: Quammi_33 Start: 22090, Stop: 22742, Start Num: 5

Candidate Starts for Quammi_33:

(Start: 5 @22090 has 18 MA's), (8, 22099), (10, 22240), (12, 22255), (20, 22378), (26, 22606),

Gene: RobinRose_36 Start: 21561, Stop: 22180, Start Num: 7

Candidate Starts for RobinRose_36:

(Start: 7 @21561 has 6 MA's), (11, 21693), (18, 21795), (19, 21825), (21, 21864), (30, 22083), (31, 22098), (32, 22119),

Gene: Rowlf_31 Start: 22265, Stop: 22917, Start Num: 5

Candidate Starts for Rowlf_31:

(Start: 5 @22265 has 18 MA's), (8, 22274), (10, 22415), (12, 22430), (20, 22553), (26, 22781),

Gene: Rudy_33 Start: 22123, Stop: 22775, Start Num: 5

Candidate Starts for Rudy_33:

(Start: 5 @22123 has 18 MA's), (8, 22132), (10, 22273), (12, 22288), (20, 22411), (26, 22639),

Gene: SadLad_39 Start: 23102, Stop: 23751, Start Num: 6

Candidate Starts for SadLad_39:

(Start: 6 @23102 has 1 MA's), (8, 23108), (13, 23276), (17, 23336), (18, 23348), (28, 23642),

Gene: Squash_37 Start: 23148, Stop: 23800, Start Num: 5

Candidate Starts for Squash_37:

(4, 23139), (Start: 5 @23148 has 18 MA's), (8, 23157), (10, 23298), (18, 23403), (24, 23643), (29, 23706),

Gene: StrawberryJamm_37 Start: 22327, Stop: 22979, Start Num: 5

Candidate Starts for StrawberryJamm_37:

(Start: 5 @22327 has 18 MA's), (8, 22336), (10, 22477), (12, 22492), (20, 22615), (26, 22843),

Gene: Teehee_36 Start: 23310, Stop: 23962, Start Num: 5

Candidate Starts for Teehee_36:

(4, 23301), (Start: 5 @23310 has 18 MA's), (8, 23319), (10, 23460), (18, 23565),

Gene: Tempo_34 Start: 21437, Stop: 22056, Start Num: 7

Candidate Starts for Tempo_34:

(Start: 7 @21437 has 6 MA's), (11, 21569), (18, 21671), (19, 21701), (21, 21740), (30, 21959), (31, 21974), (32, 21995),