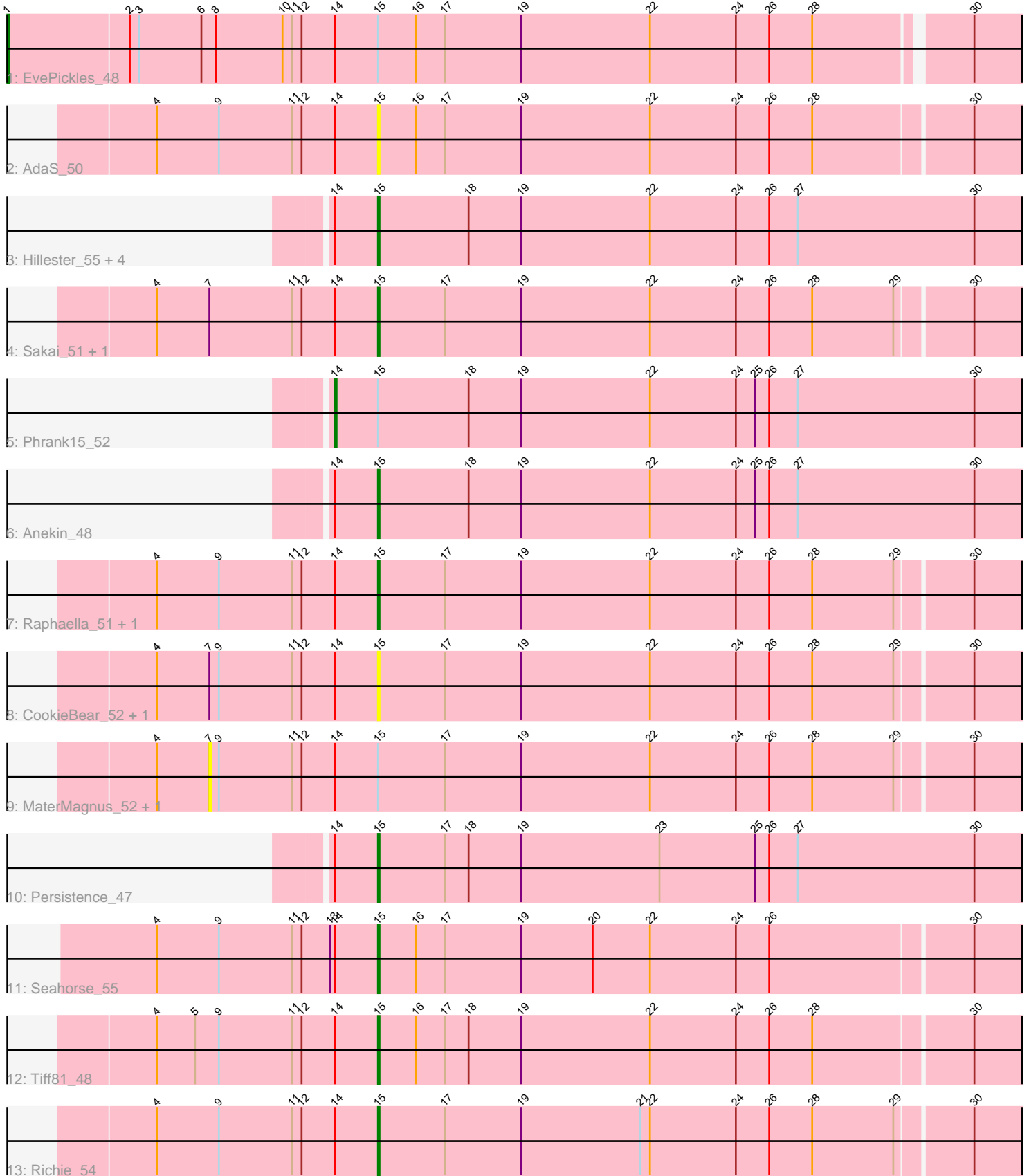


Pham 214646



Note: Tracks are now grouped by subcluster and scaled. Switching in subcluster is indicated by changes in track color. Track scale is now set by default to display the region 30 bp upstream of start 1 to 30 bp downstream of the last possible start. If this default region is judged to be packed too tightly with annotated starts, the track will be further scaled to only show that region of the ORF with annotated starts. This action will be indicated by adding "Zoomed" to the title. For starts, yellow indicates the location of called starts comprised solely of Glimmer/GeneMark auto-annotations, green indicates the location of called starts with at least 1 manual gene annotation.

## Pham 214646 Report

This analysis was run 02/22/25 on database version 588.

Pham number 214646 has 21 members, 8 are drafts.

Phages represented in each track:

- Track 1 : EvePickles\_48
- Track 2 : AdaS\_50
- Track 3 : Hillester\_55, MidnightRain\_55, RadFad\_55, Vopal\_54, Raqqa\_43
- Track 4 : Sakai\_51, Gorpy\_52
- Track 5 : Phrank15\_52
- Track 6 : Anekin\_48
- Track 7 : Raphaella\_51, Isolde\_51
- Track 8 : CookieBear\_52, MUWow\_49
- Track 9 : MaterMagnus\_52, Aikyam\_50
- Track 10 : Persistence\_47
- Track 11 : Seahorse\_55
- Track 12 : Tiff81\_48
- Track 13 : Richie\_54

### ***Summary of Final Annotations (See graph section above for start numbers):***

The start number called the most often in the published annotations is 15, it was called in 11 of the 13 non-draft genes in the pham.

Genes that call this "Most Annotated" start:

- AdaS\_50, Anekin\_48, CookieBear\_52, Gorpy\_52, Hillester\_55, Isolde\_51, MUWow\_49, MidnightRain\_55, Persistence\_47, RadFad\_55, Raphaella\_51, Raqqa\_43, Richie\_54, Sakai\_51, Seahorse\_55, Tiff81\_48, Vopal\_54,

Genes that have the "Most Annotated" start but do not call it:

- Aikyam\_50, EvePickles\_48, MaterMagnus\_52, Phrank15\_52,

Genes that do not have the "Most Annotated" start:

- 

### **Summary by start number:**

Start 1:

- Found in 1 of 21 ( 4.8% ) of genes in pham

- Manual Annotations of this start: 1 of 13
- Called 100.0% of time when present
- Phage (with cluster) where this start called: EvePickles\_48 (AY),

#### Start 7:

- Found in 6 of 21 ( 28.6% ) of genes in pham
- No Manual Annotations of this start.
- Called 33.3% of time when present
- Phage (with cluster) where this start called: Aikyam\_50 (AY), MaterMagnus\_52 (AY),

#### Start 14:

- Found in 21 of 21 ( 100.0% ) of genes in pham
- Manual Annotations of this start: 1 of 13
- Called 4.8% of time when present
- Phage (with cluster) where this start called: Phrank15\_52 (AY),

#### Start 15:

- Found in 21 of 21 ( 100.0% ) of genes in pham
- Manual Annotations of this start: 11 of 13
- Called 81.0% of time when present
- Phage (with cluster) where this start called: AdaS\_50 (AY), Anekin\_48 (AY), CookieBear\_52 (AY), Gorpy\_52 (AY), Hillester\_55 (AY), Isolde\_51 (AY), MUWow\_49 (AY), MidnightRain\_55 (AY), Persistence\_47 (AY), RadFad\_55 (AY), Raphaella\_51 (AY), Raqqa\_43 (AY), Richie\_54 (AY), Sakai\_51 (AY), Seahorse\_55 (AY), Tiff81\_48 (AY), Vopal\_54 (AY),

### Summary by clusters:

There is one cluster represented in this pham: AY

Info for manual annotations of cluster AY:

- Start number 1 was manually annotated 1 time for cluster AY.
- Start number 14 was manually annotated 1 time for cluster AY.
- Start number 15 was manually annotated 11 times for cluster AY.

### Gene Information:

Gene: AdaS\_50 Start: 30190, Stop: 29738, Start Num: 15

Candidate Starts for AdaS\_50:

(4, 30328), (9, 30289), (11, 30244), (12, 30238), (Start: 14 @30217 has 1 MA's), (Start: 15 @30190 has 11 MA's), (16, 30166), (17, 30148), (19, 30100), (22, 30019), (24, 29965), (26, 29944), (28, 29917), (30, 29821),

Gene: Aikyam\_50 Start: 30065, Stop: 29508, Start Num: 7

Candidate Starts for Aikyam\_50:

(4, 30098), (7, 30065), (9, 30059), (11, 30014), (12, 30008), (Start: 14 @29987 has 1 MA's), (Start: 15 @29960 has 11 MA's), (17, 29918), (19, 29870), (22, 29789), (24, 29735), (26, 29714), (28, 29687), (29, 29636), (30, 29591),

Gene: Anekin\_48 Start: 31396, Stop: 30938, Start Num: 15

Candidate Starts for Anekin\_48:

(Start: 14 @31423 has 1 MA's), (Start: 15 @31396 has 11 MA's), (18, 31339), (19, 31306), (22, 31225), (24, 31171), (25, 31159), (26, 31150), (27, 31132), (30, 31021),

Gene: CookieBear\_52 Start: 31940, Stop: 31488, Start Num: 15

Candidate Starts for CookieBear\_52:

(4, 32078), (7, 32045), (9, 32039), (11, 31994), (12, 31988), (Start: 14 @31967 has 1 MA's), (Start: 15 @31940 has 11 MA's), (17, 31898), (19, 31850), (22, 31769), (24, 31715), (26, 31694), (28, 31667), (29, 31616), (30, 31571),

Gene: EvePickles\_48 Start: 32370, Stop: 31693, Start Num: 1

Candidate Starts for EvePickles\_48:

(Start: 1 @32370 has 1 MA's), (2, 32295), (3, 32289), (6, 32250), (8, 32241), (10, 32199), (11, 32193), (12, 32187), (Start: 14 @32166 has 1 MA's), (Start: 15 @32139 has 11 MA's), (16, 32115), (17, 32097), (19, 32049), (22, 31968), (24, 31914), (26, 31893), (28, 31866), (30, 31776),

Gene: Gorpy\_52 Start: 32932, Stop: 32480, Start Num: 15

Candidate Starts for Gorpy\_52:

(4, 33070), (7, 33037), (11, 32986), (12, 32980), (Start: 14 @32959 has 1 MA's), (Start: 15 @32932 has 11 MA's), (17, 32890), (19, 32842), (22, 32761), (24, 32707), (26, 32686), (28, 32659), (29, 32608), (30, 32563),

Gene: Hillester\_55 Start: 32879, Stop: 32421, Start Num: 15

Candidate Starts for Hillester\_55:

(Start: 14 @32906 has 1 MA's), (Start: 15 @32879 has 11 MA's), (18, 32822), (19, 32789), (22, 32708), (24, 32654), (26, 32633), (27, 32615), (30, 32504),

Gene: Isolde\_51 Start: 31609, Stop: 31157, Start Num: 15

Candidate Starts for Isolde\_51:

(4, 31747), (9, 31708), (11, 31663), (12, 31657), (Start: 14 @31636 has 1 MA's), (Start: 15 @31609 has 11 MA's), (17, 31567), (19, 31519), (22, 31438), (24, 31384), (26, 31363), (28, 31336), (29, 31285), (30, 31240),

Gene: MUWow\_49 Start: 31874, Stop: 31422, Start Num: 15

Candidate Starts for MUWow\_49:

(4, 32012), (7, 31979), (9, 31973), (11, 31928), (12, 31922), (Start: 14 @31901 has 1 MA's), (Start: 15 @31874 has 11 MA's), (17, 31832), (19, 31784), (22, 31703), (24, 31649), (26, 31628), (28, 31601), (29, 31550), (30, 31505),

Gene: MaterMagnus\_52 Start: 32237, Stop: 31680, Start Num: 7

Candidate Starts for MaterMagnus\_52:

(4, 32270), (7, 32237), (9, 32231), (11, 32186), (12, 32180), (Start: 14 @32159 has 1 MA's), (Start: 15 @32132 has 11 MA's), (17, 32090), (19, 32042), (22, 31961), (24, 31907), (26, 31886), (28, 31859), (29, 31808), (30, 31763),

Gene: MidnightRain\_55 Start: 33060, Stop: 32602, Start Num: 15

Candidate Starts for MidnightRain\_55:

(Start: 14 @33087 has 1 MA's), (Start: 15 @33060 has 11 MA's), (18, 33003), (19, 32970), (22, 32889), (24, 32835), (26, 32814), (27, 32796), (30, 32685),

Gene: Persistence\_47 Start: 30673, Stop: 30215, Start Num: 15

Candidate Starts for Persistence\_47:

(Start: 14 @30700 has 1 MA's), (Start: 15 @30673 has 11 MA's), (17, 30631), (18, 30616), (19, 30583), (23, 30496), (25, 30436), (26, 30427), (27, 30409), (30, 30298),

Gene: Phrank15\_52 Start: 31931, Stop: 31446, Start Num: 14

Candidate Starts for Phrank15\_52:

(Start: 14 @31931 has 1 MA's), (Start: 15 @31904 has 11 MA's), (18, 31847), (19, 31814), (22, 31733), (24, 31679), (25, 31667), (26, 31658), (27, 31640), (30, 31529),

Gene: RadFad\_55 Start: 32879, Stop: 32421, Start Num: 15

Candidate Starts for RadFad\_55:

(Start: 14 @32906 has 1 MA's), (Start: 15 @32879 has 11 MA's), (18, 32822), (19, 32789), (22, 32708), (24, 32654), (26, 32633), (27, 32615), (30, 32504),

Gene: Raphaella\_51 Start: 31541, Stop: 31089, Start Num: 15

Candidate Starts for Raphaella\_51:

(4, 31679), (9, 31640), (11, 31595), (12, 31589), (Start: 14 @31568 has 1 MA's), (Start: 15 @31541 has 11 MA's), (17, 31499), (19, 31451), (22, 31370), (24, 31316), (26, 31295), (28, 31268), (29, 31217), (30, 31172),

Gene: Raqqa\_43 Start: 28744, Stop: 28286, Start Num: 15

Candidate Starts for Raqqa\_43:

(Start: 14 @28771 has 1 MA's), (Start: 15 @28744 has 11 MA's), (18, 28687), (19, 28654), (22, 28573), (24, 28519), (26, 28498), (27, 28480), (30, 28369),

Gene: Richie\_54 Start: 32610, Stop: 32158, Start Num: 15

Candidate Starts for Richie\_54:

(4, 32748), (9, 32709), (11, 32664), (12, 32658), (Start: 14 @32637 has 1 MA's), (Start: 15 @32610 has 11 MA's), (17, 32568), (19, 32520), (21, 32445), (22, 32439), (24, 32385), (26, 32364), (28, 32337), (29, 32286), (30, 32241),

Gene: Sakai\_51 Start: 31643, Stop: 31191, Start Num: 15

Candidate Starts for Sakai\_51:

(4, 31781), (7, 31748), (11, 31697), (12, 31691), (Start: 14 @31670 has 1 MA's), (Start: 15 @31643 has 11 MA's), (17, 31601), (19, 31553), (22, 31472), (24, 31418), (26, 31397), (28, 31370), (29, 31319), (30, 31274),

Gene: Seahorse\_55 Start: 33875, Stop: 33423, Start Num: 15

Candidate Starts for Seahorse\_55:

(4, 34013), (9, 33974), (11, 33929), (12, 33923), (13, 33905), (Start: 14 @33902 has 1 MA's), (Start: 15 @33875 has 11 MA's), (16, 33851), (17, 33833), (19, 33785), (20, 33740), (22, 33704), (24, 33650), (26, 33629), (30, 33506),

Gene: Tiff81\_48 Start: 30054, Stop: 29602, Start Num: 15

Candidate Starts for Tiff81\_48:

(4, 30192), (5, 30168), (9, 30153), (11, 30108), (12, 30102), (Start: 14 @30081 has 1 MA's), (Start: 15 @30054 has 11 MA's), (16, 30030), (17, 30012), (18, 29997), (19, 29964), (22, 29883), (24, 29829), (26, 29808), (28, 29781), (30, 29685),

Gene: Vopal\_54 Start: 34776, Stop: 34318, Start Num: 15

Candidate Starts for Vopal\_54:

(Start: 14 @34803 has 1 MA's), (Start: 15 @34776 has 11 MA's), (18, 34719), (19, 34686), (22, 34605), (24, 34551), (26, 34530), (27, 34512), (30, 34401),