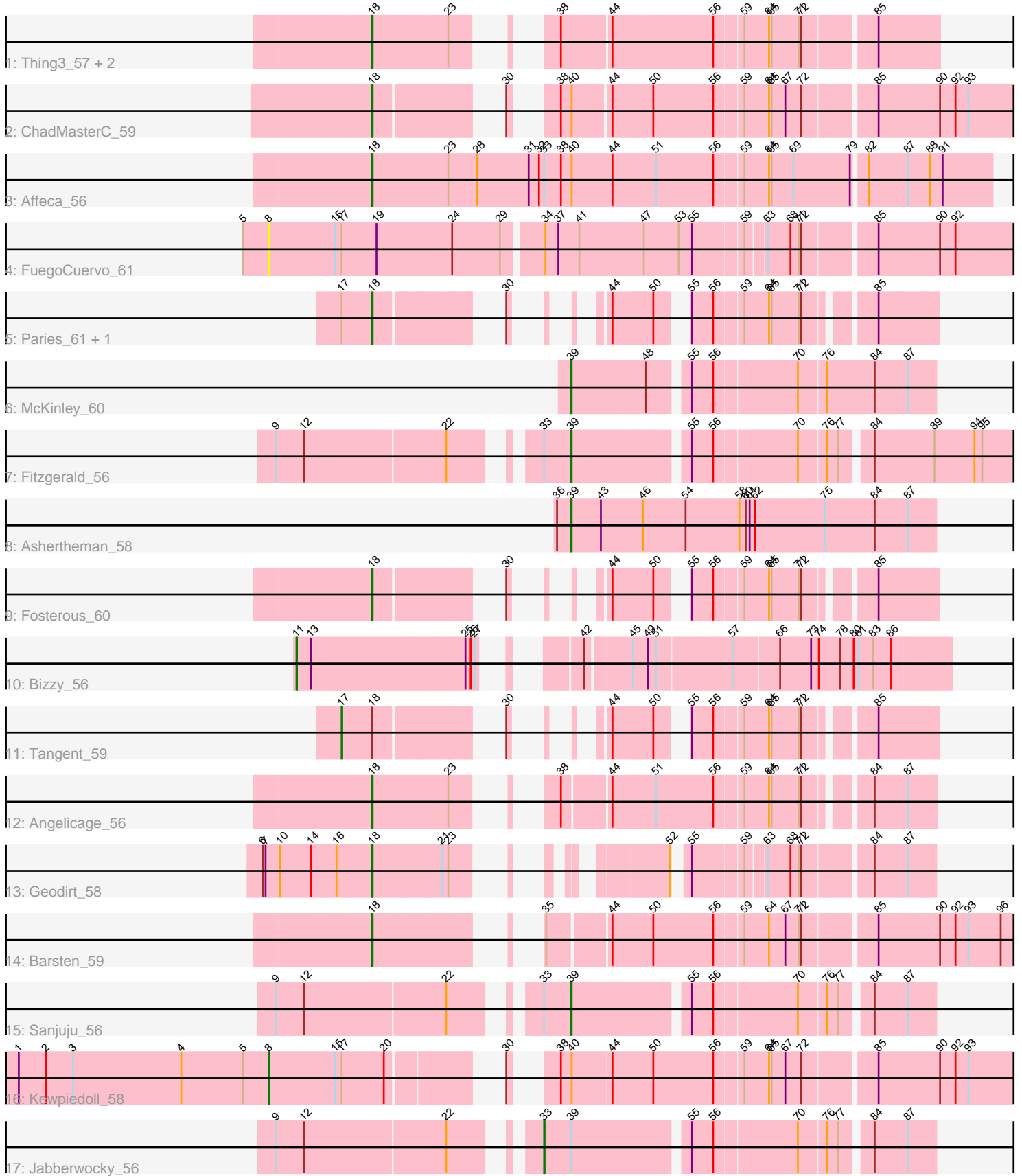


Pham 214659



Note: Tracks are now grouped by subcluster and scaled. Switching in subcluster is indicated by changes in track color. Track scale is now set by default to display the region 30 bp upstream of start 1 to 30 bp downstream of the last possible start. If this default region is judged to be packed too tightly with annotated starts, the track will be further scaled to only show that region of the ORF with annotated starts. This action will be indicated by adding "Zoomed" to the title. For starts, yellow indicates the location of called starts comprised solely of Glimmer/GeneMark auto-annotations, green indicates the location of called starts with at least 1 manual gene annotation.

Pham 214659 Report

This analysis was run 02/22/25 on database version 588.

Pham number 214659 has 20 members, 2 are drafts.

Phages represented in each track:

- Track 1 : Thing3_57, Kamashten_57, BobBob_57
- Track 2 : ChadMasterC_59
- Track 3 : Affeca_56
- Track 4 : FuegoCuervo_61
- Track 5 : Paries_61, Rofo_58
- Track 6 : McKinley_60
- Track 7 : Fitzgerald_56
- Track 8 : Ashertheman_58
- Track 9 : Fosterous_60
- Track 10 : Bizzy_56
- Track 11 : Tangent_59
- Track 12 : Angelicage_56
- Track 13 : Geodirt_58
- Track 14 : Barsten_59
- Track 15 : Sanjuju_56
- Track 16 : Kewpiedoll_58
- Track 17 : Jabberwocky_56

Summary of Final Annotations (See graph section above for start numbers):

The start number called the most often in the published annotations is 18, it was called in 10 of the 18 non-draft genes in the pham.

Genes that call this "Most Annotated" start:

- Affeca_56, Angelicage_56, Barsten_59, BobBob_57, ChadMasterC_59, Fosterous_60, Geodirt_58, Kamashten_57, Paries_61, Rofo_58, Thing3_57,

Genes that have the "Most Annotated" start but do not call it:

- Tangent_59,

Genes that do not have the "Most Annotated" start:

- Ashertheman_58, Bizzy_56, Fitzgerald_56, FuegoCuervo_61, Jabberwocky_56, Kewpiedoll_58, McKinley_60, Sanjuju_56,

Summary by start number:

Start 8:

- Found in 2 of 20 (10.0%) of genes in pham
- Manual Annotations of this start: 1 of 18
- Called 100.0% of time when present
- Phage (with cluster) where this start called: FuegoCuervo_61 (DE1), Kewpiedoll_58 (DE1),

Start 11:

- Found in 1 of 20 (5.0%) of genes in pham
- Manual Annotations of this start: 1 of 18
- Called 100.0% of time when present
- Phage (with cluster) where this start called: Bizzy_56 (DE1),

Start 17:

- Found in 5 of 20 (25.0%) of genes in pham
- Manual Annotations of this start: 1 of 18
- Called 20.0% of time when present
- Phage (with cluster) where this start called: Tangent_59 (DE1),

Start 18:

- Found in 12 of 20 (60.0%) of genes in pham
- Manual Annotations of this start: 10 of 18
- Called 91.7% of time when present
- Phage (with cluster) where this start called: Affeca_56 (DE1), Angelicage_56 (DE1), Barsten_59 (DE1), BobBob_57 (DE1), ChadMasterC_59 (DE1), Fosterous_60 (DE1), Geodirt_58 (DE1), Kamashten_57 (DE1), Paries_61 (DE1), Rofo_58 (DE1), Thing3_57 (DE1),

Start 33:

- Found in 4 of 20 (20.0%) of genes in pham
- Manual Annotations of this start: 1 of 18
- Called 25.0% of time when present
- Phage (with cluster) where this start called: Jabberwocky_56 (DE1),

Start 39:

- Found in 5 of 20 (25.0%) of genes in pham
- Manual Annotations of this start: 4 of 18
- Called 80.0% of time when present
- Phage (with cluster) where this start called: Ashertheman_58 (DE1), Fitzgerald_56 (DE1), McKinley_60 (DE1), Sanjuju_56 (DE1),

Summary by clusters:

There is one cluster represented in this pham: DE1

Info for manual annotations of cluster DE1:

- Start number 8 was manually annotated 1 time for cluster DE1.
- Start number 11 was manually annotated 1 time for cluster DE1.
- Start number 17 was manually annotated 1 time for cluster DE1.
- Start number 18 was manually annotated 10 times for cluster DE1.
- Start number 33 was manually annotated 1 time for cluster DE1.

- Start number 39 was manually annotated 4 times for cluster DE1.

Gene Information:

Gene: Affeca_56 Start: 46765, Stop: 48117, Start Num: 18

Candidate Starts for Affeca_56:

(Start: 18 @46765 has 10 MA's), (23, 46936), (28, 46999), (31, 47119), (32, 47143), (Start: 33 @47155 has 1 MA's), (38, 47194), (40, 47218), (44, 47311), (51, 47398), (56, 47524), (59, 47584), (64, 47638), (65, 47644), (69, 47689), (79, 47812), (82, 47842), (87, 47929), (88, 47980), (91, 48004),

Gene: Angelicage_56 Start: 47180, Stop: 48190, Start Num: 18

Candidate Starts for Angelicage_56:

(Start: 18 @47180 has 10 MA's), (23, 47351), (38, 47447), (44, 47546), (51, 47633), (56, 47759), (59, 47819), (64, 47873), (65, 47879), (71, 47933), (72, 47939), (84, 48059), (87, 48128),

Gene: Ashertheman_58 Start: 46515, Stop: 47336, Start Num: 39

Candidate Starts for Ashertheman_58:

(36, 46482), (Start: 39 @46515 has 4 MA's), (43, 46584), (46, 46680), (54, 46776), (58, 46896), (60, 46911), (61, 46920), (62, 46932), (75, 47094), (84, 47205), (87, 47274),

Gene: Barsten_59 Start: 47136, Stop: 48338, Start Num: 18

Candidate Starts for Barsten_59:

(Start: 18 @47136 has 10 MA's), (35, 47367), (44, 47487), (50, 47568), (56, 47700), (59, 47760), (64, 47814), (67, 47847), (71, 47874), (72, 47880), (85, 48030), (90, 48162), (92, 48198), (93, 48228), (96, 48303),

Gene: Bizzy_56 Start: 45626, Stop: 46924, Start Num: 11

Candidate Starts for Bizzy_56:

(Start: 11 @45626 has 1 MA's), (13, 45659), (25, 46007), (26, 46019), (27, 46028), (42, 46136), (45, 46232), (49, 46259), (51, 46274), (57, 46439), (66, 46541), (73, 46610), (74, 46628), (78, 46676), (80, 46706), (81, 46715), (83, 46748), (86, 46787),

Gene: BobBob_57 Start: 46363, Stop: 47412, Start Num: 18

Candidate Starts for BobBob_57:

(Start: 18 @46363 has 10 MA's), (23, 46534), (38, 46630), (44, 46738), (56, 46951), (59, 47011), (64, 47065), (65, 47071), (71, 47125), (72, 47131), (85, 47281),

Gene: ChadMasterC_59 Start: 48535, Stop: 49746, Start Num: 18

Candidate Starts for ChadMasterC_59:

(Start: 18 @48535 has 10 MA's), (30, 48739), (38, 48790), (40, 48814), (44, 48895), (50, 48976), (56, 49108), (59, 49168), (64, 49222), (65, 49228), (67, 49255), (72, 49288), (85, 49438), (90, 49570), (92, 49606), (93, 49636),

Gene: Fitzgerald_56 Start: 47515, Stop: 48432, Start Num: 39

Candidate Starts for Fitzgerald_56:

(9, 46933), (12, 46996), (22, 47311), (Start: 33 @47455 has 1 MA's), (Start: 39 @47515 has 4 MA's), (55, 47758), (56, 47806), (70, 47983), (76, 48040), (77, 48064), (84, 48124), (89, 48253), (94, 48346), (95, 48364),

Gene: Fosterous_60 Start: 47490, Stop: 48347, Start Num: 18

Candidate Starts for Fosterous_60:

(Start: 18 @47490 has 10 MA's), (30, 47694), (44, 47745), (50, 47826), (55, 47862), (56, 47907), (59, 47967), (64, 48021), (65, 48027), (71, 48081), (72, 48087), (85, 48216),

Gene: FuegoCuervo_61 Start: 46120, Stop: 47721, Start Num: 8

Candidate Starts for FuegoCuervo_61:

(5, 46060), (Start: 8 @46120 has 1 MA's), (15, 46273), (Start: 17 @46288 has 1 MA's), (19, 46369), (24, 46540), (29, 46648), (34, 46735), (37, 46765), (41, 46813), (47, 46954), (53, 47023), (55, 47053), (59, 47158), (63, 47194), (68, 47242), (71, 47257), (72, 47263), (85, 47413), (90, 47545), (92, 47581),

Gene: Geodirt_58 Start: 47882, Stop: 48784, Start Num: 18

Candidate Starts for Geodirt_58:

(6, 47648), (7, 47654), (10, 47684), (14, 47756), (16, 47813), (Start: 18 @47882 has 10 MA's), (21, 48035), (23, 48050), (52, 48284), (55, 48302), (59, 48407), (63, 48443), (68, 48491), (71, 48506), (72, 48512), (84, 48653), (87, 48722),

Gene: Jabberwocky_56 Start: 47831, Stop: 48631, Start Num: 33

Candidate Starts for Jabberwocky_56:

(9, 47309), (12, 47372), (22, 47687), (Start: 33 @47831 has 1 MA's), (Start: 39 @47891 has 4 MA's), (55, 48134), (56, 48182), (70, 48359), (76, 48416), (77, 48440), (84, 48500), (87, 48569),

Gene: Kamashten_57 Start: 46476, Stop: 47525, Start Num: 18

Candidate Starts for Kamashten_57:

(Start: 18 @46476 has 10 MA's), (23, 46647), (38, 46743), (44, 46851), (56, 47064), (59, 47124), (64, 47178), (65, 47184), (71, 47238), (72, 47244), (85, 47394),

Gene: Kewpiedoll_58 Start: 47140, Stop: 48579, Start Num: 8

Candidate Starts for Kewpiedoll_58:

(1, 46558), (2, 46621), (3, 46684), (4, 46936), (5, 47080), (Start: 8 @47140 has 1 MA's), (15, 47293), (Start: 17 @47308 has 1 MA's), (20, 47398), (30, 47566), (38, 47617), (40, 47641), (44, 47728), (50, 47809), (56, 47941), (59, 48001), (64, 48055), (65, 48061), (67, 48088), (72, 48121), (85, 48271), (90, 48403), (92, 48439), (93, 48469),

Gene: McKinley_60 Start: 47567, Stop: 48328, Start Num: 39

Candidate Starts for McKinley_60:

(Start: 39 @47567 has 4 MA's), (48, 47729), (55, 47804), (56, 47852), (70, 48032), (76, 48089), (84, 48197), (87, 48266),

Gene: Paries_61 Start: 47806, Stop: 48663, Start Num: 18

Candidate Starts for Paries_61:

(Start: 17 @47746 has 1 MA's), (Start: 18 @47806 has 10 MA's), (30, 48010), (44, 48061), (50, 48142), (55, 48178), (56, 48223), (59, 48283), (64, 48337), (65, 48343), (71, 48397), (72, 48403), (85, 48532),

Gene: Rofo_58 Start: 47154, Stop: 48011, Start Num: 18

Candidate Starts for Rofo_58:

(Start: 17 @47094 has 1 MA's), (Start: 18 @47154 has 10 MA's), (30, 47358), (44, 47409), (50, 47490), (55, 47526), (56, 47571), (59, 47631), (64, 47685), (65, 47691), (71, 47745), (72, 47751), (85, 47880),

Gene: Sanjuju_56 Start: 47648, Stop: 48388, Start Num: 39

Candidate Starts for Sanjuju_56:

(9, 47066), (12, 47129), (22, 47444), (Start: 33 @47588 has 1 MA's), (Start: 39 @47648 has 4 MA's), (55, 47891), (56, 47939), (70, 48116), (76, 48173), (77, 48197), (84, 48257), (87, 48326),

Gene: Tangent_59 Start: 46717, Stop: 47634, Start Num: 17

Candidate Starts for Tangent_59:

(Start: 17 @46717 has 1 MA's), (Start: 18 @46777 has 10 MA's), (30, 46981), (44, 47032), (50, 47113), (55, 47149), (56, 47194), (59, 47254), (64, 47308), (65, 47314), (71, 47368), (72, 47374), (85, 47503),

Gene: Thing3_57 Start: 46476, Stop: 47525, Start Num: 18

Candidate Starts for Thing3_57:

(Start: 18 @46476 has 10 MA's), (23, 46647), (38, 46743), (44, 46851), (56, 47064), (59, 47124), (64, 47178), (65, 47184), (71, 47238), (72, 47244), (85, 47394),