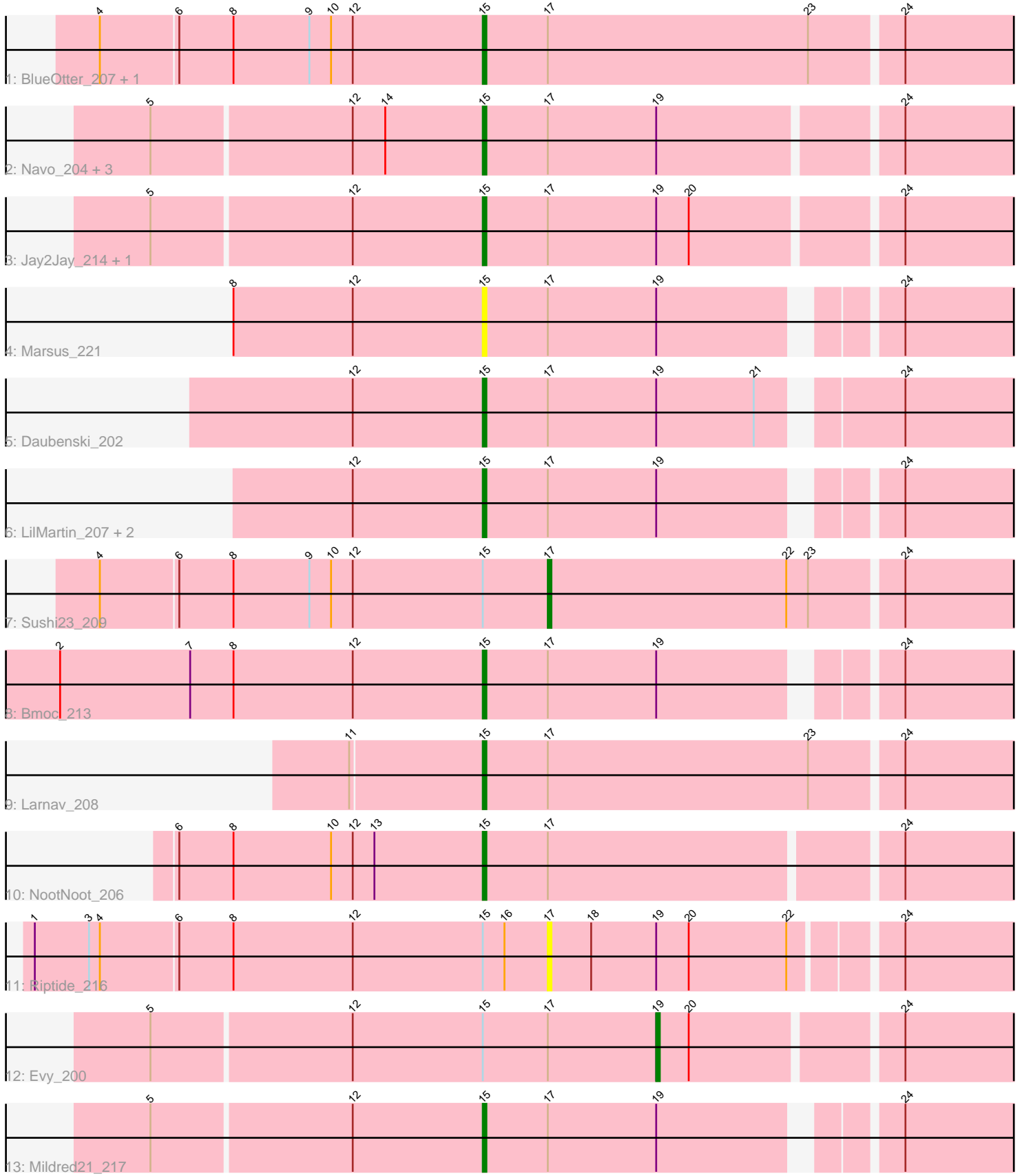


Pham 214668



Note: Tracks are now grouped by subcluster and scaled. Switching in subcluster is indicated by changes in track color. Track scale is now set by default to display the region 30 bp upstream of start 1 to 30 bp downstream of the last possible start. If this default region is judged to be packed too tightly with annotated starts, the track will be further scaled to only show that region of the ORF with annotated starts. This action will be indicated by adding "Zoomed" to the title. For starts, yellow indicates the location of called starts comprised solely of Glimmer/GeneMark auto-annotations, green indicates the location of called starts with at least 1 manual gene annotation.

Pham 214668 Report

This analysis was run 02/22/25 on database version 588.

Pham number 214668 has 20 members, 2 are drafts.

Phages represented in each track:

- Track 1 : BlueOtter_207, HangryHippo_207
- Track 2 : Navo_204, Persimmon_212, Braelyn_206, Bartholomune_210
- Track 3 : Jay2Jay_214, Warpy_212
- Track 4 : Marsus_221
- Track 5 : Daubenski_202
- Track 6 : LilMartin_207, Angela_210, MulchMansion_211
- Track 7 : Sushi23_209
- Track 8 : Bmoc_213
- Track 9 : Larnav_208
- Track 10 : NootNoot_206
- Track 11 : Riptide_216
- Track 12 : Evy_200
- Track 13 : Mildred21_217

Summary of Final Annotations (See graph section above for start numbers):

The start number called the most often in the published annotations is 15, it was called in 16 of the 18 non-draft genes in the pham.

Genes that call this "Most Annotated" start:

- Angela_210, Bartholomune_210, BlueOtter_207, Bmoc_213, Braelyn_206, Daubenski_202, HangryHippo_207, Jay2Jay_214, Larnav_208, LilMartin_207, Marsus_221, Mildred21_217, MulchMansion_211, Navo_204, NootNoot_206, Persimmon_212, Warpy_212,

Genes that have the "Most Annotated" start but do not call it:

- Evy_200, Riptide_216, Sushi23_209,

Genes that do not have the "Most Annotated" start:

-

Summary by start number:

Start 15:

- Found in 20 of 20 (100.0%) of genes in pham
- Manual Annotations of this start: 16 of 18
- Called 85.0% of time when present
- Phage (with cluster) where this start called: Angela_210 (BE1), Bartholomune_210 (BE1), BlueOtter_207 (BE1), Bmoc_213 (BE1), Braelyn_206 (BE1), Daubenski_202 (BE1), HangryHippo_207 (BE1), Jay2Jay_214 (BE1), Larnav_208 (BE1), LilMartin_207 (BE1), Marsus_221 (BE1), Mildred21_217 (BE1), MulchMansion_211 (BE1), Navo_204 (BE1), NootNoot_206 (BE1), Persimmon_212 (BE1), Warpy_212 (BE1),

Start 17:

- Found in 20 of 20 (100.0%) of genes in pham
- Manual Annotations of this start: 1 of 18
- Called 10.0% of time when present
- Phage (with cluster) where this start called: Riptide_216 (BE1), Sushi23_209 (BE1),

Start 19:

- Found in 15 of 20 (75.0%) of genes in pham
- Manual Annotations of this start: 1 of 18
- Called 6.7% of time when present
- Phage (with cluster) where this start called: Evy_200 (BE1),

Summary by clusters:

There is one cluster represented in this pham: BE1

Info for manual annotations of cluster BE1:

- Start number 15 was manually annotated 16 times for cluster BE1.
- Start number 17 was manually annotated 1 time for cluster BE1.
- Start number 19 was manually annotated 1 time for cluster BE1.

Gene Information:

Gene: Angela_210 Start: 105164, Stop: 105301, Start Num: 15

Candidate Starts for Angela_210:

(12, 105128), (Start: 15 @105164 has 16 MA's), (Start: 17 @105182 has 1 MA's), (Start: 19 @105212 has 1 MA's), (24, 105269),

Gene: Bartholomune_210 Start: 105719, Stop: 105883, Start Num: 15

Candidate Starts for Bartholomune_210:

(5, 105629), (12, 105683), (14, 105692), (Start: 15 @105719 has 16 MA's), (Start: 17 @105737 has 1 MA's), (Start: 19 @105767 has 1 MA's), (24, 105830),

Gene: BlueOtter_207 Start: 105856, Stop: 106023, Start Num: 15

Candidate Starts for BlueOtter_207:

(4, 105751), (6, 105772), (8, 105787), (9, 105808), (10, 105814), (12, 105820), (Start: 15 @105856 has 16 MA's), (Start: 17 @105874 has 1 MA's), (23, 105946), (24, 105970),

Gene: Bmoc_213 Start: 105977, Stop: 106114, Start Num: 15

Candidate Starts for Bmoc_213:

(2, 105860), (7, 105896), (8, 105908), (12, 105941), (Start: 15 @105977 has 16 MA's), (Start: 17 @105995 has 1 MA's), (Start: 19 @106025 has 1 MA's), (24, 106082),

Gene: Braelyn_206 Start: 105366, Stop: 105530, Start Num: 15

Candidate Starts for Braelyn_206:

(5, 105276), (12, 105330), (14, 105339), (Start: 15 @105366 has 16 MA's), (Start: 17 @105384 has 1 MA's), (Start: 19 @105414 has 1 MA's), (24, 105477),

Gene: Daubenski_202 Start: 106555, Stop: 106716, Start Num: 15

Candidate Starts for Daubenski_202:

(12, 106519), (Start: 15 @106555 has 16 MA's), (Start: 17 @106573 has 1 MA's), (Start: 19 @106603 has 1 MA's), (21, 106630), (24, 106663),

Gene: Evy_200 Start: 106705, Stop: 106821, Start Num: 19

Candidate Starts for Evy_200:

(5, 106567), (12, 106621), (Start: 15 @106657 has 16 MA's), (Start: 17 @106675 has 1 MA's), (Start: 19 @106705 has 1 MA's), (20, 106714), (24, 106768),

Gene: HangryHippo_207 Start: 105856, Stop: 106023, Start Num: 15

Candidate Starts for HangryHippo_207:

(4, 105751), (6, 105772), (8, 105787), (9, 105808), (10, 105814), (12, 105820), (Start: 15 @105856 has 16 MA's), (Start: 17 @105874 has 1 MA's), (23, 105946), (24, 105970),

Gene: Jay2Jay_214 Start: 106812, Stop: 106976, Start Num: 15

Candidate Starts for Jay2Jay_214:

(5, 106722), (12, 106776), (Start: 15 @106812 has 16 MA's), (Start: 17 @106830 has 1 MA's), (Start: 19 @106860 has 1 MA's), (20, 106869), (24, 106923),

Gene: Larnav_208 Start: 106317, Stop: 106484, Start Num: 15

Candidate Starts for Larnav_208:

(11, 106281), (Start: 15 @106317 has 16 MA's), (Start: 17 @106335 has 1 MA's), (23, 106407), (24, 106431),

Gene: LilMartin_207 Start: 104528, Stop: 104665, Start Num: 15

Candidate Starts for LilMartin_207:

(12, 104492), (Start: 15 @104528 has 16 MA's), (Start: 17 @104546 has 1 MA's), (Start: 19 @104576 has 1 MA's), (24, 104633),

Gene: Marsus_221 Start: 106272, Stop: 106409, Start Num: 15

Candidate Starts for Marsus_221:

(8, 106203), (12, 106236), (Start: 15 @106272 has 16 MA's), (Start: 17 @106290 has 1 MA's), (Start: 19 @106320 has 1 MA's), (24, 106377),

Gene: Mildred21_217 Start: 104294, Stop: 104452, Start Num: 15

Candidate Starts for Mildred21_217:

(5, 104204), (12, 104258), (Start: 15 @104294 has 16 MA's), (Start: 17 @104312 has 1 MA's), (Start: 19 @104342 has 1 MA's), (24, 104399),

Gene: MulchMansion_211 Start: 106162, Stop: 106299, Start Num: 15

Candidate Starts for MulchMansion_211:

(12, 106126), (Start: 15 @106162 has 16 MA's), (Start: 17 @106180 has 1 MA's), (Start: 19 @106210 has 1 MA's), (24, 106267),

Gene: Navo_204 Start: 104570, Stop: 104734, Start Num: 15

Candidate Starts for Navo_204:

(5, 104480), (12, 104534), (14, 104543), (Start: 15 @104570 has 16 MA's), (Start: 17 @104588 has 1 MA's), (Start: 19 @104618 has 1 MA's), (24, 104681),

Gene: NootNoot_206 Start: 104774, Stop: 104938, Start Num: 15

Candidate Starts for NootNoot_206:

(6, 104690), (8, 104705), (10, 104732), (12, 104738), (13, 104744), (Start: 15 @104774 has 16 MA's), (Start: 17 @104792 has 1 MA's), (24, 104885),

Gene: Persimmon_212 Start: 105588, Stop: 105752, Start Num: 15

Candidate Starts for Persimmon_212:

(5, 105498), (12, 105552), (14, 105561), (Start: 15 @105588 has 16 MA's), (Start: 17 @105606 has 1 MA's), (Start: 19 @105636 has 1 MA's), (24, 105699),

Gene: Riptide_216 Start: 105633, Stop: 105758, Start Num: 17

Candidate Starts for Riptide_216:

(1, 105492), (3, 105507), (4, 105510), (6, 105531), (8, 105546), (12, 105579), (Start: 15 @105615 has 16 MA's), (16, 105621), (Start: 17 @105633 has 1 MA's), (18, 105645), (Start: 19 @105663 has 1 MA's), (20, 105672), (22, 105699), (24, 105726),

Gene: Sushi23_209 Start: 107175, Stop: 107324, Start Num: 17

Candidate Starts for Sushi23_209:

(4, 107052), (6, 107073), (8, 107088), (9, 107109), (10, 107115), (12, 107121), (Start: 15 @107157 has 16 MA's), (Start: 17 @107175 has 1 MA's), (22, 107241), (23, 107247), (24, 107271),

Gene: Warpy_212 Start: 106250, Stop: 106414, Start Num: 15

Candidate Starts for Warpy_212:

(5, 106160), (12, 106214), (Start: 15 @106250 has 16 MA's), (Start: 17 @106268 has 1 MA's), (Start: 19 @106298 has 1 MA's), (20, 106307), (24, 106361),