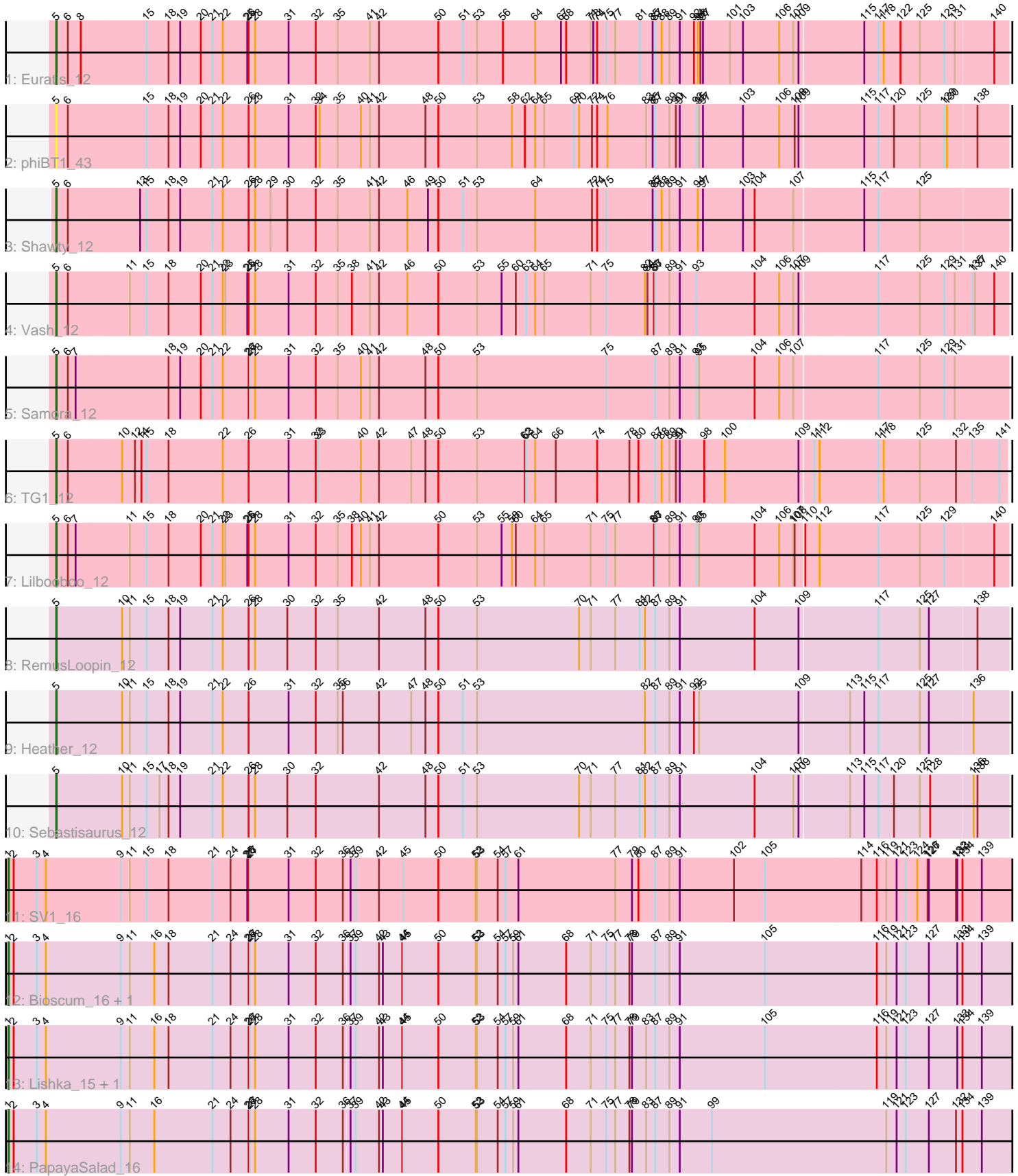


Pham 214734



Note: Tracks are now grouped by subcluster and scaled. Switching in subcluster is indicated by changes in track color. Track scale is now set by default to display the region 30 bp upstream of start 1 to 30 bp downstream of the last possible start. If this default region is judged to be packed too tightly with annotated starts, the track will be further scaled to only show that region of the ORF with annotated starts. This action will be indicated by adding "Zoomed" to the title. For starts, yellow indicates the location of called starts comprised solely of Glimmer/GeneMark auto-annotations, green indicates the location of called starts with at least 1 manual gene annotation.

Pham 214734 Report

This analysis was run 02/22/25 on database version 588.

WARNING: Pham size does not match number of genes in report. Either unphamerated genes have been added (by you) or starterator has removed genes due to invalid start codon.

Pham number 214734 has 16 members, 2 are drafts.

Phages represented in each track:

- Track 1 : Euratis_12
- Track 2 : phiBT1_43
- Track 3 : Shawty_12
- Track 4 : Vash_12
- Track 5 : Samora_12
- Track 6 : TG1_12
- Track 7 : Lilbooboo_12
- Track 8 : RemusLoopin_12
- Track 9 : Heather_12
- Track 10 : Sebastisaurus_12
- Track 11 : SV1_16
- Track 12 : Bioscum_16, Ididsumtinwong_16
- Track 13 : Lishka_15, Austintatious_16
- Track 14 : PapayaSalad_16

Summary of Final Annotations (See graph section above for start numbers):

The start number called the most often in the published annotations is 5, it was called in 9 of the 14 non-draft genes in the pham.

Genes that call this "Most Annotated" start:

- Euratis_12, Heather_12, Lilbooboo_12, RemusLoopin_12, Samora_12, Sebastisaurus_12, Shawty_12, TG1_12, Vash_12, phiBT1_43,

Genes that have the "Most Annotated" start but do not call it:

-

Genes that do not have the "Most Annotated" start:

- Austintatious_16, Bioscum_16, Ididsumtinwong_16, Lishka_15, PapayaSalad_16, SV1_16,

Summary by start number:

Start 1:

- Found in 6 of 16 (37.5%) of genes in pham
- Manual Annotations of this start: 5 of 14
- Called 100.0% of time when present
- Phage (with cluster) where this start called: Austintatious_16 (BC3), Bioscum_16 (BC3), Ididsumtinwong_16 (BC3), Lishka_15 (BC3), PapayaSalad_16 (BC3), SV1_16 (BC1),

Start 5:

- Found in 10 of 16 (62.5%) of genes in pham
- Manual Annotations of this start: 9 of 14
- Called 100.0% of time when present
- Phage (with cluster) where this start called: Euratis_12 (BB1), Heather_12 (BB2), Lilbooboo_12 (BB1), RemusLoopin_12 (BB2), Samora_12 (BB1), Sebastisaurus_12 (BB2), Shawty_12 (BB1), TG1_12 (BB1), Vash_12 (BB1), phiBT1_43 (BB1),

Summary by clusters:

There are 4 clusters represented in this pham: BB2, BC1, BB1, BC3,

Info for manual annotations of cluster BB1:

- Start number 5 was manually annotated 6 times for cluster BB1.

Info for manual annotations of cluster BB2:

- Start number 5 was manually annotated 3 times for cluster BB2.

Info for manual annotations of cluster BC1:

- Start number 1 was manually annotated 1 time for cluster BC1.

Info for manual annotations of cluster BC3:

- Start number 1 was manually annotated 4 times for cluster BC3.

Gene Information:

Gene: Austintatious_16 Start: 9780, Stop: 12197, Start Num: 1

Candidate Starts for Austintatious_16:

(Start: 1 @9780 has 5 MA's), (2, 9792), (3, 9846), (4, 9867), (9, 10041), (11, 10062), (16, 10119), (18, 10152), (21, 10254), (24, 10296), (26, 10338), (27, 10341), (28, 10353), (31, 10431), (32, 10494), (36, 10557), (37, 10575), (39, 10587), (42, 10641), (43, 10650), (44, 10695), (45, 10698), (50, 10779), (52, 10866), (53, 10869), (54, 10917), (57, 10935), (59, 10953), (61, 10965), (68, 11076), (71, 11133), (75, 11169), (77, 11190), (78, 11223), (79, 11229), (83, 11262), (87, 11283), (89, 11316), (91, 11340), (105, 11538), (116, 11796), (119, 11817), (121, 11841), (123, 11862), (127, 11916), (133, 11982), (134, 11994), (139, 12039),

Gene: Bioscum_16 Start: 9816, Stop: 12233, Start Num: 1

Candidate Starts for Bioscum_16:

(Start: 1 @9816 has 5 MA's), (2, 9828), (3, 9882), (4, 9903), (9, 10077), (11, 10098), (16, 10155), (18, 10188), (21, 10290), (24, 10332), (26, 10374), (27, 10377), (28, 10389), (31, 10467), (32, 10530), (36,

10593), (37, 10611), (39, 10623), (42, 10677), (43, 10686), (44, 10731), (45, 10734), (50, 10815), (52, 10902), (53, 10905), (54, 10953), (57, 10971), (59, 10989), (61, 11001), (68, 11112), (71, 11169), (75, 11205), (77, 11226), (78, 11259), (79, 11265), (87, 11319), (89, 11352), (91, 11376), (105, 11574), (116, 11832), (119, 11853), (121, 11877), (123, 11898), (127, 11952), (133, 12018), (134, 12030), (139, 12075),

Gene: Euratis_12 Start: 8185, Stop: 10374, Start Num: 5

Candidate Starts for Euratis_12:

(Start: 5 @8185 has 9 MA's), (6, 8212), (8, 8242), (15, 8392), (18, 8443), (19, 8470), (20, 8518), (21, 8545), (22, 8569), (25, 8626), (26, 8629), (28, 8644), (31, 8722), (32, 8785), (35, 8836), (41, 8911), (42, 8932), (50, 9070), (51, 9127), (53, 9160), (56, 9220), (64, 9295), (67, 9355), (68, 9367), (71, 9424), (73, 9430), (74, 9439), (75, 9460), (77, 9481), (81, 9538), (85, 9568), (87, 9574), (88, 9589), (89, 9607), (91, 9631), (92, 9664), (94, 9673), (96, 9679), (97, 9685), (101, 9748), (103, 9778), (106, 9862), (107, 9895), (109, 9907), (115, 10048), (117, 10081), (118, 10093), (122, 10132), (125, 10177), (129, 10231), (131, 10255), (140, 10342),

Gene: Heather_12 Start: 8215, Stop: 10404, Start Num: 5

Candidate Starts for Heather_12:

(Start: 5 @8215 has 9 MA's), (10, 8365), (11, 8383), (15, 8422), (18, 8473), (19, 8500), (21, 8575), (22, 8599), (26, 8659), (31, 8752), (32, 8815), (35, 8866), (36, 8878), (42, 8962), (47, 9037), (48, 9070), (50, 9100), (51, 9157), (53, 9190), (82, 9580), (87, 9604), (89, 9637), (91, 9661), (92, 9694), (95, 9706), (109, 9937), (113, 10045), (115, 10078), (117, 10111), (125, 10207), (127, 10228), (136, 10324),

Gene: Ididsumtinwong_16 Start: 9816, Stop: 12233, Start Num: 1

Candidate Starts for Ididsumtinwong_16:

(Start: 1 @9816 has 5 MA's), (2, 9828), (3, 9882), (4, 9903), (9, 10077), (11, 10098), (16, 10155), (18, 10188), (21, 10290), (24, 10332), (26, 10374), (27, 10377), (28, 10389), (31, 10467), (32, 10530), (36, 10593), (37, 10611), (39, 10623), (42, 10677), (43, 10686), (44, 10731), (45, 10734), (50, 10815), (52, 10902), (53, 10905), (54, 10953), (57, 10971), (59, 10989), (61, 11001), (68, 11112), (71, 11169), (75, 11205), (77, 11226), (78, 11259), (79, 11265), (87, 11319), (89, 11352), (91, 11376), (105, 11574), (116, 11832), (119, 11853), (121, 11877), (123, 11898), (127, 11952), (133, 12018), (134, 12030), (139, 12075),

Gene: Lilbooboo_12 Start: 8195, Stop: 10384, Start Num: 5

Candidate Starts for Lilbooboo_12:

(Start: 5 @8195 has 9 MA's), (6, 8222), (7, 8240), (11, 8363), (15, 8402), (18, 8453), (20, 8528), (21, 8555), (22, 8579), (23, 8585), (25, 8636), (26, 8639), (28, 8654), (31, 8732), (32, 8795), (35, 8846), (38, 8879), (40, 8900), (41, 8921), (42, 8942), (50, 9080), (53, 9170), (55, 9227), (58, 9251), (60, 9260), (64, 9305), (65, 9326), (71, 9434), (75, 9470), (77, 9491), (86, 9581), (87, 9584), (89, 9617), (91, 9641), (93, 9680), (95, 9686), (104, 9815), (106, 9872), (107, 9905), (108, 9908), (110, 9926), (112, 9959), (117, 10091), (125, 10187), (129, 10241), (140, 10352),

Gene: Lishka_15 Start: 9780, Stop: 12197, Start Num: 1

Candidate Starts for Lishka_15:

(Start: 1 @9780 has 5 MA's), (2, 9792), (3, 9846), (4, 9867), (9, 10041), (11, 10062), (16, 10119), (18, 10152), (21, 10254), (24, 10296), (26, 10338), (27, 10341), (28, 10353), (31, 10431), (32, 10494), (36, 10557), (37, 10575), (39, 10587), (42, 10641), (43, 10650), (44, 10695), (45, 10698), (50, 10779), (52, 10866), (53, 10869), (54, 10917), (57, 10935), (59, 10953), (61, 10965), (68, 11076), (71, 11133), (75, 11169), (77, 11190), (78, 11223), (79, 11229), (83, 11262), (87, 11283), (89, 11316), (91, 11340), (105, 11538), (116, 11796), (119, 11817), (121, 11841), (123, 11862), (127, 11916), (133, 11982), (134, 11994), (139, 12039),

Gene: PapayaSalad_16 Start: 9786, Stop: 12203, Start Num: 1

Candidate Starts for PapayaSalad_16:

(Start: 1 @9786 has 5 MA's), (2, 9798), (3, 9852), (4, 9873), (9, 10047), (11, 10068), (16, 10125), (21, 10260), (24, 10302), (26, 10344), (27, 10347), (28, 10359), (31, 10437), (32, 10500), (36, 10563), (37, 10581), (39, 10593), (42, 10647), (43, 10656), (44, 10701), (45, 10704), (50, 10785), (52, 10872), (53, 10875), (54, 10923), (57, 10941), (59, 10959), (61, 10971), (68, 11082), (71, 11139), (75, 11175), (77, 11196), (78, 11229), (79, 11235), (83, 11268), (87, 11289), (89, 11322), (91, 11346), (99, 11421), (119, 11823), (121, 11847), (123, 11868), (127, 11922), (132, 11985), (134, 12000), (139, 12045),

Gene: RemusLoopin_12 Start: 8193, Stop: 10382, Start Num: 5

Candidate Starts for RemusLoopin_12:

(Start: 5 @8193 has 9 MA's), (10, 8343), (11, 8361), (15, 8400), (18, 8451), (19, 8478), (21, 8553), (22, 8577), (26, 8637), (28, 8652), (30, 8727), (32, 8793), (35, 8844), (42, 8940), (48, 9048), (50, 9078), (53, 9168), (70, 9405), (71, 9432), (77, 9489), (81, 9546), (82, 9558), (87, 9582), (89, 9615), (91, 9639), (104, 9813), (109, 9915), (117, 10089), (125, 10185), (127, 10206), (138, 10311),

Gene: SV1_16 Start: 10022, Stop: 12439, Start Num: 1

Candidate Starts for SV1_16:

(Start: 1 @10022 has 5 MA's), (2, 10034), (3, 10088), (4, 10109), (9, 10283), (11, 10304), (15, 10343), (18, 10394), (21, 10496), (24, 10538), (25, 10577), (26, 10580), (27, 10583), (31, 10673), (32, 10736), (36, 10799), (37, 10817), (39, 10829), (42, 10883), (45, 10940), (50, 11021), (52, 11108), (53, 11111), (54, 11159), (57, 11177), (61, 11207), (77, 11432), (79, 11471), (80, 11486), (87, 11525), (89, 11558), (91, 11582), (102, 11708), (105, 11780), (114, 12002), (116, 12038), (119, 12059), (121, 12083), (123, 12104), (124, 12131), (126, 12155), (127, 12158), (132, 12221), (133, 12224), (134, 12236), (139, 12281),

Gene: Samora_12 Start: 8227, Stop: 10419, Start Num: 5

Candidate Starts for Samora_12:

(Start: 5 @8227 has 9 MA's), (6, 8254), (7, 8272), (18, 8485), (19, 8512), (20, 8560), (21, 8587), (22, 8611), (26, 8671), (27, 8674), (28, 8686), (31, 8764), (32, 8827), (35, 8878), (40, 8932), (41, 8953), (42, 8974), (48, 9082), (50, 9112), (53, 9202), (75, 9502), (87, 9616), (89, 9649), (91, 9673), (93, 9712), (95, 9718), (104, 9847), (106, 9904), (107, 9937), (117, 10123), (125, 10219), (129, 10273), (131, 10297),

Gene: Sebastisaurus_12 Start: 8219, Stop: 10408, Start Num: 5

Candidate Starts for Sebastisaurus_12:

(Start: 5 @8219 has 9 MA's), (10, 8369), (11, 8387), (15, 8426), (17, 8456), (18, 8477), (19, 8504), (21, 8579), (22, 8603), (26, 8663), (28, 8678), (30, 8753), (32, 8819), (42, 8966), (48, 9074), (50, 9104), (51, 9161), (53, 9194), (70, 9431), (71, 9458), (77, 9515), (81, 9572), (82, 9584), (87, 9608), (89, 9641), (91, 9665), (104, 9839), (107, 9929), (109, 9941), (113, 10049), (115, 10082), (117, 10115), (120, 10151), (125, 10211), (128, 10235), (136, 10328), (138, 10337),

Gene: Shawty_12 Start: 8222, Stop: 10411, Start Num: 5

Candidate Starts for Shawty_12:

(Start: 5 @8222 has 9 MA's), (6, 8249), (13, 8414), (15, 8429), (18, 8480), (19, 8507), (21, 8582), (22, 8606), (26, 8666), (28, 8681), (29, 8717), (30, 8756), (32, 8822), (35, 8873), (41, 8948), (42, 8969), (46, 9035), (49, 9083), (50, 9107), (51, 9164), (53, 9197), (64, 9332), (72, 9464), (74, 9476), (75, 9497), (85, 9605), (87, 9611), (88, 9626), (89, 9644), (91, 9668), (94, 9710), (97, 9722), (103, 9815), (104, 9842), (107, 9932), (115, 10085), (117, 10118), (125, 10214),

Gene: TG1_12 Start: 8190, Stop: 10379, Start Num: 5

Candidate Starts for TG1_12:

(Start: 5 @8190 has 9 MA's), (6, 8217), (10, 8340), (12, 8370), (14, 8385), (15, 8397), (18, 8448), (22, 8574), (26, 8634), (31, 8727), (32, 8790), (33, 8796), (40, 8895), (42, 8937), (47, 9012), (48, 9045), (50, 9075), (53, 9165), (62, 9276), (63, 9279), (64, 9300), (66, 9348), (74, 9444), (78, 9519), (80, 9540), (87,

9579), (88, 9594), (89, 9612), (90, 9627), (91, 9636), (98, 9693), (100, 9741), (109, 9912), (111, 9942), (112, 9954), (117, 10086), (118, 10098), (125, 10182), (132, 10263), (135, 10299), (141, 10362),

Gene: Vash_12 Start: 8200, Stop: 10392, Start Num: 5

Candidate Starts for Vash_12:

(Start: 5 @8200 has 9 MA's), (6, 8227), (11, 8368), (15, 8407), (18, 8458), (20, 8533), (21, 8560), (22, 8584), (23, 8590), (25, 8641), (26, 8644), (28, 8659), (31, 8737), (32, 8800), (35, 8851), (38, 8884), (41, 8926), (42, 8947), (46, 9013), (50, 9085), (53, 9175), (55, 9232), (60, 9265), (63, 9289), (64, 9310), (65, 9331), (71, 9439), (75, 9475), (82, 9565), (84, 9571), (86, 9586), (87, 9589), (89, 9622), (91, 9646), (93, 9685), (104, 9820), (106, 9877), (107, 9910), (109, 9922), (117, 10096), (125, 10192), (129, 10246), (131, 10270), (135, 10309), (137, 10315), (140, 10360),

Gene: phiBT1_43 Start: 8225, Stop: 10414, Start Num: 5

Candidate Starts for phiBT1_43:

(Start: 5 @8225 has 9 MA's), (6, 8252), (15, 8432), (18, 8483), (19, 8510), (20, 8558), (21, 8585), (22, 8609), (26, 8669), (28, 8684), (31, 8762), (32, 8825), (34, 8834), (35, 8876), (40, 8930), (41, 8951), (42, 8972), (48, 9080), (50, 9110), (53, 9200), (58, 9281), (62, 9311), (64, 9335), (65, 9356), (69, 9425), (70, 9437), (72, 9467), (74, 9479), (76, 9503), (83, 9593), (85, 9608), (87, 9614), (89, 9647), (90, 9662), (91, 9671), (93, 9710), (95, 9716), (97, 9725), (103, 9818), (106, 9902), (108, 9938), (109, 9947), (115, 10088), (117, 10121), (120, 10157), (125, 10217), (129, 10271), (130, 10277), (138, 10343),