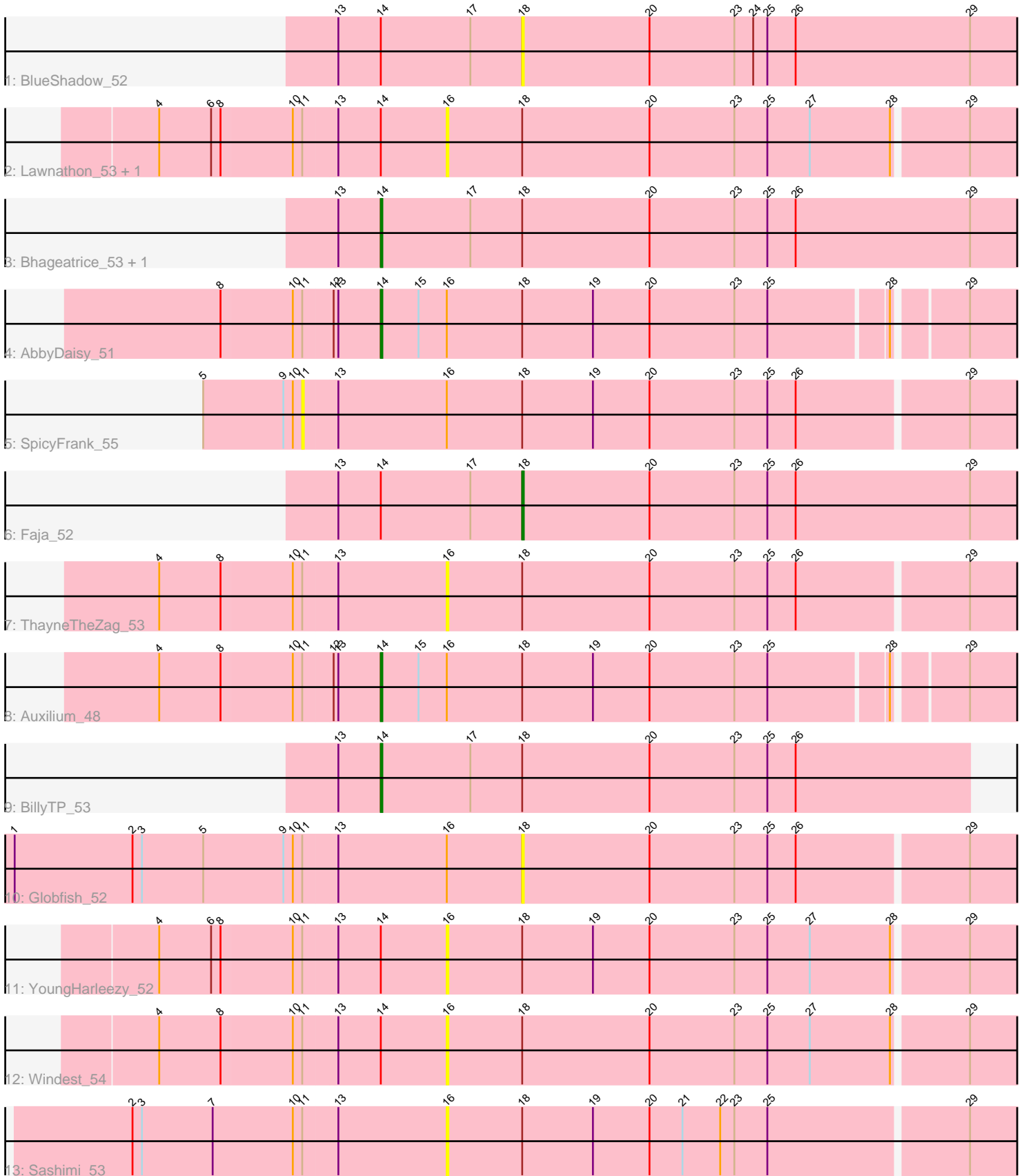


Pham 214759



Note: Tracks are now grouped by subcluster and scaled. Switching in subcluster is indicated by changes in track color. Track scale is now set by default to display the region 30 bp upstream of start 1 to 30 bp downstream of the last possible start. If this default region is judged to be packed too tightly with annotated starts, the track will be further scaled to only show that region of the ORF with annotated starts. This action will be indicated by adding "Zoomed" to the title. For starts, yellow indicates the location of called starts comprised solely of Glimmer/GeneMark auto-annotations, green indicates the location of called starts with at least 1 manual gene annotation.

Pham 214759 Report

This analysis was run 02/22/25 on database version 588.

Pham number 214759 has 15 members, 10 are drafts.

Phages represented in each track:

- Track 1 : BlueShadow_52
- Track 2 : Lawnathon_53, JellyBread_49
- Track 3 : Bhageatrice_53, BenchScraper_50
- Track 4 : AbbyDaisy_51
- Track 5 : SpicyFrank_55
- Track 6 : Faja_52
- Track 7 : ThayneTheZag_53
- Track 8 : Auxilium_48
- Track 9 : BillyTP_53
- Track 10 : Globfish_52
- Track 11 : YoungHarleezy_52
- Track 12 : Windest_54
- Track 13 : Sashimi_53

Summary of Final Annotations (See graph section above for start numbers):

The start number called the most often in the published annotations is 14, it was called in 4 of the 5 non-draft genes in the pham.

Genes that call this "Most Annotated" start:

- AbbyDaisy_51, Auxilium_48, BenchScraper_50, Bhageatrice_53, BillyTP_53,

Genes that have the "Most Annotated" start but do not call it:

- BlueShadow_52, Faja_52, JellyBread_49, Lawnathon_53, Windest_54, YoungHarleezy_52,

Genes that do not have the "Most Annotated" start:

- Globfish_52, Sashimi_53, SpicyFrank_55, ThayneTheZag_53,

Summary by start number:

Start 11:

- Found in 10 of 15 (66.7%) of genes in pham
- No Manual Annotations of this start.

- Called 10.0% of time when present
- Phage (with cluster) where this start called: SpicyFrank_55 (AY),

Start 14:

- Found in 11 of 15 (73.3%) of genes in pham
- Manual Annotations of this start: 4 of 5
- Called 45.5% of time when present
- Phage (with cluster) where this start called: AbbyDaisy_51 (AY), Auxilium_48 (AY), BenchScraper_50 (AY), Bhageatrice_53 (AY), BillyTP_53 (AY),

Start 16:

- Found in 10 of 15 (66.7%) of genes in pham
- No Manual Annotations of this start.
- Called 60.0% of time when present
- Phage (with cluster) where this start called: JellyBread_49 (AY), Lawnathon_53 (AY), Sashimi_53 (AY), ThayneTheZag_53 (AY), Windest_54 (AY), YoungHarleezy_52 (AY),

Start 18:

- Found in 15 of 15 (100.0%) of genes in pham
- Manual Annotations of this start: 1 of 5
- Called 20.0% of time when present
- Phage (with cluster) where this start called: BlueShadow_52 (AY), Faja_52 (AY), Globfish_52 (AY),

Summary by clusters:

There is one cluster represented in this pham: AY

Info for manual annotations of cluster AY:

- Start number 14 was manually annotated 4 times for cluster AY.
- Start number 18 was manually annotated 1 time for cluster AY.

Gene Information:

Gene: AbbyDaisy_51 Start: 32246, Stop: 31803, Start Num: 14

Candidate Starts for AbbyDaisy_51:

(8, 32345), (10, 32300), (11, 32294), (12, 32276), (13, 32273), (Start: 14 @32246 has 4 MA's), (15, 32222), (16, 32204), (Start: 18 @32156 has 1 MA's), (19, 32111), (20, 32075), (23, 32021), (25, 32000), (28, 31928), (29, 31886),

Gene: Auxilium_48 Start: 29517, Stop: 29074, Start Num: 14

Candidate Starts for Auxilium_48:

(4, 29655), (8, 29616), (10, 29571), (11, 29565), (12, 29547), (13, 29544), (Start: 14 @29517 has 4 MA's), (15, 29493), (16, 29475), (Start: 18 @29427 has 1 MA's), (19, 29382), (20, 29346), (23, 29292), (25, 29271), (28, 29199), (29, 29157),

Gene: BenchScraper_50 Start: 31282, Stop: 30824, Start Num: 14

Candidate Starts for BenchScraper_50:

(13, 31309), (Start: 14 @31282 has 4 MA's), (17, 31225), (Start: 18 @31192 has 1 MA's), (20, 31111), (23, 31057), (25, 31036), (26, 31018), (29, 30907),

Gene: Bhageatrice_53 Start: 33355, Stop: 32897, Start Num: 14

Candidate Starts for Bhageatrice_53:

(13, 33382), (Start: 14 @33355 has 4 MA's), (17, 33298), (Start: 18 @33265 has 1 MA's), (20, 33184), (23, 33130), (25, 33109), (26, 33091), (29, 32980),

Gene: BillyTP_53 Start: 33153, Stop: 32779, Start Num: 14

Candidate Starts for BillyTP_53:

(13, 33180), (Start: 14 @33153 has 4 MA's), (17, 33096), (Start: 18 @33063 has 1 MA's), (20, 32982), (23, 32928), (25, 32907), (26, 32889),

Gene: BlueShadow_52 Start: 31853, Stop: 31485, Start Num: 18

Candidate Starts for BlueShadow_52:

(13, 31970), (Start: 14 @31943 has 4 MA's), (17, 31886), (Start: 18 @31853 has 1 MA's), (20, 31772), (23, 31718), (24, 31706), (25, 31697), (26, 31679), (29, 31568),

Gene: Faja_52 Start: 33031, Stop: 32663, Start Num: 18

Candidate Starts for Faja_52:

(13, 33148), (Start: 14 @33121 has 4 MA's), (17, 33064), (Start: 18 @33031 has 1 MA's), (20, 32950), (23, 32896), (25, 32875), (26, 32857), (29, 32746),

Gene: Globfish_52 Start: 31948, Stop: 31586, Start Num: 18

Candidate Starts for Globfish_52:

(1, 32269), (2, 32194), (3, 32188), (5, 32149), (9, 32098), (10, 32092), (11, 32086), (13, 32065), (16, 31996), (Start: 18 @31948 has 1 MA's), (20, 31867), (23, 31813), (25, 31792), (26, 31774), (29, 31669),

Gene: JellyBread_49 Start: 30688, Stop: 30278, Start Num: 16

Candidate Starts for JellyBread_49:

(4, 30868), (6, 30835), (8, 30829), (10, 30784), (11, 30778), (13, 30757), (Start: 14 @30730 has 4 MA's), (16, 30688), (Start: 18 @30640 has 1 MA's), (20, 30559), (23, 30505), (25, 30484), (27, 30457), (28, 30406), (29, 30361),

Gene: Lawnathon_53 Start: 32055, Stop: 31645, Start Num: 16

Candidate Starts for Lawnathon_53:

(4, 32235), (6, 32202), (8, 32196), (10, 32151), (11, 32145), (13, 32124), (Start: 14 @32097 has 4 MA's), (16, 32055), (Start: 18 @32007 has 1 MA's), (20, 31926), (23, 31872), (25, 31851), (27, 31824), (28, 31773), (29, 31728),

Gene: Sashimi_53 Start: 32834, Stop: 32424, Start Num: 16

Candidate Starts for Sashimi_53:

(2, 33032), (3, 33026), (7, 32981), (10, 32930), (11, 32924), (13, 32903), (16, 32834), (Start: 18 @32786 has 1 MA's), (19, 32741), (20, 32705), (21, 32684), (22, 32660), (23, 32651), (25, 32630), (29, 32507),

Gene: SpicyFrank_55 Start: 32769, Stop: 32269, Start Num: 11

Candidate Starts for SpicyFrank_55:

(5, 32832), (9, 32781), (10, 32775), (11, 32769), (13, 32748), (16, 32679), (Start: 18 @32631 has 1 MA's), (19, 32586), (20, 32550), (23, 32496), (25, 32475), (26, 32457), (29, 32352),

Gene: ThayneTheZag_53 Start: 31675, Stop: 31265, Start Num: 16

Candidate Starts for ThayneTheZag_53:

(4, 31855), (8, 31816), (10, 31771), (11, 31765), (13, 31744), (16, 31675), (Start: 18 @31627 has 1 MA's), (20, 31546), (23, 31492), (25, 31471), (26, 31453), (29, 31348),

Gene: Windest_54 Start: 30760, Stop: 30350, Start Num: 16

Candidate Starts for Windest_54:

(4, 30940), (8, 30901), (10, 30856), (11, 30850), (13, 30829), (Start: 14 @30802 has 4 MA's), (16, 30760), (Start: 18 @30712 has 1 MA's), (20, 30631), (23, 30577), (25, 30556), (27, 30529), (28, 30478), (29, 30433),

Gene: YoungHarleezy_52 Start: 32065, Stop: 31655, Start Num: 16

Candidate Starts for YoungHarleezy_52:

(4, 32245), (6, 32212), (8, 32206), (10, 32161), (11, 32155), (13, 32134), (Start: 14 @32107 has 4 MA's), (16, 32065), (Start: 18 @32017 has 1 MA's), (19, 31972), (20, 31936), (23, 31882), (25, 31861), (27, 31834), (28, 31783), (29, 31738),