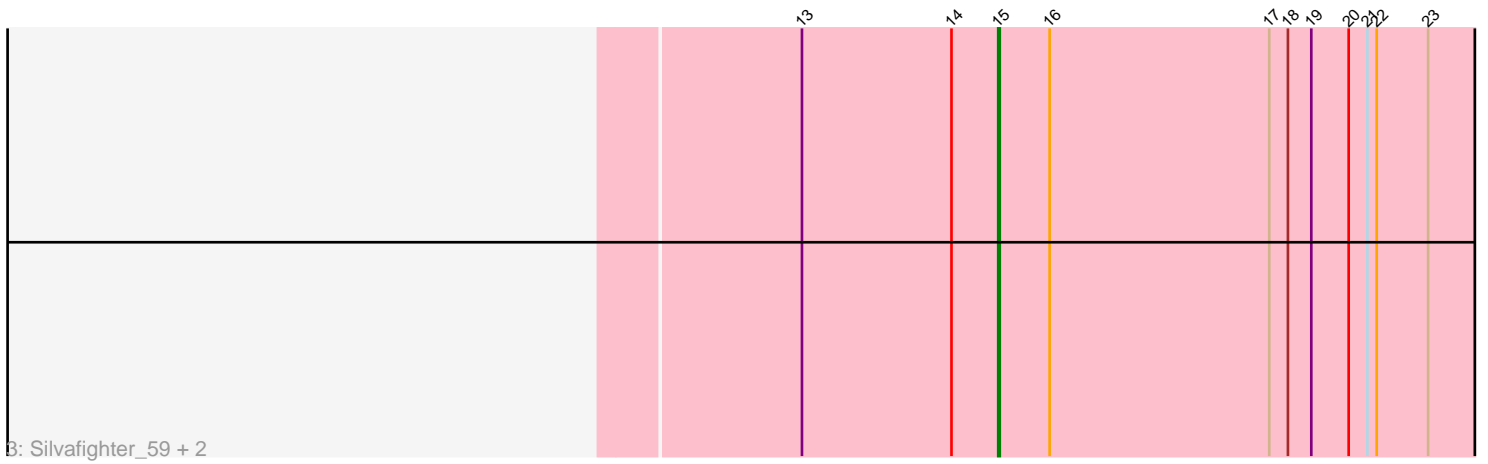
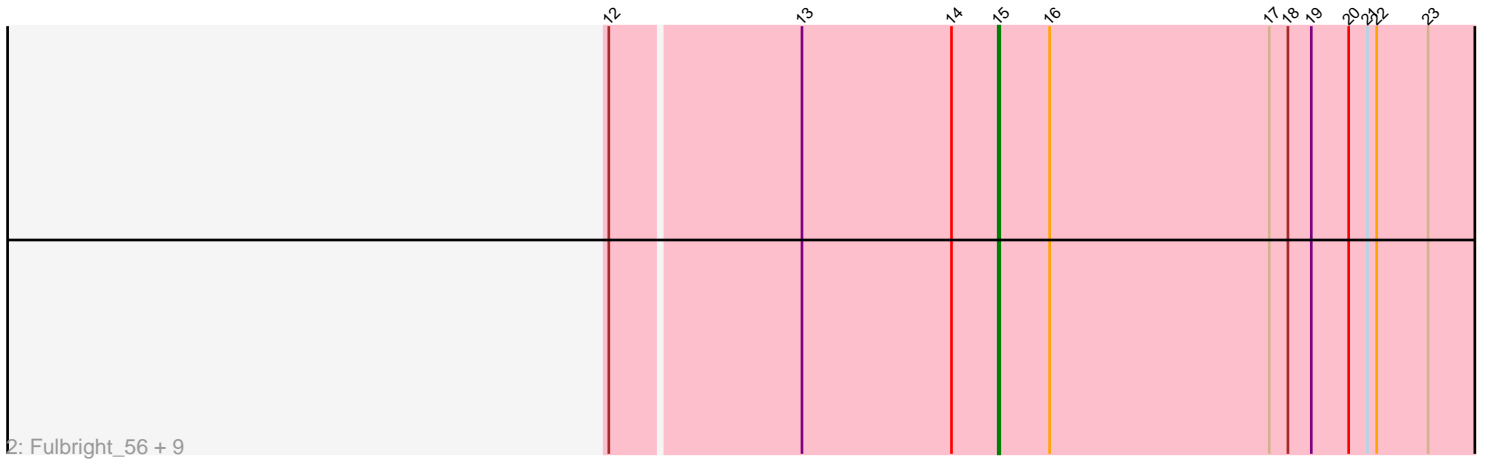
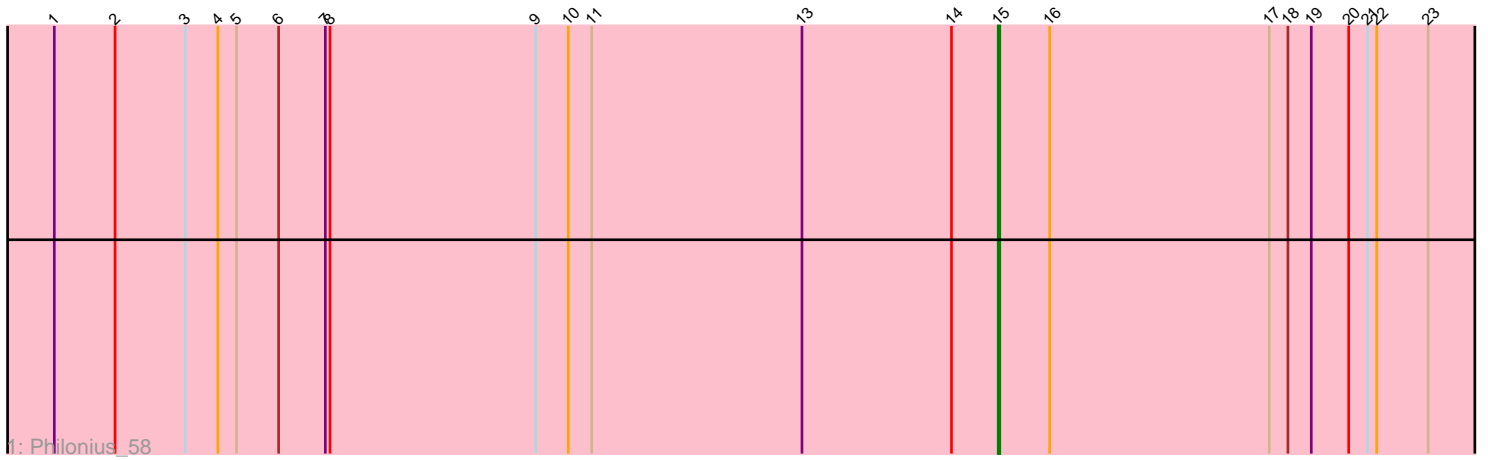


Pham 214789



Note: Tracks are now grouped by subcluster and scaled. Switching in subcluster is indicated by changes in track color. Track scale is now set by default to display the region 30 bp upstream of start 1 to 30 bp downstream of the last possible start. If this default region is judged to be packed too tightly with annotated starts, the track will be further scaled to only show that region of the ORF with annotated starts. This action will be indicated by adding "Zoomed" to the title. For starts, yellow indicates the location of called starts comprised solely of Glimmer/GeneMark auto-annotations, green indicates the location of called starts with at least 1 manual gene annotation.

Pham 214789 Report

This analysis was run 02/22/25 on database version 588.

Pham number 214789 has 14 members, 0 are drafts.

Phages represented in each track:

- Track 1 : Philonius_58
- Track 2 : Fulbright_56, Pipsqueaks_59, Parmesanjohn_58, Carcharodon_58, Schnauzer_59, Gex_59, Xerxes_58, Smurph_58, Phloss_56, Magsby_58
- Track 3 : Silvafighter_59, Melville_63, Duplicity_56

Summary of Final Annotations (See graph section above for start numbers):

The start number called the most often in the published annotations is 15, it was called in 14 of the 14 non-draft genes in the pham.

Genes that call this "Most Annotated" start:

- Carcharodon_58, Duplicity_56, Fulbright_56, Gex_59, Magsby_58, Melville_63, Parmesanjohn_58, Philonius_58, Phloss_56, Pipsqueaks_59, Schnauzer_59, Silvafighter_59, Smurph_58, Xerxes_58,

Genes that have the "Most Annotated" start but do not call it:

-

Genes that do not have the "Most Annotated" start:

-

Summary by start number:

Start 15:

- Found in 14 of 14 (100.0%) of genes in pham
- Manual Annotations of this start: 14 of 14
- Called 100.0% of time when present
- Phage (with cluster) where this start called: Carcharodon_58 (N), Duplicity_56 (N), Fulbright_56 (N), Gex_59 (N), Magsby_58 (N), Melville_63 (N), Parmesanjohn_58 (N), Philonius_58 (N), Phloss_56 (N), Pipsqueaks_59 (N), Schnauzer_59 (N), Silvafighter_59 (N), Smurph_58 (N), Xerxes_58 (N),

Summary by clusters:

There is one cluster represented in this pham: N

Info for manual annotations of cluster N:

•Start number 15 was manually annotated 14 times for cluster N.

Gene Information:

Gene: Carcharodon_58 Start: 37518, Stop: 37880, Start Num: 15

Candidate Starts for Carcharodon_58:

(12, 37275), (13, 37392), (14, 37488), (Start: 15 @37518 has 14 MA's), (16, 37551), (17, 37692), (18, 37704), (19, 37719), (20, 37743), (21, 37755), (22, 37761), (23, 37794),

Gene: Duplicity_56 Start: 36775, Stop: 37137, Start Num: 15

Candidate Starts for Duplicity_56:

(13, 36649), (14, 36745), (Start: 15 @36775 has 14 MA's), (16, 36808), (17, 36949), (18, 36961), (19, 36976), (20, 37000), (21, 37012), (22, 37018), (23, 37051),

Gene: Fulbright_56 Start: 36212, Stop: 36574, Start Num: 15

Candidate Starts for Fulbright_56:

(12, 35969), (13, 36086), (14, 36182), (Start: 15 @36212 has 14 MA's), (16, 36245), (17, 36386), (18, 36398), (19, 36413), (20, 36437), (21, 36449), (22, 36455), (23, 36488),

Gene: Gex_59 Start: 37534, Stop: 37896, Start Num: 15

Candidate Starts for Gex_59:

(12, 37291), (13, 37408), (14, 37504), (Start: 15 @37534 has 14 MA's), (16, 37567), (17, 37708), (18, 37720), (19, 37735), (20, 37759), (21, 37771), (22, 37777), (23, 37810),

Gene: Magsby_58 Start: 37535, Stop: 37897, Start Num: 15

Candidate Starts for Magsby_58:

(12, 37292), (13, 37409), (14, 37505), (Start: 15 @37535 has 14 MA's), (16, 37568), (17, 37709), (18, 37721), (19, 37736), (20, 37760), (21, 37772), (22, 37778), (23, 37811),

Gene: Melville_63 Start: 37089, Stop: 37451, Start Num: 15

Candidate Starts for Melville_63:

(13, 36963), (14, 37059), (Start: 15 @37089 has 14 MA's), (16, 37122), (17, 37263), (18, 37275), (19, 37290), (20, 37314), (21, 37326), (22, 37332), (23, 37365),

Gene: Parmesanjohn_58 Start: 37538, Stop: 37900, Start Num: 15

Candidate Starts for Parmesanjohn_58:

(12, 37295), (13, 37412), (14, 37508), (Start: 15 @37538 has 14 MA's), (16, 37571), (17, 37712), (18, 37724), (19, 37739), (20, 37763), (21, 37775), (22, 37781), (23, 37814),

Gene: Philonius_58 Start: 37703, Stop: 38065, Start Num: 15

Candidate Starts for Philonius_58:

(1, 37097), (2, 37136), (3, 37181), (4, 37202), (5, 37214), (6, 37241), (7, 37271), (8, 37274), (9, 37406), (10, 37427), (11, 37442), (13, 37577), (14, 37673), (Start: 15 @37703 has 14 MA's), (16, 37736), (17, 37877), (18, 37889), (19, 37904), (20, 37928), (21, 37940), (22, 37946), (23, 37979),

Gene: Phloss_56 Start: 36945, Stop: 37307, Start Num: 15

Candidate Starts for Phloss_56:

(12, 36702), (13, 36819), (14, 36915), (Start: 15 @36945 has 14 MA's), (16, 36978), (17, 37119), (18, 37131), (19, 37146), (20, 37170), (21, 37182), (22, 37188), (23, 37221),

Gene: Pipsqueaks_59 Start: 37516, Stop: 37878, Start Num: 15

Candidate Starts for Pipsqueaks_59:

(12, 37273), (13, 37390), (14, 37486), (Start: 15 @37516 has 14 MA's), (16, 37549), (17, 37690), (18, 37702), (19, 37717), (20, 37741), (21, 37753), (22, 37759), (23, 37792),

Gene: Schnauzer_59 Start: 37538, Stop: 37900, Start Num: 15

Candidate Starts for Schnauzer_59:

(12, 37295), (13, 37412), (14, 37508), (Start: 15 @37538 has 14 MA's), (16, 37571), (17, 37712), (18, 37724), (19, 37739), (20, 37763), (21, 37775), (22, 37781), (23, 37814),

Gene: Silvafighter_59 Start: 37081, Stop: 37443, Start Num: 15

Candidate Starts for Silvafighter_59:

(13, 36955), (14, 37051), (Start: 15 @37081 has 14 MA's), (16, 37114), (17, 37255), (18, 37267), (19, 37282), (20, 37306), (21, 37318), (22, 37324), (23, 37357),

Gene: Smurph_58 Start: 37538, Stop: 37900, Start Num: 15

Candidate Starts for Smurph_58:

(12, 37295), (13, 37412), (14, 37508), (Start: 15 @37538 has 14 MA's), (16, 37571), (17, 37712), (18, 37724), (19, 37739), (20, 37763), (21, 37775), (22, 37781), (23, 37814),

Gene: Xerxes_58 Start: 37535, Stop: 37897, Start Num: 15

Candidate Starts for Xerxes_58:

(12, 37292), (13, 37409), (14, 37505), (Start: 15 @37535 has 14 MA's), (16, 37568), (17, 37709), (18, 37721), (19, 37736), (20, 37760), (21, 37772), (22, 37778), (23, 37811),