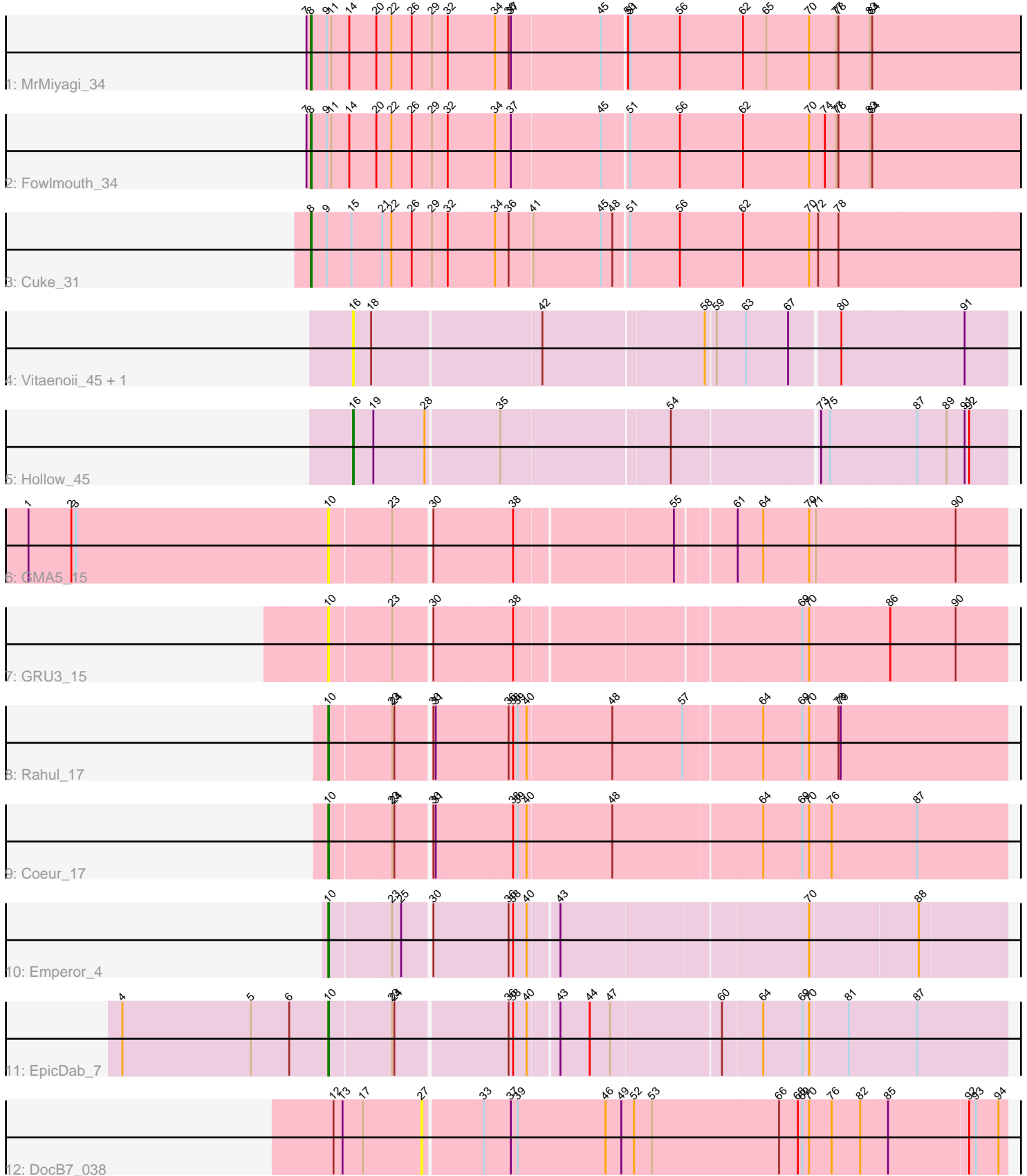


Pham 214808



Note: Tracks are now grouped by subcluster and scaled. Switching in subcluster is indicated by changes in track color. Track scale is now set by default to display the region 30 bp upstream of start 1 to 30 bp downstream of the last possible start. If this default region is judged to be packed too tightly with annotated starts, the track will be further scaled to only show that region of the ORF with annotated starts. This action will be indicated by adding "Zoomed" to the title. For starts, yellow indicates the location of called starts comprised solely of Glimmer/GeneMark auto-annotations, green indicates the location of called starts with at least 1 manual gene annotation.

Pham 214808 Report

This analysis was run 02/22/25 on database version 588.

Pham number 214808 has 13 members, 5 are drafts.

Phages represented in each track:

- Track 1 : MrMiyagi_34
- Track 2 : Fowlmouth_34
- Track 3 : Cuke_31
- Track 4 : Vitaenoi_45, Philon9_45
- Track 5 : Hollow_45
- Track 6 : GMA5_15
- Track 7 : GRU3_15
- Track 8 : Rahul_17
- Track 9 : Coeur_17
- Track 10 : Emperor_4
- Track 11 : EpicDab_7
- Track 12 : DocB7_038

Summary of Final Annotations (See graph section above for start numbers):

The start number called the most often in the published annotations is 10, it was called in 4 of the 8 non-draft genes in the pham.

Genes that call this "Most Annotated" start:

- Coeur_17, Emperor_4, EpicDab_7, GMA5_15, GRU3_15, Rahul_17,

Genes that have the "Most Annotated" start but do not call it:

-

Genes that do not have the "Most Annotated" start:

- Cuke_31, DocB7_038, Fowlmouth_34, Hollow_45, MrMiyagi_34, Philon9_45, Vitaenoi_45,

Summary by start number:

Start 8:

- Found in 3 of 13 (23.1%) of genes in pham
- Manual Annotations of this start: 3 of 8
- Called 100.0% of time when present

- Phage (with cluster) where this start called: Cuke_31 (AC), Fowlmouth_34 (AC), MrMiyagi_34 (AC),

Start 10:

- Found in 6 of 13 (46.2%) of genes in pham
- Manual Annotations of this start: 4 of 8
- Called 100.0% of time when present
- Phage (with cluster) where this start called: Coeur_17 (CW2), Emperor_4 (DM), EpicDab_7 (DM), GMA5_15 (CW2), GRU3_15 (CW2), Rahul_17 (CW2),

Start 16:

- Found in 3 of 13 (23.1%) of genes in pham
- Manual Annotations of this start: 1 of 8
- Called 100.0% of time when present
- Phage (with cluster) where this start called: Hollow_45 (CS4), Philon9_45 (CS4), Vitaenoi_45 (CS4),

Start 27:

- Found in 1 of 13 (7.7%) of genes in pham
- No Manual Annotations of this start.
- Called 100.0% of time when present
- Phage (with cluster) where this start called: DocB7_038 (singleton),

Summary by clusters:

There are 5 clusters represented in this pham: CS4, singleton, CW2, DM, AC,

Info for manual annotations of cluster AC:

- Start number 8 was manually annotated 3 times for cluster AC.

Info for manual annotations of cluster CS4:

- Start number 16 was manually annotated 1 time for cluster CS4.

Info for manual annotations of cluster CW2:

- Start number 10 was manually annotated 2 times for cluster CW2.

Info for manual annotations of cluster DM:

- Start number 10 was manually annotated 2 times for cluster DM.

Gene Information:

Gene: Coeur_17 Start: 11931, Stop: 12794, Start Num: 10

Candidate Starts for Coeur_17:

(Start: 10 @11931 has 4 MA's), (23, 12009), (24, 12012), (30, 12054), (31, 12057), (38, 12156), (39, 12162), (40, 12174), (48, 12285), (64, 12477), (69, 12528), (70, 12537), (76, 12564), (87, 12675),

Gene: Cuke_31 Start: 27339, Stop: 28265, Start Num: 8

Candidate Starts for Cuke_31:

(Start: 8 @27339 has 3 MA's), (9, 27360), (15, 27393), (21, 27432), (22, 27444), (26, 27471), (29, 27498), (32, 27519), (34, 27579), (36, 27597), (41, 27627), (45, 27717), (48, 27732), (51, 27750), (56, 27816), (62, 27897), (70, 27984), (72, 27996), (78, 28023),

Gene: DocB7_038 Start: 38440, Stop: 37679, Start Num: 27

Candidate Starts for DocB7_038:

(12, 38557), (13, 38545), (17, 38518), (27, 38440), (33, 38365), (37, 38329), (39, 38320), (46, 38203), (49, 38182), (52, 38167), (53, 38143), (66, 37975), (68, 37951), (69, 37945), (70, 37936), (76, 37906), (82, 37870), (85, 37834), (92, 37729), (93, 37720), (94, 37690),

Gene: Emperor_4 Start: 2151, Stop: 2993, Start Num: 10

Candidate Starts for Emperor_4:

(Start: 10 @2151 has 4 MA's), (23, 2229), (25, 2241), (30, 2274), (36, 2370), (38, 2376), (40, 2394), (43, 2430), (70, 2745), (88, 2880),

Gene: EpicDab_7 Start: 4348, Stop: 5202, Start Num: 10

Candidate Starts for EpicDab_7:

(4, 4075), (5, 4246), (6, 4297), (Start: 10 @4348 has 4 MA's), (23, 4426), (24, 4429), (36, 4567), (38, 4573), (40, 4591), (43, 4627), (44, 4666), (47, 4693), (60, 4834), (64, 4885), (69, 4936), (70, 4945), (81, 4993), (87, 5083),

Gene: Fowlmouth_34 Start: 30830, Stop: 31756, Start Num: 8

Candidate Starts for Fowlmouth_34:

(7, 30824), (Start: 8 @30830 has 3 MA's), (9, 30851), (11, 30857), (14, 30881), (20, 30917), (22, 30935), (26, 30962), (29, 30989), (32, 31010), (34, 31070), (37, 31091), (45, 31208), (51, 31241), (56, 31307), (62, 31388), (70, 31475), (74, 31496), (77, 31511), (78, 31514), (83, 31556), (84, 31559),

Gene: GMA5_15 Start: 12085, Stop: 12933, Start Num: 10

Candidate Starts for GMA5_15:

(1, 11686), (2, 11743), (3, 11749), (Start: 10 @12085 has 4 MA's), (23, 12163), (30, 12208), (38, 12310), (55, 12511), (61, 12583), (64, 12616), (70, 12676), (71, 12682), (90, 12865),

Gene: GRU3_15 Start: 12090, Stop: 12938, Start Num: 10

Candidate Starts for GRU3_15:

(Start: 10 @12090 has 4 MA's), (23, 12168), (30, 12213), (38, 12315), (69, 12672), (70, 12681), (86, 12783), (90, 12870),

Gene: Hollow_45 Start: 47078, Stop: 46251, Start Num: 16

Candidate Starts for Hollow_45:

(Start: 16 @47078 has 1 MA's), (19, 47051), (28, 46985), (35, 46892), (54, 46679), (73, 46493), (75, 46481), (87, 46370), (89, 46331), (91, 46307), (92, 46301),

Gene: MrMiyagi_34 Start: 30841, Stop: 31767, Start Num: 8

Candidate Starts for MrMiyagi_34:

(7, 30835), (Start: 8 @30841 has 3 MA's), (9, 30862), (11, 30868), (14, 30892), (20, 30928), (22, 30946), (26, 30973), (29, 31000), (32, 31021), (34, 31081), (36, 31099), (37, 31102), (45, 31219), (50, 31249), (51, 31252), (56, 31318), (62, 31399), (65, 31429), (70, 31486), (77, 31522), (78, 31525), (83, 31567), (84, 31570),

Gene: Philon9_45 Start: 47751, Stop: 46924, Start Num: 16

Candidate Starts for Philon9_45:

(Start: 16 @47751 has 1 MA's), (18, 47727), (42, 47514), (58, 47307), (59, 47295), (63, 47256), (67, 47202), (80, 47139), (91, 46980),

Gene: Rahul_17 Start: 11952, Stop: 12815, Start Num: 10

Candidate Starts for Rahul_17:

(Start: 10 @11952 has 4 MA's), (23, 12030), (24, 12033), (30, 12075), (31, 12078), (36, 12171), (38, 12177), (39, 12183), (40, 12195), (48, 12306), (57, 12399), (64, 12498), (69, 12549), (70, 12558), (78, 12594), (79, 12597),

Gene: Vitaenoi_45 Start: 47750, Stop: 46923, Start Num: 16

Candidate Starts for Vitaenoi_45:

(Start: 16 @47750 has 1 MA's), (18, 47726), (42, 47513), (58, 47306), (59, 47294), (63, 47255), (67, 47201), (80, 47138), (91, 46979),