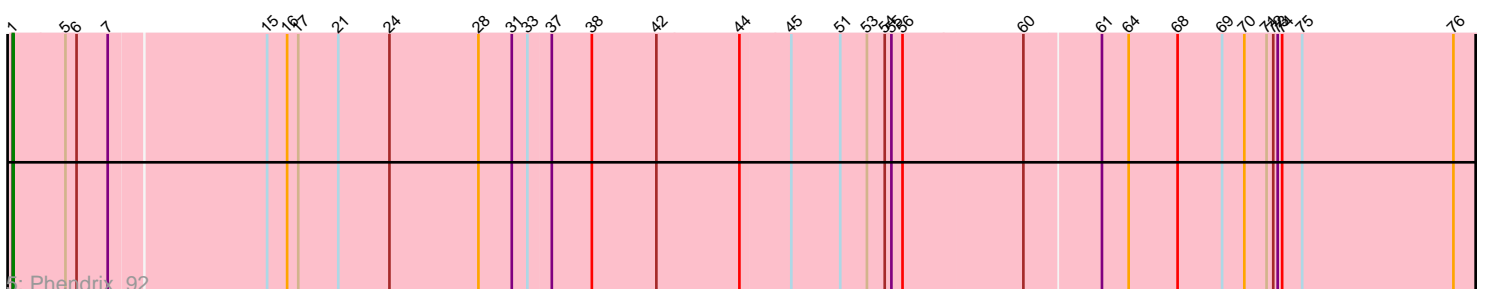
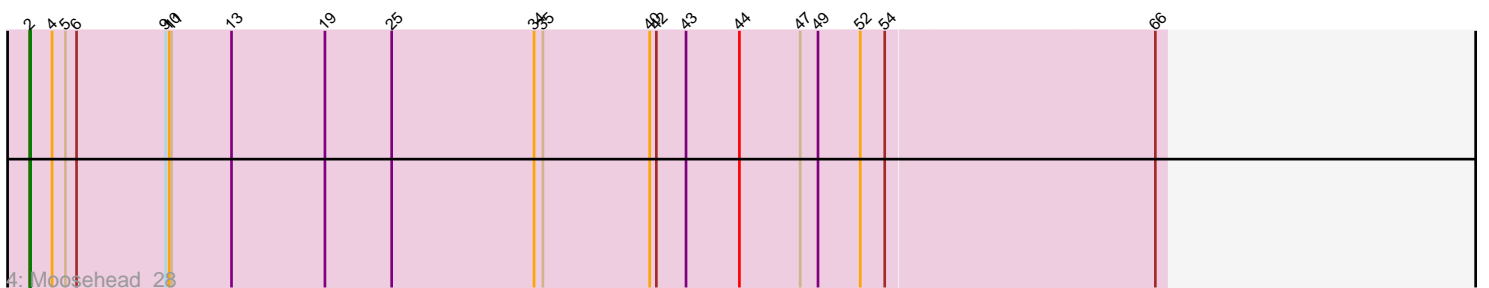
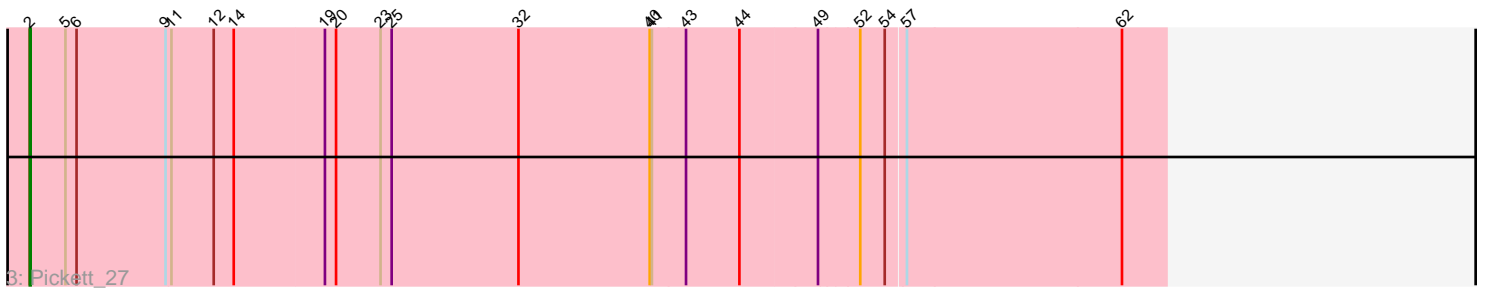
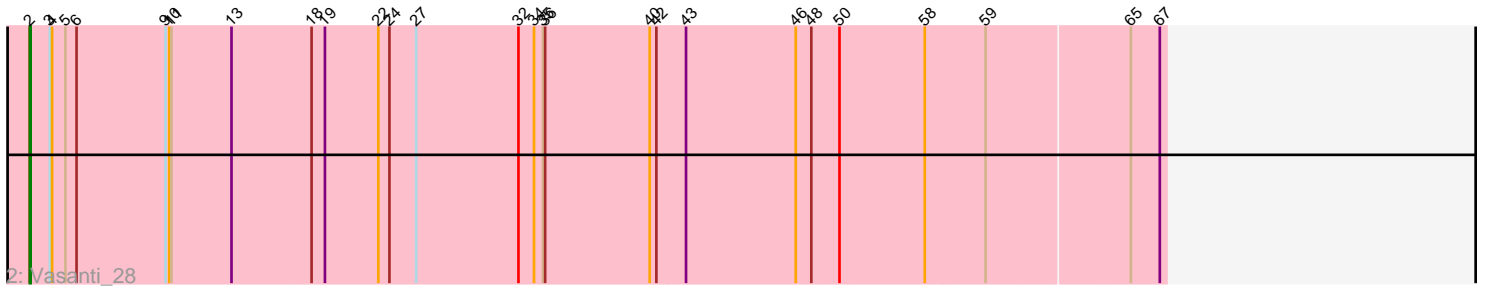
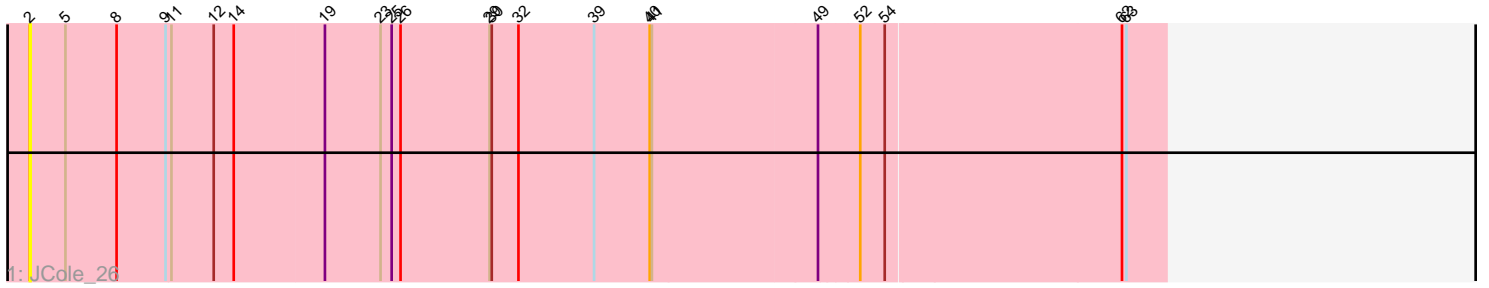


Pham 215102



Note: Tracks are now grouped by subcluster and scaled. Switching in subcluster is indicated by changes in track color. Track scale is now set by default to display the region 30 bp upstream of start 1 to 30 bp downstream of the last possible start. If this default region is judged to be packed too tightly with annotated starts, the track will be further scaled to only show that region of the ORF with annotated starts. This action will be indicated by adding "Zoomed" to the title. For starts, yellow indicates the location of called starts comprised solely of Glimmer/GeneMark auto-annotations, green indicates the location of called starts with at least 1 manual gene annotation.

Pham 215102 Report

This analysis was run 02/22/25 on database version 588.

Pham number 215102 has 5 members, 1 are drafts.

Phages represented in each track:

- Track 1 : JCole_26
- Track 2 : Vasanti_28
- Track 3 : Pickett_27
- Track 4 : Moosehead_28
- Track 5 : Phendrix_92

Summary of Final Annotations (See graph section above for start numbers):

The start number called the most often in the published annotations is 2, it was called in 3 of the 4 non-draft genes in the pham.

Genes that call this "Most Annotated" start:

- JCole_26, Moosehead_28, Pickett_27, Vasanti_28,

Genes that have the "Most Annotated" start but do not call it:

-

Genes that do not have the "Most Annotated" start:

- Phendrix_92,

Summary by start number:

Start 1:

- Found in 1 of 5 (20.0%) of genes in pham
- Manual Annotations of this start: 1 of 4
- Called 100.0% of time when present
- Phage (with cluster) where this start called: Phendrix_92 (DK),

Start 2:

- Found in 4 of 5 (80.0%) of genes in pham
- Manual Annotations of this start: 3 of 4
- Called 100.0% of time when present
- Phage (with cluster) where this start called: JCole_26 (CZ2), Moosehead_28 (CZ6), Pickett_27 (CZ2), Vasanti_28 (CZ2),

Summary by clusters:

There are 3 clusters represented in this pham: CZ2, CZ6, DK,

Info for manual annotations of cluster CZ2:

- Start number 2 was manually annotated 2 times for cluster CZ2.

Info for manual annotations of cluster CZ6:

- Start number 2 was manually annotated 1 time for cluster CZ6.

Info for manual annotations of cluster DK:

- Start number 1 was manually annotated 1 time for cluster DK.

Gene Information:

Gene: JCole_26 Start: 21727, Stop: 23235, Start Num: 2

Candidate Starts for JCole_26:

(Start: 2 @21727 has 3 MA's), (5, 21775), (8, 21844), (9, 21910), (11, 21916), (12, 21973), (14, 22000), (19, 22120), (23, 22195), (25, 22210), (26, 22222), (29, 22342), (30, 22345), (32, 22381), (39, 22483), (40, 22558), (41, 22561), (49, 22780), (52, 22831), (54, 22864), (62, 23176), (63, 23182),

Gene: Moosehead_28 Start: 21888, Stop: 23396, Start Num: 2

Candidate Starts for Moosehead_28:

(Start: 2 @21888 has 3 MA's), (4, 21918), (5, 21936), (6, 21951), (9, 22071), (10, 22074), (11, 22077), (13, 22158), (19, 22281), (25, 22371), (34, 22563), (35, 22575), (40, 22719), (42, 22728), (43, 22767), (44, 22839), (47, 22917), (49, 22941), (52, 22992), (54, 23025), (66, 23382),

Gene: Phendrix_92 Start: 57046, Stop: 59115, Start Num: 1

Candidate Starts for Phendrix_92:

(Start: 1 @57046 has 1 MA's), (5, 57115), (6, 57130), (7, 57172), (15, 57376), (16, 57403), (17, 57418), (21, 57472), (24, 57541), (28, 57661), (31, 57706), (33, 57724), (37, 57754), (38, 57808), (42, 57895), (44, 58006), (45, 58072), (51, 58138), (53, 58174), (54, 58198), (55, 58207), (56, 58222), (60, 58378), (61, 58474), (64, 58510), (68, 58576), (69, 58636), (70, 58666), (71, 58696), (72, 58705), (73, 58711), (74, 58717), (75, 58744), (76, 58948),

Gene: Pickett_27 Start: 21595, Stop: 23103, Start Num: 2

Candidate Starts for Pickett_27:

(Start: 2 @21595 has 3 MA's), (5, 21643), (6, 21658), (9, 21778), (11, 21784), (12, 21841), (14, 21868), (19, 21988), (20, 22003), (23, 22063), (25, 22078), (32, 22249), (40, 22426), (41, 22429), (43, 22474), (44, 22546), (49, 22648), (52, 22699), (54, 22732), (57, 22756), (62, 23044),

Gene: Vasanti_28 Start: 22607, Stop: 24106, Start Num: 2

Candidate Starts for Vasanti_28:

(Start: 2 @22607 has 3 MA's), (3, 22634), (4, 22637), (5, 22655), (6, 22670), (9, 22790), (10, 22793), (11, 22796), (13, 22877), (18, 22982), (19, 23000), (22, 23072), (24, 23087), (27, 23123), (32, 23261), (34, 23282), (35, 23294), (36, 23297), (40, 23438), (42, 23447), (43, 23486), (46, 23633), (48, 23654), (50, 23687), (58, 23801), (59, 23879), (65, 24059), (67, 24098),