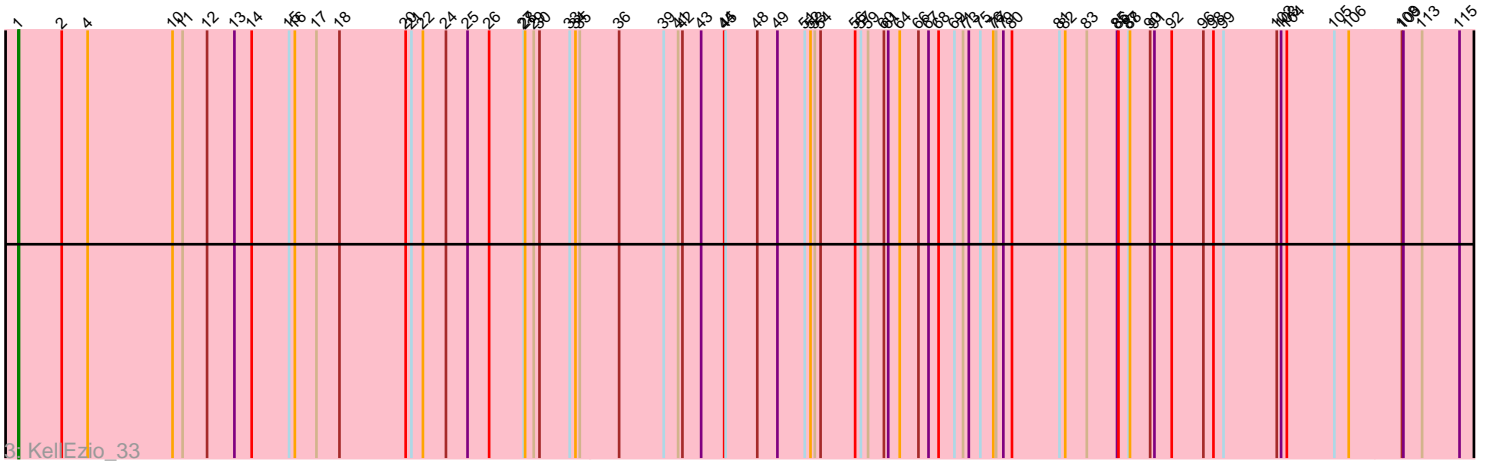
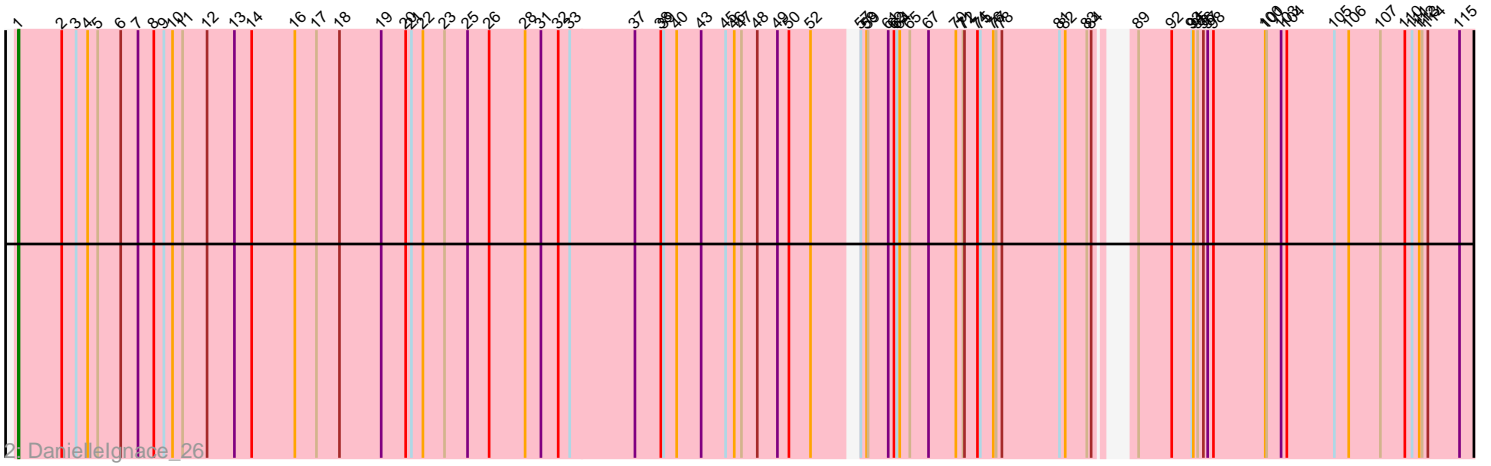
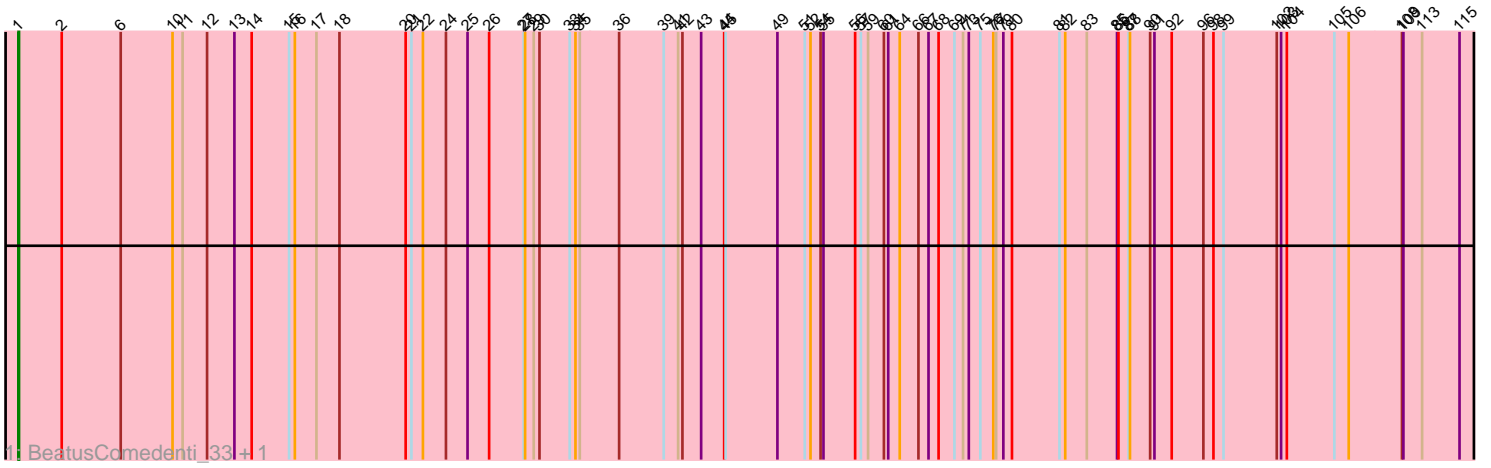


Pham 215156



Note: Tracks are now grouped by subcluster and scaled. Switching in subcluster is indicated by changes in track color. Track scale is now set by default to display the region 30 bp upstream of start 1 to 30 bp downstream of the last possible start. If this default region is judged to be packed too tightly with annotated starts, the track will be further scaled to only show that region of the ORF with annotated starts. This action will be indicated by adding "Zoomed" to the title. For starts, yellow indicates the location of called starts comprised solely of Glimmer/GeneMark auto-annotations, green indicates the location of called starts with at least 1 manual gene annotation.

Pham 215156 Report

This analysis was run 02/22/25 on database version 588.

Pham number 215156 has 4 members, 0 are drafts.

Phages represented in each track:

- Track 1 : BeatusComedenti_33, Kitkat_34
- Track 2 : DaniellEgnace_26
- Track 3 : KellEzio_33

Summary of Final Annotations (See graph section above for start numbers):

The start number called the most often in the published annotations is 1, it was called in 4 of the 4 non-draft genes in the pham.

Genes that call this "Most Annotated" start:

- BeatusComedenti_33, DaniellEgnace_26, KellEzio_33, Kitkat_34,

Genes that have the "Most Annotated" start but do not call it:

-

Genes that do not have the "Most Annotated" start:

-

Summary by start number:

Start 1:

- Found in 4 of 4 (100.0%) of genes in pham
- Manual Annotations of this start: 4 of 4
- Called 100.0% of time when present
- Phage (with cluster) where this start called: BeatusComedenti_33 (AT), DaniellEgnace_26 (AT), KellEzio_33 (AT), Kitkat_34 (AT),

Summary by clusters:

There is one cluster represented in this pham: AT

Info for manual annotations of cluster AT:

- Start number 1 was manually annotated 4 times for cluster AT.

Gene Information:

Gene: BeatusComedenti_33 Start: 18505, Stop: 21594, Start Num: 1

Candidate Starts for BeatusComedenti_33:

(Start: 1 @18505 has 4 MA's), (2, 18595), (6, 18718), (10, 18826), (11, 18847), (12, 18898), (13, 18955), (14, 18991), (15, 19069), (16, 19081), (17, 19126), (18, 19174), (20, 19312), (21, 19324), (22, 19348), (24, 19396), (25, 19441), (26, 19486), (27, 19558), (28, 19561), (29, 19579), (30, 19591), (33, 19654), (34, 19666), (35, 19675), (36, 19756), (39, 19849), (41, 19879), (42, 19888), (43, 19927), (44, 19975), (45, 19978), (49, 20086), (51, 20143), (52, 20155), (54, 20176), (55, 20182), (56, 20248), (57, 20260), (59, 20275), (60, 20308), (61, 20317), (64, 20341), (66, 20380), (67, 20401), (68, 20422), (69, 20455), (71, 20473), (73, 20485), (75, 20509), (76, 20536), (77, 20542), (79, 20557), (80, 20575), (81, 20674), (82, 20686), (83, 20731), (85, 20794), (86, 20797), (87, 20818), (88, 20821), (90, 20863), (91, 20872), (92, 20908), (96, 20974), (98, 20995), (99, 21016), (102, 21127), (103, 21136), (104, 21148), (105, 21247), (106, 21277), (108, 21385), (109, 21388), (113, 21427), (115, 21505),

Gene: DanielleIgnace_26 Start: 17678, Stop: 20671, Start Num: 1

Candidate Starts for DanielleIgnace_26:

(Start: 1 @17678 has 4 MA's), (2, 17768), (3, 17798), (4, 17822), (5, 17843), (6, 17891), (7, 17927), (8, 17960), (9, 17981), (10, 17999), (11, 18020), (12, 18071), (13, 18128), (14, 18164), (16, 18254), (17, 18299), (18, 18347), (19, 18434), (20, 18485), (21, 18497), (22, 18521), (23, 18566), (25, 18614), (26, 18659), (28, 18734), (31, 18767), (32, 18803), (33, 18827), (37, 18962), (38, 19016), (39, 19022), (40, 19049), (43, 19100), (45, 19151), (46, 19169), (47, 19184), (48, 19217), (49, 19259), (50, 19283), (52, 19328), (57, 19400), (58, 19412), (59, 19415), (61, 19457), (62, 19469), (63, 19475), (64, 19481), (65, 19502), (67, 19541), (70, 19598), (71, 19613), (72, 19616), (74, 19643), (75, 19649), (76, 19676), (77, 19682), (78, 19694), (81, 19814), (82, 19826), (83, 19871), (84, 19880), (89, 19913), (92, 19982), (93, 20024), (94, 20027), (95, 20036), (96, 20048), (97, 20057), (98, 20069), (100, 20177), (101, 20180), (103, 20210), (104, 20222), (105, 20321), (106, 20351), (107, 20417), (110, 20468), (111, 20483), (112, 20498), (113, 20504), (114, 20516), (115, 20582),

Gene: Kellezio_33 Start: 18507, Stop: 21596, Start Num: 1

Candidate Starts for Kellezio_33:

(Start: 1 @18507 has 4 MA's), (2, 18597), (4, 18651), (10, 18828), (11, 18849), (12, 18900), (13, 18957), (14, 18993), (15, 19071), (16, 19083), (17, 19128), (18, 19176), (20, 19314), (21, 19326), (22, 19350), (24, 19398), (25, 19443), (26, 19488), (27, 19560), (28, 19563), (29, 19581), (30, 19593), (33, 19656), (34, 19668), (35, 19677), (36, 19758), (39, 19851), (41, 19881), (42, 19890), (43, 19929), (44, 19977), (45, 19980), (48, 20046), (49, 20088), (51, 20145), (52, 20157), (53, 20166), (54, 20178), (56, 20250), (57, 20262), (59, 20277), (60, 20310), (61, 20319), (64, 20343), (66, 20382), (67, 20403), (68, 20424), (69, 20457), (71, 20475), (73, 20487), (75, 20511), (76, 20538), (77, 20544), (79, 20559), (80, 20577), (81, 20676), (82, 20688), (83, 20733), (85, 20796), (86, 20799), (87, 20820), (88, 20823), (90, 20865), (91, 20874), (92, 20910), (96, 20976), (98, 20997), (99, 21018), (102, 21129), (103, 21138), (104, 21150), (105, 21249), (106, 21279), (108, 21387), (109, 21390), (113, 21429), (115, 21507),

Gene: Kitkat_34 Start: 18625, Stop: 21714, Start Num: 1

Candidate Starts for Kitkat_34:

(Start: 1 @18625 has 4 MA's), (2, 18715), (6, 18838), (10, 18946), (11, 18967), (12, 19018), (13, 19075), (14, 19111), (15, 19189), (16, 19201), (17, 19246), (18, 19294), (20, 19432), (21, 19444), (22, 19468), (24, 19516), (25, 19561), (26, 19606), (27, 19678), (28, 19681), (29, 19699), (30, 19711), (33, 19774), (34, 19786), (35, 19795), (36, 19876), (39, 19969), (41, 19999), (42, 20008), (43, 20047), (44, 20095), (45, 20098), (49, 20206), (51, 20263), (52, 20275), (54, 20296), (55, 20302), (56, 20368), (57, 20380), (59, 20395), (60, 20428), (61, 20437), (64, 20461), (66, 20500), (67, 20521), (68, 20542), (69, 20575), (71, 20593), (73, 20605), (75, 20629), (76, 20656), (77, 20662), (79, 20677), (80, 20695), (81,

20794), (82, 20806), (83, 20851), (85, 20914), (86, 20917), (87, 20938), (88, 20941), (90, 20983), (91, 20992), (92, 21028), (96, 21094), (98, 21115), (99, 21136), (102, 21247), (103, 21256), (104, 21268), (105, 21367), (106, 21397), (108, 21505), (109, 21508), (113, 21547), (115, 21625),