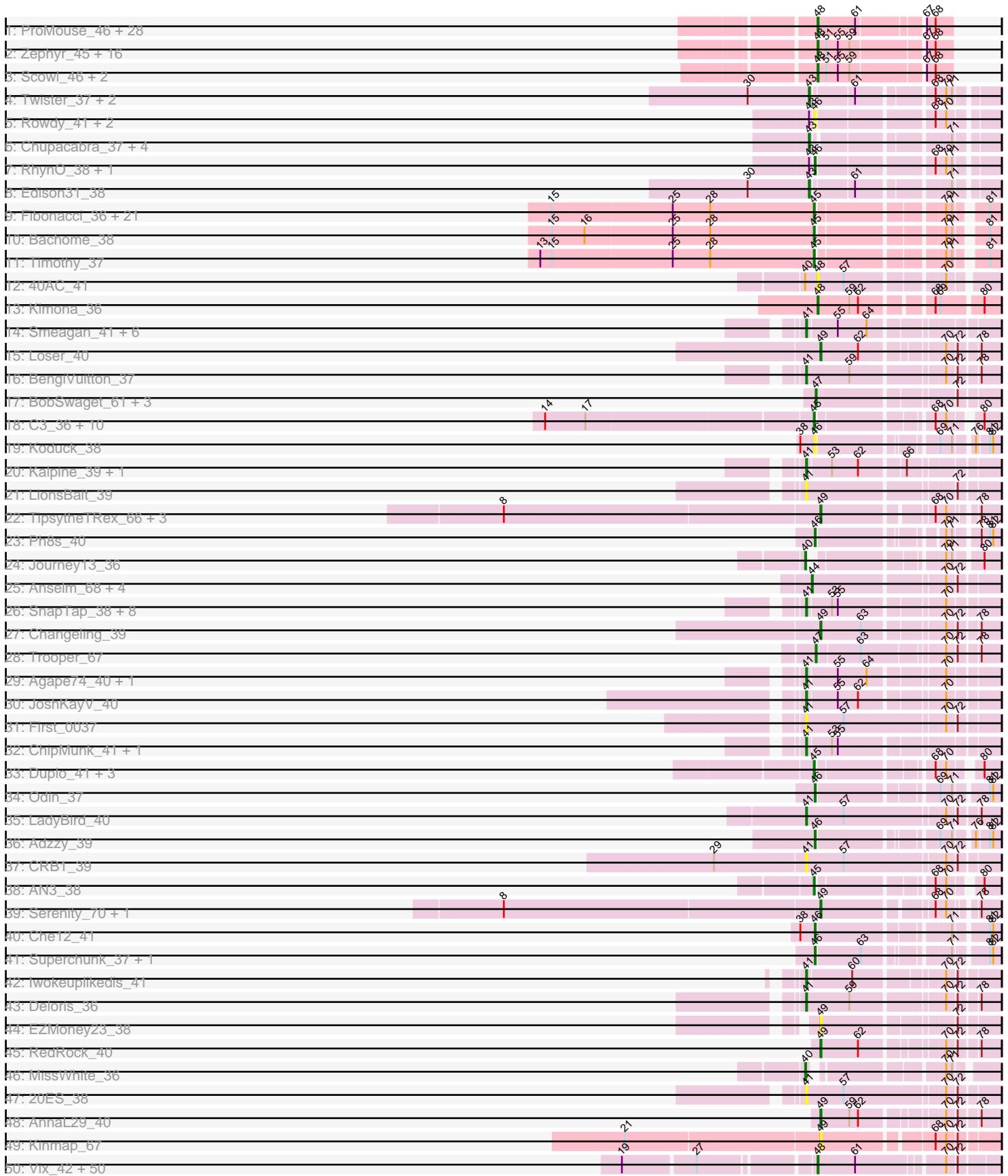
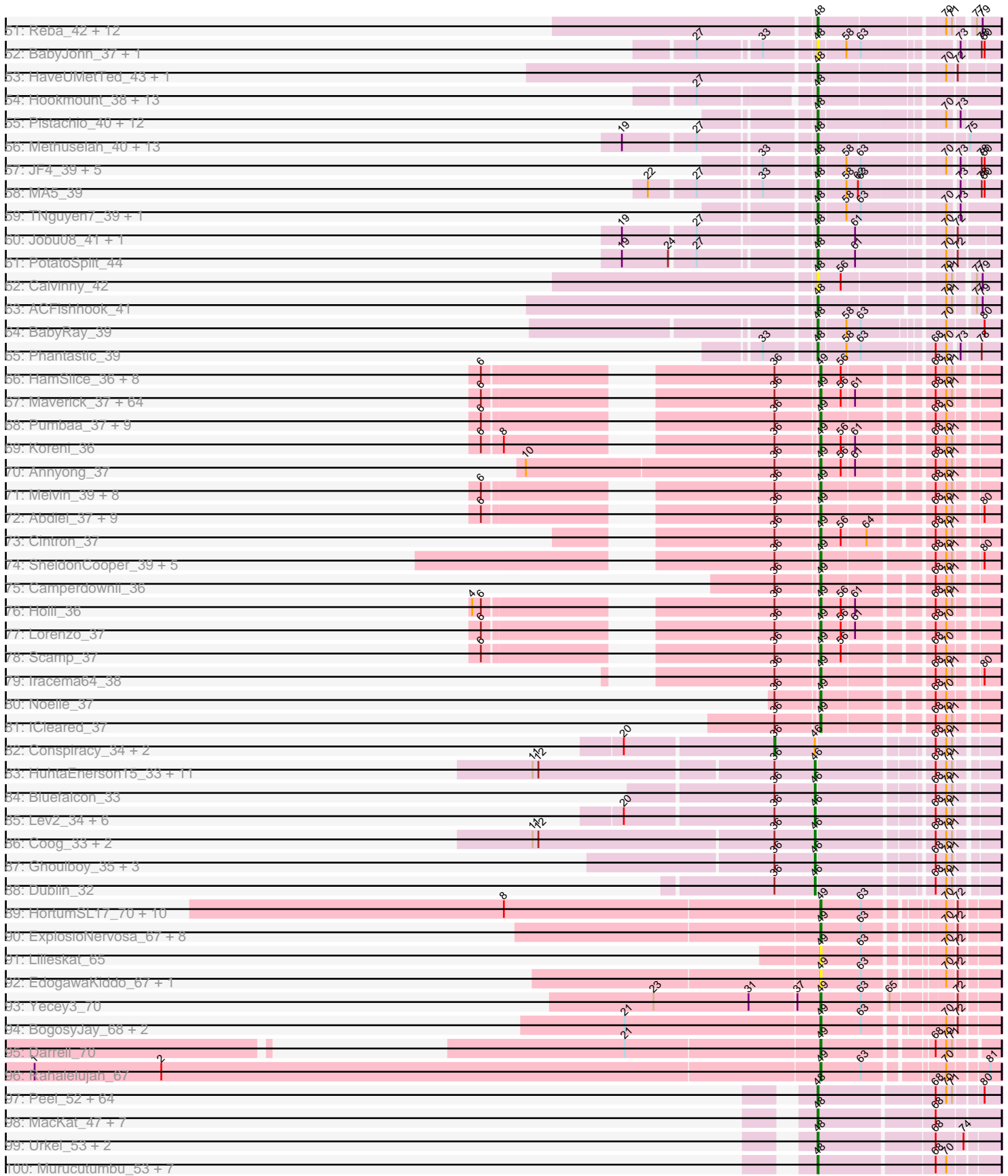


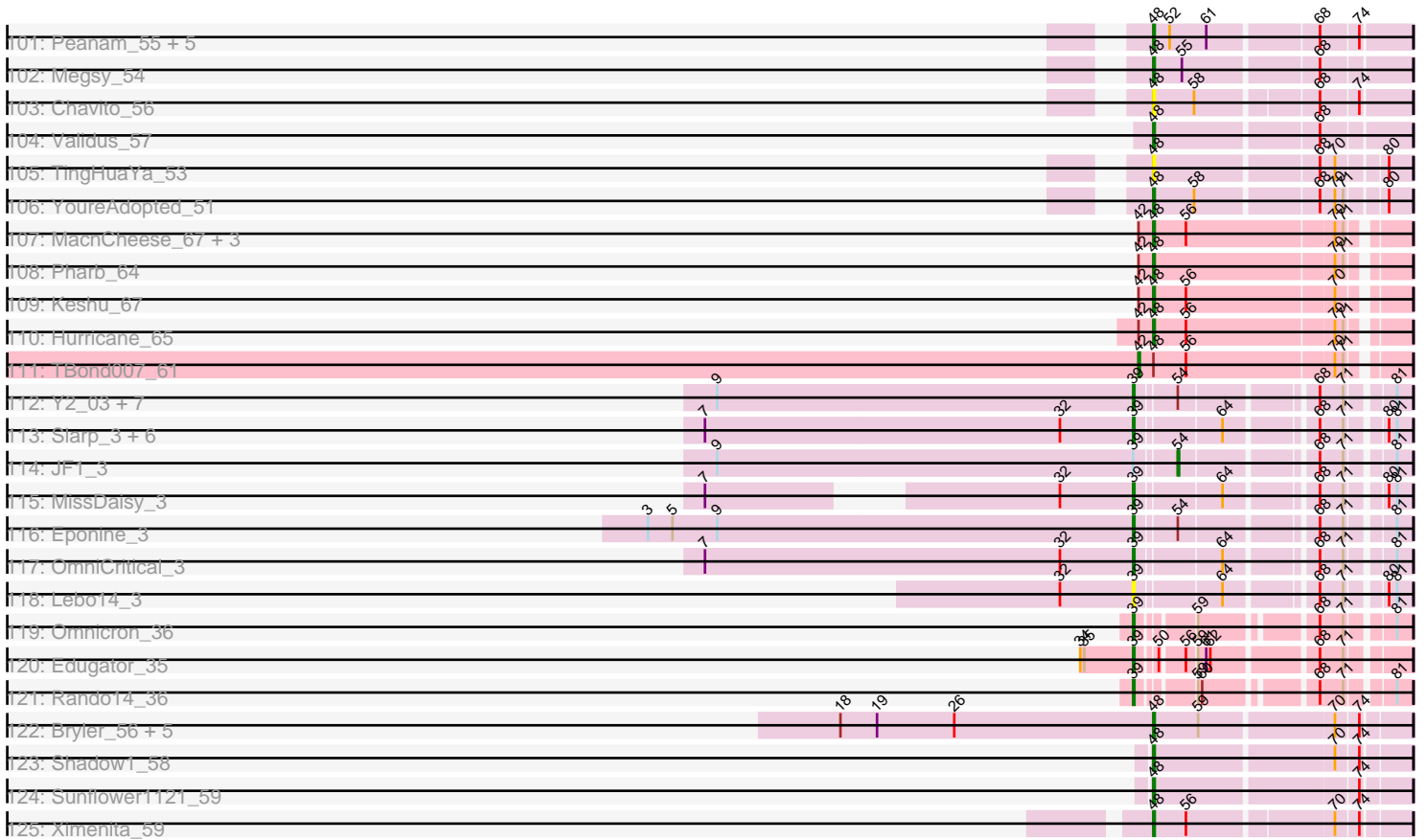
Pham 215669



Pham 215669



Pham 215669



Note: Tracks are now grouped by subcluster and scaled. Switching in subcluster is indicated by changes in track color. Track scale is now set by default to display the region 30 bp upstream of start 1 to 30 bp downstream of the last possible start. If this default region is judged to be packed too tightly with annotated starts, the track will be further scaled to only show that region of the ORF with annotated starts. This action will be indicated by adding "Zoomed" to the title. For starts, yellow indicates the location of called starts comprised solely of Glimmer/GeneMark auto-annotations, green indicates the location of called starts with at least 1 manual gene annotation.

Pham 215669 Report

This analysis was run 02/22/25 on database version 588.

Pham number 215669 has 606 members, 61 are drafts.

Phages represented in each track:

- Track 1 : ProMouse_46, Sibs6_46, PattyP_46, Blue_45, Bigchunggi_44, Big3_44, DreamCatcher_48, Anglerfish_46, Molly_46, Ichabod_47, McGuire_46, Raid_46, Jorgensen_46, Arlo_43, Snazzy_43, Kanely_46, Altman_47, Nhonho_46, SkiPole_48, PascalRango_46, Petp2012_46, HanShotFirst_44, TwoPeat_46, PSullivan_45, Gandalf20_47, PinkPlastic_44, Barriga_46, Atkinbua_47, Pita2_48
- Track 2 : Zephyr_45, JC27_46, GrecoEtereo_46, Jasper_47, Fenn_47, HarryOW_44, Bruns_44, Forsytheast_45, Corvo_46, Target_46, SwissCheese_47, Naira_47, Dreamboat_47, Moose_45, Mryolo_43, RidgeCB_45, PherrisBueller_45
- Track 3 : Scowl_46, ConceptII_47, Alsfro_49
- Track 4 : Twister_37, Topanga_37, WalterMcMickey_37
- Track 5 : Rowdy_41, Shapes_41, DustyMartin_41
- Track 6 : Chupacabra_37, Kristoff_38, Goose_38, OKCentral2016_37, Rebeuca_38
- Track 7 : RhynO_38, Eaglepride_39
- Track 8 : Edison31_38
- Track 9 : Fibonacci_36, Petersenfast_35, Sham4_36, Gilberta_37, Aneem_37, Mabel_37, Bud_36, MaCh_37, Hutc2_36, Snape_36, Lucivia_37, Mulciber_36, Joselito_37, Orange_36, Ebony_37, TinyTimmy_37, Insomnia_37, Flaverint_37, Jabith_37, Et2Brutus_36, Bowtie_37, Munch_37
- Track 10 : Bachome_38
- Track 11 : Timothy_37
- Track 12 : 40AC_41
- Track 13 : Kimona_36
- Track 14 : Smeagan_41, Jerm_40, Turbido_39, Dignity_40, Whabigail7_39, LilTurb_39, Leviathan_40
- Track 15 : Loser_40
- Track 16 : BengiVuitton_37
- Track 17 : BobSwaget_61, Rachaly_64, Miko_62, Lokk_62
- Track 18 : C3_36, AN9_41, Pomar16_41, Naji_41, D29_38, VC3_41, ANI8_41, StarStuff_41, Travvers_41, VA6_38, D32_41
- Track 19 : Koduck_38
- Track 20 : Kalpine_39, Trixie_39
- Track 21 : LionsBait_39
- Track 22 : TipsytheTRex_66, Quokka_68, Bradman_69, MajorMajor_68
- Track 23 : Ph8s_40
- Track 24 : Journey13_36
- Track 25 : Anselm_68, Retro23_68, Fameo_67, Heffalump_66, QueenB2_66

- Track 26 : SnapTap_38, Crucio_38, FiringLine_38, QueenBeesly_38, KingCyrus_41, Georgie2_39, Power_37, SemperFi_39, SweetiePie_38
- Track 27 : Changeling_39
- Track 28 : Trooper_67
- Track 29 : Agape74_40, AbbyPaige_40
- Track 30 : JoshKayV_40
- Track 31 : First_0037
- Track 32 : ChipMunk_41, EvilGenius_41
- Track 33 : Duplo_41, Tomathan_41, DBQu4n_41, Kerberos_41
- Track 34 : Odin_37
- Track 35 : LadyBird_40
- Track 36 : Adzzy_39
- Track 37 : CRB1_39
- Track 38 : AN3_38
- Track 39 : Serenity_70, Jsquared_70
- Track 40 : Che12_41
- Track 41 : Superchunk_37, Caraxes_38
- Track 42 : Iwokeuplikedis_41
- Track 43 : Deloris_36
- Track 44 : EZMoney23_38
- Track 45 : RedRock_40
- Track 46 : MissWhite_36
- Track 47 : 20ES_38
- Track 48 : AnnaL29_40
- Track 49 : Kinmap_67
- Track 50 : Vix_42, Microwolf_42, Aglet_43, MuchMore_45, DaHudson_42, Colbster_42, Grum1_42, AugsMagnumOpus_45, JHC117_42, GtownJaz_42, Grif_42, JenCasNa_43, Taurus_43, Tiffany_42, MarQuardt_42, GinkgoMaracino_42, Mainiac_42, Pembroke_42, Dieselweasel_43, Cullens_42, Stagni_42, Sabia_42, Fernando_42, Snickers_42, Watson_42, Iowa_42, LBerry_43, Bigflo_42, P28Green_43, SoYo_42, Grub_42, Beauxregard13_42, MoneyMay_42, MadMarie_42, Marie_42, Malinsilva_44, Sabinator_41, Wooldri_44, Hercules11_42, Lilith_43, StepMih_42, Penny1_43, Phoebe_43, Farber_42, Anubis_45, LugYA_45, Zetzy_41, Ollie_42, BreSam8_42, PGHhamlin_44, EpicPhail_43
- Track 51 : Reba_42, Manu_42, Marius_43, Groupthink_43, PurpleHaze_42, Gemma_41, Pawn_42, Kalb97_43, JeppNRM_43, Phranny_43, Heliosoles_41, PhishRPhriends_40, Kalnoky_43
- Track 52 : BabyJohn_37, Chiqui_37
- Track 53 : HaveUMetTed_43, OlanP_41
- Track 54 : Hookmount_38, Caviar_38, Texage_37, Margo_38, QuinnKiro_37, Todacoro_38, Veracruz_37, Lambert1_38, Noella_38, ResDef_38, Norbert_37, Popcicle_38, Panamaxus_36, Pocahontas_38
- Track 55 : Pistachio_40, Heathen_39, Fred313_39, SaturnRing_39, DropBear_39, BlueBird_40, Kachowdy_39, Giroux_39, Idleandcovert_39, HelDan_39, Marchesa_39, Bugatti_39, Scout_39
- Track 56 : Methuselah_40, Soshari_44, Daishi_41, Misomonster_43, Louie6_41, BuzzBuzz_40, LarryKay_42, Spike509_42, Rummer_41, HashRod_43, TinyPebbles_41, KADY_42, Phoxy_42, AgronaGT15_41
- Track 57 : JF4_39, JF2_39, MK4_39, Isca_38, Rockstar_39, B1_36
- Track 58 : MA5_39
- Track 59 : TNguyen7_39, Puppy_40
- Track 60 : Jobu08_41, SoilDragon_42
- Track 61 : PotatoSplit_44

- Track 62 : Calvinny_42
- Track 63 : ACFishhook_41
- Track 64 : BabyRay_39
- Track 65 : Phantastic_39
- Track 66 : HamSlice_36, Wilbur_37, Arturo_35, Sparxx_38, Kingmustik0402_37, Romney_37, Chaph_37, Koan_36, Gadost_37
- Track 67 : Maverick_37, Bartimeaus_37, Bruiser_36, Ruin_37, TygerBlood_37, Albee_37, Lunsford_38, Flux_37, Bombshell_37, TiroTheta9_37, Sabertooth_37, LochMonster_37, JoongJeon_37, Millski_36, PeterPeter_37, Broseidon_37, Eapen_37, Avle17_37, Relief_36, CentreCat_37, Thanksgivukkah_37, Phighter1804_37, Nemo27_37, LappelDuVide_37, Lemur_37, Caelakin_37, LittleB_37, Eris_36, Druantia_37, Skipitt_36, JetBlade_37, BubbleTrouble_37, Jaykayelowell_36, Huxley_38, Spino_37, Roosevelt_36, KFPoly_37, Cocoaberry_37, Houdini22_37, Taquarus_37, Kyee_37, Baby16_37, Burger_35, Iceman_38, NorthStar_36, Phacado_37, Peaches_37, Shaka_37, Deano_37, Mayonnaise_38, Mazhar510_37, Connomayer_37, Florean_37, SenorClean_36, Dhanush_37, Eros_37, Palestino_36, Wizard007_37, NotAPhaseMom_37, Wander_37, MeeZee_37, Funston_37, Blackmoor_37, Clarenza_37, YoSam321_37
- Track 68 : Pumbaa_37, Phelipe_38, Tinybot_36, Nyxis_37, TroyPia_38, Commander_37, Phontbonne_37, Ulysses_36, LittleGuy_37, Medusa_37
- Track 69 : Koreni_36
- Track 70 : Annyong_37
- Track 71 : Melvin_39, OKaNui_38, Alberto7_38, Kratark_37, Rosa24_37, Kremtemulon_37, TinaFeyge_38, Polymorphads_38, Citius_37
- Track 72 : Abdiel_37, Maxo_38, Morrow_38, Kampy_37, BellusTerra_38, Eurydice_38, Eagle_37, Ohfah_38, LeoAvram_37, Nebs_38
- Track 73 : Cintron_37
- Track 74 : SheldonCooper_39, ChampagnePapi_39, Obama12_38, LHTSCC_39, BangNhom_38, Cerulean_38
- Track 75 : Camperdownii_36
- Track 76 : Holli_36
- Track 77 : Lorenzo_37
- Track 78 : Scamp_37
- Track 79 : Iracema64_38
- Track 80 : Noelle_37
- Track 81 : ICleared_37
- Track 82 : Conspiracy_34, Discoknowium_34, Jovo_34
- Track 83 : HuhtaEnerson15_33, George_32, LittleCherry_33, Prinasha11_34, Bonamassa_33, Archetta_33, Cuco_33, Milcery_33, Twigg_33, Tarynearal_32, Theia_31, Swirley_35
- Track 84 : Bluefalcon_33
- Track 85 : Lev2_34, Aragog_34, AgentM_34, Tiger_34, Phlorence_34, ForGetIt_34, PickleBack_34
- Track 86 : Coog_33, Micasa_35, Midas2_33
- Track 87 : Ghoulboy_35, SydNat_35, Zolita_34, MarysWell_32
- Track 88 : Dublin_32
- Track 89 : HortumSL17_70, Jiawan_66, Aliter_70, Catalina_71, Hanray_67, Tubs_69, Onglai_67, PackMan_68, Horex_67, Myxus_69, Phaeder_69
- Track 90 : ExplosioNervosa_67, Eidsmoe_67, Priya_67, EmyBug_66, Alma_67, Fayely_67, Spouty_67, Qobbit_67, Conquerage_67
- Track 91 : Lilleskat_65
- Track 92 : EdogawaKiddo_67, Sachima_65
- Track 93 : Yecey3_70

- Track 94 : BogosyJay_68, Maminiaina_68, Elephantoon_67
- Track 95 : Darrell_70
- Track 96 : Rahalelujah_67
- Track 97 : Peel_52, CREW_52, LindNT_51, Jeckyll_52, Bern_53, Atiba_53, Zavala_54, Capricorn_52, Beezoo_54, Durfee_52, Tachez_52, Mynx_53, Ganymede_53, Deby_52, Piatt_52, MeaningOfLife_53, Ramen_53, Jarvi_52, Rosmarinus_52, AlishaPH_52, BaghaKamala_51, Adonis_52, Pokerus_51, Inky_52, Lunahalos_52, TreyKay_53, CallaLilly_54, Adephagia_52, Llorens_52, Jayhawk_53, Rapunzel97_53, CaseJules_54, Geraldini_55, Boiiii_52, BGIluviae_52, Hyperbowlee_52, Apocalypse_55, ActinUp_52, BEEST_52, Zabiza_47, Slimphazie_52, Prithvi_53, Spock_52, Twitch_52, Emerson_53, QuincyRose_51, Sulley_52, BarrelRoll_52, TruffulaTree_52, Topper_52, Dalmuri_52, Tiri_53, Asayake_52, Padfoot_52, Joy99_52, JAWS_52, CheetoDust_51, Blizzard_52, Belladonna_52, Angelica_52, Homura_52, Padpat_54, HedwigODU_52, ShiaSurprise_53, Veliki_53
- Track 98 : MacKat_47, TiniBug_53, Clipper_56, Efra2_55, TaiwanKao_54, Anaya_54, Bella96_53, CrimD_52
- Track 99 : Urkel_53, SamuelLPlaqson_53, DrHayes_53
- Track 100 : Murucutumbu_53, Illumine_55, Dole_55, LaterM_53, Ageofdapage_54, Devera_57, LastHope_55, Stinson_53
- Track 101 : Peanam_55, Dartin_55, Shaobing_55, Richo_55, McMater_55, Niklas_55
- Track 102 : Megsy_54
- Track 103 : Chavito_56
- Track 104 : Validus_57
- Track 105 : TingHuaYa_53
- Track 106 : YoureAdopted_51
- Track 107 : MacnCheese_67, Pixie_64, ShedlockHolmes_66, Lea83_66
- Track 108 : Pharb_64
- Track 109 : Keshu_67
- Track 110 : Hurricane_65
- Track 111 : TBond007_61
- Track 112 : Y2_03, Fionnbharth_3, Juliette_3, Ruthiejr_3, Malthus_3, Y10_03, Kraw_3, Wintermute_3
- Track 113 : Slarp_3, Cheetobro_3, Mitti_3, Chancellor_3, Patt_3, Reptar3000_3, Bobquesha_3
- Track 114 : JF1_3
- Track 115 : MissDaisy_3
- Track 116 : Eponine_3
- Track 117 : OmniCritical_3
- Track 118 : Lebo14_3
- Track 119 : Omnicron_36
- Track 120 : Edugator_35
- Track 121 : Rando14_36
- Track 122 : Bryler_56, Syra333_58, Krueger_59, Cain_56, Tierra_56, Phrank_56
- Track 123 : Shadow1_58
- Track 124 : Sunflower1121_59
- Track 125 : Ximenita_59

Summary of Final Annotations (See graph section above for start numbers):

The start number called the most often in the published annotations is 48, it was called in 259 of the 545 non-draft genes in the pham.

Genes that call this "Most Annotated" start:

- 40AC_41, ACFishhook_41, ActinUp_52, Adephagia_52, Adonis_52, Ageofdapage_54, Aglet_43, AgronaGT15_41, AlishaPH_52, Alsfro_49, Altman_47, Anaya_54, Angelica_52, Anglerfish_46, Anubis_45, Apocalypse_55, Arlo_43, Asayake_52, Atiba_53, Atkinbua_47, AugsMagnumOpus_45, B1_36, BEEST_52, BGIlluviae_52, BabyJohn_37, BabyRay_39, BaghaKamala_51, BarrelRoll_52, Barriga_46, Beauxregard13_42, Beezoo_54, Bella96_53, Belladonna_52, Bern_53, Big3_44, Bigchungi_44, Bigflo_42, Blizzard_52, BlueBird_40, Blue_45, Boiii_52, BreSam8_42, Bruns_44, Bryler_56, Bugatti_39, BuzzBuzz_40, CREW_52, Cain_56, CallaLilly_54, Calvinny_42, Capricorn_52, CaseJules_54, Caviar_38, Chavito_56, CheetoDust_51, Chiqui_37, Clipper_56, Colbster_42, ConceptII_47, Corvo_46, CrimD_52, Cullens_42, DaHudson_42, Daishi_41, Dalmuri_52, Dartin_55, Deby_52, Devera_57, Dieselweasel_43, Dole_55, DrHayes_53, DreamCatcher_48, Dreamboat_47, DropBear_39, Durfee_52, Efra2_55, Emerson_53, EpicPhail_43, Farber_42, Fenn_47, Fernando_42, Forsytheast_45, Fred313_39, Gandalf20_47, Ganymede_53, Gemma_41, Geraldini_55, GingkoMaracino_42, Giroux_39, GrecoEtereo_46, Grif_42, Groupthink_43, Grub_42, Grum1_42, GtownJaz_42, HanShotFirst_44, HarryOW_44, HashRod_43, HaveUMetTed_43, Heathen_39, HedwigODU_52, HelDan_39, Heliosoles_41, Hercules11_42, Homura_52, Hookmount_38, Hurricane_65, Hyperbowlee_52, Ichabod_47, Idleandcovert_39, Illumine_55, Inky_52, Isca_38, JAWS_52, JC27_46, JF2_39, JF4_39, JHC117_42, Jarvi_52, Jasper_47, Jayhawk_53, Jeckyll_52, JenCasNa_43, JeppNRM_43, Jobu08_41, Jorgensen_46, Joy99_52, KADY_42, Kachowdy_39, Kalb97_43, Kalnoky_43, Kanely_46, Keshu_67, Kimona_36, Krueger_59, LBerry_43, Lambert1_38, LarryKay_42, LastHope_55, LaterM_53, Lea83_66, Lilith_43, LindNT_51, Llorens_52, Louie6_41, Iowa_42, LugYA_45, Lunahalos_52, MA5_39, MK4_39, MacKat_47, MacnCheese_67, MadMarie_42, Mainiac_42, Malinsilva_44, Manu_42, MarQuardt_42, Marchesa_39, Margo_38, Marie_42, Marius_43, McGuire_46, McMater_55, MeaningOfLife_53, Megsy_54, Methuselah_40, Microwolf_42, Misomonster_43, Molly_46, MoneyMay_42, Moose_45, Mryolo_43, MuchMore_45, Murucutumbu_53, Mynx_53, Naira_47, Nhonho_46, Niklas_55, Noella_38, Norbert_37, OlanP_41, Ollie_42, P28Green_43, PGHhamlin_44, PSullivan_45, Padfoot_52, Padpat_54, Panamaxus_36, PascalRango_46, PattyP_46, Pawn_42, Peanam_55, Peel_52, Pembroke_42, Penny1_43, Petp2012_46, Phantastic_39, Pharb_64, PherrisBueller_45, PhishRPhriends_40, Phoebe_43, Phoxy_42, Phrank_56, Phranny_43, Piatt_52, PinkPlastic_44, Pistachio_40, Pita2_48, Pixie_64, Pocahontas_38, Pokerus_51, Popcicle_38, PotatoSplit_44, Prithvi_53, ProMouse_46, Puppy_40, PurpleHaze_42, QuincyRose_51, QuinnKiro_37, Raid_46, Ramen_53, Rapunzel97_53, Reba_42, ResDef_38, Richo_55, RidgeCB_45, Rockstar_39, Rosmarinus_52, Rummer_41, Sabia_42, Sabinator_41, SamuelLPlaqson_53, SaturnRing_39, Scout_39, Scowl_46, Shadow1_58, Shaobing_55, ShedlockHolmes_66, ShiaSurprise_53, Sibs6_46, SkiPole_48, Slimphazie_52, Snazzy_43, Snickers_42, SoYo_42, SoilDragon_42, Soshari_44, Spike509_42, Spock_52, Stagni_42, StepMih_42, Stinson_53, Sulley_52, Sunflower1121_59, SwissCheese_47, Syra333_58, TNguyen7_39, Tachez_52, TaiwanKao_54, Target_46, Taurus_43, Texage_37, Tierra_56, Tiffany_42, TingHuaYa_53, TiniBug_53, TinyPebbles_41, Tiri_53, Todacoro_38, Topper_52, TreyKay_53, TruffulaTree_52, Twitch_52, TwoPeat_46, Urkel_53, Validus_57, Veliki_53, Veracruz_37, Vix_42, Watson_42, Wooldri_44, Ximenita_59,

YoureAdopted_51, Zabiza_47, Zavala_54, Zephyr_45, Zetzy_41,

Genes that have the "Most Annotated" start but do not call it:

- TBond007_61,

Genes that do not have the "Most Annotated" start:

- 20ES_38, AN3_38, AN9_41, ANI8_41, AbbyPaige_40, Abdiel_37, Adzzy_39, Agape74_40, AgentM_34, Albee_37, Alberto7_38, Aliter_70, Alma_67, Aneem_37, AnnaL29_40, Annyong_37, Anselm_68, Aragog_34, Archetta_33, Arturo_35, Avle17_37, Baby16_37, Bachome_38, BangNhom_38, Bartimeaus_37, BellusTerra_38, BengiVuitton_37, Blackmoor_37, Bluefalcon_33, BobSwaget_61, Bobquesha_3, BogosyJay_68, Bombshell_37, Bonamassa_33, Bowtie_37, Bradman_69, Broseidon_37, Bruiser_36, BubbleTrouble_37, Bud_36, Burger_35, C3_36, CRB1_39, Caelakin_37, Camperdownii_36, Caraxes_38, Catalina_71, CentreCat_37, Cerulean_38, ChampagnePapi_39, Chancellor_3, Changeling_39, Chaph_37, Che12_41, Cheetobro_3, ChipMunk_41, Chupacabra_37, Cintron_37, Citius_37, Clarenza_37, Cocoaberry_37, Commander_37, Connomayer_37, Conquerage_67, Conspiracy_34, Coog_33, Crucio_38, Cuco_33, D29_38, D32_41, DBQu4n_41, Darrell_70, Deano_37, Deloris_36, Dhanush_37, Dignity_40, Discoknowium_34, Druantia_37, Dublin_32, Duplo_41, DustyMartin_41, EZMoney23_38, Eagle_37, Eaglepride_39, Eapen_37, Ebony_37, Edison31_38, EdogawaKiddo_67, Edugator_35, Eidsmoe_67, Elephantoon_67, EmyBug_66, Eponine_3, Eris_36, Eros_37, Et2Brutus_36, Eurydice_38, EvilGenius_41, ExplosioNervosa_67, Fameo_67, Fayely_67, Fibonacci_36, Fionnbharth_3, FiringLine_38, First_0037, Flaverint_37, Florean_37, Flux_37, ForGetIt_34, Funston_37, Gadost_37, George_32, Georgie2_39, Ghoulyboy_35, Gilberta_37, Goose_38, HamSlice_36, Hanray_67, Heffalump_66, Horex_67, Holli_36, HortumSL17_70, Houdini22_37, HuhtaEnerson15_33, Hutc2_36, Huxley_38, ICleared_37, Iceman_38, Insomnia_37, Iracema64_38, Iwokeuplikedis_41, JF1_3, Jabith_37, Jaykayelowell_36, Jerm_40, JetBlade_37, Jiawan_66, JoongJeon_37, Joselito_37, JoshKayV_40, Journey13_36, Jovo_34, Jsquared_70, Juliette_3, KFPoly_37, Kalpine_39, Kamy_37, Kerberos_41, KingCyrus_41, Kingmustik0402_37, Kinmap_67, Koan_36, Koduck_38, Koreni_36, Kratark_37, Kraw_3, Kremtemulon_37, Kristoff_38, Kyee_37, LHTSCC_39, LadyBird_40, LappelDuVide_37, Lebo14_3, Lemur_37, LeoAvram_37, Lev2_34, Leviathan_40, LilTurb_39, Lilleskat_65, LionsBait_39, LittleB_37, LittleCherry_33, LittleGuy_37, LochMonster_37, Lokk_62, Lorenzo_37, Loser_40, Lucivia_37, Lunsford_38, MaCh_37, Mabel_37, MajorMajor_68, Malthus_3, Maminiana_68, MarysWell_32, Maverick_37, Maxo_38, Mayonnaise_38, Mazhar510_37, Medusa_37, MeeZee_37, Melvin_39, Micasa_35, Midas2_33, Miko_62, Milcery_33, Millski_36, MissDaisy_3, MissWhite_36, Mitti_3, Morrow_38, Mulciber_36, Munch_37, Myxus_69, Naji_41, Nebs_38, Nemo27_37, Noelle_37, NorthStar_36, NotAPhaseMom_37, Nyxis_37, OKCentral2016_37, OKaNui_38, Obama12_38, Odin_37, Ohfah_38, OmniCritical_3, Omnicron_36, Onglai_67, Orange_36, PackMan_68, Palestino_36, Patt_3, Peaches_37, PeterPeter_37, Petersenfast_35, Ph8s_40, Phacado_37, Phaeder_69, Phelipe_38, Phighter1804_37, Phlorence_34, Phontbonne_37, PickleBack_34, Polymorphads_38, Pomar16_41, Power_37, Prinasha11_34, Priya_67, Pumbaa_37, Qobbit_67, QueenB2_66, QueenBeesly_38, Quokka_68, Rachaly_64, Rahalelujah_67, Rando14_36, Rebeuca_38, RedRock_40, Relief_36, Reptar3000_3, Retro23_68, RhynO_38, Romney_37, Roosevelt_36, Rosa24_37, Rowdy_41, Ruin_37, Ruthiejr_3, Sabertooth_37, Sachima_65, Scamp_37, SemperFi_39, SeniorClean_36, Serenity_70, Shaka_37, Sham4_36, Shapes_41, SheldonCooper_39, Skipitt_36, Slarp_3, Smeagan_41, SnapTap_38, Snape_36,

Sparxx_38, Spino_37, Spouty_67, StarStuff_41, Superchunk_37, SweetiePie_38, Swirley_35, SydNat_35, Taquarus_37, Tarynearal_32, Thanksgivukkah_37, Theia_31, Tiger_34, Timothy_37, TinaFeyge_38, TinyTimmy_37, Tinybot_36, TipsytheTRex_66, TiroTheta9_37, Tomathan_41, Topanga_37, Travvers_41, Trixie_39, Trooper_67, TroyPia_38, Tubs_69, Turbido_39, Twigg_33, Twister_37, TygerBlood_37, Ulysses_36, VA6_38, VC3_41, WalterMcMickey_37, Wander_37, Whabigail7_39, Wilbur_37, Wintermute_3, Wizard007_37, Y10_03, Y2_03, Yecey3_70, YoSam321_37, Zolita_34,

Summary by start number:

Start 36:

- Found in 150 of 606 (24.8%) of genes in pham
- Manual Annotations of this start: 3 of 545
- Called 2.0% of time when present
- Phage (with cluster) where this start called: Conspiracy_34 (A5), Discoknowium_34 (A5), Jovo_34 (A5),

Start 39:

- Found in 23 of 606 (3.8%) of genes in pham
- Manual Annotations of this start: 19 of 545
- Called 95.7% of time when present
- Phage (with cluster) where this start called: Bobquesha_3 (K4), Chancellor_3 (K4), Cheetobro_3 (K4), Edugator_35 (K5), Eponine_3 (K4), Fionnbharth_3 (K4), Juliette_3 (K4), Kraw_3 (K4), Lebo14_3 (K4), Malthus_3 (K4), MissDaisy_3 (K4), Mitti_3 (K4), OmniCritical_3 (K4), Omnicron_36 (K5), Patt_3 (K4), Rando14_36 (K5), Reptar3000_3 (K4), Ruthiejr_3 (K4), Slarp_3 (K4), Wintermute_3 (K4), Y10_03 (K4), Y2_03 (K4),

Start 40:

- Found in 3 of 606 (0.5%) of genes in pham
- Manual Annotations of this start: 2 of 545
- Called 66.7% of time when present
- Phage (with cluster) where this start called: Journey13_36 (A2), MissWhite_36 (A2),

Start 41:

- Found in 31 of 606 (5.1%) of genes in pham
- Manual Annotations of this start: 27 of 545
- Called 100.0% of time when present
- Phage (with cluster) where this start called: 20ES_38 (A2), AbbyPaige_40 (A2), Agape74_40 (A2), BengiVuitton_37 (A2), CRB1_39 (A2), ChipMunk_41 (A2), Crucio_38 (A2), Deloris_36 (A2), Dignity_40 (A2), EvilGenius_41 (A2), FiringLine_38 (A2), First_0037 (A2), Georgie2_39 (A2), Iwokeuplikedis_41 (A2), Jerm_40 (A2), JoshKayV_40 (A2), Kalpine_39 (A2), KingCyrus_41 (A2), LadyBird_40 (A2), Leviathan_40 (A2), LilTurb_39 (A2), LionsBait_39 (A2), Power_37 (A2), QueenBeesly_38 (A2), SemperFi_39 (A2), Smeagan_41 (A2), SnapTap_38 (A2), SweetiePie_38 (A2), Trixie_39 (A2), Turbido_39 (A2), Whabigail7_39 (A2),

Start 42:

- Found in 8 of 606 (1.3%) of genes in pham
- Manual Annotations of this start: 1 of 545
- Called 12.5% of time when present
- Phage (with cluster) where this start called: TBond007_61 (K3),

Start 43:

- Found in 14 of 606 (2.3%) of genes in pham
- Manual Annotations of this start: 9 of 545
- Called 64.3% of time when present
- Phage (with cluster) where this start called: Chupacabra_37 (A10), Edison31_38 (A10), Goose_38 (A10), Kristoff_38 (A10), OKCentral2016_37 (A10), Rebeuca_38 (A10), Topanga_37 (A10), Twister_37 (A10), WalterMcMickey_37 (A10),

Start 44:

- Found in 5 of 606 (0.8%) of genes in pham
- Manual Annotations of this start: 5 of 545
- Called 100.0% of time when present
- Phage (with cluster) where this start called: Anselm_68 (A2), Fameo_67 (A2), Heffalump_66 (A2), QueenB2_66 (A2), Retro23_68 (A2),

Start 45:

- Found in 40 of 606 (6.6%) of genes in pham
- Manual Annotations of this start: 38 of 545
- Called 100.0% of time when present
- Phage (with cluster) where this start called: AN3_38 (A2), AN9_41 (A2), ANI8_41 (A2), Aneem_37 (A11), Bachome_38 (A11), Bowtie_37 (A11), Bud_36 (A11), C3_36 (A2), D29_38 (A2), D32_41 (A2), DBQu4n_41 (A2), Duplo_41 (A2), Ebony_37 (A11), Et2Brutus_36 (A11), Fibonacci_36 (A11), Flaverint_37 (A11), Gilberta_37 (A11), Hutc2_36 (A11), Insomnia_37 (A11), Jabith_37 (A11), Joselito_37 (A11), Kerberos_41 (A2), Lucivia_37 (A11), MaCh_37 (A11), Mabel_37 (A11), Mulciber_36 (A11), Munch_37 (A11), Naji_41 (A2), Orange_36 (A11), Petersenfast_35 (A11), Pomar16_41 (A2), Sham4_36 (A11), Snape_36 (A11), StarStuff_41 (A2), Timothy_37 (A11), TinyTimmy_37 (A11), Tomathan_41 (A2), Travvers_41 (A2), VA6_38 (A2), VC3_41 (A2),

Start 46:

- Found in 43 of 606 (7.1%) of genes in pham
- Manual Annotations of this start: 33 of 545
- Called 93.0% of time when present
- Phage (with cluster) where this start called: Adzzy_39 (A2), AgentM_34 (A5), Aragog_34 (A5), Archetta_33 (A5), Bluefalcon_33 (A5), Bonamassa_33 (A5), Caraxes_38 (A2), Che12_41 (A2), Coog_33 (A5), Cuco_33 (A5), Dublin_32 (A5), DustyMartin_41 (A10), Eaglepride_39 (A10), ForGetIt_34 (A5), George_32 (A5), Ghouboy_35 (A5), HuhtaEnerson15_33 (A5), Koduck_38 (A2), Lev2_34 (A5), LittleCherry_33 (A5), MarysWell_32 (A5), Micasa_35 (A5), Midas2_33 (A5), Milcery_33 (A5), Odin_37 (A2), Ph8s_40 (A2), Phlorence_34 (A5), PickleBack_34 (A5), Prinashe11_34 (A5), RhynO_38 (A10), Rowdy_41 (A10), Shapes_41 (A10), Superchunk_37 (A2), Swirley_35 (A5), SydNat_35 (A5), Tarynearal_32 (A5), Theia_31 (A5), Tiger_34 (A5), Twigg_33 (A5), Zolita_34 (A5),

Start 47:

- Found in 5 of 606 (0.8%) of genes in pham
- Manual Annotations of this start: 5 of 545
- Called 100.0% of time when present
- Phage (with cluster) where this start called: BobSwaget_61 (A2), Lokk_62 (A2), Miko_62 (A2), Rachaly_64 (A2), Trooper_67 (A2),

Start 48:

- Found in 288 of 606 (47.5%) of genes in pham
- Manual Annotations of this start: 259 of 545
- Called 99.7% of time when present
- Phage (with cluster) where this start called: 40AC_41 (A17), ACFishhook_41 (A3), ActinUp_52 (K1), Adephagia_52 (K1), Adonis_52 (K1), Ageofdapage_54 (K1), Aglet_43 (A3), AgronaGT15_41 (A3), AlishaPH_52 (K1), Alsfro_49 (A1), Altman_47 (A1), Anaya_54 (K1), Angelica_52 (K1), Anglerfish_46 (A1), Anubis_45 (A3), Apocalypse_55 (K1), Arlo_43 (A1), Asayake_52 (K1), Atiba_53 (K1), Atkinbua_47 (A1), AugsMagnumOpus_45 (A3), B1_36 (A3), BEEST_52 (K1), BGIlluviae_52 (K1), BabyJohn_37 (A3), BabyRay_39 (A3), BaghaKamala_51 (K1), BarrelRoll_52 (K1), Barriga_46 (A1), Beauxregard13_42 (A3), Beezoo_54 (K1), Bella96_53 (K1), Belladonna_52 (K1), Bern_53 (K1), Big3_44 (A1), Bigchungu_44 (A1), Bigflo_42 (A3), Blizzard_52 (K1), BlueBird_40 (A3), Blue_45 (A1), Boiiii_52 (K1), BreSam8_42 (A3), Bruns_44 (A1), Bryler_56 (K6), Bugatti_39 (A3), BuzzBuzz_40 (A3), CREW_52 (K1), Cain_56 (K6), CallaLilly_54 (K1), Calvinny_42 (A3), Capricorn_52 (K1), CaseJules_54 (K1), Caviar_38 (A3), Chavito_56 (K1), CheetoDust_51 (K1), Chiqui_37 (A3), Clipper_56 (K1), Colbster_42 (A3), ConceptII_47 (A1), Corvo_46 (A1), CrimD_52 (K1), Cullens_42 (A3), DaHudson_42 (A3), Daishi_41 (A3), Dalmuri_52 (K1), Dartin_55 (K1), Deby_52 (K1), Devera_57 (K1), Dieselweasel_43 (A3), Dole_55 (K1), DrHayes_53 (K1), DreamCatcher_48 (A1), Dreamboat_47 (A1), DropBear_39 (A3), Durfee_52 (K1), Efra2_55 (K1), Emerson_53 (K1), EpicPhail_43 (A3), Farber_42 (A3), Fenn_47 (A1), Fernando_42 (A3), Forsytheast_45 (A1), Fred313_39 (A3), Gandalf20_47 (A1), Ganymede_53 (K1), Gemma_41 (A3), Geraldini_55 (K1), GingkoMaracino_42 (A3), Giroux_39 (A3), GrecoEtereo_46 (A1), Grif_42 (A3), Groupthink_43 (A3), Grub_42 (A3), Grum1_42 (A3), GtownJaz_42 (A3), HanShotFirst_44 (A1), HarryOW_44 (A1), HashRod_43 (A3), HaveUMetTed_43 (A3), Heathen_39 (A3), HedwigODU_52 (K1), HelDan_39 (A3), Heliosoles_41 (A3), Hercules11_42 (A3), Homura_52 (K1), Hookmount_38 (A3), Hurricane_65 (K3), Hyperbowlee_52 (K1), Ichabod_47 (A1), Idleandcovert_39 (A3), Illumine_55 (K1), Inky_52 (K1), Isca_38 (A3), JAWS_52 (K1), JC27_46 (A1), JF2_39 (A3), JF4_39 (A3), JHC117_42 (A3), Jarvi_52 (K1), Jasper_47 (A1), Jayhawk_53 (K1), Jeckyll_52 (K1), JenCasNa_43 (A3), JeppNRM_43 (A3), Jobu08_41 (A3), Jorgensen_46 (A1), Joy99_52 (K1), KADY_42 (A3), Kachowdy_39 (A3), Kalb97_43 (A3), Kalnoky_43 (A3), Kanely_46 (A1), Keshu_67 (K3), Kimona_36 (A19), Krueger_59 (K6), LBerry_43 (A3), Lambert1_38 (A3), LarryKay_42 (A3), LastHope_55 (K1), LaterM_53 (K1), Lea83_66 (K3), Lilith_43 (A3), LindNT_51 (K1), Llorens_52 (K1), Louie6_41 (A3), Lowa_42 (A3), LugYA_45 (A3), Lunahalos_52 (K1), MA5_39 (A3), MK4_39 (A3), MacKat_47 (K1), MacnCheese_67 (K3), MadMarie_42 (A3), Mainiac_42 (A3), Malinsilva_44 (A3), Manu_42 (A3), MarQuardt_42 (A3), Marchesa_39 (A3), Margo_38 (A3), Marie_42 (A3), Marius_43 (A3), McGuire_46 (A1), McMater_55 (K1), MeaningOfLife_53 (K1), Megsy_54 (K1), Methuselah_40 (A3), Microwolf_42 (A3), Misomonster_43 (A3), Molly_46 (A1), MoneyMay_42 (A3), Moose_45 (A1), Mryolo_43 (A1), MuchMore_45 (A3), Murucutumbu_53 (K1), Mynx_53 (K1), Naira_47 (A1), Nhonho_46 (A1), Niklas_55 (K1), Noella_38 (A3), Norbert_37 (A3), OlanP_41 (A3), Ollie_42 (A3), P28Green_43 (A3), PGHhamlin_44 (A3), PSullivan_45 (A1), Padfoot_52 (K1), Padpat_54 (K1), Panamaxus_36 (A3), PascalRango_46 (A1), PattyP_46 (A1), Pawn_42 (A3), Peanam_55 (K1), Peel_52 (K1), Pembroke_42 (A3), Penny1_43 (A3), Petp2012_46 (A1), Phantastic_39 (A3), Pharb_64 (K3), PherrisBueller_45 (A1), PhishRPhriends_40 (A3), Phoebe_43 (A3), Phoxy_42 (A3), Phrank_56 (K6), Phranny_43 (A3), Piatt_52 (K1), PinkPlastic_44 (A1), Pistachio_40 (A3), Pita2_48 (A1), Pixie_64 (K3), Pocahontas_38 (A3), Pokerus_51 (K1), Popcicle_38 (A3), PotatoSplit_44 (A3), Prithvi_53 (K1), ProMouse_46 (A1), Puppy_40

(A3), PurpleHaze_42 (A3), QuincyRose_51 (K1), QuinnKiro_37 (A3), Raid_46 (A1), Ramen_53 (K1), Rapunzel97_53 (K1), Reba_42 (A3), ResDef_38 (A3), Richo_55 (K1), RidgeCB_45 (A1), Rockstar_39 (A3), Rosmarinus_52 (K1), Rummer_41 (A3), Sabia_42 (A3), Sabinator_41 (A3), SamuelLPlaqson_53 (K1), SaturnRing_39 (A3), Scout_39 (A3), Scowl_46 (A1), Shadow1_58 (K6), Shaobing_55 (K1), ShedlockHolmes_66 (K3), ShiaSurprise_53 (K1), Sibs6_46 (A1), SkiPole_48 (A1), Slimphazie_52 (K1), Snazzy_43 (A1), Snickers_42 (A3), SoYo_42 (A3), SoilDragon_42 (A3), Soshari_44 (A3), Spike509_42 (A3), Spock_52 (K1), Stagni_42 (A3), StepMih_42 (A3), Stinson_53 (K1), Sulley_52 (K1), Sunflower1121_59 (K6), SwissCheese_47 (A1), Syra333_58 (K6), TNguyen7_39 (A3), Tachez_52 (K1), TaiwanKao_54 (K1), Target_46 (A1), Taurus_43 (A3), Texage_37 (A3), Tierra_56 (K6), Tiffany_42 (A3), TingHuaYa_53 (K1), TiniBug_53 (K1), TinyPebbles_41 (A3), Tiri_53 (K1), Todacoro_38 (A3), Topper_52 (K1), TreyKay_53 (K1), TruffulaTree_52 (K1), Twitch_52 (K1), TwoPeat_46 (A1), Urkel_53 (K1), Validus_57 (K1), Veliki_53 (K1), Veracruz_37 (A3), Vix_42 (A3), Watson_42 (A3), Wooldri_44 (A3), Ximenita_59 (K6), YoureAdopted_51 (K1), Zabiza_47 (K1), Zavala_54 (K1), Zephyr_45 (A1), Zetzy_41 (A3),

Start 49:

- Found in 160 of 606 (26.4%) of genes in pham
- Manual Annotations of this start: 143 of 545
- Called 100.0% of time when present
- Phage (with cluster) where this start called: Abdiel_37 (A4), Albee_37 (A4), Alberto7_38 (A4), Aliter_70 (A9), Alma_67 (A9), AnnaL29_40 (A2), Annyong_37 (A4), Arturo_35 (A4), Avle17_37 (A4), Baby16_37 (A4), BangNhom_38 (A4), Bartimeaus_37 (A4), BellusTerra_38 (A4), Blackmoor_37 (A4), BogosyJay_68 (A9), Bombshell_37 (A4), Bradman_69 (A2), Broseidon_37 (A4), Bruiser_36 (A4), BubbleTrouble_37 (A4), Burger_35 (A4), Caelakin_37 (A4), Camperdownii_36 (A4), Catalina_71 (A9), CentreCat_37 (A4), Cerulean_38 (A4), ChampagnePapi_39 (A4), Changeling_39 (A2), Chaph_37 (A4), Cintron_37 (A4), Citius_37 (A4), Clarenza_37 (A4), Cocoaberry_37 (A4), Commander_37 (A4), Connomayer_37 (A4), Conquerage_67 (A9), Darrell_70 (A9), Deano_37 (A4), Dhanush_37 (A4), Druantia_37 (A4), EZMoney23_38 (A2), Eagle_37 (A4), Eapen_37 (A4), EdogawaKiddo_67 (A9), Eidsmoe_67 (A9), Elephantoon_67 (A9), EmyBug_66 (A9), Eris_36 (A4), Eros_37 (A4), Eurydice_38 (A4), ExplosioNervosa_67 (A9), Fayely_67 (A9), Florean_37 (A4), Flux_37 (A4), Funston_37 (A4), Gadost_37 (A4), HamSlice_36 (A4), Hanray_67 (A9), Horex_67 (A9), Holli_36 (A4), HortumSL17_70 (A9), Houdini22_37 (A4), Huxley_38 (A4), ICleared_37 (A4), Iceman_38 (A4), Iracema64_38 (A4), Jaykayelowell_36 (A4), JetBlade_37 (A4), Jiawan_66 (A9), JoongJeon_37 (A4), Jsquared_70 (A2), KFPoly_37 (A4), Kampy_37 (A4), Kingmustik0402_37 (A4), Kinmap_67 (A21), Koan_36 (A4), Koreni_36 (A4), Kratak_37 (A4), Kremtemulon_37 (A4), Kyee_37 (A4), LHTSCC_39 (A4), LappelDuVide_37 (A4), Lemur_37 (A4), LeoAvram_37 (A4), Lilleskat_65 (A9), LittleB_37 (A4), LittleGuy_37 (A4), LochMonster_37 (A4), Lorenzo_37 (A4), Loser_40 (A2), Lunsford_38 (A4), MajorMajor_68 (A2), Maminiana_68 (A9), Maverick_37 (A4), Maxo_38 (A4), Mayonnaise_38 (A4), Mazhar510_37 (A4), Medusa_37 (A4), MeeZee_37 (A4), Melvin_39 (A4), Millski_36 (A4), Morrow_38 (A4), Myxus_69 (A9), Nebs_38 (A4), Nemo27_37 (A4), Noelle_37 (A4), NorthStar_36 (A4), NotAPhaseMom_37 (A4), Nyxis_37 (A4), OKaNui_38 (A4), Obama12_38 (A4), Ohfah_38 (A4), Onglai_67 (A9), PackMan_68 (A9), Palestino_36 (A4), Peaches_37 (A4), PeterPeter_37 (A4), Phacado_37 (A4), Phaeder_69 (A9), Phelipe_38 (A4), Phighter1804_37 (A4), Phontbonne_37 (A4), Polymorphads_38 (A4), Priya_67 (A9), Pumbaa_37 (A4), Qobbit_67 (A9), Quokka_68 (A2), Rahalelujah_67 (A9),

RedRock_40 (A2), Relief_36 (A4), Romney_37 (A4), Roosevelt_36 (A4), Rosa24_37 (A4), Ruin_37 (A4), Sabertooth_37 (A4), Sachima_65 (A9), Scamp_37 (A4), SenorClean_36 (A4), Serenity_70 (A2), Shaka_37 (A4), SheldonCooper_39 (A4), Skipitt_36 (A4), Sparxx_38 (A4), Spino_37 (A4), Spouty_67 (A9), Taquarus_37 (A4), Thanksgivukkah_37 (A4), TinaFeyge_38 (A4), Tinybot_36 (A4), TipsytheTRex_66 (A2), TiroTheta9_37 (A4), TroyPia_38 (A4), Tubs_69 (A9), TygerBlood_37 (A4), Ulysses_36 (A4), Wander_37 (A4), Wilbur_37 (A4), Wizard007_37 (A4), Yecey3_70 (A9), YoSam321_37 (A4),

Start 54:

- Found in 10 of 606 (1.7%) of genes in pham
- Manual Annotations of this start: 1 of 545
- Called 10.0% of time when present
- Phage (with cluster) where this start called: JF1_3 (K4),

Summary by clusters:

There are 16 clusters represented in this pham: A21, A17, A11, A10, A19, A3, A1, K1, A2, A5, A4, K5, K4, A9, K3, K6,

Info for manual annotations of cluster A1:

- Start number 48 was manually annotated 46 times for cluster A1.

Info for manual annotations of cluster A10:

- Start number 43 was manually annotated 9 times for cluster A10.
- Start number 46 was manually annotated 2 times for cluster A10.

Info for manual annotations of cluster A11:

- Start number 45 was manually annotated 23 times for cluster A11.

Info for manual annotations of cluster A19:

- Start number 48 was manually annotated 1 time for cluster A19.

Info for manual annotations of cluster A2:

- Start number 40 was manually annotated 2 times for cluster A2.
- Start number 41 was manually annotated 27 times for cluster A2.
- Start number 44 was manually annotated 5 times for cluster A2.
- Start number 45 was manually annotated 15 times for cluster A2.
- Start number 46 was manually annotated 5 times for cluster A2.
- Start number 47 was manually annotated 5 times for cluster A2.
- Start number 49 was manually annotated 7 times for cluster A2.

Info for manual annotations of cluster A3:

- Start number 48 was manually annotated 112 times for cluster A3.

Info for manual annotations of cluster A4:

- Start number 49 was manually annotated 114 times for cluster A4.

Info for manual annotations of cluster A5:

- Start number 36 was manually annotated 3 times for cluster A5.
- Start number 46 was manually annotated 26 times for cluster A5.

Info for manual annotations of cluster A9:

- Start number 49 was manually annotated 22 times for cluster A9.

Info for manual annotations of cluster K1:

- Start number 48 was manually annotated 85 times for cluster K1.

Info for manual annotations of cluster K3:

- Start number 42 was manually annotated 1 time for cluster K3.
- Start number 48 was manually annotated 6 times for cluster K3.

Info for manual annotations of cluster K4:

- Start number 39 was manually annotated 16 times for cluster K4.
- Start number 54 was manually annotated 1 time for cluster K4.

Info for manual annotations of cluster K5:

- Start number 39 was manually annotated 3 times for cluster K5.

Info for manual annotations of cluster K6:

- Start number 48 was manually annotated 9 times for cluster K6.

Gene Information:

Gene: 20ES_38 Start: 27875, Stop: 27690, Start Num: 41

Candidate Starts for 20ES_38:

(Start: 41 @27875 has 27 MA's), (57, 27836), (70, 27737), (72, 27728),

Gene: 40AC_41 Start: 29813, Stop: 29652, Start Num: 48

Candidate Starts for 40AC_41:

(Start: 40 @29825 has 2 MA's), (Start: 48 @29813 has 259 MA's), (57, 29786), (70, 29696),

Gene: ACFishhook_41 Start: 28759, Stop: 28598, Start Num: 48

Candidate Starts for ACFishhook_41:

(Start: 48 @28759 has 259 MA's), (70, 28642), (71, 28636), (77, 28621), (79, 28615),

Gene: AN3_38 Start: 28249, Stop: 28097, Start Num: 45

Candidate Starts for AN3_38:

(Start: 45 @28249 has 38 MA's), (68, 28147), (70, 28138), (80, 28114),

Gene: AN9_41 Start: 28234, Stop: 28082, Start Num: 45

Candidate Starts for AN9_41:

(14, 28501), (17, 28459), (Start: 45 @28234 has 38 MA's), (68, 28132), (70, 28123), (80, 28099),

Gene: ANI8_41 Start: 28234, Stop: 28082, Start Num: 45

Candidate Starts for ANI8_41:

(14, 28501), (17, 28459), (Start: 45 @28234 has 38 MA's), (68, 28132), (70, 28123), (80, 28099),

Gene: AbbyPaige_40 Start: 28584, Stop: 28411, Start Num: 41

Candidate Starts for AbbyPaige_40:

(Start: 41 @28584 has 27 MA's), (55, 28554), (64, 28524), (70, 28458),

Gene: Abdiel_37 Start: 28112, Stop: 27954, Start Num: 49

Candidate Starts for Abdiel_37:

(6, 28403), (Start: 36 @28154 has 3 MA's), (Start: 49 @28112 has 143 MA's), (68, 28007), (70, 27998), (71, 27992), (80, 27971),

Gene: ActinUp_52 Start: 38569, Stop: 38739, Start Num: 48

Candidate Starts for ActinUp_52:

(Start: 48 @38569 has 259 MA's), (68, 38683), (70, 38692), (71, 38698), (80, 38722),

Gene: Adephagia_52 Start: 38566, Stop: 38736, Start Num: 48

Candidate Starts for Adephagia_52:

(Start: 48 @38566 has 259 MA's), (68, 38680), (70, 38689), (71, 38695), (80, 38719),

Gene: Adonis_52 Start: 38810, Stop: 38980, Start Num: 48

Candidate Starts for Adonis_52:

(Start: 48 @38810 has 259 MA's), (68, 38924), (70, 38933), (71, 38939), (80, 38963),

Gene: Adzzy_39 Start: 26707, Stop: 26552, Start Num: 46

Candidate Starts for Adzzy_39:

(Start: 46 @26707 has 33 MA's), (69, 26602), (71, 26590), (76, 26575), (81, 26563), (82, 26560),

Gene: Agape74_40 Start: 28569, Stop: 28396, Start Num: 41

Candidate Starts for Agape74_40:

(Start: 41 @28569 has 27 MA's), (55, 28539), (64, 28509), (70, 28443),

Gene: AgentM_34 Start: 27388, Stop: 27230, Start Num: 46

Candidate Starts for AgentM_34:

(20, 27580), (Start: 36 @27430 has 3 MA's), (Start: 46 @27388 has 33 MA's), (68, 27283), (70, 27274), (71, 27268),

Gene: Ageofdapage_54 Start: 39552, Stop: 39722, Start Num: 48

Candidate Starts for Ageofdapage_54:

(Start: 48 @39552 has 259 MA's), (68, 39666), (70, 39675),

Gene: Aglet_43 Start: 28867, Stop: 28700, Start Num: 48

Candidate Starts for Aglet_43:

(19, 29047), (27, 28975), (Start: 48 @28867 has 259 MA's), (61, 28828), (70, 28747), (72, 28738),

Gene: AgronaGT15_41 Start: 28685, Stop: 28518, Start Num: 48

Candidate Starts for AgronaGT15_41:

(19, 28865), (27, 28793), (Start: 48 @28685 has 259 MA's), (75, 28550),

Gene: Albee_37 Start: 28111, Stop: 27959, Start Num: 49

Candidate Starts for Albee_37:

(6, 28402), (Start: 36 @28153 has 3 MA's), (Start: 49 @28111 has 143 MA's), (56, 28090), (61, 28078), (68, 28012), (70, 28003), (71, 27997),

Gene: Alberto7_38 Start: 28451, Stop: 28299, Start Num: 49

Candidate Starts for Alberto7_38:

(6, 28742), (Start: 36 @28493 has 3 MA's), (Start: 49 @28451 has 143 MA's), (68, 28352), (70, 28343), (71, 28337),

Gene: AlishaPH_52 Start: 38839, Stop: 38997, Start Num: 48

Candidate Starts for AlishaPH_52:

(Start: 48 @38839 has 259 MA's), (68, 38941), (70, 38950), (71, 38956), (80, 38980),

Gene: Aliter_70 Start: 40977, Stop: 40822, Start Num: 49

Candidate Starts for Aliter_70:

(8, 41301), (Start: 49 @40977 has 143 MA's), (63, 40935), (70, 40869), (72, 40860),

Gene: Alma_67 Start: 40956, Stop: 40801, Start Num: 49

Candidate Starts for Alma_67:

(Start: 49 @40956 has 143 MA's), (63, 40914), (70, 40848), (72, 40839),

Gene: Alsfro_49 Start: 35106, Stop: 34978, Start Num: 48

Candidate Starts for Alsfro_49:

(Start: 48 @35106 has 259 MA's), (51, 35097), (55, 35085), (59, 35073), (67, 35004), (68, 34995),

Gene: Altman_47 Start: 35338, Stop: 35216, Start Num: 48

Candidate Starts for Altman_47:

(Start: 48 @35338 has 259 MA's), (61, 35299), (67, 35242), (68, 35233),

Gene: Anaya_54 Start: 39085, Stop: 39258, Start Num: 48

Candidate Starts for Anaya_54:

(Start: 48 @39085 has 259 MA's), (68, 39199),

Gene: Aneem_37 Start: 27432, Stop: 27277, Start Num: 45

Candidate Starts for Aneem_37:

(15, 27702), (25, 27579), (28, 27540), (Start: 45 @27432 has 38 MA's), (70, 27318), (71, 27312), (81, 27288),

Gene: Angelica_52 Start: 38715, Stop: 38885, Start Num: 48

Candidate Starts for Angelica_52:

(Start: 48 @38715 has 259 MA's), (68, 38829), (70, 38838), (71, 38844), (80, 38868),

Gene: Anglerfish_46 Start: 34888, Stop: 34763, Start Num: 48

Candidate Starts for Anglerfish_46:

(Start: 48 @34888 has 259 MA's), (61, 34849), (67, 34789), (68, 34780),

Gene: AnnaL29_40 Start: 29084, Stop: 28926, Start Num: 49

Candidate Starts for AnnaL29_40:

(Start: 49 @29084 has 143 MA's), (59, 29054), (62, 29045), (70, 28973), (72, 28964), (78, 28946),

Gene: Annyong_37 Start: 28112, Stop: 27960, Start Num: 49

Candidate Starts for Annyong_37:

(10, 28409), (Start: 36 @28154 has 3 MA's), (Start: 49 @28112 has 143 MA's), (56, 28091), (61, 28079), (68, 28013), (70, 28004), (71, 27998),

Gene: Anselm_68 Start: 41870, Stop: 41697, Start Num: 44

Candidate Starts for Anselm_68:

(Start: 44 @41870 has 5 MA's), (70, 41744), (72, 41735),

Gene: Anubis_45 Start: 28752, Stop: 28585, Start Num: 48

Candidate Starts for Anubis_45:

(19, 28932), (27, 28860), (Start: 48 @28752 has 259 MA's), (61, 28713), (70, 28632), (72, 28623),

Gene: Apocalypse_55 Start: 39503, Stop: 39673, Start Num: 48
Candidate Starts for Apocalypse_55:
(Start: 48 @39503 has 259 MA's), (68, 39617), (70, 39626), (71, 39632), (80, 39656),

Gene: Aragog_34 Start: 27418, Stop: 27260, Start Num: 46
Candidate Starts for Aragog_34:
(20, 27610), (Start: 36 @27460 has 3 MA's), (Start: 46 @27418 has 33 MA's), (68, 27313), (70, 27304),
(71, 27298),

Gene: Archetta_33 Start: 27354, Stop: 27196, Start Num: 46
Candidate Starts for Archetta_33:
(11, 27636), (12, 27630), (Start: 36 @27396 has 3 MA's), (Start: 46 @27354 has 33 MA's), (68, 27249),
(70, 27240), (71, 27234),

Gene: Arlo_43 Start: 34235, Stop: 34110, Start Num: 48
Candidate Starts for Arlo_43:
(Start: 48 @34235 has 259 MA's), (61, 34196), (67, 34136), (68, 34127),

Gene: Arturo_35 Start: 28170, Stop: 28018, Start Num: 49
Candidate Starts for Arturo_35:
(6, 28461), (Start: 36 @28212 has 3 MA's), (Start: 49 @28170 has 143 MA's), (56, 28149), (68, 28071),
(70, 28062), (71, 28056),

Gene: Asayake_52 Start: 38881, Stop: 39051, Start Num: 48
Candidate Starts for Asayake_52:
(Start: 48 @38881 has 259 MA's), (68, 38995), (70, 39004), (71, 39010), (80, 39034),

Gene: Atiba_53 Start: 38529, Stop: 38699, Start Num: 48
Candidate Starts for Atiba_53:
(Start: 48 @38529 has 259 MA's), (68, 38643), (70, 38652), (71, 38658), (80, 38682),

Gene: Atkinbua_47 Start: 34991, Stop: 34866, Start Num: 48
Candidate Starts for Atkinbua_47:
(Start: 48 @34991 has 259 MA's), (61, 34952), (67, 34892), (68, 34883),

Gene: AugsMagnumOpus_45 Start: 28858, Stop: 28691, Start Num: 48
Candidate Starts for AugsMagnumOpus_45:
(19, 29038), (27, 28966), (Start: 48 @28858 has 259 MA's), (61, 28819), (70, 28738), (72, 28729),

Gene: Avle17_37 Start: 28111, Stop: 27959, Start Num: 49
Candidate Starts for Avle17_37:
(6, 28402), (Start: 36 @28153 has 3 MA's), (Start: 49 @28111 has 143 MA's), (56, 28090), (61, 28078),
(68, 28012), (70, 28003), (71, 27997),

Gene: B1_36 Start: 27743, Stop: 27579, Start Num: 48
Candidate Starts for B1_36:
(33, 27791), (Start: 48 @27743 has 259 MA's), (58, 27716), (63, 27701), (70, 27626), (73, 27617), (78,
27599), (80, 27596),

Gene: BEEST_52 Start: 38881, Stop: 39051, Start Num: 48
Candidate Starts for BEEST_52:
(Start: 48 @38881 has 259 MA's), (68, 38995), (70, 39004), (71, 39010), (80, 39034),

Gene: BGlluviae_52 Start: 38684, Stop: 38854, Start Num: 48
Candidate Starts for BGlluviae_52:
(Start: 48 @38684 has 259 MA's), (68, 38798), (70, 38807), (71, 38813), (80, 38837),

Gene: Baby16_37 Start: 28122, Stop: 27970, Start Num: 49
Candidate Starts for Baby16_37:
(6, 28413), (Start: 36 @28164 has 3 MA's), (Start: 49 @28122 has 143 MA's), (56, 28101), (61, 28089),
(68, 28023), (70, 28014), (71, 28008),

Gene: BabyJohn_37 Start: 28513, Stop: 28352, Start Num: 48
Candidate Starts for BabyJohn_37:
(27, 28621), (33, 28561), (Start: 48 @28513 has 259 MA's), (58, 28486), (63, 28471), (73, 28390), (78,
28372), (80, 28369),

Gene: BabyRay_39 Start: 28442, Stop: 28278, Start Num: 48
Candidate Starts for BabyRay_39:
(Start: 48 @28442 has 259 MA's), (58, 28415), (63, 28400), (70, 28328), (80, 28295),

Gene: Bachome_38 Start: 27420, Stop: 27265, Start Num: 45
Candidate Starts for Bachome_38:
(15, 27690), (16, 27657), (25, 27567), (28, 27528), (Start: 45 @27420 has 38 MA's), (70, 27306), (71,
27300), (81, 27276),

Gene: BaghaKamala_51 Start: 37929, Stop: 38099, Start Num: 48
Candidate Starts for BaghaKamala_51:
(Start: 48 @37929 has 259 MA's), (68, 38043), (70, 38052), (71, 38058), (80, 38082),

Gene: BangNhom_38 Start: 28413, Stop: 28255, Start Num: 49
Candidate Starts for BangNhom_38:
(Start: 36 @28455 has 3 MA's), (Start: 49 @28413 has 143 MA's), (68, 28308), (70, 28299), (71,
28293), (80, 28272),

Gene: BarrelRoll_52 Start: 38552, Stop: 38722, Start Num: 48
Candidate Starts for BarrelRoll_52:
(Start: 48 @38552 has 259 MA's), (68, 38666), (70, 38675), (71, 38681), (80, 38705),

Gene: Barriga_46 Start: 34493, Stop: 34368, Start Num: 48
Candidate Starts for Barriga_46:
(Start: 48 @34493 has 259 MA's), (61, 34454), (67, 34394), (68, 34385),

Gene: Bartimeaus_37 Start: 28113, Stop: 27961, Start Num: 49
Candidate Starts for Bartimeaus_37:
(6, 28404), (Start: 36 @28155 has 3 MA's), (Start: 49 @28113 has 143 MA's), (56, 28092), (61, 28080),
(68, 28014), (70, 28005), (71, 27999),

Gene: Beauxregard13_42 Start: 28869, Stop: 28699, Start Num: 48
Candidate Starts for Beauxregard13_42:
(19, 29049), (27, 28977), (Start: 48 @28869 has 259 MA's), (61, 28830), (70, 28746), (72, 28737),

Gene: Beezoo_54 Start: 39527, Stop: 39697, Start Num: 48
Candidate Starts for Beezoo_54:
(Start: 48 @39527 has 259 MA's), (68, 39641), (70, 39650), (71, 39656), (80, 39680),

Gene: Bella96_53 Start: 39309, Stop: 39479, Start Num: 48

Candidate Starts for Bella96_53:

(Start: 48 @39309 has 259 MA's), (68, 39423),

Gene: Belladonna_52 Start: 38684, Stop: 38854, Start Num: 48

Candidate Starts for Belladonna_52:

(Start: 48 @38684 has 259 MA's), (68, 38798), (70, 38807), (71, 38813), (80, 38837),

Gene: BellusTerra_38 Start: 28112, Stop: 27954, Start Num: 49

Candidate Starts for BellusTerra_38:

(6, 28403), (Start: 36 @28154 has 3 MA's), (Start: 49 @28112 has 143 MA's), (68, 28007), (70, 27998), (71, 27992), (80, 27971),

Gene: BengiVuitton_37 Start: 27840, Stop: 27661, Start Num: 41

Candidate Starts for BengiVuitton_37:

(Start: 41 @27840 has 27 MA's), (59, 27795), (70, 27708), (72, 27699), (78, 27681),

Gene: Bern_53 Start: 37518, Stop: 37688, Start Num: 48

Candidate Starts for Bern_53:

(Start: 48 @37518 has 259 MA's), (68, 37632), (70, 37641), (71, 37647), (80, 37671),

Gene: Big3_44 Start: 34810, Stop: 34685, Start Num: 48

Candidate Starts for Big3_44:

(Start: 48 @34810 has 259 MA's), (61, 34771), (67, 34711), (68, 34702),

Gene: Bigchungji_44 Start: 33937, Stop: 33812, Start Num: 48

Candidate Starts for Bigchungji_44:

(Start: 48 @33937 has 259 MA's), (61, 33898), (67, 33838), (68, 33829),

Gene: Bigflo_42 Start: 28865, Stop: 28698, Start Num: 48

Candidate Starts for Bigflo_42:

(19, 29045), (27, 28973), (Start: 48 @28865 has 259 MA's), (61, 28826), (70, 28745), (72, 28736),

Gene: Blackmoor_37 Start: 28113, Stop: 27961, Start Num: 49

Candidate Starts for Blackmoor_37:

(6, 28404), (Start: 36 @28155 has 3 MA's), (Start: 49 @28113 has 143 MA's), (56, 28092), (61, 28080), (68, 28014), (70, 28005), (71, 27999),

Gene: Blizzard_52 Start: 38881, Stop: 39051, Start Num: 48

Candidate Starts for Blizzard_52:

(Start: 48 @38881 has 259 MA's), (68, 38995), (70, 39004), (71, 39010), (80, 39034),

Gene: Blue_45 Start: 35132, Stop: 35007, Start Num: 48

Candidate Starts for Blue_45:

(Start: 48 @35132 has 259 MA's), (61, 35093), (67, 35033), (68, 35024),

Gene: BlueBird_40 Start: 28368, Stop: 28207, Start Num: 48

Candidate Starts for BlueBird_40:

(Start: 48 @28368 has 259 MA's), (70, 28254), (73, 28245),

Gene: Bluefalcon_33 Start: 27477, Stop: 27319, Start Num: 46

Candidate Starts for Bluefalcon_33:

(Start: 36 @27519 has 3 MA's), (Start: 46 @27477 has 33 MA's), (68, 27372), (70, 27363), (71, 27357),

Gene: BobSwaget_61 Start: 39908, Stop: 39744, Start Num: 47
Candidate Starts for BobSwaget_61:
(Start: 47 @39908 has 5 MA's), (72, 39782),

Gene: Bobquesha_3 Start: 478, Stop: 645, Start Num: 39
Candidate Starts for Bobquesha_3:
(7, 163), (32, 424), (Start: 39 @478 has 19 MA's), (64, 535), (68, 592), (71, 607), (80, 628), (81, 634),

Gene: BogosyJay_68 Start: 41031, Stop: 40873, Start Num: 49
Candidate Starts for BogosyJay_68:
(21, 41232), (Start: 49 @41031 has 143 MA's), (63, 40989), (70, 40920), (72, 40911),

Gene: Boiiii_52 Start: 38883, Stop: 39053, Start Num: 48
Candidate Starts for Boiiii_52:
(Start: 48 @38883 has 259 MA's), (68, 38997), (70, 39006), (71, 39012), (80, 39036),

Gene: Bombshell_37 Start: 28111, Stop: 27959, Start Num: 49
Candidate Starts for Bombshell_37:
(6, 28402), (Start: 36 @28153 has 3 MA's), (Start: 49 @28111 has 143 MA's), (56, 28090), (61, 28078),
(68, 28012), (70, 28003), (71, 27997),

Gene: Bonamassa_33 Start: 27148, Stop: 26990, Start Num: 46
Candidate Starts for Bonamassa_33:
(11, 27430), (12, 27424), (Start: 36 @27190 has 3 MA's), (Start: 46 @27148 has 33 MA's), (68, 27043),
(70, 27034), (71, 27028),

Gene: Bowtie_37 Start: 27439, Stop: 27284, Start Num: 45
Candidate Starts for Bowtie_37:
(15, 27709), (25, 27586), (28, 27547), (Start: 45 @27439 has 38 MA's), (70, 27325), (71, 27319), (81,
27295),

Gene: Bradman_69 Start: 40626, Stop: 40474, Start Num: 49
Candidate Starts for Bradman_69:
(8, 40950), (Start: 49 @40626 has 143 MA's), (68, 40524), (70, 40515), (78, 40494),

Gene: BreSam8_42 Start: 28859, Stop: 28692, Start Num: 48
Candidate Starts for BreSam8_42:
(19, 29039), (27, 28967), (Start: 48 @28859 has 259 MA's), (61, 28820), (70, 28739), (72, 28730),

Gene: Broseidon_37 Start: 28113, Stop: 27961, Start Num: 49
Candidate Starts for Broseidon_37:
(6, 28404), (Start: 36 @28155 has 3 MA's), (Start: 49 @28113 has 143 MA's), (56, 28092), (61, 28080),
(68, 28014), (70, 28005), (71, 27999),

Gene: Bruiser_36 Start: 28111, Stop: 27959, Start Num: 49
Candidate Starts for Bruiser_36:
(6, 28402), (Start: 36 @28153 has 3 MA's), (Start: 49 @28111 has 143 MA's), (56, 28090), (61, 28078),
(68, 28012), (70, 28003), (71, 27997),

Gene: Bruns_44 Start: 34427, Stop: 34302, Start Num: 48
Candidate Starts for Bruns_44:
(Start: 48 @34427 has 259 MA's), (51, 34418), (55, 34406), (59, 34394), (67, 34328), (68, 34319),

Gene: Bryler_56 Start: 38331, Stop: 38504, Start Num: 48

Candidate Starts for Bryler_56:

(18, 38100), (19, 38127), (26, 38184), (Start: 48 @38331 has 259 MA's), (59, 38364), (70, 38457), (74, 38472),

Gene: BubbleTrouble_37 Start: 28111, Stop: 27959, Start Num: 49

Candidate Starts for BubbleTrouble_37:

(6, 28402), (Start: 36 @28153 has 3 MA's), (Start: 49 @28111 has 143 MA's), (56, 28090), (61, 28078), (68, 28012), (70, 28003), (71, 27997),

Gene: Bud_36 Start: 26994, Stop: 26839, Start Num: 45

Candidate Starts for Bud_36:

(15, 27264), (25, 27141), (28, 27102), (Start: 45 @26994 has 38 MA's), (70, 26880), (71, 26874), (81, 26850),

Gene: Bugatti_39 Start: 28368, Stop: 28207, Start Num: 48

Candidate Starts for Bugatti_39:

(Start: 48 @28368 has 259 MA's), (70, 28254), (73, 28245),

Gene: Burger_35 Start: 28111, Stop: 27959, Start Num: 49

Candidate Starts for Burger_35:

(6, 28402), (Start: 36 @28153 has 3 MA's), (Start: 49 @28111 has 143 MA's), (56, 28090), (61, 28078), (68, 28012), (70, 28003), (71, 27997),

Gene: BuzzBuzz_40 Start: 28864, Stop: 28697, Start Num: 48

Candidate Starts for BuzzBuzz_40:

(19, 29044), (27, 28972), (Start: 48 @28864 has 259 MA's), (75, 28729),

Gene: C3_36 Start: 28234, Stop: 28082, Start Num: 45

Candidate Starts for C3_36:

(14, 28501), (17, 28459), (Start: 45 @28234 has 38 MA's), (68, 28132), (70, 28123), (80, 28099),

Gene: CRB1_39 Start: 28360, Stop: 28175, Start Num: 41

Candidate Starts for CRB1_39:

(29, 28453), (Start: 41 @28360 has 27 MA's), (57, 28321), (70, 28222), (72, 28213),

Gene: CREW_52 Start: 38684, Stop: 38854, Start Num: 48

Candidate Starts for CREW_52:

(Start: 48 @38684 has 259 MA's), (68, 38798), (70, 38807), (71, 38813), (80, 38837),

Gene: Caelakin_37 Start: 28111, Stop: 27959, Start Num: 49

Candidate Starts for Caelakin_37:

(6, 28402), (Start: 36 @28153 has 3 MA's), (Start: 49 @28111 has 143 MA's), (56, 28090), (61, 28078), (68, 28012), (70, 28003), (71, 27997),

Gene: Cain_56 Start: 38319, Stop: 38492, Start Num: 48

Candidate Starts for Cain_56:

(18, 38088), (19, 38115), (26, 38172), (Start: 48 @38319 has 259 MA's), (59, 38352), (70, 38445), (74, 38460),

Gene: CallaLilly_54 Start: 38607, Stop: 38777, Start Num: 48

Candidate Starts for CallaLilly_54:

(Start: 48 @38607 has 259 MA's), (68, 38721), (70, 38730), (71, 38736), (80, 38760),

Gene: Calvinny_42 Start: 28687, Stop: 28523, Start Num: 48

Candidate Starts for Calvinny_42:

(Start: 48 @28687 has 259 MA's), (56, 28663), (70, 28567), (71, 28561), (77, 28546), (79, 28540),

Gene: Camperdownii_36 Start: 27805, Stop: 27653, Start Num: 49

Candidate Starts for Camperdownii_36:

(Start: 36 @27847 has 3 MA's), (Start: 49 @27805 has 143 MA's), (68, 27706), (70, 27697), (71, 27691),

Gene: Capricorn_52 Start: 38684, Stop: 38854, Start Num: 48

Candidate Starts for Capricorn_52:

(Start: 48 @38684 has 259 MA's), (68, 38798), (70, 38807), (71, 38813), (80, 38837),

Gene: Caraxes_38 Start: 26594, Stop: 26436, Start Num: 46

Candidate Starts for Caraxes_38:

(Start: 46 @26594 has 33 MA's), (63, 26549), (71, 26477), (81, 26447), (82, 26444),

Gene: CaseJules_54 Start: 38881, Stop: 39051, Start Num: 48

Candidate Starts for CaseJules_54:

(Start: 48 @38881 has 259 MA's), (68, 38995), (70, 39004), (71, 39010), (80, 39034),

Gene: Catalina_71 Start: 41050, Stop: 40895, Start Num: 49

Candidate Starts for Catalina_71:

(8, 41374), (Start: 49 @41050 has 143 MA's), (63, 41008), (70, 40942), (72, 40933),

Gene: Caviar_38 Start: 28523, Stop: 28356, Start Num: 48

Candidate Starts for Caviar_38:

(27, 28631), (Start: 48 @28523 has 259 MA's),

Gene: CentreCat_37 Start: 28114, Stop: 27962, Start Num: 49

Candidate Starts for CentreCat_37:

(6, 28405), (Start: 36 @28156 has 3 MA's), (Start: 49 @28114 has 143 MA's), (56, 28093), (61, 28081), (68, 28015), (70, 28006), (71, 28000),

Gene: Cerulean_38 Start: 28414, Stop: 28256, Start Num: 49

Candidate Starts for Cerulean_38:

(Start: 36 @28456 has 3 MA's), (Start: 49 @28414 has 143 MA's), (68, 28309), (70, 28300), (71, 28294), (80, 28273),

Gene: ChampagnePapi_39 Start: 28413, Stop: 28255, Start Num: 49

Candidate Starts for ChampagnePapi_39:

(Start: 36 @28455 has 3 MA's), (Start: 49 @28413 has 143 MA's), (68, 28308), (70, 28299), (71, 28293), (80, 28272),

Gene: Chancellor_3 Start: 478, Stop: 645, Start Num: 39

Candidate Starts for Chancellor_3:

(7, 163), (32, 424), (Start: 39 @478 has 19 MA's), (64, 535), (68, 592), (71, 607), (80, 628), (81, 634),

Gene: Changeling_39 Start: 29036, Stop: 28875, Start Num: 49

Candidate Starts for Changeling_39:

(Start: 49 @29036 has 143 MA's), (63, 28994), (70, 28922), (72, 28913), (78, 28895),

Gene: Chaph_37 Start: 28122, Stop: 27970, Start Num: 49

Candidate Starts for Chaph_37:

(6, 28413), (Start: 36 @28164 has 3 MA's), (Start: 49 @28122 has 143 MA's), (56, 28101), (68, 28023), (70, 28014), (71, 28008),

Gene: Chavito_56 Start: 39989, Stop: 40159, Start Num: 48

Candidate Starts for Chavito_56:

(Start: 48 @39989 has 259 MA's), (58, 40019), (68, 40100), (74, 40124),

Gene: Che12_41 Start: 27298, Stop: 27137, Start Num: 46

Candidate Starts for Che12_41:

(38, 27310), (Start: 46 @27298 has 33 MA's), (71, 27178), (81, 27148), (82, 27145),

Gene: CheetoDust_51 Start: 37972, Stop: 38142, Start Num: 48

Candidate Starts for CheetoDust_51:

(Start: 48 @37972 has 259 MA's), (68, 38086), (70, 38095), (71, 38101), (80, 38125),

Gene: Cheetobro_3 Start: 478, Stop: 645, Start Num: 39

Candidate Starts for Cheetobro_3:

(7, 163), (32, 424), (Start: 39 @478 has 19 MA's), (64, 535), (68, 592), (71, 607), (80, 628), (81, 634),

Gene: ChipMunk_41 Start: 30014, Stop: 29841, Start Num: 41

Candidate Starts for ChipMunk_41:

(Start: 41 @30014 has 27 MA's), (53, 29990), (55, 29984),

Gene: Chiqui_37 Start: 28522, Stop: 28361, Start Num: 48

Candidate Starts for Chiqui_37:

(27, 28630), (33, 28570), (Start: 48 @28522 has 259 MA's), (58, 28495), (63, 28480), (73, 28399), (78, 28381), (80, 28378),

Gene: Chupacabra_37 Start: 28075, Stop: 27917, Start Num: 43

Candidate Starts for Chupacabra_37:

(Start: 43 @28075 has 9 MA's), (71, 27955),

Gene: Cintron_37 Start: 28177, Stop: 28025, Start Num: 49

Candidate Starts for Cintron_37:

(Start: 36 @28219 has 3 MA's), (Start: 49 @28177 has 143 MA's), (56, 28156), (64, 28132), (68, 28078), (70, 28069), (71, 28063),

Gene: Citius_37 Start: 28132, Stop: 27974, Start Num: 49

Candidate Starts for Citius_37:

(6, 28423), (Start: 36 @28174 has 3 MA's), (Start: 49 @28132 has 143 MA's), (68, 28027), (70, 28018), (71, 28012),

Gene: Clarenza_37 Start: 28108, Stop: 27956, Start Num: 49

Candidate Starts for Clarenza_37:

(6, 28399), (Start: 36 @28150 has 3 MA's), (Start: 49 @28108 has 143 MA's), (56, 28087), (61, 28075), (68, 28009), (70, 28000), (71, 27994),

Gene: Clipper_56 Start: 39146, Stop: 39319, Start Num: 48

Candidate Starts for Clipper_56:

(Start: 48 @39146 has 259 MA's), (68, 39260),

Gene: Cocoaberry_37 Start: 28115, Stop: 27963, Start Num: 49

Candidate Starts for Cocoaberry_37:

(6, 28406), (Start: 36 @28157 has 3 MA's), (Start: 49 @28115 has 143 MA's), (56, 28094), (61, 28082), (68, 28016), (70, 28007), (71, 28001),

Gene: Colbster_42 Start: 28869, Stop: 28699, Start Num: 48

Candidate Starts for Colbster_42:

(19, 29049), (27, 28977), (Start: 48 @28869 has 259 MA's), (61, 28830), (70, 28746), (72, 28737),

Gene: Commander_37 Start: 28110, Stop: 27958, Start Num: 49

Candidate Starts for Commander_37:

(6, 28401), (Start: 36 @28152 has 3 MA's), (Start: 49 @28110 has 143 MA's), (68, 28011), (70, 28002),

Gene: ConceptII_47 Start: 35507, Stop: 35379, Start Num: 48

Candidate Starts for ConceptII_47:

(Start: 48 @35507 has 259 MA's), (51, 35498), (55, 35486), (59, 35474), (67, 35405), (68, 35396),

Gene: Connomayer_37 Start: 28111, Stop: 27959, Start Num: 49

Candidate Starts for Connomayer_37:

(6, 28402), (Start: 36 @28153 has 3 MA's), (Start: 49 @28111 has 143 MA's), (56, 28090), (61, 28078), (68, 28012), (70, 28003), (71, 27997),

Gene: Conquerage_67 Start: 40725, Stop: 40570, Start Num: 49

Candidate Starts for Conquerage_67:

(Start: 49 @40725 has 143 MA's), (63, 40683), (70, 40617), (72, 40608),

Gene: Conspiracy_34 Start: 27260, Stop: 27060, Start Num: 36

Candidate Starts for Conspiracy_34:

(20, 27410), (Start: 36 @27260 has 3 MA's), (Start: 46 @27218 has 33 MA's), (68, 27113), (70, 27104), (71, 27098),

Gene: Coog_33 Start: 27188, Stop: 27030, Start Num: 46

Candidate Starts for Coog_33:

(11, 27476), (12, 27470), (Start: 36 @27230 has 3 MA's), (Start: 46 @27188 has 33 MA's), (68, 27083), (70, 27074), (71, 27068),

Gene: Corvo_46 Start: 35367, Stop: 35242, Start Num: 48

Candidate Starts for Corvo_46:

(Start: 48 @35367 has 259 MA's), (51, 35358), (55, 35346), (59, 35334), (67, 35268), (68, 35259),

Gene: CrimD_52 Start: 38799, Stop: 38972, Start Num: 48

Candidate Starts for CrimD_52:

(Start: 48 @38799 has 259 MA's), (68, 38913),

Gene: Crucio_38 Start: 28097, Stop: 27924, Start Num: 41

Candidate Starts for Crucio_38:

(Start: 41 @28097 has 27 MA's), (53, 28073), (55, 28067), (70, 27971),

Gene: Cuco_33 Start: 27147, Stop: 26989, Start Num: 46

Candidate Starts for Cuco_33:

(11, 27429), (12, 27423), (Start: 36 @27189 has 3 MA's), (Start: 46 @27147 has 33 MA's), (68, 27042), (70, 27033), (71, 27027),

Gene: Cullens_42 Start: 28865, Stop: 28698, Start Num: 48
Candidate Starts for Cullens_42:
(19, 29045), (27, 28973), (Start: 48 @28865 has 259 MA's), (61, 28826), (70, 28745), (72, 28736),

Gene: D29_38 Start: 28135, Stop: 27983, Start Num: 45
Candidate Starts for D29_38:
(14, 28402), (17, 28360), (Start: 45 @28135 has 38 MA's), (68, 28033), (70, 28024), (80, 28000),

Gene: D32_41 Start: 28135, Stop: 27983, Start Num: 45
Candidate Starts for D32_41:
(14, 28402), (17, 28360), (Start: 45 @28135 has 38 MA's), (68, 28033), (70, 28024), (80, 28000),

Gene: DBQu4n_41 Start: 28135, Stop: 27983, Start Num: 45
Candidate Starts for DBQu4n_41:
(Start: 45 @28135 has 38 MA's), (68, 28033), (70, 28024), (80, 28000),

Gene: DaHudson_42 Start: 28858, Stop: 28691, Start Num: 48
Candidate Starts for DaHudson_42:
(19, 29038), (27, 28966), (Start: 48 @28858 has 259 MA's), (61, 28819), (70, 28738), (72, 28729),

Gene: Daishi_41 Start: 27705, Stop: 27538, Start Num: 48
Candidate Starts for Daishi_41:
(19, 27885), (27, 27813), (Start: 48 @27705 has 259 MA's), (75, 27570),

Gene: Dalmuri_52 Start: 38684, Stop: 38854, Start Num: 48
Candidate Starts for Dalmuri_52:
(Start: 48 @38684 has 259 MA's), (68, 38798), (70, 38807), (71, 38813), (80, 38837),

Gene: Darrell_70 Start: 41552, Stop: 41397, Start Num: 49
Candidate Starts for Darrell_70:
(21, 41750), (Start: 49 @41552 has 143 MA's), (68, 41450), (70, 41441), (71, 41435),

Gene: Dartin_55 Start: 39264, Stop: 39437, Start Num: 48
Candidate Starts for Dartin_55:
(Start: 48 @39264 has 259 MA's), (52, 39276), (61, 39303), (68, 39378), (74, 39402),

Gene: Deano_37 Start: 28119, Stop: 27967, Start Num: 49
Candidate Starts for Deano_37:
(6, 28410), (Start: 36 @28161 has 3 MA's), (Start: 49 @28119 has 143 MA's), (56, 28098), (61, 28086),
(68, 28020), (70, 28011), (71, 28005),

Gene: Deby_52 Start: 38743, Stop: 38913, Start Num: 48
Candidate Starts for Deby_52:
(Start: 48 @38743 has 259 MA's), (68, 38857), (70, 38866), (71, 38872), (80, 38896),

Gene: Deloris_36 Start: 27509, Stop: 27330, Start Num: 41
Candidate Starts for Deloris_36:
(Start: 41 @27509 has 27 MA's), (59, 27464), (70, 27377), (72, 27368), (78, 27350),

Gene: Devera_57 Start: 39316, Stop: 39486, Start Num: 48
Candidate Starts for Devera_57:
(Start: 48 @39316 has 259 MA's), (68, 39430), (70, 39439),

Gene: Dhanush_37 Start: 28114, Stop: 27962, Start Num: 49

Candidate Starts for Dhanush_37:

(6, 28405), (Start: 36 @28156 has 3 MA's), (Start: 49 @28114 has 143 MA's), (56, 28093), (61, 28081), (68, 28015), (70, 28006), (71, 28000),

Gene: Dieselweasel_43 Start: 28868, Stop: 28701, Start Num: 48

Candidate Starts for Dieselweasel_43:

(19, 29048), (27, 28976), (Start: 48 @28868 has 259 MA's), (61, 28829), (70, 28748), (72, 28739),

Gene: Dignity_40 Start: 28649, Stop: 28476, Start Num: 41

Candidate Starts for Dignity_40:

(Start: 41 @28649 has 27 MA's), (55, 28619), (64, 28589),

Gene: Discoknowium_34 Start: 27469, Stop: 27269, Start Num: 36

Candidate Starts for Discoknowium_34:

(20, 27619), (Start: 36 @27469 has 3 MA's), (Start: 46 @27427 has 33 MA's), (68, 27322), (70, 27313), (71, 27307),

Gene: Dole_55 Start: 39319, Stop: 39489, Start Num: 48

Candidate Starts for Dole_55:

(Start: 48 @39319 has 259 MA's), (68, 39433), (70, 39442),

Gene: DrHayes_53 Start: 39464, Stop: 39634, Start Num: 48

Candidate Starts for DrHayes_53:

(Start: 48 @39464 has 259 MA's), (68, 39578), (74, 39602),

Gene: DreamCatcher_48 Start: 35874, Stop: 35749, Start Num: 48

Candidate Starts for DreamCatcher_48:

(Start: 48 @35874 has 259 MA's), (61, 35835), (67, 35775), (68, 35766),

Gene: Dreamboat_47 Start: 34567, Stop: 34439, Start Num: 48

Candidate Starts for Dreamboat_47:

(Start: 48 @34567 has 259 MA's), (51, 34558), (55, 34546), (59, 34534), (67, 34465), (68, 34456),

Gene: DropBear_39 Start: 28435, Stop: 28274, Start Num: 48

Candidate Starts for DropBear_39:

(Start: 48 @28435 has 259 MA's), (70, 28321), (73, 28312),

Gene: Druantia_37 Start: 28114, Stop: 27962, Start Num: 49

Candidate Starts for Druantia_37:

(6, 28405), (Start: 36 @28156 has 3 MA's), (Start: 49 @28114 has 143 MA's), (56, 28093), (61, 28081), (68, 28015), (70, 28006), (71, 28000),

Gene: Dublin_32 Start: 27119, Stop: 26961, Start Num: 46

Candidate Starts for Dublin_32:

(Start: 36 @27161 has 3 MA's), (Start: 46 @27119 has 33 MA's), (68, 27014), (70, 27005), (71, 26999),

Gene: Duplo_41 Start: 28173, Stop: 28021, Start Num: 45

Candidate Starts for Duplo_41:

(Start: 45 @28173 has 38 MA's), (68, 28071), (70, 28062), (80, 28038),

Gene: Durfee_52 Start: 38881, Stop: 39051, Start Num: 48

Candidate Starts for Durfee_52:

(Start: 48 @38881 has 259 MA's), (68, 38995), (70, 39004), (71, 39010), (80, 39034),

Gene: DustyMartin_41 Start: 27874, Stop: 27713, Start Num: 46

Candidate Starts for DustyMartin_41:

(Start: 43 @27877 has 9 MA's), (Start: 46 @27874 has 33 MA's), (68, 27766), (70, 27757),

Gene: EZMoney23_38 Start: 28376, Stop: 28215, Start Num: 49

Candidate Starts for EZMoney23_38:

(Start: 49 @28376 has 143 MA's), (72, 28253),

Gene: Eagle_37 Start: 28136, Stop: 27978, Start Num: 49

Candidate Starts for Eagle_37:

(6, 28427), (Start: 36 @28178 has 3 MA's), (Start: 49 @28136 has 143 MA's), (68, 28031), (70, 28022), (71, 28016), (80, 27995),

Gene: Eaglepride_39 Start: 28184, Stop: 28023, Start Num: 46

Candidate Starts for Eaglepride_39:

(Start: 43 @28187 has 9 MA's), (Start: 46 @28184 has 33 MA's), (68, 28076), (70, 28067), (71, 28061),

Gene: Eapen_37 Start: 28109, Stop: 27957, Start Num: 49

Candidate Starts for Eapen_37:

(6, 28400), (Start: 36 @28151 has 3 MA's), (Start: 49 @28109 has 143 MA's), (56, 28088), (61, 28076), (68, 28010), (70, 28001), (71, 27995),

Gene: Ebony_37 Start: 27394, Stop: 27239, Start Num: 45

Candidate Starts for Ebony_37:

(15, 27664), (25, 27541), (28, 27502), (Start: 45 @27394 has 38 MA's), (70, 27280), (71, 27274), (81, 27250),

Gene: Edison31_38 Start: 28283, Stop: 28125, Start Num: 43

Candidate Starts for Edison31_38:

(30, 28346), (Start: 43 @28283 has 9 MA's), (61, 28247), (71, 28163),

Gene: EdogawaKiddo_67 Start: 41017, Stop: 40862, Start Num: 49

Candidate Starts for EdogawaKiddo_67:

(Start: 49 @41017 has 143 MA's), (63, 40975), (70, 40909), (72, 40900),

Gene: Edugator_35 Start: 30175, Stop: 30339, Start Num: 39

Candidate Starts for Edugator_35:

(34, 30136), (35, 30139), (Start: 39 @30175 has 19 MA's), (50, 30187), (56, 30202), (59, 30208), (61, 30214), (62, 30217), (68, 30286), (71, 30301),

Gene: Efra2_55 Start: 38400, Stop: 38573, Start Num: 48

Candidate Starts for Efra2_55:

(Start: 48 @38400 has 259 MA's), (68, 38514),

Gene: Eidsmoe_67 Start: 40717, Stop: 40562, Start Num: 49

Candidate Starts for Eidsmoe_67:

(Start: 49 @40717 has 143 MA's), (63, 40675), (70, 40609), (72, 40600),

Gene: Elephantoon_67 Start: 40355, Stop: 40197, Start Num: 49

Candidate Starts for Elephantoon_67:

(21, 40556), (Start: 49 @40355 has 143 MA's), (63, 40313), (70, 40244), (72, 40235),

Gene: Emerson_53 Start: 38563, Stop: 38733, Start Num: 48

Candidate Starts for Emerson_53:

(Start: 48 @38563 has 259 MA's), (68, 38677), (70, 38686), (71, 38692), (80, 38716),

Gene: EmyBug_66 Start: 40719, Stop: 40564, Start Num: 49

Candidate Starts for EmyBug_66:

(Start: 49 @40719 has 143 MA's), (63, 40677), (70, 40611), (72, 40602),

Gene: EpicPhail_43 Start: 28869, Stop: 28699, Start Num: 48

Candidate Starts for EpicPhail_43:

(19, 29049), (27, 28977), (Start: 48 @28869 has 259 MA's), (61, 28830), (70, 28746), (72, 28737),

Gene: Eponine_3 Start: 478, Stop: 645, Start Num: 39

Candidate Starts for Eponine_3:

(3, 121), (5, 139), (9, 172), (Start: 39 @478 has 19 MA's), (Start: 54 @505 has 1 MA's), (68, 592), (71, 607), (81, 634),

Gene: Eris_36 Start: 28111, Stop: 27959, Start Num: 49

Candidate Starts for Eris_36:

(6, 28402), (Start: 36 @28153 has 3 MA's), (Start: 49 @28111 has 143 MA's), (56, 28090), (61, 28078), (68, 28012), (70, 28003), (71, 27997),

Gene: Eros_37 Start: 28113, Stop: 27961, Start Num: 49

Candidate Starts for Eros_37:

(6, 28404), (Start: 36 @28155 has 3 MA's), (Start: 49 @28113 has 143 MA's), (56, 28092), (61, 28080), (68, 28014), (70, 28005), (71, 27999),

Gene: Et2Brutus_36 Start: 27354, Stop: 27199, Start Num: 45

Candidate Starts for Et2Brutus_36:

(15, 27624), (25, 27501), (28, 27462), (Start: 45 @27354 has 38 MA's), (70, 27240), (71, 27234), (81, 27210),

Gene: Eurydice_38 Start: 28111, Stop: 27953, Start Num: 49

Candidate Starts for Eurydice_38:

(6, 28402), (Start: 36 @28153 has 3 MA's), (Start: 49 @28111 has 143 MA's), (68, 28006), (70, 27997), (71, 27991), (80, 27970),

Gene: EvilGenius_41 Start: 30018, Stop: 29845, Start Num: 41

Candidate Starts for EvilGenius_41:

(Start: 41 @30018 has 27 MA's), (53, 29994), (55, 29988),

Gene: ExplosioNervosa_67 Start: 40785, Stop: 40630, Start Num: 49

Candidate Starts for ExplosioNervosa_67:

(Start: 49 @40785 has 143 MA's), (63, 40743), (70, 40677), (72, 40668),

Gene: Fameo_67 Start: 41968, Stop: 41795, Start Num: 44

Candidate Starts for Fameo_67:

(Start: 44 @41968 has 5 MA's), (70, 41842), (72, 41833),

Gene: Farber_42 Start: 28859, Stop: 28692, Start Num: 48

Candidate Starts for Farber_42:

(19, 29039), (27, 28967), (Start: 48 @28859 has 259 MA's), (61, 28820), (70, 28739), (72, 28730),

Gene: Fayely_67 Start: 40686, Stop: 40531, Start Num: 49

Candidate Starts for Fayely_67:

(Start: 49 @40686 has 143 MA's), (63, 40644), (70, 40578), (72, 40569),

Gene: Fenn_47 Start: 36614, Stop: 36486, Start Num: 48

Candidate Starts for Fenn_47:

(Start: 48 @36614 has 259 MA's), (51, 36605), (55, 36593), (59, 36581), (67, 36512), (68, 36503),

Gene: Fernando_42 Start: 28865, Stop: 28698, Start Num: 48

Candidate Starts for Fernando_42:

(19, 29045), (27, 28973), (Start: 48 @28865 has 259 MA's), (61, 28826), (70, 28745), (72, 28736),

Gene: Fibonacci_36 Start: 26986, Stop: 26831, Start Num: 45

Candidate Starts for Fibonacci_36:

(15, 27256), (25, 27133), (28, 27094), (Start: 45 @26986 has 38 MA's), (70, 26872), (71, 26866), (81, 26842),

Gene: Fionnbharth_3 Start: 478, Stop: 645, Start Num: 39

Candidate Starts for Fionnbharth_3:

(9, 172), (Start: 39 @478 has 19 MA's), (Start: 54 @505 has 1 MA's), (68, 592), (71, 607), (81, 634),

Gene: FiringLine_38 Start: 28078, Stop: 27905, Start Num: 41

Candidate Starts for FiringLine_38:

(Start: 41 @28078 has 27 MA's), (53, 28054), (55, 28048), (70, 27952),

Gene: First_0037 Start: 27751, Stop: 27566, Start Num: 41

Candidate Starts for First_0037:

(Start: 41 @27751 has 27 MA's), (57, 27712), (70, 27613), (72, 27604),

Gene: Flaverint_37 Start: 27433, Stop: 27278, Start Num: 45

Candidate Starts for Flaverint_37:

(15, 27703), (25, 27580), (28, 27541), (Start: 45 @27433 has 38 MA's), (70, 27319), (71, 27313), (81, 27289),

Gene: Florean_37 Start: 28110, Stop: 27958, Start Num: 49

Candidate Starts for Florean_37:

(6, 28401), (Start: 36 @28152 has 3 MA's), (Start: 49 @28110 has 143 MA's), (56, 28089), (61, 28077), (68, 28011), (70, 28002), (71, 27996),

Gene: Flux_37 Start: 28113, Stop: 27961, Start Num: 49

Candidate Starts for Flux_37:

(6, 28404), (Start: 36 @28155 has 3 MA's), (Start: 49 @28113 has 143 MA's), (56, 28092), (61, 28080), (68, 28014), (70, 28005), (71, 27999),

Gene: ForGetIt_34 Start: 27243, Stop: 27085, Start Num: 46

Candidate Starts for ForGetIt_34:

(20, 27435), (Start: 36 @27285 has 3 MA's), (Start: 46 @27243 has 33 MA's), (68, 27138), (70, 27129), (71, 27123),

Gene: Forsytheast_45 Start: 34645, Stop: 34520, Start Num: 48

Candidate Starts for Forsytheast_45:

(Start: 48 @34645 has 259 MA's), (51, 34636), (55, 34624), (59, 34612), (67, 34546), (68, 34537),

Gene: Fred313_39 Start: 28120, Stop: 27959, Start Num: 48

Candidate Starts for Fred313_39:

(Start: 48 @28120 has 259 MA's), (70, 28006), (73, 27997),

Gene: Funston_37 Start: 28111, Stop: 27959, Start Num: 49

Candidate Starts for Funston_37:

(6, 28402), (Start: 36 @28153 has 3 MA's), (Start: 49 @28111 has 143 MA's), (56, 28090), (61, 28078), (68, 28012), (70, 28003), (71, 27997),

Gene: Gadost_37 Start: 28115, Stop: 27963, Start Num: 49

Candidate Starts for Gadost_37:

(6, 28406), (Start: 36 @28157 has 3 MA's), (Start: 49 @28115 has 143 MA's), (56, 28094), (68, 28016), (70, 28007), (71, 28001),

Gene: Gandalf20_47 Start: 35644, Stop: 35519, Start Num: 48

Candidate Starts for Gandalf20_47:

(Start: 48 @35644 has 259 MA's), (61, 35605), (67, 35545), (68, 35536),

Gene: Ganymede_53 Start: 38945, Stop: 39115, Start Num: 48

Candidate Starts for Ganymede_53:

(Start: 48 @38945 has 259 MA's), (68, 39059), (70, 39068), (71, 39074), (80, 39098),

Gene: Gemma_41 Start: 28683, Stop: 28519, Start Num: 48

Candidate Starts for Gemma_41:

(Start: 48 @28683 has 259 MA's), (70, 28563), (71, 28557), (77, 28542), (79, 28536),

Gene: George_32 Start: 27148, Stop: 26990, Start Num: 46

Candidate Starts for George_32:

(11, 27430), (12, 27424), (Start: 36 @27190 has 3 MA's), (Start: 46 @27148 has 33 MA's), (68, 27043), (70, 27034), (71, 27028),

Gene: Georgie2_39 Start: 28123, Stop: 27950, Start Num: 41

Candidate Starts for Georgie2_39:

(Start: 41 @28123 has 27 MA's), (53, 28099), (55, 28093), (70, 27997),

Gene: Geraldini_55 Start: 39616, Stop: 39786, Start Num: 48

Candidate Starts for Geraldini_55:

(Start: 48 @39616 has 259 MA's), (68, 39730), (70, 39739), (71, 39745), (80, 39769),

Gene: Ghoulboy_35 Start: 27747, Stop: 27589, Start Num: 46

Candidate Starts for Ghoulboy_35:

(Start: 36 @27789 has 3 MA's), (Start: 46 @27747 has 33 MA's), (68, 27642), (70, 27633), (71, 27627),

Gene: Gilberta_37 Start: 27423, Stop: 27268, Start Num: 45

Candidate Starts for Gilberta_37:

(15, 27693), (25, 27570), (28, 27531), (Start: 45 @27423 has 38 MA's), (70, 27309), (71, 27303), (81, 27279),

Gene: GingkoMaracino_42 Start: 28752, Stop: 28585, Start Num: 48

Candidate Starts for GingkoMaracino_42:

(19, 28932), (27, 28860), (Start: 48 @28752 has 259 MA's), (61, 28713), (70, 28632), (72, 28623),

Gene: Giroux_39 Start: 28367, Stop: 28206, Start Num: 48

Candidate Starts for Giroux_39:

(Start: 48 @28367 has 259 MA's), (70, 28253), (73, 28244),

Gene: Goose_38 Start: 27879, Stop: 27721, Start Num: 43

Candidate Starts for Goose_38:

(Start: 43 @27879 has 9 MA's), (71, 27759),

Gene: GrecoEtereo_46 Start: 34972, Stop: 34847, Start Num: 48

Candidate Starts for GrecoEtereo_46:

(Start: 48 @34972 has 259 MA's), (51, 34963), (55, 34951), (59, 34939), (67, 34873), (68, 34864),

Gene: Grif_42 Start: 28940, Stop: 28773, Start Num: 48

Candidate Starts for Grif_42:

(19, 29120), (27, 29048), (Start: 48 @28940 has 259 MA's), (61, 28901), (70, 28820), (72, 28811),

Gene: Groupthink_43 Start: 28687, Stop: 28523, Start Num: 48

Candidate Starts for Groupthink_43:

(Start: 48 @28687 has 259 MA's), (70, 28567), (71, 28561), (77, 28546), (79, 28540),

Gene: Grub_42 Start: 28858, Stop: 28691, Start Num: 48

Candidate Starts for Grub_42:

(19, 29038), (27, 28966), (Start: 48 @28858 has 259 MA's), (61, 28819), (70, 28738), (72, 28729),

Gene: Grum1_42 Start: 28865, Stop: 28698, Start Num: 48

Candidate Starts for Grum1_42:

(19, 29045), (27, 28973), (Start: 48 @28865 has 259 MA's), (61, 28826), (70, 28745), (72, 28736),

Gene: GtownJaz_42 Start: 28867, Stop: 28700, Start Num: 48

Candidate Starts for GtownJaz_42:

(19, 29047), (27, 28975), (Start: 48 @28867 has 259 MA's), (61, 28828), (70, 28747), (72, 28738),

Gene: HamSlice_36 Start: 28109, Stop: 27957, Start Num: 49

Candidate Starts for HamSlice_36:

(6, 28400), (Start: 36 @28151 has 3 MA's), (Start: 49 @28109 has 143 MA's), (56, 28088), (68, 28010), (70, 28001), (71, 27995),

Gene: HanShotFirst_44 Start: 33997, Stop: 33872, Start Num: 48

Candidate Starts for HanShotFirst_44:

(Start: 48 @33997 has 259 MA's), (61, 33958), (67, 33898), (68, 33889),

Gene: Hanray_67 Start: 41049, Stop: 40894, Start Num: 49

Candidate Starts for Hanray_67:

(8, 41373), (Start: 49 @41049 has 143 MA's), (63, 41007), (70, 40941), (72, 40932),

Gene: HarryOW_44 Start: 34144, Stop: 34019, Start Num: 48

Candidate Starts for HarryOW_44:

(Start: 48 @34144 has 259 MA's), (51, 34135), (55, 34123), (59, 34111), (67, 34045), (68, 34036),

Gene: HashRod_43 Start: 28864, Stop: 28697, Start Num: 48

Candidate Starts for HashRod_43:

(19, 29044), (27, 28972), (Start: 48 @28864 has 259 MA's), (75, 28729),

Gene: HaveUMetTed_43 Start: 28681, Stop: 28517, Start Num: 48

Candidate Starts for HaveUMetTed_43:

(Start: 48 @28681 has 259 MA's), (70, 28564), (72, 28555),

Gene: Heathen_39 Start: 28176, Stop: 28015, Start Num: 48

Candidate Starts for Heathen_39:

(Start: 48 @28176 has 259 MA's), (70, 28062), (73, 28053),

Gene: HedwigODU_52 Start: 38569, Stop: 38739, Start Num: 48

Candidate Starts for HedwigODU_52:

(Start: 48 @38569 has 259 MA's), (68, 38683), (70, 38692), (71, 38698), (80, 38722),

Gene: Heffalump_66 Start: 42436, Stop: 42263, Start Num: 44

Candidate Starts for Heffalump_66:

(Start: 44 @42436 has 5 MA's), (70, 42310), (72, 42301),

Gene: HelDan_39 Start: 28428, Stop: 28267, Start Num: 48

Candidate Starts for HelDan_39:

(Start: 48 @28428 has 259 MA's), (70, 28314), (73, 28305),

Gene: Heliosoles_41 Start: 28690, Stop: 28523, Start Num: 48

Candidate Starts for Heliosoles_41:

(Start: 48 @28690 has 259 MA's), (70, 28567), (71, 28561), (77, 28546), (79, 28540),

Gene: Hercules11_42 Start: 28874, Stop: 28707, Start Num: 48

Candidate Starts for Hercules11_42:

(19, 29054), (27, 28982), (Start: 48 @28874 has 259 MA's), (61, 28835), (70, 28754), (72, 28745),

Gene: Horex_67 Start: 41065, Stop: 40910, Start Num: 49

Candidate Starts for Horex_67:

(8, 41389), (Start: 49 @41065 has 143 MA's), (63, 41023), (70, 40957), (72, 40948),

Gene: Holli_36 Start: 27901, Stop: 27749, Start Num: 49

Candidate Starts for Holli_36:

(4, 28201), (6, 28192), (Start: 36 @27943 has 3 MA's), (Start: 49 @27901 has 143 MA's), (56, 27880), (61, 27868), (68, 27802), (70, 27793), (71, 27787),

Gene: Homura_52 Start: 38684, Stop: 38854, Start Num: 48

Candidate Starts for Homura_52:

(Start: 48 @38684 has 259 MA's), (68, 38798), (70, 38807), (71, 38813), (80, 38837),

Gene: Hookmount_38 Start: 28524, Stop: 28357, Start Num: 48

Candidate Starts for Hookmount_38:

(27, 28632), (Start: 48 @28524 has 259 MA's),

Gene: HortumSL17_70 Start: 41049, Stop: 40894, Start Num: 49

Candidate Starts for HortumSL17_70:

(8, 41373), (Start: 49 @41049 has 143 MA's), (63, 41007), (70, 40941), (72, 40932),

Gene: Houdini22_37 Start: 28115, Stop: 27963, Start Num: 49

Candidate Starts for Houdini22_37:

(6, 28406), (Start: 36 @28157 has 3 MA's), (Start: 49 @28115 has 143 MA's), (56, 28094), (61, 28082), (68, 28016), (70, 28007), (71, 28001),

Gene: HuhtaEnerson15_33 Start: 27139, Stop: 26981, Start Num: 46

Candidate Starts for HuhtaEnerson15_33:

(11, 27421), (12, 27415), (Start: 36 @27181 has 3 MA's), (Start: 46 @27139 has 33 MA's), (68, 27034), (70, 27025), (71, 27019),

Gene: Hurricane_65 Start: 43122, Stop: 43292, Start Num: 48

Candidate Starts for Hurricane_65:

(Start: 42 @43113 has 1 MA's), (Start: 48 @43122 has 259 MA's), (56, 43146), (70, 43251), (71, 43257),

Gene: Hutc2_36 Start: 26986, Stop: 26831, Start Num: 45

Candidate Starts for Hutc2_36:

(15, 27256), (25, 27133), (28, 27094), (Start: 45 @26986 has 38 MA's), (70, 26872), (71, 26866), (81, 26842),

Gene: Huxley_38 Start: 28172, Stop: 28020, Start Num: 49

Candidate Starts for Huxley_38:

(6, 28463), (Start: 36 @28214 has 3 MA's), (Start: 49 @28172 has 143 MA's), (56, 28151), (61, 28139), (68, 28073), (70, 28064), (71, 28058),

Gene: Hyperbowlee_52 Start: 38881, Stop: 39051, Start Num: 48

Candidate Starts for Hyperbowlee_52:

(Start: 48 @38881 has 259 MA's), (68, 38995), (70, 39004), (71, 39010), (80, 39034),

Gene: ICleared_37 Start: 28143, Stop: 27991, Start Num: 49

Candidate Starts for ICleared_37:

(Start: 36 @28185 has 3 MA's), (Start: 49 @28143 has 143 MA's), (68, 28044), (70, 28035), (71, 28029),

Gene: Iceman_38 Start: 28400, Stop: 28248, Start Num: 49

Candidate Starts for Iceman_38:

(6, 28691), (Start: 36 @28442 has 3 MA's), (Start: 49 @28400 has 143 MA's), (56, 28379), (61, 28367), (68, 28301), (70, 28292), (71, 28286),

Gene: Ichabod_47 Start: 35000, Stop: 34878, Start Num: 48

Candidate Starts for Ichabod_47:

(Start: 48 @35000 has 259 MA's), (61, 34961), (67, 34904), (68, 34895),

Gene: Idleandcovert_39 Start: 28368, Stop: 28207, Start Num: 48

Candidate Starts for Idleandcovert_39:

(Start: 48 @28368 has 259 MA's), (70, 28254), (73, 28245),

Gene: Illumine_55 Start: 39318, Stop: 39488, Start Num: 48

Candidate Starts for Illumine_55:

(Start: 48 @39318 has 259 MA's), (68, 39432), (70, 39441),

Gene: Inky_52 Start: 38684, Stop: 38854, Start Num: 48

Candidate Starts for Inky_52:

(Start: 48 @38684 has 259 MA's), (68, 38798), (70, 38807), (71, 38813), (80, 38837),

Gene: Insomnia_37 Start: 27491, Stop: 27336, Start Num: 45

Candidate Starts for Insomnia_37:

(15, 27761), (25, 27638), (28, 27599), (Start: 45 @27491 has 38 MA's), (70, 27377), (71, 27371), (81, 27347),

Gene: Iracema64_38 Start: 28375, Stop: 28217, Start Num: 49

Candidate Starts for Iracema64_38:

(Start: 36 @28417 has 3 MA's), (Start: 49 @28375 has 143 MA's), (68, 28270), (70, 28261), (71, 28255), (80, 28234),

Gene: Isca_38 Start: 27992, Stop: 27828, Start Num: 48

Candidate Starts for Isca_38:

(33, 28040), (Start: 48 @27992 has 259 MA's), (58, 27965), (63, 27950), (70, 27875), (73, 27866), (78, 27848), (80, 27845),

Gene: Iwokeuplikedis_41 Start: 28186, Stop: 28013, Start Num: 41

Candidate Starts for Iwokeuplikedis_41:

(Start: 41 @28186 has 27 MA's), (60, 28141), (70, 28060), (72, 28051),

Gene: JAWS_52 Start: 38558, Stop: 38728, Start Num: 48

Candidate Starts for JAWS_52:

(Start: 48 @38558 has 259 MA's), (68, 38672), (70, 38681), (71, 38687), (80, 38711),

Gene: JC27_46 Start: 35060, Stop: 34935, Start Num: 48

Candidate Starts for JC27_46:

(Start: 48 @35060 has 259 MA's), (51, 35051), (55, 35039), (59, 35027), (67, 34961), (68, 34952),

Gene: JF1_3 Start: 505, Stop: 645, Start Num: 54

Candidate Starts for JF1_3:

(9, 172), (Start: 39 @478 has 19 MA's), (Start: 54 @505 has 1 MA's), (68, 592), (71, 607), (81, 634),

Gene: JF2_39 Start: 27743, Stop: 27579, Start Num: 48

Candidate Starts for JF2_39:

(33, 27791), (Start: 48 @27743 has 259 MA's), (58, 27716), (63, 27701), (70, 27626), (73, 27617), (78, 27599), (80, 27596),

Gene: JF4_39 Start: 27743, Stop: 27579, Start Num: 48

Candidate Starts for JF4_39:

(33, 27791), (Start: 48 @27743 has 259 MA's), (58, 27716), (63, 27701), (70, 27626), (73, 27617), (78, 27599), (80, 27596),

Gene: JHC117_42 Start: 28864, Stop: 28697, Start Num: 48

Candidate Starts for JHC117_42:

(19, 29044), (27, 28972), (Start: 48 @28864 has 259 MA's), (61, 28825), (70, 28744), (72, 28735),

Gene: Jabith_37 Start: 27492, Stop: 27337, Start Num: 45

Candidate Starts for Jabith_37:

(15, 27762), (25, 27639), (28, 27600), (Start: 45 @27492 has 38 MA's), (70, 27378), (71, 27372), (81, 27348),

Gene: Jarvi_52 Start: 38684, Stop: 38854, Start Num: 48

Candidate Starts for Jarvi_52:

(Start: 48 @38684 has 259 MA's), (68, 38798), (70, 38807), (71, 38813), (80, 38837),

Gene: Jasper_47 Start: 34453, Stop: 34325, Start Num: 48
Candidate Starts for Jasper_47:
(Start: 48 @34453 has 259 MA's), (51, 34444), (55, 34432), (59, 34420), (67, 34351), (68, 34342),

Gene: Jayhawk_53 Start: 38567, Stop: 38737, Start Num: 48
Candidate Starts for Jayhawk_53:
(Start: 48 @38567 has 259 MA's), (68, 38681), (70, 38690), (71, 38696), (80, 38720),

Gene: Jaykayelowell_36 Start: 28107, Stop: 27955, Start Num: 49
Candidate Starts for Jaykayelowell_36:
(6, 28398), (Start: 36 @28149 has 3 MA's), (Start: 49 @28107 has 143 MA's), (56, 28086), (61, 28074),
(68, 28008), (70, 27999), (71, 27993),

Gene: Jeckyll_52 Start: 38684, Stop: 38854, Start Num: 48
Candidate Starts for Jeckyll_52:
(Start: 48 @38684 has 259 MA's), (68, 38798), (70, 38807), (71, 38813), (80, 38837),

Gene: JenCasNa_43 Start: 28865, Stop: 28698, Start Num: 48
Candidate Starts for JenCasNa_43:
(19, 29045), (27, 28973), (Start: 48 @28865 has 259 MA's), (61, 28826), (70, 28745), (72, 28736),

Gene: JeppNRM_43 Start: 28688, Stop: 28521, Start Num: 48
Candidate Starts for JeppNRM_43:
(Start: 48 @28688 has 259 MA's), (70, 28565), (71, 28559), (77, 28544), (79, 28538),

Gene: Jerm_40 Start: 28642, Stop: 28469, Start Num: 41
Candidate Starts for Jerm_40:
(Start: 41 @28642 has 27 MA's), (55, 28612), (64, 28582),

Gene: JetBlade_37 Start: 28108, Stop: 27956, Start Num: 49
Candidate Starts for JetBlade_37:
(6, 28399), (Start: 36 @28150 has 3 MA's), (Start: 49 @28108 has 143 MA's), (56, 28087), (61, 28075),
(68, 28009), (70, 28000), (71, 27994),

Gene: Jiawan_66 Start: 41081, Stop: 40926, Start Num: 49
Candidate Starts for Jiawan_66:
(8, 41405), (Start: 49 @41081 has 143 MA's), (63, 41039), (70, 40973), (72, 40964),

Gene: Jobu08_41 Start: 28695, Stop: 28528, Start Num: 48
Candidate Starts for Jobu08_41:
(19, 28878), (27, 28806), (Start: 48 @28695 has 259 MA's), (61, 28656), (70, 28575), (72, 28566),

Gene: JoongJeon_37 Start: 28111, Stop: 27959, Start Num: 49
Candidate Starts for JoongJeon_37:
(6, 28402), (Start: 36 @28153 has 3 MA's), (Start: 49 @28111 has 143 MA's), (56, 28090), (61, 28078),
(68, 28012), (70, 28003), (71, 27997),

Gene: Jorgensen_46 Start: 34754, Stop: 34629, Start Num: 48
Candidate Starts for Jorgensen_46:
(Start: 48 @34754 has 259 MA's), (61, 34715), (67, 34655), (68, 34646),

Gene: Joselito_37 Start: 27432, Stop: 27277, Start Num: 45

Candidate Starts for Joselito_37:

(15, 27702), (25, 27579), (28, 27540), (Start: 45 @27432 has 38 MA's), (70, 27318), (71, 27312), (81, 27288),

Gene: JoshKayV_40 Start: 28605, Stop: 28432, Start Num: 41

Candidate Starts for JoshKayV_40:

(Start: 41 @28605 has 27 MA's), (55, 28575), (62, 28554), (70, 28479),

Gene: Journey13_36 Start: 27473, Stop: 27315, Start Num: 40

Candidate Starts for Journey13_36:

(Start: 40 @27473 has 2 MA's), (70, 27362), (71, 27356), (80, 27332),

Gene: Jovo_34 Start: 27541, Stop: 27341, Start Num: 36

Candidate Starts for Jovo_34:

(20, 27691), (Start: 36 @27541 has 3 MA's), (Start: 46 @27499 has 33 MA's), (68, 27394), (70, 27385), (71, 27379),

Gene: Joy99_52 Start: 38613, Stop: 38783, Start Num: 48

Candidate Starts for Joy99_52:

(Start: 48 @38613 has 259 MA's), (68, 38727), (70, 38736), (71, 38742), (80, 38766),

Gene: Jsquared_70 Start: 40783, Stop: 40631, Start Num: 49

Candidate Starts for Jsquared_70:

(8, 41107), (Start: 49 @40783 has 143 MA's), (68, 40681), (70, 40672), (78, 40651),

Gene: Juliette_3 Start: 478, Stop: 645, Start Num: 39

Candidate Starts for Juliette_3:

(9, 172), (Start: 39 @478 has 19 MA's), (Start: 54 @505 has 1 MA's), (68, 592), (71, 607), (81, 634),

Gene: KADY_42 Start: 28864, Stop: 28697, Start Num: 48

Candidate Starts for KADY_42:

(19, 29044), (27, 28972), (Start: 48 @28864 has 259 MA's), (75, 28729),

Gene: KFPoly_37 Start: 28108, Stop: 27956, Start Num: 49

Candidate Starts for KFPoly_37:

(6, 28399), (Start: 36 @28150 has 3 MA's), (Start: 49 @28108 has 143 MA's), (56, 28087), (61, 28075), (68, 28009), (70, 28000), (71, 27994),

Gene: Kachowdy_39 Start: 28428, Stop: 28267, Start Num: 48

Candidate Starts for Kachowdy_39:

(Start: 48 @28428 has 259 MA's), (70, 28314), (73, 28305),

Gene: Kalb97_43 Start: 28686, Stop: 28522, Start Num: 48

Candidate Starts for Kalb97_43:

(Start: 48 @28686 has 259 MA's), (70, 28566), (71, 28560), (77, 28545), (79, 28539),

Gene: Kalnoky_43 Start: 28684, Stop: 28523, Start Num: 48

Candidate Starts for Kalnoky_43:

(Start: 48 @28684 has 259 MA's), (70, 28567), (71, 28561), (77, 28546), (79, 28540),

Gene: Kalpine_39 Start: 29026, Stop: 28853, Start Num: 41

Candidate Starts for Kalpine_39:

(Start: 41 @29026 has 27 MA's), (53, 29002), (62, 28975), (66, 28933),

Gene: Kamy_37 Start: 28113, Stop: 27955, Start Num: 49

Candidate Starts for Kamy_37:

(6, 28404), (Start: 36 @28155 has 3 MA's), (Start: 49 @28113 has 143 MA's), (68, 28008), (70, 27999), (71, 27993), (80, 27972),

Gene: Kanely_46 Start: 35114, Stop: 34992, Start Num: 48

Candidate Starts for Kanely_46:

(Start: 48 @35114 has 259 MA's), (61, 35075), (67, 35018), (68, 35009),

Gene: Kerberos_41 Start: 28135, Stop: 27983, Start Num: 45

Candidate Starts for Kerberos_41:

(Start: 45 @28135 has 38 MA's), (68, 28033), (70, 28024), (80, 28000),

Gene: Keshu_67 Start: 43220, Stop: 43390, Start Num: 48

Candidate Starts for Keshu_67:

(Start: 42 @43211 has 1 MA's), (Start: 48 @43220 has 259 MA's), (56, 43244), (70, 43349),

Gene: Kimona_36 Start: 26496, Stop: 26332, Start Num: 48

Candidate Starts for Kimona_36:

(Start: 48 @26496 has 259 MA's), (59, 26463), (62, 26454), (68, 26391), (69, 26388), (80, 26349),

Gene: KingCyrus_41 Start: 30013, Stop: 29840, Start Num: 41

Candidate Starts for KingCyrus_41:

(Start: 41 @30013 has 27 MA's), (53, 29989), (55, 29983), (70, 29887),

Gene: Kingmustik0402_37 Start: 28103, Stop: 27951, Start Num: 49

Candidate Starts for Kingmustik0402_37:

(6, 28394), (Start: 36 @28145 has 3 MA's), (Start: 49 @28103 has 143 MA's), (56, 28082), (68, 28004), (70, 27995), (71, 27989),

Gene: Kinmap_67 Start: 39769, Stop: 39608, Start Num: 49

Candidate Starts for Kinmap_67:

(21, 39967), (Start: 49 @39769 has 143 MA's), (68, 39664), (70, 39655), (72, 39646),

Gene: Koan_36 Start: 28111, Stop: 27959, Start Num: 49

Candidate Starts for Koan_36:

(6, 28402), (Start: 36 @28153 has 3 MA's), (Start: 49 @28111 has 143 MA's), (56, 28090), (68, 28012), (70, 28003), (71, 27997),

Gene: Koduck_38 Start: 27286, Stop: 27131, Start Num: 46

Candidate Starts for Koduck_38:

(38, 27298), (Start: 46 @27286 has 33 MA's), (69, 27181), (71, 27169), (76, 27154), (81, 27142), (82, 27139),

Gene: Koreni_36 Start: 27792, Stop: 27640, Start Num: 49

Candidate Starts for Koreni_36:

(6, 28083), (8, 28065), (Start: 36 @27834 has 3 MA's), (Start: 49 @27792 has 143 MA's), (56, 27771), (61, 27759), (68, 27693), (70, 27684), (71, 27678),

Gene: Kratak_37 Start: 28053, Stop: 27901, Start Num: 49

Candidate Starts for Kratak_37:

(6, 28344), (Start: 36 @28095 has 3 MA's), (Start: 49 @28053 has 143 MA's), (68, 27954), (70, 27945), (71, 27939),

Gene: Kraw_3 Start: 478, Stop: 645, Start Num: 39

Candidate Starts for Kraw_3:

(9, 172), (Start: 39 @478 has 19 MA's), (Start: 54 @505 has 1 MA's), (68, 592), (71, 607), (81, 634),

Gene: Kremtemulon_37 Start: 28065, Stop: 27913, Start Num: 49

Candidate Starts for Kremtemulon_37:

(6, 28356), (Start: 36 @28107 has 3 MA's), (Start: 49 @28065 has 143 MA's), (68, 27966), (70, 27957), (71, 27951),

Gene: Kristoff_38 Start: 28447, Stop: 28289, Start Num: 43

Candidate Starts for Kristoff_38:

(Start: 43 @28447 has 9 MA's), (71, 28327),

Gene: Krueger_59 Start: 39310, Stop: 39483, Start Num: 48

Candidate Starts for Krueger_59:

(18, 39079), (19, 39106), (26, 39163), (Start: 48 @39310 has 259 MA's), (59, 39343), (70, 39436), (74, 39451),

Gene: Kyee_37 Start: 28109, Stop: 27957, Start Num: 49

Candidate Starts for Kyee_37:

(6, 28400), (Start: 36 @28151 has 3 MA's), (Start: 49 @28109 has 143 MA's), (56, 28088), (61, 28076), (68, 28010), (70, 28001), (71, 27995),

Gene: LBerry_43 Start: 28869, Stop: 28699, Start Num: 48

Candidate Starts for LBerry_43:

(19, 29049), (27, 28977), (Start: 48 @28869 has 259 MA's), (61, 28830), (70, 28746), (72, 28737),

Gene: LHTSCC_39 Start: 28413, Stop: 28255, Start Num: 49

Candidate Starts for LHTSCC_39:

(Start: 36 @28455 has 3 MA's), (Start: 49 @28413 has 143 MA's), (68, 28308), (70, 28299), (71, 28293), (80, 28272),

Gene: LadyBird_40 Start: 28319, Stop: 28134, Start Num: 41

Candidate Starts for LadyBird_40:

(Start: 41 @28319 has 27 MA's), (57, 28280), (70, 28181), (72, 28172), (78, 28154),

Gene: Lambert1_38 Start: 28523, Stop: 28356, Start Num: 48

Candidate Starts for Lambert1_38:

(27, 28631), (Start: 48 @28523 has 259 MA's),

Gene: LappelDuVide_37 Start: 28110, Stop: 27958, Start Num: 49

Candidate Starts for LappelDuVide_37:

(6, 28401), (Start: 36 @28152 has 3 MA's), (Start: 49 @28110 has 143 MA's), (56, 28089), (61, 28077), (68, 28011), (70, 28002), (71, 27996),

Gene: LarryKay_42 Start: 28866, Stop: 28699, Start Num: 48

Candidate Starts for LarryKay_42:

(19, 29046), (27, 28974), (Start: 48 @28866 has 259 MA's), (75, 28731),

Gene: LastHope_55 Start: 37751, Stop: 37921, Start Num: 48

Candidate Starts for LastHope_55:
(Start: 48 @37751 has 259 MA's), (68, 37865), (70, 37874),

Gene: LaterM_53 Start: 39443, Stop: 39613, Start Num: 48
Candidate Starts for LaterM_53:
(Start: 48 @39443 has 259 MA's), (68, 39557), (70, 39566),

Gene: Lea83_66 Start: 43157, Stop: 43327, Start Num: 48
Candidate Starts for Lea83_66:
(Start: 42 @43148 has 1 MA's), (Start: 48 @43157 has 259 MA's), (56, 43181), (70, 43286), (71, 43292),

Gene: Lebo14_3 Start: 478, Stop: 645, Start Num: 39
Candidate Starts for Lebo14_3:
(32, 424), (Start: 39 @478 has 19 MA's), (64, 535), (68, 592), (71, 607), (80, 628), (81, 634),

Gene: Lemur_37 Start: 28108, Stop: 27956, Start Num: 49
Candidate Starts for Lemur_37:
(6, 28399), (Start: 36 @28150 has 3 MA's), (Start: 49 @28108 has 143 MA's), (56, 28087), (61, 28075), (68, 28009), (70, 28000), (71, 27994),

Gene: LeoAvram_37 Start: 28111, Stop: 27953, Start Num: 49
Candidate Starts for LeoAvram_37:
(6, 28402), (Start: 36 @28153 has 3 MA's), (Start: 49 @28111 has 143 MA's), (68, 28006), (70, 27997), (71, 27991), (80, 27970),

Gene: Lev2_34 Start: 27131, Stop: 26973, Start Num: 46
Candidate Starts for Lev2_34:
(20, 27323), (Start: 36 @27173 has 3 MA's), (Start: 46 @27131 has 33 MA's), (68, 27026), (70, 27017), (71, 27011),

Gene: Leviathan_40 Start: 28698, Stop: 28525, Start Num: 41
Candidate Starts for Leviathan_40:
(Start: 41 @28698 has 27 MA's), (55, 28668), (64, 28638),

Gene: LilTurb_39 Start: 28531, Stop: 28358, Start Num: 41
Candidate Starts for LilTurb_39:
(Start: 41 @28531 has 27 MA's), (55, 28501), (64, 28471),

Gene: Lilith_43 Start: 28859, Stop: 28692, Start Num: 48
Candidate Starts for Lilith_43:
(19, 29039), (27, 28967), (Start: 48 @28859 has 259 MA's), (61, 28820), (70, 28739), (72, 28730),

Gene: Lilleskat_65 Start: 40833, Stop: 40678, Start Num: 49
Candidate Starts for Lilleskat_65:
(Start: 49 @40833 has 143 MA's), (63, 40791), (70, 40725), (72, 40716),

Gene: LindNT_51 Start: 38772, Stop: 38942, Start Num: 48
Candidate Starts for LindNT_51:
(Start: 48 @38772 has 259 MA's), (68, 38886), (70, 38895), (71, 38901), (80, 38925),

Gene: LionsBait_39 Start: 29438, Stop: 29259, Start Num: 41
Candidate Starts for LionsBait_39:

(Start: 41 @29438 has 27 MA's), (72, 29297),

Gene: LittleB_37 Start: 28112, Stop: 27960, Start Num: 49

Candidate Starts for LittleB_37:

(6, 28403), (Start: 36 @28154 has 3 MA's), (Start: 49 @28112 has 143 MA's), (56, 28091), (61, 28079), (68, 28013), (70, 28004), (71, 27998),

Gene: LittleCherry_33 Start: 27149, Stop: 26991, Start Num: 46

Candidate Starts for LittleCherry_33:

(11, 27431), (12, 27425), (Start: 36 @27191 has 3 MA's), (Start: 46 @27149 has 33 MA's), (68, 27044), (70, 27035), (71, 27029),

Gene: LittleGuy_37 Start: 28010, Stop: 27858, Start Num: 49

Candidate Starts for LittleGuy_37:

(6, 28301), (Start: 36 @28052 has 3 MA's), (Start: 49 @28010 has 143 MA's), (68, 27911), (70, 27902),

Gene: Llorens_52 Start: 38684, Stop: 38854, Start Num: 48

Candidate Starts for Llorens_52:

(Start: 48 @38684 has 259 MA's), (68, 38798), (70, 38807), (71, 38813), (80, 38837),

Gene: LochMonster_37 Start: 28150, Stop: 27998, Start Num: 49

Candidate Starts for LochMonster_37:

(6, 28441), (Start: 36 @28192 has 3 MA's), (Start: 49 @28150 has 143 MA's), (56, 28129), (61, 28117), (68, 28051), (70, 28042), (71, 28036),

Gene: Lokk_62 Start: 40532, Stop: 40368, Start Num: 47

Candidate Starts for Lokk_62:

(Start: 47 @40532 has 5 MA's), (72, 40406),

Gene: Lorenzo_37 Start: 28111, Stop: 27959, Start Num: 49

Candidate Starts for Lorenzo_37:

(6, 28402), (Start: 36 @28153 has 3 MA's), (Start: 49 @28111 has 143 MA's), (56, 28090), (61, 28078), (68, 28012), (70, 28003),

Gene: Loser_40 Start: 29024, Stop: 28866, Start Num: 49

Candidate Starts for Loser_40:

(Start: 49 @29024 has 143 MA's), (62, 28985), (70, 28913), (72, 28904), (78, 28886),

Gene: Louie6_41 Start: 28865, Stop: 28698, Start Num: 48

Candidate Starts for Louie6_41:

(19, 29045), (27, 28973), (Start: 48 @28865 has 259 MA's), (75, 28730),

Gene: Lowa_42 Start: 28858, Stop: 28691, Start Num: 48

Candidate Starts for Lowa_42:

(19, 29038), (27, 28966), (Start: 48 @28858 has 259 MA's), (61, 28819), (70, 28738), (72, 28729),

Gene: Lucivia_37 Start: 27481, Stop: 27326, Start Num: 45

Candidate Starts for Lucivia_37:

(15, 27751), (25, 27628), (28, 27589), (Start: 45 @27481 has 38 MA's), (70, 27367), (71, 27361), (81, 27337),

Gene: LugYA_45 Start: 28866, Stop: 28699, Start Num: 48

Candidate Starts for LugYA_45:

(19, 29046), (27, 28974), (Start: 48 @28866 has 259 MA's), (61, 28827), (70, 28746), (72, 28737),

Gene: Lunahalos_52 Start: 38684, Stop: 38854, Start Num: 48

Candidate Starts for Lunahalos_52:

(Start: 48 @38684 has 259 MA's), (68, 38798), (70, 38807), (71, 38813), (80, 38837),

Gene: Lunsford_38 Start: 28108, Stop: 27956, Start Num: 49

Candidate Starts for Lunsford_38:

(6, 28399), (Start: 36 @28150 has 3 MA's), (Start: 49 @28108 has 143 MA's), (56, 28087), (61, 28075), (68, 28009), (70, 28000), (71, 27994),

Gene: MA5_39 Start: 27872, Stop: 27711, Start Num: 48

Candidate Starts for MA5_39:

(22, 28025), (27, 27980), (33, 27920), (Start: 48 @27872 has 259 MA's), (58, 27845), (62, 27833), (63, 27830), (73, 27749), (78, 27731), (80, 27728),

Gene: MK4_39 Start: 27977, Stop: 27813, Start Num: 48

Candidate Starts for MK4_39:

(33, 28025), (Start: 48 @27977 has 259 MA's), (58, 27950), (63, 27935), (70, 27860), (73, 27851), (78, 27833), (80, 27830),

Gene: MaCh_37 Start: 27419, Stop: 27264, Start Num: 45

Candidate Starts for MaCh_37:

(15, 27689), (25, 27566), (28, 27527), (Start: 45 @27419 has 38 MA's), (70, 27305), (71, 27299), (81, 27275),

Gene: Mabel_37 Start: 27404, Stop: 27249, Start Num: 45

Candidate Starts for Mabel_37:

(15, 27674), (25, 27551), (28, 27512), (Start: 45 @27404 has 38 MA's), (70, 27290), (71, 27284), (81, 27260),

Gene: MacKat_47 Start: 34030, Stop: 34203, Start Num: 48

Candidate Starts for MacKat_47:

(Start: 48 @34030 has 259 MA's), (68, 34144),

Gene: MacnCheese_67 Start: 43739, Stop: 43909, Start Num: 48

Candidate Starts for MacnCheese_67:

(Start: 42 @43730 has 1 MA's), (Start: 48 @43739 has 259 MA's), (56, 43763), (70, 43868), (71, 43874),

Gene: MadMarie_42 Start: 28868, Stop: 28701, Start Num: 48

Candidate Starts for MadMarie_42:

(19, 29048), (27, 28976), (Start: 48 @28868 has 259 MA's), (61, 28829), (70, 28748), (72, 28739),

Gene: Mainiac_42 Start: 28859, Stop: 28692, Start Num: 48

Candidate Starts for Mainiac_42:

(19, 29039), (27, 28967), (Start: 48 @28859 has 259 MA's), (61, 28820), (70, 28739), (72, 28730),

Gene: MajorMajor_68 Start: 40626, Stop: 40474, Start Num: 49

Candidate Starts for MajorMajor_68:

(8, 40950), (Start: 49 @40626 has 143 MA's), (68, 40524), (70, 40515), (78, 40494),

Gene: Malinsilva_44 Start: 28858, Stop: 28691, Start Num: 48

Candidate Starts for Malinsilva_44:

(19, 29038), (27, 28966), (Start: 48 @28858 has 259 MA's), (61, 28819), (70, 28738), (72, 28729),

Gene: Malthus_3 Start: 478, Stop: 645, Start Num: 39

Candidate Starts for Malthus_3:

(9, 172), (Start: 39 @478 has 19 MA's), (Start: 54 @505 has 1 MA's), (68, 592), (71, 607), (81, 634),

Gene: Maminiaina_68 Start: 41013, Stop: 40855, Start Num: 49

Candidate Starts for Maminiaina_68:

(21, 41214), (Start: 49 @41013 has 143 MA's), (63, 40971), (70, 40902), (72, 40893),

Gene: Manu_42 Start: 28687, Stop: 28523, Start Num: 48

Candidate Starts for Manu_42:

(Start: 48 @28687 has 259 MA's), (70, 28567), (71, 28561), (77, 28546), (79, 28540),

Gene: MarQuardt_42 Start: 28867, Stop: 28700, Start Num: 48

Candidate Starts for MarQuardt_42:

(19, 29047), (27, 28975), (Start: 48 @28867 has 259 MA's), (61, 28828), (70, 28747), (72, 28738),

Gene: Marchesa_39 Start: 28426, Stop: 28265, Start Num: 48

Candidate Starts for Marchesa_39:

(Start: 48 @28426 has 259 MA's), (70, 28312), (73, 28303),

Gene: Margo_38 Start: 28549, Stop: 28382, Start Num: 48

Candidate Starts for Margo_38:

(27, 28657), (Start: 48 @28549 has 259 MA's),

Gene: Marie_42 Start: 28865, Stop: 28698, Start Num: 48

Candidate Starts for Marie_42:

(19, 29045), (27, 28973), (Start: 48 @28865 has 259 MA's), (61, 28826), (70, 28745), (72, 28736),

Gene: Marius_43 Start: 28684, Stop: 28523, Start Num: 48

Candidate Starts for Marius_43:

(Start: 48 @28684 has 259 MA's), (70, 28567), (71, 28561), (77, 28546), (79, 28540),

Gene: MarysWell_32 Start: 27197, Stop: 27039, Start Num: 46

Candidate Starts for MarysWell_32:

(Start: 36 @27239 has 3 MA's), (Start: 46 @27197 has 33 MA's), (68, 27092), (70, 27083), (71, 27077),

Gene: Maverick_37 Start: 28111, Stop: 27959, Start Num: 49

Candidate Starts for Maverick_37:

(6, 28402), (Start: 36 @28153 has 3 MA's), (Start: 49 @28111 has 143 MA's), (56, 28090), (61, 28078), (68, 28012), (70, 28003), (71, 27997),

Gene: Maxo_38 Start: 28113, Stop: 27955, Start Num: 49

Candidate Starts for Maxo_38:

(6, 28404), (Start: 36 @28155 has 3 MA's), (Start: 49 @28113 has 143 MA's), (68, 28008), (70, 27999), (71, 27993), (80, 27972),

Gene: Mayonnaise_38 Start: 28111, Stop: 27959, Start Num: 49

Candidate Starts for Mayonnaise_38:

(6, 28402), (Start: 36 @28153 has 3 MA's), (Start: 49 @28111 has 143 MA's), (56, 28090), (61, 28078), (68, 28012), (70, 28003), (71, 27997),

Gene: Mazhar510_37 Start: 28112, Stop: 27960, Start Num: 49

Candidate Starts for Mazhar510_37:

(6, 28403), (Start: 36 @28154 has 3 MA's), (Start: 49 @28112 has 143 MA's), (56, 28091), (61, 28079), (68, 28013), (70, 28004), (71, 27998),

Gene: McGuire_46 Start: 34548, Stop: 34423, Start Num: 48

Candidate Starts for McGuire_46:

(Start: 48 @34548 has 259 MA's), (61, 34509), (67, 34449), (68, 34440),

Gene: McMater_55 Start: 39264, Stop: 39437, Start Num: 48

Candidate Starts for McMater_55:

(Start: 48 @39264 has 259 MA's), (52, 39276), (61, 39303), (68, 39378), (74, 39402),

Gene: MeaningOfLife_53 Start: 39439, Stop: 39609, Start Num: 48

Candidate Starts for MeaningOfLife_53:

(Start: 48 @39439 has 259 MA's), (68, 39553), (70, 39562), (71, 39568), (80, 39592),

Gene: Medusa_37 Start: 28110, Stop: 27958, Start Num: 49

Candidate Starts for Medusa_37:

(6, 28401), (Start: 36 @28152 has 3 MA's), (Start: 49 @28110 has 143 MA's), (68, 28011), (70, 28002),

Gene: MeeZee_37 Start: 28111, Stop: 27959, Start Num: 49

Candidate Starts for MeeZee_37:

(6, 28402), (Start: 36 @28153 has 3 MA's), (Start: 49 @28111 has 143 MA's), (56, 28090), (61, 28078), (68, 28012), (70, 28003), (71, 27997),

Gene: Megsy_54 Start: 38837, Stop: 39010, Start Num: 48

Candidate Starts for Megsy_54:

(Start: 48 @38837 has 259 MA's), (55, 38858), (68, 38951),

Gene: Melvin_39 Start: 28109, Stop: 27957, Start Num: 49

Candidate Starts for Melvin_39:

(6, 28400), (Start: 36 @28151 has 3 MA's), (Start: 49 @28109 has 143 MA's), (68, 28010), (70, 28001), (71, 27995),

Gene: Methuselah_40 Start: 28860, Stop: 28693, Start Num: 48

Candidate Starts for Methuselah_40:

(19, 29040), (27, 28968), (Start: 48 @28860 has 259 MA's), (75, 28725),

Gene: Micasa_35 Start: 27470, Stop: 27312, Start Num: 46

Candidate Starts for Micasa_35:

(11, 27758), (12, 27752), (Start: 36 @27512 has 3 MA's), (Start: 46 @27470 has 33 MA's), (68, 27365), (70, 27356), (71, 27350),

Gene: Microwolf_42 Start: 28867, Stop: 28700, Start Num: 48

Candidate Starts for Microwolf_42:

(19, 29047), (27, 28975), (Start: 48 @28867 has 259 MA's), (61, 28828), (70, 28747), (72, 28738),

Gene: Midas2_33 Start: 27188, Stop: 27030, Start Num: 46

Candidate Starts for Midas2_33:

(11, 27476), (12, 27470), (Start: 36 @27230 has 3 MA's), (Start: 46 @27188 has 33 MA's), (68, 27083), (70, 27074), (71, 27068),

Gene: Miko_62 Start: 41310, Stop: 41146, Start Num: 47

Candidate Starts for Miko_62:

(Start: 47 @41310 has 5 MA's), (72, 41184),

Gene: Milcery_33 Start: 27153, Stop: 26995, Start Num: 46

Candidate Starts for Milcery_33:

(11, 27435), (12, 27429), (Start: 36 @27195 has 3 MA's), (Start: 46 @27153 has 33 MA's), (68, 27048), (70, 27039), (71, 27033),

Gene: Millski_36 Start: 28115, Stop: 27963, Start Num: 49

Candidate Starts for Millski_36:

(6, 28406), (Start: 36 @28157 has 3 MA's), (Start: 49 @28115 has 143 MA's), (56, 28094), (61, 28082), (68, 28016), (70, 28007), (71, 28001),

Gene: Misomonster_43 Start: 28863, Stop: 28696, Start Num: 48

Candidate Starts for Misomonster_43:

(19, 29043), (27, 28971), (Start: 48 @28863 has 259 MA's), (75, 28728),

Gene: MissDaisy_3 Start: 424, Stop: 591, Start Num: 39

Candidate Starts for MissDaisy_3:

(7, 163), (32, 370), (Start: 39 @424 has 19 MA's), (64, 481), (68, 538), (71, 553), (80, 574), (81, 580),

Gene: MissWhite_36 Start: 26565, Stop: 26407, Start Num: 40

Candidate Starts for MissWhite_36:

(Start: 40 @26565 has 2 MA's), (70, 26451), (71, 26445),

Gene: Mitti_3 Start: 478, Stop: 645, Start Num: 39

Candidate Starts for Mitti_3:

(7, 163), (32, 424), (Start: 39 @478 has 19 MA's), (64, 535), (68, 592), (71, 607), (80, 628), (81, 634),

Gene: Molly_46 Start: 34148, Stop: 34023, Start Num: 48

Candidate Starts for Molly_46:

(Start: 48 @34148 has 259 MA's), (61, 34109), (67, 34049), (68, 34040),

Gene: MoneyMay_42 Start: 28865, Stop: 28698, Start Num: 48

Candidate Starts for MoneyMay_42:

(19, 29045), (27, 28973), (Start: 48 @28865 has 259 MA's), (61, 28826), (70, 28745), (72, 28736),

Gene: Moose_45 Start: 34645, Stop: 34520, Start Num: 48

Candidate Starts for Moose_45:

(Start: 48 @34645 has 259 MA's), (51, 34636), (55, 34624), (59, 34612), (67, 34546), (68, 34537),

Gene: Morrow_38 Start: 28117, Stop: 27959, Start Num: 49

Candidate Starts for Morrow_38:

(6, 28408), (Start: 36 @28159 has 3 MA's), (Start: 49 @28117 has 143 MA's), (68, 28012), (70, 28003), (71, 27997), (80, 27976),

Gene: Mryolo_43 Start: 34123, Stop: 33995, Start Num: 48

Candidate Starts for Mryolo_43:

(Start: 48 @34123 has 259 MA's), (51, 34114), (55, 34102), (59, 34090), (67, 34021), (68, 34012),

Gene: MuchMore_45 Start: 28858, Stop: 28691, Start Num: 48

Candidate Starts for MuchMore_45:

(19, 29038), (27, 28966), (Start: 48 @28858 has 259 MA's), (61, 28819), (70, 28738), (72, 28729),

Gene: Mulciber_36 Start: 26983, Stop: 26828, Start Num: 45

Candidate Starts for Mulciber_36:

(15, 27253), (25, 27130), (28, 27091), (Start: 45 @26983 has 38 MA's), (70, 26869), (71, 26863), (81, 26839),

Gene: Munch_37 Start: 27432, Stop: 27277, Start Num: 45

Candidate Starts for Munch_37:

(15, 27702), (25, 27579), (28, 27540), (Start: 45 @27432 has 38 MA's), (70, 27318), (71, 27312), (81, 27288),

Gene: Murucutumbu_53 Start: 39542, Stop: 39712, Start Num: 48

Candidate Starts for Murucutumbu_53:

(Start: 48 @39542 has 259 MA's), (68, 39656), (70, 39665),

Gene: Mynx_53 Start: 38888, Stop: 39058, Start Num: 48

Candidate Starts for Mynx_53:

(Start: 48 @38888 has 259 MA's), (68, 39002), (70, 39011), (71, 39017), (80, 39041),

Gene: Myxus_69 Start: 41049, Stop: 40894, Start Num: 49

Candidate Starts for Myxus_69:

(8, 41373), (Start: 49 @41049 has 143 MA's), (63, 41007), (70, 40941), (72, 40932),

Gene: Naira_47 Start: 36661, Stop: 36533, Start Num: 48

Candidate Starts for Naira_47:

(Start: 48 @36661 has 259 MA's), (51, 36652), (55, 36640), (59, 36628), (67, 36559), (68, 36550),

Gene: Naji_41 Start: 28135, Stop: 27983, Start Num: 45

Candidate Starts for Naji_41:

(14, 28402), (17, 28360), (Start: 45 @28135 has 38 MA's), (68, 28033), (70, 28024), (80, 28000),

Gene: Nebs_38 Start: 28111, Stop: 27953, Start Num: 49

Candidate Starts for Nebs_38:

(6, 28402), (Start: 36 @28153 has 3 MA's), (Start: 49 @28111 has 143 MA's), (68, 28006), (70, 27997), (71, 27991), (80, 27970),

Gene: Nemo27_37 Start: 28110, Stop: 27958, Start Num: 49

Candidate Starts for Nemo27_37:

(6, 28401), (Start: 36 @28152 has 3 MA's), (Start: 49 @28110 has 143 MA's), (56, 28089), (61, 28077), (68, 28011), (70, 28002), (71, 27996),

Gene: Nhonho_46 Start: 35237, Stop: 35112, Start Num: 48

Candidate Starts for Nhonho_46:

(Start: 48 @35237 has 259 MA's), (61, 35198), (67, 35138), (68, 35129),

Gene: Niklas_55 Start: 39325, Stop: 39498, Start Num: 48

Candidate Starts for Niklas_55:

(Start: 48 @39325 has 259 MA's), (52, 39337), (61, 39364), (68, 39439), (74, 39463),

Gene: Noella_38 Start: 28524, Stop: 28357, Start Num: 48

Candidate Starts for Noella_38:

(27, 28632), (Start: 48 @28524 has 259 MA's),

Gene: Noelle_37 Start: 28170, Stop: 28018, Start Num: 49

Candidate Starts for Noelle_37:

(Start: 36 @28212 has 3 MA's), (Start: 49 @28170 has 143 MA's), (68, 28071), (70, 28062),

Gene: Norbert_37 Start: 28523, Stop: 28356, Start Num: 48

Candidate Starts for Norbert_37:

(27, 28631), (Start: 48 @28523 has 259 MA's),

Gene: NorthStar_36 Start: 28111, Stop: 27959, Start Num: 49

Candidate Starts for NorthStar_36:

(6, 28402), (Start: 36 @28153 has 3 MA's), (Start: 49 @28111 has 143 MA's), (56, 28090), (61, 28078), (68, 28012), (70, 28003), (71, 27997),

Gene: NotAPhaseMom_37 Start: 28115, Stop: 27963, Start Num: 49

Candidate Starts for NotAPhaseMom_37:

(6, 28406), (Start: 36 @28157 has 3 MA's), (Start: 49 @28115 has 143 MA's), (56, 28094), (61, 28082), (68, 28016), (70, 28007), (71, 28001),

Gene: Nyxis_37 Start: 28004, Stop: 27852, Start Num: 49

Candidate Starts for Nyxis_37:

(6, 28295), (Start: 36 @28046 has 3 MA's), (Start: 49 @28004 has 143 MA's), (68, 27905), (70, 27896),

Gene: OKCentral2016_37 Start: 27782, Stop: 27624, Start Num: 43

Candidate Starts for OKCentral2016_37:

(Start: 43 @27782 has 9 MA's), (71, 27662),

Gene: OKaNui_38 Start: 28164, Stop: 28012, Start Num: 49

Candidate Starts for OKaNui_38:

(6, 28455), (Start: 36 @28206 has 3 MA's), (Start: 49 @28164 has 143 MA's), (68, 28065), (70, 28056), (71, 28050),

Gene: Obama12_38 Start: 28415, Stop: 28257, Start Num: 49

Candidate Starts for Obama12_38:

(Start: 36 @28457 has 3 MA's), (Start: 49 @28415 has 143 MA's), (68, 28310), (70, 28301), (71, 28295), (80, 28274),

Gene: Odin_37 Start: 26764, Stop: 26603, Start Num: 46

Candidate Starts for Odin_37:

(Start: 46 @26764 has 33 MA's), (69, 26656), (71, 26644), (81, 26614), (82, 26611),

Gene: Ohfah_38 Start: 28111, Stop: 27953, Start Num: 49

Candidate Starts for Ohfah_38:

(6, 28402), (Start: 36 @28153 has 3 MA's), (Start: 49 @28111 has 143 MA's), (68, 28006), (70, 27997), (71, 27991), (80, 27970),

Gene: OlanP_41 Start: 28869, Stop: 28705, Start Num: 48

Candidate Starts for OlanP_41:

(Start: 48 @28869 has 259 MA's), (70, 28752), (72, 28743),

Gene: Ollie_42 Start: 28737, Stop: 28570, Start Num: 48

Candidate Starts for Ollie_42:

(19, 28917), (27, 28845), (Start: 48 @28737 has 259 MA's), (61, 28698), (70, 28617), (72, 28608),

Gene: OmniCritical_3 Start: 478, Stop: 645, Start Num: 39

Candidate Starts for OmniCritical_3:

(7, 163), (32, 424), (Start: 39 @478 has 19 MA's), (64, 535), (68, 592), (71, 607), (81, 634),

Gene: Omnicron_36 Start: 29081, Stop: 29239, Start Num: 39

Candidate Starts for Omnicron_36:

(Start: 39 @29081 has 19 MA's), (59, 29114), (68, 29186), (71, 29201), (81, 29228),

Gene: Onglai_67 Start: 39253, Stop: 39098, Start Num: 49

Candidate Starts for Onglai_67:

(8, 39577), (Start: 49 @39253 has 143 MA's), (63, 39211), (70, 39145), (72, 39136),

Gene: Orange_36 Start: 26981, Stop: 26826, Start Num: 45

Candidate Starts for Orange_36:

(15, 27251), (25, 27128), (28, 27089), (Start: 45 @26981 has 38 MA's), (70, 26867), (71, 26861), (81, 26837),

Gene: P28Green_43 Start: 28868, Stop: 28701, Start Num: 48

Candidate Starts for P28Green_43:

(19, 29048), (27, 28976), (Start: 48 @28868 has 259 MA's), (61, 28829), (70, 28748), (72, 28739),

Gene: PGHhamlin_44 Start: 28858, Stop: 28691, Start Num: 48

Candidate Starts for PGHhamlin_44:

(19, 29038), (27, 28966), (Start: 48 @28858 has 259 MA's), (61, 28819), (70, 28738), (72, 28729),

Gene: PSullivan_45 Start: 34113, Stop: 33988, Start Num: 48

Candidate Starts for PSullivan_45:

(Start: 48 @34113 has 259 MA's), (61, 34074), (67, 34014), (68, 34005),

Gene: PackMan_68 Start: 40924, Stop: 40769, Start Num: 49

Candidate Starts for PackMan_68:

(8, 41248), (Start: 49 @40924 has 143 MA's), (63, 40882), (70, 40816), (72, 40807),

Gene: Padfoot_52 Start: 38881, Stop: 39051, Start Num: 48

Candidate Starts for Padfoot_52:

(Start: 48 @38881 has 259 MA's), (68, 38995), (70, 39004), (71, 39010), (80, 39034),

Gene: Padpat_54 Start: 38563, Stop: 38733, Start Num: 48

Candidate Starts for Padpat_54:

(Start: 48 @38563 has 259 MA's), (68, 38677), (70, 38686), (71, 38692), (80, 38716),

Gene: Palestino_36 Start: 28111, Stop: 27959, Start Num: 49

Candidate Starts for Palestino_36:

(6, 28402), (Start: 36 @28153 has 3 MA's), (Start: 49 @28111 has 143 MA's), (56, 28090), (61, 28078), (68, 28012), (70, 28003), (71, 27997),

Gene: Panamaxus_36 Start: 28523, Stop: 28356, Start Num: 48

Candidate Starts for Panamaxus_36:

(27, 28631), (Start: 48 @28523 has 259 MA's),

Gene: PascalRango_46 Start: 34612, Stop: 34487, Start Num: 48

Candidate Starts for PascalRango_46:

(Start: 48 @34612 has 259 MA's), (61, 34573), (67, 34513), (68, 34504),

Gene: Patt_3 Start: 478, Stop: 645, Start Num: 39

Candidate Starts for Patt_3:

(7, 163), (32, 424), (Start: 39 @478 has 19 MA's), (64, 535), (68, 592), (71, 607), (80, 628), (81, 634),

Gene: PattyP_46 Start: 34495, Stop: 34370, Start Num: 48

Candidate Starts for PattyP_46:

(Start: 48 @34495 has 259 MA's), (61, 34456), (67, 34396), (68, 34387),

Gene: Pawn_42 Start: 28691, Stop: 28524, Start Num: 48

Candidate Starts for Pawn_42:

(Start: 48 @28691 has 259 MA's), (70, 28568), (71, 28562), (77, 28547), (79, 28541),

Gene: Peaches_37 Start: 28110, Stop: 27958, Start Num: 49

Candidate Starts for Peaches_37:

(6, 28401), (Start: 36 @28152 has 3 MA's), (Start: 49 @28110 has 143 MA's), (56, 28089), (61, 28077), (68, 28011), (70, 28002), (71, 27996),

Gene: Peanam_55 Start: 39283, Stop: 39456, Start Num: 48

Candidate Starts for Peanam_55:

(Start: 48 @39283 has 259 MA's), (52, 39295), (61, 39322), (68, 39397), (74, 39421),

Gene: Peel_52 Start: 38686, Stop: 38856, Start Num: 48

Candidate Starts for Peel_52:

(Start: 48 @38686 has 259 MA's), (68, 38800), (70, 38809), (71, 38815), (80, 38839),

Gene: Pembroke_42 Start: 28867, Stop: 28700, Start Num: 48

Candidate Starts for Pembroke_42:

(19, 29047), (27, 28975), (Start: 48 @28867 has 259 MA's), (61, 28828), (70, 28747), (72, 28738),

Gene: Penny1_43 Start: 28869, Stop: 28699, Start Num: 48

Candidate Starts for Penny1_43:

(19, 29049), (27, 28977), (Start: 48 @28869 has 259 MA's), (61, 28830), (70, 28746), (72, 28737),

Gene: PeterPeter_37 Start: 28111, Stop: 27959, Start Num: 49

Candidate Starts for PeterPeter_37:

(6, 28402), (Start: 36 @28153 has 3 MA's), (Start: 49 @28111 has 143 MA's), (56, 28090), (61, 28078), (68, 28012), (70, 28003), (71, 27997),

Gene: Petersenfast_35 Start: 26988, Stop: 26833, Start Num: 45

Candidate Starts for Petersenfast_35:

(15, 27258), (25, 27135), (28, 27096), (Start: 45 @26988 has 38 MA's), (70, 26874), (71, 26868), (81, 26844),

Gene: Petp2012_46 Start: 35107, Stop: 34982, Start Num: 48

Candidate Starts for Petp2012_46:

(Start: 48 @35107 has 259 MA's), (61, 35068), (67, 35008), (68, 34999),

Gene: Ph8s_40 Start: 27348, Stop: 27193, Start Num: 46

Candidate Starts for Ph8s_40:

(Start: 46 @27348 has 33 MA's), (70, 27240), (71, 27234), (78, 27213), (81, 27204), (82, 27201),

Gene: Phacado_37 Start: 28110, Stop: 27958, Start Num: 49

Candidate Starts for Phacado_37:

(6, 28401), (Start: 36 @28152 has 3 MA's), (Start: 49 @28110 has 143 MA's), (56, 28089), (61, 28077), (68, 28011), (70, 28002), (71, 27996),

Gene: Phaeder_69 Start: 40924, Stop: 40769, Start Num: 49

Candidate Starts for Phaeder_69:

(8, 41248), (Start: 49 @40924 has 143 MA's), (63, 40882), (70, 40816), (72, 40807),

Gene: Phantastic_39 Start: 28008, Stop: 27844, Start Num: 48

Candidate Starts for Phantastic_39:

(33, 28056), (Start: 48 @28008 has 259 MA's), (58, 27981), (63, 27966), (68, 27900), (70, 27891), (73, 27882), (78, 27864),

Gene: Pharb_64 Start: 42469, Stop: 42639, Start Num: 48

Candidate Starts for Pharb_64:

(Start: 42 @42460 has 1 MA's), (Start: 48 @42469 has 259 MA's), (70, 42598), (71, 42604),

Gene: Phelipe_38 Start: 28111, Stop: 27959, Start Num: 49

Candidate Starts for Phelipe_38:

(6, 28402), (Start: 36 @28153 has 3 MA's), (Start: 49 @28111 has 143 MA's), (68, 28012), (70, 28003),

Gene: PherrisBueller_45 Start: 34086, Stop: 33958, Start Num: 48

Candidate Starts for PherrisBueller_45:

(Start: 48 @34086 has 259 MA's), (51, 34077), (55, 34065), (59, 34053), (67, 33984), (68, 33975),

Gene: Phighter1804_37 Start: 28153, Stop: 28001, Start Num: 49

Candidate Starts for Phighter1804_37:

(6, 28444), (Start: 36 @28195 has 3 MA's), (Start: 49 @28153 has 143 MA's), (56, 28132), (61, 28120), (68, 28054), (70, 28045), (71, 28039),

Gene: PhishRPhriends_40 Start: 27865, Stop: 27701, Start Num: 48

Candidate Starts for PhishRPhriends_40:

(Start: 48 @27865 has 259 MA's), (70, 27745), (71, 27739), (77, 27724), (79, 27718),

Gene: Phlorence_34 Start: 27418, Stop: 27260, Start Num: 46

Candidate Starts for Phlorence_34:

(20, 27610), (Start: 36 @27460 has 3 MA's), (Start: 46 @27418 has 33 MA's), (68, 27313), (70, 27304), (71, 27298),

Gene: Phoebe_43 Start: 28858, Stop: 28691, Start Num: 48

Candidate Starts for Phoebe_43:

(19, 29038), (27, 28966), (Start: 48 @28858 has 259 MA's), (61, 28819), (70, 28738), (72, 28729),

Gene: Phontbonne_37 Start: 28005, Stop: 27853, Start Num: 49

Candidate Starts for Phontbonne_37:

(6, 28296), (Start: 36 @28047 has 3 MA's), (Start: 49 @28005 has 143 MA's), (68, 27906), (70, 27897),

Gene: Phoxy_42 Start: 28861, Stop: 28694, Start Num: 48

Candidate Starts for Phoxy_42:

(19, 29041), (27, 28969), (Start: 48 @28861 has 259 MA's), (75, 28726),

Gene: Phrank_56 Start: 38309, Stop: 38482, Start Num: 48
Candidate Starts for Phrank_56:
(18, 38078), (19, 38105), (26, 38162), (Start: 48 @38309 has 259 MA's), (59, 38342), (70, 38435), (74, 38450),

Gene: Phranny_43 Start: 28673, Stop: 28509, Start Num: 48
Candidate Starts for Phranny_43:
(Start: 48 @28673 has 259 MA's), (70, 28553), (71, 28547), (77, 28532), (79, 28526),

Gene: Piatt_52 Start: 38881, Stop: 39051, Start Num: 48
Candidate Starts for Piatt_52:
(Start: 48 @38881 has 259 MA's), (68, 38995), (70, 39004), (71, 39010), (80, 39034),

Gene: PickleBack_34 Start: 27132, Stop: 26974, Start Num: 46
Candidate Starts for PickleBack_34:
(20, 27324), (Start: 36 @27174 has 3 MA's), (Start: 46 @27132 has 33 MA's), (68, 27027), (70, 27018), (71, 27012),

Gene: PinkPlastic_44 Start: 34317, Stop: 34192, Start Num: 48
Candidate Starts for PinkPlastic_44:
(Start: 48 @34317 has 259 MA's), (61, 34278), (67, 34218), (68, 34209),

Gene: Pistachio_40 Start: 27915, Stop: 27754, Start Num: 48
Candidate Starts for Pistachio_40:
(Start: 48 @27915 has 259 MA's), (70, 27801), (73, 27792),

Gene: Pita2_48 Start: 35610, Stop: 35485, Start Num: 48
Candidate Starts for Pita2_48:
(Start: 48 @35610 has 259 MA's), (61, 35571), (67, 35511), (68, 35502),

Gene: Pixie_64 Start: 42642, Stop: 42812, Start Num: 48
Candidate Starts for Pixie_64:
(Start: 42 @42633 has 1 MA's), (Start: 48 @42642 has 259 MA's), (56, 42666), (70, 42771), (71, 42777),

Gene: Pocahontas_38 Start: 28520, Stop: 28353, Start Num: 48
Candidate Starts for Pocahontas_38:
(27, 28628), (Start: 48 @28520 has 259 MA's),

Gene: Pokerus_51 Start: 38616, Stop: 38786, Start Num: 48
Candidate Starts for Pokerus_51:
(Start: 48 @38616 has 259 MA's), (68, 38730), (70, 38739), (71, 38745), (80, 38769),

Gene: Polymorphads_38 Start: 28104, Stop: 27952, Start Num: 49
Candidate Starts for Polymorphads_38:
(6, 28395), (Start: 36 @28146 has 3 MA's), (Start: 49 @28104 has 143 MA's), (68, 28005), (70, 27996), (71, 27990),

Gene: Pomar16_41 Start: 28176, Stop: 28024, Start Num: 45
Candidate Starts for Pomar16_41:
(14, 28443), (17, 28401), (Start: 45 @28176 has 38 MA's), (68, 28074), (70, 28065), (80, 28041),

Gene: Popcicle_38 Start: 28520, Stop: 28353, Start Num: 48

Candidate Starts for Popcicle_38:
(27, 28628), (Start: 48 @28520 has 259 MA's),

Gene: PotatoSplit_44 Start: 28869, Stop: 28699, Start Num: 48
Candidate Starts for PotatoSplit_44:
(19, 29049), (24, 29001), (27, 28977), (Start: 48 @28869 has 259 MA's), (61, 28830), (70, 28746), (72, 28737),

Gene: Power_37 Start: 28131, Stop: 27958, Start Num: 41
Candidate Starts for Power_37:
(Start: 41 @28131 has 27 MA's), (53, 28107), (55, 28101), (70, 28005),

Gene: Prin Ashe11_34 Start: 27116, Stop: 26958, Start Num: 46
Candidate Starts for Prin Ashe11_34:
(11, 27398), (12, 27392), (Start: 36 @27158 has 3 MA's), (Start: 46 @27116 has 33 MA's), (68, 27011), (70, 27002), (71, 26996),

Gene: Prithvi_53 Start: 38772, Stop: 38942, Start Num: 48
Candidate Starts for Prithvi_53:
(Start: 48 @38772 has 259 MA's), (68, 38886), (70, 38895), (71, 38901), (80, 38925),

Gene: Priya_67 Start: 40720, Stop: 40565, Start Num: 49
Candidate Starts for Priya_67:
(Start: 49 @40720 has 143 MA's), (63, 40678), (70, 40612), (72, 40603),

Gene: ProMouse_46 Start: 35318, Stop: 35193, Start Num: 48
Candidate Starts for ProMouse_46:
(Start: 48 @35318 has 259 MA's), (61, 35279), (67, 35219), (68, 35210),

Gene: Pumbaa_37 Start: 28056, Stop: 27904, Start Num: 49
Candidate Starts for Pumbaa_37:
(6, 28347), (Start: 36 @28098 has 3 MA's), (Start: 49 @28056 has 143 MA's), (68, 27957), (70, 27948),

Gene: Puppy_40 Start: 27988, Stop: 27824, Start Num: 48
Candidate Starts for Puppy_40:
(Start: 48 @27988 has 259 MA's), (58, 27961), (63, 27946), (70, 27871), (73, 27862),

Gene: PurpleHaze_42 Start: 28686, Stop: 28522, Start Num: 48
Candidate Starts for PurpleHaze_42:
(Start: 48 @28686 has 259 MA's), (70, 28566), (71, 28560), (77, 28545), (79, 28539),

Gene: Qobbit_67 Start: 40682, Stop: 40527, Start Num: 49
Candidate Starts for Qobbit_67:
(Start: 49 @40682 has 143 MA's), (63, 40640), (70, 40574), (72, 40565),

Gene: QueenB2_66 Start: 41649, Stop: 41476, Start Num: 44
Candidate Starts for QueenB2_66:
(Start: 44 @41649 has 5 MA's), (70, 41523), (72, 41514),

Gene: QueenBeesly_38 Start: 28078, Stop: 27905, Start Num: 41
Candidate Starts for QueenBeesly_38:
(Start: 41 @28078 has 27 MA's), (53, 28054), (55, 28048), (70, 27952),

Gene: QuincyRose_51 Start: 38945, Stop: 39115, Start Num: 48
Candidate Starts for QuincyRose_51:
(Start: 48 @38945 has 259 MA's), (68, 39059), (70, 39068), (71, 39074), (80, 39098),

Gene: QuinnKiro_37 Start: 28523, Stop: 28356, Start Num: 48
Candidate Starts for QuinnKiro_37:
(27, 28631), (Start: 48 @28523 has 259 MA's),

Gene: Quokka_68 Start: 40626, Stop: 40474, Start Num: 49
Candidate Starts for Quokka_68:
(8, 40950), (Start: 49 @40626 has 143 MA's), (68, 40524), (70, 40515), (78, 40494),

Gene: Rachaly_64 Start: 41455, Stop: 41291, Start Num: 47
Candidate Starts for Rachaly_64:
(Start: 47 @41455 has 5 MA's), (72, 41329),

Gene: Rahalelujah_67 Start: 40476, Stop: 40318, Start Num: 49
Candidate Starts for Rahalelujah_67:
(1, 41289), (2, 41157), (Start: 49 @40476 has 143 MA's), (63, 40434), (70, 40365), (81, 40329),

Gene: Raid_46 Start: 34895, Stop: 34770, Start Num: 48
Candidate Starts for Raid_46:
(Start: 48 @34895 has 259 MA's), (61, 34856), (67, 34796), (68, 34787),

Gene: Ramen_53 Start: 38571, Stop: 38741, Start Num: 48
Candidate Starts for Ramen_53:
(Start: 48 @38571 has 259 MA's), (68, 38685), (70, 38694), (71, 38700), (80, 38724),

Gene: Rando14_36 Start: 29035, Stop: 29193, Start Num: 39
Candidate Starts for Rando14_36:
(Start: 39 @29035 has 19 MA's), (59, 29068), (60, 29071), (68, 29140), (71, 29155), (81, 29182),

Gene: Rapunzel97_53 Start: 38567, Stop: 38737, Start Num: 48
Candidate Starts for Rapunzel97_53:
(Start: 48 @38567 has 259 MA's), (68, 38681), (70, 38690), (71, 38696), (80, 38720),

Gene: Reba_42 Start: 28346, Stop: 28182, Start Num: 48
Candidate Starts for Reba_42:
(Start: 48 @28346 has 259 MA's), (70, 28226), (71, 28220), (77, 28205), (79, 28199),

Gene: Rebeuca_38 Start: 28448, Stop: 28290, Start Num: 43
Candidate Starts for Rebeuca_38:
(Start: 43 @28448 has 9 MA's), (71, 28328),

Gene: RedRock_40 Start: 29240, Stop: 29082, Start Num: 49
Candidate Starts for RedRock_40:
(Start: 49 @29240 has 143 MA's), (62, 29201), (70, 29129), (72, 29120), (78, 29102),

Gene: Relief_36 Start: 28111, Stop: 27959, Start Num: 49
Candidate Starts for Relief_36:
(6, 28402), (Start: 36 @28153 has 3 MA's), (Start: 49 @28111 has 143 MA's), (56, 28090), (61, 28078),
(68, 28012), (70, 28003), (71, 27997),

Gene: Reptar3000_3 Start: 477, Stop: 644, Start Num: 39
Candidate Starts for Reptar3000_3:
(7, 162), (32, 423), (Start: 39 @477 has 19 MA's), (64, 534), (68, 591), (71, 606), (80, 627), (81, 633),

Gene: ResDef_38 Start: 28523, Stop: 28356, Start Num: 48
Candidate Starts for ResDef_38:
(27, 28631), (Start: 48 @28523 has 259 MA's),

Gene: Retro23_68 Start: 41863, Stop: 41690, Start Num: 44
Candidate Starts for Retro23_68:
(Start: 44 @41863 has 5 MA's), (70, 41737), (72, 41728),

Gene: RhynO_38 Start: 27966, Stop: 27805, Start Num: 46
Candidate Starts for RhynO_38:
(Start: 43 @27969 has 9 MA's), (Start: 46 @27966 has 33 MA's), (68, 27858), (70, 27849), (71, 27843),

Gene: Richo_55 Start: 39264, Stop: 39437, Start Num: 48
Candidate Starts for Richo_55:
(Start: 48 @39264 has 259 MA's), (52, 39276), (61, 39303), (68, 39378), (74, 39402),

Gene: RidgeCB_45 Start: 34456, Stop: 34328, Start Num: 48
Candidate Starts for RidgeCB_45:
(Start: 48 @34456 has 259 MA's), (51, 34447), (55, 34435), (59, 34423), (67, 34354), (68, 34345),

Gene: Rockstar_39 Start: 27984, Stop: 27820, Start Num: 48
Candidate Starts for Rockstar_39:
(33, 28032), (Start: 48 @27984 has 259 MA's), (58, 27957), (63, 27942), (70, 27867), (73, 27858), (78, 27840), (80, 27837),

Gene: Romney_37 Start: 28111, Stop: 27959, Start Num: 49
Candidate Starts for Romney_37:
(6, 28402), (Start: 36 @28153 has 3 MA's), (Start: 49 @28111 has 143 MA's), (56, 28090), (68, 28012), (70, 28003), (71, 27997),

Gene: Roosevelt_36 Start: 28113, Stop: 27961, Start Num: 49
Candidate Starts for Roosevelt_36:
(6, 28404), (Start: 36 @28155 has 3 MA's), (Start: 49 @28113 has 143 MA's), (56, 28092), (61, 28080), (68, 28014), (70, 28005), (71, 27999),

Gene: Rosa24_37 Start: 28145, Stop: 27987, Start Num: 49
Candidate Starts for Rosa24_37:
(6, 28436), (Start: 36 @28187 has 3 MA's), (Start: 49 @28145 has 143 MA's), (68, 28040), (70, 28031), (71, 28025),

Gene: Rosmarinus_52 Start: 38672, Stop: 38842, Start Num: 48
Candidate Starts for Rosmarinus_52:
(Start: 48 @38672 has 259 MA's), (68, 38786), (70, 38795), (71, 38801), (80, 38825),

Gene: Rowdy_41 Start: 27874, Stop: 27713, Start Num: 46
Candidate Starts for Rowdy_41:
(Start: 43 @27877 has 9 MA's), (Start: 46 @27874 has 33 MA's), (68, 27766), (70, 27757),

Gene: Ruin_37 Start: 28107, Stop: 27955, Start Num: 49

Candidate Starts for Ruin_37:

(6, 28398), (Start: 36 @28149 has 3 MA's), (Start: 49 @28107 has 143 MA's), (56, 28086), (61, 28074), (68, 28008), (70, 27999), (71, 27993),

Gene: Rummer_41 Start: 28864, Stop: 28694, Start Num: 48

Candidate Starts for Rummer_41:

(19, 29044), (27, 28972), (Start: 48 @28864 has 259 MA's), (75, 28726),

Gene: Ruthiejr_3 Start: 478, Stop: 645, Start Num: 39

Candidate Starts for Ruthiejr_3:

(9, 172), (Start: 39 @478 has 19 MA's), (Start: 54 @505 has 1 MA's), (68, 592), (71, 607), (81, 634),

Gene: Sabertooth_37 Start: 28110, Stop: 27958, Start Num: 49

Candidate Starts for Sabertooth_37:

(6, 28401), (Start: 36 @28152 has 3 MA's), (Start: 49 @28110 has 143 MA's), (56, 28089), (61, 28077), (68, 28011), (70, 28002), (71, 27996),

Gene: Sabia_42 Start: 28859, Stop: 28692, Start Num: 48

Candidate Starts for Sabia_42:

(19, 29039), (27, 28967), (Start: 48 @28859 has 259 MA's), (61, 28820), (70, 28739), (72, 28730),

Gene: Sabinator_41 Start: 28864, Stop: 28697, Start Num: 48

Candidate Starts for Sabinator_41:

(19, 29044), (27, 28972), (Start: 48 @28864 has 259 MA's), (61, 28825), (70, 28744), (72, 28735),

Gene: Sachima_65 Start: 40950, Stop: 40795, Start Num: 49

Candidate Starts for Sachima_65:

(Start: 49 @40950 has 143 MA's), (63, 40908), (70, 40842), (72, 40833),

Gene: SamuelLPlaqson_53 Start: 39464, Stop: 39634, Start Num: 48

Candidate Starts for SamuelLPlaqson_53:

(Start: 48 @39464 has 259 MA's), (68, 39578), (74, 39602),

Gene: SaturnRing_39 Start: 28368, Stop: 28207, Start Num: 48

Candidate Starts for SaturnRing_39:

(Start: 48 @28368 has 259 MA's), (70, 28254), (73, 28245),

Gene: Scamp_37 Start: 28113, Stop: 27961, Start Num: 49

Candidate Starts for Scamp_37:

(6, 28404), (Start: 36 @28155 has 3 MA's), (Start: 49 @28113 has 143 MA's), (56, 28092), (68, 28014), (70, 28005),

Gene: Scout_39 Start: 27675, Stop: 27514, Start Num: 48

Candidate Starts for Scout_39:

(Start: 48 @27675 has 259 MA's), (70, 27561), (73, 27552),

Gene: Scowl_46 Start: 35390, Stop: 35262, Start Num: 48

Candidate Starts for Scowl_46:

(Start: 48 @35390 has 259 MA's), (51, 35381), (55, 35369), (59, 35357), (67, 35288), (68, 35279),

Gene: SemperFi_39 Start: 28346, Stop: 28173, Start Num: 41

Candidate Starts for SemperFi_39:

(Start: 41 @28346 has 27 MA's), (53, 28322), (55, 28316), (70, 28220),

Gene: SenorClean_36 Start: 28111, Stop: 27959, Start Num: 49

Candidate Starts for SenorClean_36:

(6, 28402), (Start: 36 @28153 has 3 MA's), (Start: 49 @28111 has 143 MA's), (56, 28090), (61, 28078), (68, 28012), (70, 28003), (71, 27997),

Gene: Serenity_70 Start: 40850, Stop: 40698, Start Num: 49

Candidate Starts for Serenity_70:

(8, 41174), (Start: 49 @40850 has 143 MA's), (68, 40748), (70, 40739), (78, 40718),

Gene: Shadow1_58 Start: 39153, Stop: 39326, Start Num: 48

Candidate Starts for Shadow1_58:

(Start: 48 @39153 has 259 MA's), (70, 39279), (74, 39294),

Gene: Shaka_37 Start: 28111, Stop: 27959, Start Num: 49

Candidate Starts for Shaka_37:

(6, 28402), (Start: 36 @28153 has 3 MA's), (Start: 49 @28111 has 143 MA's), (56, 28090), (61, 28078), (68, 28012), (70, 28003), (71, 27997),

Gene: Sham4_36 Start: 26987, Stop: 26832, Start Num: 45

Candidate Starts for Sham4_36:

(15, 27257), (25, 27134), (28, 27095), (Start: 45 @26987 has 38 MA's), (70, 26873), (71, 26867), (81, 26843),

Gene: Shaobing_55 Start: 39301, Stop: 39474, Start Num: 48

Candidate Starts for Shaobing_55:

(Start: 48 @39301 has 259 MA's), (52, 39313), (61, 39340), (68, 39415), (74, 39439),

Gene: Shapes_41 Start: 27874, Stop: 27713, Start Num: 46

Candidate Starts for Shapes_41:

(Start: 43 @27877 has 9 MA's), (Start: 46 @27874 has 33 MA's), (68, 27766), (70, 27757),

Gene: ShedlockHolmes_66 Start: 43161, Stop: 43331, Start Num: 48

Candidate Starts for ShedlockHolmes_66:

(Start: 42 @43152 has 1 MA's), (Start: 48 @43161 has 259 MA's), (56, 43185), (70, 43290), (71, 43296),

Gene: SheldonCooper_39 Start: 28414, Stop: 28256, Start Num: 49

Candidate Starts for SheldonCooper_39:

(Start: 36 @28456 has 3 MA's), (Start: 49 @28414 has 143 MA's), (68, 28309), (70, 28300), (71, 28294), (80, 28273),

Gene: ShiaSurprise_53 Start: 38881, Stop: 39051, Start Num: 48

Candidate Starts for ShiaSurprise_53:

(Start: 48 @38881 has 259 MA's), (68, 38995), (70, 39004), (71, 39010), (80, 39034),

Gene: Sibs6_46 Start: 33745, Stop: 33620, Start Num: 48

Candidate Starts for Sibs6_46:

(Start: 48 @33745 has 259 MA's), (61, 33706), (67, 33646), (68, 33637),

Gene: SkiPole_48 Start: 35478, Stop: 35353, Start Num: 48

Candidate Starts for SkiPole_48:

(Start: 48 @35478 has 259 MA's), (61, 35439), (67, 35379), (68, 35370),

Gene: Skipitt_36 Start: 28108, Stop: 27956, Start Num: 49

Candidate Starts for Skipitt_36:

(6, 28399), (Start: 36 @28150 has 3 MA's), (Start: 49 @28108 has 143 MA's), (56, 28087), (61, 28075), (68, 28009), (70, 28000), (71, 27994),

Gene: Slarp_3 Start: 478, Stop: 645, Start Num: 39

Candidate Starts for Slarp_3:

(7, 163), (32, 424), (Start: 39 @478 has 19 MA's), (64, 535), (68, 592), (71, 607), (80, 628), (81, 634),

Gene: Slimphazie_52 Start: 38567, Stop: 38737, Start Num: 48

Candidate Starts for Slimphazie_52:

(Start: 48 @38567 has 259 MA's), (68, 38681), (70, 38690), (71, 38696), (80, 38720),

Gene: Smeagan_41 Start: 28785, Stop: 28612, Start Num: 41

Candidate Starts for Smeagan_41:

(Start: 41 @28785 has 27 MA's), (55, 28755), (64, 28725),

Gene: SnapTap_38 Start: 28157, Stop: 27984, Start Num: 41

Candidate Starts for SnapTap_38:

(Start: 41 @28157 has 27 MA's), (53, 28133), (55, 28127), (70, 28031),

Gene: Snape_36 Start: 26985, Stop: 26830, Start Num: 45

Candidate Starts for Snape_36:

(15, 27255), (25, 27132), (28, 27093), (Start: 45 @26985 has 38 MA's), (70, 26871), (71, 26865), (81, 26841),

Gene: Snazzy_43 Start: 34169, Stop: 34044, Start Num: 48

Candidate Starts for Snazzy_43:

(Start: 48 @34169 has 259 MA's), (61, 34130), (67, 34070), (68, 34061),

Gene: Snickers_42 Start: 28839, Stop: 28672, Start Num: 48

Candidate Starts for Snickers_42:

(19, 29019), (27, 28947), (Start: 48 @28839 has 259 MA's), (61, 28800), (70, 28719), (72, 28710),

Gene: SoYo_42 Start: 28777, Stop: 28610, Start Num: 48

Candidate Starts for SoYo_42:

(19, 28957), (27, 28885), (Start: 48 @28777 has 259 MA's), (61, 28738), (70, 28657), (72, 28648),

Gene: SoilDragon_42 Start: 28311, Stop: 28144, Start Num: 48

Candidate Starts for SoilDragon_42:

(19, 28494), (27, 28422), (Start: 48 @28311 has 259 MA's), (61, 28272), (70, 28191), (72, 28182),

Gene: Soshari_44 Start: 28860, Stop: 28693, Start Num: 48

Candidate Starts for Soshari_44:

(19, 29040), (27, 28968), (Start: 48 @28860 has 259 MA's), (75, 28725),

Gene: Sparxx_38 Start: 28106, Stop: 27954, Start Num: 49

Candidate Starts for Sparxx_38:

(6, 28397), (Start: 36 @28148 has 3 MA's), (Start: 49 @28106 has 143 MA's), (56, 28085), (68, 28007), (70, 27998), (71, 27992),

Gene: Spike509_42 Start: 28861, Stop: 28694, Start Num: 48

Candidate Starts for Spike509_42:
(19, 29041), (27, 28969), (Start: 48 @28861 has 259 MA's), (75, 28726),

Gene: Spino_37 Start: 28111, Stop: 27959, Start Num: 49
Candidate Starts for Spino_37:
(6, 28402), (Start: 36 @28153 has 3 MA's), (Start: 49 @28111 has 143 MA's), (56, 28090), (61, 28078),
(68, 28012), (70, 28003), (71, 27997),

Gene: Spock_52 Start: 38685, Stop: 38855, Start Num: 48
Candidate Starts for Spock_52:
(Start: 48 @38685 has 259 MA's), (68, 38799), (70, 38808), (71, 38814), (80, 38838),

Gene: Spouty_67 Start: 40719, Stop: 40564, Start Num: 49
Candidate Starts for Spouty_67:
(Start: 49 @40719 has 143 MA's), (63, 40677), (70, 40611), (72, 40602),

Gene: Stagni_42 Start: 28868, Stop: 28701, Start Num: 48
Candidate Starts for Stagni_42:
(19, 29048), (27, 28976), (Start: 48 @28868 has 259 MA's), (61, 28829), (70, 28748), (72, 28739),

Gene: StarStuff_41 Start: 28138, Stop: 27986, Start Num: 45
Candidate Starts for StarStuff_41:
(14, 28405), (17, 28363), (Start: 45 @28138 has 38 MA's), (68, 28036), (70, 28027), (80, 28003),

Gene: StepMih_42 Start: 28859, Stop: 28692, Start Num: 48
Candidate Starts for StepMih_42:
(19, 29039), (27, 28967), (Start: 48 @28859 has 259 MA's), (61, 28820), (70, 28739), (72, 28730),

Gene: Stinson_53 Start: 39065, Stop: 39235, Start Num: 48
Candidate Starts for Stinson_53:
(Start: 48 @39065 has 259 MA's), (68, 39179), (70, 39188),

Gene: Sulley_52 Start: 38730, Stop: 38900, Start Num: 48
Candidate Starts for Sulley_52:
(Start: 48 @38730 has 259 MA's), (68, 38844), (70, 38853), (71, 38859), (80, 38883),

Gene: Sunflower1121_59 Start: 39299, Stop: 39472, Start Num: 48
Candidate Starts for Sunflower1121_59:
(Start: 48 @39299 has 259 MA's), (74, 39440),

Gene: Superchunk_37 Start: 26594, Stop: 26436, Start Num: 46
Candidate Starts for Superchunk_37:
(Start: 46 @26594 has 33 MA's), (63, 26549), (71, 26477), (81, 26447), (82, 26444),

Gene: SweetiePie_38 Start: 28157, Stop: 27984, Start Num: 41
Candidate Starts for SweetiePie_38:
(Start: 41 @28157 has 27 MA's), (53, 28133), (55, 28127), (70, 28031),

Gene: Swirley_35 Start: 27480, Stop: 27319, Start Num: 46
Candidate Starts for Swirley_35:
(11, 27762), (12, 27756), (Start: 36 @27522 has 3 MA's), (Start: 46 @27480 has 33 MA's), (68, 27372),
(70, 27363), (71, 27357),

Gene: SwissCheese_47 Start: 35145, Stop: 35020, Start Num: 48
Candidate Starts for SwissCheese_47:
(Start: 48 @35145 has 259 MA's), (51, 35136), (55, 35124), (59, 35112), (67, 35046), (68, 35037),

Gene: SydNat_35 Start: 27756, Stop: 27598, Start Num: 46
Candidate Starts for SydNat_35:
(Start: 36 @27798 has 3 MA's), (Start: 46 @27756 has 33 MA's), (68, 27651), (70, 27642), (71, 27636),

Gene: Syra333_58 Start: 39319, Stop: 39492, Start Num: 48
Candidate Starts for Syra333_58:
(18, 39088), (19, 39115), (26, 39172), (Start: 48 @39319 has 259 MA's), (59, 39352), (70, 39445), (74, 39460),

Gene: TBond007_61 Start: 42632, Stop: 42811, Start Num: 42
Candidate Starts for TBond007_61:
(Start: 42 @42632 has 1 MA's), (Start: 48 @42641 has 259 MA's), (56, 42665), (70, 42770), (71, 42776),

Gene: TNguyen7_39 Start: 28335, Stop: 28171, Start Num: 48
Candidate Starts for TNguyen7_39:
(Start: 48 @28335 has 259 MA's), (58, 28308), (63, 28293), (70, 28218), (73, 28209),

Gene: Tachez_52 Start: 38529, Stop: 38699, Start Num: 48
Candidate Starts for Tachez_52:
(Start: 48 @38529 has 259 MA's), (68, 38643), (70, 38652), (71, 38658), (80, 38682),

Gene: TaiwanKao_54 Start: 38828, Stop: 39001, Start Num: 48
Candidate Starts for TaiwanKao_54:
(Start: 48 @38828 has 259 MA's), (68, 38942),

Gene: Taquarus_37 Start: 28114, Stop: 27962, Start Num: 49
Candidate Starts for Taquarus_37:
(6, 28405), (Start: 36 @28156 has 3 MA's), (Start: 49 @28114 has 143 MA's), (56, 28093), (61, 28081), (68, 28015), (70, 28006), (71, 28000),

Gene: Target_46 Start: 33718, Stop: 33593, Start Num: 48
Candidate Starts for Target_46:
(Start: 48 @33718 has 259 MA's), (51, 33709), (55, 33697), (59, 33685), (67, 33619), (68, 33610),

Gene: Tarynearal_32 Start: 27146, Stop: 26988, Start Num: 46
Candidate Starts for Tarynearal_32:
(11, 27428), (12, 27422), (Start: 36 @27188 has 3 MA's), (Start: 46 @27146 has 33 MA's), (68, 27041), (70, 27032), (71, 27026),

Gene: Taurus_43 Start: 28865, Stop: 28698, Start Num: 48
Candidate Starts for Taurus_43:
(19, 29045), (27, 28973), (Start: 48 @28865 has 259 MA's), (61, 28826), (70, 28745), (72, 28736),

Gene: Texage_37 Start: 28524, Stop: 28357, Start Num: 48
Candidate Starts for Texage_37:
(27, 28632), (Start: 48 @28524 has 259 MA's),

Gene: Thanksgivukkah_37 Start: 28112, Stop: 27960, Start Num: 49

Candidate Starts for Thanksgivukkah_37:

(6, 28403), (Start: 36 @28154 has 3 MA's), (Start: 49 @28112 has 143 MA's), (56, 28091), (61, 28079), (68, 28013), (70, 28004), (71, 27998),

Gene: Theia_31 Start: 27170, Stop: 27012, Start Num: 46

Candidate Starts for Theia_31:

(11, 27452), (12, 27446), (Start: 36 @27212 has 3 MA's), (Start: 46 @27170 has 33 MA's), (68, 27065), (70, 27056), (71, 27050),

Gene: Tierra_56 Start: 39120, Stop: 39293, Start Num: 48

Candidate Starts for Tierra_56:

(18, 38889), (19, 38916), (26, 38973), (Start: 48 @39120 has 259 MA's), (59, 39153), (70, 39246), (74, 39261),

Gene: Tiffany_42 Start: 28751, Stop: 28584, Start Num: 48

Candidate Starts for Tiffany_42:

(19, 28931), (27, 28859), (Start: 48 @28751 has 259 MA's), (61, 28712), (70, 28631), (72, 28622),

Gene: Tiger_34 Start: 27209, Stop: 27051, Start Num: 46

Candidate Starts for Tiger_34:

(20, 27401), (Start: 36 @27251 has 3 MA's), (Start: 46 @27209 has 33 MA's), (68, 27104), (70, 27095), (71, 27089),

Gene: Timothy_37 Start: 27345, Stop: 27190, Start Num: 45

Candidate Starts for Timothy_37:

(13, 27627), (15, 27615), (25, 27492), (28, 27453), (Start: 45 @27345 has 38 MA's), (70, 27231), (71, 27225), (81, 27201),

Gene: TinaFeyge_38 Start: 28106, Stop: 27954, Start Num: 49

Candidate Starts for TinaFeyge_38:

(6, 28397), (Start: 36 @28148 has 3 MA's), (Start: 49 @28106 has 143 MA's), (68, 28007), (70, 27998), (71, 27992),

Gene: TingHuaYa_53 Start: 37613, Stop: 37783, Start Num: 48

Candidate Starts for TingHuaYa_53:

(Start: 48 @37613 has 259 MA's), (68, 37727), (70, 37736), (80, 37766),

Gene: TiniBug_53 Start: 39460, Stop: 39630, Start Num: 48

Candidate Starts for TiniBug_53:

(Start: 48 @39460 has 259 MA's), (68, 39574),

Gene: TinyPebbles_41 Start: 28866, Stop: 28699, Start Num: 48

Candidate Starts for TinyPebbles_41:

(19, 29046), (27, 28974), (Start: 48 @28866 has 259 MA's), (75, 28731),

Gene: TinyTimmy_37 Start: 27388, Stop: 27233, Start Num: 45

Candidate Starts for TinyTimmy_37:

(15, 27658), (25, 27535), (28, 27496), (Start: 45 @27388 has 38 MA's), (70, 27274), (71, 27268), (81, 27244),

Gene: Tinybot_36 Start: 28141, Stop: 27989, Start Num: 49

Candidate Starts for Tinybot_36:

(6, 28432), (Start: 36 @28183 has 3 MA's), (Start: 49 @28141 has 143 MA's), (68, 28042), (70, 28033),

Gene: TopsytheTRex_66 Start: 40825, Stop: 40673, Start Num: 49
Candidate Starts for TopsytheTRex_66:
(8, 41149), (Start: 49 @40825 has 143 MA's), (68, 40723), (70, 40714), (78, 40693),

Gene: Tiri_53 Start: 38859, Stop: 39029, Start Num: 48
Candidate Starts for Tiri_53:
(Start: 48 @38859 has 259 MA's), (68, 38973), (70, 38982), (71, 38988), (80, 39012),

Gene: TiroTheta9_37 Start: 28108, Stop: 27956, Start Num: 49
Candidate Starts for TiroTheta9_37:
(6, 28399), (Start: 36 @28150 has 3 MA's), (Start: 49 @28108 has 143 MA's), (56, 28087), (61, 28075),
(68, 28009), (70, 28000), (71, 27994),

Gene: Todacoro_38 Start: 28523, Stop: 28356, Start Num: 48
Candidate Starts for Todacoro_38:
(27, 28631), (Start: 48 @28523 has 259 MA's),

Gene: Tomathan_41 Start: 28135, Stop: 27983, Start Num: 45
Candidate Starts for Tomathan_41:
(Start: 45 @28135 has 38 MA's), (68, 28033), (70, 28024), (80, 28000),

Gene: Topanga_37 Start: 28285, Stop: 28127, Start Num: 43
Candidate Starts for Topanga_37:
(30, 28348), (Start: 43 @28285 has 9 MA's), (61, 28249), (68, 28180), (70, 28171), (71, 28165),

Gene: Topper_52 Start: 38684, Stop: 38854, Start Num: 48
Candidate Starts for Topper_52:
(Start: 48 @38684 has 259 MA's), (68, 38798), (70, 38807), (71, 38813), (80, 38837),

Gene: Travvers_41 Start: 28135, Stop: 27983, Start Num: 45
Candidate Starts for Travvers_41:
(14, 28402), (17, 28360), (Start: 45 @28135 has 38 MA's), (68, 28033), (70, 28024), (80, 28000),

Gene: TreyKay_53 Start: 38772, Stop: 38942, Start Num: 48
Candidate Starts for TreyKay_53:
(Start: 48 @38772 has 259 MA's), (68, 38886), (70, 38895), (71, 38901), (80, 38925),

Gene: Trixie_39 Start: 28891, Stop: 28718, Start Num: 41
Candidate Starts for Trixie_39:
(Start: 41 @28891 has 27 MA's), (53, 28867), (62, 28840), (66, 28798),

Gene: Trooper_67 Start: 41763, Stop: 41599, Start Num: 47
Candidate Starts for Trooper_67:
(Start: 47 @41763 has 5 MA's), (63, 41721), (70, 41646), (72, 41637), (78, 41619),

Gene: TroyPia_38 Start: 28109, Stop: 27957, Start Num: 49
Candidate Starts for TroyPia_38:
(6, 28400), (Start: 36 @28151 has 3 MA's), (Start: 49 @28109 has 143 MA's), (68, 28010), (70, 28001),

Gene: TruffulaTree_52 Start: 38563, Stop: 38733, Start Num: 48
Candidate Starts for TruffulaTree_52:
(Start: 48 @38563 has 259 MA's), (68, 38677), (70, 38686), (71, 38692), (80, 38716),

Gene: Tubs_69 Start: 40924, Stop: 40769, Start Num: 49

Candidate Starts for Tubs_69:

(8, 41248), (Start: 49 @40924 has 143 MA's), (63, 40882), (70, 40816), (72, 40807),

Gene: Turbido_39 Start: 28525, Stop: 28352, Start Num: 41

Candidate Starts for Turbido_39:

(Start: 41 @28525 has 27 MA's), (55, 28495), (64, 28465),

Gene: Twigg_33 Start: 27119, Stop: 26961, Start Num: 46

Candidate Starts for Twigg_33:

(11, 27401), (12, 27395), (Start: 36 @27161 has 3 MA's), (Start: 46 @27119 has 33 MA's), (68, 27014), (70, 27005), (71, 26999),

Gene: Twister_37 Start: 28196, Stop: 28038, Start Num: 43

Candidate Starts for Twister_37:

(30, 28259), (Start: 43 @28196 has 9 MA's), (61, 28160), (68, 28091), (70, 28082), (71, 28076),

Gene: Twitch_52 Start: 38686, Stop: 38856, Start Num: 48

Candidate Starts for Twitch_52:

(Start: 48 @38686 has 259 MA's), (68, 38800), (70, 38809), (71, 38815), (80, 38839),

Gene: TwoPeat_46 Start: 34905, Stop: 34780, Start Num: 48

Candidate Starts for TwoPeat_46:

(Start: 48 @34905 has 259 MA's), (61, 34866), (67, 34806), (68, 34797),

Gene: TygerBlood_37 Start: 28111, Stop: 27959, Start Num: 49

Candidate Starts for TygerBlood_37:

(6, 28402), (Start: 36 @28153 has 3 MA's), (Start: 49 @28111 has 143 MA's), (56, 28090), (61, 28078), (68, 28012), (70, 28003), (71, 27997),

Gene: Ulysses_36 Start: 27791, Stop: 27639, Start Num: 49

Candidate Starts for Ulysses_36:

(6, 28082), (Start: 36 @27833 has 3 MA's), (Start: 49 @27791 has 143 MA's), (68, 27692), (70, 27683),

Gene: Urkel_53 Start: 39464, Stop: 39634, Start Num: 48

Candidate Starts for Urkel_53:

(Start: 48 @39464 has 259 MA's), (68, 39578), (74, 39602),

Gene: VA6_38 Start: 28246, Stop: 28094, Start Num: 45

Candidate Starts for VA6_38:

(14, 28513), (17, 28471), (Start: 45 @28246 has 38 MA's), (68, 28144), (70, 28135), (80, 28111),

Gene: VC3_41 Start: 28234, Stop: 28082, Start Num: 45

Candidate Starts for VC3_41:

(14, 28501), (17, 28459), (Start: 45 @28234 has 38 MA's), (68, 28132), (70, 28123), (80, 28099),

Gene: Validus_57 Start: 39481, Stop: 39654, Start Num: 48

Candidate Starts for Validus_57:

(Start: 48 @39481 has 259 MA's), (68, 39595),

Gene: Veliki_53 Start: 38549, Stop: 38719, Start Num: 48

Candidate Starts for Veliki_53:

(Start: 48 @38549 has 259 MA's), (68, 38663), (70, 38672), (71, 38678), (80, 38702),

Gene: Veracruz_37 Start: 28523, Stop: 28356, Start Num: 48

Candidate Starts for Veracruz_37:

(27, 28631), (Start: 48 @28523 has 259 MA's),

Gene: Vix_42 Start: 28948, Stop: 28781, Start Num: 48

Candidate Starts for Vix_42:

(19, 29128), (27, 29056), (Start: 48 @28948 has 259 MA's), (61, 28909), (70, 28828), (72, 28819),

Gene: WalterMcMickey_37 Start: 28196, Stop: 28038, Start Num: 43

Candidate Starts for WalterMcMickey_37:

(30, 28259), (Start: 43 @28196 has 9 MA's), (61, 28160), (68, 28091), (70, 28082), (71, 28076),

Gene: Wander_37 Start: 28111, Stop: 27959, Start Num: 49

Candidate Starts for Wander_37:

(6, 28402), (Start: 36 @28153 has 3 MA's), (Start: 49 @28111 has 143 MA's), (56, 28090), (61, 28078), (68, 28012), (70, 28003), (71, 27997),

Gene: Watson_42 Start: 28858, Stop: 28691, Start Num: 48

Candidate Starts for Watson_42:

(19, 29038), (27, 28966), (Start: 48 @28858 has 259 MA's), (61, 28819), (70, 28738), (72, 28729),

Gene: Whabigail7_39 Start: 28513, Stop: 28340, Start Num: 41

Candidate Starts for Whabigail7_39:

(Start: 41 @28513 has 27 MA's), (55, 28483), (64, 28453),

Gene: Wilbur_37 Start: 28111, Stop: 27959, Start Num: 49

Candidate Starts for Wilbur_37:

(6, 28402), (Start: 36 @28153 has 3 MA's), (Start: 49 @28111 has 143 MA's), (56, 28090), (68, 28012), (70, 28003), (71, 27997),

Gene: Wintermute_3 Start: 477, Stop: 644, Start Num: 39

Candidate Starts for Wintermute_3:

(9, 171), (Start: 39 @477 has 19 MA's), (Start: 54 @504 has 1 MA's), (68, 591), (71, 606), (81, 633),

Gene: Wizard007_37 Start: 28116, Stop: 27964, Start Num: 49

Candidate Starts for Wizard007_37:

(6, 28407), (Start: 36 @28158 has 3 MA's), (Start: 49 @28116 has 143 MA's), (56, 28095), (61, 28083), (68, 28017), (70, 28008), (71, 28002),

Gene: Wooldri_44 Start: 28777, Stop: 28610, Start Num: 48

Candidate Starts for Wooldri_44:

(19, 28957), (27, 28885), (Start: 48 @28777 has 259 MA's), (61, 28738), (70, 28657), (72, 28648),

Gene: Ximenita_59 Start: 39319, Stop: 39489, Start Num: 48

Candidate Starts for Ximenita_59:

(Start: 48 @39319 has 259 MA's), (56, 39343), (70, 39442), (74, 39457),

Gene: Y10_03 Start: 478, Stop: 645, Start Num: 39

Candidate Starts for Y10_03:

(9, 172), (Start: 39 @478 has 19 MA's), (Start: 54 @505 has 1 MA's), (68, 592), (71, 607), (81, 634),

Gene: Y2_03 Start: 478, Stop: 645, Start Num: 39

Candidate Starts for Y2_03:

(9, 172), (Start: 39 @478 has 19 MA's), (Start: 54 @505 has 1 MA's), (68, 592), (71, 607), (81, 634),

Gene: Yecey3_70 Start: 40900, Stop: 40739, Start Num: 49

Candidate Starts for Yecey3_70:

(23, 41071), (31, 40972), (37, 40924), (Start: 49 @40900 has 143 MA's), (63, 40858), (65, 40834), (72, 40777),

Gene: YoSam321_37 Start: 28108, Stop: 27956, Start Num: 49

Candidate Starts for YoSam321_37:

(6, 28399), (Start: 36 @28150 has 3 MA's), (Start: 49 @28108 has 143 MA's), (56, 28087), (61, 28075), (68, 28009), (70, 28000), (71, 27994),

Gene: YoureAdopted_51 Start: 38687, Stop: 38857, Start Num: 48

Candidate Starts for YoureAdopted_51:

(Start: 48 @38687 has 259 MA's), (58, 38717), (68, 38801), (70, 38810), (71, 38816), (80, 38840),

Gene: Zabiza_47 Start: 34874, Stop: 35044, Start Num: 48

Candidate Starts for Zabiza_47:

(Start: 48 @34874 has 259 MA's), (68, 34988), (70, 34997), (71, 35003), (80, 35027),

Gene: Zavala_54 Start: 38848, Stop: 39018, Start Num: 48

Candidate Starts for Zavala_54:

(Start: 48 @38848 has 259 MA's), (68, 38962), (70, 38971), (71, 38977), (80, 39001),

Gene: Zephyr_45 Start: 34728, Stop: 34600, Start Num: 48

Candidate Starts for Zephyr_45:

(Start: 48 @34728 has 259 MA's), (51, 34719), (55, 34707), (59, 34695), (67, 34626), (68, 34617),

Gene: Zetzy_41 Start: 28429, Stop: 28262, Start Num: 48

Candidate Starts for Zetzy_41:

(19, 28609), (27, 28537), (Start: 48 @28429 has 259 MA's), (61, 28390), (70, 28309), (72, 28300),

Gene: Zolita_34 Start: 27760, Stop: 27602, Start Num: 46

Candidate Starts for Zolita_34:

(Start: 36 @27802 has 3 MA's), (Start: 46 @27760 has 33 MA's), (68, 27655), (70, 27646), (71, 27640),