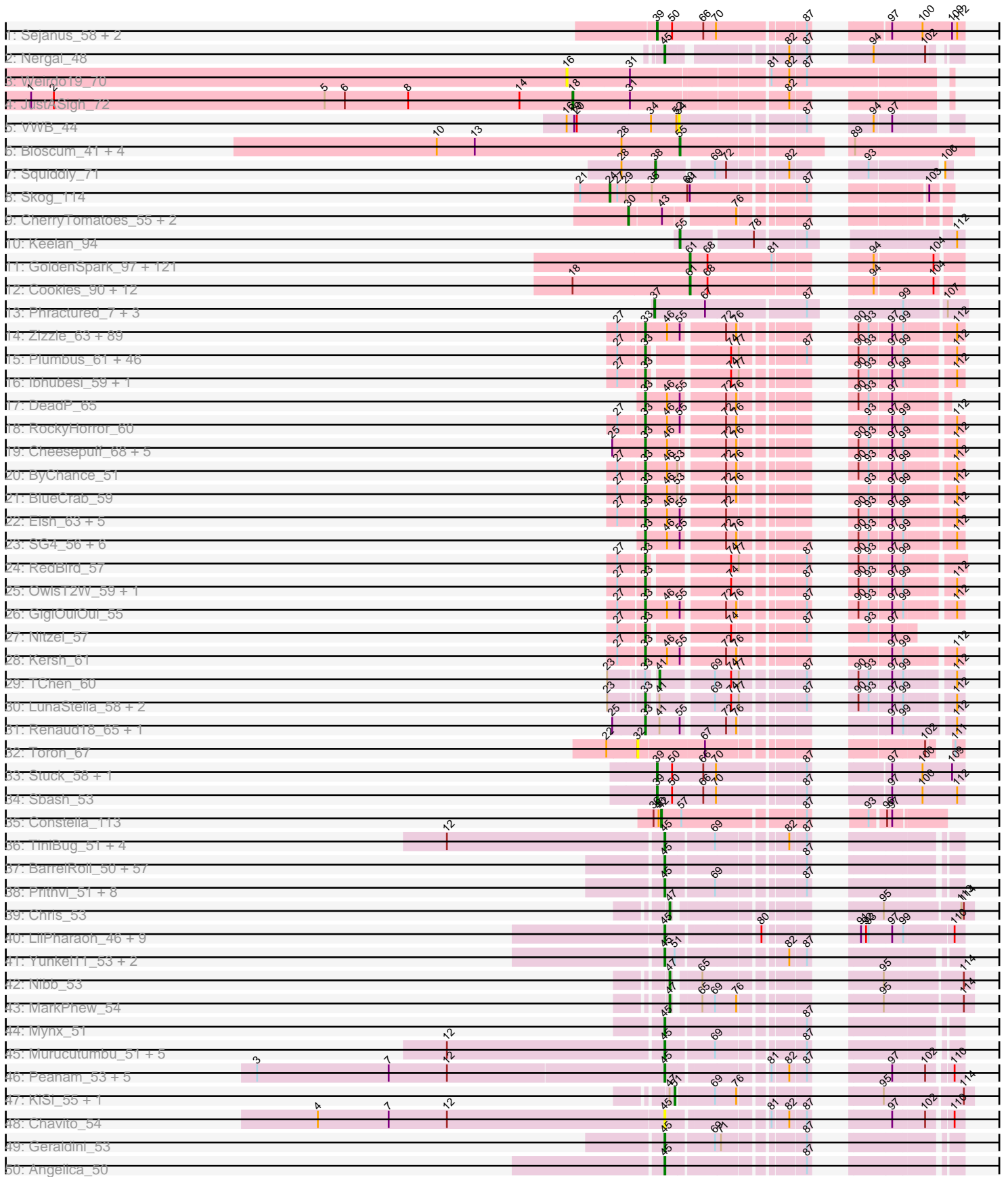
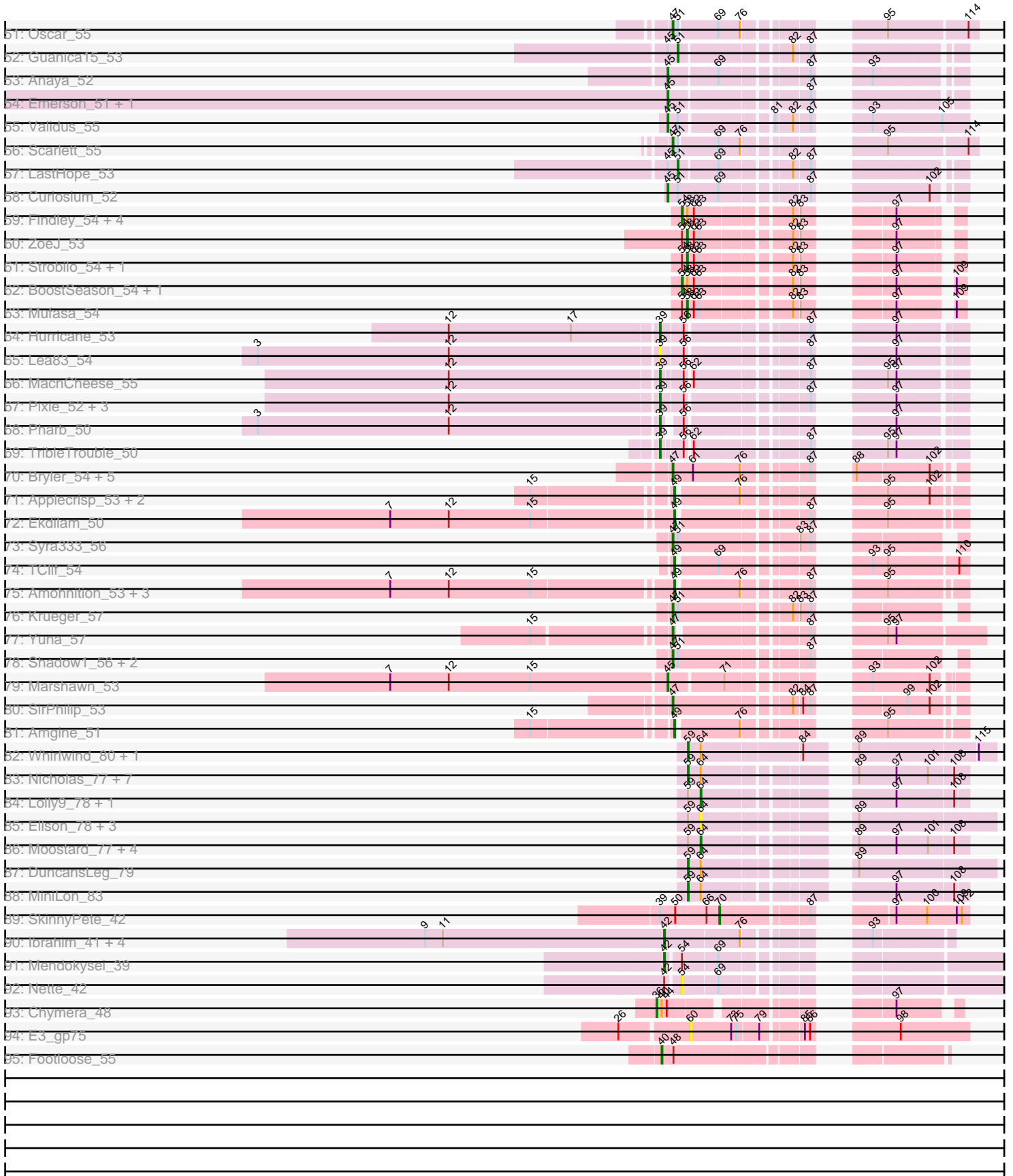


Pham 215678



Pham 215678



Note: Tracks are now grouped by subcluster and scaled. Switching in subcluster is indicated by changes in track color. Track scale is now set by default to display the region 30 bp upstream of start 1 to 30 bp downstream of the last possible start. If this default region is judged to be packed too tightly with annotated starts, the track will be further scaled to only show that region of the ORF with annotated starts. This action will be indicated by adding "Zoomed" to the title. For starts, yellow indicates the location of called starts comprised solely of Glimmer/GeneMark auto-annotations, green indicates the location of called starts with at least 1 manual gene annotation.

Pham 215678 Report

This analysis was run 02/22/25 on database version 588.

Pham number 215678 has 529 members, 57 are drafts.

Phages represented in each track:

- Track 1 : Sejanus_58, Charlie_44, Journey_43
- Track 2 : Nergal_48
- Track 3 : Weirido19_70
- Track 4 : JustASigh_72
- Track 5 : VWB_44
- Track 6 : Bioscum_41, Lishka_37, PapayaSalad_40, Ididsumtinwong_41, Austintatious_37
- Track 7 : Squiddly_71
- Track 8 : Skog_114
- Track 9 : CherryTomatoes_55, SCentae_53, Pupper_53
- Track 10 : Keelan_94
- Track 11 : GoldenSpark_97, Thimble_96, HanKaySha_94, Lilpickle_92, BigBubba_93, Terminus_96, Highbury_92, CrystalP_92, IHOP_91, Cjw1_94, YassJohnny_90, ShamWow_93, Cactus_96, ChosenOne_93, TeardropMSU_89, Inca_90, Youngblood_96, Henry_91, Simpliphy_92, GooberAzure_96, Xandras_92, BilboSwaggins_92, Holt_98, Contagion_89, MadamMonkfish_93, Murica_96, Paperbeatsrock_92, NoSleep_94, Nala_95, JeTaime_94, Flypotenuse_89, OrionPax_92, Lilizi_94, Porky_92, Icee_94, Gemini_98, Kimchi_97, Tarkin_92, Gage_95, ShereKhan_91, Willez_88, Hopey_94, FireRed_97, Dusk_90, Dumbo_93, Quallification_94, Palpatine_95, FairyPath_93, Stark_95, Easy2Say_94, NelitzaMV_91, Eureka_92, Kanye_90, Hoonter_96, SirDuracell_93, BaboJay_93, Sotrice96_94, Murphy_93, Lilac_96, Goldilocks_96, StolenFromERC_96, Tuco_94, Miniwave_88, Amao_93, MISSy_94, Phrux_91, Glexan_92, Bruin_90, Thresher_96, Bench_96, Command613_95, Becksu_92, Rakim_94, Mosby_89, Marshmallow_91, Misfit_94, 244_94, AmericanBeauty_97, Myrale_93, Manda_95, Teaspoon_94, Nimrod_94, Pumpkin_97, SophKB_90, Tomaszewski_88, ABCat_90, Sassay_88, Phaja_91, Goku_92, Argent26_97, BadStone_90, Saints25_92, Asriel_91, Elph10_94, DrDrey_93, TBrady12_96, PhatBacter_97, Toto_91, HufflyPuff_95, xkcd_96, MPhalcon_94, Harella_93, Adnama_97, Traaww1_89, Pharsalus_90, BugsBunny_93, Filch_95, Policronamos_96, StellaBean_91, Wiggin_95, Ukulele_88, Czyszczon1_94, Maxxinista_96, Mindy_92, Kostya_93, Moldemort_96, Stank_95, Emmina_93, RiverMonster_94, Elite2014_92, Barbarian_92, Phaux_96
- Track 12 : Cookies_90, Buck_94, FoghornLeghorn_87, Balomoji_93, Rimmer_91, Bask21_93, DoctorDiddles_92, Gator_91, Daikon_94, StormChicken_95, Petra64142_98, Pat3_90, ChotaBhai_93
- Track 13 : Phractured_7, Mazun_7, Phedro_7, Pharky_7

- Track 14 : Zizzle_63, Phatniss_57, Rita_60, Scottish_57, Zerg_59, Soul22_65, EleanorGeorge_60, Rockne_60, Mahavrat_57, Koella_53, Mozy_68, Zapner_72, Llij_55, Maravista_60, Radiance_58, Totinger_58, James_63, Pippy_57, UncleRicky_58, VRedHorse_59, LastJedi_53, Crumble_54, Fancypants_61, Marker_61, Drago_57, Blexus_57, Strokeseat_55, Karhdo_56, Sabbb_63, Jabbawokkie_73, GUmbie_57, Whouxphf_56, Dante_60, Tootsieroll_60, DirtMcgirt_58, Byougenkin_57, Chuckly_62, Vivum_62, Clifton_54, PMC_56, Hlubikazi_55, Blarby_71, Boomer_64, Mattes_63, Firehouse51_60, Slim_60, Hades_60, Mutaforma13_63, Spikelee_66, ShowerHandel_62, Burwell21_57, SiSi_57, SwagPiggett_64, Pollywog_60, NormanBulbieJr_59, IrishSherpFalk_60, Priscilla_59, Saal_61, BuzzLyseyear_65, Alexphander_63, DaddyRickover_58, Doug_61, OlympiaSaint_61, ShroomBoi_61, Madiba_57, Mandlovu_55, Yorick_58, WillSterrel_60, Jarcob_59, Violac_62, Latretium_61, Mova_60, Eradicator_52, Martik_59, OldBen_56, KristaRAM_62, Spartacus_61, Gandalph_62, Emmaloid_60, BobaPhett_63, Brocalys_54, ShiLan_58, MadMen_57, Cabrinians_60, Gorge_63, FreddyB_60, LittleShirley_58, Rialto_65, Lorde_59, Lizziana_65
- Track 15 : Plumbus_61, Daenerys_53, AlpineSix_64, Job42_61, Pacc40_53, Nivrat_55, LunaBlu_61, Dorothy_57, KingMidas_58, Avani_67, Sebastian_64, Jinglebell_64, Ochi17_62, Leozinho_58, SimranZ1_59, DosHalletts_61, Stap_57, Modragons_63, Inventum_54, Phasih_57, Leperchaun_51, Girr_57, JoeyJr_54, PHappiness_54, Ruby_55, Cornucopia_61, NewHope4_63, LilMoolah_57, Polo2Bam_64, Doomphist_59, Empress_57, Fastidio_59, Poenanya_59, Estave1_62, Sassafras_57, OfUltron_64, Oksu_63, Spoonbill_56, Llama_64, DRBy19_62, RitaG_54, DillTech15_56, MisterCuddles_57, Galactic_58, Philus_62, Polka14_57, BodEinwohner17_59
- Track 16 : lbhubesi_59, Veteran_56
- Track 17 : DeadP_65
- Track 18 : RockyHorror_60
- Track 19 : Cheesepuff_68, MulchExplorer_66, QuickMath_61, Starcevich_59, Kimberlium_62, Cornie_55
- Track 20 : ByChance_51
- Track 21 : BlueCrab_59
- Track 22 : Eish_63, EmiMonkey_57, KingJulian_56, DaWorst_60, PhlipPhlop_57, Corium_56
- Track 23 : SG4_56, Wee_63, Hegedechwinu_59, lbOuu_60, MinionDave_58, Enby_60, CaptainTrips_56
- Track 24 : RedBird_57
- Track 25 : OwlsT2W_59, Grimmer_69
- Track 26 : GigiOuiOui_55
- Track 27 : Nitzel_57
- Track 28 : Kersh_61
- Track 29 : TChen_60
- Track 30 : LunaStella_58, Yoshi_72, ThetaBob_64
- Track 31 : Renaud18_65, Demsculpinboyz_70
- Track 32 : Toron_67
- Track 33 : Stuck_58, Shweta_42
- Track 34 : Sbash_53
- Track 35 : Constella_113
- Track 36 : TiniBug_51, SamuelLPlaqson_51, DrHayes_51, Bella96_51, Urkel_51
- Track 37 : BarrelRoll_50, MacKat_45, AlishaPH_50, BaghaKamala_49, Bern_51, Atiba_51, Adephagia_50, Veliki_51, Beezoo_52, JAWS_50, Ramen_51, ActinUp_50, Hyperbowlee_50, CREW_50, Slimphazie_50, TruffulaTree_50, Zavala_52, Adonis_50, CallaLilly_52, Capricorn_50, Spock_50, QuincyRose_49, Clipper_54,

Durfee_50, Sulley_50, Tachez_50, Jayhawk_51, Rapunzel97_51, CaseJules_52, Topper_50, Dalmuri_50, Asayake_50, Rosmarinus_50, Apocalypse_53, Joy99_50, CheetoDust_49, Blizzard_50, Belladonna_50, Homura_50, Zabiza_45, Lunahalos_50, TaiwanKao_52, HedwigODU_50, MeaningOfLife_51, Peel_50, Llorens_50, Padfoot_50, Jeckyll_50, YoureAdopted_49, Boiii_50, BGIlluvia_50, BEEST_50, Inky_50, Ganymede_51, Piatt_50, ShiaSurprise_51, Jarvi_50, Twitch_50

- Track 38 : Prithvi_51, CrimD_50, Megsy_52, LindNT_49, TreyKay_51, LaterM_51, Deby_50, Tiri_51, Pokerus_49
- Track 39 : Chris_53
- Track 40 : LilPharaoh_46, Nutello_46, SgtBeansprout_46, Enkosi_48, Amelie_46, Nikao_49, Teejan_48, Mdavu_47, Biglebops_46, Torres_48
- Track 41 : Yunkel11_53, Efra2_53, TingHuaYa_51
- Track 42 : Nibb_53
- Track 43 : MarkPhew_54
- Track 44 : Mynx_51
- Track 45 : Murucutumbu_51, Illumine_53, Dole_53, Ageofdapage_52, Devera_55, Stinson_51
- Track 46 : Peanam_53, Dartin_53, Shaobing_53, Richo_53, McMater_53, Niklas_53
- Track 47 : KiSi_55, LeMond_55
- Track 48 : Chavito_54
- Track 49 : Geraldini_53
- Track 50 : Angelica_50
- Track 51 : Oscar_55
- Track 52 : Guanica15_53
- Track 53 : Anaya_52
- Track 54 : Emerson_51, Padpat_52
- Track 55 : Validus_55
- Track 56 : Scarlett_55
- Track 57 : LastHope_53
- Track 58 : Curiosium_52
- Track 59 : Findley_54, DismalFunk_54, Milly_54, Marcoliusprime_54, DismalStressor_54
- Track 60 : ZoeJ_53
- Track 61 : Strobilo_54, TM4_49
- Track 62 : BoostSeason_54, Doughnut_55
- Track 63 : Mufasa_54
- Track 64 : Hurricane_53
- Track 65 : Lea83_54
- Track 66 : MacnCheese_55
- Track 67 : Pixie_52, Keshu_55, TBond007_51, ShedlockHolmes_54
- Track 68 : Pharb_50
- Track 69 : TribbleTrouble_50
- Track 70 : Bryler_54, Cain_54, Tierra_54, PhelpsODU_53, Phrank_54, Unicorn_53
- Track 71 : Applecrisp_53, Fefferhead_51, Ellie_49
- Track 72 : Ekdilam_50
- Track 73 : Syra333_56
- Track 74 : TClif_54
- Track 75 : Amohnition_53, DARTH_P_53, Hammy_53, November_53
- Track 76 : Krueger_57
- Track 77 : Yuna_57
- Track 78 : Shadow1_56, Sunflower1121_57, Ximenita_57
- Track 79 : Marshawn_53
- Track 80 : SirPhilip_53

- Track 81 : Amgine_51
- Track 82 : Whirlwind_80, Krypton555_80
- Track 83 : Nicholas_77, Clautastrophe_77, Kingsolomon_77, Snenia_78, Finnry_79, Jobypre_79, MsGreen_79, Jubie_78
- Track 84 : Lolly9_78, MiniMac_83
- Track 85 : Ellson_78, KirDoubleO7_77, BourbonZero_80, LiyuLake_78
- Track 86 : Moostard_77, TriFive_79, Red305_80, Bellis_77, Samty_78
- Track 87 : DuncansLeg_79
- Track 88 : MiniLon_83
- Track 89 : SkinnyPete_42
- Track 90 : Ibrahim_41, Nairb_40, ZenTime222_40, Bernal13_41, RonRayGun_41
- Track 91 : Mendokysei_39
- Track 92 : Nette_42
- Track 93 : Chymera_48
- Track 94 : E3_gp75
- Track 95 : Footloose_55

Summary of Final Annotations (See graph section above for start numbers):

The start number called the most often in the published annotations is 33, it was called in 156 of the 472 non-draft genes in the pham.

Genes that call this "Most Annotated" start:

- Alexphander_63, AlpineSix_64, Avani_67, Blarby_71, Blexus_57, BlueCrab_59, BobaPhett_63, BodEinwohner17_59, Boomer_64, Brocalys_54, Burwell21_57, BuzzLyseyear_65, ByChance_51, Byougenkin_57, Cabrinians_60, CaptainTrips_56, CheesePuff_68, Chuckly_62, Clifton_54, Corium_56, Cornie_55, Cornucopia_61, Crumble_54, DRBy19_62, DaWorst_60, DaddyRickover_58, Daenerys_53, Dante_60, DeadP_65, Demsculpinboyz_70, DillTech15_56, DirtMcGirt_58, Doomphist_59, Dorothy_57, DosHalletts_61, Doug_61, Drago_57, Eish_63, EleanorGeorge_60, EmiMonkey_57, Emmaloid_60, Empress_57, Enby_60, Eradicator_52, Estave1_62, Fancypants_61, Fastidio_59, Firehouse51_60, FreddyB_60, GUmbie_57, Galactic_58, Gandalph_62, GigiOuiOui_55, Girr_57, Gorge_63, Grimmer_69, Hades_60, Hegedechwinu_59, Hlubikazi_55, IbOuu_60, Ibhubes_i_59, Inventum_54, IrishSherpFalk_60, Jabbawokkie_73, James_63, Jarcob_59, Jinglebell_64, Job42_61, JoeyJr_54, Karhdo_56, Kersh_61, Kimberlium_62, KingJulian_56, KingMidas_58, Koella_53, KristaRAM_62, LastJedi_53, Latretium_61, Leozinho_58, Leperchaun_51, LilMoolah_57, LittleShirley_58, Lizziana_65, Llama_64, Llij_55, Lorde_59, LunaBlu_61, LunaStella_58, MadMen_57, Madiba_57, Mahavrat_57, Mandlovu_55, Maravista_60, Marker_61, Martik_59, Mattes_63, MinionDave_58, MisterCuddles_57, Modragons_63, Mova_60, Mozy_68, MulchExplorer_66, Mutaforma13_63, NewHope4_63, Nitzel_57, Nivrat_55, NormanBulbieJr_59, Ochi17_62, OfUltron_64, Oksu_63, OldBen_56, OlympiaSaint_61, OwlsT2W_59, PHappiness_54, PMC_56, Pacc40_53, Phasih_57, Phatniss_57, Philus_62, PhlipPhlop_57, Pippy_57, Plumbus_61, Poenanya_59, Polka14_57, Pollywog_60, Polo2Bam_64, Priscilla_59, QuickMath_61, Radiance_58, RedBird_57, Renaud18_65, Rialto_65, RitaG_54, Rita_60, Rockne_60, RockyHorror_60, Ruby_55, SG4_56, Saal_61, Sabb_63, Sassafra_57, Scottish_57, Sebastian_64, ShiLan_58, ShowerHandel_62, ShroomBoi_61, SiSi_57, SimranZ1_59, Slim_60, Soul22_65, Spartacus_61,

Spikelee_66, Spoonbill_56, Stap_57, Starcevich_59, Strokeseat_55, SwagPiggett_64, ThetaBob_64, Tootsieroll_60, Totinger_58, UncleRicky_58, VRedHorse_59, Veteran_56, Violac_62, Vivum_62, Wee_63, Whouxphf_56, WillSterrel_60, Yorick_58, Yoshi_72, Zapner_72, Zerg_59, Zizzle_63,

Genes that have the "Most Annotated" start but do not call it:

- TChen_60,

Genes that do not have the "Most Annotated" start:

- 244_94, ABCat_90, ActinUp_50, Adephegia_50, Adnama_97, Adonis_50, Ageofdapage_52, AlishaPH_50, Amao_93, Amelie_46, AmericanBeauty_97, Amgine_51, Amohnition_53, Anaya_52, Angelica_50, Apocalypse_53, Applecrisp_53, Argent26_97, Asayake_50, Asriel_91, Atiba_51, Austintatious_37, BEEST_50, BGIlluviae_50, BaboJay_93, BadStone_90, BaghaKamala_49, Balomoji_93, Barbarian_92, BarrelRoll_50, Bask21_93, Becksu_92, Beezoo_52, Bella96_51, Belladonna_50, Bellis_77, Bench_96, Bern_51, Bernal13_41, BigBubba_93, Binglebops_46, BilboSwaggins_92, Bioscum_41, Blizzard_50, Boiii_50, BoostSeason_54, BourbonZero_80, Bruin_90, Bryler_54, Buck_94, BugsBunny_93, CREW_50, Cactus_96, Cain_54, CallaLilly_52, Capricorn_50, CaseJules_52, Charlie_44, Chavito_54, CheetoDust_49, CherryTomatoes_55, ChosenOne_93, ChotaBhai_93, Chris_53, Chymera_48, Cjw1_94, Clautastrophe_77, Clipper_54, Command613_95, Constella_113, Contagion_89, Cookies_90, CrimD_50, CrystalP_92, Curiosium_52, Czyszczonek_94, Daikon_94, Dalmuri_50, DARTH_53, Dartin_53, Deby_50, Devera_55, DismalFunk_54, DismalStressor_54, DoctorDiddles_92, Dole_53, Doughnut_55, DrDrey_93, DrHayes_51, Dumbo_93, DuncansLeg_79, Durfee_50, Dusk_90, E3_gp75, Easy2Say_94, Efra2_53, Ekdilam_50, Elite2014_92, Ellie_49, Ellson_78, Elph10_94, Emerson_51, Emmina_93, Enkosi_48, Eureka_92, FairyPath_93, Fefferhead_51, Filch_95, Findley_54, Finnry_79, FireRed_97, Flypotenuse_89, FoghornLeghorn_87, Footloose_55, Gage_95, Ganymede_51, Gator_91, Gemini_98, Geraldini_53, Glexan_92, Goku_92, GoldenSpark_97, Goldilocks_96, GooberAzure_96, Guanica15_53, Hammy_53, HanKaySha_94, Harella_93, HedwigODU_50, Henry_91, Highbury_92, Holt_98, Homura_50, Hoonter_96, Hopey_94, HufflyPuff_95, Hurricane_53, Hyperbowlee_50, IHOP_91, Ibrahim_41, Icee_94, Ididsumtinwong_41, Illumine_53, Inca_90, Inky_50, JAWS_50, Jarvi_50, Jayhawk_51, JeTaimie_94, Jeckyll_50, Jobypre_79, Journey_43, Joy99_50, Jubie_78, JustASigh_72, Kanye_90, Keelan_94, Keshu_55, KiSi_55, Kimchi_97, Kingsolomon_77, KirDoubleO7_77, Kostya_93, Krueger_57, Krypton555_80, LastHope_53, LaterM_51, LeMond_55, Lea83_54, LilPharaoh_46, Lilac_96, Lilizi_94, Lilpickle_92, LindNT_49, Lishka_37, LiyuLake_78, Llorens_50, Lolly9_78, Lunahalos_50, MISSy_94, MPhalcon_94, MacKat_45, MacnCheese_55, MadamMonkfish_93, Manda_95, Marcoliusprime_54, MarkPhew_54, Marshawn_53, Marshmallow_91, Maxxinista_96, Mazun_7, McMater_53, Mdavu_47, MeaningOfLife_51, Megsy_52, Mendokyse_39, Milly_54, Mindy_92, MiniLon_83, MiniMac_83, Miniwave_88, Misfit_94, Moldemort_96, Moostard_77, Mosby_89, MsGreen_79, Mufasa_54, Murica_96, Murphy_93, Murucutumbu_51, Mynx_51, Myrale_93, Nairb_40, Nala_95, NelitzaMV_91, Nergal_48, Nette_42, Nibb_53, Nicholas_77, Nikao_49, Niklas_53, Nimrod_94, NoSleep_94, November_53, Nutello_46, OrionPax_92, Oscar_55, Padfoot_50, Padpat_52, Palpatine_95, PapayaSalad_40, Paperbeatsrock_92, Pat3_90, Peanam_53, Peel_50, Petra64142_98, Phaja_91, Pharb_50, Pharky_7, Pharsalus_90, PhatBacter_97, Phaux_96, Phedro_7, PhelpsODU_53, Phracted_7, Phrank_54, Phrux_91, Piatt_50, Pixie_52, Pokerus_49, Policronamos_96, Porky_92, Prithvi_51,

Pumpkin_97, Pupper_53, Qualification_94, QuincyRose_49, Rakim_94, Ramen_51, Rapunzel97_51, Red305_80, Richo_53, Rimmer_91, RiverMonster_94, RonRayGun_41, Rosmarinus_50, SCentae_53, Saints25_92, Samty_78, SamuelLPlaqson_51, Sassay_88, Sbash_53, Scarlett_55, Sejanus_58, SgtBeansprout_46, Shadow1_56, ShamWow_93, Shaobing_53, ShedlockHolmes_54, ShereKhan_91, ShiaSurprise_51, Shweta_42, Simpliphy_92, SirDuracell_93, SirPhilip_53, SkinnyPete_42, Skog_114, Slimphazie_50, Snenia_78, SophKB_90, Sotrice96_94, Spock_50, Squiddly_71, Stank_95, Stark_95, StellaBean_91, Stinson_51, StolenFromERC_96, StormChicken_95, Strobilo_54, Stuck_58, Sulley_50, Sunflower1121_57, Syra333_56, TBond007_51, TBrady12_96, TClif_54, TM4_49, Tachez_50, TaiwanKao_52, Tarkin_92, TeardropMSU_89, Teaspoon_94, Teejan_48, Terminus_96, Thimble_96, Thresher_96, Tierra_54, TingHuaYa_51, TiniBug_51, Tiri_51, Tomaszewski_88, Topper_50, Toron_67, Torres_48, Toto_91, Traaww1_89, TreyKay_51, TriFive_79, TripleTrouble_50, TruffulaTree_50, Tuco_94, Twitch_50, Ukulele_88, Unicorn_53, Urkel_51, VWB_44, Validus_55, Veliki_51, Weirdo19_70, Whirlwind_80, Wiggin_95, Willez_88, Xandras_92, Ximenita_57, YassJohnny_90, Youngblood_96, YoureAdopted_49, Yuna_57, Yunkel11_53, Zabiza_45, Zavala_52, ZenTime222_40, ZoeJ_53, xkcd_96,

Summary by start number:

Start 16:

- Found in 2 of 529 (0.4%) of genes in pham
- No Manual Annotations of this start.
- Called 50.0% of time when present
- Phage (with cluster) where this start called: Weirdo19_70 (AH),

Start 18:

- Found in 14 of 529 (2.6%) of genes in pham
- Manual Annotations of this start: 1 of 472
- Called 7.1% of time when present
- Phage (with cluster) where this start called: JustASigh_72 (AH),

Start 24:

- Found in 1 of 529 (0.2%) of genes in pham
- Manual Annotations of this start: 1 of 472
- Called 100.0% of time when present
- Phage (with cluster) where this start called: Skog_114 (DO),

Start 30:

- Found in 3 of 529 (0.6%) of genes in pham
- Manual Annotations of this start: 3 of 472
- Called 100.0% of time when present
- Phage (with cluster) where this start called: CherryTomatoes_55 (DO), Pupper_53 (DO), SCentae_53 (DO),

Start 32:

- Found in 1 of 529 (0.2%) of genes in pham
- No Manual Annotations of this start.
- Called 100.0% of time when present
- Phage (with cluster) where this start called: Toron_67 (F6),

Start 33:

- Found in 174 of 529 (32.9%) of genes in pham
- Manual Annotations of this start: 156 of 472
- Called 99.4% of time when present
- Phage (with cluster) where this start called: Alexphander_63 (F1), AlpineSix_64 (F1), Avani_67 (F2), Blarby_71 (F), Blexus_57 (F1), BlueCrab_59 (F1), BobaPhett_63 (F1), BodEinwohner17_59 (F1), Boomer_64 (F1), Brocalys_54 (F1), Burwell21_57 (F1), BuzzLyseyear_65 (F1), ByChance_51 (F1), Byougenkin_57 (F1), Cabrinians_60 (F1), CaptainTrips_56 (F1), CheesePuff_68 (F1), Chuckly_62 (F1), Clifton_54 (F1), Corium_56 (F1), Cornie_55 (F5), Cornucopia_61 (F1), Crumble_54 (F1), DRBy19_62 (F1), DaWorst_60 (F1), DaddyRickover_58 (F1), Daenerys_53 (F1), Dante_60 (F1), DeadP_65 (F1), Demsculpinboyz_70 (F2), DillTech15_56 (F1), DirtMcGirt_58 (F1), Doomphist_59 (F1), Dorothy_57 (F1), DosHalletts_61 (F1), Doug_61 (F1), Drago_57 (F1), Eish_63 (F1), EleanorGeorge_60 (F1), EmiMonkey_57 (F1), Emmaloid_60 (F1), Empress_57 (F1), Enby_60 (F1), Eradicator_52 (F1), Estave1_62 (F1), Fancypants_61 (F1), Fastidio_59 (F1), Firehouse51_60 (F1), FreddyB_60 (F1), GUmbie_57 (F1), Galactic_58 (F1), Gandolph_62 (F1), GigiOuiOui_55 (F1), Girr_57 (F1), Gorge_63 (F1), Grimmer_69 (F1), Hades_60 (F1), Hegedechwinu_59 (F1), Hlubikazi_55 (F1), IbOuu_60 (F1), Ihubesi_59 (F1), Inventum_54 (F1), IrishSherpFalk_60 (F1), Jabbawokkie_73 (F2), James_63 (F1), Jarcob_59 (F1), Jinglebell_64 (F1), Job42_61 (F1), JoeyJr_54 (F1), Karhdo_56 (F1), Kersh_61 (F1), Kimberlium_62 (F1), KingJulian_56 (F1), KingMidas_58 (F1), Koella_53 (F1), KristaRAM_62 (F1), LastJedi_53 (F1), Latretium_61 (F1), Leozinho_58 (F1), Leperchaun_51 (F1), LilMoolah_57 (F1), LittleShirley_58 (F1), Lizziana_65 (F1), Llama_64 (F1), Llij_55 (F1), Lorde_59 (F1), LunaBlu_61 (F1), LunaStella_58 (F4), MadMen_57 (F1), Madiba_57 (F1), Mahavrat_57 (F1), Mandlovu_55 (F1), Maravista_60 (F1), Marker_61 (F1), Martik_59 (F1), Mattes_63 (F1), MinionDave_58 (F1), MisterCuddles_57 (F1), Modragons_63 (F1), Mova_60 (F1), Mozy_68 (F1), MulchExplorer_66 (F1), Mutaforma13_63 (F1), NewHope4_63 (F1), Nitzel_57 (F1), Nivrat_55 (F1), NormanBulbieJr_59 (F1), Ochi17_62 (F1), OfUltron_64 (F1), Oksu_63 (F1), OldBen_56 (F1), OlympiaSaint_61 (F1), OwlsT2W_59 (F1), PHappiness_54 (F1), PMC_56 (F1), Pacc40_53 (F1), Phasih_57 (F1), Phatniss_57 (F1), Philus_62 (F1), PhilipPhlop_57 (F1), Pippy_57 (F1), Plumbus_61 (F1), Poenanya_59 (F1), Polka14_57 (F1), Pollywog_60 (F1), Polo2Bam_64 (F1), Priscilla_59 (F1), QuickMath_61 (F1), Radiance_58 (F1), RedBird_57 (F1), Renaud18_65 (F4), Rialto_65 (F1), RitaG_54 (F1), Rita_60 (F1), Rockne_60 (F1), RockyHorror_60 (F1), Ruby_55 (F1), SG4_56 (F1), Saal_61 (F1), Sabbb_63 (F1), Sassafras_57 (F1), Scottish_57 (F1), Seabastian_64 (F1), ShiLan_58 (F1), ShowerHandel_62 (F1), ShroomBoi_61 (F1), SiSi_57 (F1), SimranZ1_59 (F1), Slim_60 (F1), Soul22_65 (F2), Spartacus_61 (F1), Spikelee_66 (F1), Spoonbill_56 (F1), Stap_57 (F1), Starcevich_59 (F1), Strokeseat_55 (F1), SwagPigglett_64 (F1), ThetaBob_64 (F4), Tootsieroll_60 (F1), Totinger_58 (F1), UncleRicky_58 (F1), VRedHorse_59 (F1), Veteran_56 (F1), Violac_62 (F1), Vivum_62 (F1), Wee_63 (F1), Whouxphf_56 (F1), WillSterrel_60 (F1), Yorick_58 (F1), Yoshi_72 (F2), Zapner_72 (F2), Zerg_59 (F1), Zizzle_63 (F1),

Start 36:

- Found in 2 of 529 (0.4%) of genes in pham
- Manual Annotations of this start: 1 of 472
- Called 50.0% of time when present
- Phage (with cluster) where this start called: Chymera_48 (singleton),

Start 37:

- Found in 4 of 529 (0.8%) of genes in pham

- Manual Annotations of this start: 4 of 472
- Called 100.0% of time when present
- Phage (with cluster) where this start called: Mazun_7 (EK2), Pharky_7 (EK2), Phedro_7 (EK2), Phracted_7 (EK2),

Start 38:

- Found in 1 of 529 (0.2%) of genes in pham
- Manual Annotations of this start: 1 of 472
- Called 100.0% of time when present
- Phage (with cluster) where this start called: Squiddly_71 (DN2),

Start 39:

- Found in 16 of 529 (3.0%) of genes in pham
- Manual Annotations of this start: 13 of 472
- Called 93.8% of time when present
- Phage (with cluster) where this start called: Charlie_44 (N), Hurricane_53 (K3), Journey_43 (N), Keshu_55 (K3), Lea83_54 (K3), MacnCheese_55 (K3), Pharb_50 (K3), Pixie_52 (K3), Sbash_53 (I2), Sejanus_58 (AD), ShedlockHolmes_54 (K3), Shweta_42 (N), Stuck_58 (I2), TBond007_51 (K3), TribbleTrouble_50 (K3),

Start 40:

- Found in 3 of 529 (0.6%) of genes in pham
- Manual Annotations of this start: 1 of 472
- Called 33.3% of time when present
- Phage (with cluster) where this start called: Footloose_55 (singleton),

Start 41:

- Found in 6 of 529 (1.1%) of genes in pham
- Manual Annotations of this start: 1 of 472
- Called 16.7% of time when present
- Phage (with cluster) where this start called: TChen_60 (F4),

Start 42:

- Found in 8 of 529 (1.5%) of genes in pham
- Manual Annotations of this start: 7 of 472
- Called 87.5% of time when present
- Phage (with cluster) where this start called: Bernal13_41 (T), Constella_113 (J), Ibrahim_41 (T), Mendokysei_39 (T), Nairb_40 (T), RonRayGun_41 (T), ZenTime222_40 (T),

Start 45:

- Found in 110 of 529 (20.8%) of genes in pham
- Manual Annotations of this start: 96 of 472
- Called 98.2% of time when present
- Phage (with cluster) where this start called: ActinUp_50 (K1), Adephegia_50 (K1), Adonis_50 (K1), Ageofdapage_52 (K1), AlishaPH_50 (K1), Amelie_46 (K1), Anaya_52 (K1), Angelica_50 (K1), Apocalypse_53 (K1), Asayake_50 (K1), Atiba_51 (K1), BEEST_50 (K1), BGlluviae_50 (K1), BaghaKamala_49 (K1), BarrelRoll_50 (K1), Beezoo_52 (K1), Bella96_51 (K1), Belladonna_50 (K1), Bern_51 (K1), Biglebops_46 (K1), Blizzard_50 (K1), Boiii_50 (K1), CREW_50 (K1), CallaLilly_52 (K1), Capricorn_50 (K1), CaseJules_52 (K1), Chavito_54 (K1), CheetoDust_49 (K1), Clipper_54 (K1), CrimD_50 (K1), Curiosium_52 (K1), Dalmuri_50 (K1), Dartin_53 (K1), Deby_50 (K1), Devera_55 (K1), Dole_53 (K1), DrHayes_51 (K1), Durfee_50

(K1), Efra2_53 (K1), Emerson_51 (K1), Enkosi_48 (K1), Ganymede_51 (K1), Geraldini_53 (K1), HedwigODU_50 (K1), Homura_50 (K1), Hyperbowlee_50 (K1), Illumine_53 (K1), Inky_50 (K1), JAWS_50 (K1), Jarvi_50 (K1), Jayhawk_51 (K1), Jeckyll_50 (K1), Joy99_50 (K1), LaterM_51 (K1), LilPharaoh_46 (K1), LindNT_49 (K1), Llorens_50 (K1), Lunahalos_50 (K1), MacKat_45 (K1), Marshawn_53 (K6), McMater_53 (K1), Mdavu_47 (K1), MeaningOfLife_51 (K1), Megsy_52 (K1), Murucutumbu_51 (K1), Mynx_51 (K1), Nergal_48 (AG), Nikao_49 (K1), Niklas_53 (K1), Nutello_46 (K1), Padfoot_50 (K1), Padpat_52 (K1), Peanam_53 (K1), Peel_50 (K1), Piatt_50 (K1), Pokerus_49 (K1), Prithvi_51 (K1), QuincyRose_49 (K1), Ramen_51 (K1), Rapunzel97_51 (K1), Richo_53 (K1), Rosmarinus_50 (K1), SamuelLPlaqson_51 (K1), SgtBeansprout_46 (K1), Shaobing_53 (K1), ShiaSurprise_51 (K1), Slimphazie_50 (K1), Spock_50 (K1), Stinson_51 (K1), Sulley_50 (K1), Tachez_50 (K1), TaiwanKao_52 (K1), Teejan_48 (K1), TingHuaYa_51 (K1), TiniBug_51 (K1), Tiri_51 (K1), Topper_50 (K1), Torres_48 (K1), TreyKay_51 (K1), TruffulaTree_50 (K1), Twitch_50 (K1), Urkel_51 (K1), Validus_55 (K1), Veliki_51 (K1), YoureAdopted_49 (K1), Yunkel11_53 (K1), Zabiza_45 (K1), Zavala_52 (K1),

Start 47:

- Found in 20 of 529 (3.8%) of genes in pham
- Manual Annotations of this start: 18 of 472
- Called 90.0% of time when present
- Phage (with cluster) where this start called: Bryler_54 (K6), Cain_54 (K6), Chris_53 (K1), Krueger_57 (K6), MarkPhew_54 (K1), Nibb_53 (K1), Oscar_55 (K1), PhelpsODU_53 (K6), Phrank_54 (K6), Scarlett_55 (K1), Shadow1_56 (K6), SirPhilip_53 (K6), Sunflower1121_57 (K6), Syra333_56 (K6), Tierra_54 (K6), Unicorn_53 (K6), Ximenita_57 (K6), Yuna_57 (K6),

Start 49:

- Found in 10 of 529 (1.9%) of genes in pham
- Manual Annotations of this start: 8 of 472
- Called 100.0% of time when present
- Phage (with cluster) where this start called: Amgine_51 (K6), Amohnition_53 (K6), Applecrisp_53 (K6), DarthP_53 (K6), Ekdilam_50 (K6), Ellie_49 (K6), Fefferhead_51 (K6), Hammy_53 (K6), November_53 (K6), TClif_54 (K6),

Start 51:

- Found in 16 of 529 (3.0%) of genes in pham
- Manual Annotations of this start: 4 of 472
- Called 25.0% of time when present
- Phage (with cluster) where this start called: Guanica15_53 (K1), KiSi_55 (K1), LastHope_53 (K1), LeMond_55 (K1),

Start 54:

- Found in 14 of 529 (2.6%) of genes in pham
- Manual Annotations of this start: 6 of 472
- Called 64.3% of time when present
- Phage (with cluster) where this start called: BoostSeason_54 (K2), DismalFunk_54 (K2), DismalStressor_54 (K2), Doughnut_55 (K2), Findley_54 (K2), Marcoliusprime_54 (K2), Milly_54 (K2), Nette_42 (T), VWB_44 (BA),

Start 55:

- Found in 115 of 529 (21.7%) of genes in pham

- Manual Annotations of this start: 5 of 472
- Called 5.2% of time when present
- Phage (with cluster) where this start called: Austintatious_37 (BC3), Bioscum_41 (BC3), Ididsumtinwong_41 (BC3), Keelan_94 (DP), Lishka_37 (BC3), PapayaSalad_40 (BC3),

Start 58:

- Found in 11 of 529 (2.1%) of genes in pham
- Manual Annotations of this start: 4 of 472
- Called 36.4% of time when present
- Phage (with cluster) where this start called: Mufasa_54 (K2), Strobilo_54 (K2), TM4_49 (K2), ZoeJ_53 (K2),

Start 59:

- Found in 23 of 529 (4.3%) of genes in pham
- Manual Annotations of this start: 12 of 472
- Called 52.2% of time when present
- Phage (with cluster) where this start called: Clautastrophe_77 (L3), DuncansLeg_79 (L3), Finnry_79 (L3), Jobypre_79 (L3), Jubie_78 (L3), Kingsolomon_77 (L3), Krypton555_80 (L3), MiniLon_83 (L3), MsGreen_79 (L3), Nicholas_77 (L3), Snenia_78 (L3), Whirlwind_80 (L3),

Start 60:

- Found in 2 of 529 (0.4%) of genes in pham
- No Manual Annotations of this start.
- Called 50.0% of time when present
- Phage (with cluster) where this start called: E3_gp75 (singleton),

Start 61:

- Found in 142 of 529 (26.8%) of genes in pham
- Manual Annotations of this start: 125 of 472
- Called 95.1% of time when present
- Phage (with cluster) where this start called: 244_94 (E), ABCat_90 (E), Adnama_97 (E), Amao_93 (E), AmericanBeauty_97 (E), Argent26_97 (E), Asriel_91 (E), BaboJay_93 (E), BadStone_90 (E), Balomoji_93 (E), Barbarian_92 (E), Bask21_93 (E), Becksu_92 (E), Bench_96 (E), BigBubba_93 (E), BilboSwaggins_92 (E), Bruin_90 (E), Buck_94 (E), BugsBunny_93 (E), Cactus_96 (E), ChosenOne_93 (E), ChotaBhai_93 (E), Cjw1_94 (E), Command613_95 (E), Contagion_89 (E), Cookies_90 (E), CrystalP_92 (E), Czystczon1_94 (E), Daikon_94 (E), DoctorDiddles_92 (E), DrDrey_93 (E), Dumbo_93 (E), Dusk_90 (E), Easy2Say_94 (E), Elite2014_92 (E), Elph10_94 (E), Emmina_93 (E), Eureka_92 (E), FairyPath_93 (E), Filch_95 (E), FireRed_97 (E), Flypotenuse_89 (E), FoghornLeghorn_87 (E), Gage_95 (E), Gator_91 (E), Gemini_98 (E), Glexan_92 (E), Goku_92 (E), GoldenSpark_97 (E), Goldilocks_96 (E), GooberAzure_96 (E), HanKaySha_94 (E), Harella_93 (E), Henry_91 (E), Highbury_92 (E), Holt_98 (E), Hoonter_96 (E), Hopey_94 (E), HufflyPuff_95 (E), IHOP_91 (E), Icee_94 (E), Inca_90 (E), JeTaimie_94 (E), Kanye_90 (E), Kimchi_97 (E), Kostya_93 (E), Lilac_96 (E), Lilizi_94 (E), Lilpickle_92 (E), MISSy_94 (E), MPhalcon_94 (E), MadamMonkfish_93 (E), Manda_95 (E), Marshmallow_91 (E), Maxxinista_96 (E), Mindy_92 (E), Miniwave_88 (E), Misfit_94 (E), Moldemort_96 (E), Mosby_89 (E), Murica_96 (E), Murphy_93 (E), Myrale_93 (E), Nala_95 (E), NelitzaMV_91 (E), Nimrod_94 (E), NoSleep_94 (E), OrionPax_92 (E), Palpatine_95 (E), Paperbeatsrock_92 (E), Pat3_90 (E), Petra64142_98 (E), Phaja_91 (E), Pharsalus_90 (E), PhatBacter_97 (E), Phaux_96

(E), Phrux_91 (E), Policronamos_96 (E), Porky_92 (E), Pumpkin_97 (E), Quallification_94 (E), Rakim_94 (E), Rimmer_91 (E), RiverMonster_94 (E), Saints25_92 (E), Sassay_88 (E), ShamWow_93 (E), ShereKhan_91 (E), Simpliphy_92 (E), SirDuracell_93 (E), SophKB_90 (E), Sotrice96_94 (E), Stank_95 (E), Stark_95 (E), StellaBean_91 (E), StolenFromERC_96 (E), StormChicken_95 (E), TBrady12_96 (E), Tarkin_92 (E), TeardropMSU_89 (E), Teaspoon_94 (E), Terminus_96 (E), Thimble_96 (E), Thresher_96 (E), Tomaszewski_88 (E), Toto_91 (E), Traaww1_89 (E), Tuco_94 (E), Ukulele_88 (E), Wiggin_95 (E), Willez_88 (E), Xandras_92 (E), YassJohnny_90 (E), Youngblood_96 (E), xkcd_96 (E),

Start 64:

- Found in 23 of 529 (4.3%) of genes in pham
- Manual Annotations of this start: 4 of 472
- Called 47.8% of time when present
- Phage (with cluster) where this start called: Bellis_77 (L3), BourbonZero_80 (L3), Ellson_78 (L3), KirDoubleO7_77 (L3), LiyuLake_78 (L3), Lolly9_78 (L3), MiniMac_83 (L3), Moostard_77 (L3), Red305_80 (L3), Samty_78 (L3), TriFive_79 (L3),

Start 70:

- Found in 7 of 529 (1.3%) of genes in pham
- Manual Annotations of this start: 1 of 472
- Called 14.3% of time when present
- Phage (with cluster) where this start called: SkinnyPete_42 (N),

Summary by clusters:

There are 26 clusters represented in this pham: DO, singleton, BA, K3, K2, K1, K6, DP, I2, DN2, E, AD, AG, F, AH, J, N, L3, F1, F2, F4, F5, F6, T, EK2, BC3,

Info for manual annotations of cluster AD:

- Start number 39 was manually annotated 1 time for cluster AD.

Info for manual annotations of cluster AG:

- Start number 45 was manually annotated 1 time for cluster AG.

Info for manual annotations of cluster AH:

- Start number 18 was manually annotated 1 time for cluster AH.

Info for manual annotations of cluster BC3:

- Start number 55 was manually annotated 4 times for cluster BC3.

Info for manual annotations of cluster DN2:

- Start number 38 was manually annotated 1 time for cluster DN2.

Info for manual annotations of cluster DO:

- Start number 24 was manually annotated 1 time for cluster DO.
- Start number 30 was manually annotated 3 times for cluster DO.

Info for manual annotations of cluster DP:

- Start number 55 was manually annotated 1 time for cluster DP.

Info for manual annotations of cluster E:

- Start number 61 was manually annotated 125 times for cluster E.

Info for manual annotations of cluster EK2:

- Start number 37 was manually annotated 4 times for cluster EK2.

Info for manual annotations of cluster F1:

- Start number 33 was manually annotated 146 times for cluster F1.

Info for manual annotations of cluster F2:

- Start number 33 was manually annotated 6 times for cluster F2.

Info for manual annotations of cluster F4:

- Start number 33 was manually annotated 3 times for cluster F4.
- Start number 41 was manually annotated 1 time for cluster F4.

Info for manual annotations of cluster F5:

- Start number 33 was manually annotated 1 time for cluster F5.

Info for manual annotations of cluster I2:

- Start number 39 was manually annotated 1 time for cluster I2.

Info for manual annotations of cluster J:

- Start number 42 was manually annotated 1 time for cluster J.

Info for manual annotations of cluster K1:

- Start number 45 was manually annotated 94 times for cluster K1.
- Start number 47 was manually annotated 5 times for cluster K1.
- Start number 51 was manually annotated 4 times for cluster K1.

Info for manual annotations of cluster K2:

- Start number 54 was manually annotated 6 times for cluster K2.
- Start number 58 was manually annotated 4 times for cluster K2.

Info for manual annotations of cluster K3:

- Start number 39 was manually annotated 8 times for cluster K3.

Info for manual annotations of cluster K6:

- Start number 45 was manually annotated 1 time for cluster K6.
- Start number 47 was manually annotated 13 times for cluster K6.
- Start number 49 was manually annotated 8 times for cluster K6.

Info for manual annotations of cluster L3:

- Start number 59 was manually annotated 12 times for cluster L3.
- Start number 64 was manually annotated 4 times for cluster L3.

Info for manual annotations of cluster N:

- Start number 39 was manually annotated 3 times for cluster N.
- Start number 70 was manually annotated 1 time for cluster N.

Info for manual annotations of cluster T:

- Start number 42 was manually annotated 6 times for cluster T.

Gene Information:

Gene: 244_94 Start: 56440, Stop: 56700, Start Num: 61

Candidate Starts for 244_94:

(Start: 61 @56440 has 125 MA's), (68, 56461), (81, 56536), (94, 56605), (104, 56671),

Gene: ABCat_90 Start: 57128, Stop: 57388, Start Num: 61

Candidate Starts for ABCat_90:

(Start: 61 @57128 has 125 MA's), (68, 57149), (81, 57224), (94, 57293), (104, 57359),

Gene: ActinUp_50 Start: 37356, Stop: 37619, Start Num: 45

Candidate Starts for ActinUp_50:

(Start: 45 @37356 has 96 MA's), (87, 37497),

Gene: Adephagia_50 Start: 37353, Stop: 37616, Start Num: 45

Candidate Starts for Adephagia_50:

(Start: 45 @37353 has 96 MA's), (87, 37494),

Gene: Adnama_97 Start: 56736, Stop: 56996, Start Num: 61

Candidate Starts for Adnama_97:

(Start: 61 @56736 has 125 MA's), (68, 56757), (81, 56832), (94, 56901), (104, 56967),

Gene: Adonis_50 Start: 37651, Stop: 37914, Start Num: 45

Candidate Starts for Adonis_50:

(Start: 45 @37651 has 96 MA's), (87, 37792),

Gene: Ageofdapage_52 Start: 38336, Stop: 38599, Start Num: 45

Candidate Starts for Ageofdapage_52:

(12, 38084), (Start: 45 @38336 has 96 MA's), (69, 38390), (87, 38477),

Gene: Alexphander_63 Start: 40422, Stop: 40706, Start Num: 33

Candidate Starts for Alexphander_63:

(27, 40395), (Start: 33 @40422 has 156 MA's), (46, 40446), (Start: 55 @40461 has 5 MA's), (72, 40506), (76, 40518), (90, 40596), (93, 40608), (97, 40632), (99, 40644), (112, 40698),

Gene: AlishaPH_50 Start: 37626, Stop: 37889, Start Num: 45

Candidate Starts for AlishaPH_50:

(Start: 45 @37626 has 96 MA's), (87, 37767),

Gene: AlpineSix_64 Start: 42541, Stop: 42819, Start Num: 33

Candidate Starts for AlpineSix_64:

(27, 42514), (Start: 33 @42541 has 156 MA's), (74, 42625), (77, 42634), (87, 42697), (90, 42712), (93, 42724), (97, 42748), (99, 42760), (112, 42811),

Gene: Amao_93 Start: 56248, Stop: 56508, Start Num: 61

Candidate Starts for Amao_93:

(Start: 61 @56248 has 125 MA's), (68, 56269), (81, 56344), (94, 56413), (104, 56479),

Gene: Amelie_46 Start: 37040, Stop: 37309, Start Num: 45

Candidate Starts for Amelie_46:

(Start: 45 @37040 has 96 MA's), (80, 37136), (91, 37196), (92, 37202), (93, 37205), (97, 37232), (99, 37244), (110, 37298),

Gene: AmericanBeauty_97 Start: 57297, Stop: 57557, Start Num: 61

Candidate Starts for AmericanBeauty_97:

(Start: 61 @57297 has 125 MA's), (68, 57318), (81, 57393), (94, 57462), (104, 57528),

Gene: Amgine_51 Start: 38553, Stop: 38807, Start Num: 49

Candidate Starts for Amgine_51:

(15, 38403), (Start: 49 @38553 has 8 MA's), (76, 38619), (95, 38727),

Gene: Amohndition_53 Start: 38560, Stop: 38814, Start Num: 49

Candidate Starts for Amohndition_53:

(7, 38242), (12, 38311), (15, 38407), (Start: 49 @38560 has 8 MA's), (76, 38626), (87, 38689), (95, 38734),

Gene: Anaya_52 Start: 37953, Stop: 38216, Start Num: 45

Candidate Starts for Anaya_52:

(Start: 45 @37953 has 96 MA's), (69, 38007), (87, 38094), (93, 38121),

Gene: Angelica_50 Start: 37583, Stop: 37846, Start Num: 45

Candidate Starts for Angelica_50:

(Start: 45 @37583 has 96 MA's), (87, 37724),

Gene: Apocalypse_53 Start: 38362, Stop: 38625, Start Num: 45

Candidate Starts for Apocalypse_53:

(Start: 45 @38362 has 96 MA's), (87, 38503),

Gene: Applecrisp_53 Start: 38049, Stop: 38303, Start Num: 49

Candidate Starts for Applecrisp_53:

(15, 37899), (Start: 49 @38049 has 8 MA's), (76, 38115), (95, 38223), (102, 38268),

Gene: Argent26_97 Start: 56657, Stop: 56917, Start Num: 61

Candidate Starts for Argent26_97:

(Start: 61 @56657 has 125 MA's), (68, 56678), (81, 56753), (94, 56822), (104, 56888),

Gene: Asayake_50 Start: 37668, Stop: 37931, Start Num: 45

Candidate Starts for Asayake_50:

(Start: 45 @37668 has 96 MA's), (87, 37809),

Gene: Asriel_91 Start: 55073, Stop: 55333, Start Num: 61

Candidate Starts for Asriel_91:

(Start: 61 @55073 has 125 MA's), (68, 55094), (81, 55169), (94, 55238), (104, 55304),

Gene: Atiba_51 Start: 37316, Stop: 37579, Start Num: 45

Candidate Starts for Atiba_51:

(Start: 45 @37316 has 96 MA's), (87, 37457),

Gene: Austintatious_37 Start: 25254, Stop: 25553, Start Num: 55

Candidate Starts for Austintatious_37:

(10, 24966), (13, 25011), (28, 25185), (Start: 55 @25254 has 5 MA's), (89, 25416),

Gene: Avani_67 Start: 40740, Stop: 41018, Start Num: 33

Candidate Starts for Avani_67:

(27, 40713), (Start: 33 @40740 has 156 MA's), (74, 40824), (77, 40833), (87, 40896), (90, 40911), (93, 40923), (97, 40947), (99, 40959), (112, 41010),

Gene: BEEST_50 Start: 37668, Stop: 37931, Start Num: 45

Candidate Starts for BEEST_50:

(Start: 45 @37668 has 96 MA's), (87, 37809),

Gene: BGlluviae_50 Start: 37471, Stop: 37734, Start Num: 45

Candidate Starts for BGlluviae_50:

(Start: 45 @37471 has 96 MA's), (87, 37612),

Gene: BaboJay_93 Start: 57319, Stop: 57579, Start Num: 61

Candidate Starts for BaboJay_93:

(Start: 61 @57319 has 125 MA's), (68, 57340), (81, 57415), (94, 57484), (104, 57550),

Gene: BadStone_90 Start: 56697, Stop: 56957, Start Num: 61

Candidate Starts for BadStone_90:

(Start: 61 @56697 has 125 MA's), (68, 56718), (81, 56793), (94, 56862), (104, 56928),

Gene: BaghaKamala_49 Start: 36791, Stop: 37054, Start Num: 45

Candidate Starts for BaghaKamala_49:

(Start: 45 @36791 has 96 MA's), (87, 36932),

Gene: Balomoji_93 Start: 56855, Stop: 57115, Start Num: 61

Candidate Starts for Balomoji_93:

(Start: 18 @56717 has 1 MA's), (Start: 61 @56855 has 125 MA's), (68, 56876), (94, 57020), (104, 57086),

Gene: Barbarian_92 Start: 55073, Stop: 55333, Start Num: 61

Candidate Starts for Barbarian_92:

(Start: 61 @55073 has 125 MA's), (68, 55094), (81, 55169), (94, 55238), (104, 55304),

Gene: BarrelRoll_50 Start: 37339, Stop: 37602, Start Num: 45

Candidate Starts for BarrelRoll_50:

(Start: 45 @37339 has 96 MA's), (87, 37480),

Gene: Bask21_93 Start: 55708, Stop: 55968, Start Num: 61

Candidate Starts for Bask21_93:

(Start: 18 @55570 has 1 MA's), (Start: 61 @55708 has 125 MA's), (68, 55729), (94, 55873), (104, 55939),

Gene: Becksu_92 Start: 57049, Stop: 57309, Start Num: 61

Candidate Starts for Becksu_92:

(Start: 61 @57049 has 125 MA's), (68, 57070), (81, 57145), (94, 57214), (104, 57280),

Gene: Beezoo_52 Start: 38314, Stop: 38577, Start Num: 45

Candidate Starts for Beezoo_52:

(Start: 45 @38314 has 96 MA's), (87, 38455),

Gene: Bella96_51 Start: 38180, Stop: 38443, Start Num: 45

Candidate Starts for Bella96_51:

(12, 37928), (Start: 45 @38180 has 96 MA's), (69, 38234), (82, 38303), (87, 38321),

Gene: Belladonna_50 Start: 37471, Stop: 37734, Start Num: 45
Candidate Starts for Belladonna_50:
(Start: 45 @37471 has 96 MA's), (87, 37612),

Gene: Bellis_77 Start: 53811, Stop: 54065, Start Num: 64
Candidate Starts for Bellis_77:
(Start: 59 @53796 has 12 MA's), (Start: 64 @53811 has 4 MA's), (89, 53946), (97, 53988), (101, 54024), (108, 54048),

Gene: Bench_96 Start: 56792, Stop: 57052, Start Num: 61
Candidate Starts for Bench_96:
(Start: 61 @56792 has 125 MA's), (68, 56813), (81, 56888), (94, 56957), (104, 57023),

Gene: Bern_51 Start: 36386, Stop: 36649, Start Num: 45
Candidate Starts for Bern_51:
(Start: 45 @36386 has 96 MA's), (87, 36527),

Gene: Bernal13_41 Start: 31446, Stop: 31703, Start Num: 42
Candidate Starts for Bernal13_41:
(9, 31170), (11, 31191), (Start: 42 @31446 has 7 MA's), (76, 31530), (93, 31620),

Gene: BigBubba_93 Start: 56089, Stop: 56349, Start Num: 61
Candidate Starts for BigBubba_93:
(Start: 61 @56089 has 125 MA's), (68, 56110), (81, 56185), (94, 56254), (104, 56320),

Gene: Binglebops_46 Start: 37040, Stop: 37309, Start Num: 45
Candidate Starts for Binglebops_46:
(Start: 45 @37040 has 96 MA's), (80, 37136), (91, 37196), (92, 37202), (93, 37205), (97, 37232), (99, 37244), (110, 37298),

Gene: BilboSwaggins_92 Start: 57094, Stop: 57354, Start Num: 61
Candidate Starts for BilboSwaggins_92:
(Start: 61 @57094 has 125 MA's), (68, 57115), (81, 57190), (94, 57259), (104, 57325),

Gene: Bioscum_41 Start: 27555, Stop: 27854, Start Num: 55
Candidate Starts for Bioscum_41:
(10, 27267), (13, 27312), (28, 27486), (Start: 55 @27555 has 5 MA's), (89, 27717),

Gene: Blarby_71 Start: 41835, Stop: 42119, Start Num: 33
Candidate Starts for Blarby_71:
(27, 41808), (Start: 33 @41835 has 156 MA's), (46, 41859), (Start: 55 @41874 has 5 MA's), (72, 41919), (76, 41931), (90, 42009), (93, 42021), (97, 42045), (99, 42057), (112, 42111),

Gene: Blexus_57 Start: 40392, Stop: 40673, Start Num: 33
Candidate Starts for Blexus_57:
(27, 40365), (Start: 33 @40392 has 156 MA's), (46, 40416), (Start: 55 @40431 has 5 MA's), (72, 40476), (76, 40488), (90, 40566), (93, 40578), (97, 40602), (99, 40614), (112, 40665),

Gene: Blizzard_50 Start: 37668, Stop: 37931, Start Num: 45
Candidate Starts for Blizzard_50:
(Start: 45 @37668 has 96 MA's), (87, 37809),

Gene: BlueCrab_59 Start: 40700, Stop: 40978, Start Num: 33

Candidate Starts for BlueCrab_59:

(27, 40673), (Start: 33 @40700 has 156 MA's), (46, 40724), (53, 40736), (72, 40781), (76, 40793), (93, 40883), (97, 40907), (99, 40919), (112, 40970),

Gene: BobaPhett_63 Start: 42651, Stop: 42935, Start Num: 33

Candidate Starts for BobaPhett_63:

(27, 42624), (Start: 33 @42651 has 156 MA's), (46, 42675), (Start: 55 @42690 has 5 MA's), (72, 42735), (76, 42747), (90, 42825), (93, 42837), (97, 42861), (99, 42873), (112, 42927),

Gene: BodEinwohner17_59 Start: 39462, Stop: 39740, Start Num: 33

Candidate Starts for BodEinwohner17_59:

(27, 39435), (Start: 33 @39462 has 156 MA's), (74, 39546), (77, 39555), (87, 39618), (90, 39633), (93, 39645), (97, 39669), (99, 39681), (112, 39732),

Gene: Boiiii_50 Start: 37670, Stop: 37933, Start Num: 45

Candidate Starts for Boiiii_50:

(Start: 45 @37670 has 96 MA's), (87, 37811),

Gene: Boomer_64 Start: 42326, Stop: 42610, Start Num: 33

Candidate Starts for Boomer_64:

(27, 42299), (Start: 33 @42326 has 156 MA's), (46, 42350), (Start: 55 @42365 has 5 MA's), (72, 42410), (76, 42422), (90, 42500), (93, 42512), (97, 42536), (99, 42548), (112, 42602),

Gene: BoostSeason_54 Start: 39128, Stop: 39364, Start Num: 54

Candidate Starts for BoostSeason_54:

(Start: 54 @39128 has 6 MA's), (Start: 58 @39131 has 4 MA's), (62, 39137), (63, 39143), (82, 39233), (83, 39239), (97, 39302), (109, 39353),

Gene: BourbonZero_80 Start: 53807, Stop: 54094, Start Num: 64

Candidate Starts for BourbonZero_80:

(Start: 59 @53792 has 12 MA's), (Start: 64 @53807 has 4 MA's), (89, 53945),

Gene: Brocalys_54 Start: 36836, Stop: 37117, Start Num: 33

Candidate Starts for Brocalys_54:

(27, 36809), (Start: 33 @36836 has 156 MA's), (46, 36860), (Start: 55 @36875 has 5 MA's), (72, 36920), (76, 36932), (90, 37010), (93, 37022), (97, 37046), (99, 37058), (112, 37109),

Gene: Bruin_90 Start: 55671, Stop: 55931, Start Num: 61

Candidate Starts for Bruin_90:

(Start: 61 @55671 has 125 MA's), (68, 55692), (81, 55767), (94, 55836), (104, 55902),

Gene: Bryler_54 Start: 37154, Stop: 37411, Start Num: 47

Candidate Starts for Bryler_54:

(Start: 47 @37154 has 18 MA's), (Start: 61 @37175 has 125 MA's), (76, 37229), (87, 37292), (88, 37301), (102, 37379),

Gene: Buck_94 Start: 57360, Stop: 57620, Start Num: 61

Candidate Starts for Buck_94:

(Start: 18 @57222 has 1 MA's), (Start: 61 @57360 has 125 MA's), (68, 57381), (94, 57525), (104, 57591),

Gene: BugsBunny_93 Start: 57200, Stop: 57460, Start Num: 61

Candidate Starts for BugsBunny_93:

(Start: 61 @57200 has 125 MA's), (68, 57221), (81, 57296), (94, 57365), (104, 57431),

Gene: Burwell21_57 Start: 39934, Stop: 40218, Start Num: 33

Candidate Starts for Burwell21_57:

(27, 39907), (Start: 33 @39934 has 156 MA's), (46, 39958), (Start: 55 @39973 has 5 MA's), (72, 40018), (76, 40030), (90, 40108), (93, 40120), (97, 40144), (99, 40156), (112, 40210),

Gene: BuzzLyseyear_65 Start: 41358, Stop: 41639, Start Num: 33

Candidate Starts for BuzzLyseyear_65:

(27, 41331), (Start: 33 @41358 has 156 MA's), (46, 41382), (Start: 55 @41397 has 5 MA's), (72, 41442), (76, 41454), (90, 41532), (93, 41544), (97, 41568), (99, 41580), (112, 41631),

Gene: ByChance_51 Start: 35625, Stop: 35906, Start Num: 33

Candidate Starts for ByChance_51:

(27, 35598), (Start: 33 @35625 has 156 MA's), (46, 35649), (53, 35661), (72, 35706), (76, 35718), (90, 35796), (93, 35808), (97, 35832), (99, 35844), (112, 35898),

Gene: Byougenkin_57 Start: 39701, Stop: 39982, Start Num: 33

Candidate Starts for Byougenkin_57:

(27, 39674), (Start: 33 @39701 has 156 MA's), (46, 39725), (Start: 55 @39740 has 5 MA's), (72, 39785), (76, 39797), (90, 39875), (93, 39887), (97, 39911), (99, 39923), (112, 39974),

Gene: CREW_50 Start: 37471, Stop: 37734, Start Num: 45

Candidate Starts for CREW_50:

(Start: 45 @37471 has 96 MA's), (87, 37612),

Gene: Cabrinians_60 Start: 40012, Stop: 40296, Start Num: 33

Candidate Starts for Cabrinians_60:

(27, 39985), (Start: 33 @40012 has 156 MA's), (46, 40036), (Start: 55 @40051 has 5 MA's), (72, 40096), (76, 40108), (90, 40186), (93, 40198), (97, 40222), (99, 40234), (112, 40288),

Gene: Cactus_96 Start: 55737, Stop: 55997, Start Num: 61

Candidate Starts for Cactus_96:

(Start: 61 @55737 has 125 MA's), (68, 55758), (81, 55833), (94, 55902), (104, 55968),

Gene: Cain_54 Start: 37142, Stop: 37399, Start Num: 47

Candidate Starts for Cain_54:

(Start: 47 @37142 has 18 MA's), (Start: 61 @37163 has 125 MA's), (76, 37217), (87, 37280), (88, 37289), (102, 37367),

Gene: CallaLilly_52 Start: 37394, Stop: 37657, Start Num: 45

Candidate Starts for CallaLilly_52:

(Start: 45 @37394 has 96 MA's), (87, 37535),

Gene: Capricorn_50 Start: 37471, Stop: 37734, Start Num: 45

Candidate Starts for Capricorn_50:

(Start: 45 @37471 has 96 MA's), (87, 37612),

Gene: CaptainTrips_56 Start: 39508, Stop: 39792, Start Num: 33

Candidate Starts for CaptainTrips_56:

(Start: 33 @39508 has 156 MA's), (46, 39532), (Start: 55 @39547 has 5 MA's), (72, 39592), (76, 39604), (90, 39682), (93, 39694), (97, 39718), (99, 39730), (112, 39784),

Gene: CaseJules_52 Start: 37668, Stop: 37931, Start Num: 45

Candidate Starts for CaseJules_52:

(Start: 45 @37668 has 96 MA's), (87, 37809),

Gene: Charlie_44 Start: 30217, Stop: 30516, Start Num: 39

Candidate Starts for Charlie_44:

(Start: 39 @30217 has 13 MA's), (50, 30235), (66, 30271), (Start: 70 @30286 has 1 MA's), (87, 30382), (97, 30433), (100, 30469), (109, 30502), (112, 30508),

Gene: Chavito_54 Start: 38944, Stop: 39207, Start Num: 45

Candidate Starts for Chavito_54:

(4, 38536), (7, 38620), (12, 38689), (Start: 45 @38944 has 96 MA's), (81, 39046), (82, 39064), (87, 39082), (97, 39136), (102, 39172), (110, 39196),

Gene: CheesePuff_68 Start: 41977, Stop: 42255, Start Num: 33

Candidate Starts for CheesePuff_68:

(25, 41941), (Start: 33 @41977 has 156 MA's), (46, 42001), (72, 42058), (76, 42070), (90, 42148), (93, 42160), (97, 42184), (99, 42196), (112, 42247),

Gene: CheetoDust_49 Start: 36840, Stop: 37103, Start Num: 45

Candidate Starts for CheetoDust_49:

(Start: 45 @36840 has 96 MA's), (87, 36981),

Gene: CherryTomatoes_55 Start: 18497, Stop: 18778, Start Num: 30

Candidate Starts for CherryTomatoes_55:

(Start: 30 @18497 has 3 MA's), (43, 18533), (76, 18608),

Gene: ChosenOne_93 Start: 56152, Stop: 56412, Start Num: 61

Candidate Starts for ChosenOne_93:

(Start: 61 @56152 has 125 MA's), (68, 56173), (81, 56248), (94, 56317), (104, 56383),

Gene: ChotaBhai_93 Start: 56073, Stop: 56333, Start Num: 61

Candidate Starts for ChotaBhai_93:

(Start: 18 @55935 has 1 MA's), (Start: 61 @56073 has 125 MA's), (68, 56094), (94, 56238), (104, 56304),

Gene: Chris_53 Start: 38292, Stop: 38561, Start Num: 47

Candidate Starts for Chris_53:

(Start: 47 @38292 has 18 MA's), (95, 38466), (113, 38547), (114, 38550),

Gene: Chuckly_62 Start: 40654, Stop: 40938, Start Num: 33

Candidate Starts for Chuckly_62:

(27, 40627), (Start: 33 @40654 has 156 MA's), (46, 40678), (Start: 55 @40693 has 5 MA's), (72, 40738), (76, 40750), (90, 40828), (93, 40840), (97, 40864), (99, 40876), (112, 40930),

Gene: Chymera_48 Start: 30948, Stop: 31208, Start Num: 36

Candidate Starts for Chymera_48:

(Start: 36 @30948 has 1 MA's), (Start: 40 @30954 has 1 MA's), (44, 30960), (97, 31149),

Gene: Cjw1_94 Start: 58116, Stop: 58376, Start Num: 61

Candidate Starts for Cjw1_94:

(Start: 61 @58116 has 125 MA's), (68, 58137), (81, 58212), (94, 58281), (104, 58347),

Gene: Clautastrophe_77 Start: 53794, Stop: 54063, Start Num: 59
Candidate Starts for Clautastrophe_77:
(Start: 59 @53794 has 12 MA's), (Start: 64 @53809 has 4 MA's), (89, 53944), (97, 53986), (101, 54022), (108, 54046),

Gene: Clifton_54 Start: 37187, Stop: 37468, Start Num: 33
Candidate Starts for Clifton_54:
(27, 37160), (Start: 33 @37187 has 156 MA's), (46, 37211), (Start: 55 @37226 has 5 MA's), (72, 37271), (76, 37283), (90, 37361), (93, 37373), (97, 37397), (99, 37409), (112, 37460),

Gene: Clipper_54 Start: 37987, Stop: 38250, Start Num: 45
Candidate Starts for Clipper_54:
(Start: 45 @37987 has 96 MA's), (87, 38128),

Gene: Command613_95 Start: 57191, Stop: 57451, Start Num: 61
Candidate Starts for Command613_95:
(Start: 61 @57191 has 125 MA's), (68, 57212), (81, 57287), (94, 57356), (104, 57422),

Gene: Constella_113 Start: 65296, Stop: 65556, Start Num: 42
Candidate Starts for Constella_113:
(Start: 36 @65287 has 1 MA's), (Start: 40 @65293 has 1 MA's), (Start: 42 @65296 has 7 MA's), (57, 65320), (87, 65452), (93, 65479), (96, 65494), (97, 65500),

Gene: Contagion_89 Start: 55952, Stop: 56212, Start Num: 61
Candidate Starts for Contagion_89:
(Start: 61 @55952 has 125 MA's), (68, 55973), (81, 56048), (94, 56117), (104, 56183),

Gene: Cookies_90 Start: 55930, Stop: 56190, Start Num: 61
Candidate Starts for Cookies_90:
(Start: 18 @55792 has 1 MA's), (Start: 61 @55930 has 125 MA's), (68, 55951), (94, 56095), (104, 56161),

Gene: Corium_56 Start: 39051, Stop: 39335, Start Num: 33
Candidate Starts for Corium_56:
(27, 39024), (Start: 33 @39051 has 156 MA's), (46, 39075), (Start: 55 @39090 has 5 MA's), (72, 39135), (90, 39225), (93, 39237), (97, 39261), (99, 39273), (112, 39327),

Gene: Cornie_55 Start: 38439, Stop: 38717, Start Num: 33
Candidate Starts for Cornie_55:
(25, 38403), (Start: 33 @38439 has 156 MA's), (46, 38463), (72, 38520), (76, 38532), (90, 38610), (93, 38622), (97, 38646), (99, 38658), (112, 38709),

Gene: Cornucopia_61 Start: 40668, Stop: 40946, Start Num: 33
Candidate Starts for Cornucopia_61:
(27, 40641), (Start: 33 @40668 has 156 MA's), (74, 40752), (77, 40761), (87, 40824), (90, 40839), (93, 40851), (97, 40875), (99, 40887), (112, 40938),

Gene: CrimD_50 Start: 37577, Stop: 37840, Start Num: 45
Candidate Starts for CrimD_50:
(Start: 45 @37577 has 96 MA's), (69, 37631), (87, 37718),

Gene: Crumble_54 Start: 35948, Stop: 36232, Start Num: 33

Candidate Starts for Crumble_54:

(27, 35921), (Start: 33 @35948 has 156 MA's), (46, 35972), (Start: 55 @35987 has 5 MA's), (72, 36032), (76, 36044), (90, 36122), (93, 36134), (97, 36158), (99, 36170), (112, 36224),

Gene: CrystalP_92 Start: 57094, Stop: 57354, Start Num: 61

Candidate Starts for CrystalP_92:

(Start: 61 @57094 has 125 MA's), (68, 57115), (81, 57190), (94, 57259), (104, 57325),

Gene: Curiosium_52 Start: 36255, Stop: 36521, Start Num: 45

Candidate Starts for Curiosium_52:

(Start: 45 @36255 has 96 MA's), (Start: 51 @36267 has 4 MA's), (69, 36312), (87, 36399), (102, 36489),

Gene: Czyszczone1_94 Start: 56655, Stop: 56915, Start Num: 61

Candidate Starts for Czyszczone1_94:

(Start: 61 @56655 has 125 MA's), (68, 56676), (81, 56751), (94, 56820), (104, 56886),

Gene: DRBy19_62 Start: 41112, Stop: 41393, Start Num: 33

Candidate Starts for DRBy19_62:

(27, 41085), (Start: 33 @41112 has 156 MA's), (74, 41196), (77, 41205), (87, 41268), (90, 41283), (93, 41295), (97, 41319), (99, 41331), (112, 41385),

Gene: DaWorst_60 Start: 40413, Stop: 40697, Start Num: 33

Candidate Starts for DaWorst_60:

(27, 40386), (Start: 33 @40413 has 156 MA's), (46, 40437), (Start: 55 @40452 has 5 MA's), (72, 40497), (90, 40587), (93, 40599), (97, 40623), (99, 40635), (112, 40689),

Gene: DaddyRickover_58 Start: 40151, Stop: 40435, Start Num: 33

Candidate Starts for DaddyRickover_58:

(27, 40124), (Start: 33 @40151 has 156 MA's), (46, 40175), (Start: 55 @40190 has 5 MA's), (72, 40235), (76, 40247), (90, 40325), (93, 40337), (97, 40361), (99, 40373), (112, 40427),

Gene: Daenerys_53 Start: 38267, Stop: 38545, Start Num: 33

Candidate Starts for Daenerys_53:

(27, 38240), (Start: 33 @38267 has 156 MA's), (74, 38351), (77, 38360), (87, 38423), (90, 38438), (93, 38450), (97, 38474), (99, 38486), (112, 38537),

Gene: Daikon_94 Start: 56682, Stop: 56942, Start Num: 61

Candidate Starts for Daikon_94:

(Start: 18 @56544 has 1 MA's), (Start: 61 @56682 has 125 MA's), (68, 56703), (94, 56847), (104, 56913),

Gene: Dalmuri_50 Start: 37471, Stop: 37734, Start Num: 45

Candidate Starts for Dalmuri_50:

(Start: 45 @37471 has 96 MA's), (87, 37612),

Gene: Dante_60 Start: 39936, Stop: 40220, Start Num: 33

Candidate Starts for Dante_60:

(27, 39909), (Start: 33 @39936 has 156 MA's), (46, 39960), (Start: 55 @39975 has 5 MA's), (72, 40020), (76, 40032), (90, 40110), (93, 40122), (97, 40146), (99, 40158), (112, 40212),

Gene: DarthP_53 Start: 38444, Stop: 38698, Start Num: 49

Candidate Starts for DarthP_53:

(7, 38126), (12, 38195), (15, 38291), (Start: 49 @38444 has 8 MA's), (76, 38510), (87, 38573), (95, 38618),

Gene: Dartin_53 Start: 38285, Stop: 38548, Start Num: 45

Candidate Starts for Dartin_53:

(3, 37805), (7, 37961), (12, 38030), (Start: 45 @38285 has 96 MA's), (81, 38387), (82, 38405), (87, 38423), (97, 38477), (102, 38513), (110, 38537),

Gene: DeadP_65 Start: 42582, Stop: 42848, Start Num: 33

Candidate Starts for DeadP_65:

(Start: 33 @42582 has 156 MA's), (46, 42606), (Start: 55 @42621 has 5 MA's), (72, 42666), (76, 42678), (90, 42756), (93, 42768), (97, 42792),

Gene: Deby_50 Start: 37599, Stop: 37862, Start Num: 45

Candidate Starts for Deby_50:

(Start: 45 @37599 has 96 MA's), (69, 37653), (87, 37740),

Gene: Demsculpinboyz_70 Start: 39936, Stop: 40217, Start Num: 33

Candidate Starts for Demsculpinboyz_70:

(25, 39900), (Start: 33 @39936 has 156 MA's), (Start: 41 @39951 has 1 MA's), (Start: 55 @39975 has 5 MA's), (72, 40020), (76, 40032), (97, 40146), (99, 40158), (112, 40209),

Gene: Devera_55 Start: 38103, Stop: 38366, Start Num: 45

Candidate Starts for Devera_55:

(12, 37851), (Start: 45 @38103 has 96 MA's), (69, 38157), (87, 38244),

Gene: DillTech15_56 Start: 38601, Stop: 38879, Start Num: 33

Candidate Starts for DillTech15_56:

(27, 38574), (Start: 33 @38601 has 156 MA's), (74, 38685), (77, 38694), (87, 38757), (90, 38772), (93, 38784), (97, 38808), (99, 38820), (112, 38871),

Gene: DirtMcgirt_58 Start: 38676, Stop: 38960, Start Num: 33

Candidate Starts for DirtMcgirt_58:

(27, 38649), (Start: 33 @38676 has 156 MA's), (46, 38700), (Start: 55 @38715 has 5 MA's), (72, 38760), (76, 38772), (90, 38850), (93, 38862), (97, 38886), (99, 38898), (112, 38952),

Gene: DismalFunk_54 Start: 39559, Stop: 39792, Start Num: 54

Candidate Starts for DismalFunk_54:

(Start: 54 @39559 has 6 MA's), (Start: 58 @39562 has 4 MA's), (62, 39568), (63, 39574), (82, 39664), (83, 39670), (97, 39733),

Gene: DismalStressor_54 Start: 39559, Stop: 39792, Start Num: 54

Candidate Starts for DismalStressor_54:

(Start: 54 @39559 has 6 MA's), (Start: 58 @39562 has 4 MA's), (62, 39568), (63, 39574), (82, 39664), (83, 39670), (97, 39733),

Gene: DoctorDiddles_92 Start: 56117, Stop: 56377, Start Num: 61

Candidate Starts for DoctorDiddles_92:

(Start: 18 @55979 has 1 MA's), (Start: 61 @56117 has 125 MA's), (68, 56138), (94, 56282), (104, 56348),

Gene: Dole_53 Start: 38105, Stop: 38368, Start Num: 45

Candidate Starts for Dole_53:

(12, 37853), (Start: 45 @38105 has 96 MA's), (69, 38159), (87, 38246),

Gene: Doomphist_59 Start: 41112, Stop: 41390, Start Num: 33

Candidate Starts for Doomphist_59:

(27, 41085), (Start: 33 @41112 has 156 MA's), (74, 41196), (77, 41205), (87, 41268), (90, 41283), (93, 41295), (97, 41319), (99, 41331), (112, 41382),

Gene: Dorothy_57 Start: 39331, Stop: 39609, Start Num: 33

Candidate Starts for Dorothy_57:

(27, 39304), (Start: 33 @39331 has 156 MA's), (74, 39415), (77, 39424), (87, 39487), (90, 39502), (93, 39514), (97, 39538), (99, 39550), (112, 39601),

Gene: DosHalletts_61 Start: 41467, Stop: 41745, Start Num: 33

Candidate Starts for DosHalletts_61:

(27, 41440), (Start: 33 @41467 has 156 MA's), (74, 41551), (77, 41560), (87, 41623), (90, 41638), (93, 41650), (97, 41674), (99, 41686), (112, 41737),

Gene: Doug_61 Start: 40679, Stop: 40963, Start Num: 33

Candidate Starts for Doug_61:

(27, 40652), (Start: 33 @40679 has 156 MA's), (46, 40703), (Start: 55 @40718 has 5 MA's), (72, 40763), (76, 40775), (90, 40853), (93, 40865), (97, 40889), (99, 40901), (112, 40955),

Gene: Doughnut_55 Start: 39169, Stop: 39405, Start Num: 54

Candidate Starts for Doughnut_55:

(Start: 54 @39169 has 6 MA's), (Start: 58 @39172 has 4 MA's), (62, 39178), (63, 39184), (82, 39274), (83, 39280), (97, 39343), (109, 39394),

Gene: DrDrey_93 Start: 57574, Stop: 57834, Start Num: 61

Candidate Starts for DrDrey_93:

(Start: 61 @57574 has 125 MA's), (68, 57595), (81, 57670), (94, 57739), (104, 57805),

Gene: DrHayes_51 Start: 38242, Stop: 38505, Start Num: 45

Candidate Starts for DrHayes_51:

(12, 37990), (Start: 45 @38242 has 96 MA's), (69, 38296), (82, 38365), (87, 38383),

Gene: Drago_57 Start: 38679, Stop: 38963, Start Num: 33

Candidate Starts for Drago_57:

(27, 38652), (Start: 33 @38679 has 156 MA's), (46, 38703), (Start: 55 @38718 has 5 MA's), (72, 38763), (76, 38775), (90, 38853), (93, 38865), (97, 38889), (99, 38901), (112, 38955),

Gene: Dumbo_93 Start: 56054, Stop: 56314, Start Num: 61

Candidate Starts for Dumbo_93:

(Start: 61 @56054 has 125 MA's), (68, 56075), (81, 56150), (94, 56219), (104, 56285),

Gene: DuncansLeg_79 Start: 53780, Stop: 54082, Start Num: 59

Candidate Starts for DuncansLeg_79:

(Start: 59 @53780 has 12 MA's), (Start: 64 @53795 has 4 MA's), (89, 53933),

Gene: Durfee_50 Start: 37668, Stop: 37931, Start Num: 45

Candidate Starts for Durfee_50:

(Start: 45 @37668 has 96 MA's), (87, 37809),

Gene: Dusk_90 Start: 56357, Stop: 56617, Start Num: 61

Candidate Starts for Dusk_90:

(Start: 61 @56357 has 125 MA's), (68, 56378), (81, 56453), (94, 56522), (104, 56588),

Gene: E3_gp75 Start: 36271, Stop: 36531, Start Num: 60

Candidate Starts for E3_gp75:

(26, 36193), (60, 36271), (73, 36319), (75, 36325), (79, 36346), (85, 36388), (86, 36394), (98, 36454),

Gene: Easy2Say_94 Start: 57556, Stop: 57816, Start Num: 61

Candidate Starts for Easy2Say_94:

(Start: 61 @57556 has 125 MA's), (68, 57577), (81, 57652), (94, 57721), (104, 57787),

Gene: Efra2_53 Start: 37187, Stop: 37450, Start Num: 45

Candidate Starts for Efra2_53:

(Start: 45 @37187 has 96 MA's), (Start: 51 @37199 has 4 MA's), (82, 37310), (87, 37328),

Gene: Eish_63 Start: 40928, Stop: 41212, Start Num: 33

Candidate Starts for Eish_63:

(27, 40901), (Start: 33 @40928 has 156 MA's), (46, 40952), (Start: 55 @40967 has 5 MA's), (72, 41012), (90, 41102), (93, 41114), (97, 41138), (99, 41150), (112, 41204),

Gene: Ekdilam_50 Start: 37991, Stop: 38245, Start Num: 49

Candidate Starts for Ekdilam_50:

(7, 37673), (12, 37742), (15, 37838), (Start: 49 @37991 has 8 MA's), (87, 38120), (95, 38165),

Gene: EleanorGeorge_60 Start: 40795, Stop: 41076, Start Num: 33

Candidate Starts for EleanorGeorge_60:

(27, 40768), (Start: 33 @40795 has 156 MA's), (46, 40819), (Start: 55 @40834 has 5 MA's), (72, 40879), (76, 40891), (90, 40969), (93, 40981), (97, 41005), (99, 41017), (112, 41068),

Gene: Elite2014_92 Start: 56151, Stop: 56411, Start Num: 61

Candidate Starts for Elite2014_92:

(Start: 61 @56151 has 125 MA's), (68, 56172), (81, 56247), (94, 56316), (104, 56382),

Gene: Ellie_49 Start: 37741, Stop: 37995, Start Num: 49

Candidate Starts for Ellie_49:

(15, 37591), (Start: 49 @37741 has 8 MA's), (76, 37807), (95, 37915), (102, 37960),

Gene: Ellson_78 Start: 54110, Stop: 54397, Start Num: 64

Candidate Starts for Ellson_78:

(Start: 59 @54095 has 12 MA's), (Start: 64 @54110 has 4 MA's), (89, 54248),

Gene: Elph10_94 Start: 56144, Stop: 56404, Start Num: 61

Candidate Starts for Elph10_94:

(Start: 61 @56144 has 125 MA's), (68, 56165), (81, 56240), (94, 56309), (104, 56375),

Gene: Emerson_51 Start: 37347, Stop: 37610, Start Num: 45

Candidate Starts for Emerson_51:

(Start: 45 @37347 has 96 MA's), (87, 37488),

Gene: EmiMonkey_57 Start: 41642, Stop: 41926, Start Num: 33

Candidate Starts for EmiMonkey_57:

(27, 41615), (Start: 33 @41642 has 156 MA's), (46, 41666), (Start: 55 @41681 has 5 MA's), (72, 41726), (90, 41816), (93, 41828), (97, 41852), (99, 41864), (112, 41918),

Gene: Emmaloid_60 Start: 40738, Stop: 41022, Start Num: 33

Candidate Starts for Emmaloid_60:

(27, 40711), (Start: 33 @40738 has 156 MA's), (46, 40762), (Start: 55 @40777 has 5 MA's), (72, 40822), (76, 40834), (90, 40912), (93, 40924), (97, 40948), (99, 40960), (112, 41014),

Gene: Emmina_93 Start: 55777, Stop: 56037, Start Num: 61

Candidate Starts for Emmina_93:

(Start: 61 @55777 has 125 MA's), (68, 55798), (81, 55873), (94, 55942), (104, 56008),

Gene: Empress_57 Start: 39681, Stop: 39959, Start Num: 33

Candidate Starts for Empress_57:

(27, 39654), (Start: 33 @39681 has 156 MA's), (74, 39765), (77, 39774), (87, 39837), (90, 39852), (93, 39864), (97, 39888), (99, 39900), (112, 39951),

Gene: Enby_60 Start: 38955, Stop: 39239, Start Num: 33

Candidate Starts for Enby_60:

(Start: 33 @38955 has 156 MA's), (46, 38979), (Start: 55 @38994 has 5 MA's), (72, 39039), (76, 39051), (90, 39129), (93, 39141), (97, 39165), (99, 39177), (112, 39231),

Gene: Enkosi_48 Start: 39653, Stop: 39922, Start Num: 45

Candidate Starts for Enkosi_48:

(Start: 45 @39653 has 96 MA's), (80, 39749), (91, 39809), (92, 39815), (93, 39818), (97, 39845), (99, 39857), (110, 39911),

Gene: Eradicator_52 Start: 38208, Stop: 38489, Start Num: 33

Candidate Starts for Eradicator_52:

(27, 38181), (Start: 33 @38208 has 156 MA's), (46, 38232), (Start: 55 @38247 has 5 MA's), (72, 38292), (76, 38304), (90, 38382), (93, 38394), (97, 38418), (99, 38430), (112, 38481),

Gene: Estave1_62 Start: 41132, Stop: 41410, Start Num: 33

Candidate Starts for Estave1_62:

(27, 41105), (Start: 33 @41132 has 156 MA's), (74, 41216), (77, 41225), (87, 41288), (90, 41303), (93, 41315), (97, 41339), (99, 41351), (112, 41402),

Gene: Eureka_92 Start: 57064, Stop: 57324, Start Num: 61

Candidate Starts for Eureka_92:

(Start: 61 @57064 has 125 MA's), (68, 57085), (81, 57160), (94, 57229), (104, 57295),

Gene: FairyPath_93 Start: 57270, Stop: 57530, Start Num: 61

Candidate Starts for FairyPath_93:

(Start: 61 @57270 has 125 MA's), (68, 57291), (81, 57366), (94, 57435), (104, 57501),

Gene: Fancypants_61 Start: 40646, Stop: 40930, Start Num: 33

Candidate Starts for Fancypants_61:

(27, 40619), (Start: 33 @40646 has 156 MA's), (46, 40670), (Start: 55 @40685 has 5 MA's), (72, 40730), (76, 40742), (90, 40820), (93, 40832), (97, 40856), (99, 40868), (112, 40922),

Gene: Fastidio_59 Start: 38748, Stop: 39026, Start Num: 33

Candidate Starts for Fastidio_59:

(27, 38721), (Start: 33 @38748 has 156 MA's), (74, 38832), (77, 38841), (87, 38904), (90, 38919), (93, 38931), (97, 38955), (99, 38967), (112, 39018),

Gene: Fefferhead_51 Start: 37691, Stop: 37945, Start Num: 49

Candidate Starts for Fefferhead_51:

(15, 37541), (Start: 49 @37691 has 8 MA's), (76, 37757), (95, 37865), (102, 37910),

Gene: Filch_95 Start: 56349, Stop: 56609, Start Num: 61

Candidate Starts for Filch_95:

(Start: 61 @56349 has 125 MA's), (68, 56370), (81, 56445), (94, 56514), (104, 56580),

Gene: Findley_54 Start: 39552, Stop: 39785, Start Num: 54

Candidate Starts for Findley_54:

(Start: 54 @39552 has 6 MA's), (Start: 58 @39555 has 4 MA's), (62, 39561), (63, 39567), (82, 39657), (83, 39663), (97, 39726),

Gene: Finnry_79 Start: 54045, Stop: 54314, Start Num: 59

Candidate Starts for Finnry_79:

(Start: 59 @54045 has 12 MA's), (Start: 64 @54060 has 4 MA's), (89, 54195), (97, 54237), (101, 54273), (108, 54297),

Gene: FireRed_97 Start: 57367, Stop: 57627, Start Num: 61

Candidate Starts for FireRed_97:

(Start: 61 @57367 has 125 MA's), (68, 57388), (81, 57463), (94, 57532), (104, 57598),

Gene: Firehouse51_60 Start: 43530, Stop: 43814, Start Num: 33

Candidate Starts for Firehouse51_60:

(27, 43503), (Start: 33 @43530 has 156 MA's), (46, 43554), (Start: 55 @43569 has 5 MA's), (72, 43614), (76, 43626), (90, 43704), (93, 43716), (97, 43740), (99, 43752), (112, 43806),

Gene: Flypotenuse_89 Start: 55727, Stop: 55987, Start Num: 61

Candidate Starts for Flypotenuse_89:

(Start: 61 @55727 has 125 MA's), (68, 55748), (81, 55823), (94, 55892), (104, 55958),

Gene: FoghornLeghorn_87 Start: 54752, Stop: 55012, Start Num: 61

Candidate Starts for FoghornLeghorn_87:

(Start: 18 @54614 has 1 MA's), (Start: 61 @54752 has 125 MA's), (68, 54773), (94, 54917), (104, 54983),

Gene: Footloose_55 Start: 31826, Stop: 32083, Start Num: 40

Candidate Starts for Footloose_55:

(Start: 40 @31826 has 1 MA's), (48, 31838),

Gene: FreddyB_60 Start: 38860, Stop: 39141, Start Num: 33

Candidate Starts for FreddyB_60:

(27, 38833), (Start: 33 @38860 has 156 MA's), (46, 38884), (Start: 55 @38899 has 5 MA's), (72, 38944), (76, 38956), (90, 39034), (93, 39046), (97, 39070), (99, 39082), (112, 39133),

Gene: GUmbie_57 Start: 39435, Stop: 39716, Start Num: 33

Candidate Starts for GUmbie_57:

(27, 39408), (Start: 33 @39435 has 156 MA's), (46, 39459), (Start: 55 @39474 has 5 MA's), (72, 39519), (76, 39531), (90, 39609), (93, 39621), (97, 39645), (99, 39657), (112, 39708),

Gene: Gage_95 Start: 56798, Stop: 57058, Start Num: 61

Candidate Starts for Gage_95:

(Start: 61 @56798 has 125 MA's), (68, 56819), (81, 56894), (94, 56963), (104, 57029),

Gene: Galactic_58 Start: 39901, Stop: 40179, Start Num: 33

Candidate Starts for Galactic_58:

(27, 39874), (Start: 33 @39901 has 156 MA's), (74, 39985), (77, 39994), (87, 40057), (90, 40072), (93, 40084), (97, 40108), (99, 40120), (112, 40171),

Gene: Gandalph_62 Start: 40257, Stop: 40538, Start Num: 33

Candidate Starts for Gandalph_62:

(27, 40230), (Start: 33 @40257 has 156 MA's), (46, 40281), (Start: 55 @40296 has 5 MA's), (72, 40341), (76, 40353), (90, 40431), (93, 40443), (97, 40467), (99, 40479), (112, 40530),

Gene: Ganymede_51 Start: 37786, Stop: 38049, Start Num: 45

Candidate Starts for Ganymede_51:

(Start: 45 @37786 has 96 MA's), (87, 37927),

Gene: Gator_91 Start: 56582, Stop: 56842, Start Num: 61

Candidate Starts for Gator_91:

(Start: 18 @56444 has 1 MA's), (Start: 61 @56582 has 125 MA's), (68, 56603), (94, 56747), (104, 56813),

Gene: Gemini_98 Start: 57174, Stop: 57434, Start Num: 61

Candidate Starts for Gemini_98:

(Start: 61 @57174 has 125 MA's), (68, 57195), (81, 57270), (94, 57339), (104, 57405),

Gene: Geraldini_53 Start: 38403, Stop: 38666, Start Num: 45

Candidate Starts for Geraldini_53:

(Start: 45 @38403 has 96 MA's), (69, 38457), (71, 38463), (87, 38544),

Gene: GigiOuiOui_55 Start: 38875, Stop: 39156, Start Num: 33

Candidate Starts for GigiOuiOui_55:

(27, 38848), (Start: 33 @38875 has 156 MA's), (46, 38899), (Start: 55 @38914 has 5 MA's), (72, 38959), (76, 38971), (87, 39034), (90, 39049), (93, 39061), (97, 39085), (99, 39097), (112, 39148),

Gene: Girr_57 Start: 39742, Stop: 40020, Start Num: 33

Candidate Starts for Girr_57:

(27, 39715), (Start: 33 @39742 has 156 MA's), (74, 39826), (77, 39835), (87, 39898), (90, 39913), (93, 39925), (97, 39949), (99, 39961), (112, 40012),

Gene: Glexan_92 Start: 56857, Stop: 57117, Start Num: 61

Candidate Starts for Glexan_92:

(Start: 61 @56857 has 125 MA's), (68, 56878), (81, 56953), (94, 57022), (104, 57088),

Gene: Goku_92 Start: 56793, Stop: 57053, Start Num: 61

Candidate Starts for Goku_92:

(Start: 61 @56793 has 125 MA's), (68, 56814), (81, 56889), (94, 56958), (104, 57024),

Gene: GoldenSpark_97 Start: 56657, Stop: 56917, Start Num: 61

Candidate Starts for GoldenSpark_97:

(Start: 61 @56657 has 125 MA's), (68, 56678), (81, 56753), (94, 56822), (104, 56888),

Gene: Goldilocks_96 Start: 56015, Stop: 56275, Start Num: 61

Candidate Starts for Goldilocks_96:

(Start: 61 @56015 has 125 MA's), (68, 56036), (81, 56111), (94, 56180), (104, 56246),

Gene: GooberAzure_96 Start: 56657, Stop: 56917, Start Num: 61
Candidate Starts for GooberAzure_96:
(Start: 61 @56657 has 125 MA's), (68, 56678), (81, 56753), (94, 56822), (104, 56888),

Gene: Gorge_63 Start: 41377, Stop: 41658, Start Num: 33
Candidate Starts for Gorge_63:
(27, 41350), (Start: 33 @41377 has 156 MA's), (46, 41401), (Start: 55 @41416 has 5 MA's), (72, 41461), (76, 41473), (90, 41551), (93, 41563), (97, 41587), (99, 41599), (112, 41650),

Gene: Grimmer_69 Start: 41537, Stop: 41815, Start Num: 33
Candidate Starts for Grimmer_69:
(27, 41510), (Start: 33 @41537 has 156 MA's), (74, 41621), (87, 41693), (90, 41708), (93, 41720), (97, 41744), (99, 41756), (112, 41807),

Gene: Guanica15_53 Start: 37156, Stop: 37407, Start Num: 51
Candidate Starts for Guanica15_53:
(Start: 45 @37144 has 96 MA's), (Start: 51 @37156 has 4 MA's), (82, 37267), (87, 37285),

Gene: Hades_60 Start: 40833, Stop: 41114, Start Num: 33
Candidate Starts for Hades_60:
(27, 40806), (Start: 33 @40833 has 156 MA's), (46, 40857), (Start: 55 @40872 has 5 MA's), (72, 40917), (76, 40929), (90, 41007), (93, 41019), (97, 41043), (99, 41055), (112, 41106),

Gene: Hammy_53 Start: 38432, Stop: 38686, Start Num: 49
Candidate Starts for Hammy_53:
(7, 38114), (12, 38183), (15, 38279), (Start: 49 @38432 has 8 MA's), (76, 38498), (87, 38561), (95, 38606),

Gene: HanKaySha_94 Start: 56224, Stop: 56484, Start Num: 61
Candidate Starts for HanKaySha_94:
(Start: 61 @56224 has 125 MA's), (68, 56245), (81, 56320), (94, 56389), (104, 56455),

Gene: Harella_93 Start: 57373, Stop: 57633, Start Num: 61
Candidate Starts for Harella_93:
(Start: 61 @57373 has 125 MA's), (68, 57394), (81, 57469), (94, 57538), (104, 57604),

Gene: HedwigODU_50 Start: 37356, Stop: 37619, Start Num: 45
Candidate Starts for HedwigODU_50:
(Start: 45 @37356 has 96 MA's), (87, 37497),

Gene: Hegedechwinu_59 Start: 39047, Stop: 39328, Start Num: 33
Candidate Starts for Hegedechwinu_59:
(Start: 33 @39047 has 156 MA's), (46, 39071), (Start: 55 @39086 has 5 MA's), (72, 39131), (76, 39143), (90, 39221), (93, 39233), (97, 39257), (99, 39269), (112, 39320),

Gene: Henry_91 Start: 56534, Stop: 56794, Start Num: 61
Candidate Starts for Henry_91:
(Start: 61 @56534 has 125 MA's), (68, 56555), (81, 56630), (94, 56699), (104, 56765),

Gene: Highbury_92 Start: 56224, Stop: 56484, Start Num: 61
Candidate Starts for Highbury_92:
(Start: 61 @56224 has 125 MA's), (68, 56245), (81, 56320), (94, 56389), (104, 56455),

Gene: Hlubikazi_55 Start: 38053, Stop: 38334, Start Num: 33

Candidate Starts for Hlubikazi_55:

(27, 38026), (Start: 33 @38053 has 156 MA's), (46, 38077), (Start: 55 @38092 has 5 MA's), (72, 38137), (76, 38149), (90, 38227), (93, 38239), (97, 38263), (99, 38275), (112, 38326),

Gene: Holt_98 Start: 57071, Stop: 57331, Start Num: 61

Candidate Starts for Holt_98:

(Start: 61 @57071 has 125 MA's), (68, 57092), (81, 57167), (94, 57236), (104, 57302),

Gene: Homura_50 Start: 37471, Stop: 37734, Start Num: 45

Candidate Starts for Homura_50:

(Start: 45 @37471 has 96 MA's), (87, 37612),

Gene: Hoonter_96 Start: 56529, Stop: 56789, Start Num: 61

Candidate Starts for Hoonter_96:

(Start: 61 @56529 has 125 MA's), (68, 56550), (81, 56625), (94, 56694), (104, 56760),

Gene: Hokey_94 Start: 57035, Stop: 57295, Start Num: 61

Candidate Starts for Hokey_94:

(Start: 61 @57035 has 125 MA's), (68, 57056), (81, 57131), (94, 57200), (104, 57266),

Gene: HufflyPuff_95 Start: 57119, Stop: 57379, Start Num: 61

Candidate Starts for HufflyPuff_95:

(Start: 61 @57119 has 125 MA's), (68, 57140), (81, 57215), (94, 57284), (104, 57350),

Gene: Hurricane_53 Start: 37919, Stop: 38188, Start Num: 39

Candidate Starts for Hurricane_53:

(12, 37679), (17, 37823), (Start: 39 @37919 has 13 MA's), (56, 37943), (87, 38063), (97, 38117),

Gene: Hyperbowlee_50 Start: 37668, Stop: 37931, Start Num: 45

Candidate Starts for Hyperbowlee_50:

(Start: 45 @37668 has 96 MA's), (87, 37809),

Gene: IHOP_91 Start: 56697, Stop: 56957, Start Num: 61

Candidate Starts for IHOP_91:

(Start: 61 @56697 has 125 MA's), (68, 56718), (81, 56793), (94, 56862), (104, 56928),

Gene: IbOuu_60 Start: 40412, Stop: 40696, Start Num: 33

Candidate Starts for IbOuu_60:

(Start: 33 @40412 has 156 MA's), (46, 40436), (Start: 55 @40451 has 5 MA's), (72, 40496), (76, 40508), (90, 40586), (93, 40598), (97, 40622), (99, 40634), (112, 40688),

Gene: Ibhubesi_59 Start: 40025, Stop: 40303, Start Num: 33

Candidate Starts for Ibhubesi_59:

(27, 39998), (Start: 33 @40025 has 156 MA's), (74, 40109), (77, 40118), (90, 40196), (93, 40208), (97, 40232), (99, 40244), (112, 40295),

Gene: Ibrahim_41 Start: 31892, Stop: 32149, Start Num: 42

Candidate Starts for Ibrahim_41:

(9, 31616), (11, 31637), (Start: 42 @31892 has 7 MA's), (76, 31976), (93, 32066),

Gene: Icee_94 Start: 56184, Stop: 56444, Start Num: 61

Candidate Starts for Icee_94:

(Start: 61 @56184 has 125 MA's), (68, 56205), (81, 56280), (94, 56349), (104, 56415),

Gene: Ididsumtinwong_41 Start: 27555, Stop: 27854, Start Num: 55

Candidate Starts for Ididsumtinwong_41:

(10, 27267), (13, 27312), (28, 27486), (Start: 55 @27555 has 5 MA's), (89, 27717),

Gene: Illumine_53 Start: 38105, Stop: 38368, Start Num: 45

Candidate Starts for Illumine_53:

(12, 37853), (Start: 45 @38105 has 96 MA's), (69, 38159), (87, 38246),

Gene: Inca_90 Start: 55186, Stop: 55446, Start Num: 61

Candidate Starts for Inca_90:

(Start: 61 @55186 has 125 MA's), (68, 55207), (81, 55282), (94, 55351), (104, 55417),

Gene: Inky_50 Start: 37471, Stop: 37734, Start Num: 45

Candidate Starts for Inky_50:

(Start: 45 @37471 has 96 MA's), (87, 37612),

Gene: Inventum_54 Start: 39529, Stop: 39807, Start Num: 33

Candidate Starts for Inventum_54:

(27, 39502), (Start: 33 @39529 has 156 MA's), (74, 39613), (77, 39622), (87, 39685), (90, 39700), (93, 39712), (97, 39736), (99, 39748), (112, 39799),

Gene: IrishSherpFalk_60 Start: 41690, Stop: 41971, Start Num: 33

Candidate Starts for IrishSherpFalk_60:

(27, 41663), (Start: 33 @41690 has 156 MA's), (46, 41714), (Start: 55 @41729 has 5 MA's), (72, 41774), (76, 41786), (90, 41864), (93, 41876), (97, 41900), (99, 41912), (112, 41963),

Gene: JAWS_50 Start: 37345, Stop: 37608, Start Num: 45

Candidate Starts for JAWS_50:

(Start: 45 @37345 has 96 MA's), (87, 37486),

Gene: Jabbawokkie_73 Start: 41755, Stop: 42039, Start Num: 33

Candidate Starts for Jabbawokkie_73:

(27, 41728), (Start: 33 @41755 has 156 MA's), (46, 41779), (Start: 55 @41794 has 5 MA's), (72, 41839), (76, 41851), (90, 41929), (93, 41941), (97, 41965), (99, 41977), (112, 42031),

Gene: James_63 Start: 41502, Stop: 41783, Start Num: 33

Candidate Starts for James_63:

(27, 41475), (Start: 33 @41502 has 156 MA's), (46, 41526), (Start: 55 @41541 has 5 MA's), (72, 41586), (76, 41598), (90, 41676), (93, 41688), (97, 41712), (99, 41724), (112, 41775),

Gene: Jarcob_59 Start: 39980, Stop: 40264, Start Num: 33

Candidate Starts for Jarcob_59:

(27, 39953), (Start: 33 @39980 has 156 MA's), (46, 40004), (Start: 55 @40019 has 5 MA's), (72, 40064), (76, 40076), (90, 40154), (93, 40166), (97, 40190), (99, 40202), (112, 40256),

Gene: Jarvi_50 Start: 37471, Stop: 37734, Start Num: 45

Candidate Starts for Jarvi_50:

(Start: 45 @37471 has 96 MA's), (87, 37612),

Gene: Jayhawk_51 Start: 37354, Stop: 37617, Start Num: 45

Candidate Starts for Jayhawk_51:
(Start: 45 @37354 has 96 MA's), (87, 37495),

Gene: JeTaime_94 Start: 57387, Stop: 57647, Start Num: 61
Candidate Starts for JeTaime_94:
(Start: 61 @57387 has 125 MA's), (68, 57408), (81, 57483), (94, 57552), (104, 57618),

Gene: Jeckyll_50 Start: 37471, Stop: 37734, Start Num: 45
Candidate Starts for Jeckyll_50:
(Start: 45 @37471 has 96 MA's), (87, 37612),

Gene: Jinglebell_64 Start: 42540, Stop: 42818, Start Num: 33
Candidate Starts for Jinglebell_64:
(27, 42513), (Start: 33 @42540 has 156 MA's), (74, 42624), (77, 42633), (87, 42696), (90, 42711), (93, 42723), (97, 42747), (99, 42759), (112, 42810),

Gene: Job42_61 Start: 41920, Stop: 42201, Start Num: 33
Candidate Starts for Job42_61:
(27, 41893), (Start: 33 @41920 has 156 MA's), (74, 42004), (77, 42013), (87, 42076), (90, 42091), (93, 42103), (97, 42127), (99, 42139), (112, 42193),

Gene: Jobypre_79 Start: 53794, Stop: 54063, Start Num: 59
Candidate Starts for Jobypre_79:
(Start: 59 @53794 has 12 MA's), (Start: 64 @53809 has 4 MA's), (89, 53944), (97, 53986), (101, 54022), (108, 54046),

Gene: JoeyJr_54 Start: 38435, Stop: 38713, Start Num: 33
Candidate Starts for JoeyJr_54:
(27, 38408), (Start: 33 @38435 has 156 MA's), (74, 38519), (77, 38528), (87, 38591), (90, 38606), (93, 38618), (97, 38642), (99, 38654), (112, 38705),

Gene: Journey_43 Start: 30217, Stop: 30516, Start Num: 39
Candidate Starts for Journey_43:
(Start: 39 @30217 has 13 MA's), (50, 30235), (66, 30271), (Start: 70 @30286 has 1 MA's), (87, 30382), (97, 30433), (100, 30469), (109, 30502), (112, 30508),

Gene: Joy99_50 Start: 37400, Stop: 37663, Start Num: 45
Candidate Starts for Joy99_50:
(Start: 45 @37400 has 96 MA's), (87, 37541),

Gene: Jubie_78 Start: 53929, Stop: 54198, Start Num: 59
Candidate Starts for Jubie_78:
(Start: 59 @53929 has 12 MA's), (Start: 64 @53944 has 4 MA's), (89, 54079), (97, 54121), (101, 54157), (108, 54181),

Gene: JustASigh_72 Start: 46685, Stop: 47041, Start Num: 18
Candidate Starts for JustASigh_72:
(1, 46043), (2, 46070), (5, 46391), (6, 46415), (8, 46490), (14, 46622), (Start: 18 @46685 has 1 MA's), (31, 46751), (82, 46919),

Gene: Kanye_90 Start: 56281, Stop: 56541, Start Num: 61
Candidate Starts for Kanye_90:
(Start: 61 @56281 has 125 MA's), (68, 56302), (81, 56377), (94, 56446), (104, 56512),

Gene: Karhdo_56 Start: 39525, Stop: 39809, Start Num: 33

Candidate Starts for Karhdo_56:

(27, 39498), (Start: 33 @39525 has 156 MA's), (46, 39549), (Start: 55 @39564 has 5 MA's), (72, 39609), (76, 39621), (90, 39699), (93, 39711), (97, 39735), (99, 39747), (112, 39801),

Gene: Keelan_94 Start: 48287, Stop: 48550, Start Num: 55

Candidate Starts for Keelan_94:

(Start: 55 @48287 has 5 MA's), (78, 48365), (87, 48419), (112, 48542),

Gene: Kersh_61 Start: 42278, Stop: 42559, Start Num: 33

Candidate Starts for Kersh_61:

(27, 42251), (Start: 33 @42278 has 156 MA's), (46, 42302), (Start: 55 @42317 has 5 MA's), (72, 42362), (76, 42374), (97, 42488), (99, 42500), (112, 42551),

Gene: Keshu_55 Start: 37986, Stop: 38255, Start Num: 39

Candidate Starts for Keshu_55:

(12, 37746), (Start: 39 @37986 has 13 MA's), (56, 38010), (87, 38130), (97, 38184),

Gene: KiSi_55 Start: 38687, Stop: 38956, Start Num: 51

Candidate Starts for KiSi_55:

(Start: 47 @38681 has 18 MA's), (Start: 51 @38687 has 4 MA's), (69, 38729), (76, 38753), (95, 38861), (114, 38945),

Gene: Kimberlium_62 Start: 41811, Stop: 42092, Start Num: 33

Candidate Starts for Kimberlium_62:

(25, 41775), (Start: 33 @41811 has 156 MA's), (46, 41835), (72, 41892), (76, 41904), (90, 41982), (93, 41994), (97, 42018), (99, 42030), (112, 42084),

Gene: Kimchi_97 Start: 56801, Stop: 57061, Start Num: 61

Candidate Starts for Kimchi_97:

(Start: 61 @56801 has 125 MA's), (68, 56822), (81, 56897), (94, 56966), (104, 57032),

Gene: KingJulian_56 Start: 39051, Stop: 39335, Start Num: 33

Candidate Starts for KingJulian_56:

(27, 39024), (Start: 33 @39051 has 156 MA's), (46, 39075), (Start: 55 @39090 has 5 MA's), (72, 39135), (90, 39225), (93, 39237), (97, 39261), (99, 39273), (112, 39327),

Gene: KingMidas_58 Start: 40097, Stop: 40375, Start Num: 33

Candidate Starts for KingMidas_58:

(27, 40070), (Start: 33 @40097 has 156 MA's), (74, 40181), (77, 40190), (87, 40253), (90, 40268), (93, 40280), (97, 40304), (99, 40316), (112, 40367),

Gene: Kingsolomon_77 Start: 53801, Stop: 54070, Start Num: 59

Candidate Starts for Kingsolomon_77:

(Start: 59 @53801 has 12 MA's), (Start: 64 @53816 has 4 MA's), (89, 53951), (97, 53993), (101, 54029), (108, 54053),

Gene: KirDoubleO7_77 Start: 53797, Stop: 54084, Start Num: 64

Candidate Starts for KirDoubleO7_77:

(Start: 59 @53782 has 12 MA's), (Start: 64 @53797 has 4 MA's), (89, 53935),

Gene: Koella_53 Start: 35910, Stop: 36194, Start Num: 33

Candidate Starts for Koella_53:

(27, 35883), (Start: 33 @35910 has 156 MA's), (46, 35934), (Start: 55 @35949 has 5 MA's), (72, 35994), (76, 36006), (90, 36084), (93, 36096), (97, 36120), (99, 36132), (112, 36186),

Gene: Kostya_93 Start: 56799, Stop: 57059, Start Num: 61

Candidate Starts for Kostya_93:

(Start: 61 @56799 has 125 MA's), (68, 56820), (81, 56895), (94, 56964), (104, 57030),

Gene: KristaRAM_62 Start: 42482, Stop: 42763, Start Num: 33

Candidate Starts for KristaRAM_62:

(27, 42455), (Start: 33 @42482 has 156 MA's), (46, 42506), (Start: 55 @42521 has 5 MA's), (72, 42566), (76, 42578), (90, 42656), (93, 42668), (97, 42692), (99, 42704), (112, 42755),

Gene: Krueger_57 Start: 38145, Stop: 38396, Start Num: 47

Candidate Starts for Krueger_57:

(Start: 47 @38145 has 18 MA's), (Start: 51 @38151 has 4 MA's), (82, 38265), (83, 38271), (87, 38283),

Gene: Krypton555_80 Start: 54028, Stop: 54342, Start Num: 59

Candidate Starts for Krypton555_80:

(Start: 59 @54028 has 12 MA's), (Start: 64 @54043 has 4 MA's), (84, 54154), (89, 54190), (115, 54322),

Gene: LastHope_53 Start: 36640, Stop: 36891, Start Num: 51

Candidate Starts for LastHope_53:

(Start: 45 @36628 has 96 MA's), (Start: 51 @36640 has 4 MA's), (69, 36682), (82, 36751), (87, 36769),

Gene: LastJedi_53 Start: 37230, Stop: 37511, Start Num: 33

Candidate Starts for LastJedi_53:

(27, 37203), (Start: 33 @37230 has 156 MA's), (46, 37254), (Start: 55 @37269 has 5 MA's), (72, 37314), (76, 37326), (90, 37404), (93, 37416), (97, 37440), (99, 37452), (112, 37503),

Gene: LaterM_51 Start: 38233, Stop: 38496, Start Num: 45

Candidate Starts for LaterM_51:

(Start: 45 @38233 has 96 MA's), (69, 38287), (87, 38374),

Gene: Latretium_61 Start: 40556, Stop: 40837, Start Num: 33

Candidate Starts for Latretium_61:

(27, 40529), (Start: 33 @40556 has 156 MA's), (46, 40580), (Start: 55 @40595 has 5 MA's), (72, 40640), (76, 40652), (90, 40730), (93, 40742), (97, 40766), (99, 40778), (112, 40829),

Gene: LeMond_55 Start: 38671, Stop: 38940, Start Num: 51

Candidate Starts for LeMond_55:

(Start: 47 @38665 has 18 MA's), (Start: 51 @38671 has 4 MA's), (69, 38713), (76, 38737), (95, 38845), (114, 38929),

Gene: Lea83_54 Start: 37972, Stop: 38241, Start Num: 39

Candidate Starts for Lea83_54:

(3, 37507), (12, 37732), (Start: 39 @37972 has 13 MA's), (56, 37996), (87, 38116), (97, 38170),

Gene: Leozinho_58 Start: 39315, Stop: 39593, Start Num: 33

Candidate Starts for Leozinho_58:

(27, 39288), (Start: 33 @39315 has 156 MA's), (74, 39399), (77, 39408), (87, 39471), (90, 39486), (93, 39498), (97, 39522), (99, 39534), (112, 39585),

Gene: Leperchaun_51 Start: 37665, Stop: 37943, Start Num: 33

Candidate Starts for Leperchaun_51:

(27, 37638), (Start: 33 @37665 has 156 MA's), (74, 37749), (77, 37758), (87, 37821), (90, 37836), (93, 37848), (97, 37872), (99, 37884), (112, 37935),

Gene: LilMoolah_57 Start: 39425, Stop: 39706, Start Num: 33

Candidate Starts for LilMoolah_57:

(27, 39398), (Start: 33 @39425 has 156 MA's), (74, 39509), (77, 39518), (87, 39581), (90, 39596), (93, 39608), (97, 39632), (99, 39644), (112, 39698),

Gene: LilPharaoh_46 Start: 36768, Stop: 37037, Start Num: 45

Candidate Starts for LilPharaoh_46:

(Start: 45 @36768 has 96 MA's), (80, 36864), (91, 36924), (92, 36930), (93, 36933), (97, 36960), (99, 36972), (110, 37026),

Gene: Lilac_96 Start: 56626, Stop: 56886, Start Num: 61

Candidate Starts for Lilac_96:

(Start: 61 @56626 has 125 MA's), (68, 56647), (81, 56722), (94, 56791), (104, 56857),

Gene: Lilizi_94 Start: 56263, Stop: 56523, Start Num: 61

Candidate Starts for Lilizi_94:

(Start: 61 @56263 has 125 MA's), (68, 56284), (81, 56359), (94, 56428), (104, 56494),

Gene: Lilpickle_92 Start: 56151, Stop: 56411, Start Num: 61

Candidate Starts for Lilpickle_92:

(Start: 61 @56151 has 125 MA's), (68, 56172), (81, 56247), (94, 56316), (104, 56382),

Gene: LindNT_49 Start: 37556, Stop: 37819, Start Num: 45

Candidate Starts for LindNT_49:

(Start: 45 @37556 has 96 MA's), (69, 37610), (87, 37697),

Gene: Lishka_37 Start: 25254, Stop: 25553, Start Num: 55

Candidate Starts for Lishka_37:

(10, 24966), (13, 25011), (28, 25185), (Start: 55 @25254 has 5 MA's), (89, 25416),

Gene: LittleShirley_58 Start: 40469, Stop: 40753, Start Num: 33

Candidate Starts for LittleShirley_58:

(27, 40442), (Start: 33 @40469 has 156 MA's), (46, 40493), (Start: 55 @40508 has 5 MA's), (72, 40553), (76, 40565), (90, 40643), (93, 40655), (97, 40679), (99, 40691), (112, 40745),

Gene: LiyuLake_78 Start: 53870, Stop: 54157, Start Num: 64

Candidate Starts for LiyuLake_78:

(Start: 59 @53855 has 12 MA's), (Start: 64 @53870 has 4 MA's), (89, 54008),

Gene: Lizziana_65 Start: 40983, Stop: 41264, Start Num: 33

Candidate Starts for Lizziana_65:

(27, 40956), (Start: 33 @40983 has 156 MA's), (46, 41007), (Start: 55 @41022 has 5 MA's), (72, 41067), (76, 41079), (90, 41157), (93, 41169), (97, 41193), (99, 41205), (112, 41256),

Gene: Llama_64 Start: 42394, Stop: 42672, Start Num: 33

Candidate Starts for Llama_64:

(27, 42367), (Start: 33 @42394 has 156 MA's), (74, 42478), (77, 42487), (87, 42550), (90, 42565), (93, 42577), (97, 42601), (99, 42613), (112, 42664),

Gene: Llij_55 Start: 38833, Stop: 39117, Start Num: 33

Candidate Starts for Llij_55:

(27, 38806), (Start: 33 @38833 has 156 MA's), (46, 38857), (Start: 55 @38872 has 5 MA's), (72, 38917), (76, 38929), (90, 39007), (93, 39019), (97, 39043), (99, 39055), (112, 39109),

Gene: Llorens_50 Start: 37471, Stop: 37734, Start Num: 45

Candidate Starts for Llorens_50:

(Start: 45 @37471 has 96 MA's), (87, 37612),

Gene: Lolly9_78 Start: 53913, Stop: 54164, Start Num: 64

Candidate Starts for Lolly9_78:

(Start: 59 @53898 has 12 MA's), (Start: 64 @53913 has 4 MA's), (97, 54090), (108, 54150),

Gene: Lorde_59 Start: 38120, Stop: 38404, Start Num: 33

Candidate Starts for Lorde_59:

(27, 38093), (Start: 33 @38120 has 156 MA's), (46, 38144), (Start: 55 @38159 has 5 MA's), (72, 38204), (76, 38216), (90, 38294), (93, 38306), (97, 38330), (99, 38342), (112, 38396),

Gene: LunaBlu_61 Start: 40560, Stop: 40838, Start Num: 33

Candidate Starts for LunaBlu_61:

(27, 40533), (Start: 33 @40560 has 156 MA's), (74, 40644), (77, 40653), (87, 40716), (90, 40731), (93, 40743), (97, 40767), (99, 40779), (112, 40830),

Gene: LunaStella_58 Start: 39407, Stop: 39685, Start Num: 33

Candidate Starts for LunaStella_58:

(23, 39371), (Start: 33 @39407 has 156 MA's), (Start: 41 @39416 has 1 MA's), (69, 39473), (74, 39491), (77, 39500), (87, 39563), (90, 39578), (93, 39590), (97, 39614), (99, 39626), (112, 39677),

Gene: Lunahalos_50 Start: 37471, Stop: 37734, Start Num: 45

Candidate Starts for Lunahalos_50:

(Start: 45 @37471 has 96 MA's), (87, 37612),

Gene: MISSy_94 Start: 56379, Stop: 56639, Start Num: 61

Candidate Starts for MISSy_94:

(Start: 61 @56379 has 125 MA's), (68, 56400), (81, 56475), (94, 56544), (104, 56610),

Gene: MPhalcon_94 Start: 56372, Stop: 56632, Start Num: 61

Candidate Starts for MPhalcon_94:

(Start: 61 @56372 has 125 MA's), (68, 56393), (81, 56468), (94, 56537), (104, 56603),

Gene: MacKat_45 Start: 32871, Stop: 33134, Start Num: 45

Candidate Starts for MacKat_45:

(Start: 45 @32871 has 96 MA's), (87, 33012),

Gene: MacnCheese_55 Start: 38928, Stop: 39194, Start Num: 39

Candidate Starts for MacnCheese_55:

(12, 38688), (Start: 39 @38928 has 13 MA's), (56, 38949), (62, 38955), (87, 39069), (95, 39114), (97, 39123),

Gene: MadMen_57 Start: 39757, Stop: 40041, Start Num: 33

Candidate Starts for MadMen_57:

(27, 39730), (Start: 33 @39757 has 156 MA's), (46, 39781), (Start: 55 @39796 has 5 MA's), (72, 39841), (76, 39853), (90, 39931), (93, 39943), (97, 39967), (99, 39979), (112, 40033),

Gene: MadamMonkfish_93 Start: 55878, Stop: 56138, Start Num: 61

Candidate Starts for MadamMonkfish_93:

(Start: 61 @55878 has 125 MA's), (68, 55899), (81, 55974), (94, 56043), (104, 56109),

Gene: Madiba_57 Start: 39006, Stop: 39290, Start Num: 33

Candidate Starts for Madiba_57:

(27, 38979), (Start: 33 @39006 has 156 MA's), (46, 39030), (Start: 55 @39045 has 5 MA's), (72, 39090), (76, 39102), (90, 39180), (93, 39192), (97, 39216), (99, 39228), (112, 39282),

Gene: Mahavrat_57 Start: 39385, Stop: 39666, Start Num: 33

Candidate Starts for Mahavrat_57:

(27, 39358), (Start: 33 @39385 has 156 MA's), (46, 39409), (Start: 55 @39424 has 5 MA's), (72, 39469), (76, 39481), (90, 39559), (93, 39571), (97, 39595), (99, 39607), (112, 39658),

Gene: Manda_95 Start: 57955, Stop: 58215, Start Num: 61

Candidate Starts for Manda_95:

(Start: 61 @57955 has 125 MA's), (68, 57976), (81, 58051), (94, 58120), (104, 58186),

Gene: Mandlovu_55 Start: 37995, Stop: 38276, Start Num: 33

Candidate Starts for Mandlovu_55:

(27, 37968), (Start: 33 @37995 has 156 MA's), (46, 38019), (Start: 55 @38034 has 5 MA's), (72, 38079), (76, 38091), (90, 38169), (93, 38181), (97, 38205), (99, 38217), (112, 38268),

Gene: Maravista_60 Start: 41432, Stop: 41713, Start Num: 33

Candidate Starts for Maravista_60:

(27, 41405), (Start: 33 @41432 has 156 MA's), (46, 41456), (Start: 55 @41471 has 5 MA's), (72, 41516), (76, 41528), (90, 41606), (93, 41618), (97, 41642), (99, 41654), (112, 41705),

Gene: Marcoliusprime_54 Start: 39559, Stop: 39792, Start Num: 54

Candidate Starts for Marcoliusprime_54:

(Start: 54 @39559 has 6 MA's), (Start: 58 @39562 has 4 MA's), (62, 39568), (63, 39574), (82, 39664), (83, 39670), (97, 39733),

Gene: MarkPhew_54 Start: 38124, Stop: 38393, Start Num: 47

Candidate Starts for MarkPhew_54:

(Start: 47 @38124 has 18 MA's), (65, 38151), (69, 38166), (76, 38190), (95, 38298), (114, 38382),

Gene: Marker_61 Start: 40100, Stop: 40384, Start Num: 33

Candidate Starts for Marker_61:

(27, 40073), (Start: 33 @40100 has 156 MA's), (46, 40124), (Start: 55 @40139 has 5 MA's), (72, 40184), (76, 40196), (90, 40274), (93, 40286), (97, 40310), (99, 40322), (112, 40376),

Gene: Marshawn_53 Start: 38262, Stop: 38522, Start Num: 45

Candidate Starts for Marshawn_53:

(7, 37941), (12, 38010), (15, 38106), (Start: 45 @38262 has 96 MA's), (71, 38319), (93, 38427), (102, 38490),

Gene: Marshmallow_91 Start: 57427, Stop: 57687, Start Num: 61

Candidate Starts for Marshmallow_91:

(Start: 61 @57427 has 125 MA's), (68, 57448), (81, 57523), (94, 57592), (104, 57658),

Gene: Martik_59 Start: 39936, Stop: 40217, Start Num: 33

Candidate Starts for Martik_59:

(27, 39909), (Start: 33 @39936 has 156 MA's), (46, 39960), (Start: 55 @39975 has 5 MA's), (72, 40020), (76, 40032), (90, 40110), (93, 40122), (97, 40146), (99, 40158), (112, 40209),

Gene: Mattes_63 Start: 41502, Stop: 41783, Start Num: 33

Candidate Starts for Mattes_63:

(27, 41475), (Start: 33 @41502 has 156 MA's), (46, 41526), (Start: 55 @41541 has 5 MA's), (72, 41586), (76, 41598), (90, 41676), (93, 41688), (97, 41712), (99, 41724), (112, 41775),

Gene: Maxxinista_96 Start: 56793, Stop: 57053, Start Num: 61

Candidate Starts for Maxxinista_96:

(Start: 61 @56793 has 125 MA's), (68, 56814), (81, 56889), (94, 56958), (104, 57024),

Gene: Mazun_7 Start: 5279, Stop: 4962, Start Num: 37

Candidate Starts for Mazun_7:

(Start: 37 @5279 has 4 MA's), (67, 5219), (87, 5105), (99, 5030), (107, 4985),

Gene: McMater_53 Start: 38285, Stop: 38548, Start Num: 45

Candidate Starts for McMater_53:

(3, 37805), (7, 37961), (12, 38030), (Start: 45 @38285 has 96 MA's), (81, 38387), (82, 38405), (87, 38423), (97, 38477), (102, 38513), (110, 38537),

Gene: Mdavu_47 Start: 37029, Stop: 37298, Start Num: 45

Candidate Starts for Mdavu_47:

(Start: 45 @37029 has 96 MA's), (80, 37125), (91, 37185), (92, 37191), (93, 37194), (97, 37221), (99, 37233), (110, 37287),

Gene: MeaningOfLife_51 Start: 38280, Stop: 38543, Start Num: 45

Candidate Starts for MeaningOfLife_51:

(Start: 45 @38280 has 96 MA's), (87, 38421),

Gene: Megsy_52 Start: 37615, Stop: 37878, Start Num: 45

Candidate Starts for Megsy_52:

(Start: 45 @37615 has 96 MA's), (69, 37669), (87, 37756),

Gene: Mendokysei_39 Start: 30983, Stop: 31297, Start Num: 42

Candidate Starts for Mendokysei_39:

(Start: 42 @30983 has 7 MA's), (Start: 54 @30998 has 6 MA's), (69, 31037),

Gene: Milly_54 Start: 39532, Stop: 39765, Start Num: 54

Candidate Starts for Milly_54:

(Start: 54 @39532 has 6 MA's), (Start: 58 @39535 has 4 MA's), (62, 39541), (63, 39547), (82, 39637), (83, 39643), (97, 39706),

Gene: Mindy_92 Start: 55700, Stop: 55960, Start Num: 61

Candidate Starts for Mindy_92:

(Start: 61 @55700 has 125 MA's), (68, 55721), (81, 55796), (94, 55865), (104, 55931),

Gene: MiniLon_83 Start: 53899, Stop: 54165, Start Num: 59

Candidate Starts for MiniLon_83:

(Start: 59 @53899 has 12 MA's), (Start: 64 @53914 has 4 MA's), (97, 54091), (108, 54151),

Gene: MiniMac_83 Start: 53909, Stop: 54160, Start Num: 64

Candidate Starts for MiniMac_83:

(Start: 59 @53894 has 12 MA's), (Start: 64 @53909 has 4 MA's), (97, 54086), (108, 54146),

Gene: MinionDave_58 Start: 40283, Stop: 40564, Start Num: 33

Candidate Starts for MinionDave_58:

(Start: 33 @40283 has 156 MA's), (46, 40307), (Start: 55 @40322 has 5 MA's), (72, 40367), (76, 40379), (90, 40457), (93, 40469), (97, 40493), (99, 40505), (112, 40556),

Gene: Miniwave_88 Start: 56195, Stop: 56455, Start Num: 61

Candidate Starts for Miniwave_88:

(Start: 61 @56195 has 125 MA's), (68, 56216), (81, 56291), (94, 56360), (104, 56426),

Gene: Misfit_94 Start: 57669, Stop: 57929, Start Num: 61

Candidate Starts for Misfit_94:

(Start: 61 @57669 has 125 MA's), (68, 57690), (81, 57765), (94, 57834), (104, 57900),

Gene: MisterCuddles_57 Start: 39742, Stop: 40020, Start Num: 33

Candidate Starts for MisterCuddles_57:

(27, 39715), (Start: 33 @39742 has 156 MA's), (74, 39826), (77, 39835), (87, 39898), (90, 39913), (93, 39925), (97, 39949), (99, 39961), (112, 40012),

Gene: Modragons_63 Start: 42384, Stop: 42662, Start Num: 33

Candidate Starts for Modragons_63:

(27, 42357), (Start: 33 @42384 has 156 MA's), (74, 42468), (77, 42477), (87, 42540), (90, 42555), (93, 42567), (97, 42591), (99, 42603), (112, 42654),

Gene: Moldemort_96 Start: 56336, Stop: 56596, Start Num: 61

Candidate Starts for Moldemort_96:

(Start: 61 @56336 has 125 MA's), (68, 56357), (81, 56432), (94, 56501), (104, 56567),

Gene: Moostard_77 Start: 53811, Stop: 54065, Start Num: 64

Candidate Starts for Moostard_77:

(Start: 59 @53796 has 12 MA's), (Start: 64 @53811 has 4 MA's), (89, 53946), (97, 53988), (101, 54024), (108, 54048),

Gene: Mosby_89 Start: 55952, Stop: 56212, Start Num: 61

Candidate Starts for Mosby_89:

(Start: 61 @55952 has 125 MA's), (68, 55973), (81, 56048), (94, 56117), (104, 56183),

Gene: Mova_60 Start: 39510, Stop: 39794, Start Num: 33

Candidate Starts for Mova_60:

(27, 39483), (Start: 33 @39510 has 156 MA's), (46, 39534), (Start: 55 @39549 has 5 MA's), (72, 39594), (76, 39606), (90, 39684), (93, 39696), (97, 39720), (99, 39732), (112, 39786),

Gene: Mozy_68 Start: 42517, Stop: 42798, Start Num: 33

Candidate Starts for Mozy_68:

(27, 42490), (Start: 33 @42517 has 156 MA's), (46, 42541), (Start: 55 @42556 has 5 MA's), (72, 42601), (76, 42613), (90, 42691), (93, 42703), (97, 42727), (99, 42739), (112, 42790),

Gene: MsGreen_79 Start: 53793, Stop: 54062, Start Num: 59

Candidate Starts for MsGreen_79:

(Start: 59 @53793 has 12 MA's), (Start: 64 @53808 has 4 MA's), (89, 53943), (97, 53985), (101, 54021), (108, 54045),

Gene: Mufasa_54 Start: 39116, Stop: 39349, Start Num: 58

Candidate Starts for Mufasa_54:

(Start: 54 @39113 has 6 MA's), (Start: 58 @39116 has 4 MA's), (62, 39122), (63, 39128), (82, 39218), (83, 39224), (97, 39287), (109, 39338),

Gene: MulchExplorer_66 Start: 41810, Stop: 42091, Start Num: 33

Candidate Starts for MulchExplorer_66:

(25, 41774), (Start: 33 @41810 has 156 MA's), (46, 41834), (72, 41891), (76, 41903), (90, 41981), (93, 41993), (97, 42017), (99, 42029), (112, 42083),

Gene: Murica_96 Start: 57595, Stop: 57855, Start Num: 61

Candidate Starts for Murica_96:

(Start: 61 @57595 has 125 MA's), (68, 57616), (81, 57691), (94, 57760), (104, 57826),

Gene: Murphy_93 Start: 57036, Stop: 57296, Start Num: 61

Candidate Starts for Murphy_93:

(Start: 61 @57036 has 125 MA's), (68, 57057), (81, 57132), (94, 57201), (104, 57267),

Gene: Murucutumbu_51 Start: 38326, Stop: 38589, Start Num: 45

Candidate Starts for Murucutumbu_51:

(12, 38074), (Start: 45 @38326 has 96 MA's), (69, 38380), (87, 38467),

Gene: Mutaforma13_63 Start: 42840, Stop: 43124, Start Num: 33

Candidate Starts for Mutaforma13_63:

(27, 42813), (Start: 33 @42840 has 156 MA's), (46, 42864), (Start: 55 @42879 has 5 MA's), (72, 42924), (76, 42936), (90, 43014), (93, 43026), (97, 43050), (99, 43062), (112, 43116),

Gene: Mynx_51 Start: 37672, Stop: 37935, Start Num: 45

Candidate Starts for Mynx_51:

(Start: 45 @37672 has 96 MA's), (87, 37813),

Gene: Myrale_93 Start: 57158, Stop: 57418, Start Num: 61

Candidate Starts for Myrale_93:

(Start: 61 @57158 has 125 MA's), (68, 57179), (81, 57254), (94, 57323), (104, 57389),

Gene: Nairb_40 Start: 31446, Stop: 31703, Start Num: 42

Candidate Starts for Nairb_40:

(9, 31170), (11, 31191), (Start: 42 @31446 has 7 MA's), (76, 31530), (93, 31620),

Gene: Nala_95 Start: 56881, Stop: 57141, Start Num: 61

Candidate Starts for Nala_95:

(Start: 61 @56881 has 125 MA's), (68, 56902), (81, 56977), (94, 57046), (104, 57112),

Gene: NelitzaMV_91 Start: 56241, Stop: 56501, Start Num: 61

Candidate Starts for NelitzaMV_91:

(Start: 61 @56241 has 125 MA's), (68, 56262), (81, 56337), (94, 56406), (104, 56472),

Gene: Nergal_48 Start: 36024, Stop: 36272, Start Num: 45

Candidate Starts for Nergal_48:

(Start: 45 @36024 has 96 MA's), (82, 36138), (87, 36156), (94, 36189), (102, 36246),

Gene: Nette_42 Start: 31007, Stop: 31306, Start Num: 54

Candidate Starts for Nette_42:

(Start: 42 @30992 has 7 MA's), (Start: 54 @31007 has 6 MA's), (69, 31046),

Gene: NewHope4_63 Start: 39931, Stop: 40209, Start Num: 33

Candidate Starts for NewHope4_63:

(27, 39904), (Start: 33 @39931 has 156 MA's), (74, 40015), (77, 40024), (87, 40087), (90, 40102), (93, 40114), (97, 40138), (99, 40150), (112, 40201),

Gene: Nibb_53 Start: 37813, Stop: 38082, Start Num: 47

Candidate Starts for Nibb_53:

(Start: 47 @37813 has 18 MA's), (65, 37840), (95, 37987), (114, 38071),

Gene: Nicholas_77 Start: 53801, Stop: 54070, Start Num: 59

Candidate Starts for Nicholas_77:

(Start: 59 @53801 has 12 MA's), (Start: 64 @53816 has 4 MA's), (89, 53951), (97, 53993), (101, 54029), (108, 54053),

Gene: Nikao_49 Start: 39653, Stop: 39922, Start Num: 45

Candidate Starts for Nikao_49:

(Start: 45 @39653 has 96 MA's), (80, 39749), (91, 39809), (92, 39815), (93, 39818), (97, 39845), (99, 39857), (110, 39911),

Gene: Niklas_53 Start: 38346, Stop: 38609, Start Num: 45

Candidate Starts for Niklas_53:

(3, 37866), (7, 38022), (12, 38091), (Start: 45 @38346 has 96 MA's), (81, 38448), (82, 38466), (87, 38484), (97, 38538), (102, 38574), (110, 38598),

Gene: Nimrod_94 Start: 57584, Stop: 57844, Start Num: 61

Candidate Starts for Nimrod_94:

(Start: 61 @57584 has 125 MA's), (68, 57605), (81, 57680), (94, 57749), (104, 57815),

Gene: Nitzel_57 Start: 39291, Stop: 39521, Start Num: 33

Candidate Starts for Nitzel_57:

(27, 39264), (Start: 33 @39291 has 156 MA's), (74, 39375), (87, 39444), (93, 39471), (97, 39495),

Gene: Nivrat_55 Start: 39298, Stop: 39579, Start Num: 33

Candidate Starts for Nivrat_55:

(27, 39271), (Start: 33 @39298 has 156 MA's), (74, 39382), (77, 39391), (87, 39454), (90, 39469), (93, 39481), (97, 39505), (99, 39517), (112, 39571),

Gene: NoSleep_94 Start: 56218, Stop: 56478, Start Num: 61

Candidate Starts for NoSleep_94:

(Start: 61 @56218 has 125 MA's), (68, 56239), (81, 56314), (94, 56383), (104, 56449),

Gene: NormanBulbieJr_59 Start: 39923, Stop: 40207, Start Num: 33

Candidate Starts for NormanBulbieJr_59:

(27, 39896), (Start: 33 @39923 has 156 MA's), (46, 39947), (Start: 55 @39962 has 5 MA's), (72, 40007), (76, 40019), (90, 40097), (93, 40109), (97, 40133), (99, 40145), (112, 40199),

Gene: November_53 Start: 38195, Stop: 38449, Start Num: 49

Candidate Starts for November_53:

(7, 37877), (12, 37946), (15, 38042), (Start: 49 @38195 has 8 MA's), (76, 38261), (87, 38324), (95, 38369),

Gene: Nutello_46 Start: 37040, Stop: 37309, Start Num: 45

Candidate Starts for Nutello_46:

(Start: 45 @37040 has 96 MA's), (80, 37136), (91, 37196), (92, 37202), (93, 37205), (97, 37232), (99, 37244), (110, 37298),

Gene: Ochi17_62 Start: 41991, Stop: 42269, Start Num: 33

Candidate Starts for Ochi17_62:

(27, 41964), (Start: 33 @41991 has 156 MA's), (74, 42075), (77, 42084), (87, 42147), (90, 42162), (93, 42174), (97, 42198), (99, 42210), (112, 42261),

Gene: OfUltron_64 Start: 42540, Stop: 42818, Start Num: 33

Candidate Starts for OfUltron_64:

(27, 42513), (Start: 33 @42540 has 156 MA's), (74, 42624), (77, 42633), (87, 42696), (90, 42711), (93, 42723), (97, 42747), (99, 42759), (112, 42810),

Gene: Oksu_63 Start: 42803, Stop: 43081, Start Num: 33

Candidate Starts for Oksu_63:

(27, 42776), (Start: 33 @42803 has 156 MA's), (74, 42887), (77, 42896), (87, 42959), (90, 42974), (93, 42986), (97, 43010), (99, 43022), (112, 43073),

Gene: OldBen_56 Start: 39848, Stop: 40132, Start Num: 33

Candidate Starts for OldBen_56:

(27, 39821), (Start: 33 @39848 has 156 MA's), (46, 39872), (Start: 55 @39887 has 5 MA's), (72, 39932), (76, 39944), (90, 40022), (93, 40034), (97, 40058), (99, 40070), (112, 40124),

Gene: OlympiaSaint_61 Start: 40444, Stop: 40725, Start Num: 33

Candidate Starts for OlympiaSaint_61:

(27, 40417), (Start: 33 @40444 has 156 MA's), (46, 40468), (Start: 55 @40483 has 5 MA's), (72, 40528), (76, 40540), (90, 40618), (93, 40630), (97, 40654), (99, 40666), (112, 40717),

Gene: OrionPax_92 Start: 55969, Stop: 56229, Start Num: 61

Candidate Starts for OrionPax_92:

(Start: 61 @55969 has 125 MA's), (68, 55990), (81, 56065), (94, 56134), (104, 56200),

Gene: Oscar_55 Start: 38567, Stop: 38842, Start Num: 47

Candidate Starts for Oscar_55:

(Start: 47 @38567 has 18 MA's), (Start: 51 @38573 has 4 MA's), (69, 38615), (76, 38639), (95, 38747), (114, 38831),

Gene: OwlsT2W_59 Start: 40166, Stop: 40444, Start Num: 33

Candidate Starts for OwlsT2W_59:

(27, 40139), (Start: 33 @40166 has 156 MA's), (74, 40250), (87, 40322), (90, 40337), (93, 40349), (97, 40373), (99, 40385), (112, 40436),

Gene: PHappiness_54 Start: 38211, Stop: 38489, Start Num: 33

Candidate Starts for PHappiness_54:

(27, 38184), (Start: 33 @38211 has 156 MA's), (74, 38295), (77, 38304), (87, 38367), (90, 38382), (93, 38394), (97, 38418), (99, 38430), (112, 38481),

Gene: PMC_56 Start: 40550, Stop: 40834, Start Num: 33

Candidate Starts for PMC_56:

(27, 40523), (Start: 33 @40550 has 156 MA's), (46, 40574), (Start: 55 @40589 has 5 MA's), (72, 40634), (76, 40646), (90, 40724), (93, 40736), (97, 40760), (99, 40772), (112, 40826),

Gene: Pacc40_53 Start: 38285, Stop: 38563, Start Num: 33

Candidate Starts for Pacc40_53:

(27, 38258), (Start: 33 @38285 has 156 MA's), (74, 38369), (77, 38378), (87, 38441), (90, 38456), (93, 38468), (97, 38492), (99, 38504), (112, 38555),

Gene: Padfoot_50 Start: 37668, Stop: 37931, Start Num: 45

Candidate Starts for Padfoot_50:

(Start: 45 @37668 has 96 MA's), (87, 37809),

Gene: Padpat_52 Start: 37347, Stop: 37610, Start Num: 45

Candidate Starts for Padpat_52:

(Start: 45 @37347 has 96 MA's), (87, 37488),

Gene: Palpatine_95 Start: 57622, Stop: 57882, Start Num: 61

Candidate Starts for Palpatine_95:

(Start: 61 @57622 has 125 MA's), (68, 57643), (81, 57718), (94, 57787), (104, 57853),

Gene: PapayaSalad_40 Start: 27840, Stop: 28139, Start Num: 55

Candidate Starts for PapayaSalad_40:

(10, 27552), (13, 27597), (28, 27771), (Start: 55 @27840 has 5 MA's), (89, 28002),

Gene: Paperbeatsrock_92 Start: 56873, Stop: 57133, Start Num: 61

Candidate Starts for Paperbeatsrock_92:

(Start: 61 @56873 has 125 MA's), (68, 56894), (81, 56969), (94, 57038), (104, 57104),

Gene: Pat3_90 Start: 55071, Stop: 55331, Start Num: 61

Candidate Starts for Pat3_90:

(Start: 18 @54933 has 1 MA's), (Start: 61 @55071 has 125 MA's), (68, 55092), (94, 55236), (104, 55302),

Gene: Peanam_53 Start: 38304, Stop: 38567, Start Num: 45

Candidate Starts for Peanam_53:

(3, 37824), (7, 37980), (12, 38049), (Start: 45 @38304 has 96 MA's), (81, 38406), (82, 38424), (87, 38442), (97, 38496), (102, 38532), (110, 38556),

Gene: Peel_50 Start: 37473, Stop: 37736, Start Num: 45

Candidate Starts for Peel_50:

(Start: 45 @37473 has 96 MA's), (87, 37614),

Gene: Petra64142_98 Start: 58076, Stop: 58336, Start Num: 61

Candidate Starts for Petra64142_98:

(Start: 18 @57938 has 1 MA's), (Start: 61 @58076 has 125 MA's), (68, 58097), (94, 58241), (104, 58307),

Gene: Phaja_91 Start: 56699, Stop: 56959, Start Num: 61

Candidate Starts for Phaja_91:

(Start: 61 @56699 has 125 MA's), (68, 56720), (81, 56795), (94, 56864), (104, 56930),

Gene: Pharb_50 Start: 36682, Stop: 36942, Start Num: 39
Candidate Starts for Pharb_50:
(3, 36217), (12, 36442), (Start: 39 @36682 has 13 MA's), (56, 36697), (97, 36871),

Gene: Pharky_7 Start: 5240, Stop: 4923, Start Num: 37
Candidate Starts for Pharky_7:
(Start: 37 @5240 has 4 MA's), (67, 5180), (87, 5066), (99, 4991), (107, 4946),

Gene: Pharsalus_90 Start: 56673, Stop: 56933, Start Num: 61
Candidate Starts for Pharsalus_90:
(Start: 61 @56673 has 125 MA's), (68, 56694), (81, 56769), (94, 56838), (104, 56904),

Gene: Phasih_57 Start: 40355, Stop: 40633, Start Num: 33
Candidate Starts for Phasih_57:
(27, 40328), (Start: 33 @40355 has 156 MA's), (74, 40439), (77, 40448), (87, 40511), (90, 40526), (93, 40538), (97, 40562), (99, 40574), (112, 40625),

Gene: PhatBacter_97 Start: 57367, Stop: 57627, Start Num: 61
Candidate Starts for PhatBacter_97:
(Start: 61 @57367 has 125 MA's), (68, 57388), (81, 57463), (94, 57532), (104, 57598),

Gene: Phatniss_57 Start: 39928, Stop: 40212, Start Num: 33
Candidate Starts for Phatniss_57:
(27, 39901), (Start: 33 @39928 has 156 MA's), (46, 39952), (Start: 55 @39967 has 5 MA's), (72, 40012), (76, 40024), (90, 40102), (93, 40114), (97, 40138), (99, 40150), (112, 40204),

Gene: Phaux_96 Start: 57909, Stop: 58169, Start Num: 61
Candidate Starts for Phaux_96:
(Start: 61 @57909 has 125 MA's), (68, 57930), (81, 58005), (94, 58074), (104, 58140),

Gene: Phedro_7 Start: 5240, Stop: 4923, Start Num: 37
Candidate Starts for Phedro_7:
(Start: 37 @5240 has 4 MA's), (67, 5180), (87, 5066), (99, 4991), (107, 4946),

Gene: PhelpsODU_53 Start: 37175, Stop: 37432, Start Num: 47
Candidate Starts for PhelpsODU_53:
(Start: 47 @37175 has 18 MA's), (Start: 61 @37196 has 125 MA's), (76, 37250), (87, 37313), (88, 37322), (102, 37400),

Gene: Philus_62 Start: 41088, Stop: 41369, Start Num: 33
Candidate Starts for Philus_62:
(27, 41061), (Start: 33 @41088 has 156 MA's), (74, 41172), (77, 41181), (87, 41244), (90, 41259), (93, 41271), (97, 41295), (99, 41307), (112, 41361),

Gene: PhlipPhlop_57 Start: 41642, Stop: 41926, Start Num: 33
Candidate Starts for PhlipPhlop_57:
(27, 41615), (Start: 33 @41642 has 156 MA's), (46, 41666), (Start: 55 @41681 has 5 MA's), (72, 41726), (90, 41816), (93, 41828), (97, 41852), (99, 41864), (112, 41918),

Gene: Phracted_7 Start: 5240, Stop: 4923, Start Num: 37
Candidate Starts for Phracted_7:
(Start: 37 @5240 has 4 MA's), (67, 5180), (87, 5066), (99, 4991), (107, 4946),

Gene: Phrank_54 Start: 37132, Stop: 37389, Start Num: 47
Candidate Starts for Phrank_54:
(Start: 47 @37132 has 18 MA's), (Start: 61 @37153 has 125 MA's), (76, 37207), (87, 37270), (88, 37279), (102, 37357),

Gene: Phrux_91 Start: 56185, Stop: 56445, Start Num: 61
Candidate Starts for Phrux_91:
(Start: 61 @56185 has 125 MA's), (68, 56206), (81, 56281), (94, 56350), (104, 56416),

Gene: Piatt_50 Start: 37668, Stop: 37931, Start Num: 45
Candidate Starts for Piatt_50:
(Start: 45 @37668 has 96 MA's), (87, 37809),

Gene: Pippy_57 Start: 38794, Stop: 39075, Start Num: 33
Candidate Starts for Pippy_57:
(27, 38767), (Start: 33 @38794 has 156 MA's), (46, 38818), (Start: 55 @38833 has 5 MA's), (72, 38878), (76, 38890), (90, 38968), (93, 38980), (97, 39004), (99, 39016), (112, 39067),

Gene: Pixie_52 Start: 37451, Stop: 37720, Start Num: 39
Candidate Starts for Pixie_52:
(12, 37211), (Start: 39 @37451 has 13 MA's), (56, 37475), (87, 37595), (97, 37649),

Gene: Plumbus_61 Start: 40255, Stop: 40533, Start Num: 33
Candidate Starts for Plumbus_61:
(27, 40228), (Start: 33 @40255 has 156 MA's), (74, 40339), (77, 40348), (87, 40411), (90, 40426), (93, 40438), (97, 40462), (99, 40474), (112, 40525),

Gene: Poenanya_59 Start: 41112, Stop: 41390, Start Num: 33
Candidate Starts for Poenanya_59:
(27, 41085), (Start: 33 @41112 has 156 MA's), (74, 41196), (77, 41205), (87, 41268), (90, 41283), (93, 41295), (97, 41319), (99, 41331), (112, 41382),

Gene: Pokerus_49 Start: 37394, Stop: 37657, Start Num: 45
Candidate Starts for Pokerus_49:
(Start: 45 @37394 has 96 MA's), (69, 37448), (87, 37535),

Gene: Policronamos_96 Start: 57640, Stop: 57900, Start Num: 61
Candidate Starts for Policronamos_96:
(Start: 61 @57640 has 125 MA's), (68, 57661), (81, 57736), (94, 57805), (104, 57871),

Gene: Polka14_57 Start: 39308, Stop: 39586, Start Num: 33
Candidate Starts for Polka14_57:
(27, 39281), (Start: 33 @39308 has 156 MA's), (74, 39392), (77, 39401), (87, 39464), (90, 39479), (93, 39491), (97, 39515), (99, 39527), (112, 39578),

Gene: Pollywog_60 Start: 40759, Stop: 41043, Start Num: 33
Candidate Starts for Pollywog_60:
(27, 40732), (Start: 33 @40759 has 156 MA's), (46, 40783), (Start: 55 @40798 has 5 MA's), (72, 40843), (76, 40855), (90, 40933), (93, 40945), (97, 40969), (99, 40981), (112, 41035),

Gene: Polo2Bam_64 Start: 39785, Stop: 40063, Start Num: 33
Candidate Starts for Polo2Bam_64:

(27, 39758), (Start: 33 @39785 has 156 MA's), (74, 39869), (77, 39878), (87, 39941), (90, 39956), (93, 39968), (97, 39992), (99, 40004), (112, 40055),

Gene: Porky_92 Start: 55785, Stop: 56045, Start Num: 61

Candidate Starts for Porky_92:

(Start: 61 @55785 has 125 MA's), (68, 55806), (81, 55881), (94, 55950), (104, 56016),

Gene: Priscilla_59 Start: 40022, Stop: 40306, Start Num: 33

Candidate Starts for Priscilla_59:

(27, 39995), (Start: 33 @40022 has 156 MA's), (46, 40046), (Start: 55 @40061 has 5 MA's), (72, 40106), (76, 40118), (90, 40196), (93, 40208), (97, 40232), (99, 40244), (112, 40298),

Gene: Prithvi_51 Start: 37556, Stop: 37819, Start Num: 45

Candidate Starts for Prithvi_51:

(Start: 45 @37556 has 96 MA's), (69, 37610), (87, 37697),

Gene: Pumpkin_97 Start: 57561, Stop: 57821, Start Num: 61

Candidate Starts for Pumpkin_97:

(Start: 61 @57561 has 125 MA's), (68, 57582), (81, 57657), (94, 57726), (104, 57792),

Gene: Pupper_53 Start: 18336, Stop: 18617, Start Num: 30

Candidate Starts for Pupper_53:

(Start: 30 @18336 has 3 MA's), (43, 18372), (76, 18447),

Gene: Quallification_94 Start: 57281, Stop: 57541, Start Num: 61

Candidate Starts for Quallification_94:

(Start: 61 @57281 has 125 MA's), (68, 57302), (81, 57377), (94, 57446), (104, 57512),

Gene: QuickMath_61 Start: 42034, Stop: 42315, Start Num: 33

Candidate Starts for QuickMath_61:

(25, 41998), (Start: 33 @42034 has 156 MA's), (46, 42058), (72, 42115), (76, 42127), (90, 42205), (93, 42217), (97, 42241), (99, 42253), (112, 42307),

Gene: QuincyRose_49 Start: 37786, Stop: 38049, Start Num: 45

Candidate Starts for QuincyRose_49:

(Start: 45 @37786 has 96 MA's), (87, 37927),

Gene: Radiance_58 Start: 40047, Stop: 40328, Start Num: 33

Candidate Starts for Radiance_58:

(27, 40020), (Start: 33 @40047 has 156 MA's), (46, 40071), (Start: 55 @40086 has 5 MA's), (72, 40131), (76, 40143), (90, 40221), (93, 40233), (97, 40257), (99, 40269), (112, 40320),

Gene: Rakim_94 Start: 56610, Stop: 56870, Start Num: 61

Candidate Starts for Rakim_94:

(Start: 61 @56610 has 125 MA's), (68, 56631), (81, 56706), (94, 56775), (104, 56841),

Gene: Ramen_51 Start: 37358, Stop: 37621, Start Num: 45

Candidate Starts for Ramen_51:

(Start: 45 @37358 has 96 MA's), (87, 37499),

Gene: Rapunzel97_51 Start: 37354, Stop: 37617, Start Num: 45

Candidate Starts for Rapunzel97_51:

(Start: 45 @37354 has 96 MA's), (87, 37495),

Gene: Red305_80 Start: 53809, Stop: 54063, Start Num: 64

Candidate Starts for Red305_80:

(Start: 59 @53794 has 12 MA's), (Start: 64 @53809 has 4 MA's), (89, 53944), (97, 53986), (101, 54022), (108, 54046),

Gene: RedBird_57 Start: 39343, Stop: 39624, Start Num: 33

Candidate Starts for RedBird_57:

(27, 39316), (Start: 33 @39343 has 156 MA's), (74, 39427), (77, 39436), (87, 39499), (90, 39514), (93, 39526), (97, 39550), (99, 39562),

Gene: Renaud18_65 Start: 40812, Stop: 41093, Start Num: 33

Candidate Starts for Renaud18_65:

(25, 40776), (Start: 33 @40812 has 156 MA's), (Start: 41 @40827 has 1 MA's), (Start: 55 @40851 has 5 MA's), (72, 40896), (76, 40908), (97, 41022), (99, 41034), (112, 41085),

Gene: Rialto_65 Start: 42826, Stop: 43110, Start Num: 33

Candidate Starts for Rialto_65:

(27, 42799), (Start: 33 @42826 has 156 MA's), (46, 42850), (Start: 55 @42865 has 5 MA's), (72, 42910), (76, 42922), (90, 43000), (93, 43012), (97, 43036), (99, 43048), (112, 43102),

Gene: Richo_53 Start: 38285, Stop: 38548, Start Num: 45

Candidate Starts for Richo_53:

(3, 37805), (7, 37961), (12, 38030), (Start: 45 @38285 has 96 MA's), (81, 38387), (82, 38405), (87, 38423), (97, 38477), (102, 38513), (110, 38537),

Gene: Rimmer_91 Start: 56182, Stop: 56442, Start Num: 61

Candidate Starts for Rimmer_91:

(Start: 18 @56044 has 1 MA's), (Start: 61 @56182 has 125 MA's), (68, 56203), (94, 56347), (104, 56413),

Gene: Rita_60 Start: 38653, Stop: 38937, Start Num: 33

Candidate Starts for Rita_60:

(27, 38626), (Start: 33 @38653 has 156 MA's), (46, 38677), (Start: 55 @38692 has 5 MA's), (72, 38737), (76, 38749), (90, 38827), (93, 38839), (97, 38863), (99, 38875), (112, 38929),

Gene: RitaG_54 Start: 38556, Stop: 38834, Start Num: 33

Candidate Starts for RitaG_54:

(27, 38529), (Start: 33 @38556 has 156 MA's), (74, 38640), (77, 38649), (87, 38712), (90, 38727), (93, 38739), (97, 38763), (99, 38775), (112, 38826),

Gene: RiverMonster_94 Start: 57081, Stop: 57341, Start Num: 61

Candidate Starts for RiverMonster_94:

(Start: 61 @57081 has 125 MA's), (68, 57102), (81, 57177), (94, 57246), (104, 57312),

Gene: Rockne_60 Start: 40562, Stop: 40846, Start Num: 33

Candidate Starts for Rockne_60:

(27, 40535), (Start: 33 @40562 has 156 MA's), (46, 40586), (Start: 55 @40601 has 5 MA's), (72, 40646), (76, 40658), (90, 40736), (93, 40748), (97, 40772), (99, 40784), (112, 40838),

Gene: RockyHorror_60 Start: 39611, Stop: 39892, Start Num: 33

Candidate Starts for RockyHorror_60:

(27, 39584), (Start: 33 @39611 has 156 MA's), (46, 39635), (Start: 55 @39650 has 5 MA's), (72, 39695), (76, 39707), (93, 39797), (97, 39821), (99, 39833), (112, 39884),

Gene: RonRayGun_41 Start: 31892, Stop: 32149, Start Num: 42

Candidate Starts for RonRayGun_41:

(9, 31616), (11, 31637), (Start: 42 @31892 has 7 MA's), (76, 31976), (93, 32066),

Gene: Rosmarinus_50 Start: 37459, Stop: 37722, Start Num: 45

Candidate Starts for Rosmarinus_50:

(Start: 45 @37459 has 96 MA's), (87, 37600),

Gene: Ruby_55 Start: 39743, Stop: 40021, Start Num: 33

Candidate Starts for Ruby_55:

(27, 39716), (Start: 33 @39743 has 156 MA's), (74, 39827), (77, 39836), (87, 39899), (90, 39914), (93, 39926), (97, 39950), (99, 39962), (112, 40013),

Gene: SCentae_53 Start: 18353, Stop: 18634, Start Num: 30

Candidate Starts for SCentae_53:

(Start: 30 @18353 has 3 MA's), (43, 18389), (76, 18464),

Gene: SG4_56 Start: 39440, Stop: 39724, Start Num: 33

Candidate Starts for SG4_56:

(Start: 33 @39440 has 156 MA's), (46, 39464), (Start: 55 @39479 has 5 MA's), (72, 39524), (76, 39536), (90, 39614), (93, 39626), (97, 39650), (99, 39662), (112, 39716),

Gene: Saal_61 Start: 41196, Stop: 41477, Start Num: 33

Candidate Starts for Saal_61:

(27, 41169), (Start: 33 @41196 has 156 MA's), (46, 41220), (Start: 55 @41235 has 5 MA's), (72, 41280), (76, 41292), (90, 41370), (93, 41382), (97, 41406), (99, 41418), (112, 41469),

Gene: Sabbb_63 Start: 40884, Stop: 41165, Start Num: 33

Candidate Starts for Sabbb_63:

(27, 40857), (Start: 33 @40884 has 156 MA's), (46, 40908), (Start: 55 @40923 has 5 MA's), (72, 40968), (76, 40980), (90, 41058), (93, 41070), (97, 41094), (99, 41106), (112, 41157),

Gene: Saints25_92 Start: 56224, Stop: 56484, Start Num: 61

Candidate Starts for Saints25_92:

(Start: 61 @56224 has 125 MA's), (68, 56245), (81, 56320), (94, 56389), (104, 56455),

Gene: Samty_78 Start: 53804, Stop: 54058, Start Num: 64

Candidate Starts for Samty_78:

(Start: 59 @53789 has 12 MA's), (Start: 64 @53804 has 4 MA's), (89, 53939), (97, 53981), (101, 54017), (108, 54041),

Gene: SamuelLPlaqson_51 Start: 38242, Stop: 38505, Start Num: 45

Candidate Starts for SamuelLPlaqson_51:

(12, 37990), (Start: 45 @38242 has 96 MA's), (69, 38296), (82, 38365), (87, 38383),

Gene: Sassafras_57 Start: 39528, Stop: 39806, Start Num: 33

Candidate Starts for Sassafras_57:

(27, 39501), (Start: 33 @39528 has 156 MA's), (74, 39612), (77, 39621), (87, 39684), (90, 39699), (93, 39711), (97, 39735), (99, 39747), (112, 39798),

Gene: Sassay_88 Start: 54914, Stop: 55174, Start Num: 61
Candidate Starts for Sassay_88:
(Start: 61 @54914 has 125 MA's), (68, 54935), (81, 55010), (94, 55079), (104, 55145),

Gene: Sbash_53 Start: 39707, Stop: 40006, Start Num: 39
Candidate Starts for Sbash_53:
(Start: 39 @39707 has 13 MA's), (50, 39725), (66, 39761), (Start: 70 @39776 has 1 MA's), (87, 39872),
(97, 39923), (100, 39959), (112, 39998),

Gene: Scarlett_55 Start: 38559, Stop: 38834, Start Num: 47
Candidate Starts for Scarlett_55:
(Start: 47 @38559 has 18 MA's), (Start: 51 @38565 has 4 MA's), (69, 38607), (76, 38631), (95, 38739),
(114, 38823),

Gene: Scottish_57 Start: 39568, Stop: 39852, Start Num: 33
Candidate Starts for Scottish_57:
(27, 39541), (Start: 33 @39568 has 156 MA's), (46, 39592), (Start: 55 @39607 has 5 MA's), (72,
39652), (76, 39664), (90, 39742), (93, 39754), (97, 39778), (99, 39790), (112, 39844),

Gene: Seabastian_64 Start: 42541, Stop: 42819, Start Num: 33
Candidate Starts for Seabastian_64:
(27, 42514), (Start: 33 @42541 has 156 MA's), (74, 42625), (77, 42634), (87, 42697), (90, 42712), (93,
42724), (97, 42748), (99, 42760), (112, 42811),

Gene: Sejanus_58 Start: 47696, Stop: 47995, Start Num: 39
Candidate Starts for Sejanus_58:
(Start: 39 @47696 has 13 MA's), (50, 47714), (66, 47750), (Start: 70 @47765 has 1 MA's), (87, 47861),
(97, 47912), (100, 47948), (109, 47981), (112, 47987),

Gene: SgtBeansprout_46 Start: 37040, Stop: 37309, Start Num: 45
Candidate Starts for SgtBeansprout_46:
(Start: 45 @37040 has 96 MA's), (80, 37136), (91, 37196), (92, 37202), (93, 37205), (97, 37232), (99,
37244), (110, 37298),

Gene: Shadow1_56 Start: 38290, Stop: 38541, Start Num: 47
Candidate Starts for Shadow1_56:
(Start: 47 @38290 has 18 MA's), (Start: 51 @38296 has 4 MA's), (87, 38428),

Gene: ShamWow_93 Start: 57094, Stop: 57354, Start Num: 61
Candidate Starts for ShamWow_93:
(Start: 61 @57094 has 125 MA's), (68, 57115), (81, 57190), (94, 57259), (104, 57325),

Gene: Shaobing_53 Start: 38322, Stop: 38585, Start Num: 45
Candidate Starts for Shaobing_53:
(3, 37842), (7, 37998), (12, 38067), (Start: 45 @38322 has 96 MA's), (81, 38424), (82, 38442), (87,
38460), (97, 38514), (102, 38550), (110, 38574),

Gene: ShedlockHolmes_54 Start: 37976, Stop: 38245, Start Num: 39
Candidate Starts for ShedlockHolmes_54:
(12, 37736), (Start: 39 @37976 has 13 MA's), (56, 38000), (87, 38120), (97, 38174),

Gene: ShereKhan_91 Start: 57206, Stop: 57466, Start Num: 61
Candidate Starts for ShereKhan_91:

(Start: 61 @57206 has 125 MA's), (68, 57227), (81, 57302), (94, 57371), (104, 57437),

Gene: ShiLan_58 Start: 39969, Stop: 40253, Start Num: 33

Candidate Starts for ShiLan_58:

(27, 39942), (Start: 33 @39969 has 156 MA's), (46, 39993), (Start: 55 @40008 has 5 MA's), (72, 40053), (76, 40065), (90, 40143), (93, 40155), (97, 40179), (99, 40191), (112, 40245),

Gene: ShiaSurprise_51 Start: 37668, Stop: 37931, Start Num: 45

Candidate Starts for ShiaSurprise_51:

(Start: 45 @37668 has 96 MA's), (87, 37809),

Gene: ShowerHandel_62 Start: 39936, Stop: 40217, Start Num: 33

Candidate Starts for ShowerHandel_62:

(27, 39909), (Start: 33 @39936 has 156 MA's), (46, 39960), (Start: 55 @39975 has 5 MA's), (72, 40020), (76, 40032), (90, 40110), (93, 40122), (97, 40146), (99, 40158), (112, 40209),

Gene: ShroomBoi_61 Start: 40896, Stop: 41177, Start Num: 33

Candidate Starts for ShroomBoi_61:

(27, 40869), (Start: 33 @40896 has 156 MA's), (46, 40920), (Start: 55 @40935 has 5 MA's), (72, 40980), (76, 40992), (90, 41070), (93, 41082), (97, 41106), (99, 41118), (112, 41169),

Gene: Shweta_42 Start: 30626, Stop: 30925, Start Num: 39

Candidate Starts for Shweta_42:

(Start: 39 @30626 has 13 MA's), (50, 30644), (66, 30680), (Start: 70 @30695 has 1 MA's), (87, 30791), (97, 30842), (100, 30878), (109, 30911),

Gene: SiSi_57 Start: 39342, Stop: 39626, Start Num: 33

Candidate Starts for SiSi_57:

(27, 39315), (Start: 33 @39342 has 156 MA's), (46, 39366), (Start: 55 @39381 has 5 MA's), (72, 39426), (76, 39438), (90, 39516), (93, 39528), (97, 39552), (99, 39564), (112, 39618),

Gene: Simpliphy_92 Start: 56214, Stop: 56474, Start Num: 61

Candidate Starts for Simpliphy_92:

(Start: 61 @56214 has 125 MA's), (68, 56235), (81, 56310), (94, 56379), (104, 56445),

Gene: SimranZ1_59 Start: 40122, Stop: 40400, Start Num: 33

Candidate Starts for SimranZ1_59:

(27, 40095), (Start: 33 @40122 has 156 MA's), (74, 40206), (77, 40215), (87, 40278), (90, 40293), (93, 40305), (97, 40329), (99, 40341), (112, 40392),

Gene: SirDuracell_93 Start: 55587, Stop: 55847, Start Num: 61

Candidate Starts for SirDuracell_93:

(Start: 61 @55587 has 125 MA's), (68, 55608), (81, 55683), (94, 55752), (104, 55818),

Gene: SirPhilip_53 Start: 38679, Stop: 38936, Start Num: 47

Candidate Starts for SirPhilip_53:

(Start: 47 @38679 has 18 MA's), (82, 38799), (84, 38808), (87, 38817), (99, 38880), (102, 38904),

Gene: SkinnyPete_42 Start: 29948, Stop: 30178, Start Num: 70

Candidate Starts for SkinnyPete_42:

(Start: 39 @29879 has 13 MA's), (50, 29897), (66, 29933), (Start: 70 @29948 has 1 MA's), (87, 30044), (97, 30095), (100, 30131), (109, 30164), (112, 30170),

Gene: Skog_114 Start: 46503, Stop: 46823, Start Num: 24

Candidate Starts for Skog_114:

(21, 46470), (Start: 24 @46503 has 1 MA's), (27, 46512), (29, 46521), (35, 46551), (60, 46593), (Start: 61 @46596 has 125 MA's), (87, 46713), (103, 46800),

Gene: Slim_60 Start: 40729, Stop: 41013, Start Num: 33

Candidate Starts for Slim_60:

(27, 40702), (Start: 33 @40729 has 156 MA's), (46, 40753), (Start: 55 @40768 has 5 MA's), (72, 40813), (76, 40825), (90, 40903), (93, 40915), (97, 40939), (99, 40951), (112, 41005),

Gene: Slimphazie_50 Start: 37354, Stop: 37617, Start Num: 45

Candidate Starts for Slimphazie_50:

(Start: 45 @37354 has 96 MA's), (87, 37495),

Gene: Snenia_78 Start: 53795, Stop: 54064, Start Num: 59

Candidate Starts for Snenia_78:

(Start: 59 @53795 has 12 MA's), (Start: 64 @53810 has 4 MA's), (89, 53945), (97, 53987), (101, 54023), (108, 54047),

Gene: SophKB_90 Start: 55892, Stop: 56152, Start Num: 61

Candidate Starts for SophKB_90:

(Start: 61 @55892 has 125 MA's), (68, 55913), (81, 55988), (94, 56057), (104, 56123),

Gene: Sotrice96_94 Start: 56480, Stop: 56740, Start Num: 61

Candidate Starts for Sotrice96_94:

(Start: 61 @56480 has 125 MA's), (68, 56501), (81, 56576), (94, 56645), (104, 56711),

Gene: Soul22_65 Start: 41527, Stop: 41811, Start Num: 33

Candidate Starts for Soul22_65:

(27, 41500), (Start: 33 @41527 has 156 MA's), (46, 41551), (Start: 55 @41566 has 5 MA's), (72, 41611), (76, 41623), (90, 41701), (93, 41713), (97, 41737), (99, 41749), (112, 41803),

Gene: Spartacus_61 Start: 40606, Stop: 40887, Start Num: 33

Candidate Starts for Spartacus_61:

(27, 40579), (Start: 33 @40606 has 156 MA's), (46, 40630), (Start: 55 @40645 has 5 MA's), (72, 40690), (76, 40702), (90, 40780), (93, 40792), (97, 40816), (99, 40828), (112, 40879),

Gene: Spikelee_66 Start: 42226, Stop: 42507, Start Num: 33

Candidate Starts for Spikelee_66:

(27, 42199), (Start: 33 @42226 has 156 MA's), (46, 42250), (Start: 55 @42265 has 5 MA's), (72, 42310), (76, 42322), (90, 42400), (93, 42412), (97, 42436), (99, 42448), (112, 42499),

Gene: Spock_50 Start: 37472, Stop: 37735, Start Num: 45

Candidate Starts for Spock_50:

(Start: 45 @37472 has 96 MA's), (87, 37613),

Gene: Spoonbill_56 Start: 38516, Stop: 38794, Start Num: 33

Candidate Starts for Spoonbill_56:

(27, 38489), (Start: 33 @38516 has 156 MA's), (74, 38600), (77, 38609), (87, 38672), (90, 38687), (93, 38699), (97, 38723), (99, 38735), (112, 38786),

Gene: Squiddly_71 Start: 45719, Stop: 45979, Start Num: 38

Candidate Starts for Squiddly_71:

(28, 45680), (Start: 38 @45719 has 1 MA's), (69, 45782), (72, 45794), (82, 45851), (93, 45896), (106, 45971),

Gene: Stank_95 Start: 56873, Stop: 57133, Start Num: 61

Candidate Starts for Stank_95:

(Start: 61 @56873 has 125 MA's), (68, 56894), (81, 56969), (94, 57038), (104, 57104),

Gene: Stap_57 Start: 39317, Stop: 39595, Start Num: 33

Candidate Starts for Stap_57:

(27, 39290), (Start: 33 @39317 has 156 MA's), (74, 39401), (77, 39410), (87, 39473), (90, 39488), (93, 39500), (97, 39524), (99, 39536), (112, 39587),

Gene: Starcevich_59 Start: 40105, Stop: 40383, Start Num: 33

Candidate Starts for Starcevich_59:

(25, 40069), (Start: 33 @40105 has 156 MA's), (46, 40129), (72, 40186), (76, 40198), (90, 40276), (93, 40288), (97, 40312), (99, 40324), (112, 40375),

Gene: Stark_95 Start: 56964, Stop: 57224, Start Num: 61

Candidate Starts for Stark_95:

(Start: 61 @56964 has 125 MA's), (68, 56985), (81, 57060), (94, 57129), (104, 57195),

Gene: StellaBean_91 Start: 56418, Stop: 56678, Start Num: 61

Candidate Starts for StellaBean_91:

(Start: 61 @56418 has 125 MA's), (68, 56439), (81, 56514), (94, 56583), (104, 56649),

Gene: Stinson_51 Start: 37846, Stop: 38109, Start Num: 45

Candidate Starts for Stinson_51:

(12, 37594), (Start: 45 @37846 has 96 MA's), (69, 37900), (87, 37987),

Gene: StolenFromERC_96 Start: 56798, Stop: 57058, Start Num: 61

Candidate Starts for StolenFromERC_96:

(Start: 61 @56798 has 125 MA's), (68, 56819), (81, 56894), (94, 56963), (104, 57029),

Gene: StormChicken_95 Start: 57577, Stop: 57837, Start Num: 61

Candidate Starts for StormChicken_95:

(Start: 18 @57439 has 1 MA's), (Start: 61 @57577 has 125 MA's), (68, 57598), (94, 57742), (104, 57808),

Gene: Strobilo_54 Start: 39537, Stop: 39767, Start Num: 58

Candidate Starts for Strobilo_54:

(Start: 54 @39534 has 6 MA's), (Start: 58 @39537 has 4 MA's), (62, 39543), (63, 39549), (82, 39639), (83, 39645), (97, 39708),

Gene: Strokeseat_55 Start: 38052, Stop: 38333, Start Num: 33

Candidate Starts for Strokeseat_55:

(27, 38025), (Start: 33 @38052 has 156 MA's), (46, 38076), (Start: 55 @38091 has 5 MA's), (72, 38136), (76, 38148), (90, 38226), (93, 38238), (97, 38262), (99, 38274), (112, 38325),

Gene: Stuck_58 Start: 41100, Stop: 41399, Start Num: 39

Candidate Starts for Stuck_58:

(Start: 39 @41100 has 13 MA's), (50, 41118), (66, 41154), (Start: 70 @41169 has 1 MA's), (87, 41265), (97, 41316), (100, 41352), (109, 41385),

Gene: Sulley_50 Start: 37598, Stop: 37861, Start Num: 45

Candidate Starts for Sulley_50:

(Start: 45 @37598 has 96 MA's), (87, 37739),

Gene: Sunflower1121_57 Start: 38391, Stop: 38642, Start Num: 47

Candidate Starts for Sunflower1121_57:

(Start: 47 @38391 has 18 MA's), (Start: 51 @38397 has 4 MA's), (87, 38529),

Gene: SwagPigglett_64 Start: 42244, Stop: 42525, Start Num: 33

Candidate Starts for SwagPigglett_64:

(27, 42217), (Start: 33 @42244 has 156 MA's), (46, 42268), (Start: 55 @42283 has 5 MA's), (72, 42328), (76, 42340), (90, 42418), (93, 42430), (97, 42454), (99, 42466), (112, 42517),

Gene: Syra333_56 Start: 38055, Stop: 38306, Start Num: 47

Candidate Starts for Syra333_56:

(Start: 47 @38055 has 18 MA's), (Start: 51 @38061 has 4 MA's), (83, 38181), (87, 38193),

Gene: TBond007_51 Start: 37450, Stop: 37719, Start Num: 39

Candidate Starts for TBond007_51:

(12, 37210), (Start: 39 @37450 has 13 MA's), (56, 37474), (87, 37594), (97, 37648),

Gene: TBrady12_96 Start: 56634, Stop: 56894, Start Num: 61

Candidate Starts for TBrady12_96:

(Start: 61 @56634 has 125 MA's), (68, 56655), (81, 56730), (94, 56799), (104, 56865),

Gene: TChen_60 Start: 41367, Stop: 41636, Start Num: 41

Candidate Starts for TChen_60:

(23, 41322), (Start: 33 @41358 has 156 MA's), (Start: 41 @41367 has 1 MA's), (69, 41424), (74, 41442), (77, 41451), (87, 41514), (90, 41529), (93, 41541), (97, 41565), (99, 41577), (112, 41628),

Gene: TClif_54 Start: 38425, Stop: 38685, Start Num: 49

Candidate Starts for TClif_54:

(Start: 49 @38425 has 8 MA's), (69, 38467), (93, 38581), (95, 38599), (110, 38674),

Gene: TM4_49 Start: 33917, Stop: 34147, Start Num: 58

Candidate Starts for TM4_49:

(Start: 54 @33914 has 6 MA's), (Start: 58 @33917 has 4 MA's), (62, 33923), (63, 33929), (82, 34019), (83, 34025), (97, 34088),

Gene: Tachez_50 Start: 37316, Stop: 37579, Start Num: 45

Candidate Starts for Tachez_50:

(Start: 45 @37316 has 96 MA's), (87, 37457),

Gene: TaiwanKao_52 Start: 37612, Stop: 37875, Start Num: 45

Candidate Starts for TaiwanKao_52:

(Start: 45 @37612 has 96 MA's), (87, 37753),

Gene: Tarkin_92 Start: 56882, Stop: 57142, Start Num: 61

Candidate Starts for Tarkin_92:

(Start: 61 @56882 has 125 MA's), (68, 56903), (81, 56978), (94, 57047), (104, 57113),

Gene: TeardropMSU_89 Start: 55882, Stop: 56142, Start Num: 61

Candidate Starts for TeardropMSU_89:

(Start: 61 @55882 has 125 MA's), (68, 55903), (81, 55978), (94, 56047), (104, 56113),

Gene: Teaspoon_94 Start: 56734, Stop: 56994, Start Num: 61

Candidate Starts for Teaspoon_94:

(Start: 61 @56734 has 125 MA's), (68, 56755), (81, 56830), (94, 56899), (104, 56965),

Gene: Teejan_48 Start: 39653, Stop: 39922, Start Num: 45

Candidate Starts for Teejan_48:

(Start: 45 @39653 has 96 MA's), (80, 39749), (91, 39809), (92, 39815), (93, 39818), (97, 39845), (99, 39857), (110, 39911),

Gene: Terminus_96 Start: 57669, Stop: 57929, Start Num: 61

Candidate Starts for Terminus_96:

(Start: 61 @57669 has 125 MA's), (68, 57690), (81, 57765), (94, 57834), (104, 57900),

Gene: ThetaBob_64 Start: 41432, Stop: 41710, Start Num: 33

Candidate Starts for ThetaBob_64:

(23, 41396), (Start: 33 @41432 has 156 MA's), (Start: 41 @41441 has 1 MA's), (69, 41498), (74, 41516), (77, 41525), (87, 41588), (90, 41603), (93, 41615), (97, 41639), (99, 41651), (112, 41702),

Gene: Thimble_96 Start: 56384, Stop: 56644, Start Num: 61

Candidate Starts for Thimble_96:

(Start: 61 @56384 has 125 MA's), (68, 56405), (81, 56480), (94, 56549), (104, 56615),

Gene: Thresher_96 Start: 57744, Stop: 58004, Start Num: 61

Candidate Starts for Thresher_96:

(Start: 61 @57744 has 125 MA's), (68, 57765), (81, 57840), (94, 57909), (104, 57975),

Gene: Tierra_54 Start: 37943, Stop: 38200, Start Num: 47

Candidate Starts for Tierra_54:

(Start: 47 @37943 has 18 MA's), (Start: 61 @37964 has 125 MA's), (76, 38018), (87, 38081), (88, 38090), (102, 38168),

Gene: TingHuaYa_51 Start: 36397, Stop: 36660, Start Num: 45

Candidate Starts for TingHuaYa_51:

(Start: 45 @36397 has 96 MA's), (Start: 51 @36409 has 4 MA's), (82, 36520), (87, 36538),

Gene: TiniBug_51 Start: 38238, Stop: 38501, Start Num: 45

Candidate Starts for TiniBug_51:

(12, 37986), (Start: 45 @38238 has 96 MA's), (69, 38292), (82, 38361), (87, 38379),

Gene: Tiri_51 Start: 37646, Stop: 37909, Start Num: 45

Candidate Starts for Tiri_51:

(Start: 45 @37646 has 96 MA's), (69, 37700), (87, 37787),

Gene: Tomaszewski_88 Start: 56045, Stop: 56305, Start Num: 61

Candidate Starts for Tomaszewski_88:

(Start: 61 @56045 has 125 MA's), (68, 56066), (81, 56141), (94, 56210), (104, 56276),

Gene: Tootsieroll_60 Start: 39265, Stop: 39549, Start Num: 33

Candidate Starts for Tootsieroll_60:

(27, 39238), (Start: 33 @39265 has 156 MA's), (46, 39289), (Start: 55 @39304 has 5 MA's), (72, 39349), (76, 39361), (90, 39439), (93, 39451), (97, 39475), (99, 39487), (112, 39541),

Gene: Topper_50 Start: 37471, Stop: 37734, Start Num: 45

Candidate Starts for Topper_50:

(Start: 45 @37471 has 96 MA's), (87, 37612),

Gene: Toron_67 Start: 42166, Stop: 42447, Start Num: 32

Candidate Starts for Toron_67:

(22, 42130), (32, 42166), (67, 42241), (102, 42427), (111, 42439),

Gene: Torres_48 Start: 39654, Stop: 39923, Start Num: 45

Candidate Starts for Torres_48:

(Start: 45 @39654 has 96 MA's), (80, 39750), (91, 39810), (92, 39816), (93, 39819), (97, 39846), (99, 39858), (110, 39912),

Gene: Totinger_58 Start: 39195, Stop: 39479, Start Num: 33

Candidate Starts for Totinger_58:

(27, 39168), (Start: 33 @39195 has 156 MA's), (46, 39219), (Start: 55 @39234 has 5 MA's), (72, 39279), (76, 39291), (90, 39369), (93, 39381), (97, 39405), (99, 39417), (112, 39471),

Gene: Toto_91 Start: 57094, Stop: 57354, Start Num: 61

Candidate Starts for Toto_91:

(Start: 61 @57094 has 125 MA's), (68, 57115), (81, 57190), (94, 57259), (104, 57325),

Gene: Traaww1_89 Start: 55902, Stop: 56162, Start Num: 61

Candidate Starts for Traaww1_89:

(Start: 61 @55902 has 125 MA's), (68, 55923), (81, 55998), (94, 56067), (104, 56133),

Gene: TreyKay_51 Start: 37556, Stop: 37819, Start Num: 45

Candidate Starts for TreyKay_51:

(Start: 45 @37556 has 96 MA's), (69, 37610), (87, 37697),

Gene: TriFive_79 Start: 53809, Stop: 54063, Start Num: 64

Candidate Starts for TriFive_79:

(Start: 59 @53794 has 12 MA's), (Start: 64 @53809 has 4 MA's), (89, 53944), (97, 53986), (101, 54022), (108, 54046),

Gene: TribbleTrouble_50 Start: 37335, Stop: 37601, Start Num: 39

Candidate Starts for TribbleTrouble_50:

(Start: 39 @37335 has 13 MA's), (56, 37356), (62, 37362), (87, 37476), (95, 37521), (97, 37530),

Gene: TruffulaTree_50 Start: 37350, Stop: 37613, Start Num: 45

Candidate Starts for TruffulaTree_50:

(Start: 45 @37350 has 96 MA's), (87, 37491),

Gene: Tuco_94 Start: 57641, Stop: 57901, Start Num: 61

Candidate Starts for Tuco_94:

(Start: 61 @57641 has 125 MA's), (68, 57662), (81, 57737), (94, 57806), (104, 57872),

Gene: Twitch_50 Start: 37473, Stop: 37736, Start Num: 45

Candidate Starts for Twitch_50:

(Start: 45 @37473 has 96 MA's), (87, 37614),

Gene: Ukulele_88 Start: 56027, Stop: 56287, Start Num: 61

Candidate Starts for Ukulele_88:

(Start: 61 @56027 has 125 MA's), (68, 56048), (81, 56123), (94, 56192), (104, 56258),

Gene: UncleRicky_58 Start: 40176, Stop: 40460, Start Num: 33

Candidate Starts for UncleRicky_58:

(27, 40149), (Start: 33 @40176 has 156 MA's), (46, 40200), (Start: 55 @40215 has 5 MA's), (72, 40260), (76, 40272), (90, 40350), (93, 40362), (97, 40386), (99, 40398), (112, 40452),

Gene: Unicorn_53 Start: 37175, Stop: 37432, Start Num: 47

Candidate Starts for Unicorn_53:

(Start: 47 @37175 has 18 MA's), (Start: 61 @37196 has 125 MA's), (76, 37250), (87, 37313), (88, 37322), (102, 37400),

Gene: Urkel_51 Start: 38242, Stop: 38505, Start Num: 45

Candidate Starts for Urkel_51:

(12, 37990), (Start: 45 @38242 has 96 MA's), (69, 38296), (82, 38365), (87, 38383),

Gene: VRedHorse_59 Start: 39252, Stop: 39533, Start Num: 33

Candidate Starts for VRedHorse_59:

(27, 39225), (Start: 33 @39252 has 156 MA's), (46, 39276), (Start: 55 @39291 has 5 MA's), (72, 39336), (76, 39348), (90, 39426), (93, 39438), (97, 39462), (99, 39474), (112, 39525),

Gene: VWB_44 Start: 35402, Stop: 35647, Start Num: 54

Candidate Starts for VWB_44:

(16, 35270), (19, 35279), (20, 35282), (34, 35369), (52, 35399), (Start: 54 @35402 has 6 MA's), (87, 35531), (94, 35564), (97, 35582),

Gene: Validus_55 Start: 38351, Stop: 38623, Start Num: 45

Candidate Starts for Validus_55:

(Start: 45 @38351 has 96 MA's), (Start: 51 @38363 has 4 MA's), (81, 38453), (82, 38471), (87, 38489), (93, 38516), (105, 38594),

Gene: Veliki_51 Start: 37390, Stop: 37653, Start Num: 45

Candidate Starts for Veliki_51:

(Start: 45 @37390 has 96 MA's), (87, 37531),

Gene: Veteran_56 Start: 38956, Stop: 39237, Start Num: 33

Candidate Starts for Veteran_56:

(27, 38929), (Start: 33 @38956 has 156 MA's), (74, 39040), (77, 39049), (90, 39127), (93, 39139), (97, 39163), (99, 39175), (112, 39229),

Gene: Violac_62 Start: 41322, Stop: 41603, Start Num: 33

Candidate Starts for Violac_62:

(27, 41295), (Start: 33 @41322 has 156 MA's), (46, 41346), (Start: 55 @41361 has 5 MA's), (72, 41406), (76, 41418), (90, 41496), (93, 41508), (97, 41532), (99, 41544), (112, 41595),

Gene: Vivum_62 Start: 40254, Stop: 40535, Start Num: 33

Candidate Starts for Vivum_62:

(27, 40227), (Start: 33 @40254 has 156 MA's), (46, 40278), (Start: 55 @40293 has 5 MA's), (72, 40338), (76, 40350), (90, 40428), (93, 40440), (97, 40464), (99, 40476), (112, 40527),

Gene: Wee_63 Start: 41773, Stop: 42054, Start Num: 33

Candidate Starts for Wee_63:

(Start: 33 @41773 has 156 MA's), (46, 41797), (Start: 55 @41812 has 5 MA's), (72, 41857), (76, 41869), (90, 41947), (93, 41959), (97, 41983), (99, 41995), (112, 42046),

Gene: Weirido19_70 Start: 45292, Stop: 45699, Start Num: 16

Candidate Starts for Weirido19_70:

(16, 45292), (31, 45364), (81, 45514), (82, 45532), (87, 45550),

Gene: Whirlwind_80 Start: 53994, Stop: 54305, Start Num: 59

Candidate Starts for Whirlwind_80:

(Start: 59 @53994 has 12 MA's), (Start: 64 @54009 has 4 MA's), (84, 54120), (89, 54156), (115, 54285),

Gene: Whouxphf_56 Start: 39848, Stop: 40129, Start Num: 33

Candidate Starts for Whouxphf_56:

(27, 39821), (Start: 33 @39848 has 156 MA's), (46, 39872), (Start: 55 @39887 has 5 MA's), (72, 39932), (76, 39944), (90, 40022), (93, 40034), (97, 40058), (99, 40070), (112, 40121),

Gene: Wiggin_95 Start: 56303, Stop: 56563, Start Num: 61

Candidate Starts for Wiggin_95:

(Start: 61 @56303 has 125 MA's), (68, 56324), (81, 56399), (94, 56468), (104, 56534),

Gene: WillSterrel_60 Start: 41723, Stop: 42004, Start Num: 33

Candidate Starts for WillSterrel_60:

(27, 41696), (Start: 33 @41723 has 156 MA's), (46, 41747), (Start: 55 @41762 has 5 MA's), (72, 41807), (76, 41819), (90, 41897), (93, 41909), (97, 41933), (99, 41945), (112, 41996),

Gene: Willez_88 Start: 54914, Stop: 55174, Start Num: 61

Candidate Starts for Willez_88:

(Start: 61 @54914 has 125 MA's), (68, 54935), (81, 55010), (94, 55079), (104, 55145),

Gene: Xandras_92 Start: 56126, Stop: 56386, Start Num: 61

Candidate Starts for Xandras_92:

(Start: 61 @56126 has 125 MA's), (68, 56147), (81, 56222), (94, 56291), (104, 56357),

Gene: Ximenita_57 Start: 38244, Stop: 38495, Start Num: 47

Candidate Starts for Ximenita_57:

(Start: 47 @38244 has 18 MA's), (Start: 51 @38250 has 4 MA's), (87, 38382),

Gene: YassJohnny_90 Start: 55767, Stop: 56027, Start Num: 61

Candidate Starts for YassJohnny_90:

(Start: 61 @55767 has 125 MA's), (68, 55788), (81, 55863), (94, 55932), (104, 55998),

Gene: Yorick_58 Start: 40310, Stop: 40591, Start Num: 33

Candidate Starts for Yorick_58:

(27, 40283), (Start: 33 @40310 has 156 MA's), (46, 40334), (Start: 55 @40349 has 5 MA's), (72, 40394), (76, 40406), (90, 40484), (93, 40496), (97, 40520), (99, 40532), (112, 40583),

Gene: Yoshi_72 Start: 41696, Stop: 41974, Start Num: 33

Candidate Starts for Yoshi_72:

(23, 41660), (Start: 33 @41696 has 156 MA's), (Start: 41 @41705 has 1 MA's), (69, 41762), (74, 41780), (77, 41789), (87, 41852), (90, 41867), (93, 41879), (97, 41903), (99, 41915), (112, 41966),

Gene: Youngblood_96 Start: 57596, Stop: 57856, Start Num: 61

Candidate Starts for Youngblood_96:
(Start: 61 @57596 has 125 MA's), (68, 57617), (81, 57692), (94, 57761), (104, 57827),

Gene: YoureAdopted_49 Start: 37555, Stop: 37818, Start Num: 45
Candidate Starts for YoureAdopted_49:
(Start: 45 @37555 has 96 MA's), (87, 37696),

Gene: Yuna_57 Start: 39151, Stop: 39429, Start Num: 47
Candidate Starts for Yuna_57:
(15, 39004), (Start: 47 @39151 has 18 MA's), (87, 39280), (95, 39325), (97, 39334),

Gene: Yunkel11_53 Start: 37143, Stop: 37406, Start Num: 45
Candidate Starts for Yunkel11_53:
(Start: 45 @37143 has 96 MA's), (Start: 51 @37155 has 4 MA's), (82, 37266), (87, 37284),

Gene: Zabiza_45 Start: 33661, Stop: 33924, Start Num: 45
Candidate Starts for Zabiza_45:
(Start: 45 @33661 has 96 MA's), (87, 33802),

Gene: Zapner_72 Start: 41849, Stop: 42133, Start Num: 33
Candidate Starts for Zapner_72:
(27, 41822), (Start: 33 @41849 has 156 MA's), (46, 41873), (Start: 55 @41888 has 5 MA's), (72, 41933), (76, 41945), (90, 42023), (93, 42035), (97, 42059), (99, 42071), (112, 42125),

Gene: Zavala_52 Start: 37632, Stop: 37895, Start Num: 45
Candidate Starts for Zavala_52:
(Start: 45 @37632 has 96 MA's), (87, 37773),

Gene: ZenTime222_40 Start: 31446, Stop: 31703, Start Num: 42
Candidate Starts for ZenTime222_40:
(9, 31170), (11, 31191), (Start: 42 @31446 has 7 MA's), (76, 31530), (93, 31620),

Gene: Zerg_59 Start: 39720, Stop: 40004, Start Num: 33
Candidate Starts for Zerg_59:
(27, 39693), (Start: 33 @39720 has 156 MA's), (46, 39744), (Start: 55 @39759 has 5 MA's), (72, 39804), (76, 39816), (90, 39894), (93, 39906), (97, 39930), (99, 39942), (112, 39996),

Gene: Zizzle_63 Start: 41563, Stop: 41847, Start Num: 33
Candidate Starts for Zizzle_63:
(27, 41536), (Start: 33 @41563 has 156 MA's), (46, 41587), (Start: 55 @41602 has 5 MA's), (72, 41647), (76, 41659), (90, 41737), (93, 41749), (97, 41773), (99, 41785), (112, 41839),

Gene: ZoeJ_53 Start: 39008, Stop: 39238, Start Num: 58
Candidate Starts for ZoeJ_53:
(Start: 54 @39005 has 6 MA's), (Start: 58 @39008 has 4 MA's), (62, 39014), (63, 39020), (82, 39110), (83, 39116), (97, 39179),

Gene: xkcd_96 Start: 57780, Stop: 58040, Start Num: 61
Candidate Starts for xkcd_96:
(Start: 61 @57780 has 125 MA's), (68, 57801), (81, 57876), (94, 57945), (104, 58011),