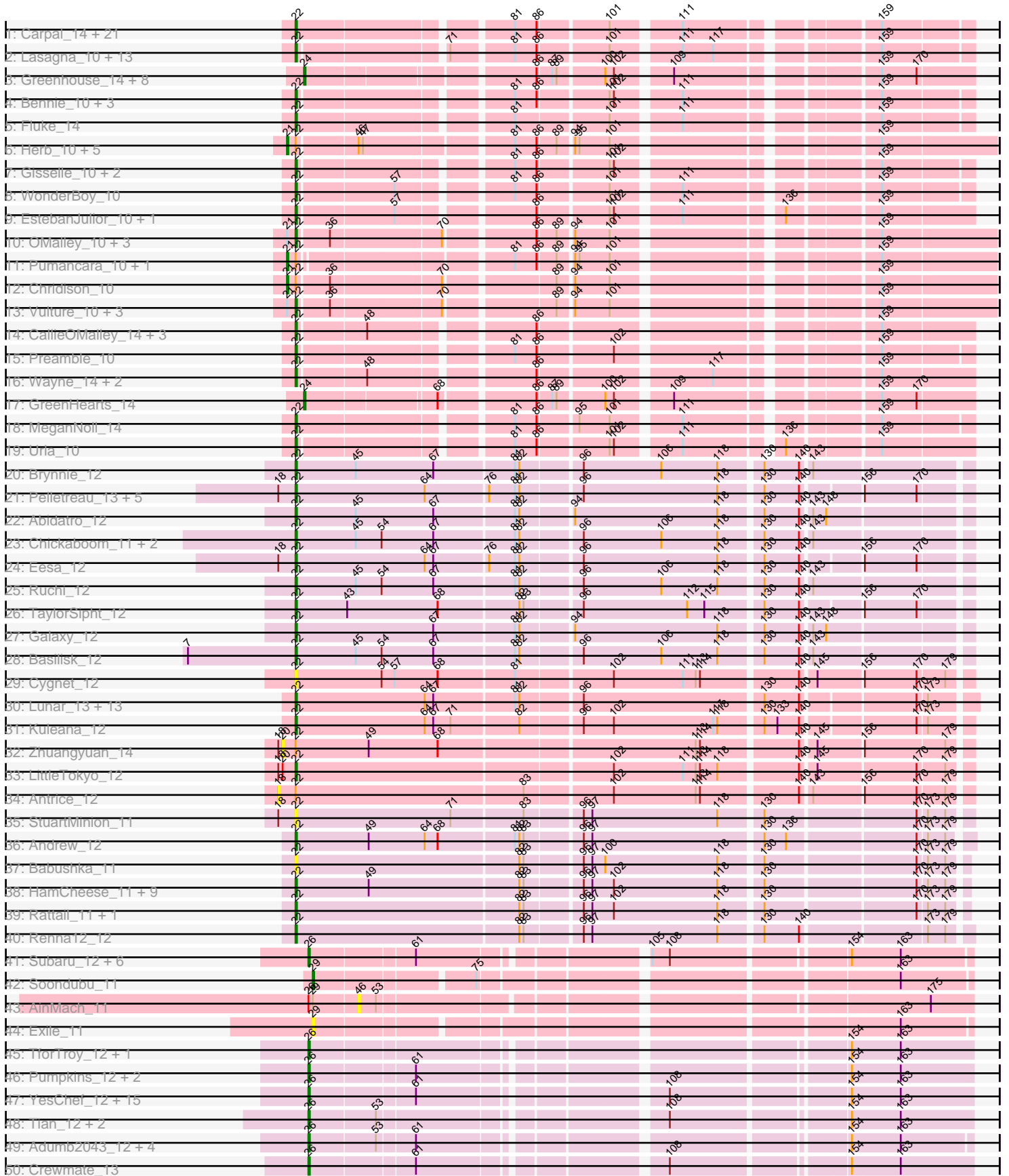
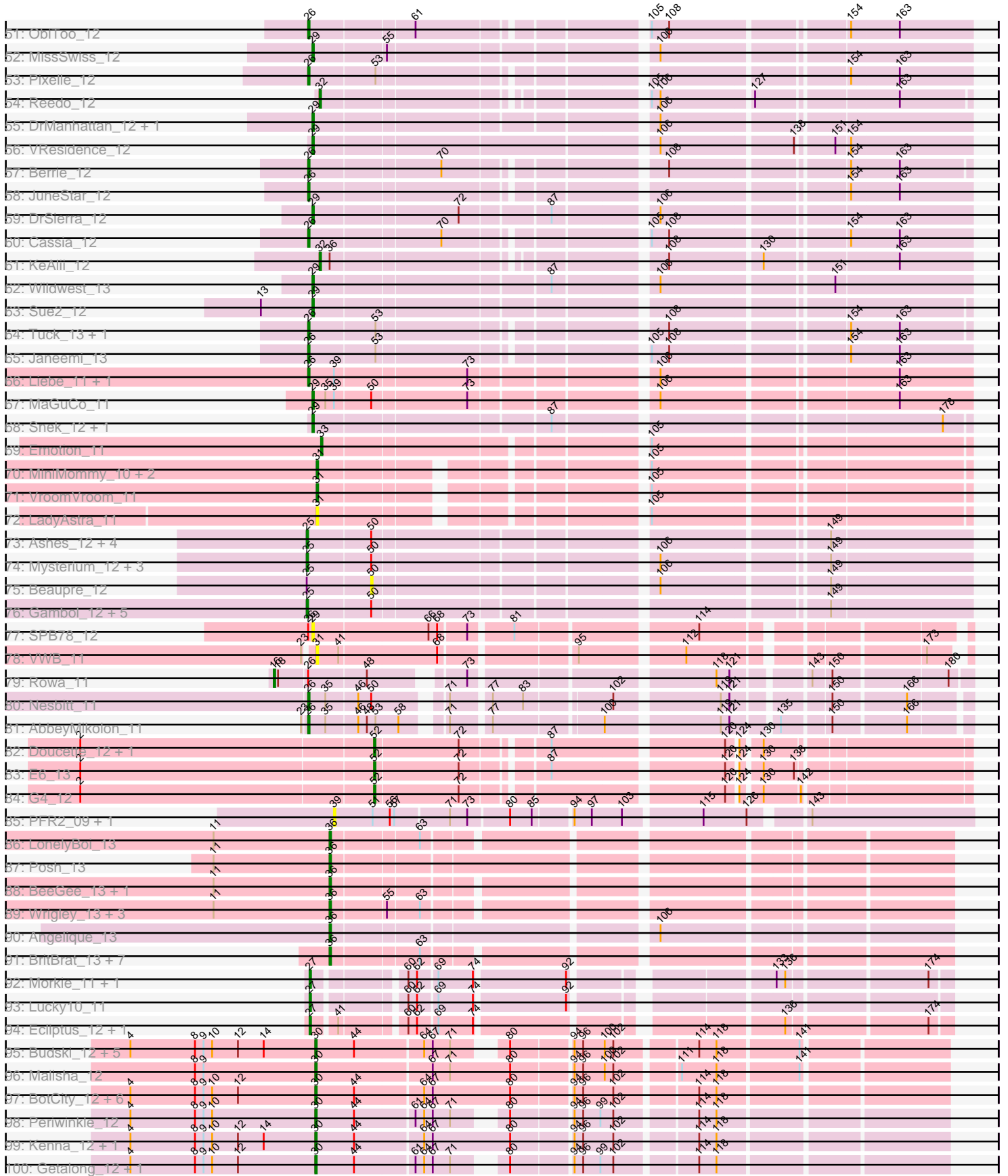


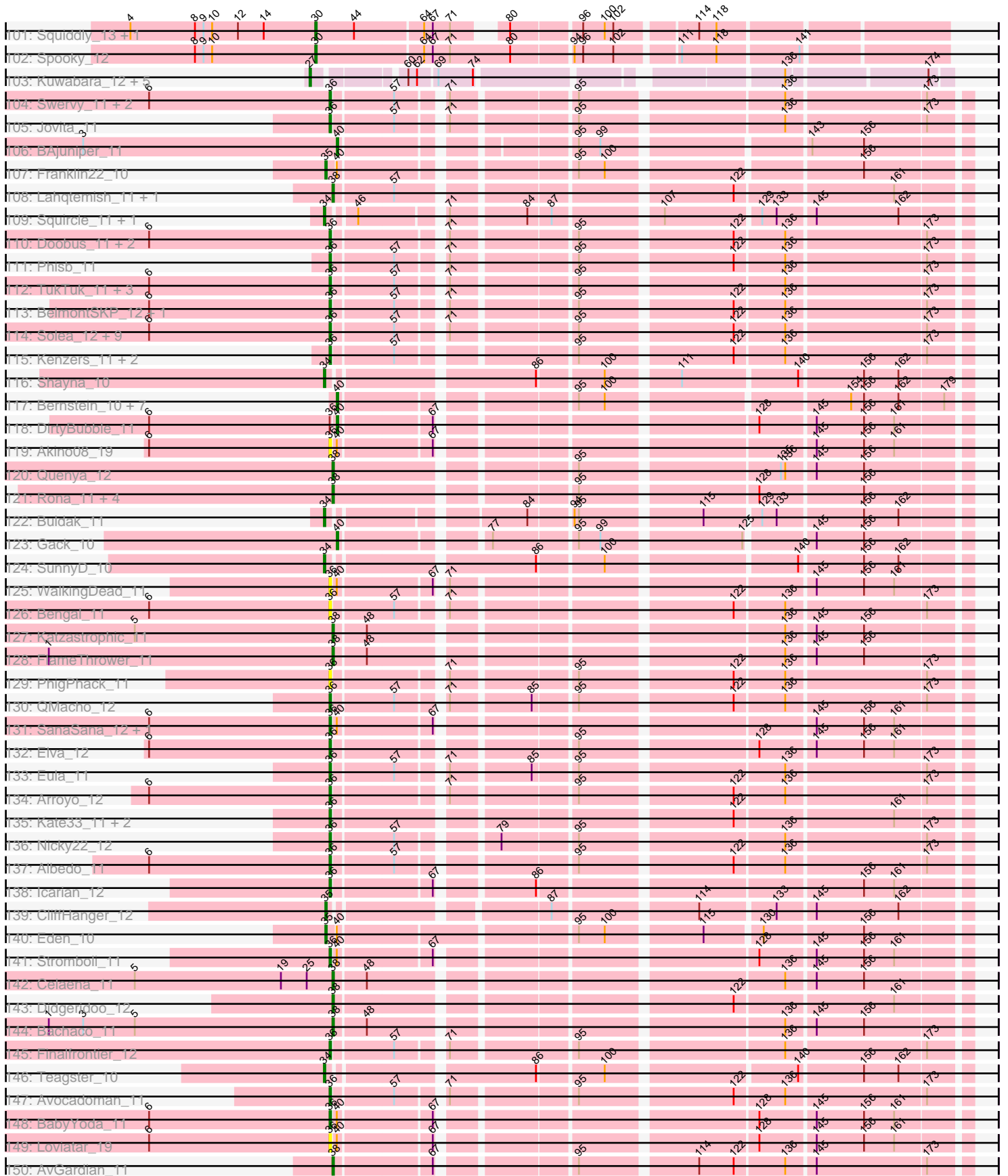
Pham 215704



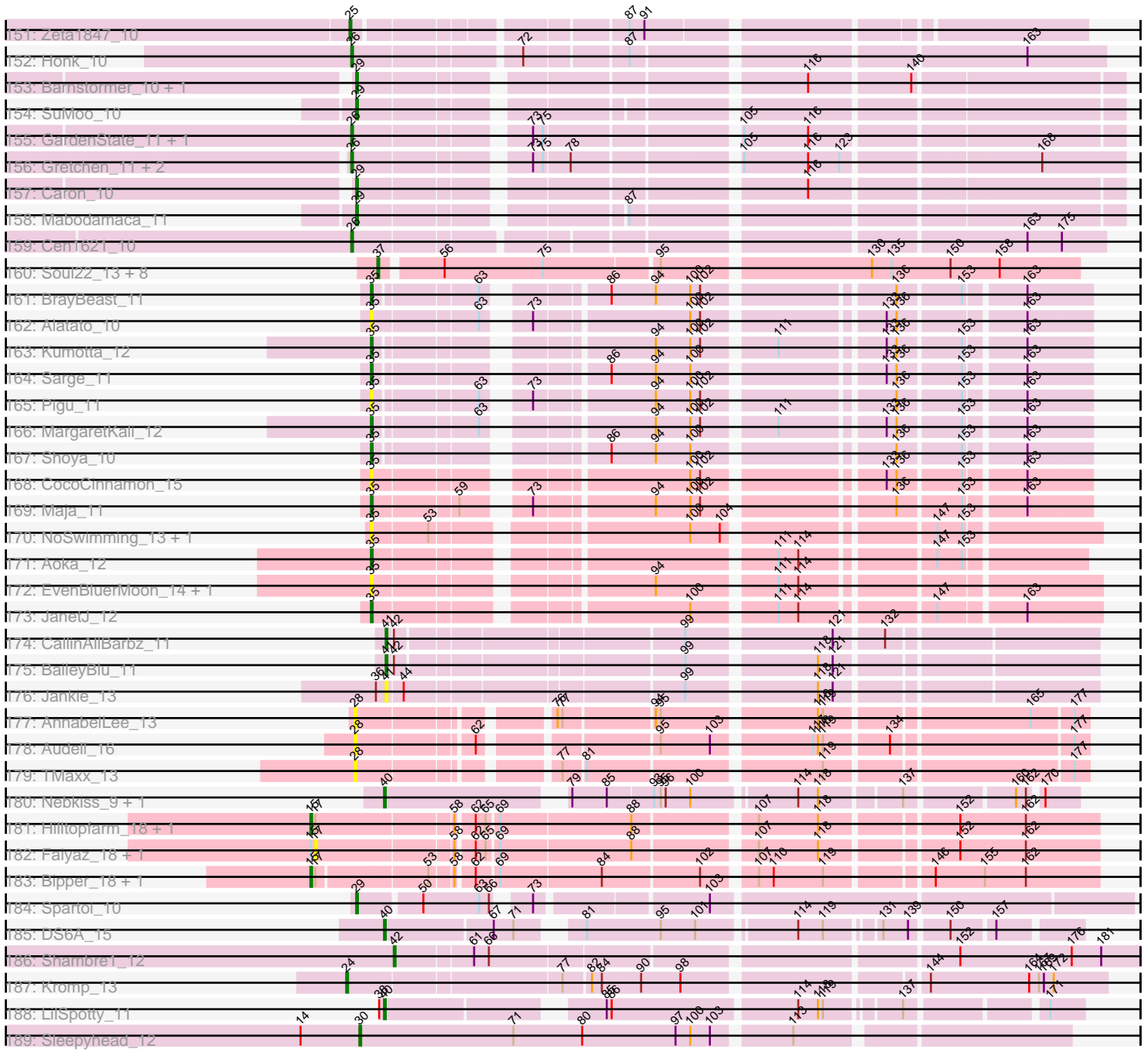
Pham 215704



Pham 215704



Pham 215704



Note: Tracks are now grouped by subcluster and scaled. Switching in subcluster is indicated by changes in track color. Track scale is now set by default to display the region 30 bp upstream of start 1 to 30 bp downstream of the last possible start. If this default region is judged to be packed too tightly with annotated starts, the track will be further scaled to only show that region of the ORF with annotated starts. This action will be indicated by adding "Zoomed" to the title. For starts, yellow indicates the location of called starts comprised solely of Glimmer/GeneMark auto-annotations, green indicates the location of called starts with at least 1 manual gene annotation.

Pham 215704 Report

This analysis was run 02/22/25 on database version 588.

WARNING: Pham size does not match number of genes in report. Either unphamerated genes have been added (by you) or starterator has removed genes due to invalid start codon.

Pham number 215704 has 419 members, 80 are drafts.

Phages represented in each track:

- Track 1 : Carpal_14, Wawa_14, Korra_14, Glenn_14, Kalizoi_14, Dino_14, Vallejo_14, TattModd_14, Zorro_14, Cholula_14, RAP15_14, Jumboset_14, Rozby_14, MrGloopy_14, Riverdale_14, BigMack_10, Scuttle_14, Potatoes_14, Savage2526_14, BrotherBLo_14, Immaculata_14, Beethoven_14
- Track 2 : Lasagna_10, OurGirlNessie_10, PitaDog_10, Christian_10, Lucy_10, ChewChew_10, Makoto_10, CristinaYang_10, Nancia_10, Bodacious_10, Lennox_10, DrRobert_10, LilStuart_10, Pterodactyl_10
- Track 3 : Greenhouse_14, Lakshmi_14, Nubia_14, RcigaStruga_14, Oxyfnrius_14, Joann_14, Albanese_14, Huntingdon_14, Misaeng_14
- Track 4 : Bennie_10, HeadNerd_10, Huckleberry_10, Moki_10
- Track 5 : Fluke_14
- Track 6 : Herb_10, Sergei_10, Daiboju_10, Maria1952_10, KingBob_10, Temper16_10
- Track 7 : Gisselle_10, Kittykat_10, DreamTeam_10
- Track 8 : WonderBoy_10
- Track 9 : EstebanJulior_10, MamaPearl_10
- Track 10 : OMalley_10, Aledel_10, Eunoia_10, Riovina_10
- Track 11 : Pumancara_10, PinkFriday_10
- Track 12 : Chridison_10
- Track 13 : Vulture_10, Supakev_10, AustinPowers_10, HunterDalle_10
- Track 14 : CallieOMalley_14, AppleCider_14, Litotes_14, PartyCup_14
- Track 15 : Preamble_10
- Track 16 : Wayne_14, Suppi_14, Canowicakte_14
- Track 17 : GreenHearts_14
- Track 18 : MeganNoll_14
- Track 19 : Urla_10
- Track 20 : Brynnie_12
- Track 21 : Pelletreau_13, Toad24_13, Orcanus_12, KendraB23_13, Westrich_13, Gravel_13
- Track 22 : Abidatro_12
- Track 23 : Chickaboom_11, Vulpecula_12, Jamun_12
- Track 24 : Eesa_12
- Track 25 : Ruchi_12

- Track 26 : TaylorSipht_12
- Track 27 : Galaxy_12
- Track 28 : Basilisk_12
- Track 29 : Cygnet_12
- Track 30 : Lunar_13, Kepler_12, Bibble12_13, Jerole_13, Polka_12, Daob_13, Coral_12, Colusalem_12, HannahPhantana_13, OtsoOtso_12, Melons_13, Bedetta_13, Amelia_13, Cote_13
- Track 31 : Kuleana_12
- Track 32 : Zhuangyuan_14
- Track 33 : LittleTokyo_12
- Track 34 : Antrice_12
- Track 35 : StuartMinion_11
- Track 36 : Andrew_12
- Track 37 : Babushka_11
- Track 38 : HamCheese_11, Glotell_11, Juno112_11, Atlantica_11, RedFox_11, PhluffyCoco_11, DanHam62_11, AmiCi24_11, KHumphrey_11, Camara_11
- Track 39 : Rattail_11, Leona_11
- Track 40 : Renna12_12
- Track 41 : Subaru_12, Elezi_12, Jstan_12, London_12, Niobe_12, Eraser_12, Asa16_12
- Track 42 : Soondubu_11
- Track 43 : AinMach_11
- Track 44 : Exile_11
- Track 45 : TforTroy_12, Yang_12
- Track 46 : Pumpkins_12, Shaffner_13, IttyBittyPiggy_12
- Track 47 : YesChef_12, Tbone_12, Mudpuppy_12, Joemato_12, JohnDoe_12, Lego_12, Simpson_13, Powerpuff_12, Cyan_12, Iter_12, Kaylissa_12, Tutumahutu_12, AGrandiflora_12, Warda_12, Lizalica_12, Ascela_12
- Track 48 : Tian_12, Amyev_12, Phives_13
- Track 49 : Adumb2043_12, Nitro_12, Tallboi_12, Turab_12, AEgle_12
- Track 50 : Crewmate_13
- Track 51 : ObiToo_12
- Track 52 : MissSwiss_12
- Track 53 : Pixelle_12
- Track 54 : Reedo_12
- Track 55 : DrManhattan_12, Adolin_12
- Track 56 : VResidence_12
- Track 57 : Berrie_12
- Track 58 : JuneStar_12
- Track 59 : DrSierra_12
- Track 60 : Cassia_12
- Track 61 : KeAlii_12
- Track 62 : Wildwest_13
- Track 63 : Sue2_12
- Track 64 : Tuck_13, Community_13
- Track 65 : Janeemi_13
- Track 66 : Liebe_11, Maureen_11
- Track 67 : MaGuCo_11
- Track 68 : Snek_12, Tweety19_12
- Track 69 : Emotion_11
- Track 70 : MiniMommy_10, JasmineDragon_11, ShakeltOph_11
- Track 71 : VroomVroom_11
- Track 72 : LadyAstra_11

- Track 73 : Ashes_12, SpecialK_12, Halsey_12, RockScotty_12, Moss_12
- Track 74 : Mysterium_12, Gumpizza_12, Giorgio_12, Stuu_12
- Track 75 : Beaupre_12
- Track 76 : Gambol_12, Sooty_12, Donkey_12, Cappuccino_12, Kalimba_12, Sabourin_12
- Track 77 : SPB78_12
- Track 78 : VWB_11
- Track 79 : Rowa_11
- Track 80 : Nesbitt_11
- Track 81 : AbbeyMikolon_11
- Track 82 : Doucette_12, B22_12
- Track 83 : E6_13
- Track 84 : G4_12
- Track 85 : PFR2_09, PFR1_09
- Track 86 : LonelyBoi_13
- Track 87 : Posh_13
- Track 88 : BeeGee_13, Cashline_13
- Track 89 : Wrigley_13, Jablanski_13, Pytheas_13, Confidence_13
- Track 90 : Angelique_13
- Track 91 : BritBrat_13, EMSquaredA_13, Pollux_13, Floral_13, Lilas_13, Bradissa_13, EnalisNailo_13, Marteena_13
- Track 92 : Morkie_11, PhorbesPhlower_11
- Track 93 : Lucky10_11
- Track 94 : Ecliptus_12, ODay_12
- Track 95 : Budski_12, Phabuloso_12, CheeseTouch_12, Holliday_12, LitninMcQueen_12, Kamaru_12
- Track 96 : Malisha_12
- Track 97 : BotCity_12, Horus_12, BENtherdunthat_12, ShawBrad_12, Frickyeah_12, Leroy_12, Asapag_12
- Track 98 : Periwinkle_12
- Track 99 : Kenna_12, Lutum_12
- Track 100 : Getalong_12, Whitney_12
- Track 101 : Squiddly_13, Phistory_12
- Track 102 : Spooky_12
- Track 103 : Kuwabara_12, BearBQ_12, MortyNRick_12, Birdsong_12, Apricot_12, Crater_12
- Track 104 : Swervy_11, Slay_11, SarBear_11
- Track 105 : Jovita_11
- Track 106 : BAjuniper_11
- Track 107 : Franklin22_10
- Track 108 : Lahqtemish_11, PastaFagioli_11
- Track 109 : Squirrel_11, Olliecat_11
- Track 110 : Doobus_11, CroZenni_11, Albright_11
- Track 111 : Phisb_11
- Track 112 : TukTuk_11, CupcakePrincess_11, Jabb_11, MsUbiquitous_11
- Track 113 : BelmontSKP_12, AnnaLie_12
- Track 114 : Solea_12, Milomuff_12, Johnathan_11, SansAfet_11, DickRichards_11, Softsoap_11, Abigail_11, LimaBean_11, Cashington_11, Burritobowl_11
- Track 115 : Kenzers_11, Lynlen_11, BubbaBear_11
- Track 116 : Shayna_10
- Track 117 : Bernstein_10, Armstrong_10, Coltrane_10, Clayda5_10, Rollins_10, Vitas_10, Skylord_10, Brahms_10
- Track 118 : DirtyBubble_11

- Track 119 : Akino08_19
- Track 120 : Quenya_12
- Track 121 : Rona_11, Sharkboy_11, Kieran_11, ChiliPepper_11, Dismas_11
- Track 122 : Buldak_11
- Track 123 : Gack_10
- Track 124 : SunnyD_10
- Track 125 : WalkingDead_11
- Track 126 : Bengal_11
- Track 127 : Katzastrophic_11
- Track 128 : FlameThrower_11
- Track 129 : PhigPhack_11
- Track 130 : QMacho_12
- Track 131 : SanaSana_12, Stoor_11
- Track 132 : Elva_12
- Track 133 : Eula_11
- Track 134 : Arroyo_12
- Track 135 : Kate33_11, BabyDaisy_12, IndyLu_11
- Track 136 : Nicky22_12
- Track 137 : Albedo_11
- Track 138 : Icarian_12
- Track 139 : CliffHanger_12
- Track 140 : Eden_10
- Track 141 : Stromboli_11
- Track 142 : Celaena_11
- Track 143 : Didgeridoo_12
- Track 144 : Bachaco_11
- Track 145 : Finalfrontier_12
- Track 146 : Teagster_10
- Track 147 : Avocadoman_11
- Track 148 : BabyYoda_11
- Track 149 : Loviatar_19
- Track 150 : AvGardian_11
- Track 151 : Zeta1847_10
- Track 152 : Honk_10
- Track 153 : Barnstormer_10, UtzChips_10
- Track 154 : SuMoo_10
- Track 155 : GardenState_11, IAmGroot_11
- Track 156 : Gretchen_11, Floof_11, Percival_11
- Track 157 : Caron_10
- Track 158 : Mabodamaca_11
- Track 159 : Cen1621_10
- Track 160 : Soul22_13, Demsculpinboyz_13, Avani_13, Che9d_13, Blarby_14, Zapner_14, Jabbawokkie_14, Yoshi_13, SilverChicken_13
- Track 161 : BrayBeast_11
- Track 162 : Alatato_10
- Track 163 : Kumotta_12
- Track 164 : Sarge_11
- Track 165 : Pigu_11
- Track 166 : MargaretKali_12
- Track 167 : Shoya_10
- Track 168 : CocoCinnamon_15
- Track 169 : Maja_11
- Track 170 : NoSwimming_13, Scotia_13

- Track 171 : Aoka_12
- Track 172 : EvenBluerMoon_14, PrairieDogTown_18
- Track 173 : JanetJ_12
- Track 174 : CallinAllBarbz_11
- Track 175 : BaileyBlu_11
- Track 176 : Jankie_13
- Track 177 : AnnabelLee_13
- Track 178 : Audell_16
- Track 179 : TMaxx_13
- Track 180 : Nebkiss_9, Gaia_9
- Track 181 : Hilltopfarm_18, Typha_18
- Track 182 : Faiyaz_18, AuntGwenStacy_18
- Track 183 : Bipper_18, Cracklewink_18
- Track 184 : Spartoi_10
- Track 185 : DS6A_15
- Track 186 : Shambre1_12
- Track 187 : Kromp_13
- Track 188 : LilSpotty_11
- Track 189 : Sleepyhead_12

Summary of Final Annotations (See graph section above for start numbers):

The start number called the most often in the published annotations is 22, it was called in 93 of the 339 non-draft genes in the pham.

Genes that call this "Most Annotated" start:

- Abidatro_12, Aledel_10, Amelia_13, AmiCi24_11, Andrew_12, AppleCider_14, Atlantica_11, AustinPowers_10, Babushka_11, Basilisk_12, Bedetta_13, Beethoven_14, Bennie_10, Bibble12_13, BigMack_10, Bodacious_10, BrotherBLo_14, Brynnie_12, CallieOMalley_14, Camara_11, Canowicakte_14, Carpal_14, ChewChew_10, Chickaboom_11, Cholula_14, Christian_10, Colusalem_12, Coral_12, Cote_13, CristinaYang_10, Cygnet_12, DanHam62_11, Daob_13, Dino_14, DrRobert_10, DreamTeam_10, Eesa_12, EstebanJulior_10, Eunoia_10, Fluke_14, Galaxy_12, Gisselle_10, Glenn_14, Glotell_11, Gravel_13, HamCheese_11, HannahPhantana_13, HeadNerd_10, Huckleberry_10, HunterDalle_10, Immaculata_14, Jamun_12, Jerole_13, Jumboset_14, Juno112_11, KHumphrey_11, Kalizoi_14, KendraB23_13, Kepler_12, Kittykat_10, Korra_14, Kuleana_12, Lasagna_10, Lennox_10, Leona_11, LilStuart_10, Litotes_14, LittleTokyo_12, Lucy_10, Lunar_13, Makoto_10, MamaPearl_10, MeganNoll_14, Melons_13, Moki_10, MrGloopy_14, Nancia_10, OMalley_10, Orcanus_12, OtsoOtso_12, OurGirlNessie_10, PartyCup_14, Pelletreau_13, PhluffyCoco_11, PitaDog_10, Polka_12, Potatoes_14, Preamble_10, Pterodactyl_10, RAP15_14, Rattail_11, RedFox_11, Renna12_12, Rivovina_10, Riverdale_14, Rozby_14, Ruchi_12, Savage2526_14, Scuttle_14, StuartMinion_11, Supakev_10, Suppi_14, TattModd_14, TaylorSipht_12, Toad24_13, Urla_10, Vallejo_14, Vulpecula_12, Vulture_10, Wawa_14, Wayne_14, Westrich_13, WonderBoy_10, Zorro_14,

Genes that have the "Most Annotated" start but do not call it:

- Antrice_12, Chridison_10, Daiboju_10, Herb_10, KingBob_10, Maria1952_10, PinkFriday_10, Pumancara_10, Sergei_10, Temper16_10, Zhuangyuan_14,

Genes that do not have the "Most Annotated" start:

- AEgle_12, AGrandiflora_12, AbbeyMikolon_11, Abigail_11, Adolin_12, Adumb2043_12, AinMach_11, Akino08_19, Alatato_10, Albanese_14, Albedo_11, Albright_11, Amyev_12, Angelique_13, AnnaLie_12, AnnabelLee_13, Aoka_12, Apricot_12, Armstrong_10, Arroyo_12, Asa16_12, Asapag_12, Ascela_12, Ashes_12, Audell_16, AuntGwenStacy_18, AvGardian_11, Avani_13, Avocadoman_11, B22_12, BAjuniper_11, BENtherdunthat_12, BabyDaisy_12, BabyYoda_11, Bachaco_11, BaileyBlu_11, Barnstormer_10, BearBQ_12, Beaupre_12, BeeGee_13, BelmontSKP_12, Bengal_11, Bernstein_10, Berrie_12, Bipper_18, Birdsong_12, Blarby_14, BotCity_12, Bradissa_13, Brahms_10, BrayBeast_11, BritBrat_13, BubbaBear_11, Budski_12, Buldak_11, Burritobowl_11, CallinAllBarbz_11, Cappuccino_12, Caron_10, Cashington_11, Cashline_13, Cassia_12, Celaena_11, Cen1621_10, Che9d_13, CheeseTouch_12, ChiliPepper_11, Clayda5_10, CliffHanger_12, CocoCinnamon_15, Coltrane_10, Community_13, Confidence_13, Cracklewink_18, Crater_12, Crewmate_13, CroZenni_11, CupcakePrincess_11, Cyan_12, DS6A_15, Demsculpinboyz_13, DickRichards_11, Didgeridoo_12, DirtyBubble_11, Dismas_11, Donkey_12, Doobus_11, Doucette_12, DrManhattan_12, DrSierra_12, E6_13, EMSquaredA_13, Ecliptus_12, Eden_10, Elezi_12, Elva_12, Emotion_11, EnalisNailo_13, Eraser_12, Eula_11, EvenBluerMoon_14, Exile_11, Faiyaz_18, Finalfrontier_12, FlameThrower_11, Floof_11, Floral_13, Franklin22_10, Frickyeah_12, G4_12, Gack_10, Gaia_9, Gambol_12, GardenState_11, Getalong_12, Giorgio_12, GreenHearts_14, Greenhouse_14, Gretchen_11, Gumpizza_12, Halsey_12, Hilltopfarm_18, Holliday_12, Honk_10, Horus_12, Huntingdon_14, IAmGroot_11, Icarian_12, IndyLu_11, Iter_12, IttyBittyPiggy_12, Jabb_11, Jabbawokkie_14, Jablanski_13, Janeemi_13, JanetJ_12, Jankie_13, JasmineDragon_11, Joann_14, Joemato_12, JohnDoe_12, Johnathan_11, Jovita_11, Jstan_12, JuneStar_12, Kalimba_12, Kamaru_12, Kate33_11, Katzastrophic_11, Kaylissa_12, KeAlii_12, Kenna_12, Kenzers_11, Kieran_11, Kromp_13, Kumotta_12, Kuwabara_12, LadyAstra_11, Lahqtemish_11, Lakshmi_14, Lego_12, Leroy_12, Liebe_11, LilSpotty_11, Lilas_13, LimaBean_11, LitninMcQueen_12, Lizalica_12, London_12, LonelyBoi_13, Loviatar_19, Lucky10_11, Lutum_12, Lynlen_11, MaGuCo_11, Mabodamaca_11, Maja_11, Malisha_12, MargaretKali_12, Marteena_13, Maureen_11, Milomuff_12, MiniMommy_10, Misaeng_14, MissSwiss_12, Morkie_11, MortyNRick_12, Moss_12, MsUbiquitous_11, Mudpuppy_12, Mysterium_12, Nebkiss_9, Nesbitt_11, Nicky22_12, Niobe_12, Nitro_12, NoSwimming_13, Nubia_14, ODay_12, ObiToo_12, Olliecat_11, Oxyfrius_14, PFR1_09, PFR2_09, PastaFagioli_11, Percival_11, Periwinkle_12, Phabuloso_12, PhigPhack_11, Phisb_11, Phistory_12, Phives_13, PhorbesPhlower_11, Pigu_11, Pixelle_12, Pollux_13, Posh_13, Powerpuff_12, PrairieDogTown_18, Pumpkins_12, Pytheas_13, QMacho_12, Quenya_12, RcigaStruga_14, Reedo_12, RockScotty_12, Rollins_10, Rona_11, Rowa_11, SPB78_12, Sabourin_12, SanaSana_12, SansAfet_11, SarBear_11, Sarge_11, Scotia_13, Shaffner_13, ShakeltOph_11, Shambre1_12, Sharkboy_11, ShawBrad_12, Shayna_10, Shoya_10, SilverChicken_13, Simpson_13, Skylord_10, Slay_11, Sleepyhead_12, Snek_12, Softsoap_11, Solea_12, Soondubu_11, Sooty_12, Soul22_13, Spartoi_10, SpecialK_12, Spooky_12, Squiddly_13, Squirrel_11, Stoor_11, Stromboli_11, Stuu_12, SuMoo_10, Subaru_12, Sue2_12, SunnyD_10, Swervy_11, TMaxx_13, Tallboi_12, Tbone_12, Teagster_10, TforTroy_12, Tian_12, Tuck_13, TukTuk_11, Turab_12, Tutumahutu_12, Tweety19_12, Typha_18, UtzChips_10, VResidence_12, VWB_11, Vitas_10, VroomVroom_11, WalkingDead_11, Warda_12, Whitney_12, Wildwest_13, Wrigley_13, Yang_12, YesChef_12, Yoshi_13, Zapner_14, Zeta1847_10,

Summary by start number:

Start 15:

- Found in 6 of 419 (1.4%) of genes in pham
- Manual Annotations of this start: 4 of 339
- Called 66.7% of time when present
- Phage (with cluster) where this start called: Bipper_18 (Y), Cracklewink_18 (Y), Hilltopfarm_18 (Y), Typha_18 (Y),

Start 16:

- Found in 1 of 419 (0.2%) of genes in pham
- Manual Annotations of this start: 1 of 339
- Called 100.0% of time when present
- Phage (with cluster) where this start called: Rowa_11 (BL),

Start 17:

- Found in 6 of 419 (1.4%) of genes in pham
- No Manual Annotations of this start.
- Called 33.3% of time when present
- Phage (with cluster) where this start called: AuntGwenStacy_18 (Y), Faiyaz_18 (Y),

Start 18:

- Found in 12 of 419 (2.9%) of genes in pham
- No Manual Annotations of this start.
- Called 8.3% of time when present
- Phage (with cluster) where this start called: Antrice_12 (AS2),

Start 20:

- Found in 2 of 419 (0.5%) of genes in pham
- No Manual Annotations of this start.
- Called 50.0% of time when present
- Phage (with cluster) where this start called: Zhuangyuan_14 (AS2),

Start 21:

- Found in 17 of 419 (4.1%) of genes in pham
- Manual Annotations of this start: 9 of 339
- Called 52.9% of time when present
- Phage (with cluster) where this start called: Chridison_10 (AK), Daiboju_10 (AK), Herb_10 (AK), KingBob_10 (AK), Maria1952_10 (AK), PinkFriday_10 (AK), Pumancara_10 (AK), Sergei_10 (AK), Temper16_10 (AK),

Start 22:

- Found in 125 of 419 (29.8%) of genes in pham
- Manual Annotations of this start: 93 of 339
- Called 91.2% of time when present
- Phage (with cluster) where this start called: Abidatro_12 (AS1), Aledel_10 (AK), Amelia_13 (AS2), AmiCi24_11 (AS3), Andrew_12 (AS3), AppleCider_14 (AK), Atlantica_11 (AS3), AustinPowers_10 (AK), Babushka_11 (AS3), Basilisk_12 (AS1), Bedetta_13 (AS2), Beethoven_14 (AK), Bennie_10 (AK), Bibble12_13 (AS2), BigMack_10 (AK), Bodacious_10 (AK), BrotherBLo_14 (AK), Brynnie_12 (AS1), CallieOMalley_14 (AK), Camara_11 (AS3), Canowicakte_14 (AK), Carpal_14 (AK), ChewChew_10 (AK), Chickaboom_11 (AS1), Cholula_14 (AK), Christian_10 (AK),

Colusalem_12 (AS2), Coral_12 (AS2), Cote_13 (AS2), CristinaYang_10 (AK), Cygnet_12 (AS2), DanHam62_11 (AS3), Daob_13 (AS2), Dino_14 (AK), DrRobert_10 (AK), DreamTeam_10 (AK), Eesa_12 (AS1), EstebanJulior_10 (AK), Eunoia_10 (AK), Fluke_14 (AK), Galaxy_12 (AS1), Gisselle_10 (AK), Glenn_14 (AK), Glotell_11 (AS3), Gravel_13 (AS1), HamCheese_11 (AS3), HannahPhantana_13 (AS2), HeadNerd_10 (AK), Huckleberry_10 (AK), HunterDalle_10 (AK), Immaculata_14 (AK), Jamun_12 (AS1), Jerole_13 (AS2), Jumboset_14 (AK), Juno112_11 (AS3), KHumphrey_11 (AS3), Kalizoi_14 (AK), KendraB23_13 (AS1), Kepler_12 (AS2), Kittykat_10 (AK), Korra_14 (AK), Kuleana_12 (AS2), Lasagna_10 (AK), Lennox_10 (AK), Leona_11 (AS3), LilStuart_10 (AK), Litotes_14 (AK), LittleTokyo_12 (AS2), Lucy_10 (AK), Lunar_13 (AS2), Makoto_10 (AK), MamaPearl_10 (AK), MeganNoll_14 (AK), Melons_13 (AS2), Moki_10 (AK), MrGloopy_14 (AK), Nancia_10 (AK), OMalley_10 (AK), Orcanus_12 (AS1), OtsoOtso_12 (AS2), OurGirlNessie_10 (AK), PartyCup_14 (AK), Pelletreau_13 (AS1), PhluffyCoco_11 (AS3), PitaDog_10 (AK), Polka_12 (AS2), Potatoes_14 (AK), Preamble_10 (AK), Pterodactyl_10 (AK), RAP15_14 (AK), Rattail_11 (AS3), RedFox_11 (AS3), Renna12_12 (AS3), Rivovina_10 (AK), Riverdale_14 (AK), Rozby_14 (AK), Ruchi_12 (AS1), Savage2526_14 (AK), Scuttle_14 (AK), StuartMinion_11 (AS3), Supakev_10 (AK), Suppi_14 (AK), TattModd_14 (AK), TaylorSipht_12 (AS1), Toad24_13 (AS1), Urla_10 (AK), Vallejo_14 (AK), Vulpecula_12 (AS1), Vulture_10 (AK), Wawa_14 (AK), Wayne_14 (AK), Westrich_13 (AS1), WonderBoy_10 (AK), Zorro_14 (AK),

Start 24:

- Found in 11 of 419 (2.6%) of genes in pham
- Manual Annotations of this start: 11 of 339
- Called 100.0% of time when present
- Phage (with cluster) where this start called: Albanese_14 (AK), GreenHearts_14 (AK), Greenhouse_14 (AK), Huntingdon_14 (AK), Joann_14 (AK), Kromp_13 (singleton), Lakshmi_14 (AK), Misaeng_14 (AK), Nubia_14 (AK), Oxynfrius_14 (AK), RcigaStruga_14 (AK),

Start 25:

- Found in 18 of 419 (4.3%) of genes in pham
- Manual Annotations of this start: 11 of 339
- Called 88.9% of time when present
- Phage (with cluster) where this start called: Ashes_12 (AZ5), Cappuccino_12 (AZ5), Donkey_12 (AZ5), Gambol_12 (AZ5), Giorgio_12 (AZ5), Gumpizza_12 (AZ5), Halsey_12 (AZ5), Kalimba_12 (AZ5), Moss_12 (AZ5), Mysterium_12 (AZ5), RockScotty_12 (AZ5), Sabourin_12 (AZ5), Sooty_12 (AZ5), SpecialK_12 (AZ5), Stuu_12 (AZ5), Zeta1847_10 (EH),

Start 26:

- Found in 59 of 419 (14.1%) of genes in pham
- Manual Annotations of this start: 47 of 339
- Called 94.9% of time when present
- Phage (with cluster) where this start called: AEgle_12 (AZ1), AGrandiflora_12 (AZ1), AbbeyMikolon_11 (BL), Adumb2043_12 (AZ1), Amyev_12 (AZ1), Asa16_12 (AZ1), Ascela_12 (AZ1), Berrie_12 (AZ1), Cassia_12 (AZ1), Cen1621_10 (EH), Community_13 (AZ1), Crewmate_13 (AZ1), Cyan_12 (AZ1), Elezi_12 (AZ1), Eraser_12 (AZ1), Floof_11 (EH), GardenState_11 (EH), Gretchen_11 (EH), Honk_10 (EH), IAmGroot_11 (EH), Iter_12 (AZ1), IttyBittyPiggy_12 (AZ1), Janeemi_13 (AZ1), Joemato_12 (AZ1), JohnDoe_12 (AZ1), Jstan_12 (AZ1), JuneStar_12 (AZ1), Kaylissa_12 (AZ1), Lego_12 (AZ1), Liebe_11 (AZ2), Lizalica_12 (AZ1), London_12

(AZ1), Maureen_11 (AZ2), Mudpuppy_12 (AZ1), Nesbitt_11 (BL), Niobe_12 (AZ1), Nitro_12 (AZ1), ObiToo_12 (AZ1), Percival_11 (EH), Phives_13 (AZ1), Pixelle_12 (AZ1), Powerpuff_12 (AZ1), Pumpkins_12 (AZ1), Shaffner_13 (AZ1), Simpson_13 (AZ1), Subaru_12 (AZ), Tallboi_12 (AZ1), Tbone_12 (AZ1), TforTroy_12 (AZ1), Tian_12 (AZ1), Tuck_13 (AZ1), Turab_12 (AZ1), Tutumahutu_12 (AZ1), Warda_12 (AZ1), Yang_12 (AZ1), YesChef_12 (AZ1),

Start 27:

- Found in 11 of 419 (2.6%) of genes in pham
- Manual Annotations of this start: 10 of 339
- Called 100.0% of time when present
- Phage (with cluster) where this start called: Apricot_12 (DN3), BearBQ_12 (DN), Birdsong_12 (DN), Crater_12 (DN3), Ecliptus_12 (DN), Kuwabara_12 (DN4), Lucky10_11 (DH), Morkie_11 (DH), MortyNRick_12 (DN), ODay_12 (DN), PhorbesPhlower_11 (DH),

Start 28:

- Found in 3 of 419 (0.7%) of genes in pham
- No Manual Annotations of this start.
- Called 100.0% of time when present
- Phage (with cluster) where this start called: AnnabelleLee_13 (FR), Audell_16 (FR), TMaxx_13 (FR),

Start 29:

- Found in 20 of 419 (4.8%) of genes in pham
- Manual Annotations of this start: 17 of 339
- Called 95.0% of time when present
- Phage (with cluster) where this start called: Adolin_12 (AZ1), Barnstormer_10 (EH), Caron_10 (EH), DrManhattan_12 (AZ1), DrSierra_12 (AZ1), Exile_11 (AZ), MaGuCo_11 (AZ2), Mabodamaca_11 (EH), MissSwiss_12 (AZ1), SPB78_12 (BA), Sneak_12 (AZ3), Soondubu_11 (AZ), Spartoi_10 (singleton), SuMoo_10 (EH), Sue2_12 (AZ1), Tweety19_12 (AZ3), UtzChips_10 (EH), VResidence_12 (AZ1), Wildwest_13 (AZ1),

Start 30:

- Found in 23 of 419 (5.5%) of genes in pham
- Manual Annotations of this start: 20 of 339
- Called 100.0% of time when present
- Phage (with cluster) where this start called: Asapag_12 (DN1), BENtherdunthat_12 (DN1), BotCity_12 (DN), Budski_12 (DN), CheeseTouch_12 (DN1), Frickyeah_12 (DN1), Getalong_12 (DN1), Holliday_12 (DN1), Horus_12 (DN1), Kamaru_12 (DN1), Kenna_12 (DN1), Leroy_12 (DN1), LitninMcQueen_12 (DN1), Lutum_12 (DN1), Malisha_12 (DN), Periwinkle_12 (DN1), Phabuloso_12 (DN1), Phistory_12 (DN1), ShawBrad_12 (DN1), Sleepyhead_12 (singleton), Spooky_12 (DN2), Squiddly_13 (DN2), Whitney_12 (DN1),

Start 31:

- Found in 6 of 419 (1.4%) of genes in pham
- Manual Annotations of this start: 2 of 339
- Called 100.0% of time when present
- Phage (with cluster) where this start called: JasmineDragon_11 (AZ4), LadyAstra_11 (AZ4), MiniMommy_10 (AZ4), ShakeltOph_11 (AZ4), VWB_11 (BA), VroomVroom_11 (AZ4),

Start 32:

- Found in 2 of 419 (0.5%) of genes in pham
- Manual Annotations of this start: 2 of 339
- Called 100.0% of time when present
- Phage (with cluster) where this start called: KeAlii_12 (AZ1), Reedo_12 (AZ1),

Start 33:

- Found in 1 of 419 (0.2%) of genes in pham
- Manual Annotations of this start: 1 of 339
- Called 100.0% of time when present
- Phage (with cluster) where this start called: Emotion_11 (AZ4),

Start 34:

- Found in 6 of 419 (1.4%) of genes in pham
- Manual Annotations of this start: 6 of 339
- Called 100.0% of time when present
- Phage (with cluster) where this start called: Buldak_11 (EB), Olliecat_11 (EB), Shayna_10 (EB), Squirrel_11 (EB), SunnyD_10 (EB), Teagster_10 (EB),

Start 35:

- Found in 21 of 419 (5.0%) of genes in pham
- Manual Annotations of this start: 11 of 339
- Called 85.7% of time when present
- Phage (with cluster) where this start called: Alatato_10 (FB), Aoka_12 (FO), BrayBeast_11 (FB), CliffHanger_12 (EB), CocoCinnamon_15 (FO), Eden_10 (EB), EvenBluerMoon_14 (FO), Franklin22_10 (EB), JanetJ_12 (FO), Kumotta_12 (FB), Maja_11 (FO), MargaretKali_12 (FB), NoSwimming_13 (FO), Pigu_11 (FB), PrairieDogTown_18 (FO), Sarge_11 (FB), Scotia_13 (FO), Shoya_10 (FB),

Start 36:

- Found in 77 of 419 (18.4%) of genes in pham
- Manual Annotations of this start: 52 of 339
- Called 84.4% of time when present
- Phage (with cluster) where this start called: Abigail_11 (EB), Akino08_19 (EB), Albedo_11 (EB), Albright_11 (EB), Angelique_13 (CY1), AnnaLie_12 (EB), Arroyo_12 (EB), Avocadoman_11 (EB), BabyDaisy_12 (EB), BabyYoda_11 (EB), BeeGee_13 (CY), BelmontSKP_12 (EB), Bengal_11 (EB), Bradissa_13 (CY1), BritBrat_13 (CY2), BubbaBear_11 (EB), Burritobowl_11 (EB), Cashington_11 (EB), Cashline_13 (CY), Confidence_13 (CY1), CroZenni_11 (EB), CupcakePrincess_11 (EB), DickRichards_11 (EB), Doobus_11 (EB), EMSquaredA_13 (CY1), Elva_12 (EB), EnalisNailo_13 (CY1), Eula_11 (EB), Finalfrontier_12 (EB), Floral_13 (CY1), Icarian_12 (EB), IndyLu_11 (EB), Jabb_11 (EB), Jablanski_13 (CY), Johnathan_11 (EB), Jovita_11 (EB), Kate33_11 (EB), Kenzers_11 (EB), Lilas_13 (CY1), LimaBean_11 (EB), LonelyBoi_13 (CY), Loviatar_19 (EB), Lynlen_11 (EB), Marteena_13 (CY1), Milomuff_12 (EB), MsUbiquitous_11 (EB), Nicky22_12 (EB), PhigPhack_11 (EB), Phisb_11 (EB), Pollux_13 (CY1), Posh_13 (CY), Pytheas_13 (CY), QMacho_12 (EB), SanaSana_12 (EB), SansAfet_11 (EB), SarBear_11 (EB), Slay_11 (EB), Softsoap_11 (EB), Solea_12 (EB), Stoor_11 (EB), Stromboli_11 (EB), Swervy_11 (EB), TukTuk_11 (EB), WalkingDead_11 (EB), Wrigley_13 (CY),

Start 37:

- Found in 9 of 419 (2.1%) of genes in pham

- Manual Annotations of this start: 7 of 339
- Called 100.0% of time when present
- Phage (with cluster) where this start called: Avani_13 (F2), Blarby_14 (F), Che9d_13 (F2), Demsculpinboyz_13 (F2), Jabbarwokie_14 (F2), SilverChicken_13 (F2), Soul22_13 (F2), Yoshi_13 (F2), Zapner_14 (F2),

Start 38:

- Found in 15 of 419 (3.6%) of genes in pham
- Manual Annotations of this start: 13 of 339
- Called 93.3% of time when present
- Phage (with cluster) where this start called: AvGuardian_11 (EB), Bachaco_11 (EB), Celaena_11 (EB), ChiliPepper_11 (EB), Didgeridoo_12 (EB), Dismas_11 (EB), FlameThrower_11 (EB), Katzastrophic_11 (EB), Kieran_11 (EB), Lahqtemish_11 (EB), PastaFagioli_11 (EB), Quenya_12 (EB), Rona_11 (EB), Sharkboy_11 (EB),

Start 39:

- Found in 5 of 419 (1.2%) of genes in pham
- No Manual Annotations of this start.
- Called 40.0% of time when present
- Phage (with cluster) where this start called: PFR1_09 (BX), PFR2_09 (BX),

Start 40:

- Found in 24 of 419 (5.7%) of genes in pham
- Manual Annotations of this start: 15 of 339
- Called 62.5% of time when present
- Phage (with cluster) where this start called: Armstrong_10 (EB), BAjuniper_11 (EB), Bernstein_10 (EB), Brahms_10 (EB), Clayda5_10 (EB), Coltrane_10 (EB), DS6A_15 (singleton), DirtyBubble_11 (EB), Gack_10 (EB), Gaia_9 (X), LilSpotty_11 (singleton), Nebkiss_9 (X), Rollins_10 (EB), Skylord_10 (EB), Vitas_10 (EB),

Start 41:

- Found in 6 of 419 (1.4%) of genes in pham
- Manual Annotations of this start: 2 of 339
- Called 50.0% of time when present
- Phage (with cluster) where this start called: BaileyBlu_11 (FP), CallinAllBarbz_11 (FP), Jankie_13 (FP),

Start 42:

- Found in 3 of 419 (0.7%) of genes in pham
- Manual Annotations of this start: 1 of 339
- Called 33.3% of time when present
- Phage (with cluster) where this start called: Shambre1_12 (singleton),

Start 46:

- Found in 11 of 419 (2.6%) of genes in pham
- No Manual Annotations of this start.
- Called 9.1% of time when present
- Phage (with cluster) where this start called: AinMach_11 (AZ),

Start 50:

- Found in 19 of 419 (4.5%) of genes in pham
- No Manual Annotations of this start.
- Called 5.3% of time when present

- Phage (with cluster) where this start called: Beaupre_12 (AZ5),

Start 52:

- Found in 4 of 419 (1.0%) of genes in pham
- Manual Annotations of this start: 4 of 339
- Called 100.0% of time when present
- Phage (with cluster) where this start called: B22_12 (BW), Doucette_12 (BW), E6_13 (BW), G4_12 (BW),

Summary by clusters:

There are 34 clusters represented in this pham: DN, FP, FR, BA, DH, CY2, BL, singleton, FB, BW, BX, FO, DN4, DN1, DN3, DN2, AS3, AS2, AS1, EH, F, AK, EB, CY, Y, X, AZ, CY1, F2, AZ1, AZ2, AZ3, AZ4, AZ5,

Info for manual annotations of cluster AK:

- Start number 21 was manually annotated 9 times for cluster AK.
- Start number 22 was manually annotated 64 times for cluster AK.
- Start number 24 was manually annotated 10 times for cluster AK.

Info for manual annotations of cluster AS1:

- Start number 22 was manually annotated 11 times for cluster AS1.

Info for manual annotations of cluster AS2:

- Start number 22 was manually annotated 11 times for cluster AS2.

Info for manual annotations of cluster AS3:

- Start number 22 was manually annotated 7 times for cluster AS3.

Info for manual annotations of cluster AZ:

- Start number 29 was manually annotated 1 time for cluster AZ.

Info for manual annotations of cluster AZ1:

- Start number 26 was manually annotated 36 times for cluster AZ1.
- Start number 29 was manually annotated 7 times for cluster AZ1.
- Start number 32 was manually annotated 2 times for cluster AZ1.

Info for manual annotations of cluster AZ2:

- Start number 26 was manually annotated 2 times for cluster AZ2.
- Start number 29 was manually annotated 1 time for cluster AZ2.

Info for manual annotations of cluster AZ3:

- Start number 29 was manually annotated 2 times for cluster AZ3.

Info for manual annotations of cluster AZ4:

- Start number 31 was manually annotated 2 times for cluster AZ4.
- Start number 33 was manually annotated 1 time for cluster AZ4.

Info for manual annotations of cluster AZ5:

- Start number 25 was manually annotated 10 times for cluster AZ5.

Info for manual annotations of cluster BL:

- Start number 16 was manually annotated 1 time for cluster BL.
- Start number 26 was manually annotated 2 times for cluster BL.

Info for manual annotations of cluster BW:

- Start number 52 was manually annotated 4 times for cluster BW.

Info for manual annotations of cluster CY:

- Start number 36 was manually annotated 7 times for cluster CY.

Info for manual annotations of cluster CY1:

- Start number 36 was manually annotated 9 times for cluster CY1.

Info for manual annotations of cluster CY2:

- Start number 36 was manually annotated 1 time for cluster CY2.

Info for manual annotations of cluster DH:

- Start number 27 was manually annotated 3 times for cluster DH.

Info for manual annotations of cluster DN:

- Start number 27 was manually annotated 4 times for cluster DN.
- Start number 30 was manually annotated 2 times for cluster DN.

Info for manual annotations of cluster DN1:

- Start number 30 was manually annotated 15 times for cluster DN1.

Info for manual annotations of cluster DN2:

- Start number 30 was manually annotated 2 times for cluster DN2.

Info for manual annotations of cluster DN3:

- Start number 27 was manually annotated 2 times for cluster DN3.

Info for manual annotations of cluster DN4:

- Start number 27 was manually annotated 1 time for cluster DN4.

Info for manual annotations of cluster EB:

- Start number 34 was manually annotated 6 times for cluster EB.
- Start number 35 was manually annotated 3 times for cluster EB.
- Start number 36 was manually annotated 35 times for cluster EB.
- Start number 38 was manually annotated 13 times for cluster EB.
- Start number 40 was manually annotated 11 times for cluster EB.

Info for manual annotations of cluster EH:

- Start number 25 was manually annotated 1 time for cluster EH.
- Start number 26 was manually annotated 7 times for cluster EH.
- Start number 29 was manually annotated 5 times for cluster EH.

Info for manual annotations of cluster F2:

- Start number 37 was manually annotated 7 times for cluster F2.

Info for manual annotations of cluster FB:

- Start number 35 was manually annotated 5 times for cluster FB.

Info for manual annotations of cluster FO:

- Start number 35 was manually annotated 3 times for cluster FO.

Info for manual annotations of cluster FP:

- Start number 41 was manually annotated 2 times for cluster FP.

Info for manual annotations of cluster X:

- Start number 40 was manually annotated 2 times for cluster X.

Info for manual annotations of cluster Y:

- Start number 15 was manually annotated 4 times for cluster Y.

Gene Information:

Gene: AEgle_12 Start: 9049, Stop: 9459, Start Num: 26

Candidate Starts for AEgle_12:

(Start: 26 @9049 has 47 MA's), (53, 9094), (61, 9118), (154, 9379), (163, 9412),

Gene: AGrandiflora_12 Start: 9036, Stop: 9449, Start Num: 26

Candidate Starts for AGrandiflora_12:

(Start: 26 @9036 has 47 MA's), (61, 9105), (108, 9255), (154, 9366), (163, 9399),

Gene: AbbeyMikolon_11 Start: 7783, Stop: 8178, Start Num: 26

Candidate Starts for AbbeyMikolon_11:

(23, 7780), (Start: 26 @7783 has 47 MA's), (Start: 35 @7795 has 11 MA's), (46, 7816), (48, 7822), (53, 7828), (58, 7843), (71, 7864), (77, 7888), (100, 7957), (119, 8029), (121, 8035), (135, 8062), (150, 8092), (166, 8140),

Gene: Abidatro_12 Start: 8321, Stop: 8764, Start Num: 22

Candidate Starts for Abidatro_12:

(Start: 22 @8321 has 93 MA's), (45, 8363), (67, 8417), (81, 8471), (82, 8474), (94, 8507), (118, 8606), (130, 8633), (140, 8657), (143, 8663), (148, 8672),

Gene: Abigail_11 Start: 8030, Stop: 8425, Start Num: 36

Candidate Starts for Abigail_11:

(6, 7904), (Start: 36 @8030 has 52 MA's), (57, 8069), (71, 8096), (95, 8174), (122, 8273), (136, 8306), (173, 8399),

Gene: Adolin_12 Start: 9024, Stop: 9440, Start Num: 29

Candidate Starts for Adolin_12:

(Start: 29 @9024 has 17 MA's), (106, 9240),

Gene: Adumb2043_12 Start: 9048, Stop: 9458, Start Num: 26

Candidate Starts for Adumb2043_12:

(Start: 26 @9048 has 47 MA's), (53, 9093), (61, 9117), (154, 9378), (163, 9411),

Gene: AinMach_11 Start: 8183, Stop: 8566, Start Num: 46

Candidate Starts for AinMach_11:

(Start: 26 @8150 has 47 MA's), (Start: 29 @8153 has 17 MA's), (46, 8183), (53, 8195), (175, 8537),

Gene: Akino08_19 Start: 8216, Stop: 8611, Start Num: 36

Candidate Starts for Akino08_19:

(6, 8090), (Start: 36 @8216 has 52 MA's), (Start: 40 @8219 has 15 MA's), (67, 8279), (145, 8510), (156, 8543), (161, 8564),

Gene: Alatato_10 Start: 7192, Stop: 7572, Start Num: 35

Candidate Starts for Alatato_10:

(Start: 35 @7192 has 11 MA's), (63, 7252), (73, 7270), (100, 7357), (102, 7363), (133, 7459), (136, 7465), (163, 7534),

Gene: Albanese_14 Start: 10476, Stop: 10886, Start Num: 24

Candidate Starts for Albanese_14:

(Start: 24 @10476 has 11 MA's), (86, 10620), (87, 10629), (89, 10632), (100, 10662), (102, 10668), (109, 10701), (159, 10824), (170, 10848),

Gene: Albedo_11 Start: 7905, Stop: 8300, Start Num: 36

Candidate Starts for Albedo_11:

(6, 7779), (Start: 36 @7905 has 52 MA's), (57, 7944), (95, 8049), (122, 8148), (136, 8181), (173, 8274),

Gene: Albright_11 Start: 7911, Stop: 8306, Start Num: 36

Candidate Starts for Albright_11:

(6, 7785), (Start: 36 @7911 has 52 MA's), (71, 7977), (95, 8055), (122, 8154), (136, 8187), (173, 8280),

Gene: Aledel_10 Start: 7551, Stop: 7982, Start Num: 22

Candidate Starts for Aledel_10:

(Start: 21 @7545 has 9 MA's), (Start: 22 @7551 has 93 MA's), (Start: 36 @7572 has 52 MA's), (70, 7644), (86, 7701), (89, 7713), (94, 7722), (101, 7746), (159, 7905),

Gene: Amelia_13 Start: 8497, Stop: 8940, Start Num: 22

Candidate Starts for Amelia_13:

(Start: 22 @8497 has 93 MA's), (64, 8587), (67, 8593), (81, 8647), (82, 8650), (96, 8689), (130, 8809), (140, 8833), (170, 8905), (173, 8911),

Gene: AmiCi24_11 Start: 7902, Stop: 8342, Start Num: 22

Candidate Starts for AmiCi24_11:

(Start: 22 @7902 has 93 MA's), (49, 7953), (82, 8055), (83, 8058), (96, 8094), (97, 8100), (102, 8115), (118, 8187), (130, 8214), (170, 8313), (173, 8319), (179, 8331),

Gene: Amyev_12 Start: 9064, Stop: 9477, Start Num: 26

Candidate Starts for Amyev_12:

(Start: 26 @9064 has 47 MA's), (53, 9109), (108, 9283), (154, 9394), (163, 9427),

Gene: Andrew_12 Start: 8281, Stop: 8724, Start Num: 22

Candidate Starts for Andrew_12:

(Start: 22 @8281 has 93 MA's), (49, 8332), (64, 8371), (68, 8380), (81, 8431), (82, 8434), (83, 8437), (96, 8473), (97, 8479), (130, 8593), (136, 8608), (170, 8692), (173, 8698), (179, 8710),

Gene: Angelique_13 Start: 8261, Stop: 8653, Start Num: 36

Candidate Starts for Angelique_13:

(Start: 36 @8261 has 52 MA's), (106, 8465),

Gene: AnnaLie_12 Start: 8320, Stop: 8715, Start Num: 36

Candidate Starts for AnnaLie_12:

(6, 8194), (Start: 36 @8320 has 52 MA's), (57, 8359), (71, 8386), (95, 8464), (122, 8563), (136, 8596), (173, 8689),

Gene: AnnabelLee_13 Start: 7727, Stop: 8119, Start Num: 28

Candidate Starts for AnnabelLee_13:

(28, 7727), (76, 7826), (77, 7829), (94, 7880), (95, 7883), (118, 7970), (119, 7973), (165, 8087), (177, 8111),

Gene: Antrice_12 Start: 8225, Stop: 8680, Start Num: 18

Candidate Starts for Antrice_12:

(18, 8225), (Start: 22 @8237 has 93 MA's), (83, 8393), (102, 8450), (113, 8507), (114, 8510), (140, 8573), (143, 8579), (156, 8612), (170, 8648), (179, 8666),

Gene: Aoka_12 Start: 8710, Stop: 9090, Start Num: 35

Candidate Starts for Aoka_12:

(Start: 35 @8710 has 11 MA's), (111, 8923), (114, 8935), (147, 9007), (153, 9022),

Gene: AppleCider_14 Start: 10411, Stop: 10824, Start Num: 22

Candidate Starts for AppleCider_14:

(Start: 22 @10411 has 93 MA's), (48, 10456), (86, 10558), (159, 10762),

Gene: Apricot_12 Start: 7390, Stop: 7773, Start Num: 27

Candidate Starts for Apricot_12:

(Start: 27 @7390 has 10 MA's), (60, 7444), (62, 7450), (69, 7462), (74, 7486), (136, 7669), (174, 7759),

Gene: Armstrong_10 Start: 7692, Stop: 8081, Start Num: 40

Candidate Starts for Armstrong_10:

(Start: 40 @7692 has 15 MA's), (95, 7833), (100, 7851), (154, 8004), (156, 8013), (162, 8037), (179, 8067),

Gene: Arroyo_12 Start: 8381, Stop: 8776, Start Num: 36

Candidate Starts for Arroyo_12:

(6, 8255), (Start: 36 @8381 has 52 MA's), (71, 8447), (95, 8525), (122, 8624), (136, 8657), (173, 8750),

Gene: Asa16_12 Start: 9018, Stop: 9428, Start Num: 26

Candidate Starts for Asa16_12:

(Start: 26 @9018 has 47 MA's), (61, 9087), (105, 9225), (108, 9237), (154, 9348), (163, 9381),

Gene: Asapag_12 Start: 7041, Stop: 7451, Start Num: 30

Candidate Starts for Asapag_12:

(4, 6912), (8, 6957), (9, 6963), (10, 6969), (12, 6987), (Start: 30 @7041 has 20 MA's), (44, 7068), (64, 7113), (67, 7119), (80, 7173), (94, 7212), (96, 7218), (102, 7239), (114, 7290), (118, 7302),

Gene: Ascela_12 Start: 9053, Stop: 9463, Start Num: 26

Candidate Starts for Ascela_12:

(Start: 26 @9053 has 47 MA's), (61, 9122), (108, 9272), (154, 9383), (163, 9416),

Gene: Ashes_12 Start: 8547, Stop: 8966, Start Num: 25

Candidate Starts for Ashes_12:

(Start: 25 @8547 has 11 MA's), (50, 8589), (149, 8871),

Gene: Atlantica_11 Start: 7902, Stop: 8342, Start Num: 22

Candidate Starts for Atlantica_11:

(Start: 22 @7902 has 93 MA's), (49, 7953), (82, 8055), (83, 8058), (96, 8094), (97, 8100), (102, 8115), (118, 8187), (130, 8214), (170, 8313), (173, 8319), (179, 8331),

Gene: Audell_16 Start: 11067, Stop: 11459, Start Num: 28

Candidate Starts for Audell_16:

(28, 11067), (62, 11130), (95, 11223), (103, 11253), (117, 11307), (118, 11310), (119, 11313), (134, 11349), (177, 11451),

Gene: AuntGwenStacy_18 Start: 11997, Stop: 12434, Start Num: 17

Candidate Starts for AuntGwenStacy_18:

(Start: 15 @11994 has 4 MA's), (17, 11997), (58, 12075), (62, 12084), (65, 12090), (69, 12096), (88, 12174), (107, 12240), (118, 12276), (152, 12351), (162, 12390),

Gene: AustinPowers_10 Start: 7552, Stop: 7983, Start Num: 22

Candidate Starts for AustinPowers_10:

(Start: 21 @7546 has 9 MA's), (Start: 22 @7552 has 93 MA's), (Start: 36 @7573 has 52 MA's), (70, 7645), (89, 7714), (94, 7723), (101, 7747), (159, 7906),

Gene: AvGardian_11 Start: 7970, Stop: 8365, Start Num: 38

Candidate Starts for AvGardian_11:

(Start: 38 @7970 has 13 MA's), (67, 8033), (95, 8114), (114, 8189), (122, 8213), (136, 8246), (145, 8264), (173, 8339),

Gene: Avani_13 Start: 7213, Stop: 7617, Start Num: 37

Candidate Starts for Avani_13:

(Start: 37 @7213 has 7 MA's), (56, 7246), (75, 7306), (95, 7372), (130, 7492), (135, 7504), (150, 7540), (158, 7570),

Gene: Avocadoman_11 Start: 7969, Stop: 8364, Start Num: 36

Candidate Starts for Avocadoman_11:

(Start: 36 @7969 has 52 MA's), (57, 8008), (71, 8035), (95, 8113), (122, 8212), (136, 8245), (173, 8338),

Gene: B22_12 Start: 7687, Stop: 8055, Start Num: 52

Candidate Starts for B22_12:

(2, 7486), (Start: 52 @7687 has 4 MA's), (72, 7744), (87, 7795), (120, 7906), (124, 7912), (130, 7924),

Gene: BAjuniper_11 Start: 7857, Stop: 8243, Start Num: 40

Candidate Starts for BAjuniper_11:

(3, 7680), (Start: 40 @7857 has 15 MA's), (95, 7995), (99, 8010), (143, 8139), (156, 8175),

Gene: BENtherdunthat_12 Start: 7041, Stop: 7451, Start Num: 30

Candidate Starts for BENtherdunthat_12:

(4, 6912), (8, 6957), (9, 6963), (10, 6969), (12, 6987), (Start: 30 @7041 has 20 MA's), (44, 7068), (64, 7113), (67, 7119), (80, 7173), (94, 7212), (96, 7218), (102, 7239), (114, 7290), (118, 7302),

Gene: Babushka_11 Start: 7950, Stop: 8390, Start Num: 22

Candidate Starts for Babushka_11:

(Start: 22 @7950 has 93 MA's), (82, 8103), (83, 8106), (96, 8142), (97, 8148), (100, 8157), (118, 8235), (130, 8262), (170, 8361), (173, 8367), (179, 8379),

Gene: BabyDaisy_12 Start: 8133, Stop: 8531, Start Num: 36

Candidate Starts for BabyDaisy_12:
(Start: 36 @8133 has 52 MA's), (122, 8379), (161, 8484),

Gene: BabyYoda_11 Start: 8162, Stop: 8557, Start Num: 36
Candidate Starts for BabyYoda_11:
(6, 8036), (Start: 36 @8162 has 52 MA's), (Start: 40 @8165 has 15 MA's), (67, 8225), (128, 8420),
(145, 8456), (156, 8489), (161, 8510),

Gene: Bachaco_11 Start: 8051, Stop: 8449, Start Num: 38
Candidate Starts for Bachaco_11:
(1, 7853), (3, 7877), (5, 7913), (Start: 38 @8051 has 13 MA's), (48, 8072), (136, 8330), (145, 8348),
(156, 8381),

Gene: BaileyBlu_11 Start: 6789, Stop: 7178, Start Num: 41
Candidate Starts for BaileyBlu_11:
(Start: 41 @6789 has 2 MA's), (Start: 42 @6792 has 1 MA's), (99, 6951), (118, 7023), (121, 7032),

Gene: Barnstormer_10 Start: 8216, Stop: 8632, Start Num: 29
Candidate Starts for Barnstormer_10:
(Start: 29 @8216 has 17 MA's), (116, 8456), (140, 8513),

Gene: Basilisk_12 Start: 8645, Stop: 9088, Start Num: 22
Candidate Starts for Basilisk_12:
(7, 8570), (Start: 22 @8645 has 93 MA's), (45, 8687), (54, 8705), (67, 8741), (81, 8795), (82, 8798),
(96, 8837), (106, 8891), (118, 8930), (130, 8957), (140, 8981), (143, 8987),

Gene: BearBQ_12 Start: 7390, Stop: 7773, Start Num: 27
Candidate Starts for BearBQ_12:
(Start: 27 @7390 has 10 MA's), (60, 7444), (62, 7450), (69, 7462), (74, 7486), (136, 7669), (174, 7759),

Gene: Beaupre_12 Start: 8590, Stop: 8967, Start Num: 50
Candidate Starts for Beaupre_12:
(Start: 25 @8548 has 11 MA's), (50, 8590), (106, 8767), (149, 8872),

Gene: Bedetta_13 Start: 8497, Stop: 8940, Start Num: 22
Candidate Starts for Bedetta_13:
(Start: 22 @8497 has 93 MA's), (64, 8587), (67, 8593), (81, 8647), (82, 8650), (96, 8689), (130, 8809),
(140, 8833), (170, 8905), (173, 8911),

Gene: BeeGee_13 Start: 8263, Stop: 8649, Start Num: 36
Candidate Starts for BeeGee_13:
(11, 8182), (Start: 36 @8263 has 52 MA's),

Gene: Beethoven_14 Start: 10371, Stop: 10784, Start Num: 22
Candidate Starts for Beethoven_14:
(Start: 22 @10371 has 93 MA's), (81, 10506), (86, 10521), (101, 10566), (111, 10608), (159, 10725),

Gene: BelmontSKP_12 Start: 8320, Stop: 8715, Start Num: 36
Candidate Starts for BelmontSKP_12:
(6, 8194), (Start: 36 @8320 has 52 MA's), (57, 8359), (71, 8386), (95, 8464), (122, 8563), (136, 8596),
(173, 8689),

Gene: Bengal_11 Start: 7911, Stop: 8306, Start Num: 36

Candidate Starts for Bengal_11:

(6, 7785), (Start: 36 @7911 has 52 MA's), (57, 7950), (71, 7977), (122, 8154), (136, 8187), (173, 8280),

Gene: Bennie_10 Start: 7516, Stop: 7926, Start Num: 22

Candidate Starts for Bennie_10:

(Start: 22 @7516 has 93 MA's), (81, 7648), (86, 7663), (101, 7708), (102, 7711), (111, 7750), (159, 7867),

Gene: Bernstein_10 Start: 7752, Stop: 8141, Start Num: 40

Candidate Starts for Bernstein_10:

(Start: 40 @7752 has 15 MA's), (95, 7893), (100, 7911), (154, 8064), (156, 8073), (162, 8097), (179, 8127),

Gene: Berrie_12 Start: 9020, Stop: 9430, Start Num: 26

Candidate Starts for Berrie_12:

(Start: 26 @9020 has 47 MA's), (70, 9107), (108, 9239), (154, 9350), (163, 9383),

Gene: Bible12_13 Start: 8500, Stop: 8943, Start Num: 22

Candidate Starts for Bible12_13:

(Start: 22 @8500 has 93 MA's), (64, 8590), (67, 8596), (81, 8650), (82, 8653), (96, 8692), (130, 8812), (140, 8836), (170, 8908), (173, 8914),

Gene: BigMack_10 Start: 7516, Stop: 7926, Start Num: 22

Candidate Starts for BigMack_10:

(Start: 22 @7516 has 93 MA's), (81, 7648), (86, 7663), (101, 7708), (111, 7750), (159, 7867),

Gene: Bipper_18 Start: 12080, Stop: 12517, Start Num: 15

Candidate Starts for Bipper_18:

(Start: 15 @12080 has 4 MA's), (17, 12083), (53, 12146), (58, 12158), (62, 12167), (69, 12179), (84, 12239), (102, 12296), (107, 12323), (110, 12332), (119, 12362), (146, 12419), (155, 12449), (162, 12473),

Gene: Birdsong_12 Start: 7390, Stop: 7773, Start Num: 27

Candidate Starts for Birdsong_12:

(Start: 27 @7390 has 10 MA's), (60, 7444), (62, 7450), (69, 7462), (74, 7486), (136, 7669), (174, 7759),

Gene: Blarby_14 Start: 7737, Stop: 8141, Start Num: 37

Candidate Starts for Blarby_14:

(Start: 37 @7737 has 7 MA's), (56, 7770), (75, 7830), (95, 7896), (130, 8016), (135, 8028), (150, 8064), (158, 8094),

Gene: Bodacious_10 Start: 7514, Stop: 7924, Start Num: 22

Candidate Starts for Bodacious_10:

(Start: 22 @7514 has 93 MA's), (71, 7607), (81, 7646), (86, 7661), (101, 7706), (111, 7748), (117, 7769), (159, 7865),

Gene: BotCity_12 Start: 7039, Stop: 7449, Start Num: 30

Candidate Starts for BotCity_12:

(4, 6910), (8, 6955), (9, 6961), (10, 6967), (12, 6985), (Start: 30 @7039 has 20 MA's), (44, 7066), (64, 7111), (67, 7117), (80, 7171), (94, 7210), (96, 7216), (102, 7237), (114, 7288), (118, 7300),

Gene: Bradissa_13 Start: 8267, Stop: 8653, Start Num: 36

Candidate Starts for Bradissa_13:

(Start: 36 @8267 has 52 MA's), (63, 8324),

Gene: Brahms_10 Start: 7692, Stop: 8081, Start Num: 40

Candidate Starts for Brahms_10:

(Start: 40 @7692 has 15 MA's), (95, 7833), (100, 7851), (154, 8004), (156, 8013), (162, 8037), (179, 8067),

Gene: BrayBeast_11 Start: 7602, Stop: 7979, Start Num: 35

Candidate Starts for BrayBeast_11:

(Start: 35 @7602 has 11 MA's), (63, 7659), (86, 7716), (94, 7743), (100, 7764), (102, 7770), (136, 7872), (153, 7908), (163, 7941),

Gene: BritBrat_13 Start: 8269, Stop: 8655, Start Num: 36

Candidate Starts for BritBrat_13:

(Start: 36 @8269 has 52 MA's), (63, 8326),

Gene: BrotherBLo_14 Start: 10378, Stop: 10791, Start Num: 22

Candidate Starts for BrotherBLo_14:

(Start: 22 @10378 has 93 MA's), (81, 10513), (86, 10528), (101, 10573), (111, 10615), (159, 10732),

Gene: Brynnie_12 Start: 8457, Stop: 8900, Start Num: 22

Candidate Starts for Brynnie_12:

(Start: 22 @8457 has 93 MA's), (45, 8499), (67, 8553), (81, 8607), (82, 8610), (96, 8649), (106, 8703), (118, 8742), (130, 8769), (140, 8793), (143, 8799),

Gene: BubbaBear_11 Start: 7905, Stop: 8300, Start Num: 36

Candidate Starts for BubbaBear_11:

(Start: 36 @7905 has 52 MA's), (57, 7944), (95, 8049), (122, 8148), (136, 8181), (173, 8274),

Gene: Budski_12 Start: 7046, Stop: 7438, Start Num: 30

Candidate Starts for Budski_12:

(4, 6917), (8, 6962), (9, 6968), (10, 6974), (12, 6992), (14, 7010), (Start: 30 @7046 has 20 MA's), (44, 7073), (64, 7118), (67, 7124), (71, 7136), (80, 7160), (94, 7199), (96, 7205), (100, 7220), (102, 7226), (114, 7277), (118, 7289), (141, 7343),

Gene: Buldak_11 Start: 8189, Stop: 8584, Start Num: 34

Candidate Starts for Buldak_11:

(Start: 34 @8189 has 6 MA's), (84, 8306), (94, 8333), (95, 8336), (115, 8414), (129, 8450), (133, 8459), (156, 8516), (162, 8540),

Gene: Burritobowl_11 Start: 7938, Stop: 8333, Start Num: 36

Candidate Starts for Burritobowl_11:

(6, 7812), (Start: 36 @7938 has 52 MA's), (57, 7977), (71, 8004), (95, 8082), (122, 8181), (136, 8214), (173, 8307),

Gene: CallieOMalley_14 Start: 10411, Stop: 10824, Start Num: 22

Candidate Starts for CallieOMalley_14:

(Start: 22 @10411 has 93 MA's), (48, 10456), (86, 10558), (159, 10762),

Gene: CallinAllBarbz_11 Start: 6799, Stop: 7188, Start Num: 41

Candidate Starts for CallinAllBarbz_11:

(Start: 41 @6799 has 2 MA's), (Start: 42 @6802 has 1 MA's), (99, 6961), (121, 7042), (132, 7069),

Gene: Camara_11 Start: 7903, Stop: 8343, Start Num: 22

Candidate Starts for Camara_11:

(Start: 22 @7903 has 93 MA's), (49, 7954), (82, 8056), (83, 8059), (96, 8095), (97, 8101), (102, 8116), (118, 8188), (130, 8215), (170, 8314), (173, 8320), (179, 8332),

Gene: Canowicakte_14 Start: 10446, Stop: 10859, Start Num: 22

Candidate Starts for Canowicakte_14:

(Start: 22 @10446 has 93 MA's), (48, 10491), (86, 10593), (117, 10701), (159, 10797),

Gene: Cappuccino_12 Start: 8456, Stop: 8875, Start Num: 25

Candidate Starts for Cappuccino_12:

(Start: 25 @8456 has 11 MA's), (50, 8498), (149, 8780),

Gene: Caron_10 Start: 8244, Stop: 8660, Start Num: 29

Candidate Starts for Caron_10:

(Start: 29 @8244 has 17 MA's), (116, 8484),

Gene: Carpal_14 Start: 10378, Stop: 10791, Start Num: 22

Candidate Starts for Carpal_14:

(Start: 22 @10378 has 93 MA's), (81, 10513), (86, 10528), (101, 10573), (111, 10615), (159, 10732),

Gene: Cashington_11 Start: 7928, Stop: 8323, Start Num: 36

Candidate Starts for Cashington_11:

(6, 7802), (Start: 36 @7928 has 52 MA's), (57, 7967), (71, 7994), (95, 8072), (122, 8171), (136, 8204), (173, 8297),

Gene: Cashline_13 Start: 8116, Stop: 8508, Start Num: 36

Candidate Starts for Cashline_13:

(11, 8035), (Start: 36 @8116 has 52 MA's),

Gene: Cassia_12 Start: 9139, Stop: 9552, Start Num: 26

Candidate Starts for Cassia_12:

(Start: 26 @9139 has 47 MA's), (70, 9226), (105, 9346), (108, 9358), (154, 9469), (163, 9502),

Gene: Celaena_11 Start: 7988, Stop: 8386, Start Num: 38

Candidate Starts for Celaena_11:

(5, 7850), (19, 7952), (Start: 25 @7970 has 11 MA's), (Start: 38 @7988 has 13 MA's), (48, 8009), (136, 8267), (145, 8285), (156, 8318),

Gene: Cen1621_10 Start: 7355, Stop: 7771, Start Num: 26

Candidate Starts for Cen1621_10:

(Start: 26 @7355 has 47 MA's), (163, 7724), (175, 7745),

Gene: Che9d_13 Start: 7222, Stop: 7626, Start Num: 37

Candidate Starts for Che9d_13:

(Start: 37 @7222 has 7 MA's), (56, 7255), (75, 7315), (95, 7381), (130, 7501), (135, 7513), (150, 7549), (158, 7579),

Gene: CheeseTouch_12 Start: 7046, Stop: 7438, Start Num: 30

Candidate Starts for CheeseTouch_12:

(4, 6917), (8, 6962), (9, 6968), (10, 6974), (12, 6992), (14, 7010), (Start: 30 @7046 has 20 MA's), (44, 7073), (64, 7118), (67, 7124), (71, 7136), (80, 7160), (94, 7199), (96, 7205), (100, 7220), (102, 7226), (114, 7277), (118, 7289), (141, 7343),

Gene: ChewChew_10 Start: 7513, Stop: 7923, Start Num: 22

Candidate Starts for ChewChew_10:

(Start: 22 @7513 has 93 MA's), (71, 7606), (81, 7645), (86, 7660), (101, 7705), (111, 7747), (117, 7768), (159, 7864),

Gene: Chickaboom_11 Start: 8002, Stop: 8445, Start Num: 22

Candidate Starts for Chickaboom_11:

(Start: 22 @8002 has 93 MA's), (45, 8044), (54, 8062), (67, 8098), (81, 8152), (82, 8155), (96, 8194), (106, 8248), (118, 8287), (130, 8314), (140, 8338), (143, 8344),

Gene: ChiliPepper_11 Start: 8141, Stop: 8542, Start Num: 38

Candidate Starts for ChiliPepper_11:

(Start: 38 @8141 has 13 MA's), (95, 8291), (128, 8405), (156, 8474),

Gene: Cholula_14 Start: 10423, Stop: 10836, Start Num: 22

Candidate Starts for Cholula_14:

(Start: 22 @10423 has 93 MA's), (81, 10558), (86, 10573), (101, 10618), (111, 10660), (159, 10777),

Gene: Chridison_10 Start: 7546, Stop: 7983, Start Num: 21

Candidate Starts for Chridison_10:

(Start: 21 @7546 has 9 MA's), (Start: 22 @7552 has 93 MA's), (Start: 36 @7573 has 52 MA's), (70, 7645), (89, 7714), (94, 7723), (101, 7747), (159, 7906),

Gene: Christian_10 Start: 7514, Stop: 7924, Start Num: 22

Candidate Starts for Christian_10:

(Start: 22 @7514 has 93 MA's), (71, 7607), (81, 7646), (86, 7661), (101, 7706), (111, 7748), (117, 7769), (159, 7865),

Gene: Clayda5_10 Start: 7692, Stop: 8081, Start Num: 40

Candidate Starts for Clayda5_10:

(Start: 40 @7692 has 15 MA's), (95, 7833), (100, 7851), (154, 8004), (156, 8013), (162, 8037), (179, 8067),

Gene: CliffHanger_12 Start: 7883, Stop: 8278, Start Num: 35

Candidate Starts for CliffHanger_12:

(Start: 35 @7883 has 11 MA's), (87, 8015), (114, 8105), (133, 8153), (145, 8177), (162, 8234),

Gene: CocoCinnamon_15 Start: 8936, Stop: 9316, Start Num: 35

Candidate Starts for CocoCinnamon_15:

(Start: 35 @8936 has 11 MA's), (100, 9101), (102, 9107), (133, 9203), (136, 9209), (153, 9245), (163, 9278),

Gene: Coltrane_10 Start: 7692, Stop: 8081, Start Num: 40

Candidate Starts for Coltrane_10:

(Start: 40 @7692 has 15 MA's), (95, 7833), (100, 7851), (154, 8004), (156, 8013), (162, 8037), (179, 8067),

Gene: Colusalem_12 Start: 8336, Stop: 8779, Start Num: 22

Candidate Starts for Colusalem_12:

(Start: 22 @8336 has 93 MA's), (64, 8426), (67, 8432), (81, 8486), (82, 8489), (96, 8528), (130, 8648), (140, 8672), (170, 8744), (173, 8750),

Gene: Community_13 Start: 10099, Stop: 10509, Start Num: 26
Candidate Starts for Community_13:
(Start: 26 @10099 has 47 MA's), (53, 10144), (108, 10318), (154, 10429), (163, 10462),

Gene: Confidence_13 Start: 8263, Stop: 8649, Start Num: 36
Candidate Starts for Confidence_13:
(11, 8182), (Start: 36 @8263 has 52 MA's), (55, 8299), (63, 8320),

Gene: Coral_12 Start: 8336, Stop: 8779, Start Num: 22
Candidate Starts for Coral_12:
(Start: 22 @8336 has 93 MA's), (64, 8426), (67, 8432), (81, 8486), (82, 8489), (96, 8528), (130, 8648),
(140, 8672), (170, 8744), (173, 8750),

Gene: Cote_13 Start: 8497, Stop: 8940, Start Num: 22
Candidate Starts for Cote_13:
(Start: 22 @8497 has 93 MA's), (64, 8587), (67, 8593), (81, 8647), (82, 8650), (96, 8689), (130, 8809),
(140, 8833), (170, 8905), (173, 8911),

Gene: Cracklewink_18 Start: 12080, Stop: 12517, Start Num: 15
Candidate Starts for Cracklewink_18:
(Start: 15 @12080 has 4 MA's), (17, 12083), (53, 12146), (58, 12158), (62, 12167), (69, 12179), (84,
12239), (102, 12296), (107, 12323), (110, 12332), (119, 12362), (146, 12419), (155, 12449), (162,
12473),

Gene: Crater_12 Start: 7390, Stop: 7773, Start Num: 27
Candidate Starts for Crater_12:
(Start: 27 @7390 has 10 MA's), (60, 7444), (62, 7450), (69, 7462), (74, 7486), (136, 7669), (174, 7759),

Gene: Crewmate_13 Start: 9485, Stop: 9898, Start Num: 26
Candidate Starts for Crewmate_13:
(Start: 26 @9485 has 47 MA's), (61, 9554), (108, 9704), (154, 9815), (163, 9848),

Gene: CristinaYang_10 Start: 7514, Stop: 7924, Start Num: 22
Candidate Starts for CristinaYang_10:
(Start: 22 @7514 has 93 MA's), (71, 7607), (81, 7646), (86, 7661), (101, 7706), (111, 7748), (117,
7769), (159, 7865),

Gene: CroZenni_11 Start: 7911, Stop: 8306, Start Num: 36
Candidate Starts for CroZenni_11:
(6, 7785), (Start: 36 @7911 has 52 MA's), (71, 7977), (95, 8055), (122, 8154), (136, 8187), (173, 8280),

Gene: CupcakePrincess_11 Start: 7951, Stop: 8346, Start Num: 36
Candidate Starts for CupcakePrincess_11:
(6, 7825), (Start: 36 @7951 has 52 MA's), (57, 7990), (71, 8017), (95, 8095), (136, 8227), (173, 8320),

Gene: Cyan_12 Start: 9040, Stop: 9453, Start Num: 26
Candidate Starts for Cyan_12:
(Start: 26 @9040 has 47 MA's), (61, 9109), (108, 9259), (154, 9370), (163, 9403),

Gene: Cygnet_12 Start: 8279, Stop: 8722, Start Num: 22
Candidate Starts for Cygnet_12:
(Start: 22 @8279 has 93 MA's), (54, 8339), (57, 8348), (68, 8378), (81, 8429), (102, 8492), (111, 8540),
(113, 8549), (114, 8552), (140, 8615), (145, 8624), (156, 8654), (170, 8690), (179, 8708),

Gene: DS6A_15 Start: 10364, Stop: 10735, Start Num: 40

Candidate Starts for DS6A_15:

(Start: 40 @10364 has 15 MA's), (67, 10427), (71, 10439), (81, 10466), (95, 10511), (101, 10532), (114, 10586), (119, 10601), (131, 10628), (139, 10643), (150, 10664), (157, 10688),

Gene: Daiboju_10 Start: 7547, Stop: 7984, Start Num: 21

Candidate Starts for Daiboju_10:

(Start: 21 @7547 has 9 MA's), (Start: 22 @7553 has 93 MA's), (46, 7592), (47, 7595), (81, 7688), (86, 7703), (89, 7715), (94, 7724), (95, 7727), (101, 7748), (159, 7907),

Gene: DanHam62_11 Start: 7902, Stop: 8342, Start Num: 22

Candidate Starts for DanHam62_11:

(Start: 22 @7902 has 93 MA's), (49, 7953), (82, 8055), (83, 8058), (96, 8094), (97, 8100), (102, 8115), (118, 8187), (130, 8214), (170, 8313), (173, 8319), (179, 8331),

Gene: Daob_13 Start: 8500, Stop: 8943, Start Num: 22

Candidate Starts for Daob_13:

(Start: 22 @8500 has 93 MA's), (64, 8590), (67, 8596), (81, 8650), (82, 8653), (96, 8692), (130, 8812), (140, 8836), (170, 8908), (173, 8914),

Gene: Demsculpinboyz_13 Start: 7213, Stop: 7617, Start Num: 37

Candidate Starts for Demsculpinboyz_13:

(Start: 37 @7213 has 7 MA's), (56, 7246), (75, 7306), (95, 7372), (130, 7492), (135, 7504), (150, 7540), (158, 7570),

Gene: DickRichards_11 Start: 8405, Stop: 8800, Start Num: 36

Candidate Starts for DickRichards_11:

(6, 8279), (Start: 36 @8405 has 52 MA's), (57, 8444), (71, 8471), (95, 8549), (122, 8648), (136, 8681), (173, 8774),

Gene: Didgeridoo_12 Start: 8135, Stop: 8533, Start Num: 38

Candidate Starts for Didgeridoo_12:

(Start: 38 @8135 has 13 MA's), (122, 8381), (161, 8486),

Gene: Dino_14 Start: 10377, Stop: 10790, Start Num: 22

Candidate Starts for Dino_14:

(Start: 22 @10377 has 93 MA's), (81, 10512), (86, 10527), (101, 10572), (111, 10614), (159, 10731),

Gene: DirtyBubble_11 Start: 8173, Stop: 8565, Start Num: 40

Candidate Starts for DirtyBubble_11:

(6, 8044), (Start: 36 @8170 has 52 MA's), (Start: 40 @8173 has 15 MA's), (67, 8233), (128, 8428), (145, 8464), (156, 8497), (161, 8518),

Gene: Dismas_11 Start: 8141, Stop: 8542, Start Num: 38

Candidate Starts for Dismas_11:

(Start: 38 @8141 has 13 MA's), (95, 8291), (128, 8405), (156, 8474),

Gene: Donkey_12 Start: 8456, Stop: 8875, Start Num: 25

Candidate Starts for Donkey_12:

(Start: 25 @8456 has 11 MA's), (50, 8498), (149, 8780),

Gene: Doobus_11 Start: 8142, Stop: 8537, Start Num: 36

Candidate Starts for Doobus_11:

(6, 8016), (Start: 36 @8142 has 52 MA's), (71, 8208), (95, 8286), (122, 8385), (136, 8418), (173, 8511),

Gene: Doucette_12 Start: 7747, Stop: 8115, Start Num: 52

Candidate Starts for Doucette_12:

(2, 7546), (Start: 52 @7747 has 4 MA's), (72, 7804), (87, 7855), (120, 7966), (124, 7972), (130, 7984),

Gene: DrManhattan_12 Start: 9014, Stop: 9430, Start Num: 29

Candidate Starts for DrManhattan_12:

(Start: 29 @9014 has 17 MA's), (106, 9230),

Gene: DrRobert_10 Start: 7514, Stop: 7924, Start Num: 22

Candidate Starts for DrRobert_10:

(Start: 22 @7514 has 93 MA's), (71, 7607), (81, 7646), (86, 7661), (101, 7706), (111, 7748), (117, 7769), (159, 7865),

Gene: DrSierra_12 Start: 9047, Stop: 9463, Start Num: 29

Candidate Starts for DrSierra_12:

(Start: 29 @9047 has 17 MA's), (72, 9143), (87, 9200), (106, 9263),

Gene: DreamTeam_10 Start: 7581, Stop: 7991, Start Num: 22

Candidate Starts for DreamTeam_10:

(Start: 22 @7581 has 93 MA's), (81, 7713), (86, 7728), (101, 7773), (102, 7776), (159, 7932),

Gene: E6_13 Start: 7798, Stop: 8166, Start Num: 52

Candidate Starts for E6_13:

(2, 7597), (Start: 52 @7798 has 4 MA's), (72, 7855), (87, 7906), (120, 8017), (124, 8023), (130, 8035), (138, 8056),

Gene: EMSquaredA_13 Start: 8269, Stop: 8655, Start Num: 36

Candidate Starts for EMSquaredA_13:

(Start: 36 @8269 has 52 MA's), (63, 8326),

Gene: Ecliptus_12 Start: 7118, Stop: 7501, Start Num: 27

Candidate Starts for Ecliptus_12:

(Start: 27 @7118 has 10 MA's), (Start: 41 @7133 has 2 MA's), (60, 7172), (62, 7178), (69, 7190), (74, 7214), (136, 7397), (174, 7487),

Gene: Eden_10 Start: 7777, Stop: 8181, Start Num: 35

Candidate Starts for Eden_10:

(Start: 35 @7777 has 11 MA's), (Start: 40 @7783 has 15 MA's), (95, 7933), (100, 7951), (115, 8011), (130, 8047), (156, 8113),

Gene: Eesa_12 Start: 8495, Stop: 8935, Start Num: 22

Candidate Starts for Eesa_12:

(18, 8483), (Start: 22 @8495 has 93 MA's), (64, 8585), (67, 8591), (76, 8627), (81, 8645), (82, 8648), (96, 8687), (118, 8780), (130, 8807), (140, 8831), (156, 8867), (170, 8903),

Gene: Elezi_12 Start: 9019, Stop: 9429, Start Num: 26

Candidate Starts for Elezi_12:

(Start: 26 @9019 has 47 MA's), (61, 9088), (105, 9226), (108, 9238), (154, 9349), (163, 9382),

Gene: Elva_12 Start: 8225, Stop: 8620, Start Num: 36

Candidate Starts for Elva_12:

(6, 8099), (Start: 36 @8225 has 52 MA's), (95, 8369), (128, 8483), (145, 8519), (156, 8552), (161, 8573),

Gene: Emotion_11 Start: 7354, Stop: 7758, Start Num: 33

Candidate Starts for Emotion_11:

(Start: 33 @7354 has 1 MA's), (105, 7555),

Gene: EnalisNailo_13 Start: 8269, Stop: 8655, Start Num: 36

Candidate Starts for EnalisNailo_13:

(Start: 36 @8269 has 52 MA's), (63, 8326),

Gene: Eraser_12 Start: 9019, Stop: 9429, Start Num: 26

Candidate Starts for Eraser_12:

(Start: 26 @9019 has 47 MA's), (61, 9088), (105, 9226), (108, 9238), (154, 9349), (163, 9382),

Gene: EstebanJulior_10 Start: 7558, Stop: 7971, Start Num: 22

Candidate Starts for EstebanJulior_10:

(Start: 22 @7558 has 93 MA's), (57, 7621), (86, 7705), (101, 7750), (102, 7753), (111, 7792), (136, 7852), (159, 7909),

Gene: Eula_11 Start: 7912, Stop: 8307, Start Num: 36

Candidate Starts for Eula_11:

(Start: 36 @7912 has 52 MA's), (57, 7951), (71, 7978), (85, 8029), (95, 8056), (136, 8188), (173, 8281),

Gene: Eunoia_10 Start: 7551, Stop: 7982, Start Num: 22

Candidate Starts for Eunoia_10:

(Start: 21 @7545 has 9 MA's), (Start: 22 @7551 has 93 MA's), (Start: 36 @7572 has 52 MA's), (70, 7644), (86, 7701), (89, 7713), (94, 7722), (101, 7746), (159, 7905),

Gene: EvenBluerMoon_14 Start: 8744, Stop: 9133, Start Num: 35

Candidate Starts for EvenBluerMoon_14:

(Start: 35 @8744 has 11 MA's), (94, 8891), (111, 8957), (114, 8969),

Gene: Exile_11 Start: 8927, Stop: 9337, Start Num: 29

Candidate Starts for Exile_11:

(Start: 29 @8927 has 17 MA's), (163, 9290),

Gene: Faiyaz_18 Start: 11997, Stop: 12434, Start Num: 17

Candidate Starts for Faiyaz_18:

(Start: 15 @11994 has 4 MA's), (17, 11997), (58, 12075), (62, 12084), (65, 12090), (69, 12096), (88, 12174), (107, 12240), (118, 12276), (152, 12351), (162, 12390),

Gene: Finalfrontier_12 Start: 8424, Stop: 8819, Start Num: 36

Candidate Starts for Finalfrontier_12:

(Start: 36 @8424 has 52 MA's), (57, 8463), (71, 8490), (95, 8568), (136, 8700), (173, 8793),

Gene: FlameThrower_11 Start: 7876, Stop: 8274, Start Num: 38

Candidate Starts for FlameThrower_11:

(1, 7678), (Start: 38 @7876 has 13 MA's), (48, 7897), (136, 8155), (145, 8173), (156, 8206),

Gene: Floof_11 Start: 7791, Stop: 8213, Start Num: 26

Candidate Starts for Floof_11:

(Start: 26 @7791 has 47 MA's), (73, 7884), (75, 7890), (78, 7905), (105, 7995), (116, 8034), (123, 8052), (168, 8163),

Gene: Floral_13 Start: 8269, Stop: 8655, Start Num: 36

Candidate Starts for Floral_13:

(Start: 36 @8269 has 52 MA's), (63, 8326),

Gene: Fluke_14 Start: 10419, Stop: 10832, Start Num: 22

Candidate Starts for Fluke_14:

(Start: 22 @10419 has 93 MA's), (81, 10554), (101, 10614), (111, 10656), (159, 10773),

Gene: Franklin22_10 Start: 7758, Stop: 8153, Start Num: 35

Candidate Starts for Franklin22_10:

(Start: 35 @7758 has 11 MA's), (Start: 40 @7764 has 15 MA's), (95, 7905), (100, 7923), (156, 8085),

Gene: Frickyeah_12 Start: 7041, Stop: 7451, Start Num: 30

Candidate Starts for Frickyeah_12:

(4, 6912), (8, 6957), (9, 6963), (10, 6969), (12, 6987), (Start: 30 @7041 has 20 MA's), (44, 7068), (64, 7113), (67, 7119), (80, 7173), (94, 7212), (96, 7218), (102, 7239), (114, 7290), (118, 7302),

Gene: G4_12 Start: 7735, Stop: 8103, Start Num: 52

Candidate Starts for G4_12:

(2, 7534), (Start: 52 @7735 has 4 MA's), (72, 7792), (120, 7954), (124, 7960), (130, 7972), (142, 7996),

Gene: Gack_10 Start: 7830, Stop: 8219, Start Num: 40

Candidate Starts for Gack_10:

(Start: 40 @7830 has 15 MA's), (77, 7917), (95, 7971), (99, 7986), (125, 8076), (145, 8118), (156, 8151),

Gene: Gaia_9 Start: 7642, Stop: 8013, Start Num: 40

Candidate Starts for Gaia_9:

(Start: 40 @7642 has 15 MA's), (79, 7738), (85, 7759), (93, 7786), (95, 7789), (96, 7792), (100, 7807), (114, 7864), (118, 7876), (137, 7921), (160, 7981), (162, 7987), (170, 7993),

Gene: Galaxy_12 Start: 8328, Stop: 8771, Start Num: 22

Candidate Starts for Galaxy_12:

(Start: 22 @8328 has 93 MA's), (67, 8424), (81, 8478), (82, 8481), (94, 8514), (118, 8613), (130, 8640), (140, 8664), (143, 8670), (148, 8679),

Gene: Gambol_12 Start: 8456, Stop: 8875, Start Num: 25

Candidate Starts for Gambol_12:

(Start: 25 @8456 has 11 MA's), (50, 8498), (149, 8780),

Gene: GardenState_11 Start: 8458, Stop: 8877, Start Num: 26

Candidate Starts for GardenState_11:

(Start: 26 @8458 has 47 MA's), (73, 8551), (75, 8557), (105, 8662), (116, 8701),

Gene: Getalong_12 Start: 7041, Stop: 7433, Start Num: 30

Candidate Starts for Getalong_12:

(4, 6912), (8, 6957), (9, 6963), (10, 6969), (12, 6987), (Start: 30 @7041 has 20 MA's), (44, 7068), (61, 7107), (64, 7113), (67, 7119), (71, 7131), (80, 7155), (94, 7194), (96, 7200), (99, 7212), (102, 7221), (114, 7272), (118, 7284),

Gene: Giorgio_12 Start: 8549, Stop: 8968, Start Num: 25
Candidate Starts for Giorgio_12:
(Start: 25 @8549 has 11 MA's), (50, 8591), (106, 8768), (149, 8873),

Gene: Gisselle_10 Start: 7581, Stop: 7991, Start Num: 22
Candidate Starts for Gisselle_10:
(Start: 22 @7581 has 93 MA's), (81, 7713), (86, 7728), (101, 7773), (102, 7776), (159, 7932),

Gene: Glenn_14 Start: 10429, Stop: 10842, Start Num: 22
Candidate Starts for Glenn_14:
(Start: 22 @10429 has 93 MA's), (81, 10564), (86, 10579), (101, 10624), (111, 10666), (159, 10783),

Gene: Glotell_11 Start: 7902, Stop: 8342, Start Num: 22
Candidate Starts for Glotell_11:
(Start: 22 @7902 has 93 MA's), (49, 7953), (82, 8055), (83, 8058), (96, 8094), (97, 8100), (102, 8115),
(118, 8187), (130, 8214), (170, 8313), (173, 8319), (179, 8331),

Gene: Gravel_13 Start: 8491, Stop: 8931, Start Num: 22
Candidate Starts for Gravel_13:
(18, 8479), (Start: 22 @8491 has 93 MA's), (64, 8581), (76, 8623), (81, 8641), (82, 8644), (96, 8683),
(118, 8776), (130, 8803), (140, 8827), (156, 8863), (170, 8899),

Gene: GreenHearts_14 Start: 10522, Stop: 10932, Start Num: 24
Candidate Starts for GreenHearts_14:
(Start: 24 @10522 has 11 MA's), (68, 10606), (86, 10666), (87, 10675), (89, 10678), (100, 10708),
(102, 10714), (109, 10747), (159, 10870), (170, 10894),

Gene: Greenhouse_14 Start: 10447, Stop: 10857, Start Num: 24
Candidate Starts for Greenhouse_14:
(Start: 24 @10447 has 11 MA's), (86, 10591), (87, 10600), (89, 10603), (100, 10633), (102, 10639),
(109, 10672), (159, 10795), (170, 10819),

Gene: Gretchen_11 Start: 9337, Stop: 9759, Start Num: 26
Candidate Starts for Gretchen_11:
(Start: 26 @9337 has 47 MA's), (73, 9430), (75, 9436), (78, 9451), (105, 9541), (116, 9580), (123,
9598), (168, 9709),

Gene: Gumpizza_12 Start: 8548, Stop: 8967, Start Num: 25
Candidate Starts for Gumpizza_12:
(Start: 25 @8548 has 11 MA's), (50, 8590), (106, 8767), (149, 8872),

Gene: Halsey_12 Start: 8547, Stop: 8966, Start Num: 25
Candidate Starts for Halsey_12:
(Start: 25 @8547 has 11 MA's), (50, 8589), (149, 8871),

Gene: HamCheese_11 Start: 7902, Stop: 8342, Start Num: 22
Candidate Starts for HamCheese_11:
(Start: 22 @7902 has 93 MA's), (49, 7953), (82, 8055), (83, 8058), (96, 8094), (97, 8100), (102, 8115),
(118, 8187), (130, 8214), (170, 8313), (173, 8319), (179, 8331),

Gene: HannahPhantana_13 Start: 8500, Stop: 8943, Start Num: 22
Candidate Starts for HannahPhantana_13:

(Start: 22 @8500 has 93 MA's), (64, 8590), (67, 8596), (81, 8650), (82, 8653), (96, 8692), (130, 8812), (140, 8836), (170, 8908), (173, 8914),

Gene: HeadNerd_10 Start: 7516, Stop: 7926, Start Num: 22

Candidate Starts for HeadNerd_10:

(Start: 22 @7516 has 93 MA's), (81, 7648), (86, 7663), (101, 7708), (102, 7711), (111, 7750), (159, 7867),

Gene: Herb_10 Start: 7547, Stop: 7984, Start Num: 21

Candidate Starts for Herb_10:

(Start: 21 @7547 has 9 MA's), (Start: 22 @7553 has 93 MA's), (46, 7592), (47, 7595), (81, 7688), (86, 7703), (89, 7715), (94, 7724), (95, 7727), (101, 7748), (159, 7907),

Gene: Hilltopfarm_18 Start: 12024, Stop: 12464, Start Num: 15

Candidate Starts for Hilltopfarm_18:

(Start: 15 @12024 has 4 MA's), (17, 12027), (58, 12105), (62, 12114), (65, 12120), (69, 12126), (88, 12204), (107, 12270), (118, 12306), (152, 12381), (162, 12420),

Gene: Holliday_12 Start: 7046, Stop: 7438, Start Num: 30

Candidate Starts for Holliday_12:

(4, 6917), (8, 6962), (9, 6968), (10, 6974), (12, 6992), (14, 7010), (Start: 30 @7046 has 20 MA's), (44, 7073), (64, 7118), (67, 7124), (71, 7136), (80, 7160), (94, 7199), (96, 7205), (100, 7220), (102, 7226), (114, 7277), (118, 7289), (141, 7343),

Gene: Honk_10 Start: 7323, Stop: 7739, Start Num: 26

Candidate Starts for Honk_10:

(Start: 26 @7323 has 47 MA's), (72, 7416), (87, 7473), (163, 7692),

Gene: Horus_12 Start: 7041, Stop: 7451, Start Num: 30

Candidate Starts for Horus_12:

(4, 6912), (8, 6957), (9, 6963), (10, 6969), (12, 6987), (Start: 30 @7041 has 20 MA's), (44, 7068), (64, 7113), (67, 7119), (80, 7173), (94, 7212), (96, 7218), (102, 7239), (114, 7290), (118, 7302),

Gene: Huckleberry_10 Start: 7516, Stop: 7926, Start Num: 22

Candidate Starts for Huckleberry_10:

(Start: 22 @7516 has 93 MA's), (81, 7648), (86, 7663), (101, 7708), (102, 7711), (111, 7750), (159, 7867),

Gene: HunterDalle_10 Start: 7551, Stop: 7982, Start Num: 22

Candidate Starts for HunterDalle_10:

(Start: 21 @7545 has 9 MA's), (Start: 22 @7551 has 93 MA's), (Start: 36 @7572 has 52 MA's), (70, 7644), (89, 7713), (94, 7722), (101, 7746), (159, 7905),

Gene: Huntingdon_14 Start: 10433, Stop: 10843, Start Num: 24

Candidate Starts for Huntingdon_14:

(Start: 24 @10433 has 11 MA's), (86, 10577), (87, 10586), (89, 10589), (100, 10619), (102, 10625), (109, 10658), (159, 10781), (170, 10805),

Gene: IAmGroot_11 Start: 9102, Stop: 9521, Start Num: 26

Candidate Starts for IAmGroot_11:

(Start: 26 @9102 has 47 MA's), (73, 9195), (75, 9201), (105, 9306), (116, 9345),

Gene: Icarian_12 Start: 8152, Stop: 8547, Start Num: 36

Candidate Starts for Icarian_12:

(Start: 36 @8152 has 52 MA's), (67, 8215), (86, 8272), (156, 8479), (161, 8500),

Gene: Immaculata_14 Start: 10423, Stop: 10836, Start Num: 22

Candidate Starts for Immaculata_14:

(Start: 22 @10423 has 93 MA's), (81, 10558), (86, 10573), (101, 10618), (111, 10660), (159, 10777),

Gene: IndyLu_11 Start: 7957, Stop: 8355, Start Num: 36

Candidate Starts for IndyLu_11:

(Start: 36 @7957 has 52 MA's), (122, 8203), (161, 8308),

Gene: Iter_12 Start: 9053, Stop: 9463, Start Num: 26

Candidate Starts for Iter_12:

(Start: 26 @9053 has 47 MA's), (61, 9122), (108, 9272), (154, 9383), (163, 9416),

Gene: IttyBittyPiggy_12 Start: 9041, Stop: 9454, Start Num: 26

Candidate Starts for IttyBittyPiggy_12:

(Start: 26 @9041 has 47 MA's), (61, 9110), (154, 9371), (163, 9404),

Gene: Jabb_11 Start: 7951, Stop: 8346, Start Num: 36

Candidate Starts for Jabb_11:

(6, 7825), (Start: 36 @7951 has 52 MA's), (57, 7990), (71, 8017), (95, 8095), (136, 8227), (173, 8320),

Gene: Jabbawokkie_14 Start: 7736, Stop: 8140, Start Num: 37

Candidate Starts for Jabbawokkie_14:

(Start: 37 @7736 has 7 MA's), (56, 7769), (75, 7829), (95, 7895), (130, 8015), (135, 8027), (150, 8063), (158, 8093),

Gene: Jablanski_13 Start: 8116, Stop: 8502, Start Num: 36

Candidate Starts for Jablanski_13:

(11, 8035), (Start: 36 @8116 has 52 MA's), (55, 8152), (63, 8173),

Gene: Jamun_12 Start: 8669, Stop: 9112, Start Num: 22

Candidate Starts for Jamun_12:

(Start: 22 @8669 has 93 MA's), (45, 8711), (54, 8729), (67, 8765), (81, 8819), (82, 8822), (96, 8861), (106, 8915), (118, 8954), (130, 8981), (140, 9005), (143, 9011),

Gene: Janeemi_13 Start: 10130, Stop: 10543, Start Num: 26

Candidate Starts for Janeemi_13:

(Start: 26 @10130 has 47 MA's), (53, 10175), (105, 10337), (108, 10349), (154, 10460), (163, 10493),

Gene: JanetJ_12 Start: 8526, Stop: 8915, Start Num: 35

Candidate Starts for JanetJ_12:

(Start: 35 @8526 has 11 MA's), (100, 8694), (111, 8739), (114, 8751), (147, 8823), (163, 8871),

Gene: Jankie_13 Start: 6796, Stop: 7188, Start Num: 41

Candidate Starts for Jankie_13:

(Start: 36 @6790 has 52 MA's), (Start: 41 @6796 has 2 MA's), (44, 6805), (99, 6961), (118, 7033), (121, 7042),

Gene: JasmineDragon_11 Start: 7286, Stop: 7681, Start Num: 31

Candidate Starts for JasmineDragon_11:

(Start: 31 @7286 has 2 MA's), (105, 7478),

Gene: Jerole_13 Start: 8497, Stop: 8940, Start Num: 22

Candidate Starts for Jerole_13:

(Start: 22 @8497 has 93 MA's), (64, 8587), (67, 8593), (81, 8647), (82, 8650), (96, 8689), (130, 8809), (140, 8833), (170, 8905), (173, 8911),

Gene: Joann_14 Start: 10425, Stop: 10835, Start Num: 24

Candidate Starts for Joann_14:

(Start: 24 @10425 has 11 MA's), (86, 10569), (87, 10578), (89, 10581), (100, 10611), (102, 10617), (109, 10650), (159, 10773), (170, 10797),

Gene: Joemato_12 Start: 9040, Stop: 9453, Start Num: 26

Candidate Starts for Joemato_12:

(Start: 26 @9040 has 47 MA's), (61, 9109), (108, 9259), (154, 9370), (163, 9403),

Gene: JohnDoe_12 Start: 9038, Stop: 9451, Start Num: 26

Candidate Starts for JohnDoe_12:

(Start: 26 @9038 has 47 MA's), (61, 9107), (108, 9257), (154, 9368), (163, 9401),

Gene: Johnathan_11 Start: 7911, Stop: 8306, Start Num: 36

Candidate Starts for Johnathan_11:

(6, 7785), (Start: 36 @7911 has 52 MA's), (57, 7950), (71, 7977), (95, 8055), (122, 8154), (136, 8187), (173, 8280),

Gene: Jovita_11 Start: 8013, Stop: 8408, Start Num: 36

Candidate Starts for Jovita_11:

(Start: 36 @8013 has 52 MA's), (57, 8052), (71, 8079), (95, 8157), (136, 8289), (173, 8382),

Gene: Jstan_12 Start: 9019, Stop: 9429, Start Num: 26

Candidate Starts for Jstan_12:

(Start: 26 @9019 has 47 MA's), (61, 9088), (105, 9226), (108, 9238), (154, 9349), (163, 9382),

Gene: Jumboset_14 Start: 10372, Stop: 10785, Start Num: 22

Candidate Starts for Jumboset_14:

(Start: 22 @10372 has 93 MA's), (81, 10507), (86, 10522), (101, 10567), (111, 10609), (159, 10726),

Gene: JuneStar_12 Start: 9135, Stop: 9548, Start Num: 26

Candidate Starts for JuneStar_12:

(Start: 26 @9135 has 47 MA's), (154, 9465), (163, 9498),

Gene: Juno112_11 Start: 7903, Stop: 8343, Start Num: 22

Candidate Starts for Juno112_11:

(Start: 22 @7903 has 93 MA's), (49, 7954), (82, 8056), (83, 8059), (96, 8095), (97, 8101), (102, 8116), (118, 8188), (130, 8215), (170, 8314), (173, 8320), (179, 8332),

Gene: KHumphrey_11 Start: 7902, Stop: 8342, Start Num: 22

Candidate Starts for KHumphrey_11:

(Start: 22 @7902 has 93 MA's), (49, 7953), (82, 8055), (83, 8058), (96, 8094), (97, 8100), (102, 8115), (118, 8187), (130, 8214), (170, 8313), (173, 8319), (179, 8331),

Gene: Kalimba_12 Start: 8456, Stop: 8875, Start Num: 25

Candidate Starts for Kalimba_12:

(Start: 25 @8456 has 11 MA's), (50, 8498), (149, 8780),

Gene: Kalizoi_14 Start: 10371, Stop: 10784, Start Num: 22

Candidate Starts for Kalizoi_14:

(Start: 22 @10371 has 93 MA's), (81, 10506), (86, 10521), (101, 10566), (111, 10608), (159, 10725),

Gene: Kamaru_12 Start: 7046, Stop: 7438, Start Num: 30

Candidate Starts for Kamaru_12:

(4, 6917), (8, 6962), (9, 6968), (10, 6974), (12, 6992), (14, 7010), (Start: 30 @7046 has 20 MA's), (44, 7073), (64, 7118), (67, 7124), (71, 7136), (80, 7160), (94, 7199), (96, 7205), (100, 7220), (102, 7226), (114, 7277), (118, 7289), (141, 7343),

Gene: Kate33_11 Start: 7956, Stop: 8354, Start Num: 36

Candidate Starts for Kate33_11:

(Start: 36 @7956 has 52 MA's), (122, 8202), (161, 8307),

Gene: Katzastrophic_11 Start: 8051, Stop: 8449, Start Num: 38

Candidate Starts for Katzastrophic_11:

(5, 7913), (Start: 38 @8051 has 13 MA's), (48, 8072), (136, 8330), (145, 8348), (156, 8381),

Gene: Kaylissa_12 Start: 9041, Stop: 9454, Start Num: 26

Candidate Starts for Kaylissa_12:

(Start: 26 @9041 has 47 MA's), (61, 9110), (108, 9260), (154, 9371), (163, 9404),

Gene: KeAlii_12 Start: 9073, Stop: 9474, Start Num: 32

Candidate Starts for KeAlii_12:

(Start: 32 @9073 has 2 MA's), (Start: 36 @9079 has 52 MA's), (108, 9280), (130, 9340), (163, 9424),

Gene: KendraB23_13 Start: 8492, Stop: 8932, Start Num: 22

Candidate Starts for KendraB23_13:

(18, 8480), (Start: 22 @8492 has 93 MA's), (64, 8582), (76, 8624), (81, 8642), (82, 8645), (96, 8684), (118, 8777), (130, 8804), (140, 8828), (156, 8864), (170, 8900),

Gene: Kenna_12 Start: 7041, Stop: 7451, Start Num: 30

Candidate Starts for Kenna_12:

(4, 6912), (8, 6957), (9, 6963), (10, 6969), (12, 6987), (14, 7005), (Start: 30 @7041 has 20 MA's), (44, 7068), (64, 7113), (67, 7119), (80, 7173), (94, 7212), (96, 7218), (102, 7239), (114, 7290), (118, 7302),

Gene: Kenzers_11 Start: 7928, Stop: 8323, Start Num: 36

Candidate Starts for Kenzers_11:

(Start: 36 @7928 has 52 MA's), (57, 7967), (95, 8072), (122, 8171), (136, 8204), (173, 8297),

Gene: Kepler_12 Start: 8335, Stop: 8778, Start Num: 22

Candidate Starts for Kepler_12:

(Start: 22 @8335 has 93 MA's), (64, 8425), (67, 8431), (81, 8485), (82, 8488), (96, 8527), (130, 8647), (140, 8671), (170, 8743), (173, 8749),

Gene: Kieran_11 Start: 8144, Stop: 8545, Start Num: 38

Candidate Starts for Kieran_11:

(Start: 38 @8144 has 13 MA's), (95, 8294), (128, 8408), (156, 8477),

Gene: KingBob_10 Start: 7547, Stop: 7984, Start Num: 21

Candidate Starts for KingBob_10:

(Start: 21 @7547 has 9 MA's), (Start: 22 @7553 has 93 MA's), (46, 7592), (47, 7595), (81, 7688), (86, 7703), (89, 7715), (94, 7724), (95, 7727), (101, 7748), (159, 7907),

Gene: Kittykat_10 Start: 7557, Stop: 7967, Start Num: 22

Candidate Starts for Kittykat_10:

(Start: 22 @7557 has 93 MA's), (81, 7689), (86, 7704), (101, 7749), (102, 7752), (159, 7908),

Gene: Korra_14 Start: 10377, Stop: 10790, Start Num: 22

Candidate Starts for Korra_14:

(Start: 22 @10377 has 93 MA's), (81, 10512), (86, 10527), (101, 10572), (111, 10614), (159, 10731),

Gene: Kromp_13 Start: 9303, Stop: 9734, Start Num: 24

Candidate Starts for Kromp_13:

(Start: 24 @9303 has 11 MA's), (77, 9426), (82, 9441), (84, 9447), (90, 9471), (98, 9495), (144, 9627), (164, 9687), (167, 9693), (169, 9696), (172, 9702),

Gene: Kuleana_12 Start: 8295, Stop: 8735, Start Num: 22

Candidate Starts for Kuleana_12:

(Start: 22 @8295 has 93 MA's), (64, 8385), (67, 8391), (71, 8403), (82, 8448), (96, 8487), (102, 8508), (117, 8577), (118, 8580), (130, 8607), (133, 8616), (140, 8631), (170, 8703), (173, 8709),

Gene: Kumotta_12 Start: 8443, Stop: 8820, Start Num: 35

Candidate Starts for Kumotta_12:

(Start: 35 @8443 has 11 MA's), (94, 8584), (100, 8605), (102, 8611), (111, 8650), (133, 8707), (136, 8713), (153, 8749), (163, 8782),

Gene: Kuwabara_12 Start: 7390, Stop: 7773, Start Num: 27

Candidate Starts for Kuwabara_12:

(Start: 27 @7390 has 10 MA's), (60, 7444), (62, 7450), (69, 7462), (74, 7486), (136, 7669), (174, 7759),

Gene: LadyAstra_11 Start: 7283, Stop: 7678, Start Num: 31

Candidate Starts for LadyAstra_11:

(Start: 31 @7283 has 2 MA's), (105, 7475),

Gene: Lahqtemish_11 Start: 8003, Stop: 8401, Start Num: 38

Candidate Starts for Lahqtemish_11:

(Start: 38 @8003 has 13 MA's), (57, 8042), (122, 8249), (161, 8354),

Gene: Lakshmi_14 Start: 10452, Stop: 10862, Start Num: 24

Candidate Starts for Lakshmi_14:

(Start: 24 @10452 has 11 MA's), (86, 10596), (87, 10605), (89, 10608), (100, 10638), (102, 10644), (109, 10677), (159, 10800), (170, 10824),

Gene: Lasagna_10 Start: 7514, Stop: 7924, Start Num: 22

Candidate Starts for Lasagna_10:

(Start: 22 @7514 has 93 MA's), (71, 7607), (81, 7646), (86, 7661), (101, 7706), (111, 7748), (117, 7769), (159, 7865),

Gene: Lego_12 Start: 9039, Stop: 9452, Start Num: 26

Candidate Starts for Lego_12:

(Start: 26 @9039 has 47 MA's), (61, 9108), (108, 9258), (154, 9369), (163, 9402),

Gene: Lennox_10 Start: 7514, Stop: 7924, Start Num: 22

Candidate Starts for Lennox_10:

(Start: 22 @7514 has 93 MA's), (71, 7607), (81, 7646), (86, 7661), (101, 7706), (111, 7748), (117, 7769), (159, 7865),

Gene: Leona_11 Start: 7953, Stop: 8393, Start Num: 22

Candidate Starts for Leona_11:

(Start: 22 @7953 has 93 MA's), (82, 8106), (83, 8109), (96, 8145), (97, 8151), (102, 8166), (118, 8238), (130, 8265), (170, 8364), (173, 8370), (179, 8382),

Gene: Leroy_12 Start: 7042, Stop: 7452, Start Num: 30

Candidate Starts for Leroy_12:

(4, 6913), (8, 6958), (9, 6964), (10, 6970), (12, 6988), (Start: 30 @7042 has 20 MA's), (44, 7069), (64, 7114), (67, 7120), (80, 7174), (94, 7213), (96, 7219), (102, 7240), (114, 7291), (118, 7303),

Gene: Liebe_11 Start: 7496, Stop: 7915, Start Num: 26

Candidate Starts for Liebe_11:

(Start: 26 @7496 has 47 MA's), (39, 7514), (73, 7601), (106, 7715), (163, 7865),

Gene: LilSpotty_11 Start: 7105, Stop: 7479, Start Num: 40

Candidate Starts for LilSpotty_11:

(Start: 38 @7102 has 13 MA's), (Start: 40 @7105 has 15 MA's), (85, 7219), (86, 7222), (114, 7330), (118, 7342), (119, 7345), (137, 7384), (171, 7459),

Gene: LilStuart_10 Start: 7514, Stop: 7924, Start Num: 22

Candidate Starts for LilStuart_10:

(Start: 22 @7514 has 93 MA's), (71, 7607), (81, 7646), (86, 7661), (101, 7706), (111, 7748), (117, 7769), (159, 7865),

Gene: Lilas_13 Start: 8269, Stop: 8655, Start Num: 36

Candidate Starts for Lilas_13:

(Start: 36 @8269 has 52 MA's), (63, 8326),

Gene: LimaBean_11 Start: 7911, Stop: 8306, Start Num: 36

Candidate Starts for LimaBean_11:

(6, 7785), (Start: 36 @7911 has 52 MA's), (57, 7950), (71, 7977), (95, 8055), (122, 8154), (136, 8187), (173, 8280),

Gene: LitninMcQueen_12 Start: 7046, Stop: 7438, Start Num: 30

Candidate Starts for LitninMcQueen_12:

(4, 6917), (8, 6962), (9, 6968), (10, 6974), (12, 6992), (14, 7010), (Start: 30 @7046 has 20 MA's), (44, 7073), (64, 7118), (67, 7124), (71, 7136), (80, 7160), (94, 7199), (96, 7205), (100, 7220), (102, 7226), (114, 7277), (118, 7289), (141, 7343),

Gene: Litotes_14 Start: 10399, Stop: 10809, Start Num: 22

Candidate Starts for Litotes_14:

(Start: 22 @10399 has 93 MA's), (48, 10441), (86, 10543), (159, 10747),

Gene: LittleTokyo_12 Start: 8235, Stop: 8678, Start Num: 22

Candidate Starts for LittleTokyo_12:

(18, 8223), (20, 8226), (Start: 22 @8235 has 93 MA's), (102, 8448), (111, 8496), (113, 8505), (114, 8508), (118, 8520), (140, 8571), (145, 8580), (170, 8646), (179, 8664),

Gene: Lizalica_12 Start: 9025, Stop: 9438, Start Num: 26

Candidate Starts for Lizalica_12:

(Start: 26 @9025 has 47 MA's), (61, 9094), (108, 9244), (154, 9355), (163, 9388),

Gene: London_12 Start: 9019, Stop: 9429, Start Num: 26

Candidate Starts for London_12:

(Start: 26 @9019 has 47 MA's), (61, 9088), (105, 9226), (108, 9238), (154, 9349), (163, 9382),

Gene: LonelyBoi_13 Start: 8116, Stop: 8502, Start Num: 36

Candidate Starts for LonelyBoi_13:

(11, 8035), (Start: 36 @8116 has 52 MA's), (63, 8173),

Gene: Loviatar_19 Start: 8231, Stop: 8626, Start Num: 36

Candidate Starts for Loviatar_19:

(6, 8105), (Start: 36 @8231 has 52 MA's), (Start: 40 @8234 has 15 MA's), (67, 8294), (128, 8489), (145, 8525), (156, 8558), (161, 8579),

Gene: Lucky10_11 Start: 6599, Stop: 6982, Start Num: 27

Candidate Starts for Lucky10_11:

(Start: 27 @6599 has 10 MA's), (60, 6653), (62, 6659), (69, 6671), (74, 6695), (92, 6755),

Gene: Lucy_10 Start: 7505, Stop: 7915, Start Num: 22

Candidate Starts for Lucy_10:

(Start: 22 @7505 has 93 MA's), (71, 7598), (81, 7637), (86, 7652), (101, 7697), (111, 7739), (117, 7760), (159, 7856),

Gene: Lunar_13 Start: 8497, Stop: 8940, Start Num: 22

Candidate Starts for Lunar_13:

(Start: 22 @8497 has 93 MA's), (64, 8587), (67, 8593), (81, 8647), (82, 8650), (96, 8689), (130, 8809), (140, 8833), (170, 8905), (173, 8911),

Gene: Lutum_12 Start: 7041, Stop: 7451, Start Num: 30

Candidate Starts for Lutum_12:

(4, 6912), (8, 6957), (9, 6963), (10, 6969), (12, 6987), (14, 7005), (Start: 30 @7041 has 20 MA's), (44, 7068), (64, 7113), (67, 7119), (80, 7173), (94, 7212), (96, 7218), (102, 7239), (114, 7290), (118, 7302),

Gene: Lynlen_11 Start: 7928, Stop: 8323, Start Num: 36

Candidate Starts for Lynlen_11:

(Start: 36 @7928 has 52 MA's), (57, 7967), (95, 8072), (122, 8171), (136, 8204), (173, 8297),

Gene: MaGuCo_11 Start: 7435, Stop: 7851, Start Num: 29

Candidate Starts for MaGuCo_11:

(Start: 29 @7435 has 17 MA's), (Start: 35 @7444 has 11 MA's), (39, 7450), (50, 7474), (73, 7537), (106, 7651), (163, 7801),

Gene: Mabodamaca_11 Start: 8555, Stop: 8968, Start Num: 29

Candidate Starts for Mabodamaca_11:

(Start: 29 @8555 has 17 MA's), (87, 8696),

Gene: Maja_11 Start: 8064, Stop: 8444, Start Num: 35

Candidate Starts for Maja_11:

(Start: 35 @8064 has 11 MA's), (59, 8112), (73, 8142), (94, 8208), (100, 8229), (102, 8235), (136, 8337), (153, 8373), (163, 8406),

Gene: Makoto_10 Start: 7514, Stop: 7924, Start Num: 22

Candidate Starts for Makoto_10:

(Start: 22 @7514 has 93 MA's), (71, 7607), (81, 7646), (86, 7661), (101, 7706), (111, 7748), (117, 7769), (159, 7865),

Gene: Malisha_12 Start: 8091, Stop: 8501, Start Num: 30

Candidate Starts for Malisha_12:

(8, 8007), (9, 8013), (Start: 30 @8091 has 20 MA's), (67, 8169), (71, 8181), (80, 8223), (94, 8262), (96, 8268), (100, 8283), (102, 8289), (111, 8328), (118, 8352), (141, 8406),

Gene: MamaPearl_10 Start: 7558, Stop: 7971, Start Num: 22

Candidate Starts for MamaPearl_10:

(Start: 22 @7558 has 93 MA's), (57, 7621), (86, 7705), (101, 7750), (102, 7753), (111, 7792), (136, 7852), (159, 7909),

Gene: MargaretKali_12 Start: 8078, Stop: 8455, Start Num: 35

Candidate Starts for MargaretKali_12:

(Start: 35 @8078 has 11 MA's), (63, 8135), (94, 8219), (100, 8240), (102, 8246), (111, 8285), (133, 8342), (136, 8348), (153, 8384), (163, 8417),

Gene: Maria1952_10 Start: 7547, Stop: 7984, Start Num: 21

Candidate Starts for Maria1952_10:

(Start: 21 @7547 has 9 MA's), (Start: 22 @7553 has 93 MA's), (46, 7592), (47, 7595), (81, 7688), (86, 7703), (89, 7715), (94, 7724), (95, 7727), (101, 7748), (159, 7907),

Gene: Marteena_13 Start: 8269, Stop: 8655, Start Num: 36

Candidate Starts for Marteena_13:

(Start: 36 @8269 has 52 MA's), (63, 8326),

Gene: Maureen_11 Start: 7496, Stop: 7915, Start Num: 26

Candidate Starts for Maureen_11:

(Start: 26 @7496 has 47 MA's), (39, 7514), (73, 7601), (106, 7715), (163, 7865),

Gene: MeganNoll_14 Start: 10429, Stop: 10842, Start Num: 22

Candidate Starts for MeganNoll_14:

(Start: 22 @10429 has 93 MA's), (81, 10564), (86, 10579), (95, 10603), (101, 10624), (111, 10666), (159, 10783),

Gene: Melons_13 Start: 8497, Stop: 8940, Start Num: 22

Candidate Starts for Melons_13:

(Start: 22 @8497 has 93 MA's), (64, 8587), (67, 8593), (81, 8647), (82, 8650), (96, 8689), (130, 8809), (140, 8833), (170, 8905), (173, 8911),

Gene: Milomuff_12 Start: 8297, Stop: 8692, Start Num: 36

Candidate Starts for Milomuff_12:

(6, 8171), (Start: 36 @8297 has 52 MA's), (57, 8336), (71, 8363), (95, 8441), (122, 8540), (136, 8573), (173, 8666),

Gene: MiniMommy_10 Start: 7286, Stop: 7681, Start Num: 31

Candidate Starts for MiniMommy_10:

(Start: 31 @7286 has 2 MA's), (105, 7478),

Gene: Misaeng_14 Start: 10498, Stop: 10908, Start Num: 24

Candidate Starts for Misaeng_14:

(Start: 24 @10498 has 11 MA's), (86, 10642), (87, 10651), (89, 10654), (100, 10684), (102, 10690), (109, 10723), (159, 10846), (170, 10870),

Gene: MissSwiss_12 Start: 9018, Stop: 9434, Start Num: 29

Candidate Starts for MissSwiss_12:

(Start: 29 @9018 has 17 MA's), (55, 9066), (106, 9234),

Gene: Moki_10 Start: 7516, Stop: 7926, Start Num: 22

Candidate Starts for Moki_10:

(Start: 22 @7516 has 93 MA's), (81, 7648), (86, 7663), (101, 7708), (102, 7711), (111, 7750), (159, 7867),

Gene: Morkie_11 Start: 6561, Stop: 6944, Start Num: 27

Candidate Starts for Morkie_11:

(Start: 27 @6561 has 10 MA's), (60, 6615), (62, 6621), (69, 6633), (74, 6657), (92, 6717), (133, 6834), (136, 6840), (174, 6930),

Gene: MortyNRick_12 Start: 7390, Stop: 7773, Start Num: 27

Candidate Starts for MortyNRick_12:

(Start: 27 @7390 has 10 MA's), (60, 7444), (62, 7450), (69, 7462), (74, 7486), (136, 7669), (174, 7759),

Gene: Moss_12 Start: 8547, Stop: 8966, Start Num: 25

Candidate Starts for Moss_12:

(Start: 25 @8547 has 11 MA's), (50, 8589), (149, 8871),

Gene: MrGloopy_14 Start: 10362, Stop: 10775, Start Num: 22

Candidate Starts for MrGloopy_14:

(Start: 22 @10362 has 93 MA's), (81, 10497), (86, 10512), (101, 10557), (111, 10599), (159, 10716),

Gene: MsUbiquitous_11 Start: 7951, Stop: 8346, Start Num: 36

Candidate Starts for MsUbiquitous_11:

(6, 7825), (Start: 36 @7951 has 52 MA's), (57, 7990), (71, 8017), (95, 8095), (136, 8227), (173, 8320),

Gene: Mudpuppy_12 Start: 9039, Stop: 9452, Start Num: 26

Candidate Starts for Mudpuppy_12:

(Start: 26 @9039 has 47 MA's), (61, 9108), (108, 9258), (154, 9369), (163, 9402),

Gene: Mysterium_12 Start: 8548, Stop: 8967, Start Num: 25

Candidate Starts for Mysterium_12:

(Start: 25 @8548 has 11 MA's), (50, 8590), (106, 8767), (149, 8872),

Gene: Nancia_10 Start: 7514, Stop: 7924, Start Num: 22

Candidate Starts for Nancia_10:

(Start: 22 @7514 has 93 MA's), (71, 7607), (81, 7646), (86, 7661), (101, 7706), (111, 7748), (117, 7769), (159, 7865),

Gene: Nebkiss_9 Start: 7643, Stop: 8014, Start Num: 40

Candidate Starts for Nebkiss_9:

(Start: 40 @7643 has 15 MA's), (79, 7739), (85, 7760), (93, 7787), (95, 7790), (96, 7793), (100, 7808), (114, 7865), (118, 7877), (137, 7922), (160, 7982), (162, 7988), (170, 7994),

Gene: Nesbitt_11 Start: 7855, Stop: 8250, Start Num: 26

Candidate Starts for Nesbitt_11:

(Start: 26 @7855 has 47 MA's), (Start: 35 @7867 has 11 MA's), (46, 7888), (50, 7897), (71, 7936), (77, 7960), (83, 7981), (102, 8035), (119, 8101), (121, 8107), (150, 8164), (166, 8212),

Gene: Nicky22_12 Start: 8359, Stop: 8754, Start Num: 36

Candidate Starts for Nicky22_12:

(Start: 36 @8359 has 52 MA's), (57, 8398), (79, 8455), (95, 8503), (136, 8635), (173, 8728),

Gene: Niobe_12 Start: 9019, Stop: 9429, Start Num: 26

Candidate Starts for Niobe_12:

(Start: 26 @9019 has 47 MA's), (61, 9088), (105, 9226), (108, 9238), (154, 9349), (163, 9382),

Gene: Nitro_12 Start: 9042, Stop: 9452, Start Num: 26

Candidate Starts for Nitro_12:

(Start: 26 @9042 has 47 MA's), (53, 9087), (61, 9111), (154, 9372), (163, 9405),

Gene: NoSwimming_13 Start: 9693, Stop: 10082, Start Num: 35

Candidate Starts for NoSwimming_13:

(Start: 35 @9693 has 11 MA's), (53, 9726), (100, 9861), (104, 9879), (147, 9990), (153, 10005),

Gene: Nubia_14 Start: 10412, Stop: 10822, Start Num: 24

Candidate Starts for Nubia_14:

(Start: 24 @10412 has 11 MA's), (86, 10556), (87, 10565), (89, 10568), (100, 10598), (102, 10604), (109, 10637), (159, 10760), (170, 10784),

Gene: ODay_12 Start: 7116, Stop: 7499, Start Num: 27

Candidate Starts for ODay_12:

(Start: 27 @7116 has 10 MA's), (Start: 41 @7131 has 2 MA's), (60, 7170), (62, 7176), (69, 7188), (74, 7212), (136, 7395), (174, 7485),

Gene: OMalley_10 Start: 7551, Stop: 7982, Start Num: 22

Candidate Starts for OMalley_10:

(Start: 21 @7545 has 9 MA's), (Start: 22 @7551 has 93 MA's), (Start: 36 @7572 has 52 MA's), (70, 7644), (86, 7701), (89, 7713), (94, 7722), (101, 7746), (159, 7905),

Gene: ObiToo_12 Start: 9222, Stop: 9635, Start Num: 26

Candidate Starts for ObiToo_12:

(Start: 26 @9222 has 47 MA's), (61, 9291), (105, 9429), (108, 9441), (154, 9552), (163, 9585),

Gene: Olliecat_11 Start: 8144, Stop: 8536, Start Num: 34

Candidate Starts for Olliecat_11:

(Start: 34 @8144 has 6 MA's), (46, 8159), (71, 8210), (84, 8258), (87, 8273), (107, 8339), (129, 8402), (133, 8411), (145, 8435), (162, 8492),

Gene: Orcanus_12 Start: 8285, Stop: 8725, Start Num: 22

Candidate Starts for Orcanus_12:

(18, 8273), (Start: 22 @8285 has 93 MA's), (64, 8375), (76, 8417), (81, 8435), (82, 8438), (96, 8477), (118, 8570), (130, 8597), (140, 8621), (156, 8657), (170, 8693),

Gene: OtsoOtso_12 Start: 8336, Stop: 8779, Start Num: 22

Candidate Starts for OtsoOtso_12:

(Start: 22 @8336 has 93 MA's), (64, 8426), (67, 8432), (81, 8486), (82, 8489), (96, 8528), (130, 8648), (140, 8672), (170, 8744), (173, 8750),

Gene: OurGirlNessie_10 Start: 7505, Stop: 7915, Start Num: 22

Candidate Starts for OurGirlNessie_10:

(Start: 22 @7505 has 93 MA's), (71, 7598), (81, 7637), (86, 7652), (101, 7697), (111, 7739), (117, 7760), (159, 7856),

Gene: Oxynfrius_14 Start: 10425, Stop: 10835, Start Num: 24

Candidate Starts for Oxynfrius_14:

(Start: 24 @10425 has 11 MA's), (86, 10569), (87, 10578), (89, 10581), (100, 10611), (102, 10617), (109, 10650), (159, 10773), (170, 10797),

Gene: PFR1_09 Start: 7693, Stop: 8106, Start Num: 39

Candidate Starts for PFR1_09:

(39, 7693), (51, 7720), (56, 7732), (57, 7735), (71, 7771), (73, 7783), (80, 7810), (85, 7825), (94, 7849), (97, 7861), (103, 7882), (115, 7933), (126, 7963), (143, 7996),

Gene: PFR2_09 Start: 7693, Stop: 8106, Start Num: 39

Candidate Starts for PFR2_09:

(39, 7693), (51, 7720), (56, 7732), (57, 7735), (71, 7771), (73, 7783), (80, 7810), (85, 7825), (94, 7849), (97, 7861), (103, 7882), (115, 7933), (126, 7963), (143, 7996),

Gene: PartyCup_14 Start: 10446, Stop: 10856, Start Num: 22

Candidate Starts for PartyCup_14:

(Start: 22 @10446 has 93 MA's), (48, 10488), (86, 10590), (159, 10794),

Gene: PastaFagioli_11 Start: 7991, Stop: 8389, Start Num: 38

Candidate Starts for PastaFagioli_11:

(Start: 38 @7991 has 13 MA's), (57, 8030), (122, 8237), (161, 8342),

Gene: Pelletreau_13 Start: 8491, Stop: 8931, Start Num: 22

Candidate Starts for Pelletreau_13:

(18, 8479), (Start: 22 @8491 has 93 MA's), (64, 8581), (76, 8623), (81, 8641), (82, 8644), (96, 8683), (118, 8776), (130, 8803), (140, 8827), (156, 8863), (170, 8899),

Gene: Percival_11 Start: 9171, Stop: 9593, Start Num: 26

Candidate Starts for Percival_11:

(Start: 26 @9171 has 47 MA's), (73, 9264), (75, 9270), (78, 9285), (105, 9375), (116, 9414), (123, 9432), (168, 9543),

Gene: Periwinkle_12 Start: 7041, Stop: 7433, Start Num: 30

Candidate Starts for Periwinkle_12:

(4, 6912), (8, 6957), (9, 6963), (10, 6969), (Start: 30 @7041 has 20 MA's), (44, 7068), (61, 7107), (64, 7113), (67, 7119), (71, 7131), (80, 7155), (94, 7194), (96, 7200), (99, 7212), (102, 7221), (114, 7272), (118, 7284),

Gene: Phabuloso_12 Start: 7046, Stop: 7438, Start Num: 30

Candidate Starts for Phabuloso_12:

(4, 6917), (8, 6962), (9, 6968), (10, 6974), (12, 6992), (14, 7010), (Start: 30 @7046 has 20 MA's), (44, 7073), (64, 7118), (67, 7124), (71, 7136), (80, 7160), (94, 7199), (96, 7205), (100, 7220), (102, 7226), (114, 7277), (118, 7289), (141, 7343),

Gene: PhigPhack_11 Start: 7940, Stop: 8335, Start Num: 36

Candidate Starts for PhigPhack_11:

(Start: 36 @7940 has 52 MA's), (71, 8006), (95, 8084), (122, 8183), (136, 8216), (173, 8309),

Gene: Phisb_11 Start: 7905, Stop: 8300, Start Num: 36

Candidate Starts for Phisb_11:

(Start: 36 @7905 has 52 MA's), (57, 7944), (71, 7971), (95, 8049), (122, 8148), (136, 8181), (173, 8274),

Gene: Phistory_12 Start: 7030, Stop: 7422, Start Num: 30

Candidate Starts for Phistory_12:

(4, 6901), (8, 6946), (9, 6952), (10, 6958), (12, 6976), (14, 6994), (Start: 30 @7030 has 20 MA's), (44, 7057), (64, 7102), (67, 7108), (71, 7120), (80, 7144), (96, 7189), (100, 7204), (102, 7210), (114, 7261), (118, 7273),

Gene: Phives_13 Start: 10124, Stop: 10537, Start Num: 26

Candidate Starts for Phives_13:

(Start: 26 @10124 has 47 MA's), (53, 10169), (108, 10343), (154, 10454), (163, 10487),

Gene: PhluffyCoco_11 Start: 7902, Stop: 8342, Start Num: 22

Candidate Starts for PhluffyCoco_11:

(Start: 22 @7902 has 93 MA's), (49, 7953), (82, 8055), (83, 8058), (96, 8094), (97, 8100), (102, 8115), (118, 8187), (130, 8214), (170, 8313), (173, 8319), (179, 8331),

Gene: PhorbesPhlower_11 Start: 6561, Stop: 6944, Start Num: 27

Candidate Starts for PhorbesPhlower_11:

(Start: 27 @6561 has 10 MA's), (60, 6615), (62, 6621), (69, 6633), (74, 6657), (92, 6717), (133, 6834), (136, 6840), (174, 6930),

Gene: Pigu_11 Start: 7154, Stop: 7531, Start Num: 35

Candidate Starts for Pigu_11:

(Start: 35 @7154 has 11 MA's), (63, 7211), (73, 7229), (94, 7295), (100, 7316), (102, 7322), (136, 7424), (153, 7460), (163, 7493),

Gene: PinkFriday_10 Start: 7548, Stop: 7982, Start Num: 21

Candidate Starts for PinkFriday_10:

(Start: 21 @7548 has 9 MA's), (Start: 22 @7554 has 93 MA's), (81, 7686), (86, 7701), (89, 7713), (94, 7722), (95, 7725), (101, 7746), (159, 7905),

Gene: PitaDog_10 Start: 7505, Stop: 7915, Start Num: 22

Candidate Starts for PitaDog_10:

(Start: 22 @7505 has 93 MA's), (71, 7598), (81, 7637), (86, 7652), (101, 7697), (111, 7739), (117, 7760), (159, 7856),

Gene: Pixelle_12 Start: 9067, Stop: 9480, Start Num: 26

Candidate Starts for Pixelle_12:

(Start: 26 @9067 has 47 MA's), (53, 9112), (154, 9397), (163, 9430),

Gene: Polka_12 Start: 8336, Stop: 8779, Start Num: 22

Candidate Starts for Polka_12:

(Start: 22 @8336 has 93 MA's), (64, 8426), (67, 8432), (81, 8486), (82, 8489), (96, 8528), (130, 8648), (140, 8672), (170, 8744), (173, 8750),

Gene: Pollux_13 Start: 8269, Stop: 8655, Start Num: 36

Candidate Starts for Pollux_13:

(Start: 36 @8269 has 52 MA's), (63, 8326),

Gene: Posh_13 Start: 8263, Stop: 8655, Start Num: 36

Candidate Starts for Posh_13:

(11, 8182), (Start: 36 @8263 has 52 MA's),

Gene: Potatoes_14 Start: 10423, Stop: 10836, Start Num: 22

Candidate Starts for Potatoes_14:

(Start: 22 @10423 has 93 MA's), (81, 10558), (86, 10573), (101, 10618), (111, 10660), (159, 10777),

Gene: Powerpuff_12 Start: 9090, Stop: 9503, Start Num: 26

Candidate Starts for Powerpuff_12:

(Start: 26 @9090 has 47 MA's), (61, 9159), (108, 9309), (154, 9420), (163, 9453),

Gene: PrairieDogTown_18 Start: 8746, Stop: 9135, Start Num: 35

Candidate Starts for PrairieDogTown_18:

(Start: 35 @8746 has 11 MA's), (94, 8893), (111, 8959), (114, 8971),

Gene: Preamble_10 Start: 7515, Stop: 7925, Start Num: 22

Candidate Starts for Preamble_10:

(Start: 22 @7515 has 93 MA's), (81, 7647), (86, 7662), (102, 7710), (159, 7866),

Gene: Pterodactyl_10 Start: 7506, Stop: 7916, Start Num: 22

Candidate Starts for Pterodactyl_10:

(Start: 22 @7506 has 93 MA's), (71, 7599), (81, 7638), (86, 7653), (101, 7698), (111, 7740), (117, 7761), (159, 7857),

Gene: Pumancara_10 Start: 7547, Stop: 7981, Start Num: 21

Candidate Starts for Pumancara_10:

(Start: 21 @7547 has 9 MA's), (Start: 22 @7553 has 93 MA's), (81, 7685), (86, 7700), (89, 7712), (94, 7721), (95, 7724), (101, 7745), (159, 7904),

Gene: Pumpkins_12 Start: 9144, Stop: 9557, Start Num: 26

Candidate Starts for Pumpkins_12:

(Start: 26 @9144 has 47 MA's), (61, 9213), (154, 9474), (163, 9507),

Gene: Pytheas_13 Start: 8116, Stop: 8502, Start Num: 36

Candidate Starts for Pytheas_13:

(11, 8035), (Start: 36 @8116 has 52 MA's), (55, 8152), (63, 8173),

Gene: QMacho_12 Start: 8395, Stop: 8790, Start Num: 36

Candidate Starts for QMacho_12:

(Start: 36 @8395 has 52 MA's), (57, 8434), (71, 8461), (85, 8512), (95, 8539), (122, 8638), (136, 8671), (173, 8764),

Gene: Quenya_12 Start: 8046, Stop: 8447, Start Num: 38

Candidate Starts for Quenya_12:

(Start: 38 @8046 has 13 MA's), (95, 8196), (135, 8325), (136, 8328), (145, 8346), (156, 8379),

Gene: RAP15_14 Start: 10429, Stop: 10842, Start Num: 22

Candidate Starts for RAP15_14:

(Start: 22 @10429 has 93 MA's), (81, 10564), (86, 10579), (101, 10624), (111, 10666), (159, 10783),

Gene: Rattail_11 Start: 7953, Stop: 8393, Start Num: 22

Candidate Starts for Rattail_11:

(Start: 22 @7953 has 93 MA's), (82, 8106), (83, 8109), (96, 8145), (97, 8151), (102, 8166), (118, 8238), (130, 8265), (170, 8364), (173, 8370), (179, 8382),

Gene: RcigaStruga_14 Start: 10433, Stop: 10843, Start Num: 24

Candidate Starts for RcigaStruga_14:

(Start: 24 @10433 has 11 MA's), (86, 10577), (87, 10586), (89, 10589), (100, 10619), (102, 10625), (109, 10658), (159, 10781), (170, 10805),

Gene: RedFox_11 Start: 7902, Stop: 8342, Start Num: 22

Candidate Starts for RedFox_11:

(Start: 22 @7902 has 93 MA's), (49, 7953), (82, 8055), (83, 8058), (96, 8094), (97, 8100), (102, 8115), (118, 8187), (130, 8214), (170, 8313), (173, 8319), (179, 8331),

Gene: Reedo_12 Start: 9091, Stop: 9489, Start Num: 32

Candidate Starts for Reedo_12:

(Start: 32 @9091 has 2 MA's), (105, 9286), (106, 9292), (127, 9352), (163, 9442),

Gene: Renna12_12 Start: 8102, Stop: 8545, Start Num: 22

Candidate Starts for Renna12_12:

(Start: 22 @8102 has 93 MA's), (82, 8255), (83, 8258), (96, 8294), (97, 8300), (118, 8387), (130, 8414), (140, 8438), (173, 8519), (179, 8531),

Gene: Riovina_10 Start: 7551, Stop: 7982, Start Num: 22

Candidate Starts for Riovina_10:

(Start: 21 @7545 has 9 MA's), (Start: 22 @7551 has 93 MA's), (Start: 36 @7572 has 52 MA's), (70, 7644), (86, 7701), (89, 7713), (94, 7722), (101, 7746), (159, 7905),

Gene: Riverdale_14 Start: 10360, Stop: 10773, Start Num: 22

Candidate Starts for Riverdale_14:

(Start: 22 @10360 has 93 MA's), (81, 10495), (86, 10510), (101, 10555), (111, 10597), (159, 10714),

Gene: RockScotty_12 Start: 8547, Stop: 8966, Start Num: 25

Candidate Starts for RockScotty_12:

(Start: 25 @8547 has 11 MA's), (50, 8589), (149, 8871),

Gene: Rollins_10 Start: 7752, Stop: 8141, Start Num: 40

Candidate Starts for Rollins_10:

(Start: 40 @7752 has 15 MA's), (95, 7893), (100, 7911), (154, 8064), (156, 8073), (162, 8097), (179, 8127),

Gene: Rona_11 Start: 8141, Stop: 8542, Start Num: 38

Candidate Starts for Rona_11:

(Start: 38 @8141 has 13 MA's), (95, 8291), (128, 8405), (156, 8474),

Gene: Rowa_11 Start: 7599, Stop: 8018, Start Num: 16

Candidate Starts for Rowa_11:

(Start: 16 @7599 has 1 MA's), (18, 7602), (Start: 26 @7620 has 47 MA's), (48, 7659), (73, 7710), (118, 7863), (121, 7872), (143, 7917), (150, 7929), (180, 8004),

Gene: Rozby_14 Start: 10360, Stop: 10773, Start Num: 22

Candidate Starts for Rozby_14:

(Start: 22 @10360 has 93 MA's), (81, 10495), (86, 10510), (101, 10555), (111, 10597), (159, 10714),

Gene: Ruchi_12 Start: 8591, Stop: 9034, Start Num: 22

Candidate Starts for Ruchi_12:

(Start: 22 @8591 has 93 MA's), (45, 8633), (54, 8651), (67, 8687), (81, 8741), (82, 8744), (96, 8783), (106, 8837), (118, 8876), (130, 8903), (140, 8927), (143, 8933),

Gene: SPB78_12 Start: 8026, Stop: 8427, Start Num: 29

Candidate Starts for SPB78_12:

(Start: 26 @8023 has 47 MA's), (Start: 29 @8026 has 17 MA's), (66, 8104), (68, 8110), (73, 8128), (81, 8155), (114, 8269),

Gene: Sabourin_12 Start: 8456, Stop: 8875, Start Num: 25

Candidate Starts for Sabourin_12:

(Start: 25 @8456 has 11 MA's), (50, 8498), (149, 8780),

Gene: SanaSana_12 Start: 8160, Stop: 8555, Start Num: 36

Candidate Starts for SanaSana_12:

(6, 8034), (Start: 36 @8160 has 52 MA's), (Start: 40 @8163 has 15 MA's), (67, 8223), (145, 8454), (156, 8487), (161, 8508),

Gene: SansAfet_11 Start: 7922, Stop: 8317, Start Num: 36

Candidate Starts for SansAfet_11:

(6, 7796), (Start: 36 @7922 has 52 MA's), (57, 7961), (71, 7988), (95, 8066), (122, 8165), (136, 8198), (173, 8291),

Gene: SarBear_11 Start: 7888, Stop: 8283, Start Num: 36

Candidate Starts for SarBear_11:

(6, 7762), (Start: 36 @7888 has 52 MA's), (57, 7927), (71, 7954), (95, 8032), (136, 8164), (173, 8257),

Gene: Sarge_11 Start: 7513, Stop: 7890, Start Num: 35

Candidate Starts for Sarge_11:

(Start: 35 @7513 has 11 MA's), (86, 7627), (94, 7654), (100, 7675), (133, 7777), (136, 7783), (153, 7819), (163, 7852),

Gene: Savage2526_14 Start: 10423, Stop: 10836, Start Num: 22

Candidate Starts for Savage2526_14:

(Start: 22 @10423 has 93 MA's), (81, 10558), (86, 10573), (101, 10618), (111, 10660), (159, 10777),

Gene: Scotia_13 Start: 9699, Stop: 10088, Start Num: 35

Candidate Starts for Scotia_13:

(Start: 35 @9699 has 11 MA's), (53, 9732), (100, 9867), (104, 9885), (147, 9996), (153, 10011),

Gene: Scuttle_14 Start: 10429, Stop: 10842, Start Num: 22

Candidate Starts for Scuttle_14:

(Start: 22 @10429 has 93 MA's), (81, 10564), (86, 10579), (101, 10624), (111, 10666), (159, 10783),

Gene: Sergei_10 Start: 7547, Stop: 7984, Start Num: 21

Candidate Starts for Sergei_10:

(Start: 21 @7547 has 9 MA's), (Start: 22 @7553 has 93 MA's), (46, 7592), (47, 7595), (81, 7688), (86, 7703), (89, 7715), (94, 7724), (95, 7727), (101, 7748), (159, 7907),

Gene: Shaffner_13 Start: 9132, Stop: 9545, Start Num: 26

Candidate Starts for Shaffner_13:
(Start: 26 @9132 has 47 MA's), (61, 9201), (154, 9462), (163, 9495),

Gene: ShakeltOph_11 Start: 7286, Stop: 7681, Start Num: 31
Candidate Starts for ShakeltOph_11:
(Start: 31 @7286 has 2 MA's), (105, 7478),

Gene: Shambre1_12 Start: 8782, Stop: 9204, Start Num: 42
Candidate Starts for Shambre1_12:
(Start: 42 @8782 has 1 MA's), (61, 8827), (66, 8836), (152, 9097), (176, 9163), (181, 9181),

Gene: Sharkboy_11 Start: 8140, Stop: 8541, Start Num: 38
Candidate Starts for Sharkboy_11:
(Start: 38 @8140 has 13 MA's), (95, 8290), (128, 8404), (156, 8473),

Gene: ShawBrad_12 Start: 7046, Stop: 7456, Start Num: 30
Candidate Starts for ShawBrad_12:
(4, 6917), (8, 6962), (9, 6968), (10, 6974), (12, 6992), (Start: 30 @7046 has 20 MA's), (44, 7073), (64, 7118), (67, 7124), (80, 7178), (94, 7217), (96, 7223), (102, 7244), (114, 7295), (118, 7307),

Gene: Shayna_10 Start: 7746, Stop: 8147, Start Num: 34
Candidate Starts for Shayna_10:
(Start: 34 @7746 has 6 MA's), (86, 7875), (100, 7917), (111, 7962), (140, 8037), (156, 8079), (162, 8103),

Gene: Shoya_10 Start: 7149, Stop: 7526, Start Num: 35
Candidate Starts for Shoya_10:
(Start: 35 @7149 has 11 MA's), (86, 7263), (94, 7290), (100, 7311), (136, 7419), (153, 7455), (163, 7488),

Gene: SilverChicken_13 Start: 7213, Stop: 7617, Start Num: 37
Candidate Starts for SilverChicken_13:
(Start: 37 @7213 has 7 MA's), (56, 7246), (75, 7306), (95, 7372), (130, 7492), (135, 7504), (150, 7540), (158, 7570),

Gene: Simpson_13 Start: 9040, Stop: 9453, Start Num: 26
Candidate Starts for Simpson_13:
(Start: 26 @9040 has 47 MA's), (61, 9109), (108, 9259), (154, 9370), (163, 9403),

Gene: Skylord_10 Start: 7692, Stop: 8081, Start Num: 40
Candidate Starts for Skylord_10:
(Start: 40 @7692 has 15 MA's), (95, 7833), (100, 7851), (154, 8004), (156, 8013), (162, 8037), (179, 8067),

Gene: Slay_11 Start: 8364, Stop: 8759, Start Num: 36
Candidate Starts for Slay_11:
(6, 8238), (Start: 36 @8364 has 52 MA's), (57, 8403), (71, 8430), (95, 8508), (136, 8640), (173, 8733),

Gene: Sleepyhead_12 Start: 7869, Stop: 8279, Start Num: 30
Candidate Starts for Sleepyhead_12:
(14, 7833), (Start: 30 @7869 has 20 MA's), (71, 7962), (80, 8004), (97, 8061), (100, 8070), (103, 8082), (113, 8124),

Gene: Snek_12 Start: 8127, Stop: 8540, Start Num: 29

Candidate Starts for Snek_12:

(Start: 29 @8127 has 17 MA's), (87, 8280), (178, 8523),

Gene: Softsoap_11 Start: 7911, Stop: 8306, Start Num: 36

Candidate Starts for Softsoap_11:

(6, 7785), (Start: 36 @7911 has 52 MA's), (57, 7950), (71, 7977), (95, 8055), (122, 8154), (136, 8187), (173, 8280),

Gene: Solea_12 Start: 8297, Stop: 8692, Start Num: 36

Candidate Starts for Solea_12:

(6, 8171), (Start: 36 @8297 has 52 MA's), (57, 8336), (71, 8363), (95, 8441), (122, 8540), (136, 8573), (173, 8666),

Gene: Soondubu_11 Start: 8928, Stop: 9338, Start Num: 29

Candidate Starts for Soondubu_11:

(Start: 29 @8928 has 17 MA's), (75, 9030), (163, 9291),

Gene: Sooty_12 Start: 8457, Stop: 8876, Start Num: 25

Candidate Starts for Sooty_12:

(Start: 25 @8457 has 11 MA's), (50, 8499), (149, 8781),

Gene: Soul22_13 Start: 7212, Stop: 7616, Start Num: 37

Candidate Starts for Soul22_13:

(Start: 37 @7212 has 7 MA's), (56, 7245), (75, 7305), (95, 7371), (130, 7491), (135, 7503), (150, 7539), (158, 7569),

Gene: Spartoi_10 Start: 6599, Stop: 7030, Start Num: 29

Candidate Starts for Spartoi_10:

(Start: 29 @6599 has 17 MA's), (50, 6635), (63, 6668), (66, 6674), (73, 6689), (103, 6785),

Gene: SpecialK_12 Start: 8454, Stop: 8873, Start Num: 25

Candidate Starts for SpecialK_12:

(Start: 25 @8454 has 11 MA's), (50, 8496), (149, 8778),

Gene: Spooky_12 Start: 7039, Stop: 7449, Start Num: 30

Candidate Starts for Spooky_12:

(8, 6955), (9, 6961), (10, 6967), (Start: 30 @7039 has 20 MA's), (64, 7111), (67, 7117), (71, 7129), (80, 7171), (94, 7210), (96, 7216), (102, 7237), (111, 7276), (118, 7300), (141, 7354),

Gene: Squiddly_13 Start: 7726, Stop: 8118, Start Num: 30

Candidate Starts for Squiddly_13:

(4, 7597), (8, 7642), (9, 7648), (10, 7654), (12, 7672), (14, 7690), (Start: 30 @7726 has 20 MA's), (44, 7753), (64, 7798), (67, 7804), (71, 7816), (80, 7840), (96, 7885), (100, 7900), (102, 7906), (114, 7957), (118, 7969),

Gene: Squircle_11 Start: 8143, Stop: 8535, Start Num: 34

Candidate Starts for Squircle_11:

(Start: 34 @8143 has 6 MA's), (46, 8158), (71, 8209), (84, 8257), (87, 8272), (107, 8338), (129, 8401), (133, 8410), (145, 8434), (162, 8491),

Gene: Stoor_11 Start: 8157, Stop: 8552, Start Num: 36

Candidate Starts for Stoor_11:

(6, 8031), (Start: 36 @8157 has 52 MA's), (Start: 40 @8160 has 15 MA's), (67, 8220), (145, 8451), (156, 8484), (161, 8505),

Gene: Stromboli_11 Start: 8161, Stop: 8556, Start Num: 36

Candidate Starts for Stromboli_11:

(Start: 36 @8161 has 52 MA's), (Start: 40 @8164 has 15 MA's), (67, 8224), (128, 8419), (145, 8455), (156, 8488), (161, 8509),

Gene: StuartMinion_11 Start: 7928, Stop: 8371, Start Num: 22

Candidate Starts for StuartMinion_11:

(18, 7916), (Start: 22 @7928 has 93 MA's), (71, 8036), (83, 8084), (96, 8120), (97, 8126), (118, 8213), (130, 8240), (170, 8339), (173, 8345), (179, 8357),

Gene: Stuu_12 Start: 8547, Stop: 8966, Start Num: 25

Candidate Starts for Stuu_12:

(Start: 25 @8547 has 11 MA's), (50, 8589), (106, 8766), (149, 8871),

Gene: SuMoo_10 Start: 7515, Stop: 7928, Start Num: 29

Candidate Starts for SuMoo_10:

(Start: 29 @7515 has 17 MA's),

Gene: Subaru_12 Start: 9019, Stop: 9429, Start Num: 26

Candidate Starts for Subaru_12:

(Start: 26 @9019 has 47 MA's), (61, 9088), (105, 9226), (108, 9238), (154, 9349), (163, 9382),

Gene: Sue2_12 Start: 9043, Stop: 9456, Start Num: 29

Candidate Starts for Sue2_12:

(13, 9007), (Start: 29 @9043 has 17 MA's),

Gene: SunnyD_10 Start: 7746, Stop: 8147, Start Num: 34

Candidate Starts for SunnyD_10:

(Start: 34 @7746 has 6 MA's), (86, 7875), (100, 7917), (140, 8037), (156, 8079), (162, 8103),

Gene: Supakev_10 Start: 7553, Stop: 7984, Start Num: 22

Candidate Starts for Supakev_10:

(Start: 21 @7547 has 9 MA's), (Start: 22 @7553 has 93 MA's), (Start: 36 @7574 has 52 MA's), (70, 7646), (89, 7715), (94, 7724), (101, 7748), (159, 7907),

Gene: Suppi_14 Start: 10446, Stop: 10859, Start Num: 22

Candidate Starts for Suppi_14:

(Start: 22 @10446 has 93 MA's), (48, 10491), (86, 10593), (117, 10701), (159, 10797),

Gene: Swervy_11 Start: 7888, Stop: 8283, Start Num: 36

Candidate Starts for Swervy_11:

(6, 7762), (Start: 36 @7888 has 52 MA's), (57, 7927), (71, 7954), (95, 8032), (136, 8164), (173, 8257),

Gene: TMaxx_13 Start: 7597, Stop: 7989, Start Num: 28

Candidate Starts for TMaxx_13:

(28, 7597), (77, 7699), (81, 7711), (119, 7843), (177, 7981),

Gene: Tallboi_12 Start: 9050, Stop: 9463, Start Num: 26

Candidate Starts for Tallboi_12:

(Start: 26 @9050 has 47 MA's), (53, 9095), (61, 9119), (154, 9380), (163, 9413),

Gene: TattModd_14 Start: 10423, Stop: 10836, Start Num: 22

Candidate Starts for TattModd_14:

(Start: 22 @10423 has 93 MA's), (81, 10558), (86, 10573), (101, 10618), (111, 10660), (159, 10777),

Gene: TaylorSipht_12 Start: 8370, Stop: 8810, Start Num: 22

Candidate Starts for TaylorSipht_12:

(Start: 22 @8370 has 93 MA's), (43, 8406), (68, 8469), (82, 8523), (83, 8526), (96, 8562), (112, 8634), (115, 8646), (130, 8682), (140, 8706), (156, 8742), (170, 8778),

Gene: Tbone_12 Start: 9033, Stop: 9446, Start Num: 26

Candidate Starts for Tbone_12:

(Start: 26 @9033 has 47 MA's), (61, 9102), (108, 9252), (154, 9363), (163, 9396),

Gene: Teagster_10 Start: 7746, Stop: 8147, Start Num: 34

Candidate Starts for Teagster_10:

(Start: 34 @7746 has 6 MA's), (86, 7875), (100, 7917), (140, 8037), (156, 8079), (162, 8103),

Gene: Temper16_10 Start: 7547, Stop: 7984, Start Num: 21

Candidate Starts for Temper16_10:

(Start: 21 @7547 has 9 MA's), (Start: 22 @7553 has 93 MA's), (46, 7592), (47, 7595), (81, 7688), (86, 7703), (89, 7715), (94, 7724), (95, 7727), (101, 7748), (159, 7907),

Gene: TforTroy_12 Start: 9164, Stop: 9577, Start Num: 26

Candidate Starts for TforTroy_12:

(Start: 26 @9164 has 47 MA's), (154, 9494), (163, 9527),

Gene: Tian_12 Start: 9064, Stop: 9477, Start Num: 26

Candidate Starts for Tian_12:

(Start: 26 @9064 has 47 MA's), (53, 9109), (108, 9283), (154, 9394), (163, 9427),

Gene: Toad24_13 Start: 8492, Stop: 8932, Start Num: 22

Candidate Starts for Toad24_13:

(18, 8480), (Start: 22 @8492 has 93 MA's), (64, 8582), (76, 8624), (81, 8642), (82, 8645), (96, 8684), (118, 8777), (130, 8804), (140, 8828), (156, 8864), (170, 8900),

Gene: Tuck_13 Start: 10079, Stop: 10489, Start Num: 26

Candidate Starts for Tuck_13:

(Start: 26 @10079 has 47 MA's), (53, 10124), (108, 10298), (154, 10409), (163, 10442),

Gene: TukTuk_11 Start: 7948, Stop: 8343, Start Num: 36

Candidate Starts for TukTuk_11:

(6, 7822), (Start: 36 @7948 has 52 MA's), (57, 7987), (71, 8014), (95, 8092), (136, 8224), (173, 8317),

Gene: Turab_12 Start: 9048, Stop: 9458, Start Num: 26

Candidate Starts for Turab_12:

(Start: 26 @9048 has 47 MA's), (53, 9093), (61, 9117), (154, 9378), (163, 9411),

Gene: Tutumahutu_12 Start: 9090, Stop: 9503, Start Num: 26

Candidate Starts for Tutumahutu_12:

(Start: 26 @9090 has 47 MA's), (61, 9159), (108, 9309), (154, 9420), (163, 9453),

Gene: Tweety19_12 Start: 8126, Stop: 8539, Start Num: 29

Candidate Starts for Tweety19_12:
(Start: 29 @8126 has 17 MA's), (87, 8279), (178, 8522),

Gene: Typha_18 Start: 11994, Stop: 12434, Start Num: 15
Candidate Starts for Typha_18:
(Start: 15 @11994 has 4 MA's), (17, 11997), (58, 12075), (62, 12084), (65, 12090), (69, 12096), (88, 12174), (107, 12240), (118, 12276), (152, 12351), (162, 12390),

Gene: Urla_10 Start: 7561, Stop: 7974, Start Num: 22
Candidate Starts for Urla_10:
(Start: 22 @7561 has 93 MA's), (81, 7693), (86, 7708), (101, 7753), (102, 7756), (111, 7795), (136, 7855), (159, 7912),

Gene: UtzChips_10 Start: 8204, Stop: 8620, Start Num: 29
Candidate Starts for UtzChips_10:
(Start: 29 @8204 has 17 MA's), (116, 8444), (140, 8501),

Gene: VResidence_12 Start: 9113, Stop: 9535, Start Num: 29
Candidate Starts for VResidence_12:
(Start: 29 @9113 has 17 MA's), (106, 9335), (138, 9422), (151, 9443), (154, 9452),

Gene: VWB_11 Start: 8079, Stop: 8474, Start Num: 31
Candidate Starts for VWB_11:
(23, 8073), (Start: 31 @8079 has 2 MA's), (Start: 41 @8094 has 2 MA's), (68, 8160), (95, 8244), (112, 8310), (173, 8454),

Gene: Vallejo_14 Start: 10361, Stop: 10774, Start Num: 22
Candidate Starts for Vallejo_14:
(Start: 22 @10361 has 93 MA's), (81, 10496), (86, 10511), (101, 10556), (111, 10598), (159, 10715),

Gene: Vitas_10 Start: 7692, Stop: 8081, Start Num: 40
Candidate Starts for Vitas_10:
(Start: 40 @7692 has 15 MA's), (95, 7833), (100, 7851), (154, 8004), (156, 8013), (162, 8037), (179, 8067),

Gene: VroomVroom_11 Start: 7298, Stop: 7693, Start Num: 31
Candidate Starts for VroomVroom_11:
(Start: 31 @7298 has 2 MA's), (105, 7490),

Gene: Vulpecula_12 Start: 8667, Stop: 9110, Start Num: 22
Candidate Starts for Vulpecula_12:
(Start: 22 @8667 has 93 MA's), (45, 8709), (54, 8727), (67, 8763), (81, 8817), (82, 8820), (96, 8859), (106, 8913), (118, 8952), (130, 8979), (140, 9003), (143, 9009),

Gene: Vulture_10 Start: 7551, Stop: 7982, Start Num: 22
Candidate Starts for Vulture_10:
(Start: 21 @7545 has 9 MA's), (Start: 22 @7551 has 93 MA's), (Start: 36 @7572 has 52 MA's), (70, 7644), (89, 7713), (94, 7722), (101, 7746), (159, 7905),

Gene: WalkingDead_11 Start: 8148, Stop: 8543, Start Num: 36
Candidate Starts for WalkingDead_11:
(Start: 36 @8148 has 52 MA's), (Start: 40 @8151 has 15 MA's), (67, 8211), (71, 8214), (145, 8442), (156, 8475), (161, 8496),

Gene: Warda_12 Start: 9036, Stop: 9449, Start Num: 26

Candidate Starts for Warda_12:

(Start: 26 @9036 has 47 MA's), (61, 9105), (108, 9255), (154, 9366), (163, 9399),

Gene: Wawa_14 Start: 10398, Stop: 10811, Start Num: 22

Candidate Starts for Wawa_14:

(Start: 22 @10398 has 93 MA's), (81, 10533), (86, 10548), (101, 10593), (111, 10635), (159, 10752),

Gene: Wayne_14 Start: 10492, Stop: 10905, Start Num: 22

Candidate Starts for Wayne_14:

(Start: 22 @10492 has 93 MA's), (48, 10537), (86, 10639), (117, 10747), (159, 10843),

Gene: Westrich_13 Start: 8480, Stop: 8920, Start Num: 22

Candidate Starts for Westrich_13:

(18, 8468), (Start: 22 @8480 has 93 MA's), (64, 8570), (76, 8612), (81, 8630), (82, 8633), (96, 8672), (118, 8765), (130, 8792), (140, 8816), (156, 8852), (170, 8888),

Gene: Whitney_12 Start: 7041, Stop: 7433, Start Num: 30

Candidate Starts for Whitney_12:

(4, 6912), (8, 6957), (9, 6963), (10, 6969), (12, 6987), (Start: 30 @7041 has 20 MA's), (44, 7068), (61, 7107), (64, 7113), (67, 7119), (71, 7131), (80, 7155), (94, 7194), (96, 7200), (99, 7212), (102, 7221), (114, 7272), (118, 7284),

Gene: Wildwest_13 Start: 9954, Stop: 10370, Start Num: 29

Candidate Starts for Wildwest_13:

(Start: 29 @9954 has 17 MA's), (87, 10107), (106, 10170), (151, 10278),

Gene: WonderBoy_10 Start: 7514, Stop: 7924, Start Num: 22

Candidate Starts for WonderBoy_10:

(Start: 22 @7514 has 93 MA's), (57, 7577), (81, 7646), (86, 7661), (101, 7706), (111, 7748), (159, 7865),

Gene: Wrigley_13 Start: 8113, Stop: 8499, Start Num: 36

Candidate Starts for Wrigley_13:

(11, 8032), (Start: 36 @8113 has 52 MA's), (55, 8149), (63, 8170),

Gene: Yang_12 Start: 9134, Stop: 9547, Start Num: 26

Candidate Starts for Yang_12:

(Start: 26 @9134 has 47 MA's), (154, 9464), (163, 9497),

Gene: YesChef_12 Start: 9090, Stop: 9503, Start Num: 26

Candidate Starts for YesChef_12:

(Start: 26 @9090 has 47 MA's), (61, 9159), (108, 9309), (154, 9420), (163, 9453),

Gene: Yoshi_13 Start: 7212, Stop: 7616, Start Num: 37

Candidate Starts for Yoshi_13:

(Start: 37 @7212 has 7 MA's), (56, 7245), (75, 7305), (95, 7371), (130, 7491), (135, 7503), (150, 7539), (158, 7569),

Gene: Zapner_14 Start: 7737, Stop: 8141, Start Num: 37

Candidate Starts for Zapner_14:

(Start: 37 @7737 has 7 MA's), (56, 7770), (75, 7830), (95, 7896), (130, 8016), (135, 8028), (150, 8064), (158, 8094),

Gene: Zeta1847_10 Start: 7300, Stop: 7692, Start Num: 25

Candidate Starts for Zeta1847_10:

(Start: 25 @7300 has 11 MA's), (87, 7444), (91, 7453),

Gene: Zhuangyuan_14 Start: 8650, Stop: 9102, Start Num: 20

Candidate Starts for Zhuangyuan_14:

(18, 8647), (20, 8650), (Start: 22 @8659 has 93 MA's), (49, 8710), (68, 8758), (113, 8929), (114, 8932), (140, 8995), (145, 9004), (156, 9034), (179, 9088),

Gene: Zorro_14 Start: 10377, Stop: 10790, Start Num: 22

Candidate Starts for Zorro_14:

(Start: 22 @10377 has 93 MA's), (81, 10512), (86, 10527), (101, 10572), (111, 10614), (159, 10731),