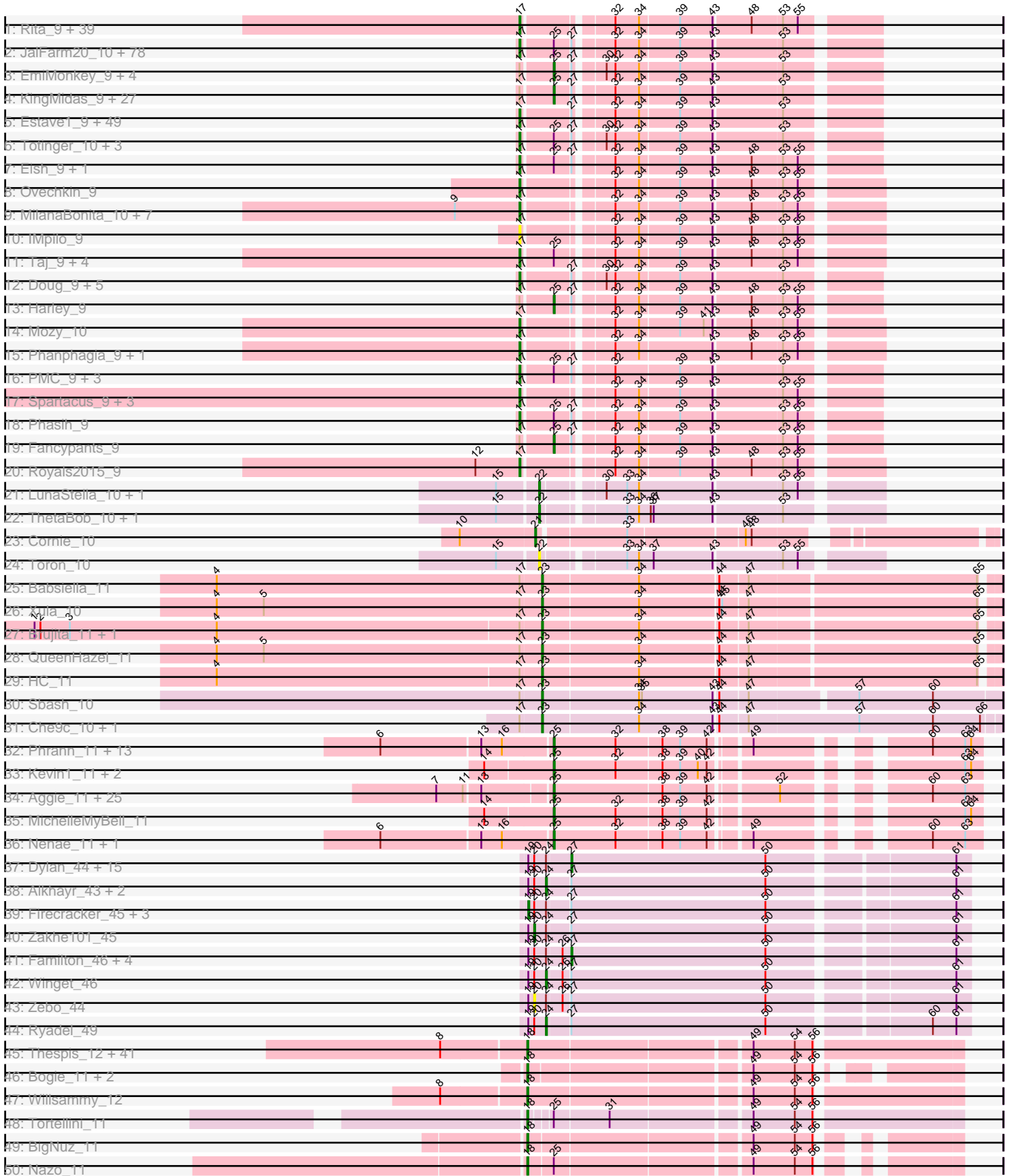
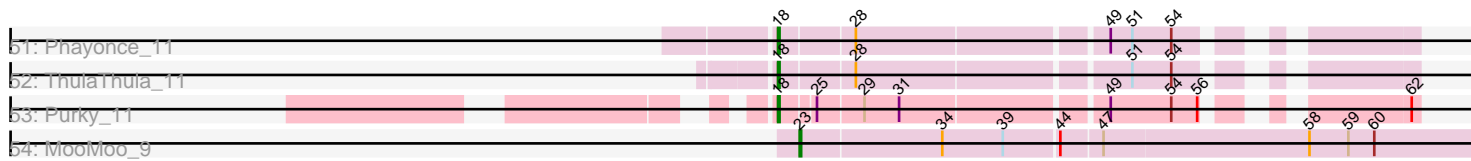


Pham 215714



Pham 215714



Note: Tracks are now grouped by subcluster and scaled. Switching in subcluster is indicated by changes in track color. Track scale is now set by default to display the region 30 bp upstream of start 1 to 30 bp downstream of the last possible start. If this default region is judged to be packed too tightly with annotated starts, the track will be further scaled to only show that region of the ORF with annotated starts. This action will be indicated by adding "Zoomed" to the title. For starts, yellow indicates the location of called starts comprised solely of Glimmer/GeneMark auto-annotations, green indicates the location of called starts with at least 1 manual gene annotation.

Pham 215714 Report

This analysis was run 02/22/25 on database version 588.

Pham number 215714 has 390 members, 43 are drafts.

Phages represented in each track:

- Track 1 : Rita_9, DotProduct_9, LunaBlu_9, NewHope4_9, StAnnes_9, Batiatus_9, Phalconet_9, PopTart_9, XFactor_9, Kenuha5_9, Corium_9, MinionDave_10, SuperGrey_9, Bipolar_9, Melissauen88_9, PhesterPhotato_9, EleanorGeorge_9, Aubs_9, Fruitloop_9, Polo2Bam_10, Guppsters_9, Krakatau_10, Galactic_9, Firehouse51_9, Chevrolet_9, SG4_9, MilleniumForce_10, DoRead_9, Cornucopia_10, DillTech15_9, Chuckly_9, Whatsapiecost_9, Tweety_9, KingJulian_9, Hamulus_9, Ardmore_9, SassyB_9, ArcusAngelus_9, CaptainTrips_10, Filuzino_9
- Track 2 : JalFarm20_10, Flathead_10, Scottish_9, ByChance_9, Wachhund_9, Zerg_9, Saal_9, Tootsieroll_10, VRedHorse_9, TootsiePop_10, Dorothy_9, Florinda_9, OldBen_9, Burwell21_9, Latretium_9, BlueCrab_9, Fastidio_9, DocMcStuffins_10, Girr_9, Polka14_9, Nimbo_9, Nivrat_9, Leperchaun_9, Dante_9, Sandalphon_9, Coco12_10, Nitzel_10, Crumble_9, RedBird_9, Bobi_10, Minnie_9, Empress_9, Job42_10, Alexphander_10, Inventum_9, Koella_9, Maravista_9, Sassafras_9, Byougenkin_9, Deb65_9, DaddyRickover_9, Kersh_9, LilMoolah_9, SwagPigglett_9, Stap_10, Mahavrat_9, Ogopogo_12, Mattes_9, Eradicator_9, FreddyB_9, Hegedechwinu_10, Awesomesauce_10, Radiance_9, Squirty_10, Bubbles123_9, RitaG_9, Che8_9, NormanBulbieJr_9, BuzzLyseyear_10, Whouxphf_9, Gandalph_9, OlympiaSaint_9, ShiLan_9, Jarcob_9, Martik_9, MisterCuddles_9, BodEinwohner17_9, SimranZ1_10, PHappiness_9, JoeyJr_9, Misha28_10, Clifton_9, Spoonbill_9, Geralt_9, Doomphist_9, Brocalys_9, Ruby_9, Priscilla_9, Marker_10
- Track 3 : EmiMonkey_9, PhlipPhlop_9, Emmaloid_11, Mantra_9, Slim_11
- Track 4 : KingMidas_9, BobaPhett_9, Aloeri_10, Vivum_9, MulchSalad_9, ChickenDinner_10, James_9, Pacc40_9, ShowerHandel_9, Cabrinians_9, Brushbloom_11, Zizzle_9, Ramsey_10, Piper2020_10, Gorge_9, Pippy_9, Philus_9, Violac_9, Grimmer_10, Seagreen_10, CheesePuff_9, Yorick_9, LastJedi_9, Lizziana_9, IbOuu_9, Daenerys_9, Poenanya_9, Frankie_10
- Track 5 : Estave1_9, Madiba_10, Seabastian_9, Cerasum_10, UncleRicky_10, Veteran_9, Lorde_10, Sabbb_9, OwlsT2W_10, BigPhil_10, Hades_9, Juniper1_9, Boomer_10, Modragons_9, Hlubikazi_9, MadMen_9, DaWorst_10, Leozinho_10, Donkeykong_9, Brookers_10, DosHalletts_10, Ochi17_9, Tchotchke_10, Spikelee_10, Quico_10, Oksu_10, Plumbus_10, RockyHorror_10, TDanisky_9, Girafales_10, Velveteen_10, DRBy19_9, Kimberlium_10, Beakin_10, Strokeseat_9, Juice456_10, Karhdo_9, MulchExplorer_11, Llama_9, Enby_10, AlpineSix_9, GUmbe_9, Sparkdehlily_9, Mandlovu_9, DirtMcgirt_10, OfUltron_9, Sarma624_10, Kingsley_10, Drago_10, Jinglebell_9

- Track 6 : Totinger_10, GigiOuiOui_9, Rialto_10, Moonbeam_9
- Track 7 : Eish_9, Ibhubesi_9
- Track 8 : Ovechkin_9
- Track 9 : MilanaBonita_10, Ms6_9, SiSi_9, QuickMath_9, KristaRAM_10, Jant_9, DLane_9, Akhila_10
- Track 10 : IMpilo_9
- Track 11 : Taj_9, Wee_9, DeadP_9, ShroomBoi_9, Emma_9
- Track 12 : Doug_9, LittleShirley_10, Mova_10, Starcevich_10, Blexus_9, Pollywog_10
- Track 13 : Harley_9
- Track 14 : Mozy_10
- Track 15 : Phanphagia_9, Shauna1_9
- Track 16 : PMC_9, Phatniss_9, Llij_9, Rockne_9
- Track 17 : Spartacus_9, IrishSherpFalk_9, Mutaforma13_9, WillSterrel_9
- Track 18 : Phasih_9
- Track 19 : Fancypants_9
- Track 20 : Royals2015_9
- Track 21 : LunaStella_10, TChen_10
- Track 22 : ThetaBob_10, Renaud18_10
- Track 23 : Cornie_10
- Track 24 : Toron_10
- Track 25 : Babsiella_11
- Track 26 : Xula_10
- Track 27 : Brujita_11, Island3_11
- Track 28 : QueenHazel_11
- Track 29 : HC_11
- Track 30 : Sbash_10
- Track 31 : Che9c_10, Stuck_10
- Track 32 : Phrann_11, Rebel_11, Redi_11, Panchino_11, PhancyPhin_11, Shweta_11, ShrimpFriedEgg_11, Snekmaggedon_11, Raymond7_11, Jamie19_11, Hanako_11, SkinnyPete_11, BabeRuth_11, SpongeBob_11
- Track 33 : Kevin1_11, Butters_11, Rubeelu_11
- Track 34 : Aggie_11, Smurph_11, Bosection6_11, Fulbright_11, Journey_11, Andies_11, Gex_11, Schnauzer_11, Scitech_11, Carcharodon_11, Silvy_11, Charlie_11, EGUnicorn_11, Melville_11, Parmesanjohn_11, Silvafighter_11, Duplicity_11, Xerxes_11, Tortoise12_11, Philonius_11, Pipsqueaks_11, Xeno_11, Phloss_11, Tapioca_11, Magsby_11, Chewbacca_11
- Track 35 : MichelleMyBell_11
- Track 36 : Nенаe_11, Purgamenstris_11
- Track 37 : Dylan_44, Smooch_47, FoulBall_45, Ashwin_46, Murai_45, Schuy_46, Krili_44, NiebruSaylor_44, Mori_44, YungJamal_48, Wildflower_45, Wogge42_44, Shida_45, Vorrrps_44, Vagabond_45, MadKillah_46
- Track 38 : Alkhayr_43, KingPhillip3_44, Idergollasper_45
- Track 39 : Firecracker_45, Bora_42, Corndog_47, Catdawg_45
- Track 40 : Zakhe101_45
- Track 41 : Familton_46, Blessica_46, SchoolBus_45, JangDynasty_45, TelAviv_42
- Track 42 : Winget_46
- Track 43 : Zebo_44
- Track 44 : Ryadel_49
- Track 45 : Thespis_12, Langerak_12, Xavia_12, Fishburne_12, Donovan_12, Ksquared_12, Arib1_12, Bhagsy_12, CactusJack_12, Bartholomew_12, Atcoo_12, Jebeks_12, Etoile_12, Sonah_12, Zilizebeth_12, Necropolis_12, Techage_12, Dynamo_12, Venti_12, Gavriela_12, Brusacoram_12, FirstPlacePfu_12, KilKor_12,

Phalm_12, Bunnies_12, Malithi_12, Glaske_12, GreaseLightnin_12, Phineas_12, StevieRay_12, Kari_12, HUHilltop_12, Juniormint_12, Mangethe_12, Majeke_12, StressBall_12, Megiddo_12, Polkaroo_12, Camster_12, Vidya_12, Phegasus_12, Jung_12

- Track 46 : Bogie_11, Shipwreck_11, Pygmy_11
- Track 47 : Willsammy_12
- Track 48 : Tortellini_11
- Track 49 : BigNuz_11
- Track 50 : Nazo_11
- Track 51 : Phayonce_11
- Track 52 : ThulaThula_11
- Track 53 : Purky_11
- Track 54 : MooMoo_9

Summary of Final Annotations (See graph section above for start numbers):

The start number called the most often in the published annotations is 17, it was called in 195 of the 347 non-draft genes in the pham.

Genes that call this "Most Annotated" start:

- Akhila_10, Alexphander_10, AlpineSix_9, ArcusAngelus_9, Ardmore_9, Aubs_9, Awesomesauce_10, Batiatus_9, Beakin_10, BigPhil_10, Bipolar_9, Blexus_9, BlueCrab_9, Bobi_10, BodEinwohner17_9, Boomer_10, Brocalys_9, Brookers_10, Bubbles123_9, Burwell21_9, BuzzLyseyear_10, ByChance_9, Byougenkin_9, CaptainTrips_10, Cerasum_10, Che8_9, Chevrolet_9, Chuckly_9, Clifton_9, Coco12_10, Corium_9, Cornucopia_10, Crumble_9, DLane_9, DRBy19_9, DaWorst_10, DaddyRickover_9, Dante_9, DeadP_9, Deb65_9, DillTech15_9, DirtMcgirt_10, DoRead_9, DocMcStuffins_10, Donkeykong_9, Doomphist_9, Dorothy_9, DosHalletts_10, DotProduct_9, Doug_9, Drago_10, Eish_9, EleanorGeorge_9, Emma_9, Empress_9, Enby_10, Eradicator_9, Estave1_9, Fastidio_9, Filuzino_9, Firehouse51_9, Flathead_10, Florinda_9, FreddyB_9, Fruitloop_9, GUmbe_9, Galactic_9, Gandalph_9, Geralt_9, GigiOuiOui_9, Girafales_10, Girr_9, Guppsters_9, Hades_9, Hamulus_9, Hegedechwinu_10, Hlubikazi_9, IMpilo_9, Ihubesi_9, Inventum_9, IrishSherpFalk_9, JalFarm20_10, Jant_9, Jarcob_9, Jinglebell_9, Job42_10, JoeyJr_9, Juice456_10, Juniper1_9, Karhdo_9, Kenuha5_9, Kersh_9, Kimberlium_10, KingJulian_9, Kingsley_10, Koella_9, Krakatau_10, KristaRAM_10, Latretium_9, Leozinho_10, Leperchaun_9, LilMoolah_9, LittleShirley_10, Llama_9, Llij_9, Lorde_10, LunaBlu_9, MadMen_9, Madiba_10, Mahavrat_9, Mandlovu_9, Maravista_9, Marker_10, Martik_9, Mattes_9, Melissauren88_9, MilanaBonita_10, MilleniumForce_10, MinionDave_10, Minnie_9, Misha28_10, MisterCuddles_9, Modragons_9, Moonbeam_9, Mova_10, Mozy_10, Ms6_9, MulchExplorer_11, Mutaforma13_9, NewHope4_9, Nimbo_9, Nitzel_10, Nivrat_9, NormanBulbieJr_9, Ochi17_9, OfUltron_9, OgoPogo_12, Oksu_10, OldBen_9, OlympiaSaint_9, Ovechkin_9, OwlsT2W_10, PHappiness_9, PMC_9, Phalconet_9, Phanphagia_9, Phasih_9, Phatniss_9, PhesterPotato_9, Plumbus_10, Polka14_9, Pollywog_10, Polo2Bam_10, PopTart_9, Priscilla_9, QuickMath_9, Quico_10, Radiance_9, RedBird_9, Rialto_10, RitaG_9, Rita_9, Rockne_9, RockyHorror_10, Royals2015_9, Ruby_9, SG4_9, Saal_9, Sabbb_9, Sandalphon_9, Sarma624_10, Sassafras_9, SassyB_9, Scottish_9, Seabastian_9, Shauna1_9, ShiLan_9, ShroomBoi_9, SiSi_9, SimranZ1_10, Sparkdehlily_9, Spartacus_9,

Spikelee_10, Spoonbill_9, Squirty_10, StAnnes_9, Stap_10, Starcevich_10, Strokeseat_9, SuperGrey_9, SwagPiggett_9, TDanisky_9, Taj_9, Tchotchke_10, TootsiePop_10, Tootsieroll_10, Totinger_10, Tweety_9, UncleRicky_10, VRedHorse_9, Velveteen_10, Veteran_9, Wachhund_9, Wee_9, Whatsapiecost_9, Whouphf_9, WillSterrel_9, XFactor_9, Zerg_9,

Genes that have the "Most Annotated" start but do not call it:

- Aleri_10, Babsiella_11, BobaPhett_9, Brujita_11, Brushbloom_11, Cabrinians_9, Che9c_10, CheesePuff_9, ChickenDinner_10, Daenerys_9, EmiMonkey_9, Emmaloid_11, Fancypants_9, Frankie_10, Gorge_9, Grimmer_10, HC_11, Harley_9, IbOuu_9, Island3_11, James_9, KingMidas_9, LastJedi_9, Lizziana_9, Mantra_9, MulchSalad_9, Pacc40_9, Philus_9, PhilipPhlop_9, Piper2020_10, Pippy_9, Poenanya_9, QueenHazel_11, Ramsey_10, Sbash_10, Seagreen_10, ShowerHandel_9, Slim_11, Stuck_10, Violac_9, Vivum_9, Xula_10, Yorick_9, Zizzle_9,

Genes that do not have the "Most Annotated" start:

- Aggie_11, Alkhayr_43, Andies_11, Arib1_12, Ashwin_46, Atcoo_12, BabeRuth_11, Bartholomew_12, Bhagsy_12, BigNuz_11, Blessica_46, Bogie_11, Bora_42, Bosection6_11, Brusacoram_12, Bunnies_12, Butters_11, CactusJack_12, Camster_12, Carcharodon_11, Catdawg_45, Charlie_11, Chewbacca_11, Corndog_47, Cornie_10, Donovan_12, Duplicity_11, Dylan_44, Dynamo_12, EGunicorn_11, Etoile_12, Familton_46, Firecracker_45, FirstPlacePfu_12, Fishburne_12, FoulBall_45, Fulbright_11, Gavriela_12, Gex_11, Glaske_12, GreaseLightnin_12, HUHilltop_12, Hanako_11, Idergollasper_45, Jamie19_11, JangDynasty_45, Jebeks_12, Journey_11, Jung_12, Juniormint_12, Kari_12, Kevin1_11, KilKor_12, KingPhillip3_44, Krili_44, Ksquared_12, Langerak_12, LunaStella_10, MadKillah_46, Magsby_11, Majeke_12, Malithi_12, Mangethe_12, Megiddo_12, Melville_11, MichelleMyBell_11, MooMoo_9, Mori_44, Murai_45, Nazo_11, Necropolis_12, Nenae_11, NiebruSaylor_44, Panchino_11, Parmesanjohn_11, Phalm_12, PhancyPhin_11, Phayonce_11, Phegasus_12, Philonius_11, Phineas_12, Phloss_11, Phrann_11, Pipsqueaks_11, Polkaroo_12, Purgamenstris_11, Purky_11, Pygmy_11, Raymond7_11, Rebel_11, Redi_11, Renaud18_10, Rubeelu_11, Ryadel_49, Schnauzer_11, SchoolBus_45, Schuy_46, Scitech_11, Shida_45, Shipwreck_11, ShrimpFriedEgg_11, Shweta_11, Silvafighter_11, Silvy_11, SkinnyPete_11, Smooch_47, Smurph_11, Snekmaggon_11, Sonah_12, SpongeBob_11, StevieRay_12, StressBall_12, TChen_10, Tapioca_11, Techage_12, TelAviv_42, Thespis_12, ThetaBob_10, ThulaThula_11, Toron_10, Tortellini_11, Tortoise12_11, Vagabond_45, Venti_12, Vidya_12, Vorrrps_44, Wildflower_45, Willsammy_12, Winget_46, Wogge42_44, Xavia_12, Xeno_11, Xerxes_11, YungJamal_48, Zakhe101_45, Zebo_44, Zilizebeth_12,

Summary by start number:

Start 17:

- Found in 253 of 390 (64.9%) of genes in pham
- Manual Annotations of this start: 195 of 347
- Called 82.6% of time when present
- Phage (with cluster) where this start called: Akhila_10 (F1), Alexphander_10 (F1), AlpineSix_9 (F1), ArcusAngelus_9 (F1), Ardmore_9 (F1), Aubs_9 (F1), Awesomesauce_10 (F1), Batiatus_9 (F1), Beakin_10 (F1), BigPhil_10 (F1), Bipolar_9 (F1), Blexus_9 (F1), BlueCrab_9 (F1), Bobi_10 (F1), BodEinwohner17_9 (F1),

Boomer_10 (F1), Brocalys_9 (F1), Brookers_10 (F1), Bubbles123_9 (F1), Burwell21_9 (F1), BuzzLyseyear_10 (F1), ByChance_9 (F1), Byougenkin_9 (F1), CaptainTrips_10 (F1), Cerasum_10 (F1), Che8_9 (F1), Chevrolet_9 (F1), Chuckly_9 (F1), Clifton_9 (F1), Coco12_10 (F1), Corium_9 (F1), Cornucopia_10 (F1), Crumble_9 (F1), DLane_9 (F1), DRBy19_9 (F1), DaWorst_10 (F1), DaddyRickover_9 (F1), Dante_9 (F1), DeadP_9 (F1), Deb65_9 (F1), DillTech15_9 (F1), DirtMcgirt_10 (F1), DoRead_9 (F1), DocMcStuffins_10 (F1), Donkeykong_9 (F1), Doomphist_9 (F1), Dorothy_9 (F1), DosHalletts_10 (F1), DotProduct_9 (F1), Doug_9 (F1), Drago_10 (F1), Eish_9 (F1), EleanorGeorge_9 (F1), Emma_9 (F1), Empress_9 (F1), Enby_10 (F1), Eradicator_9 (F1), Estave1_9 (F1), Fastidio_9 (F1), Filuzino_9 (F1), Firehouse51_9 (F1), Flathead_10 (F1), Florinda_9 (F1), FreddyB_9 (F1), Fruitloop_9 (F1), GUmbie_9 (F1), Galactic_9 (F1), Gandalph_9 (F1), Geralt_9 (F1), GigiOuiOui_9 (F1), Girafales_10 (F1), Girr_9 (F1), Guppsters_9 (F1), Hades_9 (F1), Hamulus_9 (F1), Hegedechwinu_10 (F1), Hlubikazi_9 (F1), IMpilo_9 (F1), Ibhubesi_9 (F1), Inventum_9 (F1), IrishSherpFalk_9 (F1), JalFarm20_10 (F1), Jant_9 (F1), Jarcob_9 (F1), Jinglebell_9 (F1), Job42_10 (F1), JoeyJr_9 (F1), Juice456_10 (F1), Juniper1_9 (F1), Karhdo_9 (F1), Kenuha5_9 (F1), Kersh_9 (F1), Kimberlium_10 (F1), KingJulian_9 (F1), Kingsley_10 (F1), Koella_9 (F1), Krakatau_10 (F1), KristaRAM_10 (F1), Latretium_9 (F1), Leozinho_10 (F1), Leperchaun_9 (F1), LilMoolah_9 (F1), LittleShirley_10 (F1), Llama_9 (F1), Llij_9 (F1), Lorde_10 (F1), LunaBlu_9 (F1), MadMen_9 (F1), Madiba_10 (F1), Mahavrat_9 (F1), Mandlovu_9 (F1), Maravista_9 (F1), Marker_10 (F1), Martik_9 (F1), Mattes_9 (F1), Melissauren88_9 (F1), MilanaBonita_10 (F1), MilleniumForce_10 (F1), MinionDave_10 (F1), Minnie_9 (F1), Misha28_10 (F1), MisterCuddles_9 (F1), Modragons_9 (F1), Moonbeam_9 (F1), Mova_10 (F1), Mozy_10 (F1), Ms6_9 (F1), MulchExplorer_11 (F1), Mutaforma13_9 (F1), NewHope4_9 (F1), Nimbo_9 (F1), Nitzel_10 (F1), Nivrat_9 (F1), NormanBulbieJr_9 (F1), Ochi17_9 (F1), OfUltron_9 (F1), Ogopogo_12 (F1), Oksu_10 (F1), OldBen_9 (F1), OlympiaSaint_9 (F1), Ovechkin_9 (F1), OwisT2W_10 (F1), PHappiness_9 (F1), PMC_9 (F1), Phalconet_9 (F1), Phanphagia_9 (F1), Phasih_9 (F1), Phatniss_9 (F1), PhesterPhotato_9 (F1), Plumbus_10 (F1), Polka14_9 (F1), Pollywog_10 (F1), Polo2Bam_10 (F1), PopTart_9 (F1), Priscilla_9 (F1), QuickMath_9 (F1), Quico_10 (F1), Radiance_9 (F1), RedBird_9 (F1), Rialto_10 (F1), RitaG_9 (F1), Rita_9 (F1), Rockne_9 (F1), RockyHorror_10 (F1), Royals2015_9 (F1), Ruby_9 (F1), SG4_9 (F1), Saal_9 (F1), Sabbb_9 (F1), Sandalphon_9 (F1), Sarma624_10 (F1), Sassafras_9 (F1), SassyB_9 (F1), Scottish_9 (F1), Sebastian_9 (F1), Shauna1_9 (F1), ShiLan_9 (F1), ShroomBoi_9 (F1), SiSi_9 (F1), SimranZ1_10 (F1), Sparkdehlily_9 (F1), Spartacus_9 (F1), Spikelee_10 (F1), Spoonbill_9 (F1), Squirty_10 (F3), StAnnes_9 (F1), Stap_10 (F1), Starcevich_10 (F1), Strokeseat_9 (F1), SuperGrey_9 (F1), SwagPiggett_9 (F1), TDanisky_9 (F1), Taj_9 (F1), Tchochke_10 (F1), TootsiePop_10 (F1), Tootsieroll_10 (F1), Totinger_10 (F1), Tweety_9 (F1), UncleRicky_10 (F1), VRedHorse_9 (F1), Velveteen_10 (F1), Veteran_9 (F1), Wachhund_9 (F1), Wee_9 (F1), Whatsapiecost_9 (F1), Whouxphf_9 (F1), WillSterrel_9 (F1), XFactor_9 (F1), Zerg_9 (F1),

Start 18:

- Found in 52 of 390 (13.3%) of genes in pham
- Manual Annotations of this start: 46 of 347
- Called 100.0% of time when present
- Phage (with cluster) where this start called: Arib1_12 (P1), Atcoo_12 (P1), Bartholomew_12 (P1), Bhagsy_12 (P1), BigNuz_11 (P4), Bogie_11 (P1), Brusacoram_12 (P1), Bunnies_12 (P1), CactusJack_12 (P1), Camster_12 (P1), Donovan_12 (P1), Dynamo_12 (P1), Etoile_12 (P1), FirstPlacePfu_12 (P1), Fishburne_12 (P1), Gavriela_12 (P1), Glaske_12 (P1), GreaseLightnin_12 (P1),

HUHilltop_12 (P1), Jebeks_12 (P1), Jung_12 (P1), Juniormint_12 (P1), Kari_12 (P1), KilKor_12 (P1), Ksquared_12 (P1), Langerak_12 (P1), Majeke_12 (P1), Malithi_12 (P1), Mangethe_12 (P1), Megiddo_12 (P1), Nazo_11 (P4), Necropolis_12 (P1), Phalm_12 (P1), Phayonce_11 (P5), Phegasus_12 (P1), Phineas_12 (P1), Polkaroo_12 (P1), Purky_11 (P6), Pygmy_11 (P1), Shipwreck_11 (P1), Sonah_12 (P1), StevieRay_12 (P1), StressBall_12 (P1), Techage_12 (P1), Thespi_12 (P1), ThulaThula_11 (P5), Tortellini_11 (P2), Venti_12 (P1), Vidya_12 (P1), Willsammy_12 (P1), Xavia_12 (P3), Zilizebeth_12 (P1),

Start 19:

- Found in 32 of 390 (8.2%) of genes in pham
- Manual Annotations of this start: 4 of 347
- Called 12.5% of time when present
- Phage (with cluster) where this start called: Bora_42 (O), Catdawg_45 (O), Corndog_47 (O), Firecracker_45 (O),

Start 20:

- Found in 32 of 390 (8.2%) of genes in pham
- Manual Annotations of this start: 1 of 347
- Called 6.2% of time when present
- Phage (with cluster) where this start called: Zakhe101_45 (O), Zebo_44 (O),

Start 21:

- Found in 1 of 390 (0.3%) of genes in pham
- Manual Annotations of this start: 1 of 347
- Called 100.0% of time when present
- Phage (with cluster) where this start called: Cornie_10 (F5),

Start 22:

- Found in 5 of 390 (1.3%) of genes in pham
- Manual Annotations of this start: 4 of 347
- Called 100.0% of time when present
- Phage (with cluster) where this start called: LunaStella_10 (F4), Renaud18_10 (F4), TChen_10 (F4), ThetaBob_10 (F4), Toron_10 (F6),

Start 23:

- Found in 10 of 390 (2.6%) of genes in pham
- Manual Annotations of this start: 9 of 347
- Called 100.0% of time when present
- Phage (with cluster) where this start called: Babsiella_11 (I1), Brujita_11 (I1), Che9c_10 (I2), HC_11 (I1), Island3_11 (I1), MooMoo_9 (singleton), QueenHazel_11 (I1), Sbash_10 (I2), Stuck_10 (I2), Xula_10 (I1),

Start 24:

- Found in 32 of 390 (8.2%) of genes in pham
- Manual Annotations of this start: 3 of 347
- Called 15.6% of time when present
- Phage (with cluster) where this start called: Alkhayr_43 (O), Idergollasper_45 (O), KingPhillip3_44 (O), Ryadel_49 (O), Winget_46 (O),

Start 25:

- Found in 179 of 390 (45.9%) of genes in pham
- Manual Annotations of this start: 64 of 347

- Called 45.3% of time when present
- Phage (with cluster) where this start called: Aggie_11 (N), Aloeri_10 (F1), Andies_11 (N), BabeRuth_11 (N), BobaPhett_9 (F1), Bosection6_11 (N), Brushbloom_11 (F1), Butters_11 (N), Cabrinians_9 (F1), Carcharodon_11 (N), Charlie_11 (N), Cheesepuff_9 (F1), Chewbacca_11 (N), ChickenDinner_10 (F1), Daenerys_9 (F1), Duplicity_11 (N), EGUunicorn_11 (N), EmiMonkey_9 (F1), Emmaloid_11 (F1), Fancypants_9 (F1), Frankie_10 (F1), Fulbright_11 (N), Gex_11 (N), Gorge_9 (F1), Grimmer_10 (F1), Hanako_11 (N), Harley_9 (F1), IbOuu_9 (F1), James_9 (F1), Jamie19_11 (N), Journey_11 (N), Kevin1_11 (N), KingMidas_9 (F1), LastJedi_9 (F1), Lizziana_9 (F1), Magsby_11 (N), Mantra_9 (F1), Melville_11 (N), MichelleMyBell_11 (N), MulchSalad_9 (F), Nенаe_11 (N), Pacc40_9 (F1), Panchino_11 (N), Parmesanjohn_11 (N), PhancyPhin_11 (N), Philonius_11 (N), Philus_9 (F1), PhilipPhlop_9 (F1), Phloss_11 (N), Phrann_11 (N), Piper2020_10 (F1), Pippy_9 (F1), Pipsqueaks_11 (N), Poenanya_9 (F1), Purgamenstris_11 (N), Ramsey_10 (F1), Raymond7_11 (N), Rebel_11 (N), Redi_11 (N), Rubeelu_11 (N), Schnauzer_11 (N), Scitech_11 (N), Seagreen_10 (F1), ShowerHandel_9 (F1), ShrimpFriedEgg_11 (N), Shweta_11 (N), Silvafighter_11 (N), Silvy_11 (N), SkinnyPete_11 (N), Slim_11 (F1), Smurph_11 (N), Snekmaggedon_11 (N), SpongeBob_11 (N), Tapioca_11 (N), Tortoise12_11 (N), Violac_9 (F1), Vivum_9 (F1), Xeno_11 (N), Xerxes_11 (N), Yorick_9 (F1), Zizzle_9 (F1),

Start 27:

- Found in 213 of 390 (54.6%) of genes in pham
- Manual Annotations of this start: 20 of 347
- Called 9.9% of time when present
- Phage (with cluster) where this start called: Ashwin_46 (O), Blessica_46 (O), Dylan_44 (O), Familton_46 (O), FoulBall_45 (O), JangDynasty_45 (O), Krili_44 (O), MadKillah_46 (O), Mori_44 (O), Murai_45 (O), NiebruSaylor_44 (O), SchoolBus_45 (O), Schuy_46 (O), Shida_45 (O), Smooch_47 (O), TelAviv_42 (O), Vagabond_45 (O), Vorrrps_44 (O), Wildflower_45 (O), Wogge42_44 (O), YungJamal_48 (O),

Summary by clusters:

There are 17 clusters represented in this pham: P2, F1, singleton, P1, P6, P4, F6, F, I1, P3, P5, O, N, F3, F4, I2, F5,

Info for manual annotations of cluster F1:

- Start number 17 was manually annotated 194 times for cluster F1.
- Start number 25 was manually annotated 22 times for cluster F1.

Info for manual annotations of cluster F3:

- Start number 17 was manually annotated 1 time for cluster F3.

Info for manual annotations of cluster F4:

- Start number 22 was manually annotated 4 times for cluster F4.

Info for manual annotations of cluster F5:

- Start number 21 was manually annotated 1 time for cluster F5.

Info for manual annotations of cluster I1:

- Start number 23 was manually annotated 6 times for cluster I1.

Info for manual annotations of cluster I2:

- Start number 23 was manually annotated 2 times for cluster I2.

Info for manual annotations of cluster N:

- Start number 25 was manually annotated 42 times for cluster N.

Info for manual annotations of cluster O:

- Start number 19 was manually annotated 4 times for cluster O.
- Start number 20 was manually annotated 1 time for cluster O.
- Start number 24 was manually annotated 3 times for cluster O.
- Start number 27 was manually annotated 20 times for cluster O.

Info for manual annotations of cluster P1:

- Start number 18 was manually annotated 39 times for cluster P1.

Info for manual annotations of cluster P2:

- Start number 18 was manually annotated 1 time for cluster P2.

Info for manual annotations of cluster P3:

- Start number 18 was manually annotated 1 time for cluster P3.

Info for manual annotations of cluster P4:

- Start number 18 was manually annotated 2 times for cluster P4.

Info for manual annotations of cluster P5:

- Start number 18 was manually annotated 2 times for cluster P5.

Info for manual annotations of cluster P6:

- Start number 18 was manually annotated 1 time for cluster P6.

Gene Information:

Gene: Aggie_11 Start: 6975, Stop: 7346, Start Num: 25

Candidate Starts for Aggie_11:

(7, 6867), (11, 6894), (13, 6909), (Start: 25 @6975 has 64 MA's), (38, 7083), (39, 7101), (42, 7128), (52, 7188), (60, 7296), (63, 7329),

Gene: Akhila_10 Start: 7429, Stop: 7758, Start Num: 17

Candidate Starts for Akhila_10:

(9, 7363), (Start: 17 @7429 has 195 MA's), (32, 7507), (34, 7531), (39, 7570), (43, 7603), (48, 7639), (53, 7669), (55, 7684),

Gene: Alexphander_10 Start: 6632, Stop: 6958, Start Num: 17

Candidate Starts for Alexphander_10:

(Start: 17 @6632 has 195 MA's), (Start: 25 @6662 has 64 MA's), (Start: 27 @6677 has 20 MA's), (32, 6710), (34, 6734), (39, 6773), (43, 6806), (53, 6872),

Gene: Alkhayr_43 Start: 22887, Stop: 23294, Start Num: 24

Candidate Starts for Alkhayr_43:

(Start: 19 @22869 has 4 MA's), (Start: 20 @22875 has 1 MA's), (Start: 24 @22887 has 3 MA's), (Start: 27 @22908 has 20 MA's), (50, 23106), (61, 23280),

Gene: Aloeri_10 Start: 6665, Stop: 6961, Start Num: 25

Candidate Starts for Aloeri_10:

(Start: 17 @6635 has 195 MA's), (Start: 25 @6665 has 64 MA's), (Start: 27 @6680 has 20 MA's), (32, 6713), (34, 6737), (39, 6776), (43, 6809), (53, 6875),

Gene: AlpineSix_9 Start: 6778, Stop: 7104, Start Num: 17

Candidate Starts for AlpineSix_9:

(Start: 17 @6778 has 195 MA's), (Start: 27 @6823 has 20 MA's), (32, 6856), (34, 6880), (39, 6919), (43, 6952), (53, 7018),

Gene: Andies_11 Start: 6975, Stop: 7346, Start Num: 25

Candidate Starts for Andies_11:

(7, 6867), (11, 6894), (13, 6909), (Start: 25 @6975 has 64 MA's), (38, 7083), (39, 7101), (42, 7128), (52, 7188), (60, 7296), (63, 7329),

Gene: ArcusAngelus_9 Start: 6771, Stop: 7100, Start Num: 17

Candidate Starts for ArcusAngelus_9:

(Start: 17 @6771 has 195 MA's), (32, 6849), (34, 6873), (39, 6912), (43, 6945), (48, 6981), (53, 7011), (55, 7026),

Gene: Ardmore_9 Start: 6781, Stop: 7110, Start Num: 17

Candidate Starts for Ardmore_9:

(Start: 17 @6781 has 195 MA's), (32, 6859), (34, 6883), (39, 6922), (43, 6955), (48, 6991), (53, 7021), (55, 7036),

Gene: Arib1_12 Start: 7913, Stop: 8290, Start Num: 18

Candidate Starts for Arib1_12:

(8, 7829), (Start: 18 @7913 has 46 MA's), (49, 8126), (54, 8168), (56, 8186),

Gene: Ashwin_46 Start: 22906, Stop: 23292, Start Num: 27

Candidate Starts for Ashwin_46:

(Start: 19 @22867 has 4 MA's), (Start: 20 @22873 has 1 MA's), (Start: 24 @22885 has 3 MA's), (Start: 27 @22906 has 20 MA's), (50, 23104), (61, 23278),

Gene: Atcoo_12 Start: 7900, Stop: 8313, Start Num: 18

Candidate Starts for Atcoo_12:

(8, 7816), (Start: 18 @7900 has 46 MA's), (49, 8113), (54, 8155), (56, 8173),

Gene: Aubs_9 Start: 6781, Stop: 7110, Start Num: 17

Candidate Starts for Aubs_9:

(Start: 17 @6781 has 195 MA's), (32, 6859), (34, 6883), (39, 6922), (43, 6955), (48, 6991), (53, 7021), (55, 7036),

Gene: Awesomesauce_10 Start: 6635, Stop: 6961, Start Num: 17

Candidate Starts for Awesomesauce_10:

(Start: 17 @6635 has 195 MA's), (Start: 25 @6665 has 64 MA's), (Start: 27 @6680 has 20 MA's), (32, 6713), (34, 6737), (39, 6776), (43, 6809), (53, 6875),

Gene: BabeRuth_11 Start: 7020, Stop: 7391, Start Num: 25

Candidate Starts for BabeRuth_11:

(6, 6852), (13, 6951), (16, 6972), (Start: 25 @7020 has 64 MA's), (32, 7083), (38, 7128), (39, 7146), (42, 7173), (49, 7206), (60, 7341), (63, 7374), (64, 7380),

Gene: Babsiella_11 Start: 7921, Stop: 8361, Start Num: 23

Candidate Starts for Babsiella_11:

(4, 7591), (Start: 17 @7900 has 195 MA's), (Start: 23 @7921 has 9 MA's), (34, 8017), (44, 8095), (47, 8122), (65, 8347),

Gene: Bartholomew_12 Start: 7932, Stop: 8309, Start Num: 18

Candidate Starts for Bartholomew_12:

(8, 7848), (Start: 18 @7932 has 46 MA's), (49, 8145), (54, 8187), (56, 8205),

Gene: Batiatus_9 Start: 6781, Stop: 7110, Start Num: 17

Candidate Starts for Batiatus_9:

(Start: 17 @6781 has 195 MA's), (32, 6859), (34, 6883), (39, 6922), (43, 6955), (48, 6991), (53, 7021), (55, 7036),

Gene: Beakin_10 Start: 6635, Stop: 6961, Start Num: 17

Candidate Starts for Beakin_10:

(Start: 17 @6635 has 195 MA's), (Start: 27 @6680 has 20 MA's), (32, 6713), (34, 6737), (39, 6776), (43, 6809), (53, 6875),

Gene: Bhagsy_12 Start: 7903, Stop: 8316, Start Num: 18

Candidate Starts for Bhagsy_12:

(8, 7819), (Start: 18 @7903 has 46 MA's), (49, 8116), (54, 8158), (56, 8176),

Gene: BigNuz_11 Start: 7647, Stop: 8021, Start Num: 18

Candidate Starts for BigNuz_11:

(Start: 18 @7647 has 46 MA's), (49, 7857), (54, 7899), (56, 7917),

Gene: BigPhil_10 Start: 6631, Stop: 6957, Start Num: 17

Candidate Starts for BigPhil_10:

(Start: 17 @6631 has 195 MA's), (Start: 27 @6676 has 20 MA's), (32, 6709), (34, 6733), (39, 6772), (43, 6805), (53, 6871),

Gene: Bipolar_9 Start: 6781, Stop: 7107, Start Num: 17

Candidate Starts for Bipolar_9:

(Start: 17 @6781 has 195 MA's), (32, 6859), (34, 6883), (39, 6922), (43, 6955), (48, 6991), (53, 7021), (55, 7036),

Gene: Blessica_46 Start: 23309, Stop: 23695, Start Num: 27

Candidate Starts for Blessica_46:

(Start: 19 @23270 has 4 MA's), (Start: 20 @23276 has 1 MA's), (Start: 24 @23288 has 3 MA's), (26, 23303), (Start: 27 @23309 has 20 MA's), (50, 23507), (61, 23681),

Gene: Blexus_9 Start: 6795, Stop: 7121, Start Num: 17

Candidate Starts for Blexus_9:

(Start: 17 @6795 has 195 MA's), (Start: 27 @6840 has 20 MA's), (30, 6864), (32, 6873), (34, 6897), (39, 6936), (43, 6969), (53, 7035),

Gene: BlueCrab_9 Start: 6779, Stop: 7105, Start Num: 17

Candidate Starts for BlueCrab_9:

(Start: 17 @6779 has 195 MA's), (Start: 25 @6809 has 64 MA's), (Start: 27 @6824 has 20 MA's), (32, 6857), (34, 6881), (39, 6920), (43, 6953), (53, 7019),

Gene: BobaPhett_9 Start: 6801, Stop: 7097, Start Num: 25

Candidate Starts for BobaPhett_9:

(Start: 17 @6771 has 195 MA's), (Start: 25 @6801 has 64 MA's), (Start: 27 @6816 has 20 MA's), (32, 6849), (34, 6873), (39, 6912), (43, 6945), (53, 7011),

Gene: Bobi_10 Start: 6632, Stop: 6958, Start Num: 17

Candidate Starts for Bobi_10:

(Start: 17 @6632 has 195 MA's), (Start: 25 @6662 has 64 MA's), (Start: 27 @6677 has 20 MA's), (32, 6710), (34, 6734), (39, 6773), (43, 6806), (53, 6872),

Gene: BodEinwohner17_9 Start: 6779, Stop: 7105, Start Num: 17

Candidate Starts for BodEinwohner17_9:

(Start: 17 @6779 has 195 MA's), (Start: 25 @6809 has 64 MA's), (Start: 27 @6824 has 20 MA's), (32, 6857), (34, 6881), (39, 6920), (43, 6953), (53, 7019),

Gene: Bogie_11 Start: 7652, Stop: 8026, Start Num: 18

Candidate Starts for Bogie_11:

(Start: 18 @7652 has 46 MA's), (49, 7862), (54, 7904), (56, 7922),

Gene: Boomer_10 Start: 6632, Stop: 6958, Start Num: 17

Candidate Starts for Boomer_10:

(Start: 17 @6632 has 195 MA's), (Start: 27 @6677 has 20 MA's), (32, 6710), (34, 6734), (39, 6773), (43, 6806), (53, 6872),

Gene: Bora_42 Start: 22320, Stop: 22745, Start Num: 19

Candidate Starts for Bora_42:

(Start: 19 @22320 has 4 MA's), (Start: 20 @22326 has 1 MA's), (Start: 24 @22338 has 3 MA's), (Start: 27 @22359 has 20 MA's), (50, 22557), (61, 22731),

Gene: Bosection6_11 Start: 6975, Stop: 7346, Start Num: 25

Candidate Starts for Bosection6_11:

(7, 6867), (11, 6894), (13, 6909), (Start: 25 @6975 has 64 MA's), (38, 7083), (39, 7101), (42, 7128), (52, 7188), (60, 7296), (63, 7329),

Gene: Brocalys_9 Start: 6768, Stop: 7094, Start Num: 17

Candidate Starts for Brocalys_9:

(Start: 17 @6768 has 195 MA's), (Start: 25 @6798 has 64 MA's), (Start: 27 @6813 has 20 MA's), (32, 6846), (34, 6870), (39, 6909), (43, 6942), (53, 7008),

Gene: Brookers_10 Start: 6631, Stop: 6957, Start Num: 17

Candidate Starts for Brookers_10:

(Start: 17 @6631 has 195 MA's), (Start: 27 @6676 has 20 MA's), (32, 6709), (34, 6733), (39, 6772), (43, 6805), (53, 6871),

Gene: Brujita_11 Start: 7922, Stop: 8362, Start Num: 23

Candidate Starts for Brujita_11:

(1, 7409), (2, 7415), (3, 7445), (4, 7595), (Start: 17 @7901 has 195 MA's), (Start: 23 @7922 has 9 MA's), (34, 8018), (44, 8096), (47, 8123), (65, 8348),

Gene: Brusacoram_12 Start: 7899, Stop: 8312, Start Num: 18

Candidate Starts for Brusacoram_12:
(8, 7815), (Start: 18 @7899 has 46 MA's), (49, 8112), (54, 8154), (56, 8172),

Gene: Brushbloom_11 Start: 6661, Stop: 6957, Start Num: 25
Candidate Starts for Brushbloom_11:
(Start: 17 @6631 has 195 MA's), (Start: 25 @6661 has 64 MA's), (Start: 27 @6676 has 20 MA's), (32, 6709), (34, 6733), (39, 6772), (43, 6805), (53, 6871),

Gene: Bubbles123_9 Start: 6798, Stop: 7124, Start Num: 17
Candidate Starts for Bubbles123_9:
(Start: 17 @6798 has 195 MA's), (Start: 25 @6828 has 64 MA's), (Start: 27 @6843 has 20 MA's), (32, 6876), (34, 6900), (39, 6939), (43, 6972), (53, 7038),

Gene: Bunnies_12 Start: 7912, Stop: 8325, Start Num: 18
Candidate Starts for Bunnies_12:
(8, 7828), (Start: 18 @7912 has 46 MA's), (49, 8125), (54, 8167), (56, 8185),

Gene: Burwell21_9 Start: 6779, Stop: 7105, Start Num: 17
Candidate Starts for Burwell21_9:
(Start: 17 @6779 has 195 MA's), (Start: 25 @6809 has 64 MA's), (Start: 27 @6824 has 20 MA's), (32, 6857), (34, 6881), (39, 6920), (43, 6953), (53, 7019),

Gene: Butters_11 Start: 6995, Stop: 7366, Start Num: 25
Candidate Starts for Butters_11:
(14, 6929), (Start: 25 @6995 has 64 MA's), (32, 7058), (38, 7103), (39, 7121), (40, 7139), (42, 7148), (63, 7349), (64, 7355),

Gene: BuzzLyseyear_10 Start: 6631, Stop: 6957, Start Num: 17
Candidate Starts for BuzzLyseyear_10:
(Start: 17 @6631 has 195 MA's), (Start: 25 @6661 has 64 MA's), (Start: 27 @6676 has 20 MA's), (32, 6709), (34, 6733), (39, 6772), (43, 6805), (53, 6871),

Gene: ByChance_9 Start: 6781, Stop: 7107, Start Num: 17
Candidate Starts for ByChance_9:
(Start: 17 @6781 has 195 MA's), (Start: 25 @6811 has 64 MA's), (Start: 27 @6826 has 20 MA's), (32, 6859), (34, 6883), (39, 6922), (43, 6955), (53, 7021),

Gene: Byougenkin_9 Start: 6769, Stop: 7098, Start Num: 17
Candidate Starts for Byougenkin_9:
(Start: 17 @6769 has 195 MA's), (Start: 25 @6799 has 64 MA's), (Start: 27 @6814 has 20 MA's), (32, 6847), (34, 6871), (39, 6913), (43, 6946), (53, 7012),

Gene: Cabrinians_9 Start: 6801, Stop: 7097, Start Num: 25
Candidate Starts for Cabrinians_9:
(Start: 17 @6771 has 195 MA's), (Start: 25 @6801 has 64 MA's), (Start: 27 @6816 has 20 MA's), (32, 6849), (34, 6873), (39, 6912), (43, 6945), (53, 7011),

Gene: CactusJack_12 Start: 7899, Stop: 8312, Start Num: 18
Candidate Starts for CactusJack_12:
(8, 7815), (Start: 18 @7899 has 46 MA's), (49, 8112), (54, 8154), (56, 8172),

Gene: Camster_12 Start: 7932, Stop: 8309, Start Num: 18
Candidate Starts for Camster_12:

(8, 7848), (Start: 18 @7932 has 46 MA's), (49, 8145), (54, 8187), (56, 8205),

Gene: CaptainTrips_10 Start: 7429, Stop: 7758, Start Num: 17

Candidate Starts for CaptainTrips_10:

(Start: 17 @7429 has 195 MA's), (32, 7507), (34, 7531), (39, 7570), (43, 7603), (48, 7639), (53, 7669), (55, 7684),

Gene: Carcharodon_11 Start: 6975, Stop: 7346, Start Num: 25

Candidate Starts for Carcharodon_11:

(7, 6867), (11, 6894), (13, 6909), (Start: 25 @6975 has 64 MA's), (38, 7083), (39, 7101), (42, 7128), (52, 7188), (60, 7296), (63, 7329),

Gene: Catdawg_45 Start: 22959, Stop: 23384, Start Num: 19

Candidate Starts for Catdawg_45:

(Start: 19 @22959 has 4 MA's), (Start: 20 @22965 has 1 MA's), (Start: 24 @22977 has 3 MA's), (Start: 27 @22998 has 20 MA's), (50, 23196), (61, 23370),

Gene: Cerasum_10 Start: 6631, Stop: 6957, Start Num: 17

Candidate Starts for Cerasum_10:

(Start: 17 @6631 has 195 MA's), (Start: 27 @6676 has 20 MA's), (32, 6709), (34, 6733), (39, 6772), (43, 6805), (53, 6871),

Gene: Charlie_11 Start: 6975, Stop: 7346, Start Num: 25

Candidate Starts for Charlie_11:

(7, 6867), (11, 6894), (13, 6909), (Start: 25 @6975 has 64 MA's), (38, 7083), (39, 7101), (42, 7128), (52, 7188), (60, 7296), (63, 7329),

Gene: Che8_9 Start: 6783, Stop: 7109, Start Num: 17

Candidate Starts for Che8_9:

(Start: 17 @6783 has 195 MA's), (Start: 25 @6813 has 64 MA's), (Start: 27 @6828 has 20 MA's), (32, 6861), (34, 6885), (39, 6924), (43, 6957), (53, 7023),

Gene: Che9c_10 Start: 7526, Stop: 7978, Start Num: 23

Candidate Starts for Che9c_10:

(Start: 17 @7505 has 195 MA's), (Start: 23 @7526 has 9 MA's), (34, 7622), (43, 7697), (44, 7700), (47, 7727), (57, 7838), (60, 7913), (66, 7961),

Gene: Cheesepuff_9 Start: 6811, Stop: 7107, Start Num: 25

Candidate Starts for Cheesepuff_9:

(Start: 17 @6781 has 195 MA's), (Start: 25 @6811 has 64 MA's), (Start: 27 @6826 has 20 MA's), (32, 6859), (34, 6883), (39, 6922), (43, 6955), (53, 7021),

Gene: Chevrolet_9 Start: 6771, Stop: 7100, Start Num: 17

Candidate Starts for Chevrolet_9:

(Start: 17 @6771 has 195 MA's), (32, 6849), (34, 6873), (39, 6912), (43, 6945), (48, 6981), (53, 7011), (55, 7026),

Gene: Chewbacca_11 Start: 6975, Stop: 7346, Start Num: 25

Candidate Starts for Chewbacca_11:

(7, 6867), (11, 6894), (13, 6909), (Start: 25 @6975 has 64 MA's), (38, 7083), (39, 7101), (42, 7128), (52, 7188), (60, 7296), (63, 7329),

Gene: ChickenDinner_10 Start: 6665, Stop: 6961, Start Num: 25

Candidate Starts for ChickenDinner_10:

(Start: 17 @6635 has 195 MA's), (Start: 25 @6665 has 64 MA's), (Start: 27 @6680 has 20 MA's), (32, 6713), (34, 6737), (39, 6776), (43, 6809), (53, 6875),

Gene: Chuckly_9 Start: 6781, Stop: 7110, Start Num: 17

Candidate Starts for Chuckly_9:

(Start: 17 @6781 has 195 MA's), (32, 6859), (34, 6883), (39, 6922), (43, 6955), (48, 6991), (53, 7021), (55, 7036),

Gene: Clifton_9 Start: 6767, Stop: 7093, Start Num: 17

Candidate Starts for Clifton_9:

(Start: 17 @6767 has 195 MA's), (Start: 25 @6797 has 64 MA's), (Start: 27 @6812 has 20 MA's), (32, 6845), (34, 6869), (39, 6908), (43, 6941), (53, 7007),

Gene: Coco12_10 Start: 6632, Stop: 6958, Start Num: 17

Candidate Starts for Coco12_10:

(Start: 17 @6632 has 195 MA's), (Start: 25 @6662 has 64 MA's), (Start: 27 @6677 has 20 MA's), (32, 6710), (34, 6734), (39, 6773), (43, 6806), (53, 6872),

Gene: Corium_9 Start: 6782, Stop: 7111, Start Num: 17

Candidate Starts for Corium_9:

(Start: 17 @6782 has 195 MA's), (32, 6860), (34, 6884), (39, 6923), (43, 6956), (48, 6992), (53, 7022), (55, 7037),

Gene: Corndog_47 Start: 23417, Stop: 23842, Start Num: 19

Candidate Starts for Corndog_47:

(Start: 19 @23417 has 4 MA's), (Start: 20 @23423 has 1 MA's), (Start: 24 @23435 has 3 MA's), (Start: 27 @23456 has 20 MA's), (50, 23654), (61, 23828),

Gene: Cornie_10 Start: 7003, Stop: 7410, Start Num: 21

Candidate Starts for Cornie_10:

(10, 6928), (Start: 21 @7003 has 1 MA's), (33, 7087), (46, 7198), (48, 7204),

Gene: Cornucopia_10 Start: 6631, Stop: 6960, Start Num: 17

Candidate Starts for Cornucopia_10:

(Start: 17 @6631 has 195 MA's), (32, 6709), (34, 6733), (39, 6772), (43, 6805), (48, 6841), (53, 6871), (55, 6886),

Gene: Crumble_9 Start: 6781, Stop: 7107, Start Num: 17

Candidate Starts for Crumble_9:

(Start: 17 @6781 has 195 MA's), (Start: 25 @6811 has 64 MA's), (Start: 27 @6826 has 20 MA's), (32, 6859), (34, 6883), (39, 6922), (43, 6955), (53, 7021),

Gene: DLane_9 Start: 6782, Stop: 7111, Start Num: 17

Candidate Starts for DLane_9:

(9, 6716), (Start: 17 @6782 has 195 MA's), (32, 6860), (34, 6884), (39, 6923), (43, 6956), (48, 6992), (53, 7022), (55, 7037),

Gene: DRBy19_9 Start: 6795, Stop: 7121, Start Num: 17

Candidate Starts for DRBy19_9:

(Start: 17 @6795 has 195 MA's), (Start: 27 @6840 has 20 MA's), (32, 6873), (34, 6897), (39, 6936), (43, 6969), (53, 7035),

Gene: DaWorst_10 Start: 6633, Stop: 6959, Start Num: 17

Candidate Starts for DaWorst_10:

(Start: 17 @6633 has 195 MA's), (Start: 27 @6678 has 20 MA's), (32, 6711), (34, 6735), (39, 6774), (43, 6807), (53, 6873),

Gene: DaddyRickover_9 Start: 6779, Stop: 7105, Start Num: 17

Candidate Starts for DaddyRickover_9:

(Start: 17 @6779 has 195 MA's), (Start: 25 @6809 has 64 MA's), (Start: 27 @6824 has 20 MA's), (32, 6857), (34, 6881), (39, 6920), (43, 6953), (53, 7019),

Gene: Daenerys_9 Start: 6809, Stop: 7105, Start Num: 25

Candidate Starts for Daenerys_9:

(Start: 17 @6779 has 195 MA's), (Start: 25 @6809 has 64 MA's), (Start: 27 @6824 has 20 MA's), (32, 6857), (34, 6881), (39, 6920), (43, 6953), (53, 7019),

Gene: Dante_9 Start: 6796, Stop: 7122, Start Num: 17

Candidate Starts for Dante_9:

(Start: 17 @6796 has 195 MA's), (Start: 25 @6826 has 64 MA's), (Start: 27 @6841 has 20 MA's), (32, 6874), (34, 6898), (39, 6937), (43, 6970), (53, 7036),

Gene: DeadP_9 Start: 6781, Stop: 7110, Start Num: 17

Candidate Starts for DeadP_9:

(Start: 17 @6781 has 195 MA's), (Start: 25 @6811 has 64 MA's), (32, 6859), (34, 6883), (39, 6922), (43, 6955), (48, 6991), (53, 7021), (55, 7036),

Gene: Deb65_9 Start: 6779, Stop: 7105, Start Num: 17

Candidate Starts for Deb65_9:

(Start: 17 @6779 has 195 MA's), (Start: 25 @6809 has 64 MA's), (Start: 27 @6824 has 20 MA's), (32, 6857), (34, 6881), (39, 6920), (43, 6953), (53, 7019),

Gene: DillTech15_9 Start: 6781, Stop: 7110, Start Num: 17

Candidate Starts for DillTech15_9:

(Start: 17 @6781 has 195 MA's), (32, 6859), (34, 6883), (39, 6922), (43, 6955), (48, 6991), (53, 7021), (55, 7036),

Gene: DirtMcgirt_10 Start: 6634, Stop: 6960, Start Num: 17

Candidate Starts for DirtMcgirt_10:

(Start: 17 @6634 has 195 MA's), (Start: 27 @6679 has 20 MA's), (32, 6712), (34, 6736), (39, 6775), (43, 6808), (53, 6874),

Gene: DoRead_9 Start: 6769, Stop: 7095, Start Num: 17

Candidate Starts for DoRead_9:

(Start: 17 @6769 has 195 MA's), (32, 6847), (34, 6871), (39, 6910), (43, 6943), (48, 6979), (53, 7009), (55, 7024),

Gene: DocMcStuffins_10 Start: 6635, Stop: 6961, Start Num: 17

Candidate Starts for DocMcStuffins_10:

(Start: 17 @6635 has 195 MA's), (Start: 25 @6665 has 64 MA's), (Start: 27 @6680 has 20 MA's), (32, 6713), (34, 6737), (39, 6776), (43, 6809), (53, 6875),

Gene: Donkeykong_9 Start: 6798, Stop: 7124, Start Num: 17

Candidate Starts for Donkeykong_9:

(Start: 17 @6798 has 195 MA's), (Start: 27 @6843 has 20 MA's), (32, 6876), (34, 6900), (39, 6939), (43, 6972), (53, 7038),

Gene: Donovan_12 Start: 7914, Stop: 8291, Start Num: 18

Candidate Starts for Donovan_12:

(8, 7830), (Start: 18 @7914 has 46 MA's), (49, 8127), (54, 8169), (56, 8187),

Gene: Doomphist_9 Start: 6779, Stop: 7105, Start Num: 17

Candidate Starts for Doomphist_9:

(Start: 17 @6779 has 195 MA's), (Start: 25 @6809 has 64 MA's), (Start: 27 @6824 has 20 MA's), (32, 6857), (34, 6881), (39, 6920), (43, 6953), (53, 7019),

Gene: Dorothy_9 Start: 6779, Stop: 7105, Start Num: 17

Candidate Starts for Dorothy_9:

(Start: 17 @6779 has 195 MA's), (Start: 25 @6809 has 64 MA's), (Start: 27 @6824 has 20 MA's), (32, 6857), (34, 6881), (39, 6920), (43, 6953), (53, 7019),

Gene: DosHalletts_10 Start: 6632, Stop: 6958, Start Num: 17

Candidate Starts for DosHalletts_10:

(Start: 17 @6632 has 195 MA's), (Start: 27 @6677 has 20 MA's), (32, 6710), (34, 6734), (39, 6773), (43, 6806), (53, 6872),

Gene: DotProduct_9 Start: 6782, Stop: 7111, Start Num: 17

Candidate Starts for DotProduct_9:

(Start: 17 @6782 has 195 MA's), (32, 6860), (34, 6884), (39, 6923), (43, 6956), (48, 6992), (53, 7022), (55, 7037),

Gene: Doug_9 Start: 6781, Stop: 7107, Start Num: 17

Candidate Starts for Doug_9:

(Start: 17 @6781 has 195 MA's), (Start: 27 @6826 has 20 MA's), (30, 6850), (32, 6859), (34, 6883), (39, 6922), (43, 6955), (53, 7021),

Gene: Drago_10 Start: 6632, Stop: 6958, Start Num: 17

Candidate Starts for Drago_10:

(Start: 17 @6632 has 195 MA's), (Start: 27 @6677 has 20 MA's), (32, 6710), (34, 6734), (39, 6773), (43, 6806), (53, 6872),

Gene: Duplicity_11 Start: 6975, Stop: 7346, Start Num: 25

Candidate Starts for Duplicity_11:

(7, 6867), (11, 6894), (13, 6909), (Start: 25 @6975 has 64 MA's), (38, 7083), (39, 7101), (42, 7128), (52, 7188), (60, 7296), (63, 7329),

Gene: Dylan_44 Start: 22711, Stop: 23097, Start Num: 27

Candidate Starts for Dylan_44:

(Start: 19 @22672 has 4 MA's), (Start: 20 @22678 has 1 MA's), (Start: 24 @22690 has 3 MA's), (Start: 27 @22711 has 20 MA's), (50, 22909), (61, 23083),

Gene: Dynamo_12 Start: 7932, Stop: 8309, Start Num: 18

Candidate Starts for Dynamo_12:

(8, 7848), (Start: 18 @7932 has 46 MA's), (49, 8145), (54, 8187), (56, 8205),

Gene: EGUunicorn_11 Start: 6975, Stop: 7346, Start Num: 25

Candidate Starts for EGUunicorn_11:

(7, 6867), (11, 6894), (13, 6909), (Start: 25 @6975 has 64 MA's), (38, 7083), (39, 7101), (42, 7128), (52, 7188), (60, 7296), (63, 7329),

Gene: Eish_9 Start: 6769, Stop: 7095, Start Num: 17

Candidate Starts for Eish_9:

(Start: 17 @6769 has 195 MA's), (Start: 25 @6799 has 64 MA's), (Start: 27 @6814 has 20 MA's), (32, 6847), (34, 6871), (39, 6910), (43, 6943), (48, 6979), (53, 7009), (55, 7024),

Gene: EleanorGeorge_9 Start: 6781, Stop: 7110, Start Num: 17

Candidate Starts for EleanorGeorge_9:

(Start: 17 @6781 has 195 MA's), (32, 6859), (34, 6883), (39, 6922), (43, 6955), (48, 6991), (53, 7021), (55, 7036),

Gene: EmiMonkey_9 Start: 6826, Stop: 7122, Start Num: 25

Candidate Starts for EmiMonkey_9:

(Start: 17 @6796 has 195 MA's), (Start: 25 @6826 has 64 MA's), (Start: 27 @6841 has 20 MA's), (30, 6865), (32, 6874), (34, 6898), (39, 6937), (43, 6970), (53, 7036),

Gene: Emma_9 Start: 6781, Stop: 7110, Start Num: 17

Candidate Starts for Emma_9:

(Start: 17 @6781 has 195 MA's), (Start: 25 @6811 has 64 MA's), (32, 6859), (34, 6883), (39, 6922), (43, 6955), (48, 6991), (53, 7021), (55, 7036),

Gene: Emmaloid_11 Start: 6663, Stop: 6959, Start Num: 25

Candidate Starts for Emmaloid_11:

(Start: 17 @6633 has 195 MA's), (Start: 25 @6663 has 64 MA's), (Start: 27 @6678 has 20 MA's), (30, 6702), (32, 6711), (34, 6735), (39, 6774), (43, 6807), (53, 6873),

Gene: Empress_9 Start: 6779, Stop: 7105, Start Num: 17

Candidate Starts for Empress_9:

(Start: 17 @6779 has 195 MA's), (Start: 25 @6809 has 64 MA's), (Start: 27 @6824 has 20 MA's), (32, 6857), (34, 6881), (39, 6920), (43, 6953), (53, 7019),

Gene: Enby_10 Start: 6632, Stop: 6958, Start Num: 17

Candidate Starts for Enby_10:

(Start: 17 @6632 has 195 MA's), (Start: 27 @6677 has 20 MA's), (32, 6710), (34, 6734), (39, 6773), (43, 6806), (53, 6872),

Gene: Eradicator_9 Start: 6780, Stop: 7106, Start Num: 17

Candidate Starts for Eradicator_9:

(Start: 17 @6780 has 195 MA's), (Start: 25 @6810 has 64 MA's), (Start: 27 @6825 has 20 MA's), (32, 6858), (34, 6882), (39, 6921), (43, 6954), (53, 7020),

Gene: Estave1_9 Start: 6781, Stop: 7107, Start Num: 17

Candidate Starts for Estave1_9:

(Start: 17 @6781 has 195 MA's), (Start: 27 @6826 has 20 MA's), (32, 6859), (34, 6883), (39, 6922), (43, 6955), (53, 7021),

Gene: Etoile_12 Start: 7932, Stop: 8309, Start Num: 18

Candidate Starts for Etoile_12:

(8, 7848), (Start: 18 @7932 has 46 MA's), (49, 8145), (54, 8187), (56, 8205),

Gene: Familton_46 Start: 23002, Stop: 23388, Start Num: 27

Candidate Starts for Familton_46:

(Start: 19 @22963 has 4 MA's), (Start: 20 @22969 has 1 MA's), (Start: 24 @22981 has 3 MA's), (26, 22996), (Start: 27 @23002 has 20 MA's), (50, 23200), (61, 23374),

Gene: Fancypants_9 Start: 6813, Stop: 7109, Start Num: 25

Candidate Starts for Fancypants_9:

(Start: 17 @6783 has 195 MA's), (Start: 25 @6813 has 64 MA's), (Start: 27 @6828 has 20 MA's), (32, 6861), (34, 6885), (39, 6924), (43, 6957), (53, 7023), (55, 7038),

Gene: Fastidio_9 Start: 6782, Stop: 7108, Start Num: 17

Candidate Starts for Fastidio_9:

(Start: 17 @6782 has 195 MA's), (Start: 25 @6812 has 64 MA's), (Start: 27 @6827 has 20 MA's), (32, 6860), (34, 6884), (39, 6923), (43, 6956), (53, 7022),

Gene: Filuzino_9 Start: 6782, Stop: 7111, Start Num: 17

Candidate Starts for Filuzino_9:

(Start: 17 @6782 has 195 MA's), (32, 6860), (34, 6884), (39, 6923), (43, 6956), (48, 6992), (53, 7022), (55, 7037),

Gene: Firecracker_45 Start: 22570, Stop: 22995, Start Num: 19

Candidate Starts for Firecracker_45:

(Start: 19 @22570 has 4 MA's), (Start: 20 @22576 has 1 MA's), (Start: 24 @22588 has 3 MA's), (Start: 27 @22609 has 20 MA's), (50, 22807), (61, 22981),

Gene: Firehouse51_9 Start: 6781, Stop: 7110, Start Num: 17

Candidate Starts for Firehouse51_9:

(Start: 17 @6781 has 195 MA's), (32, 6859), (34, 6883), (39, 6922), (43, 6955), (48, 6991), (53, 7021), (55, 7036),

Gene: FirstPlacePfu_12 Start: 7932, Stop: 8309, Start Num: 18

Candidate Starts for FirstPlacePfu_12:

(8, 7848), (Start: 18 @7932 has 46 MA's), (49, 8145), (54, 8187), (56, 8205),

Gene: Fishburne_12 Start: 7932, Stop: 8309, Start Num: 18

Candidate Starts for Fishburne_12:

(8, 7848), (Start: 18 @7932 has 46 MA's), (49, 8145), (54, 8187), (56, 8205),

Gene: Flathead_10 Start: 6631, Stop: 6957, Start Num: 17

Candidate Starts for Flathead_10:

(Start: 17 @6631 has 195 MA's), (Start: 25 @6661 has 64 MA's), (Start: 27 @6676 has 20 MA's), (32, 6709), (34, 6733), (39, 6772), (43, 6805), (53, 6871),

Gene: Florinda_9 Start: 6799, Stop: 7125, Start Num: 17

Candidate Starts for Florinda_9:

(Start: 17 @6799 has 195 MA's), (Start: 25 @6829 has 64 MA's), (Start: 27 @6844 has 20 MA's), (32, 6877), (34, 6901), (39, 6940), (43, 6973), (53, 7039),

Gene: FoulBall_45 Start: 22996, Stop: 23382, Start Num: 27

Candidate Starts for FoulBall_45:

(Start: 19 @22957 has 4 MA's), (Start: 20 @22963 has 1 MA's), (Start: 24 @22975 has 3 MA's), (Start: 27 @22996 has 20 MA's), (50, 23194), (61, 23368),

Gene: Frankie_10 Start: 6855, Stop: 7151, Start Num: 25

Candidate Starts for Frankie_10:

(Start: 17 @6825 has 195 MA's), (Start: 25 @6855 has 64 MA's), (Start: 27 @6870 has 20 MA's), (32, 6903), (34, 6927), (39, 6966), (43, 6999), (53, 7065),

Gene: FreddyB_9 Start: 6780, Stop: 7106, Start Num: 17

Candidate Starts for FreddyB_9:

(Start: 17 @6780 has 195 MA's), (Start: 25 @6810 has 64 MA's), (Start: 27 @6825 has 20 MA's), (32, 6858), (34, 6882), (39, 6921), (43, 6954), (53, 7020),

Gene: Fruitloop_9 Start: 6782, Stop: 7111, Start Num: 17

Candidate Starts for Fruitloop_9:

(Start: 17 @6782 has 195 MA's), (32, 6860), (34, 6884), (39, 6923), (43, 6956), (48, 6992), (53, 7022), (55, 7037),

Gene: Fulbright_11 Start: 6975, Stop: 7346, Start Num: 25

Candidate Starts for Fulbright_11:

(7, 6867), (11, 6894), (13, 6909), (Start: 25 @6975 has 64 MA's), (38, 7083), (39, 7101), (42, 7128), (52, 7188), (60, 7296), (63, 7329),

Gene: GUmbie_9 Start: 6796, Stop: 7122, Start Num: 17

Candidate Starts for GUmbie_9:

(Start: 17 @6796 has 195 MA's), (Start: 27 @6841 has 20 MA's), (32, 6874), (34, 6898), (39, 6937), (43, 6970), (53, 7036),

Gene: Galactic_9 Start: 6755, Stop: 7084, Start Num: 17

Candidate Starts for Galactic_9:

(Start: 17 @6755 has 195 MA's), (32, 6833), (34, 6857), (39, 6896), (43, 6929), (48, 6965), (53, 6995), (55, 7010),

Gene: Gandalph_9 Start: 6796, Stop: 7122, Start Num: 17

Candidate Starts for Gandalph_9:

(Start: 17 @6796 has 195 MA's), (Start: 25 @6826 has 64 MA's), (Start: 27 @6841 has 20 MA's), (32, 6874), (34, 6898), (39, 6937), (43, 6970), (53, 7036),

Gene: Gavriela_12 Start: 7899, Stop: 8312, Start Num: 18

Candidate Starts for Gavriela_12:

(8, 7815), (Start: 18 @7899 has 46 MA's), (49, 8112), (54, 8154), (56, 8172),

Gene: Geralt_9 Start: 6779, Stop: 7105, Start Num: 17

Candidate Starts for Geralt_9:

(Start: 17 @6779 has 195 MA's), (Start: 25 @6809 has 64 MA's), (Start: 27 @6824 has 20 MA's), (32, 6857), (34, 6881), (39, 6920), (43, 6953), (53, 7019),

Gene: Gex_11 Start: 6975, Stop: 7346, Start Num: 25

Candidate Starts for Gex_11:

(7, 6867), (11, 6894), (13, 6909), (Start: 25 @6975 has 64 MA's), (38, 7083), (39, 7101), (42, 7128), (52, 7188), (60, 7296), (63, 7329),

Gene: GigiOuiOui_9 Start: 6796, Stop: 7122, Start Num: 17

Candidate Starts for GigiOuiOui_9:

(Start: 17 @6796 has 195 MA's), (Start: 25 @6826 has 64 MA's), (Start: 27 @6841 has 20 MA's), (30, 6865), (32, 6874), (34, 6898), (39, 6937), (43, 6970), (53, 7036),

Gene: Girafales_10 Start: 6627, Stop: 6953, Start Num: 17

Candidate Starts for Girafales_10:

(Start: 17 @6627 has 195 MA's), (Start: 27 @6672 has 20 MA's), (32, 6705), (34, 6729), (39, 6768), (43, 6801), (53, 6867),

Gene: Girr_9 Start: 6785, Stop: 7111, Start Num: 17

Candidate Starts for Girr_9:

(Start: 17 @6785 has 195 MA's), (Start: 25 @6815 has 64 MA's), (Start: 27 @6830 has 20 MA's), (32, 6863), (34, 6887), (39, 6926), (43, 6959), (53, 7025),

Gene: Glaske_12 Start: 7899, Stop: 8312, Start Num: 18

Candidate Starts for Glaske_12:

(8, 7815), (Start: 18 @7899 has 46 MA's), (49, 8112), (54, 8154), (56, 8172),

Gene: Gorge_9 Start: 6798, Stop: 7094, Start Num: 25

Candidate Starts for Gorge_9:

(Start: 17 @6768 has 195 MA's), (Start: 25 @6798 has 64 MA's), (Start: 27 @6813 has 20 MA's), (32, 6846), (34, 6870), (39, 6909), (43, 6942), (53, 7008),

Gene: GreaseLightnin_12 Start: 7932, Stop: 8309, Start Num: 18

Candidate Starts for GreaseLightnin_12:

(8, 7848), (Start: 18 @7932 has 46 MA's), (49, 8145), (54, 8187), (56, 8205),

Gene: Grimmer_10 Start: 7464, Stop: 7760, Start Num: 25

Candidate Starts for Grimmer_10:

(Start: 17 @7434 has 195 MA's), (Start: 25 @7464 has 64 MA's), (Start: 27 @7479 has 20 MA's), (32, 7512), (34, 7536), (39, 7575), (43, 7608), (53, 7674),

Gene: Guppsters_9 Start: 6781, Stop: 7107, Start Num: 17

Candidate Starts for Guppsters_9:

(Start: 17 @6781 has 195 MA's), (32, 6859), (34, 6883), (39, 6922), (43, 6955), (48, 6991), (53, 7021), (55, 7036),

Gene: HC_11 Start: 7921, Stop: 8361, Start Num: 23

Candidate Starts for HC_11:

(4, 7594), (Start: 17 @7900 has 195 MA's), (Start: 23 @7921 has 9 MA's), (34, 8017), (44, 8095), (47, 8122), (65, 8347),

Gene: HUHilltop_12 Start: 7932, Stop: 8309, Start Num: 18

Candidate Starts for HUHilltop_12:

(8, 7848), (Start: 18 @7932 has 46 MA's), (49, 8145), (54, 8187), (56, 8205),

Gene: Hades_9 Start: 6782, Stop: 7108, Start Num: 17

Candidate Starts for Hades_9:

(Start: 17 @6782 has 195 MA's), (Start: 27 @6827 has 20 MA's), (32, 6860), (34, 6884), (39, 6923), (43, 6956), (53, 7022),

Gene: Hamulus_9 Start: 6782, Stop: 7111, Start Num: 17

Candidate Starts for Hamulus_9:

(Start: 17 @6782 has 195 MA's), (32, 6860), (34, 6884), (39, 6923), (43, 6956), (48, 6992), (53, 7022), (55, 7037),

Gene: Hanako_11 Start: 7020, Stop: 7391, Start Num: 25

Candidate Starts for Hanako_11:

(6, 6852), (13, 6951), (16, 6972), (Start: 25 @7020 has 64 MA's), (32, 7083), (38, 7128), (39, 7146), (42, 7173), (49, 7206), (60, 7341), (63, 7374), (64, 7380),

Gene: Harley_9 Start: 6799, Stop: 7095, Start Num: 25

Candidate Starts for Harley_9:

(Start: 17 @6769 has 195 MA's), (Start: 25 @6799 has 64 MA's), (Start: 27 @6814 has 20 MA's), (32, 6847), (34, 6871), (39, 6910), (43, 6943), (48, 6979), (53, 7009), (55, 7024),

Gene: Hegedechwinu_10 Start: 6631, Stop: 6957, Start Num: 17

Candidate Starts for Hegedechwinu_10:

(Start: 17 @6631 has 195 MA's), (Start: 25 @6661 has 64 MA's), (Start: 27 @6676 has 20 MA's), (32, 6709), (34, 6733), (39, 6772), (43, 6805), (53, 6871),

Gene: Hlubikazi_9 Start: 6769, Stop: 7095, Start Num: 17

Candidate Starts for Hlubikazi_9:

(Start: 17 @6769 has 195 MA's), (Start: 27 @6814 has 20 MA's), (32, 6847), (34, 6871), (39, 6910), (43, 6943), (53, 7009),

Gene: IMpilo_9 Start: 6769, Stop: 7098, Start Num: 17

Candidate Starts for IMpilo_9:

(Start: 17 @6769 has 195 MA's), (32, 6847), (34, 6871), (39, 6910), (43, 6943), (48, 6979), (53, 7009), (55, 7024),

Gene: IbOuu_9 Start: 6808, Stop: 7104, Start Num: 25

Candidate Starts for IbOuu_9:

(Start: 17 @6778 has 195 MA's), (Start: 25 @6808 has 64 MA's), (Start: 27 @6823 has 20 MA's), (32, 6856), (34, 6880), (39, 6919), (43, 6952), (53, 7018),

Gene: Ibhubesi_9 Start: 6769, Stop: 7095, Start Num: 17

Candidate Starts for Ibhubesi_9:

(Start: 17 @6769 has 195 MA's), (Start: 25 @6799 has 64 MA's), (Start: 27 @6814 has 20 MA's), (32, 6847), (34, 6871), (39, 6910), (43, 6943), (48, 6979), (53, 7009), (55, 7024),

Gene: Idergollasper_45 Start: 22975, Stop: 23382, Start Num: 24

Candidate Starts for Idergollasper_45:

(Start: 19 @22957 has 4 MA's), (Start: 20 @22963 has 1 MA's), (Start: 24 @22975 has 3 MA's), (Start: 27 @22996 has 20 MA's), (50, 23194), (61, 23368),

Gene: Inventum_9 Start: 6779, Stop: 7105, Start Num: 17

Candidate Starts for Inventum_9:

(Start: 17 @6779 has 195 MA's), (Start: 25 @6809 has 64 MA's), (Start: 27 @6824 has 20 MA's), (32, 6857), (34, 6881), (39, 6920), (43, 6953), (53, 7019),

Gene: IrishSherpFalk_9 Start: 6767, Stop: 7093, Start Num: 17

Candidate Starts for IrishSherpFalk_9:

(Start: 17 @6767 has 195 MA's), (32, 6845), (34, 6869), (39, 6908), (43, 6941), (53, 7007), (55, 7022),

Gene: Island3_11 Start: 7922, Stop: 8362, Start Num: 23

Candidate Starts for Island3_11:

(1, 7409), (2, 7415), (3, 7445), (4, 7595), (Start: 17 @7901 has 195 MA's), (Start: 23 @7922 has 9 MA's), (34, 8018), (44, 8096), (47, 8123), (65, 8348),

Gene: JalFarm20_10 Start: 6632, Stop: 6958, Start Num: 17

Candidate Starts for JalFarm20_10:

(Start: 17 @6632 has 195 MA's), (Start: 25 @6662 has 64 MA's), (Start: 27 @6677 has 20 MA's), (32, 6710), (34, 6734), (39, 6773), (43, 6806), (53, 6872),

Gene: James_9 Start: 6801, Stop: 7097, Start Num: 25

Candidate Starts for James_9:

(Start: 17 @6771 has 195 MA's), (Start: 25 @6801 has 64 MA's), (Start: 27 @6816 has 20 MA's), (32, 6849), (34, 6873), (39, 6912), (43, 6945), (53, 7011),

Gene: Jamie19_11 Start: 7020, Stop: 7391, Start Num: 25

Candidate Starts for Jamie19_11:

(6, 6852), (13, 6951), (16, 6972), (Start: 25 @7020 has 64 MA's), (32, 7083), (38, 7128), (39, 7146), (42, 7173), (49, 7206), (60, 7341), (63, 7374), (64, 7380),

Gene: JangDynasty_45 Start: 23091, Stop: 23477, Start Num: 27

Candidate Starts for JangDynasty_45:

(Start: 19 @23052 has 4 MA's), (Start: 20 @23058 has 1 MA's), (Start: 24 @23070 has 3 MA's), (26, 23085), (Start: 27 @23091 has 20 MA's), (50, 23289), (61, 23463),

Gene: Jant_9 Start: 6781, Stop: 7110, Start Num: 17

Candidate Starts for Jant_9:

(9, 6715), (Start: 17 @6781 has 195 MA's), (32, 6859), (34, 6883), (39, 6922), (43, 6955), (48, 6991), (53, 7021), (55, 7036),

Gene: Jacob_9 Start: 6780, Stop: 7106, Start Num: 17

Candidate Starts for Jacob_9:

(Start: 17 @6780 has 195 MA's), (Start: 25 @6810 has 64 MA's), (Start: 27 @6825 has 20 MA's), (32, 6858), (34, 6882), (39, 6921), (43, 6954), (53, 7020),

Gene: Jebeks_12 Start: 7913, Stop: 8290, Start Num: 18

Candidate Starts for Jebeks_12:

(8, 7829), (Start: 18 @7913 has 46 MA's), (49, 8126), (54, 8168), (56, 8186),

Gene: Jinglebell_9 Start: 6778, Stop: 7104, Start Num: 17

Candidate Starts for Jinglebell_9:

(Start: 17 @6778 has 195 MA's), (Start: 27 @6823 has 20 MA's), (32, 6856), (34, 6880), (39, 6919), (43, 6952), (53, 7018),

Gene: Job42_10 Start: 6632, Stop: 6958, Start Num: 17

Candidate Starts for Job42_10:

(Start: 17 @6632 has 195 MA's), (Start: 25 @6662 has 64 MA's), (Start: 27 @6677 has 20 MA's), (32, 6710), (34, 6734), (39, 6773), (43, 6806), (53, 6872),

Gene: JoeyJr_9 Start: 6779, Stop: 7105, Start Num: 17

Candidate Starts for JoeyJr_9:

(Start: 17 @6779 has 195 MA's), (Start: 25 @6809 has 64 MA's), (Start: 27 @6824 has 20 MA's), (32, 6857), (34, 6881), (39, 6920), (43, 6953), (53, 7019),

Gene: Journey_11 Start: 6975, Stop: 7346, Start Num: 25

Candidate Starts for Journey_11:

(7, 6867), (11, 6894), (13, 6909), (Start: 25 @6975 has 64 MA's), (38, 7083), (39, 7101), (42, 7128), (52, 7188), (60, 7296), (63, 7329),

Gene: Juice456_10 Start: 6633, Stop: 6959, Start Num: 17

Candidate Starts for Juice456_10:

(Start: 17 @6633 has 195 MA's), (Start: 27 @6678 has 20 MA's), (32, 6711), (34, 6735), (39, 6774), (43, 6807), (53, 6873),

Gene: Jung_12 Start: 7923, Stop: 8336, Start Num: 18

Candidate Starts for Jung_12:

(8, 7839), (Start: 18 @7923 has 46 MA's), (49, 8136), (54, 8178), (56, 8196),

Gene: Juniormint_12 Start: 7916, Stop: 8329, Start Num: 18

Candidate Starts for Juniormint_12:

(8, 7832), (Start: 18 @7916 has 46 MA's), (49, 8129), (54, 8171), (56, 8189),

Gene: Juniper1_9 Start: 6771, Stop: 7097, Start Num: 17

Candidate Starts for Juniper1_9:

(Start: 17 @6771 has 195 MA's), (Start: 27 @6816 has 20 MA's), (32, 6849), (34, 6873), (39, 6912), (43, 6945), (53, 7011),

Gene: Karhdo_9 Start: 6783, Stop: 7109, Start Num: 17

Candidate Starts for Karhdo_9:

(Start: 17 @6783 has 195 MA's), (Start: 27 @6828 has 20 MA's), (32, 6861), (34, 6885), (39, 6924), (43, 6957), (53, 7023),

Gene: Kari_12 Start: 7932, Stop: 8309, Start Num: 18

Candidate Starts for Kari_12:

(8, 7848), (Start: 18 @7932 has 46 MA's), (49, 8145), (54, 8187), (56, 8205),

Gene: Kenuha5_9 Start: 6781, Stop: 7107, Start Num: 17

Candidate Starts for Kenuha5_9:

(Start: 17 @6781 has 195 MA's), (32, 6859), (34, 6883), (39, 6922), (43, 6955), (48, 6991), (53, 7021), (55, 7036),

Gene: Kersh_9 Start: 6772, Stop: 7098, Start Num: 17

Candidate Starts for Kersh_9:

(Start: 17 @6772 has 195 MA's), (Start: 25 @6802 has 64 MA's), (Start: 27 @6817 has 20 MA's), (32, 6850), (34, 6874), (39, 6913), (43, 6946), (53, 7012),

Gene: Kevin1_11 Start: 6995, Stop: 7366, Start Num: 25

Candidate Starts for Kevin1_11:

(14, 6929), (Start: 25 @6995 has 64 MA's), (32, 7058), (38, 7103), (39, 7121), (40, 7139), (42, 7148), (63, 7349), (64, 7355),

Gene: KilKor_12 Start: 7899, Stop: 8312, Start Num: 18

Candidate Starts for KilKor_12:

(8, 7815), (Start: 18 @7899 has 46 MA's), (49, 8112), (54, 8154), (56, 8172),

Gene: Kimberlium_10 Start: 6633, Stop: 6959, Start Num: 17

Candidate Starts for Kimberlium_10:

(Start: 17 @6633 has 195 MA's), (Start: 27 @6678 has 20 MA's), (32, 6711), (34, 6735), (39, 6774), (43, 6807), (53, 6873),

Gene: KingJulian_9 Start: 6782, Stop: 7111, Start Num: 17

Candidate Starts for KingJulian_9:

(Start: 17 @6782 has 195 MA's), (32, 6860), (34, 6884), (39, 6923), (43, 6956), (48, 6992), (53, 7022), (55, 7037),

Gene: KingMidas_9 Start: 6809, Stop: 7105, Start Num: 25

Candidate Starts for KingMidas_9:

(Start: 17 @6779 has 195 MA's), (Start: 25 @6809 has 64 MA's), (Start: 27 @6824 has 20 MA's), (32, 6857), (34, 6881), (39, 6920), (43, 6953), (53, 7019),

Gene: KingPhillip3_44 Start: 22975, Stop: 23382, Start Num: 24

Candidate Starts for KingPhillip3_44:

(Start: 19 @22957 has 4 MA's), (Start: 20 @22963 has 1 MA's), (Start: 24 @22975 has 3 MA's), (Start: 27 @22996 has 20 MA's), (50, 23194), (61, 23368),

Gene: Kingsley_10 Start: 6631, Stop: 6957, Start Num: 17

Candidate Starts for Kingsley_10:

(Start: 17 @6631 has 195 MA's), (Start: 27 @6676 has 20 MA's), (32, 6709), (34, 6733), (39, 6772), (43, 6805), (53, 6871),

Gene: Koella_9 Start: 6779, Stop: 7105, Start Num: 17

Candidate Starts for Koella_9:

(Start: 17 @6779 has 195 MA's), (Start: 25 @6809 has 64 MA's), (Start: 27 @6824 has 20 MA's), (32, 6857), (34, 6881), (39, 6920), (43, 6953), (53, 7019),

Gene: Krakatau_10 Start: 7433, Stop: 7762, Start Num: 17

Candidate Starts for Krakatau_10:

(Start: 17 @7433 has 195 MA's), (32, 7511), (34, 7535), (39, 7574), (43, 7607), (48, 7643), (53, 7673), (55, 7688),

Gene: Krili_44 Start: 22713, Stop: 23099, Start Num: 27

Candidate Starts for Krili_44:

(Start: 19 @22674 has 4 MA's), (Start: 20 @22680 has 1 MA's), (Start: 24 @22692 has 3 MA's), (Start: 27 @22713 has 20 MA's), (50, 22911), (61, 23085),

Gene: KristaRAM_10 Start: 7429, Stop: 7758, Start Num: 17

Candidate Starts for KristaRAM_10:

(9, 7363), (Start: 17 @7429 has 195 MA's), (32, 7507), (34, 7531), (39, 7570), (43, 7603), (48, 7639), (53, 7669), (55, 7684),

Gene: Ksquared_12 Start: 7912, Stop: 8325, Start Num: 18

Candidate Starts for Ksquared_12:

(8, 7828), (Start: 18 @7912 has 46 MA's), (49, 8125), (54, 8167), (56, 8185),

Gene: Langerak_12 Start: 7913, Stop: 8290, Start Num: 18

Candidate Starts for Langerak_12:

(8, 7829), (Start: 18 @7913 has 46 MA's), (49, 8126), (54, 8168), (56, 8186),

Gene: LastJedi_9 Start: 6801, Stop: 7097, Start Num: 25

Candidate Starts for LastJedi_9:

(Start: 17 @6771 has 195 MA's), (Start: 25 @6801 has 64 MA's), (Start: 27 @6816 has 20 MA's), (32, 6849), (34, 6873), (39, 6912), (43, 6945), (53, 7011),

Gene: Latretium_9 Start: 6768, Stop: 7094, Start Num: 17

Candidate Starts for Latretium_9:

(Start: 17 @6768 has 195 MA's), (Start: 25 @6798 has 64 MA's), (Start: 27 @6813 has 20 MA's), (32, 6846), (34, 6870), (39, 6909), (43, 6942), (53, 7008),

Gene: Leozinho_10 Start: 6632, Stop: 6958, Start Num: 17

Candidate Starts for Leozinho_10:

(Start: 17 @6632 has 195 MA's), (Start: 27 @6677 has 20 MA's), (32, 6710), (34, 6734), (39, 6773), (43, 6806), (53, 6872),

Gene: Leperchaun_9 Start: 6768, Stop: 7094, Start Num: 17

Candidate Starts for Leperchaun_9:

(Start: 17 @6768 has 195 MA's), (Start: 25 @6798 has 64 MA's), (Start: 27 @6813 has 20 MA's), (32, 6846), (34, 6870), (39, 6909), (43, 6942), (53, 7008),

Gene: LilMoolah_9 Start: 6780, Stop: 7106, Start Num: 17

Candidate Starts for LilMoolah_9:

(Start: 17 @6780 has 195 MA's), (Start: 25 @6810 has 64 MA's), (Start: 27 @6825 has 20 MA's), (32, 6858), (34, 6882), (39, 6921), (43, 6954), (53, 7020),

Gene: LittleShirley_10 Start: 6633, Stop: 6959, Start Num: 17

Candidate Starts for LittleShirley_10:

(Start: 17 @6633 has 195 MA's), (Start: 27 @6678 has 20 MA's), (30, 6702), (32, 6711), (34, 6735), (39, 6774), (43, 6807), (53, 6873),

Gene: Lizziana_9 Start: 6811, Stop: 7107, Start Num: 25

Candidate Starts for Lizziana_9:

(Start: 17 @6781 has 195 MA's), (Start: 25 @6811 has 64 MA's), (Start: 27 @6826 has 20 MA's), (32, 6859), (34, 6883), (39, 6922), (43, 6955), (53, 7021),

Gene: Llama_9 Start: 6778, Stop: 7104, Start Num: 17

Candidate Starts for Llama_9:

(Start: 17 @6778 has 195 MA's), (Start: 27 @6823 has 20 MA's), (32, 6856), (34, 6880), (39, 6919), (43, 6952), (53, 7018),

Gene: Llij_9 Start: 6796, Stop: 7122, Start Num: 17

Candidate Starts for Llij_9:

(Start: 17 @6796 has 195 MA's), (Start: 25 @6826 has 64 MA's), (Start: 27 @6841 has 20 MA's), (32, 6874), (39, 6937), (43, 6970), (53, 7036),

Gene: Lorde_10 Start: 6632, Stop: 6958, Start Num: 17

Candidate Starts for Lorde_10:

(Start: 17 @6632 has 195 MA's), (Start: 27 @6677 has 20 MA's), (32, 6710), (34, 6734), (39, 6773), (43, 6806), (53, 6872),

Gene: LunaBlu_9 Start: 6755, Stop: 7084, Start Num: 17

Candidate Starts for LunaBlu_9:

(Start: 17 @6755 has 195 MA's), (32, 6833), (34, 6857), (39, 6896), (43, 6929), (48, 6965), (53, 6995), (55, 7010),

Gene: LunaStella_10 Start: 7232, Stop: 7546, Start Num: 22

Candidate Starts for LunaStella_10:

(15, 7193), (Start: 22 @7232 has 4 MA's), (30, 7283), (33, 7304), (34, 7316), (43, 7391), (53, 7457), (55, 7472),

Gene: MadKillah_46 Start: 22935, Stop: 23321, Start Num: 27

Candidate Starts for MadKillah_46:

(Start: 19 @22896 has 4 MA's), (Start: 20 @22902 has 1 MA's), (Start: 24 @22914 has 3 MA's), (Start: 27 @22935 has 20 MA's), (50, 23133), (61, 23307),

Gene: MadMen_9 Start: 6795, Stop: 7121, Start Num: 17

Candidate Starts for MadMen_9:

(Start: 17 @6795 has 195 MA's), (Start: 27 @6840 has 20 MA's), (32, 6873), (34, 6897), (39, 6936), (43, 6969), (53, 7035),

Gene: Madiba_10 Start: 6630, Stop: 6956, Start Num: 17

Candidate Starts for Madiba_10:

(Start: 17 @6630 has 195 MA's), (Start: 27 @6675 has 20 MA's), (32, 6708), (34, 6732), (39, 6771), (43, 6804), (53, 6870),

Gene: Magsby_11 Start: 6975, Stop: 7346, Start Num: 25

Candidate Starts for Magsby_11:

(7, 6867), (11, 6894), (13, 6909), (Start: 25 @6975 has 64 MA's), (38, 7083), (39, 7101), (42, 7128), (52, 7188), (60, 7296), (63, 7329),

Gene: Mahavrat_9 Start: 6768, Stop: 7094, Start Num: 17

Candidate Starts for Mahavrat_9:

(Start: 17 @6768 has 195 MA's), (Start: 25 @6798 has 64 MA's), (Start: 27 @6813 has 20 MA's), (32, 6846), (34, 6870), (39, 6909), (43, 6942), (53, 7008),

Gene: Majeke_12 Start: 7913, Stop: 8290, Start Num: 18

Candidate Starts for Majeke_12:

(8, 7829), (Start: 18 @7913 has 46 MA's), (49, 8126), (54, 8168), (56, 8186),

Gene: Malithi_12 Start: 7935, Stop: 8348, Start Num: 18

Candidate Starts for Malithi_12:

(8, 7851), (Start: 18 @7935 has 46 MA's), (49, 8148), (54, 8190), (56, 8208),

Gene: Mandlovu_9 Start: 6769, Stop: 7095, Start Num: 17

Candidate Starts for Mandlovu_9:

(Start: 17 @6769 has 195 MA's), (Start: 27 @6814 has 20 MA's), (32, 6847), (34, 6871), (39, 6910), (43, 6943), (53, 7009),

Gene: Mangethe_12 Start: 7913, Stop: 8290, Start Num: 18

Candidate Starts for Mangethe_12:

(8, 7829), (Start: 18 @7913 has 46 MA's), (49, 8126), (54, 8168), (56, 8186),

Gene: Mantra_9 Start: 6826, Stop: 7122, Start Num: 25

Candidate Starts for Mantra_9:

(Start: 17 @6796 has 195 MA's), (Start: 25 @6826 has 64 MA's), (Start: 27 @6841 has 20 MA's), (30, 6865), (32, 6874), (34, 6898), (39, 6937), (43, 6970), (53, 7036),

Gene: Maravista_9 Start: 6769, Stop: 7095, Start Num: 17

Candidate Starts for Maravista_9:

(Start: 17 @6769 has 195 MA's), (Start: 25 @6799 has 64 MA's), (Start: 27 @6814 has 20 MA's), (32, 6847), (34, 6871), (39, 6910), (43, 6943), (53, 7009),

Gene: Marker_10 Start: 6631, Stop: 6957, Start Num: 17

Candidate Starts for Marker_10:

(Start: 17 @6631 has 195 MA's), (Start: 25 @6661 has 64 MA's), (Start: 27 @6676 has 20 MA's), (32, 6709), (34, 6733), (39, 6772), (43, 6805), (53, 6871),

Gene: Martik_9 Start: 6781, Stop: 7107, Start Num: 17

Candidate Starts for Martik_9:

(Start: 17 @6781 has 195 MA's), (Start: 25 @6811 has 64 MA's), (Start: 27 @6826 has 20 MA's), (32, 6859), (34, 6883), (39, 6922), (43, 6955), (53, 7021),

Gene: Mattes_9 Start: 6771, Stop: 7097, Start Num: 17

Candidate Starts for Mattes_9:

(Start: 17 @6771 has 195 MA's), (Start: 25 @6801 has 64 MA's), (Start: 27 @6816 has 20 MA's), (32, 6849), (34, 6873), (39, 6912), (43, 6945), (53, 7011),

Gene: Megiddo_12 Start: 7899, Stop: 8312, Start Num: 18

Candidate Starts for Megiddo_12:

(8, 7815), (Start: 18 @7899 has 46 MA's), (49, 8112), (54, 8154), (56, 8172),

Gene: Melissauren88_9 Start: 6781, Stop: 7110, Start Num: 17

Candidate Starts for Melissauren88_9:

(Start: 17 @6781 has 195 MA's), (32, 6859), (34, 6883), (39, 6922), (43, 6955), (48, 6991), (53, 7021), (55, 7036),

Gene: Melville_11 Start: 6975, Stop: 7346, Start Num: 25

Candidate Starts for Melville_11:

(7, 6867), (11, 6894), (13, 6909), (Start: 25 @6975 has 64 MA's), (38, 7083), (39, 7101), (42, 7128), (52, 7188), (60, 7296), (63, 7329),

Gene: MichelleMyBell_11 Start: 7015, Stop: 7386, Start Num: 25

Candidate Starts for MichelleMyBell_11:

(14, 6949), (Start: 25 @7015 has 64 MA's), (32, 7078), (38, 7123), (39, 7141), (42, 7168), (63, 7369), (64, 7375),

Gene: MilanaBonita_10 Start: 7429, Stop: 7758, Start Num: 17

Candidate Starts for MilanaBonita_10:

(9, 7363), (Start: 17 @7429 has 195 MA's), (32, 7507), (34, 7531), (39, 7570), (43, 7603), (48, 7639), (53, 7669), (55, 7684),

Gene: MilleniumForce_10 Start: 7429, Stop: 7758, Start Num: 17

Candidate Starts for MilleniumForce_10:

(Start: 17 @7429 has 195 MA's), (32, 7507), (34, 7531), (39, 7570), (43, 7603), (48, 7639), (53, 7669), (55, 7684),

Gene: MinionDave_10 Start: 7429, Stop: 7758, Start Num: 17

Candidate Starts for MinionDave_10:

(Start: 17 @7429 has 195 MA's), (32, 7507), (34, 7531), (39, 7570), (43, 7603), (48, 7639), (53, 7669), (55, 7684),

Gene: Minnie_9 Start: 6796, Stop: 7122, Start Num: 17

Candidate Starts for Minnie_9:

(Start: 17 @6796 has 195 MA's), (Start: 25 @6826 has 64 MA's), (Start: 27 @6841 has 20 MA's), (32, 6874), (34, 6898), (39, 6937), (43, 6970), (53, 7036),

Gene: Misha28_10 Start: 6635, Stop: 6961, Start Num: 17

Candidate Starts for Misha28_10:

(Start: 17 @6635 has 195 MA's), (Start: 25 @6665 has 64 MA's), (Start: 27 @6680 has 20 MA's), (32, 6713), (34, 6737), (39, 6776), (43, 6809), (53, 6875),

Gene: MisterCuddles_9 Start: 6785, Stop: 7111, Start Num: 17

Candidate Starts for MisterCuddles_9:

(Start: 17 @6785 has 195 MA's), (Start: 25 @6815 has 64 MA's), (Start: 27 @6830 has 20 MA's), (32, 6863), (34, 6887), (39, 6926), (43, 6959), (53, 7025),

Gene: Modragons_9 Start: 6778, Stop: 7104, Start Num: 17

Candidate Starts for Modragons_9:

(Start: 17 @6778 has 195 MA's), (Start: 27 @6823 has 20 MA's), (32, 6856), (34, 6880), (39, 6919), (43, 6952), (53, 7018),

Gene: MooMoo_9 Start: 6202, Stop: 6660, Start Num: 23

Candidate Starts for MooMoo_9:

(Start: 23 @6202 has 9 MA's), (34, 6298), (39, 6340), (44, 6376), (47, 6403), (58, 6544), (59, 6571), (60, 6589),

Gene: Moonbeam_9 Start: 6781, Stop: 7107, Start Num: 17

Candidate Starts for Moonbeam_9:

(Start: 17 @6781 has 195 MA's), (Start: 25 @6811 has 64 MA's), (Start: 27 @6826 has 20 MA's), (30, 6850), (32, 6859), (34, 6883), (39, 6922), (43, 6955), (53, 7021),

Gene: Mori_44 Start: 22584, Stop: 22970, Start Num: 27

Candidate Starts for Mori_44:

(Start: 19 @22545 has 4 MA's), (Start: 20 @22551 has 1 MA's), (Start: 24 @22563 has 3 MA's), (Start: 27 @22584 has 20 MA's), (50, 22782), (61, 22956),

Gene: Mova_10 Start: 6634, Stop: 6960, Start Num: 17

Candidate Starts for Mova_10:

(Start: 17 @6634 has 195 MA's), (Start: 27 @6679 has 20 MA's), (30, 6703), (32, 6712), (34, 6736), (39, 6775), (43, 6808), (53, 6874),

Gene: Mozy_10 Start: 6629, Stop: 6958, Start Num: 17

Candidate Starts for Mozy_10:

(Start: 17 @6629 has 195 MA's), (32, 6707), (34, 6731), (39, 6770), (41, 6794), (43, 6803), (48, 6839), (53, 6869), (55, 6884),

Gene: Ms6_9 Start: 6781, Stop: 7110, Start Num: 17

Candidate Starts for Ms6_9:

(9, 6715), (Start: 17 @6781 has 195 MA's), (32, 6859), (34, 6883), (39, 6922), (43, 6955), (48, 6991), (53, 7021), (55, 7036),

Gene: MulchExplorer_11 Start: 6633, Stop: 6959, Start Num: 17

Candidate Starts for MulchExplorer_11:

(Start: 17 @6633 has 195 MA's), (Start: 27 @6678 has 20 MA's), (32, 6711), (34, 6735), (39, 6774), (43, 6807), (53, 6873),

Gene: MulchSalad_9 Start: 6812, Stop: 7108, Start Num: 25

Candidate Starts for MulchSalad_9:

(Start: 17 @6782 has 195 MA's), (Start: 25 @6812 has 64 MA's), (Start: 27 @6827 has 20 MA's), (32, 6860), (34, 6884), (39, 6923), (43, 6956), (53, 7022),

Gene: Murai_45 Start: 22774, Stop: 23160, Start Num: 27

Candidate Starts for Murai_45:

(Start: 19 @22735 has 4 MA's), (Start: 20 @22741 has 1 MA's), (Start: 24 @22753 has 3 MA's), (Start: 27 @22774 has 20 MA's), (50, 22972), (61, 23146),

Gene: Mutaforma13_9 Start: 6779, Stop: 7105, Start Num: 17

Candidate Starts for Mutaforma13_9:

(Start: 17 @6779 has 195 MA's), (32, 6857), (34, 6881), (39, 6920), (43, 6953), (53, 7019), (55, 7034),

Gene: Nazo_11 Start: 7647, Stop: 8021, Start Num: 18

Candidate Starts for Nazo_11:

(Start: 18 @7647 has 46 MA's), (Start: 25 @7671 has 64 MA's), (49, 7857), (54, 7899), (56, 7917),

Gene: Necropolis_12 Start: 7932, Stop: 8309, Start Num: 18

Candidate Starts for Necropolis_12:

(8, 7848), (Start: 18 @7932 has 46 MA's), (49, 8145), (54, 8187), (56, 8205),

Gene: Nenae_11 Start: 7020, Stop: 7391, Start Num: 25

Candidate Starts for Nenae_11:

(6, 6852), (13, 6951), (16, 6972), (Start: 25 @7020 has 64 MA's), (32, 7083), (38, 7128), (39, 7146), (42, 7173), (49, 7206), (60, 7341), (63, 7374),

Gene: NewHope4_9 Start: 6755, Stop: 7084, Start Num: 17

Candidate Starts for NewHope4_9:

(Start: 17 @6755 has 195 MA's), (32, 6833), (34, 6857), (39, 6896), (43, 6929), (48, 6965), (53, 6995), (55, 7010),

Gene: NiebruSaylor_44 Start: 22585, Stop: 22971, Start Num: 27

Candidate Starts for NiebruSaylor_44:

(Start: 19 @22546 has 4 MA's), (Start: 20 @22552 has 1 MA's), (Start: 24 @22564 has 3 MA's), (Start: 27 @22585 has 20 MA's), (50, 22783), (61, 22957),

Gene: Nimbo_9 Start: 6779, Stop: 7105, Start Num: 17

Candidate Starts for Nimbo_9:

(Start: 17 @6779 has 195 MA's), (Start: 25 @6809 has 64 MA's), (Start: 27 @6824 has 20 MA's), (32, 6857), (34, 6881), (39, 6920), (43, 6953), (53, 7019),

Gene: Nitzel_10 Start: 7432, Stop: 7758, Start Num: 17

Candidate Starts for Nitzel_10:

(Start: 17 @7432 has 195 MA's), (Start: 25 @7462 has 64 MA's), (Start: 27 @7477 has 20 MA's), (32, 7510), (34, 7534), (39, 7573), (43, 7606), (53, 7672),

Gene: Nivrat_9 Start: 6780, Stop: 7106, Start Num: 17

Candidate Starts for Nivrat_9:

(Start: 17 @6780 has 195 MA's), (Start: 25 @6810 has 64 MA's), (Start: 27 @6825 has 20 MA's), (32, 6858), (34, 6882), (39, 6921), (43, 6954), (53, 7020),

Gene: NormanBulbieJr_9 Start: 6767, Stop: 7093, Start Num: 17

Candidate Starts for NormanBulbieJr_9:

(Start: 17 @6767 has 195 MA's), (Start: 25 @6797 has 64 MA's), (Start: 27 @6812 has 20 MA's), (32, 6845), (34, 6869), (39, 6908), (43, 6941), (53, 7007),

Gene: Ochi17_9 Start: 6778, Stop: 7104, Start Num: 17

Candidate Starts for Ochi17_9:

(Start: 17 @6778 has 195 MA's), (Start: 27 @6823 has 20 MA's), (32, 6856), (34, 6880), (39, 6919), (43, 6952), (53, 7018),

Gene: OfUltron_9 Start: 6778, Stop: 7104, Start Num: 17

Candidate Starts for OfUltron_9:

(Start: 17 @6778 has 195 MA's), (Start: 27 @6823 has 20 MA's), (32, 6856), (34, 6880), (39, 6919), (43, 6952), (53, 7018),

Gene: Ogopogo_12 Start: 7034, Stop: 7360, Start Num: 17

Candidate Starts for Ogopogo_12:

(Start: 17 @7034 has 195 MA's), (Start: 25 @7064 has 64 MA's), (Start: 27 @7079 has 20 MA's), (32, 7112), (34, 7136), (39, 7175), (43, 7208), (53, 7274),

Gene: Oksu_10 Start: 6633, Stop: 6959, Start Num: 17

Candidate Starts for Oksu_10:

(Start: 17 @6633 has 195 MA's), (Start: 27 @6678 has 20 MA's), (32, 6711), (34, 6735), (39, 6774), (43, 6807), (53, 6873),

Gene: OldBen_9 Start: 6779, Stop: 7105, Start Num: 17

Candidate Starts for OldBen_9:

(Start: 17 @6779 has 195 MA's), (Start: 25 @6809 has 64 MA's), (Start: 27 @6824 has 20 MA's), (32, 6857), (34, 6881), (39, 6920), (43, 6953), (53, 7019),

Gene: OlympiaSaint_9 Start: 6780, Stop: 7106, Start Num: 17

Candidate Starts for OlympiaSaint_9:

(Start: 17 @6780 has 195 MA's), (Start: 25 @6810 has 64 MA's), (Start: 27 @6825 has 20 MA's), (32, 6858), (34, 6882), (39, 6921), (43, 6954), (53, 7020),

Gene: Ovechkin_9 Start: 6781, Stop: 7110, Start Num: 17

Candidate Starts for Ovechkin_9:

(Start: 17 @6781 has 195 MA's), (32, 6859), (34, 6883), (39, 6922), (43, 6955), (48, 6991), (53, 7021), (55, 7036),

Gene: OwlsT2W_10 Start: 6632, Stop: 6958, Start Num: 17

Candidate Starts for OwlsT2W_10:

(Start: 17 @6632 has 195 MA's), (Start: 27 @6677 has 20 MA's), (32, 6710), (34, 6734), (39, 6773), (43, 6806), (53, 6872),

Gene: PHappiness_9 Start: 6779, Stop: 7105, Start Num: 17

Candidate Starts for PHappiness_9:

(Start: 17 @6779 has 195 MA's), (Start: 25 @6809 has 64 MA's), (Start: 27 @6824 has 20 MA's), (32, 6857), (34, 6881), (39, 6920), (43, 6953), (53, 7019),

Gene: PMC_9 Start: 6796, Stop: 7122, Start Num: 17

Candidate Starts for PMC_9:

(Start: 17 @6796 has 195 MA's), (Start: 25 @6826 has 64 MA's), (Start: 27 @6841 has 20 MA's), (32, 6874), (39, 6937), (43, 6970), (53, 7036),

Gene: Pacc40_9 Start: 6809, Stop: 7105, Start Num: 25

Candidate Starts for Pacc40_9:

(Start: 17 @6779 has 195 MA's), (Start: 25 @6809 has 64 MA's), (Start: 27 @6824 has 20 MA's), (32, 6857), (34, 6881), (39, 6920), (43, 6953), (53, 7019),

Gene: Panchino_11 Start: 6996, Stop: 7367, Start Num: 25

Candidate Starts for Panchino_11:

(6, 6828), (13, 6927), (16, 6948), (Start: 25 @6996 has 64 MA's), (32, 7059), (38, 7104), (39, 7122), (42, 7149), (49, 7182), (60, 7317), (63, 7350), (64, 7356),

Gene: Parmesanjohn_11 Start: 6975, Stop: 7346, Start Num: 25

Candidate Starts for Parmesanjohn_11:

(7, 6867), (11, 6894), (13, 6909), (Start: 25 @6975 has 64 MA's), (38, 7083), (39, 7101), (42, 7128), (52, 7188), (60, 7296), (63, 7329),

Gene: Phalconet_9 Start: 6781, Stop: 7110, Start Num: 17

Candidate Starts for Phalconet_9:

(Start: 17 @6781 has 195 MA's), (32, 6859), (34, 6883), (39, 6922), (43, 6955), (48, 6991), (53, 7021), (55, 7036),

Gene: Phalm_12 Start: 7899, Stop: 8312, Start Num: 18

Candidate Starts for Phalm_12:

(8, 7815), (Start: 18 @7899 has 46 MA's), (49, 8112), (54, 8154), (56, 8172),

Gene: PhancyPhin_11 Start: 7020, Stop: 7391, Start Num: 25

Candidate Starts for PhancyPhin_11:

(6, 6852), (13, 6951), (16, 6972), (Start: 25 @7020 has 64 MA's), (32, 7083), (38, 7128), (39, 7146), (42, 7173), (49, 7206), (60, 7341), (63, 7374), (64, 7380),

Gene: Phanphagia_9 Start: 6781, Stop: 7110, Start Num: 17

Candidate Starts for Phanphagia_9:

(Start: 17 @6781 has 195 MA's), (32, 6859), (34, 6883), (43, 6955), (48, 6991), (53, 7021), (55, 7036),

Gene: Phasih_9 Start: 6795, Stop: 7121, Start Num: 17

Candidate Starts for Phasih_9:

(Start: 17 @6795 has 195 MA's), (Start: 25 @6825 has 64 MA's), (Start: 27 @6840 has 20 MA's), (32, 6873), (34, 6897), (39, 6936), (43, 6969), (53, 7035), (55, 7050),

Gene: Phatniss_9 Start: 6779, Stop: 7105, Start Num: 17

Candidate Starts for Phatniss_9:

(Start: 17 @6779 has 195 MA's), (Start: 25 @6809 has 64 MA's), (Start: 27 @6824 has 20 MA's), (32, 6857), (39, 6920), (43, 6953), (53, 7019),

Gene: Phayonce_11 Start: 7601, Stop: 7975, Start Num: 18

Candidate Starts for Phayonce_11:

(Start: 18 @7601 has 46 MA's), (28, 7649), (49, 7811), (51, 7826), (54, 7853),

Gene: Phegasus_12 Start: 7913, Stop: 8290, Start Num: 18

Candidate Starts for Phegasus_12:

(8, 7829), (Start: 18 @7913 has 46 MA's), (49, 8126), (54, 8168), (56, 8186),

Gene: PhesterPhotato_9 Start: 6781, Stop: 7110, Start Num: 17

Candidate Starts for PhesterPhotato_9:

(Start: 17 @6781 has 195 MA's), (32, 6859), (34, 6883), (39, 6922), (43, 6955), (48, 6991), (53, 7021), (55, 7036),

Gene: Philonius_11 Start: 6975, Stop: 7346, Start Num: 25

Candidate Starts for Philonius_11:

(7, 6867), (11, 6894), (13, 6909), (Start: 25 @6975 has 64 MA's), (38, 7083), (39, 7101), (42, 7128), (52, 7188), (60, 7296), (63, 7329),

Gene: Philus_9 Start: 6810, Stop: 7106, Start Num: 25

Candidate Starts for Philus_9:

(Start: 17 @6780 has 195 MA's), (Start: 25 @6810 has 64 MA's), (Start: 27 @6825 has 20 MA's), (32, 6858), (34, 6882), (39, 6921), (43, 6954), (53, 7020),

Gene: Phineas_12 Start: 7920, Stop: 8297, Start Num: 18

Candidate Starts for Phineas_12:

(8, 7836), (Start: 18 @7920 has 46 MA's), (49, 8133), (54, 8175), (56, 8193),

Gene: PhlipPhlop_9 Start: 6826, Stop: 7122, Start Num: 25

Candidate Starts for PhlipPhlop_9:

(Start: 17 @6796 has 195 MA's), (Start: 25 @6826 has 64 MA's), (Start: 27 @6841 has 20 MA's), (30, 6865), (32, 6874), (34, 6898), (39, 6937), (43, 6970), (53, 7036),

Gene: Phloss_11 Start: 6975, Stop: 7346, Start Num: 25

Candidate Starts for Phloss_11:

(7, 6867), (11, 6894), (13, 6909), (Start: 25 @6975 has 64 MA's), (38, 7083), (39, 7101), (42, 7128), (52, 7188), (60, 7296), (63, 7329),

Gene: Phrann_11 Start: 7020, Stop: 7391, Start Num: 25

Candidate Starts for Phrann_11:

(6, 6852), (13, 6951), (16, 6972), (Start: 25 @7020 has 64 MA's), (32, 7083), (38, 7128), (39, 7146), (42, 7173), (49, 7206), (60, 7341), (63, 7374), (64, 7380),

Gene: Piper2020_10 Start: 6664, Stop: 6960, Start Num: 25

Candidate Starts for Piper2020_10:

(Start: 17 @6634 has 195 MA's), (Start: 25 @6664 has 64 MA's), (Start: 27 @6679 has 20 MA's), (32, 6712), (34, 6736), (39, 6775), (43, 6808), (53, 6874),

Gene: Pippy_9 Start: 6797, Stop: 7093, Start Num: 25

Candidate Starts for Pippy_9:

(Start: 17 @6767 has 195 MA's), (Start: 25 @6797 has 64 MA's), (Start: 27 @6812 has 20 MA's), (32, 6845), (34, 6869), (39, 6908), (43, 6941), (53, 7007),

Gene: Pipsqueaks_11 Start: 6975, Stop: 7346, Start Num: 25

Candidate Starts for Pipsqueaks_11:

(7, 6867), (11, 6894), (13, 6909), (Start: 25 @6975 has 64 MA's), (38, 7083), (39, 7101), (42, 7128), (52, 7188), (60, 7296), (63, 7329),

Gene: Plumbus_10 Start: 6633, Stop: 6959, Start Num: 17

Candidate Starts for Plumbus_10:

(Start: 17 @6633 has 195 MA's), (Start: 27 @6678 has 20 MA's), (32, 6711), (34, 6735), (39, 6774), (43, 6807), (53, 6873),

Gene: Poenanya_9 Start: 6809, Stop: 7105, Start Num: 25

Candidate Starts for Poenanya_9:

(Start: 17 @6779 has 195 MA's), (Start: 25 @6809 has 64 MA's), (Start: 27 @6824 has 20 MA's), (32, 6857), (34, 6881), (39, 6920), (43, 6953), (53, 7019),

Gene: Polka14_9 Start: 6780, Stop: 7106, Start Num: 17

Candidate Starts for Polka14_9:

(Start: 17 @6780 has 195 MA's), (Start: 25 @6810 has 64 MA's), (Start: 27 @6825 has 20 MA's), (32, 6858), (34, 6882), (39, 6921), (43, 6954), (53, 7020),

Gene: Polkaroo_12 Start: 7912, Stop: 8325, Start Num: 18

Candidate Starts for Polkaroo_12:

(8, 7828), (Start: 18 @7912 has 46 MA's), (49, 8125), (54, 8167), (56, 8185),

Gene: Pollywog_10 Start: 6632, Stop: 6958, Start Num: 17

Candidate Starts for Pollywog_10:

(Start: 17 @6632 has 195 MA's), (Start: 27 @6677 has 20 MA's), (30, 6701), (32, 6710), (34, 6734), (39, 6773), (43, 6806), (53, 6872),

Gene: Polo2Bam_10 Start: 6755, Stop: 7084, Start Num: 17

Candidate Starts for Polo2Bam_10:

(Start: 17 @6755 has 195 MA's), (32, 6833), (34, 6857), (39, 6896), (43, 6929), (48, 6965), (53, 6995), (55, 7010),

Gene: PopTart_9 Start: 6781, Stop: 7110, Start Num: 17

Candidate Starts for PopTart_9:

(Start: 17 @6781 has 195 MA's), (32, 6859), (34, 6883), (39, 6922), (43, 6955), (48, 6991), (53, 7021), (55, 7036),

Gene: Priscilla_9 Start: 6780, Stop: 7106, Start Num: 17

Candidate Starts for Priscilla_9:

(Start: 17 @6780 has 195 MA's), (Start: 25 @6810 has 64 MA's), (Start: 27 @6825 has 20 MA's), (32, 6858), (34, 6882), (39, 6921), (43, 6954), (53, 7020),

Gene: Purgamenstris_11 Start: 7020, Stop: 7391, Start Num: 25

Candidate Starts for Purgamenstris_11:

(6, 6852), (13, 6951), (16, 6972), (Start: 25 @7020 has 64 MA's), (32, 7083), (38, 7128), (39, 7146), (42, 7173), (49, 7206), (60, 7341), (63, 7374),

Gene: Purky_11 Start: 7613, Stop: 7984, Start Num: 18

Candidate Starts for Purky_11:

(Start: 18 @7613 has 46 MA's), (Start: 25 @7634 has 64 MA's), (29, 7664), (31, 7688), (49, 7820), (54, 7862), (56, 7880), (62, 7979),

Gene: Pygmy_11 Start: 7652, Stop: 8026, Start Num: 18

Candidate Starts for Pygmy_11:

(Start: 18 @7652 has 46 MA's), (49, 7862), (54, 7904), (56, 7922),

Gene: QueenHazel_11 Start: 7927, Stop: 8367, Start Num: 23

Candidate Starts for QueenHazel_11:

(4, 7597), (5, 7645), (Start: 17 @7906 has 195 MA's), (Start: 23 @7927 has 9 MA's), (34, 8023), (44, 8101), (47, 8128), (65, 8353),

Gene: QuickMath_9 Start: 6782, Stop: 7111, Start Num: 17

Candidate Starts for QuickMath_9:

(9, 6716), (Start: 17 @6782 has 195 MA's), (32, 6860), (34, 6884), (39, 6923), (43, 6956), (48, 6992), (53, 7022), (55, 7037),

Gene: Quico_10 Start: 6627, Stop: 6953, Start Num: 17

Candidate Starts for Quico_10:

(Start: 17 @6627 has 195 MA's), (Start: 27 @6672 has 20 MA's), (32, 6705), (34, 6729), (39, 6768), (43, 6801), (53, 6867),

Gene: Radiance_9 Start: 6779, Stop: 7105, Start Num: 17

Candidate Starts for Radiance_9:

(Start: 17 @6779 has 195 MA's), (Start: 25 @6809 has 64 MA's), (Start: 27 @6824 has 20 MA's), (32, 6857), (34, 6881), (39, 6920), (43, 6953), (53, 7019),

Gene: Ramsey_10 Start: 6661, Stop: 6957, Start Num: 25

Candidate Starts for Ramsey_10:

(Start: 17 @6631 has 195 MA's), (Start: 25 @6661 has 64 MA's), (Start: 27 @6676 has 20 MA's), (32, 6709), (34, 6733), (39, 6772), (43, 6805), (53, 6871),

Gene: Raymond7_11 Start: 7020, Stop: 7391, Start Num: 25

Candidate Starts for Raymond7_11:

(6, 6852), (13, 6951), (16, 6972), (Start: 25 @7020 has 64 MA's), (32, 7083), (38, 7128), (39, 7146), (42, 7173), (49, 7206), (60, 7341), (63, 7374), (64, 7380),

Gene: Rebel_11 Start: 7020, Stop: 7391, Start Num: 25

Candidate Starts for Rebel_11:

(6, 6852), (13, 6951), (16, 6972), (Start: 25 @7020 has 64 MA's), (32, 7083), (38, 7128), (39, 7146), (42, 7173), (49, 7206), (60, 7341), (63, 7374), (64, 7380),

Gene: RedBird_9 Start: 6779, Stop: 7105, Start Num: 17

Candidate Starts for RedBird_9:

(Start: 17 @6779 has 195 MA's), (Start: 25 @6809 has 64 MA's), (Start: 27 @6824 has 20 MA's), (32, 6857), (34, 6881), (39, 6920), (43, 6953), (53, 7019),

Gene: Redi_11 Start: 7020, Stop: 7391, Start Num: 25

Candidate Starts for Redi_11:

(6, 6852), (13, 6951), (16, 6972), (Start: 25 @7020 has 64 MA's), (32, 7083), (38, 7128), (39, 7146), (42, 7173), (49, 7206), (60, 7341), (63, 7374), (64, 7380),

Gene: Renaud18_10 Start: 7109, Stop: 7423, Start Num: 22

Candidate Starts for Renaud18_10:

(15, 7070), (Start: 22 @7109 has 4 MA's), (33, 7181), (34, 7193), (36, 7205), (37, 7208), (43, 7268), (53, 7334),

Gene: Rialto_10 Start: 6633, Stop: 6959, Start Num: 17

Candidate Starts for Rialto_10:

(Start: 17 @6633 has 195 MA's), (Start: 25 @6663 has 64 MA's), (Start: 27 @6678 has 20 MA's), (30, 6702), (32, 6711), (34, 6735), (39, 6774), (43, 6807), (53, 6873),

Gene: Rita_9 Start: 6782, Stop: 7108, Start Num: 17

Candidate Starts for Rita_9:

(Start: 17 @6782 has 195 MA's), (32, 6860), (34, 6884), (39, 6923), (43, 6956), (48, 6992), (53, 7022), (55, 7037),

Gene: RitaG_9 Start: 6779, Stop: 7105, Start Num: 17

Candidate Starts for RitaG_9:

(Start: 17 @6779 has 195 MA's), (Start: 25 @6809 has 64 MA's), (Start: 27 @6824 has 20 MA's), (32, 6857), (34, 6881), (39, 6920), (43, 6953), (53, 7019),

Gene: Rockne_9 Start: 6796, Stop: 7122, Start Num: 17

Candidate Starts for Rockne_9:

(Start: 17 @6796 has 195 MA's), (Start: 25 @6826 has 64 MA's), (Start: 27 @6841 has 20 MA's), (32, 6874), (39, 6937), (43, 6970), (53, 7036),

Gene: RockyHorror_10 Start: 6631, Stop: 6957, Start Num: 17

Candidate Starts for RockyHorror_10:

(Start: 17 @6631 has 195 MA's), (Start: 27 @6676 has 20 MA's), (32, 6709), (34, 6733), (39, 6772), (43, 6805), (53, 6871),

Gene: Royals2015_9 Start: 6781, Stop: 7110, Start Num: 17

Candidate Starts for Royals2015_9:

(12, 6736), (Start: 17 @6781 has 195 MA's), (32, 6859), (34, 6883), (39, 6922), (43, 6955), (48, 6991), (53, 7021), (55, 7036),

Gene: Rubeelu_11 Start: 6995, Stop: 7366, Start Num: 25

Candidate Starts for Rubeelu_11:

(14, 6929), (Start: 25 @6995 has 64 MA's), (32, 7058), (38, 7103), (39, 7121), (40, 7139), (42, 7148), (63, 7349), (64, 7355),

Gene: Ruby_9 Start: 6785, Stop: 7111, Start Num: 17

Candidate Starts for Ruby_9:

(Start: 17 @6785 has 195 MA's), (Start: 25 @6815 has 64 MA's), (Start: 27 @6830 has 20 MA's), (32, 6863), (34, 6887), (39, 6926), (43, 6959), (53, 7025),

Gene: Ryadel_49 Start: 24037, Stop: 24444, Start Num: 24

Candidate Starts for Ryadel_49:

(Start: 19 @24019 has 4 MA's), (Start: 20 @24025 has 1 MA's), (Start: 24 @24037 has 3 MA's), (Start: 27 @24058 has 20 MA's), (50, 24256), (60, 24406), (61, 24430),

Gene: SG4_9 Start: 6781, Stop: 7110, Start Num: 17

Candidate Starts for SG4_9:

(Start: 17 @6781 has 195 MA's), (32, 6859), (34, 6883), (39, 6922), (43, 6955), (48, 6991), (53, 7021), (55, 7036),

Gene: Saal_9 Start: 6768, Stop: 7094, Start Num: 17

Candidate Starts for Saal_9:

(Start: 17 @6768 has 195 MA's), (Start: 25 @6798 has 64 MA's), (Start: 27 @6813 has 20 MA's), (32, 6846), (34, 6870), (39, 6909), (43, 6942), (53, 7008),

Gene: Sabbb_9 Start: 6783, Stop: 7109, Start Num: 17

Candidate Starts for Sabbb_9:

(Start: 17 @6783 has 195 MA's), (Start: 27 @6828 has 20 MA's), (32, 6861), (34, 6885), (39, 6924), (43, 6957), (53, 7023),

Gene: Sandalphon_9 Start: 6796, Stop: 7122, Start Num: 17

Candidate Starts for Sandalphon_9:

(Start: 17 @6796 has 195 MA's), (Start: 25 @6826 has 64 MA's), (Start: 27 @6841 has 20 MA's), (32, 6874), (34, 6898), (39, 6937), (43, 6970), (53, 7036),

Gene: Sarma624_10 Start: 6631, Stop: 6957, Start Num: 17

Candidate Starts for Sarma624_10:

(Start: 17 @6631 has 195 MA's), (Start: 27 @6676 has 20 MA's), (32, 6709), (34, 6733), (39, 6772), (43, 6805), (53, 6871),

Gene: Sassafras_9 Start: 6779, Stop: 7105, Start Num: 17

Candidate Starts for Sassafras_9:

(Start: 17 @6779 has 195 MA's), (Start: 25 @6809 has 64 MA's), (Start: 27 @6824 has 20 MA's), (32, 6857), (34, 6881), (39, 6920), (43, 6953), (53, 7019),

Gene: SassyB_9 Start: 6781, Stop: 7110, Start Num: 17

Candidate Starts for SassyB_9:

(Start: 17 @6781 has 195 MA's), (32, 6859), (34, 6883), (39, 6922), (43, 6955), (48, 6991), (53, 7021), (55, 7036),

Gene: Sbash_10 Start: 7504, Stop: 7950, Start Num: 23

Candidate Starts for Sbash_10:

(Start: 17 @7483 has 195 MA's), (Start: 23 @7504 has 9 MA's), (34, 7600), (35, 7603), (43, 7675), (44, 7678), (47, 7705), (57, 7807), (60, 7882),

Gene: Schnauzer_11 Start: 6975, Stop: 7346, Start Num: 25

Candidate Starts for Schnauzer_11:

(7, 6867), (11, 6894), (13, 6909), (Start: 25 @6975 has 64 MA's), (38, 7083), (39, 7101), (42, 7128), (52, 7188), (60, 7296), (63, 7329),

Gene: SchoolBus_45 Start: 22999, Stop: 23385, Start Num: 27

Candidate Starts for SchoolBus_45:

(Start: 19 @22960 has 4 MA's), (Start: 20 @22966 has 1 MA's), (Start: 24 @22978 has 3 MA's), (26, 22993), (Start: 27 @22999 has 20 MA's), (50, 23197), (61, 23371),

Gene: Schuy_46 Start: 22932, Stop: 23318, Start Num: 27

Candidate Starts for Schuy_46:

(Start: 19 @22893 has 4 MA's), (Start: 20 @22899 has 1 MA's), (Start: 24 @22911 has 3 MA's), (Start: 27 @22932 has 20 MA's), (50, 23130), (61, 23304),

Gene: Scitech_11 Start: 6975, Stop: 7346, Start Num: 25

Candidate Starts for Scitech_11:

(7, 6867), (11, 6894), (13, 6909), (Start: 25 @6975 has 64 MA's), (38, 7083), (39, 7101), (42, 7128), (52, 7188), (60, 7296), (63, 7329),

Gene: Scottish_9 Start: 6779, Stop: 7105, Start Num: 17

Candidate Starts for Scottish_9:

(Start: 17 @6779 has 195 MA's), (Start: 25 @6809 has 64 MA's), (Start: 27 @6824 has 20 MA's), (32, 6857), (34, 6881), (39, 6920), (43, 6953), (53, 7019),

Gene: Seabastian_9 Start: 6778, Stop: 7104, Start Num: 17

Candidate Starts for Seabastian_9:

(Start: 17 @6778 has 195 MA's), (Start: 27 @6823 has 20 MA's), (32, 6856), (34, 6880), (39, 6919), (43, 6952), (53, 7018),

Gene: Seagreen_10 Start: 6662, Stop: 6958, Start Num: 25

Candidate Starts for Seagreen_10:

(Start: 17 @6632 has 195 MA's), (Start: 25 @6662 has 64 MA's), (Start: 27 @6677 has 20 MA's), (32, 6710), (34, 6734), (39, 6773), (43, 6806), (53, 6872),

Gene: Shauna1_9 Start: 6781, Stop: 7110, Start Num: 17

Candidate Starts for Shauna1_9:

(Start: 17 @6781 has 195 MA's), (32, 6859), (34, 6883), (43, 6955), (48, 6991), (53, 7021), (55, 7036),

Gene: ShiLan_9 Start: 6780, Stop: 7106, Start Num: 17

Candidate Starts for ShiLan_9:

(Start: 17 @6780 has 195 MA's), (Start: 25 @6810 has 64 MA's), (Start: 27 @6825 has 20 MA's), (32, 6858), (34, 6882), (39, 6921), (43, 6954), (53, 7020),

Gene: Shida_45 Start: 22839, Stop: 23225, Start Num: 27

Candidate Starts for Shida_45:

(Start: 19 @22800 has 4 MA's), (Start: 20 @22806 has 1 MA's), (Start: 24 @22818 has 3 MA's), (Start: 27 @22839 has 20 MA's), (50, 23037), (61, 23211),

Gene: Shipwreck_11 Start: 7630, Stop: 8004, Start Num: 18

Candidate Starts for Shipwreck_11:

(Start: 18 @7630 has 46 MA's), (49, 7840), (54, 7882), (56, 7900),

Gene: ShowerHandel_9 Start: 6811, Stop: 7107, Start Num: 25

Candidate Starts for ShowerHandel_9:

(Start: 17 @6781 has 195 MA's), (Start: 25 @6811 has 64 MA's), (Start: 27 @6826 has 20 MA's), (32, 6859), (34, 6883), (39, 6922), (43, 6955), (53, 7021),

Gene: ShrimpFriedEgg_11 Start: 7020, Stop: 7391, Start Num: 25

Candidate Starts for ShrimpFriedEgg_11:

(6, 6852), (13, 6951), (16, 6972), (Start: 25 @7020 has 64 MA's), (32, 7083), (38, 7128), (39, 7146), (42, 7173), (49, 7206), (60, 7341), (63, 7374), (64, 7380),

Gene: ShroomBoi_9 Start: 6781, Stop: 7110, Start Num: 17

Candidate Starts for ShroomBoi_9:

(Start: 17 @6781 has 195 MA's), (Start: 25 @6811 has 64 MA's), (32, 6859), (34, 6883), (39, 6922), (43, 6955), (48, 6991), (53, 7021), (55, 7036),

Gene: Shweta_11 Start: 7020, Stop: 7391, Start Num: 25

Candidate Starts for Shweta_11:

(6, 6852), (13, 6951), (16, 6972), (Start: 25 @7020 has 64 MA's), (32, 7083), (38, 7128), (39, 7146), (42, 7173), (49, 7206), (60, 7341), (63, 7374), (64, 7380),

Gene: SiSi_9 Start: 6766, Stop: 7095, Start Num: 17

Candidate Starts for SiSi_9:

(9, 6700), (Start: 17 @6766 has 195 MA's), (32, 6844), (34, 6868), (39, 6907), (43, 6940), (48, 6976), (53, 7006), (55, 7021),

Gene: Silvafighter_11 Start: 6975, Stop: 7346, Start Num: 25

Candidate Starts for Silvafighter_11:

(7, 6867), (11, 6894), (13, 6909), (Start: 25 @6975 has 64 MA's), (38, 7083), (39, 7101), (42, 7128), (52, 7188), (60, 7296), (63, 7329),

Gene: Silvy_11 Start: 6975, Stop: 7346, Start Num: 25

Candidate Starts for Silvy_11:

(7, 6867), (11, 6894), (13, 6909), (Start: 25 @6975 has 64 MA's), (38, 7083), (39, 7101), (42, 7128), (52, 7188), (60, 7296), (63, 7329),

Gene: SimranZ1_10 Start: 6632, Stop: 6958, Start Num: 17

Candidate Starts for SimranZ1_10:

(Start: 17 @6632 has 195 MA's), (Start: 25 @6662 has 64 MA's), (Start: 27 @6677 has 20 MA's), (32, 6710), (34, 6734), (39, 6773), (43, 6806), (53, 6872),

Gene: SkinnyPete_11 Start: 7020, Stop: 7391, Start Num: 25

Candidate Starts for SkinnyPete_11:

(6, 6852), (13, 6951), (16, 6972), (Start: 25 @7020 has 64 MA's), (32, 7083), (38, 7128), (39, 7146), (42, 7173), (49, 7206), (60, 7341), (63, 7374), (64, 7380),

Gene: Slim_11 Start: 6663, Stop: 6959, Start Num: 25

Candidate Starts for Slim_11:

(Start: 17 @6633 has 195 MA's), (Start: 25 @6663 has 64 MA's), (Start: 27 @6678 has 20 MA's), (30, 6702), (32, 6711), (34, 6735), (39, 6774), (43, 6807), (53, 6873),

Gene: Smooch_47 Start: 24127, Stop: 24513, Start Num: 27

Candidate Starts for Smooch_47:

(Start: 19 @24088 has 4 MA's), (Start: 20 @24094 has 1 MA's), (Start: 24 @24106 has 3 MA's), (Start: 27 @24127 has 20 MA's), (50, 24325), (61, 24499),

Gene: Smurph_11 Start: 6975, Stop: 7346, Start Num: 25

Candidate Starts for Smurph_11:

(7, 6867), (11, 6894), (13, 6909), (Start: 25 @6975 has 64 MA's), (38, 7083), (39, 7101), (42, 7128), (52, 7188), (60, 7296), (63, 7329),

Gene: Snekmaggedon_11 Start: 7020, Stop: 7391, Start Num: 25

Candidate Starts for Snekmaggedon_11:

(6, 6852), (13, 6951), (16, 6972), (Start: 25 @7020 has 64 MA's), (32, 7083), (38, 7128), (39, 7146), (42, 7173), (49, 7206), (60, 7341), (63, 7374), (64, 7380),

Gene: Sonah_12 Start: 7915, Stop: 8292, Start Num: 18

Candidate Starts for Sonah_12:

(8, 7831), (Start: 18 @7915 has 46 MA's), (49, 8128), (54, 8170), (56, 8188),

Gene: Sparkdehlily_9 Start: 6795, Stop: 7121, Start Num: 17

Candidate Starts for Sparkdehlily_9:

(Start: 17 @6795 has 195 MA's), (Start: 27 @6840 has 20 MA's), (32, 6873), (34, 6897), (39, 6936), (43, 6969), (53, 7035),

Gene: Spartacus_9 Start: 6767, Stop: 7093, Start Num: 17

Candidate Starts for Spartacus_9:

(Start: 17 @6767 has 195 MA's), (32, 6845), (34, 6869), (39, 6908), (43, 6941), (53, 7007), (55, 7022),

Gene: Spikelee_10 Start: 6632, Stop: 6958, Start Num: 17

Candidate Starts for Spikelee_10:

(Start: 17 @6632 has 195 MA's), (Start: 27 @6677 has 20 MA's), (32, 6710), (34, 6734), (39, 6773), (43, 6806), (53, 6872),

Gene: SpongeBob_11 Start: 7020, Stop: 7391, Start Num: 25

Candidate Starts for SpongeBob_11:

(6, 6852), (13, 6951), (16, 6972), (Start: 25 @7020 has 64 MA's), (32, 7083), (38, 7128), (39, 7146), (42, 7173), (49, 7206), (60, 7341), (63, 7374), (64, 7380),

Gene: Spoonbill_9 Start: 6781, Stop: 7107, Start Num: 17

Candidate Starts for Spoonbill_9:

(Start: 17 @6781 has 195 MA's), (Start: 25 @6811 has 64 MA's), (Start: 27 @6826 has 20 MA's), (32, 6859), (34, 6883), (39, 6922), (43, 6955), (53, 7021),

Gene: Squirty_10 Start: 6630, Stop: 6956, Start Num: 17

Candidate Starts for Squirty_10:

(Start: 17 @6630 has 195 MA's), (Start: 25 @6660 has 64 MA's), (Start: 27 @6675 has 20 MA's), (32, 6708), (34, 6732), (39, 6771), (43, 6804), (53, 6870),

Gene: StAnnes_9 Start: 6781, Stop: 7110, Start Num: 17

Candidate Starts for StAnnes_9:

(Start: 17 @6781 has 195 MA's), (32, 6859), (34, 6883), (39, 6922), (43, 6955), (48, 6991), (53, 7021), (55, 7036),

Gene: Stap_10 Start: 6632, Stop: 6958, Start Num: 17

Candidate Starts for Stap_10:

(Start: 17 @6632 has 195 MA's), (Start: 25 @6662 has 64 MA's), (Start: 27 @6677 has 20 MA's), (32, 6710), (34, 6734), (39, 6773), (43, 6806), (53, 6872),

Gene: Starcevich_10 Start: 6632, Stop: 6958, Start Num: 17

Candidate Starts for Starcevich_10:

(Start: 17 @6632 has 195 MA's), (Start: 27 @6677 has 20 MA's), (30, 6701), (32, 6710), (34, 6734), (39, 6773), (43, 6806), (53, 6872),

Gene: StevieRay_12 Start: 7923, Stop: 8300, Start Num: 18

Candidate Starts for StevieRay_12:

(8, 7839), (Start: 18 @7923 has 46 MA's), (49, 8136), (54, 8178), (56, 8196),

Gene: StressBall_12 Start: 7899, Stop: 8312, Start Num: 18

Candidate Starts for StressBall_12:

(8, 7815), (Start: 18 @7899 has 46 MA's), (49, 8112), (54, 8154), (56, 8172),

Gene: Strokeseat_9 Start: 6769, Stop: 7095, Start Num: 17

Candidate Starts for Strokeseat_9:

(Start: 17 @6769 has 195 MA's), (Start: 27 @6814 has 20 MA's), (32, 6847), (34, 6871), (39, 6910), (43, 6943), (53, 7009),

Gene: Stuck_10 Start: 7516, Stop: 7968, Start Num: 23

Candidate Starts for Stuck_10:

(Start: 17 @7495 has 195 MA's), (Start: 23 @7516 has 9 MA's), (34, 7612), (43, 7687), (44, 7690), (47, 7717), (57, 7828), (60, 7903), (66, 7951),

Gene: SuperGrey_9 Start: 6781, Stop: 7107, Start Num: 17

Candidate Starts for SuperGrey_9:

(Start: 17 @6781 has 195 MA's), (32, 6859), (34, 6883), (39, 6922), (43, 6955), (48, 6991), (53, 7021), (55, 7036),

Gene: SwagPigglett_9 Start: 6781, Stop: 7107, Start Num: 17

Candidate Starts for SwagPigglett_9:

(Start: 17 @6781 has 195 MA's), (Start: 25 @6811 has 64 MA's), (Start: 27 @6826 has 20 MA's), (32, 6859), (34, 6883), (39, 6922), (43, 6955), (53, 7021),

Gene: TChen_10 Start: 7232, Stop: 7546, Start Num: 22

Candidate Starts for TChen_10:

(15, 7193), (Start: 22 @7232 has 4 MA's), (30, 7283), (33, 7304), (34, 7316), (43, 7391), (53, 7457), (55, 7472),

Gene: TDanisky_9 Start: 6795, Stop: 7121, Start Num: 17

Candidate Starts for TDanisky_9:

(Start: 17 @6795 has 195 MA's), (Start: 27 @6840 has 20 MA's), (32, 6873), (34, 6897), (39, 6936), (43, 6969), (53, 7035),

Gene: Taj_9 Start: 6781, Stop: 7110, Start Num: 17

Candidate Starts for Taj_9:

(Start: 17 @6781 has 195 MA's), (Start: 25 @6811 has 64 MA's), (32, 6859), (34, 6883), (39, 6922), (43, 6955), (48, 6991), (53, 7021), (55, 7036),

Gene: Tapioca_11 Start: 6975, Stop: 7346, Start Num: 25

Candidate Starts for Tapioca_11:

(7, 6867), (11, 6894), (13, 6909), (Start: 25 @6975 has 64 MA's), (38, 7083), (39, 7101), (42, 7128), (52, 7188), (60, 7296), (63, 7329),

Gene: Tchotchke_10 Start: 6632, Stop: 6958, Start Num: 17

Candidate Starts for Tchotchke_10:

(Start: 17 @6632 has 195 MA's), (Start: 27 @6677 has 20 MA's), (32, 6710), (34, 6734), (39, 6773), (43, 6806), (53, 6872),

Gene: Techage_12 Start: 7916, Stop: 8293, Start Num: 18

Candidate Starts for Techage_12:

(8, 7832), (Start: 18 @7916 has 46 MA's), (49, 8129), (54, 8171), (56, 8189),

Gene: TelAviv_42 Start: 22993, Stop: 23379, Start Num: 27

Candidate Starts for TelAviv_42:

(Start: 19 @22954 has 4 MA's), (Start: 20 @22960 has 1 MA's), (Start: 24 @22972 has 3 MA's), (26, 22987), (Start: 27 @22993 has 20 MA's), (50, 23191), (61, 23365),

Gene: Thespis_12 Start: 7899, Stop: 8312, Start Num: 18

Candidate Starts for Thespis_12:

(8, 7815), (Start: 18 @7899 has 46 MA's), (49, 8112), (54, 8154), (56, 8172),

Gene: ThetaBob_10 Start: 7112, Stop: 7426, Start Num: 22

Candidate Starts for ThetaBob_10:

(15, 7073), (Start: 22 @7112 has 4 MA's), (33, 7184), (34, 7196), (36, 7208), (37, 7211), (43, 7271), (53, 7337),

Gene: ThulaThula_11 Start: 7607, Stop: 7981, Start Num: 18

Candidate Starts for ThulaThula_11:

(Start: 18 @7607 has 46 MA's), (28, 7655), (51, 7832), (54, 7859),

Gene: TootsiePop_10 Start: 6635, Stop: 6961, Start Num: 17

Candidate Starts for TootsiePop_10:

(Start: 17 @6635 has 195 MA's), (Start: 25 @6665 has 64 MA's), (Start: 27 @6680 has 20 MA's), (32, 6713), (34, 6737), (39, 6776), (43, 6809), (53, 6875),

Gene: Tootsieroll_10 Start: 6632, Stop: 6958, Start Num: 17

Candidate Starts for Tootsieroll_10:

(Start: 17 @6632 has 195 MA's), (Start: 25 @6662 has 64 MA's), (Start: 27 @6677 has 20 MA's), (32, 6710), (34, 6734), (39, 6773), (43, 6806), (53, 6872),

Gene: Toron_10 Start: 7232, Stop: 7546, Start Num: 22

Candidate Starts for Toron_10:

(15, 7193), (Start: 22 @7232 has 4 MA's), (33, 7304), (34, 7316), (37, 7331), (43, 7391), (53, 7457), (55, 7472),

Gene: Tortellini_11 Start: 7594, Stop: 7998, Start Num: 18

Candidate Starts for Tortellini_11:

(Start: 18 @7594 has 46 MA's), (Start: 25 @7612 has 64 MA's), (31, 7666), (49, 7798), (54, 7840), (56, 7858),

Gene: Tortoise12_11 Start: 6975, Stop: 7346, Start Num: 25

Candidate Starts for Tortoise12_11:

(7, 6867), (11, 6894), (13, 6909), (Start: 25 @6975 has 64 MA's), (38, 7083), (39, 7101), (42, 7128), (52, 7188), (60, 7296), (63, 7329),

Gene: Totinger_10 Start: 6633, Stop: 6959, Start Num: 17

Candidate Starts for Totinger_10:

(Start: 17 @6633 has 195 MA's), (Start: 25 @6663 has 64 MA's), (Start: 27 @6678 has 20 MA's), (30, 6702), (32, 6711), (34, 6735), (39, 6774), (43, 6807), (53, 6873),

Gene: Tweety_9 Start: 6781, Stop: 7110, Start Num: 17

Candidate Starts for Tweety_9:

(Start: 17 @6781 has 195 MA's), (32, 6859), (34, 6883), (39, 6922), (43, 6955), (48, 6991), (53, 7021), (55, 7036),

Gene: UncleRicky_10 Start: 6632, Stop: 6958, Start Num: 17

Candidate Starts for UncleRicky_10:

(Start: 17 @6632 has 195 MA's), (Start: 27 @6677 has 20 MA's), (32, 6710), (34, 6734), (39, 6773), (43, 6806), (53, 6872),

Gene: VRedHorse_9 Start: 6781, Stop: 7107, Start Num: 17

Candidate Starts for VRedHorse_9:

(Start: 17 @6781 has 195 MA's), (Start: 25 @6811 has 64 MA's), (Start: 27 @6826 has 20 MA's), (32, 6859), (34, 6883), (39, 6922), (43, 6955), (53, 7021),

Gene: Vagabond_45 Start: 22826, Stop: 23212, Start Num: 27

Candidate Starts for Vagabond_45:

(Start: 19 @22787 has 4 MA's), (Start: 20 @22793 has 1 MA's), (Start: 24 @22805 has 3 MA's), (Start: 27 @22826 has 20 MA's), (50, 23024), (61, 23198),

Gene: Velveteen_10 Start: 6631, Stop: 6957, Start Num: 17

Candidate Starts for Velveteen_10:

(Start: 17 @6631 has 195 MA's), (Start: 27 @6676 has 20 MA's), (32, 6709), (34, 6733), (39, 6772), (43, 6805), (53, 6871),

Gene: Venti_12 Start: 7932, Stop: 8309, Start Num: 18
Candidate Starts for Venti_12:
(8, 7848), (Start: 18 @7932 has 46 MA's), (49, 8145), (54, 8187), (56, 8205),

Gene: Veteran_9 Start: 6796, Stop: 7122, Start Num: 17
Candidate Starts for Veteran_9:
(Start: 17 @6796 has 195 MA's), (Start: 27 @6841 has 20 MA's), (32, 6874), (34, 6898), (39, 6937),
(43, 6970), (53, 7036),

Gene: Vidya_12 Start: 7932, Stop: 8309, Start Num: 18
Candidate Starts for Vidya_12:
(8, 7848), (Start: 18 @7932 has 46 MA's), (49, 8145), (54, 8187), (56, 8205),

Gene: Violac_9 Start: 6812, Stop: 7108, Start Num: 25
Candidate Starts for Violac_9:
(Start: 17 @6782 has 195 MA's), (Start: 25 @6812 has 64 MA's), (Start: 27 @6827 has 20 MA's), (32,
6860), (34, 6884), (39, 6923), (43, 6956), (53, 7022),

Gene: Vivum_9 Start: 6810, Stop: 7106, Start Num: 25
Candidate Starts for Vivum_9:
(Start: 17 @6780 has 195 MA's), (Start: 25 @6810 has 64 MA's), (Start: 27 @6825 has 20 MA's), (32,
6858), (34, 6882), (39, 6921), (43, 6954), (53, 7020),

Gene: Vorrps_44 Start: 22585, Stop: 22971, Start Num: 27
Candidate Starts for Vorrps_44:
(Start: 19 @22546 has 4 MA's), (Start: 20 @22552 has 1 MA's), (Start: 24 @22564 has 3 MA's), (Start:
27 @22585 has 20 MA's), (50, 22783), (61, 22957),

Gene: Wachhund_9 Start: 6772, Stop: 7098, Start Num: 17
Candidate Starts for Wachhund_9:
(Start: 17 @6772 has 195 MA's), (Start: 25 @6802 has 64 MA's), (Start: 27 @6817 has 20 MA's), (32,
6850), (34, 6874), (39, 6913), (43, 6946), (53, 7012),

Gene: Wee_9 Start: 6781, Stop: 7110, Start Num: 17
Candidate Starts for Wee_9:
(Start: 17 @6781 has 195 MA's), (Start: 25 @6811 has 64 MA's), (32, 6859), (34, 6883), (39, 6922),
(43, 6955), (48, 6991), (53, 7021), (55, 7036),

Gene: Whatsapiecost_9 Start: 6781, Stop: 7110, Start Num: 17
Candidate Starts for Whatsapiecost_9:
(Start: 17 @6781 has 195 MA's), (32, 6859), (34, 6883), (39, 6922), (43, 6955), (48, 6991), (53, 7021),
(55, 7036),

Gene: Whouxphf_9 Start: 6771, Stop: 7097, Start Num: 17
Candidate Starts for Whouxphf_9:
(Start: 17 @6771 has 195 MA's), (Start: 25 @6801 has 64 MA's), (Start: 27 @6816 has 20 MA's), (32,
6849), (34, 6873), (39, 6912), (43, 6945), (53, 7011),

Gene: Wildflower_45 Start: 22571, Stop: 22957, Start Num: 27
Candidate Starts for Wildflower_45:
(Start: 19 @22532 has 4 MA's), (Start: 20 @22538 has 1 MA's), (Start: 24 @22550 has 3 MA's), (Start:
27 @22571 has 20 MA's), (50, 22769), (61, 22943),

Gene: WillSterrel_9 Start: 6767, Stop: 7093, Start Num: 17

Candidate Starts for WillSterrel_9:

(Start: 17 @6767 has 195 MA's), (32, 6845), (34, 6869), (39, 6908), (43, 6941), (53, 7007), (55, 7022),

Gene: Willsammy_12 Start: 7902, Stop: 8315, Start Num: 18

Candidate Starts for Willsammy_12:

(8, 7818), (Start: 18 @7902 has 46 MA's), (49, 8115), (54, 8157), (56, 8175),

Gene: Winget_46 Start: 23244, Stop: 23651, Start Num: 24

Candidate Starts for Winget_46:

(Start: 19 @23226 has 4 MA's), (Start: 20 @23232 has 1 MA's), (Start: 24 @23244 has 3 MA's), (26, 23259), (Start: 27 @23265 has 20 MA's), (50, 23463), (61, 23637),

Gene: Wogge42_44 Start: 22904, Stop: 23290, Start Num: 27

Candidate Starts for Wogge42_44:

(Start: 19 @22865 has 4 MA's), (Start: 20 @22871 has 1 MA's), (Start: 24 @22883 has 3 MA's), (Start: 27 @22904 has 20 MA's), (50, 23102), (61, 23276),

Gene: XFactor_9 Start: 6781, Stop: 7110, Start Num: 17

Candidate Starts for XFactor_9:

(Start: 17 @6781 has 195 MA's), (32, 6859), (34, 6883), (39, 6922), (43, 6955), (48, 6991), (53, 7021), (55, 7036),

Gene: Xavia_12 Start: 7936, Stop: 8313, Start Num: 18

Candidate Starts for Xavia_12:

(8, 7852), (Start: 18 @7936 has 46 MA's), (49, 8149), (54, 8191), (56, 8209),

Gene: Xeno_11 Start: 6975, Stop: 7346, Start Num: 25

Candidate Starts for Xeno_11:

(7, 6867), (11, 6894), (13, 6909), (Start: 25 @6975 has 64 MA's), (38, 7083), (39, 7101), (42, 7128), (52, 7188), (60, 7296), (63, 7329),

Gene: Xerxes_11 Start: 6975, Stop: 7346, Start Num: 25

Candidate Starts for Xerxes_11:

(7, 6867), (11, 6894), (13, 6909), (Start: 25 @6975 has 64 MA's), (38, 7083), (39, 7101), (42, 7128), (52, 7188), (60, 7296), (63, 7329),

Gene: Xula_10 Start: 7556, Stop: 7996, Start Num: 23

Candidate Starts for Xula_10:

(4, 7226), (5, 7274), (Start: 17 @7535 has 195 MA's), (Start: 23 @7556 has 9 MA's), (34, 7652), (44, 7730), (45, 7733), (47, 7757), (65, 7982),

Gene: Yorick_9 Start: 6809, Stop: 7105, Start Num: 25

Candidate Starts for Yorick_9:

(Start: 17 @6779 has 195 MA's), (Start: 25 @6809 has 64 MA's), (Start: 27 @6824 has 20 MA's), (32, 6857), (34, 6881), (39, 6920), (43, 6953), (53, 7019),

Gene: YungJamal_48 Start: 23304, Stop: 23690, Start Num: 27

Candidate Starts for YungJamal_48:

(Start: 19 @23265 has 4 MA's), (Start: 20 @23271 has 1 MA's), (Start: 24 @23283 has 3 MA's), (Start: 27 @23304 has 20 MA's), (50, 23502), (61, 23676),

Gene: Zakhe101_45 Start: 22682, Stop: 23101, Start Num: 20

Candidate Starts for Zakhe101_45:

(Start: 19 @22676 has 4 MA's), (Start: 20 @22682 has 1 MA's), (Start: 24 @22694 has 3 MA's), (Start: 27 @22715 has 20 MA's), (50, 22913), (61, 23087),

Gene: Zebo_44 Start: 22966, Stop: 23385, Start Num: 20

Candidate Starts for Zebo_44:

(Start: 19 @22960 has 4 MA's), (Start: 20 @22966 has 1 MA's), (Start: 24 @22978 has 3 MA's), (26, 22993), (Start: 27 @22999 has 20 MA's), (50, 23197), (61, 23371),

Gene: Zerg_9 Start: 6780, Stop: 7106, Start Num: 17

Candidate Starts for Zerg_9:

(Start: 17 @6780 has 195 MA's), (Start: 25 @6810 has 64 MA's), (Start: 27 @6825 has 20 MA's), (32, 6858), (34, 6882), (39, 6921), (43, 6954), (53, 7020),

Gene: Zilizebeth_12 Start: 7932, Stop: 8309, Start Num: 18

Candidate Starts for Zilizebeth_12:

(8, 7848), (Start: 18 @7932 has 46 MA's), (49, 8145), (54, 8187), (56, 8205),

Gene: Zizzle_9 Start: 6813, Stop: 7109, Start Num: 25

Candidate Starts for Zizzle_9:

(Start: 17 @6783 has 195 MA's), (Start: 25 @6813 has 64 MA's), (Start: 27 @6828 has 20 MA's), (32, 6861), (34, 6885), (39, 6924), (43, 6957), (53, 7023),