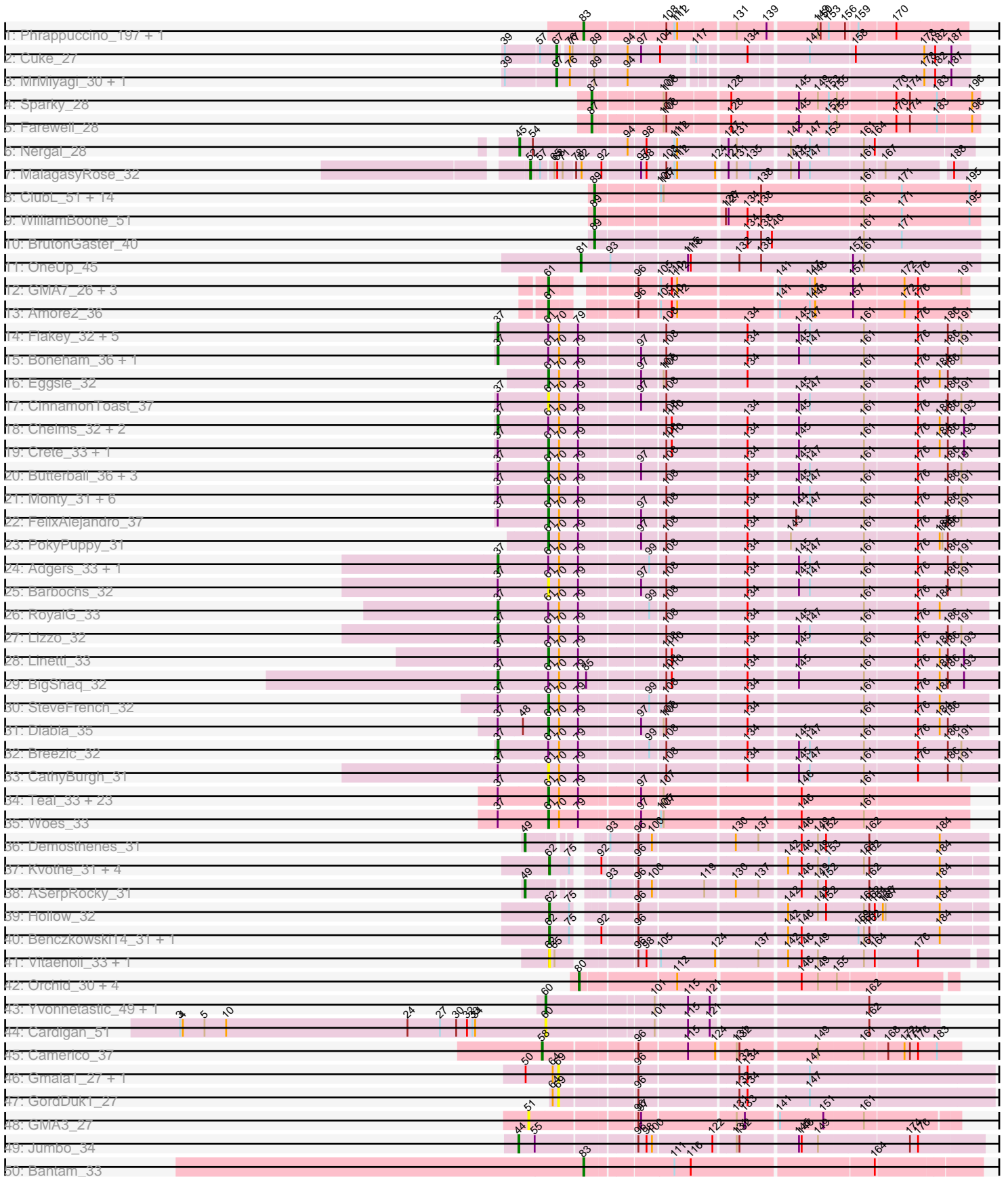
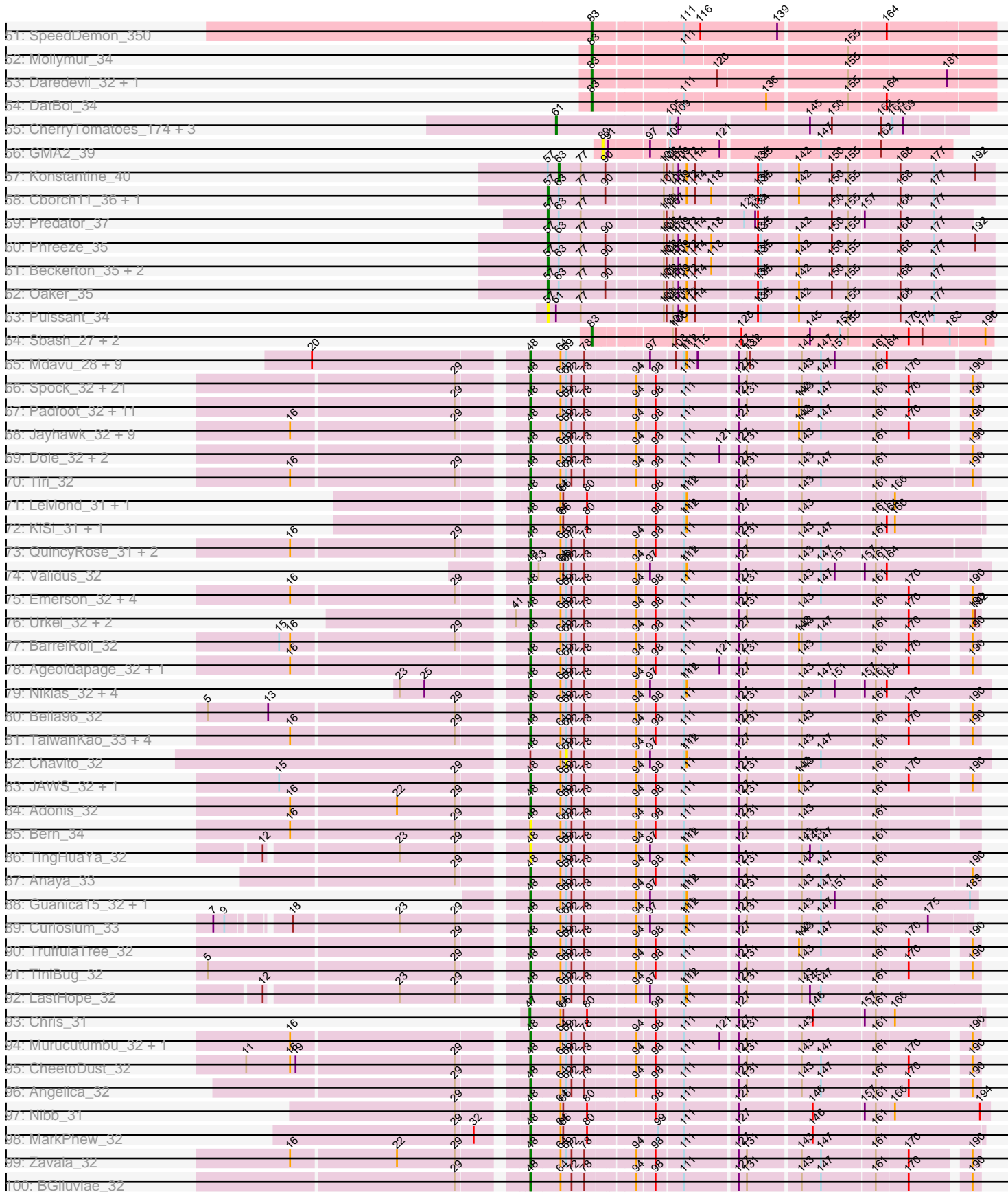


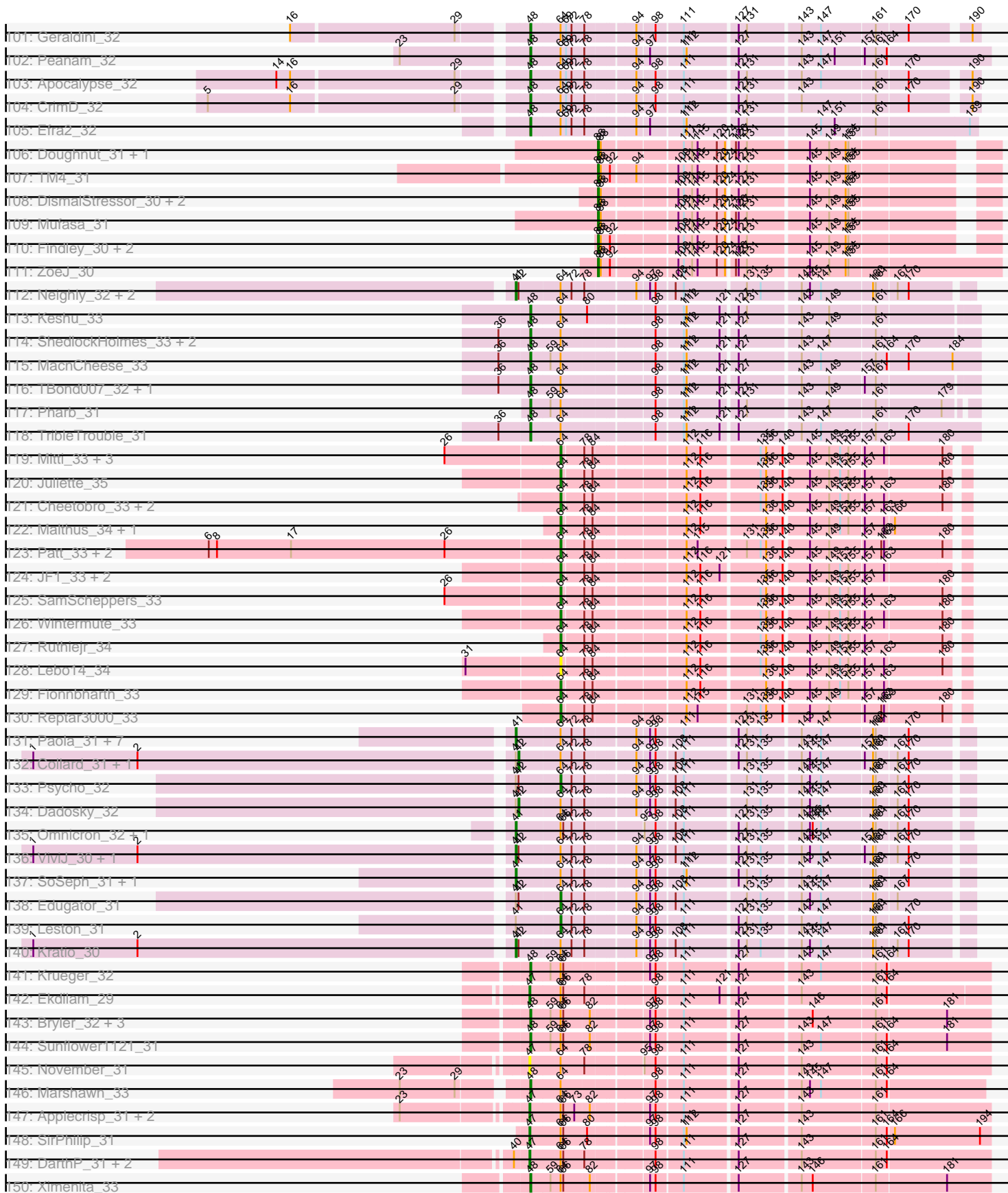
Pham 215717



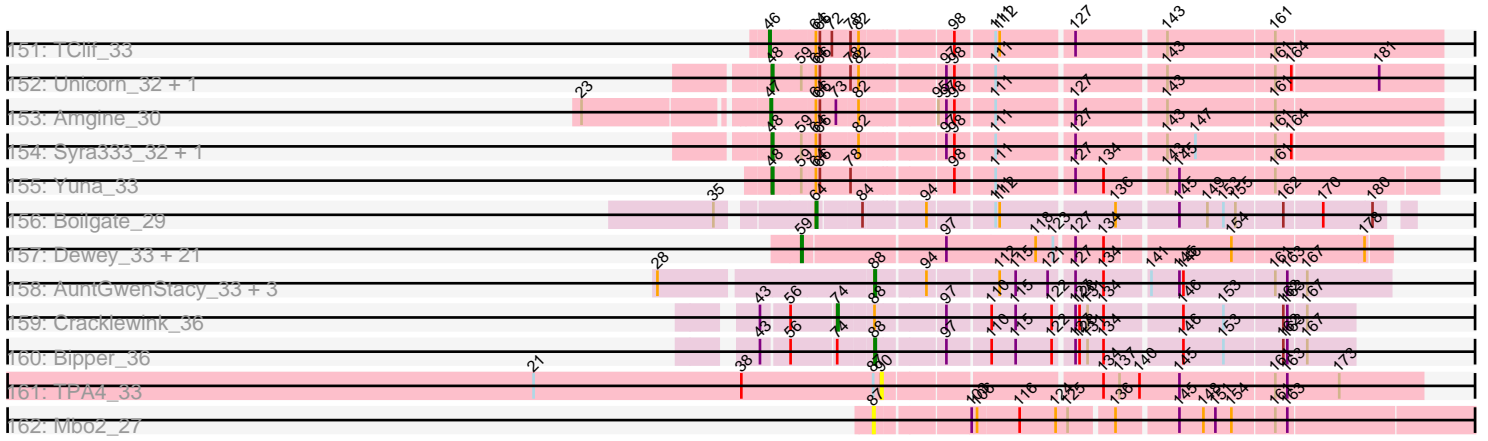
Pham 215717



Pham 215717



Pham 215717



Note: Tracks are now grouped by subcluster and scaled. Switching in subcluster is indicated by changes in track color. Track scale is now set by default to display the region 30 bp upstream of start 1 to 30 bp downstream of the last possible start. If this default region is judged to be packed too tightly with annotated starts, the track will be further scaled to only show that region of the ORF with annotated starts. This action will be indicated by adding "Zoomed" to the title. For starts, yellow indicates the location of called starts comprised solely of Glimmer/GeneMark auto-annotations, green indicates the location of called starts with at least 1 manual gene annotation.

Pham 215717 Report

This analysis was run 02/22/25 on database version 588.

Pham number 215717 has 382 members, 50 are drafts.

Phages represented in each track:

- Track 1 : Phrappuccino_197, Settecandela_222
- Track 2 : Cuke_27
- Track 3 : MrMiyagi_30, Fowlmouth_30
- Track 4 : Sparky_28
- Track 5 : Farewell_28
- Track 6 : Nergal_28
- Track 7 : MalagasyRose_32
- Track 8 : ClubL_51, Aphelion_51, Bachita_53, Norvs_52, Lozinak_52, Abscondus_50, Smoothie_53, Toniann_51, Geeche_50, Engineer_53, Miskis_53, Dusty_49, PhinkBoden_51, Cucurbita_53, Culver_51
- Track 9 : WilliamBoone_51
- Track 10 : BrutonGaster_40
- Track 11 : OneUp_45
- Track 12 : GMA7_26, GTE7_26, HayZem_35, Austin_36
- Track 13 : Amore2_36
- Track 14 : Flakey_32, Gorko_32, Sam12_32, GourdThymes_32, Ekhein_32, Hotorobo_32
- Track 15 : Boneham_36, BirksAndSocks_36
- Track 16 : Eggsie_32
- Track 17 : CinnamonToast_37
- Track 18 : Chelms_32, PierreThree_32, Dakiti_32
- Track 19 : Crete_33, BenoitCattle_32
- Track 20 : Butterball_36, Jellybones_36, Msay19_37, Poland_37
- Track 21 : Monty_31, John316_36, Exiguo_32, RemRem_33, Beaver_36, Worcestershire_32, Squibbles_31
- Track 22 : FelixAlejandro_37
- Track 23 : PokyPuppy_31
- Track 24 : Adgers_33, Sombrero_32
- Track 25 : Barbochs_32
- Track 26 : RoyalG_33
- Track 27 : Lizzo_32
- Track 28 : Linetti_33
- Track 29 : BigShaq_32
- Track 30 : SteveFrench_32
- Track 31 : Diabla_35
- Track 32 : Breezic_32
- Track 33 : CathyBurgh_31

- Track 34 : Teal_33, Minos_34, Harambe_33, Anamika_33, Berries_33, MrWormie_33, Lidong_33, Guillaume_33, Lahirium_33, Shelley_33, Bianmat_33, Damp_33, Newt_34, Jams_33, Luker_34, Sticker17_33, Hail2Pitt_33, Hello_33, Jormungandr_33, Kaseim_34, Nimi13_33, Charianelly_33, Neoevie_33, GalacticEye_33
- Track 35 : Woes_33
- Track 36 : Demosthenes_31
- Track 37 : Kvothe_31, Niagara_31, Teatealatte_31, Tredge_31, Teech_31
- Track 38 : ASerpRocky_31
- Track 39 : Hollow_32
- Track 40 : Benczkowski14_31, Katyusha_31
- Track 41 : Vitaenoi_33, Philon9_33
- Track 42 : Orchid_30, Gibbles_29, PatrickStar_30, Kampe_30, RobinSparkles_33
- Track 43 : Yvonnetastic_49, JonJames_51
- Track 44 : Cardigan_51
- Track 45 : Camerico_37
- Track 46 : Gmala1_27, GordTnk2_27
- Track 47 : GordDuk1_27
- Track 48 : GMA3_27
- Track 49 : Jumbo_34
- Track 50 : Bantam_33
- Track 51 : SpeedDemon_350
- Track 52 : Mollymur_34
- Track 53 : Daredevil_32, Towmatter_32
- Track 54 : DatBoi_34
- Track 55 : CherryTomatoes_174, Pupper_173, Skog_5, SCentae_172
- Track 56 : GMA2_39
- Track 57 : Konstantine_40
- Track 58 : Cborch11_36, Megatron06_37
- Track 59 : Predator_37
- Track 60 : Phreeze_35
- Track 61 : Beckerton_35, Damien_35, Thumb_35
- Track 62 : Oaker_35
- Track 63 : Puissant_34
- Track 64 : Sbash_27, Stuck_31, IdentityCrisis_27
- Track 65 : Mdavu_28, Teejan_28, Enkosi_28, Amelie_28, Nikao_28, LilPharaoh_28, Binglebops_28, Torres_28, SgtBeansprout_28, Nutello_28
- Track 66 : Spock_32, MacKat_33, Topper_32, Twitch_32, Llorens_32, Joy99_32, Dalmuri_32, Jeckyll_32, Peel_32, Belladonna_32, CREW_32, AlishaPH_32, Rosmarinus_32, Clipper_34, Lunahalos_32, Sulley_32, Inky_32, Deby_32, Capricorn_32, CallaLilly_33, Jarvi_32, YoureAdopted_31
- Track 67 : Padfoot_32, CaseJules_32, Blizzard_32, Homura_32, BEEST_32, Asayake_32, ShiaSurprise_32, BaghaKamala_32, Durfee_32, Piatt_32, Boiiii_32, Hyperbowlee_32
- Track 68 : Jayhawk_32, Slimphazie_32, ActinUp_32, HedwigODU_32, Veliki_32, Atiba_32, Adephagia_32, Tachez_32, Zabiza_32, Rapunzel97_32
- Track 69 : Dole_32, Devera_32, Illumine_32
- Track 70 : Tiri_32
- Track 71 : LeMond_31, Oscar_31
- Track 72 : KiSi_31, Scarlett_31
- Track 73 : QuincyRose_31, MeaningOfLife_32, Ganymede_33
- Track 74 : Validus_32
- Track 75 : Emerson_32, Padpat_32, Mynx_32, Beezoo_32, Pokerus_31

- Track 76 : Urkel_32, SamuelLPlaqson_32, DrHayes_32
- Track 77 : BarrelRoll_32
- Track 78 : Ageofdapage_32, Stinson_33
- Track 79 : Niklas_32, McMater_32, Richo_32, Shaobing_32, Dartin_32
- Track 80 : Bella96_32
- Track 81 : TaiwanKao_33, LindNT_32, Prithvi_32, TreyKay_32, Megsy_32
- Track 82 : Chavito_32
- Track 83 : JAWS_32, Ramen_32
- Track 84 : Adonis_32
- Track 85 : Bern_34
- Track 86 : TingHuaYa_32
- Track 87 : Anaya_33
- Track 88 : Guanica15_32, Yunkel11_32
- Track 89 : Curiosium_33
- Track 90 : TruffulaTree_32
- Track 91 : TiniBug_32
- Track 92 : LastHope_32
- Track 93 : Chris_31
- Track 94 : Murucutumbu_32, LaterM_32
- Track 95 : CheetoDust_32
- Track 96 : Angelica_32
- Track 97 : Nibb_31
- Track 98 : MarkPhew_32
- Track 99 : Zavala_32
- Track 100 : BGlluviae_32
- Track 101 : Geraldini_32
- Track 102 : Peanam_32
- Track 103 : Apocalypse_32
- Track 104 : CrimD_32
- Track 105 : Efra2_32
- Track 106 : Doughnut_31, BoostSeason_31
- Track 107 : TM4_31
- Track 108 : DismalStressor_30, Marcoliusprime_30, DismalFunk_30
- Track 109 : Mufasa_31
- Track 110 : Findley_30, Strobilo_30, Milly_30
- Track 111 : ZoeJ_30
- Track 112 : Neighly_32, Larva_32, AlleyCat_32
- Track 113 : Keshu_33
- Track 114 : ShedlockHolmes_33, Hurricane_33, Lea83_34
- Track 115 : MacnCheese_33
- Track 116 : TBond007_32, Pixie_32
- Track 117 : Pharb_31
- Track 118 : TribbleTrouble_31
- Track 119 : Mitti_33, Eponine_35, OmniCritical_33, Taquito_33
- Track 120 : Juliette_35
- Track 121 : Cheetobro_33, Chancellor_33, Slarp_33
- Track 122 : Malthus_34, Kraw_34
- Track 123 : Patt_33, MissDaisy_33, Bobquesha_34
- Track 124 : JF1_33, Y2_33, Y10_33
- Track 125 : SamScheppers_33
- Track 126 : Wintermute_33
- Track 127 : Ruthiejr_34
- Track 128 : Lebo14_34

- Track 129 : Fionnbharth_33
- Track 130 : Reptar3000_33
- Track 131 : Paola_31, Thyatira_31, Feyre_31, OkiRoe_31, Waterfoul_31, Gengar_31, Miryou_31, Guillsminger_31
- Track 132 : Collard_31, Agent47_31
- Track 133 : Psycho_32
- Track 134 : Dadosky_32
- Track 135 : Omnicron_32, Rando14_32
- Track 136 : ViviJ_30, InvictusManeo_31
- Track 137 : SoSeph_31, Heftyboy_31
- Track 138 : Edugator_31
- Track 139 : Leston_31
- Track 140 : Kratio_30
- Track 141 : Krueger_32
- Track 142 : Ekdilam_29
- Track 143 : Bryler_32, Phrank_32, Tierra_32, Cain_32
- Track 144 : Sunflower1121_31
- Track 145 : November_31
- Track 146 : Marshawn_33
- Track 147 : Applecrisp_31, Fefferhead_31, Ellie_29
- Track 148 : SirPhilip_31
- Track 149 : DarthP_31, Amohnition_31, Hammy_31
- Track 150 : Ximenita_33
- Track 151 : TClif_33
- Track 152 : Unicorn_32, PhelpsODU_32
- Track 153 : Amgine_30
- Track 154 : Syra333_32, Shadow1_31
- Track 155 : Yuna_33
- Track 156 : Boilgate_29
- Track 157 : Dewey_33, Forge_33, Hail_33, OBUpride_34, Luna22_33, Hadrien_34, HH92_33, Wishmaker_33, Amymech_34, Gancho_33, Webster2_34, Luke_34, Amochick_34, Giles_33, LilHazelNut_34, Ubuntu_34, Kinbote_34, Gravallia_33, Evanesce_33, DeepSoil15_34, Ein37_34, Daegal_35
- Track 158 : AuntGwenStacy_33, Hilltopfarm_33, Faiyaz_33, Typha_33
- Track 159 : Cracklewink_36
- Track 160 : Bipper_36
- Track 161 : TPA4_33
- Track 162 : Mbo2_27

Summary of Final Annotations (See graph section above for start numbers):

The start number called the most often in the published annotations is 48, it was called in 123 of the 332 non-draft genes in the pham.

Genes that call this "Most Annotated" start:

- ActinUp_32, Adephegia_32, Adonis_32, Ageofdapage_32, AlishaPH_32, Amelie_28, Anaya_33, Angelica_32, Apocalypse_32, Asayake_32, Atiba_32, BEEST_32, BGiluviae_32, BaghaKamala_32, BarrelRoll_32, Beezoo_32, Bella96_32, Belladonna_32, Bern_34, Binglebops_28, Blizzard_32, Boiiii_32, Bryler_32, CREW_32, Cain_32, CallaLilly_33, Capricorn_32, CaseJules_32, CheetoDust_32,

Clipper_34, CrimD_32, Curiosium_33, Dalmuri_32, Dartin_32, Deby_32, Devera_32, Dole_32, DrHayes_32, Durfee_32, Efra2_32, Emerson_32, Enkosi_28, Ganymede_33, Geraldini_32, Guanica15_32, HedwigODU_32, Homura_32, Hurricane_33, Hyperbowlee_32, Illumine_32, Inky_32, JAWS_32, Jarvi_32, Jayhawk_32, Jeckyll_32, Joy99_32, Keshu_33, KiSi_31, Krueger_32, LastHope_32, LaterM_32, LeMond_31, Lea83_34, LilPharaoh_28, LindNT_32, Llorens_32, Lunahalos_32, MacKat_33, MacnCheese_33, MarkPhew_32, Marshawn_33, McMater_32, Mdavu_28, MeaningOfLife_32, Megsy_32, Murucutumbu_32, Mynx_32, Nibb_31, Nikao_28, Niklas_32, Nutello_28, Oscar_31, Padfoot_32, Padpat_32, Peanam_32, Peel_32, Pharb_31, PhelpsODU_32, Phrank_32, Piatt_32, Pixie_32, Pokerus_31, Prithvi_32, QuincyRose_31, Ramen_32, Rapunzel97_32, Richo_32, Rosmarinus_32, SamuelLPlaqson_32, Scarlett_31, SgtBeansprout_28, Shadow1_31, Shaobing_32, ShedlockHolmes_33, ShiaSurprise_32, Slimphazie_32, Spock_32, Stinson_33, Sulley_32, Sunflower1121_31, Syra333_32, TBond007_32, Tachez_32, TaiwanKao_33, Teejan_28, Tierra_32, TingHuaYa_32, TiniBug_32, Tiri_32, Topper_32, Torres_28, TreyKay_32, TribleTrouble_31, TruffulaTree_32, Twitch_32, Unicorn_32, Urkel_32, Validus_32, Veliki_32, Ximenita_33, YoureAdopted_31, Yuna_33, Yunkel11_32, Zabiza_32, Zavala_32,

Genes that have the "Most Annotated" start but do not call it:

- Chavito_32, Diabla_35,

Genes that do not have the "Most Annotated" start:

- ASerpRocky_31, Abscondus_50, Adgers_33, Agent47_31, AlleyCat_32, Amgine_30, Amochick_34, Amohnition_31, Amore2_36, Amymech_34, Anamika_33, Aphelion_51, Applecrisp_31, AuntGwenStacy_33, Austin_36, Bachita_53, Bantam_33, Barbochs_32, Beaver_36, Beckerton_35, Benczkowski14_31, BenoitCattle_32, Berries_33, Bianmat_33, BigShaq_32, Bipper_36, BirksAndSocks_36, Bobquesha_34, Boilgate_29, Boneham_36, BoostSeason_31, Breezic_32, BrutonGaster_40, Butterball_36, Camerico_37, Cardigan_51, CathyBurgh_31, Cborch11_36, Chancellor_33, Charianelly_33, Cheetobro_33, Chelms_32, CherryTomatoes_174, Chris_31, CinnamonToast_37, ClubL_51, Collard_31, Cracklewink_36, Crete_33, Cucurbita_53, Cuke_27, Culver_51, Dadosky_32, Daegal_35, Dakiti_32, Damien_35, Damp_33, Daredevil_32, DarthP_31, DatBoi_34, DeepSoil15_34, Demosthenes_31, Dewey_33, DismalFunk_30, DismalStressor_30, Doughnut_31, Dusty_49, Edugator_31, Eggsie_32, Ein37_34, Ekdilam_29, Ekhein_32, Ellie_29, Engineer_53, Eponine_35, Evanesce_33, Exiguo_32, Faiyaz_33, Farewell_28, Fefferhead_31, FelixAlejandro_37, Feyre_31, Findley_30, Fionnbharth_33, Flakey_32, Forge_33, Fowlmouth_30, GMA2_39, GMA3_27, GMA7_26, GTE7_26, GalacticEye_33, Gancho_33, Geeche_50, Gengar_31, Gibbles_29, Giles_33, Gmala1_27, GordDuk1_27, GordTnk2_27, Gorko_32, GourdThymes_32, Gravallia_33, Guillaume_33, Guillsminger_31, HH92_33, Hadrien_34, Hail2Pitt_33, Hail_33, Hammy_31, Harambe_33, HayZem_35, Heftyboy_31, Hello_33, Hilltopfarm_33, Hollow_32, Hotorobo_32, IdentityCrisis_27, InvictusManeo_31, JF1_33, Jams_33, Jellybones_36, John316_36, JonJames_51, Jormungandr_33, Juliette_35, Jumbo_34, Kampe_30, Kaseim_34, Katyusha_31, Kinbote_34, Konstantine_40, Kratio_30, Kraw_34, Kvothe_31, Lahirium_33, Larva_32, Lebo14_34, Leston_31, Lidong_33, LilHazelNut_34, Linetti_33, Lizzo_32, Lozinak_52, Luke_34, Luker_34, Luna22_33, MalagasyRose_32, Malthus_34, Marcoliusprime_30, Mbo2_27, Megatron06_37, Milly_30, Minos_34, Miryou_31, Miskis_53, MissDaisy_33, Mitti_33, Mollymur_34, Monty_31, MrMiyagi_30, MrWormie_33, Msay19_37, Mufasa_31, Neighly_32, Neoevie_33, Nergal_28, Newt_34, Niagara_31, Nimi13_33, Norvs_52,

November_31, OBUpride_34, Oaker_35, OkiRoe_31, OmniCritical_33, Omnicron_32, OneUp_45, Orchid_30, Paola_31, PatrickStar_30, Patt_33, Philon9_33, PhinkBoden_51, Phrappuccino_197, Phreeze_35, PierreThree_32, PokyPuppy_31, Poland_37, Predator_37, Psycho_32, Puissant_34, Pupper_173, Rando14_32, RemRem_33, Reptar3000_33, RobinSparkles_33, RoyalG_33, Ruthiejr_34, SCentae_172, Sam12_32, SamScheppers_33, Sbash_27, Settecandela_222, Shelley_33, SirPhilip_31, Skog_5, Slarp_33, Smoothie_53, SoSeph_31, Sombrero_32, Sparky_28, SpeedDemon_350, Squibbles_31, SteveFrench_32, Sticker17_33, Strobilo_30, Stuck_31, TClif_33, TM4_31, TPA4_33, Taquito_33, Teal_33, Teatealatte_31, Teech_31, Thumb_35, Thyatira_31, Toniann_51, Towmatter_32, Tredge_31, Typha_33, Ubuntu_34, Vitaenoi_33, ViviJ_30, Waterfoul_31, Webster2_34, WilliamBoone_51, Wintermute_33, Wishmaker_33, Woes_33, Worcestershire_32, Y10_33, Y2_33, Yvonnetastic_49, ZoeJ_30,

Summary by start number:

Start 37:

- Found in 62 of 382 (16.2%) of genes in pham
- Manual Annotations of this start: 17 of 332
- Called 27.4% of time when present
- Phage (with cluster) where this start called: Adgers_33 (CS2), BigShaq_32 (CS2), BirksAndSocks_36 (CS2), Boneham_36 (CS2), Breezic_32 (CS2), Chelms_32 (CS2), Dakiti_32 (CS2), Ekhein_32 (CS2), Flakey_32 (CS2), Gorko_32 (CS2), GourdThymes_32 (CS2), Hotorobo_32 (CS2), Lizzo_32 (CS2), PierreThree_32 (CS2), RoyalG_33 (CS2), Sam12_32 (CS2), Sombrero_32 (CS2),

Start 41:

- Found in 27 of 382 (7.1%) of genes in pham
- Manual Annotations of this start: 16 of 332
- Called 66.7% of time when present
- Phage (with cluster) where this start called: AlleyCat_32 (K5), Feyre_31 (K5), Gengar_31 (K5), Guillsminger_31 (K5), Heftyboy_31 (K5), InvictusManeo_31 (K5), Kratio_30 (K5), Larva_32 (K5), Miryou_31 (K5), Neighly_32 (K3), OkiRoe_31 (K5), Omnicron_32 (K5), Paola_31 (K5), Rando14_32 (K5), SoSeph_31 (K5), Thyatira_31 (K5), ViviJ_30 (K5), Waterfoul_31 (K5),

Start 42:

- Found in 11 of 382 (2.9%) of genes in pham
- Manual Annotations of this start: 3 of 332
- Called 27.3% of time when present
- Phage (with cluster) where this start called: Agent47_31 (K5), Collard_31 (K5), Dadosky_32 (K5),

Start 44:

- Found in 1 of 382 (0.3%) of genes in pham
- Manual Annotations of this start: 1 of 332
- Called 100.0% of time when present
- Phage (with cluster) where this start called: Jumbo_34 (DF3),

Start 45:

- Found in 1 of 382 (0.3%) of genes in pham
- Manual Annotations of this start: 1 of 332
- Called 100.0% of time when present

- Phage (with cluster) where this start called: Nergal_28 (AG),

Start 46:

- Found in 1 of 382 (0.3%) of genes in pham
- Manual Annotations of this start: 1 of 332
- Called 100.0% of time when present
- Phage (with cluster) where this start called: TClif_33 (K6),

Start 47:

- Found in 11 of 382 (2.9%) of genes in pham
- Manual Annotations of this start: 9 of 332
- Called 100.0% of time when present
- Phage (with cluster) where this start called: Amgine_30 (K6), Amohnition_31 (K6), Applecrisp_31 (K6), Chris_31 (K1), DarthP_31 (K6), Ekdilam_29 (K6), Ellie_29 (K6), Fefferhead_31 (K6), Hammy_31 (K6), November_31 (K6), SirPhilip_31 (K6),

Start 48:

- Found in 137 of 382 (35.9%) of genes in pham
- Manual Annotations of this start: 123 of 332
- Called 98.5% of time when present
- Phage (with cluster) where this start called: ActinUp_32 (K1), Adephegia_32 (K1), Adonis_32 (K1), Ageofdapage_32 (K1), AlishaPH_32 (K1), Amelie_28 (K1), Anaya_33 (K1), Angelica_32 (K1), Apocalypse_32 (K1), Asayake_32 (K1), Atiba_32 (K1), BEEST_32 (K1), BGlluviae_32 (K1), BaghaKamala_32 (K1), BarrelRoll_32 (K1), Beezoo_32 (K1), Bella96_32 (K1), Belladonna_32 (K1), Bern_34 (K1), Biglebops_28 (K1), Blizzard_32 (K1), Boiii_32 (K1), Bryler_32 (K6), CREW_32 (K1), Cain_32 (K6), CallaLilly_33 (K1), Capricorn_32 (K1), CaseJules_32 (K1), CheetoDust_32 (K1), Clipper_34 (K1), CrimD_32 (K1), Curiosium_33 (K1), Dalmuri_32 (K1), Dartin_32 (K1), Deby_32 (K1), Devera_32 (K1), Dole_32 (K1), DrHayes_32 (K1), Durfee_32 (K1), Efra2_32 (K1), Emerson_32 (K1), Enkosi_28 (K1), Ganymede_33 (K1), Geraldini_32 (K1), Guanica15_32 (K1), HedwigODU_32 (K1), Homura_32 (K1), Hurricane_33 (K3), Hyperbowlee_32 (K1), Illumine_32 (K1), Inky_32 (K1), JAWS_32 (K1), Jarvi_32 (K1), Jayhawk_32 (K1), Jeckyll_32 (K1), Joy99_32 (K1), Keshu_33 (K3), KiSi_31 (K1), Krueger_32 (K6), LastHope_32 (K1), LaterM_32 (K1), LeMond_31 (K1), Lea83_34 (K3), LilPharaoh_28 (K1), LindNT_32 (K1), Llorens_32 (K1), Lunahalos_32 (K1), MacKat_33 (K1), MacnCheese_33 (K3), MarkPhew_32 (K1), Marshawn_33 (K6), McMater_32 (K1), Mdavu_28 (K1), MeaningOfLife_32 (K1), Megsy_32 (K1), Murucutumbu_32 (K1), Mynx_32 (K1), Nibb_31 (K1), Nikao_28 (K1), Niklas_32 (K1), Nutello_28 (K1), Oscar_31 (K1), Padfoot_32 (K1), Padpat_32 (K1), Peanam_32 (K1), Peel_32 (K1), Pharb_31 (K3), PhelpsODU_32 (K6), Phrank_32 (K6), Piatt_32 (K1), Pixie_32 (K3), Pokerus_31 (K1), Prithvi_32 (K1), QuincyRose_31 (K1), Ramen_32 (K1), Rapunzel97_32 (K1), Richo_32 (K1), Rosmarinus_32 (K1), SamuelLPlaqson_32 (K1), Scarlett_31 (K1), SgtBeansprout_28 (K1), Shadow1_31 (K6), Shaobing_32 (K1), ShedlockHolmes_33 (K3), ShiaSurprise_32 (K1), Slimphazie_32 (K1), Spock_32 (K1), Stinson_33 (K1), Sulley_32 (K1), Sunflower1121_31 (K6), Syra333_32 (K6), TBond007_32 (K3), Tachez_32 (K1), TaiwanKao_33 (K1), Teejan_28 (K1), Tierra_32 (K6), TingHuaYa_32 (K1), TiniBug_32 (K1), Tiri_32 (K1), Topper_32 (K1), Torres_28 (K1), TreyKay_32 (K1), TripleTrouble_31 (K3), TruffulaTree_32 (K1), Twitch_32 (K1), Unicorn_32 (K6), Urkel_32 (K1), Validus_32 (K1), Veliki_32 (K1), Ximenita_33 (K6), YoureAdopted_31 (K1), Yuna_33 (K6), Yunkel11_32 (K1), Zabiza_32 (K1), Zavala_32 (K1),

Start 49:

- Found in 2 of 382 (0.5%) of genes in pham
- Manual Annotations of this start: 2 of 332
- Called 100.0% of time when present
- Phage (with cluster) where this start called: ASerpRocky_31 (CS4), Demosthenes_31 (CS4),

Start 51:

- Found in 1 of 382 (0.3%) of genes in pham
- No Manual Annotations of this start.
- Called 100.0% of time when present
- Phage (with cluster) where this start called: GMA3_27 (DF2),

Start 52:

- Found in 1 of 382 (0.3%) of genes in pham
- Manual Annotations of this start: 1 of 332
- Called 100.0% of time when present
- Phage (with cluster) where this start called: MalagasyRose_32 (AG),

Start 57:

- Found in 12 of 382 (3.1%) of genes in pham
- Manual Annotations of this start: 8 of 332
- Called 75.0% of time when present
- Phage (with cluster) where this start called: Beckerton_35 (H1), Cborch11_36 (H1), Damien_35 (H1), Megatron06_37 (H1), Oaker_35 (H1), Phreeze_35 (H1), Predator_37 (H1), Puissant_34 (H1), Thumb_35 (H1),

Start 58:

- Found in 1 of 382 (0.3%) of genes in pham
- Manual Annotations of this start: 1 of 332
- Called 100.0% of time when present
- Phage (with cluster) where this start called: Camerico_37 (DF),

Start 59:

- Found in 36 of 382 (9.4%) of genes in pham
- Manual Annotations of this start: 22 of 332
- Called 61.1% of time when present
- Phage (with cluster) where this start called: Amochick_34 (Q), Amymech_34 (Q), Daegal_35 (Q), DeepSoil15_34 (Q), Dewey_33 (Q), Ein37_34 (Q), Evanesce_33 (Q), Forge_33 (Q), Gancho_33 (Q), Giles_33 (Q), Gravaillia_33 (Q), HH92_33 (Q), Hadrien_34 (Q), Hail_33 (Q), Kinbote_34 (Q), LilHazelnut_34 (Q), Luke_34 (Q), Luna22_33 (Q), OBUpride_34 (Q), Ubuntu_34 (Q), Webster2_34 (Q), Wishmaker_33 (Q),

Start 60:

- Found in 3 of 382 (0.8%) of genes in pham
- Manual Annotations of this start: 2 of 332
- Called 100.0% of time when present
- Phage (with cluster) where this start called: Cardigan_51 (DD), JonJames_51 (DD), Yvonnestic_49 (DD),

Start 61:

- Found in 74 of 382 (19.4%) of genes in pham
- Manual Annotations of this start: 47 of 332

- Called 75.7% of time when present
- Phage (with cluster) where this start called: Amore2_36 (CS1), Anamika_33 (CS3), Austin_36 (CS1), Barbochs_32 (CS2), Beaver_36 (CS2), BenoitCattle_32 (CS2), Berries_33 (CS3), Bianmat_33 (CS3), Butterball_36 (CS2), CathyBurgh_31 (CS2), Charianelly_33 (CS3), CherryTomatoes_174 (DO), CinnamonToast_37 (CS2), Crete_33 (CS2), Damp_33 (CS3), Diabla_35 (CS2), Eggsie_32 (CS2), Exiguo_32 (CS2), FelixAlejandro_37 (CS2), GMA7_26 (CS1), GTE7_26 (CS1), GalacticEye_33 (CS3), Guillaume_33 (CS3), Hail2Pitt_33 (CS3), Harambe_33 (CS3), HayZem_35 (CS1), Hello_33 (CS3), Jams_33 (CS3), Jellybones_36 (CS2), John316_36 (CS2), Jormungandr_33 (CS3), Kaseim_34 (CS3), Lahirium_33 (CS3), Lidong_33 (CS3), Linetti_33 (CS2), Luker_34 (CS3), Minos_34 (CS3), Monty_31 (CS2), MrWormie_33 (CS3), Msay19_37 (CS2), Neoevie_33 (CS3), Newt_34 (CS3), Nimi13_33 (CS3), PokyPuppy_31 (CS2), Poland_37 (CS2), Pupper_173 (DO), RemRem_33 (CS2), SCentae_172 (DO), Shelley_33 (CS3), Skog_5 (DO), Squibbles_31 (CS2), SteveFrench_32 (CS2), Sticker17_33 (CS3), Teal_33 (CS3), Woes_33 (CS3), Worcestershire_32 (CS2),

Start 62:

- Found in 10 of 382 (2.6%) of genes in pham
- Manual Annotations of this start: 7 of 332
- Called 100.0% of time when present
- Phage (with cluster) where this start called: Benczkowski14_31 (CS4), Hollow_32 (CS4), Katyusha_31 (CS4), Kvothe_31 (CS4), Niagara_31 (CS4), Philon9_33 (CS4), Teatealatte_31 (CS4), Teech_31 (CS4), Tredge_31 (CS4), Vitaenoi_33 (CS4),

Start 63:

- Found in 9 of 382 (2.4%) of genes in pham
- Manual Annotations of this start: 1 of 332
- Called 11.1% of time when present
- Phage (with cluster) where this start called: Konstantine_40 (H1),

Start 64:

- Found in 198 of 382 (51.8%) of genes in pham
- Manual Annotations of this start: 23 of 332
- Called 13.1% of time when present
- Phage (with cluster) where this start called: Bobquesha_34 (K4), Boilgate_29 (K8), Chancellor_33 (K4), Cheetobro_33 (K4), Edugator_31 (K5), Eponine_35 (K4), Fionnbharth_33 (K4), JF1_33 (K4), Juliette_35 (K4), Kraw_34 (K4), Lebo14_34 (K4), Leston_31 (K5), Malthus_34 (K4), MissDaisy_33 (K4), Mitti_33 (K4), OmniCritical_33 (K4), Patt_33 (K4), Psycho_32 (K5), Reptar3000_33 (K4), Ruthiejr_34 (K4), SamScheppers_33 (K4), Slarp_33 (K4), Taquito_33 (K4), Wintermute_33 (K4), Y10_33 (K4), Y2_33 (K4),

Start 67:

- Found in 3 of 382 (0.8%) of genes in pham
- Manual Annotations of this start: 3 of 332
- Called 100.0% of time when present
- Phage (with cluster) where this start called: Cuke_27 (AC), Fowlmouth_30 (AC), MrMiyagi_30 (AC),

Start 69:

- Found in 110 of 382 (28.8%) of genes in pham
- No Manual Annotations of this start.

- Called 3.6% of time when present
- Phage (with cluster) where this start called: Chavito_32 (K1), Gmala1_27 (DF1), GordDuk1_27 (DF1), GordTnk2_27 (DF1),

Start 74:

- Found in 2 of 382 (0.5%) of genes in pham
- Manual Annotations of this start: 1 of 332
- Called 50.0% of time when present
- Phage (with cluster) where this start called: Cracklewink_36 (Y),

Start 80:

- Found in 14 of 382 (3.7%) of genes in pham
- Manual Annotations of this start: 5 of 332
- Called 35.7% of time when present
- Phage (with cluster) where this start called: Gibbles_29 (CX), Kampe_30 (CX), Orchid_30 (CX), PatrickStar_30 (CX), RobinSparkles_33 (CX),

Start 81:

- Found in 1 of 382 (0.3%) of genes in pham
- Manual Annotations of this start: 1 of 332
- Called 100.0% of time when present
- Phage (with cluster) where this start called: OneUp_45 (CQ2),

Start 83:

- Found in 11 of 382 (2.9%) of genes in pham
- Manual Annotations of this start: 9 of 332
- Called 100.0% of time when present
- Phage (with cluster) where this start called: Bantam_33 (DL), Daredevil_32 (DL), DatBoi_34 (DL), IdentityCrisis_27 (singleton), Mollymur_34 (DL), Phrappuccino_197 (AA), Sbash_27 (I2), Settecandela_222 (AA), SpeedDemon_350 (DL), Stuck_31 (I2), Towmatter_32 (DL),

Start 86:

- Found in 11 of 382 (2.9%) of genes in pham
- Manual Annotations of this start: 10 of 332
- Called 100.0% of time when present
- Phage (with cluster) where this start called: BoostSeason_31 (K2), DismalFunk_30 (K2), DismalStressor_30 (K2), Doughnut_31 (K2), Findley_30 (K2), Marcoliusprime_30 (K2), Milly_30 (K2), Mufasa_31 (K2), Strobilo_30 (K2), TM4_31 (K2), ZoeJ_30 (K2),

Start 87:

- Found in 4 of 382 (1.0%) of genes in pham
- Manual Annotations of this start: 2 of 332
- Called 75.0% of time when present
- Phage (with cluster) where this start called: Farewell_28 (AF), Mbo2_27 (singleton), Sparky_28 (AF),

Start 88:

- Found in 17 of 382 (4.5%) of genes in pham
- Manual Annotations of this start: 3 of 332
- Called 29.4% of time when present

- Phage (with cluster) where this start called: AuntGwenStacy_33 (Y), Bipper_36 (Y), Faiyaz_33 (Y), Hilltopfarm_33 (Y), Typha_33 (Y),

Start 89:

- Found in 21 of 382 (5.5%) of genes in pham
- Manual Annotations of this start: 13 of 332
- Called 85.7% of time when present
- Phage (with cluster) where this start called: Abscondus_50 (CQ1), Aphelion_51 (CQ1), Bachita_53 (CQ1), BrutonGaster_40 (CQ2), ClubL_51 (CQ1), Cucurbita_53 (CQ1), Culver_51 (CQ1), Dusty_49 (CQ1), Engineer_53 (CQ1), GMA2_39 (DS), Geeche_50 (CQ1), Lozinak_52 (CQ1), Miskis_53 (CQ1), Norvs_52 (CQ1), PhinkBoden_51 (CQ1), Smoothie_53 (CQ1), Toniann_51 (CQ1), WilliamBoone_51 (CQ1),

Start 90:

- Found in 9 of 382 (2.4%) of genes in pham
- No Manual Annotations of this start.
- Called 11.1% of time when present
- Phage (with cluster) where this start called: TPA4_33 (singleton),

Summary by clusters:

There are 31 clusters represented in this pham: DO, singleton, DF, DD, DL, K3, K2, K1, K6, K5, K4, K8, DS, I2, DF1, DF3, DF2, CS4, CQ1, CS1, CS3, CS2, AA, AC, AG, AF, Q, CX, CQ2, Y, H1,

Info for manual annotations of cluster AA:

- Start number 83 was manually annotated 2 times for cluster AA.

Info for manual annotations of cluster AC:

- Start number 67 was manually annotated 3 times for cluster AC.

Info for manual annotations of cluster AF:

- Start number 87 was manually annotated 2 times for cluster AF.

Info for manual annotations of cluster AG:

- Start number 45 was manually annotated 1 time for cluster AG.
- Start number 52 was manually annotated 1 time for cluster AG.

Info for manual annotations of cluster CQ1:

- Start number 89 was manually annotated 12 times for cluster CQ1.

Info for manual annotations of cluster CQ2:

- Start number 81 was manually annotated 1 time for cluster CQ2.
- Start number 89 was manually annotated 1 time for cluster CQ2.

Info for manual annotations of cluster CS1:

- Start number 61 was manually annotated 3 times for cluster CS1.

Info for manual annotations of cluster CS2:

- Start number 37 was manually annotated 17 times for cluster CS2.
- Start number 61 was manually annotated 16 times for cluster CS2.

Info for manual annotations of cluster CS3:

- Start number 61 was manually annotated 24 times for cluster CS3.

Info for manual annotations of cluster CS4:

- Start number 49 was manually annotated 2 times for cluster CS4.
- Start number 62 was manually annotated 7 times for cluster CS4.

Info for manual annotations of cluster CX:

- Start number 80 was manually annotated 5 times for cluster CX.

Info for manual annotations of cluster DD:

- Start number 60 was manually annotated 2 times for cluster DD.

Info for manual annotations of cluster DF:

- Start number 58 was manually annotated 1 time for cluster DF.

Info for manual annotations of cluster DF3:

- Start number 44 was manually annotated 1 time for cluster DF3.

Info for manual annotations of cluster DL:

- Start number 83 was manually annotated 5 times for cluster DL.

Info for manual annotations of cluster DO:

- Start number 61 was manually annotated 4 times for cluster DO.

Info for manual annotations of cluster H1:

- Start number 57 was manually annotated 8 times for cluster H1.
- Start number 63 was manually annotated 1 time for cluster H1.

Info for manual annotations of cluster I2:

- Start number 83 was manually annotated 1 time for cluster I2.

Info for manual annotations of cluster K1:

- Start number 47 was manually annotated 1 time for cluster K1.
- Start number 48 was manually annotated 102 times for cluster K1.

Info for manual annotations of cluster K2:

- Start number 86 was manually annotated 10 times for cluster K2.

Info for manual annotations of cluster K3:

- Start number 48 was manually annotated 8 times for cluster K3.

Info for manual annotations of cluster K4:

- Start number 64 was manually annotated 19 times for cluster K4.

Info for manual annotations of cluster K5:

- Start number 41 was manually annotated 16 times for cluster K5.
- Start number 42 was manually annotated 3 times for cluster K5.
- Start number 64 was manually annotated 3 times for cluster K5.

Info for manual annotations of cluster K6:

- Start number 46 was manually annotated 1 time for cluster K6.
- Start number 47 was manually annotated 8 times for cluster K6.
- Start number 48 was manually annotated 13 times for cluster K6.

Info for manual annotations of cluster K8:

- Start number 64 was manually annotated 1 time for cluster K8.

Info for manual annotations of cluster Q:

- Start number 59 was manually annotated 22 times for cluster Q.

Info for manual annotations of cluster Y:

- Start number 74 was manually annotated 1 time for cluster Y.
- Start number 88 was manually annotated 3 times for cluster Y.

Gene Information:

Gene: ASerpRocky_31 Start: 39045, Stop: 39497, Start Num: 49

Candidate Starts for ASerpRocky_31:

(Start: 49 @39045 has 2 MA's), (93, 39105), (96, 39132), (100, 39147), (119, 39201), (130, 39231), (137, 39255), (146, 39297), (149, 39315), (152, 39324), (162, 39369), (184, 39444),

Gene: Abscondus_50 Start: 32639, Stop: 33046, Start Num: 89

Candidate Starts for Abscondus_50:

(Start: 89 @32639 has 13 MA's), (105, 32702), (107, 32705), (138, 32807), (161, 32918), (171, 32960), (195, 33035),

Gene: ActinUp_32 Start: 27346, Stop: 27786, Start Num: 48

Candidate Starts for ActinUp_32:

(16, 27109), (29, 27283), (Start: 48 @27346 has 123 MA's), (Start: 64 @27376 has 23 MA's), (69, 27382), (72, 27388), (78, 27400), (94, 27448), (98, 27466), (111, 27493), (127, 27547), (142, 27607), (143, 27610), (147, 27631), (161, 27688), (170, 27721), (190, 27778),

Gene: Adephagia_32 Start: 27343, Stop: 27783, Start Num: 48

Candidate Starts for Adephagia_32:

(16, 27106), (29, 27280), (Start: 48 @27343 has 123 MA's), (Start: 64 @27373 has 23 MA's), (69, 27379), (72, 27385), (78, 27397), (94, 27445), (98, 27463), (111, 27490), (127, 27544), (142, 27604), (143, 27607), (147, 27628), (161, 27685), (170, 27718), (190, 27775),

Gene: Adgers_33 Start: 37508, Stop: 38029, Start Num: 37

Candidate Starts for Adgers_33:

(Start: 37 @37508 has 17 MA's), (Start: 61 @37562 has 47 MA's), (70, 37574), (79, 37595), (99, 37664), (108, 37679), (134, 37763), (145, 37814), (147, 37826), (161, 37886), (176, 37943), (186, 37976), (191, 37991),

Gene: Adonis_32 Start: 27349, Stop: 27798, Start Num: 48

Candidate Starts for Adonis_32:

(16, 27112), (22, 27223), (29, 27286), (Start: 48 @27349 has 123 MA's), (Start: 64 @27379 has 23 MA's), (69, 27385), (72, 27391), (78, 27403), (94, 27451), (98, 27469), (111, 27496), (127, 27550), (131, 27559), (143, 27613), (161, 27691),

Gene: Agent47_31 Start: 27988, Stop: 28437, Start Num: 42

Candidate Starts for Agent47_31:

(1, 27472), (2, 27586), (Start: 41 @27985 has 16 MA's), (Start: 42 @27988 has 3 MA's), (Start: 64 @28030 has 23 MA's), (72, 28042), (78, 28054), (94, 28102), (97, 28114), (98, 28120), (108, 28138), (111, 28147), (127, 28201), (131, 28210), (135, 28225), (143, 28264), (145, 28273), (147, 28285), (157, 28330), (160, 28339), (161, 28342), (167, 28363), (170, 28375),

Gene: Ageofdapage_32 Start: 27286, Stop: 27726, Start Num: 48

Candidate Starts for Ageofdapage_32:

(16, 27049), (Start: 48 @27286 has 123 MA's), (Start: 64 @27316 has 23 MA's), (69, 27322), (72, 27328), (78, 27340), (94, 27388), (98, 27406), (111, 27433), (121, 27472), (127, 27487), (131, 27496), (143, 27550), (161, 27628), (170, 27661), (190, 27718),

Gene: AlishaPH_32 Start: 27336, Stop: 27776, Start Num: 48

Candidate Starts for AlishaPH_32:

(29, 27273), (Start: 48 @27336 has 123 MA's), (Start: 64 @27366 has 23 MA's), (69, 27372), (72, 27378), (78, 27390), (94, 27438), (98, 27456), (111, 27483), (127, 27537), (131, 27546), (143, 27600), (147, 27621), (161, 27678), (170, 27711), (190, 27768),

Gene: AlleyCat_32 Start: 27916, Stop: 28368, Start Num: 41

Candidate Starts for AlleyCat_32:

(Start: 41 @27916 has 16 MA's), (Start: 42 @27919 has 3 MA's), (Start: 64 @27961 has 23 MA's), (72, 27973), (78, 27985), (94, 28033), (97, 28045), (98, 28051), (108, 28069), (111, 28078), (131, 28141), (135, 28156), (143, 28195), (145, 28204), (147, 28216), (160, 28270), (161, 28273), (167, 28294), (170, 28306),

Gene: Amelie_28 Start: 26747, Stop: 27205, Start Num: 48

Candidate Starts for Amelie_28:

(20, 26528), (Start: 48 @26747 has 123 MA's), (Start: 64 @26777 has 23 MA's), (69, 26783), (78, 26801), (97, 26861), (108, 26885), (111, 26894), (112, 26897), (115, 26909), (127, 26948), (131, 26957), (132, 26960), (143, 27011), (147, 27032), (151, 27047), (161, 27089), (164, 27101),

Gene: Amgine_30 Start: 27287, Stop: 27751, Start Num: 47

Candidate Starts for Amgine_30:

(23, 27164), (Start: 47 @27287 has 9 MA's), (Start: 64 @27317 has 23 MA's), (66, 27320), (73, 27332), (82, 27347), (95, 27395), (97, 27401), (98, 27407), (111, 27434), (127, 27488), (143, 27551), (161, 27629),

Gene: Amochick_34 Start: 29602, Stop: 30012, Start Num: 59

Candidate Starts for Amochick_34:

(Start: 59 @29602 has 22 MA's), (97, 29704), (118, 29770), (123, 29782), (127, 29794), (134, 29815), (154, 29902), (178, 29995),

Gene: Amohnition_31 Start: 27721, Stop: 28185, Start Num: 47

Candidate Starts for Amohnition_31:

(40, 27706), (Start: 47 @27721 has 9 MA's), (Start: 64 @27751 has 23 MA's), (66, 27754), (78, 27775), (98, 27841), (111, 27868), (127, 27922), (143, 27985), (161, 28063), (164, 28075),

Gene: Amore2_36 Start: 38215, Stop: 38634, Start Num: 61

Candidate Starts for Amore2_36:

(Start: 61 @38215 has 47 MA's), (96, 38287), (105, 38308), (110, 38320), (112, 38326), (141, 38428), (147, 38461), (148, 38467), (157, 38509), (172, 38563), (176, 38578),

Gene: Amymech_34 Start: 29596, Stop: 30006, Start Num: 59

Candidate Starts for Amymech_34:

(Start: 59 @29596 has 22 MA's), (97, 29698), (118, 29764), (123, 29776), (127, 29788), (134, 29809), (154, 29896), (178, 29989),

Gene: Anamika_33 Start: 39971, Stop: 40408, Start Num: 61

Candidate Starts for Anamika_33:

(Start: 37 @39917 has 17 MA's), (Start: 61 @39971 has 47 MA's), (70, 39983), (79, 40004), (97, 40064), (107, 40085), (146, 40226), (161, 40295),

Gene: Anaya_33 Start: 27362, Stop: 27811, Start Num: 48

Candidate Starts for Anaya_33:

(29, 27299), (Start: 48 @27362 has 123 MA's), (Start: 64 @27392 has 23 MA's), (69, 27398), (72, 27404), (78, 27416), (94, 27464), (98, 27482), (111, 27509), (127, 27563), (131, 27572), (143, 27626), (147, 27647), (161, 27704), (190, 27803),

Gene: Angelica_32 Start: 27293, Stop: 27733, Start Num: 48

Candidate Starts for Angelica_32:

(29, 27230), (Start: 48 @27293 has 123 MA's), (Start: 64 @27323 has 23 MA's), (69, 27329), (72, 27335), (78, 27347), (94, 27395), (98, 27413), (111, 27440), (127, 27494), (131, 27503), (143, 27557), (147, 27578), (161, 27635), (170, 27668), (190, 27725),

Gene: Aphelion_51 Start: 32908, Stop: 33315, Start Num: 89

Candidate Starts for Aphelion_51:

(Start: 89 @32908 has 13 MA's), (105, 32971), (107, 32974), (138, 33076), (161, 33187), (171, 33229), (195, 33304),

Gene: Apocalypse_32 Start: 27314, Stop: 27754, Start Num: 48

Candidate Starts for Apocalypse_32:

(14, 27062), (16, 27077), (29, 27251), (Start: 48 @27314 has 123 MA's), (Start: 64 @27344 has 23 MA's), (69, 27350), (72, 27356), (78, 27368), (94, 27416), (98, 27434), (111, 27461), (127, 27515), (131, 27524), (143, 27578), (147, 27599), (161, 27656), (170, 27689), (190, 27746),

Gene: Applecrisp_31 Start: 27709, Stop: 28173, Start Num: 47

Candidate Starts for Applecrisp_31:

(23, 27586), (Start: 47 @27709 has 9 MA's), (Start: 64 @27739 has 23 MA's), (66, 27742), (73, 27754), (82, 27769), (97, 27823), (98, 27829), (111, 27856), (127, 27910), (143, 27973), (161, 28051),

Gene: Asayake_32 Start: 27377, Stop: 27817, Start Num: 48

Candidate Starts for Asayake_32:

(29, 27314), (Start: 48 @27377 has 123 MA's), (Start: 64 @27407 has 23 MA's), (69, 27413), (72, 27419), (78, 27431), (94, 27479), (98, 27497), (111, 27524), (127, 27578), (131, 27587), (142, 27638), (143, 27641), (147, 27662), (161, 27719), (170, 27752), (190, 27809),

Gene: Atiba_32 Start: 27306, Stop: 27746, Start Num: 48

Candidate Starts for Atiba_32:

(16, 27069), (29, 27243), (Start: 48 @27306 has 123 MA's), (Start: 64 @27336 has 23 MA's), (69, 27342), (72, 27348), (78, 27360), (94, 27408), (98, 27426), (111, 27453), (127, 27507), (142, 27567), (143, 27570), (147, 27591), (161, 27648), (170, 27681), (190, 27738),

Gene: AuntGwenStacy_33 Start: 30335, Stop: 30691, Start Num: 88

Candidate Starts for AuntGwenStacy_33:

(28, 30185), (Start: 88 @30335 has 3 MA's), (94, 30368), (112, 30416), (115, 30428), (121, 30452), (127, 30467), (134, 30488), (141, 30518), (145, 30539), (146, 30542), (161, 30608), (163, 30617), (167, 30629),

Gene: Austin_36 Start: 38215, Stop: 38634, Start Num: 61

Candidate Starts for Austin_36:

(Start: 61 @38215 has 47 MA's), (96, 38287), (105, 38308), (110, 38320), (112, 38326), (141, 38428), (147, 38461), (148, 38467), (157, 38509), (172, 38563), (176, 38578), (191, 38626),

Gene: BEEST_32 Start: 27377, Stop: 27817, Start Num: 48

Candidate Starts for BEEST_32:

(29, 27314), (Start: 48 @27377 has 123 MA's), (Start: 64 @27407 has 23 MA's), (69, 27413), (72, 27419), (78, 27431), (94, 27479), (98, 27497), (111, 27524), (127, 27578), (131, 27587), (142, 27638), (143, 27641), (147, 27662), (161, 27719), (170, 27752), (190, 27809),

Gene: BGIlluviae_32 Start: 27377, Stop: 27817, Start Num: 48

Candidate Starts for BGIlluviae_32:

(29, 27314), (Start: 48 @27377 has 123 MA's), (Start: 64 @27407 has 23 MA's), (72, 27419), (78, 27431), (94, 27479), (98, 27497), (111, 27524), (127, 27578), (131, 27587), (143, 27641), (147, 27662), (161, 27719), (170, 27752), (190, 27809),

Gene: Bachita_53 Start: 33341, Stop: 33748, Start Num: 89

Candidate Starts for Bachita_53:

(Start: 89 @33341 has 13 MA's), (105, 33404), (107, 33407), (138, 33509), (161, 33620), (171, 33662), (195, 33737),

Gene: BaghaKamala_32 Start: 27306, Stop: 27746, Start Num: 48

Candidate Starts for BaghaKamala_32:

(29, 27243), (Start: 48 @27306 has 123 MA's), (Start: 64 @27336 has 23 MA's), (69, 27342), (72, 27348), (78, 27360), (94, 27408), (98, 27426), (111, 27453), (127, 27507), (131, 27516), (142, 27567), (143, 27570), (147, 27591), (161, 27648), (170, 27681), (190, 27738),

Gene: Bantam_33 Start: 30576, Stop: 30989, Start Num: 83

Candidate Starts for Bantam_33:

(Start: 83 @30576 has 9 MA's), (111, 30666), (116, 30684), (164, 30879),

Gene: Barbochs_32 Start: 37400, Stop: 37867, Start Num: 61

Candidate Starts for Barbochs_32:

(Start: 37 @37346 has 17 MA's), (Start: 61 @37400 has 47 MA's), (70, 37412), (79, 37433), (97, 37493), (108, 37517), (134, 37601), (145, 37652), (147, 37664), (161, 37724), (176, 37781), (186, 37814), (191, 37829),

Gene: BarrelRoll_32 Start: 27329, Stop: 27769, Start Num: 48

Candidate Starts for BarrelRoll_32:

(15, 27080), (16, 27092), (29, 27266), (Start: 48 @27329 has 123 MA's), (Start: 64 @27359 has 23 MA's), (69, 27365), (72, 27371), (78, 27383), (94, 27431), (98, 27449), (111, 27476), (127, 27530), (142, 27590), (143, 27593), (147, 27614), (161, 27671), (170, 27704), (190, 27761),

Gene: Beaver_36 Start: 39448, Stop: 39915, Start Num: 61

Candidate Starts for Beaver_36:

(Start: 37 @39394 has 17 MA's), (Start: 61 @39448 has 47 MA's), (70, 39460), (79, 39481), (108, 39565), (134, 39649), (145, 39700), (147, 39712), (161, 39772), (176, 39829), (186, 39862), (191, 39877),

Gene: Beckerton_35 Start: 32917, Stop: 33378, Start Num: 57

Candidate Starts for Beckerton_35:

(Start: 57 @32917 has 8 MA's), (Start: 63 @32929 has 1 MA's), (77, 32953), (90, 32980), (101, 33037), (102, 33040), (107, 33046), (109, 33052), (112, 33061), (114, 33070), (118, 33088), (134, 33133), (135, 33136), (142, 33172), (150, 33208), (155, 33226), (168, 33277), (177, 33313),

Gene: Beezoo_32 Start: 27354, Stop: 27794, Start Num: 48

Candidate Starts for Beezoo_32:

(16, 27117), (29, 27291), (Start: 48 @27354 has 123 MA's), (Start: 64 @27384 has 23 MA's), (69, 27390), (72, 27396), (78, 27408), (94, 27456), (98, 27474), (111, 27501), (127, 27555), (131, 27564), (143, 27618), (147, 27639), (161, 27696), (170, 27729), (190, 27786),

Gene: Bella96_32 Start: 27247, Stop: 27687, Start Num: 48

Candidate Starts for Bella96_32:

(5, 26920), (13, 26986), (29, 27184), (Start: 48 @27247 has 123 MA's), (Start: 64 @27277 has 23 MA's), (69, 27283), (72, 27289), (78, 27301), (94, 27349), (98, 27367), (111, 27394), (127, 27448), (131, 27457), (143, 27511), (161, 27589), (170, 27622), (190, 27679),

Gene: Belladonna_32 Start: 27377, Stop: 27817, Start Num: 48

Candidate Starts for Belladonna_32:

(29, 27314), (Start: 48 @27377 has 123 MA's), (Start: 64 @27407 has 23 MA's), (69, 27413), (72, 27419), (78, 27431), (94, 27479), (98, 27497), (111, 27524), (127, 27578), (131, 27587), (143, 27641), (147, 27662), (161, 27719), (170, 27752), (190, 27809),

Gene: Benczkowski14_31 Start: 39098, Stop: 39532, Start Num: 62

Candidate Starts for Benczkowski14_31:

(Start: 62 @39098 has 7 MA's), (75, 39119), (92, 39137), (96, 39170), (142, 39320), (146, 39335), (159, 39395), (161, 39401), (162, 39407), (184, 39482),

Gene: BenoitCattle_32 Start: 37503, Stop: 37970, Start Num: 61

Candidate Starts for BenoitCattle_32:

(Start: 37 @37449 has 17 MA's), (Start: 61 @37503 has 47 MA's), (70, 37515), (79, 37536), (108, 37620), (110, 37626), (134, 37704), (145, 37755), (161, 37827), (176, 37884), (184, 37908), (186, 37917), (193, 37935),

Gene: Bern_34 Start: 27286, Stop: 27726, Start Num: 48

Candidate Starts for Bern_34:

(16, 27049), (29, 27223), (Start: 48 @27286 has 123 MA's), (Start: 64 @27316 has 23 MA's), (69, 27322), (72, 27328), (78, 27340), (94, 27388), (98, 27406), (111, 27433), (127, 27487), (131, 27496), (143, 27550), (161, 27628),

Gene: Berries_33 Start: 39941, Stop: 40378, Start Num: 61

Candidate Starts for Berries_33:

(Start: 37 @39887 has 17 MA's), (Start: 61 @39941 has 47 MA's), (70, 39953), (79, 39974), (97, 40034), (107, 40055), (146, 40196), (161, 40265),

Gene: Bianmat_33 Start: 39981, Stop: 40418, Start Num: 61

Candidate Starts for Bianmat_33:

(Start: 37 @39927 has 17 MA's), (Start: 61 @39981 has 47 MA's), (70, 39993), (79, 40014), (97, 40074), (107, 40095), (146, 40236), (161, 40305),

Gene: BigShaq_32 Start: 37454, Stop: 37975, Start Num: 37

Candidate Starts for BigShaq_32:

(Start: 37 @37454 has 17 MA's), (Start: 61 @37508 has 47 MA's), (70, 37520), (79, 37541), (85, 37550), (108, 37625), (110, 37631), (134, 37709), (145, 37760), (161, 37832), (176, 37889), (184, 37913), (186, 37922), (193, 37940),

Gene: Biglebops_28 Start: 26747, Stop: 27205, Start Num: 48

Candidate Starts for Biglebops_28:

(20, 26528), (Start: 48 @26747 has 123 MA's), (Start: 64 @26777 has 23 MA's), (69, 26783), (78, 26801), (97, 26861), (108, 26885), (111, 26894), (112, 26897), (115, 26909), (127, 26948), (131, 26957), (132, 26960), (143, 27011), (147, 27032), (151, 27047), (161, 27089), (164, 27101),

Gene: Bipper_36 Start: 31123, Stop: 31452, Start Num: 88

Candidate Starts for Bipper_36:

(43, 31051), (56, 31069), (Start: 74 @31099 has 1 MA's), (Start: 88 @31123 has 3 MA's), (97, 31168), (110, 31198), (115, 31216), (122, 31243), (127, 31255), (128, 31258), (131, 31264), (134, 31276), (146, 31330), (153, 31360), (162, 31402), (163, 31405), (167, 31417),

Gene: BirksAndSocks_36 Start: 39372, Stop: 39893, Start Num: 37

Candidate Starts for BirksAndSocks_36:

(Start: 37 @39372 has 17 MA's), (Start: 61 @39426 has 47 MA's), (70, 39438), (79, 39459), (97, 39519), (108, 39543), (134, 39627), (145, 39678), (147, 39690), (161, 39750), (176, 39807), (186, 39840), (191, 39855),

Gene: Blizzard_32 Start: 27377, Stop: 27817, Start Num: 48

Candidate Starts for Blizzard_32:

(29, 27314), (Start: 48 @27377 has 123 MA's), (Start: 64 @27407 has 23 MA's), (69, 27413), (72, 27419), (78, 27431), (94, 27479), (98, 27497), (111, 27524), (127, 27578), (131, 27587), (142, 27638), (143, 27641), (147, 27662), (161, 27719), (170, 27752), (190, 27809),

Gene: Bobquesha_34 Start: 28211, Stop: 28609, Start Num: 64

Candidate Starts for Bobquesha_34:

(6, 27833), (8, 27842), (17, 27923), (26, 28091), (Start: 64 @28211 has 23 MA's), (78, 28232), (84, 28241), (112, 28328), (115, 28340), (131, 28388), (135, 28403), (136, 28409), (140, 28427), (145, 28451), (149, 28472), (157, 28508), (162, 28526), (163, 28529), (180, 28589),

Gene: Boiiii_32 Start: 27379, Stop: 27819, Start Num: 48

Candidate Starts for Boiiii_32:

(29, 27316), (Start: 48 @27379 has 123 MA's), (Start: 64 @27409 has 23 MA's), (69, 27415), (72, 27421), (78, 27433), (94, 27481), (98, 27499), (111, 27526), (127, 27580), (131, 27589), (142, 27640), (143, 27643), (147, 27664), (161, 27721), (170, 27754), (190, 27811),

Gene: Boilgate_29 Start: 29197, Stop: 29595, Start Num: 64

Candidate Starts for Boilgate_29:

(35, 29137), (Start: 64 @29197 has 23 MA's), (84, 29227), (94, 29266), (111, 29311), (112, 29314), (136, 29395), (145, 29437), (149, 29458), (153, 29470), (155, 29479), (162, 29512), (170, 29539), (180, 29575),

Gene: Boneham_36 Start: 39371, Stop: 39892, Start Num: 37

Candidate Starts for Boneham_36:

(Start: 37 @39371 has 17 MA's), (Start: 61 @39425 has 47 MA's), (70, 39437), (79, 39458), (97, 39518), (108, 39542), (134, 39626), (145, 39677), (147, 39689), (161, 39749), (176, 39806), (186, 39839), (191, 39854),

Gene: BoostSeason_31 Start: 26116, Stop: 26502, Start Num: 86

Candidate Starts for BoostSeason_31:

(Start: 86 @26116 has 10 MA's), (Start: 88 @26119 has 3 MA's), (111, 26197), (113, 26206), (115, 26212), (120, 26233), (124, 26242), (126, 26248), (127, 26251), (131, 26260), (145, 26323), (149, 26344), (154, 26362), (155, 26365),

Gene: Breezic_32 Start: 37360, Stop: 37881, Start Num: 37

Candidate Starts for Breezic_32:

(Start: 37 @37360 has 17 MA's), (Start: 61 @37414 has 47 MA's), (70, 37426), (79, 37447), (99, 37516), (108, 37531), (134, 37615), (145, 37666), (147, 37678), (161, 37738), (176, 37795), (186, 37828), (191, 37843),

Gene: BrutonGaster_40 Start: 30025, Stop: 30432, Start Num: 89

Candidate Starts for BrutonGaster_40:

(Start: 89 @30025 has 13 MA's), (134, 30178), (138, 30193), (140, 30205), (161, 30304), (171, 30346),

Gene: Bryler_32 Start: 26627, Stop: 27091, Start Num: 48

Candidate Starts for Bryler_32:

(Start: 48 @26627 has 123 MA's), (Start: 59 @26648 has 22 MA's), (Start: 64 @26657 has 23 MA's), (66, 26660), (82, 26687), (97, 26741), (98, 26747), (111, 26774), (127, 26828), (146, 26903), (161, 26969), (181, 27044),

Gene: Butterball_36 Start: 39425, Stop: 39892, Start Num: 61

Candidate Starts for Butterball_36:

(Start: 37 @39371 has 17 MA's), (Start: 61 @39425 has 47 MA's), (70, 39437), (79, 39458), (97, 39518), (108, 39542), (134, 39626), (145, 39677), (147, 39689), (161, 39749), (176, 39806), (186, 39839), (191, 39854),

Gene: CREW_32 Start: 27377, Stop: 27817, Start Num: 48

Candidate Starts for CREW_32:

(29, 27314), (Start: 48 @27377 has 123 MA's), (Start: 64 @27407 has 23 MA's), (69, 27413), (72, 27419), (78, 27431), (94, 27479), (98, 27497), (111, 27524), (127, 27578), (131, 27587), (143, 27641), (147, 27662), (161, 27719), (170, 27752), (190, 27809),

Gene: Cain_32 Start: 26615, Stop: 27079, Start Num: 48

Candidate Starts for Cain_32:

(Start: 48 @26615 has 123 MA's), (Start: 59 @26636 has 22 MA's), (Start: 64 @26645 has 23 MA's), (66, 26648), (82, 26675), (97, 26729), (98, 26735), (111, 26762), (127, 26816), (146, 26891), (161, 26957), (181, 27032),

Gene: CallaLilly_33 Start: 27300, Stop: 27740, Start Num: 48

Candidate Starts for CallaLilly_33:

(29, 27237), (Start: 48 @27300 has 123 MA's), (Start: 64 @27330 has 23 MA's), (69, 27336), (72, 27342), (78, 27354), (94, 27402), (98, 27420), (111, 27447), (127, 27501), (131, 27510), (143, 27564), (147, 27585), (161, 27642), (170, 27675), (190, 27732),

Gene: Camerico_37 Start: 41920, Stop: 42348, Start Num: 58

Candidate Starts for Camerico_37:

(Start: 58 @41920 has 1 MA's), (96, 42013), (115, 42064), (124, 42094), (131, 42112), (132, 42115), (149, 42196), (161, 42244), (168, 42268), (172, 42286), (174, 42292), (176, 42301), (183, 42322),

Gene: Capricorn_32 Start: 27377, Stop: 27817, Start Num: 48

Candidate Starts for Capricorn_32:

(29, 27314), (Start: 48 @27377 has 123 MA's), (Start: 64 @27407 has 23 MA's), (69, 27413), (72, 27419), (78, 27431), (94, 27479), (98, 27497), (111, 27524), (127, 27578), (131, 27587), (143, 27641), (147, 27662), (161, 27719), (170, 27752), (190, 27809),

Gene: Cardigan_51 Start: 36197, Stop: 36607, Start Num: 60

Candidate Starts for Cardigan_51:

(3, 35792), (4, 35795), (5, 35819), (10, 35843), (24, 36044), (27, 36080), (30, 36098), (32, 36110), (33, 36116), (34, 36119), (Start: 60 @36197 has 2 MA's), (101, 36308), (115, 36341), (121, 36365), (162, 36530),

Gene: CaseJules_32 Start: 27377, Stop: 27817, Start Num: 48

Candidate Starts for CaseJules_32:

(29, 27314), (Start: 48 @27377 has 123 MA's), (Start: 64 @27407 has 23 MA's), (69, 27413), (72, 27419), (78, 27431), (94, 27479), (98, 27497), (111, 27524), (127, 27578), (131, 27587), (142, 27638), (143, 27641), (147, 27662), (161, 27719), (170, 27752), (190, 27809),

Gene: CathyBurgh_31 Start: 38268, Stop: 38735, Start Num: 61

Candidate Starts for CathyBurgh_31:

(Start: 37 @38214 has 17 MA's), (Start: 61 @38268 has 47 MA's), (70, 38280), (79, 38301), (108, 38385), (134, 38469), (145, 38520), (147, 38532), (161, 38592), (176, 38649), (186, 38682), (191, 38697),

Gene: Cborch11_36 Start: 32382, Stop: 32843, Start Num: 57

Candidate Starts for Cborch11_36:

(Start: 57 @32382 has 8 MA's), (Start: 63 @32394 has 1 MA's), (77, 32418), (90, 32445), (101, 32502), (107, 32511), (109, 32517), (112, 32526), (114, 32535), (118, 32553), (134, 32598), (135, 32601), (142, 32637), (150, 32673), (155, 32691), (168, 32742), (177, 32778),

Gene: Chancellor_33 Start: 28471, Stop: 28869, Start Num: 64

Candidate Starts for Chancellor_33:

(Start: 64 @28471 has 23 MA's), (78, 28492), (84, 28501), (112, 28588), (116, 28603), (135, 28663), (136, 28669), (140, 28687), (145, 28711), (149, 28732), (153, 28744), (155, 28753), (157, 28768), (163, 28789), (180, 28849),

Gene: Charianelly_33 Start: 39691, Stop: 40128, Start Num: 61

Candidate Starts for Charianelly_33:

(Start: 37 @39637 has 17 MA's), (Start: 61 @39691 has 47 MA's), (70, 39703), (79, 39724), (97, 39784), (107, 39805), (146, 39946), (161, 40015),

Gene: Chavito_32 Start: 26970, Stop: 27398, Start Num: 69

Candidate Starts for Chavito_32:

(Start: 48 @26934 has 123 MA's), (Start: 64 @26964 has 23 MA's), (69, 26970), (72, 26976), (78, 26988), (94, 27036), (97, 27048), (111, 27081), (112, 27084), (127, 27135), (143, 27198), (147, 27219), (161, 27276),

Gene: CheetoDust_32 Start: 27354, Stop: 27794, Start Num: 48

Candidate Starts for CheetoDust_32:

(11, 27069), (16, 27117), (19, 27123), (29, 27291), (Start: 48 @27354 has 123 MA's), (Start: 64 @27384 has 23 MA's), (69, 27390), (72, 27396), (78, 27408), (94, 27456), (98, 27474), (111, 27501), (127, 27555), (131, 27564), (143, 27618), (147, 27639), (161, 27696), (170, 27729), (190, 27786),

Gene: Cheetobro_33 Start: 28468, Stop: 28866, Start Num: 64

Candidate Starts for Cheetobro_33:

(Start: 64 @28468 has 23 MA's), (78, 28489), (84, 28498), (112, 28585), (116, 28600), (135, 28660), (136, 28666), (140, 28684), (145, 28708), (149, 28729), (153, 28741), (155, 28750), (157, 28765), (163, 28786), (180, 28846),

Gene: Chelms_32 Start: 37457, Stop: 37978, Start Num: 37

Candidate Starts for Chelms_32:

(Start: 37 @37457 has 17 MA's), (Start: 61 @37511 has 47 MA's), (70, 37523), (79, 37544), (108, 37628), (110, 37634), (134, 37712), (145, 37763), (161, 37835), (176, 37892), (184, 37916), (186, 37925), (193, 37943),

Gene: CherryTomatoes_174 Start: 126292, Stop: 126711, Start Num: 61

Candidate Starts for CherryTomatoes_174:

(Start: 61 @126292 has 47 MA's), (105, 126406), (109, 126415), (145, 126547), (150, 126571), (162, 126622), (165, 126634), (169, 126646),

Gene: Chris_31 Start: 26496, Stop: 26951, Start Num: 47

Candidate Starts for Chris_31:

(Start: 47 @26496 has 9 MA's), (Start: 64 @26526 has 23 MA's), (66, 26529), (Start: 80 @26553 has 5 MA's), (98, 26616), (111, 26643), (127, 26697), (146, 26772), (157, 26826), (161, 26838), (166, 26856),

Gene: CinnamonToast_37 Start: 39479, Stop: 39946, Start Num: 61

Candidate Starts for CinnamonToast_37:

(Start: 37 @39425 has 17 MA's), (Start: 61 @39479 has 47 MA's), (70, 39491), (79, 39512), (97, 39572), (108, 39596), (145, 39731), (147, 39743), (161, 39803), (176, 39860), (186, 39893), (191, 39908),

Gene: Clipper_34 Start: 27354, Stop: 27794, Start Num: 48

Candidate Starts for Clipper_34:

(29, 27291), (Start: 48 @27354 has 123 MA's), (Start: 64 @27384 has 23 MA's), (69, 27390), (72, 27396), (78, 27408), (94, 27456), (98, 27474), (111, 27501), (127, 27555), (131, 27564), (143, 27618), (147, 27639), (161, 27696), (170, 27729), (190, 27786),

Gene: ClubL_51 Start: 32830, Stop: 33237, Start Num: 89

Candidate Starts for ClubL_51:

(Start: 89 @32830 has 13 MA's), (105, 32893), (107, 32896), (138, 32998), (161, 33109), (171, 33151), (195, 33226),

Gene: Collard_31 Start: 27949, Stop: 28398, Start Num: 42

Candidate Starts for Collard_31:

(1, 27433), (2, 27547), (Start: 41 @27946 has 16 MA's), (Start: 42 @27949 has 3 MA's), (Start: 64 @27991 has 23 MA's), (72, 28003), (78, 28015), (94, 28063), (97, 28075), (98, 28081), (108, 28099), (111, 28108), (127, 28162), (131, 28171), (135, 28186), (143, 28225), (145, 28234), (147, 28246), (157, 28291), (160, 28300), (161, 28303), (167, 28324), (170, 28336),

Gene: Cracklewink_36 Start: 31099, Stop: 31452, Start Num: 74

Candidate Starts for Cracklewink_36:

(43, 31051), (56, 31069), (Start: 74 @31099 has 1 MA's), (Start: 88 @31123 has 3 MA's), (97, 31168), (110, 31198), (115, 31216), (122, 31243), (127, 31255), (128, 31258), (131, 31264), (134, 31276), (146, 31330), (153, 31360), (162, 31402), (163, 31405), (167, 31417),

Gene: Crete_33 Start: 37774, Stop: 38241, Start Num: 61

Candidate Starts for Crete_33:

(Start: 37 @37720 has 17 MA's), (Start: 61 @37774 has 47 MA's), (70, 37786), (79, 37807), (108, 37891), (110, 37897), (134, 37975), (145, 38026), (161, 38098), (176, 38155), (184, 38179), (186, 38188), (193, 38206),

Gene: CrimD_32 Start: 27314, Stop: 27754, Start Num: 48

Candidate Starts for CrimD_32:

(5, 26987), (16, 27077), (29, 27251), (Start: 48 @27314 has 123 MA's), (Start: 64 @27344 has 23 MA's), (69, 27350), (72, 27356), (78, 27368), (94, 27416), (98, 27434), (111, 27461), (127, 27515), (131, 27524), (143, 27578), (161, 27656), (170, 27689), (190, 27746),

Gene: Cucurbita_53 Start: 34200, Stop: 34607, Start Num: 89

Candidate Starts for Cucurbita_53:

(Start: 89 @34200 has 13 MA's), (105, 34263), (107, 34266), (138, 34368), (161, 34479), (171, 34521), (195, 34596),

Gene: Cuke_27 Start: 25711, Stop: 26124, Start Num: 67

Candidate Starts for Cuke_27:

(39, 25657), (Start: 57 @25693 has 8 MA's), (Start: 67 @25711 has 3 MA's), (76, 25720), (77, 25723), (Start: 89 @25744 has 13 MA's), (94, 25777), (97, 25792), (104, 25813), (117, 25846), (134, 25891), (147, 25951), (158, 25999), (178, 26074), (182, 26086), (187, 26104),

Gene: Culver_51 Start: 32639, Stop: 33046, Start Num: 89

Candidate Starts for Culver_51:

(Start: 89 @32639 has 13 MA's), (105, 32702), (107, 32705), (138, 32807), (161, 32918), (171, 32960), (195, 33035),

Gene: Curiosium_33 Start: 27140, Stop: 27580, Start Num: 48

Candidate Starts for Curiosium_33:

(7, 26840), (9, 26852), (18, 26906), (23, 27017), (29, 27077), (Start: 48 @27140 has 123 MA's), (Start: 64 @27170 has 23 MA's), (69, 27176), (72, 27182), (78, 27194), (94, 27242), (97, 27254), (111, 27287), (112, 27290), (127, 27341), (131, 27350), (143, 27404), (147, 27425), (161, 27482), (175, 27536),

Gene: Dadosky_32 Start: 27920, Stop: 28369, Start Num: 42

Candidate Starts for Dadosky_32:

(Start: 41 @27917 has 16 MA's), (Start: 42 @27920 has 3 MA's), (Start: 64 @27962 has 23 MA's), (72, 27974), (78, 27986), (94, 28034), (97, 28046), (98, 28052), (108, 28070), (111, 28079), (131, 28142), (135, 28157), (143, 28196), (145, 28205), (147, 28217), (160, 28271), (161, 28274), (167, 28295), (170, 28307),

Gene: Daegal_35 Start: 29890, Stop: 30300, Start Num: 59

Candidate Starts for Daegal_35:

(Start: 59 @29890 has 22 MA's), (97, 29992), (118, 30058), (123, 30070), (127, 30082), (134, 30103), (154, 30190), (178, 30283),

Gene: Dakiti_32 Start: 38325, Stop: 38846, Start Num: 37

Candidate Starts for Dakiti_32:

(Start: 37 @38325 has 17 MA's), (Start: 61 @38379 has 47 MA's), (70, 38391), (79, 38412), (108, 38496), (110, 38502), (134, 38580), (145, 38631), (161, 38703), (176, 38760), (184, 38784), (186, 38793), (193, 38811),

Gene: Dalmuri_32 Start: 27377, Stop: 27817, Start Num: 48

Candidate Starts for Dalmuri_32:

(29, 27314), (Start: 48 @27377 has 123 MA's), (Start: 64 @27407 has 23 MA's), (69, 27413), (72, 27419), (78, 27431), (94, 27479), (98, 27497), (111, 27524), (127, 27578), (131, 27587), (143, 27641), (147, 27662), (161, 27719), (170, 27752), (190, 27809),

Gene: Damien_35 Start: 32383, Stop: 32844, Start Num: 57

Candidate Starts for Damien_35:

(Start: 57 @32383 has 8 MA's), (Start: 63 @32395 has 1 MA's), (77, 32419), (90, 32446), (101, 32503), (102, 32506), (107, 32512), (109, 32518), (112, 32527), (114, 32536), (118, 32554), (134, 32599), (135, 32602), (142, 32638), (150, 32674), (155, 32692), (168, 32743), (177, 32779),

Gene: Damp_33 Start: 38855, Stop: 39292, Start Num: 61

Candidate Starts for Damp_33:

(Start: 37 @38801 has 17 MA's), (Start: 61 @38855 has 47 MA's), (70, 38867), (79, 38888), (97, 38948), (107, 38969), (146, 39110), (161, 39179),

Gene: Daredevil_32 Start: 29087, Stop: 29497, Start Num: 83

Candidate Starts for Daredevil_32:

(Start: 83 @29087 has 9 MA's), (120, 29213), (155, 29348), (181, 29447),

Gene: DarthP_31 Start: 27643, Stop: 28107, Start Num: 47

Candidate Starts for DarthP_31:

(40, 27628), (Start: 47 @27643 has 9 MA's), (Start: 64 @27673 has 23 MA's), (66, 27676), (78, 27697), (98, 27763), (111, 27790), (127, 27844), (143, 27907), (161, 27985), (164, 27997),

Gene: Dartin_32 Start: 26622, Stop: 27086, Start Num: 48

Candidate Starts for Dartin_32:

(23, 26496), (25, 26523), (Start: 48 @26622 has 123 MA's), (Start: 64 @26652 has 23 MA's), (69, 26658), (72, 26664), (78, 26676), (94, 26724), (97, 26736), (111, 26769), (112, 26772), (127, 26823), (143, 26886), (147, 26907), (151, 26922), (157, 26952), (161, 26964), (164, 26976),

Gene: DatBoi_34 Start: 31309, Stop: 31719, Start Num: 83

Candidate Starts for DatBoi_34:

(Start: 83 @31309 has 9 MA's), (111, 31399), (136, 31486), (155, 31570), (164, 31609),

Gene: Deby_32 Start: 27311, Stop: 27751, Start Num: 48

Candidate Starts for Deby_32:

(29, 27248), (Start: 48 @27311 has 123 MA's), (Start: 64 @27341 has 23 MA's), (69, 27347), (72, 27353), (78, 27365), (94, 27413), (98, 27431), (111, 27458), (127, 27512), (131, 27521), (143, 27575), (147, 27596), (161, 27653), (170, 27686), (190, 27743),

Gene: DeepSoil15_34 Start: 29596, Stop: 30006, Start Num: 59

Candidate Starts for DeepSoil15_34:

(Start: 59 @29596 has 22 MA's), (97, 29698), (118, 29764), (123, 29776), (127, 29788), (134, 29809), (154, 29896), (178, 29989),

Gene: Demosthenes_31 Start: 39018, Stop: 39470, Start Num: 49

Candidate Starts for Demosthenes_31:

(Start: 49 @39018 has 2 MA's), (93, 39078), (96, 39105), (100, 39120), (130, 39204), (137, 39228), (146, 39270), (149, 39288), (152, 39297), (162, 39342), (184, 39417),

Gene: Devera_32 Start: 27351, Stop: 27791, Start Num: 48

Candidate Starts for Devera_32:

(Start: 48 @27351 has 123 MA's), (Start: 64 @27381 has 23 MA's), (69, 27387), (72, 27393), (78, 27405), (94, 27453), (98, 27471), (111, 27498), (121, 27537), (127, 27552), (131, 27561), (143, 27615), (161, 27693), (190, 27783),

Gene: Dewey_33 Start: 29596, Stop: 30006, Start Num: 59

Candidate Starts for Dewey_33:

(Start: 59 @29596 has 22 MA's), (97, 29698), (118, 29764), (123, 29776), (127, 29788), (134, 29809), (154, 29896), (178, 29989),

Gene: Diabla_35 Start: 39281, Stop: 39739, Start Num: 61

Candidate Starts for Diabla_35:

(Start: 37 @39227 has 17 MA's), (Start: 48 @39254 has 123 MA's), (Start: 61 @39281 has 47 MA's), (70, 39293), (79, 39314), (97, 39374), (107, 39395), (108, 39398), (134, 39482), (161, 39605), (176, 39662), (184, 39686), (186, 39695),

Gene: DismalFunk_30 Start: 26028, Stop: 26414, Start Num: 86

Candidate Starts for DismalFunk_30:

(Start: 86 @26028 has 10 MA's), (Start: 88 @26031 has 3 MA's), (109, 26103), (111, 26109), (113, 26118), (115, 26124), (120, 26145), (124, 26154), (127, 26163), (131, 26172), (145, 26235), (149, 26256), (154, 26274), (155, 26277),

Gene: DismalStressor_30 Start: 26028, Stop: 26414, Start Num: 86

Candidate Starts for DismalStressor_30:

(Start: 86 @26028 has 10 MA's), (Start: 88 @26031 has 3 MA's), (109, 26103), (111, 26109), (113, 26118), (115, 26124), (120, 26145), (124, 26154), (127, 26163), (131, 26172), (145, 26235), (149, 26256), (154, 26274), (155, 26277),

Gene: Dole_32 Start: 27353, Stop: 27793, Start Num: 48

Candidate Starts for Dole_32:

(Start: 48 @27353 has 123 MA's), (Start: 64 @27383 has 23 MA's), (69, 27389), (72, 27395), (78, 27407), (94, 27455), (98, 27473), (111, 27500), (121, 27539), (127, 27554), (131, 27563), (143, 27617), (161, 27695), (190, 27785),

Gene: Doughnut_31 Start: 26109, Stop: 26495, Start Num: 86

Candidate Starts for Doughnut_31:

(Start: 86 @26109 has 10 MA's), (Start: 88 @26112 has 3 MA's), (111, 26190), (113, 26199), (115, 26205), (120, 26226), (124, 26235), (126, 26241), (127, 26244), (131, 26253), (145, 26316), (149, 26337), (154, 26355), (155, 26358),

Gene: DrHayes_32 Start: 27266, Stop: 27706, Start Num: 48

Candidate Starts for DrHayes_32:

(Start: 41 @27251 has 16 MA's), (Start: 48 @27266 has 123 MA's), (Start: 64 @27296 has 23 MA's), (69, 27302), (72, 27308), (78, 27320), (94, 27368), (98, 27386), (111, 27413), (127, 27467), (131, 27476), (143, 27530), (161, 27608), (170, 27641), (190, 27698), (192, 27701),

Gene: Durfee_32 Start: 27377, Stop: 27817, Start Num: 48

Candidate Starts for Durfee_32:

(29, 27314), (Start: 48 @27377 has 123 MA's), (Start: 64 @27407 has 23 MA's), (69, 27413), (72, 27419), (78, 27431), (94, 27479), (98, 27497), (111, 27524), (127, 27578), (131, 27587), (142, 27638), (143, 27641), (147, 27662), (161, 27719), (170, 27752), (190, 27809),

Gene: Dusty_49 Start: 32639, Stop: 33046, Start Num: 89

Candidate Starts for Dusty_49:

(Start: 89 @32639 has 13 MA's), (105, 32702), (107, 32705), (138, 32807), (161, 32918), (171, 32960), (195, 33035),

Gene: Edugator_31 Start: 27961, Stop: 28368, Start Num: 64

Candidate Starts for Edugator_31:

(Start: 41 @27916 has 16 MA's), (Start: 42 @27919 has 3 MA's), (Start: 64 @27961 has 23 MA's), (72, 27973), (78, 27985), (94, 28033), (97, 28045), (98, 28051), (108, 28069), (111, 28078), (131, 28141), (135, 28156), (143, 28195), (145, 28204), (147, 28216), (160, 28270), (161, 28273), (167, 28294),

Gene: Efra2_32 Start: 26582, Stop: 27031, Start Num: 48

Candidate Starts for Efra2_32:

(Start: 48 @26582 has 123 MA's), (Start: 64 @26612 has 23 MA's), (69, 26618), (72, 26624), (78, 26636), (94, 26684), (97, 26696), (111, 26729), (112, 26732), (127, 26783), (131, 26792), (147, 26867), (151, 26882), (161, 26924), (189, 27023),

Gene: Eggsie_32 Start: 37550, Stop: 38008, Start Num: 61

Candidate Starts for Eggsie_32:

(Start: 61 @37550 has 47 MA's), (70, 37562), (79, 37583), (97, 37643), (107, 37664), (108, 37667), (134, 37751), (161, 37874), (176, 37931), (184, 37955), (186, 37964),

Gene: Ein37_34 Start: 29596, Stop: 30006, Start Num: 59

Candidate Starts for Ein37_34:

(Start: 59 @29596 has 22 MA's), (97, 29698), (118, 29764), (123, 29776), (127, 29788), (134, 29809), (154, 29896), (178, 29989),

Gene: Ekdilam_29 Start: 27401, Stop: 27862, Start Num: 47

Candidate Starts for Ekdilam_29:

(Start: 47 @27401 has 9 MA's), (Start: 64 @27431 has 23 MA's), (66, 27434), (78, 27455), (98, 27521), (111, 27548), (121, 27587), (127, 27602), (143, 27665), (161, 27743), (164, 27755),

Gene: Ekhein_32 Start: 37342, Stop: 37863, Start Num: 37

Candidate Starts for Ekhein_32:

(Start: 37 @37342 has 17 MA's), (Start: 61 @37396 has 47 MA's), (70, 37408), (79, 37429), (108, 37513), (134, 37597), (145, 37648), (147, 37660), (161, 37720), (176, 37777), (186, 37810), (191, 37825),

Gene: Ellie_29 Start: 27400, Stop: 27864, Start Num: 47

Candidate Starts for Ellie_29:

(23, 27277), (Start: 47 @27400 has 9 MA's), (Start: 64 @27430 has 23 MA's), (66, 27433), (73, 27445), (82, 27460), (97, 27514), (98, 27520), (111, 27547), (127, 27601), (143, 27664), (161, 27742),

Gene: Emerson_32 Start: 27337, Stop: 27777, Start Num: 48

Candidate Starts for Emerson_32:

(16, 27100), (29, 27274), (Start: 48 @27337 has 123 MA's), (Start: 64 @27367 has 23 MA's), (69, 27373), (72, 27379), (78, 27391), (94, 27439), (98, 27457), (111, 27484), (127, 27538), (131, 27547), (143, 27601), (147, 27622), (161, 27679), (170, 27712), (190, 27769),

Gene: Engineer_53 Start: 33314, Stop: 33721, Start Num: 89

Candidate Starts for Engineer_53:

(Start: 89 @33314 has 13 MA's), (105, 33377), (107, 33380), (138, 33482), (161, 33593), (171, 33635), (195, 33710),

Gene: Enkosi_28 Start: 26747, Stop: 27205, Start Num: 48

Candidate Starts for Enkosi_28:

(20, 26528), (Start: 48 @26747 has 123 MA's), (Start: 64 @26777 has 23 MA's), (69, 26783), (78, 26801), (97, 26861), (108, 26885), (111, 26894), (112, 26897), (115, 26909), (127, 26948), (131, 26957), (132, 26960), (143, 27011), (147, 27032), (151, 27047), (161, 27089), (164, 27101),

Gene: Eponine_35 Start: 29224, Stop: 29622, Start Num: 64

Candidate Starts for Eponine_35:

(26, 29104), (Start: 64 @29224 has 23 MA's), (78, 29245), (84, 29254), (112, 29341), (116, 29356), (135, 29416), (136, 29422), (140, 29440), (145, 29464), (149, 29485), (153, 29497), (155, 29506), (157, 29521), (163, 29542), (180, 29602),

Gene: Evanesce_33 Start: 29596, Stop: 30006, Start Num: 59

Candidate Starts for Evanesce_33:

(Start: 59 @29596 has 22 MA's), (97, 29698), (118, 29764), (123, 29776), (127, 29788), (134, 29809), (154, 29896), (178, 29989),

Gene: Exiguo_32 Start: 37408, Stop: 37875, Start Num: 61

Candidate Starts for Exiguo_32:

(Start: 37 @37354 has 17 MA's), (Start: 61 @37408 has 47 MA's), (70, 37420), (79, 37441), (108, 37525), (134, 37609), (145, 37660), (147, 37672), (161, 37732), (176, 37789), (186, 37822), (191, 37837),

Gene: Faiyaz_33 Start: 30335, Stop: 30691, Start Num: 88

Candidate Starts for Faiyaz_33:

(28, 30185), (Start: 88 @30335 has 3 MA's), (94, 30368), (112, 30416), (115, 30428), (121, 30452), (127, 30467), (134, 30488), (141, 30518), (145, 30539), (146, 30542), (161, 30608), (163, 30617), (167, 30629),

Gene: Farewell_28 Start: 26686, Stop: 27078, Start Num: 87

Candidate Starts for Farewell_28:

(Start: 87 @26686 has 2 MA's), (107, 26752), (108, 26755), (128, 26818), (145, 26887), (153, 26920), (155, 26929), (170, 26989), (174, 27004), (183, 27034), (196, 27070),

Gene: Fefferhead_31 Start: 27600, Stop: 28064, Start Num: 47

Candidate Starts for Fefferhead_31:

(23, 27477), (Start: 47 @27600 has 9 MA's), (Start: 64 @27630 has 23 MA's), (66, 27633), (73, 27645), (82, 27660), (97, 27714), (98, 27720), (111, 27747), (127, 27801), (143, 27864), (161, 27942),

Gene: FelixAlejandro_37 Start: 39623, Stop: 40090, Start Num: 61

Candidate Starts for FelixAlejandro_37:

(Start: 37 @39569 has 17 MA's), (Start: 61 @39623 has 47 MA's), (70, 39635), (79, 39656), (97, 39716), (108, 39740), (134, 39824), (144, 39872), (147, 39887), (161, 39947), (176, 40004), (186, 40037), (191, 40052),

Gene: Feyre_31 Start: 27833, Stop: 28285, Start Num: 41

Candidate Starts for Feyre_31:

(Start: 41 @27833 has 16 MA's), (Start: 64 @27878 has 23 MA's), (72, 27890), (78, 27902), (94, 27950), (97, 27962), (98, 27968), (111, 27995), (127, 28049), (131, 28058), (135, 28073), (143, 28112), (147, 28133), (160, 28187), (161, 28190), (170, 28223),

Gene: Findley_30 Start: 26020, Stop: 26406, Start Num: 86

Candidate Starts for Findley_30:

(Start: 86 @26020 has 10 MA's), (Start: 88 @26023 has 3 MA's), (92, 26032), (109, 26095), (111, 26101), (113, 26110), (115, 26116), (120, 26137), (124, 26146), (127, 26155), (131, 26164), (145, 26227), (149, 26248), (154, 26266), (155, 26269),

Gene: Fionnbharth_33 Start: 28459, Stop: 28857, Start Num: 64

Candidate Starts for Fionnbharth_33:

(Start: 64 @28459 has 23 MA's), (78, 28480), (84, 28489), (112, 28576), (116, 28591), (136, 28657), (140, 28675), (145, 28699), (149, 28720), (153, 28732), (155, 28741), (157, 28756), (163, 28777),

Gene: Flakey_32 Start: 38218, Stop: 38739, Start Num: 37

Candidate Starts for Flakey_32:

(Start: 37 @38218 has 17 MA's), (Start: 61 @38272 has 47 MA's), (70, 38284), (79, 38305), (108, 38389), (134, 38473), (145, 38524), (147, 38536), (161, 38596), (176, 38653), (186, 38686), (191, 38701),

Gene: Forge_33 Start: 29596, Stop: 30006, Start Num: 59

Candidate Starts for Forge_33:

(Start: 59 @29596 has 22 MA's), (97, 29698), (118, 29764), (123, 29776), (127, 29788), (134, 29809), (154, 29896), (178, 29989),

Gene: Fowlmouth_30 Start: 29190, Stop: 29609, Start Num: 67

Candidate Starts for Fowlmouth_30:

(39, 29136), (Start: 67 @29190 has 3 MA's), (76, 29205), (Start: 89 @29229 has 13 MA's), (94, 29262), (178, 29559), (182, 29571), (187, 29589),

Gene: GMA2_39 Start: 41812, Stop: 42174, Start Num: 89

Candidate Starts for GMA2_39:

(Start: 89 @41812 has 13 MA's), (91, 41818), (97, 41857), (105, 41875), (121, 41929), (147, 42034), (162, 42097),

Gene: GMA3_27 Start: 36415, Stop: 36849, Start Num: 51

Candidate Starts for GMA3_27:

(51, 36415), (96, 36520), (97, 36523), (131, 36619), (133, 36628), (141, 36661), (151, 36709), (161, 36751),

Gene: GMA7_26 Start: 32429, Stop: 32848, Start Num: 61

Candidate Starts for GMA7_26:

(Start: 61 @32429 has 47 MA's), (96, 32501), (105, 32522), (110, 32534), (112, 32540), (141, 32642), (147, 32675), (148, 32681), (157, 32723), (172, 32777), (176, 32792), (191, 32840),

Gene: GTE7_26 Start: 32460, Stop: 32879, Start Num: 61

Candidate Starts for GTE7_26:

(Start: 61 @32460 has 47 MA's), (96, 32532), (105, 32553), (110, 32565), (112, 32571), (141, 32673), (147, 32706), (148, 32712), (157, 32754), (172, 32808), (176, 32823), (191, 32871),

Gene: GalacticEye_33 Start: 39653, Stop: 40090, Start Num: 61

Candidate Starts for GalacticEye_33:

(Start: 37 @39599 has 17 MA's), (Start: 61 @39653 has 47 MA's), (70, 39665), (79, 39686), (97, 39746), (107, 39767), (146, 39908), (161, 39977),

Gene: Gancho_33 Start: 29319, Stop: 29729, Start Num: 59

Candidate Starts for Gancho_33:

(Start: 59 @29319 has 22 MA's), (97, 29421), (118, 29487), (123, 29499), (127, 29511), (134, 29532), (154, 29619), (178, 29712),

Gene: Ganymede_33 Start: 27357, Stop: 27806, Start Num: 48

Candidate Starts for Ganymede_33:

(16, 27120), (29, 27294), (Start: 48 @27357 has 123 MA's), (Start: 64 @27387 has 23 MA's), (69, 27393), (72, 27399), (78, 27411), (94, 27459), (98, 27477), (111, 27504), (127, 27558), (131, 27567), (143, 27621), (147, 27642), (161, 27699),

Gene: Geeche_50 Start: 32730, Stop: 33137, Start Num: 89

Candidate Starts for Geeche_50:

(Start: 89 @32730 has 13 MA's), (105, 32793), (107, 32796), (138, 32898), (161, 33009), (171, 33051), (195, 33126),

Gene: Gengar_31 Start: 27943, Stop: 28395, Start Num: 41

Candidate Starts for Gengar_31:

(Start: 41 @27943 has 16 MA's), (Start: 64 @27988 has 23 MA's), (72, 28000), (78, 28012), (94, 28060), (97, 28072), (98, 28078), (111, 28105), (127, 28159), (131, 28168), (135, 28183), (143, 28222), (147, 28243), (160, 28297), (161, 28300), (170, 28333),

Gene: Geraldini_32 Start: 27354, Stop: 27794, Start Num: 48

Candidate Starts for Geraldini_32:

(16, 27117), (29, 27291), (Start: 48 @27354 has 123 MA's), (Start: 64 @27384 has 23 MA's), (69, 27390), (72, 27396), (78, 27408), (94, 27456), (98, 27474), (111, 27501), (127, 27555), (131, 27564), (143, 27618), (147, 27639), (161, 27696), (170, 27729), (190, 27786),

Gene: Gibbles_29 Start: 35291, Stop: 35674, Start Num: 80

Candidate Starts for Gibbles_29:

(Start: 80 @35291 has 5 MA's), (112, 35387), (146, 35513), (149, 35531), (155, 35552),

Gene: Giles_33 Start: 29596, Stop: 30006, Start Num: 59

Candidate Starts for Giles_33:

(Start: 59 @29596 has 22 MA's), (97, 29698), (118, 29764), (123, 29776), (127, 29788), (134, 29809), (154, 29896), (178, 29989),

Gene: Gmala1_27 Start: 34646, Stop: 35092, Start Num: 69

Candidate Starts for Gmala1_27:

(50, 34610), (Start: 64 @34640 has 23 MA's), (69, 34646), (96, 34721), (132, 34823), (134, 34832), (147, 34895),

Gene: GordDuk1_27 Start: 34584, Stop: 35030, Start Num: 69

Candidate Starts for GordDuk1_27:

(Start: 64 @34578 has 23 MA's), (69, 34584), (96, 34659), (132, 34761), (134, 34770), (147, 34833),

Gene: GordTnk2_27 Start: 34553, Stop: 34999, Start Num: 69

Candidate Starts for GordTnk2_27:

(50, 34517), (Start: 64 @34547 has 23 MA's), (69, 34553), (96, 34628), (132, 34730), (134, 34739), (147, 34802),

Gene: Gorko_32 Start: 37346, Stop: 37867, Start Num: 37

Candidate Starts for Gorko_32:

(Start: 37 @37346 has 17 MA's), (Start: 61 @37400 has 47 MA's), (70, 37412), (79, 37433), (108, 37517), (134, 37601), (145, 37652), (147, 37664), (161, 37724), (176, 37781), (186, 37814), (191,

37829),

Gene: GourdThymes_32 Start: 38220, Stop: 38741, Start Num: 37

Candidate Starts for GourdThymes_32:

(Start: 37 @38220 has 17 MA's), (Start: 61 @38274 has 47 MA's), (70, 38286), (79, 38307), (108, 38391), (134, 38475), (145, 38526), (147, 38538), (161, 38598), (176, 38655), (186, 38688), (191, 38703),

Gene: Gravaillia_33 Start: 29325, Stop: 29735, Start Num: 59

Candidate Starts for Gravaillia_33:

(Start: 59 @29325 has 22 MA's), (97, 29427), (118, 29493), (123, 29505), (127, 29517), (134, 29538), (154, 29625), (178, 29718),

Gene: Guanica15_32 Start: 26599, Stop: 27048, Start Num: 48

Candidate Starts for Guanica15_32:

(Start: 48 @26599 has 123 MA's), (Start: 64 @26629 has 23 MA's), (69, 26635), (72, 26641), (78, 26653), (94, 26701), (97, 26713), (111, 26746), (112, 26749), (127, 26800), (131, 26809), (143, 26863), (147, 26884), (151, 26899), (161, 26941), (189, 27040),

Gene: Guillaume_33 Start: 39703, Stop: 40140, Start Num: 61

Candidate Starts for Guillaume_33:

(Start: 37 @39649 has 17 MA's), (Start: 61 @39703 has 47 MA's), (70, 39715), (79, 39736), (97, 39796), (107, 39817), (146, 39958), (161, 40027),

Gene: Guillsminger_31 Start: 27915, Stop: 28367, Start Num: 41

Candidate Starts for Guillsminger_31:

(Start: 41 @27915 has 16 MA's), (Start: 64 @27960 has 23 MA's), (72, 27972), (78, 27984), (94, 28032), (97, 28044), (98, 28050), (111, 28077), (127, 28131), (131, 28140), (135, 28155), (143, 28194), (147, 28215), (160, 28269), (161, 28272), (170, 28305),

Gene: HH92_33 Start: 29596, Stop: 30006, Start Num: 59

Candidate Starts for HH92_33:

(Start: 59 @29596 has 22 MA's), (97, 29698), (118, 29764), (123, 29776), (127, 29788), (134, 29809), (154, 29896), (178, 29989),

Gene: Hadrien_34 Start: 29596, Stop: 30006, Start Num: 59

Candidate Starts for Hadrien_34:

(Start: 59 @29596 has 22 MA's), (97, 29698), (118, 29764), (123, 29776), (127, 29788), (134, 29809), (154, 29896), (178, 29989),

Gene: Hail_33 Start: 29596, Stop: 30006, Start Num: 59

Candidate Starts for Hail_33:

(Start: 59 @29596 has 22 MA's), (97, 29698), (118, 29764), (123, 29776), (127, 29788), (134, 29809), (154, 29896), (178, 29989),

Gene: Hail2Pitt_33 Start: 40180, Stop: 40617, Start Num: 61

Candidate Starts for Hail2Pitt_33:

(Start: 37 @40126 has 17 MA's), (Start: 61 @40180 has 47 MA's), (70, 40192), (79, 40213), (97, 40273), (107, 40294), (146, 40435), (161, 40504),

Gene: Hammy_31 Start: 27634, Stop: 28098, Start Num: 47

Candidate Starts for Hammy_31:

(40, 27619), (Start: 47 @27634 has 9 MA's), (Start: 64 @27664 has 23 MA's), (66, 27667), (78, 27688), (98, 27754), (111, 27781), (127, 27835), (143, 27898), (161, 27976), (164, 27988),

Gene: Harambe_33 Start: 39970, Stop: 40407, Start Num: 61

Candidate Starts for Harambe_33:

(Start: 37 @39916 has 17 MA's), (Start: 61 @39970 has 47 MA's), (70, 39982), (79, 40003), (97, 40063), (107, 40084), (146, 40225), (161, 40294),

Gene: HayZem_35 Start: 38212, Stop: 38631, Start Num: 61

Candidate Starts for HayZem_35:

(Start: 61 @38212 has 47 MA's), (96, 38284), (105, 38305), (110, 38317), (112, 38323), (141, 38425), (147, 38458), (148, 38464), (157, 38506), (172, 38560), (176, 38575), (191, 38623),

Gene: HedwigODU_32 Start: 27346, Stop: 27786, Start Num: 48

Candidate Starts for HedwigODU_32:

(16, 27109), (29, 27283), (Start: 48 @27346 has 123 MA's), (Start: 64 @27376 has 23 MA's), (69, 27382), (72, 27388), (78, 27400), (94, 27448), (98, 27466), (111, 27493), (127, 27547), (142, 27607), (143, 27610), (147, 27631), (161, 27688), (170, 27721), (190, 27778),

Gene: Heftyboy_31 Start: 28061, Stop: 28513, Start Num: 41

Candidate Starts for Heftyboy_31:

(Start: 41 @28061 has 16 MA's), (Start: 64 @28106 has 23 MA's), (72, 28118), (78, 28130), (94, 28178), (97, 28190), (98, 28196), (111, 28223), (112, 28226), (127, 28277), (131, 28286), (135, 28301), (143, 28340), (147, 28361), (160, 28415), (161, 28418), (170, 28451),

Gene: Hello_33 Start: 39932, Stop: 40369, Start Num: 61

Candidate Starts for Hello_33:

(Start: 37 @39878 has 17 MA's), (Start: 61 @39932 has 47 MA's), (70, 39944), (79, 39965), (97, 40025), (107, 40046), (146, 40187), (161, 40256),

Gene: Hilltopfarm_33 Start: 30365, Stop: 30721, Start Num: 88

Candidate Starts for Hilltopfarm_33:

(28, 30215), (Start: 88 @30365 has 3 MA's), (94, 30398), (112, 30446), (115, 30458), (121, 30482), (127, 30497), (134, 30518), (141, 30548), (145, 30569), (146, 30572), (161, 30638), (163, 30647), (167, 30659),

Gene: Hollow_32 Start: 39444, Stop: 39878, Start Num: 62

Candidate Starts for Hollow_32:

(Start: 62 @39444 has 7 MA's), (75, 39465), (96, 39516), (142, 39666), (149, 39699), (152, 39708), (161, 39747), (162, 39753), (164, 39759), (166, 39765), (167, 39768), (184, 39828),

Gene: Homura_32 Start: 27377, Stop: 27817, Start Num: 48

Candidate Starts for Homura_32:

(29, 27314), (Start: 48 @27377 has 123 MA's), (Start: 64 @27407 has 23 MA's), (69, 27413), (72, 27419), (78, 27431), (94, 27479), (98, 27497), (111, 27524), (127, 27578), (131, 27587), (142, 27638), (143, 27641), (147, 27662), (161, 27719), (170, 27752), (190, 27809),

Gene: Hotorobo_32 Start: 38225, Stop: 38746, Start Num: 37

Candidate Starts for Hotorobo_32:

(Start: 37 @38225 has 17 MA's), (Start: 61 @38279 has 47 MA's), (70, 38291), (79, 38312), (108, 38396), (134, 38480), (145, 38531), (147, 38543), (161, 38603), (176, 38660), (186, 38693), (191, 38708),

Gene: Hurricane_33 Start: 28195, Stop: 28641, Start Num: 48

Candidate Starts for Hurricane_33:

(36, 28162), (Start: 48 @28195 has 123 MA's), (Start: 64 @28225 has 23 MA's), (98, 28315), (111, 28342), (112, 28345), (121, 28381), (127, 28396), (143, 28459), (149, 28489), (161, 28537),

Gene: Hyperbowlee_32 Start: 27377, Stop: 27817, Start Num: 48

Candidate Starts for Hyperbowlee_32:

(29, 27314), (Start: 48 @27377 has 123 MA's), (Start: 64 @27407 has 23 MA's), (69, 27413), (72, 27419), (78, 27431), (94, 27479), (98, 27497), (111, 27524), (127, 27578), (131, 27587), (142, 27638), (143, 27641), (147, 27662), (161, 27719), (170, 27752), (190, 27809),

Gene: IdentityCrisis_27 Start: 23066, Stop: 23467, Start Num: 83

Candidate Starts for IdentityCrisis_27:

(Start: 83 @23066 has 9 MA's), (107, 23141), (108, 23144), (128, 23207), (145, 23276), (153, 23309), (155, 23318), (170, 23378), (174, 23393), (183, 23423), (196, 23459),

Gene: Illumine_32 Start: 27353, Stop: 27793, Start Num: 48

Candidate Starts for Illumine_32:

(Start: 48 @27353 has 123 MA's), (Start: 64 @27383 has 23 MA's), (69, 27389), (72, 27395), (78, 27407), (94, 27455), (98, 27473), (111, 27500), (121, 27539), (127, 27554), (131, 27563), (143, 27617), (161, 27695), (190, 27785),

Gene: Inky_32 Start: 27377, Stop: 27817, Start Num: 48

Candidate Starts for Inky_32:

(29, 27314), (Start: 48 @27377 has 123 MA's), (Start: 64 @27407 has 23 MA's), (69, 27413), (72, 27419), (78, 27431), (94, 27479), (98, 27497), (111, 27524), (127, 27578), (131, 27587), (143, 27641), (147, 27662), (161, 27719), (170, 27752), (190, 27809),

Gene: InvictusManeo_31 Start: 27989, Stop: 28441, Start Num: 41

Candidate Starts for InvictusManeo_31:

(1, 27476), (2, 27590), (Start: 41 @27989 has 16 MA's), (Start: 42 @27992 has 3 MA's), (Start: 64 @28034 has 23 MA's), (72, 28046), (78, 28058), (94, 28106), (97, 28118), (98, 28124), (108, 28142), (111, 28151), (127, 28205), (131, 28214), (135, 28229), (143, 28268), (145, 28277), (147, 28289), (157, 28334), (160, 28343), (161, 28346), (167, 28367), (170, 28379),

Gene: JAWS_32 Start: 27331, Stop: 27771, Start Num: 48

Candidate Starts for JAWS_32:

(15, 27082), (29, 27268), (Start: 48 @27331 has 123 MA's), (Start: 64 @27361 has 23 MA's), (69, 27367), (72, 27373), (78, 27385), (94, 27433), (98, 27451), (111, 27478), (127, 27532), (131, 27541), (142, 27592), (143, 27595), (161, 27673), (170, 27706), (190, 27763),

Gene: JF1_33 Start: 28458, Stop: 28856, Start Num: 64

Candidate Starts for JF1_33:

(Start: 64 @28458 has 23 MA's), (78, 28479), (84, 28488), (112, 28575), (116, 28590), (121, 28611), (136, 28656), (140, 28674), (145, 28698), (149, 28719), (153, 28731), (155, 28740), (157, 28755), (163, 28776),

Gene: Jams_33 Start: 39141, Stop: 39578, Start Num: 61

Candidate Starts for Jams_33:

(Start: 37 @39087 has 17 MA's), (Start: 61 @39141 has 47 MA's), (70, 39153), (79, 39174), (97, 39234), (107, 39255), (146, 39396), (161, 39465),

Gene: Jarvi_32 Start: 27377, Stop: 27817, Start Num: 48

Candidate Starts for Jarvi_32:

(29, 27314), (Start: 48 @27377 has 123 MA's), (Start: 64 @27407 has 23 MA's), (69, 27413), (72, 27419), (78, 27431), (94, 27479), (98, 27497), (111, 27524), (127, 27578), (131, 27587), (143, 27641), (147, 27662), (161, 27719), (170, 27752), (190, 27809),

Gene: Jayhawk_32 Start: 27344, Stop: 27784, Start Num: 48

Candidate Starts for Jayhawk_32:

(16, 27107), (29, 27281), (Start: 48 @27344 has 123 MA's), (Start: 64 @27374 has 23 MA's), (69, 27380), (72, 27386), (78, 27398), (94, 27446), (98, 27464), (111, 27491), (127, 27545), (142, 27605), (143, 27608), (147, 27629), (161, 27686), (170, 27719), (190, 27776),

Gene: Jeckyll_32 Start: 27377, Stop: 27817, Start Num: 48

Candidate Starts for Jeckyll_32:

(29, 27314), (Start: 48 @27377 has 123 MA's), (Start: 64 @27407 has 23 MA's), (69, 27413), (72, 27419), (78, 27431), (94, 27479), (98, 27497), (111, 27524), (127, 27578), (131, 27587), (143, 27641), (147, 27662), (161, 27719), (170, 27752), (190, 27809),

Gene: Jellybones_36 Start: 39484, Stop: 39951, Start Num: 61

Candidate Starts for Jellybones_36:

(Start: 37 @39430 has 17 MA's), (Start: 61 @39484 has 47 MA's), (70, 39496), (79, 39517), (97, 39577), (108, 39601), (134, 39685), (145, 39736), (147, 39748), (161, 39808), (176, 39865), (186, 39898), (191, 39913),

Gene: John316_36 Start: 39437, Stop: 39904, Start Num: 61

Candidate Starts for John316_36:

(Start: 37 @39383 has 17 MA's), (Start: 61 @39437 has 47 MA's), (70, 39449), (79, 39470), (108, 39554), (134, 39638), (145, 39689), (147, 39701), (161, 39761), (176, 39818), (186, 39851), (191, 39866),

Gene: JonJames_51 Start: 37099, Stop: 37509, Start Num: 60

Candidate Starts for JonJames_51:

(Start: 60 @37099 has 2 MA's), (101, 37210), (115, 37243), (121, 37267), (162, 37432),

Gene: Jormungandr_33 Start: 39685, Stop: 40122, Start Num: 61

Candidate Starts for Jormungandr_33:

(Start: 37 @39631 has 17 MA's), (Start: 61 @39685 has 47 MA's), (70, 39697), (79, 39718), (97, 39778), (107, 39799), (146, 39940), (161, 40009),

Gene: Joy99_32 Start: 27306, Stop: 27746, Start Num: 48

Candidate Starts for Joy99_32:

(29, 27243), (Start: 48 @27306 has 123 MA's), (Start: 64 @27336 has 23 MA's), (69, 27342), (72, 27348), (78, 27360), (94, 27408), (98, 27426), (111, 27453), (127, 27507), (131, 27516), (143, 27570), (147, 27591), (161, 27648), (170, 27681), (190, 27738),

Gene: Juliette_35 Start: 28617, Stop: 29015, Start Num: 64

Candidate Starts for Juliette_35:

(Start: 64 @28617 has 23 MA's), (78, 28638), (84, 28647), (112, 28734), (116, 28749), (135, 28809), (136, 28815), (140, 28833), (145, 28857), (149, 28878), (153, 28890), (155, 28899), (157, 28914), (180, 28995),

Gene: Jumbo_34 Start: 40874, Stop: 41350, Start Num: 44

Candidate Starts for Jumbo_34:

(Start: 44 @40874 has 1 MA's), (55, 40892), (96, 40991), (98, 41000), (100, 41006), (122, 41069), (131, 41090), (132, 41093), (145, 41153), (146, 41156), (149, 41174), (174, 41270), (176, 41279),

Gene: Kampe_30 Start: 35152, Stop: 35535, Start Num: 80

Candidate Starts for Kampe_30:

(Start: 80 @35152 has 5 MA's), (112, 35248), (146, 35374), (149, 35392), (155, 35413),

Gene: Kaseim_34 Start: 39126, Stop: 39563, Start Num: 61

Candidate Starts for Kaseim_34:

(Start: 37 @39072 has 17 MA's), (Start: 61 @39126 has 47 MA's), (70, 39138), (79, 39159), (97, 39219), (107, 39240), (146, 39381), (161, 39450),

Gene: Katyusha_31 Start: 39098, Stop: 39532, Start Num: 62

Candidate Starts for Katyusha_31:

(Start: 62 @39098 has 7 MA's), (75, 39119), (92, 39137), (96, 39170), (142, 39320), (146, 39335), (159, 39395), (161, 39401), (162, 39407), (184, 39482),

Gene: Keshu_33 Start: 28183, Stop: 28629, Start Num: 48

Candidate Starts for Keshu_33:

(Start: 48 @28183 has 123 MA's), (Start: 64 @28213 has 23 MA's), (Start: 80 @28240 has 5 MA's), (98, 28303), (111, 28330), (112, 28333), (121, 28369), (127, 28384), (131, 28393), (143, 28447), (149, 28477), (161, 28525),

Gene: KiSi_31 Start: 26374, Stop: 26829, Start Num: 48

Candidate Starts for KiSi_31:

(Start: 48 @26374 has 123 MA's), (Start: 64 @26404 has 23 MA's), (66, 26407), (Start: 80 @26431 has 5 MA's), (98, 26494), (111, 26521), (112, 26524), (127, 26575), (143, 26638), (161, 26716), (164, 26728), (166, 26734),

Gene: Kinbote_34 Start: 29596, Stop: 30006, Start Num: 59

Candidate Starts for Kinbote_34:

(Start: 59 @29596 has 22 MA's), (97, 29698), (118, 29764), (123, 29776), (127, 29788), (134, 29809), (154, 29896), (178, 29989),

Gene: Konstantine_40 Start: 33596, Stop: 34045, Start Num: 63

Candidate Starts for Konstantine_40:

(Start: 57 @33584 has 8 MA's), (Start: 63 @33596 has 1 MA's), (77, 33620), (90, 33647), (101, 33704), (102, 33707), (107, 33713), (109, 33719), (112, 33728), (114, 33737), (134, 33800), (135, 33803), (142, 33839), (150, 33875), (155, 33893), (168, 33944), (177, 33980), (192, 34025),

Gene: Kratio_30 Start: 27620, Stop: 28072, Start Num: 41

Candidate Starts for Kratio_30:

(1, 27107), (2, 27221), (Start: 41 @27620 has 16 MA's), (Start: 42 @27623 has 3 MA's), (Start: 64 @27665 has 23 MA's), (72, 27677), (78, 27689), (94, 27737), (97, 27749), (98, 27755), (108, 27773), (111, 27782), (127, 27836), (131, 27845), (135, 27860), (143, 27899), (145, 27908), (147, 27920), (160, 27974), (161, 27977), (167, 27998), (170, 28010),

Gene: Kraw_34 Start: 28383, Stop: 28781, Start Num: 64

Candidate Starts for Kraw_34:

(Start: 64 @28383 has 23 MA's), (78, 28404), (84, 28413), (112, 28500), (116, 28515), (136, 28581), (140, 28599), (145, 28623), (149, 28644), (153, 28656), (155, 28665), (157, 28680), (163, 28701), (166, 28710),

Gene: Krueger_32 Start: 26494, Stop: 26958, Start Num: 48

Candidate Starts for Krueger_32:

(Start: 48 @26494 has 123 MA's), (Start: 59 @26515 has 22 MA's), (Start: 64 @26524 has 23 MA's), (66, 26527), (97, 26608), (98, 26614), (111, 26641), (127, 26695), (143, 26758), (147, 26779), (161, 26836), (164, 26848),

Gene: Kvothe_31 Start: 38997, Stop: 39431, Start Num: 62

Candidate Starts for Kvothe_31:

(Start: 62 @38997 has 7 MA's), (75, 39018), (92, 39036), (96, 39069), (142, 39219), (146, 39234), (149, 39252), (153, 39264), (161, 39300), (162, 39306), (184, 39381),

Gene: Lahirium_33 Start: 40207, Stop: 40644, Start Num: 61

Candidate Starts for Lahirium_33:

(Start: 37 @40153 has 17 MA's), (Start: 61 @40207 has 47 MA's), (70, 40219), (79, 40240), (97, 40300), (107, 40321), (146, 40462), (161, 40531),

Gene: Larva_32 Start: 27784, Stop: 28236, Start Num: 41

Candidate Starts for Larva_32:

(Start: 41 @27784 has 16 MA's), (Start: 42 @27787 has 3 MA's), (Start: 64 @27829 has 23 MA's), (72, 27841), (78, 27853), (94, 27901), (97, 27913), (98, 27919), (108, 27937), (111, 27946), (131, 28009), (135, 28024), (143, 28063), (145, 28072), (147, 28084), (160, 28138), (161, 28141), (167, 28162), (170, 28174),

Gene: LastHope_32 Start: 26463, Stop: 26915, Start Num: 48

Candidate Starts for LastHope_32:

(12, 26205), (23, 26340), (29, 26400), (Start: 48 @26463 has 123 MA's), (Start: 64 @26493 has 23 MA's), (69, 26499), (72, 26505), (78, 26517), (94, 26565), (97, 26577), (111, 26610), (112, 26613), (127, 26664), (131, 26673), (143, 26727), (145, 26736), (147, 26748), (161, 26805),

Gene: LaterM_32 Start: 27270, Stop: 27710, Start Num: 48

Candidate Starts for LaterM_32:

(16, 27033), (Start: 48 @27270 has 123 MA's), (Start: 64 @27300 has 23 MA's), (69, 27306), (72, 27312), (78, 27324), (94, 27372), (98, 27390), (111, 27417), (121, 27456), (127, 27471), (131, 27480), (143, 27534), (161, 27612), (190, 27702),

Gene: LeMond_31 Start: 26445, Stop: 26900, Start Num: 48

Candidate Starts for LeMond_31:

(Start: 48 @26445 has 123 MA's), (Start: 64 @26475 has 23 MA's), (66, 26478), (Start: 80 @26502 has 5 MA's), (98, 26565), (111, 26592), (112, 26595), (127, 26646), (143, 26709), (161, 26787), (166, 26805),

Gene: Lea83_34 Start: 28253, Stop: 28699, Start Num: 48

Candidate Starts for Lea83_34:

(36, 28220), (Start: 48 @28253 has 123 MA's), (Start: 64 @28283 has 23 MA's), (98, 28373), (111, 28400), (112, 28403), (121, 28439), (127, 28454), (143, 28517), (149, 28547), (161, 28595),

Gene: Lebo14_34 Start: 28472, Stop: 28870, Start Num: 64

Candidate Starts for Lebo14_34:

(31, 28376), (Start: 64 @28472 has 23 MA's), (78, 28493), (84, 28502), (112, 28589), (116, 28604), (135, 28664), (136, 28670), (140, 28688), (145, 28712), (149, 28733), (153, 28745), (155, 28754), (157, 28769), (163, 28790), (180, 28850),

Gene: Leston_31 Start: 28090, Stop: 28497, Start Num: 64

Candidate Starts for Leston_31:

(Start: 41 @28045 has 16 MA's), (Start: 64 @28090 has 23 MA's), (72, 28102), (78, 28114), (94, 28162), (97, 28174), (98, 28180), (111, 28207), (127, 28261), (131, 28270), (135, 28285), (143, 28324), (147, 28345), (160, 28399), (161, 28402), (170, 28435),

Gene: Lidong_33 Start: 39941, Stop: 40378, Start Num: 61

Candidate Starts for Lidong_33:

(Start: 37 @39887 has 17 MA's), (Start: 61 @39941 has 47 MA's), (70, 39953), (79, 39974), (97, 40034), (107, 40055), (146, 40196), (161, 40265),

Gene: LilHazelnut_34 Start: 29596, Stop: 30006, Start Num: 59

Candidate Starts for LilHazelnut_34:

(Start: 59 @29596 has 22 MA's), (97, 29698), (118, 29764), (123, 29776), (127, 29788), (134, 29809), (154, 29896), (178, 29989),

Gene: LilPharaoh_28 Start: 26747, Stop: 27205, Start Num: 48

Candidate Starts for LilPharaoh_28:

(20, 26528), (Start: 48 @26747 has 123 MA's), (Start: 64 @26777 has 23 MA's), (69, 26783), (78, 26801), (97, 26861), (108, 26885), (111, 26894), (112, 26897), (115, 26909), (127, 26948), (131, 26957), (132, 26960), (143, 27011), (147, 27032), (151, 27047), (161, 27089), (164, 27101),

Gene: LindNT_32 Start: 27310, Stop: 27750, Start Num: 48

Candidate Starts for LindNT_32:

(16, 27073), (29, 27247), (Start: 48 @27310 has 123 MA's), (Start: 64 @27340 has 23 MA's), (69, 27346), (72, 27352), (78, 27364), (94, 27412), (98, 27430), (111, 27457), (127, 27511), (131, 27520), (143, 27574), (161, 27652), (170, 27685), (190, 27742),

Gene: Linetti_33 Start: 38505, Stop: 38972, Start Num: 61

Candidate Starts for Linetti_33:

(Start: 37 @38451 has 17 MA's), (Start: 61 @38505 has 47 MA's), (70, 38517), (79, 38538), (108, 38622), (110, 38628), (134, 38706), (145, 38757), (161, 38829), (176, 38886), (184, 38910), (186, 38919), (193, 38937),

Gene: Lizzo_32 Start: 38214, Stop: 38735, Start Num: 37

Candidate Starts for Lizzo_32:

(Start: 37 @38214 has 17 MA's), (Start: 61 @38268 has 47 MA's), (70, 38280), (79, 38301), (108, 38385), (134, 38469), (145, 38520), (147, 38532), (161, 38592), (176, 38649), (186, 38682), (191, 38697),

Gene: Llorens_32 Start: 27377, Stop: 27817, Start Num: 48

Candidate Starts for Llorens_32:

(29, 27314), (Start: 48 @27377 has 123 MA's), (Start: 64 @27407 has 23 MA's), (69, 27413), (72, 27419), (78, 27431), (94, 27479), (98, 27497), (111, 27524), (127, 27578), (131, 27587), (143, 27641), (147, 27662), (161, 27719), (170, 27752), (190, 27809),

Gene: Lozinak_52 Start: 33369, Stop: 33776, Start Num: 89

Candidate Starts for Lozinak_52:

(Start: 89 @33369 has 13 MA's), (105, 33432), (107, 33435), (138, 33537), (161, 33648), (171, 33690), (195, 33765),

Gene: Luke_34 Start: 29551, Stop: 29961, Start Num: 59

Candidate Starts for Luke_34:

(Start: 59 @29551 has 22 MA's), (97, 29653), (118, 29719), (123, 29731), (127, 29743), (134, 29764), (154, 29851), (178, 29944),

Gene: Luker_34 Start: 40160, Stop: 40597, Start Num: 61

Candidate Starts for Luker_34:

(Start: 37 @40106 has 17 MA's), (Start: 61 @40160 has 47 MA's), (70, 40172), (79, 40193), (97, 40253), (107, 40274), (146, 40415), (161, 40484),

Gene: Luna22_33 Start: 29596, Stop: 30006, Start Num: 59

Candidate Starts for Luna22_33:

(Start: 59 @29596 has 22 MA's), (97, 29698), (118, 29764), (123, 29776), (127, 29788), (134, 29809), (154, 29896), (178, 29989),

Gene: Lunahalos_32 Start: 27377, Stop: 27817, Start Num: 48

Candidate Starts for Lunahalos_32:

(29, 27314), (Start: 48 @27377 has 123 MA's), (Start: 64 @27407 has 23 MA's), (69, 27413), (72, 27419), (78, 27431), (94, 27479), (98, 27497), (111, 27524), (127, 27578), (131, 27587), (143, 27641), (147, 27662), (161, 27719), (170, 27752), (190, 27809),

Gene: MacKat_33 Start: 27354, Stop: 27794, Start Num: 48

Candidate Starts for MacKat_33:

(29, 27291), (Start: 48 @27354 has 123 MA's), (Start: 64 @27384 has 23 MA's), (69, 27390), (72, 27396), (78, 27408), (94, 27456), (98, 27474), (111, 27501), (127, 27555), (131, 27564), (143, 27618), (147, 27639), (161, 27696), (170, 27729), (190, 27786),

Gene: MacnCheese_33 Start: 28230, Stop: 28682, Start Num: 48

Candidate Starts for MacnCheese_33:

(36, 28197), (Start: 48 @28230 has 123 MA's), (Start: 59 @28251 has 22 MA's), (Start: 64 @28260 has 23 MA's), (98, 28350), (111, 28377), (112, 28380), (121, 28416), (127, 28431), (143, 28494), (147, 28515), (161, 28572), (164, 28584), (170, 28605), (184, 28653),

Gene: MalagasyRose_32 Start: 26704, Stop: 27135, Start Num: 52

Candidate Starts for MalagasyRose_32:

(Start: 52 @26704 has 1 MA's), (Start: 57 @26713 has 8 MA's), (65, 26725), (68, 26728), (71, 26734), (78, 26746), (82, 26752), (92, 26770), (97, 26806), (98, 26812), (108, 26830), (111, 26839), (112, 26842), (124, 26884), (127, 26893), (131, 26902), (135, 26917), (143, 26956), (145, 26965), (147, 26977), (161, 27034), (167, 27055), (188, 27121),

Gene: Malthus_34 Start: 28383, Stop: 28781, Start Num: 64

Candidate Starts for Malthus_34:

(Start: 64 @28383 has 23 MA's), (78, 28404), (84, 28413), (112, 28500), (116, 28515), (136, 28581), (140, 28599), (145, 28623), (149, 28644), (153, 28656), (155, 28665), (157, 28680), (163, 28701), (166, 28710),

Gene: Marcoliusprime_30 Start: 26028, Stop: 26414, Start Num: 86

Candidate Starts for Marcoliusprime_30:

(Start: 86 @26028 has 10 MA's), (Start: 88 @26031 has 3 MA's), (109, 26103), (111, 26109), (113, 26118), (115, 26124), (120, 26145), (124, 26154), (127, 26163), (131, 26172), (145, 26235), (149, 26256), (154, 26274), (155, 26277),

Gene: MarkPhew_32 Start: 26343, Stop: 26798, Start Num: 48

Candidate Starts for MarkPhew_32:

(29, 26280), (32, 26298), (Start: 48 @26343 has 123 MA's), (Start: 64 @26373 has 23 MA's), (66, 26376), (Start: 80 @26400 has 5 MA's), (99, 26466), (111, 26490), (127, 26544), (146, 26619), (161, 26685),

Gene: Marshawn_33 Start: 27023, Stop: 27481, Start Num: 48

Candidate Starts for Marshawn_33:

(23, 26900), (29, 26960), (Start: 48 @27023 has 123 MA's), (Start: 64 @27053 has 23 MA's), (98, 27143), (111, 27170), (127, 27224), (143, 27287), (145, 27296), (147, 27308), (161, 27365), (164, 27377),

Gene: Mbo2_27 Start: 28891, Stop: 29355, Start Num: 87

Candidate Starts for Mbo2_27:

(Start: 87 @28891 has 2 MA's), (103, 28954), (106, 28957), (116, 28987), (124, 29014), (125, 29023), (136, 29053), (145, 29095), (148, 29113), (151, 29122), (154, 29134), (161, 29164), (163, 29173),

Gene: McMater_32 Start: 26622, Stop: 27086, Start Num: 48

Candidate Starts for McMater_32:

(23, 26496), (25, 26523), (Start: 48 @26622 has 123 MA's), (Start: 64 @26652 has 23 MA's), (69, 26658), (72, 26664), (78, 26676), (94, 26724), (97, 26736), (111, 26769), (112, 26772), (127, 26823), (143, 26886), (147, 26907), (151, 26922), (157, 26952), (161, 26964), (164, 26976),

Gene: Mdavu_28 Start: 26735, Stop: 27193, Start Num: 48

Candidate Starts for Mdavu_28:

(20, 26516), (Start: 48 @26735 has 123 MA's), (Start: 64 @26765 has 23 MA's), (69, 26771), (78, 26789), (97, 26849), (108, 26873), (111, 26882), (112, 26885), (115, 26897), (127, 26936), (131, 26945), (132, 26948), (143, 26999), (147, 27020), (151, 27035), (161, 27077), (164, 27089),

Gene: MeaningOfLife_32 Start: 27313, Stop: 27762, Start Num: 48

Candidate Starts for MeaningOfLife_32:

(16, 27076), (29, 27250), (Start: 48 @27313 has 123 MA's), (Start: 64 @27343 has 23 MA's), (69, 27349), (72, 27355), (78, 27367), (94, 27415), (98, 27433), (111, 27460), (127, 27514), (131, 27523), (143, 27577), (147, 27598), (161, 27655),

Gene: Megatron06_37 Start: 32916, Stop: 33377, Start Num: 57

Candidate Starts for Megatron06_37:

(Start: 57 @32916 has 8 MA's), (Start: 63 @32928 has 1 MA's), (77, 32952), (90, 32979), (101, 33036), (107, 33045), (109, 33051), (112, 33060), (114, 33069), (118, 33087), (134, 33132), (135, 33135), (142, 33171), (150, 33207), (155, 33225), (168, 33276), (177, 33312),

Gene: Megsy_32 Start: 27313, Stop: 27753, Start Num: 48

Candidate Starts for Megsy_32:

(16, 27076), (29, 27250), (Start: 48 @27313 has 123 MA's), (Start: 64 @27343 has 23 MA's), (69, 27349), (72, 27355), (78, 27367), (94, 27415), (98, 27433), (111, 27460), (127, 27514), (131, 27523), (143, 27577), (161, 27655), (170, 27688), (190, 27745),

Gene: Milly_30 Start: 26001, Stop: 26387, Start Num: 86

Candidate Starts for Milly_30:

(Start: 86 @26001 has 10 MA's), (Start: 88 @26004 has 3 MA's), (92, 26013), (109, 26076), (111, 26082), (113, 26091), (115, 26097), (120, 26118), (124, 26127), (127, 26136), (131, 26145), (145, 26208), (149, 26229), (154, 26247), (155, 26250),

Gene: Minos_34 Start: 39683, Stop: 40120, Start Num: 61

Candidate Starts for Minos_34:

(Start: 37 @39629 has 17 MA's), (Start: 61 @39683 has 47 MA's), (70, 39695), (79, 39716), (97, 39776), (107, 39797), (146, 39938), (161, 40007),

Gene: Miryou_31 Start: 27900, Stop: 28352, Start Num: 41

Candidate Starts for Miryou_31:

(Start: 41 @27900 has 16 MA's), (Start: 64 @27945 has 23 MA's), (72, 27957), (78, 27969), (94, 28017), (97, 28029), (98, 28035), (111, 28062), (127, 28116), (131, 28125), (135, 28140), (143, 28179), (147, 28200), (160, 28254), (161, 28257), (170, 28290),

Gene: Miskis_53 Start: 32674, Stop: 33081, Start Num: 89

Candidate Starts for Miskis_53:

(Start: 89 @32674 has 13 MA's), (105, 32737), (107, 32740), (138, 32842), (161, 32953), (171, 32995), (195, 33070),

Gene: MissDaisy_33 Start: 28226, Stop: 28624, Start Num: 64

Candidate Starts for MissDaisy_33:

(6, 27848), (8, 27857), (17, 27938), (26, 28106), (Start: 64 @28226 has 23 MA's), (78, 28247), (84, 28256), (112, 28343), (115, 28355), (131, 28403), (135, 28418), (136, 28424), (140, 28442), (145, 28466), (149, 28487), (157, 28523), (162, 28541), (163, 28544), (180, 28604),

Gene: Mitti_33 Start: 28384, Stop: 28782, Start Num: 64

Candidate Starts for Mitti_33:

(26, 28264), (Start: 64 @28384 has 23 MA's), (78, 28405), (84, 28414), (112, 28501), (116, 28516), (135, 28576), (136, 28582), (140, 28600), (145, 28624), (149, 28645), (153, 28657), (155, 28666), (157, 28681), (163, 28702), (180, 28762),

Gene: Mollymur_34 Start: 31778, Stop: 32188, Start Num: 83

Candidate Starts for Mollymur_34:

(Start: 83 @31778 has 9 MA's), (111, 31868), (155, 32039),

Gene: Monty_31 Start: 37418, Stop: 37885, Start Num: 61

Candidate Starts for Monty_31:

(Start: 37 @37364 has 17 MA's), (Start: 61 @37418 has 47 MA's), (70, 37430), (79, 37451), (108, 37535), (134, 37619), (145, 37670), (147, 37682), (161, 37742), (176, 37799), (186, 37832), (191, 37847),

Gene: MrMiyagi_30 Start: 29201, Stop: 29620, Start Num: 67

Candidate Starts for MrMiyagi_30:

(39, 29147), (Start: 67 @29201 has 3 MA's), (76, 29216), (Start: 89 @29240 has 13 MA's), (94, 29273), (178, 29570), (182, 29582), (187, 29600),

Gene: MrWormie_33 Start: 38844, Stop: 39281, Start Num: 61

Candidate Starts for MrWormie_33:

(Start: 37 @38790 has 17 MA's), (Start: 61 @38844 has 47 MA's), (70, 38856), (79, 38877), (97, 38937), (107, 38958), (146, 39099), (161, 39168),

Gene: Msay19_37 Start: 39614, Stop: 40081, Start Num: 61

Candidate Starts for Msay19_37:

(Start: 37 @39560 has 17 MA's), (Start: 61 @39614 has 47 MA's), (70, 39626), (79, 39647), (97, 39707), (108, 39731), (134, 39815), (145, 39866), (147, 39878), (161, 39938), (176, 39995), (186, 40028), (191, 40043),

Gene: Mufasa_31 Start: 26109, Stop: 26495, Start Num: 86

Candidate Starts for Mufasa_31:

(Start: 86 @26109 has 10 MA's), (Start: 88 @26112 has 3 MA's), (109, 26184), (111, 26190), (113, 26199), (115, 26205), (120, 26226), (124, 26235), (126, 26241), (127, 26244), (131, 26253), (145, 26316), (149, 26337), (154, 26355), (155, 26358),

Gene: Murucutumbu_32 Start: 27289, Stop: 27729, Start Num: 48

Candidate Starts for Murucutumbu_32:

(16, 27052), (Start: 48 @27289 has 123 MA's), (Start: 64 @27319 has 23 MA's), (69, 27325), (72, 27331), (78, 27343), (94, 27391), (98, 27409), (111, 27436), (121, 27475), (127, 27490), (131, 27499), (143, 27553), (161, 27631), (190, 27721),

Gene: Mynx_32 Start: 27360, Stop: 27800, Start Num: 48

Candidate Starts for Mynx_32:

(16, 27123), (29, 27297), (Start: 48 @27360 has 123 MA's), (Start: 64 @27390 has 23 MA's), (69, 27396), (72, 27402), (78, 27414), (94, 27462), (98, 27480), (111, 27507), (127, 27561), (131, 27570), (143, 27624), (147, 27645), (161, 27702), (170, 27735), (190, 27792),

Gene: Neighly_32 Start: 27783, Stop: 28235, Start Num: 41

Candidate Starts for Neighly_32:

(Start: 41 @27783 has 16 MA's), (Start: 42 @27786 has 3 MA's), (Start: 64 @27828 has 23 MA's), (72, 27840), (78, 27852), (94, 27900), (97, 27912), (98, 27918), (108, 27936), (111, 27945), (131, 28008), (135, 28023), (143, 28062), (145, 28071), (147, 28083), (160, 28137), (161, 28140), (167, 28161), (170, 28173),

Gene: Neoevie_33 Start: 39947, Stop: 40384, Start Num: 61

Candidate Starts for Neoevie_33:

(Start: 37 @39893 has 17 MA's), (Start: 61 @39947 has 47 MA's), (70, 39959), (79, 39980), (97, 40040), (107, 40061), (146, 40202), (161, 40271),

Gene: Nergal_28 Start: 25031, Stop: 25495, Start Num: 45

Candidate Starts for Nergal_28:

(Start: 45 @25031 has 1 MA's), (54, 25046), (94, 25139), (98, 25157), (111, 25184), (112, 25187), (127, 25238), (131, 25247), (143, 25301), (147, 25322), (153, 25343), (161, 25379), (164, 25391),

Gene: Newt_34 Start: 40174, Stop: 40611, Start Num: 61

Candidate Starts for Newt_34:

(Start: 37 @40120 has 17 MA's), (Start: 61 @40174 has 47 MA's), (70, 40186), (79, 40207), (97, 40267), (107, 40288), (146, 40429), (161, 40498),

Gene: Niagara_31 Start: 39055, Stop: 39489, Start Num: 62

Candidate Starts for Niagara_31:

(Start: 62 @39055 has 7 MA's), (75, 39076), (92, 39094), (96, 39127), (142, 39277), (146, 39292), (149, 39310), (153, 39322), (161, 39358), (162, 39364), (184, 39439),

Gene: Nibb_31 Start: 26478, Stop: 26939, Start Num: 48

Candidate Starts for Nibb_31:

(29, 26415), (Start: 48 @26478 has 123 MA's), (Start: 64 @26508 has 23 MA's), (66, 26511), (Start: 80 @26535 has 5 MA's), (98, 26598), (111, 26625), (127, 26679), (146, 26754), (157, 26808), (161, 26820), (166, 26838), (194, 26931),

Gene: Nikao_28 Start: 26747, Stop: 27205, Start Num: 48

Candidate Starts for Nikao_28:

(20, 26528), (Start: 48 @26747 has 123 MA's), (Start: 64 @26777 has 23 MA's), (69, 26783), (78, 26801), (97, 26861), (108, 26885), (111, 26894), (112, 26897), (115, 26909), (127, 26948), (131, 26957), (132, 26960), (143, 27011), (147, 27032), (151, 27047), (161, 27089), (164, 27101),

Gene: Niklas_32 Start: 26625, Stop: 27089, Start Num: 48

Candidate Starts for Niklas_32:

(23, 26499), (25, 26526), (Start: 48 @26625 has 123 MA's), (Start: 64 @26655 has 23 MA's), (69, 26661), (72, 26667), (78, 26679), (94, 26727), (97, 26739), (111, 26772), (112, 26775), (127, 26826), (143, 26889), (147, 26910), (151, 26925), (157, 26955), (161, 26967), (164, 26979),

Gene: Nimi13_33 Start: 39692, Stop: 40129, Start Num: 61

Candidate Starts for Nimi13_33:

(Start: 37 @39638 has 17 MA's), (Start: 61 @39692 has 47 MA's), (70, 39704), (79, 39725), (97, 39785), (107, 39806), (146, 39947), (161, 40016),

Gene: Norvs_52 Start: 32913, Stop: 33320, Start Num: 89

Candidate Starts for Norvs_52:

(Start: 89 @32913 has 13 MA's), (105, 32976), (107, 32979), (138, 33081), (161, 33192), (171, 33234), (195, 33309),

Gene: November_31 Start: 27559, Stop: 28023, Start Num: 47

Candidate Starts for November_31:

(Start: 47 @27559 has 9 MA's), (Start: 64 @27589 has 23 MA's), (78, 27613), (95, 27667), (98, 27679), (111, 27706), (127, 27760), (143, 27823), (161, 27901), (164, 27913),

Gene: Nutello_28 Start: 26747, Stop: 27205, Start Num: 48

Candidate Starts for Nutello_28:

(20, 26528), (Start: 48 @26747 has 123 MA's), (Start: 64 @26777 has 23 MA's), (69, 26783), (78, 26801), (97, 26861), (108, 26885), (111, 26894), (112, 26897), (115, 26909), (127, 26948), (131, 26957), (132, 26960), (143, 27011), (147, 27032), (151, 27047), (161, 27089), (164, 27101),

Gene: OBUpride_34 Start: 29590, Stop: 30000, Start Num: 59

Candidate Starts for OBUpride_34:

(Start: 59 @29590 has 22 MA's), (97, 29692), (118, 29758), (123, 29770), (127, 29782), (134, 29803), (154, 29890), (178, 29983),

Gene: Oaker_35 Start: 32640, Stop: 33101, Start Num: 57

Candidate Starts for Oaker_35:

(Start: 57 @32640 has 8 MA's), (Start: 63 @32652 has 1 MA's), (77, 32676), (90, 32703), (101, 32760), (102, 32763), (107, 32769), (109, 32775), (112, 32784), (114, 32793), (134, 32856), (135, 32859), (142, 32895), (150, 32931), (155, 32949), (168, 33000), (177, 33036),

Gene: OkiRoe_31 Start: 27916, Stop: 28368, Start Num: 41

Candidate Starts for OkiRoe_31:

(Start: 41 @27916 has 16 MA's), (Start: 64 @27961 has 23 MA's), (72, 27973), (78, 27985), (94, 28033), (97, 28045), (98, 28051), (111, 28078), (127, 28132), (131, 28141), (135, 28156), (143, 28195), (147, 28216), (160, 28270), (161, 28273), (170, 28306),

Gene: OmniCritical_33 Start: 28368, Stop: 28766, Start Num: 64

Candidate Starts for OmniCritical_33:

(26, 28248), (Start: 64 @28368 has 23 MA's), (78, 28389), (84, 28398), (112, 28485), (116, 28500), (135, 28560), (136, 28566), (140, 28584), (145, 28608), (149, 28629), (153, 28641), (155, 28650), (157, 28665), (163, 28686), (180, 28746),

Gene: Omnicron_32 Start: 26804, Stop: 27253, Start Num: 41

Candidate Starts for Omnicron_32:

(Start: 41 @26804 has 16 MA's), (Start: 64 @26849 has 23 MA's), (66, 26852), (72, 26861), (78, 26873), (95, 26927), (98, 26939), (108, 26957), (111, 26966), (127, 27020), (131, 27029), (135, 27044), (143, 27083), (145, 27092), (146, 27095), (147, 27104), (160, 27158), (161, 27161), (167, 27182), (170, 27194),

Gene: OneUp_45 Start: 30331, Stop: 30756, Start Num: 81

Candidate Starts for OneUp_45:

(Start: 81 @30331 has 1 MA's), (93, 30364), (115, 30442), (116, 30445), (132, 30493), (138, 30517), (157, 30616), (161, 30628),

Gene: Orchid_30 Start: 35152, Stop: 35535, Start Num: 80

Candidate Starts for Orchid_30:

(Start: 80 @35152 has 5 MA's), (112, 35248), (146, 35374), (149, 35392), (155, 35413),

Gene: Oscar_31 Start: 26446, Stop: 26901, Start Num: 48

Candidate Starts for Oscar_31:

(Start: 48 @26446 has 123 MA's), (Start: 64 @26476 has 23 MA's), (66, 26479), (Start: 80 @26503 has 5 MA's), (98, 26566), (111, 26593), (112, 26596), (127, 26647), (143, 26710), (161, 26788), (166, 26806),

Gene: Padfoot_32 Start: 27377, Stop: 27817, Start Num: 48

Candidate Starts for Padfoot_32:

(29, 27314), (Start: 48 @27377 has 123 MA's), (Start: 64 @27407 has 23 MA's), (69, 27413), (72, 27419), (78, 27431), (94, 27479), (98, 27497), (111, 27524), (127, 27578), (131, 27587), (142, 27638), (143, 27641), (147, 27662), (161, 27719), (170, 27752), (190, 27809),

Gene: Padpat_32 Start: 27337, Stop: 27777, Start Num: 48

Candidate Starts for Padpat_32:

(16, 27100), (29, 27274), (Start: 48 @27337 has 123 MA's), (Start: 64 @27367 has 23 MA's), (69, 27373), (72, 27379), (78, 27391), (94, 27439), (98, 27457), (111, 27484), (127, 27538), (131, 27547), (143, 27601), (147, 27622), (161, 27679), (170, 27712), (190, 27769),

Gene: Paola_31 Start: 27915, Stop: 28367, Start Num: 41

Candidate Starts for Paola_31:

(Start: 41 @27915 has 16 MA's), (Start: 64 @27960 has 23 MA's), (72, 27972), (78, 27984), (94, 28032), (97, 28044), (98, 28050), (111, 28077), (127, 28131), (131, 28140), (135, 28155), (143, 28194), (147, 28215), (160, 28269), (161, 28272), (170, 28305),

Gene: PatrickStar_30 Start: 35152, Stop: 35535, Start Num: 80

Candidate Starts for PatrickStar_30:

(Start: 80 @35152 has 5 MA's), (112, 35248), (146, 35374), (149, 35392), (155, 35413),

Gene: Patt_33 Start: 28202, Stop: 28600, Start Num: 64

Candidate Starts for Patt_33:

(6, 27824), (8, 27833), (17, 27914), (26, 28082), (Start: 64 @28202 has 23 MA's), (78, 28223), (84, 28232), (112, 28319), (115, 28331), (131, 28379), (135, 28394), (136, 28400), (140, 28418), (145, 28442), (149, 28463), (157, 28499), (162, 28517), (163, 28520), (180, 28580),

Gene: Peanam_32 Start: 26622, Stop: 27086, Start Num: 48

Candidate Starts for Peanam_32:

(23, 26496), (Start: 48 @26622 has 123 MA's), (Start: 64 @26652 has 23 MA's), (69, 26658), (72, 26664), (78, 26676), (94, 26724), (97, 26736), (111, 26769), (112, 26772), (127, 26823), (143, 26886), (147, 26907), (151, 26922), (157, 26952), (161, 26964), (164, 26976),

Gene: Peel_32 Start: 27377, Stop: 27817, Start Num: 48

Candidate Starts for Peel_32:

(29, 27314), (Start: 48 @27377 has 123 MA's), (Start: 64 @27407 has 23 MA's), (69, 27413), (72, 27419), (78, 27431), (94, 27479), (98, 27497), (111, 27524), (127, 27578), (131, 27587), (143, 27641), (147, 27662), (161, 27719), (170, 27752), (190, 27809),

Gene: Pharb_31 Start: 27504, Stop: 27944, Start Num: 48

Candidate Starts for Pharb_31:

(Start: 48 @27504 has 123 MA's), (Start: 59 @27525 has 22 MA's), (Start: 64 @27534 has 23 MA's), (98, 27624), (111, 27651), (112, 27654), (121, 27690), (127, 27705), (131, 27714), (143, 27768), (149, 27798), (161, 27846), (179, 27915),

Gene: PhelpsODU_32 Start: 26653, Stop: 27117, Start Num: 48

Candidate Starts for PhelpsODU_32:

(Start: 48 @26653 has 123 MA's), (Start: 59 @26674 has 22 MA's), (Start: 64 @26683 has 23 MA's), (66, 26686), (78, 26707), (82, 26713), (97, 26767), (98, 26773), (111, 26800), (143, 26917), (161, 26995), (164, 27007), (181, 27070),

Gene: Philon9_33 Start: 40236, Stop: 40667, Start Num: 62

Candidate Starts for Philon9_33:

(Start: 62 @40236 has 7 MA's), (65, 40242), (96, 40311), (98, 40320), (105, 40332), (124, 40392), (137, 40434), (142, 40461), (146, 40476), (149, 40494), (161, 40542), (164, 40554), (176, 40599),

Gene: PhinkBoden_51 Start: 33294, Stop: 33701, Start Num: 89

Candidate Starts for PhinkBoden_51:

(Start: 89 @33294 has 13 MA's), (105, 33357), (107, 33360), (138, 33462), (161, 33573), (171, 33615), (195, 33690),

Gene: Phrank_32 Start: 26603, Stop: 27067, Start Num: 48

Candidate Starts for Phrank_32:

(Start: 48 @26603 has 123 MA's), (Start: 59 @26624 has 22 MA's), (Start: 64 @26633 has 23 MA's), (66, 26636), (82, 26663), (97, 26717), (98, 26723), (111, 26750), (127, 26804), (146, 26879), (161, 26945), (181, 27020),

Gene: Phrappuccino_197 Start: 132691, Stop: 133080, Start Num: 83

Candidate Starts for Phrappuccino_197:

(Start: 83 @132691 has 9 MA's), (108, 132772), (111, 132781), (112, 132784), (131, 132841), (139, 132874), (149, 132925), (150, 132928), (153, 132937), (156, 132955), (159, 132967), (170, 133006),

Gene: Phreeze_35 Start: 32383, Stop: 32844, Start Num: 57

Candidate Starts for Phreeze_35:

(Start: 57 @32383 has 8 MA's), (Start: 63 @32395 has 1 MA's), (77, 32419), (90, 32446), (101, 32503), (102, 32506), (107, 32512), (109, 32518), (112, 32527), (114, 32536), (118, 32554), (134, 32599), (135, 32602), (142, 32638), (150, 32674), (155, 32692), (168, 32743), (177, 32779), (192, 32824),

Gene: Piatt_32 Start: 27377, Stop: 27817, Start Num: 48

Candidate Starts for Piatt_32:

(29, 27314), (Start: 48 @27377 has 123 MA's), (Start: 64 @27407 has 23 MA's), (69, 27413), (72, 27419), (78, 27431), (94, 27479), (98, 27497), (111, 27524), (127, 27578), (131, 27587), (142, 27638),

(143, 27641), (147, 27662), (161, 27719), (170, 27752), (190, 27809),

Gene: PierreThree_32 Start: 38322, Stop: 38843, Start Num: 37

Candidate Starts for PierreThree_32:

(Start: 37 @38322 has 17 MA's), (Start: 61 @38376 has 47 MA's), (70, 38388), (79, 38409), (108, 38493), (110, 38499), (134, 38577), (145, 38628), (161, 38700), (176, 38757), (184, 38781), (186, 38790), (193, 38808),

Gene: Pixie_32 Start: 27737, Stop: 28183, Start Num: 48

Candidate Starts for Pixie_32:

(36, 27704), (Start: 48 @27737 has 123 MA's), (Start: 64 @27767 has 23 MA's), (98, 27857), (111, 27884), (112, 27887), (121, 27923), (127, 27938), (143, 28001), (149, 28031), (157, 28067), (161, 28079),

Gene: Pokerus_31 Start: 27294, Stop: 27734, Start Num: 48

Candidate Starts for Pokerus_31:

(16, 27057), (29, 27231), (Start: 48 @27294 has 123 MA's), (Start: 64 @27324 has 23 MA's), (69, 27330), (72, 27336), (78, 27348), (94, 27396), (98, 27414), (111, 27441), (127, 27495), (131, 27504), (143, 27558), (147, 27579), (161, 27636), (170, 27669), (190, 27726),

Gene: PokyPuppy_31 Start: 38322, Stop: 38789, Start Num: 61

Candidate Starts for PokyPuppy_31:

(Start: 61 @38322 has 47 MA's), (70, 38334), (79, 38355), (97, 38415), (108, 38439), (134, 38523), (143, 38565), (161, 38646), (176, 38703), (184, 38727), (185, 38730), (186, 38736),

Gene: Poland_37 Start: 39593, Stop: 40060, Start Num: 61

Candidate Starts for Poland_37:

(Start: 37 @39539 has 17 MA's), (Start: 61 @39593 has 47 MA's), (70, 39605), (79, 39626), (97, 39686), (108, 39710), (134, 39794), (145, 39845), (147, 39857), (161, 39917), (176, 39974), (186, 40007), (191, 40022),

Gene: Predator_37 Start: 31599, Stop: 32036, Start Num: 57

Candidate Starts for Predator_37:

(Start: 57 @31599 has 8 MA's), (Start: 63 @31611 has 1 MA's), (77, 31635), (101, 31719), (102, 31722), (107, 31728), (129, 31800), (133, 31812), (134, 31815), (150, 31890), (155, 31908), (157, 31923), (168, 31959), (177, 31995),

Gene: Prithvi_32 Start: 27310, Stop: 27750, Start Num: 48

Candidate Starts for Prithvi_32:

(16, 27073), (29, 27247), (Start: 48 @27310 has 123 MA's), (Start: 64 @27340 has 23 MA's), (69, 27346), (72, 27352), (78, 27364), (94, 27412), (98, 27430), (111, 27457), (127, 27511), (131, 27520), (143, 27574), (161, 27652), (170, 27685), (190, 27742),

Gene: Psycho_32 Start: 27959, Stop: 28366, Start Num: 64

Candidate Starts for Psycho_32:

(Start: 41 @27914 has 16 MA's), (Start: 42 @27917 has 3 MA's), (Start: 64 @27959 has 23 MA's), (72, 27971), (78, 27983), (94, 28031), (97, 28043), (98, 28049), (108, 28067), (111, 28076), (131, 28139), (135, 28154), (143, 28193), (145, 28202), (147, 28214), (160, 28268), (161, 28271), (167, 28292), (170, 28304),

Gene: Puissant_34 Start: 32872, Stop: 33333, Start Num: 57

Candidate Starts for Puissant_34:

(Start: 57 @32872 has 8 MA's), (Start: 61 @32881 has 47 MA's), (77, 32908), (101, 32992), (102, 32995), (107, 33001), (109, 33007), (112, 33016), (114, 33025), (134, 33088), (135, 33091), (142, 33127), (155, 33181), (168, 33232), (177, 33268),

Gene: Pupper_173 Start: 126534, Stop: 126953, Start Num: 61

Candidate Starts for Pupper_173:

(Start: 61 @126534 has 47 MA's), (105, 126648), (109, 126657), (145, 126789), (150, 126813), (162, 126864), (165, 126876), (169, 126888),

Gene: QuincyRose_31 Start: 27357, Stop: 27806, Start Num: 48

Candidate Starts for QuincyRose_31:

(16, 27120), (29, 27294), (Start: 48 @27357 has 123 MA's), (Start: 64 @27387 has 23 MA's), (69, 27393), (72, 27399), (78, 27411), (94, 27459), (98, 27477), (111, 27504), (127, 27558), (131, 27567), (143, 27621), (147, 27642), (161, 27699),

Gene: Ramen_32 Start: 27343, Stop: 27783, Start Num: 48

Candidate Starts for Ramen_32:

(15, 27094), (29, 27280), (Start: 48 @27343 has 123 MA's), (Start: 64 @27373 has 23 MA's), (69, 27379), (72, 27385), (78, 27397), (94, 27445), (98, 27463), (111, 27490), (127, 27544), (131, 27553), (142, 27604), (143, 27607), (161, 27685), (170, 27718), (190, 27775),

Gene: Rando14_32 Start: 26763, Stop: 27212, Start Num: 41

Candidate Starts for Rando14_32:

(Start: 41 @26763 has 16 MA's), (Start: 64 @26808 has 23 MA's), (66, 26811), (72, 26820), (78, 26832), (95, 26886), (98, 26898), (108, 26916), (111, 26925), (127, 26979), (131, 26988), (135, 27003), (143, 27042), (145, 27051), (146, 27054), (147, 27063), (160, 27117), (161, 27120), (167, 27141), (170, 27153),

Gene: Rapunzel97_32 Start: 27344, Stop: 27784, Start Num: 48

Candidate Starts for Rapunzel97_32:

(16, 27107), (29, 27281), (Start: 48 @27344 has 123 MA's), (Start: 64 @27374 has 23 MA's), (69, 27380), (72, 27386), (78, 27398), (94, 27446), (98, 27464), (111, 27491), (127, 27545), (142, 27605), (143, 27608), (147, 27629), (161, 27686), (170, 27719), (190, 27776),

Gene: RemRem_33 Start: 37408, Stop: 37875, Start Num: 61

Candidate Starts for RemRem_33:

(Start: 37 @37354 has 17 MA's), (Start: 61 @37408 has 47 MA's), (70, 37420), (79, 37441), (108, 37525), (134, 37609), (145, 37660), (147, 37672), (161, 37732), (176, 37789), (186, 37822), (191, 37837),

Gene: Reptar3000_33 Start: 28193, Stop: 28591, Start Num: 64

Candidate Starts for Reptar3000_33:

(Start: 64 @28193 has 23 MA's), (78, 28214), (84, 28223), (112, 28310), (115, 28322), (131, 28370), (135, 28385), (136, 28391), (140, 28409), (145, 28433), (149, 28454), (157, 28490), (162, 28508), (163, 28511), (180, 28571),

Gene: Richo_32 Start: 26622, Stop: 27086, Start Num: 48

Candidate Starts for Richo_32:

(23, 26496), (25, 26523), (Start: 48 @26622 has 123 MA's), (Start: 64 @26652 has 23 MA's), (69, 26658), (72, 26664), (78, 26676), (94, 26724), (97, 26736), (111, 26769), (112, 26772), (127, 26823), (143, 26886), (147, 26907), (151, 26922), (157, 26952), (161, 26964), (164, 26976),

Gene: RobinSparkles_33 Start: 36069, Stop: 36452, Start Num: 80

Candidate Starts for RobinSparkles_33:

(Start: 80 @36069 has 5 MA's), (112, 36165), (146, 36291), (149, 36309), (155, 36330),

Gene: Rosmarinus_32 Start: 27365, Stop: 27805, Start Num: 48

Candidate Starts for Rosmarinus_32:

(29, 27302), (Start: 48 @27365 has 123 MA's), (Start: 64 @27395 has 23 MA's), (69, 27401), (72, 27407), (78, 27419), (94, 27467), (98, 27485), (111, 27512), (127, 27566), (131, 27575), (143, 27629), (147, 27650), (161, 27707), (170, 27740), (190, 27797),

Gene: RoyalG_33 Start: 37836, Stop: 38348, Start Num: 37

Candidate Starts for RoyalG_33:

(Start: 37 @37836 has 17 MA's), (Start: 61 @37890 has 47 MA's), (70, 37902), (79, 37923), (99, 37992), (108, 38007), (134, 38091), (161, 38214), (176, 38271), (184, 38295),

Gene: Ruthiejr_34 Start: 28349, Stop: 28747, Start Num: 64

Candidate Starts for Ruthiejr_34:

(Start: 64 @28349 has 23 MA's), (78, 28370), (84, 28379), (112, 28466), (116, 28481), (135, 28541), (136, 28547), (140, 28565), (145, 28589), (149, 28610), (153, 28622), (155, 28631), (157, 28646), (180, 28727),

Gene: SCentae_172 Start: 126727, Stop: 127146, Start Num: 61

Candidate Starts for SCentae_172:

(Start: 61 @126727 has 47 MA's), (105, 126841), (109, 126850), (145, 126982), (150, 127006), (162, 127057), (165, 127069), (169, 127081),

Gene: Sam12_32 Start: 37354, Stop: 37875, Start Num: 37

Candidate Starts for Sam12_32:

(Start: 37 @37354 has 17 MA's), (Start: 61 @37408 has 47 MA's), (70, 37420), (79, 37441), (108, 37525), (134, 37609), (145, 37660), (147, 37672), (161, 37732), (176, 37789), (186, 37822), (191, 37837),

Gene: SamScheppers_33 Start: 28862, Stop: 29260, Start Num: 64

Candidate Starts for SamScheppers_33:

(26, 28742), (Start: 64 @28862 has 23 MA's), (78, 28883), (84, 28892), (112, 28979), (116, 28994), (135, 29054), (136, 29060), (140, 29078), (145, 29102), (149, 29123), (153, 29135), (155, 29144), (157, 29159), (180, 29240),

Gene: SamuelLPlaqson_32 Start: 27266, Stop: 27706, Start Num: 48

Candidate Starts for SamuelLPlaqson_32:

(Start: 41 @27251 has 16 MA's), (Start: 48 @27266 has 123 MA's), (Start: 64 @27296 has 23 MA's), (69, 27302), (72, 27308), (78, 27320), (94, 27368), (98, 27386), (111, 27413), (127, 27467), (131, 27476), (143, 27530), (161, 27608), (170, 27641), (190, 27698), (192, 27701),

Gene: Sbash_27 Start: 25423, Stop: 25824, Start Num: 83

Candidate Starts for Sbash_27:

(Start: 83 @25423 has 9 MA's), (107, 25498), (108, 25501), (128, 25564), (145, 25633), (153, 25666), (155, 25675), (170, 25735), (174, 25750), (183, 25780), (196, 25816),

Gene: Scarlett_31 Start: 26447, Stop: 26902, Start Num: 48

Candidate Starts for Scarlett_31:

(Start: 48 @26447 has 123 MA's), (Start: 64 @26477 has 23 MA's), (66, 26480), (Start: 80 @26504 has 5 MA's), (98, 26567), (111, 26594), (112, 26597), (127, 26648), (143, 26711), (161, 26789), (164, 26801), (166, 26807),

Gene: Settecandela_222 Start: 141538, Stop: 141927, Start Num: 83

Candidate Starts for Settecandela_222:

(Start: 83 @141538 has 9 MA's), (108, 141619), (111, 141628), (112, 141631), (131, 141688), (139, 141721), (149, 141772), (150, 141775), (153, 141784), (156, 141802), (159, 141814), (170, 141853),

Gene: SgtBeansprout_28 Start: 26747, Stop: 27205, Start Num: 48

Candidate Starts for SgtBeansprout_28:

(20, 26528), (Start: 48 @26747 has 123 MA's), (Start: 64 @26777 has 23 MA's), (69, 26783), (78, 26801), (97, 26861), (108, 26885), (111, 26894), (112, 26897), (115, 26909), (127, 26948), (131, 26957), (132, 26960), (143, 27011), (147, 27032), (151, 27047), (161, 27089), (164, 27101),

Gene: Shadow1_31 Start: 26476, Stop: 26940, Start Num: 48

Candidate Starts for Shadow1_31:

(Start: 48 @26476 has 123 MA's), (Start: 59 @26497 has 22 MA's), (Start: 64 @26506 has 23 MA's), (66, 26509), (82, 26536), (97, 26590), (98, 26596), (111, 26623), (127, 26677), (143, 26740), (147, 26761), (161, 26818), (164, 26830),

Gene: Shaobing_32 Start: 26622, Stop: 27086, Start Num: 48

Candidate Starts for Shaobing_32:

(23, 26496), (25, 26523), (Start: 48 @26622 has 123 MA's), (Start: 64 @26652 has 23 MA's), (69, 26658), (72, 26664), (78, 26676), (94, 26724), (97, 26736), (111, 26769), (112, 26772), (127, 26823), (143, 26886), (147, 26907), (151, 26922), (157, 26952), (161, 26964), (164, 26976),

Gene: ShedlockHolmes_33 Start: 28259, Stop: 28705, Start Num: 48

Candidate Starts for ShedlockHolmes_33:

(36, 28226), (Start: 48 @28259 has 123 MA's), (Start: 64 @28289 has 23 MA's), (98, 28379), (111, 28406), (112, 28409), (121, 28445), (127, 28460), (143, 28523), (149, 28553), (161, 28601),

Gene: Shelley_33 Start: 39168, Stop: 39605, Start Num: 61

Candidate Starts for Shelley_33:

(Start: 37 @39114 has 17 MA's), (Start: 61 @39168 has 47 MA's), (70, 39180), (79, 39201), (97, 39261), (107, 39282), (146, 39423), (161, 39492),

Gene: ShiaSurprise_32 Start: 27377, Stop: 27817, Start Num: 48

Candidate Starts for ShiaSurprise_32:

(29, 27314), (Start: 48 @27377 has 123 MA's), (Start: 64 @27407 has 23 MA's), (69, 27413), (72, 27419), (78, 27431), (94, 27479), (98, 27497), (111, 27524), (127, 27578), (131, 27587), (142, 27638), (143, 27641), (147, 27662), (161, 27719), (170, 27752), (190, 27809),

Gene: SirPhilip_31 Start: 26116, Stop: 26580, Start Num: 47

Candidate Starts for SirPhilip_31:

(Start: 47 @26116 has 9 MA's), (Start: 64 @26146 has 23 MA's), (66, 26149), (Start: 80 @26173 has 5 MA's), (97, 26230), (98, 26236), (111, 26263), (112, 26266), (127, 26317), (143, 26380), (161, 26458), (164, 26470), (166, 26476), (194, 26569),

Gene: Skog_5 Start: 3101, Stop: 3520, Start Num: 61

Candidate Starts for Skog_5:

(Start: 61 @3101 has 47 MA's), (105, 3215), (109, 3224), (145, 3356), (150, 3380), (162, 3431), (165, 3443), (169, 3455),

Gene: Slarp_33 Start: 28471, Stop: 28869, Start Num: 64

Candidate Starts for Slarp_33:

(Start: 64 @28471 has 23 MA's), (78, 28492), (84, 28501), (112, 28588), (116, 28603), (135, 28663), (136, 28669), (140, 28687), (145, 28711), (149, 28732), (153, 28744), (155, 28753), (157, 28768), (163, 28789), (180, 28849),

Gene: Slimphazie_32 Start: 27344, Stop: 27784, Start Num: 48

Candidate Starts for Slimphazie_32:

(16, 27107), (29, 27281), (Start: 48 @27344 has 123 MA's), (Start: 64 @27374 has 23 MA's), (69, 27380), (72, 27386), (78, 27398), (94, 27446), (98, 27464), (111, 27491), (127, 27545), (142, 27605), (143, 27608), (147, 27629), (161, 27686), (170, 27719), (190, 27776),

Gene: Smoothie_53 Start: 33369, Stop: 33776, Start Num: 89

Candidate Starts for Smoothie_53:

(Start: 89 @33369 has 13 MA's), (105, 33432), (107, 33435), (138, 33537), (161, 33648), (171, 33690), (195, 33765),

Gene: SoSeph_31 Start: 28061, Stop: 28513, Start Num: 41

Candidate Starts for SoSeph_31:

(Start: 41 @28061 has 16 MA's), (Start: 64 @28106 has 23 MA's), (72, 28118), (78, 28130), (94, 28178), (97, 28190), (98, 28196), (111, 28223), (112, 28226), (127, 28277), (131, 28286), (135, 28301), (143, 28340), (147, 28361), (160, 28415), (161, 28418), (170, 28451),

Gene: Sombrero_32 Start: 37356, Stop: 37877, Start Num: 37

Candidate Starts for Sombrero_32:

(Start: 37 @37356 has 17 MA's), (Start: 61 @37410 has 47 MA's), (70, 37422), (79, 37443), (99, 37512), (108, 37527), (134, 37611), (145, 37662), (147, 37674), (161, 37734), (176, 37791), (186, 37824), (191, 37839),

Gene: Sparky_28 Start: 26721, Stop: 27113, Start Num: 87

Candidate Starts for Sparky_28:

(Start: 87 @26721 has 2 MA's), (107, 26787), (108, 26790), (128, 26853), (145, 26922), (149, 26943), (153, 26955), (155, 26964), (170, 27024), (174, 27039), (183, 27069), (196, 27105),

Gene: SpeedDemon_350 Start: 32425, Stop: 32838, Start Num: 83

Candidate Starts for SpeedDemon_350:

(Start: 83 @32425 has 9 MA's), (111, 32515), (116, 32533), (139, 32617), (164, 32728),

Gene: Spock_32 Start: 27377, Stop: 27817, Start Num: 48

Candidate Starts for Spock_32:

(29, 27314), (Start: 48 @27377 has 123 MA's), (Start: 64 @27407 has 23 MA's), (69, 27413), (72, 27419), (78, 27431), (94, 27479), (98, 27497), (111, 27524), (127, 27578), (131, 27587), (143, 27641), (147, 27662), (161, 27719), (170, 27752), (190, 27809),

Gene: Squibbles_31 Start: 38271, Stop: 38738, Start Num: 61

Candidate Starts for Squibbles_31:

(Start: 37 @38217 has 17 MA's), (Start: 61 @38271 has 47 MA's), (70, 38283), (79, 38304), (108, 38388), (134, 38472), (145, 38523), (147, 38535), (161, 38595), (176, 38652), (186, 38685), (191, 38700),

Gene: SteveFrench_32 Start: 38130, Stop: 38588, Start Num: 61

Candidate Starts for SteveFrench_32:

(Start: 37 @38076 has 17 MA's), (Start: 61 @38130 has 47 MA's), (70, 38142), (79, 38163), (99, 38232), (108, 38247), (134, 38331), (161, 38454), (176, 38511), (184, 38535),

Gene: Sticker17_33 Start: 39683, Stop: 40120, Start Num: 61

Candidate Starts for Sticker17_33:

(Start: 37 @39629 has 17 MA's), (Start: 61 @39683 has 47 MA's), (70, 39695), (79, 39716), (97, 39776), (107, 39797), (146, 39938), (161, 40007),

Gene: Stinson_33 Start: 27579, Stop: 28019, Start Num: 48

Candidate Starts for Stinson_33:

(16, 27342), (Start: 48 @27579 has 123 MA's), (Start: 64 @27609 has 23 MA's), (69, 27615), (72, 27621), (78, 27633), (94, 27681), (98, 27699), (111, 27726), (121, 27765), (127, 27780), (131, 27789), (143, 27843), (161, 27921), (170, 27954), (190, 28011),

Gene: Strobilo_30 Start: 26001, Stop: 26387, Start Num: 86

Candidate Starts for Strobilo_30:

(Start: 86 @26001 has 10 MA's), (Start: 88 @26004 has 3 MA's), (92, 26013), (109, 26076), (111, 26082), (113, 26091), (115, 26097), (120, 26118), (124, 26127), (127, 26136), (131, 26145), (145, 26208), (149, 26229), (154, 26247), (155, 26250),

Gene: Stuck_31 Start: 25768, Stop: 26169, Start Num: 83

Candidate Starts for Stuck_31:

(Start: 83 @25768 has 9 MA's), (107, 25843), (108, 25846), (128, 25909), (145, 25978), (153, 26011), (155, 26020), (170, 26080), (174, 26095), (183, 26125), (196, 26161),

Gene: Sulley_32 Start: 27310, Stop: 27750, Start Num: 48

Candidate Starts for Sulley_32:

(29, 27247), (Start: 48 @27310 has 123 MA's), (Start: 64 @27340 has 23 MA's), (69, 27346), (72, 27352), (78, 27364), (94, 27412), (98, 27430), (111, 27457), (127, 27511), (131, 27520), (143, 27574), (147, 27595), (161, 27652), (170, 27685), (190, 27742),

Gene: Sunflower1121_31 Start: 26488, Stop: 26952, Start Num: 48

Candidate Starts for Sunflower1121_31:

(Start: 48 @26488 has 123 MA's), (Start: 59 @26509 has 22 MA's), (Start: 64 @26518 has 23 MA's), (66, 26521), (82, 26548), (97, 26602), (98, 26608), (111, 26635), (127, 26689), (143, 26752), (147, 26773), (161, 26830), (164, 26842), (181, 26905),

Gene: Syra333_32 Start: 26498, Stop: 26962, Start Num: 48

Candidate Starts for Syra333_32:

(Start: 48 @26498 has 123 MA's), (Start: 59 @26519 has 22 MA's), (Start: 64 @26528 has 23 MA's), (66, 26531), (82, 26558), (97, 26612), (98, 26618), (111, 26645), (127, 26699), (143, 26762), (147, 26783), (161, 26840), (164, 26852),

Gene: TBond007_32 Start: 27736, Stop: 28182, Start Num: 48

Candidate Starts for TBond007_32:

(36, 27703), (Start: 48 @27736 has 123 MA's), (Start: 64 @27766 has 23 MA's), (98, 27856), (111, 27883), (112, 27886), (121, 27922), (127, 27937), (143, 28000), (149, 28030), (157, 28066), (161, 28078),

Gene: TClif_33 Start: 27061, Stop: 27525, Start Num: 46

Candidate Starts for TClif_33:

(Start: 46 @27061 has 1 MA's), (Start: 64 @27091 has 23 MA's), (66, 27094), (72, 27103), (78, 27115), (82, 27121), (98, 27181), (111, 27208), (112, 27211), (127, 27262), (143, 27325), (161, 27403),

Gene: TM4_31 Start: 26207, Stop: 26593, Start Num: 86

Candidate Starts for TM4_31:

(Start: 86 @26207 has 10 MA's), (Start: 88 @26210 has 3 MA's), (92, 26219), (94, 26243), (109, 26282), (111, 26288), (113, 26297), (115, 26303), (120, 26324), (124, 26333), (127, 26342), (131, 26351), (145, 26414), (149, 26435), (154, 26453), (155, 26456),

Gene: TPA4_33 Start: 29799, Stop: 30185, Start Num: 90

Candidate Starts for TPA4_33:

(21, 29538), (38, 29694), (Start: 87 @29793 has 2 MA's), (90, 29799), (134, 29949), (137, 29961), (140, 29976), (145, 30006), (161, 30075), (163, 30084), (173, 30123),

Gene: Tachez_32 Start: 27306, Stop: 27746, Start Num: 48

Candidate Starts for Tachez_32:

(16, 27069), (29, 27243), (Start: 48 @27306 has 123 MA's), (Start: 64 @27336 has 23 MA's), (69, 27342), (72, 27348), (78, 27360), (94, 27408), (98, 27426), (111, 27453), (127, 27507), (142, 27567), (143, 27570), (147, 27591), (161, 27648), (170, 27681), (190, 27738),

Gene: TaiwanKao_33 Start: 27310, Stop: 27750, Start Num: 48

Candidate Starts for TaiwanKao_33:

(16, 27073), (29, 27247), (Start: 48 @27310 has 123 MA's), (Start: 64 @27340 has 23 MA's), (69, 27346), (72, 27352), (78, 27364), (94, 27412), (98, 27430), (111, 27457), (127, 27511), (131, 27520), (143, 27574), (161, 27652), (170, 27685), (190, 27742),

Gene: Taquito_33 Start: 28909, Stop: 29307, Start Num: 64

Candidate Starts for Taquito_33:

(26, 28789), (Start: 64 @28909 has 23 MA's), (78, 28930), (84, 28939), (112, 29026), (116, 29041), (135, 29101), (136, 29107), (140, 29125), (145, 29149), (149, 29170), (153, 29182), (155, 29191), (157, 29206), (163, 29227), (180, 29287),

Gene: Teal_33 Start: 40151, Stop: 40588, Start Num: 61

Candidate Starts for Teal_33:

(Start: 37 @40097 has 17 MA's), (Start: 61 @40151 has 47 MA's), (70, 40163), (79, 40184), (97, 40244), (107, 40265), (146, 40406), (161, 40475),

Gene: Teatealatte_31 Start: 39000, Stop: 39434, Start Num: 62

Candidate Starts for Teatealatte_31:

(Start: 62 @39000 has 7 MA's), (75, 39021), (92, 39039), (96, 39072), (142, 39222), (146, 39237), (149, 39255), (153, 39267), (161, 39303), (162, 39309), (184, 39384),

Gene: Teech_31 Start: 38801, Stop: 39235, Start Num: 62

Candidate Starts for Teech_31:

(Start: 62 @38801 has 7 MA's), (75, 38822), (92, 38840), (96, 38873), (142, 39023), (146, 39038), (149, 39056), (153, 39068), (161, 39104), (162, 39110), (184, 39185),

Gene: Teejan_28 Start: 26747, Stop: 27205, Start Num: 48

Candidate Starts for Teejan_28:

(20, 26528), (Start: 48 @26747 has 123 MA's), (Start: 64 @26777 has 23 MA's), (69, 26783), (78, 26801), (97, 26861), (108, 26885), (111, 26894), (112, 26897), (115, 26909), (127, 26948), (131, 26957), (132, 26960), (143, 27011), (147, 27032), (151, 27047), (161, 27089), (164, 27101),

Gene: Thumb_35 Start: 32380, Stop: 32841, Start Num: 57

Candidate Starts for Thumb_35:

(Start: 57 @32380 has 8 MA's), (Start: 63 @32392 has 1 MA's), (77, 32416), (90, 32443), (101, 32500), (102, 32503), (107, 32509), (109, 32515), (112, 32524), (114, 32533), (118, 32551), (134, 32596), (135, 32599), (142, 32635), (150, 32671), (155, 32689), (168, 32740), (177, 32776),

Gene: Thyatira_31 Start: 27915, Stop: 28367, Start Num: 41

Candidate Starts for Thyatira_31:

(Start: 41 @27915 has 16 MA's), (Start: 64 @27960 has 23 MA's), (72, 27972), (78, 27984), (94, 28032), (97, 28044), (98, 28050), (111, 28077), (127, 28131), (131, 28140), (135, 28155), (143, 28194), (147, 28215), (160, 28269), (161, 28272), (170, 28305),

Gene: Tierra_32 Start: 27324, Stop: 27788, Start Num: 48

Candidate Starts for Tierra_32:

(Start: 48 @27324 has 123 MA's), (Start: 59 @27345 has 22 MA's), (Start: 64 @27354 has 23 MA's), (66, 27357), (82, 27384), (97, 27438), (98, 27444), (111, 27471), (127, 27525), (146, 27600), (161, 27666), (181, 27741),

Gene: TingHuaYa_32 Start: 26466, Stop: 26918, Start Num: 48

Candidate Starts for TingHuaYa_32:

(12, 26208), (23, 26343), (29, 26403), (Start: 48 @26466 has 123 MA's), (Start: 64 @26496 has 23 MA's), (69, 26502), (72, 26508), (78, 26520), (94, 26568), (97, 26580), (111, 26613), (112, 26616), (127, 26667), (143, 26730), (145, 26739), (147, 26751), (161, 26808),

Gene: TiniBug_32 Start: 27262, Stop: 27702, Start Num: 48

Candidate Starts for TiniBug_32:

(5, 26935), (29, 27199), (Start: 48 @27262 has 123 MA's), (Start: 64 @27292 has 23 MA's), (69, 27298), (72, 27304), (78, 27316), (94, 27364), (98, 27382), (111, 27409), (127, 27463), (131, 27472), (143, 27526), (161, 27604), (170, 27637), (190, 27694),

Gene: Tiri_32 Start: 27349, Stop: 27798, Start Num: 48

Candidate Starts for Tiri_32:

(16, 27112), (29, 27286), (Start: 48 @27349 has 123 MA's), (Start: 64 @27379 has 23 MA's), (69, 27385), (72, 27391), (78, 27403), (94, 27451), (98, 27469), (111, 27496), (127, 27550), (131, 27559), (143, 27613), (147, 27634), (161, 27691), (190, 27790),

Gene: Toniann_51 Start: 32856, Stop: 33263, Start Num: 89

Candidate Starts for Toniann_51:

(Start: 89 @32856 has 13 MA's), (105, 32919), (107, 32922), (138, 33024), (161, 33135), (171, 33177), (195, 33252),

Gene: Topper_32 Start: 27377, Stop: 27817, Start Num: 48

Candidate Starts for Topper_32:

(29, 27314), (Start: 48 @27377 has 123 MA's), (Start: 64 @27407 has 23 MA's), (69, 27413), (72, 27419), (78, 27431), (94, 27479), (98, 27497), (111, 27524), (127, 27578), (131, 27587), (143, 27641), (147, 27662), (161, 27719), (170, 27752), (190, 27809),

Gene: Torres_28 Start: 26747, Stop: 27205, Start Num: 48

Candidate Starts for Torres_28:

(20, 26528), (Start: 48 @26747 has 123 MA's), (Start: 64 @26777 has 23 MA's), (69, 26783), (78, 26801), (97, 26861), (108, 26885), (111, 26894), (112, 26897), (115, 26909), (127, 26948), (131, 26957), (132, 26960), (143, 27011), (147, 27032), (151, 27047), (161, 27089), (164, 27101),

Gene: Towmatter_32 Start: 28924, Stop: 29334, Start Num: 83

Candidate Starts for Towmatter_32:

(Start: 83 @28924 has 9 MA's), (120, 29050), (155, 29185), (181, 29284),

Gene: Tredge_31 Start: 39000, Stop: 39434, Start Num: 62

Candidate Starts for Tredge_31:

(Start: 62 @39000 has 7 MA's), (75, 39021), (92, 39039), (96, 39072), (142, 39222), (146, 39237), (149, 39255), (153, 39267), (161, 39303), (162, 39309), (184, 39384),

Gene: TreyKay_32 Start: 27310, Stop: 27750, Start Num: 48

Candidate Starts for TreyKay_32:

(16, 27073), (29, 27247), (Start: 48 @27310 has 123 MA's), (Start: 64 @27340 has 23 MA's), (69, 27346), (72, 27352), (78, 27364), (94, 27412), (98, 27430), (111, 27457), (127, 27511), (131, 27520), (143, 27574), (161, 27652), (170, 27685), (190, 27742),

Gene: TribbleTrouble_31 Start: 27787, Stop: 28239, Start Num: 48

Candidate Starts for TribbleTrouble_31:

(36, 27754), (Start: 48 @27787 has 123 MA's), (Start: 64 @27817 has 23 MA's), (98, 27907), (111, 27934), (112, 27937), (121, 27973), (127, 27988), (143, 28051), (147, 28072), (161, 28129), (170, 28162),

Gene: TruffulaTree_32 Start: 27340, Stop: 27780, Start Num: 48

Candidate Starts for TruffulaTree_32:

(29, 27277), (Start: 48 @27340 has 123 MA's), (Start: 64 @27370 has 23 MA's), (69, 27376), (72, 27382), (78, 27394), (94, 27442), (98, 27460), (111, 27487), (127, 27541), (142, 27601), (143, 27604), (147, 27625), (161, 27682), (170, 27715), (190, 27772),

Gene: Twitch_32 Start: 27377, Stop: 27817, Start Num: 48

Candidate Starts for Twitch_32:

(29, 27314), (Start: 48 @27377 has 123 MA's), (Start: 64 @27407 has 23 MA's), (69, 27413), (72, 27419), (78, 27431), (94, 27479), (98, 27497), (111, 27524), (127, 27578), (131, 27587), (143, 27641), (147, 27662), (161, 27719), (170, 27752), (190, 27809),

Gene: Typha_33 Start: 30335, Stop: 30691, Start Num: 88

Candidate Starts for Typha_33:

(28, 30185), (Start: 88 @30335 has 3 MA's), (94, 30368), (112, 30416), (115, 30428), (121, 30452), (127, 30467), (134, 30488), (141, 30518), (145, 30539), (146, 30542), (161, 30608), (163, 30617), (167, 30629),

Gene: Ubuntu_34 Start: 29596, Stop: 30006, Start Num: 59

Candidate Starts for Ubuntu_34:

(Start: 59 @29596 has 22 MA's), (97, 29698), (118, 29764), (123, 29776), (127, 29788), (134, 29809), (154, 29896), (178, 29989),

Gene: Unicorn_32 Start: 26653, Stop: 27117, Start Num: 48

Candidate Starts for Unicorn_32:

(Start: 48 @26653 has 123 MA's), (Start: 59 @26674 has 22 MA's), (Start: 64 @26683 has 23 MA's), (66, 26686), (78, 26707), (82, 26713), (97, 26767), (98, 26773), (111, 26800), (143, 26917), (161, 26995), (164, 27007), (181, 27070),

Gene: Urkel_32 Start: 27266, Stop: 27706, Start Num: 48

Candidate Starts for Urkel_32:

(Start: 41 @27251 has 16 MA's), (Start: 48 @27266 has 123 MA's), (Start: 64 @27296 has 23 MA's), (69, 27302), (72, 27308), (78, 27320), (94, 27368), (98, 27386), (111, 27413), (127, 27467), (131, 27476), (143, 27530), (161, 27608), (170, 27641), (190, 27698), (192, 27701),

Gene: Validus_32 Start: 26557, Stop: 27018, Start Num: 48

Candidate Starts for Validus_32:

(Start: 48 @26557 has 123 MA's), (53, 26566), (Start: 64 @26587 has 23 MA's), (66, 26590), (69, 26593), (72, 26599), (78, 26611), (94, 26659), (97, 26671), (111, 26704), (112, 26707), (127, 26758), (143, 26821), (147, 26842), (151, 26857), (157, 26887), (161, 26899), (164, 26911),

Gene: Veliki_32 Start: 27380, Stop: 27820, Start Num: 48

Candidate Starts for Veliki_32:

(16, 27143), (29, 27317), (Start: 48 @27380 has 123 MA's), (Start: 64 @27410 has 23 MA's), (69, 27416), (72, 27422), (78, 27434), (94, 27482), (98, 27500), (111, 27527), (127, 27581), (142, 27641), (143, 27644), (147, 27665), (161, 27722), (170, 27755), (190, 27812),

Gene: Vitaenoi_33 Start: 40235, Stop: 40666, Start Num: 62

Candidate Starts for Vitaenoi_33:

(Start: 62 @40235 has 7 MA's), (65, 40241), (96, 40310), (98, 40319), (105, 40331), (124, 40391), (137, 40433), (142, 40460), (146, 40475), (149, 40493), (161, 40541), (164, 40553), (176, 40598),

Gene: ViviJ_30 Start: 27746, Stop: 28198, Start Num: 41

Candidate Starts for ViviJ_30:

(1, 27233), (2, 27347), (Start: 41 @27746 has 16 MA's), (Start: 42 @27749 has 3 MA's), (Start: 64 @27791 has 23 MA's), (72, 27803), (78, 27815), (94, 27863), (97, 27875), (98, 27881), (108, 27899), (111, 27908), (127, 27962), (131, 27971), (135, 27986), (143, 28025), (145, 28034), (147, 28046), (157, 28091), (160, 28100), (161, 28103), (167, 28124), (170, 28136),

Gene: Waterfoul_31 Start: 27939, Stop: 28391, Start Num: 41

Candidate Starts for Waterfoul_31:

(Start: 41 @27939 has 16 MA's), (Start: 64 @27984 has 23 MA's), (72, 27996), (78, 28008), (94, 28056), (97, 28068), (98, 28074), (111, 28101), (127, 28155), (131, 28164), (135, 28179), (143, 28218), (147, 28239), (160, 28293), (161, 28296), (170, 28329),

Gene: Webster2_34 Start: 29596, Stop: 30006, Start Num: 59

Candidate Starts for Webster2_34:

(Start: 59 @29596 has 22 MA's), (97, 29698), (118, 29764), (123, 29776), (127, 29788), (134, 29809), (154, 29896), (178, 29989),

Gene: WilliamBoone_51 Start: 32208, Stop: 32615, Start Num: 89

Candidate Starts for WilliamBoone_51:

(Start: 89 @32208 has 13 MA's), (126, 32337), (127, 32340), (134, 32361), (138, 32376), (161, 32487), (171, 32529), (195, 32604),

Gene: Wintermute_33 Start: 28458, Stop: 28856, Start Num: 64

Candidate Starts for Wintermute_33:

(Start: 64 @28458 has 23 MA's), (78, 28479), (84, 28488), (112, 28575), (116, 28590), (135, 28650), (136, 28656), (140, 28674), (145, 28698), (149, 28719), (153, 28731), (155, 28740), (157, 28755), (163, 28776), (180, 28836),

Gene: Wishmaker_33 Start: 29596, Stop: 30006, Start Num: 59

Candidate Starts for Wishmaker_33:

(Start: 59 @29596 has 22 MA's), (97, 29698), (118, 29764), (123, 29776), (127, 29788), (134, 29809), (154, 29896), (178, 29989),

Gene: Woes_33 Start: 40202, Stop: 40639, Start Num: 61

Candidate Starts for Woes_33:

(Start: 37 @40148 has 17 MA's), (Start: 61 @40202 has 47 MA's), (70, 40214), (79, 40235), (97, 40295), (105, 40313), (107, 40316), (146, 40457), (161, 40526),

Gene: Worcestershire_32 Start: 37410, Stop: 37877, Start Num: 61

Candidate Starts for Worcestershire_32:

(Start: 37 @37356 has 17 MA's), (Start: 61 @37410 has 47 MA's), (70, 37422), (79, 37443), (108, 37527), (134, 37611), (145, 37662), (147, 37674), (161, 37734), (176, 37791), (186, 37824), (191, 37839),

Gene: Ximenita_33 Start: 26680, Stop: 27144, Start Num: 48

Candidate Starts for Ximenita_33:

(Start: 48 @26680 has 123 MA's), (Start: 59 @26701 has 22 MA's), (Start: 64 @26710 has 23 MA's), (66, 26713), (82, 26740), (97, 26794), (98, 26800), (111, 26827), (127, 26881), (143, 26944), (146, 26956), (161, 27022), (181, 27097),

Gene: Y10_33 Start: 28458, Stop: 28856, Start Num: 64

Candidate Starts for Y10_33:

(Start: 64 @28458 has 23 MA's), (78, 28479), (84, 28488), (112, 28575), (116, 28590), (121, 28611), (136, 28656), (140, 28674), (145, 28698), (149, 28719), (153, 28731), (155, 28740), (157, 28755), (163, 28776),

Gene: Y2_33 Start: 28458, Stop: 28856, Start Num: 64

Candidate Starts for Y2_33:

(Start: 64 @28458 has 23 MA's), (78, 28479), (84, 28488), (112, 28575), (116, 28590), (121, 28611), (136, 28656), (140, 28674), (145, 28698), (149, 28719), (153, 28731), (155, 28740), (157, 28755), (163, 28776),

Gene: YoureAdopted_31 Start: 27313, Stop: 27753, Start Num: 48

Candidate Starts for YoureAdopted_31:

(29, 27250), (Start: 48 @27313 has 123 MA's), (Start: 64 @27343 has 23 MA's), (69, 27349), (72, 27355), (78, 27367), (94, 27415), (98, 27433), (111, 27460), (127, 27514), (131, 27523), (143, 27577), (147, 27598), (161, 27655), (170, 27688), (190, 27745),

Gene: Yuna_33 Start: 27088, Stop: 27546, Start Num: 48

Candidate Starts for Yuna_33:

(Start: 48 @27088 has 123 MA's), (Start: 59 @27109 has 22 MA's), (Start: 64 @27118 has 23 MA's), (66, 27121), (78, 27142), (98, 27208), (111, 27235), (127, 27289), (134, 27310), (143, 27352), (145, 27361), (161, 27430),

Gene: Yunkel11_32 Start: 26598, Stop: 27047, Start Num: 48

Candidate Starts for Yunkel11_32:

(Start: 48 @26598 has 123 MA's), (Start: 64 @26628 has 23 MA's), (69, 26634), (72, 26640), (78, 26652), (94, 26700), (97, 26712), (111, 26745), (112, 26748), (127, 26799), (131, 26808), (143, 26862), (147, 26883), (151, 26898), (161, 26940), (189, 27039),

Gene: Yvonnetastic_49 Start: 34634, Stop: 35044, Start Num: 60

Candidate Starts for Yvonnetastic_49:

(Start: 60 @34634 has 2 MA's), (101, 34745), (115, 34778), (121, 34802), (162, 34967),

Gene: Zabiza_32 Start: 27344, Stop: 27784, Start Num: 48

Candidate Starts for Zabiza_32:

(16, 27107), (29, 27281), (Start: 48 @27344 has 123 MA's), (Start: 64 @27374 has 23 MA's), (69, 27380), (72, 27386), (78, 27398), (94, 27446), (98, 27464), (111, 27491), (127, 27545), (142, 27605), (143, 27608), (147, 27629), (161, 27686), (170, 27719), (190, 27776),

Gene: Zavala_32 Start: 27319, Stop: 27759, Start Num: 48

Candidate Starts for Zavala_32:

(16, 27082), (22, 27193), (29, 27256), (Start: 48 @27319 has 123 MA's), (Start: 64 @27349 has 23 MA's), (69, 27355), (72, 27361), (78, 27373), (94, 27421), (98, 27439), (111, 27466), (127, 27520), (131, 27529), (143, 27583), (147, 27604), (161, 27661), (170, 27694), (190, 27751),

Gene: ZoeJ_30 Start: 25982, Stop: 26392, Start Num: 86

Candidate Starts for ZoeJ_30:

(Start: 86 @25982 has 10 MA's), (Start: 88 @25985 has 3 MA's), (92, 25994), (109, 26057), (111, 26063), (113, 26072), (115, 26078), (120, 26099), (124, 26108), (126, 26114), (127, 26117), (131, 26126), (145, 26189), (149, 26210), (154, 26228), (155, 26231),