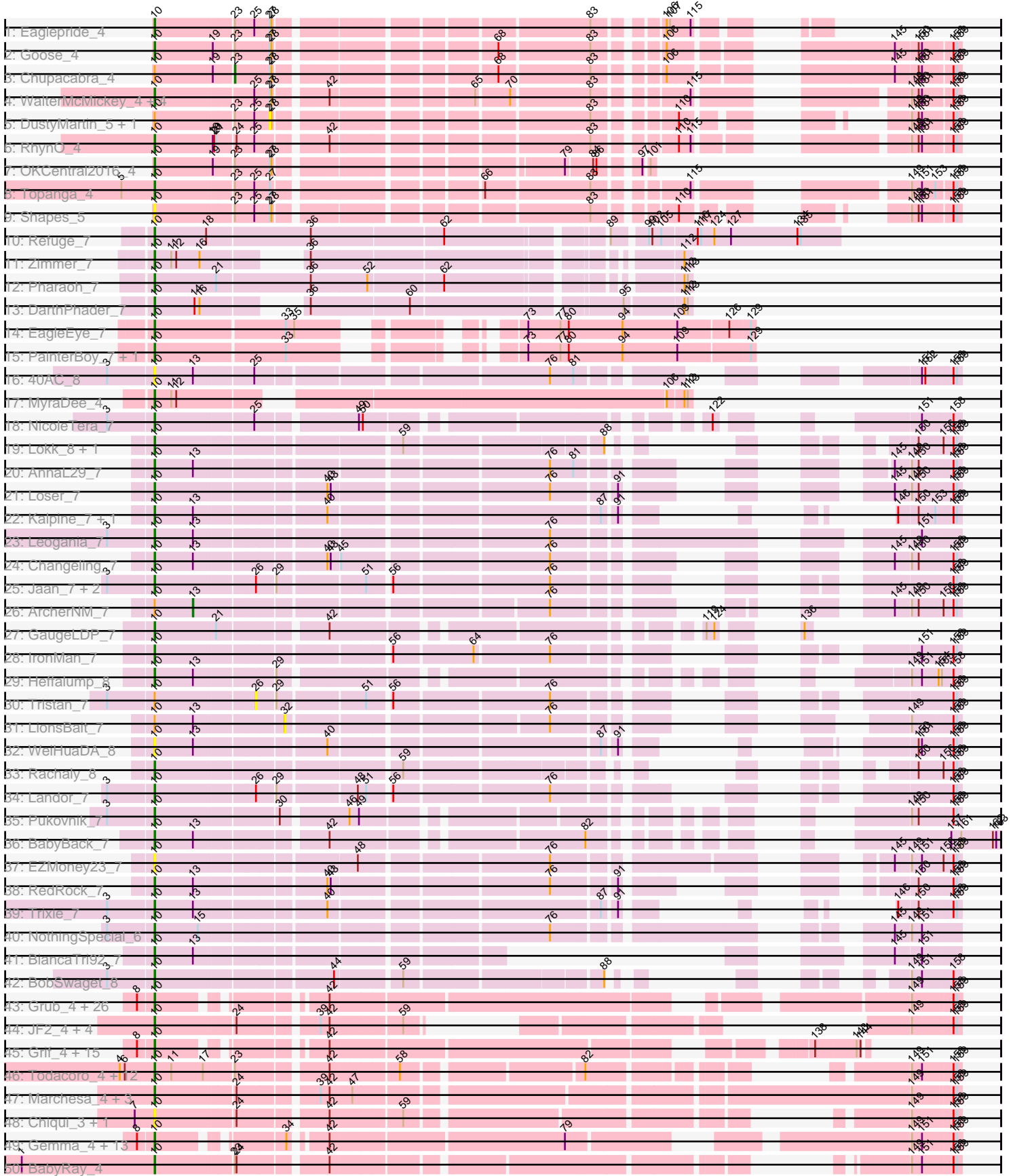
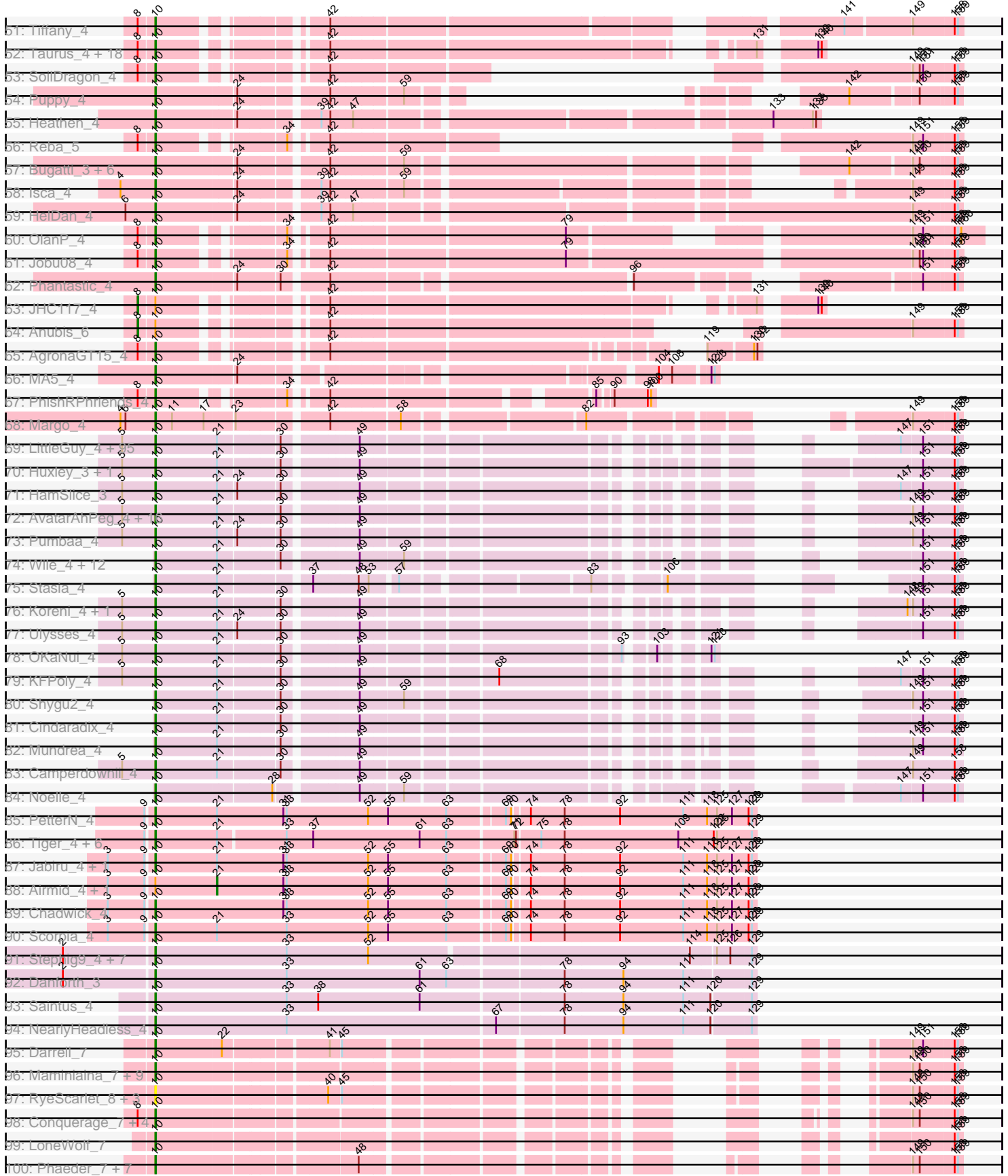
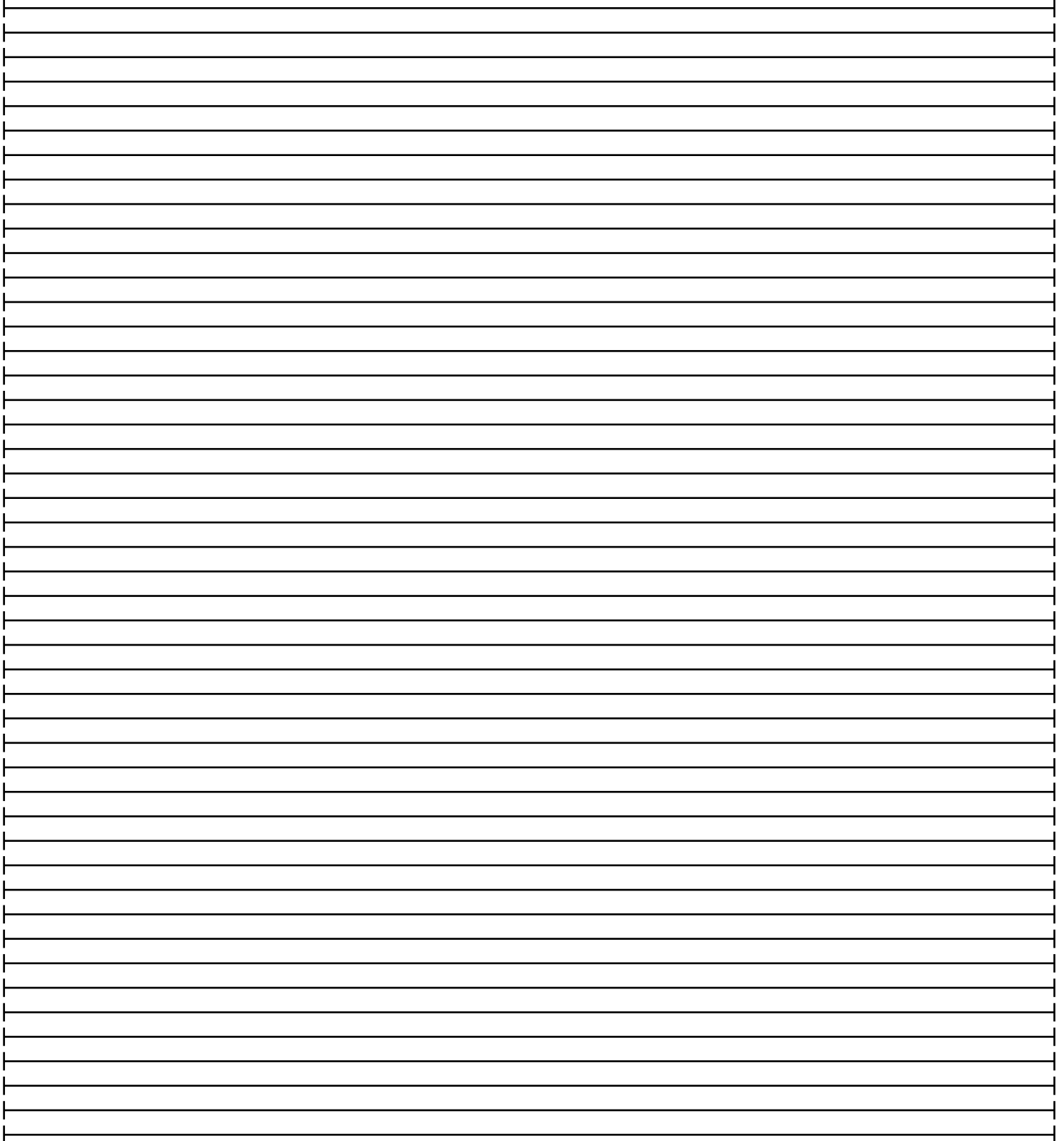
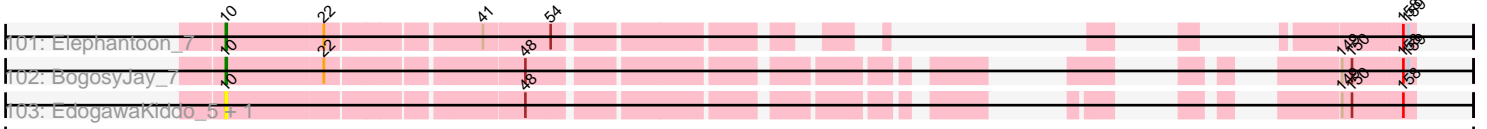


Pham 215720



Pham 215720





Note: Tracks are now grouped by subcluster and scaled. Switching in subcluster is indicated by changes in track color. Track scale is now set by default to display the region 30 bp upstream of start 1 to 30 bp downstream of the last possible start. If this default region is judged to be packed too tightly with annotated starts, the track will be further scaled to only show that region of the ORF with annotated starts. This action will be indicated by adding "Zoomed" to the title. For starts, yellow indicates the location of called starts comprised solely of Glimmer/GeneMark auto-annotations, green indicates the location of called starts with at least 1 manual gene annotation.

Pham 215720 Report

This analysis was run 02/22/25 on database version 588.

Pham number 215720 has 375 members, 34 are drafts.

Phages represented in each track:

- Track 1 : Eaglepride_4
- Track 2 : Goose_4
- Track 3 : Chupacabra_4
- Track 4 : WalterMcMickey_4, Twister_4, Rebeuca_5, Edison31_4, Kristoff_5
- Track 5 : DustyMartin_5, Rowdy_5
- Track 6 : RhynO_4
- Track 7 : OKCentral2016_4
- Track 8 : Topanga_4
- Track 9 : Shapes_5
- Track 10 : Refuge_7
- Track 11 : Zimmer_7
- Track 12 : Pharaoh_7
- Track 13 : DarthPhader_7
- Track 14 : EagleEye_7
- Track 15 : PainterBoy_7, Lucyedi_7
- Track 16 : 40AC_8
- Track 17 : MyraDee_4
- Track 18 : NicoleTera_7
- Track 19 : Lokk_8, Miko_8
- Track 20 : AnnaL29_7
- Track 21 : Loser_7
- Track 22 : Kalpine_7, Colin_8
- Track 23 : Leogania_7
- Track 24 : Changeling_7
- Track 25 : Jaan_7, Phaded_7, Bactobuster_7
- Track 26 : ArcherNM_7
- Track 27 : GaugeLDP_7
- Track 28 : IronMan_7
- Track 29 : Heffalump_8
- Track 30 : Tristan_7
- Track 31 : LionsBait_7
- Track 32 : WeiHuaDA_8
- Track 33 : Rachaly_8
- Track 34 : Landor_7
- Track 35 : Pukovnik_7
- Track 36 : BabyBack_7
- Track 37 : EZMoney23_7

- Track 38 : RedRock_7
- Track 39 : Trixie_7
- Track 40 : NothingSpecial_6
- Track 41 : BiancaTri92_7
- Track 42 : BobSwaget_8
- Track 43 : Grub_4, BreSam8_4, Snickers_4, GingkoMaracino_4, Dieselweasel_4, MuchMore_6, AugsMagnumOpus_6, Sabia_4, Microwolf_4, Lowa_4, Aglet_4, Stagni_4, StepMih_4, MadMarie_4, Ollie_4, Mainiac_4, DaHudson_4, PGHhamlin_6, MarQuardt_4, GtownJaz_4, SoYo_4, Watson_4, Malinsilva_6, Lilith_4, Pembroke_4, Farber_4, Wooldri_6
- Track 44 : JF2_4, MK4_4, Rockstar_4, B1_03, JF4_4
- Track 45 : Grif_4, Phoxy_4, Louie6_4, TinyPebbles_4, Soshari_6, Spike509_4, Methuselah_4, Vix_4, LarryKay_4, Zetzy_4, Misomonster_6, KADY_5, Bxz2_4, BuzzBuzz_3, Rummer_4, HashRod_5
- Track 46 : Todacoro_4, Popcicle_4, Veracruz_3, Texage_3, QuinnKiro_3, Pocahontas_4, ResDef_4, Hookmount_4, Panamaxus_4, Noella_4, Caviar_4, Norbert_3, Lambert1_4
- Track 47 : Marchesa_4, DropBear_4, Kachowdy_4, Fred313_4
- Track 48 : Chiqui_3, BabyJohn_3
- Track 49 : Gemma_4, Kalnoky_5, PurpleHaze_4, Manu_5, Pawn_4, Kalb97_5, JeppNRM_5, Groupthink_5, HaveUMetTed_5, Marius_5, Phranny_5, Calvinny_4, Heliosoles_4, ACFishhook_4
- Track 50 : BabyRay_4
- Track 51 : Tiffany_4
- Track 52 : Taurus_4, JenCasNa_4, Cullens_4, PotatoSplit_5, MoneyMay_4, Fernando_4, LBerry_4, Bigflo_4, Phoebe_4, Grum1_4, Colbster_4, EpicPhail_4, Beauxregard13_4, Penny1_4, Sabinator_4, P28Green_4, Marie_4, LugYA_6, Hercules11_4
- Track 53 : SoilDragon_4
- Track 54 : Puppy_4
- Track 55 : Heathen_4
- Track 56 : Reba_5
- Track 57 : Bugatti_3, TNguyen7_4, Pistachio_4, Idleandcovert_3, SaturnRing_3, BlueBird_4, Giroux_3
- Track 58 : Isca_4
- Track 59 : HelDan_4
- Track 60 : OlanP_4
- Track 61 : Jobu08_4
- Track 62 : Phantastic_4
- Track 63 : JHC117_4
- Track 64 : Anubis_6
- Track 65 : AgronaGT15_4
- Track 66 : MA5_4
- Track 67 : PhishRPhriends_4
- Track 68 : Margo_4
- Track 69 : LittleGuy_4, Kampy_4, Lorenzo_4, TroyPia_4, Ohfah_4, Sabertooth_4, Clarenza_4, CentreCat_4, Ruin_4, Kratark_4, Floean_4, Connomayer_4, Holli_4, Nyxis_4, JoongJeon_4, Phacado_4, Eros_4, Albee_4, Bombshell_4, Maverick_4, LittleB_4, BellusTerra_4, Phelipe_4, Peaches_4, ICleared_4, Taquarus_4, Avle17_4, TiroTheta9_4, Wizard007_4, MeeZee_4, LeoAvram_4, Millski_4, Commander_4, JetBlade_4, Eagle_3, TygerBlood_4, Relief_4, Eapen_4, Gadost_4, NorthStar_4, Baby16_4, Wilbur_4, Kingmustik0402_4, Mayonnaise_3, Pipcraft_4, Iceman_4, Polymorphads_4, Medusa_4, Palestino_4, Melvin_4, Phontbonne_4, YoSam321_4,

Citius_4, Sparxx_4, Caelakin_4, Arturo_3, Kyee_4, Cocoaberry_4, TinaFeyge_4, Koan_3, Bartimeaus_4, LappelDuVide_4, Roosevelt_4, Spino_4, Funston_4, Dhanush_4, Bruiser_4, Blackmoor_4, SenorClean_3, Maxo_4, Scamp_4, PeterPeter_4, Lunsford_4, Houdini22_4, Nemo27_4, Broseidon_4, BubbleTrouble_4, Jaykayelowell_4, Lemur_4, Romney_4, Nebs_4, NotAPhaseMom_4, Shaka_4, Skipitt_4, Eris_4, Chaph_4, Druantia_4, Flux_4, Eurydice_4, Thanksgivukkah_4, Morrow_4, Burger_3, Deano_4, Mazhar510_4, Abdiel_4, Wander_4

- Track 70 : Huxley_3, Annyong_4
- Track 71 : HamSlice_3
- Track 72 : AvatarAhPeg_4, Cintron_4, SheldonCooper_4, Phighter1804_4, Iracema64_4, Obama12_4, Stink_4, Rosa24_3, DirtyDunning_4, LochMonster_4, LHTSCC_4, ChampagnePapi_4, Tinybot_3, Cerulean_4, Miramae_4, Happiness_4, BangNhom_3
- Track 73 : Pumbaa_4
- Track 74 : Wile_4, Badger_4, PetiteSangsue_4, Cici_4, Katalie136_4, Perplexer_4, Xena_4, Datway_4, Morpher26_4, Achebe_4, Backyardigan_4, AbbysRanger_4, Bumblebee11_4
- Track 75 : Stasia_4
- Track 76 : Koreni_4, Alberto7_4
- Track 77 : Ulysses_4
- Track 78 : OKaNui_4
- Track 79 : KFPoly_4
- Track 80 : Shygu2_4
- Track 81 : Cindaradix_4
- Track 82 : Mundrea_4
- Track 83 : Camperdownii_4
- Track 84 : Noelle_4
- Track 85 : PetterN_4
- Track 86 : Tiger_4, Lev2_4, PickleBack_4, Conspiracy_4, UnionJack_4, ForGetIt_4, Archetta_4
- Track 87 : Jabiru_4, EITiger69_4
- Track 88 : Airmid_4, Benedict_4
- Track 89 : Chadwick_4
- Track 90 : Scorpia_4
- Track 91 : Stephig9_4, Expelliarmus_3, Dixon_4, Phillis_4, Smeadley_4, Groundhog_3, Astro_4, Roary_4
- Track 92 : Danforth_3
- Track 93 : Saintus_4
- Track 94 : NearlyHeadless_4
- Track 95 : Darrell_7
- Track 96 : Maminiaina_7, Ugenie5_5, ExplosioNervosa_7, Scherzo_7, Alma_7, EmyBug_7, Pioneer_7, Beemo_7, Phonnegut_7, Fayely_7
- Track 97 : RyeScarlet_8, Hanray_6, Jiawan_6, Holes_6
- Track 98 : Conquerage_7, Eidsmoe_7, Qobbit_7, Priya_7, Spouty_7
- Track 99 : LoneWolf_7
- Track 100 : Phaeder_7, HortumSL17_7, Tubs_7, Aliter_7, Myxus_7, Catalina_7, Lilleskat_5, PackMan_7
- Track 101 : Elephantoon_7
- Track 102 : BogosyJay_7
- Track 103 : EdogawaKiddo_5, Sachima_5

Summary of Final Annotations (See graph section above for start numbers):

The start number called the most often in the published annotations is 10, it was called in 335 of the 341 non-draft genes in the pham.

Genes that call this "Most Annotated" start:

- 40AC_8, ACFishhook_4, AbbysRanger_4, Abdiel_4, Achebe_4, Aglet_4, AgronaGT15_4, Albee_4, Alberto7_4, Aliter_7, Alma_7, AnnaL29_7, Annyong_4, Archetta_4, Arturo_3, Astro_4, AugsMagnumOpus_6, AvatarAhPeg_4, Avle17_4, B1_03, Baby16_4, BabyBack_7, BabyJohn_3, BabyRay_4, Backyardigan_4, Bactobuster_7, Badger_4, BangNhom_3, Bartimeaus_4, Beauxregard13_4, Beemo_7, BellusTerra_4, BiancaTri92_7, Bigflo_4, Blackmoor_4, BlueBird_4, BobSwaget_8, BogosyJay_7, Bombshell_4, BreSam8_4, Broseidon_4, Bruiser_4, BubbleTrouble_4, Bugatti_3, Bumblebee11_4, Burger_3, BuzzBuzz_3, Bxz2_4, Caelakin_4, Calvinny_4, Camperdownii_4, Catalina_7, Caviar_4, CentreCat_4, Cerulean_4, Chadwick_4, ChampagnePapi_4, Changeling_7, Chaph_4, Chiqui_3, Cici_4, Cindaradix_4, Cintron_4, Citius_4, Clarenza_4, Cocoaberry_4, Colbster_4, Colin_8, Commander_4, Connomayer_4, Conquerage_7, Conspiracy_4, Cullens_4, DaHudson_4, Danforth_3, Darrell_7, DARTHPhader_7, Datway_4, Deano_4, Dhanush_4, Dieselweasel_4, DirtyDunning_4, Dixon_4, DropBear_4, Druantia_4, EZMoney23_7, EagleEye_7, Eagle_3, Eaglepride_4, Eapen_4, Edison31_4, EdogawaKiddo_5, Eidsmoe_7, ElTiger69_4, Elephantoon_7, EmyBug_7, EpicPhail_4, Eris_4, Eros_4, Eurydice_4, Expelliarmus_3, ExplosioNervosa_7, Farber_4, Fayely_7, Fernando_4, Floean_4, Flux_4, ForGetIt_4, Fred313_4, Funston_4, Gadost_4, GaugeLDP_7, Gemma_4, GingkoMaracino_4, Giroux_3, Goose_4, Grif_4, Groundhog_3, Groupthink_5, Grub_4, Grum1_4, GtownJaz_4, HamSlice_3, Hanray_6, Happiness_4, HashRod_5, HaveUMetTed_5, Heathen_4, Heffalump_8, HelDan_4, Heliosoles_4, Hercules11_4, Halex_6, Holli_4, Hookmount_4, HortumSL17_7, Houdini22_4, Huxley_3, ICleared_4, Iceman_4, Idleandcovert_3, Iracema64_4, IronMan_7, Isca_4, JF2_4, JF4_4, Jaan_7, Jabiru_4, Jaykayelowell_4, JenCasNa_4, JeppNRM_5, JetBlade_4, Jiawan_6, Jobu08_4, JoongJeon_4, KADY_5, KFPoly_4, Kachowdy_4, Kalb97_5, Kalnoky_5, Kalpine_7, Kamy_4, Katalie136_4, Kingmustik0402_4, Koan_3, Koreni_4, Kratark_4, Kristoff_5, Kyee_4, LBerry_4, LHTSCC_4, Lambert1_4, Landor_7, LappelDuVide_4, LarryKay_4, Lemur_4, LeoAvram_4, Leogania_7, Lev2_4, Lilith_4, Lilleskat_5, LittleB_4, LittleGuy_4, LochMonster_4, Lokk_8, LoneWolf_7, Lorenzo_4, Loser_7, Louie6_4, Lowa_4, Lucyedi_7, LugYA_6, Lunsford_4, MA5_4, MK4_4, MadMarie_4, Mainiac_4, Malinsilva_6, Maminiaina_7, Manu_5, MarQuardt_4, Marchesa_4, Margo_4, Marie_4, Marius_5, Maverick_4, Maxo_4, Mayonnaise_3, Mazhar510_4, Medusa_4, MeeZee_4, Melvin_4, Methuselah_4, Microwolf_4, Miko_8, Millski_4, Miramae_4, Misomonster_6, MoneyMay_4, Morpher26_4, Morrow_4, MuchMore_6, Mundrea_4, MyraDee_4, Myxus_7, NearlyHeadless_4, Nebs_4, Nemo27_4, NicoleTera_7, Noella_4, Noelle_4, Norbert_3, NorthStar_4, NotAPhaseMom_4, NothingSpecial_6, Nyxis_4, OKCentral2016_4, OKaNui_4, Obama12_4, Ohfah_4, OlanP_4, Ollie_4, P28Green_4, PGHhamlin_6, PackMan_7, PainterBoy_7, Palestino_4, Panamaxus_4, Pawn_4, Peaches_4, Pembroke_4, Penny1_4, Perplexer_4, PeterPeter_4, PetiteSangsue_4, PetterN_4, Phacado_4, Phaded_7, Phaeder_7, Phantastic_4, Pharaoh_7, Phelipe_4, Phighter1804_4, Phillis_4, PhishRPhriends_4, Phoebe_4, Phonnegut_7, Phontbonne_4, Phoxy_4, Phranny_5, PickleBack_4, Pioneer_7, Pipcraft_4, Pistachio_4, Pocahontas_4, Polymorphads_4, Popcicle_4, PotatoSplit_5, Priya_7, Pukovnik_7, Pumbaa_4, Puppy_4, PurpleHaze_4, Qobbit_7, QuinnKiro_3, Rachaly_8, Reba_5, Rebeuca_5,

RedRock_7, Refuge_7, Relief_4, ResDef_4, RhynO_4, Roary_4, Rockstar_4, Romney_4, Roosevelt_4, Rosa24_3, Ruin_4, Rummer_4, RyeScarlet_8, Sabertooth_4, Sabia_4, Sabinator_4, Sachima_5, Saintus_4, SaturnRing_3, Scamp_4, Scherzo_7, Scorpia_4, SenorClean_3, Shaka_4, Shapes_5, SheldonCooper_4, Shygu2_4, Skipitt_4, Smeadley_4, Snickers_4, SoYo_4, SoilDragon_4, Soshari_6, Sparxx_4, Spike509_4, Spino_4, Spouty_7, Stagni_4, Stasia_4, StepMih_4, StepHig9_4, Stink_4, TNguyen7_4, Taquarus_4, Taurus_4, Texage_3, Thanksgivukkah_4, Tiffany_4, Tiger_4, TinaFeyge_4, TinyPebbles_4, Tinybot_3, TiroTheta9_4, Todacoro_4, Topanga_4, Trixie_7, TroyPia_4, Tubs_7, Twister_4, TygerBlood_4, Ugenie5_5, Ulysses_4, UnionJack_4, Veracruz_3, Vix_4, WalterMcMickey_4, Wander_4, Watson_4, WeiHuaDA_8, Wilbur_4, Wile_4, Wizard007_4, Wooldri_6, Xena_4, YoSam321_4, Zetzy_4, Zimmer_7,

Genes that have the "Most Annotated" start but do not call it:

- Airmid_4, Anubis_6, ArcherNM_7, Benedict_4, Chupacabra_4, DustyMartin_5, JHC117_4, LionsBait_7, Rowdy_5, Tristan_7,

Genes that do not have the "Most Annotated" start:

-

Summary by start number:

Start 8:

- Found in 90 of 375 (24.0%) of genes in pham
- Manual Annotations of this start: 2 of 341
- Called 2.2% of time when present
- Phage (with cluster) where this start called: Anubis_6 (A3), JHC117_4 (A3),

Start 10:

- Found in 375 of 375 (100.0%) of genes in pham
- Manual Annotations of this start: 335 of 341
- Called 97.3% of time when present
- Phage (with cluster) where this start called: 40AC_8 (A17), ACFishhook_4 (A3), AbbyssRanger_4 (A4), Abdiel_4 (A4), Achebe_4 (A4), Aglet_4 (A3), AgronaGT15_4 (A3), Albee_4 (A4), Alberto7_4 (A4), Aliter_7 (A9), Alma_7 (A9), AnnaL29_7 (A2), Annyong_4 (A4), Archetta_4 (A5), Arturo_3 (A4), Astro_4 (A8), AugsMagnumOpus_6 (A3), AvatarAhPeg_4 (A4), Avle17_4 (A4), B1_03 (A3), Baby16_4 (A4), BabyBack_7 (A2), BabyJohn_3 (A3), BabyRay_4 (A3), Backyardigan_4 (A4), Bactobuster_7 (A2), Badger_4 (A4), BangNhom_3 (A4), Bartimeaus_4 (A4), Beauxregard13_4 (A3), Beemo_7 (A9), BellusTerra_4 (A4), BiancaTri92_7 (A2), Bigflo_4 (A3), Blackmoor_4 (A4), BlueBird_4 (A3), BobSwaget_8 (A2), BogosyJay_7 (A9), Bombshell_4 (A4), BreSam8_4 (A3), Broseidon_4 (A4), Bruiser_4 (A4), BubbleTrouble_4 (A4), Bugatti_3 (A3), Bumblebee11_4 (A4), Burger_3 (A4), BuzzBuzz_3 (A3), Bxz2_4 (A3), Caelakin_4 (A4), Calvinny_4 (A3), Camperdownii_4 (A4), Catalina_7 (A9), Caviar_4 (A3), CentreCat_4 (A4), Cerulean_4 (A4), Chadwick_4 (A5), ChampagnePapi_4 (A4), Changeling_7 (A2), Chaph_4 (A4), Chiqui_3 (A3), Cici_4 (A4), Cindaradix_4 (A4), Cintron_4 (A4), Citius_4 (A4), Clarenza_4 (A4), Cocoaberry_4 (A4), Colbster_4 (A3), Colin_8 (A2), Commander_4 (A4), Connomayer_4 (A4), Conquerage_7 (A9), Conspiracy_4 (A5), Cullens_4 (A3), DaHudson_4 (A3), Danforth_3 (A8), Darrell_7 (A9), DarthPhader_7 (A12), Datway_4 (A4), Deano_4 (A4), Dhanush_4 (A4), Dieselweasel_4 (A3), DirtyDunning_4 (A4), Dixon_4 (A8), DropBear_4 (A3), Druantia_4 (A4), EZMoney23_7 (A2), EagleEye_7 (A16), Eagle_3 (A4), Eaglepride_4 (A10), Eapen_4 (A4), Edison31_4 (A10), EdogawaKiddo_5 (A9), Eidsmoe_7 (A9),

EITiger69_4 (A5), Elephantoon_7 (A9), EmyBug_7 (A9), EpicPhail_4 (A3), Eris_4 (A4), Eros_4 (A4), Eurydice_4 (A4), Expelliarmus_3 (A8), ExplosioNervosa_7 (A9), Farber_4 (A3), Fayely_7 (A9), Fernando_4 (A3), Florean_4 (A4), Flux_4 (A4), ForGetIt_4 (A5), Fred313_4 (A3), Funston_4 (A4), Gadost_4 (A4), GaugeLDP_7 (A2), Gemma_4 (A3), GingkoMaracino_4 (A3), Giroux_3 (A3), Goose_4 (A10), Grif_4 (A3), Groundhog_3 (A8), Groupthink_5 (A3), Grub_4 (A3), Grum1_4 (A3), GtownJaz_4 (A3), HamSlice_3 (A4), Hanray_6 (A9), Happiness_4 (A4), HashRod_5 (A3), HaveUMetTed_5 (A3), Heathen_4 (A3), Heffalump_8 (A2), HelDan_4 (A3), Heliosoles_4 (A3), Hercules11_4 (A3), Holes_6 (A9), Holli_4 (A4), Hookmount_4 (A3), HortumSL17_7 (A9), Houdini22_4 (A4), Huxley_3 (A4), ICleared_4 (A4), Iceman_4 (A4), Idleandcovert_3 (A3), Iracema64_4 (A4), IronMan_7 (A2), Isca_4 (A3), JF2_4 (A3), JF4_4 (A3), Jaan_7 (A2), Jabiru_4 (A5), Jaykayelowell_4 (A4), JenCasNa_4 (A3), JeppNRM_5 (A3), JetBlade_4 (A4), Jiawan_6 (A9), Jobu08_4 (A3), JoongJeon_4 (A4), KADY_5 (A3), KFPoly_4 (A4), Kachowdy_4 (A3), Kalb97_5 (A3), Kalnoky_5 (A3), Kalpine_7 (A2), Kampy_4 (A4), Katalie136_4 (A4), Kingmustik0402_4 (A4), Koan_3 (A4), Koreni_4 (A4), Kratark_4 (A4), Kristoff_5 (A10), Kyee_4 (A4), LBerry_4 (A3), LHTSCC_4 (A4), Lambert1_4 (A3), Landor_7 (A2), LappelDuVide_4 (A4), LarryKay_4 (A3), Lemur_4 (A4), LeoAvram_4 (A4), Leogania_7 (A2), Lev2_4 (A5), Lilith_4 (A3), Lilleskat_5 (A9), LittleB_4 (A4), LittleGuy_4 (A4), LochMonster_4 (A4), Lokk_8 (A2), LoneWolf_7 (A9), Lorenzo_4 (A4), Loser_7 (A2), Louie6_4 (A3), Iowa_4 (A3), Lucyedi_7 (A16), LugYA_6 (A3), Lunsford_4 (A4), MA5_4 (A3), MK4_4 (A3), MadMarie_4 (A3), Mainiac_4 (A3), Malinsilva_6 (A3), Maminaiaina_7 (A9), Manu_5 (A3), MarQuardt_4 (A3), Marchesa_4 (A3), Margo_4 (A3), Marie_4 (A3), Marius_5 (A3), Maverick_4 (A4), Maxo_4 (A4), Mayonnaise_3 (A4), Mazhar510_4 (A4), Medusa_4 (A4), MeeZee_4 (A4), Melvin_4 (A4), Methuselah_4 (A3), Microwolf_4 (A3), Miko_8 (A2), Millski_4 (A4), Miramae_4 (A4), Misomonster_6 (A3), MoneyMay_4 (A3), Morpher26_4 (A4), Morrow_4 (A4), MuchMore_6 (A3), Mundrea_4 (A4), MyraDee_4 (A18), Myxus_7 (A9), NearlyHeadless_4 (A8), Nebs_4 (A4), Nemo27_4 (A4), NicoleTera_7 (A2), Noella_4 (A3), Noelle_4 (A4), Norbert_3 (A3), NorthStar_4 (A4), NotAPhaseMom_4 (A4), NothingSpecial_6 (A2), Nyxis_4 (A4), OKCentral2016_4 (A10), OKaNui_4 (A4), Obama12_4 (A4), Ohfah_4 (A4), OlanP_4 (A3), Ollie_4 (A3), P28Green_4 (A3), PGHhamlin_6 (A3), PackMan_7 (A9), PainterBoy_7 (A16), Palestino_4 (A4), Panamaxus_4 (A3), Pawn_4 (A3), Peaches_4 (A4), Pembroke_4 (A3), Penny1_4 (A3), Perplexer_4 (A4), PeterPeter_4 (A4), PetiteSangsue_4 (A4), PetterN_4 (A5), Phacado_4 (A4), Phaded_7 (A2), Phaeder_7 (A9), Phantastic_4 (A3), Pharaoh_7 (A12), Felipe_4 (A4), Phighter1804_4 (A4), Phillis_4 (A8), PhishRPhriends_4 (A3), Phoebe_4 (A3), Phonnegut_7 (A9), Phontbonne_4 (A4), Phoxy_4 (A3), Phranny_5 (A3), PickleBack_4 (A5), Pioneer_7 (A9), Pipcraft_4 (A4), Pistachio_4 (A3), Pocahontas_4 (A3), Polymorphads_4 (A4), Popcicle_4 (A3), PotatoSplit_5 (A3), Priya_7 (A9), Pukovnik_7 (A2), Pumbaa_4 (A4), Puppy_4 (A3), PurpleHaze_4 (A3), Qobbit_7 (A9), QuinnKiro_3 (A3), Rachaly_8 (A2), Reba_5 (A3), Rebeuca_5 (A10), RedRock_7 (A2), Refuge_7 (A12), Relief_4 (A4), ResDef_4 (A3), RhynO_4 (A10), Roary_4 (A8), Rockstar_4 (A3), Romney_4 (A4), Roosevelt_4 (A4), Rosa24_3 (A4), Ruin_4 (A4), Rummer_4 (A3), RyeScarlet_8 (A9), Sabertooth_4 (A4), Sabia_4 (A3), Sabinator_4 (A3), Sachima_5 (A9), Saintus_4 (A8), SaturnRing_3 (A3), Scamp_4 (A4), Scherzo_7 (A9), Scorpia_4 (A5), SenorClean_3 (A4), Shaka_4 (A4), Shapes_5 (A10), SheldonCooper_4 (A4), Shygu2_4 (A4), Skipitt_4 (A4), Smeadley_4 (A8), Snickers_4 (A3), SoYo_4 (A3), SoilDragon_4 (A3), Soshari_6 (A3), Sparxx_4 (A4), Spike509_4 (A3), Spino_4 (A4), Spouty_7 (A9), Stagni_4 (A3), Stasia_4 (A4), StepMih_4 (A3), Stephig9_4 (A8), Stink_4 (A4), TNguyen7_4 (A3), Taquarus_4 (A4), Taurus_4 (A3), Texage_3 (A3), Thanksgivukkah_4 (A4), Tiffany_4 (A3), Tiger_4 (A5), TinaFeyge_4 (A4), TinyPebbles_4 (A3), Tinybot_3 (A4), TiroTheta9_4 (A4),

Todacoro_4 (A3), Topanga_4 (A10), Trixie_7 (A2), TroyPia_4 (A4), Tubs_7 (A9), Twister_4 (A10), TygerBlood_4 (A4), Ugenie5_5 (A9), Ulysses_4 (A4), UnionJack_4 (A5), Veracruz_3 (A3), Vix_4 (A3), WalterMcMickey_4 (A10), Wander_4 (A4), Watson_4 (A3), WeiHuaDA_8 (A2), Wilbur_4 (A4), Wile_4 (A4), Wizard007_4 (A4), Wooldri_6 (A3), Xena_4 (A4), YoSam321_4 (A4), Zetzy_4 (A3), Zimmer_7 (A12),

Start 13:

- Found in 14 of 375 (3.7%) of genes in pham
- Manual Annotations of this start: 1 of 341
- Called 7.1% of time when present
- Phage (with cluster) where this start called: ArcherNM_7 (A2),

Start 21:

- Found in 156 of 375 (41.6%) of genes in pham
- Manual Annotations of this start: 2 of 341
- Called 1.3% of time when present
- Phage (with cluster) where this start called: Airmid_4 (A5), Benedict_4 (A5),

Start 23:

- Found in 23 of 375 (6.1%) of genes in pham
- Manual Annotations of this start: 1 of 341
- Called 4.3% of time when present
- Phage (with cluster) where this start called: Chupacabra_4 (A10),

Start 26:

- Found in 5 of 375 (1.3%) of genes in pham
- No Manual Annotations of this start.
- Called 20.0% of time when present
- Phage (with cluster) where this start called: Tristan_7 (A2),

Start 27:

- Found in 13 of 375 (3.5%) of genes in pham
- No Manual Annotations of this start.
- Called 15.4% of time when present
- Phage (with cluster) where this start called: DustyMartin_5 (A10), Rowdy_5 (A10),

Start 32:

- Found in 1 of 375 (0.3%) of genes in pham
- No Manual Annotations of this start.
- Called 100.0% of time when present
- Phage (with cluster) where this start called: LionsBait_7 (A2),

Summary by clusters:

There are 11 clusters represented in this pham: A17, A16, A10, A12, A18, A3, A2, A5, A4, A9, A8,

Info for manual annotations of cluster A10:

- Start number 10 was manually annotated 10 times for cluster A10.
- Start number 23 was manually annotated 1 time for cluster A10.

Info for manual annotations of cluster A12:

- Start number 10 was manually annotated 4 times for cluster A12.

Info for manual annotations of cluster A16:

- Start number 10 was manually annotated 3 times for cluster A16.

Info for manual annotations of cluster A18:

- Start number 10 was manually annotated 1 time for cluster A18.

Info for manual annotations of cluster A2:

- Start number 10 was manually annotated 23 times for cluster A2.
- Start number 13 was manually annotated 1 time for cluster A2.

Info for manual annotations of cluster A3:

- Start number 8 was manually annotated 2 times for cluster A3.
- Start number 10 was manually annotated 109 times for cluster A3.

Info for manual annotations of cluster A4:

- Start number 10 was manually annotated 136 times for cluster A4.

Info for manual annotations of cluster A5:

- Start number 10 was manually annotated 12 times for cluster A5.
- Start number 21 was manually annotated 2 times for cluster A5.

Info for manual annotations of cluster A8:

- Start number 10 was manually annotated 11 times for cluster A8.

Info for manual annotations of cluster A9:

- Start number 10 was manually annotated 26 times for cluster A9.

Gene Information:

Gene: 40AC_8 Start: 4152, Stop: 5285, Start Num: 10

Candidate Starts for 40AC_8:

(3, 4071), (Start: 10 @4152 has 335 MA's), (Start: 13 @4221 has 1 MA's), (25, 4320), (76, 4791), (81, 4833), (151, 5217), (152, 5223), (158, 5271), (159, 5277),

Gene: ACFishhook_4 Start: 1685, Stop: 2965, Start Num: 10

Candidate Starts for ACFishhook_4:

(Start: 8 @1658 has 2 MA's), (Start: 10 @1685 has 335 MA's), (34, 1865), (42, 1913), (79, 2309), (149, 2879), (151, 2897), (158, 2951), (159, 2957),

Gene: AbbysRanger_4 Start: 1644, Stop: 2729, Start Num: 10

Candidate Starts for AbbysRanger_4:

(Start: 10 @1644 has 335 MA's), (Start: 21 @1752 has 2 MA's), (30, 1848), (49, 1962), (59, 2034), (151, 2658), (158, 2715), (159, 2721),

Gene: Abdiel_4 Start: 1645, Stop: 2718, Start Num: 10

Candidate Starts for Abdiel_4:

(5, 1585), (Start: 10 @1645 has 335 MA's), (Start: 21 @1753 has 2 MA's), (30, 1849), (49, 1963), (147, 2611), (151, 2647), (158, 2704), (159, 2710),

Gene: Achebe_4 Start: 1644, Stop: 2729, Start Num: 10

Candidate Starts for Achebe_4:

(Start: 10 @1644 has 335 MA's), (Start: 21 @1752 has 2 MA's), (30, 1848), (49, 1962), (59, 2034), (151, 2658), (158, 2715), (159, 2721),

Gene: Aglet_4 Start: 1681, Stop: 2895, Start Num: 10

Candidate Starts for Aglet_4:

(Start: 8 @1654 has 2 MA's), (Start: 10 @1681 has 335 MA's), (42, 1909), (149, 2809), (158, 2881), (159, 2887),

Gene: AgronaGT15_4 Start: 1682, Stop: 2536, Start Num: 10

Candidate Starts for AgronaGT15_4:

(Start: 8 @1655 has 2 MA's), (Start: 10 @1682 has 335 MA's), (42, 1910), (119, 2450), (130, 2522), (132, 2528),

Gene: Airmid_4 Start: 2465, Stop: 3403, Start Num: 21

Candidate Starts for Airmid_4:

(3, 2276), (9, 2342), (Start: 10 @2354 has 335 MA's), (Start: 21 @2465 has 2 MA's), (31, 2585), (33, 2591), (52, 2738), (55, 2774), (63, 2879), (69, 2972), (70, 2981), (74, 3005), (78, 3065), (92, 3161), (111, 3275), (118, 3317), (125, 3335), (127, 3362), (128, 3389), (129, 3395),

Gene: Albee_4 Start: 1645, Stop: 2718, Start Num: 10

Candidate Starts for Albee_4:

(5, 1585), (Start: 10 @1645 has 335 MA's), (Start: 21 @1753 has 2 MA's), (30, 1849), (49, 1963), (147, 2611), (151, 2647), (158, 2704), (159, 2710),

Gene: Alberto7_4 Start: 1646, Stop: 2719, Start Num: 10

Candidate Starts for Alberto7_4:

(5, 1586), (Start: 10 @1646 has 335 MA's), (Start: 21 @1754 has 2 MA's), (30, 1850), (49, 1964), (148, 2624), (149, 2630), (151, 2648), (158, 2705), (159, 2711),

Gene: Aliter_7 Start: 4192, Stop: 5163, Start Num: 10

Candidate Starts for Aliter_7:

(Start: 10 @4192 has 335 MA's), (48, 4525), (149, 5080), (150, 5092), (158, 5149), (159, 5155),

Gene: Alma_7 Start: 4190, Stop: 5221, Start Num: 10

Candidate Starts for Alma_7:

(Start: 10 @4190 has 335 MA's), (149, 5138), (150, 5150), (158, 5207), (159, 5213),

Gene: AnnaL29_7 Start: 4133, Stop: 5236, Start Num: 10

Candidate Starts for AnnaL29_7:

(Start: 10 @4133 has 335 MA's), (Start: 13 @4202 has 1 MA's), (76, 4772), (81, 4814), (145, 5126), (149, 5153), (150, 5165), (158, 5222), (159, 5228),

Gene: Annyong_4 Start: 1646, Stop: 2719, Start Num: 10

Candidate Starts for Annyong_4:

(5, 1586), (Start: 10 @1646 has 335 MA's), (Start: 21 @1754 has 2 MA's), (30, 1850), (49, 1964), (151, 2648), (158, 2705), (159, 2711),

Gene: Anubis_6 Start: 1654, Stop: 2805, Start Num: 8

Candidate Starts for Anubis_6:

(Start: 8 @1654 has 2 MA's), (Start: 10 @1681 has 335 MA's), (42, 1909), (149, 2719), (158, 2791), (159, 2797),

Gene: ArcherNM_7 Start: 4221, Stop: 5246, Start Num: 13

Candidate Starts for ArcherNM_7:

(Start: 10 @4152 has 335 MA's), (Start: 13 @4221 has 1 MA's), (76, 4782), (145, 5136), (149, 5163), (150, 5175), (156, 5214), (158, 5232), (159, 5238),

Gene: Archetta_4 Start: 2385, Stop: 3440, Start Num: 10

Candidate Starts for Archetta_4:

(9, 2373), (Start: 10 @2385 has 335 MA's), (Start: 21 @2496 has 2 MA's), (33, 2613), (37, 2661), (61, 2853), (63, 2901), (71, 3015), (72, 3018), (75, 3057), (78, 3099), (109, 3300), (122, 3363), (125, 3369), (129, 3432),

Gene: Arturo_3 Start: 1645, Stop: 2718, Start Num: 10

Candidate Starts for Arturo_3:

(5, 1585), (Start: 10 @1645 has 335 MA's), (Start: 21 @1753 has 2 MA's), (30, 1849), (49, 1963), (147, 2611), (151, 2647), (158, 2704), (159, 2710),

Gene: Astro_4 Start: 2306, Stop: 3343, Start Num: 10

Candidate Starts for Astro_4:

(2, 2147), (Start: 10 @2306 has 335 MA's), (33, 2543), (52, 2690), (114, 3236), (125, 3275), (126, 3299), (129, 3335),

Gene: AugsMagnumOpus_6 Start: 1681, Stop: 2886, Start Num: 10

Candidate Starts for AugsMagnumOpus_6:

(Start: 8 @1654 has 2 MA's), (Start: 10 @1681 has 335 MA's), (42, 1909), (149, 2800), (158, 2872), (159, 2878),

Gene: AvatarAhPeg_4 Start: 1638, Stop: 2714, Start Num: 10

Candidate Starts for AvatarAhPeg_4:

(5, 1578), (Start: 10 @1638 has 335 MA's), (Start: 21 @1746 has 2 MA's), (30, 1842), (49, 1956), (149, 2625), (151, 2643), (158, 2700), (159, 2706),

Gene: Avle17_4 Start: 1645, Stop: 2718, Start Num: 10

Candidate Starts for Avle17_4:

(5, 1585), (Start: 10 @1645 has 335 MA's), (Start: 21 @1753 has 2 MA's), (30, 1849), (49, 1963), (147, 2611), (151, 2647), (158, 2704), (159, 2710),

Gene: B1_03 Start: 1608, Stop: 2510, Start Num: 10

Candidate Starts for B1_03:

(Start: 10 @1608 has 335 MA's), (24, 1743), (39, 1866), (42, 1881), (59, 1995), (149, 2424), (158, 2496), (159, 2502),

Gene: Baby16_4 Start: 1645, Stop: 2727, Start Num: 10

Candidate Starts for Baby16_4:

(5, 1585), (Start: 10 @1645 has 335 MA's), (Start: 21 @1753 has 2 MA's), (30, 1849), (49, 1963), (147, 2620), (151, 2656), (158, 2713), (159, 2719),

Gene: BabyBack_7 Start: 3957, Stop: 5108, Start Num: 10

Candidate Starts for BabyBack_7:

(Start: 10 @3957 has 335 MA's), (Start: 13 @4026 has 1 MA's), (42, 4233), (82, 4629), (157, 5019), (161, 5037), (162, 5094), (163, 5100),

Gene: BabyJohn_3 Start: 1627, Stop: 2763, Start Num: 10

Candidate Starts for BabyJohn_3:

(7, 1591), (Start: 10 @1627 has 335 MA's), (24, 1762), (42, 1900), (59, 2014), (149, 2677), (158, 2749), (159, 2755),

Gene: BabyRay_4 Start: 1650, Stop: 2777, Start Num: 10

Candidate Starts for BabyRay_4:

(1, 1410), (Start: 10 @1650 has 335 MA's), (Start: 23 @1782 has 1 MA's), (24, 1785), (42, 1923), (149, 2691), (151, 2709), (158, 2763), (159, 2769),

Gene: Backyardigan_4 Start: 1644, Stop: 2729, Start Num: 10

Candidate Starts for Backyardigan_4:

(Start: 10 @1644 has 335 MA's), (Start: 21 @1752 has 2 MA's), (30, 1848), (49, 1962), (59, 2034), (151, 2658), (158, 2715), (159, 2721),

Gene: Bactobuster_7 Start: 3964, Stop: 5064, Start Num: 10

Candidate Starts for Bactobuster_7:

(3, 3883), (Start: 10 @3964 has 335 MA's), (26, 4135), (29, 4165), (51, 4306), (56, 4339), (76, 4603), (158, 5050), (159, 5056),

Gene: Badger_4 Start: 1645, Stop: 2730, Start Num: 10

Candidate Starts for Badger_4:

(Start: 10 @1645 has 335 MA's), (Start: 21 @1753 has 2 MA's), (30, 1849), (49, 1963), (59, 2035), (151, 2659), (158, 2716), (159, 2722),

Gene: BangNhom_3 Start: 1642, Stop: 2718, Start Num: 10

Candidate Starts for BangNhom_3:

(5, 1582), (Start: 10 @1642 has 335 MA's), (Start: 21 @1750 has 2 MA's), (30, 1846), (49, 1960), (149, 2629), (151, 2647), (158, 2704), (159, 2710),

Gene: Bartimeaus_4 Start: 1645, Stop: 2718, Start Num: 10

Candidate Starts for Bartimeaus_4:

(5, 1585), (Start: 10 @1645 has 335 MA's), (Start: 21 @1753 has 2 MA's), (30, 1849), (49, 1963), (147, 2611), (151, 2647), (158, 2704), (159, 2710),

Gene: Beauxregard13_4 Start: 1681, Stop: 2625, Start Num: 10

Candidate Starts for Beauxregard13_4:

(Start: 8 @1654 has 2 MA's), (Start: 10 @1681 has 335 MA's), (42, 1909), (131, 2539), (139, 2611), (140, 2617),

Gene: Beemo_7 Start: 4193, Stop: 5224, Start Num: 10

Candidate Starts for Beemo_7:

(Start: 10 @4193 has 335 MA's), (149, 5141), (150, 5153), (158, 5210), (159, 5216),

Gene: BellusTerra_4 Start: 1645, Stop: 2718, Start Num: 10

Candidate Starts for BellusTerra_4:

(5, 1585), (Start: 10 @1645 has 335 MA's), (Start: 21 @1753 has 2 MA's), (30, 1849), (49, 1963), (147, 2611), (151, 2647), (158, 2704), (159, 2710),

Gene: Benedict_4 Start: 2467, Stop: 3405, Start Num: 21

Candidate Starts for Benedict_4:

(3, 2278), (9, 2344), (Start: 10 @2356 has 335 MA's), (Start: 21 @2467 has 2 MA's), (31, 2587), (33, 2593), (52, 2740), (55, 2776), (63, 2881), (69, 2974), (70, 2983), (74, 3007), (78, 3067), (92, 3163), (111, 3277), (118, 3319), (125, 3337), (127, 3364), (128, 3391), (129, 3397),

Gene: BiancaTri92_7 Start: 4180, Stop: 5040, Start Num: 10

Candidate Starts for BiancaTri92_7:

(Start: 10 @4180 has 335 MA's), (Start: 13 @4249 has 1 MA's), (145, 4927), (151, 4972),

Gene: Bigflo_4 Start: 1681, Stop: 2625, Start Num: 10

Candidate Starts for Bigflo_4:

(Start: 8 @1654 has 2 MA's), (Start: 10 @1681 has 335 MA's), (42, 1909), (131, 2539), (139, 2611), (140, 2617),

Gene: Blackmoor_4 Start: 1645, Stop: 2718, Start Num: 10

Candidate Starts for Blackmoor_4:

(5, 1585), (Start: 10 @1645 has 335 MA's), (Start: 21 @1753 has 2 MA's), (30, 1849), (49, 1963), (147, 2611), (151, 2647), (158, 2704), (159, 2710),

Gene: BlueBird_4 Start: 1612, Stop: 2826, Start Num: 10

Candidate Starts for BlueBird_4:

(Start: 10 @1612 has 335 MA's), (24, 1747), (42, 1885), (59, 1999), (142, 2641), (149, 2743), (150, 2755), (158, 2812), (159, 2818),

Gene: BobSwaget_8 Start: 4394, Stop: 5380, Start Num: 10

Candidate Starts for BobSwaget_8:

(3, 4313), (Start: 10 @4394 has 335 MA's), (44, 4688), (59, 4793), (88, 5111), (149, 5294), (151, 5312), (158, 5366),

Gene: BogosyJay_7 Start: 3953, Stop: 5005, Start Num: 10

Candidate Starts for BogosyJay_7:

(Start: 10 @3953 has 335 MA's), (22, 4070), (48, 4286), (149, 4922), (150, 4934), (158, 4991), (159, 4997),

Gene: Bombshell_4 Start: 1645, Stop: 2718, Start Num: 10

Candidate Starts for Bombshell_4:

(5, 1585), (Start: 10 @1645 has 335 MA's), (Start: 21 @1753 has 2 MA's), (30, 1849), (49, 1963), (147, 2611), (151, 2647), (158, 2704), (159, 2710),

Gene: BreSam8_4 Start: 1682, Stop: 2887, Start Num: 10

Candidate Starts for BreSam8_4:

(Start: 8 @1655 has 2 MA's), (Start: 10 @1682 has 335 MA's), (42, 1910), (149, 2801), (158, 2873), (159, 2879),

Gene: Broseidon_4 Start: 1645, Stop: 2718, Start Num: 10

Candidate Starts for Broseidon_4:

(5, 1585), (Start: 10 @1645 has 335 MA's), (Start: 21 @1753 has 2 MA's), (30, 1849), (49, 1963), (147, 2611), (151, 2647), (158, 2704), (159, 2710),

Gene: Bruiser_4 Start: 1645, Stop: 2718, Start Num: 10

Candidate Starts for Bruiser_4:

(5, 1585), (Start: 10 @1645 has 335 MA's), (Start: 21 @1753 has 2 MA's), (30, 1849), (49, 1963), (147, 2611), (151, 2647), (158, 2704), (159, 2710),

Gene: BubbleTrouble_4 Start: 1645, Stop: 2718, Start Num: 10

Candidate Starts for BubbleTrouble_4:

(5, 1585), (Start: 10 @1645 has 335 MA's), (Start: 21 @1753 has 2 MA's), (30, 1849), (49, 1963), (147, 2611), (151, 2647), (158, 2704), (159, 2710),

Gene: Bugatti_3 Start: 1612, Stop: 2826, Start Num: 10

Candidate Starts for Bugatti_3:

(Start: 10 @1612 has 335 MA's), (24, 1747), (42, 1885), (59, 1999), (142, 2641), (149, 2743), (150, 2755), (158, 2812), (159, 2818),

Gene: Bumblebee11_4 Start: 1644, Stop: 2729, Start Num: 10

Candidate Starts for Bumblebee11_4:

(Start: 10 @1644 has 335 MA's), (Start: 21 @1752 has 2 MA's), (30, 1848), (49, 1962), (59, 2034), (151, 2658), (158, 2715), (159, 2721),

Gene: Burger_3 Start: 1645, Stop: 2718, Start Num: 10

Candidate Starts for Burger_3:

(5, 1585), (Start: 10 @1645 has 335 MA's), (Start: 21 @1753 has 2 MA's), (30, 1849), (49, 1963), (147, 2611), (151, 2647), (158, 2704), (159, 2710),

Gene: BuzzBuzz_3 Start: 1682, Stop: 2716, Start Num: 10

Candidate Starts for BuzzBuzz_3:

(Start: 8 @1655 has 2 MA's), (Start: 10 @1682 has 335 MA's), (42, 1910), (138, 2630), (143, 2702), (144, 2708),

Gene: Bxz2_4 Start: 1692, Stop: 2726, Start Num: 10

Candidate Starts for Bxz2_4:

(Start: 8 @1665 has 2 MA's), (Start: 10 @1692 has 335 MA's), (42, 1920), (138, 2640), (143, 2712), (144, 2718),

Gene: Caelakin_4 Start: 1645, Stop: 2718, Start Num: 10

Candidate Starts for Caelakin_4:

(5, 1585), (Start: 10 @1645 has 335 MA's), (Start: 21 @1753 has 2 MA's), (30, 1849), (49, 1963), (147, 2611), (151, 2647), (158, 2704), (159, 2710),

Gene: Calvinny_4 Start: 1685, Stop: 2884, Start Num: 10

Candidate Starts for Calvinny_4:

(Start: 8 @1658 has 2 MA's), (Start: 10 @1685 has 335 MA's), (34, 1865), (42, 1913), (79, 2309), (149, 2798), (151, 2816), (158, 2870), (159, 2876),

Gene: Camperdownii_4 Start: 1646, Stop: 2725, Start Num: 10

Candidate Starts for Camperdownii_4:

(5, 1586), (Start: 10 @1646 has 335 MA's), (Start: 21 @1754 has 2 MA's), (30, 1850), (49, 1964), (149, 2639), (158, 2711),

Gene: Catalina_7 Start: 4193, Stop: 5236, Start Num: 10

Candidate Starts for Catalina_7:

(Start: 10 @4193 has 335 MA's), (48, 4526), (149, 5153), (150, 5165), (158, 5222), (159, 5228),

Gene: Caviar_4 Start: 1633, Stop: 2760, Start Num: 10

Candidate Starts for Caviar_4:

(4, 1570), (6, 1579), (Start: 10 @1633 has 335 MA's), (11, 1663), (17, 1720), (Start: 23 @1765 has 1 MA's), (42, 1906), (58, 2014), (82, 2302), (149, 2674), (151, 2692), (158, 2746), (159, 2752),

Gene: CentreCat_4 Start: 1646, Stop: 2719, Start Num: 10

Candidate Starts for CentreCat_4:

(5, 1586), (Start: 10 @1646 has 335 MA's), (Start: 21 @1754 has 2 MA's), (30, 1850), (49, 1964), (147, 2612), (151, 2648), (158, 2705), (159, 2711),

Gene: Cerulean_4 Start: 1643, Stop: 2719, Start Num: 10

Candidate Starts for Cerulean_4:

(5, 1583), (Start: 10 @1643 has 335 MA's), (Start: 21 @1751 has 2 MA's), (30, 1847), (49, 1961), (149, 2630), (151, 2648), (158, 2705), (159, 2711),

Gene: Chadwick_4 Start: 2353, Stop: 3402, Start Num: 10

Candidate Starts for Chadwick_4:

(3, 2275), (9, 2341), (Start: 10 @2353 has 335 MA's), (31, 2584), (33, 2590), (52, 2737), (55, 2773), (63, 2878), (69, 2971), (70, 2980), (74, 3004), (78, 3064), (92, 3160), (111, 3274), (118, 3316), (125, 3334), (127, 3361), (128, 3388), (129, 3394),

Gene: ChampagnePapi_4 Start: 1642, Stop: 2718, Start Num: 10

Candidate Starts for ChampagnePapi_4:

(5, 1582), (Start: 10 @1642 has 335 MA's), (Start: 21 @1750 has 2 MA's), (30, 1846), (49, 1960), (149, 2629), (151, 2647), (158, 2704), (159, 2710),

Gene: Changeling_7 Start: 4153, Stop: 5271, Start Num: 10

Candidate Starts for Changeling_7:

(Start: 10 @4153 has 335 MA's), (Start: 13 @4222 has 1 MA's), (40, 4435), (43, 4441), (45, 4456), (76, 4798), (145, 5161), (149, 5188), (150, 5200), (158, 5257), (159, 5263),

Gene: Chaph_4 Start: 1645, Stop: 2727, Start Num: 10

Candidate Starts for Chaph_4:

(5, 1585), (Start: 10 @1645 has 335 MA's), (Start: 21 @1753 has 2 MA's), (30, 1849), (49, 1963), (147, 2620), (151, 2656), (158, 2713), (159, 2719),

Gene: Chiqui_3 Start: 1627, Stop: 2763, Start Num: 10

Candidate Starts for Chiqui_3:

(7, 1591), (Start: 10 @1627 has 335 MA's), (24, 1762), (42, 1900), (59, 2014), (149, 2677), (158, 2749), (159, 2755),

Gene: Chupacabra_4 Start: 1765, Stop: 2814, Start Num: 23

Candidate Starts for Chupacabra_4:

(Start: 10 @1633 has 335 MA's), (19, 1735), (Start: 23 @1765 has 1 MA's), (27, 1825), (28, 1828), (68, 2158), (83, 2314), (106, 2407), (145, 2704), (150, 2743), (151, 2749), (158, 2800), (159, 2806),

Gene: Cici_4 Start: 1644, Stop: 2729, Start Num: 10

Candidate Starts for Cici_4:

(Start: 10 @1644 has 335 MA's), (Start: 21 @1752 has 2 MA's), (30, 1848), (49, 1962), (59, 2034), (151, 2658), (158, 2715), (159, 2721),

Gene: Cindaradix_4 Start: 1642, Stop: 2718, Start Num: 10

Candidate Starts for Cindaradix_4:

(Start: 10 @1642 has 335 MA's), (Start: 21 @1750 has 2 MA's), (30, 1846), (49, 1960), (151, 2647), (158, 2704), (159, 2710),

Gene: Cintron_4 Start: 1645, Stop: 2718, Start Num: 10

Candidate Starts for Cintron_4:

(5, 1585), (Start: 10 @1645 has 335 MA's), (Start: 21 @1753 has 2 MA's), (30, 1849), (49, 1963), (149, 2629), (151, 2647), (158, 2704), (159, 2710),

Gene: Citius_4 Start: 1645, Stop: 2718, Start Num: 10

Candidate Starts for Citius_4:

(5, 1585), (Start: 10 @1645 has 335 MA's), (Start: 21 @1753 has 2 MA's), (30, 1849), (49, 1963), (147, 2611), (151, 2647), (158, 2704), (159, 2710),

Gene: Clarenza_4 Start: 1645, Stop: 2718, Start Num: 10

Candidate Starts for Clarenza_4:

(5, 1585), (Start: 10 @1645 has 335 MA's), (Start: 21 @1753 has 2 MA's), (30, 1849), (49, 1963), (147, 2611), (151, 2647), (158, 2704), (159, 2710),

Gene: Cocoaberry_4 Start: 1645, Stop: 2718, Start Num: 10

Candidate Starts for Cocoaberry_4:

(5, 1585), (Start: 10 @1645 has 335 MA's), (Start: 21 @1753 has 2 MA's), (30, 1849), (49, 1963), (147, 2611), (151, 2647), (158, 2704), (159, 2710),

Gene: Colbster_4 Start: 1681, Stop: 2625, Start Num: 10

Candidate Starts for Colbster_4:

(Start: 8 @1654 has 2 MA's), (Start: 10 @1681 has 335 MA's), (42, 1909), (131, 2539), (139, 2611), (140, 2617),

Gene: Colin_8 Start: 4293, Stop: 5243, Start Num: 10

Candidate Starts for Colin_8:

(Start: 10 @4293 has 335 MA's), (Start: 13 @4362 has 1 MA's), (40, 4575), (87, 5013), (91, 5034), (146, 5139), (150, 5172), (153, 5202), (158, 5229), (159, 5235),

Gene: Commander_4 Start: 1645, Stop: 2718, Start Num: 10

Candidate Starts for Commander_4:

(5, 1585), (Start: 10 @1645 has 335 MA's), (Start: 21 @1753 has 2 MA's), (30, 1849), (49, 1963), (147, 2611), (151, 2647), (158, 2704), (159, 2710),

Gene: Connomayer_4 Start: 1645, Stop: 2718, Start Num: 10

Candidate Starts for Connomayer_4:

(5, 1585), (Start: 10 @1645 has 335 MA's), (Start: 21 @1753 has 2 MA's), (30, 1849), (49, 1963), (147, 2611), (151, 2647), (158, 2704), (159, 2710),

Gene: Conquerage_7 Start: 4189, Stop: 5220, Start Num: 10

Candidate Starts for Conquerage_7:

(Start: 8 @4162 has 2 MA's), (Start: 10 @4189 has 335 MA's), (149, 5137), (150, 5149), (158, 5206), (159, 5212),

Gene: Conspiracy_4 Start: 2386, Stop: 3441, Start Num: 10

Candidate Starts for Conspiracy_4:

(9, 2374), (Start: 10 @2386 has 335 MA's), (Start: 21 @2497 has 2 MA's), (33, 2614), (37, 2662), (61, 2854), (63, 2902), (71, 3016), (72, 3019), (75, 3058), (78, 3100), (109, 3301), (122, 3364), (125, 3370), (129, 3433),

Gene: Cullens_4 Start: 1681, Stop: 2625, Start Num: 10

Candidate Starts for Cullens_4:

(Start: 8 @1654 has 2 MA's), (Start: 10 @1681 has 335 MA's), (42, 1909), (131, 2539), (139, 2611), (140, 2617),

Gene: DaHudson_4 Start: 1681, Stop: 2886, Start Num: 10

Candidate Starts for DaHudson_4:

(Start: 8 @1654 has 2 MA's), (Start: 10 @1681 has 335 MA's), (42, 1909), (149, 2800), (158, 2872), (159, 2878),

Gene: Danforth_3 Start: 2306, Stop: 3358, Start Num: 10

Candidate Starts for Danforth_3:

(2, 2147), (Start: 10 @2306 has 335 MA's), (33, 2543), (61, 2783), (63, 2831), (78, 3029), (94, 3131), (111, 3239), (129, 3350),

Gene: Darrell_7 Start: 4069, Stop: 5115, Start Num: 10

Candidate Starts for Darrell_7:

(Start: 10 @4069 has 335 MA's), (22, 4186), (41, 4354), (45, 4372), (149, 5029), (151, 5047), (158, 5101), (159, 5107),

Gene: DARTHPhader_7 Start: 4505, Stop: 5314, Start Num: 10

Candidate Starts for DARTHPhader_7:

(Start: 10 @4505 has 335 MA's), (14, 4577), (16, 4586), (36, 4697), (60, 4865), (95, 5201), (112, 5300), (113, 5306),

Gene: Datway_4 Start: 1644, Stop: 2729, Start Num: 10

Candidate Starts for Datway_4:

(Start: 10 @1644 has 335 MA's), (Start: 21 @1752 has 2 MA's), (30, 1848), (49, 1962), (59, 2034), (151, 2658), (158, 2715), (159, 2721),

Gene: Deano_4 Start: 1645, Stop: 2718, Start Num: 10

Candidate Starts for Deano_4:

(5, 1585), (Start: 10 @1645 has 335 MA's), (Start: 21 @1753 has 2 MA's), (30, 1849), (49, 1963), (147, 2611), (151, 2647), (158, 2704), (159, 2710),

Gene: Dhanush_4 Start: 1644, Stop: 2717, Start Num: 10

Candidate Starts for Dhanush_4:

(5, 1584), (Start: 10 @1644 has 335 MA's), (Start: 21 @1752 has 2 MA's), (30, 1848), (49, 1962), (147, 2610), (151, 2646), (158, 2703), (159, 2709),

Gene: Dieselweasel_4 Start: 1681, Stop: 2895, Start Num: 10

Candidate Starts for Dieselweasel_4:

(Start: 8 @1654 has 2 MA's), (Start: 10 @1681 has 335 MA's), (42, 1909), (149, 2809), (158, 2881), (159, 2887),

Gene: DirtyDunning_4 Start: 1643, Stop: 2716, Start Num: 10

Candidate Starts for DirtyDunning_4:

(5, 1583), (Start: 10 @1643 has 335 MA's), (Start: 21 @1751 has 2 MA's), (30, 1847), (49, 1961), (149, 2627), (151, 2645), (158, 2702), (159, 2708),

Gene: Dixon_4 Start: 2307, Stop: 3344, Start Num: 10

Candidate Starts for Dixon_4:

(2, 2148), (Start: 10 @2307 has 335 MA's), (33, 2544), (52, 2691), (114, 3237), (125, 3276), (126, 3300), (129, 3336),

Gene: DropBear_4 Start: 1605, Stop: 2909, Start Num: 10

Candidate Starts for DropBear_4:

(Start: 10 @1605 has 335 MA's), (24, 1740), (39, 1863), (42, 1878), (47, 1911), (149, 2826), (158, 2895), (159, 2901),

Gene: Druantia_4 Start: 1646, Stop: 2719, Start Num: 10

Candidate Starts for Druantia_4:

(5, 1586), (Start: 10 @1646 has 335 MA's), (Start: 21 @1754 has 2 MA's), (30, 1850), (49, 1964), (147, 2612), (151, 2648), (158, 2705), (159, 2711),

Gene: DustyMartin_5 Start: 1860, Stop: 2750, Start Num: 27

Candidate Starts for DustyMartin_5:

(Start: 10 @1668 has 335 MA's), (Start: 23 @1800 has 1 MA's), (25, 1833), (27, 1860), (28, 1863), (83, 2349), (110, 2463), (149, 2667), (150, 2679), (151, 2685), (158, 2736), (159, 2742),

Gene: EZMoney23_7 Start: 4151, Stop: 5341, Start Num: 10

Candidate Starts for EZMoney23_7:

(Start: 10 @4151 has 335 MA's), (48, 4484), (76, 4796), (145, 5231), (149, 5258), (151, 5276), (156, 5309), (158, 5327), (159, 5333),

Gene: Eagle_3 Start: 1645, Stop: 2718, Start Num: 10

Candidate Starts for Eagle_3:

(5, 1585), (Start: 10 @1645 has 335 MA's), (Start: 21 @1753 has 2 MA's), (30, 1849), (49, 1963), (147, 2611), (151, 2647), (158, 2704), (159, 2710),

Gene: EagleEye_7 Start: 3969, Stop: 4871, Start Num: 10

Candidate Starts for EagleEye_7:

(Start: 10 @3969 has 335 MA's), (33, 4197), (35, 4212), (73, 4479), (77, 4536), (80, 4551), (94, 4644), (109, 4743), (126, 4827), (129, 4863),

Gene: Eaglepride_4 Start: 1666, Stop: 2610, Start Num: 10

Candidate Starts for Eaglepride_4:

(Start: 10 @1666 has 335 MA's), (Start: 23 @1798 has 1 MA's), (25, 1831), (27, 1858), (28, 1861), (83, 2347), (106, 2440), (107, 2446), (115, 2482),

Gene: Eapen_4 Start: 1647, Stop: 2720, Start Num: 10

Candidate Starts for Eapen_4:

(5, 1587), (Start: 10 @1647 has 335 MA's), (Start: 21 @1755 has 2 MA's), (30, 1851), (49, 1965), (147, 2613), (151, 2649), (158, 2706), (159, 2712),

Gene: Edison31_4 Start: 1662, Stop: 2834, Start Num: 10

Candidate Starts for Edison31_4:

(Start: 10 @1662 has 335 MA's), (25, 1827), (27, 1854), (28, 1857), (42, 1935), (65, 2154), (70, 2208), (83, 2343), (115, 2478), (149, 2751), (150, 2763), (151, 2769), (158, 2820), (159, 2826),

Gene: EdogawaKiddo_5 Start: 4192, Stop: 5235, Start Num: 10

Candidate Starts for EdogawaKiddo_5:

(Start: 10 @4192 has 335 MA's), (48, 4525), (149, 5152), (150, 5164), (158, 5221),

Gene: Eidsmoe_7 Start: 4189, Stop: 5220, Start Num: 10

Candidate Starts for Eidsmoe_7:

(Start: 8 @4162 has 2 MA's), (Start: 10 @4189 has 335 MA's), (149, 5137), (150, 5149), (158, 5206), (159, 5212),

Gene: EITiger69_4 Start: 2354, Stop: 3403, Start Num: 10

Candidate Starts for EITiger69_4:

(3, 2276), (9, 2342), (Start: 10 @2354 has 335 MA's), (Start: 21 @2465 has 2 MA's), (31, 2585), (33, 2591), (52, 2738), (55, 2774), (63, 2879), (69, 2972), (70, 2981), (74, 3005), (78, 3065), (92, 3161), (111, 3275), (118, 3317), (125, 3335), (127, 3362), (128, 3389), (129, 3395),

Gene: Elephantoon_7 Start: 3947, Stop: 4801, Start Num: 10

Candidate Starts for Elephantoon_7:

(Start: 10 @3947 has 335 MA's), (22, 4064), (41, 4232), (54, 4310), (158, 4787), (159, 4793),

Gene: EmyBug_7 Start: 4189, Stop: 5220, Start Num: 10

Candidate Starts for EmyBug_7:

(Start: 10 @4189 has 335 MA's), (149, 5137), (150, 5149), (158, 5206), (159, 5212),

Gene: EpicPhail_4 Start: 1681, Stop: 2625, Start Num: 10

Candidate Starts for EpicPhail_4:

(Start: 8 @1654 has 2 MA's), (Start: 10 @1681 has 335 MA's), (42, 1909), (131, 2539), (139, 2611), (140, 2617),

Gene: Eris_4 Start: 1645, Stop: 2718, Start Num: 10

Candidate Starts for Eris_4:

(5, 1585), (Start: 10 @1645 has 335 MA's), (Start: 21 @1753 has 2 MA's), (30, 1849), (49, 1963), (147, 2611), (151, 2647), (158, 2704), (159, 2710),

Gene: Eros_4 Start: 1645, Stop: 2718, Start Num: 10

Candidate Starts for Eros_4:

(5, 1585), (Start: 10 @1645 has 335 MA's), (Start: 21 @1753 has 2 MA's), (30, 1849), (49, 1963), (147, 2611), (151, 2647), (158, 2704), (159, 2710),

Gene: Eurydice_4 Start: 1645, Stop: 2718, Start Num: 10

Candidate Starts for Eurydice_4:

(5, 1585), (Start: 10 @1645 has 335 MA's), (Start: 21 @1753 has 2 MA's), (30, 1849), (49, 1963), (147, 2611), (151, 2647), (158, 2704), (159, 2710),

Gene: Expelliarmus_3 Start: 2307, Stop: 3344, Start Num: 10

Candidate Starts for Expelliarmus_3:

(2, 2148), (Start: 10 @2307 has 335 MA's), (33, 2544), (52, 2691), (114, 3237), (125, 3276), (126, 3300), (129, 3336),

Gene: ExplosioNervosa_7 Start: 4192, Stop: 5223, Start Num: 10

Candidate Starts for ExplosioNervosa_7:

(Start: 10 @4192 has 335 MA's), (149, 5140), (150, 5152), (158, 5209), (159, 5215),

Gene: Farber_4 Start: 1682, Stop: 2887, Start Num: 10

Candidate Starts for Farber_4:

(Start: 8 @1655 has 2 MA's), (Start: 10 @1682 has 335 MA's), (42, 1910), (149, 2801), (158, 2873), (159, 2879),

Gene: Fayely_7 Start: 4192, Stop: 5223, Start Num: 10

Candidate Starts for Fayely_7:

(Start: 10 @4192 has 335 MA's), (149, 5140), (150, 5152), (158, 5209), (159, 5215),

Gene: Fernando_4 Start: 1681, Stop: 2625, Start Num: 10

Candidate Starts for Fernando_4:

(Start: 8 @1654 has 2 MA's), (Start: 10 @1681 has 335 MA's), (42, 1909), (131, 2539), (139, 2611), (140, 2617),

Gene: Florean_4 Start: 1645, Stop: 2718, Start Num: 10

Candidate Starts for Florean_4:

(5, 1585), (Start: 10 @1645 has 335 MA's), (Start: 21 @1753 has 2 MA's), (30, 1849), (49, 1963), (147, 2611), (151, 2647), (158, 2704), (159, 2710),

Gene: Flux_4 Start: 1645, Stop: 2718, Start Num: 10

Candidate Starts for Flux_4:

(5, 1585), (Start: 10 @1645 has 335 MA's), (Start: 21 @1753 has 2 MA's), (30, 1849), (49, 1963), (147, 2611), (151, 2647), (158, 2704), (159, 2710),

Gene: ForGetIt_4 Start: 2412, Stop: 3467, Start Num: 10

Candidate Starts for ForGetIt_4:

(9, 2400), (Start: 10 @2412 has 335 MA's), (Start: 21 @2523 has 2 MA's), (33, 2640), (37, 2688), (61, 2880), (63, 2928), (71, 3042), (72, 3045), (75, 3084), (78, 3126), (109, 3327), (122, 3390), (125, 3396), (129, 3459),

Gene: Fred313_4 Start: 1605, Stop: 2732, Start Num: 10

Candidate Starts for Fred313_4:

(Start: 10 @1605 has 335 MA's), (24, 1740), (39, 1863), (42, 1878), (47, 1911), (149, 2646), (158, 2718), (159, 2724),

Gene: Funston_4 Start: 1645, Stop: 2718, Start Num: 10

Candidate Starts for Funston_4:

(5, 1585), (Start: 10 @1645 has 335 MA's), (Start: 21 @1753 has 2 MA's), (30, 1849), (49, 1963), (147, 2611), (151, 2647), (158, 2704), (159, 2710),

Gene: Gadost_4 Start: 1645, Stop: 2718, Start Num: 10

Candidate Starts for Gadost_4:

(5, 1585), (Start: 10 @1645 has 335 MA's), (Start: 21 @1753 has 2 MA's), (30, 1849), (49, 1963), (147, 2611), (151, 2647), (158, 2704), (159, 2710),

Gene: GaugeLDP_7 Start: 3954, Stop: 4844, Start Num: 10

Candidate Starts for GaugeLDP_7:

(Start: 10 @3954 has 335 MA's), (Start: 21 @4062 has 2 MA's), (42, 4230), (119, 4761), (124, 4773), (136, 4830),

Gene: Gemma_4 Start: 1685, Stop: 2884, Start Num: 10

Candidate Starts for Gemma_4:

(Start: 8 @1658 has 2 MA's), (Start: 10 @1685 has 335 MA's), (34, 1865), (42, 1913), (79, 2309), (149, 2798), (151, 2816), (158, 2870), (159, 2876),

Gene: GingkoMaracino_4 Start: 1681, Stop: 2805, Start Num: 10

Candidate Starts for GingkoMaracino_4:

(Start: 8 @1654 has 2 MA's), (Start: 10 @1681 has 335 MA's), (42, 1909), (149, 2719), (158, 2791), (159, 2797),

Gene: Giroux_3 Start: 1612, Stop: 2826, Start Num: 10

Candidate Starts for Giroux_3:

(Start: 10 @1612 has 335 MA's), (24, 1747), (42, 1885), (59, 1999), (142, 2641), (149, 2743), (150, 2755), (158, 2812), (159, 2818),

Gene: Goose_4 Start: 1635, Stop: 2816, Start Num: 10

Candidate Starts for Goose_4:

(Start: 10 @1635 has 335 MA's), (19, 1737), (Start: 23 @1767 has 1 MA's), (27, 1827), (28, 1830), (68, 2160), (83, 2316), (106, 2409), (145, 2706), (150, 2745), (151, 2751), (158, 2802), (159, 2808),

Gene: Grif_4 Start: 1681, Stop: 2715, Start Num: 10

Candidate Starts for Grif_4:

(Start: 8 @1654 has 2 MA's), (Start: 10 @1681 has 335 MA's), (42, 1909), (138, 2629), (143, 2701), (144, 2707),

Gene: Groundhog_3 Start: 2308, Stop: 3345, Start Num: 10

Candidate Starts for Groundhog_3:

(2, 2149), (Start: 10 @2308 has 335 MA's), (33, 2545), (52, 2692), (114, 3238), (125, 3277), (126, 3301), (129, 3337),

Gene: Groupthink_5 Start: 1685, Stop: 2884, Start Num: 10

Candidate Starts for Groupthink_5:

(Start: 8 @1658 has 2 MA's), (Start: 10 @1685 has 335 MA's), (34, 1865), (42, 1913), (79, 2309), (149, 2798), (151, 2816), (158, 2870), (159, 2876),

Gene: Grub_4 Start: 1681, Stop: 2886, Start Num: 10

Candidate Starts for Grub_4:

(Start: 8 @1654 has 2 MA's), (Start: 10 @1681 has 335 MA's), (42, 1909), (149, 2800), (158, 2872), (159, 2878),

Gene: Grum1_4 Start: 1681, Stop: 2625, Start Num: 10

Candidate Starts for Grum1_4:

(Start: 8 @1654 has 2 MA's), (Start: 10 @1681 has 335 MA's), (42, 1909), (131, 2539), (139, 2611), (140, 2617),

Gene: GtownJaz_4 Start: 1681, Stop: 2895, Start Num: 10

Candidate Starts for GtownJaz_4:

(Start: 8 @1654 has 2 MA's), (Start: 10 @1681 has 335 MA's), (42, 1909), (149, 2809), (158, 2881), (159, 2887),

Gene: HamSlice_3 Start: 1646, Stop: 2719, Start Num: 10

Candidate Starts for HamSlice_3:

(5, 1586), (Start: 10 @1646 has 335 MA's), (Start: 21 @1754 has 2 MA's), (24, 1781), (30, 1850), (49, 1964), (147, 2612), (151, 2648), (158, 2705), (159, 2711),

Gene: Hanray_6 Start: 4192, Stop: 5226, Start Num: 10

Candidate Starts for Hanray_6:

(Start: 10 @4192 has 335 MA's), (40, 4474), (45, 4495), (149, 5143), (150, 5155), (158, 5212), (159, 5218),

Gene: Happiness_4 Start: 1644, Stop: 2720, Start Num: 10

Candidate Starts for Happiness_4:

(5, 1584), (Start: 10 @1644 has 335 MA's), (Start: 21 @1752 has 2 MA's), (30, 1848), (49, 1962), (149, 2631), (151, 2649), (158, 2706), (159, 2712),

Gene: HashRod_5 Start: 1682, Stop: 2716, Start Num: 10

Candidate Starts for HashRod_5:

(Start: 8 @1655 has 2 MA's), (Start: 10 @1682 has 335 MA's), (42, 1910), (138, 2630), (143, 2702), (144, 2708),

Gene: HaveUMetTed_5 Start: 1685, Stop: 2884, Start Num: 10

Candidate Starts for HaveUMetTed_5:

(Start: 8 @1658 has 2 MA's), (Start: 10 @1685 has 335 MA's), (34, 1865), (42, 1913), (79, 2309), (149, 2798), (151, 2816), (158, 2870), (159, 2876),

Gene: Heathen_4 Start: 1605, Stop: 2657, Start Num: 10

Candidate Starts for Heathen_4:

(Start: 10 @1605 has 335 MA's), (24, 1740), (39, 1863), (42, 1878), (47, 1911), (133, 2574), (137, 2643), (138, 2649),

Gene: Heffalump_8 Start: 4531, Stop: 5598, Start Num: 10

Candidate Starts for Heffalump_8:

(Start: 10 @4531 has 335 MA's), (Start: 13 @4600 has 1 MA's), (29, 4732), (149, 5512), (151, 5530), (154, 5560), (155, 5566), (158, 5584),

Gene: HelDan_4 Start: 1605, Stop: 2909, Start Num: 10

Candidate Starts for HelDan_4:

(6, 1551), (Start: 10 @1605 has 335 MA's), (24, 1740), (39, 1863), (42, 1878), (47, 1911), (149, 2826), (158, 2895), (159, 2901),

Gene: Heliosoles_4 Start: 1685, Stop: 2884, Start Num: 10

Candidate Starts for Heliosoles_4:

(Start: 8 @1658 has 2 MA's), (Start: 10 @1685 has 335 MA's), (34, 1865), (42, 1913), (79, 2309), (149, 2798), (151, 2816), (158, 2870), (159, 2876),

Gene: Hercules11_4 Start: 1681, Stop: 2634, Start Num: 10

Candidate Starts for Hercules11_4:

(Start: 8 @1654 has 2 MA's), (Start: 10 @1681 has 335 MA's), (42, 1909), (131, 2548), (139, 2620), (140, 2626),

Gene: Horex_6 Start: 4192, Stop: 5226, Start Num: 10

Candidate Starts for Horex_6:

(Start: 10 @4192 has 335 MA's), (40, 4474), (45, 4495), (149, 5143), (150, 5155), (158, 5212), (159, 5218),

Gene: Holli_4 Start: 1645, Stop: 2511, Start Num: 10

Candidate Starts for Holli_4:

(5, 1585), (Start: 10 @1645 has 335 MA's), (Start: 21 @1753 has 2 MA's), (30, 1849), (49, 1963), (147, 2404), (151, 2440), (158, 2497), (159, 2503),

Gene: Hookmount_4 Start: 1633, Stop: 2760, Start Num: 10

Candidate Starts for Hookmount_4:

(4, 1570), (6, 1579), (Start: 10 @1633 has 335 MA's), (11, 1663), (17, 1720), (Start: 23 @1765 has 1 MA's), (42, 1906), (58, 2014), (82, 2302), (149, 2674), (151, 2692), (158, 2746), (159, 2752),

Gene: HortumSL17_7 Start: 4192, Stop: 5235, Start Num: 10

Candidate Starts for HortumSL17_7:

(Start: 10 @4192 has 335 MA's), (48, 4525), (149, 5152), (150, 5164), (158, 5221), (159, 5227),

Gene: Houdini22_4 Start: 1645, Stop: 2718, Start Num: 10

Candidate Starts for Houdini22_4:

(5, 1585), (Start: 10 @1645 has 335 MA's), (Start: 21 @1753 has 2 MA's), (30, 1849), (49, 1963), (147, 2611), (151, 2647), (158, 2704), (159, 2710),

Gene: Huxley_3 Start: 1645, Stop: 2802, Start Num: 10

Candidate Starts for Huxley_3:

(5, 1585), (Start: 10 @1645 has 335 MA's), (Start: 21 @1753 has 2 MA's), (30, 1849), (49, 1963), (151, 2731), (158, 2788), (159, 2794),

Gene: ICleared_4 Start: 1645, Stop: 2718, Start Num: 10

Candidate Starts for ICleared_4:

(5, 1585), (Start: 10 @1645 has 335 MA's), (Start: 21 @1753 has 2 MA's), (30, 1849), (49, 1963), (147, 2611), (151, 2647), (158, 2704), (159, 2710),

Gene: Iceman_4 Start: 1645, Stop: 2718, Start Num: 10

Candidate Starts for Iceman_4:

(5, 1585), (Start: 10 @1645 has 335 MA's), (Start: 21 @1753 has 2 MA's), (30, 1849), (49, 1963), (147, 2611), (151, 2647), (158, 2704), (159, 2710),

Gene: Idleandcovert_3 Start: 1612, Stop: 2826, Start Num: 10

Candidate Starts for Idleandcovert_3:

(Start: 10 @1612 has 335 MA's), (24, 1747), (42, 1885), (59, 1999), (142, 2641), (149, 2743), (150, 2755), (158, 2812), (159, 2818),

Gene: Iracema64_4 Start: 1645, Stop: 2718, Start Num: 10

Candidate Starts for Iracema64_4:

(5, 1585), (Start: 10 @1645 has 335 MA's), (Start: 21 @1753 has 2 MA's), (30, 1849), (49, 1963), (149, 2629), (151, 2647), (158, 2704), (159, 2710),

Gene: IronMan_7 Start: 3972, Stop: 5072, Start Num: 10

Candidate Starts for IronMan_7:

(Start: 10 @3972 has 335 MA's), (56, 4347), (64, 4482), (76, 4611), (151, 5001), (158, 5058), (159, 5064),

Gene: Isca_4 Start: 1610, Stop: 2746, Start Num: 10

Candidate Starts for Isca_4:

(4, 1547), (Start: 10 @1610 has 335 MA's), (24, 1745), (39, 1868), (42, 1883), (59, 1997), (149, 2660), (158, 2732), (159, 2738),

Gene: JF2_4 Start: 1608, Stop: 2510, Start Num: 10

Candidate Starts for JF2_4:

(Start: 10 @1608 has 335 MA's), (24, 1743), (39, 1866), (42, 1881), (59, 1995), (149, 2424), (158, 2496), (159, 2502),

Gene: JF4_4 Start: 1608, Stop: 2510, Start Num: 10

Candidate Starts for JF4_4:

(Start: 10 @1608 has 335 MA's), (24, 1743), (39, 1866), (42, 1881), (59, 1995), (149, 2424), (158, 2496), (159, 2502),

Gene: JHC117_4 Start: 1654, Stop: 2625, Start Num: 8

Candidate Starts for JHC117_4:

(Start: 8 @1654 has 2 MA's), (Start: 10 @1681 has 335 MA's), (42, 1909), (131, 2539), (139, 2611), (140, 2617),

Gene: Jaan_7 Start: 3968, Stop: 5068, Start Num: 10

Candidate Starts for Jaan_7:

(3, 3887), (Start: 10 @3968 has 335 MA's), (26, 4139), (29, 4169), (51, 4310), (56, 4343), (76, 4607), (158, 5054), (159, 5060),

Gene: Jabiru_4 Start: 2354, Stop: 3403, Start Num: 10

Candidate Starts for Jabiru_4:

(3, 2276), (9, 2342), (Start: 10 @2354 has 335 MA's), (Start: 21 @2465 has 2 MA's), (31, 2585), (33, 2591), (52, 2738), (55, 2774), (63, 2879), (69, 2972), (70, 2981), (74, 3005), (78, 3065), (92, 3161), (111, 3275), (118, 3317), (125, 3335), (127, 3362), (128, 3389), (129, 3395),

Gene: Jaykayelowell_4 Start: 1644, Stop: 2717, Start Num: 10

Candidate Starts for Jaykayelowell_4:

(5, 1584), (Start: 10 @1644 has 335 MA's), (Start: 21 @1752 has 2 MA's), (30, 1848), (49, 1962), (147, 2610), (151, 2646), (158, 2703), (159, 2709),

Gene: JenCasNa_4 Start: 1681, Stop: 2625, Start Num: 10

Candidate Starts for JenCasNa_4:

(Start: 8 @1654 has 2 MA's), (Start: 10 @1681 has 335 MA's), (42, 1909), (131, 2539), (139, 2611), (140, 2617),

Gene: JeppNRM_5 Start: 1685, Stop: 2884, Start Num: 10

Candidate Starts for JeppNRM_5:

(Start: 8 @1658 has 2 MA's), (Start: 10 @1685 has 335 MA's), (34, 1865), (42, 1913), (79, 2309), (149, 2798), (151, 2816), (158, 2870), (159, 2876),

Gene: JetBlade_4 Start: 1645, Stop: 2718, Start Num: 10

Candidate Starts for JetBlade_4:

(5, 1585), (Start: 10 @1645 has 335 MA's), (Start: 21 @1753 has 2 MA's), (30, 1849), (49, 1963), (147, 2611), (151, 2647), (158, 2704), (159, 2710),

Gene: Jiawan_6 Start: 4192, Stop: 5226, Start Num: 10

Candidate Starts for Jiawan_6:

(Start: 10 @4192 has 335 MA's), (40, 4474), (45, 4495), (149, 5143), (150, 5155), (158, 5212), (159, 5218),

Gene: Jobu08_4 Start: 1681, Stop: 2958, Start Num: 10

Candidate Starts for Jobu08_4:

(Start: 8 @1654 has 2 MA's), (Start: 10 @1681 has 335 MA's), (34, 1861), (42, 1909), (79, 2305), (149, 2875), (150, 2887), (151, 2893), (158, 2944), (159, 2950),

Gene: JoongJeon_4 Start: 1645, Stop: 2718, Start Num: 10

Candidate Starts for JoongJeon_4:

(5, 1585), (Start: 10 @1645 has 335 MA's), (Start: 21 @1753 has 2 MA's), (30, 1849), (49, 1963), (147, 2611), (151, 2647), (158, 2704), (159, 2710),

Gene: KADY_5 Start: 1682, Stop: 2716, Start Num: 10

Candidate Starts for KADY_5:

(Start: 8 @1655 has 2 MA's), (Start: 10 @1682 has 335 MA's), (42, 1910), (138, 2630), (143, 2702), (144, 2708),

Gene: KFPoly_4 Start: 1645, Stop: 2718, Start Num: 10

Candidate Starts for KFPoly_4:

(5, 1585), (Start: 10 @1645 has 335 MA's), (Start: 21 @1753 has 2 MA's), (30, 1849), (49, 1963), (68, 2176), (147, 2611), (151, 2647), (158, 2704), (159, 2710),

Gene: Kachowdy_4 Start: 1605, Stop: 2909, Start Num: 10

Candidate Starts for Kachowdy_4:

(Start: 10 @1605 has 335 MA's), (24, 1740), (39, 1863), (42, 1878), (47, 1911), (149, 2826), (158, 2895), (159, 2901),

Gene: Kalb97_5 Start: 1683, Stop: 2882, Start Num: 10

Candidate Starts for Kalb97_5:

(Start: 8 @1656 has 2 MA's), (Start: 10 @1683 has 335 MA's), (34, 1863), (42, 1911), (79, 2307), (149, 2796), (151, 2814), (158, 2868), (159, 2874),

Gene: Kalnoky_5 Start: 1685, Stop: 2884, Start Num: 10

Candidate Starts for Kalnoky_5:

(Start: 8 @1658 has 2 MA's), (Start: 10 @1685 has 335 MA's), (34, 1865), (42, 1913), (79, 2309), (149, 2798), (151, 2816), (158, 2870), (159, 2876),

Gene: Kalpine_7 Start: 4413, Stop: 5363, Start Num: 10

Candidate Starts for Kalpine_7:

(Start: 10 @4413 has 335 MA's), (Start: 13 @4482 has 1 MA's), (40, 4695), (87, 5133), (91, 5154), (146, 5259), (150, 5292), (153, 5322), (158, 5349), (159, 5355),

Gene: Kamy_4 Start: 1646, Stop: 2719, Start Num: 10

Candidate Starts for Kamy_4:

(5, 1586), (Start: 10 @1646 has 335 MA's), (Start: 21 @1754 has 2 MA's), (30, 1850), (49, 1964), (147, 2612), (151, 2648), (158, 2705), (159, 2711),

Gene: Katalie136_4 Start: 1644, Stop: 2729, Start Num: 10

Candidate Starts for Katalie136_4:

(Start: 10 @1644 has 335 MA's), (Start: 21 @1752 has 2 MA's), (30, 1848), (49, 1962), (59, 2034), (151, 2658), (158, 2715), (159, 2721),

Gene: Kingmustik0402_4 Start: 1646, Stop: 2710, Start Num: 10

Candidate Starts for Kingmustik0402_4:

(5, 1586), (Start: 10 @1646 has 335 MA's), (Start: 21 @1754 has 2 MA's), (30, 1850), (49, 1964), (147, 2603), (151, 2639), (158, 2696), (159, 2702),

Gene: Koan_3 Start: 1645, Stop: 2718, Start Num: 10

Candidate Starts for Koan_3:

(5, 1585), (Start: 10 @1645 has 335 MA's), (Start: 21 @1753 has 2 MA's), (30, 1849), (49, 1963), (147, 2611), (151, 2647), (158, 2704), (159, 2710),

Gene: Koreni_4 Start: 1645, Stop: 2718, Start Num: 10

Candidate Starts for Koreni_4:

(5, 1585), (Start: 10 @1645 has 335 MA's), (Start: 21 @1753 has 2 MA's), (30, 1849), (49, 1963), (148, 2623), (149, 2629), (151, 2647), (158, 2704), (159, 2710),

Gene: Kratark_4 Start: 1645, Stop: 2718, Start Num: 10

Candidate Starts for Kratark_4:

(5, 1585), (Start: 10 @1645 has 335 MA's), (Start: 21 @1753 has 2 MA's), (30, 1849), (49, 1963), (147, 2611), (151, 2647), (158, 2704), (159, 2710),

Gene: Kristoff_5 Start: 1827, Stop: 2999, Start Num: 10

Candidate Starts for Kristoff_5:

(Start: 10 @1827 has 335 MA's), (25, 1992), (27, 2019), (28, 2022), (42, 2100), (65, 2319), (70, 2373), (83, 2508), (115, 2643), (149, 2916), (150, 2928), (151, 2934), (158, 2985), (159, 2991),

Gene: Kyee_4 Start: 1645, Stop: 2718, Start Num: 10

Candidate Starts for Kyee_4:

(5, 1585), (Start: 10 @1645 has 335 MA's), (Start: 21 @1753 has 2 MA's), (30, 1849), (49, 1963), (147, 2611), (151, 2647), (158, 2704), (159, 2710),

Gene: LBerry_4 Start: 1681, Stop: 2625, Start Num: 10

Candidate Starts for LBerry_4:

(Start: 8 @1654 has 2 MA's), (Start: 10 @1681 has 335 MA's), (42, 1909), (131, 2539), (139, 2611), (140, 2617),

Gene: LHTSCC_4 Start: 1642, Stop: 2718, Start Num: 10

Candidate Starts for LHTSCC_4:

(5, 1582), (Start: 10 @1642 has 335 MA's), (Start: 21 @1750 has 2 MA's), (30, 1846), (49, 1960), (149, 2629), (151, 2647), (158, 2704), (159, 2710),

Gene: Lambert1_4 Start: 1633, Stop: 2760, Start Num: 10

Candidate Starts for Lambert1_4:

(4, 1570), (6, 1579), (Start: 10 @1633 has 335 MA's), (11, 1663), (17, 1720), (Start: 23 @1765 has 1 MA's), (42, 1906), (58, 2014), (82, 2302), (149, 2674), (151, 2692), (158, 2746), (159, 2752),

Gene: Landor_7 Start: 3970, Stop: 5070, Start Num: 10

Candidate Starts for Landor_7:

(3, 3889), (Start: 10 @3970 has 335 MA's), (26, 4141), (29, 4171), (48, 4297), (51, 4312), (56, 4345), (76, 4609), (158, 5056), (159, 5062),

Gene: LappelDuVide_4 Start: 1645, Stop: 2718, Start Num: 10

Candidate Starts for LappelDuVide_4:

(5, 1585), (Start: 10 @1645 has 335 MA's), (Start: 21 @1753 has 2 MA's), (30, 1849), (49, 1963), (147, 2611), (151, 2647), (158, 2704), (159, 2710),

Gene: LarryKay_4 Start: 1682, Stop: 2716, Start Num: 10

Candidate Starts for LarryKay_4:

(Start: 8 @1655 has 2 MA's), (Start: 10 @1682 has 335 MA's), (42, 1910), (138, 2630), (143, 2702), (144, 2708),

Gene: Lemur_4 Start: 1645, Stop: 2718, Start Num: 10

Candidate Starts for Lemur_4:

(5, 1585), (Start: 10 @1645 has 335 MA's), (Start: 21 @1753 has 2 MA's), (30, 1849), (49, 1963), (147, 2611), (151, 2647), (158, 2704), (159, 2710),

Gene: LeoAvram_4 Start: 1645, Stop: 2718, Start Num: 10

Candidate Starts for LeoAvram_4:

(5, 1585), (Start: 10 @1645 has 335 MA's), (Start: 21 @1753 has 2 MA's), (30, 1849), (49, 1963), (147, 2611), (151, 2647), (158, 2704), (159, 2710),

Gene: Leogania_7 Start: 4183, Stop: 5397, Start Num: 10

Candidate Starts for Leogania_7:

(3, 4102), (Start: 10 @4183 has 335 MA's), (Start: 13 @4252 has 1 MA's), (76, 4822), (151, 5329),

Gene: Lev2_4 Start: 2385, Stop: 3440, Start Num: 10

Candidate Starts for Lev2_4:

(9, 2373), (Start: 10 @2385 has 335 MA's), (Start: 21 @2496 has 2 MA's), (33, 2613), (37, 2661), (61, 2853), (63, 2901), (71, 3015), (72, 3018), (75, 3057), (78, 3099), (109, 3300), (122, 3363), (125, 3369), (129, 3432),

Gene: Lilith_4 Start: 1682, Stop: 2887, Start Num: 10

Candidate Starts for Lilith_4:

(Start: 8 @1655 has 2 MA's), (Start: 10 @1682 has 335 MA's), (42, 1910), (149, 2801), (158, 2873), (159, 2879),

Gene: Lilleskat_5 Start: 4192, Stop: 5235, Start Num: 10

Candidate Starts for Lilleskat_5:

(Start: 10 @4192 has 335 MA's), (48, 4525), (149, 5152), (150, 5164), (158, 5221), (159, 5227),

Gene: LionsBait_7 Start: 4442, Stop: 5302, Start Num: 32

Candidate Starts for LionsBait_7:

(Start: 10 @4226 has 335 MA's), (Start: 13 @4295 has 1 MA's), (32, 4442), (76, 4856), (149, 5219), (158, 5288), (159, 5294),

Gene: LittleB_4 Start: 1645, Stop: 2718, Start Num: 10

Candidate Starts for LittleB_4:

(5, 1585), (Start: 10 @1645 has 335 MA's), (Start: 21 @1753 has 2 MA's), (30, 1849), (49, 1963), (147, 2611), (151, 2647), (158, 2704), (159, 2710),

Gene: LittleGuy_4 Start: 1645, Stop: 2718, Start Num: 10

Candidate Starts for LittleGuy_4:

(5, 1585), (Start: 10 @1645 has 335 MA's), (Start: 21 @1753 has 2 MA's), (30, 1849), (49, 1963), (147, 2611), (151, 2647), (158, 2704), (159, 2710),

Gene: LochMonster_4 Start: 1643, Stop: 2716, Start Num: 10

Candidate Starts for LochMonster_4:

(5, 1583), (Start: 10 @1643 has 335 MA's), (Start: 21 @1751 has 2 MA's), (30, 1847), (49, 1961), (149, 2627), (151, 2645), (158, 2702), (159, 2708),

Gene: Lokk_8 Start: 4396, Stop: 5382, Start Num: 10

Candidate Starts for Lokk_8:

(Start: 10 @4396 has 335 MA's), (59, 4795), (88, 5113), (150, 5308), (156, 5350), (158, 5368), (159, 5374),

Gene: LoneWolf_7 Start: 3950, Stop: 4993, Start Num: 10

Candidate Starts for LoneWolf_7:

(Start: 10 @3950 has 335 MA's), (158, 4979), (159, 4985),

Gene: Lorenzo_4 Start: 1645, Stop: 2718, Start Num: 10

Candidate Starts for Lorenzo_4:

(5, 1585), (Start: 10 @1645 has 335 MA's), (Start: 21 @1753 has 2 MA's), (30, 1849), (49, 1963), (147, 2611), (151, 2647), (158, 2704), (159, 2710),

Gene: Loser_7 Start: 4131, Stop: 5249, Start Num: 10

Candidate Starts for Loser_7:

(Start: 10 @4131 has 335 MA's), (40, 4413), (43, 4419), (76, 4776), (91, 4878), (145, 5139), (149, 5166), (150, 5178), (158, 5235), (159, 5241),

Gene: Louie6_4 Start: 1682, Stop: 2716, Start Num: 10

Candidate Starts for Louie6_4:

(Start: 8 @1655 has 2 MA's), (Start: 10 @1682 has 335 MA's), (42, 1910), (138, 2630), (143, 2702), (144, 2708),

Gene: Lowa_4 Start: 1681, Stop: 2886, Start Num: 10

Candidate Starts for Lowa_4:

(Start: 8 @1654 has 2 MA's), (Start: 10 @1681 has 335 MA's), (42, 1909), (149, 2800), (158, 2872), (159, 2878),

Gene: Lucyedi_7 Start: 3969, Stop: 4871, Start Num: 10

Candidate Starts for Lucyedi_7:

(Start: 10 @3969 has 335 MA's), (33, 4197), (73, 4479), (77, 4536), (80, 4551), (94, 4644), (109, 4743), (129, 4863),

Gene: LugYA_6 Start: 1681, Stop: 2625, Start Num: 10

Candidate Starts for LugYA_6:

(Start: 8 @1654 has 2 MA's), (Start: 10 @1681 has 335 MA's), (42, 1909), (131, 2539), (139, 2611), (140, 2617),

Gene: Lunsford_4 Start: 1645, Stop: 2718, Start Num: 10

Candidate Starts for Lunsford_4:

(5, 1585), (Start: 10 @1645 has 335 MA's), (Start: 21 @1753 has 2 MA's), (30, 1849), (49, 1963), (147, 2611), (151, 2647), (158, 2704), (159, 2710),

Gene: MA5_4 Start: 1622, Stop: 2464, Start Num: 10

Candidate Starts for MA5_4:

(Start: 10 @1622 has 335 MA's), (24, 1757), (104, 2381), (108, 2399), (121, 2450), (123, 2456),

Gene: MK4_4 Start: 1608, Stop: 2744, Start Num: 10

Candidate Starts for MK4_4:

(Start: 10 @1608 has 335 MA's), (24, 1743), (39, 1866), (42, 1881), (59, 1995), (149, 2658), (158, 2730), (159, 2736),

Gene: MadMarie_4 Start: 1682, Stop: 2896, Start Num: 10

Candidate Starts for MadMarie_4:

(Start: 8 @1655 has 2 MA's), (Start: 10 @1682 has 335 MA's), (42, 1910), (149, 2810), (158, 2882), (159, 2888),

Gene: Mainiac_4 Start: 1682, Stop: 2887, Start Num: 10

Candidate Starts for Mainiac_4:

(Start: 8 @1655 has 2 MA's), (Start: 10 @1682 has 335 MA's), (42, 1910), (149, 2801), (158, 2873), (159, 2879),

Gene: Malinsilva_6 Start: 1681, Stop: 2886, Start Num: 10

Candidate Starts for Malinsilva_6:

(Start: 8 @1654 has 2 MA's), (Start: 10 @1681 has 335 MA's), (42, 1909), (149, 2800), (158, 2872), (159, 2878),

Gene: Maminiaina_7 Start: 3953, Stop: 4984, Start Num: 10

Candidate Starts for Maminaiaina_7:

(Start: 10 @3953 has 335 MA's), (149, 4901), (150, 4913), (158, 4970), (159, 4976),

Gene: Manu_5 Start: 1685, Stop: 2884, Start Num: 10

Candidate Starts for Manu_5:

(Start: 8 @1658 has 2 MA's), (Start: 10 @1685 has 335 MA's), (34, 1865), (42, 1913), (79, 2309), (149, 2798), (151, 2816), (158, 2870), (159, 2876),

Gene: MarQuardt_4 Start: 1681, Stop: 2895, Start Num: 10

Candidate Starts for MarQuardt_4:

(Start: 8 @1654 has 2 MA's), (Start: 10 @1681 has 335 MA's), (42, 1909), (149, 2809), (158, 2881), (159, 2887),

Gene: Marchesa_4 Start: 1605, Stop: 2909, Start Num: 10

Candidate Starts for Marchesa_4:

(Start: 10 @1605 has 335 MA's), (24, 1740), (39, 1863), (42, 1878), (47, 1911), (149, 2826), (158, 2895), (159, 2901),

Gene: Margo_4 Start: 1633, Stop: 2760, Start Num: 10

Candidate Starts for Margo_4:

(4, 1570), (6, 1579), (Start: 10 @1633 has 335 MA's), (11, 1663), (17, 1720), (Start: 23 @1765 has 1 MA's), (42, 1906), (58, 2014), (82, 2302), (149, 2674), (158, 2746), (159, 2752),

Gene: Marie_4 Start: 1681, Stop: 2625, Start Num: 10

Candidate Starts for Marie_4:

(Start: 8 @1654 has 2 MA's), (Start: 10 @1681 has 335 MA's), (42, 1909), (131, 2539), (139, 2611), (140, 2617),

Gene: Marius_5 Start: 1685, Stop: 2884, Start Num: 10

Candidate Starts for Marius_5:

(Start: 8 @1658 has 2 MA's), (Start: 10 @1685 has 335 MA's), (34, 1865), (42, 1913), (79, 2309), (149, 2798), (151, 2816), (158, 2870), (159, 2876),

Gene: Maverick_4 Start: 1645, Stop: 2718, Start Num: 10

Candidate Starts for Maverick_4:

(5, 1585), (Start: 10 @1645 has 335 MA's), (Start: 21 @1753 has 2 MA's), (30, 1849), (49, 1963), (147, 2611), (151, 2647), (158, 2704), (159, 2710),

Gene: Maxo_4 Start: 1646, Stop: 2719, Start Num: 10

Candidate Starts for Maxo_4:

(5, 1586), (Start: 10 @1646 has 335 MA's), (Start: 21 @1754 has 2 MA's), (30, 1850), (49, 1964), (147, 2612), (151, 2648), (158, 2705), (159, 2711),

Gene: Mayonnaise_3 Start: 1645, Stop: 2718, Start Num: 10

Candidate Starts for Mayonnaise_3:

(5, 1585), (Start: 10 @1645 has 335 MA's), (Start: 21 @1753 has 2 MA's), (30, 1849), (49, 1963), (147, 2611), (151, 2647), (158, 2704), (159, 2710),

Gene: Mazhar510_4 Start: 1646, Stop: 2719, Start Num: 10

Candidate Starts for Mazhar510_4:

(5, 1586), (Start: 10 @1646 has 335 MA's), (Start: 21 @1754 has 2 MA's), (30, 1850), (49, 1964), (147, 2612), (151, 2648), (158, 2705), (159, 2711),

Gene: Medusa_4 Start: 1645, Stop: 2718, Start Num: 10

Candidate Starts for Medusa_4:

(5, 1585), (Start: 10 @1645 has 335 MA's), (Start: 21 @1753 has 2 MA's), (30, 1849), (49, 1963), (147, 2611), (151, 2647), (158, 2704), (159, 2710),

Gene: MeeZee_4 Start: 1645, Stop: 2718, Start Num: 10

Candidate Starts for MeeZee_4:

(5, 1585), (Start: 10 @1645 has 335 MA's), (Start: 21 @1753 has 2 MA's), (30, 1849), (49, 1963), (147, 2611), (151, 2647), (158, 2704), (159, 2710),

Gene: Melvin_4 Start: 1645, Stop: 2718, Start Num: 10

Candidate Starts for Melvin_4:

(5, 1585), (Start: 10 @1645 has 335 MA's), (Start: 21 @1753 has 2 MA's), (30, 1849), (49, 1963), (147, 2611), (151, 2647), (158, 2704), (159, 2710),

Gene: Methuselah_4 Start: 1682, Stop: 2716, Start Num: 10

Candidate Starts for Methuselah_4:

(Start: 8 @1655 has 2 MA's), (Start: 10 @1682 has 335 MA's), (42, 1910), (138, 2630), (143, 2702), (144, 2708),

Gene: Microwolf_4 Start: 1681, Stop: 2895, Start Num: 10

Candidate Starts for Microwolf_4:

(Start: 8 @1654 has 2 MA's), (Start: 10 @1681 has 335 MA's), (42, 1909), (149, 2809), (158, 2881), (159, 2887),

Gene: Miko_8 Start: 4374, Stop: 5360, Start Num: 10

Candidate Starts for Miko_8:

(Start: 10 @4374 has 335 MA's), (59, 4773), (88, 5091), (150, 5286), (156, 5328), (158, 5346), (159, 5352),

Gene: Millski_4 Start: 1645, Stop: 2718, Start Num: 10

Candidate Starts for Millski_4:

(5, 1585), (Start: 10 @1645 has 335 MA's), (Start: 21 @1753 has 2 MA's), (30, 1849), (49, 1963), (147, 2611), (151, 2647), (158, 2704), (159, 2710),

Gene: Miramae_4 Start: 1638, Stop: 2714, Start Num: 10

Candidate Starts for Miramae_4:

(5, 1578), (Start: 10 @1638 has 335 MA's), (Start: 21 @1746 has 2 MA's), (30, 1842), (49, 1956), (149, 2625), (151, 2643), (158, 2700), (159, 2706),

Gene: Misomonster_6 Start: 1681, Stop: 2715, Start Num: 10

Candidate Starts for Misomonster_6:

(Start: 8 @1654 has 2 MA's), (Start: 10 @1681 has 335 MA's), (42, 1909), (138, 2629), (143, 2701), (144, 2707),

Gene: MoneyMay_4 Start: 1681, Stop: 2625, Start Num: 10

Candidate Starts for MoneyMay_4:

(Start: 8 @1654 has 2 MA's), (Start: 10 @1681 has 335 MA's), (42, 1909), (131, 2539), (139, 2611), (140, 2617),

Gene: Morpher26_4 Start: 1644, Stop: 2729, Start Num: 10

Candidate Starts for Morpher26_4:

(Start: 10 @1644 has 335 MA's), (Start: 21 @1752 has 2 MA's), (30, 1848), (49, 1962), (59, 2034), (151, 2658), (158, 2715), (159, 2721),

Gene: Morrow_4 Start: 1645, Stop: 2718, Start Num: 10

Candidate Starts for Morrow_4:

(5, 1585), (Start: 10 @1645 has 335 MA's), (Start: 21 @1753 has 2 MA's), (30, 1849), (49, 1963), (147, 2611), (151, 2647), (158, 2704), (159, 2710),

Gene: MuchMore_6 Start: 1681, Stop: 2886, Start Num: 10

Candidate Starts for MuchMore_6:

(Start: 8 @1654 has 2 MA's), (Start: 10 @1681 has 335 MA's), (42, 1909), (149, 2800), (158, 2872), (159, 2878),

Gene: Mundrea_4 Start: 1642, Stop: 2709, Start Num: 10

Candidate Starts for Mundrea_4:

(Start: 10 @1642 has 335 MA's), (Start: 21 @1750 has 2 MA's), (30, 1846), (49, 1960), (149, 2620), (151, 2638), (158, 2695), (159, 2701),

Gene: MyraDee_4 Start: 1517, Stop: 2386, Start Num: 10

Candidate Starts for MyraDee_4:

(Start: 10 @1517 has 335 MA's), (11, 1547), (12, 1556), (106, 2345), (112, 2372), (113, 2378),

Gene: Myxus_7 Start: 4192, Stop: 5235, Start Num: 10

Candidate Starts for Myxus_7:

(Start: 10 @4192 has 335 MA's), (48, 4525), (149, 5152), (150, 5164), (158, 5221), (159, 5227),

Gene: NearlyHeadless_4 Start: 2306, Stop: 3358, Start Num: 10

Candidate Starts for NearlyHeadless_4:

(Start: 10 @2306 has 335 MA's), (33, 2543), (67, 2912), (78, 3029), (94, 3131), (111, 3239), (120, 3284), (129, 3350),

Gene: Nebs_4 Start: 1645, Stop: 2718, Start Num: 10

Candidate Starts for Nebs_4:

(5, 1585), (Start: 10 @1645 has 335 MA's), (Start: 21 @1753 has 2 MA's), (30, 1849), (49, 1963), (147, 2611), (151, 2647), (158, 2704), (159, 2710),

Gene: Nemo27_4 Start: 1644, Stop: 2717, Start Num: 10

Candidate Starts for Nemo27_4:

(5, 1584), (Start: 10 @1644 has 335 MA's), (Start: 21 @1752 has 2 MA's), (30, 1848), (49, 1962), (147, 2610), (151, 2646), (158, 2703), (159, 2709),

Gene: NicoleTera_7 Start: 4172, Stop: 5248, Start Num: 10

Candidate Starts for NicoleTera_7:

(3, 4091), (Start: 10 @4172 has 335 MA's), (25, 4340), (49, 4496), (50, 4502), (122, 4988), (151, 5180), (158, 5234),

Gene: Noella_4 Start: 1633, Stop: 2760, Start Num: 10

Candidate Starts for Noella_4:

(4, 1570), (6, 1579), (Start: 10 @1633 has 335 MA's), (11, 1663), (17, 1720), (Start: 23 @1765 has 1 MA's), (42, 1906), (58, 2014), (82, 2302), (149, 2674), (151, 2692), (158, 2746), (159, 2752),

Gene: Noelle_4 Start: 1629, Stop: 2783, Start Num: 10

Candidate Starts for Noelle_4:

(Start: 10 @1629 has 335 MA's), (28, 1824), (49, 1947), (59, 2016), (147, 2676), (151, 2712), (158, 2769), (159, 2775),

Gene: Norbert_3 Start: 1633, Stop: 2760, Start Num: 10

Candidate Starts for Norbert_3:

(4, 1570), (6, 1579), (Start: 10 @1633 has 335 MA's), (11, 1663), (17, 1720), (Start: 23 @1765 has 1 MA's), (42, 1906), (58, 2014), (82, 2302), (149, 2674), (151, 2692), (158, 2746), (159, 2752),

Gene: NorthStar_4 Start: 1645, Stop: 2718, Start Num: 10

Candidate Starts for NorthStar_4:

(5, 1585), (Start: 10 @1645 has 335 MA's), (Start: 21 @1753 has 2 MA's), (30, 1849), (49, 1963), (147, 2611), (151, 2647), (158, 2704), (159, 2710),

Gene: NotAPhaseMom_4 Start: 1645, Stop: 2718, Start Num: 10

Candidate Starts for NotAPhaseMom_4:

(5, 1585), (Start: 10 @1645 has 335 MA's), (Start: 21 @1753 has 2 MA's), (30, 1849), (49, 1963), (147, 2611), (151, 2647), (158, 2704), (159, 2710),

Gene: NothingSpecial_6 Start: 4006, Stop: 5202, Start Num: 10

Candidate Starts for NothingSpecial_6:

(3, 3925), (Start: 10 @4006 has 335 MA's), (15, 4084), (76, 4645), (145, 5089), (149, 5116), (151, 5134),

Gene: Nyxis_4 Start: 1648, Stop: 2721, Start Num: 10

Candidate Starts for Nyxis_4:

(5, 1588), (Start: 10 @1648 has 335 MA's), (Start: 21 @1756 has 2 MA's), (30, 1852), (49, 1966), (147, 2614), (151, 2650), (158, 2707), (159, 2713),

Gene: OKCentral2016_4 Start: 1637, Stop: 2374, Start Num: 10

Candidate Starts for OKCentral2016_4:

(Start: 10 @1637 has 335 MA's), (19, 1739), (Start: 23 @1769 has 1 MA's), (27, 1829), (28, 1832), (79, 2264), (84, 2303), (86, 2309), (97, 2360), (101, 2366),

Gene: OKaNui_4 Start: 1644, Stop: 2483, Start Num: 10

Candidate Starts for OKaNui_4:

(5, 1584), (Start: 10 @1644 has 335 MA's), (Start: 21 @1752 has 2 MA's), (30, 1848), (49, 1962), (93, 2376), (103, 2412), (121, 2469), (123, 2475),

Gene: Obama12_4 Start: 1644, Stop: 2720, Start Num: 10

Candidate Starts for Obama12_4:

(5, 1584), (Start: 10 @1644 has 335 MA's), (Start: 21 @1752 has 2 MA's), (30, 1848), (49, 1962), (149, 2631), (151, 2649), (158, 2706), (159, 2712),

Gene: Ohfah_4 Start: 1645, Stop: 2718, Start Num: 10

Candidate Starts for Ohfah_4:

(5, 1585), (Start: 10 @1645 has 335 MA's), (Start: 21 @1753 has 2 MA's), (30, 1849), (49, 1963), (147, 2611), (151, 2647), (158, 2704), (159, 2710),

Gene: OlanP_4 Start: 1864, Stop: 3102, Start Num: 10

Candidate Starts for OlanP_4:

(Start: 8 @1837 has 2 MA's), (Start: 10 @1864 has 335 MA's), (34, 2044), (42, 2092), (79, 2488), (149, 2977), (151, 2995), (158, 3049), (159, 3055), (160, 3061),

Gene: Ollie_4 Start: 1681, Stop: 2805, Start Num: 10

Candidate Starts for Ollie_4:

(Start: 8 @1654 has 2 MA's), (Start: 10 @1681 has 335 MA's), (42, 1909), (149, 2719), (158, 2791), (159, 2797),

Gene: P28Green_4 Start: 1682, Stop: 2626, Start Num: 10

Candidate Starts for P28Green_4:

(Start: 8 @1655 has 2 MA's), (Start: 10 @1682 has 335 MA's), (42, 1910), (131, 2540), (139, 2612), (140, 2618),

Gene: PGHhamlin_6 Start: 1681, Stop: 2886, Start Num: 10

Candidate Starts for PGHhamlin_6:

(Start: 8 @1654 has 2 MA's), (Start: 10 @1681 has 335 MA's), (42, 1909), (149, 2800), (158, 2872), (159, 2878),

Gene: PackMan_7 Start: 4192, Stop: 5235, Start Num: 10

Candidate Starts for PackMan_7:

(Start: 10 @4192 has 335 MA's), (48, 4525), (149, 5152), (150, 5164), (158, 5221), (159, 5227),

Gene: PainterBoy_7 Start: 3969, Stop: 4871, Start Num: 10

Candidate Starts for PainterBoy_7:

(Start: 10 @3969 has 335 MA's), (33, 4197), (73, 4479), (77, 4536), (80, 4551), (94, 4644), (109, 4743), (129, 4863),

Gene: Palestino_4 Start: 1645, Stop: 2718, Start Num: 10

Candidate Starts for Palestino_4:

(5, 1585), (Start: 10 @1645 has 335 MA's), (Start: 21 @1753 has 2 MA's), (30, 1849), (49, 1963), (147, 2611), (151, 2647), (158, 2704), (159, 2710),

Gene: Panamaxus_4 Start: 1633, Stop: 2760, Start Num: 10

Candidate Starts for Panamaxus_4:

(4, 1570), (6, 1579), (Start: 10 @1633 has 335 MA's), (11, 1663), (17, 1720), (Start: 23 @1765 has 1 MA's), (42, 1906), (58, 2014), (82, 2302), (149, 2674), (151, 2692), (158, 2746), (159, 2752),

Gene: Pawn_4 Start: 1685, Stop: 2884, Start Num: 10

Candidate Starts for Pawn_4:

(Start: 8 @1658 has 2 MA's), (Start: 10 @1685 has 335 MA's), (34, 1865), (42, 1913), (79, 2309), (149, 2798), (151, 2816), (158, 2870), (159, 2876),

Gene: Peaches_4 Start: 1645, Stop: 2718, Start Num: 10

Candidate Starts for Peaches_4:

(5, 1585), (Start: 10 @1645 has 335 MA's), (Start: 21 @1753 has 2 MA's), (30, 1849), (49, 1963), (147, 2611), (151, 2647), (158, 2704), (159, 2710),

Gene: Pembroke_4 Start: 1681, Stop: 2886, Start Num: 10

Candidate Starts for Pembroke_4:

(Start: 8 @1654 has 2 MA's), (Start: 10 @1681 has 335 MA's), (42, 1909), (149, 2800), (158, 2872), (159, 2878),

Gene: Penny1_4 Start: 1681, Stop: 2625, Start Num: 10

Candidate Starts for Penny1_4:

(Start: 8 @1654 has 2 MA's), (Start: 10 @1681 has 335 MA's), (42, 1909), (131, 2539), (139, 2611), (140, 2617),

Gene: Perplexer_4 Start: 1644, Stop: 2729, Start Num: 10

Candidate Starts for Perplexer_4:

(Start: 10 @1644 has 335 MA's), (Start: 21 @1752 has 2 MA's), (30, 1848), (49, 1962), (59, 2034), (151, 2658), (158, 2715), (159, 2721),

Gene: PeterPeter_4 Start: 1645, Stop: 2718, Start Num: 10

Candidate Starts for PeterPeter_4:

(5, 1585), (Start: 10 @1645 has 335 MA's), (Start: 21 @1753 has 2 MA's), (30, 1849), (49, 1963), (147, 2611), (151, 2647), (158, 2704), (159, 2710),

Gene: PetiteSangsue_4 Start: 1644, Stop: 2729, Start Num: 10

Candidate Starts for PetiteSangsue_4:

(Start: 10 @1644 has 335 MA's), (Start: 21 @1752 has 2 MA's), (30, 1848), (49, 1962), (59, 2034), (151, 2658), (158, 2715), (159, 2721),

Gene: PetterN_4 Start: 2354, Stop: 3403, Start Num: 10

Candidate Starts for PetterN_4:

(9, 2342), (Start: 10 @2354 has 335 MA's), (Start: 21 @2465 has 2 MA's), (31, 2585), (33, 2591), (52, 2738), (55, 2774), (63, 2879), (69, 2972), (70, 2981), (74, 3005), (78, 3065), (92, 3161), (111, 3275), (118, 3317), (125, 3335), (127, 3362), (128, 3389), (129, 3395),

Gene: Phacado_4 Start: 1644, Stop: 2717, Start Num: 10

Candidate Starts for Phacado_4:

(5, 1584), (Start: 10 @1644 has 335 MA's), (Start: 21 @1752 has 2 MA's), (30, 1848), (49, 1962), (147, 2610), (151, 2646), (158, 2703), (159, 2709),

Gene: Phaded_7 Start: 3967, Stop: 5067, Start Num: 10

Candidate Starts for Phaded_7:

(3, 3886), (Start: 10 @3967 has 335 MA's), (26, 4138), (29, 4168), (51, 4309), (56, 4342), (76, 4606), (158, 5053), (159, 5059),

Gene: Phaeder_7 Start: 4192, Stop: 5235, Start Num: 10

Candidate Starts for Phaeder_7:

(Start: 10 @4192 has 335 MA's), (48, 4525), (149, 5152), (150, 5164), (158, 5221), (159, 5227),

Gene: Phantastic_4 Start: 1617, Stop: 2831, Start Num: 10

Candidate Starts for Phantastic_4:

(Start: 10 @1617 has 335 MA's), (24, 1752), (30, 1821), (42, 1890), (96, 2376), (151, 2766), (158, 2817), (159, 2823),

Gene: Pharaoh_7 Start: 4476, Stop: 5333, Start Num: 10

Candidate Starts for Pharaoh_7:

(Start: 10 @4476 has 335 MA's), (Start: 21 @4584 has 2 MA's), (36, 4746), (52, 4845), (62, 4968), (112, 5319), (113, 5325),

Gene: Phelipe_4 Start: 1645, Stop: 2718, Start Num: 10

Candidate Starts for Phelipe_4:

(5, 1585), (Start: 10 @1645 has 335 MA's), (Start: 21 @1753 has 2 MA's), (30, 1849), (49, 1963), (147, 2611), (151, 2647), (158, 2704), (159, 2710),

Gene: Phighter1804_4 Start: 1644, Stop: 2717, Start Num: 10

Candidate Starts for Phighter1804_4:

(5, 1584), (Start: 10 @1644 has 335 MA's), (Start: 21 @1752 has 2 MA's), (30, 1848), (49, 1962), (149, 2628), (151, 2646), (158, 2703), (159, 2709),

Gene: Phillis_4 Start: 2306, Stop: 3343, Start Num: 10

Candidate Starts for Phillis_4:

(2, 2147), (Start: 10 @2306 has 335 MA's), (33, 2543), (52, 2690), (114, 3236), (125, 3275), (126, 3299), (129, 3335),

Gene: PhishRPhriends_4 Start: 1686, Stop: 2396, Start Num: 10

Candidate Starts for PhishRPhriends_4:

(Start: 8 @1659 has 2 MA's), (Start: 10 @1686 has 335 MA's), (34, 1866), (42, 1914), (85, 2310), (90, 2328), (98, 2382), (100, 2388),

Gene: Phoebe_4 Start: 1681, Stop: 2625, Start Num: 10

Candidate Starts for Phoebe_4:

(Start: 8 @1654 has 2 MA's), (Start: 10 @1681 has 335 MA's), (42, 1909), (131, 2539), (139, 2611), (140, 2617),

Gene: Phonnegut_7 Start: 4192, Stop: 5223, Start Num: 10

Candidate Starts for Phonnegut_7:

(Start: 10 @4192 has 335 MA's), (149, 5140), (150, 5152), (158, 5209), (159, 5215),

Gene: Phontbonne_4 Start: 1643, Stop: 2716, Start Num: 10

Candidate Starts for Phontbonne_4:

(5, 1583), (Start: 10 @1643 has 335 MA's), (Start: 21 @1751 has 2 MA's), (30, 1847), (49, 1961), (147, 2609), (151, 2645), (158, 2702), (159, 2708),

Gene: Phoxy_4 Start: 1682, Stop: 2716, Start Num: 10

Candidate Starts for Phoxy_4:

(Start: 8 @1655 has 2 MA's), (Start: 10 @1682 has 335 MA's), (42, 1910), (138, 2630), (143, 2702), (144, 2708),

Gene: Phranny_5 Start: 1685, Stop: 2884, Start Num: 10

Candidate Starts for Phranny_5:

(Start: 8 @1658 has 2 MA's), (Start: 10 @1685 has 335 MA's), (34, 1865), (42, 1913), (79, 2309), (149, 2798), (151, 2816), (158, 2870), (159, 2876),

Gene: PickleBack_4 Start: 2386, Stop: 3441, Start Num: 10

Candidate Starts for PickleBack_4:

(9, 2374), (Start: 10 @2386 has 335 MA's), (Start: 21 @2497 has 2 MA's), (33, 2614), (37, 2662), (61, 2854), (63, 2902), (71, 3016), (72, 3019), (75, 3058), (78, 3100), (109, 3301), (122, 3364), (125, 3370), (129, 3433),

Gene: Pioneer_7 Start: 4192, Stop: 5223, Start Num: 10

Candidate Starts for Pioneer_7:

(Start: 10 @4192 has 335 MA's), (149, 5140), (150, 5152), (158, 5209), (159, 5215),

Gene: Pipcraft_4 Start: 1645, Stop: 2718, Start Num: 10

Candidate Starts for Pipcraft_4:

(5, 1585), (Start: 10 @1645 has 335 MA's), (Start: 21 @1753 has 2 MA's), (30, 1849), (49, 1963), (147, 2611), (151, 2647), (158, 2704), (159, 2710),

Gene: Pistachio_4 Start: 1612, Stop: 2373, Start Num: 10

Candidate Starts for Pistachio_4:

(Start: 10 @1612 has 335 MA's), (24, 1747), (42, 1885), (59, 1999), (142, 2188), (149, 2290), (150, 2302), (158, 2359), (159, 2365),

Gene: Pocahontas_4 Start: 1633, Stop: 2760, Start Num: 10

Candidate Starts for Pocahontas_4:

(4, 1570), (6, 1579), (Start: 10 @1633 has 335 MA's), (11, 1663), (17, 1720), (Start: 23 @1765 has 1 MA's), (42, 1906), (58, 2014), (82, 2302), (149, 2674), (151, 2692), (158, 2746), (159, 2752),

Gene: Polymorphads_4 Start: 1645, Stop: 2718, Start Num: 10

Candidate Starts for Polymorphads_4:

(5, 1585), (Start: 10 @1645 has 335 MA's), (Start: 21 @1753 has 2 MA's), (30, 1849), (49, 1963), (147, 2611), (151, 2647), (158, 2704), (159, 2710),

Gene: Popcicle_4 Start: 1633, Stop: 2760, Start Num: 10

Candidate Starts for Popcicle_4:

(4, 1570), (6, 1579), (Start: 10 @1633 has 335 MA's), (11, 1663), (17, 1720), (Start: 23 @1765 has 1 MA's), (42, 1906), (58, 2014), (82, 2302), (149, 2674), (151, 2692), (158, 2746), (159, 2752),

Gene: PotatoSplit_5 Start: 1681, Stop: 2625, Start Num: 10

Candidate Starts for PotatoSplit_5:

(Start: 8 @1654 has 2 MA's), (Start: 10 @1681 has 335 MA's), (42, 1909), (131, 2539), (139, 2611), (140, 2617),

Gene: Priya_7 Start: 4190, Stop: 5221, Start Num: 10

Candidate Starts for Priya_7:

(Start: 8 @4163 has 2 MA's), (Start: 10 @4190 has 335 MA's), (149, 5138), (150, 5150), (158, 5207), (159, 5213),

Gene: Pukovnik_7 Start: 3940, Stop: 5010, Start Num: 10

Candidate Starts for Pukovnik_7:

(3, 3859), (Start: 10 @3940 has 335 MA's), (30, 4147), (46, 4246), (49, 4261), (149, 4927), (150, 4939), (158, 4996), (159, 5002),

Gene: Pumbaa_4 Start: 1643, Stop: 2716, Start Num: 10

Candidate Starts for Pumbaa_4:

(5, 1583), (Start: 10 @1643 has 335 MA's), (Start: 21 @1751 has 2 MA's), (24, 1778), (30, 1847), (49, 1961), (149, 2627), (151, 2645), (158, 2702), (159, 2708),

Gene: Puppy_4 Start: 1612, Stop: 2445, Start Num: 10

Candidate Starts for Puppy_4:

(Start: 10 @1612 has 335 MA's), (24, 1747), (42, 1885), (59, 1999), (142, 2260), (150, 2374), (158, 2431), (159, 2437),

Gene: PurpleHaze_4 Start: 1684, Stop: 2883, Start Num: 10

Candidate Starts for PurpleHaze_4:

(Start: 8 @1657 has 2 MA's), (Start: 10 @1684 has 335 MA's), (34, 1864), (42, 1912), (79, 2308), (149, 2797), (151, 2815), (158, 2869), (159, 2875),

Gene: Qobbit_7 Start: 4189, Stop: 5220, Start Num: 10

Candidate Starts for Qobbit_7:

(Start: 8 @4162 has 2 MA's), (Start: 10 @4189 has 335 MA's), (149, 5137), (150, 5149), (158, 5206), (159, 5212),

Gene: QuinnKiro_3 Start: 1633, Stop: 2760, Start Num: 10

Candidate Starts for QuinnKiro_3:

(4, 1570), (6, 1579), (Start: 10 @1633 has 335 MA's), (11, 1663), (17, 1720), (Start: 23 @1765 has 1 MA's), (42, 1906), (58, 2014), (82, 2302), (149, 2674), (151, 2692), (158, 2746), (159, 2752),

Gene: Rachaly_8 Start: 4394, Stop: 5380, Start Num: 10

Candidate Starts for Rachaly_8:

(Start: 10 @4394 has 335 MA's), (59, 4793), (150, 5306), (156, 5348), (158, 5366), (159, 5372),

Gene: Reba_5 Start: 1685, Stop: 2557, Start Num: 10

Candidate Starts for Reba_5:

(Start: 8 @1658 has 2 MA's), (Start: 10 @1685 has 335 MA's), (34, 1865), (42, 1913), (149, 2471), (151, 2489), (158, 2543), (159, 2549),

Gene: Rebeuca_5 Start: 1828, Stop: 3000, Start Num: 10

Candidate Starts for Rebeuca_5:

(Start: 10 @1828 has 335 MA's), (25, 1993), (27, 2020), (28, 2023), (42, 2101), (65, 2320), (70, 2374), (83, 2509), (115, 2644), (149, 2917), (150, 2929), (151, 2935), (158, 2986), (159, 2992),

Gene: RedRock_7 Start: 4133, Stop: 5242, Start Num: 10

Candidate Starts for RedRock_7:

(Start: 10 @4133 has 335 MA's), (Start: 13 @4202 has 1 MA's), (40, 4415), (43, 4421), (76, 4778), (91, 4880), (150, 5171), (158, 5228), (159, 5234),

Gene: Refuge_7 Start: 4506, Stop: 5639, Start Num: 10

Candidate Starts for Refuge_7:

(Start: 10 @4506 has 335 MA's), (18, 4599), (36, 4779), (62, 5001), (89, 5253), (99, 5301), (102, 5307), (105, 5322), (116, 5382), (117, 5388), (124, 5412), (127, 5442), (134, 5562), (135, 5568),

Gene: Relief_4 Start: 1646, Stop: 2719, Start Num: 10

Candidate Starts for Relief_4:

(5, 1586), (Start: 10 @1646 has 335 MA's), (Start: 21 @1754 has 2 MA's), (30, 1850), (49, 1964), (147, 2612), (151, 2648), (158, 2705), (159, 2711),

Gene: ResDef_4 Start: 1633, Stop: 2760, Start Num: 10

Candidate Starts for ResDef_4:

(4, 1570), (6, 1579), (Start: 10 @1633 has 335 MA's), (11, 1663), (17, 1720), (Start: 23 @1765 has 1 MA's), (42, 1906), (58, 2014), (82, 2302), (149, 2674), (151, 2692), (158, 2746), (159, 2752),

Gene: RhynO_4 Start: 1673, Stop: 2839, Start Num: 10

Candidate Starts for RhynO_4:

(Start: 10 @1673 has 335 MA's), (19, 1775), (20, 1778), (Start: 21 @1781 has 2 MA's), (24, 1811), (25, 1841), (42, 1949), (83, 2357), (110, 2471), (115, 2492), (149, 2756), (150, 2768), (151, 2774), (158, 2825), (159, 2831),

Gene: Roary_4 Start: 2306, Stop: 3343, Start Num: 10

Candidate Starts for Roary_4:

(2, 2147), (Start: 10 @2306 has 335 MA's), (33, 2543), (52, 2690), (114, 3236), (125, 3275), (126, 3299), (129, 3335),

Gene: Rockstar_4 Start: 1608, Stop: 2744, Start Num: 10

Candidate Starts for Rockstar_4:

(Start: 10 @1608 has 335 MA's), (24, 1743), (39, 1866), (42, 1881), (59, 1995), (149, 2658), (158, 2730), (159, 2736),

Gene: Romney_4 Start: 1644, Stop: 2717, Start Num: 10

Candidate Starts for Romney_4:

(5, 1584), (Start: 10 @1644 has 335 MA's), (Start: 21 @1752 has 2 MA's), (30, 1848), (49, 1962), (147, 2610), (151, 2646), (158, 2703), (159, 2709),

Gene: Roosevelt_4 Start: 1645, Stop: 2718, Start Num: 10

Candidate Starts for Roosevelt_4:

(5, 1585), (Start: 10 @1645 has 335 MA's), (Start: 21 @1753 has 2 MA's), (30, 1849), (49, 1963), (147, 2611), (151, 2647), (158, 2704), (159, 2710),

Gene: Rosa24_3 Start: 1643, Stop: 2716, Start Num: 10

Candidate Starts for Rosa24_3:

(5, 1583), (Start: 10 @1643 has 335 MA's), (Start: 21 @1751 has 2 MA's), (30, 1847), (49, 1961), (149, 2627), (151, 2645), (158, 2702), (159, 2708),

Gene: Rowdy_5 Start: 1860, Stop: 2750, Start Num: 27

Candidate Starts for Rowdy_5:

(Start: 10 @1668 has 335 MA's), (Start: 23 @1800 has 1 MA's), (25, 1833), (27, 1860), (28, 1863), (83, 2349), (110, 2463), (149, 2667), (150, 2679), (151, 2685), (158, 2736), (159, 2742),

Gene: Ruin_4 Start: 1644, Stop: 2717, Start Num: 10

Candidate Starts for Ruin_4:

(5, 1584), (Start: 10 @1644 has 335 MA's), (Start: 21 @1752 has 2 MA's), (30, 1848), (49, 1962), (147, 2610), (151, 2646), (158, 2703), (159, 2709),

Gene: Rummer_4 Start: 1682, Stop: 2716, Start Num: 10

Candidate Starts for Rummer_4:

(Start: 8 @1655 has 2 MA's), (Start: 10 @1682 has 335 MA's), (42, 1910), (138, 2630), (143, 2702), (144, 2708),

Gene: RyeScarlet_8 Start: 4192, Stop: 5226, Start Num: 10

Candidate Starts for RyeScarlet_8:

(Start: 10 @4192 has 335 MA's), (40, 4474), (45, 4495), (149, 5143), (150, 5155), (158, 5212), (159, 5218),

Gene: Sabertooth_4 Start: 1645, Stop: 2718, Start Num: 10

Candidate Starts for Sabertooth_4:

(5, 1585), (Start: 10 @1645 has 335 MA's), (Start: 21 @1753 has 2 MA's), (30, 1849), (49, 1963), (147, 2611), (151, 2647), (158, 2704), (159, 2710),

Gene: Sabia_4 Start: 1682, Stop: 2887, Start Num: 10

Candidate Starts for Sabia_4:

(Start: 8 @1655 has 2 MA's), (Start: 10 @1682 has 335 MA's), (42, 1910), (149, 2801), (158, 2873), (159, 2879),

Gene: Sabinator_4 Start: 1681, Stop: 2625, Start Num: 10

Candidate Starts for Sabinator_4:

(Start: 8 @1654 has 2 MA's), (Start: 10 @1681 has 335 MA's), (42, 1909), (131, 2539), (139, 2611), (140, 2617),

Gene: Sachima_5 Start: 4192, Stop: 5235, Start Num: 10

Candidate Starts for Sachima_5:

(Start: 10 @4192 has 335 MA's), (48, 4525), (149, 5152), (150, 5164), (158, 5221),

Gene: Saintus_4 Start: 2306, Stop: 3358, Start Num: 10

Candidate Starts for Saintus_4:

(Start: 10 @2306 has 335 MA's), (33, 2543), (38, 2600), (61, 2783), (78, 3029), (94, 3131), (111, 3239), (120, 3284), (129, 3350),

Gene: SaturnRing_3 Start: 1612, Stop: 2826, Start Num: 10

Candidate Starts for SaturnRing_3:

(Start: 10 @1612 has 335 MA's), (24, 1747), (42, 1885), (59, 1999), (142, 2641), (149, 2743), (150, 2755), (158, 2812), (159, 2818),

Gene: Scamp_4 Start: 1645, Stop: 2718, Start Num: 10

Candidate Starts for Scamp_4:

(5, 1585), (Start: 10 @1645 has 335 MA's), (Start: 21 @1753 has 2 MA's), (30, 1849), (49, 1963), (147, 2611), (151, 2647), (158, 2704), (159, 2710),

Gene: Scherzo_7 Start: 4192, Stop: 5223, Start Num: 10

Candidate Starts for Scherzo_7:

(Start: 10 @4192 has 335 MA's), (149, 5140), (150, 5152), (158, 5209), (159, 5215),

Gene: Scorpia_4 Start: 2355, Stop: 3404, Start Num: 10

Candidate Starts for Scorpia_4:

(3, 2277), (9, 2343), (Start: 10 @2355 has 335 MA's), (Start: 21 @2466 has 2 MA's), (33, 2592), (52, 2739), (55, 2775), (63, 2880), (69, 2973), (70, 2982), (74, 3006), (78, 3066), (92, 3162), (111, 3276), (118, 3318), (125, 3336), (127, 3363), (128, 3390), (129, 3396),

Gene: SenorClean_3 Start: 1645, Stop: 2718, Start Num: 10

Candidate Starts for SenorClean_3:

(5, 1585), (Start: 10 @1645 has 335 MA's), (Start: 21 @1753 has 2 MA's), (30, 1849), (49, 1963), (147, 2611), (151, 2647), (158, 2704), (159, 2710),

Gene: Shaka_4 Start: 1645, Stop: 2718, Start Num: 10

Candidate Starts for Shaka_4:

(5, 1585), (Start: 10 @1645 has 335 MA's), (Start: 21 @1753 has 2 MA's), (30, 1849), (49, 1963), (147, 2611), (151, 2647), (158, 2704), (159, 2710),

Gene: Shapes_5 Start: 1668, Stop: 2750, Start Num: 10

Candidate Starts for Shapes_5:

(Start: 10 @1668 has 335 MA's), (Start: 23 @1800 has 1 MA's), (25, 1833), (27, 1860), (28, 1863), (83, 2349), (110, 2463), (149, 2667), (150, 2679), (151, 2685), (158, 2736), (159, 2742),

Gene: SheldonCooper_4 Start: 1643, Stop: 2719, Start Num: 10

Candidate Starts for SheldonCooper_4:

(5, 1583), (Start: 10 @1643 has 335 MA's), (Start: 21 @1751 has 2 MA's), (30, 1847), (49, 1961), (149, 2630), (151, 2648), (158, 2705), (159, 2711),

Gene: Shygu2_4 Start: 1644, Stop: 2720, Start Num: 10

Candidate Starts for Shygu2_4:

(Start: 10 @1644 has 335 MA's), (Start: 21 @1752 has 2 MA's), (30, 1848), (49, 1962), (59, 2034), (149, 2631), (151, 2649), (158, 2706), (159, 2712),

Gene: Skipitt_4 Start: 1645, Stop: 2718, Start Num: 10

Candidate Starts for Skipitt_4:

(5, 1585), (Start: 10 @1645 has 335 MA's), (Start: 21 @1753 has 2 MA's), (30, 1849), (49, 1963), (147, 2611), (151, 2647), (158, 2704), (159, 2710),

Gene: Smeadley_4 Start: 2306, Stop: 3343, Start Num: 10

Candidate Starts for Smeadley_4:

(2, 2147), (Start: 10 @2306 has 335 MA's), (33, 2543), (52, 2690), (114, 3236), (125, 3275), (126, 3299), (129, 3335),

Gene: Snickers_4 Start: 1681, Stop: 2868, Start Num: 10

Candidate Starts for Snickers_4:

(Start: 8 @1654 has 2 MA's), (Start: 10 @1681 has 335 MA's), (42, 1909), (149, 2782), (158, 2854), (159, 2860),

Gene: SoYo_4 Start: 1681, Stop: 2805, Start Num: 10

Candidate Starts for SoYo_4:

(Start: 8 @1654 has 2 MA's), (Start: 10 @1681 has 335 MA's), (42, 1909), (149, 2719), (158, 2791), (159, 2797),

Gene: SoilDragon_4 Start: 1681, Stop: 2568, Start Num: 10

Candidate Starts for SoilDragon_4:

(Start: 8 @1654 has 2 MA's), (Start: 10 @1681 has 335 MA's), (42, 1909), (149, 2485), (150, 2497), (151, 2503), (158, 2554), (159, 2560),

Gene: Soshari_6 Start: 1682, Stop: 2716, Start Num: 10

Candidate Starts for Soshari_6:

(Start: 8 @1655 has 2 MA's), (Start: 10 @1682 has 335 MA's), (42, 1910), (138, 2630), (143, 2702), (144, 2708),

Gene: Sparxx_4 Start: 1645, Stop: 2718, Start Num: 10

Candidate Starts for Sparxx_4:

(5, 1585), (Start: 10 @1645 has 335 MA's), (Start: 21 @1753 has 2 MA's), (30, 1849), (49, 1963), (147, 2611), (151, 2647), (158, 2704), (159, 2710),

Gene: Spike509_4 Start: 1682, Stop: 2716, Start Num: 10

Candidate Starts for Spike509_4:

(Start: 8 @1655 has 2 MA's), (Start: 10 @1682 has 335 MA's), (42, 1910), (138, 2630), (143, 2702), (144, 2708),

Gene: Spino_4 Start: 1645, Stop: 2718, Start Num: 10

Candidate Starts for Spino_4:

(5, 1585), (Start: 10 @1645 has 335 MA's), (Start: 21 @1753 has 2 MA's), (30, 1849), (49, 1963), (147, 2611), (151, 2647), (158, 2704), (159, 2710),

Gene: Spouty_7 Start: 4189, Stop: 5220, Start Num: 10

Candidate Starts for Spouty_7:

(Start: 8 @4162 has 2 MA's), (Start: 10 @4189 has 335 MA's), (149, 5137), (150, 5149), (158, 5206), (159, 5212),

Gene: Stagni_4 Start: 1682, Stop: 2887, Start Num: 10

Candidate Starts for Stagni_4:

(Start: 8 @1655 has 2 MA's), (Start: 10 @1682 has 335 MA's), (42, 1910), (149, 2801), (158, 2873), (159, 2879),

Gene: Stasia_4 Start: 1647, Stop: 2741, Start Num: 10

Candidate Starts for Stasia_4:

(Start: 10 @1647 has 335 MA's), (Start: 21 @1755 has 2 MA's), (37, 1890), (48, 1968), (53, 1986), (57, 2025), (83, 2316), (106, 2418), (151, 2670), (158, 2727), (159, 2733),

Gene: StepMih_4 Start: 1682, Stop: 2887, Start Num: 10

Candidate Starts for StepMih_4:

(Start: 8 @1655 has 2 MA's), (Start: 10 @1682 has 335 MA's), (42, 1910), (149, 2801), (158, 2873), (159, 2879),

Gene: Stephig9_4 Start: 2307, Stop: 3344, Start Num: 10

Candidate Starts for Stephig9_4:

(2, 2148), (Start: 10 @2307 has 335 MA's), (33, 2544), (52, 2691), (114, 3237), (125, 3276), (126, 3300), (129, 3336),

Gene: Stink_4 Start: 1639, Stop: 2715, Start Num: 10

Candidate Starts for Stink_4:

(5, 1579), (Start: 10 @1639 has 335 MA's), (Start: 21 @1747 has 2 MA's), (30, 1843), (49, 1957), (149, 2626), (151, 2644), (158, 2701), (159, 2707),

Gene: TNguyen7_4 Start: 1610, Stop: 2824, Start Num: 10

Candidate Starts for TNguyen7_4:

(Start: 10 @1610 has 335 MA's), (24, 1745), (42, 1883), (59, 1997), (142, 2639), (149, 2741), (150, 2753), (158, 2810), (159, 2816),

Gene: Taquarus_4 Start: 1648, Stop: 2721, Start Num: 10

Candidate Starts for Taquarus_4:

(5, 1588), (Start: 10 @1648 has 335 MA's), (Start: 21 @1756 has 2 MA's), (30, 1852), (49, 1966), (147, 2614), (151, 2650), (158, 2707), (159, 2713),

Gene: Taurus_4 Start: 1681, Stop: 2625, Start Num: 10

Candidate Starts for Taurus_4:

(Start: 8 @1654 has 2 MA's), (Start: 10 @1681 has 335 MA's), (42, 1909), (131, 2539), (139, 2611), (140, 2617),

Gene: Texage_3 Start: 1633, Stop: 2760, Start Num: 10

Candidate Starts for Texage_3:

(4, 1570), (6, 1579), (Start: 10 @1633 has 335 MA's), (11, 1663), (17, 1720), (Start: 23 @1765 has 1 MA's), (42, 1906), (58, 2014), (82, 2302), (149, 2674), (151, 2692), (158, 2746), (159, 2752),

Gene: Thanksgivukkah_4 Start: 1646, Stop: 2719, Start Num: 10

Candidate Starts for Thanksgivukkah_4:

(5, 1586), (Start: 10 @1646 has 335 MA's), (Start: 21 @1754 has 2 MA's), (30, 1850), (49, 1964), (147, 2612), (151, 2648), (158, 2705), (159, 2711),

Gene: Tiffany_4 Start: 1682, Stop: 2896, Start Num: 10

Candidate Starts for Tiffany_4:

(Start: 8 @1655 has 2 MA's), (Start: 10 @1682 has 335 MA's), (42, 1910), (141, 2699), (149, 2810), (158, 2882), (159, 2888),

Gene: Tiger_4 Start: 2385, Stop: 3440, Start Num: 10

Candidate Starts for Tiger_4:

(9, 2373), (Start: 10 @2385 has 335 MA's), (Start: 21 @2496 has 2 MA's), (33, 2613), (37, 2661), (61, 2853), (63, 2901), (71, 3015), (72, 3018), (75, 3057), (78, 3099), (109, 3300), (122, 3363), (125, 3369), (129, 3432),

Gene: TinaFeyge_4 Start: 1645, Stop: 2718, Start Num: 10

Candidate Starts for TinaFeyge_4:

(5, 1585), (Start: 10 @1645 has 335 MA's), (Start: 21 @1753 has 2 MA's), (30, 1849), (49, 1963), (147, 2611), (151, 2647), (158, 2704), (159, 2710),

Gene: TinyPebbles_4 Start: 1682, Stop: 2716, Start Num: 10

Candidate Starts for TinyPebbles_4:

(Start: 8 @1655 has 2 MA's), (Start: 10 @1682 has 335 MA's), (42, 1910), (138, 2630), (143, 2702), (144, 2708),

Gene: Tinybot_3 Start: 1645, Stop: 2721, Start Num: 10

Candidate Starts for Tinybot_3:

(5, 1585), (Start: 10 @1645 has 335 MA's), (Start: 21 @1753 has 2 MA's), (30, 1849), (49, 1963), (149, 2632), (151, 2650), (158, 2707), (159, 2713),

Gene: TiroTheta9_4 Start: 1645, Stop: 2718, Start Num: 10

Candidate Starts for TiroTheta9_4:

(5, 1585), (Start: 10 @1645 has 335 MA's), (Start: 21 @1753 has 2 MA's), (30, 1849), (49, 1963), (147, 2611), (151, 2647), (158, 2704), (159, 2710),

Gene: Todacoro_4 Start: 1633, Stop: 2760, Start Num: 10

Candidate Starts for Todacoro_4:

(4, 1570), (6, 1579), (Start: 10 @1633 has 335 MA's), (11, 1663), (17, 1720), (Start: 23 @1765 has 1 MA's), (42, 1906), (58, 2014), (82, 2302), (149, 2674), (151, 2692), (158, 2746), (159, 2752),

Gene: Topanga_4 Start: 1711, Stop: 2889, Start Num: 10

Candidate Starts for Topanga_4:

(5, 1651), (Start: 10 @1711 has 335 MA's), (Start: 23 @1843 has 1 MA's), (25, 1876), (27, 1903), (66, 2218), (83, 2398), (115, 2533), (149, 2806), (151, 2824), (153, 2848), (158, 2875), (159, 2881),

Gene: Tristan_7 Start: 4145, Stop: 5074, Start Num: 26

Candidate Starts for Tristan_7:

(3, 3893), (Start: 10 @3974 has 335 MA's), (26, 4145), (29, 4175), (51, 4316), (56, 4349), (76, 4613), (158, 5060), (159, 5066),

Gene: Trixie_7 Start: 4278, Stop: 5228, Start Num: 10

Candidate Starts for Trixie_7:

(3, 4197), (Start: 10 @4278 has 335 MA's), (Start: 13 @4347 has 1 MA's), (40, 4560), (87, 4998), (91, 5019), (146, 5124), (150, 5157), (158, 5214), (159, 5220),

Gene: TroyPia_4 Start: 1645, Stop: 2718, Start Num: 10

Candidate Starts for TroyPia_4:

(5, 1585), (Start: 10 @1645 has 335 MA's), (Start: 21 @1753 has 2 MA's), (30, 1849), (49, 1963), (147, 2611), (151, 2647), (158, 2704), (159, 2710),

Gene: Tubs_7 Start: 4192, Stop: 5235, Start Num: 10

Candidate Starts for Tubs_7:

(Start: 10 @4192 has 335 MA's), (48, 4525), (149, 5152), (150, 5164), (158, 5221), (159, 5227),

Gene: Twister_4 Start: 1661, Stop: 2833, Start Num: 10

Candidate Starts for Twister_4:

(Start: 10 @1661 has 335 MA's), (25, 1826), (27, 1853), (28, 1856), (42, 1934), (65, 2153), (70, 2207), (83, 2342), (115, 2477), (149, 2750), (150, 2762), (151, 2768), (158, 2819), (159, 2825),

Gene: TygerBlood_4 Start: 1647, Stop: 2720, Start Num: 10

Candidate Starts for TygerBlood_4:

(5, 1587), (Start: 10 @1647 has 335 MA's), (Start: 21 @1755 has 2 MA's), (30, 1851), (49, 1965), (147, 2613), (151, 2649), (158, 2706), (159, 2712),

Gene: Ugenie5_5 Start: 4192, Stop: 5223, Start Num: 10

Candidate Starts for Ugenie5_5:

(Start: 10 @4192 has 335 MA's), (149, 5140), (150, 5152), (158, 5209), (159, 5215),

Gene: Ulysses_4 Start: 1646, Stop: 2719, Start Num: 10

Candidate Starts for Ulysses_4:

(5, 1586), (Start: 10 @1646 has 335 MA's), (Start: 21 @1754 has 2 MA's), (24, 1781), (30, 1850), (49, 1964), (151, 2648), (158, 2705), (159, 2711),

Gene: UnionJack_4 Start: 2352, Stop: 3407, Start Num: 10

Candidate Starts for UnionJack_4:

(9, 2340), (Start: 10 @2352 has 335 MA's), (Start: 21 @2463 has 2 MA's), (33, 2580), (37, 2628), (61, 2820), (63, 2868), (71, 2982), (72, 2985), (75, 3024), (78, 3066), (109, 3267), (122, 3330), (125, 3336), (129, 3399),

Gene: Veracruz_3 Start: 1633, Stop: 2760, Start Num: 10

Candidate Starts for Veracruz_3:

(4, 1570), (6, 1579), (Start: 10 @1633 has 335 MA's), (11, 1663), (17, 1720), (Start: 23 @1765 has 1 MA's), (42, 1906), (58, 2014), (82, 2302), (149, 2674), (151, 2692), (158, 2746), (159, 2752),

Gene: Vix_4 Start: 1681, Stop: 2715, Start Num: 10

Candidate Starts for Vix_4:

(Start: 8 @1654 has 2 MA's), (Start: 10 @1681 has 335 MA's), (42, 1909), (138, 2629), (143, 2701), (144, 2707),

Gene: WalterMcMickey_4 Start: 1661, Stop: 2833, Start Num: 10

Candidate Starts for WalterMcMickey_4:

(Start: 10 @1661 has 335 MA's), (25, 1826), (27, 1853), (28, 1856), (42, 1934), (65, 2153), (70, 2207), (83, 2342), (115, 2477), (149, 2750), (150, 2762), (151, 2768), (158, 2819), (159, 2825),

Gene: Wander_4 Start: 1645, Stop: 2718, Start Num: 10

Candidate Starts for Wander_4:

(5, 1585), (Start: 10 @1645 has 335 MA's), (Start: 21 @1753 has 2 MA's), (30, 1849), (49, 1963), (147, 2611), (151, 2647), (158, 2704), (159, 2710),

Gene: Watson_4 Start: 1681, Stop: 2886, Start Num: 10

Candidate Starts for Watson_4:

(Start: 8 @1654 has 2 MA's), (Start: 10 @1681 has 335 MA's), (42, 1909), (149, 2800), (158, 2872), (159, 2878),

Gene: WeiHuaDA_8 Start: 4411, Stop: 5442, Start Num: 10

Candidate Starts for WeiHuaDA_8:

(Start: 10 @4411 has 335 MA's), (Start: 13 @4480 has 1 MA's), (40, 4693), (87, 5131), (91, 5152), (150, 5371), (151, 5377), (158, 5428), (159, 5434),

Gene: Wilbur_4 Start: 1644, Stop: 2717, Start Num: 10

Candidate Starts for Wilbur_4:

(5, 1584), (Start: 10 @1644 has 335 MA's), (Start: 21 @1752 has 2 MA's), (30, 1848), (49, 1962), (147, 2610), (151, 2646), (158, 2703), (159, 2709),

Gene: Wile_4 Start: 1645, Stop: 2730, Start Num: 10

Candidate Starts for Wile_4:

(Start: 10 @1645 has 335 MA's), (Start: 21 @1753 has 2 MA's), (30, 1849), (49, 1963), (59, 2035), (151, 2659), (158, 2716), (159, 2722),

Gene: Wizard007_4 Start: 1647, Stop: 2720, Start Num: 10

Candidate Starts for Wizard007_4:

(5, 1587), (Start: 10 @1647 has 335 MA's), (Start: 21 @1755 has 2 MA's), (30, 1851), (49, 1965), (147, 2613), (151, 2649), (158, 2706), (159, 2712),

Gene: Wooldri_6 Start: 1681, Stop: 2805, Start Num: 10

Candidate Starts for Wooldri_6:

(Start: 8 @1654 has 2 MA's), (Start: 10 @1681 has 335 MA's), (42, 1909), (149, 2719), (158, 2791), (159, 2797),

Gene: Xena_4 Start: 1644, Stop: 2729, Start Num: 10

Candidate Starts for Xena_4:

(Start: 10 @1644 has 335 MA's), (Start: 21 @1752 has 2 MA's), (30, 1848), (49, 1962), (59, 2034), (151, 2658), (158, 2715), (159, 2721),

Gene: YoSam321_4 Start: 1645, Stop: 2718, Start Num: 10

Candidate Starts for YoSam321_4:

(5, 1585), (Start: 10 @1645 has 335 MA's), (Start: 21 @1753 has 2 MA's), (30, 1849), (49, 1963), (147, 2611), (151, 2647), (158, 2704), (159, 2710),

Gene: Zetzy_4 Start: 1683, Stop: 2717, Start Num: 10

Candidate Starts for Zetzy_4:

(Start: 8 @1656 has 2 MA's), (Start: 10 @1683 has 335 MA's), (42, 1911), (138, 2631), (143, 2703), (144, 2709),

Gene: Zimmer_7 Start: 4514, Stop: 5293, Start Num: 10

Candidate Starts for Zimmer_7:

(Start: 10 @4514 has 335 MA's), (11, 4544), (12, 4553), (16, 4595), (36, 4706), (112, 5279),