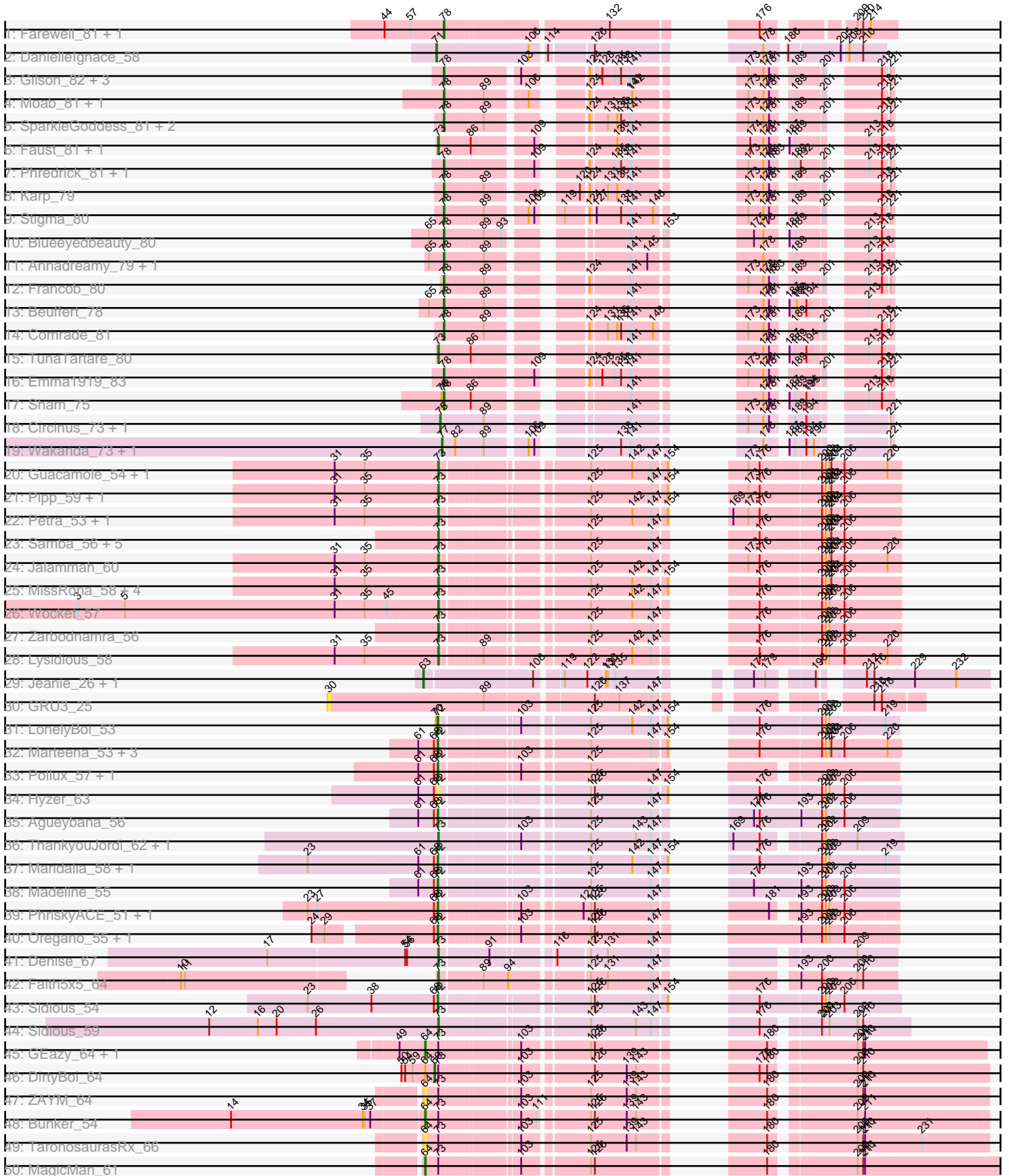
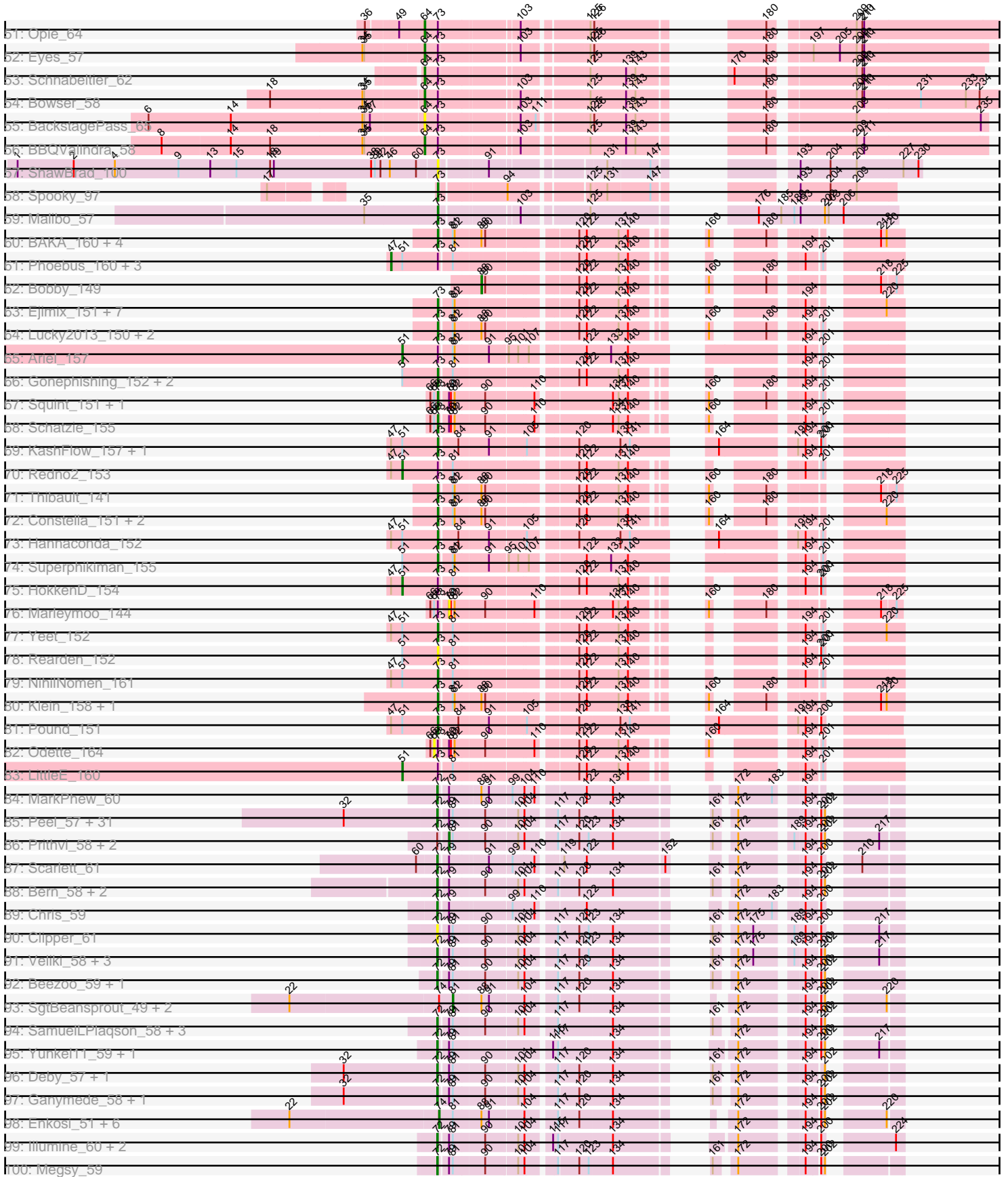


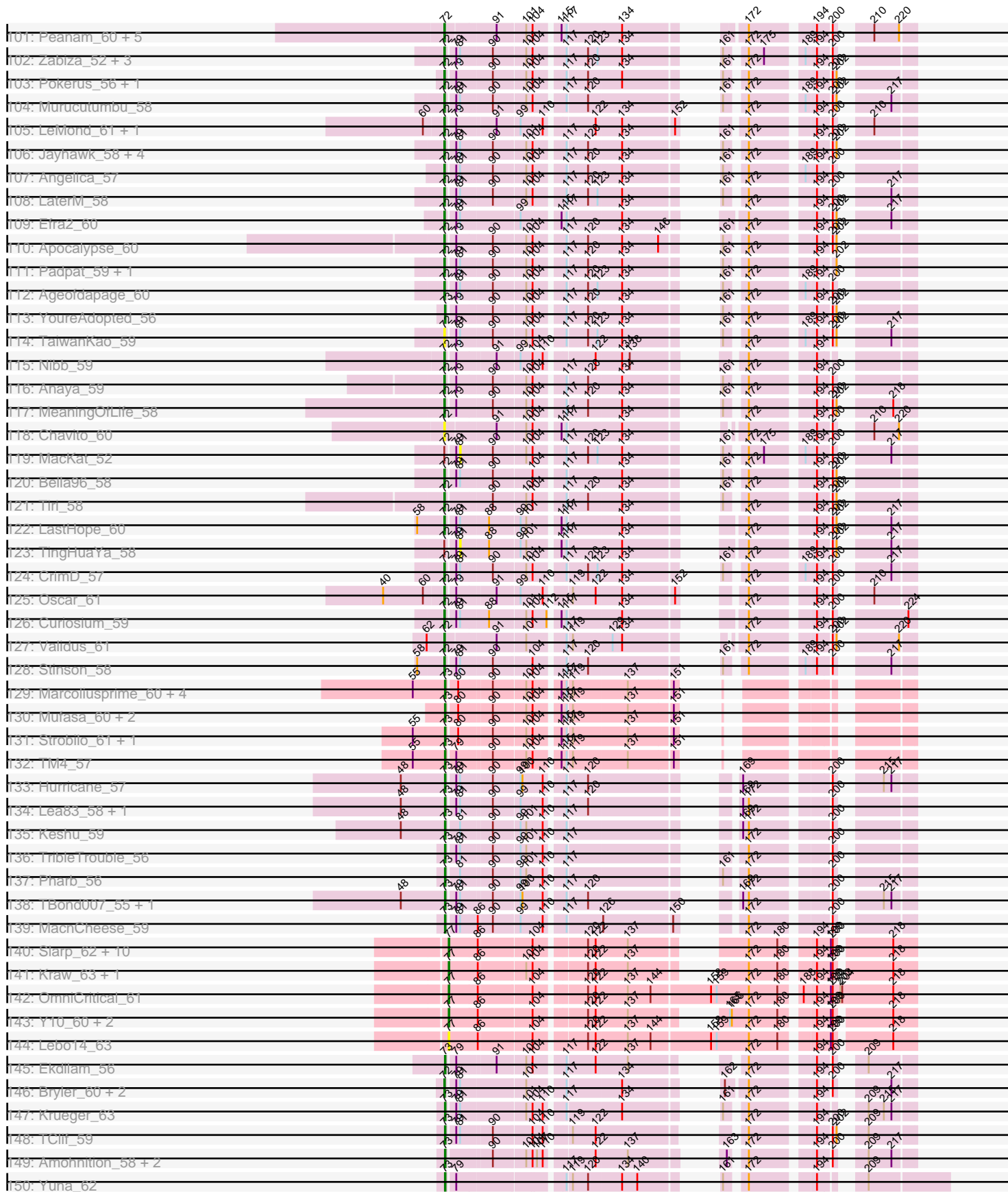
Pham 215728



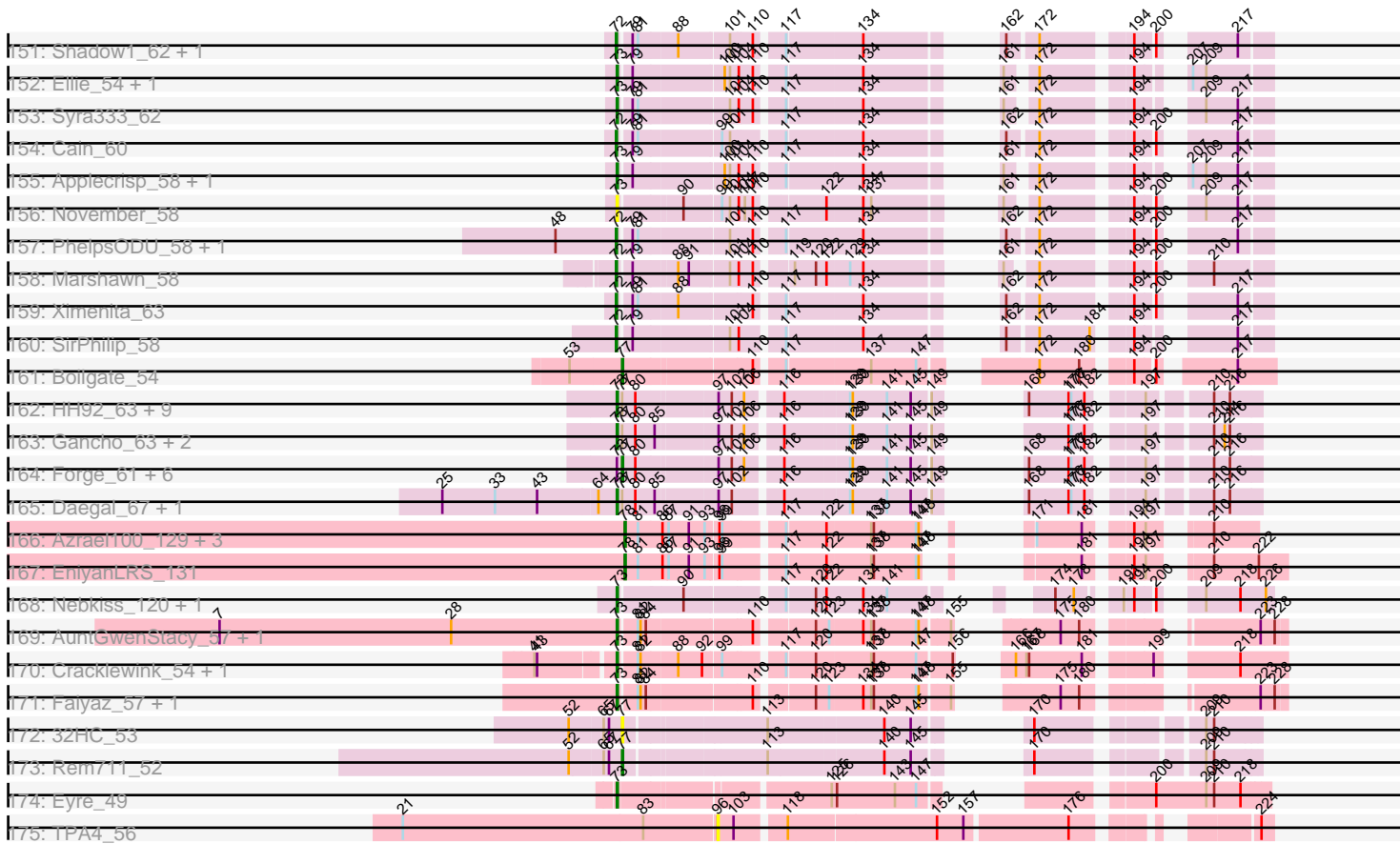
Pham 215728



Pham 215728



Pham 215728



Note: Tracks are now grouped by subcluster and scaled. Switching in subcluster is indicated by changes in track color. Track scale is now set by default to display the region 30 bp upstream of start 1 to 30 bp downstream of the last possible start. If this default region is judged to be packed too tightly with annotated starts, the track will be further scaled to only show that region of the ORF with annotated starts. This action will be indicated by adding "Zoomed" to the title. For starts, yellow indicates the location of called starts comprised solely of Glimmer/GeneMark auto-annotations, green indicates the location of called starts with at least 1 manual gene annotation.

Pham 215728 Report

This analysis was run 02/22/25 on database version 588.

Pham number 215728 has 357 members, 38 are drafts.

Phages represented in each track:

- Track 1 : Farewell_81, Sparky_80
- Track 2 : DanielleIgnace_58
- Track 3 : Gilson_82, Jada_82, Forrest_84, MeganTheeKilla_80
- Track 4 : Moab_81, Patelgo_81
- Track 5 : SparkleGoddess_81, Westy_79, Belfort_83
- Track 6 : Faust_81, SeresaTree_81
- Track 7 : Phredrick_81, Kenrey_83
- Track 8 : Karp_79
- Track 9 : Stigma_80
- Track 10 : Blueeyedbeauty_80
- Track 11 : Annadreamy_79, Limpid_78
- Track 12 : Francob_80
- Track 13 : Beuffert_78
- Track 14 : Comrade_81
- Track 15 : TunaTartare_80
- Track 16 : Emma1919_83
- Track 17 : Sham_75
- Track 18 : Circinus_73, BillNye_72
- Track 19 : Wakanda_73, Muntaha_74
- Track 20 : Guacamole_54, JasperJr_54
- Track 21 : Pipp_59, Walrus_55
- Track 22 : Petra_53, Fenry_55
- Track 23 : Samba_56, Barco_55, CaptainKirk2_57, MintFen_57, Hitter_57, Delian_60
- Track 24 : Jalammah_60
- Track 25 : MissRona_58, Blueberry_57, Gambino_60, Azula_58, Mellie_55
- Track 26 : Wocket_57
- Track 27 : Zarbodnamra_56
- Track 28 : Lysidious_58
- Track 29 : Jeanie_26, McGonagall_26
- Track 30 : GRU3_25
- Track 31 : LonelyBoi_53
- Track 32 : Marteena_53, BoyNamedSue_56, AlumE_56, EMSquaredA_54
- Track 33 : Pollux_57, Floral_55
- Track 34 : Hyzer_63
- Track 35 : Agueybana_56
- Track 36 : ThankyouJordi_62, WelcomeAyanna_62

- Track 37 : Maridalia_58, Bunnybear_50
- Track 38 : Madeline_55
- Track 39 : PhriskyACE_51, Powerball_52
- Track 40 : Oregano_55, Annalisa_52
- Track 41 : Denise_67
- Track 42 : Faith5x5_64
- Track 43 : Sidious_54
- Track 44 : Sidious_59
- Track 45 : GEazy_64, HannahD_61
- Track 46 : DirtyBoi_64
- Track 47 : ZAYM_64
- Track 48 : Bunker_54
- Track 49 : TaronosaurusRx_66
- Track 50 : MagicMan_61
- Track 51 : Opie_64
- Track 52 : Eyes_57
- Track 53 : Schnabeltier_62
- Track 54 : Bowser_58
- Track 55 : BackstagePass_65
- Track 56 : BBQValindra_58
- Track 57 : ShawBrad_100
- Track 58 : Spooky_97
- Track 59 : Malibo_57
- Track 60 : BAKA_160, Duke13_157, Bagrid_163, Optimus_151, Kalah2_151
- Track 61 : Phoebus_160, Bombitas_146, JuicyJay_154, Dove_146
- Track 62 : Bobby_149
- Track 63 : Ejimix_151, DmpstrDiver_159, Zelink_153, Dallas_159, Beem_160, Wanda_158, Halley_160, Minerva_158
- Track 64 : Lucky2013_150, Porcelain_154, MiaZeal_157
- Track 65 : Ariel_157
- Track 66 : Gonephishing_152, Nekros_156, ThreeRngTarjay_155
- Track 67 : Squint_151, Courthouse_154
- Track 68 : Schatzie_155
- Track 69 : KashFlow_157, Shaboozey_155
- Track 70 : Redno2_153
- Track 71 : Thibault_141
- Track 72 : Constella_151, Omega_164, EricMillard_153
- Track 73 : Hannaconda_152
- Track 74 : Superphikiman_155
- Track 75 : HokkenD_154
- Track 76 : Marleymoo_144
- Track 77 : Yeet_152
- Track 78 : Rearden_152
- Track 79 : NihilNomen_161
- Track 80 : Klein_158, Hughesyang_159
- Track 81 : Pound_151
- Track 82 : Odette_164
- Track 83 : LittleE_160
- Track 84 : MarkPhew_60
- Track 85 : Peel_57, CREW_57, Jeckyll_57, Atiba_58, Capricorn_57, Durfee_57, Tachez_57, Piatt_57, Jarvi_57, Rosmarinus_57, BGIlluviae_57, AlishaPH_57, Inky_57, Lunahalos_57, CallaLilly_59, Adephagia_57, Llorens_57, Padfoot_57, CaseJules_59, Boiiii_57, Hyperbowlee_57, BEEST_57, Spock_57, Twitch_57,

Topper_57, Dalmuri_57, Asayake_57, Joy99_57, Blizzard_57, Belladonna_57, Homura_57, ShiaSurprise_58

- Track 86 : Prithvi_58, LindNT_56, TreyKay_58
- Track 87 : Scarlett_61
- Track 88 : Bern_58, BaghaKamala_56, CheetoDust_56
- Track 89 : Chris_59
- Track 90 : Clipper_61
- Track 91 : Veliki_58, Mynx_58, Zavala_59, JAWS_57
- Track 92 : Beezoo_59, Sulley_57
- Track 93 : SgtBeansprout_49, Mdavu_50, Nikao_52
- Track 94 : SamuelLPlaqson_58, TiniBug_58, DrHayes_58, Urkel_58
- Track 95 : Yunkel11_59, Guanica15_59
- Track 96 : Deby_57, Adonis_57
- Track 97 : Ganymede_58, QuincyRose_56
- Track 98 : Enkosi_51, Teejan_51, Nutello_49, Amelie_49, LilPharaoh_49, Torres_51, Binglebops_49
- Track 99 : Illumine_60, Devera_62, Dole_60
- Track 100 : Megsy_59
- Track 101 : Peanam_60, Dartin_60, Shaobing_60, Richo_60, McMater_60, Niklas_60
- Track 102 : Zabiza_52, Ramen_58, ActinUp_57, HedwigODU_57
- Track 103 : Pokerus_56, Geraldini_60
- Track 104 : Murucutumbu_58
- Track 105 : LeMond_61, KiSi_61
- Track 106 : Jayhawk_58, Rapunzel97_58, Slimphazie_57, BarrelRoll_57, TruffulaTree_57
- Track 107 : Angelica_57
- Track 108 : LaterM_58
- Track 109 : Efra2_60
- Track 110 : Apocalypse_60
- Track 111 : Padpat_59, Emerson_58
- Track 112 : Ageofdapage_60
- Track 113 : YoureAdopted_56
- Track 114 : TaiwanKao_59
- Track 115 : Nibb_59
- Track 116 : Anaya_59
- Track 117 : MeaningOfLife_58
- Track 118 : Chavito_60
- Track 119 : MacKat_52
- Track 120 : Bella96_58
- Track 121 : Tiri_58
- Track 122 : LastHope_60
- Track 123 : TingHuaYa_58
- Track 124 : CrimD_57
- Track 125 : Oscar_61
- Track 126 : Curiosium_59
- Track 127 : Validus_61
- Track 128 : Stinson_58
- Track 129 : Marcoliusprime_60, Milly_60, ZoeJ_59, DismalFunk_60, DismalStressor_60
- Track 130 : Mufasa_60, BoostSeason_60, Doughnut_61
- Track 131 : Strobilo_61, Findley_60
- Track 132 : TM4_57

- Track 133 : Hurricane_57
- Track 134 : Lea83_58, ShedlockHolmes_58
- Track 135 : Keshu_59
- Track 136 : TripleTrouble_56
- Track 137 : Pharb_56
- Track 138 : TBond007_55, Pixie_56
- Track 139 : MacnCheese_59
- Track 140 : Slarp_62, Mitti_62, Juliette_64, Chancellor_62, Cheetobro_62, Ruthiejr_63, Taquito_61, Wintermute_62, SamScheppers_60, Eponine_64, Fionnbharth_62
- Track 141 : Kraw_63, Malthus_63
- Track 142 : OmniCritical_61
- Track 143 : Y10_60, Y2_60, JF1_62
- Track 144 : Lebo14_63
- Track 145 : Ekdilam_56
- Track 146 : Bryler_60, Tierra_60, Phrank_60
- Track 147 : Krueger_63
- Track 148 : TClif_59
- Track 149 : Amohntion_58, Hammy_58, DARTH_P_58
- Track 150 : Yuna_62
- Track 151 : Shadow1_62, Sunflower1121_63
- Track 152 : Ellie_54, Amgine_57
- Track 153 : Syra333_62
- Track 154 : Cain_60
- Track 155 : Applecrisp_58, Fefferhead_56
- Track 156 : November_58
- Track 157 : PhelpsODU_58, Unicorn_58
- Track 158 : Marshawn_58
- Track 159 : Ximenita_63
- Track 160 : SirPhilip_58
- Track 161 : Boilgate_54
- Track 162 : HH92_63, Webster2_64, LilHazelNut_64, Giles_61, Evanesce_63, Ein37_64, Kinbote_63, Dewey_61, Hadrien_63, DeepSoil15_64
- Track 163 : Gancho_63, OBUpride_64, Gravaillia_62
- Track 164 : Forge_61, Hail_61, Wishmaker_61, Ubuntu_64, Luna22_61, Luke_63, Amymech_64
- Track 165 : Daegal_67, Amochick_65
- Track 166 : Azrael100_129, Cosmo_137, Wildcat_136, MaryV_122
- Track 167 : EniyanLRS_131
- Track 168 : Nebkiss_120, Gaia_119
- Track 169 : AuntGwenStacy_57, Typha_56
- Track 170 : Cracklewink_54, Bipper_54
- Track 171 : Faiyaz_57, Hilltopfarm_56
- Track 172 : 32HC_53
- Track 173 : Rem711_52
- Track 174 : Eyre_49
- Track 175 : TPA4_56

Summary of Final Annotations (See graph section above for start numbers):

The start number called the most often in the published annotations is 72, it was called in 117 of the 319 non-draft genes in the pham.

Genes that call this "Most Annotated" start:

- ActinUp_57, Adephagia_57, Adonis_57, Ageofdapage_60, Agueybana_56, AlishaPH_57, AlumE_56, Anaya_59, Angelica_57, Annalisa_52, Apocalypse_60, Asayake_57, Atiba_58, BEEST_57, BGIlluviae_57, BaghaKamala_56, BarrelRoll_57, Beezoo_59, Bella96_58, Belladonna_57, Bern_58, Blizzard_57, Boiiii_57, BoyNamedSue_56, Bryler_60, Bunnybear_50, CREW_57, Cain_60, CallaLilly_59, Capricorn_57, CaseJules_59, Chavito_60, CheetoDust_56, Chris_59, Clipper_61, CrimD_57, Curiosium_59, Dalmuri_57, Dartin_60, Deby_57, Devera_62, Dole_60, DrHayes_58, Durfee_57, EMSquaredA_54, Efra2_60, Emerson_58, Floral_55, Ganymede_58, Geraldini_60, Guanica15_59, HedwigODU_57, Homura_57, Hyperbowlee_57, Hyzer_63, Illumine_60, Inky_57, JAWS_57, Jarvi_57, Jayhawk_58, Jeckyll_57, Joy99_57, KiSi_61, LastHope_60, LaterM_58, LeMond_61, Llorens_57, LonelyBoi_53, Lunahalos_57, Madeline_55, Maridalia_58, MarkPhew_60, Marshawn_58, Marteenaa_53, McMater_60, MeaningOfLife_58, Megsy_59, Murucutumbu_58, Mynx_58, Nibb_59, Niklas_60, Oregano_55, Oscar_61, Padfoot_57, Padpat_59, Peanam_60, Peel_57, PhelpsODU_58, Phrank_60, PhriskyACE_51, Piatt_57, Pokerus_56, Pollux_57, Powerball_52, QuincyRose_56, Ramen_58, Rapunzel97_58, Richo_60, Rosmarinus_57, SamuelLPlaqson_58, Scarlett_61, Shadow1_62, Shaobing_60, ShiaSurprise_58, Sidious_54, SirPhilip_58, Slimphazie_57, Spock_57, Stinson_58, Sulley_57, Sunflower1121_63, Tachez_57, TaiwanKao_59, Tierra_60, TiniBug_58, Tiri_58, Topper_57, TruffulaTree_57, Twitch_57, Unicorn_58, Urkel_58, Validus_61, Veliki_58, Ximenita_63, Yunkel11_59, Zabiza_52, Zavala_59,

Genes that have the "Most Annotated" start but do not call it:

- LindNT_56, MacKat_52, Prithvi_58, TingHuaYa_58, TreyKay_58,

Genes that do not have the "Most Annotated" start:

- 32HC_53, Amelie_49, Amgine_57, Amochick_65, Amohnition_58, Amymech_64, Annadreamy_79, Applecrisp_58, Ariel_157, AuntGwenStacy_57, Azrael100_129, Azula_58, BAKA_160, BBQValindra_58, BackstagePass_65, Bagrid_163, Barco_55, Beem_160, Belfort_83, Beuffert_78, Binglebops_49, BillNye_72, Bipper_54, Blueberry_57, Blueeyedbeauty_80, Bobby_149, Boilgate_54, Bombitas_146, BoostSeason_60, Bowser_58, Bunker_54, CaptainKirk2_57, Chancellor_62, Cheetobro_62, Circinus_73, Comrade_81, Constella_151, Cosmo_137, Courthouse_154, Cracklewink_54, Daegal_67, Dallas_159, DanielleIgnace_58, DarthP_58, DeepSoil15_64, Delian_60, Denise_67, Dewey_61, DirtyBoi_64, DismalFunk_60, DismalStressor_60, DmpstrDiver_159, Doughnut_61, Dove_146, Duke13_157, Ein37_64, Ejimix_151, Ekdilam_56, Ellie_54, Emma1919_83, EniyanLRS_131, Enkosi_51, Eponine_64, EricMillard_153, Evanesce_63, Eyes_57, Eyre_49, Faith5x5_64, Faiyaz_57, Farewell_81, Faust_81, Fefferhead_56, Fenry_55, Findley_60, Fionnbharth_62, Forge_61, Forrest_84, Francob_80, GEazy_64, GRU3_25, Gaia_119, Gambino_60, Gancho_63, Giles_61, Gilson_82, Gonephishing_152, Gravaiilia_62, Guacamole_54, HH92_63, Hadrien_63, Hail_61, Halley_160, Hammy_58, Hannaconda_152, HannahD_61, Hilltopfarm_56, Hitter_57, HokkenD_154, Hughesyang_159, Hurricane_57, JF1_62, Jada_82, Jalammah_60, JasperJr_54, Jeanie_26, JuicyJay_154, Juliette_64, Kalah2_151, Karp_79, KashFlow_157, Kenrey_83, Keshu_59, Kinbote_63, Klein_158, Kraw_63, Krueger_63, Lea83_58, Lebo14_63, LilHazelNut_64, LilPharaoh_49, Limpid_78, LittleE_160, Lucky2013_150, Luke_63, Luna22_61, Lysidious_58, MacnCheese_59,

MagicMan_61, Malibo_57, Malthus_63, Marcoliusprime_60, Marleymoo_144, MaryV_122, McGonagall_26, Mdavu_50, MeganTheeKilla_80, Mellie_55, MiaZeal_157, Milly_60, Minerva_158, MintFen_57, MissRona_58, Mitti_62, Moab_81, Mufasa_60, Muntaha_74, Nebkiss_120, Nekros_156, NihilNomen_161, Nikao_52, November_58, Nutello_49, OBUpride_64, Odette_164, Omega_164, OmniCritical_61, Opie_64, Optimus_151, Patelgo_81, Petra_53, Pharb_56, Phoebus_160, Phredrick_81, Pipp_59, Pixie_56, Porcelain_154, Pound_151, Rearden_152, Redno2_153, Rem711_52, Ruthiejr_63, SamScheppers_60, Samba_56, Schatzie_155, Schnabeltier_62, SeresaTree_81, SgtBeansprout_49, Shaboozey_155, Sham_75, ShawBrad_100, ShedlockHolmes_58, Sidious_59, Slarp_62, SparkleGoddess_81, Sparky_80, Spooky_97, Squint_151, Stigma_80, Strobilo_61, Superphikiman_155, Syra333_62, TBond007_55, TClif_59, TM4_57, TPA4_56, Taquito_61, TaronosaurusRx_66, Teejan_51, ThankyouJordi_62, Thibault_141, ThreeRngTarjay_155, Torres_51, TribbleTrouble_56, TunaTartare_80, Typha_56, Ubuntu_64, Wakanda_73, Walrus_55, Wanda_158, Webster2_64, WelcomeAyanna_62, Westy_79, Wildcat_136, Wintermute_62, Wishmaker_61, Wocket_57, Y10_60, Y2_60, Yeet_152, YoureAdopted_56, Yuna_62, ZAYM_64, Zarbodnamra_56, Zelink_153, ZoeJ_59,

Summary by start number:

Start 30:

- Found in 1 of 357 (0.3%) of genes in pham
- No Manual Annotations of this start.
- Called 100.0% of time when present
- Phage (with cluster) where this start called: GRU3_25 (CW2),

Start 47:

- Found in 12 of 357 (3.4%) of genes in pham
- Manual Annotations of this start: 4 of 319
- Called 33.3% of time when present
- Phage (with cluster) where this start called: Bombitas_146 (J), Dove_146 (J), JuicyJay_154 (J), Phoebus_160 (J),

Start 51:

- Found in 19 of 357 (5.3%) of genes in pham
- Manual Annotations of this start: 4 of 319
- Called 21.1% of time when present
- Phage (with cluster) where this start called: Ariel_157 (J), HokkenD_154 (J), LittleE_160 (J), Redno2_153 (J),

Start 63:

- Found in 2 of 357 (0.6%) of genes in pham
- Manual Annotations of this start: 2 of 319
- Called 100.0% of time when present
- Phage (with cluster) where this start called: Jeanie_26 (CW1), McGonagall_26 (CW1),

Start 64:

- Found in 15 of 357 (4.2%) of genes in pham
- Manual Annotations of this start: 9 of 319
- Called 80.0% of time when present

- Phage (with cluster) where this start called: BBQValindra_58 (DB), BackstagePass_65 (DB), Bowser_58 (DB), Bunker_54 (DB), Eyes_57 (DB), GEazy_64 (DB), HannahD_61 (DB), MagicMan_61 (DB), Opie_64 (DB), Schnabeltier_62 (DB), TaronosaurusRx_66 (DB), ZAYM_64 (DB),

Start 69:

- Found in 6 of 357 (1.7%) of genes in pham
- Manual Annotations of this start: 1 of 319
- Called 33.3% of time when present
- Phage (with cluster) where this start called: DirtyBoi_64 (DB), Odette_164 (J),

Start 71:

- Found in 1 of 357 (0.3%) of genes in pham
- Manual Annotations of this start: 1 of 319
- Called 100.0% of time when present
- Phage (with cluster) where this start called: DanielleIgnace_58 (AT),

Start 72:

- Found in 132 of 357 (37.0%) of genes in pham
- Manual Annotations of this start: 117 of 319
- Called 96.2% of time when present
- Phage (with cluster) where this start called: ActinUp_57 (K1), Adephagia_57 (K1), Adonis_57 (K1), Ageofdapage_60 (K1), Agueybana_56 (CZ1), AlishaPH_57 (K1), AlumE_56 (CZ1), Anaya_59 (K1), Angelica_57 (K1), Annalisa_52 (CZ4), Apocalypse_60 (K1), Asayake_57 (K1), Atiba_58 (K1), BEEST_57 (K1), BGIlluviae_57 (K1), BaghaKamala_56 (K1), BarrelRoll_57 (K1), Beezoo_59 (K1), Bella96_58 (K1), Belladonna_57 (K1), Bern_58 (K1), Blizzard_57 (K1), Boiiii_57 (K1), BoyNamedSue_56 (CZ1), Bryler_60 (K6), Bunnybear_50 (CZ), CREW_57 (K1), Cain_60 (K6), CallaLilly_59 (K1), Capricorn_57 (K1), CaseJules_59 (K1), Chavito_60 (K1), CheetoDust_56 (K1), Chris_59 (K1), Clipper_61 (K1), CrimD_57 (K1), Curiosium_59 (K1), Dalmuri_57 (K1), Dartin_60 (K1), Deby_57 (K1), Devera_62 (K1), Dole_60 (K1), DrHayes_58 (K1), Durfee_57 (K1), EMSquaredA_54 (CY1), Efra2_60 (K1), Emerson_58 (K1), Floral_55 (CY1), Ganymede_58 (K1), Geraldini_60 (K1), Guanica15_59 (K1), HedwigODU_57 (K1), Homura_57 (K1), Hyperbowlee_57 (K1), Hyzer_63 (CZ1), Illumine_60 (K1), Inky_57 (K1), JAWS_57 (K1), Jarvi_57 (K1), Jayhawk_58 (K1), Jeckyll_57 (K1), Joy99_57 (K1), KiSi_61 (K1), LastHope_60 (K1), LaterM_58 (K1), LeMond_61 (K1), Llorens_57 (K1), LonelyBoi_53 (CY), Lunahalos_57 (K1), Madeline_55 (CZ1), Maridalia_58 (CZ1), MarkPhew_60 (K1), Marshawn_58 (K6), Marteena_53 (CY1), McMater_60 (K1), MeaningOfLife_58 (K1), Megsy_59 (K1), Murucutumbu_58 (K1), Mynx_58 (K1), Nibb_59 (K1), Niklas_60 (K1), Oregano_55 (CZ4), Oscar_61 (K1), Padfoot_57 (K1), Padpat_59 (K1), Peanam_60 (K1), Peel_57 (K1), PhelpsODU_58 (K6), Phrank_60 (K6), PhriskyACE_51 (CZ4), Piatt_57 (K1), Pokerus_56 (K1), Pollux_57 (CY1), Powerball_52 (CZ4), QuincyRose_56 (K1), Ramen_58 (K1), Rapunzel97_58 (K1), Richo_60 (K1), Rosmarinus_57 (K1), SamuelLPlaqson_58 (K1), Scarlett_61 (K1), Shadow1_62 (K6), Shaobing_60 (K1), ShiaSurprise_58 (K1), Sidious_54 (CZ7), SirPhilip_58 (K6), Slimphazie_57 (K1), Spock_57 (K1), Stinson_58 (K1), Sulley_57 (K1), Sunflower1121_63 (K6), Tachez_57 (K1), TaiwanKao_59 (K1), Tierra_60 (K6), TiniBug_58 (K1), Tiri_58 (K1), Topper_57 (K1), TruffulaTree_57 (K1), Twitch_57 (K1), Unicorn_58 (K6), Urkel_58 (K1), Validus_61 (K1), Veliki_58 (K1), Ximenita_63 (K6), Yunkel11_59 (K1), Zabiza_52 (K1), Zavala_59 (K1),

Start 73:

- Found in 156 of 357 (43.7%) of genes in pham
- Manual Annotations of this start: 113 of 319
- Called 80.8% of time when present
- Phage (with cluster) where this start called: Amgine_57 (K6), Amochick_65 (Q), Amohnition_58 (K6), Applecrisp_58 (K6), AuntGwenStacy_57 (Y), Azula_58 (CV), BAKA_160 (J), Bagrid_163 (J), Barco_55 (CV), Beem_160 (J), Bipper_54 (Y), Blueberry_57 (CV), BoostSeason_60 (K2), CaptainKirk2_57 (CV), Constella_151 (J), Courthouse_154 (J), Cracklewink_54 (Y), Daegal_67 (Q), Dallas_159 (J), DarthP_58 (K6), DeepSoil15_64 (Q), Delian_60 (CV), Denise_67 (CZ5), Dewey_61 (Q), DismalFunk_60 (K2), DismalStressor_60 (K2), DmpstrDiver_159 (J), Doughnut_61 (K2), Duke13_157 (J), Ein37_64 (Q), Ejimix_151 (J), Ekdilam_56 (K6), Ellie_54 (K6), EricMillard_153 (J), Evanesce_63 (Q), Eyre_49 (singleton), Faith5x5_64 (CZ6), Faiyaz_57 (Y), Faust_81 (BK1), Fefferhead_56 (K6), Fenry_55 (CV), Findley_60 (K2), Gaia_119 (X), Gambino_60 (CV), Gancho_63 (Q), Giles_61 (Q), Gonephishing_152 (J), Gravaillia_62 (Q), Guacamole_54 (CV), HH92_63 (Q), Hadrien_63 (Q), Halley_160 (J), Hammy_58 (K6), Hannaconda_152 (J), Hilltopfarm_56 (Y), Hitter_57 (CV), Hughesyang_159 (J), Hurricane_57 (K3), Jalammah_60 (CV), JasperJr_54 (CV), Kalah2_151 (J), KashFlow_157 (J), Keshu_59 (K3), Kinbote_63 (Q), Klein_158 (J), Krueger_63 (K6), Lea83_58 (K3), LilHazelNut_64 (Q), Lucky2013_150 (J), Lysidious_58 (CV), MacnCheese_59 (K3), Malibo_57 (DW), Marcoliusprime_60 (K2), Mellie_55 (CV), MiaZeal_157 (J), Milly_60 (K2), Minerva_158 (J), MintFen_57 (CV), MissRona_58 (CV), Mufasa_60 (K2), Nebkiss_120 (X), Nekros_156 (J), NihilNomen_161 (J), November_58 (K6), OBUpride_64 (Q), Omega_164 (J), Optimus_151 (J), Petra_53 (CV), Pharb_56 (K3), Pipp_59 (CV), Pixie_56 (K3), Porcelain_154 (J), Pound_151 (J), Rearden_152 (J), Samba_56 (CV), Schatzie_155 (J), SeresaTree_81 (BK1), Shaboozey_155 (J), ShawBrad_100 (DN1), ShedlockHolmes_58 (K3), Sidious_59 (CZ7), Spooky_97 (DN2), Squint_151 (J), Strobilo_61 (K2), Superphikiman_155 (J), Syra333_62 (K6), TBond007_55 (K3), TClif_59 (K6), TM4_57 (K2), ThankyouJordi_62 (CZ1), Thibault_141 (J), ThreeRngTarjay_155 (J), TribbleTrouble_56 (K3), TunaTartare_80 (BK1), Typha_56 (Y), Walrus_55 (CV), Wanda_158 (J), Webster2_64 (Q), WelcomeAyanna_62 (CZ1), Wocket_57 (CV), Yeet_152 (J), YoureAdopted_56 (K1), Yuna_62 (K6), Zarbodnamra_56 (CV), Zelink_153 (J), ZoeJ_59 (K2),

Start 74:

- Found in 10 of 357 (2.8%) of genes in pham
- Manual Annotations of this start: 5 of 319
- Called 70.0% of time when present
- Phage (with cluster) where this start called: Amelie_49 (K1), Binglebops_49 (K1), Enkosi_51 (K1), LilPharaoh_49 (K1), Nutello_49 (K1), Teejan_51 (K1), Torres_51 (K1),

Start 75:

- Found in 2 of 357 (0.6%) of genes in pham
- Manual Annotations of this start: 2 of 319
- Called 100.0% of time when present
- Phage (with cluster) where this start called: BillNye_72 (BK2), Circinus_73 (BK2),

Start 77:

- Found in 45 of 357 (12.6%) of genes in pham
- Manual Annotations of this start: 27 of 319
- Called 66.7% of time when present

- Phage (with cluster) where this start called: 32HC_53 (Z), Amymech_64 (Q), Boilgate_54 (K8), Chancellor_62 (K4), Cheetobro_62 (K4), Eponine_64 (K4), Fionnbharth_62 (K4), Forge_61 (Q), Hail_61 (Q), JF1_62 (K4), Juliette_64 (K4), Kraw_63 (K4), Lebo14_63 (K4), Luke_63 (Q), Luna22_61 (Q), Malthus_63 (K4), Mitti_62 (K4), Muntaha_74 (BK2), OmniCritical_61 (K4), Rem711_52 (Z), Ruthiejr_63 (K4), SamScheppers_60 (K4), Slarp_62 (K4), Taquito_61 (K4), Ubuntu_64 (Q), Wakanda_73 (BK2), Wintermute_62 (K4), Wishmaker_61 (Q), Y10_60 (K4), Y2_60 (K4),

Start 78:

- Found in 28 of 357 (7.8%) of genes in pham
- Manual Annotations of this start: 27 of 319
- Called 100.0% of time when present
- Phage (with cluster) where this start called: Annadreamy_79 (BK1), Azrael100_129 (V), Belfort_83 (BK1), Beuffert_78 (BK1), Blueeyedbeauty_80 (BK1), Comrade_81 (BK1), Cosmo_137 (V), Emma1919_83 (BK1), EniyanLRS_131 (V), Farewell_81 (AF), Forrest_84 (BK1), Francob_80 (BK1), Gilson_82 (BK1), Jada_82 (BK1), Karp_79 (BK1), Kenrey_83 (BK1), Limpid_78 (BK1), MaryV_122 (V), MeganTheeKilla_80 (BK1), Moab_81 (BK1), Patelgo_81 (BK1), Phredrick_81 (BK1), Sham_75 (BK1), SparkleGoddess_81 (BK1), Sparky_80 (AF), Stigma_80 (BK1), Westy_79 (BK1), Wildcat_136 (V),

Start 79:

- Found in 129 of 357 (36.1%) of genes in pham
- Manual Annotations of this start: 3 of 319
- Called 3.1% of time when present
- Phage (with cluster) where this start called: LindNT_56 (K1), Marleymoo_144 (J), Prithvi_58 (K1), TreyKay_58 (K1),

Start 81:

- Found in 159 of 357 (44.5%) of genes in pham
- Manual Annotations of this start: 3 of 319
- Called 3.1% of time when present
- Phage (with cluster) where this start called: MacKat_52 (K1), Mdavu_50 (K1), Nikao_52 (K1), SgtBeansprout_49 (K1), TingHuaYa_58 (K1),

Start 88:

- Found in 35 of 357 (9.8%) of genes in pham
- Manual Annotations of this start: 1 of 319
- Called 2.9% of time when present
- Phage (with cluster) where this start called: Bobby_149 (J),

Start 96:

- Found in 1 of 357 (0.3%) of genes in pham
- No Manual Annotations of this start.
- Called 100.0% of time when present
- Phage (with cluster) where this start called: TPA4_56 (singleton),

Summary by clusters:

There are 32 clusters represented in this pham: singleton, CZ1, CZ6, CZ7, CZ4, CZ5, K3, K2, K1, K6, K4, DW, K8, CW1, CW2, DN1, DN2, CY1, AF, DB, J, Q, CZ, CY, BK1, BK2, V, Y, X, Z, CV, AT,

Info for manual annotations of cluster AF:

- Start number 78 was manually annotated 2 times for cluster AF.

Info for manual annotations of cluster AT:

- Start number 71 was manually annotated 1 time for cluster AT.

Info for manual annotations of cluster BK1:

- Start number 73 was manually annotated 2 times for cluster BK1.
- Start number 78 was manually annotated 20 times for cluster BK1.

Info for manual annotations of cluster BK2:

- Start number 75 was manually annotated 2 times for cluster BK2.
- Start number 77 was manually annotated 2 times for cluster BK2.

Info for manual annotations of cluster CV:

- Start number 73 was manually annotated 21 times for cluster CV.

Info for manual annotations of cluster CW1:

- Start number 63 was manually annotated 2 times for cluster CW1.

Info for manual annotations of cluster CY:

- Start number 72 was manually annotated 1 time for cluster CY.

Info for manual annotations of cluster CY1:

- Start number 72 was manually annotated 4 times for cluster CY1.

Info for manual annotations of cluster CZ:

- Start number 72 was manually annotated 1 time for cluster CZ.

Info for manual annotations of cluster CZ1:

- Start number 72 was manually annotated 5 times for cluster CZ1.
- Start number 73 was manually annotated 2 times for cluster CZ1.

Info for manual annotations of cluster CZ4:

- Start number 72 was manually annotated 3 times for cluster CZ4.

Info for manual annotations of cluster CZ5:

- Start number 73 was manually annotated 1 time for cluster CZ5.

Info for manual annotations of cluster CZ6:

- Start number 73 was manually annotated 1 time for cluster CZ6.

Info for manual annotations of cluster CZ7:

- Start number 72 was manually annotated 1 time for cluster CZ7.
- Start number 73 was manually annotated 1 time for cluster CZ7.

Info for manual annotations of cluster DB:

- Start number 64 was manually annotated 9 times for cluster DB.
- Start number 69 was manually annotated 1 time for cluster DB.

Info for manual annotations of cluster DN2:

- Start number 73 was manually annotated 1 time for cluster DN2.

Info for manual annotations of cluster DW:

- Start number 73 was manually annotated 1 time for cluster DW.

Info for manual annotations of cluster J:

- Start number 47 was manually annotated 4 times for cluster J.
- Start number 51 was manually annotated 4 times for cluster J.
- Start number 73 was manually annotated 31 times for cluster J.
- Start number 88 was manually annotated 1 time for cluster J.

Info for manual annotations of cluster K1:

- Start number 72 was manually annotated 91 times for cluster K1.
- Start number 73 was manually annotated 1 time for cluster K1.
- Start number 74 was manually annotated 5 times for cluster K1.
- Start number 79 was manually annotated 3 times for cluster K1.
- Start number 81 was manually annotated 3 times for cluster K1.

Info for manual annotations of cluster K2:

- Start number 73 was manually annotated 10 times for cluster K2.

Info for manual annotations of cluster K3:

- Start number 73 was manually annotated 8 times for cluster K3.

Info for manual annotations of cluster K4:

- Start number 77 was manually annotated 16 times for cluster K4.

Info for manual annotations of cluster K6:

- Start number 72 was manually annotated 11 times for cluster K6.
- Start number 73 was manually annotated 11 times for cluster K6.

Info for manual annotations of cluster K8:

- Start number 77 was manually annotated 1 time for cluster K8.

Info for manual annotations of cluster Q:

- Start number 73 was manually annotated 15 times for cluster Q.
- Start number 77 was manually annotated 7 times for cluster Q.

Info for manual annotations of cluster V:

- Start number 78 was manually annotated 5 times for cluster V.

Info for manual annotations of cluster X:

- Start number 73 was manually annotated 2 times for cluster X.

Info for manual annotations of cluster Y:

- Start number 73 was manually annotated 4 times for cluster Y.

Info for manual annotations of cluster Z:

- Start number 77 was manually annotated 1 time for cluster Z.

Gene Information:

Gene: 32HC_53 Start: 36136, Stop: 36690, Start Num: 77

Candidate Starts for 32HC_53:

(52, 36082), (65, 36118), (67, 36124), (Start: 77 @36136 has 27 MA's), (113, 36283), (140, 36409), (145, 36439), (170, 36478), (209, 36631), (210, 36640),

Gene: ActinUp_57 Start: 39985, Stop: 40539, Start Num: 72

Candidate Starts for ActinUp_57:

(Start: 72 @39985 has 117 MA's), (Start: 79 @39997 has 3 MA's), (Start: 81 @40003 has 3 MA's), (90, 40051), (101, 40099), (104, 40108), (117, 40147), (120, 40177), (123, 40192), (134, 40228), (161, 40315), (172, 40339), (175, 40363), (189, 40411), (194, 40426), (200, 40444),

Gene: Adephagia_57 Start: 39986, Stop: 40540, Start Num: 72

Candidate Starts for Adephagia_57:

(32, 39839), (Start: 72 @39986 has 117 MA's), (Start: 79 @39998 has 3 MA's), (Start: 81 @40004 has 3 MA's), (90, 40052), (101, 40100), (104, 40109), (117, 40148), (120, 40178), (134, 40229), (161, 40316), (172, 40340), (194, 40427), (200, 40445), (202, 40451),

Gene: Adonis_57 Start: 40233, Stop: 40787, Start Num: 72

Candidate Starts for Adonis_57:

(32, 40083), (Start: 72 @40233 has 117 MA's), (Start: 79 @40245 has 3 MA's), (Start: 81 @40251 has 3 MA's), (90, 40299), (101, 40347), (104, 40356), (117, 40395), (120, 40425), (134, 40476), (161, 40563), (172, 40587), (194, 40674), (202, 40698),

Gene: Ageofdapage_60 Start: 40974, Stop: 41528, Start Num: 72

Candidate Starts for Ageofdapage_60:

(Start: 72 @40974 has 117 MA's), (Start: 79 @40986 has 3 MA's), (Start: 81 @40992 has 3 MA's), (90, 41040), (101, 41088), (104, 41097), (117, 41136), (120, 41166), (123, 41181), (134, 41217), (161, 41304), (172, 41328), (189, 41400), (194, 41415), (200, 41433),

Gene: Agueybana_56 Start: 39653, Stop: 40237, Start Num: 72

Candidate Starts for Agueybana_56:

(61, 39623), (68, 39647), (Start: 72 @39653 has 117 MA's), (125, 39854), (147, 39950), (175, 40013), (176, 40022), (193, 40085), (200, 40118), (202, 40121), (206, 40151),

Gene: AlishaPH_57 Start: 40247, Stop: 40801, Start Num: 72

Candidate Starts for AlishaPH_57:

(32, 40100), (Start: 72 @40247 has 117 MA's), (Start: 79 @40259 has 3 MA's), (Start: 81 @40265 has 3 MA's), (90, 40313), (101, 40361), (104, 40370), (117, 40409), (120, 40439), (134, 40490), (161, 40577), (172, 40601), (194, 40688), (200, 40706), (202, 40712),

Gene: AlumE_56 Start: 39435, Stop: 40025, Start Num: 72

Candidate Starts for AlumE_56:

(61, 39405), (68, 39429), (Start: 72 @39435 has 117 MA's), (125, 39639), (147, 39735), (154, 39756), (176, 39807), (200, 39903), (202, 39906), (203, 39912), (204, 39915), (206, 39936), (220, 40005),

Gene: Amelie_49 Start: 38047, Stop: 38598, Start Num: 74

Candidate Starts for Amelie_49:

(22, 37813), (Start: 74 @38047 has 5 MA's), (Start: 81 @38068 has 3 MA's), (Start: 88 @38110 has 1 MA's), (91, 38122), (104, 38173), (117, 38212), (120, 38242), (134, 38293), (172, 38398), (194, 38485), (200, 38503), (202, 38509), (220, 38578),

Gene: Amgine_57 Start: 41112, Stop: 41666, Start Num: 73

Candidate Starts for Amgine_57:

(Start: 73 @41112 has 113 MA's), (Start: 79 @41124 has 3 MA's), (100, 41220), (101, 41226), (104, 41235), (110, 41250), (117, 41274), (134, 41355), (161, 41442), (172, 41466), (194, 41553), (207, 41583), (209, 41598),

Gene: Amochick_65 Start: 44443, Stop: 44997, Start Num: 73

Candidate Starts for Amochick_65:

(25, 44248), (33, 44308), (43, 44356), (Start: 64 @44422 has 9 MA's), (Start: 73 @44443 has 113 MA's), (Start: 77 @44446 has 27 MA's), (80, 44461), (85, 44482), (97, 44545), (102, 44557), (116, 44602), (129, 44671), (130, 44674), (141, 44713), (145, 44740), (149, 44758), (168, 44776), (176, 44821), (177, 44824), (182, 44839), (197, 44884), (210, 44944), (216, 44962),

Gene: Amohnition_58 Start: 40704, Stop: 41258, Start Num: 73

Candidate Starts for Amohnition_58:

(Start: 73 @40704 has 113 MA's), (90, 40767), (101, 40815), (104, 40824), (107, 40830), (110, 40839), (122, 40905), (137, 40953), (163, 41040), (172, 41058), (194, 41145), (200, 41163), (209, 41190), (217, 41226),

Gene: Amymech_64 Start: 43962, Stop: 44513, Start Num: 77

Candidate Starts for Amymech_64:

(Start: 73 @43959 has 113 MA's), (Start: 77 @43962 has 27 MA's), (80, 43977), (97, 44061), (102, 44073), (106, 44085), (116, 44118), (129, 44187), (130, 44190), (141, 44229), (145, 44256), (149, 44274), (168, 44292), (176, 44337), (177, 44340), (182, 44355), (197, 44400), (210, 44460), (216, 44478),

Gene: Anaya_59 Start: 40502, Stop: 41056, Start Num: 72

Candidate Starts for Anaya_59:

(Start: 72 @40502 has 117 MA's), (Start: 79 @40514 has 3 MA's), (90, 40568), (101, 40616), (104, 40625), (117, 40664), (120, 40694), (134, 40745), (161, 40832), (172, 40856), (194, 40943), (200, 40961),

Gene: Angelica_57 Start: 40141, Stop: 40695, Start Num: 72

Candidate Starts for Angelica_57:

(Start: 72 @40141 has 117 MA's), (Start: 79 @40153 has 3 MA's), (Start: 81 @40159 has 3 MA's), (90, 40207), (101, 40255), (104, 40264), (117, 40303), (120, 40333), (134, 40384), (161, 40471), (172, 40495), (189, 40567), (194, 40582), (200, 40600),

Gene: Annadreamy_79 Start: 59408, Stop: 59899, Start Num: 78

Candidate Starts for Annadreamy_79:

(65, 59384), (Start: 78 @59408 has 27 MA's), (89, 59468), (141, 59648), (145, 59675), (178, 59744), (189, 59777), (213, 59861), (218, 59882),

Gene: Annalisa_52 Start: 35792, Stop: 36379, Start Num: 72

Candidate Starts for Annalisa_52:

(24, 35615), (29, 35636), (68, 35786), (Start: 72 @35792 has 117 MA's), (103, 35900), (125, 35996), (126, 36002), (147, 36092), (193, 36230), (200, 36263), (202, 36266), (203, 36272), (206, 36296),

Gene: Apocalypse_60 Start: 40910, Stop: 41464, Start Num: 72

Candidate Starts for Apocalypse_60:

(Start: 72 @40910 has 117 MA's), (Start: 79 @40922 has 3 MA's), (90, 40976), (101, 41024), (104, 41033), (117, 41072), (120, 41102), (134, 41153), (146, 41210), (161, 41240), (172, 41264), (194, 41351), (200, 41369), (202, 41375),

Gene: Applecrisp_58 Start: 40249, Stop: 40803, Start Num: 73

Candidate Starts for Applecrisp_58:

(Start: 73 @40249 has 113 MA's), (Start: 79 @40261 has 3 MA's), (100, 40357), (101, 40363), (104, 40372), (110, 40387), (117, 40411), (134, 40492), (161, 40579), (172, 40603), (194, 40690), (207, 40720), (209, 40735), (217, 40771),

Gene: Ariel_157 Start: 81050, Stop: 81694, Start Num: 51

Candidate Starts for Ariel_157:

(Start: 51 @81050 has 4 MA's), (Start: 73 @81107 has 113 MA's), (Start: 81 @81125 has 3 MA's), (82, 81128), (91, 81176), (95, 81203), (101, 81218), (107, 81233), (122, 81308), (133, 81344), (140, 81371), (194, 81575), (201, 81596),

Gene: Asayake_57 Start: 40301, Stop: 40855, Start Num: 72

Candidate Starts for Asayake_57:

(32, 40154), (Start: 72 @40301 has 117 MA's), (Start: 79 @40313 has 3 MA's), (Start: 81 @40319 has 3 MA's), (90, 40367), (101, 40415), (104, 40424), (117, 40463), (120, 40493), (134, 40544), (161, 40631), (172, 40655), (194, 40742), (200, 40760), (202, 40766),

Gene: Atiba_58 Start: 39949, Stop: 40503, Start Num: 72

Candidate Starts for Atiba_58:

(32, 39802), (Start: 72 @39949 has 117 MA's), (Start: 79 @39961 has 3 MA's), (Start: 81 @39967 has 3 MA's), (90, 40015), (101, 40063), (104, 40072), (117, 40111), (120, 40141), (134, 40192), (161, 40279), (172, 40303), (194, 40390), (200, 40408), (202, 40414),

Gene: AuntGwenStacy_57 Start: 42274, Stop: 42870, Start Num: 73

Candidate Starts for AuntGwenStacy_57:

(7, 41821), (28, 42085), (Start: 73 @42274 has 113 MA's), (Start: 81 @42292 has 3 MA's), (82, 42295), (84, 42301), (110, 42412), (120, 42466), (123, 42481), (134, 42517), (137, 42526), (138, 42529), (147, 42577), (148, 42580), (155, 42610), (175, 42676), (180, 42697), (223, 42844), (228, 42859),

Gene: Azrael100_129 Start: 64551, Stop: 65066, Start Num: 78

Candidate Starts for Azrael100_129:

(Start: 78 @64551 has 27 MA's), (Start: 81 @64566 has 3 MA's), (86, 64590), (87, 64596), (91, 64617), (93, 64635), (98, 64647), (99, 64650), (117, 64707), (122, 64749), (137, 64797), (138, 64800), (147, 64848), (148, 64851), (171, 64869), (181, 64920), (194, 64959), (197, 64971), (210, 65016),

Gene: Azula_58 Start: 39149, Stop: 39736, Start Num: 73

Candidate Starts for Azula_58:

(31, 38987), (35, 39035), (Start: 73 @39149 has 113 MA's), (125, 39350), (142, 39416), (147, 39446), (154, 39467), (176, 39518), (200, 39614), (202, 39617), (203, 39623), (204, 39626), (206, 39647),

Gene: BAKA_160 Start: 84987, Stop: 85523, Start Num: 73

Candidate Starts for BAKA_160:

(Start: 73 @84987 has 113 MA's), (Start: 81 @85005 has 3 MA's), (82, 85008), (Start: 88 @85047 has 1 MA's), (90, 85050), (120, 85176), (122, 85188), (137, 85239), (140, 85254), (160, 85305), (180, 85362), (218, 85488), (220, 85497),

Gene: BBQValindra_58 Start: 41020, Stop: 41751, Start Num: 64

Candidate Starts for BBQValindra_58:

(8, 40606), (14, 40714), (18, 40777), (34, 40924), (35, 40927), (Start: 64 @41020 has 9 MA's), (Start: 73 @41038 has 113 MA's), (103, 41152), (125, 41245), (139, 41302), (143, 41317), (180, 41425), (209, 41545), (211, 41557),

Gene: BEEST_57 Start: 40301, Stop: 40855, Start Num: 72

Candidate Starts for BEEST_57:

(32, 40154), (Start: 72 @40301 has 117 MA's), (Start: 79 @40313 has 3 MA's), (Start: 81 @40319 has 3 MA's), (90, 40367), (101, 40415), (104, 40424), (117, 40463), (120, 40493), (134, 40544), (161, 40631), (172, 40655), (194, 40742), (200, 40760), (202, 40766),

Gene: BGlluviae_57 Start: 40104, Stop: 40658, Start Num: 72

Candidate Starts for BGlluviae_57:

(32, 39957), (Start: 72 @40104 has 117 MA's), (Start: 79 @40116 has 3 MA's), (Start: 81 @40122 has 3 MA's), (90, 40170), (101, 40218), (104, 40227), (117, 40266), (120, 40296), (134, 40347), (161, 40434), (172, 40458), (194, 40545), (200, 40563), (202, 40569),

Gene: BackstagePass_65 Start: 40434, Stop: 41168, Start Num: 64

Candidate Starts for BackstagePass_65:

(6, 39999), (14, 40131), (34, 40341), (35, 40344), (37, 40353), (Start: 64 @40434 has 9 MA's), (Start: 73 @40452 has 113 MA's), (103, 40566), (111, 40590), (125, 40659), (126, 40665), (139, 40716), (143, 40731), (180, 40839), (209, 40959), (235, 41157),

Gene: BaghaKamala_56 Start: 39342, Stop: 39896, Start Num: 72

Candidate Starts for BaghaKamala_56:

(Start: 72 @39342 has 117 MA's), (Start: 79 @39354 has 3 MA's), (90, 39408), (101, 39456), (104, 39465), (117, 39504), (120, 39534), (134, 39585), (161, 39672), (172, 39696), (194, 39783), (200, 39801), (202, 39807),

Gene: Bagrid_163 Start: 86216, Stop: 86752, Start Num: 73

Candidate Starts for Bagrid_163:

(Start: 73 @86216 has 113 MA's), (Start: 81 @86234 has 3 MA's), (82, 86237), (Start: 88 @86276 has 1 MA's), (90, 86279), (120, 86405), (122, 86417), (137, 86468), (140, 86483), (160, 86534), (180, 86591), (218, 86717), (220, 86726),

Gene: Barco_55 Start: 36423, Stop: 37010, Start Num: 73

Candidate Starts for Barco_55:

(Start: 73 @36423 has 113 MA's), (125, 36624), (147, 36720), (176, 36792), (200, 36888), (202, 36891), (203, 36897), (204, 36900), (206, 36921),

Gene: BarrelRoll_57 Start: 39965, Stop: 40519, Start Num: 72

Candidate Starts for BarrelRoll_57:

(Start: 72 @39965 has 117 MA's), (Start: 79 @39977 has 3 MA's), (Start: 81 @39983 has 3 MA's), (90, 40031), (101, 40079), (104, 40088), (117, 40127), (120, 40157), (134, 40208), (161, 40295), (172, 40319), (194, 40406), (200, 40424), (202, 40430),

Gene: Beem_160 Start: 86179, Stop: 86715, Start Num: 73

Candidate Starts for Beem_160:

(Start: 73 @86179 has 113 MA's), (Start: 81 @86197 has 3 MA's), (82, 86200), (120, 86368), (122, 86380), (137, 86431), (140, 86446), (194, 86596), (220, 86689),

Gene: Beezoo_59 Start: 40949, Stop: 41503, Start Num: 72

Candidate Starts for Beezoo_59:

(Start: 72 @40949 has 117 MA's), (Start: 79 @40961 has 3 MA's), (Start: 81 @40967 has 3 MA's), (90, 41015), (101, 41063), (104, 41072), (117, 41111), (120, 41141), (134, 41192), (161, 41279), (172, 41303), (194, 41390), (200, 41408), (202, 41414),

Gene: Belfort_83 Start: 61237, Stop: 61725, Start Num: 78

Candidate Starts for Belfort_83:

(Start: 78 @61237 has 27 MA's), (89, 61297), (124, 61417), (131, 61441), (136, 61456), (138, 61462), (141, 61477), (173, 61549), (178, 61573), (181, 61582), (189, 61606), (201, 61648), (218, 61711), (221, 61720),

Gene: Bella96_58 Start: 40730, Stop: 41284, Start Num: 72

Candidate Starts for Bella96_58:

(Start: 72 @40730 has 117 MA's), (Start: 79 @40742 has 3 MA's), (Start: 81 @40748 has 3 MA's), (90, 40796), (104, 40853), (117, 40892), (134, 40973), (161, 41060), (172, 41084), (194, 41171), (200, 41189), (202, 41195),

Gene: Belladonna_57 Start: 40104, Stop: 40658, Start Num: 72

Candidate Starts for Belladonna_57:

(32, 39957), (Start: 72 @40104 has 117 MA's), (Start: 79 @40116 has 3 MA's), (Start: 81 @40122 has 3 MA's), (90, 40170), (101, 40218), (104, 40227), (117, 40266), (120, 40296), (134, 40347), (161, 40434), (172, 40458), (194, 40545), (200, 40563), (202, 40569),

Gene: Bern_58 Start: 38932, Stop: 39486, Start Num: 72

Candidate Starts for Bern_58:

(Start: 72 @38932 has 117 MA's), (Start: 79 @38944 has 3 MA's), (90, 38998), (101, 39046), (104, 39055), (117, 39094), (120, 39124), (134, 39175), (161, 39262), (172, 39286), (194, 39373), (200, 39391), (202, 39397),

Gene: Beuffert_78 Start: 59970, Stop: 60461, Start Num: 78

Candidate Starts for Beuffert_78:

(65, 59946), (Start: 78 @59970 has 27 MA's), (89, 60030), (141, 60210), (178, 60306), (181, 60315), (187, 60330), (189, 60339), (190, 60342), (194, 60357), (213, 60423),

Gene: Biglebops_49 Start: 38047, Stop: 38598, Start Num: 74

Candidate Starts for Biglebops_49:

(22, 37813), (Start: 74 @38047 has 5 MA's), (Start: 81 @38068 has 3 MA's), (Start: 88 @38110 has 1 MA's), (91, 38122), (104, 38173), (117, 38212), (120, 38242), (134, 38293), (172, 38398), (194, 38485), (200, 38503), (202, 38509), (220, 38578),

Gene: BillNye_72 Start: 61063, Stop: 61557, Start Num: 75

Candidate Starts for BillNye_72:

(Start: 75 @61063 has 2 MA's), (89, 61129), (141, 61309), (173, 61381), (178, 61405), (181, 61414), (189, 61438), (194, 61456), (221, 61552),

Gene: Bipper_54 Start: 40859, Stop: 41473, Start Num: 73

Candidate Starts for Bipper_54:

(41, 40778), (43, 40781), (Start: 73 @40859 has 113 MA's), (Start: 81 @40877 has 3 MA's), (82, 40880), (Start: 88 @40919 has 1 MA's), (92, 40946), (99, 40964), (117, 41021), (120, 41051), (137, 41111), (138, 41114), (147, 41162), (156, 41198), (166, 41216), (167, 41228), (168, 41231), (181, 41291), (199, 41351), (218, 41420),

Gene: Blizzard_57 Start: 40301, Stop: 40855, Start Num: 72

Candidate Starts for Blizzard_57:

(32, 40154), (Start: 72 @40301 has 117 MA's), (Start: 79 @40313 has 3 MA's), (Start: 81 @40319 has 3 MA's), (90, 40367), (101, 40415), (104, 40424), (117, 40463), (120, 40493), (134, 40544), (161, 40631), (172, 40655), (194, 40742), (200, 40760), (202, 40766),

Gene: Blueberry_57 Start: 39149, Stop: 39736, Start Num: 73

Candidate Starts for Blueberry_57:

(31, 38987), (35, 39035), (Start: 73 @39149 has 113 MA's), (125, 39350), (142, 39416), (147, 39446), (154, 39467), (176, 39518), (200, 39614), (202, 39617), (203, 39623), (204, 39626), (206, 39647),

Gene: Blueeyedbeauty_80 Start: 59360, Stop: 59851, Start Num: 78

Candidate Starts for Blueeyedbeauty_80:

(65, 59336), (Start: 78 @59360 has 27 MA's), (89, 59420), (93, 59447), (141, 59600), (153, 59651), (175, 59681), (178, 59696), (187, 59720), (189, 59729), (213, 59813), (218, 59834),

Gene: Bobby_149 Start: 86590, Stop: 87060, Start Num: 88

Candidate Starts for Bobby_149:

(Start: 88 @86590 has 1 MA's), (90, 86593), (120, 86719), (122, 86731), (137, 86782), (140, 86797), (160, 86848), (180, 86905), (218, 87031), (225, 87052),

Gene: Boiiii_57 Start: 40303, Stop: 40857, Start Num: 72

Candidate Starts for Boiiii_57:

(32, 40156), (Start: 72 @40303 has 117 MA's), (Start: 79 @40315 has 3 MA's), (Start: 81 @40321 has 3 MA's), (90, 40369), (101, 40417), (104, 40426), (117, 40465), (120, 40495), (134, 40546), (161, 40633), (172, 40657), (194, 40744), (200, 40762), (202, 40768),

Gene: Boilgate_54 Start: 39890, Stop: 40492, Start Num: 77

Candidate Starts for Boilgate_54:

(53, 39833), (Start: 77 @39890 has 27 MA's), (110, 40025), (117, 40049), (137, 40139), (147, 40190), (172, 40277), (180, 40322), (194, 40364), (200, 40382), (217, 40451),

Gene: Bombitas_146 Start: 82178, Stop: 82789, Start Num: 47

Candidate Starts for Bombitas_146:

(Start: 47 @82178 has 4 MA's), (Start: 51 @82196 has 4 MA's), (Start: 73 @82253 has 113 MA's), (Start: 81 @82271 has 3 MA's), (120, 82442), (122, 82454), (137, 82505), (140, 82520), (194, 82670), (201, 82691),

Gene: BoostSeason_60 Start: 41609, Stop: 42142, Start Num: 73

Candidate Starts for BoostSeason_60:

(Start: 73 @41609 has 113 MA's), (80, 41624), (90, 41672), (101, 41720), (104, 41729), (115, 41762), (117, 41768), (119, 41774), (137, 41858), (151, 41924),

Gene: Bowser_58 Start: 40743, Stop: 41495, Start Num: 64

Candidate Starts for Bowser_58:

(18, 40503), (34, 40650), (35, 40653), (Start: 64 @40743 has 9 MA's), (Start: 73 @40761 has 113 MA's), (103, 40875), (125, 40968), (139, 41025), (143, 41040), (180, 41148), (209, 41268), (210, 41277), (211, 41280), (231, 41370), (233, 41442), (234, 41463),

Gene: BoyNamedSue_56 Start: 39435, Stop: 40025, Start Num: 72

Candidate Starts for BoyNamedSue_56:

(61, 39405), (68, 39429), (Start: 72 @39435 has 117 MA's), (125, 39639), (147, 39735), (154, 39756), (176, 39807), (200, 39903), (202, 39906), (203, 39912), (204, 39915), (206, 39936), (220, 40005),

Gene: Bryler_60 Start: 39479, Stop: 40042, Start Num: 72

Candidate Starts for Bryler_60:

(Start: 72 @39479 has 117 MA's), (Start: 79 @39491 has 3 MA's), (Start: 81 @39497 has 3 MA's), (101, 39593), (117, 39641), (134, 39722), (162, 39812), (172, 39842), (194, 39929), (200, 39947), (217, 40010),

Gene: Bunker_54 Start: 39327, Stop: 40058, Start Num: 64

Candidate Starts for Bunker_54:

(14, 39024), (34, 39234), (35, 39237), (37, 39246), (Start: 64 @39327 has 9 MA's), (Start: 73 @39345 has 113 MA's), (103, 39459), (111, 39483), (125, 39552), (126, 39558), (139, 39609), (143, 39624), (180, 39732), (209, 39852), (211, 39864),

Gene: Bunnybear_50 Start: 37443, Stop: 38027, Start Num: 72

Candidate Starts for Bunnybear_50:

(23, 37239), (61, 37413), (68, 37437), (Start: 72 @37443 has 117 MA's), (125, 37644), (142, 37710), (147, 37740), (154, 37761), (176, 37812), (200, 37908), (202, 37911), (203, 37917), (219, 38007),

Gene: CREW_57 Start: 40104, Stop: 40658, Start Num: 72

Candidate Starts for CREW_57:

(32, 39957), (Start: 72 @40104 has 117 MA's), (Start: 79 @40116 has 3 MA's), (Start: 81 @40122 has 3 MA's), (90, 40170), (101, 40218), (104, 40227), (117, 40266), (120, 40296), (134, 40347), (161, 40434), (172, 40458), (194, 40545), (200, 40563), (202, 40569),

Gene: Cain_60 Start: 39467, Stop: 40030, Start Num: 72

Candidate Starts for Cain_60:

(Start: 72 @39467 has 117 MA's), (Start: 79 @39479 has 3 MA's), (Start: 81 @39485 has 3 MA's), (99, 39572), (101, 39581), (117, 39629), (134, 39710), (162, 39800), (172, 39830), (194, 39917), (200, 39935), (217, 39998),

Gene: CallaLilly_59 Start: 40027, Stop: 40581, Start Num: 72

Candidate Starts for CallaLilly_59:

(32, 39880), (Start: 72 @40027 has 117 MA's), (Start: 79 @40039 has 3 MA's), (Start: 81 @40045 has 3 MA's), (90, 40093), (101, 40141), (104, 40150), (117, 40189), (120, 40219), (134, 40270), (161, 40357), (172, 40381), (194, 40468), (200, 40486), (202, 40492),

Gene: Capricorn_57 Start: 40104, Stop: 40658, Start Num: 72

Candidate Starts for Capricorn_57:

(32, 39957), (Start: 72 @40104 has 117 MA's), (Start: 79 @40116 has 3 MA's), (Start: 81 @40122 has 3 MA's), (90, 40170), (101, 40218), (104, 40227), (117, 40266), (120, 40296), (134, 40347), (161, 40434), (172, 40458), (194, 40545), (200, 40563), (202, 40569),

Gene: CaptainKirk2_57 Start: 36662, Stop: 37249, Start Num: 73

Candidate Starts for CaptainKirk2_57:

(Start: 73 @36662 has 113 MA's), (125, 36863), (147, 36959), (176, 37031), (200, 37127), (202, 37130), (203, 37136), (204, 37139), (206, 37160),

Gene: CaseJules_59 Start: 40301, Stop: 40855, Start Num: 72

Candidate Starts for CaseJules_59:

(32, 40154), (Start: 72 @40301 has 117 MA's), (Start: 79 @40313 has 3 MA's), (Start: 81 @40319 has 3 MA's), (90, 40367), (101, 40415), (104, 40424), (117, 40463), (120, 40493), (134, 40544), (161, 40631), (172, 40655), (194, 40742), (200, 40760), (202, 40766),

Gene: Chancellor_62 Start: 40161, Stop: 40757, Start Num: 77

Candidate Starts for Chancellor_62:

(Start: 77 @40161 has 27 MA's), (86, 40203), (104, 40281), (120, 40350), (122, 40362), (137, 40410), (172, 40530), (180, 40575), (194, 40617), (199, 40638), (200, 40641), (218, 40722),

Gene: Chavito_60 Start: 41135, Stop: 41692, Start Num: 72

Candidate Starts for Chavito_60:

(Start: 72 @41135 has 117 MA's), (91, 41210), (101, 41252), (104, 41261), (115, 41294), (117, 41300), (134, 41381), (172, 41492), (194, 41579), (200, 41597), (210, 41633), (220, 41672),

Gene: CheetoDust_56 Start: 39386, Stop: 39940, Start Num: 72

Candidate Starts for CheetoDust_56:

(Start: 72 @39386 has 117 MA's), (Start: 79 @39398 has 3 MA's), (90, 39452), (101, 39500), (104, 39509), (117, 39548), (120, 39578), (134, 39629), (161, 39716), (172, 39740), (194, 39827), (200, 39845), (202, 39851),

Gene: Cheetobro_62 Start: 40158, Stop: 40754, Start Num: 77

Candidate Starts for Cheetobro_62:

(Start: 77 @40158 has 27 MA's), (86, 40200), (104, 40278), (120, 40347), (122, 40359), (137, 40407), (172, 40527), (180, 40572), (194, 40614), (199, 40635), (200, 40638), (218, 40719),

Gene: Chris_59 Start: 40680, Stop: 41237, Start Num: 72

Candidate Starts for Chris_59:

(Start: 72 @40680 has 117 MA's), (Start: 79 @40692 has 3 MA's), (99, 40782), (110, 40815), (122, 40881), (172, 41037), (183, 41091), (194, 41124), (200, 41142),

Gene: Circinus_73 Start: 61050, Stop: 61544, Start Num: 75

Candidate Starts for Circinus_73:

(Start: 75 @61050 has 2 MA's), (89, 61116), (141, 61296), (173, 61368), (178, 61392), (181, 61401), (189, 61425), (194, 61443), (221, 61539),

Gene: Clipper_61 Start: 40564, Stop: 41118, Start Num: 72

Candidate Starts for Clipper_61:

(Start: 72 @40564 has 117 MA's), (Start: 79 @40576 has 3 MA's), (Start: 81 @40582 has 3 MA's), (90, 40630), (101, 40678), (104, 40687), (117, 40726), (120, 40756), (123, 40771), (134, 40807), (161, 40894), (172, 40918), (175, 40942), (189, 40990), (194, 41005), (200, 41023), (217, 41086),

Gene: Comrade_81 Start: 60853, Stop: 61341, Start Num: 78

Candidate Starts for Comrade_81:

(Start: 78 @60853 has 27 MA's), (89, 60913), (124, 61033), (131, 61057), (136, 61072), (138, 61078), (141, 61093), (148, 61129), (173, 61165), (178, 61189), (181, 61198), (189, 61222), (201, 61264), (218, 61327), (221, 61336),

Gene: Constella_151 Start: 83218, Stop: 83754, Start Num: 73

Candidate Starts for Constella_151:

(Start: 73 @83218 has 113 MA's), (Start: 81 @83236 has 3 MA's), (82, 83239), (Start: 88 @83278 has 1 MA's), (90, 83281), (120, 83407), (122, 83419), (137, 83470), (140, 83485), (160, 83536), (180, 83593), (220, 83728),

Gene: Cosmo_137 Start: 64981, Stop: 65496, Start Num: 78

Candidate Starts for Cosmo_137:

(Start: 78 @64981 has 27 MA's), (Start: 81 @64996 has 3 MA's), (86, 65020), (87, 65026), (91, 65047), (93, 65065), (98, 65077), (99, 65080), (117, 65137), (122, 65179), (137, 65227), (138, 65230), (147, 65278), (148, 65281), (171, 65299), (181, 65350), (194, 65389), (197, 65401), (210, 65446),

Gene: Courthouse_154 Start: 81602, Stop: 82138, Start Num: 73

Candidate Starts for Courthouse_154:

(66, 81590), (Start: 69 @81596 has 1 MA's), (Start: 73 @81602 has 113 MA's), (Start: 79 @81614 has 3 MA's), (80, 81617), (82, 81623), (90, 81665), (110, 81737), (134, 81845), (137, 81854), (140, 81869),

(160, 81920), (180, 81977), (194, 82019), (201, 82040),

Gene: Cracklewink_54 Start: 40852, Stop: 41466, Start Num: 73

Candidate Starts for Cracklewink_54:

(41, 40771), (43, 40774), (Start: 73 @40852 has 113 MA's), (Start: 81 @40870 has 3 MA's), (82, 40873), (Start: 88 @40912 has 1 MA's), (92, 40939), (99, 40957), (117, 41014), (120, 41044), (137, 41104), (138, 41107), (147, 41155), (156, 41191), (166, 41209), (167, 41221), (168, 41224), (181, 41284), (199, 41344), (218, 41413),

Gene: CrimD_57 Start: 40220, Stop: 40774, Start Num: 72

Candidate Starts for CrimD_57:

(Start: 72 @40220 has 117 MA's), (Start: 79 @40232 has 3 MA's), (Start: 81 @40238 has 3 MA's), (90, 40286), (101, 40334), (104, 40343), (117, 40382), (120, 40412), (123, 40427), (134, 40463), (161, 40550), (172, 40574), (189, 40646), (194, 40661), (200, 40679), (217, 40742),

Gene: Curiosium_59 Start: 38846, Stop: 39418, Start Num: 72

Candidate Starts for Curiosium_59:

(Start: 72 @38846 has 117 MA's), (Start: 79 @38858 has 3 MA's), (Start: 81 @38864 has 3 MA's), (Start: 88 @38906 has 1 MA's), (101, 38960), (104, 38969), (112, 38990), (115, 39002), (117, 39008), (134, 39089), (172, 39212), (194, 39299), (200, 39317), (224, 39407),

Gene: Daegal_67 Start: 45005, Stop: 45559, Start Num: 73

Candidate Starts for Daegal_67:

(25, 44810), (33, 44870), (43, 44918), (Start: 64 @44984 has 9 MA's), (Start: 73 @45005 has 113 MA's), (Start: 77 @45008 has 27 MA's), (80, 45023), (85, 45044), (97, 45107), (102, 45119), (116, 45164), (129, 45233), (130, 45236), (141, 45275), (145, 45302), (149, 45320), (168, 45338), (176, 45383), (177, 45386), (182, 45401), (197, 45446), (210, 45506), (216, 45524),

Gene: Dallas_159 Start: 85402, Stop: 85938, Start Num: 73

Candidate Starts for Dallas_159:

(Start: 73 @85402 has 113 MA's), (Start: 81 @85420 has 3 MA's), (82, 85423), (120, 85591), (122, 85603), (137, 85654), (140, 85669), (194, 85819), (220, 85912),

Gene: Dalmuri_57 Start: 40104, Stop: 40658, Start Num: 72

Candidate Starts for Dalmuri_57:

(32, 39957), (Start: 72 @40104 has 117 MA's), (Start: 79 @40116 has 3 MA's), (Start: 81 @40122 has 3 MA's), (90, 40170), (101, 40218), (104, 40227), (117, 40266), (120, 40296), (134, 40347), (161, 40434), (172, 40458), (194, 40545), (200, 40563), (202, 40569),

Gene: DanielleIgnace_58 Start: 38690, Stop: 39253, Start Num: 71

Candidate Starts for DanielleIgnace_58:

(Start: 71 @38690 has 1 MA's), (106, 38831), (114, 38852), (126, 38915), (178, 39083), (186, 39110), (205, 39188), (208, 39197), (210, 39218),

Gene: DarthP_58 Start: 40588, Stop: 41142, Start Num: 73

Candidate Starts for DarthP_58:

(Start: 73 @40588 has 113 MA's), (90, 40651), (101, 40699), (104, 40708), (107, 40714), (110, 40723), (122, 40789), (137, 40837), (163, 40924), (172, 40942), (194, 41029), (200, 41047), (209, 41074), (217, 41110),

Gene: Dartin_60 Start: 40625, Stop: 41188, Start Num: 72

Candidate Starts for Dartin_60:

(Start: 72 @40625 has 117 MA's), (91, 40700), (101, 40742), (104, 40751), (115, 40784), (117, 40790), (134, 40871), (172, 40988), (194, 41075), (200, 41093), (210, 41129), (220, 41168),

Gene: Deby_57 Start: 40163, Stop: 40717, Start Num: 72

Candidate Starts for Deby_57:

(32, 40013), (Start: 72 @40163 has 117 MA's), (Start: 79 @40175 has 3 MA's), (Start: 81 @40181 has 3 MA's), (90, 40229), (101, 40277), (104, 40286), (117, 40325), (120, 40355), (134, 40406), (161, 40493), (172, 40517), (194, 40604), (202, 40628),

Gene: DeepSoil15_64 Start: 43959, Stop: 44513, Start Num: 73

Candidate Starts for DeepSoil15_64:

(Start: 73 @43959 has 113 MA's), (Start: 77 @43962 has 27 MA's), (80, 43977), (97, 44061), (102, 44073), (106, 44085), (116, 44118), (129, 44187), (130, 44190), (141, 44229), (145, 44256), (149, 44274), (168, 44292), (176, 44337), (177, 44340), (182, 44355), (197, 44400), (210, 44460), (216, 44478),

Gene: Delian_60 Start: 36660, Stop: 37247, Start Num: 73

Candidate Starts for Delian_60:

(Start: 73 @36660 has 113 MA's), (125, 36861), (147, 36957), (176, 37029), (200, 37125), (202, 37128), (203, 37134), (204, 37137), (206, 37158),

Gene: Denise_67 Start: 40135, Stop: 40689, Start Num: 73

Candidate Starts for Denise_67:

(17, 39871), (54, 40084), (56, 40087), (Start: 73 @40135 has 113 MA's), (91, 40201), (116, 40285), (125, 40333), (131, 40357), (147, 40423), (209, 40627),

Gene: Devera_62 Start: 40742, Stop: 41314, Start Num: 72

Candidate Starts for Devera_62:

(Start: 72 @40742 has 117 MA's), (Start: 79 @40754 has 3 MA's), (Start: 81 @40760 has 3 MA's), (90, 40808), (101, 40856), (104, 40865), (115, 40898), (117, 40904), (134, 40985), (172, 41108), (194, 41195), (200, 41213), (224, 41303),

Gene: Dewey_61 Start: 43959, Stop: 44513, Start Num: 73

Candidate Starts for Dewey_61:

(Start: 73 @43959 has 113 MA's), (Start: 77 @43962 has 27 MA's), (80, 43977), (97, 44061), (102, 44073), (106, 44085), (116, 44118), (129, 44187), (130, 44190), (141, 44229), (145, 44256), (149, 44274), (168, 44292), (176, 44337), (177, 44340), (182, 44355), (197, 44400), (210, 44460), (216, 44478),

Gene: DirtyBoi_64 Start: 41042, Stop: 41764, Start Num: 69

Candidate Starts for DirtyBoi_64:

(50, 40991), (54, 40997), (59, 41009), (Start: 64 @41027 has 9 MA's), (Start: 69 @41042 has 1 MA's), (Start: 73 @41048 has 113 MA's), (103, 41162), (126, 41261), (139, 41312), (143, 41327), (176, 41423), (180, 41435), (209, 41555), (210, 41564),

Gene: DismalFunk_60 Start: 42031, Stop: 42564, Start Num: 73

Candidate Starts for DismalFunk_60:

(55, 41980), (Start: 73 @42031 has 113 MA's), (80, 42046), (90, 42094), (101, 42142), (104, 42151), (115, 42184), (117, 42190), (119, 42196), (137, 42280), (151, 42346),

Gene: DismalStressor_60 Start: 42031, Stop: 42564, Start Num: 73

Candidate Starts for DismalStressor_60:

(55, 41980), (Start: 73 @42031 has 113 MA's), (80, 42046), (90, 42094), (101, 42142), (104, 42151), (115, 42184), (117, 42190), (119, 42196), (137, 42280), (151, 42346),

Gene: DmpstrDiver_159 Start: 84129, Stop: 84665, Start Num: 73

Candidate Starts for DmpstrDiver_159:

(Start: 73 @84129 has 113 MA's), (Start: 81 @84147 has 3 MA's), (82, 84150), (120, 84318), (122, 84330), (137, 84381), (140, 84396), (194, 84546), (220, 84639),

Gene: Dole_60 Start: 40745, Stop: 41317, Start Num: 72

Candidate Starts for Dole_60:

(Start: 72 @40745 has 117 MA's), (Start: 79 @40757 has 3 MA's), (Start: 81 @40763 has 3 MA's), (90, 40811), (101, 40859), (104, 40868), (115, 40901), (117, 40907), (134, 40988), (172, 41111), (194, 41198), (200, 41216), (224, 41306),

Gene: Doughnut_61 Start: 41650, Stop: 42183, Start Num: 73

Candidate Starts for Doughnut_61:

(Start: 73 @41650 has 113 MA's), (80, 41665), (90, 41713), (101, 41761), (104, 41770), (115, 41803), (117, 41809), (119, 41815), (137, 41899), (151, 41965),

Gene: Dove_146 Start: 80534, Stop: 81145, Start Num: 47

Candidate Starts for Dove_146:

(Start: 47 @80534 has 4 MA's), (Start: 51 @80552 has 4 MA's), (Start: 73 @80609 has 113 MA's), (Start: 81 @80627 has 3 MA's), (120, 80798), (122, 80810), (137, 80861), (140, 80876), (194, 81026), (201, 81047),

Gene: DrHayes_58 Start: 40885, Stop: 41439, Start Num: 72

Candidate Starts for DrHayes_58:

(Start: 72 @40885 has 117 MA's), (Start: 79 @40897 has 3 MA's), (Start: 81 @40903 has 3 MA's), (90, 40951), (101, 40999), (104, 41008), (117, 41047), (134, 41128), (161, 41215), (172, 41239), (194, 41326), (200, 41344), (202, 41350),

Gene: Duke13_157 Start: 83483, Stop: 84019, Start Num: 73

Candidate Starts for Duke13_157:

(Start: 73 @83483 has 113 MA's), (Start: 81 @83501 has 3 MA's), (82, 83504), (Start: 88 @83543 has 1 MA's), (90, 83546), (120, 83672), (122, 83684), (137, 83735), (140, 83750), (160, 83801), (180, 83858), (218, 83984), (220, 83993),

Gene: Durfee_57 Start: 40301, Stop: 40855, Start Num: 72

Candidate Starts for Durfee_57:

(32, 40154), (Start: 72 @40301 has 117 MA's), (Start: 79 @40313 has 3 MA's), (Start: 81 @40319 has 3 MA's), (90, 40367), (101, 40415), (104, 40424), (117, 40463), (120, 40493), (134, 40544), (161, 40631), (172, 40655), (194, 40742), (200, 40760), (202, 40766),

Gene: EMSquaredA_54 Start: 38610, Stop: 39200, Start Num: 72

Candidate Starts for EMSquaredA_54:

(61, 38580), (68, 38604), (Start: 72 @38610 has 117 MA's), (125, 38814), (147, 38910), (154, 38931), (176, 38982), (200, 39078), (202, 39081), (203, 39087), (204, 39090), (206, 39111), (220, 39180),

Gene: Efra2_60 Start: 39747, Stop: 40313, Start Num: 72

Candidate Starts for Efra2_60:

(Start: 72 @39747 has 117 MA's), (Start: 79 @39759 has 3 MA's), (Start: 81 @39765 has 3 MA's), (99, 39852), (115, 39903), (117, 39909), (134, 39990), (172, 40113), (194, 40200), (200, 40218), (202, 40224), (217, 40281),

Gene: Ein37_64 Start: 43959, Stop: 44513, Start Num: 73

Candidate Starts for Ein37_64:

(Start: 73 @43959 has 113 MA's), (Start: 77 @43962 has 27 MA's), (80, 43977), (97, 44061), (102, 44073), (106, 44085), (116, 44118), (129, 44187), (130, 44190), (141, 44229), (145, 44256), (149, 44274), (168, 44292), (176, 44337), (177, 44340), (182, 44355), (197, 44400), (210, 44460), (216, 44478),

Gene: Ejimix_151 Start: 84390, Stop: 84926, Start Num: 73

Candidate Starts for Ejimix_151:

(Start: 73 @84390 has 113 MA's), (Start: 81 @84408 has 3 MA's), (82, 84411), (120, 84579), (122, 84591), (137, 84642), (140, 84657), (194, 84807), (220, 84900),

Gene: Ekdilam_56 Start: 40591, Stop: 41142, Start Num: 73

Candidate Starts for Ekdilam_56:

(Start: 73 @40591 has 113 MA's), (Start: 79 @40603 has 3 MA's), (91, 40660), (101, 40702), (104, 40711), (117, 40750), (122, 40792), (137, 40840), (172, 40942), (194, 41029), (200, 41047), (209, 41074),

Gene: Ellie_54 Start: 39941, Stop: 40495, Start Num: 73

Candidate Starts for Ellie_54:

(Start: 73 @39941 has 113 MA's), (Start: 79 @39953 has 3 MA's), (100, 40049), (101, 40055), (104, 40064), (110, 40079), (117, 40103), (134, 40184), (161, 40271), (172, 40295), (194, 40382), (207, 40412), (209, 40427),

Gene: Emerson_58 Start: 39982, Stop: 40536, Start Num: 72

Candidate Starts for Emerson_58:

(Start: 72 @39982 has 117 MA's), (Start: 79 @39994 has 3 MA's), (Start: 81 @40000 has 3 MA's), (90, 40048), (101, 40096), (104, 40105), (117, 40144), (120, 40174), (134, 40225), (161, 40312), (172, 40336), (194, 40423), (202, 40447),

Gene: Emma1919_83 Start: 59575, Stop: 60063, Start Num: 78

Candidate Starts for Emma1919_83:

(Start: 78 @59575 has 27 MA's), (109, 59701), (124, 59755), (128, 59770), (135, 59791), (138, 59800), (141, 59815), (173, 59887), (178, 59911), (181, 59920), (189, 59944), (201, 59986), (218, 60049), (221, 60058),

Gene: EniyanLRS_131 Start: 65177, Stop: 65725, Start Num: 78

Candidate Starts for EniyanLRS_131:

(Start: 78 @65177 has 27 MA's), (Start: 81 @65192 has 3 MA's), (86, 65216), (87, 65222), (91, 65243), (93, 65261), (98, 65273), (99, 65276), (117, 65333), (122, 65375), (137, 65423), (138, 65426), (147, 65474), (148, 65477), (181, 65546), (194, 65585), (197, 65597), (210, 65642), (222, 65693),

Gene: Enkosi_51 Start: 40660, Stop: 41211, Start Num: 74

Candidate Starts for Enkosi_51:

(22, 40426), (Start: 74 @40660 has 5 MA's), (Start: 81 @40681 has 3 MA's), (Start: 88 @40723 has 1 MA's), (91, 40735), (104, 40786), (117, 40825), (120, 40855), (134, 40906), (172, 41011), (194, 41098), (200, 41116), (202, 41122), (220, 41191),

Gene: Eponine_64 Start: 41004, Stop: 41600, Start Num: 77

Candidate Starts for Eponine_64:

(Start: 77 @41004 has 27 MA's), (86, 41046), (104, 41124), (120, 41193), (122, 41205), (137, 41253), (172, 41373), (180, 41418), (194, 41460), (199, 41481), (200, 41484), (218, 41565),

Gene: EricMillard_153 Start: 84826, Stop: 85362, Start Num: 73

Candidate Starts for EricMillard_153:

(Start: 73 @84826 has 113 MA's), (Start: 81 @84844 has 3 MA's), (82, 84847), (Start: 88 @84886 has 1 MA's), (90, 84889), (120, 85015), (122, 85027), (137, 85078), (140, 85093), (160, 85144), (180, 85201), (220, 85336),

Gene: Evanesce_63 Start: 43959, Stop: 44513, Start Num: 73

Candidate Starts for Evanesce_63:

(Start: 73 @43959 has 113 MA's), (Start: 77 @43962 has 27 MA's), (80, 43977), (97, 44061), (102, 44073), (106, 44085), (116, 44118), (129, 44187), (130, 44190), (141, 44229), (145, 44256), (149, 44274), (168, 44292), (176, 44337), (177, 44340), (182, 44355), (197, 44400), (210, 44460), (216, 44478),

Gene: Eyes_57 Start: 40795, Stop: 41526, Start Num: 64

Candidate Starts for Eyes_57:

(34, 40702), (35, 40705), (Start: 64 @40795 has 9 MA's), (Start: 73 @40813 has 113 MA's), (103, 40927), (125, 41020), (126, 41026), (180, 41200), (197, 41251), (205, 41293), (209, 41320), (210, 41329), (211, 41332),

Gene: Eyre_49 Start: 34637, Stop: 35221, Start Num: 73

Candidate Starts for Eyre_49:

(Start: 73 @34637 has 113 MA's), (125, 34853), (126, 34859), (143, 34925), (147, 34949), (200, 35096), (209, 35153), (210, 35162), (218, 35192),

Gene: Faith5x5_64 Start: 38441, Stop: 39004, Start Num: 73

Candidate Starts for Faith5x5_64:

(10, 38189), (11, 38195), (Start: 73 @38441 has 113 MA's), (89, 38498), (94, 38537), (125, 38648), (131, 38672), (147, 38738), (193, 38852), (200, 38885), (209, 38942), (210, 38951),

Gene: Faiyaz_57 Start: 42264, Stop: 42860, Start Num: 73

Candidate Starts for Faiyaz_57:

(Start: 73 @42264 has 113 MA's), (Start: 81 @42282 has 3 MA's), (82, 42285), (84, 42291), (110, 42402), (120, 42456), (123, 42471), (134, 42507), (137, 42516), (138, 42519), (147, 42567), (148, 42570), (155, 42600), (175, 42666), (180, 42687), (223, 42834), (228, 42849),

Gene: Farewell_81 Start: 52822, Stop: 53370, Start Num: 78

Candidate Starts for Farewell_81:

(44, 52732), (57, 52771), (Start: 78 @52822 has 27 MA's), (132, 53056), (176, 53191), (209, 53308), (210, 53317), (214, 53329),

Gene: Faust_81 Start: 60777, Stop: 61277, Start Num: 73

Candidate Starts for Faust_81:

(Start: 73 @60777 has 113 MA's), (86, 60825), (109, 60912), (136, 61005), (141, 61026), (174, 61101), (178, 61122), (181, 61131), (187, 61146), (189, 61155), (213, 61239), (218, 61260),

Gene: Fefferhead_56 Start: 39888, Stop: 40442, Start Num: 73

Candidate Starts for Fefferhead_56:

(Start: 73 @39888 has 113 MA's), (Start: 79 @39900 has 3 MA's), (100, 39996), (101, 40002), (104, 40011), (110, 40026), (117, 40050), (134, 40131), (161, 40218), (172, 40242), (194, 40329), (207, 40359), (209, 40374), (217, 40410),

Gene: Fenry_55 Start: 38167, Stop: 38757, Start Num: 73

Candidate Starts for Fenry_55:

(31, 38005), (35, 38053), (Start: 73 @38167 has 113 MA's), (125, 38371), (142, 38437), (147, 38467), (154, 38488), (169, 38497), (173, 38521), (176, 38539), (200, 38635), (202, 38638), (203, 38644), (204, 38647), (206, 38668),

Gene: Findley_60 Start: 42024, Stop: 42557, Start Num: 73

Candidate Starts for Findley_60:

(55, 41973), (Start: 73 @42024 has 113 MA's), (80, 42039), (90, 42087), (101, 42135), (104, 42144), (115, 42177), (117, 42183), (119, 42189), (137, 42273), (151, 42339),

Gene: Fionnbharth_62 Start: 40402, Stop: 40998, Start Num: 77

Candidate Starts for Fionnbharth_62:

(Start: 77 @40402 has 27 MA's), (86, 40444), (104, 40522), (120, 40591), (122, 40603), (137, 40651), (172, 40771), (180, 40816), (194, 40858), (199, 40879), (200, 40882), (218, 40963),

Gene: Floral_55 Start: 40516, Stop: 41088, Start Num: 72

Candidate Starts for Floral_55:

(61, 40486), (68, 40510), (Start: 72 @40516 has 117 MA's), (103, 40624), (125, 40720),

Gene: Forge_61 Start: 43962, Stop: 44513, Start Num: 77

Candidate Starts for Forge_61:

(Start: 73 @43959 has 113 MA's), (Start: 77 @43962 has 27 MA's), (80, 43977), (97, 44061), (102, 44073), (106, 44085), (116, 44118), (129, 44187), (130, 44190), (141, 44229), (145, 44256), (149, 44274), (168, 44292), (176, 44337), (177, 44340), (182, 44355), (197, 44400), (210, 44460), (216, 44478),

Gene: Forrest_84 Start: 60868, Stop: 61356, Start Num: 78

Candidate Starts for Forrest_84:

(Start: 78 @60868 has 27 MA's), (103, 60973), (124, 61048), (128, 61063), (135, 61084), (138, 61093), (141, 61108), (173, 61180), (178, 61204), (181, 61213), (189, 61237), (201, 61279), (218, 61342), (221, 61351),

Gene: Francob_80 Start: 59594, Stop: 60082, Start Num: 78

Candidate Starts for Francob_80:

(Start: 78 @59594 has 27 MA's), (89, 59654), (124, 59774), (141, 59834), (173, 59906), (178, 59930), (181, 59939), (183, 59945), (189, 59963), (201, 60005), (213, 60047), (218, 60068), (221, 60077),

Gene: GEazy_64 Start: 40986, Stop: 41714, Start Num: 64

Candidate Starts for GEazy_64:

(49, 40947), (Start: 64 @40986 has 9 MA's), (Start: 73 @41004 has 113 MA's), (103, 41118), (125, 41211), (126, 41217), (180, 41391), (209, 41511), (210, 41520), (211, 41523),

Gene: GRU3_25 Start: 16472, Stop: 17227, Start Num: 30

Candidate Starts for GRU3_25:

(30, 16472), (89, 16718), (126, 16865), (137, 16904), (147, 16955), (216, 17159), (218, 17171),

Gene: Gaia_119 Start: 67024, Stop: 67569, Start Num: 73

Candidate Starts for Gaia_119:

(Start: 73 @67024 has 113 MA's), (90, 67087), (117, 67183), (120, 67213), (122, 67225), (134, 67267), (141, 67294), (174, 67387), (178, 67408), (191, 67441), (194, 67450), (200, 67468), (209, 67495), (218, 67534), (226, 67561),

Gene: Gambino_60 Start: 39149, Stop: 39736, Start Num: 73

Candidate Starts for Gambino_60:

(31, 38987), (35, 39035), (Start: 73 @39149 has 113 MA's), (125, 39350), (142, 39416), (147, 39446), (154, 39467), (176, 39518), (200, 39614), (202, 39617), (203, 39623), (204, 39626), (206, 39647),

Gene: Gancho_63 Start: 43686, Stop: 44240, Start Num: 73

Candidate Starts for Gancho_63:

(Start: 73 @43686 has 113 MA's), (Start: 77 @43689 has 27 MA's), (80, 43704), (85, 43725), (97, 43788), (102, 43800), (106, 43812), (116, 43845), (129, 43914), (130, 43917), (141, 43956), (145, 43983), (149, 44001), (176, 44064), (177, 44067), (182, 44082), (197, 44127), (210, 44187), (214, 44199), (216, 44205),

Gene: Ganymede_58 Start: 40365, Stop: 40919, Start Num: 72

Candidate Starts for Ganymede_58:

(32, 40215), (Start: 72 @40365 has 117 MA's), (Start: 79 @40377 has 3 MA's), (Start: 81 @40383 has 3 MA's), (90, 40431), (101, 40479), (104, 40488), (117, 40527), (120, 40557), (134, 40608), (161, 40695), (172, 40719), (194, 40806), (200, 40824), (202, 40830),

Gene: Geraldini_60 Start: 41031, Stop: 41585, Start Num: 72

Candidate Starts for Geraldini_60:

(Start: 72 @41031 has 117 MA's), (Start: 79 @41043 has 3 MA's), (90, 41097), (101, 41145), (104, 41154), (117, 41193), (120, 41223), (134, 41274), (161, 41361), (172, 41385), (194, 41472), (200, 41490), (202, 41496),

Gene: Giles_61 Start: 43959, Stop: 44513, Start Num: 73

Candidate Starts for Giles_61:

(Start: 73 @43959 has 113 MA's), (Start: 77 @43962 has 27 MA's), (80, 43977), (97, 44061), (102, 44073), (106, 44085), (116, 44118), (129, 44187), (130, 44190), (141, 44229), (145, 44256), (149, 44274), (168, 44292), (176, 44337), (177, 44340), (182, 44355), (197, 44400), (210, 44460), (216, 44478),

Gene: Gilson_82 Start: 59537, Stop: 60025, Start Num: 78

Candidate Starts for Gilson_82:

(Start: 78 @59537 has 27 MA's), (103, 59642), (124, 59717), (128, 59732), (135, 59753), (138, 59762), (141, 59777), (173, 59849), (178, 59873), (181, 59882), (189, 59906), (201, 59948), (218, 60011), (221, 60020),

Gene: Gonephishing_152 Start: 83062, Stop: 83598, Start Num: 73

Candidate Starts for Gonephishing_152:

(Start: 51 @83005 has 4 MA's), (Start: 73 @83062 has 113 MA's), (Start: 81 @83080 has 3 MA's), (120, 83251), (122, 83263), (137, 83314), (140, 83329), (194, 83479), (201, 83500),

Gene: Gravaillia_62 Start: 43967, Stop: 44521, Start Num: 73

Candidate Starts for Gravaillia_62:

(Start: 73 @43967 has 113 MA's), (Start: 77 @43970 has 27 MA's), (80, 43985), (85, 44006), (97, 44069), (102, 44081), (106, 44093), (116, 44126), (129, 44195), (130, 44198), (141, 44237), (145, 44264), (149, 44282), (176, 44345), (177, 44348), (182, 44363), (197, 44408), (210, 44468), (214, 44480), (216, 44486),

Gene: Guacamole_54 Start: 36889, Stop: 37476, Start Num: 73

Candidate Starts for Guacamole_54:

(31, 36727), (35, 36775), (Start: 73 @36889 has 113 MA's), (125, 37090), (142, 37156), (147, 37186), (154, 37207), (173, 37240), (176, 37258), (200, 37354), (202, 37357), (203, 37363), (204, 37366), (206, 37387), (220, 37456),

Gene: Guanica15_59 Start: 39488, Stop: 40054, Start Num: 72

Candidate Starts for Guanica15_59:

(Start: 72 @39488 has 117 MA's), (Start: 79 @39500 has 3 MA's), (Start: 81 @39506 has 3 MA's), (115, 39644), (117, 39650), (134, 39731), (172, 39854), (194, 39941), (200, 39959), (202, 39965), (217, 40022),

Gene: HH92_63 Start: 43959, Stop: 44513, Start Num: 73

Candidate Starts for HH92_63:

(Start: 73 @43959 has 113 MA's), (Start: 77 @43962 has 27 MA's), (80, 43977), (97, 44061), (102, 44073), (106, 44085), (116, 44118), (129, 44187), (130, 44190), (141, 44229), (145, 44256), (149, 44274), (168, 44292), (176, 44337), (177, 44340), (182, 44355), (197, 44400), (210, 44460), (216, 44478),

Gene: Hadrien_63 Start: 43959, Stop: 44513, Start Num: 73

Candidate Starts for Hadrien_63:

(Start: 73 @43959 has 113 MA's), (Start: 77 @43962 has 27 MA's), (80, 43977), (97, 44061), (102, 44073), (106, 44085), (116, 44118), (129, 44187), (130, 44190), (141, 44229), (145, 44256), (149, 44274), (168, 44292), (176, 44337), (177, 44340), (182, 44355), (197, 44400), (210, 44460), (216, 44478),

Gene: Hail_61 Start: 43962, Stop: 44513, Start Num: 77

Candidate Starts for Hail_61:

(Start: 73 @43959 has 113 MA's), (Start: 77 @43962 has 27 MA's), (80, 43977), (97, 44061), (102, 44073), (106, 44085), (116, 44118), (129, 44187), (130, 44190), (141, 44229), (145, 44256), (149, 44274), (168, 44292), (176, 44337), (177, 44340), (182, 44355), (197, 44400), (210, 44460), (216, 44478),

Gene: Halley_160 Start: 84706, Stop: 85242, Start Num: 73

Candidate Starts for Halley_160:

(Start: 73 @84706 has 113 MA's), (Start: 81 @84724 has 3 MA's), (82, 84727), (120, 84895), (122, 84907), (137, 84958), (140, 84973), (194, 85123), (220, 85216),

Gene: Hammy_58 Start: 40576, Stop: 41130, Start Num: 73

Candidate Starts for Hammy_58:

(Start: 73 @40576 has 113 MA's), (90, 40639), (101, 40687), (104, 40696), (107, 40702), (110, 40711), (122, 40777), (137, 40825), (163, 40912), (172, 40930), (194, 41017), (200, 41035), (209, 41062), (217, 41098),

Gene: Hannaconda_152 Start: 85066, Stop: 85653, Start Num: 73

Candidate Starts for Hannaconda_152:

(Start: 47 @84991 has 4 MA's), (Start: 51 @85009 has 4 MA's), (Start: 73 @85066 has 113 MA's), (84, 85093), (91, 85135), (105, 85189), (120, 85255), (138, 85318), (141, 85333), (164, 85417), (191, 85525), (194, 85534), (201, 85555),

Gene: HannahD_61 Start: 40353, Stop: 41081, Start Num: 64

Candidate Starts for HannahD_61:

(49, 40314), (Start: 64 @40353 has 9 MA's), (Start: 73 @40371 has 113 MA's), (103, 40485), (125, 40578), (126, 40584), (180, 40758), (209, 40878), (210, 40887), (211, 40890),

Gene: HedwigODU_57 Start: 39985, Stop: 40539, Start Num: 72

Candidate Starts for HedwigODU_57:

(Start: 72 @39985 has 117 MA's), (Start: 79 @39997 has 3 MA's), (Start: 81 @40003 has 3 MA's), (90, 40051), (101, 40099), (104, 40108), (117, 40147), (120, 40177), (123, 40192), (134, 40228), (161, 40315), (172, 40339), (175, 40363), (189, 40411), (194, 40426), (200, 40444),

Gene: Hilltopfarm_56 Start: 41966, Stop: 42562, Start Num: 73

Candidate Starts for Hilltopfarm_56:

(Start: 73 @41966 has 113 MA's), (Start: 81 @41984 has 3 MA's), (82, 41987), (84, 41993), (110, 42104), (120, 42158), (123, 42173), (134, 42209), (137, 42218), (138, 42221), (147, 42269), (148, 42272), (155, 42302), (175, 42368), (180, 42389), (223, 42536), (228, 42551),

Gene: Hitter_57 Start: 36465, Stop: 37052, Start Num: 73

Candidate Starts for Hitter_57:

(Start: 73 @36465 has 113 MA's), (125, 36666), (147, 36762), (176, 36834), (200, 36930), (202, 36933), (203, 36939), (204, 36942), (206, 36963),

Gene: HokkenD_154 Start: 86274, Stop: 86867, Start Num: 51

Candidate Starts for HokkenD_154:

(Start: 47 @86256 has 4 MA's), (Start: 51 @86274 has 4 MA's), (Start: 73 @86331 has 113 MA's), (Start: 81 @86349 has 3 MA's), (120, 86520), (122, 86532), (137, 86583), (140, 86598), (194, 86748), (200, 86766), (201, 86769),

Gene: Homura_57 Start: 40104, Stop: 40658, Start Num: 72

Candidate Starts for Homura_57:

(32, 39957), (Start: 72 @40104 has 117 MA's), (Start: 79 @40116 has 3 MA's), (Start: 81 @40122 has 3 MA's), (90, 40170), (101, 40218), (104, 40227), (117, 40266), (120, 40296), (134, 40347), (161, 40434), (172, 40458), (194, 40545), (200, 40563), (202, 40569),

Gene: Hughesyang_159 Start: 85284, Stop: 85820, Start Num: 73

Candidate Starts for Hughesyang_159:

(Start: 73 @85284 has 113 MA's), (Start: 81 @85302 has 3 MA's), (82, 85305), (Start: 88 @85344 has 1 MA's), (90, 85347), (120, 85473), (122, 85485), (137, 85536), (140, 85551), (160, 85602), (180, 85659), (218, 85785), (220, 85794),

Gene: Hurricane_57 Start: 40251, Stop: 40808, Start Num: 73

Candidate Starts for Hurricane_57:

(48, 40182), (Start: 73 @40251 has 113 MA's), (Start: 79 @40263 has 3 MA's), (Start: 81 @40269 has 3 MA's), (90, 40314), (99, 40353), (100, 40356), (110, 40386), (117, 40410), (120, 40440), (169, 40599), (200, 40713), (215, 40764), (217, 40776),

Gene: Hyperbowlee_57 Start: 40301, Stop: 40855, Start Num: 72

Candidate Starts for Hyperbowlee_57:

(32, 40154), (Start: 72 @40301 has 117 MA's), (Start: 79 @40313 has 3 MA's), (Start: 81 @40319 has 3 MA's), (90, 40367), (101, 40415), (104, 40424), (117, 40463), (120, 40493), (134, 40544), (161, 40631), (172, 40655), (194, 40742), (200, 40760), (202, 40766),

Gene: Hyzer_63 Start: 42350, Stop: 42940, Start Num: 72

Candidate Starts for Hyzer_63:

(61, 42320), (68, 42344), (Start: 72 @42350 has 117 MA's), (125, 42554), (126, 42560), (147, 42650), (154, 42671), (176, 42722), (200, 42818), (202, 42821), (203, 42827), (206, 42851),

Gene: Illumine_60 Start: 40744, Stop: 41316, Start Num: 72

Candidate Starts for Illumine_60:

(Start: 72 @40744 has 117 MA's), (Start: 79 @40756 has 3 MA's), (Start: 81 @40762 has 3 MA's), (90, 40810), (101, 40858), (104, 40867), (115, 40900), (117, 40906), (134, 40987), (172, 41110), (194, 41197), (200, 41215), (224, 41305),

Gene: Inky_57 Start: 40104, Stop: 40658, Start Num: 72

Candidate Starts for Inky_57:

(32, 39957), (Start: 72 @40104 has 117 MA's), (Start: 79 @40116 has 3 MA's), (Start: 81 @40122 has 3 MA's), (90, 40170), (101, 40218), (104, 40227), (117, 40266), (120, 40296), (134, 40347), (161, 40434), (172, 40458), (194, 40545), (200, 40563), (202, 40569),

Gene: JAWS_57 Start: 39971, Stop: 40525, Start Num: 72

Candidate Starts for JAWS_57:

(Start: 72 @39971 has 117 MA's), (Start: 79 @39983 has 3 MA's), (Start: 81 @39989 has 3 MA's), (90, 40037), (101, 40085), (104, 40094), (117, 40133), (120, 40163), (123, 40178), (134, 40214), (161, 40301), (172, 40325), (175, 40349), (189, 40397), (194, 40412), (200, 40430), (202, 40436), (217, 40493),

Gene: JF1_62 Start: 40319, Stop: 40915, Start Num: 77

Candidate Starts for JF1_62:

(Start: 77 @40319 has 27 MA's), (86, 40361), (104, 40439), (120, 40508), (122, 40520), (137, 40568), (165, 40658), (166, 40661), (172, 40688), (180, 40733), (194, 40775), (199, 40796), (200, 40799), (218, 40880),

Gene: Jada_82 Start: 60050, Stop: 60538, Start Num: 78

Candidate Starts for Jada_82:

(Start: 78 @60050 has 27 MA's), (103, 60155), (124, 60230), (128, 60245), (135, 60266), (138, 60275), (141, 60290), (173, 60362), (178, 60386), (181, 60395), (189, 60419), (201, 60461), (218, 60524), (221, 60533),

Gene: Jalammah_60 Start: 39468, Stop: 40055, Start Num: 73

Candidate Starts for Jalammah_60:

(31, 39306), (35, 39354), (Start: 73 @39468 has 113 MA's), (125, 39669), (147, 39765), (173, 39819), (176, 39837), (200, 39933), (202, 39936), (203, 39942), (204, 39945), (206, 39966), (220, 40035),

Gene: Jarvi_57 Start: 40104, Stop: 40658, Start Num: 72

Candidate Starts for Jarvi_57:

(32, 39957), (Start: 72 @40104 has 117 MA's), (Start: 79 @40116 has 3 MA's), (Start: 81 @40122 has 3 MA's), (90, 40170), (101, 40218), (104, 40227), (117, 40266), (120, 40296), (134, 40347), (161, 40434), (172, 40458), (194, 40545), (200, 40563), (202, 40569),

Gene: JasperJr_54 Start: 36889, Stop: 37476, Start Num: 73

Candidate Starts for JasperJr_54:

(31, 36727), (35, 36775), (Start: 73 @36889 has 113 MA's), (125, 37090), (142, 37156), (147, 37186), (154, 37207), (173, 37240), (176, 37258), (200, 37354), (202, 37357), (203, 37363), (204, 37366), (206, 37387), (220, 37456),

Gene: Jayhawk_58 Start: 39980, Stop: 40534, Start Num: 72

Candidate Starts for Jayhawk_58:

(Start: 72 @39980 has 117 MA's), (Start: 79 @39992 has 3 MA's), (Start: 81 @39998 has 3 MA's), (90, 40046), (101, 40094), (104, 40103), (117, 40142), (120, 40172), (134, 40223), (161, 40310), (172, 40334), (194, 40421), (200, 40439), (202, 40445),

Gene: Jeanie_26 Start: 15627, Stop: 16337, Start Num: 63

Candidate Starts for Jeanie_26:

(Start: 63 @15627 has 2 MA's), (108, 15783), (119, 15816), (122, 15852), (130, 15879), (131, 15882), (135, 15894), (175, 16020), (179, 16038), (198, 16095), (212, 16143), (216, 16155), (229, 16218), (232, 16284),

Gene: Jeckyll_57 Start: 40104, Stop: 40658, Start Num: 72

Candidate Starts for Jeckyll_57:

(32, 39957), (Start: 72 @40104 has 117 MA's), (Start: 79 @40116 has 3 MA's), (Start: 81 @40122 has 3 MA's), (90, 40170), (101, 40218), (104, 40227), (117, 40266), (120, 40296), (134, 40347), (161, 40434), (172, 40458), (194, 40545), (200, 40563), (202, 40569),

Gene: Joy99_57 Start: 40033, Stop: 40587, Start Num: 72

Candidate Starts for Joy99_57:

(32, 39886), (Start: 72 @40033 has 117 MA's), (Start: 79 @40045 has 3 MA's), (Start: 81 @40051 has 3 MA's), (90, 40099), (101, 40147), (104, 40156), (117, 40195), (120, 40225), (134, 40276), (161, 40363), (172, 40387), (194, 40474), (200, 40492), (202, 40498),

Gene: JuicyJay_154 Start: 85903, Stop: 86514, Start Num: 47

Candidate Starts for JuicyJay_154:

(Start: 47 @85903 has 4 MA's), (Start: 51 @85921 has 4 MA's), (Start: 73 @85978 has 113 MA's), (Start: 81 @85996 has 3 MA's), (120, 86167), (122, 86179), (137, 86230), (140, 86245), (194, 86395), (201, 86416),

Gene: Juliette_64 Start: 40466, Stop: 41062, Start Num: 77

Candidate Starts for Juliette_64:

(Start: 77 @40466 has 27 MA's), (86, 40508), (104, 40586), (120, 40655), (122, 40667), (137, 40715), (172, 40835), (180, 40880), (194, 40922), (199, 40943), (200, 40946), (218, 41027),

Gene: Kalah2_151 Start: 84414, Stop: 84950, Start Num: 73

Candidate Starts for Kalah2_151:

(Start: 73 @84414 has 113 MA's), (Start: 81 @84432 has 3 MA's), (82, 84435), (Start: 88 @84474 has 1 MA's), (90, 84477), (120, 84603), (122, 84615), (137, 84666), (140, 84681), (160, 84732), (180, 84789), (218, 84915), (220, 84924),

Gene: Karp_79 Start: 60446, Stop: 60934, Start Num: 78

Candidate Starts for Karp_79:

(Start: 78 @60446 has 27 MA's), (89, 60506), (120, 60617), (124, 60626), (131, 60650), (136, 60665), (141, 60686), (173, 60758), (178, 60782), (181, 60791), (189, 60815), (201, 60857), (218, 60920), (221, 60929),

Gene: KashFlow_157 Start: 84879, Stop: 85466, Start Num: 73

Candidate Starts for KashFlow_157:

(Start: 47 @84804 has 4 MA's), (Start: 51 @84822 has 4 MA's), (Start: 73 @84879 has 113 MA's), (84, 84906), (91, 84948), (105, 85002), (120, 85068), (138, 85131), (141, 85146), (164, 85230), (191, 85338), (194, 85347), (200, 85365), (201, 85368),

Gene: Kenrey_83 Start: 59731, Stop: 60219, Start Num: 78

Candidate Starts for Kenrey_83:

(Start: 78 @59731 has 27 MA's), (109, 59857), (124, 59911), (135, 59947), (138, 59956), (141, 59971), (173, 60043), (178, 60067), (181, 60076), (183, 60082), (189, 60100), (192, 60109), (201, 60142), (213, 60184), (218, 60205), (221, 60214),

Gene: Keshu_59 Start: 40349, Stop: 40906, Start Num: 73

Candidate Starts for Keshu_59:

(48, 40280), (Start: 73 @40349 has 113 MA's), (Start: 81 @40367 has 3 MA's), (90, 40412), (99, 40451), (101, 40460), (110, 40484), (117, 40508), (169, 40697), (172, 40706), (200, 40811),

Gene: KiSi_61 Start: 40705, Stop: 41262, Start Num: 72

Candidate Starts for KiSi_61:

(60, 40675), (Start: 72 @40705 has 117 MA's), (Start: 79 @40717 has 3 MA's), (91, 40774), (99, 40807), (110, 40840), (122, 40906), (134, 40945), (152, 41023), (172, 41062), (194, 41149), (200, 41167), (210, 41203),

Gene: Kinbote_63 Start: 43959, Stop: 44513, Start Num: 73

Candidate Starts for Kinbote_63:

(Start: 73 @43959 has 113 MA's), (Start: 77 @43962 has 27 MA's), (80, 43977), (97, 44061), (102, 44073), (106, 44085), (116, 44118), (129, 44187), (130, 44190), (141, 44229), (145, 44256), (149, 44274), (168, 44292), (176, 44337), (177, 44340), (182, 44355), (197, 44400), (210, 44460), (216, 44478),

Gene: Klein_158 Start: 82774, Stop: 83310, Start Num: 73

Candidate Starts for Klein_158:

(Start: 73 @82774 has 113 MA's), (Start: 81 @82792 has 3 MA's), (82, 82795), (Start: 88 @82834 has 1 MA's), (90, 82837), (120, 82963), (122, 82975), (137, 83026), (140, 83041), (160, 83092), (180, 83149), (218, 83275), (220, 83284),

Gene: Kraw_63 Start: 40154, Stop: 40750, Start Num: 77

Candidate Starts for Kraw_63:

(Start: 77 @40154 has 27 MA's), (86, 40196), (101, 40265), (104, 40274), (120, 40343), (122, 40355), (137, 40403), (172, 40523), (180, 40568), (194, 40610), (199, 40631), (200, 40634), (218, 40715),

Gene: Krueger_63 Start: 40459, Stop: 41013, Start Num: 73

Candidate Starts for Krueger_63:

(Start: 73 @40459 has 113 MA's), (Start: 79 @40471 has 3 MA's), (Start: 81 @40477 has 3 MA's), (101, 40573), (104, 40582), (110, 40597), (117, 40621), (134, 40702), (161, 40789), (172, 40813), (194, 40900), (209, 40945), (215, 40969), (217, 40981),

Gene: LastHope_60 Start: 39135, Stop: 39701, Start Num: 72

Candidate Starts for LastHope_60:

(58, 39096), (Start: 72 @39135 has 117 MA's), (Start: 79 @39147 has 3 MA's), (Start: 81 @39153 has 3 MA's), (Start: 88 @39195 has 1 MA's), (99, 39240), (101, 39249), (115, 39291), (117, 39297), (134, 39378), (172, 39501), (194, 39588), (200, 39606), (202, 39612), (217, 39669),

Gene: LaterM_58 Start: 40866, Stop: 41420, Start Num: 72

Candidate Starts for LaterM_58:

(Start: 72 @40866 has 117 MA's), (Start: 79 @40878 has 3 MA's), (Start: 81 @40884 has 3 MA's), (90, 40932), (101, 40980), (104, 40989), (117, 41028), (120, 41058), (123, 41073), (134, 41109), (161, 41196), (172, 41220), (194, 41307), (200, 41325), (217, 41388),

Gene: LeMond_61 Start: 40686, Stop: 41243, Start Num: 72

Candidate Starts for LeMond_61:

(60, 40656), (Start: 72 @40686 has 117 MA's), (Start: 79 @40698 has 3 MA's), (91, 40755), (99, 40788), (110, 40821), (122, 40887), (134, 40926), (152, 41004), (172, 41043), (194, 41130), (200, 41148), (210, 41184),

Gene: Lea83_58 Start: 40304, Stop: 40861, Start Num: 73

Candidate Starts for Lea83_58:

(48, 40235), (Start: 73 @40304 has 113 MA's), (Start: 79 @40316 has 3 MA's), (Start: 81 @40322 has 3 MA's), (90, 40367), (99, 40406), (110, 40439), (117, 40463), (120, 40493), (169, 40652), (172, 40661), (200, 40766),

Gene: Lebo14_63 Start: 40421, Stop: 41083, Start Num: 77

Candidate Starts for Lebo14_63:

(Start: 77 @40421 has 27 MA's), (86, 40463), (104, 40541), (120, 40610), (122, 40622), (137, 40670), (144, 40706), (158, 40796), (159, 40805), (172, 40856), (180, 40901), (194, 40943), (199, 40964), (200, 40967), (218, 41048),

Gene: LilHazelnut_64 Start: 43959, Stop: 44513, Start Num: 73

Candidate Starts for LilHazelnut_64:

(Start: 73 @43959 has 113 MA's), (Start: 77 @43962 has 27 MA's), (80, 43977), (97, 44061), (102, 44073), (106, 44085), (116, 44118), (129, 44187), (130, 44190), (141, 44229), (145, 44256), (149, 44274), (168, 44292), (176, 44337), (177, 44340), (182, 44355), (197, 44400), (210, 44460), (216, 44478),

Gene: LilPharaoh_49 Start: 37775, Stop: 38326, Start Num: 74

Candidate Starts for LilPharaoh_49:

(22, 37541), (Start: 74 @37775 has 5 MA's), (Start: 81 @37796 has 3 MA's), (Start: 88 @37838 has 1 MA's), (91, 37850), (104, 37901), (117, 37940), (120, 37970), (134, 38021), (172, 38126), (194, 38213), (200, 38231), (202, 38237), (220, 38306),

Gene: Limpid_78 Start: 59407, Stop: 59898, Start Num: 78

Candidate Starts for Limpid_78:

(65, 59383), (Start: 78 @59407 has 27 MA's), (89, 59467), (141, 59647), (145, 59674), (178, 59743), (189, 59776), (213, 59860), (218, 59881),

Gene: LindNT_56 Start: 40200, Stop: 40742, Start Num: 79

Candidate Starts for LindNT_56:

(Start: 72 @40188 has 117 MA's), (Start: 79 @40200 has 3 MA's), (Start: 81 @40206 has 3 MA's), (90, 40254), (101, 40302), (104, 40311), (117, 40350), (120, 40380), (123, 40395), (134, 40431), (161, 40518), (172, 40542), (189, 40614), (194, 40629), (200, 40647), (202, 40653), (217, 40710),

Gene: LittleE_160 Start: 84645, Stop: 85238, Start Num: 51

Candidate Starts for LittleE_160:

(Start: 51 @84645 has 4 MA's), (Start: 73 @84702 has 113 MA's), (Start: 81 @84720 has 3 MA's), (120, 84891), (122, 84903), (137, 84954), (140, 84969), (194, 85119), (201, 85140),

Gene: Llorens_57 Start: 40104, Stop: 40658, Start Num: 72

Candidate Starts for Llorens_57:

(32, 39957), (Start: 72 @40104 has 117 MA's), (Start: 79 @40116 has 3 MA's), (Start: 81 @40122 has 3 MA's), (90, 40170), (101, 40218), (104, 40227), (117, 40266), (120, 40296), (134, 40347), (161, 40434), (172, 40458), (194, 40545), (200, 40563), (202, 40569),

Gene: LonelyBoi_53 Start: 40470, Stop: 41057, Start Num: 72

Candidate Starts for LonelyBoi_53:

(70, 40467), (Start: 72 @40470 has 117 MA's), (103, 40578), (125, 40674), (142, 40740), (147, 40770), (154, 40791), (176, 40842), (200, 40938), (202, 40941), (203, 40947), (219, 41037),

Gene: Lucky2013_150 Start: 79771, Stop: 80307, Start Num: 73

Candidate Starts for Lucky2013_150:

(Start: 73 @79771 has 113 MA's), (Start: 81 @79789 has 3 MA's), (82, 79792), (Start: 88 @79831 has 1 MA's), (90, 79834), (120, 79960), (122, 79972), (137, 80023), (140, 80038), (160, 80089), (180, 80146), (194, 80188), (201, 80209),

Gene: Luke_63 Start: 43917, Stop: 44468, Start Num: 77

Candidate Starts for Luke_63:

(Start: 73 @43914 has 113 MA's), (Start: 77 @43917 has 27 MA's), (80, 43932), (97, 44016), (102, 44028), (106, 44040), (116, 44073), (129, 44142), (130, 44145), (141, 44184), (145, 44211), (149, 44229), (168, 44247), (176, 44292), (177, 44295), (182, 44310), (197, 44355), (210, 44415), (216, 44433),

Gene: Luna22_61 Start: 43946, Stop: 44497, Start Num: 77

Candidate Starts for Luna22_61:

(Start: 73 @43943 has 113 MA's), (Start: 77 @43946 has 27 MA's), (80, 43961), (97, 44045), (102, 44057), (106, 44069), (116, 44102), (129, 44171), (130, 44174), (141, 44213), (145, 44240), (149, 44258), (168, 44276), (176, 44321), (177, 44324), (182, 44339), (197, 44384), (210, 44444), (216, 44462),

Gene: Lunahalos_57 Start: 40104, Stop: 40658, Start Num: 72

Candidate Starts for Lunahalos_57:

(32, 39957), (Start: 72 @40104 has 117 MA's), (Start: 79 @40116 has 3 MA's), (Start: 81 @40122 has 3 MA's), (90, 40170), (101, 40218), (104, 40227), (117, 40266), (120, 40296), (134, 40347), (161, 40434), (172, 40458), (194, 40545), (200, 40563), (202, 40569),

Gene: Lysidious_58 Start: 38835, Stop: 39422, Start Num: 73

Candidate Starts for Lysidious_58:

(31, 38673), (35, 38721), (Start: 73 @38835 has 113 MA's), (89, 38892), (125, 39036), (142, 39102), (147, 39132), (176, 39204), (200, 39300), (202, 39303), (203, 39309), (206, 39333), (220, 39402),

Gene: MacKat_52 Start: 35466, Stop: 36002, Start Num: 81

Candidate Starts for MacKat_52:

(Start: 72 @35448 has 117 MA's), (Start: 79 @35460 has 3 MA's), (Start: 81 @35466 has 3 MA's), (90, 35514), (101, 35562), (104, 35571), (117, 35610), (120, 35640), (123, 35655), (134, 35691), (161, 35778), (172, 35802), (175, 35826), (189, 35874), (194, 35889), (200, 35907), (217, 35970),

Gene: MacnCheese_59 Start: 40831, Stop: 41388, Start Num: 73

Candidate Starts for MacnCheese_59:

(Start: 73 @40831 has 113 MA's), (Start: 79 @40843 has 3 MA's), (Start: 81 @40849 has 3 MA's), (86, 40873), (90, 40894), (99, 40933), (110, 40966), (117, 40990), (126, 41041), (150, 41146), (172, 41188), (200, 41293),

Gene: Madeline_55 Start: 39843, Stop: 40427, Start Num: 72

Candidate Starts for Madeline_55:

(61, 39813), (68, 39837), (Start: 72 @39843 has 117 MA's), (125, 40044), (147, 40140), (175, 40203), (193, 40275), (200, 40308), (202, 40311), (206, 40341),

Gene: MagicMan_61 Start: 41953, Stop: 42714, Start Num: 64

Candidate Starts for MagicMan_61:

(Start: 64 @41953 has 9 MA's), (Start: 73 @41971 has 113 MA's), (103, 42085), (125, 42178), (126, 42184), (180, 42358), (209, 42478), (210, 42487), (211, 42490),

Gene: Malibo_57 Start: 39555, Stop: 40142, Start Num: 73

Candidate Starts for Malibo_57:

(35, 39441), (Start: 73 @39555 has 113 MA's), (103, 39663), (125, 39759), (176, 39927), (185, 39963), (189, 39984), (193, 39990), (202, 40026), (203, 40032), (206, 40056),

Gene: Malthus_63 Start: 40154, Stop: 40750, Start Num: 77

Candidate Starts for Malthus_63:

(Start: 77 @40154 has 27 MA's), (86, 40196), (101, 40265), (104, 40274), (120, 40343), (122, 40355), (137, 40403), (172, 40523), (180, 40568), (194, 40610), (199, 40631), (200, 40634), (218, 40715),

Gene: Marcoliusprime_60 Start: 42031, Stop: 42564, Start Num: 73

Candidate Starts for Marcoliusprime_60:

(55, 41980), (Start: 73 @42031 has 113 MA's), (80, 42046), (90, 42094), (101, 42142), (104, 42151), (115, 42184), (117, 42190), (119, 42196), (137, 42280), (151, 42346),

Gene: Maridalia_58 Start: 39189, Stop: 39773, Start Num: 72

Candidate Starts for Maridalia_58:

(23, 38985), (61, 39159), (68, 39183), (Start: 72 @39189 has 117 MA's), (125, 39390), (142, 39456), (147, 39486), (154, 39507), (176, 39558), (200, 39654), (202, 39657), (203, 39663), (219, 39753),

Gene: MarkPhew_60 Start: 40383, Stop: 40940, Start Num: 72

Candidate Starts for MarkPhew_60:

(Start: 72 @40383 has 117 MA's), (Start: 79 @40395 has 3 MA's), (Start: 88 @40440 has 1 MA's), (91, 40452), (99, 40485), (104, 40503), (110, 40518), (122, 40584), (134, 40623), (172, 40740), (183, 40794), (194, 40827),

Gene: Marleymoo_144 Start: 82634, Stop: 83152, Start Num: 79

Candidate Starts for Marleymoo_144:

(66, 82610), (Start: 69 @82616 has 1 MA's), (Start: 73 @82622 has 113 MA's), (Start: 79 @82634 has 3 MA's), (80, 82637), (82, 82643), (90, 82685), (110, 82757), (134, 82865), (137, 82874), (140, 82889), (160, 82940), (180, 82997), (218, 83123), (225, 83144),

Gene: Marshawn_58 Start: 40229, Stop: 40783, Start Num: 72

Candidate Starts for Marshawn_58:

(Start: 72 @40229 has 117 MA's), (Start: 79 @40241 has 3 MA's), (Start: 88 @40286 has 1 MA's), (91, 40298), (101, 40340), (104, 40349), (110, 40364), (119, 40394), (120, 40418), (122, 40430), (129, 40454), (134, 40469), (161, 40559), (172, 40583), (194, 40670), (200, 40688), (210, 40724),

Gene: Marteena_53 Start: 38610, Stop: 39200, Start Num: 72

Candidate Starts for Marteena_53:

(61, 38580), (68, 38604), (Start: 72 @38610 has 117 MA's), (125, 38814), (147, 38910), (154, 38931), (176, 38982), (200, 39078), (202, 39081), (203, 39087), (204, 39090), (206, 39111), (220, 39180),

Gene: MaryV_122 Start: 63041, Stop: 63556, Start Num: 78

Candidate Starts for MaryV_122:

(Start: 78 @63041 has 27 MA's), (Start: 81 @63056 has 3 MA's), (86, 63080), (87, 63086), (91, 63107), (93, 63125), (98, 63137), (99, 63140), (117, 63197), (122, 63239), (137, 63287), (138, 63290), (147, 63338), (148, 63341), (171, 63359), (181, 63410), (194, 63449), (197, 63461), (210, 63506),

Gene: McGonagall_26 Start: 15628, Stop: 16338, Start Num: 63

Candidate Starts for McGonagall_26:

(Start: 63 @15628 has 2 MA's), (108, 15784), (119, 15817), (122, 15853), (130, 15880), (131, 15883), (135, 15895), (175, 16021), (179, 16039), (198, 16096), (212, 16144), (216, 16156), (229, 16219), (232, 16285),

Gene: McMater_60 Start: 40625, Stop: 41188, Start Num: 72

Candidate Starts for McMater_60:

(Start: 72 @40625 has 117 MA's), (91, 40700), (101, 40742), (104, 40751), (115, 40784), (117, 40790), (134, 40871), (172, 40988), (194, 41075), (200, 41093), (210, 41129), (220, 41168),

Gene: Mdavu_50 Start: 38057, Stop: 38587, Start Num: 81

Candidate Starts for Mdavu_50:

(22, 37802), (Start: 74 @38036 has 5 MA's), (Start: 81 @38057 has 3 MA's), (Start: 88 @38099 has 1 MA's), (91, 38111), (104, 38162), (117, 38201), (120, 38231), (134, 38282), (172, 38387), (194, 38474), (200, 38492), (202, 38498), (220, 38567),

Gene: MeaningOfLife_58 Start: 40859, Stop: 41413, Start Num: 72

Candidate Starts for MeaningOfLife_58:

(Start: 72 @40859 has 117 MA's), (Start: 79 @40871 has 3 MA's), (90, 40925), (101, 40973), (104, 40982), (117, 41021), (120, 41051), (134, 41102), (161, 41189), (172, 41213), (194, 41300), (200, 41318), (202, 41324), (218, 41384),

Gene: MeganTheeKilla_80 Start: 58898, Stop: 59386, Start Num: 78

Candidate Starts for MeganTheeKilla_80:

(Start: 78 @58898 has 27 MA's), (103, 59003), (124, 59078), (128, 59093), (135, 59114), (138, 59123), (141, 59138), (173, 59210), (178, 59234), (181, 59243), (189, 59267), (201, 59309), (218, 59372), (221, 59381),

Gene: Megsy_59 Start: 40253, Stop: 40807, Start Num: 72

Candidate Starts for Megsy_59:

(Start: 72 @40253 has 117 MA's), (Start: 79 @40265 has 3 MA's), (Start: 81 @40271 has 3 MA's), (90, 40319), (101, 40367), (104, 40376), (117, 40415), (120, 40445), (123, 40460), (134, 40496), (161, 40583), (172, 40607), (194, 40694), (200, 40712), (202, 40718),

Gene: Mellie_55 Start: 36842, Stop: 37432, Start Num: 73

Candidate Starts for Mellie_55:

(31, 36680), (35, 36728), (Start: 73 @36842 has 113 MA's), (125, 37046), (142, 37112), (147, 37142), (154, 37163), (176, 37214), (200, 37310), (202, 37313), (203, 37319), (204, 37322), (206, 37343),

Gene: MiaZeal_157 Start: 80918, Stop: 81454, Start Num: 73

Candidate Starts for MiaZeal_157:

(Start: 73 @80918 has 113 MA's), (Start: 81 @80936 has 3 MA's), (82, 80939), (Start: 88 @80978 has 1 MA's), (90, 80981), (120, 81107), (122, 81119), (137, 81170), (140, 81185), (160, 81236), (180, 81293), (194, 81335), (201, 81356),

Gene: Milly_60 Start: 42004, Stop: 42537, Start Num: 73

Candidate Starts for Milly_60:

(55, 41953), (Start: 73 @42004 has 113 MA's), (80, 42019), (90, 42067), (101, 42115), (104, 42124), (115, 42157), (117, 42163), (119, 42169), (137, 42253), (151, 42319),

Gene: Minerva_158 Start: 84013, Stop: 84549, Start Num: 73

Candidate Starts for Minerva_158:

(Start: 73 @84013 has 113 MA's), (Start: 81 @84031 has 3 MA's), (82, 84034), (120, 84202), (122, 84214), (137, 84265), (140, 84280), (194, 84430), (220, 84523),

Gene: MintFen_57 Start: 37276, Stop: 37863, Start Num: 73

Candidate Starts for MintFen_57:

(Start: 73 @37276 has 113 MA's), (125, 37477), (147, 37573), (176, 37645), (200, 37741), (202, 37744), (203, 37750), (204, 37753), (206, 37774),

Gene: MissRona_58 Start: 39150, Stop: 39737, Start Num: 73

Candidate Starts for MissRona_58:

(31, 38988), (35, 39036), (Start: 73 @39150 has 113 MA's), (125, 39351), (142, 39417), (147, 39447), (154, 39468), (176, 39519), (200, 39615), (202, 39618), (203, 39624), (204, 39627), (206, 39648),

Gene: Mitti_62 Start: 40333, Stop: 40929, Start Num: 77

Candidate Starts for Mitti_62:

(Start: 77 @40333 has 27 MA's), (86, 40375), (104, 40453), (120, 40522), (122, 40534), (137, 40582), (172, 40702), (180, 40747), (194, 40789), (199, 40810), (200, 40813), (218, 40894),

Gene: Moab_81 Start: 60787, Stop: 61275, Start Num: 78

Candidate Starts for Moab_81:

(Start: 78 @60787 has 27 MA's), (89, 60847), (106, 60904), (124, 60967), (141, 61027), (142, 61030), (173, 61099), (178, 61123), (181, 61132), (189, 61156), (201, 61198), (218, 61261), (221, 61270),

Gene: Mufasa_60 Start: 41594, Stop: 42127, Start Num: 73

Candidate Starts for Mufasa_60:

(Start: 73 @41594 has 113 MA's), (80, 41609), (90, 41657), (101, 41705), (104, 41714), (115, 41747), (117, 41753), (119, 41759), (137, 41843), (151, 41909),

Gene: Muntaha_74 Start: 59541, Stop: 60032, Start Num: 77

Candidate Starts for Muntaha_74:

(Start: 77 @59541 has 27 MA's), (82, 59562), (89, 59604), (106, 59661), (109, 59670), (138, 59769), (141, 59784), (178, 59880), (187, 59904), (189, 59913), (194, 59931), (196, 59943), (221, 60027),

Gene: Murucutumbu_58 Start: 40959, Stop: 41513, Start Num: 72

Candidate Starts for Murucutumbu_58:

(Start: 72 @40959 has 117 MA's), (Start: 79 @40971 has 3 MA's), (Start: 81 @40977 has 3 MA's), (90, 41025), (101, 41073), (104, 41082), (117, 41121), (120, 41151), (161, 41289), (172, 41313), (189, 41385), (194, 41400), (200, 41418), (202, 41424), (217, 41481),

Gene: Mynx_58 Start: 40301, Stop: 40855, Start Num: 72

Candidate Starts for Mynx_58:

(Start: 72 @40301 has 117 MA's), (Start: 79 @40313 has 3 MA's), (Start: 81 @40319 has 3 MA's), (90, 40367), (101, 40415), (104, 40424), (117, 40463), (120, 40493), (123, 40508), (134, 40544), (161, 40631), (172, 40655), (175, 40679), (189, 40727), (194, 40742), (200, 40760), (202, 40766), (217, 40823),

Gene: Nebkiss_120 Start: 65950, Stop: 66495, Start Num: 73

Candidate Starts for Nebkiss_120:

(Start: 73 @65950 has 113 MA's), (90, 66013), (117, 66109), (120, 66139), (122, 66151), (134, 66193), (141, 66220), (174, 66313), (178, 66334), (191, 66367), (194, 66376), (200, 66394), (209, 66421), (218, 66460), (226, 66487),

Gene: Nekros_156 Start: 84379, Stop: 84915, Start Num: 73

Candidate Starts for Nekros_156:

(Start: 51 @84322 has 4 MA's), (Start: 73 @84379 has 113 MA's), (Start: 81 @84397 has 3 MA's), (120, 84568), (122, 84580), (137, 84631), (140, 84646), (194, 84796), (201, 84817),

Gene: Nibb_59 Start: 40078, Stop: 40635, Start Num: 72

Candidate Starts for Nibb_59:

(Start: 72 @40078 has 117 MA's), (Start: 79 @40090 has 3 MA's), (91, 40147), (99, 40180), (104, 40198), (110, 40213), (122, 40279), (134, 40318), (138, 40330), (172, 40435), (194, 40522),

Gene: NihilNomen_161 Start: 84104, Stop: 84640, Start Num: 73

Candidate Starts for NihilNomen_161:

(Start: 47 @84029 has 4 MA's), (Start: 51 @84047 has 4 MA's), (Start: 73 @84104 has 113 MA's), (Start: 81 @84122 has 3 MA's), (120, 84293), (122, 84305), (137, 84356), (140, 84371), (194, 84521), (201, 84542),

Gene: Nikao_52 Start: 40681, Stop: 41211, Start Num: 81

Candidate Starts for Nikao_52:

(22, 40426), (Start: 74 @40660 has 5 MA's), (Start: 81 @40681 has 3 MA's), (Start: 88 @40723 has 1 MA's), (91, 40735), (104, 40786), (117, 40825), (120, 40855), (134, 40906), (172, 41011), (194, 41098), (200, 41116), (202, 41122), (220, 41191),

Gene: Niklas_60 Start: 40686, Stop: 41249, Start Num: 72

Candidate Starts for Niklas_60:

(Start: 72 @40686 has 117 MA's), (91, 40761), (101, 40803), (104, 40812), (115, 40845), (117, 40851), (134, 40932), (172, 41049), (194, 41136), (200, 41154), (210, 41190), (220, 41229),

Gene: November_58 Start: 40462, Stop: 41016, Start Num: 73

Candidate Starts for November_58:

(Start: 73 @40462 has 113 MA's), (90, 40525), (99, 40564), (101, 40573), (104, 40582), (107, 40588), (110, 40597), (122, 40663), (134, 40702), (137, 40711), (161, 40792), (172, 40816), (194, 40903), (200, 40921), (209, 40948), (217, 40984),

Gene: Nutello_49 Start: 38047, Stop: 38598, Start Num: 74

Candidate Starts for Nutello_49:

(22, 37813), (Start: 74 @38047 has 5 MA's), (Start: 81 @38068 has 3 MA's), (Start: 88 @38110 has 1 MA's), (91, 38122), (104, 38173), (117, 38212), (120, 38242), (134, 38293), (172, 38398), (194, 38485), (200, 38503), (202, 38509), (220, 38578),

Gene: OBUpride_64 Start: 43955, Stop: 44509, Start Num: 73

Candidate Starts for OBUpride_64:

(Start: 73 @43955 has 113 MA's), (Start: 77 @43958 has 27 MA's), (80, 43973), (85, 43994), (97, 44057), (102, 44069), (106, 44081), (116, 44114), (129, 44183), (130, 44186), (141, 44225), (145, 44252), (149, 44270), (176, 44333), (177, 44336), (182, 44351), (197, 44396), (210, 44456), (214, 44468), (216, 44474),

Gene: Odette_164 Start: 87031, Stop: 87573, Start Num: 69

Candidate Starts for Odette_164:

(66, 87025), (Start: 69 @87031 has 1 MA's), (Start: 73 @87037 has 113 MA's), (Start: 79 @87049 has 3 MA's), (80, 87052), (82, 87058), (90, 87100), (110, 87172), (120, 87226), (122, 87238), (137, 87289), (140, 87304), (160, 87355), (194, 87454), (201, 87475),

Gene: Omega_164 Start: 85807, Stop: 86343, Start Num: 73

Candidate Starts for Omega_164:

(Start: 73 @85807 has 113 MA's), (Start: 81 @85825 has 3 MA's), (82, 85828), (Start: 88 @85867 has 1 MA's), (90, 85870), (120, 85996), (122, 86008), (137, 86059), (140, 86074), (160, 86125), (180, 86182), (220, 86317),

Gene: OmniCritical_61 Start: 40142, Stop: 40819, Start Num: 77

Candidate Starts for OmniCritical_61:

(Start: 77 @40142 has 27 MA's), (86, 40184), (104, 40262), (120, 40331), (122, 40343), (137, 40391), (144, 40427), (158, 40517), (159, 40526), (172, 40577), (180, 40622), (188, 40646), (194, 40664), (199, 40685), (200, 40688), (203, 40700), (204, 40703), (218, 40784),

Gene: Opie_64 Start: 42071, Stop: 42832, Start Num: 64

Candidate Starts for Opie_64:

(36, 41987), (49, 42032), (Start: 64 @42071 has 9 MA's), (Start: 73 @42089 has 113 MA's), (103, 42203), (125, 42296), (126, 42302), (180, 42476), (209, 42596), (210, 42605), (211, 42608),

Gene: Optimus_151 Start: 83303, Stop: 83839, Start Num: 73

Candidate Starts for Optimus_151:

(Start: 73 @83303 has 113 MA's), (Start: 81 @83321 has 3 MA's), (82, 83324), (Start: 88 @83363 has 1 MA's), (90, 83366), (120, 83492), (122, 83504), (137, 83555), (140, 83570), (160, 83621), (180, 83678), (218, 83804), (220, 83813),

Gene: Oregano_55 Start: 36424, Stop: 37011, Start Num: 72

Candidate Starts for Oregano_55:

(24, 36247), (29, 36268), (68, 36418), (Start: 72 @36424 has 117 MA's), (103, 36532), (125, 36628), (126, 36634), (147, 36724), (193, 36862), (200, 36895), (202, 36898), (203, 36904), (206, 36928),

Gene: Oscar_61 Start: 40591, Stop: 41148, Start Num: 72

Candidate Starts for Oscar_61:

(40, 40498), (60, 40561), (Start: 72 @40591 has 117 MA's), (Start: 79 @40603 has 3 MA's), (91, 40660), (99, 40693), (110, 40726), (119, 40756), (122, 40792), (134, 40831), (152, 40909), (172, 40948), (194, 41035), (200, 41053), (210, 41089),

Gene: Padfoot_57 Start: 40301, Stop: 40855, Start Num: 72

Candidate Starts for Padfoot_57:

(32, 40154), (Start: 72 @40301 has 117 MA's), (Start: 79 @40313 has 3 MA's), (Start: 81 @40319 has 3 MA's), (90, 40367), (101, 40415), (104, 40424), (117, 40463), (120, 40493), (134, 40544), (161, 40631), (172, 40655), (194, 40742), (200, 40760), (202, 40766),

Gene: Padpat_59 Start: 39982, Stop: 40536, Start Num: 72

Candidate Starts for Padpat_59:

(Start: 72 @39982 has 117 MA's), (Start: 79 @39994 has 3 MA's), (Start: 81 @40000 has 3 MA's), (90, 40048), (101, 40096), (104, 40105), (117, 40144), (120, 40174), (134, 40225), (161, 40312), (172, 40336), (194, 40423), (202, 40447),

Gene: Patelgo_81 Start: 60950, Stop: 61438, Start Num: 78

Candidate Starts for Patelgo_81:

(Start: 78 @60950 has 27 MA's), (89, 61010), (106, 61067), (124, 61130), (141, 61190), (142, 61193), (173, 61262), (178, 61286), (181, 61295), (189, 61319), (201, 61361), (218, 61424), (221, 61433),

Gene: Peanam_60 Start: 40644, Stop: 41207, Start Num: 72

Candidate Starts for Peanam_60:

(Start: 72 @40644 has 117 MA's), (91, 40719), (101, 40761), (104, 40770), (115, 40803), (117, 40809), (134, 40890), (172, 41007), (194, 41094), (200, 41112), (210, 41148), (220, 41187),

Gene: Peel_57 Start: 40106, Stop: 40660, Start Num: 72

Candidate Starts for Peel_57:

(32, 39959), (Start: 72 @40106 has 117 MA's), (Start: 79 @40118 has 3 MA's), (Start: 81 @40124 has 3 MA's), (90, 40172), (101, 40220), (104, 40229), (117, 40268), (120, 40298), (134, 40349), (161,

40436), (172, 40460), (194, 40547), (200, 40565), (202, 40571),

Gene: Petra_53 Start: 35617, Stop: 36207, Start Num: 73

Candidate Starts for Petra_53:

(31, 35455), (35, 35503), (Start: 73 @35617 has 113 MA's), (125, 35821), (142, 35887), (147, 35917), (154, 35938), (169, 35947), (173, 35971), (176, 35989), (200, 36085), (202, 36088), (203, 36094), (204, 36097), (206, 36118),

Gene: Pharb_56 Start: 39453, Stop: 40010, Start Num: 73

Candidate Starts for Pharb_56:

(Start: 73 @39453 has 113 MA's), (Start: 81 @39471 has 3 MA's), (90, 39516), (99, 39555), (101, 39564), (110, 39588), (117, 39612), (161, 39783), (172, 39810), (200, 39915),

Gene: PhelpsODU_58 Start: 39396, Stop: 39959, Start Num: 72

Candidate Starts for PhelpsODU_58:

(48, 39327), (Start: 72 @39396 has 117 MA's), (Start: 79 @39408 has 3 MA's), (Start: 81 @39414 has 3 MA's), (101, 39510), (110, 39534), (117, 39558), (134, 39639), (162, 39729), (172, 39759), (194, 39846), (200, 39864), (217, 39927),

Gene: Phoebus_160 Start: 87716, Stop: 88327, Start Num: 47

Candidate Starts for Phoebus_160:

(Start: 47 @87716 has 4 MA's), (Start: 51 @87734 has 4 MA's), (Start: 73 @87791 has 113 MA's), (Start: 81 @87809 has 3 MA's), (120, 87980), (122, 87992), (137, 88043), (140, 88058), (194, 88208), (201, 88229),

Gene: Phrank_60 Start: 39457, Stop: 40020, Start Num: 72

Candidate Starts for Phrank_60:

(Start: 72 @39457 has 117 MA's), (Start: 79 @39469 has 3 MA's), (Start: 81 @39475 has 3 MA's), (101, 39571), (117, 39619), (134, 39700), (162, 39790), (172, 39820), (194, 39907), (200, 39925), (217, 39988),

Gene: Phredrick_81 Start: 58811, Stop: 59299, Start Num: 78

Candidate Starts for Phredrick_81:

(Start: 78 @58811 has 27 MA's), (109, 58937), (124, 58991), (135, 59027), (138, 59036), (141, 59051), (173, 59123), (178, 59147), (181, 59156), (183, 59162), (189, 59180), (192, 59189), (201, 59222), (213, 59264), (218, 59285), (221, 59294),

Gene: PhriskyACE_51 Start: 36416, Stop: 36979, Start Num: 72

Candidate Starts for PhriskyACE_51:

(23, 36212), (27, 36227), (68, 36410), (Start: 72 @36416 has 117 MA's), (103, 36524), (121, 36608), (125, 36620), (126, 36626), (147, 36716), (181, 36803), (193, 36830), (200, 36863), (202, 36866), (203, 36872), (206, 36896),

Gene: Piatt_57 Start: 40301, Stop: 40855, Start Num: 72

Candidate Starts for Piatt_57:

(32, 40154), (Start: 72 @40301 has 117 MA's), (Start: 79 @40313 has 3 MA's), (Start: 81 @40319 has 3 MA's), (90, 40367), (101, 40415), (104, 40424), (117, 40463), (120, 40493), (134, 40544), (161, 40631), (172, 40655), (194, 40742), (200, 40760), (202, 40766),

Gene: Pipp_59 Start: 37969, Stop: 38559, Start Num: 73

Candidate Starts for Pipp_59:

(31, 37807), (35, 37855), (Start: 73 @37969 has 113 MA's), (125, 38173), (147, 38269), (154, 38290), (173, 38323), (176, 38341), (200, 38437), (202, 38440), (203, 38446), (204, 38449), (206, 38470),

Gene: Pixie_56 Start: 39789, Stop: 40346, Start Num: 73

Candidate Starts for Pixie_56:

(48, 39720), (Start: 73 @39789 has 113 MA's), (Start: 79 @39801 has 3 MA's), (Start: 81 @39807 has 3 MA's), (90, 39852), (99, 39891), (100, 39894), (110, 39924), (117, 39948), (120, 39978), (169, 40137), (172, 40146), (200, 40251), (215, 40302), (217, 40314),

Gene: Pokerus_56 Start: 40031, Stop: 40585, Start Num: 72

Candidate Starts for Pokerus_56:

(Start: 72 @40031 has 117 MA's), (Start: 79 @40043 has 3 MA's), (90, 40097), (101, 40145), (104, 40154), (117, 40193), (120, 40223), (134, 40274), (161, 40361), (172, 40385), (194, 40472), (200, 40490), (202, 40496),

Gene: Pollux_57 Start: 40516, Stop: 41088, Start Num: 72

Candidate Starts for Pollux_57:

(61, 40486), (68, 40510), (Start: 72 @40516 has 117 MA's), (103, 40624), (125, 40720),

Gene: Porcelain_154 Start: 80717, Stop: 81253, Start Num: 73

Candidate Starts for Porcelain_154:

(Start: 73 @80717 has 113 MA's), (Start: 81 @80735 has 3 MA's), (82, 80738), (Start: 88 @80777 has 1 MA's), (90, 80780), (120, 80906), (122, 80918), (137, 80969), (140, 80984), (160, 81035), (180, 81092), (194, 81134), (201, 81155),

Gene: Pound_151 Start: 82794, Stop: 83378, Start Num: 73

Candidate Starts for Pound_151:

(Start: 47 @82719 has 4 MA's), (Start: 51 @82737 has 4 MA's), (Start: 73 @82794 has 113 MA's), (84, 82821), (91, 82863), (105, 82917), (120, 82983), (138, 83046), (141, 83061), (164, 83145), (191, 83253), (194, 83262), (200, 83280),

Gene: Powerball_52 Start: 36542, Stop: 37105, Start Num: 72

Candidate Starts for Powerball_52:

(23, 36338), (27, 36353), (68, 36536), (Start: 72 @36542 has 117 MA's), (103, 36650), (121, 36734), (125, 36746), (126, 36752), (147, 36842), (181, 36929), (193, 36956), (200, 36989), (202, 36992), (203, 36998), (206, 37022),

Gene: Prithvi_58 Start: 40200, Stop: 40742, Start Num: 79

Candidate Starts for Prithvi_58:

(Start: 72 @40188 has 117 MA's), (Start: 79 @40200 has 3 MA's), (Start: 81 @40206 has 3 MA's), (90, 40254), (101, 40302), (104, 40311), (117, 40350), (120, 40380), (123, 40395), (134, 40431), (161, 40518), (172, 40542), (189, 40614), (194, 40629), (200, 40647), (202, 40653), (217, 40710),

Gene: QuincyRose_56 Start: 40365, Stop: 40919, Start Num: 72

Candidate Starts for QuincyRose_56:

(32, 40215), (Start: 72 @40365 has 117 MA's), (Start: 79 @40377 has 3 MA's), (Start: 81 @40383 has 3 MA's), (90, 40431), (101, 40479), (104, 40488), (117, 40527), (120, 40557), (134, 40608), (161, 40695), (172, 40719), (194, 40806), (200, 40824), (202, 40830),

Gene: Ramen_58 Start: 39987, Stop: 40541, Start Num: 72

Candidate Starts for Ramen_58:

(Start: 72 @39987 has 117 MA's), (Start: 79 @39999 has 3 MA's), (Start: 81 @40005 has 3 MA's), (90, 40053), (101, 40101), (104, 40110), (117, 40149), (120, 40179), (123, 40194), (134, 40230), (161, 40317), (172, 40341), (175, 40365), (189, 40413), (194, 40428), (200, 40446),

Gene: Rapunzel97_58 Start: 39980, Stop: 40534, Start Num: 72

Candidate Starts for Rapunzel97_58:

(Start: 72 @39980 has 117 MA's), (Start: 79 @39992 has 3 MA's), (Start: 81 @39998 has 3 MA's), (90, 40046), (101, 40094), (104, 40103), (117, 40142), (120, 40172), (134, 40223), (161, 40310), (172, 40334), (194, 40421), (200, 40439), (202, 40445),

Gene: Rearden_152 Start: 81615, Stop: 82151, Start Num: 73

Candidate Starts for Rearden_152:

(Start: 51 @81558 has 4 MA's), (Start: 73 @81615 has 113 MA's), (Start: 81 @81633 has 3 MA's), (120, 81804), (122, 81816), (137, 81867), (140, 81882), (194, 82032), (200, 82050), (201, 82053),

Gene: Redno2_153 Start: 81847, Stop: 82440, Start Num: 51

Candidate Starts for Redno2_153:

(Start: 47 @81829 has 4 MA's), (Start: 51 @81847 has 4 MA's), (Start: 73 @81904 has 113 MA's), (Start: 81 @81922 has 3 MA's), (120, 82093), (122, 82105), (137, 82156), (140, 82171), (194, 82321), (201, 82342),

Gene: Rem711_52 Start: 36120, Stop: 36674, Start Num: 77

Candidate Starts for Rem711_52:

(52, 36066), (65, 36102), (67, 36108), (Start: 77 @36120 has 27 MA's), (113, 36267), (140, 36393), (145, 36423), (170, 36462), (209, 36615), (210, 36624),

Gene: Richo_60 Start: 40625, Stop: 41188, Start Num: 72

Candidate Starts for Richo_60:

(Start: 72 @40625 has 117 MA's), (91, 40700), (101, 40742), (104, 40751), (115, 40784), (117, 40790), (134, 40871), (172, 40988), (194, 41075), (200, 41093), (210, 41129), (220, 41168),

Gene: Rosmarinus_57 Start: 40092, Stop: 40646, Start Num: 72

Candidate Starts for Rosmarinus_57:

(32, 39945), (Start: 72 @40092 has 117 MA's), (Start: 79 @40104 has 3 MA's), (Start: 81 @40110 has 3 MA's), (90, 40158), (101, 40206), (104, 40215), (117, 40254), (120, 40284), (134, 40335), (161, 40422), (172, 40446), (194, 40533), (200, 40551), (202, 40557),

Gene: Ruthiejr_63 Start: 40204, Stop: 40800, Start Num: 77

Candidate Starts for Ruthiejr_63:

(Start: 77 @40204 has 27 MA's), (86, 40246), (104, 40324), (120, 40393), (122, 40405), (137, 40453), (172, 40573), (180, 40618), (194, 40660), (199, 40681), (200, 40684), (218, 40765),

Gene: SamScheppers_60 Start: 40633, Stop: 41229, Start Num: 77

Candidate Starts for SamScheppers_60:

(Start: 77 @40633 has 27 MA's), (86, 40675), (104, 40753), (120, 40822), (122, 40834), (137, 40882), (172, 41002), (180, 41047), (194, 41089), (199, 41110), (200, 41113), (218, 41194),

Gene: Samba_56 Start: 39498, Stop: 40085, Start Num: 73

Candidate Starts for Samba_56:

(Start: 73 @39498 has 113 MA's), (125, 39699), (147, 39795), (176, 39867), (200, 39963), (202, 39966), (203, 39972), (204, 39975), (206, 39996),

Gene: SamuelLPlaqson_58 Start: 40885, Stop: 41439, Start Num: 72

Candidate Starts for SamuelLPlaqson_58:

(Start: 72 @40885 has 117 MA's), (Start: 79 @40897 has 3 MA's), (Start: 81 @40903 has 3 MA's), (90, 40951), (101, 40999), (104, 41008), (117, 41047), (134, 41128), (161, 41215), (172, 41239), (194, 41326), (200, 41344), (202, 41350),

Gene: Scarlett_61 Start: 40586, Stop: 41143, Start Num: 72

Candidate Starts for Scarlett_61:

(60, 40556), (Start: 72 @40586 has 117 MA's), (Start: 79 @40598 has 3 MA's), (91, 40655), (99, 40688), (110, 40721), (119, 40751), (122, 40787), (152, 40904), (172, 40943), (194, 41030), (200, 41048), (210, 41084),

Gene: Schatzie_155 Start: 85091, Stop: 85627, Start Num: 73

Candidate Starts for Schatzie_155:

(66, 85079), (Start: 69 @85085 has 1 MA's), (Start: 73 @85091 has 113 MA's), (Start: 79 @85103 has 3 MA's), (80, 85106), (82, 85112), (90, 85154), (110, 85226), (134, 85334), (137, 85343), (140, 85358), (160, 85409), (194, 85508), (201, 85529),

Gene: Schnabeltier_62 Start: 41372, Stop: 42097, Start Num: 64

Candidate Starts for Schnabeltier_62:

(Start: 64 @41372 has 9 MA's), (Start: 73 @41390 has 113 MA's), (125, 41597), (139, 41654), (143, 41669), (170, 41726), (180, 41777), (209, 41897), (210, 41906), (211, 41909),

Gene: SeresaTree_81 Start: 60167, Stop: 60667, Start Num: 73

Candidate Starts for SeresaTree_81:

(Start: 73 @60167 has 113 MA's), (86, 60215), (109, 60302), (136, 60395), (141, 60416), (174, 60491), (178, 60512), (181, 60521), (187, 60536), (189, 60545), (213, 60629), (218, 60650),

Gene: SgtBeansprout_49 Start: 38068, Stop: 38598, Start Num: 81

Candidate Starts for SgtBeansprout_49:

(22, 37813), (Start: 74 @38047 has 5 MA's), (Start: 81 @38068 has 3 MA's), (Start: 88 @38110 has 1 MA's), (91, 38122), (104, 38173), (117, 38212), (120, 38242), (134, 38293), (172, 38398), (194, 38485), (200, 38503), (202, 38509), (220, 38578),

Gene: Shaboozey_155 Start: 81389, Stop: 81976, Start Num: 73

Candidate Starts for Shaboozey_155:

(Start: 47 @81314 has 4 MA's), (Start: 51 @81332 has 4 MA's), (Start: 73 @81389 has 113 MA's), (84, 81416), (91, 81458), (105, 81512), (120, 81578), (138, 81641), (141, 81656), (164, 81740), (191, 81848), (194, 81857), (200, 81875), (201, 81878),

Gene: Shadow1_62 Start: 40304, Stop: 40867, Start Num: 72

Candidate Starts for Shadow1_62:

(Start: 72 @40304 has 117 MA's), (Start: 79 @40316 has 3 MA's), (Start: 81 @40322 has 3 MA's), (Start: 88 @40364 has 1 MA's), (101, 40418), (110, 40442), (117, 40466), (134, 40547), (162, 40637), (172, 40667), (194, 40754), (200, 40772), (217, 40835),

Gene: Sham_75 Start: 59928, Stop: 60419, Start Num: 78

Candidate Starts for Sham_75:

(76, 59925), (Start: 78 @59928 has 27 MA's), (86, 59967), (141, 60168), (178, 60264), (181, 60273), (187, 60288), (189, 60297), (194, 60315), (195, 60318), (213, 60381), (218, 60402),

Gene: Shaobing_60 Start: 40662, Stop: 41225, Start Num: 72

Candidate Starts for Shaobing_60:

(Start: 72 @40662 has 117 MA's), (91, 40737), (101, 40779), (104, 40788), (115, 40821), (117, 40827), (134, 40908), (172, 41025), (194, 41112), (200, 41130), (210, 41166), (220, 41205),

Gene: ShawBrad_100 Start: 50885, Stop: 51478, Start Num: 73

Candidate Starts for ShawBrad_100:

(1, 50216), (2, 50306), (4, 50372), (9, 50474), (13, 50525), (15, 50567), (18, 50621), (19, 50627), (38, 50783), (39, 50789), (42, 50798), (46, 50813), (60, 50855), (Start: 73 @50885 has 113 MA's), (91, 50951), (131, 51107), (147, 51173), (193, 51287), (204, 51335), (209, 51377), (227, 51449), (230, 51473),

Gene: ShedlockHolmes_58 Start: 40308, Stop: 40865, Start Num: 73

Candidate Starts for ShedlockHolmes_58:

(48, 40239), (Start: 73 @40308 has 113 MA's), (Start: 79 @40320 has 3 MA's), (Start: 81 @40326 has 3 MA's), (90, 40371), (99, 40410), (110, 40443), (117, 40467), (120, 40497), (169, 40656), (172, 40665), (200, 40770),

Gene: ShiaSurprise_58 Start: 40301, Stop: 40855, Start Num: 72

Candidate Starts for ShiaSurprise_58:

(32, 40154), (Start: 72 @40301 has 117 MA's), (Start: 79 @40313 has 3 MA's), (Start: 81 @40319 has 3 MA's), (90, 40367), (101, 40415), (104, 40424), (117, 40463), (120, 40493), (134, 40544), (161, 40631), (172, 40655), (194, 40742), (200, 40760), (202, 40766),

Gene: Sidious_54 Start: 38723, Stop: 39313, Start Num: 72

Candidate Starts for Sidious_54:

(23, 38519), (38, 38621), (68, 38717), (Start: 72 @38723 has 117 MA's), (125, 38927), (126, 38933), (147, 39023), (154, 39044), (176, 39095), (200, 39191), (202, 39194), (203, 39200), (206, 39224),

Gene: Sidious_59 Start: 42258, Stop: 42845, Start Num: 73

Candidate Starts for Sidious_59:

(12, 41895), (16, 41973), (20, 42003), (26, 42066), (Start: 73 @42258 has 113 MA's), (125, 42468), (143, 42540), (147, 42564), (176, 42636), (200, 42711), (201, 42714), (203, 42720), (209, 42765), (210, 42774),

Gene: SirPhilip_58 Start: 40708, Stop: 41271, Start Num: 72

Candidate Starts for SirPhilip_58:

(Start: 72 @40708 has 117 MA's), (Start: 79 @40720 has 3 MA's), (101, 40822), (104, 40831), (117, 40870), (134, 40951), (162, 41041), (172, 41071), (184, 41128), (194, 41158), (217, 41239),

Gene: Slarp_62 Start: 40161, Stop: 40757, Start Num: 77

Candidate Starts for Slarp_62:

(Start: 77 @40161 has 27 MA's), (86, 40203), (104, 40281), (120, 40350), (122, 40362), (137, 40410), (172, 40530), (180, 40575), (194, 40617), (199, 40638), (200, 40641), (218, 40722),

Gene: Slimphazie_57 Start: 39980, Stop: 40534, Start Num: 72

Candidate Starts for Slimphazie_57:

(Start: 72 @39980 has 117 MA's), (Start: 79 @39992 has 3 MA's), (Start: 81 @39998 has 3 MA's), (90, 40046), (101, 40094), (104, 40103), (117, 40142), (120, 40172), (134, 40223), (161, 40310), (172, 40334), (194, 40421), (200, 40439), (202, 40445),

Gene: SparkleGoddess_81 Start: 60854, Stop: 61342, Start Num: 78

Candidate Starts for SparkleGoddess_81:

(Start: 78 @60854 has 27 MA's), (89, 60914), (124, 61034), (131, 61058), (136, 61073), (138, 61079), (141, 61094), (173, 61166), (178, 61190), (181, 61199), (189, 61223), (201, 61265), (218, 61328), (221, 61337),

Gene: Sparky_80 Start: 54416, Stop: 54964, Start Num: 78

Candidate Starts for Sparky_80:

(44, 54326), (57, 54365), (Start: 78 @54416 has 27 MA's), (132, 54650), (176, 54785), (209, 54902), (210, 54911), (214, 54923),

Gene: Spock_57 Start: 40105, Stop: 40659, Start Num: 72

Candidate Starts for Spock_57:

(32, 39958), (Start: 72 @40105 has 117 MA's), (Start: 79 @40117 has 3 MA's), (Start: 81 @40123 has 3 MA's), (90, 40171), (101, 40219), (104, 40228), (117, 40267), (120, 40297), (134, 40348), (161, 40435), (172, 40459), (194, 40546), (200, 40564), (202, 40570),

Gene: Spooky_97 Start: 52512, Stop: 53075, Start Num: 73

Candidate Starts for Spooky_97:

(17, 52416), (Start: 73 @52512 has 113 MA's), (94, 52608), (125, 52719), (131, 52743), (147, 52809), (193, 52923), (204, 52971), (209, 53013),

Gene: Squint_151 Start: 81411, Stop: 81947, Start Num: 73

Candidate Starts for Squint_151:

(66, 81399), (Start: 69 @81405 has 1 MA's), (Start: 73 @81411 has 113 MA's), (Start: 79 @81423 has 3 MA's), (80, 81426), (82, 81432), (90, 81474), (110, 81546), (134, 81654), (137, 81663), (140, 81678), (160, 81729), (180, 81786), (194, 81828), (201, 81849),

Gene: Stigma_80 Start: 60862, Stop: 61350, Start Num: 78

Candidate Starts for Stigma_80:

(Start: 78 @60862 has 27 MA's), (89, 60922), (106, 60979), (109, 60988), (119, 61009), (124, 61042), (127, 61048), (138, 61087), (141, 61102), (148, 61138), (173, 61174), (178, 61198), (181, 61207), (189, 61231), (201, 61273), (218, 61336), (221, 61345),

Gene: Stinson_58 Start: 40482, Stop: 41036, Start Num: 72

Candidate Starts for Stinson_58:

(58, 40443), (Start: 72 @40482 has 117 MA's), (Start: 79 @40494 has 3 MA's), (Start: 81 @40500 has 3 MA's), (90, 40548), (104, 40605), (117, 40644), (120, 40674), (161, 40812), (172, 40836), (189, 40908), (194, 40923), (200, 40941), (217, 41004),

Gene: Strobilo_61 Start: 42006, Stop: 42539, Start Num: 73

Candidate Starts for Strobilo_61:

(55, 41955), (Start: 73 @42006 has 113 MA's), (80, 42021), (90, 42069), (101, 42117), (104, 42126), (115, 42159), (117, 42165), (119, 42171), (137, 42255), (151, 42321),

Gene: Sulley_57 Start: 40156, Stop: 40710, Start Num: 72

Candidate Starts for Sulley_57:

(Start: 72 @40156 has 117 MA's), (Start: 79 @40168 has 3 MA's), (Start: 81 @40174 has 3 MA's), (90, 40222), (101, 40270), (104, 40279), (117, 40318), (120, 40348), (134, 40399), (161, 40486), (172, 40510), (194, 40597), (200, 40615), (202, 40621),

Gene: Sunflower1121_63 Start: 40450, Stop: 41013, Start Num: 72

Candidate Starts for Sunflower1121_63:

(Start: 72 @40450 has 117 MA's), (Start: 79 @40462 has 3 MA's), (Start: 81 @40468 has 3 MA's), (Start: 88 @40510 has 1 MA's), (101, 40564), (110, 40588), (117, 40612), (134, 40693), (162, 40783), (172, 40813), (194, 40900), (200, 40918), (217, 40981),

Gene: Superphikiman_155 Start: 81247, Stop: 81834, Start Num: 73

Candidate Starts for Superphikiman_155:

(Start: 51 @81190 has 4 MA's), (Start: 73 @81247 has 113 MA's), (Start: 81 @81265 has 3 MA's), (82, 81268), (91, 81316), (95, 81343), (101, 81358), (107, 81373), (122, 81448), (133, 81484), (140,

81511), (194, 81715), (201, 81736),

Gene: Syra333_62 Start: 40471, Stop: 41025, Start Num: 73

Candidate Starts for Syra333_62:

(Start: 73 @40471 has 113 MA's), (Start: 79 @40483 has 3 MA's), (Start: 81 @40489 has 3 MA's), (101, 40585), (104, 40594), (110, 40609), (117, 40633), (134, 40714), (161, 40801), (172, 40825), (194, 40912), (209, 40957), (217, 40993),

Gene: TBond007_55 Start: 39788, Stop: 40345, Start Num: 73

Candidate Starts for TBond007_55:

(48, 39719), (Start: 73 @39788 has 113 MA's), (Start: 79 @39800 has 3 MA's), (Start: 81 @39806 has 3 MA's), (90, 39851), (99, 39890), (100, 39893), (110, 39923), (117, 39947), (120, 39977), (169, 40136), (172, 40145), (200, 40250), (215, 40301), (217, 40313),

Gene: TClif_59 Start: 40127, Stop: 40678, Start Num: 73

Candidate Starts for TClif_59:

(Start: 73 @40127 has 113 MA's), (Start: 79 @40139 has 3 MA's), (Start: 81 @40145 has 3 MA's), (90, 40190), (104, 40247), (110, 40262), (119, 40292), (122, 40328), (172, 40478), (194, 40565), (200, 40583), (202, 40589), (209, 40610),

Gene: TM4_57 Start: 36361, Stop: 36894, Start Num: 73

Candidate Starts for TM4_57:

(55, 36310), (Start: 73 @36361 has 113 MA's), (Start: 79 @36373 has 3 MA's), (90, 36424), (101, 36472), (104, 36481), (115, 36514), (117, 36520), (119, 36526), (137, 36610), (151, 36676),

Gene: TPA4_56 Start: 40632, Stop: 41162, Start Num: 96

Candidate Starts for TPA4_56:

(21, 40278), (83, 40551), (96, 40632), (103, 40650), (118, 40698), (152, 40863), (157, 40893), (176, 41004), (224, 41151),

Gene: Tachez_57 Start: 39949, Stop: 40503, Start Num: 72

Candidate Starts for Tachez_57:

(32, 39802), (Start: 72 @39949 has 117 MA's), (Start: 79 @39961 has 3 MA's), (Start: 81 @39967 has 3 MA's), (90, 40015), (101, 40063), (104, 40072), (117, 40111), (120, 40141), (134, 40192), (161, 40279), (172, 40303), (194, 40390), (200, 40408), (202, 40414),

Gene: TaiwanKao_59 Start: 40250, Stop: 40804, Start Num: 72

Candidate Starts for TaiwanKao_59:

(Start: 72 @40250 has 117 MA's), (Start: 79 @40262 has 3 MA's), (Start: 81 @40268 has 3 MA's), (90, 40316), (101, 40364), (104, 40373), (117, 40412), (120, 40442), (123, 40457), (134, 40493), (161, 40580), (172, 40604), (189, 40676), (194, 40691), (200, 40709), (202, 40715), (217, 40772),

Gene: Taquito_61 Start: 40396, Stop: 40992, Start Num: 77

Candidate Starts for Taquito_61:

(Start: 77 @40396 has 27 MA's), (86, 40438), (104, 40516), (120, 40585), (122, 40597), (137, 40645), (172, 40765), (180, 40810), (194, 40852), (199, 40873), (200, 40876), (218, 40957),

Gene: TaronosaurusRx_66 Start: 41369, Stop: 42100, Start Num: 64

Candidate Starts for TaronosaurusRx_66:

(Start: 64 @41369 has 9 MA's), (Start: 73 @41387 has 113 MA's), (103, 41501), (125, 41594), (139, 41651), (143, 41666), (180, 41774), (209, 41894), (210, 41903), (211, 41906), (231, 41996),

Gene: Teejan_51 Start: 40660, Stop: 41211, Start Num: 74

Candidate Starts for Teejan_51:

(22, 40426), (Start: 74 @40660 has 5 MA's), (Start: 81 @40681 has 3 MA's), (Start: 88 @40723 has 1 MA's), (91, 40735), (104, 40786), (117, 40825), (120, 40855), (134, 40906), (172, 41011), (194, 41098), (200, 41116), (202, 41122), (220, 41191),

Gene: ThankyouJordi_62 Start: 43975, Stop: 44550, Start Num: 73

Candidate Starts for ThankyouJordi_62:

(Start: 73 @43975 has 113 MA's), (103, 44089), (125, 44182), (143, 44254), (147, 44278), (169, 44308), (176, 44350), (200, 44425), (202, 44431), (209, 44482),

Gene: Thibault_141 Start: 81109, Stop: 81639, Start Num: 73

Candidate Starts for Thibault_141:

(Start: 73 @81109 has 113 MA's), (Start: 81 @81127 has 3 MA's), (82, 81130), (Start: 88 @81169 has 1 MA's), (90, 81172), (120, 81298), (122, 81310), (137, 81361), (140, 81376), (160, 81427), (180, 81484), (218, 81610), (225, 81631),

Gene: ThreeRngTarjay_155 Start: 85312, Stop: 85848, Start Num: 73

Candidate Starts for ThreeRngTarjay_155:

(Start: 51 @85255 has 4 MA's), (Start: 73 @85312 has 113 MA's), (Start: 81 @85330 has 3 MA's), (120, 85501), (122, 85513), (137, 85564), (140, 85579), (194, 85729), (201, 85750),

Gene: Tierra_60 Start: 40268, Stop: 40831, Start Num: 72

Candidate Starts for Tierra_60:

(Start: 72 @40268 has 117 MA's), (Start: 79 @40280 has 3 MA's), (Start: 81 @40286 has 3 MA's), (101, 40382), (117, 40430), (134, 40511), (162, 40601), (172, 40631), (194, 40718), (200, 40736), (217, 40799),

Gene: TingHuaYa_58 Start: 39013, Stop: 39561, Start Num: 81

Candidate Starts for TingHuaYa_58:

(Start: 72 @38995 has 117 MA's), (Start: 79 @39007 has 3 MA's), (Start: 81 @39013 has 3 MA's), (Start: 88 @39055 has 1 MA's), (99, 39100), (101, 39109), (115, 39151), (117, 39157), (134, 39238), (172, 39361), (194, 39448), (200, 39466), (202, 39472), (217, 39529),

Gene: TiniBug_58 Start: 40881, Stop: 41435, Start Num: 72

Candidate Starts for TiniBug_58:

(Start: 72 @40881 has 117 MA's), (Start: 79 @40893 has 3 MA's), (Start: 81 @40899 has 3 MA's), (90, 40947), (101, 40995), (104, 41004), (117, 41043), (134, 41124), (161, 41211), (172, 41235), (194, 41322), (200, 41340), (202, 41346),

Gene: Tiri_58 Start: 40270, Stop: 40824, Start Num: 72

Candidate Starts for Tiri_58:

(Start: 72 @40270 has 117 MA's), (90, 40336), (101, 40384), (104, 40393), (117, 40432), (120, 40462), (134, 40513), (161, 40600), (172, 40624), (194, 40711), (200, 40729), (202, 40735),

Gene: Topper_57 Start: 40104, Stop: 40658, Start Num: 72

Candidate Starts for Topper_57:

(32, 39957), (Start: 72 @40104 has 117 MA's), (Start: 79 @40116 has 3 MA's), (Start: 81 @40122 has 3 MA's), (90, 40170), (101, 40218), (104, 40227), (117, 40266), (120, 40296), (134, 40347), (161, 40434), (172, 40458), (194, 40545), (200, 40563), (202, 40569),

Gene: Torres_51 Start: 40661, Stop: 41212, Start Num: 74

Candidate Starts for Torres_51:

(22, 40427), (Start: 74 @40661 has 5 MA's), (Start: 81 @40682 has 3 MA's), (Start: 88 @40724 has 1 MA's), (91, 40736), (104, 40787), (117, 40826), (120, 40856), (134, 40907), (172, 41012), (194, 41099), (200, 41117), (202, 41123), (220, 41192),

Gene: TreyKay_58 Start: 40200, Stop: 40742, Start Num: 79

Candidate Starts for TreyKay_58:

(Start: 72 @40188 has 117 MA's), (Start: 79 @40200 has 3 MA's), (Start: 81 @40206 has 3 MA's), (90, 40254), (101, 40302), (104, 40311), (117, 40350), (120, 40380), (123, 40395), (134, 40431), (161, 40518), (172, 40542), (189, 40614), (194, 40629), (200, 40647), (202, 40653), (217, 40710),

Gene: TribbleTrouble_56 Start: 40264, Stop: 40821, Start Num: 73

Candidate Starts for TribbleTrouble_56:

(Start: 73 @40264 has 113 MA's), (Start: 79 @40276 has 3 MA's), (Start: 81 @40282 has 3 MA's), (90, 40327), (99, 40366), (101, 40375), (110, 40399), (117, 40423), (172, 40621), (200, 40726),

Gene: TruffulaTree_57 Start: 39976, Stop: 40530, Start Num: 72

Candidate Starts for TruffulaTree_57:

(Start: 72 @39976 has 117 MA's), (Start: 79 @39988 has 3 MA's), (Start: 81 @39994 has 3 MA's), (90, 40042), (101, 40090), (104, 40099), (117, 40138), (120, 40168), (134, 40219), (161, 40306), (172, 40330), (194, 40417), (200, 40435), (202, 40441),

Gene: TunaTartare_80 Start: 61330, Stop: 61827, Start Num: 73

Candidate Starts for TunaTartare_80:

(Start: 73 @61330 has 113 MA's), (86, 61375), (141, 61576), (178, 61672), (181, 61681), (187, 61696), (189, 61705), (194, 61723), (213, 61789), (218, 61810),

Gene: Twitch_57 Start: 40106, Stop: 40660, Start Num: 72

Candidate Starts for Twitch_57:

(32, 39959), (Start: 72 @40106 has 117 MA's), (Start: 79 @40118 has 3 MA's), (Start: 81 @40124 has 3 MA's), (90, 40172), (101, 40220), (104, 40229), (117, 40268), (120, 40298), (134, 40349), (161, 40436), (172, 40460), (194, 40547), (200, 40565), (202, 40571),

Gene: Typha_56 Start: 42274, Stop: 42870, Start Num: 73

Candidate Starts for Typha_56:

(7, 41821), (28, 42085), (Start: 73 @42274 has 113 MA's), (Start: 81 @42292 has 3 MA's), (82, 42295), (84, 42301), (110, 42412), (120, 42466), (123, 42481), (134, 42517), (137, 42526), (138, 42529), (147, 42577), (148, 42580), (155, 42610), (175, 42676), (180, 42697), (223, 42844), (228, 42859),

Gene: Ubuntu_64 Start: 43962, Stop: 44513, Start Num: 77

Candidate Starts for Ubuntu_64:

(Start: 73 @43959 has 113 MA's), (Start: 77 @43962 has 27 MA's), (80, 43977), (97, 44061), (102, 44073), (106, 44085), (116, 44118), (129, 44187), (130, 44190), (141, 44229), (145, 44256), (149, 44274), (168, 44292), (176, 44337), (177, 44340), (182, 44355), (197, 44400), (210, 44460), (216, 44478),

Gene: Unicorn_58 Start: 39396, Stop: 39959, Start Num: 72

Candidate Starts for Unicorn_58:

(48, 39327), (Start: 72 @39396 has 117 MA's), (Start: 79 @39408 has 3 MA's), (Start: 81 @39414 has 3 MA's), (101, 39510), (110, 39534), (117, 39558), (134, 39639), (162, 39729), (172, 39759), (194, 39846), (200, 39864), (217, 39927),

Gene: Urkel_58 Start: 40885, Stop: 41439, Start Num: 72

Candidate Starts for Urkel_58:

(Start: 72 @40885 has 117 MA's), (Start: 79 @40897 has 3 MA's), (Start: 81 @40903 has 3 MA's), (90, 40951), (101, 40999), (104, 41008), (117, 41047), (134, 41128), (161, 41215), (172, 41239), (194, 41326), (200, 41344), (202, 41350),

Gene: Validus_61 Start: 40705, Stop: 41262, Start Num: 72

Candidate Starts for Validus_61:

(62, 40678), (Start: 72 @40705 has 117 MA's), (91, 40780), (101, 40822), (117, 40870), (119, 40876), (129, 40936), (134, 40951), (172, 41062), (194, 41149), (200, 41167), (202, 41173), (220, 41242),

Gene: Veliki_58 Start: 39962, Stop: 40516, Start Num: 72

Candidate Starts for Veliki_58:

(Start: 72 @39962 has 117 MA's), (Start: 79 @39974 has 3 MA's), (Start: 81 @39980 has 3 MA's), (90, 40028), (101, 40076), (104, 40085), (117, 40124), (120, 40154), (123, 40169), (134, 40205), (161, 40292), (172, 40316), (175, 40340), (189, 40388), (194, 40403), (200, 40421), (202, 40427), (217, 40484),

Gene: Wakanda_73 Start: 59478, Stop: 59969, Start Num: 77

Candidate Starts for Wakanda_73:

(Start: 77 @59478 has 27 MA's), (82, 59499), (89, 59541), (106, 59598), (109, 59607), (138, 59706), (141, 59721), (178, 59817), (187, 59841), (189, 59850), (194, 59868), (196, 59880), (221, 59964),

Gene: Walrus_55 Start: 36777, Stop: 37367, Start Num: 73

Candidate Starts for Walrus_55:

(31, 36615), (35, 36663), (Start: 73 @36777 has 113 MA's), (125, 36981), (147, 37077), (154, 37098), (173, 37131), (176, 37149), (200, 37245), (202, 37248), (203, 37254), (204, 37257), (206, 37278),

Gene: Wanda_158 Start: 82485, Stop: 83021, Start Num: 73

Candidate Starts for Wanda_158:

(Start: 73 @82485 has 113 MA's), (Start: 81 @82503 has 3 MA's), (82, 82506), (120, 82674), (122, 82686), (137, 82737), (140, 82752), (194, 82902), (220, 82995),

Gene: Webster2_64 Start: 43959, Stop: 44513, Start Num: 73

Candidate Starts for Webster2_64:

(Start: 73 @43959 has 113 MA's), (Start: 77 @43962 has 27 MA's), (80, 43977), (97, 44061), (102, 44073), (106, 44085), (116, 44118), (129, 44187), (130, 44190), (141, 44229), (145, 44256), (149, 44274), (168, 44292), (176, 44337), (177, 44340), (182, 44355), (197, 44400), (210, 44460), (216, 44478),

Gene: WelcomeAyanna_62 Start: 44122, Stop: 44697, Start Num: 73

Candidate Starts for WelcomeAyanna_62:

(Start: 73 @44122 has 113 MA's), (103, 44236), (125, 44329), (143, 44401), (147, 44425), (169, 44455), (176, 44497), (200, 44572), (202, 44578), (209, 44629),

Gene: Westy_79 Start: 60854, Stop: 61342, Start Num: 78

Candidate Starts for Westy_79:

(Start: 78 @60854 has 27 MA's), (89, 60914), (124, 61034), (131, 61058), (136, 61073), (138, 61079), (141, 61094), (173, 61166), (178, 61190), (181, 61199), (189, 61223), (201, 61265), (218, 61328), (221, 61337),

Gene: Wildcat_136 Start: 64934, Stop: 65449, Start Num: 78

Candidate Starts for Wildcat_136:

(Start: 78 @64934 has 27 MA's), (Start: 81 @64949 has 3 MA's), (86, 64973), (87, 64979), (91, 65000), (93, 65018), (98, 65030), (99, 65033), (117, 65090), (122, 65132), (137, 65180), (138, 65183), (147,

65231), (148, 65234), (171, 65252), (181, 65303), (194, 65342), (197, 65354), (210, 65399),

Gene: Wintermute_62 Start: 40391, Stop: 40987, Start Num: 77

Candidate Starts for Wintermute_62:

(Start: 77 @40391 has 27 MA's), (86, 40433), (104, 40511), (120, 40580), (122, 40592), (137, 40640), (172, 40760), (180, 40805), (194, 40847), (199, 40868), (200, 40871), (218, 40952),

Gene: Wishmaker_61 Start: 43962, Stop: 44513, Start Num: 77

Candidate Starts for Wishmaker_61:

(Start: 73 @43959 has 113 MA's), (Start: 77 @43962 has 27 MA's), (80, 43977), (97, 44061), (102, 44073), (106, 44085), (116, 44118), (129, 44187), (130, 44190), (141, 44229), (145, 44256), (149, 44274), (168, 44292), (176, 44337), (177, 44340), (182, 44355), (197, 44400), (210, 44460), (216, 44478),

Gene: Wocket_57 Start: 37262, Stop: 37849, Start Num: 73

Candidate Starts for Wocket_57:

(3, 36689), (5, 36764), (31, 37100), (35, 37148), (45, 37181), (Start: 73 @37262 has 113 MA's), (125, 37463), (142, 37529), (147, 37559), (176, 37631), (200, 37727), (202, 37730), (203, 37736), (206, 37760),

Gene: Ximenita_63 Start: 40468, Stop: 41031, Start Num: 72

Candidate Starts for Ximenita_63:

(Start: 72 @40468 has 117 MA's), (Start: 79 @40480 has 3 MA's), (Start: 81 @40486 has 3 MA's), (Start: 88 @40528 has 1 MA's), (110, 40606), (117, 40630), (134, 40711), (162, 40801), (172, 40831), (194, 40918), (200, 40936), (217, 40999),

Gene: Y10_60 Start: 40319, Stop: 40915, Start Num: 77

Candidate Starts for Y10_60:

(Start: 77 @40319 has 27 MA's), (86, 40361), (104, 40439), (120, 40508), (122, 40520), (137, 40568), (165, 40658), (166, 40661), (172, 40688), (180, 40733), (194, 40775), (199, 40796), (200, 40799), (218, 40880),

Gene: Y2_60 Start: 40319, Stop: 40915, Start Num: 77

Candidate Starts for Y2_60:

(Start: 77 @40319 has 27 MA's), (86, 40361), (104, 40439), (120, 40508), (122, 40520), (137, 40568), (165, 40658), (166, 40661), (172, 40688), (180, 40733), (194, 40775), (199, 40796), (200, 40799), (218, 40880),

Gene: Yeet_152 Start: 83848, Stop: 84384, Start Num: 73

Candidate Starts for Yeet_152:

(Start: 47 @83773 has 4 MA's), (Start: 51 @83791 has 4 MA's), (Start: 73 @83848 has 113 MA's), (Start: 81 @83866 has 3 MA's), (120, 84037), (122, 84049), (137, 84100), (140, 84115), (194, 84265), (201, 84286), (220, 84358),

Gene: YoureAdopted_56 Start: 40105, Stop: 40659, Start Num: 73

Candidate Starts for YoureAdopted_56:

(Start: 73 @40105 has 113 MA's), (Start: 79 @40117 has 3 MA's), (90, 40171), (101, 40219), (104, 40228), (117, 40267), (120, 40297), (134, 40348), (161, 40435), (172, 40459), (194, 40546), (200, 40564), (202, 40570),

Gene: Yuna_62 Start: 41255, Stop: 41863, Start Num: 73

Candidate Starts for Yuna_62:

(Start: 73 @41255 has 113 MA's), (Start: 79 @41267 has 3 MA's), (117, 41417), (119, 41423), (120, 41447), (134, 41498), (140, 41522), (161, 41585), (172, 41609), (194, 41696), (209, 41741),

Gene: Yunkel11_59 Start: 39487, Stop: 40053, Start Num: 72

Candidate Starts for Yunkel11_59:

(Start: 72 @39487 has 117 MA's), (Start: 79 @39499 has 3 MA's), (Start: 81 @39505 has 3 MA's), (115, 39643), (117, 39649), (134, 39730), (172, 39853), (194, 39940), (200, 39958), (202, 39964), (217, 40021),

Gene: ZAYM_64 Start: 41414, Stop: 42145, Start Num: 64

Candidate Starts for ZAYM_64:

(Start: 64 @41414 has 9 MA's), (Start: 73 @41432 has 113 MA's), (103, 41546), (125, 41639), (139, 41696), (143, 41711), (180, 41819), (209, 41939), (210, 41948), (211, 41951),

Gene: Zabiza_52 Start: 36290, Stop: 36844, Start Num: 72

Candidate Starts for Zabiza_52:

(Start: 72 @36290 has 117 MA's), (Start: 79 @36302 has 3 MA's), (Start: 81 @36308 has 3 MA's), (90, 36356), (101, 36404), (104, 36413), (117, 36452), (120, 36482), (123, 36497), (134, 36533), (161, 36620), (172, 36644), (175, 36668), (189, 36716), (194, 36731), (200, 36749),

Gene: Zarbodnamra_56 Start: 36684, Stop: 37271, Start Num: 73

Candidate Starts for Zarbodnamra_56:

(Start: 73 @36684 has 113 MA's), (125, 36885), (147, 36981), (176, 37053), (200, 37149), (202, 37152), (203, 37158), (206, 37182),

Gene: Zavala_59 Start: 40261, Stop: 40815, Start Num: 72

Candidate Starts for Zavala_59:

(Start: 72 @40261 has 117 MA's), (Start: 79 @40273 has 3 MA's), (Start: 81 @40279 has 3 MA's), (90, 40327), (101, 40375), (104, 40384), (117, 40423), (120, 40453), (123, 40468), (134, 40504), (161, 40591), (172, 40615), (175, 40639), (189, 40687), (194, 40702), (200, 40720), (202, 40726), (217, 40783),

Gene: Zelink_153 Start: 84208, Stop: 84744, Start Num: 73

Candidate Starts for Zelink_153:

(Start: 73 @84208 has 113 MA's), (Start: 81 @84226 has 3 MA's), (82, 84229), (120, 84397), (122, 84409), (137, 84460), (140, 84475), (194, 84625), (220, 84718),

Gene: ZoeJ_59 Start: 41402, Stop: 41935, Start Num: 73

Candidate Starts for ZoeJ_59:

(55, 41351), (Start: 73 @41402 has 113 MA's), (80, 41417), (90, 41465), (101, 41513), (104, 41522), (115, 41555), (117, 41561), (119, 41567), (137, 41651), (151, 41717),