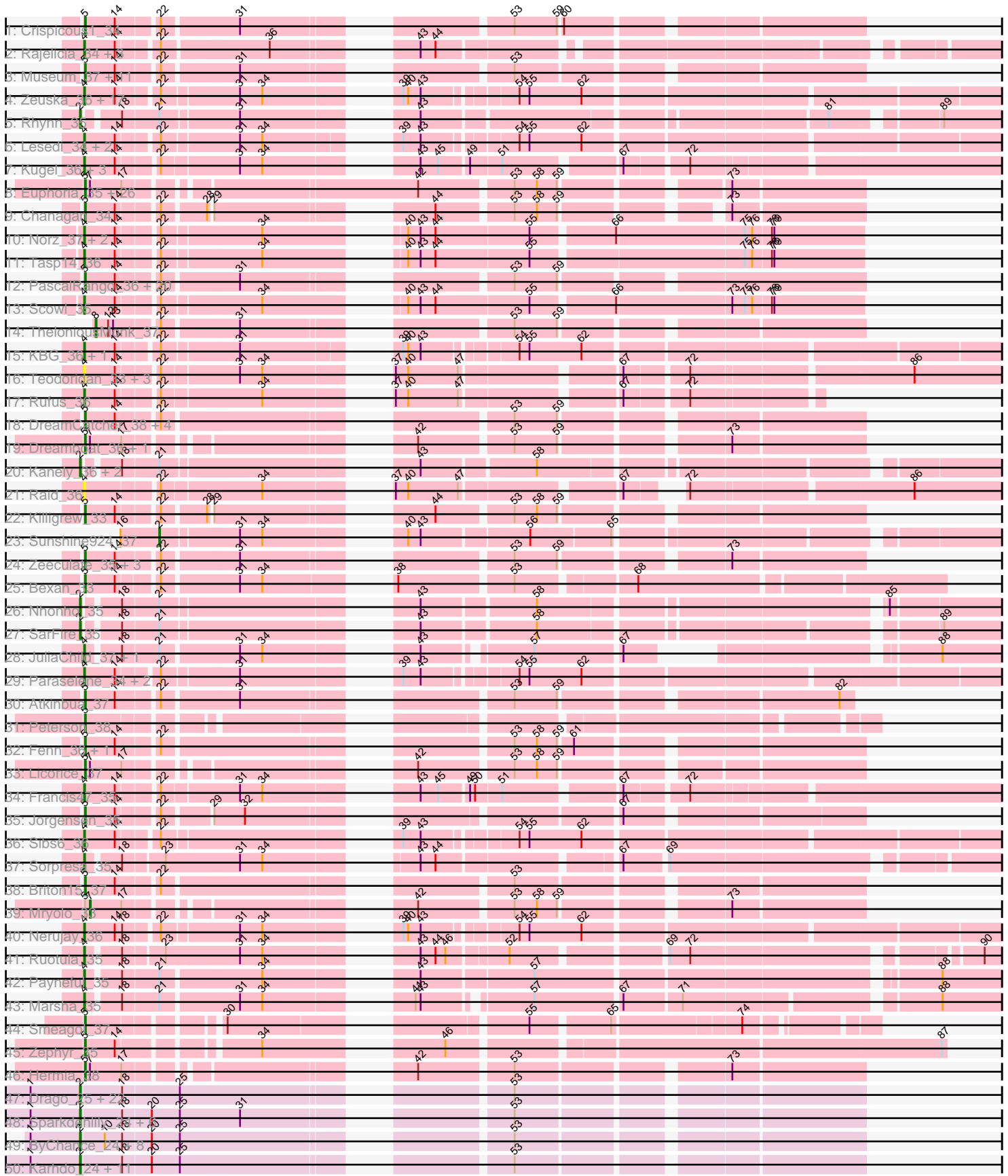
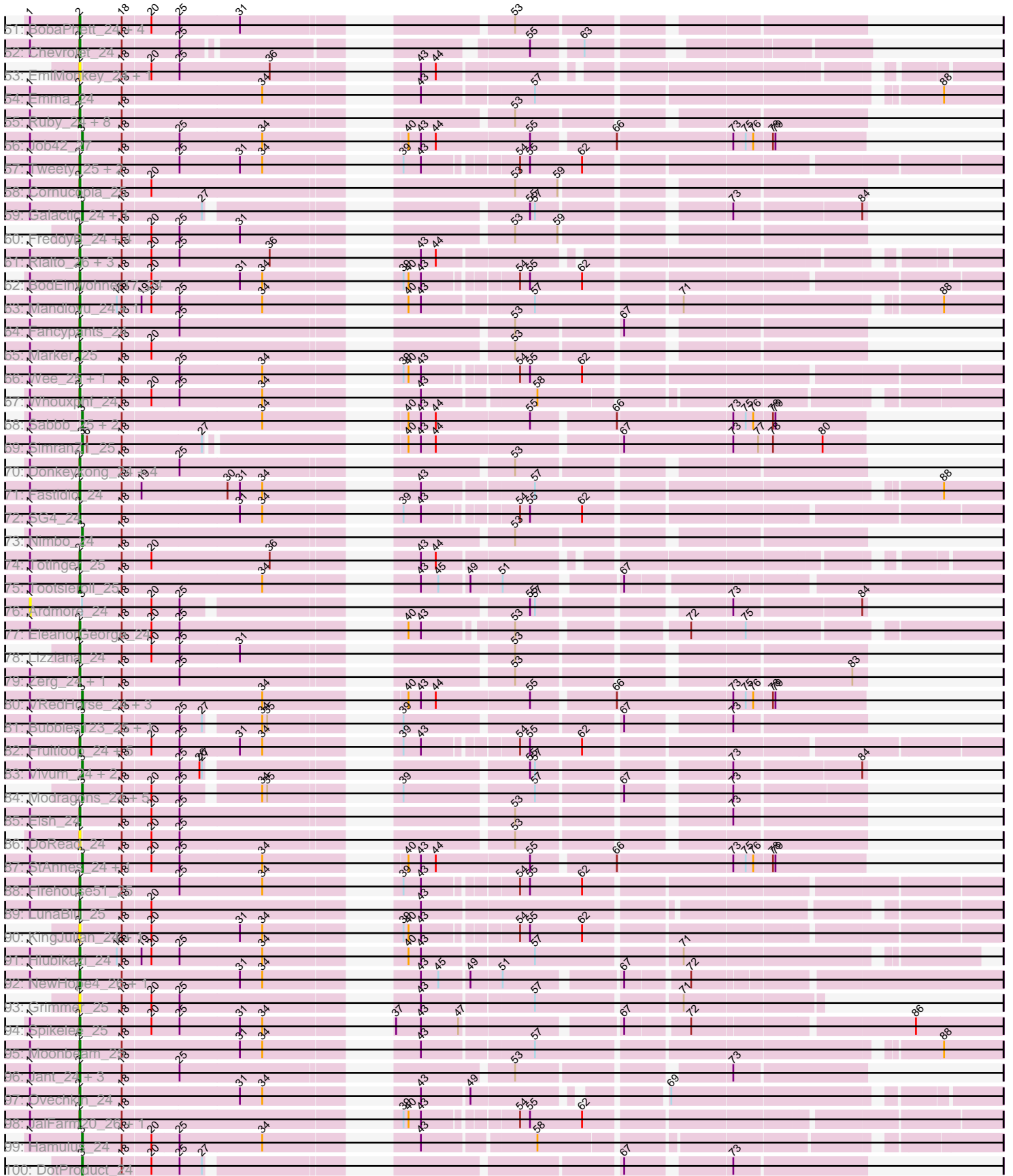


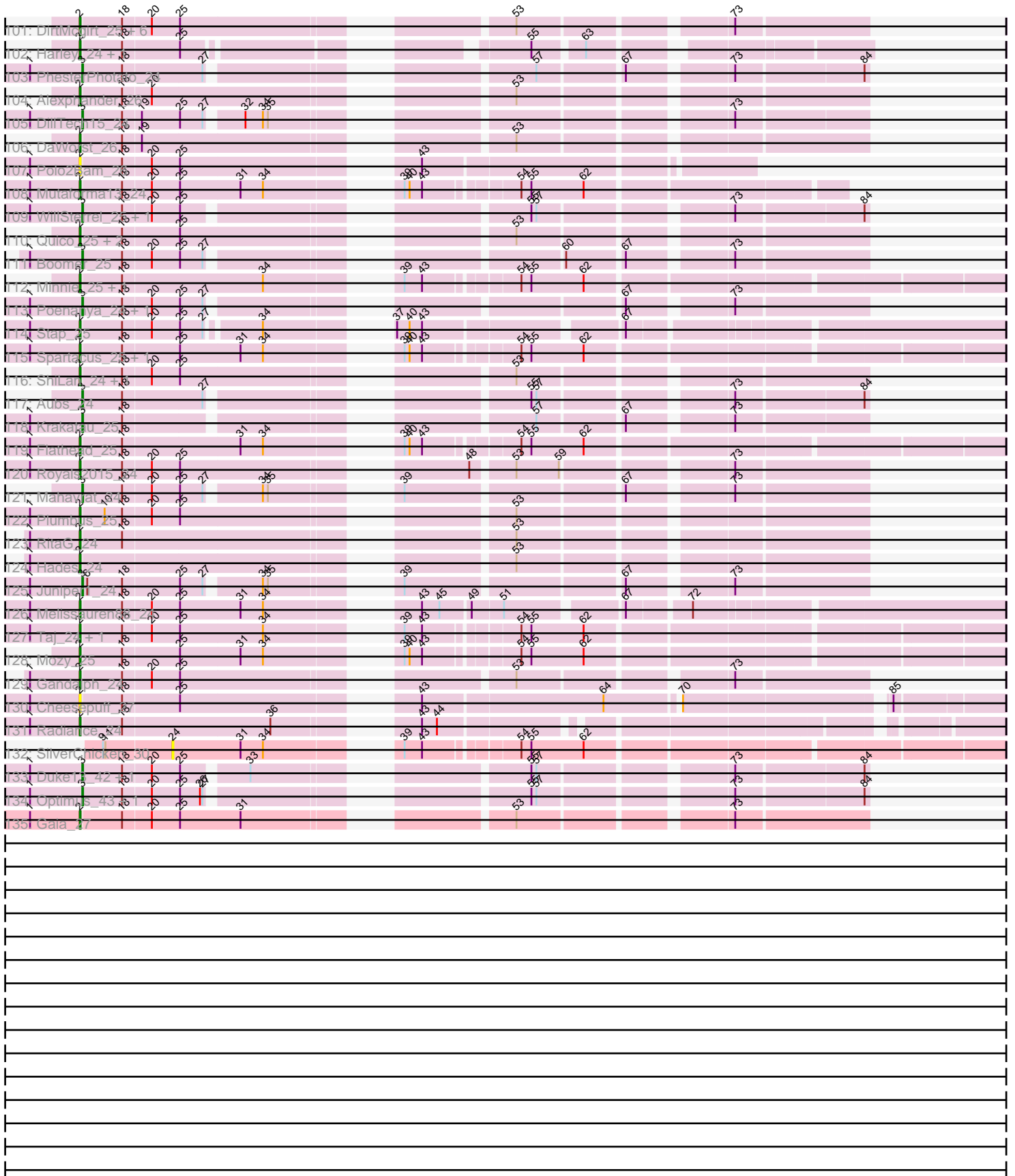
Pham 215730



Pham 215730



Pham 215730



Note: Tracks are now grouped by subcluster and scaled. Switching in subcluster is indicated by changes in track color. Track scale is now set by default to display the region 30 bp upstream of start 1 to 30 bp downstream of the last possible start. If this default region is judged to be packed too tightly with annotated starts, the track will be further scaled to only show that region of the ORF with annotated starts. This action will be indicated by adding "Zoomed" to the title. For starts, yellow indicates the location of called starts comprised solely of Glimmer/GeneMark auto-annotations, green indicates the location of called starts with at least 1 manual gene annotation.

Pham 215730 Report

This analysis was run 02/22/25 on database version 588.

Pham number 215730 has 356 members, 33 are drafts.

Phages represented in each track:

- Track 1 : Crispicous1_34
- Track 2 : Rajelicia_34, Sanya_34, TwoPeat_36, Slagathor_36
- Track 3 : Museum_37, Pari_36, BigMau_37, Jerm2_36, Bob3_34, Dulcie_34, Petp2012_37, PattyP_37, Rohr_36, Burton_36, HermioneGrange_35, Gandalf20_36
- Track 4 : Zeuska_36, DD5_36, Rutherford_37, Traft412_37, Lockley_36, BillKnuckles_36, Espresso_35, Ohno789_35, Perseus_37, Trouble_36, AFIS_35, SpikeBT_37, Edtherson_36, Magnito_34, Monet_37, JackSparrow_36, SkiPole_38, NEHalo_35
- Track 5 : Rhynn_35
- Track 6 : Lesedi_34, Abrogate_360, Marge_36
- Track 7 : Kugel_36, Paphu_34, Adahisdi_36, Ashballer_37
- Track 8 : Euphoria_35, Forsytheast_35, Violet_34, RidgeCB_35, Bones_35, Tripl3t_36, GrecoEtereo_37, Eyeball_35, LunarLander_37, Dussy_36, Papez_37, MetalQZJ_35, Jasper_36, Kenmech_38, ILeeKay_37, MaryBeth_35, Bruns_34, Cueyllyss_35, SwissCheese_37, Abbyshoes_37, Corvo_36, Graduation_37, Watermelon_37, BaconJack_38, Hope4ever_35, Moose_35, Beatrix_35
- Track 9 : Chanagan_34
- Track 10 : Norz_37, Lamina13_35, Parliament_34
- Track 11 : Tasp14_36
- Track 12 : PascalRango_36, Pippin_37, Ciao_35, Ichabod_36, McGuire_36, Mkhusele_36, Fajezeel_37, Big3_35, Greg_37, U2_35, MrGordo_35, Manatee_36, Michley_35, PinkPlastic_34, Bircsak_35, Gompeii16_35, BeesKnees_36, DrFeelGood_34, GMonster_34, Switzer_36, Dynamix_36
- Track 13 : Scowl_35
- Track 14 : TheloniousMonk_37
- Track 15 : KBG_36, Treddle_37
- Track 16 : Teodoridan_33, PhineBark_35, BarrowTuph_34, McSinger_36
- Track 17 : Rufus_36
- Track 18 : DreamCatcher_38, Seabiscuit_37, KSSJEB_35, Squee_36, Lopton_36
- Track 19 : Dreamboat_36, PherrisBueller_36
- Track 20 : Kanely_36, Altman_37, Makemake_36
- Track 21 : Raid_36
- Track 22 : Killigrew_33
- Track 23 : Sunshine924_37
- Track 24 : Zeeculate_35, Bxb1_33, Alvin_36, Blue_35
- Track 25 : Bexan_33
- Track 26 : Nhonho_35

- Track 27 : SarFire_35
- Track 28 : JuliaChild_37, Pita2_37
- Track 29 : Paraselene_34, BPBiebs31_36, Magnar_35
- Track 30 : Atkinbua_37
- Track 31 : Peterson_38
- Track 32 : Fenn_36, Naira_36
- Track 33 : Licorice_37
- Track 34 : Francis47_35
- Track 35 : Jorgensen_35
- Track 36 : Sibs6_36
- Track 37 : Sorpresa_35
- Track 38 : Briton15_37
- Track 39 : Mryolo_33
- Track 40 : Nerujay_36
- Track 41 : Ruotula_35
- Track 42 : Payneful_35
- Track 43 : Marsha_35
- Track 44 : Smeagol_37
- Track 45 : Zephyr_35
- Track 46 : Hermia_38
- Track 47 : Drago_25, Enby_25, Daenerys_24, Piper2020_26, BlueCrab_24, PHappiness_24, Chuckly_24, Lorde_25, Rockne_24, TootsiePop_25, JoeyJr_24, PMC_24, DaddyRickover_24, Filuzino_24, Awesomesauce_25, Pacc40_24, Scottish_25, Maravista_24, UncleRicky_27, Mova_25, Misha28_25, KingMidas_25, Llij_24
- Track 48 : Sparkdehlily_24, Philus_24, TDanisky_24, Saal_24, DRBy19_24, SwagPiggett_24, Nebkiss_28
- Track 49 : ByChance_24, DosHalletts_25, Yorick_24, Nivrat_24, ShowerHandel_24, LilMoolah_24, NormanBulbieJr_24, Burwell21_24, Martik_24
- Track 50 : Karhdo_24, Ramsey_25, Polka14_25, Phatniss_25, Aloeri_25, Nitzel_25, DocMcStuffins_26, DLane_24, Leozinho_25, Doug_25, Dorothy_24, ChickenDinner_25
- Track 51 : BobaPhett_24, James_24, Mattes_24, Jarcob_24, Gorge_24
- Track 52 : Chevrolet_24
- Track 53 : EmiMonkey_24, PhlipPhlop_24
- Track 54 : Emma_24
- Track 55 : Ruby_24, OldBen_24, Geralt_24, MisterCuddles_24, Empress_25, Sassafras_24, Inventum_24, Deb65_24, Girr_24
- Track 56 : Job42_27
- Track 57 : Tweety_25, Blarby_32, Wachhund_24
- Track 58 : Cornucopia_25
- Track 59 : Galactic_24, Batiatus_24
- Track 60 : FreddyB_24, Cabrinians_24, Priscilla_24, OlympiaSaint_24, Spoonbill_24
- Track 61 : Rialto_26, Slim_26, LittleShirley_25, Emmaloid_26
- Track 62 : BodEinwohner17_24
- Track 63 : Mandlovu_24, Strokeseat_24
- Track 64 : Fancypants_24
- Track 65 : Marker_25
- Track 66 : Wee_25, Omega_44
- Track 67 : Whouxphf_24
- Track 68 : Sabbb_25, Guppsters_25, Minerva_45
- Track 69 : SimranZ1_25

- Track 70 : Donkeykong_24, OwlsT2W_26, Leperchaun_24, Eradicator_24, Violac_25
- Track 71 : Fastidio_24
- Track 72 : SG4_24
- Track 73 : Nimbo_24
- Track 74 : Totinger_25
- Track 75 : Tootsieroll_25
- Track 76 : Ardmore_24
- Track 77 : EleanorGeorge_24
- Track 78 : Lizziana_24
- Track 79 : Zerg_24, RockyHorror_25
- Track 80 : VRedHorse_24, Dante_24, Phalconet_24, Beakin_25
- Track 81 : Bubbles123_25, Rita_24
- Track 82 : Fruitloop_24, XFactor_24, Juice456_26, Hegedechwinu_25, Brushbloom_26, Seagreen_25
- Track 83 : Vivum_24, RedBird_24, LittleE_45
- Track 84 : Modragons_24, Seabastian_24, Jinglebell_23, OfUltron_24, Oksu_25, Llama_24
- Track 85 : Eish_24
- Track 86 : DoRead_24
- Track 87 : StAnnes_24, IMpilo_24
- Track 88 : Firehouse51_25
- Track 89 : LunaBlu_25
- Track 90 : KingJulian_24, Corium_24
- Track 91 : Hlubikazi_24
- Track 92 : NewHope4_26, Whatsapiecost_24
- Track 93 : Grimmer_25
- Track 94 : Spikelee_25
- Track 95 : Moonbeam_25
- Track 96 : Jant_24, QuickMath_25, Kimberlium_26, MulchExplorer_27
- Track 97 : Ovechkin_24
- Track 98 : JalFarm20_26, Bobi_26
- Track 99 : Hamulus_24
- Track 100 : DotProduct_24
- Track 101 : DirtMcgirt_25, Phasih_25, GigiOuiOui_24, Veteran_24, Mantra_24, SiSi_24, GUmbie_24
- Track 102 : Harley_24, Ibhubesi_24
- Track 103 : PhesterPhotato_24
- Track 104 : Alexphander_26
- Track 105 : DillTech15_24
- Track 106 : DaWorst_26
- Track 107 : Polo2Bam_26
- Track 108 : Mutaforma13_24
- Track 109 : WillSterrel_25, IrishSherpFalk_25
- Track 110 : Quico_25, Florinda_24, Girafales_25
- Track 111 : Boomer_25
- Track 112 : Minnie_25, Sandalphon_25
- Track 113 : Poenanya_24, Doomphist_24
- Track 114 : Stap_25
- Track 115 : Spartacus_25, KristaRAM_25
- Track 116 : ShiLan_24, Zizzle_24
- Track 117 : Aubs_24
- Track 118 : Krakatau_25

- Track 119 : Flathead_25
- Track 120 : Royals2015_24
- Track 121 : Mahavrat_24
- Track 122 : Plumbus_25
- Track 123 : RitaG_24
- Track 124 : Hades_24
- Track 125 : Juniper1_24
- Track 126 : Melissauren88_24
- Track 127 : Taj_24, DeadP_24
- Track 128 : Mozy_25
- Track 129 : Gandalph_24
- Track 130 : Cheesepuff_27
- Track 131 : Radiance_24
- Track 132 : SilverChicken_30
- Track 133 : Duke13_42, Wanda_45
- Track 134 : Optimus_43, BAKA_42
- Track 135 : Gaia_27

Summary of Final Annotations (See graph section above for start numbers):

The start number called the most often in the published annotations is 2, it was called in 151 of the 323 non-draft genes in the pham.

Genes that call this "Most Annotated" start:

- Alexphander_26, Aloeri_25, Altman_37, Awesomesauce_25, Blarby_32, BlueCrab_24, BobaPhett_24, Bobi_26, BodEinwohner17_24, Brushbloom_26, Burwell21_24, ByChance_24, Cabrinians_24, Cheesepuff_27, Chevrolet_24, ChickenDinner_25, Chuckly_24, Corium_24, Cornucopia_25, DLane_24, DRBy19_24, DaWorst_26, DaddyRickover_24, Daenerys_24, DeadP_24, Deb65_24, DirtMcgirt_25, DoRead_24, DocMcStuffins_26, Donkeykong_24, Dorothy_24, DosHalletts_25, Doug_25, Drago_25, Eish_24, EleanorGeorge_24, EmiMonkey_24, Emma_24, Emmaloid_26, Empress_25, Enby_25, Eradicator_24, Fancypants_24, Fastidio_24, Filuzino_24, Firehouse51_25, Flathead_25, Florinda_24, FreddyB_24, Fruitloop_24, GUmbie_24, Gaia_27, Gandalph_24, Geralt_24, GigiOuiOui_24, Girafales_25, Girr_24, Gorge_24, Grimmer_25, Hades_24, Harley_24, Hegedechwinu_25, Hlubikazi_24, Ihubesi_24, Inventum_24, JalFarm20_26, James_24, Jant_24, Jarcob_24, JoeyJr_24, Juice456_26, Kanely_36, Karhdo_24, Kimberlium_26, KingJulian_24, KingMidas_25, KristaRAM_25, Leozinho_25, Leperchaun_24, LilMoolah_24, LittleShirley_25, Lizziana_24, Llij_24, Lorde_25, LunaBlu_25, Makemake_36, Mandlovu_24, Mantra_24, Maravista_24, Marker_25, Martik_24, Mattes_24, Melissauren88_24, Minnie_25, Misha28_25, MisterCuddles_24, Moonbeam_25, Mova_25, Mozy_25, MulchExplorer_27, Mutaforma13_24, Nebkiss_28, NewHope4_26, Nhonho_35, Nitzel_25, Nivrat_24, NormanBulbieJr_24, OldBen_24, OlympiaSaint_24, Omega_44, Ovechkin_24, OwlsT2W_26, PHappiness_24, PMC_24, Pacc40_24, Phasih_25, Phatniss_25, Philus_24, PhlipPhlop_24, Piper2020_26, Plumbus_25, Polka14_25, Polo2Bam_26, Priscilla_24, QuickMath_25, Quico_25, Radiance_24, Ramsey_25, Rhynn_35, Rialto_26, RitaG_24, Rockne_24, RockyHorror_25, Royals2015_24, Ruby_24, SG4_24, Saal_24, Sandalphon_25, SarFire_35, Sassafras_24, Scottish_25, Seagreen_25, ShiLan_24, ShowerHandel_24, SiSi_24, Slim_26, Sparkdehlily_24,

Spartacus_25, Spikelee_25, Spoonbill_24, Stap_25, Strokeseat_24, SwagPigglett_24, TDanisky_24, Taj_24, TootsiePop_25, Tootsieroll_25, Totinger_25, Tweety_25, UncleRicky_27, Veteran_24, Violac_25, Wachhund_24, Wee_25, Whatsapiecost_24, Whouxphf_24, XFactor_24, Yorick_24, Zerg_24, Zizzle_24,

Genes that have the "Most Annotated" start but do not call it:

-

Genes that do not have the "Most Annotated" start:

- AFIS_35, Abbyshoes_37, Abrogate_360, Adahisdi_36, Alvin_36, Ardmore_24, Ashballer_37, Atkinbua_37, Aubs_24, BAKA_42, BPBiebs31_36, BaconJack_38, BarrowTuph_34, Batiatus_24, Beakin_25, Beatrix_35, BeesKnees_36, Bexan_33, Big3_35, BigMau_37, BillKnuckles_36, Bircsak_35, Blue_35, Bob3_34, Bones_35, Boomer_25, Briton15_37, Bruns_34, Bubbles123_25, Burton_36, Bxb1_33, Chanagan_34, Ciao_35, Corvo_36, Crispicous1_34, Cueyllyss_35, DD5_36, Dante_24, DillTech15_24, Doomphist_24, DotProduct_24, DrFeelGood_34, DreamCatcher_38, Dreamboat_36, Duke13_42, Dulcie_34, Dussy_36, Dynamix_36, Edtherson_36, Espresso_35, Euphoria_35, Eyeball_35, Fajezeel_37, Fenn_36, Forsytheast_35, Francis47_35, GMonster_34, Galactic_24, Gandalf20_36, Gompeii16_35, Graduation_37, GrecoEtereo_37, Greg_37, Guppsters_25, Hamulus_24, Hermia_38, HermioneGrange_35, Hope4ever_35, ILeeKay_37, IMpilo_24, Ichabod_36, IrishSherpFalk_25, JackSparrow_36, Jasper_36, Jerm2_36, Jinglebell_23, Job42_27, Jorgensen_35, JuliaChild_37, Juniper1_24, KBG_36, KSSJEB_35, Kenmech_38, Killigrew_33, Krakatau_25, Kugel_36, Lamina13_35, Lesedi_34, Licorice_37, LittleE_45, Llama_24, Lockley_36, Lopton_36, LunarLander_37, Magnar_35, Magnito_34, Mahavrat_24, Manatee_36, Marge_36, Marsha_35, MaryBeth_35, McGuire_36, McSinger_36, MetalQZJ_35, Michley_35, Minerva_45, Mkhusei_36, Modragons_24, Monet_37, Moose_35, MrGordo_35, Mryolo_33, Museum_37, NEHalo_35, Naira_36, Nerujay_36, Nimbo_24, Norz_37, OfUltron_24, Ohno789_35, Oksu_25, Optimus_43, Papez_37, Paphu_34, Paraselene_34, Pari_36, Parliament_34, PascalRango_36, PattyP_37, Payneful_35, Perseus_37, Peterson_38, Petp2012_37, Phalconet_24, PherrisBueller_36, PhesterPhotato_24, PhineBark_35, PinkPlastic_34, Pippin_37, Pita2_37, Poenanya_24, Raid_36, Rajelicia_34, RedBird_24, RidgeCB_35, Rita_24, Rohr_36, Rufus_36, Ruotula_35, Rutherford_37, Sabb_25, Sanya_34, Scowl_35, Seabastian_24, Seabiscuit_37, Sibs6_36, SilverChicken_30, SimranZ1_25, SkiPole_38, Slagathor_36, Smeagol_37, Sorpresa_35, SpikeBT_37, Squee_36, StAnnes_24, Sunshine924_37, SwissCheese_37, Switzer_36, Tasp14_36, Teodoridan_33, TheloniousMonk_37, Traft412_37, Treddle_37, Tripl3t_36, Trouble_36, TwoPeat_36, U2_35, VRedHorse_24, Violet_34, Vivum_24, Wanda_45, Watermelon_37, WillSterrel_25, Zeeculate_35, Zephyr_35, Zeuska_36,

Summary by start number:

Start 1:

- Found in 168 of 356 (47.2%) of genes in pham
- No Manual Annotations of this start.
- Called 0.6% of time when present
- Phage (with cluster) where this start called: Ardmore_24 (F1),

Start 2:

- Found in 170 of 356 (47.8%) of genes in pham
- Manual Annotations of this start: 151 of 323

- Called 100.0% of time when present
- Phage (with cluster) where this start called: Alexphander_26 (F1), Aloeri_25 (F1), Altman_37 (A1), Awesomesauce_25 (F1), Blarby_32 (F), BlueCrab_24 (F1), BobaPhett_24 (F1), Bobi_26 (F1), BodEinwohner17_24 (F1), Brushbloom_26 (F1), Burwell21_24 (F1), ByChance_24 (F1), Cabrinians_24 (F1), CheesePuff_27 (F1), Chevrolet_24 (F1), ChickenDinner_25 (F1), Chuckly_24 (F1), Corium_24 (F1), Cornucopia_25 (F1), DLane_24 (F1), DRBy19_24 (F1), DaWorst_26 (F1), DaddyRickover_24 (F1), Daenerys_24 (F1), DeadP_24 (F1), Deb65_24 (F1), DirtMcGirt_25 (F1), DoRead_24 (F1), DocMcStuffins_26 (F1), Donkeykong_24 (F1), Dorothy_24 (F1), DosHalletts_25 (F1), Doug_25 (F1), Drago_25 (F1), Eish_24 (F1), EleanorGeorge_24 (F1), EmiMonkey_24 (F1), Emma_24 (F1), Emmaloid_26 (F1), Empress_25 (F1), Enby_25 (F1), Eradicator_24 (F1), Fancypants_24 (F1), Fastidio_24 (F1), Filuzino_24 (F1), Firehouse51_25 (F1), Flathead_25 (F1), Florinda_24 (F1), FreddyB_24 (F1), Fruitloop_24 (F1), GUmbie_24 (F1), Gaia_27 (X), Gandolph_24 (F1), Geralt_24 (F1), GigiOuiOui_24 (F1), Girafales_25 (F1), Girr_24 (F1), Gorge_24 (F1), Grimmer_25 (F1), Hades_24 (F1), Harley_24 (F1), Hegedechwinu_25 (F1), Hlubikazi_24 (F1), Ibhubesi_24 (F1), Inventum_24 (F1), JalFarm20_26 (F1), James_24 (F1), Jant_24 (F1), Jarcob_24 (F1), JoeyJr_24 (F1), Juice456_26 (F1), Kanely_36 (A1), Karhdo_24 (F1), Kimberlium_26 (F1), KingJulian_24 (F1), KingMidas_25 (F1), KristaRAM_25 (F1), Leozinho_25 (F1), Leperchaun_24 (F1), LilMoolah_24 (F1), LittleShirley_25 (F1), Lizziana_24 (F1), Llij_24 (F1), Lorde_25 (F1), LunaBlu_25 (F1), Makemake_36 (A1), Mandlovu_24 (F1), Mantra_24 (F1), Maravista_24 (F1), Marker_25 (F1), Martik_24 (F1), Mattes_24 (F1), Melissauren88_24 (F1), Minnie_25 (F1), Misha28_25 (F1), MisterCuddles_24 (F1), Moonbeam_25 (F1), Mova_25 (F1), Mozy_25 (F1), MulchExplorer_27 (F1), Mutaforma13_24 (F1), Nebkiss_28 (X), NewHope4_26 (F1), Nhonho_35 (A1), Nitzel_25 (F1), Nivrat_24 (F1), NormanBulbieJr_24 (F1), OldBen_24 (F1), OlympiaSaint_24 (F1), Omega_44 (J), Ovechkin_24 (F1), OwlsT2W_26 (F1), PHappiness_24 (F1), PMC_24 (F1), Pacc40_24 (F1), Phasih_25 (F1), Phatniss_25 (F1), Philus_24 (F1), PhilipPhlop_24 (F1), Piper2020_26 (F1), Plumbus_25 (F1), Polka14_25 (F1), Polo2Bam_26 (F1), Priscilla_24 (F1), QuickMath_25 (F1), Quico_25 (F1), Radiance_24 (F1), Ramsey_25 (F1), Rhynn_35 (A1), Rialto_26 (F1), RitaG_24 (F1), Rockne_24 (F1), RockyHorror_25 (F1), Royals2015_24 (F1), Ruby_24 (F1), SG4_24 (F1), Saal_24 (F1), Sandalphon_25 (F1), SarFire_35 (A1), Sassafras_24 (F1), Scottish_25 (F1), Seagreen_25 (F1), ShiLan_24 (F1), ShowerHandel_24 (F1), SiSi_24 (F1), Slim_26 (F1), Sparkdehliily_24 (F1), Spartacus_25 (F1), Spikelee_25 (F1), Spoonbill_24 (F1), Stap_25 (F1), StrokeSeat_24 (F1), SwagPigglett_24 (F1), TDanisky_24 (F1), Taj_24 (F1), TootsiePop_25 (F1), Tootsieroll_25 (F1), Totinger_25 (F1), Tweety_25 (F1), UncleRicky_27 (F1), Veteran_24 (F1), Violac_25 (F1), Wachhund_24 (F1), Wee_25 (F1), Whatsapiecost_24 (F1), Whouxphf_24 (F1), XFactor_24 (F1), Yorick_24 (F1), Zerg_24 (F1), Zizzle_24 (F1),

Start 3:

- Found in 43 of 356 (12.1%) of genes in pham
- Manual Annotations of this start: 39 of 323
- Called 97.7% of time when present
- Phage (with cluster) where this start called: Aubs_24 (F1), BAKA_42 (J), Batiatus_24 (F1), Beakin_25 (F1), Boomer_25 (F1), Bubbles123_25 (F1), Dante_24 (F1), DillTech15_24 (F1), Doomphist_24 (F1), DotProduct_24 (F1), Duke13_42 (J), Galactic_24 (F1), Guppsters_25 (F1), Hamulus_24 (F1), IMpilo_24 (F1), IrishSherpFalk_25 (F1), Jinglebell_23 (F1), Job42_27 (F1), Juniper1_24 (F1), Krakatau_25 (F1), LittleE_45 (J), Llama_24 (F1), Mahavrat_24 (F1), Minerva_45 (J), Modragons_24 (F1), Nimbo_24 (F1), OfUltron_24 (F1), Oksu_25 (F1), Optimus_43

(J), Phalconet_24 (F1), PhesterPhotato_24 (F1), Poenanya_24 (F1), RedBird_24 (F1), Rita_24 (F1), Sabbb_25 (F1), Seabastian_24 (F1), SimranZ1_25 (F1), StAnnes_24 (F1), VRedHorse_24 (F1), Vivum_24 (F1), Wanda_45 (J), WillSterrel_25 (F1),

Start 4:

- Found in 54 of 356 (15.2%) of genes in pham
- Manual Annotations of this start: 48 of 323
- Called 100.0% of time when present
- Phage (with cluster) where this start called: AFIS_35 (A1), Abrogate_360 (A1), Adahisdi_36 (A1), Ashballer_37 (A1), BPBiebs31_36 (A1), BarrowTuph_34 (A1), BillKnuckles_36 (A1), DD5_36 (A1), Edtherson_36 (A1), Espresso_35 (A1), Francis47_35 (A1), JackSparrow_36 (A1), JuliaChild_37 (A1), KBG_36 (A1), Kugel_36 (A1), Lamina13_35 (A1), Lesedi_34 (A1), Lockley_36 (A1), Magnar_35 (A1), Magnito_34 (A1), Marge_36 (A1), Marsha_35 (A1), McSinger_36 (A1), Monet_37 (A1), NEHalo_35 (A1), Nerujay_36 (A1), Norz_37 (A1), Ohno789_35 (A1), Paphu_34 (A1), Paraselene_34 (A1), Parliament_34 (A1), Payneful_35 (A1), Perseus_37 (A1), PhineBark_35 (A1), Pita2_37 (A1), Raid_36 (A1), Rajelicia_34 (A1), Rufus_36 (A1), Ruotula_35 (A1), Rutherferd_37 (A1), Sanya_34 (A1), Scowl_35 (A1), Sibs6_36 (A1), SkiPole_38 (A1), Slagathor_36 (A1), Sorpresa_35 (A1), SpikeBT_37 (A1), Tasp14_36 (A1), Teodoridan_33 (A1), Traft412_37 (A1), Treddle_37 (A1), Trouble_36 (A1), TwoPeat_36 (A1), Zeuska_36 (A1),

Start 5:

- Found in 86 of 356 (24.2%) of genes in pham
- Manual Annotations of this start: 82 of 323
- Called 98.8% of time when present
- Phage (with cluster) where this start called: Abbyshoes_37 (A1), Alvin_36 (A1), Atkinbua_37 (A1), BaconJack_38 (A1), Beatrix_35 (A1), BeesKnees_36 (A1), Bexan_33 (A1), Big3_35 (A1), BigMau_37 (A1), Bircsak_35 (A1), Blue_35 (A1), Bob3_34 (A1), Bones_35 (A1), Briton15_37 (A1), Bruns_34 (A1), Burton_36 (A1), Bxb1_33 (A1), Chanagan_34 (A1), Ciao_35 (A1), Corvo_36 (A1), Crispicous1_34 (A1), Cueylyss_35 (A1), DrFeelGood_34 (A1), DreamCatcher_38 (A1), Dreamboat_36 (A1), Dulcie_34 (A1), Dussy_36 (A1), Dynamix_36 (A1), Euphoria_35 (A1), Eyeball_35 (A1), Fajezeel_37 (A1), Fenn_36 (A1), Forsytheast_35 (A1), GMonster_34 (A1), Gandalf20_36 (A1), Gompeii16_35 (A1), Graduation_37 (A1), GrecoEtereo_37 (A1), Greg_37 (A1), Hermia_38 (A1), HermioneGrange_35 (A1), Hope4ever_35 (A1), ILeeKay_37 (A1), Ichabod_36 (A1), Jasper_36 (A1), Jerm2_36 (A1), Jorgensen_35 (A1), KSSJEB_35 (A1), Kenmech_38 (A1), Killigrew_33 (A1), Licorice_37 (A1), Lopton_36 (A1), LunarLander_37 (A1), Manatee_36 (A1), MaryBeth_35 (A1), McGuire_36 (A1), MetalQZJ_35 (A1), Michley_35 (A1), Mkhusei_36 (A1), Moose_35 (A1), MrGordo_35 (A1), Museum_37 (A1), Naira_36 (A1), Papez_37 (A1), Pari_36 (A1), PascalRango_36 (A1), PattyP_37 (A1), Peterson_38 (A1), Petp2012_37 (A1), PherrisBueller_36 (A1), PinkPlastic_34 (A1), Pippin_37 (A1), RidgeCB_35 (A1), Rohr_36 (A1), Seabiscuit_37 (A1), Smeagol_37 (A1), Squee_36 (A1), SwissCheese_37 (A1), Switzer_36 (A1), Tripl3t_36 (A1), U2_35 (A1), Violet_34 (A1), Watermelon_37 (A1), Zeeculate_35 (A1), Zephyr_35 (A1),

Start 7:

- Found in 32 of 356 (9.0%) of genes in pham
- Manual Annotations of this start: 1 of 323
- Called 3.1% of time when present
- Phage (with cluster) where this start called: Mryolo_33 (A1),

Start 8:

- Found in 1 of 356 (0.3%) of genes in pham
- Manual Annotations of this start: 1 of 323
- Called 100.0% of time when present
- Phage (with cluster) where this start called: TheloniousMonk_37 (A1),

Start 21:

- Found in 11 of 356 (3.1%) of genes in pham
- Manual Annotations of this start: 1 of 323
- Called 9.1% of time when present
- Phage (with cluster) where this start called: Sunshine924_37 (A1),

Start 24:

- Found in 1 of 356 (0.3%) of genes in pham
- No Manual Annotations of this start.
- Called 100.0% of time when present
- Phage (with cluster) where this start called: SilverChicken_30 (F2),

Summary by clusters:

There are 6 clusters represented in this pham: F1, F2, F, J, A1, X,

Info for manual annotations of cluster A1:

- Start number 2 was manually annotated 6 times for cluster A1.
- Start number 4 was manually annotated 48 times for cluster A1.
- Start number 5 was manually annotated 82 times for cluster A1.
- Start number 7 was manually annotated 1 time for cluster A1.
- Start number 8 was manually annotated 1 time for cluster A1.
- Start number 21 was manually annotated 1 time for cluster A1.

Info for manual annotations of cluster F1:

- Start number 2 was manually annotated 142 times for cluster F1.
- Start number 3 was manually annotated 33 times for cluster F1.

Info for manual annotations of cluster J:

- Start number 2 was manually annotated 1 time for cluster J.
- Start number 3 was manually annotated 6 times for cluster J.

Info for manual annotations of cluster X:

- Start number 2 was manually annotated 2 times for cluster X.

Gene Information:

Gene: AFIS_35 Start: 28138, Stop: 29097, Start Num: 4

Candidate Starts for AFIS_35:

(Start: 4 @28138 has 48 MA's), (14, 28174), (22, 28216), (31, 28303), (34, 28330), (39, 28438), (40, 28444), (43, 28459), (54, 28558), (55, 28570), (62, 28633),

Gene: Abbysshoes_37 Start: 28238, Stop: 29026, Start Num: 5
Candidate Starts for Abbysshoes_37:
(Start: 5 @28238 has 82 MA's), (Start: 7 @28244 has 1 MA's), (17, 28280), (42, 28538), (53, 28643), (58, 28670), (59, 28694), (73, 28871),

Gene: Abrogate_360 Start: 28813, Stop: 29772, Start Num: 4
Candidate Starts for Abrogate_360:
(Start: 4 @28813 has 48 MA's), (14, 28849), (22, 28891), (31, 28978), (34, 29005), (39, 29113), (43, 29134), (54, 29233), (55, 29245), (62, 29308),

Gene: Adahisdi_36 Start: 28227, Stop: 29183, Start Num: 4
Candidate Starts for Adahisdi_36:
(Start: 4 @28227 has 48 MA's), (14, 28263), (22, 28305), (31, 28392), (34, 28419), (43, 28548), (45, 28569), (49, 28602), (51, 28638), (67, 28764), (72, 28833),

Gene: Alexphander_26 Start: 24790, Stop: 25614, Start Num: 2
Candidate Starts for Alexphander_26:
(Start: 2 @24790 has 151 MA's), (18, 24838), (20, 24871), (53, 25231),

Gene: Aloeri_25 Start: 24858, Stop: 25682, Start Num: 2
Candidate Starts for Aloeri_25:
(1, 24798), (Start: 2 @24858 has 151 MA's), (18, 24906), (20, 24939), (25, 24972), (53, 25299),

Gene: Altman_37 Start: 28857, Stop: 29801, Start Num: 2
Candidate Starts for Altman_37:
(Start: 2 @28857 has 151 MA's), (18, 28893), (Start: 21 @28935 has 1 MA's), (43, 29178), (58, 29304),

Gene: Alvin_36 Start: 28638, Stop: 29438, Start Num: 5
Candidate Starts for Alvin_36:
(Start: 5 @28638 has 82 MA's), (14, 28674), (22, 28716), (31, 28803), (53, 29055), (59, 29106), (73, 29283),

Gene: Ardmore_24 Start: 24249, Stop: 25115, Start Num: 1
Candidate Starts for Ardmore_24:
(1, 24249), (Start: 3 @24309 has 39 MA's), (18, 24357), (20, 24390), (25, 24423), (55, 24753), (57, 24759), (73, 24963), (84, 25110),

Gene: Ashballer_37 Start: 28784, Stop: 29740, Start Num: 4
Candidate Starts for Ashballer_37:
(Start: 4 @28784 has 48 MA's), (14, 28820), (22, 28862), (31, 28949), (34, 28976), (43, 29105), (45, 29126), (49, 29159), (51, 29195), (67, 29321), (72, 29390),

Gene: Atkinbua_37 Start: 28484, Stop: 29272, Start Num: 5
Candidate Starts for Atkinbua_37:
(Start: 5 @28484 has 82 MA's), (14, 28520), (22, 28562), (31, 28649), (53, 28904), (59, 28955), (82, 29255),

Gene: Aubs_24 Start: 24425, Stop: 25231, Start Num: 3
Candidate Starts for Aubs_24:
(Start: 3 @24425 has 39 MA's), (18, 24473), (27, 24566), (55, 24869), (57, 24875), (73, 25079), (84, 25226),

Gene: Awesomesauce_25 Start: 24131, Stop: 24955, Start Num: 2

Candidate Starts for Awesomesauce_25:

(1, 24071), (Start: 2 @24131 has 151 MA's), (18, 24179), (25, 24245), (53, 24572),

Gene: BAKA_42 Start: 36778, Stop: 37584, Start Num: 3

Candidate Starts for BAKA_42:

(1, 36718), (Start: 3 @36778 has 39 MA's), (18, 36826), (20, 36859), (25, 36892), (26, 36916), (27, 36919), (55, 37222), (57, 37228), (73, 37432), (84, 37579),

Gene: BPBiabs31_36 Start: 28355, Stop: 29314, Start Num: 4

Candidate Starts for BPBiabs31_36:

(Start: 4 @28355 has 48 MA's), (14, 28391), (22, 28433), (31, 28520), (39, 28655), (43, 28676), (54, 28775), (55, 28787), (62, 28850),

Gene: BaconJack_38 Start: 28558, Stop: 29346, Start Num: 5

Candidate Starts for BaconJack_38:

(Start: 5 @28558 has 82 MA's), (Start: 7 @28564 has 1 MA's), (17, 28600), (42, 28858), (53, 28963), (58, 28990), (59, 29014), (73, 29191),

Gene: BarrowTuph_34 Start: 27895, Stop: 28854, Start Num: 4

Candidate Starts for BarrowTuph_34:

(Start: 4 @27895 has 48 MA's), (14, 27931), (22, 27973), (31, 28060), (34, 28087), (37, 28186), (40, 28201), (47, 28261), (67, 28432), (72, 28501), (86, 28750),

Gene: Batiatus_24 Start: 24316, Stop: 25122, Start Num: 3

Candidate Starts for Batiatus_24:

(1, 24256), (Start: 3 @24316 has 39 MA's), (18, 24364), (27, 24457), (55, 24760), (57, 24766), (73, 24970), (84, 25117),

Gene: Beakin_25 Start: 24117, Stop: 24971, Start Num: 3

Candidate Starts for Beakin_25:

(1, 24057), (Start: 3 @24117 has 39 MA's), (18, 24165), (34, 24330), (40, 24444), (43, 24459), (44, 24477), (55, 24588), (66, 24681), (73, 24816), (75, 24831), (76, 24840), (78, 24861), (79, 24864),

Gene: Beatrix_35 Start: 29473, Stop: 30261, Start Num: 5

Candidate Starts for Beatrix_35:

(Start: 5 @29473 has 82 MA's), (Start: 7 @29479 has 1 MA's), (17, 29515), (42, 29773), (53, 29878), (58, 29905), (59, 29929), (73, 30106),

Gene: BeesKnees_36 Start: 28085, Stop: 28894, Start Num: 5

Candidate Starts for BeesKnees_36:

(Start: 5 @28085 has 82 MA's), (14, 28121), (22, 28163), (31, 28250), (53, 28505), (59, 28556),

Gene: Bexan_33 Start: 28908, Stop: 29804, Start Num: 5

Candidate Starts for Bexan_33:

(Start: 5 @28908 has 82 MA's), (14, 28944), (22, 28986), (31, 29073), (34, 29100), (38, 29202), (53, 29331), (68, 29460),

Gene: Big3_35 Start: 28678, Stop: 29481, Start Num: 5

Candidate Starts for Big3_35:

(Start: 5 @28678 has 82 MA's), (14, 28714), (22, 28756), (31, 28843), (53, 29098), (59, 29149),

Gene: BigMau_37 Start: 28214, Stop: 29017, Start Num: 5

Candidate Starts for BigMau_37:

(Start: 5 @28214 has 82 MA's), (14, 28250), (22, 28292), (31, 28379), (53, 28634),

Gene: BillKnuckles_36 Start: 28751, Stop: 29710, Start Num: 4

Candidate Starts for BillKnuckles_36:

(Start: 4 @28751 has 48 MA's), (14, 28787), (22, 28829), (31, 28916), (34, 28943), (39, 29051), (40, 29057), (43, 29072), (54, 29171), (55, 29183), (62, 29246),

Gene: Bircsak_35 Start: 28523, Stop: 29326, Start Num: 5

Candidate Starts for Bircsak_35:

(Start: 5 @28523 has 82 MA's), (14, 28559), (22, 28601), (31, 28688), (53, 28943), (59, 28994),

Gene: Blarby_32 Start: 24541, Stop: 25521, Start Num: 2

Candidate Starts for Blarby_32:

(1, 24481), (Start: 2 @24541 has 151 MA's), (18, 24589), (25, 24655), (31, 24727), (34, 24754), (39, 24862), (43, 24883), (54, 24982), (55, 24994), (62, 25057),

Gene: Blue_35 Start: 28519, Stop: 29322, Start Num: 5

Candidate Starts for Blue_35:

(Start: 5 @28519 has 82 MA's), (14, 28555), (22, 28597), (31, 28684), (53, 28939), (59, 28990), (73, 29167),

Gene: BlueCrab_24 Start: 24432, Stop: 25256, Start Num: 2

Candidate Starts for BlueCrab_24:

(1, 24372), (Start: 2 @24432 has 151 MA's), (18, 24480), (25, 24546), (53, 24873),

Gene: Bob3_34 Start: 27560, Stop: 28363, Start Num: 5

Candidate Starts for Bob3_34:

(Start: 5 @27560 has 82 MA's), (14, 27596), (22, 27638), (31, 27725), (53, 27980),

Gene: BobaPhett_24 Start: 24420, Stop: 25244, Start Num: 2

Candidate Starts for BobaPhett_24:

(1, 24360), (Start: 2 @24420 has 151 MA's), (18, 24468), (20, 24501), (25, 24534), (31, 24606), (53, 24861),

Gene: Bobi_26 Start: 24854, Stop: 25834, Start Num: 2

Candidate Starts for Bobi_26:

(1, 24794), (Start: 2 @24854 has 151 MA's), (18, 24902), (39, 25175), (40, 25181), (43, 25196), (54, 25295), (55, 25307), (62, 25370),

Gene: BodEinwohner17_24 Start: 24438, Stop: 25418, Start Num: 2

Candidate Starts for BodEinwohner17_24:

(1, 24378), (Start: 2 @24438 has 151 MA's), (18, 24486), (20, 24519), (31, 24624), (34, 24651), (39, 24759), (40, 24765), (43, 24780), (54, 24879), (55, 24891), (62, 24954),

Gene: Bones_35 Start: 27931, Stop: 28719, Start Num: 5

Candidate Starts for Bones_35:

(Start: 5 @27931 has 82 MA's), (Start: 7 @27937 has 1 MA's), (17, 27973), (42, 28231), (53, 28336), (58, 28363), (59, 28387), (73, 28564),

Gene: Boomer_25 Start: 24077, Stop: 24886, Start Num: 3

Candidate Starts for Boomer_25:

(1, 24017), (Start: 3 @24077 has 39 MA's), (18, 24125), (20, 24158), (25, 24191), (27, 24218), (60, 24557), (67, 24620), (73, 24731),

Gene: Briton15_37 Start: 28318, Stop: 29121, Start Num: 5
Candidate Starts for Briton15_37:
(Start: 5 @28318 has 82 MA's), (14, 28354), (22, 28396), (53, 28738),

Gene: Bruns_34 Start: 27953, Stop: 28801, Start Num: 5
Candidate Starts for Bruns_34:
(Start: 5 @27953 has 82 MA's), (Start: 7 @27959 has 1 MA's), (17, 27995), (42, 28313), (53, 28418),
(58, 28445), (59, 28469), (73, 28646),

Gene: Brushbloom_26 Start: 24149, Stop: 25129, Start Num: 2
Candidate Starts for Brushbloom_26:
(1, 24089), (Start: 2 @24149 has 151 MA's), (18, 24197), (20, 24230), (25, 24263), (31, 24335), (34,
24362), (39, 24470), (43, 24491), (54, 24590), (55, 24602), (62, 24665),

Gene: Bubbles123_25 Start: 24980, Stop: 25789, Start Num: 3
Candidate Starts for Bubbles123_25:
(1, 24920), (Start: 3 @24980 has 39 MA's), (18, 25028), (25, 25094), (27, 25121), (34, 25178), (35,
25184), (39, 25283), (67, 25523), (73, 25634),

Gene: Burton_36 Start: 28168, Stop: 28971, Start Num: 5
Candidate Starts for Burton_36:
(Start: 5 @28168 has 82 MA's), (14, 28204), (22, 28246), (31, 28333), (53, 28588),

Gene: Burwell21_24 Start: 24454, Stop: 25278, Start Num: 2
Candidate Starts for Burwell21_24:
(1, 24394), (Start: 2 @24454 has 151 MA's), (10, 24481), (18, 24502), (20, 24535), (25, 24568), (53,
24895),

Gene: Bxb1_33 Start: 28131, Stop: 28934, Start Num: 5
Candidate Starts for Bxb1_33:
(Start: 5 @28131 has 82 MA's), (14, 28167), (22, 28209), (31, 28296), (53, 28551), (59, 28602), (73,
28779),

Gene: ByChance_24 Start: 24431, Stop: 25255, Start Num: 2
Candidate Starts for ByChance_24:
(1, 24371), (Start: 2 @24431 has 151 MA's), (10, 24458), (18, 24479), (20, 24512), (25, 24545), (53,
24872),

Gene: Cabrinians_24 Start: 24448, Stop: 25272, Start Num: 2
Candidate Starts for Cabrinians_24:
(Start: 2 @24448 has 151 MA's), (18, 24496), (20, 24529), (25, 24562), (31, 24634), (53, 24889), (59,
24940),

Gene: Chanagan_34 Start: 27633, Stop: 28415, Start Num: 5
Candidate Starts for Chanagan_34:
(Start: 5 @27633 has 82 MA's), (14, 27669), (22, 27711), (28, 27759), (29, 27762), (44, 27963), (53,
28047), (58, 28074), (59, 28098), (73, 28260),

Gene: Cheesepuff_27 Start: 25116, Stop: 26096, Start Num: 2
Candidate Starts for Cheesepuff_27:
(1, 25056), (Start: 2 @25116 has 151 MA's), (18, 25164), (25, 25230), (43, 25458), (64, 25668), (70,
25749), (85, 25974),

Gene: Chevrolet_24 Start: 24302, Stop: 25084, Start Num: 2

Candidate Starts for Chevrolet_24:

(1, 24242), (Start: 2 @24302 has 151 MA's), (18, 24350), (25, 24416), (55, 24734), (63, 24788),

Gene: ChickenDinner_25 Start: 24858, Stop: 25682, Start Num: 2

Candidate Starts for ChickenDinner_25:

(1, 24798), (Start: 2 @24858 has 151 MA's), (18, 24906), (20, 24939), (25, 24972), (53, 25299),

Gene: Chuckly_24 Start: 24431, Stop: 25255, Start Num: 2

Candidate Starts for Chuckly_24:

(1, 24371), (Start: 2 @24431 has 151 MA's), (18, 24479), (25, 24545), (53, 24872),

Gene: Ciao_35 Start: 27976, Stop: 28779, Start Num: 5

Candidate Starts for Ciao_35:

(Start: 5 @27976 has 82 MA's), (14, 28012), (22, 28054), (31, 28141), (53, 28396), (59, 28447),

Gene: Corium_24 Start: 24305, Stop: 25285, Start Num: 2

Candidate Starts for Corium_24:

(Start: 2 @24305 has 151 MA's), (18, 24353), (20, 24386), (31, 24491), (34, 24518), (39, 24626), (40, 24632), (43, 24647), (54, 24746), (55, 24758), (62, 24821),

Gene: Cornucopia_25 Start: 24304, Stop: 25140, Start Num: 2

Candidate Starts for Cornucopia_25:

(1, 24244), (Start: 2 @24304 has 151 MA's), (18, 24352), (20, 24385), (53, 24757), (59, 24808),

Gene: Corvo_36 Start: 28990, Stop: 29778, Start Num: 5

Candidate Starts for Corvo_36:

(Start: 5 @28990 has 82 MA's), (Start: 7 @28996 has 1 MA's), (17, 29032), (42, 29290), (53, 29395), (58, 29422), (59, 29446), (73, 29623),

Gene: Crispicous1_34 Start: 27574, Stop: 28377, Start Num: 5

Candidate Starts for Crispicous1_34:

(Start: 5 @27574 has 82 MA's), (14, 27610), (22, 27652), (31, 27739), (53, 27994), (59, 28045), (60, 28048),

Gene: Cueylyss_35 Start: 28164, Stop: 28952, Start Num: 5

Candidate Starts for Cueylyss_35:

(Start: 5 @28164 has 82 MA's), (Start: 7 @28170 has 1 MA's), (17, 28206), (42, 28464), (53, 28569), (58, 28596), (59, 28620), (73, 28797),

Gene: DD5_36 Start: 28752, Stop: 29711, Start Num: 4

Candidate Starts for DD5_36:

(Start: 4 @28752 has 48 MA's), (14, 28788), (22, 28830), (31, 28917), (34, 28944), (39, 29052), (40, 29058), (43, 29073), (54, 29172), (55, 29184), (62, 29247),

Gene: DLane_24 Start: 24254, Stop: 25078, Start Num: 2

Candidate Starts for DLane_24:

(1, 24194), (Start: 2 @24254 has 151 MA's), (18, 24302), (20, 24335), (25, 24368), (53, 24695),

Gene: DRBy19_24 Start: 24290, Stop: 25114, Start Num: 2

Candidate Starts for DRBy19_24:

(1, 24230), (Start: 2 @24290 has 151 MA's), (18, 24338), (20, 24371), (25, 24404), (31, 24476), (53, 24731),

Gene: DaWorst_26 Start: 24797, Stop: 25621, Start Num: 2

Candidate Starts for DaWorst_26:

(Start: 2 @24797 has 151 MA's), (18, 24845), (19, 24866), (53, 25238),

Gene: DaddyRickover_24 Start: 24437, Stop: 25261, Start Num: 2

Candidate Starts for DaddyRickover_24:

(1, 24377), (Start: 2 @24437 has 151 MA's), (18, 24485), (25, 24551), (53, 24878),

Gene: Daenerys_24 Start: 24264, Stop: 25088, Start Num: 2

Candidate Starts for Daenerys_24:

(1, 24204), (Start: 2 @24264 has 151 MA's), (18, 24312), (25, 24378), (53, 24705),

Gene: Dante_24 Start: 24282, Stop: 25136, Start Num: 3

Candidate Starts for Dante_24:

(1, 24222), (Start: 3 @24282 has 39 MA's), (18, 24330), (34, 24495), (40, 24609), (43, 24624), (44, 24642), (55, 24753), (66, 24846), (73, 24981), (75, 24996), (76, 25005), (78, 25026), (79, 25029),

Gene: DeadP_24 Start: 24297, Stop: 25277, Start Num: 2

Candidate Starts for DeadP_24:

(1, 24237), (Start: 2 @24297 has 151 MA's), (18, 24345), (20, 24378), (25, 24411), (34, 24510), (39, 24618), (43, 24639), (54, 24738), (55, 24750), (62, 24813),

Gene: Deb65_24 Start: 24261, Stop: 25085, Start Num: 2

Candidate Starts for Deb65_24:

(1, 24201), (Start: 2 @24261 has 151 MA's), (18, 24309), (53, 24702),

Gene: DillTech15_24 Start: 24302, Stop: 25108, Start Num: 3

Candidate Starts for DillTech15_24:

(1, 24242), (Start: 3 @24302 has 39 MA's), (18, 24350), (19, 24371), (25, 24416), (27, 24443), (32, 24479), (34, 24500), (35, 24506), (73, 24956),

Gene: DirtMcgirt_25 Start: 24087, Stop: 24911, Start Num: 2

Candidate Starts for DirtMcgirt_25:

(Start: 2 @24087 has 151 MA's), (18, 24135), (20, 24168), (25, 24201), (53, 24528), (73, 24756),

Gene: DoRead_24 Start: 24262, Stop: 25086, Start Num: 2

Candidate Starts for DoRead_24:

(1, 24202), (Start: 2 @24262 has 151 MA's), (18, 24310), (20, 24343), (25, 24376), (53, 24703),

Gene: DocMcStuffins_26 Start: 24858, Stop: 25682, Start Num: 2

Candidate Starts for DocMcStuffins_26:

(1, 24798), (Start: 2 @24858 has 151 MA's), (18, 24906), (20, 24939), (25, 24972), (53, 25299),

Gene: Donkeykong_24 Start: 24440, Stop: 25264, Start Num: 2

Candidate Starts for Donkeykong_24:

(1, 24380), (Start: 2 @24440 has 151 MA's), (18, 24488), (25, 24554), (53, 24881),

Gene: Doomphist_24 Start: 24402, Stop: 25211, Start Num: 3

Candidate Starts for Doomphist_24:

(1, 24342), (Start: 3 @24402 has 39 MA's), (18, 24450), (20, 24483), (25, 24516), (27, 24543), (67, 24945), (73, 25056),

Gene: Dorothy_24 Start: 24222, Stop: 25046, Start Num: 2

Candidate Starts for Dorothy_24:

(1, 24162), (Start: 2 @24222 has 151 MA's), (18, 24270), (20, 24303), (25, 24336), (53, 24663),

Gene: DosHalletts_25 Start: 24377, Stop: 25201, Start Num: 2

Candidate Starts for DosHalletts_25:

(1, 24317), (Start: 2 @24377 has 151 MA's), (10, 24404), (18, 24425), (20, 24458), (25, 24491), (53, 24818),

Gene: DotProduct_24 Start: 24269, Stop: 25078, Start Num: 3

Candidate Starts for DotProduct_24:

(Start: 3 @24269 has 39 MA's), (18, 24317), (20, 24350), (25, 24383), (27, 24410), (67, 24812), (73, 24923),

Gene: Doug_25 Start: 24814, Stop: 25638, Start Num: 2

Candidate Starts for Doug_25:

(1, 24754), (Start: 2 @24814 has 151 MA's), (18, 24862), (20, 24895), (25, 24928), (53, 25255),

Gene: DrFeelGood_34 Start: 28437, Stop: 29240, Start Num: 5

Candidate Starts for DrFeelGood_34:

(Start: 5 @28437 has 82 MA's), (14, 28473), (22, 28515), (31, 28602), (53, 28857), (59, 28908),

Gene: Drago_25 Start: 24086, Stop: 24910, Start Num: 2

Candidate Starts for Drago_25:

(1, 24026), (Start: 2 @24086 has 151 MA's), (18, 24134), (25, 24200), (53, 24527),

Gene: DreamCatcher_38 Start: 29392, Stop: 30195, Start Num: 5

Candidate Starts for DreamCatcher_38:

(Start: 5 @29392 has 82 MA's), (14, 29428), (22, 29470), (53, 29812), (59, 29863),

Gene: Dreamboat_36 Start: 27996, Stop: 28784, Start Num: 5

Candidate Starts for Dreamboat_36:

(Start: 5 @27996 has 82 MA's), (Start: 7 @28002 has 1 MA's), (17, 28038), (42, 28296), (53, 28401), (59, 28452), (73, 28629),

Gene: Duke13_42 Start: 36667, Stop: 37473, Start Num: 3

Candidate Starts for Duke13_42:

(1, 36607), (Start: 3 @36667 has 39 MA's), (18, 36715), (20, 36748), (25, 36781), (33, 36850), (55, 37111), (57, 37117), (73, 37321), (84, 37468),

Gene: Dulcie_34 Start: 27688, Stop: 28491, Start Num: 5

Candidate Starts for Dulcie_34:

(Start: 5 @27688 has 82 MA's), (14, 27724), (22, 27766), (31, 27853), (53, 28108),

Gene: Dussy_36 Start: 28258, Stop: 29046, Start Num: 5

Candidate Starts for Dussy_36:

(Start: 5 @28258 has 82 MA's), (Start: 7 @28264 has 1 MA's), (17, 28300), (42, 28558), (53, 28663), (58, 28690), (59, 28714), (73, 28891),

Gene: Dynamix_36 Start: 28070, Stop: 28879, Start Num: 5

Candidate Starts for Dynamix_36:

(Start: 5 @28070 has 82 MA's), (14, 28106), (22, 28148), (31, 28235), (53, 28490), (59, 28541),

Gene: Edtherson_36 Start: 28770, Stop: 29729, Start Num: 4

Candidate Starts for Edtherson_36:

(Start: 4 @28770 has 48 MA's), (14, 28806), (22, 28848), (31, 28935), (34, 28962), (39, 29070), (40, 29076), (43, 29091), (54, 29190), (55, 29202), (62, 29265),

Gene: Eish_24 Start: 24401, Stop: 25225, Start Num: 2

Candidate Starts for Eish_24:

(1, 24341), (Start: 2 @24401 has 151 MA's), (18, 24449), (20, 24482), (25, 24515), (53, 24842), (73, 25070),

Gene: EleanorGeorge_24 Start: 24437, Stop: 25399, Start Num: 2

Candidate Starts for EleanorGeorge_24:

(1, 24377), (Start: 2 @24437 has 151 MA's), (18, 24485), (20, 24518), (25, 24551), (40, 24764), (43, 24779), (53, 24875), (72, 25058), (75, 25121),

Gene: EmiMonkey_24 Start: 24219, Stop: 25160, Start Num: 2

Candidate Starts for EmiMonkey_24:

(Start: 2 @24219 has 151 MA's), (18, 24267), (20, 24300), (25, 24333), (36, 24441), (43, 24558), (44, 24576),

Gene: Emma_24 Start: 24316, Stop: 25299, Start Num: 2

Candidate Starts for Emma_24:

(1, 24256), (Start: 2 @24316 has 151 MA's), (18, 24364), (34, 24529), (43, 24658), (57, 24784), (88, 25228),

Gene: Emmaloid_26 Start: 24066, Stop: 25007, Start Num: 2

Candidate Starts for Emmaloid_26:

(1, 24006), (Start: 2 @24066 has 151 MA's), (18, 24114), (20, 24147), (25, 24180), (36, 24288), (43, 24405), (44, 24423),

Gene: Empress_25 Start: 25613, Stop: 26437, Start Num: 2

Candidate Starts for Empress_25:

(1, 25553), (Start: 2 @25613 has 151 MA's), (18, 25661), (53, 26054),

Gene: Enby_25 Start: 24086, Stop: 24910, Start Num: 2

Candidate Starts for Enby_25:

(1, 24026), (Start: 2 @24086 has 151 MA's), (18, 24134), (25, 24200), (53, 24527),

Gene: Eradicator_24 Start: 24309, Stop: 25133, Start Num: 2

Candidate Starts for Eradicator_24:

(1, 24249), (Start: 2 @24309 has 151 MA's), (18, 24357), (25, 24423), (53, 24750),

Gene: Espresso_35 Start: 28134, Stop: 29081, Start Num: 4

Candidate Starts for Espresso_35:

(Start: 4 @28134 has 48 MA's), (14, 28170), (22, 28212), (31, 28299), (34, 28326), (39, 28434), (40, 28440), (43, 28455), (54, 28554), (55, 28566), (62, 28629),

Gene: Euphoria_35 Start: 28029, Stop: 28874, Start Num: 5

Candidate Starts for Euphoria_35:

(Start: 5 @28029 has 82 MA's), (Start: 7 @28035 has 1 MA's), (17, 28071), (42, 28389), (53, 28494), (58, 28521), (59, 28545), (73, 28719),

Gene: Eyeball_35 Start: 27834, Stop: 28622, Start Num: 5

Candidate Starts for Eyeball_35:

(Start: 5 @27834 has 82 MA's), (Start: 7 @27840 has 1 MA's), (17, 27876), (42, 28134), (53, 28239), (58, 28266), (59, 28290), (73, 28467),

Gene: Fajezeel_37 Start: 28339, Stop: 29142, Start Num: 5

Candidate Starts for Fajezeel_37:

(Start: 5 @28339 has 82 MA's), (14, 28375), (22, 28417), (31, 28504), (53, 28759), (59, 28810),

Gene: Fancypants_24 Start: 24269, Stop: 25093, Start Num: 2

Candidate Starts for Fancypants_24:

(1, 24209), (Start: 2 @24269 has 151 MA's), (18, 24317), (25, 24383), (53, 24710), (67, 24827),

Gene: Fastidio_24 Start: 24233, Stop: 25216, Start Num: 2

Candidate Starts for Fastidio_24:

(1, 24173), (Start: 2 @24233 has 151 MA's), (18, 24281), (19, 24302), (30, 24404), (31, 24419), (34, 24446), (43, 24575), (57, 24701), (88, 25145),

Gene: Fenn_36 Start: 29657, Stop: 30460, Start Num: 5

Candidate Starts for Fenn_36:

(Start: 5 @29657 has 82 MA's), (14, 29693), (22, 29735), (53, 30077), (58, 30104), (59, 30128), (61, 30143),

Gene: Filuzino_24 Start: 24259, Stop: 25083, Start Num: 2

Candidate Starts for Filuzino_24:

(1, 24199), (Start: 2 @24259 has 151 MA's), (18, 24307), (25, 24373), (53, 24700),

Gene: Firehouse51_25 Start: 24825, Stop: 25805, Start Num: 2

Candidate Starts for Firehouse51_25:

(1, 24765), (Start: 2 @24825 has 151 MA's), (18, 24873), (25, 24939), (34, 25038), (39, 25146), (43, 25167), (54, 25266), (55, 25278), (62, 25341),

Gene: Flathead_25 Start: 24133, Stop: 25113, Start Num: 2

Candidate Starts for Flathead_25:

(1, 24073), (Start: 2 @24133 has 151 MA's), (18, 24181), (31, 24319), (34, 24346), (39, 24454), (40, 24460), (43, 24475), (54, 24574), (55, 24586), (62, 24649),

Gene: Florinda_24 Start: 24279, Stop: 25103, Start Num: 2

Candidate Starts for Florinda_24:

(Start: 2 @24279 has 151 MA's), (18, 24327), (25, 24393), (53, 24720),

Gene: Forsytheast_35 Start: 28268, Stop: 29056, Start Num: 5

Candidate Starts for Forsytheast_35:

(Start: 5 @28268 has 82 MA's), (Start: 7 @28274 has 1 MA's), (17, 28310), (42, 28568), (53, 28673), (58, 28700), (59, 28724), (73, 28901),

Gene: Francis47_35 Start: 28529, Stop: 29485, Start Num: 4

Candidate Starts for Francis47_35:

(Start: 4 @28529 has 48 MA's), (14, 28565), (22, 28607), (31, 28694), (34, 28721), (43, 28850), (45, 28871), (49, 28904), (50, 28910), (51, 28940), (67, 29066), (72, 29135),

Gene: FreddyB_24 Start: 24457, Stop: 25281, Start Num: 2
Candidate Starts for FreddyB_24:
(Start: 2 @24457 has 151 MA's), (18, 24505), (20, 24538), (25, 24571), (31, 24643), (53, 24898), (59, 24949),

Gene: Fruitloop_24 Start: 24297, Stop: 25277, Start Num: 2
Candidate Starts for Fruitloop_24:
(1, 24237), (Start: 2 @24297 has 151 MA's), (18, 24345), (20, 24378), (25, 24411), (31, 24483), (34, 24510), (39, 24618), (43, 24639), (54, 24738), (55, 24750), (62, 24813),

Gene: GMonster_34 Start: 27408, Stop: 28217, Start Num: 5
Candidate Starts for GMonster_34:
(Start: 5 @27408 has 82 MA's), (14, 27444), (22, 27486), (31, 27573), (53, 27828), (59, 27879),

Gene: GUmbie_24 Start: 24269, Stop: 25093, Start Num: 2
Candidate Starts for GUmbie_24:
(Start: 2 @24269 has 151 MA's), (18, 24317), (20, 24350), (25, 24383), (53, 24710), (73, 24938),

Gene: Gaia_27 Start: 26804, Stop: 27628, Start Num: 2
Candidate Starts for Gaia_27:
(1, 26744), (Start: 2 @26804 has 151 MA's), (18, 26852), (20, 26885), (25, 26918), (31, 26990), (53, 27245), (73, 27473),

Gene: Galactic_24 Start: 24262, Stop: 25068, Start Num: 3
Candidate Starts for Galactic_24:
(1, 24202), (Start: 3 @24262 has 39 MA's), (18, 24310), (27, 24403), (55, 24706), (57, 24712), (73, 24916), (84, 25063),

Gene: Gandalf20_36 Start: 28867, Stop: 29670, Start Num: 5
Candidate Starts for Gandalf20_36:
(Start: 5 @28867 has 82 MA's), (14, 28903), (22, 28945), (31, 29032), (53, 29287),

Gene: Gandalph_24 Start: 24362, Stop: 25186, Start Num: 2
Candidate Starts for Gandalph_24:
(1, 24302), (Start: 2 @24362 has 151 MA's), (18, 24410), (20, 24443), (25, 24476), (53, 24803), (73, 25031),

Gene: Geralt_24 Start: 24260, Stop: 25084, Start Num: 2
Candidate Starts for Geralt_24:
(1, 24200), (Start: 2 @24260 has 151 MA's), (18, 24308), (53, 24701),

Gene: GigiOuiOui_24 Start: 24393, Stop: 25217, Start Num: 2
Candidate Starts for GigiOuiOui_24:
(Start: 2 @24393 has 151 MA's), (18, 24441), (20, 24474), (25, 24507), (53, 24834), (73, 25062),

Gene: Girafales_25 Start: 24087, Stop: 24911, Start Num: 2
Candidate Starts for Girafales_25:
(Start: 2 @24087 has 151 MA's), (18, 24135), (25, 24201), (53, 24528),

Gene: Girr_24 Start: 24239, Stop: 25063, Start Num: 2
Candidate Starts for Girr_24:
(1, 24179), (Start: 2 @24239 has 151 MA's), (18, 24287), (53, 24680),

Gene: Gompeii16_35 Start: 28524, Stop: 29327, Start Num: 5

Candidate Starts for Gompeii16_35:

(Start: 5 @28524 has 82 MA's), (14, 28560), (22, 28602), (31, 28689), (53, 28944), (59, 28995),

Gene: Gorge_24 Start: 24424, Stop: 25248, Start Num: 2

Candidate Starts for Gorge_24:

(1, 24364), (Start: 2 @24424 has 151 MA's), (18, 24472), (20, 24505), (25, 24538), (31, 24610), (53, 24865),

Gene: Graduation_37 Start: 28751, Stop: 29539, Start Num: 5

Candidate Starts for Graduation_37:

(Start: 5 @28751 has 82 MA's), (Start: 7 @28757 has 1 MA's), (17, 28793), (42, 29051), (53, 29156), (58, 29183), (59, 29207), (73, 29384),

Gene: GrecoEtereo_37 Start: 28838, Stop: 29623, Start Num: 5

Candidate Starts for GrecoEtereo_37:

(Start: 5 @28838 has 82 MA's), (Start: 7 @28844 has 1 MA's), (17, 28880), (42, 29138), (53, 29243), (58, 29270), (59, 29294), (73, 29468),

Gene: Greg_37 Start: 28339, Stop: 29142, Start Num: 5

Candidate Starts for Greg_37:

(Start: 5 @28339 has 82 MA's), (14, 28375), (22, 28417), (31, 28504), (53, 28759), (59, 28810),

Gene: Grimmer_25 Start: 24869, Stop: 25660, Start Num: 2

Candidate Starts for Grimmer_25:

(Start: 2 @24869 has 151 MA's), (18, 24917), (20, 24950), (25, 24983), (43, 25211), (57, 25337), (71, 25502),

Gene: Guppsters_25 Start: 24505, Stop: 25359, Start Num: 3

Candidate Starts for Guppsters_25:

(1, 24445), (Start: 3 @24505 has 39 MA's), (18, 24553), (34, 24718), (40, 24832), (43, 24847), (44, 24865), (55, 24976), (66, 25069), (73, 25204), (75, 25219), (76, 25228), (78, 25249), (79, 25252),

Gene: Hades_24 Start: 24354, Stop: 25178, Start Num: 2

Candidate Starts for Hades_24:

(1, 24294), (Start: 2 @24354 has 151 MA's), (53, 24795),

Gene: Hamulus_24 Start: 24276, Stop: 25241, Start Num: 3

Candidate Starts for Hamulus_24:

(1, 24213), (Start: 3 @24276 has 39 MA's), (18, 24324), (20, 24357), (25, 24390), (34, 24489), (43, 24618), (58, 24744),

Gene: Harley_24 Start: 24258, Stop: 25040, Start Num: 2

Candidate Starts for Harley_24:

(Start: 2 @24258 has 151 MA's), (18, 24306), (25, 24372), (55, 24690), (63, 24744),

Gene: Hegedechwinu_25 Start: 24114, Stop: 25094, Start Num: 2

Candidate Starts for Hegedechwinu_25:

(1, 24054), (Start: 2 @24114 has 151 MA's), (18, 24162), (20, 24195), (25, 24228), (31, 24300), (34, 24327), (39, 24435), (43, 24456), (54, 24555), (55, 24567), (62, 24630),

Gene: Hermia_38 Start: 29555, Stop: 30343, Start Num: 5

Candidate Starts for Hermia_38:

(Start: 5 @29555 has 82 MA's), (Start: 7 @29561 has 1 MA's), (17, 29597), (42, 29855), (53, 29960), (73, 30188),

Gene: HermioneGrange_35 Start: 27948, Stop: 28751, Start Num: 5

Candidate Starts for HermioneGrange_35:

(Start: 5 @27948 has 82 MA's), (14, 27984), (22, 28026), (31, 28113), (53, 28368),

Gene: Hlubikazi_24 Start: 24362, Stop: 25318, Start Num: 2

Candidate Starts for Hlubikazi_24:

(1, 24302), (Start: 2 @24362 has 151 MA's), (15, 24404), (18, 24410), (19, 24431), (20, 24443), (25, 24476), (34, 24575), (40, 24689), (43, 24704), (57, 24830), (71, 24995),

Gene: Hope4ever_35 Start: 28441, Stop: 29229, Start Num: 5

Candidate Starts for Hope4ever_35:

(Start: 5 @28441 has 82 MA's), (Start: 7 @28447 has 1 MA's), (17, 28483), (42, 28741), (53, 28846), (58, 28873), (59, 28897), (73, 29074),

Gene: ILeeKay_37 Start: 28205, Stop: 28993, Start Num: 5

Candidate Starts for ILeeKay_37:

(Start: 5 @28205 has 82 MA's), (Start: 7 @28211 has 1 MA's), (17, 28247), (42, 28505), (53, 28610), (58, 28637), (59, 28661), (73, 28838),

Gene: IMpilo_24 Start: 24298, Stop: 25152, Start Num: 3

Candidate Starts for IMpilo_24:

(1, 24238), (Start: 3 @24298 has 39 MA's), (18, 24346), (20, 24379), (25, 24412), (34, 24511), (40, 24625), (43, 24640), (44, 24658), (55, 24769), (66, 24862), (73, 24997), (75, 25012), (76, 25021), (78, 25042), (79, 25045),

Gene: Ibhubesi_24 Start: 24265, Stop: 25047, Start Num: 2

Candidate Starts for Ibhubesi_24:

(Start: 2 @24265 has 151 MA's), (18, 24313), (25, 24379), (55, 24697), (63, 24751),

Gene: Ichabod_36 Start: 28224, Stop: 29027, Start Num: 5

Candidate Starts for Ichabod_36:

(Start: 5 @28224 has 82 MA's), (14, 28260), (22, 28302), (31, 28389), (53, 28644), (59, 28695),

Gene: Inventum_24 Start: 24395, Stop: 25219, Start Num: 2

Candidate Starts for Inventum_24:

(1, 24335), (Start: 2 @24395 has 151 MA's), (18, 24443), (53, 24836),

Gene: IrishSherpFalk_25 Start: 25625, Stop: 26431, Start Num: 3

Candidate Starts for IrishSherpFalk_25:

(1, 25565), (Start: 3 @25625 has 39 MA's), (18, 25673), (20, 25706), (25, 25739), (55, 26069), (57, 26075), (73, 26279), (84, 26426),

Gene: JackSparrow_36 Start: 28398, Stop: 29357, Start Num: 4

Candidate Starts for JackSparrow_36:

(Start: 4 @28398 has 48 MA's), (14, 28434), (22, 28476), (31, 28563), (34, 28590), (39, 28698), (40, 28704), (43, 28719), (54, 28818), (55, 28830), (62, 28893),

Gene: JalFarm20_26 Start: 24635, Stop: 25615, Start Num: 2

Candidate Starts for JalFarm20_26:

(1, 24575), (Start: 2 @24635 has 151 MA's), (18, 24683), (39, 24956), (40, 24962), (43, 24977), (54, 25076), (55, 25088), (62, 25151),

Gene: James_24 Start: 24420, Stop: 25244, Start Num: 2

Candidate Starts for James_24:

(1, 24360), (Start: 2 @24420 has 151 MA's), (18, 24468), (20, 24501), (25, 24534), (31, 24606), (53, 24861),

Gene: Jant_24 Start: 24416, Stop: 25240, Start Num: 2

Candidate Starts for Jant_24:

(1, 24356), (Start: 2 @24416 has 151 MA's), (18, 24464), (25, 24530), (53, 24857), (73, 25085),

Gene: Jacob_24 Start: 24455, Stop: 25279, Start Num: 2

Candidate Starts for Jacob_24:

(1, 24395), (Start: 2 @24455 has 151 MA's), (18, 24503), (20, 24536), (25, 24569), (31, 24641), (53, 24896),

Gene: Jasper_36 Start: 27882, Stop: 28670, Start Num: 5

Candidate Starts for Jasper_36:

(Start: 5 @27882 has 82 MA's), (Start: 7 @27888 has 1 MA's), (17, 27924), (42, 28182), (53, 28287), (58, 28314), (59, 28338), (73, 28515),

Gene: Jerm2_36 Start: 28214, Stop: 29017, Start Num: 5

Candidate Starts for Jerm2_36:

(Start: 5 @28214 has 82 MA's), (14, 28250), (22, 28292), (31, 28379), (53, 28634),

Gene: Jinglebell_23 Start: 24502, Stop: 25308, Start Num: 3

Candidate Starts for Jinglebell_23:

(Start: 3 @24502 has 39 MA's), (18, 24550), (20, 24583), (25, 24616), (34, 24700), (35, 24706), (39, 24805), (57, 24952), (67, 25045), (73, 25156),

Gene: Job42_27 Start: 25950, Stop: 26804, Start Num: 3

Candidate Starts for Job42_27:

(1, 25890), (Start: 3 @25950 has 39 MA's), (18, 25998), (25, 26064), (34, 26163), (40, 26277), (43, 26292), (44, 26310), (55, 26421), (66, 26514), (73, 26649), (75, 26664), (76, 26673), (78, 26694), (79, 26697),

Gene: JoeyJr_24 Start: 24432, Stop: 25256, Start Num: 2

Candidate Starts for JoeyJr_24:

(1, 24372), (Start: 2 @24432 has 151 MA's), (18, 24480), (25, 24546), (53, 24873),

Gene: Jorgensen_35 Start: 27931, Stop: 28722, Start Num: 5

Candidate Starts for Jorgensen_35:

(Start: 5 @27931 has 82 MA's), (14, 27967), (22, 28009), (29, 28060), (32, 28096), (67, 28459),

Gene: Juice456_26 Start: 25385, Stop: 26365, Start Num: 2

Candidate Starts for Juice456_26:

(1, 25325), (Start: 2 @25385 has 151 MA's), (18, 25433), (20, 25466), (25, 25499), (31, 25571), (34, 25598), (39, 25706), (43, 25727), (54, 25826), (55, 25838), (62, 25901),

Gene: JuliaChild_37 Start: 28576, Stop: 29454, Start Num: 4

Candidate Starts for JuliaChild_37:

(Start: 4 @28576 has 48 MA's), (18, 28612), (Start: 21 @28654 has 1 MA's), (31, 28741), (34, 28768), (43, 28897), (57, 29008), (67, 29107), (88, 29383),

Gene: Juniper1_24 Start: 24259, Stop: 25068, Start Num: 3

Candidate Starts for Juniper1_24:

(1, 24196), (Start: 3 @24259 has 39 MA's), (6, 24265), (18, 24307), (25, 24373), (27, 24400), (34, 24457), (35, 24463), (39, 24562), (67, 24802), (73, 24913),

Gene: KBG_36 Start: 28930, Stop: 29886, Start Num: 4

Candidate Starts for KBG_36:

(Start: 4 @28930 has 48 MA's), (14, 28966), (22, 29008), (31, 29095), (39, 29227), (40, 29233), (43, 29248), (54, 29347), (55, 29359), (62, 29422),

Gene: KSSJEB_35 Start: 27824, Stop: 28633, Start Num: 5

Candidate Starts for KSSJEB_35:

(Start: 5 @27824 has 82 MA's), (14, 27860), (22, 27902), (53, 28244), (59, 28295),

Gene: Kanely_36 Start: 28634, Stop: 29578, Start Num: 2

Candidate Starts for Kanely_36:

(Start: 2 @28634 has 151 MA's), (18, 28670), (Start: 21 @28712 has 1 MA's), (43, 28955), (58, 29081),

Gene: Karhdo_24 Start: 24395, Stop: 25219, Start Num: 2

Candidate Starts for Karhdo_24:

(1, 24335), (Start: 2 @24395 has 151 MA's), (18, 24443), (20, 24476), (25, 24509), (53, 24836),

Gene: Kenmech_38 Start: 29345, Stop: 30133, Start Num: 5

Candidate Starts for Kenmech_38:

(Start: 5 @29345 has 82 MA's), (Start: 7 @29351 has 1 MA's), (17, 29387), (42, 29645), (53, 29750), (58, 29777), (59, 29801), (73, 29978),

Gene: Killigrew_33 Start: 27558, Stop: 28355, Start Num: 5

Candidate Starts for Killigrew_33:

(Start: 5 @27558 has 82 MA's), (14, 27594), (22, 27636), (28, 27684), (29, 27687), (44, 27888), (53, 27972), (58, 27999), (59, 28023),

Gene: Kimberlium_26 Start: 25387, Stop: 26211, Start Num: 2

Candidate Starts for Kimberlium_26:

(1, 25327), (Start: 2 @25387 has 151 MA's), (18, 25435), (25, 25501), (53, 25828), (73, 26056),

Gene: KingJulian_24 Start: 24305, Stop: 25285, Start Num: 2

Candidate Starts for KingJulian_24:

(Start: 2 @24305 has 151 MA's), (18, 24353), (20, 24386), (31, 24491), (34, 24518), (39, 24626), (40, 24632), (43, 24647), (54, 24746), (55, 24758), (62, 24821),

Gene: KingMidas_25 Start: 25564, Stop: 26388, Start Num: 2

Candidate Starts for KingMidas_25:

(1, 25504), (Start: 2 @25564 has 151 MA's), (18, 25612), (25, 25678), (53, 26005),

Gene: Krakatau_25 Start: 24963, Stop: 25769, Start Num: 3

Candidate Starts for Krakatau_25:

(1, 24903), (Start: 3 @24963 has 39 MA's), (18, 25011), (57, 25413), (67, 25506), (73, 25617),

Gene: KristaRAM_25 Start: 24939, Stop: 25919, Start Num: 2

Candidate Starts for KristaRAM_25:

(1, 24879), (Start: 2 @24939 has 151 MA's), (18, 24987), (25, 25053), (31, 25125), (34, 25152), (39, 25260), (40, 25266), (43, 25281), (54, 25380), (55, 25392), (62, 25455),

Gene: Kugel_36 Start: 28207, Stop: 29163, Start Num: 4

Candidate Starts for Kugel_36:

(Start: 4 @28207 has 48 MA's), (14, 28243), (22, 28285), (31, 28372), (34, 28399), (43, 28528), (45, 28549), (49, 28582), (51, 28618), (67, 28744), (72, 28813),

Gene: Lamina13_35 Start: 27644, Stop: 28477, Start Num: 4

Candidate Starts for Lamina13_35:

(Start: 4 @27644 has 48 MA's), (14, 27680), (22, 27722), (34, 27836), (40, 27950), (43, 27965), (44, 27983), (55, 28094), (66, 28187), (75, 28337), (76, 28346), (78, 28367), (79, 28370),

Gene: Leozinho_25 Start: 24109, Stop: 24933, Start Num: 2

Candidate Starts for Leozinho_25:

(1, 24049), (Start: 2 @24109 has 151 MA's), (18, 24157), (20, 24190), (25, 24223), (53, 24550),

Gene: Leperchaun_24 Start: 24336, Stop: 25160, Start Num: 2

Candidate Starts for Leperchaun_24:

(1, 24276), (Start: 2 @24336 has 151 MA's), (18, 24384), (25, 24450), (53, 24777),

Gene: Lesedi_34 Start: 27802, Stop: 28758, Start Num: 4

Candidate Starts for Lesedi_34:

(Start: 4 @27802 has 48 MA's), (14, 27838), (22, 27880), (31, 27967), (34, 27994), (39, 28099), (43, 28120), (54, 28219), (55, 28231), (62, 28294),

Gene: Licorice_37 Start: 29036, Stop: 29821, Start Num: 5

Candidate Starts for Licorice_37:

(Start: 5 @29036 has 82 MA's), (Start: 7 @29042 has 1 MA's), (17, 29078), (42, 29336), (53, 29441), (58, 29468), (59, 29492),

Gene: LilMoolah_24 Start: 24554, Stop: 25378, Start Num: 2

Candidate Starts for LilMoolah_24:

(1, 24494), (Start: 2 @24554 has 151 MA's), (10, 24581), (18, 24602), (20, 24635), (25, 24668), (53, 24995),

Gene: LittleE_45 Start: 37858, Stop: 38664, Start Num: 3

Candidate Starts for LittleE_45:

(1, 37798), (Start: 3 @37858 has 39 MA's), (18, 37906), (25, 37972), (26, 37996), (27, 37999), (55, 38302), (57, 38308), (73, 38512), (84, 38659),

Gene: LittleShirley_25 Start: 24086, Stop: 25027, Start Num: 2

Candidate Starts for LittleShirley_25:

(1, 24026), (Start: 2 @24086 has 151 MA's), (18, 24134), (20, 24167), (25, 24200), (36, 24308), (43, 24425), (44, 24443),

Gene: Lizziana_24 Start: 24429, Stop: 25253, Start Num: 2

Candidate Starts for Lizziana_24:

(Start: 2 @24429 has 151 MA's), (18, 24477), (20, 24510), (25, 24543), (31, 24615), (53, 24870),

Gene: Llama_24 Start: 24502, Stop: 25308, Start Num: 3

Candidate Starts for Llama_24:

(Start: 3 @24502 has 39 MA's), (18, 24550), (20, 24583), (25, 24616), (34, 24700), (35, 24706), (39, 24805), (57, 24952), (67, 25045), (73, 25156),

Gene: Llij_24 Start: 24250, Stop: 25074, Start Num: 2

Candidate Starts for Llij_24:

(1, 24190), (Start: 2 @24250 has 151 MA's), (18, 24298), (25, 24364), (53, 24691),

Gene: Lockley_36 Start: 27986, Stop: 28873, Start Num: 4

Candidate Starts for Lockley_36:

(Start: 4 @27986 has 48 MA's), (14, 28022), (22, 28064), (31, 28151), (34, 28178), (39, 28286), (40, 28292), (43, 28307), (54, 28406), (55, 28418), (62, 28481),

Gene: Lopton_36 Start: 29446, Stop: 30216, Start Num: 5

Candidate Starts for Lopton_36:

(Start: 5 @29446 has 82 MA's), (14, 29482), (22, 29524), (53, 29866), (59, 29917),

Gene: Lorde_25 Start: 24086, Stop: 24910, Start Num: 2

Candidate Starts for Lorde_25:

(1, 24026), (Start: 2 @24086 has 151 MA's), (18, 24134), (25, 24200), (53, 24527),

Gene: LunaBlu_25 Start: 24345, Stop: 25313, Start Num: 2

Candidate Starts for LunaBlu_25:

(1, 24285), (Start: 2 @24345 has 151 MA's), (18, 24393), (20, 24426), (43, 24687),

Gene: LunarLander_37 Start: 28152, Stop: 28940, Start Num: 5

Candidate Starts for LunarLander_37:

(Start: 5 @28152 has 82 MA's), (Start: 7 @28158 has 1 MA's), (17, 28194), (42, 28452), (53, 28557), (58, 28584), (59, 28608), (73, 28785),

Gene: Magnar_35 Start: 27771, Stop: 28730, Start Num: 4

Candidate Starts for Magnar_35:

(Start: 4 @27771 has 48 MA's), (14, 27807), (22, 27849), (31, 27936), (39, 28071), (43, 28092), (54, 28191), (55, 28203), (62, 28266),

Gene: Magnito_34 Start: 27523, Stop: 28482, Start Num: 4

Candidate Starts for Magnito_34:

(Start: 4 @27523 has 48 MA's), (14, 27559), (22, 27601), (31, 27688), (34, 27715), (39, 27823), (40, 27829), (43, 27844), (54, 27943), (55, 27955), (62, 28018),

Gene: Mahavrat_24 Start: 24254, Stop: 25063, Start Num: 3

Candidate Starts for Mahavrat_24:

(Start: 3 @24254 has 39 MA's), (18, 24302), (20, 24335), (25, 24368), (27, 24395), (34, 24452), (35, 24458), (39, 24557), (67, 24797), (73, 24908),

Gene: Makemake_36 Start: 29239, Stop: 30183, Start Num: 2

Candidate Starts for Makemake_36:

(Start: 2 @29239 has 151 MA's), (18, 29275), (Start: 21 @29317 has 1 MA's), (43, 29560), (58, 29686),

Gene: Manatee_36 Start: 27769, Stop: 28572, Start Num: 5

Candidate Starts for Manatee_36:

(Start: 5 @27769 has 82 MA's), (14, 27805), (22, 27847), (31, 27934), (53, 28189), (59, 28240),

Gene: Mandlovu_24 Start: 24305, Stop: 25288, Start Num: 2

Candidate Starts for Mandlovu_24:

(1, 24245), (Start: 2 @24305 has 151 MA's), (15, 24347), (18, 24353), (19, 24374), (20, 24386), (25, 24419), (34, 24518), (40, 24632), (43, 24647), (57, 24773), (71, 24938), (88, 25217),

Gene: Mantra_24 Start: 24362, Stop: 25186, Start Num: 2

Candidate Starts for Mantra_24:

(Start: 2 @24362 has 151 MA's), (18, 24410), (20, 24443), (25, 24476), (53, 24803), (73, 25031),

Gene: Maravista_24 Start: 24211, Stop: 25035, Start Num: 2

Candidate Starts for Maravista_24:

(1, 24151), (Start: 2 @24211 has 151 MA's), (18, 24259), (25, 24325), (53, 24652),

Gene: Marge_36 Start: 28659, Stop: 29618, Start Num: 4

Candidate Starts for Marge_36:

(Start: 4 @28659 has 48 MA's), (14, 28695), (22, 28737), (31, 28824), (34, 28851), (39, 28959), (43, 28980), (54, 29079), (55, 29091), (62, 29154),

Gene: Marker_25 Start: 24115, Stop: 24939, Start Num: 2

Candidate Starts for Marker_25:

(1, 24055), (Start: 2 @24115 has 151 MA's), (18, 24163), (20, 24196), (53, 24556),

Gene: Marsha_35 Start: 28838, Stop: 29779, Start Num: 4

Candidate Starts for Marsha_35:

(Start: 4 @28838 has 48 MA's), (18, 28874), (Start: 21 @28916 has 1 MA's), (31, 29003), (34, 29030), (41, 29153), (43, 29159), (57, 29270), (67, 29369), (71, 29435), (88, 29708),

Gene: Martik_24 Start: 24456, Stop: 25280, Start Num: 2

Candidate Starts for Martik_24:

(1, 24396), (Start: 2 @24456 has 151 MA's), (10, 24483), (18, 24504), (20, 24537), (25, 24570), (53, 24897),

Gene: MaryBeth_35 Start: 28196, Stop: 28984, Start Num: 5

Candidate Starts for MaryBeth_35:

(Start: 5 @28196 has 82 MA's), (Start: 7 @28202 has 1 MA's), (17, 28238), (42, 28496), (53, 28601), (58, 28628), (59, 28652), (73, 28829),

Gene: Mattes_24 Start: 24420, Stop: 25244, Start Num: 2

Candidate Starts for Mattes_24:

(1, 24360), (Start: 2 @24420 has 151 MA's), (18, 24468), (20, 24501), (25, 24534), (31, 24606), (53, 24861),

Gene: McGuire_36 Start: 28061, Stop: 28864, Start Num: 5

Candidate Starts for McGuire_36:

(Start: 5 @28061 has 82 MA's), (14, 28097), (22, 28139), (31, 28226), (53, 28481), (59, 28532),

Gene: McSinger_36 Start: 28453, Stop: 29412, Start Num: 4

Candidate Starts for McSinger_36:

(Start: 4 @28453 has 48 MA's), (14, 28489), (22, 28531), (31, 28618), (34, 28645), (37, 28744), (40, 28759), (47, 28819), (67, 28990), (72, 29059), (86, 29308),

Gene: Melissauren88_24 Start: 24296, Stop: 25273, Start Num: 2

Candidate Starts for Melissauren88_24:

(1, 24236), (Start: 2 @24296 has 151 MA's), (18, 24344), (20, 24377), (25, 24410), (31, 24482), (34, 24509), (43, 24638), (45, 24659), (49, 24692), (51, 24728), (67, 24854), (72, 24923),

Gene: MetalQZJ_35 Start: 28196, Stop: 28984, Start Num: 5

Candidate Starts for MetalQZJ_35:

(Start: 5 @28196 has 82 MA's), (Start: 7 @28202 has 1 MA's), (17, 28238), (42, 28496), (53, 28601), (58, 28628), (59, 28652), (73, 28829),

Gene: Michley_35 Start: 27900, Stop: 28703, Start Num: 5

Candidate Starts for Michley_35:

(Start: 5 @27900 has 82 MA's), (14, 27936), (22, 27978), (31, 28065), (53, 28320), (59, 28371),

Gene: Minerva_45 Start: 38161, Stop: 39015, Start Num: 3

Candidate Starts for Minerva_45:

(1, 38101), (Start: 3 @38161 has 39 MA's), (18, 38209), (34, 38374), (40, 38488), (43, 38503), (44, 38521), (55, 38632), (66, 38725), (73, 38860), (75, 38875), (76, 38884), (78, 38905), (79, 38908),

Gene: Minnie_25 Start: 24808, Stop: 25788, Start Num: 2

Candidate Starts for Minnie_25:

(Start: 2 @24808 has 151 MA's), (18, 24856), (34, 25021), (39, 25129), (43, 25150), (54, 25249), (55, 25261), (62, 25324),

Gene: Misha28_25 Start: 24136, Stop: 24960, Start Num: 2

Candidate Starts for Misha28_25:

(1, 24076), (Start: 2 @24136 has 151 MA's), (18, 24184), (25, 24250), (53, 24577),

Gene: MisterCuddles_24 Start: 24239, Stop: 25063, Start Num: 2

Candidate Starts for MisterCuddles_24:

(1, 24179), (Start: 2 @24239 has 151 MA's), (18, 24287), (53, 24680),

Gene: Mkhuseli_36 Start: 28098, Stop: 28901, Start Num: 5

Candidate Starts for Mkhuseli_36:

(Start: 5 @28098 has 82 MA's), (14, 28134), (22, 28176), (31, 28263), (53, 28518), (59, 28569),

Gene: Modragons_24 Start: 24346, Stop: 25152, Start Num: 3

Candidate Starts for Modragons_24:

(Start: 3 @24346 has 39 MA's), (18, 24394), (20, 24427), (25, 24460), (34, 24544), (35, 24550), (39, 24649), (57, 24796), (67, 24889), (73, 25000),

Gene: Monet_37 Start: 29287, Stop: 30246, Start Num: 4

Candidate Starts for Monet_37:

(Start: 4 @29287 has 48 MA's), (14, 29323), (22, 29365), (31, 29452), (34, 29479), (39, 29587), (40, 29593), (43, 29608), (54, 29707), (55, 29719), (62, 29782),

Gene: Moonbeam_25 Start: 24757, Stop: 25740, Start Num: 2

Candidate Starts for Moonbeam_25:

(1, 24697), (Start: 2 @24757 has 151 MA's), (18, 24805), (31, 24943), (34, 24970), (43, 25099), (57, 25225), (88, 25669),

Gene: Moose_35 Start: 28268, Stop: 29056, Start Num: 5

Candidate Starts for Moose_35:

(Start: 5 @28268 has 82 MA's), (Start: 7 @28274 has 1 MA's), (17, 28310), (42, 28568), (53, 28673), (58, 28700), (59, 28724), (73, 28901),

Gene: Mova_25 Start: 24116, Stop: 24940, Start Num: 2

Candidate Starts for Mova_25:

(1, 24056), (Start: 2 @24116 has 151 MA's), (18, 24164), (25, 24230), (53, 24557),

Gene: Mozy_25 Start: 24170, Stop: 25150, Start Num: 2

Candidate Starts for Mozy_25:

(Start: 2 @24170 has 151 MA's), (18, 24218), (25, 24284), (31, 24356), (34, 24383), (39, 24491), (40, 24497), (43, 24512), (54, 24611), (55, 24623), (62, 24686),

Gene: MrGordo_35 Start: 27763, Stop: 28566, Start Num: 5

Candidate Starts for MrGordo_35:

(Start: 5 @27763 has 82 MA's), (14, 27799), (22, 27841), (31, 27928), (53, 28183), (59, 28234),

Gene: Mryolo_33 Start: 27800, Stop: 28582, Start Num: 7

Candidate Starts for Mryolo_33:

(Start: 5 @27794 has 82 MA's), (Start: 7 @27800 has 1 MA's), (17, 27836), (42, 28094), (53, 28199), (58, 28226), (59, 28250), (73, 28427),

Gene: MulchExplorer_27 Start: 25387, Stop: 26211, Start Num: 2

Candidate Starts for MulchExplorer_27:

(1, 25327), (Start: 2 @25387 has 151 MA's), (18, 25435), (25, 25501), (53, 25828), (73, 26056),

Gene: Museum_37 Start: 28107, Stop: 28910, Start Num: 5

Candidate Starts for Museum_37:

(Start: 5 @28107 has 82 MA's), (14, 28143), (22, 28185), (31, 28272), (53, 28527),

Gene: Mutaforma13_24 Start: 24312, Stop: 25115, Start Num: 2

Candidate Starts for Mutaforma13_24:

(1, 24252), (Start: 2 @24312 has 151 MA's), (18, 24360), (20, 24393), (25, 24426), (31, 24498), (34, 24525), (39, 24633), (40, 24639), (43, 24654), (54, 24753), (55, 24765), (62, 24828),

Gene: NEHalo_35 Start: 27845, Stop: 28804, Start Num: 4

Candidate Starts for NEHalo_35:

(Start: 4 @27845 has 48 MA's), (14, 27881), (22, 27923), (31, 28010), (34, 28037), (39, 28145), (40, 28151), (43, 28166), (54, 28265), (55, 28277), (62, 28340),

Gene: Naira_36 Start: 29704, Stop: 30507, Start Num: 5

Candidate Starts for Naira_36:

(Start: 5 @29704 has 82 MA's), (14, 29740), (22, 29782), (53, 30124), (58, 30151), (59, 30175), (61, 30190),

Gene: Nebkiss_28 Start: 26805, Stop: 27629, Start Num: 2

Candidate Starts for Nebkiss_28:

(1, 26745), (Start: 2 @26805 has 151 MA's), (18, 26853), (20, 26886), (25, 26919), (31, 26991), (53, 27246),

Gene: Nerujay_36 Start: 28513, Stop: 29472, Start Num: 4

Candidate Starts for Nerujay_36:

(Start: 4 @28513 has 48 MA's), (14, 28549), (18, 28555), (22, 28591), (31, 28678), (34, 28705), (39, 28813), (40, 28819), (43, 28834), (54, 28933), (55, 28945), (62, 29008),

Gene: NewHope4_26 Start: 24314, Stop: 25291, Start Num: 2

Candidate Starts for NewHope4_26:

(1, 24254), (Start: 2 @24314 has 151 MA's), (18, 24362), (31, 24500), (34, 24527), (43, 24656), (45, 24677), (49, 24710), (51, 24746), (67, 24872), (72, 24941),

Gene: Nhonho_35 Start: 28264, Stop: 29211, Start Num: 2

Candidate Starts for Nhonho_35:

(Start: 2 @28264 has 151 MA's), (18, 28300), (Start: 21 @28342 has 1 MA's), (43, 28585), (58, 28711), (85, 29086),

Gene: Nimbo_24 Start: 24268, Stop: 25092, Start Num: 3

Candidate Starts for Nimbo_24:

(1, 24205), (Start: 3 @24268 has 39 MA's), (18, 24316), (53, 24709),

Gene: Nitzel_25 Start: 24998, Stop: 25822, Start Num: 2

Candidate Starts for Nitzel_25:

(1, 24938), (Start: 2 @24998 has 151 MA's), (18, 25046), (20, 25079), (25, 25112), (53, 25439),

Gene: Nivrat_24 Start: 24428, Stop: 25252, Start Num: 2

Candidate Starts for Nivrat_24:

(1, 24368), (Start: 2 @24428 has 151 MA's), (10, 24455), (18, 24476), (20, 24509), (25, 24542), (53, 24869),

Gene: NormanBulbieJr_24 Start: 24443, Stop: 25267, Start Num: 2

Candidate Starts for NormanBulbieJr_24:

(1, 24383), (Start: 2 @24443 has 151 MA's), (10, 24470), (18, 24491), (20, 24524), (25, 24557), (53, 24884),

Gene: Norz_37 Start: 28914, Stop: 29747, Start Num: 4

Candidate Starts for Norz_37:

(Start: 4 @28914 has 48 MA's), (14, 28950), (22, 28992), (34, 29106), (40, 29220), (43, 29235), (44, 29253), (55, 29364), (66, 29457), (75, 29607), (76, 29616), (78, 29637), (79, 29640),

Gene: OfUltron_24 Start: 24502, Stop: 25308, Start Num: 3

Candidate Starts for OfUltron_24:

(Start: 3 @24502 has 39 MA's), (18, 24550), (20, 24583), (25, 24616), (34, 24700), (35, 24706), (39, 24805), (57, 24952), (67, 25045), (73, 25156),

Gene: Ohno789_35 Start: 27906, Stop: 28865, Start Num: 4

Candidate Starts for Ohno789_35:

(Start: 4 @27906 has 48 MA's), (14, 27942), (22, 27984), (31, 28071), (34, 28098), (39, 28206), (40, 28212), (43, 28227), (54, 28326), (55, 28338), (62, 28401),

Gene: Oksu_25 Start: 24347, Stop: 25153, Start Num: 3

Candidate Starts for Oksu_25:

(Start: 3 @24347 has 39 MA's), (18, 24395), (20, 24428), (25, 24461), (34, 24545), (35, 24551), (39, 24650), (57, 24797), (67, 24890), (73, 25001),

Gene: OldBen_24 Start: 24234, Stop: 25058, Start Num: 2

Candidate Starts for OldBen_24:

(1, 24174), (Start: 2 @24234 has 151 MA's), (18, 24282), (53, 24675),

Gene: OlympiaSaint_24 Start: 24643, Stop: 25467, Start Num: 2

Candidate Starts for OlympiaSaint_24:

(Start: 2 @24643 has 151 MA's), (18, 24691), (20, 24724), (25, 24757), (31, 24829), (53, 25084), (59, 25135),

Gene: Omega_44 Start: 38316, Stop: 39296, Start Num: 2

Candidate Starts for Omega_44:

(1, 38256), (Start: 2 @38316 has 151 MA's), (18, 38364), (25, 38430), (34, 38529), (39, 38637), (40, 38643), (43, 38658), (54, 38757), (55, 38769), (62, 38832),

Gene: Optimus_43 Start: 37661, Stop: 38467, Start Num: 3

Candidate Starts for Optimus_43:

(1, 37601), (Start: 3 @37661 has 39 MA's), (18, 37709), (20, 37742), (25, 37775), (26, 37799), (27, 37802), (55, 38105), (57, 38111), (73, 38315), (84, 38462),

Gene: Ovechkin_24 Start: 24295, Stop: 25245, Start Num: 2

Candidate Starts for Ovechkin_24:

(1, 24235), (Start: 2 @24295 has 151 MA's), (18, 24343), (31, 24481), (34, 24508), (43, 24637), (49, 24691), (69, 24886),

Gene: OwlsT2W_26 Start: 24714, Stop: 25538, Start Num: 2

Candidate Starts for OwlsT2W_26:

(1, 24654), (Start: 2 @24714 has 151 MA's), (18, 24762), (25, 24828), (53, 25155),

Gene: PHappiness_24 Start: 24242, Stop: 25066, Start Num: 2

Candidate Starts for PHappiness_24:

(1, 24182), (Start: 2 @24242 has 151 MA's), (18, 24290), (25, 24356), (53, 24683),

Gene: PMC_24 Start: 24250, Stop: 25074, Start Num: 2

Candidate Starts for PMC_24:

(1, 24190), (Start: 2 @24250 has 151 MA's), (18, 24298), (25, 24364), (53, 24691),

Gene: Pacc40_24 Start: 24432, Stop: 25256, Start Num: 2

Candidate Starts for Pacc40_24:

(1, 24372), (Start: 2 @24432 has 151 MA's), (18, 24480), (25, 24546), (53, 24873),

Gene: Papez_37 Start: 29749, Stop: 30537, Start Num: 5

Candidate Starts for Papez_37:

(Start: 5 @29749 has 82 MA's), (Start: 7 @29755 has 1 MA's), (17, 29791), (42, 30049), (53, 30154), (58, 30181), (59, 30205), (73, 30382),

Gene: Paphu_34 Start: 27776, Stop: 28732, Start Num: 4

Candidate Starts for Paphu_34:

(Start: 4 @27776 has 48 MA's), (14, 27812), (22, 27854), (31, 27941), (34, 27968), (43, 28097), (45, 28118), (49, 28151), (51, 28187), (67, 28313), (72, 28382),

Gene: Paraselene_34 Start: 28248, Stop: 29207, Start Num: 4

Candidate Starts for Paraselene_34:

(Start: 4 @28248 has 48 MA's), (14, 28284), (22, 28326), (31, 28413), (39, 28548), (43, 28569), (54, 28668), (55, 28680), (62, 28743),

Gene: Pari_36 Start: 27780, Stop: 28583, Start Num: 5

Candidate Starts for Pari_36:

(Start: 5 @27780 has 82 MA's), (14, 27816), (22, 27858), (31, 27945), (53, 28200),

Gene: Parliament_34 Start: 28115, Stop: 28948, Start Num: 4

Candidate Starts for Parliament_34:

(Start: 4 @28115 has 48 MA's), (14, 28151), (22, 28193), (34, 28307), (40, 28421), (43, 28436), (44, 28454), (55, 28565), (66, 28658), (75, 28808), (76, 28817), (78, 28838), (79, 28841),

Gene: PascalRango_36 Start: 28083, Stop: 28892, Start Num: 5

Candidate Starts for PascalRango_36:

(Start: 5 @28083 has 82 MA's), (14, 28119), (22, 28161), (31, 28248), (53, 28503), (59, 28554),

Gene: PattyP_37 Start: 28316, Stop: 29119, Start Num: 5

Candidate Starts for PattyP_37:

(Start: 5 @28316 has 82 MA's), (14, 28352), (22, 28394), (31, 28481), (53, 28736),

Gene: Payneful_35 Start: 27564, Stop: 28526, Start Num: 4

Candidate Starts for Payneful_35:

(Start: 4 @27564 has 48 MA's), (18, 27600), (Start: 21 @27642 has 1 MA's), (34, 27756), (43, 27885), (57, 28011), (88, 28455),

Gene: Perseus_37 Start: 28932, Stop: 29891, Start Num: 4

Candidate Starts for Perseus_37:

(Start: 4 @28932 has 48 MA's), (14, 28968), (22, 29010), (31, 29097), (34, 29124), (39, 29232), (40, 29238), (43, 29253), (54, 29352), (55, 29364), (62, 29427),

Gene: Peterson_38 Start: 29965, Stop: 30759, Start Num: 5

Candidate Starts for Peterson_38:

(Start: 5 @29965 has 82 MA's),

Gene: Petp2012_37 Start: 28987, Stop: 29790, Start Num: 5

Candidate Starts for Petp2012_37:

(Start: 5 @28987 has 82 MA's), (14, 29023), (22, 29065), (31, 29152), (53, 29407),

Gene: Phalconet_24 Start: 24310, Stop: 25164, Start Num: 3

Candidate Starts for Phalconet_24:

(1, 24250), (Start: 3 @24310 has 39 MA's), (18, 24358), (34, 24523), (40, 24637), (43, 24652), (44, 24670), (55, 24781), (66, 24874), (73, 25009), (75, 25024), (76, 25033), (78, 25054), (79, 25057),

Gene: Phasih_25 Start: 24806, Stop: 25630, Start Num: 2

Candidate Starts for Phasih_25:

(Start: 2 @24806 has 151 MA's), (18, 24854), (20, 24887), (25, 24920), (53, 25247), (73, 25475),

Gene: Phatniss_25 Start: 24767, Stop: 25591, Start Num: 2

Candidate Starts for Phatniss_25:

(1, 24707), (Start: 2 @24767 has 151 MA's), (18, 24815), (20, 24848), (25, 24881), (53, 25208),

Gene: PherrisBueller_36 Start: 27905, Stop: 28693, Start Num: 5

Candidate Starts for PherrisBueller_36:

(Start: 5 @27905 has 82 MA's), (Start: 7 @27911 has 1 MA's), (17, 27947), (42, 28205), (53, 28310), (59, 28361), (73, 28538),

Gene: PhesterPhotato_24 Start: 24286, Stop: 25092, Start Num: 3

Candidate Starts for PhesterPhotato_24:

(1, 24226), (Start: 3 @24286 has 39 MA's), (18, 24334), (27, 24427), (57, 24736), (67, 24829), (73, 24940), (84, 25087),

Gene: Philus_24 Start: 24266, Stop: 25090, Start Num: 2

Candidate Starts for Philus_24:

(1, 24206), (Start: 2 @24266 has 151 MA's), (18, 24314), (20, 24347), (25, 24380), (31, 24452), (53, 24707),

Gene: PhineBark_35 Start: 28791, Stop: 29750, Start Num: 4

Candidate Starts for PhineBark_35:

(Start: 4 @28791 has 48 MA's), (14, 28827), (22, 28869), (31, 28956), (34, 28983), (37, 29082), (40, 29097), (47, 29157), (67, 29328), (72, 29397), (86, 29646),

Gene: PhlipPhlop_24 Start: 24219, Stop: 25160, Start Num: 2

Candidate Starts for PhlipPhlop_24:

(Start: 2 @24219 has 151 MA's), (18, 24267), (20, 24300), (25, 24333), (36, 24441), (43, 24558), (44, 24576),

Gene: PinkPlastic_34 Start: 27834, Stop: 28637, Start Num: 5

Candidate Starts for PinkPlastic_34:

(Start: 5 @27834 has 82 MA's), (14, 27870), (22, 27912), (31, 27999), (53, 28254), (59, 28305),

Gene: Piper2020_26 Start: 24860, Stop: 25684, Start Num: 2

Candidate Starts for Piper2020_26:

(1, 24800), (Start: 2 @24860 has 151 MA's), (18, 24908), (25, 24974), (53, 25301),

Gene: Pippin_37 Start: 28398, Stop: 29201, Start Num: 5

Candidate Starts for Pippin_37:

(Start: 5 @28398 has 82 MA's), (14, 28434), (22, 28476), (31, 28563), (53, 28818), (59, 28869),

Gene: Pita2_37 Start: 28576, Stop: 29523, Start Num: 4

Candidate Starts for Pita2_37:

(Start: 4 @28576 has 48 MA's), (18, 28612), (Start: 21 @28654 has 1 MA's), (31, 28741), (34, 28768), (43, 28897), (57, 29008), (67, 29107), (88, 29452),

Gene: Plumbus_25 Start: 24094, Stop: 24918, Start Num: 2

Candidate Starts for Plumbus_25:

(1, 24034), (Start: 2 @24094 has 151 MA's), (10, 24121), (18, 24142), (20, 24175), (25, 24208), (53, 24535),

Gene: Poenanya_24 Start: 24402, Stop: 25211, Start Num: 3

Candidate Starts for Poenanya_24:

(1, 24342), (Start: 3 @24402 has 39 MA's), (18, 24450), (20, 24483), (25, 24516), (27, 24543), (67, 24945), (73, 25056),

Gene: Polka14_25 Start: 24804, Stop: 25628, Start Num: 2

Candidate Starts for Polka14_25:

(1, 24744), (Start: 2 @24804 has 151 MA's), (18, 24852), (20, 24885), (25, 24918), (53, 25245),

Gene: Polo2Bam_26 Start: 24314, Stop: 25024, Start Num: 2

Candidate Starts for Polo2Bam_26:

(1, 24254), (Start: 2 @24314 has 151 MA's), (18, 24362), (20, 24395), (25, 24428), (43, 24656),

Gene: Priscilla_24 Start: 24457, Stop: 25281, Start Num: 2

Candidate Starts for Priscilla_24:

(Start: 2 @24457 has 151 MA's), (18, 24505), (20, 24538), (25, 24571), (31, 24643), (53, 24898), (59, 24949),

Gene: QuickMath_25 Start: 25611, Stop: 26435, Start Num: 2

Candidate Starts for QuickMath_25:

(1, 25551), (Start: 2 @25611 has 151 MA's), (18, 25659), (25, 25725), (53, 26052), (73, 26280),

Gene: Quico_25 Start: 24087, Stop: 24911, Start Num: 2

Candidate Starts for Quico_25:

(Start: 2 @24087 has 151 MA's), (18, 24135), (25, 24201), (53, 24528),

Gene: Radiance_24 Start: 24248, Stop: 25189, Start Num: 2

Candidate Starts for Radiance_24:

(1, 24188), (Start: 2 @24248 has 151 MA's), (18, 24296), (36, 24470), (43, 24587), (44, 24605),

Gene: Raid_36 Start: 28103, Stop: 29035, Start Num: 4

Candidate Starts for Raid_36:

(Start: 4 @28103 has 48 MA's), (22, 28181), (34, 28295), (37, 28394), (40, 28409), (47, 28469), (67, 28640), (72, 28682), (86, 28931),

Gene: Rajelicia_34 Start: 27812, Stop: 28732, Start Num: 4

Candidate Starts for Rajelicia_34:

(Start: 4 @27812 has 48 MA's), (14, 27848), (22, 27890), (36, 28013), (43, 28130), (44, 28148),

Gene: Ramsey_25 Start: 24297, Stop: 25121, Start Num: 2

Candidate Starts for Ramsey_25:

(1, 24237), (Start: 2 @24297 has 151 MA's), (18, 24345), (20, 24378), (25, 24411), (53, 24738),

Gene: RedBird_24 Start: 24225, Stop: 25031, Start Num: 3

Candidate Starts for RedBird_24:

(1, 24165), (Start: 3 @24225 has 39 MA's), (18, 24273), (25, 24339), (26, 24363), (27, 24366), (55, 24669), (57, 24675), (73, 24879), (84, 25026),

Gene: Rhynn_35 Start: 28103, Stop: 29047, Start Num: 2

Candidate Starts for Rhynn_35:

(Start: 2 @28103 has 151 MA's), (18, 28139), (Start: 21 @28181 has 1 MA's), (31, 28268), (43, 28424), (81, 28868), (89, 28979),

Gene: Rialto_26 Start: 24777, Stop: 25718, Start Num: 2

Candidate Starts for Rialto_26:

(1, 24717), (Start: 2 @24777 has 151 MA's), (18, 24825), (20, 24858), (25, 24891), (36, 24999), (43, 25116), (44, 25134),

Gene: RidgeCB_35 Start: 27836, Stop: 28624, Start Num: 5

Candidate Starts for RidgeCB_35:

(Start: 5 @27836 has 82 MA's), (Start: 7 @27842 has 1 MA's), (17, 27878), (42, 28136), (53, 28241), (58, 28268), (59, 28292), (73, 28469),

Gene: Rita_24 Start: 24276, Stop: 25085, Start Num: 3

Candidate Starts for Rita_24:

(1, 24216), (Start: 3 @24276 has 39 MA's), (18, 24324), (25, 24390), (27, 24417), (34, 24474), (35, 24480), (39, 24579), (67, 24819), (73, 24930),

Gene: RitaG_24 Start: 24488, Stop: 25312, Start Num: 2
Candidate Starts for RitaG_24:
(1, 24428), (Start: 2 @24488 has 151 MA's), (18, 24536), (53, 24929),

Gene: Rockne_24 Start: 24250, Stop: 25074, Start Num: 2
Candidate Starts for Rockne_24:
(1, 24190), (Start: 2 @24250 has 151 MA's), (18, 24298), (25, 24364), (53, 24691),

Gene: RockyHorror_25 Start: 24122, Stop: 24946, Start Num: 2
Candidate Starts for RockyHorror_25:
(1, 24062), (Start: 2 @24122 has 151 MA's), (18, 24170), (25, 24236), (53, 24563), (83, 24929),

Gene: Rohr_36 Start: 28253, Stop: 29056, Start Num: 5
Candidate Starts for Rohr_36:
(Start: 5 @28253 has 82 MA's), (14, 28289), (22, 28331), (31, 28418), (53, 28673),

Gene: Royals2015_24 Start: 24344, Stop: 25168, Start Num: 2
Candidate Starts for Royals2015_24:
(1, 24284), (Start: 2 @24344 has 151 MA's), (18, 24392), (20, 24425), (25, 24458), (48, 24740), (53, 24785), (59, 24836), (73, 25013),

Gene: Ruby_24 Start: 24239, Stop: 25063, Start Num: 2
Candidate Starts for Ruby_24:
(1, 24179), (Start: 2 @24239 has 151 MA's), (18, 24287), (53, 24680),

Gene: Rufus_36 Start: 28440, Stop: 29189, Start Num: 4
Candidate Starts for Rufus_36:
(Start: 4 @28440 has 48 MA's), (14, 28476), (22, 28518), (34, 28632), (37, 28731), (40, 28746), (47, 28806), (67, 28977), (72, 29046),

Gene: Ruotula_35 Start: 28645, Stop: 29577, Start Num: 4
Candidate Starts for Ruotula_35:
(Start: 4 @28645 has 48 MA's), (18, 28681), (23, 28723), (31, 28810), (34, 28837), (43, 28966), (44, 28984), (46, 28996), (52, 29062), (69, 29227), (72, 29251), (90, 29557),

Gene: Rutherferd_37 Start: 28709, Stop: 29668, Start Num: 4
Candidate Starts for Rutherferd_37:
(Start: 4 @28709 has 48 MA's), (14, 28745), (22, 28787), (31, 28874), (34, 28901), (39, 29009), (40, 29015), (43, 29030), (54, 29129), (55, 29141), (62, 29204),

Gene: SG4_24 Start: 24415, Stop: 25395, Start Num: 2
Candidate Starts for SG4_24:
(1, 24355), (Start: 2 @24415 has 151 MA's), (18, 24463), (31, 24601), (34, 24628), (39, 24736), (43, 24757), (54, 24856), (55, 24868), (62, 24931),

Gene: Saal_24 Start: 24244, Stop: 25068, Start Num: 2
Candidate Starts for Saal_24:
(1, 24184), (Start: 2 @24244 has 151 MA's), (18, 24292), (20, 24325), (25, 24358), (31, 24430), (53, 24685),

Gene: Sabbb_25 Start: 24561, Stop: 25415, Start Num: 3
Candidate Starts for Sabbb_25:

(1, 24501), (Start: 3 @24561 has 39 MA's), (18, 24609), (34, 24774), (40, 24888), (43, 24903), (44, 24921), (55, 25032), (66, 25125), (73, 25260), (75, 25275), (76, 25284), (78, 25305), (79, 25308),

Gene: Sandalphon_25 Start: 24822, Stop: 25802, Start Num: 2

Candidate Starts for Sandalphon_25:

(Start: 2 @24822 has 151 MA's), (18, 24870), (34, 25035), (39, 25143), (43, 25164), (54, 25263), (55, 25275), (62, 25338),

Gene: Sanya_34 Start: 28677, Stop: 29597, Start Num: 4

Candidate Starts for Sanya_34:

(Start: 4 @28677 has 48 MA's), (14, 28713), (22, 28755), (36, 28878), (43, 28995), (44, 29013),

Gene: SarFire_35 Start: 28155, Stop: 29099, Start Num: 2

Candidate Starts for SarFire_35:

(Start: 2 @28155 has 151 MA's), (18, 28191), (Start: 21 @28233 has 1 MA's), (43, 28476), (58, 28602), (89, 29031),

Gene: Sassafras_24 Start: 24395, Stop: 25219, Start Num: 2

Candidate Starts for Sassafras_24:

(1, 24335), (Start: 2 @24395 has 151 MA's), (18, 24443), (53, 24836),

Gene: Scottish_25 Start: 25565, Stop: 26389, Start Num: 2

Candidate Starts for Scottish_25:

(1, 25505), (Start: 2 @25565 has 151 MA's), (18, 25613), (25, 25679), (53, 26006),

Gene: Scowl_35 Start: 28529, Stop: 29362, Start Num: 4

Candidate Starts for Scowl_35:

(Start: 4 @28529 has 48 MA's), (14, 28565), (22, 28607), (34, 28721), (40, 28835), (43, 28850), (44, 28868), (55, 28979), (66, 29072), (73, 29207), (75, 29222), (76, 29231), (78, 29252), (79, 29255),

Gene: Seabastian_24 Start: 24502, Stop: 25308, Start Num: 3

Candidate Starts for Seabastian_24:

(Start: 3 @24502 has 39 MA's), (18, 24550), (20, 24583), (25, 24616), (34, 24700), (35, 24706), (39, 24805), (57, 24952), (67, 25045), (73, 25156),

Gene: Seabiscuit_37 Start: 28061, Stop: 28864, Start Num: 5

Candidate Starts for Seabiscuit_37:

(Start: 5 @28061 has 82 MA's), (14, 28097), (22, 28139), (53, 28481), (59, 28532),

Gene: Seagreen_25 Start: 24109, Stop: 25089, Start Num: 2

Candidate Starts for Seagreen_25:

(1, 24049), (Start: 2 @24109 has 151 MA's), (18, 24157), (20, 24190), (25, 24223), (31, 24295), (34, 24322), (39, 24430), (43, 24451), (54, 24550), (55, 24562), (62, 24625),

Gene: ShiLan_24 Start: 24455, Stop: 25279, Start Num: 2

Candidate Starts for ShiLan_24:

(Start: 2 @24455 has 151 MA's), (18, 24503), (20, 24536), (25, 24569), (53, 24896),

Gene: ShowerHandel_24 Start: 24456, Stop: 25280, Start Num: 2

Candidate Starts for ShowerHandel_24:

(1, 24396), (Start: 2 @24456 has 151 MA's), (10, 24483), (18, 24504), (20, 24537), (25, 24570), (53, 24897),

Gene: SiSi_24 Start: 24255, Stop: 25079, Start Num: 2
Candidate Starts for SiSi_24:
(Start: 2 @24255 has 151 MA's), (18, 24303), (20, 24336), (25, 24369), (53, 24696), (73, 24924),

Gene: Sibs6_36 Start: 27022, Stop: 27981, Start Num: 4
Candidate Starts for Sibs6_36:
(Start: 4 @27022 has 48 MA's), (14, 27058), (22, 27100), (39, 27322), (43, 27343), (54, 27442), (55, 27454), (62, 27517),

Gene: SilverChicken_30 Start: 24074, Stop: 24949, Start Num: 24
Candidate Starts for SilverChicken_30:
(9, 23993), (11, 23996), (24, 24074), (31, 24155), (34, 24182), (39, 24290), (43, 24311), (54, 24410), (55, 24422), (62, 24485),

Gene: SimranZ1_25 Start: 24067, Stop: 24906, Start Num: 3
Candidate Starts for SimranZ1_25:
(1, 24004), (Start: 3 @24067 has 39 MA's), (6, 24073), (18, 24115), (27, 24208), (40, 24379), (43, 24394), (44, 24412), (67, 24622), (73, 24751), (77, 24781), (78, 24796), (80, 24856),

Gene: SkiPole_38 Start: 28360, Stop: 29319, Start Num: 4
Candidate Starts for SkiPole_38:
(Start: 4 @28360 has 48 MA's), (14, 28396), (22, 28438), (31, 28525), (34, 28552), (39, 28660), (40, 28666), (43, 28681), (54, 28780), (55, 28792), (62, 28855),

Gene: Slagathor_36 Start: 28020, Stop: 28940, Start Num: 4
Candidate Starts for Slagathor_36:
(Start: 4 @28020 has 48 MA's), (14, 28056), (22, 28098), (36, 28221), (43, 28338), (44, 28356),

Gene: Slim_26 Start: 24057, Stop: 24998, Start Num: 2
Candidate Starts for Slim_26:
(1, 23997), (Start: 2 @24057 has 151 MA's), (18, 24105), (20, 24138), (25, 24171), (36, 24279), (43, 24396), (44, 24414),

Gene: Smeagol_37 Start: 29393, Stop: 30175, Start Num: 5
Candidate Starts for Smeagol_37:
(Start: 5 @29393 has 82 MA's), (30, 29528), (55, 29816), (65, 29903), (74, 30044),

Gene: Sorpresa_35 Start: 27993, Stop: 28931, Start Num: 4
Candidate Starts for Sorpresa_35:
(Start: 4 @27993 has 48 MA's), (18, 28029), (23, 28071), (31, 28158), (34, 28185), (43, 28311), (44, 28329), (67, 28524), (69, 28572),

Gene: Sparkdehlily_24 Start: 24290, Stop: 25114, Start Num: 2
Candidate Starts for Sparkdehlily_24:
(1, 24230), (Start: 2 @24290 has 151 MA's), (18, 24338), (20, 24371), (25, 24404), (31, 24476), (53, 24731),

Gene: Spartacus_25 Start: 24348, Stop: 25328, Start Num: 2
Candidate Starts for Spartacus_25:
(1, 24288), (Start: 2 @24348 has 151 MA's), (18, 24396), (25, 24462), (31, 24534), (34, 24561), (39, 24669), (40, 24675), (43, 24690), (54, 24789), (55, 24801), (62, 24864),

Gene: SpikeBT_37 Start: 28951, Stop: 29910, Start Num: 4

Candidate Starts for SpikeBT_37:

(Start: 4 @28951 has 48 MA's), (14, 28987), (22, 29029), (31, 29116), (34, 29143), (39, 29251), (40, 29257), (43, 29272), (54, 29371), (55, 29383), (62, 29446),

Gene: Spikelee_25 Start: 24092, Stop: 25072, Start Num: 2

Candidate Starts for Spikelee_25:

(1, 24032), (Start: 2 @24092 has 151 MA's), (18, 24140), (20, 24173), (25, 24206), (31, 24278), (34, 24305), (37, 24404), (43, 24434), (47, 24479), (67, 24650), (72, 24719), (86, 24968),

Gene: Spoonbill_24 Start: 24454, Stop: 25278, Start Num: 2

Candidate Starts for Spoonbill_24:

(Start: 2 @24454 has 151 MA's), (18, 24502), (20, 24535), (25, 24568), (31, 24640), (53, 24895), (59, 24946),

Gene: Squee_36 Start: 28900, Stop: 29703, Start Num: 5

Candidate Starts for Squee_36:

(Start: 5 @28900 has 82 MA's), (14, 28936), (22, 28978), (53, 29320), (59, 29371),

Gene: StAnnes_24 Start: 24309, Stop: 25163, Start Num: 3

Candidate Starts for StAnnes_24:

(1, 24249), (Start: 3 @24309 has 39 MA's), (18, 24357), (20, 24390), (25, 24423), (34, 24522), (40, 24636), (43, 24651), (44, 24669), (55, 24780), (66, 24873), (73, 25008), (75, 25023), (76, 25032), (78, 25053), (79, 25056),

Gene: Stap_25 Start: 24298, Stop: 25260, Start Num: 2

Candidate Starts for Stap_25:

(1, 24238), (Start: 2 @24298 has 151 MA's), (18, 24346), (20, 24379), (25, 24412), (27, 24439), (34, 24496), (37, 24595), (40, 24610), (43, 24625), (67, 24841),

Gene: Strokeseat_24 Start: 24362, Stop: 25345, Start Num: 2

Candidate Starts for Strokeseat_24:

(1, 24302), (Start: 2 @24362 has 151 MA's), (15, 24404), (18, 24410), (19, 24431), (20, 24443), (25, 24476), (34, 24575), (40, 24689), (43, 24704), (57, 24830), (71, 24995), (88, 25274),

Gene: Sunshine924_37 Start: 27945, Stop: 28811, Start Num: 21

Candidate Starts for Sunshine924_37:

(16, 27900), (Start: 21 @27945 has 1 MA's), (31, 28032), (34, 28059), (40, 28173), (43, 28188), (56, 28308), (65, 28398),

Gene: SwagPigglett_24 Start: 24267, Stop: 25091, Start Num: 2

Candidate Starts for SwagPigglett_24:

(1, 24207), (Start: 2 @24267 has 151 MA's), (18, 24315), (20, 24348), (25, 24381), (31, 24453), (53, 24708),

Gene: SwissCheese_37 Start: 28768, Stop: 29556, Start Num: 5

Candidate Starts for SwissCheese_37:

(Start: 5 @28768 has 82 MA's), (Start: 7 @28774 has 1 MA's), (17, 28810), (42, 29068), (53, 29173), (58, 29200), (59, 29224), (73, 29401),

Gene: Switzer_36 Start: 28167, Stop: 28970, Start Num: 5

Candidate Starts for Switzer_36:

(Start: 5 @28167 has 82 MA's), (14, 28203), (22, 28245), (31, 28332), (53, 28587), (59, 28638),

Gene: TDanisky_24 Start: 24290, Stop: 25114, Start Num: 2

Candidate Starts for TDanisky_24:

(1, 24230), (Start: 2 @24290 has 151 MA's), (18, 24338), (20, 24371), (25, 24404), (31, 24476), (53, 24731),

Gene: Taj_24 Start: 24299, Stop: 25279, Start Num: 2

Candidate Starts for Taj_24:

(1, 24239), (Start: 2 @24299 has 151 MA's), (18, 24347), (20, 24380), (25, 24413), (34, 24512), (39, 24620), (43, 24641), (54, 24740), (55, 24752), (62, 24815),

Gene: Tasp14_36 Start: 28268, Stop: 29101, Start Num: 4

Candidate Starts for Tasp14_36:

(Start: 4 @28268 has 48 MA's), (14, 28304), (22, 28346), (34, 28460), (40, 28574), (43, 28589), (44, 28607), (55, 28718), (75, 28961), (76, 28970), (78, 28991), (79, 28994),

Gene: Teodoridan_33 Start: 27398, Stop: 28357, Start Num: 4

Candidate Starts for Teodoridan_33:

(Start: 4 @27398 has 48 MA's), (14, 27434), (22, 27476), (31, 27563), (34, 27590), (37, 27689), (40, 27704), (47, 27764), (67, 27935), (72, 28004), (86, 28253),

Gene: TheloniousMonk_37 Start: 29707, Stop: 30498, Start Num: 8

Candidate Starts for TheloniousMonk_37:

(Start: 8 @29707 has 1 MA's), (12, 29722), (13, 29728), (22, 29773), (31, 29860), (53, 30115), (59, 30166),

Gene: TootsiePop_25 Start: 24136, Stop: 24960, Start Num: 2

Candidate Starts for TootsiePop_25:

(1, 24076), (Start: 2 @24136 has 151 MA's), (18, 24184), (25, 24250), (53, 24577),

Gene: Tootsieroll_25 Start: 24107, Stop: 25084, Start Num: 2

Candidate Starts for Tootsieroll_25:

(1, 24047), (Start: 2 @24107 has 151 MA's), (18, 24155), (34, 24320), (43, 24449), (45, 24470), (49, 24503), (51, 24539), (67, 24665),

Gene: Totinger_25 Start: 24056, Stop: 24997, Start Num: 2

Candidate Starts for Totinger_25:

(1, 23996), (Start: 2 @24056 has 151 MA's), (18, 24104), (20, 24137), (36, 24278), (43, 24395), (44, 24413),

Gene: Traft412_37 Start: 28951, Stop: 29910, Start Num: 4

Candidate Starts for Traft412_37:

(Start: 4 @28951 has 48 MA's), (14, 28987), (22, 29029), (31, 29116), (34, 29143), (39, 29251), (40, 29257), (43, 29272), (54, 29371), (55, 29383), (62, 29446),

Gene: Treddle_37 Start: 29241, Stop: 30200, Start Num: 4

Candidate Starts for Treddle_37:

(Start: 4 @29241 has 48 MA's), (14, 29277), (22, 29319), (31, 29406), (39, 29541), (40, 29547), (43, 29562), (54, 29661), (55, 29673), (62, 29736),

Gene: Tripl3t_36 Start: 28912, Stop: 29700, Start Num: 5

Candidate Starts for Tripl3t_36:

(Start: 5 @28912 has 82 MA's), (Start: 7 @28918 has 1 MA's), (17, 28954), (42, 29212), (53, 29317), (58, 29344), (59, 29368), (73, 29545),

Gene: Trouble_36 Start: 28854, Stop: 29813, Start Num: 4

Candidate Starts for Trouble_36:

(Start: 4 @28854 has 48 MA's), (14, 28890), (22, 28932), (31, 29019), (34, 29046), (39, 29154), (40, 29160), (43, 29175), (54, 29274), (55, 29286), (62, 29349),

Gene: Tweety_25 Start: 24317, Stop: 25297, Start Num: 2

Candidate Starts for Tweety_25:

(1, 24257), (Start: 2 @24317 has 151 MA's), (18, 24365), (25, 24431), (31, 24503), (34, 24530), (39, 24638), (43, 24659), (54, 24758), (55, 24770), (62, 24833),

Gene: TwoPeat_36 Start: 28375, Stop: 29295, Start Num: 4

Candidate Starts for TwoPeat_36:

(Start: 4 @28375 has 48 MA's), (14, 28411), (22, 28453), (36, 28576), (43, 28693), (44, 28711),

Gene: U2_35 Start: 28173, Stop: 28955, Start Num: 5

Candidate Starts for U2_35:

(Start: 5 @28173 has 82 MA's), (14, 28209), (22, 28251), (31, 28338), (53, 28572), (59, 28623),

Gene: UncleRicky_27 Start: 25583, Stop: 26407, Start Num: 2

Candidate Starts for UncleRicky_27:

(1, 25523), (Start: 2 @25583 has 151 MA's), (18, 25631), (25, 25697), (53, 26024),

Gene: VRedHorse_24 Start: 24432, Stop: 25286, Start Num: 3

Candidate Starts for VRedHorse_24:

(1, 24372), (Start: 3 @24432 has 39 MA's), (18, 24480), (34, 24645), (40, 24759), (43, 24774), (44, 24792), (55, 24903), (66, 24996), (73, 25131), (75, 25146), (76, 25155), (78, 25176), (79, 25179),

Gene: Veteran_24 Start: 24269, Stop: 25093, Start Num: 2

Candidate Starts for Veteran_24:

(Start: 2 @24269 has 151 MA's), (18, 24317), (20, 24350), (25, 24383), (53, 24710), (73, 24938),

Gene: Violac_25 Start: 24966, Stop: 25790, Start Num: 2

Candidate Starts for Violac_25:

(1, 24906), (Start: 2 @24966 has 151 MA's), (18, 25014), (25, 25080), (53, 25407),

Gene: Violet_34 Start: 28585, Stop: 29373, Start Num: 5

Candidate Starts for Violet_34:

(Start: 5 @28585 has 82 MA's), (Start: 7 @28591 has 1 MA's), (17, 28627), (42, 28885), (53, 28990), (58, 29017), (59, 29041), (73, 29218),

Gene: Vivum_24 Start: 24212, Stop: 25018, Start Num: 3

Candidate Starts for Vivum_24:

(1, 24152), (Start: 3 @24212 has 39 MA's), (18, 24260), (25, 24326), (26, 24350), (27, 24353), (55, 24656), (57, 24662), (73, 24866), (84, 25013),

Gene: Wachhund_24 Start: 24290, Stop: 25270, Start Num: 2

Candidate Starts for Wachhund_24:

(1, 24230), (Start: 2 @24290 has 151 MA's), (18, 24338), (25, 24404), (31, 24476), (34, 24503), (39, 24611), (43, 24632), (54, 24731), (55, 24743), (62, 24806),

Gene: Wanda_45 Start: 36693, Stop: 37499, Start Num: 3

Candidate Starts for Wanda_45:

(1, 36633), (Start: 3 @36693 has 39 MA's), (18, 36741), (20, 36774), (25, 36807), (33, 36876), (55, 37137), (57, 37143), (73, 37347), (84, 37494),

Gene: Watermelon_37 Start: 28921, Stop: 29709, Start Num: 5

Candidate Starts for Watermelon_37:

(Start: 5 @28921 has 82 MA's), (Start: 7 @28927 has 1 MA's), (17, 28963), (42, 29221), (53, 29326), (58, 29353), (59, 29377), (73, 29554),

Gene: Wee_25 Start: 24838, Stop: 25818, Start Num: 2

Candidate Starts for Wee_25:

(1, 24778), (Start: 2 @24838 has 151 MA's), (18, 24886), (25, 24952), (34, 25051), (39, 25159), (40, 25165), (43, 25180), (54, 25279), (55, 25291), (62, 25354),

Gene: Whatsapiecost_24 Start: 24315, Stop: 25292, Start Num: 2

Candidate Starts for Whatsapiecost_24:

(1, 24255), (Start: 2 @24315 has 151 MA's), (18, 24363), (31, 24501), (34, 24528), (43, 24657), (45, 24678), (49, 24711), (51, 24747), (67, 24873), (72, 24942),

Gene: Whouxphf_24 Start: 24369, Stop: 25334, Start Num: 2

Candidate Starts for Whouxphf_24:

(1, 24309), (Start: 2 @24369 has 151 MA's), (18, 24417), (20, 24450), (25, 24483), (34, 24582), (43, 24711), (58, 24837),

Gene: WillSterrel_25 Start: 25658, Stop: 26464, Start Num: 3

Candidate Starts for WillSterrel_25:

(1, 25598), (Start: 3 @25658 has 39 MA's), (18, 25706), (20, 25739), (25, 25772), (55, 26102), (57, 26108), (73, 26312), (84, 26459),

Gene: XFactor_24 Start: 24271, Stop: 25251, Start Num: 2

Candidate Starts for XFactor_24:

(1, 24211), (Start: 2 @24271 has 151 MA's), (18, 24319), (20, 24352), (25, 24385), (31, 24457), (34, 24484), (39, 24592), (43, 24613), (54, 24712), (55, 24724), (62, 24787),

Gene: Yorick_24 Start: 24454, Stop: 25278, Start Num: 2

Candidate Starts for Yorick_24:

(1, 24394), (Start: 2 @24454 has 151 MA's), (10, 24481), (18, 24502), (20, 24535), (25, 24568), (53, 24895),

Gene: Zeeculate_35 Start: 28799, Stop: 29602, Start Num: 5

Candidate Starts for Zeeculate_35:

(Start: 5 @28799 has 82 MA's), (14, 28835), (22, 28877), (31, 28964), (53, 29219), (59, 29270), (73, 29447),

Gene: Zephyr_35 Start: 28152, Stop: 29057, Start Num: 5

Candidate Starts for Zephyr_35:

(Start: 5 @28152 has 82 MA's), (14, 28188), (34, 28332), (46, 28494), (87, 29052),

Gene: Zerg_24 Start: 24231, Stop: 25055, Start Num: 2

Candidate Starts for Zerg_24:

(1, 24171), (Start: 2 @24231 has 151 MA's), (18, 24279), (25, 24345), (53, 24672), (83, 25038),

Gene: Zeuska_36 Start: 28583, Stop: 29542, Start Num: 4

Candidate Starts for Zeuska_36:

(Start: 4 @28583 has 48 MA's), (14, 28619), (22, 28661), (31, 28748), (34, 28775), (39, 28883), (40, 28889), (43, 28904), (54, 29003), (55, 29015), (62, 29078),

Gene: Zizzle_24 Start: 24398, Stop: 25222, Start Num: 2

Candidate Starts for Zizzle_24:

(Start: 2 @24398 has 151 MA's), (18, 24446), (20, 24479), (25, 24512), (53, 24839),