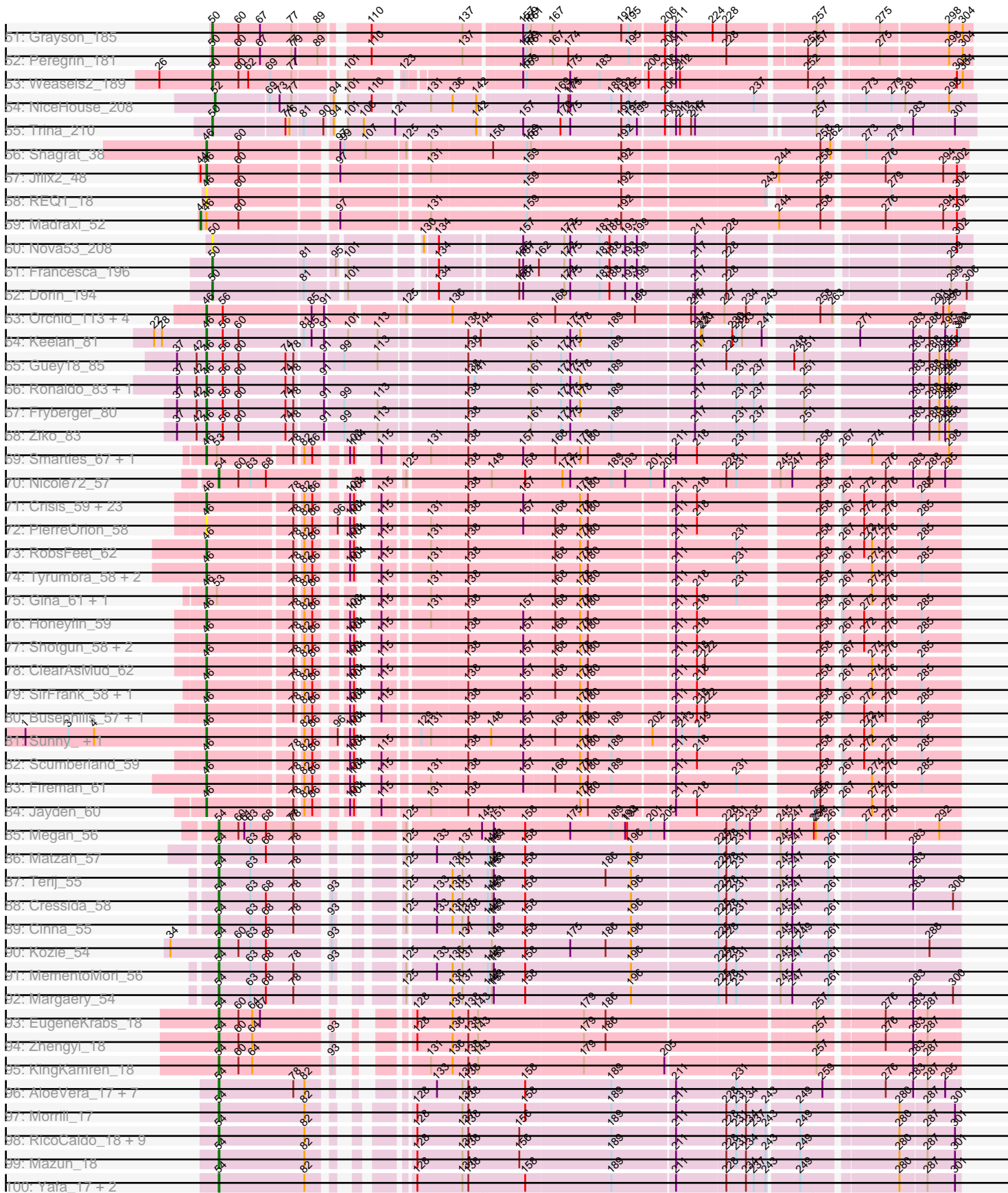
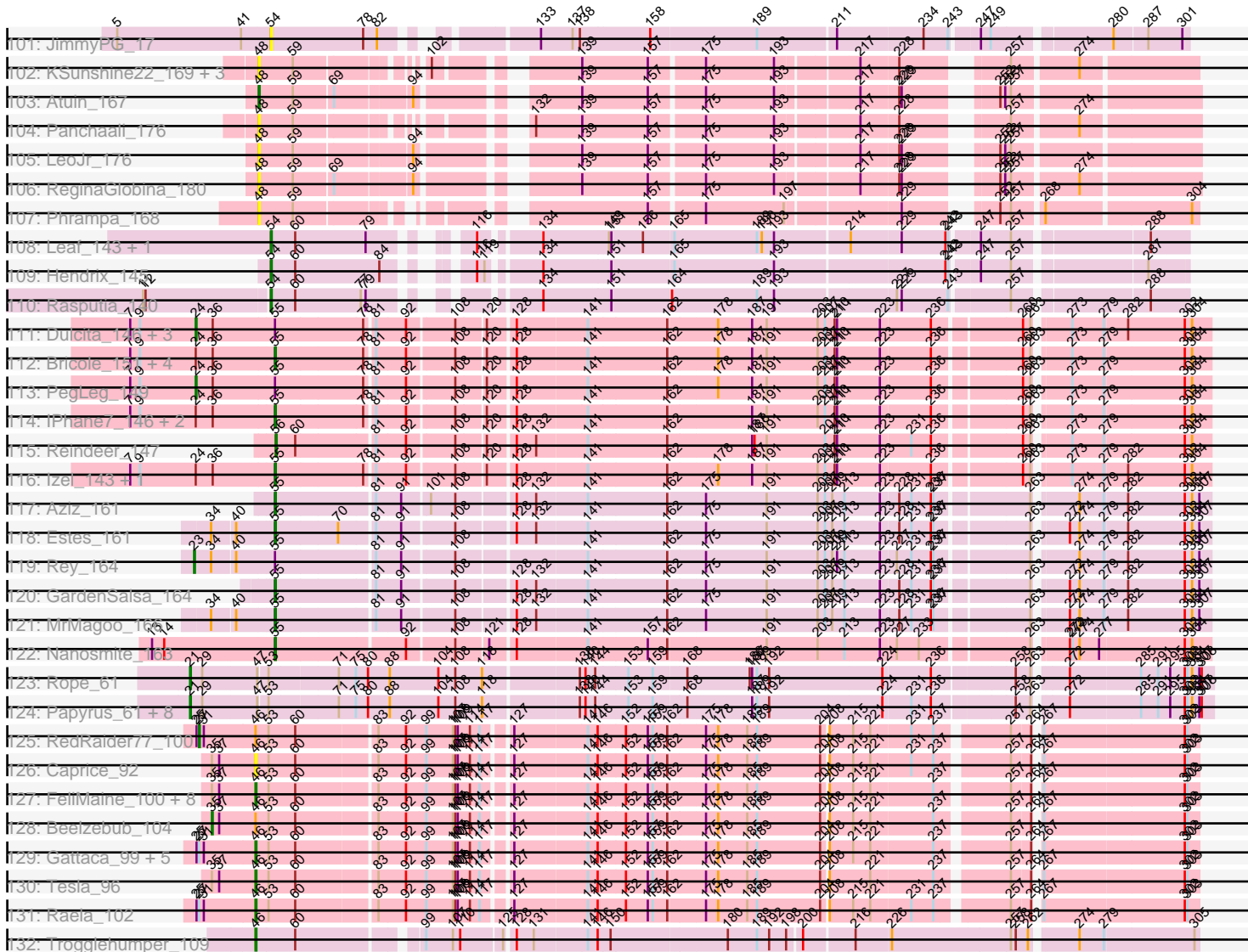


Pham 215734



Pham 215734



Note: Tracks are now grouped by subcluster and scaled. Switching in subcluster is indicated by changes in track color. Track scale is now set by default to display the region 30 bp upstream of start 1 to 30 bp downstream of the last possible start. If this default region is judged to be packed too tightly with annotated starts, the track will be further scaled to only show that region of the ORF with annotated starts. This action will be indicated by adding "Zoomed" to the title. For starts, yellow indicates the location of called starts comprised solely of Glimmer/GeneMark auto-annotations, green indicates the location of called starts with at least 1 manual gene annotation.

Pham 215734 Report

This analysis was run 02/22/25 on database version 588.

Pham number 215734 has 344 members, 43 are drafts.

Phages represented in each track:

- Track 1 : Indlulamithi_50
- Track 2 : Fowlmouth_54
- Track 3 : Cuke_50
- Track 4 : MrMiyagi_53
- Track 5 : Teutsch_2, Larnav_252, Teutsch_249, Tribute_2, Samisti12_2, Larnav_2, Tribute_248, Samisti12_253, Sushi23_253, Sushi23_2
- Track 6 : PinkiePie_3, Paradiddles_3, NootNoot_3, PinkiePie_253, Bartholomune_3, Bartholomune_253, Braelyn_248, NootNoot_248, Liandry_3, Squillium_255, Braelyn_3, Squillium_3, Paradiddles_244, Liandry_252
- Track 7 : Jay2Jay_5, Warpy_257, Jay2Jay_260, Warpy_5
- Track 8 : Watermoore_2, Watermoore_249, Leo04_253, Cross_2, Leo04_2, BlueOtter_250, HangryHippo_2, Cross_250, BlueOtter_2, HangryHippo_250
- Track 9 : Lululemon_249, PacManQ_2, Lululemon_2, PacManQ_249
- Track 10 : EGole_256, EGole_2
- Track 11 : Cursive_2, Cursive_256
- Track 12 : Mildred21_266, Mildred21_3
- Track 13 : Bmoc_2, Bmoc_258
- Track 14 : LilMartin_254, MulchMansion_258, LilMartin_2, MulchMansion_2
- Track 15 : Targaryen_2, Targaryen_253, Evy_2, Evy_240
- Track 16 : Navo_2, Navo_244
- Track 17 : Anedea_267, Anedea_2, Riptide_260, Riptide_3
- Track 18 : Angela_259, Angela_2
- Track 19 : Scheme_256, Scheme_3, Pepperwood_3, Pepperwood_252
- Track 20 : Marsus_270, Marsus_2
- Track 21 : Shuckle_3, Shuckle_256
- Track 22 : Persimmon_2, WhereRU_251, WhereRU_2, Persimmon_253
- Track 23 : Peebs_2, Peebs_249
- Track 24 : Jollison_260, Starbow_260, CeilingFan_268, KentuckyRacer_270, Jollison_3, Karimac_261, Battuta_3, KentuckyRacer_2, CeilingFan_2, SaltySpitoon_3, SaltySpitoon_263, IchabodCrane_2, Battuta_260, Karimac_3, Starbow_3, IchabodCrane_255
- Track 25 : Sollertia_260, Yaboi_4, Yaboi_265, Sollertia_4, BoomerJR_259, Stanimal_4, Genie2_259, Stanimal_259, Genie2_4, BoomerJR_4
- Track 26 : JimJam_271, Amabiko_3, Rikishi_272, Spilled_2, PumpkinSpice_267, Rikishi_2, Bordeaux_260, Amabiko_267, JimJam_3, MindFlayer_2, PumpkinSpice_3, Quaran19_264, Spilled_270, Spelly_3, Quaran19_3, Spelly_269, MindFlayer_254, Bordeaux_3

- Track 27 : Wipeout_2, Wipeout_255
- Track 28 : LukeCage_2, LukeCage_265
- Track 29 : StarPlatinum_2, StarPlatinum_272
- Track 30 : Wofford_3, Wofford_261
- Track 31 : Elmer_3, Elmer_270
- Track 32 : Gibbi_273, Gibbi_2
- Track 33 : Mugiwara_2, Mugiwara_274
- Track 34 : Enygma_2, Enygma_270
- Track 35 : TomSawyer_2, TomSawyer_267
- Track 36 : Tomas_3, Tomas_258
- Track 37 : TunaTartare_218, Sham_210
- Track 38 : Kenrey_224
- Track 39 : Comrade_215, Stigma_217, Westy_221, Belfort_218, Karp_214, SparkleGoddess_218
- Track 40 : Limpid_212, Annadreamy_205
- Track 41 : Emma1919_221, Gilson_218, Jada_220
- Track 42 : Patelgo_221
- Track 43 : Beuffert_213
- Track 44 : Francob_223
- Track 45 : Faust_215, SeresaTree_219
- Track 46 : Moab_220
- Track 47 : Phredrick_223
- Track 48 : MeganTheeKilla_223
- Track 49 : Blueeyedbeauty_214
- Track 50 : Forrest_221
- Track 51 : Grayson_185
- Track 52 : Peregrin_181
- Track 53 : Weasels2_189
- Track 54 : NiceHouse_208
- Track 55 : Trina_210
- Track 56 : Shagrat_38
- Track 57 : Jflix2_48
- Track 58 : REQ1_18
- Track 59 : Madraxi_52
- Track 60 : Nova53_208
- Track 61 : Francesca_196
- Track 62 : Dorin_194
- Track 63 : Orchid_113, RobinSparkles_123, Kampe_114, Gibbles_116, PatrickStar_114
- Track 64 : Keelan_81
- Track 65 : Guey18_85
- Track 66 : Ronaldo_83, Volt_83
- Track 67 : Fryberger_80
- Track 68 : Ziko_83
- Track 69 : Smarties_67, Ariadne_67
- Track 70 : Nicole72_57
- Track 71 : Crisis_59, Glorp_59, Hermeonysus_57, Ganandorf_57, LittleFortune_60, Yeti_59, CrazyRich_57, Pulchra_60, Kowalski_57, Piperis_59, EarickHC_59, BrazzalePHS_57, Selwyn23_59, Quhwah_62, Jefe_58, Antares_58, Onika_57, PhedwardCullen_56, Savannah_57, Ramiel05_57, Cranjjs_59, KaiHaiDragon_59, Phorgeous_58, PiperSansNom_59
- Track 72 : PierreOrion_58
- Track 73 : RobsFeet_62

- Track 74 : Tyumbra_58, Metamorphoo_61, Shrubaron_60
- Track 75 : Gina_61, Teamocil_61
- Track 76 : Honeyfin_59
- Track 77 : Shotgun_58, Jollipop_59, Paschalis_58
- Track 78 : ClearAsMud_62
- Track 79 : SirFrank_58, NoodlelyBoi_59
- Track 80 : Busephilis_57, Phrancesco_58
- Track 81 : Sunny_, Merry_
- Track 82 : Scumberland_59
- Track 83 : Fireman_61
- Track 84 : Jayden_60
- Track 85 : Megan_56
- Track 86 : Matzah_57
- Track 87 : Terij_55
- Track 88 : Cressida_58
- Track 89 : Cinna_55
- Track 90 : Kozie_54
- Track 91 : MementoMori_56
- Track 92 : Margaery_54
- Track 93 : EugeneKrabs_18
- Track 94 : Zhengyi_18
- Track 95 : KingKamren_18
- Track 96 : AloeVera_17, Waterlily_17, Ashton_17, Truong_17, JordanFarm_17, Barroma_17, ShyRosie_17, Akoni_17
- Track 97 : Morrill_17
- Track 98 : RicoCaldo_18, Fullmetal_18, Phractured_18, Phedro_18, Pharky_18, StagePhright_18, Astartes_18, TrippleS_17, PhriedRice_18, Moleficent_18
- Track 99 : Mazun_18
- Track 100 : Yafa_17, ThirteenKH_17, Atraxi_17
- Track 101 : JimmyPG_17
- Track 102 : KSunshine22_169, WaddleDee_170, Ellewin_170, DunneganBoMo_171
- Track 103 : Atuin_167
- Track 104 : Panchaali_176
- Track 105 : LeoJr_176
- Track 106 : ReginaGlobina_180
- Track 107 : Phrampa_168
- Track 108 : Leaf_143, Dewdrop_143
- Track 109 : Hendrix_145
- Track 110 : Rasputia_140
- Track 111 : Dulcita_146, Diminimus_146, Glaske16_148, Skinny_152
- Track 112 : Bricole_151, SlimJimmy_146, LilhomieP_145, FreakyGoo_148, KleverKiS_151
- Track 113 : PegLeg_149
- Track 114 : IPhane7_146, TyDawg_142, Auspice_149
- Track 115 : Reindeer_147
- Track 116 : Izel_143, Bongo_143
- Track 117 : Aziz_161
- Track 118 : Estes_161
- Track 119 : Rey_164
- Track 120 : GardenSalsa_164
- Track 121 : MrMagoo_166
- Track 122 : Nanosmite_163
- Track 123 : Rope_61

- Track 124 : Papyrus_61, MontyDev_62, Nilo_63, Candle_59, Riparian_63, Zenon_62, Send513_61, Yelo_60, Weiss13_60
- Track 125 : RedRaider77_100
- Track 126 : Caprice_92
- Track 127 : FeliMaine_100, Clarkson_101, Pringar_96, Lilbit_98, VasuNzinga_98, Huphlepuuff_102, Corazon_95, LittleLaf_98, Marvin_94
- Track 128 : Beelzebub_104
- Track 129 : Gattaca_99, GoongGoong_97, Poise_101, Blackbeetle_101, MosMoris_96, JoieB_101
- Track 130 : Tesla_96
- Track 131 : Raela_102
- Track 132 : Trogglehumper_109

Summary of Final Annotations (See graph section above for start numbers):

The start number called the most often in the published annotations is 50, it was called in 120 of the 301 non-draft genes in the pham.

Genes that call this "Most Annotated" start:

- Anedea_2, Anedea_267, Angela_2, Angela_259, Bartholomune_253, Bartholomune_3, Battuta_260, Battuta_3, BlueOtter_2, BlueOtter_250, Bmoc_2, Bmoc_258, BoomerJR_259, BoomerJR_4, Braelyn_248, Braelyn_3, CeilingFan_2, CeilingFan_268, Cross_2, Cross_250, Cursive_2, Cursive_256, Dorin_194, Elmer_270, Elmer_3, Emma1919_221, Enygma_2, Enygma_270, Evy_2, Evy_240, Faust_215, Forrest_221, Francesca_196, Genie2_259, Genie2_4, Gibbi_2, Gibbi_273, Gilson_218, Grayson_185, HangryHippo_2, HangryHippo_250, IchabodCrane_2, IchabodCrane_255, Jada_220, Jollison_260, Jollison_3, Karimac_261, Karimac_3, Kenrey_224, KentuckyRacer_2, KentuckyRacer_270, Larnav_2, Larnav_252, Leo04_2, Leo04_253, Liandry_252, Liandry_3, LilMartin_2, LilMartin_254, LukeCage_2, LukeCage_265, Lululemon_2, Lululemon_249, Marsus_2, Marsus_270, MeganTheeKilla_223, Mildred21_266, Mildred21_3, MulchMansion_2, MulchMansion_258, Navo_2, Navo_244, NootNoot_248, NootNoot_3, Nova53_208, PacManQ_2, PacManQ_249, Paradiddles_244, Paradiddles_3, Pepperwood_252, Pepperwood_3, Peregrin_181, Persimmon_2, Persimmon_253, Phredrick_223, PinkiePie_253, PinkiePie_3, Riptide_260, Riptide_3, SaltySpittoon_263, SaltySpittoon_3, Samisti12_2, Samisti12_253, Scheme_256, Scheme_3, SeresaTree_219, Sham_210, Sollertia_260, Sollertia_4, Squillium_255, Squillium_3, Stanimal_259, Stanimal_4, StarPlatinum_2, StarPlatinum_272, Starbow_260, Starbow_3, Sushi23_2, Sushi23_253, Targaryen_2, Targaryen_253, Teutsch_2, Teutsch_249, TomSawyer_2, TomSawyer_267, Tomas_258, Tomas_3, Tribute_2, Tribute_248, Trina_210, TunaTartare_218, Watermoore_2, Watermoore_249, Weasels2_189, WhereRU_2, WhereRU_251, Wofford_261, Wofford_3, Yaboi_265, Yaboi_4,

Genes that have the "Most Annotated" start but do not call it:

- Amabiko_267, Amabiko_3, Bordeaux_260, Bordeaux_3, EGole_2, EGole_256, Jay2Jay_260, Jay2Jay_5, JimJam_271, JimJam_3, MindFlayer_2, MindFlayer_254, Mugiwara_2, Mugiwara_274, Peebs_2, Peebs_249, PumpkinSpice_267, PumpkinSpice_3, Quaran19_264, Quaran19_3, Rikishi_2, Rikishi_272, Shuckle_256, Shuckle_3, Spelly_269, Spelly_3, Spilled_2, Spilled_270, Warpy_257, Warpy_5,

Wipeout_2, Wipeout_255,

Genes that do not have the "Most Annotated" start:

- Akoni_17, AloeVera_17, Annadreamy_205, Antares_58, Ariadne_67, Ashton_17, Astartes_18, Atraxi_17, Atuin_167, Auspice_149, Aziz_161, Barroma_17, Beelzebub_104, Belfort_218, Beuffert_213, Blackbeetle_101, Blueeyedbeauty_214, Bongo_143, BrazzalePHS_57, Bricole_151, Busephilis_57, Candle_59, Caprice_92, Cinna_55, Clarkson_101, ClearAsMud_62, Comrade_215, Corazon_95, Cranjis_59, CrazyRich_57, Cressida_58, Crisis_59, Cuke_50, Dewdrop_143, Diminimus_146, Dulcita_146, DunneganBoMo_171, EarickHC_59, Ellewin_170, Estes_161, EugeneKrabs_18, FeliMaine_100, Fireman_61, Fowlmouth_54, Francob_223, FreakyGoo_148, Fryberger_80, Fullmetal_18, Ganandorf_57, GardenSalsa_164, Gattaca_99, Gibbles_116, Gina_61, Glaske16_148, Glorp_59, GoongGoong_97, Guey18_85, Hendrix_145, Hermeonysus_57, Honeyfin_59, Huphlepuuff_102, IPhane7_146, Indlulamithi_50, Izel_143, Jayden_60, Jefe_58, Jflix2_48, JimmyPG_17, JoieB_101, Jollipop_59, JordanFarm_17, KSunshine22_169, KaiHaiDragon_59, Kampe_114, Karp_214, Keelan_81, KingKamren_18, KleverKiS_151, Kowalski_57, Kozie_54, Leaf_143, LeoJr_176, Lilbit_98, LilhomieP_145, Limpid_212, LittleFortune_60, LittleLaf_98, Madraxi_52, Margaery_54, Marvin_94, Matzah_57, Mazun_18, Megan_56, MementoMori_56, Merry_, Metamorphoo_61, Moab_220, Moleficent_18, MontyDev_62, Morrill_17, MosMoris_96, MrMagoo_166, MrMiyagi_53, Nanosmite_163, NiceHouse_208, Nicole72_57, Nilo_63, NoodlelyBoi_59, Onika_57, Orchid_113, Panchaali_176, Papyrus_61, Paschalis_58, Patelgo_221, PatrickStar_114, PegLeg_149, Pharky_18, Phedro_18, PhedwardCullen_56, Phorgeous_58, Phracted_18, Phrampa_168, Phrancesco_58, PhriedRice_18, PierreOrion_58, PiperSansNom_59, Piperis_59, Poise_101, Pringar_96, Pulchra_60, Quhwah_62, REQ1_18, Raela_102, Ramiel05_57, Rasputia_140, RedRaider77_100, ReginaGlobina_180, Reindeer_147, Rey_164, RicoCaldo_18, Riparian_63, RobinSparkles_123, RobsFeet_62, Ronaldo_83, Rope_61, Savannah_57, Scumberland_59, Selwyn23_59, Send513_61, Shagrat_38, Shotgun_58, Shrubaron_60, ShyRosie_17, SirFrank_58, Skinny_152, SlimJimmy_146, Smarties_67, SparkleGoddess_218, StagePhright_18, Stigma_217, Sunny_, Teamocil_61, Terij_55, Tesla_96, ThirteenKH_17, TrippleS_17, Trogglehumper_109, Truong_17, TyDawg_142, Tyumbra_58, VasuNzinga_98, Volt_83, WaddleDee_170, Waterlily_17, Weiss13_60, Westy_221, Yafa_17, Yelo_60, Yeti_59, Zenon_62, Zhengyi_18, Ziko_83,

Summary by start number:

Start 8:

- Found in 14 of 344 (4.1%) of genes in pham
- No Manual Annotations of this start.
- Called 14.3% of time when present
- Phage (with cluster) where this start called: Mugiwara_2 (BE2), Mugiwara_274 (BE2),

Start 10:

- Found in 24 of 344 (7.0%) of genes in pham
- Manual Annotations of this start: 4 of 301
- Called 25.0% of time when present
- Phage (with cluster) where this start called: EGole_2 (BE1), EGole_256 (BE1), Peebs_2 (BE1), Peebs_249 (BE1), Shuckle_256 (BE1), Shuckle_3 (BE1),

Start 19:

- Found in 48 of 344 (14.0%) of genes in pham
- Manual Annotations of this start: 4 of 301
- Called 8.3% of time when present
- Phage (with cluster) where this start called: Jay2Jay_260 (BE1), Jay2Jay_5 (BE1), Warpy_257 (BE1), Warpy_5 (BE1),

Start 20:

- Found in 1 of 344 (0.3%) of genes in pham
- Manual Annotations of this start: 1 of 301
- Called 100.0% of time when present
- Phage (with cluster) where this start called: Indlulamithi_50 (AC),

Start 21:

- Found in 13 of 344 (3.8%) of genes in pham
- Manual Annotations of this start: 12 of 301
- Called 100.0% of time when present
- Phage (with cluster) where this start called: Candle_59 (R), Cuke_50 (AC), Fowlmouth_54 (AC), MontyDev_62 (R), MrMiyagi_53 (AC), Nilo_63 (R), Papyrus_61 (R), Riparian_63 (R), Rope_61 (R), Send513_61 (R), Weiss13_60 (R), Yelo_60 (R), Zenon_62 (R),

Start 23:

- Found in 11 of 344 (3.2%) of genes in pham
- Manual Annotations of this start: 1 of 301
- Called 9.1% of time when present
- Phage (with cluster) where this start called: Rey_164 (M2),

Start 24:

- Found in 19 of 344 (5.5%) of genes in pham
- Manual Annotations of this start: 5 of 301
- Called 26.3% of time when present
- Phage (with cluster) where this start called: Diminimus_146 (M1), Dulcita_146 (M1), Glaske16_148 (M1), PegLeg_149 (M1), Skinny_152 (M1),

Start 27:

- Found in 8 of 344 (2.3%) of genes in pham
- Manual Annotations of this start: 1 of 301
- Called 12.5% of time when present
- Phage (with cluster) where this start called: RedRaider77_100 (S),

Start 35:

- Found in 12 of 344 (3.5%) of genes in pham
- Manual Annotations of this start: 1 of 301
- Called 8.3% of time when present
- Phage (with cluster) where this start called: Beelzebub_104 (S),

Start 39:

- Found in 38 of 344 (11.0%) of genes in pham
- Manual Annotations of this start: 18 of 301
- Called 52.6% of time when present
- Phage (with cluster) where this start called: Amabiko_267 (BE2), Amabiko_3 (BE2), Bordeaux_260 (BE2), Bordeaux_3 (BE2), JimJam_271 (BE2), JimJam_3 (BE2),

MindFlayer_2 (BE2), MindFlayer_254 (BE2), PumpkinSpice_267 (BE2), PumpkinSpice_3 (BE2), Quaran19_264 (BE2), Quaran19_3 (BE2), Rikishi_2 (BE2), Rikishi_272 (BE2), Spelly_269 (BE2), Spelly_3 (BE2), Spilled_2 (BE2), Spilled_270 (BE2), Wipeout_2 (BE2), Wipeout_255 (BE2),

Start 44:

- Found in 2 of 344 (0.6%) of genes in pham
- Manual Annotations of this start: 1 of 301
- Called 50.0% of time when present
- Phage (with cluster) where this start called: Madraxi_52 (CF),

Start 46:

- Found in 83 of 344 (24.1%) of genes in pham
- Manual Annotations of this start: 71 of 301
- Called 96.4% of time when present
- Phage (with cluster) where this start called: Antares_58 (EC), Ariadne_67 (EC), Blackbeetle_101 (S), BrazzalePHS_57 (EC), Busephilis_57 (EC), Caprice_92 (S), Clarkson_101 (S), ClearAsMud_62 (EC), Corazon_95 (S), Cranjis_59 (EC), CrazyRich_57 (EC), Crisis_59 (EC), EarickHC_59 (EC), FeliMaine_100 (S), Fireman_61 (EC), Fryberger_80 (DP), Ganandorf_57 (EC), Gattaca_99 (S), Gibbles_116 (CX), Gina_61 (EC), Glorp_59 (EC), GoongGoong_97 (S), Guey18_85 (DP), Hermeonysus_57 (EC), Honeyfin_59 (EC), Huphlepuuff_102 (S), Jayden_60 (EC), Jefe_58 (EC), Jflix2_48 (CF), JoieB_101 (S), Jollipop_59 (EC), KaiHaiDragon_59 (EC), Kampe_114 (CX), Keelan_81 (DP), Kowalski_57 (EC), Lilbit_98 (S), LittleFortune_60 (EC), LittleLaf_98 (S), Marvin_94 (S), Merry_ (EC), Metamorphoo_61 (EC), MosMoris_96 (S), NoodlelyBoi_59 (EC), Onika_57 (EC), Orchid_113 (CX), Paschalis_58 (EC), PatrickStar_114 (CX), PhedwardCullen_56 (EC), Phorgeous_58 (EC), Phrancesco_58 (EC), PierreOrion_58 (EC), PiperSansNom_59 (EC), Piperis_59 (EC), Poise_101 (S), Pringar_96 (S), Pulchra_60 (EC), Quhwah_62 (EC), REQ1_18 (CF), Raela_102 (S), Ramiel05_57 (EC), RobinSparkles_123 (CX), RobsFeet_62 (EC), Ronaldo_83 (DP), Savannah_57 (EC), Scumberland_59 (EC), Selwyn23_59 (EC), Shagrat_38 (CF), Shotgun_58 (EC), Shrubaron_60 (EC), SirFrank_58 (EC), Smarties_67 (EC), Sunny_ (EC), Teamocil_61 (EC), Tesla_96 (S), Trogglehumper_109 (singleton), Tyumbra_58 (EC), VasuNzinga_98 (S), Volt_83 (DP), Yeti_59 (EC), Ziko_83 (DP),

Start 48:

- Found in 9 of 344 (2.6%) of genes in pham
- Manual Annotations of this start: 1 of 301
- Called 100.0% of time when present
- Phage (with cluster) where this start called: Atuin_167 (FC), DunneganBoMo_171 (FC), Ellewin_170 (FC), KSunshine22_169 (FC), LeoJr_176 (FC), Panchaali_176 (FC), Phrampa_168 (FC), ReginaGlobina_180 (FC), WaddleDee_170 (FC),

Start 49:

- Found in 9 of 344 (2.6%) of genes in pham
- Manual Annotations of this start: 8 of 301
- Called 100.0% of time when present
- Phage (with cluster) where this start called: Belfort_218 (BK1), Comrade_215 (BK1), Francob_223 (BK1), Karp_214 (BK1), Moab_220 (BK1), Patelgo_221 (BK1), SparkleGoddess_218 (BK1), Stigma_217 (BK1), Westy_221 (BK1),

Start 50:

- Found in 162 of 344 (47.1%) of genes in pham
- Manual Annotations of this start: 120 of 301
- Called 80.2% of time when present
- Phage (with cluster) where this start called: Anedea_2 (BE1), Anedea_267 (BE1), Angela_2 (BE1), Angela_259 (BE1), Bartholomune_253 (BE1), Bartholomune_3 (BE1), Battuta_260 (BE2), Battuta_3 (BE2), BlueOtter_2 (BE1), BlueOtter_250 (BE1), Bmoc_2 (BE1), Bmoc_258 (BE1), BoomerJR_259 (BE2), BoomerJR_4 (BE2), Braelyn_248 (BE1), Braelyn_3 (BE1), CeilingFan_2 (BE2), CeilingFan_268 (BE2), Cross_2 (BE1), Cross_250 (BE1), Cursive_2 (BE1), Cursive_256 (BE1), Dorin_194 (CG), Elmer_270 (BE2), Elmer_3 (BE2), Emma1919_221 (BK1), Enygma_2 (BE2), Enygma_270 (BE2), Evy_2 (BE1), Evy_240 (BE1), Faust_215 (BK1), Forrest_221 (BK1), Francesca_196 (CG), Genie2_259 (BE2), Genie2_4 (BE2), Gibbi_2 (BE2), Gibbi_273 (BE2), Gilson_218 (BK1), Grayson_185 (CB), HangryHippo_2 (BE1), HangryHippo_250 (BE1), IchabodCrane_2 (BE2), IchabodCrane_255 (BE2), Jada_220 (BK1), Jollison_260 (BE2), Jollison_3 (BE2), Karimac_261 (BE2), Karimac_3 (BE2), Kenrey_224 (BK1), KentuckyRacer_2 (BE2), KentuckyRacer_270 (BE2), Larnav_2 (BE1), Larnav_252 (BE1), Leo04_2 (BE1), Leo04_253 (BE1), Liandry_252 (BE1), Liandry_3 (BE1), LilMartin_2 (BE1), LilMartin_254 (BE1), LukeCage_2 (BE2), LukeCage_265 (BE2), Lululemon_2 (BE1), Lululemon_249 (BE1), Marsus_2 (BE1), Marsus_270 (BE1), MeganTheeKilla_223 (BK1), Mildred21_266 (BE1), Mildred21_3 (BE1), MulchMansion_2 (BE1), MulchMansion_258 (BE1), Navo_2 (BE1), Navo_244 (BE1), NootNoot_248 (BE1), NootNoot_3 (BE1), Nova53_208 (CG), PacManQ_2 (BE1), PacManQ_249 (BE1), Paradiddles_244 (BE1), Paradiddles_3 (BE1), Pepperwood_252 (BE1), Pepperwood_3 (BE1), Peregrin_181 (CB), Persimmon_2 (BE1), Persimmon_253 (BE1), Phredrick_223 (BK1), PinkiePie_253 (BE1), PinkiePie_3 (BE1), Riptide_260 (BE1), Riptide_3 (BE1), SaltySpittoon_263 (BE2), SaltySpittoon_3 (BE2), Samisti12_2 (BE1), Samisti12_253 (BE1), Scheme_256 (BE1), Scheme_3 (BE1), SeresaTree_219 (BK1), Sham_210 (BK1), Sollertia_260 (BE2), Sollertia_4 (BE2), Squillium_255 (BE1), Squillium_3 (BE1), Stanimal_259 (BE2), Stanimal_4 (BE2), StarPlatinum_2 (BE2), StarPlatinum_272 (BE2), Starbow_260 (BE2), Starbow_3 (BE2), Sushi23_2 (BE1), Sushi23_253 (BE1), Targaryen_2 (BE1), Targaryen_253 (BE1), Teutsch_2 (BE1), Teutsch_249 (BE1), TomSawyer_2 (BE2), TomSawyer_267 (BE2), Tomas_258 (BE2), Tomas_3 (BE2), Tribute_2 (BE1), Tribute_248 (BE1), Trina_210 (CE), TunaTartare_218 (BK1), Watermoore_2 (BE1), Watermoore_249 (BE1), Weasels2_189 (CB), WhereRU_2 (BE1), WhereRU_251 (BE1), Wofford_261 (BE2), Wofford_3 (BE2), Yaboi_265 (BE2), Yaboi_4 (BE2),

Start 51:

- Found in 4 of 344 (1.2%) of genes in pham
- Manual Annotations of this start: 4 of 301
- Called 100.0% of time when present
- Phage (with cluster) where this start called: Annadreamy_205 (BK1), Beuffert_213 (BK1), Blueeyedbeauty_214 (BK1), Limpid_212 (BK1),

Start 52:

- Found in 1 of 344 (0.3%) of genes in pham
- Manual Annotations of this start: 1 of 301
- Called 100.0% of time when present
- Phage (with cluster) where this start called: NiceHouse_208 (CE),

Start 54:

- Found in 40 of 344 (11.6%) of genes in pham

- Manual Annotations of this start: 35 of 301
- Called 100.0% of time when present
- Phage (with cluster) where this start called: Akoni_17 (EK2), AloeVera_17 (EK2), Ashton_17 (EK2), Astartes_18 (EK2), Atraxi_17 (EK2), Barroma_17 (EK2), Cinna_55 (EI), Cressida_58 (EI), Dewdrop_143 (GC), EugeneKrabs_18 (EK), Fullmetal_18 (EK2), Hendrix_145 (GC), JimmyPG_17 (EK2), JordanFarm_17 (EK2), KingKamren_18 (EK), Kozie_54 (EI), Leaf_143 (GC), Margaery_54 (EI), Matzah_57 (EI), Mazun_18 (EK2), Megan_56 (EC), MementoMori_56 (EI), Moleficent_18 (EK2), Morrill_17 (EK2), Nicole72_57 (EC), Pharky_18 (EK2), Phedro_18 (EK2), Phractured_18 (EK2), PhriedRice_18 (EK2), Rasputia_140 (GC), RicoCaldo_18 (EK2), ShyRosie_17 (EK2), StagePhright_18 (EK2), Terij_55 (EI), ThirteenKH_17 (EK2), TrippleS_17 (EK2), Truong_17 (EK2), Waterlily_17 (EK2), Yafa_17 (EK2), Zhengyi_18 (EK),

Start 55:

- Found in 22 of 344 (6.4%) of genes in pham
- Manual Annotations of this start: 12 of 301
- Called 68.2% of time when present
- Phage (with cluster) where this start called: Auspice_149 (M1), Aziz_161 (M2), Bongo_143 (M1), Bricole_151 (M1), Estes_161 (M2), FreakyGoo_148 (M1), GardenSalsa_164 (M2), IPhane7_146 (M1), Izel_143 (M1), KleverKiS_151 (M1), LilhomieP_145 (M1), MrMagoo_166 (M2), Nanosmite_163 (M3), SlimJimmy_146 (M1), TyDawg_142 (M1),

Start 56:

- Found in 12 of 344 (3.5%) of genes in pham
- Manual Annotations of this start: 1 of 301
- Called 8.3% of time when present
- Phage (with cluster) where this start called: Reindeer_147 (M1),

Summary by clusters:

There are 22 clusters represented in this pham: singleton, FC, M1, M3, M2, DP, CE, AC, EI, EK, CB, CG, CF, EC, S, CX, GC, BK1, R, BE2, BE1, EK2,

Info for manual annotations of cluster AC:

- Start number 20 was manually annotated 1 time for cluster AC.
- Start number 21 was manually annotated 3 times for cluster AC.

Info for manual annotations of cluster BE1:

- Start number 10 was manually annotated 4 times for cluster BE1.
- Start number 19 was manually annotated 4 times for cluster BE1.
- Start number 50 was manually annotated 64 times for cluster BE1.

Info for manual annotations of cluster BE2:

- Start number 39 was manually annotated 18 times for cluster BE2.
- Start number 50 was manually annotated 40 times for cluster BE2.

Info for manual annotations of cluster BK1:

- Start number 49 was manually annotated 8 times for cluster BK1.
- Start number 50 was manually annotated 10 times for cluster BK1.
- Start number 51 was manually annotated 4 times for cluster BK1.

Info for manual annotations of cluster CB:

- Start number 50 was manually annotated 3 times for cluster CB.

Info for manual annotations of cluster CE:

- Start number 50 was manually annotated 1 time for cluster CE.
- Start number 52 was manually annotated 1 time for cluster CE.

Info for manual annotations of cluster CF:

- Start number 44 was manually annotated 1 time for cluster CF.
- Start number 46 was manually annotated 2 times for cluster CF.

Info for manual annotations of cluster CG:

- Start number 50 was manually annotated 2 times for cluster CG.

Info for manual annotations of cluster CX:

- Start number 46 was manually annotated 5 times for cluster CX.

Info for manual annotations of cluster DP:

- Start number 46 was manually annotated 6 times for cluster DP.

Info for manual annotations of cluster EC:

- Start number 46 was manually annotated 42 times for cluster EC.
- Start number 54 was manually annotated 2 times for cluster EC.

Info for manual annotations of cluster EI:

- Start number 54 was manually annotated 7 times for cluster EI.

Info for manual annotations of cluster EK:

- Start number 54 was manually annotated 3 times for cluster EK.

Info for manual annotations of cluster EK2:

- Start number 54 was manually annotated 19 times for cluster EK2.

Info for manual annotations of cluster FC:

- Start number 48 was manually annotated 1 time for cluster FC.

Info for manual annotations of cluster GC:

- Start number 54 was manually annotated 4 times for cluster GC.

Info for manual annotations of cluster M1:

- Start number 24 was manually annotated 5 times for cluster M1.
- Start number 55 was manually annotated 7 times for cluster M1.
- Start number 56 was manually annotated 1 time for cluster M1.

Info for manual annotations of cluster M2:

- Start number 23 was manually annotated 1 time for cluster M2.
- Start number 55 was manually annotated 4 times for cluster M2.

Info for manual annotations of cluster M3:

- Start number 55 was manually annotated 1 time for cluster M3.

Info for manual annotations of cluster R:

- Start number 21 was manually annotated 9 times for cluster R.

Info for manual annotations of cluster S:

- Start number 27 was manually annotated 1 time for cluster S.
- Start number 35 was manually annotated 1 time for cluster S.
- Start number 46 was manually annotated 15 times for cluster S.

Gene Information:

Gene: Akoni_17 Start: 12296, Stop: 11307, Start Num: 54

Candidate Starts for Akoni_17:

(Start: 54 @12296 has 35 MA's), (78, 12182), (82, 12167), (133, 12053), (137, 12014), (138, 12005), (158, 11921), (189, 11792), (211, 11699), (231, 11612), (259, 11492), (276, 11414), (283, 11372), (287, 11354), (295, 11327),

Gene: AloeVera_17 Start: 12296, Stop: 11307, Start Num: 54

Candidate Starts for AloeVera_17:

(Start: 54 @12296 has 35 MA's), (78, 12182), (82, 12167), (133, 12053), (137, 12014), (138, 12005), (158, 11921), (189, 11792), (211, 11699), (231, 11612), (259, 11492), (276, 11414), (283, 11372), (287, 11354), (295, 11327),

Gene: Amabiko_3 Start: 2651, Stop: 1611, Start Num: 39

Candidate Starts for Amabiko_3:

(Start: 39 @2651 has 18 MA's), (Start: 50 @2606 has 120 MA's), (76, 2495), (87, 2462), (101, 2429), (108, 2417), (111, 2408), (134, 2360), (135, 2342), (136, 2339), (169, 2195), (173, 2186), (181, 2144), (189, 2114), (199, 2075), (202, 2057), (211, 2027), (226, 1964), (257, 1832), (270, 1772), (278, 1724), (289, 1667), (302, 1631),

Gene: Amabiko_267 Start: 121477, Stop: 120437, Start Num: 39

Candidate Starts for Amabiko_267:

(Start: 39 @121477 has 18 MA's), (Start: 50 @121432 has 120 MA's), (76, 121321), (87, 121288), (101, 121255), (108, 121243), (111, 121234), (134, 121186), (135, 121168), (136, 121165), (169, 121021), (173, 121012), (181, 120970), (189, 120940), (199, 120901), (202, 120883), (211, 120853), (226, 120790), (257, 120658), (270, 120598), (278, 120550), (289, 120493), (302, 120457),

Gene: Anedea_267 Start: 125337, Stop: 124315, Start Num: 50

Candidate Starts for Anedea_267:

(Start: 50 @125337 has 120 MA's), (69, 125256), (76, 125226), (87, 125193), (90, 125178), (95, 125166), (100, 125160), (110, 125121), (134, 125067), (155, 124956), (156, 124953), (169, 124902), (180, 124857), (189, 124821), (199, 124782), (202, 124764), (211, 124734), (226, 124671), (230, 124653), (248, 124575), (257, 124542), (278, 124434), (281, 124416), (289, 124377),

Gene: Anedea_2 Start: 2288, Stop: 1266, Start Num: 50

Candidate Starts for Anedea_2:

(Start: 50 @2288 has 120 MA's), (69, 2207), (76, 2177), (87, 2144), (90, 2129), (95, 2117), (100, 2111), (110, 2072), (134, 2018), (155, 1907), (156, 1904), (169, 1853), (180, 1808), (189, 1772), (199, 1733), (202, 1715), (211, 1685), (226, 1622), (230, 1604), (248, 1526), (257, 1493), (278, 1385), (281, 1367), (289, 1328),

Gene: Angela_259 Start: 124677, Stop: 123661, Start Num: 50

Candidate Starts for Angela_259:

(45, 124689), (Start: 50 @124677 has 120 MA's), (69, 124596), (76, 124566), (90, 124518), (94, 124509), (95, 124506), (100, 124500), (105, 124476), (110, 124461), (134, 124407), (155, 124296), (169, 124242), (189, 124161), (199, 124122), (202, 124104), (211, 124074), (226, 124011), (248, 123915), (257, 123882), (270, 123822), (278, 123774), (281, 123756), (289, 123717),

Gene: Angela_2 Start: 2274, Stop: 1258, Start Num: 50

Candidate Starts for Angela_2:

(45, 2286), (Start: 50 @2274 has 120 MA's), (69, 2193), (76, 2163), (90, 2115), (94, 2106), (95, 2103), (100, 2097), (105, 2073), (110, 2058), (134, 2004), (155, 1893), (169, 1839), (189, 1758), (199, 1719), (202, 1701), (211, 1671), (226, 1608), (248, 1512), (257, 1479), (270, 1419), (278, 1371), (281, 1353), (289, 1314),

Gene: Annadreamy_205 Start: 103409, Stop: 104425, Start Num: 51

Candidate Starts for Annadreamy_205:

(Start: 51 @103409 has 4 MA's), (58, 103436), (73, 103508), (76, 103523), (89, 103562), (117, 103631), (135, 103676), (175, 103850), (184, 103898), (193, 103934), (195, 103940), (206, 103985), (226, 104060), (231, 104084), (265, 104219), (285, 104348), (286, 104354), (298, 104387), (302, 104399), (303, 104402),

Gene: Antares_58 Start: 37535, Stop: 38530, Start Num: 46

Candidate Starts for Antares_58:

(Start: 46 @37535 has 71 MA's), (78, 37655), (82, 37664), (86, 37676), (103, 37709), (104, 37715), (115, 37733), (138, 37844), (157, 37925), (178, 38003), (180, 38015), (211, 38138), (218, 38168), (258, 38339), (267, 38360), (272, 38390), (276, 38423), (285, 38471),

Gene: Ariadne_67 Start: 39139, Stop: 40134, Start Num: 46

Candidate Starts for Ariadne_67:

(Start: 46 @39139 has 71 MA's), (53, 39154), (78, 39259), (82, 39268), (86, 39280), (103, 39313), (104, 39319), (115, 39337), (131, 39394), (138, 39448), (157, 39529), (168, 39571), (178, 39607), (180, 39619), (211, 39742), (218, 39772), (231, 39832), (258, 39943), (267, 39964), (274, 40006), (298, 40117),

Gene: Ashton_17 Start: 12300, Stop: 11311, Start Num: 54

Candidate Starts for Ashton_17:

(Start: 54 @12300 has 35 MA's), (78, 12186), (82, 12171), (133, 12057), (137, 12018), (138, 12009), (158, 11925), (189, 11796), (211, 11703), (231, 11616), (259, 11496), (276, 11418), (283, 11376), (287, 11358), (295, 11331),

Gene: Astartes_18 Start: 12572, Stop: 11568, Start Num: 54

Candidate Starts for Astartes_18:

(Start: 54 @12572 has 35 MA's), (82, 12443), (128, 12347), (137, 12278), (138, 12269), (156, 12194), (189, 12056), (211, 11963), (228, 11891), (231, 11876), (234, 11861), (237, 11849), (243, 11831), (249, 11786), (280, 11654), (287, 11615), (301, 11573),

Gene: Atraxi_17 Start: 12329, Stop: 11325, Start Num: 54

Candidate Starts for Atraxi_17:

(Start: 54 @12329 has 35 MA's), (82, 12200), (128, 12104), (137, 12035), (138, 12026), (158, 11942), (189, 11813), (211, 11720), (228, 11648), (234, 11618), (237, 11606), (243, 11588), (249, 11543), (280, 11411), (287, 11372), (301, 11330),

Gene: Atuin_167 Start: 115486, Stop: 116493, Start Num: 48

Candidate Starts for Atuin_167:

(Start: 48 @115486 has 1 MA's), (59, 115528), (69, 115573), (94, 115660), (139, 115816), (157, 115897), (175, 115960), (193, 116044), (217, 116134), (228, 116179), (229, 116182), (252, 116266), (253, 116272), (257, 116278),

Gene: Auspice_149 Start: 75730, Stop: 74657, Start Num: 55

Candidate Starts for Auspice_149:

(7, 75907), (9, 75895), (Start: 24 @75826 has 5 MA's), (36, 75805), (Start: 55 @75730 has 12 MA's), (78, 75625), (81, 75616), (92, 75580), (108, 75526), (120, 75493), (128, 75463), (141, 75379), (162, 75283), (187, 75184), (191, 75166), (203, 75103), (207, 75094), (210, 75082), (211, 75079), (223, 75028), (236, 74968), (260, 74869), (263, 74860), (273, 74824), (279, 74785), (302, 74689), (304, 74680),

Gene: Aziz_161 Start: 77655, Stop: 76582, Start Num: 55

Candidate Starts for Aziz_161:

(Start: 55 @77655 has 12 MA's), (81, 77541), (91, 77511), (101, 77481), (108, 77451), (128, 77388), (132, 77364), (141, 77304), (162, 77208), (175, 77166), (191, 77091), (203, 77028), (207, 77019), (209, 77010), (213, 76995), (223, 76953), (228, 76932), (231, 76917), (236, 76893), (237, 76890), (263, 76785), (274, 76740), (279, 76710), (282, 76683), (302, 76614), (304, 76605), (307, 76596),

Gene: Barrroma_17 Start: 12296, Stop: 11307, Start Num: 54

Candidate Starts for Barrroma_17:

(Start: 54 @12296 has 35 MA's), (78, 12182), (82, 12167), (133, 12053), (137, 12014), (138, 12005), (158, 11921), (189, 11792), (211, 11699), (231, 11612), (259, 11492), (276, 11414), (283, 11372), (287, 11354), (295, 11327),

Gene: Bartholomune_3 Start: 2417, Stop: 1404, Start Num: 50

Candidate Starts for Bartholomune_3:

(9, 2567), (15, 2531), (Start: 19 @2510 has 4 MA's), (28, 2492), (Start: 50 @2417 has 120 MA's), (69, 2336), (76, 2306), (95, 2246), (105, 2216), (110, 2201), (111, 2198), (134, 2150), (155, 2039), (169, 1985), (180, 1940), (189, 1904), (199, 1865), (202, 1847), (211, 1817), (248, 1658), (257, 1625), (270, 1565), (278, 1517), (281, 1499), (289, 1460),

Gene: Bartholomune_253 Start: 123516, Stop: 122503, Start Num: 50

Candidate Starts for Bartholomune_253:

(9, 123666), (15, 123630), (Start: 19 @123609 has 4 MA's), (28, 123591), (Start: 50 @123516 has 120 MA's), (69, 123435), (76, 123405), (95, 123345), (105, 123315), (110, 123300), (111, 123297), (134, 123249), (155, 123138), (169, 123084), (180, 123039), (189, 123003), (199, 122964), (202, 122946), (211, 122916), (248, 122757), (257, 122724), (270, 122664), (278, 122616), (281, 122598), (289, 122559),

Gene: Battuta_3 Start: 2606, Stop: 1611, Start Num: 50

Candidate Starts for Battuta_3:

(Start: 39 @2651 has 18 MA's), (Start: 50 @2606 has 120 MA's), (76, 2495), (87, 2462), (101, 2429), (108, 2417), (111, 2408), (134, 2360), (135, 2342), (136, 2339), (169, 2195), (173, 2186), (181, 2144), (189, 2114), (199, 2075), (202, 2057), (211, 2027), (226, 1964), (257, 1832), (270, 1772), (278, 1724), (289, 1667), (302, 1631),

Gene: Battuta_260 Start: 120761, Stop: 119766, Start Num: 50

Candidate Starts for Battuta_260:

(Start: 39 @120806 has 18 MA's), (Start: 50 @120761 has 120 MA's), (76, 120650), (87, 120617), (101, 120584), (108, 120572), (111, 120563), (134, 120515), (135, 120497), (136, 120494), (169, 120350), (173, 120341), (181, 120299), (189, 120269), (199, 120230), (202, 120212), (211, 120182), (226, 120119), (257, 119987), (270, 119927), (278, 119879), (289, 119822), (302, 119786),

Gene: Beelzebub_104 Start: 58128, Stop: 57004, Start Num: 35

Candidate Starts for Beelzebub_104:

(Start: 35 @58128 has 1 MA's), (37, 58119), (Start: 46 @58074 has 71 MA's), (53, 58059), (60, 58026), (83, 57933), (92, 57900), (99, 57876), (107, 57843), (108, 57840), (109, 57837), (114, 57822), (117, 57810), (127, 57783), (141, 57696), (146, 57684), (152, 57651), (157, 57624), (159, 57618), (162, 57600), (175, 57558), (178, 57543), (185, 57507), (189, 57495), (204, 57417), (208, 57411), (215, 57384), (221, 57363), (237, 57288), (257, 57213), (264, 57192), (267, 57189), (302, 57021), (303, 57018),

Gene: Belfort_218 Start: 108041, Stop: 109063, Start Num: 49

Candidate Starts for Belfort_218:

(Start: 49 @108041 has 8 MA's), (58, 108071), (76, 108152), (81, 108170), (95, 108212), (105, 108230), (111, 108248), (160, 108428), (175, 108491), (181, 108524), (183, 108536), (184, 108539), (188, 108551), (206, 108626), (226, 108701), (231, 108725), (238, 108755), (252, 108818), (302, 109037),

Gene: Beuffert_213 Start: 107581, Stop: 108594, Start Num: 51

Candidate Starts for Beuffert_213:

(Start: 51 @107581 has 4 MA's), (58, 107608), (73, 107680), (76, 107695), (89, 107734), (117, 107803), (135, 107848), (175, 108022), (193, 108106), (195, 108112), (206, 108157), (226, 108232), (231, 108256), (265, 108391), (285, 108520), (302, 108571), (303, 108574),

Gene: Blackbeetle_101 Start: 57574, Stop: 56504, Start Num: 46

Candidate Starts for Blackbeetle_101:

(25, 57646), (Start: 27 @57643 has 1 MA's), (31, 57637), (Start: 46 @57574 has 71 MA's), (53, 57559), (60, 57526), (83, 57433), (92, 57400), (99, 57376), (107, 57343), (108, 57340), (109, 57337), (114, 57322), (117, 57310), (127, 57283), (141, 57196), (146, 57184), (152, 57151), (157, 57124), (159, 57118), (162, 57100), (175, 57058), (178, 57043), (185, 57007), (189, 56995), (204, 56917), (208, 56911), (215, 56884), (221, 56863), (237, 56788), (257, 56713), (264, 56692), (267, 56689), (302, 56521), (303, 56518),

Gene: BlueOtter_250 Start: 123312, Stop: 122299, Start Num: 50

Candidate Starts for BlueOtter_250:

(Start: 10 @123459 has 4 MA's), (Start: 19 @123405 has 4 MA's), (28, 123387), (Start: 50 @123312 has 120 MA's), (76, 123201), (87, 123168), (95, 123141), (101, 123132), (105, 123111), (110, 123096), (134, 123045), (155, 122934), (169, 122880), (189, 122799), (199, 122760), (202, 122742), (211, 122712), (226, 122649), (246, 122565), (248, 122553), (257, 122520), (270, 122460), (278, 122412), (281, 122394), (289, 122355),

Gene: BlueOtter_2 Start: 2225, Stop: 1212, Start Num: 50

Candidate Starts for BlueOtter_2:

(Start: 10 @2372 has 4 MA's), (Start: 19 @2318 has 4 MA's), (28, 2300), (Start: 50 @2225 has 120 MA's), (76, 2114), (87, 2081), (95, 2054), (101, 2045), (105, 2024), (110, 2009), (134, 1958), (155, 1847), (169, 1793), (189, 1712), (199, 1673), (202, 1655), (211, 1625), (226, 1562), (246, 1478), (248, 1466), (257, 1433), (270, 1373), (278, 1325), (281, 1307), (289, 1268),

Gene: Blueeyedbeauty_214 Start: 107117, Stop: 108130, Start Num: 51

Candidate Starts for Blueeyedbeauty_214:

(Start: 51 @107117 has 4 MA's), (58, 107144), (73, 107216), (76, 107231), (89, 107270), (117, 107339), (175, 107558), (184, 107606), (193, 107642), (195, 107648), (206, 107693), (226, 107768), (231, 107792), (265, 107927), (285, 108056), (302, 108107), (303, 108110),

Gene: Bmoc_2 Start: 2308, Stop: 1286, Start Num: 50

Candidate Starts for Bmoc_2:

(Start: 50 @2308 has 120 MA's), (69, 2227), (76, 2197), (90, 2149), (95, 2137), (100, 2131), (110, 2092), (134, 2038), (155, 1927), (156, 1924), (169, 1873), (180, 1828), (189, 1792), (199, 1753), (202, 1735), (211, 1705), (226, 1642), (230, 1624), (248, 1546), (257, 1513), (278, 1405), (281, 1387), (289, 1348),

Gene: Bmoc_258 Start: 124130, Stop: 123108, Start Num: 50

Candidate Starts for Bmoc_258:

(Start: 50 @124130 has 120 MA's), (69, 124049), (76, 124019), (90, 123971), (95, 123959), (100, 123953), (110, 123914), (134, 123860), (155, 123749), (156, 123746), (169, 123695), (180, 123650), (189, 123614), (199, 123575), (202, 123557), (211, 123527), (226, 123464), (230, 123446), (248, 123368), (257, 123335), (278, 123227), (281, 123209), (289, 123170),

Gene: Bongo_143 Start: 74587, Stop: 73514, Start Num: 55

Candidate Starts for Bongo_143:

(7, 74764), (9, 74752), (Start: 24 @74683 has 5 MA's), (36, 74662), (Start: 55 @74587 has 12 MA's), (78, 74482), (81, 74473), (92, 74437), (108, 74383), (120, 74350), (128, 74320), (141, 74236), (162, 74140), (178, 74083), (187, 74041), (191, 74023), (203, 73960), (207, 73951), (210, 73939), (211, 73936), (223, 73885), (236, 73825), (260, 73726), (263, 73717), (273, 73681), (279, 73642), (282, 73615), (302, 73546), (304, 73537),

Gene: BoomerJR_259 Start: 121416, Stop: 120415, Start Num: 50

Candidate Starts for BoomerJR_259:

(30, 121482), (33, 121473), (Start: 50 @121416 has 120 MA's), (76, 121305), (111, 121218), (162, 121026), (169, 121005), (173, 120996), (181, 120954), (189, 120924), (199, 120885), (202, 120867), (211, 120837), (226, 120774), (257, 120642), (270, 120582), (278, 120534), (281, 120516), (289, 120477),

Gene: BoomerJR_4 Start: 2628, Stop: 1627, Start Num: 50

Candidate Starts for BoomerJR_4:

(30, 2694), (33, 2685), (Start: 50 @2628 has 120 MA's), (76, 2517), (111, 2430), (162, 2238), (169, 2217), (173, 2208), (181, 2166), (189, 2136), (199, 2097), (202, 2079), (211, 2049), (226, 1986), (257, 1854), (270, 1794), (278, 1746), (281, 1728), (289, 1689),

Gene: Bordeaux_260 Start: 121389, Stop: 120349, Start Num: 39

Candidate Starts for Bordeaux_260:

(Start: 39 @121389 has 18 MA's), (Start: 50 @121344 has 120 MA's), (76, 121233), (87, 121200), (101, 121167), (108, 121155), (111, 121146), (134, 121098), (135, 121080), (136, 121077), (169, 120933), (173, 120924), (181, 120882), (189, 120852), (199, 120813), (202, 120795), (211, 120765), (226, 120702), (257, 120570), (270, 120510), (278, 120462), (289, 120405), (302, 120369),

Gene: Bordeaux_3 Start: 2651, Stop: 1611, Start Num: 39

Candidate Starts for Bordeaux_3:

(Start: 39 @2651 has 18 MA's), (Start: 50 @2606 has 120 MA's), (76, 2495), (87, 2462), (101, 2429), (108, 2417), (111, 2408), (134, 2360), (135, 2342), (136, 2339), (169, 2195), (173, 2186), (181, 2144), (189, 2114), (199, 2075), (202, 2057), (211, 2027), (226, 1964), (257, 1832), (270, 1772), (278, 1724), (289, 1667), (302, 1631),

Gene: Braelyn_248 Start: 122839, Stop: 121826, Start Num: 50

Candidate Starts for Braelyn_248:

(9, 122989), (15, 122953), (Start: 19 @122932 has 4 MA's), (28, 122914), (Start: 50 @122839 has 120 MA's), (69, 122758), (76, 122728), (95, 122668), (105, 122638), (110, 122623), (111, 122620), (134,

122572), (155, 122461), (169, 122407), (180, 122362), (189, 122326), (199, 122287), (202, 122269), (211, 122239), (248, 122080), (257, 122047), (270, 121987), (278, 121939), (281, 121921), (289, 121882),

Gene: Braelyn_3 Start: 2429, Stop: 1416, Start Num: 50

Candidate Starts for Braelyn_3:

(9, 2579), (15, 2543), (Start: 19 @2522 has 4 MA's), (28, 2504), (Start: 50 @2429 has 120 MA's), (69, 2348), (76, 2318), (95, 2258), (105, 2228), (110, 2213), (111, 2210), (134, 2162), (155, 2051), (169, 1997), (180, 1952), (189, 1916), (199, 1877), (202, 1859), (211, 1829), (248, 1670), (257, 1637), (270, 1577), (278, 1529), (281, 1511), (289, 1472),

Gene: BrazzalePHS_57 Start: 37331, Stop: 38326, Start Num: 46

Candidate Starts for BrazzalePHS_57:

(Start: 46 @37331 has 71 MA's), (78, 37451), (82, 37460), (86, 37472), (103, 37505), (104, 37511), (115, 37529), (138, 37640), (157, 37721), (178, 37799), (180, 37811), (211, 37934), (218, 37964), (258, 38135), (267, 38156), (272, 38186), (276, 38219), (285, 38267),

Gene: Bricole_151 Start: 75493, Stop: 74420, Start Num: 55

Candidate Starts for Bricole_151:

(7, 75670), (9, 75658), (Start: 24 @75589 has 5 MA's), (36, 75568), (Start: 55 @75493 has 12 MA's), (78, 75388), (81, 75379), (92, 75343), (108, 75289), (120, 75256), (128, 75226), (141, 75142), (162, 75046), (178, 74989), (187, 74947), (191, 74929), (203, 74866), (207, 74857), (210, 74845), (211, 74842), (223, 74791), (236, 74731), (260, 74632), (263, 74623), (273, 74587), (279, 74548), (302, 74452), (304, 74443),

Gene: Busephilis_57 Start: 37241, Stop: 38236, Start Num: 46

Candidate Starts for Busephilis_57:

(Start: 46 @37241 has 71 MA's), (78, 37361), (82, 37370), (86, 37382), (103, 37415), (104, 37421), (115, 37439), (138, 37550), (157, 37631), (178, 37709), (180, 37721), (211, 37844), (218, 37874), (222, 37886), (258, 38045), (267, 38066), (272, 38096), (276, 38129), (285, 38177),

Gene: Candle_59 Start: 44716, Stop: 45912, Start Num: 21

Candidate Starts for Candle_59:

(Start: 21 @44716 has 12 MA's), (29, 44731), (47, 44797), (53, 44806), (71, 44887), (75, 44908), (80, 44923), (88, 44950), (104, 45010), (108, 45031), (118, 45064), (138, 45175), (140, 45181), (144, 45193), (153, 45232), (159, 45262), (168, 45301), (187, 45379), (189, 45385), (192, 45400), (224, 45538), (231, 45571), (236, 45595), (258, 45688), (263, 45706), (272, 45739), (285, 45823), (291, 45844), (295, 45859), (302, 45877), (303, 45880), (304, 45886), (307, 45895), (308, 45898),

Gene: Caprice_92 Start: 57512, Stop: 56442, Start Num: 46

Candidate Starts for Caprice_92:

(Start: 35 @57566 has 1 MA's), (37, 57557), (Start: 46 @57512 has 71 MA's), (53, 57497), (60, 57464), (83, 57371), (92, 57338), (99, 57314), (107, 57281), (108, 57278), (109, 57275), (114, 57260), (117, 57248), (127, 57221), (141, 57134), (146, 57122), (152, 57089), (157, 57062), (159, 57056), (162, 57038), (175, 56996), (178, 56981), (185, 56945), (189, 56933), (204, 56855), (208, 56849), (215, 56822), (221, 56801), (231, 56753), (237, 56726), (257, 56651), (264, 56630), (267, 56627), (302, 56459), (303, 56456),

Gene: CeilingFan_268 Start: 122824, Stop: 121829, Start Num: 50

Candidate Starts for CeilingFan_268:

(Start: 39 @122869 has 18 MA's), (Start: 50 @122824 has 120 MA's), (76, 122713), (87, 122680), (101, 122647), (108, 122635), (111, 122626), (134, 122578), (135, 122560), (136, 122557), (169, 122413), (173, 122404), (181, 122362), (189, 122332), (199, 122293), (202, 122275), (211, 122245),

(226, 122182), (257, 122050), (270, 121990), (278, 121942), (289, 121885), (302, 121849),

Gene: CeilingFan_2 Start: 2217, Stop: 1222, Start Num: 50

Candidate Starts for CeilingFan_2:

(Start: 39 @2262 has 18 MA's), (Start: 50 @2217 has 120 MA's), (76, 2106), (87, 2073), (101, 2040), (108, 2028), (111, 2019), (134, 1971), (135, 1953), (136, 1950), (169, 1806), (173, 1797), (181, 1755), (189, 1725), (199, 1686), (202, 1668), (211, 1638), (226, 1575), (257, 1443), (270, 1383), (278, 1335), (289, 1278), (302, 1242),

Gene: Cinna_55 Start: 38481, Stop: 39482, Start Num: 54

Candidate Starts for Cinna_55:

(Start: 54 @38481 has 35 MA's), (63, 38529), (68, 38553), (78, 38595), (93, 38637), (125, 38697), (133, 38736), (136, 38760), (137, 38775), (138, 38784), (147, 38811), (149, 38817), (151, 38820), (158, 38868), (196, 39027), (225, 39150), (228, 39162), (231, 39177), (245, 39237), (247, 39252), (261, 39306),

Gene: Clarkson_101 Start: 57755, Stop: 56685, Start Num: 46

Candidate Starts for Clarkson_101:

(Start: 35 @57809 has 1 MA's), (37, 57800), (Start: 46 @57755 has 71 MA's), (53, 57740), (60, 57707), (83, 57614), (92, 57581), (99, 57557), (107, 57524), (108, 57521), (109, 57518), (114, 57503), (117, 57491), (127, 57464), (141, 57377), (146, 57365), (152, 57332), (157, 57305), (159, 57299), (162, 57281), (175, 57239), (178, 57224), (185, 57188), (189, 57176), (204, 57098), (208, 57092), (215, 57065), (221, 57044), (237, 56969), (257, 56894), (264, 56873), (267, 56870), (302, 56702), (303, 56699),

Gene: ClearAsMud_62 Start: 37812, Stop: 38807, Start Num: 46

Candidate Starts for ClearAsMud_62:

(Start: 46 @37812 has 71 MA's), (78, 37932), (82, 37941), (86, 37953), (103, 37986), (104, 37992), (115, 38010), (138, 38121), (157, 38202), (168, 38244), (178, 38280), (180, 38292), (211, 38415), (218, 38445), (222, 38457), (258, 38616), (267, 38637), (274, 38679), (276, 38700), (285, 38748),

Gene: Comrade_215 Start: 108241, Stop: 109263, Start Num: 49

Candidate Starts for Comrade_215:

(Start: 49 @108241 has 8 MA's), (58, 108271), (76, 108352), (81, 108370), (95, 108412), (105, 108430), (111, 108448), (160, 108628), (175, 108691), (181, 108724), (183, 108736), (184, 108739), (188, 108751), (206, 108826), (226, 108901), (231, 108925), (238, 108955), (252, 109018), (302, 109237),

Gene: Corazon_95 Start: 57949, Stop: 56879, Start Num: 46

Candidate Starts for Corazon_95:

(Start: 35 @58003 has 1 MA's), (37, 57994), (Start: 46 @57949 has 71 MA's), (53, 57934), (60, 57901), (83, 57808), (92, 57775), (99, 57751), (107, 57718), (108, 57715), (109, 57712), (114, 57697), (117, 57685), (127, 57658), (141, 57571), (146, 57559), (152, 57526), (157, 57499), (159, 57493), (162, 57475), (175, 57433), (178, 57418), (185, 57382), (189, 57370), (204, 57292), (208, 57286), (215, 57259), (221, 57238), (237, 57163), (257, 57088), (264, 57067), (267, 57064), (302, 56896), (303, 56893),

Gene: Cranjis_59 Start: 37490, Stop: 38485, Start Num: 46

Candidate Starts for Cranjis_59:

(Start: 46 @37490 has 71 MA's), (78, 37610), (82, 37619), (86, 37631), (103, 37664), (104, 37670), (115, 37688), (138, 37799), (157, 37880), (178, 37958), (180, 37970), (211, 38093), (218, 38123), (258, 38294), (267, 38315), (272, 38345), (276, 38378), (285, 38426),

Gene: CrazyRich_57 Start: 37299, Stop: 38294, Start Num: 46

Candidate Starts for CrazyRich_57:

(Start: 46 @37299 has 71 MA's), (78, 37419), (82, 37428), (86, 37440), (103, 37473), (104, 37479), (115, 37497), (138, 37608), (157, 37689), (178, 37767), (180, 37779), (211, 37902), (218, 37932), (258, 38103), (267, 38124), (272, 38154), (276, 38187), (285, 38235),

Gene: Cressida_58 Start: 38132, Stop: 39133, Start Num: 54

Candidate Starts for Cressida_58:

(Start: 54 @38132 has 35 MA's), (63, 38180), (68, 38204), (78, 38246), (93, 38288), (125, 38348), (133, 38387), (136, 38411), (137, 38426), (147, 38462), (149, 38468), (151, 38471), (158, 38519), (196, 38678), (225, 38801), (228, 38813), (231, 38828), (245, 38888), (247, 38903), (261, 38957), (283, 39068), (300, 39125),

Gene: Crisis_59 Start: 37290, Stop: 38285, Start Num: 46

Candidate Starts for Crisis_59:

(Start: 46 @37290 has 71 MA's), (78, 37410), (82, 37419), (86, 37431), (103, 37464), (104, 37470), (115, 37488), (138, 37599), (157, 37680), (178, 37758), (180, 37770), (211, 37893), (218, 37923), (258, 38094), (267, 38115), (272, 38145), (276, 38178), (285, 38226),

Gene: Cross_2 Start: 2225, Stop: 1212, Start Num: 50

Candidate Starts for Cross_2:

(Start: 10 @2372 has 4 MA's), (Start: 19 @2318 has 4 MA's), (28, 2300), (Start: 50 @2225 has 120 MA's), (76, 2114), (87, 2081), (95, 2054), (101, 2045), (105, 2024), (110, 2009), (134, 1958), (155, 1847), (169, 1793), (189, 1712), (199, 1673), (202, 1655), (211, 1625), (226, 1562), (246, 1478), (248, 1466), (257, 1433), (270, 1373), (278, 1325), (281, 1307), (289, 1268),

Gene: Cross_250 Start: 123957, Stop: 122944, Start Num: 50

Candidate Starts for Cross_250:

(Start: 10 @124104 has 4 MA's), (Start: 19 @124050 has 4 MA's), (28, 124032), (Start: 50 @123957 has 120 MA's), (76, 123846), (87, 123813), (95, 123786), (101, 123777), (105, 123756), (110, 123741), (134, 123690), (155, 123579), (169, 123525), (189, 123444), (199, 123405), (202, 123387), (211, 123357), (226, 123294), (246, 123210), (248, 123198), (257, 123165), (270, 123105), (278, 123057), (281, 123039), (289, 123000),

Gene: Cuke_50 Start: 34724, Stop: 35866, Start Num: 21

Candidate Starts for Cuke_50:

(Start: 21 @34724 has 12 MA's), (43, 34790), (Start: 55 @34826 has 12 MA's), (57, 34832), (65, 34874), (75, 34925), (98, 34988), (126, 35075), (138, 35126), (146, 35147), (152, 35180), (157, 35207), (159, 35213), (161, 35219), (168, 35252), (171, 35261), (187, 35330), (193, 35357), (207, 35420), (226, 35498), (241, 35561), (243, 35567), (255, 35636), (263, 35663), (266, 35666), (269, 35675), (272, 35696), (281, 35753), (283, 35765), (284, 35774), (297, 35816), (307, 35849),

Gene: Cursive_2 Start: 2225, Stop: 1212, Start Num: 50

Candidate Starts for Cursive_2:

(Start: 50 @2225 has 120 MA's), (76, 2114), (87, 2081), (95, 2054), (101, 2045), (105, 2024), (110, 2009), (134, 1958), (155, 1847), (169, 1793), (189, 1712), (199, 1673), (202, 1655), (211, 1625), (226, 1562), (246, 1478), (248, 1466), (257, 1433), (270, 1373), (278, 1325), (281, 1307), (289, 1268),

Gene: Cursive_256 Start: 124234, Stop: 123221, Start Num: 50

Candidate Starts for Cursive_256:

(Start: 50 @124234 has 120 MA's), (76, 124123), (87, 124090), (95, 124063), (101, 124054), (105, 124033), (110, 124018), (134, 123967), (155, 123856), (169, 123802), (189, 123721), (199, 123682), (202, 123664), (211, 123634), (226, 123571), (246, 123487), (248, 123475), (257, 123442), (270,

123382), (278, 123334), (281, 123316), (289, 123277),

Gene: Dewdrop_143 Start: 85445, Stop: 86449, Start Num: 54

Candidate Starts for Dewdrop_143:

(Start: 54 @85445 has 35 MA's), (60, 85475), (79, 85562), (116, 85640), (134, 85703), (149, 85781), (151, 85784), (156, 85823), (165, 85859), (189, 85961), (190, 85967), (193, 85982), (214, 86069), (229, 86129), (242, 86183), (243, 86186), (247, 86216), (257, 86252), (288, 86402),

Gene: Diminimus_146 Start: 74499, Stop: 73330, Start Num: 24

Candidate Starts for Diminimus_146:

(7, 74580), (9, 74568), (Start: 24 @74499 has 5 MA's), (36, 74478), (Start: 55 @74403 has 12 MA's), (78, 74298), (81, 74289), (92, 74253), (108, 74199), (120, 74166), (128, 74136), (141, 74052), (162, 73956), (178, 73899), (187, 73857), (191, 73839), (203, 73776), (207, 73767), (210, 73755), (211, 73752), (223, 73701), (236, 73641), (260, 73542), (263, 73533), (273, 73497), (279, 73458), (282, 73431), (302, 73362), (304, 73353),

Gene: Dorin_194 Start: 106517, Stop: 107539, Start Num: 50

Candidate Starts for Dorin_194:

(Start: 50 @106517 has 120 MA's), (81, 106646), (101, 106697), (134, 106805), (156, 106910), (157, 106916), (173, 106979), (175, 106988), (183, 107033), (188, 107048), (193, 107072), (199, 107087), (217, 107162), (228, 107207), (299, 107507), (306, 107531),

Gene: Dulcita_146 Start: 74500, Stop: 73331, Start Num: 24

Candidate Starts for Dulcita_146:

(7, 74581), (9, 74569), (Start: 24 @74500 has 5 MA's), (36, 74479), (Start: 55 @74404 has 12 MA's), (78, 74299), (81, 74290), (92, 74254), (108, 74200), (120, 74167), (128, 74137), (141, 74053), (162, 73957), (178, 73900), (187, 73858), (191, 73840), (203, 73777), (207, 73768), (210, 73756), (211, 73753), (223, 73702), (236, 73642), (260, 73543), (263, 73534), (273, 73498), (279, 73459), (282, 73432), (302, 73363), (304, 73354),

Gene: DunneganBoMo_171 Start: 112270, Stop: 113247, Start Num: 48

Candidate Starts for DunneganBoMo_171:

(Start: 48 @112270 has 1 MA's), (59, 112312), (102, 112438), (139, 112573), (157, 112654), (175, 112717), (193, 112801), (217, 112891), (228, 112936), (257, 113035), (274, 113110),

Gene: EGole_256 Start: 127107, Stop: 125947, Start Num: 10

Candidate Starts for EGole_256:

(Start: 10 @127107 has 4 MA's), (Start: 19 @127053 has 4 MA's), (28, 127035), (Start: 50 @126960 has 120 MA's), (76, 126849), (87, 126816), (95, 126789), (101, 126780), (105, 126759), (110, 126744), (134, 126693), (155, 126582), (156, 126579), (169, 126528), (189, 126447), (199, 126408), (202, 126390), (211, 126360), (226, 126297), (230, 126279), (248, 126201), (257, 126168), (270, 126108), (278, 126060),

Gene: EGole_2 Start: 2795, Stop: 1635, Start Num: 10

Candidate Starts for EGole_2:

(Start: 10 @2795 has 4 MA's), (Start: 19 @2741 has 4 MA's), (28, 2723), (Start: 50 @2648 has 120 MA's), (76, 2537), (87, 2504), (95, 2477), (101, 2468), (105, 2447), (110, 2432), (134, 2381), (155, 2270), (156, 2267), (169, 2216), (189, 2135), (199, 2096), (202, 2078), (211, 2048), (226, 1985), (230, 1967), (248, 1889), (257, 1856), (270, 1796), (278, 1748),

Gene: EarickHC_59 Start: 37213, Stop: 38208, Start Num: 46

Candidate Starts for EarickHC_59:

(Start: 46 @37213 has 71 MA's), (78, 37333), (82, 37342), (86, 37354), (103, 37387), (104, 37393), (115, 37411), (138, 37522), (157, 37603), (178, 37681), (180, 37693), (211, 37816), (218, 37846), (258, 38017), (267, 38038), (272, 38068), (276, 38101), (285, 38149),

Gene: Ellewin_170 Start: 112375, Stop: 113352, Start Num: 48

Candidate Starts for Ellewin_170:

(Start: 48 @112375 has 1 MA's), (59, 112417), (102, 112543), (139, 112678), (157, 112759), (175, 112822), (193, 112906), (217, 112996), (228, 113041), (257, 113140), (274, 113215),

Gene: Elmer_3 Start: 2485, Stop: 1490, Start Num: 50

Candidate Starts for Elmer_3:

(8, 2632), (15, 2593), (16, 2581), (Start: 24 @2560 has 5 MA's), (33, 2542), (Start: 50 @2485 has 120 MA's), (76, 2374), (108, 2296), (111, 2287), (134, 2239), (135, 2221), (136, 2218), (169, 2074), (173, 2065), (189, 1993), (199, 1954), (202, 1936), (211, 1906), (226, 1843), (239, 1786), (257, 1711), (270, 1651), (274, 1630), (278, 1603), (281, 1585), (302, 1510), (304, 1501),

Gene: Elmer_270 Start: 124853, Stop: 123858, Start Num: 50

Candidate Starts for Elmer_270:

(8, 125000), (15, 124961), (16, 124949), (Start: 24 @124928 has 5 MA's), (33, 124910), (Start: 50 @124853 has 120 MA's), (76, 124742), (108, 124664), (111, 124655), (134, 124607), (135, 124589), (136, 124586), (169, 124442), (173, 124433), (189, 124361), (199, 124322), (202, 124304), (211, 124274), (226, 124211), (239, 124154), (257, 124079), (270, 124019), (274, 123998), (278, 123971), (281, 123953), (302, 123878), (304, 123869),

Gene: Emma1919_221 Start: 106800, Stop: 107822, Start Num: 50

Candidate Starts for Emma1919_221:

(Start: 50 @106800 has 120 MA's), (58, 106830), (76, 106911), (81, 106929), (95, 106971), (105, 106989), (111, 107007), (160, 107187), (175, 107250), (181, 107283), (183, 107295), (184, 107298), (188, 107310), (206, 107385), (226, 107460), (231, 107484), (232, 107490), (238, 107514), (252, 107577), (302, 107799), (306, 107814),

Gene: Enygma_2 Start: 2171, Stop: 1176, Start Num: 50

Candidate Starts for Enygma_2:

(8, 2315), (15, 2276), (17, 2261), (Start: 23 @2246 has 1 MA's), (33, 2228), (Start: 50 @2171 has 120 MA's), (76, 2060), (108, 1982), (111, 1973), (166, 1775), (173, 1751), (176, 1739), (181, 1709), (189, 1679), (199, 1640), (202, 1622), (211, 1592), (226, 1529), (257, 1397), (270, 1337), (278, 1289), (289, 1232), (302, 1196),

Gene: Enygma_270 Start: 124595, Stop: 123600, Start Num: 50

Candidate Starts for Enygma_270:

(8, 124739), (15, 124700), (17, 124685), (Start: 23 @124670 has 1 MA's), (33, 124652), (Start: 50 @124595 has 120 MA's), (76, 124484), (108, 124406), (111, 124397), (166, 124199), (173, 124175), (176, 124163), (181, 124133), (189, 124103), (199, 124064), (202, 124046), (211, 124016), (226, 123953), (257, 123821), (270, 123761), (278, 123713), (289, 123656), (302, 123620),

Gene: Estes_161 Start: 77859, Stop: 76786, Start Num: 55

Candidate Starts for Estes_161:

(34, 77931), (40, 77904), (Start: 55 @77859 has 12 MA's), (70, 77784), (81, 77745), (91, 77715), (108, 77655), (128, 77592), (132, 77568), (141, 77508), (162, 77412), (175, 77370), (191, 77295), (203, 77232), (207, 77223), (209, 77214), (213, 77199), (223, 77157), (228, 77136), (231, 77121), (236, 77097), (237, 77094), (263, 76989), (272, 76956), (274, 76944), (279, 76914), (282, 76887), (302, 76818), (304, 76809), (307, 76800),

Gene: EugeneKrabs_18 Start: 13122, Stop: 12133, Start Num: 54

Candidate Starts for EugeneKrabs_18:

(Start: 54 @13122 has 35 MA's), (60, 13092), (64, 13071), (67, 13059), (128, 12909), (136, 12855), (138, 12831), (143, 12816), (179, 12660), (186, 12627), (257, 12327), (276, 12240), (283, 12198), (287, 12180),

Gene: Evy_2 Start: 2329, Stop: 1316, Start Num: 50

Candidate Starts for Evy_2:

(Start: 10 @2467 has 4 MA's), (Start: 19 @2422 has 4 MA's), (28, 2404), (45, 2341), (Start: 50 @2329 has 120 MA's), (69, 2248), (76, 2218), (87, 2185), (100, 2152), (105, 2128), (110, 2113), (134, 2062), (169, 1897), (189, 1816), (199, 1777), (202, 1759), (211, 1729), (226, 1666), (230, 1648), (248, 1570), (257, 1537), (278, 1429), (281, 1411), (289, 1372),

Gene: Evy_240 Start: 124058, Stop: 123045, Start Num: 50

Candidate Starts for Evy_240:

(Start: 10 @124196 has 4 MA's), (Start: 19 @124151 has 4 MA's), (28, 124133), (45, 124070), (Start: 50 @124058 has 120 MA's), (69, 123977), (76, 123947), (87, 123914), (100, 123881), (105, 123857), (110, 123842), (134, 123791), (169, 123626), (189, 123545), (199, 123506), (202, 123488), (211, 123458), (226, 123395), (230, 123377), (248, 123299), (257, 123266), (278, 123158), (281, 123140), (289, 123101),

Gene: Faust_215 Start: 108762, Stop: 109772, Start Num: 50

Candidate Starts for Faust_215:

(Start: 50 @108762 has 120 MA's), (58, 108792), (69, 108843), (76, 108873), (89, 108912), (117, 108981), (192, 109278), (214, 109362), (226, 109410), (231, 109434), (232, 109440), (250, 109518), (258, 109545), (286, 109704), (298, 109737), (299, 109740), (303, 109752),

Gene: FeliMaine_100 Start: 57997, Stop: 56927, Start Num: 46

Candidate Starts for FeliMaine_100:

(Start: 35 @58051 has 1 MA's), (37, 58042), (Start: 46 @57997 has 71 MA's), (53, 57982), (60, 57949), (83, 57856), (92, 57823), (99, 57799), (107, 57766), (108, 57763), (109, 57760), (114, 57745), (117, 57733), (127, 57706), (141, 57619), (146, 57607), (152, 57574), (157, 57547), (159, 57541), (162, 57523), (175, 57481), (178, 57466), (185, 57430), (189, 57418), (204, 57340), (208, 57334), (215, 57307), (221, 57286), (237, 57211), (257, 57136), (264, 57115), (267, 57112), (302, 56944), (303, 56941),

Gene: Fireman_61 Start: 39216, Stop: 40211, Start Num: 46

Candidate Starts for Fireman_61:

(Start: 46 @39216 has 71 MA's), (78, 39336), (82, 39345), (86, 39357), (103, 39390), (104, 39396), (115, 39414), (131, 39471), (138, 39525), (157, 39606), (168, 39648), (178, 39684), (180, 39696), (189, 39732), (211, 39819), (231, 39909), (258, 40020), (267, 40041), (274, 40083), (276, 40104), (285, 40152),

Gene: Forrest_221 Start: 107765, Stop: 108787, Start Num: 50

Candidate Starts for Forrest_221:

(Start: 50 @107765 has 120 MA's), (58, 107795), (76, 107876), (81, 107894), (95, 107936), (105, 107954), (111, 107972), (160, 108152), (175, 108215), (181, 108248), (183, 108260), (184, 108263), (188, 108275), (206, 108350), (226, 108425), (231, 108449), (238, 108479), (252, 108542), (302, 108764), (306, 108779),

Gene: Fowlmouth_54 Start: 38133, Stop: 39266, Start Num: 21

Candidate Starts for Fowlmouth_54:

(Start: 21 @38133 has 12 MA's), (38, 38172), (43, 38199), (57, 38241), (65, 38283), (72, 38319), (75, 38334), (98, 38397), (126, 38475), (138, 38526), (146, 38547), (154, 38595), (159, 38613), (161, 38619), (168, 38652), (171, 38661), (189, 38736), (193, 38757), (195, 38763), (207, 38820), (224, 38889), (226, 38898), (231, 38922), (241, 38961), (243, 38967), (248, 39006), (255, 39036), (263, 39063), (266, 39066), (269, 39075), (271, 39090), (281, 39153), (283, 39165), (284, 39174), (297, 39216), (307, 39249),

Gene: Francesca_196 Start: 107439, Stop: 108461, Start Num: 50

Candidate Starts for Francesca_196:

(Start: 50 @107439 has 120 MA's), (81, 107568), (95, 107610), (101, 107619), (134, 107727), (156, 107832), (157, 107838), (162, 107862), (173, 107901), (175, 107910), (183, 107955), (188, 107970), (193, 107994), (199, 108009), (217, 108084), (228, 108129), (299, 108429),

Gene: Francob_223 Start: 107816, Stop: 108835, Start Num: 49

Candidate Starts for Francob_223:

(Start: 49 @107816 has 8 MA's), (58, 107843), (76, 107924), (81, 107942), (95, 107984), (105, 108002), (111, 108020), (124, 108053), (160, 108200), (175, 108263), (177, 108269), (181, 108296), (182, 108302), (183, 108308), (184, 108311), (188, 108323), (206, 108398), (226, 108473), (231, 108497), (238, 108527), (252, 108590), (302, 108809),

Gene: FreakyGoo_148 Start: 75645, Stop: 74572, Start Num: 55

Candidate Starts for FreakyGoo_148:

(7, 75822), (9, 75810), (Start: 24 @75741 has 5 MA's), (36, 75720), (Start: 55 @75645 has 12 MA's), (78, 75540), (81, 75531), (92, 75495), (108, 75441), (120, 75408), (128, 75378), (141, 75294), (162, 75198), (178, 75141), (187, 75099), (191, 75081), (203, 75018), (207, 75009), (210, 74997), (211, 74994), (223, 74943), (236, 74883), (260, 74784), (263, 74775), (273, 74739), (279, 74700), (302, 74604), (304, 74595),

Gene: Fryberger_80 Start: 42863, Stop: 41793, Start Num: 46

Candidate Starts for Fryberger_80:

(37, 42908), (42, 42878), (Start: 46 @42863 has 71 MA's), (Start: 56 @42839 has 1 MA's), (60, 42815), (74, 42743), (78, 42731), (91, 42692), (99, 42668), (113, 42617), (138, 42494), (161, 42401), (171, 42359), (175, 42347), (178, 42332), (189, 42284), (217, 42167), (231, 42110), (237, 42083), (251, 42023), (283, 41873), (288, 41849), (292, 41834), (295, 41825), (298, 41819),

Gene: Fullmetal_18 Start: 12570, Stop: 11566, Start Num: 54

Candidate Starts for Fullmetal_18:

(Start: 54 @12570 has 35 MA's), (82, 12441), (128, 12345), (137, 12276), (138, 12267), (156, 12192), (189, 12054), (211, 11961), (228, 11889), (231, 11874), (234, 11859), (237, 11847), (243, 11829), (249, 11784), (280, 11652), (287, 11613), (301, 11571),

Gene: Ganandorf_57 Start: 37323, Stop: 38318, Start Num: 46

Candidate Starts for Ganandorf_57:

(Start: 46 @37323 has 71 MA's), (78, 37443), (82, 37452), (86, 37464), (103, 37497), (104, 37503), (115, 37521), (138, 37632), (157, 37713), (178, 37791), (180, 37803), (211, 37926), (218, 37956), (258, 38127), (267, 38148), (272, 38178), (276, 38211), (285, 38259),

Gene: GardenSalsa_164 Start: 78536, Stop: 77463, Start Num: 55

Candidate Starts for GardenSalsa_164:

(Start: 55 @78536 has 12 MA's), (81, 78422), (91, 78392), (108, 78332), (128, 78269), (132, 78245), (141, 78185), (162, 78089), (175, 78047), (191, 77972), (203, 77909), (207, 77900), (209, 77891), (213, 77876), (223, 77834), (228, 77813), (231, 77798), (236, 77774), (237, 77771), (263, 77666), (272, 77633), (274, 77621), (279, 77591), (282, 77564), (302, 77495), (304, 77486), (307, 77477),

Gene: Gattaca_99 Start: 57986, Stop: 56916, Start Num: 46

Candidate Starts for Gattaca_99:

(25, 58058), (Start: 27 @58055 has 1 MA's), (31, 58049), (Start: 46 @57986 has 71 MA's), (53, 57971), (60, 57938), (83, 57845), (92, 57812), (99, 57788), (107, 57755), (108, 57752), (109, 57749), (114, 57734), (117, 57722), (127, 57695), (141, 57608), (146, 57596), (152, 57563), (157, 57536), (159, 57530), (162, 57512), (175, 57470), (178, 57455), (185, 57419), (189, 57407), (204, 57329), (208, 57323), (215, 57296), (221, 57275), (237, 57200), (257, 57125), (264, 57104), (267, 57101), (302, 56933), (303, 56930),

Gene: Genie2_259 Start: 121529, Stop: 120528, Start Num: 50

Candidate Starts for Genie2_259:

(30, 121595), (33, 121586), (Start: 50 @121529 has 120 MA's), (76, 121418), (111, 121331), (162, 121139), (169, 121118), (173, 121109), (181, 121067), (189, 121037), (199, 120998), (202, 120980), (211, 120950), (226, 120887), (257, 120755), (270, 120695), (278, 120647), (281, 120629), (289, 120590),

Gene: Genie2_4 Start: 2628, Stop: 1627, Start Num: 50

Candidate Starts for Genie2_4:

(30, 2694), (33, 2685), (Start: 50 @2628 has 120 MA's), (76, 2517), (111, 2430), (162, 2238), (169, 2217), (173, 2208), (181, 2166), (189, 2136), (199, 2097), (202, 2079), (211, 2049), (226, 1986), (257, 1854), (270, 1794), (278, 1746), (281, 1728), (289, 1689),

Gene: Gibbi_273 Start: 122322, Stop: 121321, Start Num: 50

Candidate Starts for Gibbi_273:

(8, 122466), (15, 122427), (17, 122412), (Start: 23 @122397 has 1 MA's), (30, 122388), (33, 122379), (Start: 50 @122322 has 120 MA's), (76, 122211), (108, 122133), (162, 121932), (166, 121926), (173, 121902), (176, 121890), (189, 121830), (199, 121791), (202, 121773), (211, 121743), (226, 121680), (257, 121548), (270, 121488), (278, 121440), (289, 121383), (304, 121338),

Gene: Gibbi_2 Start: 2222, Stop: 1221, Start Num: 50

Candidate Starts for Gibbi_2:

(8, 2366), (15, 2327), (17, 2312), (Start: 23 @2297 has 1 MA's), (30, 2288), (33, 2279), (Start: 50 @2222 has 120 MA's), (76, 2111), (108, 2033), (162, 1832), (166, 1826), (173, 1802), (176, 1790), (189, 1730), (199, 1691), (202, 1673), (211, 1643), (226, 1580), (257, 1448), (270, 1388), (278, 1340), (289, 1283), (304, 1238),

Gene: Gibbles_116 Start: 78724, Stop: 77663, Start Num: 46

Candidate Starts for Gibbles_116:

(Start: 46 @78724 has 71 MA's), (Start: 56 @78700 has 1 MA's), (85, 78571), (91, 78553), (125, 78448), (136, 78388), (168, 78238), (198, 78118), (216, 78040), (217, 78034), (227, 77992), (234, 77959), (243, 77929), (258, 77866), (263, 77848), (291, 77707), (294, 77695), (298, 77686),

Gene: Gilson_218 Start: 106326, Stop: 107348, Start Num: 50

Candidate Starts for Gilson_218:

(Start: 50 @106326 has 120 MA's), (58, 106356), (76, 106437), (81, 106455), (95, 106497), (105, 106515), (111, 106533), (160, 106713), (175, 106776), (181, 106809), (183, 106821), (184, 106824), (188, 106836), (206, 106911), (226, 106986), (231, 107010), (232, 107016), (238, 107040), (252, 107103), (302, 107325), (306, 107340),

Gene: Gina_61 Start: 37315, Stop: 38310, Start Num: 46

Candidate Starts for Gina_61:

(Start: 46 @37315 has 71 MA's), (53, 37330), (78, 37435), (82, 37444), (86, 37456), (115, 37513), (131, 37570), (138, 37624), (168, 37747), (178, 37783), (180, 37795), (211, 37918), (218, 37948), (231, 38008), (258, 38119), (267, 38140), (274, 38182), (276, 38203),

Gene: Glaske16_148 Start: 75618, Stop: 74449, Start Num: 24

Candidate Starts for Glaske16_148:

(7, 75699), (9, 75687), (Start: 24 @75618 has 5 MA's), (36, 75597), (Start: 55 @75522 has 12 MA's), (78, 75417), (81, 75408), (92, 75372), (108, 75318), (120, 75285), (128, 75255), (141, 75171), (162, 75075), (178, 75018), (187, 74976), (191, 74958), (203, 74895), (207, 74886), (210, 74874), (211, 74871), (223, 74820), (236, 74760), (260, 74661), (263, 74652), (273, 74616), (279, 74577), (282, 74550), (302, 74481), (304, 74472),

Gene: Glorp_59 Start: 37324, Stop: 38319, Start Num: 46

Candidate Starts for Glorp_59:

(Start: 46 @37324 has 71 MA's), (78, 37444), (82, 37453), (86, 37465), (103, 37498), (104, 37504), (115, 37522), (138, 37633), (157, 37714), (178, 37792), (180, 37804), (211, 37927), (218, 37957), (258, 38128), (267, 38149), (272, 38179), (276, 38212), (285, 38260),

Gene: GoongGoong_97 Start: 57792, Stop: 56722, Start Num: 46

Candidate Starts for GoongGoong_97:

(25, 57864), (Start: 27 @57861 has 1 MA's), (31, 57855), (Start: 46 @57792 has 71 MA's), (53, 57777), (60, 57744), (83, 57651), (92, 57618), (99, 57594), (107, 57561), (108, 57558), (109, 57555), (114, 57540), (117, 57528), (127, 57501), (141, 57414), (146, 57402), (152, 57369), (157, 57342), (159, 57336), (162, 57318), (175, 57276), (178, 57261), (185, 57225), (189, 57213), (204, 57135), (208, 57129), (215, 57102), (221, 57081), (237, 57006), (257, 56931), (264, 56910), (267, 56907), (302, 56739), (303, 56736),

Gene: Grayson_185 Start: 96345, Stop: 97394, Start Num: 50

Candidate Starts for Grayson_185:

(Start: 50 @96345 has 120 MA's), (60, 96384), (67, 96417), (77, 96462), (89, 96498), (110, 96555), (137, 96693), (157, 96774), (159, 96780), (161, 96786), (167, 96819), (192, 96924), (195, 96936), (206, 96981), (211, 96993), (224, 97047), (228, 97065), (257, 97185), (275, 97263), (298, 97359), (304, 97380),

Gene: Guey18_85 Start: 44196, Stop: 43126, Start Num: 46

Candidate Starts for Guey18_85:

(37, 44241), (42, 44211), (Start: 46 @44196 has 71 MA's), (Start: 56 @44172 has 1 MA's), (60, 44148), (74, 44076), (78, 44064), (91, 44025), (99, 44001), (113, 43950), (138, 43827), (161, 43734), (171, 43692), (175, 43680), (189, 43617), (217, 43500), (228, 43458), (248, 43371), (251, 43356), (283, 43206), (288, 43182), (292, 43167), (295, 43158), (298, 43152),

Gene: HangryHippo_2 Start: 2225, Stop: 1212, Start Num: 50

Candidate Starts for HangryHippo_2:

(Start: 10 @2372 has 4 MA's), (Start: 19 @2318 has 4 MA's), (28, 2300), (Start: 50 @2225 has 120 MA's), (76, 2114), (87, 2081), (95, 2054), (101, 2045), (105, 2024), (110, 2009), (134, 1958), (155, 1847), (169, 1793), (189, 1712), (199, 1673), (202, 1655), (211, 1625), (226, 1562), (246, 1478), (248, 1466), (257, 1433), (270, 1373), (278, 1325), (281, 1307), (289, 1268),

Gene: HangryHippo_250 Start: 123312, Stop: 122299, Start Num: 50

Candidate Starts for HangryHippo_250:

(Start: 10 @123459 has 4 MA's), (Start: 19 @123405 has 4 MA's), (28, 123387), (Start: 50 @123312 has 120 MA's), (76, 123201), (87, 123168), (95, 123141), (101, 123132), (105, 123111), (110, 123096), (134, 123045), (155, 122934), (169, 122880), (189, 122799), (199, 122760), (202, 122742), (211,

122712), (226, 122649), (246, 122565), (248, 122553), (257, 122520), (270, 122460), (278, 122412), (281, 122394), (289, 122355),

Gene: Hendrix_145 Start: 89503, Stop: 90504, Start Num: 54

Candidate Starts for Hendrix_145:

(Start: 54 @89503 has 35 MA's), (60, 89533), (84, 89635), (116, 89698), (119, 89707), (134, 89761), (151, 89842), (165, 89917), (193, 90040), (242, 90241), (243, 90244), (247, 90274), (257, 90310), (287, 90457),

Gene: Hermeonysus_57 Start: 37219, Stop: 38214, Start Num: 46

Candidate Starts for Hermeonysus_57:

(Start: 46 @37219 has 71 MA's), (78, 37339), (82, 37348), (86, 37360), (103, 37393), (104, 37399), (115, 37417), (138, 37528), (157, 37609), (178, 37687), (180, 37699), (211, 37822), (218, 37852), (258, 38023), (267, 38044), (272, 38074), (276, 38107), (285, 38155),

Gene: Honeyfin_59 Start: 37511, Stop: 38506, Start Num: 46

Candidate Starts for Honeyfin_59:

(Start: 46 @37511 has 71 MA's), (78, 37631), (82, 37640), (86, 37652), (103, 37685), (104, 37691), (115, 37709), (131, 37766), (138, 37820), (157, 37901), (168, 37943), (178, 37979), (180, 37991), (211, 38114), (218, 38144), (258, 38315), (267, 38336), (272, 38366), (276, 38399), (285, 38447),

Gene: Huphleuff_102 Start: 57560, Stop: 56490, Start Num: 46

Candidate Starts for Huphleuff_102:

(Start: 35 @57614 has 1 MA's), (37, 57605), (Start: 46 @57560 has 71 MA's), (53, 57545), (60, 57512), (83, 57419), (92, 57386), (99, 57362), (107, 57329), (108, 57326), (109, 57323), (114, 57308), (117, 57296), (127, 57269), (141, 57182), (146, 57170), (152, 57137), (157, 57110), (159, 57104), (162, 57086), (175, 57044), (178, 57029), (185, 56993), (189, 56981), (204, 56903), (208, 56897), (215, 56870), (221, 56849), (237, 56774), (257, 56699), (264, 56678), (267, 56675), (302, 56507), (303, 56504),

Gene: IPHane7_146 Start: 75346, Stop: 74273, Start Num: 55

Candidate Starts for IPHane7_146:

(7, 75523), (9, 75511), (Start: 24 @75442 has 5 MA's), (36, 75421), (Start: 55 @75346 has 12 MA's), (78, 75241), (81, 75232), (92, 75196), (108, 75142), (120, 75109), (128, 75079), (141, 74995), (162, 74899), (187, 74800), (191, 74782), (203, 74719), (207, 74710), (210, 74698), (211, 74695), (223, 74644), (236, 74584), (260, 74485), (263, 74476), (273, 74440), (279, 74401), (302, 74305), (304, 74296),

Gene: IchabodCrane_2 Start: 2214, Stop: 1219, Start Num: 50

Candidate Starts for IchabodCrane_2:

(Start: 39 @2259 has 18 MA's), (Start: 50 @2214 has 120 MA's), (76, 2103), (87, 2070), (101, 2037), (108, 2025), (111, 2016), (134, 1968), (135, 1950), (136, 1947), (169, 1803), (173, 1794), (181, 1752), (189, 1722), (199, 1683), (202, 1665), (211, 1635), (226, 1572), (257, 1440), (270, 1380), (278, 1332), (289, 1275), (302, 1239),

Gene: IchabodCrane_255 Start: 120757, Stop: 119762, Start Num: 50

Candidate Starts for IchabodCrane_255:

(Start: 39 @120802 has 18 MA's), (Start: 50 @120757 has 120 MA's), (76, 120646), (87, 120613), (101, 120580), (108, 120568), (111, 120559), (134, 120511), (135, 120493), (136, 120490), (169, 120346), (173, 120337), (181, 120295), (189, 120265), (199, 120226), (202, 120208), (211, 120178), (226, 120115), (257, 119983), (270, 119923), (278, 119875), (289, 119818), (302, 119782),

Gene: Indlulamithi_50 Start: 39104, Stop: 40291, Start Num: 20

Candidate Starts for Indlulamithi_50:

(6, 39026), (17, 39098), (Start: 20 @39104 has 1 MA's), (29, 39119), (32, 39128), (57, 39212), (65, 39254), (98, 39371), (122, 39443), (138, 39503), (140, 39509), (144, 39521), (159, 39590), (162, 39608), (168, 39629), (175, 39650), (188, 39710), (213, 39821), (216, 39833), (223, 39863), (231, 39899), (236, 39923), (255, 40010), (281, 40130), (293, 40184), (296, 40190), (309, 40241), (310, 40244), (311, 40262), (312, 40277),

Gene: Izel_143 Start: 74403, Stop: 73330, Start Num: 55

Candidate Starts for Izel_143:

(7, 74580), (9, 74568), (Start: 24 @74499 has 5 MA's), (36, 74478), (Start: 55 @74403 has 12 MA's), (78, 74298), (81, 74289), (92, 74253), (108, 74199), (120, 74166), (128, 74136), (141, 74052), (162, 73956), (178, 73899), (187, 73857), (191, 73839), (203, 73776), (207, 73767), (210, 73755), (211, 73752), (223, 73701), (236, 73641), (260, 73542), (263, 73533), (273, 73497), (279, 73458), (282, 73431), (302, 73362), (304, 73353),

Gene: Jada_220 Start: 107002, Stop: 108024, Start Num: 50

Candidate Starts for Jada_220:

(Start: 50 @107002 has 120 MA's), (58, 107032), (76, 107113), (81, 107131), (95, 107173), (105, 107191), (111, 107209), (160, 107389), (175, 107452), (181, 107485), (183, 107497), (184, 107500), (188, 107512), (206, 107587), (226, 107662), (231, 107686), (232, 107692), (238, 107716), (252, 107779), (302, 108001), (306, 108016),

Gene: Jay2Jay_5 Start: 2708, Stop: 1602, Start Num: 19

Candidate Starts for Jay2Jay_5:

(Start: 19 @2708 has 4 MA's), (28, 2690), (45, 2627), (Start: 50 @2615 has 120 MA's), (69, 2534), (76, 2504), (87, 2471), (100, 2438), (105, 2414), (110, 2399), (134, 2348), (169, 2183), (189, 2102), (199, 2063), (202, 2045), (211, 2015), (226, 1952), (230, 1934), (248, 1856), (257, 1823), (278, 1715), (281, 1697), (289, 1658),

Gene: Jay2Jay_260 Start: 124801, Stop: 123695, Start Num: 19

Candidate Starts for Jay2Jay_260:

(Start: 19 @124801 has 4 MA's), (28, 124783), (45, 124720), (Start: 50 @124708 has 120 MA's), (69, 124627), (76, 124597), (87, 124564), (100, 124531), (105, 124507), (110, 124492), (134, 124441), (169, 124276), (189, 124195), (199, 124156), (202, 124138), (211, 124108), (226, 124045), (230, 124027), (248, 123949), (257, 123916), (278, 123808), (281, 123790), (289, 123751),

Gene: Jayden_60 Start: 37996, Stop: 38991, Start Num: 46

Candidate Starts for Jayden_60:

(Start: 46 @37996 has 71 MA's), (78, 38116), (82, 38125), (86, 38137), (103, 38170), (104, 38176), (115, 38194), (131, 38251), (138, 38305), (178, 38464), (180, 38476), (211, 38599), (218, 38629), (255, 38791), (258, 38800), (267, 38821), (274, 38863), (276, 38884),

Gene: Jefe_58 Start: 37277, Stop: 38272, Start Num: 46

Candidate Starts for Jefe_58:

(Start: 46 @37277 has 71 MA's), (78, 37397), (82, 37406), (86, 37418), (103, 37451), (104, 37457), (115, 37475), (138, 37586), (157, 37667), (178, 37745), (180, 37757), (211, 37880), (218, 37910), (258, 38081), (267, 38102), (272, 38132), (276, 38165), (285, 38213),

Gene: Jflix2_48 Start: 34302, Stop: 33235, Start Num: 46

Candidate Starts for Jflix2_48:

(Start: 44 @34311 has 1 MA's), (Start: 46 @34302 has 71 MA's), (60, 34254), (97, 34125), (131, 33999), (159, 33858), (192, 33720), (244, 33495), (258, 33435), (276, 33351), (294, 33267), (302, 33246),

Gene: JimJam_271 Start: 124187, Stop: 123147, Start Num: 39

Candidate Starts for JimJam_271:

(Start: 39 @124187 has 18 MA's), (Start: 50 @124142 has 120 MA's), (76, 124031), (87, 123998), (101, 123965), (108, 123953), (111, 123944), (134, 123896), (135, 123878), (136, 123875), (169, 123731), (173, 123722), (181, 123680), (189, 123650), (199, 123611), (202, 123593), (211, 123563), (226, 123500), (257, 123368), (270, 123308), (278, 123260), (289, 123203), (302, 123167),

Gene: JimJam_3 Start: 2651, Stop: 1611, Start Num: 39

Candidate Starts for JimJam_3:

(Start: 39 @2651 has 18 MA's), (Start: 50 @2606 has 120 MA's), (76, 2495), (87, 2462), (101, 2429), (108, 2417), (111, 2408), (134, 2360), (135, 2342), (136, 2339), (169, 2195), (173, 2186), (181, 2144), (189, 2114), (199, 2075), (202, 2057), (211, 2027), (226, 1964), (257, 1832), (270, 1772), (278, 1724), (289, 1667), (302, 1631),

Gene: JimmyPG_17 Start: 12538, Stop: 11522, Start Num: 54

Candidate Starts for JimmyPG_17:

(5, 12724), (41, 12571), (Start: 54 @12538 has 35 MA's), (78, 12424), (82, 12409), (133, 12268), (137, 12229), (138, 12220), (158, 12136), (189, 12007), (211, 11914), (234, 11812), (243, 11782), (247, 11752), (249, 11740), (280, 11608), (287, 11569), (301, 11527),

Gene: JoieB_101 Start: 58161, Stop: 57091, Start Num: 46

Candidate Starts for JoieB_101:

(25, 58233), (Start: 27 @58230 has 1 MA's), (31, 58224), (Start: 46 @58161 has 71 MA's), (53, 58146), (60, 58113), (83, 58020), (92, 57987), (99, 57963), (107, 57930), (108, 57927), (109, 57924), (114, 57909), (117, 57897), (127, 57870), (141, 57783), (146, 57771), (152, 57738), (157, 57711), (159, 57705), (162, 57687), (175, 57645), (178, 57630), (185, 57594), (189, 57582), (204, 57504), (208, 57498), (215, 57471), (221, 57450), (237, 57375), (257, 57300), (264, 57279), (267, 57276), (302, 57108), (303, 57105),

Gene: Jollipop_59 Start: 37692, Stop: 38687, Start Num: 46

Candidate Starts for Jollipop_59:

(Start: 46 @37692 has 71 MA's), (78, 37812), (82, 37821), (86, 37833), (103, 37866), (104, 37872), (115, 37890), (138, 38001), (157, 38082), (168, 38124), (178, 38160), (180, 38172), (211, 38295), (218, 38325), (258, 38496), (267, 38517), (272, 38547), (276, 38580), (285, 38628),

Gene: Jollison_260 Start: 121281, Stop: 120286, Start Num: 50

Candidate Starts for Jollison_260:

(Start: 39 @121326 has 18 MA's), (Start: 50 @121281 has 120 MA's), (76, 121170), (87, 121137), (101, 121104), (108, 121092), (111, 121083), (134, 121035), (135, 121017), (136, 121014), (169, 120870), (173, 120861), (181, 120819), (189, 120789), (199, 120750), (202, 120732), (211, 120702), (226, 120639), (257, 120507), (270, 120447), (278, 120399), (289, 120342), (302, 120306),

Gene: Jollison_3 Start: 2606, Stop: 1611, Start Num: 50

Candidate Starts for Jollison_3:

(Start: 39 @2651 has 18 MA's), (Start: 50 @2606 has 120 MA's), (76, 2495), (87, 2462), (101, 2429), (108, 2417), (111, 2408), (134, 2360), (135, 2342), (136, 2339), (169, 2195), (173, 2186), (181, 2144), (189, 2114), (199, 2075), (202, 2057), (211, 2027), (226, 1964), (257, 1832), (270, 1772), (278, 1724), (289, 1667), (302, 1631),

Gene: JordanFarm_17 Start: 12296, Stop: 11307, Start Num: 54

Candidate Starts for JordanFarm_17:

(Start: 54 @12296 has 35 MA's), (78, 12182), (82, 12167), (133, 12053), (137, 12014), (138, 12005), (158, 11921), (189, 11792), (211, 11699), (231, 11612), (259, 11492), (276, 11414), (283, 11372), (287, 11354), (295, 11327),

Gene: KSunshine22_169 Start: 113333, Stop: 114310, Start Num: 48

Candidate Starts for KSunshine22_169:

(Start: 48 @113333 has 1 MA's), (59, 113375), (102, 113501), (139, 113636), (157, 113717), (175, 113780), (193, 113864), (217, 113954), (228, 113999), (257, 114098), (274, 114173),

Gene: KaiHaiDragon_59 Start: 37213, Stop: 38208, Start Num: 46

Candidate Starts for KaiHaiDragon_59:

(Start: 46 @37213 has 71 MA's), (78, 37333), (82, 37342), (86, 37354), (103, 37387), (104, 37393), (115, 37411), (138, 37522), (157, 37603), (178, 37681), (180, 37693), (211, 37816), (218, 37846), (258, 38017), (267, 38038), (272, 38068), (276, 38101), (285, 38149),

Gene: Kampe_114 Start: 77930, Stop: 76869, Start Num: 46

Candidate Starts for Kampe_114:

(Start: 46 @77930 has 71 MA's), (Start: 56 @77906 has 1 MA's), (85, 77777), (91, 77759), (125, 77654), (136, 77594), (168, 77444), (198, 77324), (216, 77246), (217, 77240), (227, 77198), (234, 77165), (243, 77135), (258, 77072), (263, 77054), (291, 76913), (294, 76901), (298, 76892),

Gene: Karimac_261 Start: 121927, Stop: 120932, Start Num: 50

Candidate Starts for Karimac_261:

(Start: 39 @121972 has 18 MA's), (Start: 50 @121927 has 120 MA's), (76, 121816), (87, 121783), (101, 121750), (108, 121738), (111, 121729), (134, 121681), (135, 121663), (136, 121660), (169, 121516), (173, 121507), (181, 121465), (189, 121435), (199, 121396), (202, 121378), (211, 121348), (226, 121285), (257, 121153), (270, 121093), (278, 121045), (289, 120988), (302, 120952),

Gene: Karimac_3 Start: 2608, Stop: 1613, Start Num: 50

Candidate Starts for Karimac_3:

(Start: 39 @2653 has 18 MA's), (Start: 50 @2608 has 120 MA's), (76, 2497), (87, 2464), (101, 2431), (108, 2419), (111, 2410), (134, 2362), (135, 2344), (136, 2341), (169, 2197), (173, 2188), (181, 2146), (189, 2116), (199, 2077), (202, 2059), (211, 2029), (226, 1966), (257, 1834), (270, 1774), (278, 1726), (289, 1669), (302, 1633),

Gene: Karp_214 Start: 108408, Stop: 109430, Start Num: 49

Candidate Starts for Karp_214:

(Start: 49 @108408 has 8 MA's), (58, 108438), (76, 108519), (81, 108537), (95, 108579), (105, 108597), (111, 108615), (160, 108795), (175, 108858), (181, 108891), (183, 108903), (184, 108906), (188, 108918), (206, 108993), (226, 109068), (231, 109092), (238, 109122), (252, 109185), (302, 109404),

Gene: Keelan_81 Start: 43600, Stop: 42530, Start Num: 46

Candidate Starts for Keelan_81:

(22, 43678), (28, 43666), (Start: 46 @43600 has 71 MA's), (Start: 56 @43576 has 1 MA's), (60, 43552), (81, 43459), (85, 43447), (91, 43429), (101, 43399), (113, 43354), (138, 43231), (144, 43213), (161, 43138), (175, 43084), (178, 43069), (189, 43021), (217, 42907), (220, 42901), (221, 42898), (230, 42856), (231, 42850), (233, 42841), (241, 42811), (271, 42694), (283, 42613), (288, 42589), (295, 42565), (302, 42547), (303, 42544),

Gene: Kenrey_224 Start: 107547, Stop: 108569, Start Num: 50

Candidate Starts for Kenrey_224:

(Start: 50 @107547 has 120 MA's), (58, 107577), (76, 107658), (81, 107676), (95, 107718), (111, 107754), (142, 107862), (160, 107934), (175, 107997), (181, 108030), (183, 108042), (184, 108045), (188, 108057), (192, 108075), (206, 108132), (226, 108207), (231, 108231), (238, 108261), (252, 108324), (302, 108546), (306, 108561),

Gene: KentuckyRacer_270 Start: 123669, Stop: 122674, Start Num: 50

Candidate Starts for KentuckyRacer_270:

(Start: 39 @123714 has 18 MA's), (Start: 50 @123669 has 120 MA's), (76, 123558), (87, 123525), (101, 123492), (108, 123480), (111, 123471), (134, 123423), (135, 123405), (136, 123402), (169, 123258), (173, 123249), (181, 123207), (189, 123177), (199, 123138), (202, 123120), (211, 123090), (226, 123027), (257, 122895), (270, 122835), (278, 122787), (289, 122730), (302, 122694),

Gene: KentuckyRacer_2 Start: 2218, Stop: 1223, Start Num: 50

Candidate Starts for KentuckyRacer_2:

(Start: 39 @2263 has 18 MA's), (Start: 50 @2218 has 120 MA's), (76, 2107), (87, 2074), (101, 2041), (108, 2029), (111, 2020), (134, 1972), (135, 1954), (136, 1951), (169, 1807), (173, 1798), (181, 1756), (189, 1726), (199, 1687), (202, 1669), (211, 1639), (226, 1576), (257, 1444), (270, 1384), (278, 1336), (289, 1279), (302, 1243),

Gene: KingKamren_18 Start: 13027, Stop: 12038, Start Num: 54

Candidate Starts for KingKamren_18:

(Start: 54 @13027 has 35 MA's), (60, 12997), (64, 12976), (93, 12871), (131, 12793), (136, 12760), (138, 12736), (143, 12721), (179, 12565), (205, 12442), (257, 12232), (283, 12103), (287, 12085),

Gene: KleverKiS_151 Start: 76403, Stop: 75330, Start Num: 55

Candidate Starts for KleverKiS_151:

(7, 76580), (9, 76568), (Start: 24 @76499 has 5 MA's), (36, 76478), (Start: 55 @76403 has 12 MA's), (78, 76298), (81, 76289), (92, 76253), (108, 76199), (120, 76166), (128, 76136), (141, 76052), (162, 75956), (178, 75899), (187, 75857), (191, 75839), (203, 75776), (207, 75767), (210, 75755), (211, 75752), (223, 75701), (236, 75641), (260, 75542), (263, 75533), (273, 75497), (279, 75458), (302, 75362), (304, 75353),

Gene: Kowalski_57 Start: 37326, Stop: 38321, Start Num: 46

Candidate Starts for Kowalski_57:

(Start: 46 @37326 has 71 MA's), (78, 37446), (82, 37455), (86, 37467), (103, 37500), (104, 37506), (115, 37524), (138, 37635), (157, 37716), (178, 37794), (180, 37806), (211, 37929), (218, 37959), (258, 38130), (267, 38151), (272, 38181), (276, 38214), (285, 38262),

Gene: Kozie_54 Start: 37761, Stop: 38762, Start Num: 54

Candidate Starts for Kozie_54:

(34, 37689), (Start: 54 @37761 has 35 MA's), (60, 37791), (63, 37809), (68, 37833), (93, 37917), (137, 38055), (149, 38097), (158, 38148), (175, 38214), (186, 38268), (196, 38307), (225, 38430), (228, 38442), (245, 38517), (247, 38532), (249, 38544), (261, 38586), (288, 38718),

Gene: Larnav_252 Start: 124229, Stop: 123216, Start Num: 50

Candidate Starts for Larnav_252:

(Start: 50 @124229 has 120 MA's), (76, 124118), (95, 124058), (101, 124049), (105, 124028), (110, 124013), (134, 123962), (155, 123851), (169, 123797), (189, 123716), (199, 123677), (202, 123659), (211, 123629), (226, 123566), (246, 123482), (248, 123470), (257, 123437), (270, 123377), (278, 123329), (281, 123311), (289, 123272),

Gene: Larnav_2 Start: 2224, Stop: 1211, Start Num: 50

Candidate Starts for Larnav_2:

(Start: 50 @2224 has 120 MA's), (76, 2113), (95, 2053), (101, 2044), (105, 2023), (110, 2008), (134, 1957), (155, 1846), (169, 1792), (189, 1711), (199, 1672), (202, 1654), (211, 1624), (226, 1561), (246, 1477), (248, 1465), (257, 1432), (270, 1372), (278, 1324), (281, 1306), (289, 1267),

Gene: Leaf_143 Start: 85376, Stop: 86380, Start Num: 54

Candidate Starts for Leaf_143:

(Start: 54 @85376 has 35 MA's), (60, 85406), (79, 85493), (116, 85571), (134, 85634), (149, 85712), (151, 85715), (156, 85754), (165, 85790), (189, 85892), (190, 85898), (193, 85913), (214, 86000), (229, 86060), (242, 86114), (243, 86117), (247, 86147), (257, 86183), (288, 86333),

Gene: Leo04_253 Start: 124342, Stop: 123329, Start Num: 50

Candidate Starts for Leo04_253:

(Start: 10 @124489 has 4 MA's), (Start: 19 @124435 has 4 MA's), (28, 124417), (Start: 50 @124342 has 120 MA's), (76, 124231), (87, 124198), (95, 124171), (101, 124162), (105, 124141), (110, 124126), (134, 124075), (155, 123964), (169, 123910), (189, 123829), (199, 123790), (202, 123772), (211, 123742), (226, 123679), (246, 123595), (248, 123583), (257, 123550), (270, 123490), (278, 123442), (281, 123424), (289, 123385),

Gene: Leo04_2 Start: 2224, Stop: 1211, Start Num: 50

Candidate Starts for Leo04_2:

(Start: 10 @2371 has 4 MA's), (Start: 19 @2317 has 4 MA's), (28, 2299), (Start: 50 @2224 has 120 MA's), (76, 2113), (87, 2080), (95, 2053), (101, 2044), (105, 2023), (110, 2008), (134, 1957), (155, 1846), (169, 1792), (189, 1711), (199, 1672), (202, 1654), (211, 1624), (226, 1561), (246, 1477), (248, 1465), (257, 1432), (270, 1372), (278, 1324), (281, 1306), (289, 1267),

Gene: LeoJr_176 Start: 116106, Stop: 117113, Start Num: 48

Candidate Starts for LeoJr_176:

(Start: 48 @116106 has 1 MA's), (59, 116148), (94, 116280), (139, 116436), (157, 116517), (175, 116580), (193, 116664), (217, 116754), (228, 116799), (229, 116802), (252, 116886), (253, 116892), (257, 116898),

Gene: Liandry_3 Start: 2417, Stop: 1404, Start Num: 50

Candidate Starts for Liandry_3:

(9, 2567), (15, 2531), (Start: 19 @2510 has 4 MA's), (28, 2492), (Start: 50 @2417 has 120 MA's), (69, 2336), (76, 2306), (95, 2246), (105, 2216), (110, 2201), (111, 2198), (134, 2150), (155, 2039), (169, 1985), (180, 1940), (189, 1904), (199, 1865), (202, 1847), (211, 1817), (248, 1658), (257, 1625), (270, 1565), (278, 1517), (281, 1499), (289, 1460),

Gene: Liandry_252 Start: 123938, Stop: 122925, Start Num: 50

Candidate Starts for Liandry_252:

(9, 124088), (15, 124052), (Start: 19 @124031 has 4 MA's), (28, 124013), (Start: 50 @123938 has 120 MA's), (69, 123857), (76, 123827), (95, 123767), (105, 123737), (110, 123722), (111, 123719), (134, 123671), (155, 123560), (169, 123506), (180, 123461), (189, 123425), (199, 123386), (202, 123368), (211, 123338), (248, 123179), (257, 123146), (270, 123086), (278, 123038), (281, 123020), (289, 122981),

Gene: LilMartin_254 Start: 123618, Stop: 122602, Start Num: 50

Candidate Starts for LilMartin_254:

(Start: 50 @123618 has 120 MA's), (76, 123507), (90, 123459), (95, 123447), (100, 123441), (110, 123402), (134, 123348), (155, 123237), (169, 123183), (189, 123102), (199, 123063), (202, 123045), (211, 123015), (226, 122952), (248, 122856), (257, 122823), (270, 122763), (278, 122715), (281, 122697), (289, 122658),

Gene: LilMartin_2 Start: 2274, Stop: 1258, Start Num: 50

Candidate Starts for LilMartin_2:

(Start: 50 @2274 has 120 MA's), (76, 2163), (90, 2115), (95, 2103), (100, 2097), (110, 2058), (134, 2004), (155, 1893), (169, 1839), (189, 1758), (199, 1719), (202, 1701), (211, 1671), (226, 1608), (248, 1512), (257, 1479), (270, 1419), (278, 1371), (281, 1353), (289, 1314),

Gene: Lilbit_98 Start: 58120, Stop: 57050, Start Num: 46

Candidate Starts for Lilbit_98:

(Start: 35 @58174 has 1 MA's), (37, 58165), (Start: 46 @58120 has 71 MA's), (53, 58105), (60, 58072), (83, 57979), (92, 57946), (99, 57922), (107, 57889), (108, 57886), (109, 57883), (114, 57868), (117, 57856), (127, 57829), (141, 57742), (146, 57730), (152, 57697), (157, 57670), (159, 57664), (162, 57646), (175, 57604), (178, 57589), (185, 57553), (189, 57541), (204, 57463), (208, 57457), (215, 57430), (221, 57409), (237, 57334), (257, 57259), (264, 57238), (267, 57235), (302, 57067), (303, 57064),

Gene: LilhomieP_145 Start: 75433, Stop: 74360, Start Num: 55

Candidate Starts for LilhomieP_145:

(7, 75610), (9, 75598), (Start: 24 @75529 has 5 MA's), (36, 75508), (Start: 55 @75433 has 12 MA's), (78, 75328), (81, 75319), (92, 75283), (108, 75229), (120, 75196), (128, 75166), (141, 75082), (162, 74986), (178, 74929), (187, 74887), (191, 74869), (203, 74806), (207, 74797), (210, 74785), (211, 74782), (223, 74731), (236, 74671), (260, 74572), (263, 74563), (273, 74527), (279, 74488), (302, 74392), (304, 74383),

Gene: Limpid_212 Start: 108722, Stop: 109738, Start Num: 51

Candidate Starts for Limpid_212:

(Start: 51 @108722 has 4 MA's), (58, 108749), (73, 108821), (76, 108836), (89, 108875), (117, 108944), (135, 108989), (175, 109163), (184, 109211), (193, 109247), (195, 109253), (206, 109298), (226, 109373), (231, 109397), (265, 109532), (285, 109661), (286, 109667), (298, 109700), (302, 109712), (303, 109715),

Gene: LittleFortune_60 Start: 37582, Stop: 38577, Start Num: 46

Candidate Starts for LittleFortune_60:

(Start: 46 @37582 has 71 MA's), (78, 37702), (82, 37711), (86, 37723), (103, 37756), (104, 37762), (115, 37780), (138, 37891), (157, 37972), (178, 38050), (180, 38062), (211, 38185), (218, 38215), (258, 38386), (267, 38407), (272, 38437), (276, 38470), (285, 38518),

Gene: LittleLaf_98 Start: 57849, Stop: 56779, Start Num: 46

Candidate Starts for LittleLaf_98:

(Start: 35 @57903 has 1 MA's), (37, 57894), (Start: 46 @57849 has 71 MA's), (53, 57834), (60, 57801), (83, 57708), (92, 57675), (99, 57651), (107, 57618), (108, 57615), (109, 57612), (114, 57597), (117, 57585), (127, 57558), (141, 57471), (146, 57459), (152, 57426), (157, 57399), (159, 57393), (162, 57375), (175, 57333), (178, 57318), (185, 57282), (189, 57270), (204, 57192), (208, 57186), (215, 57159), (221, 57138), (237, 57063), (257, 56988), (264, 56967), (267, 56964), (302, 56796), (303, 56793),

Gene: LukeCage_2 Start: 2214, Stop: 1213, Start Num: 50

Candidate Starts for LukeCage_2:

(8, 2358), (15, 2319), (17, 2304), (Start: 23 @2289 has 1 MA's), (33, 2271), (Start: 50 @2214 has 120 MA's), (76, 2103), (89, 2064), (90, 2055), (111, 2016), (162, 1824), (173, 1794), (176, 1782), (182, 1746), (189, 1722), (199, 1683), (202, 1665), (211, 1635), (226, 1572), (230, 1554), (236, 1524), (257, 1440), (270, 1380), (278, 1332), (281, 1314),

Gene: LukeCage_265 Start: 123118, Stop: 122117, Start Num: 50

Candidate Starts for LukeCage_265:

(8, 123262), (15, 123223), (17, 123208), (Start: 23 @123193 has 1 MA's), (33, 123175), (Start: 50 @123118 has 120 MA's), (76, 123007), (89, 122968), (90, 122959), (111, 122920), (162, 122728), (173, 122698), (176, 122686), (182, 122650), (189, 122626), (199, 122587), (202, 122569), (211, 122539), (226, 122476), (230, 122458), (236, 122428), (257, 122344), (270, 122284), (278, 122236), (281, 122218),

Gene: Lululemon_249 Start: 123117, Stop: 122104, Start Num: 50

Candidate Starts for Lululemon_249:

(18, 123213), (Start: 50 @123117 has 120 MA's), (76, 123006), (87, 122973), (95, 122946), (101, 122937), (105, 122916), (110, 122901), (134, 122850), (155, 122739), (169, 122685), (189, 122604), (199, 122565), (202, 122547), (211, 122517), (226, 122454), (246, 122370), (248, 122358), (257, 122325), (270, 122265), (278, 122217), (281, 122199), (289, 122160),

Gene: Lululemon_2 Start: 2225, Stop: 1212, Start Num: 50

Candidate Starts for Lululemon_2:

(18, 2321), (Start: 50 @2225 has 120 MA's), (76, 2114), (87, 2081), (95, 2054), (101, 2045), (105, 2024), (110, 2009), (134, 1958), (155, 1847), (169, 1793), (189, 1712), (199, 1673), (202, 1655), (211, 1625), (226, 1562), (246, 1478), (248, 1466), (257, 1433), (270, 1373), (278, 1325), (281, 1307), (289, 1268),

Gene: Madraxi_52 Start: 37049, Stop: 35973, Start Num: 44

Candidate Starts for Madraxi_52:

(Start: 44 @37049 has 1 MA's), (Start: 46 @37040 has 71 MA's), (60, 36992), (97, 36863), (131, 36737), (159, 36596), (192, 36458), (244, 36233), (258, 36173), (276, 36089), (294, 36005), (302, 35984),

Gene: Margaery_54 Start: 37699, Stop: 38700, Start Num: 54

Candidate Starts for Margaery_54:

(Start: 54 @37699 has 35 MA's), (63, 37747), (68, 37771), (78, 37813), (125, 37915), (136, 37978), (137, 37993), (147, 38029), (149, 38035), (151, 38038), (158, 38086), (196, 38245), (225, 38368), (228, 38380), (231, 38395), (245, 38455), (247, 38470), (261, 38524), (283, 38635), (300, 38692),

Gene: Marsus_270 Start: 125936, Stop: 124920, Start Num: 50

Candidate Starts for Marsus_270:

(45, 125948), (Start: 50 @125936 has 120 MA's), (69, 125855), (76, 125825), (90, 125777), (94, 125768), (95, 125765), (100, 125759), (110, 125720), (134, 125666), (155, 125555), (169, 125501), (189, 125420), (199, 125381), (202, 125363), (211, 125333), (226, 125270), (248, 125174), (257, 125141), (270, 125081), (278, 125033), (281, 125015), (290, 124973),

Gene: Marsus_2 Start: 2232, Stop: 1216, Start Num: 50

Candidate Starts for Marsus_2:

(45, 2244), (Start: 50 @2232 has 120 MA's), (69, 2151), (76, 2121), (90, 2073), (94, 2064), (95, 2061), (100, 2055), (110, 2016), (134, 1962), (155, 1851), (169, 1797), (189, 1716), (199, 1677), (202, 1659), (211, 1629), (226, 1566), (248, 1470), (257, 1437), (270, 1377), (278, 1329), (281, 1311), (290, 1269),

Gene: Marvin_94 Start: 57642, Stop: 56572, Start Num: 46

Candidate Starts for Marvin_94:

(Start: 35 @57696 has 1 MA's), (37, 57687), (Start: 46 @57642 has 71 MA's), (53, 57627), (60, 57594), (83, 57501), (92, 57468), (99, 57444), (107, 57411), (108, 57408), (109, 57405), (114, 57390), (117, 57378), (127, 57351), (141, 57264), (146, 57252), (152, 57219), (157, 57192), (159, 57186), (162, 57168), (175, 57126), (178, 57111), (185, 57075), (189, 57063), (204, 56985), (208, 56979), (215, 56952), (221, 56931), (237, 56856), (257, 56781), (264, 56760), (267, 56757), (302, 56589), (303,

56586),

Gene: Matzah_57 Start: 38560, Stop: 39561, Start Num: 54

Candidate Starts for Matzah_57:

(Start: 54 @38560 has 35 MA's), (63, 38608), (68, 38632), (78, 38674), (125, 38776), (133, 38815), (137, 38854), (147, 38890), (149, 38896), (151, 38899), (158, 38947), (196, 39106), (225, 39229), (228, 39241), (231, 39256), (245, 39316), (247, 39331), (261, 39385), (283, 39496),

Gene: Mazun_18 Start: 12571, Stop: 11567, Start Num: 54

Candidate Starts for Mazun_18:

(Start: 54 @12571 has 35 MA's), (82, 12442), (128, 12346), (137, 12277), (138, 12268), (156, 12193), (189, 12055), (211, 11962), (228, 11890), (231, 11875), (234, 11860), (243, 11830), (249, 11785), (280, 11653), (287, 11614), (301, 11572),

Gene: Megan_56 Start: 41734, Stop: 42738, Start Num: 54

Candidate Starts for Megan_56:

(Start: 54 @41734 has 35 MA's), (60, 41764), (61, 41773), (63, 41782), (68, 41806), (77, 41845), (78, 41848), (125, 41950), (145, 42058), (151, 42076), (158, 42124), (175, 42190), (189, 42253), (193, 42274), (194, 42277), (201, 42313), (205, 42334), (228, 42418), (231, 42433), (235, 42454), (245, 42493), (247, 42508), (254, 42541), (256, 42544), (261, 42562), (273, 42601), (276, 42631), (292, 42709),

Gene: MeganTheeKilla_223 Start: 107197, Stop: 108219, Start Num: 50

Candidate Starts for MeganTheeKilla_223:

(Start: 50 @107197 has 120 MA's), (58, 107227), (76, 107308), (81, 107326), (95, 107368), (111, 107404), (160, 107584), (175, 107647), (181, 107680), (183, 107692), (184, 107695), (188, 107707), (206, 107782), (226, 107857), (231, 107881), (238, 107911), (252, 107974), (302, 108196),

Gene: MementoMori_56 Start: 38139, Stop: 39140, Start Num: 54

Candidate Starts for MementoMori_56:

(Start: 54 @38139 has 35 MA's), (63, 38187), (68, 38211), (78, 38253), (93, 38295), (125, 38355), (133, 38394), (136, 38418), (137, 38433), (147, 38469), (149, 38475), (151, 38478), (158, 38526), (196, 38685), (225, 38808), (228, 38820), (231, 38835), (245, 38895), (247, 38910), (261, 38964),

Gene: Merry_ Start: 39138, Stop: 40133, Start Num: 46

Candidate Starts for Merry_:

(1, 38865), (3, 38931), (4, 38970), (Start: 46 @39138 has 71 MA's), (82, 39267), (86, 39279), (96, 39303), (103, 39312), (104, 39318), (129, 39378), (131, 39393), (138, 39447), (148, 39480), (157, 39528), (168, 39570), (178, 39606), (180, 39618), (189, 39654), (202, 39711), (211, 39741), (213, 39750), (219, 39774), (258, 39942), (272, 39993), (274, 40005), (285, 40074),

Gene: Metamorphoo_61 Start: 38510, Stop: 39505, Start Num: 46

Candidate Starts for Metamorphoo_61:

(Start: 46 @38510 has 71 MA's), (78, 38630), (82, 38639), (86, 38651), (103, 38684), (104, 38690), (115, 38708), (131, 38765), (138, 38819), (168, 38942), (178, 38978), (180, 38990), (211, 39113), (231, 39203), (258, 39314), (267, 39335), (274, 39377), (276, 39398), (285, 39446),

Gene: Mildred21_266 Start: 123620, Stop: 122598, Start Num: 50

Candidate Starts for Mildred21_266:

(Start: 50 @123620 has 120 MA's), (76, 123509), (90, 123461), (95, 123449), (100, 123443), (110, 123404), (134, 123350), (155, 123239), (169, 123185), (180, 123140), (186, 123113), (202, 123047), (211, 123017), (226, 122954), (248, 122858), (257, 122825), (278, 122717),

Gene: Mildred21_3 Start: 2462, Stop: 1440, Start Num: 50

Candidate Starts for Mildred21_3:

(Start: 50 @2462 has 120 MA's), (76, 2351), (90, 2303), (95, 2291), (100, 2285), (110, 2246), (134, 2192), (155, 2081), (169, 2027), (180, 1982), (186, 1955), (202, 1889), (211, 1859), (226, 1796), (248, 1700), (257, 1667), (278, 1559),

Gene: MindFlayer_2 Start: 2261, Stop: 1221, Start Num: 39

Candidate Starts for MindFlayer_2:

(Start: 39 @2261 has 18 MA's), (Start: 50 @2216 has 120 MA's), (76, 2105), (87, 2072), (101, 2039), (108, 2027), (111, 2018), (134, 1970), (135, 1952), (136, 1949), (169, 1805), (173, 1796), (181, 1754), (189, 1724), (199, 1685), (202, 1667), (211, 1637), (226, 1574), (257, 1442), (270, 1382), (278, 1334), (289, 1277), (302, 1241),

Gene: MindFlayer_254 Start: 120321, Stop: 119281, Start Num: 39

Candidate Starts for MindFlayer_254:

(Start: 39 @120321 has 18 MA's), (Start: 50 @120276 has 120 MA's), (76, 120165), (87, 120132), (101, 120099), (108, 120087), (111, 120078), (134, 120030), (135, 120012), (136, 120009), (169, 119865), (173, 119856), (181, 119814), (189, 119784), (199, 119745), (202, 119727), (211, 119697), (226, 119634), (257, 119502), (270, 119442), (278, 119394), (289, 119337), (302, 119301),

Gene: Moab_220 Start: 109307, Stop: 110329, Start Num: 49

Candidate Starts for Moab_220:

(Start: 49 @109307 has 8 MA's), (58, 109337), (67, 109379), (76, 109418), (81, 109436), (95, 109478), (105, 109496), (111, 109514), (160, 109694), (163, 109712), (175, 109757), (181, 109790), (182, 109796), (183, 109802), (206, 109892), (226, 109967), (231, 109991), (238, 110021), (252, 110084), (302, 110303),

Gene: Moleficent_18 Start: 12566, Stop: 11562, Start Num: 54

Candidate Starts for Moleficent_18:

(Start: 54 @12566 has 35 MA's), (82, 12437), (128, 12341), (137, 12272), (138, 12263), (156, 12188), (189, 12050), (211, 11957), (228, 11885), (231, 11870), (234, 11855), (237, 11843), (243, 11825), (249, 11780), (280, 11648), (287, 11609), (301, 11567),

Gene: MontyDev_62 Start: 44363, Stop: 45559, Start Num: 21

Candidate Starts for MontyDev_62:

(Start: 21 @44363 has 12 MA's), (29, 44378), (47, 44444), (53, 44453), (71, 44534), (75, 44555), (80, 44570), (88, 44597), (104, 44657), (108, 44678), (118, 44711), (138, 44822), (140, 44828), (144, 44840), (153, 44879), (159, 44909), (168, 44948), (187, 45026), (189, 45032), (192, 45047), (224, 45185), (231, 45218), (236, 45242), (258, 45335), (263, 45353), (272, 45386), (285, 45470), (291, 45491), (295, 45506), (302, 45524), (303, 45527), (304, 45533), (307, 45542), (308, 45545),

Gene: Morrill_17 Start: 12308, Stop: 11304, Start Num: 54

Candidate Starts for Morrill_17:

(Start: 54 @12308 has 35 MA's), (82, 12179), (128, 12083), (137, 12014), (138, 12005), (158, 11921), (189, 11792), (211, 11699), (228, 11627), (231, 11612), (234, 11597), (243, 11567), (249, 11522), (280, 11390), (287, 11351), (301, 11309),

Gene: MosMoris_96 Start: 57992, Stop: 56922, Start Num: 46

Candidate Starts for MosMoris_96:

(25, 58064), (Start: 27 @58061 has 1 MA's), (31, 58055), (Start: 46 @57992 has 71 MA's), (53, 57977), (60, 57944), (83, 57851), (92, 57818), (99, 57794), (107, 57761), (108, 57758), (109, 57755), (114, 57740), (117, 57728), (127, 57701), (141, 57614), (146, 57602), (152, 57569), (157, 57542), (159, 57536), (162, 57518), (175, 57476), (178, 57461), (185, 57425), (189, 57413), (204, 57335), (208,

57329), (215, 57302), (221, 57281), (237, 57206), (257, 57131), (264, 57110), (267, 57107), (302, 56939), (303, 56936),

Gene: MrMagoo_166 Start: 78537, Stop: 77464, Start Num: 55

Candidate Starts for MrMagoo_166:

(34, 78609), (40, 78582), (Start: 55 @78537 has 12 MA's), (81, 78423), (91, 78393), (108, 78333), (128, 78270), (132, 78246), (141, 78186), (162, 78090), (175, 78048), (191, 77973), (203, 77910), (207, 77901), (209, 77892), (213, 77877), (223, 77835), (228, 77814), (231, 77799), (236, 77775), (237, 77772), (263, 77667), (272, 77634), (274, 77622), (279, 77592), (282, 77565), (302, 77496), (304, 77487), (307, 77478),

Gene: MrMiyagi_53 Start: 38517, Stop: 39650, Start Num: 21

Candidate Starts for MrMiyagi_53:

(Start: 21 @38517 has 12 MA's), (38, 38556), (43, 38583), (57, 38625), (65, 38667), (72, 38703), (75, 38718), (98, 38781), (126, 38859), (138, 38910), (146, 38931), (154, 38979), (159, 38997), (161, 39003), (168, 39036), (171, 39045), (189, 39120), (193, 39141), (195, 39147), (207, 39204), (224, 39273), (226, 39282), (231, 39306), (241, 39345), (243, 39351), (248, 39390), (255, 39420), (263, 39447), (266, 39450), (269, 39459), (271, 39474), (281, 39537), (283, 39549), (284, 39558), (297, 39600), (307, 39633), (308, 39636),

Gene: Mugiwara_2 Start: 2345, Stop: 1200, Start Num: 8

Candidate Starts for Mugiwara_2:

(8, 2345), (15, 2306), (17, 2291), (Start: 23 @2276 has 1 MA's), (33, 2258), (Start: 50 @2201 has 120 MA's), (76, 2090), (108, 2012), (111, 2003), (134, 1955), (135, 1937), (162, 1811), (166, 1805), (173, 1781), (176, 1769), (181, 1739), (189, 1709), (199, 1670), (202, 1652), (211, 1622), (226, 1559), (257, 1427), (270, 1367), (278, 1319), (289, 1262), (304, 1217),

Gene: Mugiwara_274 Start: 123730, Stop: 122585, Start Num: 8

Candidate Starts for Mugiwara_274:

(8, 123730), (15, 123691), (17, 123676), (Start: 23 @123661 has 1 MA's), (33, 123643), (Start: 50 @123586 has 120 MA's), (76, 123475), (108, 123397), (111, 123388), (134, 123340), (135, 123322), (162, 123196), (166, 123190), (173, 123166), (176, 123154), (181, 123124), (189, 123094), (199, 123055), (202, 123037), (211, 123007), (226, 122944), (257, 122812), (270, 122752), (278, 122704), (289, 122647), (304, 122602),

Gene: MulchMansion_258 Start: 125252, Stop: 124236, Start Num: 50

Candidate Starts for MulchMansion_258:

(Start: 50 @125252 has 120 MA's), (76, 125141), (90, 125093), (95, 125081), (100, 125075), (110, 125036), (134, 124982), (155, 124871), (169, 124817), (189, 124736), (199, 124697), (202, 124679), (211, 124649), (226, 124586), (248, 124490), (257, 124457), (270, 124397), (278, 124349), (281, 124331), (289, 124292),

Gene: MulchMansion_2 Start: 2274, Stop: 1258, Start Num: 50

Candidate Starts for MulchMansion_2:

(Start: 50 @2274 has 120 MA's), (76, 2163), (90, 2115), (95, 2103), (100, 2097), (110, 2058), (134, 2004), (155, 1893), (169, 1839), (189, 1758), (199, 1719), (202, 1701), (211, 1671), (226, 1608), (248, 1512), (257, 1479), (270, 1419), (278, 1371), (281, 1353), (289, 1314),

Gene: Nanosmite_163 Start: 77987, Stop: 76914, Start Num: 55

Candidate Starts for Nanosmite_163:

(13, 78134), (14, 78119), (Start: 55 @77987 has 12 MA's), (92, 77837), (108, 77783), (121, 77747), (128, 77720), (141, 77636), (157, 77564), (162, 77540), (191, 77423), (203, 77360), (213, 77327), (223, 77285), (227, 77267), (233, 77240), (263, 77117), (272, 77084), (273, 77081), (274, 77072),

(277, 77048), (302, 76946), (304, 76937),

Gene: Navo_2 Start: 2214, Stop: 1201, Start Num: 50

Candidate Starts for Navo_2:

(2, 2436), (9, 2364), (15, 2328), (Start: 19 @2307 has 4 MA's), (28, 2289), (Start: 50 @2214 has 120 MA's), (69, 2133), (76, 2103), (95, 2043), (105, 2013), (110, 1998), (111, 1995), (134, 1947), (155, 1836), (169, 1782), (180, 1737), (189, 1701), (199, 1662), (202, 1644), (211, 1614), (248, 1455), (257, 1422), (270, 1362), (278, 1314), (281, 1296), (289, 1257),

Gene: Navo_244 Start: 121839, Stop: 120826, Start Num: 50

Candidate Starts for Navo_244:

(2, 122061), (9, 121989), (15, 121953), (Start: 19 @121932 has 4 MA's), (28, 121914), (Start: 50 @121839 has 120 MA's), (69, 121758), (76, 121728), (95, 121668), (105, 121638), (110, 121623), (111, 121620), (134, 121572), (155, 121461), (169, 121407), (180, 121362), (189, 121326), (199, 121287), (202, 121269), (211, 121239), (248, 121080), (257, 121047), (270, 120987), (278, 120939), (281, 120921), (289, 120882),

Gene: NiceHouse_208 Start: 114434, Stop: 115474, Start Num: 52

Candidate Starts for NiceHouse_208:

(Start: 52 @114434 has 1 MA's), (69, 114512), (73, 114527), (77, 114545), (94, 114599), (101, 114602), (110, 114638), (131, 114719), (136, 114752), (142, 114785), (169, 114896), (174, 114911), (175, 114914), (189, 114977), (192, 114992), (195, 115004), (206, 115049), (237, 115175), (257, 115259), (273, 115316), (279, 115355), (281, 115376), (298, 115439),

Gene: Nicole72_57 Start: 42240, Stop: 43244, Start Num: 54

Candidate Starts for Nicole72_57:

(Start: 54 @42240 has 35 MA's), (60, 42270), (63, 42288), (68, 42312), (125, 42456), (138, 42543), (149, 42579), (158, 42630), (172, 42684), (175, 42696), (189, 42759), (193, 42780), (201, 42819), (205, 42840), (228, 42924), (231, 42939), (245, 42999), (247, 43014), (258, 43056), (276, 43137), (283, 43179), (288, 43200), (295, 43224),

Gene: Nilo_63 Start: 44715, Stop: 45911, Start Num: 21

Candidate Starts for Nilo_63:

(Start: 21 @44715 has 12 MA's), (29, 44730), (47, 44796), (53, 44805), (71, 44886), (75, 44907), (80, 44922), (88, 44949), (104, 45009), (108, 45030), (118, 45063), (138, 45174), (140, 45180), (144, 45192), (153, 45231), (159, 45261), (168, 45300), (187, 45378), (189, 45384), (192, 45399), (224, 45537), (231, 45570), (236, 45594), (258, 45687), (263, 45705), (272, 45738), (285, 45822), (291, 45843), (295, 45858), (302, 45876), (303, 45879), (304, 45885), (307, 45894), (308, 45897),

Gene: NoodlelyBoi_59 Start: 38103, Stop: 39098, Start Num: 46

Candidate Starts for NoodlelyBoi_59:

(Start: 46 @38103 has 71 MA's), (78, 38223), (82, 38232), (86, 38244), (103, 38277), (104, 38283), (115, 38301), (138, 38412), (157, 38493), (168, 38535), (178, 38571), (180, 38583), (211, 38706), (218, 38736), (258, 38907), (267, 38928), (274, 38970), (276, 38991), (285, 39039),

Gene: NootNoot_3 Start: 2427, Stop: 1414, Start Num: 50

Candidate Starts for NootNoot_3:

(9, 2577), (15, 2541), (Start: 19 @2520 has 4 MA's), (28, 2502), (Start: 50 @2427 has 120 MA's), (69, 2346), (76, 2316), (95, 2256), (105, 2226), (110, 2211), (111, 2208), (134, 2160), (155, 2049), (169, 1995), (180, 1950), (189, 1914), (199, 1875), (202, 1857), (211, 1827), (248, 1668), (257, 1635), (270, 1575), (278, 1527), (281, 1509), (289, 1470),

Gene: NootNoot_248 Start: 122726, Stop: 121713, Start Num: 50

Candidate Starts for NootNoot_248:

(9, 122876), (15, 122840), (Start: 19 @122819 has 4 MA's), (28, 122801), (Start: 50 @122726 has 120 MA's), (69, 122645), (76, 122615), (95, 122555), (105, 122525), (110, 122510), (111, 122507), (134, 122459), (155, 122348), (169, 122294), (180, 122249), (189, 122213), (199, 122174), (202, 122156), (211, 122126), (248, 121967), (257, 121934), (270, 121874), (278, 121826), (281, 121808), (289, 121769),

Gene: Nova53_208 Start: 111289, Stop: 112311, Start Num: 50

Candidate Starts for Nova53_208:

(Start: 50 @111289 has 120 MA's), (130, 111562), (134, 111580), (157, 111691), (173, 111754), (175, 111763), (183, 111808), (188, 111823), (193, 111847), (199, 111862), (217, 111937), (228, 111982), (302, 112288),

Gene: Onika_57 Start: 37301, Stop: 38296, Start Num: 46

Candidate Starts for Onika_57:

(Start: 46 @37301 has 71 MA's), (78, 37421), (82, 37430), (86, 37442), (103, 37475), (104, 37481), (115, 37499), (138, 37610), (157, 37691), (178, 37769), (180, 37781), (211, 37904), (218, 37934), (258, 38105), (267, 38126), (272, 38156), (276, 38189), (285, 38237),

Gene: Orchid_113 Start: 77931, Stop: 76870, Start Num: 46

Candidate Starts for Orchid_113:

(Start: 46 @77931 has 71 MA's), (Start: 56 @77907 has 1 MA's), (85, 77778), (91, 77760), (125, 77655), (136, 77595), (168, 77445), (198, 77325), (216, 77247), (217, 77241), (227, 77199), (234, 77166), (243, 77136), (258, 77073), (263, 77055), (291, 76914), (294, 76902), (298, 76893),

Gene: PacManQ_2 Start: 2225, Stop: 1212, Start Num: 50

Candidate Starts for PacManQ_2:

(18, 2321), (Start: 50 @2225 has 120 MA's), (76, 2114), (87, 2081), (95, 2054), (101, 2045), (105, 2024), (110, 2009), (134, 1958), (155, 1847), (169, 1793), (189, 1712), (199, 1673), (202, 1655), (211, 1625), (226, 1562), (246, 1478), (248, 1466), (257, 1433), (270, 1373), (278, 1325), (281, 1307), (289, 1268),

Gene: PacManQ_249 Start: 123117, Stop: 122104, Start Num: 50

Candidate Starts for PacManQ_249:

(18, 123213), (Start: 50 @123117 has 120 MA's), (76, 123006), (87, 122973), (95, 122946), (101, 122937), (105, 122916), (110, 122901), (134, 122850), (155, 122739), (169, 122685), (189, 122604), (199, 122565), (202, 122547), (211, 122517), (226, 122454), (246, 122370), (248, 122358), (257, 122325), (270, 122265), (278, 122217), (281, 122199), (289, 122160),

Gene: Panchaali_176 Start: 113192, Stop: 114172, Start Num: 48

Candidate Starts for Panchaali_176:

(Start: 48 @113192 has 1 MA's), (59, 113234), (132, 113438), (139, 113495), (157, 113576), (175, 113639), (193, 113723), (217, 113813), (228, 113858), (257, 113957), (274, 114032),

Gene: Papyrus_61 Start: 44571, Stop: 45767, Start Num: 21

Candidate Starts for Papyrus_61:

(Start: 21 @44571 has 12 MA's), (29, 44586), (47, 44652), (53, 44661), (71, 44742), (75, 44763), (80, 44778), (88, 44805), (104, 44865), (108, 44886), (118, 44919), (138, 45030), (140, 45036), (144, 45048), (153, 45087), (159, 45117), (168, 45156), (187, 45234), (189, 45240), (192, 45255), (224, 45393), (231, 45426), (236, 45450), (258, 45543), (263, 45561), (272, 45594), (285, 45678), (291, 45699), (295, 45714), (302, 45732), (303, 45735), (304, 45741), (307, 45750), (308, 45753),

Gene: Paradiddles_3 Start: 2417, Stop: 1404, Start Num: 50

Candidate Starts for Paradiddles_3:

(9, 2567), (15, 2531), (Start: 19 @2510 has 4 MA's), (28, 2492), (Start: 50 @2417 has 120 MA's), (69, 2336), (76, 2306), (95, 2246), (105, 2216), (110, 2201), (111, 2198), (134, 2150), (155, 2039), (169, 1985), (180, 1940), (189, 1904), (199, 1865), (202, 1847), (211, 1817), (248, 1658), (257, 1625), (270, 1565), (278, 1517), (281, 1499), (289, 1460),

Gene: Paradiddles_244 Start: 125125, Stop: 124112, Start Num: 50

Candidate Starts for Paradiddles_244:

(9, 125275), (15, 125239), (Start: 19 @125218 has 4 MA's), (28, 125200), (Start: 50 @125125 has 120 MA's), (69, 125044), (76, 125014), (95, 124954), (105, 124924), (110, 124909), (111, 124906), (134, 124858), (155, 124747), (169, 124693), (180, 124648), (189, 124612), (199, 124573), (202, 124555), (211, 124525), (248, 124366), (257, 124333), (270, 124273), (278, 124225), (281, 124207), (289, 124168),

Gene: Paschalis_58 Start: 37308, Stop: 38303, Start Num: 46

Candidate Starts for Paschalis_58:

(Start: 46 @37308 has 71 MA's), (78, 37428), (82, 37437), (86, 37449), (103, 37482), (104, 37488), (115, 37506), (138, 37617), (157, 37698), (168, 37740), (178, 37776), (180, 37788), (211, 37911), (218, 37941), (258, 38112), (267, 38133), (272, 38163), (276, 38196), (285, 38244),

Gene: Patelgo_221 Start: 109737, Stop: 110759, Start Num: 49

Candidate Starts for Patelgo_221:

(Start: 49 @109737 has 8 MA's), (58, 109767), (76, 109848), (81, 109866), (95, 109908), (105, 109926), (111, 109944), (160, 110124), (163, 110142), (175, 110187), (181, 110220), (182, 110226), (183, 110232), (206, 110322), (226, 110397), (231, 110421), (238, 110451), (252, 110514), (302, 110733),

Gene: PatrickStar_114 Start: 78010, Stop: 76949, Start Num: 46

Candidate Starts for PatrickStar_114:

(Start: 46 @78010 has 71 MA's), (Start: 56 @77986 has 1 MA's), (85, 77857), (91, 77839), (125, 77734), (136, 77674), (168, 77524), (198, 77404), (216, 77326), (217, 77320), (227, 77278), (234, 77245), (243, 77215), (258, 77152), (263, 77134), (291, 76993), (294, 76981), (298, 76972),

Gene: Peebs_2 Start: 2371, Stop: 1211, Start Num: 10

Candidate Starts for Peebs_2:

(Start: 10 @2371 has 4 MA's), (Start: 19 @2317 has 4 MA's), (28, 2299), (Start: 50 @2224 has 120 MA's), (76, 2113), (95, 2053), (101, 2044), (105, 2023), (110, 2008), (134, 1957), (155, 1846), (169, 1792), (189, 1711), (202, 1654), (211, 1624), (226, 1561), (246, 1477), (248, 1465), (257, 1432), (270, 1372), (278, 1324), (281, 1306), (289, 1267),

Gene: Peebs_249 Start: 124346, Stop: 123186, Start Num: 10

Candidate Starts for Peebs_249:

(Start: 10 @124346 has 4 MA's), (Start: 19 @124292 has 4 MA's), (28, 124274), (Start: 50 @124199 has 120 MA's), (76, 124088), (95, 124028), (101, 124019), (105, 123998), (110, 123983), (134, 123932), (155, 123821), (169, 123767), (189, 123686), (202, 123629), (211, 123599), (226, 123536), (246, 123452), (248, 123440), (257, 123407), (270, 123347), (278, 123299), (281, 123281), (289, 123242),

Gene: PegLeg_149 Start: 75413, Stop: 74244, Start Num: 24

Candidate Starts for PegLeg_149:

(7, 75494), (9, 75482), (Start: 24 @75413 has 5 MA's), (36, 75392), (Start: 55 @75317 has 12 MA's), (78, 75212), (81, 75203), (92, 75167), (108, 75113), (120, 75080), (128, 75050), (141, 74966), (162, 74870), (178, 74813), (187, 74771), (191, 74753), (203, 74690), (207, 74681), (210, 74669), (211,

74666), (223, 74615), (236, 74555), (260, 74456), (263, 74447), (273, 74411), (279, 74372), (302, 74276), (304, 74267),

Gene: Pepperwood_3 Start: 2379, Stop: 1366, Start Num: 50

Candidate Starts for Pepperwood_3:

(Start: 10 @2526 has 4 MA's), (Start: 19 @2472 has 4 MA's), (28, 2454), (Start: 50 @2379 has 120 MA's), (76, 2268), (95, 2208), (101, 2199), (105, 2178), (110, 2163), (134, 2112), (155, 2001), (169, 1947), (189, 1866), (199, 1827), (202, 1809), (211, 1779), (226, 1716), (246, 1632), (248, 1620), (257, 1587), (270, 1527), (278, 1479), (281, 1461), (289, 1422),

Gene: Pepperwood_252 Start: 124164, Stop: 123151, Start Num: 50

Candidate Starts for Pepperwood_252:

(Start: 10 @124311 has 4 MA's), (Start: 19 @124257 has 4 MA's), (28, 124239), (Start: 50 @124164 has 120 MA's), (76, 124053), (95, 123993), (101, 123984), (105, 123963), (110, 123948), (134, 123897), (155, 123786), (169, 123732), (189, 123651), (199, 123612), (202, 123594), (211, 123564), (226, 123501), (246, 123417), (248, 123405), (257, 123372), (270, 123312), (278, 123264), (281, 123246), (289, 123207),

Gene: Peregrin_181 Start: 95378, Stop: 96424, Start Num: 50

Candidate Starts for Peregrin_181:

(Start: 50 @95378 has 120 MA's), (60, 95417), (67, 95450), (77, 95495), (79, 95501), (89, 95531), (110, 95588), (137, 95726), (157, 95807), (159, 95813), (161, 95819), (167, 95852), (174, 95876), (195, 95969), (206, 96014), (211, 96026), (228, 96098), (252, 96203), (257, 96215), (275, 96293), (298, 96389), (304, 96410),

Gene: Persimmon_2 Start: 2215, Stop: 1202, Start Num: 50

Candidate Starts for Persimmon_2:

(9, 2365), (15, 2329), (Start: 19 @2308 has 4 MA's), (28, 2290), (Start: 50 @2215 has 120 MA's), (69, 2134), (76, 2104), (95, 2044), (105, 2014), (110, 1999), (111, 1996), (134, 1948), (155, 1837), (169, 1783), (180, 1738), (189, 1702), (199, 1663), (202, 1645), (211, 1615), (248, 1456), (257, 1423), (270, 1363), (278, 1315), (281, 1297), (289, 1258),

Gene: Persimmon_253 Start: 123026, Stop: 122013, Start Num: 50

Candidate Starts for Persimmon_253:

(9, 123176), (15, 123140), (Start: 19 @123119 has 4 MA's), (28, 123101), (Start: 50 @123026 has 120 MA's), (69, 122945), (76, 122915), (95, 122855), (105, 122825), (110, 122810), (111, 122807), (134, 122759), (155, 122648), (169, 122594), (180, 122549), (189, 122513), (199, 122474), (202, 122456), (211, 122426), (248, 122267), (257, 122234), (270, 122174), (278, 122126), (281, 122108), (289, 122069),

Gene: Pharky_18 Start: 12530, Stop: 11526, Start Num: 54

Candidate Starts for Pharky_18:

(Start: 54 @12530 has 35 MA's), (82, 12401), (128, 12305), (137, 12236), (138, 12227), (156, 12152), (189, 12014), (211, 11921), (228, 11849), (231, 11834), (234, 11819), (237, 11807), (243, 11789), (249, 11744), (280, 11612), (287, 11573), (301, 11531),

Gene: Phedro_18 Start: 12530, Stop: 11526, Start Num: 54

Candidate Starts for Phedro_18:

(Start: 54 @12530 has 35 MA's), (82, 12401), (128, 12305), (137, 12236), (138, 12227), (156, 12152), (189, 12014), (211, 11921), (228, 11849), (231, 11834), (234, 11819), (237, 11807), (243, 11789), (249, 11744), (280, 11612), (287, 11573), (301, 11531),

Gene: PhedwardCullen_56 Start: 37059, Stop: 38054, Start Num: 46

Candidate Starts for PhedwardCullen_56:

(Start: 46 @37059 has 71 MA's), (78, 37179), (82, 37188), (86, 37200), (103, 37233), (104, 37239), (115, 37257), (138, 37368), (157, 37449), (178, 37527), (180, 37539), (211, 37662), (218, 37692), (258, 37863), (267, 37884), (272, 37914), (276, 37947), (285, 37995),

Gene: Phorgeous_58 Start: 37142, Stop: 38137, Start Num: 46

Candidate Starts for Phorgeous_58:

(Start: 46 @37142 has 71 MA's), (78, 37262), (82, 37271), (86, 37283), (103, 37316), (104, 37322), (115, 37340), (138, 37451), (157, 37532), (178, 37610), (180, 37622), (211, 37745), (218, 37775), (258, 37946), (267, 37967), (272, 37997), (276, 38030), (285, 38078),

Gene: Phractured_18 Start: 12530, Stop: 11526, Start Num: 54

Candidate Starts for Phractured_18:

(Start: 54 @12530 has 35 MA's), (82, 12401), (128, 12305), (137, 12236), (138, 12227), (156, 12152), (189, 12014), (211, 11921), (228, 11849), (231, 11834), (234, 11819), (237, 11807), (243, 11789), (249, 11744), (280, 11612), (287, 11573), (301, 11531),

Gene: Phrampa_168 Start: 117794, Stop: 118768, Start Num: 48

Candidate Starts for Phrampa_168:

(Start: 48 @117794 has 1 MA's), (59, 117836), (157, 118175), (175, 118238), (197, 118334), (229, 118460), (252, 118544), (257, 118556), (268, 118589), (304, 118760),

Gene: Phrancesco_58 Start: 37431, Stop: 38426, Start Num: 46

Candidate Starts for Phrancesco_58:

(Start: 46 @37431 has 71 MA's), (78, 37551), (82, 37560), (86, 37572), (103, 37605), (104, 37611), (115, 37629), (138, 37740), (157, 37821), (178, 37899), (180, 37911), (211, 38034), (218, 38064), (222, 38076), (258, 38235), (267, 38256), (272, 38286), (276, 38319), (285, 38367),

Gene: Phredrick_223 Start: 106600, Stop: 107622, Start Num: 50

Candidate Starts for Phredrick_223:

(Start: 50 @106600 has 120 MA's), (58, 106630), (76, 106711), (81, 106729), (95, 106771), (111, 106807), (160, 106987), (175, 107050), (181, 107083), (183, 107095), (184, 107098), (188, 107110), (192, 107128), (206, 107185), (226, 107260), (231, 107284), (238, 107314), (252, 107377), (302, 107599), (306, 107614),

Gene: PhriedRice_18 Start: 12541, Stop: 11537, Start Num: 54

Candidate Starts for PhriedRice_18:

(Start: 54 @12541 has 35 MA's), (82, 12412), (128, 12316), (137, 12247), (138, 12238), (156, 12163), (189, 12025), (211, 11932), (228, 11860), (231, 11845), (234, 11830), (237, 11818), (243, 11800), (249, 11755), (280, 11623), (287, 11584), (301, 11542),

Gene: PierreOrion_58 Start: 37551, Stop: 38546, Start Num: 46

Candidate Starts for PierreOrion_58:

(Start: 46 @37551 has 71 MA's), (78, 37671), (82, 37680), (86, 37692), (96, 37716), (103, 37725), (104, 37731), (115, 37749), (131, 37806), (138, 37860), (157, 37941), (168, 37983), (178, 38019), (180, 38031), (211, 38154), (218, 38184), (258, 38355), (267, 38376), (272, 38406), (276, 38439), (285, 38487),

Gene: PinkiePie_3 Start: 2417, Stop: 1404, Start Num: 50

Candidate Starts for PinkiePie_3:

(9, 2567), (15, 2531), (Start: 19 @2510 has 4 MA's), (28, 2492), (Start: 50 @2417 has 120 MA's), (69, 2336), (76, 2306), (95, 2246), (105, 2216), (110, 2201), (111, 2198), (134, 2150), (155, 2039), (169, 1985), (180, 1940), (189, 1904), (199, 1865), (202, 1847), (211, 1817), (248, 1658), (257, 1625), (270,

1565), (278, 1517), (281, 1499), (289, 1460),

Gene: PinkiePie_253 Start: 123938, Stop: 122925, Start Num: 50

Candidate Starts for PinkiePie_253:

(9, 124088), (15, 124052), (Start: 19 @124031 has 4 MA's), (28, 124013), (Start: 50 @123938 has 120 MA's), (69, 123857), (76, 123827), (95, 123767), (105, 123737), (110, 123722), (111, 123719), (134, 123671), (155, 123560), (169, 123506), (180, 123461), (189, 123425), (199, 123386), (202, 123368), (211, 123338), (248, 123179), (257, 123146), (270, 123086), (278, 123038), (281, 123020), (289, 122981),

Gene: PiperSansNom_59 Start: 37615, Stop: 38610, Start Num: 46

Candidate Starts for PiperSansNom_59:

(Start: 46 @37615 has 71 MA's), (78, 37735), (82, 37744), (86, 37756), (103, 37789), (104, 37795), (115, 37813), (138, 37924), (157, 38005), (178, 38083), (180, 38095), (211, 38218), (218, 38248), (258, 38419), (267, 38440), (272, 38470), (276, 38503), (285, 38551),

Gene: Piperis_59 Start: 37265, Stop: 38260, Start Num: 46

Candidate Starts for Piperis_59:

(Start: 46 @37265 has 71 MA's), (78, 37385), (82, 37394), (86, 37406), (103, 37439), (104, 37445), (115, 37463), (138, 37574), (157, 37655), (178, 37733), (180, 37745), (211, 37868), (218, 37898), (258, 38069), (267, 38090), (272, 38120), (276, 38153), (285, 38201),

Gene: Poise_101 Start: 57574, Stop: 56504, Start Num: 46

Candidate Starts for Poise_101:

(25, 57646), (Start: 27 @57643 has 1 MA's), (31, 57637), (Start: 46 @57574 has 71 MA's), (53, 57559), (60, 57526), (83, 57433), (92, 57400), (99, 57376), (107, 57343), (108, 57340), (109, 57337), (114, 57322), (117, 57310), (127, 57283), (141, 57196), (146, 57184), (152, 57151), (157, 57124), (159, 57118), (162, 57100), (175, 57058), (178, 57043), (185, 57007), (189, 56995), (204, 56917), (208, 56911), (215, 56884), (221, 56863), (237, 56788), (257, 56713), (264, 56692), (267, 56689), (302, 56521), (303, 56518),

Gene: Pringar_96 Start: 57361, Stop: 56291, Start Num: 46

Candidate Starts for Pringar_96:

(Start: 35 @57415 has 1 MA's), (37, 57406), (Start: 46 @57361 has 71 MA's), (53, 57346), (60, 57313), (83, 57220), (92, 57187), (99, 57163), (107, 57130), (108, 57127), (109, 57124), (114, 57109), (117, 57097), (127, 57070), (141, 56983), (146, 56971), (152, 56938), (157, 56911), (159, 56905), (162, 56887), (175, 56845), (178, 56830), (185, 56794), (189, 56782), (204, 56704), (208, 56698), (215, 56671), (221, 56650), (237, 56575), (257, 56500), (264, 56479), (267, 56476), (302, 56308), (303, 56305),

Gene: Pulchra_60 Start: 37662, Stop: 38657, Start Num: 46

Candidate Starts for Pulchra_60:

(Start: 46 @37662 has 71 MA's), (78, 37782), (82, 37791), (86, 37803), (103, 37836), (104, 37842), (115, 37860), (138, 37971), (157, 38052), (178, 38130), (180, 38142), (211, 38265), (218, 38295), (258, 38466), (267, 38487), (272, 38517), (276, 38550), (285, 38598),

Gene: PumpkinSpice_267 Start: 122543, Stop: 121503, Start Num: 39

Candidate Starts for PumpkinSpice_267:

(Start: 39 @122543 has 18 MA's), (Start: 50 @122498 has 120 MA's), (76, 122387), (87, 122354), (101, 122321), (108, 122309), (111, 122300), (134, 122252), (135, 122234), (136, 122231), (169, 122087), (173, 122078), (181, 122036), (189, 122006), (199, 121967), (202, 121949), (211, 121919), (226, 121856), (257, 121724), (270, 121664), (278, 121616), (289, 121559), (302, 121523),

Gene: PumpkinSpice_3 Start: 2651, Stop: 1611, Start Num: 39

Candidate Starts for PumpkinSpice_3:

(Start: 39 @2651 has 18 MA's), (Start: 50 @2606 has 120 MA's), (76, 2495), (87, 2462), (101, 2429), (108, 2417), (111, 2408), (134, 2360), (135, 2342), (136, 2339), (169, 2195), (173, 2186), (181, 2144), (189, 2114), (199, 2075), (202, 2057), (211, 2027), (226, 1964), (257, 1832), (270, 1772), (278, 1724), (289, 1667), (302, 1631),

Gene: Quaran19_264 Start: 121833, Stop: 120793, Start Num: 39

Candidate Starts for Quaran19_264:

(Start: 39 @121833 has 18 MA's), (Start: 50 @121788 has 120 MA's), (76, 121677), (87, 121644), (101, 121611), (108, 121599), (111, 121590), (134, 121542), (135, 121524), (136, 121521), (169, 121377), (173, 121368), (181, 121326), (189, 121296), (199, 121257), (202, 121239), (211, 121209), (226, 121146), (257, 121014), (270, 120954), (278, 120906), (289, 120849), (302, 120813),

Gene: Quaran19_3 Start: 2651, Stop: 1611, Start Num: 39

Candidate Starts for Quaran19_3:

(Start: 39 @2651 has 18 MA's), (Start: 50 @2606 has 120 MA's), (76, 2495), (87, 2462), (101, 2429), (108, 2417), (111, 2408), (134, 2360), (135, 2342), (136, 2339), (169, 2195), (173, 2186), (181, 2144), (189, 2114), (199, 2075), (202, 2057), (211, 2027), (226, 1964), (257, 1832), (270, 1772), (278, 1724), (289, 1667), (302, 1631),

Gene: Quhwah_62 Start: 37923, Stop: 38918, Start Num: 46

Candidate Starts for Quhwah_62:

(Start: 46 @37923 has 71 MA's), (78, 38043), (82, 38052), (86, 38064), (103, 38097), (104, 38103), (115, 38121), (138, 38232), (157, 38313), (178, 38391), (180, 38403), (211, 38526), (218, 38556), (258, 38727), (267, 38748), (272, 38778), (276, 38811), (285, 38859),

Gene: REQ1_18 Start: 6081, Stop: 5032, Start Num: 46

Candidate Starts for REQ1_18:

(Start: 46 @6081 has 71 MA's), (60, 6033), (159, 5637), (192, 5499), (243, 5295), (258, 5232), (279, 5139), (302, 5043),

Gene: Raela_102 Start: 58129, Stop: 57059, Start Num: 46

Candidate Starts for Raela_102:

(25, 58201), (Start: 27 @58198 has 1 MA's), (31, 58192), (Start: 46 @58129 has 71 MA's), (53, 58114), (60, 58081), (83, 57988), (92, 57955), (99, 57931), (107, 57898), (108, 57895), (109, 57892), (114, 57877), (117, 57865), (127, 57838), (141, 57751), (146, 57739), (152, 57706), (157, 57679), (159, 57673), (162, 57655), (175, 57613), (178, 57598), (185, 57562), (189, 57550), (204, 57472), (208, 57466), (215, 57439), (221, 57418), (231, 57370), (237, 57343), (257, 57268), (264, 57247), (267, 57244), (302, 57076), (303, 57073),

Gene: Ramiel05_57 Start: 37326, Stop: 38321, Start Num: 46

Candidate Starts for Ramiel05_57:

(Start: 46 @37326 has 71 MA's), (78, 37446), (82, 37455), (86, 37467), (103, 37500), (104, 37506), (115, 37524), (138, 37635), (157, 37716), (178, 37794), (180, 37806), (211, 37929), (218, 37959), (258, 38130), (267, 38151), (272, 38181), (276, 38214), (285, 38262),

Gene: Rasputia_140 Start: 86821, Stop: 87828, Start Num: 54

Candidate Starts for Rasputia_140:

(11, 86671), (12, 86674), (Start: 54 @86821 has 35 MA's), (60, 86851), (77, 86932), (79, 86938), (134, 87082), (151, 87163), (164, 87235), (189, 87340), (193, 87361), (227, 87502), (229, 87508), (243, 87565), (257, 87631), (288, 87781),

Gene: RedRaider77_100 Start: 57591, Stop: 56452, Start Num: 27

Candidate Starts for RedRaider77_100:

(25, 57594), (Start: 27 @57591 has 1 MA's), (31, 57585), (Start: 46 @57522 has 71 MA's), (53, 57507), (60, 57474), (83, 57381), (92, 57348), (99, 57324), (107, 57291), (108, 57288), (109, 57285), (114, 57270), (117, 57258), (127, 57231), (141, 57144), (146, 57132), (152, 57099), (157, 57072), (159, 57066), (162, 57048), (175, 57006), (178, 56991), (185, 56955), (189, 56943), (204, 56865), (208, 56859), (215, 56832), (221, 56811), (231, 56763), (237, 56736), (257, 56661), (264, 56640), (267, 56637), (302, 56469), (303, 56466),

Gene: ReginaGlobina_180 Start: 117379, Stop: 118386, Start Num: 48

Candidate Starts for ReginaGlobina_180:

(Start: 48 @117379 has 1 MA's), (59, 117421), (69, 117466), (94, 117553), (139, 117709), (157, 117790), (175, 117853), (193, 117937), (217, 118027), (228, 118072), (229, 118075), (252, 118159), (253, 118165), (257, 118171), (274, 118246),

Gene: Reindeer_147 Start: 76556, Stop: 75483, Start Num: 56

Candidate Starts for Reindeer_147:

(Start: 56 @76556 has 1 MA's), (60, 76532), (81, 76442), (92, 76406), (108, 76352), (120, 76319), (128, 76289), (132, 76265), (141, 76205), (162, 76109), (187, 76010), (188, 76007), (191, 75992), (207, 75920), (210, 75908), (211, 75905), (223, 75854), (231, 75818), (236, 75794), (260, 75695), (263, 75686), (273, 75650), (279, 75611), (302, 75515), (304, 75506),

Gene: Rey_164 Start: 77837, Stop: 76674, Start Num: 23

Candidate Starts for Rey_164:

(Start: 23 @77837 has 1 MA's), (34, 77819), (40, 77792), (Start: 55 @77747 has 12 MA's), (81, 77633), (91, 77603), (108, 77543), (141, 77396), (162, 77300), (175, 77258), (191, 77183), (203, 77120), (207, 77111), (209, 77102), (211, 77096), (213, 77087), (223, 77045), (227, 77027), (231, 77009), (236, 76985), (237, 76982), (263, 76877), (274, 76832), (279, 76802), (282, 76775), (302, 76706), (304, 76697), (307, 76688),

Gene: RicoCaldo_18 Start: 12562, Stop: 11558, Start Num: 54

Candidate Starts for RicoCaldo_18:

(Start: 54 @12562 has 35 MA's), (82, 12433), (128, 12337), (137, 12268), (138, 12259), (156, 12184), (189, 12046), (211, 11953), (228, 11881), (231, 11866), (234, 11851), (237, 11839), (243, 11821), (249, 11776), (280, 11644), (287, 11605), (301, 11563),

Gene: Rikishi_272 Start: 122334, Stop: 121294, Start Num: 39

Candidate Starts for Rikishi_272:

(Start: 39 @122334 has 18 MA's), (Start: 50 @122289 has 120 MA's), (76, 122178), (87, 122145), (101, 122112), (108, 122100), (111, 122091), (134, 122043), (135, 122025), (136, 122022), (169, 121878), (173, 121869), (181, 121827), (189, 121797), (199, 121758), (202, 121740), (211, 121710), (226, 121647), (257, 121515), (270, 121455), (278, 121407), (289, 121350), (302, 121314),

Gene: Rikishi_2 Start: 2261, Stop: 1221, Start Num: 39

Candidate Starts for Rikishi_2:

(Start: 39 @2261 has 18 MA's), (Start: 50 @2216 has 120 MA's), (76, 2105), (87, 2072), (101, 2039), (108, 2027), (111, 2018), (134, 1970), (135, 1952), (136, 1949), (169, 1805), (173, 1796), (181, 1754), (189, 1724), (199, 1685), (202, 1667), (211, 1637), (226, 1574), (257, 1442), (270, 1382), (278, 1334), (289, 1277), (302, 1241),

Gene: Riparian_63 Start: 44163, Stop: 45359, Start Num: 21

Candidate Starts for Riparian_63:

(Start: 21 @44163 has 12 MA's), (29, 44178), (47, 44244), (53, 44253), (71, 44334), (75, 44355), (80, 44370), (88, 44397), (104, 44457), (108, 44478), (118, 44511), (138, 44622), (140, 44628), (144, 44640), (153, 44679), (159, 44709), (168, 44748), (187, 44826), (189, 44832), (192, 44847), (224, 44985), (231, 45018), (236, 45042), (258, 45135), (263, 45153), (272, 45186), (285, 45270), (291, 45291), (295, 45306), (302, 45324), (303, 45327), (304, 45333), (307, 45342), (308, 45345),

Gene: Riptide_260 Start: 123758, Stop: 122736, Start Num: 50

Candidate Starts for Riptide_260:

(Start: 50 @123758 has 120 MA's), (69, 123677), (76, 123647), (87, 123614), (90, 123599), (95, 123587), (100, 123581), (110, 123542), (134, 123488), (155, 123377), (156, 123374), (169, 123323), (180, 123278), (189, 123242), (199, 123203), (202, 123185), (211, 123155), (226, 123092), (230, 123074), (248, 122996), (257, 122963), (278, 122855), (281, 122837), (289, 122798),

Gene: Riptide_3 Start: 2306, Stop: 1284, Start Num: 50

Candidate Starts for Riptide_3:

(Start: 50 @2306 has 120 MA's), (69, 2225), (76, 2195), (87, 2162), (90, 2147), (95, 2135), (100, 2129), (110, 2090), (134, 2036), (155, 1925), (156, 1922), (169, 1871), (180, 1826), (189, 1790), (199, 1751), (202, 1733), (211, 1703), (226, 1640), (230, 1622), (248, 1544), (257, 1511), (278, 1403), (281, 1385), (289, 1346),

Gene: RobinSparkles_123 Start: 79116, Stop: 78055, Start Num: 46

Candidate Starts for RobinSparkles_123:

(Start: 46 @79116 has 71 MA's), (Start: 56 @79092 has 1 MA's), (85, 78963), (91, 78945), (125, 78840), (136, 78780), (168, 78630), (198, 78510), (216, 78432), (217, 78426), (227, 78384), (234, 78351), (243, 78321), (258, 78258), (263, 78240), (291, 78099), (294, 78087), (298, 78078),

Gene: RobsFeet_62 Start: 38777, Stop: 39772, Start Num: 46

Candidate Starts for RobsFeet_62:

(Start: 46 @38777 has 71 MA's), (78, 38897), (82, 38906), (86, 38918), (103, 38951), (104, 38957), (115, 38975), (131, 39032), (138, 39086), (168, 39209), (178, 39245), (180, 39257), (211, 39380), (231, 39470), (258, 39581), (267, 39602), (272, 39632), (274, 39644), (276, 39665), (285, 39713),

Gene: Ronaldo_83 Start: 43764, Stop: 42694, Start Num: 46

Candidate Starts for Ronaldo_83:

(37, 43809), (42, 43779), (Start: 46 @43764 has 71 MA's), (Start: 56 @43740 has 1 MA's), (60, 43716), (74, 43644), (78, 43632), (91, 43593), (138, 43395), (141, 43386), (161, 43302), (171, 43260), (175, 43248), (178, 43233), (189, 43185), (217, 43068), (231, 43011), (237, 42984), (251, 42924), (283, 42774), (288, 42750), (292, 42735), (295, 42726), (298, 42720),

Gene: Rope_61 Start: 44561, Stop: 45757, Start Num: 21

Candidate Starts for Rope_61:

(Start: 21 @44561 has 12 MA's), (29, 44576), (47, 44642), (53, 44651), (71, 44732), (75, 44753), (80, 44768), (88, 44795), (104, 44855), (108, 44876), (118, 44909), (138, 45020), (140, 45026), (144, 45038), (153, 45077), (159, 45107), (168, 45146), (186, 45221), (187, 45224), (189, 45230), (192, 45245), (224, 45383), (236, 45440), (258, 45533), (263, 45551), (272, 45584), (285, 45668), (291, 45689), (295, 45704), (302, 45722), (303, 45725), (304, 45731), (307, 45740), (308, 45743),

Gene: SaltySpittoon_3 Start: 2606, Stop: 1611, Start Num: 50

Candidate Starts for SaltySpittoon_3:

(Start: 39 @2651 has 18 MA's), (Start: 50 @2606 has 120 MA's), (76, 2495), (87, 2462), (101, 2429), (108, 2417), (111, 2408), (134, 2360), (135, 2342), (136, 2339), (169, 2195), (173, 2186), (181, 2144), (189, 2114), (199, 2075), (202, 2057), (211, 2027), (226, 1964), (257, 1832), (270, 1772), (278, 1724), (289, 1667), (302, 1631),

Gene: SaltySpittoon_263 Start: 120870, Stop: 119875, Start Num: 50

Candidate Starts for SaltySpittoon_263:

(Start: 39 @120915 has 18 MA's), (Start: 50 @120870 has 120 MA's), (76, 120759), (87, 120726), (101, 120693), (108, 120681), (111, 120672), (134, 120624), (135, 120606), (136, 120603), (169, 120459), (173, 120450), (181, 120408), (189, 120378), (199, 120339), (202, 120321), (211, 120291), (226, 120228), (257, 120096), (270, 120036), (278, 119988), (289, 119931), (302, 119895),

Gene: Samisti12_2 Start: 2223, Stop: 1210, Start Num: 50

Candidate Starts for Samisti12_2:

(Start: 50 @2223 has 120 MA's), (76, 2112), (95, 2052), (101, 2043), (105, 2022), (110, 2007), (134, 1956), (155, 1845), (169, 1791), (189, 1710), (199, 1671), (202, 1653), (211, 1623), (226, 1560), (246, 1476), (248, 1464), (257, 1431), (270, 1371), (278, 1323), (281, 1305), (289, 1266),

Gene: Samisti12_253 Start: 125267, Stop: 124254, Start Num: 50

Candidate Starts for Samisti12_253:

(Start: 50 @125267 has 120 MA's), (76, 125156), (95, 125096), (101, 125087), (105, 125066), (110, 125051), (134, 125000), (155, 124889), (169, 124835), (189, 124754), (199, 124715), (202, 124697), (211, 124667), (226, 124604), (246, 124520), (248, 124508), (257, 124475), (270, 124415), (278, 124367), (281, 124349), (289, 124310),

Gene: Savannah_57 Start: 37353, Stop: 38348, Start Num: 46

Candidate Starts for Savannah_57:

(Start: 46 @37353 has 71 MA's), (78, 37473), (82, 37482), (86, 37494), (103, 37527), (104, 37533), (115, 37551), (138, 37662), (157, 37743), (178, 37821), (180, 37833), (211, 37956), (218, 37986), (258, 38157), (267, 38178), (272, 38208), (276, 38241), (285, 38289),

Gene: Scheme_256 Start: 125574, Stop: 124561, Start Num: 50

Candidate Starts for Scheme_256:

(Start: 10 @125721 has 4 MA's), (Start: 19 @125667 has 4 MA's), (28, 125649), (Start: 50 @125574 has 120 MA's), (76, 125463), (95, 125403), (101, 125394), (105, 125373), (110, 125358), (134, 125307), (155, 125196), (169, 125142), (189, 125061), (199, 125022), (202, 125004), (211, 124974), (226, 124911), (246, 124827), (248, 124815), (257, 124782), (270, 124722), (278, 124674), (281, 124656), (289, 124617),

Gene: Scheme_3 Start: 2379, Stop: 1366, Start Num: 50

Candidate Starts for Scheme_3:

(Start: 10 @2526 has 4 MA's), (Start: 19 @2472 has 4 MA's), (28, 2454), (Start: 50 @2379 has 120 MA's), (76, 2268), (95, 2208), (101, 2199), (105, 2178), (110, 2163), (134, 2112), (155, 2001), (169, 1947), (189, 1866), (199, 1827), (202, 1809), (211, 1779), (226, 1716), (246, 1632), (248, 1620), (257, 1587), (270, 1527), (278, 1479), (281, 1461), (289, 1422),

Gene: Scumberland_59 Start: 37548, Stop: 38543, Start Num: 46

Candidate Starts for Scumberland_59:

(Start: 46 @37548 has 71 MA's), (78, 37668), (82, 37677), (86, 37689), (103, 37722), (104, 37728), (115, 37746), (138, 37857), (157, 37938), (178, 38016), (180, 38028), (189, 38064), (211, 38151), (218, 38181), (258, 38352), (267, 38373), (272, 38403), (276, 38436), (285, 38484),

Gene: Selwyn23_59 Start: 37496, Stop: 38491, Start Num: 46

Candidate Starts for Selwyn23_59:

(Start: 46 @37496 has 71 MA's), (78, 37616), (82, 37625), (86, 37637), (103, 37670), (104, 37676), (115, 37694), (138, 37805), (157, 37886), (178, 37964), (180, 37976), (211, 38099), (218, 38129), (258, 38300), (267, 38321), (272, 38351), (276, 38384), (285, 38432),

Gene: Send513_61 Start: 44696, Stop: 45892, Start Num: 21

Candidate Starts for Send513_61:

(Start: 21 @44696 has 12 MA's), (29, 44711), (47, 44777), (53, 44786), (71, 44867), (75, 44888), (80, 44903), (88, 44930), (104, 44990), (108, 45011), (118, 45044), (138, 45155), (140, 45161), (144, 45173), (153, 45212), (159, 45242), (168, 45281), (187, 45359), (189, 45365), (192, 45380), (224, 45518), (231, 45551), (236, 45575), (258, 45668), (263, 45686), (272, 45719), (285, 45803), (291, 45824), (295, 45839), (302, 45857), (303, 45860), (304, 45866), (307, 45875), (308, 45878),

Gene: SeresaTree_219 Start: 108748, Stop: 109758, Start Num: 50

Candidate Starts for SeresaTree_219:

(Start: 50 @108748 has 120 MA's), (58, 108778), (69, 108829), (76, 108859), (89, 108898), (117, 108967), (192, 109264), (214, 109348), (226, 109396), (231, 109420), (232, 109426), (250, 109504), (258, 109531), (286, 109690), (298, 109723), (299, 109726), (303, 109738),

Gene: Shagrat_38 Start: 31485, Stop: 30412, Start Num: 46

Candidate Starts for Shagrat_38:

(Start: 46 @31485 has 71 MA's), (60, 31437), (97, 31308), (99, 31302), (107, 31269), (125, 31212), (131, 31182), (150, 31092), (159, 31041), (161, 31035), (192, 30903), (258, 30618), (262, 30603), (273, 30564), (279, 30525),

Gene: Sham_210 Start: 109632, Stop: 110651, Start Num: 50

Candidate Starts for Sham_210:

(Start: 50 @109632 has 120 MA's), (58, 109662), (76, 109749), (89, 109788), (107, 109827), (117, 109860), (175, 110079), (184, 110127), (193, 110163), (195, 110169), (226, 110289), (231, 110313), (232, 110319), (233, 110322), (257, 110418), (265, 110448), (285, 110577), (298, 110616), (299, 110619), (303, 110631),

Gene: Shotgun_58 Start: 37229, Stop: 38224, Start Num: 46

Candidate Starts for Shotgun_58:

(Start: 46 @37229 has 71 MA's), (78, 37349), (82, 37358), (86, 37370), (103, 37403), (104, 37409), (115, 37427), (138, 37538), (157, 37619), (168, 37661), (178, 37697), (180, 37709), (211, 37832), (218, 37862), (258, 38033), (267, 38054), (272, 38084), (276, 38117), (285, 38165),

Gene: Shrubaron_60 Start: 38390, Stop: 39385, Start Num: 46

Candidate Starts for Shrubaron_60:

(Start: 46 @38390 has 71 MA's), (78, 38510), (82, 38519), (86, 38531), (103, 38564), (104, 38570), (115, 38588), (131, 38645), (138, 38699), (168, 38822), (178, 38858), (180, 38870), (211, 38993), (231, 39083), (258, 39194), (267, 39215), (274, 39257), (276, 39278), (285, 39326),

Gene: Shuckle_3 Start: 2394, Stop: 1234, Start Num: 10

Candidate Starts for Shuckle_3:

(Start: 10 @2394 has 4 MA's), (Start: 19 @2340 has 4 MA's), (28, 2322), (Start: 50 @2247 has 120 MA's), (69, 2166), (76, 2136), (100, 2070), (105, 2046), (110, 2031), (134, 1980), (155, 1869), (169, 1815), (189, 1734), (199, 1695), (202, 1677), (211, 1647), (226, 1584), (230, 1566), (248, 1488), (257, 1455), (278, 1347), (281, 1329), (289, 1290),

Gene: Shuckle_256 Start: 125027, Stop: 123867, Start Num: 10

Candidate Starts for Shuckle_256:

(Start: 10 @125027 has 4 MA's), (Start: 19 @124973 has 4 MA's), (28, 124955), (Start: 50 @124880 has 120 MA's), (69, 124799), (76, 124769), (100, 124703), (105, 124679), (110, 124664), (134, 124613), (155, 124502), (169, 124448), (189, 124367), (199, 124328), (202, 124310), (211, 124280), (226, 124217), (230, 124199), (248, 124121), (257, 124088), (278, 123980), (281, 123962), (289,

123923),

Gene: ShyRosie_17 Start: 12296, Stop: 11307, Start Num: 54

Candidate Starts for ShyRosie_17:

(Start: 54 @12296 has 35 MA's), (78, 12182), (82, 12167), (133, 12053), (137, 12014), (138, 12005), (158, 11921), (189, 11792), (211, 11699), (231, 11612), (259, 11492), (276, 11414), (283, 11372), (287, 11354), (295, 11327),

Gene: SirFrank_58 Start: 37508, Stop: 38503, Start Num: 46

Candidate Starts for SirFrank_58:

(Start: 46 @37508 has 71 MA's), (78, 37628), (82, 37637), (86, 37649), (103, 37682), (104, 37688), (115, 37706), (138, 37817), (157, 37898), (168, 37940), (178, 37976), (180, 37988), (211, 38111), (218, 38141), (258, 38312), (267, 38333), (274, 38375), (276, 38396), (285, 38444),

Gene: Skinny_152 Start: 76530, Stop: 75361, Start Num: 24

Candidate Starts for Skinny_152:

(7, 76611), (9, 76599), (Start: 24 @76530 has 5 MA's), (36, 76509), (Start: 55 @76434 has 12 MA's), (78, 76329), (81, 76320), (92, 76284), (108, 76230), (120, 76197), (128, 76167), (141, 76083), (162, 75987), (178, 75930), (187, 75888), (191, 75870), (203, 75807), (207, 75798), (210, 75786), (211, 75783), (223, 75732), (236, 75672), (260, 75573), (263, 75564), (273, 75528), (279, 75489), (282, 75462), (302, 75393), (304, 75384),

Gene: SlimJimmy_146 Start: 75904, Stop: 74831, Start Num: 55

Candidate Starts for SlimJimmy_146:

(7, 76081), (9, 76069), (Start: 24 @76000 has 5 MA's), (36, 75979), (Start: 55 @75904 has 12 MA's), (78, 75799), (81, 75790), (92, 75754), (108, 75700), (120, 75667), (128, 75637), (141, 75553), (162, 75457), (178, 75400), (187, 75358), (191, 75340), (203, 75277), (207, 75268), (210, 75256), (211, 75253), (223, 75202), (236, 75142), (260, 75043), (263, 75034), (273, 74998), (279, 74959), (302, 74863), (304, 74854),

Gene: Smarties_67 Start: 39139, Stop: 40134, Start Num: 46

Candidate Starts for Smarties_67:

(Start: 46 @39139 has 71 MA's), (53, 39154), (78, 39259), (82, 39268), (86, 39280), (103, 39313), (104, 39319), (115, 39337), (131, 39394), (138, 39448), (157, 39529), (168, 39571), (178, 39607), (180, 39619), (211, 39742), (218, 39772), (231, 39832), (258, 39943), (267, 39964), (274, 40006), (298, 40117),

Gene: Sollertia_260 Start: 121518, Stop: 120517, Start Num: 50

Candidate Starts for Sollertia_260:

(30, 121584), (33, 121575), (Start: 50 @121518 has 120 MA's), (76, 121407), (111, 121320), (162, 121128), (169, 121107), (173, 121098), (181, 121056), (189, 121026), (199, 120987), (202, 120969), (211, 120939), (226, 120876), (257, 120744), (270, 120684), (278, 120636), (281, 120618), (289, 120579),

Gene: Sollertia_4 Start: 2628, Stop: 1627, Start Num: 50

Candidate Starts for Sollertia_4:

(30, 2694), (33, 2685), (Start: 50 @2628 has 120 MA's), (76, 2517), (111, 2430), (162, 2238), (169, 2217), (173, 2208), (181, 2166), (189, 2136), (199, 2097), (202, 2079), (211, 2049), (226, 1986), (257, 1854), (270, 1794), (278, 1746), (281, 1728), (289, 1689),

Gene: SparkleGoddess_218 Start: 108469, Stop: 109491, Start Num: 49

Candidate Starts for SparkleGoddess_218:

(Start: 49 @108469 has 8 MA's), (58, 108499), (76, 108580), (81, 108598), (95, 108640), (105, 108658), (111, 108676), (160, 108856), (175, 108919), (181, 108952), (183, 108964), (184, 108967), (188, 108979), (206, 109054), (226, 109129), (231, 109153), (238, 109183), (252, 109246), (302, 109465),

Gene: Spelly_3 Start: 2651, Stop: 1611, Start Num: 39

Candidate Starts for Spelly_3:

(Start: 39 @2651 has 18 MA's), (Start: 50 @2606 has 120 MA's), (76, 2495), (87, 2462), (101, 2429), (108, 2417), (111, 2408), (134, 2360), (135, 2342), (136, 2339), (169, 2195), (173, 2186), (181, 2144), (189, 2114), (199, 2075), (202, 2057), (211, 2027), (226, 1964), (257, 1832), (270, 1772), (278, 1724), (289, 1667), (302, 1631),

Gene: Spelly_269 Start: 121455, Stop: 120415, Start Num: 39

Candidate Starts for Spelly_269:

(Start: 39 @121455 has 18 MA's), (Start: 50 @121410 has 120 MA's), (76, 121299), (87, 121266), (101, 121233), (108, 121221), (111, 121212), (134, 121164), (135, 121146), (136, 121143), (169, 120999), (173, 120990), (181, 120948), (189, 120918), (199, 120879), (202, 120861), (211, 120831), (226, 120768), (257, 120636), (270, 120576), (278, 120528), (289, 120471), (302, 120435),

Gene: Spilled_2 Start: 2261, Stop: 1221, Start Num: 39

Candidate Starts for Spilled_2:

(Start: 39 @2261 has 18 MA's), (Start: 50 @2216 has 120 MA's), (76, 2105), (87, 2072), (101, 2039), (108, 2027), (111, 2018), (134, 1970), (135, 1952), (136, 1949), (169, 1805), (173, 1796), (181, 1754), (189, 1724), (199, 1685), (202, 1667), (211, 1637), (226, 1574), (257, 1442), (270, 1382), (278, 1334), (289, 1277), (302, 1241),

Gene: Spilled_270 Start: 122730, Stop: 121690, Start Num: 39

Candidate Starts for Spilled_270:

(Start: 39 @122730 has 18 MA's), (Start: 50 @122685 has 120 MA's), (76, 122574), (87, 122541), (101, 122508), (108, 122496), (111, 122487), (134, 122439), (135, 122421), (136, 122418), (169, 122274), (173, 122265), (181, 122223), (189, 122193), (199, 122154), (202, 122136), (211, 122106), (226, 122043), (257, 121911), (270, 121851), (278, 121803), (289, 121746), (302, 121710),

Gene: Squillium_255 Start: 123941, Stop: 122928, Start Num: 50

Candidate Starts for Squillium_255:

(9, 124091), (15, 124055), (Start: 19 @124034 has 4 MA's), (28, 124016), (Start: 50 @123941 has 120 MA's), (69, 123860), (76, 123830), (95, 123770), (105, 123740), (110, 123725), (111, 123722), (134, 123674), (155, 123563), (169, 123509), (180, 123464), (189, 123428), (199, 123389), (202, 123371), (211, 123341), (248, 123182), (257, 123149), (270, 123089), (278, 123041), (281, 123023), (289, 122984),

Gene: Squillium_3 Start: 2417, Stop: 1404, Start Num: 50

Candidate Starts for Squillium_3:

(9, 2567), (15, 2531), (Start: 19 @2510 has 4 MA's), (28, 2492), (Start: 50 @2417 has 120 MA's), (69, 2336), (76, 2306), (95, 2246), (105, 2216), (110, 2201), (111, 2198), (134, 2150), (155, 2039), (169, 1985), (180, 1940), (189, 1904), (199, 1865), (202, 1847), (211, 1817), (248, 1658), (257, 1625), (270, 1565), (278, 1517), (281, 1499), (289, 1460),

Gene: StagePhright_18 Start: 12530, Stop: 11526, Start Num: 54

Candidate Starts for StagePhright_18:

(Start: 54 @12530 has 35 MA's), (82, 12401), (128, 12305), (137, 12236), (138, 12227), (156, 12152), (189, 12014), (211, 11921), (228, 11849), (231, 11834), (234, 11819), (237, 11807), (243, 11789), (249, 11744), (280, 11612), (287, 11573), (301, 11531),

Gene: Stanimal_4 Start: 2628, Stop: 1627, Start Num: 50

Candidate Starts for Stanimal_4:

(30, 2694), (33, 2685), (Start: 50 @2628 has 120 MA's), (76, 2517), (111, 2430), (162, 2238), (169, 2217), (173, 2208), (181, 2166), (189, 2136), (199, 2097), (202, 2079), (211, 2049), (226, 1986), (257, 1854), (270, 1794), (278, 1746), (281, 1728), (289, 1689),

Gene: Stanimal_259 Start: 121902, Stop: 120901, Start Num: 50

Candidate Starts for Stanimal_259:

(30, 121968), (33, 121959), (Start: 50 @121902 has 120 MA's), (76, 121791), (111, 121704), (162, 121512), (169, 121491), (173, 121482), (181, 121440), (189, 121410), (199, 121371), (202, 121353), (211, 121323), (226, 121260), (257, 121128), (270, 121068), (278, 121020), (281, 121002), (289, 120963),

Gene: StarPlatinum_2 Start: 2355, Stop: 1354, Start Num: 50

Candidate Starts for StarPlatinum_2:

(8, 2499), (15, 2460), (17, 2445), (Start: 23 @2430 has 1 MA's), (33, 2412), (Start: 50 @2355 has 120 MA's), (76, 2244), (111, 2157), (162, 1965), (166, 1959), (173, 1935), (176, 1923), (181, 1893), (189, 1863), (199, 1824), (202, 1806), (211, 1776), (226, 1713), (230, 1695), (236, 1665), (257, 1581), (270, 1521), (278, 1473), (281, 1455),

Gene: StarPlatinum_272 Start: 124042, Stop: 123041, Start Num: 50

Candidate Starts for StarPlatinum_272:

(8, 124186), (15, 124147), (17, 124132), (Start: 23 @124117 has 1 MA's), (33, 124099), (Start: 50 @124042 has 120 MA's), (76, 123931), (111, 123844), (162, 123652), (166, 123646), (173, 123622), (176, 123610), (181, 123580), (189, 123550), (199, 123511), (202, 123493), (211, 123463), (226, 123400), (230, 123382), (236, 123352), (257, 123268), (270, 123208), (278, 123160), (281, 123142),

Gene: Starbow_260 Start: 121454, Stop: 120459, Start Num: 50

Candidate Starts for Starbow_260:

(Start: 39 @121499 has 18 MA's), (Start: 50 @121454 has 120 MA's), (76, 121343), (87, 121310), (101, 121277), (108, 121265), (111, 121256), (134, 121208), (135, 121190), (136, 121187), (169, 121043), (173, 121034), (181, 120992), (189, 120962), (199, 120923), (202, 120905), (211, 120875), (226, 120812), (257, 120680), (270, 120620), (278, 120572), (289, 120515), (302, 120479),

Gene: Starbow_3 Start: 2606, Stop: 1611, Start Num: 50

Candidate Starts for Starbow_3:

(Start: 39 @2651 has 18 MA's), (Start: 50 @2606 has 120 MA's), (76, 2495), (87, 2462), (101, 2429), (108, 2417), (111, 2408), (134, 2360), (135, 2342), (136, 2339), (169, 2195), (173, 2186), (181, 2144), (189, 2114), (199, 2075), (202, 2057), (211, 2027), (226, 1964), (257, 1832), (270, 1772), (278, 1724), (289, 1667), (302, 1631),

Gene: Stigma_217 Start: 108675, Stop: 109697, Start Num: 49

Candidate Starts for Stigma_217:

(Start: 49 @108675 has 8 MA's), (58, 108705), (76, 108786), (81, 108804), (95, 108846), (105, 108864), (111, 108882), (160, 109062), (175, 109125), (181, 109158), (183, 109170), (184, 109173), (188, 109185), (206, 109260), (226, 109335), (231, 109359), (238, 109389), (252, 109452), (302, 109671),

Gene: Sunny_ Start: 39140, Stop: 40135, Start Num: 46

Candidate Starts for Sunny_:

(1, 38867), (3, 38933), (4, 38972), (Start: 46 @39140 has 71 MA's), (82, 39269), (86, 39281), (96, 39305), (103, 39314), (104, 39320), (129, 39380), (131, 39395), (138, 39449), (148, 39482), (157,

39530), (168, 39572), (178, 39608), (180, 39620), (189, 39656), (202, 39713), (211, 39743), (213, 39752), (219, 39776), (258, 39944), (272, 39995), (274, 40007), (285, 40076),

Gene: Sushi23_253 Start: 125067, Stop: 124054, Start Num: 50

Candidate Starts for Sushi23_253:

(Start: 50 @125067 has 120 MA's), (76, 124956), (95, 124896), (101, 124887), (105, 124866), (110, 124851), (134, 124800), (155, 124689), (169, 124635), (189, 124554), (199, 124515), (202, 124497), (211, 124467), (226, 124404), (246, 124320), (248, 124308), (257, 124275), (270, 124215), (278, 124167), (281, 124149), (289, 124110),

Gene: Sushi23_2 Start: 2224, Stop: 1211, Start Num: 50

Candidate Starts for Sushi23_2:

(Start: 50 @2224 has 120 MA's), (76, 2113), (95, 2053), (101, 2044), (105, 2023), (110, 2008), (134, 1957), (155, 1846), (169, 1792), (189, 1711), (199, 1672), (202, 1654), (211, 1624), (226, 1561), (246, 1477), (248, 1465), (257, 1432), (270, 1372), (278, 1324), (281, 1306), (289, 1267),

Gene: Targaryen_2 Start: 2329, Stop: 1316, Start Num: 50

Candidate Starts for Targaryen_2:

(Start: 10 @2467 has 4 MA's), (Start: 19 @2422 has 4 MA's), (28, 2404), (45, 2341), (Start: 50 @2329 has 120 MA's), (69, 2248), (76, 2218), (87, 2185), (100, 2152), (105, 2128), (110, 2113), (134, 2062), (169, 1897), (189, 1816), (199, 1777), (202, 1759), (211, 1729), (226, 1666), (230, 1648), (248, 1570), (257, 1537), (278, 1429), (281, 1411), (289, 1372),

Gene: Targaryen_253 Start: 126005, Stop: 124992, Start Num: 50

Candidate Starts for Targaryen_253:

(Start: 10 @126143 has 4 MA's), (Start: 19 @126098 has 4 MA's), (28, 126080), (45, 126017), (Start: 50 @126005 has 120 MA's), (69, 125924), (76, 125894), (87, 125861), (100, 125828), (105, 125804), (110, 125789), (134, 125738), (169, 125573), (189, 125492), (199, 125453), (202, 125435), (211, 125405), (226, 125342), (230, 125324), (248, 125246), (257, 125213), (278, 125105), (281, 125087), (289, 125048),

Gene: Teamocil_61 Start: 37414, Stop: 38409, Start Num: 46

Candidate Starts for Teamocil_61:

(Start: 46 @37414 has 71 MA's), (53, 37429), (78, 37534), (82, 37543), (86, 37555), (115, 37612), (131, 37669), (138, 37723), (168, 37846), (178, 37882), (180, 37894), (211, 38017), (218, 38047), (231, 38107), (258, 38218), (267, 38239), (274, 38281), (276, 38302),

Gene: Terij_55 Start: 37200, Stop: 38201, Start Num: 54

Candidate Starts for Terij_55:

(Start: 54 @37200 has 35 MA's), (63, 37248), (78, 37314), (125, 37416), (136, 37479), (137, 37494), (147, 37530), (149, 37536), (151, 37539), (158, 37587), (186, 37707), (196, 37746), (225, 37869), (228, 37881), (231, 37896), (245, 37956), (247, 37971), (261, 38025), (283, 38136),

Gene: Tesla_96 Start: 57368, Stop: 56298, Start Num: 46

Candidate Starts for Tesla_96:

(Start: 35 @57422 has 1 MA's), (37, 57413), (Start: 46 @57368 has 71 MA's), (53, 57353), (60, 57320), (83, 57227), (92, 57194), (99, 57170), (107, 57137), (108, 57134), (109, 57131), (114, 57116), (117, 57104), (127, 57077), (141, 56990), (146, 56978), (152, 56945), (157, 56918), (159, 56912), (162, 56894), (175, 56852), (178, 56837), (185, 56801), (189, 56789), (204, 56711), (208, 56705), (221, 56657), (237, 56582), (257, 56507), (264, 56486), (267, 56483), (302, 56315), (303, 56312),

Gene: Teutsch_2 Start: 2225, Stop: 1212, Start Num: 50

Candidate Starts for Teutsch_2:

(Start: 50 @2225 has 120 MA's), (76, 2114), (95, 2054), (101, 2045), (105, 2024), (110, 2009), (134, 1958), (155, 1847), (169, 1793), (189, 1712), (199, 1673), (202, 1655), (211, 1625), (226, 1562), (246, 1478), (248, 1466), (257, 1433), (270, 1373), (278, 1325), (281, 1307), (289, 1268),

Gene: Deutsch_249 Start: 124434, Stop: 123421, Start Num: 50

Candidate Starts for Deutsch_249:

(Start: 50 @124434 has 120 MA's), (76, 124323), (95, 124263), (101, 124254), (105, 124233), (110, 124218), (134, 124167), (155, 124056), (169, 124002), (189, 123921), (199, 123882), (202, 123864), (211, 123834), (226, 123771), (246, 123687), (248, 123675), (257, 123642), (270, 123582), (278, 123534), (281, 123516), (289, 123477),

Gene: ThirteenKH_17 Start: 12307, Stop: 11303, Start Num: 54

Candidate Starts for ThirteenKH_17:

(Start: 54 @12307 has 35 MA's), (82, 12178), (128, 12082), (137, 12013), (138, 12004), (158, 11920), (189, 11791), (211, 11698), (228, 11626), (234, 11596), (237, 11584), (243, 11566), (249, 11521), (280, 11389), (287, 11350), (301, 11308),

Gene: TomSawyer_2 Start: 2200, Stop: 1199, Start Num: 50

Candidate Starts for TomSawyer_2:

(Start: 39 @2245 has 18 MA's), (Start: 50 @2200 has 120 MA's), (76, 2089), (87, 2056), (101, 2023), (108, 2011), (111, 2002), (134, 1954), (135, 1936), (136, 1933), (169, 1789), (173, 1780), (181, 1738), (189, 1708), (199, 1669), (202, 1651), (211, 1621), (226, 1558), (257, 1426), (270, 1366), (278, 1318), (289, 1261), (304, 1216),

Gene: TomSawyer_267 Start: 123979, Stop: 122978, Start Num: 50

Candidate Starts for TomSawyer_267:

(Start: 39 @124024 has 18 MA's), (Start: 50 @123979 has 120 MA's), (76, 123868), (87, 123835), (101, 123802), (108, 123790), (111, 123781), (134, 123733), (135, 123715), (136, 123712), (169, 123568), (173, 123559), (181, 123517), (189, 123487), (199, 123448), (202, 123430), (211, 123400), (226, 123337), (257, 123205), (270, 123145), (278, 123097), (289, 123040), (304, 122995),

Gene: Tomas_3 Start: 2619, Stop: 1627, Start Num: 50

Candidate Starts for Tomas_3:

(33, 2676), (Start: 50 @2619 has 120 MA's), (66, 2550), (69, 2538), (76, 2508), (79, 2499), (108, 2430), (112, 2418), (134, 2373), (189, 2127), (199, 2088), (202, 2070), (211, 2040), (226, 1977), (248, 1881), (257, 1848), (270, 1788), (278, 1740), (290, 1680), (302, 1647),

Gene: Tomas_258 Start: 124326, Stop: 123334, Start Num: 50

Candidate Starts for Tomas_258:

(33, 124383), (Start: 50 @124326 has 120 MA's), (66, 124257), (69, 124245), (76, 124215), (79, 124206), (108, 124137), (112, 124125), (134, 124080), (189, 123834), (199, 123795), (202, 123777), (211, 123747), (226, 123684), (248, 123588), (257, 123555), (270, 123495), (278, 123447), (290, 123387), (302, 123354),

Gene: Tribute_2 Start: 2225, Stop: 1212, Start Num: 50

Candidate Starts for Tribute_2:

(Start: 50 @2225 has 120 MA's), (76, 2114), (95, 2054), (101, 2045), (105, 2024), (110, 2009), (134, 1958), (155, 1847), (169, 1793), (189, 1712), (199, 1673), (202, 1655), (211, 1625), (226, 1562), (246, 1478), (248, 1466), (257, 1433), (270, 1373), (278, 1325), (281, 1307), (289, 1268),

Gene: Tribute_248 Start: 124769, Stop: 123756, Start Num: 50

Candidate Starts for Tribute_248:

(Start: 50 @124769 has 120 MA's), (76, 124658), (95, 124598), (101, 124589), (105, 124568), (110, 124553), (134, 124502), (155, 124391), (169, 124337), (189, 124256), (199, 124217), (202, 124199), (211, 124169), (226, 124106), (246, 124022), (248, 124010), (257, 123977), (270, 123917), (278, 123869), (281, 123851), (289, 123812),

Gene: Trina_210 Start: 112849, Stop: 113895, Start Num: 50

Candidate Starts for Trina_210:

(Start: 50 @112849 has 120 MA's), (74, 112954), (76, 112960), (81, 112978), (90, 113008), (94, 113017), (101, 113020), (106, 113044), (121, 113092), (142, 113215), (157, 113275), (170, 113332), (175, 113347), (192, 113425), (195, 113437), (199, 113446), (206, 113482), (211, 113494), (212, 113500), (216, 113515), (217, 113521), (257, 113683), (283, 113806), (301, 113866),

Gene: TrippleS_17 Start: 12314, Stop: 11310, Start Num: 54

Candidate Starts for TrippleS_17:

(Start: 54 @12314 has 35 MA's), (82, 12185), (128, 12089), (137, 12020), (138, 12011), (156, 11936), (189, 11798), (211, 11705), (228, 11633), (231, 11618), (234, 11603), (237, 11591), (243, 11573), (249, 11528), (280, 11396), (287, 11357), (301, 11315),

Gene: Trogglehumper_109 Start: 75166, Stop: 74096, Start Num: 46

Candidate Starts for Trogglehumper_109:

(Start: 46 @75166 has 71 MA's), (60, 75118), (99, 74983), (107, 74950), (110, 74941), (125, 74893), (128, 74884), (131, 74863), (141, 74800), (146, 74788), (150, 74773), (180, 74635), (189, 74599), (192, 74584), (198, 74563), (200, 74548), (216, 74491), (226, 74449), (257, 74308), (258, 74302), (262, 74287), (274, 74239), (279, 74209), (305, 74101),

Gene: Truong_17 Start: 12296, Stop: 11307, Start Num: 54

Candidate Starts for Truong_17:

(Start: 54 @12296 has 35 MA's), (78, 12182), (82, 12167), (133, 12053), (137, 12014), (138, 12005), (158, 11921), (189, 11792), (211, 11699), (231, 11612), (259, 11492), (276, 11414), (283, 11372), (287, 11354), (295, 11327),

Gene: TunaTartare_218 Start: 111927, Stop: 112946, Start Num: 50

Candidate Starts for TunaTartare_218:

(Start: 50 @111927 has 120 MA's), (58, 111957), (76, 112044), (89, 112083), (107, 112122), (117, 112155), (175, 112374), (184, 112422), (193, 112458), (195, 112464), (226, 112584), (231, 112608), (232, 112614), (233, 112617), (257, 112713), (265, 112743), (285, 112872), (298, 112911), (299, 112914), (303, 112926),

Gene: TyDawg_142 Start: 75349, Stop: 74276, Start Num: 55

Candidate Starts for TyDawg_142:

(7, 75526), (9, 75514), (Start: 24 @75445 has 5 MA's), (36, 75424), (Start: 55 @75349 has 12 MA's), (78, 75244), (81, 75235), (92, 75199), (108, 75145), (120, 75112), (128, 75082), (141, 74998), (162, 74902), (187, 74803), (191, 74785), (203, 74722), (207, 74713), (210, 74701), (211, 74698), (223, 74647), (236, 74587), (260, 74488), (263, 74479), (273, 74443), (279, 74404), (302, 74308), (304, 74299),

Gene: Tyrumbra_58 Start: 38636, Stop: 39631, Start Num: 46

Candidate Starts for Tyrumbra_58:

(Start: 46 @38636 has 71 MA's), (78, 38756), (82, 38765), (86, 38777), (103, 38810), (104, 38816), (115, 38834), (131, 38891), (138, 38945), (168, 39068), (178, 39104), (180, 39116), (211, 39239), (231, 39329), (258, 39440), (267, 39461), (274, 39503), (276, 39524), (285, 39572),

Gene: VasuNzinga_98 Start: 57452, Stop: 56382, Start Num: 46

Candidate Starts for VasuNzinga_98:

(Start: 35 @57506 has 1 MA's), (37, 57497), (Start: 46 @57452 has 71 MA's), (53, 57437), (60, 57404), (83, 57311), (92, 57278), (99, 57254), (107, 57221), (108, 57218), (109, 57215), (114, 57200), (117, 57188), (127, 57161), (141, 57074), (146, 57062), (152, 57029), (157, 57002), (159, 56996), (162, 56978), (175, 56936), (178, 56921), (185, 56885), (189, 56873), (204, 56795), (208, 56789), (215, 56762), (221, 56741), (237, 56666), (257, 56591), (264, 56570), (267, 56567), (302, 56399), (303, 56396),

Gene: Volt_83 Start: 43928, Stop: 42858, Start Num: 46

Candidate Starts for Volt_83:

(37, 43973), (42, 43943), (Start: 46 @43928 has 71 MA's), (Start: 56 @43904 has 1 MA's), (60, 43880), (74, 43808), (78, 43796), (91, 43757), (138, 43559), (141, 43550), (161, 43466), (171, 43424), (175, 43412), (178, 43397), (189, 43349), (217, 43232), (231, 43175), (237, 43148), (251, 43088), (283, 42938), (288, 42914), (292, 42899), (295, 42890), (298, 42884),

Gene: WaddleDee_170 Start: 111543, Stop: 112520, Start Num: 48

Candidate Starts for WaddleDee_170:

(Start: 48 @111543 has 1 MA's), (59, 111585), (102, 111711), (139, 111846), (157, 111927), (175, 111990), (193, 112074), (217, 112164), (228, 112209), (257, 112308), (274, 112383),

Gene: Warpy_257 Start: 124267, Stop: 123161, Start Num: 19

Candidate Starts for Warpy_257:

(Start: 19 @124267 has 4 MA's), (28, 124249), (45, 124186), (Start: 50 @124174 has 120 MA's), (69, 124093), (76, 124063), (87, 124030), (100, 123997), (105, 123973), (110, 123958), (134, 123907), (169, 123742), (189, 123661), (199, 123622), (202, 123604), (211, 123574), (226, 123511), (230, 123493), (248, 123415), (257, 123382), (278, 123274), (281, 123256), (289, 123217),

Gene: Warpy_5 Start: 2729, Stop: 1623, Start Num: 19

Candidate Starts for Warpy_5:

(Start: 19 @2729 has 4 MA's), (28, 2711), (45, 2648), (Start: 50 @2636 has 120 MA's), (69, 2555), (76, 2525), (87, 2492), (100, 2459), (105, 2435), (110, 2420), (134, 2369), (169, 2204), (189, 2123), (199, 2084), (202, 2066), (211, 2036), (226, 1973), (230, 1955), (248, 1877), (257, 1844), (278, 1736), (281, 1718), (289, 1679),

Gene: Waterlily_17 Start: 12338, Stop: 11307, Start Num: 54

Candidate Starts for Waterlily_17:

(Start: 54 @12338 has 35 MA's), (78, 12224), (82, 12209), (133, 12053), (137, 12014), (138, 12005), (158, 11921), (189, 11792), (211, 11699), (231, 11612), (259, 11492), (276, 11414), (283, 11372), (287, 11354), (295, 11327),

Gene: Watermoore_2 Start: 2226, Stop: 1213, Start Num: 50

Candidate Starts for Watermoore_2:

(Start: 10 @2373 has 4 MA's), (Start: 19 @2319 has 4 MA's), (28, 2301), (Start: 50 @2226 has 120 MA's), (76, 2115), (87, 2082), (95, 2055), (101, 2046), (105, 2025), (110, 2010), (134, 1959), (155, 1848), (169, 1794), (189, 1713), (199, 1674), (202, 1656), (211, 1626), (226, 1563), (246, 1479), (248, 1467), (257, 1434), (270, 1374), (278, 1326), (281, 1308), (289, 1269),

Gene: Watermoore_249 Start: 124822, Stop: 123809, Start Num: 50

Candidate Starts for Watermoore_249:

(Start: 10 @124969 has 4 MA's), (Start: 19 @124915 has 4 MA's), (28, 124897), (Start: 50 @124822 has 120 MA's), (76, 124711), (87, 124678), (95, 124651), (101, 124642), (105, 124621), (110, 124606), (134, 124555), (155, 124444), (169, 124390), (189, 124309), (199, 124270), (202, 124252), (211, 124222), (226, 124159), (246, 124075), (248, 124063), (257, 124030), (270, 123970), (278, 123922),

(281, 123904), (289, 123865),

Gene: Weasels2_189 Start: 100516, Stop: 101544, Start Num: 50

Candidate Starts for Weasels2_189:

(26, 100435), (Start: 50 @100516 has 120 MA's), (60, 100555), (62, 100570), (69, 100600), (77, 100633), (101, 100690), (123, 100762), (157, 100918), (159, 100924), (175, 100990), (183, 101035), (200, 101101), (206, 101125), (211, 101137), (212, 101143), (252, 101320), (302, 101521), (304, 101530),

Gene: Weiss13_60 Start: 44400, Stop: 45596, Start Num: 21

Candidate Starts for Weiss13_60:

(Start: 21 @44400 has 12 MA's), (29, 44415), (47, 44481), (53, 44490), (71, 44571), (75, 44592), (80, 44607), (88, 44634), (104, 44694), (108, 44715), (118, 44748), (138, 44859), (140, 44865), (144, 44877), (153, 44916), (159, 44946), (168, 44985), (187, 45063), (189, 45069), (192, 45084), (224, 45222), (231, 45255), (236, 45279), (258, 45372), (263, 45390), (272, 45423), (285, 45507), (291, 45528), (295, 45543), (302, 45561), (303, 45564), (304, 45570), (307, 45579), (308, 45582),

Gene: Westy_221 Start: 109461, Stop: 110483, Start Num: 49

Candidate Starts for Westy_221:

(Start: 49 @109461 has 8 MA's), (58, 109491), (76, 109572), (81, 109590), (95, 109632), (105, 109650), (111, 109668), (160, 109848), (175, 109911), (181, 109944), (183, 109956), (184, 109959), (188, 109971), (206, 110046), (226, 110121), (231, 110145), (238, 110175), (252, 110238), (302, 110457),

Gene: WhereRU_251 Start: 123360, Stop: 122347, Start Num: 50

Candidate Starts for WhereRU_251:

(9, 123510), (15, 123474), (Start: 19 @123453 has 4 MA's), (28, 123435), (Start: 50 @123360 has 120 MA's), (69, 123279), (76, 123249), (95, 123189), (105, 123159), (110, 123144), (111, 123141), (134, 123093), (155, 122982), (169, 122928), (180, 122883), (189, 122847), (199, 122808), (202, 122790), (211, 122760), (248, 122601), (257, 122568), (270, 122508), (278, 122460), (281, 122442), (289, 122403),

Gene: WhereRU_2 Start: 2215, Stop: 1202, Start Num: 50

Candidate Starts for WhereRU_2:

(9, 2365), (15, 2329), (Start: 19 @2308 has 4 MA's), (28, 2290), (Start: 50 @2215 has 120 MA's), (69, 2134), (76, 2104), (95, 2044), (105, 2014), (110, 1999), (111, 1996), (134, 1948), (155, 1837), (169, 1783), (180, 1738), (189, 1702), (199, 1663), (202, 1645), (211, 1615), (248, 1456), (257, 1423), (270, 1363), (278, 1315), (281, 1297), (289, 1258),

Gene: Wipeout_2 Start: 2266, Stop: 1220, Start Num: 39

Candidate Starts for Wipeout_2:

(Start: 39 @2266 has 18 MA's), (Start: 50 @2221 has 120 MA's), (76, 2110), (87, 2077), (101, 2044), (108, 2032), (111, 2023), (134, 1975), (135, 1957), (136, 1954), (169, 1810), (173, 1801), (181, 1759), (189, 1729), (199, 1690), (202, 1672), (211, 1642), (226, 1579), (257, 1447), (270, 1387), (278, 1339), (289, 1282), (304, 1237),

Gene: Wipeout_255 Start: 122997, Stop: 121951, Start Num: 39

Candidate Starts for Wipeout_255:

(Start: 39 @122997 has 18 MA's), (Start: 50 @122952 has 120 MA's), (76, 122841), (87, 122808), (101, 122775), (108, 122763), (111, 122754), (134, 122706), (135, 122688), (136, 122685), (169, 122541), (173, 122532), (181, 122490), (189, 122460), (199, 122421), (202, 122403), (211, 122373), (226, 122310), (257, 122178), (270, 122118), (278, 122070), (289, 122013), (304, 121968),

Gene: Wofford_3 Start: 2491, Stop: 1490, Start Num: 50

Candidate Starts for Wofford_3:

(8, 2638), (15, 2599), (16, 2587), (Start: 24 @2566 has 5 MA's), (33, 2548), (Start: 50 @2491 has 120 MA's), (76, 2380), (108, 2302), (111, 2293), (134, 2245), (135, 2227), (136, 2224), (169, 2080), (173, 2071), (189, 1999), (199, 1960), (202, 1942), (211, 1912), (226, 1849), (239, 1792), (240, 1789), (257, 1717), (270, 1657), (274, 1636), (278, 1609), (281, 1591), (302, 1516),

Gene: Wofford_261 Start: 124284, Stop: 123283, Start Num: 50

Candidate Starts for Wofford_261:

(8, 124431), (15, 124392), (16, 124380), (Start: 24 @124359 has 5 MA's), (33, 124341), (Start: 50 @124284 has 120 MA's), (76, 124173), (108, 124095), (111, 124086), (134, 124038), (135, 124020), (136, 124017), (169, 123873), (173, 123864), (189, 123792), (199, 123753), (202, 123735), (211, 123705), (226, 123642), (239, 123585), (240, 123582), (257, 123510), (270, 123450), (274, 123429), (278, 123402), (281, 123384), (302, 123309),

Gene: Yaboi_4 Start: 2628, Stop: 1627, Start Num: 50

Candidate Starts for Yaboi_4:

(30, 2694), (33, 2685), (Start: 50 @2628 has 120 MA's), (76, 2517), (111, 2430), (162, 2238), (169, 2217), (173, 2208), (181, 2166), (189, 2136), (199, 2097), (202, 2079), (211, 2049), (226, 1986), (257, 1854), (270, 1794), (278, 1746), (281, 1728), (289, 1689),

Gene: Yaboi_265 Start: 121446, Stop: 120445, Start Num: 50

Candidate Starts for Yaboi_265:

(30, 121512), (33, 121503), (Start: 50 @121446 has 120 MA's), (76, 121335), (111, 121248), (162, 121056), (169, 121035), (173, 121026), (181, 120984), (189, 120954), (199, 120915), (202, 120897), (211, 120867), (226, 120804), (257, 120672), (270, 120612), (278, 120564), (281, 120546), (289, 120507),

Gene: Yafa_17 Start: 12330, Stop: 11326, Start Num: 54

Candidate Starts for Yafa_17:

(Start: 54 @12330 has 35 MA's), (82, 12201), (128, 12105), (137, 12036), (138, 12027), (158, 11943), (189, 11814), (211, 11721), (228, 11649), (234, 11619), (237, 11607), (243, 11589), (249, 11544), (280, 11412), (287, 11373), (301, 11331),

Gene: Yelo_60 Start: 44779, Stop: 45975, Start Num: 21

Candidate Starts for Yelo_60:

(Start: 21 @44779 has 12 MA's), (29, 44794), (47, 44860), (53, 44869), (71, 44950), (75, 44971), (80, 44986), (88, 45013), (104, 45073), (108, 45094), (118, 45127), (138, 45238), (140, 45244), (144, 45256), (153, 45295), (159, 45325), (168, 45364), (187, 45442), (189, 45448), (192, 45463), (224, 45601), (231, 45634), (236, 45658), (258, 45751), (263, 45769), (272, 45802), (285, 45886), (291, 45907), (295, 45922), (302, 45940), (303, 45943), (304, 45949), (307, 45958), (308, 45961),

Gene: Yeti_59 Start: 37298, Stop: 38293, Start Num: 46

Candidate Starts for Yeti_59:

(Start: 46 @37298 has 71 MA's), (78, 37418), (82, 37427), (86, 37439), (103, 37472), (104, 37478), (115, 37496), (138, 37607), (157, 37688), (178, 37766), (180, 37778), (211, 37901), (218, 37931), (258, 38102), (267, 38123), (272, 38153), (276, 38186), (285, 38234),

Gene: Zenon_62 Start: 44725, Stop: 45921, Start Num: 21

Candidate Starts for Zenon_62:

(Start: 21 @44725 has 12 MA's), (29, 44740), (47, 44806), (53, 44815), (71, 44896), (75, 44917), (80, 44932), (88, 44959), (104, 45019), (108, 45040), (118, 45073), (138, 45184), (140, 45190), (144, 45202), (153, 45241), (159, 45271), (168, 45310), (187, 45388), (189, 45394), (192, 45409), (224,

45547), (231, 45580), (236, 45604), (258, 45697), (263, 45715), (272, 45748), (285, 45832), (291, 45853), (295, 45868), (302, 45886), (303, 45889), (304, 45895), (307, 45904), (308, 45907),

Gene: Zhengyi_18 Start: 13141, Stop: 12152, Start Num: 54

Candidate Starts for Zhengyi_18:

(Start: 54 @13141 has 35 MA's), (60, 13111), (64, 13090), (93, 12985), (128, 12928), (136, 12874), (138, 12850), (143, 12835), (179, 12679), (186, 12646), (257, 12346), (276, 12259), (283, 12217), (287, 12199),

Gene: Ziko_83 Start: 43750, Stop: 42680, Start Num: 46

Candidate Starts for Ziko_83:

(37, 43795), (42, 43765), (Start: 46 @43750 has 71 MA's), (Start: 56 @43726 has 1 MA's), (60, 43702), (74, 43630), (78, 43618), (91, 43579), (99, 43555), (113, 43504), (138, 43381), (161, 43288), (171, 43246), (175, 43234), (189, 43171), (217, 43054), (231, 42997), (237, 42970), (251, 42910), (283, 42760), (288, 42736), (292, 42721), (295, 42712), (298, 42706),