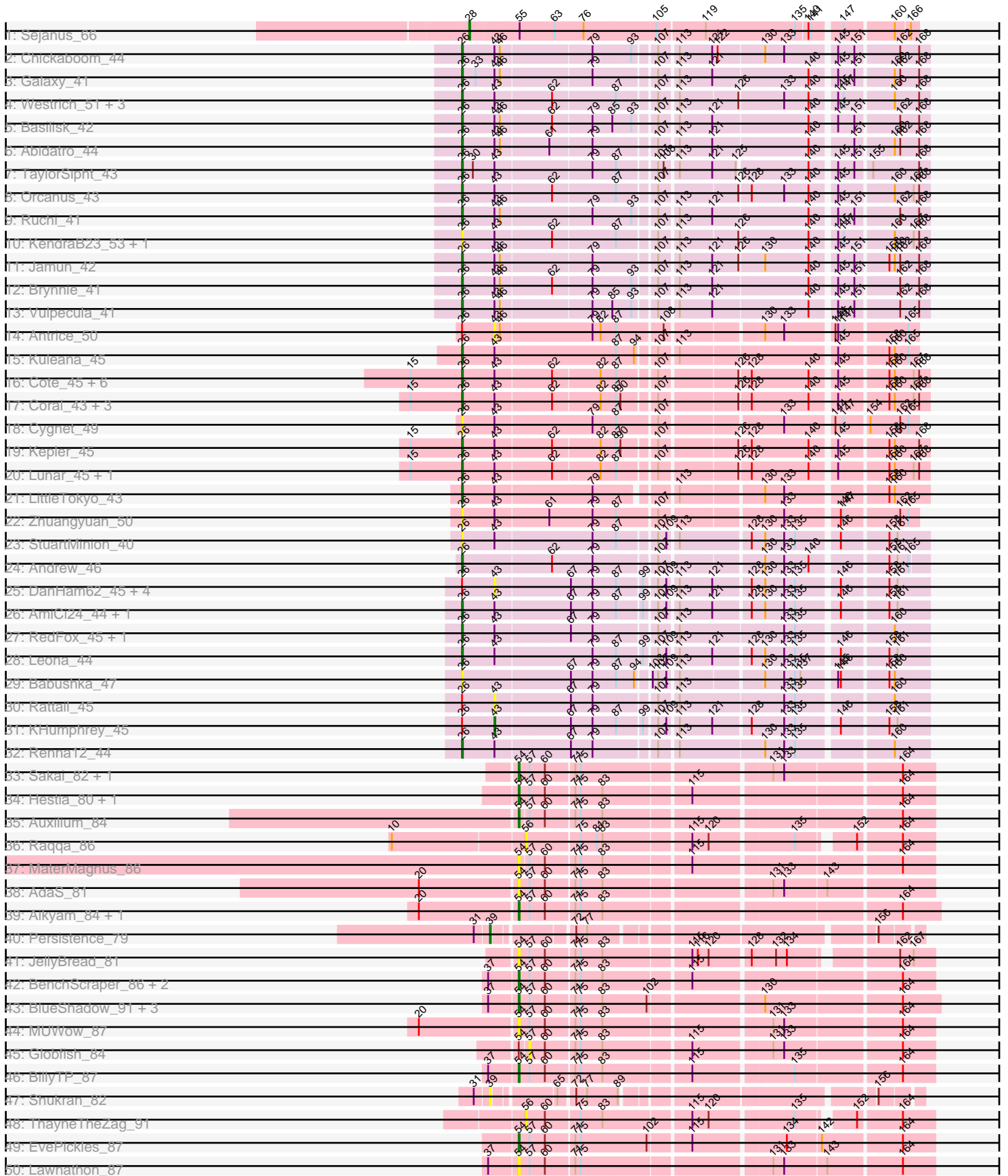
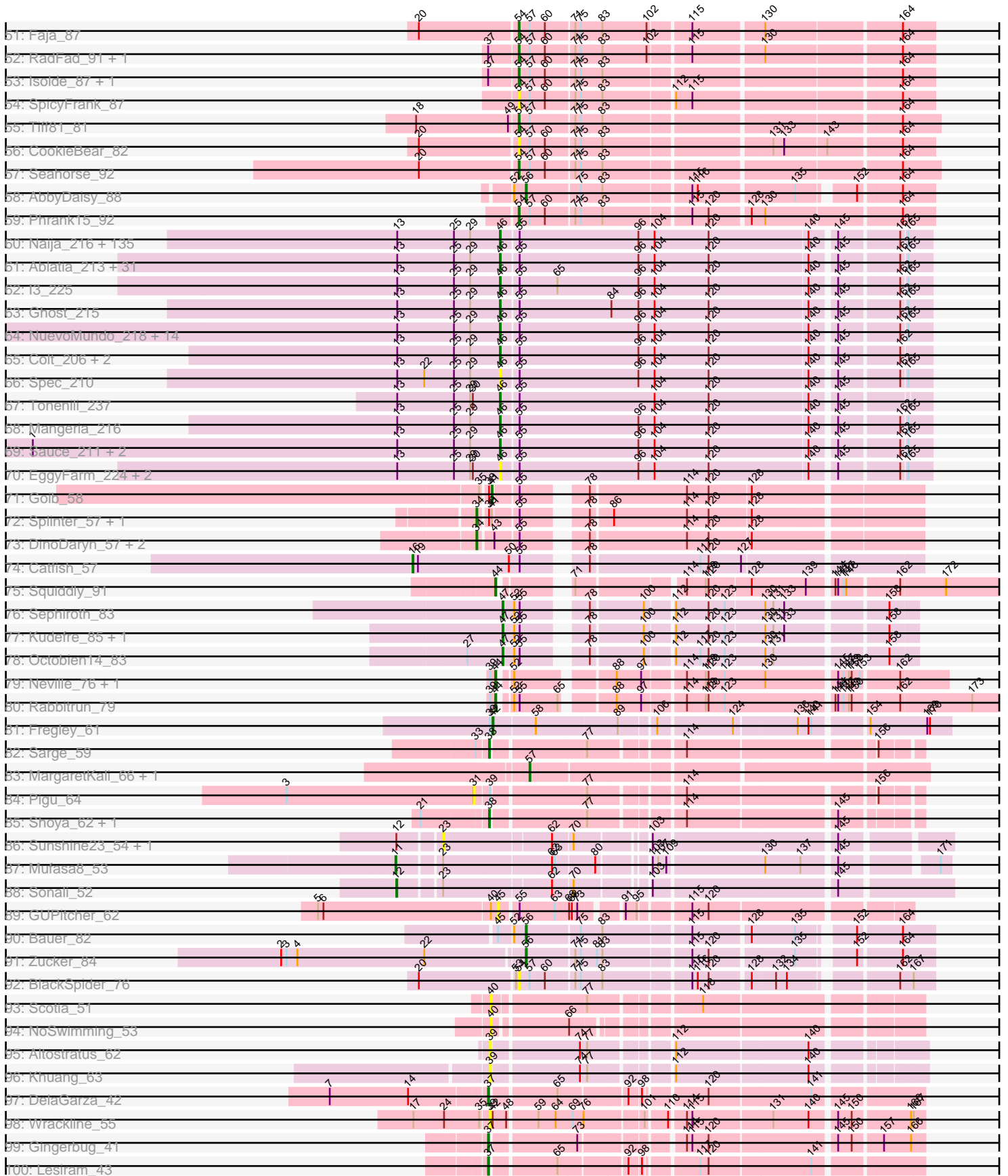


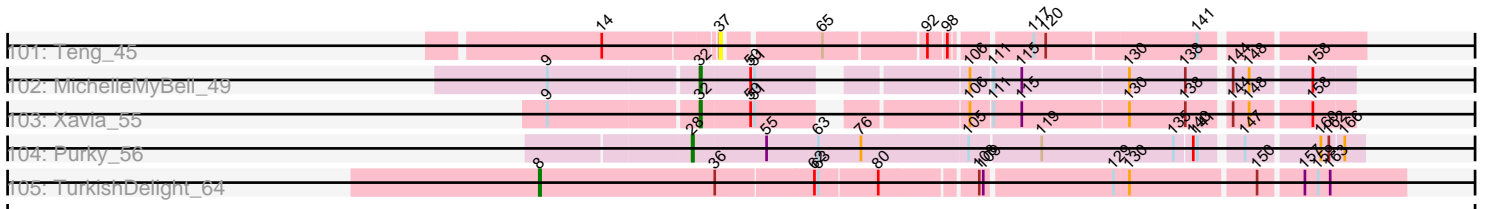
Pham 215741



Pham 215741



Pham 215741



Note: Tracks are now grouped by subcluster and scaled. Switching in subcluster is indicated by changes in track color. Track scale is now set by default to display the region 30 bp upstream of start 1 to 30 bp downstream of the last possible start. If this default region is judged to be packed too tightly with annotated starts, the track will be further scaled to only show that region of the ORF with annotated starts. This action will be indicated by adding "Zoomed" to the title. For starts, yellow indicates the location of called starts comprised solely of Glimmer/GeneMark auto-annotations, green indicates the location of called starts with at least 1 manual gene annotation.

Pham 215741 Report

This analysis was run 02/22/25 on database version 588.

Pham number 215741 has 329 members, 76 are drafts.

Phages represented in each track:

- Track 1 : Sejanus_66
- Track 2 : Chickaboom_44
- Track 3 : Galaxy_41
- Track 4 : Westrich_51, Eesa_42, Gravel_52, Pelletreau_52
- Track 5 : Basilisk_42
- Track 6 : Abidatro_44
- Track 7 : TaylorSipht_43
- Track 8 : Orcanus_43
- Track 9 : Ruchi_41
- Track 10 : KendraB23_53, Toad24_45
- Track 11 : Jamun_42
- Track 12 : Brynnie_41
- Track 13 : Vulpecula_41
- Track 14 : Antrice_50
- Track 15 : Kuleana_45
- Track 16 : Cote_45, Bedetta_48, Colusalem_46, Amelia_43, HannahPhantana_44, Jerole_53, Bible12_47
- Track 17 : Coral_43, OtsoOtso_51, Melons_45, Polka_43
- Track 18 : Cygnet_49
- Track 19 : Kepler_45
- Track 20 : Lunar_45, Daob_45
- Track 21 : LittleTokyo_43
- Track 22 : Zhuangyuan_50
- Track 23 : StuartMinion_40
- Track 24 : Andrew_46
- Track 25 : DanHam62_45, Glotell_47, Camara_45, HamCheese_44, Atlantica_45
- Track 26 : AmiCi24_44, Juno112_44
- Track 27 : RedFox_45, PhluffyCoco_45
- Track 28 : Leona_44
- Track 29 : Babushka_47
- Track 30 : Rattail_45
- Track 31 : KHumphrey_45
- Track 32 : Renna12_44
- Track 33 : Sakai_82, Gorpy_83
- Track 34 : Hestia_80, Bhageatrice_92
- Track 35 : Auxilium_84
- Track 36 : Raqqa_86

- Track 37 : MaterMagnus_86
- Track 38 : AdaS_81
- Track 39 : Aikyam_84, Anekin_86
- Track 40 : Persistence_79
- Track 41 : JellyBread_81
- Track 42 : BenchScraper_86, Richie_89, Windest_89
- Track 43 : BlueShadow_91, Vopal_87, Raphaella_86, MidnightRain_92
- Track 44 : MUWow_87
- Track 45 : Globfish_84
- Track 46 : BillyTP_87
- Track 47 : Shukran_82
- Track 48 : ThayneTheZag_91
- Track 49 : EvePickles_87
- Track 50 : Lawnathon_87
- Track 51 : Faja_87
- Track 52 : RadFad_91, Hillester_90
- Track 53 : Isolde_87, YoungHarleezy_85
- Track 54 : SpicyFrank_87
- Track 55 : Tiff81_81
- Track 56 : CookieBear_82
- Track 57 : Seahorse_92
- Track 58 : AbbyDaisy_88
- Track 59 : Phrank15_92
- Track 60 : Naija_216, Bangla1971_215, IkeLoa_207, Drazdys_213, ShiaLabeouf_212, Primadonna_210, RoMag_210, Loanshark_212, Khaleesi_214, Jaygup_211, SrishMeg2525_212, Essence_212, SVoro_212, CindyLou_216, Delylah_217, GlutenPhree_215, ValleyTerrace_216, Delilah_213, Bipolarisk_213, Rizal_207, Koguma_214, CharlieB_209, Jessibeth14_215, BadAgartude_209, Jezreel_212, Gabriel_218, Capablanca_220, ArcherS7_215, Shelob_216, Pivoine_216, DTDevon_217, Ewok_214, Naval22_220, Morizzled23_212, Gamgam_216, JPickles_211, Littleton_218, MoMoMixon_213, ZygoTaiga_212, Breeniome_214, Erdmann_216, Blackdragon_210, Dietrick_204, McWolfish_212, NedWong_214, Asterius_217, Astraea_209, Kboogie_219, Roots515_217, Lukilu_206, Amataga_216, Maby2021_215, Momo_216, McGee_214, Latch_215, Patter_216, JustHall_209, Melpomini_210, Ading_216, EmToTheThree_215, Burrough_217, Derek_212, StephanieG_211, Phusco_213, Grungle_199, SmallFry_215, PurduePete_215, Shnickers_213, Bread_210, Shaqnato_206, Jedediah_215, Bonray_217, Atlantean_215, Ngannou_212, Issimir_208, Zeenon_217, Rahel_216, Tyke_213, Napoleon13_212, Daffodil_220, YoungMoneyMata_214, ScottMcG_209, EmmaElysia_219, NoodleTree_221, Norm_215, DrPhinkDaddy_212, Iota_210, Halldule_208, Teardrop_212, Sprinklers_213, Domi_209, Chomp_215, MikeLiesIn_217, ParkTD_214, Lethe_217, YemiJoy2021_216, Tortoise16_213, Jemmno_214, StubbySaigey_220, DirtMonster_208, FudgeTart_210, LifeSavor_214, Gizmo_221, Pleione_219, Izajani_213, Adlitam_214, Wally_213, Zalkecks_214, Catera_207, Megamind_212, Shrimp_217, Lee7_215, Fongie_216, Mikro_211, Yucca_215, BananaFence_212, Caravan_206, Salacia_215, Kamryn_214, Janiyra_218, Darko_214, Matsumoto_214, Nidhogg_216, Audrick_217, Phlegm_219, Ava3_214, Willis_216, TinyTim_213, ET08_203, Babylant_218, InigoMontoya_218, Guwapp_210, FoxtrotP1_213, Spud_209, Ronan_211, SilverDipper_219
- Track 61 : Ablatia_213, Tainan_216, Concombre_220, Pio_223, EasyJones_218, BeanWater_207, LolaVinca_213, Belieber_208, Basquiat_212, ChickenPhender_211, LordLeafolot_217, Specks_219, Bigswole_220, FrayBell_218, Trinitium_211,

Demodog_221, JigglyPuff_222, Fludd_215, Phox_216, Cactojaque_210, Cali_208, ErnieJ_208, Chargie21_212, Blackbrain_212, LRRHood_208, Dandelion_223, Bxz1_205, InterFolia_218, Turret_208, Quasimodo_217, QBert_207, Nappy_216

- Track 62 : l3_225
- Track 63 : Ghost_215
- Track 64 : NuevoMundo_218, ChaylaJr_213, Sebata_216, Shifa_192, Pinkcreek_199, BackyardAgain_211, Alice_202, JayJay_217, Rabinovish_208, DeejaClivia_203, Pier_216, HyRo_203, Flabslab_210, LinStu_214, Stubby_199
- Track 65 : Colt_206, Blubba_204, Cane17_206
- Track 66 : Spec_210
- Track 67 : Tonenili_237
- Track 68 : Mangeria_216
- Track 69 : Sauce_211, Yassified_212, JulietS_208
- Track 70 : EggyFarm_224, Grasshills_223, BigCity_224
- Track 71 : Goib_58
- Track 72 : Splinter_57, Vendetta_57
- Track 73 : DinoDaryn_57, TZGordon_58, Huffy_57
- Track 74 : Catfish_57
- Track 75 : Squiddly_91
- Track 76 : Sephiroth_83
- Track 77 : Kudefre_85, Syleon_86
- Track 78 : Octobien14_83
- Track 79 : Neville_76, Trax_79
- Track 80 : Rabbitrun_79
- Track 81 : Fregley_61
- Track 82 : Sarge_59
- Track 83 : MargaretKali_66, Kumotta_70
- Track 84 : Pigu_64
- Track 85 : Shoya_62, BrayBeast_62
- Track 86 : Sunshine23_54, Maruru_53
- Track 87 : Mufasa8_53
- Track 88 : Sonali_52
- Track 89 : GUPitcher_62
- Track 90 : Bauer_82
- Track 91 : Zucker_84
- Track 92 : BlackSpider_76
- Track 93 : Scotia_51
- Track 94 : NoSwimming_53
- Track 95 : Altostratus_62
- Track 96 : Khuang_63
- Track 97 : DelaGarza_42
- Track 98 : Wrackline_55
- Track 99 : Gingerbug_41
- Track 100 : Lesiram_43
- Track 101 : Teng_45
- Track 102 : MichelleMyBell_49
- Track 103 : Xavia_55
- Track 104 : Purky_56
- Track 105 : TurkishDelight_64

Summary of Final Annotations (See graph section above for start numbers):

The start number called the most often in the published annotations is 46, it was called in 172 of the 253 non-draft genes in the pham.

Genes that call this "Most Annotated" start:

- Ablatia_213, Ading_216, Adlitam_214, Alice_202, Amataga_216, ArcherS7_215, Asterius_217, Astraea_209, Atlantean_215, Audrick_217, Ava3_214, Babyland_218, BackyardAgain_211, BadAgartude_209, BananaFence_212, Bangla1971_215, Basquiat_212, BeanWater_207, Belieber_208, BigCity_224, Bigswole_220, Bipolarisk_213, Blackbrain_212, Blackdragon_210, Blubba_204, Bonray_217, Bread_210, Breeniome_214, Burrough_217, Bxz1_205, Cactojaque_210, Cali_208, Cane17_206, Capablanca_220, Caravan_206, Catera_207, Chargie21_212, CharlieB_209, ChaylaJr_213, ChickenPhender_211, Chomp_215, CindyLou_216, Colt_206, Concombre_220, DTDevon_217, Daffodil_220, Dandelion_223, Darko_214, DeejaClivia_203, Delilah_213, Delylah_217, Demodog_221, Derek_212, Dietrick_204, DirtMonster_208, Domi_209, DrPhinkDaddy_212, Drazdys_213, ET08_203, EasyJones_218, EggyFarm_224, EmToTheThree_215, EmmaElysia_219, Erdmann_216, ErnieJ_208, Essence_212, Ewok_214, Flabslab_210, Fludd_215, Fongie_216, FoxtrotP1_213, FrayBell_218, FudgeTart_210, Gabriel_218, Gamgam_216, Ghost_215, Gizmo_221, GlutenPhree_215, Grasshills_223, Grungle_199, Guwapp_210, Halldule_208, HyRo_203, I3_225, IkeLoa_207, InigoMontoya_218, InterFolia_218, Iota_210, Issimir_208, Izajani_213, JPickles_211, Janiyra_218, JayJay_217, Jaygup_211, Jedediah_215, Jemmno_214, Jessibeth14_215, Jezreel_212, JigglyPuff_222, JulietS_208, JustHall_209, Kamryn_214, Kboogie_219, Khaleesi_214, Koguma_214, LRRHood_208, Latch_215, Lee7_215, Lethe_217, LifeSavor_214, LinStu_214, Littleton_218, Loanshark_212, LolaVinca_213, LordLeafolot_217, Lukilu_206, Maby2021_215, Mangeria_216, Matsumoto_214, McGee_214, McWolfish_212, Megamind_212, Melpomini_210, MikeLiesIn_217, Mikro_211, MoMoMixon_213, Momo_216, Morizzled23_212, Naija_216, Napoleon13_212, Nappy_216, Naval22_220, NedWong_214, Ngannou_212, Nidhogg_216, NoodleTree_221, Norm_215, NuevoMundo_218, ParkTD_214, Patter_216, Phlegm_219, Phox_216, Phusco_213, Pier_216, Pinkcreek_199, Pio_223, Pivoine_216, Pleione_219, Primadonna_210, PurduePete_215, QBert_207, Quasimodo_217, Rabinovish_208, Rahel_216, Rizal_207, RoMag_210, Ronan_211, Roots515_217, SVoro_212, Salacia_215, Sauce_211, ScottMcG_209, Sebata_216, Shaqnato_206, Shelob_216, ShiaLabeouf_212, Shifa_192, Shnickers_213, Shrimp_217, SilverDipper_219, SmallFry_215, Spec_210, Specks_219, Sprinklers_213, Spud_209, SrishMeg2525_212, StephanieG_211, StubbySaigey_220, Stubby_199, Tainan_216, Teardrop_212, TinyTim_213, Tonenili_237, Tortoise16_213, Trinitium_211, Turret_208, Tyke_213, ValleyTerrace_216, Wally_213, Willis_216, Yassified_212, YemiJoy2021_216, YoungMoneyMata_214, Yucca_215, Zalkecks_214, Zeenon_217, ZyoTaiga_212,

Genes that have the "Most Annotated" start but do not call it:

- Abidatro_44, Antrice_50, Basilisk_42, Brynnie_41, Chickaboom_44, Galaxy_41, Jamun_42, Ruchi_41, Vulpecula_41,

Genes that do not have the "Most Annotated" start:

- AbbyDaisy_88, AdaS_81, Aikyam_84, Altostratus_62, Amelia_43, AmiCi24_44, Andrew_46, Anekin_86, Atlantica_45, Auxilium_84, Babushka_47, Bauer_82, Bedetta_48, BenchScraper_86, Bhageatrice_92, Bible12_47, BillyTP_87, BlackSpider_76, BlueShadow_91, BrayBeast_62, Camara_45, Catfish_57,

Colusalem_46, CookieBear_82, Coral_43, Cote_45, Cygnet_49, DanHam62_45, Daob_45, DelaGarza_42, DinoDaryn_57, Eesa_42, EvePickles_87, Faja_87, Fregley_61, GUPitcher_62, Gingerbug_41, Globfish_84, Glotell_47, Goib_58, Gorpy_83, Gravel_52, HamCheese_44, HannahPhantana_44, Hestia_80, Hillester_90, Huffy_57, Isolde_87, JellyBread_81, Jerole_53, Juno112_44, KHumphrey_45, KendraB23_53, Kepler_45, Khuang_63, Kudrefre_85, Kuleana_45, Kumotta_70, Lawnathon_87, Leona_44, Lesiram_43, LittleTokyo_43, Lunar_45, MUWow_87, MargaretKali_66, Maruru_53, MaterMagnus_86, Melons_45, MichelleMyBell_49, MidnightRain_92, Mufasa8_53, Neville_76, NoSwimming_53, Octobien14_83, Orcanus_43, OtsoOtso_51, Pelletreau_52, Persistence_79, PhluffyCoco_45, Phrank15_92, Pigu_64, Polka_43, Purky_56, Rabbitrun_79, RadFad_91, Raphaella_86, Raqqa_86, Rattail_45, RedFox_45, Renna12_44, Richie_89, Sakai_82, Sarge_59, Scotia_51, Seahorse_92, Sejanus_66, Sephiroth_83, Shoya_62, Shukran_82, Sonali_52, SpicyFrank_87, Splinter_57, Squiddly_91, StuartMinion_40, Sunshine23_54, Syleon_86, TzGordon_58, TaylorSipt_43, Teng_45, ThayneTheZag_91, Tiff81_81, Toad24_45, Trax_79, TurkishDelight_64, Vendetta_57, Vopal_87, Westrich_51, Windest_89, Wrackline_55, Xavia_55, YoungHarleezy_85, Zhuangyuan_50, Zucker_84,

Summary by start number:

Start 8:

- Found in 1 of 329 (0.3%) of genes in pham
- Manual Annotations of this start: 1 of 253
- Called 100.0% of time when present
- Phage (with cluster) where this start called: TurkishDelight_64 (singleton),

Start 11:

- Found in 1 of 329 (0.3%) of genes in pham
- Manual Annotations of this start: 1 of 253
- Called 100.0% of time when present
- Phage (with cluster) where this start called: Mufasa8_53 (FG),

Start 12:

- Found in 3 of 329 (0.9%) of genes in pham
- Manual Annotations of this start: 1 of 253
- Called 33.3% of time when present
- Phage (with cluster) where this start called: Sonali_52 (FG),

Start 16:

- Found in 1 of 329 (0.3%) of genes in pham
- Manual Annotations of this start: 1 of 253
- Called 100.0% of time when present
- Phage (with cluster) where this start called: Catfish_57 (CU5),

Start 23:

- Found in 4 of 329 (1.2%) of genes in pham
- No Manual Annotations of this start.
- Called 50.0% of time when present
- Phage (with cluster) where this start called: Maruru_53 (FG), Sunshine23_54 (FG),

Start 26:

- Found in 51 of 329 (15.5%) of genes in pham

- Manual Annotations of this start: 28 of 253
- Called 84.3% of time when present
- Phage (with cluster) where this start called: Abidatro_44 (AS1), Amelia_43 (AS2), AmiCi24_44 (AS3), Andrew_46 (AS3), Babushka_47 (AS3), Basilisk_42 (AS1), Bedetta_48 (AS2), Bibble12_47 (AS2), Brynnie_41 (AS1), Chickaboom_44 (AS1), Colusalem_46 (AS2), Coral_43 (AS2), Cote_45 (AS2), Cygnet_49 (AS2), Daob_45 (AS2), Eesa_42 (AS1), Galaxy_41 (AS1), Gravel_52 (AS1), HannahPhantana_44 (AS2), Jamun_42 (AS1), Jerole_53 (AS2), Juno112_44 (AS3), KendraB23_53 (AS1), Kepler_45 (AS2), Kuleana_45 (AS2), Leona_44 (AS3), LittleTokyo_43 (AS2), Lunar_45 (AS2), Melons_45 (AS2), Orcanus_43 (AS1), OtsoOtso_51 (AS2), Pelletreau_52 (AS1), PhluffyCoco_45 (AS3), Polka_43 (AS2), RedFox_45 (AS3), Rennan12_44 (AS3), Ruchi_41 (AS1), StuartMinion_40 (AS3), TaylorSipht_43 (AS1), Toad24_45 (AS1), Vulpecula_41 (AS1), Westrich_51 (AS1), Zhuangyuan_50 (AS2),

Start 28:

- Found in 2 of 329 (0.6%) of genes in pham
- Manual Annotations of this start: 2 of 253
- Called 100.0% of time when present
- Phage (with cluster) where this start called: Purky_56 (P6), Sejanus_66 (AD),

Start 31:

- Found in 3 of 329 (0.9%) of genes in pham
- No Manual Annotations of this start.
- Called 33.3% of time when present
- Phage (with cluster) where this start called: Pigu_64 (FB),

Start 32:

- Found in 2 of 329 (0.6%) of genes in pham
- Manual Annotations of this start: 2 of 253
- Called 100.0% of time when present
- Phage (with cluster) where this start called: MichelleMyBell_49 (N), Xavia_55 (P3),

Start 34:

- Found in 5 of 329 (1.5%) of genes in pham
- Manual Annotations of this start: 5 of 253
- Called 100.0% of time when present
- Phage (with cluster) where this start called: DinoDaryn_57 (CU1), Huffy_57 (CU1), Splinter_57 (CU1), TZGordon_58 (CU1), Vendetta_57 (CU1),

Start 37:

- Found in 17 of 329 (5.2%) of genes in pham
- Manual Annotations of this start: 3 of 253
- Called 23.5% of time when present
- Phage (with cluster) where this start called: DelaGarza_42 (GF), Gingerbug_41 (GF), Lesiram_43 (GF), Teng_45 (GF),

Start 38:

- Found in 6 of 329 (1.8%) of genes in pham
- Manual Annotations of this start: 3 of 253
- Called 50.0% of time when present
- Phage (with cluster) where this start called: BrayBeast_62 (FB), Sarge_59 (FB), Shoya_62 (FB),

Start 39:

- Found in 10 of 329 (3.0%) of genes in pham
- Manual Annotations of this start: 1 of 253
- Called 50.0% of time when present
- Phage (with cluster) where this start called: Altostratus_62 (FS), Khuang_63 (FS), Persistence_79 (AY), Shukran_82 (AY), Wrackline_55 (GF),

Start 40:

- Found in 3 of 329 (0.9%) of genes in pham
- No Manual Annotations of this start.
- Called 66.7% of time when present
- Phage (with cluster) where this start called: NoSwimming_53 (FO), Scotia_51 (FO),

Start 41:

- Found in 3 of 329 (0.9%) of genes in pham
- Manual Annotations of this start: 1 of 253
- Called 33.3% of time when present
- Phage (with cluster) where this start called: Goib_58 (CU1),

Start 42:

- Found in 2 of 329 (0.6%) of genes in pham
- Manual Annotations of this start: 1 of 253
- Called 50.0% of time when present
- Phage (with cluster) where this start called: Fregley_61 (EG),

Start 43:

- Found in 52 of 329 (15.8%) of genes in pham
- Manual Annotations of this start: 1 of 253
- Called 15.4% of time when present
- Phage (with cluster) where this start called: Antrice_50 (AS2), Atlantica_45 (AS3), Camara_45 (AS3), DanHam62_45 (AS3), Glotell_47 (AS3), HamCheese_44 (AS3), KHumphrey_45 (AS3), Rattail_45 (AS3),

Start 44:

- Found in 4 of 329 (1.2%) of genes in pham
- Manual Annotations of this start: 4 of 253
- Called 100.0% of time when present
- Phage (with cluster) where this start called: Neville_76 (DU2), Rabbitrun_79 (DU2), Squiddly_91 (DN2), Trax_79 (DU2),

Start 45:

- Found in 2 of 329 (0.6%) of genes in pham
- No Manual Annotations of this start.
- Called 50.0% of time when present
- Phage (with cluster) where this start called: GUPitcher_62 (FJ),

Start 46:

- Found in 206 of 329 (62.6%) of genes in pham
- Manual Annotations of this start: 172 of 253
- Called 95.6% of time when present
- Phage (with cluster) where this start called: Ablatia_213 (C1), Ading_216 (C1), Adlitam_214 (C1), Alice_202 (C1), Amataga_216 (C1), ArcherS7_215 (C1), Asterius_217 (C1), Astraea_209 (C1), Atlantean_215 (C1), Audrick_217 (C1),

Ava3_214 (C1), Babyland_218 (C1), BackyardAgain_211 (C1), BadAgartude_209 (C1), BananaFence_212 (C1), Bangla1971_215 (C1), Basquiat_212 (C1), BeanWater_207 (C1), Belieber_208 (C1), BigCity_224 (C1), Bigswole_220 (C1), Bipolarisk_213 (C1), Blackbrain_212 (C1), Blackdragon_210 (C1), Blubba_204 (C1), Bonray_217 (C1), Bread_210 (C1), Breeniome_214 (C1), Burrough_217 (C1), Bxz1_205 (C1), Cactojaque_210 (C1), Cali_208 (C1), Cane17_206 (C1), Capablanca_220 (C1), Caravan_206 (C1), Catera_207 (C1), Chargie21_212 (C1), CharlieB_209 (C1), ChaylaJr_213 (C1), ChickenPhender_211 (C1), Chomp_215 (C1), CindyLou_216 (C1), Colt_206 (C1), Concombre_220 (C1), DTDevon_217 (C1), Daffodil_220 (C1), Dandelion_223 (C1), Darko_214 (C1), DeejaClivia_203 (C1), Delilah_213 (C1), Delylah_217 (C1), Demodog_221 (C1), Derek_212 (C1), Dietrick_204 (C1), DirtMonster_208 (C1), Domi_209 (C1), DrPhinkDaddy_212 (C1), Drazdys_213 (C1), ET08_203 (C1), EasyJones_218 (C1), EggYFarm_224 (C1), EmToTheThree_215 (C1), EmmaElysia_219 (C1), Erdmann_216 (C1), ErnieJ_208 (C1), Essence_212 (C1), Ewok_214 (C1), Flabslab_210 (C1), Fludd_215 (C1), Fongie_216 (C1), FoxtrotP1_213 (C1), FrayBell_218 (C1), FudgeTart_210 (C1), Gabriel_218 (C1), Gamgam_216 (C1), Ghost_215 (C1), Gizmo_221 (C1), GlutenPhree_215 (C1), Grasshills_223 (C1), Grungle_199 (C1), Guwapp_210 (C1), Halldule_208 (C1), HyRo_203 (C1), I3_225 (C1), IkeLoa_207 (C1), InigoMontoya_218 (C1), InterFolia_218 (C1), Iota_210 (C1), Issimir_208 (C1), Izajani_213 (C1), JPickles_211 (C1), Janiyr_218 (C1), JayJay_217 (C1), Jaygup_211 (C1), Jedediah_215 (C1), Jemmno_214 (C1), Jessibeth14_215 (C1), Jezreel_212 (C1), JigglyPuff_222 (C1), JulietS_208 (C1), JustHall_209 (C1), Kamryn_214 (C1), Kboogie_219 (C1), Khaleesi_214 (C1), Koguma_214 (C1), LRRHood_208 (C1), Latch_215 (C1), Lee7_215 (C1), Lethe_217 (C1), LifeSavor_214 (C1), LinStu_214 (C1), Littleton_218 (C1), Loanshark_212 (C1), LolaVinca_213 (C1), LordLeafolot_217 (C1), Lukilu_206 (C1), Maby2021_215 (C1), Mangeria_216 (C1), Matsumoto_214 (C1), McGee_214 (C1), McWolfish_212 (C1), Megamind_212 (C1), Melpomini_210 (C1), MikeLiesIn_217 (C1), Mikro_211 (C1), MoMoMixon_213 (C1), Momo_216 (C1), Morizzled23_212 (C1), Naija_216 (C1), Napoleon13_212 (C1), Nappy_216 (C1), Naval22_220 (C1), NedWong_214 (C1), Ngannou_212 (C1), Nidhogg_216 (C1), NoodleTree_221 (C1), Norm_215 (C1), NuevoMundo_218 (C1), ParkTD_214 (C1), Patter_216 (C1), Phlegm_219 (C1), Phox_216 (C1), Phusco_213 (C1), Pier_216 (C1), Pinkcreek_199 (C1), Pio_223 (C1), Pivoine_216 (C1), Pleione_219 (C1), Primadonna_210 (C1), PurduePete_215 (C1), QBert_207 (C1), Quasimodo_217 (C1), Rabinovish_208 (C1), Rahel_216 (C1), Rizal_207 (C1), RoMag_210 (C1), Ronan_211 (C1), Roots515_217 (C1), SVoro_212 (C1), Salacia_215 (C1), Sauce_211 (C1), ScottMcG_209 (C1), Sebata_216 (C1), Shaq nato_206 (C1), Shelob_216 (C1), ShiaLabeouf_212 (C1), Shifa_192 (C1), Shnickers_213 (C1), Shrimp_217 (C1), SilverDipper_219 (C1), SmallFry_215 (C1), Spec_210 (C1), Specks_219 (C1), Sprinklers_213 (C1), Spud_209 (C1), SrishMeg2525_212 (C1), StephanieG_211 (C1), StubbySaigey_220 (C1), Stubby_199 (C1), Tainan_216 (C1), Teardrop_212 (C1), TinyTim_213 (C1), Tonenili_237 (C1), Tortoise16_213 (C1), Trinitium_211 (C1), Turret_208 (C1), Tyke_213 (C1), ValleyTerrace_216 (C1), Wally_213 (C1), Willis_216 (C1), Yassified_212 (C1), YemiJoy2021_216 (C1), YoungMoneyMata_214 (C1), Yucca_215 (C1), Zalkecks_214 (C1), Zeenon_217 (C1), ZygoTaiga_212 (C1),

Start 47:

- Found in 4 of 329 (1.2%) of genes in pham
- Manual Annotations of this start: 4 of 253
- Called 100.0% of time when present

- Phage (with cluster) where this start called: Kundefre_85 (DU1), Octobien14_83 (DU1), Sephiroth_83 (DU1), Syleon_86 (DU1),

Start 54:

- Found in 33 of 329 (10.0%) of genes in pham
- Manual Annotations of this start: 17 of 253
- Called 97.0% of time when present
- Phage (with cluster) where this start called: AdaS_81 (AY), Aikyam_84 (AY), Anekin_86 (AY), Auxilium_84 (AY), BenchScraper_86 (AY), Bhageatrice_92 (AY), BillyTP_87 (AY), BlackSpider_76 (FN), BlueShadow_91 (AY), CookieBear_82 (AY), EvePickles_87 (AY), Faja_87 (AY), Gorpy_83 (AY), Hestia_80 (AY), Hillester_90 (AY), Isolde_87 (AY), JellyBread_81 (AY), Lawnathon_87 (AY), MUWow_87 (AY), MaterMagnus_86 (AY), MidnightRain_92 (AY), Phrank15_92 (AY), RadFad_91 (AY), Raphaella_86 (AY), Richie_89 (AY), Sakai_82 (AY), Seahorse_92 (AY), SpicyFrank_87 (AY), Tiff81_81 (AY), Vopal_87 (AY), Windest_89 (AY), YoungHarleezy_85 (AY),

Start 56:

- Found in 5 of 329 (1.5%) of genes in pham
- Manual Annotations of this start: 3 of 253
- Called 100.0% of time when present
- Phage (with cluster) where this start called: AbbyDaisy_88 (AY), Bauer_82 (FN), Raqqa_86 (AY), ThayneTheZag_91 (AY), Zucker_84 (FN),

Start 57:

- Found in 35 of 329 (10.6%) of genes in pham
- Manual Annotations of this start: 2 of 253
- Called 8.6% of time when present
- Phage (with cluster) where this start called: Globfish_84 (AY), Kumotta_70 (FB), MargaretKali_66 (FB),

Summary by clusters:

There are 23 clusters represented in this pham: singleton, FS, AS2, FB, FG, FJ, FN, FO, CU5, CU1, DN2, DU1, DU2, AS3, P3, AS1, P6, AD, EG, N, GF, AY, C1,

Info for manual annotations of cluster AD:

- Start number 28 was manually annotated 1 time for cluster AD.

Info for manual annotations of cluster AS1:

- Start number 26 was manually annotated 11 times for cluster AS1.

Info for manual annotations of cluster AS2:

- Start number 26 was manually annotated 11 times for cluster AS2.

Info for manual annotations of cluster AS3:

- Start number 26 was manually annotated 6 times for cluster AS3.
- Start number 43 was manually annotated 1 time for cluster AS3.

Info for manual annotations of cluster AY:

- Start number 39 was manually annotated 1 time for cluster AY.
- Start number 54 was manually annotated 17 times for cluster AY.
- Start number 56 was manually annotated 1 time for cluster AY.

Info for manual annotations of cluster C1:

- Start number 46 was manually annotated 172 times for cluster C1.

Info for manual annotations of cluster CU1:

- Start number 34 was manually annotated 5 times for cluster CU1.
- Start number 41 was manually annotated 1 time for cluster CU1.

Info for manual annotations of cluster CU5:

- Start number 16 was manually annotated 1 time for cluster CU5.

Info for manual annotations of cluster DN2:

- Start number 44 was manually annotated 1 time for cluster DN2.

Info for manual annotations of cluster DU1:

- Start number 47 was manually annotated 4 times for cluster DU1.

Info for manual annotations of cluster DU2:

- Start number 44 was manually annotated 3 times for cluster DU2.

Info for manual annotations of cluster EG:

- Start number 42 was manually annotated 1 time for cluster EG.

Info for manual annotations of cluster FB:

- Start number 38 was manually annotated 3 times for cluster FB.
- Start number 57 was manually annotated 2 times for cluster FB.

Info for manual annotations of cluster FG:

- Start number 11 was manually annotated 1 time for cluster FG.
- Start number 12 was manually annotated 1 time for cluster FG.

Info for manual annotations of cluster FN:

- Start number 56 was manually annotated 2 times for cluster FN.

Info for manual annotations of cluster GF:

- Start number 37 was manually annotated 3 times for cluster GF.

Info for manual annotations of cluster N:

- Start number 32 was manually annotated 1 time for cluster N.

Info for manual annotations of cluster P3:

- Start number 32 was manually annotated 1 time for cluster P3.

Info for manual annotations of cluster P6:

- Start number 28 was manually annotated 1 time for cluster P6.

Gene Information:

Gene: AbbyDaisy_88 Start: 50419, Stop: 50823, Start Num: 56

Candidate Starts for AbbyDaisy_88:

(52, 50407), (Start: 56 @50419 has 3 MA's), (75, 50476), (83, 50500), (115, 50590), (116, 50596), (135, 50692), (152, 50743), (164, 50788),

Gene: Abidatro_44 Start: 29002, Stop: 29472, Start Num: 26

Candidate Starts for Abidatro_44:

(Start: 26 @29002 has 28 MA's), (Start: 43 @29038 has 1 MA's), (Start: 46 @29044 has 172 MA's), (61, 29095), (79, 29140), (107, 29200), (113, 29218), (121, 29254), (140, 29353), (151, 29395), (160, 29434), (162, 29440), (168, 29461),

Gene: Ablatia_213 Start: 119512, Stop: 119967, Start Num: 46

Candidate Starts for Ablatia_213:

(13, 119398), (25, 119461), (29, 119479), (Start: 46 @119512 has 172 MA's), (55, 119530), (96, 119662), (104, 119680), (120, 119740), (140, 119848), (145, 119872), (162, 119935), (165, 119941),

Gene: AdaS_81 Start: 45341, Stop: 45766, Start Num: 54

Candidate Starts for AdaS_81:

(20, 45236), (Start: 54 @45341 has 17 MA's), (Start: 57 @45353 has 2 MA's), (60, 45368), (71, 45398), (75, 45404), (83, 45428), (131, 45596), (133, 45608), (143, 45653),

Gene: Ading_216 Start: 121132, Stop: 121587, Start Num: 46

Candidate Starts for Ading_216:

(13, 121018), (25, 121081), (29, 121099), (Start: 46 @121132 has 172 MA's), (55, 121150), (96, 121282), (104, 121300), (120, 121360), (140, 121468), (145, 121492), (162, 121555), (165, 121561),

Gene: Adlitam_214 Start: 119736, Stop: 120191, Start Num: 46

Candidate Starts for Adlitam_214:

(13, 119622), (25, 119685), (29, 119703), (Start: 46 @119736 has 172 MA's), (55, 119754), (96, 119886), (104, 119904), (120, 119964), (140, 120072), (145, 120096), (162, 120159), (165, 120165),

Gene: Aikyam_84 Start: 46399, Stop: 46830, Start Num: 54

Candidate Starts for Aikyam_84:

(20, 46294), (Start: 54 @46399 has 17 MA's), (Start: 57 @46411 has 2 MA's), (60, 46426), (71, 46456), (75, 46462), (83, 46486), (164, 46789),

Gene: Alice_202 Start: 118711, Stop: 119166, Start Num: 46

Candidate Starts for Alice_202:

(13, 118597), (25, 118660), (29, 118678), (Start: 46 @118711 has 172 MA's), (55, 118729), (96, 118861), (104, 118879), (120, 118939), (140, 119047), (145, 119071), (162, 119134), (165, 119140),

Gene: Altostratus_62 Start: 36693, Stop: 37115, Start Num: 39

Candidate Starts for Altostratus_62:

(Start: 39 @36693 has 1 MA's), (74, 36783), (77, 36789), (112, 36867), (140, 37005),

Gene: Amataga_216 Start: 119548, Stop: 120003, Start Num: 46

Candidate Starts for Amataga_216:

(13, 119434), (25, 119497), (29, 119515), (Start: 46 @119548 has 172 MA's), (55, 119566), (96, 119698), (104, 119716), (120, 119776), (140, 119884), (145, 119908), (162, 119971), (165, 119977),

Gene: Amelia_43 Start: 27285, Stop: 27752, Start Num: 26

Candidate Starts for Amelia_43:

(15, 27228), (Start: 26 @27285 has 28 MA's), (Start: 43 @27321 has 1 MA's), (62, 27381), (82, 27432), (87, 27447), (107, 27483), (126, 27561), (128, 27573), (140, 27633), (145, 27657), (158, 27708), (160, 27714), (167, 27735), (168, 27741),

Gene: AmiCi24_44 Start: 28339, Stop: 28809, Start Num: 26

Candidate Starts for AmiCi24_44:

(Start: 26 @28339 has 28 MA's), (Start: 43 @28375 has 1 MA's), (67, 28456), (79, 28480), (87, 28504), (99, 28528), (107, 28540), (109, 28549), (113, 28558), (121, 28594), (128, 28630), (130, 28642), (133, 28663), (135, 28675), (146, 28717), (158, 28765), (161, 28774),

Gene: Andrew_46 Start: 28224, Stop: 28688, Start Num: 26

Candidate Starts for Andrew_46:

(Start: 26 @28224 has 28 MA's), (62, 28320), (79, 28365), (107, 28425), (130, 28524), (133, 28545), (140, 28572), (158, 28647), (161, 28656), (165, 28668),

Gene: Anekin_86 Start: 48622, Stop: 49053, Start Num: 54

Candidate Starts for Anekin_86:

(20, 48517), (Start: 54 @48622 has 17 MA's), (Start: 57 @48634 has 2 MA's), (60, 48649), (71, 48679), (75, 48685), (83, 48709), (164, 49012),

Gene: Antrice_50 Start: 28494, Stop: 28919, Start Num: 43

Candidate Starts for Antrice_50:

(Start: 26 @28458 has 28 MA's), (Start: 43 @28494 has 1 MA's), (Start: 46 @28500 has 172 MA's), (79, 28599), (82, 28608), (87, 28623), (108, 28671), (130, 28764), (133, 28785), (144, 28833), (145, 28836), (147, 28842), (165, 28908),

Gene: ArcherS7_215 Start: 120590, Stop: 121045, Start Num: 46

Candidate Starts for ArcherS7_215:

(13, 120476), (25, 120539), (29, 120557), (Start: 46 @120590 has 172 MA's), (55, 120608), (96, 120740), (104, 120758), (120, 120818), (140, 120926), (145, 120950), (162, 121013), (165, 121019),

Gene: Asterius_217 Start: 119957, Stop: 120412, Start Num: 46

Candidate Starts for Asterius_217:

(13, 119843), (25, 119906), (29, 119924), (Start: 46 @119957 has 172 MA's), (55, 119975), (96, 120107), (104, 120125), (120, 120185), (140, 120293), (145, 120317), (162, 120380), (165, 120386),

Gene: Astraea_209 Start: 119152, Stop: 119607, Start Num: 46

Candidate Starts for Astraea_209:

(13, 119038), (25, 119101), (29, 119119), (Start: 46 @119152 has 172 MA's), (55, 119170), (96, 119302), (104, 119320), (120, 119380), (140, 119488), (145, 119512), (162, 119575), (165, 119581),

Gene: Atlantean_215 Start: 119548, Stop: 120003, Start Num: 46

Candidate Starts for Atlantean_215:

(13, 119434), (25, 119497), (29, 119515), (Start: 46 @119548 has 172 MA's), (55, 119566), (96, 119698), (104, 119716), (120, 119776), (140, 119884), (145, 119908), (162, 119971), (165, 119977),

Gene: Atlantica_45 Start: 28377, Stop: 28811, Start Num: 43

Candidate Starts for Atlantica_45:

(Start: 26 @28341 has 28 MA's), (Start: 43 @28377 has 1 MA's), (67, 28458), (79, 28482), (87, 28506), (99, 28530), (107, 28542), (109, 28551), (113, 28560), (121, 28596), (128, 28632), (130, 28644), (133, 28665), (135, 28677), (146, 28719), (158, 28767), (161, 28776),

Gene: Audrick_217 Start: 119438, Stop: 119893, Start Num: 46

Candidate Starts for Audrick_217:

(13, 119324), (25, 119387), (29, 119405), (Start: 46 @119438 has 172 MA's), (55, 119456), (96, 119588), (104, 119606), (120, 119666), (140, 119774), (145, 119798), (162, 119861), (165, 119867),

Gene: Auxilium_84 Start: 46039, Stop: 46461, Start Num: 54

Candidate Starts for Auxilium_84:

(Start: 54 @46039 has 17 MA's), (Start: 57 @46048 has 2 MA's), (60, 46063), (71, 46093), (75, 46099), (83, 46123), (164, 46426),

Gene: Ava3_214 Start: 119982, Stop: 120437, Start Num: 46

Candidate Starts for Ava3_214:

(13, 119868), (25, 119931), (29, 119949), (Start: 46 @119982 has 172 MA's), (55, 120000), (96, 120132), (104, 120150), (120, 120210), (140, 120318), (145, 120342), (162, 120405), (165, 120411),

Gene: Babushka_47 Start: 28169, Stop: 28636, Start Num: 26

Candidate Starts for Babushka_47:

(Start: 26 @28169 has 28 MA's), (67, 28286), (79, 28310), (87, 28334), (94, 28352), (103, 28364), (107, 28370), (109, 28379), (113, 28388), (130, 28469), (133, 28490), (135, 28502), (137, 28508), (145, 28541), (146, 28544), (158, 28592), (160, 28598),

Gene: Babyland_218 Start: 120325, Stop: 120780, Start Num: 46

Candidate Starts for Babyland_218:

(13, 120211), (25, 120274), (29, 120292), (Start: 46 @120325 has 172 MA's), (55, 120343), (96, 120475), (104, 120493), (120, 120553), (140, 120661), (145, 120685), (162, 120748), (165, 120754),

Gene: BackyardAgain_211 Start: 117513, Stop: 117968, Start Num: 46

Candidate Starts for BackyardAgain_211:

(13, 117399), (25, 117462), (29, 117480), (Start: 46 @117513 has 172 MA's), (55, 117531), (96, 117663), (104, 117681), (120, 117741), (140, 117849), (145, 117873), (162, 117936), (165, 117942),

Gene: BadAgartude_209 Start: 119650, Stop: 120105, Start Num: 46

Candidate Starts for BadAgartude_209:

(13, 119536), (25, 119599), (29, 119617), (Start: 46 @119650 has 172 MA's), (55, 119668), (96, 119800), (104, 119818), (120, 119878), (140, 119986), (145, 120010), (162, 120073), (165, 120079),

Gene: BananaFence_212 Start: 119781, Stop: 120236, Start Num: 46

Candidate Starts for BananaFence_212:

(13, 119667), (25, 119730), (29, 119748), (Start: 46 @119781 has 172 MA's), (55, 119799), (96, 119931), (104, 119949), (120, 120009), (140, 120117), (145, 120141), (162, 120204), (165, 120210),

Gene: Bangla1971_215 Start: 119554, Stop: 120009, Start Num: 46

Candidate Starts for Bangla1971_215:

(13, 119440), (25, 119503), (29, 119521), (Start: 46 @119554 has 172 MA's), (55, 119572), (96, 119704), (104, 119722), (120, 119782), (140, 119890), (145, 119914), (162, 119977), (165, 119983),

Gene: Basilisk_42 Start: 28172, Stop: 28642, Start Num: 26

Candidate Starts for Basilisk_42:

(Start: 26 @28172 has 28 MA's), (Start: 43 @28208 has 1 MA's), (Start: 46 @28214 has 172 MA's), (62, 28268), (79, 28310), (85, 28331), (93, 28349), (107, 28370), (113, 28388), (121, 28424), (140, 28523), (145, 28547), (151, 28565), (162, 28610), (168, 28631),

Gene: Basquiat_212 Start: 118067, Stop: 118522, Start Num: 46

Candidate Starts for Basquiat_212:

(13, 117953), (25, 118016), (29, 118034), (Start: 46 @118067 has 172 MA's), (55, 118085), (96, 118217), (104, 118235), (120, 118295), (140, 118403), (145, 118427), (162, 118490), (165, 118496),

Gene: Bauer_82 Start: 45126, Stop: 45530, Start Num: 56

Candidate Starts for Bauer_82:

(45, 45099), (52, 45114), (Start: 56 @45126 has 3 MA's), (75, 45183), (83, 45207), (115, 45297), (128, 45354), (135, 45399), (152, 45450), (164, 45495),

Gene: BeanWater_207 Start: 118593, Stop: 119048, Start Num: 46

Candidate Starts for BeanWater_207:

(13, 118479), (25, 118542), (29, 118560), (Start: 46 @118593 has 172 MA's), (55, 118611), (96, 118743), (104, 118761), (120, 118821), (140, 118929), (145, 118953), (162, 119016), (165, 119022),

Gene: Bedetta_48 Start: 27432, Stop: 27899, Start Num: 26

Candidate Starts for Bedetta_48:

(15, 27375), (Start: 26 @27432 has 28 MA's), (Start: 43 @27468 has 1 MA's), (62, 27528), (82, 27579), (87, 27594), (107, 27630), (126, 27708), (128, 27720), (140, 27780), (145, 27804), (158, 27855), (160, 27861), (167, 27882), (168, 27888),

Gene: Belieber_208 Start: 117381, Stop: 117836, Start Num: 46

Candidate Starts for Belieber_208:

(13, 117267), (25, 117330), (29, 117348), (Start: 46 @117381 has 172 MA's), (55, 117399), (96, 117531), (104, 117549), (120, 117609), (140, 117717), (145, 117741), (162, 117804), (165, 117810),

Gene: BenchScraper_86 Start: 46987, Stop: 47412, Start Num: 54

Candidate Starts for BenchScraper_86:

(Start: 37 @46957 has 3 MA's), (Start: 54 @46987 has 17 MA's), (Start: 57 @46999 has 2 MA's), (60, 47014), (71, 47044), (75, 47050), (83, 47074), (115, 47164), (164, 47377),

Gene: Bhageatrice_92 Start: 51263, Stop: 51688, Start Num: 54

Candidate Starts for Bhageatrice_92:

(Start: 54 @51263 has 17 MA's), (Start: 57 @51275 has 2 MA's), (60, 51290), (71, 51320), (75, 51326), (83, 51350), (115, 51440), (164, 51653),

Gene: Bible12_47 Start: 27280, Stop: 27747, Start Num: 26

Candidate Starts for Bible12_47:

(15, 27223), (Start: 26 @27280 has 28 MA's), (Start: 43 @27316 has 1 MA's), (62, 27376), (82, 27427), (87, 27442), (107, 27478), (126, 27556), (128, 27568), (140, 27628), (145, 27652), (158, 27703), (160, 27709), (167, 27730), (168, 27736),

Gene: BigCity_224 Start: 122164, Stop: 122619, Start Num: 46

Candidate Starts for BigCity_224:

(13, 122050), (25, 122113), (29, 122131), (30, 122134), (Start: 46 @122164 has 172 MA's), (55, 122182), (96, 122314), (104, 122332), (120, 122392), (140, 122500), (145, 122524), (162, 122587), (165, 122593),

Gene: Bigswole_220 Start: 122018, Stop: 122473, Start Num: 46

Candidate Starts for Bigswole_220:

(13, 121904), (25, 121967), (29, 121985), (Start: 46 @122018 has 172 MA's), (55, 122036), (96, 122168), (104, 122186), (120, 122246), (140, 122354), (145, 122378), (162, 122441), (165, 122447),

Gene: BillyTP_87 Start: 49093, Stop: 49518, Start Num: 54

Candidate Starts for BillyTP_87:

(Start: 37 @49063 has 3 MA's), (Start: 54 @49093 has 17 MA's), (Start: 57 @49105 has 2 MA's), (60, 49120), (71, 49150), (75, 49156), (83, 49180), (115, 49270), (135, 49372), (164, 49483),

Gene: Bipolarisk_213 Start: 120251, Stop: 120706, Start Num: 46

Candidate Starts for Bipolarisk_213:

(13, 120137), (25, 120200), (29, 120218), (Start: 46 @120251 has 172 MA's), (55, 120269), (96, 120401), (104, 120419), (120, 120479), (140, 120587), (145, 120611), (162, 120674), (165, 120680),

Gene: BlackSpider_76 Start: 45516, Stop: 45926, Start Num: 54

Candidate Starts for BlackSpider_76:

(20, 45411), (53, 45513), (Start: 54 @45516 has 17 MA's), (Start: 57 @45528 has 2 MA's), (60, 45543), (71, 45573), (75, 45579), (83, 45603), (115, 45693), (116, 45699), (120, 45711), (128, 45750), (132, 45774), (134, 45786), (162, 45888), (167, 45903),

Gene: Blackbrain_212 Start: 119152, Stop: 119607, Start Num: 46

Candidate Starts for Blackbrain_212:

(13, 119038), (25, 119101), (29, 119119), (Start: 46 @119152 has 172 MA's), (55, 119170), (96, 119302), (104, 119320), (120, 119380), (140, 119488), (145, 119512), (162, 119575), (165, 119581),

Gene: Blackdragon_210 Start: 119884, Stop: 120339, Start Num: 46

Candidate Starts for Blackdragon_210:

(13, 119770), (25, 119833), (29, 119851), (Start: 46 @119884 has 172 MA's), (55, 119902), (96, 120034), (104, 120052), (120, 120112), (140, 120220), (145, 120244), (162, 120307), (165, 120313),

Gene: Blubba_204 Start: 123233, Stop: 123688, Start Num: 46

Candidate Starts for Blubba_204:

(13, 123119), (25, 123182), (29, 123200), (Start: 46 @123233 has 172 MA's), (55, 123251), (96, 123383), (104, 123401), (120, 123461), (140, 123569), (145, 123593), (162, 123656),

Gene: BlueShadow_91 Start: 48348, Stop: 48779, Start Num: 54

Candidate Starts for BlueShadow_91:

(Start: 37 @48318 has 3 MA's), (Start: 54 @48348 has 17 MA's), (Start: 57 @48360 has 2 MA's), (60, 48375), (71, 48405), (75, 48411), (83, 48435), (102, 48483), (130, 48594), (164, 48738),

Gene: Bonray_217 Start: 121653, Stop: 122108, Start Num: 46

Candidate Starts for Bonray_217:

(13, 121539), (25, 121602), (29, 121620), (Start: 46 @121653 has 172 MA's), (55, 121671), (96, 121803), (104, 121821), (120, 121881), (140, 121989), (145, 122013), (162, 122076), (165, 122082),

Gene: BrayBeast_62 Start: 35523, Stop: 35936, Start Num: 38

Candidate Starts for BrayBeast_62:

(21, 35457), (Start: 38 @35523 has 3 MA's), (77, 35619), (114, 35709), (145, 35859),

Gene: Bread_210 Start: 119651, Stop: 120106, Start Num: 46

Candidate Starts for Bread_210:

(13, 119537), (25, 119600), (29, 119618), (Start: 46 @119651 has 172 MA's), (55, 119669), (96, 119801), (104, 119819), (120, 119879), (140, 119987), (145, 120011), (162, 120074), (165, 120080),

Gene: Breeniome_214 Start: 119105, Stop: 119560, Start Num: 46

Candidate Starts for Breeniome_214:

(13, 118991), (25, 119054), (29, 119072), (Start: 46 @119105 has 172 MA's), (55, 119123), (96, 119255), (104, 119273), (120, 119333), (140, 119441), (145, 119465), (162, 119528), (165, 119534),

Gene: Brynnie_41 Start: 28050, Stop: 28520, Start Num: 26

Candidate Starts for Brynnie_41:

(Start: 26 @28050 has 28 MA's), (Start: 43 @28086 has 1 MA's), (Start: 46 @28092 has 172 MA's), (62, 28146), (79, 28188), (93, 28227), (107, 28248), (113, 28266), (121, 28302), (140, 28401), (145, 28425), (151, 28443), (162, 28488), (168, 28509),

Gene: Burrough_217 Start: 121421, Stop: 121876, Start Num: 46

Candidate Starts for Burrough_217:

(13, 121307), (25, 121370), (29, 121388), (Start: 46 @121421 has 172 MA's), (55, 121439), (96, 121571), (104, 121589), (120, 121649), (140, 121757), (145, 121781), (162, 121844), (165, 121850),

Gene: Bxz1_205 Start: 121627, Stop: 122082, Start Num: 46

Candidate Starts for Bxz1_205:

(13, 121513), (25, 121576), (29, 121594), (Start: 46 @121627 has 172 MA's), (55, 121645), (96, 121777), (104, 121795), (120, 121855), (140, 121963), (145, 121987), (162, 122050), (165, 122056),

Gene: Cactojaque_210 Start: 118087, Stop: 118542, Start Num: 46

Candidate Starts for Cactojaque_210:

(13, 117973), (25, 118036), (29, 118054), (Start: 46 @118087 has 172 MA's), (55, 118105), (96, 118237), (104, 118255), (120, 118315), (140, 118423), (145, 118447), (162, 118510), (165, 118516),

Gene: Cali_208 Start: 120034, Stop: 120489, Start Num: 46

Candidate Starts for Cali_208:

(13, 119920), (25, 119983), (29, 120001), (Start: 46 @120034 has 172 MA's), (55, 120052), (96, 120184), (104, 120202), (120, 120262), (140, 120370), (145, 120394), (162, 120457), (165, 120463),

Gene: Camara_45 Start: 28277, Stop: 28711, Start Num: 43

Candidate Starts for Camara_45:

(Start: 26 @28241 has 28 MA's), (Start: 43 @28277 has 1 MA's), (67, 28358), (79, 28382), (87, 28406), (99, 28430), (107, 28442), (109, 28451), (113, 28460), (121, 28496), (128, 28532), (130, 28544), (133, 28565), (135, 28577), (146, 28619), (158, 28667), (161, 28676),

Gene: Cane17_206 Start: 123642, Stop: 124097, Start Num: 46

Candidate Starts for Cane17_206:

(13, 123528), (25, 123591), (29, 123609), (Start: 46 @123642 has 172 MA's), (55, 123660), (96, 123792), (104, 123810), (120, 123870), (140, 123978), (145, 124002), (162, 124065),

Gene: Capablanca_220 Start: 122248, Stop: 122703, Start Num: 46

Candidate Starts for Capablanca_220:

(13, 122134), (25, 122197), (29, 122215), (Start: 46 @122248 has 172 MA's), (55, 122266), (96, 122398), (104, 122416), (120, 122476), (140, 122584), (145, 122608), (162, 122671), (165, 122677),

Gene: Caravan_206 Start: 120368, Stop: 120823, Start Num: 46

Candidate Starts for Caravan_206:

(13, 120254), (25, 120317), (29, 120335), (Start: 46 @120368 has 172 MA's), (55, 120386), (96, 120518), (104, 120536), (120, 120596), (140, 120704), (145, 120728), (162, 120791), (165, 120797),

Gene: Catera_207 Start: 118761, Stop: 119216, Start Num: 46

Candidate Starts for Catera_207:

(13, 118647), (25, 118710), (29, 118728), (Start: 46 @118761 has 172 MA's), (55, 118779), (96, 118911), (104, 118929), (120, 118989), (140, 119097), (145, 119121), (162, 119184), (165, 119190),

Gene: Catfish_57 Start: 38946, Stop: 39467, Start Num: 16

Candidate Starts for Catfish_57:

(Start: 16 @38946 has 1 MA's), (19, 38952), (50, 39051), (55, 39063), (78, 39117), (117, 39234), (120, 39243), (127, 39279),

Gene: Chargie21_212 Start: 118067, Stop: 118522, Start Num: 46

Candidate Starts for Chargie21_212:

(13, 117953), (25, 118016), (29, 118034), (Start: 46 @118067 has 172 MA's), (55, 118085), (96, 118217), (104, 118235), (120, 118295), (140, 118403), (145, 118427), (162, 118490), (165, 118496),

Gene: CharlieB_209 Start: 119788, Stop: 120243, Start Num: 46

Candidate Starts for CharlieB_209:

(13, 119674), (25, 119737), (29, 119755), (Start: 46 @119788 has 172 MA's), (55, 119806), (96, 119938), (104, 119956), (120, 120016), (140, 120124), (145, 120148), (162, 120211), (165, 120217),

Gene: ChaylaJr_213 Start: 118767, Stop: 119222, Start Num: 46

Candidate Starts for ChaylaJr_213:

(13, 118653), (25, 118716), (29, 118734), (Start: 46 @118767 has 172 MA's), (55, 118785), (96, 118917), (104, 118935), (120, 118995), (140, 119103), (145, 119127), (162, 119190), (165, 119196),

Gene: Chickaboom_44 Start: 28771, Stop: 29241, Start Num: 26

Candidate Starts for Chickaboom_44:

(Start: 26 @28771 has 28 MA's), (Start: 43 @28807 has 1 MA's), (Start: 46 @28813 has 172 MA's), (79, 28909), (93, 28948), (107, 28969), (113, 28987), (121, 29023), (122, 29029), (130, 29074), (133, 29095), (145, 29146), (151, 29164), (162, 29209), (168, 29230),

Gene: ChickenPhender_211 Start: 118214, Stop: 118669, Start Num: 46

Candidate Starts for ChickenPhender_211:

(13, 118100), (25, 118163), (29, 118181), (Start: 46 @118214 has 172 MA's), (55, 118232), (96, 118364), (104, 118382), (120, 118442), (140, 118550), (145, 118574), (162, 118637), (165, 118643),

Gene: Chomp_215 Start: 120837, Stop: 121292, Start Num: 46

Candidate Starts for Chomp_215:

(13, 120723), (25, 120786), (29, 120804), (Start: 46 @120837 has 172 MA's), (55, 120855), (96, 120987), (104, 121005), (120, 121065), (140, 121173), (145, 121197), (162, 121260), (165, 121266),

Gene: CindyLou_216 Start: 121097, Stop: 121552, Start Num: 46

Candidate Starts for CindyLou_216:

(13, 120983), (25, 121046), (29, 121064), (Start: 46 @121097 has 172 MA's), (55, 121115), (96, 121247), (104, 121265), (120, 121325), (140, 121433), (145, 121457), (162, 121520), (165, 121526),

Gene: Colt_206 Start: 122873, Stop: 123328, Start Num: 46

Candidate Starts for Colt_206:

(13, 122759), (25, 122822), (29, 122840), (Start: 46 @122873 has 172 MA's), (55, 122891), (96, 123023), (104, 123041), (120, 123101), (140, 123209), (145, 123233), (162, 123296),

Gene: Colusalem_46 Start: 27262, Stop: 27729, Start Num: 26

Candidate Starts for Colusalem_46:

(15, 27205), (Start: 26 @27262 has 28 MA's), (Start: 43 @27298 has 1 MA's), (62, 27358), (82, 27409), (87, 27424), (107, 27460), (126, 27538), (128, 27550), (140, 27610), (145, 27634), (158, 27685), (160, 27691), (167, 27712), (168, 27718),

Gene: Concombre_220 Start: 121707, Stop: 122162, Start Num: 46

Candidate Starts for Concombre_220:

(13, 121593), (25, 121656), (29, 121674), (Start: 46 @121707 has 172 MA's), (55, 121725), (96, 121857), (104, 121875), (120, 121935), (140, 122043), (145, 122067), (162, 122130), (165, 122136),

Gene: CookieBear_82 Start: 47392, Stop: 47817, Start Num: 54

Candidate Starts for CookieBear_82:

(20, 47287), (Start: 54 @47392 has 17 MA's), (Start: 57 @47404 has 2 MA's), (60, 47419), (71, 47449), (75, 47455), (83, 47479), (131, 47647), (133, 47659), (143, 47704), (164, 47782),

Gene: Coral_43 Start: 27133, Stop: 27600, Start Num: 26

Candidate Starts for Coral_43:

(15, 27076), (Start: 26 @27133 has 28 MA's), (Start: 43 @27169 has 1 MA's), (62, 27229), (82, 27280), (87, 27295), (90, 27298), (107, 27331), (126, 27409), (128, 27421), (140, 27481), (145, 27505), (158, 27556), (160, 27562), (167, 27583), (168, 27589),

Gene: Cote_45 Start: 27610, Stop: 28077, Start Num: 26

Candidate Starts for Cote_45:

(15, 27553), (Start: 26 @27610 has 28 MA's), (Start: 43 @27646 has 1 MA's), (62, 27706), (82, 27757), (87, 27772), (107, 27808), (126, 27886), (128, 27898), (140, 27958), (145, 27982), (158, 28033), (160, 28039), (167, 28060), (168, 28066),

Gene: Cygnet_49 Start: 29068, Stop: 29529, Start Num: 26

Candidate Starts for Cygnet_49:

(Start: 26 @29068 has 28 MA's), (Start: 43 @29104 has 1 MA's), (79, 29209), (87, 29233), (107, 29275), (133, 29395), (144, 29443), (147, 29452), (154, 29476), (162, 29509), (165, 29518),

Gene: DTDevon_217 Start: 121586, Stop: 122041, Start Num: 46

Candidate Starts for DTDevon_217:

(13, 121472), (25, 121535), (29, 121553), (Start: 46 @121586 has 172 MA's), (55, 121604), (96, 121736), (104, 121754), (120, 121814), (140, 121922), (145, 121946), (162, 122009), (165, 122015),

Gene: Daffodil_220 Start: 120551, Stop: 121006, Start Num: 46

Candidate Starts for Daffodil_220:

(13, 120437), (25, 120500), (29, 120518), (Start: 46 @120551 has 172 MA's), (55, 120569), (96, 120701), (104, 120719), (120, 120779), (140, 120887), (145, 120911), (162, 120974), (165, 120980),

Gene: DanHam62_45 Start: 28376, Stop: 28810, Start Num: 43

Candidate Starts for DanHam62_45:

(Start: 26 @28340 has 28 MA's), (Start: 43 @28376 has 1 MA's), (67, 28457), (79, 28481), (87, 28505), (99, 28529), (107, 28541), (109, 28550), (113, 28559), (121, 28595), (128, 28631), (130, 28643), (133, 28664), (135, 28676), (146, 28718), (158, 28766), (161, 28775),

Gene: Dandelion_223 Start: 123191, Stop: 123646, Start Num: 46

Candidate Starts for Dandelion_223:

(13, 123077), (25, 123140), (29, 123158), (Start: 46 @123191 has 172 MA's), (55, 123209), (96, 123341), (104, 123359), (120, 123419), (140, 123527), (145, 123551), (162, 123614), (165, 123620),

Gene: Daob_45 Start: 27618, Stop: 28085, Start Num: 26

Candidate Starts for Daob_45:

(15, 27561), (Start: 26 @27618 has 28 MA's), (Start: 43 @27654 has 1 MA's), (62, 27714), (82, 27765), (87, 27780), (107, 27816), (126, 27894), (128, 27906), (140, 27966), (145, 27990), (158, 28041), (160, 28047), (167, 28068), (168, 28074),

Gene: Darko_214 Start: 119785, Stop: 120240, Start Num: 46

Candidate Starts for Darko_214:

(13, 119671), (25, 119734), (29, 119752), (Start: 46 @119785 has 172 MA's), (55, 119803), (96, 119935), (104, 119953), (120, 120013), (140, 120121), (145, 120145), (162, 120208), (165, 120214),

Gene: DeejaClivia_203 Start: 117927, Stop: 118382, Start Num: 46

Candidate Starts for DeejaClivia_203:

(13, 117813), (25, 117876), (29, 117894), (Start: 46 @117927 has 172 MA's), (55, 117945), (96, 118077), (104, 118095), (120, 118155), (140, 118263), (145, 118287), (162, 118350), (165, 118356),

Gene: DelaGarza_42 Start: 25918, Stop: 25496, Start Num: 37

Candidate Starts for DelaGarza_42:

(7, 26086), (14, 25999), (Start: 37 @25918 has 3 MA's), (65, 25852), (92, 25783), (98, 25771), (120, 25711), (141, 25606),

Gene: Delilah_213 Start: 120669, Stop: 121124, Start Num: 46

Candidate Starts for Delilah_213:

(13, 120555), (25, 120618), (29, 120636), (Start: 46 @120669 has 172 MA's), (55, 120687), (96, 120819), (104, 120837), (120, 120897), (140, 121005), (145, 121029), (162, 121092), (165, 121098),

Gene: Delylah_217 Start: 120958, Stop: 121413, Start Num: 46

Candidate Starts for Delylah_217:

(13, 120844), (25, 120907), (29, 120925), (Start: 46 @120958 has 172 MA's), (55, 120976), (96, 121108), (104, 121126), (120, 121186), (140, 121294), (145, 121318), (162, 121381), (165, 121387),

Gene: Demodog_221 Start: 121717, Stop: 122172, Start Num: 46

Candidate Starts for Demodog_221:

(13, 121603), (25, 121666), (29, 121684), (Start: 46 @121717 has 172 MA's), (55, 121735), (96, 121867), (104, 121885), (120, 121945), (140, 122053), (145, 122077), (162, 122140), (165, 122146),

Gene: Derek_212 Start: 120114, Stop: 120569, Start Num: 46

Candidate Starts for Derek_212:

(13, 120000), (25, 120063), (29, 120081), (Start: 46 @120114 has 172 MA's), (55, 120132), (96, 120264), (104, 120282), (120, 120342), (140, 120450), (145, 120474), (162, 120537), (165, 120543),

Gene: Dietrick_204 Start: 118790, Stop: 119245, Start Num: 46

Candidate Starts for Dietrick_204:

(13, 118676), (25, 118739), (29, 118757), (Start: 46 @118790 has 172 MA's), (55, 118808), (96, 118940), (104, 118958), (120, 119018), (140, 119126), (145, 119150), (162, 119213), (165, 119219),

Gene: DinoDaryn_57 Start: 37067, Stop: 37507, Start Num: 34

Candidate Starts for DinoDaryn_57:

(Start: 34 @37067 has 5 MA's), (Start: 43 @37082 has 1 MA's), (55, 37106), (78, 37160), (114, 37262), (120, 37286), (128, 37331),

Gene: DirtMonster_208 Start: 120030, Stop: 120485, Start Num: 46

Candidate Starts for DirtMonster_208:

(13, 119916), (25, 119979), (29, 119997), (Start: 46 @120030 has 172 MA's), (55, 120048), (96, 120180), (104, 120198), (120, 120258), (140, 120366), (145, 120390), (162, 120453), (165, 120459),

Gene: Domi_209 Start: 120141, Stop: 120596, Start Num: 46

Candidate Starts for Domi_209:

(13, 120027), (25, 120090), (29, 120108), (Start: 46 @120141 has 172 MA's), (55, 120159), (96, 120291), (104, 120309), (120, 120369), (140, 120477), (145, 120501), (162, 120564), (165, 120570),

Gene: DrPhinkDaddy_212 Start: 121329, Stop: 121784, Start Num: 46

Candidate Starts for DrPhinkDaddy_212:

(13, 121215), (25, 121278), (29, 121296), (Start: 46 @121329 has 172 MA's), (55, 121347), (96, 121479), (104, 121497), (120, 121557), (140, 121665), (145, 121689), (162, 121752), (165, 121758),

Gene: Drazdys_213 Start: 120231, Stop: 120686, Start Num: 46

Candidate Starts for Drazdys_213:

(13, 120117), (25, 120180), (29, 120198), (Start: 46 @120231 has 172 MA's), (55, 120249), (96, 120381), (104, 120399), (120, 120459), (140, 120567), (145, 120591), (162, 120654), (165, 120660),

Gene: ET08_203 Start: 119822, Stop: 120277, Start Num: 46

Candidate Starts for ET08_203:

(13, 119708), (25, 119771), (29, 119789), (Start: 46 @119822 has 172 MA's), (55, 119840), (96, 119972), (104, 119990), (120, 120050), (140, 120158), (145, 120182), (162, 120245), (165, 120251),

Gene: EasyJones_218 Start: 119310, Stop: 119765, Start Num: 46

Candidate Starts for EasyJones_218:

(13, 119196), (25, 119259), (29, 119277), (Start: 46 @119310 has 172 MA's), (55, 119328), (96, 119460), (104, 119478), (120, 119538), (140, 119646), (145, 119670), (162, 119733), (165, 119739),

Gene: Eesa_42 Start: 29653, Stop: 30120, Start Num: 26

Candidate Starts for Eesa_42:

(Start: 26 @29653 has 28 MA's), (Start: 43 @29689 has 1 MA's), (62, 29749), (87, 29815), (107, 29851), (113, 29869), (126, 29929), (133, 29974), (140, 30001), (145, 30025), (147, 30031), (160, 30082), (168, 30109),

Gene: EggyFarm_224 Start: 122165, Stop: 122620, Start Num: 46

Candidate Starts for EggyFarm_224:

(13, 122051), (25, 122114), (29, 122132), (30, 122135), (Start: 46 @122165 has 172 MA's), (55, 122183), (96, 122315), (104, 122333), (120, 122393), (140, 122501), (145, 122525), (162, 122588), (165, 122594),

Gene: EmToTheThree_215 Start: 120702, Stop: 121157, Start Num: 46

Candidate Starts for EmToTheThree_215:

(13, 120588), (25, 120651), (29, 120669), (Start: 46 @120702 has 172 MA's), (55, 120720), (96, 120852), (104, 120870), (120, 120930), (140, 121038), (145, 121062), (162, 121125), (165, 121131),

Gene: EmmaElysia_219 Start: 120993, Stop: 121448, Start Num: 46

Candidate Starts for EmmaElysia_219:

(13, 120879), (25, 120942), (29, 120960), (Start: 46 @120993 has 172 MA's), (55, 121011), (96, 121143), (104, 121161), (120, 121221), (140, 121329), (145, 121353), (162, 121416), (165, 121422),

Gene: Erdmann_216 Start: 120661, Stop: 121116, Start Num: 46

Candidate Starts for Erdmann_216:

(13, 120547), (25, 120610), (29, 120628), (Start: 46 @120661 has 172 MA's), (55, 120679), (96, 120811), (104, 120829), (120, 120889), (140, 120997), (145, 121021), (162, 121084), (165, 121090),

Gene: ErnieJ_208 Start: 117489, Stop: 117944, Start Num: 46

Candidate Starts for ErnieJ_208:

(13, 117375), (25, 117438), (29, 117456), (Start: 46 @117489 has 172 MA's), (55, 117507), (96, 117639), (104, 117657), (120, 117717), (140, 117825), (145, 117849), (162, 117912), (165, 117918),

Gene: Essence_212 Start: 119443, Stop: 119898, Start Num: 46

Candidate Starts for Essence_212:

(13, 119329), (25, 119392), (29, 119410), (Start: 46 @119443 has 172 MA's), (55, 119461), (96, 119593), (104, 119611), (120, 119671), (140, 119779), (145, 119803), (162, 119866), (165, 119872),

Gene: EvePickles_87 Start: 49459, Stop: 49884, Start Num: 54

Candidate Starts for EvePickles_87:

(Start: 54 @49459 has 17 MA's), (Start: 57 @49471 has 2 MA's), (60, 49486), (71, 49516), (75, 49522), (102, 49594), (115, 49636), (134, 49729), (142, 49765), (164, 49849),

Gene: Ewok_214 Start: 120579, Stop: 121034, Start Num: 46

Candidate Starts for Ewok_214:

(13, 120465), (25, 120528), (29, 120546), (Start: 46 @120579 has 172 MA's), (55, 120597), (96, 120729), (104, 120747), (120, 120807), (140, 120915), (145, 120939), (162, 121002), (165, 121008),

Gene: Faja_87 Start: 48745, Stop: 49170, Start Num: 54

Candidate Starts for Faja_87:

(20, 48640), (Start: 54 @48745 has 17 MA's), (Start: 57 @48757 has 2 MA's), (60, 48772), (71, 48802), (75, 48808), (83, 48832), (102, 48880), (115, 48922), (130, 48991), (164, 49135),

Gene: Flabslab_210 Start: 117631, Stop: 118086, Start Num: 46

Candidate Starts for Flabslab_210:

(13, 117517), (25, 117580), (29, 117598), (Start: 46 @117631 has 172 MA's), (55, 117649), (96, 117781), (104, 117799), (120, 117859), (140, 117967), (145, 117991), (162, 118054), (165, 118060),

Gene: Fludd_215 Start: 119022, Stop: 119477, Start Num: 46

Candidate Starts for Fludd_215:

(13, 118908), (25, 118971), (29, 118989), (Start: 46 @119022 has 172 MA's), (55, 119040), (96, 119172), (104, 119190), (120, 119250), (140, 119358), (145, 119382), (162, 119445), (165, 119451),

Gene: Fongie_216 Start: 120602, Stop: 121057, Start Num: 46

Candidate Starts for Fongie_216:

(13, 120488), (25, 120551), (29, 120569), (Start: 46 @120602 has 172 MA's), (55, 120620), (96, 120752), (104, 120770), (120, 120830), (140, 120938), (145, 120962), (162, 121025), (165, 121031),

Gene: FoxtrotP1_213 Start: 121259, Stop: 121714, Start Num: 46

Candidate Starts for FoxtrotP1_213:

(13, 121145), (25, 121208), (29, 121226), (Start: 46 @121259 has 172 MA's), (55, 121277), (96, 121409), (104, 121427), (120, 121487), (140, 121595), (145, 121619), (162, 121682), (165, 121688),

Gene: FrayBell_218 Start: 119112, Stop: 119567, Start Num: 46

Candidate Starts for FrayBell_218:

(13, 118998), (25, 119061), (29, 119079), (Start: 46 @119112 has 172 MA's), (55, 119130), (96, 119262), (104, 119280), (120, 119340), (140, 119448), (145, 119472), (162, 119535), (165, 119541),

Gene: Fregley_61 Start: 42057, Stop: 41593, Start Num: 42

Candidate Starts for Fregley_61:

(Start: 39 @42060 has 1 MA's), (Start: 42 @42057 has 1 MA's), (58, 42012), (89, 41925), (106, 41889), (124, 41814), (136, 41748), (140, 41736), (141, 41733), (154, 41682), (169, 41619), (170, 41616),

Gene: FudgeTart_210 Start: 119726, Stop: 120181, Start Num: 46

Candidate Starts for FudgeTart_210:

(13, 119612), (25, 119675), (29, 119693), (Start: 46 @119726 has 172 MA's), (55, 119744), (96, 119876), (104, 119894), (120, 119954), (140, 120062), (145, 120086), (162, 120149), (165, 120155),

Gene: GUPitcher_62 Start: 39387, Stop: 39782, Start Num: 45

Candidate Starts for GUPitcher_62:

(5, 39192), (6, 39198), (40, 39381), (45, 39387), (55, 39405), (63, 39444), (66, 39459), (68, 39462), (73, 39468), (91, 39504), (95, 39516), (115, 39564), (120, 39582),

Gene: Gabriel_218 Start: 119181, Stop: 119636, Start Num: 46

Candidate Starts for Gabriel_218:

(13, 119067), (25, 119130), (29, 119148), (Start: 46 @119181 has 172 MA's), (55, 119199), (96, 119331), (104, 119349), (120, 119409), (140, 119517), (145, 119541), (162, 119604), (165, 119610),

Gene: Galaxy_41 Start: 27422, Stop: 27892, Start Num: 26

Candidate Starts for Galaxy_41:

(Start: 26 @27422 has 28 MA's), (33, 27437), (Start: 43 @27458 has 1 MA's), (Start: 46 @27464 has 172 MA's), (79, 27560), (107, 27620), (113, 27638), (121, 27674), (140, 27773), (145, 27797), (151, 27815), (160, 27854), (162, 27860), (168, 27881),

Gene: Gamgam_216 Start: 119538, Stop: 119993, Start Num: 46

Candidate Starts for Gamgam_216:

(13, 119424), (25, 119487), (29, 119505), (Start: 46 @119538 has 172 MA's), (55, 119556), (96, 119688), (104, 119706), (120, 119766), (140, 119874), (145, 119898), (162, 119961), (165, 119967),

Gene: Ghost_215 Start: 119459, Stop: 119914, Start Num: 46

Candidate Starts for Ghost_215:

(13, 119345), (25, 119408), (29, 119426), (Start: 46 @119459 has 172 MA's), (55, 119477), (84, 119579), (96, 119609), (104, 119627), (120, 119687), (140, 119795), (145, 119819), (162, 119882), (165, 119888),

Gene: Gingerbug_41 Start: 26445, Stop: 26023, Start Num: 37

Candidate Starts for Gingerbug_41:

(Start: 37 @26445 has 3 MA's), (73, 26358), (114, 26262), (115, 26256), (120, 26238), (145, 26112), (150, 26097), (157, 26067), (166, 26037),

Gene: Gizmo_221 Start: 122577, Stop: 123032, Start Num: 46

Candidate Starts for Gizmo_221:

(13, 122463), (25, 122526), (29, 122544), (Start: 46 @122577 has 172 MA's), (55, 122595), (96, 122727), (104, 122745), (120, 122805), (140, 122913), (145, 122937), (162, 123000), (165, 123006),

Gene: Globfish_84 Start: 47023, Stop: 47436, Start Num: 57

Candidate Starts for Globfish_84:

(Start: 54 @47014 has 17 MA's), (Start: 57 @47023 has 2 MA's), (60, 47038), (71, 47068), (75, 47074), (83, 47098), (115, 47188), (131, 47266), (133, 47278), (164, 47401),

Gene: Glotell_47 Start: 28433, Stop: 28867, Start Num: 43

Candidate Starts for Glotell_47:

(Start: 26 @28397 has 28 MA's), (Start: 43 @28433 has 1 MA's), (67, 28514), (79, 28538), (87, 28562), (99, 28586), (107, 28598), (109, 28607), (113, 28616), (121, 28652), (128, 28688), (130, 28700), (133, 28721), (135, 28733), (146, 28775), (158, 28823), (161, 28832),

Gene: GlutenPhree_215 Start: 119549, Stop: 120004, Start Num: 46

Candidate Starts for GlutenPhree_215:

(13, 119435), (25, 119498), (29, 119516), (Start: 46 @119549 has 172 MA's), (55, 119567), (96, 119699), (104, 119717), (120, 119777), (140, 119885), (145, 119909), (162, 119972), (165, 119978),

Gene: Goib_58 Start: 38192, Stop: 38617, Start Num: 41

Candidate Starts for Goib_58:

(35, 38183), (Start: 38 @38189 has 3 MA's), (Start: 41 @38192 has 1 MA's), (55, 38216), (78, 38270), (114, 38372), (120, 38396), (128, 38441),

Gene: Gorpy_83 Start: 48809, Stop: 49234, Start Num: 54

Candidate Starts for Gorpy_83:

(Start: 54 @48809 has 17 MA's), (Start: 57 @48821 has 2 MA's), (60, 48836), (71, 48866), (75, 48872), (131, 49064), (133, 49076), (164, 49199),

Gene: Grasshills_223 Start: 122164, Stop: 122619, Start Num: 46

Candidate Starts for Grasshills_223:

(13, 122050), (25, 122113), (29, 122131), (30, 122134), (Start: 46 @122164 has 172 MA's), (55, 122182), (96, 122314), (104, 122332), (120, 122392), (140, 122500), (145, 122524), (162, 122587), (165, 122593),

Gene: Gravel_52 Start: 29743, Stop: 30210, Start Num: 26

Candidate Starts for Gravel_52:

(Start: 26 @29743 has 28 MA's), (Start: 43 @29779 has 1 MA's), (62, 29839), (87, 29905), (107, 29941), (113, 29959), (126, 30019), (133, 30064), (140, 30091), (145, 30115), (147, 30121), (160, 30172), (168, 30199),

Gene: Grungle_199 Start: 117496, Stop: 117951, Start Num: 46

Candidate Starts for Grungle_199:

(13, 117382), (25, 117445), (29, 117463), (Start: 46 @117496 has 172 MA's), (55, 117514), (96, 117646), (104, 117664), (120, 117724), (140, 117832), (145, 117856), (162, 117919), (165, 117925),

Gene: Guwapp_210 Start: 118293, Stop: 118748, Start Num: 46

Candidate Starts for Guwapp_210:

(13, 118179), (25, 118242), (29, 118260), (Start: 46 @118293 has 172 MA's), (55, 118311), (96, 118443), (104, 118461), (120, 118521), (140, 118629), (145, 118653), (162, 118716), (165, 118722),

Gene: Halldule_208 Start: 118678, Stop: 119133, Start Num: 46

Candidate Starts for Halldule_208:

(13, 118564), (25, 118627), (29, 118645), (Start: 46 @118678 has 172 MA's), (55, 118696), (96, 118828), (104, 118846), (120, 118906), (140, 119014), (145, 119038), (162, 119101), (165, 119107),

Gene: HamCheese_44 Start: 28363, Stop: 28797, Start Num: 43

Candidate Starts for HamCheese_44:

(Start: 26 @28327 has 28 MA's), (Start: 43 @28363 has 1 MA's), (67, 28444), (79, 28468), (87, 28492), (99, 28516), (107, 28528), (109, 28537), (113, 28546), (121, 28582), (128, 28618), (130, 28630), (133, 28651), (135, 28663), (146, 28705), (158, 28753), (161, 28762),

Gene: HannahPhantana_44 Start: 27280, Stop: 27747, Start Num: 26

Candidate Starts for HannahPhantana_44:

(15, 27223), (Start: 26 @27280 has 28 MA's), (Start: 43 @27316 has 1 MA's), (62, 27376), (82, 27427), (87, 27442), (107, 27478), (126, 27556), (128, 27568), (140, 27628), (145, 27652), (158, 27703), (160, 27709), (167, 27730), (168, 27736),

Gene: Hestia_80 Start: 45962, Stop: 46387, Start Num: 54

Candidate Starts for Hestia_80:

(Start: 54 @45962 has 17 MA's), (Start: 57 @45974 has 2 MA's), (60, 45989), (71, 46019), (75, 46025), (83, 46049), (115, 46139), (164, 46352),

Gene: Hillester_90 Start: 48709, Stop: 49134, Start Num: 54

Candidate Starts for Hillester_90:

(Start: 37 @48679 has 3 MA's), (Start: 54 @48709 has 17 MA's), (Start: 57 @48721 has 2 MA's), (60, 48736), (71, 48766), (75, 48772), (83, 48796), (102, 48844), (115, 48886), (130, 48955), (164, 49099),

Gene: Huffy_57 Start: 37067, Stop: 37507, Start Num: 34

Candidate Starts for Huffy_57:

(Start: 34 @37067 has 5 MA's), (Start: 43 @37082 has 1 MA's), (55, 37106), (78, 37160), (114, 37262), (120, 37286), (128, 37331),

Gene: HyRo_203 Start: 118809, Stop: 119264, Start Num: 46

Candidate Starts for HyRo_203:

(13, 118695), (25, 118758), (29, 118776), (Start: 46 @118809 has 172 MA's), (55, 118827), (96, 118959), (104, 118977), (120, 119037), (140, 119145), (145, 119169), (162, 119232), (165, 119238),

Gene: I3_225 Start: 121254, Stop: 121709, Start Num: 46

Candidate Starts for I3_225:

(13, 121140), (25, 121203), (29, 121221), (Start: 46 @121254 has 172 MA's), (55, 121272), (65, 121314), (96, 121404), (104, 121422), (120, 121482), (140, 121590), (145, 121614), (162, 121677), (165, 121683),

Gene: IkeLoa_207 Start: 119203, Stop: 119658, Start Num: 46

Candidate Starts for IkeLoa_207:

(13, 119089), (25, 119152), (29, 119170), (Start: 46 @119203 has 172 MA's), (55, 119221), (96, 119353), (104, 119371), (120, 119431), (140, 119539), (145, 119563), (162, 119626), (165, 119632),

Gene: InigoMontoya_218 Start: 120212, Stop: 120667, Start Num: 46

Candidate Starts for InigoMontoya_218:

(13, 120098), (25, 120161), (29, 120179), (Start: 46 @120212 has 172 MA's), (55, 120230), (96, 120362), (104, 120380), (120, 120440), (140, 120548), (145, 120572), (162, 120635), (165, 120641),

Gene: InterFolia_218 Start: 120917, Stop: 121372, Start Num: 46

Candidate Starts for InterFolia_218:

(13, 120803), (25, 120866), (29, 120884), (Start: 46 @120917 has 172 MA's), (55, 120935), (96, 121067), (104, 121085), (120, 121145), (140, 121253), (145, 121277), (162, 121340), (165, 121346),

Gene: Iota_210 Start: 119897, Stop: 120352, Start Num: 46

Candidate Starts for Iota_210:

(13, 119783), (25, 119846), (29, 119864), (Start: 46 @119897 has 172 MA's), (55, 119915), (96, 120047), (104, 120065), (120, 120125), (140, 120233), (145, 120257), (162, 120320), (165, 120326),

Gene: Isolde_87 Start: 49198, Stop: 49623, Start Num: 54

Candidate Starts for Isolde_87:

(Start: 37 @49168 has 3 MA's), (Start: 54 @49198 has 17 MA's), (Start: 57 @49210 has 2 MA's), (60, 49225), (71, 49255), (75, 49261), (83, 49285), (164, 49588),

Gene: Issimir_208 Start: 119850, Stop: 120305, Start Num: 46

Candidate Starts for Issimir_208:

(13, 119736), (25, 119799), (29, 119817), (Start: 46 @119850 has 172 MA's), (55, 119868), (96, 120000), (104, 120018), (120, 120078), (140, 120186), (145, 120210), (162, 120273), (165, 120279),

Gene: Izajani_213 Start: 120719, Stop: 121174, Start Num: 46

Candidate Starts for Izajani_213:

(13, 120605), (25, 120668), (29, 120686), (Start: 46 @120719 has 172 MA's), (55, 120737), (96, 120869), (104, 120887), (120, 120947), (140, 121055), (145, 121079), (162, 121142), (165, 121148),

Gene: JPickles_211 Start: 118197, Stop: 118652, Start Num: 46

Candidate Starts for JPickles_211:

(13, 118083), (25, 118146), (29, 118164), (Start: 46 @118197 has 172 MA's), (55, 118215), (96, 118347), (104, 118365), (120, 118425), (140, 118533), (145, 118557), (162, 118620), (165, 118626),

Gene: Jamun_42 Start: 28931, Stop: 29401, Start Num: 26

Candidate Starts for Jamun_42:

(Start: 26 @28931 has 28 MA's), (Start: 43 @28967 has 1 MA's), (Start: 46 @28973 has 172 MA's), (79, 29069), (107, 29129), (113, 29147), (121, 29183), (126, 29210), (130, 29234), (140, 29282), (145, 29306), (151, 29324), (158, 29357), (160, 29363), (162, 29369), (168, 29390),

Gene: Janiyra_218 Start: 120437, Stop: 120892, Start Num: 46

Candidate Starts for Janiyra_218:

(13, 120323), (25, 120386), (29, 120404), (Start: 46 @120437 has 172 MA's), (55, 120455), (96, 120587), (104, 120605), (120, 120665), (140, 120773), (145, 120797), (162, 120860), (165, 120866),

Gene: JayJay_217 Start: 120141, Stop: 120596, Start Num: 46

Candidate Starts for JayJay_217:

(13, 120027), (25, 120090), (29, 120108), (Start: 46 @120141 has 172 MA's), (55, 120159), (96, 120291), (104, 120309), (120, 120369), (140, 120477), (145, 120501), (162, 120564), (165, 120570),

Gene: Jaygup_211 Start: 119258, Stop: 119713, Start Num: 46

Candidate Starts for Jaygup_211:

(13, 119144), (25, 119207), (29, 119225), (Start: 46 @119258 has 172 MA's), (55, 119276), (96, 119408), (104, 119426), (120, 119486), (140, 119594), (145, 119618), (162, 119681), (165, 119687),

Gene: Jedediah_215 Start: 120311, Stop: 120766, Start Num: 46

Candidate Starts for Jedediah_215:

(13, 120197), (25, 120260), (29, 120278), (Start: 46 @120311 has 172 MA's), (55, 120329), (96, 120461), (104, 120479), (120, 120539), (140, 120647), (145, 120671), (162, 120734), (165, 120740),

Gene: JellyBread_81 Start: 47875, Stop: 48285, Start Num: 54

Candidate Starts for JellyBread_81:

(Start: 54 @47875 has 17 MA's), (Start: 57 @47887 has 2 MA's), (60, 47902), (71, 47932), (75, 47938), (83, 47962), (115, 48052), (116, 48058), (120, 48070), (128, 48109), (132, 48133), (134, 48145), (162, 48247), (167, 48262),

Gene: Jemmno_214 Start: 119140, Stop: 119595, Start Num: 46

Candidate Starts for Jemmno_214:

(13, 119026), (25, 119089), (29, 119107), (Start: 46 @119140 has 172 MA's), (55, 119158), (96, 119290), (104, 119308), (120, 119368), (140, 119476), (145, 119500), (162, 119563), (165, 119569),

Gene: Jerole_53 Start: 27404, Stop: 27871, Start Num: 26

Candidate Starts for Jerole_53:

(15, 27347), (Start: 26 @27404 has 28 MA's), (Start: 43 @27440 has 1 MA's), (62, 27500), (82, 27551), (87, 27566), (107, 27602), (126, 27680), (128, 27692), (140, 27752), (145, 27776), (158, 27827), (160, 27833), (167, 27854), (168, 27860),

Gene: Jessibeth14_215 Start: 121328, Stop: 121783, Start Num: 46

Candidate Starts for Jessibeth14_215:

(13, 121214), (25, 121277), (29, 121295), (Start: 46 @121328 has 172 MA's), (55, 121346), (96, 121478), (104, 121496), (120, 121556), (140, 121664), (145, 121688), (162, 121751), (165, 121757),

Gene: Jezreel_212 Start: 120398, Stop: 120853, Start Num: 46

Candidate Starts for Jezreel_212:

(13, 120284), (25, 120347), (29, 120365), (Start: 46 @120398 has 172 MA's), (55, 120416), (96, 120548), (104, 120566), (120, 120626), (140, 120734), (145, 120758), (162, 120821), (165, 120827),

Gene: JigglyPuff_222 Start: 121715, Stop: 122170, Start Num: 46

Candidate Starts for JigglyPuff_222:

(13, 121601), (25, 121664), (29, 121682), (Start: 46 @121715 has 172 MA's), (55, 121733), (96, 121865), (104, 121883), (120, 121943), (140, 122051), (145, 122075), (162, 122138), (165, 122144),

Gene: JulietS_208 Start: 117438, Stop: 117893, Start Num: 46

Candidate Starts for JulietS_208:

(1, 116919), (13, 117324), (25, 117387), (29, 117405), (Start: 46 @117438 has 172 MA's), (55, 117456), (96, 117588), (104, 117606), (120, 117666), (140, 117774), (145, 117798), (162, 117861), (165, 117867),

Gene: Juno112_44 Start: 28343, Stop: 28813, Start Num: 26

Candidate Starts for Juno112_44:

(Start: 26 @28343 has 28 MA's), (Start: 43 @28379 has 1 MA's), (67, 28460), (79, 28484), (87, 28508), (99, 28532), (107, 28544), (109, 28553), (113, 28562), (121, 28598), (128, 28634), (130, 28646), (133, 28667), (135, 28679), (146, 28721), (158, 28769), (161, 28778),

Gene: JustHall_209 Start: 119344, Stop: 119799, Start Num: 46

Candidate Starts for JustHall_209:

(13, 119230), (25, 119293), (29, 119311), (Start: 46 @119344 has 172 MA's), (55, 119362), (96, 119494), (104, 119512), (120, 119572), (140, 119680), (145, 119704), (162, 119767), (165, 119773),

Gene: KHumphrey_45 Start: 28276, Stop: 28710, Start Num: 43

Candidate Starts for KHumphrey_45:

(Start: 26 @28240 has 28 MA's), (Start: 43 @28276 has 1 MA's), (67, 28357), (79, 28381), (87, 28405), (99, 28429), (107, 28441), (109, 28450), (113, 28459), (121, 28495), (128, 28531), (133, 28564), (135, 28576), (146, 28618), (158, 28666), (161, 28675),

Gene: Kamryn_214 Start: 120974, Stop: 121429, Start Num: 46

Candidate Starts for Kamryn_214:

(13, 120860), (25, 120923), (29, 120941), (Start: 46 @120974 has 172 MA's), (55, 120992), (96, 121124), (104, 121142), (120, 121202), (140, 121310), (145, 121334), (162, 121397), (165, 121403),

Gene: Kboogie_219 Start: 120002, Stop: 120457, Start Num: 46

Candidate Starts for Kboogie_219:

(13, 119888), (25, 119951), (29, 119969), (Start: 46 @120002 has 172 MA's), (55, 120020), (96, 120152), (104, 120170), (120, 120230), (140, 120338), (145, 120362), (162, 120425), (165, 120431),

Gene: KendraB23_53 Start: 29930, Stop: 30397, Start Num: 26

Candidate Starts for KendraB23_53:

(Start: 26 @29930 has 28 MA's), (Start: 43 @29966 has 1 MA's), (62, 30026), (87, 30092), (107, 30128), (113, 30146), (126, 30206), (140, 30278), (145, 30302), (147, 30308), (160, 30359), (167, 30380), (168, 30386),

Gene: Kepler_45 Start: 28028, Stop: 28495, Start Num: 26

Candidate Starts for Kepler_45:

(15, 27971), (Start: 26 @28028 has 28 MA's), (Start: 43 @28064 has 1 MA's), (62, 28124), (82, 28175), (87, 28190), (90, 28193), (107, 28226), (126, 28304), (128, 28316), (140, 28376), (145, 28400), (158, 28451), (160, 28457), (168, 28484),

Gene: Khaleesi_214 Start: 120795, Stop: 121250, Start Num: 46

Candidate Starts for Khaleesi_214:

(13, 120681), (25, 120744), (29, 120762), (Start: 46 @120795 has 172 MA's), (55, 120813), (96, 120945), (104, 120963), (120, 121023), (140, 121131), (145, 121155), (162, 121218), (165, 121224),

Gene: Khuang_63 Start: 36921, Stop: 37343, Start Num: 39

Candidate Starts for Khuang_63:

(Start: 39 @36921 has 1 MA's), (74, 37011), (77, 37017), (112, 37095), (140, 37233),

Gene: Koguma_214 Start: 119655, Stop: 120110, Start Num: 46

Candidate Starts for Koguma_214:

(13, 119541), (25, 119604), (29, 119622), (Start: 46 @119655 has 172 MA's), (55, 119673), (96, 119805), (104, 119823), (120, 119883), (140, 119991), (145, 120015), (162, 120078), (165, 120084),

Gene: Kudrefre_85 Start: 49906, Stop: 50304, Start Num: 47

Candidate Starts for Kudrefre_85:

(Start: 47 @49906 has 4 MA's), (52, 49918), (55, 49924), (78, 49978), (100, 50032), (112, 50059), (120, 50095), (123, 50113), (130, 50155), (131, 50164), (133, 50176), (158, 50275),

Gene: Kuleana_45 Start: 27612, Stop: 28070, Start Num: 26

Candidate Starts for Kuleana_45:

(Start: 26 @27612 has 28 MA's), (Start: 43 @27648 has 1 MA's), (87, 27777), (94, 27795), (107, 27813), (113, 27831), (145, 27987), (158, 28038), (160, 28044), (165, 28059),

Gene: Kumotta_70 Start: 37512, Stop: 37922, Start Num: 57

Candidate Starts for Kumotta_70:

(Start: 57 @37512 has 2 MA's),

Gene: LRRHood_208 Start: 119007, Stop: 119462, Start Num: 46

Candidate Starts for LRRHood_208:

(13, 118893), (25, 118956), (29, 118974), (Start: 46 @119007 has 172 MA's), (55, 119025), (96, 119157), (104, 119175), (120, 119235), (140, 119343), (145, 119367), (162, 119430), (165, 119436),

Gene: Latch_215 Start: 119548, Stop: 120003, Start Num: 46

Candidate Starts for Latch_215:

(13, 119434), (25, 119497), (29, 119515), (Start: 46 @119548 has 172 MA's), (55, 119566), (96, 119698), (104, 119716), (120, 119776), (140, 119884), (145, 119908), (162, 119971), (165, 119977),

Gene: Lawnathon_87 Start: 48159, Stop: 48584, Start Num: 54

Candidate Starts for Lawnathon_87:

(Start: 37 @48129 has 3 MA's), (Start: 54 @48159 has 17 MA's), (Start: 57 @48171 has 2 MA's), (60, 48186), (71, 48216), (75, 48222), (131, 48414), (133, 48426), (143, 48471), (164, 48549),

Gene: Lee7_215 Start: 122175, Stop: 122630, Start Num: 46

Candidate Starts for Lee7_215:

(13, 122061), (25, 122124), (29, 122142), (Start: 46 @122175 has 172 MA's), (55, 122193), (96, 122325), (104, 122343), (120, 122403), (140, 122511), (145, 122535), (162, 122598), (165, 122604),

Gene: Leona_44 Start: 28420, Stop: 28890, Start Num: 26

Candidate Starts for Leona_44:

(Start: 26 @28420 has 28 MA's), (Start: 43 @28456 has 1 MA's), (79, 28561), (87, 28585), (99, 28609), (107, 28621), (109, 28630), (113, 28639), (121, 28675), (128, 28711), (130, 28723), (133, 28744), (135, 28756), (146, 28798), (158, 28846), (161, 28855),

Gene: Lesiram_43 Start: 25890, Stop: 25468, Start Num: 37

Candidate Starts for Lesiram_43:

(Start: 37 @25890 has 3 MA's), (65, 25824), (92, 25755), (98, 25743), (117, 25692), (120, 25683), (141, 25578),

Gene: Lethe_217 Start: 121438, Stop: 121893, Start Num: 46

Candidate Starts for Lethe_217:

(13, 121324), (25, 121387), (29, 121405), (Start: 46 @121438 has 172 MA's), (55, 121456), (96, 121588), (104, 121606), (120, 121666), (140, 121774), (145, 121798), (162, 121861), (165, 121867),

Gene: LifeSavor_214 Start: 120073, Stop: 120528, Start Num: 46

Candidate Starts for LifeSavor_214:

(13, 119959), (25, 120022), (29, 120040), (Start: 46 @120073 has 172 MA's), (55, 120091), (96, 120223), (104, 120241), (120, 120301), (140, 120409), (145, 120433), (162, 120496), (165, 120502),

Gene: LinStu_214 Start: 119294, Stop: 119749, Start Num: 46

Candidate Starts for LinStu_214:

(13, 119180), (25, 119243), (29, 119261), (Start: 46 @119294 has 172 MA's), (55, 119312), (96, 119444), (104, 119462), (120, 119522), (140, 119630), (145, 119654), (162, 119717), (165, 119723),

Gene: LittleTokyo_43 Start: 27119, Stop: 27583, Start Num: 26

Candidate Starts for LittleTokyo_43:

(Start: 26 @27119 has 28 MA's), (Start: 43 @27155 has 1 MA's), (79, 27260), (113, 27335), (130, 27416), (133, 27437), (158, 27539), (160, 27545),

Gene: Littleton_218 Start: 120785, Stop: 121240, Start Num: 46

Candidate Starts for Littleton_218:

(13, 120671), (25, 120734), (29, 120752), (Start: 46 @120785 has 172 MA's), (55, 120803), (96, 120935), (104, 120953), (120, 121013), (140, 121121), (145, 121145), (162, 121208), (165, 121214),

Gene: Loanshark_212 Start: 120110, Stop: 120565, Start Num: 46

Candidate Starts for Loanshark_212:

(13, 119996), (25, 120059), (29, 120077), (Start: 46 @120110 has 172 MA's), (55, 120128), (96, 120260), (104, 120278), (120, 120338), (140, 120446), (145, 120470), (162, 120533), (165, 120539),

Gene: LolaVinca_213 Start: 120347, Stop: 120802, Start Num: 46

Candidate Starts for LolaVinca_213:

(13, 120233), (25, 120296), (29, 120314), (Start: 46 @120347 has 172 MA's), (55, 120365), (96, 120497), (104, 120515), (120, 120575), (140, 120683), (145, 120707), (162, 120770), (165, 120776),

Gene: LordLeafolot_217 Start: 119960, Stop: 120415, Start Num: 46

Candidate Starts for LordLeafolot_217:

(13, 119846), (25, 119909), (29, 119927), (Start: 46 @119960 has 172 MA's), (55, 119978), (96, 120110), (104, 120128), (120, 120188), (140, 120296), (145, 120320), (162, 120383), (165, 120389),

Gene: Lukilu_206 Start: 121010, Stop: 121465, Start Num: 46

Candidate Starts for Lukilu_206:

(13, 120896), (25, 120959), (29, 120977), (Start: 46 @121010 has 172 MA's), (55, 121028), (96, 121160), (104, 121178), (120, 121238), (140, 121346), (145, 121370), (162, 121433), (165, 121439),

Gene: Lunar_45 Start: 27944, Stop: 28411, Start Num: 26

Candidate Starts for Lunar_45:

(15, 27887), (Start: 26 @27944 has 28 MA's), (Start: 43 @27980 has 1 MA's), (62, 28040), (82, 28091), (87, 28106), (107, 28142), (126, 28220), (128, 28232), (140, 28292), (145, 28316), (158, 28367), (160, 28373), (167, 28394), (168, 28400),

Gene: MUWow_87 Start: 49555, Stop: 49980, Start Num: 54

Candidate Starts for MUWow_87:

(20, 49450), (Start: 54 @49555 has 17 MA's), (Start: 57 @49567 has 2 MA's), (60, 49582), (71, 49612), (75, 49618), (83, 49642), (131, 49810), (133, 49822), (164, 49945),

Gene: Maby2021_215 Start: 121239, Stop: 121694, Start Num: 46

Candidate Starts for Maby2021_215:

(13, 121125), (25, 121188), (29, 121206), (Start: 46 @121239 has 172 MA's), (55, 121257), (96, 121389), (104, 121407), (120, 121467), (140, 121575), (145, 121599), (162, 121662), (165, 121668),

Gene: Mangeria_216 Start: 121341, Stop: 121796, Start Num: 46

Candidate Starts for Mangeria_216:

(13, 121227), (25, 121290), (29, 121308), (Start: 46 @121341 has 172 MA's), (55, 121359), (96, 121491), (104, 121509), (120, 121569), (140, 121677), (145, 121701), (162, 121764), (165, 121770),

Gene: MargaretKali_66 Start: 36130, Stop: 36540, Start Num: 57

Candidate Starts for MargaretKali_66:

(Start: 57 @36130 has 2 MA's),

Gene: Maruru_53 Start: 40603, Stop: 41109, Start Num: 23

Candidate Starts for Maruru_53:

(Start: 12 @40561 has 1 MA's), (23, 40603), (62, 40714), (70, 40735), (103, 40804), (145, 40990),

Gene: MaterMagnus_86 Start: 49021, Stop: 49443, Start Num: 54

Candidate Starts for MaterMagnus_86:

(Start: 54 @49021 has 17 MA's), (Start: 57 @49030 has 2 MA's), (60, 49045), (71, 49075), (75, 49081), (83, 49105), (115, 49195), (164, 49408),

Gene: Matsumoto_214 Start: 119990, Stop: 120445, Start Num: 46

Candidate Starts for Matsumoto_214:

(13, 119876), (25, 119939), (29, 119957), (Start: 46 @119990 has 172 MA's), (55, 120008), (96, 120140), (104, 120158), (120, 120218), (140, 120326), (145, 120350), (162, 120413), (165, 120419),

Gene: McGee_214 Start: 119184, Stop: 119639, Start Num: 46

Candidate Starts for McGee_214:

(13, 119070), (25, 119133), (29, 119151), (Start: 46 @119184 has 172 MA's), (55, 119202), (96, 119334), (104, 119352), (120, 119412), (140, 119520), (145, 119544), (162, 119607), (165, 119613),

Gene: McWolfish_212 Start: 120006, Stop: 120461, Start Num: 46

Candidate Starts for McWolfish_212:

(13, 119892), (25, 119955), (29, 119973), (Start: 46 @120006 has 172 MA's), (55, 120024), (96, 120156), (104, 120174), (120, 120234), (140, 120342), (145, 120366), (162, 120429), (165, 120435),

Gene: Megamind_212 Start: 120297, Stop: 120752, Start Num: 46

Candidate Starts for Megamind_212:

(13, 120183), (25, 120246), (29, 120264), (Start: 46 @120297 has 172 MA's), (55, 120315), (96, 120447), (104, 120465), (120, 120525), (140, 120633), (145, 120657), (162, 120720), (165, 120726),

Gene: Melons_45 Start: 27758, Stop: 28225, Start Num: 26

Candidate Starts for Melons_45:

(15, 27701), (Start: 26 @27758 has 28 MA's), (Start: 43 @27794 has 1 MA's), (62, 27854), (82, 27905), (87, 27920), (90, 27923), (107, 27956), (126, 28034), (128, 28046), (140, 28106), (145, 28130), (158, 28181), (160, 28187), (167, 28208), (168, 28214),

Gene: Melpomini_210 Start: 119082, Stop: 119537, Start Num: 46

Candidate Starts for Melpomini_210:

(13, 118968), (25, 119031), (29, 119049), (Start: 46 @119082 has 172 MA's), (55, 119100), (96, 119232), (104, 119250), (120, 119310), (140, 119418), (145, 119442), (162, 119505), (165, 119511),

Gene: MichelleMyBell_49 Start: 33179, Stop: 33610, Start Num: 32

Candidate Starts for MichelleMyBell_49:

(9, 33071), (Start: 32 @33179 has 2 MA's), (50, 33215), (51, 33218), (106, 33347), (111, 33362), (115, 33383), (130, 33461), (138, 33503), (144, 33527), (148, 33539), (158, 33581),

Gene: MidnightRain_92 Start: 49545, Stop: 49970, Start Num: 54

Candidate Starts for MidnightRain_92:

(Start: 37 @49515 has 3 MA's), (Start: 54 @49545 has 17 MA's), (Start: 57 @49557 has 2 MA's), (60, 49572), (71, 49602), (75, 49608), (83, 49632), (102, 49680), (130, 49791), (164, 49935),

Gene: MikeLiesIn_217 Start: 121433, Stop: 121888, Start Num: 46

Candidate Starts for MikeLiesIn_217:

(13, 121319), (25, 121382), (29, 121400), (Start: 46 @121433 has 172 MA's), (55, 121451), (96, 121583), (104, 121601), (120, 121661), (140, 121769), (145, 121793), (162, 121856), (165, 121862),

Gene: Mikro_211 Start: 121982, Stop: 122437, Start Num: 46

Candidate Starts for Mikro_211:

(13, 121868), (25, 121931), (29, 121949), (Start: 46 @121982 has 172 MA's), (55, 122000), (96, 122132), (104, 122150), (120, 122210), (140, 122318), (145, 122342), (162, 122405), (165, 122411),

Gene: MoMoMixon_213 Start: 120472, Stop: 120927, Start Num: 46

Candidate Starts for MoMoMixon_213:

(13, 120358), (25, 120421), (29, 120439), (Start: 46 @120472 has 172 MA's), (55, 120490), (96, 120622), (104, 120640), (120, 120700), (140, 120808), (145, 120832), (162, 120895), (165, 120901),

Gene: Momo_216 Start: 119548, Stop: 120003, Start Num: 46

Candidate Starts for Momo_216:

(13, 119434), (25, 119497), (29, 119515), (Start: 46 @119548 has 172 MA's), (55, 119566), (96, 119698), (104, 119716), (120, 119776), (140, 119884), (145, 119908), (162, 119971), (165, 119977),

Gene: Morizzled23_212 Start: 118915, Stop: 119370, Start Num: 46

Candidate Starts for Morizzled23_212:

(13, 118801), (25, 118864), (29, 118882), (Start: 46 @118915 has 172 MA's), (55, 118933), (96, 119065), (104, 119083), (120, 119143), (140, 119251), (145, 119275), (162, 119338), (165, 119344),

Gene: Mufasa8_53 Start: 38883, Stop: 39419, Start Num: 11

Candidate Starts for Mufasa8_53:

(Start: 11 @38883 has 1 MA's), (23, 38925), (62, 39039), (63, 39042), (80, 39084), (103, 39129), (107, 39135), (109, 39144), (130, 39243), (137, 39282), (145, 39315), (171, 39408),

Gene: Naija_216 Start: 120251, Stop: 120706, Start Num: 46

Candidate Starts for Naija_216:

(13, 120137), (25, 120200), (29, 120218), (Start: 46 @120251 has 172 MA's), (55, 120269), (96, 120401), (104, 120419), (120, 120479), (140, 120587), (145, 120611), (162, 120674), (165, 120680),

Gene: Napoleon13_212 Start: 119279, Stop: 119734, Start Num: 46

Candidate Starts for Napoleon13_212:

(13, 119165), (25, 119228), (29, 119246), (Start: 46 @119279 has 172 MA's), (55, 119297), (96, 119429), (104, 119447), (120, 119507), (140, 119615), (145, 119639), (162, 119702), (165, 119708),

Gene: Nappy_216 Start: 120952, Stop: 121407, Start Num: 46

Candidate Starts for Nappy_216:

(13, 120838), (25, 120901), (29, 120919), (Start: 46 @120952 has 172 MA's), (55, 120970), (96, 121102), (104, 121120), (120, 121180), (140, 121288), (145, 121312), (162, 121375), (165, 121381),

Gene: Naval22_220 Start: 122028, Stop: 122483, Start Num: 46

Candidate Starts for Naval22_220:

(13, 121914), (25, 121977), (29, 121995), (Start: 46 @122028 has 172 MA's), (55, 122046), (96, 122178), (104, 122196), (120, 122256), (140, 122364), (145, 122388), (162, 122451), (165, 122457),

Gene: NedWong_214 Start: 120684, Stop: 121139, Start Num: 46

Candidate Starts for NedWong_214:

(13, 120570), (25, 120633), (29, 120651), (Start: 46 @120684 has 172 MA's), (55, 120702), (96, 120834), (104, 120852), (120, 120912), (140, 121020), (145, 121044), (162, 121107), (165, 121113),

Gene: Neville_76 Start: 48231, Stop: 48671, Start Num: 44

Candidate Starts for Neville_76:

(Start: 39 @48225 has 1 MA's), (Start: 44 @48231 has 4 MA's), (52, 48240), (88, 48333), (97, 48360), (114, 48402), (119, 48423), (120, 48426), (123, 48444), (130, 48489), (145, 48558), (147, 48564), (149, 48570), (150, 48573), (153, 48582), (162, 48621),

Gene: Ngannou_212 Start: 118530, Stop: 118985, Start Num: 46

Candidate Starts for Ngannou_212:

(13, 118416), (25, 118479), (29, 118497), (Start: 46 @118530 has 172 MA's), (55, 118548), (96, 118680), (104, 118698), (120, 118758), (140, 118866), (145, 118890), (162, 118953), (165, 118959),

Gene: Nidhogg_216 Start: 121077, Stop: 121532, Start Num: 46

Candidate Starts for Nidhogg_216:

(13, 120963), (25, 121026), (29, 121044), (Start: 46 @121077 has 172 MA's), (55, 121095), (96, 121227), (104, 121245), (120, 121305), (140, 121413), (145, 121437), (162, 121500), (165, 121506),

Gene: NoSwimming_53 Start: 38737, Stop: 39144, Start Num: 40

Candidate Starts for NoSwimming_53:

(40, 38737), (66, 38809),

Gene: NoodleTree_221 Start: 120984, Stop: 121439, Start Num: 46

Candidate Starts for NoodleTree_221:

(13, 120870), (25, 120933), (29, 120951), (Start: 46 @120984 has 172 MA's), (55, 121002), (96, 121134), (104, 121152), (120, 121212), (140, 121320), (145, 121344), (162, 121407), (165, 121413),

Gene: Norm_215 Start: 120986, Stop: 121441, Start Num: 46

Candidate Starts for Norm_215:

(13, 120872), (25, 120935), (29, 120953), (Start: 46 @120986 has 172 MA's), (55, 121004), (96, 121136), (104, 121154), (120, 121214), (140, 121322), (145, 121346), (162, 121409), (165, 121415),

Gene: NuevoMundo_218 Start: 121545, Stop: 122000, Start Num: 46

Candidate Starts for NuevoMundo_218:

(13, 121431), (25, 121494), (29, 121512), (Start: 46 @121545 has 172 MA's), (55, 121563), (96, 121695), (104, 121713), (120, 121773), (140, 121881), (145, 121905), (162, 121968), (165, 121974),

Gene: Octobien14_83 Start: 49218, Stop: 49616, Start Num: 47

Candidate Starts for Octobien14_83:

(27, 49179), (Start: 47 @49218 has 4 MA's), (52, 49230), (55, 49236), (78, 49290), (100, 49344), (112, 49371), (117, 49398), (120, 49407), (123, 49425), (130, 49467), (131, 49476), (158, 49587),

Gene: Orcanus_43 Start: 29287, Stop: 29754, Start Num: 26

Candidate Starts for Orcanus_43:

(Start: 26 @29287 has 28 MA's), (Start: 43 @29323 has 1 MA's), (62, 29383), (87, 29449), (107, 29485), (126, 29563), (128, 29575), (133, 29608), (140, 29635), (145, 29659), (160, 29716), (167, 29737), (168, 29743),

Gene: OtsoOtso_51 Start: 27134, Stop: 27601, Start Num: 26

Candidate Starts for OtsoOtso_51:

(15, 27077), (Start: 26 @27134 has 28 MA's), (Start: 43 @27170 has 1 MA's), (62, 27230), (82, 27281), (87, 27296), (90, 27299), (107, 27332), (126, 27410), (128, 27422), (140, 27482), (145, 27506), (158, 27557), (160, 27563), (167, 27584), (168, 27590),

Gene: ParkTD_214 Start: 120548, Stop: 121003, Start Num: 46

Candidate Starts for ParkTD_214:

(13, 120434), (25, 120497), (29, 120515), (Start: 46 @120548 has 172 MA's), (55, 120566), (96, 120698), (104, 120716), (120, 120776), (140, 120884), (145, 120908), (162, 120971), (165, 120977),

Gene: Patter_216 Start: 119562, Stop: 120017, Start Num: 46

Candidate Starts for Patter_216:

(13, 119448), (25, 119511), (29, 119529), (Start: 46 @119562 has 172 MA's), (55, 119580), (96, 119712), (104, 119730), (120, 119790), (140, 119898), (145, 119922), (162, 119985), (165, 119991),

Gene: Pelletreau_52 Start: 29743, Stop: 30210, Start Num: 26

Candidate Starts for Pelletreau_52:

(Start: 26 @29743 has 28 MA's), (Start: 43 @29779 has 1 MA's), (62, 29839), (87, 29905), (107, 29941), (113, 29959), (126, 30019), (133, 30064), (140, 30091), (145, 30115), (147, 30121), (160, 30172), (168, 30199),

Gene: Persistence_79 Start: 45632, Stop: 46033, Start Num: 39

Candidate Starts for Persistence_79:

(31, 45617), (Start: 39 @45632 has 1 MA's), (72, 45707), (77, 45716), (156, 45992),

Gene: Phlegm_219 Start: 120251, Stop: 120706, Start Num: 46

Candidate Starts for Phlegm_219:

(13, 120137), (25, 120200), (29, 120218), (Start: 46 @120251 has 172 MA's), (55, 120269), (96, 120401), (104, 120419), (120, 120479), (140, 120587), (145, 120611), (162, 120674), (165, 120680),

Gene: PhluffyCoco_45 Start: 28438, Stop: 28911, Start Num: 26

Candidate Starts for PhluffyCoco_45:

(Start: 26 @28438 has 28 MA's), (Start: 43 @28474 has 1 MA's), (67, 28555), (79, 28579), (107, 28639), (113, 28657), (133, 28765), (135, 28777), (160, 28873),

Gene: Phox_216 Start: 120213, Stop: 120668, Start Num: 46

Candidate Starts for Phox_216:

(13, 120099), (25, 120162), (29, 120180), (Start: 46 @120213 has 172 MA's), (55, 120231), (96, 120363), (104, 120381), (120, 120441), (140, 120549), (145, 120573), (162, 120636), (165, 120642),

Gene: Phrank15_92 Start: 49189, Stop: 49614, Start Num: 54

Candidate Starts for Phrank15_92:

(Start: 54 @49189 has 17 MA's), (Start: 57 @49201 has 2 MA's), (60, 49216), (71, 49246), (75, 49252), (83, 49276), (115, 49366), (120, 49384), (128, 49423), (130, 49435), (164, 49579),

Gene: Phusco_213 Start: 119083, Stop: 119538, Start Num: 46

Candidate Starts for Phusco_213:

(13, 118969), (25, 119032), (29, 119050), (Start: 46 @119083 has 172 MA's), (55, 119101), (96, 119233), (104, 119251), (120, 119311), (140, 119419), (145, 119443), (162, 119506), (165, 119512),

Gene: Pier_216 Start: 121090, Stop: 121545, Start Num: 46

Candidate Starts for Pier_216:

(13, 120976), (25, 121039), (29, 121057), (Start: 46 @121090 has 172 MA's), (55, 121108), (96, 121240), (104, 121258), (120, 121318), (140, 121426), (145, 121450), (162, 121513), (165, 121519),

Gene: Pigu_64 Start: 34020, Stop: 34448, Start Num: 31

Candidate Starts for Pigu_64:

(3, 33813), (31, 34020), (Start: 39 @34035 has 1 MA's), (77, 34131), (114, 34221), (156, 34407),

Gene: Pinkcreek_199 Start: 118466, Stop: 118921, Start Num: 46

Candidate Starts for Pinkcreek_199:

(13, 118352), (25, 118415), (29, 118433), (Start: 46 @118466 has 172 MA's), (55, 118484), (96, 118616), (104, 118634), (120, 118694), (140, 118802), (145, 118826), (162, 118889), (165, 118895),

Gene: Pio_223 Start: 122282, Stop: 122737, Start Num: 46

Candidate Starts for Pio_223:

(13, 122168), (25, 122231), (29, 122249), (Start: 46 @122282 has 172 MA's), (55, 122300), (96, 122432), (104, 122450), (120, 122510), (140, 122618), (145, 122642), (162, 122705), (165, 122711),

Gene: Pivoine_216 Start: 120251, Stop: 120706, Start Num: 46

Candidate Starts for Pivoine_216:

(13, 120137), (25, 120200), (29, 120218), (Start: 46 @120251 has 172 MA's), (55, 120269), (96, 120401), (104, 120419), (120, 120479), (140, 120587), (145, 120611), (162, 120674), (165, 120680),

Gene: Pleione_219 Start: 121026, Stop: 121481, Start Num: 46

Candidate Starts for Pleione_219:

(13, 120912), (25, 120975), (29, 120993), (Start: 46 @121026 has 172 MA's), (55, 121044), (96, 121176), (104, 121194), (120, 121254), (140, 121362), (145, 121386), (162, 121449), (165, 121455),

Gene: Polka_43 Start: 27134, Stop: 27601, Start Num: 26

Candidate Starts for Polka_43:

(15, 27077), (Start: 26 @27134 has 28 MA's), (Start: 43 @27170 has 1 MA's), (62, 27230), (82, 27281), (87, 27296), (90, 27299), (107, 27332), (126, 27410), (128, 27422), (140, 27482), (145, 27506), (158, 27557), (160, 27563), (167, 27584), (168, 27590),

Gene: Primadonna_210 Start: 119912, Stop: 120367, Start Num: 46

Candidate Starts for Primadonna_210:

(13, 119798), (25, 119861), (29, 119879), (Start: 46 @119912 has 172 MA's), (55, 119930), (96, 120062), (104, 120080), (120, 120140), (140, 120248), (145, 120272), (162, 120335), (165, 120341),

Gene: PurduePete_215 Start: 121254, Stop: 121709, Start Num: 46

Candidate Starts for PurduePete_215:

(13, 121140), (25, 121203), (29, 121221), (Start: 46 @121254 has 172 MA's), (55, 121272), (96, 121404), (104, 121422), (120, 121482), (140, 121590), (145, 121614), (162, 121677), (165, 121683),

Gene: Purky_56 Start: 37685, Stop: 38155, Start Num: 28

Candidate Starts for Purky_56:

(Start: 28 @37685 has 2 MA's), (55, 37736), (63, 37775), (76, 37805), (105, 37883), (119, 37934), (135, 38033), (140, 38045), (141, 38048), (147, 38075), (160, 38126), (162, 38132), (166, 38141),

Gene: QBert_207 Start: 118614, Stop: 119069, Start Num: 46

Candidate Starts for QBert_207:

(13, 118500), (25, 118563), (29, 118581), (Start: 46 @118614 has 172 MA's), (55, 118632), (96, 118764), (104, 118782), (120, 118842), (140, 118950), (145, 118974), (162, 119037), (165, 119043),

Gene: Quasimodo_217 Start: 119884, Stop: 120339, Start Num: 46

Candidate Starts for Quasimodo_217:

(13, 119770), (25, 119833), (29, 119851), (Start: 46 @119884 has 172 MA's), (55, 119902), (96, 120034), (104, 120052), (120, 120112), (140, 120220), (145, 120244), (162, 120307), (165, 120313),

Gene: Rabbitrun_79 Start: 48496, Stop: 48996, Start Num: 44

Candidate Starts for Rabbitrun_79:

(Start: 39 @48490 has 1 MA's), (Start: 44 @48496 has 4 MA's), (52, 48505), (55, 48511), (65, 48553), (88, 48598), (97, 48625), (114, 48667), (119, 48688), (120, 48691), (123, 48709), (144, 48820), (145, 48823), (147, 48829), (149, 48835), (150, 48838), (162, 48886), (173, 48964),

Gene: Rabinovish_208 Start: 120159, Stop: 120614, Start Num: 46

Candidate Starts for Rabinovish_208:

(13, 120045), (25, 120108), (29, 120126), (Start: 46 @120159 has 172 MA's), (55, 120177), (96, 120309), (104, 120327), (120, 120387), (140, 120495), (145, 120519), (162, 120582), (165, 120588),

Gene: RadFad_91 Start: 48709, Stop: 49134, Start Num: 54

Candidate Starts for RadFad_91:

(Start: 37 @48679 has 3 MA's), (Start: 54 @48709 has 17 MA's), (Start: 57 @48721 has 2 MA's), (60, 48736), (71, 48766), (75, 48772), (83, 48796), (102, 48844), (115, 48886), (130, 48955), (164, 49099),

Gene: Rahel_216 Start: 119986, Stop: 120441, Start Num: 46

Candidate Starts for Rahel_216:

(13, 119872), (25, 119935), (29, 119953), (Start: 46 @119986 has 172 MA's), (55, 120004), (96, 120136), (104, 120154), (120, 120214), (140, 120322), (145, 120346), (162, 120409), (165, 120415),

Gene: Raphaella_86 Start: 47326, Stop: 47757, Start Num: 54

Candidate Starts for Raphaella_86:

(Start: 37 @47296 has 3 MA's), (Start: 54 @47326 has 17 MA's), (Start: 57 @47338 has 2 MA's), (60, 47353), (71, 47383), (75, 47389), (83, 47413), (102, 47461), (130, 47572), (164, 47716),

Gene: Raqqa_86 Start: 48107, Stop: 48511, Start Num: 56

Candidate Starts for Raqqa_86:

(10, 47966), (Start: 56 @48107 has 3 MA's), (75, 48164), (81, 48182), (83, 48188), (115, 48278), (120, 48296), (135, 48380), (152, 48431), (164, 48476),

Gene: Rattail_45 Start: 28560, Stop: 28997, Start Num: 43

Candidate Starts for Rattail_45:

(Start: 26 @28524 has 28 MA's), (Start: 43 @28560 has 1 MA's), (67, 28641), (79, 28665), (107, 28725), (113, 28743), (133, 28851), (135, 28863), (160, 28959),

Gene: RedFox_45 Start: 28437, Stop: 28910, Start Num: 26

Candidate Starts for RedFox_45:

(Start: 26 @28437 has 28 MA's), (Start: 43 @28473 has 1 MA's), (67, 28554), (79, 28578), (107, 28638), (113, 28656), (133, 28764), (135, 28776), (160, 28872),

Gene: Renna12_44 Start: 28294, Stop: 28767, Start Num: 26

Candidate Starts for Renna12_44:

(Start: 26 @28294 has 28 MA's), (Start: 43 @28330 has 1 MA's), (67, 28411), (79, 28435), (107, 28495), (113, 28513), (130, 28600), (133, 28621), (135, 28633), (160, 28729),

Gene: Richie_89 Start: 49559, Stop: 49984, Start Num: 54

Candidate Starts for Richie_89:

(Start: 37 @49529 has 3 MA's), (Start: 54 @49559 has 17 MA's), (Start: 57 @49571 has 2 MA's), (60, 49586), (71, 49616), (75, 49622), (83, 49646), (115, 49736), (164, 49949),

Gene: Rizal_207 Start: 118504, Stop: 118959, Start Num: 46

Candidate Starts for Rizal_207:

(13, 118390), (25, 118453), (29, 118471), (Start: 46 @118504 has 172 MA's), (55, 118522), (96, 118654), (104, 118672), (120, 118732), (140, 118840), (145, 118864), (162, 118927), (165, 118933),

Gene: RoMag_210 Start: 120297, Stop: 120752, Start Num: 46

Candidate Starts for RoMag_210:

(13, 120183), (25, 120246), (29, 120264), (Start: 46 @120297 has 172 MA's), (55, 120315), (96, 120447), (104, 120465), (120, 120525), (140, 120633), (145, 120657), (162, 120720), (165, 120726),

Gene: Ronan_211 Start: 118689, Stop: 119144, Start Num: 46

Candidate Starts for Ronan_211:

(13, 118575), (25, 118638), (29, 118656), (Start: 46 @118689 has 172 MA's), (55, 118707), (96, 118839), (104, 118857), (120, 118917), (140, 119025), (145, 119049), (162, 119112), (165, 119118),

Gene: Roots515_217 Start: 121805, Stop: 122260, Start Num: 46

Candidate Starts for Roots515_217:

(13, 121691), (25, 121754), (29, 121772), (Start: 46 @121805 has 172 MA's), (55, 121823), (96, 121955), (104, 121973), (120, 122033), (140, 122141), (145, 122165), (162, 122228), (165, 122234),

Gene: Ruchi_41 Start: 28118, Stop: 28588, Start Num: 26

Candidate Starts for Ruchi_41:

(Start: 26 @28118 has 28 MA's), (Start: 43 @28154 has 1 MA's), (Start: 46 @28160 has 172 MA's), (79, 28256), (93, 28295), (107, 28316), (113, 28334), (121, 28370), (140, 28469), (145, 28493), (151,

28511), (162, 28556), (168, 28577),

Gene: SVoro_212 Start: 120599, Stop: 121054, Start Num: 46

Candidate Starts for SVoro_212:

(13, 120485), (25, 120548), (29, 120566), (Start: 46 @120599 has 172 MA's), (55, 120617), (96, 120749), (104, 120767), (120, 120827), (140, 120935), (145, 120959), (162, 121022), (165, 121028),

Gene: Sakai_82 Start: 47520, Stop: 47945, Start Num: 54

Candidate Starts for Sakai_82:

(Start: 54 @47520 has 17 MA's), (Start: 57 @47532 has 2 MA's), (60, 47547), (71, 47577), (75, 47583), (131, 47775), (133, 47787), (164, 47910),

Gene: Salacia_215 Start: 120389, Stop: 120844, Start Num: 46

Candidate Starts for Salacia_215:

(13, 120275), (25, 120338), (29, 120356), (Start: 46 @120389 has 172 MA's), (55, 120407), (96, 120539), (104, 120557), (120, 120617), (140, 120725), (145, 120749), (162, 120812), (165, 120818),

Gene: Sarge_59 Start: 33281, Stop: 33694, Start Num: 38

Candidate Starts for Sarge_59:

(33, 33269), (Start: 38 @33281 has 3 MA's), (77, 33377), (114, 33467), (156, 33653),

Gene: Sauce_211 Start: 119212, Stop: 119667, Start Num: 46

Candidate Starts for Sauce_211:

(1, 118693), (13, 119098), (25, 119161), (29, 119179), (Start: 46 @119212 has 172 MA's), (55, 119230), (96, 119362), (104, 119380), (120, 119440), (140, 119548), (145, 119572), (162, 119635), (165, 119641),

Gene: Scotia_51 Start: 37733, Stop: 38152, Start Num: 40

Candidate Starts for Scotia_51:

(40, 37733), (77, 37826), (118, 37934),

Gene: ScottMcG_209 Start: 119282, Stop: 119737, Start Num: 46

Candidate Starts for ScottMcG_209:

(13, 119168), (25, 119231), (29, 119249), (Start: 46 @119282 has 172 MA's), (55, 119300), (96, 119432), (104, 119450), (120, 119510), (140, 119618), (145, 119642), (162, 119705), (165, 119711),

Gene: Seahorse_92 Start: 52725, Stop: 53156, Start Num: 54

Candidate Starts for Seahorse_92:

(20, 52620), (Start: 54 @52725 has 17 MA's), (Start: 57 @52737 has 2 MA's), (60, 52752), (71, 52782), (75, 52788), (83, 52812), (164, 53115),

Gene: Sebata_216 Start: 120719, Stop: 121174, Start Num: 46

Candidate Starts for Sebata_216:

(13, 120605), (25, 120668), (29, 120686), (Start: 46 @120719 has 172 MA's), (55, 120737), (96, 120869), (104, 120887), (120, 120947), (140, 121055), (145, 121079), (162, 121142), (165, 121148),

Gene: Sejanus_66 Start: 51688, Stop: 52152, Start Num: 28

Candidate Starts for Sejanus_66:

(Start: 28 @51688 has 2 MA's), (55, 51739), (63, 51778), (76, 51808), (105, 51886), (119, 51937), (135, 52036), (140, 52048), (141, 52051), (147, 52078), (160, 52129), (166, 52144),

Gene: Sephiroth_83 Start: 50078, Stop: 50476, Start Num: 47

Candidate Starts for Sephiroth_83:

(Start: 47 @50078 has 4 MA's), (52, 50090), (55, 50096), (78, 50150), (100, 50204), (112, 50231), (120, 50267), (123, 50285), (130, 50327), (131, 50336), (133, 50348), (158, 50447),

Gene: Shaqnato_206 Start: 119420, Stop: 119875, Start Num: 46

Candidate Starts for Shaqnato_206:

(13, 119306), (25, 119369), (29, 119387), (Start: 46 @119420 has 172 MA's), (55, 119438), (96, 119570), (104, 119588), (120, 119648), (140, 119756), (145, 119780), (162, 119843), (165, 119849),

Gene: Shelob_216 Start: 122160, Stop: 122615, Start Num: 46

Candidate Starts for Shelob_216:

(13, 122046), (25, 122109), (29, 122127), (Start: 46 @122160 has 172 MA's), (55, 122178), (96, 122310), (104, 122328), (120, 122388), (140, 122496), (145, 122520), (162, 122583), (165, 122589),

Gene: ShiaLabeouf_212 Start: 119194, Stop: 119649, Start Num: 46

Candidate Starts for ShiaLabeouf_212:

(13, 119080), (25, 119143), (29, 119161), (Start: 46 @119194 has 172 MA's), (55, 119212), (96, 119344), (104, 119362), (120, 119422), (140, 119530), (145, 119554), (162, 119617), (165, 119623),

Gene: Shifa_192 Start: 118778, Stop: 119233, Start Num: 46

Candidate Starts for Shifa_192:

(13, 118664), (25, 118727), (29, 118745), (Start: 46 @118778 has 172 MA's), (55, 118796), (96, 118928), (104, 118946), (120, 119006), (140, 119114), (145, 119138), (162, 119201), (165, 119207),

Gene: Shnickers_213 Start: 119258, Stop: 119713, Start Num: 46

Candidate Starts for Shnickers_213:

(13, 119144), (25, 119207), (29, 119225), (Start: 46 @119258 has 172 MA's), (55, 119276), (96, 119408), (104, 119426), (120, 119486), (140, 119594), (145, 119618), (162, 119681), (165, 119687),

Gene: Shoya_62 Start: 35352, Stop: 35765, Start Num: 38

Candidate Starts for Shoya_62:

(21, 35286), (Start: 38 @35352 has 3 MA's), (77, 35448), (114, 35538), (145, 35688),

Gene: Shrimp_217 Start: 121315, Stop: 121770, Start Num: 46

Candidate Starts for Shrimp_217:

(13, 121201), (25, 121264), (29, 121282), (Start: 46 @121315 has 172 MA's), (55, 121333), (96, 121465), (104, 121483), (120, 121543), (140, 121651), (145, 121675), (162, 121738), (165, 121744),

Gene: Shukran_82 Start: 46326, Stop: 46727, Start Num: 39

Candidate Starts for Shukran_82:

(31, 46311), (Start: 39 @46326 has 1 MA's), (65, 46386), (72, 46401), (77, 46410), (89, 46443), (156, 46686),

Gene: SilverDipper_219 Start: 120807, Stop: 121262, Start Num: 46

Candidate Starts for SilverDipper_219:

(13, 120693), (25, 120756), (29, 120774), (Start: 46 @120807 has 172 MA's), (55, 120825), (96, 120957), (104, 120975), (120, 121035), (140, 121143), (145, 121167), (162, 121230), (165, 121236),

Gene: SmallFry_215 Start: 119352, Stop: 119807, Start Num: 46

Candidate Starts for SmallFry_215:

(13, 119238), (25, 119301), (29, 119319), (Start: 46 @119352 has 172 MA's), (55, 119370), (96, 119502), (104, 119520), (120, 119580), (140, 119688), (145, 119712), (162, 119775), (165, 119781),

Gene: Sonali_52 Start: 41017, Stop: 41565, Start Num: 12

Candidate Starts for Sonali_52:

(Start: 12 @41017 has 1 MA's), (23, 41059), (62, 41170), (70, 41191), (103, 41260), (145, 41446),

Gene: Spec_210 Start: 119543, Stop: 119998, Start Num: 46

Candidate Starts for Spec_210:

(13, 119429), (22, 119459), (25, 119492), (29, 119510), (Start: 46 @119543 has 172 MA's), (55, 119561), (96, 119693), (104, 119711), (120, 119771), (140, 119879), (145, 119903), (162, 119966), (165, 119972),

Gene: Specks_219 Start: 120668, Stop: 121123, Start Num: 46

Candidate Starts for Specks_219:

(13, 120554), (25, 120617), (29, 120635), (Start: 46 @120668 has 172 MA's), (55, 120686), (96, 120818), (104, 120836), (120, 120896), (140, 121004), (145, 121028), (162, 121091), (165, 121097),

Gene: SpicyFrank_87 Start: 47815, Stop: 48240, Start Num: 54

Candidate Starts for SpicyFrank_87:

(Start: 54 @47815 has 17 MA's), (Start: 57 @47827 has 2 MA's), (60, 47842), (71, 47872), (75, 47878), (83, 47902), (112, 47974), (115, 47992), (164, 48205),

Gene: Splinter_57 Start: 38151, Stop: 38588, Start Num: 34

Candidate Starts for Splinter_57:

(Start: 34 @38151 has 5 MA's), (Start: 38 @38160 has 3 MA's), (Start: 41 @38163 has 1 MA's), (55, 38187), (78, 38241), (86, 38262), (114, 38343), (120, 38367), (128, 38412),

Gene: Sprinklers_213 Start: 119910, Stop: 120365, Start Num: 46

Candidate Starts for Sprinklers_213:

(13, 119796), (25, 119859), (29, 119877), (Start: 46 @119910 has 172 MA's), (55, 119928), (96, 120060), (104, 120078), (120, 120138), (140, 120246), (145, 120270), (162, 120333), (165, 120339),

Gene: Spud_209 Start: 119622, Stop: 120077, Start Num: 46

Candidate Starts for Spud_209:

(13, 119508), (25, 119571), (29, 119589), (Start: 46 @119622 has 172 MA's), (55, 119640), (96, 119772), (104, 119790), (120, 119850), (140, 119958), (145, 119982), (162, 120045), (165, 120051),

Gene: Squiddly_91 Start: 53227, Stop: 53721, Start Num: 44

Candidate Starts for Squiddly_91:

(Start: 44 @53227 has 4 MA's), (71, 53281), (114, 53386), (119, 53407), (120, 53410), (128, 53455), (139, 53512), (144, 53536), (145, 53539), (147, 53545), (148, 53548), (162, 53602), (172, 53650),

Gene: SrishMeg2525_212 Start: 120786, Stop: 121241, Start Num: 46

Candidate Starts for SrishMeg2525_212:

(13, 120672), (25, 120735), (29, 120753), (Start: 46 @120786 has 172 MA's), (55, 120804), (96, 120936), (104, 120954), (120, 121014), (140, 121122), (145, 121146), (162, 121209), (165, 121215),

Gene: StephanieG_211 Start: 120820, Stop: 121275, Start Num: 46

Candidate Starts for StephanieG_211:

(13, 120706), (25, 120769), (29, 120787), (Start: 46 @120820 has 172 MA's), (55, 120838), (96, 120970), (104, 120988), (120, 121048), (140, 121156), (145, 121180), (162, 121243), (165, 121249),

Gene: StuartMinion_40 Start: 25394, Stop: 25864, Start Num: 26

Candidate Starts for StuartMinion_40:

(Start: 26 @25394 has 28 MA's), (Start: 43 @25430 has 1 MA's), (79, 25535), (87, 25559), (107, 25595), (109, 25604), (113, 25613), (128, 25685), (130, 25697), (133, 25718), (135, 25730), (146,

25772), (158, 25820), (161, 25829),

Gene: Stubby_199 Start: 118669, Stop: 119124, Start Num: 46

Candidate Starts for Stubby_199:

(13, 118555), (25, 118618), (29, 118636), (Start: 46 @118669 has 172 MA's), (55, 118687), (96, 118819), (104, 118837), (120, 118897), (140, 119005), (145, 119029), (162, 119092), (165, 119098),

Gene: StubbySaigey_220 Start: 120341, Stop: 120796, Start Num: 46

Candidate Starts for StubbySaigey_220:

(13, 120227), (25, 120290), (29, 120308), (Start: 46 @120341 has 172 MA's), (55, 120359), (96, 120491), (104, 120509), (120, 120569), (140, 120677), (145, 120701), (162, 120764), (165, 120770),

Gene: Sunshine23_54 Start: 40949, Stop: 41446, Start Num: 23

Candidate Starts for Sunshine23_54:

(Start: 12 @40907 has 1 MA's), (23, 40949), (62, 41060), (70, 41081), (103, 41150), (145, 41336),

Gene: Syleon_86 Start: 50016, Stop: 50414, Start Num: 47

Candidate Starts for Syleon_86:

(Start: 47 @50016 has 4 MA's), (52, 50028), (55, 50034), (78, 50088), (100, 50142), (112, 50169), (120, 50205), (123, 50223), (130, 50265), (131, 50274), (133, 50286), (158, 50385),

Gene: TZGordon_58 Start: 37043, Stop: 37483, Start Num: 34

Candidate Starts for TZGordon_58:

(Start: 34 @37043 has 5 MA's), (Start: 43 @37058 has 1 MA's), (55, 37082), (78, 37136), (114, 37238), (120, 37262), (128, 37307),

Gene: Tainan_216 Start: 119687, Stop: 120142, Start Num: 46

Candidate Starts for Tainan_216:

(13, 119573), (25, 119636), (29, 119654), (Start: 46 @119687 has 172 MA's), (55, 119705), (96, 119837), (104, 119855), (120, 119915), (140, 120023), (145, 120047), (162, 120110), (165, 120116),

Gene: TaylorSipht_43 Start: 28692, Stop: 29159, Start Num: 26

Candidate Starts for TaylorSipht_43:

(Start: 26 @28692 has 28 MA's), (30, 28704), (Start: 43 @28728 has 1 MA's), (79, 28830), (87, 28854), (107, 28890), (108, 28896), (113, 28908), (121, 28944), (125, 28968), (140, 29040), (145, 29064), (151, 29082), (155, 29097), (168, 29148),

Gene: Teardrop_212 Start: 118854, Stop: 119309, Start Num: 46

Candidate Starts for Teardrop_212:

(13, 118740), (25, 118803), (29, 118821), (Start: 46 @118854 has 172 MA's), (55, 118872), (96, 119004), (104, 119022), (120, 119082), (140, 119190), (145, 119214), (162, 119277), (165, 119283),

Gene: Teng_45 Start: 25920, Stop: 25498, Start Num: 37

Candidate Starts for Teng_45:

(14, 25998), (Start: 37 @25920 has 3 MA's), (65, 25854), (92, 25785), (98, 25773), (117, 25722), (120, 25713), (141, 25608),

Gene: ThayneTheZag_91 Start: 48711, Stop: 49115, Start Num: 56

Candidate Starts for ThayneTheZag_91:

(Start: 56 @48711 has 3 MA's), (60, 48732), (75, 48768), (83, 48792), (115, 48882), (120, 48900), (135, 48984), (152, 49035), (164, 49080),

Gene: Tiff81_81 Start: 46437, Stop: 46868, Start Num: 54

Candidate Starts for Tiff81_81:

(18, 46326), (49, 46428), (Start: 54 @46437 has 17 MA's), (Start: 57 @46449 has 2 MA's), (71, 46494), (75, 46500), (83, 46524), (164, 46827),

Gene: TinyTim_213 Start: 119635, Stop: 120090, Start Num: 46

Candidate Starts for TinyTim_213:

(13, 119521), (25, 119584), (29, 119602), (Start: 46 @119635 has 172 MA's), (55, 119653), (96, 119785), (104, 119803), (120, 119863), (140, 119971), (145, 119995), (162, 120058), (165, 120064),

Gene: Toad24_45 Start: 29983, Stop: 30450, Start Num: 26

Candidate Starts for Toad24_45:

(Start: 26 @29983 has 28 MA's), (Start: 43 @30019 has 1 MA's), (62, 30079), (87, 30145), (107, 30181), (113, 30199), (126, 30259), (140, 30331), (145, 30355), (147, 30361), (160, 30412), (167, 30433), (168, 30439),

Gene: Tonenili_237 Start: 125468, Stop: 125920, Start Num: 46

Candidate Starts for Tonenili_237:

(13, 125354), (25, 125417), (29, 125435), (30, 125438), (Start: 46 @125468 has 172 MA's), (55, 125486), (104, 125636), (120, 125696), (140, 125804), (145, 125828),

Gene: Tortoise16_213 Start: 120097, Stop: 120552, Start Num: 46

Candidate Starts for Tortoise16_213:

(13, 119983), (25, 120046), (29, 120064), (Start: 46 @120097 has 172 MA's), (55, 120115), (96, 120247), (104, 120265), (120, 120325), (140, 120433), (145, 120457), (162, 120520), (165, 120526),

Gene: Trax_79 Start: 49196, Stop: 49636, Start Num: 44

Candidate Starts for Trax_79:

(Start: 39 @49190 has 1 MA's), (Start: 44 @49196 has 4 MA's), (52, 49205), (88, 49298), (97, 49325), (114, 49367), (119, 49388), (120, 49391), (123, 49409), (130, 49454), (145, 49523), (147, 49529), (149, 49535), (150, 49538), (153, 49547), (162, 49586),

Gene: Trinitium_211 Start: 118389, Stop: 118844, Start Num: 46

Candidate Starts for Trinitium_211:

(13, 118275), (25, 118338), (29, 118356), (Start: 46 @118389 has 172 MA's), (55, 118407), (96, 118539), (104, 118557), (120, 118617), (140, 118725), (145, 118749), (162, 118812), (165, 118818),

Gene: TurkishDelight_64 Start: 53655, Stop: 54263, Start Num: 8

Candidate Starts for TurkishDelight_64:

(Start: 8 @53655 has 1 MA's), (36, 53787), (62, 53856), (63, 53859), (80, 53901), (108, 53967), (109, 53970), (129, 54060), (130, 54069), (150, 54159), (157, 54189), (159, 54198), (163, 54207),

Gene: Turret_208 Start: 117971, Stop: 118426, Start Num: 46

Candidate Starts for Turret_208:

(13, 117857), (25, 117920), (29, 117938), (Start: 46 @117971 has 172 MA's), (55, 117989), (96, 118121), (104, 118139), (120, 118199), (140, 118307), (145, 118331), (162, 118394), (165, 118400),

Gene: Tyke_213 Start: 121464, Stop: 121919, Start Num: 46

Candidate Starts for Tyke_213:

(13, 121350), (25, 121413), (29, 121431), (Start: 46 @121464 has 172 MA's), (55, 121482), (96, 121614), (104, 121632), (120, 121692), (140, 121800), (145, 121824), (162, 121887), (165, 121893),

Gene: ValleyTerrace_216 Start: 119548, Stop: 120003, Start Num: 46

Candidate Starts for ValleyTerrace_216:

(13, 119434), (25, 119497), (29, 119515), (Start: 46 @119548 has 172 MA's), (55, 119566), (96, 119698), (104, 119716), (120, 119776), (140, 119884), (145, 119908), (162, 119971), (165, 119977),

Gene: Vendetta_57 Start: 38151, Stop: 38588, Start Num: 34

Candidate Starts for Vendetta_57:

(Start: 34 @38151 has 5 MA's), (Start: 38 @38160 has 3 MA's), (Start: 41 @38163 has 1 MA's), (55, 38187), (78, 38241), (86, 38262), (114, 38343), (120, 38367), (128, 38412),

Gene: Vopal_87 Start: 49392, Stop: 49823, Start Num: 54

Candidate Starts for Vopal_87:

(Start: 37 @49362 has 3 MA's), (Start: 54 @49392 has 17 MA's), (Start: 57 @49404 has 2 MA's), (60, 49419), (71, 49449), (75, 49455), (83, 49479), (102, 49527), (130, 49638), (164, 49782),

Gene: Vulpecula_41 Start: 27795, Stop: 28265, Start Num: 26

Candidate Starts for Vulpecula_41:

(Start: 26 @27795 has 28 MA's), (Start: 43 @27831 has 1 MA's), (Start: 46 @27837 has 172 MA's), (79, 27933), (85, 27954), (93, 27972), (107, 27993), (113, 28011), (121, 28047), (140, 28146), (145, 28170), (151, 28188), (162, 28233), (168, 28254),

Gene: Wally_213 Start: 119532, Stop: 119987, Start Num: 46

Candidate Starts for Wally_213:

(13, 119418), (25, 119481), (29, 119499), (Start: 46 @119532 has 172 MA's), (55, 119550), (96, 119682), (104, 119700), (120, 119760), (140, 119868), (145, 119892), (162, 119955), (165, 119961),

Gene: Westrich_51 Start: 29667, Stop: 30134, Start Num: 26

Candidate Starts for Westrich_51:

(Start: 26 @29667 has 28 MA's), (Start: 43 @29703 has 1 MA's), (62, 29763), (87, 29829), (107, 29865), (113, 29883), (126, 29943), (133, 29988), (140, 30015), (145, 30039), (147, 30045), (160, 30096), (168, 30123),

Gene: Willis_216 Start: 120446, Stop: 120901, Start Num: 46

Candidate Starts for Willis_216:

(13, 120332), (25, 120395), (29, 120413), (Start: 46 @120446 has 172 MA's), (55, 120464), (96, 120596), (104, 120614), (120, 120674), (140, 120782), (145, 120806), (162, 120869), (165, 120875),

Gene: Windest_89 Start: 47044, Stop: 47469, Start Num: 54

Candidate Starts for Windest_89:

(Start: 37 @47014 has 3 MA's), (Start: 54 @47044 has 17 MA's), (Start: 57 @47056 has 2 MA's), (60, 47071), (71, 47101), (75, 47107), (83, 47131), (115, 47221), (164, 47434),

Gene: Wrackline_55 Start: 29872, Stop: 29441, Start Num: 39

Candidate Starts for Wrackline_55:

(17, 29953), (24, 29920), (35, 29881), (Start: 39 @29872 has 1 MA's), (Start: 42 @29869 has 1 MA's), (48, 29854), (59, 29824), (64, 29806), (69, 29788), (76, 29776), (101, 29716), (110, 29695), (114, 29680), (115, 29674), (131, 29593), (140, 29554), (145, 29530), (150, 29515), (166, 29455), (167, 29452),

Gene: Xavia_55 Start: 40820, Stop: 41251, Start Num: 32

Candidate Starts for Xavia_55:

(9, 40712), (Start: 32 @40820 has 2 MA's), (50, 40856), (51, 40859), (106, 40988), (111, 41003), (115, 41024), (130, 41102), (138, 41144), (144, 41168), (148, 41180), (158, 41222),

Gene: Yassified_212 Start: 119896, Stop: 120351, Start Num: 46

Candidate Starts for Yassified_212:

(1, 119377), (13, 119782), (25, 119845), (29, 119863), (Start: 46 @119896 has 172 MA's), (55, 119914), (96, 120046), (104, 120064), (120, 120124), (140, 120232), (145, 120256), (162, 120319), (165, 120325),

Gene: YemiJoy2021_216 Start: 121202, Stop: 121657, Start Num: 46

Candidate Starts for YemiJoy2021_216:

(13, 121088), (25, 121151), (29, 121169), (Start: 46 @121202 has 172 MA's), (55, 121220), (96, 121352), (104, 121370), (120, 121430), (140, 121538), (145, 121562), (162, 121625), (165, 121631),

Gene: YoungHarleezy_85 Start: 48839, Stop: 49270, Start Num: 54

Candidate Starts for YoungHarleezy_85:

(Start: 37 @48809 has 3 MA's), (Start: 54 @48839 has 17 MA's), (Start: 57 @48851 has 2 MA's), (60, 48866), (71, 48896), (75, 48902), (83, 48926), (164, 49229),

Gene: YoungMoneyMata_214 Start: 120016, Stop: 120471, Start Num: 46

Candidate Starts for YoungMoneyMata_214:

(13, 119902), (25, 119965), (29, 119983), (Start: 46 @120016 has 172 MA's), (55, 120034), (96, 120166), (104, 120184), (120, 120244), (140, 120352), (145, 120376), (162, 120439), (165, 120445),

Gene: Yucca_215 Start: 121194, Stop: 121649, Start Num: 46

Candidate Starts for Yucca_215:

(13, 121080), (25, 121143), (29, 121161), (Start: 46 @121194 has 172 MA's), (55, 121212), (96, 121344), (104, 121362), (120, 121422), (140, 121530), (145, 121554), (162, 121617), (165, 121623),

Gene: Zalkecks_214 Start: 120275, Stop: 120730, Start Num: 46

Candidate Starts for Zalkecks_214:

(13, 120161), (25, 120224), (29, 120242), (Start: 46 @120275 has 172 MA's), (55, 120293), (96, 120425), (104, 120443), (120, 120503), (140, 120611), (145, 120635), (162, 120698), (165, 120704),

Gene: Zeenon_217 Start: 120846, Stop: 121301, Start Num: 46

Candidate Starts for Zeenon_217:

(13, 120732), (25, 120795), (29, 120813), (Start: 46 @120846 has 172 MA's), (55, 120864), (96, 120996), (104, 121014), (120, 121074), (140, 121182), (145, 121206), (162, 121269), (165, 121275),

Gene: Zhuangyuan_50 Start: 28900, Stop: 29361, Start Num: 26

Candidate Starts for Zhuangyuan_50:

(Start: 26 @28900 has 28 MA's), (Start: 43 @28936 has 1 MA's), (61, 28993), (79, 29041), (87, 29065), (107, 29107), (133, 29227), (146, 29281), (147, 29284), (162, 29341), (165, 29350),

Gene: Zucker_84 Start: 49086, Stop: 49490, Start Num: 56

Candidate Starts for Zucker_84:

(2, 48822), (3, 48828), (4, 48840), (22, 48981), (Start: 56 @49086 has 3 MA's), (71, 49137), (75, 49143), (81, 49161), (83, 49167), (115, 49257), (120, 49275), (135, 49359), (152, 49410), (164, 49455),

Gene: ZygoTaiga_212 Start: 121466, Stop: 121921, Start Num: 46

Candidate Starts for ZygoTaiga_212:

(13, 121352), (25, 121415), (29, 121433), (Start: 46 @121466 has 172 MA's), (55, 121484), (96, 121616), (104, 121634), (120, 121694), (140, 121802), (145, 121826), (162, 121889), (165, 121895),