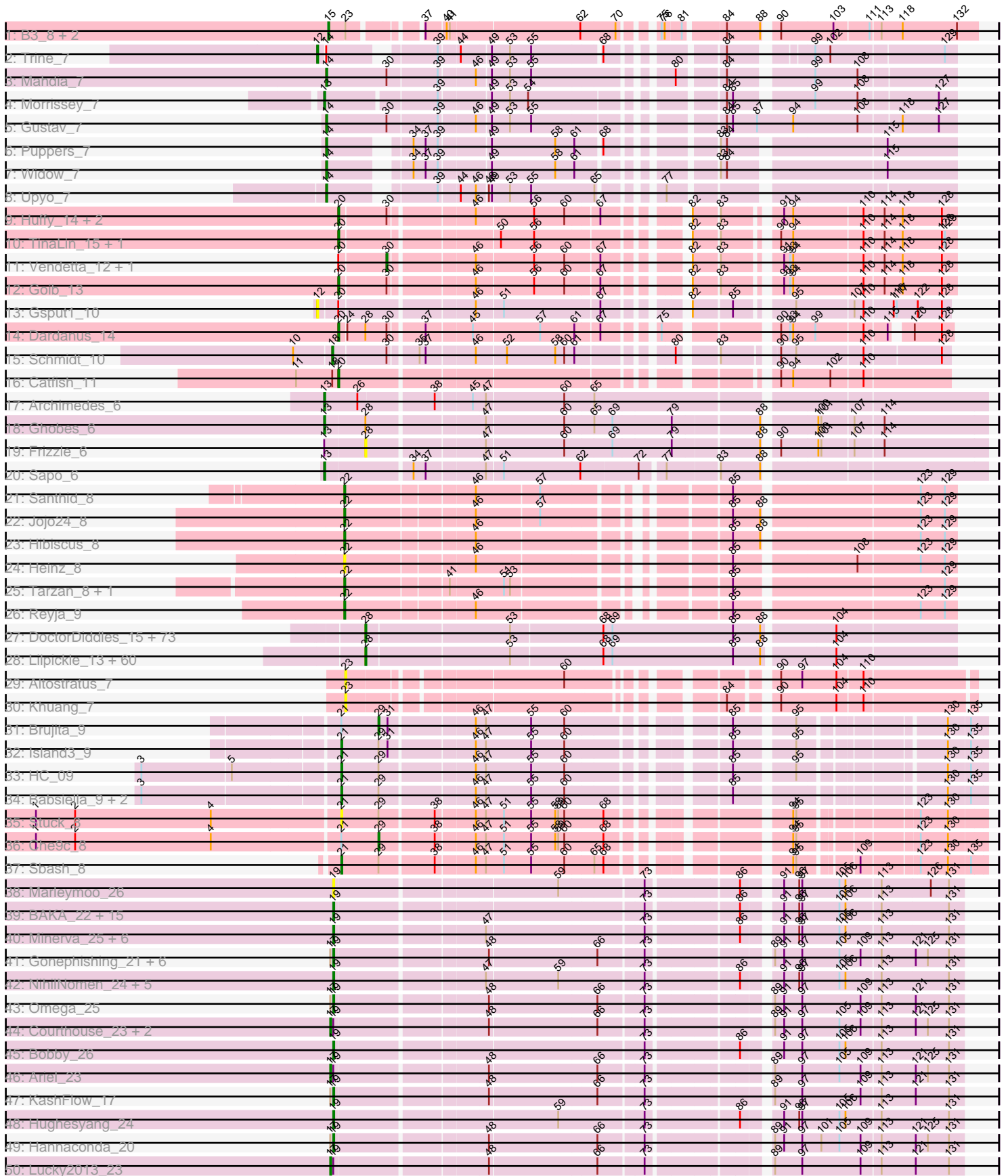
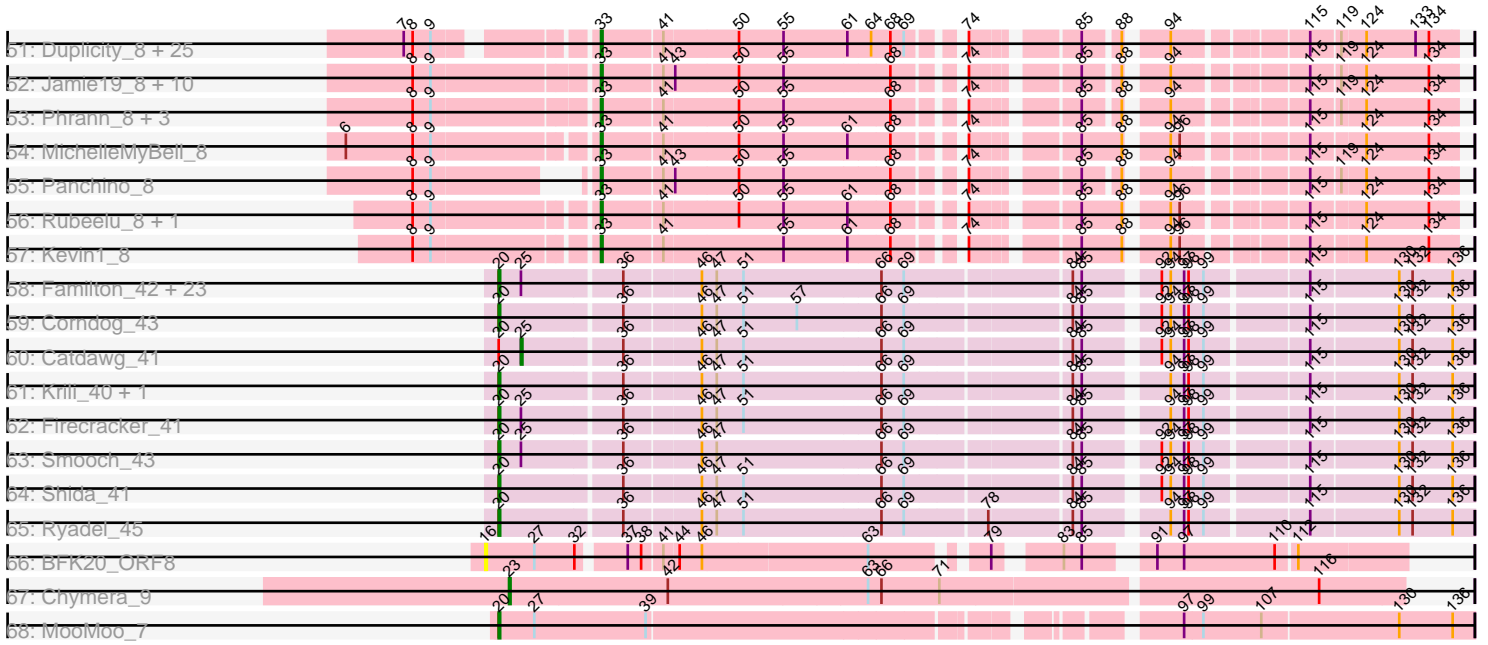


Pham 215754



Pham 215754



Note: Tracks are now grouped by subcluster and scaled. Switching in subcluster is indicated by changes in track color. Track scale is now set by default to display the region 30 bp upstream of start 1 to 30 bp downstream of the last possible start. If this default region is judged to be packed too tightly with annotated starts, the track will be further scaled to only show that region of the ORF with annotated starts. This action will be indicated by adding "Zoomed" to the title. For starts, yellow indicates the location of called starts comprised solely of Glimmer/GeneMark auto-annotations, green indicates the location of called starts with at least 1 manual gene annotation.

Pham 215754 Report

This analysis was run 02/22/25 on database version 588.

Pham number 215754 has 307 members, 33 are drafts.

Phages represented in each track:

- Track 1 : B3_8, E1_8, Anatole_8
- Track 2 : Trine_7
- Track 3 : Mahdia_7
- Track 4 : Morrissey_7
- Track 5 : Gustav_7
- Track 6 : Poppers_7
- Track 7 : Widow_7
- Track 8 : Upyo_7
- Track 9 : Huff_14, TZGordon_14, DinoDaryn_14
- Track 10 : TinaLin_15, Banquo_16
- Track 11 : Vendetta_12, Splinter_12
- Track 12 : Goib_13
- Track 13 : Gspu1_10
- Track 14 : Dardanus_14
- Track 15 : Schmidt_10
- Track 16 : Catfish_11
- Track 17 : Archimedes_6
- Track 18 : Ghobes_6
- Track 19 : Frizzle_6
- Track 20 : Sapo_6
- Track 21 : Santhid_8
- Track 22 : Jojo24_8
- Track 23 : Hibiscus_8
- Track 24 : Heinz_8
- Track 25 : Tarzan_8, DonkeyMan_8
- Track 26 : Reyja_9
- Track 27 : DoctorDiddles_15, Balomaji_14, Henry_15, Palpatine_14, Harella_13, IHOP_14, Bruin_14, Willez_14, Quallification_16, Bask21_14, Nala_14, Rakim_16, Dusk_14, StellaBean_15, Command613_16, Miniwave_15, Gator_13, Policronamos_14, CrystalP_15, Tomaszewski_14, BaboJay_14, Manda_15, Thimble_15, BugsBunny_12, FairyPath_15, Icee_14, Pat3_14, MPhalcon_14, Marshmallow_15, Cookies_15, YassJohnny_15, ShamWow_15, Rimmer_14, Sotrice96_15, Teaspoon_14, SophKB_15, Buck_14, Kostya_15, NelitzaMV_15, Eureka_15, Cactus_16, Goku_15, Phaja_14, TeardropMSU_14, ABCat_14, SirDuracell_14, BilboSwaggins_15, Goldilocks_16, Mindy_15, Toto_15, Holt_16, Sassay_14, Murica_13, FireRed_14, Inca_14, Tuco_15, Asriel_14, Barbarian_14, Traaww1_13, Flypotenuse_13, PhatBacter_14, StormChicken_15, Daikon_13,

Contagion_14, Myrale_15, Phaux_13, BadStone_14, Glexan_13, Amao_15, xkcd_15, Mosby_14, FoghornLeghorn_14, HufflyPuff_13, MISSy_14

- Track 28 : Lilpickle_13, Petra64142_15, Adnama_16, ChotaBhai_14, BigBubba_14, Thresher_15, GoldenSpark_16, Lilizi_16, OrionPax_15, ShereKhan_16, Bench_16, Hopey_15, Terminus_14, AmericanBeauty_16, Maxxinista_15, 244_15, ChosenOne_13, Argent26_16, Hoonter_16, Cjw1_14, Ukulele_14, Becksu_14, Pharsalus_15, Simpliphy_15, Czyszczo1_15, Highbury_15, MadamMonkfish_14, Stank_16, Kanye_16, RiverMonster_14, Stark_15, Xandras_16, GooberAzure_16, Misfit_14, Wiggin_16, Youngblood_14, Emmina_14, DrDrey_15, Elph10_15, Paperbeatsrock_16, Elite2014_13, Pumpkin_15, Gage_16, Murphy_14, Nimrod_14, Filch_15, Gemini_16, Phrux_14, Lilac_16, Dumbo_14, Kimchi_16, JeTaime_16, Porky_13, Easy2Say_15, Tarkin_16, Moldemort_15, StolenFromERC_16, NoSleep_15, HanKaySha_15, TBrady12_16, Saints25_15
- Track 29 : Altostratus_7
- Track 30 : Khuang_7
- Track 31 : Brujita_9
- Track 32 : Island3_9
- Track 33 : HC_09
- Track 34 : Babsiella_9, QueenHazel_9, Xula_8
- Track 35 : Stuck_8
- Track 36 : Che9c_8
- Track 37 : Sbash_8
- Track 38 : Marleymoo_26
- Track 39 : BAKA_22, HokkenD_20, Pound_25, EricMillard_25, Beem_25, Dallas_25, DmpstrDiver_24, Optimus_23, Halley_25, Redno2_24, Bagrid_23, Ejimix_26, Kalah2_26, Phoebus_25, ThreeRngTarjay_24, Thibault_21
- Track 40 : Minerva_25, Constella_20, Odette_24, Duke13_22, Yeet_23, JuicyJay_27, Zelink_26
- Track 41 : Gonephishing_21, Porcelain_23, Superphikiman_23, Rearden_20, Squint_22, Nekros_23, Shaboozey_17
- Track 42 : NihilNomen_24, Schatzie_23, Klein_25, Bombitas_22, Dove_23, Wanda_26
- Track 43 : Omega_25
- Track 44 : Courthouse_23, MiaZeal_23, LittleE_23
- Track 45 : Bobby_26
- Track 46 : Ariel_23
- Track 47 : KashFlow_17
- Track 48 : Hughesyang_24
- Track 49 : Hannaconda_20
- Track 50 : Lucky2013_23
- Track 51 : Duplicity_8, Melville_8, Aggie_8, Xerxes_8, Carcharodon_8, Tapioca_8, Bosection6_8, Parmesanjohn_8, Andies_8, Gex_8, Xeno_8, Fulbright_8, Tortoise12_8, Schnauzer_8, Silvafighter_8, EGUnicorn_8, Journey_8, Chewbacca_8, Magsby_8, Charlie_8, Philonius_8, Silvy_8, Smurph_8, Pipsqueaks_8, Scitech_8, Phloss_8
- Track 52 : Jamie19_8, SkinnyPete_8, Hanako_8, Nenae_8, Redi_8, Snekmaggedon_8, SpongeBob_8, ShrimpFriedEgg_8, Rebel_8, BabeRuth_8, Purgamenstris_8
- Track 53 : Phrann_8, PhancyPhin_8, Shweta_8, Raymond7_8
- Track 54 : MichelleMyBell_8
- Track 55 : Panchino_8
- Track 56 : Rubeelu_8, Butters_8
- Track 57 : Kevin1_8

- Track 58 : Familton_42, Mori_40, Ashwin_42, Zebo_40, Idergollasper_41, SchoolBus_41, Bora_38, Winget_42, Wogge42_40, Dylan_40, Blessica_42, JangDynasty_41, NiebruSaylor_40, TelAviv_38, Vorrps_40, KingPhillip3_40, Zakhe101_41, FoulBall_41, Schuy_42, MadKillah_42, Vagabond_41, YungJamal_44, Wildflower_41, Alkhayr_39
- Track 59 : Corndog_43
- Track 60 : Catdawg_41
- Track 61 : Krili_40, Murai_41
- Track 62 : Firecracker_41
- Track 63 : Smooch_43
- Track 64 : Shida_41
- Track 65 : Ryadel_45
- Track 66 : BFK20_ORF8
- Track 67 : Chymera_9
- Track 68 : MooMoo_7

Summary of Final Annotations (See graph section above for start numbers):

The start number called the most often in the published annotations is 28, it was called in 125 of the 274 non-draft genes in the pham.

Genes that call this "Most Annotated" start:

- 244_15, ABCat_14, Adnama_16, Amao_15, AmericanBeauty_16, Argent26_16, Asriel_14, BaboJay_14, BadStone_14, Balomoji_14, Barbarian_14, Bask21_14, Becksu_14, Bench_16, BigBubba_14, BilboSwaggins_15, Bruin_14, Buck_14, BugsBunny_12, Cactus_16, ChosenOne_13, ChotaBhai_14, Cjw1_14, Command613_16, Contagion_14, Cookies_15, CrystalP_15, Czystoczon1_15, Daikon_13, DoctorDiddles_15, DrDrey_15, Dumbo_14, Dusk_14, Easy2Say_15, Elite2014_13, Elph10_15, Emmina_14, Eureka_15, FairyPath_15, Filch_15, FireRed_14, Flypotenuse_13, FoghornLeghorn_14, Frizzle_6, Gage_16, Gator_13, Gemini_16, Glexan_13, Goku_15, GoldenSpark_16, Goldilocks_16, GooberAzure_16, HanKaySha_15, Harella_13, Henry_15, Highbury_15, Holt_16, Hoonter_16, Hopey_15, HufflyPuff_13, IHOP_14, Icee_14, Inca_14, JeTaime_16, Kanye_16, Kimchi_16, Kostya_15, Lilac_16, Lilizi_16, Lilpickle_13, MISSy_14, MPhalcon_14, MadamMonkfish_14, Manda_15, Marshmallow_15, Maxxinista_15, Mindy_15, Miniwave_15, Misfit_14, Moldemort_15, Mosby_14, Murica_13, Murphy_14, Myrale_15, Nala_14, NelitzaMV_15, Nimrod_14, NoSleep_15, OrionPax_15, Palpatine_14, Paperbeatsrock_16, Pat3_14, Petra64142_15, Phaja_14, Pharsalus_15, PhatBacter_14, Phaux_13, Phrux_14, Policronamos_14, Porky_13, Pumpkin_15, Quallification_16, Rakim_16, Rimmer_14, RiverMonster_14, Saints25_15, Sassay_14, ShamWow_15, ShereKhan_16, Simpliphy_15, SirDuracell_14, SophKB_15, Sotrice96_15, Stank_16, Stark_15, StellaBean_15, StolenFromERC_16, StormChicken_15, TBrady12_16, Tarkin_16, TeardropMSU_14, Teaspoon_14, Terminus_14, Thimble_15, Thresher_15, Tomaszewski_14, Toto_15, Traaww1_13, Tuco_15, Ukulele_14, Wiggin_16, Willez_14, Xandras_16, YassJohnny_15, Youngblood_14, xkcd_15,

Genes that have the "Most Annotated" start but do not call it:

- Dardanus_14, Ghobes_6,

Genes that do not have the "Most Annotated" start:

- Aggie_8, Alkhayr_39, Altostratus_7, Anatole_8, Andies_8, Archimedes_6, Ariel_23, Ashwin_42, B3_8, BAKA_22, BFK20_ORF8, BabeRuth_8, Babsiella_9, Bagrid_23, Banquo_16, Beem_25, Blessica_42, Bobby_26, Bombitas_22, Bora_38, Bosection6_8, Brujita_9, Butters_8, Carcharodon_8, Catdawg_41, Catfish_11, Charlie_8, Che9c_8, Chewbacca_8, Chymera_9, Constella_20, Corndog_43, Courthouse_23, Dallas_25, DinoDaryn_14, DmpstrDiver_24, DonkeyMan_8, Dove_23, Duke13_22, Duplicity_8, Dylan_40, E1_8, EGUnicorn_8, Ejimix_26, EricMillard_25, Familton_42, Firecracker_41, FoulBall_41, Fulbright_8, Gex_8, Goib_13, Gonephishing_21, Gsput1_10, Gustav_7, HC_09, Halley_25, Hanako_8, Hannaconda_20, Heinz_8, Hibiscus_8, HokkenD_20, Huffy_14, Hughesyang_24, Idergollasper_41, Island3_9, Jamie19_8, JangDynasty_41, Jojo24_8, Journey_8, JuicyJay_27, Kalah2_26, KashFlow_17, Kevin1_8, Khuang_7, KingPhillip3_40, Klein_25, Krili_40, LittleE_23, Lucky2013_23, MadKillah_42, Magsby_8, Mahdia_7, Marleymoo_26, Melville_8, MiaZeal_23, MichelleMyBell_8, Minerva_25, MooMoo_7, Mori_40, Morrissey_7, Murai_41, Nekros_23, Nenae_8, NiebruSaylor_40, NihilNomen_24, Odette_24, Omega_25, Optimus_23, Panchino_8, Parmesanjohn_8, PhancyPhin_8, Philonius_8, Phloss_8, Phoebus_25, Phrann_8, Pipsqueaks_8, Porcelain_23, Pound_25, Puppies_7, Purgamenstris_8, QueenHazel_9, Raymond7_8, Rearden_20, Rebel_8, Redi_8, Redno2_24, Reyja_9, Rubeelu_8, Ryadel_45, Santhid_8, Sapo_6, Sbash_8, Schatzie_23, Schmidt_10, Schnauzer_8, SchoolBus_41, Schuy_42, Scitech_8, Shaboozey_17, Shida_41, ShrimpFriedEgg_8, Shweta_8, Silvafighter_8, Silvy_8, SkinnyPete_8, Smooch_43, Smurph_8, Snekmaggon_8, Splinter_12, SpongeBob_8, Squint_22, Stuck_8, Superphikiman_23, TZGordon_14, Tapioca_8, Tarzan_8, TelAviv_38, Thibault_21, ThreeRngTarjay_24, TinaLin_15, Tortoise12_8, Trine_7, Upyo_7, Vagabond_41, Vendetta_12, Vorrrps_40, Wanda_26, Widow_7, Wildflower_41, Winget_42, Wogge42_40, Xeno_8, Xerxes_8, Xula_8, Yeet_23, YungJamal_44, Zakhe101_41, Zebo_40, Zelink_26,

Summary by start number:

Start 12:

- Found in 2 of 307 (0.7%) of genes in pham
- Manual Annotations of this start: 1 of 274
- Called 100.0% of time when present
- Phage (with cluster) where this start called: Gsput1_10 (CU2), Trine_7 (CD),

Start 13:

- Found in 5 of 307 (1.6%) of genes in pham
- Manual Annotations of this start: 4 of 274
- Called 80.0% of time when present
- Phage (with cluster) where this start called: Archimedes_6 (DA), Ghobes_6 (DA), Morrissey_7 (CD), Sapo_6 (DA),

Start 14:

- Found in 6 of 307 (2.0%) of genes in pham
- Manual Annotations of this start: 5 of 274
- Called 83.3% of time when present
- Phage (with cluster) where this start called: Gustav_7 (CD), Mahdia_7 (CD), Puppies_7 (CD), Upyo_7 (CD), Widow_7 (CD),

Start 15:

- Found in 3 of 307 (1.0%) of genes in pham
- Manual Annotations of this start: 3 of 274
- Called 100.0% of time when present
- Phage (with cluster) where this start called: Anatole_8 (BV), B3_8 (BV), E1_8 (BV),

Start 16:

- Found in 1 of 307 (0.3%) of genes in pham
- No Manual Annotations of this start.
- Called 100.0% of time when present
- Phage (with cluster) where this start called: BFK20_ORF8 (singleton),

Start 17:

- Found in 15 of 307 (4.9%) of genes in pham
- Manual Annotations of this start: 5 of 274
- Called 33.3% of time when present
- Phage (with cluster) where this start called: Ariel_23 (J), Courthouse_23 (J), LittleE_23 (J), Lucky2013_23 (J), MiaZeal_23 (J),

Start 18:

- Found in 2 of 307 (0.7%) of genes in pham
- Manual Annotations of this start: 1 of 274
- Called 50.0% of time when present
- Phage (with cluster) where this start called: Schmidt_10 (CU4),

Start 19:

- Found in 47 of 307 (15.3%) of genes in pham
- Manual Annotations of this start: 35 of 274
- Called 89.4% of time when present
- Phage (with cluster) where this start called: BAKA_22 (J), Bagrid_23 (J), Beem_25 (J), Bobby_26 (J), Bombitas_22 (J), Constella_20 (J), Dallas_25 (J), DmpstrDiver_24 (J), Dove_23 (J), Duke13_22 (J), Ejimix_26 (J), EricMillard_25 (J), Gonephishing_21 (J), Halley_25 (J), Hannaconda_20 (J), HokkenD_20 (J), Hughesyang_24 (J), JuicyJay_27 (J), Kalah2_26 (J), KashFlow_17 (J), Klein_25 (J), Marleymoo_26 (J), Minerva_25 (J), Nekros_23 (J), NihilNomen_24 (J), Odette_24 (J), Omega_25 (J), Optimus_23 (J), Phoebus_25 (J), Porcelain_23 (J), Pound_25 (J), Rearden_20 (J), Redno2_24 (J), Schatzie_23 (J), Shaboozey_17 (J), Squint_22 (J), Superphikiman_23 (J), Thibault_21 (J), ThreeRngTarjay_24 (J), Wanda_26 (J), Yeet_23 (J), Zelink_26 (J),

Start 20:

- Found in 44 of 307 (14.3%) of genes in pham
- Manual Annotations of this start: 36 of 274
- Called 90.9% of time when present
- Phage (with cluster) where this start called: Alkhayr_39 (O), Ashwin_42 (O), Banquo_16 (CU1), Blessica_42 (O), Bora_38 (O), Catfish_11 (CU5), Corndog_43 (O), Dardanus_14 (CU3), DinoDaryn_14 (CU1), Dylan_40 (O), Familton_42 (O), Firecracker_41 (O), FoulBall_41 (O), Goib_13 (CU1), Huffy_14 (CU1), Idergollasper_41 (O), JangDynasty_41 (O), KingPhillip3_40 (O), Krili_40 (O), MadKillah_42 (O), MooMoo_7 (singleton), Mori_40 (O), Murai_41 (O), NiebruSaylor_40 (O), Ryadel_45 (O), SchoolBus_41 (O), Schuy_42 (O), Shida_41 (O), Smooch_43 (O), TZGordon_14 (CU1), TelAviv_38 (O), TinaLin_15 (CU1), Vagabond_41 (O), Vorrps_40 (O), Wildflower_41 (O), Winget_42 (O), Wogge42_40 (O), YungJamal_44 (O), Zakhe101_41 (O), Zebo_40 (O),

Start 21:

- Found in 9 of 307 (2.9%) of genes in pham
- Manual Annotations of this start: 6 of 274
- Called 77.8% of time when present
- Phage (with cluster) where this start called: Babsiella_9 (I1), HC_09 (I1), Island3_9 (I1), QueenHazel_9 (I1), Sbash_8 (I2), Stuck_8 (I2), Xula_8 (I1),

Start 22:

- Found in 7 of 307 (2.3%) of genes in pham
- Manual Annotations of this start: 5 of 274
- Called 100.0% of time when present
- Phage (with cluster) where this start called: DonkeyMan_8 (DY), Heinz_8 (DY), Hibiscus_8 (DY), Jojo24_8 (DY), Reyja_9 (DY), Santhid_8 (DY), Tarzan_8 (DY),

Start 23:

- Found in 6 of 307 (2.0%) of genes in pham
- Manual Annotations of this start: 1 of 274
- Called 50.0% of time when present
- Phage (with cluster) where this start called: Altostratus_7 (FS), Chymera_9 (singleton), Khuang_7 (FS),

Start 25:

- Found in 27 of 307 (8.8%) of genes in pham
- Manual Annotations of this start: 1 of 274
- Called 3.7% of time when present
- Phage (with cluster) where this start called: Catdawg_41 (O),

Start 28:

- Found in 138 of 307 (45.0%) of genes in pham
- Manual Annotations of this start: 125 of 274
- Called 98.6% of time when present
- Phage (with cluster) where this start called: 244_15 (E), ABCat_14 (E), Adnama_16 (E), Amao_15 (E), AmericanBeauty_16 (E), Argent26_16 (E), Asriel_14 (E), BaboJay_14 (E), BadStone_14 (E), Balomoji_14 (E), Barbarian_14 (E), Bask21_14 (E), Becksu_14 (E), Bench_16 (E), BigBubba_14 (E), BilboSwaggins_15 (E), Bruin_14 (E), Buck_14 (E), BugsBunny_12 (E), Cactus_16 (E), ChosenOne_13 (E), ChotaBhai_14 (E), Cjw1_14 (E), Command613_16 (E), Contagion_14 (E), Cookies_15 (E), CrystalP_15 (E), Czyszczonek_15 (E), Daikon_13 (E), DoctorDiddles_15 (E), DrDrey_15 (E), Dumbo_14 (E), Dusk_14 (E), Easy2Say_15 (E), Elite2014_13 (E), Elph10_15 (E), Emmina_14 (E), Eureka_15 (E), FairyPath_15 (E), Filch_15 (E), FireRed_14 (E), Flypotenuse_13 (E), FoghornLeghorn_14 (E), Frizzle_6 (DA), Gage_16 (E), Gator_13 (E), Gemini_16 (E), Glexan_13 (E), Goku_15 (E), GoldenSpark_16 (E), Goldilocks_16 (E), GooberAzure_16 (E), HanKaySha_15 (E), Harella_13 (E), Henry_15 (E), Highbury_15 (E), Holt_16 (E), Hoonter_16 (E), Hopey_15 (E), HufflyPuff_13 (E), IHOP_14 (E), Icee_14 (E), Inca_14 (E), JeTaime_16 (E), Kanye_16 (E), Kimchi_16 (E), Kostya_15 (E), Lilac_16 (E), Lilizi_16 (E), Lilpickle_13 (E), MISSy_14 (E), MPhalcon_14 (E), MadamMonkfish_14 (E), Manda_15 (E), Marshmallow_15 (E), Maxxinista_15 (E), Mindy_15 (E), Miniwave_15 (E), Misfit_14 (E), Moldemort_15 (E), Mosby_14 (E), Murica_13 (E), Murphy_14 (E), Myrale_15 (E), Nala_14 (E), NelitzaMV_15 (E), Nimrod_14 (E), NoSleep_15 (E), OrionPax_15 (E), Palpatine_14 (E), Paperbeatsrock_16 (E), Pat3_14 (E), Petra64142_15 (E), Phaja_14 (E), Pharsalus_15 (E), PhatBacter_14 (E), Phaux_13

(E), Phrux_14 (E), Policronamos_14 (E), Porky_13 (E), Pumpkin_15 (E), Quallification_16 (E), Rakim_16 (E), Rimmer_14 (E), RiverMonster_14 (E), Saints25_15 (E), Sassay_14 (E), ShamWow_15 (E), ShereKhan_16 (E), Simpliphy_15 (E), SirDuracell_14 (E), SophKB_15 (E), Sotrice96_15 (E), Stank_16 (E), Stark_15 (E), StellaBean_15 (E), StolenFromERC_16 (E), StormChicken_15 (E), TBrady12_16 (E), Tarkin_16 (E), TeardropMSU_14 (E), Teaspoon_14 (E), Terminus_14 (E), Thimble_15 (E), Thresher_15 (E), Tomaszewski_14 (E), Toto_15 (E), Traaww1_13 (E), Tuco_15 (E), Ukulele_14 (E), Wiggin_16 (E), Willez_14 (E), Xandras_16 (E), YassJohnny_15 (E), Youngblood_14 (E), xkcd_15 (E),

Start 29:

- Found in 9 of 307 (2.9%) of genes in pham
- Manual Annotations of this start: 2 of 274
- Called 22.2% of time when present
- Phage (with cluster) where this start called: Brujita_9 (I1), Che9c_8 (I2),

Start 30:

- Found in 10 of 307 (3.3%) of genes in pham
- Manual Annotations of this start: 2 of 274
- Called 20.0% of time when present
- Phage (with cluster) where this start called: Splinter_12 (CU1), Vendetta_12 (CU1),

Start 33:

- Found in 46 of 307 (15.0%) of genes in pham
- Manual Annotations of this start: 42 of 274
- Called 100.0% of time when present
- Phage (with cluster) where this start called: Aggie_8 (N), Andies_8 (N), BabeRuth_8 (N), Bosection6_8 (N), Butters_8 (N), Carcharodon_8 (N), Charlie_8 (N), Chewbacca_8 (N), Duplicity_8 (N), EGUunicorn_8 (N), Fulbright_8 (N), Gex_8 (N), Hanako_8 (N), Jamie19_8 (N), Journey_8 (N), Kevin1_8 (N), Magsby_8 (N), Melville_8 (N), MichelleMyBell_8 (N), Nenae_8 (N), Panchino_8 (N), Parmesanjohn_8 (N), PhancyPhin_8 (N), Philonius_8 (N), Phloss_8 (N), Phrann_8 (N), Pipsqueaks_8 (N), Purgamenstris_8 (N), Raymond7_8 (N), Rebel_8 (N), Redi_8 (N), Rubeelu_8 (N), Schnauzer_8 (N), Scitech_8 (N), ShrimpFriedEgg_8 (N), Shweta_8 (N), Silvafighter_8 (N), Silvy_8 (N), SkinnyPete_8 (N), Smurph_8 (N), Snekmaggedon_8 (N), SpongeBob_8 (N), Tapioca_8 (N), Tortoise12_8 (N), Xeno_8 (N), Xerxes_8 (N),

Summary by clusters:

There are 17 clusters represented in this pham: CU5, I2, E, CU2, CU1, DA, I1, J, CU3, singleton, O, N, BV, FS, DY, CU4, CD,

Info for manual annotations of cluster BV:

- Start number 15 was manually annotated 3 times for cluster BV.

Info for manual annotations of cluster CD:

- Start number 12 was manually annotated 1 time for cluster CD.
- Start number 13 was manually annotated 1 time for cluster CD.
- Start number 14 was manually annotated 5 times for cluster CD.

Info for manual annotations of cluster CU1:

- Start number 20 was manually annotated 6 times for cluster CU1.
- Start number 30 was manually annotated 2 times for cluster CU1.

Info for manual annotations of cluster CU3:

- Start number 20 was manually annotated 1 time for cluster CU3.

Info for manual annotations of cluster CU4:

- Start number 18 was manually annotated 1 time for cluster CU4.

Info for manual annotations of cluster CU5:

- Start number 20 was manually annotated 1 time for cluster CU5.

Info for manual annotations of cluster DA:

- Start number 13 was manually annotated 3 times for cluster DA.

Info for manual annotations of cluster DY:

- Start number 22 was manually annotated 5 times for cluster DY.

Info for manual annotations of cluster E:

- Start number 28 was manually annotated 125 times for cluster E.

Info for manual annotations of cluster I1:

- Start number 21 was manually annotated 5 times for cluster I1.
- Start number 29 was manually annotated 1 time for cluster I1.

Info for manual annotations of cluster I2:

- Start number 21 was manually annotated 1 time for cluster I2.
- Start number 29 was manually annotated 1 time for cluster I2.

Info for manual annotations of cluster J:

- Start number 17 was manually annotated 5 times for cluster J.
- Start number 19 was manually annotated 35 times for cluster J.

Info for manual annotations of cluster N:

- Start number 33 was manually annotated 42 times for cluster N.

Info for manual annotations of cluster O:

- Start number 20 was manually annotated 27 times for cluster O.
- Start number 25 was manually annotated 1 time for cluster O.

Gene Information:

Gene: 244_15 Start: 8901, Stop: 9467, Start Num: 28

Candidate Starts for 244_15:

(Start: 28 @8901 has 125 MA's), (53, 9039), (68, 9129), (69, 9138), (85, 9258), (88, 9285), (104, 9351),

Gene: ABCat_14 Start: 9678, Stop: 10244, Start Num: 28

Candidate Starts for ABCat_14:

(Start: 28 @9678 has 125 MA's), (53, 9816), (68, 9906), (69, 9915), (85, 10035), (88, 10062), (104, 10128),

Gene: Adnama_16 Start: 9133, Stop: 9699, Start Num: 28

Candidate Starts for Adnama_16:

(Start: 28 @9133 has 125 MA's), (53, 9271), (68, 9361), (69, 9370), (85, 9490), (88, 9517), (104, 9583),

Gene: Aggie_8 Start: 5956, Stop: 6441, Start Num: 33

Candidate Starts for Aggie_8:

(7, 5854), (8, 5860), (9, 5872), (Start: 33 @5956 has 42 MA's), (41, 5995), (50, 6043), (55, 6073), (61, 6115), (64, 6130), (68, 6142), (69, 6151), (74, 6175), (85, 6232), (88, 6253), (94, 6274), (115, 6349), (119, 6367), (124, 6382), (133, 6415), (134, 6424),

Gene: Alkhayr_39 Start: 21489, Stop: 22094, Start Num: 20

Candidate Starts for Alkhayr_39:

(Start: 20 @21489 has 36 MA's), (Start: 25 @21504 has 1 MA's), (36, 21567), (46, 21615), (47, 21624), (51, 21642), (66, 21732), (69, 21747), (84, 21849), (85, 21855), (92, 21897), (94, 21903), (97, 21912), (98, 21915), (99, 21924), (115, 21987), (130, 22044), (132, 22053), (136, 22080),

Gene: Altostratus_7 Start: 5860, Stop: 6384, Start Num: 23

Candidate Starts for Altostratus_7:

(Start: 23 @5860 has 1 MA's), (60, 6052), (90, 6202), (97, 6223), (104, 6256), (110, 6280),

Gene: Amao_15 Start: 8883, Stop: 9449, Start Num: 28

Candidate Starts for Amao_15:

(Start: 28 @8883 has 125 MA's), (53, 9021), (68, 9111), (69, 9120), (85, 9240), (88, 9267), (104, 9333),

Gene: AmericanBeauty_16 Start: 9130, Stop: 9696, Start Num: 28

Candidate Starts for AmericanBeauty_16:

(Start: 28 @9130 has 125 MA's), (53, 9268), (68, 9358), (69, 9367), (85, 9487), (88, 9514), (104, 9580),

Gene: Anatole_8 Start: 6423, Stop: 6980, Start Num: 15

Candidate Starts for Anatole_8:

(Start: 15 @6423 has 3 MA's), (Start: 23 @6438 has 1 MA's), (37, 6495), (40, 6513), (41, 6516), (62, 6639), (70, 6672), (75, 6696), (76, 6699), (81, 6714), (84, 6750), (88, 6783), (90, 6792), (103, 6843), (111, 6876), (113, 6885), (118, 6906), (132, 6960),

Gene: Andies_8 Start: 5956, Stop: 6441, Start Num: 33

Candidate Starts for Andies_8:

(7, 5854), (8, 5860), (9, 5872), (Start: 33 @5956 has 42 MA's), (41, 5995), (50, 6043), (55, 6073), (61, 6115), (64, 6130), (68, 6142), (69, 6151), (74, 6175), (85, 6232), (88, 6253), (94, 6274), (115, 6349), (119, 6367), (124, 6382), (133, 6415), (134, 6424),

Gene: Archimedes_6 Start: 5387, Stop: 6001, Start Num: 13

Candidate Starts for Archimedes_6:

(Start: 13 @5387 has 4 MA's), (26, 5420), (38, 5489), (45, 5522), (47, 5534), (60, 5609), (65, 5636),

Gene: Argent26_16 Start: 9133, Stop: 9699, Start Num: 28

Candidate Starts for Argent26_16:

(Start: 28 @9133 has 125 MA's), (53, 9271), (68, 9361), (69, 9370), (85, 9490), (88, 9517), (104, 9583),

Gene: Ariel_23 Start: 13524, Stop: 14096, Start Num: 17

Candidate Starts for Ariel_23:

(Start: 17 @13524 has 5 MA's), (Start: 19 @13527 has 35 MA's), (48, 13668), (66, 13770), (73, 13812), (89, 13914), (97, 13941), (105, 13977), (109, 13998), (113, 14016), (121, 14049), (125, 14061), (131, 14082),

Gene: Ashwin_42 Start: 21487, Stop: 22092, Start Num: 20

Candidate Starts for Ashwin_42:

(Start: 20 @21487 has 36 MA's), (Start: 25 @21502 has 1 MA's), (36, 21565), (46, 21613), (47, 21622), (51, 21640), (66, 21730), (69, 21745), (84, 21847), (85, 21853), (92, 21895), (94, 21901), (97, 21910), (98, 21913), (99, 21922), (115, 21985), (130, 22042), (132, 22051), (136, 22078),

Gene: Asriel_14 Start: 8550, Stop: 9116, Start Num: 28

Candidate Starts for Asriel_14:

(Start: 28 @8550 has 125 MA's), (53, 8688), (68, 8778), (69, 8787), (85, 8907), (88, 8934), (104, 9000),

Gene: B3_8 Start: 6423, Stop: 6980, Start Num: 15

Candidate Starts for B3_8:

(Start: 15 @6423 has 3 MA's), (Start: 23 @6438 has 1 MA's), (37, 6495), (40, 6513), (41, 6516), (62, 6639), (70, 6672), (75, 6696), (76, 6699), (81, 6714), (84, 6750), (88, 6783), (90, 6792), (103, 6843), (111, 6876), (113, 6885), (118, 6906), (132, 6960),

Gene: BAKA_22 Start: 15634, Stop: 16203, Start Num: 19

Candidate Starts for BAKA_22:

(Start: 19 @15634 has 35 MA's), (73, 15919), (86, 16000), (91, 16030), (96, 16045), (97, 16048), (105, 16084), (106, 16090), (113, 16123), (131, 16189),

Gene: BFK20_ORF8 Start: 6306, Stop: 6848, Start Num: 16

Candidate Starts for BFK20_ORF8:

(16, 6306), (27, 6339), (32, 6366), (37, 6393), (38, 6402), (41, 6414), (44, 6423), (46, 6438), (63, 6546), (79, 6609), (83, 6642), (85, 6654), (91, 6687), (97, 6705), (110, 6765), (112, 6777),

Gene: BabeRuth_8 Start: 5997, Stop: 6482, Start Num: 33

Candidate Starts for BabeRuth_8:

(8, 5883), (9, 5895), (Start: 33 @5997 has 42 MA's), (41, 6036), (43, 6042), (50, 6084), (55, 6114), (68, 6183), (74, 6216), (85, 6273), (88, 6294), (94, 6315), (115, 6390), (119, 6408), (124, 6423), (134, 6465),

Gene: BaboJay_14 Start: 9212, Stop: 9778, Start Num: 28

Candidate Starts for BaboJay_14:

(Start: 28 @9212 has 125 MA's), (53, 9350), (68, 9440), (69, 9449), (85, 9569), (88, 9596), (104, 9662),

Gene: Babsiella_9 Start: 6984, Stop: 7529, Start Num: 21

Candidate Starts for Babsiella_9:

(3, 6798), (Start: 21 @6984 has 6 MA's), (Start: 29 @7020 has 2 MA's), (46, 7107), (47, 7116), (55, 7161), (60, 7194), (85, 7320), (130, 7494), (135, 7515),

Gene: BadStone_14 Start: 9678, Stop: 10244, Start Num: 28

Candidate Starts for BadStone_14:

(Start: 28 @9678 has 125 MA's), (53, 9816), (68, 9906), (69, 9915), (85, 10035), (88, 10062), (104, 10128),

Gene: Bagrid_23 Start: 15423, Stop: 15992, Start Num: 19

Candidate Starts for Bagrid_23:

(Start: 19 @15423 has 35 MA's), (73, 15708), (86, 15789), (91, 15819), (96, 15834), (97, 15837), (105, 15873), (106, 15879), (113, 15912), (131, 15978),

Gene: Balomoji_14 Start: 9412, Stop: 9978, Start Num: 28

Candidate Starts for Balomoji_14:

(Start: 28 @9412 has 125 MA's), (53, 9550), (68, 9640), (69, 9649), (85, 9769), (88, 9796), (104, 9862),

Gene: Banquo_16 Start: 9976, Stop: 10500, Start Num: 20

Candidate Starts for Banquo_16:

(Start: 20 @9976 has 36 MA's), (50, 10117), (56, 10150), (82, 10267), (83, 10291), (90, 10333), (94, 10345), (110, 10411), (114, 10429), (118, 10447), (128, 10486), (129, 10489),

Gene: Barbarian_14 Start: 8550, Stop: 9116, Start Num: 28

Candidate Starts for Barbarian_14:

(Start: 28 @8550 has 125 MA's), (53, 8688), (68, 8778), (69, 8787), (85, 8907), (88, 8934), (104, 9000),

Gene: Bask21_14 Start: 8345, Stop: 8911, Start Num: 28

Candidate Starts for Bask21_14:

(Start: 28 @8345 has 125 MA's), (53, 8483), (68, 8573), (69, 8582), (85, 8702), (88, 8729), (104, 8795),

Gene: Becksu_14 Start: 9320, Stop: 9886, Start Num: 28

Candidate Starts for Becksu_14:

(Start: 28 @9320 has 125 MA's), (53, 9458), (68, 9548), (69, 9557), (85, 9677), (88, 9704), (104, 9770),

Gene: Beem_25 Start: 15989, Stop: 16558, Start Num: 19

Candidate Starts for Beem_25:

(Start: 19 @15989 has 35 MA's), (73, 16274), (86, 16355), (91, 16385), (96, 16400), (97, 16403), (105, 16439), (106, 16445), (113, 16478), (131, 16544),

Gene: Bench_16 Start: 9006, Stop: 9572, Start Num: 28

Candidate Starts for Bench_16:

(Start: 28 @9006 has 125 MA's), (53, 9144), (68, 9234), (69, 9243), (85, 9363), (88, 9390), (104, 9456),

Gene: BigBubba_14 Start: 8389, Stop: 8955, Start Num: 28

Candidate Starts for BigBubba_14:

(Start: 28 @8389 has 125 MA's), (53, 8527), (68, 8617), (69, 8626), (85, 8746), (88, 8773), (104, 8839),

Gene: BilboSwaggins_15 Start: 9679, Stop: 10245, Start Num: 28

Candidate Starts for BilboSwaggins_15:

(Start: 28 @9679 has 125 MA's), (53, 9817), (68, 9907), (69, 9916), (85, 10036), (88, 10063), (104, 10129),

Gene: Blessica_42 Start: 21890, Stop: 22495, Start Num: 20

Candidate Starts for Blessica_42:

(Start: 20 @21890 has 36 MA's), (Start: 25 @21905 has 1 MA's), (36, 21968), (46, 22016), (47, 22025), (51, 22043), (66, 22133), (69, 22148), (84, 22250), (85, 22256), (92, 22298), (94, 22304), (97, 22313), (98, 22316), (99, 22325), (115, 22388), (130, 22445), (132, 22454), (136, 22481),

Gene: Bobby_26 Start: 15942, Stop: 16511, Start Num: 19

Candidate Starts for Bobby_26:

(Start: 19 @15942 has 35 MA's), (73, 16227), (86, 16308), (91, 16338), (97, 16356), (105, 16392), (106, 16398), (113, 16431), (131, 16497),

Gene: Bombitas_22 Start: 15299, Stop: 15868, Start Num: 19

Candidate Starts for Bombitas_22:

(Start: 19 @15299 has 35 MA's), (47, 15437), (59, 15506), (73, 15584), (86, 15665), (91, 15695), (96, 15710), (97, 15713), (105, 15749), (106, 15755), (113, 15788), (131, 15854),

Gene: Bora_38 Start: 20940, Stop: 21545, Start Num: 20

Candidate Starts for Bora_38:

(Start: 20 @20940 has 36 MA's), (Start: 25 @20955 has 1 MA's), (36, 21018), (46, 21066), (47, 21075), (51, 21093), (66, 21183), (69, 21198), (84, 21300), (85, 21306), (92, 21348), (94, 21354), (97, 21363), (98, 21366), (99, 21375), (115, 21438), (130, 21495), (132, 21504), (136, 21531),

Gene: Bosection6_8 Start: 5956, Stop: 6441, Start Num: 33

Candidate Starts for Bosection6_8:

(7, 5854), (8, 5860), (9, 5872), (Start: 33 @5956 has 42 MA's), (41, 5995), (50, 6043), (55, 6073), (61, 6115), (64, 6130), (68, 6142), (69, 6151), (74, 6175), (85, 6232), (88, 6253), (94, 6274), (115, 6349), (119, 6367), (124, 6382), (133, 6415), (134, 6424),

Gene: Bruin_14 Start: 9186, Stop: 9752, Start Num: 28

Candidate Starts for Bruin_14:

(Start: 28 @9186 has 125 MA's), (53, 9324), (68, 9414), (69, 9423), (85, 9543), (88, 9570), (104, 9636),

Gene: Brujita_9 Start: 7024, Stop: 7533, Start Num: 29

Candidate Starts for Brujita_9:

(Start: 21 @6988 has 6 MA's), (Start: 29 @7024 has 2 MA's), (31, 7033), (46, 7111), (47, 7120), (55, 7165), (60, 7198), (85, 7324), (95, 7375), (130, 7498), (135, 7519),

Gene: Buck_14 Start: 9635, Stop: 10201, Start Num: 28

Candidate Starts for Buck_14:

(Start: 28 @9635 has 125 MA's), (53, 9773), (68, 9863), (69, 9872), (85, 9992), (88, 10019), (104, 10085),

Gene: BugsBunny_12 Start: 8752, Stop: 9318, Start Num: 28

Candidate Starts for BugsBunny_12:

(Start: 28 @8752 has 125 MA's), (53, 8890), (68, 8980), (69, 8989), (85, 9109), (88, 9136), (104, 9202),

Gene: Butters_8 Start: 5970, Stop: 6461, Start Num: 33

Candidate Starts for Butters_8:

(8, 5859), (9, 5871), (Start: 33 @5970 has 42 MA's), (41, 6009), (50, 6057), (55, 6087), (61, 6129), (68, 6156), (74, 6189), (85, 6246), (88, 6273), (94, 6294), (96, 6300), (115, 6369), (124, 6402), (134, 6444),

Gene: Cactus_16 Start: 8891, Stop: 9457, Start Num: 28

Candidate Starts for Cactus_16:

(Start: 28 @8891 has 125 MA's), (53, 9029), (68, 9119), (69, 9128), (85, 9248), (88, 9275), (104, 9341),

Gene: Carcharodon_8 Start: 5956, Stop: 6441, Start Num: 33

Candidate Starts for Carcharodon_8:

(7, 5854), (8, 5860), (9, 5872), (Start: 33 @5956 has 42 MA's), (41, 5995), (50, 6043), (55, 6073), (61, 6115), (64, 6130), (68, 6142), (69, 6151), (74, 6175), (85, 6232), (88, 6253), (94, 6274), (115, 6349), (119, 6367), (124, 6382), (133, 6415), (134, 6424),

Gene: Catdawg_41 Start: 21594, Stop: 22184, Start Num: 25

Candidate Starts for Catdawg_41:

(Start: 20 @21579 has 36 MA's), (Start: 25 @21594 has 1 MA's), (36, 21657), (46, 21705), (47, 21714), (51, 21732), (66, 21822), (69, 21837), (84, 21939), (85, 21945), (92, 21987), (94, 21993), (97, 22002), (98, 22005), (99, 22014), (115, 22077), (130, 22134), (132, 22143), (136, 22170),

Gene: Catfish_11 Start: 7940, Stop: 8464, Start Num: 20

Candidate Starts for Cattfish_11:

(11, 7898), (Start: 18 @7934 has 1 MA's), (Start: 20 @7940 has 36 MA's), (90, 8303), (94, 8315), (102, 8351), (110, 8381),

Gene: Charlie_8 Start: 5956, Stop: 6441, Start Num: 33

Candidate Starts for Charlie_8:

(7, 5854), (8, 5860), (9, 5872), (Start: 33 @5956 has 42 MA's), (41, 5995), (50, 6043), (55, 6073), (61, 6115), (64, 6130), (68, 6142), (69, 6151), (74, 6175), (85, 6232), (88, 6253), (94, 6274), (115, 6349), (119, 6367), (124, 6382), (133, 6415), (134, 6424),

Gene: Che9c_8 Start: 6622, Stop: 7134, Start Num: 29

Candidate Starts for Che9c_8:

(1, 6289), (2, 6328), (4, 6463), (Start: 21 @6586 has 6 MA's), (Start: 29 @6622 has 2 MA's), (38, 6673), (46, 6709), (47, 6718), (51, 6736), (55, 6763), (58, 6787), (59, 6790), (60, 6796), (68, 6832), (94, 6970), (95, 6973), (123, 7072), (130, 7099),

Gene: Chewbacca_8 Start: 5956, Stop: 6441, Start Num: 33

Candidate Starts for Chewbacca_8:

(7, 5854), (8, 5860), (9, 5872), (Start: 33 @5956 has 42 MA's), (41, 5995), (50, 6043), (55, 6073), (61, 6115), (64, 6130), (68, 6142), (69, 6151), (74, 6175), (85, 6232), (88, 6253), (94, 6274), (115, 6349), (119, 6367), (124, 6382), (133, 6415), (134, 6424),

Gene: ChosenOne_13 Start: 8353, Stop: 8919, Start Num: 28

Candidate Starts for ChosenOne_13:

(Start: 28 @8353 has 125 MA's), (53, 8491), (68, 8581), (69, 8590), (85, 8710), (88, 8737), (104, 8803),

Gene: ChotaBhai_14 Start: 8389, Stop: 8955, Start Num: 28

Candidate Starts for ChotaBhai_14:

(Start: 28 @8389 has 125 MA's), (53, 8527), (68, 8617), (69, 8626), (85, 8746), (88, 8773), (104, 8839),

Gene: Chymera_9 Start: 7652, Stop: 8236, Start Num: 23

Candidate Starts for Chymera_9:

(Start: 23 @7652 has 1 MA's), (42, 7757), (63, 7889), (66, 7898), (71, 7937), (116, 8180),

Gene: Cjw1_14 Start: 9903, Stop: 10469, Start Num: 28

Candidate Starts for Cjw1_14:

(Start: 28 @9903 has 125 MA's), (53, 10041), (68, 10131), (69, 10140), (85, 10260), (88, 10287), (104, 10353),

Gene: Command613_16 Start: 9947, Stop: 10513, Start Num: 28

Candidate Starts for Command613_16:

(Start: 28 @9947 has 125 MA's), (53, 10085), (68, 10175), (69, 10184), (85, 10304), (88, 10331), (104, 10397),

Gene: Constella_20 Start: 14812, Stop: 15381, Start Num: 19

Candidate Starts for Constella_20:

(Start: 19 @14812 has 35 MA's), (47, 14950), (73, 15097), (86, 15178), (91, 15208), (96, 15223), (97, 15226), (105, 15262), (106, 15268), (113, 15301), (131, 15367),

Gene: Contagion_14 Start: 9186, Stop: 9752, Start Num: 28

Candidate Starts for Contagion_14:

(Start: 28 @9186 has 125 MA's), (53, 9324), (68, 9414), (69, 9423), (85, 9543), (88, 9570), (104, 9636),

Gene: Cookies_15 Start: 9551, Stop: 10117, Start Num: 28

Candidate Starts for Cookies_15:

(Start: 28 @9551 has 125 MA's), (53, 9689), (68, 9779), (69, 9788), (85, 9908), (88, 9935), (104, 10001),

Gene: Corndog_43 Start: 22037, Stop: 22642, Start Num: 20

Candidate Starts for Corndog_43:

(Start: 20 @22037 has 36 MA's), (36, 22115), (46, 22163), (47, 22172), (51, 22190), (57, 22226), (66, 22280), (69, 22295), (84, 22397), (85, 22403), (92, 22445), (94, 22451), (97, 22460), (98, 22463), (99, 22472), (115, 22535), (130, 22592), (132, 22601), (136, 22628),

Gene: Courthouse_23 Start: 13926, Stop: 14498, Start Num: 17

Candidate Starts for Courthouse_23:

(Start: 17 @13926 has 5 MA's), (Start: 19 @13929 has 35 MA's), (48, 14070), (66, 14172), (73, 14214), (89, 14316), (91, 14325), (97, 14343), (105, 14379), (109, 14400), (113, 14418), (121, 14451), (125, 14463), (131, 14484),

Gene: CrystalP_15 Start: 9679, Stop: 10245, Start Num: 28

Candidate Starts for CrystalP_15:

(Start: 28 @9679 has 125 MA's), (53, 9817), (68, 9907), (69, 9916), (85, 10036), (88, 10063), (104, 10129),

Gene: Czyszczone1_15 Start: 8888, Stop: 9454, Start Num: 28

Candidate Starts for Czyszczone1_15:

(Start: 28 @8888 has 125 MA's), (53, 9026), (68, 9116), (69, 9125), (85, 9245), (88, 9272), (104, 9338),

Gene: Daikon_13 Start: 9413, Stop: 9979, Start Num: 28

Candidate Starts for Daikon_13:

(Start: 28 @9413 has 125 MA's), (53, 9551), (68, 9641), (69, 9650), (85, 9770), (88, 9797), (104, 9863),

Gene: Dallas_25 Start: 15529, Stop: 16098, Start Num: 19

Candidate Starts for Dallas_25:

(Start: 19 @15529 has 35 MA's), (73, 15814), (86, 15895), (91, 15925), (96, 15940), (97, 15943), (105, 15979), (106, 15985), (113, 16018), (131, 16084),

Gene: Dardanus_14 Start: 9026, Stop: 9541, Start Num: 20

Candidate Starts for Dardanus_14:

(Start: 20 @9026 has 36 MA's), (24, 9032), (Start: 28 @9050 has 125 MA's), (Start: 30 @9071 has 2 MA's), (37, 9101), (45, 9143), (57, 9206), (61, 9239), (67, 9260), (75, 9299), (90, 9389), (93, 9398), (94, 9401), (99, 9422), (110, 9467), (115, 9488), (120, 9503), (128, 9530),

Gene: DinoDaryn_14 Start: 9110, Stop: 9634, Start Num: 20

Candidate Starts for DinoDaryn_14:

(Start: 20 @9110 has 36 MA's), (Start: 30 @9155 has 2 MA's), (46, 9230), (56, 9284), (60, 9314), (67, 9344), (82, 9401), (83, 9425), (91, 9470), (94, 9479), (110, 9545), (114, 9563), (118, 9581), (128, 9620),

Gene: DmpstrDiver_24 Start: 16165, Stop: 16734, Start Num: 19

Candidate Starts for DmpstrDiver_24:

(Start: 19 @16165 has 35 MA's), (73, 16450), (86, 16531), (91, 16561), (96, 16576), (97, 16579), (105, 16615), (106, 16621), (113, 16654), (131, 16720),

Gene: DoctorDiddles_15 Start: 8844, Stop: 9410, Start Num: 28

Candidate Starts for DoctorDiddles_15:

(Start: 28 @8844 has 125 MA's), (53, 8982), (68, 9072), (69, 9081), (85, 9201), (88, 9228), (104, 9294),

Gene: DonkeyMan_8 Start: 6278, Stop: 6811, Start Num: 22

Candidate Starts for DonkeyMan_8:

(Start: 22 @6278 has 5 MA's), (41, 6374), (51, 6425), (53, 6431), (85, 6605), (129, 6800),

Gene: Dove_23 Start: 15298, Stop: 15867, Start Num: 19

Candidate Starts for Dove_23:

(Start: 19 @15298 has 35 MA's), (47, 15436), (59, 15505), (73, 15583), (86, 15664), (91, 15694), (96, 15709), (97, 15712), (105, 15748), (106, 15754), (113, 15787), (131, 15853),

Gene: DrDrey_15 Start: 9629, Stop: 10195, Start Num: 28

Candidate Starts for DrDrey_15:

(Start: 28 @9629 has 125 MA's), (53, 9767), (68, 9857), (69, 9866), (85, 9986), (88, 10013), (104, 10079),

Gene: Duke13_22 Start: 15563, Stop: 16132, Start Num: 19

Candidate Starts for Duke13_22:

(Start: 19 @15563 has 35 MA's), (47, 15701), (73, 15848), (86, 15929), (91, 15959), (96, 15974), (97, 15977), (105, 16013), (106, 16019), (113, 16052), (131, 16118),

Gene: Dumbo_14 Start: 8610, Stop: 9176, Start Num: 28

Candidate Starts for Dumbo_14:

(Start: 28 @8610 has 125 MA's), (53, 8748), (68, 8838), (69, 8847), (85, 8967), (88, 8994), (104, 9060),

Gene: Duplicity_8 Start: 5956, Stop: 6441, Start Num: 33

Candidate Starts for Duplicity_8:

(7, 5854), (8, 5860), (9, 5872), (Start: 33 @5956 has 42 MA's), (41, 5995), (50, 6043), (55, 6073), (61, 6115), (64, 6130), (68, 6142), (69, 6151), (74, 6175), (85, 6232), (88, 6253), (94, 6274), (115, 6349), (119, 6367), (124, 6382), (133, 6415), (134, 6424),

Gene: Dusk_14 Start: 9338, Stop: 9904, Start Num: 28

Candidate Starts for Dusk_14:

(Start: 28 @9338 has 125 MA's), (53, 9476), (68, 9566), (69, 9575), (85, 9695), (88, 9722), (104, 9788),

Gene: Dylan_40 Start: 21292, Stop: 21897, Start Num: 20

Candidate Starts for Dylan_40:

(Start: 20 @21292 has 36 MA's), (Start: 25 @21307 has 1 MA's), (36, 21370), (46, 21418), (47, 21427), (51, 21445), (66, 21535), (69, 21550), (84, 21652), (85, 21658), (92, 21700), (94, 21706), (97, 21715), (98, 21718), (99, 21727), (115, 21790), (130, 21847), (132, 21856), (136, 21883),

Gene: E1_8 Start: 6423, Stop: 6980, Start Num: 15

Candidate Starts for E1_8:

(Start: 15 @6423 has 3 MA's), (Start: 23 @6438 has 1 MA's), (37, 6495), (40, 6513), (41, 6516), (62, 6639), (70, 6672), (75, 6696), (76, 6699), (81, 6714), (84, 6750), (88, 6783), (90, 6792), (103, 6843), (111, 6876), (113, 6885), (118, 6906), (132, 6960),

Gene: EGUunicorn_8 Start: 5956, Stop: 6441, Start Num: 33

Candidate Starts for EGUunicorn_8:

(7, 5854), (8, 5860), (9, 5872), (Start: 33 @5956 has 42 MA's), (41, 5995), (50, 6043), (55, 6073), (61, 6115), (64, 6130), (68, 6142), (69, 6151), (74, 6175), (85, 6232), (88, 6253), (94, 6274), (115, 6349), (119, 6367), (124, 6382), (133, 6415), (134, 6424),

Gene: Easy2Say_15 Start: 9876, Stop: 10442, Start Num: 28

Candidate Starts for Easy2Say_15:

(Start: 28 @9876 has 125 MA's), (53, 10014), (68, 10104), (69, 10113), (85, 10233), (88, 10260), (104, 10326),

Gene: Ejimix_26 Start: 16739, Stop: 17308, Start Num: 19

Candidate Starts for Ejimix_26:

(Start: 19 @16739 has 35 MA's), (73, 17024), (86, 17105), (91, 17135), (96, 17150), (97, 17153), (105, 17189), (106, 17195), (113, 17228), (131, 17294),

Gene: Elite2014_13 Start: 8353, Stop: 8919, Start Num: 28

Candidate Starts for Elite2014_13:

(Start: 28 @8353 has 125 MA's), (53, 8491), (68, 8581), (69, 8590), (85, 8710), (88, 8737), (104, 8803),

Gene: Elph10_15 Start: 8613, Stop: 9179, Start Num: 28

Candidate Starts for Elph10_15:

(Start: 28 @8613 has 125 MA's), (53, 8751), (68, 8841), (69, 8850), (85, 8970), (88, 8997), (104, 9063),

Gene: Emmina_14 Start: 8458, Stop: 9024, Start Num: 28

Candidate Starts for Emmina_14:

(Start: 28 @8458 has 125 MA's), (53, 8596), (68, 8686), (69, 8695), (85, 8815), (88, 8842), (104, 8908),

Gene: EricMillard_25 Start: 16275, Stop: 16844, Start Num: 19

Candidate Starts for EricMillard_25:

(Start: 19 @16275 has 35 MA's), (73, 16560), (86, 16641), (91, 16671), (96, 16686), (97, 16689), (105, 16725), (106, 16731), (113, 16764), (131, 16830),

Gene: Eureka_15 Start: 9658, Stop: 10224, Start Num: 28

Candidate Starts for Eureka_15:

(Start: 28 @9658 has 125 MA's), (53, 9796), (68, 9886), (69, 9895), (85, 10015), (88, 10042), (104, 10108),

Gene: FairyPath_15 Start: 9876, Stop: 10442, Start Num: 28

Candidate Starts for FairyPath_15:

(Start: 28 @9876 has 125 MA's), (53, 10014), (68, 10104), (69, 10113), (85, 10233), (88, 10260), (104, 10326),

Gene: Familton_42 Start: 21583, Stop: 22188, Start Num: 20

Candidate Starts for Familton_42:

(Start: 20 @21583 has 36 MA's), (Start: 25 @21598 has 1 MA's), (36, 21661), (46, 21709), (47, 21718), (51, 21736), (66, 21826), (69, 21841), (84, 21943), (85, 21949), (92, 21991), (94, 21997), (97, 22006), (98, 22009), (99, 22018), (115, 22081), (130, 22138), (132, 22147), (136, 22174),

Gene: Filch_15 Start: 8898, Stop: 9464, Start Num: 28

Candidate Starts for Filch_15:

(Start: 28 @8898 has 125 MA's), (53, 9036), (68, 9126), (69, 9135), (85, 9255), (88, 9282), (104, 9348),

Gene: FireRed_14 Start: 9186, Stop: 9752, Start Num: 28

Candidate Starts for FireRed_14:

(Start: 28 @9186 has 125 MA's), (53, 9324), (68, 9414), (69, 9423), (85, 9543), (88, 9570), (104, 9636),

Gene: Firecracker_41 Start: 21190, Stop: 21795, Start Num: 20

Candidate Starts for Firecracker_41:

(Start: 20 @21190 has 36 MA's), (Start: 25 @21205 has 1 MA's), (36, 21268), (46, 21316), (47, 21325), (51, 21343), (66, 21433), (69, 21448), (84, 21550), (85, 21556), (94, 21604), (97, 21613), (98, 21616), (99, 21625), (115, 21688), (130, 21745), (132, 21754), (136, 21781),

Gene: Flypotenuse_13 Start: 9295, Stop: 9861, Start Num: 28

Candidate Starts for Flypotenuse_13:

(Start: 28 @9295 has 125 MA's), (53, 9433), (68, 9523), (69, 9532), (85, 9652), (88, 9679), (104, 9745),

Gene: FoghornLeghorn_14 Start: 9183, Stop: 9749, Start Num: 28

Candidate Starts for FoghornLeghorn_14:

(Start: 28 @9183 has 125 MA's), (53, 9321), (68, 9411), (69, 9420), (85, 9540), (88, 9567), (104, 9633),

Gene: FoulBall_41 Start: 21577, Stop: 22182, Start Num: 20

Candidate Starts for FoulBall_41:

(Start: 20 @21577 has 36 MA's), (Start: 25 @21592 has 1 MA's), (36, 21655), (46, 21703), (47, 21712), (51, 21730), (66, 21820), (69, 21835), (84, 21937), (85, 21943), (92, 21985), (94, 21991), (97, 22000), (98, 22003), (99, 22012), (115, 22075), (130, 22132), (132, 22141), (136, 22168),

Gene: Frizzle_6 Start: 5483, Stop: 6055, Start Num: 28

Candidate Starts for Frizzle_6:

(Start: 13 @5444 has 4 MA's), (Start: 28 @5483 has 125 MA's), (47, 5591), (60, 5666), (69, 5711), (79, 5768), (88, 5849), (90, 5858), (100, 5894), (101, 5897), (107, 5927), (114, 5954),

Gene: Fulbright_8 Start: 5956, Stop: 6441, Start Num: 33

Candidate Starts for Fulbright_8:

(7, 5854), (8, 5860), (9, 5872), (Start: 33 @5956 has 42 MA's), (41, 5995), (50, 6043), (55, 6073), (61, 6115), (64, 6130), (68, 6142), (69, 6151), (74, 6175), (85, 6232), (88, 6253), (94, 6274), (115, 6349), (119, 6367), (124, 6382), (133, 6415), (134, 6424),

Gene: Gage_16 Start: 9133, Stop: 9699, Start Num: 28

Candidate Starts for Gage_16:

(Start: 28 @9133 has 125 MA's), (53, 9271), (68, 9361), (69, 9370), (85, 9490), (88, 9517), (104, 9583),

Gene: Gator_13 Start: 9294, Stop: 9860, Start Num: 28

Candidate Starts for Gator_13:

(Start: 28 @9294 has 125 MA's), (53, 9432), (68, 9522), (69, 9531), (85, 9651), (88, 9678), (104, 9744),

Gene: Gemini_16 Start: 9133, Stop: 9699, Start Num: 28

Candidate Starts for Gemini_16:

(Start: 28 @9133 has 125 MA's), (53, 9271), (68, 9361), (69, 9370), (85, 9490), (88, 9517), (104, 9583),

Gene: Gex_8 Start: 5956, Stop: 6441, Start Num: 33

Candidate Starts for Gex_8:

(7, 5854), (8, 5860), (9, 5872), (Start: 33 @5956 has 42 MA's), (41, 5995), (50, 6043), (55, 6073), (61, 6115), (64, 6130), (68, 6142), (69, 6151), (74, 6175), (85, 6232), (88, 6253), (94, 6274), (115, 6349), (119, 6367), (124, 6382), (133, 6415), (134, 6424),

Gene: Ghobes_6 Start: 5444, Stop: 6055, Start Num: 13

Candidate Starts for Ghobes_6:

(Start: 13 @5444 has 4 MA's), (Start: 28 @5483 has 125 MA's), (47, 5591), (60, 5666), (65, 5693), (69, 5711), (79, 5768), (88, 5849), (100, 5894), (101, 5897), (107, 5927), (114, 5954),

Gene: Glexan_13 Start: 9295, Stop: 9861, Start Num: 28

Candidate Starts for Glexan_13:

(Start: 28 @9295 has 125 MA's), (53, 9433), (68, 9523), (69, 9532), (85, 9652), (88, 9679), (104, 9745),

Gene: Goib_13 Start: 8885, Stop: 9409, Start Num: 20

Candidate Starts for Goib_13:

(Start: 20 @8885 has 36 MA's), (Start: 30 @8930 has 2 MA's), (46, 9005), (56, 9059), (60, 9089), (67, 9119), (82, 9176), (83, 9200), (91, 9245), (93, 9251), (94, 9254), (110, 9320), (114, 9338), (118, 9356), (128, 9395),

Gene: Goku_15 Start: 9385, Stop: 9951, Start Num: 28

Candidate Starts for Goku_15:

(Start: 28 @9385 has 125 MA's), (53, 9523), (68, 9613), (69, 9622), (85, 9742), (88, 9769), (104, 9835),

Gene: GoldenSpark_16 Start: 9133, Stop: 9699, Start Num: 28

Candidate Starts for GoldenSpark_16:

(Start: 28 @9133 has 125 MA's), (53, 9271), (68, 9361), (69, 9370), (85, 9490), (88, 9517), (104, 9583),

Gene: Goldilocks_16 Start: 9089, Stop: 9655, Start Num: 28

Candidate Starts for Goldilocks_16:

(Start: 28 @9089 has 125 MA's), (53, 9227), (68, 9317), (69, 9326), (85, 9446), (88, 9473), (104, 9539),

Gene: Gonephishing_21 Start: 14102, Stop: 14671, Start Num: 19

Candidate Starts for Gonephishing_21:

(Start: 17 @14099 has 5 MA's), (Start: 19 @14102 has 35 MA's), (48, 14243), (66, 14345), (73, 14387), (89, 14489), (91, 14498), (97, 14516), (105, 14552), (109, 14573), (113, 14591), (121, 14624), (125, 14636), (131, 14657),

Gene: GooberAzure_16 Start: 9133, Stop: 9699, Start Num: 28

Candidate Starts for GooberAzure_16:

(Start: 28 @9133 has 125 MA's), (53, 9271), (68, 9361), (69, 9370), (85, 9490), (88, 9517), (104, 9583),

Gene: Gspu1_10 Start: 7323, Stop: 7862, Start Num: 12

Candidate Starts for Gspu1_10:

(Start: 12 @7323 has 1 MA's), (Start: 20 @7341 has 36 MA's), (46, 7464), (51, 7488), (67, 7578), (82, 7635), (85, 7671), (95, 7716), (107, 7770), (110, 7779), (116, 7806), (117, 7809), (122, 7830), (128, 7854),

Gene: Gustav_7 Start: 6033, Stop: 6599, Start Num: 14

Candidate Starts for Gustav_7:

(Start: 14 @6033 has 5 MA's), (Start: 30 @6093 has 2 MA's), (39, 6141), (46, 6174), (49, 6186), (53, 6204), (55, 6225), (84, 6378), (85, 6384), (87, 6408), (94, 6444), (108, 6507), (118, 6546), (127, 6582),

Gene: HC_09 Start: 6987, Stop: 7532, Start Num: 21

Candidate Starts for HC_09:

(3, 6801), (5, 6888), (Start: 21 @6987 has 6 MA's), (Start: 29 @7023 has 2 MA's), (46, 7110), (47, 7119), (55, 7164), (60, 7197), (85, 7323), (95, 7374), (130, 7497), (135, 7518),

Gene: Halley_25 Start: 15988, Stop: 16557, Start Num: 19

Candidate Starts for Halley_25:

(Start: 19 @15988 has 35 MA's), (73, 16273), (86, 16354), (91, 16384), (96, 16399), (97, 16402), (105, 16438), (106, 16444), (113, 16477), (131, 16543),

Gene: HanKaySha_15 Start: 8888, Stop: 9454, Start Num: 28

Candidate Starts for HanKaySha_15:

(Start: 28 @8888 has 125 MA's), (53, 9026), (68, 9116), (69, 9125), (85, 9245), (88, 9272), (104, 9338),

Gene: Hanako_8 Start: 5997, Stop: 6482, Start Num: 33

Candidate Starts for Hanako_8:

(8, 5883), (9, 5895), (Start: 33 @5997 has 42 MA's), (41, 6036), (43, 6042), (50, 6084), (55, 6114), (68, 6183), (74, 6216), (85, 6273), (88, 6294), (94, 6315), (115, 6390), (119, 6408), (124, 6423), (134, 6465),

Gene: Hannaconda_20 Start: 12609, Stop: 13178, Start Num: 19

Candidate Starts for Hannaconda_20:

(Start: 17 @12606 has 5 MA's), (Start: 19 @12609 has 35 MA's), (48, 12750), (66, 12852), (73, 12894), (89, 12996), (91, 13005), (97, 13023), (101, 13041), (105, 13059), (109, 13080), (113, 13098), (121, 13131), (125, 13143), (131, 13164),

Gene: Harella_13 Start: 9295, Stop: 9861, Start Num: 28

Candidate Starts for Harella_13:

(Start: 28 @9295 has 125 MA's), (53, 9433), (68, 9523), (69, 9532), (85, 9652), (88, 9679), (104, 9745),

Gene: Heinz_8 Start: 6314, Stop: 6847, Start Num: 22

Candidate Starts for Heinz_8:

(Start: 22 @6314 has 5 MA's), (46, 6434), (85, 6641), (108, 6752), (123, 6812), (129, 6836),

Gene: Henry_15 Start: 9678, Stop: 10244, Start Num: 28

Candidate Starts for Henry_15:

(Start: 28 @9678 has 125 MA's), (53, 9816), (68, 9906), (69, 9915), (85, 10035), (88, 10062), (104, 10128),

Gene: Hibiscus_8 Start: 6288, Stop: 6821, Start Num: 22

Candidate Starts for Hibiscus_8:

(Start: 22 @6288 has 5 MA's), (46, 6408), (85, 6615), (88, 6642), (123, 6786), (129, 6810),

Gene: Highbury_15 Start: 8807, Stop: 9373, Start Num: 28

Candidate Starts for Highbury_15:

(Start: 28 @8807 has 125 MA's), (53, 8945), (68, 9035), (69, 9044), (85, 9164), (88, 9191), (104, 9257),

Gene: HokkenD_20 Start: 15558, Stop: 16127, Start Num: 19

Candidate Starts for HokkenD_20:

(Start: 19 @15558 has 35 MA's), (73, 15843), (86, 15924), (91, 15954), (96, 15969), (97, 15972), (105, 16008), (106, 16014), (113, 16047), (131, 16113),

Gene: Holt_16 Start: 8962, Stop: 9528, Start Num: 28

Candidate Starts for Holt_16:

(Start: 28 @8962 has 125 MA's), (53, 9100), (68, 9190), (69, 9199), (85, 9319), (88, 9346), (104, 9412),

Gene: Hoonter_16 Start: 9133, Stop: 9699, Start Num: 28

Candidate Starts for Hoonter_16:

(Start: 28 @9133 has 125 MA's), (53, 9271), (68, 9361), (69, 9370), (85, 9490), (88, 9517), (104, 9583),

Gene: Hokey_15 Start: 8898, Stop: 9464, Start Num: 28

Candidate Starts for Hokey_15:

(Start: 28 @8898 has 125 MA's), (53, 9036), (68, 9126), (69, 9135), (85, 9255), (88, 9282), (104, 9348),

Gene: HufflyPuff_13 Start: 9142, Stop: 9708, Start Num: 28

Candidate Starts for HufflyPuff_13:

(Start: 28 @9142 has 125 MA's), (53, 9280), (68, 9370), (69, 9379), (85, 9499), (88, 9526), (104, 9592),

Gene: Huffly_14 Start: 9110, Stop: 9634, Start Num: 20

Candidate Starts for Huffly_14:

(Start: 20 @9110 has 36 MA's), (Start: 30 @9155 has 2 MA's), (46, 9230), (56, 9284), (60, 9314), (67, 9344), (82, 9401), (83, 9425), (91, 9470), (94, 9479), (110, 9545), (114, 9563), (118, 9581), (128, 9620),

Gene: Hughesyang_24 Start: 16171, Stop: 16740, Start Num: 19

Candidate Starts for Hughesyang_24:

(Start: 19 @16171 has 35 MA's), (59, 16378), (73, 16456), (86, 16537), (91, 16567), (96, 16582), (97, 16585), (105, 16621), (106, 16627), (113, 16660), (131, 16726),

Gene: IHOP_14 Start: 9338, Stop: 9904, Start Num: 28

Candidate Starts for IHOP_14:

(Start: 28 @9338 has 125 MA's), (53, 9476), (68, 9566), (69, 9575), (85, 9695), (88, 9722), (104, 9788),

Gene: Icee_14 Start: 9338, Stop: 9904, Start Num: 28

Candidate Starts for Icee_14:

(Start: 28 @9338 has 125 MA's), (53, 9476), (68, 9566), (69, 9575), (85, 9695), (88, 9722), (104, 9788),

Gene: Idergollasper_41 Start: 21577, Stop: 22182, Start Num: 20

Candidate Starts for Idergollasper_41:

(Start: 20 @21577 has 36 MA's), (Start: 25 @21592 has 1 MA's), (36, 21655), (46, 21703), (47, 21712), (51, 21730), (66, 21820), (69, 21835), (84, 21937), (85, 21943), (92, 21985), (94, 21991), (97, 22000), (98, 22003), (99, 22012), (115, 22075), (130, 22132), (132, 22141), (136, 22168),

Gene: Inca_14 Start: 8358, Stop: 8924, Start Num: 28

Candidate Starts for Inca_14:

(Start: 28 @8358 has 125 MA's), (53, 8496), (68, 8586), (69, 8595), (85, 8715), (88, 8742), (104, 8808),

Gene: Island3_9 Start: 6988, Stop: 7533, Start Num: 21

Candidate Starts for Island3_9:

(Start: 21 @6988 has 6 MA's), (Start: 29 @7024 has 2 MA's), (31, 7033), (46, 7111), (47, 7120), (55, 7165), (60, 7198), (85, 7324), (95, 7375), (130, 7498), (135, 7519),

Gene: Jamie19_8 Start: 5997, Stop: 6482, Start Num: 33

Candidate Starts for Jamie19_8:

(8, 5883), (9, 5895), (Start: 33 @5997 has 42 MA's), (41, 6036), (43, 6042), (50, 6084), (55, 6114), (68, 6183), (74, 6216), (85, 6273), (88, 6294), (94, 6315), (115, 6390), (119, 6408), (124, 6423), (134, 6465),

Gene: JangDynasty_41 Start: 21672, Stop: 22277, Start Num: 20

Candidate Starts for JangDynasty_41:

(Start: 20 @21672 has 36 MA's), (Start: 25 @21687 has 1 MA's), (36, 21750), (46, 21798), (47, 21807), (51, 21825), (66, 21915), (69, 21930), (84, 22032), (85, 22038), (92, 22080), (94, 22086), (97, 22095), (98, 22098), (99, 22107), (115, 22170), (130, 22227), (132, 22236), (136, 22263),

Gene: JeTaime_16 Start: 9938, Stop: 10504, Start Num: 28

Candidate Starts for JeTaime_16:

(Start: 28 @9938 has 125 MA's), (53, 10076), (68, 10166), (69, 10175), (85, 10295), (88, 10322), (104, 10388),

Gene: Jojo24_8 Start: 6283, Stop: 6816, Start Num: 22

Candidate Starts for Jojo24_8:

(Start: 22 @6283 has 5 MA's), (46, 6403), (57, 6463), (85, 6610), (88, 6637), (123, 6781), (129, 6805),

Gene: Journey_8 Start: 5956, Stop: 6441, Start Num: 33

Candidate Starts for Journey_8:

(7, 5854), (8, 5860), (9, 5872), (Start: 33 @5956 has 42 MA's), (41, 5995), (50, 6043), (55, 6073), (61, 6115), (64, 6130), (68, 6142), (69, 6151), (74, 6175), (85, 6232), (88, 6253), (94, 6274), (115, 6349), (119, 6367), (124, 6382), (133, 6415), (134, 6424),

Gene: JuicyJay_27 Start: 16822, Stop: 17391, Start Num: 19

Candidate Starts for JuicyJay_27:

(Start: 19 @16822 has 35 MA's), (47, 16960), (73, 17107), (86, 17188), (91, 17218), (96, 17233), (97, 17236), (105, 17272), (106, 17278), (113, 17311), (131, 17377),

Gene: Kalah2_26 Start: 16590, Stop: 17159, Start Num: 19

Candidate Starts for Kalah2_26:

(Start: 19 @16590 has 35 MA's), (73, 16875), (86, 16956), (91, 16986), (96, 17001), (97, 17004), (105, 17040), (106, 17046), (113, 17079), (131, 17145),

Gene: Kanye_16 Start: 10126, Stop: 10692, Start Num: 28

Candidate Starts for Kanye_16:

(Start: 28 @10126 has 125 MA's), (53, 10264), (68, 10354), (69, 10363), (85, 10483), (88, 10510), (104, 10576),

Gene: KashFlow_17 Start: 12175, Stop: 12744, Start Num: 19

Candidate Starts for KashFlow_17:

(Start: 17 @12172 has 5 MA's), (Start: 19 @12175 has 35 MA's), (48, 12316), (66, 12418), (73, 12460), (89, 12562), (97, 12589), (109, 12646), (113, 12664), (121, 12697), (131, 12730),

Gene: Kevin1_8 Start: 5970, Stop: 6461, Start Num: 33

Candidate Starts for Kevin1_8:

(8, 5859), (9, 5871), (Start: 33 @5970 has 42 MA's), (41, 6009), (55, 6087), (61, 6129), (68, 6156), (74, 6189), (85, 6246), (88, 6273), (94, 6294), (96, 6300), (115, 6369), (124, 6402), (134, 6444),

Gene: Khuang_7 Start: 5855, Stop: 6379, Start Num: 23

Candidate Starts for Khuang_7:

(Start: 23 @5855 has 1 MA's), (84, 6161), (90, 6197), (104, 6251), (110, 6275),

Gene: Kimchi_16 Start: 9133, Stop: 9699, Start Num: 28

Candidate Starts for Kimchi_16:

(Start: 28 @9133 has 125 MA's), (53, 9271), (68, 9361), (69, 9370), (85, 9490), (88, 9517), (104, 9583),

Gene: KingPhillip3_40 Start: 21577, Stop: 22182, Start Num: 20

Candidate Starts for KingPhillip3_40:

(Start: 20 @21577 has 36 MA's), (Start: 25 @21592 has 1 MA's), (36, 21655), (46, 21703), (47, 21712), (51, 21730), (66, 21820), (69, 21835), (84, 21937), (85, 21943), (92, 21985), (94, 21991), (97, 22000), (98, 22003), (99, 22012), (115, 22075), (130, 22132), (132, 22141), (136, 22168),

Gene: Klein_25 Start: 15568, Stop: 16137, Start Num: 19

Candidate Starts for Klein_25:

(Start: 19 @15568 has 35 MA's), (47, 15706), (59, 15775), (73, 15853), (86, 15934), (91, 15964), (96, 15979), (97, 15982), (105, 16018), (106, 16024), (113, 16057), (131, 16123),

Gene: Kostya_15 Start: 9678, Stop: 10244, Start Num: 28

Candidate Starts for Kostya_15:

(Start: 28 @9678 has 125 MA's), (53, 9816), (68, 9906), (69, 9915), (85, 10035), (88, 10062), (104, 10128),

Gene: Krili_40 Start: 21294, Stop: 21899, Start Num: 20

Candidate Starts for Krili_40:

(Start: 20 @21294 has 36 MA's), (36, 21372), (46, 21420), (47, 21429), (51, 21447), (66, 21537), (69, 21552), (84, 21654), (85, 21660), (94, 21708), (97, 21717), (98, 21720), (99, 21729), (115, 21792), (130, 21849), (132, 21858), (136, 21885),

Gene: Lilac_16 Start: 8634, Stop: 9200, Start Num: 28

Candidate Starts for Lilac_16:

(Start: 28 @8634 has 125 MA's), (53, 8772), (68, 8862), (69, 8871), (85, 8991), (88, 9018), (104, 9084),

Gene: Lilizi_16 Start: 8845, Stop: 9411, Start Num: 28

Candidate Starts for Lilizi_16:

(Start: 28 @8845 has 125 MA's), (53, 8983), (68, 9073), (69, 9082), (85, 9202), (88, 9229), (104, 9295),

Gene: Lilpickle_13 Start: 8353, Stop: 8919, Start Num: 28

Candidate Starts for Lilpickle_13:

(Start: 28 @8353 has 125 MA's), (53, 8491), (68, 8581), (69, 8590), (85, 8710), (88, 8737), (104, 8803),

Gene: LittleE_23 Start: 15311, Stop: 15883, Start Num: 17

Candidate Starts for LittleE_23:

(Start: 17 @15311 has 5 MA's), (Start: 19 @15314 has 35 MA's), (48, 15455), (66, 15557), (73, 15599), (89, 15701), (91, 15710), (97, 15728), (105, 15764), (109, 15785), (113, 15803), (121, 15836), (125, 15848), (131, 15869),

Gene: Lucky2013_23 Start: 14054, Stop: 14626, Start Num: 17

Candidate Starts for Lucky2013_23:

(Start: 17 @14054 has 5 MA's), (Start: 19 @14057 has 35 MA's), (48, 14198), (66, 14300), (73, 14342), (89, 14444), (97, 14471), (109, 14528), (113, 14546), (121, 14579), (131, 14612),

Gene: MISSy_14 Start: 9186, Stop: 9752, Start Num: 28

Candidate Starts for MISSy_14:

(Start: 28 @9186 has 125 MA's), (53, 9324), (68, 9414), (69, 9423), (85, 9543), (88, 9570), (104, 9636),

Gene: MPhalcon_14 Start: 9186, Stop: 9752, Start Num: 28

Candidate Starts for MPhalcon_14:

(Start: 28 @9186 has 125 MA's), (53, 9324), (68, 9414), (69, 9423), (85, 9543), (88, 9570), (104, 9636),

Gene: MadKillah_42 Start: 21516, Stop: 22121, Start Num: 20

Candidate Starts for MadKillah_42:

(Start: 20 @21516 has 36 MA's), (Start: 25 @21531 has 1 MA's), (36, 21594), (46, 21642), (47, 21651), (51, 21669), (66, 21759), (69, 21774), (84, 21876), (85, 21882), (92, 21924), (94, 21930), (97, 21939), (98, 21942), (99, 21951), (115, 22014), (130, 22071), (132, 22080), (136, 22107),

Gene: MadamMonkfish_14 Start: 8564, Stop: 9130, Start Num: 28

Candidate Starts for MadamMonkfish_14:

(Start: 28 @8564 has 125 MA's), (53, 8702), (68, 8792), (69, 8801), (85, 8921), (88, 8948), (104, 9014),

Gene: Magsby_8 Start: 5956, Stop: 6441, Start Num: 33

Candidate Starts for Magsby_8:

(7, 5854), (8, 5860), (9, 5872), (Start: 33 @5956 has 42 MA's), (41, 5995), (50, 6043), (55, 6073), (61, 6115), (64, 6130), (68, 6142), (69, 6151), (74, 6175), (85, 6232), (88, 6253), (94, 6274), (115, 6349), (119, 6367), (124, 6382), (133, 6415), (134, 6424),

Gene: Mahdia_7 Start: 6047, Stop: 6601, Start Num: 14

Candidate Starts for Mahdia_7:

(Start: 14 @6047 has 5 MA's), (Start: 30 @6107 has 2 MA's), (39, 6155), (46, 6188), (49, 6200), (53, 6218), (55, 6239), (80, 6356), (84, 6395), (99, 6467), (108, 6509),

Gene: Manda_15 Start: 9648, Stop: 10214, Start Num: 28

Candidate Starts for Manda_15:

(Start: 28 @9648 has 125 MA's), (53, 9786), (68, 9876), (69, 9885), (85, 10005), (88, 10032), (104, 10098),

Gene: Marleymoo_26 Start: 16649, Stop: 17218, Start Num: 19

Candidate Starts for Marleymoo_26:

(Start: 19 @16649 has 35 MA's), (59, 16856), (73, 16934), (86, 17015), (91, 17045), (96, 17060), (97, 17063), (105, 17099), (106, 17105), (113, 17138), (126, 17186), (131, 17204),

Gene: Marshmallow_15 Start: 9678, Stop: 10244, Start Num: 28

Candidate Starts for Marshmallow_15:

(Start: 28 @9678 has 125 MA's), (53, 9816), (68, 9906), (69, 9915), (85, 10035), (88, 10062), (104, 10128),

Gene: Maxxinista_15 Start: 8613, Stop: 9179, Start Num: 28

Candidate Starts for Maxxinista_15:

(Start: 28 @8613 has 125 MA's), (53, 8751), (68, 8841), (69, 8850), (85, 8970), (88, 8997), (104, 9063),

Gene: Melville_8 Start: 5956, Stop: 6441, Start Num: 33

Candidate Starts for Melville_8:

(7, 5854), (8, 5860), (9, 5872), (Start: 33 @5956 has 42 MA's), (41, 5995), (50, 6043), (55, 6073), (61, 6115), (64, 6130), (68, 6142), (69, 6151), (74, 6175), (85, 6232), (88, 6253), (94, 6274), (115, 6349), (119, 6367), (124, 6382), (133, 6415), (134, 6424),

Gene: MiaZeal_23 Start: 13745, Stop: 14317, Start Num: 17

Candidate Starts for MiaZeal_23:

(Start: 17 @13745 has 5 MA's), (Start: 19 @13748 has 35 MA's), (48, 13889), (66, 13991), (73, 14033), (89, 14135), (91, 14144), (97, 14162), (105, 14198), (109, 14219), (113, 14237), (121, 14270), (125, 14282), (131, 14303),

Gene: MichelleMyBell_8 Start: 5990, Stop: 6481, Start Num: 33

Candidate Starts for MichelleMyBell_8:

(6, 5834), (8, 5879), (9, 5891), (Start: 33 @5990 has 42 MA's), (41, 6029), (50, 6077), (55, 6107), (61, 6149), (68, 6176), (74, 6209), (85, 6266), (88, 6293), (94, 6314), (96, 6320), (115, 6389), (124, 6422), (134, 6464),

Gene: Mindy_15 Start: 9457, Stop: 10023, Start Num: 28

Candidate Starts for Mindy_15:

(Start: 28 @9457 has 125 MA's), (53, 9595), (68, 9685), (69, 9694), (85, 9814), (88, 9841), (104, 9907),

Gene: Minerva_25 Start: 16053, Stop: 16622, Start Num: 19

Candidate Starts for Minerva_25:

(Start: 19 @16053 has 35 MA's), (47, 16191), (73, 16338), (86, 16419), (91, 16449), (96, 16464), (97, 16467), (105, 16503), (106, 16509), (113, 16542), (131, 16608),

Gene: Miniwave_15 Start: 9876, Stop: 10442, Start Num: 28

Candidate Starts for Miniwave_15:

(Start: 28 @9876 has 125 MA's), (53, 10014), (68, 10104), (69, 10113), (85, 10233), (88, 10260), (104, 10326),

Gene: Misfit_14 Start: 9230, Stop: 9796, Start Num: 28

Candidate Starts for Misfit_14:

(Start: 28 @9230 has 125 MA's), (53, 9368), (68, 9458), (69, 9467), (85, 9587), (88, 9614), (104, 9680),

Gene: Moldemort_15 Start: 8888, Stop: 9454, Start Num: 28

Candidate Starts for Moldemort_15:

(Start: 28 @8888 has 125 MA's), (53, 9026), (68, 9116), (69, 9125), (85, 9245), (88, 9272), (104, 9338),

Gene: MooMoo_7 Start: 5220, Stop: 5819, Start Num: 20

Candidate Starts for MooMoo_7:

(Start: 20 @5220 has 36 MA's), (27, 5244), (39, 5319), (97, 5628), (99, 5640), (107, 5679), (130, 5769), (136, 5805),

Gene: Mori_40 Start: 21165, Stop: 21770, Start Num: 20

Candidate Starts for Mori_40:

(Start: 20 @21165 has 36 MA's), (Start: 25 @21180 has 1 MA's), (36, 21243), (46, 21291), (47, 21300), (51, 21318), (66, 21408), (69, 21423), (84, 21525), (85, 21531), (92, 21573), (94, 21579), (97, 21588), (98, 21591), (99, 21600), (115, 21663), (130, 21720), (132, 21729), (136, 21756),

Gene: Morrissey_7 Start: 6029, Stop: 6574, Start Num: 13

Candidate Starts for Morrissey_7:

(Start: 13 @6029 has 4 MA's), (39, 6131), (49, 6176), (53, 6194), (54, 6212), (84, 6368), (85, 6374), (99, 6440), (108, 6482), (127, 6557),

Gene: Mosby_14 Start: 9186, Stop: 9752, Start Num: 28

Candidate Starts for Mosby_14:

(Start: 28 @9186 has 125 MA's), (53, 9324), (68, 9414), (69, 9423), (85, 9543), (88, 9570), (104, 9636),

Gene: Murai_41 Start: 21355, Stop: 21960, Start Num: 20

Candidate Starts for Murai_41:

(Start: 20 @21355 has 36 MA's), (36, 21433), (46, 21481), (47, 21490), (51, 21508), (66, 21598), (69, 21613), (84, 21715), (85, 21721), (94, 21769), (97, 21778), (98, 21781), (99, 21790), (115, 21853), (130, 21910), (132, 21919), (136, 21946),

Gene: Murica_13 Start: 9142, Stop: 9708, Start Num: 28

Candidate Starts for Murica_13:

(Start: 28 @9142 has 125 MA's), (53, 9280), (68, 9370), (69, 9379), (85, 9499), (88, 9526), (104, 9592),

Gene: Murphy_14 Start: 8605, Stop: 9171, Start Num: 28

Candidate Starts for Murphy_14:

(Start: 28 @8605 has 125 MA's), (53, 8743), (68, 8833), (69, 8842), (85, 8962), (88, 8989), (104, 9055),

Gene: Myrale_15 Start: 9549, Stop: 10115, Start Num: 28

Candidate Starts for Myrale_15:

(Start: 28 @9549 has 125 MA's), (53, 9687), (68, 9777), (69, 9786), (85, 9906), (88, 9933), (104, 9999),

Gene: Nala_14 Start: 9186, Stop: 9752, Start Num: 28

Candidate Starts for Nala_14:

(Start: 28 @9186 has 125 MA's), (53, 9324), (68, 9414), (69, 9423), (85, 9543), (88, 9570), (104, 9636),

Gene: Nekros_23 Start: 15994, Stop: 16563, Start Num: 19

Candidate Starts for Nekros_23:

(Start: 17 @15991 has 5 MA's), (Start: 19 @15994 has 35 MA's), (48, 16135), (66, 16237), (73, 16279), (89, 16381), (91, 16390), (97, 16408), (105, 16444), (109, 16465), (113, 16483), (121, 16516), (125, 16528), (131, 16549),

Gene: NelitzaMV_15 Start: 9748, Stop: 10314, Start Num: 28

Candidate Starts for NelitzaMV_15:

(Start: 28 @9748 has 125 MA's), (53, 9886), (68, 9976), (69, 9985), (85, 10105), (88, 10132), (104, 10198),

Gene: Nенаe_8 Start: 5997, Stop: 6482, Start Num: 33

Candidate Starts for Nенаe_8:

(8, 5883), (9, 5895), (Start: 33 @5997 has 42 MA's), (41, 6036), (43, 6042), (50, 6084), (55, 6114), (68, 6183), (74, 6216), (85, 6273), (88, 6294), (94, 6315), (115, 6390), (119, 6408), (124, 6423), (134, 6465),

Gene: NiebruSaylor_40 Start: 21166, Stop: 21771, Start Num: 20

Candidate Starts for NiebruSaylor_40:

(Start: 20 @21166 has 36 MA's), (Start: 25 @21181 has 1 MA's), (36, 21244), (46, 21292), (47, 21301), (51, 21319), (66, 21409), (69, 21424), (84, 21526), (85, 21532), (92, 21574), (94, 21580), (97, 21589), (98, 21592), (99, 21601), (115, 21664), (130, 21721), (132, 21730), (136, 21757),

Gene: NihilNomen_24 Start: 16050, Stop: 16619, Start Num: 19

Candidate Starts for NihilNomen_24:

(Start: 19 @16050 has 35 MA's), (47, 16188), (59, 16257), (73, 16335), (86, 16416), (91, 16446), (96, 16461), (97, 16464), (105, 16500), (106, 16506), (113, 16539), (131, 16605),

Gene: Nimrod_14 Start: 9385, Stop: 9951, Start Num: 28

Candidate Starts for Nimrod_14:

(Start: 28 @9385 has 125 MA's), (53, 9523), (68, 9613), (69, 9622), (85, 9742), (88, 9769), (104, 9835),

Gene: NoSleep_15 Start: 8885, Stop: 9451, Start Num: 28

Candidate Starts for NoSleep_15:

(Start: 28 @8885 has 125 MA's), (53, 9023), (68, 9113), (69, 9122), (85, 9242), (88, 9269), (104, 9335),

Gene: Odette_24 Start: 15531, Stop: 16100, Start Num: 19

Candidate Starts for Odette_24:

(Start: 19 @15531 has 35 MA's), (47, 15669), (73, 15816), (86, 15897), (91, 15927), (96, 15942), (97, 15945), (105, 15981), (106, 15987), (113, 16020), (131, 16086),

Gene: Omega_25 Start: 17674, Stop: 18243, Start Num: 19

Candidate Starts for Omega_25:

(Start: 17 @17671 has 5 MA's), (Start: 19 @17674 has 35 MA's), (48, 17815), (66, 17917), (73, 17959), (89, 18061), (91, 18070), (97, 18088), (109, 18145), (113, 18163), (121, 18196), (131, 18229),

Gene: Optimus_23 Start: 15628, Stop: 16197, Start Num: 19

Candidate Starts for Optimus_23:

(Start: 19 @15628 has 35 MA's), (73, 15913), (86, 15994), (91, 16024), (96, 16039), (97, 16042), (105, 16078), (106, 16084), (113, 16117), (131, 16183),

Gene: OrionPax_15 Start: 8888, Stop: 9454, Start Num: 28

Candidate Starts for OrionPax_15:

(Start: 28 @8888 has 125 MA's), (53, 9026), (68, 9116), (69, 9125), (85, 9245), (88, 9272), (104, 9338),

Gene: Palpatine_14 Start: 9183, Stop: 9749, Start Num: 28

Candidate Starts for Palpatine_14:

(Start: 28 @9183 has 125 MA's), (53, 9321), (68, 9411), (69, 9420), (85, 9540), (88, 9567), (104, 9633),

Gene: Panchino_8 Start: 5973, Stop: 6458, Start Num: 33

Candidate Starts for Panchino_8:

(8, 5883), (9, 5895), (Start: 33 @5973 has 42 MA's), (41, 6012), (43, 6018), (50, 6060), (55, 6090), (68, 6159), (74, 6192), (85, 6249), (88, 6270), (94, 6291), (115, 6366), (119, 6384), (124, 6399), (134, 6441),

Gene: Paperbeatsrock_16 Start: 10120, Stop: 10686, Start Num: 28

Candidate Starts for Paperbeatsrock_16:

(Start: 28 @10120 has 125 MA's), (53, 10258), (68, 10348), (69, 10357), (85, 10477), (88, 10504), (104, 10570),

Gene: Parmesanjohn_8 Start: 5956, Stop: 6441, Start Num: 33

Candidate Starts for Parmesanjohn_8:

(7, 5854), (8, 5860), (9, 5872), (Start: 33 @5956 has 42 MA's), (41, 5995), (50, 6043), (55, 6073), (61, 6115), (64, 6130), (68, 6142), (69, 6151), (74, 6175), (85, 6232), (88, 6253), (94, 6274), (115, 6349), (119, 6367), (124, 6382), (133, 6415), (134, 6424),

Gene: Pat3_14 Start: 8388, Stop: 8954, Start Num: 28

Candidate Starts for Pat3_14:

(Start: 28 @8388 has 125 MA's), (53, 8526), (68, 8616), (69, 8625), (85, 8745), (88, 8772), (104, 8838),

Gene: Petra64142_15 Start: 9601, Stop: 10167, Start Num: 28

Candidate Starts for Petra64142_15:

(Start: 28 @9601 has 125 MA's), (53, 9739), (68, 9829), (69, 9838), (85, 9958), (88, 9985), (104, 10051),

Gene: Phaja_14 Start: 9338, Stop: 9904, Start Num: 28

Candidate Starts for Phaja_14:

(Start: 28 @9338 has 125 MA's), (53, 9476), (68, 9566), (69, 9575), (85, 9695), (88, 9722), (104, 9788),

Gene: PhancyPhin_8 Start: 5997, Stop: 6482, Start Num: 33

Candidate Starts for PhancyPhin_8:

(8, 5883), (9, 5895), (Start: 33 @5997 has 42 MA's), (41, 6036), (50, 6084), (55, 6114), (68, 6183), (74, 6216), (85, 6273), (88, 6294), (94, 6315), (115, 6390), (119, 6408), (124, 6423), (134, 6465),

Gene: Pharsalus_15 Start: 9920, Stop: 10486, Start Num: 28

Candidate Starts for Pharsalus_15:

(Start: 28 @9920 has 125 MA's), (53, 10058), (68, 10148), (69, 10157), (85, 10277), (88, 10304), (104, 10370),

Gene: PhatBacter_14 Start: 9186, Stop: 9752, Start Num: 28

Candidate Starts for PhatBacter_14:

(Start: 28 @9186 has 125 MA's), (53, 9324), (68, 9414), (69, 9423), (85, 9543), (88, 9570), (104, 9636),

Gene: Phaux_13 Start: 9186, Stop: 9752, Start Num: 28

Candidate Starts for Phaux_13:

(Start: 28 @9186 has 125 MA's), (53, 9324), (68, 9414), (69, 9423), (85, 9543), (88, 9570), (104, 9636),

Gene: Philonius_8 Start: 5956, Stop: 6441, Start Num: 33

Candidate Starts for Philonius_8:

(7, 5854), (8, 5860), (9, 5872), (Start: 33 @5956 has 42 MA's), (41, 5995), (50, 6043), (55, 6073), (61, 6115), (64, 6130), (68, 6142), (69, 6151), (74, 6175), (85, 6232), (88, 6253), (94, 6274), (115, 6349), (119, 6367), (124, 6382), (133, 6415), (134, 6424),

Gene: Phloss_8 Start: 5956, Stop: 6441, Start Num: 33

Candidate Starts for Phloss_8:

(7, 5854), (8, 5860), (9, 5872), (Start: 33 @5956 has 42 MA's), (41, 5995), (50, 6043), (55, 6073), (61, 6115), (64, 6130), (68, 6142), (69, 6151), (74, 6175), (85, 6232), (88, 6253), (94, 6274), (115, 6349), (119, 6367), (124, 6382), (133, 6415), (134, 6424),

Gene: Phoebus_25 Start: 16275, Stop: 16844, Start Num: 19

Candidate Starts for Phoebus_25:

(Start: 19 @16275 has 35 MA's), (73, 16560), (86, 16641), (91, 16671), (96, 16686), (97, 16689), (105, 16725), (106, 16731), (113, 16764), (131, 16830),

Gene: Phrann_8 Start: 5997, Stop: 6482, Start Num: 33

Candidate Starts for Phrann_8:

(8, 5883), (9, 5895), (Start: 33 @5997 has 42 MA's), (41, 6036), (50, 6084), (55, 6114), (68, 6183), (74, 6216), (85, 6273), (88, 6294), (94, 6315), (115, 6390), (119, 6408), (124, 6423), (134, 6465),

Gene: Phrux_14 Start: 8884, Stop: 9450, Start Num: 28

Candidate Starts for Phrux_14:

(Start: 28 @8884 has 125 MA's), (53, 9022), (68, 9112), (69, 9121), (85, 9241), (88, 9268), (104, 9334),

Gene: Pipsqueaks_8 Start: 5956, Stop: 6441, Start Num: 33

Candidate Starts for Pipsqueaks_8:

(7, 5854), (8, 5860), (9, 5872), (Start: 33 @5956 has 42 MA's), (41, 5995), (50, 6043), (55, 6073), (61, 6115), (64, 6130), (68, 6142), (69, 6151), (74, 6175), (85, 6232), (88, 6253), (94, 6274), (115, 6349), (119, 6367), (124, 6382), (133, 6415), (134, 6424),

Gene: Policronamos_14 Start: 9186, Stop: 9752, Start Num: 28

Candidate Starts for Policronamos_14:

(Start: 28 @9186 has 125 MA's), (53, 9324), (68, 9414), (69, 9423), (85, 9543), (88, 9570), (104, 9636),

Gene: Porcelain_23 Start: 13748, Stop: 14317, Start Num: 19

Candidate Starts for Porcelain_23:

(Start: 17 @13745 has 5 MA's), (Start: 19 @13748 has 35 MA's), (48, 13889), (66, 13991), (73, 14033), (89, 14135), (91, 14144), (97, 14162), (105, 14198), (109, 14219), (113, 14237), (121, 14270), (125, 14282), (131, 14303),

Gene: Porky_13 Start: 8458, Stop: 9024, Start Num: 28

Candidate Starts for Porky_13:

(Start: 28 @8458 has 125 MA's), (53, 8596), (68, 8686), (69, 8695), (85, 8815), (88, 8842), (104, 8908),

Gene: Pound_25 Start: 16367, Stop: 16936, Start Num: 19

Candidate Starts for Pound_25:

(Start: 19 @16367 has 35 MA's), (73, 16652), (86, 16733), (91, 16763), (96, 16778), (97, 16781), (105, 16817), (106, 16823), (113, 16856), (131, 16922),

Gene: Pumpkin_15 Start: 8701, Stop: 9267, Start Num: 28

Candidate Starts for Pumpkin_15:

(Start: 28 @8701 has 125 MA's), (53, 8839), (68, 8929), (69, 8938), (85, 9058), (88, 9085), (104, 9151),

Gene: Puppies_7 Start: 5969, Stop: 6499, Start Num: 14

Candidate Starts for Puppies_7:

(Start: 14 @5969 has 5 MA's), (34, 6032), (37, 6044), (39, 6056), (49, 6101), (58, 6164), (61, 6182), (68, 6203), (83, 6284), (84, 6290), (115, 6431),

Gene: Purgamenstris_8 Start: 5997, Stop: 6482, Start Num: 33

Candidate Starts for Purgamenstris_8:

(8, 5883), (9, 5895), (Start: 33 @5997 has 42 MA's), (41, 6036), (43, 6042), (50, 6084), (55, 6114), (68, 6183), (74, 6216), (85, 6273), (88, 6294), (94, 6315), (115, 6390), (119, 6408), (124, 6423), (134, 6465),

Gene: Quallification_16 Start: 9885, Stop: 10451, Start Num: 28

Candidate Starts for Quallification_16:

(Start: 28 @9885 has 125 MA's), (53, 10023), (68, 10113), (69, 10122), (85, 10242), (88, 10269), (104, 10335),

Gene: QueenHazel_9 Start: 6990, Stop: 7535, Start Num: 21

Candidate Starts for QueenHazel_9:

(3, 6804), (Start: 21 @6990 has 6 MA's), (Start: 29 @7026 has 2 MA's), (46, 7113), (47, 7122), (55, 7167), (60, 7200), (85, 7326), (130, 7500), (135, 7521),

Gene: Rakim_16 Start: 9792, Stop: 10358, Start Num: 28

Candidate Starts for Rakim_16:

(Start: 28 @9792 has 125 MA's), (53, 9930), (68, 10020), (69, 10029), (85, 10149), (88, 10176), (104, 10242),

Gene: Raymond7_8 Start: 5997, Stop: 6482, Start Num: 33

Candidate Starts for Raymond7_8:

(8, 5883), (9, 5895), (Start: 33 @5997 has 42 MA's), (41, 6036), (50, 6084), (55, 6114), (68, 6183), (74, 6216), (85, 6273), (88, 6294), (94, 6315), (115, 6390), (119, 6408), (124, 6423), (134, 6465),

Gene: Rearden_20 Start: 12733, Stop: 13302, Start Num: 19

Candidate Starts for Rearden_20:

(Start: 17 @12730 has 5 MA's), (Start: 19 @12733 has 35 MA's), (48, 12874), (66, 12976), (73, 13018), (89, 13120), (91, 13129), (97, 13147), (105, 13183), (109, 13204), (113, 13222), (121, 13255), (125, 13267), (131, 13288),

Gene: Rebel_8 Start: 5997, Stop: 6482, Start Num: 33

Candidate Starts for Rebel_8:

(8, 5883), (9, 5895), (Start: 33 @5997 has 42 MA's), (41, 6036), (43, 6042), (50, 6084), (55, 6114), (68, 6183), (74, 6216), (85, 6273), (88, 6294), (94, 6315), (115, 6390), (119, 6408), (124, 6423), (134, 6465),

Gene: Redi_8 Start: 5997, Stop: 6482, Start Num: 33

Candidate Starts for Redi_8:

(8, 5883), (9, 5895), (Start: 33 @5997 has 42 MA's), (41, 6036), (43, 6042), (50, 6084), (55, 6114), (68, 6183), (74, 6216), (85, 6273), (88, 6294), (94, 6315), (115, 6390), (119, 6408), (124, 6423), (134, 6465),

Gene: Redno2_24 Start: 15759, Stop: 16328, Start Num: 19

Candidate Starts for Redno2_24:

(Start: 19 @15759 has 35 MA's), (73, 16044), (86, 16125), (91, 16155), (96, 16170), (97, 16173), (105, 16209), (106, 16215), (113, 16248), (131, 16314),

Gene: Reyja_9 Start: 6424, Stop: 6957, Start Num: 22

Candidate Starts for Reyja_9:

(Start: 22 @6424 has 5 MA's), (46, 6544), (85, 6751), (123, 6922), (129, 6946),

Gene: Rimmer_14 Start: 9245, Stop: 9811, Start Num: 28

Candidate Starts for Rimmer_14:

(Start: 28 @9245 has 125 MA's), (53, 9383), (68, 9473), (69, 9482), (85, 9602), (88, 9629), (104, 9695),

Gene: RiverMonster_14 Start: 8898, Stop: 9464, Start Num: 28

Candidate Starts for RiverMonster_14:

(Start: 28 @8898 has 125 MA's), (53, 9036), (68, 9126), (69, 9135), (85, 9255), (88, 9282), (104, 9348),

Gene: Rubeelu_8 Start: 5970, Stop: 6461, Start Num: 33

Candidate Starts for Rubeelu_8:

(8, 5859), (9, 5871), (Start: 33 @5970 has 42 MA's), (41, 6009), (50, 6057), (55, 6087), (61, 6129), (68, 6156), (74, 6189), (85, 6246), (88, 6273), (94, 6294), (96, 6300), (115, 6369), (124, 6402), (134, 6444),

Gene: Ryadel_45 Start: 22639, Stop: 23244, Start Num: 20

Candidate Starts for Ryadel_45:

(Start: 20 @22639 has 36 MA's), (36, 22717), (46, 22765), (47, 22774), (51, 22792), (66, 22882), (69, 22897), (78, 22948), (84, 22999), (85, 23005), (94, 23053), (97, 23062), (98, 23065), (99, 23074), (115, 23137), (130, 23194), (132, 23203), (136, 23230),

Gene: Saints25_15 Start: 8807, Stop: 9373, Start Num: 28

Candidate Starts for Saints25_15:

(Start: 28 @8807 has 125 MA's), (53, 8945), (68, 9035), (69, 9044), (85, 9164), (88, 9191), (104, 9257),

Gene: Santhid_8 Start: 6292, Stop: 6825, Start Num: 22

Candidate Starts for Santhid_8:

(Start: 22 @6292 has 5 MA's), (46, 6412), (57, 6472), (85, 6619), (123, 6790), (129, 6814),

Gene: Sapo_6 Start: 5442, Stop: 6047, Start Num: 13

Candidate Starts for Sapo_6:

(Start: 13 @5442 has 4 MA's), (34, 5523), (37, 5535), (47, 5589), (51, 5604), (62, 5679), (72, 5733), (77, 5754), (83, 5802), (88, 5841),

Gene: Sassay_14 Start: 9186, Stop: 9752, Start Num: 28

Candidate Starts for Sassay_14:

(Start: 28 @9186 has 125 MA's), (53, 9324), (68, 9414), (69, 9423), (85, 9543), (88, 9570), (104, 9636),

Gene: Sbash_8 Start: 6564, Stop: 7112, Start Num: 21

Candidate Starts for Sbash_8:

(Start: 21 @6564 has 6 MA's), (Start: 29 @6600 has 2 MA's), (38, 6651), (46, 6687), (47, 6696), (51, 6714), (55, 6741), (60, 6774), (65, 6801), (68, 6810), (94, 6948), (95, 6951), (109, 6999), (123, 7050), (130, 7077), (135, 7098),

Gene: Schatzie_23 Start: 15300, Stop: 15869, Start Num: 19

Candidate Starts for Schatzie_23:

(Start: 19 @15300 has 35 MA's), (47, 15438), (59, 15507), (73, 15585), (86, 15666), (91, 15696), (96, 15711), (97, 15714), (105, 15750), (106, 15756), (113, 15789), (131, 15855),

Gene: Schmidt_10 Start: 7341, Stop: 7862, Start Num: 18

Candidate Starts for Schmidt_10:

(10, 7305), (Start: 18 @7341 has 1 MA's), (Start: 30 @7392 has 2 MA's), (35, 7416), (37, 7422), (46, 7467), (52, 7494), (58, 7542), (60, 7551), (61, 7560), (80, 7632), (83, 7662), (90, 7704), (95, 7719), (110, 7782), (128, 7854),

Gene: Schnauzer_8 Start: 5956, Stop: 6441, Start Num: 33

Candidate Starts for Schnauzer_8:

(7, 5854), (8, 5860), (9, 5872), (Start: 33 @5956 has 42 MA's), (41, 5995), (50, 6043), (55, 6073), (61, 6115), (64, 6130), (68, 6142), (69, 6151), (74, 6175), (85, 6232), (88, 6253), (94, 6274), (115, 6349), (119, 6367), (124, 6382), (133, 6415), (134, 6424),

Gene: SchoolBus_41 Start: 21580, Stop: 22185, Start Num: 20

Candidate Starts for SchoolBus_41:

(Start: 20 @21580 has 36 MA's), (Start: 25 @21595 has 1 MA's), (36, 21658), (46, 21706), (47, 21715), (51, 21733), (66, 21823), (69, 21838), (84, 21940), (85, 21946), (92, 21988), (94, 21994), (97, 22003), (98, 22006), (99, 22015), (115, 22078), (130, 22135), (132, 22144), (136, 22171),

Gene: Schuy_42 Start: 21513, Stop: 22118, Start Num: 20

Candidate Starts for Schuy_42:

(Start: 20 @21513 has 36 MA's), (Start: 25 @21528 has 1 MA's), (36, 21591), (46, 21639), (47, 21648), (51, 21666), (66, 21756), (69, 21771), (84, 21873), (85, 21879), (92, 21921), (94, 21927), (97, 21936), (98, 21939), (99, 21948), (115, 22011), (130, 22068), (132, 22077), (136, 22104),

Gene: Scitech_8 Start: 5956, Stop: 6441, Start Num: 33

Candidate Starts for Scitech_8:

(7, 5854), (8, 5860), (9, 5872), (Start: 33 @5956 has 42 MA's), (41, 5995), (50, 6043), (55, 6073), (61, 6115), (64, 6130), (68, 6142), (69, 6151), (74, 6175), (85, 6232), (88, 6253), (94, 6274), (115, 6349), (119, 6367), (124, 6382), (133, 6415), (134, 6424),

Gene: Shaboozey_17 Start: 12159, Stop: 12728, Start Num: 19

Candidate Starts for Shaboozey_17:

(Start: 17 @12156 has 5 MA's), (Start: 19 @12159 has 35 MA's), (48, 12300), (66, 12402), (73, 12444), (89, 12546), (91, 12555), (97, 12573), (105, 12609), (109, 12630), (113, 12648), (121, 12681), (125, 12693), (131, 12714),

Gene: ShamWow_15 Start: 9679, Stop: 10245, Start Num: 28

Candidate Starts for ShamWow_15:

(Start: 28 @9679 has 125 MA's), (53, 9817), (68, 9907), (69, 9916), (85, 10036), (88, 10063), (104, 10129),

Gene: ShereKhan_16 Start: 10126, Stop: 10692, Start Num: 28

Candidate Starts for ShereKhan_16:

(Start: 28 @10126 has 125 MA's), (53, 10264), (68, 10354), (69, 10363), (85, 10483), (88, 10510), (104, 10576),

Gene: Shida_41 Start: 21420, Stop: 22025, Start Num: 20

Candidate Starts for Shida_41:

(Start: 20 @21420 has 36 MA's), (36, 21498), (46, 21546), (47, 21555), (51, 21573), (66, 21663), (69, 21678), (84, 21780), (85, 21786), (92, 21828), (94, 21834), (97, 21843), (98, 21846), (99, 21855), (115, 21918), (130, 21975), (132, 21984), (136, 22011),

Gene: ShrimpFriedEgg_8 Start: 5997, Stop: 6482, Start Num: 33

Candidate Starts for ShrimpFriedEgg_8:

(8, 5883), (9, 5895), (Start: 33 @5997 has 42 MA's), (41, 6036), (43, 6042), (50, 6084), (55, 6114), (68, 6183), (74, 6216), (85, 6273), (88, 6294), (94, 6315), (115, 6390), (119, 6408), (124, 6423), (134, 6465),

Gene: Shweta_8 Start: 5997, Stop: 6482, Start Num: 33

Candidate Starts for Shweta_8:

(8, 5883), (9, 5895), (Start: 33 @5997 has 42 MA's), (41, 6036), (50, 6084), (55, 6114), (68, 6183), (74, 6216), (85, 6273), (88, 6294), (94, 6315), (115, 6390), (119, 6408), (124, 6423), (134, 6465),

Gene: Silvafighter_8 Start: 5956, Stop: 6441, Start Num: 33

Candidate Starts for Silvafighter_8:

(7, 5854), (8, 5860), (9, 5872), (Start: 33 @5956 has 42 MA's), (41, 5995), (50, 6043), (55, 6073), (61, 6115), (64, 6130), (68, 6142), (69, 6151), (74, 6175), (85, 6232), (88, 6253), (94, 6274), (115, 6349), (119, 6367), (124, 6382), (133, 6415), (134, 6424),

Gene: Silvy_8 Start: 5956, Stop: 6441, Start Num: 33

Candidate Starts for Silvy_8:

(7, 5854), (8, 5860), (9, 5872), (Start: 33 @5956 has 42 MA's), (41, 5995), (50, 6043), (55, 6073), (61, 6115), (64, 6130), (68, 6142), (69, 6151), (74, 6175), (85, 6232), (88, 6253), (94, 6274), (115, 6349), (119, 6367), (124, 6382), (133, 6415), (134, 6424),

Gene: Simpliphy_15 Start: 8888, Stop: 9454, Start Num: 28

Candidate Starts for Simpliphy_15:

(Start: 28 @8888 has 125 MA's), (53, 9026), (68, 9116), (69, 9125), (85, 9245), (88, 9272), (104, 9338),

Gene: SirDuracell_14 Start: 8345, Stop: 8911, Start Num: 28

Candidate Starts for SirDuracell_14:

(Start: 28 @8345 has 125 MA's), (53, 8483), (68, 8573), (69, 8582), (85, 8702), (88, 8729), (104, 8795),

Gene: SkinnyPete_8 Start: 5997, Stop: 6482, Start Num: 33

Candidate Starts for SkinnyPete_8:

(8, 5883), (9, 5895), (Start: 33 @5997 has 42 MA's), (41, 6036), (43, 6042), (50, 6084), (55, 6114), (68, 6183), (74, 6216), (85, 6273), (88, 6294), (94, 6315), (115, 6390), (119, 6408), (124, 6423), (134, 6465),

Gene: Smooch_43 Start: 22708, Stop: 23313, Start Num: 20

Candidate Starts for Smooch_43:

(Start: 20 @22708 has 36 MA's), (Start: 25 @22723 has 1 MA's), (36, 22786), (46, 22834), (47, 22843), (66, 22951), (69, 22966), (84, 23068), (85, 23074), (92, 23116), (94, 23122), (97, 23131), (98, 23134),

(99, 23143), (115, 23206), (130, 23263), (132, 23272), (136, 23299),

Gene: Smurph_8 Start: 5956, Stop: 6441, Start Num: 33

Candidate Starts for Smurph_8:

(7, 5854), (8, 5860), (9, 5872), (Start: 33 @5956 has 42 MA's), (41, 5995), (50, 6043), (55, 6073), (61, 6115), (64, 6130), (68, 6142), (69, 6151), (74, 6175), (85, 6232), (88, 6253), (94, 6274), (115, 6349), (119, 6367), (124, 6382), (133, 6415), (134, 6424),

Gene: Snekmaggedon_8 Start: 5997, Stop: 6482, Start Num: 33

Candidate Starts for Snekmaggedon_8:

(8, 5883), (9, 5895), (Start: 33 @5997 has 42 MA's), (41, 6036), (43, 6042), (50, 6084), (55, 6114), (68, 6183), (74, 6216), (85, 6273), (88, 6294), (94, 6315), (115, 6390), (119, 6408), (124, 6423), (134, 6465),

Gene: SophKB_15 Start: 9678, Stop: 10244, Start Num: 28

Candidate Starts for SophKB_15:

(Start: 28 @9678 has 125 MA's), (53, 9816), (68, 9906), (69, 9915), (85, 10035), (88, 10062), (104, 10128),

Gene: Sotrice96_15 Start: 9634, Stop: 10200, Start Num: 28

Candidate Starts for Sotrice96_15:

(Start: 28 @9634 has 125 MA's), (53, 9772), (68, 9862), (69, 9871), (85, 9991), (88, 10018), (104, 10084),

Gene: Splinter_12 Start: 8930, Stop: 9409, Start Num: 30

Candidate Starts for Splinter_12:

(Start: 20 @8885 has 36 MA's), (Start: 30 @8930 has 2 MA's), (46, 9005), (56, 9059), (60, 9089), (67, 9119), (82, 9176), (83, 9200), (91, 9245), (93, 9251), (94, 9254), (110, 9320), (114, 9338), (118, 9356), (128, 9395),

Gene: SpongeBob_8 Start: 5997, Stop: 6482, Start Num: 33

Candidate Starts for SpongeBob_8:

(8, 5883), (9, 5895), (Start: 33 @5997 has 42 MA's), (41, 6036), (43, 6042), (50, 6084), (55, 6114), (68, 6183), (74, 6216), (85, 6273), (88, 6294), (94, 6315), (115, 6390), (119, 6408), (124, 6423), (134, 6465),

Gene: Squint_22 Start: 13875, Stop: 14444, Start Num: 19

Candidate Starts for Squint_22:

(Start: 17 @13872 has 5 MA's), (Start: 19 @13875 has 35 MA's), (48, 14016), (66, 14118), (73, 14160), (89, 14262), (91, 14271), (97, 14289), (105, 14325), (109, 14346), (113, 14364), (121, 14397), (125, 14409), (131, 14430),

Gene: Stank_16 Start: 9133, Stop: 9699, Start Num: 28

Candidate Starts for Stank_16:

(Start: 28 @9133 has 125 MA's), (53, 9271), (68, 9361), (69, 9370), (85, 9490), (88, 9517), (104, 9583),

Gene: Stark_15 Start: 8901, Stop: 9467, Start Num: 28

Candidate Starts for Stark_15:

(Start: 28 @8901 has 125 MA's), (53, 9039), (68, 9129), (69, 9138), (85, 9258), (88, 9285), (104, 9351),

Gene: StellaBean_15 Start: 9678, Stop: 10244, Start Num: 28

Candidate Starts for StellaBean_15:

(Start: 28 @9678 has 125 MA's), (53, 9816), (68, 9906), (69, 9915), (85, 10035), (88, 10062), (104, 10128),

Gene: StolenFromERC_16 Start: 9133, Stop: 9699, Start Num: 28

Candidate Starts for StolenFromERC_16:

(Start: 28 @9133 has 125 MA's), (53, 9271), (68, 9361), (69, 9370), (85, 9490), (88, 9517), (104, 9583),

Gene: StormChicken_15 Start: 9851, Stop: 10417, Start Num: 28

Candidate Starts for StormChicken_15:

(Start: 28 @9851 has 125 MA's), (53, 9989), (68, 10079), (69, 10088), (85, 10208), (88, 10235), (104, 10301),

Gene: Stuck_8 Start: 6576, Stop: 7124, Start Num: 21

Candidate Starts for Stuck_8:

(1, 6279), (2, 6318), (4, 6453), (Start: 21 @6576 has 6 MA's), (Start: 29 @6612 has 2 MA's), (38, 6663), (46, 6699), (47, 6708), (51, 6726), (55, 6753), (58, 6777), (59, 6780), (60, 6786), (68, 6822), (94, 6960), (95, 6963), (123, 7062), (130, 7089),

Gene: Superphikiman_23 Start: 13929, Stop: 14498, Start Num: 19

Candidate Starts for Superphikiman_23:

(Start: 17 @13926 has 5 MA's), (Start: 19 @13929 has 35 MA's), (48, 14070), (66, 14172), (73, 14214), (89, 14316), (91, 14325), (97, 14343), (105, 14379), (109, 14400), (113, 14418), (121, 14451), (125, 14463), (131, 14484),

Gene: TBrady12_16 Start: 9130, Stop: 9696, Start Num: 28

Candidate Starts for TBrady12_16:

(Start: 28 @9130 has 125 MA's), (53, 9268), (68, 9358), (69, 9367), (85, 9487), (88, 9514), (104, 9580),

Gene: TZGordon_14 Start: 9027, Stop: 9551, Start Num: 20

Candidate Starts for TZGordon_14:

(Start: 20 @9027 has 36 MA's), (Start: 30 @9072 has 2 MA's), (46, 9147), (56, 9201), (60, 9231), (67, 9261), (82, 9318), (83, 9342), (91, 9387), (94, 9396), (110, 9462), (114, 9480), (118, 9498), (128, 9537),

Gene: Tapioca_8 Start: 5956, Stop: 6441, Start Num: 33

Candidate Starts for Tapioca_8:

(7, 5854), (8, 5860), (9, 5872), (Start: 33 @5956 has 42 MA's), (41, 5995), (50, 6043), (55, 6073), (61, 6115), (64, 6130), (68, 6142), (69, 6151), (74, 6175), (85, 6232), (88, 6253), (94, 6274), (115, 6349), (119, 6367), (124, 6382), (133, 6415), (134, 6424),

Gene: Tarkin_16 Start: 10129, Stop: 10695, Start Num: 28

Candidate Starts for Tarkin_16:

(Start: 28 @10129 has 125 MA's), (53, 10267), (68, 10357), (69, 10366), (85, 10486), (88, 10513), (104, 10579),

Gene: Tarzan_8 Start: 6283, Stop: 6816, Start Num: 22

Candidate Starts for Tarzan_8:

(Start: 22 @6283 has 5 MA's), (41, 6379), (51, 6430), (53, 6436), (85, 6610), (129, 6805),

Gene: TeardropMSU_14 Start: 9586, Stop: 10152, Start Num: 28

Candidate Starts for TeardropMSU_14:

(Start: 28 @9586 has 125 MA's), (53, 9724), (68, 9814), (69, 9823), (85, 9943), (88, 9970), (104, 10036),

Gene: Teaspoon_14 Start: 8583, Stop: 9149, Start Num: 28

Candidate Starts for Teaspoon_14:

(Start: 28 @8583 has 125 MA's), (53, 8721), (68, 8811), (69, 8820), (85, 8940), (88, 8967), (104, 9033),

Gene: TelAviv_38 Start: 21574, Stop: 22179, Start Num: 20

Candidate Starts for TelAviv_38:

(Start: 20 @21574 has 36 MA's), (Start: 25 @21589 has 1 MA's), (36, 21652), (46, 21700), (47, 21709), (51, 21727), (66, 21817), (69, 21832), (84, 21934), (85, 21940), (92, 21982), (94, 21988), (97, 21997), (98, 22000), (99, 22009), (115, 22072), (130, 22129), (132, 22138), (136, 22165),

Gene: Terminus_14 Start: 9230, Stop: 9796, Start Num: 28

Candidate Starts for Terminus_14:

(Start: 28 @9230 has 125 MA's), (53, 9368), (68, 9458), (69, 9467), (85, 9587), (88, 9614), (104, 9680),

Gene: Thibault_21 Start: 15559, Stop: 16128, Start Num: 19

Candidate Starts for Thibault_21:

(Start: 19 @15559 has 35 MA's), (73, 15844), (86, 15925), (91, 15955), (96, 15970), (97, 15973), (105, 16009), (106, 16015), (113, 16048), (131, 16114),

Gene: Thimble_15 Start: 8635, Stop: 9201, Start Num: 28

Candidate Starts for Thimble_15:

(Start: 28 @8635 has 125 MA's), (53, 8773), (68, 8863), (69, 8872), (85, 8992), (88, 9019), (104, 9085),

Gene: ThreeRngTarjay_24 Start: 16125, Stop: 16694, Start Num: 19

Candidate Starts for ThreeRngTarjay_24:

(Start: 19 @16125 has 35 MA's), (73, 16410), (86, 16491), (91, 16521), (96, 16536), (97, 16539), (105, 16575), (106, 16581), (113, 16614), (131, 16680),

Gene: Thresher_15 Start: 9891, Stop: 10457, Start Num: 28

Candidate Starts for Thresher_15:

(Start: 28 @9891 has 125 MA's), (53, 10029), (68, 10119), (69, 10128), (85, 10248), (88, 10275), (104, 10341),

Gene: TinaLin_15 Start: 9599, Stop: 10123, Start Num: 20

Candidate Starts for TinaLin_15:

(Start: 20 @9599 has 36 MA's), (50, 9740), (56, 9773), (82, 9890), (83, 9914), (90, 9956), (94, 9968), (110, 10034), (114, 10052), (118, 10070), (128, 10109), (129, 10112),

Gene: Tomaszewski_14 Start: 9279, Stop: 9845, Start Num: 28

Candidate Starts for Tomaszewski_14:

(Start: 28 @9279 has 125 MA's), (53, 9417), (68, 9507), (69, 9516), (85, 9636), (88, 9663), (104, 9729),

Gene: Tortoise12_8 Start: 5956, Stop: 6441, Start Num: 33

Candidate Starts for Tortoise12_8:

(7, 5854), (8, 5860), (9, 5872), (Start: 33 @5956 has 42 MA's), (41, 5995), (50, 6043), (55, 6073), (61, 6115), (64, 6130), (68, 6142), (69, 6151), (74, 6175), (85, 6232), (88, 6253), (94, 6274), (115, 6349), (119, 6367), (124, 6382), (133, 6415), (134, 6424),

Gene: Toto_15 Start: 9679, Stop: 10245, Start Num: 28

Candidate Starts for Toto_15:

(Start: 28 @9679 has 125 MA's), (53, 9817), (68, 9907), (69, 9916), (85, 10036), (88, 10063), (104, 10129),

Gene: Traaww1_13 Start: 9324, Stop: 9890, Start Num: 28

Candidate Starts for Traaww1_13:

(Start: 28 @9324 has 125 MA's), (53, 9462), (68, 9552), (69, 9561), (85, 9681), (88, 9708), (104, 9774),

Gene: Trine_7 Start: 5978, Stop: 6505, Start Num: 12

Candidate Starts for Trine_7:

(Start: 12 @5978 has 1 MA's), (Start: 14 @5984 has 5 MA's), (39, 6071), (44, 6089), (49, 6116), (53, 6134), (55, 6155), (68, 6218), (84, 6305), (99, 6371), (102, 6386), (129, 6494),

Gene: Tuco_15 Start: 9678, Stop: 10244, Start Num: 28

Candidate Starts for Tuco_15:

(Start: 28 @9678 has 125 MA's), (53, 9816), (68, 9906), (69, 9915), (85, 10035), (88, 10062), (104, 10128),

Gene: Ukulele_14 Start: 8901, Stop: 9467, Start Num: 28

Candidate Starts for Ukulele_14:

(Start: 28 @8901 has 125 MA's), (53, 9039), (68, 9129), (69, 9138), (85, 9258), (88, 9285), (104, 9351),

Gene: Upyo_7 Start: 5995, Stop: 6522, Start Num: 14

Candidate Starts for Upyo_7:

(Start: 14 @5995 has 5 MA's), (39, 6082), (44, 6100), (46, 6115), (48, 6124), (49, 6127), (53, 6145), (55, 6166), (65, 6226), (77, 6268),

Gene: Vagabond_41 Start: 21407, Stop: 22012, Start Num: 20

Candidate Starts for Vagabond_41:

(Start: 20 @21407 has 36 MA's), (Start: 25 @21422 has 1 MA's), (36, 21485), (46, 21533), (47, 21542), (51, 21560), (66, 21650), (69, 21665), (84, 21767), (85, 21773), (92, 21815), (94, 21821), (97, 21830), (98, 21833), (99, 21842), (115, 21905), (130, 21962), (132, 21971), (136, 21998),

Gene: Vendetta_12 Start: 8930, Stop: 9409, Start Num: 30

Candidate Starts for Vendetta_12:

(Start: 20 @8885 has 36 MA's), (Start: 30 @8930 has 2 MA's), (46, 9005), (56, 9059), (60, 9089), (67, 9119), (82, 9176), (83, 9200), (91, 9245), (93, 9251), (94, 9254), (110, 9320), (114, 9338), (118, 9356), (128, 9395),

Gene: Vorrps_40 Start: 21166, Stop: 21771, Start Num: 20

Candidate Starts for Vorrps_40:

(Start: 20 @21166 has 36 MA's), (Start: 25 @21181 has 1 MA's), (36, 21244), (46, 21292), (47, 21301), (51, 21319), (66, 21409), (69, 21424), (84, 21526), (85, 21532), (92, 21574), (94, 21580), (97, 21589), (98, 21592), (99, 21601), (115, 21664), (130, 21721), (132, 21730), (136, 21757),

Gene: Wanda_26 Start: 15568, Stop: 16137, Start Num: 19

Candidate Starts for Wanda_26:

(Start: 19 @15568 has 35 MA's), (47, 15706), (59, 15775), (73, 15853), (86, 15934), (91, 15964), (96, 15979), (97, 15982), (105, 16018), (106, 16024), (113, 16057), (131, 16123),

Gene: Widow_7 Start: 5960, Stop: 6490, Start Num: 14

Candidate Starts for Widow_7:

(Start: 14 @5960 has 5 MA's), (34, 6023), (37, 6035), (39, 6047), (49, 6092), (58, 6155), (61, 6173), (83, 6275), (84, 6281), (115, 6422),

Gene: Wiggin_16 Start: 9133, Stop: 9699, Start Num: 28

Candidate Starts for Wiggin_16:

(Start: 28 @9133 has 125 MA's), (53, 9271), (68, 9361), (69, 9370), (85, 9490), (88, 9517), (104, 9583),

Gene: Wildflower_41 Start: 21152, Stop: 21757, Start Num: 20

Candidate Starts for Wildflower_41:

(Start: 20 @21152 has 36 MA's), (Start: 25 @21167 has 1 MA's), (36, 21230), (46, 21278), (47, 21287), (51, 21305), (66, 21395), (69, 21410), (84, 21512), (85, 21518), (92, 21560), (94, 21566), (97, 21575), (98, 21578), (99, 21587), (115, 21650), (130, 21707), (132, 21716), (136, 21743),

Gene: Willez_14 Start: 9186, Stop: 9752, Start Num: 28

Candidate Starts for Willez_14:

(Start: 28 @9186 has 125 MA's), (53, 9324), (68, 9414), (69, 9423), (85, 9543), (88, 9570), (104, 9636),

Gene: Winget_42 Start: 21846, Stop: 22451, Start Num: 20

Candidate Starts for Winget_42:

(Start: 20 @21846 has 36 MA's), (Start: 25 @21861 has 1 MA's), (36, 21924), (46, 21972), (47, 21981), (51, 21999), (66, 22089), (69, 22104), (84, 22206), (85, 22212), (92, 22254), (94, 22260), (97, 22269), (98, 22272), (99, 22281), (115, 22344), (130, 22401), (132, 22410), (136, 22437),

Gene: Wogge42_40 Start: 21485, Stop: 22090, Start Num: 20

Candidate Starts for Wogge42_40:

(Start: 20 @21485 has 36 MA's), (Start: 25 @21500 has 1 MA's), (36, 21563), (46, 21611), (47, 21620), (51, 21638), (66, 21728), (69, 21743), (84, 21845), (85, 21851), (92, 21893), (94, 21899), (97, 21908), (98, 21911), (99, 21920), (115, 21983), (130, 22040), (132, 22049), (136, 22076),

Gene: Xandras_16 Start: 9133, Stop: 9699, Start Num: 28

Candidate Starts for Xandras_16:

(Start: 28 @9133 has 125 MA's), (53, 9271), (68, 9361), (69, 9370), (85, 9490), (88, 9517), (104, 9583),

Gene: Xeno_8 Start: 5956, Stop: 6441, Start Num: 33

Candidate Starts for Xeno_8:

(7, 5854), (8, 5860), (9, 5872), (Start: 33 @5956 has 42 MA's), (41, 5995), (50, 6043), (55, 6073), (61, 6115), (64, 6130), (68, 6142), (69, 6151), (74, 6175), (85, 6232), (88, 6253), (94, 6274), (115, 6349), (119, 6367), (124, 6382), (133, 6415), (134, 6424),

Gene: Xerxes_8 Start: 5956, Stop: 6441, Start Num: 33

Candidate Starts for Xerxes_8:

(7, 5854), (8, 5860), (9, 5872), (Start: 33 @5956 has 42 MA's), (41, 5995), (50, 6043), (55, 6073), (61, 6115), (64, 6130), (68, 6142), (69, 6151), (74, 6175), (85, 6232), (88, 6253), (94, 6274), (115, 6349), (119, 6367), (124, 6382), (133, 6415), (134, 6424),

Gene: Xula_8 Start: 6619, Stop: 7164, Start Num: 21

Candidate Starts for Xula_8:

(3, 6433), (Start: 21 @6619 has 6 MA's), (Start: 29 @6655 has 2 MA's), (46, 6742), (47, 6751), (55, 6796), (60, 6829), (85, 6955), (130, 7129), (135, 7150),

Gene: YassJohnny_15 Start: 9678, Stop: 10244, Start Num: 28

Candidate Starts for YassJohnny_15:

(Start: 28 @9678 has 125 MA's), (53, 9816), (68, 9906), (69, 9915), (85, 10035), (88, 10062), (104, 10128),

Gene: Yeet_23 Start: 15301, Stop: 15870, Start Num: 19

Candidate Starts for Yeet_23:

(Start: 19 @15301 has 35 MA's), (47, 15439), (73, 15586), (86, 15667), (91, 15697), (96, 15712), (97, 15715), (105, 15751), (106, 15757), (113, 15790), (131, 15856),

Gene: Youngblood_14 Start: 9311, Stop: 9877, Start Num: 28

Candidate Starts for Youngblood_14:

(Start: 28 @9311 has 125 MA's), (53, 9449), (68, 9539), (69, 9548), (85, 9668), (88, 9695), (104, 9761),

Gene: YungJamal_44 Start: 21885, Stop: 22490, Start Num: 20

Candidate Starts for YungJamal_44:

(Start: 20 @21885 has 36 MA's), (Start: 25 @21900 has 1 MA's), (36, 21963), (46, 22011), (47, 22020), (51, 22038), (66, 22128), (69, 22143), (84, 22245), (85, 22251), (92, 22293), (94, 22299), (97, 22308), (98, 22311), (99, 22320), (115, 22383), (130, 22440), (132, 22449), (136, 22476),

Gene: Zakhe101_41 Start: 21296, Stop: 21901, Start Num: 20

Candidate Starts for Zakhe101_41:

(Start: 20 @21296 has 36 MA's), (Start: 25 @21311 has 1 MA's), (36, 21374), (46, 21422), (47, 21431), (51, 21449), (66, 21539), (69, 21554), (84, 21656), (85, 21662), (92, 21704), (94, 21710), (97, 21719), (98, 21722), (99, 21731), (115, 21794), (130, 21851), (132, 21860), (136, 21887),

Gene: Zebo_40 Start: 21580, Stop: 22185, Start Num: 20

Candidate Starts for Zebo_40:

(Start: 20 @21580 has 36 MA's), (Start: 25 @21595 has 1 MA's), (36, 21658), (46, 21706), (47, 21715), (51, 21733), (66, 21823), (69, 21838), (84, 21940), (85, 21946), (92, 21988), (94, 21994), (97, 22003), (98, 22006), (99, 22015), (115, 22078), (130, 22135), (132, 22144), (136, 22171),

Gene: Zelink_26 Start: 16153, Stop: 16722, Start Num: 19

Candidate Starts for Zelink_26:

(Start: 19 @16153 has 35 MA's), (47, 16291), (73, 16438), (86, 16519), (91, 16549), (96, 16564), (97, 16567), (105, 16603), (106, 16609), (113, 16642), (131, 16708),

Gene: xkcd_15 Start: 9338, Stop: 9904, Start Num: 28

Candidate Starts for xkcd_15:

(Start: 28 @9338 has 125 MA's), (53, 9476), (68, 9566), (69, 9575), (85, 9695), (88, 9722), (104, 9788),