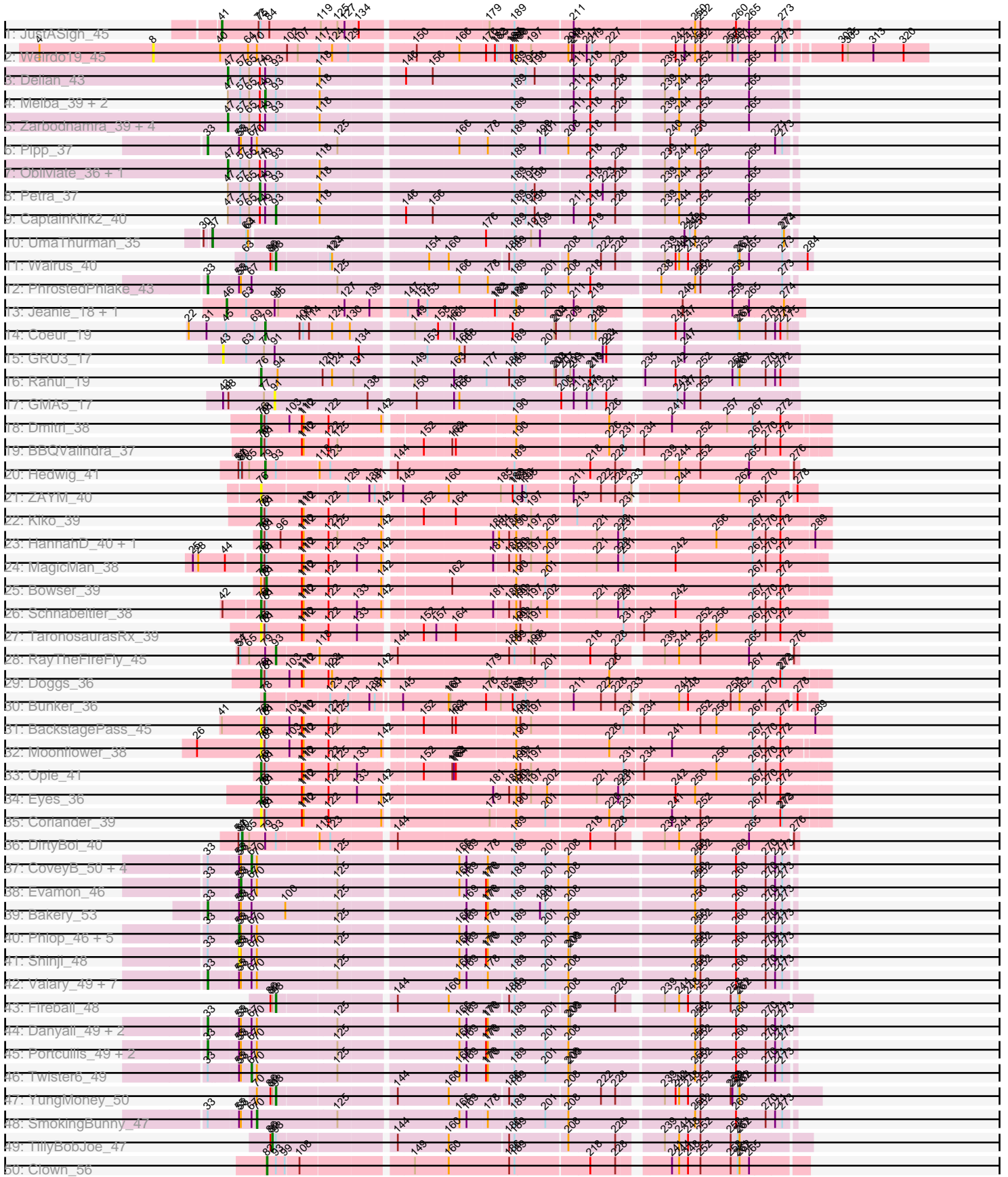
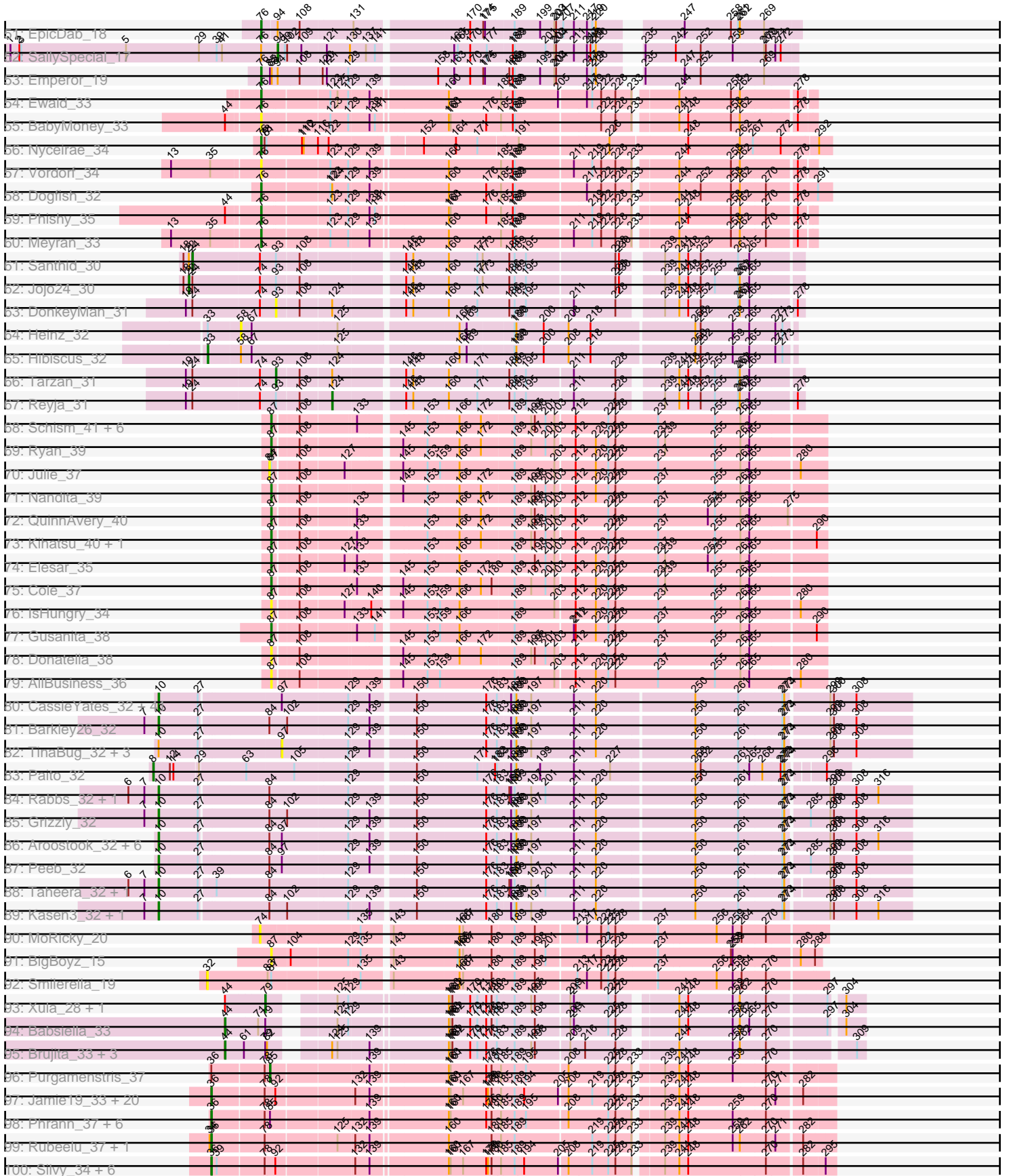


Pham 215761



Pham 215761



Note: Tracks are now grouped by subcluster and scaled. Switching in subcluster is indicated by changes in track color. Track scale is now set by default to display the region 30 bp upstream of start 1 to 30 bp downstream of the last possible start. If this default region is judged to be packed too tightly with annotated starts, the track will be further scaled to only show that region of the ORF with annotated starts. This action will be indicated by adding "Zoomed" to the title. For starts, yellow indicates the location of called starts comprised solely of Glimmer/GeneMark auto-annotations, green indicates the location of called starts with at least 1 manual gene annotation.

Pham 215761 Report

This analysis was run 02/22/25 on database version 588.

Pham number 215761 has 296 members, 50 are drafts.

Phages represented in each track:

- Track 1 : JustASigh_45
- Track 2 : Weirido19_45
- Track 3 : Delian_43
- Track 4 : Melba_39, Barco_38, BlingBling_37
- Track 5 : Zarbodnamra_39, JasperJr_38, Archis_43, MintFen_40, Guacamole_38
- Track 6 : Pipp_37
- Track 7 : Obliviate_36, Hitter_41
- Track 8 : Petra_37
- Track 9 : CaptainKirk2_40
- Track 10 : UmaThurman_35
- Track 11 : Walrus_40
- Track 12 : PhrostedPhlake_43
- Track 13 : Jeanie_18, McGonagall_18
- Track 14 : Coeur_19
- Track 15 : GRU3_17
- Track 16 : Rahul_19
- Track 17 : GMA5_17
- Track 18 : Dmitri_38
- Track 19 : BBQValindra_37
- Track 20 : Hedwig_41
- Track 21 : ZAYM_40
- Track 22 : Kiko_39
- Track 23 : HannahD_40, GEazy_42
- Track 24 : MagicMan_38
- Track 25 : Bowser_39
- Track 26 : Schnabeltier_38
- Track 27 : TaronosaurusRx_39
- Track 28 : RayTheFireFly_45
- Track 29 : Doggs_36
- Track 30 : Bunker_36
- Track 31 : BackstagePass_45
- Track 32 : Moonflower_38
- Track 33 : Opie_41
- Track 34 : Eyes_36
- Track 35 : Coriander_39
- Track 36 : DirtyBoi_40
- Track 37 : CoveyB_50, KimmyK_48, Togo_46, Egi03_50, CherryCola_51

- Track 38 : Evamon_46
- Track 39 : Bakery_53
- Track 40 : Phlop_46, Wizard_46, Gezellig_49, Barb_49, PinkCoffee_49, Fugax_50
- Track 41 : Shinji_48
- Track 42 : Valary_49, Mutzi_47, Jambalaya_47, PullumCavea_46, ClamChowder_49, VanDeWege_50, Savbucketdawg_47, Nubi_47
- Track 43 : Fireball_48
- Track 44 : Danyall_49, Arri_50, RogerDodger_50
- Track 45 : Portcullis_49, Halo3_48, Salvador_46
- Track 46 : Twister6_49
- Track 47 : YungMoney_50
- Track 48 : SmokingBunny_47
- Track 49 : TillyBobJoe_47
- Track 50 : Clown_56
- Track 51 : EpicDab_18
- Track 52 : SallySpecial_17
- Track 53 : Emperor_19
- Track 54 : Ewald_33
- Track 55 : BabyMoney_33
- Track 56 : Nyceirae_34
- Track 57 : Vordorf_34
- Track 58 : Dogfish_32
- Track 59 : Phishy_35
- Track 60 : Meyran_33
- Track 61 : Santhid_30
- Track 62 : Jojo24_30
- Track 63 : DonkeyMan_31
- Track 64 : Heinz_32
- Track 65 : Hibiscus_32
- Track 66 : Tarzan_31
- Track 67 : Reyja_31
- Track 68 : Schism_41, GoodLuckBabe_39, Ichiang_36, Guinevere_39, Lenoxika_39, Halloweekend_36, Popper_37
- Track 69 : Ryan_39
- Track 70 : Julie_37
- Track 71 : Nandita_39
- Track 72 : QuinnAvery_40
- Track 73 : Kihatsu_40, Zaheer_39
- Track 74 : Elesar_35
- Track 75 : Cole_37
- Track 76 : IsHungry_34
- Track 77 : Gusanita_38
- Track 78 : Donatella_38
- Track 79 : AllBusiness_36
- Track 80 : CassieYates_32, BruceB_32, Angel_32, Coleslaw_32, Sweets_32, Halo_32, GoldenAsh_32, Annihilator_32, BPs_32, Gideon_32, Kareem_32, ShaboiShabazz_32, Frosty24_32, Hotshotbaby7_32, Cherrybomb426_32, Cedasite_32, Plagueis_32, Hope_32, Darionha_32, Crespo_32, Mowgli_32, TomBrady_32, DMoney_32, OctaviousRex_32, Jane_32, Marmie_32, Camri_32, LouisV14_32, Renaissance_32, Remy19_32, JorRay_32, CLED96_32, Avrafan_32, Gomashi_32, ZoMa_32, Schiebel_32, Zombie_32, PinkYoshi_32, Phish_32, Olga_32, Phreak_32, BQuat_32
- Track 81 : Barkley26_32

- Track 82 : TinaBug_32, Maliketh_32, AzulaCat_32, Wendigo_32
- Track 83 : Paito_32
- Track 84 : Rabbs_32, Sneeze_32
- Track 85 : Grizzly_32
- Track 86 : Aroostook_32, Chance64_32, ECartman_32, Liefie_32, Periodt_32, Jonghyun_32, Jolene_32
- Track 87 : Peeb_32
- Track 88 : Taheera_32, Terror_32
- Track 89 : Kasen3_32, Sizemore_32
- Track 90 : MoRicky_20
- Track 91 : BigBoyz_15
- Track 92 : Smilerella_19
- Track 93 : Xula_28, QueenHazel_29
- Track 94 : Babsiella_33
- Track 95 : Brujita_33, Malithi_30, Island3_33, Sonah_30
- Track 96 : Purgamenstris_37
- Track 97 : Jamie19_33, Duplicity_36, Phloss_34, Parmesanjohn_36, Chewbacca_37, Tapioca_37, Carcharodon_36, Melville_38, Andies_33, Panchino_32, Shweta_33, SpongeBob_33, MichelleMyBell_34, Schnauzer_36, Smurph_36, Pipsqueaks_36, Fulbright_35, Xerxes_36, Snekmaggedon_33, Silvafighter_37, Magsby_36
- Track 98 : Phrann_37, Redi_37, PhancyPhin_37, BabeRuth_38, Hanako_37, Nенаe_37, ShrimpFriedEgg_37
- Track 99 : Rubeelu_37, Butters_37
- Track 100 : Silvy_34, Charlie_34, Philonius_34, Aggie_34, Journey_34, Tortoise12_34, Bosection6_34
- Track 101 : Kevin1_35
- Track 102 : Gex_36
- Track 103 : Raymond7_31
- Track 104 : Scitech_31, SkinnyPete_31, EGUnicorn_35
- Track 105 : Xeno_33
- Track 106 : Juniormint_30, Bhagsy_30, Ksquared_30, Bunnies_30
- Track 107 : Fishburne_30, Venti_30, Dynamo_30, Phineas_30
- Track 108 : Polkaroo_30, Brusacoram_30, Thespis_30
- Track 109 : CactusJack_30, Atcoo_30, Phalm_30, Megiddo_30, Willsammy_29, KilKor_30, Gavriela_30, StressBall_30, Glaske_30
- Track 110 : Etoile_30, Kari_30, Bartholomew_29
- Track 111 : Jung_29
- Track 112 : Langerak_30, Mangethe_30, Majeke_30, FirstPlacePfu_30, Techage_30, Zilizebeth_30
- Track 113 : Arib1_30
- Track 114 : HUHilltop_30
- Track 115 : Vidya_30
- Track 116 : Shipwreck_32
- Track 117 : Necropolis_30
- Track 118 : Pygmy_32, Bogie_32
- Track 119 : Donovan_30
- Track 120 : StevieRay_30
- Track 121 : Jebeks_30, Camster_30
- Track 122 : GreaseLightnin_30
- Track 123 : Phegasus_30
- Track 124 : Nazo_34, BigNuz_33
- Track 125 : Phayonce_32

- Track 126 : Purky_37
- Track 127 : AuntGwenStacy_53, Faiyaz_53, Hilltopfarm_52, Typha_52
- Track 128 : Cracklewink_50
- Track 129 : Bipper_50
- Track 130 : 32HC_47
- Track 131 : Rem711_46
- Track 132 : Eyre_35
- Track 133 : Gudmit_35
- Track 134 : Ball_28
- Track 135 : P3MA_37
- Track 136 : Barebow_18
- Track 137 : CyranoPS_17
- Track 138 : Whack_39
- Track 139 : IdentityCrisis_34

Summary of Final Annotations (See graph section above for start numbers):

The start number called the most often in the published annotations is 10, it was called in 58 of the 246 non-draft genes in the pham.

Genes that call this "Most Annotated" start:

- Angel_32, Annihilator_32, Aroostook_32, Avrafan_32, BPs_32, BQuat_32, Barkley26_32, BruceB_32, CLED96_32, Camri_32, CassieYates_32, Cedasite_32, Chance64_32, Cherrybomb426_32, Coleslaw_32, Crespo_32, DMoney_32, Darionha_32, ECartman_32, Frosty24_32, Gideon_32, GoldenAsh_32, Gomashi_32, Grizzly_32, Halo_32, Hope_32, Hotshotbaby7_32, Jane_32, Jolene_32, Jonghyun_32, JorRay_32, Kareem_32, Kasen3_32, Liefie_32, LouisV14_32, Marmie_32, Mowgli_32, OctaviousRex_32, Olga_32, Peeb_32, Periodt_32, Phish_32, Phreak_32, PinkYoshi_32, Plagueis_32, Rabbs_32, Remy19_32, Renaissance_32, Schiebel_32, ShaboiShabazz_32, Sizemore_32, Sneeze_32, Sweets_32, Taheera_32, Terror_32, TomBrady_32, ZoMa_32, Zombie_32,

Genes that have the "Most Annotated" start but do not call it:

- AzulaCat_32, Maliketh_32, TinaBug_32, Wendigo_32,

Genes that do not have the "Most Annotated" start:

- 32HC_47, Aggie_34, AllBusiness_36, Andies_33, Archis_43, Arib1_30, Arri_50, Atcoo_30, AuntGwenStacy_53, BBQValindra_37, BabeRuth_38, Babsiella_33, BabyMoney_33, BackstagePass_45, Bakery_53, Ball_28, Barb_49, Barco_38, Barebow_18, Bartholomew_29, Bhagsy_30, BigBoyz_15, BigNuz_33, Bipper_50, BlingBling_37, Bogie_32, Bosection6_34, Bowser_39, Brujita_33, Brusacoram_30, Bunker_36, Bunnies_30, Butters_37, CactusJack_30, Camster_30, CaptainKirk2_40, Carcharodon_36, Charlie_34, CherryCola_51, Chewbacca_37, ClamChowder_49, Clown_56, Coeur_19, Cole_37, Coriander_39, CoveyB_50, Cracklewink_50, CyranoPS_17, Danyall_49, Delian_43, DirtyBoi_40, Dmitri_38, Dogfish_32, Doggs_36, Donatella_38, DonkeyMan_31, Donovan_30, Duplicity_36, Dynamo_30, EGUnicorn_35, Egi03_50, Elesar_35, Emperor_19, EpicDab_18, Etoile_30, Evamon_46, Ewald_33, Eyes_36, Eyre_35, Faiyaz_53, Fireball_48, FirstPlacePfu_30, Fishburne_30, Fugax_50, Fulbright_35, GEazy_42, GMA5_17, GRU3_17, Gavriela_30, Gex_36, Gezellig_49, Glaske_30, GoodLuckBabe_39,

GreaseLightnin_30, Guacamole_38, Gudmit_35, Guinevere_39, Gusanita_38, HUHilltop_30, Halloween_36, Halo3_48, Hanako_37, HannahD_40, Hedwig_41, Heinz_32, Hibiscus_32, Hilltopfarm_52, Hitter_41, Ichiang_36, IdentityCrisis_34, IsHungry_34, Island3_33, Jambalaya_47, Jamie19_33, JasperJr_38, Jeanie_18, Jebeks_30, Jojo24_30, Journey_34, Julie_37, Jung_29, Juniormint_30, JustASigh_45, Kari_30, Kevin1_35, Kihatsu_40, Kiko_39, KilKor_30, KimmyK_48, Ksquared_30, Langerak_30, Lenoxika_39, MagicMan_38, Magsby_36, Majeke_30, Malithi_30, Mangethe_30, McGonagall_18, Megidido_30, Melba_39, Melville_38, Meyran_33, MichelleMyBell_34, MintFen_40, MoRicky_20, Moonflower_38, Mutzi_47, Nandita_39, Nazo_34, Necropolis_30, Nенаe_37, Nubi_47, Nyceirae_34, Obliviate_36, Opie_41, P3MA_37, Paito_32, Panchino_32, Parmesanjohn_36, Petra_37, Phalm_30, PhancyPhin_37, Phayonce_32, Phegasus_30, Philonius_34, Phineas_30, Phishy_35, Phlop_46, Phloss_34, Phrann_37, PhrostedPhlake_43, PinkCoffee_49, Pipp_37, Pipsqueaks_36, Polkaroo_30, Popper_37, Portcullis_49, PullumCavea_46, Purgamenstris_37, Purky_37, Pygmy_32, QueenHazel_29, QuinnAvery_40, Rahul_19, RayTheFireFly_45, Raymond7_31, Redi_37, Rem711_46, Reyja_31, RogerDodger_50, Rubeelu_37, Ryan_39, SallySpecial_17, Salvador_46, Santhid_30, Savbucketdawg_47, Schism_41, Schnabeltier_38, Schnauzer_36, Scitech_31, Shinji_48, Shipwreck_32, ShrimpFriedEgg_37, Shweta_33, Silvafighter_37, Silvy_34, SkinnyPete_31, Smilerella_19, SmokingBunny_47, Smurph_36, Snekmaggon_33, Sonah_30, SpongeBob_33, StevieRay_30, StressBall_30, Tapioca_37, TaronosaurusRx_39, Tarzan_31, Techage_30, Thespis_30, TillyBobJoe_47, Togo_46, Tortoise12_34, Twister6_49, Typha_52, UmaThurman_35, Valary_49, VanDeWege_50, Venti_30, Vidya_30, Vordorf_34, Walrus_40, Weirdo19_45, Whack_39, Willsammy_29, Wizard_46, Xeno_33, Xerxes_36, Xula_28, YungMoney_50, ZAYM_40, Zaheer_39, Zarbodnamra_39, Zilizebeth_30,

Summary by start number:

Start 8:

- Found in 2 of 296 (0.7%) of genes in pham
- Manual Annotations of this start: 1 of 246
- Called 100.0% of time when present
- Phage (with cluster) where this start called: Paito_32 (G1), Weirdo19_45 (AH),

Start 10:

- Found in 62 of 296 (20.9%) of genes in pham
- Manual Annotations of this start: 58 of 246
- Called 93.5% of time when present
- Phage (with cluster) where this start called: Angel_32 (G1), Annihilator_32 (G1), Aroostook_32 (G1), Avrafan_32 (G1), BPs_32 (G1), BQuat_32 (G1), Barkley26_32 (G1), BruceB_32 (G1), CLED96_32 (G1), Camri_32 (G1), CassieYates_32 (G1), Cedasite_32 (G1), Chance64_32 (G1), Cherrybomb426_32 (G1), Coleslaw_32 (G1), Crespo_32 (G1), DMoney_32 (G1), Darionha_32 (G1), ECartman_32 (G1), Frosty24_32 (G1), Gideon_32 (G1), GoldenAsh_32 (G1), Gomashi_32 (G1), Grizzly_32 (G1), Halo_32 (G1), Hope_32 (G1), Hotshotbaby7_32 (G1), Jane_32 (G1), Jolene_32 (G1), Jonghyun_32 (G1), JorRay_32 (G1), Kareem_32 (G1), Kasen3_32 (G1), Liefie_32 (G1), LouisV14_32 (G1), Marmie_32 (G1), Mowgli_32 (G1), OctaviousRex_32 (G1), Olga_32 (G1), Peeb_32 (G1), Periodt_32 (G1), Phish_32 (G1), Phreak_32 (G1), PinkYoshi_32 (G1), Plagueis_32 (G1), Rabbs_32 (G1), Remy19_32 (G1), Renaissance_32 (G1), Schiebel_32 (G1), ShaboiShabazz_32 (G1), Sizemore_32 (G1), Sneeze_32 (G1), Sweets_32 (G1), Taheera_32 (G1), Terror_32

(G1), TomBrady_32 (G1), ZoMa_32 (G1), Zombie_32 (G1),

Start 11:

- Found in 6 of 296 (2.0%) of genes in pham
- Manual Annotations of this start: 1 of 246
- Called 16.7% of time when present
- Phage (with cluster) where this start called: Cracklewink_50 (Y),

Start 17:

- Found in 2 of 296 (0.7%) of genes in pham
- Manual Annotations of this start: 1 of 246
- Called 100.0% of time when present
- Phage (with cluster) where this start called: 32HC_47 (Z), Rem711_46 (Z),

Start 21:

- Found in 1 of 296 (0.3%) of genes in pham
- Manual Annotations of this start: 1 of 246
- Called 100.0% of time when present
- Phage (with cluster) where this start called: P3MA_37 (singleton),

Start 22:

- Found in 3 of 296 (1.0%) of genes in pham
- Manual Annotations of this start: 1 of 246
- Called 33.3% of time when present
- Phage (with cluster) where this start called: Jojo24_30 (DY),

Start 24:

- Found in 5 of 296 (1.7%) of genes in pham
- Manual Annotations of this start: 1 of 246
- Called 20.0% of time when present
- Phage (with cluster) where this start called: Santhid_30 (DY),

Start 32:

- Found in 1 of 296 (0.3%) of genes in pham
- No Manual Annotations of this start.
- Called 100.0% of time when present
- Phage (with cluster) where this start called: Smilerella_19 (GH),

Start 33:

- Found in 35 of 296 (11.8%) of genes in pham
- Manual Annotations of this start: 18 of 246
- Called 51.4% of time when present
- Phage (with cluster) where this start called: Arri_50 (DC1), Bakery_53 (DC1), ClamChowder_49 (DC1), Danyall_49 (DC1), Halo3_48 (DC1), Hibiscus_32 (DY), Jambalaya_47 (DC1), Mutzi_47 (DC1), Nubi_47 (DC1), PhrostedPhlake_43 (CV), Pipp_37 (CV), Portcullis_49 (DC1), PullumCavea_46 (DC1), RogerDodger_50 (DC1), Salvador_46 (DC1), Savbucketdawg_47 (DC1), Valary_49 (DC1), VanDeWege_50 (DC1),

Start 36:

- Found in 45 of 296 (15.2%) of genes in pham
- Manual Annotations of this start: 39 of 246
- Called 95.6% of time when present

- Phage (with cluster) where this start called: Aggie_34 (N), Andies_33 (N), BabeRuth_38 (N), Bosection6_34 (N), Butters_37 (N), Carcharodon_36 (N), Charlie_34 (N), Chewbacca_37 (N), Duplicity_36 (N), EGUnicorn_35 (N), Fulbright_35 (N), Hanako_37 (N), Jamie19_33 (N), Journey_34 (N), Kevin1_35 (N), Magsby_36 (N), Melville_38 (N), MichelleMyBell_34 (N), Nenae_37 (N), Panchino_32 (N), Parmesanjohn_36 (N), PhancyPhin_37 (N), Philonius_34 (N), Phloss_34 (N), Phrann_37 (N), Pipsqueaks_36 (N), Raymond7_31 (N), Redi_37 (N), Rubeelu_37 (N), Schnauzer_36 (N), Scitech_31 (N), ShrimpFriedEgg_37 (N), Shweta_33 (N), Silvafighter_37 (N), Silvy_34 (N), SkinnyPete_31 (N), Smurph_36 (N), Snekmaggedon_33 (N), SpongeBob_33 (N), Tapioca_37 (N), Tortoise12_34 (N), Xeno_33 (N), Xerxes_36 (N),

Start 37:

- Found in 1 of 296 (0.3%) of genes in pham
- Manual Annotations of this start: 1 of 246
- Called 100.0% of time when present
- Phage (with cluster) where this start called: UmaThurman_35 (CV),

Start 41:

- Found in 3 of 296 (1.0%) of genes in pham
- Manual Annotations of this start: 1 of 246
- Called 33.3% of time when present
- Phage (with cluster) where this start called: JustASigh_45 (AH),

Start 43:

- Found in 2 of 296 (0.7%) of genes in pham
- No Manual Annotations of this start.
- Called 50.0% of time when present
- Phage (with cluster) where this start called: GRU3_17 (CW2),

Start 44:

- Found in 53 of 296 (17.9%) of genes in pham
- Manual Annotations of this start: 34 of 246
- Called 67.9% of time when present
- Phage (with cluster) where this start called: Arib1_30 (P1), Atcoo_30 (P1), Babsiella_33 (I1), Bhagsy_30 (P1), Bogie_32 (P1), Brujita_33 (I1), Bunnies_30 (P1), CactusJack_30 (P1), Donovan_30 (P1), Dynamo_30 (P1), FirstPlacePfu_30 (P1), Fishburne_30 (P1), Gavriela_30 (P1), Glaske_30 (P1), GreaseLightnin_30 (P1), HUHilltop_30 (P1), Island3_33 (I1), Juniormint_30 (P1), KilKor_30 (P1), Ksqared_30 (P1), Langerak_30 (P1), Majeke_30 (P1), Malithi_30 (P1), Mangethe_30 (P1), Megiddo_30 (P1), Necropolis_30 (P1), Phalm_30 (P1), Phegasus_30 (P1), Phineas_30 (P1), Pygmy_32 (P1), Sonah_30 (P1), StressBall_30 (P1), Techage_30 (P1), Venti_30 (P1), Willsammy_29 (P1), Zilizebeth_30 (P1),

Start 46:

- Found in 3 of 296 (1.0%) of genes in pham
- Manual Annotations of this start: 2 of 246
- Called 66.7% of time when present
- Phage (with cluster) where this start called: Jeanie_18 (CW1), McGonagall_18 (CW1),

Start 47:

- Found in 14 of 296 (4.7%) of genes in pham

- Manual Annotations of this start: 8 of 246
- Called 57.1% of time when present
- Phage (with cluster) where this start called: Archis_43 (CV), Delian_43 (CV), Guacamole_38 (CV), Hitter_41 (CV), JasperJr_38 (CV), MintFen_40 (CV), Obliviate_36 (CV), Zarbodnamra_39 (CV),

Start 50:

- Found in 1 of 296 (0.3%) of genes in pham
- Manual Annotations of this start: 1 of 246
- Called 100.0% of time when present
- Phage (with cluster) where this start called: Whack_39 (singleton),

Start 55:

- Found in 32 of 296 (10.8%) of genes in pham
- Manual Annotations of this start: 5 of 246
- Called 21.9% of time when present
- Phage (with cluster) where this start called: Barb_49 (DC1), Fugax_50 (DC1), Gezellig_49 (DC1), Phlop_46 (DC1), PinkCoffee_49 (DC1), Shinji_48 (DC1), Wizard_46 (DC1),

Start 57:

- Found in 18 of 296 (6.1%) of genes in pham
- Manual Annotations of this start: 1 of 246
- Called 5.6% of time when present
- Phage (with cluster) where this start called: Gudmit_35 (singleton),

Start 58:

- Found in 34 of 296 (11.5%) of genes in pham
- Manual Annotations of this start: 1 of 246
- Called 5.9% of time when present
- Phage (with cluster) where this start called: Evamon_46 (DC1), Heinz_32 (DY),

Start 60:

- Found in 2 of 296 (0.7%) of genes in pham
- Manual Annotations of this start: 1 of 246
- Called 50.0% of time when present
- Phage (with cluster) where this start called: DirtyBoi_40 (DB),

Start 67:

- Found in 34 of 296 (11.5%) of genes in pham
- Manual Annotations of this start: 3 of 246
- Called 17.6% of time when present
- Phage (with cluster) where this start called: CherryCola_51 (DC1), CoveyB_50 (DC1), Egi03_50 (DC1), KimmyK_48 (DC1), Togo_46 (DC1), Twister6_49 (DC1),

Start 68:

- Found in 2 of 296 (0.7%) of genes in pham
- Manual Annotations of this start: 1 of 246
- Called 50.0% of time when present
- Phage (with cluster) where this start called: Barebow_18 (singleton),

Start 70:

- Found in 32 of 296 (10.8%) of genes in pham

- Manual Annotations of this start: 1 of 246
- Called 3.1% of time when present
- Phage (with cluster) where this start called: SmokingBunny_47 (DC1),

Start 73:

- Found in 2 of 296 (0.7%) of genes in pham
- Manual Annotations of this start: 2 of 246
- Called 100.0% of time when present
- Phage (with cluster) where this start called: BigNuz_33 (P4), Nazo_34 (P4),

Start 74:

- Found in 19 of 296 (6.4%) of genes in pham
- Manual Annotations of this start: 1 of 246
- Called 10.5% of time when present
- Phage (with cluster) where this start called: MoRicky_20 (GH), Petra_37 (CV),

Start 76:

- Found in 27 of 296 (9.1%) of genes in pham
- Manual Annotations of this start: 18 of 246
- Called 92.6% of time when present
- Phage (with cluster) where this start called: BBQValindra_37 (DB), BabyMoney_33 (DT), BackstagePass_45 (DB), Coriander_39 (DB), Dmitri_38 (DB), Dogfish_32 (DT), Doggs_36 (DB), Emperor_19 (DM), EpicDab_18 (DM), Ewald_33 (DT), Eyes_36 (DB), GEazy_42 (DB), HannahD_40 (DB), Kiko_39 (DB), MagicMan_38 (DB), Meyran_33 (DT), Moonflower_38 (DB), Nyceirae_34 (DT), Opie_41 (DB), Phishy_35 (DT), Rahul_19 (CW2), Schnabeltier_38 (DB), TaronosaurusRx_39 (DB), Vordorf_34 (DT), ZAYM_40 (DB),

Start 78:

- Found in 62 of 296 (20.9%) of genes in pham
- Manual Annotations of this start: 1 of 246
- Called 1.6% of time when present
- Phage (with cluster) where this start called: Bunker_36 (DB),

Start 79:

- Found in 73 of 296 (24.7%) of genes in pham
- Manual Annotations of this start: 18 of 246
- Called 30.1% of time when present
- Phage (with cluster) where this start called: Barco_38 (CV), Bartholomew_29 (P1), BlingBling_37 (CV), Brusacoram_30 (P1), Camster_30 (P1), Coeur_19 (CW2), Etoile_30 (P1), Eyre_35 (singleton), Hedwig_41 (DB), Jebeks_30 (P1), Jung_29 (P1), Kari_30 (P1), Melba_39 (CV), Phayonce_32 (P5), Polkaroo_30 (P1), Purky_37 (P6), QueenHazel_29 (I1), Shipwreck_32 (P1), StevieRay_30 (P1), Thespis_30 (P1), Vidya_30 (P1), Xula_28 (I1),

Start 80:

- Found in 2 of 296 (0.7%) of genes in pham
- Manual Annotations of this start: 1 of 246
- Called 50.0% of time when present
- Phage (with cluster) where this start called: IdentityCrisis_34 (singleton),

Start 81:

- Found in 16 of 296 (5.4%) of genes in pham

- Manual Annotations of this start: 1 of 246
- Called 6.2% of time when present
- Phage (with cluster) where this start called: Bowser_39 (DB),

Start 82:

- Found in 49 of 296 (16.6%) of genes in pham
- Manual Annotations of this start: 1 of 246
- Called 4.1% of time when present
- Phage (with cluster) where this start called: Clown_56 (DC2), CyranoPS_17 (singleton),

Start 84:

- Found in 18 of 296 (6.1%) of genes in pham
- No Manual Annotations of this start.
- Called 5.6% of time when present
- Phage (with cluster) where this start called: Julie_37 (FF),

Start 85:

- Found in 9 of 296 (3.0%) of genes in pham
- Manual Annotations of this start: 1 of 246
- Called 11.1% of time when present
- Phage (with cluster) where this start called: Purgamenstris_37 (N),

Start 87:

- Found in 22 of 296 (7.4%) of genes in pham
- Manual Annotations of this start: 8 of 246
- Called 90.9% of time when present
- Phage (with cluster) where this start called: AllBusiness_36 (FF), Ball_28 (singleton), BigBoyz_15 (GH), Cole_37 (FF), Donatella_38 (FF), Elesar_35 (FF), GoodLuckBabe_39 (FF), Guinevere_39 (FF), Gusanita_38 (FF), Halloweekend_36 (FF), Ichiang_36 (FF), IsHungry_34 (FF), Kihatsu_40 (FF), Lenoxika_39 (FF), Nandita_39 (FF), Popper_37 (FF), QuinnAvery_40 (FF), Ryan_39 (FF), Schism_41 (FF), Zaheer_39 (FF),

Start 89:

- Found in 6 of 296 (2.0%) of genes in pham
- Manual Annotations of this start: 1 of 246
- Called 16.7% of time when present
- Phage (with cluster) where this start called: TillyBobJoe_47 (DC1),

Start 91:

- Found in 6 of 296 (2.0%) of genes in pham
- No Manual Annotations of this start.
- Called 16.7% of time when present
- Phage (with cluster) where this start called: GMA5_17 (CW2),

Start 92:

- Found in 33 of 296 (11.1%) of genes in pham
- Manual Annotations of this start: 1 of 246
- Called 3.0% of time when present
- Phage (with cluster) where this start called: Gex_36 (N),

Start 93:

- Found in 28 of 296 (9.5%) of genes in pham
- Manual Annotations of this start: 6 of 246
- Called 25.0% of time when present
- Phage (with cluster) where this start called: CaptainKirk2_40 (CV), DonkeyMan_31 (DY), Fireball_48 (DC1), RayTheFireFly_45 (DB), Tarzan_31 (DY), Walrus_40 (CV), YungMoney_50 (DC1),

Start 94:

- Found in 5 of 296 (1.7%) of genes in pham
- Manual Annotations of this start: 1 of 246
- Called 20.0% of time when present
- Phage (with cluster) where this start called: SallySpecial_17 (DM),

Start 97:

- Found in 56 of 296 (18.9%) of genes in pham
- No Manual Annotations of this start.
- Called 7.1% of time when present
- Phage (with cluster) where this start called: AzulaCat_32 (G1), Maliketh_32 (G1), TinaBug_32 (G1), Wendigo_32 (G1),

Start 124:

- Found in 60 of 296 (20.3%) of genes in pham
- Manual Annotations of this start: 1 of 246
- Called 1.7% of time when present
- Phage (with cluster) where this start called: Reyja_31 (DY),

Start 125:

- Found in 105 of 296 (35.5%) of genes in pham
- Manual Annotations of this start: 3 of 246
- Called 4.8% of time when present
- Phage (with cluster) where this start called: AuntGwenStacy_53 (Y), Bipper_50 (Y), Faiyaz_53 (Y), Hilltopfarm_52 (Y), Typha_52 (Y),

Summary by clusters:

There are 22 clusters represented in this pham: singleton, DM, DB, FF, DY, DT, G1, CW1, CW2, DC1, P1, P6, P4, P5, AH, N, Y, Z, DC2, CV, GH, I1,

Info for manual annotations of cluster AH:

- Start number 41 was manually annotated 1 time for cluster AH.

Info for manual annotations of cluster CV:

- Start number 33 was manually annotated 2 times for cluster CV.
- Start number 37 was manually annotated 1 time for cluster CV.
- Start number 47 was manually annotated 8 times for cluster CV.
- Start number 74 was manually annotated 1 time for cluster CV.
- Start number 79 was manually annotated 3 times for cluster CV.
- Start number 93 was manually annotated 2 times for cluster CV.

Info for manual annotations of cluster CW1:

- Start number 46 was manually annotated 2 times for cluster CW1.

Info for manual annotations of cluster CW2:

- Start number 76 was manually annotated 1 time for cluster CW2.
- Start number 79 was manually annotated 1 time for cluster CW2.

Info for manual annotations of cluster DB:

- Start number 60 was manually annotated 1 time for cluster DB.
- Start number 76 was manually annotated 10 times for cluster DB.
- Start number 78 was manually annotated 1 time for cluster DB.
- Start number 79 was manually annotated 1 time for cluster DB.
- Start number 81 was manually annotated 1 time for cluster DB.
- Start number 93 was manually annotated 1 time for cluster DB.

Info for manual annotations of cluster DC1:

- Start number 33 was manually annotated 15 times for cluster DC1.
- Start number 55 was manually annotated 5 times for cluster DC1.
- Start number 58 was manually annotated 1 time for cluster DC1.
- Start number 67 was manually annotated 3 times for cluster DC1.
- Start number 70 was manually annotated 1 time for cluster DC1.
- Start number 89 was manually annotated 1 time for cluster DC1.
- Start number 93 was manually annotated 2 times for cluster DC1.

Info for manual annotations of cluster DC2:

- Start number 82 was manually annotated 1 time for cluster DC2.

Info for manual annotations of cluster DM:

- Start number 76 was manually annotated 2 times for cluster DM.
- Start number 94 was manually annotated 1 time for cluster DM.

Info for manual annotations of cluster DT:

- Start number 76 was manually annotated 5 times for cluster DT.

Info for manual annotations of cluster DY:

- Start number 22 was manually annotated 1 time for cluster DY.
- Start number 24 was manually annotated 1 time for cluster DY.
- Start number 33 was manually annotated 1 time for cluster DY.
- Start number 93 was manually annotated 1 time for cluster DY.
- Start number 124 was manually annotated 1 time for cluster DY.

Info for manual annotations of cluster FF:

- Start number 87 was manually annotated 8 times for cluster FF.

Info for manual annotations of cluster G1:

- Start number 8 was manually annotated 1 time for cluster G1.
- Start number 10 was manually annotated 58 times for cluster G1.

Info for manual annotations of cluster I1:

- Start number 44 was manually annotated 3 times for cluster I1.
- Start number 79 was manually annotated 2 times for cluster I1.

Info for manual annotations of cluster N:

- Start number 36 was manually annotated 39 times for cluster N.
- Start number 85 was manually annotated 1 time for cluster N.
- Start number 92 was manually annotated 1 time for cluster N.

Info for manual annotations of cluster P1:

- Start number 44 was manually annotated 31 times for cluster P1.
- Start number 79 was manually annotated 8 times for cluster P1.

Info for manual annotations of cluster P4:

- Start number 73 was manually annotated 2 times for cluster P4.

Info for manual annotations of cluster P5:

- Start number 79 was manually annotated 1 time for cluster P5.

Info for manual annotations of cluster P6:

- Start number 79 was manually annotated 1 time for cluster P6.

Info for manual annotations of cluster Y:

- Start number 11 was manually annotated 1 time for cluster Y.
- Start number 125 was manually annotated 3 times for cluster Y.

Info for manual annotations of cluster Z:

- Start number 17 was manually annotated 1 time for cluster Z.

Gene Information:

Gene: 32HC_47 Start: 33699, Stop: 32656, Start Num: 17

Candidate Starts for 32HC_47:

(Start: 17 @33699 has 1 MA's), (75, 33564), (91, 33540), (106, 33504), (113, 33483), (115, 33474), (132, 33411), (136, 33396), (138, 33390), (153, 33303), (155, 33297), (156, 33294), (160, 33270), (180, 33198), (185, 33183), (188, 33165), (189, 33162), (198, 33129), (211, 33069), (225, 33012), (228, 33000), (244, 32907), (255, 32847), (259, 32817),

Gene: Aggie_34 Start: 27389, Stop: 26418, Start Num: 36

Candidate Starts for Aggie_34:

(Start: 36 @27389 has 39 MA's), (39, 27380), (Start: 78 @27305 has 1 MA's), (Start: 92 @27290 has 1 MA's), (132, 27167), (139, 27143), (160, 27026), (161, 27023), (167, 27002), (176, 26963), (178, 26960), (180, 26954), (185, 26939), (189, 26918), (194, 26903), (205, 26846), (208, 26834), (219, 26795), (225, 26768), (228, 26756), (233, 26729), (239, 26690), (244, 26666), (248, 26651), (270, 26522), (282, 26468), (295, 26435),

Gene: AllBusiness_36 Start: 29466, Stop: 28591, Start Num: 87

Candidate Starts for AllBusiness_36:

(Start: 87 @29466 has 8 MA's), (108, 29427), (145, 29280), (153, 29241), (159, 29220), (189, 29100), (203, 29034), (212, 29004), (220, 28971), (225, 28950), (228, 28938), (237, 28866), (255, 28770), (263, 28728), (265, 28713), (280, 28635),

Gene: Andies_33 Start: 27907, Stop: 26936, Start Num: 36

Candidate Starts for Andies_33:

(Start: 36 @27907 has 39 MA's), (Start: 78 @27823 has 1 MA's), (Start: 92 @27808 has 1 MA's), (132, 27685), (139, 27661), (160, 27544), (161, 27541), (167, 27520), (176, 27481), (178, 27478), (180, 27472), (185, 27457), (189, 27436), (194, 27421), (205, 27364), (208, 27352), (219, 27313), (225, 27286), (228, 27274), (233, 27247), (239, 27208), (244, 27184), (248, 27169), (270, 27040), (271, 27025), (282, 26986),

Gene: Angel_32 Start: 28917, Stop: 27721, Start Num: 10

Candidate Starts for Angel_32:

(Start: 10 @28917 has 58 MA's), (27, 28854), (97, 28728), (129, 28620), (139, 28587), (150, 28521), (176, 28410), (183, 28392), (187, 28371), (189, 28365), (190, 28362), (197, 28338), (211, 28266), (220, 28230), (250, 28071), (261, 27999), (273, 27927), (274, 27924), (299, 27855), (300, 27849), (308, 27813),

Gene: Annihilator_32 Start: 28908, Stop: 27712, Start Num: 10

Candidate Starts for Annihilator_32:

(Start: 10 @28908 has 58 MA's), (27, 28845), (97, 28719), (129, 28611), (139, 28578), (150, 28512), (176, 28401), (183, 28383), (187, 28362), (189, 28356), (190, 28353), (197, 28329), (211, 28257), (220, 28221), (250, 28062), (261, 27990), (273, 27918), (274, 27915), (299, 27846), (300, 27840), (308, 27804),

Gene: Archis_43 Start: 32279, Stop: 31389, Start Num: 47

Candidate Starts for Archis_43:

(Start: 47 @32279 has 8 MA's), (Start: 57 @32258 has 1 MA's), (65, 32243), (Start: 74 @32225 has 1 MA's), (Start: 79 @32216 has 18 MA's), (Start: 93 @32198 has 6 MA's), (118, 32132), (189, 31826), (211, 31733), (218, 31706), (228, 31664), (239, 31604), (244, 31580), (252, 31544), (265, 31463),

Gene: Arib1_30 Start: 26880, Stop: 25924, Start Num: 44

Candidate Starts for Arib1_30:

(Start: 44 @26880 has 34 MA's), (61, 26850), (Start: 79 @26817 has 18 MA's), (Start: 82 @26814 has 1 MA's), (Start: 124 @26742 has 1 MA's), (Start: 125 @26733 has 3 MA's), (126, 26727), (139, 26682), (160, 26565), (161, 26562), (162, 26559), (170, 26529), (171, 26517), (176, 26502), (183, 26484), (189, 26457), (197, 26430), (198, 26424), (209, 26370), (211, 26364), (228, 26295), (244, 26211), (248, 26196), (262, 26109), (270, 26067), (309, 25938),

Gene: Aroostook_32 Start: 28917, Stop: 27721, Start Num: 10

Candidate Starts for Aroostook_32:

(Start: 10 @28917 has 58 MA's), (27, 28854), (84, 28749), (97, 28728), (129, 28620), (139, 28587), (150, 28521), (176, 28410), (183, 28392), (187, 28371), (189, 28365), (190, 28362), (197, 28338), (211, 28266), (220, 28230), (250, 28071), (261, 27999), (273, 27927), (274, 27924), (299, 27855), (300, 27849), (308, 27813), (316, 27777),

Gene: Arri_50 Start: 39538, Stop: 38603, Start Num: 33

Candidate Starts for Arri_50:

(Start: 33 @39538 has 18 MA's), (Start: 55 @39490 has 5 MA's), (Start: 58 @39487 has 1 MA's), (Start: 67 @39469 has 3 MA's), (Start: 70 @39460 has 1 MA's), (Start: 125 @39328 has 3 MA's), (166, 39145), (169, 39133), (176, 39103), (178, 39100), (189, 39058), (201, 39007), (208, 38968), (209, 38965), (250, 38764), (252, 38755), (260, 38695), (270, 38647), (271, 38632), (273, 38620),

Gene: Atcoo_30 Start: 27362, Stop: 26406, Start Num: 44

Candidate Starts for Atcoo_30:

(Start: 44 @27362 has 34 MA's), (Start: 79 @27299 has 18 MA's), (Start: 82 @27296 has 1 MA's), (Start: 124 @27224 has 1 MA's), (Start: 125 @27215 has 3 MA's), (139, 27164), (160, 27047), (161, 27044), (162, 27041), (170, 27011), (171, 26999), (176, 26984), (183, 26966), (189, 26939), (197, 26912), (198, 26906), (209, 26852), (211, 26846), (216, 26828), (228, 26777), (244, 26693), (259, 26603), (262, 26591), (270, 26549), (309, 26420),

Gene: AuntGwenStacy_53 Start: 40512, Stop: 39421, Start Num: 125

Candidate Starts for AuntGwenStacy_53:

(Start: 11 @40800 has 1 MA's), (16, 40770), (49, 40683), (52, 40680), (62, 40662), (106, 40578), (108, 40572), (Start: 125 @40512 has 3 MA's), (134, 40479), (176, 40284), (186, 40248), (189, 40239), (190, 40236), (232, 40047), (240, 39978), (247, 39954), (250, 39936), (259, 39873), (267, 39840), (273, 39792), (283, 39756), (285, 39750), (287, 39747), (293, 39735), (294, 39726), (296, 39723), (310, 39651), (311, 39648), (314, 39642), (315, 39639), (321, 39462),

Gene: Avrafan_32 Start: 28917, Stop: 27721, Start Num: 10

Candidate Starts for Avrafan_32:

(Start: 10 @28917 has 58 MA's), (27, 28854), (97, 28728), (129, 28620), (139, 28587), (150, 28521), (176, 28410), (183, 28392), (187, 28371), (189, 28365), (190, 28362), (197, 28338), (211, 28266), (220, 28230), (250, 28071), (261, 27999), (273, 27927), (274, 27924), (299, 27855), (300, 27849), (308, 27813),

Gene: AzulaCat_32 Start: 28728, Stop: 27721, Start Num: 97

Candidate Starts for AzulaCat_32:

(Start: 10 @28917 has 58 MA's), (27, 28854), (97, 28728), (129, 28620), (139, 28587), (150, 28521), (176, 28410), (183, 28392), (187, 28371), (189, 28365), (190, 28362), (197, 28338), (211, 28266), (220, 28230), (250, 28071), (261, 27999), (273, 27927), (274, 27924), (299, 27855), (300, 27849), (308, 27813),

Gene: BBQValindra_37 Start: 32011, Stop: 31118, Start Num: 76

Candidate Starts for BBQValindra_37:

(Start: 76 @32011 has 18 MA's), (Start: 78 @32005 has 1 MA's), (Start: 81 @32002 has 1 MA's), (110, 31945), (112, 31942), (122, 31900), (Start: 125 @31885 has 3 MA's), (152, 31765), (162, 31720), (164, 31714), (190, 31618), (226, 31471), (231, 31447), (234, 31417), (252, 31324), (267, 31237), (270, 31216), (272, 31192),

Gene: BPs_32 Start: 28917, Stop: 27721, Start Num: 10

Candidate Starts for BPs_32:

(Start: 10 @28917 has 58 MA's), (27, 28854), (97, 28728), (129, 28620), (139, 28587), (150, 28521), (176, 28410), (183, 28392), (187, 28371), (189, 28365), (190, 28362), (197, 28338), (211, 28266), (220, 28230), (250, 28071), (261, 27999), (273, 27927), (274, 27924), (299, 27855), (300, 27849), (308, 27813),

Gene: BQuat_32 Start: 28908, Stop: 27712, Start Num: 10

Candidate Starts for BQuat_32:

(Start: 10 @28908 has 58 MA's), (27, 28845), (97, 28719), (129, 28611), (139, 28578), (150, 28512), (176, 28401), (183, 28383), (187, 28362), (189, 28356), (190, 28353), (197, 28329), (211, 28257), (220, 28221), (250, 28062), (261, 27990), (273, 27918), (274, 27915), (299, 27846), (300, 27840), (308, 27804),

Gene: BabeRuth_38 Start: 29036, Stop: 28065, Start Num: 36

Candidate Starts for BabeRuth_38:

(Start: 36 @29036 has 39 MA's), (Start: 78 @28952 has 1 MA's), (Start: 85 @28943 has 1 MA's), (139, 28790), (160, 28673), (161, 28670), (176, 28610), (180, 28601), (185, 28586), (189, 28565), (195, 28547), (208, 28481), (225, 28415), (228, 28403), (233, 28376), (239, 28337), (244, 28313), (248, 28298), (259, 28223), (270, 28169),

Gene: Babsiella_33 Start: 28104, Stop: 27151, Start Num: 44

Candidate Starts for Babsiella_33:

(Start: 44 @28104 has 34 MA's), (71, 28053), (Start: 79 @28041 has 18 MA's), (Start: 125 @27957 has 3 MA's), (129, 27939), (160, 27789), (161, 27786), (162, 27783), (170, 27753), (171, 27741), (176, 27726), (180, 27717), (183, 27708), (189, 27681), (198, 27648), (209, 27594), (211, 27588), (225,

27531), (228, 27519), (244, 27435), (248, 27420), (259, 27345), (262, 27333), (265, 27318), (270, 27291), (297, 27198), (304, 27183),

Gene: BabyMoney_33 Start: 29420, Stop: 28557, Start Num: 76

Candidate Starts for BabyMoney_33:

(Start: 44 @29471 has 34 MA's), (Start: 76 @29420 has 18 MA's), (123, 29315), (129, 29285), (139, 29252), (141, 29243), (160, 29135), (161, 29132), (176, 29072), (185, 29048), (188, 29030), (189, 29027), (222, 28889), (228, 28865), (233, 28838), (244, 28775), (248, 28760), (258, 28688), (262, 28673), (278, 28586),

Gene: BackstagePass_45 Start: 32457, Stop: 31561, Start Num: 76

Candidate Starts for BackstagePass_45:

(Start: 41 @32523 has 1 MA's), (Start: 76 @32457 has 18 MA's), (Start: 78 @32451 has 1 MA's), (Start: 81 @32448 has 1 MA's), (103, 32412), (110, 32391), (112, 32388), (122, 32346), (Start: 125 @32331 has 3 MA's), (152, 32211), (162, 32166), (164, 32160), (190, 32064), (192, 32058), (197, 32040), (231, 31893), (234, 31863), (252, 31770), (256, 31743), (267, 31683), (272, 31638), (289, 31581),

Gene: Bakery_53 Start: 40679, Stop: 39744, Start Num: 33

Candidate Starts for Bakery_53:

(Start: 33 @40679 has 18 MA's), (Start: 55 @40631 has 5 MA's), (Start: 58 @40628 has 1 MA's), (Start: 67 @40610 has 3 MA's), (100, 40553), (Start: 125 @40469 has 3 MA's), (169, 40274), (176, 40244), (178, 40241), (189, 40199), (199, 40157), (201, 40148), (208, 40109), (250, 39905), (260, 39836), (270, 39788), (271, 39773), (273, 39761),

Gene: Ball_28 Start: 23533, Stop: 22643, Start Num: 87

Candidate Starts for Ball_28:

(Start: 87 @23533 has 8 MA's), (108, 23494), (141, 23377), (153, 23305), (166, 23254), (172, 23218), (189, 23164), (201, 23113), (228, 23002), (237, 22930), (247, 22885), (255, 22834), (263, 22792), (265, 22777), (277, 22708), (280, 22699),

Gene: Barb_49 Start: 39609, Stop: 38722, Start Num: 55

Candidate Starts for Barb_49:

(Start: 33 @39657 has 18 MA's), (Start: 55 @39609 has 5 MA's), (Start: 58 @39606 has 1 MA's), (Start: 67 @39588 has 3 MA's), (Start: 70 @39579 has 1 MA's), (Start: 125 @39447 has 3 MA's), (166, 39264), (169, 39252), (178, 39219), (189, 39177), (201, 39126), (208, 39087), (250, 38883), (252, 38874), (260, 38814), (270, 38766), (271, 38751), (273, 38739),

Gene: Barco_38 Start: 31266, Stop: 30439, Start Num: 79

Candidate Starts for Barco_38:

(Start: 47 @31329 has 8 MA's), (Start: 57 @31308 has 1 MA's), (65, 31293), (Start: 74 @31275 has 1 MA's), (Start: 79 @31266 has 18 MA's), (Start: 93 @31248 has 6 MA's), (118, 31182), (189, 30876), (211, 30783), (218, 30756), (228, 30714), (239, 30654), (244, 30630), (252, 30594), (265, 30513),

Gene: Barebow_18 Start: 15231, Stop: 14389, Start Num: 68

Candidate Starts for Barebow_18:

(15, 15354), (16, 15345), (23, 15327), (38, 15294), (56, 15252), (Start: 68 @15231 has 1 MA's), (71, 15222), (Start: 80 @15210 has 1 MA's), (98, 15180), (139, 15039), (152, 14964), (166, 14907), (169, 14895), (176, 14865), (182, 14850), (189, 14820), (190, 14817), (197, 14793), (211, 14721), (219, 14691),

Gene: Barkley26_32 Start: 28939, Stop: 27743, Start Num: 10

Candidate Starts for Barkley26_32:

(7, 28963), (Start: 10 @28939 has 58 MA's), (27, 28876), (84, 28771), (102, 28741), (129, 28642), (139, 28609), (150, 28543), (176, 28432), (183, 28414), (187, 28393), (189, 28387), (190, 28384), (197, 28360), (211, 28288), (220, 28252), (250, 28093), (261, 28021), (273, 27949), (274, 27946), (299, 27877), (300, 27871), (308, 27835),

Gene: Bartholomew_29 Start: 26812, Stop: 25919, Start Num: 79

Candidate Starts for Bartholomew_29:

(Start: 44 @26875 has 34 MA's), (61, 26845), (Start: 79 @26812 has 18 MA's), (Start: 82 @26809 has 1 MA's), (Start: 124 @26737 has 1 MA's), (Start: 125 @26728 has 3 MA's), (126, 26722), (139, 26677), (160, 26560), (161, 26557), (162, 26554), (170, 26524), (171, 26512), (176, 26497), (183, 26479), (189, 26452), (197, 26425), (198, 26419), (209, 26365), (211, 26359), (228, 26290), (244, 26206), (255, 26146), (262, 26104), (270, 26062), (309, 25933),

Gene: Bhagsy_30 Start: 26871, Stop: 25915, Start Num: 44

Candidate Starts for Bhagsy_30:

(Start: 44 @26871 has 34 MA's), (Start: 79 @26808 has 18 MA's), (Start: 82 @26805 has 1 MA's), (Start: 124 @26733 has 1 MA's), (Start: 125 @26724 has 3 MA's), (139, 26673), (160, 26556), (161, 26553), (162, 26550), (170, 26520), (171, 26508), (176, 26493), (183, 26475), (189, 26448), (197, 26421), (198, 26415), (209, 26361), (228, 26286), (244, 26202), (259, 26112), (262, 26100), (270, 26058), (309, 25929),

Gene: BigBoyz_15 Start: 12973, Stop: 12104, Start Num: 87

Candidate Starts for BigBoyz_15:

(Start: 87 @12973 has 8 MA's), (104, 12943), (129, 12850), (135, 12832), (143, 12793), (165, 12688), (166, 12685), (167, 12679), (180, 12631), (189, 12595), (198, 12562), (201, 12544), (222, 12457), (228, 12433), (237, 12367), (258, 12247), (259, 12244), (280, 12139), (288, 12115),

Gene: BigNuz_33 Start: 28934, Stop: 28032, Start Num: 73

Candidate Starts for BigNuz_33:

(59, 28961), (Start: 73 @28934 has 2 MA's), (Start: 79 @28925 has 18 MA's), (Start: 124 @28850 has 1 MA's), (Start: 125 @28841 has 3 MA's), (160, 28673), (161, 28670), (162, 28667), (170, 28637), (171, 28625), (176, 28610), (183, 28592), (189, 28565), (197, 28538), (198, 28532), (209, 28478), (216, 28454), (225, 28415), (228, 28403), (244, 28319), (248, 28304), (251, 28286), (262, 28217), (270, 28175), (287, 28106), (309, 28046),

Gene: Bipper_50 Start: 39303, Stop: 38347, Start Num: 125

Candidate Starts for Bipper_50:

(9, 39591), (Start: 11 @39579 has 1 MA's), (16, 39549), (20, 39537), (62, 39453), (66, 39444), (90, 39408), (97, 39393), (108, 39363), (Start: 125 @39303 has 3 MA's), (189, 39030), (190, 39027), (192, 39021), (196, 39009), (199, 38988), (200, 38982), (219, 38901), (232, 38838), (242, 38760), (247, 38745), (250, 38727), (259, 38664), (270, 38610), (273, 38583), (291, 38532), (294, 38520), (296, 38517), (301, 38499), (302, 38490), (303, 38487), (306, 38478), (307, 38475), (312, 38442), (316, 38433), (317, 38421), (318, 38403), (319, 38400),

Gene: BlingBling_37 Start: 32229, Stop: 31402, Start Num: 79

Candidate Starts for BlingBling_37:

(Start: 47 @32292 has 8 MA's), (Start: 57 @32271 has 1 MA's), (65, 32256), (Start: 74 @32238 has 1 MA's), (Start: 79 @32229 has 18 MA's), (Start: 93 @32211 has 6 MA's), (118, 32145), (189, 31839), (211, 31746), (218, 31719), (228, 31677), (239, 31617), (244, 31593), (252, 31557), (265, 31476),

Gene: Bogie_32 Start: 28658, Stop: 27702, Start Num: 44

Candidate Starts for Bogie_32:

(Start: 44 @28658 has 34 MA's), (61, 28628), (Start: 79 @28595 has 18 MA's), (Start: 82 @28592 has 1 MA's), (Start: 124 @28520 has 1 MA's), (Start: 125 @28511 has 3 MA's), (126, 28505), (139, 28460), (160, 28343), (161, 28340), (162, 28337), (170, 28307), (171, 28295), (176, 28280), (180, 28271), (183, 28262), (189, 28235), (197, 28208), (198, 28202), (209, 28148), (216, 28124), (228, 28073), (244, 27989), (255, 27929), (259, 27899), (262, 27887), (270, 27845), (309, 27716),

Gene: Bosection6_34 Start: 27410, Stop: 26439, Start Num: 36

Candidate Starts for Bosection6_34:

(Start: 36 @27410 has 39 MA's), (39, 27401), (Start: 78 @27326 has 1 MA's), (Start: 92 @27311 has 1 MA's), (132, 27188), (139, 27164), (160, 27047), (161, 27044), (167, 27023), (176, 26984), (178, 26981), (180, 26975), (185, 26960), (189, 26939), (194, 26924), (205, 26867), (208, 26855), (219, 26816), (225, 26789), (228, 26777), (233, 26750), (239, 26711), (244, 26687), (248, 26672), (270, 26543), (282, 26489), (295, 26456),

Gene: Bowser_39 Start: 31647, Stop: 30763, Start Num: 81

Candidate Starts for Bowser_39:

(Start: 76 @31656 has 18 MA's), (Start: 78 @31650 has 1 MA's), (Start: 81 @31647 has 1 MA's), (110, 31590), (112, 31587), (122, 31545), (142, 31461), (162, 31365), (190, 31263), (201, 31215), (267, 30882), (272, 30837),

Gene: BruceB_32 Start: 28917, Stop: 27721, Start Num: 10

Candidate Starts for BruceB_32:

(Start: 10 @28917 has 58 MA's), (27, 28854), (97, 28728), (129, 28620), (139, 28587), (150, 28521), (176, 28410), (183, 28392), (187, 28371), (189, 28365), (190, 28362), (197, 28338), (211, 28266), (220, 28230), (250, 28071), (261, 27999), (273, 27927), (274, 27924), (299, 27855), (300, 27849), (308, 27813),

Gene: Brujita_33 Start: 29011, Stop: 28055, Start Num: 44

Candidate Starts for Brujita_33:

(Start: 44 @29011 has 34 MA's), (61, 28981), (Start: 79 @28948 has 18 MA's), (Start: 82 @28945 has 1 MA's), (Start: 124 @28873 has 1 MA's), (Start: 125 @28864 has 3 MA's), (139, 28813), (160, 28696), (161, 28693), (162, 28690), (170, 28660), (171, 28648), (176, 28633), (183, 28615), (189, 28588), (197, 28561), (198, 28555), (209, 28501), (216, 28477), (228, 28426), (244, 28342), (259, 28252), (262, 28240), (270, 28198), (309, 28069),

Gene: Brusacoram_30 Start: 26805, Stop: 25912, Start Num: 79

Candidate Starts for Brusacoram_30:

(Start: 44 @26868 has 34 MA's), (Start: 79 @26805 has 18 MA's), (Start: 82 @26802 has 1 MA's), (Start: 124 @26730 has 1 MA's), (Start: 125 @26721 has 3 MA's), (139, 26670), (160, 26553), (161, 26550), (162, 26547), (170, 26517), (171, 26505), (176, 26490), (183, 26472), (189, 26445), (197, 26418), (198, 26412), (209, 26358), (211, 26352), (216, 26334), (228, 26283), (244, 26199), (259, 26109), (262, 26097), (270, 26055), (309, 25926),

Gene: Bunker_36 Start: 30985, Stop: 30131, Start Num: 78

Candidate Starts for Bunker_36:

(Start: 78 @30985 has 1 MA's), (123, 30886), (129, 30856), (139, 30823), (141, 30814), (145, 30778), (160, 30706), (161, 30703), (176, 30643), (185, 30619), (188, 30601), (189, 30598), (195, 30580), (211, 30505), (222, 30460), (228, 30436), (233, 30409), (244, 30346), (248, 30331), (258, 30259), (262, 30244), (270, 30202), (278, 30157),

Gene: Bunnies_30 Start: 26889, Stop: 25933, Start Num: 44

Candidate Starts for Bunnies_30:

(Start: 44 @26889 has 34 MA's), (Start: 79 @26826 has 18 MA's), (Start: 82 @26823 has 1 MA's), (Start: 124 @26751 has 1 MA's), (Start: 125 @26742 has 3 MA's), (139, 26691), (160, 26574), (161, 26571), (162, 26568), (170, 26538), (171, 26526), (176, 26511), (183, 26493), (189, 26466), (197, 26439), (198, 26433), (209, 26379), (228, 26304), (244, 26220), (259, 26130), (262, 26118), (270, 26076), (309, 25947),

Gene: Butters_37 Start: 29461, Stop: 28490, Start Num: 36

Candidate Starts for Butters_37:

(34, 29464), (Start: 36 @29461 has 39 MA's), (Start: 78 @29377 has 1 MA's), (Start: 125 @29266 has 3 MA's), (132, 29239), (139, 29215), (160, 29098), (180, 29026), (185, 29011), (189, 28990), (219, 28867), (225, 28840), (228, 28828), (233, 28801), (239, 28762), (244, 28738), (248, 28723), (259, 28648), (262, 28636), (270, 28594), (271, 28579), (282, 28540),

Gene: CLED96_32 Start: 28917, Stop: 27721, Start Num: 10

Candidate Starts for CLED96_32:

(Start: 10 @28917 has 58 MA's), (27, 28854), (97, 28728), (129, 28620), (139, 28587), (150, 28521), (176, 28410), (183, 28392), (187, 28371), (189, 28365), (190, 28362), (197, 28338), (211, 28266), (220, 28230), (250, 28071), (261, 27999), (273, 27927), (274, 27924), (299, 27855), (300, 27849), (308, 27813),

Gene: CactusJack_30 Start: 27132, Stop: 26176, Start Num: 44

Candidate Starts for CactusJack_30:

(Start: 44 @27132 has 34 MA's), (Start: 79 @27069 has 18 MA's), (Start: 82 @27066 has 1 MA's), (Start: 124 @26994 has 1 MA's), (Start: 125 @26985 has 3 MA's), (139, 26934), (160, 26817), (161, 26814), (162, 26811), (170, 26781), (171, 26769), (176, 26754), (183, 26736), (189, 26709), (197, 26682), (198, 26676), (209, 26622), (211, 26616), (216, 26598), (228, 26547), (244, 26463), (259, 26373), (262, 26361), (270, 26319), (309, 26190),

Gene: Camri_32 Start: 28917, Stop: 27721, Start Num: 10

Candidate Starts for Camri_32:

(Start: 10 @28917 has 58 MA's), (27, 28854), (97, 28728), (129, 28620), (139, 28587), (150, 28521), (176, 28410), (183, 28392), (187, 28371), (189, 28365), (190, 28362), (197, 28338), (211, 28266), (220, 28230), (250, 28071), (261, 27999), (273, 27927), (274, 27924), (299, 27855), (300, 27849), (308, 27813),

Gene: Camster_30 Start: 26842, Stop: 25949, Start Num: 79

Candidate Starts for Camster_30:

(Start: 44 @26905 has 34 MA's), (61, 26875), (Start: 79 @26842 has 18 MA's), (Start: 82 @26839 has 1 MA's), (Start: 124 @26767 has 1 MA's), (Start: 125 @26758 has 3 MA's), (139, 26707), (160, 26590), (161, 26587), (162, 26584), (170, 26554), (171, 26542), (176, 26527), (183, 26509), (189, 26482), (197, 26455), (198, 26449), (209, 26395), (211, 26389), (228, 26320), (244, 26236), (259, 26146), (262, 26134), (270, 26092), (309, 25963),

Gene: CaptainKirk2_40 Start: 31496, Stop: 30687, Start Num: 93

Candidate Starts for CaptainKirk2_40:

(Start: 47 @31577 has 8 MA's), (Start: 57 @31556 has 1 MA's), (65, 31541), (Start: 74 @31523 has 1 MA's), (Start: 79 @31514 has 18 MA's), (Start: 93 @31496 has 6 MA's), (118, 31430), (146, 31304), (156, 31259), (189, 31124), (195, 31106), (198, 31091), (211, 31031), (218, 31004), (228, 30962), (239, 30902), (244, 30878), (252, 30842), (265, 30761),

Gene: Carcharodon_36 Start: 28718, Stop: 27747, Start Num: 36

Candidate Starts for Carcharodon_36:

(Start: 36 @28718 has 39 MA's), (Start: 78 @28634 has 1 MA's), (Start: 92 @28619 has 1 MA's), (132, 28496), (139, 28472), (160, 28355), (161, 28352), (167, 28331), (176, 28292), (178, 28289), (180, 28283), (185, 28268), (189, 28247), (194, 28232), (205, 28175), (208, 28163), (219, 28124), (225, 28097), (228, 28085), (233, 28058), (239, 28019), (244, 27995), (248, 27980), (270, 27851), (271, 27836), (282, 27797),

Gene: CassieYates_32 Start: 28917, Stop: 27721, Start Num: 10

Candidate Starts for CassieYates_32:

(Start: 10 @28917 has 58 MA's), (27, 28854), (97, 28728), (129, 28620), (139, 28587), (150, 28521), (176, 28410), (183, 28392), (187, 28371), (189, 28365), (190, 28362), (197, 28338), (211, 28266), (220, 28230), (250, 28071), (261, 27999), (273, 27927), (274, 27924), (299, 27855), (300, 27849), (308, 27813),

Gene: Cedasite_32 Start: 28917, Stop: 27721, Start Num: 10

Candidate Starts for Cedasite_32:

(Start: 10 @28917 has 58 MA's), (27, 28854), (97, 28728), (129, 28620), (139, 28587), (150, 28521), (176, 28410), (183, 28392), (187, 28371), (189, 28365), (190, 28362), (197, 28338), (211, 28266), (220, 28230), (250, 28071), (261, 27999), (273, 27927), (274, 27924), (299, 27855), (300, 27849), (308, 27813),

Gene: Chance64_32 Start: 28917, Stop: 27721, Start Num: 10

Candidate Starts for Chance64_32:

(Start: 10 @28917 has 58 MA's), (27, 28854), (84, 28749), (97, 28728), (129, 28620), (139, 28587), (150, 28521), (176, 28410), (183, 28392), (187, 28371), (189, 28365), (190, 28362), (197, 28338), (211, 28266), (220, 28230), (250, 28071), (261, 27999), (273, 27927), (274, 27924), (299, 27855), (300, 27849), (308, 27813), (316, 27777),

Gene: Charlie_34 Start: 27409, Stop: 26438, Start Num: 36

Candidate Starts for Charlie_34:

(Start: 36 @27409 has 39 MA's), (39, 27400), (Start: 78 @27325 has 1 MA's), (Start: 92 @27310 has 1 MA's), (132, 27187), (139, 27163), (160, 27046), (161, 27043), (167, 27022), (176, 26983), (178, 26980), (180, 26974), (185, 26959), (189, 26938), (194, 26923), (205, 26866), (208, 26854), (219, 26815), (225, 26788), (228, 26776), (233, 26749), (239, 26710), (244, 26686), (248, 26671), (270, 26542), (282, 26488), (295, 26455),

Gene: CherryCola_51 Start: 40242, Stop: 39376, Start Num: 67

Candidate Starts for CherryCola_51:

(Start: 33 @40311 has 18 MA's), (Start: 55 @40263 has 5 MA's), (Start: 58 @40260 has 1 MA's), (Start: 67 @40242 has 3 MA's), (Start: 70 @40233 has 1 MA's), (Start: 125 @40101 has 3 MA's), (166, 39918), (169, 39906), (178, 39873), (189, 39831), (201, 39780), (208, 39741), (250, 39537), (252, 39528), (260, 39468), (270, 39420), (271, 39405), (273, 39393),

Gene: Cherrybomb426_32 Start: 28917, Stop: 27721, Start Num: 10

Candidate Starts for Cherrybomb426_32:

(Start: 10 @28917 has 58 MA's), (27, 28854), (97, 28728), (129, 28620), (139, 28587), (150, 28521), (176, 28410), (183, 28392), (187, 28371), (189, 28365), (190, 28362), (197, 28338), (211, 28266), (220, 28230), (250, 28071), (261, 27999), (273, 27927), (274, 27924), (299, 27855), (300, 27849), (308, 27813),

Gene: Chewbacca_37 Start: 28718, Stop: 27747, Start Num: 36

Candidate Starts for Chewbacca_37:

(Start: 36 @28718 has 39 MA's), (Start: 78 @28634 has 1 MA's), (Start: 92 @28619 has 1 MA's), (132, 28496), (139, 28472), (160, 28355), (161, 28352), (167, 28331), (176, 28292), (178, 28289), (180,

28283), (185, 28268), (189, 28247), (194, 28232), (205, 28175), (208, 28163), (219, 28124), (225, 28097), (228, 28085), (233, 28058), (239, 28019), (244, 27995), (248, 27980), (270, 27851), (271, 27836), (282, 27797),

Gene: ClamChowder_49 Start: 39657, Stop: 38722, Start Num: 33

Candidate Starts for ClamChowder_49:

(Start: 33 @39657 has 18 MA's), (Start: 55 @39609 has 5 MA's), (Start: 58 @39606 has 1 MA's), (Start: 67 @39588 has 3 MA's), (Start: 70 @39579 has 1 MA's), (Start: 125 @39447 has 3 MA's), (166, 39264), (169, 39252), (178, 39219), (189, 39177), (201, 39126), (208, 39087), (250, 38883), (252, 38874), (260, 38814), (270, 38766), (271, 38751), (273, 38739),

Gene: Clown_56 Start: 42611, Stop: 41772, Start Num: 82

Candidate Starts for Clown_56:

(Start: 82 @42611 has 1 MA's), (Start: 93 @42596 has 6 MA's), (99, 42581), (108, 42560), (149, 42389), (160, 42335), (186, 42233), (189, 42224), (218, 42104), (228, 42062), (241, 41993), (244, 41981), (248, 41966), (252, 41945), (258, 41894), (261, 41882), (262, 41879), (265, 41864),

Gene: Coeur_19 Start: 13884, Stop: 13063, Start Num: 79

Candidate Starts for Coeur_19:

(Start: 22 @14010 has 1 MA's), (31, 13980), (45, 13950), (69, 13902), (Start: 79 @13884 has 18 MA's), (108, 13827), (111, 13821), (114, 13812), (Start: 124 @13776 has 1 MA's), (130, 13746), (149, 13653), (158, 13614), (161, 13596), (163, 13590), (188, 13497), (203, 13428), (204, 13425), (209, 13401), (219, 13365), (220, 13359), (242, 13263), (247, 13248), (261, 13158), (262, 13155), (270, 13113), (271, 13098), (272, 13089), (275, 13077),

Gene: Cole_37 Start: 28322, Stop: 27447, Start Num: 87

Candidate Starts for Cole_37:

(Start: 87 @28322 has 8 MA's), (108, 28283), (133, 28196), (145, 28136), (153, 28097), (166, 28046), (172, 28010), (180, 27992), (189, 27956), (197, 27929), (201, 27905), (203, 27890), (212, 27860), (220, 27827), (225, 27806), (228, 27794), (237, 27722), (239, 27710), (255, 27626), (263, 27584), (265, 27569),

Gene: Coleslaw_32 Start: 28908, Stop: 27712, Start Num: 10

Candidate Starts for Coleslaw_32:

(Start: 10 @28908 has 58 MA's), (27, 28845), (97, 28719), (129, 28611), (139, 28578), (150, 28512), (176, 28401), (183, 28383), (187, 28362), (189, 28356), (190, 28353), (197, 28329), (211, 28257), (220, 28221), (250, 28062), (261, 27990), (273, 27918), (274, 27915), (299, 27846), (300, 27840), (308, 27804),

Gene: Coriander_39 Start: 31214, Stop: 30324, Start Num: 76

Candidate Starts for Coriander_39:

(Start: 76 @31214 has 18 MA's), (Start: 78 @31208 has 1 MA's), (Start: 81 @31205 has 1 MA's), (110, 31148), (112, 31145), (122, 31103), (142, 31019), (179, 30860), (190, 30821), (201, 30773), (226, 30674), (231, 30650), (241, 30575), (252, 30527), (267, 30440), (272, 30395), (273, 30392),

Gene: CoveyB_50 Start: 39287, Stop: 38421, Start Num: 67

Candidate Starts for CoveyB_50:

(Start: 33 @39356 has 18 MA's), (Start: 55 @39308 has 5 MA's), (Start: 58 @39305 has 1 MA's), (Start: 67 @39287 has 3 MA's), (Start: 70 @39278 has 1 MA's), (Start: 125 @39146 has 3 MA's), (166, 38963), (169, 38951), (178, 38918), (189, 38876), (201, 38825), (208, 38786), (250, 38582), (252, 38573), (260, 38513), (270, 38465), (271, 38450), (273, 38438),

Gene: Cracklewink_50 Start: 39572, Stop: 38340, Start Num: 11

Candidate Starts for Cracklewink_50:

(9, 39584), (Start: 11 @39572 has 1 MA's), (16, 39542), (20, 39530), (62, 39446), (66, 39437), (90, 39401), (97, 39386), (108, 39356), (Start: 125 @39296 has 3 MA's), (189, 39023), (190, 39020), (192, 39014), (196, 39002), (199, 38981), (200, 38975), (219, 38894), (232, 38831), (242, 38753), (247, 38738), (250, 38720), (259, 38657), (270, 38603), (273, 38576), (291, 38525), (294, 38513), (296, 38510), (301, 38492), (302, 38483), (303, 38480), (306, 38471), (307, 38468), (312, 38435), (316, 38426), (317, 38414), (318, 38396), (319, 38393),

Gene: Crespo_32 Start: 28918, Stop: 27722, Start Num: 10

Candidate Starts for Crespo_32:

(Start: 10 @28918 has 58 MA's), (27, 28855), (97, 28729), (129, 28621), (139, 28588), (150, 28522), (176, 28411), (183, 28393), (187, 28372), (189, 28366), (190, 28363), (197, 28339), (211, 28267), (220, 28231), (250, 28072), (261, 28000), (273, 27928), (274, 27925), (299, 27856), (300, 27850), (308, 27814),

Gene: CyranoPS_17 Start: 12355, Stop: 11534, Start Num: 82

Candidate Starts for CyranoPS_17:

(Start: 82 @12355 has 1 MA's), (Start: 94 @12337 has 1 MA's), (108, 12304), (120, 12268), (128, 12232), (131, 12220), (158, 12091), (163, 12067), (170, 12040), (178, 12010), (238, 11764), (240, 11749), (242, 11740), (254, 11677), (270, 11590),

Gene: DMoney_32 Start: 28917, Stop: 27721, Start Num: 10

Candidate Starts for DMoney_32:

(Start: 10 @28917 has 58 MA's), (27, 28854), (97, 28728), (129, 28620), (139, 28587), (150, 28521), (176, 28410), (183, 28392), (187, 28371), (189, 28365), (190, 28362), (197, 28338), (211, 28266), (220, 28230), (250, 28071), (261, 27999), (273, 27927), (274, 27924), (299, 27855), (300, 27849), (308, 27813),

Gene: Danyall_49 Start: 39358, Stop: 38423, Start Num: 33

Candidate Starts for Danyall_49:

(Start: 33 @39358 has 18 MA's), (Start: 55 @39310 has 5 MA's), (Start: 58 @39307 has 1 MA's), (Start: 67 @39289 has 3 MA's), (Start: 70 @39280 has 1 MA's), (Start: 125 @39148 has 3 MA's), (166, 38965), (169, 38953), (176, 38923), (178, 38920), (189, 38878), (201, 38827), (208, 38788), (209, 38785), (250, 38584), (252, 38575), (260, 38515), (270, 38467), (271, 38452), (273, 38440),

Gene: Darionha_32 Start: 28917, Stop: 27721, Start Num: 10

Candidate Starts for Darionha_32:

(Start: 10 @28917 has 58 MA's), (27, 28854), (97, 28728), (129, 28620), (139, 28587), (150, 28521), (176, 28410), (183, 28392), (187, 28371), (189, 28365), (190, 28362), (197, 28338), (211, 28266), (220, 28230), (250, 28071), (261, 27999), (273, 27927), (274, 27924), (299, 27855), (300, 27849), (308, 27813),

Gene: Delian_43 Start: 31575, Stop: 30685, Start Num: 47

Candidate Starts for Delian_43:

(Start: 47 @31575 has 8 MA's), (Start: 57 @31554 has 1 MA's), (65, 31539), (Start: 74 @31521 has 1 MA's), (Start: 79 @31512 has 18 MA's), (Start: 93 @31494 has 6 MA's), (118, 31428), (146, 31302), (156, 31257), (189, 31122), (195, 31104), (198, 31089), (211, 31029), (218, 31002), (228, 30960), (239, 30900), (244, 30876), (252, 30840), (265, 30759),

Gene: DirtyBoi_40 Start: 31075, Stop: 30209, Start Num: 60

Candidate Starts for DirtyBoi_40:

(54, 31081), (Start: 57 @31078 has 1 MA's), (Start: 60 @31075 has 1 MA's), (65, 31063), (Start: 79 @31036 has 18 MA's), (Start: 93 @31018 has 6 MA's), (118, 30952), (123, 30934), (144, 30838), (189,

30646), (218, 30526), (228, 30484), (239, 30424), (244, 30400), (252, 30364), (265, 30283), (276, 30217),

Gene: Dmitri_38 Start: 32615, Stop: 31725, Start Num: 76

Candidate Starts for Dmitri_38:

(Start: 76 @32615 has 18 MA's), (Start: 78 @32609 has 1 MA's), (Start: 81 @32606 has 1 MA's), (103, 32570), (110, 32549), (112, 32546), (122, 32504), (142, 32420), (190, 32222), (226, 32075), (241, 31976), (257, 31883), (267, 31841), (272, 31796),

Gene: Dogfish_32 Start: 28978, Stop: 28088, Start Num: 76

Candidate Starts for Dogfish_32:

(Start: 76 @28978 has 18 MA's), (123, 28873), (Start: 124 @28870 has 1 MA's), (129, 28843), (139, 28810), (160, 28693), (176, 28630), (185, 28606), (188, 28588), (189, 28585), (217, 28471), (222, 28447), (228, 28423), (233, 28396), (244, 28333), (252, 28297), (258, 28246), (262, 28231), (270, 28189), (278, 28144), (291, 28111),

Gene: Doggs_36 Start: 31939, Stop: 31049, Start Num: 76

Candidate Starts for Doggs_36:

(Start: 76 @31939 has 18 MA's), (Start: 78 @31933 has 1 MA's), (Start: 81 @31930 has 1 MA's), (103, 31894), (110, 31873), (112, 31870), (122, 31828), (Start: 124 @31822 has 1 MA's), (142, 31744), (179, 31585), (201, 31498), (226, 31399), (267, 31165), (272, 31120), (273, 31117),

Gene: Donatella_38 Start: 28796, Stop: 27921, Start Num: 87

Candidate Starts for Donatella_38:

(Start: 87 @28796 has 8 MA's), (108, 28757), (145, 28610), (153, 28571), (166, 28520), (172, 28484), (189, 28430), (197, 28403), (198, 28397), (201, 28379), (203, 28364), (212, 28334), (225, 28280), (228, 28268), (237, 28196), (255, 28100), (263, 28058), (265, 28043),

Gene: DonkeyMan_31 Start: 27041, Stop: 26220, Start Num: 93

Candidate Starts for DonkeyMan_31:

(19, 27188), (Start: 24 @27179 has 1 MA's), (Start: 74 @27068 has 1 MA's), (Start: 93 @27041 has 6 MA's), (108, 27005), (Start: 124 @26954 has 1 MA's), (146, 26849), (148, 26837), (160, 26777), (171, 26729), (186, 26675), (189, 26666), (195, 26648), (211, 26573), (228, 26504), (239, 26444), (244, 26420), (248, 26405), (252, 26384), (261, 26321), (262, 26318), (265, 26303), (278, 26231),

Gene: Donovan_30 Start: 26897, Stop: 25908, Start Num: 44

Candidate Starts for Donovan_30:

(Start: 44 @26897 has 34 MA's), (61, 26867), (Start: 79 @26834 has 18 MA's), (Start: 82 @26831 has 1 MA's), (99, 26801), (101, 26798), (Start: 124 @26726 has 1 MA's), (Start: 125 @26717 has 3 MA's), (126, 26711), (139, 26666), (160, 26549), (161, 26546), (162, 26543), (170, 26513), (171, 26501), (176, 26486), (183, 26468), (189, 26441), (197, 26414), (198, 26408), (209, 26354), (211, 26348), (216, 26330), (228, 26279), (244, 26195), (255, 26135), (262, 26093), (309, 25922),

Gene: Duplicity_36 Start: 28727, Stop: 27756, Start Num: 36

Candidate Starts for Duplicity_36:

(Start: 36 @28727 has 39 MA's), (Start: 78 @28643 has 1 MA's), (Start: 92 @28628 has 1 MA's), (132, 28505), (139, 28481), (160, 28364), (161, 28361), (167, 28340), (176, 28301), (178, 28298), (180, 28292), (185, 28277), (189, 28256), (194, 28241), (205, 28184), (208, 28172), (219, 28133), (225, 28106), (228, 28094), (233, 28067), (239, 28028), (244, 28004), (248, 27989), (270, 27860), (271, 27845), (282, 27806),

Gene: Dynamo_30 Start: 27286, Stop: 26330, Start Num: 44

Candidate Starts for Dynamo_30:

(Start: 44 @27286 has 34 MA's), (61, 27256), (Start: 79 @27223 has 18 MA's), (Start: 82 @27220 has 1 MA's), (Start: 124 @27148 has 1 MA's), (Start: 125 @27139 has 3 MA's), (126, 27133), (139, 27088), (160, 26971), (161, 26968), (162, 26965), (170, 26935), (171, 26923), (176, 26908), (183, 26890), (189, 26863), (197, 26836), (198, 26830), (209, 26776), (211, 26770), (228, 26701), (244, 26617), (255, 26557), (262, 26515), (270, 26473), (309, 26344),

Gene: ECartman_32 Start: 28917, Stop: 27721, Start Num: 10

Candidate Starts for ECartman_32:

(Start: 10 @28917 has 58 MA's), (27, 28854), (84, 28749), (97, 28728), (129, 28620), (139, 28587), (150, 28521), (176, 28410), (183, 28392), (187, 28371), (189, 28365), (190, 28362), (197, 28338), (211, 28266), (220, 28230), (250, 28071), (261, 27999), (273, 27927), (274, 27924), (299, 27855), (300, 27849), (308, 27813), (316, 27777),

Gene: EGUunicorn_35 Start: 27409, Stop: 26438, Start Num: 36

Candidate Starts for EGUunicorn_35:

(Start: 36 @27409 has 39 MA's), (Start: 78 @27325 has 1 MA's), (Start: 92 @27310 has 1 MA's), (132, 27187), (139, 27163), (160, 27046), (161, 27043), (167, 27022), (176, 26983), (178, 26980), (180, 26974), (185, 26959), (189, 26938), (194, 26923), (205, 26866), (208, 26854), (219, 26815), (225, 26788), (228, 26776), (233, 26749), (239, 26710), (244, 26686), (248, 26671), (270, 26542), (282, 26488), (295, 26455),

Gene: Egi03_50 Start: 39069, Stop: 38203, Start Num: 67

Candidate Starts for Egi03_50:

(Start: 33 @39138 has 18 MA's), (Start: 55 @39090 has 5 MA's), (Start: 58 @39087 has 1 MA's), (Start: 67 @39069 has 3 MA's), (Start: 70 @39060 has 1 MA's), (Start: 125 @38928 has 3 MA's), (166, 38745), (169, 38733), (178, 38700), (189, 38658), (201, 38607), (208, 38568), (250, 38364), (252, 38355), (260, 38295), (270, 38247), (271, 38232), (273, 38220),

Gene: Elesar_35 Start: 29248, Stop: 28373, Start Num: 87

Candidate Starts for Elesar_35:

(Start: 87 @29248 has 8 MA's), (108, 29209), (127, 29137), (133, 29122), (153, 29023), (166, 28972), (189, 28882), (198, 28849), (201, 28831), (203, 28816), (212, 28786), (220, 28753), (225, 28732), (228, 28720), (237, 28648), (239, 28636), (253, 28564), (255, 28552), (263, 28510), (265, 28495),

Gene: Emperor_19 Start: 14339, Stop: 13512, Start Num: 76

Candidate Starts for Emperor_19:

(Start: 76 @14339 has 18 MA's), (Start: 85 @14324 has 1 MA's), (88, 14321), (Start: 94 @14312 has 1 MA's), (108, 14276), (120, 14240), (121, 14234), (129, 14198), (158, 14063), (163, 14039), (170, 14012), (174, 13991), (175, 13988), (186, 13952), (188, 13946), (189, 13943), (199, 13901), (203, 13877), (204, 13874), (217, 13823), (219, 13814), (220, 13808), (235, 13763), (247, 13697), (252, 13670), (269, 13565),

Gene: EpicDab_18 Start: 14205, Stop: 13375, Start Num: 76

Candidate Starts for EpicDab_18:

(Start: 76 @14205 has 18 MA's), (Start: 94 @14181 has 1 MA's), (108, 14145), (131, 14058), (170, 13881), (174, 13860), (175, 13857), (189, 13812), (199, 13770), (203, 13746), (204, 13743), (207, 13731), (211, 13713), (217, 13692), (219, 13683), (220, 13677), (247, 13566), (258, 13488), (261, 13476), (262, 13473), (269, 13434),

Gene: Etoile_30 Start: 26812, Stop: 25919, Start Num: 79

Candidate Starts for Etoile_30:

(Start: 44 @26875 has 34 MA's), (61, 26845), (Start: 79 @26812 has 18 MA's), (Start: 82 @26809 has 1 MA's), (Start: 124 @26737 has 1 MA's), (Start: 125 @26728 has 3 MA's), (126, 26722), (139, 26677),

(160, 26560), (161, 26557), (162, 26554), (170, 26524), (171, 26512), (176, 26497), (183, 26479), (189, 26452), (197, 26425), (198, 26419), (209, 26365), (211, 26359), (228, 26290), (244, 26206), (255, 26146), (262, 26104), (270, 26062), (309, 25933),

Gene: Evamon_46 Start: 39326, Stop: 38442, Start Num: 58

Candidate Starts for Evamon_46:

(Start: 33 @39377 has 18 MA's), (Start: 55 @39329 has 5 MA's), (Start: 58 @39326 has 1 MA's), (Start: 67 @39308 has 3 MA's), (Start: 70 @39299 has 1 MA's), (Start: 125 @39167 has 3 MA's), (166, 38984), (169, 38972), (176, 38942), (178, 38939), (189, 38897), (201, 38846), (208, 38807), (250, 38603), (252, 38594), (260, 38534), (270, 38486), (271, 38471), (273, 38459),

Gene: Ewald_33 Start: 29356, Stop: 28496, Start Num: 76

Candidate Starts for Ewald_33:

(Start: 76 @29356 has 18 MA's), (123, 29251), (Start: 125 @29239 has 3 MA's), (129, 29221), (139, 29188), (160, 29071), (185, 28984), (188, 28966), (189, 28963), (205, 28891), (217, 28849), (219, 28840), (222, 28825), (228, 28801), (233, 28774), (244, 28711), (258, 28624), (262, 28609), (278, 28522),

Gene: Eyes_36 Start: 31424, Stop: 30528, Start Num: 76

Candidate Starts for Eyes_36:

(Start: 76 @31424 has 18 MA's), (Start: 78 @31418 has 1 MA's), (Start: 81 @31415 has 1 MA's), (110, 31358), (112, 31355), (122, 31313), (133, 31268), (142, 31229), (181, 31064), (186, 31043), (190, 31031), (192, 31025), (197, 31007), (202, 30980), (221, 30905), (229, 30869), (231, 30860), (242, 30779), (250, 30746), (267, 30650), (270, 30629), (272, 30605),

Gene: Eyre_35 Start: 27388, Stop: 26561, Start Num: 79

Candidate Starts for Eyre_35:

(54, 27433), (Start: 57 @27430 has 1 MA's), (65, 27415), (Start: 79 @27388 has 18 MA's), (Start: 93 @27370 has 6 MA's), (118, 27304), (123, 27286), (144, 27190), (186, 27007), (189, 26998), (195, 26980), (218, 26878), (228, 26836), (244, 26752), (252, 26716), (265, 26635),

Gene: Faiyaz_53 Start: 40500, Stop: 39406, Start Num: 125

Candidate Starts for Faiyaz_53:

(Start: 11 @40788 has 1 MA's), (16, 40758), (49, 40671), (52, 40668), (62, 40650), (106, 40566), (108, 40560), (Start: 125 @40500 has 3 MA's), (134, 40467), (176, 40272), (186, 40236), (189, 40227), (190, 40224), (232, 40035), (240, 39966), (247, 39942), (250, 39924), (259, 39861), (267, 39828), (273, 39780), (283, 39741), (285, 39735), (287, 39732), (293, 39720), (294, 39711), (296, 39708), (310, 39636), (311, 39633), (314, 39627), (315, 39624), (321, 39447),

Gene: Fireball_48 Start: 39639, Stop: 38821, Start Num: 93

Candidate Starts for Fireball_48:

(86, 39648), (Start: 89 @39645 has 1 MA's), (Start: 93 @39639 has 6 MA's), (144, 39462), (160, 39381), (186, 39285), (189, 39276), (208, 39192), (228, 39114), (239, 39057), (244, 39033), (248, 39018), (252, 38997), (258, 38946), (261, 38934), (262, 38931),

Gene: FirstPlacePfu_30 Start: 26907, Stop: 25918, Start Num: 44

Candidate Starts for FirstPlacePfu_30:

(Start: 44 @26907 has 34 MA's), (61, 26877), (Start: 79 @26844 has 18 MA's), (Start: 82 @26841 has 1 MA's), (99, 26811), (101, 26808), (Start: 124 @26736 has 1 MA's), (Start: 125 @26727 has 3 MA's), (126, 26721), (139, 26676), (160, 26559), (161, 26556), (162, 26553), (170, 26523), (171, 26511), (176, 26496), (183, 26478), (189, 26451), (197, 26424), (198, 26418), (209, 26364), (211, 26358), (216, 26340), (228, 26289), (244, 26205), (255, 26145), (262, 26103), (270, 26061), (309, 25932),

Gene: Fishburne_30 Start: 26875, Stop: 25919, Start Num: 44

Candidate Starts for Fishburne_30:

(Start: 44 @26875 has 34 MA's), (61, 26845), (Start: 79 @26812 has 18 MA's), (Start: 82 @26809 has 1 MA's), (Start: 124 @26737 has 1 MA's), (Start: 125 @26728 has 3 MA's), (126, 26722), (139, 26677), (160, 26560), (161, 26557), (162, 26554), (170, 26524), (171, 26512), (176, 26497), (183, 26479), (189, 26452), (197, 26425), (198, 26419), (209, 26365), (211, 26359), (228, 26290), (244, 26206), (255, 26146), (262, 26104), (270, 26062), (309, 25933),

Gene: Frosty24_32 Start: 28917, Stop: 27721, Start Num: 10

Candidate Starts for Frosty24_32:

(Start: 10 @28917 has 58 MA's), (27, 28854), (97, 28728), (129, 28620), (139, 28587), (150, 28521), (176, 28410), (183, 28392), (187, 28371), (189, 28365), (190, 28362), (197, 28338), (211, 28266), (220, 28230), (250, 28071), (261, 27999), (273, 27927), (274, 27924), (299, 27855), (300, 27849), (308, 27813),

Gene: Fugax_50 Start: 39601, Stop: 38714, Start Num: 55

Candidate Starts for Fugax_50:

(Start: 33 @39649 has 18 MA's), (Start: 55 @39601 has 5 MA's), (Start: 58 @39598 has 1 MA's), (Start: 67 @39580 has 3 MA's), (Start: 70 @39571 has 1 MA's), (Start: 125 @39439 has 3 MA's), (166, 39256), (169, 39244), (178, 39211), (189, 39169), (201, 39118), (208, 39079), (250, 38875), (252, 38866), (260, 38806), (270, 38758), (271, 38743), (273, 38731),

Gene: Fulbright_35 Start: 27807, Stop: 26836, Start Num: 36

Candidate Starts for Fulbright_35:

(Start: 36 @27807 has 39 MA's), (Start: 78 @27723 has 1 MA's), (Start: 92 @27708 has 1 MA's), (132, 27585), (139, 27561), (160, 27444), (161, 27441), (167, 27420), (176, 27381), (178, 27378), (180, 27372), (185, 27357), (189, 27336), (194, 27321), (205, 27264), (208, 27252), (219, 27213), (225, 27186), (228, 27174), (233, 27147), (239, 27108), (244, 27084), (248, 27069), (270, 26940), (271, 26925), (282, 26886),

Gene: GEazy_42 Start: 31613, Stop: 30720, Start Num: 76

Candidate Starts for GEazy_42:

(Start: 76 @31613 has 18 MA's), (Start: 78 @31607 has 1 MA's), (Start: 81 @31604 has 1 MA's), (96, 31580), (110, 31547), (112, 31544), (122, 31502), (Start: 125 @31487 has 3 MA's), (142, 31418), (181, 31253), (184, 31247), (186, 31232), (190, 31220), (197, 31196), (202, 31169), (221, 31094), (229, 31058), (231, 31049), (256, 30899), (267, 30839), (270, 30818), (272, 30794), (289, 30740),

Gene: GMA5_17 Start: 13993, Stop: 13184, Start Num: 91

Candidate Starts for GMA5_17:

(43, 14077), (48, 14071), (77, 14011), (91, 13993), (138, 13840), (150, 13774), (163, 13714), (166, 13705), (189, 13618), (206, 13540), (211, 13519), (217, 13498), (219, 13489), (224, 13465), (243, 13384), (247, 13372), (252, 13345),

Gene: GRU3_17 Start: 14088, Stop: 13195, Start Num: 43

Candidate Starts for GRU3_17:

(43, 14088), (63, 14052), (77, 14022), (91, 14004), (134, 13866), (153, 13767), (166, 13716), (168, 13707), (189, 13629), (201, 13578), (223, 13482), (224, 13476), (247, 13383),

Gene: Gavriela_30 Start: 27132, Stop: 26176, Start Num: 44

Candidate Starts for Gavriela_30:

(Start: 44 @27132 has 34 MA's), (Start: 79 @27069 has 18 MA's), (Start: 82 @27066 has 1 MA's), (Start: 124 @26994 has 1 MA's), (Start: 125 @26985 has 3 MA's), (139, 26934), (160, 26817), (161, 26814), (162, 26811), (170, 26781), (171, 26769), (176, 26754), (183, 26736), (189, 26709), (197,

26682), (198, 26676), (209, 26622), (211, 26616), (216, 26598), (228, 26547), (244, 26463), (259, 26373), (262, 26361), (270, 26319), (309, 26190),

Gene: Gex_36 Start: 28635, Stop: 27763, Start Num: 92

Candidate Starts for Gex_36:

(Start: 36 @28734 has 39 MA's), (Start: 78 @28650 has 1 MA's), (Start: 92 @28635 has 1 MA's), (132, 28512), (139, 28488), (160, 28371), (161, 28368), (167, 28347), (176, 28308), (178, 28305), (180, 28299), (185, 28284), (189, 28263), (194, 28248), (205, 28191), (208, 28179), (219, 28140), (225, 28113), (228, 28101), (233, 28074), (239, 28035), (244, 28011), (248, 27996), (270, 27867), (271, 27852), (282, 27813),

Gene: Gezellig_49 Start: 39461, Stop: 38574, Start Num: 55

Candidate Starts for Gezellig_49:

(Start: 33 @39509 has 18 MA's), (Start: 55 @39461 has 5 MA's), (Start: 58 @39458 has 1 MA's), (Start: 67 @39440 has 3 MA's), (Start: 70 @39431 has 1 MA's), (Start: 125 @39299 has 3 MA's), (166, 39116), (169, 39104), (178, 39071), (189, 39029), (201, 38978), (208, 38939), (250, 38735), (252, 38726), (260, 38666), (270, 38618), (271, 38603), (273, 38591),

Gene: Gideon_32 Start: 28917, Stop: 27721, Start Num: 10

Candidate Starts for Gideon_32:

(Start: 10 @28917 has 58 MA's), (27, 28854), (97, 28728), (129, 28620), (139, 28587), (150, 28521), (176, 28410), (183, 28392), (187, 28371), (189, 28365), (190, 28362), (197, 28338), (211, 28266), (220, 28230), (250, 28071), (261, 27999), (273, 27927), (274, 27924), (299, 27855), (300, 27849), (308, 27813),

Gene: Glaske_30 Start: 27132, Stop: 26176, Start Num: 44

Candidate Starts for Glaske_30:

(Start: 44 @27132 has 34 MA's), (Start: 79 @27069 has 18 MA's), (Start: 82 @27066 has 1 MA's), (Start: 124 @26994 has 1 MA's), (Start: 125 @26985 has 3 MA's), (139, 26934), (160, 26817), (161, 26814), (162, 26811), (170, 26781), (171, 26769), (176, 26754), (183, 26736), (189, 26709), (197, 26682), (198, 26676), (209, 26622), (211, 26616), (216, 26598), (228, 26547), (244, 26463), (259, 26373), (262, 26361), (270, 26319), (309, 26190),

Gene: GoldenAsh_32 Start: 28917, Stop: 27721, Start Num: 10

Candidate Starts for GoldenAsh_32:

(Start: 10 @28917 has 58 MA's), (27, 28854), (97, 28728), (129, 28620), (139, 28587), (150, 28521), (176, 28410), (183, 28392), (187, 28371), (189, 28365), (190, 28362), (197, 28338), (211, 28266), (220, 28230), (250, 28071), (261, 27999), (273, 27927), (274, 27924), (299, 27855), (300, 27849), (308, 27813),

Gene: Gomashi_32 Start: 28918, Stop: 27722, Start Num: 10

Candidate Starts for Gomashi_32:

(Start: 10 @28918 has 58 MA's), (27, 28855), (97, 28729), (129, 28621), (139, 28588), (150, 28522), (176, 28411), (183, 28393), (187, 28372), (189, 28366), (190, 28363), (197, 28339), (211, 28267), (220, 28231), (250, 28072), (261, 28000), (273, 27928), (274, 27925), (299, 27856), (300, 27850), (308, 27814),

Gene: GoodLuckBabe_39 Start: 28904, Stop: 28029, Start Num: 87

Candidate Starts for GoodLuckBabe_39:

(Start: 87 @28904 has 8 MA's), (108, 28865), (133, 28778), (153, 28679), (166, 28628), (172, 28592), (189, 28538), (197, 28511), (198, 28505), (201, 28487), (203, 28472), (212, 28442), (225, 28388), (228, 28376), (237, 28304), (255, 28208), (263, 28166), (265, 28151),

Gene: GreaseLightnin_30 Start: 27124, Stop: 26168, Start Num: 44

Candidate Starts for GreaseLightnin_30:

(Start: 44 @27124 has 34 MA's), (Start: 79 @27061 has 18 MA's), (Start: 82 @27058 has 1 MA's), (Start: 124 @26986 has 1 MA's), (Start: 125 @26977 has 3 MA's), (139, 26926), (160, 26809), (161, 26806), (162, 26803), (170, 26773), (171, 26761), (176, 26746), (183, 26728), (189, 26701), (197, 26674), (198, 26668), (209, 26614), (216, 26590), (228, 26539), (244, 26455), (259, 26365), (262, 26353), (270, 26311), (309, 26182),

Gene: Grizzly_32 Start: 28917, Stop: 27721, Start Num: 10

Candidate Starts for Grizzly_32:

(7, 28941), (Start: 10 @28917 has 58 MA's), (27, 28854), (84, 28749), (102, 28719), (129, 28620), (139, 28587), (150, 28521), (176, 28410), (183, 28392), (187, 28371), (189, 28365), (190, 28362), (197, 28338), (211, 28266), (220, 28230), (250, 28071), (261, 27999), (273, 27927), (274, 27924), (285, 27888), (299, 27855), (300, 27849), (308, 27813),

Gene: Guacamole_38 Start: 32142, Stop: 31252, Start Num: 47

Candidate Starts for Guacamole_38:

(Start: 47 @32142 has 8 MA's), (Start: 57 @32121 has 1 MA's), (65, 32106), (Start: 74 @32088 has 1 MA's), (Start: 79 @32079 has 18 MA's), (Start: 93 @32061 has 6 MA's), (118, 31995), (189, 31689), (211, 31596), (218, 31569), (228, 31527), (239, 31467), (244, 31443), (252, 31407), (265, 31326),

Gene: Gudmit_35 Start: 26430, Stop: 25561, Start Num: 57

Candidate Starts for Gudmit_35:

(54, 26433), (Start: 57 @26430 has 1 MA's), (Start: 79 @26388 has 18 MA's), (Start: 89 @26376 has 1 MA's), (Start: 93 @26370 has 6 MA's), (105, 26343), (118, 26304), (123, 26286), (146, 26178), (171, 26061), (172, 26055), (189, 25998), (195, 25980), (198, 25965), (199, 25956), (205, 25926), (211, 25905), (228, 25836), (230, 25830), (239, 25776), (244, 25752), (252, 25716), (256, 25689), (258, 25665), (265, 25635),

Gene: Guinevere_39 Start: 28494, Stop: 27619, Start Num: 87

Candidate Starts for Guinevere_39:

(Start: 87 @28494 has 8 MA's), (108, 28455), (133, 28368), (153, 28269), (166, 28218), (172, 28182), (189, 28128), (197, 28101), (198, 28095), (201, 28077), (203, 28062), (212, 28032), (225, 27978), (228, 27966), (237, 27894), (255, 27798), (263, 27756), (265, 27741),

Gene: Gusanita_38 Start: 28900, Stop: 28025, Start Num: 87

Candidate Starts for Gusanita_38:

(Start: 87 @28900 has 8 MA's), (108, 28861), (133, 28774), (141, 28747), (153, 28675), (159, 28654), (166, 28624), (189, 28534), (211, 28441), (212, 28438), (220, 28405), (225, 28384), (228, 28372), (237, 28300), (255, 28204), (263, 28162), (265, 28147), (290, 28042),

Gene: HUHilltop_30 Start: 26908, Stop: 25919, Start Num: 44

Candidate Starts for HUHilltop_30:

(Start: 44 @26908 has 34 MA's), (61, 26878), (Start: 79 @26845 has 18 MA's), (Start: 82 @26842 has 1 MA's), (99, 26812), (101, 26809), (Start: 124 @26737 has 1 MA's), (Start: 125 @26728 has 3 MA's), (126, 26722), (139, 26677), (160, 26560), (161, 26557), (162, 26554), (170, 26524), (171, 26512), (176, 26497), (180, 26488), (183, 26479), (189, 26452), (197, 26425), (198, 26419), (209, 26365), (211, 26359), (216, 26341), (225, 26302), (228, 26290), (244, 26206), (255, 26146), (262, 26104), (309, 25933),

Gene: Halloweekend_36 Start: 27956, Stop: 27081, Start Num: 87

Candidate Starts for Halloweekend_36:

(Start: 87 @27956 has 8 MA's), (108, 27917), (133, 27830), (153, 27731), (166, 27680), (172, 27644), (189, 27590), (197, 27563), (198, 27557), (201, 27539), (203, 27524), (212, 27494), (225, 27440), (228, 27428), (237, 27356), (255, 27260), (263, 27218), (265, 27203),

Gene: Halo_32 Start: 28912, Stop: 27716, Start Num: 10

Candidate Starts for Halo_32:

(Start: 10 @28912 has 58 MA's), (27, 28849), (97, 28723), (129, 28615), (139, 28582), (150, 28516), (176, 28405), (183, 28387), (187, 28366), (189, 28360), (190, 28357), (197, 28333), (211, 28261), (220, 28225), (250, 28066), (261, 27994), (273, 27922), (274, 27919), (299, 27850), (300, 27844), (308, 27808),

Gene: Halo3_48 Start: 40094, Stop: 39159, Start Num: 33

Candidate Starts for Halo3_48:

(Start: 33 @40094 has 18 MA's), (Start: 55 @40046 has 5 MA's), (Start: 58 @40043 has 1 MA's), (Start: 67 @40025 has 3 MA's), (Start: 70 @40016 has 1 MA's), (Start: 125 @39884 has 3 MA's), (166, 39701), (169, 39689), (176, 39659), (178, 39656), (189, 39614), (201, 39563), (208, 39524), (250, 39320), (252, 39311), (260, 39251), (270, 39203), (271, 39188), (273, 39176),

Gene: Hanako_37 Start: 29035, Stop: 28064, Start Num: 36

Candidate Starts for Hanako_37:

(Start: 36 @29035 has 39 MA's), (Start: 78 @28951 has 1 MA's), (Start: 85 @28942 has 1 MA's), (139, 28789), (160, 28672), (161, 28669), (176, 28609), (180, 28600), (185, 28585), (189, 28564), (195, 28546), (208, 28480), (225, 28414), (228, 28402), (233, 28375), (239, 28336), (244, 28312), (248, 28297), (259, 28222), (270, 28168),

Gene: HannahD_40 Start: 30978, Stop: 30085, Start Num: 76

Candidate Starts for HannahD_40:

(Start: 76 @30978 has 18 MA's), (Start: 78 @30972 has 1 MA's), (Start: 81 @30969 has 1 MA's), (96, 30945), (110, 30912), (112, 30909), (122, 30867), (Start: 125 @30852 has 3 MA's), (142, 30783), (181, 30618), (184, 30612), (186, 30597), (190, 30585), (197, 30561), (202, 30534), (221, 30459), (229, 30423), (231, 30414), (256, 30264), (267, 30204), (270, 30183), (272, 30159), (289, 30105),

Gene: Hedwig_41 Start: 31459, Stop: 30632, Start Num: 79

Candidate Starts for Hedwig_41:

(54, 31504), (Start: 57 @31501 has 1 MA's), (Start: 60 @31498 has 1 MA's), (65, 31486), (Start: 79 @31459 has 18 MA's), (Start: 93 @31441 has 6 MA's), (118, 31375), (123, 31357), (144, 31261), (189, 31069), (218, 30949), (228, 30907), (239, 30847), (244, 30823), (252, 30787), (265, 30706), (276, 30640),

Gene: Heinz_32 Start: 25034, Stop: 24150, Start Num: 58

Candidate Starts for Heinz_32:

(Start: 33 @25085 has 18 MA's), (Start: 58 @25034 has 1 MA's), (Start: 67 @25016 has 3 MA's), (Start: 125 @24875 has 3 MA's), (166, 24692), (169, 24680), (189, 24605), (190, 24602), (200, 24557), (208, 24515), (218, 24479), (250, 24311), (252, 24302), (259, 24248), (265, 24221), (271, 24179), (273, 24167),

Gene: Hibiscus_32 Start: 25034, Stop: 24099, Start Num: 33

Candidate Starts for Hibiscus_32:

(Start: 33 @25034 has 18 MA's), (Start: 58 @24983 has 1 MA's), (Start: 67 @24965 has 3 MA's), (Start: 125 @24824 has 3 MA's), (166, 24641), (169, 24629), (189, 24554), (190, 24551), (200, 24506), (208, 24464), (218, 24428), (250, 24260), (252, 24251), (259, 24197), (265, 24170), (271, 24128), (273, 24116),

Gene: Hilltopfarm_52 Start: 40199, Stop: 39105, Start Num: 125

Candidate Starts for Hilltopfarm_52:

(Start: 11 @40487 has 1 MA's), (16, 40457), (49, 40370), (52, 40367), (62, 40349), (106, 40265), (108, 40259), (Start: 125 @40199 has 3 MA's), (134, 40166), (176, 39971), (186, 39935), (189, 39926), (190, 39923), (232, 39734), (240, 39665), (247, 39641), (250, 39623), (259, 39560), (267, 39527), (273, 39479), (283, 39440), (285, 39434), (287, 39431), (293, 39419), (294, 39410), (296, 39407), (310, 39335), (311, 39332), (314, 39326), (315, 39323), (321, 39146),

Gene: Hitter_41 Start: 31874, Stop: 30984, Start Num: 47

Candidate Starts for Hitter_41:

(Start: 47 @31874 has 8 MA's), (Start: 57 @31853 has 1 MA's), (65, 31838), (Start: 74 @31820 has 1 MA's), (Start: 79 @31811 has 18 MA's), (Start: 93 @31793 has 6 MA's), (118, 31727), (189, 31421), (218, 31301), (228, 31259), (239, 31199), (244, 31175), (252, 31139), (265, 31058),

Gene: Hope_32 Start: 28917, Stop: 27721, Start Num: 10

Candidate Starts for Hope_32:

(Start: 10 @28917 has 58 MA's), (27, 28854), (97, 28728), (129, 28620), (139, 28587), (150, 28521), (176, 28410), (183, 28392), (187, 28371), (189, 28365), (190, 28362), (197, 28338), (211, 28266), (220, 28230), (250, 28071), (261, 27999), (273, 27927), (274, 27924), (299, 27855), (300, 27849), (308, 27813),

Gene: Hotshotbaby7_32 Start: 28917, Stop: 27721, Start Num: 10

Candidate Starts for Hotshotbaby7_32:

(Start: 10 @28917 has 58 MA's), (27, 28854), (97, 28728), (129, 28620), (139, 28587), (150, 28521), (176, 28410), (183, 28392), (187, 28371), (189, 28365), (190, 28362), (197, 28338), (211, 28266), (220, 28230), (250, 28071), (261, 27999), (273, 27927), (274, 27924), (299, 27855), (300, 27849), (308, 27813),

Gene: Ichiang_36 Start: 27975, Stop: 27100, Start Num: 87

Candidate Starts for Ichiang_36:

(Start: 87 @27975 has 8 MA's), (108, 27936), (133, 27849), (153, 27750), (166, 27699), (172, 27663), (189, 27609), (197, 27582), (198, 27576), (201, 27558), (203, 27543), (212, 27513), (225, 27459), (228, 27447), (237, 27375), (255, 27279), (263, 27237), (265, 27222),

Gene: IdentityCrisis_34 Start: 26927, Stop: 26055, Start Num: 80

Candidate Starts for IdentityCrisis_34:

(Start: 33 @27017 has 18 MA's), (53, 26969), (Start: 68 @26948 has 1 MA's), (Start: 80 @26927 has 1 MA's), (121, 26840), (160, 26651), (167, 26627), (185, 26564), (189, 26543), (191, 26537), (198, 26510), (211, 26450), (223, 26402), (225, 26393), (228, 26381), (233, 26354), (237, 26327), (244, 26291), (255, 26231), (261, 26192), (262, 26189), (291, 26069),

Gene: IsHungry_34 Start: 26992, Stop: 26117, Start Num: 87

Candidate Starts for IsHungry_34:

(Start: 87 @26992 has 8 MA's), (108, 26953), (127, 26881), (140, 26845), (145, 26806), (153, 26767), (159, 26746), (166, 26716), (189, 26626), (203, 26560), (212, 26530), (220, 26497), (225, 26476), (228, 26464), (237, 26392), (255, 26296), (263, 26254), (265, 26239), (280, 26161),

Gene: Island3_33 Start: 29011, Stop: 28055, Start Num: 44

Candidate Starts for Island3_33:

(Start: 44 @29011 has 34 MA's), (61, 28981), (Start: 79 @28948 has 18 MA's), (Start: 82 @28945 has 1 MA's), (Start: 124 @28873 has 1 MA's), (Start: 125 @28864 has 3 MA's), (139, 28813), (160, 28696), (161, 28693), (162, 28690), (170, 28660), (171, 28648), (176, 28633), (183, 28615), (189, 28588), (197, 28561), (198, 28555), (209, 28501), (216, 28477), (228, 28426), (244, 28342), (259, 28252),

(262, 28240), (270, 28198), (309, 28069),

Gene: Jambalaya_47 Start: 39156, Stop: 38221, Start Num: 33

Candidate Starts for Jambalaya_47:

(Start: 33 @39156 has 18 MA's), (Start: 55 @39108 has 5 MA's), (Start: 58 @39105 has 1 MA's), (Start: 67 @39087 has 3 MA's), (Start: 70 @39078 has 1 MA's), (Start: 125 @38946 has 3 MA's), (166, 38763), (169, 38751), (178, 38718), (189, 38676), (201, 38625), (208, 38586), (250, 38382), (252, 38373), (260, 38313), (270, 38265), (271, 38250), (273, 38238),

Gene: Jamie19_33 Start: 27788, Stop: 26817, Start Num: 36

Candidate Starts for Jamie19_33:

(Start: 36 @27788 has 39 MA's), (Start: 78 @27704 has 1 MA's), (Start: 92 @27689 has 1 MA's), (132, 27566), (139, 27542), (160, 27425), (161, 27422), (167, 27401), (176, 27362), (178, 27359), (180, 27353), (185, 27338), (189, 27317), (194, 27302), (205, 27245), (208, 27233), (219, 27194), (225, 27167), (228, 27155), (233, 27128), (239, 27089), (244, 27065), (248, 27050), (270, 26921), (271, 26906), (282, 26867),

Gene: Jane_32 Start: 28917, Stop: 27721, Start Num: 10

Candidate Starts for Jane_32:

(Start: 10 @28917 has 58 MA's), (27, 28854), (97, 28728), (129, 28620), (139, 28587), (150, 28521), (176, 28410), (183, 28392), (187, 28371), (189, 28365), (190, 28362), (197, 28338), (211, 28266), (220, 28230), (250, 28071), (261, 27999), (273, 27927), (274, 27924), (299, 27855), (300, 27849), (308, 27813),

Gene: JasperJr_38 Start: 32142, Stop: 31252, Start Num: 47

Candidate Starts for JasperJr_38:

(Start: 47 @32142 has 8 MA's), (Start: 57 @32121 has 1 MA's), (65, 32106), (Start: 74 @32088 has 1 MA's), (Start: 79 @32079 has 18 MA's), (Start: 93 @32061 has 6 MA's), (118, 31995), (189, 31689), (211, 31596), (218, 31569), (228, 31527), (239, 31467), (244, 31443), (252, 31407), (265, 31326),

Gene: Jeanie_18 Start: 13573, Stop: 12677, Start Num: 46

Candidate Starts for Jeanie_18:

(Start: 46 @13573 has 2 MA's), (63, 13540), (91, 13492), (95, 13486), (127, 13381), (139, 13339), (147, 13291), (151, 13273), (153, 13258), (182, 13150), (183, 13147), (189, 13120), (190, 13117), (201, 13069), (211, 13021), (219, 12991), (246, 12877), (259, 12793), (265, 12766), (274, 12709),

Gene: Jebeks_30 Start: 26796, Stop: 25903, Start Num: 79

Candidate Starts for Jebeks_30:

(Start: 44 @26859 has 34 MA's), (61, 26829), (Start: 79 @26796 has 18 MA's), (Start: 82 @26793 has 1 MA's), (Start: 124 @26721 has 1 MA's), (Start: 125 @26712 has 3 MA's), (139, 26661), (160, 26544), (161, 26541), (162, 26538), (170, 26508), (171, 26496), (176, 26481), (183, 26463), (189, 26436), (197, 26409), (198, 26403), (209, 26349), (211, 26343), (228, 26274), (244, 26190), (259, 26100), (262, 26088), (270, 26046), (309, 25917),

Gene: Jojo24_30 Start: 25776, Stop: 24811, Start Num: 22

Candidate Starts for Jojo24_30:

(18, 25785), (Start: 22 @25776 has 1 MA's), (Start: 24 @25770 has 1 MA's), (Start: 74 @25659 has 1 MA's), (Start: 93 @25632 has 6 MA's), (108, 25596), (146, 25440), (148, 25428), (160, 25368), (171, 25320), (173, 25311), (186, 25266), (189, 25257), (195, 25239), (228, 25095), (230, 25089), (239, 25035), (244, 25011), (248, 24996), (252, 24975), (255, 24951), (261, 24912), (262, 24909), (265, 24894),

Gene: Jolene_32 Start: 28917, Stop: 27721, Start Num: 10

Candidate Starts for Jolene_32:

(Start: 10 @28917 has 58 MA's), (27, 28854), (84, 28749), (97, 28728), (129, 28620), (139, 28587), (150, 28521), (176, 28410), (183, 28392), (187, 28371), (189, 28365), (190, 28362), (197, 28338), (211, 28266), (220, 28230), (250, 28071), (261, 27999), (273, 27927), (274, 27924), (299, 27855), (300, 27849), (308, 27813), (316, 27777),

Gene: Jonghyun_32 Start: 28917, Stop: 27721, Start Num: 10

Candidate Starts for Jonghyun_32:

(Start: 10 @28917 has 58 MA's), (27, 28854), (84, 28749), (97, 28728), (129, 28620), (139, 28587), (150, 28521), (176, 28410), (183, 28392), (187, 28371), (189, 28365), (190, 28362), (197, 28338), (211, 28266), (220, 28230), (250, 28071), (261, 27999), (273, 27927), (274, 27924), (299, 27855), (300, 27849), (308, 27813), (316, 27777),

Gene: JorRay_32 Start: 28917, Stop: 27721, Start Num: 10

Candidate Starts for JorRay_32:

(Start: 10 @28917 has 58 MA's), (27, 28854), (97, 28728), (129, 28620), (139, 28587), (150, 28521), (176, 28410), (183, 28392), (187, 28371), (189, 28365), (190, 28362), (197, 28338), (211, 28266), (220, 28230), (250, 28071), (261, 27999), (273, 27927), (274, 27924), (299, 27855), (300, 27849), (308, 27813),

Gene: Journey_34 Start: 27409, Stop: 26438, Start Num: 36

Candidate Starts for Journey_34:

(Start: 36 @27409 has 39 MA's), (39, 27400), (Start: 78 @27325 has 1 MA's), (Start: 92 @27310 has 1 MA's), (132, 27187), (139, 27163), (160, 27046), (161, 27043), (167, 27022), (176, 26983), (178, 26980), (180, 26974), (185, 26959), (189, 26938), (194, 26923), (205, 26866), (208, 26854), (219, 26815), (225, 26788), (228, 26776), (233, 26749), (239, 26710), (244, 26686), (248, 26671), (270, 26542), (282, 26488), (295, 26455),

Gene: Julie_37 Start: 28908, Stop: 28030, Start Num: 84

Candidate Starts for Julie_37:

(84, 28908), (Start: 87 @28905 has 8 MA's), (108, 28866), (127, 28794), (145, 28719), (153, 28680), (159, 28659), (166, 28629), (189, 28539), (203, 28473), (212, 28443), (220, 28410), (225, 28389), (228, 28377), (237, 28305), (255, 28209), (263, 28167), (265, 28152), (280, 28074),

Gene: Jung_29 Start: 26776, Stop: 25883, Start Num: 79

Candidate Starts for Jung_29:

(Start: 44 @26839 has 34 MA's), (Start: 79 @26776 has 18 MA's), (Start: 82 @26773 has 1 MA's), (Start: 124 @26701 has 1 MA's), (Start: 125 @26692 has 3 MA's), (139, 26641), (160, 26524), (161, 26521), (162, 26518), (170, 26488), (171, 26476), (176, 26461), (183, 26443), (189, 26416), (197, 26389), (198, 26383), (209, 26329), (216, 26305), (228, 26254), (244, 26170), (259, 26080), (262, 26068), (270, 26026), (309, 25897),

Gene: Juniormint_30 Start: 26911, Stop: 25955, Start Num: 44

Candidate Starts for Juniormint_30:

(Start: 44 @26911 has 34 MA's), (Start: 79 @26848 has 18 MA's), (Start: 82 @26845 has 1 MA's), (Start: 124 @26773 has 1 MA's), (Start: 125 @26764 has 3 MA's), (139, 26713), (160, 26596), (161, 26593), (162, 26590), (170, 26560), (171, 26548), (176, 26533), (183, 26515), (189, 26488), (197, 26461), (198, 26455), (209, 26401), (228, 26326), (244, 26242), (259, 26152), (262, 26140), (270, 26098), (309, 25969),

Gene: JustASigh_45 Start: 34059, Stop: 33148, Start Num: 41

Candidate Starts for JustASigh_45:

(Start: 41 @34059 has 1 MA's), (72, 33999), (75, 33996), (84, 33984), (119, 33900), (Start: 125 @33873 has 3 MA's), (127, 33861), (134, 33840), (179, 33642), (189, 33603), (211, 33510), (250, 33312), (252, 33303), (260, 33243), (265, 33222), (273, 33168),

Gene: Kareem_32 Start: 28917, Stop: 27721, Start Num: 10

Candidate Starts for Kareem_32:

(Start: 10 @28917 has 58 MA's), (27, 28854), (97, 28728), (129, 28620), (139, 28587), (150, 28521), (176, 28410), (183, 28392), (187, 28371), (189, 28365), (190, 28362), (197, 28338), (211, 28266), (220, 28230), (250, 28071), (261, 27999), (273, 27927), (274, 27924), (299, 27855), (300, 27849), (308, 27813),

Gene: Kari_30 Start: 26809, Stop: 25916, Start Num: 79

Candidate Starts for Kari_30:

(Start: 44 @26872 has 34 MA's), (61, 26842), (Start: 79 @26809 has 18 MA's), (Start: 82 @26806 has 1 MA's), (Start: 124 @26734 has 1 MA's), (Start: 125 @26725 has 3 MA's), (126, 26719), (139, 26674), (160, 26557), (161, 26554), (162, 26551), (170, 26521), (171, 26509), (176, 26494), (183, 26476), (189, 26449), (197, 26422), (198, 26416), (209, 26362), (211, 26356), (228, 26287), (244, 26203), (255, 26143), (262, 26101), (270, 26059), (309, 25930),

Gene: Kasen3_32 Start: 28918, Stop: 27722, Start Num: 10

Candidate Starts for Kasen3_32:

(7, 28942), (Start: 10 @28918 has 58 MA's), (27, 28855), (84, 28750), (102, 28720), (129, 28621), (139, 28588), (150, 28522), (176, 28411), (183, 28393), (187, 28372), (189, 28366), (190, 28363), (197, 28339), (211, 28267), (220, 28231), (250, 28072), (261, 28000), (273, 27928), (274, 27925), (299, 27856), (300, 27850), (308, 27814), (316, 27778),

Gene: Kevin1_35 Start: 28640, Stop: 27669, Start Num: 36

Candidate Starts for Kevin1_35:

(34, 28643), (Start: 36 @28640 has 39 MA's), (Start: 78 @28556 has 1 MA's), (Start: 125 @28445 has 3 MA's), (132, 28418), (139, 28394), (160, 28277), (180, 28205), (185, 28190), (189, 28169), (219, 28046), (225, 28019), (228, 28007), (233, 27980), (239, 27941), (244, 27917), (248, 27902), (262, 27815), (270, 27773), (271, 27758), (282, 27719),

Gene: Kihatsu_40 Start: 29365, Stop: 28490, Start Num: 87

Candidate Starts for Kihatsu_40:

(Start: 87 @29365 has 8 MA's), (108, 29326), (133, 29239), (153, 29140), (166, 29089), (172, 29053), (189, 28999), (197, 28972), (198, 28966), (201, 28948), (203, 28933), (212, 28903), (225, 28849), (228, 28837), (237, 28765), (255, 28669), (263, 28627), (265, 28612), (290, 28507),

Gene: Kiko_39 Start: 31306, Stop: 30413, Start Num: 76

Candidate Starts for Kiko_39:

(Start: 76 @31306 has 18 MA's), (Start: 78 @31300 has 1 MA's), (Start: 81 @31297 has 1 MA's), (110, 31240), (112, 31237), (122, 31195), (142, 31111), (152, 31060), (164, 31009), (190, 30913), (197, 30889), (213, 30817), (231, 30742), (267, 30532), (272, 30487),

Gene: KilKor_30 Start: 27132, Stop: 26176, Start Num: 44

Candidate Starts for KilKor_30:

(Start: 44 @27132 has 34 MA's), (Start: 79 @27069 has 18 MA's), (Start: 82 @27066 has 1 MA's), (Start: 124 @26994 has 1 MA's), (Start: 125 @26985 has 3 MA's), (139, 26934), (160, 26817), (161, 26814), (162, 26811), (170, 26781), (171, 26769), (176, 26754), (183, 26736), (189, 26709), (197, 26682), (198, 26676), (209, 26622), (211, 26616), (216, 26598), (228, 26547), (244, 26463), (259, 26373), (262, 26361), (270, 26319), (309, 26190),

Gene: KimmyK_48 Start: 40022, Stop: 39156, Start Num: 67

Candidate Starts for KimmyK_48:

(Start: 33 @40091 has 18 MA's), (Start: 55 @40043 has 5 MA's), (Start: 58 @40040 has 1 MA's), (Start: 67 @40022 has 3 MA's), (Start: 70 @40013 has 1 MA's), (Start: 125 @39881 has 3 MA's), (166, 39698), (169, 39686), (178, 39653), (189, 39611), (201, 39560), (208, 39521), (250, 39317), (252, 39308), (260, 39248), (270, 39200), (271, 39185), (273, 39173),

Gene: Ksquared_30 Start: 26889, Stop: 25933, Start Num: 44

Candidate Starts for Ksquared_30:

(Start: 44 @26889 has 34 MA's), (Start: 79 @26826 has 18 MA's), (Start: 82 @26823 has 1 MA's), (Start: 124 @26751 has 1 MA's), (Start: 125 @26742 has 3 MA's), (139, 26691), (160, 26574), (161, 26571), (162, 26568), (170, 26538), (171, 26526), (176, 26511), (183, 26493), (189, 26466), (197, 26439), (198, 26433), (209, 26379), (228, 26304), (244, 26220), (259, 26130), (262, 26118), (270, 26076), (309, 25947),

Gene: Langerak_30 Start: 26891, Stop: 25902, Start Num: 44

Candidate Starts for Langerak_30:

(Start: 44 @26891 has 34 MA's), (61, 26861), (Start: 79 @26828 has 18 MA's), (Start: 82 @26825 has 1 MA's), (99, 26795), (101, 26792), (Start: 124 @26720 has 1 MA's), (Start: 125 @26711 has 3 MA's), (126, 26705), (139, 26660), (160, 26543), (161, 26540), (162, 26537), (170, 26507), (171, 26495), (176, 26480), (183, 26462), (189, 26435), (197, 26408), (198, 26402), (209, 26348), (211, 26342), (216, 26324), (228, 26273), (244, 26189), (255, 26129), (262, 26087), (270, 26045), (309, 25916),

Gene: Lenoxika_39 Start: 28640, Stop: 27765, Start Num: 87

Candidate Starts for Lenoxika_39:

(Start: 87 @28640 has 8 MA's), (108, 28601), (133, 28514), (153, 28415), (166, 28364), (172, 28328), (189, 28274), (197, 28247), (198, 28241), (201, 28223), (203, 28208), (212, 28178), (225, 28124), (228, 28112), (237, 28040), (255, 27944), (263, 27902), (265, 27887),

Gene: Liefie_32 Start: 28915, Stop: 27719, Start Num: 10

Candidate Starts for Liefie_32:

(Start: 10 @28915 has 58 MA's), (27, 28852), (84, 28747), (97, 28726), (129, 28618), (139, 28585), (150, 28519), (176, 28408), (183, 28390), (187, 28369), (189, 28363), (190, 28360), (197, 28336), (211, 28264), (220, 28228), (250, 28069), (261, 27997), (273, 27925), (274, 27922), (299, 27853), (300, 27847), (308, 27811), (316, 27775),

Gene: LouisV14_32 Start: 28917, Stop: 27721, Start Num: 10

Candidate Starts for LouisV14_32:

(Start: 10 @28917 has 58 MA's), (27, 28854), (97, 28728), (129, 28620), (139, 28587), (150, 28521), (176, 28410), (183, 28392), (187, 28371), (189, 28365), (190, 28362), (197, 28338), (211, 28266), (220, 28230), (250, 28071), (261, 27999), (273, 27927), (274, 27924), (299, 27855), (300, 27849), (308, 27813),

Gene: MagicMan_38 Start: 31978, Stop: 31088, Start Num: 76

Candidate Starts for MagicMan_38:

(25, 32086), (28, 32077), (Start: 44 @32032 has 34 MA's), (Start: 76 @31978 has 18 MA's), (Start: 78 @31972 has 1 MA's), (Start: 81 @31969 has 1 MA's), (110, 31912), (112, 31909), (122, 31867), (133, 31822), (142, 31783), (181, 31618), (186, 31597), (190, 31585), (192, 31579), (197, 31561), (202, 31534), (221, 31459), (229, 31423), (231, 31414), (242, 31333), (267, 31204), (270, 31183), (272, 31159),

Gene: Magsby_36 Start: 28735, Stop: 27764, Start Num: 36

Candidate Starts for Magsby_36:

(Start: 36 @28735 has 39 MA's), (Start: 78 @28651 has 1 MA's), (Start: 92 @28636 has 1 MA's), (132, 28513), (139, 28489), (160, 28372), (161, 28369), (167, 28348), (176, 28309), (178, 28306), (180, 28300), (185, 28285), (189, 28264), (194, 28249), (205, 28192), (208, 28180), (219, 28141), (225, 28114), (228, 28102), (233, 28075), (239, 28036), (244, 28012), (248, 27997), (270, 27868), (271, 27853), (282, 27814),

Gene: Majeke_30 Start: 26913, Stop: 25924, Start Num: 44

Candidate Starts for Majeke_30:

(Start: 44 @26913 has 34 MA's), (61, 26883), (Start: 79 @26850 has 18 MA's), (Start: 82 @26847 has 1 MA's), (99, 26817), (101, 26814), (Start: 124 @26742 has 1 MA's), (Start: 125 @26733 has 3 MA's), (126, 26727), (139, 26682), (160, 26565), (161, 26562), (162, 26559), (170, 26529), (171, 26517), (176, 26502), (183, 26484), (189, 26457), (197, 26430), (198, 26424), (209, 26370), (211, 26364), (216, 26346), (228, 26295), (244, 26211), (255, 26151), (262, 26109), (270, 26067), (309, 25938),

Gene: Maliketh_32 Start: 28728, Stop: 27721, Start Num: 97

Candidate Starts for Maliketh_32:

(Start: 10 @28917 has 58 MA's), (27, 28854), (97, 28728), (129, 28620), (139, 28587), (150, 28521), (176, 28410), (183, 28392), (187, 28371), (189, 28365), (190, 28362), (197, 28338), (211, 28266), (220, 28230), (250, 28071), (261, 27999), (273, 27927), (274, 27924), (299, 27855), (300, 27849), (308, 27813),

Gene: Malithi_30 Start: 26799, Stop: 25843, Start Num: 44

Candidate Starts for Malithi_30:

(Start: 44 @26799 has 34 MA's), (61, 26769), (Start: 79 @26736 has 18 MA's), (Start: 82 @26733 has 1 MA's), (Start: 124 @26661 has 1 MA's), (Start: 125 @26652 has 3 MA's), (139, 26601), (160, 26484), (161, 26481), (162, 26478), (170, 26448), (171, 26436), (176, 26421), (183, 26403), (189, 26376), (197, 26349), (198, 26343), (209, 26289), (216, 26265), (228, 26214), (244, 26130), (259, 26040), (262, 26028), (270, 25986), (309, 25857),

Gene: Mangethe_30 Start: 26913, Stop: 25924, Start Num: 44

Candidate Starts for Mangethe_30:

(Start: 44 @26913 has 34 MA's), (61, 26883), (Start: 79 @26850 has 18 MA's), (Start: 82 @26847 has 1 MA's), (99, 26817), (101, 26814), (Start: 124 @26742 has 1 MA's), (Start: 125 @26733 has 3 MA's), (126, 26727), (139, 26682), (160, 26565), (161, 26562), (162, 26559), (170, 26529), (171, 26517), (176, 26502), (183, 26484), (189, 26457), (197, 26430), (198, 26424), (209, 26370), (211, 26364), (216, 26346), (228, 26295), (244, 26211), (255, 26151), (262, 26109), (270, 26067), (309, 25938),

Gene: Marmie_32 Start: 28917, Stop: 27721, Start Num: 10

Candidate Starts for Marmie_32:

(Start: 10 @28917 has 58 MA's), (27, 28854), (97, 28728), (129, 28620), (139, 28587), (150, 28521), (176, 28410), (183, 28392), (187, 28371), (189, 28365), (190, 28362), (197, 28338), (211, 28266), (220, 28230), (250, 28071), (261, 27999), (273, 27927), (274, 27924), (299, 27855), (300, 27849), (308, 27813),

Gene: McGonagall_18 Start: 13573, Stop: 12677, Start Num: 46

Candidate Starts for McGonagall_18:

(Start: 46 @13573 has 2 MA's), (63, 13540), (91, 13492), (95, 13486), (127, 13381), (139, 13339), (147, 13291), (151, 13273), (153, 13258), (182, 13150), (183, 13147), (189, 13120), (190, 13117), (201, 13069), (211, 13021), (219, 12991), (246, 12877), (259, 12793), (265, 12766), (274, 12709),

Gene: Megiddo_30 Start: 27132, Stop: 26176, Start Num: 44

Candidate Starts for Megiddo_30:

(Start: 44 @27132 has 34 MA's), (Start: 79 @27069 has 18 MA's), (Start: 82 @27066 has 1 MA's), (Start: 124 @26994 has 1 MA's), (Start: 125 @26985 has 3 MA's), (139, 26934), (160, 26817), (161, 26814), (162, 26811), (170, 26781), (171, 26769), (176, 26754), (183, 26736), (189, 26709), (197, 26682), (198, 26676), (209, 26622), (211, 26616), (216, 26598), (228, 26547), (244, 26463), (259, 26373), (262, 26361), (270, 26319), (309, 26190),

Gene: Melba_39 Start: 32054, Stop: 31227, Start Num: 79

Candidate Starts for Melba_39:

(Start: 47 @32117 has 8 MA's), (Start: 57 @32096 has 1 MA's), (65, 32081), (Start: 74 @32063 has 1 MA's), (Start: 79 @32054 has 18 MA's), (Start: 93 @32036 has 6 MA's), (118, 31970), (189, 31664), (211, 31571), (218, 31544), (228, 31502), (239, 31442), (244, 31418), (252, 31382), (265, 31301),

Gene: Melville_38 Start: 28719, Stop: 27748, Start Num: 36

Candidate Starts for Melville_38:

(Start: 36 @28719 has 39 MA's), (Start: 78 @28635 has 1 MA's), (Start: 92 @28620 has 1 MA's), (132, 28497), (139, 28473), (160, 28356), (161, 28353), (167, 28332), (176, 28293), (178, 28290), (180, 28284), (185, 28269), (189, 28248), (194, 28233), (205, 28176), (208, 28164), (219, 28125), (225, 28098), (228, 28086), (233, 28059), (239, 28020), (244, 27996), (248, 27981), (270, 27852), (271, 27837), (282, 27798),

Gene: Meyran_33 Start: 30330, Stop: 29470, Start Num: 76

Candidate Starts for Meyran_33:

(13, 30474), (35, 30408), (Start: 76 @30330 has 18 MA's), (123, 30225), (129, 30195), (139, 30162), (160, 30045), (185, 29958), (188, 29940), (189, 29937), (211, 29844), (219, 29814), (222, 29799), (228, 29775), (233, 29748), (244, 29685), (258, 29598), (262, 29583), (270, 29541), (278, 29496),

Gene: MichelleMyBell_34 Start: 27726, Stop: 26755, Start Num: 36

Candidate Starts for MichelleMyBell_34:

(Start: 36 @27726 has 39 MA's), (Start: 78 @27642 has 1 MA's), (Start: 92 @27627 has 1 MA's), (132, 27504), (139, 27480), (160, 27363), (161, 27360), (167, 27339), (176, 27300), (178, 27297), (180, 27291), (185, 27276), (189, 27255), (194, 27240), (205, 27183), (208, 27171), (219, 27132), (225, 27105), (228, 27093), (233, 27066), (239, 27027), (244, 27003), (248, 26988), (270, 26859), (271, 26844), (282, 26805),

Gene: MintFen_40 Start: 32191, Stop: 31301, Start Num: 47

Candidate Starts for MintFen_40:

(Start: 47 @32191 has 8 MA's), (Start: 57 @32170 has 1 MA's), (65, 32155), (Start: 74 @32137 has 1 MA's), (Start: 79 @32128 has 18 MA's), (Start: 93 @32110 has 6 MA's), (118, 32044), (189, 31738), (211, 31645), (218, 31618), (228, 31576), (239, 31516), (244, 31492), (252, 31456), (265, 31375),

Gene: MoRicky_20 Start: 13746, Stop: 12850, Start Num: 74

Candidate Starts for MoRicky_20:

(Start: 74 @13746 has 1 MA's), (135, 13587), (143, 13548), (166, 13440), (167, 13434), (180, 13386), (189, 13350), (198, 13317), (213, 13251), (217, 13236), (222, 13212), (225, 13200), (228, 13188), (237, 13122), (256, 13026), (259, 12999), (264, 12984), (270, 12945),

Gene: Moonflower_38 Start: 32642, Stop: 31752, Start Num: 76

Candidate Starts for Moonflower_38:

(26, 32750), (Start: 76 @32642 has 18 MA's), (Start: 78 @32636 has 1 MA's), (Start: 81 @32633 has 1 MA's), (103, 32597), (110, 32576), (112, 32573), (122, 32531), (142, 32447), (190, 32249), (226, 32102), (241, 32003), (267, 31868), (270, 31847), (272, 31823),

Gene: Mowgli_32 Start: 28917, Stop: 27721, Start Num: 10

Candidate Starts for Mowgli_32:

(Start: 10 @28917 has 58 MA's), (27, 28854), (97, 28728), (129, 28620), (139, 28587), (150, 28521), (176, 28410), (183, 28392), (187, 28371), (189, 28365), (190, 28362), (197, 28338), (211, 28266), (220, 28230), (250, 28071), (261, 27999), (273, 27927), (274, 27924), (299, 27855), (300, 27849), (308, 27813),

Gene: Mutzi_47 Start: 40485, Stop: 39550, Start Num: 33

Candidate Starts for Mutzi_47:

(Start: 33 @40485 has 18 MA's), (Start: 55 @40437 has 5 MA's), (Start: 58 @40434 has 1 MA's), (Start: 67 @40416 has 3 MA's), (Start: 70 @40407 has 1 MA's), (Start: 125 @40275 has 3 MA's), (166, 40092), (169, 40080), (178, 40047), (189, 40005), (201, 39954), (208, 39915), (250, 39711), (252, 39702), (260, 39642), (270, 39594), (271, 39579), (273, 39567),

Gene: Nandita_39 Start: 28503, Stop: 27628, Start Num: 87

Candidate Starts for Nandita_39:

(Start: 87 @28503 has 8 MA's), (108, 28464), (145, 28317), (153, 28278), (166, 28227), (172, 28191), (189, 28137), (197, 28110), (198, 28104), (201, 28086), (203, 28071), (212, 28041), (220, 28008), (225, 27987), (228, 27975), (237, 27903), (255, 27807), (263, 27765), (265, 27750),

Gene: Nazo_34 Start: 28936, Stop: 28034, Start Num: 73

Candidate Starts for Nazo_34:

(59, 28963), (Start: 73 @28936 has 2 MA's), (Start: 79 @28927 has 18 MA's), (Start: 124 @28852 has 1 MA's), (Start: 125 @28843 has 3 MA's), (160, 28675), (161, 28672), (162, 28669), (170, 28639), (171, 28627), (176, 28612), (183, 28594), (189, 28567), (197, 28540), (198, 28534), (209, 28480), (216, 28456), (225, 28417), (228, 28405), (244, 28321), (248, 28306), (251, 28288), (262, 28219), (270, 28177), (287, 28108), (309, 28048),

Gene: Necropolis_30 Start: 26871, Stop: 25915, Start Num: 44

Candidate Starts for Necropolis_30:

(Start: 44 @26871 has 34 MA's), (61, 26841), (Start: 79 @26808 has 18 MA's), (Start: 82 @26805 has 1 MA's), (Start: 124 @26733 has 1 MA's), (Start: 125 @26724 has 3 MA's), (126, 26718), (139, 26673), (160, 26556), (161, 26553), (162, 26550), (170, 26520), (171, 26508), (176, 26493), (183, 26475), (189, 26448), (197, 26421), (198, 26415), (209, 26361), (216, 26337), (228, 26286), (244, 26202), (259, 26112), (262, 26100), (270, 26058), (309, 25929),

Gene: Nenae_37 Start: 29038, Stop: 28067, Start Num: 36

Candidate Starts for Nenae_37:

(Start: 36 @29038 has 39 MA's), (Start: 78 @28954 has 1 MA's), (Start: 85 @28945 has 1 MA's), (139, 28792), (160, 28675), (161, 28672), (176, 28612), (180, 28603), (185, 28588), (189, 28567), (195, 28549), (208, 28483), (225, 28417), (228, 28405), (233, 28378), (239, 28339), (244, 28315), (248, 28300), (259, 28225), (270, 28171),

Gene: Nubi_47 Start: 39482, Stop: 38547, Start Num: 33

Candidate Starts for Nubi_47:

(Start: 33 @39482 has 18 MA's), (Start: 55 @39434 has 5 MA's), (Start: 58 @39431 has 1 MA's), (Start: 67 @39413 has 3 MA's), (Start: 70 @39404 has 1 MA's), (Start: 125 @39272 has 3 MA's), (166, 39089), (169, 39077), (178, 39044), (189, 39002), (201, 38951), (208, 38912), (250, 38708), (252, 38699), (260, 38639), (270, 38591), (271, 38576), (273, 38564),

Gene: Nyceirae_34 Start: 29373, Stop: 28474, Start Num: 76

Candidate Starts for Nyceirae_34:

(Start: 76 @29373 has 18 MA's), (Start: 78 @29367 has 1 MA's), (Start: 81 @29364 has 1 MA's), (110, 29307), (112, 29304), (116, 29280), (122, 29262), (152, 29127), (164, 29076), (171, 29040), (191,

28977), (226, 28833), (248, 28707), (262, 28620), (267, 28599), (272, 28554), (292, 28494),

Gene: Obliviate_36 Start: 30564, Stop: 29674, Start Num: 47

Candidate Starts for Obliviate_36:

(Start: 47 @30564 has 8 MA's), (Start: 57 @30543 has 1 MA's), (65, 30528), (Start: 74 @30510 has 1 MA's), (Start: 79 @30501 has 18 MA's), (Start: 93 @30483 has 6 MA's), (118, 30417), (189, 30111), (218, 29991), (228, 29949), (239, 29889), (244, 29865), (252, 29829), (265, 29748),

Gene: OctaviousRex_32 Start: 28917, Stop: 27721, Start Num: 10

Candidate Starts for OctaviousRex_32:

(Start: 10 @28917 has 58 MA's), (27, 28854), (97, 28728), (129, 28620), (139, 28587), (150, 28521), (176, 28410), (183, 28392), (187, 28371), (189, 28365), (190, 28362), (197, 28338), (211, 28266), (220, 28230), (250, 28071), (261, 27999), (273, 27927), (274, 27924), (299, 27855), (300, 27849), (308, 27813),

Gene: Olga_32 Start: 28917, Stop: 27721, Start Num: 10

Candidate Starts for Olga_32:

(Start: 10 @28917 has 58 MA's), (27, 28854), (97, 28728), (129, 28620), (139, 28587), (150, 28521), (176, 28410), (183, 28392), (187, 28371), (189, 28365), (190, 28362), (197, 28338), (211, 28266), (220, 28230), (250, 28071), (261, 27999), (273, 27927), (274, 27924), (299, 27855), (300, 27849), (308, 27813),

Gene: Opie_41 Start: 32411, Stop: 31515, Start Num: 76

Candidate Starts for Opie_41:

(Start: 76 @32411 has 18 MA's), (Start: 78 @32405 has 1 MA's), (Start: 81 @32402 has 1 MA's), (110, 32345), (112, 32342), (122, 32300), (Start: 125 @32285 has 3 MA's), (133, 32255), (152, 32165), (162, 32120), (163, 32117), (164, 32114), (190, 32018), (192, 32012), (197, 31994), (231, 31847), (234, 31817), (256, 31697), (267, 31637), (270, 31616), (272, 31592),

Gene: P3MA_37 Start: 29827, Stop: 28817, Start Num: 21

Candidate Starts for P3MA_37:

(Start: 21 @29827 has 1 MA's), (72, 29710), (113, 29641), (Start: 124 @29605 has 1 MA's), (Start: 125 @29596 has 3 MA's), (149, 29470), (153, 29449), (160, 29416), (185, 29329), (189, 29308), (198, 29275), (205, 29236), (211, 29215), (216, 29197), (218, 29188), (219, 29185), (223, 29167), (228, 29146), (236, 29101), (243, 29065), (266, 28945), (286, 28843),

Gene: Paito_32 Start: 29040, Stop: 27946, Start Num: 8

Candidate Starts for Paito_32:

(Start: 8 @29040 has 1 MA's), (12, 29013), (14, 29007), (29, 28971), (63, 28899), (105, 28821), (129, 28734), (150, 28635), (171, 28536), (182, 28509), (183, 28506), (187, 28485), (189, 28479), (190, 28476), (199, 28437), (211, 28380), (227, 28320), (250, 28185), (252, 28176), (261, 28113), (265, 28095), (268, 28074), (272, 28044), (273, 28041), (274, 28038), (296, 27984),

Gene: Panchino_32 Start: 29134, Stop: 28163, Start Num: 36

Candidate Starts for Panchino_32:

(Start: 36 @29134 has 39 MA's), (Start: 78 @29050 has 1 MA's), (Start: 92 @29035 has 1 MA's), (132, 28912), (139, 28888), (160, 28771), (161, 28768), (167, 28747), (176, 28708), (178, 28705), (180, 28699), (185, 28684), (189, 28663), (194, 28648), (205, 28591), (208, 28579), (219, 28540), (225, 28513), (228, 28501), (233, 28474), (239, 28435), (244, 28411), (248, 28396), (270, 28267), (271, 28252), (282, 28213),

Gene: Parmesanjohn_36 Start: 28738, Stop: 27767, Start Num: 36

Candidate Starts for Parmesanjohn_36:

(Start: 36 @28738 has 39 MA's), (Start: 78 @28654 has 1 MA's), (Start: 92 @28639 has 1 MA's), (132, 28516), (139, 28492), (160, 28375), (161, 28372), (167, 28351), (176, 28312), (178, 28309), (180, 28303), (185, 28288), (189, 28267), (194, 28252), (205, 28195), (208, 28183), (219, 28144), (225, 28117), (228, 28105), (233, 28078), (239, 28039), (244, 28015), (248, 28000), (270, 27871), (271, 27856), (282, 27817),

Gene: Peeb_32 Start: 28917, Stop: 27721, Start Num: 10

Candidate Starts for Peeb_32:

(Start: 10 @28917 has 58 MA's), (27, 28854), (84, 28749), (97, 28728), (129, 28620), (139, 28587), (150, 28521), (176, 28410), (183, 28392), (187, 28371), (189, 28365), (190, 28362), (197, 28338), (211, 28266), (220, 28230), (250, 28071), (261, 27999), (273, 27927), (274, 27924), (285, 27888), (299, 27855), (300, 27849), (308, 27813),

Gene: Periodt_32 Start: 28908, Stop: 27712, Start Num: 10

Candidate Starts for Periodt_32:

(Start: 10 @28908 has 58 MA's), (27, 28845), (84, 28740), (97, 28719), (129, 28611), (139, 28578), (150, 28512), (176, 28401), (183, 28383), (187, 28362), (189, 28356), (190, 28353), (197, 28329), (211, 28257), (220, 28221), (250, 28062), (261, 27990), (273, 27918), (274, 27915), (299, 27846), (300, 27840), (308, 27804), (316, 27768),

Gene: Petra_37 Start: 30869, Stop: 30033, Start Num: 74

Candidate Starts for Petra_37:

(Start: 47 @30923 has 8 MA's), (Start: 57 @30902 has 1 MA's), (65, 30887), (Start: 74 @30869 has 1 MA's), (Start: 79 @30860 has 18 MA's), (Start: 93 @30842 has 6 MA's), (118, 30776), (189, 30470), (195, 30452), (198, 30437), (218, 30350), (223, 30329), (228, 30308), (239, 30248), (244, 30224), (252, 30188), (265, 30107),

Gene: Phalm_30 Start: 27132, Stop: 26176, Start Num: 44

Candidate Starts for Phalm_30:

(Start: 44 @27132 has 34 MA's), (Start: 79 @27069 has 18 MA's), (Start: 82 @27066 has 1 MA's), (Start: 124 @26994 has 1 MA's), (Start: 125 @26985 has 3 MA's), (139, 26934), (160, 26817), (161, 26814), (162, 26811), (170, 26781), (171, 26769), (176, 26754), (183, 26736), (189, 26709), (197, 26682), (198, 26676), (209, 26622), (211, 26616), (216, 26598), (228, 26547), (244, 26463), (259, 26373), (262, 26361), (270, 26319), (309, 26190),

Gene: PhancyPhin_37 Start: 29032, Stop: 28061, Start Num: 36

Candidate Starts for PhancyPhin_37:

(Start: 36 @29032 has 39 MA's), (Start: 78 @28948 has 1 MA's), (Start: 85 @28939 has 1 MA's), (139, 28786), (160, 28669), (161, 28666), (176, 28606), (180, 28597), (185, 28582), (189, 28561), (195, 28543), (208, 28477), (225, 28411), (228, 28399), (233, 28372), (239, 28333), (244, 28309), (248, 28294), (259, 28219), (270, 28165),

Gene: Phayonce_32 Start: 28847, Stop: 27957, Start Num: 79

Candidate Starts for Phayonce_32:

(42, 28913), (Start: 47 @28904 has 8 MA's), (51, 28895), (Start: 79 @28847 has 18 MA's), (Start: 124 @28772 has 1 MA's), (Start: 125 @28763 has 3 MA's), (160, 28589), (161, 28586), (162, 28583), (171, 28541), (176, 28526), (183, 28508), (189, 28481), (198, 28448), (209, 28394), (220, 28352), (228, 28319), (244, 28235), (248, 28220), (262, 28133), (270, 28091), (281, 28040), (293, 28010), (297, 27998),

Gene: Phegasus_30 Start: 26880, Stop: 25924, Start Num: 44

Candidate Starts for Phegasus_30:

(Start: 44 @26880 has 34 MA's), (61, 26850), (Start: 79 @26817 has 18 MA's), (Start: 82 @26814 has 1 MA's), (Start: 124 @26742 has 1 MA's), (Start: 125 @26733 has 3 MA's), (126, 26727), (139, 26682), (160, 26565), (161, 26562), (162, 26559), (170, 26529), (171, 26517), (176, 26502), (183, 26484), (189, 26457), (197, 26430), (198, 26424), (209, 26370), (216, 26346), (228, 26295), (244, 26211), (255, 26151), (262, 26109), (270, 26067), (309, 25938),

Gene: Philonius_34 Start: 27400, Stop: 26429, Start Num: 36

Candidate Starts for Philonius_34:

(Start: 36 @27400 has 39 MA's), (39, 27391), (Start: 78 @27316 has 1 MA's), (Start: 92 @27301 has 1 MA's), (132, 27178), (139, 27154), (160, 27037), (161, 27034), (167, 27013), (176, 26974), (178, 26971), (180, 26965), (185, 26950), (189, 26929), (194, 26914), (205, 26857), (208, 26845), (219, 26806), (225, 26779), (228, 26767), (233, 26740), (239, 26701), (244, 26677), (248, 26662), (270, 26533), (282, 26479), (295, 26446),

Gene: Phineas_30 Start: 27246, Stop: 26290, Start Num: 44

Candidate Starts for Phineas_30:

(Start: 44 @27246 has 34 MA's), (61, 27216), (Start: 79 @27183 has 18 MA's), (Start: 82 @27180 has 1 MA's), (Start: 124 @27108 has 1 MA's), (Start: 125 @27099 has 3 MA's), (126, 27093), (139, 27048), (160, 26931), (161, 26928), (162, 26925), (170, 26895), (171, 26883), (176, 26868), (183, 26850), (189, 26823), (197, 26796), (198, 26790), (209, 26736), (211, 26730), (228, 26661), (244, 26577), (255, 26517), (262, 26475), (270, 26433), (309, 26304),

Gene: Phish_32 Start: 28917, Stop: 27721, Start Num: 10

Candidate Starts for Phish_32:

(Start: 10 @28917 has 58 MA's), (27, 28854), (97, 28728), (129, 28620), (139, 28587), (150, 28521), (176, 28410), (183, 28392), (187, 28371), (189, 28365), (190, 28362), (197, 28338), (211, 28266), (220, 28230), (250, 28071), (261, 27999), (273, 27927), (274, 27924), (299, 27855), (300, 27849), (308, 27813),

Gene: Phishy_35 Start: 30744, Stop: 29884, Start Num: 76

Candidate Starts for Phishy_35:

(Start: 44 @30795 has 34 MA's), (Start: 76 @30744 has 18 MA's), (123, 30639), (129, 30609), (139, 30576), (141, 30567), (160, 30459), (161, 30456), (176, 30396), (185, 30372), (188, 30354), (189, 30351), (219, 30228), (222, 30213), (228, 30189), (233, 30162), (244, 30099), (248, 30084), (258, 30012), (262, 29997), (270, 29955), (278, 29910),

Gene: Phlop_46 Start: 39515, Stop: 38628, Start Num: 55

Candidate Starts for Phlop_46:

(Start: 33 @39563 has 18 MA's), (Start: 55 @39515 has 5 MA's), (Start: 58 @39512 has 1 MA's), (Start: 67 @39494 has 3 MA's), (Start: 70 @39485 has 1 MA's), (Start: 125 @39353 has 3 MA's), (166, 39170), (169, 39158), (178, 39125), (189, 39083), (201, 39032), (208, 38993), (250, 38789), (252, 38780), (260, 38720), (270, 38672), (271, 38657), (273, 38645),

Gene: Phloss_34 Start: 28145, Stop: 27174, Start Num: 36

Candidate Starts for Phloss_34:

(Start: 36 @28145 has 39 MA's), (Start: 78 @28061 has 1 MA's), (Start: 92 @28046 has 1 MA's), (132, 27923), (139, 27899), (160, 27782), (161, 27779), (167, 27758), (176, 27719), (178, 27716), (180, 27710), (185, 27695), (189, 27674), (194, 27659), (205, 27602), (208, 27590), (219, 27551), (225, 27524), (228, 27512), (233, 27485), (239, 27446), (244, 27422), (248, 27407), (270, 27278), (271, 27263), (282, 27224),

Gene: Phrann_37 Start: 29816, Stop: 28845, Start Num: 36

Candidate Starts for Phrann_37:

(Start: 36 @29816 has 39 MA's), (Start: 78 @29732 has 1 MA's), (Start: 85 @29723 has 1 MA's), (139, 29570), (160, 29453), (161, 29450), (176, 29390), (180, 29381), (185, 29366), (189, 29345), (195, 29327), (208, 29261), (225, 29195), (228, 29183), (233, 29156), (239, 29117), (244, 29093), (248, 29078), (259, 29003), (270, 28949),

Gene: Phreak_32 Start: 28917, Stop: 27721, Start Num: 10

Candidate Starts for Phreak_32:

(Start: 10 @28917 has 58 MA's), (27, 28854), (97, 28728), (129, 28620), (139, 28587), (150, 28521), (176, 28410), (183, 28392), (187, 28371), (189, 28365), (190, 28362), (197, 28338), (211, 28266), (220, 28230), (250, 28071), (261, 27999), (273, 27927), (274, 27924), (299, 27855), (300, 27849), (308, 27813),

Gene: PhrostedPhlake_43 Start: 32416, Stop: 31481, Start Num: 33

Candidate Starts for PhrostedPhlake_43:

(Start: 33 @32416 has 18 MA's), (Start: 55 @32368 has 5 MA's), (Start: 58 @32365 has 1 MA's), (Start: 67 @32347 has 3 MA's), (Start: 125 @32206 has 3 MA's), (166, 32023), (178, 31978), (189, 31936), (201, 31885), (208, 31846), (218, 31810), (238, 31699), (250, 31642), (252, 31633), (259, 31579), (273, 31498),

Gene: PinkCoffee_49 Start: 39618, Stop: 38731, Start Num: 55

Candidate Starts for PinkCoffee_49:

(Start: 33 @39666 has 18 MA's), (Start: 55 @39618 has 5 MA's), (Start: 58 @39615 has 1 MA's), (Start: 67 @39597 has 3 MA's), (Start: 70 @39588 has 1 MA's), (Start: 125 @39456 has 3 MA's), (166, 39273), (169, 39261), (178, 39228), (189, 39186), (201, 39135), (208, 39096), (250, 38892), (252, 38883), (260, 38823), (270, 38775), (271, 38760), (273, 38748),

Gene: PinkYoshi_32 Start: 28908, Stop: 27712, Start Num: 10

Candidate Starts for PinkYoshi_32:

(Start: 10 @28908 has 58 MA's), (27, 28845), (97, 28719), (129, 28611), (139, 28578), (150, 28512), (176, 28401), (183, 28383), (187, 28362), (189, 28356), (190, 28353), (197, 28329), (211, 28257), (220, 28221), (250, 28062), (261, 27990), (273, 27918), (274, 27915), (299, 27846), (300, 27840), (308, 27804),

Gene: Pipp_37 Start: 31000, Stop: 30065, Start Num: 33

Candidate Starts for Pipp_37:

(Start: 33 @31000 has 18 MA's), (Start: 55 @30952 has 5 MA's), (Start: 58 @30949 has 1 MA's), (Start: 67 @30931 has 3 MA's), (Start: 70 @30922 has 1 MA's), (Start: 125 @30790 has 3 MA's), (166, 30607), (178, 30562), (189, 30520), (199, 30478), (201, 30469), (208, 30430), (218, 30394), (240, 30268), (250, 30226), (271, 30094), (273, 30082),

Gene: Pipsqueaks_36 Start: 28715, Stop: 27744, Start Num: 36

Candidate Starts for Pipsqueaks_36:

(Start: 36 @28715 has 39 MA's), (Start: 78 @28631 has 1 MA's), (Start: 92 @28616 has 1 MA's), (132, 28493), (139, 28469), (160, 28352), (161, 28349), (167, 28328), (176, 28289), (178, 28286), (180, 28280), (185, 28265), (189, 28244), (194, 28229), (205, 28172), (208, 28160), (219, 28121), (225, 28094), (228, 28082), (233, 28055), (239, 28016), (244, 27992), (248, 27977), (270, 27848), (271, 27833), (282, 27794),

Gene: Plagueis_32 Start: 28752, Stop: 27556, Start Num: 10

Candidate Starts for Plagueis_32:

(Start: 10 @28752 has 58 MA's), (27, 28689), (97, 28563), (129, 28455), (139, 28422), (150, 28356), (176, 28245), (183, 28227), (187, 28206), (189, 28200), (190, 28197), (197, 28173), (211, 28101), (220, 28065), (250, 27906), (261, 27834), (273, 27762), (274, 27759), (299, 27690), (300, 27684),

(308, 27648),

Gene: Polkaroo_30 Start: 26826, Stop: 25933, Start Num: 79

Candidate Starts for Polkaroo_30:

(Start: 44 @26889 has 34 MA's), (Start: 79 @26826 has 18 MA's), (Start: 82 @26823 has 1 MA's), (Start: 124 @26751 has 1 MA's), (Start: 125 @26742 has 3 MA's), (139, 26691), (160, 26574), (161, 26571), (162, 26568), (170, 26538), (171, 26526), (176, 26511), (183, 26493), (189, 26466), (197, 26439), (198, 26433), (209, 26379), (211, 26373), (216, 26355), (228, 26304), (244, 26220), (259, 26130), (262, 26118), (270, 26076), (309, 25947),

Gene: Popper_37 Start: 28406, Stop: 27531, Start Num: 87

Candidate Starts for Popper_37:

(Start: 87 @28406 has 8 MA's), (108, 28367), (133, 28280), (153, 28181), (166, 28130), (172, 28094), (189, 28040), (197, 28013), (198, 28007), (201, 27989), (203, 27974), (212, 27944), (225, 27890), (228, 27878), (237, 27806), (255, 27710), (263, 27668), (265, 27653),

Gene: Portcullis_49 Start: 39169, Stop: 38234, Start Num: 33

Candidate Starts for Portcullis_49:

(Start: 33 @39169 has 18 MA's), (Start: 55 @39121 has 5 MA's), (Start: 58 @39118 has 1 MA's), (Start: 67 @39100 has 3 MA's), (Start: 70 @39091 has 1 MA's), (Start: 125 @38959 has 3 MA's), (166, 38776), (169, 38764), (176, 38734), (178, 38731), (189, 38689), (201, 38638), (208, 38599), (250, 38395), (252, 38386), (260, 38326), (270, 38278), (271, 38263), (273, 38251),

Gene: PullumCavea_46 Start: 39563, Stop: 38628, Start Num: 33

Candidate Starts for PullumCavea_46:

(Start: 33 @39563 has 18 MA's), (Start: 55 @39515 has 5 MA's), (Start: 58 @39512 has 1 MA's), (Start: 67 @39494 has 3 MA's), (Start: 70 @39485 has 1 MA's), (Start: 125 @39353 has 3 MA's), (166, 39170), (169, 39158), (178, 39125), (189, 39083), (201, 39032), (208, 38993), (250, 38789), (252, 38780), (260, 38720), (270, 38672), (271, 38657), (273, 38645),

Gene: Purgamenstris_37 Start: 28943, Stop: 28065, Start Num: 85

Candidate Starts for Purgamenstris_37:

(Start: 36 @29036 has 39 MA's), (Start: 78 @28952 has 1 MA's), (Start: 85 @28943 has 1 MA's), (139, 28790), (160, 28673), (161, 28670), (176, 28610), (180, 28601), (185, 28586), (189, 28565), (195, 28547), (208, 28481), (225, 28415), (228, 28403), (233, 28376), (239, 28337), (244, 28313), (248, 28298), (259, 28223), (270, 28169),

Gene: Purky_37 Start: 29562, Stop: 28654, Start Num: 79

Candidate Starts for Purky_37:

(Start: 46 @29622 has 2 MA's), (49, 29613), (Start: 79 @29562 has 18 MA's), (121, 29496), (Start: 125 @29478 has 3 MA's), (160, 29310), (162, 29304), (170, 29274), (171, 29262), (183, 29229), (189, 29202), (191, 29196), (228, 29040), (244, 28956), (245, 28953), (257, 28875), (259, 28866), (270, 28812), (293, 28731),

Gene: Pygmy_32 Start: 28714, Stop: 27758, Start Num: 44

Candidate Starts for Pygmy_32:

(Start: 44 @28714 has 34 MA's), (61, 28684), (Start: 79 @28651 has 18 MA's), (Start: 82 @28648 has 1 MA's), (Start: 124 @28576 has 1 MA's), (Start: 125 @28567 has 3 MA's), (126, 28561), (139, 28516), (160, 28399), (161, 28396), (162, 28393), (170, 28363), (171, 28351), (176, 28336), (180, 28327), (183, 28318), (189, 28291), (197, 28264), (198, 28258), (209, 28204), (216, 28180), (228, 28129), (244, 28045), (255, 27985), (259, 27955), (262, 27943), (270, 27901), (309, 27772),

Gene: QueenHazel_29 Start: 26975, Stop: 26085, Start Num: 79

Candidate Starts for QueenHazel_29:

(Start: 44 @27038 has 34 MA's), (Start: 79 @26975 has 18 MA's), (Start: 125 @26891 has 3 MA's), (129, 26873), (160, 26723), (161, 26720), (162, 26717), (170, 26687), (171, 26675), (176, 26660), (180, 26651), (183, 26642), (189, 26615), (197, 26588), (198, 26582), (209, 26528), (211, 26522), (225, 26465), (228, 26453), (244, 26369), (248, 26354), (259, 26279), (262, 26267), (270, 26225), (297, 26132), (304, 26117),

Gene: QuinnAvery_40 Start: 29406, Stop: 28531, Start Num: 87

Candidate Starts for QuinnAvery_40:

(Start: 87 @29406 has 8 MA's), (108, 29367), (133, 29280), (153, 29181), (166, 29130), (172, 29094), (189, 29040), (197, 29013), (198, 29007), (201, 28989), (203, 28974), (212, 28944), (225, 28890), (228, 28878), (237, 28806), (253, 28722), (255, 28710), (263, 28668), (265, 28653), (275, 28590),

Gene: Rabbs_32 Start: 29000, Stop: 27804, Start Num: 10

Candidate Starts for Rabbs_32:

(6, 29051), (7, 29024), (Start: 10 @29000 has 58 MA's), (27, 28937), (84, 28832), (129, 28703), (150, 28604), (176, 28493), (183, 28475), (186, 28457), (187, 28454), (189, 28448), (197, 28421), (201, 28397), (211, 28349), (220, 28313), (250, 28154), (261, 28082), (273, 28010), (274, 28007), (299, 27938), (300, 27932), (308, 27896), (316, 27860),

Gene: Rahul_19 Start: 13941, Stop: 13114, Start Num: 76

Candidate Starts for Rahul_19:

(Start: 76 @13941 has 18 MA's), (Start: 94 @13914 has 1 MA's), (120, 13842), (Start: 124 @13827 has 1 MA's), (131, 13791), (149, 13704), (163, 13641), (177, 13587), (186, 13554), (189, 13545), (203, 13479), (204, 13476), (207, 13464), (209, 13452), (211, 13446), (218, 13419), (219, 13416), (235, 13365), (242, 13314), (252, 13272), (259, 13218), (261, 13209), (262, 13206), (270, 13164), (271, 13149), (272, 13140),

Gene: RayTheFireFly_45 Start: 32624, Stop: 31815, Start Num: 93

Candidate Starts for RayTheFireFly_45:

(54, 32687), (Start: 57 @32684 has 1 MA's), (65, 32669), (Start: 79 @32642 has 18 MA's), (Start: 93 @32624 has 6 MA's), (118, 32558), (144, 32444), (186, 32261), (189, 32252), (197, 32225), (198, 32219), (218, 32132), (228, 32090), (239, 32030), (244, 32006), (252, 31970), (265, 31889), (276, 31823),

Gene: Raymond7_31 Start: 28846, Stop: 27872, Start Num: 36

Candidate Starts for Raymond7_31:

(Start: 36 @28846 has 39 MA's), (Start: 78 @28762 has 1 MA's), (126, 28645), (132, 28624), (139, 28600), (153, 28516), (160, 28483), (161, 28480), (167, 28459), (178, 28417), (180, 28411), (185, 28396), (189, 28375), (195, 28357), (205, 28303), (208, 28291), (219, 28252), (225, 28225), (228, 28213), (233, 28186), (239, 28147), (244, 28123), (248, 28108), (255, 28063), (270, 27979), (282, 27925),

Gene: Redi_37 Start: 29035, Stop: 28064, Start Num: 36

Candidate Starts for Redi_37:

(Start: 36 @29035 has 39 MA's), (Start: 78 @28951 has 1 MA's), (Start: 85 @28942 has 1 MA's), (139, 28789), (160, 28672), (161, 28669), (176, 28609), (180, 28600), (185, 28585), (189, 28564), (195, 28546), (208, 28480), (225, 28414), (228, 28402), (233, 28375), (239, 28336), (244, 28312), (248, 28297), (259, 28222), (270, 28168),

Gene: Rem711_46 Start: 33683, Stop: 32640, Start Num: 17

Candidate Starts for Rem711_46:

(Start: 17 @33683 has 1 MA's), (75, 33548), (91, 33524), (113, 33467), (115, 33458), (132, 33395), (136, 33380), (138, 33374), (153, 33287), (155, 33281), (156, 33278), (160, 33254), (180, 33182), (185, 33167), (188, 33149), (189, 33146), (198, 33113), (211, 33053), (222, 33008), (225, 32996), (228, 32984), (244, 32891), (252, 32855), (255, 32831), (259, 32801),

Gene: Remy19_32 Start: 28917, Stop: 27721, Start Num: 10

Candidate Starts for Remy19_32:

(Start: 10 @28917 has 58 MA's), (27, 28854), (97, 28728), (129, 28620), (139, 28587), (150, 28521), (176, 28410), (183, 28392), (187, 28371), (189, 28365), (190, 28362), (197, 28338), (211, 28266), (220, 28230), (250, 28071), (261, 27999), (273, 27927), (274, 27924), (299, 27855), (300, 27849), (308, 27813),

Gene: Renaissance_32 Start: 28917, Stop: 27721, Start Num: 10

Candidate Starts for Renaissance_32:

(Start: 10 @28917 has 58 MA's), (27, 28854), (97, 28728), (129, 28620), (139, 28587), (150, 28521), (176, 28410), (183, 28392), (187, 28371), (189, 28365), (190, 28362), (197, 28338), (211, 28266), (220, 28230), (250, 28071), (261, 27999), (273, 27927), (274, 27924), (299, 27855), (300, 27849), (308, 27813),

Gene: Reyja_31 Start: 25906, Stop: 25172, Start Num: 124

Candidate Starts for Reyja_31:

(19, 26140), (Start: 24 @26131 has 1 MA's), (Start: 74 @26020 has 1 MA's), (Start: 93 @25993 has 6 MA's), (108, 25957), (Start: 124 @25906 has 1 MA's), (146, 25801), (148, 25789), (160, 25729), (171, 25681), (186, 25627), (189, 25618), (195, 25600), (211, 25525), (228, 25456), (239, 25396), (244, 25372), (248, 25357), (252, 25336), (255, 25312), (261, 25273), (262, 25270), (265, 25255), (278, 25183),

Gene: RogerDodger_50 Start: 39706, Stop: 38771, Start Num: 33

Candidate Starts for RogerDodger_50:

(Start: 33 @39706 has 18 MA's), (Start: 55 @39658 has 5 MA's), (Start: 58 @39655 has 1 MA's), (Start: 67 @39637 has 3 MA's), (Start: 70 @39628 has 1 MA's), (Start: 125 @39496 has 3 MA's), (166, 39313), (169, 39301), (176, 39271), (178, 39268), (189, 39226), (201, 39175), (208, 39136), (209, 39133), (250, 38932), (252, 38923), (260, 38863), (270, 38815), (271, 38800), (273, 38788),

Gene: Rubeelu_37 Start: 29461, Stop: 28490, Start Num: 36

Candidate Starts for Rubeelu_37:

(34, 29464), (Start: 36 @29461 has 39 MA's), (Start: 78 @29377 has 1 MA's), (Start: 125 @29266 has 3 MA's), (132, 29239), (139, 29215), (160, 29098), (180, 29026), (185, 29011), (189, 28990), (219, 28867), (225, 28840), (228, 28828), (233, 28801), (239, 28762), (244, 28738), (248, 28723), (259, 28648), (262, 28636), (270, 28594), (271, 28579), (282, 28540),

Gene: Ryan_39 Start: 29105, Stop: 28230, Start Num: 87

Candidate Starts for Ryan_39:

(Start: 87 @29105 has 8 MA's), (108, 29066), (145, 28919), (153, 28880), (166, 28829), (172, 28793), (189, 28739), (197, 28712), (201, 28688), (203, 28673), (212, 28643), (220, 28610), (225, 28589), (228, 28577), (237, 28505), (239, 28493), (255, 28409), (263, 28367), (265, 28352),

Gene: SallySpecial_17 Start: 13669, Stop: 12869, Start Num: 94

Candidate Starts for SallySpecial_17:

(1, 14119), (2, 14104), (3, 14101), (5, 13924), (29, 13801), (39, 13771), (Start: 41 @13762 has 1 MA's), (Start: 76 @13696 has 18 MA's), (Start: 94 @13669 has 1 MA's), (99, 13657), (102, 13654), (109, 13630), (121, 13591), (130, 13552), (137, 13525), (141, 13510), (163, 13396), (165, 13390), (170, 13369), (177, 13342), (188, 13303), (189, 13300), (201, 13249), (203, 13234), (204, 13231), (211,

13201), (217, 13180), (218, 13174), (219, 13171), (220, 13165), (235, 13120), (242, 13069), (252, 13027), (259, 12973), (269, 12922), (270, 12919), (271, 12904), (272, 12895),

Gene: Salvador_46 Start: 39375, Stop: 38440, Start Num: 33

Candidate Starts for Salvador_46:

(Start: 33 @39375 has 18 MA's), (Start: 55 @39327 has 5 MA's), (Start: 58 @39324 has 1 MA's), (Start: 67 @39306 has 3 MA's), (Start: 70 @39297 has 1 MA's), (Start: 125 @39165 has 3 MA's), (166, 38982), (169, 38970), (176, 38940), (178, 38937), (189, 38895), (201, 38844), (208, 38805), (250, 38601), (252, 38592), (260, 38532), (270, 38484), (271, 38469), (273, 38457),

Gene: Santhid_30 Start: 24489, Stop: 23530, Start Num: 24

Candidate Starts for Santhid_30:

(18, 24504), (Start: 22 @24495 has 1 MA's), (Start: 24 @24489 has 1 MA's), (Start: 74 @24378 has 1 MA's), (Start: 93 @24351 has 6 MA's), (108, 24315), (146, 24159), (148, 24147), (160, 24087), (171, 24039), (173, 24030), (186, 23985), (189, 23976), (195, 23958), (228, 23814), (230, 23808), (239, 23754), (244, 23730), (248, 23715), (252, 23694), (261, 23631), (265, 23613),

Gene: Savbucketdawg_47 Start: 39156, Stop: 38221, Start Num: 33

Candidate Starts for Savbucketdawg_47:

(Start: 33 @39156 has 18 MA's), (Start: 55 @39108 has 5 MA's), (Start: 58 @39105 has 1 MA's), (Start: 67 @39087 has 3 MA's), (Start: 70 @39078 has 1 MA's), (Start: 125 @38946 has 3 MA's), (166, 38763), (169, 38751), (178, 38718), (189, 38676), (201, 38625), (208, 38586), (250, 38382), (252, 38373), (260, 38313), (270, 38265), (271, 38250), (273, 38238),

Gene: Schiebel_32 Start: 28917, Stop: 27721, Start Num: 10

Candidate Starts for Schiebel_32:

(Start: 10 @28917 has 58 MA's), (27, 28854), (97, 28728), (129, 28620), (139, 28587), (150, 28521), (176, 28410), (183, 28392), (187, 28371), (189, 28365), (190, 28362), (197, 28338), (211, 28266), (220, 28230), (250, 28071), (261, 27999), (273, 27927), (274, 27924), (299, 27855), (300, 27849), (308, 27813),

Gene: Schism_41 Start: 29284, Stop: 28409, Start Num: 87

Candidate Starts for Schism_41:

(Start: 87 @29284 has 8 MA's), (108, 29245), (133, 29158), (153, 29059), (166, 29008), (172, 28972), (189, 28918), (197, 28891), (198, 28885), (201, 28867), (203, 28852), (212, 28822), (225, 28768), (228, 28756), (237, 28684), (255, 28588), (263, 28546), (265, 28531),

Gene: Schnabeltier_38 Start: 31608, Stop: 30718, Start Num: 76

Candidate Starts for Schnabeltier_38:

(42, 31668), (Start: 76 @31608 has 18 MA's), (Start: 78 @31602 has 1 MA's), (Start: 81 @31599 has 1 MA's), (110, 31542), (112, 31539), (122, 31497), (133, 31452), (142, 31413), (181, 31248), (186, 31227), (190, 31215), (192, 31209), (197, 31191), (202, 31164), (221, 31089), (229, 31053), (231, 31044), (242, 30963), (267, 30834), (270, 30813), (272, 30789),

Gene: Schnauzer_36 Start: 28738, Stop: 27767, Start Num: 36

Candidate Starts for Schnauzer_36:

(Start: 36 @28738 has 39 MA's), (Start: 78 @28654 has 1 MA's), (Start: 92 @28639 has 1 MA's), (132, 28516), (139, 28492), (160, 28375), (161, 28372), (167, 28351), (176, 28312), (178, 28309), (180, 28303), (185, 28288), (189, 28267), (194, 28252), (205, 28195), (208, 28183), (219, 28144), (225, 28117), (228, 28105), (233, 28078), (239, 28039), (244, 28015), (248, 28000), (270, 27871), (271, 27856), (282, 27817),

Gene: Scitech_31 Start: 26586, Stop: 25615, Start Num: 36

Candidate Starts for Scitech_31:

(Start: 36 @26586 has 39 MA's), (Start: 78 @26502 has 1 MA's), (Start: 92 @26487 has 1 MA's), (132, 26364), (139, 26340), (160, 26223), (161, 26220), (167, 26199), (176, 26160), (178, 26157), (180, 26151), (185, 26136), (189, 26115), (194, 26100), (205, 26043), (208, 26031), (219, 25992), (225, 25965), (228, 25953), (233, 25926), (239, 25887), (244, 25863), (248, 25848), (270, 25719), (282, 25665), (295, 25632),

Gene: ShaboiShabazz_32 Start: 28917, Stop: 27721, Start Num: 10

Candidate Starts for ShaboiShabazz_32:

(Start: 10 @28917 has 58 MA's), (27, 28854), (97, 28728), (129, 28620), (139, 28587), (150, 28521), (176, 28410), (183, 28392), (187, 28371), (189, 28365), (190, 28362), (197, 28338), (211, 28266), (220, 28230), (250, 28071), (261, 27999), (273, 27927), (274, 27924), (299, 27855), (300, 27849), (308, 27813),

Gene: Shinji_48 Start: 38871, Stop: 37984, Start Num: 55

Candidate Starts for Shinji_48:

(Start: 33 @38919 has 18 MA's), (Start: 55 @38871 has 5 MA's), (Start: 58 @38868 has 1 MA's), (Start: 67 @38850 has 3 MA's), (Start: 70 @38841 has 1 MA's), (Start: 125 @38709 has 3 MA's), (166, 38526), (169, 38514), (176, 38484), (178, 38481), (189, 38439), (201, 38388), (208, 38349), (209, 38346), (250, 38145), (252, 38136), (260, 38076), (270, 38028), (271, 38013), (273, 38001),

Gene: Shipwreck_32 Start: 28626, Stop: 27733, Start Num: 79

Candidate Starts for Shipwreck_32:

(Start: 44 @28689 has 34 MA's), (61, 28659), (Start: 79 @28626 has 18 MA's), (Start: 82 @28623 has 1 MA's), (Start: 124 @28551 has 1 MA's), (Start: 125 @28542 has 3 MA's), (126, 28536), (139, 28491), (160, 28374), (161, 28371), (162, 28368), (170, 28338), (171, 28326), (176, 28311), (180, 28302), (183, 28293), (189, 28266), (197, 28239), (198, 28233), (209, 28179), (216, 28155), (228, 28104), (244, 28020), (255, 27960), (259, 27930), (262, 27918), (270, 27876), (309, 27747),

Gene: ShrimpFriedEgg_37 Start: 29035, Stop: 28064, Start Num: 36

Candidate Starts for ShrimpFriedEgg_37:

(Start: 36 @29035 has 39 MA's), (Start: 78 @28951 has 1 MA's), (Start: 85 @28942 has 1 MA's), (139, 28789), (160, 28672), (161, 28669), (176, 28609), (180, 28600), (185, 28585), (189, 28564), (195, 28546), (208, 28480), (225, 28414), (228, 28402), (233, 28375), (239, 28336), (244, 28312), (248, 28297), (259, 28222), (270, 28168),

Gene: Shweta_33 Start: 27918, Stop: 26947, Start Num: 36

Candidate Starts for Shweta_33:

(Start: 36 @27918 has 39 MA's), (Start: 78 @27834 has 1 MA's), (Start: 92 @27819 has 1 MA's), (132, 27696), (139, 27672), (160, 27555), (161, 27552), (167, 27531), (176, 27492), (178, 27489), (180, 27483), (185, 27468), (189, 27447), (194, 27432), (205, 27375), (208, 27363), (219, 27324), (225, 27297), (228, 27285), (233, 27258), (239, 27219), (244, 27195), (248, 27180), (270, 27051), (271, 27036), (282, 26997),

Gene: Silvafighter_37 Start: 28711, Stop: 27740, Start Num: 36

Candidate Starts for Silvafighter_37:

(Start: 36 @28711 has 39 MA's), (Start: 78 @28627 has 1 MA's), (Start: 92 @28612 has 1 MA's), (132, 28489), (139, 28465), (160, 28348), (161, 28345), (167, 28324), (176, 28285), (178, 28282), (180, 28276), (185, 28261), (189, 28240), (194, 28225), (205, 28168), (208, 28156), (219, 28117), (225, 28090), (228, 28078), (233, 28051), (239, 28012), (244, 27988), (248, 27973), (270, 27844), (271, 27829), (282, 27790),

Gene: Silvy_34 Start: 27389, Stop: 26418, Start Num: 36

Candidate Starts for Silvy_34:

(Start: 36 @27389 has 39 MA's), (39, 27380), (Start: 78 @27305 has 1 MA's), (Start: 92 @27290 has 1 MA's), (132, 27167), (139, 27143), (160, 27026), (161, 27023), (167, 27002), (176, 26963), (178, 26960), (180, 26954), (185, 26939), (189, 26918), (194, 26903), (205, 26846), (208, 26834), (219, 26795), (225, 26768), (228, 26756), (233, 26729), (239, 26690), (244, 26666), (248, 26651), (270, 26522), (282, 26468), (295, 26435),

Gene: Sizemore_32 Start: 28918, Stop: 27722, Start Num: 10

Candidate Starts for Sizemore_32:

(7, 28942), (Start: 10 @28918 has 58 MA's), (27, 28855), (84, 28750), (102, 28720), (129, 28621), (139, 28588), (150, 28522), (176, 28411), (183, 28393), (187, 28372), (189, 28366), (190, 28363), (197, 28339), (211, 28267), (220, 28231), (250, 28072), (261, 28000), (273, 27928), (274, 27925), (299, 27856), (300, 27850), (308, 27814), (316, 27778),

Gene: SkinnyPete_31 Start: 26449, Stop: 25478, Start Num: 36

Candidate Starts for SkinnyPete_31:

(Start: 36 @26449 has 39 MA's), (Start: 78 @26365 has 1 MA's), (Start: 92 @26350 has 1 MA's), (132, 26227), (139, 26203), (160, 26086), (161, 26083), (167, 26062), (176, 26023), (178, 26020), (180, 26014), (185, 25999), (189, 25978), (194, 25963), (205, 25906), (208, 25894), (219, 25855), (225, 25828), (228, 25816), (233, 25789), (239, 25750), (244, 25726), (248, 25711), (270, 25582), (282, 25528), (295, 25495),

Gene: Smilerella_19 Start: 13836, Stop: 12850, Start Num: 32

Candidate Starts for Smilerella_19:

(32, 13836), (83, 13734), (Start: 87 @13728 has 8 MA's), (135, 13587), (143, 13548), (166, 13440), (167, 13434), (180, 13386), (189, 13350), (198, 13317), (213, 13251), (217, 13236), (222, 13212), (225, 13200), (228, 13188), (237, 13122), (256, 13026), (259, 12999), (264, 12984), (270, 12945),

Gene: SmokingBunny_47 Start: 39390, Stop: 38533, Start Num: 70

Candidate Starts for SmokingBunny_47:

(Start: 33 @39468 has 18 MA's), (Start: 55 @39420 has 5 MA's), (Start: 58 @39417 has 1 MA's), (Start: 67 @39399 has 3 MA's), (Start: 70 @39390 has 1 MA's), (Start: 125 @39258 has 3 MA's), (166, 39075), (169, 39063), (178, 39030), (189, 38988), (201, 38937), (208, 38898), (250, 38694), (252, 38685), (260, 38625), (270, 38577), (271, 38562), (273, 38550),

Gene: Smurph_36 Start: 28738, Stop: 27767, Start Num: 36

Candidate Starts for Smurph_36:

(Start: 36 @28738 has 39 MA's), (Start: 78 @28654 has 1 MA's), (Start: 92 @28639 has 1 MA's), (132, 28516), (139, 28492), (160, 28375), (161, 28372), (167, 28351), (176, 28312), (178, 28309), (180, 28303), (185, 28288), (189, 28267), (194, 28252), (205, 28195), (208, 28183), (219, 28144), (225, 28117), (228, 28105), (233, 28078), (239, 28039), (244, 28015), (248, 28000), (270, 27871), (271, 27856), (282, 27817),

Gene: Sneeze_32 Start: 28999, Stop: 27803, Start Num: 10

Candidate Starts for Sneeze_32:

(6, 29050), (7, 29023), (Start: 10 @28999 has 58 MA's), (27, 28936), (84, 28831), (129, 28702), (150, 28603), (176, 28492), (183, 28474), (186, 28456), (187, 28453), (189, 28447), (197, 28420), (201, 28396), (211, 28348), (220, 28312), (250, 28153), (261, 28081), (273, 28009), (274, 28006), (299, 27937), (300, 27931), (308, 27895), (316, 27859),

Gene: Snekmaggedon_33 Start: 27788, Stop: 26817, Start Num: 36

Candidate Starts for Snekmaggedon_33:

(Start: 36 @27788 has 39 MA's), (Start: 78 @27704 has 1 MA's), (Start: 92 @27689 has 1 MA's), (132, 27566), (139, 27542), (160, 27425), (161, 27422), (167, 27401), (176, 27362), (178, 27359), (180, 27353), (185, 27338), (189, 27317), (194, 27302), (205, 27245), (208, 27233), (219, 27194), (225, 27167), (228, 27155), (233, 27128), (239, 27089), (244, 27065), (248, 27050), (270, 26921), (271, 26906), (282, 26867),

Gene: Sonah_30 Start: 26861, Stop: 25905, Start Num: 44

Candidate Starts for Sonah_30:

(Start: 44 @26861 has 34 MA's), (61, 26831), (Start: 79 @26798 has 18 MA's), (Start: 82 @26795 has 1 MA's), (Start: 124 @26723 has 1 MA's), (Start: 125 @26714 has 3 MA's), (139, 26663), (160, 26546), (161, 26543), (162, 26540), (170, 26510), (171, 26498), (176, 26483), (183, 26465), (189, 26438), (197, 26411), (198, 26405), (209, 26351), (216, 26327), (228, 26276), (244, 26192), (259, 26102), (262, 26090), (270, 26048), (309, 25919),

Gene: SpongeBob_33 Start: 27788, Stop: 26817, Start Num: 36

Candidate Starts for SpongeBob_33:

(Start: 36 @27788 has 39 MA's), (Start: 78 @27704 has 1 MA's), (Start: 92 @27689 has 1 MA's), (132, 27566), (139, 27542), (160, 27425), (161, 27422), (167, 27401), (176, 27362), (178, 27359), (180, 27353), (185, 27338), (189, 27317), (194, 27302), (205, 27245), (208, 27233), (219, 27194), (225, 27167), (228, 27155), (233, 27128), (239, 27089), (244, 27065), (248, 27050), (270, 26921), (271, 26906), (282, 26867),

Gene: StevieRay_30 Start: 26777, Stop: 25884, Start Num: 79

Candidate Starts for StevieRay_30:

(Start: 44 @26840 has 34 MA's), (Start: 79 @26777 has 18 MA's), (Start: 82 @26774 has 1 MA's), (Start: 124 @26702 has 1 MA's), (Start: 125 @26693 has 3 MA's), (139, 26642), (160, 26525), (161, 26522), (162, 26519), (170, 26489), (171, 26477), (176, 26462), (183, 26444), (189, 26417), (197, 26390), (198, 26384), (209, 26330), (228, 26255), (244, 26171), (259, 26081), (262, 26069), (270, 26027), (309, 25898),

Gene: StressBall_30 Start: 27132, Stop: 26176, Start Num: 44

Candidate Starts for StressBall_30:

(Start: 44 @27132 has 34 MA's), (Start: 79 @27069 has 18 MA's), (Start: 82 @27066 has 1 MA's), (Start: 124 @26994 has 1 MA's), (Start: 125 @26985 has 3 MA's), (139, 26934), (160, 26817), (161, 26814), (162, 26811), (170, 26781), (171, 26769), (176, 26754), (183, 26736), (189, 26709), (197, 26682), (198, 26676), (209, 26622), (211, 26616), (216, 26598), (228, 26547), (244, 26463), (259, 26373), (262, 26361), (270, 26319), (309, 26190),

Gene: Sweets_32 Start: 28912, Stop: 27716, Start Num: 10

Candidate Starts for Sweets_32:

(Start: 10 @28912 has 58 MA's), (27, 28849), (97, 28723), (129, 28615), (139, 28582), (150, 28516), (176, 28405), (183, 28387), (187, 28366), (189, 28360), (190, 28357), (197, 28333), (211, 28261), (220, 28225), (250, 28066), (261, 27994), (273, 27922), (274, 27919), (299, 27850), (300, 27844), (308, 27808),

Gene: Taheera_32 Start: 29035, Stop: 27845, Start Num: 10

Candidate Starts for Taheera_32:

(6, 29086), (7, 29059), (Start: 10 @29035 has 58 MA's), (27, 28972), (39, 28951), (84, 28867), (129, 28738), (150, 28639), (176, 28528), (183, 28510), (186, 28492), (187, 28489), (189, 28483), (197, 28456), (201, 28432), (211, 28384), (220, 28348), (250, 28189), (261, 28117), (273, 28045), (274, 28042), (299, 27979), (300, 27973), (308, 27937),

Gene: Tapioca_37 Start: 28704, Stop: 27733, Start Num: 36

Candidate Starts for Tapioca_37:

(Start: 36 @28704 has 39 MA's), (Start: 78 @28620 has 1 MA's), (Start: 92 @28605 has 1 MA's), (132, 28482), (139, 28458), (160, 28341), (161, 28338), (167, 28317), (176, 28278), (178, 28275), (180, 28269), (185, 28254), (189, 28233), (194, 28218), (205, 28161), (208, 28149), (219, 28110), (225, 28083), (228, 28071), (233, 28044), (239, 28005), (244, 27981), (248, 27966), (270, 27837), (271, 27822), (282, 27783),

Gene: TaronosaurusRx_39 Start: 30540, Stop: 29644, Start Num: 76

Candidate Starts for TaronosaurusRx_39:

(Start: 76 @30540 has 18 MA's), (Start: 78 @30534 has 1 MA's), (Start: 81 @30531 has 1 MA's), (110, 30474), (112, 30471), (122, 30429), (133, 30384), (152, 30294), (157, 30273), (164, 30243), (190, 30147), (192, 30141), (197, 30123), (231, 29976), (234, 29946), (252, 29853), (256, 29826), (267, 29766), (270, 29745), (272, 29721),

Gene: Tarzan_31 Start: 25523, Stop: 24702, Start Num: 93

Candidate Starts for Tarzan_31:

(19, 25670), (Start: 24 @25661 has 1 MA's), (Start: 74 @25550 has 1 MA's), (Start: 93 @25523 has 6 MA's), (108, 25487), (Start: 124 @25436 has 1 MA's), (146, 25331), (148, 25319), (160, 25259), (171, 25211), (186, 25157), (189, 25148), (195, 25130), (211, 25055), (228, 24986), (239, 24926), (244, 24902), (248, 24887), (252, 24866), (255, 24842), (261, 24803), (262, 24800), (265, 24785),

Gene: Techage_30 Start: 26898, Stop: 25909, Start Num: 44

Candidate Starts for Techage_30:

(Start: 44 @26898 has 34 MA's), (61, 26868), (Start: 79 @26835 has 18 MA's), (Start: 82 @26832 has 1 MA's), (99, 26802), (101, 26799), (Start: 124 @26727 has 1 MA's), (Start: 125 @26718 has 3 MA's), (126, 26712), (139, 26667), (160, 26550), (161, 26547), (162, 26544), (170, 26514), (171, 26502), (176, 26487), (183, 26469), (189, 26442), (197, 26415), (198, 26409), (209, 26355), (211, 26349), (216, 26331), (228, 26280), (244, 26196), (255, 26136), (262, 26094), (270, 26052), (309, 25923),

Gene: Terror_32 Start: 29035, Stop: 27845, Start Num: 10

Candidate Starts for Terror_32:

(6, 29086), (7, 29059), (Start: 10 @29035 has 58 MA's), (27, 28972), (39, 28951), (84, 28867), (129, 28738), (150, 28639), (176, 28528), (183, 28510), (186, 28492), (187, 28489), (189, 28483), (197, 28456), (201, 28432), (211, 28384), (220, 28348), (250, 28189), (261, 28117), (273, 28045), (274, 28042), (299, 27979), (300, 27973), (308, 27937),

Gene: Thespis_30 Start: 26805, Stop: 25912, Start Num: 79

Candidate Starts for Thespis_30:

(Start: 44 @26868 has 34 MA's), (Start: 79 @26805 has 18 MA's), (Start: 82 @26802 has 1 MA's), (Start: 124 @26730 has 1 MA's), (Start: 125 @26721 has 3 MA's), (139, 26670), (160, 26553), (161, 26550), (162, 26547), (170, 26517), (171, 26505), (176, 26490), (183, 26472), (189, 26445), (197, 26418), (198, 26412), (209, 26358), (211, 26352), (216, 26334), (228, 26283), (244, 26199), (259, 26109), (262, 26097), (270, 26055), (309, 25926),

Gene: TillyBobJoe_47 Start: 39311, Stop: 38487, Start Num: 89

Candidate Starts for TillyBobJoe_47:

(86, 39314), (Start: 89 @39311 has 1 MA's), (Start: 93 @39305 has 6 MA's), (144, 39128), (160, 39047), (186, 38951), (189, 38942), (208, 38858), (228, 38780), (239, 38723), (244, 38699), (248, 38684), (252, 38663), (258, 38612), (261, 38600), (262, 38597),

Gene: TinaBug_32 Start: 28723, Stop: 27716, Start Num: 97

Candidate Starts for TinaBug_32:

(Start: 10 @28912 has 58 MA's), (27, 28849), (97, 28723), (129, 28615), (139, 28582), (150, 28516), (176, 28405), (183, 28387), (187, 28366), (189, 28360), (190, 28357), (197, 28333), (211, 28261), (220, 28225), (250, 28066), (261, 27994), (273, 27922), (274, 27919), (299, 27850), (300, 27844), (308, 27808),

Gene: Togo_46 Start: 39399, Stop: 38533, Start Num: 67

Candidate Starts for Togo_46:

(Start: 33 @39468 has 18 MA's), (Start: 55 @39420 has 5 MA's), (Start: 58 @39417 has 1 MA's), (Start: 67 @39399 has 3 MA's), (Start: 70 @39390 has 1 MA's), (Start: 125 @39258 has 3 MA's), (166, 39075), (169, 39063), (178, 39030), (189, 38988), (201, 38937), (208, 38898), (250, 38694), (252, 38685), (260, 38625), (270, 38577), (271, 38562), (273, 38550),

Gene: TomBrady_32 Start: 28918, Stop: 27722, Start Num: 10

Candidate Starts for TomBrady_32:

(Start: 10 @28918 has 58 MA's), (27, 28855), (97, 28729), (129, 28621), (139, 28588), (150, 28522), (176, 28411), (183, 28393), (187, 28372), (189, 28366), (190, 28363), (197, 28339), (211, 28267), (220, 28231), (250, 28072), (261, 28000), (273, 27928), (274, 27925), (299, 27856), (300, 27850), (308, 27814),

Gene: Tortoise12_34 Start: 27421, Stop: 26450, Start Num: 36

Candidate Starts for Tortoise12_34:

(Start: 36 @27421 has 39 MA's), (39, 27412), (Start: 78 @27337 has 1 MA's), (Start: 92 @27322 has 1 MA's), (132, 27199), (139, 27175), (160, 27058), (161, 27055), (167, 27034), (176, 26995), (178, 26992), (180, 26986), (185, 26971), (189, 26950), (194, 26935), (205, 26878), (208, 26866), (219, 26827), (225, 26800), (228, 26788), (233, 26761), (239, 26722), (244, 26698), (248, 26683), (270, 26554), (282, 26500), (295, 26467),

Gene: Twister6_49 Start: 39200, Stop: 38334, Start Num: 67

Candidate Starts for Twister6_49:

(Start: 33 @39269 has 18 MA's), (Start: 55 @39221 has 5 MA's), (Start: 58 @39218 has 1 MA's), (Start: 67 @39200 has 3 MA's), (Start: 70 @39191 has 1 MA's), (Start: 125 @39059 has 3 MA's), (166, 38876), (169, 38864), (176, 38834), (178, 38831), (189, 38789), (201, 38738), (208, 38699), (209, 38696), (250, 38495), (252, 38486), (260, 38426), (270, 38378), (271, 38363), (273, 38351),

Gene: Typha_52 Start: 40512, Stop: 39421, Start Num: 125

Candidate Starts for Typha_52:

(Start: 11 @40800 has 1 MA's), (16, 40770), (49, 40683), (52, 40680), (62, 40662), (106, 40578), (108, 40572), (Start: 125 @40512 has 3 MA's), (134, 40479), (176, 40284), (186, 40248), (189, 40239), (190, 40236), (232, 40047), (240, 39978), (247, 39954), (250, 39936), (259, 39873), (267, 39840), (273, 39792), (283, 39756), (285, 39750), (287, 39747), (293, 39735), (294, 39726), (296, 39723), (310, 39651), (311, 39648), (314, 39642), (315, 39639), (321, 39462),

Gene: UmaThurman_35 Start: 31152, Stop: 30235, Start Num: 37

Candidate Starts for UmaThurman_35:

(30, 31161), (Start: 37 @31152 has 1 MA's), (63, 31101), (64, 31098), (176, 30735), (189, 30690), (197, 30663), (199, 30648), (219, 30561), (247, 30414), (249, 30405), (250, 30396), (273, 30252), (274, 30249),

Gene: Valary_49 Start: 40311, Stop: 39376, Start Num: 33

Candidate Starts for Valary_49:

(Start: 33 @40311 has 18 MA's), (Start: 55 @40263 has 5 MA's), (Start: 58 @40260 has 1 MA's), (Start: 67 @40242 has 3 MA's), (Start: 70 @40233 has 1 MA's), (Start: 125 @40101 has 3 MA's), (166, 39918), (169, 39906), (178, 39873), (189, 39831), (201, 39780), (208, 39741), (250, 39537), (252,

39528), (260, 39468), (270, 39420), (271, 39405), (273, 39393),

Gene: VanDeWege_50 Start: 39603, Stop: 38668, Start Num: 33

Candidate Starts for VanDeWege_50:

(Start: 33 @39603 has 18 MA's), (Start: 55 @39555 has 5 MA's), (Start: 58 @39552 has 1 MA's), (Start: 67 @39534 has 3 MA's), (Start: 70 @39525 has 1 MA's), (Start: 125 @39393 has 3 MA's), (166, 39210), (169, 39198), (178, 39165), (189, 39123), (201, 39072), (208, 39033), (250, 38829), (252, 38820), (260, 38760), (270, 38712), (271, 38697), (273, 38685),

Gene: Venti_30 Start: 26875, Stop: 25919, Start Num: 44

Candidate Starts for Venti_30:

(Start: 44 @26875 has 34 MA's), (61, 26845), (Start: 79 @26812 has 18 MA's), (Start: 82 @26809 has 1 MA's), (Start: 124 @26737 has 1 MA's), (Start: 125 @26728 has 3 MA's), (126, 26722), (139, 26677), (160, 26560), (161, 26557), (162, 26554), (170, 26524), (171, 26512), (176, 26497), (183, 26479), (189, 26452), (197, 26425), (198, 26419), (209, 26365), (211, 26359), (228, 26290), (244, 26206), (255, 26146), (262, 26104), (270, 26062), (309, 25933),

Gene: Vidya_30 Start: 26845, Stop: 25919, Start Num: 79

Candidate Starts for Vidya_30:

(Start: 44 @26908 has 34 MA's), (61, 26878), (Start: 79 @26845 has 18 MA's), (Start: 82 @26842 has 1 MA's), (99, 26812), (101, 26809), (Start: 124 @26737 has 1 MA's), (Start: 125 @26728 has 3 MA's), (126, 26722), (139, 26677), (160, 26560), (161, 26557), (162, 26554), (170, 26524), (171, 26512), (176, 26497), (183, 26479), (189, 26452), (197, 26425), (198, 26419), (209, 26365), (211, 26359), (216, 26341), (228, 26290), (244, 26206), (255, 26146), (262, 26104), (309, 25933),

Gene: Vordorf_34 Start: 29605, Stop: 28745, Start Num: 76

Candidate Starts for Vordorf_34:

(13, 29749), (35, 29683), (Start: 76 @29605 has 18 MA's), (123, 29500), (129, 29470), (139, 29437), (160, 29320), (185, 29233), (188, 29215), (189, 29212), (211, 29119), (219, 29089), (222, 29074), (228, 29050), (233, 29023), (244, 28960), (258, 28873), (262, 28858), (278, 28771),

Gene: Walrus_40 Start: 32146, Stop: 31328, Start Num: 93

Candidate Starts for Walrus_40:

(63, 32194), (86, 32155), (Start: 89 @32152 has 1 MA's), (Start: 93 @32146 has 6 MA's), (123, 32065), (Start: 124 @32062 has 1 MA's), (154, 31918), (160, 31888), (186, 31792), (189, 31783), (208, 31699), (222, 31645), (228, 31621), (239, 31564), (242, 31546), (244, 31540), (248, 31525), (252, 31504), (261, 31441), (262, 31438), (265, 31423), (273, 31369), (284, 31336),

Gene: Weirido19_45 Start: 34583, Stop: 33348, Start Num: 8

Candidate Starts for Weirido19_45:

(4, 34775), (Start: 8 @34583 has 1 MA's), (40, 34472), (64, 34427), (Start: 70 @34412 has 1 MA's), (102, 34364), (107, 34346), (117, 34313), (Start: 124 @34292 has 1 MA's), (129, 34265), (150, 34166), (166, 34097), (176, 34055), (182, 34040), (183, 34037), (187, 34016), (188, 34013), (189, 34010), (190, 34007), (197, 33983), (208, 33920), (210, 33914), (211, 33911), (217, 33890), (219, 33881), (227, 33851), (242, 33749), (247, 33734), (250, 33716), (252, 33707), (257, 33662), (259, 33653), (261, 33644), (265, 33626), (271, 33584), (273, 33572), (302, 33491), (305, 33482), (313, 33440), (320, 33389),

Gene: Wendigo_32 Start: 28728, Stop: 27721, Start Num: 97

Candidate Starts for Wendigo_32:

(Start: 10 @28917 has 58 MA's), (27, 28854), (97, 28728), (129, 28620), (139, 28587), (150, 28521), (176, 28410), (183, 28392), (187, 28371), (189, 28365), (190, 28362), (197, 28338), (211, 28266), (220, 28230), (250, 28071), (261, 27999), (273, 27927), (274, 27924), (299, 27855), (300, 27849),

(308, 27813),

Gene: Whack_39 Start: 32450, Stop: 31497, Start Num: 50

Candidate Starts for Whack_39:

(Start: 50 @32450 has 1 MA's), (Start: 89 @32384 has 1 MA's), (99, 32363), (149, 32177), (157, 32141), (164, 32111), (170, 32087), (201, 31961), (203, 31946), (214, 31910), (215, 31907), (231, 31835), (239, 31775), (255, 31691), (257, 31670), (279, 31550), (298, 31502),

Gene: Willsammy_29 Start: 26615, Stop: 25659, Start Num: 44

Candidate Starts for Willsammy_29:

(Start: 44 @26615 has 34 MA's), (Start: 79 @26552 has 18 MA's), (Start: 82 @26549 has 1 MA's), (Start: 124 @26477 has 1 MA's), (Start: 125 @26468 has 3 MA's), (139, 26417), (160, 26300), (161, 26297), (162, 26294), (170, 26264), (171, 26252), (176, 26237), (183, 26219), (189, 26192), (197, 26165), (198, 26159), (209, 26105), (211, 26099), (216, 26081), (228, 26030), (244, 25946), (259, 25856), (262, 25844), (270, 25802), (309, 25673),

Gene: Wizard_46 Start: 39461, Stop: 38574, Start Num: 55

Candidate Starts for Wizard_46:

(Start: 33 @39509 has 18 MA's), (Start: 55 @39461 has 5 MA's), (Start: 58 @39458 has 1 MA's), (Start: 67 @39440 has 3 MA's), (Start: 70 @39431 has 1 MA's), (Start: 125 @39299 has 3 MA's), (166, 39116), (169, 39104), (178, 39071), (189, 39029), (201, 38978), (208, 38939), (250, 38735), (252, 38726), (260, 38666), (270, 38618), (271, 38603), (273, 38591),

Gene: Xeno_33 Start: 27175, Stop: 26204, Start Num: 36

Candidate Starts for Xeno_33:

(Start: 36 @27175 has 39 MA's), (Start: 78 @27091 has 1 MA's), (Start: 92 @27076 has 1 MA's), (132, 26953), (139, 26929), (160, 26812), (161, 26809), (167, 26788), (176, 26749), (178, 26746), (180, 26740), (185, 26725), (189, 26704), (194, 26689), (205, 26632), (208, 26620), (219, 26581), (225, 26554), (228, 26542), (233, 26515), (239, 26476), (244, 26452), (248, 26437), (270, 26308), (282, 26254),

Gene: Xerxes_36 Start: 28735, Stop: 27764, Start Num: 36

Candidate Starts for Xerxes_36:

(Start: 36 @28735 has 39 MA's), (Start: 78 @28651 has 1 MA's), (Start: 92 @28636 has 1 MA's), (132, 28513), (139, 28489), (160, 28372), (161, 28369), (167, 28348), (176, 28309), (178, 28306), (180, 28300), (185, 28285), (189, 28264), (194, 28249), (205, 28192), (208, 28180), (219, 28141), (225, 28114), (228, 28102), (233, 28075), (239, 28036), (244, 28012), (248, 27997), (270, 27868), (271, 27853), (282, 27814),

Gene: Xula_28 Start: 26499, Stop: 25609, Start Num: 79

Candidate Starts for Xula_28:

(Start: 44 @26562 has 34 MA's), (Start: 79 @26499 has 18 MA's), (Start: 125 @26415 has 3 MA's), (129, 26397), (160, 26247), (161, 26244), (162, 26241), (170, 26211), (171, 26199), (176, 26184), (180, 26175), (183, 26166), (189, 26139), (197, 26112), (198, 26106), (209, 26052), (211, 26046), (225, 25989), (228, 25977), (244, 25893), (248, 25878), (259, 25803), (262, 25791), (270, 25749), (297, 25656), (304, 25641),

Gene: YungMoney_50 Start: 41701, Stop: 40871, Start Num: 93

Candidate Starts for YungMoney_50:

(Start: 70 @41731 has 1 MA's), (86, 41710), (Start: 89 @41707 has 1 MA's), (Start: 93 @41701 has 6 MA's), (144, 41524), (160, 41443), (186, 41347), (189, 41338), (208, 41254), (222, 41200), (228, 41176), (239, 41119), (242, 41101), (244, 41095), (248, 41080), (252, 41059), (258, 41008), (259, 41005), (261, 40996), (262, 40993),

Gene: ZAYM_40 Start: 31559, Stop: 30693, Start Num: 76

Candidate Starts for ZAYM_40:

(Start: 76 @31559 has 18 MA's), (129, 31424), (139, 31391), (141, 31382), (145, 31346), (160, 31274), (185, 31187), (188, 31169), (189, 31166), (193, 31154), (195, 31148), (211, 31073), (222, 31028), (228, 31004), (233, 30977), (244, 30914), (262, 30812), (270, 30770), (278, 30725),

Gene: Zaheer_39 Start: 29719, Stop: 28844, Start Num: 87

Candidate Starts for Zaheer_39:

(Start: 87 @29719 has 8 MA's), (108, 29680), (133, 29593), (153, 29494), (166, 29443), (172, 29407), (189, 29353), (197, 29326), (198, 29320), (201, 29302), (203, 29287), (212, 29257), (225, 29203), (228, 29191), (237, 29119), (255, 29023), (263, 28981), (265, 28966), (290, 28861),

Gene: Zarbodnamra_39 Start: 31599, Stop: 30709, Start Num: 47

Candidate Starts for Zarbodnamra_39:

(Start: 47 @31599 has 8 MA's), (Start: 57 @31578 has 1 MA's), (65, 31563), (Start: 74 @31545 has 1 MA's), (Start: 79 @31536 has 18 MA's), (Start: 93 @31518 has 6 MA's), (118, 31452), (189, 31146), (211, 31053), (218, 31026), (228, 30984), (239, 30924), (244, 30900), (252, 30864), (265, 30783),

Gene: Zilizebeth_30 Start: 26907, Stop: 25918, Start Num: 44

Candidate Starts for Zilizebeth_30:

(Start: 44 @26907 has 34 MA's), (61, 26877), (Start: 79 @26844 has 18 MA's), (Start: 82 @26841 has 1 MA's), (99, 26811), (101, 26808), (Start: 124 @26736 has 1 MA's), (Start: 125 @26727 has 3 MA's), (126, 26721), (139, 26676), (160, 26559), (161, 26556), (162, 26553), (170, 26523), (171, 26511), (176, 26496), (183, 26478), (189, 26451), (197, 26424), (198, 26418), (209, 26364), (211, 26358), (216, 26340), (228, 26289), (244, 26205), (255, 26145), (262, 26103), (270, 26061), (309, 25932),

Gene: ZoMa_32 Start: 28917, Stop: 27721, Start Num: 10

Candidate Starts for ZoMa_32:

(Start: 10 @28917 has 58 MA's), (27, 28854), (97, 28728), (129, 28620), (139, 28587), (150, 28521), (176, 28410), (183, 28392), (187, 28371), (189, 28365), (190, 28362), (197, 28338), (211, 28266), (220, 28230), (250, 28071), (261, 27999), (273, 27927), (274, 27924), (299, 27855), (300, 27849), (308, 27813),

Gene: Zombie_32 Start: 28917, Stop: 27721, Start Num: 10

Candidate Starts for Zombie_32:

(Start: 10 @28917 has 58 MA's), (27, 28854), (97, 28728), (129, 28620), (139, 28587), (150, 28521), (176, 28410), (183, 28392), (187, 28371), (189, 28365), (190, 28362), (197, 28338), (211, 28266), (220, 28230), (250, 28071), (261, 27999), (273, 27927), (274, 27924), (299, 27855), (300, 27849), (308, 27813),