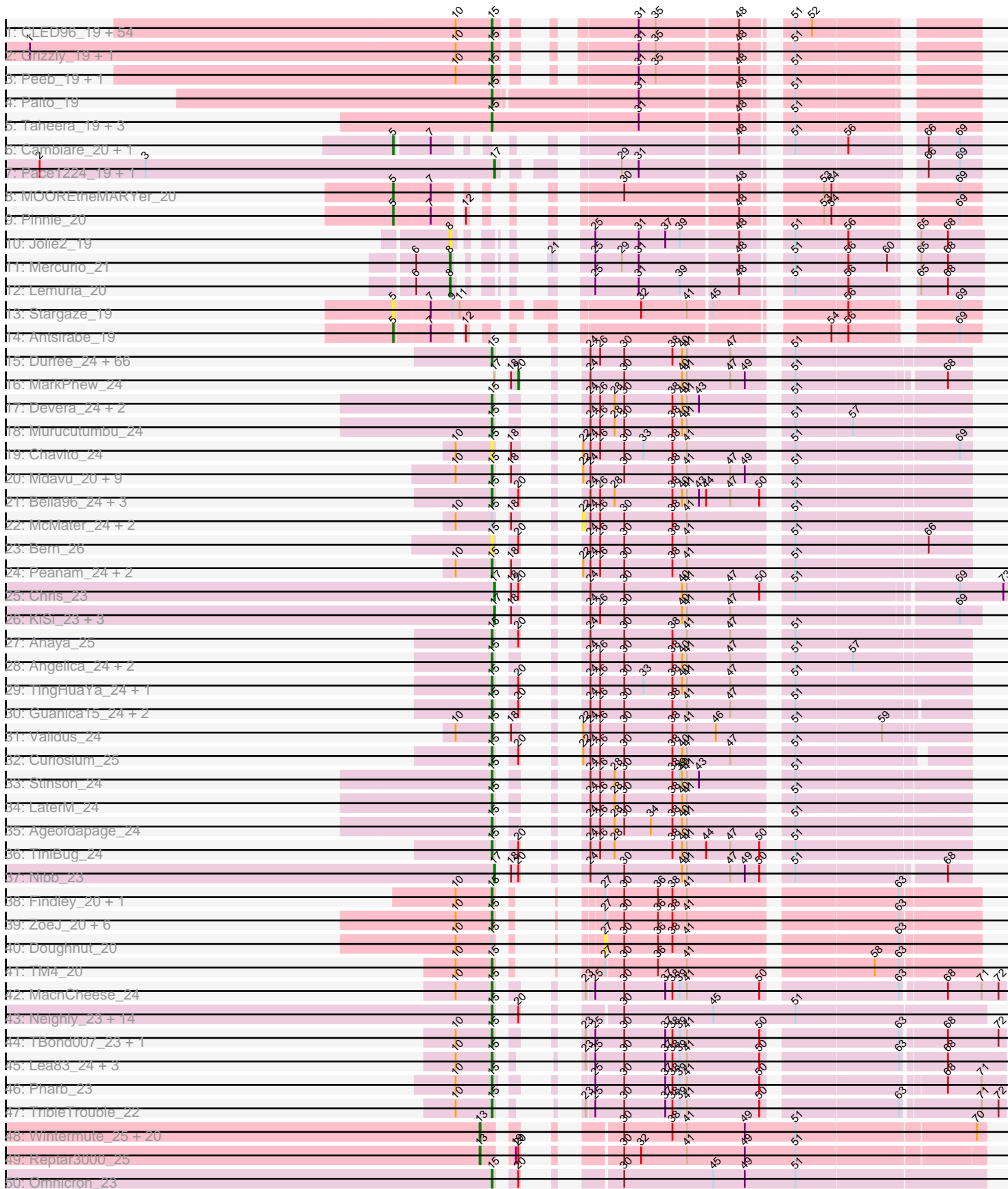
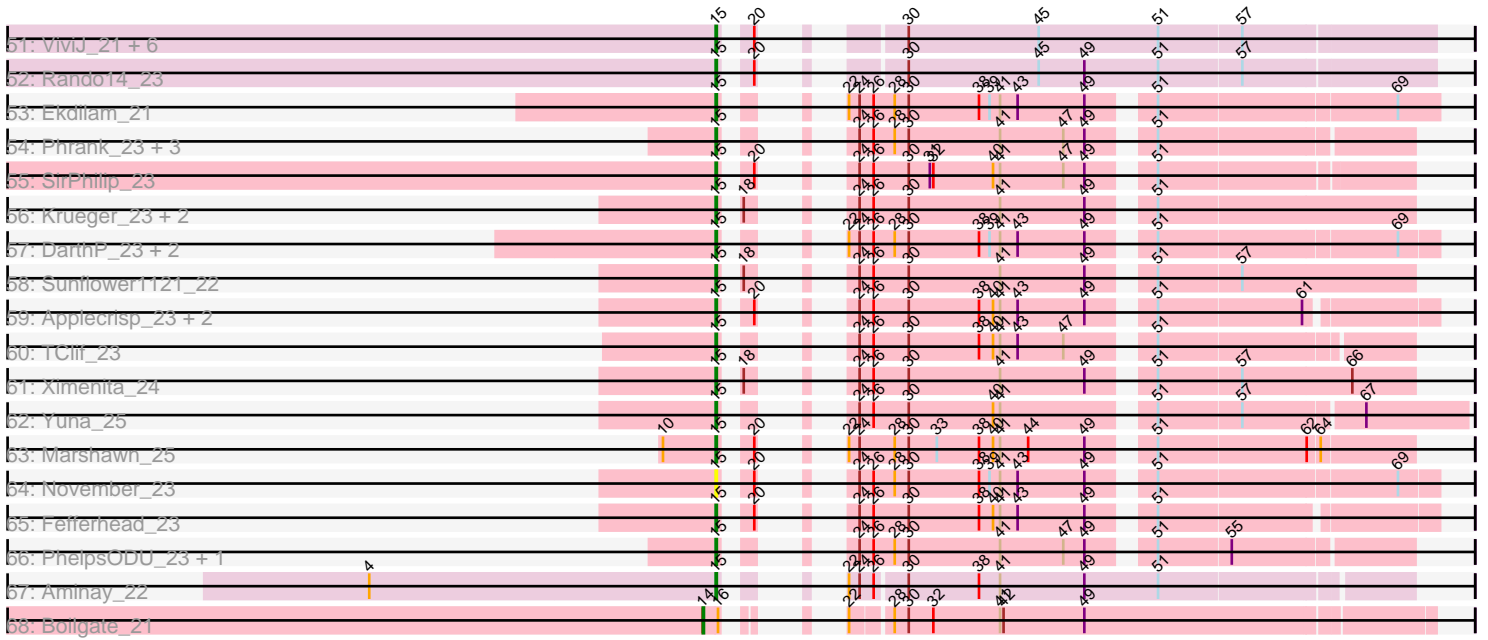


Pham 215774



Pham 215774



Note: Tracks are now grouped by subcluster and scaled. Switching in subcluster is indicated by changes in track color. Track scale is now set by default to display the region 30 bp upstream of start 1 to 30 bp downstream of the last possible start. If this default region is judged to be packed too tightly with annotated starts, the track will be further scaled to only show that region of the ORF with annotated starts. This action will be indicated by adding "Zoomed" to the title. For starts, yellow indicates the location of called starts comprised solely of Glimmer/GeneMark auto-annotations, green indicates the location of called starts with at least 1 manual gene annotation.

Pham 215774 Report

This analysis was run 02/22/25 on database version 588.

Pham number 215774 has 282 members, 28 are drafts.

Phages represented in each track:

- Track 1 : CLED96_19, Darionha_19, Crespo_19, PinkYoshi_19, Frosty24_19, Gomashi_19, LouisV14_19, Jolene_19, Jane_19, BQuat_19, Remy19_19, Angel_19, CassieYates_19, Coleslaw_19, Sweets_19, Kasen3_19, ECartman_19, OctaviousRex_19, Halo_19, Wendigo_19, DNAIII_0019, Cherrybomb426_19, ZoMa_19, Maliketh_19, TomBrady_19, Jonghyun_19, Avrafan_19, Gideon_19, Schiebel_19, Sizemore_19, Olga_19, Plagueis_19, Aroostook_19, Zombie_19, Hope_19, Phish_19, Hotshotbaby7_19, DMoney_19, Kareem_19, Mowgli_19, Chance64_19, ShaboiShabazz_19, BruceB_19, Periodt_19, Marmie_19, Cedasite_19, Camri_19, GoldenAsh_19, TinaBug_19, JorRay_19, Renaissance_19, Annihilator_19, Phreak_19, BPs_19, AzulaCat_19
- Track 2 : Grizzly_19, Barkley26_19
- Track 3 : Peeb_19, Liefie_19
- Track 4 : Paito_19
- Track 5 : Taheera_19, Rabbs_19, Sneeze_19, Terror_19
- Track 6 : Cambiare_20, Avocado_19
- Track 7 : Pace1224_19, FlagStaff_19
- Track 8 : MOOREtheMARYer_20
- Track 9 : Pinnie_20
- Track 10 : Jolie2_19
- Track 11 : Mercurio_21
- Track 12 : Lemuria_20
- Track 13 : Stargaze_19
- Track 14 : Antsirabe_19
- Track 15 : Durfee_24, Piatt_24, BaghaKamala_24, Apocalypse_24, Slimphazie_24, CrimD_24, Pokerus_23, Joy99_24, YoureAdopted_23, Belladonna_24, TaiwanKao_25, CheetoDust_24, Boiii_24, Peel_24, Blizzard_24, Adonis_24, BarrelRoll_24, Padfoot_24, Zavala_24, Jayhawk_24, HedwigODU_24, Dalmuri_24, Mynx_24, Inky_24, JAWS_24, TreyKay_24, Asayake_24, BGlluviae_24, Capricorn_24, Atiba_24, Geraldini_24, CREW_24, MacKat_25, Beezoo_24, MeaningOfLife_24, ActinUp_24, CallaLilly_25, BEEST_24, Veliki_24, Tachez_24, Rosmarinus_24, Jeckyll_24, LindNT_24, Padpat_24, Twitch_24, Emerson_24, CaseJules_24, Ramen_24, Rapunzel97_24, Ganyমেদে_25, Zabiza_24, Tiri_24, Topper_24, Hyperbowlee_24, AlishaPH_24, Adephagia_24, Jarvi_24, Homura_24, Clipper_26, TruffulaTree_24, Spock_24, QuincyRose_23, ShiaSurprise_24, Megsy_24, Lunahalos_24, Prithvi_24, Llorens_24
- Track 16 : MarkPhew_24
- Track 17 : Devera_24, Dole_24, Illumine_24

- Track 18 : Murucutumbu_24
- Track 19 : Chavito_24
- Track 20 : Mdavu_20, Binglebops_20, Enkosi_20, Nikao_20, Teejan_20, Amelie_20, SgtBeansprout_20, LilPharaoh_20, Torres_20, Nutello_20
- Track 21 : Bella96_24, DrHayes_24, Urkel_24, SamuelLPlaqson_24
- Track 22 : McMater_24, Dartin_24, Richo_24
- Track 23 : Bern_26
- Track 24 : Peanam_24, Shaobing_24, Niklas_24
- Track 25 : Chris_23
- Track 26 : KiSi_23, Oscar_23, LeMond_23, Scarlett_23
- Track 27 : Anaya_25
- Track 28 : Angelica_24, Sulley_24, Deby_24
- Track 29 : TingHuaYa_24, LastHope_24
- Track 30 : Guanica15_24, Yunkel11_24, Efra2_24
- Track 31 : Validus_24
- Track 32 : Curiosium_25
- Track 33 : Stinson_24
- Track 34 : LaterM_24
- Track 35 : Ageofdapage_24
- Track 36 : TiniBug_24
- Track 37 : Nibb_23
- Track 38 : Findley_20, Strobilo_20
- Track 39 : ZoeJ_20, Milly_20, DismalStressor_20, BoostSeason_20, DismalFunk_20, Mufasa_20, Marcoliusprime_20
- Track 40 : Doughnut_20
- Track 41 : TM4_20
- Track 42 : MacnCheese_24
- Track 43 : Neighly_23, Larva_23, SoSeph_22, Leston_22, Heftyboy_22, Thyatira_22, Psycho_23, Guillsminger_22, Gengar_22, Waterfoul_22, Dadosky_23, Edugator_22, Feyre_22, AlleyCat_23, Paola_22
- Track 44 : TBond007_23, Pixie_23
- Track 45 : Lea83_24, Keshu_23, Hurricane_23, ShedlockHolmes_23
- Track 46 : Pharb_23
- Track 47 : TribbleTrouble_22
- Track 48 : Wintermute_25, Bobquesha_26, Mitti_25, Juliette_25, Fionnbharth_25, Kraw_26, Chancellor_25, Lebo14_26, JF1_25, MissDaisy_25, Y2_25, Cheetobro_25, Y10_25, Patt_25, SamScheppers_23, Ruthiejr_24, Eponine_25, Slarp_25, Malthus_26, OmniCritical_25, Taquito_23
- Track 49 : Reptar3000_25
- Track 50 : Omnicron_23
- Track 51 : ViviJ_21, OkiRoe_22, Agent47_22, Collard_22, Kratio_21, Miryou_22, InvictusManeo_22
- Track 52 : Rando14_23
- Track 53 : Ekdilam_21
- Track 54 : Phrank_23, Tierra_23, Bryler_23, Cain_23
- Track 55 : SirPhilip_23
- Track 56 : Krueger_23, Syra333_23, Shadow1_22
- Track 57 : DARTH_23, Hammy_23, Amohnition_23
- Track 58 : Sunflower1121_22
- Track 59 : Applecrisp_23, Ellie_21, Amgine_22
- Track 60 : TClif_23
- Track 61 : Ximenita_24
- Track 62 : Yuna_25

- Track 63 : Marshawn_25
- Track 64 : November_23
- Track 65 : Fefferhead_23
- Track 66 : PhelpsODU_23, Unicorn_23
- Track 67 : Aminay_22
- Track 68 : Boilgate_21

Summary of Final Annotations (See graph section above for start numbers):

The start number called the most often in the published annotations is 15, it was called in 219 of the 254 non-draft genes in the pham.

Genes that call this "Most Annotated" start:

- ActinUp_24, Adephegia_24, Adonis_24, Agent47_22, Ageofdapage_24, AlishaPH_24, AlleyCat_23, Amelie_20, Amgine_22, Aminay_22, Amohnition_23, Anaya_25, Angel_19, Angelica_24, Annihilator_19, Apocalypse_24, Applecrisp_23, Aroostook_19, Asayake_24, Atiba_24, Avrafan_19, AzulaCat_19, BEEST_24, BGIlluviae_24, BPs_19, BQuat_19, BaghaKamala_24, Barkley26_19, BarrelRoll_24, Beezoo_24, Bella96_24, Belladonna_24, Bern_26, Biglebops_20, Blizzard_24, Boiiii_24, BoostSeason_20, BruceB_19, Bryler_23, CLED96_19, CREW_24, Cain_23, CallaLilly_25, Camri_19, Capricorn_24, CaseJules_24, CassieYates_19, Cedasite_19, Chance64_19, Chavito_24, CheetoDust_24, Cherrybomb426_19, Clipper_26, Coleslaw_19, Collard_22, Crespo_19, CrimD_24, Curiosium_25, DMoney_19, DNAIII_0019, Dadosky_23, Dalmuri_24, Darionha_19, DarthP_23, Deby_24, Devera_24, DismalFunk_20, DismalStressor_20, Dole_24, DrHayes_24, Durfee_24, ECartman_19, Edugator_22, Efra2_24, Ekdilam_21, Ellie_21, Emerson_24, Enkosi_20, Fefferhead_23, Feyre_22, Findley_20, Frosty24_19, Ganymede_25, Gengar_22, Geraldini_24, Gideon_19, GoldenAsh_19, Gomashi_19, Grizzly_19, Guanica15_24, Guillsminger_22, Halo_19, Hammy_23, HedwigODU_24, Heftyboy_22, Homura_24, Hope_19, Hotshotbaby7_19, Hurricane_23, Hyperbowlee_24, Illumine_24, Inky_24, InvictusManeo_22, JAWS_24, Jane_19, Jarvi_24, Jayhawk_24, Jeckyll_24, Jolene_19, Jonghyun_19, JorRay_19, Joy99_24, Kareem_19, Kasen3_19, Keshu_23, Kratio_21, Krueger_23, Larva_23, LastHope_24, LaterM_24, Lea83_24, Leston_22, Liefie_19, LilPharaoh_20, LindNT_24, Llorens_24, LouisV14_19, Lunahalos_24, MacKat_25, MacnCheese_24, Maliketh_19, Marcoliusprime_20, Marmie_19, Marshawn_25, Mdavu_20, MeaningOfLife_24, Megsy_24, Milly_20, Miryou_22, Mowgli_19, Mufasa_20, Murucutumbu_24, Mynx_24, Neighly_23, Nikao_20, Niklas_24, November_23, Nutello_20, OctaviousRex_19, OkiRoe_22, Olga_19, Omnicron_23, Padfoot_24, Padpat_24, Paito_19, Paola_22, Peanam_24, Peeb_19, Peel_24, Periodt_19, Pharb_23, PhelpsODU_23, Phish_19, Phrank_23, Phreak_19, Piatt_24, PinkYoshi_19, Pixie_23, Plagueis_19, Pokerus_23, Prithvi_24, Psycho_23, QuincyRose_23, Rabbs_19, Ramen_24, Rando14_23, Rapunzel97_24, Remy19_19, Renaissance_19, Rosmarinus_24, SamuelLPlaqson_24, Schiebel_19, SgtBeansprout_20, ShaboiShabazz_19, Shadow1_22, Shaobing_24, ShedlockHolmes_23, ShiaSurprise_24, SirPhilip_23, Sizemore_19, Slimphazie_24, Sneeze_19, SoSeph_22, Spock_24, Stinson_24, Strobilo_20, Sulley_24, Sunflower1121_22, Sweets_19, Syra333_23, TBond007_23, TClif_23, TM4_20, Tachez_24, Taheera_19, TaiwanKao_25, Teejan_20, Terror_19, Thyatira_22, Tierra_23, TinaBug_19, TingHuaYa_24, TiniBug_24, Tiri_24, TomBrady_19, Topper_24, Torres_20,

TreyKay_24, TripleTrouble_22, TruffulaTree_24, Twitch_24, Unicorn_23, Urkel_24, Validus_24, Veliki_24, ViviJ_21, Waterfoul_22, Wendigo_19, Ximenita_24, YoureAdopted_23, Yuna_25, Yunkel11_24, Zabiza_24, Zavala_24, ZoMa_19, ZoeJ_20, Zombie_19,

Genes that have the "Most Annotated" start but do not call it:

- Dartin_24, Doughnut_20, McMater_24, Richo_24,

Genes that do not have the "Most Annotated" start:

- Antsirabe_19, Avocado_19, Bobquesha_26, Boilgate_21, Cambiare_20, Chancellor_25, Cheetobro_25, Chris_23, Eponine_25, Fionnbharth_25, FlagStaff_19, JF1_25, Jolie2_19, Juliette_25, KiSi_23, Kraw_26, LeMond_23, Lebo14_26, Lemuria_20, MOOREtheMARYer_20, Malthus_26, MarkPhew_24, Mercurio_21, MissDaisy_25, Mitti_25, Nibb_23, OmniCritical_25, Oscar_23, Pace1224_19, Patt_25, Pinnie_20, Reptar3000_25, Ruthiejr_24, SamScheppers_23, Scarlett_23, Slarp_25, Stargaze_19, Taquito_23, Wintermute_25, Y10_25, Y2_25,

Summary by start number:

Start 5:

- Found in 6 of 282 (2.1%) of genes in pham
- Manual Annotations of this start: 5 of 254
- Called 100.0% of time when present
- Phage (with cluster) where this start called: Antsirabe_19 (G5), Avocado_19 (G2), Cambiare_20 (G2), MOOREtheMARYer_20 (G3), Pinnie_20 (G3), Stargaze_19 (G5),

Start 8:

- Found in 3 of 282 (1.1%) of genes in pham
- Manual Annotations of this start: 2 of 254
- Called 100.0% of time when present
- Phage (with cluster) where this start called: Jolie2_19 (G4), Lemuria_20 (G4), Mercurio_21 (G4),

Start 13:

- Found in 22 of 282 (7.8%) of genes in pham
- Manual Annotations of this start: 19 of 254
- Called 100.0% of time when present
- Phage (with cluster) where this start called: Bobquesha_26 (K4), Chancellor_25 (K4), Cheetobro_25 (K4), Eponine_25 (K4), Fionnbharth_25 (K4), JF1_25 (K4), Juliette_25 (K4), Kraw_26 (K4), Lebo14_26 (K4), Malthus_26 (K4), MissDaisy_25 (K4), Mitti_25 (K4), OmniCritical_25 (K4), Patt_25 (K4), Reptar3000_25 (K4), Ruthiejr_24 (K4), SamScheppers_23 (K4), Slarp_25 (K4), Taquito_23 (K4), Wintermute_25 (K4), Y10_25 (K4), Y2_25 (K4),

Start 14:

- Found in 1 of 282 (0.4%) of genes in pham
- Manual Annotations of this start: 1 of 254
- Called 100.0% of time when present
- Phage (with cluster) where this start called: Boilgate_21 (K8),

Start 15:

- Found in 241 of 282 (85.5%) of genes in pham
- Manual Annotations of this start: 219 of 254

- Called 98.3% of time when present
- Phage (with cluster) where this start called: ActinUp_24 (K1), Adephagia_24 (K1), Adonis_24 (K1), Agent47_22 (K5), Ageofdapage_24 (K1), AlishaPH_24 (K1), AlleyCat_23 (K5), Amelie_20 (K1), Amgine_22 (K6), Aminay_22 (K7), Amohntion_23 (K6), Anaya_25 (K1), Angel_19 (G1), Angelica_24 (K1), Annihilator_19 (G1), Apocalypse_24 (K1), Applecrisp_23 (K6), Aroostook_19 (G1), Asayake_24 (K1), Atiba_24 (K1), Avrafan_19 (G1), AzulaCat_19 (G1), BEEEST_24 (K1), BGlluviae_24 (K1), BPs_19 (G1), BQuat_19 (G1), BaghaKamala_24 (K1), Barkley26_19 (G1), BarrelRoll_24 (K1), Beezoo_24 (K1), Bella96_24 (K1), Belladonna_24 (K1), Bern_26 (K1), Binglebops_20 (K1), Blizzard_24 (K1), Boiiii_24 (K1), BoostSeason_20 (K2), BruceB_19 (G1), Bryler_23 (K6), CLED96_19 (G1), CREW_24 (K1), Cain_23 (K6), CallaLilly_25 (K1), Camri_19 (G1), Capricorn_24 (K1), CaseJules_24 (K1), CassieYates_19 (G1), Cedasite_19 (G1), Chance64_19 (G1), Chavito_24 (K1), CheetoDust_24 (K1), Cherrybomb426_19 (G1), Clipper_26 (K1), Coleslaw_19 (G1), Collard_22 (K5), Crespo_19 (G1), CrimD_24 (K1), Curiosium_25 (K1), DMoney_19 (G1), DNAll_0019 (G1), Dadosky_23 (K5), Dalmuri_24 (K1), Darionha_19 (G1), DarthP_23 (K6), Deby_24 (K1), Devera_24 (K1), DismalFunk_20 (K2), DismalStressor_20 (K2), Dole_24 (K1), DrHayes_24 (K1), Durfee_24 (K1), ECartman_19 (G1), Edugator_22 (K5), Efra2_24 (K1), Ekdilam_21 (K6), Ellie_21 (K6), Emerson_24 (K1), Enkosi_20 (K1), Fefferhead_23 (K6), Feyre_22 (K5), Findley_20 (K2), Frosty24_19 (G1), Ganymede_25 (K1), Gengar_22 (K5), Geraldini_24 (K1), Gideon_19 (G1), GoldenAsh_19 (G1), Gomashi_19 (G1), Grizzly_19 (G1), Guanica15_24 (K1), Guillsminger_22 (K5), Halo_19 (G1), Hammy_23 (K6), HedwigODU_24 (K1), Heftyboy_22 (K5), Homura_24 (K1), Hope_19 (G1), Hotshotbaby7_19 (G1), Hurricane_23 (K3), Hyperbowlee_24 (K1), Illumine_24 (K1), Inky_24 (K1), InvictusManeo_22 (K5), JAWS_24 (K1), Jane_19 (G1), Jarvi_24 (K1), Jayhawk_24 (K1), Jeckyll_24 (K1), Jolene_19 (G1), Jonghyun_19 (G1), JorRay_19 (G1), Joy99_24 (K1), Kareem_19 (G1), Kasen3_19 (G1), Keshu_23 (K3), Kratio_21 (K5), Krueger_23 (K6), Larva_23 (K5), LastHope_24 (K1), LaterM_24 (K1), Lea83_24 (K3), Leston_22 (K5), Liefie_19 (G1), LilPharaoh_20 (K1), LindNT_24 (K1), Llorens_24 (K1), LouisV14_19 (G1), Lunahalos_24 (K1), MacKat_25 (K1), MacnCheese_24 (K3), Maliketh_19 (G1), Marcoliusprime_20 (K2), Marmie_19 (G1), Marshawn_25 (K6), Mdavu_20 (K1), MeaningOfLife_24 (K1), Megsy_24 (K1), Milly_20 (K2), Miryou_22 (K5), Mowgli_19 (G1), Mufasa_20 (K2), Murucutumbu_24 (K1), Mynx_24 (K1), Neighly_23 (K3), Nikao_20 (K1), Niklas_24 (K1), November_23 (K6), Nutello_20 (K1), OctaviousRex_19 (G1), OkiRoe_22 (K5), Olga_19 (G1), Omnicron_23 (K5), Padfoot_24 (K1), Padpat_24 (K1), Paito_19 (G1), Paola_22 (K5), Peanam_24 (K1), Peeb_19 (G1), Peel_24 (K1), Periodt_19 (G1), Pharb_23 (K3), PhelpsODU_23 (K6), Phish_19 (G1), Phrank_23 (K6), Phreak_19 (G1), Piatt_24 (K1), PinkYoshi_19 (G1), Pixie_23 (K3), Plagueis_19 (G1), Pokerus_23 (K1), Prithvi_24 (K1), Psycho_23 (K5), QuincyRose_23 (K1), Rabbs_19 (G1), Ramen_24 (K1), Rando14_23 (K5), Rapunzel97_24 (K1), Remy19_19 (G1), Renaissance_19 (G1), Rosmarinus_24 (K1), SamuelLPlaqson_24 (K1), Schiebel_19 (G1), SgtBeansprout_20 (K1), ShaboiShabazz_19 (G1), Shadow1_22 (K6), Shaobing_24 (K1), ShedlockHolmes_23 (K3), ShiaSurprise_24 (K1), SirPhilip_23 (K6), Sizemore_19 (G1), Slimphazie_24 (K1), Sneeze_19 (G1), SoSeph_22 (K5), Spock_24 (K1), Stinson_24 (K1), Strobilo_20 (K2), Sulley_24 (K1), Sunflower1121_22 (K6), Sweets_19 (G1), Syra333_23 (K6), TBond007_23 (K3), TClif_23 (K6), TM4_20 (K2), Tachez_24 (K1), Taheera_19 (G1), TaiwanKao_25 (K1), Teejan_20 (K1), Terror_19 (G1), Thyatira_22 (K5), Tierra_23 (K6), TinaBug_19 (G1), TingHuaYa_24 (K1), TiniBug_24 (K1), Tiri_24 (K1), TomBrady_19 (G1), Topper_24 (K1), Torres_20 (K1), TreyKay_24 (K1), TripleTrouble_22 (K3), TruffulaTree_24 (K1), Twitch_24 (K1), Unicorn_23 (K6), Urkel_24 (K1), Validus_24 (K1), Veliki_24 (K1),

ViviJ_21 (K5), Waterfoul_22 (K5), Wendigo_19 (G1), Ximenita_24 (K6), YoureAdopted_23 (K1), Yuna_25 (K6), Yunkel11_24 (K1), Zabiza_24 (K1), Zavala_24 (K1), ZoMa_19 (G1), ZoeJ_20 (K2), Zombie_19 (G1),

Start 17:

- Found in 9 of 282 (3.2%) of genes in pham
- Manual Annotations of this start: 7 of 254
- Called 88.9% of time when present
- Phage (with cluster) where this start called: Chris_23 (K1), FlagStaff_19 (G2), KiSi_23 (K1), LeMond_23 (K1), Nibb_23 (K1), Oscar_23 (K1), Pace1224_19 (G2), Scarlett_23 (K1),

Start 20:

- Found in 48 of 282 (17.0%) of genes in pham
- Manual Annotations of this start: 1 of 254
- Called 2.1% of time when present
- Phage (with cluster) where this start called: MarkPhew_24 (K1),

Start 22:

- Found in 26 of 282 (9.2%) of genes in pham
- No Manual Annotations of this start.
- Called 11.5% of time when present
- Phage (with cluster) where this start called: Dartin_24 (K1), McMater_24 (K1), Richo_24 (K1),

Start 27:

- Found in 11 of 282 (3.9%) of genes in pham
- No Manual Annotations of this start.
- Called 9.1% of time when present
- Phage (with cluster) where this start called: Doughnut_20 (K2),

Summary by clusters:

There are 13 clusters represented in this pham: G5, G4, G3, G2, G1, K3, K2, K1, K7, K6, K5, K4, K8,

Info for manual annotations of cluster G1:

- Start number 15 was manually annotated 60 times for cluster G1.

Info for manual annotations of cluster G2:

- Start number 5 was manually annotated 2 times for cluster G2.
- Start number 17 was manually annotated 1 time for cluster G2.

Info for manual annotations of cluster G3:

- Start number 5 was manually annotated 2 times for cluster G3.

Info for manual annotations of cluster G4:

- Start number 8 was manually annotated 2 times for cluster G4.

Info for manual annotations of cluster G5:

- Start number 5 was manually annotated 1 time for cluster G5.

Info for manual annotations of cluster K1:

- Start number 15 was manually annotated 96 times for cluster K1.
- Start number 17 was manually annotated 6 times for cluster K1.
- Start number 20 was manually annotated 1 time for cluster K1.

Info for manual annotations of cluster K2:

- Start number 15 was manually annotated 10 times for cluster K2.

Info for manual annotations of cluster K3:

- Start number 15 was manually annotated 8 times for cluster K3.

Info for manual annotations of cluster K4:

- Start number 13 was manually annotated 19 times for cluster K4.

Info for manual annotations of cluster K5:

- Start number 15 was manually annotated 22 times for cluster K5.

Info for manual annotations of cluster K6:

- Start number 15 was manually annotated 22 times for cluster K6.

Info for manual annotations of cluster K7:

- Start number 15 was manually annotated 1 time for cluster K7.

Info for manual annotations of cluster K8:

- Start number 14 was manually annotated 1 time for cluster K8.

Gene Information:

Gene: ActinUp_24 Start: 18923, Stop: 19399, Start Num: 15

Candidate Starts for ActinUp_24:

(Start: 15 @18923 has 219 MA's), (24, 18956), (26, 18968), (30, 18998), (38, 19058), (40, 19070), (41, 19076), (47, 19130), (51, 19190),

Gene: Adephagia_24 Start: 18920, Stop: 19396, Start Num: 15

Candidate Starts for Adephagia_24:

(Start: 15 @18920 has 219 MA's), (24, 18953), (26, 18965), (30, 18995), (38, 19055), (40, 19067), (41, 19073), (47, 19127), (51, 19187),

Gene: Adonis_24 Start: 18926, Stop: 19402, Start Num: 15

Candidate Starts for Adonis_24:

(Start: 15 @18926 has 219 MA's), (24, 18959), (26, 18971), (30, 19001), (38, 19061), (40, 19073), (41, 19079), (47, 19133), (51, 19193),

Gene: Agent47_22 Start: 19364, Stop: 19873, Start Num: 15

Candidate Starts for Agent47_22:

(Start: 15 @19364 has 219 MA's), (Start: 20 @19379 has 1 MA's), (30, 19433), (45, 19544), (51, 19646), (57, 19715),

Gene: Ageofdapage_24 Start: 18854, Stop: 19330, Start Num: 15

Candidate Starts for Ageofdapage_24:

(Start: 15 @18854 has 219 MA's), (24, 18887), (26, 18899), (28, 18917), (30, 18929), (34, 18962), (38, 18989), (40, 19001), (41, 19007), (51, 19121),

Gene: AlishaPH_24 Start: 18913, Stop: 19389, Start Num: 15

Candidate Starts for AlishaPH_24:

(Start: 15 @18913 has 219 MA's), (24, 18946), (26, 18958), (30, 18988), (38, 19048), (40, 19060), (41, 19066), (47, 19120), (51, 19180),

Gene: AlleyCat_23 Start: 19301, Stop: 19810, Start Num: 15

Candidate Starts for AlleyCat_23:

(Start: 15 @19301 has 219 MA's), (Start: 20 @19316 has 1 MA's), (30, 19370), (45, 19481), (51, 19583),

Gene: Amelie_20 Start: 18463, Stop: 18939, Start Num: 15

Candidate Starts for Amelie_20:

(10, 18418), (Start: 15 @18463 has 219 MA's), (18, 18469), (22, 18487), (24, 18496), (30, 18538), (38, 18598), (41, 18616), (47, 18670), (49, 18688), (51, 18730),

Gene: Amgine_22 Start: 19009, Stop: 19494, Start Num: 15

Candidate Starts for Amgine_22:

(Start: 15 @19009 has 219 MA's), (Start: 20 @19024 has 1 MA's), (24, 19042), (26, 19054), (30, 19084), (38, 19144), (40, 19156), (41, 19162), (43, 19177), (49, 19234), (51, 19276), (61, 19396),

Gene: Aminay_22 Start: 19210, Stop: 19692, Start Num: 15

Candidate Starts for Aminay_22:

(4, 18916), (Start: 15 @19210 has 219 MA's), (22, 19234), (24, 19243), (26, 19255), (30, 19279), (38, 19339), (41, 19357), (49, 19429), (51, 19492),

Gene: Amohnition_23 Start: 19395, Stop: 19892, Start Num: 15

Candidate Starts for Amohnition_23:

(Start: 15 @19395 has 219 MA's), (22, 19419), (24, 19428), (26, 19440), (28, 19458), (30, 19470), (38, 19530), (39, 19539), (41, 19548), (43, 19563), (49, 19620), (51, 19662), (69, 19857),

Gene: Anaya_25 Start: 18939, Stop: 19415, Start Num: 15

Candidate Starts for Anaya_25:

(Start: 15 @18939 has 219 MA's), (Start: 20 @18954 has 1 MA's), (24, 18972), (30, 19014), (38, 19074), (41, 19092), (47, 19146), (51, 19206),

Gene: Angel_19 Start: 18403, Stop: 18864, Start Num: 15

Candidate Starts for Angel_19:

(10, 18358), (Start: 15 @18403 has 219 MA's), (31, 18505), (35, 18526), (48, 18622), (51, 18661), (52, 18682),

Gene: Angelica_24 Start: 18888, Stop: 19364, Start Num: 15

Candidate Starts for Angelica_24:

(Start: 15 @18888 has 219 MA's), (24, 18921), (26, 18933), (30, 18963), (38, 19023), (40, 19035), (41, 19041), (47, 19095), (51, 19155), (57, 19224),

Gene: Annihilator_19 Start: 18394, Stop: 18855, Start Num: 15

Candidate Starts for Annihilator_19:

(10, 18349), (Start: 15 @18394 has 219 MA's), (31, 18496), (35, 18517), (48, 18613), (51, 18652), (52, 18673),

Gene: Antsirabe_19 Start: 18709, Stop: 19239, Start Num: 5

Candidate Starts for Antsirabe_19:

(Start: 5 @18709 has 5 MA's), (7, 18751), (12, 18781), (54, 19081), (56, 19099), (69, 19213),

Gene: Apocalypse_24 Start: 18891, Stop: 19367, Start Num: 15

Candidate Starts for Apocalypse_24:

(Start: 15 @18891 has 219 MA's), (24, 18924), (26, 18936), (30, 18966), (38, 19026), (40, 19038), (41, 19044), (47, 19098), (51, 19158),

Gene: Applecrisp_23 Start: 19420, Stop: 19908, Start Num: 15

Candidate Starts for Applecrisp_23:

(Start: 15 @19420 has 219 MA's), (Start: 20 @19435 has 1 MA's), (24, 19453), (26, 19465), (30, 19495), (38, 19555), (40, 19567), (41, 19573), (43, 19588), (49, 19645), (51, 19687), (61, 19807),

Gene: Aroostook_19 Start: 18403, Stop: 18864, Start Num: 15

Candidate Starts for Aroostook_19:

(10, 18358), (Start: 15 @18403 has 219 MA's), (31, 18505), (35, 18526), (48, 18622), (51, 18661), (52, 18682),

Gene: Asayake_24 Start: 18954, Stop: 19430, Start Num: 15

Candidate Starts for Asayake_24:

(Start: 15 @18954 has 219 MA's), (24, 18987), (26, 18999), (30, 19029), (38, 19089), (40, 19101), (41, 19107), (47, 19161), (51, 19221),

Gene: Atiba_24 Start: 18883, Stop: 19359, Start Num: 15

Candidate Starts for Atiba_24:

(Start: 15 @18883 has 219 MA's), (24, 18916), (26, 18928), (30, 18958), (38, 19018), (40, 19030), (41, 19036), (47, 19090), (51, 19150),

Gene: Avocado_19 Start: 18653, Stop: 19183, Start Num: 5

Candidate Starts for Avocado_19:

(Start: 5 @18653 has 5 MA's), (7, 18692), (48, 18938), (51, 18977), (56, 19040), (66, 19118), (69, 19157),

Gene: Avrafan_19 Start: 18403, Stop: 18864, Start Num: 15

Candidate Starts for Avrafan_19:

(10, 18358), (Start: 15 @18403 has 219 MA's), (31, 18505), (35, 18526), (48, 18622), (51, 18661), (52, 18682),

Gene: AzulaCat_19 Start: 18403, Stop: 18864, Start Num: 15

Candidate Starts for AzulaCat_19:

(10, 18358), (Start: 15 @18403 has 219 MA's), (31, 18505), (35, 18526), (48, 18622), (51, 18661), (52, 18682),

Gene: BEEST_24 Start: 18954, Stop: 19430, Start Num: 15

Candidate Starts for BEEST_24:

(Start: 15 @18954 has 219 MA's), (24, 18987), (26, 18999), (30, 19029), (38, 19089), (40, 19101), (41, 19107), (47, 19161), (51, 19221),

Gene: BGlluviae_24 Start: 18954, Stop: 19430, Start Num: 15

Candidate Starts for BGlluviae_24:

(Start: 15 @18954 has 219 MA's), (24, 18987), (26, 18999), (30, 19029), (38, 19089), (40, 19101), (41, 19107), (47, 19161), (51, 19221),

Gene: BPs_19 Start: 18403, Stop: 18864, Start Num: 15

Candidate Starts for BPs_19:

(10, 18358), (Start: 15 @18403 has 219 MA's), (31, 18505), (35, 18526), (48, 18622), (51, 18661), (52, 18682),

Gene: BQuat_19 Start: 18394, Stop: 18855, Start Num: 15

Candidate Starts for BQuat_19:

(10, 18349), (Start: 15 @18394 has 219 MA's), (31, 18496), (35, 18517), (48, 18613), (51, 18652), (52, 18673),

Gene: BaghaKamala_24 Start: 18883, Stop: 19359, Start Num: 15

Candidate Starts for BaghaKamala_24:

(Start: 15 @18883 has 219 MA's), (24, 18916), (26, 18928), (30, 18958), (38, 19018), (40, 19030), (41, 19036), (47, 19090), (51, 19150),

Gene: Barkley26_19 Start: 18406, Stop: 18867, Start Num: 15

Candidate Starts for Barkley26_19:

(1, 17833), (10, 18361), (Start: 15 @18406 has 219 MA's), (31, 18508), (35, 18529), (48, 18625), (51, 18664),

Gene: BarrelRoll_24 Start: 18906, Stop: 19382, Start Num: 15

Candidate Starts for BarrelRoll_24:

(Start: 15 @18906 has 219 MA's), (24, 18939), (26, 18951), (30, 18981), (38, 19041), (40, 19053), (41, 19059), (47, 19113), (51, 19173),

Gene: Beezoo_24 Start: 18930, Stop: 19406, Start Num: 15

Candidate Starts for Beezoo_24:

(Start: 15 @18930 has 219 MA's), (24, 18963), (26, 18975), (30, 19005), (38, 19065), (40, 19077), (41, 19083), (47, 19137), (51, 19197),

Gene: Bella96_24 Start: 18850, Stop: 19326, Start Num: 15

Candidate Starts for Bella96_24:

(Start: 15 @18850 has 219 MA's), (Start: 20 @18865 has 1 MA's), (24, 18883), (26, 18895), (28, 18913), (38, 18985), (40, 18997), (41, 19003), (43, 19018), (44, 19027), (47, 19057), (50, 19093), (51, 19117),

Gene: Belladonna_24 Start: 18954, Stop: 19430, Start Num: 15

Candidate Starts for Belladonna_24:

(Start: 15 @18954 has 219 MA's), (24, 18987), (26, 18999), (30, 19029), (38, 19089), (40, 19101), (41, 19107), (47, 19161), (51, 19221),

Gene: Bern_26 Start: 18878, Stop: 19354, Start Num: 15

Candidate Starts for Bern_26:

(Start: 15 @18878 has 219 MA's), (Start: 20 @18893 has 1 MA's), (24, 18911), (26, 18923), (30, 18953), (38, 19013), (41, 19031), (51, 19145), (66, 19301),

Gene: Biglebops_20 Start: 18463, Stop: 18939, Start Num: 15

Candidate Starts for Biglebops_20:

(10, 18418), (Start: 15 @18463 has 219 MA's), (18, 18469), (22, 18487), (24, 18496), (30, 18538), (38, 18598), (41, 18616), (47, 18670), (49, 18688), (51, 18730),

Gene: Blizzard_24 Start: 18954, Stop: 19430, Start Num: 15

Candidate Starts for Blizzard_24:

(Start: 15 @18954 has 219 MA's), (24, 18987), (26, 18999), (30, 19029), (38, 19089), (40, 19101), (41, 19107), (47, 19161), (51, 19221),

Gene: Bobquesha_26 Start: 20155, Stop: 20673, Start Num: 13

Candidate Starts for Bobquesha_26:

(Start: 13 @20155 has 19 MA's), (30, 20239), (38, 20299), (41, 20317), (49, 20389), (51, 20452), (70, 20662),

Gene: Boiiii_24 Start: 18956, Stop: 19432, Start Num: 15

Candidate Starts for Boiiii_24:

(Start: 15 @18956 has 219 MA's), (24, 18989), (26, 19001), (30, 19031), (38, 19091), (40, 19103), (41, 19109), (47, 19163), (51, 19223),

Gene: Boilgate_21 Start: 19350, Stop: 19856, Start Num: 14

Candidate Starts for Boilgate_21:

(Start: 14 @19350 has 1 MA's), (16, 19362), (22, 19380), (28, 19410), (30, 19422), (32, 19443), (41, 19500), (42, 19503), (49, 19572),

Gene: BoostSeason_20 Start: 16808, Stop: 17272, Start Num: 15

Candidate Starts for BoostSeason_20:

(10, 16763), (Start: 15 @16808 has 219 MA's), (27, 16841), (30, 16862), (36, 16904), (38, 16922), (41, 16940), (63, 17180),

Gene: BruceB_19 Start: 18403, Stop: 18864, Start Num: 15

Candidate Starts for BruceB_19:

(10, 18358), (Start: 15 @18403 has 219 MA's), (31, 18505), (35, 18526), (48, 18622), (51, 18661), (52, 18682),

Gene: Bryler_23 Start: 18116, Stop: 18589, Start Num: 15

Candidate Starts for Bryler_23:

(Start: 15 @18116 has 219 MA's), (24, 18149), (26, 18161), (28, 18179), (30, 18191), (41, 18269), (47, 18323), (49, 18341), (51, 18383),

Gene: CLED96_19 Start: 18403, Stop: 18864, Start Num: 15

Candidate Starts for CLED96_19:

(10, 18358), (Start: 15 @18403 has 219 MA's), (31, 18505), (35, 18526), (48, 18622), (51, 18661), (52, 18682),

Gene: CREW_24 Start: 18954, Stop: 19430, Start Num: 15

Candidate Starts for CREW_24:

(Start: 15 @18954 has 219 MA's), (24, 18987), (26, 18999), (30, 19029), (38, 19089), (40, 19101), (41, 19107), (47, 19161), (51, 19221),

Gene: Cain_23 Start: 18104, Stop: 18577, Start Num: 15

Candidate Starts for Cain_23:

(Start: 15 @18104 has 219 MA's), (24, 18137), (26, 18149), (28, 18167), (30, 18179), (41, 18257), (47, 18311), (49, 18329), (51, 18371),

Gene: CallaLilly_25 Start: 18877, Stop: 19353, Start Num: 15

Candidate Starts for CallaLilly_25:

(Start: 15 @18877 has 219 MA's), (24, 18910), (26, 18922), (30, 18952), (38, 19012), (40, 19024), (41, 19030), (47, 19084), (51, 19144),

Gene: Cambiare_20 Start: 19118, Stop: 19648, Start Num: 5

Candidate Starts for Cambiare_20:

(Start: 5 @19118 has 5 MA's), (7, 19157), (48, 19403), (51, 19442), (56, 19505), (66, 19583), (69, 19622),

Gene: Camri_19 Start: 18403, Stop: 18864, Start Num: 15

Candidate Starts for Camri_19:

(10, 18358), (Start: 15 @18403 has 219 MA's), (31, 18505), (35, 18526), (48, 18622), (51, 18661), (52, 18682),

Gene: Capricorn_24 Start: 18954, Stop: 19430, Start Num: 15

Candidate Starts for Capricorn_24:

(Start: 15 @18954 has 219 MA's), (24, 18987), (26, 18999), (30, 19029), (38, 19089), (40, 19101), (41, 19107), (47, 19161), (51, 19221),

Gene: CaseJules_24 Start: 18954, Stop: 19430, Start Num: 15

Candidate Starts for CaseJules_24:

(Start: 15 @18954 has 219 MA's), (24, 18987), (26, 18999), (30, 19029), (38, 19089), (40, 19101), (41, 19107), (47, 19161), (51, 19221),

Gene: CassieYates_19 Start: 18403, Stop: 18864, Start Num: 15

Candidate Starts for CassieYates_19:

(10, 18358), (Start: 15 @18403 has 219 MA's), (31, 18505), (35, 18526), (48, 18622), (51, 18661), (52, 18682),

Gene: Cedasite_19 Start: 18403, Stop: 18864, Start Num: 15

Candidate Starts for Cedasite_19:

(10, 18358), (Start: 15 @18403 has 219 MA's), (31, 18505), (35, 18526), (48, 18622), (51, 18661), (52, 18682),

Gene: Chance64_19 Start: 18403, Stop: 18864, Start Num: 15

Candidate Starts for Chance64_19:

(10, 18358), (Start: 15 @18403 has 219 MA's), (31, 18505), (35, 18526), (48, 18622), (51, 18661), (52, 18682),

Gene: Chancellor_25 Start: 20421, Stop: 20939, Start Num: 13

Candidate Starts for Chancellor_25:

(Start: 13 @20421 has 19 MA's), (30, 20505), (38, 20565), (41, 20583), (49, 20655), (51, 20718), (70, 20928),

Gene: Chavito_24 Start: 18290, Stop: 18766, Start Num: 15

Candidate Starts for Chavito_24:

(10, 18245), (Start: 15 @18290 has 219 MA's), (18, 18296), (22, 18314), (24, 18323), (26, 18335), (30, 18365), (33, 18389), (38, 18425), (41, 18443), (51, 18557), (69, 18752),

Gene: CheetoDust_24 Start: 18931, Stop: 19407, Start Num: 15

Candidate Starts for CheetoDust_24:

(Start: 15 @18931 has 219 MA's), (24, 18964), (26, 18976), (30, 19006), (38, 19066), (40, 19078), (41, 19084), (47, 19138), (51, 19198),

Gene: Cheetobro_25 Start: 20418, Stop: 20936, Start Num: 13

Candidate Starts for Cheetobro_25:

(Start: 13 @20418 has 19 MA's), (30, 20502), (38, 20562), (41, 20580), (49, 20652), (51, 20715), (70, 20925),

Gene: Cherrybomb426_19 Start: 18403, Stop: 18864, Start Num: 15

Candidate Starts for Cherrybomb426_19:

(10, 18358), (Start: 15 @18403 has 219 MA's), (31, 18505), (35, 18526), (48, 18622), (51, 18661), (52, 18682),

Gene: Chris_23 Start: 18146, Stop: 18661, Start Num: 17

Candidate Starts for Chris_23:

(Start: 17 @18146 has 7 MA's), (18, 18149), (Start: 20 @18158 has 1 MA's), (24, 18176), (30, 18218), (40, 18290), (41, 18296), (47, 18350), (50, 18386), (51, 18410), (69, 18596), (73, 18650),

Gene: Clipper_26 Start: 18931, Stop: 19407, Start Num: 15

Candidate Starts for Clipper_26:

(Start: 15 @18931 has 219 MA's), (24, 18964), (26, 18976), (30, 19006), (38, 19066), (40, 19078), (41, 19084), (47, 19138), (51, 19198),

Gene: Coleslaw_19 Start: 18394, Stop: 18855, Start Num: 15

Candidate Starts for Coleslaw_19:

(10, 18349), (Start: 15 @18394 has 219 MA's), (31, 18496), (35, 18517), (48, 18613), (51, 18652), (52, 18673),

Gene: Collard_22 Start: 19325, Stop: 19834, Start Num: 15

Candidate Starts for Collard_22:

(Start: 15 @19325 has 219 MA's), (Start: 20 @19340 has 1 MA's), (30, 19394), (45, 19505), (51, 19607), (57, 19676),

Gene: Crespo_19 Start: 18404, Stop: 18865, Start Num: 15

Candidate Starts for Crespo_19:

(10, 18359), (Start: 15 @18404 has 219 MA's), (31, 18506), (35, 18527), (48, 18623), (51, 18662), (52, 18683),

Gene: CrimD_24 Start: 18892, Stop: 19368, Start Num: 15

Candidate Starts for CrimD_24:

(Start: 15 @18892 has 219 MA's), (24, 18925), (26, 18937), (30, 18967), (38, 19027), (40, 19039), (41, 19045), (47, 19099), (51, 19159),

Gene: Curiosium_25 Start: 18640, Stop: 19101, Start Num: 15

Candidate Starts for Curiosium_25:

(Start: 15 @18640 has 219 MA's), (Start: 20 @18655 has 1 MA's), (22, 18664), (24, 18673), (26, 18685), (30, 18715), (38, 18775), (40, 18787), (41, 18793), (47, 18847), (51, 18907),

Gene: DMoney_19 Start: 18403, Stop: 18864, Start Num: 15

Candidate Starts for DMoney_19:

(10, 18358), (Start: 15 @18403 has 219 MA's), (31, 18505), (35, 18526), (48, 18622), (51, 18661), (52, 18682),

Gene: DNAlll_0019 Start: 18412, Stop: 18873, Start Num: 15

Candidate Starts for DNAlll_0019:

(10, 18367), (Start: 15 @18412 has 219 MA's), (31, 18514), (35, 18535), (48, 18631), (51, 18670), (52, 18691),

Gene: Dadosky_23 Start: 19302, Stop: 19811, Start Num: 15

Candidate Starts for Dadosky_23:

(Start: 15 @19302 has 219 MA's), (Start: 20 @19317 has 1 MA's), (30, 19371), (45, 19482), (51, 19584),

Gene: Dalmuri_24 Start: 18954, Stop: 19430, Start Num: 15

Candidate Starts for Dalmuri_24:

(Start: 15 @18954 has 219 MA's), (24, 18987), (26, 18999), (30, 19029), (38, 19089), (40, 19101), (41, 19107), (47, 19161), (51, 19221),

Gene: Darionha_19 Start: 18403, Stop: 18864, Start Num: 15

Candidate Starts for Darionha_19:

(10, 18358), (Start: 15 @18403 has 219 MA's), (31, 18505), (35, 18526), (48, 18622), (51, 18661), (52, 18682),

Gene: DarthP_23 Start: 19344, Stop: 19838, Start Num: 15

Candidate Starts for DarthP_23:

(Start: 15 @19344 has 219 MA's), (22, 19368), (24, 19377), (26, 19389), (28, 19407), (30, 19419), (38, 19479), (39, 19488), (41, 19497), (43, 19512), (49, 19569), (51, 19611), (69, 19806),

Gene: Dartin_24 Start: 18304, Stop: 18756, Start Num: 22

Candidate Starts for Dartin_24:

(10, 18235), (Start: 15 @18280 has 219 MA's), (18, 18286), (22, 18304), (24, 18313), (26, 18325), (30, 18355), (38, 18415), (41, 18433), (51, 18547),

Gene: Deby_24 Start: 18888, Stop: 19364, Start Num: 15

Candidate Starts for Deby_24:

(Start: 15 @18888 has 219 MA's), (24, 18921), (26, 18933), (30, 18963), (38, 19023), (40, 19035), (41, 19041), (47, 19095), (51, 19155), (57, 19224),

Gene: Devera_24 Start: 18935, Stop: 19411, Start Num: 15

Candidate Starts for Devera_24:

(Start: 15 @18935 has 219 MA's), (24, 18968), (26, 18980), (28, 18998), (30, 19010), (38, 19070), (40, 19082), (41, 19088), (43, 19103), (51, 19202),

Gene: DismalFunk_20 Start: 16782, Stop: 17246, Start Num: 15

Candidate Starts for DismalFunk_20:

(10, 16737), (Start: 15 @16782 has 219 MA's), (27, 16815), (30, 16836), (36, 16878), (38, 16896), (41, 16914), (63, 17154),

Gene: DismalStressor_20 Start: 16782, Stop: 17246, Start Num: 15

Candidate Starts for DismalStressor_20:

(10, 16737), (Start: 15 @16782 has 219 MA's), (27, 16815), (30, 16836), (36, 16878), (38, 16896), (41, 16914), (63, 17154),

Gene: Dole_24 Start: 18937, Stop: 19413, Start Num: 15

Candidate Starts for Dole_24:

(Start: 15 @18937 has 219 MA's), (24, 18970), (26, 18982), (28, 19000), (30, 19012), (38, 19072), (40, 19084), (41, 19090), (43, 19105), (51, 19204),

Gene: Doughnut_20 Start: 16835, Stop: 17266, Start Num: 27

Candidate Starts for Doughnut_20:

(10, 16757), (Start: 15 @16802 has 219 MA's), (27, 16835), (30, 16856), (36, 16898), (38, 16916), (41, 16934), (63, 17174),

Gene: DrHayes_24 Start: 18868, Stop: 19344, Start Num: 15

Candidate Starts for DrHayes_24:

(Start: 15 @18868 has 219 MA's), (Start: 20 @18883 has 1 MA's), (24, 18901), (26, 18913), (28, 18931), (38, 19003), (40, 19015), (41, 19021), (43, 19036), (44, 19045), (47, 19075), (50, 19111), (51, 19135),

Gene: Durfee_24 Start: 18954, Stop: 19430, Start Num: 15

Candidate Starts for Durfee_24:

(Start: 15 @18954 has 219 MA's), (24, 18987), (26, 18999), (30, 19029), (38, 19089), (40, 19101), (41, 19107), (47, 19161), (51, 19221),

Gene: ECartman_19 Start: 18403, Stop: 18864, Start Num: 15

Candidate Starts for ECartman_19:

(10, 18358), (Start: 15 @18403 has 219 MA's), (31, 18505), (35, 18526), (48, 18622), (51, 18661), (52, 18682),

Gene: Edugator_22 Start: 19301, Stop: 19810, Start Num: 15

Candidate Starts for Edugator_22:

(Start: 15 @19301 has 219 MA's), (Start: 20 @19316 has 1 MA's), (30, 19370), (45, 19481), (51, 19583),

Gene: Efra2_24 Start: 18130, Stop: 18600, Start Num: 15

Candidate Starts for Efra2_24:

(Start: 15 @18130 has 219 MA's), (Start: 20 @18145 has 1 MA's), (24, 18163), (26, 18175), (30, 18205), (38, 18265), (41, 18283), (47, 18337), (51, 18397),

Gene: Ekdilam_21 Start: 19106, Stop: 19603, Start Num: 15

Candidate Starts for Ekdilam_21:

(Start: 15 @19106 has 219 MA's), (22, 19130), (24, 19139), (26, 19151), (28, 19169), (30, 19181), (38, 19241), (39, 19250), (41, 19259), (43, 19274), (49, 19331), (51, 19373), (69, 19568),

Gene: Ellie_21 Start: 19090, Stop: 19578, Start Num: 15

Candidate Starts for Ellie_21:

(Start: 15 @19090 has 219 MA's), (Start: 20 @19105 has 1 MA's), (24, 19123), (26, 19135), (30, 19165), (38, 19225), (40, 19237), (41, 19243), (43, 19258), (49, 19315), (51, 19357), (61, 19477),

Gene: Emerson_24 Start: 18914, Stop: 19390, Start Num: 15

Candidate Starts for Emerson_24:

(Start: 15 @18914 has 219 MA's), (24, 18947), (26, 18959), (30, 18989), (38, 19049), (40, 19061), (41, 19067), (47, 19121), (51, 19181),

Gene: Enkosi_20 Start: 18463, Stop: 18939, Start Num: 15

Candidate Starts for Enkosi_20:

(10, 18418), (Start: 15 @18463 has 219 MA's), (18, 18469), (22, 18487), (24, 18496), (30, 18538), (38, 18598), (41, 18616), (47, 18670), (49, 18688), (51, 18730),

Gene: Eponine_25 Start: 20311, Stop: 20829, Start Num: 13

Candidate Starts for Eponine_25:

(Start: 13 @20311 has 19 MA's), (30, 20395), (38, 20455), (41, 20473), (49, 20545), (51, 20608), (70, 20818),

Gene: Fefferhead_23 Start: 19257, Stop: 19745, Start Num: 15

Candidate Starts for Fefferhead_23:

(Start: 15 @19257 has 219 MA's), (Start: 20 @19272 has 1 MA's), (24, 19290), (26, 19302), (30, 19332), (38, 19392), (40, 19404), (41, 19410), (43, 19425), (49, 19482), (51, 19524),

Gene: Feyre_22 Start: 19186, Stop: 19695, Start Num: 15

Candidate Starts for Feyre_22:

(Start: 15 @19186 has 219 MA's), (Start: 20 @19201 has 1 MA's), (30, 19255), (45, 19366), (51, 19468),

Gene: Findley_20 Start: 16785, Stop: 17249, Start Num: 15

Candidate Starts for Findley_20:

(10, 16740), (Start: 15 @16785 has 219 MA's), (27, 16818), (30, 16839), (36, 16881), (38, 16899), (41, 16917), (63, 17157),

Gene: Fionnbharth_25 Start: 20411, Stop: 20929, Start Num: 13

Candidate Starts for Fionnbharth_25:

(Start: 13 @20411 has 19 MA's), (30, 20495), (38, 20555), (41, 20573), (49, 20645), (51, 20708), (70, 20918),

Gene: FlagStaff_19 Start: 18575, Stop: 19054, Start Num: 17

Candidate Starts for FlagStaff_19:

(2, 18014), (3, 18146), (Start: 17 @18575 has 7 MA's), (29, 18671), (31, 18692), (66, 18989), (69, 19028),

Gene: Frosty24_19 Start: 18403, Stop: 18864, Start Num: 15

Candidate Starts for Frosty24_19:

(10, 18358), (Start: 15 @18403 has 219 MA's), (31, 18505), (35, 18526), (48, 18622), (51, 18661), (52, 18682),

Gene: Ganymede_25 Start: 18934, Stop: 19410, Start Num: 15

Candidate Starts for Ganymede_25:

(Start: 15 @18934 has 219 MA's), (24, 18967), (26, 18979), (30, 19009), (38, 19069), (40, 19081), (41, 19087), (47, 19141), (51, 19201),

Gene: Gengar_22 Start: 19293, Stop: 19802, Start Num: 15

Candidate Starts for Gengar_22:

(Start: 15 @19293 has 219 MA's), (Start: 20 @19308 has 1 MA's), (30, 19362), (45, 19473), (51, 19575),

Gene: Geraldini_24 Start: 18930, Stop: 19406, Start Num: 15

Candidate Starts for Geraldini_24:

(Start: 15 @18930 has 219 MA's), (24, 18963), (26, 18975), (30, 19005), (38, 19065), (40, 19077), (41, 19083), (47, 19137), (51, 19197),

Gene: Gideon_19 Start: 18403, Stop: 18864, Start Num: 15

Candidate Starts for Gideon_19:

(10, 18358), (Start: 15 @18403 has 219 MA's), (31, 18505), (35, 18526), (48, 18622), (51, 18661), (52, 18682),

Gene: GoldenAsh_19 Start: 18403, Stop: 18864, Start Num: 15

Candidate Starts for GoldenAsh_19:

(10, 18358), (Start: 15 @18403 has 219 MA's), (31, 18505), (35, 18526), (48, 18622), (51, 18661), (52, 18682),

Gene: Gomashi_19 Start: 18404, Stop: 18865, Start Num: 15

Candidate Starts for Gomashi_19:

(10, 18359), (Start: 15 @18404 has 219 MA's), (31, 18506), (35, 18527), (48, 18623), (51, 18662), (52, 18683),

Gene: Grizzly_19 Start: 18406, Stop: 18867, Start Num: 15

Candidate Starts for Grizzly_19:

(1, 17833), (10, 18361), (Start: 15 @18406 has 219 MA's), (31, 18508), (35, 18529), (48, 18625), (51, 18664),

Gene: Guanica15_24 Start: 18146, Stop: 18616, Start Num: 15

Candidate Starts for Guanica15_24:

(Start: 15 @18146 has 219 MA's), (Start: 20 @18161 has 1 MA's), (24, 18179), (26, 18191), (30, 18221), (38, 18281), (41, 18299), (47, 18353), (51, 18413),

Gene: Guillsminger_22 Start: 19268, Stop: 19777, Start Num: 15

Candidate Starts for Guillsminger_22:

(Start: 15 @19268 has 219 MA's), (Start: 20 @19283 has 1 MA's), (30, 19337), (45, 19448), (51, 19550),

Gene: Halo_19 Start: 18398, Stop: 18859, Start Num: 15

Candidate Starts for Halo_19:

(10, 18353), (Start: 15 @18398 has 219 MA's), (31, 18500), (35, 18521), (48, 18617), (51, 18656), (52, 18677),

Gene: Hammy_23 Start: 19338, Stop: 19835, Start Num: 15

Candidate Starts for Hammy_23:

(Start: 15 @19338 has 219 MA's), (22, 19362), (24, 19371), (26, 19383), (28, 19401), (30, 19413), (38, 19473), (39, 19482), (41, 19491), (43, 19506), (49, 19563), (51, 19605), (69, 19800),

Gene: HedwigODU_24 Start: 18923, Stop: 19399, Start Num: 15

Candidate Starts for HedwigODU_24:

(Start: 15 @18923 has 219 MA's), (24, 18956), (26, 18968), (30, 18998), (38, 19058), (40, 19070), (41, 19076), (47, 19130), (51, 19190),

Gene: Heftyboy_22 Start: 19416, Stop: 19925, Start Num: 15

Candidate Starts for Heftyboy_22:

(Start: 15 @19416 has 219 MA's), (Start: 20 @19431 has 1 MA's), (30, 19485), (45, 19596), (51, 19698),

Gene: Homura_24 Start: 18954, Stop: 19430, Start Num: 15

Candidate Starts for Homura_24:

(Start: 15 @18954 has 219 MA's), (24, 18987), (26, 18999), (30, 19029), (38, 19089), (40, 19101), (41, 19107), (47, 19161), (51, 19221),

Gene: Hope_19 Start: 18403, Stop: 18864, Start Num: 15

Candidate Starts for Hope_19:

(10, 18358), (Start: 15 @18403 has 219 MA's), (31, 18505), (35, 18526), (48, 18622), (51, 18661), (52, 18682),

Gene: Hotshotbaby7_19 Start: 18403, Stop: 18864, Start Num: 15

Candidate Starts for Hotshotbaby7_19:

(10, 18358), (Start: 15 @18403 has 219 MA's), (31, 18505), (35, 18526), (48, 18622), (51, 18661), (52, 18682),

Gene: Hurricane_23 Start: 19350, Stop: 19862, Start Num: 15

Candidate Starts for Hurricane_23:

(10, 19305), (Start: 15 @19350 has 219 MA's), (23, 19377), (25, 19386), (30, 19422), (37, 19473), (38, 19482), (39, 19491), (41, 19500), (50, 19590), (63, 19740), (68, 19791),

Gene: Hyperbowlee_24 Start: 18954, Stop: 19430, Start Num: 15

Candidate Starts for Hyperbowlee_24:

(Start: 15 @18954 has 219 MA's), (24, 18987), (26, 18999), (30, 19029), (38, 19089), (40, 19101), (41, 19107), (47, 19161), (51, 19221),

Gene: Illumine_24 Start: 18937, Stop: 19413, Start Num: 15

Candidate Starts for Illumine_24:

(Start: 15 @18937 has 219 MA's), (24, 18970), (26, 18982), (28, 19000), (30, 19012), (38, 19072), (40, 19084), (41, 19090), (43, 19105), (51, 19204),

Gene: Inky_24 Start: 18954, Stop: 19430, Start Num: 15

Candidate Starts for Inky_24:

(Start: 15 @18954 has 219 MA's), (24, 18987), (26, 18999), (30, 19029), (38, 19089), (40, 19101), (41, 19107), (47, 19161), (51, 19221),

Gene: InvictusManeo_22 Start: 19368, Stop: 19877, Start Num: 15

Candidate Starts for InvictusManeo_22:

(Start: 15 @19368 has 219 MA's), (Start: 20 @19383 has 1 MA's), (30, 19437), (45, 19548), (51, 19650), (57, 19719),

Gene: JAWS_24 Start: 18908, Stop: 19384, Start Num: 15

Candidate Starts for JAWS_24:

(Start: 15 @18908 has 219 MA's), (24, 18941), (26, 18953), (30, 18983), (38, 19043), (40, 19055), (41, 19061), (47, 19115), (51, 19175),

Gene: JF1_25 Start: 20410, Stop: 20928, Start Num: 13

Candidate Starts for JF1_25:

(Start: 13 @20410 has 19 MA's), (30, 20494), (38, 20554), (41, 20572), (49, 20644), (51, 20707), (70, 20917),

Gene: Jane_19 Start: 18403, Stop: 18864, Start Num: 15

Candidate Starts for Jane_19:

(10, 18358), (Start: 15 @18403 has 219 MA's), (31, 18505), (35, 18526), (48, 18622), (51, 18661), (52, 18682),

Gene: Jarvi_24 Start: 18954, Stop: 19430, Start Num: 15

Candidate Starts for Jarvi_24:

(Start: 15 @18954 has 219 MA's), (24, 18987), (26, 18999), (30, 19029), (38, 19089), (40, 19101), (41, 19107), (47, 19161), (51, 19221),

Gene: Jayhawk_24 Start: 18921, Stop: 19397, Start Num: 15

Candidate Starts for Jayhawk_24:

(Start: 15 @18921 has 219 MA's), (24, 18954), (26, 18966), (30, 18996), (38, 19056), (40, 19068), (41, 19074), (47, 19128), (51, 19188),

Gene: Jeckyll_24 Start: 18954, Stop: 19430, Start Num: 15

Candidate Starts for Jeckyll_24:

(Start: 15 @18954 has 219 MA's), (24, 18987), (26, 18999), (30, 19029), (38, 19089), (40, 19101), (41, 19107), (47, 19161), (51, 19221),

Gene: Jolene_19 Start: 18403, Stop: 18864, Start Num: 15

Candidate Starts for Jolene_19:

(10, 18358), (Start: 15 @18403 has 219 MA's), (31, 18505), (35, 18526), (48, 18622), (51, 18661), (52, 18682),

Gene: Jolie2_19 Start: 17715, Stop: 18197, Start Num: 8

Candidate Starts for Jolie2_19:

(Start: 8 @17715 has 2 MA's), (25, 17781), (31, 17835), (37, 17868), (39, 17886), (48, 17952), (51, 17991), (56, 18054), (65, 18120), (68, 18153),

Gene: Jonghyun_19 Start: 18403, Stop: 18864, Start Num: 15

Candidate Starts for Jonghyun_19:

(10, 18358), (Start: 15 @18403 has 219 MA's), (31, 18505), (35, 18526), (48, 18622), (51, 18661), (52, 18682),

Gene: JorRay_19 Start: 18403, Stop: 18864, Start Num: 15

Candidate Starts for JorRay_19:

(10, 18358), (Start: 15 @18403 has 219 MA's), (31, 18505), (35, 18526), (48, 18622), (51, 18661), (52, 18682),

Gene: Joy99_24 Start: 18883, Stop: 19359, Start Num: 15

Candidate Starts for Joy99_24:

(Start: 15 @18883 has 219 MA's), (24, 18916), (26, 18928), (30, 18958), (38, 19018), (40, 19030), (41, 19036), (47, 19090), (51, 19150),

Gene: Juliette_25 Start: 20311, Stop: 20829, Start Num: 13

Candidate Starts for Juliette_25:

(Start: 13 @20311 has 19 MA's), (30, 20395), (38, 20455), (41, 20473), (49, 20545), (51, 20608), (70, 20818),

Gene: Kareem_19 Start: 18403, Stop: 18864, Start Num: 15

Candidate Starts for Kareem_19:

(10, 18358), (Start: 15 @18403 has 219 MA's), (31, 18505), (35, 18526), (48, 18622), (51, 18661), (52, 18682),

Gene: Kasen3_19 Start: 18404, Stop: 18865, Start Num: 15

Candidate Starts for Kasen3_19:

(10, 18359), (Start: 15 @18404 has 219 MA's), (31, 18506), (35, 18527), (48, 18623), (51, 18662), (52, 18683),

Gene: Keshu_23 Start: 19342, Stop: 19854, Start Num: 15

Candidate Starts for Keshu_23:

(10, 19297), (Start: 15 @19342 has 219 MA's), (23, 19369), (25, 19378), (30, 19414), (37, 19465), (38, 19474), (39, 19483), (41, 19492), (50, 19582), (63, 19732), (68, 19783),

Gene: KiSi_23 Start: 18086, Stop: 18562, Start Num: 17

Candidate Starts for KiSi_23:

(Start: 17 @18086 has 7 MA's), (18, 18089), (24, 18116), (26, 18128), (30, 18158), (40, 18230), (41, 18236), (47, 18290), (69, 18536),

Gene: Kratio_21 Start: 18999, Stop: 19508, Start Num: 15

Candidate Starts for Kratio_21:

(Start: 15 @18999 has 219 MA's), (Start: 20 @19014 has 1 MA's), (30, 19068), (45, 19179), (51, 19281), (57, 19350),

Gene: Kraw_26 Start: 20334, Stop: 20852, Start Num: 13

Candidate Starts for Kraw_26:

(Start: 13 @20334 has 19 MA's), (30, 20418), (38, 20478), (41, 20496), (49, 20568), (51, 20631), (70, 20841),

Gene: Krueger_23 Start: 18075, Stop: 18557, Start Num: 15

Candidate Starts for Krueger_23:

(Start: 15 @18075 has 219 MA's), (18, 18081), (24, 18108), (26, 18120), (30, 18150), (41, 18228), (49, 18300), (51, 18342),

Gene: Larva_23 Start: 19169, Stop: 19678, Start Num: 15

Candidate Starts for Larva_23:

(Start: 15 @19169 has 219 MA's), (Start: 20 @19184 has 1 MA's), (30, 19238), (45, 19349), (51, 19451),

Gene: LastHope_24 Start: 18217, Stop: 18693, Start Num: 15

Candidate Starts for LastHope_24:

(Start: 15 @18217 has 219 MA's), (Start: 20 @18232 has 1 MA's), (24, 18250), (26, 18262), (30, 18292), (33, 18316), (38, 18352), (40, 18364), (41, 18370), (47, 18424), (51, 18484),

Gene: LaterM_24 Start: 18882, Stop: 19358, Start Num: 15

Candidate Starts for LaterM_24:

(Start: 15 @18882 has 219 MA's), (24, 18915), (26, 18927), (28, 18945), (30, 18957), (38, 19017), (40, 19029), (41, 19035), (51, 19149),

Gene: LeMond_23 Start: 18157, Stop: 18633, Start Num: 17

Candidate Starts for LeMond_23:

(Start: 17 @18157 has 7 MA's), (18, 18160), (24, 18187), (26, 18199), (30, 18229), (40, 18301), (41, 18307), (47, 18361), (69, 18607),

Gene: Lea83_24 Start: 19339, Stop: 19842, Start Num: 15

Candidate Starts for Lea83_24:

(10, 19294), (Start: 15 @19339 has 219 MA's), (23, 19357), (25, 19366), (30, 19402), (37, 19453), (38, 19462), (39, 19471), (41, 19480), (50, 19570), (63, 19720), (68, 19771),

Gene: Lebo14_26 Start: 20427, Stop: 20945, Start Num: 13

Candidate Starts for Lebo14_26:

(Start: 13 @20427 has 19 MA's), (30, 20511), (38, 20571), (41, 20589), (49, 20661), (51, 20724), (70, 20934),

Gene: Lemuria_20 Start: 18526, Stop: 19005, Start Num: 8

Candidate Starts for Lemuria_20:

(6, 18484), (Start: 8 @18526 has 2 MA's), (25, 18589), (31, 18643), (39, 18694), (48, 18760), (51, 18799), (56, 18862), (65, 18928), (68, 18961),

Gene: Leston_22 Start: 19398, Stop: 19907, Start Num: 15

Candidate Starts for Leston_22:

(Start: 15 @19398 has 219 MA's), (Start: 20 @19413 has 1 MA's), (30, 19467), (45, 19578), (51, 19680),

Gene: Liefie_19 Start: 18402, Stop: 18863, Start Num: 15

Candidate Starts for Liefie_19:

(10, 18357), (Start: 15 @18402 has 219 MA's), (31, 18504), (35, 18525), (48, 18621), (51, 18660),

Gene: LilPharaoh_20 Start: 18463, Stop: 18939, Start Num: 15

Candidate Starts for LilPharaoh_20:

(10, 18418), (Start: 15 @18463 has 219 MA's), (18, 18469), (22, 18487), (24, 18496), (30, 18538), (38, 18598), (41, 18616), (47, 18670), (49, 18688), (51, 18730),

Gene: LindNT_24 Start: 18888, Stop: 19364, Start Num: 15

Candidate Starts for LindNT_24:

(Start: 15 @18888 has 219 MA's), (24, 18921), (26, 18933), (30, 18963), (38, 19023), (40, 19035), (41, 19041), (47, 19095), (51, 19155),

Gene: Llorens_24 Start: 18954, Stop: 19430, Start Num: 15

Candidate Starts for Llorens_24:

(Start: 15 @18954 has 219 MA's), (24, 18987), (26, 18999), (30, 19029), (38, 19089), (40, 19101), (41, 19107), (47, 19161), (51, 19221),

Gene: LouisV14_19 Start: 18403, Stop: 18864, Start Num: 15

Candidate Starts for LouisV14_19:

(10, 18358), (Start: 15 @18403 has 219 MA's), (31, 18505), (35, 18526), (48, 18622), (51, 18661), (52, 18682),

Gene: Lunahalos_24 Start: 18954, Stop: 19430, Start Num: 15

Candidate Starts for Lunahalos_24:

(Start: 15 @18954 has 219 MA's), (24, 18987), (26, 18999), (30, 19029), (38, 19089), (40, 19101), (41, 19107), (47, 19161), (51, 19221),

Gene: MOOREtheMARYer_20 Start: 18675, Stop: 19208, Start Num: 5

Candidate Starts for MOOREtheMARYer_20:

(Start: 5 @18675 has 5 MA's), (7, 18720), (30, 18831), (48, 18966), (53, 19041), (54, 19050), (69, 19182),

Gene: MacKat_25 Start: 18931, Stop: 19407, Start Num: 15

Candidate Starts for MacKat_25:

(Start: 15 @18931 has 219 MA's), (24, 18964), (26, 18976), (30, 19006), (38, 19066), (40, 19078), (41, 19084), (47, 19138), (51, 19198),

Gene: MacnCheese_24 Start: 19584, Stop: 20096, Start Num: 15

Candidate Starts for MacnCheese_24:

(10, 19539), (Start: 15 @19584 has 219 MA's), (23, 19611), (25, 19620), (30, 19656), (37, 19707), (38, 19716), (39, 19725), (41, 19734), (50, 19824), (63, 19974), (68, 20025), (71, 20067), (72, 20088),

Gene: Maliketh_19 Start: 18403, Stop: 18864, Start Num: 15

Candidate Starts for Maliketh_19:

(10, 18358), (Start: 15 @18403 has 219 MA's), (31, 18505), (35, 18526), (48, 18622), (51, 18661), (52, 18682),

Gene: Malthus_26 Start: 20334, Stop: 20852, Start Num: 13

Candidate Starts for Malthus_26:

(Start: 13 @20334 has 19 MA's), (30, 20418), (38, 20478), (41, 20496), (49, 20568), (51, 20631), (70, 20841),

Gene: Marcoliusprime_20 Start: 16782, Stop: 17246, Start Num: 15

Candidate Starts for Marcoliusprime_20:

(10, 16737), (Start: 15 @16782 has 219 MA's), (27, 16815), (30, 16836), (36, 16878), (38, 16896), (41, 16914), (63, 17154),

Gene: MarkPhew_24 Start: 18066, Stop: 18518, Start Num: 20

Candidate Starts for MarkPhew_24:

(Start: 17 @18054 has 7 MA's), (18, 18057), (Start: 20 @18066 has 1 MA's), (24, 18084), (30, 18126), (40, 18198), (41, 18204), (47, 18258), (49, 18276), (51, 18318), (68, 18489),

Gene: Marmie_19 Start: 18403, Stop: 18864, Start Num: 15

Candidate Starts for Marmie_19:

(10, 18358), (Start: 15 @18403 has 219 MA's), (31, 18505), (35, 18526), (48, 18622), (51, 18661), (52, 18682),

Gene: Marshawn_25 Start: 18671, Stop: 19147, Start Num: 15

Candidate Starts for Marshawn_25:

(10, 18626), (Start: 15 @18671 has 219 MA's), (Start: 20 @18686 has 1 MA's), (22, 18695), (24, 18704), (28, 18734), (30, 18746), (33, 18770), (38, 18806), (40, 18818), (41, 18824), (44, 18848), (49, 18896), (51, 18938), (62, 19061), (64, 19070),

Gene: McMater_24 Start: 18304, Stop: 18756, Start Num: 22

Candidate Starts for McMater_24:

(10, 18235), (Start: 15 @18280 has 219 MA's), (18, 18286), (22, 18304), (24, 18313), (26, 18325), (30, 18355), (38, 18415), (41, 18433), (51, 18547),

Gene: Mdavu_20 Start: 18451, Stop: 18927, Start Num: 15

Candidate Starts for Mdavu_20:

(10, 18406), (Start: 15 @18451 has 219 MA's), (18, 18457), (22, 18475), (24, 18484), (30, 18526), (38, 18586), (41, 18604), (47, 18658), (49, 18676), (51, 18718),

Gene: MeaningOfLife_24 Start: 18890, Stop: 19366, Start Num: 15

Candidate Starts for MeaningOfLife_24:

(Start: 15 @18890 has 219 MA's), (24, 18923), (26, 18935), (30, 18965), (38, 19025), (40, 19037), (41, 19043), (47, 19097), (51, 19157),

Gene: Megsy_24 Start: 18891, Stop: 19367, Start Num: 15

Candidate Starts for Megsy_24:

(Start: 15 @18891 has 219 MA's), (24, 18924), (26, 18936), (30, 18966), (38, 19026), (40, 19038), (41, 19044), (47, 19098), (51, 19158),

Gene: Mercurio_21 Start: 19148, Stop: 19627, Start Num: 8

Candidate Starts for Mercurio_21:

(6, 19106), (Start: 8 @19148 has 2 MA's), (21, 19187), (25, 19211), (29, 19244), (31, 19265), (48, 19382), (51, 19421), (56, 19484), (60, 19532), (65, 19550), (68, 19583),

Gene: Milly_20 Start: 16782, Stop: 17246, Start Num: 15

Candidate Starts for Milly_20:

(10, 16737), (Start: 15 @16782 has 219 MA's), (27, 16815), (30, 16836), (36, 16878), (38, 16896), (41, 16914), (63, 17154),

Gene: Miryou_22 Start: 19253, Stop: 19762, Start Num: 15

Candidate Starts for Miryou_22:

(Start: 15 @19253 has 219 MA's), (Start: 20 @19268 has 1 MA's), (30, 19322), (45, 19433), (51, 19535), (57, 19604),

Gene: MissDaisy_25 Start: 20173, Stop: 20691, Start Num: 13

Candidate Starts for MissDaisy_25:

(Start: 13 @20173 has 19 MA's), (30, 20257), (38, 20317), (41, 20335), (49, 20407), (51, 20470), (70, 20680),

Gene: Mitti_25 Start: 20334, Stop: 20852, Start Num: 13

Candidate Starts for Mitti_25:

(Start: 13 @20334 has 19 MA's), (30, 20418), (38, 20478), (41, 20496), (49, 20568), (51, 20631), (70, 20841),

Gene: Mowgli_19 Start: 18403, Stop: 18864, Start Num: 15

Candidate Starts for Mowgli_19:

(10, 18358), (Start: 15 @18403 has 219 MA's), (31, 18505), (35, 18526), (48, 18622), (51, 18661), (52, 18682),

Gene: Mufasa_20 Start: 16802, Stop: 17266, Start Num: 15

Candidate Starts for Mufasa_20:

(10, 16757), (Start: 15 @16802 has 219 MA's), (27, 16835), (30, 16856), (36, 16898), (38, 16916), (41, 16934), (63, 17174),

Gene: Murucutumbu_24 Start: 18872, Stop: 19348, Start Num: 15

Candidate Starts for Murucutumbu_24:

(Start: 15 @18872 has 219 MA's), (24, 18905), (26, 18917), (28, 18935), (30, 18947), (38, 19007), (40, 19019), (41, 19025), (51, 19139), (57, 19208),

Gene: Mynx_24 Start: 18937, Stop: 19413, Start Num: 15

Candidate Starts for Mynx_24:

(Start: 15 @18937 has 219 MA's), (24, 18970), (26, 18982), (30, 19012), (38, 19072), (40, 19084), (41, 19090), (47, 19144), (51, 19204),

Gene: Neighly_23 Start: 19168, Stop: 19677, Start Num: 15

Candidate Starts for Neighly_23:

(Start: 15 @19168 has 219 MA's), (Start: 20 @19183 has 1 MA's), (30, 19237), (45, 19348), (51, 19450),

Gene: Nibb_23 Start: 18198, Stop: 18662, Start Num: 17

Candidate Starts for Nibb_23:

(Start: 17 @18198 has 7 MA's), (18, 18201), (Start: 20 @18210 has 1 MA's), (24, 18228), (30, 18270), (40, 18342), (41, 18348), (47, 18402), (49, 18420), (50, 18438), (51, 18462), (68, 18633),

Gene: Nikao_20 Start: 18463, Stop: 18939, Start Num: 15

Candidate Starts for Nikao_20:

(10, 18418), (Start: 15 @18463 has 219 MA's), (18, 18469), (22, 18487), (24, 18496), (30, 18538), (38, 18598), (41, 18616), (47, 18670), (49, 18688), (51, 18730),

Gene: Niklas_24 Start: 18283, Stop: 18759, Start Num: 15

Candidate Starts for Niklas_24:

(10, 18238), (Start: 15 @18283 has 219 MA's), (18, 18289), (22, 18307), (24, 18316), (26, 18328), (30, 18358), (38, 18418), (41, 18436), (51, 18550),

Gene: November_23 Start: 19238, Stop: 19732, Start Num: 15

Candidate Starts for November_23:

(Start: 15 @19238 has 219 MA's), (Start: 20 @19253 has 1 MA's), (24, 19271), (26, 19283), (28, 19301), (30, 19313), (38, 19373), (39, 19382), (41, 19391), (43, 19406), (49, 19463), (51, 19505), (69, 19700),

Gene: Nutello_20 Start: 18463, Stop: 18939, Start Num: 15

Candidate Starts for Nutello_20:

(10, 18418), (Start: 15 @18463 has 219 MA's), (18, 18469), (22, 18487), (24, 18496), (30, 18538), (38, 18598), (41, 18616), (47, 18670), (49, 18688), (51, 18730),

Gene: OctaviousRex_19 Start: 18403, Stop: 18864, Start Num: 15

Candidate Starts for OctaviousRex_19:

(10, 18358), (Start: 15 @18403 has 219 MA's), (31, 18505), (35, 18526), (48, 18622), (51, 18661), (52, 18682),

Gene: OkiRoe_22 Start: 19269, Stop: 19778, Start Num: 15

Candidate Starts for OkiRoe_22:

(Start: 15 @19269 has 219 MA's), (Start: 20 @19284 has 1 MA's), (30, 19338), (45, 19449), (51, 19551), (57, 19620),

Gene: Olga_19 Start: 18403, Stop: 18864, Start Num: 15

Candidate Starts for Olga_19:

(10, 18358), (Start: 15 @18403 has 219 MA's), (31, 18505), (35, 18526), (48, 18622), (51, 18661), (52, 18682),

Gene: OmniCritical_25 Start: 20319, Stop: 20837, Start Num: 13

Candidate Starts for OmniCritical_25:

(Start: 13 @20319 has 19 MA's), (30, 20403), (38, 20463), (41, 20481), (49, 20553), (51, 20616), (70, 20826),

Gene: Omnicron_23 Start: 18088, Stop: 18597, Start Num: 15

Candidate Starts for Omnicron_23:

(Start: 15 @18088 has 219 MA's), (Start: 20 @18103 has 1 MA's), (30, 18157), (45, 18268), (49, 18307), (51, 18370),

Gene: Oscar_23 Start: 18158, Stop: 18634, Start Num: 17

Candidate Starts for Oscar_23:

(Start: 17 @18158 has 7 MA's), (18, 18161), (24, 18188), (26, 18200), (30, 18230), (40, 18302), (41, 18308), (47, 18362), (69, 18608),

Gene: Pace1224_19 Start: 18575, Stop: 19054, Start Num: 17

Candidate Starts for Pace1224_19:

(2, 18014), (3, 18146), (Start: 17 @18575 has 7 MA's), (29, 18671), (31, 18692), (66, 18989), (69, 19028),

Gene: Padfoot_24 Start: 18954, Stop: 19430, Start Num: 15

Candidate Starts for Padfoot_24:

(Start: 15 @18954 has 219 MA's), (24, 18987), (26, 18999), (30, 19029), (38, 19089), (40, 19101), (41, 19107), (47, 19161), (51, 19221),

Gene: Padpat_24 Start: 18914, Stop: 19390, Start Num: 15

Candidate Starts for Padpat_24:

(Start: 15 @18914 has 219 MA's), (24, 18947), (26, 18959), (30, 18989), (38, 19049), (40, 19061), (41, 19067), (47, 19121), (51, 19181),

Gene: Paito_19 Start: 18536, Stop: 19066, Start Num: 15

Candidate Starts for Paito_19:

(Start: 15 @18536 has 219 MA's), (31, 18707), (48, 18824), (51, 18863),

Gene: Paola_22 Start: 19268, Stop: 19777, Start Num: 15

Candidate Starts for Paola_22:

(Start: 15 @19268 has 219 MA's), (Start: 20 @19283 has 1 MA's), (30, 19337), (45, 19448), (51, 19550),

Gene: Patt_25 Start: 20152, Stop: 20670, Start Num: 13

Candidate Starts for Patt_25:

(Start: 13 @20152 has 19 MA's), (30, 20236), (38, 20296), (41, 20314), (49, 20386), (51, 20449), (70, 20659),

Gene: Peanam_24 Start: 18280, Stop: 18756, Start Num: 15

Candidate Starts for Peanam_24:

(10, 18235), (Start: 15 @18280 has 219 MA's), (18, 18286), (22, 18304), (24, 18313), (26, 18325), (30, 18355), (38, 18415), (41, 18433), (51, 18547),

Gene: Peeb_19 Start: 18403, Stop: 18864, Start Num: 15

Candidate Starts for Peeb_19:

(10, 18358), (Start: 15 @18403 has 219 MA's), (31, 18505), (35, 18526), (48, 18622), (51, 18661),

Gene: Peel_24 Start: 18954, Stop: 19430, Start Num: 15

Candidate Starts for Peel_24:

(Start: 15 @18954 has 219 MA's), (24, 18987), (26, 18999), (30, 19029), (38, 19089), (40, 19101), (41, 19107), (47, 19161), (51, 19221),

Gene: Periodt_19 Start: 18403, Stop: 18864, Start Num: 15

Candidate Starts for Periodt_19:

(10, 18358), (Start: 15 @18403 has 219 MA's), (31, 18505), (35, 18526), (48, 18622), (51, 18661), (52, 18682),

Gene: Pharb_23 Start: 19190, Stop: 19702, Start Num: 15

Candidate Starts for Pharb_23:

(10, 19145), (Start: 15 @19190 has 219 MA's), (25, 19229), (30, 19265), (37, 19316), (38, 19325), (39, 19334), (41, 19343), (50, 19433), (68, 19631), (71, 19673),

Gene: PhelpsODU_23 Start: 18138, Stop: 18611, Start Num: 15

Candidate Starts for PhelpsODU_23:

(Start: 15 @18138 has 219 MA's), (24, 18171), (26, 18183), (28, 18201), (30, 18213), (41, 18291), (47, 18345), (49, 18363), (51, 18405), (55, 18465),

Gene: Phish_19 Start: 18403, Stop: 18864, Start Num: 15

Candidate Starts for Phish_19:

(10, 18358), (Start: 15 @18403 has 219 MA's), (31, 18505), (35, 18526), (48, 18622), (51, 18661), (52, 18682),

Gene: Phrank_23 Start: 18092, Stop: 18565, Start Num: 15

Candidate Starts for Phrank_23:

(Start: 15 @18092 has 219 MA's), (24, 18125), (26, 18137), (28, 18155), (30, 18167), (41, 18245), (47, 18299), (49, 18317), (51, 18359),

Gene: Phreak_19 Start: 18403, Stop: 18864, Start Num: 15

Candidate Starts for Phreak_19:

(10, 18358), (Start: 15 @18403 has 219 MA's), (31, 18505), (35, 18526), (48, 18622), (51, 18661), (52, 18682),

Gene: Piatt_24 Start: 18954, Stop: 19430, Start Num: 15

Candidate Starts for Piatt_24:

(Start: 15 @18954 has 219 MA's), (24, 18987), (26, 18999), (30, 19029), (38, 19089), (40, 19101), (41, 19107), (47, 19161), (51, 19221),

Gene: PinkYoshi_19 Start: 18394, Stop: 18855, Start Num: 15

Candidate Starts for PinkYoshi_19:

(10, 18349), (Start: 15 @18394 has 219 MA's), (31, 18496), (35, 18517), (48, 18613), (51, 18652), (52, 18673),

Gene: Pinnie_20 Start: 19082, Stop: 19615, Start Num: 5

Candidate Starts for Pinnie_20:

(Start: 5 @19082 has 5 MA's), (7, 19127), (12, 19157), (48, 19373), (53, 19448), (54, 19457), (69, 19589),

Gene: Pixie_23 Start: 19121, Stop: 19633, Start Num: 15

Candidate Starts for Pixie_23:

(10, 19076), (Start: 15 @19121 has 219 MA's), (23, 19148), (25, 19157), (30, 19193), (37, 19244), (38, 19253), (39, 19262), (41, 19271), (50, 19361), (63, 19511), (68, 19562), (72, 19625),

Gene: Plagueis_19 Start: 18403, Stop: 18864, Start Num: 15

Candidate Starts for Plagueis_19:

(10, 18358), (Start: 15 @18403 has 219 MA's), (31, 18505), (35, 18526), (48, 18622), (51, 18661), (52, 18682),

Gene: Pokerus_23 Start: 18871, Stop: 19347, Start Num: 15

Candidate Starts for Pokerus_23:

(Start: 15 @18871 has 219 MA's), (24, 18904), (26, 18916), (30, 18946), (38, 19006), (40, 19018), (41, 19024), (47, 19078), (51, 19138),

Gene: Prithvi_24 Start: 18888, Stop: 19364, Start Num: 15

Candidate Starts for Prithvi_24:

(Start: 15 @18888 has 219 MA's), (24, 18921), (26, 18933), (30, 18963), (38, 19023), (40, 19035), (41, 19041), (47, 19095), (51, 19155),

Gene: Psycho_23 Start: 19299, Stop: 19808, Start Num: 15

Candidate Starts for Psycho_23:

(Start: 15 @19299 has 219 MA's), (Start: 20 @19314 has 1 MA's), (30, 19368), (45, 19479), (51, 19581),

Gene: QuincyRose_23 Start: 18934, Stop: 19410, Start Num: 15

Candidate Starts for QuincyRose_23:

(Start: 15 @18934 has 219 MA's), (24, 18967), (26, 18979), (30, 19009), (38, 19069), (40, 19081), (41, 19087), (47, 19141), (51, 19201),

Gene: Rabbs_19 Start: 18411, Stop: 18950, Start Num: 15

Candidate Starts for Rabbs_19:

(Start: 15 @18411 has 219 MA's), (31, 18591), (48, 18708), (51, 18747),

Gene: Ramen_24 Start: 18920, Stop: 19396, Start Num: 15

Candidate Starts for Ramen_24:

(Start: 15 @18920 has 219 MA's), (24, 18953), (26, 18965), (30, 18995), (38, 19055), (40, 19067), (41, 19073), (47, 19127), (51, 19187),

Gene: Rando14_23 Start: 17987, Stop: 18496, Start Num: 15

Candidate Starts for Rando14_23:

(Start: 15 @17987 has 219 MA's), (Start: 20 @18002 has 1 MA's), (30, 18056), (45, 18167), (49, 18206), (51, 18269), (57, 18338),

Gene: Rapunzel97_24 Start: 18921, Stop: 19397, Start Num: 15

Candidate Starts for Rapunzel97_24:

(Start: 15 @18921 has 219 MA's), (24, 18954), (26, 18966), (30, 18996), (38, 19056), (40, 19068), (41, 19074), (47, 19128), (51, 19188),

Gene: Remy19_19 Start: 18403, Stop: 18864, Start Num: 15

Candidate Starts for Remy19_19:

(10, 18358), (Start: 15 @18403 has 219 MA's), (31, 18505), (35, 18526), (48, 18622), (51, 18661), (52, 18682),

Gene: Renaissance_19 Start: 18403, Stop: 18864, Start Num: 15

Candidate Starts for Renaissance_19:

(10, 18358), (Start: 15 @18403 has 219 MA's), (31, 18505), (35, 18526), (48, 18622), (51, 18661), (52, 18682),

Gene: Reptar3000_25 Start: 20151, Stop: 20666, Start Num: 13

Candidate Starts for Reptar3000_25:

(Start: 13 @20151 has 19 MA's), (19, 20178), (Start: 20 @20181 has 1 MA's), (30, 20235), (32, 20256), (41, 20313), (49, 20385), (51, 20448),

Gene: Richo_24 Start: 18304, Stop: 18756, Start Num: 22

Candidate Starts for Richo_24:

(10, 18235), (Start: 15 @18280 has 219 MA's), (18, 18286), (22, 18304), (24, 18313), (26, 18325), (30, 18355), (38, 18415), (41, 18433), (51, 18547),

Gene: Rosmarinus_24 Start: 18942, Stop: 19418, Start Num: 15

Candidate Starts for Rosmarinus_24:

(Start: 15 @18942 has 219 MA's), (24, 18975), (26, 18987), (30, 19017), (38, 19077), (40, 19089), (41, 19095), (47, 19149), (51, 19209),

Gene: Ruthiejr_24 Start: 20042, Stop: 20560, Start Num: 13

Candidate Starts for Ruthiejr_24:

(Start: 13 @20042 has 19 MA's), (30, 20126), (38, 20186), (41, 20204), (49, 20276), (51, 20339), (70, 20549),

Gene: SamScheppers_23 Start: 19949, Stop: 20467, Start Num: 13

Candidate Starts for SamScheppers_23:

(Start: 13 @19949 has 19 MA's), (30, 20033), (38, 20093), (41, 20111), (49, 20183), (51, 20246), (70, 20456),

Gene: SamuelLPlaqson_24 Start: 18868, Stop: 19344, Start Num: 15

Candidate Starts for SamuelLPlaqson_24:

(Start: 15 @18868 has 219 MA's), (Start: 20 @18883 has 1 MA's), (24, 18901), (26, 18913), (28, 18931), (38, 19003), (40, 19015), (41, 19021), (43, 19036), (44, 19045), (47, 19075), (50, 19111), (51, 19135),

Gene: Scarlett_23 Start: 18160, Stop: 18636, Start Num: 17

Candidate Starts for Scarlett_23:

(Start: 17 @18160 has 7 MA's), (18, 18163), (24, 18190), (26, 18202), (30, 18232), (40, 18304), (41, 18310), (47, 18364), (69, 18610),

Gene: Schiebel_19 Start: 18403, Stop: 18864, Start Num: 15

Candidate Starts for Schiebel_19:

(10, 18358), (Start: 15 @18403 has 219 MA's), (31, 18505), (35, 18526), (48, 18622), (51, 18661), (52, 18682),

Gene: SgtBeansprout_20 Start: 18463, Stop: 18939, Start Num: 15

Candidate Starts for SgtBeansprout_20:

(10, 18418), (Start: 15 @18463 has 219 MA's), (18, 18469), (22, 18487), (24, 18496), (30, 18538), (38, 18598), (41, 18616), (47, 18670), (49, 18688), (51, 18730),

Gene: ShaboiShabazz_19 Start: 18403, Stop: 18864, Start Num: 15

Candidate Starts for ShaboiShabazz_19:

(10, 18358), (Start: 15 @18403 has 219 MA's), (31, 18505), (35, 18526), (48, 18622), (51, 18661), (52, 18682),

Gene: Shadow1_22 Start: 17980, Stop: 18462, Start Num: 15

Candidate Starts for Shadow1_22:

(Start: 15 @17980 has 219 MA's), (18, 17986), (24, 18013), (26, 18025), (30, 18055), (41, 18133), (49, 18205), (51, 18247),

Gene: Shaobing_24 Start: 18280, Stop: 18756, Start Num: 15

Candidate Starts for Shaobing_24:

(10, 18235), (Start: 15 @18280 has 219 MA's), (18, 18286), (22, 18304), (24, 18313), (26, 18325), (30, 18355), (38, 18415), (41, 18433), (51, 18547),

Gene: ShedlockHolmes_23 Start: 19339, Stop: 19842, Start Num: 15

Candidate Starts for ShedlockHolmes_23:

(10, 19294), (Start: 15 @19339 has 219 MA's), (23, 19357), (25, 19366), (30, 19402), (37, 19453), (38, 19462), (39, 19471), (41, 19480), (50, 19570), (63, 19720), (68, 19771),

Gene: ShiaSurprise_24 Start: 18954, Stop: 19430, Start Num: 15

Candidate Starts for ShiaSurprise_24:

(Start: 15 @18954 has 219 MA's), (24, 18987), (26, 18999), (30, 19029), (38, 19089), (40, 19101), (41, 19107), (47, 19161), (51, 19221),

Gene: SirPhilip_23 Start: 17768, Stop: 18241, Start Num: 15

Candidate Starts for SirPhilip_23:

(Start: 15 @17768 has 219 MA's), (Start: 20 @17783 has 1 MA's), (24, 17801), (26, 17813), (30, 17843), (31, 17861), (32, 17864), (40, 17915), (41, 17921), (47, 17975), (49, 17993), (51, 18035),

Gene: Sizemore_19 Start: 18404, Stop: 18865, Start Num: 15

Candidate Starts for Sizemore_19:

(10, 18359), (Start: 15 @18404 has 219 MA's), (31, 18506), (35, 18527), (48, 18623), (51, 18662), (52, 18683),

Gene: Slarp_25 Start: 20421, Stop: 20939, Start Num: 13

Candidate Starts for Slarp_25:

(Start: 13 @20421 has 19 MA's), (30, 20505), (38, 20565), (41, 20583), (49, 20655), (51, 20718), (70, 20928),

Gene: Slimphazie_24 Start: 18921, Stop: 19397, Start Num: 15

Candidate Starts for Slimphazie_24:

(Start: 15 @18921 has 219 MA's), (24, 18954), (26, 18966), (30, 18996), (38, 19056), (40, 19068), (41, 19074), (47, 19128), (51, 19188),

Gene: Sneeze_19 Start: 18410, Stop: 18949, Start Num: 15

Candidate Starts for Sneeze_19:

(Start: 15 @18410 has 219 MA's), (31, 18590), (48, 18707), (51, 18746),

Gene: SoSeph_22 Start: 19416, Stop: 19925, Start Num: 15

Candidate Starts for SoSeph_22:

(Start: 15 @19416 has 219 MA's), (Start: 20 @19431 has 1 MA's), (30, 19485), (45, 19596), (51, 19698),

Gene: Spock_24 Start: 18954, Stop: 19430, Start Num: 15

Candidate Starts for Spock_24:

(Start: 15 @18954 has 219 MA's), (24, 18987), (26, 18999), (30, 19029), (38, 19089), (40, 19101), (41, 19107), (47, 19161), (51, 19221),

Gene: Stargaze_19 Start: 18702, Stop: 19301, Start Num: 5

Candidate Starts for Stargaze_19:

(Start: 5 @18702 has 5 MA's), (7, 18744), (9, 18771), (11, 18780), (32, 18945), (41, 19002), (45, 19029), (56, 19161), (69, 19275),

Gene: Stinson_24 Start: 18887, Stop: 19363, Start Num: 15

Candidate Starts for Stinson_24:

(Start: 15 @18887 has 219 MA's), (24, 18920), (26, 18932), (28, 18950), (30, 18962), (38, 19022), (39, 19031), (40, 19034), (41, 19040), (43, 19055), (51, 19154),

Gene: Strobilo_20 Start: 16785, Stop: 17249, Start Num: 15

Candidate Starts for Strobilo_20:

(10, 16740), (Start: 15 @16785 has 219 MA's), (27, 16818), (30, 16839), (36, 16881), (38, 16899), (41, 16917), (63, 17157),

Gene: Sulley_24 Start: 18887, Stop: 19363, Start Num: 15

Candidate Starts for Sulley_24:

(Start: 15 @18887 has 219 MA's), (24, 18920), (26, 18932), (30, 18962), (38, 19022), (40, 19034), (41, 19040), (47, 19094), (51, 19154), (57, 19223),

Gene: Sunflower1121_22 Start: 17992, Stop: 18474, Start Num: 15

Candidate Starts for Sunflower1121_22:

(Start: 15 @17992 has 219 MA's), (18, 17998), (24, 18025), (26, 18037), (30, 18067), (41, 18145), (49, 18217), (51, 18259), (57, 18328),

Gene: Sweets_19 Start: 18398, Stop: 18859, Start Num: 15

Candidate Starts for Sweets_19:

(10, 18353), (Start: 15 @18398 has 219 MA's), (31, 18500), (35, 18521), (48, 18617), (51, 18656), (52, 18677),

Gene: Syra333_23 Start: 18087, Stop: 18569, Start Num: 15

Candidate Starts for Syra333_23:

(Start: 15 @18087 has 219 MA's), (18, 18093), (24, 18120), (26, 18132), (30, 18162), (41, 18240), (49, 18312), (51, 18354),

Gene: TBond007_23 Start: 19120, Stop: 19632, Start Num: 15

Candidate Starts for TBond007_23:

(10, 19075), (Start: 15 @19120 has 219 MA's), (23, 19147), (25, 19156), (30, 19192), (37, 19243), (38, 19252), (39, 19261), (41, 19270), (50, 19360), (63, 19510), (68, 19561), (72, 19624),

Gene: TClif_23 Start: 18120, Stop: 18590, Start Num: 15

Candidate Starts for TClif_23:

(Start: 15 @18120 has 219 MA's), (24, 18153), (26, 18165), (30, 18195), (38, 18255), (40, 18267), (41, 18273), (43, 18288), (47, 18327), (51, 18387),

Gene: TM4_20 Start: 16851, Stop: 17315, Start Num: 15

Candidate Starts for TM4_20:

(10, 16806), (Start: 15 @16851 has 219 MA's), (27, 16884), (30, 16905), (36, 16947), (41, 16983), (58, 17193), (63, 17223),

Gene: Tachez_24 Start: 18883, Stop: 19359, Start Num: 15

Candidate Starts for Tachez_24:

(Start: 15 @18883 has 219 MA's), (24, 18916), (26, 18928), (30, 18958), (38, 19018), (40, 19030), (41, 19036), (47, 19090), (51, 19150),

Gene: Taheera_19 Start: 18420, Stop: 18959, Start Num: 15

Candidate Starts for Taheera_19:

(Start: 15 @18420 has 219 MA's), (31, 18600), (48, 18717), (51, 18756),

Gene: TaiwanKao_25 Start: 18894, Stop: 19370, Start Num: 15

Candidate Starts for TaiwanKao_25:

(Start: 15 @18894 has 219 MA's), (24, 18927), (26, 18939), (30, 18969), (38, 19029), (40, 19041), (41, 19047), (47, 19101), (51, 19161),

Gene: Taquito_23 Start: 20030, Stop: 20548, Start Num: 13

Candidate Starts for Taquito_23:

(Start: 13 @20030 has 19 MA's), (30, 20114), (38, 20174), (41, 20192), (49, 20264), (51, 20327), (70, 20537),

Gene: Teejan_20 Start: 18463, Stop: 18939, Start Num: 15

Candidate Starts for Teejan_20:

(10, 18418), (Start: 15 @18463 has 219 MA's), (18, 18469), (22, 18487), (24, 18496), (30, 18538), (38, 18598), (41, 18616), (47, 18670), (49, 18688), (51, 18730),

Gene: Terror_19 Start: 18420, Stop: 18959, Start Num: 15

Candidate Starts for Terror_19:

(Start: 15 @18420 has 219 MA's), (31, 18600), (48, 18717), (51, 18756),

Gene: Thyatira_22 Start: 19268, Stop: 19777, Start Num: 15

Candidate Starts for Thyatira_22:

(Start: 15 @19268 has 219 MA's), (Start: 20 @19283 has 1 MA's), (30, 19337), (45, 19448), (51, 19550),

Gene: Tierra_23 Start: 18813, Stop: 19286, Start Num: 15

Candidate Starts for Tierra_23:

(Start: 15 @18813 has 219 MA's), (24, 18846), (26, 18858), (28, 18876), (30, 18888), (41, 18966), (47, 19020), (49, 19038), (51, 19080),

Gene: TinaBug_19 Start: 18398, Stop: 18859, Start Num: 15

Candidate Starts for TinaBug_19:

(10, 18353), (Start: 15 @18398 has 219 MA's), (31, 18500), (35, 18521), (48, 18617), (51, 18656), (52, 18677),

Gene: TingHuaYa_24 Start: 18220, Stop: 18696, Start Num: 15

Candidate Starts for TingHuaYa_24:

(Start: 15 @18220 has 219 MA's), (Start: 20 @18235 has 1 MA's), (24, 18253), (26, 18265), (30, 18295), (33, 18319), (38, 18355), (40, 18367), (41, 18373), (47, 18427), (51, 18487),

Gene: TiniBug_24 Start: 18865, Stop: 19341, Start Num: 15

Candidate Starts for TiniBug_24:

(Start: 15 @18865 has 219 MA's), (Start: 20 @18880 has 1 MA's), (24, 18898), (26, 18910), (28, 18928), (38, 19000), (40, 19012), (41, 19018), (44, 19042), (47, 19072), (50, 19108), (51, 19132),

Gene: Tiri_24 Start: 18926, Stop: 19402, Start Num: 15

Candidate Starts for Tiri_24:

(Start: 15 @18926 has 219 MA's), (24, 18959), (26, 18971), (30, 19001), (38, 19061), (40, 19073), (41, 19079), (47, 19133), (51, 19193),

Gene: TomBrady_19 Start: 18404, Stop: 18865, Start Num: 15

Candidate Starts for TomBrady_19:

(10, 18359), (Start: 15 @18404 has 219 MA's), (31, 18506), (35, 18527), (48, 18623), (51, 18662), (52, 18683),

Gene: Topper_24 Start: 18954, Stop: 19430, Start Num: 15

Candidate Starts for Topper_24:

(Start: 15 @18954 has 219 MA's), (24, 18987), (26, 18999), (30, 19029), (38, 19089), (40, 19101), (41, 19107), (47, 19161), (51, 19221),

Gene: Torres_20 Start: 18463, Stop: 18939, Start Num: 15

Candidate Starts for Torres_20:

(10, 18418), (Start: 15 @18463 has 219 MA's), (18, 18469), (22, 18487), (24, 18496), (30, 18538), (38, 18598), (41, 18616), (47, 18670), (49, 18688), (51, 18730),

Gene: TreyKay_24 Start: 18888, Stop: 19364, Start Num: 15

Candidate Starts for TreyKay_24:

(Start: 15 @18888 has 219 MA's), (24, 18921), (26, 18933), (30, 18963), (38, 19023), (40, 19035), (41, 19041), (47, 19095), (51, 19155),

Gene: TribelTrouble_22 Start: 19166, Stop: 19669, Start Num: 15

Candidate Starts for TribelTrouble_22:

(10, 19121), (Start: 15 @19166 has 219 MA's), (23, 19184), (25, 19193), (30, 19229), (37, 19280), (38, 19289), (39, 19298), (41, 19307), (50, 19397), (63, 19547), (71, 19640), (72, 19661),

Gene: TruffulaTree_24 Start: 18917, Stop: 19393, Start Num: 15

Candidate Starts for TruffulaTree_24:

(Start: 15 @18917 has 219 MA's), (24, 18950), (26, 18962), (30, 18992), (38, 19052), (40, 19064), (41, 19070), (47, 19124), (51, 19184),

Gene: Twitch_24 Start: 18954, Stop: 19430, Start Num: 15

Candidate Starts for Twitch_24:

(Start: 15 @18954 has 219 MA's), (24, 18987), (26, 18999), (30, 19029), (38, 19089), (40, 19101), (41, 19107), (47, 19161), (51, 19221),

Gene: Unicorn_23 Start: 18138, Stop: 18611, Start Num: 15

Candidate Starts for Unicorn_23:

(Start: 15 @18138 has 219 MA's), (24, 18171), (26, 18183), (28, 18201), (30, 18213), (41, 18291), (47, 18345), (49, 18363), (51, 18405), (55, 18465),

Gene: Urkel_24 Start: 18868, Stop: 19344, Start Num: 15

Candidate Starts for Urkel_24:

(Start: 15 @18868 has 219 MA's), (Start: 20 @18883 has 1 MA's), (24, 18901), (26, 18913), (28, 18931), (38, 19003), (40, 19015), (41, 19021), (43, 19036), (44, 19045), (47, 19075), (50, 19111), (51, 19135),

Gene: Validus_24 Start: 18214, Stop: 18687, Start Num: 15

Candidate Starts for Validus_24:

(10, 18169), (Start: 15 @18214 has 219 MA's), (18, 18220), (22, 18238), (24, 18247), (26, 18259), (30, 18289), (38, 18349), (41, 18367), (46, 18403), (51, 18481), (59, 18586),

Gene: Veliki_24 Start: 18957, Stop: 19433, Start Num: 15

Candidate Starts for Veliki_24:

(Start: 15 @18957 has 219 MA's), (24, 18990), (26, 19002), (30, 19032), (38, 19092), (40, 19104), (41, 19110), (47, 19164), (51, 19224),

Gene: ViviJ_21 Start: 19125, Stop: 19634, Start Num: 15

Candidate Starts for ViviJ_21:

(Start: 15 @19125 has 219 MA's), (Start: 20 @19140 has 1 MA's), (30, 19194), (45, 19305), (51, 19407), (57, 19476),

Gene: Waterfoul_22 Start: 19289, Stop: 19798, Start Num: 15

Candidate Starts for Waterfoul_22:

(Start: 15 @19289 has 219 MA's), (Start: 20 @19304 has 1 MA's), (30, 19358), (45, 19469), (51, 19571),

Gene: Wendigo_19 Start: 18403, Stop: 18864, Start Num: 15

Candidate Starts for Wendigo_19:

(10, 18358), (Start: 15 @18403 has 219 MA's), (31, 18505), (35, 18526), (48, 18622), (51, 18661), (52, 18682),

Gene: Wintermute_25 Start: 20410, Stop: 20928, Start Num: 13

Candidate Starts for Wintermute_25:

(Start: 13 @20410 has 19 MA's), (30, 20494), (38, 20554), (41, 20572), (49, 20644), (51, 20707), (70, 20917),

Gene: Ximenita_24 Start: 18265, Stop: 18747, Start Num: 15

Candidate Starts for Ximenita_24:

(Start: 15 @18265 has 219 MA's), (18, 18271), (24, 18298), (26, 18310), (30, 18340), (41, 18418), (49, 18490), (51, 18532), (57, 18601), (66, 18694),

Gene: Y10_25 Start: 20410, Stop: 20928, Start Num: 13

Candidate Starts for Y10_25:

(Start: 13 @20410 has 19 MA's), (30, 20494), (38, 20554), (41, 20572), (49, 20644), (51, 20707), (70, 20917),

Gene: Y2_25 Start: 20410, Stop: 20928, Start Num: 13

Candidate Starts for Y2_25:

(Start: 13 @20410 has 19 MA's), (30, 20494), (38, 20554), (41, 20572), (49, 20644), (51, 20707), (70, 20917),

Gene: YoureAdopted_23 Start: 18890, Stop: 19366, Start Num: 15

Candidate Starts for YoureAdopted_23:

(Start: 15 @18890 has 219 MA's), (24, 18923), (26, 18935), (30, 18965), (38, 19025), (40, 19037), (41, 19043), (47, 19097), (51, 19157),

Gene: Yuna_25 Start: 18808, Stop: 19326, Start Num: 15

Candidate Starts for Yuna_25:

(Start: 15 @18808 has 219 MA's), (24, 18841), (26, 18853), (30, 18883), (40, 18955), (41, 18961), (51, 19075), (57, 19144), (67, 19240),

Gene: Yunkel11_24 Start: 18146, Stop: 18616, Start Num: 15

Candidate Starts for Yunkel11_24:

(Start: 15 @18146 has 219 MA's), (Start: 20 @18161 has 1 MA's), (24, 18179), (26, 18191), (30, 18221), (38, 18281), (41, 18299), (47, 18353), (51, 18413),

Gene: Zabiza_24 Start: 18921, Stop: 19397, Start Num: 15

Candidate Starts for Zabiza_24:

(Start: 15 @18921 has 219 MA's), (24, 18954), (26, 18966), (30, 18996), (38, 19056), (40, 19068), (41, 19074), (47, 19128), (51, 19188),

Gene: Zavala_24 Start: 18895, Stop: 19371, Start Num: 15

Candidate Starts for Zavala_24:

(Start: 15 @18895 has 219 MA's), (24, 18928), (26, 18940), (30, 18970), (38, 19030), (40, 19042), (41, 19048), (47, 19102), (51, 19162),

Gene: ZoMa_19 Start: 18403, Stop: 18864, Start Num: 15

Candidate Starts for ZoMa_19:

(10, 18358), (Start: 15 @18403 has 219 MA's), (31, 18505), (35, 18526), (48, 18622), (51, 18661), (52, 18682),

Gene: ZoeJ_20 Start: 16723, Stop: 17187, Start Num: 15

Candidate Starts for ZoeJ_20:

(10, 16678), (Start: 15 @16723 has 219 MA's), (27, 16756), (30, 16777), (36, 16819), (38, 16837), (41, 16855), (63, 17095),

Gene: Zombie_19 Start: 18403, Stop: 18864, Start Num: 15

Candidate Starts for Zombie_19:

(10, 18358), (Start: 15 @18403 has 219 MA's), (31, 18505), (35, 18526), (48, 18622), (51, 18661), (52, 18682),