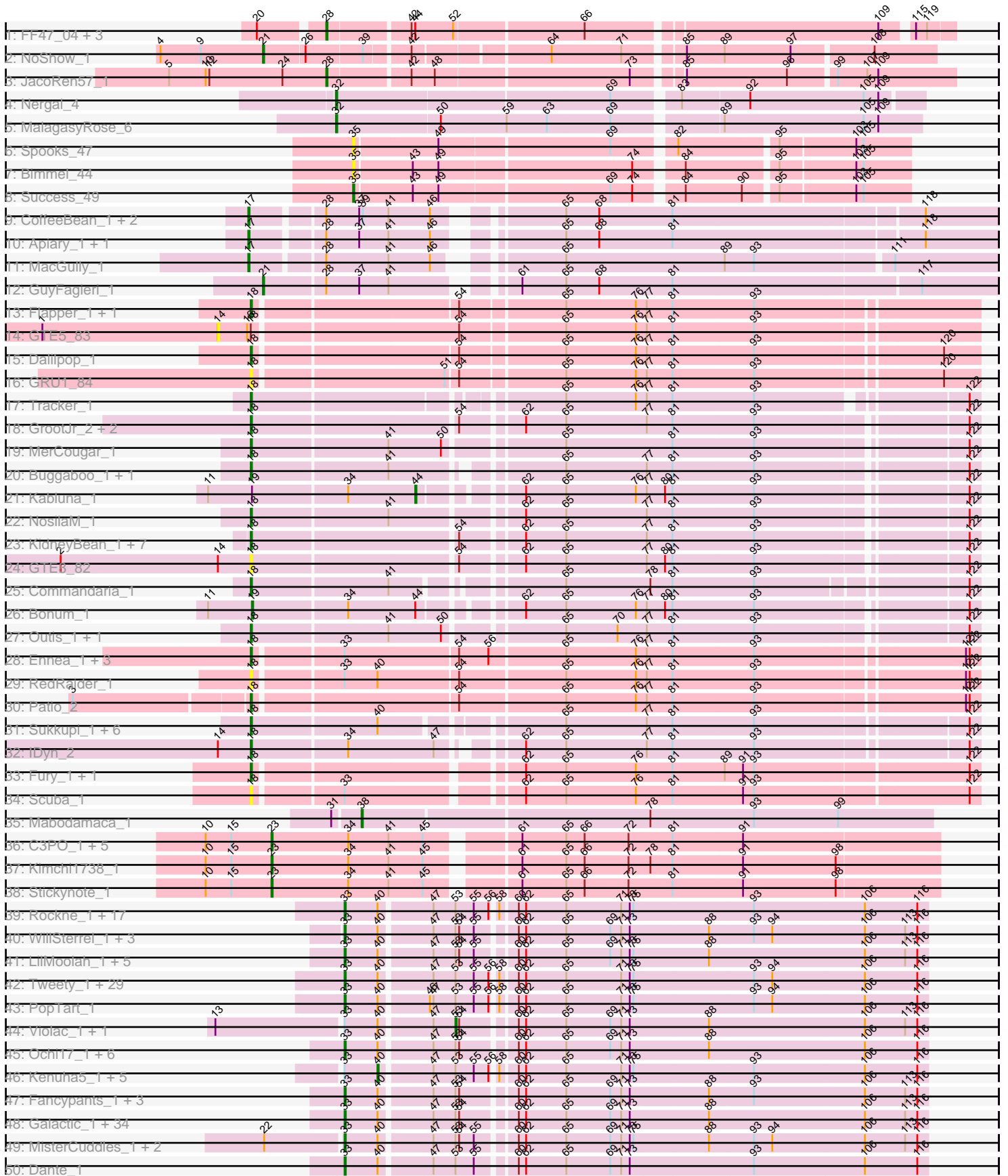
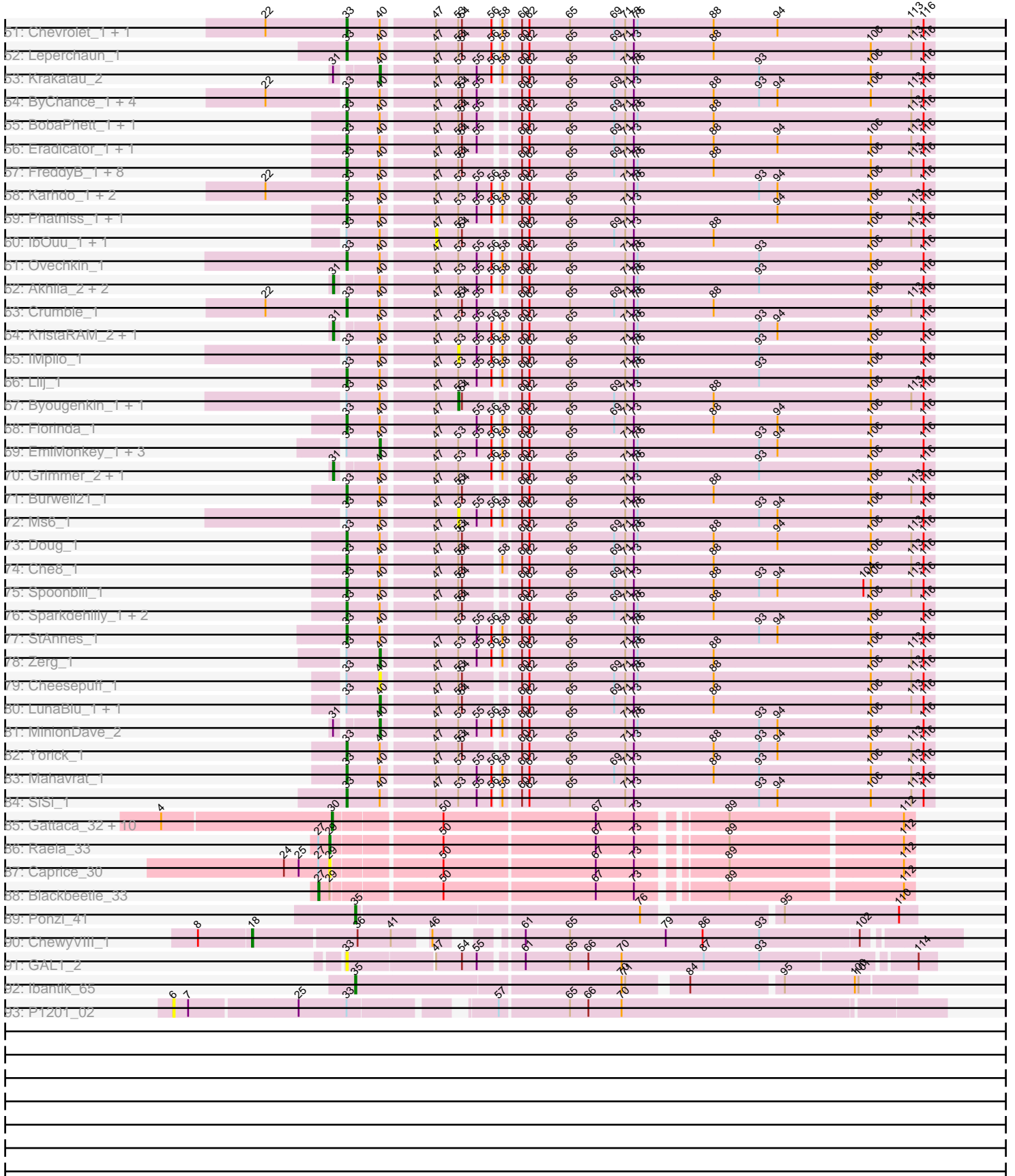


Pham 215781



Pham 215781



Note: Tracks are now grouped by subcluster and scaled. Switching in subcluster is indicated by changes in track color. Track scale is now set by default to display the region 30 bp upstream of start 1 to 30 bp downstream of the last possible start. If this default region is judged to be packed too tightly with annotated starts, the track will be further scaled to only show that region of the ORF with annotated starts. This action will be indicated by adding "Zoomed" to the title. For starts, yellow indicates the location of called starts comprised solely of Glimmer/GeneMark auto-annotations, green indicates the location of called starts with at least 1 manual gene annotation.

Pham 215781 Report

This analysis was run 02/22/25 on database version 588.

Pham number 215781 has 271 members, 32 are drafts.

Phages represented in each track:

- Track 1 : FF47_04, Muddy_4, 8UZL_4, Maco6_2
- Track 2 : NoShow_1
- Track 3 : JacoRen57_1
- Track 4 : Nergal_4
- Track 5 : MalagasyRose_6
- Track 6 : Spooks_47
- Track 7 : Bimmel_44
- Track 8 : Success_49
- Track 9 : CoffeeBean_1, Braxoaddie_1, Maselop_1
- Track 10 : Apiary_1, Polyuyuki_1
- Track 11 : MacGully_1
- Track 12 : GuyFagieri_1
- Track 13 : Flapper_1, Turuncu_1
- Track 14 : GTE5_83
- Track 15 : Dalilpop_1
- Track 16 : GRU1_84
- Track 17 : Tracker_1
- Track 18 : GrootJr_2, NovumRegina_2, NatB6_2
- Track 19 : MerCougar_1
- Track 20 : Buggaboo_1, SuperSulley_1
- Track 21 : Kabluna_1
- Track 22 : NosilaM_1
- Track 23 : KidneyBean_1, Arti_1, Foxboro_1, Emianna_1, Wheezy_1, Kurt_1, Jifall16_1, Phomeo_1
- Track 24 : GTE8_82
- Track 25 : Commandaria_1
- Track 26 : Bonum_1
- Track 27 : Outis_1, StarStruck_1
- Track 28 : Ennea_1, Lollipop1437_1, Float294_1, Skysand_1
- Track 29 : RedRaider_1
- Track 30 : Patio_2
- Track 31 : Sukkupi_1, WhoseManz_1, NadineRae_1, HubbaBubba_1, BiPauneto_1, Marietta_1, Yndexa_1
- Track 32 : IDyn_2
- Track 33 : Fury_1, Pleakley_1
- Track 34 : Scuba_1
- Track 35 : Mabodamaca_1

- Track 36 : C3PO_1, PeteyPab_1, PotatoChip_1, Darwin_1, Cruella_1, Zion_1
- Track 37 : Kimchi1738_1
- Track 38 : Stickynote_1
- Track 39 : Rockne_1, Firehouse51_1, Sandalphon_1, Rita_1, QuickMath_1, Phasih_1, Taj_1, Sabbb_1, Ardmore_1, MadMen_1, DillTech15_1, Batiatus_1, Jant_1, Donkeykong_1, EleanorGeorge_1, Filuzino_1, PMC_1, Whatsapiecost_1
- Track 40 : WillSterrel_1, Kersh_1, Spartacus_1, IrishSherpFalk_1
- Track 41 : LilMoolah_1, Nivrat_1, ShiLan_1, Polka14_1, Jarcob_1, Philus_1
- Track 42 : Tweety_1, Melissaueren88_1, DotProduct_1, Fruitloop_1, XFactor_1, Zizzle_1, DeadP_1, Hamulus_1, Mantra_1, SuperGrey_1, PhesterPhotato_1, Bipolar_1, SG4_1, Blexus_1, GigiOuiOui_1, Emma_1, Shauna1_1, Mutaforma13_1, DLane_1, Guppsters_1, Wee_1, SassyB_1, Aubs_1, ShroomBoi_1, Chuckly_1, Phanphagia_1, Bubbles123_1, Hades_1, Gandalph_1, Royals2015_1
- Track 43 : PopTart_1
- Track 44 : Violac_1, Juniper1_1
- Track 45 : Ochi17_1, Seabastian_1, Llama_1, AlpineSix_1, Modragons_1, OfUltron_1, Jinglebell_1
- Track 46 : Kenuha5_1, Corium_1, KingJulian_1, Minnie_1, MulchSalad_1, Phalconet_1
- Track 47 : Fancypants_1, Ibhubesi_1, Harley_1, Whouxphf_1
- Track 48 : Galactic_1, Mattes_1, BodEinwohner17_1, Nimbo_1, Scottish_1, Estave1_1, Eish_1, Strokeseat_1, PHappiness_1, RedBird_1, Wachhund_1, Daenerys_1, Saal_1, VRedHorse_1, JoeyJr_1, Dorothy_1, Empress_1, Radiance_1, Inventum_1, Hlubikazi_1, Latretium_1, RitaG_1, Mandlovu_1, BlueCrab_1, Sassafras_1, Pacc40_1, Geralt_1, Doomphist_1, Gorge_1, Polo2Bam_1, Poenanya_1, Brocalys_1, KingMidas_1, Deb65_1, OldBen_1
- Track 49 : MisterCuddles_1, Girr_1, Ruby_1
- Track 50 : Dante_1
- Track 51 : Chevrolet_1, ArcusAngelus_1
- Track 52 : Leperchaun_1
- Track 53 : Krakatau_2
- Track 54 : ByChance_1, SwagPiggett_1, Lizziana_1, ShowerHandel_1, Martik_1
- Track 55 : BobaPhett_1, James_1
- Track 56 : Eradicator_1, Moonbeam_1
- Track 57 : FreddyB_1, Koella_1, LastJedi_1, Clifton_1, NormanBulbieJr_1, OlympiaSaint_1, Pippy_1, Priscilla_1, Cabrinians_1
- Track 58 : Karhdo_1, Veteran_1, GUmbie_1
- Track 59 : Phatniss_1, Maravista_1
- Track 60 : IbOuu_1, NewHope4_1
- Track 61 : Ovechkin_1
- Track 62 : Akhila_2, MilleniumForce_2, MilanaBonita_2
- Track 63 : Crumble_1
- Track 64 : KristaRAM_2, CaptainTrips_2
- Track 65 : IMPilo_1
- Track 66 : Llij_1
- Track 67 : Byougenkin_1, Vivum_1
- Track 68 : Florinda_1
- Track 69 : EmiMonkey_1, DoRead_1, Fastidio_1, PhlipPhlop_1
- Track 70 : Grimmer_2, Nitzel_2
- Track 71 : Burwell21_1
- Track 72 : Ms6_1
- Track 73 : Doug_1
- Track 74 : Che8_1

- Track 75 : Spoonbill_1
- Track 76 : Sparkdehlily_1, TDanisky_1, DRBy19_1
- Track 77 : StAnnes_1
- Track 78 : Zerg_1
- Track 79 : Cheesepuff_1
- Track 80 : LunaBlu_1, DaddyRickover_1
- Track 81 : MinionDave_2
- Track 82 : Yorick_1
- Track 83 : Mahavrat_1
- Track 84 : SiSi_1
- Track 85 : Gattaca_32, Corazon_31, Clarkson_34, Huphlepuuff_35, FeliMaine_35, RedRaider77_33, Lilbit_34, Pringar_33, VasuNzinga_33, LittleLaf_33, Tesla_32
- Track 86 : Raela_33
- Track 87 : Caprice_30
- Track 88 : Blackbeetle_33
- Track 89 : Ponzi_41
- Track 90 : ChewyVIII_1
- Track 91 : GAL1_2
- Track 92 : lbantik_65
- Track 93 : P1201_02

Summary of Final Annotations (See graph section above for start numbers):

The start number called the most often in the published annotations is 33, it was called in 147 of the 239 non-draft genes in the pham.

Genes that call this "Most Annotated" start:

- AlpineSix_1, ArcusAngelus_1, Ardmore_1, Aubs_1, Batiatus_1, Bipolar_1, Blexus_1, BlueCrab_1, BobaPhett_1, BodEinwohner17_1, Brocalys_1, Bubbles123_1, Burwell21_1, ByChance_1, Cabrinians_1, Che8_1, Chevrolet_1, Chuckly_1, Clifton_1, Crumble_1, DLane_1, DRBy19_1, Daenerys_1, Dante_1, DeadP_1, Deb65_1, DillTech15_1, Donkeykong_1, Doomphist_1, Dorothy_1, DotProduct_1, Doug_1, Eish_1, EleanorGeorge_1, Emma_1, Empress_1, Eradicator_1, Estave1_1, Fancypants_1, Filuzino_1, Firehouse51_1, Florinda_1, FreddyB_1, Fruitloop_1, GAL1_2, GUmbe_1, Galactic_1, Gandalph_1, Geralt_1, GigiOuiOui_1, Girr_1, Gorge_1, Guppsters_1, Hades_1, Hamulus_1, Harley_1, Hlubikazi_1, Ibhubesi_1, Inventum_1, IrishSherpFalk_1, James_1, Jant_1, Jarcob_1, Jinglebell_1, JoeyJr_1, Karhdo_1, Kersh_1, KingMidas_1, Koella_1, LastJedi_1, Latretium_1, Leperchaun_1, LilMoolah_1, Lizziana_1, Llama_1, Llij_1, MadMen_1, Mahavrat_1, Mandlovu_1, Mantra_1, Maravista_1, Martik_1, Mattes_1, Melissauren88_1, MisterCuddles_1, Modragons_1, Moonbeam_1, Mutaforma13_1, Nimbo_1, Nivrat_1, NormanBulbieJr_1, Ochi17_1, OfUltron_1, OldBen_1, OlympiaSaint_1, Ovechkin_1, PHappiness_1, PMC_1, Pacc40_1, Phanphagia_1, Phasih_1, Phatniss_1, PhesterPhotato_1, Philus_1, Pippy_1, Poenanya_1, Polka14_1, Polo2Bam_1, PopTart_1, Priscilla_1, QuickMath_1, Radiance_1, RedBird_1, RitaG_1, Rita_1, Rockne_1, Royals2015_1, Ruby_1, SG4_1, Saal_1, Sabb_1, Sandalphon_1, Sassafras_1, SassyB_1, Scottish_1, Seabastian_1, Shauna1_1, ShiLan_1, ShowerHandel_1, ShroomBoi_1, SiSi_1, Sparkdehlily_1, Spartacus_1, Spoonbill_1, StAnnes_1, Strokeseat_1, SuperGrey_1, SwagPigglett_1, TDanisky_1, Taj_1, Tweety_1, VRedHorse_1, Veteran_1, Wachhund_1, Wee_1,

Whatsapiecost_1, Whouxphf_1, WillSterrel_1, XFactor_1, Yorick_1, Zizzle_1,

Genes that have the "Most Annotated" start but do not call it:

- Byougenkin_1, Cheesepuff_1, Corium_1, DaddyRickover_1, DoRead_1, EmiMonkey_1, Ennea_1, Fastidio_1, Float294_1, IMpilo_1, IbOuu_1, Juniper1_1, Kenuha5_1, KingJulian_1, Lollipop1437_1, LunaBlu_1, Minnie_1, Ms6_1, MulchSalad_1, NewHope4_1, P1201_02, Phalconet_1, PhlipPhlop_1, RedRaider_1, Scuba_1, Skysand_1, Violac_1, Vivum_1, Zerg_1,

Genes that do not have the "Most Annotated" start:

- 8UZL_4, Akhila_2, Apiary_1, Arti_1, BiPauneto_1, Bimmel_44, Blackbeetle_33, Bonum_1, Braxoaddie_1, Buggaboo_1, C3PO_1, Caprice_30, CaptainTrips_2, ChewyVIII_1, Clarkson_34, CoffeeBean_1, Commandaria_1, Corazon_31, Cruella_1, Dalilpop_1, Darwin_1, Emianna_1, FF47_04, FeliMaine_35, Flapper_1, Foxboro_1, Fury_1, GRU1_84, GTE5_83, GTE8_82, Gattaca_32, Grimmer_2, GrootJr_2, GuyFagieri_1, HubbaBubba_1, Huphlepuuff_35, IDyn_2, Ibantik_65, JacoRen57_1, Jifall16_1, Kabluna_1, KidneyBean_1, Kimchi1738_1, Krakatau_2, KristaRAM_2, Kurt_1, Lilbit_34, LittleLaf_33, Mabodamaca_1, MacGully_1, Maco6_2, MalagasyRose_6, Marietta_1, Maselop_1, MerCougar_1, MilanaBonita_2, MilleniumForce_2, MinionDave_2, Muddy_4, NadineRae_1, NatB6_2, Nergal_4, Nitzel_2, NoShow_1, NosilaM_1, NovumRegina_2, Outis_1, Patio_2, PeteyPab_1, Phomeo_1, Pleakley_1, Polyuyuki_1, Ponzi_41, PotatoChip_1, Pringar_33, Raela_33, RedRaider77_33, Spooks_47, StarStruck_1, Stickynote_1, Success_49, Sukkupi_1, SuperSulley_1, Tesla_32, Tracker_1, Turuncu_1, VasuNzinga_33, Wheezy_1, WhoseManz_1, Yndexa_1, Zion_1,

Summary by start number:

Start 6:

- Found in 1 of 271 (0.4%) of genes in pham
- No Manual Annotations of this start.
- Called 100.0% of time when present
- Phage (with cluster) where this start called: P1201_02 (singleton),

Start 14:

- Found in 3 of 271 (1.1%) of genes in pham
- No Manual Annotations of this start.
- Called 33.3% of time when present
- Phage (with cluster) where this start called: GTE5_83 (CR1),

Start 17:

- Found in 6 of 271 (2.2%) of genes in pham
- Manual Annotations of this start: 6 of 239
- Called 100.0% of time when present
- Phage (with cluster) where this start called: Apiary_1 (CR), Braxoaddie_1 (CR), CoffeeBean_1 (CR), MacGully_1 (CR), Maselop_1 (CR), Polyuyuki_1 (CR),

Start 18:

- Found in 43 of 271 (15.9%) of genes in pham
- Manual Annotations of this start: 37 of 239
- Called 97.7% of time when present
- Phage (with cluster) where this start called: Arti_1 (CR2), BiPauneto_1 (CR4), Buggaboo_1 (CR2), ChewyVIII_1 (singleton), Commandaria_1 (CR2), Dalilpop_1

(CR1), Emianna_1 (CR2), Ennea_1 (CR3), Flapper_1 (CR1), Float294_1 (CR3), Foxboro_1 (CR2), Fury_1 (CR5), GRU1_84 (CR1), GTE8_82 (CR2), GrootJr_2 (CR2), HubbaBubba_1 (CR4), IDyn_2 (CR4), Jifall16_1 (CR2), KidneyBean_1 (CR2), Kurt_1 (CR2), Lollipop1437_1 (CR3), Marietta_1 (CR4), MerCougar_1 (CR2), NadineRae_1 (CR4), NatB6_2 (CR2), NosilaM_1 (CR2), NovumRegina_2 (CR2), Outis_1 (CR2), Patio_2 (CR3), Phomeo_1 (CR2), Pleakley_1 (CR5), RedRaider_1 (CR3), Scuba_1 (CR5), Skysand_1 (CR3), StarStruck_1 (CR2), Sukkupi_1 (CR4), SuperSulley_1 (CR2), Tracker_1 (CR2), Turuncu_1 (CR1), Wheezy_1 (CR2), WhoseManz_1 (CR4), Yndexa_1 (CR4),

Start 19:

- Found in 2 of 271 (0.7%) of genes in pham
- Manual Annotations of this start: 1 of 239
- Called 50.0% of time when present
- Phage (with cluster) where this start called: Bonum_1 (CR2),

Start 21:

- Found in 2 of 271 (0.7%) of genes in pham
- Manual Annotations of this start: 2 of 239
- Called 100.0% of time when present
- Phage (with cluster) where this start called: GuyFagieri_1 (CR), NoShow_1 (AB),

Start 23:

- Found in 8 of 271 (3.0%) of genes in pham
- Manual Annotations of this start: 8 of 239
- Called 100.0% of time when present
- Phage (with cluster) where this start called: C3PO_1 (EN), Cruella_1 (EN), Darwin_1 (EN), Kimchi1738_1 (EN), PeteyPab_1 (EN), PotatoChip_1 (EN), Stickynote_1 (EN), Zion_1 (EN),

Start 27:

- Found in 3 of 271 (1.1%) of genes in pham
- Manual Annotations of this start: 1 of 239
- Called 33.3% of time when present
- Phage (with cluster) where this start called: Blackbeetle_33 (S),

Start 28:

- Found in 12 of 271 (4.4%) of genes in pham
- Manual Annotations of this start: 3 of 239
- Called 41.7% of time when present
- Phage (with cluster) where this start called: 8UZL_4 (AB), FF47_04 (AB), JacoRen57_1 (AB), Maco6_2 (AB), Muddy_4 (AB),

Start 29:

- Found in 3 of 271 (1.1%) of genes in pham
- Manual Annotations of this start: 1 of 239
- Called 66.7% of time when present
- Phage (with cluster) where this start called: Caprice_30 (S), Raela_33 (S),

Start 30:

- Found in 11 of 271 (4.1%) of genes in pham
- Manual Annotations of this start: 10 of 239
- Called 100.0% of time when present

- Phage (with cluster) where this start called: Clarkson_34 (S), Corazon_31 (S), FeliMaine_35 (S), Gattaca_32 (S), Huphlepuuff_35 (S), Lilbit_34 (S), LittleLaf_33 (S), Pringar_33 (S), RedRaider77_33 (S), Tesla_32 (S), VasuNzinga_33 (S),

Start 31:

- Found in 10 of 271 (3.7%) of genes in pham
- Manual Annotations of this start: 6 of 239
- Called 70.0% of time when present
- Phage (with cluster) where this start called: Akhila_2 (F1), CaptainTrips_2 (F1), Grimmer_2 (F1), KristaRAM_2 (F1), MilanaBonita_2 (F1), MilleniumForce_2 (F1), Nitzel_2 (F1),

Start 32:

- Found in 2 of 271 (0.7%) of genes in pham
- Manual Annotations of this start: 2 of 239
- Called 100.0% of time when present
- Phage (with cluster) where this start called: MalagasyRose_6 (AG), Nergal_4 (AG),

Start 33:

- Found in 180 of 271 (66.4%) of genes in pham
- Manual Annotations of this start: 147 of 239
- Called 83.9% of time when present
- Phage (with cluster) where this start called: AlpineSix_1 (F1), ArcusAngelus_1 (F1), Ardmore_1 (F1), Aubs_1 (F1), Batiatus_1 (F1), Bipolar_1 (F1), Blexus_1 (F1), BlueCrab_1 (F1), BobaPhett_1 (F1), BodEinwohner17_1 (F1), Brocalys_1 (F1), Bubbles123_1 (F1), Burwell21_1 (F1), ByChance_1 (F1), Cabrinians_1 (F1), Che8_1 (F1), Chevrolet_1 (F1), Chuckly_1 (F1), Clifton_1 (F1), Crumble_1 (F1), DLane_1 (F1), DRBy19_1 (F1), Daenerys_1 (F1), Dante_1 (F1), DeadP_1 (F1), Deb65_1 (F1), DillTech15_1 (F1), Donkeykong_1 (F1), Doomphist_1 (F1), Dorothy_1 (F1), DotProduct_1 (F1), Doug_1 (F1), Eish_1 (F1), EleanorGeorge_1 (F1), Emma_1 (F1), Empress_1 (F1), Eradicator_1 (F1), Estave1_1 (F1), Fancypants_1 (F1), Filuzino_1 (F1), Firehouse51_1 (F1), Florinda_1 (F1), FreddyB_1 (F1), Fruitloop_1 (F1), GAL1_2 (singleton), GUmbie_1 (F1), Galactic_1 (F1), Gandalph_1 (F1), Geralt_1 (F1), GigiOuiOui_1 (F1), Girr_1 (F1), Gorge_1 (F1), Guppsters_1 (F1), Hades_1 (F1), Hamulus_1 (F1), Harley_1 (F1), Hlubikazi_1 (F1), Ibhubesi_1 (F1), Inventum_1 (F1), IrishSherpFalk_1 (F1), James_1 (F1), Jant_1 (F1), Jarcob_1 (F1), Jinglebell_1 (F1), JoeyJr_1 (F1), Karhdo_1 (F1), Kersh_1 (F1), KingMidas_1 (F1), Koella_1 (F1), LastJedi_1 (F1), Latretium_1 (F1), Leperchaun_1 (F1), LilMoolah_1 (F1), Lizziana_1 (F1), Llama_1 (F1), Llij_1 (F1), MadMen_1 (F1), Mahavrat_1 (F1), Mandlovu_1 (F1), Mantra_1 (F1), Maravista_1 (F1), Martik_1 (F1), Mattes_1 (F1), Melissauren88_1 (F1), MisterCuddles_1 (F1), Modragons_1 (F1), Moonbeam_1 (F1), Mutaforma13_1 (F1), Nimbo_1 (F1), Nivrat_1 (F1), NormanBulbieJr_1 (F1), Ochi17_1 (F1), OfUltron_1 (F1), OldBen_1 (F1), OlympiaSaint_1 (F1), Ovechkin_1 (F1), PHappiness_1 (F1), PMC_1 (F1), Pacc40_1 (F1), Phanphagia_1 (F1), Phasih_1 (F1), Phatniss_1 (F1), PhesterPhotato_1 (F1), Philus_1 (F1), Pippy_1 (F1), Poenanya_1 (F1), Polka14_1 (F1), Polo2Bam_1 (F1), PopTart_1 (F1), Priscilla_1 (F1), QuickMath_1 (F1), Radiance_1 (F1), RedBird_1 (F1), RitaG_1 (F1), Rita_1 (F1), Rockne_1 (F1), Royals2015_1 (F1), Ruby_1 (F1), SG4_1 (F1), Saal_1 (F1), Sabbb_1 (F1), Sandalphon_1 (F1), Sassafras_1 (F1), SassyB_1 (F1), Scottish_1 (F1), Sebastian_1 (F1), Shauna1_1 (F1), ShiLan_1 (F1), ShowerHandel_1 (F1), ShroomBoi_1 (F1), SiSi_1 (F1), Sparkdehlily_1 (F1), Spartacus_1 (F1), Spoonbill_1 (F1), StAnnes_1 (F1), Strokeseat_1 (F1), SuperGrey_1 (F1), SwagPigglett_1 (F1), TDanisky_1 (F1), Taj_1 (F1), Tweety_1 (F1), VRedHorse_1 (F1), Veteran_1 (F1),

Wachhund_1 (F1), Wee_1 (F1), Whatsapiecost_1 (F1), Whouxphf_1 (F1), WillSterrel_1 (F1), XFactor_1 (F1), Yorick_1 (F1), Zizzle_1 (F1),

Start 35:

- Found in 5 of 271 (1.8%) of genes in pham
- Manual Annotations of this start: 3 of 239
- Called 100.0% of time when present
- Phage (with cluster) where this start called: Bimmel_44 (BT), Ibantik_65 (singleton), Ponzi_41 (singleton), Spooks_47 (BT), Success_49 (BT),

Start 38:

- Found in 1 of 271 (0.4%) of genes in pham
- Manual Annotations of this start: 1 of 239
- Called 100.0% of time when present
- Phage (with cluster) where this start called: Mabodamaca_1 (EH),

Start 40:

- Found in 189 of 271 (69.7%) of genes in pham
- Manual Annotations of this start: 8 of 239
- Called 8.5% of time when present
- Phage (with cluster) where this start called: Cheese puff_1 (F1), Corium_1 (F1), DaddyRickover_1 (F1), DoRead_1 (F1), EmiMonkey_1 (F1), Fastidio_1 (F1), Kenuha5_1 (F1), KingJulian_1 (F1), Krakatau_2 (F1), LunaBlu_1 (F1), MinionDave_2 (F1), Minnie_1 (F1), MulchSalad_1 (F), Phalconet_1 (F1), PhlipPhlop_1 (F1), Zerg_1 (F1),

Start 44:

- Found in 6 of 271 (2.2%) of genes in pham
- Manual Annotations of this start: 1 of 239
- Called 16.7% of time when present
- Phage (with cluster) where this start called: Kabluna_1 (CR2),

Start 47:

- Found in 182 of 271 (67.2%) of genes in pham
- No Manual Annotations of this start.
- Called 1.1% of time when present
- Phage (with cluster) where this start called: IbOuu_1 (F1), NewHope4_1 (F1),

Start 53:

- Found in 180 of 271 (66.4%) of genes in pham
- Manual Annotations of this start: 2 of 239
- Called 3.3% of time when present
- Phage (with cluster) where this start called: Byougenkin_1 (F1), IMpilo_1 (F1), Juniper1_1 (F1), Ms6_1 (F1), Violac_1 (F1), Vivum_1 (F1),

Summary by clusters:

There are 15 clusters represented in this pham: CR2, F1, singleton, CR1, AG, CR4, CR3, CR5, BT, S, EN, F, CR, AB, EH,

Info for manual annotations of cluster AB:

- Start number 21 was manually annotated 1 time for cluster AB.
- Start number 28 was manually annotated 3 times for cluster AB.

Info for manual annotations of cluster AG:

- Start number 32 was manually annotated 2 times for cluster AG.

Info for manual annotations of cluster BT:

- Start number 35 was manually annotated 1 time for cluster BT.

Info for manual annotations of cluster CR:

- Start number 17 was manually annotated 6 times for cluster CR.
- Start number 21 was manually annotated 1 time for cluster CR.

Info for manual annotations of cluster CR1:

- Start number 18 was manually annotated 3 times for cluster CR1.

Info for manual annotations of cluster CR2:

- Start number 18 was manually annotated 18 times for cluster CR2.
- Start number 19 was manually annotated 1 time for cluster CR2.
- Start number 44 was manually annotated 1 time for cluster CR2.

Info for manual annotations of cluster CR3:

- Start number 18 was manually annotated 5 times for cluster CR3.

Info for manual annotations of cluster CR4:

- Start number 18 was manually annotated 8 times for cluster CR4.

Info for manual annotations of cluster CR5:

- Start number 18 was manually annotated 2 times for cluster CR5.

Info for manual annotations of cluster EH:

- Start number 38 was manually annotated 1 time for cluster EH.

Info for manual annotations of cluster EN:

- Start number 23 was manually annotated 8 times for cluster EN.

Info for manual annotations of cluster F1:

- Start number 31 was manually annotated 6 times for cluster F1.
- Start number 33 was manually annotated 147 times for cluster F1.
- Start number 40 was manually annotated 8 times for cluster F1.
- Start number 53 was manually annotated 2 times for cluster F1.

Info for manual annotations of cluster S:

- Start number 27 was manually annotated 1 time for cluster S.
- Start number 29 was manually annotated 1 time for cluster S.
- Start number 30 was manually annotated 10 times for cluster S.

Gene Information:

Gene: 8UZL_4 Start: 1322, Stop: 1795, Start Num: 28

Candidate Starts for 8UZL_4:

(20, 1274), (Start: 28 @1322 has 3 MA's), (42, 1385), (Start: 44 @1388 has 1 MA's), (52, 1418), (66, 1520), (109, 1745), (115, 1766), (119, 1775),

Gene: Akhila_2 Start: 754, Stop: 1212, Start Num: 31

Candidate Starts for Akhila_2:

(Start: 31 @754 has 6 MA's), (Start: 40 @784 has 8 MA's), (47, 823), (Start: 53 @841 has 2 MA's), (55, 856), (56, 868), (58, 871), (60, 883), (62, 889), (65, 922), (71, 967), (73, 973), (75, 976), (93, 1072), (106, 1162), (116, 1204),

Gene: AlpineSix_1 Start: 109, Stop: 564, Start Num: 33

Candidate Starts for AlpineSix_1:

(Start: 33 @109 has 147 MA's), (Start: 40 @136 has 8 MA's), (47, 175), (Start: 53 @193 has 2 MA's), (54, 196), (60, 235), (62, 241), (65, 274), (69, 310), (71, 319), (73, 325), (88, 388), (106, 514), (116, 556),

Gene: Apiary_1 Start: 110, Stop: 667, Start Num: 17

Candidate Starts for Apiary_1:

(Start: 17 @110 has 6 MA's), (Start: 28 @161 has 3 MA's), (37, 188), (41, 212), (46, 245), (65, 326), (68, 353), (81, 413), (118, 608),

Gene: ArcusAngelus_1 Start: 110, Stop: 565, Start Num: 33

Candidate Starts for ArcusAngelus_1:

(22, 50), (Start: 33 @110 has 147 MA's), (Start: 40 @137 has 8 MA's), (47, 176), (Start: 53 @194 has 2 MA's), (54, 197), (56, 221), (58, 224), (60, 236), (62, 242), (65, 275), (69, 311), (71, 320), (73, 326), (75, 329), (88, 389), (94, 440), (113, 548), (116, 557),

Gene: Ardmore_1 Start: 109, Stop: 564, Start Num: 33

Candidate Starts for Ardmore_1:

(Start: 33 @109 has 147 MA's), (Start: 40 @136 has 8 MA's), (47, 175), (Start: 53 @193 has 2 MA's), (55, 208), (56, 220), (58, 223), (60, 235), (62, 241), (65, 274), (71, 319), (73, 325), (75, 328), (93, 424), (106, 514), (116, 556),

Gene: Arti_1 Start: 158, Stop: 715, Start Num: 18

Candidate Starts for Arti_1:

(Start: 18 @158 has 37 MA's), (54, 317), (62, 362), (65, 395), (77, 461), (81, 482), (93, 548), (122, 707),

Gene: Aubs_1 Start: 109, Stop: 564, Start Num: 33

Candidate Starts for Aubs_1:

(Start: 33 @109 has 147 MA's), (Start: 40 @136 has 8 MA's), (47, 175), (Start: 53 @193 has 2 MA's), (55, 208), (56, 220), (58, 223), (60, 235), (62, 241), (65, 274), (71, 319), (73, 325), (75, 328), (93, 424), (94, 439), (106, 514), (116, 556),

Gene: Batiatus_1 Start: 109, Stop: 564, Start Num: 33

Candidate Starts for Batiatus_1:

(Start: 33 @109 has 147 MA's), (Start: 40 @136 has 8 MA's), (47, 175), (Start: 53 @193 has 2 MA's), (55, 208), (56, 220), (58, 223), (60, 235), (62, 241), (65, 274), (71, 319), (73, 325), (75, 328), (93, 424), (106, 514), (116, 556),

Gene: BiPauneto_1 Start: 159, Stop: 710, Start Num: 18

Candidate Starts for BiPauneto_1:

(Start: 18 @159 has 37 MA's), (Start: 40 @258 has 8 MA's), (65, 387), (77, 453), (81, 474), (93, 540), (122, 702),

Gene: Bimmel_44 Start: 24939, Stop: 25364, Start Num: 35

Candidate Starts for Bimmel_44:

(Start: 35 @24939 has 3 MA's), (43, 24984), (49, 25005), (74, 25158), (84, 25191), (95, 25260), (103, 25320), (105, 25326),

Gene: Bipolar_1 Start: 109, Stop: 564, Start Num: 33

Candidate Starts for Bipolar_1:

(Start: 33 @109 has 147 MA's), (Start: 40 @136 has 8 MA's), (47, 175), (Start: 53 @193 has 2 MA's), (55, 208), (56, 220), (58, 223), (60, 235), (62, 241), (65, 274), (71, 319), (73, 325), (75, 328), (93, 424), (94, 439), (106, 514), (116, 556),

Gene: Blackbeetle_33 Start: 9732, Stop: 10175, Start Num: 27

Candidate Starts for Blackbeetle_33:

(Start: 27 @9732 has 1 MA's), (Start: 29 @9741 has 1 MA's), (50, 9822), (67, 9942), (73, 9972), (89, 10032), (112, 10167),

Gene: Blexus_1 Start: 109, Stop: 564, Start Num: 33

Candidate Starts for Blexus_1:

(Start: 33 @109 has 147 MA's), (Start: 40 @136 has 8 MA's), (47, 175), (Start: 53 @193 has 2 MA's), (55, 208), (56, 220), (58, 223), (60, 235), (62, 241), (65, 274), (71, 319), (73, 325), (75, 328), (93, 424), (94, 439), (106, 514), (116, 556),

Gene: BlueCrab_1 Start: 108, Stop: 563, Start Num: 33

Candidate Starts for BlueCrab_1:

(Start: 33 @108 has 147 MA's), (Start: 40 @135 has 8 MA's), (47, 174), (Start: 53 @192 has 2 MA's), (54, 195), (60, 234), (62, 240), (65, 273), (69, 309), (71, 318), (73, 324), (88, 387), (106, 513), (113, 546), (116, 555),

Gene: BobaPhett_1 Start: 109, Stop: 564, Start Num: 33

Candidate Starts for BobaPhett_1:

(Start: 33 @109 has 147 MA's), (Start: 40 @136 has 8 MA's), (47, 175), (Start: 53 @193 has 2 MA's), (54, 196), (55, 208), (60, 235), (62, 241), (65, 274), (69, 310), (71, 319), (73, 325), (75, 328), (88, 388), (113, 547), (116, 556),

Gene: BodEinwohner17_1 Start: 108, Stop: 563, Start Num: 33

Candidate Starts for BodEinwohner17_1:

(Start: 33 @108 has 147 MA's), (Start: 40 @135 has 8 MA's), (47, 174), (Start: 53 @192 has 2 MA's), (54, 195), (60, 234), (62, 240), (65, 273), (69, 309), (71, 318), (73, 324), (88, 387), (106, 513), (113, 546), (116, 555),

Gene: Bonum_1 Start: 160, Stop: 708, Start Num: 19

Candidate Starts for Bonum_1:

(11, 124), (Start: 19 @160 has 1 MA's), (34, 235), (Start: 44 @289 has 1 MA's), (62, 355), (65, 388), (76, 445), (77, 454), (80, 469), (81, 475), (93, 541), (122, 700),

Gene: Braxoaddie_1 Start: 110, Stop: 667, Start Num: 17

Candidate Starts for Braxoaddie_1:

(Start: 17 @110 has 6 MA's), (Start: 28 @161 has 3 MA's), (37, 188), (39, 191), (41, 212), (46, 245), (65, 326), (68, 353), (81, 413), (118, 608),

Gene: Brocalys_1 Start: 109, Stop: 564, Start Num: 33

Candidate Starts for Brocalys_1:

(Start: 33 @109 has 147 MA's), (Start: 40 @136 has 8 MA's), (47, 175), (Start: 53 @193 has 2 MA's), (54, 196), (60, 235), (62, 241), (65, 274), (69, 310), (71, 319), (73, 325), (88, 388), (106, 514), (113, 547), (116, 556),

Gene: Bubbles123_1 Start: 109, Stop: 564, Start Num: 33

Candidate Starts for Bubbles123_1:

(Start: 33 @109 has 147 MA's), (Start: 40 @136 has 8 MA's), (47, 175), (Start: 53 @193 has 2 MA's), (55, 208), (56, 220), (58, 223), (60, 235), (62, 241), (65, 274), (71, 319), (73, 325), (75, 328), (93, 424), (94, 439), (106, 514), (116, 556),

Gene: Buggaboo_1 Start: 157, Stop: 702, Start Num: 18

Candidate Starts for Buggaboo_1:

(Start: 18 @157 has 37 MA's), (41, 265), (65, 382), (77, 448), (81, 469), (93, 535), (122, 694),

Gene: Burwell21_1 Start: 108, Stop: 563, Start Num: 33

Candidate Starts for Burwell21_1:

(Start: 33 @108 has 147 MA's), (Start: 40 @135 has 8 MA's), (47, 174), (Start: 53 @192 has 2 MA's), (54, 195), (60, 234), (62, 240), (65, 273), (71, 318), (73, 324), (88, 387), (106, 513), (113, 546), (116, 555),

Gene: ByChance_1 Start: 110, Stop: 565, Start Num: 33

Candidate Starts for ByChance_1:

(22, 50), (Start: 33 @110 has 147 MA's), (Start: 40 @137 has 8 MA's), (47, 176), (Start: 53 @194 has 2 MA's), (54, 197), (55, 209), (60, 236), (62, 242), (65, 275), (69, 311), (71, 320), (73, 326), (88, 389), (93, 425), (94, 440), (106, 515), (113, 548), (116, 557),

Gene: Byougenkin_1 Start: 193, Stop: 564, Start Num: 53

Candidate Starts for Byougenkin_1:

(Start: 33 @109 has 147 MA's), (Start: 40 @136 has 8 MA's), (47, 175), (Start: 53 @193 has 2 MA's), (54, 196), (60, 235), (62, 241), (65, 274), (69, 310), (71, 319), (73, 325), (88, 388), (106, 514), (113, 547), (116, 556),

Gene: C3PO_1 Start: 94, Stop: 618, Start Num: 23

Candidate Starts for C3PO_1:

(10, 40), (15, 61), (Start: 23 @94 has 8 MA's), (34, 157), (41, 190), (45, 217), (61, 280), (65, 316), (66, 331), (72, 367), (81, 403), (91, 460),

Gene: Cabrinians_1 Start: 109, Stop: 564, Start Num: 33

Candidate Starts for Cabrinians_1:

(Start: 33 @109 has 147 MA's), (Start: 40 @136 has 8 MA's), (47, 175), (Start: 53 @193 has 2 MA's), (54, 196), (60, 235), (62, 241), (65, 274), (69, 310), (71, 319), (73, 325), (75, 328), (88, 388), (106, 514), (113, 547), (116, 556),

Gene: Caprice_30 Start: 9811, Stop: 10245, Start Num: 29

Candidate Starts for Caprice_30:

(24, 9775), (25, 9787), (Start: 27 @9802 has 1 MA's), (Start: 29 @9811 has 1 MA's), (50, 9892), (67, 10012), (73, 10042), (89, 10102), (112, 10237),

Gene: CaptainTrips_2 Start: 754, Stop: 1212, Start Num: 31

Candidate Starts for CaptainTrips_2:

(Start: 31 @754 has 6 MA's), (Start: 40 @784 has 8 MA's), (47, 823), (Start: 53 @841 has 2 MA's), (55, 856), (56, 868), (58, 871), (60, 883), (62, 889), (65, 922), (71, 967), (73, 973), (75, 976), (93, 1072), (94, 1087), (106, 1162), (116, 1204),

Gene: Che8_1 Start: 108, Stop: 563, Start Num: 33

Candidate Starts for Che8_1:

(Start: 33 @108 has 147 MA's), (Start: 40 @135 has 8 MA's), (47, 174), (Start: 53 @192 has 2 MA's), (54, 195), (58, 222), (60, 234), (62, 240), (65, 273), (69, 309), (71, 318), (73, 324), (88, 387), (106, 513), (113, 546), (116, 555),

Gene: Cheese puff_1 Start: 136, Stop: 564, Start Num: 40

Candidate Starts for Cheese puff_1:

(Start: 33 @109 has 147 MA's), (Start: 40 @136 has 8 MA's), (47, 175), (Start: 53 @193 has 2 MA's), (54, 196), (60, 235), (62, 241), (65, 274), (69, 310), (71, 319), (73, 325), (75, 328), (88, 388), (106, 514), (113, 547), (116, 556),

Gene: Chevrolet_1 Start: 110, Stop: 565, Start Num: 33

Candidate Starts for Chevrolet_1:

(22, 50), (Start: 33 @110 has 147 MA's), (Start: 40 @137 has 8 MA's), (47, 176), (Start: 53 @194 has 2 MA's), (54, 197), (56, 221), (58, 224), (60, 236), (62, 242), (65, 275), (69, 311), (71, 320), (73, 326), (75, 329), (88, 389), (94, 440), (113, 548), (116, 557),

Gene: ChewyVIII_1 Start: 141, Stop: 653, Start Num: 18

Candidate Starts for ChewyVIII_1:

(8, 99), (Start: 18 @141 has 37 MA's), (36, 222), (41, 249), (46, 270), (61, 315), (65, 351), (79, 429), (86, 459), (93, 504), (102, 582),

Gene: Chuckly_1 Start: 109, Stop: 564, Start Num: 33

Candidate Starts for Chuckly_1:

(Start: 33 @109 has 147 MA's), (Start: 40 @136 has 8 MA's), (47, 175), (Start: 53 @193 has 2 MA's), (55, 208), (56, 220), (58, 223), (60, 235), (62, 241), (65, 274), (71, 319), (73, 325), (75, 328), (93, 424), (94, 439), (106, 514), (116, 556),

Gene: Clarkson_34 Start: 10423, Stop: 10857, Start Num: 30

Candidate Starts for Clarkson_34:

(4, 10288), (Start: 30 @10423 has 10 MA's), (50, 10504), (67, 10624), (73, 10654), (89, 10714), (112, 10849),

Gene: Clifton_1 Start: 109, Stop: 564, Start Num: 33

Candidate Starts for Clifton_1:

(Start: 33 @109 has 147 MA's), (Start: 40 @136 has 8 MA's), (47, 175), (Start: 53 @193 has 2 MA's), (54, 196), (60, 235), (62, 241), (65, 274), (69, 310), (71, 319), (73, 325), (75, 328), (88, 388), (106, 514), (113, 547), (116, 556),

Gene: CoffeeBean_1 Start: 110, Stop: 667, Start Num: 17

Candidate Starts for CoffeeBean_1:

(Start: 17 @110 has 6 MA's), (Start: 28 @161 has 3 MA's), (37, 188), (39, 191), (41, 212), (46, 245), (65, 326), (68, 353), (81, 413), (118, 608),

Gene: Commandaria_1 Start: 158, Stop: 700, Start Num: 18

Candidate Starts for Commandaria_1:

(Start: 18 @158 has 37 MA's), (41, 266), (65, 383), (78, 452), (81, 470), (93, 536), (122, 692),

Gene: Corazon_31 Start: 10376, Stop: 10810, Start Num: 30

Candidate Starts for Corazon_31:

(4, 10241), (Start: 30 @10376 has 10 MA's), (50, 10457), (67, 10577), (73, 10607), (89, 10667), (112, 10802),

Gene: Corium_1 Start: 136, Stop: 564, Start Num: 40

Candidate Starts for Corium_1:

(Start: 33 @109 has 147 MA's), (Start: 40 @136 has 8 MA's), (47, 175), (Start: 53 @193 has 2 MA's), (55, 208), (56, 220), (58, 223), (60, 235), (62, 241), (65, 274), (71, 319), (73, 325), (75, 328), (93, 424), (106, 514), (116, 556),

Gene: Cruella_1 Start: 94, Stop: 618, Start Num: 23

Candidate Starts for Cruella_1:

(10, 40), (15, 61), (Start: 23 @94 has 8 MA's), (34, 157), (41, 190), (45, 217), (61, 280), (65, 316), (66, 331), (72, 367), (81, 403), (91, 460),

Gene: Crumble_1 Start: 110, Stop: 565, Start Num: 33

Candidate Starts for Crumble_1:

(22, 50), (Start: 33 @110 has 147 MA's), (Start: 40 @137 has 8 MA's), (47, 176), (Start: 53 @194 has 2 MA's), (54, 197), (55, 209), (60, 236), (62, 242), (65, 275), (69, 311), (71, 320), (73, 326), (75, 329), (88, 389), (106, 515), (113, 548), (116, 557),

Gene: DLane_1 Start: 109, Stop: 564, Start Num: 33

Candidate Starts for DLane_1:

(Start: 33 @109 has 147 MA's), (Start: 40 @136 has 8 MA's), (47, 175), (Start: 53 @193 has 2 MA's), (55, 208), (56, 220), (58, 223), (60, 235), (62, 241), (65, 274), (71, 319), (73, 325), (75, 328), (93, 424), (94, 439), (106, 514), (116, 556),

Gene: DRBy19_1 Start: 110, Stop: 565, Start Num: 33

Candidate Starts for DRBy19_1:

(Start: 33 @110 has 147 MA's), (Start: 40 @137 has 8 MA's), (47, 176), (Start: 53 @194 has 2 MA's), (54, 197), (60, 236), (62, 242), (65, 275), (69, 311), (71, 320), (73, 326), (75, 329), (88, 389), (106, 515), (116, 557),

Gene: DaddyRickover_1 Start: 135, Stop: 563, Start Num: 40

Candidate Starts for DaddyRickover_1:

(Start: 33 @108 has 147 MA's), (Start: 40 @135 has 8 MA's), (47, 174), (Start: 53 @192 has 2 MA's), (54, 195), (60, 234), (62, 240), (65, 273), (69, 309), (71, 318), (73, 324), (88, 387), (106, 513), (113, 546), (116, 555),

Gene: Daenerys_1 Start: 108, Stop: 563, Start Num: 33

Candidate Starts for Daenerys_1:

(Start: 33 @108 has 147 MA's), (Start: 40 @135 has 8 MA's), (47, 174), (Start: 53 @192 has 2 MA's), (54, 195), (60, 234), (62, 240), (65, 273), (69, 309), (71, 318), (73, 324), (88, 387), (106, 513), (113, 546), (116, 555),

Gene: Dalilpop_1 Start: 122, Stop: 685, Start Num: 18

Candidate Starts for Dalilpop_1:

(Start: 18 @122 has 37 MA's), (54, 278), (65, 359), (76, 416), (77, 425), (81, 446), (93, 512), (120, 656),

Gene: Dante_1 Start: 109, Stop: 564, Start Num: 33

Candidate Starts for Dante_1:

(Start: 33 @109 has 147 MA's), (Start: 40 @136 has 8 MA's), (47, 175), (Start: 53 @193 has 2 MA's), (55, 208), (60, 235), (62, 241), (65, 274), (69, 310), (71, 319), (73, 325), (93, 424), (106, 514), (116,

556),

Gene: Darwin_1 Start: 94, Stop: 618, Start Num: 23

Candidate Starts for Darwin_1:

(10, 40), (15, 61), (Start: 23 @94 has 8 MA's), (34, 157), (41, 190), (45, 217), (61, 280), (65, 316), (66, 331), (72, 367), (81, 403), (91, 460),

Gene: DeadP_1 Start: 109, Stop: 564, Start Num: 33

Candidate Starts for DeadP_1:

(Start: 33 @109 has 147 MA's), (Start: 40 @136 has 8 MA's), (47, 175), (Start: 53 @193 has 2 MA's), (55, 208), (56, 220), (58, 223), (60, 235), (62, 241), (65, 274), (71, 319), (73, 325), (75, 328), (93, 424), (94, 439), (106, 514), (116, 556),

Gene: Deb65_1 Start: 108, Stop: 563, Start Num: 33

Candidate Starts for Deb65_1:

(Start: 33 @108 has 147 MA's), (Start: 40 @135 has 8 MA's), (47, 174), (Start: 53 @192 has 2 MA's), (54, 195), (60, 234), (62, 240), (65, 273), (69, 309), (71, 318), (73, 324), (88, 387), (106, 513), (113, 546), (116, 555),

Gene: DillTech15_1 Start: 109, Stop: 564, Start Num: 33

Candidate Starts for DillTech15_1:

(Start: 33 @109 has 147 MA's), (Start: 40 @136 has 8 MA's), (47, 175), (Start: 53 @193 has 2 MA's), (55, 208), (56, 220), (58, 223), (60, 235), (62, 241), (65, 274), (71, 319), (73, 325), (75, 328), (93, 424), (106, 514), (116, 556),

Gene: DoRead_1 Start: 136, Stop: 564, Start Num: 40

Candidate Starts for DoRead_1:

(Start: 33 @109 has 147 MA's), (Start: 40 @136 has 8 MA's), (47, 175), (Start: 53 @193 has 2 MA's), (55, 208), (56, 220), (58, 223), (60, 235), (62, 241), (65, 274), (71, 319), (73, 325), (75, 328), (93, 424), (94, 439), (106, 514), (116, 556),

Gene: Donkeykong_1 Start: 109, Stop: 564, Start Num: 33

Candidate Starts for Donkeykong_1:

(Start: 33 @109 has 147 MA's), (Start: 40 @136 has 8 MA's), (47, 175), (Start: 53 @193 has 2 MA's), (55, 208), (56, 220), (58, 223), (60, 235), (62, 241), (65, 274), (71, 319), (73, 325), (75, 328), (93, 424), (106, 514), (116, 556),

Gene: Doomphist_1 Start: 108, Stop: 563, Start Num: 33

Candidate Starts for Doomphist_1:

(Start: 33 @108 has 147 MA's), (Start: 40 @135 has 8 MA's), (47, 174), (Start: 53 @192 has 2 MA's), (54, 195), (60, 234), (62, 240), (65, 273), (69, 309), (71, 318), (73, 324), (88, 387), (106, 513), (113, 546), (116, 555),

Gene: Dorothy_1 Start: 108, Stop: 563, Start Num: 33

Candidate Starts for Dorothy_1:

(Start: 33 @108 has 147 MA's), (Start: 40 @135 has 8 MA's), (47, 174), (Start: 53 @192 has 2 MA's), (54, 195), (60, 234), (62, 240), (65, 273), (69, 309), (71, 318), (73, 324), (88, 387), (106, 513), (113, 546), (116, 555),

Gene: DotProduct_1 Start: 110, Stop: 565, Start Num: 33

Candidate Starts for DotProduct_1:

(Start: 33 @110 has 147 MA's), (Start: 40 @137 has 8 MA's), (47, 176), (Start: 53 @194 has 2 MA's), (55, 209), (56, 221), (58, 224), (60, 236), (62, 242), (65, 275), (71, 320), (73, 326), (75, 329), (93, 425),

(94, 440), (106, 515), (116, 557),

Gene: Doug_1 Start: 109, Stop: 564, Start Num: 33

Candidate Starts for Doug_1:

(Start: 33 @109 has 147 MA's), (Start: 40 @136 has 8 MA's), (47, 175), (Start: 53 @193 has 2 MA's), (54, 196), (60, 235), (62, 241), (65, 274), (69, 310), (71, 319), (73, 325), (75, 328), (88, 388), (94, 439), (106, 514), (113, 547), (116, 556),

Gene: Eish_1 Start: 109, Stop: 564, Start Num: 33

Candidate Starts for Eish_1:

(Start: 33 @109 has 147 MA's), (Start: 40 @136 has 8 MA's), (47, 175), (Start: 53 @193 has 2 MA's), (54, 196), (60, 235), (62, 241), (65, 274), (69, 310), (71, 319), (73, 325), (88, 388), (106, 514), (113, 547), (116, 556),

Gene: EleanorGeorge_1 Start: 109, Stop: 564, Start Num: 33

Candidate Starts for EleanorGeorge_1:

(Start: 33 @109 has 147 MA's), (Start: 40 @136 has 8 MA's), (47, 175), (Start: 53 @193 has 2 MA's), (55, 208), (56, 220), (58, 223), (60, 235), (62, 241), (65, 274), (71, 319), (73, 325), (75, 328), (93, 424), (106, 514), (116, 556),

Gene: EmiMonkey_1 Start: 136, Stop: 564, Start Num: 40

Candidate Starts for EmiMonkey_1:

(Start: 33 @109 has 147 MA's), (Start: 40 @136 has 8 MA's), (47, 175), (Start: 53 @193 has 2 MA's), (55, 208), (56, 220), (58, 223), (60, 235), (62, 241), (65, 274), (71, 319), (73, 325), (75, 328), (93, 424), (94, 439), (106, 514), (116, 556),

Gene: Emianna_1 Start: 158, Stop: 715, Start Num: 18

Candidate Starts for Emianna_1:

(Start: 18 @158 has 37 MA's), (54, 317), (62, 362), (65, 395), (77, 461), (81, 482), (93, 548), (122, 707),

Gene: Emma_1 Start: 109, Stop: 564, Start Num: 33

Candidate Starts for Emma_1:

(Start: 33 @109 has 147 MA's), (Start: 40 @136 has 8 MA's), (47, 175), (Start: 53 @193 has 2 MA's), (55, 208), (56, 220), (58, 223), (60, 235), (62, 241), (65, 274), (71, 319), (73, 325), (75, 328), (93, 424), (94, 439), (106, 514), (116, 556),

Gene: Empress_1 Start: 108, Stop: 563, Start Num: 33

Candidate Starts for Empress_1:

(Start: 33 @108 has 147 MA's), (Start: 40 @135 has 8 MA's), (47, 174), (Start: 53 @192 has 2 MA's), (54, 195), (60, 234), (62, 240), (65, 273), (69, 309), (71, 318), (73, 324), (88, 387), (106, 513), (113, 546), (116, 555),

Gene: Ennea_1 Start: 121, Stop: 687, Start Num: 18

Candidate Starts for Ennea_1:

(Start: 18 @121 has 37 MA's), (Start: 33 @187 has 147 MA's), (54, 277), (56, 301), (65, 361), (76, 418), (77, 427), (81, 448), (93, 514), (121, 676), (122, 679),

Gene: Eradicator_1 Start: 109, Stop: 564, Start Num: 33

Candidate Starts for Eradicator_1:

(Start: 33 @109 has 147 MA's), (Start: 40 @136 has 8 MA's), (47, 175), (Start: 53 @193 has 2 MA's), (54, 196), (55, 208), (60, 235), (62, 241), (65, 274), (69, 310), (71, 319), (73, 325), (88, 388), (94, 439), (106, 514), (113, 547), (116, 556),

Gene: Estave1_1 Start: 109, Stop: 564, Start Num: 33

Candidate Starts for Estave1_1:

(Start: 33 @109 has 147 MA's), (Start: 40 @136 has 8 MA's), (47, 175), (Start: 53 @193 has 2 MA's), (54, 196), (60, 235), (62, 241), (65, 274), (69, 310), (71, 319), (73, 325), (88, 388), (106, 514), (113, 547), (116, 556),

Gene: FF47_04 Start: 1302, Stop: 1775, Start Num: 28

Candidate Starts for FF47_04:

(20, 1254), (Start: 28 @1302 has 3 MA's), (42, 1365), (Start: 44 @1368 has 1 MA's), (52, 1398), (66, 1500), (109, 1725), (115, 1746), (119, 1755),

Gene: Fancypants_1 Start: 109, Stop: 564, Start Num: 33

Candidate Starts for Fancypants_1:

(Start: 33 @109 has 147 MA's), (Start: 40 @136 has 8 MA's), (47, 175), (Start: 53 @193 has 2 MA's), (54, 196), (60, 235), (62, 241), (65, 274), (69, 310), (71, 319), (73, 325), (88, 388), (93, 424), (106, 514), (113, 547), (116, 556),

Gene: Fastidio_1 Start: 136, Stop: 564, Start Num: 40

Candidate Starts for Fastidio_1:

(Start: 33 @109 has 147 MA's), (Start: 40 @136 has 8 MA's), (47, 175), (Start: 53 @193 has 2 MA's), (55, 208), (56, 220), (58, 223), (60, 235), (62, 241), (65, 274), (71, 319), (73, 325), (75, 328), (93, 424), (94, 439), (106, 514), (116, 556),

Gene: FeliMaine_35 Start: 10424, Stop: 10858, Start Num: 30

Candidate Starts for FeliMaine_35:

(4, 10289), (Start: 30 @10424 has 10 MA's), (50, 10505), (67, 10625), (73, 10655), (89, 10715), (112, 10850),

Gene: Filuzino_1 Start: 110, Stop: 565, Start Num: 33

Candidate Starts for Filuzino_1:

(Start: 33 @110 has 147 MA's), (Start: 40 @137 has 8 MA's), (47, 176), (Start: 53 @194 has 2 MA's), (55, 209), (56, 221), (58, 224), (60, 236), (62, 242), (65, 275), (71, 320), (73, 326), (75, 329), (93, 425), (106, 515), (116, 557),

Gene: Firehouse51_1 Start: 109, Stop: 564, Start Num: 33

Candidate Starts for Firehouse51_1:

(Start: 33 @109 has 147 MA's), (Start: 40 @136 has 8 MA's), (47, 175), (Start: 53 @193 has 2 MA's), (55, 208), (56, 220), (58, 223), (60, 235), (62, 241), (65, 274), (71, 319), (73, 325), (75, 328), (93, 424), (106, 514), (116, 556),

Gene: Flapper_1 Start: 122, Stop: 685, Start Num: 18

Candidate Starts for Flapper_1:

(Start: 18 @122 has 37 MA's), (54, 278), (65, 359), (76, 416), (77, 425), (81, 446), (93, 512),

Gene: Float294_1 Start: 121, Stop: 687, Start Num: 18

Candidate Starts for Float294_1:

(Start: 18 @121 has 37 MA's), (Start: 33 @187 has 147 MA's), (54, 277), (56, 301), (65, 361), (76, 418), (77, 427), (81, 448), (93, 514), (121, 676), (122, 679),

Gene: Florinda_1 Start: 106, Stop: 561, Start Num: 33

Candidate Starts for Florinda_1:

(Start: 33 @106 has 147 MA's), (Start: 40 @133 has 8 MA's), (47, 172), (55, 205), (56, 217), (58, 220), (60, 232), (62, 238), (65, 271), (69, 307), (71, 316), (73, 322), (88, 385), (94, 436), (106, 511), (116, 553),

Gene: Foxboro_1 Start: 158, Stop: 715, Start Num: 18

Candidate Starts for Foxboro_1:

(Start: 18 @158 has 37 MA's), (54, 317), (62, 362), (65, 395), (77, 461), (81, 482), (93, 548), (122, 707),

Gene: FreddyB_1 Start: 109, Stop: 564, Start Num: 33

Candidate Starts for FreddyB_1:

(Start: 33 @109 has 147 MA's), (Start: 40 @136 has 8 MA's), (47, 175), (Start: 53 @193 has 2 MA's), (54, 196), (60, 235), (62, 241), (65, 274), (69, 310), (71, 319), (73, 325), (75, 328), (88, 388), (106, 514), (113, 547), (116, 556),

Gene: Fruitloop_1 Start: 109, Stop: 564, Start Num: 33

Candidate Starts for Fruitloop_1:

(Start: 33 @109 has 147 MA's), (Start: 40 @136 has 8 MA's), (47, 175), (Start: 53 @193 has 2 MA's), (55, 208), (56, 220), (58, 223), (60, 235), (62, 241), (65, 274), (71, 319), (73, 325), (75, 328), (93, 424), (94, 439), (106, 514), (116, 556),

Gene: Fury_1 Start: 122, Stop: 679, Start Num: 18

Candidate Starts for Fury_1:

(Start: 18 @122 has 37 MA's), (62, 317), (65, 350), (76, 407), (81, 437), (89, 479), (91, 494), (93, 503), (122, 671),

Gene: GAL1_2 Start: 720, Stop: 1169, Start Num: 33

Candidate Starts for GAL1_2:

(Start: 33 @720 has 147 MA's), (47, 786), (54, 807), (55, 819), (61, 849), (65, 885), (66, 900), (70, 927), (87, 993), (93, 1038), (114, 1155),

Gene: GRU1_84 Start: 59190, Stop: 59753, Start Num: 18

Candidate Starts for GRU1_84:

(Start: 18 @59190 has 37 MA's), (51, 59337), (54, 59346), (65, 59427), (76, 59484), (77, 59493), (81, 59514), (93, 59580), (120, 59724),

Gene: GTE5_83 Start: 60179, Stop: 60772, Start Num: 14

Candidate Starts for GTE5_83:

(1, 60035), (14, 60179), (16, 60203), (Start: 18 @60206 has 37 MA's), (54, 60365), (65, 60446), (76, 60503), (77, 60512), (81, 60533), (93, 60599),

Gene: GTE8_82 Start: 60392, Stop: 60949, Start Num: 18

Candidate Starts for GTE8_82:

(2, 60236), (14, 60365), (Start: 18 @60392 has 37 MA's), (54, 60551), (62, 60596), (65, 60629), (77, 60695), (80, 60710), (81, 60716), (93, 60782), (122, 60941),

Gene: GUmbie_1 Start: 110, Stop: 565, Start Num: 33

Candidate Starts for GUmbie_1:

(22, 50), (Start: 33 @110 has 147 MA's), (Start: 40 @137 has 8 MA's), (47, 176), (Start: 53 @194 has 2 MA's), (55, 209), (56, 221), (58, 224), (60, 236), (62, 242), (65, 275), (71, 320), (73, 326), (75, 329), (93, 425), (94, 440), (106, 515), (116, 557),

Gene: Galactic_1 Start: 108, Stop: 563, Start Num: 33

Candidate Starts for Galactic_1:

(Start: 33 @108 has 147 MA's), (Start: 40 @135 has 8 MA's), (47, 174), (Start: 53 @192 has 2 MA's), (54, 195), (60, 234), (62, 240), (65, 273), (69, 309), (71, 318), (73, 324), (88, 387), (106, 513), (113, 546), (116, 555),

Gene: Gandalph_1 Start: 109, Stop: 564, Start Num: 33

Candidate Starts for Gandalph_1:

(Start: 33 @109 has 147 MA's), (Start: 40 @136 has 8 MA's), (47, 175), (Start: 53 @193 has 2 MA's), (55, 208), (56, 220), (58, 223), (60, 235), (62, 241), (65, 274), (71, 319), (73, 325), (75, 328), (93, 424), (94, 439), (106, 514), (116, 556),

Gene: Gattaca_32 Start: 9603, Stop: 10037, Start Num: 30

Candidate Starts for Gattaca_32:

(4, 9468), (Start: 30 @9603 has 10 MA's), (50, 9684), (67, 9804), (73, 9834), (89, 9894), (112, 10029),

Gene: Geralt_1 Start: 108, Stop: 563, Start Num: 33

Candidate Starts for Geralt_1:

(Start: 33 @108 has 147 MA's), (Start: 40 @135 has 8 MA's), (47, 174), (Start: 53 @192 has 2 MA's), (54, 195), (60, 234), (62, 240), (65, 273), (69, 309), (71, 318), (73, 324), (88, 387), (106, 513), (113, 546), (116, 555),

Gene: GigiOuiOui_1 Start: 109, Stop: 564, Start Num: 33

Candidate Starts for GigiOuiOui_1:

(Start: 33 @109 has 147 MA's), (Start: 40 @136 has 8 MA's), (47, 175), (Start: 53 @193 has 2 MA's), (55, 208), (56, 220), (58, 223), (60, 235), (62, 241), (65, 274), (71, 319), (73, 325), (75, 328), (93, 424), (94, 439), (106, 514), (116, 556),

Gene: Girr_1 Start: 110, Stop: 565, Start Num: 33

Candidate Starts for Girr_1:

(22, 50), (Start: 33 @110 has 147 MA's), (Start: 40 @137 has 8 MA's), (47, 176), (Start: 53 @194 has 2 MA's), (54, 197), (55, 209), (60, 236), (62, 242), (65, 275), (69, 311), (71, 320), (73, 326), (75, 329), (88, 389), (93, 425), (94, 440), (106, 515), (113, 548), (116, 557),

Gene: Gorge_1 Start: 109, Stop: 564, Start Num: 33

Candidate Starts for Gorge_1:

(Start: 33 @109 has 147 MA's), (Start: 40 @136 has 8 MA's), (47, 175), (Start: 53 @193 has 2 MA's), (54, 196), (60, 235), (62, 241), (65, 274), (69, 310), (71, 319), (73, 325), (88, 388), (106, 514), (113, 547), (116, 556),

Gene: Grimmer_2 Start: 754, Stop: 1212, Start Num: 31

Candidate Starts for Grimmer_2:

(Start: 31 @754 has 6 MA's), (Start: 40 @784 has 8 MA's), (47, 823), (Start: 53 @841 has 2 MA's), (56, 868), (58, 871), (60, 883), (62, 889), (65, 922), (71, 967), (73, 973), (75, 976), (93, 1072), (106, 1162), (116, 1204),

Gene: GrootJr_2 Start: 773, Stop: 1330, Start Num: 18

Candidate Starts for GrootJr_2:

(Start: 18 @773 has 37 MA's), (54, 932), (62, 977), (65, 1010), (77, 1076), (81, 1097), (93, 1163), (122, 1322),

Gene: Guppsters_1 Start: 109, Stop: 564, Start Num: 33

Candidate Starts for Guppsters_1:

(Start: 33 @109 has 147 MA's), (Start: 40 @136 has 8 MA's), (47, 175), (Start: 53 @193 has 2 MA's), (55, 208), (56, 220), (58, 223), (60, 235), (62, 241), (65, 274), (71, 319), (73, 325), (75, 328), (93, 424), (94, 439), (106, 514), (116, 556),

Gene: GuyFagieri_1 Start: 112, Stop: 669, Start Num: 21

Candidate Starts for GuyFagieri_1:

(Start: 21 @112 has 2 MA's), (Start: 28 @160 has 3 MA's), (37, 187), (41, 211), (61, 289), (65, 325), (68, 352), (81, 412), (117, 607),

Gene: Hades_1 Start: 109, Stop: 564, Start Num: 33

Candidate Starts for Hades_1:

(Start: 33 @109 has 147 MA's), (Start: 40 @136 has 8 MA's), (47, 175), (Start: 53 @193 has 2 MA's), (55, 208), (56, 220), (58, 223), (60, 235), (62, 241), (65, 274), (71, 319), (73, 325), (75, 328), (93, 424), (94, 439), (106, 514), (116, 556),

Gene: Hamulus_1 Start: 110, Stop: 565, Start Num: 33

Candidate Starts for Hamulus_1:

(Start: 33 @110 has 147 MA's), (Start: 40 @137 has 8 MA's), (47, 176), (Start: 53 @194 has 2 MA's), (55, 209), (56, 221), (58, 224), (60, 236), (62, 242), (65, 275), (71, 320), (73, 326), (75, 329), (93, 425), (94, 440), (106, 515), (116, 557),

Gene: Harley_1 Start: 109, Stop: 564, Start Num: 33

Candidate Starts for Harley_1:

(Start: 33 @109 has 147 MA's), (Start: 40 @136 has 8 MA's), (47, 175), (Start: 53 @193 has 2 MA's), (54, 196), (60, 235), (62, 241), (65, 274), (69, 310), (71, 319), (73, 325), (88, 388), (93, 424), (106, 514), (113, 547), (116, 556),

Gene: Hlubikazi_1 Start: 109, Stop: 564, Start Num: 33

Candidate Starts for Hlubikazi_1:

(Start: 33 @109 has 147 MA's), (Start: 40 @136 has 8 MA's), (47, 175), (Start: 53 @193 has 2 MA's), (54, 196), (60, 235), (62, 241), (65, 274), (69, 310), (71, 319), (73, 325), (88, 388), (106, 514), (113, 547), (116, 556),

Gene: HubbaBubba_1 Start: 158, Stop: 709, Start Num: 18

Candidate Starts for HubbaBubba_1:

(Start: 18 @158 has 37 MA's), (Start: 40 @257 has 8 MA's), (65, 386), (77, 452), (81, 473), (93, 539), (122, 701),

Gene: Huphlebuff_35 Start: 10228, Stop: 10662, Start Num: 30

Candidate Starts for Huphlebuff_35:

(4, 10093), (Start: 30 @10228 has 10 MA's), (50, 10309), (67, 10429), (73, 10459), (89, 10519), (112, 10654),

Gene: IDyn_2 Start: 786, Stop: 1334, Start Num: 18

Candidate Starts for IDyn_2:

(14, 759), (Start: 18 @786 has 37 MA's), (34, 861), (47, 930), (62, 978), (65, 1011), (77, 1077), (81, 1098), (93, 1164), (122, 1326),

Gene: IMpilo_1 Start: 194, Stop: 565, Start Num: 53

Candidate Starts for IMpilo_1:

(Start: 33 @110 has 147 MA's), (Start: 40 @137 has 8 MA's), (47, 176), (Start: 53 @194 has 2 MA's), (55, 209), (56, 221), (58, 224), (60, 236), (62, 242), (65, 275), (71, 320), (73, 326), (75, 329), (93, 425), (106, 515), (116, 557),

Gene: lbOuu_1 Start: 174, Stop: 563, Start Num: 47

Candidate Starts for lbOuu_1:

(Start: 33 @108 has 147 MA's), (Start: 40 @135 has 8 MA's), (47, 174), (Start: 53 @192 has 2 MA's), (54, 195), (60, 234), (62, 240), (65, 273), (69, 309), (71, 318), (73, 324), (88, 387), (106, 513), (113, 546), (116, 555),

Gene: lbantik_65 Start: 27614, Stop: 28042, Start Num: 35

Candidate Starts for lbantik_65:

(Start: 35 @27614 has 3 MA's), (70, 27824), (71, 27827), (84, 27869), (95, 27938), (100, 27995), (101, 27998),

Gene: lbhubesi_1 Start: 109, Stop: 564, Start Num: 33

Candidate Starts for lbhubesi_1:

(Start: 33 @109 has 147 MA's), (Start: 40 @136 has 8 MA's), (47, 175), (Start: 53 @193 has 2 MA's), (54, 196), (60, 235), (62, 241), (65, 274), (69, 310), (71, 319), (73, 325), (88, 388), (93, 424), (106, 514), (113, 547), (116, 556),

Gene: Inventum_1 Start: 108, Stop: 563, Start Num: 33

Candidate Starts for Inventum_1:

(Start: 33 @108 has 147 MA's), (Start: 40 @135 has 8 MA's), (47, 174), (Start: 53 @192 has 2 MA's), (54, 195), (60, 234), (62, 240), (65, 273), (69, 309), (71, 318), (73, 324), (88, 387), (106, 513), (113, 546), (116, 555),

Gene: IrishSherpFalk_1 Start: 112, Stop: 567, Start Num: 33

Candidate Starts for IrishSherpFalk_1:

(Start: 33 @112 has 147 MA's), (Start: 40 @139 has 8 MA's), (47, 178), (Start: 53 @196 has 2 MA's), (54, 199), (55, 211), (60, 238), (62, 244), (65, 277), (69, 313), (71, 322), (73, 328), (88, 391), (93, 427), (94, 442), (106, 517), (113, 550), (116, 559),

Gene: JacoRen57_1 Start: 190, Stop: 669, Start Num: 28

Candidate Starts for JacoRen57_1:

(5, 61), (10, 91), (12, 94), (24, 154), (Start: 28 @190 has 3 MA's), (42, 253), (48, 271), (73, 424), (85, 457), (96, 538), (99, 574), (107, 598), (109, 607),

Gene: James_1 Start: 109, Stop: 564, Start Num: 33

Candidate Starts for James_1:

(Start: 33 @109 has 147 MA's), (Start: 40 @136 has 8 MA's), (47, 175), (Start: 53 @193 has 2 MA's), (54, 196), (55, 208), (60, 235), (62, 241), (65, 274), (69, 310), (71, 319), (73, 325), (75, 328), (88, 388), (113, 547), (116, 556),

Gene: Jant_1 Start: 109, Stop: 564, Start Num: 33

Candidate Starts for Jant_1:

(Start: 33 @109 has 147 MA's), (Start: 40 @136 has 8 MA's), (47, 175), (Start: 53 @193 has 2 MA's), (55, 208), (56, 220), (58, 223), (60, 235), (62, 241), (65, 274), (71, 319), (73, 325), (75, 328), (93, 424), (106, 514), (116, 556),

Gene: Jacob_1 Start: 109, Stop: 564, Start Num: 33

Candidate Starts for Jacob_1:

(Start: 33 @109 has 147 MA's), (Start: 40 @136 has 8 MA's), (47, 175), (Start: 53 @193 has 2 MA's), (54, 196), (55, 208), (60, 235), (62, 241), (65, 274), (69, 310), (71, 319), (73, 325), (75, 328), (88, 388), (106, 514), (113, 547), (116, 556),

Gene: Jifall16_1 Start: 158, Stop: 715, Start Num: 18

Candidate Starts for Jifall16_1:

(Start: 18 @158 has 37 MA's), (54, 317), (62, 362), (65, 395), (77, 461), (81, 482), (93, 548), (122, 707),

Gene: Jinglebell_1 Start: 109, Stop: 564, Start Num: 33

Candidate Starts for Jinglebell_1:

(Start: 33 @109 has 147 MA's), (Start: 40 @136 has 8 MA's), (47, 175), (Start: 53 @193 has 2 MA's), (54, 196), (60, 235), (62, 241), (65, 274), (69, 310), (71, 319), (73, 325), (88, 388), (106, 514), (116, 556),

Gene: JoeyJr_1 Start: 108, Stop: 563, Start Num: 33

Candidate Starts for JoeyJr_1:

(Start: 33 @108 has 147 MA's), (Start: 40 @135 has 8 MA's), (47, 174), (Start: 53 @192 has 2 MA's), (54, 195), (60, 234), (62, 240), (65, 273), (69, 309), (71, 318), (73, 324), (88, 387), (106, 513), (113, 546), (116, 555),

Gene: Juniper1_1 Start: 192, Stop: 563, Start Num: 53

Candidate Starts for Juniper1_1:

(13, 9), (Start: 33 @108 has 147 MA's), (Start: 40 @135 has 8 MA's), (47, 174), (Start: 53 @192 has 2 MA's), (54, 195), (60, 234), (62, 240), (65, 273), (69, 309), (71, 318), (73, 324), (88, 387), (106, 513), (113, 546), (116, 555),

Gene: Kabluna_1 Start: 289, Stop: 708, Start Num: 44

Candidate Starts for Kabluna_1:

(11, 124), (Start: 19 @160 has 1 MA's), (34, 235), (Start: 44 @289 has 1 MA's), (62, 355), (65, 388), (76, 445), (77, 454), (80, 469), (81, 475), (93, 541), (122, 700),

Gene: Karhdo_1 Start: 110, Stop: 565, Start Num: 33

Candidate Starts for Karhdo_1:

(22, 50), (Start: 33 @110 has 147 MA's), (Start: 40 @137 has 8 MA's), (47, 176), (Start: 53 @194 has 2 MA's), (55, 209), (56, 221), (58, 224), (60, 236), (62, 242), (65, 275), (71, 320), (73, 326), (75, 329), (93, 425), (94, 440), (106, 515), (116, 557),

Gene: Kenuha5_1 Start: 136, Stop: 564, Start Num: 40

Candidate Starts for Kenuha5_1:

(Start: 33 @109 has 147 MA's), (Start: 40 @136 has 8 MA's), (47, 175), (Start: 53 @193 has 2 MA's), (55, 208), (56, 220), (58, 223), (60, 235), (62, 241), (65, 274), (71, 319), (73, 325), (75, 328), (93, 424), (106, 514), (116, 556),

Gene: Kersh_1 Start: 112, Stop: 567, Start Num: 33

Candidate Starts for Kersh_1:

(Start: 33 @112 has 147 MA's), (Start: 40 @139 has 8 MA's), (47, 178), (Start: 53 @196 has 2 MA's), (54, 199), (55, 211), (60, 238), (62, 244), (65, 277), (69, 313), (71, 322), (73, 328), (88, 391), (93, 427), (94, 442), (106, 517), (113, 550), (116, 559),

Gene: KidneyBean_1 Start: 158, Stop: 715, Start Num: 18

Candidate Starts for KidneyBean_1:

(Start: 18 @158 has 37 MA's), (54, 317), (62, 362), (65, 395), (77, 461), (81, 482), (93, 548), (122, 707),

Gene: Kimchi1738_1 Start: 94, Stop: 618, Start Num: 23

Candidate Starts for Kimchi1738_1:

(10, 40), (15, 61), (Start: 23 @94 has 8 MA's), (34, 157), (41, 190), (45, 217), (61, 280), (65, 316), (66, 331), (72, 367), (78, 385), (81, 403), (91, 460), (98, 535),

Gene: KingJulian_1 Start: 136, Stop: 564, Start Num: 40

Candidate Starts for KingJulian_1:

(Start: 33 @109 has 147 MA's), (Start: 40 @136 has 8 MA's), (47, 175), (Start: 53 @193 has 2 MA's), (55, 208), (56, 220), (58, 223), (60, 235), (62, 241), (65, 274), (71, 319), (73, 325), (75, 328), (93, 424), (106, 514), (116, 556),

Gene: KingMidas_1 Start: 108, Stop: 563, Start Num: 33

Candidate Starts for KingMidas_1:

(Start: 33 @108 has 147 MA's), (Start: 40 @135 has 8 MA's), (47, 174), (Start: 53 @192 has 2 MA's), (54, 195), (60, 234), (62, 240), (65, 273), (69, 309), (71, 318), (73, 324), (88, 387), (106, 513), (113, 546), (116, 555),

Gene: Koella_1 Start: 109, Stop: 564, Start Num: 33

Candidate Starts for Koella_1:

(Start: 33 @109 has 147 MA's), (Start: 40 @136 has 8 MA's), (47, 175), (Start: 53 @193 has 2 MA's), (54, 196), (60, 235), (62, 241), (65, 274), (69, 310), (71, 319), (73, 325), (75, 328), (88, 388), (106, 514), (113, 547), (116, 556),

Gene: Krakatau_2 Start: 784, Stop: 1212, Start Num: 40

Candidate Starts for Krakatau_2:

(Start: 31 @754 has 6 MA's), (Start: 40 @784 has 8 MA's), (47, 823), (Start: 53 @841 has 2 MA's), (55, 856), (56, 868), (58, 871), (60, 883), (62, 889), (65, 922), (71, 967), (73, 973), (75, 976), (93, 1072), (106, 1162), (116, 1204),

Gene: KristaRAM_2 Start: 754, Stop: 1212, Start Num: 31

Candidate Starts for KristaRAM_2:

(Start: 31 @754 has 6 MA's), (Start: 40 @784 has 8 MA's), (47, 823), (Start: 53 @841 has 2 MA's), (55, 856), (56, 868), (58, 871), (60, 883), (62, 889), (65, 922), (71, 967), (73, 973), (75, 976), (93, 1072), (94, 1087), (106, 1162), (116, 1204),

Gene: Kurt_1 Start: 158, Stop: 715, Start Num: 18

Candidate Starts for Kurt_1:

(Start: 18 @158 has 37 MA's), (54, 317), (62, 362), (65, 395), (77, 461), (81, 482), (93, 548), (122, 707),

Gene: LastJedi_1 Start: 109, Stop: 564, Start Num: 33

Candidate Starts for LastJedi_1:

(Start: 33 @109 has 147 MA's), (Start: 40 @136 has 8 MA's), (47, 175), (Start: 53 @193 has 2 MA's), (54, 196), (60, 235), (62, 241), (65, 274), (69, 310), (71, 319), (73, 325), (75, 328), (88, 388), (106, 514), (113, 547), (116, 556),

Gene: Latretium_1 Start: 108, Stop: 563, Start Num: 33

Candidate Starts for Latretium_1:

(Start: 33 @108 has 147 MA's), (Start: 40 @135 has 8 MA's), (47, 174), (Start: 53 @192 has 2 MA's), (54, 195), (60, 234), (62, 240), (65, 273), (69, 309), (71, 318), (73, 324), (88, 387), (106, 513), (113, 546), (116, 555),

Gene: Leperchaun_1 Start: 109, Stop: 564, Start Num: 33

Candidate Starts for Leperchaun_1:

(Start: 33 @109 has 147 MA's), (Start: 40 @136 has 8 MA's), (47, 175), (Start: 53 @193 has 2 MA's), (54, 196), (56, 220), (58, 223), (60, 235), (62, 241), (65, 274), (69, 310), (71, 319), (73, 325), (88, 388), (106, 514), (113, 547), (116, 556),

Gene: LilMoolah_1 Start: 109, Stop: 564, Start Num: 33

Candidate Starts for LilMoolah_1:

(Start: 33 @109 has 147 MA's), (Start: 40 @136 has 8 MA's), (47, 175), (Start: 53 @193 has 2 MA's), (54, 196), (55, 208), (60, 235), (62, 241), (65, 274), (69, 310), (71, 319), (73, 325), (75, 328), (88, 388), (106, 514), (113, 547), (116, 556),

Gene: Lilbit_34 Start: 10424, Stop: 10858, Start Num: 30

Candidate Starts for Lilbit_34:

(4, 10289), (Start: 30 @10424 has 10 MA's), (50, 10505), (67, 10625), (73, 10655), (89, 10715), (112, 10850),

Gene: LittleLaf_33 Start: 10153, Stop: 10587, Start Num: 30

Candidate Starts for LittleLaf_33:

(4, 10018), (Start: 30 @10153 has 10 MA's), (50, 10234), (67, 10354), (73, 10384), (89, 10444), (112, 10579),

Gene: Lizziana_1 Start: 110, Stop: 565, Start Num: 33

Candidate Starts for Lizziana_1:

(22, 50), (Start: 33 @110 has 147 MA's), (Start: 40 @137 has 8 MA's), (47, 176), (Start: 53 @194 has 2 MA's), (54, 197), (55, 209), (60, 236), (62, 242), (65, 275), (69, 311), (71, 320), (73, 326), (88, 389), (93, 425), (94, 440), (106, 515), (113, 548), (116, 557),

Gene: Llama_1 Start: 109, Stop: 564, Start Num: 33

Candidate Starts for Llama_1:

(Start: 33 @109 has 147 MA's), (Start: 40 @136 has 8 MA's), (47, 175), (Start: 53 @193 has 2 MA's), (54, 196), (60, 235), (62, 241), (65, 274), (69, 310), (71, 319), (73, 325), (88, 388), (106, 514), (116, 556),

Gene: Llij_1 Start: 109, Stop: 564, Start Num: 33

Candidate Starts for Llij_1:

(Start: 33 @109 has 147 MA's), (Start: 40 @136 has 8 MA's), (47, 175), (Start: 53 @193 has 2 MA's), (55, 208), (56, 220), (58, 223), (60, 235), (62, 241), (65, 274), (71, 319), (73, 325), (75, 328), (93, 424), (106, 514), (116, 556),

Gene: Lollipop1437_1 Start: 121, Stop: 687, Start Num: 18

Candidate Starts for Lollipop1437_1:

(Start: 18 @121 has 37 MA's), (Start: 33 @187 has 147 MA's), (54, 277), (56, 301), (65, 361), (76, 418), (77, 427), (81, 448), (93, 514), (121, 676), (122, 679),

Gene: LunaBlu_1 Start: 135, Stop: 563, Start Num: 40

Candidate Starts for LunaBlu_1:

(Start: 33 @108 has 147 MA's), (Start: 40 @135 has 8 MA's), (47, 174), (Start: 53 @192 has 2 MA's), (54, 195), (60, 234), (62, 240), (65, 273), (69, 309), (71, 318), (73, 324), (88, 387), (106, 513), (113, 546), (116, 555),

Gene: Mabodamaca_1 Start: 146, Stop: 604, Start Num: 38

Candidate Starts for Mabodamaca_1:

(Start: 31 @125 has 6 MA's), (Start: 38 @146 has 1 MA's), (78, 374), (93, 458), (99, 527),

Gene: MacGully_1 Start: 112, Stop: 666, Start Num: 17

Candidate Starts for MacGully_1:

(Start: 17 @112 has 6 MA's), (Start: 28 @163 has 3 MA's), (41, 214), (46, 247), (65, 325), (89, 454), (93, 478), (111, 583),

Gene: Maco6_2 Start: 581, Stop: 1054, Start Num: 28

Candidate Starts for Maco6_2:

(20, 533), (Start: 28 @581 has 3 MA's), (42, 644), (Start: 44 @647 has 1 MA's), (52, 677), (66, 779), (109, 1004), (115, 1025), (119, 1034),

Gene: MadMen_1 Start: 109, Stop: 564, Start Num: 33

Candidate Starts for MadMen_1:

(Start: 33 @109 has 147 MA's), (Start: 40 @136 has 8 MA's), (47, 175), (Start: 53 @193 has 2 MA's), (55, 208), (56, 220), (58, 223), (60, 235), (62, 241), (65, 274), (71, 319), (73, 325), (75, 328), (93, 424), (106, 514), (116, 556),

Gene: Mahavrat_1 Start: 108, Stop: 563, Start Num: 33

Candidate Starts for Mahavrat_1:

(Start: 33 @108 has 147 MA's), (Start: 40 @135 has 8 MA's), (47, 174), (Start: 53 @192 has 2 MA's), (55, 207), (56, 219), (58, 222), (60, 234), (62, 240), (65, 273), (69, 309), (71, 318), (73, 324), (88, 387), (93, 423), (106, 513), (113, 546), (116, 555),

Gene: MalagasyRose_6 Start: 1600, Stop: 2064, Start Num: 32

Candidate Starts for MalagasyRose_6:

(Start: 32 @1600 has 2 MA's), (50, 1684), (59, 1738), (63, 1771), (69, 1822), (89, 1903), (105, 2017), (109, 2029),

Gene: Mandlovu_1 Start: 109, Stop: 564, Start Num: 33

Candidate Starts for Mandlovu_1:

(Start: 33 @109 has 147 MA's), (Start: 40 @136 has 8 MA's), (47, 175), (Start: 53 @193 has 2 MA's), (54, 196), (60, 235), (62, 241), (65, 274), (69, 310), (71, 319), (73, 325), (88, 388), (106, 514), (113, 547), (116, 556),

Gene: Mantra_1 Start: 109, Stop: 564, Start Num: 33

Candidate Starts for Mantra_1:

(Start: 33 @109 has 147 MA's), (Start: 40 @136 has 8 MA's), (47, 175), (Start: 53 @193 has 2 MA's), (55, 208), (56, 220), (58, 223), (60, 235), (62, 241), (65, 274), (71, 319), (73, 325), (75, 328), (93, 424), (94, 439), (106, 514), (116, 556),

Gene: Maravista_1 Start: 109, Stop: 564, Start Num: 33

Candidate Starts for Maravista_1:

(Start: 33 @109 has 147 MA's), (Start: 40 @136 has 8 MA's), (47, 175), (Start: 53 @193 has 2 MA's), (55, 208), (56, 220), (58, 223), (60, 235), (62, 241), (65, 274), (71, 319), (73, 325), (94, 439), (106, 514), (113, 547), (116, 556),

Gene: Marietta_1 Start: 159, Stop: 710, Start Num: 18

Candidate Starts for Marietta_1:

(Start: 18 @159 has 37 MA's), (Start: 40 @258 has 8 MA's), (65, 387), (77, 453), (81, 474), (93, 540), (122, 702),

Gene: Martik_1 Start: 110, Stop: 565, Start Num: 33

Candidate Starts for Martik_1:

(22, 50), (Start: 33 @110 has 147 MA's), (Start: 40 @137 has 8 MA's), (47, 176), (Start: 53 @194 has 2 MA's), (54, 197), (55, 209), (60, 236), (62, 242), (65, 275), (69, 311), (71, 320), (73, 326), (88, 389), (93, 425), (94, 440), (106, 515), (113, 548), (116, 557),

Gene: Maselop_1 Start: 110, Stop: 667, Start Num: 17

Candidate Starts for Maselop_1:

(Start: 17 @110 has 6 MA's), (Start: 28 @161 has 3 MA's), (37, 188), (39, 191), (41, 212), (46, 245), (65, 326), (68, 353), (81, 413), (118, 608),

Gene: Mattes_1 Start: 109, Stop: 564, Start Num: 33

Candidate Starts for Mattes_1:

(Start: 33 @109 has 147 MA's), (Start: 40 @136 has 8 MA's), (47, 175), (Start: 53 @193 has 2 MA's), (54, 196), (60, 235), (62, 241), (65, 274), (69, 310), (71, 319), (73, 325), (88, 388), (106, 514), (113, 547), (116, 556),

Gene: Melissauren88_1 Start: 109, Stop: 564, Start Num: 33

Candidate Starts for Melissauren88_1:

(Start: 33 @109 has 147 MA's), (Start: 40 @136 has 8 MA's), (47, 175), (Start: 53 @193 has 2 MA's), (55, 208), (56, 220), (58, 223), (60, 235), (62, 241), (65, 274), (71, 319), (73, 325), (75, 328), (93, 424), (94, 439), (106, 514), (116, 556),

Gene: MerCougar_1 Start: 158, Stop: 715, Start Num: 18

Candidate Starts for MerCougar_1:

(Start: 18 @158 has 37 MA's), (41, 266), (50, 308), (65, 395), (81, 482), (93, 548), (122, 707),

Gene: MilanaBonita_2 Start: 754, Stop: 1212, Start Num: 31

Candidate Starts for MilanaBonita_2:

(Start: 31 @754 has 6 MA's), (Start: 40 @784 has 8 MA's), (47, 823), (Start: 53 @841 has 2 MA's), (55, 856), (56, 868), (58, 871), (60, 883), (62, 889), (65, 922), (71, 967), (73, 973), (75, 976), (93, 1072), (106, 1162), (116, 1204),

Gene: MilleniumForce_2 Start: 754, Stop: 1212, Start Num: 31

Candidate Starts for MilleniumForce_2:

(Start: 31 @754 has 6 MA's), (Start: 40 @784 has 8 MA's), (47, 823), (Start: 53 @841 has 2 MA's), (55, 856), (56, 868), (58, 871), (60, 883), (62, 889), (65, 922), (71, 967), (73, 973), (75, 976), (93, 1072), (106, 1162), (116, 1204),

Gene: MinionDave_2 Start: 784, Stop: 1212, Start Num: 40

Candidate Starts for MinionDave_2:

(Start: 31 @754 has 6 MA's), (Start: 40 @784 has 8 MA's), (47, 823), (Start: 53 @841 has 2 MA's), (55, 856), (56, 868), (58, 871), (60, 883), (62, 889), (65, 922), (71, 967), (73, 973), (75, 976), (93, 1072), (94, 1087), (106, 1162), (116, 1204),

Gene: Minnie_1 Start: 136, Stop: 564, Start Num: 40

Candidate Starts for Minnie_1:

(Start: 33 @109 has 147 MA's), (Start: 40 @136 has 8 MA's), (47, 175), (Start: 53 @193 has 2 MA's), (55, 208), (56, 220), (58, 223), (60, 235), (62, 241), (65, 274), (71, 319), (73, 325), (75, 328), (93, 424), (106, 514), (116, 556),

Gene: MisterCuddles_1 Start: 110, Stop: 565, Start Num: 33

Candidate Starts for MisterCuddles_1:

(22, 50), (Start: 33 @110 has 147 MA's), (Start: 40 @137 has 8 MA's), (47, 176), (Start: 53 @194 has 2 MA's), (54, 197), (55, 209), (60, 236), (62, 242), (65, 275), (69, 311), (71, 320), (73, 326), (75, 329), (88,

389), (93, 425), (94, 440), (106, 515), (113, 548), (116, 557),

Gene: Modragons_1 Start: 109, Stop: 564, Start Num: 33

Candidate Starts for Modragons_1:

(Start: 33 @109 has 147 MA's), (Start: 40 @136 has 8 MA's), (47, 175), (Start: 53 @193 has 2 MA's), (54, 196), (60, 235), (62, 241), (65, 274), (69, 310), (71, 319), (73, 325), (88, 388), (106, 514), (116, 556),

Gene: Moonbeam_1 Start: 109, Stop: 564, Start Num: 33

Candidate Starts for Moonbeam_1:

(Start: 33 @109 has 147 MA's), (Start: 40 @136 has 8 MA's), (47, 175), (Start: 53 @193 has 2 MA's), (54, 196), (55, 208), (60, 235), (62, 241), (65, 274), (69, 310), (71, 319), (73, 325), (88, 388), (94, 439), (106, 514), (113, 547), (116, 556),

Gene: Ms6_1 Start: 193, Stop: 564, Start Num: 53

Candidate Starts for Ms6_1:

(Start: 33 @109 has 147 MA's), (Start: 40 @136 has 8 MA's), (47, 175), (Start: 53 @193 has 2 MA's), (55, 208), (56, 220), (58, 223), (60, 235), (62, 241), (65, 274), (71, 319), (73, 325), (75, 328), (93, 424), (94, 439), (106, 514), (116, 556),

Gene: Muddy_4 Start: 1535, Stop: 2008, Start Num: 28

Candidate Starts for Muddy_4:

(20, 1487), (Start: 28 @1535 has 3 MA's), (42, 1598), (Start: 44 @1601 has 1 MA's), (52, 1631), (66, 1733), (109, 1958), (115, 1979), (119, 1988),

Gene: MulchSalad_1 Start: 135, Stop: 563, Start Num: 40

Candidate Starts for MulchSalad_1:

(Start: 33 @108 has 147 MA's), (Start: 40 @135 has 8 MA's), (47, 174), (Start: 53 @192 has 2 MA's), (55, 207), (56, 219), (58, 222), (60, 234), (62, 240), (65, 273), (71, 318), (73, 324), (75, 327), (93, 423), (106, 513), (116, 555),

Gene: Mutaforma13_1 Start: 109, Stop: 564, Start Num: 33

Candidate Starts for Mutaforma13_1:

(Start: 33 @109 has 147 MA's), (Start: 40 @136 has 8 MA's), (47, 175), (Start: 53 @193 has 2 MA's), (55, 208), (56, 220), (58, 223), (60, 235), (62, 241), (65, 274), (71, 319), (73, 325), (75, 328), (93, 424), (94, 439), (106, 514), (116, 556),

Gene: NadineRae_1 Start: 159, Stop: 710, Start Num: 18

Candidate Starts for NadineRae_1:

(Start: 18 @159 has 37 MA's), (Start: 40 @258 has 8 MA's), (65, 387), (77, 453), (81, 474), (93, 540), (122, 702),

Gene: NatB6_2 Start: 773, Stop: 1330, Start Num: 18

Candidate Starts for NatB6_2:

(Start: 18 @773 has 37 MA's), (54, 932), (62, 977), (65, 1010), (77, 1076), (81, 1097), (93, 1163), (122, 1322),

Gene: Nergal_4 Start: 1389, Stop: 1844, Start Num: 32

Candidate Starts for Nergal_4:

(Start: 32 @1389 has 2 MA's), (69, 1605), (83, 1653), (92, 1707), (105, 1800), (109, 1812),

Gene: NewHope4_1 Start: 174, Stop: 563, Start Num: 47

Candidate Starts for NewHope4_1:

(Start: 33 @108 has 147 MA's), (Start: 40 @135 has 8 MA's), (47, 174), (Start: 53 @192 has 2 MA's), (54, 195), (60, 234), (62, 240), (65, 273), (69, 309), (71, 318), (73, 324), (88, 387), (106, 513), (113, 546), (116, 555),

Gene: Nimbo_1 Start: 108, Stop: 563, Start Num: 33

Candidate Starts for Nimbo_1:

(Start: 33 @108 has 147 MA's), (Start: 40 @135 has 8 MA's), (47, 174), (Start: 53 @192 has 2 MA's), (54, 195), (60, 234), (62, 240), (65, 273), (69, 309), (71, 318), (73, 324), (88, 387), (106, 513), (113, 546), (116, 555),

Gene: Nitzel_2 Start: 754, Stop: 1212, Start Num: 31

Candidate Starts for Nitzel_2:

(Start: 31 @754 has 6 MA's), (Start: 40 @784 has 8 MA's), (47, 823), (Start: 53 @841 has 2 MA's), (56, 868), (58, 871), (60, 883), (62, 889), (65, 922), (71, 967), (73, 973), (75, 976), (93, 1072), (106, 1162), (116, 1204),

Gene: Nivrat_1 Start: 109, Stop: 564, Start Num: 33

Candidate Starts for Nivrat_1:

(Start: 33 @109 has 147 MA's), (Start: 40 @136 has 8 MA's), (47, 175), (Start: 53 @193 has 2 MA's), (54, 196), (55, 208), (60, 235), (62, 241), (65, 274), (69, 310), (71, 319), (73, 325), (75, 328), (88, 388), (106, 514), (113, 547), (116, 556),

Gene: NoShow_1 Start: 166, Stop: 675, Start Num: 21

Candidate Starts for NoShow_1:

(4, 82), (9, 115), (Start: 21 @166 has 2 MA's), (26, 199), (39, 244), (42, 277), (64, 379), (71, 436), (85, 478), (89, 508), (97, 562), (108, 625),

Gene: NormanBulbieJr_1 Start: 109, Stop: 564, Start Num: 33

Candidate Starts for NormanBulbieJr_1:

(Start: 33 @109 has 147 MA's), (Start: 40 @136 has 8 MA's), (47, 175), (Start: 53 @193 has 2 MA's), (54, 196), (60, 235), (62, 241), (65, 274), (69, 310), (71, 319), (73, 325), (75, 328), (88, 388), (106, 514), (113, 547), (116, 556),

Gene: NosilaM_1 Start: 158, Stop: 715, Start Num: 18

Candidate Starts for NosilaM_1:

(Start: 18 @158 has 37 MA's), (41, 266), (62, 362), (65, 395), (77, 461), (81, 482), (93, 548), (122, 707),

Gene: NovumRegina_2 Start: 773, Stop: 1330, Start Num: 18

Candidate Starts for NovumRegina_2:

(Start: 18 @773 has 37 MA's), (54, 932), (62, 977), (65, 1010), (77, 1076), (81, 1097), (93, 1163), (122, 1322),

Gene: Ochi17_1 Start: 109, Stop: 564, Start Num: 33

Candidate Starts for Ochi17_1:

(Start: 33 @109 has 147 MA's), (Start: 40 @136 has 8 MA's), (47, 175), (Start: 53 @193 has 2 MA's), (54, 196), (60, 235), (62, 241), (65, 274), (69, 310), (71, 319), (73, 325), (88, 388), (106, 514), (116, 556),

Gene: OfUltron_1 Start: 109, Stop: 564, Start Num: 33

Candidate Starts for OfUltron_1:

(Start: 33 @109 has 147 MA's), (Start: 40 @136 has 8 MA's), (47, 175), (Start: 53 @193 has 2 MA's), (54, 196), (60, 235), (62, 241), (65, 274), (69, 310), (71, 319), (73, 325), (88, 388), (106, 514), (116, 556),

556),

Gene: OldBen_1 Start: 108, Stop: 563, Start Num: 33

Candidate Starts for OldBen_1:

(Start: 33 @108 has 147 MA's), (Start: 40 @135 has 8 MA's), (47, 174), (Start: 53 @192 has 2 MA's), (54, 195), (60, 234), (62, 240), (65, 273), (69, 309), (71, 318), (73, 324), (88, 387), (106, 513), (113, 546), (116, 555),

Gene: OlympiaSaint_1 Start: 109, Stop: 564, Start Num: 33

Candidate Starts for OlympiaSaint_1:

(Start: 33 @109 has 147 MA's), (Start: 40 @136 has 8 MA's), (47, 175), (Start: 53 @193 has 2 MA's), (54, 196), (60, 235), (62, 241), (65, 274), (69, 310), (71, 319), (73, 325), (75, 328), (88, 388), (106, 514), (113, 547), (116, 556),

Gene: Outis_1 Start: 158, Stop: 715, Start Num: 18

Candidate Starts for Outis_1:

(Start: 18 @158 has 37 MA's), (41, 266), (50, 308), (65, 395), (70, 437), (77, 461), (81, 482), (93, 548), (122, 707),

Gene: Ovechkin_1 Start: 109, Stop: 564, Start Num: 33

Candidate Starts for Ovechkin_1:

(Start: 33 @109 has 147 MA's), (Start: 40 @136 has 8 MA's), (47, 175), (Start: 53 @193 has 2 MA's), (55, 208), (56, 220), (58, 223), (60, 235), (62, 241), (65, 274), (71, 319), (73, 325), (75, 328), (93, 424), (106, 514), (116, 556),

Gene: P1201_02 Start: 294, Stop: 875, Start Num: 6

Candidate Starts for P1201_02:

(6, 294), (7, 306), (25, 390), (Start: 33 @429 has 147 MA's), (57, 525), (65, 579), (66, 594), (70, 621),

Gene: PHappiness_1 Start: 108, Stop: 563, Start Num: 33

Candidate Starts for PHappiness_1:

(Start: 33 @108 has 147 MA's), (Start: 40 @135 has 8 MA's), (47, 174), (Start: 53 @192 has 2 MA's), (54, 195), (60, 234), (62, 240), (65, 273), (69, 309), (71, 318), (73, 324), (88, 387), (106, 513), (113, 546), (116, 555),

Gene: PMC_1 Start: 109, Stop: 564, Start Num: 33

Candidate Starts for PMC_1:

(Start: 33 @109 has 147 MA's), (Start: 40 @136 has 8 MA's), (47, 175), (Start: 53 @193 has 2 MA's), (55, 208), (56, 220), (58, 223), (60, 235), (62, 241), (65, 274), (71, 319), (73, 325), (75, 328), (93, 424), (106, 514), (116, 556),

Gene: Pacc40_1 Start: 108, Stop: 563, Start Num: 33

Candidate Starts for Pacc40_1:

(Start: 33 @108 has 147 MA's), (Start: 40 @135 has 8 MA's), (47, 174), (Start: 53 @192 has 2 MA's), (54, 195), (60, 234), (62, 240), (65, 273), (69, 309), (71, 318), (73, 324), (88, 387), (106, 513), (113, 546), (116, 555),

Gene: Patio_2 Start: 777, Stop: 1343, Start Num: 18

Candidate Starts for Patio_2:

(3, 642), (Start: 18 @777 has 37 MA's), (54, 933), (65, 1017), (76, 1074), (77, 1083), (81, 1104), (93, 1170), (121, 1332), (122, 1335),

Gene: PeteyPab_1 Start: 94, Stop: 618, Start Num: 23

Candidate Starts for PeteyPab_1:

(10, 40), (15, 61), (Start: 23 @94 has 8 MA's), (34, 157), (41, 190), (45, 217), (61, 280), (65, 316), (66, 331), (72, 367), (81, 403), (91, 460),

Gene: Phalconet_1 Start: 136, Stop: 564, Start Num: 40

Candidate Starts for Phalconet_1:

(Start: 33 @109 has 147 MA's), (Start: 40 @136 has 8 MA's), (47, 175), (Start: 53 @193 has 2 MA's), (55, 208), (56, 220), (58, 223), (60, 235), (62, 241), (65, 274), (71, 319), (73, 325), (75, 328), (93, 424), (106, 514), (116, 556),

Gene: Phanphagia_1 Start: 109, Stop: 564, Start Num: 33

Candidate Starts for Phanphagia_1:

(Start: 33 @109 has 147 MA's), (Start: 40 @136 has 8 MA's), (47, 175), (Start: 53 @193 has 2 MA's), (55, 208), (56, 220), (58, 223), (60, 235), (62, 241), (65, 274), (71, 319), (73, 325), (75, 328), (93, 424), (94, 439), (106, 514), (116, 556),

Gene: Phasih_1 Start: 109, Stop: 564, Start Num: 33

Candidate Starts for Phasih_1:

(Start: 33 @109 has 147 MA's), (Start: 40 @136 has 8 MA's), (47, 175), (Start: 53 @193 has 2 MA's), (55, 208), (56, 220), (58, 223), (60, 235), (62, 241), (65, 274), (71, 319), (73, 325), (75, 328), (93, 424), (106, 514), (116, 556),

Gene: Phatniss_1 Start: 109, Stop: 564, Start Num: 33

Candidate Starts for Phatniss_1:

(Start: 33 @109 has 147 MA's), (Start: 40 @136 has 8 MA's), (47, 175), (Start: 53 @193 has 2 MA's), (55, 208), (56, 220), (58, 223), (60, 235), (62, 241), (65, 274), (71, 319), (73, 325), (94, 439), (106, 514), (113, 547), (116, 556),

Gene: PhesterPhotato_1 Start: 109, Stop: 564, Start Num: 33

Candidate Starts for PhesterPhotato_1:

(Start: 33 @109 has 147 MA's), (Start: 40 @136 has 8 MA's), (47, 175), (Start: 53 @193 has 2 MA's), (55, 208), (56, 220), (58, 223), (60, 235), (62, 241), (65, 274), (71, 319), (73, 325), (75, 328), (93, 424), (94, 439), (106, 514), (116, 556),

Gene: Philus_1 Start: 109, Stop: 564, Start Num: 33

Candidate Starts for Philus_1:

(Start: 33 @109 has 147 MA's), (Start: 40 @136 has 8 MA's), (47, 175), (Start: 53 @193 has 2 MA's), (54, 196), (55, 208), (60, 235), (62, 241), (65, 274), (69, 310), (71, 319), (73, 325), (75, 328), (88, 388), (106, 514), (113, 547), (116, 556),

Gene: PhlipPhlop_1 Start: 136, Stop: 564, Start Num: 40

Candidate Starts for PhlipPhlop_1:

(Start: 33 @109 has 147 MA's), (Start: 40 @136 has 8 MA's), (47, 175), (Start: 53 @193 has 2 MA's), (55, 208), (56, 220), (58, 223), (60, 235), (62, 241), (65, 274), (71, 319), (73, 325), (75, 328), (93, 424), (94, 439), (106, 514), (116, 556),

Gene: Phomeo_1 Start: 158, Stop: 715, Start Num: 18

Candidate Starts for Phomeo_1:

(Start: 18 @158 has 37 MA's), (54, 317), (62, 362), (65, 395), (77, 461), (81, 482), (93, 548), (122, 707),

Gene: Pippy_1 Start: 109, Stop: 564, Start Num: 33

Candidate Starts for Pippy_1:

(Start: 33 @109 has 147 MA's), (Start: 40 @136 has 8 MA's), (47, 175), (Start: 53 @193 has 2 MA's), (54, 196), (60, 235), (62, 241), (65, 274), (69, 310), (71, 319), (73, 325), (75, 328), (88, 388), (106, 514), (113, 547), (116, 556),

Gene: Pleakley_1 Start: 122, Stop: 679, Start Num: 18

Candidate Starts for Pleakley_1:

(Start: 18 @122 has 37 MA's), (62, 317), (65, 350), (76, 407), (81, 437), (89, 479), (91, 494), (93, 503), (122, 671),

Gene: Poenanya_1 Start: 108, Stop: 563, Start Num: 33

Candidate Starts for Poenanya_1:

(Start: 33 @108 has 147 MA's), (Start: 40 @135 has 8 MA's), (47, 174), (Start: 53 @192 has 2 MA's), (54, 195), (60, 234), (62, 240), (65, 273), (69, 309), (71, 318), (73, 324), (88, 387), (106, 513), (113, 546), (116, 555),

Gene: Polka14_1 Start: 109, Stop: 564, Start Num: 33

Candidate Starts for Polka14_1:

(Start: 33 @109 has 147 MA's), (Start: 40 @136 has 8 MA's), (47, 175), (Start: 53 @193 has 2 MA's), (54, 196), (55, 208), (60, 235), (62, 241), (65, 274), (69, 310), (71, 319), (73, 325), (75, 328), (88, 388), (106, 514), (113, 547), (116, 556),

Gene: Polo2Bam_1 Start: 108, Stop: 563, Start Num: 33

Candidate Starts for Polo2Bam_1:

(Start: 33 @108 has 147 MA's), (Start: 40 @135 has 8 MA's), (47, 174), (Start: 53 @192 has 2 MA's), (54, 195), (60, 234), (62, 240), (65, 273), (69, 309), (71, 318), (73, 324), (88, 387), (106, 513), (113, 546), (116, 555),

Gene: Polyuki_1 Start: 110, Stop: 667, Start Num: 17

Candidate Starts for Polyuki_1:

(Start: 17 @110 has 6 MA's), (Start: 28 @161 has 3 MA's), (37, 188), (41, 212), (46, 245), (65, 326), (68, 353), (81, 413), (118, 608),

Gene: Ponzi_41 Start: 22312, Stop: 22740, Start Num: 35

Candidate Starts for Ponzi_41:

(Start: 35 @22312 has 3 MA's), (76, 22534), (95, 22633), (110, 22726),

Gene: PopTart_1 Start: 109, Stop: 564, Start Num: 33

Candidate Starts for PopTart_1:

(Start: 33 @109 has 147 MA's), (Start: 40 @136 has 8 MA's), (46, 172), (47, 175), (Start: 53 @193 has 2 MA's), (55, 208), (56, 220), (58, 223), (60, 235), (62, 241), (65, 274), (71, 319), (73, 325), (75, 328), (93, 424), (94, 439), (106, 514), (116, 556),

Gene: PotatoChip_1 Start: 94, Stop: 618, Start Num: 23

Candidate Starts for PotatoChip_1:

(10, 40), (15, 61), (Start: 23 @94 has 8 MA's), (34, 157), (41, 190), (45, 217), (61, 280), (65, 316), (66, 331), (72, 367), (81, 403), (91, 460),

Gene: Pringar_33 Start: 10053, Stop: 10487, Start Num: 30

Candidate Starts for Pringar_33:

(4, 9918), (Start: 30 @10053 has 10 MA's), (50, 10134), (67, 10254), (73, 10284), (89, 10344), (112, 10479),

Gene: Priscilla_1 Start: 109, Stop: 564, Start Num: 33

Candidate Starts for Priscilla_1:

(Start: 33 @109 has 147 MA's), (Start: 40 @136 has 8 MA's), (47, 175), (Start: 53 @193 has 2 MA's), (54, 196), (60, 235), (62, 241), (65, 274), (69, 310), (71, 319), (73, 325), (75, 328), (88, 388), (106, 514), (113, 547), (116, 556),

Gene: QuickMath_1 Start: 109, Stop: 564, Start Num: 33

Candidate Starts for QuickMath_1:

(Start: 33 @109 has 147 MA's), (Start: 40 @136 has 8 MA's), (47, 175), (Start: 53 @193 has 2 MA's), (55, 208), (56, 220), (58, 223), (60, 235), (62, 241), (65, 274), (71, 319), (73, 325), (75, 328), (93, 424), (106, 514), (116, 556),

Gene: Radiance_1 Start: 108, Stop: 563, Start Num: 33

Candidate Starts for Radiance_1:

(Start: 33 @108 has 147 MA's), (Start: 40 @135 has 8 MA's), (47, 174), (Start: 53 @192 has 2 MA's), (54, 195), (60, 234), (62, 240), (65, 273), (69, 309), (71, 318), (73, 324), (88, 387), (106, 513), (113, 546), (116, 555),

Gene: Raela_33 Start: 10296, Stop: 10730, Start Num: 29

Candidate Starts for Raela_33:

(Start: 27 @10287 has 1 MA's), (Start: 29 @10296 has 1 MA's), (50, 10377), (67, 10497), (73, 10527), (89, 10587), (112, 10722),

Gene: RedBird_1 Start: 108, Stop: 563, Start Num: 33

Candidate Starts for RedBird_1:

(Start: 33 @108 has 147 MA's), (Start: 40 @135 has 8 MA's), (47, 174), (Start: 53 @192 has 2 MA's), (54, 195), (60, 234), (62, 240), (65, 273), (69, 309), (71, 318), (73, 324), (88, 387), (106, 513), (113, 546), (116, 555),

Gene: RedRaider77_33 Start: 10197, Stop: 10631, Start Num: 30

Candidate Starts for RedRaider77_33:

(4, 10062), (Start: 30 @10197 has 10 MA's), (50, 10278), (67, 10398), (73, 10428), (89, 10488), (112, 10623),

Gene: RedRaider_1 Start: 121, Stop: 687, Start Num: 18

Candidate Starts for RedRaider_1:

(Start: 18 @121 has 37 MA's), (Start: 33 @187 has 147 MA's), (Start: 40 @214 has 8 MA's), (54, 277), (65, 361), (76, 418), (77, 427), (81, 448), (93, 514), (121, 676), (122, 679),

Gene: Rita_1 Start: 110, Stop: 565, Start Num: 33

Candidate Starts for Rita_1:

(Start: 33 @110 has 147 MA's), (Start: 40 @137 has 8 MA's), (47, 176), (Start: 53 @194 has 2 MA's), (55, 209), (56, 221), (58, 224), (60, 236), (62, 242), (65, 275), (71, 320), (73, 326), (75, 329), (93, 425), (106, 515), (116, 557),

Gene: RitaG_1 Start: 108, Stop: 563, Start Num: 33

Candidate Starts for RitaG_1:

(Start: 33 @108 has 147 MA's), (Start: 40 @135 has 8 MA's), (47, 174), (Start: 53 @192 has 2 MA's), (54, 195), (60, 234), (62, 240), (65, 273), (69, 309), (71, 318), (73, 324), (88, 387), (106, 513), (113, 546), (116, 555),

Gene: Rockne_1 Start: 109, Stop: 564, Start Num: 33

Candidate Starts for Rockne_1:

(Start: 33 @109 has 147 MA's), (Start: 40 @136 has 8 MA's), (47, 175), (Start: 53 @193 has 2 MA's), (55, 208), (56, 220), (58, 223), (60, 235), (62, 241), (65, 274), (71, 319), (73, 325), (75, 328), (93, 424), (106, 514), (116, 556),

Gene: Royals2015_1 Start: 109, Stop: 564, Start Num: 33

Candidate Starts for Royals2015_1:

(Start: 33 @109 has 147 MA's), (Start: 40 @136 has 8 MA's), (47, 175), (Start: 53 @193 has 2 MA's), (55, 208), (56, 220), (58, 223), (60, 235), (62, 241), (65, 274), (71, 319), (73, 325), (75, 328), (93, 424), (94, 439), (106, 514), (116, 556),

Gene: Ruby_1 Start: 110, Stop: 565, Start Num: 33

Candidate Starts for Ruby_1:

(22, 50), (Start: 33 @110 has 147 MA's), (Start: 40 @137 has 8 MA's), (47, 176), (Start: 53 @194 has 2 MA's), (54, 197), (55, 209), (60, 236), (62, 242), (65, 275), (69, 311), (71, 320), (73, 326), (75, 329), (88, 389), (93, 425), (94, 440), (106, 515), (113, 548), (116, 557),

Gene: SG4_1 Start: 109, Stop: 564, Start Num: 33

Candidate Starts for SG4_1:

(Start: 33 @109 has 147 MA's), (Start: 40 @136 has 8 MA's), (47, 175), (Start: 53 @193 has 2 MA's), (55, 208), (56, 220), (58, 223), (60, 235), (62, 241), (65, 274), (71, 319), (73, 325), (75, 328), (93, 424), (94, 439), (106, 514), (116, 556),

Gene: Saal_1 Start: 109, Stop: 564, Start Num: 33

Candidate Starts for Saal_1:

(Start: 33 @109 has 147 MA's), (Start: 40 @136 has 8 MA's), (47, 175), (Start: 53 @193 has 2 MA's), (54, 196), (60, 235), (62, 241), (65, 274), (69, 310), (71, 319), (73, 325), (88, 388), (106, 514), (113, 547), (116, 556),

Gene: Sabbb_1 Start: 109, Stop: 564, Start Num: 33

Candidate Starts for Sabbb_1:

(Start: 33 @109 has 147 MA's), (Start: 40 @136 has 8 MA's), (47, 175), (Start: 53 @193 has 2 MA's), (55, 208), (56, 220), (58, 223), (60, 235), (62, 241), (65, 274), (71, 319), (73, 325), (75, 328), (93, 424), (106, 514), (116, 556),

Gene: Sandalphon_1 Start: 109, Stop: 564, Start Num: 33

Candidate Starts for Sandalphon_1:

(Start: 33 @109 has 147 MA's), (Start: 40 @136 has 8 MA's), (47, 175), (Start: 53 @193 has 2 MA's), (55, 208), (56, 220), (58, 223), (60, 235), (62, 241), (65, 274), (71, 319), (73, 325), (75, 328), (93, 424), (106, 514), (116, 556),

Gene: Sassafras_1 Start: 108, Stop: 563, Start Num: 33

Candidate Starts for Sassafras_1:

(Start: 33 @108 has 147 MA's), (Start: 40 @135 has 8 MA's), (47, 174), (Start: 53 @192 has 2 MA's), (54, 195), (60, 234), (62, 240), (65, 273), (69, 309), (71, 318), (73, 324), (88, 387), (106, 513), (113, 546), (116, 555),

Gene: SassyB_1 Start: 109, Stop: 564, Start Num: 33

Candidate Starts for SassyB_1:

(Start: 33 @109 has 147 MA's), (Start: 40 @136 has 8 MA's), (47, 175), (Start: 53 @193 has 2 MA's), (55, 208), (56, 220), (58, 223), (60, 235), (62, 241), (65, 274), (71, 319), (73, 325), (75, 328), (93, 424), (94, 439), (106, 514), (116, 556),

Gene: Scottish_1 Start: 108, Stop: 563, Start Num: 33

Candidate Starts for Scottish_1:

(Start: 33 @108 has 147 MA's), (Start: 40 @135 has 8 MA's), (47, 174), (Start: 53 @192 has 2 MA's), (54, 195), (60, 234), (62, 240), (65, 273), (69, 309), (71, 318), (73, 324), (88, 387), (106, 513), (113, 546), (116, 555),

Gene: Scuba_1 Start: 122, Stop: 679, Start Num: 18

Candidate Starts for Scuba_1:

(Start: 18 @122 has 37 MA's), (Start: 33 @188 has 147 MA's), (62, 317), (65, 350), (76, 407), (81, 437), (91, 494), (93, 503), (122, 671),

Gene: Seabastian_1 Start: 109, Stop: 564, Start Num: 33

Candidate Starts for Seabastian_1:

(Start: 33 @109 has 147 MA's), (Start: 40 @136 has 8 MA's), (47, 175), (Start: 53 @193 has 2 MA's), (54, 196), (60, 235), (62, 241), (65, 274), (69, 310), (71, 319), (73, 325), (88, 388), (106, 514), (116, 556),

Gene: Shauna1_1 Start: 109, Stop: 564, Start Num: 33

Candidate Starts for Shauna1_1:

(Start: 33 @109 has 147 MA's), (Start: 40 @136 has 8 MA's), (47, 175), (Start: 53 @193 has 2 MA's), (55, 208), (56, 220), (58, 223), (60, 235), (62, 241), (65, 274), (71, 319), (73, 325), (75, 328), (93, 424), (94, 439), (106, 514), (116, 556),

Gene: ShiLan_1 Start: 109, Stop: 564, Start Num: 33

Candidate Starts for ShiLan_1:

(Start: 33 @109 has 147 MA's), (Start: 40 @136 has 8 MA's), (47, 175), (Start: 53 @193 has 2 MA's), (54, 196), (55, 208), (60, 235), (62, 241), (65, 274), (69, 310), (71, 319), (73, 325), (75, 328), (88, 388), (106, 514), (113, 547), (116, 556),

Gene: ShowerHandel_1 Start: 110, Stop: 565, Start Num: 33

Candidate Starts for ShowerHandel_1:

(22, 50), (Start: 33 @110 has 147 MA's), (Start: 40 @137 has 8 MA's), (47, 176), (Start: 53 @194 has 2 MA's), (54, 197), (55, 209), (60, 236), (62, 242), (65, 275), (69, 311), (71, 320), (73, 326), (88, 389), (93, 425), (94, 440), (106, 515), (113, 548), (116, 557),

Gene: ShroomBoi_1 Start: 109, Stop: 564, Start Num: 33

Candidate Starts for ShroomBoi_1:

(Start: 33 @109 has 147 MA's), (Start: 40 @136 has 8 MA's), (47, 175), (Start: 53 @193 has 2 MA's), (55, 208), (56, 220), (58, 223), (60, 235), (62, 241), (65, 274), (71, 319), (73, 325), (75, 328), (93, 424), (94, 439), (106, 514), (116, 556),

Gene: SiSi_1 Start: 109, Stop: 564, Start Num: 33

Candidate Starts for SiSi_1:

(Start: 33 @109 has 147 MA's), (Start: 40 @136 has 8 MA's), (47, 175), (Start: 53 @193 has 2 MA's), (55, 208), (56, 220), (58, 223), (60, 235), (62, 241), (65, 274), (71, 319), (73, 325), (93, 424), (94, 439), (106, 514), (113, 547), (116, 556),

Gene: Skysand_1 Start: 121, Stop: 687, Start Num: 18

Candidate Starts for Skysand_1:

(Start: 18 @121 has 37 MA's), (Start: 33 @187 has 147 MA's), (54, 277), (56, 301), (65, 361), (76, 418), (77, 427), (81, 448), (93, 514), (121, 676), (122, 679),

Gene: Sparkdehlily_1 Start: 110, Stop: 565, Start Num: 33

Candidate Starts for Sparkdehlily_1:

(Start: 33 @110 has 147 MA's), (Start: 40 @137 has 8 MA's), (47, 176), (Start: 53 @194 has 2 MA's), (54, 197), (60, 236), (62, 242), (65, 275), (69, 311), (71, 320), (73, 326), (75, 329), (88, 389), (106, 515), (116, 557),

Gene: Spartacus_1 Start: 112, Stop: 567, Start Num: 33

Candidate Starts for Spartacus_1:

(Start: 33 @112 has 147 MA's), (Start: 40 @139 has 8 MA's), (47, 178), (Start: 53 @196 has 2 MA's), (54, 199), (55, 211), (60, 238), (62, 244), (65, 277), (69, 313), (71, 322), (73, 328), (88, 391), (93, 427), (94, 442), (106, 517), (113, 550), (116, 559),

Gene: Spooks_47 Start: 26248, Stop: 26673, Start Num: 35

Candidate Starts for Spooks_47:

(Start: 35 @26248 has 3 MA's), (49, 26314), (69, 26449), (82, 26494), (95, 26569), (103, 26629), (105, 26635),

Gene: Spoonbill_1 Start: 109, Stop: 564, Start Num: 33

Candidate Starts for Spoonbill_1:

(Start: 33 @109 has 147 MA's), (Start: 40 @136 has 8 MA's), (47, 175), (Start: 53 @193 has 2 MA's), (54, 196), (60, 235), (62, 241), (65, 274), (69, 310), (71, 319), (73, 325), (88, 388), (93, 424), (94, 439), (104, 508), (106, 514), (113, 547), (116, 556),

Gene: StAnnes_1 Start: 109, Stop: 564, Start Num: 33

Candidate Starts for StAnnes_1:

(Start: 33 @109 has 147 MA's), (Start: 40 @136 has 8 MA's), (Start: 53 @193 has 2 MA's), (55, 208), (56, 220), (58, 223), (60, 235), (62, 241), (65, 274), (71, 319), (73, 325), (75, 328), (93, 424), (94, 439), (106, 514), (116, 556),

Gene: StarStruck_1 Start: 158, Stop: 715, Start Num: 18

Candidate Starts for StarStruck_1:

(Start: 18 @158 has 37 MA's), (41, 266), (50, 308), (65, 395), (70, 437), (77, 461), (81, 482), (93, 548), (122, 707),

Gene: Stickynote_1 Start: 94, Stop: 618, Start Num: 23

Candidate Starts for Stickynote_1:

(10, 40), (15, 61), (Start: 23 @94 has 8 MA's), (34, 157), (41, 190), (45, 217), (61, 280), (65, 316), (66, 331), (72, 367), (81, 403), (91, 460), (98, 535),

Gene: Strokeseat_1 Start: 109, Stop: 564, Start Num: 33

Candidate Starts for Strokeseat_1:

(Start: 33 @109 has 147 MA's), (Start: 40 @136 has 8 MA's), (47, 175), (Start: 53 @193 has 2 MA's), (54, 196), (60, 235), (62, 241), (65, 274), (69, 310), (71, 319), (73, 325), (88, 388), (106, 514), (113, 547), (116, 556),

Gene: Success_49 Start: 25367, Stop: 25792, Start Num: 35

Candidate Starts for Success_49:

(Start: 35 @25367 has 3 MA's), (43, 25412), (49, 25433), (69, 25568), (74, 25586), (84, 25619), (90, 25664), (95, 25688), (103, 25748), (105, 25754),

Gene: Sukkupi_1 Start: 159, Stop: 710, Start Num: 18

Candidate Starts for Sukkupi_1:

(Start: 18 @159 has 37 MA's), (Start: 40 @258 has 8 MA's), (65, 387), (77, 453), (81, 474), (93, 540), (122, 702),

Gene: SuperGrey_1 Start: 109, Stop: 564, Start Num: 33

Candidate Starts for SuperGrey_1:

(Start: 33 @109 has 147 MA's), (Start: 40 @136 has 8 MA's), (47, 175), (Start: 53 @193 has 2 MA's), (55, 208), (56, 220), (58, 223), (60, 235), (62, 241), (65, 274), (71, 319), (73, 325), (75, 328), (93, 424), (94, 439), (106, 514), (116, 556),

Gene: SuperSulley_1 Start: 157, Stop: 702, Start Num: 18

Candidate Starts for SuperSulley_1:

(Start: 18 @157 has 37 MA's), (41, 265), (65, 382), (77, 448), (81, 469), (93, 535), (122, 694),

Gene: SwagPiggett_1 Start: 110, Stop: 565, Start Num: 33

Candidate Starts for SwagPiggett_1:

(22, 50), (Start: 33 @110 has 147 MA's), (Start: 40 @137 has 8 MA's), (47, 176), (Start: 53 @194 has 2 MA's), (54, 197), (55, 209), (60, 236), (62, 242), (65, 275), (69, 311), (71, 320), (73, 326), (88, 389), (93, 425), (94, 440), (106, 515), (113, 548), (116, 557),

Gene: TDanisky_1 Start: 110, Stop: 565, Start Num: 33

Candidate Starts for TDanisky_1:

(Start: 33 @110 has 147 MA's), (Start: 40 @137 has 8 MA's), (47, 176), (Start: 53 @194 has 2 MA's), (54, 197), (60, 236), (62, 242), (65, 275), (69, 311), (71, 320), (73, 326), (75, 329), (88, 389), (106, 515), (116, 557),

Gene: Taj_1 Start: 109, Stop: 564, Start Num: 33

Candidate Starts for Taj_1:

(Start: 33 @109 has 147 MA's), (Start: 40 @136 has 8 MA's), (47, 175), (Start: 53 @193 has 2 MA's), (55, 208), (56, 220), (58, 223), (60, 235), (62, 241), (65, 274), (71, 319), (73, 325), (75, 328), (93, 424), (106, 514), (116, 556),

Gene: Tesla_32 Start: 10046, Stop: 10480, Start Num: 30

Candidate Starts for Tesla_32:

(4, 9911), (Start: 30 @10046 has 10 MA's), (50, 10127), (67, 10247), (73, 10277), (89, 10337), (112, 10472),

Gene: Tracker_1 Start: 159, Stop: 701, Start Num: 18

Candidate Starts for Tracker_1:

(Start: 18 @159 has 37 MA's), (65, 387), (76, 444), (77, 453), (81, 474), (93, 540), (122, 693),

Gene: Turuncu_1 Start: 122, Stop: 688, Start Num: 18

Candidate Starts for Turuncu_1:

(Start: 18 @122 has 37 MA's), (54, 281), (65, 362), (76, 419), (77, 428), (81, 449), (93, 515),

Gene: Tweety_1 Start: 109, Stop: 564, Start Num: 33

Candidate Starts for Tweety_1:

(Start: 33 @109 has 147 MA's), (Start: 40 @136 has 8 MA's), (47, 175), (Start: 53 @193 has 2 MA's), (55, 208), (56, 220), (58, 223), (60, 235), (62, 241), (65, 274), (71, 319), (73, 325), (75, 328), (93, 424), (94, 439), (106, 514), (116, 556),

Gene: VRedHorse_1 Start: 109, Stop: 564, Start Num: 33

Candidate Starts for VRedHorse_1:

(Start: 33 @109 has 147 MA's), (Start: 40 @136 has 8 MA's), (47, 175), (Start: 53 @193 has 2 MA's), (54, 196), (60, 235), (62, 241), (65, 274), (69, 310), (71, 319), (73, 325), (88, 388), (106, 514), (113, 547), (116, 556),

Gene: VasuNzinga_33 Start: 9630, Stop: 10064, Start Num: 30

Candidate Starts for VasuNzinga_33:

(4, 9495), (Start: 30 @9630 has 10 MA's), (50, 9711), (67, 9831), (73, 9861), (89, 9921), (112, 10056),

Gene: Veteran_1 Start: 110, Stop: 565, Start Num: 33

Candidate Starts for Veteran_1:

(22, 50), (Start: 33 @110 has 147 MA's), (Start: 40 @137 has 8 MA's), (47, 176), (Start: 53 @194 has 2 MA's), (55, 209), (56, 221), (58, 224), (60, 236), (62, 242), (65, 275), (71, 320), (73, 326), (75, 329), (93, 425), (94, 440), (106, 515), (116, 557),

Gene: Violac_1 Start: 192, Stop: 563, Start Num: 53

Candidate Starts for Violac_1:

(13, 9), (Start: 33 @108 has 147 MA's), (Start: 40 @135 has 8 MA's), (47, 174), (Start: 53 @192 has 2 MA's), (54, 195), (60, 234), (62, 240), (65, 273), (69, 309), (71, 318), (73, 324), (88, 387), (106, 513), (113, 546), (116, 555),

Gene: Vivum_1 Start: 193, Stop: 564, Start Num: 53

Candidate Starts for Vivum_1:

(Start: 33 @109 has 147 MA's), (Start: 40 @136 has 8 MA's), (47, 175), (Start: 53 @193 has 2 MA's), (54, 196), (60, 235), (62, 241), (65, 274), (69, 310), (71, 319), (73, 325), (88, 388), (106, 514), (113, 547), (116, 556),

Gene: Wachhund_1 Start: 109, Stop: 564, Start Num: 33

Candidate Starts for Wachhund_1:

(Start: 33 @109 has 147 MA's), (Start: 40 @136 has 8 MA's), (47, 175), (Start: 53 @193 has 2 MA's), (54, 196), (60, 235), (62, 241), (65, 274), (69, 310), (71, 319), (73, 325), (88, 388), (106, 514), (113, 547), (116, 556),

Gene: Wee_1 Start: 109, Stop: 564, Start Num: 33

Candidate Starts for Wee_1:

(Start: 33 @109 has 147 MA's), (Start: 40 @136 has 8 MA's), (47, 175), (Start: 53 @193 has 2 MA's), (55, 208), (56, 220), (58, 223), (60, 235), (62, 241), (65, 274), (71, 319), (73, 325), (75, 328), (93, 424), (94, 439), (106, 514), (116, 556),

Gene: Whatsapiecost_1 Start: 109, Stop: 564, Start Num: 33

Candidate Starts for Whatsapiecost_1:

(Start: 33 @109 has 147 MA's), (Start: 40 @136 has 8 MA's), (47, 175), (Start: 53 @193 has 2 MA's), (55, 208), (56, 220), (58, 223), (60, 235), (62, 241), (65, 274), (71, 319), (73, 325), (75, 328), (93, 424), (106, 514), (116, 556),

Gene: Wheezy_1 Start: 158, Stop: 715, Start Num: 18

Candidate Starts for Wheezy_1:

(Start: 18 @158 has 37 MA's), (54, 317), (62, 362), (65, 395), (77, 461), (81, 482), (93, 548), (122, 707),

Gene: WhoseManz_1 Start: 159, Stop: 710, Start Num: 18

Candidate Starts for WhoseManz_1:

(Start: 18 @159 has 37 MA's), (Start: 40 @258 has 8 MA's), (65, 387), (77, 453), (81, 474), (93, 540), (122, 702),

Gene: Whouxphf_1 Start: 109, Stop: 564, Start Num: 33

Candidate Starts for Whouxphf_1:

(Start: 33 @109 has 147 MA's), (Start: 40 @136 has 8 MA's), (47, 175), (Start: 53 @193 has 2 MA's), (54, 196), (60, 235), (62, 241), (65, 274), (69, 310), (71, 319), (73, 325), (88, 388), (93, 424), (106, 514), (113, 547), (116, 556),

Gene: WillSterrel_1 Start: 112, Stop: 567, Start Num: 33

Candidate Starts for WillSterrel_1:

(Start: 33 @112 has 147 MA's), (Start: 40 @139 has 8 MA's), (47, 178), (Start: 53 @196 has 2 MA's), (54, 199), (55, 211), (60, 238), (62, 244), (65, 277), (69, 313), (71, 322), (73, 328), (88, 391), (93, 427), (94, 442), (106, 517), (113, 550), (116, 559),

Gene: XFactor_1 Start: 109, Stop: 564, Start Num: 33

Candidate Starts for XFactor_1:

(Start: 33 @109 has 147 MA's), (Start: 40 @136 has 8 MA's), (47, 175), (Start: 53 @193 has 2 MA's), (55, 208), (56, 220), (58, 223), (60, 235), (62, 241), (65, 274), (71, 319), (73, 325), (75, 328), (93, 424), (94, 439), (106, 514), (116, 556),

Gene: Yndexa_1 Start: 159, Stop: 710, Start Num: 18

Candidate Starts for Yndexa_1:

(Start: 18 @159 has 37 MA's), (Start: 40 @258 has 8 MA's), (65, 387), (77, 453), (81, 474), (93, 540), (122, 702),

Gene: Yorick_1 Start: 108, Stop: 563, Start Num: 33

Candidate Starts for Yorick_1:

(Start: 33 @108 has 147 MA's), (Start: 40 @135 has 8 MA's), (47, 174), (Start: 53 @192 has 2 MA's), (54, 195), (60, 234), (62, 240), (65, 273), (71, 318), (73, 324), (88, 387), (93, 423), (94, 438), (106, 513), (113, 546), (116, 555),

Gene: Zerg_1 Start: 136, Stop: 564, Start Num: 40

Candidate Starts for Zerg_1:

(Start: 33 @109 has 147 MA's), (Start: 40 @136 has 8 MA's), (47, 175), (Start: 53 @193 has 2 MA's), (55, 208), (56, 220), (58, 223), (60, 235), (62, 241), (65, 274), (71, 319), (73, 325), (75, 328), (88, 388), (106, 514), (113, 547), (116, 556),

Gene: Zion_1 Start: 94, Stop: 618, Start Num: 23

Candidate Starts for Zion_1:

(10, 40), (15, 61), (Start: 23 @94 has 8 MA's), (34, 157), (41, 190), (45, 217), (61, 280), (65, 316), (66, 331), (72, 367), (81, 403), (91, 460),

Gene: Zizzle_1 Start: 109, Stop: 564, Start Num: 33

Candidate Starts for Zizzle_1:

(Start: 33 @109 has 147 MA's), (Start: 40 @136 has 8 MA's), (47, 175), (Start: 53 @193 has 2 MA's), (55, 208), (56, 220), (58, 223), (60, 235), (62, 241), (65, 274), (71, 319), (73, 325), (75, 328), (93, 424), (94, 439), (106, 514), (116, 556),