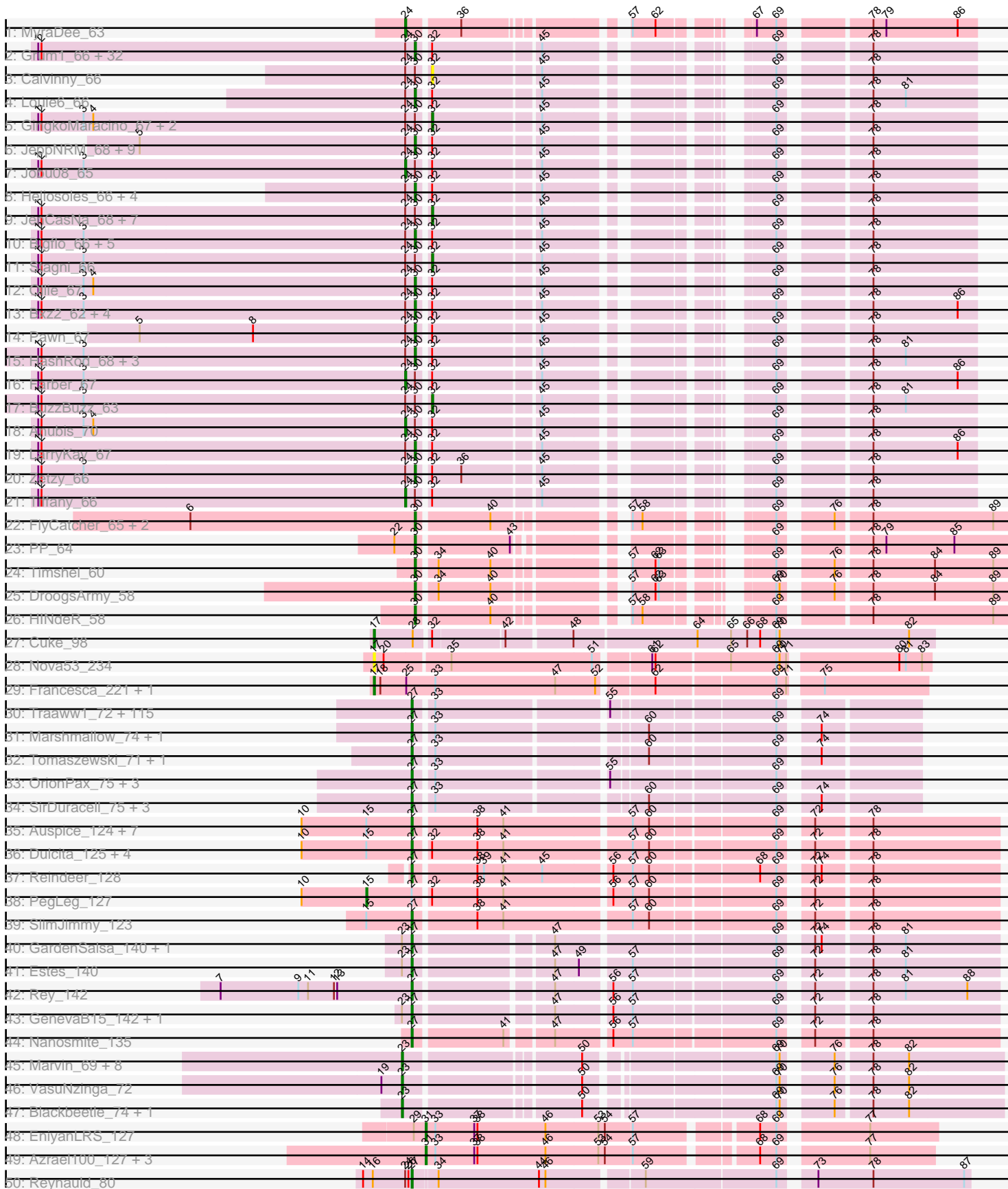


Pham 215782



Pham 215782

51: Kumao_84

The image displays a genomic map for Kumao_84. At the top, a horizontal bar represents the genome, with several colored segments: pink, light blue, and light green. Vertical lines of various colors (red, purple, orange, green) are placed along this bar, each accompanied by a small number (e.g., 2, 3, 6, 1, 2, 1, 2). Below the genomic map is a large rectangular area filled with horizontal lines, resembling a page of lined paper. The right edge of this area is marked with a dashed vertical line.

Note: Tracks are now grouped by subcluster and scaled. Switching in subcluster is indicated by changes in track color. Track scale is now set by default to display the region 30 bp upstream of start 1 to 30 bp downstream of the last possible start. If this default region is judged to be packed too tightly with annotated starts, the track will be further scaled to only show that region of the ORF with annotated starts. This action will be indicated by adding "Zoomed" to the title. For starts, yellow indicates the location of called starts comprised solely of Glimmer/GeneMark auto-annotations, green indicates the location of called starts with at least 1 manual gene annotation.

Pham 215782 Report

This analysis was run 02/22/25 on database version 588.

Pham number 215782 has 268 members, 20 are drafts.

Phages represented in each track:

- Track 1 : MyraDee_63
- Track 2 : Grum1_66, Beauxregard13_66, Mainiac_67, Grub_67, Cullens_67, Daishi_66, GtownJaz_67, Marie_65, Grif_67, Fernando_67, Phoebe_68, Lilith_66, P28Green_68, Penny1_67, MoneyMay_66, DaHudson_66, Sabinator_65, Hercules11_67, PGHhamlin_69, EpicPhail_68, Phoxy_67, BreSam8_67, Vix_65, Colbster_65, Microwolf_65, LBerry_68, Spike509_67, PotatoSplit_68, Lova_66, Dieselweasel_68, JHC117_65, LugYA_70, SoYo_66
- Track 3 : Calvinny_66
- Track 4 : Louie6_66
- Track 5 : GingkoMaracino_67, StepMih_66, Rummer_66
- Track 6 : JeppNRM_68, HaveUMetTed_68, Gemma_66, OlanP_66, Reba_67, PhishRPhriends_65, Kalb97_68, Phranny_68, Manu_67, ACFishhook_65
- Track 7 : Jobu08_65
- Track 8 : Heliosoles_66, Kalnoky_68, Groupthink_68, Marius_68, PurpleHaze_67
- Track 9 : JenCasNa_68, Sabia_67, Pembroke_67, Snickers_65, Taurus_68, Malinsilva_69, Watson_66, MarQuardt_67
- Track 10 : Bigflo_66, SoilDragon_67, MadMarie_67, MuchMore_70, AugsMagnumOpus_70, Aglet_68
- Track 11 : Stagni_66
- Track 12 : Ollie_67
- Track 13 : Bxz2_62, Soshari_69, Methuselah_62, AgronaGT15_66, Wooldri_69
- Track 14 : Pawn_67
- Track 15 : HashRod_68, Misomonster_68, TinyPebbles_65, KADY_66
- Track 16 : Farber_67
- Track 17 : BuzzBuzz_63
- Track 18 : Anubis_70
- Track 19 : LarryKay_67
- Track 20 : Zetzy_66
- Track 21 : Tiffany_66
- Track 22 : FlyCatcher_65, Sheen_63, Toro_63
- Track 23 : PP_64
- Track 24 : Timshel_60
- Track 25 : DroogsArmy_58
- Track 26 : HINdeR_58
- Track 27 : Cuke_98
- Track 28 : Nova53_234
- Track 29 : Francesca_221, Dorin_220

- Track 30 : Traaww1_72, Barbarian_75, Hoonter_79, BilboSwaggins_75, Mindy_75, Simpliphy_75, AmericanBeauty_80, Dumbo_76, Flypotenuse_72, Lilac_78, Manda_77, Daikon_78, TBrady12_79, Ukulele_71, Filch_77, IHOP_74, Easy2Say_77, Rimmer_77, ShamWow_76, Teaspoon_77, Porky_75, Buck_77, Petra64142_80, Phaux_78, SophKB_73, Cactus_79, Highbury_75, NelitzaMV_74, Pumpkin_79, Glexan_75, FireRed_80, Nala_78, Czyszczonek_77, ABCat_73, Eureka_74, Elph10_76, TeardropMSU_72, NoSleep_77, Myrale_76, Becksu_75, Lilizi_77, Hopey_76, GooberAzure_79, Thresher_78, Harella_76, MPhalcon_77, Icee_77, Mosby_72, Sassay_71, Goldilocks_79, StellaBean_74, Toto_74, Murphy_76, Murica_79, Inca_73, Kimchi_80, Dusk_73, Balomoji_76, Gator_74, Command613_78, Sotrice96_77, Saints25_75, CrystalP_75, StormChicken_78, Stark_77, 244_77, Phrux_73, Miniwave_71, Elite2014_75, StolenFromERC_79, Contagion_72, Cjw1_76, Maxxinista_78, JeTaime_76, Misfit_77, ChosenOne_76, BaboJay_73, HufflyPuff_79, Pharsalus_73, Tarkin_75, Youngblood_79, Goku_74, Gage_78, Bench_79, Policronamos_79, Henry_74, BadStone_73, Phaja_74, Asriel_75, Argent26_80, Emmina_76, PhatBacter_80, Nimrod_77, RiverMonster_76, Lilpickle_75, Moldemort_79, Bruin_73, Wiggin_78, Willez_71, Terminus_79, Xandras_75, HanKaySha_76, Tuco_77, DrDrey_76, Rakim_77, BigBubba_76, Quallification_77, Holt_81, Paperbeatsrock_75, Kanye_73, Adnama_80, MadamMonkfish_76, Gemini_81, Stank_79, xkcd_79, GoldenSpark_80
- Track 31 : Marshmallow_74, FairyPath_76
- Track 32 : Tomaszewski_71, YassJohnny_73
- Track 33 : OrionPax_75, Amao_76, Pat3_74, Bask21_76
- Track 34 : SirDuracell_75, Cookies_73, ChotaBhai_76, DoctorDiddles_75
- Track 35 : Auspice_124, Bongo_123, FreakyGoo_123, Bricole_126, KleverKiS_127, LilhomieP_124, TyDawg_119, IPhane7_122
- Track 36 : Dulcita_125, Skinny_130, Diminimus_125, Glaske16_127, Izel_123
- Track 37 : Reindeer_128
- Track 38 : PegLeg_127
- Track 39 : SlimJimmy_123
- Track 40 : GardenSalsa_140, MrMagoo_142
- Track 41 : Estes_140
- Track 42 : Rey_142
- Track 43 : GenevaB15_142, Aziz_139
- Track 44 : Nanosmite_135
- Track 45 : Marvin_69, MosMoris_70, Lilbit_73, RedRaider77_73, GoongGoong_70, Raela_74, Tesla_70, LittleLaf_73, Gattaca_71
- Track 46 : VasuNzinga_72
- Track 47 : Blackbeetle_74, Poise_74
- Track 48 : EniyanLRS_127
- Track 49 : Azrael100_127, MaryV_120, Cosmo_135, Wildcat_134
- Track 50 : Reynauld_80
- Track 51 : Kumao_84

Summary of Final Annotations (See graph section above for start numbers):

The start number called the most often in the published annotations is 27, it was called in 141 of the 248 non-draft genes in the pham.

Genes that call this "Most Annotated" start:

- 244_77, ABCat_73, Adnama_80, Amao_76, AmericanBeauty_80, Argent26_80, Asriel_75, Auspice_124, Aziz_139, BaboJay_73, BadStone_73, Balomoji_76, Barbarian_75, Bask21_76, Becksu_75, Bench_79, BigBubba_76, BilboSwaggins_75, Bongo_123, Bricole_126, Bruin_73, Buck_77, Cactus_79, ChosenOne_76, ChotaBhai_76, Cjw1_76, Command613_78, Contagion_72, Cookies_73, CrystalP_75, Czyszczo1_77, Daikon_78, Diminimus_125, DoctorDiddles_75, DrDrey_76, Dulcita_125, Dumbo_76, Dusk_73, Easy2Say_77, Elite2014_75, Elph10_76, Emmina_76, Estes_140, Eureka_74, FairyPath_76, Filch_77, FireRed_80, Flypotenuse_72, FreakyGoo_123, Gage_78, GardenSalsa_140, Gator_74, Gemini_81, GenevaB15_142, Glaske16_127, Glexan_75, Goku_74, GoldenSpark_80, Goldilocks_79, GooberAzure_79, HanKaySha_76, Harella_76, Henry_74, Highbury_75, Holt_81, Hoonter_79, Hopey_76, HufflyPuff_79, IHOP_74, IPhane7_122, Icee_77, Inca_73, Izel_123, JeTaime_76, Kanye_73, Kimchi_80, KleverKiS_127, Lilac_78, LilhomieP_124, Lilizi_77, Lilpickle_75, MPhalcon_77, MadamMonkfish_76, Manda_77, Marshmallow_74, Maxxinista_78, Mindy_75, Miniwave_71, Misfit_77, Moldemort_79, Mosby_72, MrMagoo_142, Murica_79, Murphy_76, Myrale_76, Nala_78, Nanosmite_135, NelitzaMV_74, Nimrod_77, NoSleep_77, OrionPax_75, Paperbeatsrock_75, Pat3_74, Petra64142_80, Phaja_74, Pharsalus_73, PhatBacter_80, Phaux_78, Phrux_73, Policronamos_79, Porky_75, Pumpkin_79, Quallification_77, Rakim_77, Reindeer_128, Rey_142, Reynauld_80, Rimmer_77, RiverMonster_76, Saints25_75, Sassay_71, ShamWow_76, Simpliphy_75, SirDuracell_75, Skinny_130, SlimJimmy_123, SophKB_73, Sotrice96_77, Stank_79, Stark_77, StellaBean_74, StolenFromERC_79, StormChicken_78, TBrady12_79, Tarkin_75, TeardropMSU_72, Teaspoon_77, Terminus_79, Thresher_78, Tomaszewski_71, Toto_74, Traaww1_72, Tuco_77, TyDawg_119, Ukulele_71, Wiggin_78, Willez_71, Xandras_75, YassJohnny_73, Youngblood_79, xkcd_79,

Genes that have the "Most Annotated" start but do not call it:

- PegLeg_127,

Genes that do not have the "Most Annotated" start:

- ACFishhook_65, Aglet_68, AgronaGT15_66, Anubis_70, AugsMagnumOpus_70, Azrael100_127, Beauxregard13_66, Bigflo_66, Blackbeetle_74, BreSam8_67, BuzzBuzz_63, Bxz2_62, Calvinny_66, Colbster_65, Cosmo_135, Cuke_98, Cullens_67, DaHudson_66, Daishi_66, Dieselweasel_68, Dorin_220, DroogsArmy_58, EniyanLRS_127, EpicPhail_68, Farber_67, Fernando_67, FlyCatcher_65, Francesca_221, Gattaca_71, Gemma_66, GingkoMaracino_67, GoongGoong_70, Grif_67, Groupthink_68, Grub_67, Grum1_66, GtownJaz_67, HINdeR_58, HashRod_68, HaveUMetTed_68, Heliosoles_66, Hercules11_67, JHC117_65, JenCasNa_68, JeppNRM_68, Jobu08_65, KADY_66, Kalb97_68, Kalnok_68, Kumao_84, LBerry_68, LarryKay_67, Lilbit_73, Lilith_66, LittleLaf_73, Louie6_66, Lowa_66, LugYA_70, MadMarie_67, Mainiac_67, Malinsilva_69, Manu_67, MarQuardt_67, Marie_65, Marius_68, Marvin_69, MaryV_120, Methuselah_62, Microwolf_65, Misomonster_68, MoneyMay_66, MosMoris_70, MuchMore_70, MyraDee_63, Nova53_234, OlanP_66, Ollie_67, P28Green_68, PGHhamlin_69, PP_64, Pawn_67, Pembroke_67, Penny1_67, PhishRPhriends_65, Phoebe_68, Phoxy_67, Phranny_68, Poise_74, PotatoSplit_68, PurpleHaze_67, Raela_74, Reba_67, RedRaider77_73, Rummer_66, Sabia_67, Sabinator_65, Sheen_63, Snickers_65, SoYo_66, SoilDragon_67, Soshari_69, Spike509_67, Stagni_66, StepMih_66, Taurus_68, Tesla_70, Tiffany_66, Timshel_60, TinyPebbles_65, Toro_63, VasuNzinga_72, Vix_65, Watson_66, Wildcat_134, Wooldri_69, Zetzy_66,

Summary by start number:

Start 15:

- Found in 15 of 268 (5.6%) of genes in pham
- Manual Annotations of this start: 1 of 248
- Called 6.7% of time when present
- Phage (with cluster) where this start called: PegLeg_127 (M1),

Start 17:

- Found in 4 of 268 (1.5%) of genes in pham
- Manual Annotations of this start: 3 of 248
- Called 100.0% of time when present
- Phage (with cluster) where this start called: Cuke_98 (AC), Dorin_220 (CG), Francesca_221 (CG), Nova53_234 (CG),

Start 23:

- Found in 18 of 268 (6.7%) of genes in pham
- Manual Annotations of this start: 10 of 248
- Called 66.7% of time when present
- Phage (with cluster) where this start called: Blackbeetle_74 (S), Gattaca_71 (S), GoongGoong_70 (S), Lilbit_73 (S), LittleLaf_73 (S), Marvin_69 (S), MosMoris_70 (S), Poise_74 (S), Raela_74 (S), RedRaider77_73 (S), Tesla_70 (S), VasuNzinga_72 (S),

Start 24:

- Found in 88 of 268 (32.8%) of genes in pham
- Manual Annotations of this start: 5 of 248
- Called 5.7% of time when present
- Phage (with cluster) where this start called: Anubis_70 (A3), Farber_67 (A3), Jobu08_65 (A3), MyraDee_63 (A18), Tiffany_66 (A3),

Start 27:

- Found in 152 of 268 (56.7%) of genes in pham
- Manual Annotations of this start: 141 of 248
- Called 99.3% of time when present
- Phage (with cluster) where this start called: 244_77 (E), ABCat_73 (E), Adnama_80 (E), Amao_76 (E), AmericanBeauty_80 (E), Argent26_80 (E), Asriel_75 (E), Auspice_124 (M1), Aziz_139 (M2), BaboJay_73 (E), BadStone_73 (E), Balomoji_76 (E), Barbarian_75 (E), Bask21_76 (E), Becksu_75 (E), Bench_79 (E), BigBubba_76 (E), BilboSwaggins_75 (E), Bongo_123 (M1), Bricole_126 (M1), Bruin_73 (E), Buck_77 (E), Cactus_79 (E), ChosenOne_76 (E), ChotaBhai_76 (E), Cjw1_76 (E), Command613_78 (E), Contagion_72 (E), Cookies_73 (E), CrystalP_75 (E), Czystoczon1_77 (E), Daikon_78 (E), Diminimus_125 (M1), DoctorDiddles_75 (E), DrDrey_76 (E), Dulcita_125 (M1), Dumbo_76 (E), Dusk_73 (E), Easy2Say_77 (E), Elite2014_75 (E), Elph10_76 (E), Emmina_76 (E), Estes_140 (M2), Eureka_74 (E), FairyPath_76 (E), Filch_77 (E), FireRed_80 (E), Flypotenuse_72 (E), FreakyGoo_123 (M1), Gage_78 (E), GardenSalsa_140 (M2), Gator_74 (E), Gemini_81 (E), GenevaB15_142 (M2), Glaske16_127 (M1), Glexan_75 (E), Goku_74 (E), GoldenSpark_80 (E), Goldilocks_79 (E), GooberAzure_79 (E), HanKaySha_76 (E), Harella_76 (E), Henry_74 (E), Highbury_75 (E), Holt_81 (E), Hoonter_79 (E), Hopey_76 (E), HufflyPuff_79 (E), IHOP_74 (E), IPhane7_122 (M1), Icee_77 (E), Inca_73 (E), Izel_123 (M1), JeTaime_76 (E), Kanye_73 (E), Kimchi_80 (E), KleverKiS_127 (M1), Lilac_78 (E), LilhomieP_124 (M1), Lilizi_77 (E), Lilpickle_75 (E),

MPhalcon_77 (E), MadamMonkfish_76 (E), Manda_77 (E), Marshmallow_74 (E), Maxxinista_78 (E), Mindy_75 (E), Miniwave_71 (E), Misfit_77 (E), Moldemort_79 (E), Mosby_72 (E), MrMagoo_142 (M2), Murica_79 (E), Murphy_76 (E), Myrale_76 (E), Nala_78 (E), Nanosmite_135 (M3), NelitzaMV_74 (E), Nimrod_77 (E), NoSleep_77 (E), OrionPax_75 (E), Paperbeatsrock_75 (E), Pat3_74 (E), Petra64142_80 (E), Phaja_74 (E), Pharsalus_73 (E), PhatBacter_80 (E), Phaux_78 (E), Phrux_73 (E), Policronamos_79 (E), Porky_75 (E), Pumpkin_79 (E), Quallification_77 (E), Rakim_77 (E), Reindeer_128 (M1), Rey_142 (M2), Reynauld_80 (singleton), Rimmer_77 (E), RiverMonster_76 (E), Saints25_75 (E), Sassay_71 (E), ShamWow_76 (E), Simpliphy_75 (E), SirDuracell_75 (E), Skinny_130 (M1), SlimJimmy_123 (M1), SophKB_73 (E), Sotrice96_77 (E), Stank_79 (E), Stark_77 (E), StellaBean_74 (E), StolenFromERC_79 (E), StormChicken_78 (E), TBrady12_79 (E), Tarkin_75 (E), TeardropMSU_72 (E), Teaspoon_77 (E), Terminus_79 (E), Thresher_78 (E), Tomaszewski_71 (E), Toto_74 (E), Traaww1_72 (E), Tuco_77 (E), TyDawg_119 (M1), Ukulele_71 (E), Wiggin_78 (E), Willez_71 (E), Xandras_75 (E), YassJohnny_73 (E), Youngblood_79 (E), xkcd_79 (E),

Start 30:

- Found in 93 of 268 (34.7%) of genes in pham
- Manual Annotations of this start: 70 of 248
- Called 80.6% of time when present
- Phage (with cluster) where this start called: ACFishhook_65 (A3), Aglet_68 (A3), AgronaGT15_66 (A3), AugsMagnumOpus_70 (A3), Beauxregard13_66 (A3), Bigflo_66 (A3), BreSam8_67 (A3), Bxz2_62 (A3), Colbster_65 (A3), Cullens_67 (A3), DaHudson_66 (A3), Daishi_66 (A3), Dieselweasel_68 (A3), DroogsArmy_58 (A7), EpicPhail_68 (A3), Fernando_67 (A3), FlyCatcher_65 (A7), Gemma_66 (A3), Grif_67 (A3), Groupthink_68 (A3), Grub_67 (A3), Grum1_66 (A3), GtownJaz_67 (A3), HINdeR_58 (A7), HashRod_68 (A3), HaveUMetTed_68 (A3), Heliosoles_66 (A3), Hercules11_67 (A3), JHC117_65 (A3), JeppNRM_68 (A3), KADY_66 (A3), Kalb97_68 (A3), Kalnoky_68 (A3), LBerry_68 (A3), LarryKay_67 (A3), Lilith_66 (A3), Louie6_66 (A3), Iowa_66 (A3), LugYA_70 (A3), MadMarie_67 (A3), Mainiac_67 (A3), Manu_67 (A3), Marie_65 (A3), Marius_68 (A3), Methuselah_62 (A3), Microwolf_65 (A3), Misomonster_68 (A3), MoneyMay_66 (A3), MuchMore_70 (A3), OlanP_66 (A3), Ollie_67 (A3), P28Green_68 (A3), PGHhamlin_69 (A3), PP_64 (A7), Pawn_67 (A3), Penny1_67 (A3), PhishRPhriends_65 (A3), Phoebe_68 (A3), Phoxy_67 (A3), Phranny_68 (A3), PotatoSplit_68 (A3), PurpleHaze_67 (A3), Reba_67 (A3), Sabinator_65 (A3), Sheen_63 (A7), SoYo_66 (A3), SoilDragon_67 (A3), Soshari_69 (A3), Spike509_67 (A3), Timshel_60 (A7), TinyPebbles_65 (A3), Toro_63 (A7), Vix_65 (A3), Wooldri_69 (A3), Zetzy_66 (A3),

Start 31:

- Found in 5 of 268 (1.9%) of genes in pham
- Manual Annotations of this start: 5 of 248
- Called 100.0% of time when present
- Phage (with cluster) where this start called: Azrael100_127 (V), Cosmo_135 (V), EniyanLRS_127 (V), MaryV_120 (V), Wildcat_134 (V),

Start 32:

- Found in 94 of 268 (35.1%) of genes in pham
- Manual Annotations of this start: 13 of 248
- Called 16.0% of time when present
- Phage (with cluster) where this start called: BuzzBuzz_63 (A3), Calvinny_66 (A3), GingkoMaracino_67 (A3), JenCasNa_68 (A3), Kumao_84 (singleton), Malinsilva_69

(A3), MarQuardt_67 (A3), Pembroke_67 (A3), Rummer_66 (A3), Sabia_67 (A3), Snickers_65 (A3), Stagni_66 (A3), StepMih_66 (A3), Taurus_68 (A3), Watson_66 (A3),

Summary by clusters:

There are 12 clusters represented in this pham: AC, singleton, E, M3, V, CG, S, A18, A3, M1, A7, M2,

Info for manual annotations of cluster A18:

- Start number 24 was manually annotated 1 time for cluster A18.

Info for manual annotations of cluster A3:

- Start number 24 was manually annotated 4 times for cluster A3.
- Start number 30 was manually annotated 65 times for cluster A3.
- Start number 32 was manually annotated 12 times for cluster A3.

Info for manual annotations of cluster A7:

- Start number 30 was manually annotated 5 times for cluster A7.

Info for manual annotations of cluster AC:

- Start number 17 was manually annotated 1 time for cluster AC.

Info for manual annotations of cluster CG:

- Start number 17 was manually annotated 2 times for cluster CG.

Info for manual annotations of cluster E:

- Start number 27 was manually annotated 121 times for cluster E.

Info for manual annotations of cluster M1:

- Start number 15 was manually annotated 1 time for cluster M1.
- Start number 27 was manually annotated 12 times for cluster M1.

Info for manual annotations of cluster M2:

- Start number 27 was manually annotated 6 times for cluster M2.

Info for manual annotations of cluster M3:

- Start number 27 was manually annotated 1 time for cluster M3.

Info for manual annotations of cluster S:

- Start number 23 was manually annotated 10 times for cluster S.

Info for manual annotations of cluster V:

- Start number 31 was manually annotated 5 times for cluster V.

Gene Information:

Gene: 244_77 Start: 48199, Stop: 48612, Start Num: 27

Candidate Starts for 244_77:

(Start: 27 @48199 has 141 MA's), (33, 48214), (55, 48361), (69, 48499),

Gene: ABCat_73 Start: 48552, Stop: 48965, Start Num: 27
Candidate Starts for ABCat_73:
(Start: 27 @48552 has 141 MA's), (33, 48567), (55, 48714), (69, 48852),

Gene: ACFishhook_65 Start: 40901, Stop: 40482, Start Num: 30
Candidate Starts for ACFishhook_65:
(5, 41156), (Start: 24 @40910 has 5 MA's), (Start: 30 @40901 has 70 MA's), (Start: 32 @40892 has 13 MA's), (45, 40799), (69, 40646), (78, 40577),

Gene: Adnama_80 Start: 48578, Stop: 48991, Start Num: 27
Candidate Starts for Adnama_80:
(Start: 27 @48578 has 141 MA's), (33, 48593), (55, 48740), (69, 48878),

Gene: Aglet_68 Start: 40944, Stop: 40525, Start Num: 30
Candidate Starts for Aglet_68:
(1, 41292), (2, 41289), (3, 41250), (Start: 24 @40953 has 5 MA's), (Start: 30 @40944 has 70 MA's),
(Start: 32 @40935 has 13 MA's), (45, 40842), (69, 40689), (78, 40620),

Gene: AgronaGT15_66 Start: 40792, Stop: 40373, Start Num: 30
Candidate Starts for AgronaGT15_66:
(1, 41140), (2, 41137), (3, 41098), (Start: 24 @40801 has 5 MA's), (Start: 30 @40792 has 70 MA's),
(Start: 32 @40783 has 13 MA's), (45, 40690), (69, 40537), (78, 40468), (86, 40390),

Gene: Amao_76 Start: 47972, Stop: 48385, Start Num: 27
Candidate Starts for Amao_76:
(Start: 27 @47972 has 141 MA's), (33, 47987), (55, 48134), (69, 48272),

Gene: AmericanBeauty_80 Start: 48721, Stop: 49134, Start Num: 27
Candidate Starts for AmericanBeauty_80:
(Start: 27 @48721 has 141 MA's), (33, 48736), (55, 48883), (69, 49021),

Gene: Anubis_70 Start: 40839, Stop: 40411, Start Num: 24
Candidate Starts for Anubis_70:
(1, 41178), (2, 41175), (3, 41136), (4, 41127), (Start: 24 @40839 has 5 MA's), (Start: 30 @40830 has 70 MA's), (Start: 32 @40821 has 13 MA's), (45, 40728), (69, 40575), (78, 40506),

Gene: Argent26_80 Start: 48359, Stop: 48772, Start Num: 27
Candidate Starts for Argent26_80:
(Start: 27 @48359 has 141 MA's), (33, 48374), (55, 48521), (69, 48659),

Gene: Asriel_75 Start: 46915, Stop: 47328, Start Num: 27
Candidate Starts for Asriel_75:
(Start: 27 @46915 has 141 MA's), (33, 46930), (55, 47077), (69, 47215),

Gene: AugsMagnumOpus_70 Start: 40935, Stop: 40516, Start Num: 30
Candidate Starts for AugsMagnumOpus_70:
(1, 41283), (2, 41280), (3, 41241), (Start: 24 @40944 has 5 MA's), (Start: 30 @40935 has 70 MA's),
(Start: 32 @40926 has 13 MA's), (45, 40833), (69, 40680), (78, 40611),

Gene: Auspice_124 Start: 65416, Stop: 65913, Start Num: 27
Candidate Starts for Auspice_124:
(10, 65314), (Start: 15 @65374 has 1 MA's), (Start: 27 @65416 has 141 MA's), (38, 65470), (41, 65494), (57, 65605), (60, 65620), (69, 65728), (72, 65749), (78, 65797),

Gene: Aziz_139 Start: 66655, Stop: 67140, Start Num: 27

Candidate Starts for Aziz_139:

(Start: 23 @66646 has 10 MA's), (Start: 27 @66655 has 141 MA's), (47, 66769), (56, 66814), (57, 66832), (69, 66955), (72, 66976), (78, 67024),

Gene: Azrael100_127 Start: 63905, Stop: 64339, Start Num: 31

Candidate Starts for Azrael100_127:

(Start: 31 @63905 has 5 MA's), (33, 63914), (37, 63950), (38, 63953), (46, 64016), (53, 64064), (54, 64070), (57, 64094), (68, 64193), (69, 64208), (77, 64280),

Gene: BaboJay_73 Start: 47752, Stop: 48165, Start Num: 27

Candidate Starts for BaboJay_73:

(Start: 27 @47752 has 141 MA's), (33, 47767), (55, 47914), (69, 48052),

Gene: BadStone_73 Start: 48121, Stop: 48534, Start Num: 27

Candidate Starts for BadStone_73:

(Start: 27 @48121 has 141 MA's), (33, 48136), (55, 48283), (69, 48421),

Gene: Balomoji_76 Start: 48682, Stop: 49095, Start Num: 27

Candidate Starts for Balomoji_76:

(Start: 27 @48682 has 141 MA's), (33, 48697), (55, 48844), (69, 48982),

Gene: Barbarian_75 Start: 46915, Stop: 47328, Start Num: 27

Candidate Starts for Barbarian_75:

(Start: 27 @46915 has 141 MA's), (33, 46930), (55, 47077), (69, 47215),

Gene: Bask21_76 Start: 47535, Stop: 47948, Start Num: 27

Candidate Starts for Bask21_76:

(Start: 27 @47535 has 141 MA's), (33, 47550), (55, 47697), (69, 47835),

Gene: Beauxregard13_66 Start: 40947, Stop: 40528, Start Num: 30

Candidate Starts for Beauxregard13_66:

(1, 41295), (2, 41292), (Start: 24 @40956 has 5 MA's), (Start: 30 @40947 has 70 MA's), (Start: 32 @40938 has 13 MA's), (45, 40845), (69, 40692), (78, 40623),

Gene: Becksu_75 Start: 48751, Stop: 49164, Start Num: 27

Candidate Starts for Becksu_75:

(Start: 27 @48751 has 141 MA's), (33, 48766), (55, 48913), (69, 49051),

Gene: Bench_79 Start: 48219, Stop: 48632, Start Num: 27

Candidate Starts for Bench_79:

(Start: 27 @48219 has 141 MA's), (33, 48234), (55, 48381), (69, 48519),

Gene: BigBubba_76 Start: 47931, Stop: 48344, Start Num: 27

Candidate Starts for BigBubba_76:

(Start: 27 @47931 has 141 MA's), (33, 47946), (55, 48093), (69, 48231),

Gene: Bigflo_66 Start: 40943, Stop: 40524, Start Num: 30

Candidate Starts for Bigflo_66:

(1, 41291), (2, 41288), (3, 41249), (Start: 24 @40952 has 5 MA's), (Start: 30 @40943 has 70 MA's), (Start: 32 @40934 has 13 MA's), (45, 40841), (69, 40688), (78, 40619),

Gene: BilboSwaggins_75 Start: 48560, Stop: 48973, Start Num: 27
Candidate Starts for BilboSwaggins_75:
(Start: 27 @48560 has 141 MA's), (33, 48575), (55, 48722), (69, 48860),

Gene: Blackbeetle_74 Start: 40595, Stop: 41086, Start Num: 23
Candidate Starts for Blackbeetle_74:
(Start: 23 @40595 has 10 MA's), (50, 40742), (69, 40898), (70, 40901), (76, 40937), (78, 40967), (82, 41000),

Gene: Bongo_123 Start: 65032, Stop: 65529, Start Num: 27
Candidate Starts for Bongo_123:
(10, 64930), (Start: 15 @64990 has 1 MA's), (Start: 27 @65032 has 141 MA's), (38, 65086), (41, 65110), (57, 65221), (60, 65236), (69, 65344), (72, 65365), (78, 65413),

Gene: BreSam8_67 Start: 40937, Stop: 40518, Start Num: 30
Candidate Starts for BreSam8_67:
(1, 41285), (2, 41282), (Start: 24 @40946 has 5 MA's), (Start: 30 @40937 has 70 MA's), (Start: 32 @40928 has 13 MA's), (45, 40835), (69, 40682), (78, 40613),

Gene: Bricole_126 Start: 65180, Stop: 65677, Start Num: 27
Candidate Starts for Bricole_126:
(10, 65078), (Start: 15 @65138 has 1 MA's), (Start: 27 @65180 has 141 MA's), (38, 65234), (41, 65258), (57, 65369), (60, 65384), (69, 65492), (72, 65513), (78, 65561),

Gene: Bruin_73 Start: 47095, Stop: 47508, Start Num: 27
Candidate Starts for Bruin_73:
(Start: 27 @47095 has 141 MA's), (33, 47110), (55, 47257), (69, 47395),

Gene: Buck_77 Start: 48800, Stop: 49213, Start Num: 27
Candidate Starts for Buck_77:
(Start: 27 @48800 has 141 MA's), (33, 48815), (55, 48962), (69, 49100),

Gene: BuzzBuzz_63 Start: 40962, Stop: 40552, Start Num: 32
Candidate Starts for BuzzBuzz_63:
(1, 41319), (2, 41316), (3, 41277), (Start: 24 @40980 has 5 MA's), (Start: 30 @40971 has 70 MA's), (Start: 32 @40962 has 13 MA's), (45, 40869), (69, 40716), (78, 40647), (81, 40617),

Gene: Bxz2_62 Start: 40978, Stop: 40559, Start Num: 30
Candidate Starts for Bxz2_62:
(1, 41326), (2, 41323), (3, 41284), (Start: 24 @40987 has 5 MA's), (Start: 30 @40978 has 70 MA's), (Start: 32 @40969 has 13 MA's), (45, 40876), (69, 40723), (78, 40654), (86, 40576),

Gene: Cactus_79 Start: 47576, Stop: 47989, Start Num: 27
Candidate Starts for Cactus_79:
(Start: 27 @47576 has 141 MA's), (33, 47591), (55, 47738), (69, 47876),

Gene: Calvinny_66 Start: 40820, Stop: 40410, Start Num: 32
Candidate Starts for Calvinny_66:
(Start: 24 @40838 has 5 MA's), (Start: 30 @40829 has 70 MA's), (Start: 32 @40820 has 13 MA's), (45, 40727), (69, 40574), (78, 40505),

Gene: ChosenOne_76 Start: 47576, Stop: 47989, Start Num: 27
Candidate Starts for ChosenOne_76:

(Start: 27 @47576 has 141 MA's), (33, 47591), (55, 47738), (69, 47876),

Gene: ChotaBhai_76 Start: 47900, Stop: 48313, Start Num: 27

Candidate Starts for ChotaBhai_76:

(Start: 27 @47900 has 141 MA's), (33, 47915), (60, 48092), (69, 48200), (74, 48227),

Gene: Cjw1_76 Start: 49273, Stop: 49686, Start Num: 27

Candidate Starts for Cjw1_76:

(Start: 27 @49273 has 141 MA's), (33, 49288), (55, 49435), (69, 49573),

Gene: Colbster_65 Start: 40947, Stop: 40528, Start Num: 30

Candidate Starts for Colbster_65:

(1, 41295), (2, 41292), (Start: 24 @40956 has 5 MA's), (Start: 30 @40947 has 70 MA's), (Start: 32 @40938 has 13 MA's), (45, 40845), (69, 40692), (78, 40623),

Gene: Command613_78 Start: 48615, Stop: 49028, Start Num: 27

Candidate Starts for Command613_78:

(Start: 27 @48615 has 141 MA's), (33, 48630), (55, 48777), (69, 48915),

Gene: Contagion_72 Start: 47376, Stop: 47789, Start Num: 27

Candidate Starts for Contagion_72:

(Start: 27 @47376 has 141 MA's), (33, 47391), (55, 47538), (69, 47676),

Gene: Cookies_73 Start: 47757, Stop: 48170, Start Num: 27

Candidate Starts for Cookies_73:

(Start: 27 @47757 has 141 MA's), (33, 47772), (60, 47949), (69, 48057), (74, 48084),

Gene: Cosmo_135 Start: 64335, Stop: 64769, Start Num: 31

Candidate Starts for Cosmo_135:

(Start: 31 @64335 has 5 MA's), (33, 64344), (37, 64380), (38, 64383), (46, 64446), (53, 64494), (54, 64500), (57, 64524), (68, 64623), (69, 64638), (77, 64710),

Gene: CrystalP_75 Start: 48560, Stop: 48973, Start Num: 27

Candidate Starts for CrystalP_75:

(Start: 27 @48560 has 141 MA's), (33, 48575), (55, 48722), (69, 48860),

Gene: Cuke_98 Start: 56091, Stop: 56588, Start Num: 17

Candidate Starts for Cuke_98:

(Start: 17 @56091 has 3 MA's), (28, 56127), (Start: 32 @56139 has 13 MA's), (42, 56202), (48, 56259), (64, 56370), (65, 56400), (66, 56415), (68, 56427), (69, 56442), (70, 56445), (82, 56565),

Gene: Cullens_67 Start: 40943, Stop: 40524, Start Num: 30

Candidate Starts for Cullens_67:

(1, 41291), (2, 41288), (Start: 24 @40952 has 5 MA's), (Start: 30 @40943 has 70 MA's), (Start: 32 @40934 has 13 MA's), (45, 40841), (69, 40688), (78, 40619),

Gene: Czyszczone1_77 Start: 48082, Stop: 48495, Start Num: 27

Candidate Starts for Czyszczone1_77:

(Start: 27 @48082 has 141 MA's), (33, 48097), (55, 48244), (69, 48382),

Gene: DaHudson_66 Start: 40936, Stop: 40517, Start Num: 30

Candidate Starts for DaHudson_66:

(1, 41284), (2, 41281), (Start: 24 @40945 has 5 MA's), (Start: 30 @40936 has 70 MA's), (Start: 32 @40927 has 13 MA's), (45, 40834), (69, 40681), (78, 40612),

Gene: Daikon_78 Start: 48703, Stop: 49116, Start Num: 27
Candidate Starts for Daikon_78:
(Start: 27 @48703 has 141 MA's), (33, 48718), (55, 48865), (69, 49003),

Gene: Daishi_66 Start: 39812, Stop: 39393, Start Num: 30
Candidate Starts for Daishi_66:
(1, 40160), (2, 40157), (Start: 24 @39821 has 5 MA's), (Start: 30 @39812 has 70 MA's), (Start: 32 @39803 has 13 MA's), (45, 39710), (69, 39557), (78, 39488),

Gene: Dieselweasel_68 Start: 40946, Stop: 40527, Start Num: 30
Candidate Starts for Dieselweasel_68:
(1, 41294), (2, 41291), (Start: 24 @40955 has 5 MA's), (Start: 30 @40946 has 70 MA's), (Start: 32 @40937 has 13 MA's), (45, 40844), (69, 40691), (78, 40622),

Gene: Diminimus_125 Start: 65027, Stop: 65524, Start Num: 27
Candidate Starts for Diminimus_125:
(10, 64925), (Start: 15 @64985 has 1 MA's), (Start: 27 @65027 has 141 MA's), (Start: 32 @65039 has 13 MA's), (38, 65081), (41, 65105), (57, 65216), (60, 65231), (69, 65339), (72, 65360), (78, 65408),

Gene: DoctorDiddles_75 Start: 47944, Stop: 48357, Start Num: 27
Candidate Starts for DoctorDiddles_75:
(Start: 27 @47944 has 141 MA's), (33, 47959), (60, 48136), (69, 48244), (74, 48271),

Gene: Dorin_220 Start: 115745, Stop: 116227, Start Num: 17
Candidate Starts for Dorin_220:
(Start: 17 @115745 has 3 MA's), (18, 115751), (25, 115775), (33, 115802), (47, 115913), (52, 115949), (62, 115994), (69, 116099), (71, 116108), (75, 116132),

Gene: DrDrey_76 Start: 49001, Stop: 49414, Start Num: 27
Candidate Starts for DrDrey_76:
(Start: 27 @49001 has 141 MA's), (33, 49016), (55, 49163), (69, 49301),

Gene: DroogsArmy_58 Start: 42717, Stop: 42268, Start Num: 30
Candidate Starts for DroogsArmy_58:
(Start: 30 @42717 has 70 MA's), (34, 42702), (40, 42654), (57, 42558), (62, 42537), (63, 42534), (69, 42465), (70, 42462), (76, 42426), (78, 42396), (84, 42339), (89, 42285),

Gene: Dulcita_125 Start: 65028, Stop: 65525, Start Num: 27
Candidate Starts for Dulcita_125:
(10, 64926), (Start: 15 @64986 has 1 MA's), (Start: 27 @65028 has 141 MA's), (Start: 32 @65040 has 13 MA's), (38, 65082), (41, 65106), (57, 65217), (60, 65232), (69, 65340), (72, 65361), (78, 65409),

Gene: Dumbo_76 Start: 47481, Stop: 47894, Start Num: 27
Candidate Starts for Dumbo_76:
(Start: 27 @47481 has 141 MA's), (33, 47496), (55, 47643), (69, 47781),

Gene: Dusk_73 Start: 47781, Stop: 48194, Start Num: 27
Candidate Starts for Dusk_73:
(Start: 27 @47781 has 141 MA's), (33, 47796), (55, 47943), (69, 48081),

Gene: Easy2Say_77 Start: 49025, Stop: 49438, Start Num: 27
Candidate Starts for Easy2Say_77:
(Start: 27 @49025 has 141 MA's), (33, 49040), (55, 49187), (69, 49325),

Gene: Elite2014_75 Start: 47575, Stop: 47988, Start Num: 27
Candidate Starts for Elite2014_75:
(Start: 27 @47575 has 141 MA's), (33, 47590), (55, 47737), (69, 47875),

Gene: Elph10_76 Start: 47580, Stop: 47993, Start Num: 27
Candidate Starts for Elph10_76:
(Start: 27 @47580 has 141 MA's), (33, 47595), (55, 47742), (69, 47880),

Gene: Emmina_76 Start: 47482, Stop: 47895, Start Num: 27
Candidate Starts for Emmina_76:
(Start: 27 @47482 has 141 MA's), (33, 47497), (55, 47644), (69, 47782),

Gene: EniyanLRS_127 Start: 63903, Stop: 64340, Start Num: 31
Candidate Starts for EniyanLRS_127:
(29, 63894), (Start: 31 @63903 has 5 MA's), (33, 63912), (37, 63948), (38, 63951), (46, 64014), (53, 64062), (54, 64068), (57, 64092), (68, 64191), (69, 64206), (77, 64278),

Gene: EpicPhail_68 Start: 40947, Stop: 40528, Start Num: 30
Candidate Starts for EpicPhail_68:
(1, 41295), (2, 41292), (Start: 24 @40956 has 5 MA's), (Start: 30 @40947 has 70 MA's), (Start: 32 @40938 has 13 MA's), (45, 40845), (69, 40692), (78, 40623),

Gene: Estes_140 Start: 66866, Stop: 67351, Start Num: 27
Candidate Starts for Estes_140:
(Start: 23 @66857 has 10 MA's), (Start: 27 @66866 has 141 MA's), (47, 66980), (49, 67001), (57, 67043), (69, 67166), (72, 67187), (78, 67235), (81, 67265),

Gene: Eureka_74 Start: 48046, Stop: 48459, Start Num: 27
Candidate Starts for Eureka_74:
(Start: 27 @48046 has 141 MA's), (33, 48061), (55, 48208), (69, 48346),

Gene: FairyPath_76 Start: 48694, Stop: 49107, Start Num: 27
Candidate Starts for FairyPath_76:
(Start: 27 @48694 has 141 MA's), (33, 48709), (60, 48886), (69, 48994), (74, 49021),

Gene: Farber_67 Start: 40942, Stop: 40514, Start Num: 24
Candidate Starts for Farber_67:
(1, 41281), (2, 41278), (3, 41239), (Start: 24 @40942 has 5 MA's), (Start: 30 @40933 has 70 MA's), (Start: 32 @40924 has 13 MA's), (45, 40831), (69, 40678), (78, 40609), (86, 40531),

Gene: Fernando_67 Start: 40943, Stop: 40524, Start Num: 30
Candidate Starts for Fernando_67:
(1, 41291), (2, 41288), (Start: 24 @40952 has 5 MA's), (Start: 30 @40943 has 70 MA's), (Start: 32 @40934 has 13 MA's), (45, 40841), (69, 40688), (78, 40619),

Gene: Filch_77 Start: 47507, Stop: 47920, Start Num: 27
Candidate Starts for Filch_77:
(Start: 27 @47507 has 141 MA's), (33, 47522), (55, 47669), (69, 47807),

Gene: FireRed_80 Start: 49069, Stop: 49482, Start Num: 27
Candidate Starts for FireRed_80:
(Start: 27 @49069 has 141 MA's), (33, 49084), (55, 49231), (69, 49369),

Gene: FlyCatcher_65 Start: 43633, Stop: 43184, Start Num: 30
Candidate Starts for FlyCatcher_65:
(6, 43837), (Start: 30 @43633 has 70 MA's), (40, 43570), (57, 43474), (58, 43465), (69, 43381), (76, 43342), (78, 43312), (89, 43201),

Gene: Flypotenuse_72 Start: 47566, Stop: 47979, Start Num: 27
Candidate Starts for Flypotenuse_72:
(Start: 27 @47566 has 141 MA's), (33, 47581), (55, 47728), (69, 47866),

Gene: Francesca_221 Start: 116394, Stop: 116876, Start Num: 17
Candidate Starts for Francesca_221:
(Start: 17 @116394 has 3 MA's), (18, 116400), (25, 116424), (33, 116451), (47, 116562), (52, 116598), (62, 116643), (69, 116748), (71, 116757), (75, 116781),

Gene: FreakyGoo_123 Start: 65512, Stop: 66009, Start Num: 27
Candidate Starts for FreakyGoo_123:
(10, 65410), (Start: 15 @65470 has 1 MA's), (Start: 27 @65512 has 141 MA's), (38, 65566), (41, 65590), (57, 65701), (60, 65716), (69, 65824), (72, 65845), (78, 65893),

Gene: Gage_78 Start: 48359, Stop: 48772, Start Num: 27
Candidate Starts for Gage_78:
(Start: 27 @48359 has 141 MA's), (33, 48374), (55, 48521), (69, 48659),

Gene: GardenSalsa_140 Start: 66997, Stop: 67482, Start Num: 27
Candidate Starts for GardenSalsa_140:
(Start: 23 @66988 has 10 MA's), (Start: 27 @66997 has 141 MA's), (47, 67111), (69, 67297), (72, 67318), (74, 67324), (78, 67366), (81, 67396),

Gene: Gator_74 Start: 48412, Stop: 48825, Start Num: 27
Candidate Starts for Gator_74:
(Start: 27 @48412 has 141 MA's), (33, 48427), (55, 48574), (69, 48712),

Gene: Gattaca_71 Start: 40699, Stop: 41190, Start Num: 23
Candidate Starts for Gattaca_71:
(Start: 23 @40699 has 10 MA's), (50, 40846), (69, 41002), (70, 41005), (76, 41041), (78, 41071), (82, 41104),

Gene: Gemini_81 Start: 48876, Stop: 49289, Start Num: 27
Candidate Starts for Gemini_81:
(Start: 27 @48876 has 141 MA's), (33, 48891), (55, 49038), (69, 49176),

Gene: Gemma_66 Start: 40825, Stop: 40406, Start Num: 30
Candidate Starts for Gemma_66:
(5, 41080), (Start: 24 @40834 has 5 MA's), (Start: 30 @40825 has 70 MA's), (Start: 32 @40816 has 13 MA's), (45, 40723), (69, 40570), (78, 40501),

Gene: GenevaB15_142 Start: 66655, Stop: 67140, Start Num: 27
Candidate Starts for GenevaB15_142:

(Start: 23 @66646 has 10 MA's), (Start: 27 @66655 has 141 MA's), (47, 66769), (56, 66814), (57, 66832), (69, 66955), (72, 66976), (78, 67024),

Gene: GingkoMaracino_67 Start: 40820, Stop: 40410, Start Num: 32

Candidate Starts for GingkoMaracino_67:

(1, 41177), (2, 41174), (3, 41135), (4, 41126), (Start: 24 @40838 has 5 MA's), (Start: 30 @40829 has 70 MA's), (Start: 32 @40820 has 13 MA's), (45, 40727), (69, 40574), (78, 40505),

Gene: Glaske16_127 Start: 66146, Stop: 66643, Start Num: 27

Candidate Starts for Glaske16_127:

(10, 66044), (Start: 15 @66104 has 1 MA's), (Start: 27 @66146 has 141 MA's), (Start: 32 @66158 has 13 MA's), (38, 66200), (41, 66224), (57, 66335), (60, 66350), (69, 66458), (72, 66479), (78, 66527),

Gene: Glexan_75 Start: 48696, Stop: 49109, Start Num: 27

Candidate Starts for Glexan_75:

(Start: 27 @48696 has 141 MA's), (33, 48711), (55, 48858), (69, 48996),

Gene: Goku_74 Start: 47775, Stop: 48188, Start Num: 27

Candidate Starts for Goku_74:

(Start: 27 @47775 has 141 MA's), (33, 47790), (55, 47937), (69, 48075),

Gene: GoldenSpark_80 Start: 48359, Stop: 48772, Start Num: 27

Candidate Starts for GoldenSpark_80:

(Start: 27 @48359 has 141 MA's), (33, 48374), (55, 48521), (69, 48659),

Gene: Goldilocks_79 Start: 47857, Stop: 48270, Start Num: 27

Candidate Starts for Goldilocks_79:

(Start: 27 @47857 has 141 MA's), (33, 47872), (55, 48019), (69, 48157),

Gene: GooberAzure_79 Start: 48359, Stop: 48772, Start Num: 27

Candidate Starts for GooberAzure_79:

(Start: 27 @48359 has 141 MA's), (33, 48374), (55, 48521), (69, 48659),

Gene: GoongGoong_70 Start: 40498, Stop: 40989, Start Num: 23

Candidate Starts for GoongGoong_70:

(Start: 23 @40498 has 10 MA's), (50, 40645), (69, 40801), (70, 40804), (76, 40840), (78, 40870), (82, 40903),

Gene: Grif_67 Start: 41018, Stop: 40599, Start Num: 30

Candidate Starts for Grif_67:

(1, 41366), (2, 41363), (Start: 24 @41027 has 5 MA's), (Start: 30 @41018 has 70 MA's), (Start: 32 @41009 has 13 MA's), (45, 40916), (69, 40763), (78, 40694),

Gene: Groupthink_68 Start: 40829, Stop: 40410, Start Num: 30

Candidate Starts for Groupthink_68:

(Start: 24 @40838 has 5 MA's), (Start: 30 @40829 has 70 MA's), (Start: 32 @40820 has 13 MA's), (45, 40727), (69, 40574), (78, 40505),

Gene: Grub_67 Start: 40935, Stop: 40516, Start Num: 30

Candidate Starts for Grub_67:

(1, 41283), (2, 41280), (Start: 24 @40944 has 5 MA's), (Start: 30 @40935 has 70 MA's), (Start: 32 @40926 has 13 MA's), (45, 40833), (69, 40680), (78, 40611),

Gene: Grum1_66 Start: 40943, Stop: 40524, Start Num: 30

Candidate Starts for Grum1_66:

(1, 41291), (2, 41288), (Start: 24 @40952 has 5 MA's), (Start: 30 @40943 has 70 MA's), (Start: 32 @40934 has 13 MA's), (45, 40841), (69, 40688), (78, 40619),

Gene: GtownJaz_67 Start: 40945, Stop: 40526, Start Num: 30

Candidate Starts for GtownJaz_67:

(1, 41293), (2, 41290), (Start: 24 @40954 has 5 MA's), (Start: 30 @40945 has 70 MA's), (Start: 32 @40936 has 13 MA's), (45, 40843), (69, 40690), (78, 40621),

Gene: HINdeR_58 Start: 42418, Stop: 41969, Start Num: 30

Candidate Starts for HINdeR_58:

(Start: 30 @42418 has 70 MA's), (40, 42355), (57, 42259), (58, 42250), (69, 42166), (78, 42097), (89, 41986),

Gene: HanKaySha_76 Start: 47660, Stop: 48073, Start Num: 27

Candidate Starts for HanKaySha_76:

(Start: 27 @47660 has 141 MA's), (33, 47675), (55, 47822), (69, 47960),

Gene: Harella_76 Start: 49212, Stop: 49625, Start Num: 27

Candidate Starts for Harella_76:

(Start: 27 @49212 has 141 MA's), (33, 49227), (55, 49374), (69, 49512),

Gene: HashRod_68 Start: 40971, Stop: 40552, Start Num: 30

Candidate Starts for HashRod_68:

(1, 41319), (2, 41316), (3, 41277), (Start: 24 @40980 has 5 MA's), (Start: 30 @40971 has 70 MA's), (Start: 32 @40962 has 13 MA's), (45, 40869), (69, 40716), (78, 40647), (81, 40617),

Gene: HaveUMetTed_68 Start: 40814, Stop: 40395, Start Num: 30

Candidate Starts for HaveUMetTed_68:

(5, 41069), (Start: 24 @40823 has 5 MA's), (Start: 30 @40814 has 70 MA's), (Start: 32 @40805 has 13 MA's), (45, 40712), (69, 40559), (78, 40490),

Gene: Heliosoles_66 Start: 40832, Stop: 40413, Start Num: 30

Candidate Starts for Heliosoles_66:

(Start: 24 @40841 has 5 MA's), (Start: 30 @40832 has 70 MA's), (Start: 32 @40823 has 13 MA's), (45, 40730), (69, 40577), (78, 40508),

Gene: Henry_74 Start: 48000, Stop: 48413, Start Num: 27

Candidate Starts for Henry_74:

(Start: 27 @48000 has 141 MA's), (33, 48015), (55, 48162), (69, 48300),

Gene: Hercules11_67 Start: 40952, Stop: 40533, Start Num: 30

Candidate Starts for Hercules11_67:

(1, 41300), (2, 41297), (Start: 24 @40961 has 5 MA's), (Start: 30 @40952 has 70 MA's), (Start: 32 @40943 has 13 MA's), (45, 40850), (69, 40697), (78, 40628),

Gene: Highbury_75 Start: 47648, Stop: 48061, Start Num: 27

Candidate Starts for Highbury_75:

(Start: 27 @47648 has 141 MA's), (33, 47663), (55, 47810), (69, 47948),

Gene: Holt_81 Start: 48773, Stop: 49186, Start Num: 27

Candidate Starts for Holt_81:

(Start: 27 @48773 has 141 MA's), (33, 48788), (55, 48935), (69, 49073),

Gene: Hoonter_79 Start: 48359, Stop: 48772, Start Num: 27

Candidate Starts for Hoonter_79:

(Start: 27 @48359 has 141 MA's), (33, 48374), (55, 48521), (69, 48659),

Gene: Hohey_76 Start: 48192, Stop: 48605, Start Num: 27

Candidate Starts for Hohey_76:

(Start: 27 @48192 has 141 MA's), (33, 48207), (55, 48354), (69, 48492),

Gene: HufflyPuff_79 Start: 49025, Stop: 49438, Start Num: 27

Candidate Starts for HufflyPuff_79:

(Start: 27 @49025 has 141 MA's), (33, 49040), (55, 49187), (69, 49325),

Gene: IHOP_74 Start: 48124, Stop: 48537, Start Num: 27

Candidate Starts for IHOP_74:

(Start: 27 @48124 has 141 MA's), (33, 48139), (55, 48286), (69, 48424),

Gene: IPhane7_122 Start: 65032, Stop: 65529, Start Num: 27

Candidate Starts for IPhane7_122:

(10, 64930), (Start: 15 @64990 has 1 MA's), (Start: 27 @65032 has 141 MA's), (38, 65086), (41, 65110), (57, 65221), (60, 65236), (69, 65344), (72, 65365), (78, 65413),

Gene: Icee_77 Start: 48023, Stop: 48436, Start Num: 27

Candidate Starts for Icee_77:

(Start: 27 @48023 has 141 MA's), (33, 48038), (55, 48185), (69, 48323),

Gene: Inca_73 Start: 46649, Stop: 47062, Start Num: 27

Candidate Starts for Inca_73:

(Start: 27 @46649 has 141 MA's), (33, 46664), (55, 46811), (69, 46949),

Gene: Izel_123 Start: 65027, Stop: 65524, Start Num: 27

Candidate Starts for Izel_123:

(10, 64925), (Start: 15 @64985 has 1 MA's), (Start: 27 @65027 has 141 MA's), (Start: 32 @65039 has 13 MA's), (38, 65081), (41, 65105), (57, 65216), (60, 65231), (69, 65339), (72, 65360), (78, 65408),

Gene: JHC117_65 Start: 40942, Stop: 40523, Start Num: 30

Candidate Starts for JHC117_65:

(1, 41290), (2, 41287), (Start: 24 @40951 has 5 MA's), (Start: 30 @40942 has 70 MA's), (Start: 32 @40933 has 13 MA's), (45, 40840), (69, 40687), (78, 40618),

Gene: JeTaime_76 Start: 48841, Stop: 49254, Start Num: 27

Candidate Starts for JeTaime_76:

(Start: 27 @48841 has 141 MA's), (33, 48856), (55, 49003), (69, 49141),

Gene: JenCasNa_68 Start: 40934, Stop: 40524, Start Num: 32

Candidate Starts for JenCasNa_68:

(1, 41291), (2, 41288), (Start: 24 @40952 has 5 MA's), (Start: 30 @40943 has 70 MA's), (Start: 32 @40934 has 13 MA's), (45, 40841), (69, 40688), (78, 40619),

Gene: JeppNRM_68 Start: 40830, Stop: 40411, Start Num: 30

Candidate Starts for JeppNRM_68:

(5, 41085), (Start: 24 @40839 has 5 MA's), (Start: 30 @40830 has 70 MA's), (Start: 32 @40821 has 13 MA's), (45, 40728), (69, 40575), (78, 40506),

Gene: Jobu08_65 Start: 40784, Stop: 40356, Start Num: 24

Candidate Starts for Jobu08_65:

(1, 41123), (2, 41120), (3, 41081), (Start: 24 @40784 has 5 MA's), (Start: 30 @40775 has 70 MA's), (Start: 32 @40766 has 13 MA's), (45, 40673), (69, 40520), (78, 40451),

Gene: KADY_66 Start: 40971, Stop: 40552, Start Num: 30

Candidate Starts for KADY_66:

(1, 41319), (2, 41316), (3, 41277), (Start: 24 @40980 has 5 MA's), (Start: 30 @40971 has 70 MA's), (Start: 32 @40962 has 13 MA's), (45, 40869), (69, 40716), (78, 40647), (81, 40617),

Gene: Kalb97_68 Start: 40828, Stop: 40409, Start Num: 30

Candidate Starts for Kalb97_68:

(5, 41083), (Start: 24 @40837 has 5 MA's), (Start: 30 @40828 has 70 MA's), (Start: 32 @40819 has 13 MA's), (45, 40726), (69, 40573), (78, 40504),

Gene: Kalnoky_68 Start: 40826, Stop: 40407, Start Num: 30

Candidate Starts for Kalnoky_68:

(Start: 24 @40835 has 5 MA's), (Start: 30 @40826 has 70 MA's), (Start: 32 @40817 has 13 MA's), (45, 40724), (69, 40571), (78, 40502),

Gene: Kanye_73 Start: 47705, Stop: 48118, Start Num: 27

Candidate Starts for Kanye_73:

(Start: 27 @47705 has 141 MA's), (33, 47720), (55, 47867), (69, 48005),

Gene: Kimchi_80 Start: 48362, Stop: 48775, Start Num: 27

Candidate Starts for Kimchi_80:

(Start: 27 @48362 has 141 MA's), (33, 48377), (55, 48524), (69, 48662),

Gene: KleverKiS_127 Start: 66517, Stop: 67014, Start Num: 27

Candidate Starts for KleverKiS_127:

(10, 66415), (Start: 15 @66475 has 1 MA's), (Start: 27 @66517 has 141 MA's), (38, 66571), (41, 66595), (57, 66706), (60, 66721), (69, 66829), (72, 66850), (78, 66898),

Gene: Kumao_84 Start: 54374, Stop: 54781, Start Num: 32

Candidate Starts for Kumao_84:

(21, 54347), (Start: 23 @54353 has 10 MA's), (Start: 32 @54374 has 13 MA's), (62, 54545), (67, 54599), (69, 54617), (70, 54620), (78, 54686), (82, 54719),

Gene: LBerry_68 Start: 40947, Stop: 40528, Start Num: 30

Candidate Starts for LBerry_68:

(1, 41295), (2, 41292), (Start: 24 @40956 has 5 MA's), (Start: 30 @40947 has 70 MA's), (Start: 32 @40938 has 13 MA's), (45, 40845), (69, 40692), (78, 40623),

Gene: LarryKay_67 Start: 40973, Stop: 40554, Start Num: 30

Candidate Starts for LarryKay_67:

(1, 41321), (2, 41318), (Start: 24 @40982 has 5 MA's), (Start: 30 @40973 has 70 MA's), (Start: 32 @40964 has 13 MA's), (45, 40871), (69, 40718), (78, 40649), (86, 40571),

Gene: Lilac_78 Start: 47977, Stop: 48390, Start Num: 27

Candidate Starts for Lilac_78:

(Start: 27 @47977 has 141 MA's), (33, 47992), (55, 48139), (69, 48277),

Gene: Lilbit_73 Start: 41279, Stop: 41770, Start Num: 23

Candidate Starts for Lilbit_73:

(Start: 23 @41279 has 10 MA's), (50, 41426), (69, 41582), (70, 41585), (76, 41621), (78, 41651), (82, 41684),

Gene: LilhomieP_124 Start: 66310, Stop: 66807, Start Num: 27

Candidate Starts for LilhomieP_124:

(10, 66208), (Start: 15 @66268 has 1 MA's), (Start: 27 @66310 has 141 MA's), (38, 66364), (41, 66388), (57, 66499), (60, 66514), (69, 66622), (72, 66643), (78, 66691),

Gene: Lilith_66 Start: 40936, Stop: 40517, Start Num: 30

Candidate Starts for Lilith_66:

(1, 41284), (2, 41281), (Start: 24 @40945 has 5 MA's), (Start: 30 @40936 has 70 MA's), (Start: 32 @40927 has 13 MA's), (45, 40834), (69, 40681), (78, 40612),

Gene: Lilizi_77 Start: 47690, Stop: 48103, Start Num: 27

Candidate Starts for Lilizi_77:

(Start: 27 @47690 has 141 MA's), (33, 47705), (55, 47852), (69, 47990),

Gene: Lilpickle_75 Start: 47575, Stop: 47988, Start Num: 27

Candidate Starts for Lilpickle_75:

(Start: 27 @47575 has 141 MA's), (33, 47590), (55, 47737), (69, 47875),

Gene: LittleLaf_73 Start: 41008, Stop: 41499, Start Num: 23

Candidate Starts for LittleLaf_73:

(Start: 23 @41008 has 10 MA's), (50, 41155), (69, 41311), (70, 41314), (76, 41350), (78, 41380), (82, 41413),

Gene: Louie6_66 Start: 40972, Stop: 40553, Start Num: 30

Candidate Starts for Louie6_66:

(Start: 24 @40981 has 5 MA's), (Start: 30 @40972 has 70 MA's), (Start: 32 @40963 has 13 MA's), (45, 40870), (69, 40717), (78, 40648), (81, 40618),

Gene: Lowa_66 Start: 40935, Stop: 40516, Start Num: 30

Candidate Starts for Lowa_66:

(1, 41283), (2, 41280), (Start: 24 @40944 has 5 MA's), (Start: 30 @40935 has 70 MA's), (Start: 32 @40926 has 13 MA's), (45, 40833), (69, 40680), (78, 40611),

Gene: LugYA_70 Start: 40944, Stop: 40525, Start Num: 30

Candidate Starts for LugYA_70:

(1, 41292), (2, 41289), (Start: 24 @40953 has 5 MA's), (Start: 30 @40944 has 70 MA's), (Start: 32 @40935 has 13 MA's), (45, 40842), (69, 40689), (78, 40620),

Gene: MPhalcon_77 Start: 48074, Stop: 48487, Start Num: 27

Candidate Starts for MPhalcon_77:

(Start: 27 @48074 has 141 MA's), (33, 48089), (55, 48236), (69, 48374),

Gene: MadMarie_67 Start: 40945, Stop: 40526, Start Num: 30

Candidate Starts for MadMarie_67:

(1, 41293), (2, 41290), (3, 41251), (Start: 24 @40954 has 5 MA's), (Start: 30 @40945 has 70 MA's), (Start: 32 @40936 has 13 MA's), (45, 40843), (69, 40690), (78, 40621),

Gene: MadamMonkfish_76 Start: 47299, Stop: 47712, Start Num: 27
Candidate Starts for MadamMonkfish_76:
(Start: 27 @47299 has 141 MA's), (33, 47314), (55, 47461), (69, 47599),

Gene: Mainiac_67 Start: 40937, Stop: 40518, Start Num: 30
Candidate Starts for Mainiac_67:
(1, 41285), (2, 41282), (Start: 24 @40946 has 5 MA's), (Start: 30 @40937 has 70 MA's), (Start: 32 @40928 has 13 MA's), (45, 40835), (69, 40682), (78, 40613),

Gene: Malinsilva_69 Start: 40926, Stop: 40516, Start Num: 32
Candidate Starts for Malinsilva_69:
(1, 41283), (2, 41280), (Start: 24 @40944 has 5 MA's), (Start: 30 @40935 has 70 MA's), (Start: 32 @40926 has 13 MA's), (45, 40833), (69, 40680), (78, 40611),

Gene: Manda_77 Start: 49161, Stop: 49574, Start Num: 27
Candidate Starts for Manda_77:
(Start: 27 @49161 has 141 MA's), (33, 49176), (55, 49323), (69, 49461),

Gene: Manu_67 Start: 40829, Stop: 40410, Start Num: 30
Candidate Starts for Manu_67:
(5, 41084), (Start: 24 @40838 has 5 MA's), (Start: 30 @40829 has 70 MA's), (Start: 32 @40820 has 13 MA's), (45, 40727), (69, 40574), (78, 40505),

Gene: MarQuardt_67 Start: 40936, Stop: 40526, Start Num: 32
Candidate Starts for MarQuardt_67:
(1, 41293), (2, 41290), (Start: 24 @40954 has 5 MA's), (Start: 30 @40945 has 70 MA's), (Start: 32 @40936 has 13 MA's), (45, 40843), (69, 40690), (78, 40621),

Gene: Marie_65 Start: 40943, Stop: 40524, Start Num: 30
Candidate Starts for Marie_65:
(1, 41291), (2, 41288), (Start: 24 @40952 has 5 MA's), (Start: 30 @40943 has 70 MA's), (Start: 32 @40934 has 13 MA's), (45, 40841), (69, 40688), (78, 40619),

Gene: Marius_68 Start: 40826, Stop: 40407, Start Num: 30
Candidate Starts for Marius_68:
(Start: 24 @40835 has 5 MA's), (Start: 30 @40826 has 70 MA's), (Start: 32 @40817 has 13 MA's), (45, 40724), (69, 40571), (78, 40502),

Gene: Marshmallow_74 Start: 48854, Stop: 49267, Start Num: 27
Candidate Starts for Marshmallow_74:
(Start: 27 @48854 has 141 MA's), (33, 48869), (60, 49046), (69, 49154), (74, 49181),

Gene: Marvin_69 Start: 40817, Stop: 41308, Start Num: 23
Candidate Starts for Marvin_69:
(Start: 23 @40817 has 10 MA's), (50, 40964), (69, 41120), (70, 41123), (76, 41159), (78, 41189), (82, 41222),

Gene: MaryV_120 Start: 62395, Stop: 62829, Start Num: 31
Candidate Starts for MaryV_120:
(Start: 31 @62395 has 5 MA's), (33, 62404), (37, 62440), (38, 62443), (46, 62506), (53, 62554), (54, 62560), (57, 62584), (68, 62683), (69, 62698), (77, 62770),

Gene: Maxxinista_78 Start: 47950, Stop: 48363, Start Num: 27
Candidate Starts for Maxxinista_78:
(Start: 27 @47950 has 141 MA's), (33, 47965), (55, 48112), (69, 48250),

Gene: Methuselah_62 Start: 40967, Stop: 40548, Start Num: 30
Candidate Starts for Methuselah_62:
(1, 41315), (2, 41312), (3, 41273), (Start: 24 @40976 has 5 MA's), (Start: 30 @40967 has 70 MA's),
(Start: 32 @40958 has 13 MA's), (45, 40865), (69, 40712), (78, 40643), (86, 40565),

Gene: Microwolf_65 Start: 40959, Stop: 40540, Start Num: 30
Candidate Starts for Microwolf_65:
(1, 41307), (2, 41304), (Start: 24 @40968 has 5 MA's), (Start: 30 @40959 has 70 MA's), (Start: 32
@40950 has 13 MA's), (45, 40857), (69, 40704), (78, 40635),

Gene: Mindy_75 Start: 47166, Stop: 47579, Start Num: 27
Candidate Starts for Mindy_75:
(Start: 27 @47166 has 141 MA's), (33, 47181), (55, 47328), (69, 47466),

Gene: Miniwave_71 Start: 47619, Stop: 48032, Start Num: 27
Candidate Starts for Miniwave_71:
(Start: 27 @47619 has 141 MA's), (33, 47634), (55, 47781), (69, 47919),

Gene: Misfit_77 Start: 49093, Stop: 49506, Start Num: 27
Candidate Starts for Misfit_77:
(Start: 27 @49093 has 141 MA's), (33, 49108), (55, 49255), (69, 49393),

Gene: Misomonster_68 Start: 40970, Stop: 40551, Start Num: 30
Candidate Starts for Misomonster_68:
(1, 41318), (2, 41315), (3, 41276), (Start: 24 @40979 has 5 MA's), (Start: 30 @40970 has 70 MA's),
(Start: 32 @40961 has 13 MA's), (45, 40868), (69, 40715), (78, 40646), (81, 40616),

Gene: Moldemort_79 Start: 48178, Stop: 48591, Start Num: 27
Candidate Starts for Moldemort_79:
(Start: 27 @48178 has 141 MA's), (33, 48193), (55, 48340), (69, 48478),

Gene: MoneyMay_66 Start: 40943, Stop: 40524, Start Num: 30
Candidate Starts for MoneyMay_66:
(1, 41291), (2, 41288), (Start: 24 @40952 has 5 MA's), (Start: 30 @40943 has 70 MA's), (Start: 32
@40934 has 13 MA's), (45, 40841), (69, 40688), (78, 40619),

Gene: MosMoris_70 Start: 40699, Stop: 41190, Start Num: 23
Candidate Starts for MosMoris_70:
(Start: 23 @40699 has 10 MA's), (50, 40846), (69, 41002), (70, 41005), (76, 41041), (78, 41071), (82,
41104),

Gene: Mosby_72 Start: 47376, Stop: 47789, Start Num: 27
Candidate Starts for Mosby_72:
(Start: 27 @47376 has 141 MA's), (33, 47391), (55, 47538), (69, 47676),

Gene: MrMagoo_142 Start: 66998, Stop: 67483, Start Num: 27
Candidate Starts for MrMagoo_142:
(Start: 23 @66989 has 10 MA's), (Start: 27 @66998 has 141 MA's), (47, 67112), (69, 67298), (72,
67319), (74, 67325), (78, 67367), (81, 67397),

Gene: MuchMore_70 Start: 40935, Stop: 40516, Start Num: 30

Candidate Starts for MuchMore_70:

(1, 41283), (2, 41280), (3, 41241), (Start: 24 @40944 has 5 MA's), (Start: 30 @40935 has 70 MA's), (Start: 32 @40926 has 13 MA's), (45, 40833), (69, 40680), (78, 40611),

Gene: Murica_79 Start: 49025, Stop: 49438, Start Num: 27

Candidate Starts for Murica_79:

(Start: 27 @49025 has 141 MA's), (33, 49040), (55, 49187), (69, 49325),

Gene: Murphy_76 Start: 48462, Stop: 48875, Start Num: 27

Candidate Starts for Murphy_76:

(Start: 27 @48462 has 141 MA's), (33, 48477), (55, 48624), (69, 48762),

Gene: MyraDee_63 Start: 37799, Stop: 37377, Start Num: 24

Candidate Starts for MyraDee_63:

(Start: 24 @37799 has 5 MA's), (36, 37754), (57, 37634), (62, 37613), (67, 37559), (69, 37541), (78, 37472), (79, 37460), (86, 37394),

Gene: Myrale_76 Start: 48719, Stop: 49132, Start Num: 27

Candidate Starts for Myrale_76:

(Start: 27 @48719 has 141 MA's), (33, 48734), (55, 48881), (69, 49019),

Gene: Nala_78 Start: 48583, Stop: 48996, Start Num: 27

Candidate Starts for Nala_78:

(Start: 27 @48583 has 141 MA's), (33, 48598), (55, 48745), (69, 48883),

Gene: Nanosmite_135 Start: 66876, Stop: 67361, Start Num: 27

Candidate Starts for Nanosmite_135:

(Start: 27 @66876 has 141 MA's), (41, 66954), (47, 66990), (56, 67035), (57, 67053), (69, 67176), (72, 67197), (78, 67245),

Gene: NelitzaMV_74 Start: 47665, Stop: 48078, Start Num: 27

Candidate Starts for NelitzaMV_74:

(Start: 27 @47665 has 141 MA's), (33, 47680), (55, 47827), (69, 47965),

Gene: Nimrod_77 Start: 49286, Stop: 49699, Start Num: 27

Candidate Starts for Nimrod_77:

(Start: 27 @49286 has 141 MA's), (33, 49301), (55, 49448), (69, 49586),

Gene: NoSleep_77 Start: 47920, Stop: 48333, Start Num: 27

Candidate Starts for NoSleep_77:

(Start: 27 @47920 has 141 MA's), (33, 47935), (55, 48082), (69, 48220),

Gene: Nova53_234 Start: 121074, Stop: 121556, Start Num: 17

Candidate Starts for Nova53_234:

(Start: 17 @121074 has 3 MA's), (20, 121083), (35, 121140), (51, 121269), (61, 121314), (62, 121317), (65, 121383), (69, 121425), (70, 121428), (71, 121434), (80, 121527), (81, 121533), (83, 121548),

Gene: OlanP_66 Start: 41002, Stop: 40583, Start Num: 30

Candidate Starts for OlanP_66:

(5, 41257), (Start: 24 @41011 has 5 MA's), (Start: 30 @41002 has 70 MA's), (Start: 32 @40993 has 13 MA's), (45, 40900), (69, 40747), (78, 40678),

Gene: Ollie_67 Start: 40814, Stop: 40395, Start Num: 30

Candidate Starts for Ollie_67:

(1, 41162), (2, 41159), (3, 41120), (4, 41111), (Start: 24 @40823 has 5 MA's), (Start: 30 @40814 has 70 MA's), (Start: 32 @40805 has 13 MA's), (45, 40712), (69, 40559), (78, 40490),

Gene: OrionPax_75 Start: 47671, Stop: 48084, Start Num: 27

Candidate Starts for OrionPax_75:

(Start: 27 @47671 has 141 MA's), (33, 47686), (55, 47833), (69, 47971),

Gene: P28Green_68 Start: 40946, Stop: 40527, Start Num: 30

Candidate Starts for P28Green_68:

(1, 41294), (2, 41291), (Start: 24 @40955 has 5 MA's), (Start: 30 @40946 has 70 MA's), (Start: 32 @40937 has 13 MA's), (45, 40844), (69, 40691), (78, 40622),

Gene: PGHhamlin_69 Start: 40935, Stop: 40516, Start Num: 30

Candidate Starts for PGHhamlin_69:

(1, 41283), (2, 41280), (Start: 24 @40944 has 5 MA's), (Start: 30 @40935 has 70 MA's), (Start: 32 @40926 has 13 MA's), (45, 40833), (69, 40680), (78, 40611),

Gene: PP_64 Start: 44619, Stop: 44173, Start Num: 30

Candidate Starts for PP_64:

(22, 44637), (Start: 30 @44619 has 70 MA's), (43, 44538), (69, 44370), (78, 44301), (79, 44289), (85, 44226),

Gene: Paperbeatsrock_75 Start: 48297, Stop: 48710, Start Num: 27

Candidate Starts for Paperbeatsrock_75:

(Start: 27 @48297 has 141 MA's), (33, 48312), (55, 48459), (69, 48597),

Gene: Pat3_74 Start: 46829, Stop: 47242, Start Num: 27

Candidate Starts for Pat3_74:

(Start: 27 @46829 has 141 MA's), (33, 46844), (55, 46991), (69, 47129),

Gene: Pawn_67 Start: 40833, Stop: 40414, Start Num: 30

Candidate Starts for Pawn_67:

(5, 41088), (8, 40983), (Start: 24 @40842 has 5 MA's), (Start: 30 @40833 has 70 MA's), (Start: 32 @40824 has 13 MA's), (45, 40731), (69, 40578), (78, 40509),

Gene: PegLeg_127 Start: 66152, Stop: 66691, Start Num: 15

Candidate Starts for PegLeg_127:

(10, 66092), (Start: 15 @66152 has 1 MA's), (Start: 27 @66194 has 141 MA's), (Start: 32 @66206 has 13 MA's), (38, 66248), (41, 66272), (56, 66365), (57, 66383), (60, 66398), (69, 66506), (72, 66527), (78, 66575),

Gene: Pembroke_67 Start: 40935, Stop: 40525, Start Num: 32

Candidate Starts for Pembroke_67:

(1, 41292), (2, 41289), (Start: 24 @40953 has 5 MA's), (Start: 30 @40944 has 70 MA's), (Start: 32 @40935 has 13 MA's), (45, 40842), (69, 40689), (78, 40620),

Gene: Penny1_67 Start: 40947, Stop: 40528, Start Num: 30

Candidate Starts for Penny1_67:

(1, 41295), (2, 41292), (Start: 24 @40956 has 5 MA's), (Start: 30 @40947 has 70 MA's), (Start: 32 @40938 has 13 MA's), (45, 40845), (69, 40692), (78, 40623),

Gene: Petra64142_80 Start: 49516, Stop: 49929, Start Num: 27
Candidate Starts for Petra64142_80:
(Start: 27 @49516 has 141 MA's), (33, 49531), (55, 49678), (69, 49816),

Gene: Phaja_74 Start: 48123, Stop: 48536, Start Num: 27
Candidate Starts for Phaja_74:
(Start: 27 @48123 has 141 MA's), (33, 48138), (55, 48285), (69, 48423),

Gene: Pharsalus_73 Start: 48097, Stop: 48510, Start Num: 27
Candidate Starts for Pharsalus_73:
(Start: 27 @48097 has 141 MA's), (33, 48112), (55, 48259), (69, 48397),

Gene: PhatBacter_80 Start: 49069, Stop: 49482, Start Num: 27
Candidate Starts for PhatBacter_80:
(Start: 27 @49069 has 141 MA's), (33, 49084), (55, 49231), (69, 49369),

Gene: Phaux_78 Start: 49064, Stop: 49477, Start Num: 27
Candidate Starts for Phaux_78:
(Start: 27 @49064 has 141 MA's), (33, 49079), (55, 49226), (69, 49364),

Gene: PhishRPhriends_65 Start: 40010, Stop: 39591, Start Num: 30
Candidate Starts for PhishRPhriends_65:
(5, 40265), (Start: 24 @40019 has 5 MA's), (Start: 30 @40010 has 70 MA's), (Start: 32 @40001 has 13 MA's), (45, 39908), (69, 39755), (78, 39686),

Gene: Phoebe_68 Start: 40936, Stop: 40517, Start Num: 30
Candidate Starts for Phoebe_68:
(1, 41284), (2, 41281), (Start: 24 @40945 has 5 MA's), (Start: 30 @40936 has 70 MA's), (Start: 32 @40927 has 13 MA's), (45, 40834), (69, 40681), (78, 40612),

Gene: Phoxy_67 Start: 40968, Stop: 40549, Start Num: 30
Candidate Starts for Phoxy_67:
(1, 41316), (2, 41313), (Start: 24 @40977 has 5 MA's), (Start: 30 @40968 has 70 MA's), (Start: 32 @40959 has 13 MA's), (45, 40866), (69, 40713), (78, 40644),

Gene: Phranny_68 Start: 40815, Stop: 40396, Start Num: 30
Candidate Starts for Phranny_68:
(5, 41070), (Start: 24 @40824 has 5 MA's), (Start: 30 @40815 has 70 MA's), (Start: 32 @40806 has 13 MA's), (45, 40713), (69, 40560), (78, 40491),

Gene: Phrux_73 Start: 47660, Stop: 48073, Start Num: 27
Candidate Starts for Phrux_73:
(Start: 27 @47660 has 141 MA's), (33, 47675), (55, 47822), (69, 47960),

Gene: Poise_74 Start: 40595, Stop: 41086, Start Num: 23
Candidate Starts for Poise_74:
(Start: 23 @40595 has 10 MA's), (50, 40742), (69, 40898), (70, 40901), (76, 40937), (78, 40967), (82, 41000),

Gene: Policronamos_79 Start: 49064, Stop: 49477, Start Num: 27
Candidate Starts for Policronamos_79:
(Start: 27 @49064 has 141 MA's), (33, 49079), (55, 49226), (69, 49364),

Gene: Porky_75 Start: 47490, Stop: 47903, Start Num: 27
Candidate Starts for Porky_75:
(Start: 27 @47490 has 141 MA's), (33, 47505), (55, 47652), (69, 47790),

Gene: PotatoSplit_68 Start: 40947, Stop: 40528, Start Num: 30
Candidate Starts for PotatoSplit_68:
(1, 41295), (2, 41292), (Start: 24 @40956 has 5 MA's), (Start: 30 @40947 has 70 MA's), (Start: 32 @40938 has 13 MA's), (45, 40845), (69, 40692), (78, 40623),

Gene: Pumpkin_79 Start: 48718, Stop: 49131, Start Num: 27
Candidate Starts for Pumpkin_79:
(Start: 27 @48718 has 141 MA's), (33, 48733), (55, 48880), (69, 49018),

Gene: PurpleHaze_67 Start: 40828, Stop: 40409, Start Num: 30
Candidate Starts for PurpleHaze_67:
(Start: 24 @40837 has 5 MA's), (Start: 30 @40828 has 70 MA's), (Start: 32 @40819 has 13 MA's), (45, 40726), (69, 40573), (78, 40504),

Gene: Quallification_77 Start: 48705, Stop: 49118, Start Num: 27
Candidate Starts for Quallification_77:
(Start: 27 @48705 has 141 MA's), (33, 48720), (55, 48867), (69, 49005),

Gene: Raela_74 Start: 41152, Stop: 41643, Start Num: 23
Candidate Starts for Raela_74:
(Start: 23 @41152 has 10 MA's), (50, 41299), (69, 41455), (70, 41458), (76, 41494), (78, 41524), (82, 41557),

Gene: Rakim_77 Start: 48174, Stop: 48587, Start Num: 27
Candidate Starts for Rakim_77:
(Start: 27 @48174 has 141 MA's), (33, 48189), (55, 48336), (69, 48474),

Gene: Reba_67 Start: 40488, Stop: 40069, Start Num: 30
Candidate Starts for Reba_67:
(5, 40743), (Start: 24 @40497 has 5 MA's), (Start: 30 @40488 has 70 MA's), (Start: 32 @40479 has 13 MA's), (45, 40386), (69, 40233), (78, 40164),

Gene: RedRaider77_73 Start: 40540, Stop: 41031, Start Num: 23
Candidate Starts for RedRaider77_73:
(Start: 23 @40540 has 10 MA's), (50, 40687), (69, 40843), (70, 40846), (76, 40882), (78, 40912), (82, 40945),

Gene: Reindeer_128 Start: 67626, Stop: 68123, Start Num: 27
Candidate Starts for Reindeer_128:
(Start: 27 @67626 has 141 MA's), (38, 67680), (39, 67686), (41, 67704), (45, 67740), (56, 67797), (57, 67815), (60, 67830), (68, 67923), (69, 67938), (72, 67959), (74, 67965), (78, 68007),

Gene: Rey_142 Start: 66571, Stop: 67056, Start Num: 27
Candidate Starts for Rey_142:
(7, 66394), (9, 66466), (11, 66475), (12, 66499), (13, 66502), (Start: 27 @66571 has 141 MA's), (47, 66685), (56, 66730), (57, 66748), (69, 66871), (72, 66892), (78, 66940), (81, 66970), (88, 67027),

Gene: Reynauld_80 Start: 64338, Stop: 63856, Start Num: 27

Candidate Starts for Reynauld_80:

(14, 64383), (16, 64374), (Start: 24 @64344 has 5 MA's), (26, 64341), (Start: 27 @64338 has 141 MA's), (34, 64317), (44, 64224), (46, 64218), (59, 64137), (69, 64020), (73, 63996), (78, 63945), (87, 63861),

Gene: Rimmer_77 Start: 48410, Stop: 48823, Start Num: 27

Candidate Starts for Rimmer_77:

(Start: 27 @48410 has 141 MA's), (33, 48425), (55, 48572), (69, 48710),

Gene: RiverMonster_76 Start: 48238, Stop: 48651, Start Num: 27

Candidate Starts for RiverMonster_76:

(Start: 27 @48238 has 141 MA's), (33, 48253), (55, 48400), (69, 48538),

Gene: Rummer_66 Start: 40962, Stop: 40552, Start Num: 32

Candidate Starts for Rummer_66:

(1, 41319), (2, 41316), (3, 41277), (4, 41268), (Start: 24 @40980 has 5 MA's), (Start: 30 @40971 has 70 MA's), (Start: 32 @40962 has 13 MA's), (45, 40869), (69, 40716), (78, 40647),

Gene: Sabia_67 Start: 40943, Stop: 40533, Start Num: 32

Candidate Starts for Sabia_67:

(1, 41300), (2, 41297), (Start: 24 @40961 has 5 MA's), (Start: 30 @40952 has 70 MA's), (Start: 32 @40943 has 13 MA's), (45, 40850), (69, 40697), (78, 40628),

Gene: Sabinator_65 Start: 40942, Stop: 40523, Start Num: 30

Candidate Starts for Sabinator_65:

(1, 41290), (2, 41287), (Start: 24 @40951 has 5 MA's), (Start: 30 @40942 has 70 MA's), (Start: 32 @40933 has 13 MA's), (45, 40840), (69, 40687), (78, 40618),

Gene: Saints25_75 Start: 47648, Stop: 48061, Start Num: 27

Candidate Starts for Saints25_75:

(Start: 27 @47648 has 141 MA's), (33, 47663), (55, 47810), (69, 47948),

Gene: Sassay_71 Start: 46338, Stop: 46751, Start Num: 27

Candidate Starts for Sassay_71:

(Start: 27 @46338 has 141 MA's), (33, 46353), (55, 46500), (69, 46638),

Gene: ShamWow_76 Start: 48560, Stop: 48973, Start Num: 27

Candidate Starts for ShamWow_76:

(Start: 27 @48560 has 141 MA's), (33, 48575), (55, 48722), (69, 48860),

Gene: Sheen_63 Start: 43521, Stop: 43072, Start Num: 30

Candidate Starts for Sheen_63:

(6, 43725), (Start: 30 @43521 has 70 MA's), (40, 43458), (57, 43362), (58, 43353), (69, 43269), (76, 43230), (78, 43200), (89, 43089),

Gene: Simpliphy_75 Start: 47638, Stop: 48051, Start Num: 27

Candidate Starts for Simpliphy_75:

(Start: 27 @47638 has 141 MA's), (33, 47653), (55, 47800), (69, 47938),

Gene: SirDuracell_75 Start: 46924, Stop: 47337, Start Num: 27

Candidate Starts for SirDuracell_75:

(Start: 27 @46924 has 141 MA's), (33, 46939), (60, 47116), (69, 47224), (74, 47251),

Gene: Skinny_130 Start: 67311, Stop: 67808, Start Num: 27

Candidate Starts for Skinny_130:

(10, 67209), (Start: 15 @67269 has 1 MA's), (Start: 27 @67311 has 141 MA's), (Start: 32 @67323 has 13 MA's), (38, 67365), (41, 67389), (57, 67500), (60, 67515), (69, 67623), (72, 67644), (78, 67692),

Gene: SlimJimmy_123 Start: 66020, Stop: 66517, Start Num: 27

Candidate Starts for SlimJimmy_123:

(Start: 15 @65978 has 1 MA's), (Start: 27 @66020 has 141 MA's), (38, 66074), (41, 66098), (57, 66209), (60, 66224), (69, 66332), (72, 66353), (78, 66401),

Gene: Snickers_65 Start: 40908, Stop: 40498, Start Num: 32

Candidate Starts for Snickers_65:

(1, 41265), (2, 41262), (Start: 24 @40926 has 5 MA's), (Start: 30 @40917 has 70 MA's), (Start: 32 @40908 has 13 MA's), (45, 40815), (69, 40662), (78, 40593),

Gene: SoYo_66 Start: 40855, Stop: 40436, Start Num: 30

Candidate Starts for SoYo_66:

(1, 41203), (2, 41200), (Start: 24 @40864 has 5 MA's), (Start: 30 @40855 has 70 MA's), (Start: 32 @40846 has 13 MA's), (45, 40753), (69, 40600), (78, 40531),

Gene: SoilDragon_67 Start: 40391, Stop: 39972, Start Num: 30

Candidate Starts for SoilDragon_67:

(1, 40739), (2, 40736), (3, 40697), (Start: 24 @40400 has 5 MA's), (Start: 30 @40391 has 70 MA's), (Start: 32 @40382 has 13 MA's), (45, 40289), (69, 40136), (78, 40067),

Gene: SophKB_73 Start: 47316, Stop: 47729, Start Num: 27

Candidate Starts for SophKB_73:

(Start: 27 @47316 has 141 MA's), (33, 47331), (55, 47478), (69, 47616),

Gene: Soshari_69 Start: 40967, Stop: 40548, Start Num: 30

Candidate Starts for Soshari_69:

(1, 41315), (2, 41312), (3, 41273), (Start: 24 @40976 has 5 MA's), (Start: 30 @40967 has 70 MA's), (Start: 32 @40958 has 13 MA's), (45, 40865), (69, 40712), (78, 40643), (86, 40565),

Gene: Sotrice96_77 Start: 48319, Stop: 48732, Start Num: 27

Candidate Starts for Sotrice96_77:

(Start: 27 @48319 has 141 MA's), (33, 48334), (55, 48481), (69, 48619),

Gene: Spike509_67 Start: 40968, Stop: 40549, Start Num: 30

Candidate Starts for Spike509_67:

(1, 41316), (2, 41313), (Start: 24 @40977 has 5 MA's), (Start: 30 @40968 has 70 MA's), (Start: 32 @40959 has 13 MA's), (45, 40866), (69, 40713), (78, 40644),

Gene: Stagni_66 Start: 40937, Stop: 40527, Start Num: 32

Candidate Starts for Stagni_66:

(1, 41294), (2, 41291), (3, 41252), (Start: 24 @40955 has 5 MA's), (Start: 30 @40946 has 70 MA's), (Start: 32 @40937 has 13 MA's), (45, 40844), (69, 40691), (78, 40622),

Gene: Stank_79 Start: 48577, Stop: 48990, Start Num: 27

Candidate Starts for Stank_79:

(Start: 27 @48577 has 141 MA's), (33, 48592), (55, 48739), (69, 48877),

Gene: Stark_77 Start: 48121, Stop: 48534, Start Num: 27

Candidate Starts for Stark_77:

(Start: 27 @48121 has 141 MA's), (33, 48136), (55, 48283), (69, 48421),

Gene: StellaBean_74 Start: 47884, Stop: 48297, Start Num: 27

Candidate Starts for StellaBean_74:

(Start: 27 @47884 has 141 MA's), (33, 47899), (55, 48046), (69, 48184),

Gene: StepMih_66 Start: 40928, Stop: 40518, Start Num: 32

Candidate Starts for StepMih_66:

(1, 41285), (2, 41282), (3, 41243), (4, 41234), (Start: 24 @40946 has 5 MA's), (Start: 30 @40937 has 70 MA's), (Start: 32 @40928 has 13 MA's), (45, 40835), (69, 40682), (78, 40613),

Gene: StolenFromERC_79 Start: 48359, Stop: 48772, Start Num: 27

Candidate Starts for StolenFromERC_79:

(Start: 27 @48359 has 141 MA's), (33, 48374), (55, 48521), (69, 48659),

Gene: StormChicken_78 Start: 49017, Stop: 49430, Start Num: 27

Candidate Starts for StormChicken_78:

(Start: 27 @49017 has 141 MA's), (33, 49032), (55, 49179), (69, 49317),

Gene: TBrady12_79 Start: 48058, Stop: 48471, Start Num: 27

Candidate Starts for TBrady12_79:

(Start: 27 @48058 has 141 MA's), (33, 48073), (55, 48220), (69, 48358),

Gene: Tarkin_75 Start: 48306, Stop: 48719, Start Num: 27

Candidate Starts for Tarkin_75:

(Start: 27 @48306 has 141 MA's), (33, 48321), (55, 48468), (69, 48606),

Gene: Taurus_68 Start: 40934, Stop: 40524, Start Num: 32

Candidate Starts for Taurus_68:

(1, 41291), (2, 41288), (Start: 24 @40952 has 5 MA's), (Start: 30 @40943 has 70 MA's), (Start: 32 @40934 has 13 MA's), (45, 40841), (69, 40688), (78, 40619),

Gene: TeardropMSU_72 Start: 47306, Stop: 47719, Start Num: 27

Candidate Starts for TeardropMSU_72:

(Start: 27 @47306 has 141 MA's), (33, 47321), (55, 47468), (69, 47606),

Gene: Teaspoon_77 Start: 48200, Stop: 48613, Start Num: 27

Candidate Starts for Teaspoon_77:

(Start: 27 @48200 has 141 MA's), (33, 48215), (55, 48362), (69, 48500),

Gene: Terminus_79 Start: 49093, Stop: 49506, Start Num: 27

Candidate Starts for Terminus_79:

(Start: 27 @49093 has 141 MA's), (33, 49108), (55, 49255), (69, 49393),

Gene: Tesla_70 Start: 40389, Stop: 40880, Start Num: 23

Candidate Starts for Tesla_70:

(Start: 23 @40389 has 10 MA's), (50, 40536), (69, 40692), (70, 40695), (76, 40731), (78, 40761), (82, 40794),

Gene: Thresher_78 Start: 49180, Stop: 49593, Start Num: 27

Candidate Starts for Thresher_78:

(Start: 27 @49180 has 141 MA's), (33, 49195), (55, 49342), (69, 49480),

Gene: Tiffany_66 Start: 40838, Stop: 40410, Start Num: 24

Candidate Starts for Tiffany_66:

(1, 41177), (2, 41174), (Start: 24 @40838 has 5 MA's), (Start: 30 @40829 has 70 MA's), (Start: 32 @40820 has 13 MA's), (45, 40727), (69, 40574), (78, 40505),

Gene: Timshel_60 Start: 42789, Stop: 42340, Start Num: 30

Candidate Starts for Timshel_60:

(Start: 30 @42789 has 70 MA's), (34, 42774), (40, 42726), (57, 42630), (62, 42609), (63, 42606), (69, 42537), (76, 42498), (78, 42468), (84, 42411), (89, 42357),

Gene: TinyPebbles_65 Start: 40973, Stop: 40554, Start Num: 30

Candidate Starts for TinyPebbles_65:

(1, 41321), (2, 41318), (3, 41279), (Start: 24 @40982 has 5 MA's), (Start: 30 @40973 has 70 MA's), (Start: 32 @40964 has 13 MA's), (45, 40871), (69, 40718), (78, 40649), (81, 40619),

Gene: Tomaszewski_71 Start: 47469, Stop: 47882, Start Num: 27

Candidate Starts for Tomaszewski_71:

(Start: 27 @47469 has 141 MA's), (33, 47484), (60, 47661), (69, 47769), (74, 47796),

Gene: Toro_63 Start: 43633, Stop: 43184, Start Num: 30

Candidate Starts for Toro_63:

(6, 43837), (Start: 30 @43633 has 70 MA's), (40, 43570), (57, 43474), (58, 43465), (69, 43381), (76, 43342), (78, 43312), (89, 43201),

Gene: Toto_74 Start: 48560, Stop: 48973, Start Num: 27

Candidate Starts for Toto_74:

(Start: 27 @48560 has 141 MA's), (33, 48575), (55, 48722), (69, 48860),

Gene: Traaww1_72 Start: 47744, Stop: 48157, Start Num: 27

Candidate Starts for Traaww1_72:

(Start: 27 @47744 has 141 MA's), (33, 47759), (55, 47906), (69, 48044),

Gene: Tuco_77 Start: 49068, Stop: 49481, Start Num: 27

Candidate Starts for Tuco_77:

(Start: 27 @49068 has 141 MA's), (33, 49083), (55, 49230), (69, 49368),

Gene: TyDawg_119 Start: 65035, Stop: 65532, Start Num: 27

Candidate Starts for TyDawg_119:

(10, 64933), (Start: 15 @64993 has 1 MA's), (Start: 27 @65035 has 141 MA's), (38, 65089), (41, 65113), (57, 65224), (60, 65239), (69, 65347), (72, 65368), (78, 65416),

Gene: Ukulele_71 Start: 47451, Stop: 47864, Start Num: 27

Candidate Starts for Ukulele_71:

(Start: 27 @47451 has 141 MA's), (33, 47466), (55, 47613), (69, 47751),

Gene: VasuNzinga_72 Start: 40491, Stop: 40982, Start Num: 23

Candidate Starts for VasuNzinga_72:

(19, 40473), (Start: 23 @40491 has 10 MA's), (50, 40638), (69, 40794), (70, 40797), (76, 40833), (78, 40863), (82, 40896),

Gene: Vix_65 Start: 41026, Stop: 40607, Start Num: 30

Candidate Starts for Vix_65:

(1, 41374), (2, 41371), (Start: 24 @41035 has 5 MA's), (Start: 30 @41026 has 70 MA's), (Start: 32 @41017 has 13 MA's), (45, 40924), (69, 40771), (78, 40702),

Gene: Watson_66 Start: 40926, Stop: 40516, Start Num: 32

Candidate Starts for Watson_66:

(1, 41283), (2, 41280), (Start: 24 @40944 has 5 MA's), (Start: 30 @40935 has 70 MA's), (Start: 32 @40926 has 13 MA's), (45, 40833), (69, 40680), (78, 40611),

Gene: Wiggin_78 Start: 48145, Stop: 48558, Start Num: 27

Candidate Starts for Wiggin_78:

(Start: 27 @48145 has 141 MA's), (33, 48160), (55, 48307), (69, 48445),

Gene: Wildcat_134 Start: 64288, Stop: 64722, Start Num: 31

Candidate Starts for Wildcat_134:

(Start: 31 @64288 has 5 MA's), (33, 64297), (37, 64333), (38, 64336), (46, 64399), (53, 64447), (54, 64453), (57, 64477), (68, 64576), (69, 64591), (77, 64663),

Gene: Willez_71 Start: 46338, Stop: 46751, Start Num: 27

Candidate Starts for Willez_71:

(Start: 27 @46338 has 141 MA's), (33, 46353), (55, 46500), (69, 46638),

Gene: Wooldri_69 Start: 40855, Stop: 40436, Start Num: 30

Candidate Starts for Wooldri_69:

(1, 41203), (2, 41200), (3, 41161), (Start: 24 @40864 has 5 MA's), (Start: 30 @40855 has 70 MA's), (Start: 32 @40846 has 13 MA's), (45, 40753), (69, 40600), (78, 40531), (86, 40453),

Gene: Xandras_75 Start: 47553, Stop: 47966, Start Num: 27

Candidate Starts for Xandras_75:

(Start: 27 @47553 has 141 MA's), (33, 47568), (55, 47715), (69, 47853),

Gene: YassJohnny_73 Start: 47508, Stop: 47921, Start Num: 27

Candidate Starts for YassJohnny_73:

(Start: 27 @47508 has 141 MA's), (33, 47523), (60, 47700), (69, 47808), (74, 47835),

Gene: Youngblood_79 Start: 49020, Stop: 49433, Start Num: 27

Candidate Starts for Youngblood_79:

(Start: 27 @49020 has 141 MA's), (33, 49035), (55, 49182), (69, 49320),

Gene: Zetzy_66 Start: 40506, Stop: 40087, Start Num: 30

Candidate Starts for Zetzy_66:

(1, 40854), (2, 40851), (3, 40812), (Start: 24 @40515 has 5 MA's), (Start: 30 @40506 has 70 MA's), (Start: 32 @40497 has 13 MA's), (36, 40470), (45, 40404), (69, 40251), (78, 40182),

Gene: xkcd_79 Start: 49210, Stop: 49623, Start Num: 27

Candidate Starts for xkcd_79:

(Start: 27 @49210 has 141 MA's), (33, 49225), (55, 49372), (69, 49510),