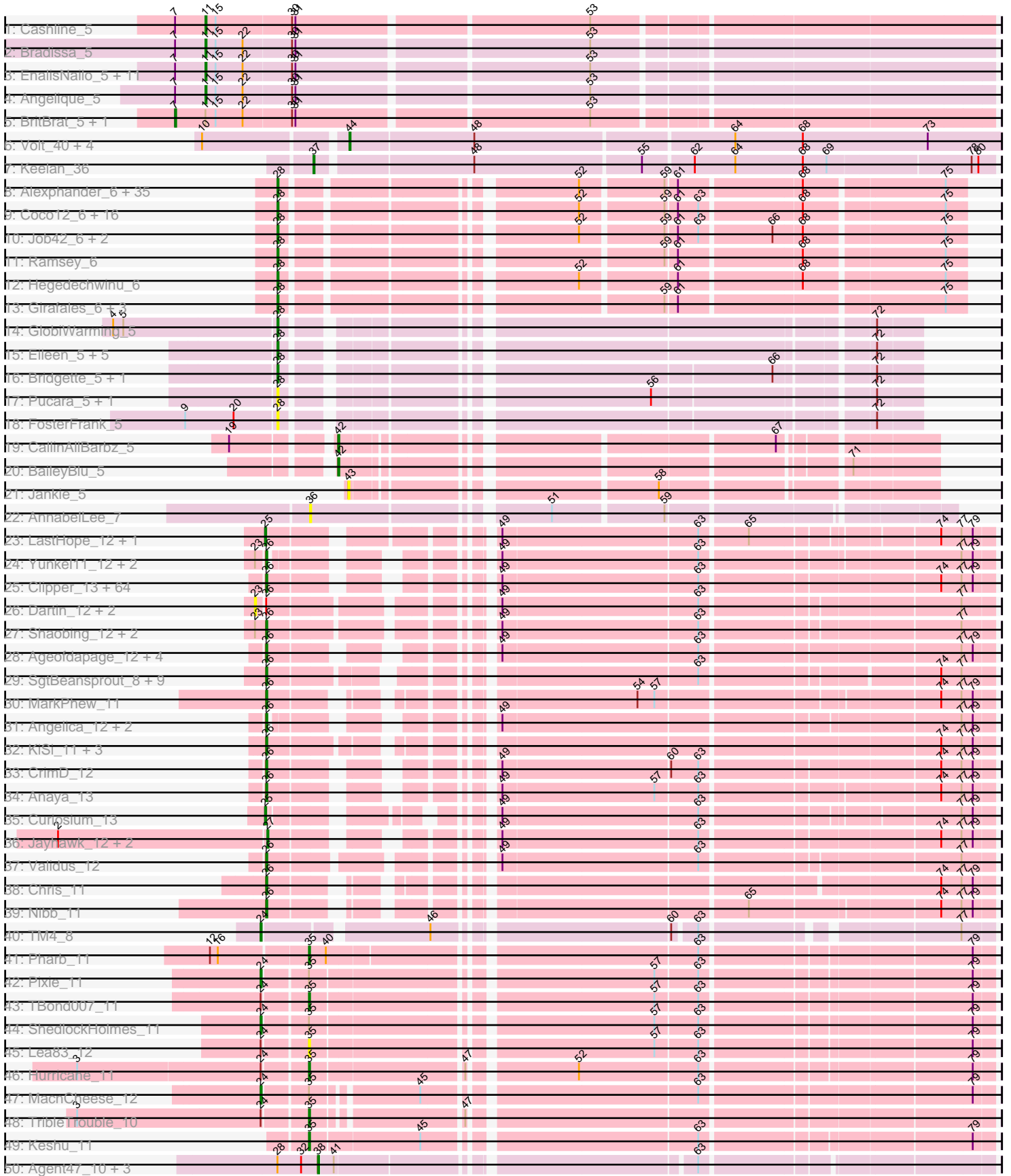
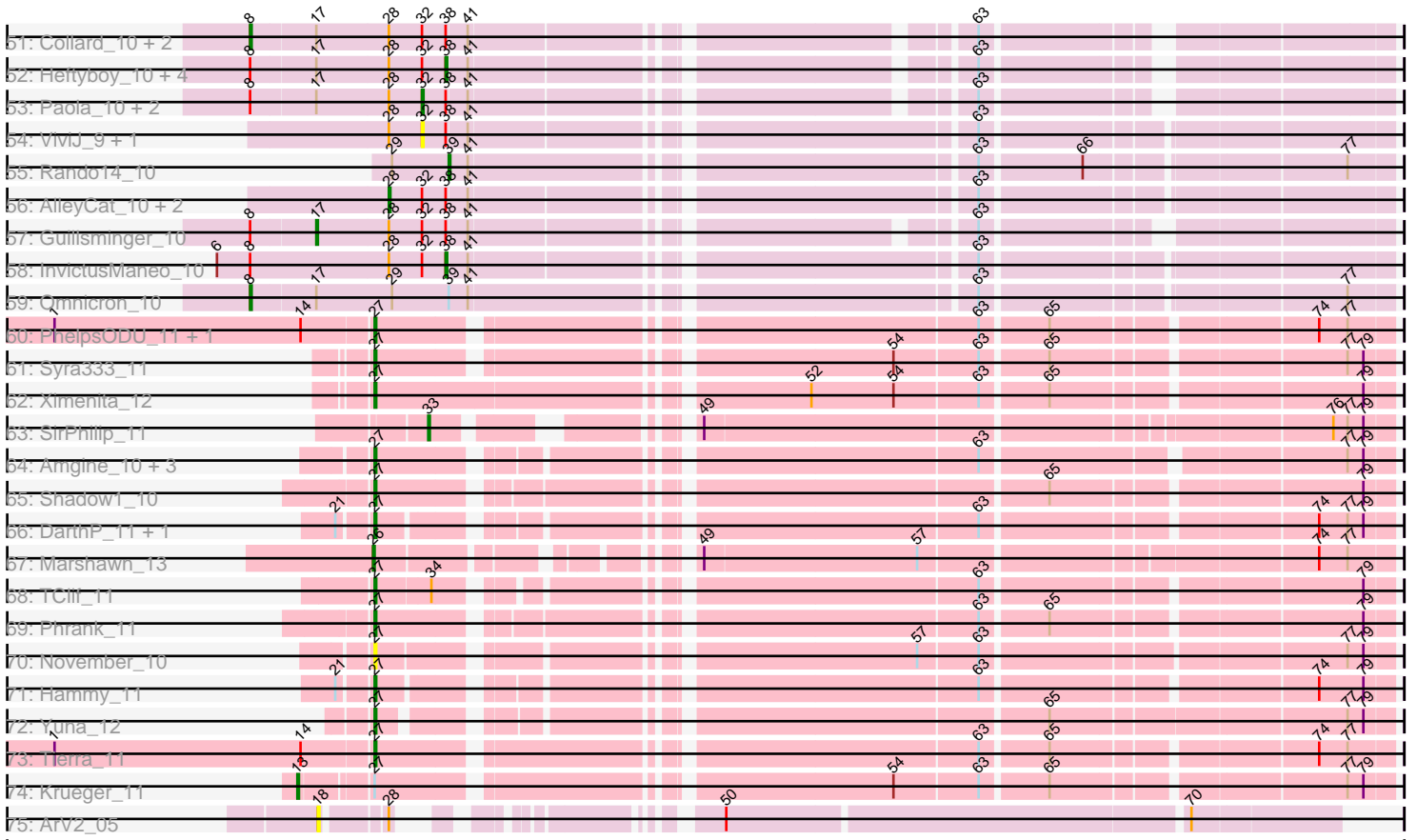


Pham 215784



Pham 215784



Note: Tracks are now grouped by subcluster and scaled. Switching in subcluster is indicated by changes in track color. Track scale is now set by default to display the region 30 bp upstream of start 1 to 30 bp downstream of the last possible start. If this default region is judged to be packed too tightly with annotated starts, the track will be further scaled to only show that region of the ORF with annotated starts. This action will be indicated by adding "Zoomed" to the title. For starts, yellow indicates the location of called starts comprised solely of Glimmer/GeneMark auto-annotations, green indicates the location of called starts with at least 1 manual gene annotation.

Pham 215784 Report

This analysis was run 02/22/25 on database version 588.

Pham number 215784 has 264 members, 32 are drafts.

Phages represented in each track:

- Track 1 : Cashline_5
- Track 2 : Bradissa_5
- Track 3 : EnalisNailo_5, Jablanski_5, Posh_5, Pytheas_5, Confidence_5, BeeGee_5, EMSquaredA_5, Wrigley_5, LonelyBoi_5, Floral_5, Marteena_5, Lilas_5
- Track 4 : Angelique_5
- Track 5 : BritBrat_5, Pollux_5
- Track 6 : Volt_40, Guey18_43, Fryberger_38, Ronaldo_41, Ziko_41
- Track 7 : Keelan_36
- Track 8 : Alexphander_6, Leozinho_6, LittleShirley_6, Brookers_6, Frankie_6, Plumbus_6, Beakin_6, BigPhil_6, Bobi_6, Kingsley_6, Lorde_6, RockyHorror_6, Seagreen_6, Boomer_6, Enby_6, BuzzLyseyear_6, Juice456_6, JalFarm20_6, MulchExplorer_6, DirtMcgirt_6, OwlsT2W_6, Cerasum_6, Tchotchke_6, Sarma624_6, DosHalletts_6, Brushbloom_6, Oksu_6, Flathead_6, UncleRicky_6, Stap_6, Kimberlium_6, SimranZ1_6, Drago_6, Squirty_6, Velveteen_6, Tootsieroll_6
- Track 9 : Coco12_6, Emmaloid_7, Aloeri_6, Rialto_6, Starceвич_6, ChickenDinner_6, Piper2020_6, DocMcStuffins_6, TootsiePop_6, Mova_6, DaWorst_6, Awesomesauce_6, Pollywog_6, Slim_7, Misha28_6, Spikelee_6, Totinger_6
- Track 10 : Job42_6, Marker_6, Madiba_6
- Track 11 : Ramsey_6
- Track 12 : Hegedechwinu_6
- Track 13 : Girafales_6, Mozy_6, Cornucopia_6, Quico_6
- Track 14 : GlobiWarming_5
- Track 15 : Eileen_5, Constance_5, Judy_5, Peas_5, PeggyLeg03_5, KayMoney_5
- Track 16 : Bridgette_5, Karkharias_5
- Track 17 : Pucara_5, HotPotato_5
- Track 18 : FosterFrank_5
- Track 19 : CallinAllBarbz_5
- Track 20 : BaileyBlu_5
- Track 21 : Jankie_5
- Track 22 : AnnabelLee_7
- Track 23 : LastHope_12, TingHuaYa_12
- Track 24 : Yunkel11_12, Guanica15_12, Efra2_12
- Track 25 : Clipper_13, Capricorn_12, SamuelLPlaqson_12, Blizzard_12, CallaLilly_12, Adonis_12, Lunahalos_12, Dalmuri_12, BEEST_12, JAWS_12, Belladonna_12, Adephegia_12, Tachez_12, HedwigODU_12, Beezoo_12, Homura_12, YoureAdopted_11, CheetoDust_12, Spock_12, Twitch_12,

MeaningOfLife_12, TaiwanKao_12, ShiaSurprise_12, Ganymede_12, Durfee_12, Llorens_12, TreyKay_12, Rosmarinus_12, Prithvi_12, BarrelRoll_12, CaseJules_12, Jarvi_12, Tiri_12, TruffulaTree_12, Mynx_12, Asayake_12, Peel_12, BGIlluviae_12, CREW_12, TiniBug_12, DrHayes_12, MacKat_12, Geraldini_12, Megsy_12, Padfoot_12, Apocalypse_12, Piatt_12, Boiiii_12, Topper_12, Hyperbowlee_12, Bella96_12, Ramen_12, Inky_12, LindNT_12, Jeckyll_12, Zabiza_12, Atiba_12, ActinUp_12, BaghaKamala_12, Veliki_12, Urkel_12, Zavala_12, Pokerus_11, QuincyRose_11, Joy99_12

- Track 26 : Dartin_12, McMater_12, Richo_12
- Track 27 : Shaobing_12, Peanam_12, Niklas_12
- Track 28 : Ageofdapage_12, Murucutumbu_12, Stinson_12, LaterM_12, Bern_13
- Track 29 : SgtBeansprout_8, Nutello_8, Enkosi_8, Torres_8, Mdavu_8, Teejan_8, Amelie_8, Nikao_8, LilPharaoh_8, Biglebops_8
- Track 30 : MarkPhew_11
- Track 31 : Angelica_12, Sulley_12, Deby_12
- Track 32 : KiSi_11, Scarlett_11, LeMond_11, Oscar_11
- Track 33 : CrimD_12
- Track 34 : Anaya_13
- Track 35 : Curiosium_13
- Track 36 : Jayhawk_12, Rapunzel97_12, Slimphazie_12
- Track 37 : Validus_12
- Track 38 : Chris_11
- Track 39 : Nibb_11
- Track 40 : TM4_8
- Track 41 : Pharb_11
- Track 42 : Pixie_11
- Track 43 : TBond007_11
- Track 44 : ShedlockHolmes_11
- Track 45 : Lea83_12
- Track 46 : Hurricane_11
- Track 47 : MacnCheese_12
- Track 48 : TribbleTrouble_10
- Track 49 : Keshu_11
- Track 50 : Agent47_10, Edugator_9, Dadosky_10, Psycho_10
- Track 51 : Collard_10, Gengar_10, Leston_10
- Track 52 : Heftyboy_10, Thyatira_10, Miryou_10, SoSeph_10, Waterfoul_10
- Track 53 : Paola_10, Feyre_10, OkiRoe_10
- Track 54 : ViviJ_9, Neighly_10
- Track 55 : Rando14_10
- Track 56 : AlleyCat_10, Larva_10, Kratio_9
- Track 57 : Guillsminger_10
- Track 58 : InvictusManeo_10
- Track 59 : Omnicron_10
- Track 60 : PhelpsODU_11, Unicorn_11
- Track 61 : Syra333_11
- Track 62 : Ximenita_12
- Track 63 : SirPhilip_11
- Track 64 : Amgine_10, Applecrisp_10, Fefferhead_11, Ellie_9
- Track 65 : Shadow1_10
- Track 66 : DarthP_11, Amohnition_11
- Track 67 : Marshawn_13
- Track 68 : TClif_11
- Track 69 : Phrank_11

- Track 70 : November_10
- Track 71 : Hammy_11
- Track 72 : Yuna_12
- Track 73 : Tierra_11
- Track 74 : Krueger_11
- Track 75 : ArV2_05

Summary of Final Annotations (See graph section above for start numbers):

The start number called the most often in the published annotations is 26, it was called in 93 of the 232 non-draft genes in the pham.

Genes that call this "Most Annotated" start:

- ActinUp_12, Adephegia_12, Adonis_12, Ageofdapage_12, Amelie_8, Anaya_13, Angelica_12, Apocalypse_12, Asayake_12, Atiba_12, BEEST_12, BGIluviae_12, BaghaKamala_12, BarrelRoll_12, Beezoo_12, Bella96_12, Belladonna_12, Bern_13, Biglebops_8, Blizzard_12, Boiiii_12, CREW_12, CallaLilly_12, Capricorn_12, CaseJules_12, CheetoDust_12, Chris_11, Clipper_13, CrimD_12, Dalmuri_12, Deby_12, DrHayes_12, Durfee_12, Efra2_12, Enkosi_8, Ganymede_12, Geraldini_12, Guanica15_12, HedwigODU_12, Homura_12, Hyperbowlee_12, Inky_12, JAWS_12, Jarvi_12, Jeckyll_12, Joy99_12, KiSi_11, LaterM_12, LeMond_11, LilPharaoh_8, LindNT_12, Llorens_12, Lunahalos_12, MacKat_12, MarkPhew_11, Marshawn_13, Mdavu_8, MeaningOfLife_12, Megsy_12, Murucutumbu_12, Mynx_12, Nibb_11, Nikao_8, Niklas_12, Nutello_8, Oscar_11, Padfoot_12, Peanam_12, Peel_12, Piatt_12, Pokerus_11, Prithvi_12, QuincyRose_11, Ramen_12, Rosmarinus_12, SamuelLPlaqson_12, Scarlett_11, SgtBeansprout_8, Shaobing_12, ShiaSurprise_12, Spock_12, Stinson_12, Sulley_12, Tachez_12, TaiwanKao_12, Teejan_8, TiniBug_12, Tiri_12, Topper_12, Torres_8, TreyKay_12, TruffulaTree_12, Twitch_12, Urkel_12, Validus_12, Veliki_12, YoureAdopted_11, Yunkel11_12, Zabiza_12, Zavala_12,

Genes that have the "Most Annotated" start but do not call it:

- Dartin_12, McMater_12, Richo_12,

Genes that do not have the "Most Annotated" start:

- Agent47_10, Alexphander_6, AlleyCat_10, Aloeri_6, Amgine_10, Amohnition_11, Angelique_5, AnnabelLee_7, Applecrisp_10, ArV2_05, Awesomesauce_6, BaileyBlu_5, Beakin_6, BeeGee_5, BigPhil_6, Bobi_6, Boomer_6, Bradissa_5, Bridgette_5, BritBrat_5, Brookers_6, Brushbloom_6, BuzzLyseyear_6, CallinAllBarbz_5, Cashline_5, Cerasum_6, ChickenDinner_6, Coco12_6, Collard_10, Confidence_5, Constance_5, Cornucopia_6, Curiosium_13, DaWorst_6, Dadosky_10, DarthP_11, DirtMcgirt_6, DocMcStuffins_6, DosHalletts_6, Drago_6, EMSquaredA_5, Edugator_9, Eileen_5, Ellie_9, Emmaloid_7, EnalisNailo_5, Enby_6, Fefferhead_11, Feyre_10, Flathead_6, Floral_5, FosterFrank_5, Frankie_6, Fryberger_38, Gengar_10, Girafales_6, GlobiWarming_5, Guey18_43, Guillsminger_10, Hammy_11, Heftyboy_10, Hegedechwinu_6, HotPotato_5, Hurricane_11, InvictusManeo_10, Jablanski_5, JalFarm20_6, Jankie_5, Jayhawk_12, Job42_6, Judy_5, Juice456_6, Karkharias_5, KayMoney_5, Keelan_36, Keshu_11, Kimberlium_6, Kingsley_6, Kratio_9, Krueger_11, Larva_10, LastHope_12, Lea83_12, Leozinho_6, Leston_10, Lilas_5, LittleShirley_6, LonelyBoi_5, Lorde_6,

MacnCheese_12, Madiba_6, Marker_6, Marteena_5, Miryou_10, Misha28_6, Mova_6, Mozy_6, MulchExplorer_6, Neighly_10, November_10, OkiRoe_10, Oksu_6, Omnicron_10, OwlsT2W_6, Paola_10, Peas_5, PeggyLeg03_5, Pharb_11, PhelpsODU_11, Phrank_11, Piper2020_6, Pixie_11, Plumbus_6, Pollux_5, Pollywog_6, Posh_5, Psycho_10, Pucara_5, Pytheas_5, Quico_6, Ramsey_6, Rando14_10, Rapunzel97_12, Rialto_6, RockyHorror_6, Ronaldo_41, Sarma624_6, Seagreen_6, Shadow1_10, ShedlockHolmes_11, SimranZ1_6, SirPhilip_11, Slim_7, Slimphazie_12, SoSeph_10, Spikelee_6, Squirty_6, Stap_6, Starcevich_6, Syra333_11, TBond007_11, TClif_11, TM4_8, Tchotchke_6, Thyatira_10, Tierra_11, TingHuaYa_12, TootsiePop_6, Tootsieroll_6, Totinger_6, TribbleTrouble_10, UncleRicky_6, Unicorn_11, Velveteen_6, ViviJ_9, Volt_40, Waterfoul_10, Wrigley_5, Ximenita_12, Yuna_12, Ziko_41,

Summary by start number:

Start 7:

- Found in 17 of 264 (6.4%) of genes in pham
- Manual Annotations of this start: 2 of 232
- Called 11.8% of time when present
- Phage (with cluster) where this start called: BritBrat_5 (CY2), Pollux_5 (CY1),

Start 8:

- Found in 14 of 264 (5.3%) of genes in pham
- Manual Annotations of this start: 4 of 232
- Called 28.6% of time when present
- Phage (with cluster) where this start called: Collard_10 (K5), Gengar_10 (K5), Leston_10 (K5), Omnicron_10 (K5),

Start 11:

- Found in 17 of 264 (6.4%) of genes in pham
- Manual Annotations of this start: 15 of 232
- Called 88.2% of time when present
- Phage (with cluster) where this start called: Angelique_5 (CY1), BeeGee_5 (CY), Bradissa_5 (CY1), Cashline_5 (CY), Confidence_5 (CY1), EMSquaredA_5 (CY1), EnalisNailo_5 (CY1), Floral_5 (CY1), Jablanski_5 (CY), Lilas_5 (CY1), LonelyBoi_5 (CY), Marteena_5 (CY1), Posh_5 (CY), Pytheas_5 (CY), Wrigley_5 (CY),

Start 13:

- Found in 1 of 264 (0.4%) of genes in pham
- Manual Annotations of this start: 1 of 232
- Called 100.0% of time when present
- Phage (with cluster) where this start called: Krueger_11 (K6),

Start 17:

- Found in 13 of 264 (4.9%) of genes in pham
- Manual Annotations of this start: 1 of 232
- Called 7.7% of time when present
- Phage (with cluster) where this start called: Guillsminger_10 (K5),

Start 18:

- Found in 1 of 264 (0.4%) of genes in pham
- No Manual Annotations of this start.
- Called 100.0% of time when present

- Phage (with cluster) where this start called: ArV2_05 (singleton),

Start 23:

- Found in 9 of 264 (3.4%) of genes in pham
- No Manual Annotations of this start.
- Called 33.3% of time when present
- Phage (with cluster) where this start called: Dartin_12 (K1), McMater_12 (K1), Richo_12 (K1),

Start 24:

- Found in 8 of 264 (3.0%) of genes in pham
- Manual Annotations of this start: 4 of 232
- Called 50.0% of time when present
- Phage (with cluster) where this start called: MacnCheese_12 (K3), Pixie_11 (K3), ShedlockHolmes_11 (K3), TM4_8 (K2),

Start 25:

- Found in 3 of 264 (1.1%) of genes in pham
- Manual Annotations of this start: 2 of 232
- Called 100.0% of time when present
- Phage (with cluster) where this start called: Curiosium_13 (K1), LastHope_12 (K1), TingHuaYa_12 (K1),

Start 26:

- Found in 103 of 264 (39.0%) of genes in pham
- Manual Annotations of this start: 93 of 232
- Called 97.1% of time when present
- Phage (with cluster) where this start called: ActinUp_12 (K1), Adephagia_12 (K1), Adonis_12 (K1), Ageofdapage_12 (K1), Amelie_8 (K1), Anaya_13 (K1), Angelica_12 (K1), Apocalypse_12 (K1), Asayake_12 (K1), Atiba_12 (K1), BEEEST_12 (K1), BGIlluvia_12 (K1), BaghaKamala_12 (K1), BarrelRoll_12 (K1), Beezoo_12 (K1), Bella96_12 (K1), Belladonna_12 (K1), Bern_13 (K1), Binglebops_8 (K1), Blizzard_12 (K1), Boiiii_12 (K1), CREW_12 (K1), CallaLilly_12 (K1), Capricorn_12 (K1), CaseJules_12 (K1), CheetoDust_12 (K1), Chris_11 (K1), Clipper_13 (K1), CrimD_12 (K1), Dalmuri_12 (K1), Deby_12 (K1), DrHayes_12 (K1), Durfee_12 (K1), Efra2_12 (K1), Enkosi_8 (K1), Ganymede_12 (K1), Geraldini_12 (K1), Guanica15_12 (K1), HedwigODU_12 (K1), Homura_12 (K1), Hyperbowlee_12 (K1), Inky_12 (K1), JAWS_12 (K1), Jarvi_12 (K1), Jeckyll_12 (K1), Joy99_12 (K1), KiSi_11 (K1), LaterM_12 (K1), LeMond_11 (K1), LilPharaoh_8 (K1), LindNT_12 (K1), Llorens_12 (K1), Lunahalos_12 (K1), MacKat_12 (K1), MarkPhew_11 (K1), Marshawn_13 (K6), Mdavu_8 (K1), MeaningOfLife_12 (K1), Megsy_12 (K1), Murucutumbu_12 (K1), Mynx_12 (K1), Nibb_11 (K1), Nikao_8 (K1), Niklas_12 (K1), Nutello_8 (K1), Oscar_11 (K1), Padfoot_12 (K1), Peanam_12 (K1), Peel_12 (K1), Piatt_12 (K1), Pokerus_11 (K1), Prithvi_12 (K1), QuincyRose_11 (K1), Ramen_12 (K1), Rosmarinus_12 (K1), SamuelLPlaqson_12 (K1), Scarlett_11 (K1), SgtBeansprout_8 (K1), Shaobing_12 (K1), ShiaSurprise_12 (K1), Spock_12 (K1), Stinson_12 (K1), Sulley_12 (K1), Tachez_12 (K1), TaiwanKao_12 (K1), Teejan_8 (K1), TiniBug_12 (K1), Tiri_12 (K1), Topper_12 (K1), Torres_8 (K1), TreyKay_12 (K1), TruffulaTree_12 (K1), Twitch_12 (K1), Urkel_12 (K1), Validus_12 (K1), Veliki_12 (K1), YoureAdopted_11 (K1), Yunkel11_12 (K1), Zabiza_12 (K1), Zavala_12 (K1),

Start 27:

- Found in 21 of 264 (8.0%) of genes in pham

- Manual Annotations of this start: 18 of 232
- Called 95.2% of time when present
- Phage (with cluster) where this start called: Amgine_10 (K6), Amohnition_11 (K6), Applecrisp_10 (K6), DarthP_11 (K6), Ellie_9 (K6), Fefferhead_11 (K6), Hammy_11 (K6), Jayhawk_12 (K1), November_10 (K6), PhelpsODU_11 (K6), Phrank_11 (K6), Rapunzel97_12 (K1), Shadow1_10 (K6), Slimphazie_12 (K1), Syra333_11 (K6), TClif_11 (K6), Tierra_11 (K6), Unicorn_11 (K6), Ximenita_12 (K6), Yuna_12 (K6),

Start 28:

- Found in 97 of 264 (36.7%) of genes in pham
- Manual Annotations of this start: 64 of 232
- Called 79.4% of time when present
- Phage (with cluster) where this start called: Alexphander_6 (F1), AlleyCat_10 (K5), Aloeri_6 (F1), Awesomesauce_6 (F1), Beakin_6 (F1), BigPhil_6 (F1), Bobi_6 (F1), Boomer_6 (F1), Bridgette_5 (FA), Brookers_6 (F1), Brushbloom_6 (F1), BuzzLyseyear_6 (F1), Cerasum_6 (F1), ChickenDinner_6 (F1), Coco12_6 (F1), Constance_5 (FA), Cornucopia_6 (F1), DaWorst_6 (F1), DirtMcgirt_6 (F1), DocMcStuffins_6 (F1), DosHalletts_6 (F1), Drago_6 (F1), Eileen_5 (FA), Emmaloid_7 (F1), Enby_6 (F1), Flathead_6 (F1), FosterFrank_5 (FA), Frankie_6 (F1), Girafales_6 (F1), GlobiWarming_5 (FA), Hegedechwinu_6 (F1), HotPotato_5 (FA), JalFarm20_6 (F1), Job42_6 (F1), Judy_5 (FA), Juice456_6 (F1), Karkharias_5 (FA), KayMoney_5 (FA), Kimberlium_6 (F1), Kingsley_6 (F1), Kratio_9 (K5), Larva_10 (K5), Leozinho_6 (F1), LittleShirley_6 (F1), Lorde_6 (F1), Madiba_6 (F1), Marker_6 (F1), Misha28_6 (F1), Mova_6 (F1), Mozy_6 (F1), MulchExplorer_6 (F1), Oksu_6 (F1), OwlsT2W_6 (F1), Peas_5 (FA), PeggyLeg03_5 (FA), Piper2020_6 (F1), Plumbus_6 (F1), Pollywog_6 (F1), Pucara_5 (FA), Quico_6 (F1), Ramsey_6 (F1), Rialto_6 (F1), RockyHorror_6 (F1), Sarma624_6 (F1), Seagreen_6 (F1), SimranZ1_6 (F1), Slim_7 (F1), Spikelee_6 (F1), Squirty_6 (F3), Stap_6 (F1), Starcevich_6 (F1), Tchotchke_6 (F1), TootsiePop_6 (F1), Tootsieroll_6 (F1), Totinger_6 (F1), UncleRicky_6 (F1), Velveteen_6 (F1),

Start 32:

- Found in 22 of 264 (8.3%) of genes in pham
- Manual Annotations of this start: 3 of 232
- Called 22.7% of time when present
- Phage (with cluster) where this start called: Feyre_10 (K5), Neighly_10 (K3), OkiRoe_10 (K5), Paola_10 (K5), ViviJ_9 (K5),

Start 33:

- Found in 1 of 264 (0.4%) of genes in pham
- Manual Annotations of this start: 1 of 232
- Called 100.0% of time when present
- Phage (with cluster) where this start called: SirPhilip_11 (K6),

Start 35:

- Found in 9 of 264 (3.4%) of genes in pham
- Manual Annotations of this start: 5 of 232
- Called 66.7% of time when present
- Phage (with cluster) where this start called: Hurricane_11 (K3), Keshu_11 (K3), Lea83_12 (K3), Pharb_11 (K3), TBond007_11 (K3), TribbleTrouble_10 (K3),

Start 36:

- Found in 1 of 264 (0.4%) of genes in pham

- No Manual Annotations of this start.
- Called 100.0% of time when present
- Phage (with cluster) where this start called: AnnabelLee_7 (FR),

Start 37:

- Found in 1 of 264 (0.4%) of genes in pham
- Manual Annotations of this start: 1 of 232
- Called 100.0% of time when present
- Phage (with cluster) where this start called: Keelan_36 (DP),

Start 38:

- Found in 22 of 264 (8.3%) of genes in pham
- Manual Annotations of this start: 10 of 232
- Called 45.5% of time when present
- Phage (with cluster) where this start called: Agent47_10 (K5), Dadosky_10 (K5), Edugator_9 (K5), Heftyboy_10 (K5), InvictusManeo_10 (K5), Miryou_10 (K5), Psycho_10 (K5), SoSeph_10 (K5), Thyatira_10 (K5), Waterfoul_10 (K5),

Start 39:

- Found in 2 of 264 (0.8%) of genes in pham
- Manual Annotations of this start: 1 of 232
- Called 50.0% of time when present
- Phage (with cluster) where this start called: Rando14_10 (K5),

Start 42:

- Found in 2 of 264 (0.8%) of genes in pham
- Manual Annotations of this start: 2 of 232
- Called 100.0% of time when present
- Phage (with cluster) where this start called: BaileyBlu_5 (FP), CallinAllBarbz_5 (FP),

Start 43:

- Found in 1 of 264 (0.4%) of genes in pham
- No Manual Annotations of this start.
- Called 100.0% of time when present
- Phage (with cluster) where this start called: Jankie_5 (FP),

Start 44:

- Found in 5 of 264 (1.9%) of genes in pham
- Manual Annotations of this start: 5 of 232
- Called 100.0% of time when present
- Phage (with cluster) where this start called: Fryberger_38 (DP), Guey18_43 (DP), Ronaldo_41 (DP), Volt_40 (DP), Ziko_41 (DP),

Summary by clusters:

There are 15 clusters represented in this pham: FP, F1, singleton, F3, K2, FR, CY, CY1, K3, FA, K1, K6, K5, CY2, DP,

Info for manual annotations of cluster CY:

- Start number 11 was manually annotated 7 times for cluster CY.

Info for manual annotations of cluster CY1:

- Start number 7 was manually annotated 1 time for cluster CY1.

- Start number 11 was manually annotated 8 times for cluster CY1.

Info for manual annotations of cluster CY2:

- Start number 7 was manually annotated 1 time for cluster CY2.

Info for manual annotations of cluster DP:

- Start number 37 was manually annotated 1 time for cluster DP.
- Start number 44 was manually annotated 5 times for cluster DP.

Info for manual annotations of cluster F1:

- Start number 28 was manually annotated 52 times for cluster F1.

Info for manual annotations of cluster F3:

- Start number 28 was manually annotated 1 time for cluster F3.

Info for manual annotations of cluster FA:

- Start number 28 was manually annotated 8 times for cluster FA.

Info for manual annotations of cluster FP:

- Start number 42 was manually annotated 2 times for cluster FP.

Info for manual annotations of cluster K1:

- Start number 25 was manually annotated 2 times for cluster K1.
- Start number 26 was manually annotated 92 times for cluster K1.
- Start number 27 was manually annotated 3 times for cluster K1.

Info for manual annotations of cluster K2:

- Start number 24 was manually annotated 1 time for cluster K2.

Info for manual annotations of cluster K3:

- Start number 24 was manually annotated 3 times for cluster K3.
- Start number 35 was manually annotated 5 times for cluster K3.

Info for manual annotations of cluster K5:

- Start number 8 was manually annotated 4 times for cluster K5.
- Start number 17 was manually annotated 1 time for cluster K5.
- Start number 28 was manually annotated 3 times for cluster K5.
- Start number 32 was manually annotated 3 times for cluster K5.
- Start number 38 was manually annotated 10 times for cluster K5.
- Start number 39 was manually annotated 1 time for cluster K5.

Info for manual annotations of cluster K6:

- Start number 13 was manually annotated 1 time for cluster K6.
- Start number 26 was manually annotated 1 time for cluster K6.
- Start number 27 was manually annotated 15 times for cluster K6.
- Start number 33 was manually annotated 1 time for cluster K6.

Gene Information:

Gene: ActinUp_12 Start: 7313, Stop: 7855, Start Num: 26

Candidate Starts for ActinUp_12:

(Start: 26 @7313 has 93 MA's), (49, 7448), (63, 7616), (74, 7811), (77, 7829), (79, 7838),

Gene: Adephagia_12 Start: 7313, Stop: 7855, Start Num: 26

Candidate Starts for Adephagia_12:

(Start: 26 @7313 has 93 MA's), (49, 7448), (63, 7616), (74, 7811), (77, 7829), (79, 7838),

Gene: Adonis_12 Start: 7324, Stop: 7866, Start Num: 26

Candidate Starts for Adonis_12:

(Start: 26 @7324 has 93 MA's), (49, 7459), (63, 7627), (74, 7822), (77, 7840), (79, 7849),

Gene: Agent47_10 Start: 7496, Stop: 8026, Start Num: 38

Candidate Starts for Agent47_10:

(Start: 28 @7460 has 64 MA's), (Start: 32 @7481 has 3 MA's), (Start: 38 @7496 has 10 MA's), (41, 7508), (63, 7793),

Gene: Ageofdapage_12 Start: 7253, Stop: 7795, Start Num: 26

Candidate Starts for Ageofdapage_12:

(Start: 26 @7253 has 93 MA's), (49, 7388), (63, 7556), (77, 7769), (79, 7778),

Gene: Alexphander_6 Start: 4408, Stop: 4944, Start Num: 28

Candidate Starts for Alexphander_6:

(Start: 28 @4408 has 64 MA's), (52, 4630), (59, 4699), (61, 4708), (68, 4810), (75, 4927),

Gene: AlleyCat_10 Start: 7355, Stop: 7921, Start Num: 28

Candidate Starts for AlleyCat_10:

(Start: 28 @7355 has 64 MA's), (Start: 32 @7376 has 3 MA's), (Start: 38 @7391 has 10 MA's), (41, 7403), (63, 7688),

Gene: Aloeri_6 Start: 4412, Stop: 4948, Start Num: 28

Candidate Starts for Aloeri_6:

(Start: 28 @4412 has 64 MA's), (52, 4634), (59, 4703), (61, 4712), (63, 4730), (68, 4814), (75, 4931),

Gene: Amelie_8 Start: 6589, Stop: 7137, Start Num: 26

Candidate Starts for Amelie_8:

(Start: 26 @6589 has 93 MA's), (63, 6904), (74, 7093), (77, 7111),

Gene: Amgine_10 Start: 6944, Stop: 7507, Start Num: 27

Candidate Starts for Amgine_10:

(Start: 27 @6944 has 18 MA's), (63, 7274), (77, 7481), (79, 7490),

Gene: Amohndition_11 Start: 7198, Stop: 7755, Start Num: 27

Candidate Starts for Amohndition_11:

(21, 7180), (Start: 27 @7198 has 18 MA's), (63, 7522), (74, 7711), (77, 7729), (79, 7738),

Gene: Anaya_13 Start: 7316, Stop: 7855, Start Num: 26

Candidate Starts for Anaya_13:

(Start: 26 @7316 has 93 MA's), (49, 7451), (57, 7583), (63, 7619), (74, 7811), (77, 7829), (79, 7838),

Gene: Angelica_12 Start: 7293, Stop: 7826, Start Num: 26

Candidate Starts for Angelica_12:

(Start: 26 @7293 has 93 MA's), (49, 7422), (77, 7800), (79, 7809),

Gene: Angelique_5 Start: 4595, Stop: 5251, Start Num: 11
Candidate Starts for Angelique_5:
(Start: 7 @4568 has 2 MA's), (Start: 11 @4595 has 15 MA's), (15, 4604), (22, 4628), (30, 4670), (31, 4673), (53, 4919),

Gene: AnnabelLee_7 Start: 4967, Stop: 5473, Start Num: 36
Candidate Starts for AnnabelLee_7:
(36, 4967), (51, 5153), (59, 5246),

Gene: Apocalypse_12 Start: 7291, Stop: 7833, Start Num: 26
Candidate Starts for Apocalypse_12:
(Start: 26 @7291 has 93 MA's), (49, 7426), (63, 7594), (74, 7789), (77, 7807), (79, 7816),

Gene: Applecrisp_10 Start: 7342, Stop: 7908, Start Num: 27
Candidate Starts for Applecrisp_10:
(Start: 27 @7342 has 18 MA's), (63, 7675), (77, 7882), (79, 7891),

Gene: ArV2_05 Start: 4203, Stop: 4730, Start Num: 18
Candidate Starts for ArV2_05:
(18, 4203), (Start: 28 @4236 has 64 MA's), (50, 4362), (70, 4641),

Gene: Asayake_12 Start: 7357, Stop: 7899, Start Num: 26
Candidate Starts for Asayake_12:
(Start: 26 @7357 has 93 MA's), (49, 7492), (63, 7660), (74, 7855), (77, 7873), (79, 7882),

Gene: Atiba_12 Start: 7279, Stop: 7821, Start Num: 26
Candidate Starts for Atiba_12:
(Start: 26 @7279 has 93 MA's), (49, 7414), (63, 7582), (74, 7777), (77, 7795), (79, 7804),

Gene: Awesomesauce_6 Start: 4411, Stop: 4947, Start Num: 28
Candidate Starts for Awesomesauce_6:
(Start: 28 @4411 has 64 MA's), (52, 4633), (59, 4702), (61, 4711), (63, 4729), (68, 4813), (75, 4930),

Gene: BEEST_12 Start: 7357, Stop: 7899, Start Num: 26
Candidate Starts for BEEST_12:
(Start: 26 @7357 has 93 MA's), (49, 7492), (63, 7660), (74, 7855), (77, 7873), (79, 7882),

Gene: BGlluviae_12 Start: 7357, Stop: 7899, Start Num: 26
Candidate Starts for BGlluviae_12:
(Start: 26 @7357 has 93 MA's), (49, 7492), (63, 7660), (74, 7855), (77, 7873), (79, 7882),

Gene: BaghaKamala_12 Start: 7289, Stop: 7825, Start Num: 26
Candidate Starts for BaghaKamala_12:
(Start: 26 @7289 has 93 MA's), (49, 7418), (63, 7586), (74, 7781), (77, 7799), (79, 7808),

Gene: BaileyBlu_5 Start: 4160, Stop: 4618, Start Num: 42
Candidate Starts for BaileyBlu_5:
(Start: 42 @4160 has 2 MA's), (71, 4547),

Gene: BarrelRoll_12 Start: 7307, Stop: 7849, Start Num: 26
Candidate Starts for BarrelRoll_12:
(Start: 26 @7307 has 93 MA's), (49, 7442), (63, 7610), (74, 7805), (77, 7823), (79, 7832),

Gene: Beakin_6 Start: 4411, Stop: 4947, Start Num: 28
Candidate Starts for Beakin_6:
(Start: 28 @4411 has 64 MA's), (52, 4633), (59, 4702), (61, 4711), (68, 4813), (75, 4930),

Gene: BeeGee_5 Start: 4598, Stop: 5254, Start Num: 11
Candidate Starts for BeeGee_5:
(Start: 7 @4571 has 2 MA's), (Start: 11 @4598 has 15 MA's), (15, 4607), (22, 4631), (30, 4673), (31, 4676), (53, 4922),

Gene: Beezoo_12 Start: 7339, Stop: 7875, Start Num: 26
Candidate Starts for Beezoo_12:
(Start: 26 @7339 has 93 MA's), (49, 7468), (63, 7636), (74, 7831), (77, 7849), (79, 7858),

Gene: Bella96_12 Start: 7242, Stop: 7784, Start Num: 26
Candidate Starts for Bella96_12:
(Start: 26 @7242 has 93 MA's), (49, 7377), (63, 7545), (74, 7740), (77, 7758), (79, 7767),

Gene: Belladonna_12 Start: 7357, Stop: 7899, Start Num: 26
Candidate Starts for Belladonna_12:
(Start: 26 @7357 has 93 MA's), (49, 7492), (63, 7660), (74, 7855), (77, 7873), (79, 7882),

Gene: Bern_13 Start: 7282, Stop: 7815, Start Num: 26
Candidate Starts for Bern_13:
(Start: 26 @7282 has 93 MA's), (49, 7411), (63, 7579), (77, 7789), (79, 7798),

Gene: BigPhil_6 Start: 4408, Stop: 4944, Start Num: 28
Candidate Starts for BigPhil_6:
(Start: 28 @4408 has 64 MA's), (52, 4630), (59, 4699), (61, 4708), (68, 4810), (75, 4927),

Gene: Biglebops_8 Start: 6589, Stop: 7137, Start Num: 26
Candidate Starts for Biglebops_8:
(Start: 26 @6589 has 93 MA's), (63, 6904), (74, 7093), (77, 7111),

Gene: Blizzard_12 Start: 7357, Stop: 7899, Start Num: 26
Candidate Starts for Blizzard_12:
(Start: 26 @7357 has 93 MA's), (49, 7492), (63, 7660), (74, 7855), (77, 7873), (79, 7882),

Gene: Bobi_6 Start: 4408, Stop: 4944, Start Num: 28
Candidate Starts for Bobi_6:
(Start: 28 @4408 has 64 MA's), (52, 4630), (59, 4699), (61, 4708), (68, 4810), (75, 4927),

Gene: Boiiii_12 Start: 7357, Stop: 7899, Start Num: 26
Candidate Starts for Boiiii_12:
(Start: 26 @7357 has 93 MA's), (49, 7492), (63, 7660), (74, 7855), (77, 7873), (79, 7882),

Gene: Boomer_6 Start: 4408, Stop: 4944, Start Num: 28
Candidate Starts for Boomer_6:
(Start: 28 @4408 has 64 MA's), (52, 4630), (59, 4699), (61, 4708), (68, 4810), (75, 4927),

Gene: Bradissa_5 Start: 4602, Stop: 5258, Start Num: 11
Candidate Starts for Bradissa_5:
(Start: 7 @4575 has 2 MA's), (Start: 11 @4602 has 15 MA's), (15, 4611), (22, 4635), (30, 4677), (31, 4680), (53, 4926),

Gene: Bridgette_5 Start: 5076, Stop: 5570, Start Num: 28

Candidate Starts for Bridgette_5:

(Start: 28 @5076 has 64 MA's), (66, 5457), (72, 5532),

Gene: BritBrat_5 Start: 4577, Stop: 5260, Start Num: 7

Candidate Starts for BritBrat_5:

(Start: 7 @4577 has 2 MA's), (Start: 11 @4604 has 15 MA's), (15, 4613), (22, 4637), (30, 4679), (31, 4682), (53, 4928),

Gene: Brookers_6 Start: 4408, Stop: 4944, Start Num: 28

Candidate Starts for Brookers_6:

(Start: 28 @4408 has 64 MA's), (52, 4630), (59, 4699), (61, 4708), (68, 4810), (75, 4927),

Gene: Brushbloom_6 Start: 4408, Stop: 4944, Start Num: 28

Candidate Starts for Brushbloom_6:

(Start: 28 @4408 has 64 MA's), (52, 4630), (59, 4699), (61, 4708), (68, 4810), (75, 4927),

Gene: BuzzLyseyear_6 Start: 4407, Stop: 4943, Start Num: 28

Candidate Starts for BuzzLyseyear_6:

(Start: 28 @4407 has 64 MA's), (52, 4629), (59, 4698), (61, 4707), (68, 4809), (75, 4926),

Gene: CREW_12 Start: 7357, Stop: 7899, Start Num: 26

Candidate Starts for CREW_12:

(Start: 26 @7357 has 93 MA's), (49, 7492), (63, 7660), (74, 7855), (77, 7873), (79, 7882),

Gene: CallaLilly_12 Start: 7286, Stop: 7822, Start Num: 26

Candidate Starts for CallaLilly_12:

(Start: 26 @7286 has 93 MA's), (49, 7415), (63, 7583), (74, 7778), (77, 7796), (79, 7805),

Gene: CallinAllBarbz_5 Start: 4163, Stop: 4621, Start Num: 42

Candidate Starts for CallinAllBarbz_5:

(19, 4088), (Start: 42 @4163 has 2 MA's), (67, 4499),

Gene: Capricorn_12 Start: 7357, Stop: 7899, Start Num: 26

Candidate Starts for Capricorn_12:

(Start: 26 @7357 has 93 MA's), (49, 7492), (63, 7660), (74, 7855), (77, 7873), (79, 7882),

Gene: CaseJules_12 Start: 7357, Stop: 7899, Start Num: 26

Candidate Starts for CaseJules_12:

(Start: 26 @7357 has 93 MA's), (49, 7492), (63, 7660), (74, 7855), (77, 7873), (79, 7882),

Gene: Cashline_5 Start: 4451, Stop: 5107, Start Num: 11

Candidate Starts for Cashline_5:

(Start: 7 @4424 has 2 MA's), (Start: 11 @4451 has 15 MA's), (15, 4460), (30, 4526), (31, 4529), (53, 4775),

Gene: Cerasum_6 Start: 4408, Stop: 4944, Start Num: 28

Candidate Starts for Cerasum_6:

(Start: 28 @4408 has 64 MA's), (52, 4630), (59, 4699), (61, 4708), (68, 4810), (75, 4927),

Gene: CheetoDust_12 Start: 7333, Stop: 7875, Start Num: 26

Candidate Starts for CheetoDust_12:

(Start: 26 @7333 has 93 MA's), (49, 7468), (63, 7636), (74, 7831), (77, 7849), (79, 7858),

Gene: ChickenDinner_6 Start: 4412, Stop: 4948, Start Num: 28

Candidate Starts for ChickenDinner_6:

(Start: 28 @4412 has 64 MA's), (52, 4634), (59, 4703), (61, 4712), (63, 4730), (68, 4814), (75, 4931),

Gene: Chris_11 Start: 6182, Stop: 6724, Start Num: 26

Candidate Starts for Chris_11:

(Start: 26 @6182 has 93 MA's), (74, 6680), (77, 6698), (79, 6707),

Gene: Clipper_13 Start: 7333, Stop: 7875, Start Num: 26

Candidate Starts for Clipper_13:

(Start: 26 @7333 has 93 MA's), (49, 7468), (63, 7636), (74, 7831), (77, 7849), (79, 7858),

Gene: Coco12_6 Start: 4408, Stop: 4944, Start Num: 28

Candidate Starts for Coco12_6:

(Start: 28 @4408 has 64 MA's), (52, 4630), (59, 4699), (61, 4708), (63, 4726), (68, 4810), (75, 4927),

Gene: Collard_10 Start: 7358, Stop: 7987, Start Num: 8

Candidate Starts for Collard_10:

(Start: 8 @7358 has 4 MA's), (Start: 17 @7397 has 1 MA's), (Start: 28 @7442 has 64 MA's), (Start: 32 @7463 has 3 MA's), (Start: 38 @7478 has 10 MA's), (41, 7490), (63, 7763),

Gene: Confidence_5 Start: 4598, Stop: 5254, Start Num: 11

Candidate Starts for Confidence_5:

(Start: 7 @4571 has 2 MA's), (Start: 11 @4598 has 15 MA's), (15, 4607), (22, 4631), (30, 4673), (31, 4676), (53, 4922),

Gene: Constance_5 Start: 5077, Stop: 5574, Start Num: 28

Candidate Starts for Constance_5:

(Start: 28 @5077 has 64 MA's), (72, 5536),

Gene: Cornucopia_6 Start: 4408, Stop: 4944, Start Num: 28

Candidate Starts for Cornucopia_6:

(Start: 28 @4408 has 64 MA's), (59, 4699), (61, 4708), (75, 4927),

Gene: CrimD_12 Start: 7285, Stop: 7827, Start Num: 26

Candidate Starts for CrimD_12:

(Start: 26 @7285 has 93 MA's), (49, 7420), (60, 7564), (63, 7588), (74, 7783), (77, 7801), (79, 7810),

Gene: Curiosium_13 Start: 6689, Stop: 7222, Start Num: 25

Candidate Starts for Curiosium_13:

(Start: 25 @6689 has 2 MA's), (49, 6824), (63, 6992), (77, 7196), (79, 7205),

Gene: DaWorst_6 Start: 4409, Stop: 4945, Start Num: 28

Candidate Starts for DaWorst_6:

(Start: 28 @4409 has 64 MA's), (52, 4631), (59, 4700), (61, 4709), (63, 4727), (68, 4811), (75, 4928),

Gene: Dadosky_10 Start: 7391, Stop: 7921, Start Num: 38

Candidate Starts for Dadosky_10:

(Start: 28 @7355 has 64 MA's), (Start: 32 @7376 has 3 MA's), (Start: 38 @7391 has 10 MA's), (41, 7403), (63, 7688),

Gene: Dalmuri_12 Start: 7357, Stop: 7899, Start Num: 26

Candidate Starts for Dalmuri_12:

(Start: 26 @7357 has 93 MA's), (49, 7492), (63, 7660), (74, 7855), (77, 7873), (79, 7882),

Gene: DarthP_11 Start: 7198, Stop: 7755, Start Num: 27

Candidate Starts for DarthP_11:

(21, 7180), (Start: 27 @7198 has 18 MA's), (63, 7522), (74, 7711), (77, 7729), (79, 7738),

Gene: Dartin_12 Start: 6370, Stop: 6936, Start Num: 23

Candidate Starts for Dartin_12:

(23, 6370), (Start: 26 @6376 has 93 MA's), (49, 6532), (63, 6700), (77, 6910),

Gene: Deby_12 Start: 7293, Stop: 7826, Start Num: 26

Candidate Starts for Deby_12:

(Start: 26 @7293 has 93 MA's), (49, 7422), (77, 7800), (79, 7809),

Gene: DirtMcgirt_6 Start: 4410, Stop: 4946, Start Num: 28

Candidate Starts for DirtMcgirt_6:

(Start: 28 @4410 has 64 MA's), (52, 4632), (59, 4701), (61, 4710), (68, 4812), (75, 4929),

Gene: DocMcStuffins_6 Start: 4412, Stop: 4948, Start Num: 28

Candidate Starts for DocMcStuffins_6:

(Start: 28 @4412 has 64 MA's), (52, 4634), (59, 4703), (61, 4712), (63, 4730), (68, 4814), (75, 4931),

Gene: DosHalletts_6 Start: 4408, Stop: 4944, Start Num: 28

Candidate Starts for DosHalletts_6:

(Start: 28 @4408 has 64 MA's), (52, 4630), (59, 4699), (61, 4708), (68, 4810), (75, 4927),

Gene: DrHayes_12 Start: 7263, Stop: 7805, Start Num: 26

Candidate Starts for DrHayes_12:

(Start: 26 @7263 has 93 MA's), (49, 7398), (63, 7566), (74, 7761), (77, 7779), (79, 7788),

Gene: Drago_6 Start: 4408, Stop: 4944, Start Num: 28

Candidate Starts for Drago_6:

(Start: 28 @4408 has 64 MA's), (52, 4630), (59, 4699), (61, 4708), (68, 4810), (75, 4927),

Gene: Durfee_12 Start: 7357, Stop: 7899, Start Num: 26

Candidate Starts for Durfee_12:

(Start: 26 @7357 has 93 MA's), (49, 7492), (63, 7660), (74, 7855), (77, 7873), (79, 7882),

Gene: EMSquaredA_5 Start: 4604, Stop: 5260, Start Num: 11

Candidate Starts for EMSquaredA_5:

(Start: 7 @4577 has 2 MA's), (Start: 11 @4604 has 15 MA's), (15, 4613), (22, 4637), (30, 4679), (31, 4682), (53, 4928),

Gene: Edugator_9 Start: 7391, Stop: 7921, Start Num: 38

Candidate Starts for Edugator_9:

(Start: 28 @7355 has 64 MA's), (Start: 32 @7376 has 3 MA's), (Start: 38 @7391 has 10 MA's), (41, 7403), (63, 7688),

Gene: Efra2_12 Start: 6263, Stop: 6796, Start Num: 26

Candidate Starts for Efra2_12:

(23, 6257), (Start: 26 @6263 has 93 MA's), (49, 6392), (63, 6560), (77, 6770), (79, 6779),

Gene: Eileen_5 Start: 5037, Stop: 5534, Start Num: 28

Candidate Starts for Eileen_5:

(Start: 28 @5037 has 64 MA's), (72, 5496),

Gene: Ellie_9 Start: 7015, Stop: 7581, Start Num: 27

Candidate Starts for Ellie_9:

(Start: 27 @7015 has 18 MA's), (63, 7348), (77, 7555), (79, 7564),

Gene: Emmaloid_7 Start: 4409, Stop: 4945, Start Num: 28

Candidate Starts for Emmaloid_7:

(Start: 28 @4409 has 64 MA's), (52, 4631), (59, 4700), (61, 4709), (63, 4727), (68, 4811), (75, 4928),

Gene: EnalisNailo_5 Start: 4604, Stop: 5260, Start Num: 11

Candidate Starts for EnalisNailo_5:

(Start: 7 @4577 has 2 MA's), (Start: 11 @4604 has 15 MA's), (15, 4613), (22, 4637), (30, 4679), (31, 4682), (53, 4928),

Gene: Enby_6 Start: 4408, Stop: 4944, Start Num: 28

Candidate Starts for Enby_6:

(Start: 28 @4408 has 64 MA's), (52, 4630), (59, 4699), (61, 4708), (68, 4810), (75, 4927),

Gene: Enkosi_8 Start: 6589, Stop: 7137, Start Num: 26

Candidate Starts for Enkosi_8:

(Start: 26 @6589 has 93 MA's), (63, 6904), (74, 7093), (77, 7111),

Gene: Fefferhead_11 Start: 7185, Stop: 7748, Start Num: 27

Candidate Starts for Fefferhead_11:

(Start: 27 @7185 has 18 MA's), (63, 7515), (77, 7722), (79, 7731),

Gene: Feyre_10 Start: 7278, Stop: 7802, Start Num: 32

Candidate Starts for Feyre_10:

(Start: 8 @7173 has 4 MA's), (Start: 17 @7212 has 1 MA's), (Start: 28 @7257 has 64 MA's), (Start: 32 @7278 has 3 MA's), (Start: 38 @7293 has 10 MA's), (41, 7305), (63, 7578),

Gene: Flathead_6 Start: 4408, Stop: 4944, Start Num: 28

Candidate Starts for Flathead_6:

(Start: 28 @4408 has 64 MA's), (52, 4630), (59, 4699), (61, 4708), (68, 4810), (75, 4927),

Gene: Floral_5 Start: 4604, Stop: 5260, Start Num: 11

Candidate Starts for Floral_5:

(Start: 7 @4577 has 2 MA's), (Start: 11 @4604 has 15 MA's), (15, 4613), (22, 4637), (30, 4679), (31, 4682), (53, 4928),

Gene: FosterFrank_5 Start: 5039, Stop: 5533, Start Num: 28

Candidate Starts for FosterFrank_5:

(9, 4961), (20, 5003), (Start: 28 @5039 has 64 MA's), (72, 5495),

Gene: Frankie_6 Start: 4602, Stop: 5138, Start Num: 28

Candidate Starts for Frankie_6:

(Start: 28 @4602 has 64 MA's), (52, 4824), (59, 4893), (61, 4902), (68, 5004), (75, 5121),

Gene: Fryberger_38 Start: 13725, Stop: 14291, Start Num: 44

Candidate Starts for Fryberger_38:

(10, 13608), (Start: 44 @13725 has 5 MA's), (48, 13833), (64, 14055), (68, 14115), (73, 14226),

Gene: Ganymede_12 Start: 7333, Stop: 7875, Start Num: 26

Candidate Starts for Ganymede_12:

(Start: 26 @7333 has 93 MA's), (49, 7468), (63, 7636), (74, 7831), (77, 7849), (79, 7858),

Gene: Gengar_10 Start: 7279, Stop: 7908, Start Num: 8

Candidate Starts for Gengar_10:

(Start: 8 @7279 has 4 MA's), (Start: 17 @7318 has 1 MA's), (Start: 28 @7363 has 64 MA's), (Start: 32 @7384 has 3 MA's), (Start: 38 @7399 has 10 MA's), (41, 7411), (63, 7684),

Gene: Geraldini_12 Start: 7339, Stop: 7875, Start Num: 26

Candidate Starts for Geraldini_12:

(Start: 26 @7339 has 93 MA's), (49, 7468), (63, 7636), (74, 7831), (77, 7849), (79, 7858),

Gene: Girafales_6 Start: 4403, Stop: 4939, Start Num: 28

Candidate Starts for Girafales_6:

(Start: 28 @4403 has 64 MA's), (59, 4694), (61, 4703), (75, 4922),

Gene: GlobiWarming_5 Start: 5032, Stop: 5529, Start Num: 28

Candidate Starts for GlobiWarming_5:

(4, 4891), (5, 4900), (Start: 28 @5032 has 64 MA's), (72, 5491),

Gene: Guanica15_12 Start: 6279, Stop: 6812, Start Num: 26

Candidate Starts for Guanica15_12:

(23, 6273), (Start: 26 @6279 has 93 MA's), (49, 6408), (63, 6576), (77, 6786), (79, 6795),

Gene: Guey18_43 Start: 14918, Stop: 15484, Start Num: 44

Candidate Starts for Guey18_43:

(10, 14801), (Start: 44 @14918 has 5 MA's), (48, 15026), (64, 15248), (68, 15308), (73, 15419),

Gene: Guillsminger_10 Start: 7293, Stop: 7883, Start Num: 17

Candidate Starts for Guillsminger_10:

(Start: 8 @7254 has 4 MA's), (Start: 17 @7293 has 1 MA's), (Start: 28 @7338 has 64 MA's), (Start: 32 @7359 has 3 MA's), (Start: 38 @7374 has 10 MA's), (41, 7386), (63, 7659),

Gene: Hammy_11 Start: 7195, Stop: 7752, Start Num: 27

Candidate Starts for Hammy_11:

(21, 7177), (Start: 27 @7195 has 18 MA's), (63, 7519), (74, 7708), (79, 7735),

Gene: HedwigODU_12 Start: 7313, Stop: 7855, Start Num: 26

Candidate Starts for HedwigODU_12:

(Start: 26 @7313 has 93 MA's), (49, 7448), (63, 7616), (74, 7811), (77, 7829), (79, 7838),

Gene: Heftyboy_10 Start: 7501, Stop: 8010, Start Num: 38

Candidate Starts for Heftyboy_10:

(Start: 8 @7381 has 4 MA's), (Start: 17 @7420 has 1 MA's), (Start: 28 @7465 has 64 MA's), (Start: 32 @7486 has 3 MA's), (Start: 38 @7501 has 10 MA's), (41, 7513), (63, 7786),

Gene: Hegedechwinu_6 Start: 4408, Stop: 4944, Start Num: 28

Candidate Starts for Hegedechwinu_6:

(Start: 28 @4408 has 64 MA's), (52, 4630), (61, 4708), (68, 4810), (75, 4927),

Gene: Homura_12 Start: 7357, Stop: 7899, Start Num: 26

Candidate Starts for Homura_12:

(Start: 26 @7357 has 93 MA's), (49, 7492), (63, 7660), (74, 7855), (77, 7873), (79, 7882),

Gene: HotPotato_5 Start: 5037, Stop: 5534, Start Num: 28

Candidate Starts for HotPotato_5:

(Start: 28 @5037 has 64 MA's), (56, 5316), (72, 5496),

Gene: Hurricane_11 Start: 7335, Stop: 7883, Start Num: 35

Candidate Starts for Hurricane_11:

(3, 7140), (Start: 24 @7299 has 4 MA's), (Start: 35 @7335 has 5 MA's), (47, 7461), (52, 7545), (63, 7647), (79, 7866),

Gene: Hyperbowlee_12 Start: 7357, Stop: 7899, Start Num: 26

Candidate Starts for Hyperbowlee_12:

(Start: 26 @7357 has 93 MA's), (49, 7492), (63, 7660), (74, 7855), (77, 7873), (79, 7882),

Gene: Inky_12 Start: 7357, Stop: 7899, Start Num: 26

Candidate Starts for Inky_12:

(Start: 26 @7357 has 93 MA's), (49, 7492), (63, 7660), (74, 7855), (77, 7873), (79, 7882),

Gene: InvictusManeo_10 Start: 7500, Stop: 8030, Start Num: 38

Candidate Starts for InvictusManeo_10:

(6, 7356), (Start: 8 @7377 has 4 MA's), (Start: 28 @7464 has 64 MA's), (Start: 32 @7485 has 3 MA's), (Start: 38 @7500 has 10 MA's), (41, 7512), (63, 7797),

Gene: JAWS_12 Start: 7310, Stop: 7852, Start Num: 26

Candidate Starts for JAWS_12:

(Start: 26 @7310 has 93 MA's), (49, 7445), (63, 7613), (74, 7808), (77, 7826), (79, 7835),

Gene: Jablanski_5 Start: 4451, Stop: 5107, Start Num: 11

Candidate Starts for Jablanski_5:

(Start: 7 @4424 has 2 MA's), (Start: 11 @4451 has 15 MA's), (15, 4460), (22, 4484), (30, 4526), (31, 4529), (53, 4775),

Gene: JalFarm20_6 Start: 4408, Stop: 4944, Start Num: 28

Candidate Starts for JalFarm20_6:

(Start: 28 @4408 has 64 MA's), (52, 4630), (59, 4699), (61, 4708), (68, 4810), (75, 4927),

Gene: Jankie_5 Start: 4178, Stop: 4630, Start Num: 43

Candidate Starts for Jankie_5:

(43, 4178), (58, 4409),

Gene: Jarvi_12 Start: 7357, Stop: 7899, Start Num: 26

Candidate Starts for Jarvi_12:

(Start: 26 @7357 has 93 MA's), (49, 7492), (63, 7660), (74, 7855), (77, 7873), (79, 7882),

Gene: Jayhawk_12 Start: 7314, Stop: 7856, Start Num: 27

Candidate Starts for Jayhawk_12:

(2, 7131), (Start: 27 @7314 has 18 MA's), (49, 7449), (63, 7617), (74, 7812), (77, 7830), (79, 7839),

Gene: Jeckyll_12 Start: 7357, Stop: 7899, Start Num: 26

Candidate Starts for Jeckyll_12:

(Start: 26 @7357 has 93 MA's), (49, 7492), (63, 7660), (74, 7855), (77, 7873), (79, 7882),

Gene: Job42_6 Start: 4408, Stop: 4944, Start Num: 28

Candidate Starts for Job42_6:

(Start: 28 @4408 has 64 MA's), (52, 4630), (59, 4699), (61, 4708), (63, 4726), (66, 4786), (68, 4810), (75, 4927),

Gene: Joy99_12 Start: 7289, Stop: 7825, Start Num: 26

Candidate Starts for Joy99_12:

(Start: 26 @7289 has 93 MA's), (49, 7418), (63, 7586), (74, 7781), (77, 7799), (79, 7808),

Gene: Judy_5 Start: 5076, Stop: 5573, Start Num: 28

Candidate Starts for Judy_5:

(Start: 28 @5076 has 64 MA's), (72, 5535),

Gene: Juice456_6 Start: 4409, Stop: 4945, Start Num: 28

Candidate Starts for Juice456_6:

(Start: 28 @4409 has 64 MA's), (52, 4631), (59, 4700), (61, 4709), (68, 4811), (75, 4928),

Gene: Karkharias_5 Start: 5037, Stop: 5531, Start Num: 28

Candidate Starts for Karkharias_5:

(Start: 28 @5037 has 64 MA's), (66, 5418), (72, 5493),

Gene: KayMoney_5 Start: 5037, Stop: 5531, Start Num: 28

Candidate Starts for KayMoney_5:

(Start: 28 @5037 has 64 MA's), (72, 5493),

Gene: Keelan_36 Start: 13692, Stop: 14267, Start Num: 37

Candidate Starts for Keelan_36:

(Start: 37 @13692 has 1 MA's), (48, 13821), (55, 13965), (62, 14007), (64, 14043), (68, 14103), (69, 14124), (78, 14247), (80, 14253),

Gene: Keshu_11 Start: 7324, Stop: 7872, Start Num: 35

Candidate Starts for Keshu_11:

(Start: 35 @7324 has 5 MA's), (45, 7417), (63, 7636), (79, 7855),

Gene: KiSi_11 Start: 6171, Stop: 6728, Start Num: 26

Candidate Starts for KiSi_11:

(Start: 26 @6171 has 93 MA's), (74, 6684), (77, 6702), (79, 6711),

Gene: Kimberlium_6 Start: 4409, Stop: 4945, Start Num: 28

Candidate Starts for Kimberlium_6:

(Start: 28 @4409 has 64 MA's), (52, 4631), (59, 4700), (61, 4709), (68, 4811), (75, 4928),

Gene: Kingsley_6 Start: 4408, Stop: 4944, Start Num: 28

Candidate Starts for Kingsley_6:

(Start: 28 @4408 has 64 MA's), (52, 4630), (59, 4699), (61, 4708), (68, 4810), (75, 4927),

Gene: Kratio_9 Start: 7091, Stop: 7657, Start Num: 28

Candidate Starts for Kratio_9:

(Start: 28 @7091 has 64 MA's), (Start: 32 @7112 has 3 MA's), (Start: 38 @7127 has 10 MA's), (41, 7139), (63, 7424),

Gene: Krueger_11 Start: 6185, Stop: 6796, Start Num: 13

Candidate Starts for Krueger_11:

(Start: 13 @6185 has 1 MA's), (Start: 27 @6224 has 18 MA's), (54, 6512), (63, 6563), (65, 6602), (77, 6770), (79, 6779),

Gene: Larva_10 Start: 7222, Stop: 7788, Start Num: 28

Candidate Starts for Larva_10:

(Start: 28 @7222 has 64 MA's), (Start: 32 @7243 has 3 MA's), (Start: 38 @7258 has 10 MA's), (41, 7270), (63, 7555),

Gene: LastHope_12 Start: 6334, Stop: 6882, Start Num: 25

Candidate Starts for LastHope_12:

(Start: 25 @6334 has 2 MA's), (49, 6484), (63, 6652), (65, 6691), (74, 6838), (77, 6856), (79, 6865),

Gene: LaterM_12 Start: 7280, Stop: 7822, Start Num: 26

Candidate Starts for LaterM_12:

(Start: 26 @7280 has 93 MA's), (49, 7415), (63, 7583), (77, 7796), (79, 7805),

Gene: LeMond_11 Start: 6171, Stop: 6728, Start Num: 26

Candidate Starts for LeMond_11:

(Start: 26 @6171 has 93 MA's), (74, 6684), (77, 6702), (79, 6711),

Gene: Lea83_12 Start: 7326, Stop: 7874, Start Num: 35

Candidate Starts for Lea83_12:

(Start: 24 @7290 has 4 MA's), (Start: 35 @7326 has 5 MA's), (57, 7602), (63, 7638), (79, 7857),

Gene: Leozinho_6 Start: 4408, Stop: 4944, Start Num: 28

Candidate Starts for Leozinho_6:

(Start: 28 @4408 has 64 MA's), (52, 4630), (59, 4699), (61, 4708), (68, 4810), (75, 4927),

Gene: Leston_10 Start: 7384, Stop: 8013, Start Num: 8

Candidate Starts for Leston_10:

(Start: 8 @7384 has 4 MA's), (Start: 17 @7423 has 1 MA's), (Start: 28 @7468 has 64 MA's), (Start: 32 @7489 has 3 MA's), (Start: 38 @7504 has 10 MA's), (41, 7516), (63, 7789),

Gene: LilPharaoh_8 Start: 6589, Stop: 7137, Start Num: 26

Candidate Starts for LilPharaoh_8:

(Start: 26 @6589 has 93 MA's), (63, 6904), (74, 7093), (77, 7111),

Gene: Lilas_5 Start: 4604, Stop: 5260, Start Num: 11

Candidate Starts for Lilas_5:

(Start: 7 @4577 has 2 MA's), (Start: 11 @4604 has 15 MA's), (15, 4613), (22, 4637), (30, 4679), (31, 4682), (53, 4928),

Gene: LindNT_12 Start: 7280, Stop: 7822, Start Num: 26

Candidate Starts for LindNT_12:

(Start: 26 @7280 has 93 MA's), (49, 7415), (63, 7583), (74, 7778), (77, 7796), (79, 7805),

Gene: LittleShirley_6 Start: 4409, Stop: 4945, Start Num: 28

Candidate Starts for LittleShirley_6:

(Start: 28 @4409 has 64 MA's), (52, 4631), (59, 4700), (61, 4709), (68, 4811), (75, 4928),

Gene: Llorens_12 Start: 7357, Stop: 7899, Start Num: 26

Candidate Starts for Llorens_12:

(Start: 26 @7357 has 93 MA's), (49, 7492), (63, 7660), (74, 7855), (77, 7873), (79, 7882),

Gene: LonelyBoi_5 Start: 4451, Stop: 5107, Start Num: 11

Candidate Starts for LonelyBoi_5:

(Start: 7 @4424 has 2 MA's), (Start: 11 @4451 has 15 MA's), (15, 4460), (22, 4484), (30, 4526), (31, 4529), (53, 4775),

Gene: Lorde_6 Start: 4408, Stop: 4944, Start Num: 28

Candidate Starts for Lorde_6:

(Start: 28 @4408 has 64 MA's), (52, 4630), (59, 4699), (61, 4708), (68, 4810), (75, 4927),

Gene: Lunahalos_12 Start: 7357, Stop: 7899, Start Num: 26

Candidate Starts for Lunahalos_12:

(Start: 26 @7357 has 93 MA's), (49, 7492), (63, 7660), (74, 7855), (77, 7873), (79, 7882),

Gene: MacKat_12 Start: 7333, Stop: 7875, Start Num: 26

Candidate Starts for MacKat_12:

(Start: 26 @7333 has 93 MA's), (49, 7468), (63, 7636), (74, 7831), (77, 7849), (79, 7858),

Gene: MacnCheese_12 Start: 7513, Stop: 8091, Start Num: 24

Candidate Starts for MacnCheese_12:

(Start: 24 @7513 has 4 MA's), (Start: 35 @7549 has 5 MA's), (45, 7633), (63, 7852), (79, 8074),

Gene: Madiba_6 Start: 4407, Stop: 4943, Start Num: 28

Candidate Starts for Madiba_6:

(Start: 28 @4407 has 64 MA's), (52, 4629), (59, 4698), (61, 4707), (63, 4725), (66, 4785), (68, 4809), (75, 4926),

Gene: MarkPhew_11 Start: 6090, Stop: 6629, Start Num: 26

Candidate Starts for MarkPhew_11:

(Start: 26 @6090 has 93 MA's), (54, 6342), (57, 6357), (74, 6585), (77, 6603), (79, 6612),

Gene: Marker_6 Start: 4407, Stop: 4943, Start Num: 28

Candidate Starts for Marker_6:

(Start: 28 @4407 has 64 MA's), (52, 4629), (59, 4698), (61, 4707), (63, 4725), (66, 4785), (68, 4809), (75, 4926),

Gene: Marshawn_13 Start: 6726, Stop: 7280, Start Num: 26

Candidate Starts for Marshawn_13:

(Start: 26 @6726 has 93 MA's), (49, 6876), (57, 7008), (74, 7236), (77, 7254),

Gene: Marteena_5 Start: 4604, Stop: 5260, Start Num: 11

Candidate Starts for Marteena_5:

(Start: 7 @4577 has 2 MA's), (Start: 11 @4604 has 15 MA's), (15, 4613), (22, 4637), (30, 4679), (31, 4682), (53, 4928),

Gene: McMater_12 Start: 6370, Stop: 6936, Start Num: 23

Candidate Starts for McMater_12:

(23, 6370), (Start: 26 @6376 has 93 MA's), (49, 6532), (63, 6700), (77, 6910),

Gene: Mdavu_8 Start: 6577, Stop: 7125, Start Num: 26

Candidate Starts for Mdavu_8:

(Start: 26 @6577 has 93 MA's), (63, 6892), (74, 7081), (77, 7099),

Gene: MeaningOfLife_12 Start: 7286, Stop: 7828, Start Num: 26

Candidate Starts for MeaningOfLife_12:

(Start: 26 @7286 has 93 MA's), (49, 7421), (63, 7589), (74, 7784), (77, 7802), (79, 7811),

Gene: Megsy_12 Start: 7283, Stop: 7825, Start Num: 26

Candidate Starts for Megsy_12:

(Start: 26 @7283 has 93 MA's), (49, 7418), (63, 7586), (74, 7781), (77, 7799), (79, 7808),

Gene: Miryou_10 Start: 7374, Stop: 7883, Start Num: 38

Candidate Starts for Miryou_10:

(Start: 8 @7254 has 4 MA's), (Start: 17 @7293 has 1 MA's), (Start: 28 @7338 has 64 MA's), (Start: 32 @7359 has 3 MA's), (Start: 38 @7374 has 10 MA's), (41, 7386), (63, 7659),

Gene: Misha28_6 Start: 4412, Stop: 4948, Start Num: 28

Candidate Starts for Misha28_6:

(Start: 28 @4412 has 64 MA's), (52, 4634), (59, 4703), (61, 4712), (63, 4730), (68, 4814), (75, 4931),

Gene: Mova_6 Start: 4410, Stop: 4946, Start Num: 28

Candidate Starts for Mova_6:

(Start: 28 @4410 has 64 MA's), (52, 4632), (59, 4701), (61, 4710), (63, 4728), (68, 4812), (75, 4929),

Gene: Mozy_6 Start: 4405, Stop: 4941, Start Num: 28

Candidate Starts for Mozy_6:

(Start: 28 @4405 has 64 MA's), (59, 4696), (61, 4705), (75, 4924),

Gene: MulchExplorer_6 Start: 4409, Stop: 4945, Start Num: 28

Candidate Starts for MulchExplorer_6:

(Start: 28 @4409 has 64 MA's), (52, 4631), (59, 4700), (61, 4709), (68, 4811), (75, 4928),

Gene: Murucutumbu_12 Start: 7273, Stop: 7815, Start Num: 26

Candidate Starts for Murucutumbu_12:

(Start: 26 @7273 has 93 MA's), (49, 7408), (63, 7576), (77, 7789), (79, 7798),

Gene: Mynx_12 Start: 7336, Stop: 7878, Start Num: 26

Candidate Starts for Mynx_12:

(Start: 26 @7336 has 93 MA's), (49, 7471), (63, 7639), (74, 7834), (77, 7852), (79, 7861),

Gene: Neighly_10 Start: 7242, Stop: 7787, Start Num: 32

Candidate Starts for Neighly_10:

(Start: 28 @7221 has 64 MA's), (Start: 32 @7242 has 3 MA's), (Start: 38 @7257 has 10 MA's), (41, 7269), (63, 7554),

Gene: Nibb_11 Start: 6227, Stop: 6772, Start Num: 26

Candidate Starts for Nibb_11:

(Start: 26 @6227 has 93 MA's), (65, 6572), (74, 6728), (77, 6746), (79, 6755),

Gene: Nikao_8 Start: 6589, Stop: 7137, Start Num: 26

Candidate Starts for Nikao_8:

(Start: 26 @6589 has 93 MA's), (63, 6904), (74, 7093), (77, 7111),

Gene: Niklas_12 Start: 6376, Stop: 6936, Start Num: 26
Candidate Starts for Niklas_12:
(23, 6370), (Start: 26 @6376 has 93 MA's), (49, 6532), (63, 6700), (77, 6910),

Gene: November_10 Start: 7032, Stop: 7598, Start Num: 27
Candidate Starts for November_10:
(Start: 27 @7032 has 18 MA's), (57, 7326), (63, 7362), (77, 7572), (79, 7581),

Gene: Nutello_8 Start: 6589, Stop: 7137, Start Num: 26
Candidate Starts for Nutello_8:
(Start: 26 @6589 has 93 MA's), (63, 6904), (74, 7093), (77, 7111),

Gene: OkiRoe_10 Start: 7360, Stop: 7884, Start Num: 32
Candidate Starts for OkiRoe_10:
(Start: 8 @7255 has 4 MA's), (Start: 17 @7294 has 1 MA's), (Start: 28 @7339 has 64 MA's), (Start: 32 @7360 has 3 MA's), (Start: 38 @7375 has 10 MA's), (41, 7387), (63, 7660),

Gene: Oksu_6 Start: 4409, Stop: 4945, Start Num: 28
Candidate Starts for Oksu_6:
(Start: 28 @4409 has 64 MA's), (52, 4631), (59, 4700), (61, 4709), (68, 4811), (75, 4928),

Gene: Omnicron_10 Start: 6242, Stop: 6898, Start Num: 8
Candidate Starts for Omnicron_10:
(Start: 8 @6242 has 4 MA's), (Start: 17 @6281 has 1 MA's), (29, 6329), (Start: 39 @6365 has 1 MA's), (41, 6377), (63, 6665), (77, 6872),

Gene: Oscar_11 Start: 6172, Stop: 6729, Start Num: 26
Candidate Starts for Oscar_11:
(Start: 26 @6172 has 93 MA's), (74, 6685), (77, 6703), (79, 6712),

Gene: OwlsT2W_6 Start: 4408, Stop: 4944, Start Num: 28
Candidate Starts for OwlsT2W_6:
(Start: 28 @4408 has 64 MA's), (52, 4630), (59, 4699), (61, 4708), (68, 4810), (75, 4927),

Gene: Padfoot_12 Start: 7357, Stop: 7899, Start Num: 26
Candidate Starts for Padfoot_12:
(Start: 26 @7357 has 93 MA's), (49, 7492), (63, 7660), (74, 7855), (77, 7873), (79, 7882),

Gene: Paola_10 Start: 7359, Stop: 7883, Start Num: 32
Candidate Starts for Paola_10:
(Start: 8 @7254 has 4 MA's), (Start: 17 @7293 has 1 MA's), (Start: 28 @7338 has 64 MA's), (Start: 32 @7359 has 3 MA's), (Start: 38 @7374 has 10 MA's), (41, 7386), (63, 7659),

Gene: Peanam_12 Start: 6376, Stop: 6936, Start Num: 26
Candidate Starts for Peanam_12:
(23, 6370), (Start: 26 @6376 has 93 MA's), (49, 6532), (63, 6700), (77, 6910),

Gene: Peas_5 Start: 5037, Stop: 5534, Start Num: 28
Candidate Starts for Peas_5:
(Start: 28 @5037 has 64 MA's), (72, 5496),

Gene: Peel_12 Start: 7357, Stop: 7899, Start Num: 26
Candidate Starts for Peel_12:

(Start: 26 @7357 has 93 MA's), (49, 7492), (63, 7660), (74, 7855), (77, 7873), (79, 7882),

Gene: PeggyLeg03_5 Start: 5077, Stop: 5574, Start Num: 28

Candidate Starts for PeggyLeg03_5:

(Start: 28 @5077 has 64 MA's), (72, 5536),

Gene: Pharb_11 Start: 7169, Stop: 7717, Start Num: 35

Candidate Starts for Pharb_11:

(12, 7088), (16, 7094), (Start: 35 @7169 has 5 MA's), (40, 7184), (63, 7481), (79, 7700),

Gene: PhelpsODU_11 Start: 6278, Stop: 6850, Start Num: 27

Candidate Starts for PhelpsODU_11:

(1, 6080), (14, 6236), (Start: 27 @6278 has 18 MA's), (63, 6617), (65, 6656), (74, 6806), (77, 6824),

Gene: Phrank_11 Start: 6234, Stop: 6800, Start Num: 27

Candidate Starts for Phrank_11:

(Start: 27 @6234 has 18 MA's), (63, 6567), (65, 6606), (79, 6783),

Gene: Piatt_12 Start: 7357, Stop: 7899, Start Num: 26

Candidate Starts for Piatt_12:

(Start: 26 @7357 has 93 MA's), (49, 7492), (63, 7660), (74, 7855), (77, 7873), (79, 7882),

Gene: Piper2020_6 Start: 4411, Stop: 4947, Start Num: 28

Candidate Starts for Piper2020_6:

(Start: 28 @4411 has 64 MA's), (52, 4633), (59, 4702), (61, 4711), (63, 4729), (68, 4813), (75, 4930),

Gene: Pixie_11 Start: 7042, Stop: 7626, Start Num: 24

Candidate Starts for Pixie_11:

(Start: 24 @7042 has 4 MA's), (Start: 35 @7078 has 5 MA's), (57, 7354), (63, 7390), (79, 7609),

Gene: Plumbus_6 Start: 4409, Stop: 4945, Start Num: 28

Candidate Starts for Plumbus_6:

(Start: 28 @4409 has 64 MA's), (52, 4631), (59, 4700), (61, 4709), (68, 4811), (75, 4928),

Gene: Pokerus_11 Start: 7270, Stop: 7812, Start Num: 26

Candidate Starts for Pokerus_11:

(Start: 26 @7270 has 93 MA's), (49, 7405), (63, 7573), (74, 7768), (77, 7786), (79, 7795),

Gene: Pollux_5 Start: 4577, Stop: 5260, Start Num: 7

Candidate Starts for Pollux_5:

(Start: 7 @4577 has 2 MA's), (Start: 11 @4604 has 15 MA's), (15, 4613), (22, 4637), (30, 4679), (31, 4682), (53, 4928),

Gene: Pollywog_6 Start: 4408, Stop: 4944, Start Num: 28

Candidate Starts for Pollywog_6:

(Start: 28 @4408 has 64 MA's), (52, 4630), (59, 4699), (61, 4708), (63, 4726), (68, 4810), (75, 4927),

Gene: Posh_5 Start: 4598, Stop: 5254, Start Num: 11

Candidate Starts for Posh_5:

(Start: 7 @4571 has 2 MA's), (Start: 11 @4598 has 15 MA's), (15, 4607), (22, 4631), (30, 4673), (31, 4676), (53, 4922),

Gene: Prithvi_12 Start: 7280, Stop: 7822, Start Num: 26

Candidate Starts for Prithvi_12:

(Start: 26 @7280 has 93 MA's), (49, 7415), (63, 7583), (74, 7778), (77, 7796), (79, 7805),

Gene: Psycho_10 Start: 7388, Stop: 7918, Start Num: 38

Candidate Starts for Psycho_10:

(Start: 28 @7352 has 64 MA's), (Start: 32 @7373 has 3 MA's), (Start: 38 @7388 has 10 MA's), (41, 7400), (63, 7685),

Gene: Pucara_5 Start: 5039, Stop: 5533, Start Num: 28

Candidate Starts for Pucara_5:

(Start: 28 @5039 has 64 MA's), (56, 5318), (72, 5495),

Gene: Pytheas_5 Start: 4451, Stop: 5107, Start Num: 11

Candidate Starts for Pytheas_5:

(Start: 7 @4424 has 2 MA's), (Start: 11 @4451 has 15 MA's), (15, 4460), (22, 4484), (30, 4526), (31, 4529), (53, 4775),

Gene: Quico_6 Start: 4403, Stop: 4939, Start Num: 28

Candidate Starts for Quico_6:

(Start: 28 @4403 has 64 MA's), (59, 4694), (61, 4703), (75, 4922),

Gene: QuincyRose_11 Start: 7333, Stop: 7875, Start Num: 26

Candidate Starts for QuincyRose_11:

(Start: 26 @7333 has 93 MA's), (49, 7468), (63, 7636), (74, 7831), (77, 7849), (79, 7858),

Gene: Ramen_12 Start: 7313, Stop: 7855, Start Num: 26

Candidate Starts for Ramen_12:

(Start: 26 @7313 has 93 MA's), (49, 7448), (63, 7616), (74, 7811), (77, 7829), (79, 7838),

Gene: Ramsey_6 Start: 4408, Stop: 4944, Start Num: 28

Candidate Starts for Ramsey_6:

(Start: 28 @4408 has 64 MA's), (59, 4699), (61, 4708), (68, 4810), (75, 4927),

Gene: Rando14_10 Start: 6393, Stop: 6926, Start Num: 39

Candidate Starts for Rando14_10:

(29, 6357), (Start: 39 @6393 has 1 MA's), (41, 6405), (63, 6693), (66, 6753), (77, 6900),

Gene: Rapunzel97_12 Start: 7314, Stop: 7856, Start Num: 27

Candidate Starts for Rapunzel97_12:

(2, 7131), (Start: 27 @7314 has 18 MA's), (49, 7449), (63, 7617), (74, 7812), (77, 7830), (79, 7839),

Gene: Rialto_6 Start: 4409, Stop: 4945, Start Num: 28

Candidate Starts for Rialto_6:

(Start: 28 @4409 has 64 MA's), (52, 4631), (59, 4700), (61, 4709), (63, 4727), (68, 4811), (75, 4928),

Gene: Richo_12 Start: 6370, Stop: 6936, Start Num: 23

Candidate Starts for Richo_12:

(23, 6370), (Start: 26 @6376 has 93 MA's), (49, 6532), (63, 6700), (77, 6910),

Gene: RockyHorror_6 Start: 4408, Stop: 4944, Start Num: 28

Candidate Starts for RockyHorror_6:

(Start: 28 @4408 has 64 MA's), (52, 4630), (59, 4699), (61, 4708), (68, 4810), (75, 4927),

Gene: Ronaldo_41 Start: 14655, Stop: 15221, Start Num: 44
Candidate Starts for Ronaldo_41:
(10, 14538), (Start: 44 @14655 has 5 MA's), (48, 14763), (64, 14985), (68, 15045), (73, 15156),

Gene: Rosmarinus_12 Start: 7345, Stop: 7887, Start Num: 26
Candidate Starts for Rosmarinus_12:
(Start: 26 @7345 has 93 MA's), (49, 7480), (63, 7648), (74, 7843), (77, 7861), (79, 7870),

Gene: SamuelLPlaqson_12 Start: 7263, Stop: 7805, Start Num: 26
Candidate Starts for SamuelLPlaqson_12:
(Start: 26 @7263 has 93 MA's), (49, 7398), (63, 7566), (74, 7761), (77, 7779), (79, 7788),

Gene: Sarma624_6 Start: 4408, Stop: 4944, Start Num: 28
Candidate Starts for Sarma624_6:
(Start: 28 @4408 has 64 MA's), (52, 4630), (59, 4699), (61, 4708), (68, 4810), (75, 4927),

Gene: Scarlett_11 Start: 6171, Stop: 6728, Start Num: 26
Candidate Starts for Scarlett_11:
(Start: 26 @6171 has 93 MA's), (74, 6684), (77, 6702), (79, 6711),

Gene: Seagreen_6 Start: 4409, Stop: 4945, Start Num: 28
Candidate Starts for Seagreen_6:
(Start: 28 @4409 has 64 MA's), (52, 4631), (59, 4700), (61, 4709), (68, 4811), (75, 4928),

Gene: SgtBeansprout_8 Start: 6589, Stop: 7137, Start Num: 26
Candidate Starts for SgtBeansprout_8:
(Start: 26 @6589 has 93 MA's), (63, 6904), (74, 7093), (77, 7111),

Gene: Shadow1_10 Start: 6145, Stop: 6711, Start Num: 27
Candidate Starts for Shadow1_10:
(Start: 27 @6145 has 18 MA's), (65, 6517), (79, 6694),

Gene: Shaobing_12 Start: 6376, Stop: 6936, Start Num: 26
Candidate Starts for Shaobing_12:
(23, 6370), (Start: 26 @6376 has 93 MA's), (49, 6532), (63, 6700), (77, 6910),

Gene: ShedlockHolmes_11 Start: 7290, Stop: 7874, Start Num: 24
Candidate Starts for ShedlockHolmes_11:
(Start: 24 @7290 has 4 MA's), (Start: 35 @7326 has 5 MA's), (57, 7602), (63, 7638), (79, 7857),

Gene: ShiaSurprise_12 Start: 7357, Stop: 7899, Start Num: 26
Candidate Starts for ShiaSurprise_12:
(Start: 26 @7357 has 93 MA's), (49, 7492), (63, 7660), (74, 7855), (77, 7873), (79, 7882),

Gene: SimranZ1_6 Start: 4408, Stop: 4944, Start Num: 28
Candidate Starts for SimranZ1_6:
(Start: 28 @4408 has 64 MA's), (52, 4630), (59, 4699), (61, 4708), (68, 4810), (75, 4927),

Gene: SirPhilip_11 Start: 6046, Stop: 6564, Start Num: 33
Candidate Starts for SirPhilip_11:
(Start: 33 @6046 has 1 MA's), (49, 6163), (76, 6529), (77, 6538), (79, 6547),

Gene: Slim_7 Start: 4409, Stop: 4945, Start Num: 28

Candidate Starts for Slim_7:

(Start: 28 @4409 has 64 MA's), (52, 4631), (59, 4700), (61, 4709), (63, 4727), (68, 4811), (75, 4928),

Gene: Slimphazie_12 Start: 7314, Stop: 7856, Start Num: 27

Candidate Starts for Slimphazie_12:

(2, 7131), (Start: 27 @7314 has 18 MA's), (49, 7449), (63, 7617), (74, 7812), (77, 7830), (79, 7839),

Gene: SoSeph_10 Start: 7501, Stop: 8010, Start Num: 38

Candidate Starts for SoSeph_10:

(Start: 8 @7381 has 4 MA's), (Start: 17 @7420 has 1 MA's), (Start: 28 @7465 has 64 MA's), (Start: 32 @7486 has 3 MA's), (Start: 38 @7501 has 10 MA's), (41, 7513), (63, 7786),

Gene: Spikelee_6 Start: 4409, Stop: 4945, Start Num: 28

Candidate Starts for Spikelee_6:

(Start: 28 @4409 has 64 MA's), (52, 4631), (59, 4700), (61, 4709), (63, 4727), (68, 4811), (75, 4928),

Gene: Spock_12 Start: 7357, Stop: 7899, Start Num: 26

Candidate Starts for Spock_12:

(Start: 26 @7357 has 93 MA's), (49, 7492), (63, 7660), (74, 7855), (77, 7873), (79, 7882),

Gene: Squirty_6 Start: 4407, Stop: 4943, Start Num: 28

Candidate Starts for Squirty_6:

(Start: 28 @4407 has 64 MA's), (52, 4629), (59, 4698), (61, 4707), (68, 4809), (75, 4926),

Gene: Stap_6 Start: 4408, Stop: 4944, Start Num: 28

Candidate Starts for Stap_6:

(Start: 28 @4408 has 64 MA's), (52, 4630), (59, 4699), (61, 4708), (68, 4810), (75, 4927),

Gene: Starcevich_6 Start: 4409, Stop: 4945, Start Num: 28

Candidate Starts for Starcevich_6:

(Start: 28 @4409 has 64 MA's), (52, 4631), (59, 4700), (61, 4709), (63, 4727), (68, 4811), (75, 4928),

Gene: Stinson_12 Start: 7285, Stop: 7827, Start Num: 26

Candidate Starts for Stinson_12:

(Start: 26 @7285 has 93 MA's), (49, 7420), (63, 7588), (77, 7801), (79, 7810),

Gene: Sulley_12 Start: 7292, Stop: 7825, Start Num: 26

Candidate Starts for Sulley_12:

(Start: 26 @7292 has 93 MA's), (49, 7421), (77, 7799), (79, 7808),

Gene: Syra333_11 Start: 6243, Stop: 6815, Start Num: 27

Candidate Starts for Syra333_11:

(Start: 27 @6243 has 18 MA's), (54, 6531), (63, 6582), (65, 6621), (77, 6789), (79, 6798),

Gene: TBond007_11 Start: 7077, Stop: 7625, Start Num: 35

Candidate Starts for TBond007_11:

(Start: 24 @7041 has 4 MA's), (Start: 35 @7077 has 5 MA's), (57, 7353), (63, 7389), (79, 7608),

Gene: TClif_11 Start: 6257, Stop: 6814, Start Num: 27

Candidate Starts for TClif_11:

(Start: 27 @6257 has 18 MA's), (34, 6290), (63, 6581), (79, 6797),

Gene: TM4_8 Start: 5384, Stop: 5944, Start Num: 24

Candidate Starts for TM4_8:

(Start: 24 @5384 has 4 MA's), (46, 5516), (60, 5702), (63, 5720), (77, 5918),

Gene: Tachez_12 Start: 7279, Stop: 7821, Start Num: 26

Candidate Starts for Tachez_12:

(Start: 26 @7279 has 93 MA's), (49, 7414), (63, 7582), (74, 7777), (77, 7795), (79, 7804),

Gene: TaiwanKao_12 Start: 7286, Stop: 7828, Start Num: 26

Candidate Starts for TaiwanKao_12:

(Start: 26 @7286 has 93 MA's), (49, 7421), (63, 7589), (74, 7784), (77, 7802), (79, 7811),

Gene: Tchotchke_6 Start: 4409, Stop: 4945, Start Num: 28

Candidate Starts for Tchotchke_6:

(Start: 28 @4409 has 64 MA's), (52, 4631), (59, 4700), (61, 4709), (68, 4811), (75, 4928),

Gene: Teejan_8 Start: 6589, Stop: 7137, Start Num: 26

Candidate Starts for Teejan_8:

(Start: 26 @6589 has 93 MA's), (63, 6904), (74, 7093), (77, 7111),

Gene: Thyatira_10 Start: 7374, Stop: 7883, Start Num: 38

Candidate Starts for Thyatira_10:

(Start: 8 @7254 has 4 MA's), (Start: 17 @7293 has 1 MA's), (Start: 28 @7338 has 64 MA's), (Start: 32 @7359 has 3 MA's), (Start: 38 @7374 has 10 MA's), (41, 7386), (63, 7659),

Gene: Tierra_11 Start: 6942, Stop: 7514, Start Num: 27

Candidate Starts for Tierra_11:

(1, 6744), (14, 6900), (Start: 27 @6942 has 18 MA's), (63, 7281), (65, 7320), (74, 7470), (77, 7488),

Gene: TingHuaYa_12 Start: 6338, Stop: 6886, Start Num: 25

Candidate Starts for TingHuaYa_12:

(Start: 25 @6338 has 2 MA's), (49, 6488), (63, 6656), (65, 6695), (74, 6842), (77, 6860), (79, 6869),

Gene: TiniBug_12 Start: 7263, Stop: 7805, Start Num: 26

Candidate Starts for TiniBug_12:

(Start: 26 @7263 has 93 MA's), (49, 7398), (63, 7566), (74, 7761), (77, 7779), (79, 7788),

Gene: Tiri_12 Start: 7324, Stop: 7866, Start Num: 26

Candidate Starts for Tiri_12:

(Start: 26 @7324 has 93 MA's), (49, 7459), (63, 7627), (74, 7822), (77, 7840), (79, 7849),

Gene: TootsiePop_6 Start: 4412, Stop: 4948, Start Num: 28

Candidate Starts for TootsiePop_6:

(Start: 28 @4412 has 64 MA's), (52, 4634), (59, 4703), (61, 4712), (63, 4730), (68, 4814), (75, 4931),

Gene: Tootsieroll_6 Start: 4408, Stop: 4944, Start Num: 28

Candidate Starts for Tootsieroll_6:

(Start: 28 @4408 has 64 MA's), (52, 4630), (59, 4699), (61, 4708), (68, 4810), (75, 4927),

Gene: Topper_12 Start: 7357, Stop: 7899, Start Num: 26

Candidate Starts for Topper_12:

(Start: 26 @7357 has 93 MA's), (49, 7492), (63, 7660), (74, 7855), (77, 7873), (79, 7882),

Gene: Torres_8 Start: 6589, Stop: 7137, Start Num: 26

Candidate Starts for Torres_8:

(Start: 26 @6589 has 93 MA's), (63, 6904), (74, 7093), (77, 7111),

Gene: Totinger_6 Start: 4409, Stop: 4945, Start Num: 28

Candidate Starts for Totinger_6:

(Start: 28 @4409 has 64 MA's), (52, 4631), (59, 4700), (61, 4709), (63, 4727), (68, 4811), (75, 4928),

Gene: TreyKay_12 Start: 7280, Stop: 7822, Start Num: 26

Candidate Starts for TreyKay_12:

(Start: 26 @7280 has 93 MA's), (49, 7415), (63, 7583), (74, 7778), (77, 7796), (79, 7805),

Gene: TribelTrouble_10 Start: 7121, Stop: 7663, Start Num: 35

Candidate Starts for TribelTrouble_10:

(3, 6923), (Start: 24 @7085 has 4 MA's), (Start: 35 @7121 has 5 MA's), (47, 7238),

Gene: TruffulaTree_12 Start: 7310, Stop: 7852, Start Num: 26

Candidate Starts for TruffulaTree_12:

(Start: 26 @7310 has 93 MA's), (49, 7445), (63, 7613), (74, 7808), (77, 7826), (79, 7835),

Gene: Twitch_12 Start: 7357, Stop: 7899, Start Num: 26

Candidate Starts for Twitch_12:

(Start: 26 @7357 has 93 MA's), (49, 7492), (63, 7660), (74, 7855), (77, 7873), (79, 7882),

Gene: UncleRicky_6 Start: 4408, Stop: 4944, Start Num: 28

Candidate Starts for UncleRicky_6:

(Start: 28 @4408 has 64 MA's), (52, 4630), (59, 4699), (61, 4708), (68, 4810), (75, 4927),

Gene: Unicorn_11 Start: 6278, Stop: 6850, Start Num: 27

Candidate Starts for Unicorn_11:

(1, 6080), (14, 6236), (Start: 27 @6278 has 18 MA's), (63, 6617), (65, 6656), (74, 6806), (77, 6824),

Gene: Urkel_12 Start: 7263, Stop: 7805, Start Num: 26

Candidate Starts for Urkel_12:

(Start: 26 @7263 has 93 MA's), (49, 7398), (63, 7566), (74, 7761), (77, 7779), (79, 7788),

Gene: Validus_12 Start: 6293, Stop: 6850, Start Num: 26

Candidate Starts for Validus_12:

(Start: 26 @6293 has 93 MA's), (49, 6446), (63, 6614), (77, 6824),

Gene: Veliki_12 Start: 7357, Stop: 7899, Start Num: 26

Candidate Starts for Veliki_12:

(Start: 26 @7357 has 93 MA's), (49, 7492), (63, 7660), (74, 7855), (77, 7873), (79, 7882),

Gene: Velveteen_6 Start: 4408, Stop: 4944, Start Num: 28

Candidate Starts for Velveteen_6:

(Start: 28 @4408 has 64 MA's), (52, 4630), (59, 4699), (61, 4708), (68, 4810), (75, 4927),

Gene: ViviJ_9 Start: 7242, Stop: 7787, Start Num: 32

Candidate Starts for ViviJ_9:

(Start: 28 @7221 has 64 MA's), (Start: 32 @7242 has 3 MA's), (Start: 38 @7257 has 10 MA's), (41, 7269), (63, 7554),

Gene: Volt_40 Start: 14655, Stop: 15221, Start Num: 44

Candidate Starts for Volt_40:

(10, 14538), (Start: 44 @14655 has 5 MA's), (48, 14763), (64, 14985), (68, 15045), (73, 15156),

Gene: Waterfoul_10 Start: 7396, Stop: 7905, Start Num: 38

Candidate Starts for Waterfoul_10:

(Start: 8 @7276 has 4 MA's), (Start: 17 @7315 has 1 MA's), (Start: 28 @7360 has 64 MA's), (Start: 32 @7381 has 3 MA's), (Start: 38 @7396 has 10 MA's), (41, 7408), (63, 7681),

Gene: Wrigley_5 Start: 4448, Stop: 5104, Start Num: 11

Candidate Starts for Wrigley_5:

(Start: 7 @4421 has 2 MA's), (Start: 11 @4448 has 15 MA's), (15, 4457), (22, 4481), (30, 4523), (31, 4526), (53, 4772),

Gene: Ximenita_12 Start: 6410, Stop: 6994, Start Num: 27

Candidate Starts for Ximenita_12:

(Start: 27 @6410 has 18 MA's), (52, 6659), (54, 6710), (63, 6761), (65, 6800), (79, 6977),

Gene: YoureAdopted_11 Start: 7286, Stop: 7828, Start Num: 26

Candidate Starts for YoureAdopted_11:

(Start: 26 @7286 has 93 MA's), (49, 7421), (63, 7589), (74, 7784), (77, 7802), (79, 7811),

Gene: Yuna_12 Start: 6421, Stop: 6981, Start Num: 27

Candidate Starts for Yuna_12:

(Start: 27 @6421 has 18 MA's), (65, 6781), (77, 6955), (79, 6964),

Gene: Yunkel11_12 Start: 6279, Stop: 6812, Start Num: 26

Candidate Starts for Yunkel11_12:

(23, 6273), (Start: 26 @6279 has 93 MA's), (49, 6408), (63, 6576), (77, 6786), (79, 6795),

Gene: Zabiza_12 Start: 7313, Stop: 7855, Start Num: 26

Candidate Starts for Zabiza_12:

(Start: 26 @7313 has 93 MA's), (49, 7448), (63, 7616), (74, 7811), (77, 7829), (79, 7838),

Gene: Zavala_12 Start: 7295, Stop: 7837, Start Num: 26

Candidate Starts for Zavala_12:

(Start: 26 @7295 has 93 MA's), (49, 7430), (63, 7598), (74, 7793), (77, 7811), (79, 7820),

Gene: Ziko_41 Start: 14595, Stop: 15161, Start Num: 44

Candidate Starts for Ziko_41:

(10, 14478), (Start: 44 @14595 has 5 MA's), (48, 14703), (64, 14925), (68, 14985), (73, 15096),