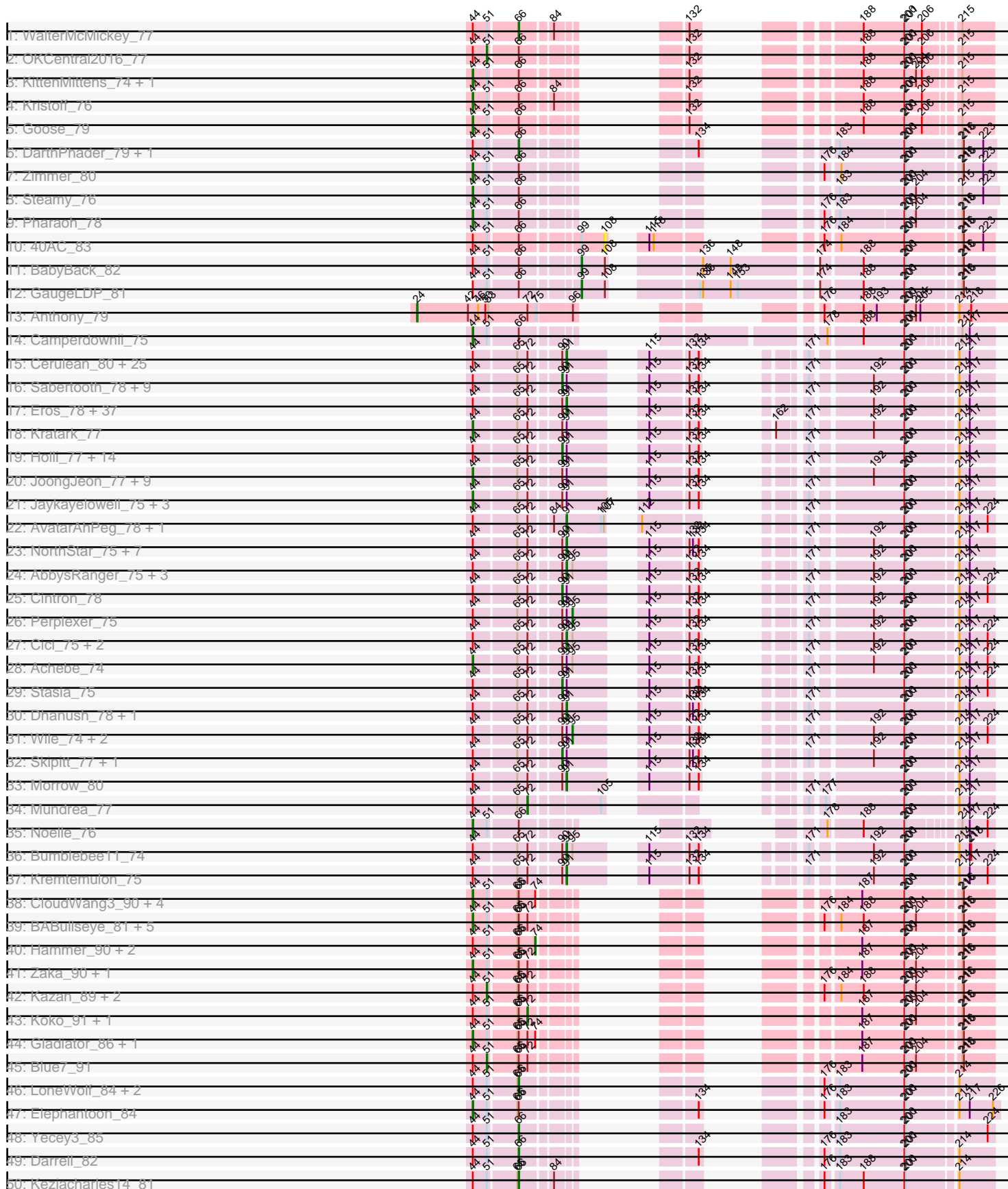
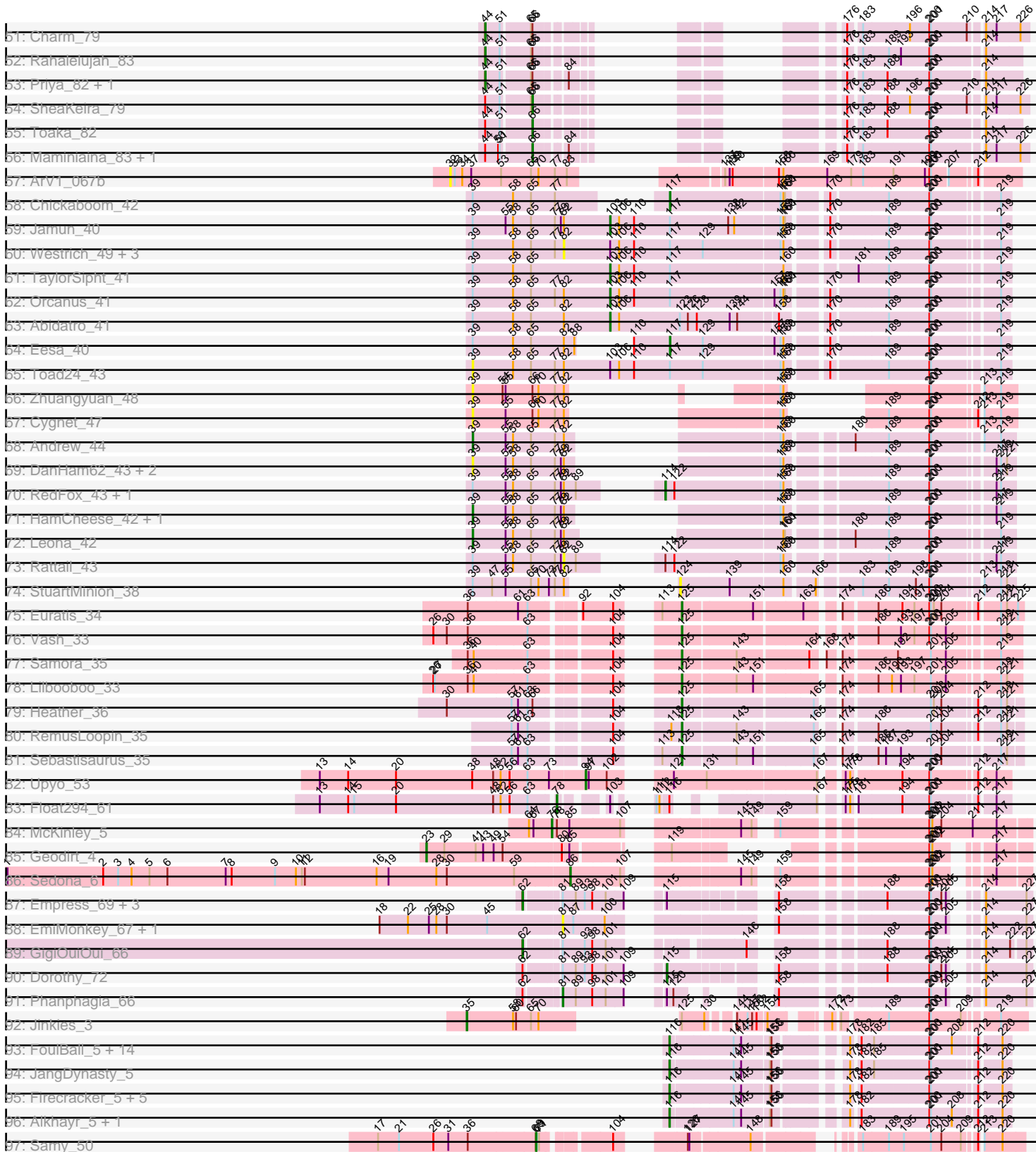


Pham 215785



Pham 215785



Note: Tracks are now grouped by subcluster and scaled. Switching in subcluster is indicated by changes in track color. Track scale is now set by default to display the region 30 bp upstream of start 1 to 30 bp downstream of the last possible start. If this default region is judged to be packed too tightly with annotated starts, the track will be further scaled to only show that region of the ORF with annotated starts. This action will be indicated by adding "Zoomed" to the title. For starts, yellow indicates the location of called starts comprised solely of Glimmer/GeneMark auto-annotations, green indicates the location of called starts with at least 1 manual gene annotation.

Pham 215785 Report

This analysis was run 02/22/25 on database version 588.

Pham number 215785 has 264 members, 22 are drafts.

Phages represented in each track:

- Track 1 : WalterMcMickey_77
- Track 2 : OKCentral2016_77
- Track 3 : KittenMittens_74, Drake94_75
- Track 4 : Kristoff_76
- Track 5 : Goose_79
- Track 6 : DarthPhader_79, Refuge_81
- Track 7 : Zimmer_80
- Track 8 : Steamy_76
- Track 9 : Pharaoh_78
- Track 10 : 40AC_83
- Track 11 : BabyBack_82
- Track 12 : GaugeLDP_81
- Track 13 : Anthony_79
- Track 14 : Camperdownii_75
- Track 15 : Cerulean_80, Deano_75, TiroTheta9_77, Caelakin_76, LochMonster_79, Kamy_77, Eagle_77, Iracema64_78, ChampagnePapi_81, Spino_77, Shaka_76, Lunsford_78, BellusTerra_79, Roosevelt_76, Abdiel_77, SheldonCooper_78, Taquarus_77, Phelipe_79, CentreCat_78, Citius_78, Phontbonne_78, SenorClean_73, Nebs_79, Medusa_77, Ulysses_77, Druantia_77
- Track 16 : Sabertooth_78, Koan_73, Pumbaa_78, Mazhar510_78, Connomayer_78, Polymorphads_79, Koreni_77, LHTSCC_80, Tinybot_77, TygerBlood_78
- Track 17 : Eros_78, Commander_76, DirtyDunning_77, Iceman_76, MeeZee_77, Obama12_79, OKaNui_77, Maverick_77, Happiness_77, Burger_76, Phacado_78, Huxley_67, Millski_77, Peaches_76, PeterPeter_78, Avle17_78, Broseidon_78, Datway_75, Lorenzo_78, Cocoaberry_78, ICleared_77, Annyong_77, Alberto7_79, Wander_78, Relief_77, Kyee_78, Arturo_75, LittleGuy_78, Scamp_78, HamSlice_74, Nemo27_77, LappelDuVide_78, Gadost_78, Eapen_78, Houdini22_77, NotAPhaseMom_77, Phighter1804_78, Xena_74
- Track 18 : Kratak_77
- Track 19 : Holli_77, Kingmustik0402_78, Maxo_80, Blackmoor_77, Eurydice_79, Ohfah_79, JetBlade_79, Nyxis_77, Bartimeaus_78, TroyPia_79, Sparxx_79, BangNhom_75, YoSam321_78, Baby16_78, Rosa24_74
- Track 20 : JoongJeon_77, Clarenza_77, BubbleTrouble_77, KFPoly_77, Albee_78, Thanksgivukkah_77, Palestino_77, LittleB_78, Eris_77, Funston_77
- Track 21 : Jaykayelowell_75, Florean_78, Bruiser_77, TinaFeyge_76
- Track 22 : AvatarAhPeg_78, Miramae_78

- Track 23 : NorthStar_75, Romney_77, Wilbur_78, Pipcraft_74, Ruin_78, Lemur_78, Flux_79, Melvin_80
- Track 24 : AbbysRanger_75, Backyardigan_73, Badger_74, PetiteSangsue_75
- Track 25 : Cintron_78
- Track 26 : Perplexer_75
- Track 27 : Cici_75, Morpher26_75, Shygu2_76
- Track 28 : Achebe_74
- Track 29 : Stasia_75
- Track 30 : Dhanush_78, Chaph_78
- Track 31 : Wile_74, Wizard007_75, Katalie136_75
- Track 32 : Skipitt_77, Bombshell_78
- Track 33 : Morrow_80
- Track 34 : Mundrea_77
- Track 35 : Noelle_76
- Track 36 : Bumblebee11_74
- Track 37 : Kremtemulon_75
- Track 38 : CloudWang3_90, Roksolana_90, Hexamo_89, Rifter_90, Artemis2UCLA_89
- Track 39 : BABullseye_81, Dorothea_88, Hoot_83, Jordennis_86, Isiphiwo_84, JewelBug_80
- Track 40 : Hammer_90, ToneTone_87, Tucker_90
- Track 41 : Zaka_90, Wiks_89
- Track 42 : Kazan_89, SmellyB_88, Cookiedough_88
- Track 43 : Koko_91, Yokurt_89
- Track 44 : Gladiator_86, Gruunaga_89
- Track 45 : Blue7_91
- Track 46 : LoneWolf_84, Vanisoa_79, Arissanae_79
- Track 47 : Elephantoon_84
- Track 48 : Yecey3_85
- Track 49 : Darrell_82
- Track 50 : Keziacharles14_81
- Track 51 : Charm_79
- Track 52 : Rahalelujah_83
- Track 53 : Priya_82, Spouty_82
- Track 54 : SheaKeira_79
- Track 55 : Toaka_82
- Track 56 : Maminiaina_83, BogosyJay_83
- Track 57 : ArV1_067b
- Track 58 : Chickaboom_42
- Track 59 : Jamun_40
- Track 60 : Westrich_49, KendraB23_51, Gravel_50, Pelletreau_50
- Track 61 : TaylorSipht_41
- Track 62 : Orcanus_41
- Track 63 : Abidatro_41
- Track 64 : Eesa_40
- Track 65 : Toad24_43
- Track 66 : Zhuangyuan_48
- Track 67 : Cygnet_47
- Track 68 : Andrew_44
- Track 69 : DanHam62_43, AmiCi24_42, Atlantica_43
- Track 70 : RedFox_43, PhluffyCoco_43
- Track 71 : HamCheese_42, Juno112_42
- Track 72 : Leona_42

- Track 73 : Rattail_43
- Track 74 : StuartMinion_38
- Track 75 : Euratis_34
- Track 76 : Vash_33
- Track 77 : Samora_35
- Track 78 : Lilbooboo_33
- Track 79 : Heather_36
- Track 80 : RemusLoopin_35
- Track 81 : Sebastisaurus_35
- Track 82 : Upyo_53
- Track 83 : Float294_61
- Track 84 : McKinley_5
- Track 85 : Geodirt_4
- Track 86 : Sedona_6
- Track 87 : Empress_69, Doomphist_74, Poenanya_74, RedBird_72
- Track 88 : EmiMonkey_67, PhlipPhlop_67
- Track 89 : GigiOuiOui_66
- Track 90 : Dorothy_72
- Track 91 : Phanphagia_66
- Track 92 : Jinkies_3
- Track 93 : FoulBall_5, Mori_5, Familton_6, Schuy_5, Ryadel_7, Idergollasper_5, Shida_5, TelAviv_5, Blessica_5, Krili_5, MadKillah_5, NiebruSaylor_5, Catdawg_5, SchoolBus_5, Vorrps_5
- Track 94 : JangDynasty_5
- Track 95 : Firecracker_5, Corndog_6, YungJamal_6, Dylan_6, Smooch_6, Zakhe101_6
- Track 96 : Alkhayr_5, Winget_5
- Track 97 : Samy_50

Summary of Final Annotations (See graph section above for start numbers):

The start number called the most often in the published annotations is 91, it was called in 84 of the 242 non-draft genes in the pham.

Genes that call this "Most Annotated" start:

- AbbysRanger_75, Abdiel_77, Alberto7_79, Annyong_77, Arturo_75, AvatarAhPeg_78, Avle17_78, Backyardigan_73, Badger_74, BellusTerra_79, Broseidon_78, Bumblebee11_74, Burger_76, Caelakin_76, CentreCat_78, Cerulean_80, ChampagnePapi_81, Chaph_78, Cici_75, Citius_78, Cocoaberry_78, Commander_76, Datway_75, Deano_75, Dhanush_78, DirtyDunning_77, Druantia_77, Eagle_77, Eapen_78, Eros_78, Flux_79, Gadost_78, HamSlice_74, Happiness_77, Houdini22_77, Huxley_67, ICleared_77, Iceman_76, Iracema64_78, Kampy_77, Kremtemulon_75, Kyee_78, LappelDuVide_78, Lemur_78, LittleGuy_78, LochMonster_79, Lorenzo_78, Lunsford_78, Maverick_77, Medusa_77, MeeZee_77, Melvin_80, Millski_77, Miramae_78, Morpher26_75, Morrow_80, Nebs_79, Nemo27_77, NorthStar_75, NotAPhaseMom_77, OKaNui_77, Obama12_79, Peaches_76, PeterPeter_78, PetiteSangsue_75, Phacado_78, Phelipe_79, Phighter1804_78, Phontbonne_78, Pipcraft_74, Relief_77, Romney_77, Roosevelt_76, Ruin_78, Scamp_78, SeniorClean_73, Shaka_76, SheldonCooper_78, Shygu2_76, Spino_77, Taquarus_77, TiroTheta9_77, Ulysses_77, Wander_78,

Wilbur_78, Xena_74,

Genes that have the "Most Annotated" start but do not call it:

- Achebe_74, Albee_78, Baby16_78, BangNhom_75, Bartimeaus_78, Blackmoor_77, Bombshell_78, Bruiser_77, BubbleTrouble_77, Cintron_78, Clarenza_77, Connomayer_78, Eris_77, Eurydice_79, Florean_78, Funston_77, Holli_77, Jaykayelowell_75, JetBlade_79, JoongJeon_77, KFPoly_77, Katalie136_75, Kingmustik0402_78, Koan_73, Koreni_77, Kratak_77, LHTSCC_80, LittleB_78, Maxo_80, Mazhar510_78, Nyxis_77, Ohfah_79, Palestino_77, Perplexer_75, Polymorphads_79, Pumbaa_78, Rosa24_74, Sabertooth_78, Skipitt_77, Sparxx_79, Stasia_75, Thanksgivukkah_77, TinaFeyge_76, Tinybot_77, TroyPia_79, TygerBlood_78, Wile_74, Wizard007_75, YoSam321_78,

Genes that do not have the "Most Annotated" start:

- 40AC_83, Abidatro_41, Alkhayr_5, AmiCi24_42, Andrew_44, Anthony_79, ArV1_067b, Arissanae_79, Artemis2UCLA_89, Atlantica_43, BABullseye_81, BabyBack_82, Blessica_5, Blue7_91, BogosyJay_83, Camperdownii_75, Catdawg_5, Charm_79, Chickaboom_42, CloudWang3_90, Cookiedough_88, Corndog_6, Cygnet_47, DanHam62_43, Darrell_82, DarthPhader_79, Doomphist_74, Dorothea_88, Dorothy_72, Drake94_75, Dylan_6, Eesa_40, Elephantoon_84, EmiMonkey_67, Empress_69, Euratis_34, Familton_6, Firecracker_5, Float294_61, FoulBall_5, GaugeLDP_81, Geodirt_4, GigiOuiOui_66, Gladiator_86, Goose_79, Gravel_50, Gruunaga_89, HamCheese_42, Hammer_90, Heather_36, Hexamo_89, Hoot_83, Idergollasper_5, Isiphiwo_84, Jamun_40, JangDynasty_5, JewelBug_80, Jinkies_3, Jordennis_86, Juno112_42, Kazan_89, KendraB23_51, Keziacharles14_81, KittenMittens_74, Koko_91, Krili_5, Kristoff_76, Leona_42, Lilbooboo_33, LoneWolf_84, MadKillah_5, Maminina_83, McKinley_5, Mori_5, Mundrea_77, NiebruSaylor_5, Noelle_76, OKCentral2016_77, Orcanus_41, Pelletreau_50, Phanphagia_66, Pharaoh_78, PhilipPhlop_67, PhluffyCoco_43, Poenanya_74, Priya_82, Rahalelujah_83, Rattail_43, RedBird_72, RedFox_43, Refuge_81, RemusLoopin_35, Rifter_90, Roksolana_90, Ryadel_7, Samora_35, Samy_50, SchoolBus_5, Schuy_5, Sebastisaurus_35, Sedona_6, SheaKeira_79, Shida_5, SmellyB_88, Smooch_6, Spouty_82, Steamy_76, StuartMinion_38, TaylorSipt_41, TelAviv_5, Toad24_43, Toaka_82, ToneTone_87, Tucker_90, Upyo_53, Vanisoa_79, Vash_33, Vorrrps_5, WalterMcMickey_77, Westrich_49, Wiks_89, Winget_5, Yecey3_85, Yokurt_89, YungJamal_6, Zaka_90, Zakhe101_6, Zhuangyuan_48, Zimmer_80,

Summary by start number:

Start 23:

- Found in 1 of 264 (0.4%) of genes in pham
- Manual Annotations of this start: 1 of 242
- Called 100.0% of time when present
- Phage (with cluster) where this start called: Geodirt_4 (DE1),

Start 24:

- Found in 1 of 264 (0.4%) of genes in pham
- Manual Annotations of this start: 1 of 242
- Called 100.0% of time when present
- Phage (with cluster) where this start called: Anthony_79 (A20),

Start 32:

- Found in 1 of 264 (0.4%) of genes in pham
- No Manual Annotations of this start.
- Called 100.0% of time when present
- Phage (with cluster) where this start called: ArV1_067b (AR),

Start 35:

- Found in 1 of 264 (0.4%) of genes in pham
- Manual Annotations of this start: 1 of 242
- Called 100.0% of time when present
- Phage (with cluster) where this start called: Jinkies_3 (FL),

Start 39:

- Found in 24 of 264 (9.1%) of genes in pham
- Manual Annotations of this start: 3 of 242
- Called 41.7% of time when present
- Phage (with cluster) where this start called: AmiCi24_42 (AS3), Andrew_44 (AS3), Atlantica_43 (AS3), Cygnet_47 (AS2), DanHam62_43 (AS3), HamCheese_42 (AS3), Juno112_42 (AS3), Leona_42 (AS3), Toad24_43 (AS1), Zhuangyuan_48 (AS2),

Start 44:

- Found in 191 of 264 (72.3%) of genes in pham
- Manual Annotations of this start: 45 of 242
- Called 23.6% of time when present
- Phage (with cluster) where this start called: Achebe_74 (A4), Albee_78 (A4), Artemis2UCLA_89 (A6), BABullseye_81 (A6), Bruiser_77 (A4), BubbleTrouble_77 (A4), Camperdownii_75 (A4), Charm_79 (A9), Clarenza_77 (A4), CloudWang3_90 (A6), Dorothea_88 (A6), Drake94_75 (A10), Elephantoon_84 (A9), Eris_77 (A4), Florean_78 (A4), Funston_77 (A4), Gladiator_86 (A6), Goose_79 (A10), Gruunaga_89 (A6), Hexamo_89 (A6), Hoot_83 (A6), Isiphiwo_84 (A6), Jaykayelowell_75 (A4), JewelBug_80 (A6), JoongJeon_77 (A4), Jordennis_86 (A6), KFPoly_77 (A4), KittenMittens_74 (A10), Kratak_77 (A4), Kristoff_76 (A10), LittleB_78 (A4), Noelle_76 (A4), Palestino_77 (A4), Pharaoh_78 (A12), Priya_82 (A9), Rahalelujah_83 (A9), Rifter_90 (A6), Roksolana_90 (A6), Spouty_82 (A9), Steamy_76 (A12), Thanksgivukkah_77 (A4), TinaFeyge_76 (A4), Wiks_89 (A6), Zaka_90 (A6), Zimmer_80 (A12),

Start 51:

- Found in 55 of 264 (20.8%) of genes in pham
- Manual Annotations of this start: 5 of 242
- Called 9.1% of time when present
- Phage (with cluster) where this start called: Blue7_91 (A6), Cookiedough_88 (A6), Kazan_89 (A6), OKCentral2016_77 (A10), SmellyB_88 (A6),

Start 62:

- Found in 7 of 264 (2.7%) of genes in pham
- Manual Annotations of this start: 5 of 242
- Called 71.4% of time when present
- Phage (with cluster) where this start called: Doomphist_74 (F1), Empress_69 (F1), GigiOuiOui_66 (F1), Poenanya_74 (F1), RedBird_72 (F1),

Start 66:

- Found in 58 of 264 (22.0%) of genes in pham
- Manual Annotations of this start: 13 of 242

- Called 22.4% of time when present
- Phage (with cluster) where this start called: Arissanae_79 (A9), BogosyJay_83 (A9), Darrell_82 (A9), DarthPhader_79 (A12), Keziacharles14_81 (A9), LoneWolf_84 (A9), Maminiaina_83 (A9), Refuge_81 (A12), SheaKeira_79 (A9), Toaka_82 (A9), Vanisoa_79 (A9), WalterMcMickey_77 (A10), Yecey3_85 (A9),

Start 68:

- Found in 1 of 264 (0.4%) of genes in pham
- Manual Annotations of this start: 1 of 242
- Called 100.0% of time when present
- Phage (with cluster) where this start called: Samy_50 (singleton),

Start 72:

- Found in 153 of 264 (58.0%) of genes in pham
- Manual Annotations of this start: 3 of 242
- Called 2.0% of time when present
- Phage (with cluster) where this start called: Koko_91 (A6), Mundrea_77 (A4), Yokurt_89 (A6),

Start 74:

- Found in 10 of 264 (3.8%) of genes in pham
- Manual Annotations of this start: 3 of 242
- Called 30.0% of time when present
- Phage (with cluster) where this start called: Hammer_90 (A6), ToneTone_87 (A6), Tucker_90 (A6),

Start 76:

- Found in 1 of 264 (0.4%) of genes in pham
- Manual Annotations of this start: 1 of 242
- Called 100.0% of time when present
- Phage (with cluster) where this start called: McKinley_5 (DE1),

Start 78:

- Found in 2 of 264 (0.8%) of genes in pham
- Manual Annotations of this start: 1 of 242
- Called 50.0% of time when present
- Phage (with cluster) where this start called: Float294_61 (CR3),

Start 81:

- Found in 9 of 264 (3.4%) of genes in pham
- Manual Annotations of this start: 1 of 242
- Called 33.3% of time when present
- Phage (with cluster) where this start called: EmiMonkey_67 (F1), Phanphagia_66 (F1), PhlipPhlop_67 (F1),

Start 82:

- Found in 22 of 264 (8.3%) of genes in pham
- No Manual Annotations of this start.
- Called 22.7% of time when present
- Phage (with cluster) where this start called: Gravel_50 (AS1), KendraB23_51 (AS1), Pelletreau_50 (AS1), Rattail_43 (AS3), Westrich_49 (AS1),

Start 86:

- Found in 1 of 264 (0.4%) of genes in pham
- Manual Annotations of this start: 1 of 242
- Called 100.0% of time when present
- Phage (with cluster) where this start called: Sedona_6 (DE1),

Start 90:

- Found in 133 of 264 (50.4%) of genes in pham
- Manual Annotations of this start: 27 of 242
- Called 21.8% of time when present
- Phage (with cluster) where this start called: Baby16_78 (A4), BangNhom_75 (A4), Bartimeaus_78 (A4), Blackmoor_77 (A4), Bombshell_78 (A4), Cintron_78 (A4), Connomayer_78 (A4), Eurydice_79 (A4), Holli_77 (A4), JetBlade_79 (A4), Kingmustik0402_78 (A4), Koan_73 (A4), Koreni_77 (A4), LHTSCC_80 (A4), Maxo_80 (A4), Mazhar510_78 (A4), Nyxis_77 (A4), Ohfah_79 (A4), Polymorphads_79 (A4), Pumbaa_78 (A4), Rosa24_74 (A4), Sabertooth_78 (A4), Skipitt_77 (A4), Sparxx_79 (A4), Stasia_75 (A4), Tinybot_77 (A4), TroyPia_79 (A4), TygerBlood_78 (A4), YoSam321_78 (A4),

Start 91:

- Found in 135 of 264 (51.1%) of genes in pham
- Manual Annotations of this start: 84 of 242
- Called 63.7% of time when present
- Phage (with cluster) where this start called: AbbysRanger_75 (A4), Abdiel_77 (A4), Alberto7_79 (A4), Annyong_77 (A4), Arturo_75 (A4), AvatarAhPeg_78 (A4), Avle17_78 (A4), Backyardigan_73 (A4), Badger_74 (A4), BellusTerra_79 (A4), Broseidon_78 (A4), Bumblebee11_74 (A4), Burger_76 (A4), Caelakin_76 (A4), CentreCat_78 (A4), Cerulean_80 (A4), ChampagnePapi_81 (A4), Chaph_78 (A4), Cici_75 (A4), Citius_78 (A4), Cocoaberry_78 (A4), Commander_76 (A4), Datway_75 (A4), Deano_75 (A4), Dhanush_78 (A4), DirtyDunning_77 (A4), Druantia_77 (A4), Eagle_77 (A4), Eapen_78 (A4), Eros_78 (A4), Flux_79 (A4), Gadost_78 (A4), HamSlice_74 (A4), Happiness_77 (A4), Houdini22_77 (A4), Huxley_67 (A4), ICleared_77 (A4), Iceman_76 (A4), Iracema64_78 (A4), Kampy_77 (A4), Kremtemulon_75 (A4), Kyee_78 (A4), LappelDuVide_78 (A4), Lemur_78 (A4), LittleGuy_78 (A4), LochMonster_79 (A4), Lorenzo_78 (A4), Lunsford_78 (A4), Maverick_77 (A4), Medusa_77 (A4), MeeZee_77 (A4), Melvin_80 (A4), Millski_77 (A4), Miramae_78 (A4), Morpher26_75 (A4), Morrow_80 (A4), Nebs_79 (A4), Nemo27_77 (A4), NorthStar_75 (A4), NotAPhaseMom_77 (A4), OKaNui_77 (A4), Obama12_79 (A4), Peaches_76 (A4), PeterPeter_78 (A4), PetiteSangsue_75 (A4), Phacado_78 (A4), Phelipe_79 (A4), Phighter1804_78 (A4), Phontbonne_78 (A4), Pipcraft_74 (A4), Relief_77 (A4), Romney_77 (A4), Roosevelt_76 (A4), Ruin_78 (A4), Scamp_78 (A4), SeniorClean_73 (A4), Shaka_76 (A4), SheldonCooper_78 (A4), Shygu2_76 (A4), Spino_77 (A4), Taquarus_77 (A4), TiroTheta9_77 (A4), Ulysses_77 (A4), Wander_78 (A4), Wilbur_78 (A4), Xena_74 (A4),

Start 94:

- Found in 1 of 264 (0.4%) of genes in pham
- Manual Annotations of this start: 1 of 242
- Called 100.0% of time when present
- Phage (with cluster) where this start called: Upyo_53 (CD),

Start 95:

- Found in 13 of 264 (4.9%) of genes in pham
- Manual Annotations of this start: 4 of 242

- Called 30.8% of time when present
- Phage (with cluster) where this start called: Katalie136_75 (A4), Perplexer_75 (A4), Wile_74 (A4), Wizard007_75 (A4),

Start 99:

- Found in 3 of 264 (1.1%) of genes in pham
- Manual Annotations of this start: 2 of 242
- Called 66.7% of time when present
- Phage (with cluster) where this start called: BabyBack_82 (A2), GaugeLDP_81 (A2),

Start 103:

- Found in 10 of 264 (3.8%) of genes in pham
- Manual Annotations of this start: 4 of 242
- Called 40.0% of time when present
- Phage (with cluster) where this start called: Abidatro_41 (AS1), Jamun_40 (AS1), Orcanus_41 (AS1), TaylorSipht_41 (AS1),

Start 108:

- Found in 3 of 264 (1.1%) of genes in pham
- No Manual Annotations of this start.
- Called 33.3% of time when present
- Phage (with cluster) where this start called: 40AC_83 (A17),

Start 114:

- Found in 3 of 264 (1.1%) of genes in pham
- Manual Annotations of this start: 2 of 242
- Called 66.7% of time when present
- Phage (with cluster) where this start called: PhluffyCoco_43 (AS3), RedFox_43 (AS3),

Start 115:

- Found in 140 of 264 (53.0%) of genes in pham
- Manual Annotations of this start: 1 of 242
- Called 0.7% of time when present
- Phage (with cluster) where this start called: Dorothy_72 (F1),

Start 116:

- Found in 25 of 264 (9.5%) of genes in pham
- Manual Annotations of this start: 23 of 242
- Called 96.0% of time when present
- Phage (with cluster) where this start called: Alkhayr_5 (O), Blessica_5 (O), Catdawg_5 (O), Corndog_6 (O), Dylan_6 (O), Familton_6 (O), Firecracker_5 (O), FoulBall_5 (O), Idergollasper_5 (O), JangDynasty_5 (O), Krili_5 (O), MadKillah_5 (O), Mori_5 (O), NiebruSaylor_5 (O), Ryadel_7 (O), SchoolBus_5 (O), Schuy_5 (O), Shida_5 (O), Smooch_6 (O), TelAviv_5 (O), Vorrps_5 (O), Winget_5 (O), YungJamal_6 (O), Zakhe101_6 (O),

Start 117:

- Found in 10 of 264 (3.8%) of genes in pham
- Manual Annotations of this start: 2 of 242
- Called 20.0% of time when present
- Phage (with cluster) where this start called: Chickaboom_42 (AS1), Eesa_40 (AS1),

Start 124:

- Found in 1 of 264 (0.4%) of genes in pham
- No Manual Annotations of this start.
- Called 100.0% of time when present
- Phage (with cluster) where this start called: StuartMinion_38 (AS3),

Start 125:

- Found in 8 of 264 (3.0%) of genes in pham
- Manual Annotations of this start: 7 of 242
- Called 87.5% of time when present
- Phage (with cluster) where this start called: Euratis_34 (BB1), Heather_36 (BB2), Lilbooboo_33 (BB1), RemusLoopin_35 (BB2), Samora_35 (BB1), Sebastisaurus_35 (BB2), Vash_33 (BB1),

Summary by clusters:

There are 21 clusters represented in this pham: AS3, F1, A17, AR, A10, A12, DE1, CR3, AS1, O, CD, A20, A2, A4, A6, A9, singleton, AS2, FL, BB2, BB1,

Info for manual annotations of cluster A10:

- Start number 44 was manually annotated 4 times for cluster A10.
- Start number 51 was manually annotated 1 time for cluster A10.
- Start number 66 was manually annotated 1 time for cluster A10.

Info for manual annotations of cluster A12:

- Start number 44 was manually annotated 3 times for cluster A12.
- Start number 66 was manually annotated 2 times for cluster A12.

Info for manual annotations of cluster A2:

- Start number 99 was manually annotated 2 times for cluster A2.

Info for manual annotations of cluster A20:

- Start number 24 was manually annotated 1 time for cluster A20.

Info for manual annotations of cluster A4:

- Start number 44 was manually annotated 18 times for cluster A4.
- Start number 72 was manually annotated 1 time for cluster A4.
- Start number 90 was manually annotated 27 times for cluster A4.
- Start number 91 was manually annotated 84 times for cluster A4.
- Start number 95 was manually annotated 4 times for cluster A4.

Info for manual annotations of cluster A6:

- Start number 44 was manually annotated 15 times for cluster A6.
- Start number 51 was manually annotated 4 times for cluster A6.
- Start number 72 was manually annotated 2 times for cluster A6.
- Start number 74 was manually annotated 3 times for cluster A6.

Info for manual annotations of cluster A9:

- Start number 44 was manually annotated 5 times for cluster A9.
- Start number 66 was manually annotated 10 times for cluster A9.

Info for manual annotations of cluster AS1:

- Start number 103 was manually annotated 4 times for cluster AS1.
- Start number 117 was manually annotated 2 times for cluster AS1.

Info for manual annotations of cluster AS3:

- Start number 39 was manually annotated 3 times for cluster AS3.
- Start number 114 was manually annotated 2 times for cluster AS3.

Info for manual annotations of cluster BB1:

- Start number 125 was manually annotated 4 times for cluster BB1.

Info for manual annotations of cluster BB2:

- Start number 125 was manually annotated 3 times for cluster BB2.

Info for manual annotations of cluster CD:

- Start number 94 was manually annotated 1 time for cluster CD.

Info for manual annotations of cluster CR3:

- Start number 78 was manually annotated 1 time for cluster CR3.

Info for manual annotations of cluster DE1:

- Start number 23 was manually annotated 1 time for cluster DE1.
- Start number 76 was manually annotated 1 time for cluster DE1.
- Start number 86 was manually annotated 1 time for cluster DE1.

Info for manual annotations of cluster F1:

- Start number 62 was manually annotated 5 times for cluster F1.
- Start number 81 was manually annotated 1 time for cluster F1.
- Start number 115 was manually annotated 1 time for cluster F1.

Info for manual annotations of cluster FL:

- Start number 35 was manually annotated 1 time for cluster FL.

Info for manual annotations of cluster O:

- Start number 116 was manually annotated 23 times for cluster O.

Gene Information:

Gene: 40AC_83 Start: 49035, Stop: 48499, Start Num: 108

Candidate Starts for 40AC_83:

(Start: 44 @49257 has 45 MA's), (Start: 51 @49233 has 5 MA's), (Start: 66 @49176 has 13 MA's), (Start: 99 @49083 has 2 MA's), (108, 49035), (Start: 115 @49005 has 1 MA's), (118, 48996), (176, 48810), (184, 48786), (200, 48663), (201, 48660), (215, 48564), (216, 48561), (223, 48522),

Gene: AbbysRanger_75 Start: 46560, Stop: 45976, Start Num: 91

Candidate Starts for AbbysRanger_75:

(Start: 44 @46710 has 45 MA's), (65, 46632), (Start: 72 @46611 has 3 MA's), (Start: 90 @46563 has 27 MA's), (Start: 91 @46560 has 84 MA's), (Start: 95 @46548 has 4 MA's), (Start: 115 @46455 has 1 MA's), (132, 46383), (134, 46365), (171, 46299), (192, 46194), (200, 46134), (201, 46131), (214, 46044), (217, 46023),

Gene: Abdiel_77 Start: 46760, Stop: 46176, Start Num: 91

Candidate Starts for Abdiel_77:

(Start: 44 @46910 has 45 MA's), (65, 46832), (Start: 72 @46811 has 3 MA's), (Start: 90 @46763 has 27 MA's), (Start: 91 @46760 has 84 MA's), (Start: 115 @46655 has 1 MA's), (132, 46583), (134, 46565), (171, 46499), (200, 46334), (201, 46331), (214, 46244), (217, 46223),

Gene: Abidatro_41 Start: 27763, Stop: 28476, Start Num: 103

Candidate Starts for Abidatro_41:

(Start: 39 @27487 has 3 MA's), (58, 27568), (65, 27604), (82, 27670), (Start: 103 @27763 has 4 MA's), (106, 27781), (123, 27901), (126, 27916), (128, 27934), (139, 28000), (144, 28015), (158, 28087), (170, 28162), (189, 28264), (200, 28339), (201, 28342), (219, 28459),

Gene: Achebe_74 Start: 46689, Stop: 45955, Start Num: 44

Candidate Starts for Achebe_74:

(Start: 44 @46689 has 45 MA's), (65, 46611), (Start: 72 @46590 has 3 MA's), (Start: 90 @46542 has 27 MA's), (Start: 91 @46539 has 84 MA's), (Start: 95 @46527 has 4 MA's), (Start: 115 @46434 has 1 MA's), (132, 46362), (134, 46344), (171, 46278), (192, 46173), (200, 46113), (201, 46110), (214, 46023), (217, 46002), (224, 45966),

Gene: Albee_78 Start: 46898, Stop: 46164, Start Num: 44

Candidate Starts for Albee_78:

(Start: 44 @46898 has 45 MA's), (65, 46820), (Start: 72 @46799 has 3 MA's), (Start: 90 @46751 has 27 MA's), (Start: 91 @46748 has 84 MA's), (Start: 115 @46643 has 1 MA's), (132, 46571), (134, 46553), (171, 46487), (192, 46382), (200, 46322), (201, 46319), (214, 46232), (217, 46211),

Gene: Alberto7_79 Start: 47085, Stop: 46501, Start Num: 91

Candidate Starts for Alberto7_79:

(Start: 44 @47235 has 45 MA's), (65, 47157), (Start: 72 @47136 has 3 MA's), (Start: 90 @47088 has 27 MA's), (Start: 91 @47085 has 84 MA's), (Start: 115 @46980 has 1 MA's), (132, 46908), (134, 46890), (171, 46824), (192, 46719), (200, 46659), (201, 46656), (214, 46569), (217, 46548),

Gene: Alkhayr_5 Start: 1855, Stop: 1286, Start Num: 116

Candidate Starts for Alkhayr_5:

(Start: 116 @1855 has 23 MA's), (141, 1738), (145, 1723), (155, 1672), (156, 1669), (178, 1555), (182, 1546), (200, 1417), (201, 1414), (208, 1378), (212, 1339), (220, 1303),

Gene: AmiCi24_42 Start: 27168, Stop: 27965, Start Num: 39

Candidate Starts for AmiCi24_42:

(Start: 39 @27168 has 3 MA's), (55, 27234), (58, 27249), (65, 27285), (77, 27333), (79, 27345), (82, 27351), (159, 27567), (160, 27573), (189, 27741), (200, 27816), (201, 27819), (217, 27927), (219, 27936), (221, 27948),

Gene: Andrew_44 Start: 27053, Stop: 27850, Start Num: 39

Candidate Starts for Andrew_44:

(Start: 39 @27053 has 3 MA's), (55, 27119), (58, 27134), (65, 27170), (77, 27218), (82, 27236), (159, 27452), (160, 27458), (180, 27563), (189, 27626), (200, 27701), (201, 27704), (213, 27788), (219, 27821),

Gene: Annyong_77 Start: 46793, Stop: 46209, Start Num: 91

Candidate Starts for Annyong_77:

(Start: 44 @46943 has 45 MA's), (65, 46865), (Start: 72 @46844 has 3 MA's), (Start: 90 @46796 has 27 MA's), (Start: 91 @46793 has 84 MA's), (Start: 115 @46688 has 1 MA's), (132, 46616), (134,

46598), (171, 46532), (192, 46427), (200, 46367), (201, 46364), (214, 46277), (217, 46256),

Gene: Anthony_79 Start: 47520, Stop: 46663, Start Num: 24

Candidate Starts for Anthony_79:

(Start: 24 @47520 has 1 MA's), (42, 47415), (46, 47394), (50, 47382), (53, 47376), (Start: 72 @47298 has 3 MA's), (75, 47280), (96, 47214), (176, 47034), (188, 46965), (193, 46941), (200, 46887), (201, 46884), (204, 46863), (205, 46854), (214, 46791), (218, 46767),

Gene: ArV1_067b Start: 51785, Stop: 52711, Start Num: 32

Candidate Starts for ArV1_067b:

(32, 51785), (33, 51794), (34, 51809), (37, 51827), (53, 51887), (65, 51944), (70, 51959), (77, 51992), (83, 52016), (137, 52154), (139, 52163), (140, 52169), (158, 52256), (160, 52265), (169, 52352), (179, 52400), (183, 52424), (191, 52484), (199, 52547), (200, 52556), (201, 52559), (207, 52589), (212, 52634),

Gene: Arissanae_79 Start: 46740, Stop: 46174, Start Num: 66

Candidate Starts for Arissanae_79:

(Start: 44 @46821 has 45 MA's), (Start: 51 @46797 has 5 MA's), (65, 46743), (Start: 66 @46740 has 13 MA's), (176, 46482), (183, 46461), (200, 46335), (201, 46332), (214, 46245),

Gene: Artemis2UCLA_89 Start: 47205, Stop: 46558, Start Num: 44

Candidate Starts for Artemis2UCLA_89:

(Start: 44 @47205 has 45 MA's), (Start: 51 @47181 has 5 MA's), (65, 47127), (Start: 66 @47124 has 13 MA's), (Start: 74 @47094 has 3 MA's), (187, 46800), (200, 46719), (201, 46716), (215, 46623), (216, 46620),

Gene: Arturo_75 Start: 46876, Stop: 46292, Start Num: 91

Candidate Starts for Arturo_75:

(Start: 44 @47026 has 45 MA's), (65, 46948), (Start: 72 @46927 has 3 MA's), (Start: 90 @46879 has 27 MA's), (Start: 91 @46876 has 84 MA's), (Start: 115 @46771 has 1 MA's), (132, 46699), (134, 46681), (171, 46615), (192, 46510), (200, 46450), (201, 46447), (214, 46360), (217, 46339),

Gene: Atlantica_43 Start: 27170, Stop: 27967, Start Num: 39

Candidate Starts for Atlantica_43:

(Start: 39 @27170 has 3 MA's), (55, 27236), (58, 27251), (65, 27287), (77, 27335), (79, 27347), (82, 27353), (159, 27569), (160, 27575), (189, 27743), (200, 27818), (201, 27821), (217, 27929), (219, 27938), (221, 27950),

Gene: AvatarAhPeg_78 Start: 46909, Stop: 46328, Start Num: 91

Candidate Starts for AvatarAhPeg_78:

(Start: 44 @47059 has 45 MA's), (65, 46981), (Start: 72 @46960 has 3 MA's), (84, 46927), (Start: 91 @46909 has 84 MA's), (105, 46840), (107, 46834), (112, 46822), (171, 46651), (200, 46486), (201, 46483), (214, 46396), (217, 46375), (224, 46339),

Gene: Avle17_78 Start: 46742, Stop: 46158, Start Num: 91

Candidate Starts for Avle17_78:

(Start: 44 @46892 has 45 MA's), (65, 46814), (Start: 72 @46793 has 3 MA's), (Start: 90 @46745 has 27 MA's), (Start: 91 @46742 has 84 MA's), (Start: 115 @46637 has 1 MA's), (132, 46565), (134, 46547), (171, 46481), (192, 46376), (200, 46316), (201, 46313), (214, 46226), (217, 46205),

Gene: BABullseye_81 Start: 45537, Stop: 44887, Start Num: 44

Candidate Starts for BABullseye_81:

(Start: 44 @45537 has 45 MA's), (Start: 51 @45513 has 5 MA's), (65, 45459), (Start: 66 @45456 has 13 MA's), (Start: 72 @45438 has 3 MA's), (176, 45198), (184, 45174), (188, 45129), (200, 45051), (201, 45048), (204, 45027), (215, 44952), (216, 44949),

Gene: Baby16_78 Start: 46762, Stop: 46175, Start Num: 90

Candidate Starts for Baby16_78:

(Start: 44 @46909 has 45 MA's), (65, 46831), (Start: 72 @46810 has 3 MA's), (Start: 90 @46762 has 27 MA's), (Start: 91 @46759 has 84 MA's), (Start: 115 @46654 has 1 MA's), (132, 46582), (134, 46564), (171, 46498), (200, 46333), (201, 46330), (214, 46243), (217, 46222),

Gene: BabyBack_82 Start: 48998, Stop: 48291, Start Num: 99

Candidate Starts for BabyBack_82:

(Start: 44 @49172 has 45 MA's), (Start: 51 @49148 has 5 MA's), (Start: 66 @49091 has 13 MA's), (Start: 99 @48998 has 2 MA's), (108, 48950), (136, 48821), (148, 48764), (174, 48611), (188, 48533), (200, 48455), (201, 48452), (215, 48356), (216, 48353),

Gene: Backyardigan_73 Start: 46576, Stop: 45992, Start Num: 91

Candidate Starts for Backyardigan_73:

(Start: 44 @46726 has 45 MA's), (65, 46648), (Start: 72 @46627 has 3 MA's), (Start: 90 @46579 has 27 MA's), (Start: 91 @46576 has 84 MA's), (Start: 95 @46564 has 4 MA's), (Start: 115 @46471 has 1 MA's), (132, 46399), (134, 46381), (171, 46315), (192, 46210), (200, 46150), (201, 46147), (214, 46060), (217, 46039),

Gene: Badger_74 Start: 46542, Stop: 45958, Start Num: 91

Candidate Starts for Badger_74:

(Start: 44 @46692 has 45 MA's), (65, 46614), (Start: 72 @46593 has 3 MA's), (Start: 90 @46545 has 27 MA's), (Start: 91 @46542 has 84 MA's), (Start: 95 @46530 has 4 MA's), (Start: 115 @46437 has 1 MA's), (132, 46365), (134, 46347), (171, 46281), (192, 46176), (200, 46116), (201, 46113), (214, 46026), (217, 46005),

Gene: BangNhom_75 Start: 47188, Stop: 46601, Start Num: 90

Candidate Starts for BangNhom_75:

(Start: 44 @47335 has 45 MA's), (65, 47257), (Start: 72 @47236 has 3 MA's), (Start: 90 @47188 has 27 MA's), (Start: 91 @47185 has 84 MA's), (Start: 115 @47080 has 1 MA's), (132, 47008), (134, 46990), (171, 46924), (200, 46759), (201, 46756), (214, 46669), (217, 46648),

Gene: Bartimeaus_78 Start: 46753, Stop: 46166, Start Num: 90

Candidate Starts for Bartimeaus_78:

(Start: 44 @46900 has 45 MA's), (65, 46822), (Start: 72 @46801 has 3 MA's), (Start: 90 @46753 has 27 MA's), (Start: 91 @46750 has 84 MA's), (Start: 115 @46645 has 1 MA's), (132, 46573), (134, 46555), (171, 46489), (200, 46324), (201, 46321), (214, 46234), (217, 46213),

Gene: BellusTerra_79 Start: 46789, Stop: 46205, Start Num: 91

Candidate Starts for BellusTerra_79:

(Start: 44 @46939 has 45 MA's), (65, 46861), (Start: 72 @46840 has 3 MA's), (Start: 90 @46792 has 27 MA's), (Start: 91 @46789 has 84 MA's), (Start: 115 @46684 has 1 MA's), (132, 46612), (134, 46594), (171, 46528), (200, 46363), (201, 46360), (214, 46273), (217, 46252),

Gene: Blackmoor_77 Start: 46753, Stop: 46166, Start Num: 90

Candidate Starts for Blackmoor_77:

(Start: 44 @46900 has 45 MA's), (65, 46822), (Start: 72 @46801 has 3 MA's), (Start: 90 @46753 has 27 MA's), (Start: 91 @46750 has 84 MA's), (Start: 115 @46645 has 1 MA's), (132, 46573), (134, 46555), (171, 46489), (200, 46324), (201, 46321), (214, 46234), (217, 46213),

Gene: Blessica_5 Start: 1714, Stop: 1145, Start Num: 116

Candidate Starts for Blessica_5:

(Start: 116 @1714 has 23 MA's), (141, 1597), (145, 1582), (155, 1531), (156, 1528), (178, 1414), (182, 1405), (185, 1381), (200, 1276), (201, 1273), (208, 1237), (212, 1198), (220, 1162),

Gene: Blue7_91 Start: 47412, Stop: 46786, Start Num: 51

Candidate Starts for Blue7_91:

(Start: 44 @47436 has 45 MA's), (Start: 51 @47412 has 5 MA's), (65, 47358), (Start: 66 @47355 has 13 MA's), (Start: 72 @47337 has 3 MA's), (187, 47031), (200, 46950), (201, 46947), (204, 46926), (215, 46851), (216, 46848),

Gene: BogosyJay_83 Start: 46896, Stop: 46318, Start Num: 66

Candidate Starts for BogosyJay_83:

(Start: 44 @46977 has 45 MA's), (50, 46956), (Start: 51 @46953 has 5 MA's), (Start: 66 @46896 has 13 MA's), (84, 46845), (176, 46638), (183, 46617), (200, 46491), (201, 46488), (214, 46401), (217, 46380), (226, 46335),

Gene: Bombshell_78 Start: 46748, Stop: 46161, Start Num: 90

Candidate Starts for Bombshell_78:

(Start: 44 @46895 has 45 MA's), (65, 46817), (Start: 72 @46796 has 3 MA's), (Start: 90 @46748 has 27 MA's), (Start: 91 @46745 has 84 MA's), (Start: 115 @46640 has 1 MA's), (132, 46568), (133, 46562), (134, 46550), (171, 46484), (192, 46379), (200, 46319), (201, 46316), (214, 46229), (217, 46208),

Gene: Broseidon_78 Start: 46751, Stop: 46167, Start Num: 91

Candidate Starts for Broseidon_78:

(Start: 44 @46901 has 45 MA's), (65, 46823), (Start: 72 @46802 has 3 MA's), (Start: 90 @46754 has 27 MA's), (Start: 91 @46751 has 84 MA's), (Start: 115 @46646 has 1 MA's), (132, 46574), (134, 46556), (171, 46490), (192, 46385), (200, 46325), (201, 46322), (214, 46235), (217, 46214),

Gene: Bruiser_77 Start: 46898, Stop: 46164, Start Num: 44

Candidate Starts for Bruiser_77:

(Start: 44 @46898 has 45 MA's), (65, 46820), (Start: 72 @46799 has 3 MA's), (Start: 90 @46751 has 27 MA's), (Start: 91 @46748 has 84 MA's), (Start: 115 @46643 has 1 MA's), (132, 46571), (134, 46553), (171, 46487), (200, 46322), (201, 46319), (214, 46232), (217, 46211),

Gene: BubbleTrouble_77 Start: 46925, Stop: 46191, Start Num: 44

Candidate Starts for BubbleTrouble_77:

(Start: 44 @46925 has 45 MA's), (65, 46847), (Start: 72 @46826 has 3 MA's), (Start: 90 @46778 has 27 MA's), (Start: 91 @46775 has 84 MA's), (Start: 115 @46670 has 1 MA's), (132, 46598), (134, 46580), (171, 46514), (192, 46409), (200, 46349), (201, 46346), (214, 46259), (217, 46238),

Gene: Bumblebee11_74 Start: 46542, Stop: 45958, Start Num: 91

Candidate Starts for Bumblebee11_74:

(Start: 44 @46692 has 45 MA's), (65, 46614), (Start: 72 @46593 has 3 MA's), (Start: 90 @46545 has 27 MA's), (Start: 91 @46542 has 84 MA's), (Start: 95 @46530 has 4 MA's), (Start: 115 @46437 has 1 MA's), (132, 46365), (134, 46347), (171, 46281), (192, 46176), (200, 46116), (201, 46113), (214, 46026), (217, 46005), (218, 46002),

Gene: Burger_76 Start: 46748, Stop: 46164, Start Num: 91

Candidate Starts for Burger_76:

(Start: 44 @46898 has 45 MA's), (65, 46820), (Start: 72 @46799 has 3 MA's), (Start: 90 @46751 has 27 MA's), (Start: 91 @46748 has 84 MA's), (Start: 115 @46643 has 1 MA's), (132, 46571), (134, 46553), (171, 46487), (192, 46382), (200, 46322), (201, 46319), (214, 46232), (217, 46211),

Gene: Caelakin_76 Start: 46748, Stop: 46164, Start Num: 91

Candidate Starts for Caelakin_76:

(Start: 44 @46898 has 45 MA's), (65, 46820), (Start: 72 @46799 has 3 MA's), (Start: 90 @46751 has 27 MA's), (Start: 91 @46748 has 84 MA's), (Start: 115 @46643 has 1 MA's), (132, 46571), (134, 46553), (171, 46487), (200, 46322), (201, 46319), (214, 46232), (217, 46211),

Gene: Camperdownii_75 Start: 46323, Stop: 45583, Start Num: 44

Candidate Starts for Camperdownii_75:

(Start: 44 @46323 has 45 MA's), (Start: 51 @46299 has 5 MA's), (Start: 66 @46242 has 13 MA's), (178, 45870), (188, 45807), (200, 45729), (201, 45726), (215, 45645), (217, 45630),

Gene: Catdawg_5 Start: 1764, Stop: 1195, Start Num: 116

Candidate Starts for Catdawg_5:

(Start: 116 @1764 has 23 MA's), (141, 1647), (145, 1632), (155, 1581), (156, 1578), (178, 1464), (182, 1455), (185, 1431), (200, 1326), (201, 1323), (208, 1287), (212, 1248), (220, 1212),

Gene: CentreCat_78 Start: 46788, Stop: 46204, Start Num: 91

Candidate Starts for CentreCat_78:

(Start: 44 @46938 has 45 MA's), (65, 46860), (Start: 72 @46839 has 3 MA's), (Start: 90 @46791 has 27 MA's), (Start: 91 @46788 has 84 MA's), (Start: 115 @46683 has 1 MA's), (132, 46611), (134, 46593), (171, 46527), (200, 46362), (201, 46359), (214, 46272), (217, 46251),

Gene: Cerulean_80 Start: 47186, Stop: 46602, Start Num: 91

Candidate Starts for Cerulean_80:

(Start: 44 @47336 has 45 MA's), (65, 47258), (Start: 72 @47237 has 3 MA's), (Start: 90 @47189 has 27 MA's), (Start: 91 @47186 has 84 MA's), (Start: 115 @47081 has 1 MA's), (132, 47009), (134, 46991), (171, 46925), (200, 46760), (201, 46757), (214, 46670), (217, 46649),

Gene: ChampagnePapi_81 Start: 47188, Stop: 46604, Start Num: 91

Candidate Starts for ChampagnePapi_81:

(Start: 44 @47338 has 45 MA's), (65, 47260), (Start: 72 @47239 has 3 MA's), (Start: 90 @47191 has 27 MA's), (Start: 91 @47188 has 84 MA's), (Start: 115 @47083 has 1 MA's), (132, 47011), (134, 46993), (171, 46927), (200, 46762), (201, 46759), (214, 46672), (217, 46651),

Gene: Chaph_78 Start: 46759, Stop: 46175, Start Num: 91

Candidate Starts for Chaph_78:

(Start: 44 @46909 has 45 MA's), (65, 46831), (Start: 72 @46810 has 3 MA's), (Start: 90 @46762 has 27 MA's), (Start: 91 @46759 has 84 MA's), (Start: 115 @46654 has 1 MA's), (132, 46582), (133, 46576), (134, 46564), (171, 46498), (200, 46333), (201, 46330), (214, 46243), (217, 46222),

Gene: Charm_79 Start: 46368, Stop: 45709, Start Num: 44

Candidate Starts for Charm_79:

(Start: 44 @46368 has 45 MA's), (Start: 51 @46344 has 5 MA's), (65, 46290), (Start: 66 @46287 has 13 MA's), (176, 46029), (183, 46008), (196, 45921), (200, 45882), (201, 45879), (210, 45813), (214, 45792), (217, 45771), (226, 45726),

Gene: Chickaboom_42 Start: 27783, Stop: 28385, Start Num: 117

Candidate Starts for Chickaboom_42:

(Start: 39 @27504 has 3 MA's), (58, 27585), (65, 27621), (77, 27669), (Start: 117 @27783 has 2 MA's), (159, 27996), (160, 28002), (161, 28005), (170, 28068), (189, 28170), (200, 28245), (201, 28248), (219, 28365),

Gene: Cici_75 Start: 46555, Stop: 45971, Start Num: 91

Candidate Starts for Cici_75:

(Start: 44 @46705 has 45 MA's), (65, 46627), (Start: 72 @46606 has 3 MA's), (Start: 90 @46558 has 27 MA's), (Start: 91 @46555 has 84 MA's), (Start: 95 @46543 has 4 MA's), (Start: 115 @46450 has 1 MA's), (132, 46378), (134, 46360), (171, 46294), (192, 46189), (200, 46129), (201, 46126), (214, 46039), (217, 46018), (224, 45982),

Gene: Cintron_78 Start: 46867, Stop: 46280, Start Num: 90

Candidate Starts for Cintron_78:

(Start: 44 @47014 has 45 MA's), (65, 46936), (Start: 72 @46915 has 3 MA's), (Start: 90 @46867 has 27 MA's), (Start: 91 @46864 has 84 MA's), (Start: 115 @46759 has 1 MA's), (132, 46687), (134, 46669), (171, 46603), (192, 46498), (200, 46438), (201, 46435), (214, 46348), (217, 46327), (224, 46291),

Gene: Citius_78 Start: 46769, Stop: 46185, Start Num: 91

Candidate Starts for Citius_78:

(Start: 44 @46919 has 45 MA's), (65, 46841), (Start: 72 @46820 has 3 MA's), (Start: 90 @46772 has 27 MA's), (Start: 91 @46769 has 84 MA's), (Start: 115 @46664 has 1 MA's), (132, 46592), (134, 46574), (171, 46508), (200, 46343), (201, 46340), (214, 46253), (217, 46232),

Gene: Clarenza_77 Start: 46895, Stop: 46161, Start Num: 44

Candidate Starts for Clarenza_77:

(Start: 44 @46895 has 45 MA's), (65, 46817), (Start: 72 @46796 has 3 MA's), (Start: 90 @46748 has 27 MA's), (Start: 91 @46745 has 84 MA's), (Start: 115 @46640 has 1 MA's), (132, 46568), (134, 46550), (171, 46484), (192, 46379), (200, 46319), (201, 46316), (214, 46229), (217, 46208),

Gene: CloudWang3_90 Start: 47734, Stop: 47087, Start Num: 44

Candidate Starts for CloudWang3_90:

(Start: 44 @47734 has 45 MA's), (Start: 51 @47710 has 5 MA's), (65, 47656), (Start: 66 @47653 has 13 MA's), (Start: 74 @47623 has 3 MA's), (187, 47329), (200, 47248), (201, 47245), (215, 47152), (216, 47149),

Gene: Cocoaberry_78 Start: 46749, Stop: 46165, Start Num: 91

Candidate Starts for Cocoaberry_78:

(Start: 44 @46899 has 45 MA's), (65, 46821), (Start: 72 @46800 has 3 MA's), (Start: 90 @46752 has 27 MA's), (Start: 91 @46749 has 84 MA's), (Start: 115 @46644 has 1 MA's), (132, 46572), (134, 46554), (171, 46488), (192, 46383), (200, 46323), (201, 46320), (214, 46233), (217, 46212),

Gene: Commander_76 Start: 46746, Stop: 46162, Start Num: 91

Candidate Starts for Commander_76:

(Start: 44 @46896 has 45 MA's), (65, 46818), (Start: 72 @46797 has 3 MA's), (Start: 90 @46749 has 27 MA's), (Start: 91 @46746 has 84 MA's), (Start: 115 @46641 has 1 MA's), (132, 46569), (134, 46551), (171, 46485), (192, 46380), (200, 46320), (201, 46317), (214, 46230), (217, 46209),

Gene: Connomayer_78 Start: 46751, Stop: 46164, Start Num: 90

Candidate Starts for Connomayer_78:

(Start: 44 @46898 has 45 MA's), (65, 46820), (Start: 72 @46799 has 3 MA's), (Start: 90 @46751 has 27 MA's), (Start: 91 @46748 has 84 MA's), (Start: 115 @46643 has 1 MA's), (132, 46571), (134, 46553), (171, 46487), (192, 46382), (200, 46322), (201, 46319), (214, 46232), (217, 46211),

Gene: Cookie dough_88 Start: 47826, Stop: 47200, Start Num: 51

Candidate Starts for Cookie dough_88:

(Start: 44 @47850 has 45 MA's), (Start: 51 @47826 has 5 MA's), (65, 47772), (Start: 66 @47769 has 13 MA's), (Start: 72 @47751 has 3 MA's), (176, 47511), (184, 47487), (188, 47442), (200, 47364), (201, 47361), (204, 47340), (215, 47265), (216, 47262),

Gene: Corndog_6 Start: 2141, Stop: 1578, Start Num: 116

Candidate Starts for Corndog_6:

(Start: 116 @2141 has 23 MA's), (141, 2024), (145, 2009), (155, 1958), (156, 1955), (178, 1847), (182, 1838), (200, 1709), (201, 1706), (212, 1631), (220, 1595),

Gene: Cygnet_47 Start: 28047, Stop: 28715, Start Num: 39

Candidate Starts for Cygnet_47:

(Start: 39 @28047 has 3 MA's), (55, 28113), (Start: 66 @28167 has 13 MA's), (70, 28179), (77, 28212), (82, 28230), (159, 28431), (160, 28437), (189, 28488), (200, 28563), (201, 28566), (212, 28647), (213, 28650), (219, 28683),

Gene: DanHam62_43 Start: 27169, Stop: 27966, Start Num: 39

Candidate Starts for DanHam62_43:

(Start: 39 @27169 has 3 MA's), (55, 27235), (58, 27250), (65, 27286), (77, 27334), (79, 27346), (82, 27352), (159, 27568), (160, 27574), (189, 27742), (200, 27817), (201, 27820), (217, 27928), (219, 27937), (221, 27949),

Gene: Darrell_82 Start: 46051, Stop: 45485, Start Num: 66

Candidate Starts for Darrell_82:

(Start: 44 @46132 has 45 MA's), (Start: 51 @46108 has 5 MA's), (Start: 66 @46051 has 13 MA's), (134, 45898), (176, 45793), (183, 45772), (200, 45646), (201, 45643), (214, 45556),

Gene: DarthPhader_79 Start: 47620, Stop: 47048, Start Num: 66

Candidate Starts for DarthPhader_79:

(Start: 44 @47701 has 45 MA's), (Start: 51 @47677 has 5 MA's), (Start: 66 @47620 has 13 MA's), (134, 47464), (183, 47338), (200, 47212), (201, 47209), (215, 47116), (216, 47113), (223, 47074),

Gene: Datway_75 Start: 46559, Stop: 45975, Start Num: 91

Candidate Starts for Datway_75:

(Start: 44 @46709 has 45 MA's), (65, 46631), (Start: 72 @46610 has 3 MA's), (Start: 90 @46562 has 27 MA's), (Start: 91 @46559 has 84 MA's), (Start: 115 @46454 has 1 MA's), (132, 46382), (134, 46364), (171, 46298), (192, 46193), (200, 46133), (201, 46130), (214, 46043), (217, 46022),

Gene: Deano_75 Start: 46756, Stop: 46172, Start Num: 91

Candidate Starts for Deano_75:

(Start: 44 @46906 has 45 MA's), (65, 46828), (Start: 72 @46807 has 3 MA's), (Start: 90 @46759 has 27 MA's), (Start: 91 @46756 has 84 MA's), (Start: 115 @46651 has 1 MA's), (132, 46579), (134, 46561), (171, 46495), (200, 46330), (201, 46327), (214, 46240), (217, 46219),

Gene: Dhanush_78 Start: 46751, Stop: 46167, Start Num: 91

Candidate Starts for Dhanush_78:

(Start: 44 @46901 has 45 MA's), (65, 46823), (Start: 72 @46802 has 3 MA's), (Start: 90 @46754 has 27 MA's), (Start: 91 @46751 has 84 MA's), (Start: 115 @46646 has 1 MA's), (132, 46574), (133, 46568), (134, 46556), (171, 46490), (200, 46325), (201, 46322), (214, 46235), (217, 46214),

Gene: DirtyDunning_77 Start: 46760, Stop: 46176, Start Num: 91

Candidate Starts for DirtyDunning_77:

(Start: 44 @46910 has 45 MA's), (65, 46832), (Start: 72 @46811 has 3 MA's), (Start: 90 @46763 has 27 MA's), (Start: 91 @46760 has 84 MA's), (Start: 115 @46655 has 1 MA's), (132, 46583), (134, 46565), (171, 46499), (192, 46394), (200, 46334), (201, 46331), (214, 46244), (217, 46223),

Gene: Doomphist_74 Start: 45998, Stop: 46735, Start Num: 62

Candidate Starts for Doomphist_74:

(Start: 62 @45998 has 5 MA's), (Start: 81 @46055 has 1 MA's), (89, 46079), (93, 46097), (98, 46112), (101, 46133), (109, 46166), (Start: 115 @46184 has 1 MA's), (158, 46343), (188, 46505), (200, 46583), (201, 46586), (204, 46607), (205, 46616), (214, 46643), (227, 46724),

Gene: Dorothea_88 Start: 47842, Stop: 47192, Start Num: 44

Candidate Starts for Dorothea_88:

(Start: 44 @47842 has 45 MA's), (Start: 51 @47818 has 5 MA's), (65, 47764), (Start: 66 @47761 has 13 MA's), (Start: 72 @47743 has 3 MA's), (176, 47503), (184, 47479), (188, 47434), (200, 47356), (201, 47353), (204, 47332), (215, 47257), (216, 47254),

Gene: Dorothy_72 Start: 44809, Stop: 45360, Start Num: 115

Candidate Starts for Dorothy_72:

(Start: 62 @44623 has 5 MA's), (Start: 81 @44680 has 1 MA's), (89, 44704), (93, 44722), (98, 44737), (101, 44758), (109, 44791), (Start: 115 @44809 has 1 MA's), (158, 44968), (188, 45130), (200, 45208), (201, 45211), (204, 45232), (205, 45241), (214, 45268), (227, 45349),

Gene: Drake94_75 Start: 45844, Stop: 45209, Start Num: 44

Candidate Starts for Drake94_75:

(Start: 44 @45844 has 45 MA's), (Start: 51 @45820 has 5 MA's), (Start: 66 @45763 has 13 MA's), (132, 45628), (188, 45439), (200, 45361), (201, 45358), (204, 45337), (206, 45325), (215, 45271),

Gene: Druantia_77 Start: 46751, Stop: 46167, Start Num: 91

Candidate Starts for Druantia_77:

(Start: 44 @46901 has 45 MA's), (65, 46823), (Start: 72 @46802 has 3 MA's), (Start: 90 @46754 has 27 MA's), (Start: 91 @46751 has 84 MA's), (Start: 115 @46646 has 1 MA's), (132, 46574), (134, 46556), (171, 46490), (200, 46325), (201, 46322), (214, 46235), (217, 46214),

Gene: Dylan_6 Start: 2163, Stop: 1594, Start Num: 116

Candidate Starts for Dylan_6:

(Start: 116 @2163 has 23 MA's), (141, 2046), (145, 2031), (155, 1980), (156, 1977), (178, 1863), (182, 1854), (200, 1725), (201, 1722), (212, 1647), (220, 1611),

Gene: Eagle_77 Start: 46810, Stop: 46226, Start Num: 91

Candidate Starts for Eagle_77:

(Start: 44 @46960 has 45 MA's), (65, 46882), (Start: 72 @46861 has 3 MA's), (Start: 90 @46813 has 27 MA's), (Start: 91 @46810 has 84 MA's), (Start: 115 @46705 has 1 MA's), (132, 46633), (134, 46615), (171, 46549), (200, 46384), (201, 46381), (214, 46294), (217, 46273),

Gene: Eapen_78 Start: 46743, Stop: 46159, Start Num: 91

Candidate Starts for Eapen_78:

(Start: 44 @46893 has 45 MA's), (65, 46815), (Start: 72 @46794 has 3 MA's), (Start: 90 @46746 has 27 MA's), (Start: 91 @46743 has 84 MA's), (Start: 115 @46638 has 1 MA's), (132, 46566), (134, 46548), (171, 46482), (192, 46377), (200, 46317), (201, 46314), (214, 46227), (217, 46206),

Gene: Eesa_40 Start: 28668, Stop: 29270, Start Num: 117

Candidate Starts for Eesa_40:

(Start: 39 @28389 has 3 MA's), (58, 28470), (65, 28506), (82, 28572), (88, 28593), (110, 28596),
(Start: 117 @28668 has 2 MA's), (129, 28734), (157, 28869), (159, 28881), (160, 28887), (170, 28953),
(189, 29055), (200, 29130), (201, 29133), (219, 29250),

Gene: Elephantoon_84 Start: 46848, Stop: 46192, Start Num: 44

Candidate Starts for Elephantoon_84:

(Start: 44 @46848 has 45 MA's), (Start: 51 @46824 has 5 MA's), (65, 46770), (Start: 66 @46767 has
13 MA's), (134, 46614), (176, 46509), (183, 46488), (200, 46362), (201, 46359), (214, 46272), (217,
46251), (226, 46206),

Gene: EmiMonkey_67 Start: 47844, Stop: 48557, Start Num: 81

Candidate Starts for EmiMonkey_67:

(18, 47481), (22, 47538), (25, 47580), (28, 47595), (30, 47616), (45, 47697), (Start: 81 @47844 has 1
MA's), (87, 47865), (100, 47925), (158, 48165), (200, 48405), (201, 48408), (205, 48438), (214,
48465), (227, 48546),

Gene: Empress_69 Start: 44809, Stop: 45546, Start Num: 62

Candidate Starts for Empress_69:

(Start: 62 @44809 has 5 MA's), (Start: 81 @44866 has 1 MA's), (89, 44890), (93, 44908), (98, 44923),
(101, 44944), (109, 44977), (Start: 115 @44995 has 1 MA's), (158, 45154), (188, 45316), (200, 45394),
(201, 45397), (204, 45418), (205, 45427), (214, 45454), (227, 45535),

Gene: Eris_77 Start: 46910, Stop: 46176, Start Num: 44

Candidate Starts for Eris_77:

(Start: 44 @46910 has 45 MA's), (65, 46832), (Start: 72 @46811 has 3 MA's), (Start: 90 @46763 has
27 MA's), (Start: 91 @46760 has 84 MA's), (Start: 115 @46655 has 1 MA's), (132, 46583), (134,
46565), (171, 46499), (192, 46394), (200, 46334), (201, 46331), (214, 46244), (217, 46223),

Gene: Eros_78 Start: 46750, Stop: 46166, Start Num: 91

Candidate Starts for Eros_78:

(Start: 44 @46900 has 45 MA's), (65, 46822), (Start: 72 @46801 has 3 MA's), (Start: 90 @46753 has
27 MA's), (Start: 91 @46750 has 84 MA's), (Start: 115 @46645 has 1 MA's), (132, 46573), (134,
46555), (171, 46489), (192, 46384), (200, 46324), (201, 46321), (214, 46234), (217, 46213),

Gene: Euratis_34 Start: 26257, Stop: 26847, Start Num: 125

Candidate Starts for Euratis_34:

(36, 25936), (61, 26032), (63, 26047), (92, 26125), (104, 26185), (113, 26221), (Start: 125 @26257 has
7 MA's), (151, 26392), (163, 26482), (174, 26530), (186, 26587), (194, 26635), (197, 26656), (200,
26686), (201, 26689), (203, 26695), (204, 26710), (212, 26767), (219, 26803), (221, 26815), (225,
26836),

Gene: Eurydice_79 Start: 46788, Stop: 46201, Start Num: 90

Candidate Starts for Eurydice_79:

(Start: 44 @46935 has 45 MA's), (65, 46857), (Start: 72 @46836 has 3 MA's), (Start: 90 @46788 has
27 MA's), (Start: 91 @46785 has 84 MA's), (Start: 115 @46680 has 1 MA's), (132, 46608), (134,
46590), (171, 46524), (200, 46359), (201, 46356), (214, 46269), (217, 46248),

Gene: Familton_6 Start: 1765, Stop: 1196, Start Num: 116

Candidate Starts for Familton_6:

(Start: 116 @1765 has 23 MA's), (141, 1648), (145, 1633), (155, 1582), (156, 1579), (178, 1465), (182,
1456), (185, 1432), (200, 1327), (201, 1324), (208, 1288), (212, 1249), (220, 1213),

Gene: Firecracker_5 Start: 1850, Stop: 1287, Start Num: 116

Candidate Starts for Firecracker_5:

(Start: 116 @1850 has 23 MA's), (141, 1733), (145, 1718), (155, 1667), (156, 1664), (178, 1556), (182, 1547), (200, 1418), (201, 1415), (212, 1340), (220, 1304),

Gene: Float294_61 Start: 49716, Stop: 49099, Start Num: 78

Candidate Starts for Float294_61:

(13, 50178), (14, 50121), (15, 50109), (20, 50025), (48, 49830), (52, 49815), (56, 49797), (63, 49761), (Start: 78 @49716 has 1 MA's), (Start: 103 @49653 has 4 MA's), (111, 49638), (112, 49632), (Start: 116 @49617 has 23 MA's), (167, 49413), (175, 49386), (178, 49377), (181, 49371), (194, 49287), (200, 49236), (201, 49233), (212, 49155), (217, 49128),

Gene: Florean_78 Start: 46897, Stop: 46163, Start Num: 44

Candidate Starts for Florean_78:

(Start: 44 @46897 has 45 MA's), (65, 46819), (Start: 72 @46798 has 3 MA's), (Start: 90 @46750 has 27 MA's), (Start: 91 @46747 has 84 MA's), (Start: 115 @46642 has 1 MA's), (132, 46570), (134, 46552), (171, 46486), (200, 46321), (201, 46318), (214, 46231), (217, 46210),

Gene: Flux_79 Start: 46746, Stop: 46162, Start Num: 91

Candidate Starts for Flux_79:

(Start: 44 @46896 has 45 MA's), (65, 46818), (Start: 72 @46797 has 3 MA's), (Start: 90 @46749 has 27 MA's), (Start: 91 @46746 has 84 MA's), (Start: 115 @46641 has 1 MA's), (132, 46569), (133, 46563), (134, 46551), (171, 46485), (192, 46380), (200, 46320), (201, 46317), (214, 46230), (217, 46209),

Gene: FoulBall_5 Start: 1765, Stop: 1196, Start Num: 116

Candidate Starts for FoulBall_5:

(Start: 116 @1765 has 23 MA's), (141, 1648), (145, 1633), (155, 1582), (156, 1579), (178, 1465), (182, 1456), (185, 1432), (200, 1327), (201, 1324), (208, 1288), (212, 1249), (220, 1213),

Gene: Funston_77 Start: 46895, Stop: 46161, Start Num: 44

Candidate Starts for Funston_77:

(Start: 44 @46895 has 45 MA's), (65, 46817), (Start: 72 @46796 has 3 MA's), (Start: 90 @46748 has 27 MA's), (Start: 91 @46745 has 84 MA's), (Start: 115 @46640 has 1 MA's), (132, 46568), (134, 46550), (171, 46484), (192, 46379), (200, 46319), (201, 46316), (214, 46229), (217, 46208),

Gene: Gadost_78 Start: 46749, Stop: 46165, Start Num: 91

Candidate Starts for Gadost_78:

(Start: 44 @46899 has 45 MA's), (65, 46821), (Start: 72 @46800 has 3 MA's), (Start: 90 @46752 has 27 MA's), (Start: 91 @46749 has 84 MA's), (Start: 115 @46644 has 1 MA's), (132, 46572), (134, 46554), (171, 46488), (192, 46383), (200, 46323), (201, 46320), (214, 46233), (217, 46212),

Gene: GaugeLDP_81 Start: 48551, Stop: 47844, Start Num: 99

Candidate Starts for GaugeLDP_81:

(Start: 44 @48725 has 45 MA's), (Start: 51 @48701 has 5 MA's), (Start: 66 @48644 has 13 MA's), (Start: 99 @48551 has 2 MA's), (108, 48503), (135, 48380), (136, 48374), (148, 48317), (153, 48302), (174, 48164), (188, 48086), (200, 48008), (201, 48005), (215, 47909), (216, 47906),

Gene: Geodirt_4 Start: 2785, Stop: 3651, Start Num: 23

Candidate Starts for Geodirt_4:

(Start: 23 @2785 has 1 MA's), (29, 2821), (41, 2884), (43, 2899), (49, 2920), (54, 2938), (80, 3049), (85, 3064), (119, 3181), (200, 3505), (201, 3508), (202, 3511), (217, 3589),

Gene: GigiOuiOui_66 Start: 44414, Stop: 45145, Start Num: 62

Candidate Starts for GigiOuiOui_66:

(Start: 62 @44414 has 5 MA's), (Start: 81 @44471 has 1 MA's), (93, 44513), (98, 44528), (101, 44549), (146, 44729), (188, 44921), (200, 45002), (201, 45005), (214, 45062), (222, 45110), (227, 45134),

Gene: Gladiator_86 Start: 47390, Stop: 46743, Start Num: 44

Candidate Starts for Gladiator_86:

(Start: 44 @47390 has 45 MA's), (Start: 51 @47366 has 5 MA's), (65, 47312), (Start: 66 @47309 has 13 MA's), (Start: 72 @47291 has 3 MA's), (Start: 74 @47279 has 3 MA's), (187, 46985), (200, 46904), (201, 46901), (215, 46808), (216, 46805),

Gene: Goose_79 Start: 46498, Stop: 45863, Start Num: 44

Candidate Starts for Goose_79:

(Start: 44 @46498 has 45 MA's), (Start: 51 @46474 has 5 MA's), (Start: 66 @46417 has 13 MA's), (132, 46282), (188, 46093), (200, 46015), (201, 46012), (206, 45979), (215, 45925),

Gene: Gravel_50 Start: 28545, Stop: 29360, Start Num: 82

Candidate Starts for Gravel_50:

(Start: 39 @28362 has 3 MA's), (58, 28443), (65, 28479), (77, 28527), (82, 28545), (Start: 103 @28638 has 4 MA's), (106, 28656), (110, 28686), (Start: 117 @28758 has 2 MA's), (129, 28824), (159, 28971), (160, 28977), (170, 29043), (189, 29145), (200, 29220), (201, 29223), (219, 29340),

Gene: Gruunaga_89 Start: 47345, Stop: 46698, Start Num: 44

Candidate Starts for Gruunaga_89:

(Start: 44 @47345 has 45 MA's), (Start: 51 @47321 has 5 MA's), (65, 47267), (Start: 66 @47264 has 13 MA's), (Start: 72 @47246 has 3 MA's), (Start: 74 @47234 has 3 MA's), (187, 46940), (200, 46859), (201, 46856), (215, 46763), (216, 46760),

Gene: HamCheese_42 Start: 27156, Stop: 27953, Start Num: 39

Candidate Starts for HamCheese_42:

(Start: 39 @27156 has 3 MA's), (55, 27222), (58, 27237), (65, 27273), (77, 27321), (79, 27333), (82, 27339), (159, 27555), (160, 27561), (189, 27729), (200, 27804), (201, 27807), (217, 27915), (219, 27924),

Gene: HamSlice_74 Start: 46747, Stop: 46163, Start Num: 91

Candidate Starts for HamSlice_74:

(Start: 44 @46897 has 45 MA's), (65, 46819), (Start: 72 @46798 has 3 MA's), (Start: 90 @46750 has 27 MA's), (Start: 91 @46747 has 84 MA's), (Start: 115 @46642 has 1 MA's), (132, 46570), (134, 46552), (171, 46486), (192, 46381), (200, 46321), (201, 46318), (214, 46231), (217, 46210),

Gene: Hammer_90 Start: 46941, Stop: 46405, Start Num: 74

Candidate Starts for Hammer_90:

(Start: 44 @47052 has 45 MA's), (Start: 51 @47028 has 5 MA's), (65, 46974), (Start: 66 @46971 has 13 MA's), (Start: 74 @46941 has 3 MA's), (187, 46647), (200, 46566), (201, 46563), (215, 46470), (216, 46467),

Gene: Happiness_77 Start: 46771, Stop: 46187, Start Num: 91

Candidate Starts for Happiness_77:

(Start: 44 @46921 has 45 MA's), (65, 46843), (Start: 72 @46822 has 3 MA's), (Start: 90 @46774 has 27 MA's), (Start: 91 @46771 has 84 MA's), (Start: 115 @46666 has 1 MA's), (132, 46594), (134, 46576), (171, 46510), (192, 46405), (200, 46345), (201, 46342), (214, 46255), (217, 46234),

Gene: Heather_36 Start: 27272, Stop: 27856, Start Num: 125

Candidate Starts for Heather_36:

(30, 26909), (57, 27035), (61, 27047), (63, 27062), (Start: 66 @27071 has 13 MA's), (104, 27200), (Start: 125 @27272 has 7 MA's), (165, 27518), (174, 27545), (201, 27704), (203, 27710), (204, 27725), (212, 27782), (219, 27818), (221, 27830),

Gene: Hexamo_89 Start: 47220, Stop: 46573, Start Num: 44

Candidate Starts for Hexamo_89:

(Start: 44 @47220 has 45 MA's), (Start: 51 @47196 has 5 MA's), (65, 47142), (Start: 66 @47139 has 13 MA's), (Start: 74 @47109 has 3 MA's), (187, 46815), (200, 46734), (201, 46731), (215, 46638), (216, 46635),

Gene: Holli_77 Start: 46541, Stop: 45954, Start Num: 90

Candidate Starts for Holli_77:

(Start: 44 @46688 has 45 MA's), (65, 46610), (Start: 72 @46589 has 3 MA's), (Start: 90 @46541 has 27 MA's), (Start: 91 @46538 has 84 MA's), (Start: 115 @46433 has 1 MA's), (132, 46361), (134, 46343), (171, 46277), (200, 46112), (201, 46109), (214, 46022), (217, 46001),

Gene: Hoot_83 Start: 45056, Stop: 44406, Start Num: 44

Candidate Starts for Hoot_83:

(Start: 44 @45056 has 45 MA's), (Start: 51 @45032 has 5 MA's), (65, 44978), (Start: 66 @44975 has 13 MA's), (Start: 72 @44957 has 3 MA's), (176, 44717), (184, 44693), (188, 44648), (200, 44570), (201, 44567), (204, 44546), (215, 44471), (216, 44468),

Gene: Houdini22_77 Start: 46749, Stop: 46165, Start Num: 91

Candidate Starts for Houdini22_77:

(Start: 44 @46899 has 45 MA's), (65, 46821), (Start: 72 @46800 has 3 MA's), (Start: 90 @46752 has 27 MA's), (Start: 91 @46749 has 84 MA's), (Start: 115 @46644 has 1 MA's), (132, 46572), (134, 46554), (171, 46488), (192, 46383), (200, 46323), (201, 46320), (214, 46233), (217, 46212),

Gene: Huxley_67 Start: 44641, Stop: 44057, Start Num: 91

Candidate Starts for Huxley_67:

(Start: 44 @44791 has 45 MA's), (65, 44713), (Start: 72 @44692 has 3 MA's), (Start: 90 @44644 has 27 MA's), (Start: 91 @44641 has 84 MA's), (Start: 115 @44536 has 1 MA's), (132, 44464), (134, 44446), (171, 44380), (192, 44275), (200, 44215), (201, 44212), (214, 44125), (217, 44104),

Gene: ICleared_77 Start: 46816, Stop: 46232, Start Num: 91

Candidate Starts for ICleared_77:

(Start: 44 @46966 has 45 MA's), (65, 46888), (Start: 72 @46867 has 3 MA's), (Start: 90 @46819 has 27 MA's), (Start: 91 @46816 has 84 MA's), (Start: 115 @46711 has 1 MA's), (132, 46639), (134, 46621), (171, 46555), (192, 46450), (200, 46390), (201, 46387), (214, 46300), (217, 46279),

Gene: Iceman_76 Start: 47038, Stop: 46454, Start Num: 91

Candidate Starts for Iceman_76:

(Start: 44 @47188 has 45 MA's), (65, 47110), (Start: 72 @47089 has 3 MA's), (Start: 90 @47041 has 27 MA's), (Start: 91 @47038 has 84 MA's), (Start: 115 @46933 has 1 MA's), (132, 46861), (134, 46843), (171, 46777), (192, 46672), (200, 46612), (201, 46609), (214, 46522), (217, 46501),

Gene: Idergollasper_5 Start: 1765, Stop: 1196, Start Num: 116

Candidate Starts for Idergollasper_5:

(Start: 116 @1765 has 23 MA's), (141, 1648), (145, 1633), (155, 1582), (156, 1579), (178, 1465), (182, 1456), (185, 1432), (200, 1327), (201, 1324), (208, 1288), (212, 1249), (220, 1213),

Gene: Iracema64_78 Start: 47012, Stop: 46428, Start Num: 91

Candidate Starts for Iracema64_78:

(Start: 44 @47162 has 45 MA's), (65, 47084), (Start: 72 @47063 has 3 MA's), (Start: 90 @47015 has 27 MA's), (Start: 91 @47012 has 84 MA's), (Start: 115 @46907 has 1 MA's), (132, 46835), (134, 46817), (171, 46751), (200, 46586), (201, 46583), (214, 46496), (217, 46475),

Gene: Isiphiwo_84 Start: 46767, Stop: 46117, Start Num: 44

Candidate Starts for Isiphiwo_84:

(Start: 44 @46767 has 45 MA's), (Start: 51 @46743 has 5 MA's), (65, 46689), (Start: 66 @46686 has 13 MA's), (Start: 72 @46668 has 3 MA's), (176, 46428), (184, 46404), (188, 46359), (200, 46281), (201, 46278), (204, 46257), (215, 46182), (216, 46179),

Gene: Jamun_40 Start: 27823, Stop: 28545, Start Num: 103

Candidate Starts for Jamun_40:

(Start: 39 @27547 has 3 MA's), (55, 27613), (58, 27628), (65, 27664), (77, 27712), (79, 27724), (82, 27730), (Start: 103 @27823 has 4 MA's), (106, 27841), (110, 27871), (Start: 117 @27943 has 2 MA's), (138, 28057), (142, 28069), (159, 28156), (160, 28162), (161, 28165), (170, 28228), (189, 28330), (200, 28405), (201, 28408), (219, 28525),

Gene: JangDynasty_5 Start: 1854, Stop: 1291, Start Num: 116

Candidate Starts for JangDynasty_5:

(Start: 116 @1854 has 23 MA's), (141, 1737), (145, 1722), (155, 1671), (156, 1668), (178, 1560), (182, 1551), (185, 1527), (200, 1422), (201, 1419), (212, 1344), (220, 1308),

Gene: Jaykayelowell_75 Start: 46891, Stop: 46157, Start Num: 44

Candidate Starts for Jaykayelowell_75:

(Start: 44 @46891 has 45 MA's), (65, 46813), (Start: 72 @46792 has 3 MA's), (Start: 90 @46744 has 27 MA's), (Start: 91 @46741 has 84 MA's), (Start: 115 @46636 has 1 MA's), (132, 46564), (134, 46546), (171, 46480), (200, 46315), (201, 46312), (214, 46225), (217, 46204),

Gene: JetBlade_79 Start: 46779, Stop: 46192, Start Num: 90

Candidate Starts for JetBlade_79:

(Start: 44 @46926 has 45 MA's), (65, 46848), (Start: 72 @46827 has 3 MA's), (Start: 90 @46779 has 27 MA's), (Start: 91 @46776 has 84 MA's), (Start: 115 @46671 has 1 MA's), (132, 46599), (134, 46581), (171, 46515), (200, 46350), (201, 46347), (214, 46260), (217, 46239),

Gene: JewelBug_80 Start: 45535, Stop: 44885, Start Num: 44

Candidate Starts for JewelBug_80:

(Start: 44 @45535 has 45 MA's), (Start: 51 @45511 has 5 MA's), (65, 45457), (Start: 66 @45454 has 13 MA's), (Start: 72 @45436 has 3 MA's), (176, 45196), (184, 45172), (188, 45127), (200, 45049), (201, 45046), (204, 45025), (215, 44950), (216, 44947),

Gene: Jinkies_3 Start: 2349, Stop: 3125, Start Num: 35

Candidate Starts for Jinkies_3:

(Start: 35 @2349 has 1 MA's), (58, 2442), (60, 2448), (65, 2478), (70, 2493), (Start: 125 @2571 has 7 MA's), (130, 2616), (144, 2649), (147, 2670), (150, 2676), (152, 2685), (154, 2700), (172, 2784), (173, 2793), (189, 2871), (200, 2952), (201, 2955), (209, 3015), (219, 3072),

Gene: JoongJeon_77 Start: 46892, Stop: 46158, Start Num: 44

Candidate Starts for JoongJeon_77:

(Start: 44 @46892 has 45 MA's), (65, 46814), (Start: 72 @46793 has 3 MA's), (Start: 90 @46745 has 27 MA's), (Start: 91 @46742 has 84 MA's), (Start: 115 @46637 has 1 MA's), (132, 46565), (134, 46547), (171, 46481), (192, 46376), (200, 46316), (201, 46313), (214, 46226), (217, 46205),

Gene: Jordennis_86 Start: 47439, Stop: 46789, Start Num: 44

Candidate Starts for Jordennis_86:

(Start: 44 @47439 has 45 MA's), (Start: 51 @47415 has 5 MA's), (65, 47361), (Start: 66 @47358 has 13 MA's), (Start: 72 @47340 has 3 MA's), (176, 47100), (184, 47076), (188, 47031), (200, 46953), (201, 46950), (204, 46929), (215, 46854), (216, 46851),

Gene: Juno112_42 Start: 27172, Stop: 27969, Start Num: 39

Candidate Starts for Juno112_42:

(Start: 39 @27172 has 3 MA's), (55, 27238), (58, 27253), (65, 27289), (77, 27337), (79, 27349), (82, 27355), (159, 27571), (160, 27577), (189, 27745), (200, 27820), (201, 27823), (217, 27931), (219, 27940),

Gene: KFPoly_77 Start: 46892, Stop: 46158, Start Num: 44

Candidate Starts for KFPoly_77:

(Start: 44 @46892 has 45 MA's), (65, 46814), (Start: 72 @46793 has 3 MA's), (Start: 90 @46745 has 27 MA's), (Start: 91 @46742 has 84 MA's), (Start: 115 @46637 has 1 MA's), (132, 46565), (134, 46547), (171, 46481), (192, 46376), (200, 46316), (201, 46313), (214, 46226), (217, 46205),

Gene: Kamy_77 Start: 46751, Stop: 46167, Start Num: 91

Candidate Starts for Kamy_77:

(Start: 44 @46901 has 45 MA's), (65, 46823), (Start: 72 @46802 has 3 MA's), (Start: 90 @46754 has 27 MA's), (Start: 91 @46751 has 84 MA's), (Start: 115 @46646 has 1 MA's), (132, 46574), (134, 46556), (171, 46490), (200, 46325), (201, 46322), (214, 46235), (217, 46214),

Gene: Katalie136_75 Start: 46530, Stop: 45958, Start Num: 95

Candidate Starts for Katalie136_75:

(Start: 44 @46692 has 45 MA's), (65, 46614), (Start: 72 @46593 has 3 MA's), (Start: 90 @46545 has 27 MA's), (Start: 91 @46542 has 84 MA's), (Start: 95 @46530 has 4 MA's), (Start: 115 @46437 has 1 MA's), (132, 46365), (134, 46347), (171, 46281), (192, 46176), (200, 46116), (201, 46113), (214, 46026), (217, 46005), (224, 45969),

Gene: Kazan_89 Start: 47187, Stop: 46561, Start Num: 51

Candidate Starts for Kazan_89:

(Start: 44 @47211 has 45 MA's), (Start: 51 @47187 has 5 MA's), (65, 47133), (Start: 66 @47130 has 13 MA's), (Start: 72 @47112 has 3 MA's), (176, 46872), (184, 46848), (188, 46803), (200, 46725), (201, 46722), (204, 46701), (215, 46626), (216, 46623),

Gene: KendraB23_51 Start: 28732, Stop: 29547, Start Num: 82

Candidate Starts for KendraB23_51:

(Start: 39 @28549 has 3 MA's), (58, 28630), (65, 28666), (77, 28714), (82, 28732), (Start: 103 @28825 has 4 MA's), (106, 28843), (110, 28873), (Start: 117 @28945 has 2 MA's), (129, 29011), (159, 29158), (160, 29164), (170, 29230), (189, 29332), (200, 29407), (201, 29410), (219, 29527),

Gene: Keziacharles14_81 Start: 47447, Stop: 46881, Start Num: 66

Candidate Starts for Keziacharles14_81:

(Start: 44 @47528 has 45 MA's), (Start: 51 @47504 has 5 MA's), (65, 47450), (Start: 66 @47447 has 13 MA's), (84, 47396), (176, 47189), (183, 47168), (188, 47120), (200, 47042), (201, 47039), (214, 46952),

Gene: Kingmustik0402_78 Start: 46740, Stop: 46153, Start Num: 90

Candidate Starts for Kingmustik0402_78:

(Start: 44 @46887 has 45 MA's), (65, 46809), (Start: 72 @46788 has 3 MA's), (Start: 90 @46740 has 27 MA's), (Start: 91 @46737 has 84 MA's), (Start: 115 @46632 has 1 MA's), (132, 46560), (134, 46542), (171, 46476), (200, 46311), (201, 46308), (214, 46221), (217, 46200),

Gene: KittenMittens_74 Start: 45854, Stop: 45219, Start Num: 44

Candidate Starts for KittenMittens_74:

(Start: 44 @45854 has 45 MA's), (Start: 51 @45830 has 5 MA's), (Start: 66 @45773 has 13 MA's), (132, 45638), (188, 45449), (200, 45371), (201, 45368), (204, 45347), (206, 45335), (215, 45281),

Gene: Koan_73 Start: 46751, Stop: 46164, Start Num: 90

Candidate Starts for Koan_73:

(Start: 44 @46898 has 45 MA's), (65, 46820), (Start: 72 @46799 has 3 MA's), (Start: 90 @46751 has 27 MA's), (Start: 91 @46748 has 84 MA's), (Start: 115 @46643 has 1 MA's), (132, 46571), (134, 46553), (171, 46487), (192, 46382), (200, 46322), (201, 46319), (214, 46232), (217, 46211),

Gene: Koko_91 Start: 47970, Stop: 47419, Start Num: 72

Candidate Starts for Koko_91:

(Start: 44 @48069 has 45 MA's), (Start: 51 @48045 has 5 MA's), (65, 47991), (Start: 66 @47988 has 13 MA's), (Start: 72 @47970 has 3 MA's), (187, 47664), (200, 47583), (201, 47580), (204, 47559), (215, 47484), (216, 47481),

Gene: Koreni_77 Start: 46432, Stop: 45845, Start Num: 90

Candidate Starts for Koreni_77:

(Start: 44 @46579 has 45 MA's), (65, 46501), (Start: 72 @46480 has 3 MA's), (Start: 90 @46432 has 27 MA's), (Start: 91 @46429 has 84 MA's), (Start: 115 @46324 has 1 MA's), (132, 46252), (134, 46234), (171, 46168), (192, 46063), (200, 46003), (201, 46000), (214, 45913), (217, 45892),

Gene: Kratark_77 Start: 46932, Stop: 46198, Start Num: 44

Candidate Starts for Kratark_77:

(Start: 44 @46932 has 45 MA's), (65, 46854), (Start: 72 @46833 has 3 MA's), (Start: 90 @46785 has 27 MA's), (Start: 91 @46782 has 84 MA's), (Start: 115 @46677 has 1 MA's), (132, 46605), (134, 46587), (162, 46566), (171, 46521), (192, 46416), (200, 46356), (201, 46353), (214, 46266), (217, 46245),

Gene: Kremtemulon_75 Start: 46628, Stop: 46044, Start Num: 91

Candidate Starts for Kremtemulon_75:

(Start: 44 @46778 has 45 MA's), (65, 46700), (Start: 72 @46679 has 3 MA's), (Start: 90 @46631 has 27 MA's), (Start: 91 @46628 has 84 MA's), (Start: 115 @46523 has 1 MA's), (132, 46451), (134, 46433), (171, 46367), (192, 46262), (200, 46202), (201, 46199), (214, 46112), (217, 46091), (224, 46055),

Gene: Krili_5 Start: 1716, Stop: 1147, Start Num: 116

Candidate Starts for Krili_5:

(Start: 116 @1716 has 23 MA's), (141, 1599), (145, 1584), (155, 1533), (156, 1530), (178, 1416), (182, 1407), (185, 1383), (200, 1278), (201, 1275), (208, 1239), (212, 1200), (220, 1164),

Gene: Kristoff_76 Start: 47122, Stop: 46487, Start Num: 44

Candidate Starts for Kristoff_76:

(Start: 44 @47122 has 45 MA's), (Start: 51 @47098 has 5 MA's), (Start: 66 @47041 has 13 MA's), (84, 46990), (132, 46906), (188, 46717), (200, 46639), (201, 46636), (206, 46603), (215, 46549),

Gene: Kyee_78 Start: 46743, Stop: 46159, Start Num: 91

Candidate Starts for Kyee_78:

(Start: 44 @46893 has 45 MA's), (65, 46815), (Start: 72 @46794 has 3 MA's), (Start: 90 @46746 has 27 MA's), (Start: 91 @46743 has 84 MA's), (Start: 115 @46638 has 1 MA's), (132, 46566), (134, 46548), (171, 46482), (192, 46377), (200, 46317), (201, 46314), (214, 46227), (217, 46206),

Gene: LHTSCC_80 Start: 47191, Stop: 46604, Start Num: 90

Candidate Starts for LHTSCC_80:

(Start: 44 @47338 has 45 MA's), (65, 47260), (Start: 72 @47239 has 3 MA's), (Start: 90 @47191 has 27 MA's), (Start: 91 @47188 has 84 MA's), (Start: 115 @47083 has 1 MA's), (132, 47011), (134, 46993), (171, 46927), (192, 46822), (200, 46762), (201, 46759), (214, 46672), (217, 46651),

Gene: LappelDuVide_78 Start: 46748, Stop: 46164, Start Num: 91

Candidate Starts for LappelDuVide_78:

(Start: 44 @46898 has 45 MA's), (65, 46820), (Start: 72 @46799 has 3 MA's), (Start: 90 @46751 has 27 MA's), (Start: 91 @46748 has 84 MA's), (Start: 115 @46643 has 1 MA's), (132, 46571), (134, 46553), (171, 46487), (192, 46382), (200, 46322), (201, 46319), (214, 46232), (217, 46211),

Gene: Lemur_78 Start: 46745, Stop: 46161, Start Num: 91

Candidate Starts for Lemur_78:

(Start: 44 @46895 has 45 MA's), (65, 46817), (Start: 72 @46796 has 3 MA's), (Start: 90 @46748 has 27 MA's), (Start: 91 @46745 has 84 MA's), (Start: 115 @46640 has 1 MA's), (132, 46568), (133, 46562), (134, 46550), (171, 46484), (192, 46379), (200, 46319), (201, 46316), (214, 46229), (217, 46208),

Gene: Leona_42 Start: 27237, Stop: 28046, Start Num: 39

Candidate Starts for Leona_42:

(Start: 39 @27237 has 3 MA's), (55, 27303), (58, 27318), (65, 27354), (77, 27402), (79, 27414), (82, 27420), (160, 27654), (161, 27657), (180, 27759), (189, 27822), (200, 27897), (201, 27900), (219, 28017),

Gene: Lilbooboo_33 Start: 26272, Stop: 26859, Start Num: 125

Candidate Starts for Lilbooboo_33:

(26, 25882), (27, 25885), (36, 25951), (40, 25963), (63, 26062), (104, 26200), (Start: 125 @26272 has 7 MA's), (143, 26374), (151, 26407), (174, 26545), (186, 26602), (190, 26629), (193, 26647), (197, 26671), (201, 26704), (205, 26734), (219, 26818), (221, 26830),

Gene: LittleB_78 Start: 46899, Stop: 46165, Start Num: 44

Candidate Starts for LittleB_78:

(Start: 44 @46899 has 45 MA's), (65, 46821), (Start: 72 @46800 has 3 MA's), (Start: 90 @46752 has 27 MA's), (Start: 91 @46749 has 84 MA's), (Start: 115 @46644 has 1 MA's), (132, 46572), (134, 46554), (171, 46488), (192, 46383), (200, 46323), (201, 46320), (214, 46233), (217, 46212),

Gene: LittleGuy_78 Start: 46633, Stop: 46049, Start Num: 91

Candidate Starts for LittleGuy_78:

(Start: 44 @46783 has 45 MA's), (65, 46705), (Start: 72 @46684 has 3 MA's), (Start: 90 @46636 has 27 MA's), (Start: 91 @46633 has 84 MA's), (Start: 115 @46528 has 1 MA's), (132, 46456), (134, 46438), (171, 46372), (192, 46267), (200, 46207), (201, 46204), (214, 46117), (217, 46096),

Gene: LochMonster_79 Start: 46985, Stop: 46401, Start Num: 91

Candidate Starts for LochMonster_79:

(Start: 44 @47135 has 45 MA's), (65, 47057), (Start: 72 @47036 has 3 MA's), (Start: 90 @46988 has 27 MA's), (Start: 91 @46985 has 84 MA's), (Start: 115 @46880 has 1 MA's), (132, 46808), (134, 46790), (171, 46724), (200, 46559), (201, 46556), (214, 46469), (217, 46448),

Gene: LoneWolf_84 Start: 46963, Stop: 46397, Start Num: 66

Candidate Starts for LoneWolf_84:

(Start: 44 @47044 has 45 MA's), (Start: 51 @47020 has 5 MA's), (65, 46966), (Start: 66 @46963 has 13 MA's), (176, 46705), (183, 46684), (200, 46558), (201, 46555), (214, 46468),

Gene: Lorenzo_78 Start: 46746, Stop: 46162, Start Num: 91

Candidate Starts for Lorenzo_78:

(Start: 44 @46896 has 45 MA's), (65, 46818), (Start: 72 @46797 has 3 MA's), (Start: 90 @46749 has 27 MA's), (Start: 91 @46746 has 84 MA's), (Start: 115 @46641 has 1 MA's), (132, 46569), (134, 46551), (171, 46485), (192, 46380), (200, 46320), (201, 46317), (214, 46230), (217, 46209),

Gene: Lunsford_78 Start: 46741, Stop: 46157, Start Num: 91

Candidate Starts for Lunsford_78:

(Start: 44 @46891 has 45 MA's), (65, 46813), (Start: 72 @46792 has 3 MA's), (Start: 90 @46744 has 27 MA's), (Start: 91 @46741 has 84 MA's), (Start: 115 @46636 has 1 MA's), (132, 46564), (134, 46546), (171, 46480), (200, 46315), (201, 46312), (214, 46225), (217, 46204),

Gene: MadKillah_5 Start: 1716, Stop: 1147, Start Num: 116

Candidate Starts for MadKillah_5:

(Start: 116 @1716 has 23 MA's), (141, 1599), (145, 1584), (155, 1533), (156, 1530), (178, 1416), (182, 1407), (185, 1383), (200, 1278), (201, 1275), (208, 1239), (212, 1200), (220, 1164),

Gene: Maminiaina_83 Start: 46878, Stop: 46300, Start Num: 66

Candidate Starts for Maminiaina_83:

(Start: 44 @46959 has 45 MA's), (50, 46938), (Start: 51 @46935 has 5 MA's), (Start: 66 @46878 has 13 MA's), (84, 46827), (176, 46620), (183, 46599), (200, 46473), (201, 46470), (214, 46383), (217, 46362), (226, 46317),

Gene: Maverick_77 Start: 46745, Stop: 46161, Start Num: 91

Candidate Starts for Maverick_77:

(Start: 44 @46895 has 45 MA's), (65, 46817), (Start: 72 @46796 has 3 MA's), (Start: 90 @46748 has 27 MA's), (Start: 91 @46745 has 84 MA's), (Start: 115 @46640 has 1 MA's), (132, 46568), (134, 46550), (171, 46484), (192, 46379), (200, 46319), (201, 46316), (214, 46229), (217, 46208),

Gene: Maxo_80 Start: 46754, Stop: 46167, Start Num: 90

Candidate Starts for Maxo_80:

(Start: 44 @46901 has 45 MA's), (65, 46823), (Start: 72 @46802 has 3 MA's), (Start: 90 @46754 has 27 MA's), (Start: 91 @46751 has 84 MA's), (Start: 115 @46646 has 1 MA's), (132, 46574), (134, 46556), (171, 46490), (200, 46325), (201, 46322), (214, 46235), (217, 46214),

Gene: Mazhar510_78 Start: 46749, Stop: 46162, Start Num: 90

Candidate Starts for Mazhar510_78:

(Start: 44 @46896 has 45 MA's), (65, 46818), (Start: 72 @46797 has 3 MA's), (Start: 90 @46749 has 27 MA's), (Start: 91 @46746 has 84 MA's), (Start: 115 @46641 has 1 MA's), (132, 46569), (134, 46551), (171, 46485), (192, 46380), (200, 46320), (201, 46317), (214, 46230), (217, 46209),

Gene: McKinley_5 Start: 3198, Stop: 3983, Start Num: 76

Candidate Starts for McKinley_5:

(64, 3156), (67, 3165), (Start: 76 @3198 has 1 MA's), (Start: 78 @3204 has 1 MA's), (85, 3228), (107, 3327), (145, 3495), (149, 3516), (159, 3537), (200, 3786), (201, 3789), (202, 3792), (204, 3810), (211, 3873), (217, 3921),

Gene: Medusa_77 Start: 46761, Stop: 46177, Start Num: 91

Candidate Starts for Medusa_77:

(Start: 44 @46911 has 45 MA's), (65, 46833), (Start: 72 @46812 has 3 MA's), (Start: 90 @46764 has 27 MA's), (Start: 91 @46761 has 84 MA's), (Start: 115 @46656 has 1 MA's), (132, 46584), (134, 46566), (171, 46500), (200, 46335), (201, 46332), (214, 46245), (217, 46224),

Gene: MeeZee_77 Start: 46742, Stop: 46158, Start Num: 91

Candidate Starts for MeeZee_77:

(Start: 44 @46892 has 45 MA's), (65, 46814), (Start: 72 @46793 has 3 MA's), (Start: 90 @46745 has 27 MA's), (Start: 91 @46742 has 84 MA's), (Start: 115 @46637 has 1 MA's), (132, 46565), (134, 46547), (171, 46481), (192, 46376), (200, 46316), (201, 46313), (214, 46226), (217, 46205),

Gene: Melvin_80 Start: 46743, Stop: 46159, Start Num: 91

Candidate Starts for Melvin_80:

(Start: 44 @46893 has 45 MA's), (65, 46815), (Start: 72 @46794 has 3 MA's), (Start: 90 @46746 has 27 MA's), (Start: 91 @46743 has 84 MA's), (Start: 115 @46638 has 1 MA's), (132, 46566), (133, 46560), (134, 46548), (171, 46482), (192, 46377), (200, 46317), (201, 46314), (214, 46227), (217, 46206),

Gene: Millski_77 Start: 46749, Stop: 46165, Start Num: 91

Candidate Starts for Millski_77:

(Start: 44 @46899 has 45 MA's), (65, 46821), (Start: 72 @46800 has 3 MA's), (Start: 90 @46752 has 27 MA's), (Start: 91 @46749 has 84 MA's), (Start: 115 @46644 has 1 MA's), (132, 46572), (134, 46554), (171, 46488), (192, 46383), (200, 46323), (201, 46320), (214, 46233), (217, 46212),

Gene: Miramae_78 Start: 46572, Stop: 45991, Start Num: 91

Candidate Starts for Miramae_78:

(Start: 44 @46722 has 45 MA's), (65, 46644), (Start: 72 @46623 has 3 MA's), (84, 46590), (Start: 91 @46572 has 84 MA's), (105, 46503), (107, 46497), (112, 46485), (171, 46314), (200, 46149), (201, 46146), (214, 46059), (217, 46038), (224, 46002),

Gene: Mori_5 Start: 1716, Stop: 1147, Start Num: 116

Candidate Starts for Mori_5:

(Start: 116 @1716 has 23 MA's), (141, 1599), (145, 1584), (155, 1533), (156, 1530), (178, 1416), (182, 1407), (185, 1383), (200, 1278), (201, 1275), (208, 1239), (212, 1200), (220, 1164),

Gene: Morpher26_75 Start: 46563, Stop: 45979, Start Num: 91

Candidate Starts for Morpher26_75:

(Start: 44 @46713 has 45 MA's), (65, 46635), (Start: 72 @46614 has 3 MA's), (Start: 90 @46566 has 27 MA's), (Start: 91 @46563 has 84 MA's), (Start: 95 @46551 has 4 MA's), (Start: 115 @46458 has 1 MA's), (132, 46386), (134, 46368), (171, 46302), (192, 46197), (200, 46137), (201, 46134), (214, 46047), (217, 46026), (224, 45990),

Gene: Morrow_80 Start: 46788, Stop: 46204, Start Num: 91

Candidate Starts for Morrow_80:

(Start: 44 @46938 has 45 MA's), (65, 46860), (Start: 72 @46839 has 3 MA's), (Start: 90 @46791 has 27 MA's), (Start: 91 @46788 has 84 MA's), (Start: 115 @46683 has 1 MA's), (132, 46611), (134, 46593), (200, 46362), (201, 46359), (214, 46272), (217, 46251),

Gene: Mundrea_77 Start: 46850, Stop: 46224, Start Num: 72

Candidate Starts for Mundrea_77:

(Start: 44 @46949 has 45 MA's), (65, 46871), (Start: 72 @46850 has 3 MA's), (105, 46730), (171, 46547), (177, 46526), (200, 46382), (201, 46379), (214, 46292), (217, 46271),

Gene: Nebs_79 Start: 46788, Stop: 46204, Start Num: 91

Candidate Starts for Nebs_79:

(Start: 44 @46938 has 45 MA's), (65, 46860), (Start: 72 @46839 has 3 MA's), (Start: 90 @46791 has 27 MA's), (Start: 91 @46788 has 84 MA's), (Start: 115 @46683 has 1 MA's), (132, 46611), (134, 46593), (171, 46527), (200, 46362), (201, 46359), (214, 46272), (217, 46251),

Gene: Nemo27_77 Start: 46744, Stop: 46160, Start Num: 91

Candidate Starts for Nemo27_77:

(Start: 44 @46894 has 45 MA's), (65, 46816), (Start: 72 @46795 has 3 MA's), (Start: 90 @46747 has 27 MA's), (Start: 91 @46744 has 84 MA's), (Start: 115 @46639 has 1 MA's), (132, 46567), (134, 46549), (171, 46483), (192, 46378), (200, 46318), (201, 46315), (214, 46228), (217, 46207),

Gene: NiebruSaylor_5 Start: 1716, Stop: 1147, Start Num: 116

Candidate Starts for NiebruSaylor_5:

(Start: 116 @1716 has 23 MA's), (141, 1599), (145, 1584), (155, 1533), (156, 1530), (178, 1416), (182, 1407), (185, 1383), (200, 1278), (201, 1275), (208, 1239), (212, 1200), (220, 1164),

Gene: Noelle_76 Start: 46925, Stop: 46305, Start Num: 44

Candidate Starts for Noelle_76:

(Start: 44 @46925 has 45 MA's), (Start: 51 @46901 has 5 MA's), (Start: 66 @46844 has 13 MA's), (178, 46592), (188, 46529), (200, 46451), (201, 46448), (215, 46367), (217, 46352), (224, 46316),

Gene: NorthStar_75 Start: 46748, Stop: 46164, Start Num: 91

Candidate Starts for NorthStar_75:

(Start: 44 @46898 has 45 MA's), (65, 46820), (Start: 72 @46799 has 3 MA's), (Start: 90 @46751 has 27 MA's), (Start: 91 @46748 has 84 MA's), (Start: 115 @46643 has 1 MA's), (132, 46571), (133, 46565), (134, 46553), (171, 46487), (192, 46382), (200, 46322), (201, 46319), (214, 46232), (217, 46211),

Gene: NotAPhaseMom_77 Start: 46749, Stop: 46165, Start Num: 91

Candidate Starts for NotAPhaseMom_77:

(Start: 44 @46899 has 45 MA's), (65, 46821), (Start: 72 @46800 has 3 MA's), (Start: 90 @46752 has 27 MA's), (Start: 91 @46749 has 84 MA's), (Start: 115 @46644 has 1 MA's), (132, 46572), (134, 46554), (171, 46488), (192, 46383), (200, 46323), (201, 46320), (214, 46233), (217, 46212),

Gene: Nyxis_77 Start: 46630, Stop: 46043, Start Num: 90

Candidate Starts for Nyxis_77:

(Start: 44 @46777 has 45 MA's), (65, 46699), (Start: 72 @46678 has 3 MA's), (Start: 90 @46630 has 27 MA's), (Start: 91 @46627 has 84 MA's), (Start: 115 @46522 has 1 MA's), (132, 46450), (134, 46432), (171, 46366), (200, 46201), (201, 46198), (214, 46111), (217, 46090),

Gene: OKCentral2016_77 Start: 45901, Stop: 45290, Start Num: 51

Candidate Starts for OKCentral2016_77:

(Start: 44 @45925 has 45 MA's), (Start: 51 @45901 has 5 MA's), (Start: 66 @45844 has 13 MA's), (132, 45709), (188, 45520), (200, 45442), (201, 45439), (206, 45406), (215, 45352),

Gene: OKaNui_77 Start: 46799, Stop: 46215, Start Num: 91

Candidate Starts for OKaNui_77:

(Start: 44 @46949 has 45 MA's), (65, 46871), (Start: 72 @46850 has 3 MA's), (Start: 90 @46802 has 27 MA's), (Start: 91 @46799 has 84 MA's), (Start: 115 @46694 has 1 MA's), (132, 46622), (134, 46604), (171, 46538), (192, 46433), (200, 46373), (201, 46370), (214, 46283), (217, 46262),

Gene: Obama12_79 Start: 47172, Stop: 46588, Start Num: 91

Candidate Starts for Obama12_79:

(Start: 44 @47322 has 45 MA's), (65, 47244), (Start: 72 @47223 has 3 MA's), (Start: 90 @47175 has 27 MA's), (Start: 91 @47172 has 84 MA's), (Start: 115 @47067 has 1 MA's), (132, 46995), (134, 46977), (171, 46911), (192, 46806), (200, 46746), (201, 46743), (214, 46656), (217, 46635),

Gene: Ohfah_79 Start: 46791, Stop: 46204, Start Num: 90

Candidate Starts for Ohfah_79:

(Start: 44 @46938 has 45 MA's), (65, 46860), (Start: 72 @46839 has 3 MA's), (Start: 90 @46791 has 27 MA's), (Start: 91 @46788 has 84 MA's), (Start: 115 @46683 has 1 MA's), (132, 46611), (134, 46593), (171, 46527), (200, 46362), (201, 46359), (214, 46272), (217, 46251),

Gene: Orcanus_41 Start: 28182, Stop: 28904, Start Num: 103

Candidate Starts for Orcanus_41:

(Start: 39 @27906 has 3 MA's), (58, 27987), (65, 28023), (77, 28071), (82, 28089), (Start: 103 @28182 has 4 MA's), (106, 28200), (110, 28230), (Start: 117 @28302 has 2 MA's), (157, 28503), (159, 28515), (160, 28521), (161, 28524), (170, 28587), (189, 28689), (200, 28764), (201, 28767), (219, 28884),

Gene: Palestino_77 Start: 46895, Stop: 46161, Start Num: 44

Candidate Starts for Palestino_77:

(Start: 44 @46895 has 45 MA's), (65, 46817), (Start: 72 @46796 has 3 MA's), (Start: 90 @46748 has 27 MA's), (Start: 91 @46745 has 84 MA's), (Start: 115 @46640 has 1 MA's), (132, 46568), (134, 46550), (171, 46484), (192, 46379), (200, 46319), (201, 46316), (214, 46229), (217, 46208),

Gene: Peaches_76 Start: 46747, Stop: 46163, Start Num: 91

Candidate Starts for Peaches_76:

(Start: 44 @46897 has 45 MA's), (65, 46819), (Start: 72 @46798 has 3 MA's), (Start: 90 @46750 has 27 MA's), (Start: 91 @46747 has 84 MA's), (Start: 115 @46642 has 1 MA's), (132, 46570), (134, 46552), (171, 46486), (192, 46381), (200, 46321), (201, 46318), (214, 46231), (217, 46210),

Gene: Pelletreau_50 Start: 28545, Stop: 29360, Start Num: 82

Candidate Starts for Pelletreau_50:

(Start: 39 @28362 has 3 MA's), (58, 28443), (65, 28479), (77, 28527), (82, 28545), (Start: 103 @28638 has 4 MA's), (106, 28656), (110, 28686), (Start: 117 @28758 has 2 MA's), (129, 28824), (159, 28971), (160, 28977), (170, 29043), (189, 29145), (200, 29220), (201, 29223), (219, 29340),

Gene: Perplexer_75 Start: 46531, Stop: 45959, Start Num: 95

Candidate Starts for Perplexer_75:

(Start: 44 @46693 has 45 MA's), (65, 46615), (Start: 72 @46594 has 3 MA's), (Start: 90 @46546 has 27 MA's), (Start: 91 @46543 has 84 MA's), (Start: 95 @46531 has 4 MA's), (Start: 115 @46438 has 1 MA's), (132, 46366), (134, 46348), (171, 46282), (192, 46177), (200, 46117), (201, 46114), (214, 46027), (217, 46006),

Gene: PeterPeter_78 Start: 46742, Stop: 46158, Start Num: 91

Candidate Starts for PeterPeter_78:

(Start: 44 @46892 has 45 MA's), (65, 46814), (Start: 72 @46793 has 3 MA's), (Start: 90 @46745 has 27 MA's), (Start: 91 @46742 has 84 MA's), (Start: 115 @46637 has 1 MA's), (132, 46565), (134, 46547), (171, 46481), (192, 46376), (200, 46316), (201, 46313), (214, 46226), (217, 46205),

Gene: PetiteSangsue_75 Start: 46546, Stop: 45962, Start Num: 91

Candidate Starts for PetiteSangsue_75:

(Start: 44 @46696 has 45 MA's), (65, 46618), (Start: 72 @46597 has 3 MA's), (Start: 90 @46549 has 27 MA's), (Start: 91 @46546 has 84 MA's), (Start: 95 @46534 has 4 MA's), (Start: 115 @46441 has 1 MA's), (132, 46369), (134, 46351), (171, 46285), (192, 46180), (200, 46120), (201, 46117), (214, 46030), (217, 46009),

Gene: Phacado_78 Start: 46744, Stop: 46160, Start Num: 91

Candidate Starts for Phacado_78:

(Start: 44 @46894 has 45 MA's), (65, 46816), (Start: 72 @46795 has 3 MA's), (Start: 90 @46747 has 27 MA's), (Start: 91 @46744 has 84 MA's), (Start: 115 @46639 has 1 MA's), (132, 46567), (134, 46549), (171, 46483), (192, 46378), (200, 46318), (201, 46315), (214, 46228), (217, 46207),

Gene: Phanphagia_66 Start: 43660, Stop: 44277, Start Num: 81

Candidate Starts for Phanphagia_66:

(Start: 62 @43603 has 5 MA's), (Start: 81 @43660 has 1 MA's), (89, 43684), (98, 43717), (101, 43738), (109, 43771), (Start: 115 @43789 has 1 MA's), (120, 43798), (158, 43876), (200, 44125), (201, 44128), (205, 44158), (214, 44185), (227, 44266),

Gene: Pharaoh_78 Start: 47942, Stop: 47292, Start Num: 44

Candidate Starts for Pharaoh_78:

(Start: 44 @47942 has 45 MA's), (Start: 51 @47918 has 5 MA's), (Start: 66 @47861 has 13 MA's), (176, 47600), (183, 47579), (200, 47456), (201, 47453), (204, 47432), (215, 47360), (216, 47357),

Gene: Phelipe_79 Start: 46788, Stop: 46204, Start Num: 91

Candidate Starts for Phelipe_79:

(Start: 44 @46938 has 45 MA's), (65, 46860), (Start: 72 @46839 has 3 MA's), (Start: 90 @46791 has 27 MA's), (Start: 91 @46788 has 84 MA's), (Start: 115 @46683 has 1 MA's), (132, 46611), (134, 46593), (171, 46527), (200, 46362), (201, 46359), (214, 46272), (217, 46251),

Gene: Phighter1804_78 Start: 46809, Stop: 46225, Start Num: 91

Candidate Starts for Phighter1804_78:

(Start: 44 @46959 has 45 MA's), (65, 46881), (Start: 72 @46860 has 3 MA's), (Start: 90 @46812 has 27 MA's), (Start: 91 @46809 has 84 MA's), (Start: 115 @46704 has 1 MA's), (132, 46632), (134, 46614), (171, 46548), (192, 46443), (200, 46383), (201, 46380), (214, 46293), (217, 46272),

Gene: PhlipPhlop_67 Start: 47844, Stop: 48557, Start Num: 81

Candidate Starts for PhlipPhlop_67:

(18, 47481), (22, 47538), (25, 47580), (28, 47595), (30, 47616), (45, 47697), (Start: 81 @47844 has 1 MA's), (87, 47865), (100, 47925), (158, 48165), (200, 48405), (201, 48408), (205, 48438), (214, 48465), (227, 48546),

Gene: PhluffyCoco_43 Start: 27444, Stop: 28064, Start Num: 114

Candidate Starts for PhluffyCoco_43:

(Start: 39 @27168 has 3 MA's), (55, 27234), (58, 27249), (65, 27285), (77, 27333), (79, 27345), (82, 27351), (89, 27375), (Start: 114 @27444 has 2 MA's), (122, 27462), (159, 27666), (160, 27672), (189, 27840), (200, 27915), (201, 27918), (217, 28026), (219, 28035),

Gene: Phontbonne_78 Start: 46643, Stop: 46059, Start Num: 91

Candidate Starts for Phontbonne_78:

(Start: 44 @46793 has 45 MA's), (65, 46715), (Start: 72 @46694 has 3 MA's), (Start: 90 @46646 has 27 MA's), (Start: 91 @46643 has 84 MA's), (Start: 115 @46538 has 1 MA's), (132, 46466), (134, 46448), (171, 46382), (200, 46217), (201, 46214), (214, 46127), (217, 46106),

Gene: Pipcraft_74 Start: 46749, Stop: 46165, Start Num: 91

Candidate Starts for Pipcraft_74:

(Start: 44 @46899 has 45 MA's), (65, 46821), (Start: 72 @46800 has 3 MA's), (Start: 90 @46752 has 27 MA's), (Start: 91 @46749 has 84 MA's), (Start: 115 @46644 has 1 MA's), (132, 46572), (133, 46566), (134, 46554), (171, 46488), (192, 46383), (200, 46323), (201, 46320), (214, 46233), (217,

46212),

Gene: Poenanya_74 Start: 45998, Stop: 46735, Start Num: 62

Candidate Starts for Poenanya_74:

(Start: 62 @45998 has 5 MA's), (Start: 81 @46055 has 1 MA's), (89, 46079), (93, 46097), (98, 46112), (101, 46133), (109, 46166), (Start: 115 @46184 has 1 MA's), (158, 46343), (188, 46505), (200, 46583), (201, 46586), (204, 46607), (205, 46616), (214, 46643), (227, 46724),

Gene: Polymorphads_79 Start: 46772, Stop: 46185, Start Num: 90

Candidate Starts for Polymorphads_79:

(Start: 44 @46919 has 45 MA's), (65, 46841), (Start: 72 @46820 has 3 MA's), (Start: 90 @46772 has 27 MA's), (Start: 91 @46769 has 84 MA's), (Start: 115 @46664 has 1 MA's), (132, 46592), (134, 46574), (171, 46508), (192, 46403), (200, 46343), (201, 46340), (214, 46253), (217, 46232),

Gene: Priya_82 Start: 46693, Stop: 46046, Start Num: 44

Candidate Starts for Priya_82:

(Start: 44 @46693 has 45 MA's), (Start: 51 @46669 has 5 MA's), (65, 46615), (Start: 66 @46612 has 13 MA's), (84, 46561), (176, 46354), (183, 46333), (188, 46285), (200, 46207), (201, 46204), (214, 46117),

Gene: Pumbaa_78 Start: 46696, Stop: 46109, Start Num: 90

Candidate Starts for Pumbaa_78:

(Start: 44 @46843 has 45 MA's), (65, 46765), (Start: 72 @46744 has 3 MA's), (Start: 90 @46696 has 27 MA's), (Start: 91 @46693 has 84 MA's), (Start: 115 @46588 has 1 MA's), (132, 46516), (134, 46498), (171, 46432), (192, 46327), (200, 46267), (201, 46264), (214, 46177), (217, 46156),

Gene: Rahalelujah_83 Start: 46456, Stop: 45809, Start Num: 44

Candidate Starts for Rahalelujah_83:

(Start: 44 @46456 has 45 MA's), (Start: 51 @46432 has 5 MA's), (65, 46378), (Start: 66 @46375 has 13 MA's), (176, 46117), (183, 46096), (189, 46045), (193, 46024), (200, 45970), (201, 45967), (214, 45880),

Gene: Rattail_43 Start: 27437, Stop: 28150, Start Num: 82

Candidate Starts for Rattail_43:

(Start: 39 @27254 has 3 MA's), (55, 27320), (58, 27335), (65, 27371), (77, 27419), (79, 27431), (82, 27437), (89, 27461), (Start: 114 @27530 has 2 MA's), (122, 27548), (159, 27752), (160, 27758), (189, 27926), (200, 28001), (201, 28004), (217, 28112), (219, 28121),

Gene: RedBird_72 Start: 44502, Stop: 45227, Start Num: 62

Candidate Starts for RedBird_72:

(Start: 62 @44502 has 5 MA's), (Start: 81 @44559 has 1 MA's), (89, 44583), (93, 44589), (98, 44604), (101, 44625), (109, 44658), (Start: 115 @44676 has 1 MA's), (158, 44835), (188, 44997), (200, 45075), (201, 45078), (204, 45099), (205, 45108), (214, 45135), (227, 45216),

Gene: RedFox_43 Start: 27443, Stop: 28063, Start Num: 114

Candidate Starts for RedFox_43:

(Start: 39 @27167 has 3 MA's), (55, 27233), (58, 27248), (65, 27284), (77, 27332), (79, 27344), (82, 27350), (89, 27374), (Start: 114 @27443 has 2 MA's), (122, 27461), (159, 27665), (160, 27671), (189, 27839), (200, 27914), (201, 27917), (217, 28025), (219, 28034),

Gene: Refuge_81 Start: 48475, Stop: 47903, Start Num: 66

Candidate Starts for Refuge_81:

(Start: 44 @48556 has 45 MA's), (Start: 51 @48532 has 5 MA's), (Start: 66 @48475 has 13 MA's), (134, 48319), (183, 48193), (200, 48067), (201, 48064), (215, 47971), (216, 47968), (223, 47929),

Gene: Relief_77 Start: 46745, Stop: 46161, Start Num: 91

Candidate Starts for Relief_77:

(Start: 44 @46895 has 45 MA's), (65, 46817), (Start: 72 @46796 has 3 MA's), (Start: 90 @46748 has 27 MA's), (Start: 91 @46745 has 84 MA's), (Start: 115 @46640 has 1 MA's), (132, 46568), (134, 46550), (171, 46484), (192, 46379), (200, 46319), (201, 46316), (214, 46229), (217, 46208),

Gene: RemusLoopin_35 Start: 27467, Stop: 28051, Start Num: 125

Candidate Starts for RemusLoopin_35:

(57, 27230), (61, 27242), (63, 27257), (104, 27395), (118, 27449), (Start: 125 @27467 has 7 MA's), (143, 27569), (165, 27713), (174, 27740), (186, 27797), (201, 27899), (204, 27920), (212, 27977), (219, 28013), (221, 28025),

Gene: Rifter_90 Start: 46847, Stop: 46200, Start Num: 44

Candidate Starts for Rifter_90:

(Start: 44 @46847 has 45 MA's), (Start: 51 @46823 has 5 MA's), (65, 46769), (Start: 66 @46766 has 13 MA's), (Start: 74 @46736 has 3 MA's), (187, 46442), (200, 46361), (201, 46358), (215, 46265), (216, 46262),

Gene: Roksolana_90 Start: 47563, Stop: 46916, Start Num: 44

Candidate Starts for Roksolana_90:

(Start: 44 @47563 has 45 MA's), (Start: 51 @47539 has 5 MA's), (65, 47485), (Start: 66 @47482 has 13 MA's), (Start: 74 @47452 has 3 MA's), (187, 47158), (200, 47077), (201, 47074), (215, 46981), (216, 46978),

Gene: Romney_77 Start: 46745, Stop: 46161, Start Num: 91

Candidate Starts for Romney_77:

(Start: 44 @46895 has 45 MA's), (65, 46817), (Start: 72 @46796 has 3 MA's), (Start: 90 @46748 has 27 MA's), (Start: 91 @46745 has 84 MA's), (Start: 115 @46640 has 1 MA's), (132, 46568), (133, 46562), (134, 46550), (171, 46484), (192, 46379), (200, 46319), (201, 46316), (214, 46229), (217, 46208),

Gene: Roosevelt_76 Start: 46750, Stop: 46166, Start Num: 91

Candidate Starts for Roosevelt_76:

(Start: 44 @46900 has 45 MA's), (65, 46822), (Start: 72 @46801 has 3 MA's), (Start: 90 @46753 has 27 MA's), (Start: 91 @46750 has 84 MA's), (Start: 115 @46645 has 1 MA's), (132, 46573), (134, 46555), (171, 46489), (200, 46324), (201, 46321), (214, 46234), (217, 46213),

Gene: Rosa24_74 Start: 46779, Stop: 46192, Start Num: 90

Candidate Starts for Rosa24_74:

(Start: 44 @46926 has 45 MA's), (65, 46848), (Start: 72 @46827 has 3 MA's), (Start: 90 @46779 has 27 MA's), (Start: 91 @46776 has 84 MA's), (Start: 115 @46671 has 1 MA's), (132, 46599), (134, 46581), (171, 46515), (200, 46350), (201, 46347), (214, 46260), (217, 46239),

Gene: Ruin_78 Start: 46741, Stop: 46157, Start Num: 91

Candidate Starts for Ruin_78:

(Start: 44 @46891 has 45 MA's), (65, 46813), (Start: 72 @46792 has 3 MA's), (Start: 90 @46744 has 27 MA's), (Start: 91 @46741 has 84 MA's), (Start: 115 @46636 has 1 MA's), (132, 46564), (133, 46558), (134, 46546), (171, 46480), (192, 46375), (200, 46315), (201, 46312), (214, 46225), (217, 46204),

Gene: Ryadel_7 Start: 2296, Stop: 1727, Start Num: 116

Candidate Starts for Ryadel_7:

(Start: 116 @2296 has 23 MA's), (141, 2179), (145, 2164), (155, 2113), (156, 2110), (178, 1996), (182, 1987), (185, 1963), (200, 1858), (201, 1855), (208, 1819), (212, 1780), (220, 1744),

Gene: Sabertooth_78 Start: 46756, Stop: 46169, Start Num: 90

Candidate Starts for Sabertooth_78:

(Start: 44 @46903 has 45 MA's), (65, 46825), (Start: 72 @46804 has 3 MA's), (Start: 90 @46756 has 27 MA's), (Start: 91 @46753 has 84 MA's), (Start: 115 @46648 has 1 MA's), (132, 46576), (134, 46558), (171, 46492), (192, 46387), (200, 46327), (201, 46324), (214, 46237), (217, 46216),

Gene: Samora_35 Start: 26872, Stop: 27459, Start Num: 125

Candidate Starts for Samora_35:

(36, 26551), (40, 26563), (63, 26662), (104, 26800), (Start: 125 @26872 has 7 MA's), (143, 26974), (164, 27109), (168, 27127), (174, 27145), (192, 27241), (201, 27304), (205, 27334), (219, 27418),

Gene: Samy_50 Start: 33615, Stop: 34364, Start Num: 68

Candidate Starts for Samy_50:

(17, 33303), (21, 33345), (26, 33414), (31, 33444), (36, 33483), (Start: 68 @33615 has 1 MA's), (69, 33618), (71, 33621), (104, 33735), (126, 33819), (127, 33822), (148, 33933), (183, 34071), (189, 34122), (195, 34152), (201, 34203), (204, 34224), (209, 34260), (212, 34281), (213, 34284), (220, 34320),

Gene: Scamp_78 Start: 46750, Stop: 46166, Start Num: 91

Candidate Starts for Scamp_78:

(Start: 44 @46900 has 45 MA's), (65, 46822), (Start: 72 @46801 has 3 MA's), (Start: 90 @46753 has 27 MA's), (Start: 91 @46750 has 84 MA's), (Start: 115 @46645 has 1 MA's), (132, 46573), (134, 46555), (171, 46489), (192, 46384), (200, 46324), (201, 46321), (214, 46234), (217, 46213),

Gene: SchoolBus_5 Start: 1765, Stop: 1196, Start Num: 116

Candidate Starts for SchoolBus_5:

(Start: 116 @1765 has 23 MA's), (141, 1648), (145, 1633), (155, 1582), (156, 1579), (178, 1465), (182, 1456), (185, 1432), (200, 1327), (201, 1324), (208, 1288), (212, 1249), (220, 1213),

Gene: Schuy_5 Start: 1716, Stop: 1147, Start Num: 116

Candidate Starts for Schuy_5:

(Start: 116 @1716 has 23 MA's), (141, 1599), (145, 1584), (155, 1533), (156, 1530), (178, 1416), (182, 1407), (185, 1383), (200, 1278), (201, 1275), (208, 1239), (212, 1200), (220, 1164),

Gene: Sebastisaurus_35 Start: 27189, Stop: 27773, Start Num: 125

Candidate Starts for Sebastisaurus_35:

(57, 26952), (61, 26964), (63, 26979), (104, 27117), (113, 27153), (Start: 125 @27189 has 7 MA's), (143, 27291), (151, 27324), (165, 27435), (174, 27462), (186, 27519), (187, 27534), (193, 27564), (201, 27621), (204, 27642), (219, 27735), (221, 27747),

Gene: Sedona_6 Start: 4350, Stop: 5051, Start Num: 86

Candidate Starts for Sedona_6:

(1, 3228), (2, 3420), (3, 3450), (4, 3477), (5, 3513), (6, 3549), (7, 3666), (8, 3678), (9, 3765), (10, 3807), (11, 3819), (12, 3825), (16, 3969), (19, 3993), (28, 4089), (30, 4110), (59, 4245), (Start: 86 @4350 has 1 MA's), (107, 4446), (145, 4614), (149, 4635), (159, 4656), (200, 4905), (201, 4908), (202, 4911), (217, 4989),

Gene: SeniorClean_73 Start: 46748, Stop: 46164, Start Num: 91

Candidate Starts for SenorClean_73:

(Start: 44 @46898 has 45 MA's), (65, 46820), (Start: 72 @46799 has 3 MA's), (Start: 90 @46751 has 27 MA's), (Start: 91 @46748 has 84 MA's), (Start: 115 @46643 has 1 MA's), (132, 46571), (134, 46553), (171, 46487), (200, 46322), (201, 46319), (214, 46232), (217, 46211),

Gene: Shaka_76 Start: 46746, Stop: 46162, Start Num: 91

Candidate Starts for Shaka_76:

(Start: 44 @46896 has 45 MA's), (65, 46818), (Start: 72 @46797 has 3 MA's), (Start: 90 @46749 has 27 MA's), (Start: 91 @46746 has 84 MA's), (Start: 115 @46641 has 1 MA's), (132, 46569), (134, 46551), (171, 46485), (200, 46320), (201, 46317), (214, 46230), (217, 46209),

Gene: SheaKeira_79 Start: 46163, Stop: 45585, Start Num: 66

Candidate Starts for SheaKeira_79:

(Start: 44 @46244 has 45 MA's), (Start: 51 @46220 has 5 MA's), (65, 46166), (Start: 66 @46163 has 13 MA's), (176, 45905), (183, 45884), (188, 45836), (196, 45797), (200, 45758), (201, 45755), (210, 45689), (214, 45668), (217, 45647), (226, 45602),

Gene: SheldonCooper_78 Start: 47186, Stop: 46602, Start Num: 91

Candidate Starts for SheldonCooper_78:

(Start: 44 @47336 has 45 MA's), (65, 47258), (Start: 72 @47237 has 3 MA's), (Start: 90 @47189 has 27 MA's), (Start: 91 @47186 has 84 MA's), (Start: 115 @47081 has 1 MA's), (132, 47009), (134, 46991), (171, 46925), (200, 46760), (201, 46757), (214, 46670), (217, 46649),

Gene: Shida_5 Start: 1765, Stop: 1196, Start Num: 116

Candidate Starts for Shida_5:

(Start: 116 @1765 has 23 MA's), (141, 1648), (145, 1633), (155, 1582), (156, 1579), (178, 1465), (182, 1456), (185, 1432), (200, 1327), (201, 1324), (208, 1288), (212, 1249), (220, 1213),

Gene: Shygu2_76 Start: 46692, Stop: 46108, Start Num: 91

Candidate Starts for Shygu2_76:

(Start: 44 @46842 has 45 MA's), (65, 46764), (Start: 72 @46743 has 3 MA's), (Start: 90 @46695 has 27 MA's), (Start: 91 @46692 has 84 MA's), (Start: 95 @46680 has 4 MA's), (Start: 115 @46587 has 1 MA's), (132, 46515), (134, 46497), (171, 46431), (192, 46326), (200, 46266), (201, 46263), (214, 46176), (217, 46155), (224, 46119),

Gene: Skipitt_77 Start: 46745, Stop: 46158, Start Num: 90

Candidate Starts for Skipitt_77:

(Start: 44 @46892 has 45 MA's), (65, 46814), (Start: 72 @46793 has 3 MA's), (Start: 90 @46745 has 27 MA's), (Start: 91 @46742 has 84 MA's), (Start: 115 @46637 has 1 MA's), (132, 46565), (133, 46559), (134, 46547), (171, 46481), (192, 46376), (200, 46316), (201, 46313), (214, 46226), (217, 46205),

Gene: SmellyB_88 Start: 47181, Stop: 46555, Start Num: 51

Candidate Starts for SmellyB_88:

(Start: 44 @47205 has 45 MA's), (Start: 51 @47181 has 5 MA's), (65, 47127), (Start: 66 @47124 has 13 MA's), (Start: 72 @47106 has 3 MA's), (176, 46866), (184, 46842), (188, 46797), (200, 46719), (201, 46716), (204, 46695), (215, 46620), (216, 46617),

Gene: Smooch_6 Start: 2139, Stop: 1576, Start Num: 116

Candidate Starts for Smooch_6:

(Start: 116 @2139 has 23 MA's), (141, 2022), (145, 2007), (155, 1956), (156, 1953), (178, 1845), (182, 1836), (200, 1707), (201, 1704), (212, 1629), (220, 1593),

Gene: Sparxx_79 Start: 46747, Stop: 46160, Start Num: 90

Candidate Starts for Sparxx_79:

(Start: 44 @46894 has 45 MA's), (65, 46816), (Start: 72 @46795 has 3 MA's), (Start: 90 @46747 has 27 MA's), (Start: 91 @46744 has 84 MA's), (Start: 115 @46639 has 1 MA's), (132, 46567), (134, 46549), (171, 46483), (200, 46318), (201, 46315), (214, 46228), (217, 46207),

Gene: Spino_77 Start: 46748, Stop: 46164, Start Num: 91

Candidate Starts for Spino_77:

(Start: 44 @46898 has 45 MA's), (65, 46820), (Start: 72 @46799 has 3 MA's), (Start: 90 @46751 has 27 MA's), (Start: 91 @46748 has 84 MA's), (Start: 115 @46643 has 1 MA's), (132, 46571), (134, 46553), (171, 46487), (200, 46322), (201, 46319), (214, 46232), (217, 46211),

Gene: Spouty_82 Start: 46692, Stop: 46045, Start Num: 44

Candidate Starts for Spouty_82:

(Start: 44 @46692 has 45 MA's), (Start: 51 @46668 has 5 MA's), (65, 46614), (Start: 66 @46611 has 13 MA's), (84, 46560), (176, 46353), (183, 46332), (188, 46284), (200, 46206), (201, 46203), (214, 46116),

Gene: Stasia_75 Start: 46708, Stop: 46121, Start Num: 90

Candidate Starts for Stasia_75:

(Start: 44 @46855 has 45 MA's), (65, 46777), (Start: 72 @46756 has 3 MA's), (Start: 90 @46708 has 27 MA's), (Start: 91 @46705 has 84 MA's), (Start: 115 @46600 has 1 MA's), (132, 46528), (134, 46510), (171, 46444), (200, 46279), (201, 46276), (214, 46189), (217, 46168), (224, 46132),

Gene: Steamy_76 Start: 47037, Stop: 46378, Start Num: 44

Candidate Starts for Steamy_76:

(Start: 44 @47037 has 45 MA's), (Start: 51 @47013 has 5 MA's), (Start: 66 @46956 has 13 MA's), (183, 46674), (200, 46548), (201, 46545), (204, 46524), (215, 46452), (223, 46410),

Gene: StuartMinion_38 Start: 24430, Stop: 25020, Start Num: 124

Candidate Starts for StuartMinion_38:

(Start: 39 @24235 has 3 MA's), (47, 24274), (55, 24301), (65, 24352), (70, 24367), (73, 24388), (77, 24400), (82, 24418), (124, 24430), (139, 24526), (160, 24625), (166, 24676), (183, 24745), (189, 24796), (198, 24844), (200, 24871), (201, 24874), (213, 24958), (219, 24991), (221, 25003),

Gene: Taquarus_77 Start: 46751, Stop: 46167, Start Num: 91

Candidate Starts for Taquarus_77:

(Start: 44 @46901 has 45 MA's), (65, 46823), (Start: 72 @46802 has 3 MA's), (Start: 90 @46754 has 27 MA's), (Start: 91 @46751 has 84 MA's), (Start: 115 @46646 has 1 MA's), (132, 46574), (134, 46556), (171, 46490), (200, 46325), (201, 46322), (214, 46235), (217, 46214),

Gene: TaylorSipht_41 Start: 27587, Stop: 28306, Start Num: 103

Candidate Starts for TaylorSipht_41:

(Start: 39 @27311 has 3 MA's), (58, 27392), (65, 27428), (Start: 103 @27587 has 4 MA's), (106, 27605), (110, 27635), (Start: 117 @27707 has 2 MA's), (160, 27923), (181, 28034), (189, 28091), (200, 28166), (201, 28169), (219, 28286),

Gene: TelAviv_5 Start: 1762, Stop: 1193, Start Num: 116

Candidate Starts for TelAviv_5:

(Start: 116 @1762 has 23 MA's), (141, 1645), (145, 1630), (155, 1579), (156, 1576), (178, 1462), (182, 1453), (185, 1429), (200, 1324), (201, 1321), (208, 1285), (212, 1246), (220, 1210),

Gene: Thanksgivukkah_77 Start: 46896, Stop: 46162, Start Num: 44

Candidate Starts for Thanksgivukkah_77:

(Start: 44 @46896 has 45 MA's), (65, 46818), (Start: 72 @46797 has 3 MA's), (Start: 90 @46749 has 27 MA's), (Start: 91 @46746 has 84 MA's), (Start: 115 @46641 has 1 MA's), (132, 46569), (134, 46551), (171, 46485), (192, 46380), (200, 46320), (201, 46317), (214, 46230), (217, 46209),

Gene: TinaFeyge_76 Start: 46893, Stop: 46159, Start Num: 44

Candidate Starts for TinaFeyge_76:

(Start: 44 @46893 has 45 MA's), (65, 46815), (Start: 72 @46794 has 3 MA's), (Start: 90 @46746 has 27 MA's), (Start: 91 @46743 has 84 MA's), (Start: 115 @46638 has 1 MA's), (132, 46566), (134, 46548), (171, 46482), (200, 46317), (201, 46314), (214, 46227), (217, 46206),

Gene: Tinybot_77 Start: 46778, Stop: 46191, Start Num: 90

Candidate Starts for Tinybot_77:

(Start: 44 @46925 has 45 MA's), (65, 46847), (Start: 72 @46826 has 3 MA's), (Start: 90 @46778 has 27 MA's), (Start: 91 @46775 has 84 MA's), (Start: 115 @46670 has 1 MA's), (132, 46598), (134, 46580), (171, 46514), (192, 46409), (200, 46349), (201, 46346), (214, 46259), (217, 46238),

Gene: TiroTheta9_77 Start: 46742, Stop: 46158, Start Num: 91

Candidate Starts for TiroTheta9_77:

(Start: 44 @46892 has 45 MA's), (65, 46814), (Start: 72 @46793 has 3 MA's), (Start: 90 @46745 has 27 MA's), (Start: 91 @46742 has 84 MA's), (Start: 115 @46637 has 1 MA's), (132, 46565), (134, 46547), (171, 46481), (200, 46316), (201, 46313), (214, 46226), (217, 46205),

Gene: Toad24_43 Start: 28602, Stop: 29600, Start Num: 39

Candidate Starts for Toad24_43:

(Start: 39 @28602 has 3 MA's), (58, 28683), (65, 28719), (77, 28767), (82, 28785), (Start: 103 @28878 has 4 MA's), (106, 28896), (110, 28926), (Start: 117 @28998 has 2 MA's), (129, 29064), (159, 29211), (160, 29217), (170, 29283), (189, 29385), (200, 29460), (201, 29463), (219, 29580),

Gene: Toaka_82 Start: 46732, Stop: 46166, Start Num: 66

Candidate Starts for Toaka_82:

(Start: 44 @46813 has 45 MA's), (Start: 51 @46789 has 5 MA's), (Start: 66 @46732 has 13 MA's), (176, 46474), (183, 46453), (188, 46405), (200, 46327), (201, 46324), (214, 46237),

Gene: ToneTone_87 Start: 47116, Stop: 46580, Start Num: 74

Candidate Starts for ToneTone_87:

(Start: 44 @47227 has 45 MA's), (Start: 51 @47203 has 5 MA's), (65, 47149), (Start: 66 @47146 has 13 MA's), (Start: 74 @47116 has 3 MA's), (187, 46822), (200, 46741), (201, 46738), (215, 46645), (216, 46642),

Gene: TroyPia_79 Start: 46786, Stop: 46199, Start Num: 90

Candidate Starts for TroyPia_79:

(Start: 44 @46933 has 45 MA's), (65, 46855), (Start: 72 @46834 has 3 MA's), (Start: 90 @46786 has 27 MA's), (Start: 91 @46783 has 84 MA's), (Start: 115 @46678 has 1 MA's), (132, 46606), (134, 46588), (171, 46522), (200, 46357), (201, 46354), (214, 46267), (217, 46246),

Gene: Tucker_90 Start: 47319, Stop: 46783, Start Num: 74

Candidate Starts for Tucker_90:

(Start: 44 @47430 has 45 MA's), (Start: 51 @47406 has 5 MA's), (65, 47352), (Start: 66 @47349 has 13 MA's), (Start: 74 @47319 has 3 MA's), (187, 47025), (200, 46944), (201, 46941), (215, 46848), (216, 46845),

Gene: TygerBlood_78 Start: 46751, Stop: 46164, Start Num: 90

Candidate Starts for TygerBlood_78:

(Start: 44 @46898 has 45 MA's), (65, 46820), (Start: 72 @46799 has 3 MA's), (Start: 90 @46751 has 27 MA's), (Start: 91 @46748 has 84 MA's), (Start: 115 @46643 has 1 MA's), (132, 46571), (134, 46553), (171, 46487), (192, 46382), (200, 46322), (201, 46319), (214, 46232), (217, 46211),

Gene: Ulysses_77 Start: 46431, Stop: 45847, Start Num: 91

Candidate Starts for Ulysses_77:

(Start: 44 @46581 has 45 MA's), (65, 46503), (Start: 72 @46482 has 3 MA's), (Start: 90 @46434 has 27 MA's), (Start: 91 @46431 has 84 MA's), (Start: 115 @46326 has 1 MA's), (132, 46254), (134, 46236), (171, 46170), (200, 46005), (201, 46002), (214, 45915), (217, 45894),

Gene: Upyo_53 Start: 39312, Stop: 38611, Start Num: 94

Candidate Starts for Upyo_53:

(13, 39840), (14, 39783), (20, 39687), (38, 39534), (48, 39492), (52, 39477), (56, 39459), (63, 39423), (73, 39381), (Start: 94 @39312 has 1 MA's), (97, 39306), (102, 39270), (121, 39198), (131, 39132), (167, 38925), (175, 38898), (178, 38889), (194, 38799), (200, 38748), (201, 38745), (212, 38667), (217, 38640),

Gene: Vanisoa_79 Start: 47062, Stop: 46496, Start Num: 66

Candidate Starts for Vanisoa_79:

(Start: 44 @47143 has 45 MA's), (Start: 51 @47119 has 5 MA's), (65, 47065), (Start: 66 @47062 has 13 MA's), (176, 46804), (183, 46783), (200, 46657), (201, 46654), (214, 46567),

Gene: Vash_33 Start: 26115, Stop: 26702, Start Num: 125

Candidate Starts for Vash_33:

(26, 25725), (30, 25752), (36, 25794), (63, 25905), (104, 26043), (Start: 125 @26115 has 7 MA's), (186, 26445), (193, 26490), (197, 26514), (200, 26544), (201, 26547), (205, 26577), (219, 26661), (221, 26673),

Gene: Vorrrps_5 Start: 1716, Stop: 1147, Start Num: 116

Candidate Starts for Vorrrps_5:

(Start: 116 @1716 has 23 MA's), (141, 1599), (145, 1584), (155, 1533), (156, 1530), (178, 1416), (182, 1407), (185, 1383), (200, 1278), (201, 1275), (208, 1239), (212, 1200), (220, 1164),

Gene: WalterMcMickey_77 Start: 46600, Stop: 46046, Start Num: 66

Candidate Starts for WalterMcMickey_77:

(Start: 44 @46681 has 45 MA's), (Start: 51 @46657 has 5 MA's), (Start: 66 @46600 has 13 MA's), (84, 46549), (132, 46465), (188, 46276), (200, 46198), (201, 46195), (206, 46162), (215, 46108),

Gene: Wander_78 Start: 46742, Stop: 46158, Start Num: 91

Candidate Starts for Wander_78:

(Start: 44 @46892 has 45 MA's), (65, 46814), (Start: 72 @46793 has 3 MA's), (Start: 90 @46745 has 27 MA's), (Start: 91 @46742 has 84 MA's), (Start: 115 @46637 has 1 MA's), (132, 46565), (134, 46547), (171, 46481), (192, 46376), (200, 46316), (201, 46313), (214, 46226), (217, 46205),

Gene: Westrich_49 Start: 28469, Stop: 29284, Start Num: 82

Candidate Starts for Westrich_49:

(Start: 39 @28286 has 3 MA's), (58, 28367), (65, 28403), (77, 28451), (82, 28469), (Start: 103 @28562 has 4 MA's), (106, 28580), (110, 28610), (Start: 117 @28682 has 2 MA's), (129, 28748), (159, 28895), (160, 28901), (170, 28967), (189, 29069), (200, 29144), (201, 29147), (219, 29264),

Gene: Wiks_89 Start: 47310, Stop: 46660, Start Num: 44

Candidate Starts for Wiks_89:

(Start: 44 @47310 has 45 MA's), (Start: 51 @47286 has 5 MA's), (65, 47232), (Start: 66 @47229 has 13 MA's), (Start: 72 @47211 has 3 MA's), (187, 46905), (200, 46824), (201, 46821), (204, 46800), (215, 46725), (216, 46722),

Gene: Wilbur_78 Start: 46745, Stop: 46161, Start Num: 91

Candidate Starts for Wilbur_78:

(Start: 44 @46895 has 45 MA's), (65, 46817), (Start: 72 @46796 has 3 MA's), (Start: 90 @46748 has 27 MA's), (Start: 91 @46745 has 84 MA's), (Start: 115 @46640 has 1 MA's), (132, 46568), (133, 46562), (134, 46550), (171, 46484), (192, 46379), (200, 46319), (201, 46316), (214, 46229), (217, 46208),

Gene: Wile_74 Start: 46560, Stop: 45988, Start Num: 95

Candidate Starts for Wile_74:

(Start: 44 @46722 has 45 MA's), (65, 46644), (Start: 72 @46623 has 3 MA's), (Start: 90 @46575 has 27 MA's), (Start: 91 @46572 has 84 MA's), (Start: 95 @46560 has 4 MA's), (Start: 115 @46467 has 1 MA's), (132, 46395), (134, 46377), (171, 46311), (192, 46206), (200, 46146), (201, 46143), (214, 46056), (217, 46035), (224, 45999),

Gene: Winget_5 Start: 1850, Stop: 1287, Start Num: 116

Candidate Starts for Winget_5:

(Start: 116 @1850 has 23 MA's), (141, 1733), (145, 1718), (155, 1667), (156, 1664), (178, 1556), (182, 1547), (200, 1418), (201, 1415), (208, 1379), (212, 1340), (220, 1304),

Gene: Wizard007_75 Start: 46286, Stop: 45714, Start Num: 95

Candidate Starts for Wizard007_75:

(Start: 44 @46448 has 45 MA's), (65, 46370), (Start: 72 @46349 has 3 MA's), (Start: 90 @46301 has 27 MA's), (Start: 91 @46298 has 84 MA's), (Start: 95 @46286 has 4 MA's), (Start: 115 @46193 has 1 MA's), (132, 46121), (134, 46103), (171, 46037), (192, 45932), (200, 45872), (201, 45869), (214, 45782), (217, 45761), (224, 45725),

Gene: Xena_74 Start: 46567, Stop: 45983, Start Num: 91

Candidate Starts for Xena_74:

(Start: 44 @46717 has 45 MA's), (65, 46639), (Start: 72 @46618 has 3 MA's), (Start: 90 @46570 has 27 MA's), (Start: 91 @46567 has 84 MA's), (Start: 115 @46462 has 1 MA's), (132, 46390), (134, 46372), (171, 46306), (192, 46201), (200, 46141), (201, 46138), (214, 46051), (217, 46030),

Gene: Yecey3_85 Start: 46628, Stop: 46062, Start Num: 66

Candidate Starts for Yecey3_85:

(Start: 44 @46709 has 45 MA's), (Start: 51 @46685 has 5 MA's), (Start: 66 @46628 has 13 MA's), (183, 46349), (200, 46223), (201, 46220), (224, 46076),

Gene: YoSam321_78 Start: 46746, Stop: 46159, Start Num: 90

Candidate Starts for YoSam321_78:

(Start: 44 @46893 has 45 MA's), (65, 46815), (Start: 72 @46794 has 3 MA's), (Start: 90 @46746 has 27 MA's), (Start: 91 @46743 has 84 MA's), (Start: 115 @46638 has 1 MA's), (132, 46566), (134, 46548), (171, 46482), (200, 46317), (201, 46314), (214, 46227), (217, 46206),

Gene: Yokurt_89 Start: 47211, Stop: 46660, Start Num: 72

Candidate Starts for Yokurt_89:

(Start: 44 @47310 has 45 MA's), (Start: 51 @47286 has 5 MA's), (65, 47232), (Start: 66 @47229 has 13 MA's), (Start: 72 @47211 has 3 MA's), (187, 46905), (200, 46824), (201, 46821), (204, 46800), (215, 46725), (216, 46722),

Gene: YungJamal_6 Start: 2139, Stop: 1576, Start Num: 116

Candidate Starts for YungJamal_6:

(Start: 116 @2139 has 23 MA's), (141, 2022), (145, 2007), (155, 1956), (156, 1953), (178, 1845), (182, 1836), (200, 1707), (201, 1704), (212, 1629), (220, 1593),

Gene: Zaka_90 Start: 47310, Stop: 46660, Start Num: 44

Candidate Starts for Zaka_90:

(Start: 44 @47310 has 45 MA's), (Start: 51 @47286 has 5 MA's), (65, 47232), (Start: 66 @47229 has 13 MA's), (Start: 72 @47211 has 3 MA's), (187, 46905), (200, 46824), (201, 46821), (204, 46800), (215, 46725), (216, 46722),

Gene: Zakhe101_6 Start: 2163, Stop: 1594, Start Num: 116

Candidate Starts for Zakhe101_6:

(Start: 116 @2163 has 23 MA's), (141, 2046), (145, 2031), (155, 1980), (156, 1977), (178, 1863), (182, 1854), (200, 1725), (201, 1722), (212, 1647), (220, 1611),

Gene: Zhuangyuan_48 Start: 27978, Stop: 28547, Start Num: 39

Candidate Starts for Zhuangyuan_48:

(Start: 39 @27978 has 3 MA's), (54, 28038), (55, 28044), (Start: 66 @28098 has 13 MA's), (70, 28110), (77, 28143), (82, 28161), (159, 28263), (160, 28269), (200, 28395), (201, 28398), (213, 28482), (219, 28515),

Gene: Zimmer_80 Start: 47793, Stop: 47140, Start Num: 44

Candidate Starts for Zimmer_80:

(Start: 44 @47793 has 45 MA's), (Start: 51 @47769 has 5 MA's), (Start: 66 @47712 has 13 MA's), (176, 47451), (184, 47427), (200, 47304), (201, 47301), (215, 47208), (216, 47205), (223, 47166),