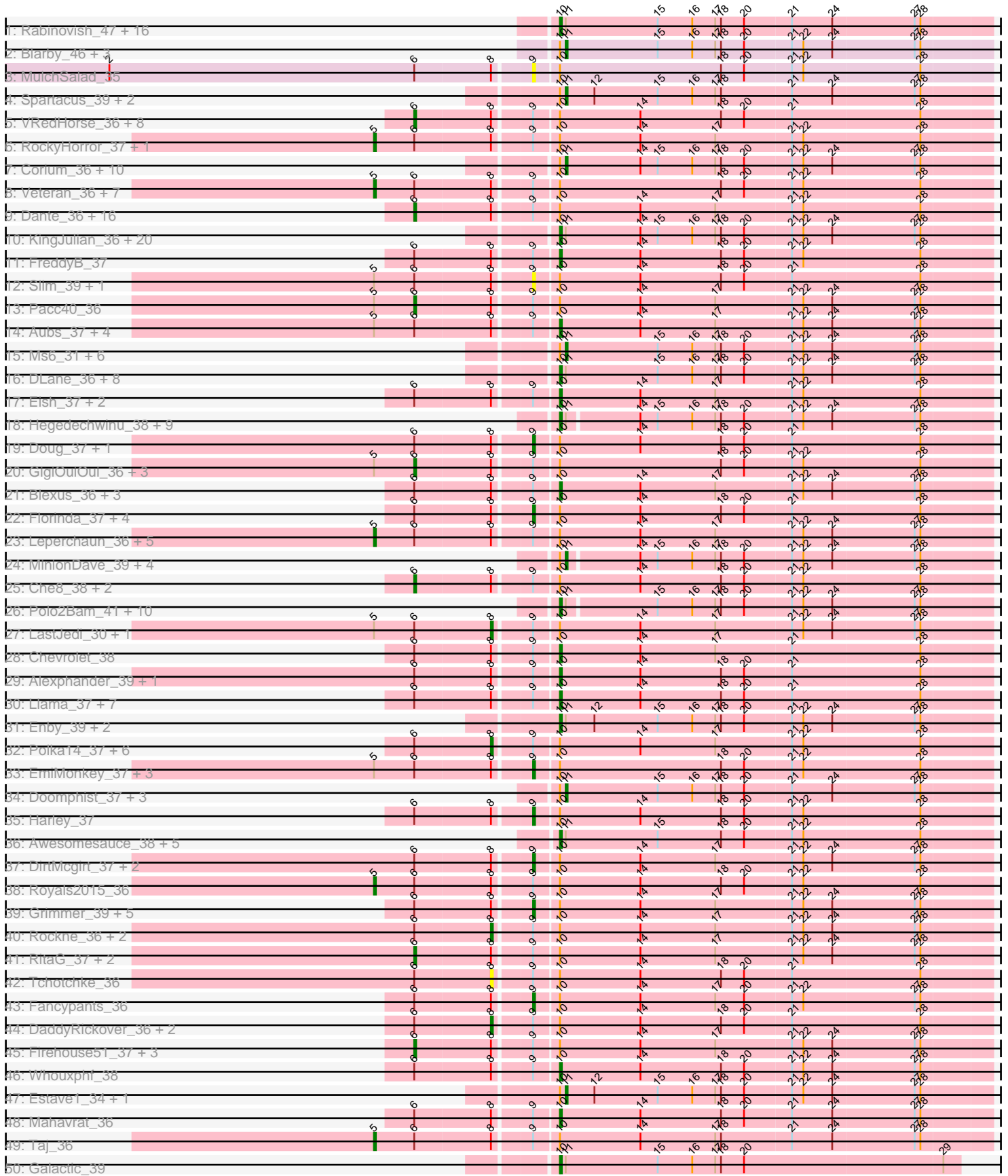
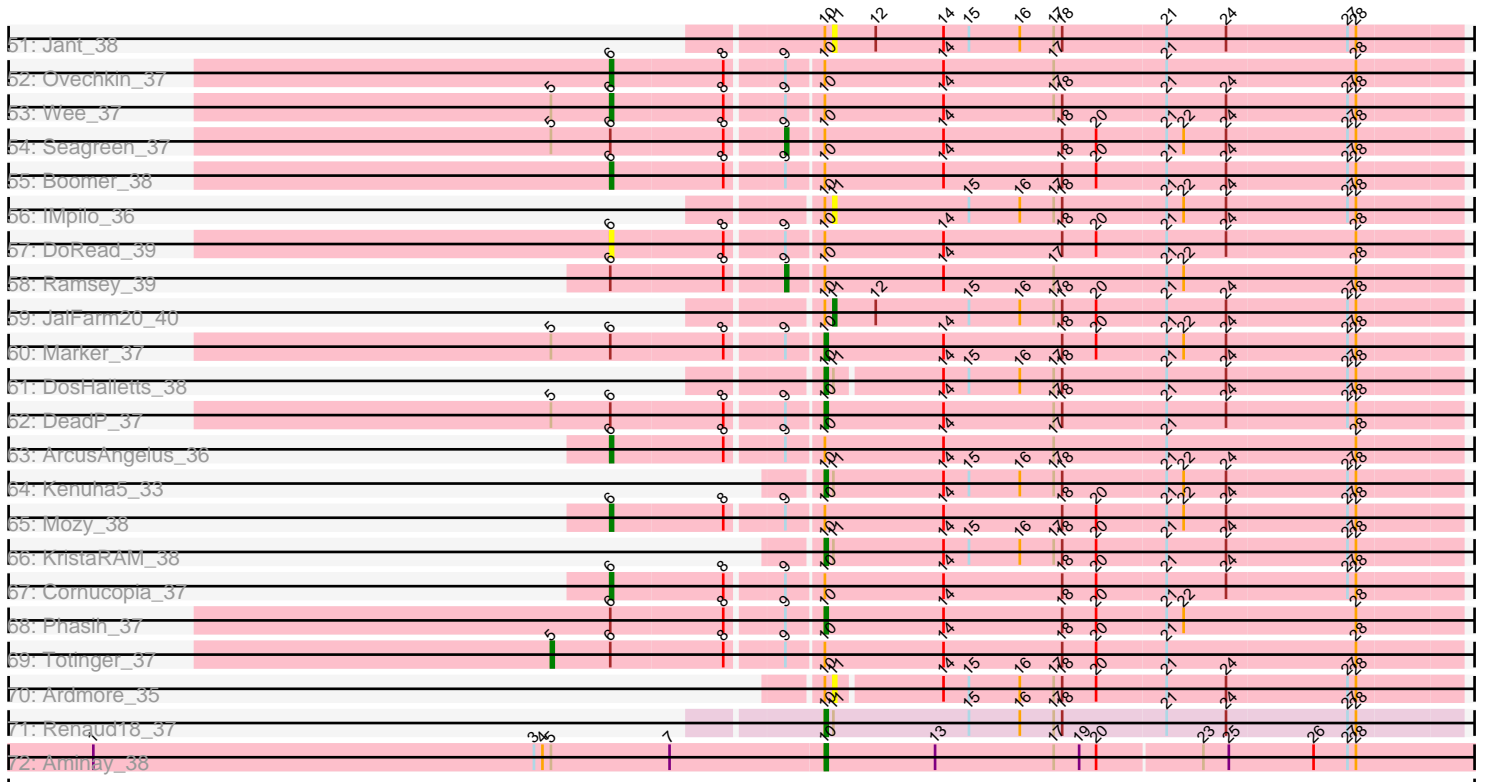


Pham 215786



Pham 215786



Note: Tracks are now grouped by subcluster and scaled. Switching in subcluster is indicated by changes in track color. Track scale is now set by default to display the region 30 bp upstream of start 1 to 30 bp downstream of the last possible start. If this default region is judged to be packed too tightly with annotated starts, the track will be further scaled to only show that region of the ORF with annotated starts. This action will be indicated by adding "Zoomed" to the title. For starts, yellow indicates the location of called starts comprised solely of Glimmer/GeneMark auto-annotations, green indicates the location of called starts with at least 1 manual gene annotation.

Pham 215786 Report

This analysis was run 02/22/25 on database version 588.

Pham number 215786 has 262 members, 31 are drafts.

Phages represented in each track:

- Track 1 : Rabinovish_47, NormanBulbieJr_37, Pippy_30, Koella_30, SwagPiggett_37, Cabrinians_36, Nivrat_36, SilverChicken_44, ShowerHandel_37, Zizzle_36, Priscilla_36, Crumble_30, LilMoolah_36, Burwell21_36, ShiLan_36, Jarcob_36, BobaPhett_36
- Track 2 : Blarby_46, Phalconet_37, Wachhund_36, Philus_36
- Track 3 : MulchSalad_35
- Track 4 : Spartacus_39, WillSterrel_39, IrishSherpFalk_39
- Track 5 : VRedHorse_36, BigPhil_32, Cerasum_32, Sarma624_32, Modragons_36, Velveteen_31, Minnie_38, Girafales_37, Quico_37
- Track 6 : RockyHorror_37, Zerg_36
- Track 7 : Corium_36, Bobi_38, IbOuu_39, Stubby_44, Astraea_50, Shaqnato_44, Yassified_47, Brookers_36, Morizzled23_51, Shauna1_34, Tootsieroll_38
- Track 8 : Veteran_36, Krakatau_37, LittleShirley_39, Starcevich_40, Kersh_35, Plumbus_38, SiSi_36, Sabbb_37
- Track 9 : Dante_36, Daenerys_36, Inventum_36, Empress_37, Ruby_38, PHappiness_36, OlympiaSaint_36, Job42_40, OwlsT2W_37, BlueCrab_36, Spoonbill_36, Nimbo_36, Deb65_36, Stap_37, JoeyJr_36, Leozinho_38, Girr_38
- Track 10 : KingJulian_36, Phanphagia_33, Akhila_30, Alice_43, Lukilu_43, Koguma_45, Emma_39, EasyJones_50, Grungle_41, Bipolar_34, MilanaBonita_30, Halldule_44, Coco12_36, Phox_47, Rialto_41, Juice456_39, JulietS_44, Ronan_43, Blackdragon_45, Pinkcreek_40, LRRHood_46
- Track 11 : FreddyB_37
- Track 12 : Slim_39, Emmaloid_39
- Track 13 : Pacc40_36
- Track 14 : Aubs_37, Tweety_36, RedBird_36, MadMen_34, Bubbles123_38
- Track 15 : Ms6_31, PhesterPhotato_37, Fruitloop_35, StAnnes_36, LunaBlu_40, Melissauren88_36, Strokeseat_38
- Track 16 : DLane_36, Byougenkin_36, Hlubikazi_38, Brushbloom_40, Gandalph_38, Mandlovu_37, Kingsley_36, XFactor_36, Soul22_42
- Track 17 : Eish_37, Sassafras_37, Radiance_37
- Track 18 : Hegedechwinu_38, SuperGrey_38, MilleniumForce_38, Sandalphon_37, CaptainTrips_37, Donkeykong_37, Moonbeam_37, Chuckly_37, PopTart_36, SassyB_36
- Track 19 : Doug_37, Hades_38
- Track 20 : GigiOuiOui_36, DotProduct_36, GUmbie_36, Mutaforma13_36
- Track 21 : Blexus_36, Filuzino_36, Madiba_35, Latretium_37
- Track 22 : Florinda_37, Sparkdehlily_36, Beakin_37, Oksu_37, TDanisky_36

- Track 23 : Leperchaun_36, Dorothy_36, Brocalys_31, ShroomBoi_33, Clifton_30, Guppsters_38
- Track 24 : MinionDave_39, Batiatus_36, Whatsapiecost_38, Violac_39, Flathead_36
- Track 25 : Che8_38, Ibhubesi_36, Nitzel_37
- Track 26 : Polo2Bam_41, Piper2020_39, Ogopogo_36, DRBy19_36, James_36, Mattes_36, Mova_37, Fastidio_39, Gorge_36, Saal_36, DillTech15_36
- Track 27 : LastJedi_30, Maravista_36
- Track 28 : Chevrolet_38
- Track 29 : Alexphander_39, DaWorst_38
- Track 30 : Llama_37, Seabastian_37, Ochi17_35, OfUltron_37, Juniper1_36, Rita_38, Jinglebell_36, AlpineSix_37
- Track 31 : Enby_39, Lorde_39, EleanorGeorge_38
- Track 32 : Polka14_37, Scottish_37, OldBen_36, Geralt_36, MisterCuddles_38, KingMidas_38, Karhdo_36
- Track 33 : EmiMonkey_37, Hamulus_37, Mantra_36, PhlipPhlop_37
- Track 34 : Doomphist_37, Martik_37, Poenanya_37, Lizziana_36
- Track 35 : Harley_37
- Track 36 : Awesomesauce_38, Misha28_38, Aloeri_39, TootsiePop_38, ChickenDinner_39, DocMcStuffins_39
- Track 37 : DirtMcGirt_37, Drago_38, Vivum_37
- Track 38 : Royals2015_36
- Track 39 : Grimmer_39, Spikelee_38, Pollywog_36, BodEinwohner17_36, Yorick_36, MulchExplorer_40
- Track 40 : Rockne_36, Phatniss_37, UncleRicky_39
- Track 41 : RitaG_37, PMC_36, Llij_36
- Track 42 : Tchotchke_36
- Track 43 : Fancypants_36
- Track 44 : DaddyRickover_36, SimranZ1_39, Cheesepuff_40
- Track 45 : Firehouse51_37, BuzzLyseyear_39, QuickMath_37, Kimberlium_38
- Track 46 : Whouxphf_38
- Track 47 : Estave1_34, SG4_38
- Track 48 : Mahavrat_36
- Track 49 : Taj_36
- Track 50 : Galactic_39
- Track 51 : Jant_38
- Track 52 : Ovechkin_37
- Track 53 : Wee_37
- Track 54 : Seagreen_37
- Track 55 : Boomer_38
- Track 56 : IMpilo_36
- Track 57 : DoRead_39
- Track 58 : Ramsey_39
- Track 59 : JalFarm20_40
- Track 60 : Marker_37
- Track 61 : DosHalletts_38
- Track 62 : DeadP_37
- Track 63 : ArcusAngelus_36
- Track 64 : Kenuha5_33
- Track 65 : Mozy_38
- Track 66 : KristaRAM_38
- Track 67 : Cornucopia_37
- Track 68 : Phasih_37
- Track 69 : Totinger_37

- Track 70 : Ardmore_35
- Track 71 : Renaud18_37
- Track 72 : Aminay_38

Summary of Final Annotations (See graph section above for start numbers):

The start number called the most often in the published annotations is 10, it was called in 103 of the 231 non-draft genes in the pham.

Genes that call this "Most Annotated" start:

- Akhila_30, Alexphander_39, Alice_43, Aloeri_39, AlpineSix_37, Aminay_38, Aubs_37, Awesomesauce_38, Bipolar_34, Blackdragon_45, Blexus_36, BobaPhett_36, Brushbloom_40, Bubbles123_38, Burwell21_36, Byougenkin_36, Cabrinians_36, CaptainTrips_37, Chevrolet_38, ChickenDinner_39, Chuckly_37, Coco12_36, Crumble_30, DLane_36, DRBy19_36, DaWorst_38, DeadP_37, DillTech15_36, DocMcStuffins_39, Donkeykong_37, DosHalletts_38, EasyJones_50, Eish_37, EleanorGeorge_38, Emma_39, Enby_39, Fastidio_39, Filuzino_36, FreddyB_37, Galactic_39, Gandalph_38, Gorge_36, Grungle_41, Halldule_44, Hegedechwinu_38, Hlubikazi_38, James_36, Jarcob_36, Jinglebell_36, Juice456_39, JulietS_44, Juniper1_36, Kenuha5_33, KingJulian_36, Kingsley_36, Koella_30, Koguma_45, KristaRAM_38, LRRHood_46, Latretium_37, LilMoolah_36, Llama_37, Lorde_39, Lukilu_43, MadMen_34, Madiba_35, Mahavrat_36, Mandlovu_37, Marker_37, Mattes_36, MilanaBonita_30, MilleniumForce_38, Misha28_38, Moonbeam_37, Mova_37, Nivrat_36, NormanBulbieJr_37, Ochi17_35, OfUltron_37, Ogotogo_36, Phanphagia_33, Phasih_37, Phox_47, Pinkcreek_40, Piper2020_39, Pippy_30, Polo2Bam_41, PopTart_36, Priscilla_36, Rabinovish_47, Radiance_37, RedBird_36, Renaud18_37, Rialto_41, Rita_38, Ronan_43, Saal_36, Sandalphon_37, Sassafras_37, SassyB_36, Sebastian_37, ShiLan_36, ShowerHandel_37, SilverChicken_44, Soul22_42, SuperGrey_38, SwagPiggett_37, TootsiePop_38, Tweety_36, Whouxphf_38, XFactor_36, Zizzle_36,

Genes that have the "Most Annotated" start but do not call it:

- ArcusAngelus_36, Ardmore_35, Astraea_50, Batiatus_36, Beakin_37, BigPhil_32, Blarby_46, BlueCrab_36, Bobi_38, BodEinwohner17_36, Boomer_38, Brocalys_31, Brookers_36, BuzzLyseyear_39, Cerasum_32, Che8_38, CheesePuff_40, Clifton_30, Corium_36, Cornucopia_37, DaddyRickover_36, Daenerys_36, Dante_36, Deb65_36, DirtMcGirt_37, DoRead_39, Doomphist_37, Dorothy_36, DotProduct_36, Doug_37, Drago_38, EmiMonkey_37, Emmaloid_39, Empress_37, Estave1_34, Fancypants_36, Firehouse51_37, Flathead_36, Florinda_37, Fruitloop_35, GUmbe_36, Geralt_36, GigiOuiOui_36, Girafales_37, Girr_38, Grimmer_39, Guppsters_38, Hades_38, Hamulus_37, Harley_37, IMpilo_36, IbOuu_39, Ibhuesi_36, Inventum_36, IrishSherpFalk_39, JalFarm20_40, Jant_38, Job42_40, JoeyJr_36, Karhdo_36, Kersh_35, Kimberlium_38, KingMidas_38, Krakatau_37, LastJedi_30, Leozinho_38, Leperchaun_36, LittleShirley_39, Lizziana_36, Llij_36, LunaBlu_40, Mantra_36, Maravista_36, Martik_37, Melissauren88_36, MinionDave_39, Minnie_38, MisterCuddles_38, Modragons_36, Morizzled23_51, Mozy_38, Ms6_31, MulchExplorer_40, MulchSalad_35, Mutaforma13_36, Nimbo_36, Nitzel_37, Oksu_37, OldBen_36, OlympiaSaint_36, Ovechkin_37, OwlsT2W_37, PHappiness_36, PMC_36, Pacc40_36, Phalconet_37, Phatniss_37, PhesterPotato_37, Philus_36, PhilipPhlop_37, Plumbus_38, Poenanya_37,

Polka14_37, Pollywog_36, QuickMath_37, Quico_37, Ramsey_39, RitaG_37, Rockne_36, RockyHorror_37, Royals2015_36, Ruby_38, SG4_38, Sabbb_37, Sarma624_32, Scottish_37, Seagreen_37, Shaq nato_44, Shauna1_34, ShroomBoi_33, SiSi_36, SimranZ1_39, Slim_39, Sparkdehlily_36, Spartacus_39, Spikelee_38, Spoonbill_36, StAnnes_36, Stap_37, Starcevich_40, Strokeseat_38, Stubby_44, TDanisky_36, Taj_36, Tchotchke_36, Tootsieroll_38, Totinger_37, UncleRicky_39, VRedHorse_36, Velveteen_31, Veteran_36, Violac_39, Vivum_37, Wachhund_36, Wee_37, Whatsapiecost_38, WillSterrel_39, Yassified_47, Yorick_36, Zerg_36,

Genes that do not have the "Most Annotated" start:

•

Summary by start number:

Start 5:

- Found in 42 of 262 (16.0%) of genes in pham
- Manual Annotations of this start: 19 of 231
- Called 45.2% of time when present
- Phage (with cluster) where this start called: Brocalys_31 (F1), Clifton_30 (F1), Dorothy_36 (F1), Guppsters_38 (F1), Kersh_35 (F1), Krakatau_37 (F1), Leperchaun_36 (F1), LittleShirley_39 (F1), Plumbus_38 (F1), RockyHorror_37 (F1), Royals2015_36 (F1), Sabbb_37 (F1), ShroomBoi_33 (F1), SiSi_36 (F1), Starcevich_40 (F1), Taj_36 (F1), Totinger_37 (F1), Veteran_36 (F1), Zerg_36 (F1),

Start 6:

- Found in 139 of 262 (53.1%) of genes in pham
- Manual Annotations of this start: 47 of 231
- Called 34.5% of time when present
- Phage (with cluster) where this start called: ArcusAngelus_36 (F1), BigPhil_32 (F1), BlueCrab_36 (F1), Boomer_38 (F1), BuzzLyseyear_39 (F1), Cerasum_32 (F1), Che8_38 (F1), Cornucopia_37 (F1), Daenerys_36 (F1), Dante_36 (F1), Deb65_36 (F1), DoRead_39 (F1), DotProduct_36 (F1), Empress_37 (F1), Firehouse51_37 (F1), GUmby_36 (F1), GigiOuiOui_36 (F1), Girafales_37 (F1), Girr_38 (F1), Ibhubesi_36 (F1), Inventum_36 (F1), Job42_40 (F1), JoeyJr_36 (F1), Kimberlium_38 (F1), Leozinho_38 (F1), Llij_36 (F1), Minnie_38 (F1), Modragons_36 (F1), Mozy_38 (F1), Mutaforma13_36 (F1), Nimbo_36 (F1), Nitzel_37 (F1), OlympiaSaint_36 (F1), Ovechkin_37 (F1), OwlsT2W_37 (F1), PHappiness_36 (F1), PMC_36 (F1), Pacc40_36 (F1), QuickMath_37 (F1), Quico_37 (F1), RitaG_37 (F1), Ruby_38 (F1), Sarma624_32 (F1), Spoonbill_36 (F1), Stap_37 (F1), VRedHorse_36 (F1), Velveteen_31 (F1), Wee_37 (F1),

Start 8:

- Found in 139 of 262 (53.1%) of genes in pham
- Manual Annotations of this start: 13 of 231
- Called 11.5% of time when present
- Phage (with cluster) where this start called: Cheese puff_40 (F1), DaddyRickover_36 (F1), Geralt_36 (F1), Karhdo_36 (F1), KingMidas_38 (F1), LastJedi_30 (F1), Maravista_36 (F1), MisterCuddles_38 (F1), OldBen_36 (F1), Phatniss_37 (F1), Polka14_37 (F1), Rockne_36 (F1), Scottish_37 (F1), SimranZ1_39 (F1), Tchotchke_36 (F1), UncleRicky_39 (F1),

Start 9:

- Found in 139 of 262 (53.1%) of genes in pham
- Manual Annotations of this start: 18 of 231
- Called 19.4% of time when present
- Phage (with cluster) where this start called: Beakin_37 (F1), BodEinwohner17_36 (F1), DirtMcgirt_37 (F1), Doug_37 (F1), Drago_38 (F1), EmiMonkey_37 (F1), Emmaloid_39 (F1), Fancypants_36 (F1), Florinda_37 (F1), Grimmer_39 (F1), Hades_38 (F1), Hamulus_37 (F1), Harley_37 (F1), Mantra_36 (F1), MulchExplorer_40 (F1), MulchSalad_35 (F1), Oksu_37 (F1), PhlipPhlop_37 (F1), Pollywog_36 (F1), Ramsey_39 (F1), Seagreen_37 (F1), Slim_39 (F1), Sparkdehlily_36 (F1), Spikelee_38 (F1), TDanisky_36 (F1), Vivum_37 (F1), Yorick_36 (F1),

Start 10:

- Found in 262 of 262 (100.0%) of genes in pham
- Manual Annotations of this start: 103 of 231
- Called 42.7% of time when present
- Phage (with cluster) where this start called: Akhila_30 (F1), Alexphander_39 (F1), Alice_43 (C1), Aloeri_39 (F1), AlpineSix_37 (F1), Aminay_38 (K7), Aubs_37 (F1), Awesomesauce_38 (F1), Bipolar_34 (F1), Blackdragon_45 (C1), Blexus_36 (F1), BobaPhett_36 (F1), Brushbloom_40 (F1), Bubbles123_38 (F1), Burwell21_36 (F1), Byougenkin_36 (F1), Cabrinians_36 (F1), CaptainTrips_37 (F1), Chevrolet_38 (F1), ChickenDinner_39 (F1), Chuckly_37 (F1), Coco12_36 (F1), Crumble_30 (F1), DLane_36 (F1), DRBy19_36 (F1), DaWorst_38 (F1), DeadP_37 (F1), DillTech15_36 (F1), DocMcStuffins_39 (F1), Donkeykong_37 (F1), DosHalletts_38 (F1), EasyJones_50 (C1), Eish_37 (F1), EleanorGeorge_38 (F1), Emma_39 (F1), Enby_39 (F1), Fastidio_39 (F1), Filuzino_36 (F1), FreddyB_37 (F1), Galactic_39 (F1), Gandolph_38 (F1), Gorge_36 (F1), Grungle_41 (C1), Halldule_44 (C1), Hegedechwinu_38 (F1), Hlubikazi_38 (F1), James_36 (F1), Jarcob_36 (F1), Jinglebell_36 (F1), Juice456_39 (F1), JulietS_44 (C1), Juniper1_36 (F1), Kenuha5_33 (F1), KingJulian_36 (F1), Kingsley_36 (F1), Koella_30 (F1), Koguma_45 (C1), KristaRAM_38 (F1), LRRHood_46 (C1), Latretium_37 (F1), LiiMoolah_36 (F1), Llama_37 (F1), Lorde_39 (F1), Lukilu_43 (C1), MadMen_34 (F1), Madiba_35 (F1), Mahavrat_36 (F1), Mandlovu_37 (F1), Marker_37 (F1), Mattes_36 (F1), MilanaBonita_30 (F1), MilleniumForce_38 (F1), Misha28_38 (F1), Moonbeam_37 (F1), Mova_37 (F1), Nivrat_36 (F1), NormanBulbieJr_37 (F1), Ochi17_35 (F1), OfUltron_37 (F1), Ogoopogo_36 (F1), Phanphagia_33 (F1), Phasih_37 (F1), Phox_47 (C1), Pinkcreek_40 (C1), Piper2020_39 (F1), Pippy_30 (F1), Polo2Bam_41 (F1), PopTart_36 (F1), Priscilla_36 (F1), Rabinovish_47 (C1), Radiance_37 (F1), RedBird_36 (F1), Renaud18_37 (F4), Rialto_41 (F1), Rita_38 (F1), Ronan_43 (C1), Saal_36 (F1), Sandalphon_37 (F1), Sassafras_37 (F1), SassyB_36 (F1), Sebastian_37 (F1), ShiLan_36 (F1), ShowerHandel_37 (F1), SilverChicken_44 (F2), Soul22_42 (F2), SuperGrey_38 (F1), SwagPigglett_37 (F1), TootsiePop_38 (F1), Tweety_36 (F1), Whouxphf_38 (F1), XFactor_36 (F1), Zizzle_36 (F1),

Start 11:

- Found in 122 of 262 (46.6%) of genes in pham
- Manual Annotations of this start: 31 of 231
- Called 32.8% of time when present
- Phage (with cluster) where this start called: Ardmore_35 (F1), Astraea_50 (C1), Batiatus_36 (F1), Blarby_46 (F), Bobi_38 (F1), Brookers_36 (F1), Corium_36 (F1), Doomphist_37 (F1), Estave1_34 (F1), Flathead_36 (F1), Fruitloop_35 (F1), IMPilo_36 (F1), IbOuu_39 (F1), IrishSherpFalk_39 (F1), JalFarm20_40 (F1), Jant_38 (F1), Lizziana_36 (F1), LunaBlu_40 (F1), Martik_37 (F1), Melissauren88_36 (F1),

MinionDave_39 (F1), Morizzled23_51 (C1), Ms6_31 (F1), Phalconet_37 (F1), PhesterPhotato_37 (F1), Philus_36 (F1), Poenanya_37 (F1), SG4_38 (F1), Shaqnato_44 (C1), Shauna1_34 (F1), Spartacus_39 (F1), StAnnes_36 (F1), Strokeseat_38 (F1), Stubby_44 (C1), Tootsieroll_38 (F1), Violac_39 (F1), Wachhund_36 (F1), Whatsapiecost_38 (F1), WillSterrel_39 (F1), Yassified_47 (C1),

Summary by clusters:

There are 6 clusters represented in this pham: F1, F2, F4, F, K7, C1,

Info for manual annotations of cluster C1:

- Start number 10 was manually annotated 10 times for cluster C1.
- Start number 11 was manually annotated 5 times for cluster C1.

Info for manual annotations of cluster F1:

- Start number 5 was manually annotated 19 times for cluster F1.
- Start number 6 was manually annotated 47 times for cluster F1.
- Start number 8 was manually annotated 13 times for cluster F1.
- Start number 9 was manually annotated 18 times for cluster F1.
- Start number 10 was manually annotated 90 times for cluster F1.
- Start number 11 was manually annotated 26 times for cluster F1.

Info for manual annotations of cluster F2:

- Start number 10 was manually annotated 1 time for cluster F2.

Info for manual annotations of cluster F4:

- Start number 10 was manually annotated 1 time for cluster F4.

Info for manual annotations of cluster K7:

- Start number 10 was manually annotated 1 time for cluster K7.

Gene Information:

Gene: Akhila_30 Start: 26361, Stop: 26582, Start Num: 10

Candidate Starts for Akhila_30:

(Start: 10 @26361 has 103 MA's), (Start: 11 @26364 has 31 MA's), (14, 26403), (15, 26412), (16, 26430), (17, 26442), (18, 26445), (20, 26457), (21, 26481), (22, 26487), (24, 26502), (27, 26544), (28, 26547),

Gene: Alexphander_39 Start: 31054, Stop: 31275, Start Num: 10

Candidate Starts for Alexphander_39:

(Start: 6 @30985 has 47 MA's), (Start: 8 @31024 has 13 MA's), (Start: 9 @31042 has 18 MA's), (Start: 10 @31054 has 103 MA's), (14, 31096), (18, 31138), (20, 31150), (21, 31174), (28, 31240),

Gene: Alice_43 Start: 14907, Stop: 14686, Start Num: 10

Candidate Starts for Alice_43:

(Start: 10 @14907 has 103 MA's), (Start: 11 @14904 has 31 MA's), (14, 14865), (15, 14856), (16, 14838), (17, 14826), (18, 14823), (20, 14811), (21, 14787), (22, 14781), (24, 14766), (27, 14724), (28, 14721),

Gene: Aloeri_39 Start: 30905, Stop: 31126, Start Num: 10

Candidate Starts for Aloeri_39:

(Start: 10 @30905 has 103 MA's), (Start: 11 @30908 has 31 MA's), (15, 30956), (18, 30989), (20, 31001), (21, 31025), (22, 31031), (28, 31091),

Gene: AlpineSix_37 Start: 30499, Stop: 30720, Start Num: 10

Candidate Starts for AlpineSix_37:

(Start: 6 @30430 has 47 MA's), (Start: 8 @30469 has 13 MA's), (Start: 9 @30487 has 18 MA's), (Start: 10 @30499 has 103 MA's), (14, 30541), (18, 30583), (20, 30595), (21, 30619), (28, 30685),

Gene: Aminay_38 Start: 31323, Stop: 31559, Start Num: 10

Candidate Starts for Aminay_38:

(1, 31065), (3, 31221), (4, 31224), (Start: 5 @31227 has 19 MA's), (7, 31269), (Start: 10 @31323 has 103 MA's), (13, 31362), (17, 31404), (19, 31413), (20, 31419), (23, 31455), (25, 31464), (26, 31494), (27, 31506), (28, 31509),

Gene: ArcusAngelus_36 Start: 30765, Stop: 31055, Start Num: 6

Candidate Starts for ArcusAngelus_36:

(Start: 6 @30765 has 47 MA's), (Start: 8 @30804 has 13 MA's), (Start: 9 @30822 has 18 MA's), (Start: 10 @30834 has 103 MA's), (14, 30876), (17, 30915), (21, 30954), (28, 31020),

Gene: Ardmore_35 Start: 30281, Stop: 30496, Start Num: 11

Candidate Starts for Ardmore_35:

(Start: 10 @30278 has 103 MA's), (Start: 11 @30281 has 31 MA's), (14, 30317), (15, 30326), (16, 30344), (17, 30356), (18, 30359), (20, 30371), (21, 30395), (24, 30416), (27, 30458), (28, 30461),

Gene: Astraea_50 Start: 16300, Stop: 16082, Start Num: 11

Candidate Starts for Astraea_50:

(Start: 10 @16303 has 103 MA's), (Start: 11 @16300 has 31 MA's), (14, 16261), (15, 16252), (16, 16234), (17, 16222), (18, 16219), (20, 16207), (21, 16183), (22, 16177), (24, 16162), (27, 16120), (28, 16117),

Gene: Aubs_37 Start: 30615, Stop: 30836, Start Num: 10

Candidate Starts for Aubs_37:

(Start: 5 @30525 has 19 MA's), (Start: 6 @30546 has 47 MA's), (Start: 8 @30585 has 13 MA's), (Start: 9 @30603 has 18 MA's), (Start: 10 @30615 has 103 MA's), (14, 30657), (17, 30696), (21, 30735), (22, 30741), (24, 30756), (27, 30798), (28, 30801),

Gene: Awesomesauce_38 Start: 30167, Stop: 30388, Start Num: 10

Candidate Starts for Awesomesauce_38:

(Start: 10 @30167 has 103 MA's), (Start: 11 @30170 has 31 MA's), (15, 30218), (18, 30251), (20, 30263), (21, 30287), (22, 30293), (28, 30353),

Gene: Batiatus_36 Start: 30274, Stop: 30489, Start Num: 11

Candidate Starts for Batiatus_36:

(Start: 10 @30271 has 103 MA's), (Start: 11 @30274 has 31 MA's), (14, 30310), (15, 30319), (16, 30337), (17, 30349), (18, 30352), (20, 30364), (21, 30388), (22, 30394), (24, 30409), (27, 30451), (28, 30454),

Gene: Beakin_37 Start: 30174, Stop: 30407, Start Num: 9

Candidate Starts for Beakin_37:

(Start: 6 @30117 has 47 MA's), (Start: 8 @30156 has 13 MA's), (Start: 9 @30174 has 18 MA's), (Start: 10 @30186 has 103 MA's), (14, 30228), (18, 30270), (20, 30282), (21, 30306), (28, 30372),

Gene: BigPhil_32 Start: 26427, Stop: 26717, Start Num: 6

Candidate Starts for BigPhil_32:

(Start: 6 @26427 has 47 MA's), (Start: 8 @26466 has 13 MA's), (Start: 9 @26484 has 18 MA's), (Start: 10 @26496 has 103 MA's), (14, 26538), (18, 26580), (20, 26592), (21, 26616), (28, 26682),

Gene: Bipolar_34 Start: 29357, Stop: 29578, Start Num: 10

Candidate Starts for Bipolar_34:

(Start: 10 @29357 has 103 MA's), (Start: 11 @29360 has 31 MA's), (14, 29399), (15, 29408), (16, 29426), (17, 29438), (18, 29441), (20, 29453), (21, 29477), (22, 29483), (24, 29498), (27, 29540), (28, 29543),

Gene: Blackdragon_45 Start: 15234, Stop: 15013, Start Num: 10

Candidate Starts for Blackdragon_45:

(Start: 10 @15234 has 103 MA's), (Start: 11 @15231 has 31 MA's), (14, 15192), (15, 15183), (16, 15165), (17, 15153), (18, 15150), (20, 15138), (21, 15114), (22, 15108), (24, 15093), (27, 15051), (28, 15048),

Gene: Blarby_46 Start: 30753, Stop: 30971, Start Num: 11

Candidate Starts for Blarby_46:

(Start: 10 @30750 has 103 MA's), (Start: 11 @30753 has 31 MA's), (15, 30801), (16, 30819), (17, 30831), (18, 30834), (20, 30846), (21, 30870), (22, 30876), (24, 30891), (27, 30933), (28, 30936),

Gene: Blexus_36 Start: 30607, Stop: 30828, Start Num: 10

Candidate Starts for Blexus_36:

(Start: 6 @30538 has 47 MA's), (Start: 8 @30577 has 13 MA's), (Start: 9 @30595 has 18 MA's), (Start: 10 @30607 has 103 MA's), (14, 30649), (17, 30688), (21, 30727), (22, 30733), (24, 30748), (27, 30790), (28, 30793),

Gene: BlueCrab_36 Start: 30388, Stop: 30678, Start Num: 6

Candidate Starts for BlueCrab_36:

(Start: 6 @30388 has 47 MA's), (Start: 8 @30427 has 13 MA's), (Start: 9 @30445 has 18 MA's), (Start: 10 @30457 has 103 MA's), (14, 30499), (17, 30538), (21, 30577), (22, 30583), (28, 30643),

Gene: BobaPhett_36 Start: 30477, Stop: 30698, Start Num: 10

Candidate Starts for BobaPhett_36:

(Start: 10 @30477 has 103 MA's), (Start: 11 @30480 has 31 MA's), (15, 30528), (16, 30546), (17, 30558), (18, 30561), (20, 30573), (21, 30597), (24, 30618), (27, 30660), (28, 30663),

Gene: Bobi_38 Start: 30987, Stop: 31202, Start Num: 11

Candidate Starts for Bobi_38:

(Start: 10 @30984 has 103 MA's), (Start: 11 @30987 has 31 MA's), (14, 31023), (15, 31032), (16, 31050), (17, 31062), (18, 31065), (20, 31077), (21, 31101), (22, 31107), (24, 31122), (27, 31164), (28, 31167),

Gene: BodEinwohner17_36 Start: 30665, Stop: 30898, Start Num: 9

Candidate Starts for BodEinwohner17_36:

(Start: 6 @30608 has 47 MA's), (Start: 8 @30647 has 13 MA's), (Start: 9 @30665 has 18 MA's), (Start: 10 @30677 has 103 MA's), (14, 30719), (17, 30758), (21, 30797), (22, 30803), (24, 30818), (27, 30860), (28, 30863),

Gene: Boomer_38 Start: 30281, Stop: 30571, Start Num: 6

Candidate Starts for Boomer_38:

(Start: 6 @30281 has 47 MA's), (Start: 8 @30320 has 13 MA's), (Start: 9 @30338 has 18 MA's), (Start: 10 @30350 has 103 MA's), (14, 30392), (18, 30434), (20, 30446), (21, 30470), (24, 30491), (27, 30533), (28, 30536),

Gene: Brocalys_31 Start: 25986, Stop: 26297, Start Num: 5

Candidate Starts for Brocalys_31:

(Start: 5 @25986 has 19 MA's), (Start: 6 @26007 has 47 MA's), (Start: 8 @26046 has 13 MA's), (Start: 9 @26064 has 18 MA's), (Start: 10 @26076 has 103 MA's), (14, 26118), (17, 26157), (21, 26196), (22, 26202), (24, 26217), (27, 26259), (28, 26262),

Gene: Brookers_36 Start: 29223, Stop: 29441, Start Num: 11

Candidate Starts for Brookers_36:

(Start: 10 @29220 has 103 MA's), (Start: 11 @29223 has 31 MA's), (14, 29262), (15, 29271), (16, 29289), (17, 29301), (18, 29304), (20, 29316), (21, 29340), (22, 29346), (24, 29361), (27, 29403), (28, 29406),

Gene: Brushbloom_40 Start: 30295, Stop: 30516, Start Num: 10

Candidate Starts for Brushbloom_40:

(Start: 10 @30295 has 103 MA's), (Start: 11 @30298 has 31 MA's), (15, 30346), (16, 30364), (17, 30376), (18, 30379), (20, 30391), (21, 30415), (22, 30421), (24, 30436), (27, 30478), (28, 30481),

Gene: Bubbles123_38 Start: 31264, Stop: 31485, Start Num: 10

Candidate Starts for Bubbles123_38:

(Start: 5 @31174 has 19 MA's), (Start: 6 @31195 has 47 MA's), (Start: 8 @31234 has 13 MA's), (Start: 9 @31252 has 18 MA's), (Start: 10 @31264 has 103 MA's), (14, 31306), (17, 31345), (21, 31384), (22, 31390), (24, 31405), (27, 31447), (28, 31450),

Gene: Burwell21_36 Start: 30460, Stop: 30681, Start Num: 10

Candidate Starts for Burwell21_36:

(Start: 10 @30460 has 103 MA's), (Start: 11 @30463 has 31 MA's), (15, 30511), (16, 30529), (17, 30541), (18, 30544), (20, 30556), (21, 30580), (24, 30601), (27, 30643), (28, 30646),

Gene: BuzzLyseyear_39 Start: 31008, Stop: 31298, Start Num: 6

Candidate Starts for BuzzLyseyear_39:

(Start: 6 @31008 has 47 MA's), (Start: 8 @31047 has 13 MA's), (Start: 9 @31065 has 18 MA's), (Start: 10 @31077 has 103 MA's), (14, 31119), (17, 31158), (21, 31197), (22, 31203), (24, 31218), (27, 31260), (28, 31263),

Gene: Byougenkin_36 Start: 30359, Stop: 30580, Start Num: 10

Candidate Starts for Byougenkin_36:

(Start: 10 @30359 has 103 MA's), (Start: 11 @30362 has 31 MA's), (15, 30410), (16, 30428), (17, 30440), (18, 30443), (20, 30455), (21, 30479), (22, 30485), (24, 30500), (27, 30542), (28, 30545),

Gene: Cabrinians_36 Start: 30538, Stop: 30759, Start Num: 10

Candidate Starts for Cabrinians_36:

(Start: 10 @30538 has 103 MA's), (Start: 11 @30541 has 31 MA's), (15, 30589), (16, 30607), (17, 30619), (18, 30622), (20, 30634), (21, 30658), (24, 30679), (27, 30721), (28, 30724),

Gene: CaptainTrips_37 Start: 30684, Stop: 30902, Start Num: 10

Candidate Starts for CaptainTrips_37:

(Start: 10 @30684 has 103 MA's), (Start: 11 @30687 has 31 MA's), (14, 30723), (15, 30732), (16, 30750), (17, 30762), (18, 30765), (20, 30777), (21, 30801), (22, 30807), (24, 30822), (27, 30864), (28, 30867),

Gene: Cerasum_32 Start: 26427, Stop: 26717, Start Num: 6

Candidate Starts for Cerasum_32:

(Start: 6 @26427 has 47 MA's), (Start: 8 @26466 has 13 MA's), (Start: 9 @26484 has 18 MA's), (Start: 10 @26496 has 103 MA's), (14, 26538), (18, 26580), (20, 26592), (21, 26616), (28, 26682),

Gene: Che8_38 Start: 30659, Stop: 30949, Start Num: 6

Candidate Starts for Che8_38:

(Start: 6 @30659 has 47 MA's), (Start: 8 @30698 has 13 MA's), (Start: 9 @30716 has 18 MA's), (Start: 10 @30728 has 103 MA's), (14, 30770), (18, 30812), (20, 30824), (21, 30848), (22, 30854), (28, 30914),

Gene: Cheese puff_40 Start: 31517, Stop: 31768, Start Num: 8

Candidate Starts for Cheese puff_40:

(Start: 6 @31478 has 47 MA's), (Start: 8 @31517 has 13 MA's), (Start: 9 @31535 has 18 MA's), (Start: 10 @31547 has 103 MA's), (14, 31589), (18, 31631), (20, 31643), (21, 31667), (28, 31733),

Gene: Chevrolet_38 Start: 30835, Stop: 31056, Start Num: 10

Candidate Starts for Chevrolet_38:

(Start: 6 @30766 has 47 MA's), (Start: 8 @30805 has 13 MA's), (Start: 9 @30823 has 18 MA's), (Start: 10 @30835 has 103 MA's), (14, 30877), (17, 30916), (21, 30955), (28, 31021),

Gene: ChickenDinner_39 Start: 30905, Stop: 31126, Start Num: 10

Candidate Starts for ChickenDinner_39:

(Start: 10 @30905 has 103 MA's), (Start: 11 @30908 has 31 MA's), (15, 30956), (18, 30989), (20, 31001), (21, 31025), (22, 31031), (28, 31091),

Gene: Chuckly_37 Start: 30459, Stop: 30680, Start Num: 10

Candidate Starts for Chuckly_37:

(Start: 10 @30459 has 103 MA's), (Start: 11 @30462 has 31 MA's), (14, 30501), (15, 30510), (16, 30528), (17, 30540), (18, 30543), (20, 30555), (21, 30579), (22, 30585), (24, 30600), (27, 30642), (28, 30645),

Gene: Clifton_30 Start: 26337, Stop: 26648, Start Num: 5

Candidate Starts for Clifton_30:

(Start: 5 @26337 has 19 MA's), (Start: 6 @26358 has 47 MA's), (Start: 8 @26397 has 13 MA's), (Start: 9 @26415 has 18 MA's), (Start: 10 @26427 has 103 MA's), (14, 26469), (17, 26508), (21, 26547), (22, 26553), (24, 26568), (27, 26610), (28, 26613),

Gene: Coco12_36 Start: 30344, Stop: 30565, Start Num: 10

Candidate Starts for Coco12_36:

(Start: 10 @30344 has 103 MA's), (Start: 11 @30347 has 31 MA's), (14, 30386), (15, 30395), (16, 30413), (17, 30425), (18, 30428), (20, 30440), (21, 30464), (22, 30470), (24, 30485), (27, 30527), (28, 30530),

Gene: Corium_36 Start: 30487, Stop: 30705, Start Num: 11

Candidate Starts for Corium_36:

(Start: 10 @30484 has 103 MA's), (Start: 11 @30487 has 31 MA's), (14, 30526), (15, 30535), (16, 30553), (17, 30565), (18, 30568), (20, 30580), (21, 30604), (22, 30610), (24, 30625), (27, 30667), (28, 30670),

Gene: Cornucopia_37 Start: 30234, Stop: 30524, Start Num: 6

Candidate Starts for Cornucopia_37:

(Start: 6 @30234 has 47 MA's), (Start: 8 @30273 has 13 MA's), (Start: 9 @30291 has 18 MA's), (Start: 10 @30303 has 103 MA's), (14, 30345), (18, 30387), (20, 30399), (21, 30423), (24, 30444), (27, 30486), (28, 30489),

Gene: Crumble_30 Start: 26474, Stop: 26695, Start Num: 10

Candidate Starts for Crumble_30:

(Start: 10 @26474 has 103 MA's), (Start: 11 @26477 has 31 MA's), (15, 26525), (16, 26543), (17, 26555), (18, 26558), (20, 26570), (21, 26594), (24, 26615), (27, 26657), (28, 26660),

Gene: DLane_36 Start: 30248, Stop: 30469, Start Num: 10

Candidate Starts for DLane_36:

(Start: 10 @30248 has 103 MA's), (Start: 11 @30251 has 31 MA's), (15, 30299), (16, 30317), (17, 30329), (18, 30332), (20, 30344), (21, 30368), (22, 30374), (24, 30389), (27, 30431), (28, 30434),

Gene: DRBy19_36 Start: 30386, Stop: 30607, Start Num: 10

Candidate Starts for DRBy19_36:

(Start: 10 @30386 has 103 MA's), (Start: 11 @30389 has 31 MA's), (15, 30437), (16, 30455), (17, 30467), (18, 30470), (20, 30482), (21, 30506), (22, 30512), (24, 30527), (27, 30569), (28, 30572),

Gene: DaWorst_38 Start: 30828, Stop: 31049, Start Num: 10

Candidate Starts for DaWorst_38:

(Start: 6 @30759 has 47 MA's), (Start: 8 @30798 has 13 MA's), (Start: 9 @30816 has 18 MA's), (Start: 10 @30828 has 103 MA's), (14, 30870), (18, 30912), (20, 30924), (21, 30948), (28, 31014),

Gene: DaddyRickover_36 Start: 30439, Stop: 30690, Start Num: 8

Candidate Starts for DaddyRickover_36:

(Start: 6 @30400 has 47 MA's), (Start: 8 @30439 has 13 MA's), (Start: 9 @30457 has 18 MA's), (Start: 10 @30469 has 103 MA's), (14, 30511), (18, 30553), (20, 30565), (21, 30589), (28, 30655),

Gene: Daenerys_36 Start: 30222, Stop: 30512, Start Num: 6

Candidate Starts for Daenerys_36:

(Start: 6 @30222 has 47 MA's), (Start: 8 @30261 has 13 MA's), (Start: 9 @30279 has 18 MA's), (Start: 10 @30291 has 103 MA's), (14, 30333), (17, 30372), (21, 30411), (22, 30417), (28, 30477),

Gene: Dante_36 Start: 30339, Stop: 30629, Start Num: 6

Candidate Starts for Dante_36:

(Start: 6 @30339 has 47 MA's), (Start: 8 @30378 has 13 MA's), (Start: 9 @30396 has 18 MA's), (Start: 10 @30408 has 103 MA's), (14, 30450), (17, 30489), (21, 30528), (22, 30534), (28, 30594),

Gene: DeadP_37 Start: 30447, Stop: 30668, Start Num: 10

Candidate Starts for DeadP_37:

(Start: 5 @30357 has 19 MA's), (Start: 6 @30378 has 47 MA's), (Start: 8 @30417 has 13 MA's), (Start: 9 @30435 has 18 MA's), (Start: 10 @30447 has 103 MA's), (14, 30489), (17, 30528), (18, 30531), (21, 30567), (24, 30588), (27, 30630), (28, 30633),

Gene: Deb65_36 Start: 30222, Stop: 30512, Start Num: 6

Candidate Starts for Deb65_36:

(Start: 6 @30222 has 47 MA's), (Start: 8 @30261 has 13 MA's), (Start: 9 @30279 has 18 MA's), (Start: 10 @30291 has 103 MA's), (14, 30333), (17, 30372), (21, 30411), (22, 30417), (28, 30477),

Gene: DillTech15_36 Start: 30376, Stop: 30594, Start Num: 10

Candidate Starts for DillTech15_36:

(Start: 10 @30376 has 103 MA's), (Start: 11 @30379 has 31 MA's), (15, 30424), (16, 30442), (17, 30454), (18, 30457), (20, 30469), (21, 30493), (22, 30499), (24, 30514), (27, 30556), (28, 30559),

Gene: DirtMcgirt_37 Start: 30102, Stop: 30335, Start Num: 9

Candidate Starts for DirtMcgirt_37:

(Start: 6 @30045 has 47 MA's), (Start: 8 @30084 has 13 MA's), (Start: 9 @30102 has 18 MA's), (Start: 10 @30114 has 103 MA's), (14, 30156), (17, 30195), (21, 30234), (22, 30240), (24, 30255), (27, 30297), (28, 30300),

Gene: DoRead_39 Start: 30453, Stop: 30743, Start Num: 6

Candidate Starts for DoRead_39:

(Start: 6 @30453 has 47 MA's), (Start: 8 @30492 has 13 MA's), (Start: 9 @30510 has 18 MA's), (Start: 10 @30522 has 103 MA's), (14, 30564), (18, 30606), (20, 30618), (21, 30642), (24, 30663), (28, 30708),

Gene: DocMcStuffins_39 Start: 30905, Stop: 31126, Start Num: 10

Candidate Starts for DocMcStuffins_39:

(Start: 10 @30905 has 103 MA's), (Start: 11 @30908 has 31 MA's), (15, 30956), (18, 30989), (20, 31001), (21, 31025), (22, 31031), (28, 31091),

Gene: Donkeykong_37 Start: 30472, Stop: 30693, Start Num: 10

Candidate Starts for Donkeykong_37:

(Start: 10 @30472 has 103 MA's), (Start: 11 @30475 has 31 MA's), (14, 30514), (15, 30523), (16, 30541), (17, 30553), (18, 30556), (20, 30568), (21, 30592), (22, 30598), (24, 30613), (27, 30655), (28, 30658),

Gene: Doomphist_37 Start: 30411, Stop: 30629, Start Num: 11

Candidate Starts for Doomphist_37:

(Start: 10 @30408 has 103 MA's), (Start: 11 @30411 has 31 MA's), (15, 30459), (16, 30477), (17, 30489), (18, 30492), (20, 30504), (21, 30528), (24, 30549), (27, 30591), (28, 30594),

Gene: Dorothy_36 Start: 30166, Stop: 30477, Start Num: 5

Candidate Starts for Dorothy_36:

(Start: 5 @30166 has 19 MA's), (Start: 6 @30187 has 47 MA's), (Start: 8 @30226 has 13 MA's), (Start: 9 @30244 has 18 MA's), (Start: 10 @30256 has 103 MA's), (14, 30298), (17, 30337), (21, 30376), (22, 30382), (24, 30397), (27, 30439), (28, 30442),

Gene: DosHalletts_38 Start: 30672, Stop: 30890, Start Num: 10

Candidate Starts for DosHalletts_38:

(Start: 10 @30672 has 103 MA's), (Start: 11 @30675 has 31 MA's), (14, 30711), (15, 30720), (16, 30738), (17, 30750), (18, 30753), (21, 30789), (24, 30810), (27, 30852), (28, 30855),

Gene: DotProduct_36 Start: 30211, Stop: 30501, Start Num: 6

Candidate Starts for DotProduct_36:

(Start: 5 @30190 has 19 MA's), (Start: 6 @30211 has 47 MA's), (Start: 8 @30250 has 13 MA's), (Start: 9 @30268 has 18 MA's), (Start: 10 @30280 has 103 MA's), (18, 30364), (20, 30376), (21, 30400), (22, 30406), (28, 30466),

Gene: Doug_37 Start: 30840, Stop: 31073, Start Num: 9

Candidate Starts for Doug_37:

(Start: 6 @30783 has 47 MA's), (Start: 8 @30822 has 13 MA's), (Start: 9 @30840 has 18 MA's), (Start: 10 @30852 has 103 MA's), (14, 30894), (18, 30936), (20, 30948), (21, 30972), (28, 31038),

Gene: Drago_38 Start: 30095, Stop: 30328, Start Num: 9

Candidate Starts for Drago_38:

(Start: 6 @30038 has 47 MA's), (Start: 8 @30077 has 13 MA's), (Start: 9 @30095 has 18 MA's), (Start: 10 @30107 has 103 MA's), (14, 30149), (17, 30188), (21, 30227), (22, 30233), (24, 30248), (27, 30290), (28, 30293),

Gene: EasyJones_50 Start: 15986, Stop: 15765, Start Num: 10

Candidate Starts for EasyJones_50:

(Start: 10 @15986 has 103 MA's), (Start: 11 @15983 has 31 MA's), (14, 15944), (15, 15935), (16, 15917), (17, 15905), (18, 15902), (20, 15890), (21, 15866), (22, 15860), (24, 15845), (27, 15803), (28, 15800),

Gene: Eish_37 Start: 30996, Stop: 31217, Start Num: 10

Candidate Starts for Eish_37:

(Start: 6 @30927 has 47 MA's), (Start: 8 @30966 has 13 MA's), (Start: 9 @30984 has 18 MA's), (Start: 10 @30996 has 103 MA's), (14, 31038), (17, 31077), (21, 31116), (22, 31122), (28, 31182),

Gene: EleanorGeorge_38 Start: 31025, Stop: 31246, Start Num: 10

Candidate Starts for EleanorGeorge_38:

(Start: 10 @31025 has 103 MA's), (Start: 11 @31028 has 31 MA's), (12, 31043), (15, 31076), (16, 31094), (17, 31106), (18, 31109), (20, 31121), (21, 31145), (22, 31151), (24, 31166), (27, 31208), (28, 31211),

Gene: EmiMonkey_37 Start: 31891, Stop: 32124, Start Num: 9

Candidate Starts for EmiMonkey_37:

(Start: 5 @31813 has 19 MA's), (Start: 6 @31834 has 47 MA's), (Start: 8 @31873 has 13 MA's), (Start: 9 @31891 has 18 MA's), (Start: 10 @31903 has 103 MA's), (18, 31987), (20, 31999), (21, 32023), (22, 32029), (28, 32089),

Gene: Emma_39 Start: 30889, Stop: 31110, Start Num: 10

Candidate Starts for Emma_39:

(Start: 10 @30889 has 103 MA's), (Start: 11 @30892 has 31 MA's), (14, 30931), (15, 30940), (16, 30958), (17, 30970), (18, 30973), (20, 30985), (21, 31009), (22, 31015), (24, 31030), (27, 31072), (28, 31075),

Gene: Emmaloid_39 Start: 31659, Stop: 31892, Start Num: 9

Candidate Starts for Emmaloid_39:

(Start: 5 @31581 has 19 MA's), (Start: 6 @31602 has 47 MA's), (Start: 8 @31641 has 13 MA's), (Start: 9 @31659 has 18 MA's), (Start: 10 @31671 has 103 MA's), (14, 31713), (18, 31755), (20, 31767), (21, 31791), (28, 31857),

Gene: Empress_37 Start: 31635, Stop: 31925, Start Num: 6

Candidate Starts for Empress_37:

(Start: 6 @31635 has 47 MA's), (Start: 8 @31674 has 13 MA's), (Start: 9 @31692 has 18 MA's), (Start: 10 @31704 has 103 MA's), (14, 31746), (17, 31785), (21, 31824), (22, 31830), (28, 31890),

Gene: Enby_39 Start: 30554, Stop: 30775, Start Num: 10

Candidate Starts for Enby_39:

(Start: 10 @30554 has 103 MA's), (Start: 11 @30557 has 31 MA's), (12, 30572), (15, 30605), (16, 30623), (17, 30635), (18, 30638), (20, 30650), (21, 30674), (22, 30680), (24, 30695), (27, 30737), (28, 30740),

Gene: Estave1_34 Start: 29814, Stop: 30032, Start Num: 11

Candidate Starts for Estave1_34:

(Start: 10 @29811 has 103 MA's), (Start: 11 @29814 has 31 MA's), (12, 29829), (15, 29862), (16, 29880), (17, 29892), (18, 29895), (20, 29907), (21, 29931), (22, 29937), (24, 29952), (27, 29994), (28, 29997),

Gene: Fancypants_36 Start: 30285, Stop: 30518, Start Num: 9

Candidate Starts for Fancypants_36:

(Start: 6 @30228 has 47 MA's), (Start: 8 @30267 has 13 MA's), (Start: 9 @30285 has 18 MA's), (Start: 10 @30297 has 103 MA's), (14, 30339), (17, 30378), (20, 30393), (21, 30417), (22, 30423), (27, 30480), (28, 30483),

Gene: Fastidio_39 Start: 30605, Stop: 30823, Start Num: 10

Candidate Starts for Fastidio_39:

(Start: 10 @30605 has 103 MA's), (Start: 11 @30608 has 31 MA's), (15, 30653), (16, 30671), (17, 30683), (18, 30686), (20, 30698), (21, 30722), (22, 30728), (24, 30743), (27, 30785), (28, 30788),

Gene: Filuzino_36 Start: 30240, Stop: 30461, Start Num: 10

Candidate Starts for Filuzino_36:

(Start: 6 @30171 has 47 MA's), (Start: 8 @30210 has 13 MA's), (Start: 9 @30228 has 18 MA's), (Start: 10 @30240 has 103 MA's), (14, 30282), (17, 30321), (21, 30360), (22, 30366), (24, 30381), (27, 30423), (28, 30426),

Gene: Firehouse51_37 Start: 31010, Stop: 31300, Start Num: 6

Candidate Starts for Firehouse51_37:

(Start: 6 @31010 has 47 MA's), (Start: 8 @31049 has 13 MA's), (Start: 9 @31067 has 18 MA's), (Start: 10 @31079 has 103 MA's), (14, 31121), (17, 31160), (21, 31199), (22, 31205), (24, 31220), (27, 31262), (28, 31265),

Gene: Flathead_36 Start: 30889, Stop: 31104, Start Num: 11

Candidate Starts for Flathead_36:

(Start: 10 @30886 has 103 MA's), (Start: 11 @30889 has 31 MA's), (14, 30925), (15, 30934), (16, 30952), (17, 30964), (18, 30967), (20, 30979), (21, 31003), (22, 31009), (24, 31024), (27, 31066), (28, 31069),

Gene: Florinda_37 Start: 30277, Stop: 30510, Start Num: 9

Candidate Starts for Florinda_37:

(Start: 6 @30220 has 47 MA's), (Start: 8 @30259 has 13 MA's), (Start: 9 @30277 has 18 MA's), (Start: 10 @30289 has 103 MA's), (14, 30331), (18, 30373), (20, 30385), (21, 30409), (28, 30475),

Gene: FreddyB_37 Start: 30554, Stop: 30775, Start Num: 10

Candidate Starts for FreddyB_37:

(Start: 6 @30485 has 47 MA's), (Start: 8 @30524 has 13 MA's), (Start: 9 @30542 has 18 MA's), (Start: 10 @30554 has 103 MA's), (14, 30596), (18, 30638), (20, 30650), (21, 30674), (22, 30680), (28, 30740),

Gene: Fruitloop_35 Start: 30437, Stop: 30652, Start Num: 11

Candidate Starts for Fruitloop_35:

(Start: 10 @30434 has 103 MA's), (Start: 11 @30437 has 31 MA's), (15, 30482), (16, 30500), (17, 30512), (18, 30515), (20, 30527), (21, 30551), (22, 30557), (24, 30572), (27, 30614), (28, 30617),

Gene: GUmbie_36 Start: 30241, Stop: 30531, Start Num: 6

Candidate Starts for GUmbie_36:

(Start: 5 @30220 has 19 MA's), (Start: 6 @30241 has 47 MA's), (Start: 8 @30280 has 13 MA's), (Start: 9 @30298 has 18 MA's), (Start: 10 @30310 has 103 MA's), (18, 30394), (20, 30406), (21, 30430), (22, 30436), (28, 30496),

Gene: Galactic_39 Start: 31126, Stop: 31332, Start Num: 10

Candidate Starts for Galactic_39:

(Start: 10 @31126 has 103 MA's), (Start: 11 @31129 has 31 MA's), (15, 31177), (16, 31195), (17, 31207), (18, 31210), (20, 31222), (29, 31324),

Gene: Gandolph_38 Start: 30624, Stop: 30845, Start Num: 10

Candidate Starts for Gandolph_38:

(Start: 10 @30624 has 103 MA's), (Start: 11 @30627 has 31 MA's), (15, 30675), (16, 30693), (17, 30705), (18, 30708), (20, 30720), (21, 30744), (22, 30750), (24, 30765), (27, 30807), (28, 30810),

Gene: Geralt_36 Start: 30260, Stop: 30511, Start Num: 8

Candidate Starts for Geralt_36:

(Start: 6 @30221 has 47 MA's), (Start: 8 @30260 has 13 MA's), (Start: 9 @30278 has 18 MA's), (Start: 10 @30290 has 103 MA's), (14, 30332), (17, 30371), (21, 30410), (22, 30416), (28, 30476),

Gene: GigiOuiOui_36 Start: 30353, Stop: 30643, Start Num: 6

Candidate Starts for GigiOuiOui_36:

(Start: 5 @30332 has 19 MA's), (Start: 6 @30353 has 47 MA's), (Start: 8 @30392 has 13 MA's), (Start: 9 @30410 has 18 MA's), (Start: 10 @30422 has 103 MA's), (18, 30506), (20, 30518), (21, 30542), (22, 30548), (28, 30608),

Gene: Girafales_37 Start: 30028, Stop: 30318, Start Num: 6

Candidate Starts for Girafales_37:

(Start: 6 @30028 has 47 MA's), (Start: 8 @30067 has 13 MA's), (Start: 9 @30085 has 18 MA's), (Start: 10 @30097 has 103 MA's), (14, 30139), (18, 30181), (20, 30193), (21, 30217), (28, 30283),

Gene: Girr_38 Start: 31257, Stop: 31547, Start Num: 6

Candidate Starts for Girr_38:

(Start: 6 @31257 has 47 MA's), (Start: 8 @31296 has 13 MA's), (Start: 9 @31314 has 18 MA's), (Start: 10 @31326 has 103 MA's), (14, 31368), (17, 31407), (21, 31446), (22, 31452), (28, 31512),

Gene: Gorge_36 Start: 30520, Stop: 30741, Start Num: 10

Candidate Starts for Gorge_36:

(Start: 10 @30520 has 103 MA's), (Start: 11 @30523 has 31 MA's), (15, 30571), (16, 30589), (17, 30601), (18, 30604), (20, 30616), (21, 30640), (22, 30646), (24, 30661), (27, 30703), (28, 30706),

Gene: Grimmer_39 Start: 30999, Stop: 31232, Start Num: 9

Candidate Starts for Grimmer_39:

(Start: 6 @30942 has 47 MA's), (Start: 8 @30981 has 13 MA's), (Start: 9 @30999 has 18 MA's), (Start: 10 @31011 has 103 MA's), (14, 31053), (17, 31092), (21, 31131), (22, 31137), (24, 31152), (27, 31194), (28, 31197),

Gene: Grungle_41 Start: 13722, Stop: 13501, Start Num: 10

Candidate Starts for Grungle_41:

(Start: 10 @13722 has 103 MA's), (Start: 11 @13719 has 31 MA's), (14, 13680), (15, 13671), (16, 13653), (17, 13641), (18, 13638), (20, 13626), (21, 13602), (22, 13596), (24, 13581), (27, 13539), (28, 13536),

Gene: Guppsters_38 Start: 30718, Stop: 31029, Start Num: 5

Candidate Starts for Guppsters_38:

(Start: 5 @30718 has 19 MA's), (Start: 6 @30739 has 47 MA's), (Start: 8 @30778 has 13 MA's), (Start: 9 @30796 has 18 MA's), (Start: 10 @30808 has 103 MA's), (14, 30850), (17, 30889), (21, 30928), (22, 30934), (24, 30949), (27, 30991), (28, 30994),

Gene: Hades_38 Start: 30608, Stop: 30841, Start Num: 9

Candidate Starts for Hades_38:

(Start: 6 @30551 has 47 MA's), (Start: 8 @30590 has 13 MA's), (Start: 9 @30608 has 18 MA's), (Start: 10 @30620 has 103 MA's), (14, 30662), (18, 30704), (20, 30716), (21, 30740), (28, 30806),

Gene: Halldule_44 Start: 14174, Stop: 13953, Start Num: 10

Candidate Starts for Halldule_44:

(Start: 10 @14174 has 103 MA's), (Start: 11 @14171 has 31 MA's), (14, 14132), (15, 14123), (16, 14105), (17, 14093), (18, 14090), (20, 14078), (21, 14054), (22, 14048), (24, 14033), (27, 13991), (28, 13988),

Gene: Hamulus_37 Start: 31270, Stop: 31503, Start Num: 9

Candidate Starts for Hamulus_37:

(Start: 5 @31192 has 19 MA's), (Start: 6 @31213 has 47 MA's), (Start: 8 @31252 has 13 MA's), (Start: 9 @31270 has 18 MA's), (Start: 10 @31282 has 103 MA's), (18, 31366), (20, 31378), (21, 31402), (22, 31408), (28, 31468),

Gene: Harley_37 Start: 30214, Stop: 30447, Start Num: 9

Candidate Starts for Harley_37:

(Start: 6 @30157 has 47 MA's), (Start: 8 @30196 has 13 MA's), (Start: 9 @30214 has 18 MA's), (Start: 10 @30226 has 103 MA's), (14, 30268), (18, 30310), (20, 30322), (21, 30346), (22, 30352), (28, 30412),

Gene: Hegedechwinu_38 Start: 30315, Stop: 30533, Start Num: 10

Candidate Starts for Hegedechwinu_38:

(Start: 10 @30315 has 103 MA's), (Start: 11 @30318 has 31 MA's), (14, 30354), (15, 30363), (16, 30381), (17, 30393), (18, 30396), (20, 30408), (21, 30432), (22, 30438), (24, 30453), (27, 30495), (28, 30498),

Gene: Hlubikazi_38 Start: 31112, Stop: 31330, Start Num: 10

Candidate Starts for Hlubikazi_38:

(Start: 10 @31112 has 103 MA's), (Start: 11 @31115 has 31 MA's), (15, 31160), (16, 31178), (17, 31190), (18, 31193), (20, 31205), (21, 31229), (22, 31235), (24, 31250), (27, 31292), (28, 31295),

Gene: IMpilo_36 Start: 30096, Stop: 30314, Start Num: 11

Candidate Starts for IMpilo_36:

(Start: 10 @30093 has 103 MA's), (Start: 11 @30096 has 31 MA's), (15, 30144), (16, 30162), (17, 30174), (18, 30177), (21, 30213), (22, 30219), (24, 30234), (27, 30276), (28, 30279),

Gene: IbOuu_39 Start: 30868, Stop: 31086, Start Num: 11

Candidate Starts for IbOuu_39:

(Start: 10 @30865 has 103 MA's), (Start: 11 @30868 has 31 MA's), (14, 30907), (15, 30916), (16, 30934), (17, 30946), (18, 30949), (20, 30961), (21, 30985), (22, 30991), (24, 31006), (27, 31048), (28, 31051),

Gene: Ibhubesi_36 Start: 30164, Stop: 30454, Start Num: 6

Candidate Starts for Ibhubesi_36:

(Start: 6 @30164 has 47 MA's), (Start: 8 @30203 has 13 MA's), (Start: 9 @30221 has 18 MA's), (Start: 10 @30233 has 103 MA's), (14, 30275), (18, 30317), (20, 30329), (21, 30353), (22, 30359), (28, 30419),

Gene: Inventum_36 Start: 30902, Stop: 31192, Start Num: 6

Candidate Starts for Inventum_36:

(Start: 6 @30902 has 47 MA's), (Start: 8 @30941 has 13 MA's), (Start: 9 @30959 has 18 MA's), (Start: 10 @30971 has 103 MA's), (14, 31013), (17, 31052), (21, 31091), (22, 31097), (28, 31157),

Gene: IrishSherpFalk_39 Start: 31884, Stop: 32102, Start Num: 11

Candidate Starts for IrishSherpFalk_39:

(Start: 10 @31881 has 103 MA's), (Start: 11 @31884 has 31 MA's), (12, 31899), (15, 31932), (16, 31950), (17, 31962), (18, 31965), (21, 32001), (24, 32022), (27, 32064), (28, 32067),

Gene: JalFarm20_40 Start: 31369, Stop: 31587, Start Num: 11

Candidate Starts for JalFarm20_40:

(Start: 10 @31366 has 103 MA's), (Start: 11 @31369 has 31 MA's), (12, 31384), (15, 31417), (16, 31435), (17, 31447), (18, 31450), (20, 31462), (21, 31486), (24, 31507), (27, 31549), (28, 31552),

Gene: James_36 Start: 30477, Stop: 30698, Start Num: 10

Candidate Starts for James_36:

(Start: 10 @30477 has 103 MA's), (Start: 11 @30480 has 31 MA's), (15, 30528), (16, 30546), (17, 30558), (18, 30561), (20, 30573), (21, 30597), (22, 30603), (24, 30618), (27, 30660), (28, 30663),

Gene: Jant_38 Start: 30466, Stop: 30684, Start Num: 11

Candidate Starts for Jant_38:

(Start: 10 @30463 has 103 MA's), (Start: 11 @30466 has 31 MA's), (12, 30481), (14, 30505), (15, 30514), (16, 30532), (17, 30544), (18, 30547), (21, 30583), (24, 30604), (27, 30646), (28, 30649),

Gene: Jacob_36 Start: 30512, Stop: 30733, Start Num: 10

Candidate Starts for Jacob_36:

(Start: 10 @30512 has 103 MA's), (Start: 11 @30515 has 31 MA's), (15, 30563), (16, 30581), (17, 30593), (18, 30596), (20, 30608), (21, 30632), (24, 30653), (27, 30695), (28, 30698),

Gene: Jinglebell_36 Start: 30498, Stop: 30719, Start Num: 10

Candidate Starts for Jinglebell_36:

(Start: 6 @30429 has 47 MA's), (Start: 8 @30468 has 13 MA's), (Start: 9 @30486 has 18 MA's), (Start: 10 @30498 has 103 MA's), (14, 30540), (18, 30582), (20, 30594), (21, 30618), (28, 30684),

Gene: Job42_40 Start: 32218, Stop: 32508, Start Num: 6

Candidate Starts for Job42_40:

(Start: 6 @32218 has 47 MA's), (Start: 8 @32257 has 13 MA's), (Start: 9 @32275 has 18 MA's), (Start: 10 @32287 has 103 MA's), (14, 32329), (17, 32368), (21, 32407), (22, 32413), (28, 32473),

Gene: JoeyJr_36 Start: 30390, Stop: 30680, Start Num: 6

Candidate Starts for JoeyJr_36:

(Start: 6 @30390 has 47 MA's), (Start: 8 @30429 has 13 MA's), (Start: 9 @30447 has 18 MA's), (Start: 10 @30459 has 103 MA's), (14, 30501), (17, 30540), (21, 30579), (22, 30585), (28, 30645),

Gene: Juice456_39 Start: 31586, Stop: 31807, Start Num: 10

Candidate Starts for Juice456_39:

(Start: 10 @31586 has 103 MA's), (Start: 11 @31589 has 31 MA's), (14, 31628), (15, 31637), (16, 31655), (17, 31667), (18, 31670), (20, 31682), (21, 31706), (22, 31712), (24, 31727), (27, 31769), (28,

31772),

Gene: JulietS_44 Start: 14025, Stop: 13804, Start Num: 10

Candidate Starts for JulietS_44:

(Start: 10 @14025 has 103 MA's), (Start: 11 @14022 has 31 MA's), (14, 13983), (15, 13974), (16, 13956), (17, 13944), (18, 13941), (20, 13929), (21, 13905), (22, 13899), (24, 13884), (27, 13842), (28, 13839),

Gene: Juniper1_36 Start: 30256, Stop: 30477, Start Num: 10

Candidate Starts for Juniper1_36:

(Start: 6 @30187 has 47 MA's), (Start: 8 @30226 has 13 MA's), (Start: 9 @30244 has 18 MA's), (Start: 10 @30256 has 103 MA's), (14, 30298), (18, 30340), (20, 30352), (21, 30376), (28, 30442),

Gene: Karhdo_36 Start: 30393, Stop: 30644, Start Num: 8

Candidate Starts for Karhdo_36:

(Start: 6 @30354 has 47 MA's), (Start: 8 @30393 has 13 MA's), (Start: 9 @30411 has 18 MA's), (Start: 10 @30423 has 103 MA's), (14, 30465), (17, 30504), (21, 30543), (22, 30549), (28, 30609),

Gene: Kenuha5_33 Start: 29400, Stop: 29621, Start Num: 10

Candidate Starts for Kenuha5_33:

(Start: 10 @29400 has 103 MA's), (Start: 11 @29403 has 31 MA's), (14, 29442), (15, 29451), (16, 29469), (17, 29481), (18, 29484), (21, 29520), (22, 29526), (24, 29541), (27, 29583), (28, 29586),

Gene: Kersh_35 Start: 31408, Stop: 31719, Start Num: 5

Candidate Starts for Kersh_35:

(Start: 5 @31408 has 19 MA's), (Start: 6 @31429 has 47 MA's), (Start: 8 @31468 has 13 MA's), (Start: 9 @31486 has 18 MA's), (Start: 10 @31498 has 103 MA's), (18, 31582), (20, 31594), (21, 31618), (22, 31624), (28, 31684),

Gene: Kimberlium_38 Start: 31345, Stop: 31635, Start Num: 6

Candidate Starts for Kimberlium_38:

(Start: 6 @31345 has 47 MA's), (Start: 8 @31384 has 13 MA's), (Start: 9 @31402 has 18 MA's), (Start: 10 @31414 has 103 MA's), (14, 31456), (17, 31495), (21, 31534), (22, 31540), (24, 31555), (27, 31597), (28, 31600),

Gene: KingJulian_36 Start: 30484, Stop: 30705, Start Num: 10

Candidate Starts for KingJulian_36:

(Start: 10 @30484 has 103 MA's), (Start: 11 @30487 has 31 MA's), (14, 30526), (15, 30535), (16, 30553), (17, 30565), (18, 30568), (20, 30580), (21, 30604), (22, 30610), (24, 30625), (27, 30667), (28, 30670),

Gene: KingMidas_38 Start: 32123, Stop: 32374, Start Num: 8

Candidate Starts for KingMidas_38:

(Start: 6 @32084 has 47 MA's), (Start: 8 @32123 has 13 MA's), (Start: 9 @32141 has 18 MA's), (Start: 10 @32153 has 103 MA's), (14, 32195), (17, 32234), (21, 32273), (22, 32279), (28, 32339),

Gene: Kingsley_36 Start: 30109, Stop: 30327, Start Num: 10

Candidate Starts for Kingsley_36:

(Start: 10 @30109 has 103 MA's), (Start: 11 @30112 has 31 MA's), (15, 30157), (16, 30175), (17, 30187), (18, 30190), (20, 30202), (21, 30226), (22, 30232), (24, 30247), (27, 30289), (28, 30292),

Gene: Koella_30 Start: 26436, Stop: 26657, Start Num: 10

Candidate Starts for Koella_30:

(Start: 10 @26436 has 103 MA's), (Start: 11 @26439 has 31 MA's), (15, 26487), (16, 26505), (17, 26517), (18, 26520), (20, 26532), (21, 26556), (24, 26577), (27, 26619), (28, 26622),

Gene: Koguma_45 Start: 14368, Stop: 14147, Start Num: 10

Candidate Starts for Koguma_45:

(Start: 10 @14368 has 103 MA's), (Start: 11 @14365 has 31 MA's), (14, 14326), (15, 14317), (16, 14299), (17, 14287), (18, 14284), (20, 14272), (21, 14248), (22, 14242), (24, 14227), (27, 14185), (28, 14182),

Gene: Krakatau_37 Start: 30895, Stop: 31206, Start Num: 5

Candidate Starts for Krakatau_37:

(Start: 5 @30895 has 19 MA's), (Start: 6 @30916 has 47 MA's), (Start: 8 @30955 has 13 MA's), (Start: 9 @30973 has 18 MA's), (Start: 10 @30985 has 103 MA's), (18, 31069), (20, 31081), (21, 31105), (22, 31111), (28, 31171),

Gene: KristaRAM_38 Start: 31109, Stop: 31330, Start Num: 10

Candidate Starts for KristaRAM_38:

(Start: 10 @31109 has 103 MA's), (Start: 11 @31112 has 31 MA's), (14, 31151), (15, 31160), (16, 31178), (17, 31190), (18, 31193), (20, 31205), (21, 31229), (24, 31250), (27, 31292), (28, 31295),

Gene: LRRHood_46 Start: 16291, Stop: 16070, Start Num: 10

Candidate Starts for LRRHood_46:

(Start: 10 @16291 has 103 MA's), (Start: 11 @16288 has 31 MA's), (14, 16249), (15, 16240), (16, 16222), (17, 16210), (18, 16207), (20, 16195), (21, 16171), (22, 16165), (24, 16150), (27, 16108), (28, 16105),

Gene: LastJedi_30 Start: 26440, Stop: 26691, Start Num: 8

Candidate Starts for LastJedi_30:

(Start: 5 @26380 has 19 MA's), (Start: 6 @26401 has 47 MA's), (Start: 8 @26440 has 13 MA's), (Start: 9 @26458 has 18 MA's), (Start: 10 @26470 has 103 MA's), (14, 26512), (17, 26551), (21, 26590), (22, 26596), (24, 26611), (27, 26653), (28, 26656),

Gene: Latretium_37 Start: 31069, Stop: 31290, Start Num: 10

Candidate Starts for Latretium_37:

(Start: 6 @31000 has 47 MA's), (Start: 8 @31039 has 13 MA's), (Start: 9 @31057 has 18 MA's), (Start: 10 @31069 has 103 MA's), (14, 31111), (17, 31150), (21, 31189), (22, 31195), (24, 31210), (27, 31252), (28, 31255),

Gene: Leozinho_38 Start: 30643, Stop: 30933, Start Num: 6

Candidate Starts for Leozinho_38:

(Start: 6 @30643 has 47 MA's), (Start: 8 @30682 has 13 MA's), (Start: 9 @30700 has 18 MA's), (Start: 10 @30712 has 103 MA's), (14, 30754), (17, 30793), (21, 30832), (22, 30838), (28, 30898),

Gene: Leperchaun_36 Start: 30275, Stop: 30586, Start Num: 5

Candidate Starts for Leperchaun_36:

(Start: 5 @30275 has 19 MA's), (Start: 6 @30296 has 47 MA's), (Start: 8 @30335 has 13 MA's), (Start: 9 @30353 has 18 MA's), (Start: 10 @30365 has 103 MA's), (14, 30407), (17, 30446), (21, 30485), (22, 30491), (24, 30506), (27, 30548), (28, 30551),

Gene: LilMoolah_36 Start: 30560, Stop: 30781, Start Num: 10

Candidate Starts for LilMoolah_36:

(Start: 10 @30560 has 103 MA's), (Start: 11 @30563 has 31 MA's), (15, 30611), (16, 30629), (17, 30641), (18, 30644), (20, 30656), (21, 30680), (24, 30701), (27, 30743), (28, 30746),

Gene: LittleShirley_39 Start: 31841, Stop: 32152, Start Num: 5

Candidate Starts for LittleShirley_39:

(Start: 5 @31841 has 19 MA's), (Start: 6 @31862 has 47 MA's), (Start: 8 @31901 has 13 MA's), (Start: 9 @31919 has 18 MA's), (Start: 10 @31931 has 103 MA's), (18, 32015), (20, 32027), (21, 32051), (22, 32057), (28, 32117),

Gene: Lizziana_36 Start: 30438, Stop: 30656, Start Num: 11

Candidate Starts for Lizziana_36:

(Start: 10 @30435 has 103 MA's), (Start: 11 @30438 has 31 MA's), (15, 30486), (16, 30504), (17, 30516), (18, 30519), (20, 30531), (21, 30555), (24, 30576), (27, 30618), (28, 30621),

Gene: Llama_37 Start: 30497, Stop: 30718, Start Num: 10

Candidate Starts for Llama_37:

(Start: 6 @30428 has 47 MA's), (Start: 8 @30467 has 13 MA's), (Start: 9 @30485 has 18 MA's), (Start: 10 @30497 has 103 MA's), (14, 30539), (18, 30581), (20, 30593), (21, 30617), (28, 30683),

Gene: Llij_36 Start: 30202, Stop: 30492, Start Num: 6

Candidate Starts for Llij_36:

(Start: 6 @30202 has 47 MA's), (Start: 8 @30241 has 13 MA's), (Start: 9 @30259 has 18 MA's), (Start: 10 @30271 has 103 MA's), (14, 30313), (17, 30352), (21, 30391), (22, 30397), (24, 30412), (27, 30454), (28, 30457),

Gene: Lorde_39 Start: 30529, Stop: 30750, Start Num: 10

Candidate Starts for Lorde_39:

(Start: 10 @30529 has 103 MA's), (Start: 11 @30532 has 31 MA's), (12, 30547), (15, 30580), (16, 30598), (17, 30610), (18, 30613), (20, 30625), (21, 30649), (22, 30655), (24, 30670), (27, 30712), (28, 30715),

Gene: Lukilu_43 Start: 15493, Stop: 15272, Start Num: 10

Candidate Starts for Lukilu_43:

(Start: 10 @15493 has 103 MA's), (Start: 11 @15490 has 31 MA's), (14, 15451), (15, 15442), (16, 15424), (17, 15412), (18, 15409), (20, 15397), (21, 15373), (22, 15367), (24, 15352), (27, 15310), (28, 15307),

Gene: LunaBlu_40 Start: 31303, Stop: 31521, Start Num: 11

Candidate Starts for LunaBlu_40:

(Start: 10 @31300 has 103 MA's), (Start: 11 @31303 has 31 MA's), (15, 31351), (16, 31369), (17, 31381), (18, 31384), (20, 31396), (21, 31420), (22, 31426), (24, 31441), (27, 31483), (28, 31486),

Gene: MadMen_34 Start: 29725, Stop: 29946, Start Num: 10

Candidate Starts for MadMen_34:

(Start: 5 @29635 has 19 MA's), (Start: 6 @29656 has 47 MA's), (Start: 8 @29695 has 13 MA's), (Start: 9 @29713 has 18 MA's), (Start: 10 @29725 has 103 MA's), (14, 29767), (17, 29806), (21, 29845), (22, 29851), (24, 29866), (27, 29908), (28, 29911),

Gene: Madiba_35 Start: 29198, Stop: 29419, Start Num: 10

Candidate Starts for Madiba_35:

(Start: 6 @29129 has 47 MA's), (Start: 8 @29168 has 13 MA's), (Start: 9 @29186 has 18 MA's), (Start: 10 @29198 has 103 MA's), (14, 29240), (17, 29279), (21, 29318), (22, 29324), (24, 29339), (27, 29381), (28, 29384),

Gene: Mahavrat_36 Start: 30329, Stop: 30550, Start Num: 10

Candidate Starts for Mahavrat_36:

(Start: 6 @30260 has 47 MA's), (Start: 8 @30299 has 13 MA's), (Start: 9 @30317 has 18 MA's), (Start: 10 @30329 has 103 MA's), (14, 30371), (18, 30413), (20, 30425), (21, 30449), (24, 30470), (27, 30512), (28, 30515),

Gene: Mandlovu_37 Start: 31054, Stop: 31272, Start Num: 10

Candidate Starts for Mandlovu_37:

(Start: 10 @31054 has 103 MA's), (Start: 11 @31057 has 31 MA's), (15, 31102), (16, 31120), (17, 31132), (18, 31135), (20, 31147), (21, 31171), (22, 31177), (24, 31192), (27, 31234), (28, 31237),

Gene: Mantra_36 Start: 30377, Stop: 30610, Start Num: 9

Candidate Starts for Mantra_36:

(Start: 5 @30299 has 19 MA's), (Start: 6 @30320 has 47 MA's), (Start: 8 @30359 has 13 MA's), (Start: 9 @30377 has 18 MA's), (Start: 10 @30389 has 103 MA's), (18, 30473), (20, 30485), (21, 30509), (22, 30515), (28, 30575),

Gene: Maravista_36 Start: 30190, Stop: 30441, Start Num: 8

Candidate Starts for Maravista_36:

(Start: 5 @30130 has 19 MA's), (Start: 6 @30151 has 47 MA's), (Start: 8 @30190 has 13 MA's), (Start: 9 @30208 has 18 MA's), (Start: 10 @30220 has 103 MA's), (14, 30262), (17, 30301), (21, 30340), (22, 30346), (24, 30361), (27, 30403), (28, 30406),

Gene: Marker_37 Start: 30156, Stop: 30377, Start Num: 10

Candidate Starts for Marker_37:

(Start: 5 @30066 has 19 MA's), (Start: 6 @30087 has 47 MA's), (Start: 8 @30126 has 13 MA's), (Start: 9 @30144 has 18 MA's), (Start: 10 @30156 has 103 MA's), (14, 30198), (18, 30240), (20, 30252), (21, 30276), (22, 30282), (24, 30297), (27, 30339), (28, 30342),

Gene: Martik_37 Start: 30465, Stop: 30683, Start Num: 11

Candidate Starts for Martik_37:

(Start: 10 @30462 has 103 MA's), (Start: 11 @30465 has 31 MA's), (15, 30513), (16, 30531), (17, 30543), (18, 30546), (20, 30558), (21, 30582), (24, 30603), (27, 30645), (28, 30648),

Gene: Mattes_36 Start: 30477, Stop: 30698, Start Num: 10

Candidate Starts for Mattes_36:

(Start: 10 @30477 has 103 MA's), (Start: 11 @30480 has 31 MA's), (15, 30528), (16, 30546), (17, 30558), (18, 30561), (20, 30573), (21, 30597), (22, 30603), (24, 30618), (27, 30660), (28, 30663),

Gene: Melissauren88_36 Start: 30433, Stop: 30648, Start Num: 11

Candidate Starts for Melissauren88_36:

(Start: 10 @30430 has 103 MA's), (Start: 11 @30433 has 31 MA's), (15, 30478), (16, 30496), (17, 30508), (18, 30511), (20, 30523), (21, 30547), (22, 30553), (24, 30568), (27, 30610), (28, 30613),

Gene: MilanaBonita_30 Start: 26361, Stop: 26582, Start Num: 10

Candidate Starts for MilanaBonita_30:

(Start: 10 @26361 has 103 MA's), (Start: 11 @26364 has 31 MA's), (14, 26403), (15, 26412), (16, 26430), (17, 26442), (18, 26445), (20, 26457), (21, 26481), (22, 26487), (24, 26502), (27, 26544), (28, 26547),

Gene: MilleniumForce_38 Start: 31222, Stop: 31440, Start Num: 10

Candidate Starts for MilleniumForce_38:

(Start: 10 @31222 has 103 MA's), (Start: 11 @31225 has 31 MA's), (14, 31261), (15, 31270), (16, 31288), (17, 31300), (18, 31303), (20, 31315), (21, 31339), (22, 31345), (24, 31360), (27, 31402), (28,

31405),

Gene: MinionDave_39 Start: 31462, Stop: 31677, Start Num: 11

Candidate Starts for MinionDave_39:

(Start: 10 @31459 has 103 MA's), (Start: 11 @31462 has 31 MA's), (14, 31498), (15, 31507), (16, 31525), (17, 31537), (18, 31540), (20, 31552), (21, 31576), (22, 31582), (24, 31597), (27, 31639), (28, 31642),

Gene: Minnie_38 Start: 31204, Stop: 31494, Start Num: 6

Candidate Starts for Minnie_38:

(Start: 6 @31204 has 47 MA's), (Start: 8 @31243 has 13 MA's), (Start: 9 @31261 has 18 MA's), (Start: 10 @31273 has 103 MA's), (14, 31315), (18, 31357), (20, 31369), (21, 31393), (28, 31459),

Gene: Misha28_38 Start: 30172, Stop: 30393, Start Num: 10

Candidate Starts for Misha28_38:

(Start: 10 @30172 has 103 MA's), (Start: 11 @30175 has 31 MA's), (15, 30223), (18, 30256), (20, 30268), (21, 30292), (22, 30298), (28, 30358),

Gene: MisterCuddles_38 Start: 31296, Stop: 31547, Start Num: 8

Candidate Starts for MisterCuddles_38:

(Start: 6 @31257 has 47 MA's), (Start: 8 @31296 has 13 MA's), (Start: 9 @31314 has 18 MA's), (Start: 10 @31326 has 103 MA's), (14, 31368), (17, 31407), (21, 31446), (22, 31452), (28, 31512),

Gene: Modragons_36 Start: 30273, Stop: 30563, Start Num: 6

Candidate Starts for Modragons_36:

(Start: 6 @30273 has 47 MA's), (Start: 8 @30312 has 13 MA's), (Start: 9 @30330 has 18 MA's), (Start: 10 @30342 has 103 MA's), (14, 30384), (18, 30426), (20, 30438), (21, 30462), (28, 30528),

Gene: Moonbeam_37 Start: 30976, Stop: 31194, Start Num: 10

Candidate Starts for Moonbeam_37:

(Start: 10 @30976 has 103 MA's), (Start: 11 @30979 has 31 MA's), (14, 31015), (15, 31024), (16, 31042), (17, 31054), (18, 31057), (20, 31069), (21, 31093), (22, 31099), (24, 31114), (27, 31156), (28, 31159),

Gene: Morizzled23_51 Start: 15991, Stop: 15773, Start Num: 11

Candidate Starts for Morizzled23_51:

(Start: 10 @15994 has 103 MA's), (Start: 11 @15991 has 31 MA's), (14, 15952), (15, 15943), (16, 15925), (17, 15913), (18, 15910), (20, 15898), (21, 15874), (22, 15868), (24, 15853), (27, 15811), (28, 15808),

Gene: Mova_37 Start: 30111, Stop: 30332, Start Num: 10

Candidate Starts for Mova_37:

(Start: 10 @30111 has 103 MA's), (Start: 11 @30114 has 31 MA's), (15, 30162), (16, 30180), (17, 30192), (18, 30195), (20, 30207), (21, 30231), (22, 30237), (24, 30252), (27, 30294), (28, 30297),

Gene: Mozy_38 Start: 31099, Stop: 31389, Start Num: 6

Candidate Starts for Mozy_38:

(Start: 6 @31099 has 47 MA's), (Start: 8 @31138 has 13 MA's), (Start: 9 @31156 has 18 MA's), (Start: 10 @31168 has 103 MA's), (14, 31210), (18, 31252), (20, 31264), (21, 31288), (22, 31294), (24, 31309), (27, 31351), (28, 31354),

Gene: Ms6_31 Start: 25896, Stop: 26114, Start Num: 11

Candidate Starts for Ms6_31:

(Start: 10 @25893 has 103 MA's), (Start: 11 @25896 has 31 MA's), (15, 25944), (16, 25962), (17, 25974), (18, 25977), (20, 25989), (21, 26013), (22, 26019), (24, 26034), (27, 26076), (28, 26079),

Gene: MulchExplorer_40 Start: 31401, Stop: 31634, Start Num: 9

Candidate Starts for MulchExplorer_40:

(Start: 6 @31344 has 47 MA's), (Start: 8 @31383 has 13 MA's), (Start: 9 @31401 has 18 MA's), (Start: 10 @31413 has 103 MA's), (14, 31455), (17, 31494), (21, 31533), (22, 31539), (24, 31554), (27, 31596), (28, 31599),

Gene: MulchSalad_35 Start: 27165, Stop: 27398, Start Num: 9

Candidate Starts for MulchSalad_35:

(2, 26949), (Start: 6 @27108 has 47 MA's), (Start: 8 @27147 has 13 MA's), (Start: 9 @27165 has 18 MA's), (Start: 10 @27177 has 103 MA's), (18, 27261), (20, 27273), (21, 27297), (22, 27303), (28, 27363),

Gene: Mutaforma13_36 Start: 30479, Stop: 30769, Start Num: 6

Candidate Starts for Mutaforma13_36:

(Start: 5 @30458 has 19 MA's), (Start: 6 @30479 has 47 MA's), (Start: 8 @30518 has 13 MA's), (Start: 9 @30536 has 18 MA's), (Start: 10 @30548 has 103 MA's), (18, 30632), (20, 30644), (21, 30668), (22, 30674), (28, 30734),

Gene: Nimbo_36 Start: 30225, Stop: 30515, Start Num: 6

Candidate Starts for Nimbo_36:

(Start: 6 @30225 has 47 MA's), (Start: 8 @30264 has 13 MA's), (Start: 9 @30282 has 18 MA's), (Start: 10 @30294 has 103 MA's), (14, 30336), (17, 30375), (21, 30414), (22, 30420), (28, 30480),

Gene: Nitzel_37 Start: 30941, Stop: 31231, Start Num: 6

Candidate Starts for Nitzel_37:

(Start: 6 @30941 has 47 MA's), (Start: 8 @30980 has 13 MA's), (Start: 9 @30998 has 18 MA's), (Start: 10 @31010 has 103 MA's), (14, 31052), (18, 31094), (20, 31106), (21, 31130), (22, 31136), (28, 31196),

Gene: Nivrat_36 Start: 30434, Stop: 30655, Start Num: 10

Candidate Starts for Nivrat_36:

(Start: 10 @30434 has 103 MA's), (Start: 11 @30437 has 31 MA's), (15, 30485), (16, 30503), (17, 30515), (18, 30518), (20, 30530), (21, 30554), (24, 30575), (27, 30617), (28, 30620),

Gene: NormanBulbieJr_37 Start: 30449, Stop: 30670, Start Num: 10

Candidate Starts for NormanBulbieJr_37:

(Start: 10 @30449 has 103 MA's), (Start: 11 @30452 has 31 MA's), (15, 30500), (16, 30518), (17, 30530), (18, 30533), (20, 30545), (21, 30569), (24, 30590), (27, 30632), (28, 30635),

Gene: Ochi17_35 Start: 29949, Stop: 30170, Start Num: 10

Candidate Starts for Ochi17_35:

(Start: 6 @29880 has 47 MA's), (Start: 8 @29919 has 13 MA's), (Start: 9 @29937 has 18 MA's), (Start: 10 @29949 has 103 MA's), (14, 29991), (18, 30033), (20, 30045), (21, 30069), (28, 30135),

Gene: OfUltron_37 Start: 30498, Stop: 30719, Start Num: 10

Candidate Starts for OfUltron_37:

(Start: 6 @30429 has 47 MA's), (Start: 8 @30468 has 13 MA's), (Start: 9 @30486 has 18 MA's), (Start: 10 @30498 has 103 MA's), (14, 30540), (18, 30582), (20, 30594), (21, 30618), (28, 30684),

Gene: Ogopogo_36 Start: 29642, Stop: 29863, Start Num: 10

Candidate Starts for Ogotogo_36:

(Start: 10 @29642 has 103 MA's), (Start: 11 @29645 has 31 MA's), (15, 29693), (16, 29711), (17, 29723), (18, 29726), (20, 29738), (21, 29762), (22, 29768), (24, 29783), (27, 29825), (28, 29828),

Gene: Oksu_37 Start: 30330, Stop: 30563, Start Num: 9

Candidate Starts for Oksu_37:

(Start: 6 @30273 has 47 MA's), (Start: 8 @30312 has 13 MA's), (Start: 9 @30330 has 18 MA's), (Start: 10 @30342 has 103 MA's), (14, 30384), (18, 30426), (20, 30438), (21, 30462), (28, 30528),

Gene: OldBen_36 Start: 30295, Stop: 30546, Start Num: 8

Candidate Starts for OldBen_36:

(Start: 6 @30256 has 47 MA's), (Start: 8 @30295 has 13 MA's), (Start: 9 @30313 has 18 MA's), (Start: 10 @30325 has 103 MA's), (14, 30367), (17, 30406), (21, 30445), (22, 30451), (28, 30511),

Gene: OlympiaSaint_36 Start: 30671, Stop: 30961, Start Num: 6

Candidate Starts for OlympiaSaint_36:

(Start: 6 @30671 has 47 MA's), (Start: 8 @30710 has 13 MA's), (Start: 9 @30728 has 18 MA's), (Start: 10 @30740 has 103 MA's), (14, 30782), (17, 30821), (21, 30860), (22, 30866), (28, 30926),

Gene: Ovechkin_37 Start: 31231, Stop: 31521, Start Num: 6

Candidate Starts for Ovechkin_37:

(Start: 6 @31231 has 47 MA's), (Start: 8 @31270 has 13 MA's), (Start: 9 @31288 has 18 MA's), (Start: 10 @31300 has 103 MA's), (14, 31342), (17, 31381), (21, 31420), (28, 31486),

Gene: OwlsT2W_37 Start: 30646, Stop: 30936, Start Num: 6

Candidate Starts for OwlsT2W_37:

(Start: 6 @30646 has 47 MA's), (Start: 8 @30685 has 13 MA's), (Start: 9 @30703 has 18 MA's), (Start: 10 @30715 has 103 MA's), (14, 30757), (17, 30796), (21, 30835), (22, 30841), (28, 30901),

Gene: PHappiness_36 Start: 30198, Stop: 30488, Start Num: 6

Candidate Starts for PHappiness_36:

(Start: 6 @30198 has 47 MA's), (Start: 8 @30237 has 13 MA's), (Start: 9 @30255 has 18 MA's), (Start: 10 @30267 has 103 MA's), (14, 30309), (17, 30348), (21, 30387), (22, 30393), (28, 30453),

Gene: PMC_36 Start: 30202, Stop: 30492, Start Num: 6

Candidate Starts for PMC_36:

(Start: 6 @30202 has 47 MA's), (Start: 8 @30241 has 13 MA's), (Start: 9 @30259 has 18 MA's), (Start: 10 @30271 has 103 MA's), (14, 30313), (17, 30352), (21, 30391), (22, 30397), (24, 30412), (27, 30454), (28, 30457),

Gene: Pacc40_36 Start: 30392, Stop: 30682, Start Num: 6

Candidate Starts for Pacc40_36:

(Start: 5 @30371 has 19 MA's), (Start: 6 @30392 has 47 MA's), (Start: 8 @30431 has 13 MA's), (Start: 9 @30449 has 18 MA's), (Start: 10 @30461 has 103 MA's), (14, 30503), (17, 30542), (21, 30581), (22, 30587), (24, 30602), (27, 30644), (28, 30647),

Gene: Phalconet_37 Start: 30400, Stop: 30615, Start Num: 11

Candidate Starts for Phalconet_37:

(Start: 10 @30397 has 103 MA's), (Start: 11 @30400 has 31 MA's), (15, 30445), (16, 30463), (17, 30475), (18, 30478), (20, 30490), (21, 30514), (22, 30520), (24, 30535), (27, 30577), (28, 30580),

Gene: Phanphagia_33 Start: 29419, Stop: 29640, Start Num: 10

Candidate Starts for Phanphagia_33:

(Start: 10 @29419 has 103 MA's), (Start: 11 @29422 has 31 MA's), (14, 29461), (15, 29470), (16, 29488), (17, 29500), (18, 29503), (20, 29515), (21, 29539), (22, 29545), (24, 29560), (27, 29602), (28, 29605),

Gene: Phasih_37 Start: 30847, Stop: 31068, Start Num: 10

Candidate Starts for Phasih_37:

(Start: 6 @30778 has 47 MA's), (Start: 8 @30817 has 13 MA's), (Start: 9 @30835 has 18 MA's), (Start: 10 @30847 has 103 MA's), (14, 30889), (18, 30931), (20, 30943), (21, 30967), (22, 30973), (28, 31033),

Gene: Phatniss_37 Start: 30758, Stop: 31009, Start Num: 8

Candidate Starts for Phatniss_37:

(Start: 6 @30719 has 47 MA's), (Start: 8 @30758 has 13 MA's), (Start: 9 @30776 has 18 MA's), (Start: 10 @30788 has 103 MA's), (14, 30830), (17, 30869), (21, 30908), (22, 30914), (24, 30929), (27, 30971), (28, 30974),

Gene: PhesterPhotato_37 Start: 30320, Stop: 30538, Start Num: 11

Candidate Starts for PhesterPhotato_37:

(Start: 10 @30317 has 103 MA's), (Start: 11 @30320 has 31 MA's), (15, 30368), (16, 30386), (17, 30398), (18, 30401), (20, 30413), (21, 30437), (22, 30443), (24, 30458), (27, 30500), (28, 30503),

Gene: Philus_36 Start: 30365, Stop: 30583, Start Num: 11

Candidate Starts for Philus_36:

(Start: 10 @30362 has 103 MA's), (Start: 11 @30365 has 31 MA's), (15, 30413), (16, 30431), (17, 30443), (18, 30446), (20, 30458), (21, 30482), (22, 30488), (24, 30503), (27, 30545), (28, 30548),

Gene: PhlipPhlop_37 Start: 31891, Stop: 32124, Start Num: 9

Candidate Starts for PhlipPhlop_37:

(Start: 5 @31813 has 19 MA's), (Start: 6 @31834 has 47 MA's), (Start: 8 @31873 has 13 MA's), (Start: 9 @31891 has 18 MA's), (Start: 10 @31903 has 103 MA's), (18, 31987), (20, 31999), (21, 32023), (22, 32029), (28, 32089),

Gene: Phox_47 Start: 16755, Stop: 16534, Start Num: 10

Candidate Starts for Phox_47:

(Start: 10 @16755 has 103 MA's), (Start: 11 @16752 has 31 MA's), (14, 16713), (15, 16704), (16, 16686), (17, 16674), (18, 16671), (20, 16659), (21, 16635), (22, 16629), (24, 16614), (27, 16572), (28, 16569),

Gene: Pinkcreek_40 Start: 14224, Stop: 14003, Start Num: 10

Candidate Starts for Pinkcreek_40:

(Start: 10 @14224 has 103 MA's), (Start: 11 @14221 has 31 MA's), (14, 14182), (15, 14173), (16, 14155), (17, 14143), (18, 14140), (20, 14128), (21, 14104), (22, 14098), (24, 14083), (27, 14041), (28, 14038),

Gene: Piper2020_39 Start: 30888, Stop: 31109, Start Num: 10

Candidate Starts for Piper2020_39:

(Start: 10 @30888 has 103 MA's), (Start: 11 @30891 has 31 MA's), (15, 30939), (16, 30957), (17, 30969), (18, 30972), (20, 30984), (21, 31008), (22, 31014), (24, 31029), (27, 31071), (28, 31074),

Gene: Pippy_30 Start: 26425, Stop: 26646, Start Num: 10

Candidate Starts for Pippy_30:

(Start: 10 @26425 has 103 MA's), (Start: 11 @26428 has 31 MA's), (15, 26476), (16, 26494), (17, 26506), (18, 26509), (20, 26521), (21, 26545), (24, 26566), (27, 26608), (28, 26611),

Gene: Plumbus_38 Start: 30277, Stop: 30588, Start Num: 5

Candidate Starts for Plumbus_38:

(Start: 5 @30277 has 19 MA's), (Start: 6 @30298 has 47 MA's), (Start: 8 @30337 has 13 MA's), (Start: 9 @30355 has 18 MA's), (Start: 10 @30367 has 103 MA's), (18, 30451), (20, 30463), (21, 30487), (22, 30493), (28, 30553),

Gene: Poenanya_37 Start: 30411, Stop: 30629, Start Num: 11

Candidate Starts for Poenanya_37:

(Start: 10 @30408 has 103 MA's), (Start: 11 @30411 has 31 MA's), (15, 30459), (16, 30477), (17, 30489), (18, 30492), (20, 30504), (21, 30528), (24, 30549), (27, 30591), (28, 30594),

Gene: Polka14_37 Start: 30882, Stop: 31133, Start Num: 8

Candidate Starts for Polka14_37:

(Start: 6 @30843 has 47 MA's), (Start: 8 @30882 has 13 MA's), (Start: 9 @30900 has 18 MA's), (Start: 10 @30912 has 103 MA's), (14, 30954), (17, 30993), (21, 31032), (22, 31038), (28, 31098),

Gene: Pollywog_36 Start: 30608, Stop: 30841, Start Num: 9

Candidate Starts for Pollywog_36:

(Start: 6 @30551 has 47 MA's), (Start: 8 @30590 has 13 MA's), (Start: 9 @30608 has 18 MA's), (Start: 10 @30620 has 103 MA's), (14, 30662), (17, 30701), (21, 30740), (22, 30746), (24, 30761), (27, 30803), (28, 30806),

Gene: Polo2Bam_41 Start: 30467, Stop: 30685, Start Num: 10

Candidate Starts for Polo2Bam_41:

(Start: 10 @30467 has 103 MA's), (Start: 11 @30470 has 31 MA's), (15, 30515), (16, 30533), (17, 30545), (18, 30548), (20, 30560), (21, 30584), (22, 30590), (24, 30605), (27, 30647), (28, 30650),

Gene: PopTart_36 Start: 30601, Stop: 30819, Start Num: 10

Candidate Starts for PopTart_36:

(Start: 10 @30601 has 103 MA's), (Start: 11 @30604 has 31 MA's), (14, 30640), (15, 30649), (16, 30667), (17, 30679), (18, 30682), (20, 30694), (21, 30718), (22, 30724), (24, 30739), (27, 30781), (28, 30784),

Gene: Priscilla_36 Start: 30547, Stop: 30768, Start Num: 10

Candidate Starts for Priscilla_36:

(Start: 10 @30547 has 103 MA's), (Start: 11 @30550 has 31 MA's), (15, 30598), (16, 30616), (17, 30628), (18, 30631), (20, 30643), (21, 30667), (24, 30688), (27, 30730), (28, 30733),

Gene: QuickMath_37 Start: 31568, Stop: 31858, Start Num: 6

Candidate Starts for QuickMath_37:

(Start: 6 @31568 has 47 MA's), (Start: 8 @31607 has 13 MA's), (Start: 9 @31625 has 18 MA's), (Start: 10 @31637 has 103 MA's), (14, 31679), (17, 31718), (21, 31757), (22, 31763), (24, 31778), (27, 31820), (28, 31823),

Gene: Quico_37 Start: 30028, Stop: 30318, Start Num: 6

Candidate Starts for Quico_37:

(Start: 6 @30028 has 47 MA's), (Start: 8 @30067 has 13 MA's), (Start: 9 @30085 has 18 MA's), (Start: 10 @30097 has 103 MA's), (14, 30139), (18, 30181), (20, 30193), (21, 30217), (28, 30283),

Gene: Rabinovish_47 Start: 16933, Stop: 16712, Start Num: 10

Candidate Starts for Rabinovish_47:

(Start: 10 @16933 has 103 MA's), (Start: 11 @16930 has 31 MA's), (15, 16882), (16, 16864), (17, 16852), (18, 16849), (20, 16837), (21, 16813), (24, 16792), (27, 16750), (28, 16747),

Gene: Radiance_37 Start: 30462, Stop: 30683, Start Num: 10

Candidate Starts for Radiance_37:

(Start: 6 @30393 has 47 MA's), (Start: 8 @30432 has 13 MA's), (Start: 9 @30450 has 18 MA's), (Start: 10 @30462 has 103 MA's), (14, 30504), (17, 30543), (21, 30582), (22, 30588), (28, 30648),

Gene: Ramsey_39 Start: 31110, Stop: 31343, Start Num: 9

Candidate Starts for Ramsey_39:

(Start: 6 @31053 has 47 MA's), (Start: 8 @31092 has 13 MA's), (Start: 9 @31110 has 18 MA's), (Start: 10 @31122 has 103 MA's), (14, 31164), (17, 31203), (21, 31242), (22, 31248), (28, 31308),

Gene: RedBird_36 Start: 30268, Stop: 30489, Start Num: 10

Candidate Starts for RedBird_36:

(Start: 5 @30178 has 19 MA's), (Start: 6 @30199 has 47 MA's), (Start: 8 @30238 has 13 MA's), (Start: 9 @30256 has 18 MA's), (Start: 10 @30268 has 103 MA's), (14, 30310), (17, 30349), (21, 30388), (22, 30394), (24, 30409), (27, 30451), (28, 30454),

Gene: Renaud18_37 Start: 30490, Stop: 30711, Start Num: 10

Candidate Starts for Renaud18_37:

(Start: 10 @30490 has 103 MA's), (Start: 11 @30493 has 31 MA's), (15, 30541), (16, 30559), (17, 30571), (18, 30574), (21, 30610), (24, 30631), (27, 30673), (28, 30676),

Gene: Rialto_41 Start: 32618, Stop: 32839, Start Num: 10

Candidate Starts for Rialto_41:

(Start: 10 @32618 has 103 MA's), (Start: 11 @32621 has 31 MA's), (14, 32660), (15, 32669), (16, 32687), (17, 32699), (18, 32702), (20, 32714), (21, 32738), (22, 32744), (24, 32759), (27, 32801), (28, 32804),

Gene: Rita_38 Start: 30536, Stop: 30757, Start Num: 10

Candidate Starts for Rita_38:

(Start: 6 @30467 has 47 MA's), (Start: 8 @30506 has 13 MA's), (Start: 9 @30524 has 18 MA's), (Start: 10 @30536 has 103 MA's), (14, 30578), (18, 30620), (20, 30632), (21, 30656), (28, 30722),

Gene: RitaG_37 Start: 30665, Stop: 30955, Start Num: 6

Candidate Starts for RitaG_37:

(Start: 6 @30665 has 47 MA's), (Start: 8 @30704 has 13 MA's), (Start: 9 @30722 has 18 MA's), (Start: 10 @30734 has 103 MA's), (14, 30776), (17, 30815), (21, 30854), (22, 30860), (24, 30875), (27, 30917), (28, 30920),

Gene: Rockne_36 Start: 30241, Stop: 30492, Start Num: 8

Candidate Starts for Rockne_36:

(Start: 6 @30202 has 47 MA's), (Start: 8 @30241 has 13 MA's), (Start: 9 @30259 has 18 MA's), (Start: 10 @30271 has 103 MA's), (14, 30313), (17, 30352), (21, 30391), (22, 30397), (24, 30412), (27, 30454), (28, 30457),

Gene: RockyHorror_37 Start: 30124, Stop: 30435, Start Num: 5

Candidate Starts for RockyHorror_37:

(Start: 5 @30124 has 19 MA's), (Start: 6 @30145 has 47 MA's), (Start: 8 @30184 has 13 MA's), (Start: 9 @30202 has 18 MA's), (Start: 10 @30214 has 103 MA's), (14, 30256), (17, 30295), (21, 30334), (22, 30340), (28, 30400),

Gene: Ronan_43 Start: 13565, Stop: 13344, Start Num: 10

Candidate Starts for Ronan_43:

(Start: 10 @13565 has 103 MA's), (Start: 11 @13562 has 31 MA's), (14, 13523), (15, 13514), (16, 13496), (17, 13484), (18, 13481), (20, 13469), (21, 13445), (22, 13439), (24, 13424), (27, 13382), (28, 13379),

Gene: Royals2015_36 Start: 30297, Stop: 30608, Start Num: 5

Candidate Starts for Royals2015_36:

(Start: 5 @30297 has 19 MA's), (Start: 6 @30318 has 47 MA's), (Start: 8 @30357 has 13 MA's), (Start: 9 @30375 has 18 MA's), (Start: 10 @30387 has 103 MA's), (14, 30429), (18, 30471), (20, 30483), (21, 30507), (22, 30513), (28, 30573),

Gene: Ruby_38 Start: 31257, Stop: 31547, Start Num: 6

Candidate Starts for Ruby_38:

(Start: 6 @31257 has 47 MA's), (Start: 8 @31296 has 13 MA's), (Start: 9 @31314 has 18 MA's), (Start: 10 @31326 has 103 MA's), (14, 31368), (17, 31407), (21, 31446), (22, 31452), (28, 31512),

Gene: SG4_38 Start: 31042, Stop: 31260, Start Num: 11

Candidate Starts for SG4_38:

(Start: 10 @31039 has 103 MA's), (Start: 11 @31042 has 31 MA's), (12, 31057), (15, 31090), (16, 31108), (17, 31120), (18, 31123), (20, 31135), (21, 31159), (22, 31165), (24, 31180), (27, 31222), (28, 31225),

Gene: Saal_36 Start: 30340, Stop: 30561, Start Num: 10

Candidate Starts for Saal_36:

(Start: 10 @30340 has 103 MA's), (Start: 11 @30343 has 31 MA's), (15, 30391), (16, 30409), (17, 30421), (18, 30424), (20, 30436), (21, 30460), (22, 30466), (24, 30481), (27, 30523), (28, 30526),

Gene: Sabbb_37 Start: 30597, Stop: 30908, Start Num: 5

Candidate Starts for Sabbb_37:

(Start: 5 @30597 has 19 MA's), (Start: 6 @30618 has 47 MA's), (Start: 8 @30657 has 13 MA's), (Start: 9 @30675 has 18 MA's), (Start: 10 @30687 has 103 MA's), (18, 30771), (20, 30783), (21, 30807), (22, 30813), (28, 30873),

Gene: Sandalphon_37 Start: 31069, Stop: 31290, Start Num: 10

Candidate Starts for Sandalphon_37:

(Start: 10 @31069 has 103 MA's), (Start: 11 @31072 has 31 MA's), (14, 31111), (15, 31120), (16, 31138), (17, 31150), (18, 31153), (20, 31165), (21, 31189), (22, 31195), (24, 31210), (27, 31252), (28, 31255),

Gene: Sarma624_32 Start: 26427, Stop: 26717, Start Num: 6

Candidate Starts for Sarma624_32:

(Start: 6 @26427 has 47 MA's), (Start: 8 @26466 has 13 MA's), (Start: 9 @26484 has 18 MA's), (Start: 10 @26496 has 103 MA's), (14, 26538), (18, 26580), (20, 26592), (21, 26616), (28, 26682),

Gene: Sassafras_37 Start: 30971, Stop: 31192, Start Num: 10

Candidate Starts for Sassafras_37:

(Start: 6 @30902 has 47 MA's), (Start: 8 @30941 has 13 MA's), (Start: 9 @30959 has 18 MA's), (Start: 10 @30971 has 103 MA's), (14, 31013), (17, 31052), (21, 31091), (22, 31097), (28, 31157),

Gene: SassyB_36 Start: 30601, Stop: 30819, Start Num: 10

Candidate Starts for SassyB_36:

(Start: 10 @30601 has 103 MA's), (Start: 11 @30604 has 31 MA's), (14, 30640), (15, 30649), (16, 30667), (17, 30679), (18, 30682), (20, 30694), (21, 30718), (22, 30724), (24, 30739), (27, 30781), (28, 30784),

Gene: Scottish_37 Start: 31562, Stop: 31813, Start Num: 8

Candidate Starts for Scottish_37:

(Start: 6 @31523 has 47 MA's), (Start: 8 @31562 has 13 MA's), (Start: 9 @31580 has 18 MA's), (Start: 10 @31592 has 103 MA's), (14, 31634), (17, 31673), (21, 31712), (22, 31718), (28, 31778),

Gene: Seabastian_37 Start: 30498, Stop: 30719, Start Num: 10

Candidate Starts for Seabastian_37:

(Start: 6 @30429 has 47 MA's), (Start: 8 @30468 has 13 MA's), (Start: 9 @30486 has 18 MA's), (Start: 10 @30498 has 103 MA's), (14, 30540), (18, 30582), (20, 30594), (21, 30618), (28, 30684),

Gene: Seagreen_37 Start: 30398, Stop: 30631, Start Num: 9

Candidate Starts for Seagreen_37:

(Start: 5 @30320 has 19 MA's), (Start: 6 @30341 has 47 MA's), (Start: 8 @30380 has 13 MA's), (Start: 9 @30398 has 18 MA's), (Start: 10 @30410 has 103 MA's), (14, 30452), (18, 30494), (20, 30506), (21, 30530), (22, 30536), (24, 30551), (27, 30593), (28, 30596),

Gene: Shaqnato_44 Start: 14710, Stop: 14492, Start Num: 11

Candidate Starts for Shaqnato_44:

(Start: 10 @14713 has 103 MA's), (Start: 11 @14710 has 31 MA's), (14, 14671), (15, 14662), (16, 14644), (17, 14632), (18, 14629), (20, 14617), (21, 14593), (22, 14587), (24, 14572), (27, 14530), (28, 14527),

Gene: Shauna1_34 Start: 29425, Stop: 29643, Start Num: 11

Candidate Starts for Shauna1_34:

(Start: 10 @29422 has 103 MA's), (Start: 11 @29425 has 31 MA's), (14, 29464), (15, 29473), (16, 29491), (17, 29503), (18, 29506), (20, 29518), (21, 29542), (22, 29548), (24, 29563), (27, 29605), (28, 29608),

Gene: ShiLan_36 Start: 30503, Stop: 30724, Start Num: 10

Candidate Starts for ShiLan_36:

(Start: 10 @30503 has 103 MA's), (Start: 11 @30506 has 31 MA's), (15, 30554), (16, 30572), (17, 30584), (18, 30587), (20, 30599), (21, 30623), (24, 30644), (27, 30686), (28, 30689),

Gene: ShowerHandel_37 Start: 30462, Stop: 30683, Start Num: 10

Candidate Starts for ShowerHandel_37:

(Start: 10 @30462 has 103 MA's), (Start: 11 @30465 has 31 MA's), (15, 30513), (16, 30531), (17, 30543), (18, 30546), (20, 30558), (21, 30582), (24, 30603), (27, 30645), (28, 30648),

Gene: ShroomBoi_33 Start: 29273, Stop: 29584, Start Num: 5

Candidate Starts for ShroomBoi_33:

(Start: 5 @29273 has 19 MA's), (Start: 6 @29294 has 47 MA's), (Start: 8 @29333 has 13 MA's), (Start: 9 @29351 has 18 MA's), (Start: 10 @29363 has 103 MA's), (14, 29405), (17, 29444), (21, 29483), (22, 29489), (24, 29504), (27, 29546), (28, 29549),

Gene: SiSi_36 Start: 30181, Stop: 30492, Start Num: 5

Candidate Starts for SiSi_36:

(Start: 5 @30181 has 19 MA's), (Start: 6 @30202 has 47 MA's), (Start: 8 @30241 has 13 MA's), (Start: 9 @30259 has 18 MA's), (Start: 10 @30271 has 103 MA's), (18, 30355), (20, 30367), (21, 30391), (22, 30397), (28, 30457),

Gene: SilverChicken_44 Start: 30187, Stop: 30408, Start Num: 10

Candidate Starts for SilverChicken_44:

(Start: 10 @30187 has 103 MA's), (Start: 11 @30190 has 31 MA's), (15, 30238), (16, 30256), (17, 30268), (18, 30271), (20, 30283), (21, 30307), (24, 30328), (27, 30370), (28, 30373),

Gene: SimranZ1_39 Start: 30558, Stop: 30809, Start Num: 8

Candidate Starts for SimranZ1_39:

(Start: 6 @30519 has 47 MA's), (Start: 8 @30558 has 13 MA's), (Start: 9 @30576 has 18 MA's), (Start: 10 @30588 has 103 MA's), (14, 30630), (18, 30672), (20, 30684), (21, 30708), (28, 30774),

Gene: Slim_39 Start: 31650, Stop: 31883, Start Num: 9

Candidate Starts for Slim_39:

(Start: 5 @31572 has 19 MA's), (Start: 6 @31593 has 47 MA's), (Start: 8 @31632 has 13 MA's), (Start: 9 @31650 has 18 MA's), (Start: 10 @31662 has 103 MA's), (14, 31704), (18, 31746), (20, 31758), (21, 31782), (28, 31848),

Gene: Soul22_42 Start: 30665, Stop: 30883, Start Num: 10

Candidate Starts for Soul22_42:

(Start: 10 @30665 has 103 MA's), (Start: 11 @30668 has 31 MA's), (15, 30713), (16, 30731), (17, 30743), (18, 30746), (20, 30758), (21, 30782), (22, 30788), (24, 30803), (27, 30845), (28, 30848),

Gene: Sparkdehlily_36 Start: 30375, Stop: 30608, Start Num: 9

Candidate Starts for Sparkdehlily_36:

(Start: 6 @30318 has 47 MA's), (Start: 8 @30357 has 13 MA's), (Start: 9 @30375 has 18 MA's), (Start: 10 @30387 has 103 MA's), (14, 30429), (18, 30471), (20, 30483), (21, 30507), (28, 30573),

Gene: Spartacus_39 Start: 30803, Stop: 31021, Start Num: 11

Candidate Starts for Spartacus_39:

(Start: 10 @30800 has 103 MA's), (Start: 11 @30803 has 31 MA's), (12, 30818), (15, 30851), (16, 30869), (17, 30881), (18, 30884), (21, 30920), (24, 30941), (27, 30983), (28, 30986),

Gene: Spikelee_38 Start: 30523, Stop: 30756, Start Num: 9

Candidate Starts for Spikelee_38:

(Start: 6 @30466 has 47 MA's), (Start: 8 @30505 has 13 MA's), (Start: 9 @30523 has 18 MA's), (Start: 10 @30535 has 103 MA's), (14, 30577), (17, 30616), (21, 30655), (22, 30661), (24, 30676), (27, 30718), (28, 30721),

Gene: Spoonbill_36 Start: 30482, Stop: 30772, Start Num: 6

Candidate Starts for Spoonbill_36:

(Start: 6 @30482 has 47 MA's), (Start: 8 @30521 has 13 MA's), (Start: 9 @30539 has 18 MA's), (Start: 10 @30551 has 103 MA's), (14, 30593), (17, 30632), (21, 30671), (22, 30677), (28, 30737),

Gene: StAnnes_36 Start: 30868, Stop: 31086, Start Num: 11

Candidate Starts for StAnnes_36:

(Start: 10 @30865 has 103 MA's), (Start: 11 @30868 has 31 MA's), (15, 30916), (16, 30934), (17, 30946), (18, 30949), (20, 30961), (21, 30985), (22, 30991), (24, 31006), (27, 31048), (28, 31051),

Gene: Stap_37 Start: 30373, Stop: 30663, Start Num: 6

Candidate Starts for Stap_37:

(Start: 6 @30373 has 47 MA's), (Start: 8 @30412 has 13 MA's), (Start: 9 @30430 has 18 MA's), (Start: 10 @30442 has 103 MA's), (14, 30484), (17, 30523), (21, 30562), (22, 30568), (28, 30628),

Gene: Starcevich_40 Start: 31076, Stop: 31387, Start Num: 5

Candidate Starts for Starcevich_40:

(Start: 5 @31076 has 19 MA's), (Start: 6 @31097 has 47 MA's), (Start: 8 @31136 has 13 MA's), (Start: 9 @31154 has 18 MA's), (Start: 10 @31166 has 103 MA's), (18, 31250), (20, 31262), (21, 31286), (22, 31292), (28, 31352),

Gene: Strokeseat_38 Start: 31114, Stop: 31329, Start Num: 11

Candidate Starts for Strokeseat_38:

(Start: 10 @31111 has 103 MA's), (Start: 11 @31114 has 31 MA's), (15, 31159), (16, 31177), (17, 31189), (18, 31192), (20, 31204), (21, 31228), (22, 31234), (24, 31249), (27, 31291), (28, 31294),

Gene: Stubby_44 Start: 15552, Stop: 15334, Start Num: 11

Candidate Starts for Stubby_44:

(Start: 10 @15555 has 103 MA's), (Start: 11 @15552 has 31 MA's), (14, 15513), (15, 15504), (16, 15486), (17, 15474), (18, 15471), (20, 15459), (21, 15435), (22, 15429), (24, 15414), (27, 15372), (28, 15369),

Gene: SuperGrey_38 Start: 31257, Stop: 31478, Start Num: 10

Candidate Starts for SuperGrey_38:

(Start: 10 @31257 has 103 MA's), (Start: 11 @31260 has 31 MA's), (14, 31299), (15, 31308), (16, 31326), (17, 31338), (18, 31341), (20, 31353), (21, 31377), (22, 31383), (24, 31398), (27, 31440), (28, 31443),

Gene: SwagPigglett_37 Start: 30273, Stop: 30494, Start Num: 10

Candidate Starts for SwagPigglett_37:

(Start: 10 @30273 has 103 MA's), (Start: 11 @30276 has 31 MA's), (15, 30324), (16, 30342), (17, 30354), (18, 30357), (20, 30369), (21, 30393), (24, 30414), (27, 30456), (28, 30459),

Gene: TDanisky_36 Start: 30375, Stop: 30608, Start Num: 9

Candidate Starts for TDanisky_36:

(Start: 6 @30318 has 47 MA's), (Start: 8 @30357 has 13 MA's), (Start: 9 @30375 has 18 MA's), (Start: 10 @30387 has 103 MA's), (14, 30429), (18, 30471), (20, 30483), (21, 30507), (28, 30573),

Gene: Taj_36 Start: 30359, Stop: 30670, Start Num: 5

Candidate Starts for Taj_36:

(Start: 5 @30359 has 19 MA's), (Start: 6 @30380 has 47 MA's), (Start: 8 @30419 has 13 MA's), (Start: 9 @30437 has 18 MA's), (Start: 10 @30449 has 103 MA's), (14, 30491), (17, 30530), (18, 30533), (21, 30569), (24, 30590), (27, 30632), (28, 30635),

Gene: Tchotchke_36 Start: 29861, Stop: 30112, Start Num: 8

Candidate Starts for Tchotchke_36:

(Start: 6 @29822 has 47 MA's), (Start: 8 @29861 has 13 MA's), (Start: 9 @29879 has 18 MA's), (Start: 10 @29891 has 103 MA's), (14, 29933), (18, 29975), (20, 29987), (21, 30011), (28, 30077),

Gene: TootsiePop_38 Start: 30172, Stop: 30393, Start Num: 10

Candidate Starts for TootsiePop_38:

(Start: 10 @30172 has 103 MA's), (Start: 11 @30175 has 31 MA's), (15, 30223), (18, 30256), (20, 30268), (21, 30292), (22, 30298), (28, 30358),

Gene: Tootsieroll_38 Start: 30341, Stop: 30559, Start Num: 11

Candidate Starts for Tootsieroll_38:

(Start: 10 @30338 has 103 MA's), (Start: 11 @30341 has 31 MA's), (14, 30380), (15, 30389), (16, 30407), (17, 30419), (18, 30422), (20, 30434), (21, 30458), (22, 30464), (24, 30479), (27, 30521), (28,

30524),

Gene: Totinger_37 Start: 30183, Stop: 30494, Start Num: 5

Candidate Starts for Totinger_37:

(Start: 5 @30183 has 19 MA's), (Start: 6 @30204 has 47 MA's), (Start: 8 @30243 has 13 MA's), (Start: 9 @30261 has 18 MA's), (Start: 10 @30273 has 103 MA's), (14, 30315), (18, 30357), (20, 30369), (21, 30393), (28, 30459),

Gene: Tweety_36 Start: 30508, Stop: 30729, Start Num: 10

Candidate Starts for Tweety_36:

(Start: 5 @30418 has 19 MA's), (Start: 6 @30439 has 47 MA's), (Start: 8 @30478 has 13 MA's), (Start: 9 @30496 has 18 MA's), (Start: 10 @30508 has 103 MA's), (14, 30550), (17, 30589), (21, 30628), (22, 30634), (24, 30649), (27, 30691), (28, 30694),

Gene: UncleRicky_39 Start: 31574, Stop: 31825, Start Num: 8

Candidate Starts for UncleRicky_39:

(Start: 6 @31535 has 47 MA's), (Start: 8 @31574 has 13 MA's), (Start: 9 @31592 has 18 MA's), (Start: 10 @31604 has 103 MA's), (14, 31646), (17, 31685), (21, 31724), (22, 31730), (24, 31745), (27, 31787), (28, 31790),

Gene: VRedHorse_36 Start: 30390, Stop: 30680, Start Num: 6

Candidate Starts for VRedHorse_36:

(Start: 6 @30390 has 47 MA's), (Start: 8 @30429 has 13 MA's), (Start: 9 @30447 has 18 MA's), (Start: 10 @30459 has 103 MA's), (14, 30501), (18, 30543), (20, 30555), (21, 30579), (28, 30645),

Gene: Velveteen_31 Start: 26427, Stop: 26717, Start Num: 6

Candidate Starts for Velveteen_31:

(Start: 6 @26427 has 47 MA's), (Start: 8 @26466 has 13 MA's), (Start: 9 @26484 has 18 MA's), (Start: 10 @26496 has 103 MA's), (14, 26538), (18, 26580), (20, 26592), (21, 26616), (28, 26682),

Gene: Veteran_36 Start: 30220, Stop: 30531, Start Num: 5

Candidate Starts for Veteran_36:

(Start: 5 @30220 has 19 MA's), (Start: 6 @30241 has 47 MA's), (Start: 8 @30280 has 13 MA's), (Start: 9 @30298 has 18 MA's), (Start: 10 @30310 has 103 MA's), (18, 30394), (20, 30406), (21, 30430), (22, 30436), (28, 30496),

Gene: Violac_39 Start: 30993, Stop: 31211, Start Num: 11

Candidate Starts for Violac_39:

(Start: 10 @30990 has 103 MA's), (Start: 11 @30993 has 31 MA's), (14, 31032), (15, 31041), (16, 31059), (17, 31071), (18, 31074), (20, 31086), (21, 31110), (22, 31116), (24, 31131), (27, 31173), (28, 31176),

Gene: Vivum_37 Start: 30276, Stop: 30509, Start Num: 9

Candidate Starts for Vivum_37:

(Start: 6 @30219 has 47 MA's), (Start: 8 @30258 has 13 MA's), (Start: 9 @30276 has 18 MA's), (Start: 10 @30288 has 103 MA's), (14, 30330), (17, 30369), (21, 30408), (22, 30414), (24, 30429), (27, 30471), (28, 30474),

Gene: Wachhund_36 Start: 30465, Stop: 30683, Start Num: 11

Candidate Starts for Wachhund_36:

(Start: 10 @30462 has 103 MA's), (Start: 11 @30465 has 31 MA's), (15, 30513), (16, 30531), (17, 30543), (18, 30546), (20, 30558), (21, 30582), (22, 30588), (24, 30603), (27, 30645), (28, 30648),

Gene: Wee_37 Start: 30918, Stop: 31208, Start Num: 6

Candidate Starts for Wee_37:

(Start: 5 @30897 has 19 MA's), (Start: 6 @30918 has 47 MA's), (Start: 8 @30957 has 13 MA's), (Start: 9 @30975 has 18 MA's), (Start: 10 @30987 has 103 MA's), (14, 31029), (17, 31068), (18, 31071), (21, 31107), (24, 31128), (27, 31170), (28, 31173),

Gene: Whatsapiecost_38 Start: 30724, Stop: 30939, Start Num: 11

Candidate Starts for Whatsapiecost_38:

(Start: 10 @30721 has 103 MA's), (Start: 11 @30724 has 31 MA's), (14, 30760), (15, 30769), (16, 30787), (17, 30799), (18, 30802), (20, 30814), (21, 30838), (22, 30844), (24, 30859), (27, 30901), (28, 30904),

Gene: Whouxphf_38 Start: 30779, Stop: 31000, Start Num: 10

Candidate Starts for Whouxphf_38:

(Start: 6 @30710 has 47 MA's), (Start: 8 @30749 has 13 MA's), (Start: 9 @30767 has 18 MA's), (Start: 10 @30779 has 103 MA's), (14, 30821), (18, 30863), (20, 30875), (21, 30899), (22, 30905), (24, 30920), (27, 30962), (28, 30965),

Gene: WillSterrel_39 Start: 31917, Stop: 32135, Start Num: 11

Candidate Starts for WillSterrel_39:

(Start: 10 @31914 has 103 MA's), (Start: 11 @31917 has 31 MA's), (12, 31932), (15, 31965), (16, 31983), (17, 31995), (18, 31998), (21, 32034), (24, 32055), (27, 32097), (28, 32100),

Gene: XFactor_36 Start: 30466, Stop: 30687, Start Num: 10

Candidate Starts for XFactor_36:

(Start: 10 @30466 has 103 MA's), (Start: 11 @30469 has 31 MA's), (15, 30517), (16, 30535), (17, 30547), (18, 30550), (20, 30562), (21, 30586), (22, 30592), (24, 30607), (27, 30649), (28, 30652),

Gene: Yassified_47 Start: 15547, Stop: 15329, Start Num: 11

Candidate Starts for Yassified_47:

(Start: 10 @15550 has 103 MA's), (Start: 11 @15547 has 31 MA's), (14, 15508), (15, 15499), (16, 15481), (17, 15469), (18, 15466), (20, 15454), (21, 15430), (22, 15424), (24, 15409), (27, 15367), (28, 15364),

Gene: Yorick_36 Start: 30450, Stop: 30683, Start Num: 9

Candidate Starts for Yorick_36:

(Start: 6 @30393 has 47 MA's), (Start: 8 @30432 has 13 MA's), (Start: 9 @30450 has 18 MA's), (Start: 10 @30462 has 103 MA's), (14, 30504), (17, 30543), (21, 30582), (22, 30588), (24, 30603), (27, 30645), (28, 30648),

Gene: Zerg_36 Start: 30233, Stop: 30544, Start Num: 5

Candidate Starts for Zerg_36:

(Start: 5 @30233 has 19 MA's), (Start: 6 @30254 has 47 MA's), (Start: 8 @30293 has 13 MA's), (Start: 9 @30311 has 18 MA's), (Start: 10 @30323 has 103 MA's), (14, 30365), (17, 30404), (21, 30443), (22, 30449), (28, 30509),

Gene: Zizzle_36 Start: 30404, Stop: 30625, Start Num: 10

Candidate Starts for Zizzle_36:

(Start: 10 @30404 has 103 MA's), (Start: 11 @30407 has 31 MA's), (15, 30455), (16, 30473), (17, 30485), (18, 30488), (20, 30500), (21, 30524), (24, 30545), (27, 30587), (28, 30590),