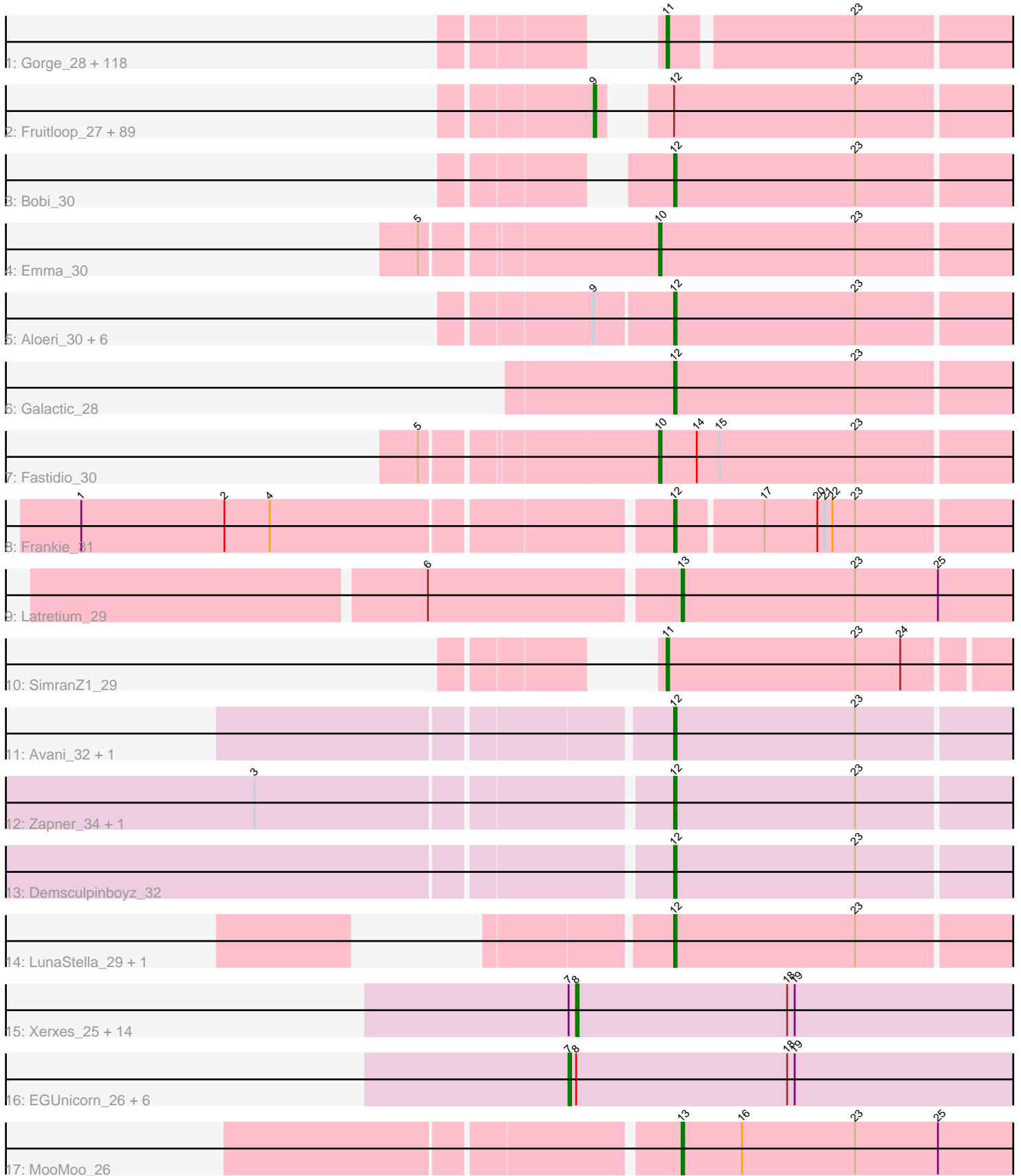


Pham 215790



Note: Tracks are now grouped by subcluster and scaled. Switching in subcluster is indicated by changes in track color. Track scale is now set by default to display the region 30 bp upstream of start 1 to 30 bp downstream of the last possible start. If this default region is judged to be packed too tightly with annotated starts, the track will be further scaled to only show that region of the ORF with annotated starts. This action will be indicated by adding "Zoomed" to the title. For starts, yellow indicates the location of called starts comprised solely of Glimmer/GeneMark auto-annotations, green indicates the location of called starts with at least 1 manual gene annotation.

## Pham 215790 Report

This analysis was run 02/22/25 on database version 588.

Pham number 215790 has 253 members, 24 are drafts.

Phages represented in each track:

- Track 1 : Gorge\_28, Karhdo\_28, QuickMath\_29, ByChance\_28, Drago\_29, Che8\_30, Sparkdehlily\_28, Saal\_28, Chevrolet\_28, CaptainTrips\_29, BobaPhett\_28, Lorde\_29, Guppsters\_29, Cheese puff\_31, Mahavrat\_28, Pollywog\_28, SuperGrey\_28, Leperchaun\_28, TDanisky\_28, MinionDave\_29, Sandalphon\_29, PMC\_28, Cornie\_28, Cabrinians\_28, Veteran\_28, Modragons\_28, Pacc40\_28, Daenerys\_28, Renaud18\_28, Phatniss\_29, Rockne\_28, Blexus\_28, Ruby\_28, Ogo pogo\_28, Zizzle\_28, James\_28, LunaBlu\_29, Mattes\_28, Grimmer\_30, Ibhubesi\_28, Piper2020\_30, Dante\_28, Madiba\_26, Empress\_29, FreddyB\_28, BodEinwohner17\_28, Mutaforma13\_28, Donkeykong\_28, Nivrat\_28, RitaG\_28, OlympiaSaint\_28, OldBen\_28, DotProduct\_28, Eradicator\_28, Boomer\_29, Juniper1\_28, Llij\_28, ShowerHandel\_28, Byougenkin\_28, DRBy19\_28, Scottish\_29, AlpineSix\_29, UncleRicky\_31, Estave1\_26, Seabastian\_28, Sassafras\_28, Kimberlium\_30, Rita\_28, Kenuha5\_25, MulchExplorer\_31, Nitzel\_29, SiSi\_28, Stap\_29, ThetaBob\_27, ArcusAngelus\_28, Jinglebell\_27, DirtMcgirt\_29, Whouxphf\_28, Hamulus\_28, Wachhund\_28, Phasih\_29, GUmbie\_28, OfUltron\_28, Sabbb\_29, Inventum\_28, JoeyJr\_28, MadMen\_25, RedBird\_28, Yorick\_28, Nimbo\_28, Totinger\_29, MisterCuddles\_28, Oksu\_29, BlueCrab\_28, KingMidas\_29, Burwell21\_28, Girr\_28, Priscilla\_28, Lizziana\_28, Mantra\_28, PHappiness\_28, Llama\_28, Doomphist\_28, Harley\_28, LilMoolah\_28, Poenanya\_28, Whatsapiecost\_28, ShiLan\_28, NormanBulbieJr\_28, Maravista\_28, Radiance\_28, Spoonbill\_28, SwagPigglett\_28, Philus\_28, Jarcob\_28, Martik\_28, GigiOuiOui\_28, Chuckly\_28, Soul22\_32

- Track 2 : Fruitloop\_27, Cornucopia\_29, Vivum\_28, Enby\_29, Polka14\_29, DillTech15\_28, XFactor\_28, Awesomesauce\_29, Phanphagia\_25, Filuzino\_28, IbOuu\_30, JalFarm20\_30, Corium\_28, Royals2015\_28, Alexphander\_30, Eish\_28, Seagreen\_29, Florinda\_28, Blarby\_36, DoRead\_29, Doug\_29, Job42\_31, Firehouse51\_29, ShroomBoi\_25, Marker\_29, Bipolar\_25, Tweety\_28, IMpilo\_27, Dorothy\_28, Batiatus\_28, MilleniumForce\_29, Hlubikazi\_28, OwlsT2W\_29, Plumbus\_29, DaWorst\_30, WillSterrel\_29, TootsiePop\_29, SassyB\_28, DLane\_28, Moonbeam\_29, Spikelee\_29, Kingsley\_26, Fancypants\_28, DaddyRickover\_28, Coco12\_27, Melissauren88\_28, Juice456\_29, Polo2Bam\_32, Strokeseat\_28, KingJulian\_28, Beakin\_29, PopTart\_28, Taj\_28, Shauna1\_25, Jant\_29, Wee\_29, Hades\_28, Ovechkin\_28, DeadP\_28, Mova\_29, RockyHorror\_29, Quico\_29, Violac\_30, SG4\_28, Ramsey\_29, Phalconet\_28, Mozy\_29, Geralt\_28, Misha28\_29, Mandlovu\_28, Deb65\_28, Leozinho\_29, Zerg\_28, Girafales\_29, EleanorGeorge\_28, DosHalletts\_29, Gandolph\_28, VRedHorse\_28, Bubbles123\_29, KristaRAM\_29, Tootsieroll\_29, BuzzLyseyear\_30, Spartacus\_29, DocMcStuffins\_30,

PhesterPhotato\_28, Hegedechwinu\_29, IrishSherpFalk\_29, Flathead\_28, Krakatau\_29, Aubs\_28

- Track 3 : Bobi\_30
- Track 4 : Emma\_30
- Track 5 : Aloeri\_30, NewHope4\_31, Brushbloom\_30, SilverChicken\_35, ChickenDinner\_30, Brookers\_26, Minnie\_29
- Track 6 : Galactic\_28
- Track 7 : Fastidio\_30
- Track 8 : Frankie\_31
- Track 9 : Latretium\_29
- Track 10 : SimranZ1\_29
- Track 11 : Avani\_32, Che9d\_32
- Track 12 : Zapner\_34, Jabbawokkie\_35
- Track 13 : Demsculpinboyz\_32
- Track 14 : LunaStella\_29, TChen\_27
- Track 15 : Xerxes\_25, Parmesanjohn\_25, Duplicity\_25, Tapioca\_25, Charlie\_25, LilSpotty\_28, Gex\_25, Silvy\_25, Journey\_25, Smurph\_25, Tortoise12\_25, Melville\_25, Aggie\_25, Magsby\_25, Bosection6\_25
- Track 16 : EGUnicorn\_26, Pipsqueaks\_25, Carcharodon\_25, Chewbacca\_25, Schnauzer\_25, Philonius\_25, Silvafighter\_25
- Track 17 : MooMoo\_26

***Summary of Final Annotations (See graph section above for start numbers):***

The start number called the most often in the published annotations is 11, it was called in 116 of the 229 non-draft genes in the pham.

Genes that call this "Most Annotated" start:

- AlpineSix\_29, ArcusAngelus\_28, Blexus\_28, BlueCrab\_28, BobaPhett\_28, BodEinwohner17\_28, Boomer\_29, Burwell21\_28, ByChance\_28, Byougenkin\_28, Cabrinians\_28, CaptainTrips\_29, Che8\_30, CheesePuff\_31, Chevrolet\_28, Chuckly\_28, Cornie\_28, DRBy19\_28, Daenerys\_28, Dante\_28, DirtMcGirt\_29, Donkeykong\_28, Doomphist\_28, DotProduct\_28, Drago\_29, Empress\_29, Eradicator\_28, Estave1\_26, FreddyB\_28, GUmble\_28, GigiOuiOui\_28, Girr\_28, Gorge\_28, Grimmer\_30, Guppsters\_29, Hamulus\_28, Harley\_28, Ibhubesi\_28, Inventum\_28, James\_28, Jarcob\_28, Jinglebell\_27, JoeyJr\_28, Juniper1\_28, Karhdo\_28, Kenuha5\_25, Kimberlium\_30, KingMidas\_29, Leperchaun\_28, LilMoolah\_28, Lizziana\_28, Llama\_28, Llij\_28, Lorde\_29, LunaBlu\_29, MadMen\_25, Madiba\_26, Mahavrat\_28, Mantra\_28, Maravista\_28, Martik\_28, Mattes\_28, MinionDave\_29, MisterCuddles\_28, Modragons\_28, MulchExplorer\_31, Mutaforma13\_28, Nimbo\_28, Nitzel\_29, Nivrat\_28, NormanBulbieJr\_28, OfUltron\_28, OgoPogo\_28, Oksu\_29, OldBen\_28, OlympiaSaint\_28, PHappiness\_28, PMC\_28, Pacc40\_28, Phasih\_29, Phatniss\_29, Philus\_28, Piper2020\_30, Poenanya\_28, Pollywog\_28, Priscilla\_28, QuickMath\_29, Radiance\_28, RedBird\_28, Renaud18\_28, RitaG\_28, Rita\_28, Rockne\_28, Ruby\_28, Saal\_28, Sabb\_29, Sandalphon\_29, Sassafras\_28, Scottish\_29, Seabastian\_28, ShiLan\_28, ShowerHandel\_28, SiSi\_28, SimranZ1\_29, Soul22\_32, Sparkdehlily\_28, Spoonbill\_28, Stap\_29, SuperGrey\_28, SwagPiggett\_28, TDanisky\_28, ThetaBob\_27, Totinger\_29, UncleRicky\_31, Veteran\_28, Wachhund\_28, Whatsapiecost\_28, Whouxphf\_28, Yorick\_28, Zizzle\_28,

Genes that have the "Most Annotated" start but do not call it:

- 

Genes that do not have the "Most Annotated" start:

- Aggie\_25, Alexphander\_30, Aloeri\_30, Aubs\_28, Avani\_32, Awesomesauce\_29, Batiatus\_28, Beakin\_29, Bipolar\_25, Blarby\_36, Bobi\_30, Bosection6\_25, Brookers\_26, Brushbloom\_30, Bubbles123\_29, BuzzLyseyear\_30, Carcharodon\_25, Charlie\_25, Che9d\_32, Chewbacca\_25, ChickenDinner\_30, Coco12\_27, Corium\_28, Cornucopia\_29, DLane\_28, DaWorst\_30, DaddyRickover\_28, DeadP\_28, Deb65\_28, Demsculpinboyz\_32, DillTech15\_28, DoRead\_29, DocMcStuffins\_30, Dorothy\_28, DosHalletts\_29, Doug\_29, Duplicity\_25, EGUnicorn\_26, Eish\_28, EleanorGeorge\_28, Emma\_30, Enby\_29, Fancypants\_28, Fastidio\_30, Filuzino\_28, Firehouse51\_29, Flathead\_28, Florinda\_28, Frankie\_31, Fruitloop\_27, Galactic\_28, Gandolph\_28, Geralt\_28, Gex\_25, Girafales\_29, Hades\_28, Hegedechwinu\_29, Hlubikazi\_28, IMpilo\_27, IbOuu\_30, IrishSherpFalk\_29, Jabbawokkie\_35, JalFarm20\_30, Jant\_29, Job42\_31, Journey\_25, Juice456\_29, KingJulian\_28, Kingsley\_26, Krakatau\_29, KristaRAM\_29, Latretium\_29, Leozinho\_29, LilSpotty\_28, LunaStella\_29, Magsby\_25, Mandlovu\_28, Marker\_29, Melissauren88\_28, Melville\_25, MilleniumForce\_29, Minnie\_29, Misha28\_29, MooMoo\_26, Moonbeam\_29, Mova\_29, Mozy\_29, NewHope4\_31, Ovechkin\_28, OwlsT2W\_29, Parmesanjohn\_25, Phalconet\_28, Phanphagia\_25, PhesterPotato\_28, Philonius\_25, Pipsqueaks\_25, Plumbus\_29, Polka14\_29, Polo2Bam\_32, PopTart\_28, Quico\_29, Ramsey\_29, RockyHorror\_29, Royals2015\_28, SG4\_28, SassyB\_28, Schnauzer\_25, Seagreen\_29, Shauna1\_25, ShroomBoi\_25, Silvafighter\_25, SilverChicken\_35, Silvy\_25, Smurph\_25, Spartacus\_29, Spikelee\_29, Strokeseat\_28, TChen\_27, Taj\_28, Tapioca\_25, TootsiePop\_29, Tootsieroll\_29, Tortoise12\_25, Tweety\_28, VRedHorse\_28, Violac\_30, Vivum\_28, Wee\_29, WillSterrel\_29, XFactor\_28, Xerxes\_25, Zapner\_34, Zerg\_28,

### Summary by start number:

Start 7:

- Found in 22 of 253 ( 8.7% ) of genes in pham
- Manual Annotations of this start: 6 of 229
- Called 31.8% of time when present
- Phage (with cluster) where this start called: Carcharodon\_25 (N), Chewbacca\_25 (N), EGUnicorn\_26 (N), Philonius\_25 (N), Pipsqueaks\_25 (N), Schnauzer\_25 (N), Silvafighter\_25 (N),

Start 8:

- Found in 22 of 253 ( 8.7% ) of genes in pham
- Manual Annotations of this start: 13 of 229
- Called 68.2% of time when present
- Phage (with cluster) where this start called: Aggie\_25 (N), Bosection6\_25 (N), Charlie\_25 (N), Duplicity\_25 (N), Gex\_25 (N), Journey\_25 (N), LilSpotty\_28 (singleton), Magsby\_25 (N), Melville\_25 (N), Parmesanjohn\_25 (N), Silvy\_25 (N), Smurph\_25 (N), Tapioca\_25 (N), Tortoise12\_25 (N), Xerxes\_25 (N),

Start 9:

- Found in 97 of 253 ( 38.3% ) of genes in pham
- Manual Annotations of this start: 79 of 229
- Called 92.8% of time when present

- Phage (with cluster) where this start called: Alexphander\_30 (F1), Aubs\_28 (F1), Awesomesauce\_29 (F1), Batiatus\_28 (F1), Beakin\_29 (F1), Bipolar\_25 (F1), Blarby\_36 (F), Bubbles123\_29 (F1), BuzzLyseyear\_30 (F1), Coco12\_27 (F1), Corium\_28 (F1), Cornucopia\_29 (F1), DLane\_28 (F1), DaWorst\_30 (F1), DaddyRickover\_28 (F1), DeadP\_28 (F1), Deb65\_28 (F1), DillTech15\_28 (F1), DoRead\_29 (F1), DocMcStuffins\_30 (F1), Dorothy\_28 (F1), DosHalletts\_29 (F1), Doug\_29 (F1), Eish\_28 (F1), EleanorGeorge\_28 (F1), Enby\_29 (F1), Fancypants\_28 (F1), Filuzino\_28 (F1), Firehouse51\_29 (F1), Flathead\_28 (F1), Florinda\_28 (F1), Fruitloop\_27 (F1), Gandolph\_28 (F1), Geralt\_28 (F1), Girafales\_29 (F1), Hades\_28 (F1), Hegedechwinu\_29 (F1), Hlubikazi\_28 (F1), IMpilo\_27 (F1), IbOuu\_30 (F1), IrishSherpFalk\_29 (F1), JalFarm20\_30 (F1), Jant\_29 (F1), Job42\_31 (F1), Juice456\_29 (F1), KingJulian\_28 (F1), Kingsley\_26 (F1), Krakatau\_29 (F1), KristaRAM\_29 (F1), Leozinho\_29 (F1), Mandlovu\_28 (F1), Marker\_29 (F1), Melissauren88\_28 (F1), MilleniumForce\_29 (F1), Misha28\_29 (F1), Moonbeam\_29 (F1), Mova\_29 (F1), Mozy\_29 (F1), Ovechkin\_28 (F1), OwlsT2W\_29 (F1), Phalconet\_28 (F1), Phanphagia\_25 (F1), PhesterPhotato\_28 (F1), Plumbus\_29 (F1), Polka14\_29 (F1), Polo2Bam\_32 (F1), PopTart\_28 (F1), Quico\_29 (F1), Ramsey\_29 (F1), RockyHorror\_29 (F1), Royals2015\_28 (F1), SG4\_28 (F1), SassyB\_28 (F1), Seagreen\_29 (F1), Shauna1\_25 (F1), ShroomBoi\_25 (F1), Spartacus\_29 (F1), Spikelee\_29 (F1), Strokeseat\_28 (F1), Taj\_28 (F1), TootsiePop\_29 (F1), Tootsieroll\_29 (F1), Tweety\_28 (F1), VRedHorse\_28 (F1), Violac\_30 (F1), Vivum\_28 (F1), Wee\_29 (F1), WillSterrel\_29 (F1), XFactor\_28 (F1), Zerg\_28 (F1),

#### Start 10:

- Found in 2 of 253 ( 0.8% ) of genes in pham
- Manual Annotations of this start: 2 of 229
- Called 100.0% of time when present
- Phage (with cluster) where this start called: Emma\_30 (F1), Fastidio\_30 (F1),

#### Start 11:

- Found in 120 of 253 ( 47.4% ) of genes in pham
- Manual Annotations of this start: 116 of 229
- Called 100.0% of time when present
- Phage (with cluster) where this start called: AlpineSix\_29 (F1), ArcusAngelus\_28 (F1), Blexus\_28 (F1), BlueCrab\_28 (F1), BobaPhett\_28 (F1), BodEinwohner17\_28 (F1), Boomer\_29 (F1), Burwell21\_28 (F1), ByChance\_28 (F1), Byougenkin\_28 (F1), Cabrinians\_28 (F1), CaptainTrips\_29 (F1), Che8\_30 (F1), Cheesepuff\_31 (F1), Chevrolet\_28 (F1), Chuckly\_28 (F1), Cornie\_28 (F5), DRBy19\_28 (F1), Daenerys\_28 (F1), Dante\_28 (F1), DirtMcgirt\_29 (F1), Donkeykong\_28 (F1), Doomphist\_28 (F1), DotProduct\_28 (F1), Drago\_29 (F1), Empress\_29 (F1), Eradicator\_28 (F1), Estave1\_26 (F1), FreddyB\_28 (F1), GUmbie\_28 (F1), GigiOuiOui\_28 (F1), Girr\_28 (F1), Gorge\_28 (F1), Grimmer\_30 (F1), Guppsters\_29 (F1), Hamulus\_28 (F1), Harley\_28 (F1), Ibhubesi\_28 (F1), Inventum\_28 (F1), James\_28 (F1), Jarcob\_28 (F1), Jinglebell\_27 (F1), JoeyJr\_28 (F1), Juniper1\_28 (F1), Karhdo\_28 (F1), Kenuha5\_25 (F1), Kimberlium\_30 (F1), KingMidas\_29 (F1), Leperchaun\_28 (F1), LilMoolah\_28 (F1), Lizziana\_28 (F1), Llama\_28 (F1), Llij\_28 (F1), Lorde\_29 (F1), LunaBlu\_29 (F1), MadMen\_25 (F1), Madiba\_26 (F1), Mahavrat\_28 (F1), Mantra\_28 (F1), Maravista\_28 (F1), Martik\_28 (F1), Mattes\_28 (F1), MinionDave\_29 (F1), MisterCuddles\_28 (F1), Modragons\_28 (F1), MulchExplorer\_31 (F1), Mutaforma13\_28 (F1), Nimbo\_28 (F1), Nitzel\_29 (F1), Nivrat\_28 (F1), NormanBulbieJr\_28 (F1), OfUltron\_28 (F1), Ogopogo\_28 (F1), Oksu\_29 (F1), OldBen\_28 (F1), OlympiaSaint\_28 (F1), PHappiness\_28 (F1), PMC\_28 (F1), Pacc40\_28 (F1), Phasih\_29 (F1), Phatniss\_29 (F1), Philus\_28 (F1), Piper2020\_30

(F1), Poenanya\_28 (F1), Pollywog\_28 (F1), Priscilla\_28 (F1), QuickMath\_29 (F1), Radiance\_28 (F1), RedBird\_28 (F1), Renaud18\_28 (F4), RitaG\_28 (F1), Rita\_28 (F1), Rockne\_28 (F1), Ruby\_28 (F1), Saal\_28 (F1), Sabb\_29 (F1), Sandalphon\_29 (F1), Sassafras\_28 (F1), Scottish\_29 (F1), Seabastian\_28 (F1), ShiLan\_28 (F1), ShowerHandel\_28 (F1), SiSi\_28 (F1), SimranZ1\_29 (F1), Soul22\_32 (F2), Sparkdehlily\_28 (F1), Spoonbill\_28 (F1), Stap\_29 (F1), SuperGrey\_28 (F1), SwagPiggett\_28 (F1), TDanisky\_28 (F1), ThetaBob\_27 (F4), Totinger\_29 (F1), UncleRicky\_31 (F1), Veteran\_28 (F1), Wachhund\_28 (F1), Whatsapiecost\_28 (F1), Whouxphf\_28 (F1), Yorick\_28 (F1), Zizzle\_28 (F1),

Start 12:

- Found in 107 of 253 ( 42.3% ) of genes in pham
- Manual Annotations of this start: 11 of 229
- Called 15.9% of time when present
- Phage (with cluster) where this start called: Aloeri\_30 (F1), Avani\_32 (F2), Bobi\_30 (F1), Brookers\_26 (F1), Brushbloom\_30 (F1), Che9d\_32 (F2), ChickenDinner\_30 (F1), Demsculpinboyz\_32 (F2), Frankie\_31 (F1), Galactic\_28 (F1), Jabbawokkie\_35 (F2), LunaStella\_29 (F4), Minnie\_29 (F1), NewHope4\_31 (F1), SilverChicken\_35 (F2), TChen\_27 (F4), Zapner\_34 (F2),

Start 13:

- Found in 2 of 253 ( 0.8% ) of genes in pham
- Manual Annotations of this start: 2 of 229
- Called 100.0% of time when present
- Phage (with cluster) where this start called: Latretium\_29 (F1), MooMoo\_26 (singleton),

### Summary by clusters:

There are 7 clusters represented in this pham: F1, F2, F4, F5, F, singleton, N,

Info for manual annotations of cluster F1:

- Start number 9 was manually annotated 79 times for cluster F1.
- Start number 10 was manually annotated 2 times for cluster F1.
- Start number 11 was manually annotated 112 times for cluster F1.
- Start number 12 was manually annotated 4 times for cluster F1.
- Start number 13 was manually annotated 1 time for cluster F1.

Info for manual annotations of cluster F2:

- Start number 11 was manually annotated 1 time for cluster F2.
- Start number 12 was manually annotated 5 times for cluster F2.

Info for manual annotations of cluster F4:

- Start number 11 was manually annotated 2 times for cluster F4.
- Start number 12 was manually annotated 2 times for cluster F4.

Info for manual annotations of cluster F5:

- Start number 11 was manually annotated 1 time for cluster F5.

Info for manual annotations of cluster N:

- Start number 7 was manually annotated 6 times for cluster N.
- Start number 8 was manually annotated 12 times for cluster N.

**Gene Information:**

Gene: Aggie\_25 Start: 22170, Stop: 22349, Start Num: 8

Candidate Starts for Aggie\_25:

(Start: 7 @22167 has 6 MA's), (Start: 8 @22170 has 13 MA's), (18, 22254), (19, 22257),

Gene: Alexphander\_30 Start: 26399, Stop: 26551, Start Num: 9

Candidate Starts for Alexphander\_30:

(Start: 9 @26399 has 79 MA's), (Start: 12 @26414 has 11 MA's), (23, 26486),

Gene: Aloeri\_30 Start: 26497, Stop: 26634, Start Num: 12

Candidate Starts for Aloeri\_30:

(Start: 9 @26467 has 79 MA's), (Start: 12 @26497 has 11 MA's), (23, 26569),

Gene: AlpineSix\_29 Start: 26099, Stop: 26239, Start Num: 11

Candidate Starts for AlpineSix\_29:

(Start: 11 @26099 has 116 MA's), (23, 26174),

Gene: ArcusAngelus\_28 Start: 25871, Stop: 26011, Start Num: 11

Candidate Starts for ArcusAngelus\_28:

(Start: 11 @25871 has 116 MA's), (23, 25946),

Gene: Aubs\_28 Start: 26001, Stop: 26168, Start Num: 9

Candidate Starts for Aubs\_28:

(Start: 9 @26001 has 79 MA's), (Start: 12 @26031 has 11 MA's), (23, 26103),

Gene: Avani\_32 Start: 24801, Stop: 24938, Start Num: 12

Candidate Starts for Avani\_32:

(Start: 12 @24801 has 11 MA's), (23, 24873),

Gene: Awesomesauce\_29 Start: 25741, Stop: 25893, Start Num: 9

Candidate Starts for Awesomesauce\_29:

(Start: 9 @25741 has 79 MA's), (Start: 12 @25756 has 11 MA's), (23, 25828),

Gene: Batiatus\_28 Start: 25899, Stop: 26051, Start Num: 9

Candidate Starts for Batiatus\_28:

(Start: 9 @25899 has 79 MA's), (Start: 12 @25914 has 11 MA's), (23, 25986),

Gene: Beakin\_29 Start: 25768, Stop: 25920, Start Num: 9

Candidate Starts for Beakin\_29:

(Start: 9 @25768 has 79 MA's), (Start: 12 @25783 has 11 MA's), (23, 25855),

Gene: Bipolar\_25 Start: 24931, Stop: 25083, Start Num: 9

Candidate Starts for Bipolar\_25:

(Start: 9 @24931 has 79 MA's), (Start: 12 @24946 has 11 MA's), (23, 25018),

Gene: Blarby\_36 Start: 26306, Stop: 26470, Start Num: 9

Candidate Starts for Blarby\_36:

(Start: 9 @26306 has 79 MA's), (Start: 12 @26333 has 11 MA's), (23, 26405),

Gene: Blexus\_28 Start: 26193, Stop: 26327, Start Num: 11  
Candidate Starts for Blexus\_28:  
(Start: 11 @26193 has 116 MA's), (23, 26262),

Gene: BlueCrab\_28 Start: 26057, Stop: 26197, Start Num: 11  
Candidate Starts for BlueCrab\_28:  
(Start: 11 @26057 has 116 MA's), (23, 26132),

Gene: BobaPhett\_28 Start: 26045, Stop: 26179, Start Num: 11  
Candidate Starts for BobaPhett\_28:  
(Start: 11 @26045 has 116 MA's), (23, 26114),

Gene: Bobi\_30 Start: 26629, Stop: 26766, Start Num: 12  
Candidate Starts for Bobi\_30:  
(Start: 12 @26629 has 11 MA's), (23, 26701),

Gene: BodEinwohner17\_28 Start: 26197, Stop: 26337, Start Num: 11  
Candidate Starts for BodEinwohner17\_28:  
(Start: 11 @26197 has 116 MA's), (23, 26272),

Gene: Boomer\_29 Start: 25673, Stop: 25813, Start Num: 11  
Candidate Starts for Boomer\_29:  
(Start: 11 @25673 has 116 MA's), (23, 25748),

Gene: Bosection6\_25 Start: 22169, Stop: 22348, Start Num: 8  
Candidate Starts for Bosection6\_25:  
(Start: 7 @22166 has 6 MA's), (Start: 8 @22169 has 13 MA's), (18, 22253), (19, 22256),

Gene: Brookers\_26 Start: 24863, Stop: 25000, Start Num: 12  
Candidate Starts for Brookers\_26:  
(Start: 9 @24833 has 79 MA's), (Start: 12 @24863 has 11 MA's), (23, 24935),

Gene: Brushbloom\_30 Start: 25938, Stop: 26075, Start Num: 12  
Candidate Starts for Brushbloom\_30:  
(Start: 9 @25908 has 79 MA's), (Start: 12 @25938 has 11 MA's), (23, 26010),

Gene: Bubbles123\_29 Start: 26579, Stop: 26746, Start Num: 9  
Candidate Starts for Bubbles123\_29:  
(Start: 9 @26579 has 79 MA's), (Start: 12 @26609 has 11 MA's), (23, 26681),

Gene: Burwell21\_28 Start: 26064, Stop: 26204, Start Num: 11  
Candidate Starts for Burwell21\_28:  
(Start: 11 @26064 has 116 MA's), (23, 26139),

Gene: BuzzLyseyear\_30 Start: 26410, Stop: 26577, Start Num: 9  
Candidate Starts for BuzzLyseyear\_30:  
(Start: 9 @26410 has 79 MA's), (Start: 12 @26440 has 11 MA's), (23, 26512),

Gene: ByChance\_28 Start: 26041, Stop: 26181, Start Num: 11  
Candidate Starts for ByChance\_28:  
(Start: 11 @26041 has 116 MA's), (23, 26116),

Gene: Byougenkin\_28 Start: 25893, Stop: 26033, Start Num: 11



Candidate Starts for Byougenkin\_28:  
(Start: 11 @25893 has 116 MA's), (23, 25968),

Gene: Cabrinians\_28 Start: 26073, Stop: 26207, Start Num: 11  
Candidate Starts for Cabrinians\_28:  
(Start: 11 @26073 has 116 MA's), (23, 26142),

Gene: CaptainTrips\_29 Start: 26266, Stop: 26406, Start Num: 11  
Candidate Starts for CaptainTrips\_29:  
(Start: 11 @26266 has 116 MA's), (23, 26341),

Gene: Carcharodon\_25 Start: 22166, Stop: 22348, Start Num: 7  
Candidate Starts for Carcharodon\_25:  
(Start: 7 @22166 has 6 MA's), (Start: 8 @22169 has 13 MA's), (18, 22253), (19, 22256),

Gene: Charlie\_25 Start: 22169, Stop: 22348, Start Num: 8  
Candidate Starts for Charlie\_25:  
(Start: 7 @22166 has 6 MA's), (Start: 8 @22169 has 13 MA's), (18, 22253), (19, 22256),

Gene: Che8\_30 Start: 26247, Stop: 26387, Start Num: 11  
Candidate Starts for Che8\_30:  
(Start: 11 @26247 has 116 MA's), (23, 26322),

Gene: Che9d\_32 Start: 24809, Stop: 24946, Start Num: 12  
Candidate Starts for Che9d\_32:  
(Start: 12 @24809 has 11 MA's), (23, 24881),

Gene: Cheesepuff\_31 Start: 26888, Stop: 27028, Start Num: 11  
Candidate Starts for Cheesepuff\_31:  
(Start: 11 @26888 has 116 MA's), (23, 26963),

Gene: Chevrolet\_28 Start: 25872, Stop: 26012, Start Num: 11  
Candidate Starts for Chevrolet\_28:  
(Start: 11 @25872 has 116 MA's), (23, 25947),

Gene: Chewbacca\_25 Start: 22166, Stop: 22348, Start Num: 7  
Candidate Starts for Chewbacca\_25:  
(Start: 7 @22166 has 6 MA's), (Start: 8 @22169 has 13 MA's), (18, 22253), (19, 22256),

Gene: ChickenDinner\_30 Start: 26497, Stop: 26634, Start Num: 12  
Candidate Starts for ChickenDinner\_30:  
(Start: 9 @26467 has 79 MA's), (Start: 12 @26497 has 11 MA's), (23, 26569),

Gene: Chuckly\_28 Start: 26043, Stop: 26183, Start Num: 11  
Candidate Starts for Chuckly\_28:  
(Start: 11 @26043 has 116 MA's), (23, 26118),

Gene: Coco12\_27 Start: 25374, Stop: 25541, Start Num: 9  
Candidate Starts for Coco12\_27:  
(Start: 9 @25374 has 79 MA's), (Start: 12 @25404 has 11 MA's), (23, 25476),

Gene: Corium\_28 Start: 26064, Stop: 26216, Start Num: 9  
Candidate Starts for Corium\_28:

(Start: 9 @26064 has 79 MA's), (Start: 12 @26079 has 11 MA's), (23, 26151),

Gene: Cornie\_28 Start: 26284, Stop: 26424, Start Num: 11

Candidate Starts for Cornie\_28:

(Start: 11 @26284 has 116 MA's), (23, 26359),

Gene: Cornucopia\_29 Start: 25927, Stop: 26079, Start Num: 9

Candidate Starts for Cornucopia\_29:

(Start: 9 @25927 has 79 MA's), (Start: 12 @25942 has 11 MA's), (23, 26014),

Gene: DLane\_28 Start: 25876, Stop: 26028, Start Num: 9

Candidate Starts for DLane\_28:

(Start: 9 @25876 has 79 MA's), (Start: 12 @25891 has 11 MA's), (23, 25963),

Gene: DRBy19\_28 Start: 25915, Stop: 26049, Start Num: 11

Candidate Starts for DRBy19\_28:

(Start: 11 @25915 has 116 MA's), (23, 25984),

Gene: DaWorst\_30 Start: 26406, Stop: 26558, Start Num: 9

Candidate Starts for DaWorst\_30:

(Start: 9 @26406 has 79 MA's), (Start: 12 @26421 has 11 MA's), (23, 26493),

Gene: DaddyRickover\_28 Start: 26046, Stop: 26198, Start Num: 9

Candidate Starts for DaddyRickover\_28:

(Start: 9 @26046 has 79 MA's), (Start: 12 @26061 has 11 MA's), (23, 26133),

Gene: Daenerys\_28 Start: 25889, Stop: 26029, Start Num: 11

Candidate Starts for Daenerys\_28:

(Start: 11 @25889 has 116 MA's), (23, 25964),

Gene: Dante\_28 Start: 25935, Stop: 26069, Start Num: 11

Candidate Starts for Dante\_28:

(Start: 11 @25935 has 116 MA's), (23, 26004),

Gene: DeadP\_28 Start: 26058, Stop: 26225, Start Num: 9

Candidate Starts for DeadP\_28:

(Start: 9 @26058 has 79 MA's), (Start: 12 @26088 has 11 MA's), (23, 26160),

Gene: Deb65\_28 Start: 25873, Stop: 26025, Start Num: 9

Candidate Starts for Deb65\_28:

(Start: 9 @25873 has 79 MA's), (Start: 12 @25888 has 11 MA's), (23, 25960),

Gene: Demsculpinboyz\_32 Start: 24795, Stop: 24932, Start Num: 12

Candidate Starts for Demsculpinboyz\_32:

(Start: 12 @24795 has 11 MA's), (23, 24867),

Gene: DillTech15\_28 Start: 25893, Stop: 26060, Start Num: 9

Candidate Starts for DillTech15\_28:

(Start: 9 @25893 has 79 MA's), (Start: 12 @25923 has 11 MA's), (23, 25995),

Gene: DirtMcgirt\_29 Start: 25712, Stop: 25852, Start Num: 11

Candidate Starts for DirtMcgirt\_29:

(Start: 11 @25712 has 116 MA's), (23, 25787),

Gene: DoRead\_29 Start: 25871, Stop: 26023, Start Num: 9  
Candidate Starts for DoRead\_29:  
(Start: 9 @25871 has 79 MA's), (Start: 12 @25886 has 11 MA's), (23, 25958),

Gene: DocMcStuffins\_30 Start: 26467, Stop: 26634, Start Num: 9  
Candidate Starts for DocMcStuffins\_30:  
(Start: 9 @26467 has 79 MA's), (Start: 12 @26497 has 11 MA's), (23, 26569),

Gene: Donkeykong\_28 Start: 26059, Stop: 26199, Start Num: 11  
Candidate Starts for Donkeykong\_28:  
(Start: 11 @26059 has 116 MA's), (23, 26134),

Gene: Doomphist\_28 Start: 25998, Stop: 26138, Start Num: 11  
Candidate Starts for Doomphist\_28:  
(Start: 11 @25998 has 116 MA's), (23, 26073),

Gene: Dorothy\_28 Start: 25831, Stop: 25983, Start Num: 9  
Candidate Starts for Dorothy\_28:  
(Start: 9 @25831 has 79 MA's), (Start: 12 @25846 has 11 MA's), (23, 25918),

Gene: DosHalletts\_29 Start: 25988, Stop: 26140, Start Num: 9  
Candidate Starts for DosHalletts\_29:  
(Start: 9 @25988 has 79 MA's), (Start: 12 @26003 has 11 MA's), (23, 26075),

Gene: DotProduct\_28 Start: 25865, Stop: 26005, Start Num: 11  
Candidate Starts for DotProduct\_28:  
(Start: 11 @25865 has 116 MA's), (23, 25940),

Gene: Doug\_29 Start: 26423, Stop: 26575, Start Num: 9  
Candidate Starts for Doug\_29:  
(Start: 9 @26423 has 79 MA's), (Start: 12 @26438 has 11 MA's), (23, 26510),

Gene: Drago\_29 Start: 25698, Stop: 25838, Start Num: 11  
Candidate Starts for Drago\_29:  
(Start: 11 @25698 has 116 MA's), (23, 25773),

Gene: Duplicity\_25 Start: 22169, Stop: 22348, Start Num: 8  
Candidate Starts for Duplicity\_25:  
(Start: 7 @22166 has 6 MA's), (Start: 8 @22169 has 13 MA's), (18, 22253), (19, 22256),

Gene: EGUunicorn\_26 Start: 22166, Stop: 22348, Start Num: 7  
Candidate Starts for EGUunicorn\_26:  
(Start: 7 @22166 has 6 MA's), (Start: 8 @22169 has 13 MA's), (18, 22253), (19, 22256),

Gene: Eish\_28 Start: 26011, Stop: 26163, Start Num: 9  
Candidate Starts for Eish\_28:  
(Start: 9 @26011 has 79 MA's), (Start: 12 @26026 has 11 MA's), (23, 26098),

Gene: EleanorGeorge\_28 Start: 26166, Stop: 26333, Start Num: 9  
Candidate Starts for EleanorGeorge\_28:  
(Start: 9 @26166 has 79 MA's), (Start: 12 @26196 has 11 MA's), (23, 26268),

Gene: Emma\_30 Start: 26455, Stop: 26598, Start Num: 10

Candidate Starts for Emma\_30:

(5, 26395), (Start: 10 @26455 has 2 MA's), (23, 26533),

Gene: Empress\_29 Start: 27231, Stop: 27365, Start Num: 11

Candidate Starts for Empress\_29:

(Start: 11 @27231 has 116 MA's), (23, 27300),

Gene: Enby\_29 Start: 25696, Stop: 25863, Start Num: 9

Candidate Starts for Enby\_29:

(Start: 9 @25696 has 79 MA's), (Start: 12 @25726 has 11 MA's), (23, 25798),

Gene: Eradicator\_28 Start: 25919, Stop: 26059, Start Num: 11

Candidate Starts for Eradicator\_28:

(Start: 11 @25919 has 116 MA's), (23, 25994),

Gene: Estave1\_26 Start: 25327, Stop: 25467, Start Num: 11

Candidate Starts for Estave1\_26:

(Start: 11 @25327 has 116 MA's), (23, 25402),

Gene: Fancypants\_28 Start: 25879, Stop: 26031, Start Num: 9

Candidate Starts for Fancypants\_28:

(Start: 9 @25879 has 79 MA's), (Start: 12 @25894 has 11 MA's), (23, 25966),

Gene: Fastidio\_30 Start: 26198, Stop: 26341, Start Num: 10

Candidate Starts for Fastidio\_30:

(5, 26138), (Start: 10 @26198 has 2 MA's), (14, 26213), (15, 26222), (23, 26276),

Gene: Filuzino\_28 Start: 25868, Stop: 26020, Start Num: 9

Candidate Starts for Filuzino\_28:

(Start: 9 @25868 has 79 MA's), (Start: 12 @25883 has 11 MA's), (23, 25955),

Gene: Firehouse51\_29 Start: 26590, Stop: 26742, Start Num: 9

Candidate Starts for Firehouse51\_29:

(Start: 9 @26590 has 79 MA's), (Start: 12 @26605 has 11 MA's), (23, 26677),

Gene: Flathead\_28 Start: 25891, Stop: 26058, Start Num: 9

Candidate Starts for Flathead\_28:

(Start: 9 @25891 has 79 MA's), (Start: 12 @25921 has 11 MA's), (23, 25993),

Gene: Florinda\_28 Start: 25889, Stop: 26032, Start Num: 9

Candidate Starts for Florinda\_28:

(Start: 9 @25889 has 79 MA's), (Start: 12 @25895 has 11 MA's), (23, 25967),

Gene: Frankie\_31 Start: 26420, Stop: 26554, Start Num: 12

Candidate Starts for Frankie\_31:

(1, 26195), (2, 26252), (4, 26270), (Start: 12 @26420 has 11 MA's), (17, 26453), (20, 26474), (21, 26477), (22, 26480), (23, 26489),

Gene: FreddyB\_28 Start: 26082, Stop: 26216, Start Num: 11

Candidate Starts for FreddyB\_28:

(Start: 11 @26082 has 116 MA's), (23, 26151),

Gene: Fruitloop\_27 Start: 26062, Stop: 26214, Start Num: 9  
Candidate Starts for Fruitloop\_27:  
(Start: 9 @26062 has 79 MA's), (Start: 12 @26077 has 11 MA's), (23, 26149),

Gene: GUmbie\_28 Start: 25894, Stop: 26034, Start Num: 11  
Candidate Starts for GUmbie\_28:  
(Start: 11 @25894 has 116 MA's), (23, 25969),

Gene: Galactic\_28 Start: 25877, Stop: 26014, Start Num: 12  
Candidate Starts for Galactic\_28:  
(Start: 12 @25877 has 11 MA's), (23, 25949),

Gene: Gandalph\_28 Start: 25972, Stop: 26124, Start Num: 9  
Candidate Starts for Gandalph\_28:  
(Start: 9 @25972 has 79 MA's), (Start: 12 @25987 has 11 MA's), (23, 26059),

Gene: Geralt\_28 Start: 25872, Stop: 26024, Start Num: 9  
Candidate Starts for Geralt\_28:  
(Start: 9 @25872 has 79 MA's), (Start: 12 @25887 has 11 MA's), (23, 25959),

Gene: Gex\_25 Start: 22165, Stop: 22344, Start Num: 8  
Candidate Starts for Gex\_25:  
(Start: 7 @22162 has 6 MA's), (Start: 8 @22165 has 13 MA's), (18, 22249), (19, 22252),

Gene: GigiOuiOui\_28 Start: 26018, Stop: 26158, Start Num: 11  
Candidate Starts for GigiOuiOui\_28:  
(Start: 11 @26018 has 116 MA's), (23, 26093),

Gene: Girafales\_29 Start: 25697, Stop: 25840, Start Num: 9  
Candidate Starts for Girafales\_29:  
(Start: 9 @25697 has 79 MA's), (Start: 12 @25703 has 11 MA's), (23, 25775),

Gene: Girr\_28 Start: 25857, Stop: 25991, Start Num: 11  
Candidate Starts for Girr\_28:  
(Start: 11 @25857 has 116 MA's), (23, 25926),

Gene: Gorge\_28 Start: 26049, Stop: 26183, Start Num: 11  
Candidate Starts for Gorge\_28:  
(Start: 11 @26049 has 116 MA's), (23, 26118),

Gene: Grimmer\_30 Start: 26613, Stop: 26753, Start Num: 11  
Candidate Starts for Grimmer\_30:  
(Start: 11 @26613 has 116 MA's), (23, 26688),

Gene: Guppsters\_29 Start: 26159, Stop: 26299, Start Num: 11  
Candidate Starts for Guppsters\_29:  
(Start: 11 @26159 has 116 MA's), (23, 26234),

Gene: Hades\_28 Start: 25964, Stop: 26116, Start Num: 9  
Candidate Starts for Hades\_28:  
(Start: 9 @25964 has 79 MA's), (Start: 12 @25979 has 11 MA's), (23, 26051),

Gene: Hamulus\_28 Start: 26041, Stop: 26181, Start Num: 11

Candidate Starts for Hamulus\_28:  
(Start: 11 @26041 has 116 MA's), (23, 26116),

Gene: Harley\_28 Start: 25828, Stop: 25968, Start Num: 11  
Candidate Starts for Harley\_28:  
(Start: 11 @25828 has 116 MA's), (23, 25903),

Gene: Hegedechwinu\_29 Start: 25873, Stop: 26040, Start Num: 9  
Candidate Starts for Hegedechwinu\_29:  
(Start: 9 @25873 has 79 MA's), (Start: 12 @25903 has 11 MA's), (23, 25975),

Gene: Hlubikazi\_28 Start: 26131, Stop: 26283, Start Num: 9  
Candidate Starts for Hlubikazi\_28:  
(Start: 9 @26131 has 79 MA's), (Start: 12 @26146 has 11 MA's), (23, 26218),

Gene: IMpilo\_27 Start: 25655, Stop: 25807, Start Num: 9  
Candidate Starts for IMpilo\_27:  
(Start: 9 @25655 has 79 MA's), (Start: 12 @25670 has 11 MA's), (23, 25742),

Gene: IbOuu\_30 Start: 25887, Stop: 26039, Start Num: 9  
Candidate Starts for IbOuu\_30:  
(Start: 9 @25887 has 79 MA's), (Start: 12 @25902 has 11 MA's), (23, 25974),

Gene: Ibhubesi\_28 Start: 25835, Stop: 25975, Start Num: 11  
Candidate Starts for Ibhubesi\_28:  
(Start: 11 @25835 has 116 MA's), (23, 25910),

Gene: Inventum\_28 Start: 26013, Stop: 26147, Start Num: 11  
Candidate Starts for Inventum\_28:  
(Start: 11 @26013 has 116 MA's), (23, 26082),

Gene: IrishSherpFalk\_29 Start: 27208, Stop: 27375, Start Num: 9  
Candidate Starts for IrishSherpFalk\_29:  
(Start: 9 @27208 has 79 MA's), (Start: 12 @27238 has 11 MA's), (23, 27310),

Gene: Jabbawokkie\_35 Start: 26242, Stop: 26379, Start Num: 12  
Candidate Starts for Jabbawokkie\_35:  
(3, 26086), (Start: 12 @26242 has 11 MA's), (23, 26314),

Gene: JalFarm20\_30 Start: 26395, Stop: 26562, Start Num: 9  
Candidate Starts for JalFarm20\_30:  
(Start: 9 @26395 has 79 MA's), (Start: 12 @26425 has 11 MA's), (23, 26497),

Gene: James\_28 Start: 26045, Stop: 26179, Start Num: 11  
Candidate Starts for James\_28:  
(Start: 11 @26045 has 116 MA's), (23, 26114),

Gene: Jant\_29 Start: 26025, Stop: 26192, Start Num: 9  
Candidate Starts for Jant\_29:  
(Start: 9 @26025 has 79 MA's), (Start: 12 @26055 has 11 MA's), (23, 26127),

Gene: Jarcob\_28 Start: 26080, Stop: 26214, Start Num: 11  
Candidate Starts for Jarcob\_28:

(Start: 11 @26080 has 116 MA's), (23, 26149),

Gene: Jinglebell\_27 Start: 26098, Stop: 26238, Start Num: 11

Candidate Starts for Jinglebell\_27:

(Start: 11 @26098 has 116 MA's), (23, 26173),

Gene: Job42\_31 Start: 27602, Stop: 27754, Start Num: 9

Candidate Starts for Job42\_31:

(Start: 9 @27602 has 79 MA's), (Start: 12 @27617 has 11 MA's), (23, 27689),

Gene: JoeyJr\_28 Start: 26057, Stop: 26197, Start Num: 11

Candidate Starts for JoeyJr\_28:

(Start: 11 @26057 has 116 MA's), (23, 26132),

Gene: Journey\_25 Start: 22169, Stop: 22348, Start Num: 8

Candidate Starts for Journey\_25:

(Start: 7 @22166 has 6 MA's), (Start: 8 @22169 has 13 MA's), (18, 22253), (19, 22256),

Gene: Juice456\_29 Start: 27144, Stop: 27311, Start Num: 9

Candidate Starts for Juice456\_29:

(Start: 9 @27144 has 79 MA's), (Start: 12 @27174 has 11 MA's), (23, 27246),

Gene: Juniper1\_28 Start: 25857, Stop: 25997, Start Num: 11

Candidate Starts for Juniper1\_28:

(Start: 11 @25857 has 116 MA's), (23, 25932),

Gene: Karhdo\_28 Start: 26020, Stop: 26160, Start Num: 11

Candidate Starts for Karhdo\_28:

(Start: 11 @26020 has 116 MA's), (23, 26095),

Gene: Kenuha5\_25 Start: 25038, Stop: 25178, Start Num: 11

Candidate Starts for Kenuha5\_25:

(Start: 11 @25038 has 116 MA's), (23, 25113),

Gene: Kimberlium\_30 Start: 27010, Stop: 27150, Start Num: 11

Candidate Starts for Kimberlium\_30:

(Start: 11 @27010 has 116 MA's), (23, 27085),

Gene: KingJulian\_28 Start: 26064, Stop: 26216, Start Num: 9

Candidate Starts for KingJulian\_28:

(Start: 9 @26064 has 79 MA's), (Start: 12 @26079 has 11 MA's), (23, 26151),

Gene: KingMidas\_29 Start: 27185, Stop: 27325, Start Num: 11

Candidate Starts for KingMidas\_29:

(Start: 11 @27185 has 116 MA's), (23, 27260),

Gene: Kingsley\_26 Start: 24838, Stop: 25005, Start Num: 9

Candidate Starts for Kingsley\_26:

(Start: 9 @24838 has 79 MA's), (Start: 12 @24868 has 11 MA's), (23, 24940),

Gene: Krakatau\_29 Start: 26546, Stop: 26698, Start Num: 9

Candidate Starts for Krakatau\_29:

(Start: 9 @26546 has 79 MA's), (Start: 12 @26561 has 11 MA's), (23, 26633),

Gene: KristaRAM\_29 Start: 26704, Stop: 26871, Start Num: 9  
Candidate Starts for KristaRAM\_29:  
(Start: 9 @26704 has 79 MA's), (Start: 12 @26734 has 11 MA's), (23, 26806),

Gene: Latretium\_29 Start: 26693, Stop: 26830, Start Num: 13  
Candidate Starts for Latretium\_29:  
(6, 26597), (Start: 13 @26693 has 2 MA's), (23, 26762), (25, 26795),

Gene: Leozinho\_29 Start: 25731, Stop: 25883, Start Num: 9  
Candidate Starts for Leozinho\_29:  
(Start: 9 @25731 has 79 MA's), (Start: 12 @25746 has 11 MA's), (23, 25818),

Gene: Leperchaun\_28 Start: 25946, Stop: 26086, Start Num: 11  
Candidate Starts for Leperchaun\_28:  
(Start: 11 @25946 has 116 MA's), (23, 26021),

Gene: LilMoolah\_28 Start: 26164, Stop: 26304, Start Num: 11  
Candidate Starts for LilMoolah\_28:  
(Start: 11 @26164 has 116 MA's), (23, 26239),

Gene: LilSpotty\_28 Start: 23137, Stop: 23316, Start Num: 8  
Candidate Starts for LilSpotty\_28:  
(Start: 7 @23134 has 6 MA's), (Start: 8 @23137 has 13 MA's), (18, 23221), (19, 23224),

Gene: Lizziana\_28 Start: 26039, Stop: 26179, Start Num: 11  
Candidate Starts for Lizziana\_28:  
(Start: 11 @26039 has 116 MA's), (23, 26114),

Gene: Llama\_28 Start: 26097, Stop: 26237, Start Num: 11  
Candidate Starts for Llama\_28:  
(Start: 11 @26097 has 116 MA's), (23, 26172),

Gene: Llij\_28 Start: 25862, Stop: 26002, Start Num: 11  
Candidate Starts for Llij\_28:  
(Start: 11 @25862 has 116 MA's), (23, 25937),

Gene: Lorde\_29 Start: 25698, Stop: 25838, Start Num: 11  
Candidate Starts for Lorde\_29:  
(Start: 11 @25698 has 116 MA's), (23, 25773),

Gene: LunaBlu\_29 Start: 26100, Stop: 26240, Start Num: 11  
Candidate Starts for LunaBlu\_29:  
(Start: 11 @26100 has 116 MA's), (23, 26175),

Gene: LunaStella\_29 Start: 26164, Stop: 26301, Start Num: 12  
Candidate Starts for LunaStella\_29:  
(Start: 12 @26164 has 11 MA's), (23, 26236),

Gene: MadMen\_25 Start: 25147, Stop: 25287, Start Num: 11  
Candidate Starts for MadMen\_25:  
(Start: 11 @25147 has 116 MA's), (23, 25222),



Gene: Madiba\_26 Start: 24800, Stop: 24940, Start Num: 11

Candidate Starts for Madiba\_26:

(Start: 11 @24800 has 116 MA's), (23, 24875),

Gene: Magsby\_25 Start: 22166, Stop: 22345, Start Num: 8

Candidate Starts for Magsby\_25:

(Start: 7 @22163 has 6 MA's), (Start: 8 @22166 has 13 MA's), (18, 22250), (19, 22253),

Gene: Mahavrat\_28 Start: 25850, Stop: 25990, Start Num: 11

Candidate Starts for Mahavrat\_28:

(Start: 11 @25850 has 116 MA's), (23, 25925),

Gene: Mandlovu\_28 Start: 26073, Stop: 26225, Start Num: 9

Candidate Starts for Mandlovu\_28:

(Start: 9 @26073 has 79 MA's), (Start: 12 @26088 has 11 MA's), (23, 26160),

Gene: Mantra\_28 Start: 25987, Stop: 26127, Start Num: 11

Candidate Starts for Mantra\_28:

(Start: 11 @25987 has 116 MA's), (23, 26062),

Gene: Maravista\_28 Start: 25821, Stop: 25961, Start Num: 11

Candidate Starts for Maravista\_28:

(Start: 11 @25821 has 116 MA's), (23, 25896),

Gene: Marker\_29 Start: 25737, Stop: 25889, Start Num: 9

Candidate Starts for Marker\_29:

(Start: 9 @25737 has 79 MA's), (Start: 12 @25752 has 11 MA's), (23, 25824),

Gene: Martik\_28 Start: 26066, Stop: 26206, Start Num: 11

Candidate Starts for Martik\_28:

(Start: 11 @26066 has 116 MA's), (23, 26141),

Gene: Mattes\_28 Start: 26045, Stop: 26179, Start Num: 11

Candidate Starts for Mattes\_28:

(Start: 11 @26045 has 116 MA's), (23, 26114),

Gene: Melissauren88\_28 Start: 26058, Stop: 26210, Start Num: 9

Candidate Starts for Melissauren88\_28:

(Start: 9 @26058 has 79 MA's), (Start: 12 @26073 has 11 MA's), (23, 26145),

Gene: Melville\_25 Start: 22169, Stop: 22348, Start Num: 8

Candidate Starts for Melville\_25:

(Start: 7 @22166 has 6 MA's), (Start: 8 @22169 has 13 MA's), (18, 22253), (19, 22256),

Gene: MilleniumForce\_29 Start: 26835, Stop: 27002, Start Num: 9

Candidate Starts for MilleniumForce\_29:

(Start: 9 @26835 has 79 MA's), (Start: 12 @26865 has 11 MA's), (23, 26937),

Gene: MinionDave\_29 Start: 26258, Stop: 26398, Start Num: 11

Candidate Starts for MinionDave\_29:

(Start: 11 @26258 has 116 MA's), (23, 26333),

Gene: Minnie\_29 Start: 26603, Stop: 26740, Start Num: 12

Candidate Starts for Minnie\_29:  
(Start: 9 @26573 has 79 MA's), (Start: 12 @26603 has 11 MA's), (23, 26675),

Gene: Misha28\_29 Start: 25746, Stop: 25898, Start Num: 9  
Candidate Starts for Misha28\_29:  
(Start: 9 @25746 has 79 MA's), (Start: 12 @25761 has 11 MA's), (23, 25833),

Gene: MisterCuddles\_28 Start: 25857, Stop: 25991, Start Num: 11  
Candidate Starts for MisterCuddles\_28:  
(Start: 11 @25857 has 116 MA's), (23, 25926),

Gene: Modragons\_28 Start: 25942, Stop: 26082, Start Num: 11  
Candidate Starts for Modragons\_28:  
(Start: 11 @25942 has 116 MA's), (23, 26017),

Gene: MooMoo\_26 Start: 24806, Stop: 24943, Start Num: 13  
Candidate Starts for MooMoo\_26:  
(Start: 13 @24806 has 2 MA's), (16, 24830), (23, 24875), (25, 24908),

Gene: Moonbeam\_29 Start: 26528, Stop: 26695, Start Num: 9  
Candidate Starts for Moonbeam\_29:  
(Start: 9 @26528 has 79 MA's), (Start: 12 @26558 has 11 MA's), (23, 26630),

Gene: Mova\_29 Start: 25725, Stop: 25892, Start Num: 9  
Candidate Starts for Mova\_29:  
(Start: 9 @25725 has 79 MA's), (Start: 12 @25755 has 11 MA's), (23, 25827),

Gene: Mozy\_29 Start: 25935, Stop: 26087, Start Num: 9  
Candidate Starts for Mozy\_29:  
(Start: 9 @25935 has 79 MA's), (Start: 12 @25950 has 11 MA's), (23, 26022),

Gene: MulchExplorer\_31 Start: 27010, Stop: 27150, Start Num: 11  
Candidate Starts for MulchExplorer\_31:  
(Start: 11 @27010 has 116 MA's), (23, 27085),

Gene: Mutaforma13\_28 Start: 26073, Stop: 26213, Start Num: 11  
Candidate Starts for Mutaforma13\_28:  
(Start: 11 @26073 has 116 MA's), (23, 26148),

Gene: NewHope4\_31 Start: 26105, Stop: 26242, Start Num: 12  
Candidate Starts for NewHope4\_31:  
(Start: 9 @26075 has 79 MA's), (Start: 12 @26105 has 11 MA's), (23, 26177),

Gene: Nimbo\_28 Start: 25893, Stop: 26033, Start Num: 11  
Candidate Starts for Nimbo\_28:  
(Start: 11 @25893 has 116 MA's), (23, 25968),

Gene: Nitzel\_29 Start: 26607, Stop: 26747, Start Num: 11  
Candidate Starts for Nitzel\_29:  
(Start: 11 @26607 has 116 MA's), (23, 26682),

Gene: Nivrat\_28 Start: 26038, Stop: 26178, Start Num: 11  
Candidate Starts for Nivrat\_28:

(Start: 11 @26038 has 116 MA's), (23, 26113),

Gene: NormanBulbieJr\_28 Start: 26053, Stop: 26193, Start Num: 11

Candidate Starts for NormanBulbieJr\_28:

(Start: 11 @26053 has 116 MA's), (23, 26128),

Gene: OfUltron\_28 Start: 26098, Stop: 26238, Start Num: 11

Candidate Starts for OfUltron\_28:

(Start: 11 @26098 has 116 MA's), (23, 26173),

Gene: Ogopogo\_28 Start: 25248, Stop: 25388, Start Num: 11

Candidate Starts for Ogopogo\_28:

(Start: 11 @25248 has 116 MA's), (23, 25323),

Gene: Oksu\_29 Start: 25942, Stop: 26082, Start Num: 11

Candidate Starts for Oksu\_29:

(Start: 11 @25942 has 116 MA's), (23, 26017),

Gene: OldBen\_28 Start: 25852, Stop: 25986, Start Num: 11

Candidate Starts for OldBen\_28:

(Start: 11 @25852 has 116 MA's), (23, 25921),

Gene: OlympiaSaint\_28 Start: 26268, Stop: 26402, Start Num: 11

Candidate Starts for OlympiaSaint\_28:

(Start: 11 @26268 has 116 MA's), (23, 26337),

Gene: Ovechkin\_28 Start: 26030, Stop: 26197, Start Num: 9

Candidate Starts for Ovechkin\_28:

(Start: 9 @26030 has 79 MA's), (Start: 12 @26060 has 11 MA's), (23, 26132),

Gene: OwlsT2W\_29 Start: 26324, Stop: 26476, Start Num: 9

Candidate Starts for OwlsT2W\_29:

(Start: 9 @26324 has 79 MA's), (Start: 12 @26339 has 11 MA's), (23, 26411),

Gene: PHappiness\_28 Start: 25867, Stop: 26007, Start Num: 11

Candidate Starts for PHappiness\_28:

(Start: 11 @25867 has 116 MA's), (23, 25942),

Gene: PMC\_28 Start: 25862, Stop: 26002, Start Num: 11

Candidate Starts for PMC\_28:

(Start: 11 @25862 has 116 MA's), (23, 25937),

Gene: Pacc40\_28 Start: 26042, Stop: 26182, Start Num: 11

Candidate Starts for Pacc40\_28:

(Start: 11 @26042 has 116 MA's), (23, 26117),

Gene: Parmesanjohn\_25 Start: 22169, Stop: 22348, Start Num: 8

Candidate Starts for Parmesanjohn\_25:

(Start: 7 @22166 has 6 MA's), (Start: 8 @22169 has 13 MA's), (18, 22253), (19, 22256),

Gene: Phalconet\_28 Start: 25961, Stop: 26113, Start Num: 9

Candidate Starts for Phalconet\_28:

(Start: 9 @25961 has 79 MA's), (Start: 12 @25976 has 11 MA's), (23, 26048),

Gene: Phanphagia\_25 Start: 25032, Stop: 25199, Start Num: 9  
Candidate Starts for Phanphagia\_25:  
(Start: 9 @25032 has 79 MA's), (Start: 12 @25062 has 11 MA's), (23, 25134),

Gene: Phasih\_29 Start: 26431, Stop: 26571, Start Num: 11  
Candidate Starts for Phasih\_29:  
(Start: 11 @26431 has 116 MA's), (23, 26506),

Gene: Phatniss\_29 Start: 26379, Stop: 26519, Start Num: 11  
Candidate Starts for Phatniss\_29:  
(Start: 11 @26379 has 116 MA's), (23, 26454),

Gene: PhesterPhotato\_28 Start: 25881, Stop: 26033, Start Num: 9  
Candidate Starts for PhesterPhotato\_28:  
(Start: 9 @25881 has 79 MA's), (Start: 12 @25896 has 11 MA's), (23, 25968),

Gene: Philonius\_25 Start: 22166, Stop: 22348, Start Num: 7  
Candidate Starts for Philonius\_25:  
(Start: 7 @22166 has 6 MA's), (Start: 8 @22169 has 13 MA's), (18, 22253), (19, 22256),

Gene: Philus\_28 Start: 25891, Stop: 26025, Start Num: 11  
Candidate Starts for Philus\_28:  
(Start: 11 @25891 has 116 MA's), (23, 25960),

Gene: Piper2020\_30 Start: 26484, Stop: 26618, Start Num: 11  
Candidate Starts for Piper2020\_30:  
(Start: 11 @26484 has 116 MA's), (23, 26553),

Gene: Pipsqueaks\_25 Start: 22166, Stop: 22348, Start Num: 7  
Candidate Starts for Pipsqueaks\_25:  
(Start: 7 @22166 has 6 MA's), (Start: 8 @22169 has 13 MA's), (18, 22253), (19, 22256),

Gene: Plumbus\_29 Start: 25705, Stop: 25857, Start Num: 9  
Candidate Starts for Plumbus\_29:  
(Start: 9 @25705 has 79 MA's), (Start: 12 @25720 has 11 MA's), (23, 25792),

Gene: Poenanya\_28 Start: 25998, Stop: 26138, Start Num: 11  
Candidate Starts for Poenanya\_28:  
(Start: 11 @25998 has 116 MA's), (23, 26073),

Gene: Polka14\_29 Start: 26413, Stop: 26565, Start Num: 9  
Candidate Starts for Polka14\_29:  
(Start: 9 @26413 has 79 MA's), (Start: 12 @26428 has 11 MA's), (23, 26500),

Gene: Pollywog\_28 Start: 26127, Stop: 26267, Start Num: 11  
Candidate Starts for Pollywog\_28:  
(Start: 11 @26127 has 116 MA's), (23, 26202),

Gene: Polo2Bam\_32 Start: 26049, Stop: 26201, Start Num: 9  
Candidate Starts for Polo2Bam\_32:  
(Start: 9 @26049 has 79 MA's), (Start: 12 @26064 has 11 MA's), (23, 26136),

Gene: PopTart\_28 Start: 26073, Stop: 26240, Start Num: 9  
Candidate Starts for PopTart\_28:  
(Start: 9 @26073 has 79 MA's), (Start: 12 @26103 has 11 MA's), (23, 26175),

Gene: Priscilla\_28 Start: 26082, Stop: 26216, Start Num: 11  
Candidate Starts for Priscilla\_28:  
(Start: 11 @26082 has 116 MA's), (23, 26151),

Gene: QuickMath\_29 Start: 27234, Stop: 27374, Start Num: 11  
Candidate Starts for QuickMath\_29:  
(Start: 11 @27234 has 116 MA's), (23, 27309),

Gene: Quico\_29 Start: 25697, Stop: 25840, Start Num: 9  
Candidate Starts for Quico\_29:  
(Start: 9 @25697 has 79 MA's), (Start: 12 @25703 has 11 MA's), (23, 25775),

Gene: Radiance\_28 Start: 25990, Stop: 26124, Start Num: 11  
Candidate Starts for Radiance\_28:  
(Start: 11 @25990 has 116 MA's), (23, 26059),

Gene: Ramsey\_29 Start: 25906, Stop: 26058, Start Num: 9  
Candidate Starts for Ramsey\_29:  
(Start: 9 @25906 has 79 MA's), (Start: 12 @25921 has 11 MA's), (23, 25993),

Gene: RedBird\_28 Start: 25808, Stop: 25948, Start Num: 11  
Candidate Starts for RedBird\_28:  
(Start: 11 @25808 has 116 MA's), (23, 25883),

Gene: Renaud18\_28 Start: 26074, Stop: 26214, Start Num: 11  
Candidate Starts for Renaud18\_28:  
(Start: 11 @26074 has 116 MA's), (23, 26149),

Gene: Rita\_28 Start: 25888, Stop: 26028, Start Num: 11  
Candidate Starts for Rita\_28:  
(Start: 11 @25888 has 116 MA's), (23, 25963),

Gene: RitaG\_28 Start: 26097, Stop: 26231, Start Num: 11  
Candidate Starts for RitaG\_28:  
(Start: 11 @26097 has 116 MA's), (23, 26166),

Gene: Rockne\_28 Start: 25862, Stop: 26002, Start Num: 11  
Candidate Starts for Rockne\_28:  
(Start: 11 @25862 has 116 MA's), (23, 25937),

Gene: RockyHorror\_29 Start: 25730, Stop: 25897, Start Num: 9  
Candidate Starts for RockyHorror\_29:  
(Start: 9 @25730 has 79 MA's), (Start: 12 @25760 has 11 MA's), (23, 25832),

Gene: Royals2015\_28 Start: 25953, Stop: 26120, Start Num: 9  
Candidate Starts for Royals2015\_28:  
(Start: 9 @25953 has 79 MA's), (Start: 12 @25983 has 11 MA's), (23, 26055),

Gene: Ruby\_28 Start: 25857, Stop: 25991, Start Num: 11

Candidate Starts for Ruby\_28:  
(Start: 11 @25857 has 116 MA's), (23, 25926),

Gene: SG4\_28 Start: 26181, Stop: 26348, Start Num: 9  
Candidate Starts for SG4\_28:  
(Start: 9 @26181 has 79 MA's), (Start: 12 @26211 has 11 MA's), (23, 26283),

Gene: Saal\_28 Start: 25869, Stop: 26003, Start Num: 11  
Candidate Starts for Saal\_28:  
(Start: 11 @25869 has 116 MA's), (23, 25938),

Gene: Sabbb\_29 Start: 26215, Stop: 26349, Start Num: 11  
Candidate Starts for Sabbb\_29:  
(Start: 11 @26215 has 116 MA's), (23, 26284),

Gene: Sandalphon\_29 Start: 26600, Stop: 26734, Start Num: 11  
Candidate Starts for Sandalphon\_29:  
(Start: 11 @26600 has 116 MA's), (23, 26669),

Gene: Sassafras\_28 Start: 26013, Stop: 26147, Start Num: 11  
Candidate Starts for Sassafras\_28:  
(Start: 11 @26013 has 116 MA's), (23, 26082),

Gene: SassyB\_28 Start: 26073, Stop: 26240, Start Num: 9  
Candidate Starts for SassyB\_28:  
(Start: 9 @26073 has 79 MA's), (Start: 12 @26103 has 11 MA's), (23, 26175),

Gene: Schnauzer\_25 Start: 22166, Stop: 22348, Start Num: 7  
Candidate Starts for Schnauzer\_25:  
(Start: 7 @22166 has 6 MA's), (Start: 8 @22169 has 13 MA's), (18, 22253), (19, 22256),

Gene: Scottish\_29 Start: 27190, Stop: 27330, Start Num: 11  
Candidate Starts for Scottish\_29:  
(Start: 11 @27190 has 116 MA's), (23, 27265),

Gene: Seabastian\_28 Start: 26098, Stop: 26238, Start Num: 11  
Candidate Starts for Seabastian\_28:  
(Start: 11 @26098 has 116 MA's), (23, 26173),

Gene: Seagreen\_29 Start: 25880, Stop: 26047, Start Num: 9  
Candidate Starts for Seagreen\_29:  
(Start: 9 @25880 has 79 MA's), (Start: 12 @25910 has 11 MA's), (23, 25982),

Gene: Shauna1\_25 Start: 25035, Stop: 25202, Start Num: 9  
Candidate Starts for Shauna1\_25:  
(Start: 9 @25035 has 79 MA's), (Start: 12 @25065 has 11 MA's), (23, 25137),

Gene: ShiLan\_28 Start: 26065, Stop: 26205, Start Num: 11  
Candidate Starts for ShiLan\_28:  
(Start: 11 @26065 has 116 MA's), (23, 26140),

Gene: ShowerHandel\_28 Start: 26066, Stop: 26206, Start Num: 11  
Candidate Starts for ShowerHandel\_28:

(Start: 11 @26066 has 116 MA's), (23, 26141),

Gene: ShroomBoi\_25 Start: 24925, Stop: 25092, Start Num: 9

Candidate Starts for ShroomBoi\_25:

(Start: 9 @24925 has 79 MA's), (Start: 12 @24955 has 11 MA's), (23, 25027),

Gene: SiSi\_28 Start: 25864, Stop: 26004, Start Num: 11

Candidate Starts for SiSi\_28:

(Start: 11 @25864 has 116 MA's), (23, 25939),

Gene: Silvafighter\_25 Start: 22166, Stop: 22348, Start Num: 7

Candidate Starts for Silvafighter\_25:

(Start: 7 @22166 has 6 MA's), (Start: 8 @22169 has 13 MA's), (18, 22253), (19, 22256),

Gene: SilverChicken\_35 Start: 25765, Stop: 25902, Start Num: 12

Candidate Starts for SilverChicken\_35:

(Start: 9 @25735 has 79 MA's), (Start: 12 @25765 has 11 MA's), (23, 25837),

Gene: Silvy\_25 Start: 22170, Stop: 22349, Start Num: 8

Candidate Starts for Silvy\_25:

(Start: 7 @22167 has 6 MA's), (Start: 8 @22170 has 13 MA's), (18, 22254), (19, 22257),

Gene: SimranZ1\_29 Start: 25717, Stop: 25854, Start Num: 11

Candidate Starts for SimranZ1\_29:

(Start: 11 @25717 has 116 MA's), (23, 25792), (24, 25810),

Gene: Smurph\_25 Start: 22169, Stop: 22348, Start Num: 8

Candidate Starts for Smurph\_25:

(Start: 7 @22166 has 6 MA's), (Start: 8 @22169 has 13 MA's), (18, 22253), (19, 22256),

Gene: Soul22\_32 Start: 25415, Stop: 25555, Start Num: 11

Candidate Starts for Soul22\_32:

(Start: 11 @25415 has 116 MA's), (23, 25490),

Gene: Sparkdehlily\_28 Start: 25915, Stop: 26049, Start Num: 11

Candidate Starts for Sparkdehlily\_28:

(Start: 11 @25915 has 116 MA's), (23, 25984),

Gene: Spartacus\_29 Start: 26108, Stop: 26275, Start Num: 9

Candidate Starts for Spartacus\_29:

(Start: 9 @26108 has 79 MA's), (Start: 12 @26138 has 11 MA's), (23, 26210),

Gene: Spikelee\_29 Start: 25856, Stop: 26023, Start Num: 9

Candidate Starts for Spikelee\_29:

(Start: 9 @25856 has 79 MA's), (Start: 12 @25886 has 11 MA's), (23, 25958),

Gene: Spoonbill\_28 Start: 26079, Stop: 26213, Start Num: 11

Candidate Starts for Spoonbill\_28:

(Start: 11 @26079 has 116 MA's), (23, 26148),

Gene: Stap\_29 Start: 26038, Stop: 26178, Start Num: 11

Candidate Starts for Stap\_29:

(Start: 11 @26038 has 116 MA's), (23, 26113),

Gene: Strokeseat\_28 Start: 26130, Stop: 26282, Start Num: 9  
Candidate Starts for Strokeseat\_28:  
(Start: 9 @26130 has 79 MA's), (Start: 12 @26145 has 11 MA's), (23, 26217),

Gene: SuperGrey\_28 Start: 26610, Stop: 26750, Start Num: 11  
Candidate Starts for SuperGrey\_28:  
(Start: 11 @26610 has 116 MA's), (23, 26685),

Gene: SwagPiggett\_28 Start: 25877, Stop: 26017, Start Num: 11  
Candidate Starts for SwagPiggett\_28:  
(Start: 11 @25877 has 116 MA's), (23, 25952),

Gene: TChen\_27 Start: 26165, Stop: 26302, Start Num: 12  
Candidate Starts for TChen\_27:  
(Start: 12 @26165 has 11 MA's), (23, 26237),

Gene: TDanisky\_28 Start: 25915, Stop: 26049, Start Num: 11  
Candidate Starts for TDanisky\_28:  
(Start: 11 @25915 has 116 MA's), (23, 25984),

Gene: Taj\_28 Start: 26060, Stop: 26227, Start Num: 9  
Candidate Starts for Taj\_28:  
(Start: 9 @26060 has 79 MA's), (Start: 12 @26090 has 11 MA's), (23, 26162),

Gene: Tapioca\_25 Start: 22169, Stop: 22348, Start Num: 8  
Candidate Starts for Tapioca\_25:  
(Start: 7 @22166 has 6 MA's), (Start: 8 @22169 has 13 MA's), (18, 22253), (19, 22256),

Gene: ThetaBob\_27 Start: 25254, Stop: 25394, Start Num: 11  
Candidate Starts for ThetaBob\_27:  
(Start: 11 @25254 has 116 MA's), (23, 25329),

Gene: TootsiePop\_29 Start: 25746, Stop: 25898, Start Num: 9  
Candidate Starts for TootsiePop\_29:  
(Start: 9 @25746 has 79 MA's), (Start: 12 @25761 has 11 MA's), (23, 25833),

Gene: Tootsieroll\_29 Start: 25869, Stop: 26021, Start Num: 9  
Candidate Starts for Tootsieroll\_29:  
(Start: 9 @25869 has 79 MA's), (Start: 12 @25884 has 11 MA's), (23, 25956),

Gene: Tortoise12\_25 Start: 22169, Stop: 22348, Start Num: 8  
Candidate Starts for Tortoise12\_25:  
(Start: 7 @22166 has 6 MA's), (Start: 8 @22169 has 13 MA's), (18, 22253), (19, 22256),

Gene: Totinger\_29 Start: 25797, Stop: 25931, Start Num: 11  
Candidate Starts for Totinger\_29:  
(Start: 11 @25797 has 116 MA's), (23, 25866),

Gene: Tweety\_28 Start: 26076, Stop: 26228, Start Num: 9  
Candidate Starts for Tweety\_28:  
(Start: 9 @26076 has 79 MA's), (Start: 12 @26091 has 11 MA's), (23, 26163),



Gene: UncleRicky\_31 Start: 27195, Stop: 27335, Start Num: 11  
Candidate Starts for UncleRicky\_31:  
(Start: 11 @27195 has 116 MA's), (23, 27270),

Gene: VRedHorse\_28 Start: 26083, Stop: 26235, Start Num: 9  
Candidate Starts for VRedHorse\_28:  
(Start: 9 @26083 has 79 MA's), (Start: 12 @26098 has 11 MA's), (23, 26170),

Gene: Veteran\_28 Start: 25894, Stop: 26034, Start Num: 11  
Candidate Starts for Veteran\_28:  
(Start: 11 @25894 has 116 MA's), (23, 25969),

Gene: Violac\_30 Start: 26576, Stop: 26728, Start Num: 9  
Candidate Starts for Violac\_30:  
(Start: 9 @26576 has 79 MA's), (Start: 12 @26591 has 11 MA's), (23, 26663),

Gene: Vivum\_28 Start: 25795, Stop: 25962, Start Num: 9  
Candidate Starts for Vivum\_28:  
(Start: 9 @25795 has 79 MA's), (Start: 12 @25825 has 11 MA's), (23, 25897),

Gene: Wachhund\_28 Start: 26049, Stop: 26189, Start Num: 11  
Candidate Starts for Wachhund\_28:  
(Start: 11 @26049 has 116 MA's), (23, 26124),

Gene: Wee\_29 Start: 26598, Stop: 26765, Start Num: 9  
Candidate Starts for Wee\_29:  
(Start: 9 @26598 has 79 MA's), (Start: 12 @26628 has 11 MA's), (23, 26700),

Gene: Whatsapiecost\_28 Start: 26075, Stop: 26215, Start Num: 11  
Candidate Starts for Whatsapiecost\_28:  
(Start: 11 @26075 has 116 MA's), (23, 26150),

Gene: Whouxphf\_28 Start: 26134, Stop: 26274, Start Num: 11  
Candidate Starts for Whouxphf\_28:  
(Start: 11 @26134 has 116 MA's), (23, 26209),

Gene: WillSterrel\_29 Start: 27241, Stop: 27408, Start Num: 9  
Candidate Starts for WillSterrel\_29:  
(Start: 9 @27241 has 79 MA's), (Start: 12 @27271 has 11 MA's), (23, 27343),

Gene: XFactor\_28 Start: 26030, Stop: 26182, Start Num: 9  
Candidate Starts for XFactor\_28:  
(Start: 9 @26030 has 79 MA's), (Start: 12 @26045 has 11 MA's), (23, 26117),

Gene: Xerxes\_25 Start: 22166, Stop: 22345, Start Num: 8  
Candidate Starts for Xerxes\_25:  
(Start: 7 @22163 has 6 MA's), (Start: 8 @22166 has 13 MA's), (18, 22250), (19, 22253),

Gene: Yorick\_28 Start: 26064, Stop: 26204, Start Num: 11  
Candidate Starts for Yorick\_28:  
(Start: 11 @26064 has 116 MA's), (23, 26139),

Gene: Zapner\_34 Start: 26243, Stop: 26380, Start Num: 12

Candidate Starts for Zapner\_34:  
(3, 26087), (Start: 12 @26243 has 11 MA's), (23, 26315),

Gene: Zerg\_28 Start: 25839, Stop: 26006, Start Num: 9  
Candidate Starts for Zerg\_28:  
(Start: 9 @25839 has 79 MA's), (Start: 12 @25869 has 11 MA's), (23, 25941),

Gene: Zizzle\_28 Start: 26008, Stop: 26148, Start Num: 11  
Candidate Starts for Zizzle\_28:  
(Start: 11 @26008 has 116 MA's), (23, 26083),