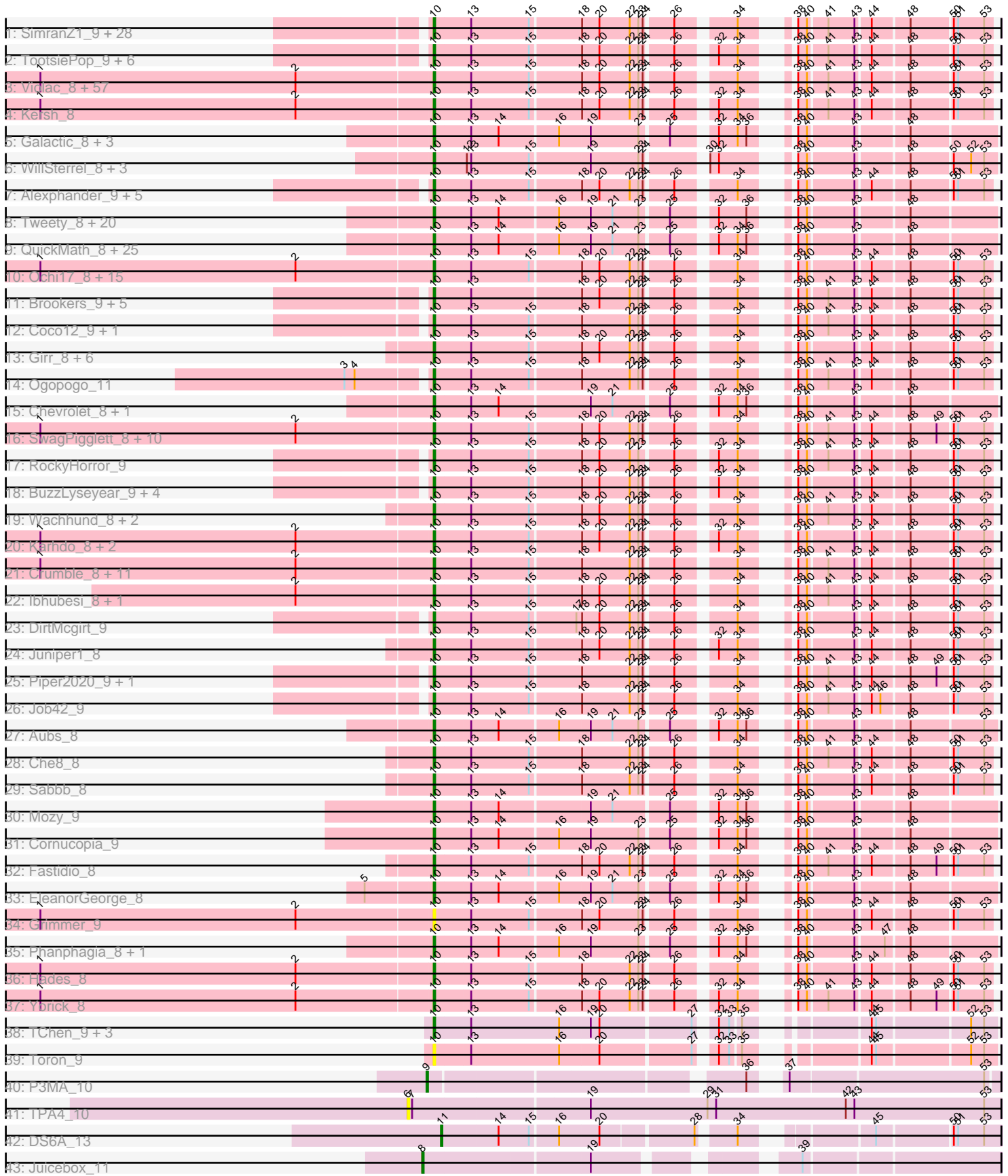


Pham 215791



Note: Tracks are now grouped by subcluster and scaled. Switching in subcluster is indicated by changes in track color. Track scale is now set by default to display the region 30 bp upstream of start 1 to 30 bp downstream of the last possible start. If this default region is judged to be packed too tightly with annotated starts, the track will be further scaled to only show that region of the ORF with annotated starts. This action will be indicated by adding "Zoomed" to the title. For starts, yellow indicates the location of called starts comprised solely of Glimmer/GeneMark auto-annotations, green indicates the location of called starts with at least 1 manual gene annotation.

## Pham 215791 Report

This analysis was run 02/22/25 on database version 588.

Pham number 215791 has 253 members, 29 are drafts.

Phages represented in each track:

- Track 1 : SimranZ1\_9, Leozinho\_9, Emmaloid\_10, Spikelee\_9, Beakin\_9, Plumbus\_9, Brushbloom\_10, Owlst2W\_9, Boomer\_9, Flathead\_9, Rialto\_9, Slim\_10, MulchExplorer\_10, Squirty\_9, Ramsey\_9, Madiba\_9, Tchotchke\_9, LittleShirley\_9, Girafales\_9, DosHalletts\_9, Starceвич\_9, Frankie\_9, DaWorst\_9, Pollywog\_9, Kimberlium\_9, Hegedechwinu\_9, Juice456\_9, Quico\_9, Totinger\_9
- Track 2 : TootsiePop\_9, Aloeri\_9, ChickenDinner\_9, DocMcStuffins\_9, Mova\_9, Misha28\_9, Tootsieroll\_9
- Track 3 : Violac\_8, Leperchaun\_8, Brocalys\_8, Koella\_8, Dante\_8, BodEinwohner17\_8, Sandalphon\_8, LilMoolah\_8, KingMidas\_8, Nimbo\_8, Estave1\_8, ByChance\_8, Eradicator\_8, Gandalph\_8, PHappiness\_8, RedBird\_8, Phatniss\_8, FreddyB\_8, Poenanya\_8, TDanisky\_8, Gorge\_8, Minnie\_8, Saal\_8, Mahavrat\_8, JoeyJr\_8, Llij\_8, Empress\_8, Dorothy\_8, Radiance\_8, Clifton\_8, Blexus\_8, Inventum\_8, OldBen\_8, Doug\_8, Sparkdehlily\_8, Geralt\_8, Vivum\_8, NormanBulbieJr\_8, Cabrinians\_8, BlueCrab\_8, MadMen\_8, Sassafras\_8, EmiMonkey\_8, Pacc40\_8, RitaG\_8, IbOuu\_8, Daenerys\_8, Doomphist\_8, PhilipPhlop\_8, Rockne\_8, Pippy\_8, DRBy19\_8, Polka14\_8, Priscilla\_8, Scottish\_8, DaddyRickover\_8, PMC\_8, Deb65\_8
- Track 4 : Kersh\_8
- Track 5 : Galactic\_8, LunaBlu\_8, NewHope4\_8, Polo2Bam\_9
- Track 6 : WillSterrel\_8, Spartacus\_8, Mutaforma13\_8, IrishSherpFalk\_8
- Track 7 : Alexphander\_9, Lorde\_9, Enby\_9, UncleRicky\_9, Oksu\_9, Drago\_9
- Track 8 : Tweety\_8, KingJulian\_8, Corium\_8, Krakatau\_9, XFactor\_8, PhesterPhotato\_8, CaptainTrips\_9, PopTart\_8, ShroomBoi\_8, Batiatus\_8, Filuzino\_8, StAnnes\_8, Ovechkin\_8, Phalconet\_8, MinionDave\_9, Fruitloop\_8, SassyB\_8, Chuckly\_8, Melissaueren88\_8, Royals2015\_8, Whatsapiecost\_8
- Track 9 : QuickMath\_8, Kenuha5\_8, Rita\_8, Firehouse51\_8, DotProduct\_8, Hamulus\_8, SuperGrey\_8, Akhila\_9, Bipolar\_8, KristaRAM\_9, DeadP\_8, Taj\_8, MilleniumForce\_9, DoRead\_8, Ms6\_8, Emma\_8, DillTech15\_8, Ardmore\_8, MilanaBonita\_9, SG4\_8, Wee\_8, Jant\_8, DLane\_8, Guppsters\_8, IMpilo\_8, SiSi\_8
- Track 10 : Ochi17\_8, Mattes\_8, BobaPhett\_8, Sebastian\_8, OfUltron\_8, Llama\_8, LastJedi\_8, AlpineSix\_8, Modragons\_8, Hlubikazi\_8, Mandlovu\_8, MulchSalad\_8, James\_8, Fancypants\_8, Jinglebell\_8, Strokeseat\_8
- Track 11 : Brookers\_9, BigPhil\_9, Kingsley\_9, Cerasum\_9, Sarma624\_9, Velveteen\_9
- Track 12 : Coco12\_9, Marker\_9
- Track 13 : Girr\_8, Eish\_8, Phasih\_8, MisterCuddles\_8, Latretium\_8, Ruby\_8, Whouxphf\_8

- Track 14 : Ogopogo\_11
- Track 15 : Chevrolet\_8, ArcusAngelus\_8
- Track 16 : SwagPigglett\_8, Zizzle\_8, Burwell21\_8, Lizziana\_8, Maravista\_8, ShowerHandel\_8, Jarcob\_8, Nivrat\_8, Martik\_8, Philus\_8, ShiLan\_8
- Track 17 : RockyHorror\_9
- Track 18 : BuzzLyseyear\_9, Seagreen\_9, JalFarm20\_9, Stap\_9, Bobi\_9
- Track 19 : Wachhund\_8, Spoonbill\_8, Byougenkin\_8
- Track 20 : Karhdo\_8, Veteran\_8, GUmbie\_8
- Track 21 : Crumble\_8, VRedHorse\_8, Florinda\_8, GigiOuiOui\_8, Nitzel\_9, Zerg\_8, CheesePuff\_8, OlympiaSaint\_8, Donkeykong\_8, Moonbeam\_8, Mantra\_8, Bubbles123\_8
- Track 22 : lbhubesi\_8, Harley\_8
- Track 23 : DirtMcgirt\_9
- Track 24 : Juniper1\_8
- Track 25 : Piper2020\_9, Awesomesauce\_9
- Track 26 : Job42\_9
- Track 27 : Aubs\_8
- Track 28 : Che8\_8
- Track 29 : Sabbb\_8
- Track 30 : Mozy\_9
- Track 31 : Cornucopia\_9
- Track 32 : Fastidio\_8
- Track 33 : EleanorGeorge\_8
- Track 34 : Grimmer\_9
- Track 35 : Phanphagia\_8, Shauna1\_8
- Track 36 : Hades\_8
- Track 37 : Yorick\_8
- Track 38 : TChen\_9, LunaStella\_9, ThetaBob\_9, Renaud18\_9
- Track 39 : Toron\_9
- Track 40 : P3MA\_10
- Track 41 : TPA4\_10
- Track 42 : DS6A\_13
- Track 43 : Juicebox\_11

***Summary of Final Annotations (See graph section above for start numbers):***

The start number called the most often in the published annotations is 10, it was called in 221 of the 224 non-draft genes in the pham.

Genes that call this "Most Annotated" start:

- Akhila\_9, Alexphander\_9, Aloeri\_9, AlpineSix\_8, ArcusAngelus\_8, Ardmore\_8, Aubs\_8, Awesomesauce\_9, Batiatus\_8, Beakin\_9, BigPhil\_9, Bipolar\_8, Blexus\_8, BlueCrab\_8, BobaPhett\_8, Bobi\_9, BodEinwohner17\_8, Boomer\_9, Brocalys\_8, Brookers\_9, Brushbloom\_10, Bubbles123\_8, Burwell21\_8, BuzzLyseyear\_9, ByChance\_8, Byougenkin\_8, Cabrinians\_8, CaptainTrips\_9, Cerasum\_9, Che8\_8, CheesePuff\_8, Chevrolet\_8, ChickenDinner\_9, Chuckly\_8, Clifton\_8, Coco12\_9, Corium\_8, Cornucopia\_9, Crumble\_8, DLane\_8, DRBy19\_8, DaWorst\_9, DaddyRickover\_8, Daenerys\_8, Dante\_8, DeadP\_8, Deb65\_8, DillTech15\_8, DirtMcgirt\_9, DoRead\_8, DocMcStuffins\_9, Donkeykong\_8, Doomphist\_8, Dorothy\_8, DosHalletts\_9, DotProduct\_8, Doug\_8, Drago\_9, Eish\_8, EleanorGeorge\_8,

EmiMonkey\_8, Emma\_8, Emmaloid\_10, Empress\_8, Enby\_9, Eradicator\_8, Estave1\_8, Fancypants\_8, Fastidio\_8, Filuzino\_8, Firehouse51\_8, Flathead\_9, Florinda\_8, Frankie\_9, FreddyB\_8, Fruitloop\_8, GUmbe\_8, Galactic\_8, Gandolph\_8, Geralt\_8, GigiOuiOui\_8, Girafales\_9, Girr\_8, Gorge\_8, Grimmer\_9, Guppsters\_8, Hades\_8, Hamulus\_8, Harley\_8, Hegedechwinu\_9, Hlubikazi\_8, IMpilo\_8, IbOuu\_8, Ibhubesi\_8, Inventum\_8, IrishSherpFalk\_8, JalFarm20\_9, James\_8, Jant\_8, Jarcob\_8, Jinglebell\_8, Job42\_9, JoeyJr\_8, Juice456\_9, Juniper1\_8, Karhdo\_8, Kenuha5\_8, Kersh\_8, Kimberlium\_9, KingJulian\_8, KingMidas\_8, Kingsley\_9, Koella\_8, Krakatau\_9, KristaRAM\_9, LastJedi\_8, Latretium\_8, Leozinho\_9, Leperchaun\_8, LiIMoolah\_8, LittleShirley\_9, Lizziana\_8, Llama\_8, Llij\_8, Lorde\_9, LunaBlu\_8, LunaStella\_9, MadMen\_8, Madiba\_9, Mahavrat\_8, Mandlovu\_8, Mantra\_8, Maravista\_8, Marker\_9, Martik\_8, Mattes\_8, Melissauren88\_8, MilanaBonita\_9, MilleniumForce\_9, MinionDave\_9, Minnie\_8, Misha28\_9, MisterCuddles\_8, Modragons\_8, Moonbeam\_8, Mova\_9, Mozy\_9, Ms6\_8, MulchExplorer\_10, MulchSalad\_8, Mutaforma13\_8, NewHope4\_8, Nimbo\_8, Nitzel\_9, Nivrat\_8, NormanBulbieJr\_8, Ochi17\_8, OfUltron\_8, Ogopogo\_11, Oksu\_9, OldBen\_8, OlympiaSaint\_8, Ovechkin\_8, OwlsT2W\_9, PHappiness\_8, PMC\_8, Pacc40\_8, Phalconet\_8, Phanphagia\_8, Phasih\_8, Phatniss\_8, PhesterPhotato\_8, Philus\_8, PhlipPhlop\_8, Piper2020\_9, Pippy\_8, Plumbus\_9, Poenanya\_8, Polka14\_8, Pollywog\_9, Polo2Bam\_9, PopTart\_8, Priscilla\_8, QuickMath\_8, Quico\_9, Radiance\_8, Ramsey\_9, RedBird\_8, Renaud18\_9, Rialto\_9, RitaG\_8, Rita\_8, Rockne\_8, RockyHorror\_9, Royals2015\_8, Ruby\_8, SG4\_8, Saal\_8, Sabbb\_8, Sandalphon\_8, Sarma624\_9, Sassafras\_8, SassyB\_8, Scottish\_8, Seabastian\_8, Seagreen\_9, Shauna1\_8, ShiLan\_8, ShowerHandel\_8, ShroomBoi\_8, SiSi\_8, SimranZ1\_9, Slim\_10, Sparkdehlily\_8, Spartacus\_8, Spikelee\_9, Spoonbill\_8, Squirty\_9, StAnnes\_8, Stap\_9, Starceвич\_9, Strokeseat\_8, SuperGrey\_8, SwagPiggett\_8, TChen\_9, TDanisky\_8, Taj\_8, Tchotchke\_9, ThetaBob\_9, TootsiePop\_9, Tootsieroll\_9, Toron\_9, Totinger\_9, Tweety\_8, UncleRicky\_9, VRedHorse\_8, Velveteen\_9, Veteran\_8, Violac\_8, Vivum\_8, Wachhund\_8, Wee\_8, Whatsapiecost\_8, Whouxphf\_8, WillSterrel\_8, XFactor\_8, Yorick\_8, Zerg\_8, Zizzle\_8,

Genes that have the "Most Annotated" start but do not call it:

- 

Genes that do not have the "Most Annotated" start:

- DS6A\_13, Juicebox\_11, P3MA\_10, TPA4\_10,

### Summary by start number:

Start 6:

- Found in 1 of 253 ( 0.4% ) of genes in pham
- No Manual Annotations of this start.
- Called 100.0% of time when present
- Phage (with cluster) where this start called: TPA4\_10 (singleton),

Start 8:

- Found in 1 of 253 ( 0.4% ) of genes in pham
- Manual Annotations of this start: 1 of 224
- Called 100.0% of time when present
- Phage (with cluster) where this start called: Juicebox\_11 (singleton),

Start 9:

- Found in 1 of 253 ( 0.4% ) of genes in pham

- Manual Annotations of this start: 1 of 224
- Called 100.0% of time when present
- Phage (with cluster) where this start called: P3MA\_10 (singleton),

Start 10:

- Found in 249 of 253 ( 98.4% ) of genes in pham
- Manual Annotations of this start: 221 of 224
- Called 100.0% of time when present
- Phage (with cluster) where this start called: Akhila\_9 (F1), Alexphander\_9 (F1), Aloeri\_9 (F1), AlpineSix\_8 (F1), ArcusAngelus\_8 (F1), Ardmore\_8 (F1), Aubs\_8 (F1), Awesomesauce\_9 (F1), Batiatus\_8 (F1), Beakin\_9 (F1), BigPhil\_9 (F1), Bipolar\_8 (F1), Blexus\_8 (F1), BlueCrab\_8 (F1), BobaPhett\_8 (F1), Bobi\_9 (F1), BodEinwohner17\_8 (F1), Boomer\_9 (F1), Brocalys\_8 (F1), Brookers\_9 (F1), Brushbloom\_10 (F1), Bubbles123\_8 (F1), Burwell21\_8 (F1), BuzzLyseyear\_9 (F1), ByChance\_8 (F1), Byougenkin\_8 (F1), Cabrinians\_8 (F1), CaptainTrips\_9 (F1), Cerasum\_9 (F1), Che8\_8 (F1), CheesePuff\_8 (F1), Chevrolet\_8 (F1), ChickenDinner\_9 (F1), Chuckly\_8 (F1), Clifton\_8 (F1), Coco12\_9 (F1), Corium\_8 (F1), Cornucopia\_9 (F1), Crumble\_8 (F1), DLane\_8 (F1), DRBy19\_8 (F1), DaWorst\_9 (F1), DaddyRickover\_8 (F1), Daenerys\_8 (F1), Dante\_8 (F1), DeadP\_8 (F1), Deb65\_8 (F1), DillTech15\_8 (F1), DirtMcGirt\_9 (F1), DoRead\_8 (F1), DocMcStuffins\_9 (F1), Donkeykong\_8 (F1), Doomphist\_8 (F1), Dorothy\_8 (F1), DosHalletts\_9 (F1), DotProduct\_8 (F1), Doug\_8 (F1), Drago\_9 (F1), Eish\_8 (F1), EleanorGeorge\_8 (F1), EmiMonkey\_8 (F1), Emma\_8 (F1), Emmaloid\_10 (F1), Empress\_8 (F1), Enby\_9 (F1), Eradicator\_8 (F1), Estave1\_8 (F1), Fancypants\_8 (F1), Fastidio\_8 (F1), Filuzino\_8 (F1), Firehouse51\_8 (F1), Flathead\_9 (F1), Florinda\_8 (F1), Frankie\_9 (F1), FreddyB\_8 (F1), Fruitloop\_8 (F1), GUmBie\_8 (F1), Galactic\_8 (F1), Gandolph\_8 (F1), Geralt\_8 (F1), GigiOuiOui\_8 (F1), Girafales\_9 (F1), Girr\_8 (F1), Gorge\_8 (F1), Grimmer\_9 (F1), Guppsters\_8 (F1), Hades\_8 (F1), Hamulus\_8 (F1), Harley\_8 (F1), Hegedechwinu\_9 (F1), Hlubikazi\_8 (F1), IMpilo\_8 (F1), IbOuu\_8 (F1), Ibhubesi\_8 (F1), Inventum\_8 (F1), IrishSherpFalk\_8 (F1), JalFarm20\_9 (F1), James\_8 (F1), Jant\_8 (F1), Jarcob\_8 (F1), Jinglebell\_8 (F1), Job42\_9 (F1), JoeyJr\_8 (F1), Juice456\_9 (F1), Juniper1\_8 (F1), Karhdo\_8 (F1), Kenuha5\_8 (F1), Kersh\_8 (F1), Kimberlium\_9 (F1), KingJulian\_8 (F1), KingMidas\_8 (F1), Kingsley\_9 (F1), Koella\_8 (F1), Krakatau\_9 (F1), KristaRAM\_9 (F1), LastJedi\_8 (F1), Latretium\_8 (F1), Leozinho\_9 (F1), Leperchaun\_8 (F1), LilMoolah\_8 (F1), LittleShirley\_9 (F1), Lizziana\_8 (F1), Llama\_8 (F1), Llij\_8 (F1), Lorde\_9 (F1), LunaBlu\_8 (F1), LunaStella\_9 (F4), MadMen\_8 (F1), Madiba\_9 (F1), Mahavrat\_8 (F1), Mandlovu\_8 (F1), Mantra\_8 (F1), Maravista\_8 (F1), Marker\_9 (F1), Martik\_8 (F1), Mattes\_8 (F1), Melissauren88\_8 (F1), MilanaBonita\_9 (F1), MilleniumForce\_9 (F1), MinionDave\_9 (F1), Minnie\_8 (F1), Misha28\_9 (F1), MisterCuddles\_8 (F1), Modragons\_8 (F1), Moonbeam\_8 (F1), Mova\_9 (F1), Mozy\_9 (F1), Ms6\_8 (F1), MulchExplorer\_10 (F1), MulchSalad\_8 (F), Mutaforma13\_8 (F1), NewHope4\_8 (F1), Nimbo\_8 (F1), Nitzel\_9 (F1), Nivrat\_8 (F1), NormanBulbieJr\_8 (F1), Ochi17\_8 (F1), OfUltron\_8 (F1), Ogopogo\_11 (F1), Oksu\_9 (F1), OldBen\_8 (F1), OlympiaSaint\_8 (F1), Ovechkin\_8 (F1), OwIsT2W\_9 (F1), PHappiness\_8 (F1), PMC\_8 (F1), Pacc40\_8 (F1), Phalconet\_8 (F1), Phanphagia\_8 (F1), Phasih\_8 (F1), Phatniss\_8 (F1), PhesterPhotato\_8 (F1), Philus\_8 (F1), PhilipPhlop\_8 (F1), Piper2020\_9 (F1), Pippy\_8 (F1), Plumbus\_9 (F1), Poenanya\_8 (F1), Polka14\_8 (F1), Pollywog\_9 (F1), Polo2Bam\_9 (F1), PopTart\_8 (F1), Priscilla\_8 (F1), QuickMath\_8 (F1), Quico\_9 (F1), Radiance\_8 (F1), Ramsey\_9 (F1), RedBird\_8 (F1), Renaud18\_9 (F4), Rialto\_9 (F1), RitaG\_8 (F1), Rita\_8 (F1), Rockne\_8 (F1), RockyHorror\_9 (F1), Royals2015\_8 (F1), Ruby\_8 (F1), SG4\_8 (F1), Saal\_8 (F1), Sabbb\_8 (F1), Sandalphon\_8 (F1), Sarma624\_9 (F1), Sassafras\_8 (F1), SassyB\_8 (F1), Scottish\_8 (F1), Sebastian\_8

(F1), Seagreen\_9 (F1), Shauna1\_8 (F1), ShiLan\_8 (F1), ShowerHandel\_8 (F1), ShroomBoi\_8 (F1), SiSi\_8 (F1), SimranZ1\_9 (F1), Slim\_10 (F1), Sparkdehlily\_8 (F1), Spartacus\_8 (F1), Spikelee\_9 (F1), Spoonbill\_8 (F1), Squirty\_9 (F3), StAnnes\_8 (F1), Stap\_9 (F1), Starceвич\_9 (F1), Strokeseat\_8 (F1), SuperGrey\_8 (F1), SwagPiggett\_8 (F1), TChen\_9 (F4), TDanisky\_8 (F1), Taj\_8 (F1), Tchotchke\_9 (F1), ThetaBob\_9 (F4), TootsiePop\_9 (F1), Tootsieroll\_9 (F1), Toron\_9 (F6), Totinger\_9 (F1), Tweety\_8 (F1), UncleRicky\_9 (F1), VRedHorse\_8 (F1), Velveteen\_9 (F1), Veteran\_8 (F1), Violac\_8 (F1), Vivum\_8 (F1), Wachhund\_8 (F1), Wee\_8 (F1), Whatsapiecost\_8 (F1), Whouxphf\_8 (F1), WillSterrel\_8 (F1), XFactor\_8 (F1), Yorick\_8 (F1), Zerg\_8 (F1), Zizzle\_8 (F1),

Start 11:

- Found in 1 of 253 ( 0.4% ) of genes in pham
- Manual Annotations of this start: 1 of 224
- Called 100.0% of time when present
- Phage (with cluster) where this start called: DS6A\_13 (singleton),

### Summary by clusters:

There are 6 clusters represented in this pham: F1, singleton, F3, F4, F6, F,

Info for manual annotations of cluster F1:

- Start number 10 was manually annotated 216 times for cluster F1.

Info for manual annotations of cluster F3:

- Start number 10 was manually annotated 1 time for cluster F3.

Info for manual annotations of cluster F4:

- Start number 10 was manually annotated 4 times for cluster F4.

### Gene Information:

Gene: Akhila\_9 Start: 7094, Stop: 7426, Start Num: 10

Candidate Starts for Akhila\_9:

(Start: 10 @7094 has 221 MA's), (13, 7118), (14, 7136), (16, 7175), (19, 7196), (21, 7211), (23, 7229), (25, 7247), (32, 7271), (34, 7283), (36, 7289), (38, 7301), (40, 7307), (43, 7337), (48, 7370),

Gene: Alexphander\_9 Start: 6296, Stop: 6625, Start Num: 10

Candidate Starts for Alexphander\_9:

(Start: 10 @6296 has 221 MA's), (13, 6320), (15, 6359), (18, 6392), (20, 6404), (22, 6425), (23, 6431), (24, 6434), (26, 6452), (34, 6485), (38, 6503), (40, 6509), (43, 6539), (44, 6548), (48, 6572), (50, 6599), (51, 6602), (53, 6620),

Gene: Aloeri\_9 Start: 6299, Stop: 6628, Start Num: 10

Candidate Starts for Aloeri\_9:

(Start: 10 @6299 has 221 MA's), (13, 6323), (15, 6362), (18, 6395), (20, 6407), (22, 6428), (23, 6434), (24, 6437), (26, 6455), (32, 6476), (34, 6488), (38, 6506), (40, 6512), (41, 6524), (43, 6542), (44, 6551), (48, 6575), (50, 6602), (51, 6605), (53, 6623),

Gene: AlpineSix\_8 Start: 6442, Stop: 6771, Start Num: 10

Candidate Starts for AlpineSix\_8:

(1, 6172), (2, 6349), (Start: 10 @6442 has 221 MA's), (13, 6466), (15, 6505), (18, 6538), (20, 6550), (22, 6571), (23, 6577), (24, 6580), (26, 6598), (34, 6631), (38, 6649), (40, 6655), (43, 6685), (44, 6694), (48, 6718), (50, 6745), (51, 6748), (53, 6766),

Gene: ArcusAngelus\_8 Start: 6436, Stop: 6768, Start Num: 10

Candidate Starts for ArcusAngelus\_8:

(Start: 10 @6436 has 221 MA's), (13, 6460), (14, 6478), (19, 6538), (21, 6553), (25, 6589), (32, 6613), (34, 6625), (36, 6631), (38, 6643), (40, 6649), (43, 6679), (48, 6712),

Gene: Ardmore\_8 Start: 6446, Stop: 6778, Start Num: 10

Candidate Starts for Ardmore\_8:

(Start: 10 @6446 has 221 MA's), (13, 6470), (14, 6488), (16, 6527), (19, 6548), (21, 6563), (23, 6581), (25, 6599), (32, 6623), (34, 6635), (36, 6641), (38, 6653), (40, 6659), (43, 6689), (48, 6722),

Gene: Aubs\_8 Start: 6446, Stop: 6778, Start Num: 10

Candidate Starts for Aubs\_8:

(Start: 10 @6446 has 221 MA's), (13, 6470), (14, 6488), (16, 6527), (19, 6548), (21, 6563), (23, 6581), (25, 6599), (32, 6623), (34, 6635), (36, 6641), (38, 6653), (40, 6659), (43, 6689), (48, 6722), (53, 6770),

Gene: Awesomesauce\_9 Start: 6299, Stop: 6628, Start Num: 10

Candidate Starts for Awesomesauce\_9:

(Start: 10 @6299 has 221 MA's), (13, 6323), (15, 6362), (18, 6395), (22, 6428), (23, 6434), (24, 6437), (26, 6455), (34, 6488), (38, 6506), (40, 6512), (41, 6524), (43, 6542), (44, 6551), (48, 6575), (49, 6593), (50, 6602), (51, 6605), (53, 6623),

Gene: Batiatus\_8 Start: 6446, Stop: 6778, Start Num: 10

Candidate Starts for Batiatus\_8:

(Start: 10 @6446 has 221 MA's), (13, 6470), (14, 6488), (16, 6527), (19, 6548), (21, 6563), (23, 6581), (25, 6599), (32, 6623), (36, 6641), (38, 6653), (40, 6659), (43, 6689), (48, 6722),

Gene: Beakin\_9 Start: 6299, Stop: 6628, Start Num: 10

Candidate Starts for Beakin\_9:

(Start: 10 @6299 has 221 MA's), (13, 6323), (15, 6362), (18, 6395), (20, 6407), (22, 6428), (23, 6434), (24, 6437), (26, 6455), (34, 6488), (38, 6506), (40, 6512), (41, 6524), (43, 6542), (44, 6551), (48, 6575), (50, 6602), (51, 6605), (53, 6623),

Gene: BigPhil\_9 Start: 6295, Stop: 6624, Start Num: 10

Candidate Starts for BigPhil\_9:

(Start: 10 @6295 has 221 MA's), (13, 6319), (18, 6391), (20, 6403), (22, 6424), (23, 6430), (24, 6433), (26, 6451), (34, 6484), (38, 6502), (40, 6508), (41, 6520), (43, 6538), (44, 6547), (48, 6571), (50, 6598), (51, 6601), (53, 6619),

Gene: Bipolar\_8 Start: 6446, Stop: 6778, Start Num: 10

Candidate Starts for Bipolar\_8:

(Start: 10 @6446 has 221 MA's), (13, 6470), (14, 6488), (16, 6527), (19, 6548), (21, 6563), (23, 6581), (25, 6599), (32, 6623), (34, 6635), (36, 6641), (38, 6653), (40, 6659), (43, 6689), (48, 6722),

Gene: Blexus\_8 Start: 6459, Stop: 6788, Start Num: 10

Candidate Starts for Blexus\_8:

(1, 6189), (2, 6366), (Start: 10 @6459 has 221 MA's), (13, 6483), (15, 6522), (18, 6555), (20, 6567), (22, 6588), (23, 6594), (24, 6597), (26, 6615), (34, 6648), (38, 6666), (40, 6672), (41, 6684), (43, 6702),

(44, 6711), (48, 6735), (50, 6762), (51, 6765), (53, 6783),

Gene: BlueCrab\_8 Start: 6443, Stop: 6772, Start Num: 10

Candidate Starts for BlueCrab\_8:

(1, 6173), (2, 6350), (Start: 10 @6443 has 221 MA's), (13, 6467), (15, 6506), (18, 6539), (20, 6551), (22, 6572), (23, 6578), (24, 6581), (26, 6599), (34, 6632), (38, 6650), (40, 6656), (41, 6668), (43, 6686), (44, 6695), (48, 6719), (50, 6746), (51, 6749), (53, 6767),

Gene: BobaPhett\_8 Start: 6435, Stop: 6764, Start Num: 10

Candidate Starts for BobaPhett\_8:

(1, 6165), (2, 6342), (Start: 10 @6435 has 221 MA's), (13, 6459), (15, 6498), (18, 6531), (20, 6543), (22, 6564), (23, 6570), (24, 6573), (26, 6591), (34, 6624), (38, 6642), (40, 6648), (43, 6678), (44, 6687), (48, 6711), (50, 6738), (51, 6741), (53, 6759),

Gene: Bobi\_9 Start: 6296, Stop: 6625, Start Num: 10

Candidate Starts for Bobi\_9:

(Start: 10 @6296 has 221 MA's), (13, 6320), (15, 6359), (18, 6392), (20, 6404), (22, 6425), (23, 6431), (24, 6434), (26, 6452), (32, 6473), (34, 6485), (38, 6503), (40, 6509), (43, 6539), (44, 6548), (48, 6572), (50, 6599), (51, 6602), (53, 6620),

Gene: BodEinwohner17\_8 Start: 6443, Stop: 6772, Start Num: 10

Candidate Starts for BodEinwohner17\_8:

(1, 6173), (2, 6350), (Start: 10 @6443 has 221 MA's), (13, 6467), (15, 6506), (18, 6539), (20, 6551), (22, 6572), (23, 6578), (24, 6581), (26, 6599), (34, 6632), (38, 6650), (40, 6656), (41, 6668), (43, 6686), (44, 6695), (48, 6719), (50, 6746), (51, 6749), (53, 6767),

Gene: Boomer\_9 Start: 6296, Stop: 6625, Start Num: 10

Candidate Starts for Boomer\_9:

(Start: 10 @6296 has 221 MA's), (13, 6320), (15, 6359), (18, 6392), (20, 6404), (22, 6425), (23, 6431), (24, 6434), (26, 6452), (34, 6485), (38, 6503), (40, 6509), (41, 6521), (43, 6539), (44, 6548), (48, 6572), (50, 6599), (51, 6602), (53, 6620),

Gene: Brocalys\_8 Start: 6432, Stop: 6761, Start Num: 10

Candidate Starts for Brocalys\_8:

(1, 6162), (2, 6339), (Start: 10 @6432 has 221 MA's), (13, 6456), (15, 6495), (18, 6528), (20, 6540), (22, 6561), (23, 6567), (24, 6570), (26, 6588), (34, 6621), (38, 6639), (40, 6645), (41, 6657), (43, 6675), (44, 6684), (48, 6708), (50, 6735), (51, 6738), (53, 6756),

Gene: Brookers\_9 Start: 6295, Stop: 6624, Start Num: 10

Candidate Starts for Brookers\_9:

(Start: 10 @6295 has 221 MA's), (13, 6319), (18, 6391), (20, 6403), (22, 6424), (23, 6430), (24, 6433), (26, 6451), (34, 6484), (38, 6502), (40, 6508), (41, 6520), (43, 6538), (44, 6547), (48, 6571), (50, 6598), (51, 6601), (53, 6619),

Gene: Brushbloom\_10 Start: 6295, Stop: 6624, Start Num: 10

Candidate Starts for Brushbloom\_10:

(Start: 10 @6295 has 221 MA's), (13, 6319), (15, 6358), (18, 6391), (20, 6403), (22, 6424), (23, 6430), (24, 6433), (26, 6451), (34, 6484), (38, 6502), (40, 6508), (41, 6520), (43, 6538), (44, 6547), (48, 6571), (50, 6598), (51, 6601), (53, 6619),

Gene: Bubbles123\_8 Start: 6462, Stop: 6791, Start Num: 10

Candidate Starts for Bubbles123\_8:



(1, 6192), (2, 6369), (Start: 10 @6462 has 221 MA's), (13, 6486), (15, 6525), (18, 6558), (22, 6591), (23, 6597), (24, 6600), (26, 6618), (34, 6651), (38, 6669), (40, 6675), (41, 6687), (43, 6705), (44, 6714), (48, 6738), (50, 6765), (51, 6768), (53, 6786),

Gene: Burwell21\_8 Start: 6443, Stop: 6772, Start Num: 10

Candidate Starts for Burwell21\_8:

(1, 6173), (2, 6350), (Start: 10 @6443 has 221 MA's), (13, 6467), (15, 6506), (18, 6539), (20, 6551), (22, 6572), (23, 6578), (24, 6581), (26, 6599), (34, 6632), (38, 6650), (40, 6656), (41, 6668), (43, 6686), (44, 6695), (48, 6719), (49, 6737), (50, 6746), (51, 6749), (53, 6767),

Gene: BuzzLyseyear\_9 Start: 6295, Stop: 6624, Start Num: 10

Candidate Starts for BuzzLyseyear\_9:

(Start: 10 @6295 has 221 MA's), (13, 6319), (15, 6358), (18, 6391), (20, 6403), (22, 6424), (23, 6430), (24, 6433), (26, 6451), (32, 6472), (34, 6484), (38, 6502), (40, 6508), (43, 6538), (44, 6547), (48, 6571), (50, 6598), (51, 6601), (53, 6619),

Gene: ByChance\_8 Start: 6445, Stop: 6774, Start Num: 10

Candidate Starts for ByChance\_8:

(1, 6175), (2, 6352), (Start: 10 @6445 has 221 MA's), (13, 6469), (15, 6508), (18, 6541), (20, 6553), (22, 6574), (23, 6580), (24, 6583), (26, 6601), (34, 6634), (38, 6652), (40, 6658), (41, 6670), (43, 6688), (44, 6697), (48, 6721), (50, 6748), (51, 6751), (53, 6769),

Gene: Byougenkin\_8 Start: 6433, Stop: 6762, Start Num: 10

Candidate Starts for Byougenkin\_8:

(Start: 10 @6433 has 221 MA's), (13, 6457), (15, 6496), (18, 6529), (20, 6541), (22, 6562), (23, 6568), (24, 6571), (26, 6589), (34, 6622), (38, 6640), (40, 6646), (41, 6658), (43, 6676), (44, 6685), (48, 6709), (50, 6736), (51, 6739), (53, 6757),

Gene: Cabrinians\_8 Start: 6435, Stop: 6764, Start Num: 10

Candidate Starts for Cabrinians\_8:

(1, 6165), (2, 6342), (Start: 10 @6435 has 221 MA's), (13, 6459), (15, 6498), (18, 6531), (20, 6543), (22, 6564), (23, 6570), (24, 6573), (26, 6591), (34, 6624), (38, 6642), (40, 6648), (41, 6660), (43, 6678), (44, 6687), (48, 6711), (50, 6738), (51, 6741), (53, 6759),

Gene: CaptainTrips\_9 Start: 7094, Stop: 7426, Start Num: 10

Candidate Starts for CaptainTrips\_9:

(Start: 10 @7094 has 221 MA's), (13, 7118), (14, 7136), (16, 7175), (19, 7196), (21, 7211), (23, 7229), (25, 7247), (32, 7271), (36, 7289), (38, 7301), (40, 7307), (43, 7337), (48, 7370),

Gene: Cerasum\_9 Start: 6295, Stop: 6624, Start Num: 10

Candidate Starts for Cerasum\_9:

(Start: 10 @6295 has 221 MA's), (13, 6319), (18, 6391), (20, 6403), (22, 6424), (23, 6430), (24, 6433), (26, 6451), (34, 6484), (38, 6502), (40, 6508), (41, 6520), (43, 6538), (44, 6547), (48, 6571), (50, 6598), (51, 6601), (53, 6619),

Gene: Che8\_8 Start: 6447, Stop: 6776, Start Num: 10

Candidate Starts for Che8\_8:

(Start: 10 @6447 has 221 MA's), (13, 6471), (15, 6510), (18, 6543), (22, 6576), (23, 6582), (24, 6585), (26, 6603), (34, 6636), (38, 6654), (40, 6660), (41, 6672), (43, 6690), (44, 6699), (48, 6723), (50, 6750), (51, 6753), (53, 6771),

Gene: Cheesepuff\_8 Start: 6445, Stop: 6774, Start Num: 10

Candidate Starts for Cheesepuff\_8:

(1, 6175), (2, 6352), (Start: 10 @6445 has 221 MA's), (13, 6469), (15, 6508), (18, 6541), (22, 6574), (23, 6580), (24, 6583), (26, 6601), (34, 6634), (38, 6652), (40, 6658), (41, 6670), (43, 6688), (44, 6697), (48, 6721), (50, 6748), (51, 6751), (53, 6769),

Gene: Chevrolet\_8 Start: 6436, Stop: 6768, Start Num: 10

Candidate Starts for Chevrolet\_8:

(Start: 10 @6436 has 221 MA's), (13, 6460), (14, 6478), (19, 6538), (21, 6553), (25, 6589), (32, 6613), (34, 6625), (36, 6631), (38, 6643), (40, 6649), (43, 6679), (48, 6712),

Gene: ChickenDinner\_9 Start: 6299, Stop: 6628, Start Num: 10

Candidate Starts for ChickenDinner\_9:

(Start: 10 @6299 has 221 MA's), (13, 6323), (15, 6362), (18, 6395), (20, 6407), (22, 6428), (23, 6434), (24, 6437), (26, 6455), (32, 6476), (34, 6488), (38, 6506), (40, 6512), (41, 6524), (43, 6542), (44, 6551), (48, 6575), (50, 6602), (51, 6605), (53, 6623),

Gene: Chuckly\_8 Start: 6446, Stop: 6778, Start Num: 10

Candidate Starts for Chuckly\_8:

(Start: 10 @6446 has 221 MA's), (13, 6470), (14, 6488), (16, 6527), (19, 6548), (21, 6563), (23, 6581), (25, 6599), (32, 6623), (36, 6641), (38, 6653), (40, 6659), (43, 6689), (48, 6722),

Gene: Clifton\_8 Start: 6431, Stop: 6760, Start Num: 10

Candidate Starts for Clifton\_8:

(1, 6161), (2, 6338), (Start: 10 @6431 has 221 MA's), (13, 6455), (15, 6494), (18, 6527), (20, 6539), (22, 6560), (23, 6566), (24, 6569), (26, 6587), (34, 6620), (38, 6638), (40, 6644), (41, 6656), (43, 6674), (44, 6683), (48, 6707), (50, 6734), (51, 6737), (53, 6755),

Gene: Coco12\_9 Start: 6296, Stop: 6625, Start Num: 10

Candidate Starts for Coco12\_9:

(Start: 10 @6296 has 221 MA's), (13, 6320), (15, 6359), (18, 6392), (22, 6425), (23, 6431), (24, 6434), (26, 6452), (34, 6485), (38, 6503), (40, 6509), (41, 6521), (43, 6539), (44, 6548), (48, 6572), (50, 6599), (51, 6602), (53, 6620),

Gene: Corium\_8 Start: 6447, Stop: 6779, Start Num: 10

Candidate Starts for Corium\_8:

(Start: 10 @6447 has 221 MA's), (13, 6471), (14, 6489), (16, 6528), (19, 6549), (21, 6564), (23, 6582), (25, 6600), (32, 6624), (36, 6642), (38, 6654), (40, 6660), (43, 6690), (48, 6723),

Gene: Cornucopia\_9 Start: 6296, Stop: 6628, Start Num: 10

Candidate Starts for Cornucopia\_9:

(Start: 10 @6296 has 221 MA's), (13, 6320), (14, 6338), (16, 6377), (19, 6398), (23, 6431), (25, 6449), (32, 6473), (34, 6485), (36, 6491), (38, 6503), (40, 6509), (43, 6539), (48, 6572),

Gene: Crumble\_8 Start: 6445, Stop: 6774, Start Num: 10

Candidate Starts for Crumble\_8:

(1, 6175), (2, 6352), (Start: 10 @6445 has 221 MA's), (13, 6469), (15, 6508), (18, 6541), (22, 6574), (23, 6580), (24, 6583), (26, 6601), (34, 6634), (38, 6652), (40, 6658), (41, 6670), (43, 6688), (44, 6697), (48, 6721), (50, 6748), (51, 6751), (53, 6769),

Gene: DLane\_8 Start: 6447, Stop: 6779, Start Num: 10

Candidate Starts for DLane\_8:

(Start: 10 @6447 has 221 MA's), (13, 6471), (14, 6489), (16, 6528), (19, 6549), (21, 6564), (23, 6582), (25, 6600), (32, 6624), (34, 6636), (36, 6642), (38, 6654), (40, 6660), (43, 6690), (48, 6723),

Gene: DRBy19\_8 Start: 6459, Stop: 6788, Start Num: 10

Candidate Starts for DRBy19\_8:

(1, 6189), (2, 6366), (Start: 10 @6459 has 221 MA's), (13, 6483), (15, 6522), (18, 6555), (20, 6567), (22, 6588), (23, 6594), (24, 6597), (26, 6615), (34, 6648), (38, 6666), (40, 6672), (41, 6684), (43, 6702), (44, 6711), (48, 6735), (50, 6762), (51, 6765), (53, 6783),

Gene: DS6A\_13 Start: 9721, Stop: 10056, Start Num: 11

Candidate Starts for DS6A\_13:

(Start: 11 @9721 has 1 MA's), (14, 9760), (15, 9781), (16, 9799), (20, 9826), (28, 9886), (34, 9907), (45, 9976), (50, 10024), (51, 10027), (53, 10045),

Gene: DaWorst\_9 Start: 6297, Stop: 6626, Start Num: 10

Candidate Starts for DaWorst\_9:

(Start: 10 @6297 has 221 MA's), (13, 6321), (15, 6360), (18, 6393), (20, 6405), (22, 6426), (23, 6432), (24, 6435), (26, 6453), (34, 6486), (38, 6504), (40, 6510), (41, 6522), (43, 6540), (44, 6549), (48, 6573), (50, 6600), (51, 6603), (53, 6621),

Gene: DaddyRickover\_8 Start: 6443, Stop: 6772, Start Num: 10

Candidate Starts for DaddyRickover\_8:

(1, 6173), (2, 6350), (Start: 10 @6443 has 221 MA's), (13, 6467), (15, 6506), (18, 6539), (20, 6551), (22, 6572), (23, 6578), (24, 6581), (26, 6599), (34, 6632), (38, 6650), (40, 6656), (41, 6668), (43, 6686), (44, 6695), (48, 6719), (50, 6746), (51, 6749), (53, 6767),

Gene: Daenerys\_8 Start: 6443, Stop: 6772, Start Num: 10

Candidate Starts for Daenerys\_8:

(1, 6173), (2, 6350), (Start: 10 @6443 has 221 MA's), (13, 6467), (15, 6506), (18, 6539), (20, 6551), (22, 6572), (23, 6578), (24, 6581), (26, 6599), (34, 6632), (38, 6650), (40, 6656), (41, 6668), (43, 6686), (44, 6695), (48, 6719), (50, 6746), (51, 6749), (53, 6767),

Gene: Dante\_8 Start: 6460, Stop: 6789, Start Num: 10

Candidate Starts for Dante\_8:

(1, 6190), (2, 6367), (Start: 10 @6460 has 221 MA's), (13, 6484), (15, 6523), (18, 6556), (20, 6568), (22, 6589), (23, 6595), (24, 6598), (26, 6616), (34, 6649), (38, 6667), (40, 6673), (41, 6685), (43, 6703), (44, 6712), (48, 6736), (50, 6763), (51, 6766), (53, 6784),

Gene: DeadP\_8 Start: 6446, Stop: 6778, Start Num: 10

Candidate Starts for DeadP\_8:

(Start: 10 @6446 has 221 MA's), (13, 6470), (14, 6488), (16, 6527), (19, 6548), (21, 6563), (23, 6581), (25, 6599), (32, 6623), (34, 6635), (36, 6641), (38, 6653), (40, 6659), (43, 6689), (48, 6722),

Gene: Deb65\_8 Start: 6443, Stop: 6772, Start Num: 10

Candidate Starts for Deb65\_8:

(1, 6173), (2, 6350), (Start: 10 @6443 has 221 MA's), (13, 6467), (15, 6506), (18, 6539), (20, 6551), (22, 6572), (23, 6578), (24, 6581), (26, 6599), (34, 6632), (38, 6650), (40, 6656), (41, 6668), (43, 6686), (44, 6695), (48, 6719), (50, 6746), (51, 6749), (53, 6767),

Gene: DillTech15\_8 Start: 6446, Stop: 6778, Start Num: 10

Candidate Starts for DillTech15\_8:

(Start: 10 @6446 has 221 MA's), (13, 6470), (14, 6488), (16, 6527), (19, 6548), (21, 6563), (23, 6581), (25, 6599), (32, 6623), (34, 6635), (36, 6641), (38, 6653), (40, 6659), (43, 6689), (48, 6722),

Gene: DirtMcgirt\_9 Start: 6298, Stop: 6627, Start Num: 10

Candidate Starts for DirtMcgirt\_9:

(Start: 10 @6298 has 221 MA's), (13, 6322), (15, 6361), (17, 6391), (18, 6394), (20, 6406), (22, 6427), (23, 6433), (24, 6436), (26, 6454), (34, 6487), (38, 6505), (40, 6511), (43, 6541), (44, 6550), (48, 6574), (50, 6601), (51, 6604), (53, 6622),

Gene: DoRead\_8 Start: 6434, Stop: 6766, Start Num: 10

Candidate Starts for DoRead\_8:

(Start: 10 @6434 has 221 MA's), (13, 6458), (14, 6476), (16, 6515), (19, 6536), (21, 6551), (23, 6569), (25, 6587), (32, 6611), (34, 6623), (36, 6629), (38, 6641), (40, 6647), (43, 6677), (48, 6710),

Gene: DocMcStuffins\_9 Start: 6299, Stop: 6628, Start Num: 10

Candidate Starts for DocMcStuffins\_9:

(Start: 10 @6299 has 221 MA's), (13, 6323), (15, 6362), (18, 6395), (20, 6407), (22, 6428), (23, 6434), (24, 6437), (26, 6455), (32, 6476), (34, 6488), (38, 6506), (40, 6512), (41, 6524), (43, 6542), (44, 6551), (48, 6575), (50, 6602), (51, 6605), (53, 6623),

Gene: Donkeykong\_8 Start: 6462, Stop: 6791, Start Num: 10

Candidate Starts for Donkeykong\_8:

(1, 6192), (2, 6369), (Start: 10 @6462 has 221 MA's), (13, 6486), (15, 6525), (18, 6558), (22, 6591), (23, 6597), (24, 6600), (26, 6618), (34, 6651), (38, 6669), (40, 6675), (41, 6687), (43, 6705), (44, 6714), (48, 6738), (50, 6765), (51, 6768), (53, 6786),

Gene: Doomphist\_8 Start: 6443, Stop: 6772, Start Num: 10

Candidate Starts for Doomphist\_8:

(1, 6173), (2, 6350), (Start: 10 @6443 has 221 MA's), (13, 6467), (15, 6506), (18, 6539), (20, 6551), (22, 6572), (23, 6578), (24, 6581), (26, 6599), (34, 6632), (38, 6650), (40, 6656), (41, 6668), (43, 6686), (44, 6695), (48, 6719), (50, 6746), (51, 6749), (53, 6767),

Gene: Dorothy\_8 Start: 6443, Stop: 6772, Start Num: 10

Candidate Starts for Dorothy\_8:

(1, 6173), (2, 6350), (Start: 10 @6443 has 221 MA's), (13, 6467), (15, 6506), (18, 6539), (20, 6551), (22, 6572), (23, 6578), (24, 6581), (26, 6599), (34, 6632), (38, 6650), (40, 6656), (41, 6668), (43, 6686), (44, 6695), (48, 6719), (50, 6746), (51, 6749), (53, 6767),

Gene: DosHalletts\_9 Start: 6296, Stop: 6625, Start Num: 10

Candidate Starts for DosHalletts\_9:

(Start: 10 @6296 has 221 MA's), (13, 6320), (15, 6359), (18, 6392), (20, 6404), (22, 6425), (23, 6431), (24, 6434), (26, 6452), (34, 6485), (38, 6503), (40, 6509), (41, 6521), (43, 6539), (44, 6548), (48, 6572), (50, 6599), (51, 6602), (53, 6620),

Gene: DotProduct\_8 Start: 6447, Stop: 6779, Start Num: 10

Candidate Starts for DotProduct\_8:

(Start: 10 @6447 has 221 MA's), (13, 6471), (14, 6489), (16, 6528), (19, 6549), (21, 6564), (23, 6582), (25, 6600), (32, 6624), (34, 6636), (36, 6642), (38, 6654), (40, 6660), (43, 6690), (48, 6723),

Gene: Doug\_8 Start: 6445, Stop: 6774, Start Num: 10

Candidate Starts for Doug\_8:

(1, 6175), (2, 6352), (Start: 10 @6445 has 221 MA's), (13, 6469), (15, 6508), (18, 6541), (20, 6553), (22, 6574), (23, 6580), (24, 6583), (26, 6601), (34, 6634), (38, 6652), (40, 6658), (41, 6670), (43, 6688), (44, 6697), (48, 6721), (50, 6748), (51, 6751), (53, 6769),

Gene: Drago\_9 Start: 6296, Stop: 6625, Start Num: 10

Candidate Starts for Drago\_9:

(Start: 10 @6296 has 221 MA's), (13, 6320), (15, 6359), (18, 6392), (20, 6404), (22, 6425), (23, 6431), (24, 6434), (26, 6452), (34, 6485), (38, 6503), (40, 6509), (43, 6539), (44, 6548), (48, 6572), (50, 6599), (51, 6602), (53, 6620),

Gene: Eish\_8 Start: 6433, Stop: 6762, Start Num: 10

Candidate Starts for Eish\_8:

(Start: 10 @6433 has 221 MA's), (13, 6457), (15, 6496), (18, 6529), (20, 6541), (22, 6562), (23, 6568), (24, 6571), (26, 6589), (34, 6622), (38, 6640), (40, 6646), (43, 6676), (44, 6685), (48, 6709), (50, 6736), (51, 6739), (53, 6757),

Gene: EleanorGeorge\_8 Start: 6446, Stop: 6778, Start Num: 10

Candidate Starts for EleanorGeorge\_8:

(5, 6401), (Start: 10 @6446 has 221 MA's), (13, 6470), (14, 6488), (16, 6527), (19, 6548), (21, 6563), (23, 6581), (25, 6599), (32, 6623), (34, 6635), (36, 6641), (38, 6653), (40, 6659), (43, 6689), (48, 6722),

Gene: EmiMonkey\_8 Start: 6460, Stop: 6789, Start Num: 10

Candidate Starts for EmiMonkey\_8:

(1, 6190), (2, 6367), (Start: 10 @6460 has 221 MA's), (13, 6484), (15, 6523), (18, 6556), (20, 6568), (22, 6589), (23, 6595), (24, 6598), (26, 6616), (34, 6649), (38, 6667), (40, 6673), (41, 6685), (43, 6703), (44, 6712), (48, 6736), (50, 6763), (51, 6766), (53, 6784),

Gene: Emma\_8 Start: 6446, Stop: 6778, Start Num: 10

Candidate Starts for Emma\_8:

(Start: 10 @6446 has 221 MA's), (13, 6470), (14, 6488), (16, 6527), (19, 6548), (21, 6563), (23, 6581), (25, 6599), (32, 6623), (34, 6635), (36, 6641), (38, 6653), (40, 6659), (43, 6689), (48, 6722),

Gene: Emmaloid\_10 Start: 6297, Stop: 6626, Start Num: 10

Candidate Starts for Emmaloid\_10:

(Start: 10 @6297 has 221 MA's), (13, 6321), (15, 6360), (18, 6393), (20, 6405), (22, 6426), (23, 6432), (24, 6435), (26, 6453), (34, 6486), (38, 6504), (40, 6510), (41, 6522), (43, 6540), (44, 6549), (48, 6573), (50, 6600), (51, 6603), (53, 6621),

Gene: Empress\_8 Start: 6443, Stop: 6772, Start Num: 10

Candidate Starts for Empress\_8:

(1, 6173), (2, 6350), (Start: 10 @6443 has 221 MA's), (13, 6467), (15, 6506), (18, 6539), (20, 6551), (22, 6572), (23, 6578), (24, 6581), (26, 6599), (34, 6632), (38, 6650), (40, 6656), (41, 6668), (43, 6686), (44, 6695), (48, 6719), (50, 6746), (51, 6749), (53, 6767),

Gene: Enby\_9 Start: 6296, Stop: 6625, Start Num: 10

Candidate Starts for Enby\_9:

(Start: 10 @6296 has 221 MA's), (13, 6320), (15, 6359), (18, 6392), (20, 6404), (22, 6425), (23, 6431), (24, 6434), (26, 6452), (34, 6485), (38, 6503), (40, 6509), (43, 6539), (44, 6548), (48, 6572), (50, 6599), (51, 6602), (53, 6620),

Gene: Eradicator\_8 Start: 6444, Stop: 6773, Start Num: 10

Candidate Starts for Eradicator\_8:

(1, 6174), (2, 6351), (Start: 10 @6444 has 221 MA's), (13, 6468), (15, 6507), (18, 6540), (20, 6552), (22, 6573), (23, 6579), (24, 6582), (26, 6600), (34, 6633), (38, 6651), (40, 6657), (41, 6669), (43, 6687), (44, 6696), (48, 6720), (50, 6747), (51, 6750), (53, 6768),

Gene: Estave1\_8 Start: 6445, Stop: 6774, Start Num: 10

Candidate Starts for Estave1\_8:

(1, 6175), (2, 6352), (Start: 10 @6445 has 221 MA's), (13, 6469), (15, 6508), (18, 6541), (20, 6553), (22, 6574), (23, 6580), (24, 6583), (26, 6601), (34, 6634), (38, 6652), (40, 6658), (41, 6670), (43, 6688), (44, 6697), (48, 6721), (50, 6748), (51, 6751), (53, 6769),

Gene: Fancypants\_8 Start: 6447, Stop: 6776, Start Num: 10

Candidate Starts for Fancypants\_8:

(1, 6177), (2, 6354), (Start: 10 @6447 has 221 MA's), (13, 6471), (15, 6510), (18, 6543), (20, 6555), (22, 6576), (23, 6582), (24, 6585), (26, 6603), (34, 6636), (38, 6654), (40, 6660), (43, 6690), (44, 6699), (48, 6723), (50, 6750), (51, 6753), (53, 6771),

Gene: Fastidio\_8 Start: 6446, Stop: 6775, Start Num: 10

Candidate Starts for Fastidio\_8:

(Start: 10 @6446 has 221 MA's), (13, 6470), (15, 6509), (18, 6542), (20, 6554), (22, 6575), (23, 6581), (24, 6584), (26, 6602), (34, 6635), (38, 6653), (40, 6659), (41, 6671), (43, 6689), (44, 6698), (48, 6722), (49, 6740), (50, 6749), (51, 6752), (53, 6770),

Gene: Filuzino\_8 Start: 6447, Stop: 6779, Start Num: 10

Candidate Starts for Filuzino\_8:

(Start: 10 @6447 has 221 MA's), (13, 6471), (14, 6489), (16, 6528), (19, 6549), (21, 6564), (23, 6582), (25, 6600), (32, 6624), (36, 6642), (38, 6654), (40, 6660), (43, 6690), (48, 6723),

Gene: Firehouse51\_8 Start: 6446, Stop: 6778, Start Num: 10

Candidate Starts for Firehouse51\_8:

(Start: 10 @6446 has 221 MA's), (13, 6470), (14, 6488), (16, 6527), (19, 6548), (21, 6563), (23, 6581), (25, 6599), (32, 6623), (34, 6635), (36, 6641), (38, 6653), (40, 6659), (43, 6689), (48, 6722),

Gene: Flathead\_9 Start: 6295, Stop: 6624, Start Num: 10

Candidate Starts for Flathead\_9:

(Start: 10 @6295 has 221 MA's), (13, 6319), (15, 6358), (18, 6391), (20, 6403), (22, 6424), (23, 6430), (24, 6433), (26, 6451), (34, 6484), (38, 6502), (40, 6508), (41, 6520), (43, 6538), (44, 6547), (48, 6571), (50, 6598), (51, 6601), (53, 6619),

Gene: Florinda\_8 Start: 6463, Stop: 6792, Start Num: 10

Candidate Starts for Florinda\_8:

(1, 6193), (2, 6370), (Start: 10 @6463 has 221 MA's), (13, 6487), (15, 6526), (18, 6559), (22, 6592), (23, 6598), (24, 6601), (26, 6619), (34, 6652), (38, 6670), (40, 6676), (41, 6688), (43, 6706), (44, 6715), (48, 6739), (50, 6766), (51, 6769), (53, 6787),

Gene: Frankie\_9 Start: 6489, Stop: 6818, Start Num: 10

Candidate Starts for Frankie\_9:

(Start: 10 @6489 has 221 MA's), (13, 6513), (15, 6552), (18, 6585), (20, 6597), (22, 6618), (23, 6624), (24, 6627), (26, 6645), (34, 6678), (38, 6696), (40, 6702), (41, 6714), (43, 6732), (44, 6741), (48, 6765), (50, 6792), (51, 6795), (53, 6813),

Gene: FreddyB\_8 Start: 6444, Stop: 6773, Start Num: 10

Candidate Starts for FreddyB\_8:

(1, 6174), (2, 6351), (Start: 10 @6444 has 221 MA's), (13, 6468), (15, 6507), (18, 6540), (20, 6552), (22, 6573), (23, 6579), (24, 6582), (26, 6600), (34, 6633), (38, 6651), (40, 6657), (41, 6669), (43, 6687), (44, 6696), (48, 6720), (50, 6747), (51, 6750), (53, 6768),

Gene: Fruitloop\_8 Start: 6447, Stop: 6779, Start Num: 10

Candidate Starts for Fruitloop\_8:

(Start: 10 @6447 has 221 MA's), (13, 6471), (14, 6489), (16, 6528), (19, 6549), (21, 6564), (23, 6582), (25, 6600), (32, 6624), (36, 6642), (38, 6654), (40, 6660), (43, 6690), (48, 6723),

Gene: GUmbie\_8 Start: 6460, Stop: 6789, Start Num: 10

Candidate Starts for GUmbie\_8:

(1, 6190), (2, 6367), (Start: 10 @6460 has 221 MA's), (13, 6484), (15, 6523), (18, 6556), (20, 6568), (22, 6589), (23, 6595), (24, 6598), (26, 6616), (32, 6637), (34, 6649), (38, 6667), (40, 6673), (43, 6703), (44, 6712), (48, 6736), (50, 6763), (51, 6766), (53, 6784),

Gene: Galactic\_8 Start: 6420, Stop: 6752, Start Num: 10

Candidate Starts for Galactic\_8:

(Start: 10 @6420 has 221 MA's), (13, 6444), (14, 6462), (16, 6501), (19, 6522), (23, 6555), (25, 6573), (32, 6597), (34, 6609), (36, 6615), (38, 6627), (40, 6633), (43, 6663), (48, 6696),

Gene: Gandalph\_8 Start: 6460, Stop: 6789, Start Num: 10

Candidate Starts for Gandalph\_8:

(1, 6190), (2, 6367), (Start: 10 @6460 has 221 MA's), (13, 6484), (15, 6523), (18, 6556), (20, 6568), (22, 6589), (23, 6595), (24, 6598), (26, 6616), (34, 6649), (38, 6667), (40, 6673), (41, 6685), (43, 6703), (44, 6712), (48, 6736), (50, 6763), (51, 6766), (53, 6784),

Gene: Geralt\_8 Start: 6443, Stop: 6772, Start Num: 10

Candidate Starts for Geralt\_8:

(1, 6173), (2, 6350), (Start: 10 @6443 has 221 MA's), (13, 6467), (15, 6506), (18, 6539), (20, 6551), (22, 6572), (23, 6578), (24, 6581), (26, 6599), (34, 6632), (38, 6650), (40, 6656), (41, 6668), (43, 6686), (44, 6695), (48, 6719), (50, 6746), (51, 6749), (53, 6767),

Gene: GigiOuiOui\_8 Start: 6460, Stop: 6789, Start Num: 10

Candidate Starts for GigiOuiOui\_8:

(1, 6190), (2, 6367), (Start: 10 @6460 has 221 MA's), (13, 6484), (15, 6523), (18, 6556), (22, 6589), (23, 6595), (24, 6598), (26, 6616), (34, 6649), (38, 6667), (40, 6673), (41, 6685), (43, 6703), (44, 6712), (48, 6736), (50, 6763), (51, 6766), (53, 6784),

Gene: Girafales\_9 Start: 6291, Stop: 6620, Start Num: 10

Candidate Starts for Girafales\_9:

(Start: 10 @6291 has 221 MA's), (13, 6315), (15, 6354), (18, 6387), (20, 6399), (22, 6420), (23, 6426), (24, 6429), (26, 6447), (34, 6480), (38, 6498), (40, 6504), (41, 6516), (43, 6534), (44, 6543), (48, 6567), (50, 6594), (51, 6597), (53, 6615),

Gene: Girr\_8 Start: 6449, Stop: 6778, Start Num: 10

Candidate Starts for Girr\_8:

(Start: 10 @6449 has 221 MA's), (13, 6473), (15, 6512), (18, 6545), (20, 6557), (22, 6578), (23, 6584), (24, 6587), (26, 6605), (34, 6638), (38, 6656), (40, 6662), (43, 6692), (44, 6701), (48, 6725), (50, 6752), (51, 6755), (53, 6773),

Gene: Gorge\_8 Start: 6432, Stop: 6761, Start Num: 10

Candidate Starts for Gorge\_8:

(1, 6162), (2, 6339), (Start: 10 @6432 has 221 MA's), (13, 6456), (15, 6495), (18, 6528), (20, 6540), (22, 6561), (23, 6567), (24, 6570), (26, 6588), (34, 6621), (38, 6639), (40, 6645), (41, 6657), (43, 6675), (44, 6684), (48, 6708), (50, 6735), (51, 6738), (53, 6756),

Gene: Grimmer\_9 Start: 7098, Stop: 7427, Start Num: 10

Candidate Starts for Grimmer\_9:

(1, 6828), (2, 7005), (Start: 10 @7098 has 221 MA's), (13, 7122), (15, 7161), (18, 7194), (20, 7206), (23, 7233), (24, 7236), (26, 7254), (34, 7287), (38, 7305), (40, 7311), (43, 7341), (44, 7350), (48, 7374), (50, 7401), (51, 7404), (53, 7422),

Gene: Guppsters\_8 Start: 6446, Stop: 6778, Start Num: 10

Candidate Starts for Guppsters\_8:

(Start: 10 @6446 has 221 MA's), (13, 6470), (14, 6488), (16, 6527), (19, 6548), (21, 6563), (23, 6581), (25, 6599), (32, 6623), (34, 6635), (36, 6641), (38, 6653), (40, 6659), (43, 6689), (48, 6722),

Gene: Hades\_8 Start: 6446, Stop: 6775, Start Num: 10

Candidate Starts for Hades\_8:

(1, 6176), (2, 6353), (Start: 10 @6446 has 221 MA's), (13, 6470), (15, 6509), (18, 6542), (22, 6575), (23, 6581), (24, 6584), (26, 6602), (34, 6635), (38, 6653), (40, 6659), (43, 6689), (44, 6698), (48, 6722), (50, 6749), (51, 6752), (53, 6770),

Gene: Hamulus\_8 Start: 6447, Stop: 6779, Start Num: 10

Candidate Starts for Hamulus\_8:

(Start: 10 @6447 has 221 MA's), (13, 6471), (14, 6489), (16, 6528), (19, 6549), (21, 6564), (23, 6582), (25, 6600), (32, 6624), (34, 6636), (36, 6642), (38, 6654), (40, 6660), (43, 6690), (48, 6723),

Gene: Harley\_8 Start: 6433, Stop: 6762, Start Num: 10

Candidate Starts for Harley\_8:

(2, 6340), (Start: 10 @6433 has 221 MA's), (13, 6457), (15, 6496), (18, 6529), (20, 6541), (22, 6562), (23, 6568), (24, 6571), (26, 6589), (34, 6622), (38, 6640), (40, 6646), (41, 6658), (43, 6676), (44, 6685), (48, 6709), (50, 6736), (51, 6739), (53, 6757),

Gene: Hegedechwinu\_9 Start: 6295, Stop: 6624, Start Num: 10

Candidate Starts for Hegedechwinu\_9:

(Start: 10 @6295 has 221 MA's), (13, 6319), (15, 6358), (18, 6391), (20, 6403), (22, 6424), (23, 6430), (24, 6433), (26, 6451), (34, 6484), (38, 6502), (40, 6508), (41, 6520), (43, 6538), (44, 6547), (48, 6571), (50, 6598), (51, 6601), (53, 6619),

Gene: Hlubikazi\_8 Start: 6433, Stop: 6762, Start Num: 10

Candidate Starts for Hlubikazi\_8:

(1, 6163), (2, 6340), (Start: 10 @6433 has 221 MA's), (13, 6457), (15, 6496), (18, 6529), (20, 6541), (22, 6562), (23, 6568), (24, 6571), (26, 6589), (34, 6622), (38, 6640), (40, 6646), (43, 6676), (44, 6685), (48, 6709), (50, 6736), (51, 6739), (53, 6757),

Gene: IMpilo\_8 Start: 6434, Stop: 6766, Start Num: 10

Candidate Starts for IMpilo\_8:

(Start: 10 @6434 has 221 MA's), (13, 6458), (14, 6476), (16, 6515), (19, 6536), (21, 6551), (23, 6569), (25, 6587), (32, 6611), (34, 6623), (36, 6629), (38, 6641), (40, 6647), (43, 6677), (48, 6710),

Gene: lbOuu\_8 Start: 6442, Stop: 6771, Start Num: 10

Candidate Starts for lbOuu\_8:

(1, 6172), (2, 6349), (Start: 10 @6442 has 221 MA's), (13, 6466), (15, 6505), (18, 6538), (20, 6550), (22, 6571), (23, 6577), (24, 6580), (26, 6598), (34, 6631), (38, 6649), (40, 6655), (41, 6667), (43, 6685), (44, 6694), (48, 6718), (50, 6745), (51, 6748), (53, 6766),

Gene: lbhubesi\_8 Start: 6433, Stop: 6762, Start Num: 10

Candidate Starts for lbhubesi\_8:

(2, 6340), (Start: 10 @6433 has 221 MA's), (13, 6457), (15, 6496), (18, 6529), (20, 6541), (22, 6562), (23, 6568), (24, 6571), (26, 6589), (34, 6622), (38, 6640), (40, 6646), (41, 6658), (43, 6676), (44, 6685),



(48, 6709), (50, 6736), (51, 6739), (53, 6757),

Gene: Inventum\_8 Start: 6443, Stop: 6772, Start Num: 10

Candidate Starts for Inventum\_8:

(1, 6173), (2, 6350), (Start: 10 @6443 has 221 MA's), (13, 6467), (15, 6506), (18, 6539), (20, 6551), (22, 6572), (23, 6578), (24, 6581), (26, 6599), (34, 6632), (38, 6650), (40, 6656), (41, 6668), (43, 6686), (44, 6695), (48, 6719), (50, 6746), (51, 6749), (53, 6767),

Gene: IrishSherpFalk\_8 Start: 6434, Stop: 6766, Start Num: 10

Candidate Starts for IrishSherpFalk\_8:

(Start: 10 @6434 has 221 MA's), (12, 6455), (13, 6458), (15, 6497), (19, 6536), (23, 6569), (24, 6572), (30, 6605), (32, 6611), (38, 6641), (40, 6647), (43, 6677), (48, 6710), (50, 6737), (52, 6749), (53, 6758),

Gene: JalFarm20\_9 Start: 6296, Stop: 6625, Start Num: 10

Candidate Starts for JalFarm20\_9:

(Start: 10 @6296 has 221 MA's), (13, 6320), (15, 6359), (18, 6392), (20, 6404), (22, 6425), (23, 6431), (24, 6434), (26, 6452), (32, 6473), (34, 6485), (38, 6503), (40, 6509), (43, 6539), (44, 6548), (48, 6572), (50, 6599), (51, 6602), (53, 6620),

Gene: James\_8 Start: 6435, Stop: 6764, Start Num: 10

Candidate Starts for James\_8:

(1, 6165), (2, 6342), (Start: 10 @6435 has 221 MA's), (13, 6459), (15, 6498), (18, 6531), (20, 6543), (22, 6564), (23, 6570), (24, 6573), (26, 6591), (34, 6624), (38, 6642), (40, 6648), (43, 6678), (44, 6687), (48, 6711), (50, 6738), (51, 6741), (53, 6759),

Gene: Jant\_8 Start: 6446, Stop: 6778, Start Num: 10

Candidate Starts for Jant\_8:

(Start: 10 @6446 has 221 MA's), (13, 6470), (14, 6488), (16, 6527), (19, 6548), (21, 6563), (23, 6581), (25, 6599), (32, 6623), (34, 6635), (36, 6641), (38, 6653), (40, 6659), (43, 6689), (48, 6722),

Gene: Jacob\_8 Start: 6444, Stop: 6773, Start Num: 10

Candidate Starts for Jacob\_8:

(1, 6174), (2, 6351), (Start: 10 @6444 has 221 MA's), (13, 6468), (15, 6507), (18, 6540), (20, 6552), (22, 6573), (23, 6579), (24, 6582), (26, 6600), (34, 6633), (38, 6651), (40, 6657), (41, 6669), (43, 6687), (44, 6696), (48, 6720), (49, 6738), (50, 6747), (51, 6750), (53, 6768),

Gene: Jinglebell\_8 Start: 6442, Stop: 6771, Start Num: 10

Candidate Starts for Jinglebell\_8:

(1, 6172), (2, 6349), (Start: 10 @6442 has 221 MA's), (13, 6466), (15, 6505), (18, 6538), (20, 6550), (22, 6571), (23, 6577), (24, 6580), (26, 6598), (34, 6631), (38, 6649), (40, 6655), (43, 6685), (44, 6694), (48, 6718), (50, 6745), (51, 6748), (53, 6766),

Gene: Job42\_9 Start: 6296, Stop: 6625, Start Num: 10

Candidate Starts for Job42\_9:

(Start: 10 @6296 has 221 MA's), (13, 6320), (15, 6359), (18, 6392), (22, 6425), (23, 6431), (24, 6434), (26, 6452), (34, 6485), (38, 6503), (40, 6509), (41, 6521), (43, 6539), (44, 6548), (46, 6554), (48, 6572), (50, 6599), (51, 6602), (53, 6620),

Gene: JoeyJr\_8 Start: 6443, Stop: 6772, Start Num: 10

Candidate Starts for JoeyJr\_8:

(1, 6173), (2, 6350), (Start: 10 @6443 has 221 MA's), (13, 6467), (15, 6506), (18, 6539), (20, 6551), (22, 6572), (23, 6578), (24, 6581), (26, 6599), (34, 6632), (38, 6650), (40, 6656), (41, 6668), (43, 6686), (44, 6695), (48, 6719), (50, 6746), (51, 6749), (53, 6767),

Gene: Juice456\_9 Start: 6297, Stop: 6626, Start Num: 10

Candidate Starts for Juice456\_9:

(Start: 10 @6297 has 221 MA's), (13, 6321), (15, 6360), (18, 6393), (20, 6405), (22, 6426), (23, 6432), (24, 6435), (26, 6453), (34, 6486), (38, 6504), (40, 6510), (41, 6522), (43, 6540), (44, 6549), (48, 6573), (50, 6600), (51, 6603), (53, 6621),

Gene: Juicebox\_11 Start: 8253, Stop: 8600, Start Num: 8

Candidate Starts for Juicebox\_11:

(Start: 8 @8253 has 1 MA's), (19, 8364), (39, 8472),

Gene: Juniper1\_8 Start: 6435, Stop: 6764, Start Num: 10

Candidate Starts for Juniper1\_8:

(Start: 10 @6435 has 221 MA's), (13, 6459), (15, 6498), (18, 6531), (20, 6543), (22, 6564), (23, 6570), (24, 6573), (26, 6591), (32, 6612), (34, 6624), (38, 6642), (40, 6648), (43, 6678), (44, 6687), (48, 6711), (50, 6738), (51, 6741), (53, 6759),

Gene: Karhdo\_8 Start: 6447, Stop: 6776, Start Num: 10

Candidate Starts for Karhdo\_8:

(1, 6177), (2, 6354), (Start: 10 @6447 has 221 MA's), (13, 6471), (15, 6510), (18, 6543), (20, 6555), (22, 6576), (23, 6582), (24, 6585), (26, 6603), (32, 6624), (34, 6636), (38, 6654), (40, 6660), (43, 6690), (44, 6699), (48, 6723), (50, 6750), (51, 6753), (53, 6771),

Gene: Kenuha5\_8 Start: 6446, Stop: 6778, Start Num: 10

Candidate Starts for Kenuha5\_8:

(Start: 10 @6446 has 221 MA's), (13, 6470), (14, 6488), (16, 6527), (19, 6548), (21, 6563), (23, 6581), (25, 6599), (32, 6623), (34, 6635), (36, 6641), (38, 6653), (40, 6659), (43, 6689), (48, 6722),

Gene: Kersh\_8 Start: 6436, Stop: 6765, Start Num: 10

Candidate Starts for Kersh\_8:

(1, 6166), (2, 6343), (Start: 10 @6436 has 221 MA's), (13, 6460), (15, 6499), (18, 6532), (20, 6544), (22, 6565), (23, 6571), (24, 6574), (26, 6592), (32, 6613), (34, 6625), (38, 6643), (40, 6649), (41, 6661), (43, 6679), (44, 6688), (48, 6712), (50, 6739), (51, 6742), (53, 6760),

Gene: Kimberlium\_9 Start: 6297, Stop: 6626, Start Num: 10

Candidate Starts for Kimberlium\_9:

(Start: 10 @6297 has 221 MA's), (13, 6321), (15, 6360), (18, 6393), (20, 6405), (22, 6426), (23, 6432), (24, 6435), (26, 6453), (34, 6486), (38, 6504), (40, 6510), (41, 6522), (43, 6540), (44, 6549), (48, 6573), (50, 6600), (51, 6603), (53, 6621),

Gene: KingJulian\_8 Start: 6447, Stop: 6779, Start Num: 10

Candidate Starts for KingJulian\_8:

(Start: 10 @6447 has 221 MA's), (13, 6471), (14, 6489), (16, 6528), (19, 6549), (21, 6564), (23, 6582), (25, 6600), (32, 6624), (36, 6642), (38, 6654), (40, 6660), (43, 6690), (48, 6723),

Gene: KingMidas\_8 Start: 6443, Stop: 6772, Start Num: 10

Candidate Starts for KingMidas\_8:

(1, 6173), (2, 6350), (Start: 10 @6443 has 221 MA's), (13, 6467), (15, 6506), (18, 6539), (20, 6551), (22, 6572), (23, 6578), (24, 6581), (26, 6599), (34, 6632), (38, 6650), (40, 6656), (41, 6668), (43, 6686), (44, 6695), (48, 6719), (50, 6746), (51, 6749), (53, 6767),

Gene: Kingsley\_9 Start: 6295, Stop: 6624, Start Num: 10

Candidate Starts for Kingsley\_9:

(Start: 10 @6295 has 221 MA's), (13, 6319), (18, 6391), (20, 6403), (22, 6424), (23, 6430), (24, 6433), (26, 6451), (34, 6484), (38, 6502), (40, 6508), (41, 6520), (43, 6538), (44, 6547), (48, 6571), (50, 6598), (51, 6601), (53, 6619),

Gene: Koella\_8 Start: 6443, Stop: 6772, Start Num: 10

Candidate Starts for Koella\_8:

(1, 6173), (2, 6350), (Start: 10 @6443 has 221 MA's), (13, 6467), (15, 6506), (18, 6539), (20, 6551), (22, 6572), (23, 6578), (24, 6581), (26, 6599), (34, 6632), (38, 6650), (40, 6656), (41, 6668), (43, 6686), (44, 6695), (48, 6719), (50, 6746), (51, 6749), (53, 6767),

Gene: Krakatau\_9 Start: 7098, Stop: 7430, Start Num: 10

Candidate Starts for Krakatau\_9:

(Start: 10 @7098 has 221 MA's), (13, 7122), (14, 7140), (16, 7179), (19, 7200), (21, 7215), (23, 7233), (25, 7251), (32, 7275), (36, 7293), (38, 7305), (40, 7311), (43, 7341), (48, 7374),

Gene: KristaRAM\_9 Start: 7094, Stop: 7426, Start Num: 10

Candidate Starts for KristaRAM\_9:

(Start: 10 @7094 has 221 MA's), (13, 7118), (14, 7136), (16, 7175), (19, 7196), (21, 7211), (23, 7229), (25, 7247), (32, 7271), (34, 7283), (36, 7289), (38, 7301), (40, 7307), (43, 7337), (48, 7370),

Gene: LastJedi\_8 Start: 6435, Stop: 6764, Start Num: 10

Candidate Starts for LastJedi\_8:

(1, 6165), (2, 6342), (Start: 10 @6435 has 221 MA's), (13, 6459), (15, 6498), (18, 6531), (20, 6543), (22, 6564), (23, 6570), (24, 6573), (26, 6591), (34, 6624), (38, 6642), (40, 6648), (43, 6678), (44, 6687), (48, 6711), (50, 6738), (51, 6741), (53, 6759),

Gene: Latretium\_8 Start: 6432, Stop: 6761, Start Num: 10

Candidate Starts for Latretium\_8:

(Start: 10 @6432 has 221 MA's), (13, 6456), (15, 6495), (18, 6528), (20, 6540), (22, 6561), (23, 6567), (24, 6570), (26, 6588), (34, 6621), (38, 6639), (40, 6645), (43, 6675), (44, 6684), (48, 6708), (50, 6735), (51, 6738), (53, 6756),

Gene: Leozinho\_9 Start: 6296, Stop: 6625, Start Num: 10

Candidate Starts for Leozinho\_9:

(Start: 10 @6296 has 221 MA's), (13, 6320), (15, 6359), (18, 6392), (20, 6404), (22, 6425), (23, 6431), (24, 6434), (26, 6452), (34, 6485), (38, 6503), (40, 6509), (41, 6521), (43, 6539), (44, 6548), (48, 6572), (50, 6599), (51, 6602), (53, 6620),

Gene: Leperchaun\_8 Start: 6432, Stop: 6761, Start Num: 10

Candidate Starts for Leperchaun\_8:

(1, 6162), (2, 6339), (Start: 10 @6432 has 221 MA's), (13, 6456), (15, 6495), (18, 6528), (20, 6540), (22, 6561), (23, 6567), (24, 6570), (26, 6588), (34, 6621), (38, 6639), (40, 6645), (41, 6657), (43, 6675), (44, 6684), (48, 6708), (50, 6735), (51, 6738), (53, 6756),

Gene: LilMoolah\_8 Start: 6444, Stop: 6773, Start Num: 10

Candidate Starts for LilMoolah\_8:

(1, 6174), (2, 6351), (Start: 10 @6444 has 221 MA's), (13, 6468), (15, 6507), (18, 6540), (20, 6552), (22, 6573), (23, 6579), (24, 6582), (26, 6600), (34, 6633), (38, 6651), (40, 6657), (41, 6669), (43, 6687), (44, 6696), (48, 6720), (50, 6747), (51, 6750), (53, 6768),

Gene: LittleShirley\_9 Start: 6297, Stop: 6626, Start Num: 10

Candidate Starts for LittleShirley\_9:

(Start: 10 @6297 has 221 MA's), (13, 6321), (15, 6360), (18, 6393), (20, 6405), (22, 6426), (23, 6432), (24, 6435), (26, 6453), (34, 6486), (38, 6504), (40, 6510), (41, 6522), (43, 6540), (44, 6549), (48, 6573), (50, 6600), (51, 6603), (53, 6621),

Gene: Lizziana\_8 Start: 6445, Stop: 6774, Start Num: 10

Candidate Starts for Lizziana\_8:

(1, 6175), (2, 6352), (Start: 10 @6445 has 221 MA's), (13, 6469), (15, 6508), (18, 6541), (20, 6553), (22, 6574), (23, 6580), (24, 6583), (26, 6601), (34, 6634), (38, 6652), (40, 6658), (41, 6670), (43, 6688), (44, 6697), (48, 6721), (49, 6739), (50, 6748), (51, 6751), (53, 6769),

Gene: Llama\_8 Start: 6442, Stop: 6771, Start Num: 10

Candidate Starts for Llama\_8:

(1, 6172), (2, 6349), (Start: 10 @6442 has 221 MA's), (13, 6466), (15, 6505), (18, 6538), (20, 6550), (22, 6571), (23, 6577), (24, 6580), (26, 6598), (34, 6631), (38, 6649), (40, 6655), (43, 6685), (44, 6694), (48, 6718), (50, 6745), (51, 6748), (53, 6766),

Gene: Llij\_8 Start: 6460, Stop: 6789, Start Num: 10

Candidate Starts for Llij\_8:

(1, 6190), (2, 6367), (Start: 10 @6460 has 221 MA's), (13, 6484), (15, 6523), (18, 6556), (20, 6568), (22, 6589), (23, 6595), (24, 6598), (26, 6616), (34, 6649), (38, 6667), (40, 6673), (41, 6685), (43, 6703), (44, 6712), (48, 6736), (50, 6763), (51, 6766), (53, 6784),

Gene: Lorde\_9 Start: 6296, Stop: 6625, Start Num: 10

Candidate Starts for Lorde\_9:

(Start: 10 @6296 has 221 MA's), (13, 6320), (15, 6359), (18, 6392), (20, 6404), (22, 6425), (23, 6431), (24, 6434), (26, 6452), (34, 6485), (38, 6503), (40, 6509), (43, 6539), (44, 6548), (48, 6572), (50, 6599), (51, 6602), (53, 6620),

Gene: LunaBlu\_8 Start: 6420, Stop: 6752, Start Num: 10

Candidate Starts for LunaBlu\_8:

(Start: 10 @6420 has 221 MA's), (13, 6444), (14, 6462), (16, 6501), (19, 6522), (23, 6555), (25, 6573), (32, 6597), (34, 6609), (36, 6615), (38, 6627), (40, 6633), (43, 6663), (48, 6696),

Gene: LunaStella\_9 Start: 6903, Stop: 7235, Start Num: 10

Candidate Starts for LunaStella\_9:

(Start: 10 @6903 has 221 MA's), (13, 6927), (16, 6987), (19, 7008), (20, 7014), (27, 7074), (32, 7083), (33, 7089), (35, 7095), (44, 7155), (45, 7158), (52, 7218), (53, 7227),

Gene: MadMen\_8 Start: 6459, Stop: 6788, Start Num: 10

Candidate Starts for MadMen\_8:

(1, 6189), (2, 6366), (Start: 10 @6459 has 221 MA's), (13, 6483), (15, 6522), (18, 6555), (20, 6567), (22, 6588), (23, 6594), (24, 6597), (26, 6615), (34, 6648), (38, 6666), (40, 6672), (41, 6684), (43, 6702), (44, 6711), (48, 6735), (50, 6762), (51, 6765), (53, 6783),

Gene: Madiba\_9 Start: 6294, Stop: 6623, Start Num: 10

Candidate Starts for Madiba\_9:

(Start: 10 @6294 has 221 MA's), (13, 6318), (15, 6357), (18, 6390), (20, 6402), (22, 6423), (23, 6429), (24, 6432), (26, 6450), (34, 6483), (38, 6501), (40, 6507), (41, 6519), (43, 6537), (44, 6546), (48, 6570), (50, 6597), (51, 6600), (53, 6618),

Gene: Mahavrat\_8 Start: 6432, Stop: 6761, Start Num: 10

Candidate Starts for Mahavrat\_8:

(1, 6162), (2, 6339), (Start: 10 @6432 has 221 MA's), (13, 6456), (15, 6495), (18, 6528), (20, 6540), (22, 6561), (23, 6567), (24, 6570), (26, 6588), (34, 6621), (38, 6639), (40, 6645), (41, 6657), (43, 6675), (44, 6684), (48, 6708), (50, 6735), (51, 6738), (53, 6756),

Gene: Mandlovu\_8 Start: 6433, Stop: 6762, Start Num: 10

Candidate Starts for Mandlovu\_8:

(1, 6163), (2, 6340), (Start: 10 @6433 has 221 MA's), (13, 6457), (15, 6496), (18, 6529), (20, 6541), (22, 6562), (23, 6568), (24, 6571), (26, 6589), (34, 6622), (38, 6640), (40, 6646), (43, 6676), (44, 6685), (48, 6709), (50, 6736), (51, 6739), (53, 6757),

Gene: Mantra\_8 Start: 6460, Stop: 6789, Start Num: 10

Candidate Starts for Mantra\_8:

(1, 6190), (2, 6367), (Start: 10 @6460 has 221 MA's), (13, 6484), (15, 6523), (18, 6556), (22, 6589), (23, 6595), (24, 6598), (26, 6616), (34, 6649), (38, 6667), (40, 6673), (41, 6685), (43, 6703), (44, 6712), (48, 6736), (50, 6763), (51, 6766), (53, 6784),

Gene: Maravista\_8 Start: 6433, Stop: 6762, Start Num: 10

Candidate Starts for Maravista\_8:

(1, 6163), (2, 6340), (Start: 10 @6433 has 221 MA's), (13, 6457), (15, 6496), (18, 6529), (20, 6541), (22, 6562), (23, 6568), (24, 6571), (26, 6589), (34, 6622), (38, 6640), (40, 6646), (41, 6658), (43, 6676), (44, 6685), (48, 6709), (49, 6727), (50, 6736), (51, 6739), (53, 6757),

Gene: Marker\_9 Start: 6295, Stop: 6624, Start Num: 10

Candidate Starts for Marker\_9:

(Start: 10 @6295 has 221 MA's), (13, 6319), (15, 6358), (18, 6391), (22, 6424), (23, 6430), (24, 6433), (26, 6451), (34, 6484), (38, 6502), (40, 6508), (41, 6520), (43, 6538), (44, 6547), (48, 6571), (50, 6598), (51, 6601), (53, 6619),

Gene: Martik\_8 Start: 6445, Stop: 6774, Start Num: 10

Candidate Starts for Martik\_8:

(1, 6175), (2, 6352), (Start: 10 @6445 has 221 MA's), (13, 6469), (15, 6508), (18, 6541), (20, 6553), (22, 6574), (23, 6580), (24, 6583), (26, 6601), (34, 6634), (38, 6652), (40, 6658), (41, 6670), (43, 6688), (44, 6697), (48, 6721), (49, 6739), (50, 6748), (51, 6751), (53, 6769),

Gene: Mattes\_8 Start: 6435, Stop: 6764, Start Num: 10

Candidate Starts for Mattes\_8:

(1, 6165), (2, 6342), (Start: 10 @6435 has 221 MA's), (13, 6459), (15, 6498), (18, 6531), (20, 6543), (22, 6564), (23, 6570), (24, 6573), (26, 6591), (34, 6624), (38, 6642), (40, 6648), (43, 6678), (44, 6687), (48, 6711), (50, 6738), (51, 6741), (53, 6759),

Gene: Melissauren88\_8 Start: 6446, Stop: 6778, Start Num: 10

Candidate Starts for Melissauren88\_8:

(Start: 10 @6446 has 221 MA's), (13, 6470), (14, 6488), (16, 6527), (19, 6548), (21, 6563), (23, 6581), (25, 6599), (32, 6623), (36, 6641), (38, 6653), (40, 6659), (43, 6689), (48, 6722),

Gene: MilanaBonita\_9 Start: 7094, Stop: 7426, Start Num: 10

Candidate Starts for MilanaBonita\_9:

(Start: 10 @7094 has 221 MA's), (13, 7118), (14, 7136), (16, 7175), (19, 7196), (21, 7211), (23, 7229), (25, 7247), (32, 7271), (34, 7283), (36, 7289), (38, 7301), (40, 7307), (43, 7337), (48, 7370),

Gene: MilleniumForce\_9 Start: 7094, Stop: 7426, Start Num: 10

Candidate Starts for MilleniumForce\_9:

(Start: 10 @7094 has 221 MA's), (13, 7118), (14, 7136), (16, 7175), (19, 7196), (21, 7211), (23, 7229), (25, 7247), (32, 7271), (34, 7283), (36, 7289), (38, 7301), (40, 7307), (43, 7337), (48, 7370),

Gene: MinionDave\_9 Start: 7094, Stop: 7426, Start Num: 10

Candidate Starts for MinionDave\_9:

(Start: 10 @7094 has 221 MA's), (13, 7118), (14, 7136), (16, 7175), (19, 7196), (21, 7211), (23, 7229), (25, 7247), (32, 7271), (36, 7289), (38, 7301), (40, 7307), (43, 7337), (48, 7370),

Gene: Minnie\_8 Start: 6460, Stop: 6789, Start Num: 10

Candidate Starts for Minnie\_8:

(1, 6190), (2, 6367), (Start: 10 @6460 has 221 MA's), (13, 6484), (15, 6523), (18, 6556), (20, 6568), (22, 6589), (23, 6595), (24, 6598), (26, 6616), (34, 6649), (38, 6667), (40, 6673), (41, 6685), (43, 6703), (44, 6712), (48, 6736), (50, 6763), (51, 6766), (53, 6784),

Gene: Misha28\_9 Start: 6299, Stop: 6628, Start Num: 10

Candidate Starts for Misha28\_9:

(Start: 10 @6299 has 221 MA's), (13, 6323), (15, 6362), (18, 6395), (20, 6407), (22, 6428), (23, 6434), (24, 6437), (26, 6455), (32, 6476), (34, 6488), (38, 6506), (40, 6512), (41, 6524), (43, 6542), (44, 6551), (48, 6575), (50, 6602), (51, 6605), (53, 6623),

Gene: MisterCuddles\_8 Start: 6449, Stop: 6778, Start Num: 10

Candidate Starts for MisterCuddles\_8:

(Start: 10 @6449 has 221 MA's), (13, 6473), (15, 6512), (18, 6545), (20, 6557), (22, 6578), (23, 6584), (24, 6587), (26, 6605), (34, 6638), (38, 6656), (40, 6662), (43, 6692), (44, 6701), (48, 6725), (50, 6752), (51, 6755), (53, 6773),

Gene: Modragons\_8 Start: 6442, Stop: 6771, Start Num: 10

Candidate Starts for Modragons\_8:

(1, 6172), (2, 6349), (Start: 10 @6442 has 221 MA's), (13, 6466), (15, 6505), (18, 6538), (20, 6550), (22, 6571), (23, 6577), (24, 6580), (26, 6598), (34, 6631), (38, 6649), (40, 6655), (43, 6685), (44, 6694), (48, 6718), (50, 6745), (51, 6748), (53, 6766),

Gene: Moonbeam\_8 Start: 6445, Stop: 6774, Start Num: 10

Candidate Starts for Moonbeam\_8:

(1, 6175), (2, 6352), (Start: 10 @6445 has 221 MA's), (13, 6469), (15, 6508), (18, 6541), (22, 6574), (23, 6580), (24, 6583), (26, 6601), (34, 6634), (38, 6652), (40, 6658), (41, 6670), (43, 6688), (44, 6697), (48, 6721), (50, 6748), (51, 6751), (53, 6769),

Gene: Mova\_9 Start: 6298, Stop: 6627, Start Num: 10

Candidate Starts for Mova\_9:

(Start: 10 @6298 has 221 MA's), (13, 6322), (15, 6361), (18, 6394), (20, 6406), (22, 6427), (23, 6433), (24, 6436), (26, 6454), (32, 6475), (34, 6487), (38, 6505), (40, 6511), (41, 6523), (43, 6541), (44, 6550), (48, 6574), (50, 6601), (51, 6604), (53, 6622),

Gene: Mozy\_9 Start: 6294, Stop: 6626, Start Num: 10

Candidate Starts for Mozy\_9:

(Start: 10 @6294 has 221 MA's), (13, 6318), (14, 6336), (19, 6396), (21, 6411), (25, 6447), (32, 6471), (34, 6483), (36, 6489), (38, 6501), (40, 6507), (43, 6537), (48, 6570),

Gene: Ms6\_8 Start: 6446, Stop: 6778, Start Num: 10

Candidate Starts for Ms6\_8:

(Start: 10 @6446 has 221 MA's), (13, 6470), (14, 6488), (16, 6527), (19, 6548), (21, 6563), (23, 6581), (25, 6599), (32, 6623), (34, 6635), (36, 6641), (38, 6653), (40, 6659), (43, 6689), (48, 6722),

Gene: MulchExplorer\_10 Start: 6297, Stop: 6626, Start Num: 10

Candidate Starts for MulchExplorer\_10:

(Start: 10 @6297 has 221 MA's), (13, 6321), (15, 6360), (18, 6393), (20, 6405), (22, 6426), (23, 6432), (24, 6435), (26, 6453), (34, 6486), (38, 6504), (40, 6510), (41, 6522), (43, 6540), (44, 6549), (48, 6573), (50, 6600), (51, 6603), (53, 6621),

Gene: MulchSalad\_8 Start: 6446, Stop: 6775, Start Num: 10

Candidate Starts for MulchSalad\_8:

(1, 6176), (2, 6353), (Start: 10 @6446 has 221 MA's), (13, 6470), (15, 6509), (18, 6542), (20, 6554), (22, 6575), (23, 6581), (24, 6584), (26, 6602), (34, 6635), (38, 6653), (40, 6659), (43, 6689), (44, 6698), (48, 6722), (50, 6749), (51, 6752), (53, 6770),

Gene: Mutaforma13\_8 Start: 6446, Stop: 6778, Start Num: 10

Candidate Starts for Mutaforma13\_8:

(Start: 10 @6446 has 221 MA's), (12, 6467), (13, 6470), (15, 6509), (19, 6548), (23, 6581), (24, 6584), (30, 6617), (32, 6623), (38, 6653), (40, 6659), (43, 6689), (48, 6722), (50, 6749), (52, 6761), (53, 6770),

Gene: NewHope4\_8 Start: 6420, Stop: 6752, Start Num: 10

Candidate Starts for NewHope4\_8:

(Start: 10 @6420 has 221 MA's), (13, 6444), (14, 6462), (16, 6501), (19, 6522), (23, 6555), (25, 6573), (32, 6597), (34, 6609), (36, 6615), (38, 6627), (40, 6633), (43, 6663), (48, 6696),

Gene: Nimbo\_8 Start: 6443, Stop: 6772, Start Num: 10

Candidate Starts for Nimbo\_8:

(1, 6173), (2, 6350), (Start: 10 @6443 has 221 MA's), (13, 6467), (15, 6506), (18, 6539), (20, 6551), (22, 6572), (23, 6578), (24, 6581), (26, 6599), (34, 6632), (38, 6650), (40, 6656), (41, 6668), (43, 6686), (44, 6695), (48, 6719), (50, 6746), (51, 6749), (53, 6767),

Gene: Nitzel\_9 Start: 7096, Stop: 7425, Start Num: 10

Candidate Starts for Nitzel\_9:

(1, 6826), (2, 7003), (Start: 10 @7096 has 221 MA's), (13, 7120), (15, 7159), (18, 7192), (22, 7225), (23, 7231), (24, 7234), (26, 7252), (34, 7285), (38, 7303), (40, 7309), (41, 7321), (43, 7339), (44, 7348), (48, 7372), (50, 7399), (51, 7402), (53, 7420),

Gene: Nivrat\_8 Start: 6444, Stop: 6773, Start Num: 10

Candidate Starts for Nivrat\_8:

(1, 6174), (2, 6351), (Start: 10 @6444 has 221 MA's), (13, 6468), (15, 6507), (18, 6540), (20, 6552), (22, 6573), (23, 6579), (24, 6582), (26, 6600), (34, 6633), (38, 6651), (40, 6657), (41, 6669), (43, 6687), (44, 6696), (48, 6720), (49, 6738), (50, 6747), (51, 6750), (53, 6768),

Gene: NormanBulbieJr\_8 Start: 6431, Stop: 6760, Start Num: 10

Candidate Starts for NormanBulbieJr\_8:

(1, 6161), (2, 6338), (Start: 10 @6431 has 221 MA's), (13, 6455), (15, 6494), (18, 6527), (20, 6539), (22, 6560), (23, 6566), (24, 6569), (26, 6587), (34, 6620), (38, 6638), (40, 6644), (41, 6656), (43, 6674), (44, 6683), (48, 6707), (50, 6734), (51, 6737), (53, 6755),

Gene: Ochi17\_8 Start: 6442, Stop: 6771, Start Num: 10

Candidate Starts for Ochi17\_8:

(1, 6172), (2, 6349), (Start: 10 @6442 has 221 MA's), (13, 6466), (15, 6505), (18, 6538), (20, 6550), (22, 6571), (23, 6577), (24, 6580), (26, 6598), (34, 6631), (38, 6649), (40, 6655), (43, 6685), (44, 6694), (48, 6718), (50, 6745), (51, 6748), (53, 6766),

Gene: OfUltron\_8 Start: 6442, Stop: 6771, Start Num: 10

Candidate Starts for OfUltron\_8:

(1, 6172), (2, 6349), (Start: 10 @6442 has 221 MA's), (13, 6466), (15, 6505), (18, 6538), (20, 6550), (22, 6571), (23, 6577), (24, 6580), (26, 6598), (34, 6631), (38, 6649), (40, 6655), (43, 6685), (44, 6694), (48, 6718), (50, 6745), (51, 6748), (53, 6766),

Gene: Ogotopogo\_11 Start: 6698, Stop: 7027, Start Num: 10

Candidate Starts for Ogotopogo\_11:

(3, 6647), (4, 6653), (Start: 10 @6698 has 221 MA's), (13, 6722), (15, 6761), (18, 6794), (22, 6827), (23, 6833), (24, 6836), (26, 6854), (34, 6887), (38, 6905), (40, 6911), (41, 6923), (43, 6941), (44, 6950), (48, 6974), (50, 7001), (51, 7004), (53, 7022),

Gene: Oksu\_9 Start: 6297, Stop: 6626, Start Num: 10

Candidate Starts for Oksu\_9:

(Start: 10 @6297 has 221 MA's), (13, 6321), (15, 6360), (18, 6393), (20, 6405), (22, 6426), (23, 6432), (24, 6435), (26, 6453), (34, 6486), (38, 6504), (40, 6510), (43, 6540), (44, 6549), (48, 6573), (50, 6600), (51, 6603), (53, 6621),

Gene: OldBen\_8 Start: 6443, Stop: 6772, Start Num: 10

Candidate Starts for OldBen\_8:

(1, 6173), (2, 6350), (Start: 10 @6443 has 221 MA's), (13, 6467), (15, 6506), (18, 6539), (20, 6551), (22, 6572), (23, 6578), (24, 6581), (26, 6599), (34, 6632), (38, 6650), (40, 6656), (41, 6668), (43, 6686), (44, 6695), (48, 6719), (50, 6746), (51, 6749), (53, 6767),

Gene: OlympiaSaint\_8 Start: 6444, Stop: 6773, Start Num: 10

Candidate Starts for OlympiaSaint\_8:

(1, 6174), (2, 6351), (Start: 10 @6444 has 221 MA's), (13, 6468), (15, 6507), (18, 6540), (22, 6573), (23, 6579), (24, 6582), (26, 6600), (34, 6633), (38, 6651), (40, 6657), (41, 6669), (43, 6687), (44, 6696), (48, 6720), (50, 6747), (51, 6750), (53, 6768),

Gene: Ovechkin\_8 Start: 6446, Stop: 6778, Start Num: 10

Candidate Starts for Ovechkin\_8:

(Start: 10 @6446 has 221 MA's), (13, 6470), (14, 6488), (16, 6527), (19, 6548), (21, 6563), (23, 6581), (25, 6599), (32, 6623), (36, 6641), (38, 6653), (40, 6659), (43, 6689), (48, 6722),

Gene: OwlsT2W\_9 Start: 6296, Stop: 6625, Start Num: 10

Candidate Starts for OwlsT2W\_9:

(Start: 10 @6296 has 221 MA's), (13, 6320), (15, 6359), (18, 6392), (20, 6404), (22, 6425), (23, 6431), (24, 6434), (26, 6452), (34, 6485), (38, 6503), (40, 6509), (41, 6521), (43, 6539), (44, 6548), (48, 6572), (50, 6599), (51, 6602), (53, 6620),

Gene: P3MA\_10 Start: 7100, Stop: 7444, Start Num: 9

Candidate Starts for P3MA\_10:

(Start: 9 @7100 has 1 MA's), (36, 7295), (37, 7307), (53, 7436),

Gene: PHappiness\_8 Start: 6443, Stop: 6772, Start Num: 10

Candidate Starts for PHappiness\_8:

(1, 6173), (2, 6350), (Start: 10 @6443 has 221 MA's), (13, 6467), (15, 6506), (18, 6539), (20, 6551), (22, 6572), (23, 6578), (24, 6581), (26, 6599), (34, 6632), (38, 6650), (40, 6656), (41, 6668), (43, 6686), (44, 6695), (48, 6719), (50, 6746), (51, 6749), (53, 6767),

Gene: PMC\_8 Start: 6460, Stop: 6789, Start Num: 10

Candidate Starts for PMC\_8:



(1, 6190), (2, 6367), (Start: 10 @6460 has 221 MA's), (13, 6484), (15, 6523), (18, 6556), (20, 6568), (22, 6589), (23, 6595), (24, 6598), (26, 6616), (34, 6649), (38, 6667), (40, 6673), (41, 6685), (43, 6703), (44, 6712), (48, 6736), (50, 6763), (51, 6766), (53, 6784),

Gene: Pacc40\_8 Start: 6443, Stop: 6772, Start Num: 10

Candidate Starts for Pacc40\_8:

(1, 6173), (2, 6350), (Start: 10 @6443 has 221 MA's), (13, 6467), (15, 6506), (18, 6539), (20, 6551), (22, 6572), (23, 6578), (24, 6581), (26, 6599), (34, 6632), (38, 6650), (40, 6656), (41, 6668), (43, 6686), (44, 6695), (48, 6719), (50, 6746), (51, 6749), (53, 6767),

Gene: Phalconet\_8 Start: 6446, Stop: 6778, Start Num: 10

Candidate Starts for Phalconet\_8:

(Start: 10 @6446 has 221 MA's), (13, 6470), (14, 6488), (16, 6527), (19, 6548), (21, 6563), (23, 6581), (25, 6599), (32, 6623), (36, 6641), (38, 6653), (40, 6659), (43, 6689), (48, 6722),

Gene: Phanphagia\_8 Start: 6446, Stop: 6778, Start Num: 10

Candidate Starts for Phanphagia\_8:

(Start: 10 @6446 has 221 MA's), (13, 6470), (14, 6488), (16, 6527), (19, 6548), (23, 6581), (25, 6599), (32, 6623), (34, 6635), (36, 6641), (38, 6653), (40, 6659), (43, 6689), (47, 6707), (48, 6722),

Gene: Phasih\_8 Start: 6459, Stop: 6788, Start Num: 10

Candidate Starts for Phasih\_8:

(Start: 10 @6459 has 221 MA's), (13, 6483), (15, 6522), (18, 6555), (20, 6567), (22, 6588), (23, 6594), (24, 6597), (26, 6615), (34, 6648), (38, 6666), (40, 6672), (43, 6702), (44, 6711), (48, 6735), (50, 6762), (51, 6765), (53, 6783),

Gene: Phatniss\_8 Start: 6443, Stop: 6772, Start Num: 10

Candidate Starts for Phatniss\_8:

(1, 6173), (2, 6350), (Start: 10 @6443 has 221 MA's), (13, 6467), (15, 6506), (18, 6539), (20, 6551), (22, 6572), (23, 6578), (24, 6581), (26, 6599), (34, 6632), (38, 6650), (40, 6656), (41, 6668), (43, 6686), (44, 6695), (48, 6719), (50, 6746), (51, 6749), (53, 6767),

Gene: PhesterPhotato\_8 Start: 6446, Stop: 6778, Start Num: 10

Candidate Starts for PhesterPhotato\_8:

(Start: 10 @6446 has 221 MA's), (13, 6470), (14, 6488), (16, 6527), (19, 6548), (21, 6563), (23, 6581), (25, 6599), (32, 6623), (36, 6641), (38, 6653), (40, 6659), (43, 6689), (48, 6722),

Gene: Philus\_8 Start: 6444, Stop: 6773, Start Num: 10

Candidate Starts for Philus\_8:

(1, 6174), (2, 6351), (Start: 10 @6444 has 221 MA's), (13, 6468), (15, 6507), (18, 6540), (20, 6552), (22, 6573), (23, 6579), (24, 6582), (26, 6600), (34, 6633), (38, 6651), (40, 6657), (41, 6669), (43, 6687), (44, 6696), (48, 6720), (49, 6738), (50, 6747), (51, 6750), (53, 6768),

Gene: PhlipPhlop\_8 Start: 6460, Stop: 6789, Start Num: 10

Candidate Starts for PhlipPhlop\_8:

(1, 6190), (2, 6367), (Start: 10 @6460 has 221 MA's), (13, 6484), (15, 6523), (18, 6556), (20, 6568), (22, 6589), (23, 6595), (24, 6598), (26, 6616), (34, 6649), (38, 6667), (40, 6673), (41, 6685), (43, 6703), (44, 6712), (48, 6736), (50, 6763), (51, 6766), (53, 6784),

Gene: Piper2020\_9 Start: 6298, Stop: 6627, Start Num: 10

Candidate Starts for Piper2020\_9:

(Start: 10 @6298 has 221 MA's), (13, 6322), (15, 6361), (18, 6394), (22, 6427), (23, 6433), (24, 6436), (26, 6454), (34, 6487), (38, 6505), (40, 6511), (41, 6523), (43, 6541), (44, 6550), (48, 6574), (49, 6592),

(50, 6601), (51, 6604), (53, 6622),

Gene: Pippy\_8 Start: 6431, Stop: 6760, Start Num: 10

Candidate Starts for Pippy\_8:

(1, 6161), (2, 6338), (Start: 10 @6431 has 221 MA's), (13, 6455), (15, 6494), (18, 6527), (20, 6539), (22, 6560), (23, 6566), (24, 6569), (26, 6587), (34, 6620), (38, 6638), (40, 6644), (41, 6656), (43, 6674), (44, 6683), (48, 6707), (50, 6734), (51, 6737), (53, 6755),

Gene: Plumbus\_9 Start: 6297, Stop: 6626, Start Num: 10

Candidate Starts for Plumbus\_9:

(Start: 10 @6297 has 221 MA's), (13, 6321), (15, 6360), (18, 6393), (20, 6405), (22, 6426), (23, 6432), (24, 6435), (26, 6453), (34, 6486), (38, 6504), (40, 6510), (41, 6522), (43, 6540), (44, 6549), (48, 6573), (50, 6600), (51, 6603), (53, 6621),

Gene: Poenanya\_8 Start: 6443, Stop: 6772, Start Num: 10

Candidate Starts for Poenanya\_8:

(1, 6173), (2, 6350), (Start: 10 @6443 has 221 MA's), (13, 6467), (15, 6506), (18, 6539), (20, 6551), (22, 6572), (23, 6578), (24, 6581), (26, 6599), (34, 6632), (38, 6650), (40, 6656), (41, 6668), (43, 6686), (44, 6695), (48, 6719), (50, 6746), (51, 6749), (53, 6767),

Gene: Polka14\_8 Start: 6444, Stop: 6773, Start Num: 10

Candidate Starts for Polka14\_8:

(1, 6174), (2, 6351), (Start: 10 @6444 has 221 MA's), (13, 6468), (15, 6507), (18, 6540), (20, 6552), (22, 6573), (23, 6579), (24, 6582), (26, 6600), (34, 6633), (38, 6651), (40, 6657), (41, 6669), (43, 6687), (44, 6696), (48, 6720), (50, 6747), (51, 6750), (53, 6768),

Gene: Pollywog\_9 Start: 6296, Stop: 6625, Start Num: 10

Candidate Starts for Pollywog\_9:

(Start: 10 @6296 has 221 MA's), (13, 6320), (15, 6359), (18, 6392), (20, 6404), (22, 6425), (23, 6431), (24, 6434), (26, 6452), (34, 6485), (38, 6503), (40, 6509), (41, 6521), (43, 6539), (44, 6548), (48, 6572), (50, 6599), (51, 6602), (53, 6620),

Gene: Polo2Bam\_9 Start: 6420, Stop: 6752, Start Num: 10

Candidate Starts for Polo2Bam\_9:

(Start: 10 @6420 has 221 MA's), (13, 6444), (14, 6462), (16, 6501), (19, 6522), (23, 6555), (25, 6573), (32, 6597), (34, 6609), (36, 6615), (38, 6627), (40, 6633), (43, 6663), (48, 6696),

Gene: PopTart\_8 Start: 6446, Stop: 6778, Start Num: 10

Candidate Starts for PopTart\_8:

(Start: 10 @6446 has 221 MA's), (13, 6470), (14, 6488), (16, 6527), (19, 6548), (21, 6563), (23, 6581), (25, 6599), (32, 6623), (36, 6641), (38, 6653), (40, 6659), (43, 6689), (48, 6722),

Gene: Priscilla\_8 Start: 6444, Stop: 6773, Start Num: 10

Candidate Starts for Priscilla\_8:

(1, 6174), (2, 6351), (Start: 10 @6444 has 221 MA's), (13, 6468), (15, 6507), (18, 6540), (20, 6552), (22, 6573), (23, 6579), (24, 6582), (26, 6600), (34, 6633), (38, 6651), (40, 6657), (41, 6669), (43, 6687), (44, 6696), (48, 6720), (50, 6747), (51, 6750), (53, 6768),

Gene: QuickMath\_8 Start: 6447, Stop: 6779, Start Num: 10

Candidate Starts for QuickMath\_8:

(Start: 10 @6447 has 221 MA's), (13, 6471), (14, 6489), (16, 6528), (19, 6549), (21, 6564), (23, 6582), (25, 6600), (32, 6624), (34, 6636), (36, 6642), (38, 6654), (40, 6660), (43, 6690), (48, 6723),

Gene: Quico\_9 Start: 6291, Stop: 6620, Start Num: 10

Candidate Starts for Quico\_9:

(Start: 10 @6291 has 221 MA's), (13, 6315), (15, 6354), (18, 6387), (20, 6399), (22, 6420), (23, 6426), (24, 6429), (26, 6447), (34, 6480), (38, 6498), (40, 6504), (41, 6516), (43, 6534), (44, 6543), (48, 6567), (50, 6594), (51, 6597), (53, 6615),

Gene: Radiance\_8 Start: 6443, Stop: 6772, Start Num: 10

Candidate Starts for Radiance\_8:

(1, 6173), (2, 6350), (Start: 10 @6443 has 221 MA's), (13, 6467), (15, 6506), (18, 6539), (20, 6551), (22, 6572), (23, 6578), (24, 6581), (26, 6599), (34, 6632), (38, 6650), (40, 6656), (41, 6668), (43, 6686), (44, 6695), (48, 6719), (50, 6746), (51, 6749), (53, 6767),

Gene: Ramsey\_9 Start: 6295, Stop: 6624, Start Num: 10

Candidate Starts for Ramsey\_9:

(Start: 10 @6295 has 221 MA's), (13, 6319), (15, 6358), (18, 6391), (20, 6403), (22, 6424), (23, 6430), (24, 6433), (26, 6451), (34, 6484), (38, 6502), (40, 6508), (41, 6520), (43, 6538), (44, 6547), (48, 6571), (50, 6598), (51, 6601), (53, 6619),

Gene: RedBird\_8 Start: 6443, Stop: 6772, Start Num: 10

Candidate Starts for RedBird\_8:

(1, 6173), (2, 6350), (Start: 10 @6443 has 221 MA's), (13, 6467), (15, 6506), (18, 6539), (20, 6551), (22, 6572), (23, 6578), (24, 6581), (26, 6599), (34, 6632), (38, 6650), (40, 6656), (41, 6668), (43, 6686), (44, 6695), (48, 6719), (50, 6746), (51, 6749), (53, 6767),

Gene: Renaud18\_9 Start: 6780, Stop: 7112, Start Num: 10

Candidate Starts for Renaud18\_9:

(Start: 10 @6780 has 221 MA's), (13, 6804), (16, 6864), (19, 6885), (20, 6891), (27, 6951), (32, 6960), (33, 6966), (35, 6972), (44, 7032), (45, 7035), (52, 7095), (53, 7104),

Gene: Rialto\_9 Start: 6297, Stop: 6626, Start Num: 10

Candidate Starts for Rialto\_9:

(Start: 10 @6297 has 221 MA's), (13, 6321), (15, 6360), (18, 6393), (20, 6405), (22, 6426), (23, 6432), (24, 6435), (26, 6453), (34, 6486), (38, 6504), (40, 6510), (41, 6522), (43, 6540), (44, 6549), (48, 6573), (50, 6600), (51, 6603), (53, 6621),

Gene: Rita\_8 Start: 6447, Stop: 6779, Start Num: 10

Candidate Starts for Rita\_8:

(Start: 10 @6447 has 221 MA's), (13, 6471), (14, 6489), (16, 6528), (19, 6549), (21, 6564), (23, 6582), (25, 6600), (32, 6624), (34, 6636), (36, 6642), (38, 6654), (40, 6660), (43, 6690), (48, 6723),

Gene: RitaG\_8 Start: 6443, Stop: 6772, Start Num: 10

Candidate Starts for RitaG\_8:

(1, 6173), (2, 6350), (Start: 10 @6443 has 221 MA's), (13, 6467), (15, 6506), (18, 6539), (20, 6551), (22, 6572), (23, 6578), (24, 6581), (26, 6599), (34, 6632), (38, 6650), (40, 6656), (41, 6668), (43, 6686), (44, 6695), (48, 6719), (50, 6746), (51, 6749), (53, 6767),

Gene: Rockne\_8 Start: 6460, Stop: 6789, Start Num: 10

Candidate Starts for Rockne\_8:

(1, 6190), (2, 6367), (Start: 10 @6460 has 221 MA's), (13, 6484), (15, 6523), (18, 6556), (20, 6568), (22, 6589), (23, 6595), (24, 6598), (26, 6616), (34, 6649), (38, 6667), (40, 6673), (41, 6685), (43, 6703), (44, 6712), (48, 6736), (50, 6763), (51, 6766), (53, 6784),

Gene: RockyHorror\_9 Start: 6295, Stop: 6624, Start Num: 10

Candidate Starts for RockyHorror\_9:

(Start: 10 @6295 has 221 MA's), (13, 6319), (15, 6358), (18, 6391), (20, 6403), (22, 6424), (23, 6430), (26, 6451), (32, 6472), (34, 6484), (38, 6502), (40, 6508), (41, 6520), (43, 6538), (44, 6547), (48, 6571), (50, 6598), (51, 6601), (53, 6619),

Gene: Royals2015\_8 Start: 6446, Stop: 6778, Start Num: 10

Candidate Starts for Royals2015\_8:

(Start: 10 @6446 has 221 MA's), (13, 6470), (14, 6488), (16, 6527), (19, 6548), (21, 6563), (23, 6581), (25, 6599), (32, 6623), (36, 6641), (38, 6653), (40, 6659), (43, 6689), (48, 6722),

Gene: Ruby\_8 Start: 6449, Stop: 6778, Start Num: 10

Candidate Starts for Ruby\_8:

(Start: 10 @6449 has 221 MA's), (13, 6473), (15, 6512), (18, 6545), (20, 6557), (22, 6578), (23, 6584), (24, 6587), (26, 6605), (34, 6638), (38, 6656), (40, 6662), (43, 6692), (44, 6701), (48, 6725), (50, 6752), (51, 6755), (53, 6773),

Gene: SG4\_8 Start: 6446, Stop: 6778, Start Num: 10

Candidate Starts for SG4\_8:

(Start: 10 @6446 has 221 MA's), (13, 6470), (14, 6488), (16, 6527), (19, 6548), (21, 6563), (23, 6581), (25, 6599), (32, 6623), (34, 6635), (36, 6641), (38, 6653), (40, 6659), (43, 6689), (48, 6722),

Gene: Saal\_8 Start: 6432, Stop: 6761, Start Num: 10

Candidate Starts for Saal\_8:

(1, 6162), (2, 6339), (Start: 10 @6432 has 221 MA's), (13, 6456), (15, 6495), (18, 6528), (20, 6540), (22, 6561), (23, 6567), (24, 6570), (26, 6588), (34, 6621), (38, 6639), (40, 6645), (41, 6657), (43, 6675), (44, 6684), (48, 6708), (50, 6735), (51, 6738), (53, 6756),

Gene: Sabbb\_8 Start: 6447, Stop: 6776, Start Num: 10

Candidate Starts for Sabbb\_8:

(Start: 10 @6447 has 221 MA's), (13, 6471), (15, 6510), (18, 6543), (22, 6576), (23, 6582), (24, 6585), (26, 6603), (34, 6636), (38, 6654), (40, 6660), (43, 6690), (44, 6699), (48, 6723), (50, 6750), (51, 6753), (53, 6771),

Gene: Sandalphon\_8 Start: 6460, Stop: 6789, Start Num: 10

Candidate Starts for Sandalphon\_8:

(1, 6190), (2, 6367), (Start: 10 @6460 has 221 MA's), (13, 6484), (15, 6523), (18, 6556), (20, 6568), (22, 6589), (23, 6595), (24, 6598), (26, 6616), (34, 6649), (38, 6667), (40, 6673), (41, 6685), (43, 6703), (44, 6712), (48, 6736), (50, 6763), (51, 6766), (53, 6784),

Gene: Sarma624\_9 Start: 6295, Stop: 6624, Start Num: 10

Candidate Starts for Sarma624\_9:

(Start: 10 @6295 has 221 MA's), (13, 6319), (18, 6391), (20, 6403), (22, 6424), (23, 6430), (24, 6433), (26, 6451), (34, 6484), (38, 6502), (40, 6508), (41, 6520), (43, 6538), (44, 6547), (48, 6571), (50, 6598), (51, 6601), (53, 6619),

Gene: Sassafras\_8 Start: 6443, Stop: 6772, Start Num: 10

Candidate Starts for Sassafras\_8:

(1, 6173), (2, 6350), (Start: 10 @6443 has 221 MA's), (13, 6467), (15, 6506), (18, 6539), (20, 6551), (22, 6572), (23, 6578), (24, 6581), (26, 6599), (34, 6632), (38, 6650), (40, 6656), (41, 6668), (43, 6686), (44, 6695), (48, 6719), (50, 6746), (51, 6749), (53, 6767),

Gene: SassyB\_8 Start: 6446, Stop: 6778, Start Num: 10

Candidate Starts for SassyB\_8:

(Start: 10 @6446 has 221 MA's), (13, 6470), (14, 6488), (16, 6527), (19, 6548), (21, 6563), (23, 6581), (25, 6599), (32, 6623), (36, 6641), (38, 6653), (40, 6659), (43, 6689), (48, 6722),

Gene: Scottish\_8 Start: 6443, Stop: 6772, Start Num: 10

Candidate Starts for Scottish\_8:

(1, 6173), (2, 6350), (Start: 10 @6443 has 221 MA's), (13, 6467), (15, 6506), (18, 6539), (20, 6551), (22, 6572), (23, 6578), (24, 6581), (26, 6599), (34, 6632), (38, 6650), (40, 6656), (41, 6668), (43, 6686), (44, 6695), (48, 6719), (50, 6746), (51, 6749), (53, 6767),

Gene: Seabastian\_8 Start: 6442, Stop: 6771, Start Num: 10

Candidate Starts for Seabastian\_8:

(1, 6172), (2, 6349), (Start: 10 @6442 has 221 MA's), (13, 6466), (15, 6505), (18, 6538), (20, 6550), (22, 6571), (23, 6577), (24, 6580), (26, 6598), (34, 6631), (38, 6649), (40, 6655), (43, 6685), (44, 6694), (48, 6718), (50, 6745), (51, 6748), (53, 6766),

Gene: Seagreen\_9 Start: 6296, Stop: 6625, Start Num: 10

Candidate Starts for Seagreen\_9:

(Start: 10 @6296 has 221 MA's), (13, 6320), (15, 6359), (18, 6392), (20, 6404), (22, 6425), (23, 6431), (24, 6434), (26, 6452), (32, 6473), (34, 6485), (38, 6503), (40, 6509), (43, 6539), (44, 6548), (48, 6572), (50, 6599), (51, 6602), (53, 6620),

Gene: Shauna1\_8 Start: 6446, Stop: 6778, Start Num: 10

Candidate Starts for Shauna1\_8:

(Start: 10 @6446 has 221 MA's), (13, 6470), (14, 6488), (16, 6527), (19, 6548), (23, 6581), (25, 6599), (32, 6623), (34, 6635), (36, 6641), (38, 6653), (40, 6659), (43, 6689), (47, 6707), (48, 6722),

Gene: ShiLan\_8 Start: 6444, Stop: 6773, Start Num: 10

Candidate Starts for ShiLan\_8:

(1, 6174), (2, 6351), (Start: 10 @6444 has 221 MA's), (13, 6468), (15, 6507), (18, 6540), (20, 6552), (22, 6573), (23, 6579), (24, 6582), (26, 6600), (34, 6633), (38, 6651), (40, 6657), (41, 6669), (43, 6687), (44, 6696), (48, 6720), (49, 6738), (50, 6747), (51, 6750), (53, 6768),

Gene: ShowerHandel\_8 Start: 6445, Stop: 6774, Start Num: 10

Candidate Starts for ShowerHandel\_8:

(1, 6175), (2, 6352), (Start: 10 @6445 has 221 MA's), (13, 6469), (15, 6508), (18, 6541), (20, 6553), (22, 6574), (23, 6580), (24, 6583), (26, 6601), (34, 6634), (38, 6652), (40, 6658), (41, 6670), (43, 6688), (44, 6697), (48, 6721), (49, 6739), (50, 6748), (51, 6751), (53, 6769),

Gene: ShroomBoi\_8 Start: 6446, Stop: 6778, Start Num: 10

Candidate Starts for ShroomBoi\_8:

(Start: 10 @6446 has 221 MA's), (13, 6470), (14, 6488), (16, 6527), (19, 6548), (21, 6563), (23, 6581), (25, 6599), (32, 6623), (36, 6641), (38, 6653), (40, 6659), (43, 6689), (48, 6722),

Gene: SiSi\_8 Start: 6431, Stop: 6763, Start Num: 10

Candidate Starts for SiSi\_8:

(Start: 10 @6431 has 221 MA's), (13, 6455), (14, 6473), (16, 6512), (19, 6533), (21, 6548), (23, 6566), (25, 6584), (32, 6608), (34, 6620), (36, 6626), (38, 6638), (40, 6644), (43, 6674), (48, 6707),

Gene: SimranZ1\_9 Start: 6296, Stop: 6625, Start Num: 10

Candidate Starts for SimranZ1\_9:

(Start: 10 @6296 has 221 MA's), (13, 6320), (15, 6359), (18, 6392), (20, 6404), (22, 6425), (23, 6431), (24, 6434), (26, 6452), (34, 6485), (38, 6503), (40, 6509), (41, 6521), (43, 6539), (44, 6548), (48, 6572), (50, 6599), (51, 6602), (53, 6620),

Gene: Slim\_10 Start: 6297, Stop: 6626, Start Num: 10

Candidate Starts for Slim\_10:

(Start: 10 @6297 has 221 MA's), (13, 6321), (15, 6360), (18, 6393), (20, 6405), (22, 6426), (23, 6432), (24, 6435), (26, 6453), (34, 6486), (38, 6504), (40, 6510), (41, 6522), (43, 6540), (44, 6549), (48, 6573), (50, 6600), (51, 6603), (53, 6621),

Gene: Sparkdehlily\_8 Start: 6459, Stop: 6788, Start Num: 10

Candidate Starts for Sparkdehlily\_8:

(1, 6189), (2, 6366), (Start: 10 @6459 has 221 MA's), (13, 6483), (15, 6522), (18, 6555), (20, 6567), (22, 6588), (23, 6594), (24, 6597), (26, 6615), (34, 6648), (38, 6666), (40, 6672), (41, 6684), (43, 6702), (44, 6711), (48, 6735), (50, 6762), (51, 6765), (53, 6783),

Gene: Spartacus\_8 Start: 6434, Stop: 6766, Start Num: 10

Candidate Starts for Spartacus\_8:

(Start: 10 @6434 has 221 MA's), (12, 6455), (13, 6458), (15, 6497), (19, 6536), (23, 6569), (24, 6572), (30, 6605), (32, 6611), (38, 6641), (40, 6647), (43, 6677), (48, 6710), (50, 6737), (52, 6749), (53, 6758),

Gene: Spikelee\_9 Start: 6296, Stop: 6625, Start Num: 10

Candidate Starts for Spikelee\_9:

(Start: 10 @6296 has 221 MA's), (13, 6320), (15, 6359), (18, 6392), (20, 6404), (22, 6425), (23, 6431), (24, 6434), (26, 6452), (34, 6485), (38, 6503), (40, 6509), (41, 6521), (43, 6539), (44, 6548), (48, 6572), (50, 6599), (51, 6602), (53, 6620),

Gene: Spoonbill\_8 Start: 6445, Stop: 6774, Start Num: 10

Candidate Starts for Spoonbill\_8:

(Start: 10 @6445 has 221 MA's), (13, 6469), (15, 6508), (18, 6541), (20, 6553), (22, 6574), (23, 6580), (24, 6583), (26, 6601), (34, 6634), (38, 6652), (40, 6658), (41, 6670), (43, 6688), (44, 6697), (48, 6721), (50, 6748), (51, 6751), (53, 6769),

Gene: Squirty\_9 Start: 6294, Stop: 6623, Start Num: 10

Candidate Starts for Squirty\_9:

(Start: 10 @6294 has 221 MA's), (13, 6318), (15, 6357), (18, 6390), (20, 6402), (22, 6423), (23, 6429), (24, 6432), (26, 6450), (34, 6483), (38, 6501), (40, 6507), (41, 6519), (43, 6537), (44, 6546), (48, 6570), (50, 6597), (51, 6600), (53, 6618),

Gene: StAnnes\_8 Start: 6446, Stop: 6778, Start Num: 10

Candidate Starts for StAnnes\_8:

(Start: 10 @6446 has 221 MA's), (13, 6470), (14, 6488), (16, 6527), (19, 6548), (21, 6563), (23, 6581), (25, 6599), (32, 6623), (36, 6641), (38, 6653), (40, 6659), (43, 6689), (48, 6722),

Gene: Stap\_9 Start: 6296, Stop: 6625, Start Num: 10

Candidate Starts for Stap\_9:

(Start: 10 @6296 has 221 MA's), (13, 6320), (15, 6359), (18, 6392), (20, 6404), (22, 6425), (23, 6431), (24, 6434), (26, 6452), (32, 6473), (34, 6485), (38, 6503), (40, 6509), (43, 6539), (44, 6548), (48, 6572), (50, 6599), (51, 6602), (53, 6620),

Gene: Starcevich\_9 Start: 6296, Stop: 6625, Start Num: 10

Candidate Starts for Starcevich\_9:

(Start: 10 @6296 has 221 MA's), (13, 6320), (15, 6359), (18, 6392), (20, 6404), (22, 6425), (23, 6431), (24, 6434), (26, 6452), (34, 6485), (38, 6503), (40, 6509), (41, 6521), (43, 6539), (44, 6548), (48, 6572), (50, 6599), (51, 6602), (53, 6620),

Gene: Strokeseat\_8 Start: 6433, Stop: 6762, Start Num: 10

Candidate Starts for Strokeseat\_8:

(1, 6163), (2, 6340), (Start: 10 @6433 has 221 MA's), (13, 6457), (15, 6496), (18, 6529), (20, 6541), (22, 6562), (23, 6568), (24, 6571), (26, 6589), (34, 6622), (38, 6640), (40, 6646), (43, 6676), (44, 6685), (48, 6709), (50, 6736), (51, 6739), (53, 6757),

Gene: SuperGrey\_8 Start: 6446, Stop: 6778, Start Num: 10

Candidate Starts for SuperGrey\_8:

(Start: 10 @6446 has 221 MA's), (13, 6470), (14, 6488), (16, 6527), (19, 6548), (21, 6563), (23, 6581), (25, 6599), (32, 6623), (34, 6635), (36, 6641), (38, 6653), (40, 6659), (43, 6689), (48, 6722),

Gene: SwagPigglett\_8 Start: 6445, Stop: 6774, Start Num: 10

Candidate Starts for SwagPigglett\_8:

(1, 6175), (2, 6352), (Start: 10 @6445 has 221 MA's), (13, 6469), (15, 6508), (18, 6541), (20, 6553), (22, 6574), (23, 6580), (24, 6583), (26, 6601), (34, 6634), (38, 6652), (40, 6658), (41, 6670), (43, 6688), (44, 6697), (48, 6721), (49, 6739), (50, 6748), (51, 6751), (53, 6769),

Gene: TChen\_9 Start: 6903, Stop: 7235, Start Num: 10

Candidate Starts for TChen\_9:

(Start: 10 @6903 has 221 MA's), (13, 6927), (16, 6987), (19, 7008), (20, 7014), (27, 7074), (32, 7083), (33, 7089), (35, 7095), (44, 7155), (45, 7158), (52, 7218), (53, 7227),

Gene: TDanisky\_8 Start: 6459, Stop: 6788, Start Num: 10

Candidate Starts for TDanisky\_8:

(1, 6189), (2, 6366), (Start: 10 @6459 has 221 MA's), (13, 6483), (15, 6522), (18, 6555), (20, 6567), (22, 6588), (23, 6594), (24, 6597), (26, 6615), (34, 6648), (38, 6666), (40, 6672), (41, 6684), (43, 6702), (44, 6711), (48, 6735), (50, 6762), (51, 6765), (53, 6783),

Gene: TPA4\_10 Start: 7947, Stop: 8351, Start Num: 6

Candidate Starts for TPA4\_10:

(6, 7947), (7, 7950), (19, 8067), (29, 8148), (31, 8154), (42, 8244), (43, 8250), (53, 8340),

Gene: Taj\_8 Start: 6446, Stop: 6778, Start Num: 10

Candidate Starts for Taj\_8:

(Start: 10 @6446 has 221 MA's), (13, 6470), (14, 6488), (16, 6527), (19, 6548), (21, 6563), (23, 6581), (25, 6599), (32, 6623), (34, 6635), (36, 6641), (38, 6653), (40, 6659), (43, 6689), (48, 6722),

Gene: Tchotchke\_9 Start: 6296, Stop: 6625, Start Num: 10

Candidate Starts for Tchotchke\_9:

(Start: 10 @6296 has 221 MA's), (13, 6320), (15, 6359), (18, 6392), (20, 6404), (22, 6425), (23, 6431), (24, 6434), (26, 6452), (34, 6485), (38, 6503), (40, 6509), (41, 6521), (43, 6539), (44, 6548), (48, 6572), (50, 6599), (51, 6602), (53, 6620),

Gene: ThetaBob\_9 Start: 6783, Stop: 7115, Start Num: 10

Candidate Starts for ThetaBob\_9:

(Start: 10 @6783 has 221 MA's), (13, 6807), (16, 6867), (19, 6888), (20, 6894), (27, 6954), (32, 6963), (33, 6969), (35, 6975), (44, 7035), (45, 7038), (52, 7098), (53, 7107),

Gene: TootsiePop\_9 Start: 6299, Stop: 6628, Start Num: 10

Candidate Starts for TootsiePop\_9:

(Start: 10 @6299 has 221 MA's), (13, 6323), (15, 6362), (18, 6395), (20, 6407), (22, 6428), (23, 6434), (24, 6437), (26, 6455), (32, 6476), (34, 6488), (38, 6506), (40, 6512), (41, 6524), (43, 6542), (44, 6551), (48, 6575), (50, 6602), (51, 6605), (53, 6623),

Gene: Tootsieroll\_9 Start: 6296, Stop: 6625, Start Num: 10

Candidate Starts for Tootsieroll\_9:

(Start: 10 @6296 has 221 MA's), (13, 6320), (15, 6359), (18, 6392), (20, 6404), (22, 6425), (23, 6431), (24, 6434), (26, 6452), (32, 6473), (34, 6485), (38, 6503), (40, 6509), (41, 6521), (43, 6539), (44, 6548), (48, 6572), (50, 6599), (51, 6602), (53, 6620),

Gene: Toron\_9 Start: 6903, Stop: 7235, Start Num: 10

Candidate Starts for Toron\_9:

(Start: 10 @6903 has 221 MA's), (13, 6927), (16, 6987), (20, 7014), (27, 7074), (32, 7083), (33, 7089), (35, 7095), (44, 7155), (45, 7158), (52, 7218), (53, 7227),

Gene: Totinger\_9 Start: 6297, Stop: 6626, Start Num: 10

Candidate Starts for Totinger\_9:

(Start: 10 @6297 has 221 MA's), (13, 6321), (15, 6360), (18, 6393), (20, 6405), (22, 6426), (23, 6432), (24, 6435), (26, 6453), (34, 6486), (38, 6504), (40, 6510), (41, 6522), (43, 6540), (44, 6549), (48, 6573), (50, 6600), (51, 6603), (53, 6621),

Gene: Tweety\_8 Start: 6446, Stop: 6778, Start Num: 10

Candidate Starts for Tweety\_8:

(Start: 10 @6446 has 221 MA's), (13, 6470), (14, 6488), (16, 6527), (19, 6548), (21, 6563), (23, 6581), (25, 6599), (32, 6623), (36, 6641), (38, 6653), (40, 6659), (43, 6689), (48, 6722),

Gene: UncleRicky\_9 Start: 6296, Stop: 6625, Start Num: 10

Candidate Starts for UncleRicky\_9:

(Start: 10 @6296 has 221 MA's), (13, 6320), (15, 6359), (18, 6392), (20, 6404), (22, 6425), (23, 6431), (24, 6434), (26, 6452), (34, 6485), (38, 6503), (40, 6509), (43, 6539), (44, 6548), (48, 6572), (50, 6599), (51, 6602), (53, 6620),

Gene: VRedHorse\_8 Start: 6445, Stop: 6774, Start Num: 10

Candidate Starts for VRedHorse\_8:

(1, 6175), (2, 6352), (Start: 10 @6445 has 221 MA's), (13, 6469), (15, 6508), (18, 6541), (22, 6574), (23, 6580), (24, 6583), (26, 6601), (34, 6634), (38, 6652), (40, 6658), (41, 6670), (43, 6688), (44, 6697), (48, 6721), (50, 6748), (51, 6751), (53, 6769),

Gene: Velveteen\_9 Start: 6295, Stop: 6624, Start Num: 10

Candidate Starts for Velveteen\_9:

(Start: 10 @6295 has 221 MA's), (13, 6319), (18, 6391), (20, 6403), (22, 6424), (23, 6430), (24, 6433), (26, 6451), (34, 6484), (38, 6502), (40, 6508), (41, 6520), (43, 6538), (44, 6547), (48, 6571), (50, 6598), (51, 6601), (53, 6619),

Gene: Veteran\_8 Start: 6460, Stop: 6789, Start Num: 10

Candidate Starts for Veteran\_8:

(1, 6190), (2, 6367), (Start: 10 @6460 has 221 MA's), (13, 6484), (15, 6523), (18, 6556), (20, 6568), (22, 6589), (23, 6595), (24, 6598), (26, 6616), (32, 6637), (34, 6649), (38, 6667), (40, 6673), (43, 6703), (44, 6712), (48, 6736), (50, 6763), (51, 6766), (53, 6784),

Gene: Violac\_8 Start: 6446, Stop: 6775, Start Num: 10

Candidate Starts for Violac\_8:

(1, 6176), (2, 6353), (Start: 10 @6446 has 221 MA's), (13, 6470), (15, 6509), (18, 6542), (20, 6554), (22, 6575), (23, 6581), (24, 6584), (26, 6602), (34, 6635), (38, 6653), (40, 6659), (41, 6671), (43, 6689), (44, 6698), (48, 6722), (50, 6749), (51, 6752), (53, 6770),



Gene: Vivum\_8 Start: 6444, Stop: 6773, Start Num: 10

Candidate Starts for Vivum\_8:

(1, 6174), (2, 6351), (Start: 10 @6444 has 221 MA's), (13, 6468), (15, 6507), (18, 6540), (20, 6552), (22, 6573), (23, 6579), (24, 6582), (26, 6600), (34, 6633), (38, 6651), (40, 6657), (41, 6669), (43, 6687), (44, 6696), (48, 6720), (50, 6747), (51, 6750), (53, 6768),

Gene: Wachhund\_8 Start: 6436, Stop: 6765, Start Num: 10

Candidate Starts for Wachhund\_8:

(Start: 10 @6436 has 221 MA's), (13, 6460), (15, 6499), (18, 6532), (20, 6544), (22, 6565), (23, 6571), (24, 6574), (26, 6592), (34, 6625), (38, 6643), (40, 6649), (41, 6661), (43, 6679), (44, 6688), (48, 6712), (50, 6739), (51, 6742), (53, 6760),

Gene: Wee\_8 Start: 6446, Stop: 6778, Start Num: 10

Candidate Starts for Wee\_8:

(Start: 10 @6446 has 221 MA's), (13, 6470), (14, 6488), (16, 6527), (19, 6548), (21, 6563), (23, 6581), (25, 6599), (32, 6623), (34, 6635), (36, 6641), (38, 6653), (40, 6659), (43, 6689), (48, 6722),

Gene: Whatsapiecost\_8 Start: 6446, Stop: 6778, Start Num: 10

Candidate Starts for Whatsapiecost\_8:

(Start: 10 @6446 has 221 MA's), (13, 6470), (14, 6488), (16, 6527), (19, 6548), (21, 6563), (23, 6581), (25, 6599), (32, 6623), (36, 6641), (38, 6653), (40, 6659), (43, 6689), (48, 6722),

Gene: Whouxphf\_8 Start: 6435, Stop: 6764, Start Num: 10

Candidate Starts for Whouxphf\_8:

(Start: 10 @6435 has 221 MA's), (13, 6459), (15, 6498), (18, 6531), (20, 6543), (22, 6564), (23, 6570), (24, 6573), (26, 6591), (34, 6624), (38, 6642), (40, 6648), (43, 6678), (44, 6687), (48, 6711), (50, 6738), (51, 6741), (53, 6759),

Gene: WillSterrel\_8 Start: 6434, Stop: 6766, Start Num: 10

Candidate Starts for WillSterrel\_8:

(Start: 10 @6434 has 221 MA's), (12, 6455), (13, 6458), (15, 6497), (19, 6536), (23, 6569), (24, 6572), (30, 6605), (32, 6611), (38, 6641), (40, 6647), (43, 6677), (48, 6710), (50, 6737), (52, 6749), (53, 6758),

Gene: XFactor\_8 Start: 6446, Stop: 6778, Start Num: 10

Candidate Starts for XFactor\_8:

(Start: 10 @6446 has 221 MA's), (13, 6470), (14, 6488), (16, 6527), (19, 6548), (21, 6563), (23, 6581), (25, 6599), (32, 6623), (36, 6641), (38, 6653), (40, 6659), (43, 6689), (48, 6722),

Gene: Yorick\_8 Start: 6443, Stop: 6772, Start Num: 10

Candidate Starts for Yorick\_8:

(1, 6173), (2, 6350), (Start: 10 @6443 has 221 MA's), (13, 6467), (15, 6506), (18, 6539), (20, 6551), (22, 6572), (23, 6578), (24, 6581), (26, 6599), (32, 6620), (34, 6632), (38, 6650), (40, 6656), (41, 6668), (43, 6686), (44, 6695), (48, 6719), (49, 6737), (50, 6746), (51, 6749), (53, 6767),

Gene: Zerg\_8 Start: 6444, Stop: 6773, Start Num: 10

Candidate Starts for Zerg\_8:

(1, 6174), (2, 6351), (Start: 10 @6444 has 221 MA's), (13, 6468), (15, 6507), (18, 6540), (22, 6573), (23, 6579), (24, 6582), (26, 6600), (34, 6633), (38, 6651), (40, 6657), (41, 6669), (43, 6687), (44, 6696), (48, 6720), (50, 6747), (51, 6750), (53, 6768),

Gene: Zizzle\_8 Start: 6447, Stop: 6776, Start Num: 10

Candidate Starts for Zizzle\_8:

(1, 6177), (2, 6354), (Start: 10 @6447 has 221 MA's), (13, 6471), (15, 6510), (18, 6543), (20, 6555),  
(22, 6576), (23, 6582), (24, 6585), (26, 6603), (34, 6636), (38, 6654), (40, 6660), (41, 6672), (43, 6690),  
(44, 6699), (48, 6723), (49, 6741), (50, 6750), (51, 6753), (53, 6771),