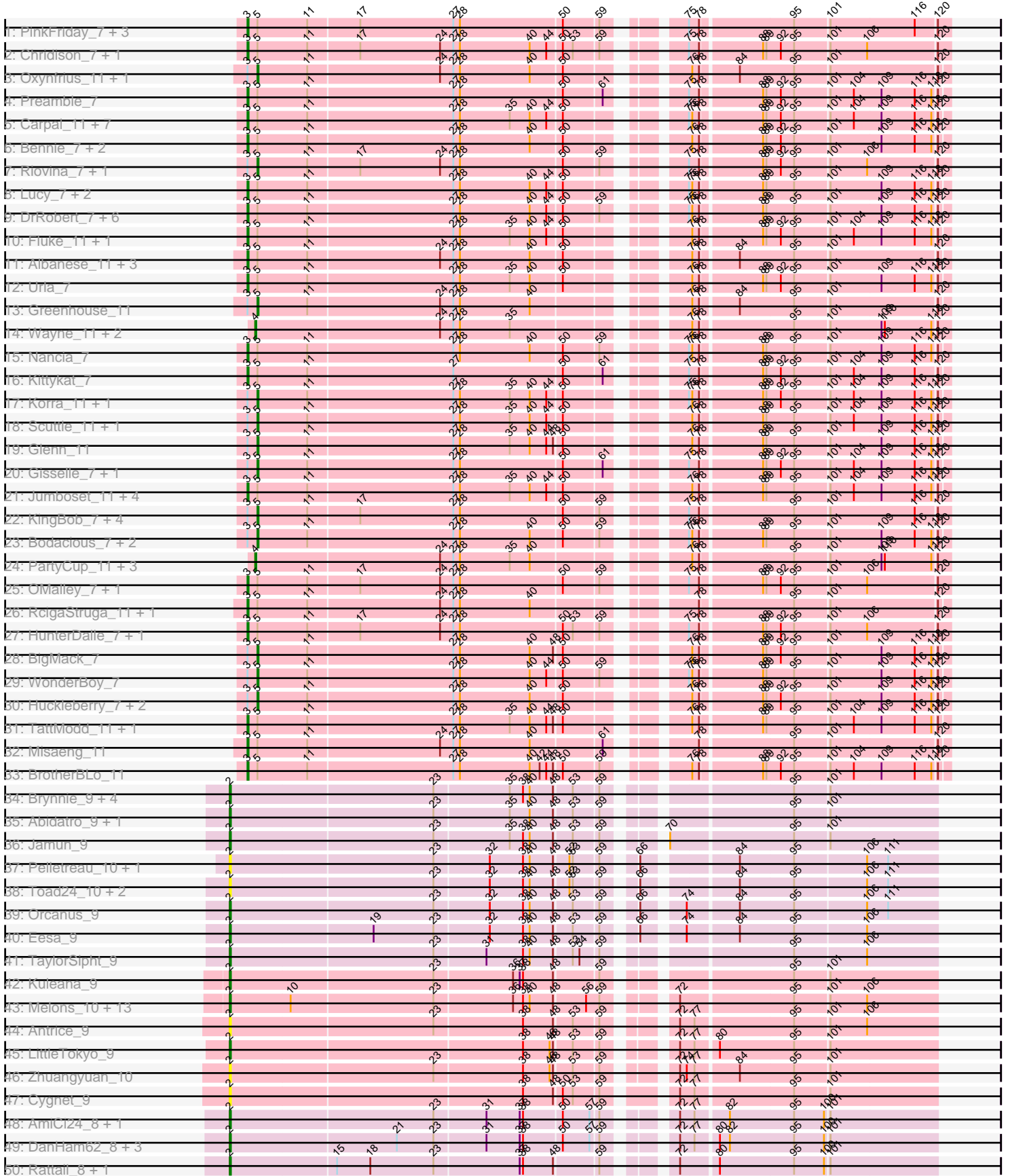
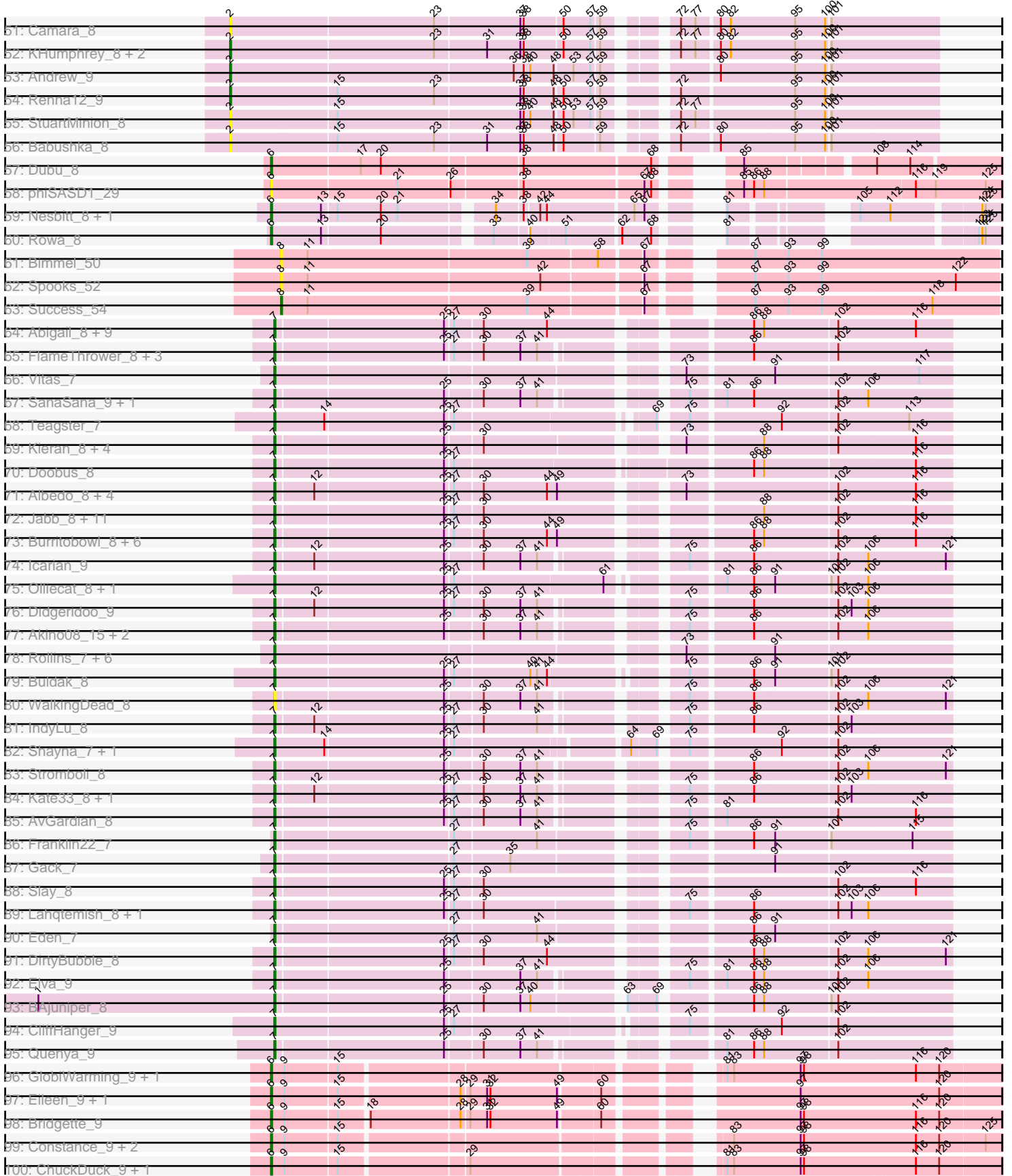


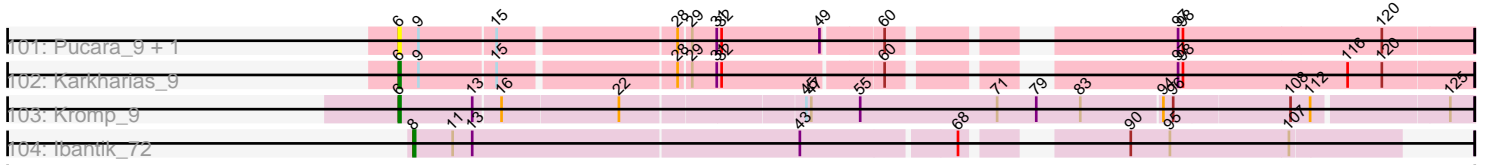
Pham 215797



Pham 215797



Pham 215797



Note: Tracks are now grouped by subcluster and scaled. Switching in subcluster is indicated by changes in track color. Track scale is now set by default to display the region 30 bp upstream of start 1 to 30 bp downstream of the last possible start. If this default region is judged to be packed too tightly with annotated starts, the track will be further scaled to only show that region of the ORF with annotated starts. This action will be indicated by adding "Zoomed" to the title. For starts, yellow indicates the location of called starts comprised solely of Glimmer/GeneMark auto-annotations, green indicates the location of called starts with at least 1 manual gene annotation.

Pham 215797 Report

This analysis was run 02/22/25 on database version 588.

Pham number 215797 has 240 members, 44 are drafts.

Phages represented in each track:

- Track 1 : PinkFriday_7, Maria1952_7, Pumancara_7, Supakev_7
- Track 2 : Chridison_7, AustinPowers_7
- Track 3 : Oxyntrius_11, Nubia_11
- Track 4 : Preamble_7
- Track 5 : Carpal_11, Wawa_11, Potatoes_11, Cholula_11, Dino_11, Immaculata_11, Beethoven_11, Kalizoi_11
- Track 6 : Bennie_7, HeadNerd_7, Moki_7
- Track 7 : Riovina_7, Eunoia_7
- Track 8 : Lucy_7, Makoto_7, Pterodactyl_7
- Track 9 : DrRobert_7, Lennox_7, Christian_7, PitaDog_7, LilStuart_7, ChewChew_7, OurGirlNessie_7
- Track 10 : Fluke_11, Rozby_11
- Track 11 : Albanese_11, Lakshmi_11, GreenHearts_11, Joann_11
- Track 12 : Urla_7
- Track 13 : Greenhouse_11
- Track 14 : Wayne_11, Suppi_11, Canowicakte_11
- Track 15 : Nancia_7
- Track 16 : Kittykat_7
- Track 17 : Korra_11, Zorro_11
- Track 18 : Scuttle_11, Vallejo_11
- Track 19 : Glenn_11
- Track 20 : Gisselle_7, DreamTeam_7
- Track 21 : Jumboset_11, Riverdale_11, RAP15_11, Savage2526_11, MeganNoll_11
- Track 22 : KingBob_7, Herb_7, Sergei_7, Daiboju_7, Temper16_7
- Track 23 : Bodacious_7, CristinaYang_7, Lasagna_7
- Track 24 : PartyCup_11, Litotes_11, AppleCider_11, CallieOMalley_11
- Track 25 : OMalley_7, Aledel_7
- Track 26 : RcigaStruga_11, Huntingdon_11
- Track 27 : HunterDalle_7, Vulture_7
- Track 28 : BigMack_7
- Track 29 : WonderBoy_7
- Track 30 : Huckleberry_7, EstebanJulior_7, MamaPearl_7
- Track 31 : TattModd_11, MrGloopy_11
- Track 32 : Misaeng_11
- Track 33 : BrotherBLo_11
- Track 34 : Brynnie_9, Chickaboom_8, Vulpecula_9, Ruchi_9, Basilisk_9
- Track 35 : Abidatro_9, Galaxy_9

- Track 36 : Jamun_9
- Track 37 : Pelletreau_10, Gravel_10
- Track 38 : Toad24_10, Westrich_10, KendraB23_10
- Track 39 : Orcanus_9
- Track 40 : Eesa_9
- Track 41 : TaylorSipht_9
- Track 42 : Kuleana_9
- Track 43 : Melons_10, OtsoOtso_9, Polka_9, Bibble12_10, Amelia_10, Cote_10, Bedetta_10, Coral_9, Lunar_10, Daob_10, Kepler_9, HannahPhantana_10, Jerole_10, Colusalem_9
- Track 44 : Antrice_9
- Track 45 : LittleTokyo_9
- Track 46 : Zhuangyuan_10
- Track 47 : Cygnet_9
- Track 48 : AmiCi24_8, Juno112_8
- Track 49 : DanHam62_8, HamCheese_8, PhluffyCoco_8, RedFox_8
- Track 50 : Rattail_8, Leona_8
- Track 51 : Camara_8
- Track 52 : KHumphrey_8, Glotell_8, Atlantica_8
- Track 53 : Andrew_9
- Track 54 : Renna12_9
- Track 55 : StuartMinion_8
- Track 56 : Babushka_8
- Track 57 : Dubu_8
- Track 58 : phiSASD1_29
- Track 59 : Nesbitt_8, AbbeyMikolon_8
- Track 60 : Rowa_8
- Track 61 : Bimmel_50
- Track 62 : Spooks_52
- Track 63 : Success_54
- Track 64 : Abigail_8, Avocadoman_8, Johnathan_8, Softsoap_8, Albright_8, Solea_9, LimaBean_8, Arroyo_9, Milomuff_9, Bengal_8
- Track 65 : FlameThrower_8, Bachaco_8, Celaena_8, Katzastrophic_8
- Track 66 : Vitas_7
- Track 67 : SanaSana_9, Stoor_8
- Track 68 : Teagster_7
- Track 69 : Kieran_8, Sharkboy_8, Dismas_8, ChiliPepper_8, Rona_8
- Track 70 : Doobus_8
- Track 71 : Albedo_8, Lynlen_8, Kenzers_8, BubbaBear_8, Phisb_8
- Track 72 : Jabb_8, Swervy_8, Finalfrontier_9, CupcakePrincess_8, TukTuk_8, MsUbiquitous_8, Jovita_8, Nicky22_9, SarBear_8, Cashington_8, Eula_8, QMacho_9
- Track 73 : Burritobowl_8, BelmontSKP_9, AnnaLie_9, SansAfet_8, PhigPhack_8, CroZenni_8, DickRichards_8
- Track 74 : Icarian_9
- Track 75 : Olliecat_8, Squirrel_8
- Track 76 : Didgeridoo_9
- Track 77 : Akino08_15, BabyYoda_8, Loviatar_15
- Track 78 : Rollins_7, Clayda5_7, Bernstein_7, Brahms_7, Coltrane_7, Armstrong_7, Skylord_7
- Track 79 : Buldak_8
- Track 80 : WalkingDead_8
- Track 81 : IndyLu_8
- Track 82 : Shayna_7, SunnyD_7

- Track 83 : Stromboli_8
- Track 84 : Kate33_8, BabyDaisy_9
- Track 85 : AvGardian_8
- Track 86 : Franklin22_7
- Track 87 : Gack_7
- Track 88 : Slay_8
- Track 89 : Lahqtemish_8, PastaFagioli_8
- Track 90 : Eden_7
- Track 91 : DirtyBubble_8
- Track 92 : Elva_9
- Track 93 : BAjuniper_8
- Track 94 : CliffHanger_9
- Track 95 : Quenya_9
- Track 96 : GlobiWarming_9, Judy_9
- Track 97 : Eileen_9, Peas_9
- Track 98 : Bridgette_9
- Track 99 : Constance_9, PeggyLeg03_9, FosterFrank_9
- Track 100 : ChuckDuck_9, KayMoney_9
- Track 101 : Pucara_9, HotPotato_9
- Track 102 : Karkharias_9
- Track 103 : Kromp_9
- Track 104 : Ibantik_72

Summary of Final Annotations (See graph section above for start numbers):

The start number called the most often in the published annotations is 7, it was called in 68 of the 196 non-draft genes in the pham.

Genes that call this "Most Annotated" start:

- Abigail_8, Akino08_15, Albedo_8, Albright_8, AnnaLie_9, Armstrong_7, Arroyo_9, AvGardian_8, Avocadoman_8, BAjuniper_8, BabyDaisy_9, BabyYoda_8, Bachaco_8, BelmontSKP_9, Bengal_8, Bernstein_7, Brahms_7, BubbaBear_8, Buldak_8, Burritobowl_8, Cashington_8, Celaena_8, ChiliPepper_8, Clayda5_7, CliffHanger_9, Coltrane_7, CroZenni_8, CupcakePrincess_8, DickRichards_8, Didgeridoo_9, DirtyBubble_8, Dismas_8, Doobus_8, Eden_7, Elva_9, Eula_8, Finalfrontier_9, FlameThrower_8, Franklin22_7, Gack_7, Icarian_9, IndyLu_8, Jabb_8, Johnathan_8, Jovita_8, Kate33_8, Katzastrophic_8, Kenzers_8, Kieran_8, Lahqtemish_8, LimaBean_8, Loviatar_15, Lynlen_8, Milomuff_9, MsUbiquitous_8, Nicky22_9, Olliecat_8, PastaFagioli_8, PhigPhack_8, Phisb_8, QMacho_9, Quenya_9, Rollins_7, Rona_8, SanaSana_9, SansAfet_8, SarBear_8, Sharkboy_8, Shayna_7, Skylord_7, Slay_8, Softsoap_8, Solea_9, Squircle_8, Stoor_8, Stromboli_8, SunnyD_7, Swervy_8, Teagster_7, TukTuk_8, Vitas_7, WalkingDead_8,

Genes that have the "Most Annotated" start but do not call it:

-

Genes that do not have the "Most Annotated" start:

- AbbeyMikolon_8, Abidatro_9, Albanese_11, Aledel_7, Amelia_10, AmiCi24_8, Andrew_9, Antrice_9, AppleCider_11, Atlantica_8, AustinPowers_7, Babushka_8, Basilisk_9, Bedetta_10, Beethoven_11, Bennie_7, Bibble12_10, BigMack_7,

Bimmel_50, Bodacious_7, Bridgette_9, BrotherBLo_11, Brynnie_9, CallieOMalley_11, Camara_8, Canowicakte_11, Carpal_11, ChewChew_7, Chickaboom_8, Cholula_11, Chridison_7, Christian_7, ChuckDuck_9, Colusalem_9, Constance_9, Coral_9, Cote_10, CristinaYang_7, Cygnet_9, Daiboju_7, DanHam62_8, Daob_10, Dino_11, DrRobert_7, DreamTeam_7, Dubu_8, Eesa_9, Eileen_9, EstebanJulior_7, Eunoia_7, Fluke_11, FosterFrank_9, Galaxy_9, Gisselle_7, Glenn_11, GlobiWarming_9, Glotell_8, Gravel_10, GreenHearts_11, Greenhouse_11, HamCheese_8, HannahPhantana_10, HeadNerd_7, Herb_7, HotPotato_9, Huckleberry_7, HunterDalle_7, Huntingdon_11, Ibantik_72, Immaculata_11, Jamun_9, Jerole_10, Joann_11, Judy_9, Jumboset_11, Juno112_8, KHumphrey_8, Kalizoi_11, Karkharias_9, KayMoney_9, KendraB23_10, Kepler_9, KingBob_7, Kittykat_7, Korra_11, Kromp_9, Kuleana_9, Lakshmi_11, Lasagna_7, Lennox_7, Leona_8, LilStuart_7, Litotes_11, LittleTokyo_9, Lucy_7, Lunar_10, Makoto_7, MamaPearl_7, Maria1952_7, MeganNoll_11, Melons_10, Misaeng_11, Moki_7, MrGloopy_11, Nancia_7, Nesbitt_8, Nubia_11, OMalley_7, Orcanus_9, OtsoOtso_9, OurGirlNessie_7, Oxynfrius_11, PartyCup_11, Peas_9, PeggyLeg03_9, Pelletreau_10, PhluffyCoco_8, PinkFriday_7, PitaDog_7, Polka_9, Potatoes_11, Preamble_7, Pterodactyl_7, Pucara_9, Pumancara_7, RAP15_11, Rattail_8, RcigaStruga_11, RedFox_8, Renna12_9, Riovina_7, Riverdale_11, Rowa_8, Rozby_11, Ruchi_9, Savage2526_11, Scuttle_11, Sergei_7, Spooks_52, StuartMinion_8, Success_54, Supakev_7, Suppi_11, TattModd_11, TaylorSipht_9, Temper16_7, Toad24_10, Urla_7, Vallejo_11, Vulpecula_9, Vulture_7, Wawa_11, Wayne_11, Westrich_10, WonderBoy_7, Zhuangyuan_10, Zorro_11, phiSASD1_29,

Summary by start number:

Start 2:

- Found in 51 of 240 (21.2%) of genes in pham
- Manual Annotations of this start: 29 of 196
- Called 100.0% of time when present
- Phage (with cluster) where this start called: Abidatro_9 (AS1), Amelia_10 (AS2), AmiCi24_8 (AS3), Andrew_9 (AS3), Antrice_9 (AS2), Atlantica_8 (AS3), Babushka_8 (AS3), Basilisk_9 (AS1), Bedetta_10 (AS2), Bible12_10 (AS2), Brynnie_9 (AS1), Camara_8 (AS3), Chickaboom_8 (AS1), Colusalem_9 (AS2), Coral_9 (AS2), Cote_10 (AS2), Cygnet_9 (AS2), DanHam62_8 (AS3), Daob_10 (AS2), Eesa_9 (AS1), Galaxy_9 (AS1), Glotell_8 (AS3), Gravel_10 (AS1), HamCheese_8 (AS3), HannahPhantana_10 (AS2), Jamun_9 (AS1), Jerole_10 (AS2), Juno112_8 (AS3), KHumphrey_8 (AS3), KendraB23_10 (AS1), Kepler_9 (AS2), Kuleana_9 (AS2), Leona_8 (AS3), LittleTokyo_9 (AS2), Lunar_10 (AS2), Melons_10 (AS2), Orcanus_9 (AS1), OtsoOtso_9 (AS2), Pelletreau_10 (AS1), PhluffyCoco_8 (AS3), Polka_9 (AS2), Rattail_8 (AS3), RedFox_8 (AS3), Renna12_9 (AS3), Ruchi_9 (AS1), StuartMinion_8 (AS3), TaylorSipht_9 (AS1), Toad24_10 (AS1), Vulpecula_9 (AS1), Westrich_10 (AS1), Zhuangyuan_10 (AS2),

Start 3:

- Found in 77 of 240 (32.1%) of genes in pham
- Manual Annotations of this start: 52 of 196
- Called 67.5% of time when present
- Phage (with cluster) where this start called: Albanese_11 (AK), Aledel_7 (AK), AustinPowers_7 (AK), Beethoven_11 (AK), Bennie_7 (AK), BrotherBLo_11 (AK), Carpal_11 (AK), ChewChew_7 (AK), Cholula_11 (AK), Chridison_7 (AK), Christian_7 (AK), Dino_11 (AK), DrRobert_7 (AK), Fluke_11 (AK), GreenHearts_11 (AK), HeadNerd_7 (AK), HunterDalle_7 (AK), Huntingdon_11 (AK), Immaculata_11 (AK),

Joann_11 (AK), Jumboset_11 (AK), Kalizoi_11 (AK), Kittykat_7 (AK), Lakshmi_11 (AK), Lennox_7 (AK), LilStuart_7 (AK), Lucy_7 (AK), Makoto_7 (AK), Maria1952_7 (AK), MeganNoll_11 (AK), Misaeng_11 (AK), Moki_7 (AK), MrGloopy_11 (AK), Nancia_7 (AK), OMalley_7 (AK), OurGirlNessie_7 (AK), PinkFriday_7 (AK), PitaDog_7 (AK), Potatoes_11 (AK), Preamble_7 (AK), Pterodactyl_7 (AK), Pumancara_7 (AK), RAP15_11 (AK), RcigaStruga_11 (AK), Riverdale_11 (AK), Rozby_11 (AK), Savage2526_11 (AK), Supakev_7 (AK), TattModd_11 (AK), Urla_7 (AK), Vulture_7 (AK), Wawa_11 (AK),

Start 4:

- Found in 7 of 240 (2.9%) of genes in pham
- Manual Annotations of this start: 6 of 196
- Called 100.0% of time when present
- Phage (with cluster) where this start called: AppleCider_11 (AK), CallieOMalley_11 (AK), Canowicakte_11 (AK), Litotes_11 (AK), PartyCup_11 (AK), Suppi_11 (AK), Wayne_11 (AK),

Start 5:

- Found in 77 of 240 (32.1%) of genes in pham
- Manual Annotations of this start: 25 of 196
- Called 32.5% of time when present
- Phage (with cluster) where this start called: BigMack_7 (AK), Bodacious_7 (AK), CristinaYang_7 (AK), Daiboju_7 (AK), DreamTeam_7 (AK), EstebanJulior_7 (AK), Eunoia_7 (AK), Gisselle_7 (AK), Glenn_11 (AK), Greenhouse_11 (AK), Herb_7 (AK), Huckleberry_7 (AK), KingBob_7 (AK), Korra_11 (AK), Lasagna_7 (AK), MamaPearl_7 (AK), Nubia_11 (AK), Oxynfrius_11 (AK), Riovina_7 (AK), Scuttle_11 (AK), Sergei_7 (AK), Temper16_7 (AK), Vallejo_11 (AK), WonderBoy_7 (AK), Zorro_11 (AK),

Start 6:

- Found in 19 of 240 (7.9%) of genes in pham
- Manual Annotations of this start: 14 of 196
- Called 100.0% of time when present
- Phage (with cluster) where this start called: AbbeyMikolon_8 (BL), Bridgette_9 (FA), ChuckDuck_9 (FA), Constance_9 (FA), Dubu_8 (BJ), Eileen_9 (FA), FosterFrank_9 (FA), GlobiWarming_9 (FA), HotPotato_9 (FA), Judy_9 (FA), Karkharias_9 (FA), KayMoney_9 (FA), Kromp_9 (singleton), Nesbitt_8 (BL), Peas_9 (FA), PeggyLeg03_9 (FA), Pucara_9 (FA), Rowa_8 (BL), phiSASD1_29 (BJ),

Start 7:

- Found in 82 of 240 (34.2%) of genes in pham
- Manual Annotations of this start: 68 of 196
- Called 100.0% of time when present
- Phage (with cluster) where this start called: Abigail_8 (EB), Akino08_15 (EB), Albedo_8 (EB), Albright_8 (EB), AnnaLie_9 (EB), Armstrong_7 (EB), Arroyo_9 (EB), AvGardian_8 (EB), Avocadoman_8 (EB), BAjuniper_8 (EB), BabyDaisy_9 (EB), BabyYoda_8 (EB), Bachaco_8 (EB), BelmontSKP_9 (EB), Bengal_8 (EB), Bernstein_7 (EB), Brahms_7 (EB), BubbaBear_8 (EB), Buldak_8 (EB), Burritobowl_8 (EB), Cashington_8 (EB), Celaena_8 (EB), ChiliPepper_8 (EB), Clayda5_7 (EB), CliffHanger_9 (EB), Coltrane_7 (EB), CroZenni_8 (EB), CupcakePrincess_8 (EB), DickRichards_8 (EB), Didgeridoo_9 (EB), DirtyBubble_8 (EB), Dismas_8 (EB), Doobus_8 (EB), Eden_7 (EB), Elva_9 (EB), Eula_8 (EB), Finalfrontier_9 (EB), FlameThrower_8 (EB), Franklin22_7 (EB), Gack_7 (EB), Icarian_9 (EB), IndyLu_8 (EB), Jabb_8 (EB), Johnathan_8 (EB), Jovita_8 (EB), Kate33_8 (EB),

Katzastrophic_8 (EB), Kenzers_8 (EB), Kieran_8 (EB), Lahqtemish_8 (EB), LimaBean_8 (EB), Loviatar_15 (EB), Lynlen_8 (EB), Milomuff_9 (EB), MsUbiquitous_8 (EB), Nicky22_9 (EB), Olliecat_8 (EB), PastaFagioli_8 (EB), PhigPhack_8 (EB), Phisb_8 (EB), QMacho_9 (EB), Quenya_9 (EB), Rollins_7 (EB), Rona_8 (EB), SanaSana_9 (EB), SansAfet_8 (EB), SarBear_8 (EB), Sharkboy_8 (EB), Shayna_7 (EB), Skylord_7 (EB), Slay_8 (EB), Softsoap_8 (EB), Solea_9 (EB), Squirrel_8 (EB), Stoor_8 (EB), Stromboli_8 (EB), SunnyD_7 (EB), Swervy_8 (EB), Teagster_7 (EB), TukTuk_8 (EB), Vitas_7 (EB), WalkingDead_8 (EB),

Start 8:

- Found in 4 of 240 (1.7%) of genes in pham
- Manual Annotations of this start: 2 of 196
- Called 100.0% of time when present
- Phage (with cluster) where this start called: Bimmel_50 (BT), Ibantik_72 (singleton), Spooks_52 (BT), Success_54 (BT),

Summary by clusters:

There are 10 clusters represented in this pham: AS3, AS2, AS1, BL, AK, singleton, BJ, EB, BT, FA,

Info for manual annotations of cluster AK:

- Start number 3 was manually annotated 52 times for cluster AK.
- Start number 4 was manually annotated 6 times for cluster AK.
- Start number 5 was manually annotated 25 times for cluster AK.

Info for manual annotations of cluster AS1:

- Start number 2 was manually annotated 11 times for cluster AS1.

Info for manual annotations of cluster AS2:

- Start number 2 was manually annotated 11 times for cluster AS2.

Info for manual annotations of cluster AS3:

- Start number 2 was manually annotated 7 times for cluster AS3.

Info for manual annotations of cluster BJ:

- Start number 6 was manually annotated 1 time for cluster BJ.

Info for manual annotations of cluster BL:

- Start number 6 was manually annotated 3 times for cluster BL.

Info for manual annotations of cluster BT:

- Start number 8 was manually annotated 1 time for cluster BT.

Info for manual annotations of cluster EB:

- Start number 7 was manually annotated 68 times for cluster EB.

Info for manual annotations of cluster FA:

- Start number 6 was manually annotated 9 times for cluster FA.

Gene Information:

Gene: AbbeyMikolon_8 Start: 6661, Stop: 7194, Start Num: 6

Candidate Starts for AbbeyMikolon_8:

(Start: 6 @6661 has 14 MA's), (13, 6706), (15, 6718), (20, 6757), (21, 6772), (34, 6844), (38, 6865), (42, 6877), (44, 6883), (65, 6955), (67, 6964), (81, 6997), (105, 7078), (112, 7105), (124, 7177), (125, 7180),

Gene: Abidatro_9 Start: 7106, Stop: 7693, Start Num: 2

Candidate Starts for Abidatro_9:

(Start: 2 @7106 has 29 MA's), (23, 7286), (35, 7352), (40, 7370), (48, 7391), (53, 7406), (59, 7427), (95, 7568), (101, 7598),

Gene: Abigail_8 Start: 6884, Stop: 7444, Start Num: 7

Candidate Starts for Abigail_8:

(Start: 7 @6884 has 68 MA's), (25, 7031), (27, 7037), (30, 7061), (44, 7118), (86, 7271), (88, 7280), (102, 7343), (116, 7412),

Gene: Akino08_15 Start: 7012, Stop: 7563, Start Num: 7

Candidate Starts for Akino08_15:

(Start: 7 @7012 has 68 MA's), (25, 7159), (30, 7189), (37, 7222), (41, 7237), (75, 7339), (86, 7390), (102, 7462), (106, 7489),

Gene: Albanese_11 Start: 9268, Stop: 9846, Start Num: 3

Candidate Starts for Albanese_11:

(Start: 3 @9268 has 52 MA's), (Start: 5 @9277 has 25 MA's), (11, 9322), (24, 9439), (27, 9451), (28, 9457), (40, 9520), (50, 9547), (76, 9631), (78, 9637), (84, 9667), (95, 9715), (101, 9745), (120, 9838),

Gene: Albedo_8 Start: 6756, Stop: 7316, Start Num: 7

Candidate Starts for Albedo_8:

(Start: 7 @6756 has 68 MA's), (12, 6789), (25, 6903), (27, 6909), (30, 6933), (44, 6990), (49, 6999), (73, 7089), (102, 7215), (116, 7284),

Gene: Albright_8 Start: 6765, Stop: 7325, Start Num: 7

Candidate Starts for Albright_8:

(Start: 7 @6765 has 68 MA's), (25, 6912), (27, 6918), (30, 6942), (44, 6999), (86, 7152), (88, 7161), (102, 7224), (116, 7293),

Gene: Aledel_7 Start: 6342, Stop: 6923, Start Num: 3

Candidate Starts for Aledel_7:

(Start: 3 @6342 has 52 MA's), (Start: 5 @6351 has 25 MA's), (11, 6396), (17, 6441), (24, 6513), (27, 6525), (28, 6531), (50, 6621), (59, 6651), (75, 6702), (78, 6711), (88, 6762), (89, 6765), (92, 6777), (95, 6789), (101, 6819), (106, 6852), (120, 6912),

Gene: Amelia_10 Start: 7302, Stop: 7892, Start Num: 2

Candidate Starts for Amelia_10:

(Start: 2 @7302 has 29 MA's), (10, 7356), (23, 7482), (36, 7551), (38, 7560), (40, 7566), (48, 7587), (56, 7614), (59, 7626), (72, 7671), (95, 7767), (101, 7797), (106, 7830),

Gene: AmiCi24_8 Start: 6714, Stop: 7301, Start Num: 2

Candidate Starts for AmiCi24_8:

(Start: 2 @6714 has 29 MA's), (23, 6894), (31, 6939), (37, 6969), (38, 6972), (50, 7005), (57, 7029), (59, 7035), (72, 7080), (77, 7092), (82, 7119), (95, 7176), (100, 7203), (101, 7206),

Gene: Andrew_9 Start: 7093, Stop: 7680, Start Num: 2

Candidate Starts for Andrew_9:

(Start: 2 @7093 has 29 MA's), (36, 7342), (38, 7351), (40, 7357), (48, 7378), (53, 7393), (57, 7408), (59, 7414), (80, 7489), (95, 7555), (100, 7582), (101, 7585),

Gene: AnnaLie_9 Start: 7111, Stop: 7671, Start Num: 7

Candidate Starts for AnnaLie_9:

(Start: 7 @7111 has 68 MA's), (25, 7258), (27, 7264), (30, 7288), (44, 7345), (49, 7354), (86, 7498), (88, 7507), (102, 7570), (116, 7639),

Gene: Antrice_9 Start: 7049, Stop: 7636, Start Num: 2

Candidate Starts for Antrice_9:

(Start: 2 @7049 has 29 MA's), (23, 7229), (38, 7307), (48, 7334), (53, 7349), (59, 7370), (72, 7415), (77, 7427), (95, 7511), (101, 7541), (106, 7574),

Gene: AppleCider_11 Start: 9230, Stop: 9802, Start Num: 4

Candidate Starts for AppleCider_11:

(Start: 4 @9230 has 6 MA's), (24, 9392), (27, 9404), (28, 9410), (35, 9455), (40, 9473), (76, 9584), (78, 9590), (95, 9668), (101, 9698), (109, 9743), (110, 9746), (118, 9788), (120, 9791),

Gene: Armstrong_7 Start: 6533, Stop: 7093, Start Num: 7

Candidate Starts for Armstrong_7:

(Start: 7 @6533 has 68 MA's), (73, 6866), (91, 6938),

Gene: Arroyo_9 Start: 7235, Stop: 7795, Start Num: 7

Candidate Starts for Arroyo_9:

(Start: 7 @7235 has 68 MA's), (25, 7382), (27, 7388), (30, 7412), (44, 7469), (86, 7622), (88, 7631), (102, 7694), (116, 7763),

Gene: Atlantica_8 Start: 6714, Stop: 7301, Start Num: 2

Candidate Starts for Atlantica_8:

(Start: 2 @6714 has 29 MA's), (23, 6894), (31, 6939), (37, 6969), (38, 6972), (50, 7005), (57, 7029), (59, 7035), (72, 7080), (77, 7092), (80, 7110), (82, 7119), (95, 7176), (100, 7203), (101, 7206),

Gene: AustinPowers_7 Start: 6343, Stop: 6924, Start Num: 3

Candidate Starts for AustinPowers_7:

(Start: 3 @6343 has 52 MA's), (Start: 5 @6352 has 25 MA's), (11, 6397), (17, 6442), (24, 6514), (27, 6526), (28, 6532), (40, 6595), (44, 6610), (50, 6622), (53, 6631), (59, 6652), (75, 6703), (78, 6712), (88, 6763), (89, 6766), (92, 6778), (95, 6790), (101, 6820), (106, 6853), (120, 6913),

Gene: AvGardian_8 Start: 6822, Stop: 7373, Start Num: 7

Candidate Starts for AvGardian_8:

(Start: 7 @6822 has 68 MA's), (25, 6969), (27, 6975), (30, 6999), (37, 7032), (41, 7047), (75, 7149), (81, 7176), (102, 7272), (116, 7341),

Gene: Avocadoman_8 Start: 6823, Stop: 7383, Start Num: 7

Candidate Starts for Avocadoman_8:

(Start: 7 @6823 has 68 MA's), (25, 6970), (27, 6976), (30, 7000), (44, 7057), (86, 7210), (88, 7219), (102, 7282), (116, 7351),

Gene: BAjuniper_8 Start: 6709, Stop: 7266, Start Num: 7

Candidate Starts for BAjuniper_8:

(1, 6496), (Start: 7 @6709 has 68 MA's), (25, 6856), (30, 6886), (37, 6919), (40, 6928), (63, 7000), (69, 7024), (86, 7093), (88, 7102), (101, 7159), (102, 7165),

Gene: Babushka_8 Start: 6762, Stop: 7349, Start Num: 2

Candidate Starts for Babushka_8:

(Start: 2 @6762 has 29 MA's), (15, 6855), (23, 6942), (31, 6987), (37, 7017), (38, 7020), (48, 7047), (50, 7053), (59, 7083), (72, 7128), (80, 7158), (95, 7224), (100, 7251), (101, 7254),

Gene: BabyDaisy_9 Start: 6993, Stop: 7544, Start Num: 7

Candidate Starts for BabyDaisy_9:

(Start: 7 @6993 has 68 MA's), (12, 7026), (25, 7140), (27, 7146), (30, 7170), (37, 7203), (41, 7218), (75, 7320), (86, 7371), (102, 7443), (103, 7455),

Gene: BabyYoda_8 Start: 7015, Stop: 7566, Start Num: 7

Candidate Starts for BabyYoda_8:

(Start: 7 @7015 has 68 MA's), (25, 7162), (30, 7192), (37, 7225), (41, 7240), (75, 7342), (86, 7393), (102, 7465), (106, 7492),

Gene: Bachaco_8 Start: 6906, Stop: 7457, Start Num: 7

Candidate Starts for Bachaco_8:

(Start: 7 @6906 has 68 MA's), (25, 7053), (27, 7059), (30, 7083), (37, 7116), (41, 7131), (86, 7284), (102, 7356),

Gene: Basilisk_9 Start: 7430, Stop: 8017, Start Num: 2

Candidate Starts for Basilisk_9:

(Start: 2 @7430 has 29 MA's), (23, 7610), (35, 7676), (38, 7688), (40, 7694), (48, 7715), (53, 7730), (59, 7751), (95, 7892), (101, 7922),

Gene: Bedetta_10 Start: 7302, Stop: 7892, Start Num: 2

Candidate Starts for Bedetta_10:

(Start: 2 @7302 has 29 MA's), (10, 7356), (23, 7482), (36, 7551), (38, 7560), (40, 7566), (48, 7587), (56, 7614), (59, 7626), (72, 7671), (95, 7767), (101, 7797), (106, 7830),

Gene: Beethoven_11 Start: 9184, Stop: 9762, Start Num: 3

Candidate Starts for Beethoven_11:

(Start: 3 @9184 has 52 MA's), (Start: 5 @9193 has 25 MA's), (11, 9238), (27, 9367), (28, 9373), (35, 9418), (40, 9436), (44, 9451), (50, 9463), (75, 9544), (76, 9547), (78, 9553), (88, 9604), (89, 9607), (92, 9619), (95, 9631), (101, 9661), (104, 9682), (109, 9706), (116, 9736), (118, 9751), (120, 9754),

Gene: BelmontSKP_9 Start: 7111, Stop: 7671, Start Num: 7

Candidate Starts for BelmontSKP_9:

(Start: 7 @7111 has 68 MA's), (25, 7258), (27, 7264), (30, 7288), (44, 7345), (49, 7354), (86, 7498), (88, 7507), (102, 7570), (116, 7639),

Gene: Bengal_8 Start: 6765, Stop: 7325, Start Num: 7

Candidate Starts for Bengal_8:

(Start: 7 @6765 has 68 MA's), (25, 6912), (27, 6918), (30, 6942), (44, 6999), (86, 7152), (88, 7161), (102, 7224), (116, 7293),

Gene: Bennie_7 Start: 6329, Stop: 6907, Start Num: 3

Candidate Starts for Bennie_7:

(Start: 3 @6329 has 52 MA's), (Start: 5 @6338 has 25 MA's), (11, 6383), (27, 6512), (28, 6518), (40, 6581), (50, 6608), (76, 6692), (78, 6698), (88, 6749), (89, 6752), (92, 6764), (95, 6776), (101, 6806), (109, 6851), (116, 6881), (118, 6896), (120, 6899),

Gene: Bernstein_7 Start: 6593, Stop: 7153, Start Num: 7

Candidate Starts for Bernstein_7:

(Start: 7 @6593 has 68 MA's), (73, 6926), (91, 6998),

Gene: Bible12_10 Start: 7305, Stop: 7895, Start Num: 2

Candidate Starts for Bible12_10:

(Start: 2 @7305 has 29 MA's), (10, 7359), (23, 7485), (36, 7554), (38, 7563), (40, 7569), (48, 7590), (56, 7617), (59, 7629), (72, 7674), (95, 7770), (101, 7800), (106, 7833),

Gene: BigMack_7 Start: 6338, Stop: 6907, Start Num: 5

Candidate Starts for BigMack_7:

(Start: 3 @6329 has 52 MA's), (Start: 5 @6338 has 25 MA's), (11, 6383), (27, 6512), (28, 6518), (40, 6581), (48, 6602), (50, 6608), (76, 6692), (78, 6698), (88, 6749), (89, 6752), (92, 6764), (95, 6776), (101, 6806), (109, 6851), (116, 6881), (118, 6896), (120, 6899),

Gene: Bimmel_50 Start: 30092, Stop: 30691, Start Num: 8

Candidate Starts for Bimmel_50:

(Start: 8 @30092 has 2 MA's), (11, 30116), (39, 30311), (58, 30371), (67, 30404), (87, 30473), (93, 30503), (99, 30533),

Gene: Bodacious_7 Start: 6336, Stop: 6905, Start Num: 5

Candidate Starts for Bodacious_7:

(Start: 3 @6327 has 52 MA's), (Start: 5 @6336 has 25 MA's), (11, 6381), (27, 6510), (28, 6516), (40, 6579), (50, 6606), (59, 6636), (75, 6687), (76, 6690), (78, 6696), (88, 6747), (89, 6750), (95, 6774), (101, 6804), (109, 6849), (116, 6879), (118, 6894), (120, 6897),

Gene: Brahms_7 Start: 6533, Stop: 7093, Start Num: 7

Candidate Starts for Brahms_7:

(Start: 7 @6533 has 68 MA's), (73, 6866), (91, 6938),

Gene: Bridgette_9 Start: 7210, Stop: 7803, Start Num: 6

Candidate Starts for Bridgette_9:

(Start: 6 @7210 has 14 MA's), (9, 7222), (15, 7267), (18, 7291), (28, 7369), (29, 7375), (31, 7390), (32, 7393), (49, 7453), (60, 7486), (97, 7627), (98, 7630), (116, 7729), (120, 7750),

Gene: BrotherBLo_11 Start: 9191, Stop: 9769, Start Num: 3

Candidate Starts for BrotherBLo_11:

(Start: 3 @9191 has 52 MA's), (Start: 5 @9200 has 25 MA's), (11, 9245), (27, 9374), (28, 9380), (40, 9443), (42, 9452), (44, 9458), (48, 9464), (50, 9470), (59, 9500), (76, 9554), (78, 9560), (88, 9611), (89, 9614), (92, 9626), (95, 9638), (101, 9668), (104, 9689), (109, 9713), (116, 9743), (118, 9758), (120, 9761),

Gene: Brynnie_9 Start: 7242, Stop: 7829, Start Num: 2

Candidate Starts for Brynnie_9:

(Start: 2 @7242 has 29 MA's), (23, 7422), (35, 7488), (38, 7500), (40, 7506), (48, 7527), (53, 7542), (59, 7563), (95, 7704), (101, 7734),

Gene: BubbaBear_8 Start: 6756, Stop: 7316, Start Num: 7

Candidate Starts for BubbaBear_8:

(Start: 7 @6756 has 68 MA's), (12, 6789), (25, 6903), (27, 6909), (30, 6933), (44, 6990), (49, 6999), (73, 7089), (102, 7215), (116, 7284),

Gene: Buldak_8 Start: 7041, Stop: 7601, Start Num: 7

Candidate Starts for Buldak_8:

(Start: 7 @7041 has 68 MA's), (25, 7191), (27, 7197), (40, 7263), (41, 7269), (44, 7278), (75, 7377), (86, 7428), (91, 7446), (101, 7494), (102, 7500),

Gene: Burritobowl_8 Start: 6792, Stop: 7352, Start Num: 7

Candidate Starts for Burritobowl_8:

(Start: 7 @6792 has 68 MA's), (25, 6939), (27, 6945), (30, 6969), (44, 7026), (49, 7035), (86, 7179), (88, 7188), (102, 7251), (116, 7320),

Gene: CallieOMalley_11 Start: 9230, Stop: 9802, Start Num: 4

Candidate Starts for CallieOMalley_11:

(Start: 4 @9230 has 6 MA's), (24, 9392), (27, 9404), (28, 9410), (35, 9455), (40, 9473), (76, 9584), (78, 9590), (95, 9668), (101, 9698), (109, 9743), (110, 9746), (118, 9788), (120, 9791),

Gene: Camara_8 Start: 6715, Stop: 7302, Start Num: 2

Candidate Starts for Camara_8:

(Start: 2 @6715 has 29 MA's), (23, 6895), (37, 6970), (38, 6973), (50, 7006), (57, 7030), (59, 7036), (72, 7081), (77, 7093), (80, 7111), (82, 7120), (95, 7177), (100, 7204), (101, 7207),

Gene: Canowicakte_11 Start: 9265, Stop: 9837, Start Num: 4

Candidate Starts for Canowicakte_11:

(Start: 4 @9265 has 6 MA's), (24, 9427), (27, 9439), (28, 9445), (35, 9490), (76, 9619), (78, 9625), (95, 9703), (101, 9733), (109, 9778), (110, 9781), (118, 9823), (120, 9826),

Gene: Carpal_11 Start: 9191, Stop: 9769, Start Num: 3

Candidate Starts for Carpal_11:

(Start: 3 @9191 has 52 MA's), (Start: 5 @9200 has 25 MA's), (11, 9245), (27, 9374), (28, 9380), (35, 9425), (40, 9443), (44, 9458), (50, 9470), (75, 9551), (76, 9554), (78, 9560), (88, 9611), (89, 9614), (92, 9626), (95, 9638), (101, 9668), (104, 9689), (109, 9713), (116, 9743), (118, 9758), (120, 9761),

Gene: Cashington_8 Start: 6782, Stop: 7342, Start Num: 7

Candidate Starts for Cashington_8:

(Start: 7 @6782 has 68 MA's), (25, 6929), (27, 6935), (30, 6959), (88, 7178), (102, 7241), (116, 7310),

Gene: Celaena_8 Start: 6843, Stop: 7394, Start Num: 7

Candidate Starts for Celaena_8:

(Start: 7 @6843 has 68 MA's), (25, 6990), (27, 6996), (30, 7020), (37, 7053), (41, 7068), (86, 7221), (102, 7293),

Gene: ChewChew_7 Start: 6326, Stop: 6904, Start Num: 3

Candidate Starts for ChewChew_7:

(Start: 3 @6326 has 52 MA's), (Start: 5 @6335 has 25 MA's), (11, 6380), (27, 6509), (28, 6515), (40, 6578), (44, 6593), (50, 6605), (59, 6635), (75, 6686), (76, 6689), (78, 6695), (88, 6746), (89, 6749), (95, 6773), (101, 6803), (109, 6848), (116, 6878), (118, 6893), (120, 6896),

Gene: Chickaboom_8 Start: 6787, Stop: 7374, Start Num: 2

Candidate Starts for Chickaboom_8:

(Start: 2 @6787 has 29 MA's), (23, 6967), (35, 7033), (38, 7045), (40, 7051), (48, 7072), (53, 7087), (59, 7108), (95, 7249), (101, 7279),

Gene: ChiliPepper_8 Start: 6996, Stop: 7553, Start Num: 7

Candidate Starts for ChiliPepper_8:

(Start: 7 @6996 has 68 MA's), (25, 7143), (30, 7173), (73, 7326), (88, 7389), (102, 7452), (116, 7521),

Gene: Cholula_11 Start: 9236, Stop: 9814, Start Num: 3

Candidate Starts for Cholula_11:

(Start: 3 @9236 has 52 MA's), (Start: 5 @9245 has 25 MA's), (11, 9290), (27, 9419), (28, 9425), (35, 9470), (40, 9488), (44, 9503), (50, 9515), (75, 9596), (76, 9599), (78, 9605), (88, 9656), (89, 9659), (92, 9671), (95, 9683), (101, 9713), (104, 9734), (109, 9758), (116, 9788), (118, 9803), (120, 9806),

Gene: Chridison_7 Start: 6343, Stop: 6924, Start Num: 3

Candidate Starts for Chridison_7:

(Start: 3 @6343 has 52 MA's), (Start: 5 @6352 has 25 MA's), (11, 6397), (17, 6442), (24, 6514), (27, 6526), (28, 6532), (40, 6595), (44, 6610), (50, 6622), (53, 6631), (59, 6652), (75, 6703), (78, 6712), (88, 6763), (89, 6766), (92, 6778), (95, 6790), (101, 6820), (106, 6853), (120, 6913),

Gene: Christian_7 Start: 6327, Stop: 6905, Start Num: 3

Candidate Starts for Christian_7:

(Start: 3 @6327 has 52 MA's), (Start: 5 @6336 has 25 MA's), (11, 6381), (27, 6510), (28, 6516), (40, 6579), (44, 6594), (50, 6606), (59, 6636), (75, 6687), (76, 6690), (78, 6696), (88, 6747), (89, 6750), (95, 6774), (101, 6804), (109, 6849), (116, 6879), (118, 6894), (120, 6897),

Gene: ChuckDuck_9 Start: 7169, Stop: 7759, Start Num: 6

Candidate Starts for ChuckDuck_9:

(Start: 6 @7169 has 14 MA's), (9, 7181), (15, 7226), (29, 7334), (81, 7517), (83, 7523), (97, 7583), (98, 7586), (116, 7685), (120, 7706),

Gene: Clayda5_7 Start: 6533, Stop: 7093, Start Num: 7

Candidate Starts for Clayda5_7:

(Start: 7 @6533 has 68 MA's), (73, 6866), (91, 6938),

Gene: CliffHanger_9 Start: 6740, Stop: 7300, Start Num: 7

Candidate Starts for CliffHanger_9:

(Start: 7 @6740 has 68 MA's), (25, 6890), (27, 6896), (75, 7076), (92, 7151), (102, 7199),

Gene: Coltrane_7 Start: 6533, Stop: 7093, Start Num: 7

Candidate Starts for Coltrane_7:

(Start: 7 @6533 has 68 MA's), (73, 6866), (91, 6938),

Gene: Colusalem_9 Start: 7141, Stop: 7731, Start Num: 2

Candidate Starts for Colusalem_9:

(Start: 2 @7141 has 29 MA's), (10, 7195), (23, 7321), (36, 7390), (38, 7399), (40, 7405), (48, 7426), (56, 7453), (59, 7465), (72, 7510), (95, 7606), (101, 7636), (106, 7669),

Gene: Constance_9 Start: 7215, Stop: 7805, Start Num: 6

Candidate Starts for Constance_9:

(Start: 6 @7215 has 14 MA's), (9, 7227), (15, 7272), (83, 7569), (97, 7629), (98, 7632), (116, 7731), (120, 7752), (125, 7791),

Gene: Coral_9 Start: 7141, Stop: 7731, Start Num: 2

Candidate Starts for Coral_9:

(Start: 2 @7141 has 29 MA's), (10, 7195), (23, 7321), (36, 7390), (38, 7399), (40, 7405), (48, 7426), (56, 7453), (59, 7465), (72, 7510), (95, 7606), (101, 7636), (106, 7669),

Gene: Cote_10 Start: 7302, Stop: 7892, Start Num: 2

Candidate Starts for Cote_10:

(Start: 2 @7302 has 29 MA's), (10, 7356), (23, 7482), (36, 7551), (38, 7560), (40, 7566), (48, 7587), (56, 7614), (59, 7626), (72, 7671), (95, 7767), (101, 7797), (106, 7830),

Gene: CristinaYang_7 Start: 6336, Stop: 6905, Start Num: 5

Candidate Starts for CristinaYang_7:

(Start: 3 @6327 has 52 MA's), (Start: 5 @6336 has 25 MA's), (11, 6381), (27, 6510), (28, 6516), (40, 6579), (50, 6606), (59, 6636), (75, 6687), (76, 6690), (78, 6696), (88, 6747), (89, 6750), (95, 6774), (101, 6804), (109, 6849), (116, 6879), (118, 6894), (120, 6897),

Gene: CroZenni_8 Start: 6765, Stop: 7325, Start Num: 7

Candidate Starts for CroZenni_8:

(Start: 7 @6765 has 68 MA's), (25, 6912), (27, 6918), (30, 6942), (44, 6999), (49, 7008), (86, 7152), (88, 7161), (102, 7224), (116, 7293),

Gene: CupcakePrincess_8 Start: 6742, Stop: 7302, Start Num: 7

Candidate Starts for CupcakePrincess_8:

(Start: 7 @6742 has 68 MA's), (25, 6889), (27, 6895), (30, 6919), (88, 7138), (102, 7201), (116, 7270),

Gene: Cygnet_9 Start: 7088, Stop: 7678, Start Num: 2

Candidate Starts for Cygnet_9:

(Start: 2 @7088 has 29 MA's), (38, 7346), (48, 7373), (50, 7379), (53, 7388), (59, 7409), (72, 7457), (77, 7469), (95, 7553), (101, 7583),

Gene: Daiboju_7 Start: 6353, Stop: 6925, Start Num: 5

Candidate Starts for Daiboju_7:

(Start: 3 @6344 has 52 MA's), (Start: 5 @6353 has 25 MA's), (11, 6398), (17, 6443), (27, 6527), (28, 6533), (50, 6623), (59, 6653), (75, 6704), (78, 6713), (95, 6791), (101, 6821), (116, 6896), (120, 6914),

Gene: DanHam62_8 Start: 6714, Stop: 7301, Start Num: 2

Candidate Starts for DanHam62_8:

(Start: 2 @6714 has 29 MA's), (21, 6861), (23, 6894), (31, 6939), (37, 6969), (38, 6972), (50, 7005), (57, 7029), (59, 7035), (72, 7080), (77, 7092), (80, 7110), (82, 7119), (95, 7176), (100, 7203), (101, 7206),

Gene: Daob_10 Start: 7305, Stop: 7895, Start Num: 2

Candidate Starts for Daob_10:

(Start: 2 @7305 has 29 MA's), (10, 7359), (23, 7485), (36, 7554), (38, 7563), (40, 7569), (48, 7590), (56, 7617), (59, 7629), (72, 7674), (95, 7770), (101, 7800), (106, 7833),

Gene: DickRichards_8 Start: 7259, Stop: 7819, Start Num: 7

Candidate Starts for DickRichards_8:

(Start: 7 @7259 has 68 MA's), (25, 7406), (27, 7412), (30, 7436), (44, 7493), (49, 7502), (86, 7646), (88, 7655), (102, 7718), (116, 7787),

Gene: Didgeridoo_9 Start: 6993, Stop: 7544, Start Num: 7

Candidate Starts for Didgeridoo_9:

(Start: 7 @6993 has 68 MA's), (12, 7026), (25, 7140), (27, 7146), (30, 7170), (37, 7203), (41, 7218), (75, 7320), (86, 7371), (102, 7443), (103, 7455), (106, 7470),

Gene: Dino_11 Start: 9190, Stop: 9768, Start Num: 3

Candidate Starts for Dino_11:

(Start: 3 @9190 has 52 MA's), (Start: 5 @9199 has 25 MA's), (11, 9244), (27, 9373), (28, 9379), (35, 9424), (40, 9442), (44, 9457), (50, 9469), (75, 9550), (76, 9553), (78, 9559), (88, 9610), (89, 9613), (92,

9625), (95, 9637), (101, 9667), (104, 9688), (109, 9712), (116, 9742), (118, 9757), (120, 9760),

Gene: DirtyBubble_8 Start: 7014, Stop: 7574, Start Num: 7

Candidate Starts for DirtyBubble_8:

(Start: 7 @7014 has 68 MA's), (25, 7161), (27, 7167), (30, 7191), (44, 7248), (86, 7401), (88, 7410), (102, 7473), (106, 7500), (121, 7569),

Gene: Dismas_8 Start: 6996, Stop: 7553, Start Num: 7

Candidate Starts for Dismas_8:

(Start: 7 @6996 has 68 MA's), (25, 7143), (30, 7173), (73, 7326), (88, 7389), (102, 7452), (116, 7521),

Gene: Doobus_8 Start: 6987, Stop: 7556, Start Num: 7

Candidate Starts for Doobus_8:

(Start: 7 @6987 has 68 MA's), (25, 7134), (27, 7140), (86, 7383), (88, 7392), (116, 7524),

Gene: DrRobert_7 Start: 6327, Stop: 6905, Start Num: 3

Candidate Starts for DrRobert_7:

(Start: 3 @6327 has 52 MA's), (Start: 5 @6336 has 25 MA's), (11, 6381), (27, 6510), (28, 6516), (40, 6579), (44, 6594), (50, 6606), (59, 6636), (75, 6687), (76, 6690), (78, 6696), (88, 6747), (89, 6750), (95, 6774), (101, 6804), (109, 6849), (116, 6879), (118, 6894), (120, 6897),

Gene: DreamTeam_7 Start: 6382, Stop: 6951, Start Num: 5

Candidate Starts for DreamTeam_7:

(Start: 3 @6373 has 52 MA's), (Start: 5 @6382 has 25 MA's), (11, 6427), (27, 6556), (28, 6562), (50, 6652), (61, 6685), (75, 6733), (78, 6742), (88, 6793), (89, 6796), (92, 6808), (95, 6820), (101, 6850), (104, 6871), (109, 6895), (116, 6925), (118, 6940), (120, 6943),

Gene: Dubu_8 Start: 6313, Stop: 6891, Start Num: 6

Candidate Starts for Dubu_8:

(Start: 6 @6313 has 14 MA's), (17, 6391), (20, 6409), (38, 6529), (68, 6640), (85, 6682), (108, 6784), (114, 6814),

Gene: Eden_7 Start: 6625, Stop: 7182, Start Num: 7

Candidate Starts for Eden_7:

(Start: 7 @6625 has 68 MA's), (27, 6778), (41, 6850), (86, 7009), (91, 7027),

Gene: Eesa_9 Start: 7305, Stop: 7892, Start Num: 2

Candidate Starts for Eesa_9:

(Start: 2 @7305 has 29 MA's), (19, 7431), (23, 7485), (32, 7533), (38, 7563), (40, 7569), (48, 7590), (53, 7605), (59, 7626), (66, 7647), (74, 7677), (84, 7719), (95, 7767), (106, 7830),

Gene: Eileen_9 Start: 7175, Stop: 7768, Start Num: 6

Candidate Starts for Eileen_9:

(Start: 6 @7175 has 14 MA's), (9, 7187), (15, 7232), (28, 7334), (29, 7340), (31, 7355), (32, 7358), (49, 7418), (60, 7451), (97, 7592), (120, 7715),

Gene: Elva_9 Start: 7080, Stop: 7631, Start Num: 7

Candidate Starts for Elva_9:

(Start: 7 @7080 has 68 MA's), (25, 7227), (37, 7290), (41, 7305), (75, 7407), (81, 7434), (86, 7458), (88, 7467), (102, 7530), (106, 7557),

Gene: EstebanJulior_7 Start: 6380, Stop: 6949, Start Num: 5

Candidate Starts for EstebanJulior_7:

(Start: 3 @6371 has 52 MA's), (Start: 5 @6380 has 25 MA's), (11, 6425), (27, 6554), (28, 6560), (40, 6623), (50, 6650), (76, 6734), (78, 6740), (88, 6791), (89, 6794), (92, 6806), (95, 6818), (101, 6848), (109, 6893), (116, 6923), (118, 6938), (120, 6941),

Gene: Eula_8 Start: 6763, Stop: 7323, Start Num: 7

Candidate Starts for Eula_8:

(Start: 7 @6763 has 68 MA's), (25, 6910), (27, 6916), (30, 6940), (88, 7159), (102, 7222), (116, 7291),

Gene: Eunoia_7 Start: 6351, Stop: 6923, Start Num: 5

Candidate Starts for Eunoia_7:

(Start: 3 @6342 has 52 MA's), (Start: 5 @6351 has 25 MA's), (11, 6396), (17, 6441), (24, 6513), (27, 6525), (28, 6531), (50, 6621), (59, 6651), (75, 6702), (78, 6711), (88, 6762), (89, 6765), (92, 6777), (95, 6789), (101, 6819), (106, 6852), (120, 6912),

Gene: Finalfrontier_9 Start: 7274, Stop: 7834, Start Num: 7

Candidate Starts for Finalfrontier_9:

(Start: 7 @7274 has 68 MA's), (25, 7421), (27, 7427), (30, 7451), (88, 7670), (102, 7733), (116, 7802),

Gene: FlameThrower_8 Start: 6731, Stop: 7282, Start Num: 7

Candidate Starts for FlameThrower_8:

(Start: 7 @6731 has 68 MA's), (25, 6878), (27, 6884), (30, 6908), (37, 6941), (41, 6956), (86, 7109), (102, 7181),

Gene: Fluke_11 Start: 9232, Stop: 9810, Start Num: 3

Candidate Starts for Fluke_11:

(Start: 3 @9232 has 52 MA's), (Start: 5 @9241 has 25 MA's), (11, 9286), (27, 9415), (28, 9421), (35, 9466), (40, 9484), (44, 9499), (50, 9511), (76, 9595), (78, 9601), (88, 9652), (89, 9655), (92, 9667), (95, 9679), (101, 9709), (104, 9730), (109, 9754), (116, 9784), (118, 9799), (120, 9802),

Gene: FosterFrank_9 Start: 7173, Stop: 7763, Start Num: 6

Candidate Starts for FosterFrank_9:

(Start: 6 @7173 has 14 MA's), (9, 7185), (15, 7230), (83, 7527), (97, 7587), (98, 7590), (116, 7689), (120, 7710), (125, 7749),

Gene: Franklin22_7 Start: 6606, Stop: 7163, Start Num: 7

Candidate Starts for Franklin22_7:

(Start: 7 @6606 has 68 MA's), (27, 6759), (41, 6831), (75, 6939), (86, 6990), (91, 7008), (101, 7056), (115, 7128),

Gene: Gack_7 Start: 6676, Stop: 7233, Start Num: 7

Candidate Starts for Gack_7:

(Start: 7 @6676 has 68 MA's), (27, 6829), (35, 6877), (91, 7078),

Gene: Galaxy_9 Start: 7113, Stop: 7700, Start Num: 2

Candidate Starts for Galaxy_9:

(Start: 2 @7113 has 29 MA's), (23, 7293), (35, 7359), (40, 7377), (48, 7398), (53, 7413), (59, 7434), (95, 7575), (101, 7605),

Gene: Gisselle_7 Start: 6382, Stop: 6951, Start Num: 5

Candidate Starts for Gisselle_7:

(Start: 3 @6373 has 52 MA's), (Start: 5 @6382 has 25 MA's), (11, 6427), (27, 6556), (28, 6562), (50, 6652), (61, 6685), (75, 6733), (78, 6742), (88, 6793), (89, 6796), (92, 6808), (95, 6820), (101, 6850), (104, 6871), (109, 6895), (116, 6925), (118, 6940), (120, 6943),

Gene: Glenn_11 Start: 9251, Stop: 9820, Start Num: 5

Candidate Starts for Glenn_11:

(Start: 3 @9242 has 52 MA's), (Start: 5 @9251 has 25 MA's), (11, 9296), (27, 9425), (28, 9431), (35, 9476), (40, 9494), (44, 9509), (48, 9515), (50, 9521), (76, 9605), (78, 9611), (88, 9662), (89, 9665), (95, 9689), (101, 9719), (109, 9764), (116, 9794), (118, 9809), (120, 9812),

Gene: GlobiWarming_9 Start: 7170, Stop: 7760, Start Num: 6

Candidate Starts for GlobiWarming_9:

(Start: 6 @7170 has 14 MA's), (9, 7182), (15, 7227), (81, 7518), (83, 7524), (97, 7584), (98, 7587), (116, 7686), (120, 7707),

Gene: Glotell_8 Start: 6714, Stop: 7301, Start Num: 2

Candidate Starts for Glotell_8:

(Start: 2 @6714 has 29 MA's), (23, 6894), (31, 6939), (37, 6969), (38, 6972), (50, 7005), (57, 7029), (59, 7035), (72, 7080), (77, 7092), (80, 7110), (82, 7119), (95, 7176), (100, 7203), (101, 7206),

Gene: Gravel_10 Start: 7301, Stop: 7888, Start Num: 2

Candidate Starts for Gravel_10:

(Start: 2 @7301 has 29 MA's), (23, 7481), (32, 7529), (38, 7559), (40, 7565), (48, 7586), (52, 7598), (53, 7601), (59, 7622), (66, 7643), (84, 7715), (95, 7763), (106, 7826), (111, 7844),

Gene: GreenHearts_11 Start: 9314, Stop: 9892, Start Num: 3

Candidate Starts for GreenHearts_11:

(Start: 3 @9314 has 52 MA's), (Start: 5 @9323 has 25 MA's), (11, 9368), (24, 9485), (27, 9497), (28, 9503), (40, 9566), (50, 9593), (76, 9677), (78, 9683), (84, 9713), (95, 9761), (101, 9791), (120, 9884),

Gene: Greenhouse_11 Start: 9248, Stop: 9817, Start Num: 5

Candidate Starts for Greenhouse_11:

(Start: 3 @9239 has 52 MA's), (Start: 5 @9248 has 25 MA's), (11, 9293), (24, 9410), (27, 9422), (28, 9428), (40, 9491), (76, 9602), (78, 9608), (84, 9638), (95, 9686), (101, 9716), (120, 9809),

Gene: HamCheese_8 Start: 6714, Stop: 7301, Start Num: 2

Candidate Starts for HamCheese_8:

(Start: 2 @6714 has 29 MA's), (21, 6861), (23, 6894), (31, 6939), (37, 6969), (38, 6972), (50, 7005), (57, 7029), (59, 7035), (72, 7080), (77, 7092), (80, 7110), (82, 7119), (95, 7176), (100, 7203), (101, 7206),

Gene: HannahPhantana_10 Start: 7305, Stop: 7895, Start Num: 2

Candidate Starts for HannahPhantana_10:

(Start: 2 @7305 has 29 MA's), (10, 7359), (23, 7485), (36, 7554), (38, 7563), (40, 7569), (48, 7590), (56, 7617), (59, 7629), (72, 7674), (95, 7770), (101, 7800), (106, 7833),

Gene: HeadNerd_7 Start: 6329, Stop: 6907, Start Num: 3

Candidate Starts for HeadNerd_7:

(Start: 3 @6329 has 52 MA's), (Start: 5 @6338 has 25 MA's), (11, 6383), (27, 6512), (28, 6518), (40, 6581), (50, 6608), (76, 6692), (78, 6698), (88, 6749), (89, 6752), (92, 6764), (95, 6776), (101, 6806), (109, 6851), (116, 6881), (118, 6896), (120, 6899),

Gene: Herb_7 Start: 6353, Stop: 6925, Start Num: 5

Candidate Starts for Herb_7:

(Start: 3 @6344 has 52 MA's), (Start: 5 @6353 has 25 MA's), (11, 6398), (17, 6443), (27, 6527), (28, 6533), (50, 6623), (59, 6653), (75, 6704), (78, 6713), (95, 6791), (101, 6821), (116, 6896), (120, 6914),

Gene: HotPotato_9 Start: 7175, Stop: 7768, Start Num: 6

Candidate Starts for HotPotato_9:

(Start: 6 @7175 has 14 MA's), (9, 7187), (15, 7232), (28, 7334), (29, 7340), (31, 7355), (32, 7358), (49, 7418), (60, 7451), (97, 7592), (98, 7595), (120, 7715),

Gene: Huckleberry_7 Start: 6338, Stop: 6907, Start Num: 5

Candidate Starts for Huckleberry_7:

(Start: 3 @6329 has 52 MA's), (Start: 5 @6338 has 25 MA's), (11, 6383), (27, 6512), (28, 6518), (40, 6581), (50, 6608), (76, 6692), (78, 6698), (88, 6749), (89, 6752), (92, 6764), (95, 6776), (101, 6806), (109, 6851), (116, 6881), (118, 6896), (120, 6899),

Gene: HunterDalle_7 Start: 6342, Stop: 6923, Start Num: 3

Candidate Starts for HunterDalle_7:

(Start: 3 @6342 has 52 MA's), (Start: 5 @6351 has 25 MA's), (11, 6396), (17, 6441), (24, 6513), (27, 6525), (28, 6531), (50, 6621), (53, 6630), (59, 6651), (75, 6702), (78, 6711), (88, 6762), (89, 6765), (92, 6777), (95, 6789), (101, 6819), (106, 6852), (120, 6912),

Gene: Huntingdon_11 Start: 9225, Stop: 9803, Start Num: 3

Candidate Starts for Huntingdon_11:

(Start: 3 @9225 has 52 MA's), (Start: 5 @9234 has 25 MA's), (11, 9279), (24, 9396), (27, 9408), (28, 9414), (40, 9477), (78, 9594), (95, 9672), (101, 9702), (120, 9795),

Gene: Ibantik_72 Start: 34097, Stop: 34657, Start Num: 8

Candidate Starts for Ibantik_72:

(Start: 8 @34097 has 2 MA's), (11, 34121), (13, 34133), (43, 34331), (68, 34421), (90, 34496), (95, 34520), (107, 34592),

Gene: Icarian_9 Start: 7006, Stop: 7557, Start Num: 7

Candidate Starts for Icarian_9:

(Start: 7 @7006 has 68 MA's), (12, 7039), (25, 7153), (30, 7183), (37, 7216), (41, 7231), (75, 7333), (86, 7384), (102, 7456), (106, 7483), (121, 7552),

Gene: Immaculata_11 Start: 9236, Stop: 9814, Start Num: 3

Candidate Starts for Immaculata_11:

(Start: 3 @9236 has 52 MA's), (Start: 5 @9245 has 25 MA's), (11, 9290), (27, 9419), (28, 9425), (35, 9470), (40, 9488), (44, 9503), (50, 9515), (75, 9596), (76, 9599), (78, 9605), (88, 9656), (89, 9659), (92, 9671), (95, 9683), (101, 9713), (104, 9734), (109, 9758), (116, 9788), (118, 9803), (120, 9806),

Gene: IndyLu_8 Start: 6817, Stop: 7368, Start Num: 7

Candidate Starts for IndyLu_8:

(Start: 7 @6817 has 68 MA's), (12, 6850), (25, 6964), (27, 6970), (30, 6994), (41, 7042), (75, 7144), (86, 7195), (102, 7267), (103, 7279),

Gene: Jabb_8 Start: 6742, Stop: 7302, Start Num: 7

Candidate Starts for Jabb_8:

(Start: 7 @6742 has 68 MA's), (25, 6889), (27, 6895), (30, 6919), (88, 7138), (102, 7201), (116, 7270),

Gene: Jamun_9 Start: 7454, Stop: 8041, Start Num: 2

Candidate Starts for Jamun_9:

(Start: 2 @7454 has 29 MA's), (23, 7634), (35, 7700), (38, 7712), (40, 7718), (48, 7739), (53, 7754), (59, 7775), (70, 7811), (95, 7916), (101, 7946),

Gene: Jerole_10 Start: 7302, Stop: 7892, Start Num: 2

Candidate Starts for Jerole_10:

(Start: 2 @7302 has 29 MA's), (10, 7356), (23, 7482), (36, 7551), (38, 7560), (40, 7566), (48, 7587), (56, 7614), (59, 7626), (72, 7671), (95, 7767), (101, 7797), (106, 7830),

Gene: Joann_11 Start: 9217, Stop: 9795, Start Num: 3

Candidate Starts for Joann_11:

(Start: 3 @9217 has 52 MA's), (Start: 5 @9226 has 25 MA's), (11, 9271), (24, 9388), (27, 9400), (28, 9406), (40, 9469), (50, 9496), (76, 9580), (78, 9586), (84, 9616), (95, 9664), (101, 9694), (120, 9787),

Gene: Johnathan_8 Start: 6765, Stop: 7325, Start Num: 7

Candidate Starts for Johnathan_8:

(Start: 7 @6765 has 68 MA's), (25, 6912), (27, 6918), (30, 6942), (44, 6999), (86, 7152), (88, 7161), (102, 7224), (116, 7293),

Gene: Jovita_8 Start: 6864, Stop: 7424, Start Num: 7

Candidate Starts for Jovita_8:

(Start: 7 @6864 has 68 MA's), (25, 7011), (27, 7017), (30, 7041), (88, 7260), (102, 7323), (116, 7392),

Gene: Judy_9 Start: 7214, Stop: 7804, Start Num: 6

Candidate Starts for Judy_9:

(Start: 6 @7214 has 14 MA's), (9, 7226), (15, 7271), (81, 7562), (83, 7568), (97, 7628), (98, 7631), (116, 7730), (120, 7751),

Gene: Jumboset_11 Start: 9185, Stop: 9763, Start Num: 3

Candidate Starts for Jumboset_11:

(Start: 3 @9185 has 52 MA's), (Start: 5 @9194 has 25 MA's), (11, 9239), (27, 9368), (28, 9374), (35, 9419), (40, 9437), (44, 9452), (50, 9464), (76, 9548), (78, 9554), (88, 9605), (89, 9608), (95, 9632), (101, 9662), (104, 9683), (109, 9707), (116, 9737), (118, 9752), (120, 9755),

Gene: Juno112_8 Start: 6715, Stop: 7302, Start Num: 2

Candidate Starts for Juno112_8:

(Start: 2 @6715 has 29 MA's), (23, 6895), (31, 6940), (37, 6970), (38, 6973), (50, 7006), (57, 7030), (59, 7036), (72, 7081), (77, 7093), (82, 7120), (95, 7177), (100, 7204), (101, 7207),

Gene: KHumphrey_8 Start: 6714, Stop: 7301, Start Num: 2

Candidate Starts for KHumphrey_8:

(Start: 2 @6714 has 29 MA's), (23, 6894), (31, 6939), (37, 6969), (38, 6972), (50, 7005), (57, 7029), (59, 7035), (72, 7080), (77, 7092), (80, 7110), (82, 7119), (95, 7176), (100, 7203), (101, 7206),

Gene: Kalizoi_11 Start: 9184, Stop: 9762, Start Num: 3

Candidate Starts for Kalizoi_11:

(Start: 3 @9184 has 52 MA's), (Start: 5 @9193 has 25 MA's), (11, 9238), (27, 9367), (28, 9373), (35, 9418), (40, 9436), (44, 9451), (50, 9463), (75, 9544), (76, 9547), (78, 9553), (88, 9604), (89, 9607), (92, 9619), (95, 9631), (101, 9661), (104, 9682), (109, 9706), (116, 9736), (118, 9751), (120, 9754),

Gene: Karkharias_9 Start: 7171, Stop: 7764, Start Num: 6

Candidate Starts for Karkharias_9:

(Start: 6 @7171 has 14 MA's), (9, 7183), (15, 7228), (28, 7330), (29, 7336), (31, 7351), (32, 7354), (60, 7447), (97, 7588), (98, 7591), (116, 7690), (120, 7711),

Gene: Kate33_8 Start: 6816, Stop: 7367, Start Num: 7

Candidate Starts for Kate33_8:

(Start: 7 @6816 has 68 MA's), (12, 6849), (25, 6963), (27, 6969), (30, 6993), (37, 7026), (41, 7041), (75, 7143), (86, 7194), (102, 7266), (103, 7278),

Gene: Katzastrophic_8 Start: 6906, Stop: 7457, Start Num: 7

Candidate Starts for Katzastrophic_8:

(Start: 7 @6906 has 68 MA's), (25, 7053), (27, 7059), (30, 7083), (37, 7116), (41, 7131), (86, 7284), (102, 7356),

Gene: KayMoney_9 Start: 7171, Stop: 7761, Start Num: 6

Candidate Starts for KayMoney_9:

(Start: 6 @7171 has 14 MA's), (9, 7183), (15, 7228), (29, 7336), (81, 7519), (83, 7525), (97, 7585), (98, 7588), (116, 7687), (120, 7708),

Gene: KendraB23_10 Start: 7302, Stop: 7889, Start Num: 2

Candidate Starts for KendraB23_10:

(Start: 2 @7302 has 29 MA's), (23, 7482), (32, 7530), (38, 7560), (40, 7566), (48, 7587), (52, 7599), (53, 7602), (59, 7623), (66, 7644), (84, 7716), (95, 7764), (106, 7827), (111, 7845),

Gene: Kenzers_8 Start: 6779, Stop: 7339, Start Num: 7

Candidate Starts for Kenzers_8:

(Start: 7 @6779 has 68 MA's), (12, 6812), (25, 6926), (27, 6932), (30, 6956), (44, 7013), (49, 7022), (73, 7112), (102, 7238), (116, 7307),

Gene: Kepler_9 Start: 7140, Stop: 7730, Start Num: 2

Candidate Starts for Kepler_9:

(Start: 2 @7140 has 29 MA's), (10, 7194), (23, 7320), (36, 7389), (38, 7398), (40, 7404), (48, 7425), (56, 7452), (59, 7464), (72, 7509), (95, 7605), (101, 7635), (106, 7668),

Gene: Kieran_8 Start: 6999, Stop: 7556, Start Num: 7

Candidate Starts for Kieran_8:

(Start: 7 @6999 has 68 MA's), (25, 7146), (30, 7176), (73, 7329), (88, 7392), (102, 7455), (116, 7524),

Gene: KingBob_7 Start: 6353, Stop: 6925, Start Num: 5

Candidate Starts for KingBob_7:

(Start: 3 @6344 has 52 MA's), (Start: 5 @6353 has 25 MA's), (11, 6398), (17, 6443), (27, 6527), (28, 6533), (50, 6623), (59, 6653), (75, 6704), (78, 6713), (95, 6791), (101, 6821), (116, 6896), (120, 6914),

Gene: Kittykat_7 Start: 6370, Stop: 6948, Start Num: 3

Candidate Starts for Kittykat_7:

(Start: 3 @6370 has 52 MA's), (Start: 5 @6379 has 25 MA's), (11, 6424), (27, 6553), (50, 6649), (61, 6682), (75, 6730), (78, 6739), (88, 6790), (89, 6793), (92, 6805), (95, 6817), (101, 6847), (104, 6868), (109, 6892), (116, 6922), (120, 6940),

Gene: Korra_11 Start: 9199, Stop: 9768, Start Num: 5

Candidate Starts for Korra_11:

(Start: 3 @9190 has 52 MA's), (Start: 5 @9199 has 25 MA's), (11, 9244), (27, 9373), (28, 9379), (35, 9424), (40, 9442), (44, 9457), (50, 9469), (75, 9550), (76, 9553), (78, 9559), (88, 9610), (89, 9613), (92, 9625), (95, 9637), (101, 9667), (104, 9688), (109, 9712), (116, 9742), (118, 9757), (120, 9760),

Gene: Kromp_9 Start: 7708, Stop: 8337, Start Num: 6

Candidate Starts for Kromp_9:

(Start: 6 @7708 has 14 MA's), (13, 7753), (16, 7768), (22, 7837), (45, 7942), (47, 7945), (55, 7975), (71, 8059), (79, 8083), (83, 8110), (94, 8158), (96, 8164), (108, 8233), (112, 8245), (125, 8323),

Gene: Kuleana_9 Start: 7105, Stop: 7692, Start Num: 2

Candidate Starts for Kuleana_9:

(Start: 2 @7105 has 29 MA's), (23, 7285), (36, 7354), (37, 7360), (38, 7363), (48, 7390), (59, 7426), (95, 7567), (101, 7597),

Gene: Lahqtemish_8 Start: 6855, Stop: 7412, Start Num: 7

Candidate Starts for Lahqtemish_8:

(Start: 7 @6855 has 68 MA's), (25, 7002), (27, 7008), (30, 7032), (75, 7188), (86, 7239), (102, 7311), (103, 7323), (106, 7338),

Gene: Lakshmi_11 Start: 9244, Stop: 9822, Start Num: 3

Candidate Starts for Lakshmi_11:

(Start: 3 @9244 has 52 MA's), (Start: 5 @9253 has 25 MA's), (11, 9298), (24, 9415), (27, 9427), (28, 9433), (40, 9496), (50, 9523), (76, 9607), (78, 9613), (84, 9643), (95, 9691), (101, 9721), (120, 9814),

Gene: Lasagna_7 Start: 6336, Stop: 6905, Start Num: 5

Candidate Starts for Lasagna_7:

(Start: 3 @6327 has 52 MA's), (Start: 5 @6336 has 25 MA's), (11, 6381), (27, 6510), (28, 6516), (40, 6579), (50, 6606), (59, 6636), (75, 6687), (76, 6690), (78, 6696), (88, 6747), (89, 6750), (95, 6774), (101, 6804), (109, 6849), (116, 6879), (118, 6894), (120, 6897),

Gene: Lennox_7 Start: 6327, Stop: 6905, Start Num: 3

Candidate Starts for Lennox_7:

(Start: 3 @6327 has 52 MA's), (Start: 5 @6336 has 25 MA's), (11, 6381), (27, 6510), (28, 6516), (40, 6579), (44, 6594), (50, 6606), (59, 6636), (75, 6687), (76, 6690), (78, 6696), (88, 6747), (89, 6750), (95, 6774), (101, 6804), (109, 6849), (116, 6879), (118, 6894), (120, 6897),

Gene: Leona_8 Start: 6765, Stop: 7352, Start Num: 2

Candidate Starts for Leona_8:

(Start: 2 @6765 has 29 MA's), (15, 6858), (18, 6888), (23, 6945), (37, 7020), (38, 7023), (48, 7050), (59, 7086), (72, 7131), (80, 7161), (95, 7227), (100, 7254), (101, 7257),

Gene: LilStuart_7 Start: 6327, Stop: 6905, Start Num: 3

Candidate Starts for LilStuart_7:

(Start: 3 @6327 has 52 MA's), (Start: 5 @6336 has 25 MA's), (11, 6381), (27, 6510), (28, 6516), (40, 6579), (44, 6594), (50, 6606), (59, 6636), (75, 6687), (76, 6690), (78, 6696), (88, 6747), (89, 6750), (95, 6774), (101, 6804), (109, 6849), (116, 6879), (118, 6894), (120, 6897),

Gene: LimaBean_8 Start: 6765, Stop: 7325, Start Num: 7

Candidate Starts for LimaBean_8:

(Start: 7 @6765 has 68 MA's), (25, 6912), (27, 6918), (30, 6942), (44, 6999), (86, 7152), (88, 7161), (102, 7224), (116, 7293),

Gene: Litotes_11 Start: 9218, Stop: 9790, Start Num: 4

Candidate Starts for Litotes_11:

(Start: 4 @9218 has 6 MA's), (24, 9380), (27, 9392), (28, 9398), (35, 9443), (40, 9461), (76, 9572), (78, 9578), (95, 9656), (101, 9686), (109, 9731), (110, 9734), (118, 9776), (120, 9779),

Gene: LittleTokyo_9 Start: 7047, Stop: 7634, Start Num: 2

Candidate Starts for LittleTokyo_9:

(Start: 2 @7047 has 29 MA's), (38, 7305), (46, 7329), (48, 7332), (53, 7347), (59, 7368), (72, 7413), (77, 7425), (80, 7443), (95, 7509), (101, 7539),

Gene: Loviatar_15 Start: 7027, Stop: 7578, Start Num: 7

Candidate Starts for Loviatar_15:

(Start: 7 @7027 has 68 MA's), (25, 7174), (30, 7204), (37, 7237), (41, 7252), (75, 7354), (86, 7405), (102, 7477), (106, 7504),

Gene: Lucy_7 Start: 6318, Stop: 6896, Start Num: 3

Candidate Starts for Lucy_7:

(Start: 3 @6318 has 52 MA's), (Start: 5 @6327 has 25 MA's), (11, 6372), (27, 6501), (28, 6507), (40, 6570), (44, 6585), (50, 6597), (75, 6678), (76, 6681), (78, 6687), (88, 6738), (89, 6741), (95, 6765), (101, 6795), (109, 6840), (116, 6870), (118, 6885), (120, 6888),

Gene: Lunar_10 Start: 7302, Stop: 7892, Start Num: 2

Candidate Starts for Lunar_10:

(Start: 2 @7302 has 29 MA's), (10, 7356), (23, 7482), (36, 7551), (38, 7560), (40, 7566), (48, 7587), (56, 7614), (59, 7626), (72, 7671), (95, 7767), (101, 7797), (106, 7830),

Gene: Lynlen_8 Start: 6779, Stop: 7339, Start Num: 7

Candidate Starts for Lynlen_8:

(Start: 7 @6779 has 68 MA's), (12, 6812), (25, 6926), (27, 6932), (30, 6956), (44, 7013), (49, 7022), (73, 7112), (102, 7238), (116, 7307),

Gene: Makoto_7 Start: 6327, Stop: 6905, Start Num: 3

Candidate Starts for Makoto_7:

(Start: 3 @6327 has 52 MA's), (Start: 5 @6336 has 25 MA's), (11, 6381), (27, 6510), (28, 6516), (40, 6579), (44, 6594), (50, 6606), (75, 6687), (76, 6690), (78, 6696), (88, 6747), (89, 6750), (95, 6774), (101, 6804), (109, 6849), (116, 6879), (118, 6894), (120, 6897),

Gene: MamaPearl_7 Start: 6380, Stop: 6949, Start Num: 5

Candidate Starts for MamaPearl_7:

(Start: 3 @6371 has 52 MA's), (Start: 5 @6380 has 25 MA's), (11, 6425), (27, 6554), (28, 6560), (40, 6623), (50, 6650), (76, 6734), (78, 6740), (88, 6791), (89, 6794), (92, 6806), (95, 6818), (101, 6848), (109, 6893), (116, 6923), (118, 6938), (120, 6941),

Gene: Maria1952_7 Start: 6344, Stop: 6925, Start Num: 3

Candidate Starts for Maria1952_7:

(Start: 3 @6344 has 52 MA's), (Start: 5 @6353 has 25 MA's), (11, 6398), (17, 6443), (27, 6527), (28, 6533), (50, 6623), (59, 6653), (75, 6704), (78, 6713), (95, 6791), (101, 6821), (116, 6896), (120, 6914),

Gene: MeganNoll_11 Start: 9242, Stop: 9820, Start Num: 3

Candidate Starts for MeganNoll_11:

(Start: 3 @9242 has 52 MA's), (Start: 5 @9251 has 25 MA's), (11, 9296), (27, 9425), (28, 9431), (35, 9476), (40, 9494), (44, 9509), (50, 9521), (76, 9605), (78, 9611), (88, 9662), (89, 9665), (95, 9689), (101, 9719), (104, 9740), (109, 9764), (116, 9794), (118, 9809), (120, 9812),

Gene: Melons_10 Start: 7302, Stop: 7892, Start Num: 2

Candidate Starts for Melons_10:

(Start: 2 @7302 has 29 MA's), (10, 7356), (23, 7482), (36, 7551), (38, 7560), (40, 7566), (48, 7587), (56, 7614), (59, 7626), (72, 7671), (95, 7767), (101, 7797), (106, 7830),

Gene: Milomuff_9 Start: 7151, Stop: 7711, Start Num: 7

Candidate Starts for Milomuff_9:

(Start: 7 @7151 has 68 MA's), (25, 7298), (27, 7304), (30, 7328), (44, 7385), (86, 7538), (88, 7547), (102, 7610), (116, 7679),

Gene: Misaeng_11 Start: 9290, Stop: 9868, Start Num: 3

Candidate Starts for Misaeng_11:

(Start: 3 @9290 has 52 MA's), (Start: 5 @9299 has 25 MA's), (11, 9344), (24, 9461), (27, 9473), (28, 9479), (40, 9542), (61, 9602), (78, 9659), (95, 9737), (101, 9767), (120, 9860),

Gene: Moki_7 Start: 6329, Stop: 6907, Start Num: 3

Candidate Starts for Moki_7:

(Start: 3 @6329 has 52 MA's), (Start: 5 @6338 has 25 MA's), (11, 6383), (27, 6512), (28, 6518), (40, 6581), (50, 6608), (76, 6692), (78, 6698), (88, 6749), (89, 6752), (92, 6764), (95, 6776), (101, 6806), (109, 6851), (116, 6881), (118, 6896), (120, 6899),

Gene: MrGloopy_11 Start: 9175, Stop: 9753, Start Num: 3

Candidate Starts for MrGloopy_11:

(Start: 3 @9175 has 52 MA's), (Start: 5 @9184 has 25 MA's), (11, 9229), (27, 9358), (28, 9364), (35, 9409), (40, 9427), (44, 9442), (48, 9448), (50, 9454), (76, 9538), (78, 9544), (88, 9595), (89, 9598), (95, 9622), (101, 9652), (104, 9673), (109, 9697), (116, 9727), (118, 9742), (120, 9745),

Gene: MsUbiquitous_8 Start: 6742, Stop: 7302, Start Num: 7

Candidate Starts for MsUbiquitous_8:

(Start: 7 @6742 has 68 MA's), (25, 6889), (27, 6895), (30, 6919), (88, 7138), (102, 7201), (116, 7270),

Gene: Nancia_7 Start: 6327, Stop: 6905, Start Num: 3

Candidate Starts for Nancia_7:

(Start: 3 @6327 has 52 MA's), (Start: 5 @6336 has 25 MA's), (11, 6381), (27, 6510), (28, 6516), (40, 6579), (50, 6606), (59, 6636), (75, 6687), (76, 6690), (78, 6696), (88, 6747), (89, 6750), (95, 6774), (101, 6804), (109, 6849), (116, 6879), (118, 6894), (120, 6897),

Gene: Nesbitt_8 Start: 6733, Stop: 7266, Start Num: 6

Candidate Starts for Nesbitt_8:

(Start: 6 @6733 has 14 MA's), (13, 6778), (15, 6790), (20, 6829), (21, 6844), (34, 6916), (38, 6937), (42, 6949), (44, 6955), (65, 7027), (67, 7036), (81, 7069), (105, 7150), (112, 7177), (124, 7249), (125, 7252),

Gene: Nicky22_9 Start: 7213, Stop: 7773, Start Num: 7

Candidate Starts for Nicky22_9:

(Start: 7 @7213 has 68 MA's), (25, 7360), (27, 7366), (30, 7390), (88, 7609), (102, 7672), (116, 7741),

Gene: Nubia_11 Start: 9213, Stop: 9782, Start Num: 5

Candidate Starts for Nubia_11:

(Start: 3 @9204 has 52 MA's), (Start: 5 @9213 has 25 MA's), (11, 9258), (24, 9375), (27, 9387), (28, 9393), (40, 9456), (50, 9483), (76, 9567), (78, 9573), (84, 9603), (95, 9651), (101, 9681), (120, 9774),

Gene: OMalley_7 Start: 6342, Stop: 6923, Start Num: 3

Candidate Starts for OMalley_7:

(Start: 3 @6342 has 52 MA's), (Start: 5 @6351 has 25 MA's), (11, 6396), (17, 6441), (24, 6513), (27, 6525), (28, 6531), (50, 6621), (59, 6651), (75, 6702), (78, 6711), (88, 6762), (89, 6765), (92, 6777), (95, 6789), (101, 6819), (106, 6852), (120, 6912),

Gene: Olliecat_8 Start: 6996, Stop: 7556, Start Num: 7

Candidate Starts for Olliecat_8:

(Start: 7 @6996 has 68 MA's), (25, 7146), (27, 7152), (61, 7281), (81, 7359), (86, 7383), (91, 7401), (101, 7449), (102, 7455), (106, 7482),

Gene: Orcanus_9 Start: 7095, Stop: 7682, Start Num: 2

Candidate Starts for Orcanus_9:

(Start: 2 @7095 has 29 MA's), (23, 7275), (32, 7323), (38, 7353), (40, 7359), (48, 7380), (53, 7395), (59, 7416), (66, 7437), (74, 7467), (84, 7509), (95, 7557), (106, 7620), (111, 7638),

Gene: OtsoOtso_9 Start: 7141, Stop: 7731, Start Num: 2

Candidate Starts for OtsoOtso_9:

(Start: 2 @7141 has 29 MA's), (10, 7195), (23, 7321), (36, 7390), (38, 7399), (40, 7405), (48, 7426), (56, 7453), (59, 7465), (72, 7510), (95, 7606), (101, 7636), (106, 7669),

Gene: OurGirlNessie_7 Start: 6318, Stop: 6896, Start Num: 3

Candidate Starts for OurGirlNessie_7:

(Start: 3 @6318 has 52 MA's), (Start: 5 @6327 has 25 MA's), (11, 6372), (27, 6501), (28, 6507), (40, 6570), (44, 6585), (50, 6597), (59, 6627), (75, 6678), (76, 6681), (78, 6687), (88, 6738), (89, 6741), (95, 6765), (101, 6795), (109, 6840), (116, 6870), (118, 6885), (120, 6888),

Gene: Oxynfrius_11 Start: 9226, Stop: 9795, Start Num: 5

Candidate Starts for Oxynfrius_11:

(Start: 3 @9217 has 52 MA's), (Start: 5 @9226 has 25 MA's), (11, 9271), (24, 9388), (27, 9400), (28, 9406), (40, 9469), (50, 9496), (76, 9580), (78, 9586), (84, 9616), (95, 9664), (101, 9694), (120, 9787),

Gene: PartyCup_11 Start: 9265, Stop: 9837, Start Num: 4

Candidate Starts for PartyCup_11:

(Start: 4 @9265 has 6 MA's), (24, 9427), (27, 9439), (28, 9445), (35, 9490), (40, 9508), (76, 9619), (78, 9625), (95, 9703), (101, 9733), (109, 9778), (110, 9781), (118, 9823), (120, 9826),

Gene: PastaFagioli_8 Start: 6843, Stop: 7400, Start Num: 7

Candidate Starts for PastaFagioli_8:

(Start: 7 @6843 has 68 MA's), (25, 6990), (27, 6996), (30, 7020), (75, 7176), (86, 7227), (102, 7299), (103, 7311), (106, 7326),

Gene: Peas_9 Start: 7175, Stop: 7768, Start Num: 6

Candidate Starts for Peas_9:

(Start: 6 @7175 has 14 MA's), (9, 7187), (15, 7232), (28, 7334), (29, 7340), (31, 7355), (32, 7358), (49, 7418), (60, 7451), (97, 7592), (120, 7715),

Gene: PeggyLeg03_9 Start: 7215, Stop: 7805, Start Num: 6

Candidate Starts for PeggyLeg03_9:

(Start: 6 @7215 has 14 MA's), (9, 7227), (15, 7272), (83, 7569), (97, 7629), (98, 7632), (116, 7731), (120, 7752), (125, 7791),

Gene: Pelletreau_10 Start: 7301, Stop: 7888, Start Num: 2

Candidate Starts for Pelletreau_10:

(Start: 2 @7301 has 29 MA's), (23, 7481), (32, 7529), (38, 7559), (40, 7565), (48, 7586), (52, 7598), (53, 7601), (59, 7622), (66, 7643), (84, 7715), (95, 7763), (106, 7826), (111, 7844),

Gene: PhigPhack_8 Start: 6794, Stop: 7354, Start Num: 7

Candidate Starts for PhigPhack_8:

(Start: 7 @6794 has 68 MA's), (25, 6941), (27, 6947), (30, 6971), (44, 7028), (49, 7037), (86, 7181), (88, 7190), (102, 7253), (116, 7322),

Gene: Phisb_8 Start: 6756, Stop: 7316, Start Num: 7

Candidate Starts for Phisb_8:

(Start: 7 @6756 has 68 MA's), (12, 6789), (25, 6903), (27, 6909), (30, 6933), (44, 6990), (49, 6999), (73, 7089), (102, 7215), (116, 7284),

Gene: PhluffyCoco_8 Start: 6714, Stop: 7301, Start Num: 2

Candidate Starts for PhluffyCoco_8:

(Start: 2 @6714 has 29 MA's), (21, 6861), (23, 6894), (31, 6939), (37, 6969), (38, 6972), (50, 7005), (57, 7029), (59, 7035), (72, 7080), (77, 7092), (80, 7110), (82, 7119), (95, 7176), (100, 7203), (101, 7206),

Gene: PinkFriday_7 Start: 6345, Stop: 6926, Start Num: 3

Candidate Starts for PinkFriday_7:

(Start: 3 @6345 has 52 MA's), (Start: 5 @6354 has 25 MA's), (11, 6399), (17, 6444), (27, 6528), (28, 6534), (50, 6624), (59, 6654), (75, 6705), (78, 6714), (95, 6792), (101, 6822), (116, 6897), (120, 6915),

Gene: PitaDog_7 Start: 6318, Stop: 6896, Start Num: 3

Candidate Starts for PitaDog_7:

(Start: 3 @6318 has 52 MA's), (Start: 5 @6327 has 25 MA's), (11, 6372), (27, 6501), (28, 6507), (40, 6570), (44, 6585), (50, 6597), (59, 6627), (75, 6678), (76, 6681), (78, 6687), (88, 6738), (89, 6741), (95, 6765), (101, 6795), (109, 6840), (116, 6870), (118, 6885), (120, 6888),

Gene: Polka_9 Start: 7141, Stop: 7731, Start Num: 2

Candidate Starts for Polka_9:

(Start: 2 @7141 has 29 MA's), (10, 7195), (23, 7321), (36, 7390), (38, 7399), (40, 7405), (48, 7426), (56, 7453), (59, 7465), (72, 7510), (95, 7606), (101, 7636), (106, 7669),

Gene: Potatoes_11 Start: 9236, Stop: 9814, Start Num: 3

Candidate Starts for Potatoes_11:

(Start: 3 @9236 has 52 MA's), (Start: 5 @9245 has 25 MA's), (11, 9290), (27, 9419), (28, 9425), (35, 9470), (40, 9488), (44, 9503), (50, 9515), (75, 9596), (76, 9599), (78, 9605), (88, 9656), (89, 9659), (92, 9671), (95, 9683), (101, 9713), (104, 9734), (109, 9758), (116, 9788), (118, 9803), (120, 9806),

Gene: Preamble_7 Start: 6328, Stop: 6906, Start Num: 3

Candidate Starts for Preamble_7:

(Start: 3 @6328 has 52 MA's), (Start: 5 @6337 has 25 MA's), (11, 6382), (27, 6511), (28, 6517), (50, 6607), (61, 6640), (75, 6688), (78, 6697), (88, 6748), (89, 6751), (92, 6763), (95, 6775), (101, 6805), (104, 6826), (109, 6850), (116, 6880), (118, 6895), (120, 6898),

Gene: Pterodactyl_7 Start: 6319, Stop: 6897, Start Num: 3

Candidate Starts for Pterodactyl_7:

(Start: 3 @6319 has 52 MA's), (Start: 5 @6328 has 25 MA's), (11, 6373), (27, 6502), (28, 6508), (40, 6571), (44, 6586), (50, 6598), (75, 6679), (76, 6682), (78, 6688), (88, 6739), (89, 6742), (95, 6766), (101, 6796), (109, 6841), (116, 6871), (118, 6886), (120, 6889),

Gene: Pucara_9 Start: 7174, Stop: 7767, Start Num: 6

Candidate Starts for Pucara_9:

(Start: 6 @7174 has 14 MA's), (9, 7186), (15, 7231), (28, 7333), (29, 7339), (31, 7354), (32, 7357), (49, 7417), (60, 7450), (97, 7591), (98, 7594), (120, 7714),

Gene: Pumancara_7 Start: 6344, Stop: 6925, Start Num: 3

Candidate Starts for Pumancara_7:

(Start: 3 @6344 has 52 MA's), (Start: 5 @6353 has 25 MA's), (11, 6398), (17, 6443), (27, 6527), (28, 6533), (50, 6623), (59, 6653), (75, 6704), (78, 6713), (95, 6791), (101, 6821), (116, 6896), (120, 6914),

Gene: QMacho_9 Start: 7246, Stop: 7806, Start Num: 7

Candidate Starts for QMacho_9:

(Start: 7 @7246 has 68 MA's), (25, 7393), (27, 7399), (30, 7423), (88, 7642), (102, 7705), (116, 7774),

Gene: Quenya_9 Start: 6901, Stop: 7452, Start Num: 7

Candidate Starts for Quenya_9:

(Start: 7 @6901 has 68 MA's), (25, 7048), (30, 7078), (37, 7111), (41, 7126), (81, 7255), (86, 7279), (88, 7288), (102, 7351),

Gene: RAP15_11 Start: 9242, Stop: 9820, Start Num: 3

Candidate Starts for RAP15_11:

(Start: 3 @9242 has 52 MA's), (Start: 5 @9251 has 25 MA's), (11, 9296), (27, 9425), (28, 9431), (35, 9476), (40, 9494), (44, 9509), (50, 9521), (76, 9605), (78, 9611), (88, 9662), (89, 9665), (95, 9689), (101, 9719), (104, 9740), (109, 9764), (116, 9794), (118, 9809), (120, 9812),

Gene: Rattail_8 Start: 6765, Stop: 7352, Start Num: 2

Candidate Starts for Rattail_8:

(Start: 2 @6765 has 29 MA's), (15, 6858), (18, 6888), (23, 6945), (37, 7020), (38, 7023), (48, 7050), (59, 7086), (72, 7131), (80, 7161), (95, 7227), (100, 7254), (101, 7257),

Gene: RcigaStruga_11 Start: 9225, Stop: 9803, Start Num: 3

Candidate Starts for RcigaStruga_11:

(Start: 3 @9225 has 52 MA's), (Start: 5 @9234 has 25 MA's), (11, 9279), (24, 9396), (27, 9408), (28, 9414), (40, 9477), (78, 9594), (95, 9672), (101, 9702), (120, 9795),

Gene: RedFox_8 Start: 6714, Stop: 7301, Start Num: 2

Candidate Starts for RedFox_8:

(Start: 2 @6714 has 29 MA's), (21, 6861), (23, 6894), (31, 6939), (37, 6969), (38, 6972), (50, 7005), (57, 7029), (59, 7035), (72, 7080), (77, 7092), (80, 7110), (82, 7119), (95, 7176), (100, 7203), (101, 7206),

Gene: Renna12_9 Start: 6911, Stop: 7501, Start Num: 2

Candidate Starts for Renna12_9:

(Start: 2 @6911 has 29 MA's), (15, 7004), (23, 7091), (37, 7166), (38, 7169), (48, 7196), (50, 7202), (57, 7226), (59, 7232), (72, 7280), (95, 7376), (100, 7403), (101, 7406),

Gene: Riovina_7 Start: 6351, Stop: 6923, Start Num: 5

Candidate Starts for Riovina_7:

(Start: 3 @6342 has 52 MA's), (Start: 5 @6351 has 25 MA's), (11, 6396), (17, 6441), (24, 6513), (27, 6525), (28, 6531), (50, 6621), (59, 6651), (75, 6702), (78, 6711), (88, 6762), (89, 6765), (92, 6777), (95, 6789), (101, 6819), (106, 6852), (120, 6912),

Gene: Riverdale_11 Start: 9173, Stop: 9751, Start Num: 3

Candidate Starts for Riverdale_11:

(Start: 3 @9173 has 52 MA's), (Start: 5 @9182 has 25 MA's), (11, 9227), (27, 9356), (28, 9362), (35, 9407), (40, 9425), (44, 9440), (50, 9452), (76, 9536), (78, 9542), (88, 9593), (89, 9596), (95, 9620), (101, 9650), (104, 9671), (109, 9695), (116, 9725), (118, 9740), (120, 9743),

Gene: Rollins_7 Start: 6593, Stop: 7153, Start Num: 7

Candidate Starts for Rollins_7:

(Start: 7 @6593 has 68 MA's), (73, 6926), (91, 6998),

Gene: Rona_8 Start: 6996, Stop: 7553, Start Num: 7

Candidate Starts for Rona_8:

(Start: 7 @6996 has 68 MA's), (25, 7143), (30, 7173), (73, 7326), (88, 7389), (102, 7452), (116, 7521),

Gene: Rowa_8 Start: 6493, Stop: 7023, Start Num: 6

Candidate Starts for Rowa_8:

(Start: 6 @6493 has 14 MA's), (13, 6538), (20, 6589), (33, 6673), (40, 6700), (51, 6730), (62, 6775), (68, 6799), (81, 6826), (123, 7003), (124, 7006), (125, 7009),

Gene: Rozby_11 Start: 9173, Stop: 9751, Start Num: 3

Candidate Starts for Rozby_11:

(Start: 3 @9173 has 52 MA's), (Start: 5 @9182 has 25 MA's), (11, 9227), (27, 9356), (28, 9362), (35, 9407), (40, 9425), (44, 9440), (50, 9452), (76, 9536), (78, 9542), (88, 9593), (89, 9596), (92, 9608), (95, 9620), (101, 9650), (104, 9671), (109, 9695), (116, 9725), (118, 9740), (120, 9743),

Gene: Ruchi_9 Start: 7376, Stop: 7963, Start Num: 2

Candidate Starts for Ruchi_9:

(Start: 2 @7376 has 29 MA's), (23, 7556), (35, 7622), (38, 7634), (40, 7640), (48, 7661), (53, 7676), (59, 7697), (95, 7838), (101, 7868),

Gene: SanaSana_9 Start: 7016, Stop: 7567, Start Num: 7

Candidate Starts for SanaSana_9:

(Start: 7 @7016 has 68 MA's), (25, 7163), (30, 7193), (37, 7226), (41, 7241), (75, 7343), (81, 7370), (86, 7394), (102, 7466), (106, 7493),

Gene: SansAfet_8 Start: 6776, Stop: 7336, Start Num: 7

Candidate Starts for SansAfet_8:

(Start: 7 @6776 has 68 MA's), (25, 6923), (27, 6929), (30, 6953), (44, 7010), (49, 7019), (86, 7163), (88, 7172), (102, 7235), (116, 7304),

Gene: SarBear_8 Start: 6739, Stop: 7299, Start Num: 7

Candidate Starts for SarBear_8:

(Start: 7 @6739 has 68 MA's), (25, 6886), (27, 6892), (30, 6916), (88, 7135), (102, 7198), (116, 7267),

Gene: Savage2526_11 Start: 9236, Stop: 9814, Start Num: 3

Candidate Starts for Savage2526_11:

(Start: 3 @9236 has 52 MA's), (Start: 5 @9245 has 25 MA's), (11, 9290), (27, 9419), (28, 9425), (35, 9470), (40, 9488), (44, 9503), (50, 9515), (76, 9599), (78, 9605), (88, 9656), (89, 9659), (95, 9683), (101, 9713), (104, 9734), (109, 9758), (116, 9788), (118, 9803), (120, 9806),

Gene: Scuttle_11 Start: 9251, Stop: 9820, Start Num: 5

Candidate Starts for Scuttle_11:

(Start: 3 @9242 has 52 MA's), (Start: 5 @9251 has 25 MA's), (11, 9296), (27, 9425), (28, 9431), (35, 9476), (40, 9494), (44, 9509), (50, 9521), (76, 9605), (78, 9611), (88, 9662), (89, 9665), (95, 9689), (101, 9719), (104, 9740), (109, 9764), (116, 9794), (118, 9809), (120, 9812),

Gene: Sergei_7 Start: 6353, Stop: 6925, Start Num: 5

Candidate Starts for Sergei_7:

(Start: 3 @6344 has 52 MA's), (Start: 5 @6353 has 25 MA's), (11, 6398), (17, 6443), (27, 6527), (28, 6533), (50, 6623), (59, 6653), (75, 6704), (78, 6713), (95, 6791), (101, 6821), (116, 6896), (120, 6914),

Gene: Sharkboy_8 Start: 6995, Stop: 7552, Start Num: 7
Candidate Starts for Sharkboy_8:
(Start: 7 @6995 has 68 MA's), (25, 7142), (30, 7172), (73, 7325), (88, 7388), (102, 7451), (116, 7520),

Gene: Shayna_7 Start: 6598, Stop: 7158, Start Num: 7
Candidate Starts for Shayna_7:
(Start: 7 @6598 has 68 MA's), (14, 6643), (25, 6748), (27, 6754), (64, 6895), (69, 6916), (75, 6934),
(92, 7009), (102, 7057),

Gene: Skylord_7 Start: 6533, Stop: 7093, Start Num: 7
Candidate Starts for Skylord_7:
(Start: 7 @6533 has 68 MA's), (73, 6866), (91, 6938),

Gene: Slay_8 Start: 7215, Stop: 7775, Start Num: 7
Candidate Starts for Slay_8:
(Start: 7 @7215 has 68 MA's), (25, 7362), (27, 7368), (30, 7392), (102, 7674), (116, 7743),

Gene: Softsoap_8 Start: 6765, Stop: 7325, Start Num: 7
Candidate Starts for Softsoap_8:
(Start: 7 @6765 has 68 MA's), (25, 6912), (27, 6918), (30, 6942), (44, 6999), (86, 7152), (88, 7161),
(102, 7224), (116, 7293),

Gene: Solea_9 Start: 7151, Stop: 7711, Start Num: 7
Candidate Starts for Solea_9:
(Start: 7 @7151 has 68 MA's), (25, 7298), (27, 7304), (30, 7328), (44, 7385), (86, 7538), (88, 7547),
(102, 7610), (116, 7679),

Gene: Spooks_52 Start: 31393, Stop: 31992, Start Num: 8
Candidate Starts for Spooks_52:
(Start: 8 @31393 has 2 MA's), (11, 31417), (42, 31624), (67, 31705), (87, 31774), (93, 31804), (99,
31834), (122, 31954),

Gene: Squirle_8 Start: 6995, Stop: 7555, Start Num: 7
Candidate Starts for Squirle_8:
(Start: 7 @6995 has 68 MA's), (25, 7145), (27, 7151), (61, 7280), (81, 7358), (86, 7382), (91, 7400),
(101, 7448), (102, 7454), (106, 7481),

Gene: Stoor_8 Start: 7013, Stop: 7564, Start Num: 7
Candidate Starts for Stoor_8:
(Start: 7 @7013 has 68 MA's), (25, 7160), (30, 7190), (37, 7223), (41, 7238), (75, 7340), (81, 7367),
(86, 7391), (102, 7463), (106, 7490),

Gene: Stromboli_8 Start: 7014, Stop: 7565, Start Num: 7
Candidate Starts for Stromboli_8:
(Start: 7 @7014 has 68 MA's), (25, 7161), (30, 7191), (37, 7224), (41, 7239), (86, 7392), (102, 7464),
(106, 7491), (121, 7560),

Gene: StuartMinion_8 Start: 6740, Stop: 7327, Start Num: 2
Candidate Starts for StuartMinion_8:
(Start: 2 @6740 has 29 MA's), (15, 6833), (37, 6995), (38, 6998), (40, 7004), (48, 7025), (50, 7031),
(53, 7040), (57, 7055), (59, 7061), (72, 7106), (77, 7118), (95, 7202), (100, 7229), (101, 7232),

Gene: Success_54 Start: 30512, Stop: 31111, Start Num: 8

Candidate Starts for Success_54:

(Start: 8 @30512 has 2 MA's), (11, 30536), (39, 30731), (67, 30824), (87, 30893), (93, 30923), (99, 30953), (118, 31052),

Gene: SunnyD_7 Start: 6598, Stop: 7158, Start Num: 7

Candidate Starts for SunnyD_7:

(Start: 7 @6598 has 68 MA's), (14, 6643), (25, 6748), (27, 6754), (64, 6895), (69, 6916), (75, 6934), (92, 7009), (102, 7057),

Gene: Supakev_7 Start: 6344, Stop: 6925, Start Num: 3

Candidate Starts for Supakev_7:

(Start: 3 @6344 has 52 MA's), (Start: 5 @6353 has 25 MA's), (11, 6398), (17, 6443), (27, 6527), (28, 6533), (50, 6623), (59, 6653), (75, 6704), (78, 6713), (95, 6791), (101, 6821), (116, 6896), (120, 6914),

Gene: Suppi_11 Start: 9265, Stop: 9837, Start Num: 4

Candidate Starts for Suppi_11:

(Start: 4 @9265 has 6 MA's), (24, 9427), (27, 9439), (28, 9445), (35, 9490), (76, 9619), (78, 9625), (95, 9703), (101, 9733), (109, 9778), (110, 9781), (118, 9823), (120, 9826),

Gene: Swervy_8 Start: 6739, Stop: 7299, Start Num: 7

Candidate Starts for Swervy_8:

(Start: 7 @6739 has 68 MA's), (25, 6886), (27, 6892), (30, 6916), (88, 7135), (102, 7198), (116, 7267),

Gene: TattModd_11 Start: 9236, Stop: 9814, Start Num: 3

Candidate Starts for TattModd_11:

(Start: 3 @9236 has 52 MA's), (Start: 5 @9245 has 25 MA's), (11, 9290), (27, 9419), (28, 9425), (35, 9470), (40, 9488), (44, 9503), (48, 9509), (50, 9515), (76, 9599), (78, 9605), (88, 9656), (89, 9659), (95, 9683), (101, 9713), (104, 9734), (109, 9758), (116, 9788), (118, 9803), (120, 9806),

Gene: TaylorSipht_9 Start: 7181, Stop: 7768, Start Num: 2

Candidate Starts for TaylorSipht_9:

(Start: 2 @7181 has 29 MA's), (23, 7361), (31, 7406), (38, 7439), (40, 7445), (48, 7466), (53, 7481), (54, 7487), (59, 7502), (95, 7643), (106, 7706),

Gene: Teagster_7 Start: 6601, Stop: 7158, Start Num: 7

Candidate Starts for Teagster_7:

(Start: 7 @6601 has 68 MA's), (14, 6646), (25, 6751), (27, 6757), (69, 6916), (75, 6934), (92, 7009), (102, 7057), (113, 7120),

Gene: Temper16_7 Start: 6353, Stop: 6925, Start Num: 5

Candidate Starts for Temper16_7:

(Start: 3 @6344 has 52 MA's), (Start: 5 @6353 has 25 MA's), (11, 6398), (17, 6443), (27, 6527), (28, 6533), (50, 6623), (59, 6653), (75, 6704), (78, 6713), (95, 6791), (101, 6821), (116, 6896), (120, 6914),

Gene: Toad24_10 Start: 7302, Stop: 7889, Start Num: 2

Candidate Starts for Toad24_10:

(Start: 2 @7302 has 29 MA's), (23, 7482), (32, 7530), (38, 7560), (40, 7566), (48, 7587), (52, 7599), (53, 7602), (59, 7623), (66, 7644), (84, 7716), (95, 7764), (106, 7827), (111, 7845),

Gene: TukTuk_8 Start: 6739, Stop: 7299, Start Num: 7

Candidate Starts for TukTuk_8:

(Start: 7 @6739 has 68 MA's), (25, 6886), (27, 6892), (30, 6916), (88, 7135), (102, 7198), (116, 7267),

Gene: Urla_7 Start: 6374, Stop: 6952, Start Num: 3

Candidate Starts for Urla_7:

(Start: 3 @6374 has 52 MA's), (Start: 5 @6383 has 25 MA's), (11, 6428), (27, 6557), (28, 6563), (35, 6608), (40, 6626), (50, 6653), (76, 6737), (78, 6743), (88, 6794), (89, 6797), (92, 6809), (95, 6821), (101, 6851), (109, 6896), (116, 6926), (118, 6941), (120, 6944),

Gene: Vallejo_11 Start: 9183, Stop: 9752, Start Num: 5

Candidate Starts for Vallejo_11:

(Start: 3 @9174 has 52 MA's), (Start: 5 @9183 has 25 MA's), (11, 9228), (27, 9357), (28, 9363), (35, 9408), (40, 9426), (44, 9441), (50, 9453), (76, 9537), (78, 9543), (88, 9594), (89, 9597), (95, 9621), (101, 9651), (104, 9672), (109, 9696), (116, 9726), (118, 9741), (120, 9744),

Gene: Vitas_7 Start: 6533, Stop: 7093, Start Num: 7

Candidate Starts for Vitas_7:

(Start: 7 @6533 has 68 MA's), (73, 6866), (91, 6938), (117, 7064),

Gene: Vulpecula_9 Start: 7452, Stop: 8039, Start Num: 2

Candidate Starts for Vulpecula_9:

(Start: 2 @7452 has 29 MA's), (23, 7632), (35, 7698), (38, 7710), (40, 7716), (48, 7737), (53, 7752), (59, 7773), (95, 7914), (101, 7944),

Gene: Vulture_7 Start: 6342, Stop: 6923, Start Num: 3

Candidate Starts for Vulture_7:

(Start: 3 @6342 has 52 MA's), (Start: 5 @6351 has 25 MA's), (11, 6396), (17, 6441), (24, 6513), (27, 6525), (28, 6531), (50, 6621), (53, 6630), (59, 6651), (75, 6702), (78, 6711), (88, 6762), (89, 6765), (92, 6777), (95, 6789), (101, 6819), (106, 6852), (120, 6912),

Gene: WalkingDead_8 Start: 7002, Stop: 7553, Start Num: 7

Candidate Starts for WalkingDead_8:

(Start: 7 @7002 has 68 MA's), (25, 7149), (30, 7179), (37, 7212), (41, 7227), (75, 7329), (86, 7380), (102, 7452), (106, 7479), (121, 7548),

Gene: Wawa_11 Start: 9211, Stop: 9789, Start Num: 3

Candidate Starts for Wawa_11:

(Start: 3 @9211 has 52 MA's), (Start: 5 @9220 has 25 MA's), (11, 9265), (27, 9394), (28, 9400), (35, 9445), (40, 9463), (44, 9478), (50, 9490), (75, 9571), (76, 9574), (78, 9580), (88, 9631), (89, 9634), (92, 9646), (95, 9658), (101, 9688), (104, 9709), (109, 9733), (116, 9763), (118, 9778), (120, 9781),

Gene: Wayne_11 Start: 9311, Stop: 9883, Start Num: 4

Candidate Starts for Wayne_11:

(Start: 4 @9311 has 6 MA's), (24, 9473), (27, 9485), (28, 9491), (35, 9536), (76, 9665), (78, 9671), (95, 9749), (101, 9779), (109, 9824), (110, 9827), (118, 9869), (120, 9872),

Gene: Westrich_10 Start: 7290, Stop: 7877, Start Num: 2

Candidate Starts for Westrich_10:

(Start: 2 @7290 has 29 MA's), (23, 7470), (32, 7518), (38, 7548), (40, 7554), (48, 7575), (52, 7587), (53, 7590), (59, 7611), (66, 7632), (84, 7704), (95, 7752), (106, 7815), (111, 7833),

Gene: WonderBoy_7 Start: 6336, Stop: 6905, Start Num: 5

Candidate Starts for WonderBoy_7:

(Start: 3 @6327 has 52 MA's), (Start: 5 @6336 has 25 MA's), (11, 6381), (27, 6510), (28, 6516), (40, 6579), (44, 6594), (50, 6606), (59, 6636), (75, 6687), (76, 6690), (78, 6696), (88, 6747), (89, 6750), (95, 6774), (101, 6804), (109, 6849), (116, 6879), (118, 6894), (120, 6897),

Gene: Zhuangyuan_10 Start: 7471, Stop: 8058, Start Num: 2

Candidate Starts for Zhuangyuan_10:

(Start: 2 @7471 has 29 MA's), (23, 7651), (38, 7729), (46, 7753), (48, 7756), (53, 7771), (59, 7792), (72, 7837), (74, 7843), (77, 7849), (84, 7885), (95, 7933), (101, 7963),

Gene: Zorro_11 Start: 9199, Stop: 9768, Start Num: 5

Candidate Starts for Zorro_11:

(Start: 3 @9190 has 52 MA's), (Start: 5 @9199 has 25 MA's), (11, 9244), (27, 9373), (28, 9379), (35, 9424), (40, 9442), (44, 9457), (50, 9469), (75, 9550), (76, 9553), (78, 9559), (88, 9610), (89, 9613), (92, 9625), (95, 9637), (101, 9667), (104, 9688), (109, 9712), (116, 9742), (118, 9757), (120, 9760),

Gene: phiSASD1_29 Start: 6506, Stop: 7102, Start Num: 6

Candidate Starts for phiSASD1_29:

(Start: 6 @6506 has 14 MA's), (21, 6617), (26, 6662), (38, 6722), (67, 6827), (68, 6833), (85, 6875), (86, 6884), (88, 6893), (116, 7025), (119, 7043), (125, 7088),