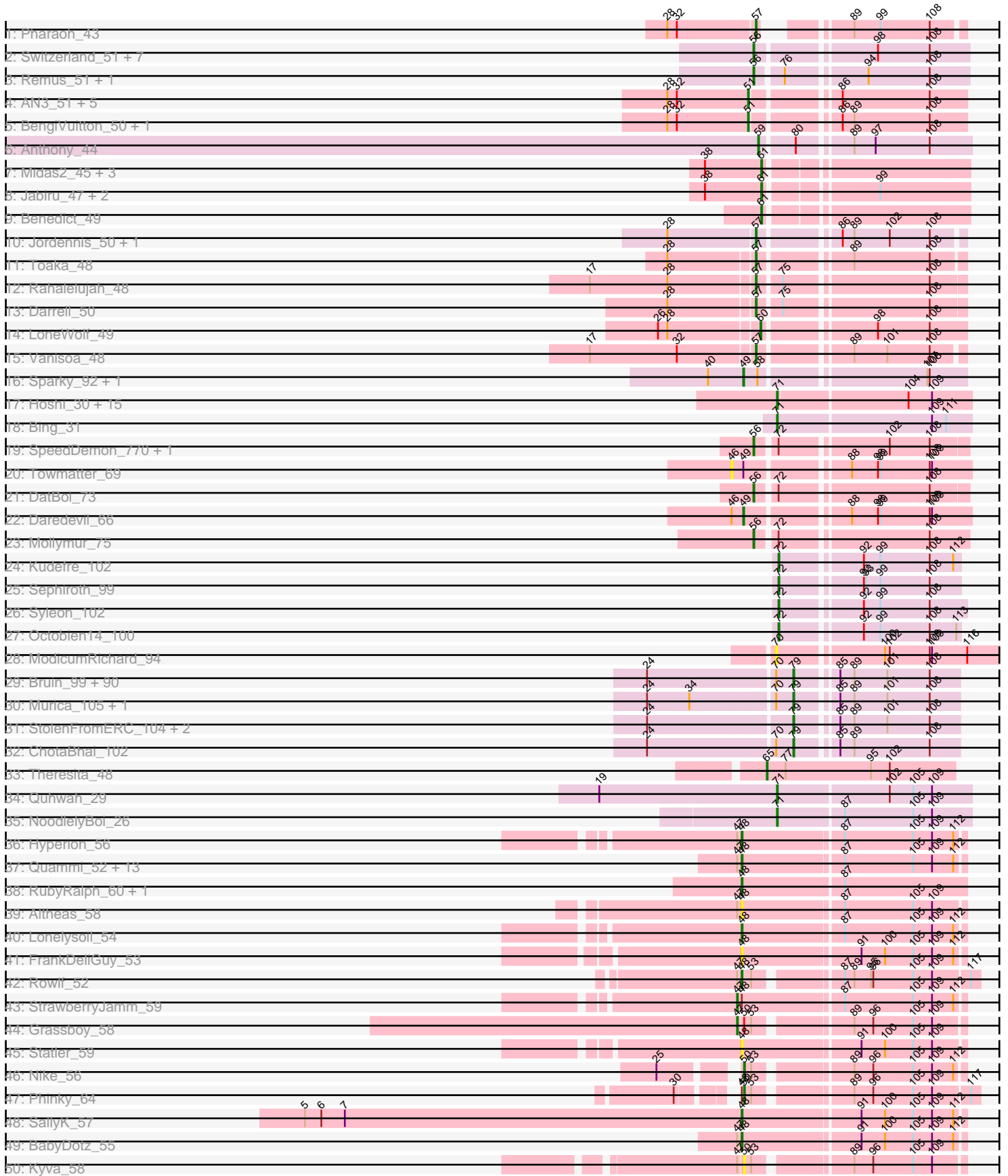
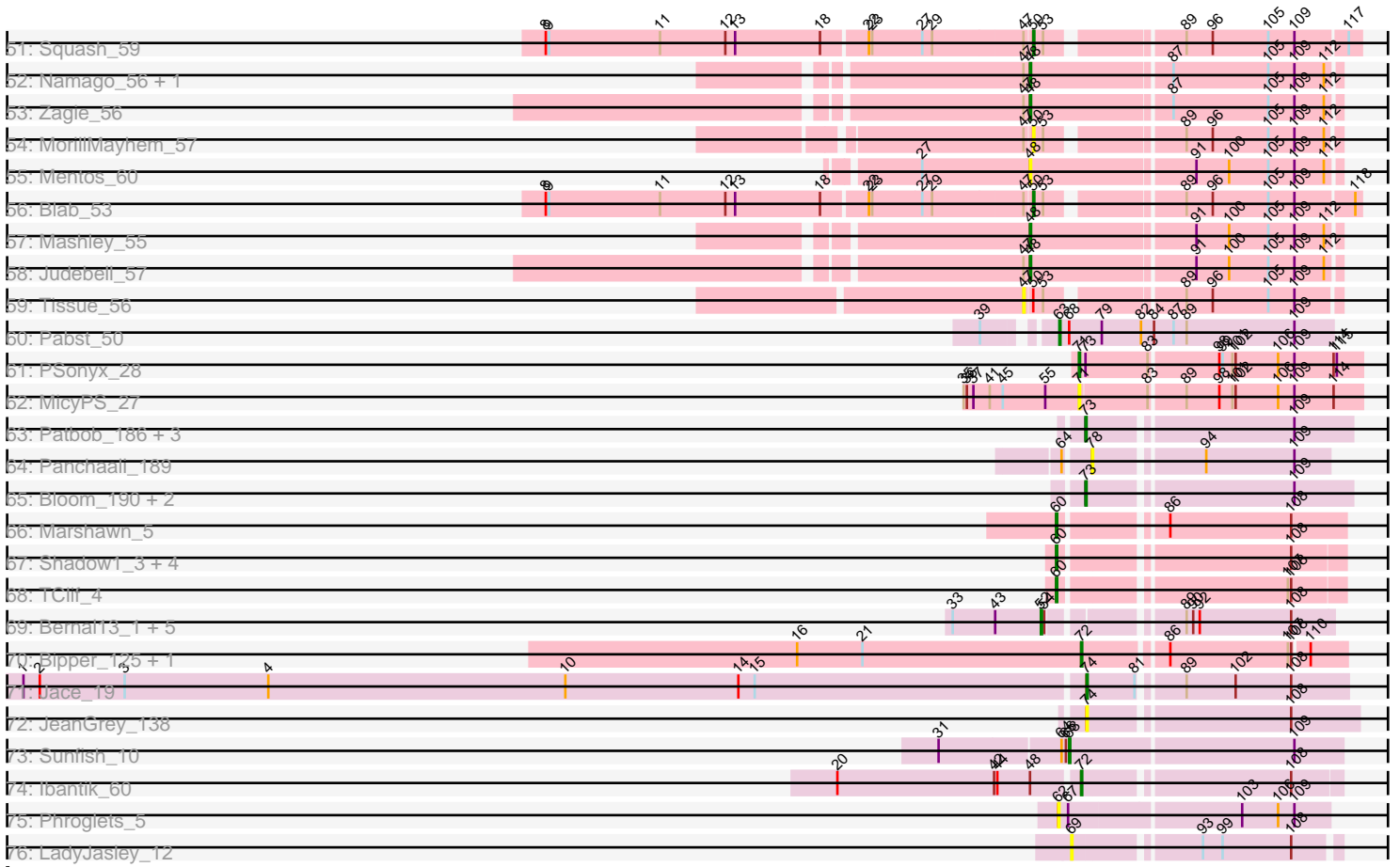


Pham 215802



Pham 215802



Note: Tracks are now grouped by subcluster and scaled. Switching in subcluster is indicated by changes in track color. Track scale is now set by default to display the region 30 bp upstream of start 1 to 30 bp downstream of the last possible start. If this default region is judged to be packed too tightly with annotated starts, the track will be further scaled to only show that region of the ORF with annotated starts. This action will be indicated by adding "Zoomed" to the title. For starts, yellow indicates the location of called starts comprised solely of Glimmer/GeneMark auto-annotations, green indicates the location of called starts with at least 1 manual gene annotation.

Pham 215802 Report

This analysis was run 02/22/25 on database version 588.

Pham number 215802 has 236 members, 33 are drafts.

Phages represented in each track:

- Track 1 : Pharaoh_43
- Track 2 : Switzerland_51, Warrior24_53, Anon_46, Waits_51, Battleship_52, MinecraftSteve_52, JSwag_50, Rosalind_50
- Track 3 : Remus_51, Strosahl_51
- Track 4 : AN3_51, CRB1_52, 20ES_51, VA6_49, First_0050, LadyBird_53
- Track 5 : BengiVuitton_50, Deloris_49
- Track 6 : Anthony_44
- Track 7 : Midas2_45, PetterN_50, UnionJack_47, EITiger69_48
- Track 8 : Jabiru_47, Scorpia_50, Chadwick_49
- Track 9 : Benedict_49
- Track 10 : Jordennis_50, Polyphemos_52
- Track 11 : Toaka_48
- Track 12 : Rahalelujah_48
- Track 13 : Darrell_50
- Track 14 : LoneWolf_49
- Track 15 : Vanisoa_48
- Track 16 : Sparky_92, Farewell_93
- Track 17 : Hoshi_30, TaidaOne_30, Maya_30, Namo_30, CherryBlossom_30, FidgetOrca_30, Esketit_30, Spectropatronm_30, Jaylociraptor_30, IceWarrior_30, TonyStarch_30, TieDye_29, Rima_30, Indigenous_30, OlympicHelado_30, Meibysrarus_30
- Track 18 : Bing_31
- Track 19 : SpeedDemon_770, Bantam_75
- Track 20 : Towmatter_69
- Track 21 : DatBoi_73
- Track 22 : Daredevil_66
- Track 23 : Mollymur_75
- Track 24 : Kudrefre_102
- Track 25 : Sephiroth_99
- Track 26 : Syleon_102
- Track 27 : Octobien14_100
- Track 28 : ModicumRichard_94
- Track 29 : Bruin_99, Lilpickle_101, Nimrod_102, Petra64142_106, Eureka_101, Paperbeatsrock_101, DrDrey_102, ShamWow_102, Emmina_102, Nala_104, Bask21_102, MPhalcon_103, BigBubba_102, SirDuracell_102, Pharsalus_99, Dusk_99, StormChicken_103, Miniwave_97, BilboSwaggins_101, Misfit_103, Phaja_100, Daikon_102, PhatBacter_105, Tarkin_101, Adnama_106, Elite2014_101,

Manda_103, Marshmallow_99, Buck_103, ChosenOne_102, Harella_102, Command613_104, Phaux_104, Mindy_101, StellaBean_101, Tomaszewski_97, Mosby_98, CrystalP_101, Wiggin_104, GoldenSpark_106, YassJohnny_99, NelitzaMV_99, xkcd_105, Cookies_99, DoctorDiddles_101, Gator_100, Easy2Say_102, Cactus_106, Hoonter_105, Gemini_107, Barbarian_101, Qualification_103, FireRed_105, ABCat_99, Henry_99, Contagion_98, IHOP_100, HufflyPuff_104, Sotrice96_103, Argent26_106, Goldilocks_105, TeardropMSU_98, Sassay_97, SophKB_100, Icee_103, Inca_99, Pat3_99, Youngblood_105, TBrady12_105, Rimmer_100, Stank_104, Kanye_99, Asriel_100, BadStone_99, Policronamos_104, Rakim_103, Holt_107, ShereKhan_100, Kostya_102, Tuco_103, Goku_101, GooberAzure_105, Myrale_102, Amao_102, Willez_97, Terminus_105, Toto_100, Flypotenuse_98, Kimchi_106, Traaww1_98, Balomoji_102

- Track 30 : Murica_105, MISSy_103
- Track 31 : StolenFromERC_104, Gage_104, Xandras_101
- Track 32 : ChotaBhai_102
- Track 33 : Theresita_48
- Track 34 : Quhwah_29
- Track 35 : NoodlelyBoi_26
- Track 36 : Hyperion_56
- Track 37 : Quammi_52, EverythinBagel_54, Casend_55, Llemily_54, Sillytadpoles_55, DonaldDuck_54, Zhafia_57, Viceroy_53, Jehoshaphat_56, Rudy_52, Wayne3_56, Wheelie_54, Teehee_55, Phabia_54
- Track 38 : RubyRalph_60, Fransoyer_58
- Track 39 : Altheas_58
- Track 40 : Lonelysoil_54
- Track 41 : FrankDeliGuy_53
- Track 42 : Rowlf_52
- Track 43 : StrawberryJamm_59
- Track 44 : Grassboy_58
- Track 45 : Statler_59
- Track 46 : Nike_56
- Track 47 : Phinky_64
- Track 48 : SallyK_57
- Track 49 : BabyDotz_55
- Track 50 : Kyva_58
- Track 51 : Squash_59
- Track 52 : Namago_56, Gazebo_55
- Track 53 : Zagie_56
- Track 54 : MorillMayhem_57
- Track 55 : Mentos_60
- Track 56 : Blab_53
- Track 57 : Mashley_55
- Track 58 : Judebell_57
- Track 59 : Tissue_56
- Track 60 : Pabst_50
- Track 61 : PSonyx_28
- Track 62 : MicyPS_27
- Track 63 : Patbob_186, GoldenEssence_175, Phrampa_179, Mimi_186
- Track 64 : Panchaali_189
- Track 65 : Bloom_190, Racecar_187, Talia1610_187
- Track 66 : Marshawn_5
- Track 67 : Shadow1_3, Krueger_4, Ximenita_5, Syra333_4, Sunflower1121_3
- Track 68 : TClif_4

- Track 69 : Bernal13_1, ZenTime222_1, Ibrahim_1, RonRayGun_1, Whitty_1, Nairb_1
- Track 70 : Bipper_125, Cracklewink_126
- Track 71 : Jace_19
- Track 72 : JeanGrey_138
- Track 73 : Sunfish_10
- Track 74 : Ibantik_60
- Track 75 : Phroglets_5
- Track 76 : LadyJasley_12

Summary of Final Annotations (See graph section above for start numbers):

The start number called the most often in the published annotations is 79, it was called in 92 of the 203 non-draft genes in the pham.

Genes that call this "Most Annotated" start:

- ABCat_99, Adnama_106, Amao_102, Argent26_106, Asriel_100, BadStone_99, Balomoji_102, Barbarian_101, Bask21_102, BigBubba_102, BilboSwaggins_101, Bruin_99, Buck_103, Cactus_106, ChosenOne_102, ChotaBhai_102, Command613_104, Contagion_98, Cookies_99, CrystalP_101, Daikon_102, DoctorDiddles_101, DrDrey_102, Dusk_99, Easy2Say_102, Elite2014_101, Emmina_102, Eureka_101, FireRed_105, Flypotenuse_98, Gage_104, Gator_100, Gemini_107, Goku_101, GoldenSpark_106, Goldilocks_105, GooberAzure_105, Harella_102, Henry_99, Holt_107, Hoonter_105, HufflyPuff_104, IHOP_100, Icee_103, Inca_99, Kanye_99, Kimchi_106, Kostya_102, Lilpickle_101, MISSy_103, MPhalcon_103, Manda_103, Marshmallow_99, Mindy_101, Miniwave_97, Misfit_103, Mosby_98, Murica_105, Myrale_102, Nala_104, NelitzaMV_99, Nimrod_102, Paperbeatsrock_101, Pat3_99, Petra64142_106, Phaja_100, Pharsalus_99, PhatBacter_105, Phaux_104, Policronamos_104, Quallification_103, Rakim_103, Rimmer_100, Sassay_97, ShamWow_102, ShereKhan_100, SirDuracell_102, SophKB_100, Sotrice96_103, Stank_104, StellaBean_101, StolenFromERC_104, StormChicken_103, TBrady12_105, Tarkin_101, TeardropMSU_98, Terminus_105, Tomaszewski_97, Toto_100, Traaww1_98, Tuco_103, Wiggin_104, Willez_97, Xandras_101, YassJohnny_99, Youngblood_105, xkcd_105,

Genes that have the "Most Annotated" start but do not call it:

- Pabst_50,

Genes that do not have the "Most Annotated" start:

- 20ES_51, AN3_51, Altheas_58, Anon_46, Anthony_44, BabyDotz_55, Bantam_75, Battleship_52, Benedict_49, BengiVuitton_50, Bernal13_1, Bing_31, Bipper_125, Blab_53, Bloom_190, CRB1_52, Casend_55, Chadwick_49, CherryBlossom_30, Cracklewink_126, Daredevil_66, Darrell_50, DatBoi_73, Deloris_49, DonaldDuck_54, EITiger69_48, Esketit_30, EverythinBagel_54, Farewell_93, FidgetOrca_30, First_0050, FrankDeliGuy_53, Fransoyer_58, Gazebo_55, GoldenEssence_175, Grassboy_58, Hoshi_30, Hyperion_56, Ibantik_60, Ibrahim_1, IceWarrior_30, Indigenous_30, JSwag_50, Jabiru_47, Jace_19, Jaylociraptor_30, JeanGrey_138, Jehoshaphat_56, Jordennis_50, Judebell_57, Krueger_4, Kudrefre_102, Kyva_58, LadyBird_53, LadyJasley_12, Llemily_54, LoneWolf_49, Lonelysoil_54, Marshawn_5, Mashley_55, Maya_30, Meibysrarus_30, Mentos_60, MicyPS_27, Midas2_45,

Mimi_186, MinecraftSteve_52, ModicumRichard_94, Mollymur_75, MorillMayhem_57, Nairb_1, Namago_56, Namo_30, Nike_56, NoodlelyBoi_26, Octobien14_100, OlympicHelado_30, PSonyx_28, Panchaali_189, Patbob_186, PetterN_50, Phabia_54, Pharaoh_43, Phinky_64, Phrampa_179, Phroglets_5, Polyphemus_52, Quammi_52, Quhwah_29, Racecar_187, Rahalelujah_48, Remus_51, Rima_30, RonRayGun_1, Rosalind_50, Rowlf_52, RubyRalph_60, Rudy_52, SallyK_57, Scorpia_50, Sephiroth_99, Shadow1_3, Sillytadpoles_55, Sparky_92, Spectropatronm_30, SpeedDemon_770, Squash_59, Statler_59, StrawberryJamm_59, Strosahl_51, Sunfish_10, Sunflower1121_3, Switzerland_51, Syleon_102, Syra333_4, TClif_4, TaidaOne_30, Talia1610_187, Teehee_55, Theresita_48, TieDye_29, Tissue_56, Toaka_48, TonyStarch_30, Towmatter_69, UnionJack_47, VA6_49, Vanisoa_48, Viceroy_53, Waits_51, Warrior24_53, Wayne3_56, Wheelie_54, Whitty_1, Ximenita_5, Zagie_56, ZenTime222_1, Zhafia_57,

Summary by start number:

Start 46:

- Found in 2 of 236 (0.8%) of genes in pham
- No Manual Annotations of this start.
- Called 50.0% of time when present
- Phage (with cluster) where this start called: Towmatter_69 (DL),

Start 47:

- Found in 29 of 236 (12.3%) of genes in pham
- Manual Annotations of this start: 2 of 203
- Called 10.3% of time when present
- Phage (with cluster) where this start called: Grassboy_58 (EG), StrawberryJamm_59 (EG), Tissue_56 (EG),

Start 48:

- Found in 33 of 236 (14.0%) of genes in pham
- Manual Annotations of this start: 21 of 203
- Called 90.9% of time when present
- Phage (with cluster) where this start called: Altheas_58 (EG), BabyDotz_55 (EG), Casend_55 (EG), DonaldDuck_54 (EG), EverythinBagel_54 (EG), FrankDeliGuy_53 (EG), Fransoyer_58 (EG), Gazebo_55 (EG), Hyperion_56 (EG), Jehoshaphat_56 (EG), Judebell_57 (EG), Llemily_54 (EG), Lonelysoil_54 (EG), Mashley_55 (EG), Mentos_60 (EG), Namago_56 (EG), Phabia_54 (EG), Quammi_52 (EG), Rowlf_52 (EG), RubyRalph_60 (EG), Rudy_52 (EG), SallyK_57 (EG), Sillytadpoles_55 (EG), Statler_59 (EG), Teehee_55 (EG), Viceroy_53 (EG), Wayne3_56 (EG), Wheelie_54 (EG), Zagie_56 (EG), Zhafia_57 (EG),

Start 49:

- Found in 4 of 236 (1.7%) of genes in pham
- Manual Annotations of this start: 3 of 203
- Called 75.0% of time when present
- Phage (with cluster) where this start called: Daredevil_66 (DL), Farewell_93 (AF), Sparky_92 (AF),

Start 50:

- Found in 8 of 236 (3.4%) of genes in pham
- Manual Annotations of this start: 4 of 203

- Called 75.0% of time when present
- Phage (with cluster) where this start called: Blab_53 (EG), Kyva_58 (EG), MorillMayhem_57 (EG), Nike_56 (EG), Phinky_64 (EG), Squash_59 (EG),

Start 51:

- Found in 8 of 236 (3.4%) of genes in pham
- Manual Annotations of this start: 5 of 203
- Called 100.0% of time when present
- Phage (with cluster) where this start called: 20ES_51 (A2), AN3_51 (A2), BengiVuitton_50 (A2), CRB1_52 (A2), Deloris_49 (A2), First_0050 (A2), LadyBird_53 (A2), VA6_49 (A2),

Start 52:

- Found in 6 of 236 (2.5%) of genes in pham
- Manual Annotations of this start: 6 of 203
- Called 100.0% of time when present
- Phage (with cluster) where this start called: Bernal13_1 (T), Ibrahim_1 (T), Nairb_1 (T), RonRayGun_1 (T), Whitty_1 (T), ZenTime222_1 (T),

Start 56:

- Found in 14 of 236 (5.9%) of genes in pham
- Manual Annotations of this start: 13 of 203
- Called 100.0% of time when present
- Phage (with cluster) where this start called: Anon_46 (A15), Bantam_75 (DL), Battleship_52 (A15), DatBoi_73 (DL), JSwag_50 (A15), MinecraftSteve_52 (A15), Mollymur_75 (DL), Remus_51 (A15), Rosalind_50 (A15), SpeedDemon_770 (DL), Strosahl_51 (A15), Switzerland_51 (A15), Waits_51 (A15), Warrior24_53 (A15),

Start 57:

- Found in 7 of 236 (3.0%) of genes in pham
- Manual Annotations of this start: 6 of 203
- Called 100.0% of time when present
- Phage (with cluster) where this start called: Darrell_50 (A9), Jordennis_50 (A6), Pharaoh_43 (A12), Polyphemus_52 (A6), Rahalelujah_48 (A9), Toaka_48 (A9), Vanisoa_48 (A9),

Start 59:

- Found in 1 of 236 (0.4%) of genes in pham
- Manual Annotations of this start: 1 of 203
- Called 100.0% of time when present
- Phage (with cluster) where this start called: Anthony_44 (A20),

Start 60:

- Found in 8 of 236 (3.4%) of genes in pham
- Manual Annotations of this start: 8 of 203
- Called 100.0% of time when present
- Phage (with cluster) where this start called: Krueger_4 (K6), LoneWolf_49 (A9), Marshawn_5 (K6), Shadow1_3 (K6), Sunflower1121_3 (K6), Syra333_4 (K6), TClif_4 (K6), Ximenita_5 (K6),

Start 61:

- Found in 8 of 236 (3.4%) of genes in pham
- Manual Annotations of this start: 8 of 203

- Called 100.0% of time when present
- Phage (with cluster) where this start called: Benedict_49 (A5), Chadwick_49 (A5), EITiger69_48 (A5), Jabiru_47 (A5), Midas2_45 (A5), PetterN_50 (A5), Scorpio_50 (A5), UnionJack_47 (A5),

Start 62:

- Found in 1 of 236 (0.4%) of genes in pham
- No Manual Annotations of this start.
- Called 100.0% of time when present
- Phage (with cluster) where this start called: Phroglets_5 (singleton),

Start 63:

- Found in 1 of 236 (0.4%) of genes in pham
- Manual Annotations of this start: 1 of 203
- Called 100.0% of time when present
- Phage (with cluster) where this start called: Pabst_50 (EK1),

Start 65:

- Found in 1 of 236 (0.4%) of genes in pham
- Manual Annotations of this start: 1 of 203
- Called 100.0% of time when present
- Phage (with cluster) where this start called: Theresita_48 (EA7),

Start 68:

- Found in 2 of 236 (0.8%) of genes in pham
- Manual Annotations of this start: 1 of 203
- Called 50.0% of time when present
- Phage (with cluster) where this start called: Sunfish_10 (singleton),

Start 69:

- Found in 1 of 236 (0.4%) of genes in pham
- No Manual Annotations of this start.
- Called 100.0% of time when present
- Phage (with cluster) where this start called: LadyJasley_12 (singleton),

Start 70:

- Found in 95 of 236 (40.3%) of genes in pham
- No Manual Annotations of this start.
- Called 1.1% of time when present
- Phage (with cluster) where this start called: ModicumRichard_94 (DZ),

Start 71:

- Found in 21 of 236 (8.9%) of genes in pham
- Manual Annotations of this start: 20 of 203
- Called 100.0% of time when present
- Phage (with cluster) where this start called: Bing_31 (BI5), CherryBlossom_30 (BI1), Esketit_30 (BI1), FidgetOrca_30 (BI1), Hoshi_30 (BI1), IceWarrior_30 (BI1), Indigenous_30 (BI1), Jaylociraptor_30 (BI1), Maya_30 (BI1), Meibysrarus_30 (BI1), MicyPS_27 (EQ), Namu_30 (BI1), NoodlelyBoi_26 (EC), OlympicHelado_30 (BI1), PSonyx_28 (EQ), Quhwah_29 (EC), Rima_30 (BI1), Spectropatronm_30 (BI1), TaidaOne_30 (BI1), TieDye_29 (BI1), TonyStarch_30 (BI1),

Start 72:

- Found in 11 of 236 (4.7%) of genes in pham
- Manual Annotations of this start: 7 of 203
- Called 63.6% of time when present
- Phage (with cluster) where this start called: Bipper_125 (Y), Cracklewink_126 (Y), Ibantik_60 (singleton), Kudrefre_102 (DU1), Octobien14_100 (DU1), Sephiroth_99 (DU1), Syleon_102 (DU1),

Start 73:

- Found in 8 of 236 (3.4%) of genes in pham
- Manual Annotations of this start: 3 of 203
- Called 87.5% of time when present
- Phage (with cluster) where this start called: Bloom_190 (FC), GoldenEssence_175 (FC), Mimi_186 (FC), Patbob_186 (FC), Phrampa_179 (FC), Racecar_187 (FC), Talia1610_187 (FC),

Start 74:

- Found in 2 of 236 (0.8%) of genes in pham
- Manual Annotations of this start: 1 of 203
- Called 100.0% of time when present
- Phage (with cluster) where this start called: Jace_19 (singleton), JeanGrey_138 (singleton),

Start 78:

- Found in 1 of 236 (0.4%) of genes in pham
- No Manual Annotations of this start.
- Called 100.0% of time when present
- Phage (with cluster) where this start called: Panchaali_189 (FC),

Start 79:

- Found in 98 of 236 (41.5%) of genes in pham
- Manual Annotations of this start: 92 of 203
- Called 99.0% of time when present
- Phage (with cluster) where this start called: ABCat_99 (E), Adnama_106 (E), Amao_102 (E), Argent26_106 (E), Asriel_100 (E), BadStone_99 (E), Balomoji_102 (E), Barbarian_101 (E), Bask21_102 (E), BigBubba_102 (E), BilboSwaggins_101 (E), Bruin_99 (E), Buck_103 (E), Cactus_106 (E), ChosenOne_102 (E), ChotaBhai_102 (E), Command613_104 (E), Contagion_98 (E), Cookies_99 (E), CrystalP_101 (E), Daikon_102 (E), DoctorDiddles_101 (E), DrDrey_102 (E), Dusk_99 (E), Easy2Say_102 (E), Elite2014_101 (E), Emmina_102 (E), Eureka_101 (E), FireRed_105 (E), Flypotenuse_98 (E), Gage_104 (E), Gator_100 (E), Gemini_107 (E), Goku_101 (E), GoldenSpark_106 (E), Goldilocks_105 (E), GooberAzure_105 (E), Harella_102 (E), Henry_99 (E), Holt_107 (E), Hoonter_105 (E), HufflyPuff_104 (E), IHOP_100 (E), Icee_103 (E), Inca_99 (E), Kanye_99 (E), Kimchi_106 (E), Kostya_102 (E), Lilpickle_101 (E), MISSy_103 (E), MPhalcon_103 (E), Manda_103 (E), Marshmallow_99 (E), Mindy_101 (E), Miniwave_97 (E), Misfit_103 (E), Mosby_98 (E), Murica_105 (E), Myrale_102 (E), Nala_104 (E), NelitzaMV_99 (E), Nimrod_102 (E), Paperbeatsrock_101 (E), Pat3_99 (E), Petra64142_106 (E), Phaja_100 (E), Pharsalus_99 (E), PhatBacter_105 (E), Phaux_104 (E), Policronamos_104 (E), Quallification_103 (E), Rakim_103 (E), Rimmer_100 (E), Sassay_97 (E), ShamWow_102 (E), ShereKhan_100 (E), SirDuracell_102 (E), SophKB_100 (E), Sotrice96_103 (E), Stank_104 (E), StellaBean_101 (E), StolenFromERC_104 (E), StormChicken_103 (E), TBrady12_105 (E), Tarkin_101 (E), TeardropMSU_98 (E), Terminus_105 (E), Tomaszewski_97 (E), Toto_100 (E), Traaww1_98 (E), Tucu_103

(E), Wiggin_104 (E), Willez_97 (E), Xandras_101 (E), YassJohnny_99 (E), Youngblood_105 (E), xkcd_105 (E),

Summary by clusters:

There are 24 clusters represented in this pham: DL, singleton, FC, DZ, K6, A15, A12, A2, A5, A6, A9, DU1, E, AF, EG, EC, T, Y, BI5, EQ, EA7, BI1, A20, EK1,

Info for manual annotations of cluster A12:

- Start number 57 was manually annotated 1 time for cluster A12.

Info for manual annotations of cluster A15:

- Start number 56 was manually annotated 9 times for cluster A15.

Info for manual annotations of cluster A2:

- Start number 51 was manually annotated 5 times for cluster A2.

Info for manual annotations of cluster A20:

- Start number 59 was manually annotated 1 time for cluster A20.

Info for manual annotations of cluster A5:

- Start number 61 was manually annotated 8 times for cluster A5.

Info for manual annotations of cluster A6:

- Start number 57 was manually annotated 1 time for cluster A6.

Info for manual annotations of cluster A9:

- Start number 57 was manually annotated 4 times for cluster A9.
- Start number 60 was manually annotated 1 time for cluster A9.

Info for manual annotations of cluster AF:

- Start number 49 was manually annotated 2 times for cluster AF.

Info for manual annotations of cluster BI1:

- Start number 71 was manually annotated 16 times for cluster BI1.

Info for manual annotations of cluster BI5:

- Start number 71 was manually annotated 1 time for cluster BI5.

Info for manual annotations of cluster DL:

- Start number 49 was manually annotated 1 time for cluster DL.
- Start number 56 was manually annotated 4 times for cluster DL.

Info for manual annotations of cluster DU1:

- Start number 72 was manually annotated 4 times for cluster DU1.

Info for manual annotations of cluster E:

- Start number 79 was manually annotated 92 times for cluster E.

Info for manual annotations of cluster EA7:

- Start number 65 was manually annotated 1 time for cluster EA7.

Info for manual annotations of cluster EC:

- Start number 71 was manually annotated 2 times for cluster EC.

Info for manual annotations of cluster EG:

- Start number 47 was manually annotated 2 times for cluster EG.
- Start number 48 was manually annotated 21 times for cluster EG.
- Start number 50 was manually annotated 4 times for cluster EG.

Info for manual annotations of cluster EK1:

- Start number 63 was manually annotated 1 time for cluster EK1.

Info for manual annotations of cluster EQ:

- Start number 71 was manually annotated 1 time for cluster EQ.

Info for manual annotations of cluster FC:

- Start number 73 was manually annotated 3 times for cluster FC.

Info for manual annotations of cluster K6:

- Start number 60 was manually annotated 7 times for cluster K6.

Info for manual annotations of cluster T:

- Start number 52 was manually annotated 6 times for cluster T.

Info for manual annotations of cluster Y:

- Start number 72 was manually annotated 2 times for cluster Y.

Gene Information:

Gene: 20ES_51 Start: 32882, Stop: 32634, Start Num: 51

Candidate Starts for 20ES_51:

(28, 32984), (32, 32972), (Start: 51 @32882 has 5 MA's), (86, 32792), (108, 32681),

Gene: ABCat_99 Start: 61561, Stop: 61758, Start Num: 79

Candidate Starts for ABCat_99:

(24, 61384), (70, 61540), (Start: 79 @61561 has 92 MA's), (85, 61606), (89, 61624), (101, 61666), (108, 61720),

Gene: AN3_51 Start: 33253, Stop: 33005, Start Num: 51

Candidate Starts for AN3_51:

(28, 33355), (32, 33343), (Start: 51 @33253 has 5 MA's), (86, 33163), (108, 33052),

Gene: Adnama_106 Start: 60871, Stop: 61068, Start Num: 79

Candidate Starts for Adnama_106:

(24, 60694), (70, 60850), (Start: 79 @60871 has 92 MA's), (85, 60916), (89, 60934), (101, 60976), (108, 61030),

Gene: Altheas_58 Start: 42617, Stop: 42345, Start Num: 48

Candidate Starts for Altheas_58:

(Start: 47 @42623 has 2 MA's), (Start: 48 @42617 has 21 MA's), (87, 42494), (105, 42407), (109, 42383),

Gene: Amao_102 Start: 60985, Stop: 61182, Start Num: 79
Candidate Starts for Amao_102:
(24, 60808), (70, 60964), (Start: 79 @60985 has 92 MA's), (85, 61030), (89, 61048), (101, 61090),
(108, 61144),

Gene: Anon_46 Start: 30067, Stop: 29819, Start Num: 56
Candidate Starts for Anon_46:
(Start: 56 @30067 has 13 MA's), (98, 29935), (108, 29869),

Gene: Anthony_44 Start: 30206, Stop: 29964, Start Num: 59
Candidate Starts for Anthony_44:
(Start: 59 @30206 has 1 MA's), (80, 30173), (89, 30113), (97, 30086), (108, 30017),

Gene: Argent26_106 Start: 60795, Stop: 60992, Start Num: 79
Candidate Starts for Argent26_106:
(24, 60618), (70, 60774), (Start: 79 @60795 has 92 MA's), (85, 60840), (89, 60858), (101, 60900),
(108, 60954),

Gene: Asriel_100 Start: 59208, Stop: 59405, Start Num: 79
Candidate Starts for Asriel_100:
(24, 59031), (70, 59187), (Start: 79 @59208 has 92 MA's), (85, 59253), (89, 59271), (101, 59313),
(108, 59367),

Gene: BabyDotz_55 Start: 42840, Stop: 42568, Start Num: 48
Candidate Starts for BabyDotz_55:
(Start: 47 @42843 has 2 MA's), (Start: 48 @42840 has 21 MA's), (91, 42696), (100, 42666), (105,
42630), (109, 42606), (112, 42579),

Gene: BadStone_99 Start: 61130, Stop: 61327, Start Num: 79
Candidate Starts for BadStone_99:
(24, 60953), (70, 61109), (Start: 79 @61130 has 92 MA's), (85, 61175), (89, 61193), (101, 61235),
(108, 61289),

Gene: Balomoji_102 Start: 60991, Stop: 61188, Start Num: 79
Candidate Starts for Balomoji_102:
(24, 60814), (70, 60970), (Start: 79 @60991 has 92 MA's), (85, 61036), (89, 61054), (101, 61096),
(108, 61150),

Gene: Bantam_75 Start: 53471, Stop: 53229, Start Num: 56
Candidate Starts for Bantam_75:
(Start: 56 @53471 has 13 MA's), (Start: 72 @53450 has 7 MA's), (102, 53327), (108, 53276),

Gene: Barbarian_101 Start: 59208, Stop: 59405, Start Num: 79
Candidate Starts for Barbarian_101:
(24, 59031), (70, 59187), (Start: 79 @59208 has 92 MA's), (85, 59253), (89, 59271), (101, 59313),
(108, 59367),

Gene: Bask21_102 Start: 59847, Stop: 60044, Start Num: 79
Candidate Starts for Bask21_102:
(24, 59670), (70, 59826), (Start: 79 @59847 has 92 MA's), (85, 59892), (89, 59910), (101, 59952),
(108, 60006),

Gene: Battleship_52 Start: 31061, Stop: 30813, Start Num: 56

Candidate Starts for Battleship_52:

(Start: 56 @31061 has 13 MA's), (98, 30929), (108, 30863),

Gene: Benedict_49 Start: 34952, Stop: 34716, Start Num: 61

Candidate Starts for Benedict_49:

(Start: 61 @34952 has 8 MA's),

Gene: BengiVuitton_50 Start: 32835, Stop: 32587, Start Num: 51

Candidate Starts for BengiVuitton_50:

(28, 32937), (32, 32925), (Start: 51 @32835 has 5 MA's), (86, 32745), (89, 32730), (108, 32634),

Gene: Bernal13_1 Start: 89, Stop: 325, Start Num: 52

Candidate Starts for Bernal13_1:

(33, 8), (43, 47), (Start: 52 @89 has 6 MA's), (54, 92), (89, 191), (90, 197), (92, 203), (108, 287),

Gene: BigBubba_102 Start: 59904, Stop: 60101, Start Num: 79

Candidate Starts for BigBubba_102:

(24, 59727), (70, 59883), (Start: 79 @59904 has 92 MA's), (85, 59949), (89, 59967), (101, 60009), (108, 60063),

Gene: BilboSwaggins_101 Start: 61530, Stop: 61727, Start Num: 79

Candidate Starts for BilboSwaggins_101:

(24, 61353), (70, 61509), (Start: 79 @61530 has 92 MA's), (85, 61575), (89, 61593), (101, 61635), (108, 61689),

Gene: Bing_31 Start: 25537, Stop: 25779, Start Num: 71

Candidate Starts for Bing_31:

(Start: 71 @25537 has 20 MA's), (109, 25729), (111, 25747),

Gene: Bipper_125 Start: 73005, Stop: 73226, Start Num: 72

Candidate Starts for Bipper_125:

(16, 72744), (21, 72804), (Start: 72 @73005 has 7 MA's), (86, 73074), (107, 73182), (108, 73185), (110, 73197),

Gene: Blab_53 Start: 41667, Stop: 41395, Start Num: 50

Candidate Starts for Blab_53:

(8, 42102), (9, 42099), (11, 41997), (12, 41937), (13, 41928), (18, 41850), (22, 41811), (23, 41808), (27, 41763), (29, 41754), (Start: 47 @41673 has 2 MA's), (Start: 50 @41667 has 4 MA's), (53, 41658), (89, 41550), (96, 41526), (105, 41475), (109, 41451), (118, 41400),

Gene: Bloom_190 Start: 124505, Stop: 124735, Start Num: 73

Candidate Starts for Bloom_190:

(Start: 73 @124505 has 3 MA's), (109, 124682),

Gene: Bruin_99 Start: 60236, Stop: 60433, Start Num: 79

Candidate Starts for Bruin_99:

(24, 60059), (70, 60215), (Start: 79 @60236 has 92 MA's), (85, 60281), (89, 60299), (101, 60341), (108, 60395),

Gene: Buck_103 Start: 62073, Stop: 62270, Start Num: 79

Candidate Starts for Buck_103:

(24, 61896), (70, 62052), (Start: 79 @62073 has 92 MA's), (85, 62118), (89, 62136), (101, 62178), (108, 62232),

Gene: CRB1_52 Start: 33225, Stop: 32989, Start Num: 51

Candidate Starts for CRB1_52:

(28, 33327), (32, 33315), (Start: 51 @33225 has 5 MA's), (86, 33135), (108, 33024),

Gene: Cactus_106 Start: 60490, Stop: 60687, Start Num: 79

Candidate Starts for Cactus_106:

(24, 60313), (70, 60469), (Start: 79 @60490 has 92 MA's), (85, 60535), (89, 60553), (101, 60595), (108, 60649),

Gene: Casend_55 Start: 42251, Stop: 41979, Start Num: 48

Candidate Starts for Casend_55:

(Start: 47 @42254 has 2 MA's), (Start: 48 @42251 has 21 MA's), (87, 42128), (105, 42041), (109, 42017), (112, 41990),

Gene: Chadwick_49 Start: 34763, Stop: 34527, Start Num: 61

Candidate Starts for Chadwick_49:

(38, 34832), (Start: 61 @34763 has 8 MA's), (99, 34640),

Gene: CherryBlossom_30 Start: 25644, Stop: 25883, Start Num: 71

Candidate Starts for CherryBlossom_30:

(Start: 71 @25644 has 20 MA's), (104, 25803), (109, 25833),

Gene: ChosenOne_102 Start: 60439, Stop: 60636, Start Num: 79

Candidate Starts for ChosenOne_102:

(24, 60262), (70, 60418), (Start: 79 @60439 has 92 MA's), (85, 60484), (89, 60502), (101, 60544), (108, 60598),

Gene: ChotaBhai_102 Start: 60849, Stop: 61046, Start Num: 79

Candidate Starts for ChotaBhai_102:

(24, 60672), (70, 60828), (Start: 79 @60849 has 92 MA's), (85, 60894), (89, 60912), (108, 61008),

Gene: Command613_104 Start: 61005, Stop: 61202, Start Num: 79

Candidate Starts for Command613_104:

(24, 60828), (70, 60984), (Start: 79 @61005 has 92 MA's), (85, 61050), (89, 61068), (101, 61110), (108, 61164),

Gene: Contagion_98 Start: 60598, Stop: 60795, Start Num: 79

Candidate Starts for Contagion_98:

(24, 60421), (70, 60577), (Start: 79 @60598 has 92 MA's), (85, 60643), (89, 60661), (101, 60703), (108, 60757),

Gene: Cookies_99 Start: 60775, Stop: 60972, Start Num: 79

Candidate Starts for Cookies_99:

(24, 60598), (70, 60754), (Start: 79 @60775 has 92 MA's), (85, 60820), (89, 60838), (101, 60880), (108, 60934),

Gene: Cracklewink_126 Start: 72157, Stop: 72378, Start Num: 72

Candidate Starts for Cracklewink_126:

(16, 71896), (21, 71956), (Start: 72 @72157 has 7 MA's), (86, 72226), (107, 72334), (108, 72337), (110, 72349),

Gene: CrystalP_101 Start: 61530, Stop: 61727, Start Num: 79

Candidate Starts for CrystalP_101:

(24, 61353), (70, 61509), (Start: 79 @61530 has 92 MA's), (85, 61575), (89, 61593), (101, 61635), (108, 61689),

Gene: Daikon_102 Start: 60404, Stop: 60601, Start Num: 79

Candidate Starts for Daikon_102:

(24, 60227), (70, 60383), (Start: 79 @60404 has 92 MA's), (85, 60449), (89, 60467), (101, 60509), (108, 60563),

Gene: Daredevil_66 Start: 49516, Stop: 49250, Start Num: 49

Candidate Starts for Daredevil_66:

(46, 49531), (Start: 49 @49516 has 3 MA's), (88, 49402), (98, 49369), (99, 49366), (108, 49303), (109, 49300),

Gene: Darrell_50 Start: 32937, Stop: 32701, Start Num: 57

Candidate Starts for Darrell_50:

(28, 33039), (Start: 57 @32937 has 6 MA's), (75, 32913), (108, 32745),

Gene: DatBoi_73 Start: 53464, Stop: 53222, Start Num: 56

Candidate Starts for DatBoi_73:

(Start: 56 @53464 has 13 MA's), (Start: 72 @53443 has 7 MA's), (108, 53269),

Gene: Deloris_49 Start: 32504, Stop: 32256, Start Num: 51

Candidate Starts for Deloris_49:

(28, 32606), (32, 32594), (Start: 51 @32504 has 5 MA's), (86, 32414), (89, 32399), (108, 32303),

Gene: DoctorDiddles_101 Start: 60253, Stop: 60450, Start Num: 79

Candidate Starts for DoctorDiddles_101:

(24, 60076), (70, 60232), (Start: 79 @60253 has 92 MA's), (85, 60298), (89, 60316), (101, 60358), (108, 60412),

Gene: DonaldDuck_54 Start: 41600, Stop: 41328, Start Num: 48

Candidate Starts for DonaldDuck_54:

(Start: 47 @41603 has 2 MA's), (Start: 48 @41600 has 21 MA's), (87, 41477), (105, 41390), (109, 41366), (112, 41339),

Gene: DrDrey_102 Start: 62268, Stop: 62465, Start Num: 79

Candidate Starts for DrDrey_102:

(24, 62091), (70, 62247), (Start: 79 @62268 has 92 MA's), (85, 62313), (89, 62331), (101, 62373), (108, 62427),

Gene: Dusk_99 Start: 60790, Stop: 60987, Start Num: 79

Candidate Starts for Dusk_99:

(24, 60613), (70, 60769), (Start: 79 @60790 has 92 MA's), (85, 60835), (89, 60853), (101, 60895), (108, 60949),

Gene: Easy2Say_102 Start: 61262, Stop: 61459, Start Num: 79

Candidate Starts for Easy2Say_102:

(24, 61085), (70, 61241), (Start: 79 @61262 has 92 MA's), (85, 61307), (89, 61325), (101, 61367), (108, 61421),

Gene: EITiger69_48 Start: 34934, Stop: 34698, Start Num: 61

Candidate Starts for EITiger69_48:

(38, 35003), (Start: 61 @34934 has 8 MA's),

Gene: Elite2014_101 Start: 60438, Stop: 60635, Start Num: 79

Candidate Starts for Elite2014_101:

(24, 60261), (70, 60417), (Start: 79 @60438 has 92 MA's), (85, 60483), (89, 60501), (101, 60543), (108, 60597),

Gene: Emmina_102 Start: 60213, Stop: 60410, Start Num: 79

Candidate Starts for Emmina_102:

(24, 60036), (70, 60192), (Start: 79 @60213 has 92 MA's), (85, 60258), (89, 60276), (101, 60318), (108, 60372),

Gene: Esketit_30 Start: 25627, Stop: 25866, Start Num: 71

Candidate Starts for Esketit_30:

(Start: 71 @25627 has 20 MA's), (104, 25786), (109, 25816),

Gene: Eureka_101 Start: 61401, Stop: 61598, Start Num: 79

Candidate Starts for Eureka_101:

(24, 61224), (70, 61380), (Start: 79 @61401 has 92 MA's), (85, 61446), (89, 61464), (101, 61506), (108, 61560),

Gene: EverythinBagel_54 Start: 41961, Stop: 41689, Start Num: 48

Candidate Starts for EverythinBagel_54:

(Start: 47 @41964 has 2 MA's), (Start: 48 @41961 has 21 MA's), (87, 41838), (105, 41751), (109, 41727), (112, 41700),

Gene: Farewell_93 Start: 60714, Stop: 60971, Start Num: 49

Candidate Starts for Farewell_93:

(40, 60669), (Start: 49 @60714 has 3 MA's), (58, 60732), (107, 60921), (108, 60924),

Gene: FidgetOrca_30 Start: 25633, Stop: 25872, Start Num: 71

Candidate Starts for FidgetOrca_30:

(Start: 71 @25633 has 20 MA's), (104, 25792), (109, 25822),

Gene: FireRed_105 Start: 61677, Stop: 61874, Start Num: 79

Candidate Starts for FireRed_105:

(24, 61500), (70, 61656), (Start: 79 @61677 has 92 MA's), (85, 61722), (89, 61740), (101, 61782), (108, 61836),

Gene: First_0050 Start: 32758, Stop: 32510, Start Num: 51

Candidate Starts for First_0050:

(28, 32860), (32, 32848), (Start: 51 @32758 has 5 MA's), (86, 32668), (108, 32557),

Gene: Flypotenuse_98 Start: 59862, Stop: 60059, Start Num: 79

Candidate Starts for Flypotenuse_98:

(24, 59685), (70, 59841), (Start: 79 @59862 has 92 MA's), (85, 59907), (89, 59925), (101, 59967), (108, 60021),

Gene: FrankDeliGuy_53 Start: 41773, Stop: 41501, Start Num: 48

Candidate Starts for FrankDeliGuy_53:

(Start: 48 @41773 has 21 MA's), (91, 41629), (100, 41599), (105, 41563), (109, 41539), (112, 41512),

Gene: Fransoyer_58 Start: 44153, Stop: 43872, Start Num: 48

Candidate Starts for Fransoyer_58:
(Start: 48 @44153 has 21 MA's), (87, 44027),

Gene: Gage_104 Start: 60933, Stop: 61130, Start Num: 79
Candidate Starts for Gage_104:
(24, 60756), (Start: 79 @60933 has 92 MA's), (85, 60978), (89, 60996), (101, 61038), (108, 61092),

Gene: Gator_100 Start: 60718, Stop: 60915, Start Num: 79
Candidate Starts for Gator_100:
(24, 60541), (70, 60697), (Start: 79 @60718 has 92 MA's), (85, 60763), (89, 60781), (101, 60823),
(108, 60877),

Gene: Gazebo_55 Start: 42275, Stop: 42003, Start Num: 48
Candidate Starts for Gazebo_55:
(Start: 47 @42281 has 2 MA's), (Start: 48 @42275 has 21 MA's), (87, 42152), (105, 42065), (109, 42041), (112, 42014),

Gene: Gemini_107 Start: 61312, Stop: 61509, Start Num: 79
Candidate Starts for Gemini_107:
(24, 61135), (70, 61291), (Start: 79 @61312 has 92 MA's), (85, 61357), (89, 61375), (101, 61417),
(108, 61471),

Gene: Goku_101 Start: 61130, Stop: 61327, Start Num: 79
Candidate Starts for Goku_101:
(24, 60953), (70, 61109), (Start: 79 @61130 has 92 MA's), (85, 61175), (89, 61193), (101, 61235),
(108, 61289),

Gene: GoldenEssence_175 Start: 118714, Stop: 118944, Start Num: 73
Candidate Starts for GoldenEssence_175:
(Start: 73 @118714 has 3 MA's), (109, 118891),

Gene: GoldenSpark_106 Start: 60795, Stop: 60992, Start Num: 79
Candidate Starts for GoldenSpark_106:
(24, 60618), (70, 60774), (Start: 79 @60795 has 92 MA's), (85, 60840), (89, 60858), (101, 60900),
(108, 60954),

Gene: Goldilocks_105 Start: 60712, Stop: 60909, Start Num: 79
Candidate Starts for Goldilocks_105:
(24, 60535), (70, 60691), (Start: 79 @60712 has 92 MA's), (85, 60757), (89, 60775), (101, 60817),
(108, 60871),

Gene: GooberAzure_105 Start: 60795, Stop: 60992, Start Num: 79
Candidate Starts for GooberAzure_105:
(24, 60618), (70, 60774), (Start: 79 @60795 has 92 MA's), (85, 60840), (89, 60858), (101, 60900),
(108, 60954),

Gene: Grassboy_58 Start: 42646, Stop: 42386, Start Num: 47
Candidate Starts for Grassboy_58:
(Start: 47 @42646 has 2 MA's), (Start: 50 @42640 has 4 MA's), (53, 42631), (89, 42523), (96, 42499),
(105, 42448), (109, 42424),

Gene: Harella_102 Start: 61508, Stop: 61705, Start Num: 79
Candidate Starts for Harella_102:

(24, 61331), (70, 61487), (Start: 79 @61508 has 92 MA's), (85, 61553), (89, 61571), (101, 61613), (108, 61667),

Gene: Henry_99 Start: 60835, Stop: 61032, Start Num: 79

Candidate Starts for Henry_99:

(24, 60658), (70, 60814), (Start: 79 @60835 has 92 MA's), (85, 60880), (89, 60898), (101, 60940), (108, 60994),

Gene: Holt_107 Start: 61209, Stop: 61406, Start Num: 79

Candidate Starts for Holt_107:

(24, 61032), (70, 61188), (Start: 79 @61209 has 92 MA's), (85, 61254), (89, 61272), (101, 61314), (108, 61368),

Gene: Hoonter_105 Start: 61288, Stop: 61485, Start Num: 79

Candidate Starts for Hoonter_105:

(24, 61111), (70, 61267), (Start: 79 @61288 has 92 MA's), (85, 61333), (89, 61351), (101, 61393), (108, 61447),

Gene: Hoshi_30 Start: 25627, Stop: 25866, Start Num: 71

Candidate Starts for Hoshi_30:

(Start: 71 @25627 has 20 MA's), (104, 25786), (109, 25816),

Gene: HufflyPuff_104 Start: 61903, Stop: 62100, Start Num: 79

Candidate Starts for HufflyPuff_104:

(24, 61726), (70, 61882), (Start: 79 @61903 has 92 MA's), (85, 61948), (89, 61966), (101, 62008), (108, 62062),

Gene: Hyperion_56 Start: 42456, Stop: 42184, Start Num: 48

Candidate Starts for Hyperion_56:

(Start: 47 @42459 has 2 MA's), (Start: 48 @42456 has 21 MA's), (87, 42333), (105, 42246), (109, 42222), (112, 42195),

Gene: IHOP_100 Start: 60511, Stop: 60708, Start Num: 79

Candidate Starts for IHOP_100:

(24, 60334), (70, 60490), (Start: 79 @60511 has 92 MA's), (85, 60556), (89, 60574), (101, 60616), (108, 60670),

Gene: Ibantik_60 Start: 25970, Stop: 26188, Start Num: 72

Candidate Starts for Ibantik_60:

(20, 25754), (42, 25898), (44, 25901), (Start: 48 @25931 has 21 MA's), (Start: 72 @25970 has 7 MA's), (108, 26144),

Gene: Ibrahim_1 Start: 89, Stop: 325, Start Num: 52

Candidate Starts for Ibrahim_1:

(33, 8), (43, 47), (Start: 52 @89 has 6 MA's), (54, 92), (89, 191), (90, 197), (92, 203), (108, 287),

Gene: IceWarrior_30 Start: 25627, Stop: 25866, Start Num: 71

Candidate Starts for IceWarrior_30:

(Start: 71 @25627 has 20 MA's), (104, 25786), (109, 25816),

Gene: Icee_103 Start: 60319, Stop: 60516, Start Num: 79

Candidate Starts for Icee_103:

(24, 60142), (70, 60298), (Start: 79 @60319 has 92 MA's), (85, 60364), (89, 60382), (101, 60424), (108, 60478),

Gene: Inca_99 Start: 59000, Stop: 59197, Start Num: 79

Candidate Starts for Inca_99:

(24, 58823), (70, 58979), (Start: 79 @59000 has 92 MA's), (85, 59045), (89, 59063), (101, 59105), (108, 59159),

Gene: Indigenous_30 Start: 25627, Stop: 25866, Start Num: 71

Candidate Starts for Indigenous_30:

(Start: 71 @25627 has 20 MA's), (104, 25786), (109, 25816),

Gene: JSwag_50 Start: 30801, Stop: 30553, Start Num: 56

Candidate Starts for JSwag_50:

(Start: 56 @30801 has 13 MA's), (98, 30669), (108, 30603),

Gene: Jabiru_47 Start: 34807, Stop: 34571, Start Num: 61

Candidate Starts for Jabiru_47:

(38, 34876), (Start: 61 @34807 has 8 MA's), (99, 34684),

Gene: Jace_19 Start: 17315, Stop: 17536, Start Num: 74

Candidate Starts for Jace_19:

(1, 16346), (2, 16361), (3, 16439), (4, 16571), (10, 16844), (14, 17003), (15, 17018), (Start: 74 @17315 has 1 MA's), (81, 17357), (89, 17390), (102, 17435), (108, 17486),

Gene: Jaylociraptor_30 Start: 25627, Stop: 25866, Start Num: 71

Candidate Starts for Jaylociraptor_30:

(Start: 71 @25627 has 20 MA's), (104, 25786), (109, 25816),

Gene: JeanGrey_138 Start: 105656, Stop: 105889, Start Num: 74

Candidate Starts for JeanGrey_138:

(Start: 74 @105656 has 1 MA's), (108, 105827),

Gene: Jehoshaphat_56 Start: 42519, Stop: 42247, Start Num: 48

Candidate Starts for Jehoshaphat_56:

(Start: 47 @42522 has 2 MA's), (Start: 48 @42519 has 21 MA's), (87, 42396), (105, 42309), (109, 42285), (112, 42258),

Gene: Jordennis_50 Start: 31033, Stop: 30803, Start Num: 57

Candidate Starts for Jordennis_50:

(28, 31141), (Start: 57 @31033 has 6 MA's), (86, 30952), (89, 30937), (102, 30892), (108, 30841),

Gene: Judebell_57 Start: 42165, Stop: 41893, Start Num: 48

Candidate Starts for Judebell_57:

(Start: 47 @42168 has 2 MA's), (Start: 48 @42165 has 21 MA's), (91, 42021), (100, 41991), (105, 41955), (109, 41931), (112, 41904),

Gene: Kanye_99 Start: 61044, Stop: 61241, Start Num: 79

Candidate Starts for Kanye_99:

(24, 60867), (70, 61023), (Start: 79 @61044 has 92 MA's), (85, 61089), (89, 61107), (101, 61149), (108, 61203),

Gene: Kimchi_106 Start: 60936, Stop: 61133, Start Num: 79

Candidate Starts for Kimchi_106:

(24, 60759), (70, 60915), (Start: 79 @60936 has 92 MA's), (85, 60981), (89, 60999), (101, 61041), (108, 61095),

Gene: Kostya_102 Start: 60613, Stop: 60810, Start Num: 79

Candidate Starts for Kostya_102:

(24, 60436), (70, 60592), (Start: 79 @60613 has 92 MA's), (85, 60658), (89, 60676), (101, 60718), (108, 60772),

Gene: Krueger_4 Start: 823, Stop: 1062, Start Num: 60

Candidate Starts for Krueger_4:

(Start: 60 @823 has 8 MA's), (108, 1015),

Gene: Kudrefre_102 Start: 58639, Stop: 58851, Start Num: 72

Candidate Starts for Kudrefre_102:

(Start: 72 @58639 has 7 MA's), (92, 58729), (99, 58750), (108, 58813), (112, 58843),

Gene: Kyva_58 Start: 42697, Stop: 42443, Start Num: 50

Candidate Starts for Kyva_58:

(Start: 47 @42703 has 2 MA's), (Start: 50 @42697 has 4 MA's), (53, 42688), (89, 42580), (96, 42556), (105, 42505), (109, 42481),

Gene: LadyBird_53 Start: 33193, Stop: 32945, Start Num: 51

Candidate Starts for LadyBird_53:

(28, 33295), (32, 33283), (Start: 51 @33193 has 5 MA's), (86, 33103), (108, 32992),

Gene: LadyJasley_12 Start: 5128, Stop: 5349, Start Num: 69

Candidate Starts for LadyJasley_12:

(69, 5128), (93, 5230), (99, 5248), (108, 5311),

Gene: Lilpickle_101 Start: 60438, Stop: 60635, Start Num: 79

Candidate Starts for Lilpickle_101:

(24, 60261), (70, 60417), (Start: 79 @60438 has 92 MA's), (85, 60483), (89, 60501), (101, 60543), (108, 60597),

Gene: Llemily_54 Start: 41295, Stop: 41023, Start Num: 48

Candidate Starts for Llemily_54:

(Start: 47 @41298 has 2 MA's), (Start: 48 @41295 has 21 MA's), (87, 41172), (105, 41085), (109, 41061), (112, 41034),

Gene: LoneWolf_49 Start: 32307, Stop: 32071, Start Num: 60

Candidate Starts for LoneWolf_49:

(26, 32427), (28, 32415), (Start: 60 @32307 has 8 MA's), (98, 32184), (108, 32118),

Gene: Lonelysoil_54 Start: 41648, Stop: 41376, Start Num: 48

Candidate Starts for Lonelysoil_54:

(Start: 48 @41648 has 21 MA's), (87, 41525), (105, 41438), (109, 41414), (112, 41387),

Gene: MISSy_103 Start: 61721, Stop: 61918, Start Num: 79

Candidate Starts for MISSy_103:

(24, 61544), (34, 61598), (70, 61700), (Start: 79 @61721 has 92 MA's), (85, 61766), (89, 61784), (101, 61826), (108, 61880),

Gene: MPhalcon_103 Start: 61138, Stop: 61335, Start Num: 79
Candidate Starts for MPhalcon_103:
(24, 60961), (70, 61117), (Start: 79 @61138 has 92 MA's), (85, 61183), (89, 61201), (101, 61243),
(108, 61297),

Gene: Manda_103 Start: 61175, Stop: 61372, Start Num: 79
Candidate Starts for Manda_103:
(24, 60998), (70, 61154), (Start: 79 @61175 has 92 MA's), (85, 61220), (89, 61238), (101, 61280),
(108, 61334),

Gene: Marshawn_5 Start: 936, Stop: 1178, Start Num: 60
Candidate Starts for Marshawn_5:
(Start: 60 @936 has 8 MA's), (86, 1017), (108, 1128),

Gene: Marshmallow_99 Start: 61133, Stop: 61330, Start Num: 79
Candidate Starts for Marshmallow_99:
(24, 60956), (70, 61112), (Start: 79 @61133 has 92 MA's), (85, 61178), (89, 61196), (101, 61238),
(108, 61292),

Gene: Mashley_55 Start: 42232, Stop: 41960, Start Num: 48
Candidate Starts for Mashley_55:
(Start: 48 @42232 has 21 MA's), (91, 42088), (100, 42058), (105, 42022), (109, 41998), (112, 41971),

Gene: Maya_30 Start: 25641, Stop: 25880, Start Num: 71
Candidate Starts for Maya_30:
(Start: 71 @25641 has 20 MA's), (104, 25800), (109, 25830),

Gene: Meibysrarus_30 Start: 25627, Stop: 25866, Start Num: 71
Candidate Starts for Meibysrarus_30:
(Start: 71 @25627 has 20 MA's), (104, 25786), (109, 25816),

Gene: Mentos_60 Start: 43466, Stop: 43194, Start Num: 48
Candidate Starts for Mentos_60:
(27, 43562), (Start: 48 @43466 has 21 MA's), (91, 43322), (100, 43292), (105, 43256), (109, 43232),
(112, 43205),

Gene: MicyPS_27 Start: 28079, Stop: 28330, Start Num: 71
Candidate Starts for MicyPS_27:
(35, 27974), (36, 27977), (37, 27983), (41, 27998), (45, 28010), (55, 28049), (Start: 71 @28079 has 20
MA's), (83, 28139), (89, 28169), (98, 28199), (101, 28211), (102, 28214), (106, 28253), (109, 28268),
(114, 28304),

Gene: Midas2_45 Start: 34966, Stop: 34730, Start Num: 61
Candidate Starts for Midas2_45:
(38, 35035), (Start: 61 @34966 has 8 MA's),

Gene: Mimi_186 Start: 124218, Stop: 124448, Start Num: 73
Candidate Starts for Mimi_186:
(Start: 73 @124218 has 3 MA's), (109, 124395),

Gene: Mindy_101 Start: 60454, Stop: 60651, Start Num: 79
Candidate Starts for Mindy_101:

(24, 60277), (70, 60433), (Start: 79 @60454 has 92 MA's), (85, 60499), (89, 60517), (101, 60559), (108, 60613),

Gene: MinecraftSteve_52 Start: 31065, Stop: 30817, Start Num: 56

Candidate Starts for MinecraftSteve_52:

(Start: 56 @31065 has 13 MA's), (98, 30933), (108, 30867),

Gene: Miniwave_97 Start: 60631, Stop: 60828, Start Num: 79

Candidate Starts for Miniwave_97:

(24, 60454), (70, 60610), (Start: 79 @60631 has 92 MA's), (85, 60676), (89, 60694), (101, 60736), (108, 60790),

Gene: Misfit_103 Start: 62234, Stop: 62431, Start Num: 79

Candidate Starts for Misfit_103:

(24, 62057), (70, 62213), (Start: 79 @62234 has 92 MA's), (85, 62279), (89, 62297), (101, 62339), (108, 62393),

Gene: ModicumRichard_94 Start: 55434, Stop: 55703, Start Num: 70

Candidate Starts for ModicumRichard_94:

(70, 55434), (100, 55554), (102, 55560), (108, 55611), (109, 55614), (116, 55659),

Gene: Mollymur_75 Start: 54003, Stop: 53758, Start Num: 56

Candidate Starts for Mollymur_75:

(Start: 56 @54003 has 13 MA's), (Start: 72 @53982 has 7 MA's), (108, 53808),

Gene: MorillMayhem_57 Start: 42562, Stop: 42308, Start Num: 50

Candidate Starts for MorillMayhem_57:

(Start: 47 @42568 has 2 MA's), (Start: 50 @42562 has 4 MA's), (53, 42553), (89, 42445), (96, 42421), (105, 42370), (109, 42346), (112, 42319),

Gene: Mosby_98 Start: 60598, Stop: 60795, Start Num: 79

Candidate Starts for Mosby_98:

(24, 60421), (70, 60577), (Start: 79 @60598 has 92 MA's), (85, 60643), (89, 60661), (101, 60703), (108, 60757),

Gene: Murica_105 Start: 62937, Stop: 63134, Start Num: 79

Candidate Starts for Murica_105:

(24, 62760), (34, 62814), (70, 62916), (Start: 79 @62937 has 92 MA's), (85, 62982), (89, 63000), (101, 63042), (108, 63096),

Gene: Myrale_102 Start: 61293, Stop: 61490, Start Num: 79

Candidate Starts for Myrale_102:

(24, 61116), (70, 61272), (Start: 79 @61293 has 92 MA's), (85, 61338), (89, 61356), (101, 61398), (108, 61452),

Gene: Nairb_1 Start: 89, Stop: 325, Start Num: 52

Candidate Starts for Nairb_1:

(33, 8), (43, 47), (Start: 52 @89 has 6 MA's), (54, 92), (89, 191), (90, 197), (92, 203), (108, 287),

Gene: Nala_104 Start: 61647, Stop: 61844, Start Num: 79

Candidate Starts for Nala_104:

(24, 61470), (70, 61626), (Start: 79 @61647 has 92 MA's), (85, 61692), (89, 61710), (101, 61752), (108, 61806),

Gene: Namago_56 Start: 41635, Stop: 41363, Start Num: 48
Candidate Starts for Namago_56:
(Start: 47 @41641 has 2 MA's), (Start: 48 @41635 has 21 MA's), (87, 41512), (105, 41425), (109, 41401), (112, 41374),

Gene: Namo_30 Start: 25633, Stop: 25872, Start Num: 71
Candidate Starts for Namo_30:
(Start: 71 @25633 has 20 MA's), (104, 25792), (109, 25822),

Gene: NelitzaMV_99 Start: 59641, Stop: 59838, Start Num: 79
Candidate Starts for NelitzaMV_99:
(24, 59464), (70, 59620), (Start: 79 @59641 has 92 MA's), (85, 59686), (89, 59704), (101, 59746), (108, 59800),

Gene: Nike_56 Start: 42603, Stop: 42349, Start Num: 50
Candidate Starts for Nike_56:
(25, 42684), (Start: 50 @42603 has 4 MA's), (53, 42594), (89, 42486), (96, 42462), (105, 42411), (109, 42387), (112, 42360),

Gene: Nimrod_102 Start: 61260, Stop: 61457, Start Num: 79
Candidate Starts for Nimrod_102:
(24, 61083), (70, 61239), (Start: 79 @61260 has 92 MA's), (85, 61305), (89, 61323), (101, 61365), (108, 61419),

Gene: NoodlelyBoi_26 Start: 13691, Stop: 13933, Start Num: 71
Candidate Starts for NoodlelyBoi_26:
(Start: 71 @13691 has 20 MA's), (87, 13772), (105, 13859), (109, 13883),

Gene: Octobien14_100 Start: 58045, Stop: 58257, Start Num: 72
Candidate Starts for Octobien14_100:
(Start: 72 @58045 has 7 MA's), (92, 58135), (99, 58156), (108, 58219), (113, 58252),

Gene: OlympicHelado_30 Start: 25633, Stop: 25872, Start Num: 71
Candidate Starts for OlympicHelado_30:
(Start: 71 @25633 has 20 MA's), (104, 25792), (109, 25822),

Gene: PSonyx_28 Start: 27311, Stop: 27562, Start Num: 71
Candidate Starts for PSonyx_28:
(Start: 71 @27311 has 20 MA's), (Start: 73 @27314 has 3 MA's), (83, 27371), (98, 27431), (99, 27434), (101, 27443), (102, 27446), (106, 27485), (109, 27500), (114, 27536), (115, 27539),

Gene: Pabst_50 Start: 50450, Stop: 50701, Start Num: 63
Candidate Starts for Pabst_50:
(39, 50399), (Start: 63 @50450 has 1 MA's), (Start: 68 @50459 has 1 MA's), (Start: 79 @50489 has 92 MA's), (82, 50525), (84, 50537), (87, 50555), (89, 50567), (109, 50666),

Gene: Panchaali_189 Start: 122700, Stop: 122903, Start Num: 78
Candidate Starts for Panchaali_189:
(64, 122679), (78, 122700), (94, 122790), (109, 122871),

Gene: Paperbeatsrock_101 Start: 61309, Stop: 61506, Start Num: 79
Candidate Starts for Paperbeatsrock_101:

(24, 61132), (70, 61288), (Start: 79 @61309 has 92 MA's), (85, 61354), (89, 61372), (101, 61414), (108, 61468),

Gene: Pat3_99 Start: 59826, Stop: 60023, Start Num: 79

Candidate Starts for Pat3_99:

(24, 59649), (70, 59805), (Start: 79 @59826 has 92 MA's), (85, 59871), (89, 59889), (101, 59931), (108, 59985),

Gene: Patbob_186 Start: 125330, Stop: 125560, Start Num: 73

Candidate Starts for Patbob_186:

(Start: 73 @125330 has 3 MA's), (109, 125507),

Gene: Petra64142_106 Start: 61798, Stop: 61995, Start Num: 79

Candidate Starts for Petra64142_106:

(24, 61621), (70, 61777), (Start: 79 @61798 has 92 MA's), (85, 61843), (89, 61861), (101, 61903), (108, 61957),

Gene: PetterN_50 Start: 34931, Stop: 34695, Start Num: 61

Candidate Starts for PetterN_50:

(38, 35000), (Start: 61 @34931 has 8 MA's),

Gene: Phabia_54 Start: 41710, Stop: 41438, Start Num: 48

Candidate Starts for Phabia_54:

(Start: 47 @41713 has 2 MA's), (Start: 48 @41710 has 21 MA's), (87, 41587), (105, 41500), (109, 41476), (112, 41449),

Gene: Phaja_100 Start: 60513, Stop: 60710, Start Num: 79

Candidate Starts for Phaja_100:

(24, 60336), (70, 60492), (Start: 79 @60513 has 92 MA's), (85, 60558), (89, 60576), (101, 60618), (108, 60672),

Gene: Pharaoh_43 Start: 32085, Stop: 31876, Start Num: 57

Candidate Starts for Pharaoh_43:

(28, 32193), (32, 32181), (Start: 57 @32085 has 6 MA's), (89, 32010), (99, 31977), (108, 31914),

Gene: Pharsalus_99 Start: 61008, Stop: 61205, Start Num: 79

Candidate Starts for Pharsalus_99:

(24, 60831), (70, 60987), (Start: 79 @61008 has 92 MA's), (85, 61053), (89, 61071), (101, 61113), (108, 61167),

Gene: PhatBacter_105 Start: 61677, Stop: 61874, Start Num: 79

Candidate Starts for PhatBacter_105:

(24, 61500), (70, 61656), (Start: 79 @61677 has 92 MA's), (85, 61722), (89, 61740), (101, 61782), (108, 61836),

Gene: Phaux_104 Start: 62237, Stop: 62434, Start Num: 79

Candidate Starts for Phaux_104:

(24, 62060), (70, 62216), (Start: 79 @62237 has 92 MA's), (85, 62282), (89, 62300), (101, 62342), (108, 62396),

Gene: Phinky_64 Start: 44342, Stop: 44070, Start Num: 50

Candidate Starts for Phinky_64:

(30, 44396), (Start: 48 @44345 has 21 MA's), (Start: 50 @44342 has 4 MA's), (53, 44333), (89, 44225), (96, 44201), (105, 44150), (109, 44126), (117, 44081),

Gene: Phrampa_179 Start: 126373, Stop: 126600, Start Num: 73

Candidate Starts for Phrampa_179:

(Start: 73 @126373 has 3 MA's), (109, 126550),

Gene: Phroglets_5 Start: 3497, Stop: 3736, Start Num: 62

Candidate Starts for Phroglets_5:

(62, 3497), (67, 3506), (103, 3656), (106, 3689), (109, 3704),

Gene: Policronamos_104 Start: 61941, Stop: 62138, Start Num: 79

Candidate Starts for Policronamos_104:

(24, 61764), (70, 61920), (Start: 79 @61941 has 92 MA's), (85, 61986), (89, 62004), (101, 62046), (108, 62100),

Gene: Polyphemus_52 Start: 31731, Stop: 31501, Start Num: 57

Candidate Starts for Polyphemus_52:

(28, 31839), (Start: 57 @31731 has 6 MA's), (86, 31650), (89, 31635), (102, 31590), (108, 31539),

Gene: Quallification_103 Start: 61723, Stop: 61920, Start Num: 79

Candidate Starts for Quallification_103:

(24, 61546), (70, 61702), (Start: 79 @61723 has 92 MA's), (85, 61768), (89, 61786), (101, 61828), (108, 61882),

Gene: Quammi_52 Start: 41410, Stop: 41138, Start Num: 48

Candidate Starts for Quammi_52:

(Start: 47 @41413 has 2 MA's), (Start: 48 @41410 has 21 MA's), (87, 41287), (105, 41200), (109, 41176), (112, 41149),

Gene: Quhwah_29 Start: 14012, Stop: 14254, Start Num: 71

Candidate Starts for Quhwah_29:

(19, 13787), (Start: 71 @14012 has 20 MA's), (102, 14150), (105, 14180), (109, 14204),

Gene: Racecar_187 Start: 125098, Stop: 125328, Start Num: 73

Candidate Starts for Racecar_187:

(Start: 73 @125098 has 3 MA's), (109, 125275),

Gene: Rahalelujah_48 Start: 31854, Stop: 31618, Start Num: 57

Candidate Starts for Rahalelujah_48:

(17, 32055), (28, 31956), (Start: 57 @31854 has 6 MA's), (75, 31830), (108, 31662),

Gene: Rakim_103 Start: 60745, Stop: 60942, Start Num: 79

Candidate Starts for Rakim_103:

(24, 60568), (70, 60724), (Start: 79 @60745 has 92 MA's), (85, 60790), (89, 60808), (101, 60850), (108, 60904),

Gene: Remus_51 Start: 30778, Stop: 30533, Start Num: 56

Candidate Starts for Remus_51:

(Start: 56 @30778 has 13 MA's), (76, 30751), (94, 30661), (108, 30583),

Gene: Rima_30 Start: 25633, Stop: 25872, Start Num: 71

Candidate Starts for Rima_30:

(Start: 71 @25633 has 20 MA's), (104, 25792), (109, 25822),

Gene: Rimmer_100 Start: 61135, Stop: 61332, Start Num: 79

Candidate Starts for Rimmer_100:

(24, 60958), (70, 61114), (Start: 79 @61135 has 92 MA's), (85, 61180), (89, 61198), (101, 61240), (108, 61294),

Gene: RonRayGun_1 Start: 89, Stop: 325, Start Num: 52

Candidate Starts for RonRayGun_1:

(33, 8), (43, 47), (Start: 52 @89 has 6 MA's), (54, 92), (89, 191), (90, 197), (92, 203), (108, 287),

Gene: Rosalind_50 Start: 30984, Stop: 30736, Start Num: 56

Candidate Starts for Rosalind_50:

(Start: 56 @30984 has 13 MA's), (98, 30852), (108, 30786),

Gene: Rowlf_52 Start: 41508, Stop: 41236, Start Num: 48

Candidate Starts for Rowlf_52:

(Start: 47 @41511 has 2 MA's), (Start: 48 @41508 has 21 MA's), (53, 41499), (87, 41403), (89, 41391), (95, 41370), (96, 41367), (105, 41316), (109, 41292), (117, 41247),

Gene: RubyRalph_60 Start: 44491, Stop: 44210, Start Num: 48

Candidate Starts for RubyRalph_60:

(Start: 48 @44491 has 21 MA's), (87, 44365),

Gene: Rudy_52 Start: 41446, Stop: 41174, Start Num: 48

Candidate Starts for Rudy_52:

(Start: 47 @41449 has 2 MA's), (Start: 48 @41446 has 21 MA's), (87, 41323), (105, 41236), (109, 41212), (112, 41185),

Gene: SallyK_57 Start: 42760, Stop: 42488, Start Num: 48

Candidate Starts for SallyK_57:

(5, 43315), (6, 43294), (7, 43264), (Start: 48 @42760 has 21 MA's), (91, 42616), (100, 42586), (105, 42550), (109, 42526), (112, 42499),

Gene: Sassay_97 Start: 59560, Stop: 59757, Start Num: 79

Candidate Starts for Sassay_97:

(24, 59383), (70, 59539), (Start: 79 @59560 has 92 MA's), (85, 59605), (89, 59623), (101, 59665), (108, 59719),

Gene: Scorpia_50 Start: 35017, Stop: 34781, Start Num: 61

Candidate Starts for Scorpia_50:

(38, 35086), (Start: 61 @35017 has 8 MA's), (99, 34894),

Gene: Sephiroth_99 Start: 58611, Stop: 58823, Start Num: 72

Candidate Starts for Sephiroth_99:

(Start: 72 @58611 has 7 MA's), (92, 58701), (93, 58704), (99, 58722), (108, 58785),

Gene: Shadow1_3 Start: 728, Stop: 967, Start Num: 60

Candidate Starts for Shadow1_3:

(Start: 60 @728 has 8 MA's), (108, 920),

Gene: ShamWow_102 Start: 61530, Stop: 61727, Start Num: 79

Candidate Starts for ShamWow_102:

(24, 61353), (70, 61509), (Start: 79 @61530 has 92 MA's), (85, 61575), (89, 61593), (101, 61635), (108, 61689),

Gene: ShereKhan_100 Start: 61969, Stop: 62166, Start Num: 79

Candidate Starts for ShereKhan_100:

(24, 61792), (70, 61948), (Start: 79 @61969 has 92 MA's), (85, 62014), (89, 62032), (101, 62074), (108, 62128),

Gene: Sillytadpoles_55 Start: 41283, Stop: 41011, Start Num: 48

Candidate Starts for Sillytadpoles_55:

(Start: 47 @41286 has 2 MA's), (Start: 48 @41283 has 21 MA's), (87, 41160), (105, 41073), (109, 41049), (112, 41022),

Gene: SirDuracell_102 Start: 60347, Stop: 60544, Start Num: 79

Candidate Starts for SirDuracell_102:

(24, 60170), (70, 60326), (Start: 79 @60347 has 92 MA's), (85, 60392), (89, 60410), (101, 60452), (108, 60506),

Gene: SophKB_100 Start: 60770, Stop: 60967, Start Num: 79

Candidate Starts for SophKB_100:

(24, 60593), (70, 60749), (Start: 79 @60770 has 92 MA's), (85, 60815), (89, 60833), (101, 60875), (108, 60929),

Gene: Sotrice96_103 Start: 61234, Stop: 61431, Start Num: 79

Candidate Starts for Sotrice96_103:

(24, 61057), (70, 61213), (Start: 79 @61234 has 92 MA's), (85, 61279), (89, 61297), (101, 61339), (108, 61393),

Gene: Sparky_92 Start: 62308, Stop: 62565, Start Num: 49

Candidate Starts for Sparky_92:

(40, 62263), (Start: 49 @62308 has 3 MA's), (58, 62326), (107, 62515), (108, 62518),

Gene: Spectropatronm_30 Start: 25627, Stop: 25866, Start Num: 71

Candidate Starts for Spectropatronm_30:

(Start: 71 @25627 has 20 MA's), (104, 25786), (109, 25816),

Gene: SpeedDemon_770 Start: 55702, Stop: 55460, Start Num: 56

Candidate Starts for SpeedDemon_770:

(Start: 56 @55702 has 13 MA's), (Start: 72 @55681 has 7 MA's), (102, 55558), (108, 55507),

Gene: Squash_59 Start: 42626, Stop: 42354, Start Num: 50

Candidate Starts for Squash_59:

(8, 43061), (9, 43058), (11, 42956), (12, 42896), (13, 42887), (18, 42809), (22, 42770), (23, 42767), (27, 42722), (29, 42713), (Start: 47 @42632 has 2 MA's), (Start: 50 @42626 has 4 MA's), (53, 42617), (89, 42509), (96, 42485), (105, 42434), (109, 42410), (117, 42365),

Gene: Stank_104 Start: 61008, Stop: 61205, Start Num: 79

Candidate Starts for Stank_104:

(24, 60831), (70, 60987), (Start: 79 @61008 has 92 MA's), (85, 61053), (89, 61071), (101, 61113), (108, 61167),

Gene: Statler_59 Start: 42227, Stop: 41955, Start Num: 48

Candidate Starts for Statler_59:

(Start: 48 @42227 has 21 MA's), (91, 42083), (100, 42053), (105, 42017), (109, 41993),

Gene: StellaBean_101 Start: 61370, Stop: 61567, Start Num: 79

Candidate Starts for StellaBean_101:

(24, 61193), (70, 61349), (Start: 79 @61370 has 92 MA's), (85, 61415), (89, 61433), (101, 61475), (108, 61529),

Gene: StolenFromERC_104 Start: 60933, Stop: 61130, Start Num: 79

Candidate Starts for StolenFromERC_104:

(24, 60756), (Start: 79 @60933 has 92 MA's), (85, 60978), (89, 60996), (101, 61038), (108, 61092),

Gene: StormChicken_103 Start: 61299, Stop: 61496, Start Num: 79

Candidate Starts for StormChicken_103:

(24, 61122), (70, 61278), (Start: 79 @61299 has 92 MA's), (85, 61344), (89, 61362), (101, 61404), (108, 61458),

Gene: StrawberryJamm_59 Start: 41944, Stop: 41666, Start Num: 47

Candidate Starts for StrawberryJamm_59:

(Start: 47 @41944 has 2 MA's), (Start: 48 @41938 has 21 MA's), (87, 41815), (105, 41728), (109, 41704), (112, 41677),

Gene: Strosahl_51 Start: 30778, Stop: 30533, Start Num: 56

Candidate Starts for Strosahl_51:

(Start: 56 @30778 has 13 MA's), (76, 30751), (94, 30661), (108, 30583),

Gene: Sunfish_10 Start: 3392, Stop: 3637, Start Num: 68

Candidate Starts for Sunfish_10:

(31, 3278), (64, 3386), (66, 3389), (Start: 68 @3392 has 1 MA's), (109, 3593),

Gene: Sunflower1121_3 Start: 727, Stop: 966, Start Num: 60

Candidate Starts for Sunflower1121_3:

(Start: 60 @727 has 8 MA's), (108, 919),

Gene: Switzerland_51 Start: 31164, Stop: 30916, Start Num: 56

Candidate Starts for Switzerland_51:

(Start: 56 @31164 has 13 MA's), (98, 31032), (108, 30966),

Gene: Syleon_102 Start: 58815, Stop: 59036, Start Num: 72

Candidate Starts for Syleon_102:

(Start: 72 @58815 has 7 MA's), (92, 58905), (99, 58926), (108, 58989),

Gene: Syra333_4 Start: 832, Stop: 1071, Start Num: 60

Candidate Starts for Syra333_4:

(Start: 60 @832 has 8 MA's), (108, 1024),

Gene: TBrady12_105 Start: 60448, Stop: 60645, Start Num: 79

Candidate Starts for TBrady12_105:

(24, 60271), (70, 60427), (Start: 79 @60448 has 92 MA's), (85, 60493), (89, 60511), (101, 60553), (108, 60607),

Gene: TClif_4 Start: 786, Stop: 1025, Start Num: 60

Candidate Starts for TClif_4:

(Start: 60 @786 has 8 MA's), (107, 975), (108, 978),

Gene: TaidaOne_30 Start: 26275, Stop: 26514, Start Num: 71
Candidate Starts for TaidaOne_30:
(Start: 71 @26275 has 20 MA's), (104, 26434), (109, 26464),

Gene: Talia1610_187 Start: 124515, Stop: 124745, Start Num: 73
Candidate Starts for Talia1610_187:
(Start: 73 @124515 has 3 MA's), (109, 124692),

Gene: Tarkin_101 Start: 61834, Stop: 62031, Start Num: 79
Candidate Starts for Tarkin_101:
(24, 61657), (70, 61813), (Start: 79 @61834 has 92 MA's), (85, 61879), (89, 61897), (101, 61939),
(108, 61993),

Gene: TeardropMSU_98 Start: 60315, Stop: 60512, Start Num: 79
Candidate Starts for TeardropMSU_98:
(24, 60138), (70, 60294), (Start: 79 @60315 has 92 MA's), (85, 60360), (89, 60378), (101, 60420),
(108, 60474),

Gene: Teehee_55 Start: 42516, Stop: 42244, Start Num: 48
Candidate Starts for Teehee_55:
(Start: 47 @42519 has 2 MA's), (Start: 48 @42516 has 21 MA's), (87, 42393), (105, 42306), (109,
42282), (112, 42255),

Gene: Terminus_105 Start: 62234, Stop: 62431, Start Num: 79
Candidate Starts for Terminus_105:
(24, 62057), (70, 62213), (Start: 79 @62234 has 92 MA's), (85, 62279), (89, 62297), (101, 62339),
(108, 62393),

Gene: Theresita_48 Start: 29943, Stop: 30182, Start Num: 65
Candidate Starts for Theresita_48:
(Start: 65 @29943 has 1 MA's), (77, 29967), (95, 30075), (102, 30099),

Gene: TieDye_29 Start: 25319, Stop: 25558, Start Num: 71
Candidate Starts for TieDye_29:
(Start: 71 @25319 has 20 MA's), (104, 25478), (109, 25508),

Gene: Tissue_56 Start: 42542, Stop: 42282, Start Num: 47
Candidate Starts for Tissue_56:
(Start: 47 @42542 has 2 MA's), (Start: 50 @42536 has 4 MA's), (53, 42527), (89, 42419), (96, 42395),
(105, 42344), (109, 42320),

Gene: Toaka_48 Start: 32116, Stop: 31880, Start Num: 57
Candidate Starts for Toaka_48:
(28, 32218), (Start: 57 @32116 has 6 MA's), (89, 32017), (108, 31921),

Gene: Tomaszewski_97 Start: 60772, Stop: 60969, Start Num: 79
Candidate Starts for Tomaszewski_97:
(24, 60595), (70, 60751), (Start: 79 @60772 has 92 MA's), (85, 60817), (89, 60835), (101, 60877),
(108, 60931),

Gene: TonyStarch_30 Start: 25633, Stop: 25872, Start Num: 71
Candidate Starts for TonyStarch_30:

(Start: 71 @25633 has 20 MA's), (104, 25792), (109, 25822),

Gene: Toto_100 Start: 61530, Stop: 61727, Start Num: 79

Candidate Starts for Toto_100:

(24, 61353), (70, 61509), (Start: 79 @61530 has 92 MA's), (85, 61575), (89, 61593), (101, 61635), (108, 61689),

Gene: Towmatter_69 Start: 49610, Stop: 49329, Start Num: 46

Candidate Starts for Towmatter_69:

(46, 49610), (Start: 49 @49595 has 3 MA's), (88, 49481), (98, 49448), (99, 49445), (108, 49382), (109, 49379),

Gene: Traaww1_98 Start: 60037, Stop: 60234, Start Num: 79

Candidate Starts for Traaww1_98:

(24, 59860), (70, 60016), (Start: 79 @60037 has 92 MA's), (85, 60082), (89, 60100), (101, 60142), (108, 60196),

Gene: Tuco_103 Start: 62395, Stop: 62592, Start Num: 79

Candidate Starts for Tuco_103:

(24, 62218), (70, 62374), (Start: 79 @62395 has 92 MA's), (85, 62440), (89, 62458), (101, 62500), (108, 62554),

Gene: UnionJack_47 Start: 34507, Stop: 34271, Start Num: 61

Candidate Starts for UnionJack_47:

(38, 34576), (Start: 61 @34507 has 8 MA's),

Gene: VA6_49 Start: 32727, Stop: 32479, Start Num: 51

Candidate Starts for VA6_49:

(28, 32829), (32, 32817), (Start: 51 @32727 has 5 MA's), (86, 32637), (108, 32526),

Gene: Vanisoa_48 Start: 33142, Stop: 32909, Start Num: 57

Candidate Starts for Vanisoa_48:

(17, 33343), (32, 33232), (Start: 57 @33142 has 6 MA's), (89, 33043), (101, 33001), (108, 32947),

Gene: Viceroy_53 Start: 41416, Stop: 41144, Start Num: 48

Candidate Starts for Viceroy_53:

(Start: 47 @41419 has 2 MA's), (Start: 48 @41416 has 21 MA's), (87, 41293), (105, 41206), (109, 41182), (112, 41155),

Gene: Waits_51 Start: 30953, Stop: 30705, Start Num: 56

Candidate Starts for Waits_51:

(Start: 56 @30953 has 13 MA's), (98, 30821), (108, 30755),

Gene: Warrior24_53 Start: 31163, Stop: 30915, Start Num: 56

Candidate Starts for Warrior24_53:

(Start: 56 @31163 has 13 MA's), (98, 31031), (108, 30965),

Gene: Wayne3_56 Start: 42279, Stop: 42007, Start Num: 48

Candidate Starts for Wayne3_56:

(Start: 47 @42282 has 2 MA's), (Start: 48 @42279 has 21 MA's), (87, 42156), (105, 42069), (109, 42045), (112, 42018),

Gene: Wheelie_54 Start: 41600, Stop: 41328, Start Num: 48

Candidate Starts for Wheelie_54:

(Start: 47 @41603 has 2 MA's), (Start: 48 @41600 has 21 MA's), (87, 41477), (105, 41390), (109, 41366), (112, 41339),

Gene: Whitty_1 Start: 89, Stop: 325, Start Num: 52

Candidate Starts for Whitty_1:

(33, 8), (43, 47), (Start: 52 @89 has 6 MA's), (54, 92), (89, 191), (90, 197), (92, 203), (108, 287),

Gene: Wiggin_104 Start: 60438, Stop: 60635, Start Num: 79

Candidate Starts for Wiggin_104:

(24, 60261), (70, 60417), (Start: 79 @60438 has 92 MA's), (85, 60483), (89, 60501), (101, 60543), (108, 60597),

Gene: Willez_97 Start: 59560, Stop: 59757, Start Num: 79

Candidate Starts for Willez_97:

(24, 59383), (70, 59539), (Start: 79 @59560 has 92 MA's), (85, 59605), (89, 59623), (101, 59665), (108, 59719),

Gene: Xandras_101 Start: 60261, Stop: 60458, Start Num: 79

Candidate Starts for Xandras_101:

(24, 60084), (Start: 79 @60261 has 92 MA's), (85, 60306), (89, 60324), (101, 60366), (108, 60420),

Gene: Ximenita_5 Start: 995, Stop: 1234, Start Num: 60

Candidate Starts for Ximenita_5:

(Start: 60 @995 has 8 MA's), (108, 1187),

Gene: YassJohnny_99 Start: 59581, Stop: 59778, Start Num: 79

Candidate Starts for YassJohnny_99:

(24, 59404), (70, 59560), (Start: 79 @59581 has 92 MA's), (85, 59626), (89, 59644), (101, 59686), (108, 59740),

Gene: Youngblood_105 Start: 61731, Stop: 61928, Start Num: 79

Candidate Starts for Youngblood_105:

(24, 61554), (70, 61710), (Start: 79 @61731 has 92 MA's), (85, 61776), (89, 61794), (101, 61836), (108, 61890),

Gene: Zagie_56 Start: 42135, Stop: 41863, Start Num: 48

Candidate Starts for Zagie_56:

(Start: 47 @42141 has 2 MA's), (Start: 48 @42135 has 21 MA's), (87, 42012), (105, 41925), (109, 41901), (112, 41874),

Gene: ZenTime222_1 Start: 89, Stop: 325, Start Num: 52

Candidate Starts for ZenTime222_1:

(33, 8), (43, 47), (Start: 52 @89 has 6 MA's), (54, 92), (89, 191), (90, 197), (92, 203), (108, 287),

Gene: Zhafia_57 Start: 42080, Stop: 41808, Start Num: 48

Candidate Starts for Zhafia_57:

(Start: 47 @42083 has 2 MA's), (Start: 48 @42080 has 21 MA's), (87, 41957), (105, 41870), (109, 41846), (112, 41819),

Gene: xkcd_105 Start: 61915, Stop: 62112, Start Num: 79

Candidate Starts for xkcd_105:

(24, 61738), (70, 61894), (Start: 79 @61915 has 92 MA's), (85, 61960), (89, 61978), (101, 62020),
(108, 62074),