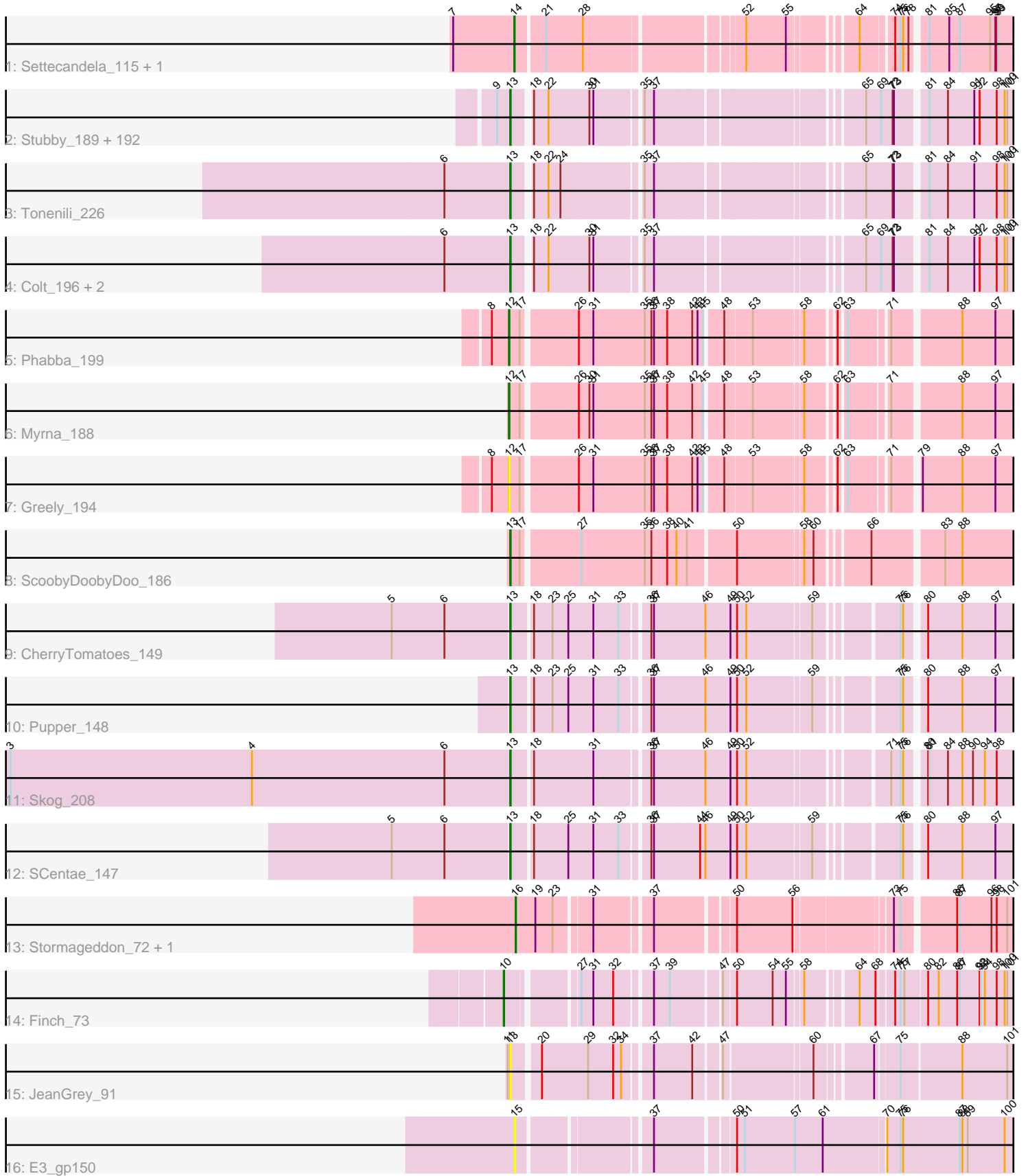


Zoomed Pham 215830



Note: Tracks are now grouped by subcluster and scaled. Switching in subcluster is indicated by changes in track color. Track scale is now set by default to display the region 30 bp upstream of start 1 to 30 bp downstream of the last possible start. If this default region is judged to be packed too tightly with annotated starts, the track will be further scaled to only show that region of the ORF with annotated starts. This action will be indicated by adding "Zoomed" to the title. For starts, yellow indicates the location of called starts comprised solely of Glimmer/GeneMark auto-annotations, green indicates the location of called starts with at least 1 manual gene annotation.

Pham 215830 Report

This analysis was run 02/22/25 on database version 588.

Pham number 215830 has 212 members, 28 are drafts.

Phages represented in each track:

- Track 1 : Settecandela_115, Phrappuccino_115
- Track 2 : Stubby_189, Amataga_206, Burrough_207, Napoleon13_202, InigoMontoya_208, Bigswole_210, CindyLou_206, Willis_206, Spec_200, Breeniome_204, Shelob_206, Ghost_205, NuevoMundo_208, Tainan_206, Cactojaque_200, Bonray_207, BeanWater_197, MikeLiesIn_207, Cali_198, Derek_202, RoMag_200, JPickles_201, Rizal_197, LifeSavor_204, SilverDipper_209, Basquiat_202, Littleton_208, Yassified_202, Patter_206, Rahel_206, I3_215, Latch_205, SmallFry_205, Shifa_182, LolaVinca_203, MoMoMixon_203, Babyland_208, Astraea_199, Concombre_210, Teardrop_202, Daffodil_210, Gabriel_208, Bread_200, Chomp_205, Morizzled23_202, Grasshills_213, Naval22_210, Dietrick_194, Ading_206, BadAgartude_199, Dandelion_213, Darko_204, YemiJoy2021_206, Lethe_207, Phlegm_209, Norm_205, Pio_213, Janiyra_208, Capablanca_210, Megamind_202, Audrick_207, ZygoTaiga_202, JayJay_207, Koguma_204, Erdmann_206, Phusco_203, Domi_199, DeejaClivia_193, InterFolia_208, ChickenPhender_201, Zeenon_207, Issimir_198, Melpomini_200, Salacia_205, EmToTheThree_205, Belieber_198, Quasimodo_207, Turret_198, Sauce_201, Blackdragon_200, Asterius_207, Bipolarisk_203, Phox_206, ET08_193, ErnieJ_198, Chargie21_202, FrayBell_208, Mikro_201, Ngannou_202, SVoro_202, Khaleesi_204, Delylah_207, Catera_198, Delilah_203, Jezreel_202, Lukilu_196, Halldule_198, ArcherS7_205, Maby2021_205, ChaylaJr_202, Ava3_204, EmmaElysia_208, BananaFence_202, EasyJones_208, DrPhinkDaddy_202, Sprinklers_203, StubbySaigey_210, FudgeTart_200, Iota_200, Demodog_211, Gizmo_211, Momo_206, Shaqnato_196, EggyFarm_214, Alice_192, Pleione_209, Mangeria_206, DirtMonster_198, Shrimp_207, StephanieG_201, BackyardAgain_200, BigCity_214, TinyTim_203, Spud_199, Grungle_189, Ronan_201, Wally_203, Drazdys_203, Gamgam_206, Yucca_205, Jemmno_204, Pier_206, Jaygup_201, Bxz1_195, Ablatia_203, QBert_197, Blackbrain_202, McGee_204, Atlantean_205, Fongie_206, Shnickers_203, Zalkecks_204, Bangla1971_205, HyRo_193, Naija_206, DTDevon_207, FoxtrotP1_203, Trinitium_201, Izajani_203, Ewok_204, Flabslab_200, Tortoise16_203, LordLeafolot_207, NedWong_204, JigglyPuff_212, JulietS_198, Kamryn_204, Pivoine_206, YoungMoneyMata_203, Loanshark_202, LRRHood_198, Jessibeth14_205, LinStu_204, CharlieB_199, PurduePete_205, Sebata_206, Jedediah_205, Lee7_205, NoodleTree_211, Essence_202, Specks_209, ParkTD_204, SrishMeg2525_202, GlutenPhree_205, Fludd_205, IkeLoa_197, ShiaLabeouf_202, Roots515_207, Guwapp_200, McWolfish_202, Primadonna_200, Nidhogg_206, Adlitam_204, Tyke_203, ValleyTerrace_206, Kboogie_209,

Matsumoto_204, ScottMcG_198, JustHall_199, Nappy_206, Caravan_196, Rabinovich_198, Pinkcreek_189

- Track 3 : Tonenili_226
- Track 4 : Colt_196, Cane17_196, Blubba_194
- Track 5 : Phabba_199
- Track 6 : Myrna_188
- Track 7 : Greely_194
- Track 8 : ScoobyDoobyDoo_186
- Track 9 : CherryTomatoes_149
- Track 10 : Pupper_148
- Track 11 : Skog_208
- Track 12 : SCentae_147
- Track 13 : Stormageddon_72, RedWattleHog_75
- Track 14 : Finch_73
- Track 15 : JeanGrey_91
- Track 16 : E3_gp150

Summary of Final Annotations (See graph section above for start numbers):

The start number called the most often in the published annotations is 13, it was called in 177 of the 184 non-draft genes in the pham.

Genes that call this "Most Annotated" start:

- Ablatia_203, Ading_206, Adlitam_204, Alice_192, Amataga_206, ArcherS7_205, Asterius_207, Astraea_199, Atlantean_205, Audrick_207, Ava3_204, Babyland_208, BackyardAgain_200, BadAgartude_199, BananaFence_202, Bangla1971_205, Basquiat_202, BeanWater_197, Belieber_198, BigCity_214, Bigswole_210, Bipolarisk_203, Blackbrain_202, Blackdragon_200, Blubba_194, Bonray_207, Bread_200, Breeniome_204, Burrough_207, Bxz1_195, Cactojaque_200, Cali_198, Cane17_196, Capablanca_210, Caravan_196, Catera_198, Chargie21_202, CharlieB_199, ChaylaJr_202, CherryTomatoes_149, ChickenPhender_201, Chomp_205, CindyLou_206, Colt_196, Concombre_210, DTDevon_207, Daffodil_210, Dandelion_213, Darko_204, DeejaClivia_193, Delilah_203, Delylah_207, Demodog_211, Derek_202, Dietrick_194, DirtMonster_198, Domi_199, DrPhinkDaddy_202, Drazdys_203, ET08_193, EasyJones_208, EggFarm_214, EmToTheThree_205, EmmaElysia_208, Erdmann_206, ErnieJ_198, Essence_202, Ewok_204, Flabslab_200, Fludd_205, Fongie_206, FoxtrotP1_203, FrayBell_208, FudgeTart_200, Gabriel_208, Gamgam_206, Ghost_205, Gizmo_211, GlutenPhree_205, Grasshills_213, Grungle_189, Guwapp_200, Halldule_198, HyRo_193, I3_215, IkeLoa_197, InigoMontoya_208, InterFolia_208, Iota_200, Issimir_198, Izajani_203, JPickles_201, Janiyra_208, JayJay_207, Jaygup_201, JeanGrey_91, Jedediah_205, Jemmno_204, Jessibeth14_205, Jezreel_202, JigglyPuff_212, JulietS_198, JustHall_199, Kamryn_204, Kboogie_209, Khaleesi_204, Koguma_204, LRRHood_198, Latch_205, Lee7_205, Lethe_207, LifeSavor_204, LinStu_204, Littleton_208, Loanshark_202, LolaVinca_203, LordLeafolot_207, Lukilu_196, Maby2021_205, Mangeria_206, Matsumoto_204, McGee_204, McWolfish_202, Megamind_202, Melpomini_200, MikeLiesIn_207, Mikro_201, MoMoMixon_203, Momo_206, Morizzled23_202, Naija_206, Napoleon13_202, Nappy_206, Naval22_210, NedWong_204, Ngannou_202, Nidhogg_206, NoodleTree_211, Norm_205, NuevoMundo_208, ParkTD_204,

Patter_206, Phlegm_209, Phox_206, Phusco_203, Pier_206, Pinkcreek_189, Pio_213, Pivoine_206, Pleione_209, Primadonna_200, Pupper_148, PurduePete_205, QBert_197, Quasimodo_207, Rabinovish_198, Rahel_206, Rizal_197, RoMag_200, Ronan_201, Roots515_207, SCentae_147, SVoro_202, Salacia_205, Sauce_201, ScoobyDoobyDoo_186, ScottMcG_198, Sebata_206, Shaqnato_196, Shelob_206, ShiaLabeouf_202, Shifa_182, Shnickers_203, Shrimp_207, SilverDipper_209, Skog_208, SmallFry_205, Spec_200, Specks_209, Sprinklers_203, Spud_199, SrishMeg2525_202, StephanieG_201, StubbySaigey_210, Stubby_189, Tainan_206, Teardrop_202, TinyTim_203, Tonenili_226, Tortoise16_203, Trinitium_201, Turret_198, Tyke_203, ValleyTerrace_206, Wally_203, Willis_206, Yassified_202, YemiJoy2021_206, YoungMoneyMata_203, Yucca_205, Zalkecks_204, Zeenon_207, ZygoTaiga_202,

Genes that have the "Most Annotated" start but do not call it:

-

Genes that do not have the "Most Annotated" start:

- E3_gp150, Finch_73, Greely_194, Myrna_188, Phabba_199, Phrappuccino_115, RedWattleHog_75, Settecandela_115, Stormageddon_72,

Summary by start number:

Start 10:

- Found in 1 of 212 (0.5%) of genes in pham
- Manual Annotations of this start: 1 of 184
- Called 100.0% of time when present
- Phage (with cluster) where this start called: Finch_73 (singleton),

Start 12:

- Found in 3 of 212 (1.4%) of genes in pham
- Manual Annotations of this start: 2 of 184
- Called 100.0% of time when present
- Phage (with cluster) where this start called: Greely_194 (C2), Myrna_188 (C2), Phabba_199 (C2),

Start 13:

- Found in 203 of 212 (95.8%) of genes in pham
- Manual Annotations of this start: 177 of 184
- Called 100.0% of time when present
- Phage (with cluster) where this start called: Ablatia_203 (C1), Ading_206 (C1), Adlitam_204 (C1), Alice_192 (C1), Amataga_206 (C1), ArcherS7_205 (C1), Asterius_207 (C1), Astraea_199 (C1), Atlantean_205 (C1), Audrick_207 (C1), Ava3_204 (C1), Babyland_208 (C1), BackyardAgain_200 (C1), BadAgartude_199 (C1), BananaFence_202 (C1), Bangla1971_205 (C1), Basquiat_202 (C1), BeanWater_197 (C1), Belieber_198 (C1), BigCity_214 (C1), Bigswole_210 (C1), Bipolarisk_203 (C1), Blackbrain_202 (C1), Blackdragon_200 (C1), Blubba_194 (C1), Bonray_207 (C1), Bread_200 (C1), Breeniome_204 (C1), Burrough_207 (C1), Bxz1_195 (C1), Cactojaque_200 (C1), Cali_198 (C1), Cane17_196 (C1), Capablanca_210 (C1), Caravan_196 (C1), Catera_198 (C1), Chargie21_202 (C1), CharlieB_199 (C1), ChaylaJr_202 (C1), CherryTomatoes_149 (DO), ChickenPhender_201 (C1), Chomp_205 (C1), CindyLou_206 (C1), Colt_196 (C1), Concombre_210 (C1), DTDevon_207 (C1), Daffodil_210 (C1), Dandelion_213 (C1), Darko_204 (C1), DeejaClivia_193 (C1), Delilah_203 (C1), Delylah_207 (C1),

Demodog_211 (C1), Derek_202 (C1), Dietrick_194 (C1), DirtMonster_198 (C1), Domi_199 (C1), DrPhinkDaddy_202 (C1), Drazdys_203 (C1), ET08_193 (C1), EasyJones_208 (C1), EggyFarm_214 (C1), EmToTheThree_205 (C1), EmmaElysia_208 (C1), Erdmann_206 (C1), ErnieJ_198 (C1), Essence_202 (C1), Ewok_204 (C1), Flabslab_200 (C1), Fludd_205 (C1), Fongie_206 (C1), FoxtrotP1_203 (C1), FrayBell_208 (C1), FudgeTart_200 (C1), Gabriel_208 (C1), Gamgam_206 (C1), Ghost_205 (C1), Gizmo_211 (C1), GlutenPhree_205 (C1), Grasshills_213 (C1), Grungle_189 (C1), Guwapp_200 (C1), Halldule_198 (C1), HyRo_193 (C1), I3_215 (C1), IkeLoa_197 (C1), InigoMontoya_208 (C1), InterFolia_208 (C1), Iota_200 (C1), Issimir_198 (C1), Izajani_203 (C1), JPickles_201 (C1), Janiyr_208 (C1), JayJay_207 (C1), Jaygup_201 (C1), JeanGrey_91 (singleton), Jedediah_205 (C1), Jemmno_204 (C1), Jessibeth14_205 (C1), Jezreel_202 (C1), JigglyPuff_212 (C1), JulietS_198 (C1), JustHall_199 (C1), Kamryn_204 (C1), Kboogie_209 (C1), Khaleesi_204 (C1), Koguma_204 (C1), LRRHood_198 (C1), Latch_205 (C1), Lee7_205 (C1), Lethe_207 (C1), LifeSavor_204 (C1), LinStu_204 (C1), Littleton_208 (C1), Loanshark_202 (C1), LolaVinca_203 (C1), LordLeafolot_207 (C1), Lukilu_196 (C1), Maby2021_205 (C1), Mangeria_206 (C1), Matsumoto_204 (C1), McGee_204 (C1), McWolfish_202 (C1), Megamind_202 (C1), Melpomini_200 (C1), MikeLiesIn_207 (C1), Mikro_201 (C1), MoMoMixon_203 (C1), Momo_206 (C1), Morizzled23_202 (C1), Naija_206 (C1), Napoleon13_202 (C1), Nappy_206 (C1), Naval22_210 (C1), NedWong_204 (C1), Ngannou_202 (C1), Nidhogg_206 (C1), NoodleTree_211 (C1), Norm_205 (C1), NuevoMundo_208 (C1), ParkTD_204 (C1), Patter_206 (C1), Phlegm_209 (C1), Phox_206 (C1), Phusco_203 (C1), Pier_206 (C1), Pinkcreek_189 (C1), Pio_213 (C1), Pivoine_206 (C1), Pleione_209 (C1), Primadonna_200 (C1), Pupper_148 (DO), PurduePete_205 (C1), QBert_197 (C1), Quasimodo_207 (C1), Rabinovish_198 (C1), Rahel_206 (C1), Rizal_197 (C1), RoMag_200 (C1), Ronan_201 (C1), Roots515_207 (C1), SCentae_147 (DO), SVoro_202 (C1), Salacia_205 (C1), Sauce_201 (C1), ScoobyDoobyDoo_186 (C2), ScottMcG_198 (C1), Sebata_206 (C1), Shaqnato_196 (C1), Shelob_206 (C1), ShiaLabeouf_202 (C1), Shifa_182 (C1), Shnickers_203 (C1), Shrimp_207 (C1), SilverDipper_209 (C1), Skog_208 (DO), SmallFry_205 (C1), Spec_200 (C1), Specks_209 (C1), Sprinklers_203 (C1), Spud_199 (C1), SrishMeg2525_202 (C1), StephanieG_201 (C1), StubbySaigey_210 (C1), Stubby_189 (C1), Tainan_206 (C1), Teardrop_202 (C1), TinyTim_203 (C1), Tonenili_226 (C1), Tortoise16_203 (C1), Trinitium_201 (C1), Turret_198 (C1), Tyke_203 (C1), ValleyTerrace_206 (C1), Wally_203 (C1), Willis_206 (C1), Yassified_202 (C1), YemiJoy2021_206 (C1), YoungMoneyMata_203 (C1), Yucca_205 (C1), Zalkecks_204 (C1), Zeenon_207 (C1), ZygoTaiga_202 (C1),

Start 14:

- Found in 2 of 212 (0.9%) of genes in pham
- Manual Annotations of this start: 2 of 184
- Called 100.0% of time when present
- Phage (with cluster) where this start called: Phrappuccino_115 (AA), Settecandela_115 (AA),

Start 15:

- Found in 1 of 212 (0.5%) of genes in pham
- No Manual Annotations of this start.
- Called 100.0% of time when present
- Phage (with cluster) where this start called: E3_gp150 (singleton),

Start 16:

- Found in 2 of 212 (0.9%) of genes in pham
- Manual Annotations of this start: 2 of 184
- Called 100.0% of time when present
- Phage (with cluster) where this start called: RedWattleHog_75 (DX), Stormageddon_72 (DX),

Summary by clusters:

There are 6 clusters represented in this pham: AA, DO, singleton, DX, C2, C1,

Info for manual annotations of cluster AA:

- Start number 14 was manually annotated 2 times for cluster AA.

Info for manual annotations of cluster C1:

- Start number 13 was manually annotated 172 times for cluster C1.

Info for manual annotations of cluster C2:

- Start number 12 was manually annotated 2 times for cluster C2.
- Start number 13 was manually annotated 1 time for cluster C2.

Info for manual annotations of cluster DO:

- Start number 13 was manually annotated 4 times for cluster DO.

Info for manual annotations of cluster DX:

- Start number 16 was manually annotated 2 times for cluster DX.

Gene Information:

Gene: Ablatia_203 Start: 110022, Stop: 111095, Start Num: 13

Candidate Starts for Ablatia_203:

(9, 109995), (Start: 13 @110022 has 177 MA's), (18, 110055), (22, 110088), (30, 110178), (31, 110187), (35, 110283), (37, 110304), (65, 110712), (69, 110742), (72, 110766), (73, 110769), (81, 110829), (84, 110871), (91, 110931), (92, 110943), (98, 110982), (100, 111000), (101, 111006), (102, 111030), (108, 111066), (109, 111075), (112, 111090),

Gene: Ading_206 Start: 110649, Stop: 111722, Start Num: 13

Candidate Starts for Ading_206:

(9, 110622), (Start: 13 @110649 has 177 MA's), (18, 110682), (22, 110715), (30, 110805), (31, 110814), (35, 110910), (37, 110931), (65, 111339), (69, 111369), (72, 111393), (73, 111396), (81, 111456), (84, 111498), (91, 111558), (92, 111570), (98, 111609), (100, 111627), (101, 111633), (102, 111657), (108, 111693), (109, 111702), (112, 111717),

Gene: Adlitam_204 Start: 109253, Stop: 110326, Start Num: 13

Candidate Starts for Adlitam_204:

(9, 109226), (Start: 13 @109253 has 177 MA's), (18, 109286), (22, 109319), (30, 109409), (31, 109418), (35, 109514), (37, 109535), (65, 109943), (69, 109973), (72, 109997), (73, 110000), (81, 110060), (84, 110102), (91, 110162), (92, 110174), (98, 110213), (100, 110231), (101, 110237), (102, 110261), (108, 110297), (109, 110306), (112, 110321),

Gene: Alice_192 Start: 109221, Stop: 110294, Start Num: 13

Candidate Starts for Alice_192:

(9, 109194), (Start: 13 @109221 has 177 MA's), (18, 109254), (22, 109287), (30, 109377), (31, 109386), (35, 109482), (37, 109503), (65, 109911), (69, 109941), (72, 109965), (73, 109968), (81, 110028), (84, 110070), (91, 110130), (92, 110142), (98, 110181), (100, 110199), (101, 110205), (102, 110229), (108, 110265), (109, 110274), (112, 110289),

Gene: Amataga_206 Start: 109065, Stop: 110138, Start Num: 13

Candidate Starts for Amataga_206:

(9, 109038), (Start: 13 @109065 has 177 MA's), (18, 109098), (22, 109131), (30, 109221), (31, 109230), (35, 109326), (37, 109347), (65, 109755), (69, 109785), (72, 109809), (73, 109812), (81, 109872), (84, 109914), (91, 109974), (92, 109986), (98, 110025), (100, 110043), (101, 110049), (102, 110073), (108, 110109), (109, 110118), (112, 110133),

Gene: ArcherS7_205 Start: 110107, Stop: 111180, Start Num: 13

Candidate Starts for ArcherS7_205:

(9, 110080), (Start: 13 @110107 has 177 MA's), (18, 110140), (22, 110173), (30, 110263), (31, 110272), (35, 110368), (37, 110389), (65, 110797), (69, 110827), (72, 110851), (73, 110854), (81, 110914), (84, 110956), (91, 111016), (92, 111028), (98, 111067), (100, 111085), (101, 111091), (102, 111115), (108, 111151), (109, 111160), (112, 111175),

Gene: Asterius_207 Start: 109474, Stop: 110547, Start Num: 13

Candidate Starts for Asterius_207:

(9, 109447), (Start: 13 @109474 has 177 MA's), (18, 109507), (22, 109540), (30, 109630), (31, 109639), (35, 109735), (37, 109756), (65, 110164), (69, 110194), (72, 110218), (73, 110221), (81, 110281), (84, 110323), (91, 110383), (92, 110395), (98, 110434), (100, 110452), (101, 110458), (102, 110482), (108, 110518), (109, 110527), (112, 110542),

Gene: Astraea_199 Start: 108669, Stop: 109742, Start Num: 13

Candidate Starts for Astraea_199:

(9, 108642), (Start: 13 @108669 has 177 MA's), (18, 108702), (22, 108735), (30, 108825), (31, 108834), (35, 108930), (37, 108951), (65, 109359), (69, 109389), (72, 109413), (73, 109416), (81, 109476), (84, 109518), (91, 109578), (92, 109590), (98, 109629), (100, 109647), (101, 109653), (102, 109677), (108, 109713), (109, 109722), (112, 109737),

Gene: Atlantean_205 Start: 109065, Stop: 110138, Start Num: 13

Candidate Starts for Atlantean_205:

(9, 109038), (Start: 13 @109065 has 177 MA's), (18, 109098), (22, 109131), (30, 109221), (31, 109230), (35, 109326), (37, 109347), (65, 109755), (69, 109785), (72, 109809), (73, 109812), (81, 109872), (84, 109914), (91, 109974), (92, 109986), (98, 110025), (100, 110043), (101, 110049), (102, 110073), (108, 110109), (109, 110118), (112, 110133),

Gene: Audrick_207 Start: 108955, Stop: 110028, Start Num: 13

Candidate Starts for Audrick_207:

(9, 108928), (Start: 13 @108955 has 177 MA's), (18, 108988), (22, 109021), (30, 109111), (31, 109120), (35, 109216), (37, 109237), (65, 109645), (69, 109675), (72, 109699), (73, 109702), (81, 109762), (84, 109804), (91, 109864), (92, 109876), (98, 109915), (100, 109933), (101, 109939), (102, 109963), (108, 109999), (109, 110008), (112, 110023),

Gene: Ava3_204 Start: 109499, Stop: 110572, Start Num: 13

Candidate Starts for Ava3_204:

(9, 109472), (Start: 13 @109499 has 177 MA's), (18, 109532), (22, 109565), (30, 109655), (31, 109664), (35, 109760), (37, 109781), (65, 110189), (69, 110219), (72, 110243), (73, 110246), (81, 110306), (84, 110348), (91, 110408), (92, 110420), (98, 110459), (100, 110477), (101, 110483), (102, 110507), (108, 110543), (109, 110552), (112, 110567),

Gene: Babyland_208 Start: 109842, Stop: 110915, Start Num: 13

Candidate Starts for Babyland_208:

(9, 109815), (Start: 13 @109842 has 177 MA's), (18, 109875), (22, 109908), (30, 109998), (31, 110007), (35, 110103), (37, 110124), (65, 110532), (69, 110562), (72, 110586), (73, 110589), (81, 110649), (84, 110691), (91, 110751), (92, 110763), (98, 110802), (100, 110820), (101, 110826), (102, 110850), (108, 110886), (109, 110895), (112, 110910),

Gene: BackyardAgain_200 Start: 107751, Stop: 108824, Start Num: 13

Candidate Starts for BackyardAgain_200:

(9, 107724), (Start: 13 @107751 has 177 MA's), (18, 107784), (22, 107817), (30, 107907), (31, 107916), (35, 108012), (37, 108033), (65, 108441), (69, 108471), (72, 108495), (73, 108498), (81, 108558), (84, 108600), (91, 108660), (92, 108672), (98, 108711), (100, 108729), (101, 108735), (102, 108759), (108, 108795), (109, 108804), (112, 108819),

Gene: BadAgartude_199 Start: 109164, Stop: 110237, Start Num: 13

Candidate Starts for BadAgartude_199:

(9, 109137), (Start: 13 @109164 has 177 MA's), (18, 109197), (22, 109230), (30, 109320), (31, 109329), (35, 109425), (37, 109446), (65, 109854), (69, 109884), (72, 109908), (73, 109911), (81, 109971), (84, 110013), (91, 110073), (92, 110085), (98, 110124), (100, 110142), (101, 110148), (102, 110172), (108, 110208), (109, 110217), (112, 110232),

Gene: BananaFence_202 Start: 109298, Stop: 110371, Start Num: 13

Candidate Starts for BananaFence_202:

(9, 109271), (Start: 13 @109298 has 177 MA's), (18, 109331), (22, 109364), (30, 109454), (31, 109463), (35, 109559), (37, 109580), (65, 109988), (69, 110018), (72, 110042), (73, 110045), (81, 110105), (84, 110147), (91, 110207), (92, 110219), (98, 110258), (100, 110276), (101, 110282), (102, 110306), (108, 110342), (109, 110351), (112, 110366),

Gene: Bangla1971_205 Start: 109071, Stop: 110144, Start Num: 13

Candidate Starts for Bangla1971_205:

(9, 109044), (Start: 13 @109071 has 177 MA's), (18, 109104), (22, 109137), (30, 109227), (31, 109236), (35, 109332), (37, 109353), (65, 109761), (69, 109791), (72, 109815), (73, 109818), (81, 109878), (84, 109920), (91, 109980), (92, 109992), (98, 110031), (100, 110049), (101, 110055), (102, 110079), (108, 110115), (109, 110124), (112, 110139),

Gene: Basquiat_202 Start: 108577, Stop: 109650, Start Num: 13

Candidate Starts for Basquiat_202:

(9, 108550), (Start: 13 @108577 has 177 MA's), (18, 108610), (22, 108643), (30, 108733), (31, 108742), (35, 108838), (37, 108859), (65, 109267), (69, 109297), (72, 109321), (73, 109324), (81, 109384), (84, 109426), (91, 109486), (92, 109498), (98, 109537), (100, 109555), (101, 109561), (102, 109585), (108, 109621), (109, 109630), (112, 109645),

Gene: BeanWater_197 Start: 109103, Stop: 110176, Start Num: 13

Candidate Starts for BeanWater_197:

(9, 109076), (Start: 13 @109103 has 177 MA's), (18, 109136), (22, 109169), (30, 109259), (31, 109268), (35, 109364), (37, 109385), (65, 109793), (69, 109823), (72, 109847), (73, 109850), (81, 109910), (84, 109952), (91, 110012), (92, 110024), (98, 110063), (100, 110081), (101, 110087), (102, 110111), (108, 110147), (109, 110156), (112, 110171),

Gene: Belieber_198 Start: 107891, Stop: 108964, Start Num: 13

Candidate Starts for Belieber_198:

(9, 107864), (Start: 13 @107891 has 177 MA's), (18, 107924), (22, 107957), (30, 108047), (31, 108056), (35, 108152), (37, 108173), (65, 108581), (69, 108611), (72, 108635), (73, 108638), (81, 108698), (84, 108740), (91, 108800), (92, 108812), (98, 108851), (100, 108869), (101, 108875), (102, 108899), (108, 108935), (109, 108944), (112, 108959),

Gene: BigCity_214 Start: 112674, Stop: 113747, Start Num: 13

Candidate Starts for BigCity_214:

(9, 112647), (Start: 13 @112674 has 177 MA's), (18, 112707), (22, 112740), (30, 112830), (31, 112839), (35, 112935), (37, 112956), (65, 113364), (69, 113394), (72, 113418), (73, 113421), (81, 113481), (84, 113523), (91, 113583), (92, 113595), (98, 113634), (100, 113652), (101, 113658), (102, 113682), (108, 113718), (109, 113727), (112, 113742),

Gene: Bigswole_210 Start: 112525, Stop: 113598, Start Num: 13

Candidate Starts for Bigswole_210:

(9, 112498), (Start: 13 @112525 has 177 MA's), (18, 112558), (22, 112591), (30, 112681), (31, 112690), (35, 112786), (37, 112807), (65, 113215), (69, 113245), (72, 113269), (73, 113272), (81, 113332), (84, 113374), (91, 113434), (92, 113446), (98, 113485), (100, 113503), (101, 113509), (102, 113533), (108, 113569), (109, 113578), (112, 113593),

Gene: Bipolarisk_203 Start: 109768, Stop: 110841, Start Num: 13

Candidate Starts for Bipolarisk_203:

(9, 109741), (Start: 13 @109768 has 177 MA's), (18, 109801), (22, 109834), (30, 109924), (31, 109933), (35, 110029), (37, 110050), (65, 110458), (69, 110488), (72, 110512), (73, 110515), (81, 110575), (84, 110617), (91, 110677), (92, 110689), (98, 110728), (100, 110746), (101, 110752), (102, 110776), (108, 110812), (109, 110821), (112, 110836),

Gene: Blackbrain_202 Start: 109662, Stop: 110735, Start Num: 13

Candidate Starts for Blackbrain_202:

(9, 109635), (Start: 13 @109662 has 177 MA's), (18, 109695), (22, 109728), (30, 109818), (31, 109827), (35, 109923), (37, 109944), (65, 110352), (69, 110382), (72, 110406), (73, 110409), (81, 110469), (84, 110511), (91, 110571), (92, 110583), (98, 110622), (100, 110640), (101, 110646), (102, 110670), (108, 110706), (109, 110715), (112, 110730),

Gene: Blackdragon_200 Start: 109401, Stop: 110474, Start Num: 13

Candidate Starts for Blackdragon_200:

(9, 109374), (Start: 13 @109401 has 177 MA's), (18, 109434), (22, 109467), (30, 109557), (31, 109566), (35, 109662), (37, 109683), (65, 110091), (69, 110121), (72, 110145), (73, 110148), (81, 110208), (84, 110250), (91, 110310), (92, 110322), (98, 110361), (100, 110379), (101, 110385), (102, 110409), (108, 110445), (109, 110454), (112, 110469),

Gene: Blubba_194 Start: 112787, Stop: 113860, Start Num: 13

Candidate Starts for Blubba_194:

(6, 112637), (Start: 13 @112787 has 177 MA's), (18, 112820), (22, 112853), (30, 112943), (31, 112952), (35, 113048), (37, 113069), (65, 113477), (69, 113507), (72, 113531), (73, 113534), (81, 113594), (84, 113636), (91, 113696), (92, 113708), (98, 113747), (100, 113765), (101, 113771), (102, 113795), (108, 113831), (109, 113840), (112, 113855),

Gene: Bonray_207 Start: 111170, Stop: 112243, Start Num: 13

Candidate Starts for Bonray_207:

(9, 111143), (Start: 13 @111170 has 177 MA's), (18, 111203), (22, 111236), (30, 111326), (31, 111335), (35, 111431), (37, 111452), (65, 111860), (69, 111890), (72, 111914), (73, 111917), (81, 111977), (84, 112019), (91, 112079), (92, 112091), (98, 112130), (100, 112148), (101, 112154), (102, 112178), (108, 112214), (109, 112223), (112, 112238),

Gene: Bread_200 Start: 109168, Stop: 110241, Start Num: 13

Candidate Starts for Bread_200:

(9, 109141), (Start: 13 @109168 has 177 MA's), (18, 109201), (22, 109234), (30, 109324), (31, 109333), (35, 109429), (37, 109450), (65, 109858), (69, 109888), (72, 109912), (73, 109915), (81, 109975), (84, 110017), (91, 110077), (92, 110089), (98, 110128), (100, 110146), (101, 110152), (102, 110176), (108, 110212), (109, 110221), (112, 110236),

Gene: Breeniome_204 Start: 108622, Stop: 109695, Start Num: 13

Candidate Starts for Breeniome_204:

(9, 108595), (Start: 13 @108622 has 177 MA's), (18, 108655), (22, 108688), (30, 108778), (31, 108787), (35, 108883), (37, 108904), (65, 109312), (69, 109342), (72, 109366), (73, 109369), (81, 109429), (84, 109471), (91, 109531), (92, 109543), (98, 109582), (100, 109600), (101, 109606), (102, 109630), (108, 109666), (109, 109675), (112, 109690),

Gene: Burrough_207 Start: 110938, Stop: 112011, Start Num: 13

Candidate Starts for Burrough_207:

(9, 110911), (Start: 13 @110938 has 177 MA's), (18, 110971), (22, 111004), (30, 111094), (31, 111103), (35, 111199), (37, 111220), (65, 111628), (69, 111658), (72, 111682), (73, 111685), (81, 111745), (84, 111787), (91, 111847), (92, 111859), (98, 111898), (100, 111916), (101, 111922), (102, 111946), (108, 111982), (109, 111991), (112, 112006),

Gene: Bxz1_195 Start: 112137, Stop: 113210, Start Num: 13

Candidate Starts for Bxz1_195:

(9, 112110), (Start: 13 @112137 has 177 MA's), (18, 112170), (22, 112203), (30, 112293), (31, 112302), (35, 112398), (37, 112419), (65, 112827), (69, 112857), (72, 112881), (73, 112884), (81, 112944), (84, 112986), (91, 113046), (92, 113058), (98, 113097), (100, 113115), (101, 113121), (102, 113145), (108, 113181), (109, 113190), (112, 113205),

Gene: Cactojaque_200 Start: 108597, Stop: 109670, Start Num: 13

Candidate Starts for Cactojaque_200:

(9, 108570), (Start: 13 @108597 has 177 MA's), (18, 108630), (22, 108663), (30, 108753), (31, 108762), (35, 108858), (37, 108879), (65, 109287), (69, 109317), (72, 109341), (73, 109344), (81, 109404), (84, 109446), (91, 109506), (92, 109518), (98, 109557), (100, 109575), (101, 109581), (102, 109605), (108, 109641), (109, 109650), (112, 109665),

Gene: Cali_198 Start: 110544, Stop: 111617, Start Num: 13

Candidate Starts for Cali_198:

(9, 110517), (Start: 13 @110544 has 177 MA's), (18, 110577), (22, 110610), (30, 110700), (31, 110709), (35, 110805), (37, 110826), (65, 111234), (69, 111264), (72, 111288), (73, 111291), (81, 111351), (84, 111393), (91, 111453), (92, 111465), (98, 111504), (100, 111522), (101, 111528), (102, 111552), (108, 111588), (109, 111597), (112, 111612),

Gene: Cane17_196 Start: 113196, Stop: 114269, Start Num: 13

Candidate Starts for Cane17_196:

(6, 113046), (Start: 13 @113196 has 177 MA's), (18, 113229), (22, 113262), (30, 113352), (31, 113361), (35, 113457), (37, 113478), (65, 113886), (69, 113916), (72, 113940), (73, 113943), (81, 114003), (84, 114045), (91, 114105), (92, 114117), (98, 114156), (100, 114174), (101, 114180), (102, 114204), (108, 114240), (109, 114249), (112, 114264),

Gene: Capablanca_210 Start: 111765, Stop: 112838, Start Num: 13

Candidate Starts for Capablanca_210:

(9, 111738), (Start: 13 @111765 has 177 MA's), (18, 111798), (22, 111831), (30, 111921), (31, 111930), (35, 112026), (37, 112047), (65, 112455), (69, 112485), (72, 112509), (73, 112512), (81, 112572), (84, 112614), (91, 112674), (92, 112686), (98, 112725), (100, 112743), (101, 112749), (102, 112773), (108, 112809), (109, 112818), (112, 112833),

Gene: Caravan_196 Start: 109885, Stop: 110958, Start Num: 13

Candidate Starts for Caravan_196:

(9, 109858), (Start: 13 @109885 has 177 MA's), (18, 109918), (22, 109951), (30, 110041), (31, 110050), (35, 110146), (37, 110167), (65, 110575), (69, 110605), (72, 110629), (73, 110632), (81, 110692), (84, 110734), (91, 110794), (92, 110806), (98, 110845), (100, 110863), (101, 110869), (102, 110893), (108, 110929), (109, 110938), (112, 110953),

Gene: Catera_198 Start: 108278, Stop: 109351, Start Num: 13

Candidate Starts for Catera_198:

(9, 108251), (Start: 13 @108278 has 177 MA's), (18, 108311), (22, 108344), (30, 108434), (31, 108443), (35, 108539), (37, 108560), (65, 108968), (69, 108998), (72, 109022), (73, 109025), (81, 109085), (84, 109127), (91, 109187), (92, 109199), (98, 109238), (100, 109256), (101, 109262), (102, 109286), (108, 109322), (109, 109331), (112, 109346),

Gene: Chargie21_202 Start: 108577, Stop: 109650, Start Num: 13

Candidate Starts for Chargie21_202:

(9, 108550), (Start: 13 @108577 has 177 MA's), (18, 108610), (22, 108643), (30, 108733), (31, 108742), (35, 108838), (37, 108859), (65, 109267), (69, 109297), (72, 109321), (73, 109324), (81, 109384), (84, 109426), (91, 109486), (92, 109498), (98, 109537), (100, 109555), (101, 109561), (102, 109585), (108, 109621), (109, 109630), (112, 109645),

Gene: CharlieB_199 Start: 109305, Stop: 110378, Start Num: 13

Candidate Starts for CharlieB_199:

(9, 109278), (Start: 13 @109305 has 177 MA's), (18, 109338), (22, 109371), (30, 109461), (31, 109470), (35, 109566), (37, 109587), (65, 109995), (69, 110025), (72, 110049), (73, 110052), (81, 110112), (84, 110154), (91, 110214), (92, 110226), (98, 110265), (100, 110283), (101, 110289), (102, 110313), (108, 110349), (109, 110358), (112, 110373),

Gene: ChaylaJr_202 Start: 109005, Stop: 110078, Start Num: 13

Candidate Starts for ChaylaJr_202:

(9, 108978), (Start: 13 @109005 has 177 MA's), (18, 109038), (22, 109071), (30, 109161), (31, 109170), (35, 109266), (37, 109287), (65, 109695), (69, 109725), (72, 109749), (73, 109752), (81, 109812), (84, 109854), (91, 109914), (92, 109926), (98, 109965), (100, 109983), (101, 109989), (102, 110013), (108, 110049), (109, 110058), (112, 110073),

Gene: CherryTomatoes_149 Start: 102880, Stop: 103995, Start Num: 13

Candidate Starts for CherryTomatoes_149:

(5, 102616), (6, 102736), (Start: 13 @102880 has 177 MA's), (18, 102922), (23, 102964), (25, 103000), (31, 103057), (33, 103114), (36, 103168), (37, 103174), (46, 103288), (49, 103345), (50, 103360), (52, 103381), (59, 103516), (75, 103663), (76, 103669), (80, 103705), (88, 103783), (97, 103855), (107, 103933), (110, 103957),

Gene: ChickenPhender_201 Start: 108724, Stop: 109797, Start Num: 13

Candidate Starts for ChickenPhender_201:

(9, 108697), (Start: 13 @108724 has 177 MA's), (18, 108757), (22, 108790), (30, 108880), (31, 108889), (35, 108985), (37, 109006), (65, 109414), (69, 109444), (72, 109468), (73, 109471), (81, 109531), (84, 109573), (91, 109633), (92, 109645), (98, 109684), (100, 109702), (101, 109708), (102, 109732), (108, 109768), (109, 109777), (112, 109792),

Gene: Chomp_205 Start: 110354, Stop: 111427, Start Num: 13

Candidate Starts for Chomp_205:

(9, 110327), (Start: 13 @110354 has 177 MA's), (18, 110387), (22, 110420), (30, 110510), (31, 110519), (35, 110615), (37, 110636), (65, 111044), (69, 111074), (72, 111098), (73, 111101), (81, 111161), (84, 111203), (91, 111263), (92, 111275), (98, 111314), (100, 111332), (101, 111338), (102, 111362), (108, 111398), (109, 111407), (112, 111422),

Gene: CindyLou_206 Start: 110614, Stop: 111687, Start Num: 13

Candidate Starts for CindyLou_206:

(9, 110587), (Start: 13 @110614 has 177 MA's), (18, 110647), (22, 110680), (30, 110770), (31, 110779), (35, 110875), (37, 110896), (65, 111304), (69, 111334), (72, 111358), (73, 111361), (81, 111421), (84, 111463), (91, 111523), (92, 111535), (98, 111574), (100, 111592), (101, 111598), (102, 111622), (108, 111658), (109, 111667), (112, 111682),

Gene: Colt_196 Start: 112427, Stop: 113500, Start Num: 13

Candidate Starts for Colt_196:

(6, 112277), (Start: 13 @112427 has 177 MA's), (18, 112460), (22, 112493), (30, 112583), (31, 112592), (35, 112688), (37, 112709), (65, 113117), (69, 113147), (72, 113171), (73, 113174), (81, 113234), (84, 113276), (91, 113336), (92, 113348), (98, 113387), (100, 113405), (101, 113411), (102, 113435), (108, 113471), (109, 113480), (112, 113495),

Gene: Concombres_210 Start: 112217, Stop: 113290, Start Num: 13

Candidate Starts for Concombres_210:

(9, 112190), (Start: 13 @112217 has 177 MA's), (18, 112250), (22, 112283), (30, 112373), (31, 112382), (35, 112478), (37, 112499), (65, 112907), (69, 112937), (72, 112961), (73, 112964), (81, 113024), (84, 113066), (91, 113126), (92, 113138), (98, 113177), (100, 113195), (101, 113201), (102, 113225), (108, 113261), (109, 113270), (112, 113285),

Gene: DTDevon_207 Start: 111103, Stop: 112176, Start Num: 13

Candidate Starts for DTDevon_207:

(9, 111076), (Start: 13 @111103 has 177 MA's), (18, 111136), (22, 111169), (30, 111259), (31, 111268), (35, 111364), (37, 111385), (65, 111793), (69, 111823), (72, 111847), (73, 111850), (81, 111910), (84, 111952), (91, 112012), (92, 112024), (98, 112063), (100, 112081), (101, 112087), (102, 112111), (108, 112147), (109, 112156), (112, 112171),

Gene: Daffodil_210 Start: 110068, Stop: 111141, Start Num: 13

Candidate Starts for Daffodil_210:

(9, 110041), (Start: 13 @110068 has 177 MA's), (18, 110101), (22, 110134), (30, 110224), (31, 110233), (35, 110329), (37, 110350), (65, 110758), (69, 110788), (72, 110812), (73, 110815), (81, 110875), (84, 110917), (91, 110977), (92, 110989), (98, 111028), (100, 111046), (101, 111052), (102, 111076), (108, 111112), (109, 111121), (112, 111136),

Gene: Dandelion_213 Start: 113701, Stop: 114774, Start Num: 13

Candidate Starts for Dandelion_213:

(9, 113674), (Start: 13 @113701 has 177 MA's), (18, 113734), (22, 113767), (30, 113857), (31, 113866), (35, 113962), (37, 113983), (65, 114391), (69, 114421), (72, 114445), (73, 114448), (81, 114508), (84, 114550), (91, 114610), (92, 114622), (98, 114661), (100, 114679), (101, 114685), (102, 114709), (108, 114745), (109, 114754), (112, 114769),

Gene: Darko_204 Start: 109302, Stop: 110375, Start Num: 13

Candidate Starts for Darko_204:

(9, 109275), (Start: 13 @109302 has 177 MA's), (18, 109335), (22, 109368), (30, 109458), (31, 109467), (35, 109563), (37, 109584), (65, 109992), (69, 110022), (72, 110046), (73, 110049), (81, 110109), (84, 110151), (91, 110211), (92, 110223), (98, 110262), (100, 110280), (101, 110286), (102, 110310), (108, 110346), (109, 110355), (112, 110370),

Gene: DeejaClivia_193 Start: 108437, Stop: 109510, Start Num: 13

Candidate Starts for DeejaClivia_193:

(9, 108410), (Start: 13 @108437 has 177 MA's), (18, 108470), (22, 108503), (30, 108593), (31, 108602), (35, 108698), (37, 108719), (65, 109127), (69, 109157), (72, 109181), (73, 109184), (81, 109244), (84, 109286), (91, 109346), (92, 109358), (98, 109397), (100, 109415), (101, 109421), (102, 109445), (108, 109481), (109, 109490), (112, 109505),

Gene: Delilah_203 Start: 110186, Stop: 111259, Start Num: 13

Candidate Starts for Delilah_203:

(9, 110159), (Start: 13 @110186 has 177 MA's), (18, 110219), (22, 110252), (30, 110342), (31, 110351), (35, 110447), (37, 110468), (65, 110876), (69, 110906), (72, 110930), (73, 110933), (81, 110993), (84, 111035), (91, 111095), (92, 111107), (98, 111146), (100, 111164), (101, 111170), (102, 111194), (108, 111230), (109, 111239), (112, 111254),

Gene: Delylah_207 Start: 110475, Stop: 111548, Start Num: 13

Candidate Starts for Delylah_207:

(9, 110448), (Start: 13 @110475 has 177 MA's), (18, 110508), (22, 110541), (30, 110631), (31, 110640), (35, 110736), (37, 110757), (65, 111165), (69, 111195), (72, 111219), (73, 111222), (81, 111282), (84, 111324), (91, 111384), (92, 111396), (98, 111435), (100, 111453), (101, 111459), (102, 111483), (108, 111519), (109, 111528), (112, 111543),

Gene: Demodog_211 Start: 112227, Stop: 113300, Start Num: 13

Candidate Starts for Demodog_211:

(9, 112200), (Start: 13 @112227 has 177 MA's), (18, 112260), (22, 112293), (30, 112383), (31, 112392), (35, 112488), (37, 112509), (65, 112917), (69, 112947), (72, 112971), (73, 112974), (81, 113034), (84, 113076), (91, 113136), (92, 113148), (98, 113187), (100, 113205), (101, 113211), (102, 113235), (108, 113271), (109, 113280), (112, 113295),

Gene: Derek_202 Start: 109631, Stop: 110704, Start Num: 13

Candidate Starts for Derek_202:

(9, 109604), (Start: 13 @109631 has 177 MA's), (18, 109664), (22, 109697), (30, 109787), (31, 109796), (35, 109892), (37, 109913), (65, 110321), (69, 110351), (72, 110375), (73, 110378), (81, 110438), (84, 110480), (91, 110540), (92, 110552), (98, 110591), (100, 110609), (101, 110615), (102, 110639), (108, 110675), (109, 110684), (112, 110699),

Gene: Dietrick_194 Start: 108307, Stop: 109380, Start Num: 13

Candidate Starts for Dietrick_194:

(9, 108280), (Start: 13 @108307 has 177 MA's), (18, 108340), (22, 108373), (30, 108463), (31, 108472), (35, 108568), (37, 108589), (65, 108997), (69, 109027), (72, 109051), (73, 109054), (81, 109114), (84, 109156), (91, 109216), (92, 109228), (98, 109267), (100, 109285), (101, 109291), (102, 109315), (108, 109351), (109, 109360), (112, 109375),

Gene: DirtMonster_198 Start: 109547, Stop: 110620, Start Num: 13

Candidate Starts for DirtMonster_198:

(9, 109520), (Start: 13 @109547 has 177 MA's), (18, 109580), (22, 109613), (30, 109703), (31, 109712), (35, 109808), (37, 109829), (65, 110237), (69, 110267), (72, 110291), (73, 110294), (81, 110354), (84, 110396), (91, 110456), (92, 110468), (98, 110507), (100, 110525), (101, 110531), (102, 110555), (108, 110591), (109, 110600), (112, 110615),

Gene: Domi_199 Start: 109658, Stop: 110731, Start Num: 13

Candidate Starts for Domi_199:

(9, 109631), (Start: 13 @109658 has 177 MA's), (18, 109691), (22, 109724), (30, 109814), (31, 109823), (35, 109919), (37, 109940), (65, 110348), (69, 110378), (72, 110402), (73, 110405), (81, 110465), (84, 110507), (91, 110567), (92, 110579), (98, 110618), (100, 110636), (101, 110642), (102, 110666), (108, 110702), (109, 110711), (112, 110726),

Gene: DrPhinkDaddy_202 Start: 110846, Stop: 111919, Start Num: 13

Candidate Starts for DrPhinkDaddy_202:

(9, 110819), (Start: 13 @110846 has 177 MA's), (18, 110879), (22, 110912), (30, 111002), (31, 111011), (35, 111107), (37, 111128), (65, 111536), (69, 111566), (72, 111590), (73, 111593), (81, 111653), (84, 111695), (91, 111755), (92, 111767), (98, 111806), (100, 111824), (101, 111830), (102, 111854), (108, 111890), (109, 111899), (112, 111914),

Gene: Drazdys_203 Start: 109748, Stop: 110821, Start Num: 13

Candidate Starts for Drazdys_203:

(9, 109721), (Start: 13 @109748 has 177 MA's), (18, 109781), (22, 109814), (30, 109904), (31, 109913), (35, 110009), (37, 110030), (65, 110438), (69, 110468), (72, 110492), (73, 110495), (81, 110555), (84, 110597), (91, 110657), (92, 110669), (98, 110708), (100, 110726), (101, 110732), (102, 110756), (108, 110792), (109, 110801), (112, 110816),

Gene: E3_gp150 Start: 99938, Stop: 101044, Start Num: 15

Candidate Starts for E3_gp150:

(15, 99938), (37, 100202), (50, 100355), (51, 100373), (57, 100487), (61, 100550), (70, 100682), (75, 100712), (76, 100718), (87, 100847), (88, 100853), (89, 100865), (100, 100949), (104, 100985), (108, 101015), (109, 101024),

Gene: ET08_193 Start: 109339, Stop: 110412, Start Num: 13

Candidate Starts for ET08_193:

(9, 109312), (Start: 13 @109339 has 177 MA's), (18, 109372), (22, 109405), (30, 109495), (31, 109504), (35, 109600), (37, 109621), (65, 110029), (69, 110059), (72, 110083), (73, 110086), (81, 110146), (84, 110188), (91, 110248), (92, 110260), (98, 110299), (100, 110317), (101, 110323), (102, 110347), (108, 110383), (109, 110392), (112, 110407),

Gene: EasyJones_208 Start: 109820, Stop: 110893, Start Num: 13

Candidate Starts for EasyJones_208:

(9, 109793), (Start: 13 @109820 has 177 MA's), (18, 109853), (22, 109886), (30, 109976), (31, 109985), (35, 110081), (37, 110102), (65, 110510), (69, 110540), (72, 110564), (73, 110567), (81, 110627), (84, 110669), (91, 110729), (92, 110741), (98, 110780), (100, 110798), (101, 110804), (102, 110828), (108, 110864), (109, 110873), (112, 110888),

Gene: EggyFarm_214 Start: 112675, Stop: 113748, Start Num: 13

Candidate Starts for EggyFarm_214:

(9, 112648), (Start: 13 @112675 has 177 MA's), (18, 112708), (22, 112741), (30, 112831), (31, 112840), (35, 112936), (37, 112957), (65, 113365), (69, 113395), (72, 113419), (73, 113422), (81, 113482), (84, 113524), (91, 113584), (92, 113596), (98, 113635), (100, 113653), (101, 113659), (102, 113683), (108, 113719), (109, 113728), (112, 113743),

Gene: EmToTheThree_205 Start: 110219, Stop: 111292, Start Num: 13

Candidate Starts for EmToTheThree_205:

(9, 110192), (Start: 13 @110219 has 177 MA's), (18, 110252), (22, 110285), (30, 110375), (31, 110384), (35, 110480), (37, 110501), (65, 110909), (69, 110939), (72, 110963), (73, 110966), (81,

111026), (84, 111068), (91, 111128), (92, 111140), (98, 111179), (100, 111197), (101, 111203), (102, 111227), (108, 111263), (109, 111272), (112, 111287),

Gene: EmmaElysia_208 Start: 110238, Stop: 111311, Start Num: 13

Candidate Starts for EmmaElysia_208:

(9, 110211), (Start: 13 @110238 has 177 MA's), (18, 110271), (22, 110304), (30, 110394), (31, 110403), (35, 110499), (37, 110520), (65, 110928), (69, 110958), (72, 110982), (73, 110985), (81, 111045), (84, 111087), (91, 111147), (92, 111159), (98, 111198), (100, 111216), (101, 111222), (102, 111246), (108, 111282), (109, 111291), (112, 111306),

Gene: Erdmann_206 Start: 110177, Stop: 111250, Start Num: 13

Candidate Starts for Erdmann_206:

(9, 110150), (Start: 13 @110177 has 177 MA's), (18, 110210), (22, 110243), (30, 110333), (31, 110342), (35, 110438), (37, 110459), (65, 110867), (69, 110897), (72, 110921), (73, 110924), (81, 110984), (84, 111026), (91, 111086), (92, 111098), (98, 111137), (100, 111155), (101, 111161), (102, 111185), (108, 111221), (109, 111230), (112, 111245),

Gene: ErnieJ_198 Start: 107999, Stop: 109072, Start Num: 13

Candidate Starts for ErnieJ_198:

(9, 107972), (Start: 13 @107999 has 177 MA's), (18, 108032), (22, 108065), (30, 108155), (31, 108164), (35, 108260), (37, 108281), (65, 108689), (69, 108719), (72, 108743), (73, 108746), (81, 108806), (84, 108848), (91, 108908), (92, 108920), (98, 108959), (100, 108977), (101, 108983), (102, 109007), (108, 109043), (109, 109052), (112, 109067),

Gene: Essence_202 Start: 108960, Stop: 110033, Start Num: 13

Candidate Starts for Essence_202:

(9, 108933), (Start: 13 @108960 has 177 MA's), (18, 108993), (22, 109026), (30, 109116), (31, 109125), (35, 109221), (37, 109242), (65, 109650), (69, 109680), (72, 109704), (73, 109707), (81, 109767), (84, 109809), (91, 109869), (92, 109881), (98, 109920), (100, 109938), (101, 109944), (102, 109968), (108, 110004), (109, 110013), (112, 110028),

Gene: Ewok_204 Start: 110096, Stop: 111169, Start Num: 13

Candidate Starts for Ewok_204:

(9, 110069), (Start: 13 @110096 has 177 MA's), (18, 110129), (22, 110162), (30, 110252), (31, 110261), (35, 110357), (37, 110378), (65, 110786), (69, 110816), (72, 110840), (73, 110843), (81, 110903), (84, 110945), (91, 111005), (92, 111017), (98, 111056), (100, 111074), (101, 111080), (102, 111104), (108, 111140), (109, 111149), (112, 111164),

Gene: Finch_73 Start: 62417, Stop: 63523, Start Num: 10

Candidate Starts for Finch_73:

(Start: 10 @62417 has 1 MA's), (27, 62549), (31, 62576), (32, 62621), (37, 62693), (39, 62729), (47, 62831), (50, 62852), (54, 62930), (55, 62960), (58, 62990), (64, 63086), (68, 63122), (74, 63155), (75, 63167), (77, 63176), (80, 63224), (82, 63248), (86, 63290), (87, 63296), (92, 63341), (93, 63344), (94, 63353), (98, 63380), (100, 63398), (101, 63404), (108, 63464), (111, 63482),

Gene: Flabslab_200 Start: 108141, Stop: 109214, Start Num: 13

Candidate Starts for Flabslab_200:

(9, 108114), (Start: 13 @108141 has 177 MA's), (18, 108174), (22, 108207), (30, 108297), (31, 108306), (35, 108402), (37, 108423), (65, 108831), (69, 108861), (72, 108885), (73, 108888), (81, 108948), (84, 108990), (91, 109050), (92, 109062), (98, 109101), (100, 109119), (101, 109125), (102, 109149), (108, 109185), (109, 109194), (112, 109209),

Gene: Fludd_205 Start: 109532, Stop: 110605, Start Num: 13

Candidate Starts for Fludd_205:

(9, 109505), (Start: 13 @109532 has 177 MA's), (18, 109565), (22, 109598), (30, 109688), (31, 109697), (35, 109793), (37, 109814), (65, 110222), (69, 110252), (72, 110276), (73, 110279), (81, 110339), (84, 110381), (91, 110441), (92, 110453), (98, 110492), (100, 110510), (101, 110516), (102, 110540), (108, 110576), (109, 110585), (112, 110600),

Gene: Fongie_206 Start: 110119, Stop: 111192, Start Num: 13

Candidate Starts for Fongie_206:

(9, 110092), (Start: 13 @110119 has 177 MA's), (18, 110152), (22, 110185), (30, 110275), (31, 110284), (35, 110380), (37, 110401), (65, 110809), (69, 110839), (72, 110863), (73, 110866), (81, 110926), (84, 110968), (91, 111028), (92, 111040), (98, 111079), (100, 111097), (101, 111103), (102, 111127), (108, 111163), (109, 111172), (112, 111187),

Gene: FoxtrotP1_203 Start: 110776, Stop: 111849, Start Num: 13

Candidate Starts for FoxtrotP1_203:

(9, 110749), (Start: 13 @110776 has 177 MA's), (18, 110809), (22, 110842), (30, 110932), (31, 110941), (35, 111037), (37, 111058), (65, 111466), (69, 111496), (72, 111520), (73, 111523), (81, 111583), (84, 111625), (91, 111685), (92, 111697), (98, 111736), (100, 111754), (101, 111760), (102, 111784), (108, 111820), (109, 111829), (112, 111844),

Gene: FrayBell_208 Start: 109621, Stop: 110694, Start Num: 13

Candidate Starts for FrayBell_208:

(9, 109594), (Start: 13 @109621 has 177 MA's), (18, 109654), (22, 109687), (30, 109777), (31, 109786), (35, 109882), (37, 109903), (65, 110311), (69, 110341), (72, 110365), (73, 110368), (81, 110428), (84, 110470), (91, 110530), (92, 110542), (98, 110581), (100, 110599), (101, 110605), (102, 110629), (108, 110665), (109, 110674), (112, 110689),

Gene: FudgeTart_200 Start: 109243, Stop: 110316, Start Num: 13

Candidate Starts for FudgeTart_200:

(9, 109216), (Start: 13 @109243 has 177 MA's), (18, 109276), (22, 109309), (30, 109399), (31, 109408), (35, 109504), (37, 109525), (65, 109933), (69, 109963), (72, 109987), (73, 109990), (81, 110050), (84, 110092), (91, 110152), (92, 110164), (98, 110203), (100, 110221), (101, 110227), (102, 110251), (108, 110287), (109, 110296), (112, 110311),

Gene: Gabriel_208 Start: 108698, Stop: 109771, Start Num: 13

Candidate Starts for Gabriel_208:

(9, 108671), (Start: 13 @108698 has 177 MA's), (18, 108731), (22, 108764), (30, 108854), (31, 108863), (35, 108959), (37, 108980), (65, 109388), (69, 109418), (72, 109442), (73, 109445), (81, 109505), (84, 109547), (91, 109607), (92, 109619), (98, 109658), (100, 109676), (101, 109682), (102, 109706), (108, 109742), (109, 109751), (112, 109766),

Gene: Gamgam_206 Start: 109055, Stop: 110128, Start Num: 13

Candidate Starts for Gamgam_206:

(9, 109028), (Start: 13 @109055 has 177 MA's), (18, 109088), (22, 109121), (30, 109211), (31, 109220), (35, 109316), (37, 109337), (65, 109745), (69, 109775), (72, 109799), (73, 109802), (81, 109862), (84, 109904), (91, 109964), (92, 109976), (98, 110015), (100, 110033), (101, 110039), (102, 110063), (108, 110099), (109, 110108), (112, 110123),

Gene: Ghost_205 Start: 108976, Stop: 110049, Start Num: 13

Candidate Starts for Ghost_205:

(9, 108949), (Start: 13 @108976 has 177 MA's), (18, 109009), (22, 109042), (30, 109132), (31, 109141), (35, 109237), (37, 109258), (65, 109666), (69, 109696), (72, 109720), (73, 109723), (81, 109783), (84, 109825), (91, 109885), (92, 109897), (98, 109936), (100, 109954), (101, 109960), (102,

109984), (108, 110020), (109, 110029), (112, 110044),

Gene: Gizmo_211 Start: 112094, Stop: 113167, Start Num: 13

Candidate Starts for Gizmo_211:

(9, 112067), (Start: 13 @112094 has 177 MA's), (18, 112127), (22, 112160), (30, 112250), (31, 112259), (35, 112355), (37, 112376), (65, 112784), (69, 112814), (72, 112838), (73, 112841), (81, 112901), (84, 112943), (91, 113003), (92, 113015), (98, 113054), (100, 113072), (101, 113078), (102, 113102), (108, 113138), (109, 113147), (112, 113162),

Gene: GlutenPhree_205 Start: 109066, Stop: 110139, Start Num: 13

Candidate Starts for GlutenPhree_205:

(9, 109039), (Start: 13 @109066 has 177 MA's), (18, 109099), (22, 109132), (30, 109222), (31, 109231), (35, 109327), (37, 109348), (65, 109756), (69, 109786), (72, 109810), (73, 109813), (81, 109873), (84, 109915), (91, 109975), (92, 109987), (98, 110026), (100, 110044), (101, 110050), (102, 110074), (108, 110110), (109, 110119), (112, 110134),

Gene: Grasshills_213 Start: 112674, Stop: 113747, Start Num: 13

Candidate Starts for Grasshills_213:

(9, 112647), (Start: 13 @112674 has 177 MA's), (18, 112707), (22, 112740), (30, 112830), (31, 112839), (35, 112935), (37, 112956), (65, 113364), (69, 113394), (72, 113418), (73, 113421), (81, 113481), (84, 113523), (91, 113583), (92, 113595), (98, 113634), (100, 113652), (101, 113658), (102, 113682), (108, 113718), (109, 113727), (112, 113742),

Gene: Greely_194 Start: 106927, Stop: 108072, Start Num: 12

Candidate Starts for Greely_194:

(8, 106888), (Start: 12 @106927 has 2 MA's), (17, 106951), (26, 107065), (31, 107098), (35, 107215), (36, 107230), (37, 107236), (38, 107266), (42, 107320), (43, 107332), (45, 107344), (48, 107377), (53, 107437), (58, 107539), (62, 107593), (63, 107602), (71, 107683), (79, 107734), (88, 107821), (97, 107896), (113, 108016),

Gene: Grungle_189 Start: 107013, Stop: 108086, Start Num: 13

Candidate Starts for Grungle_189:

(9, 106986), (Start: 13 @107013 has 177 MA's), (18, 107046), (22, 107079), (30, 107169), (31, 107178), (35, 107274), (37, 107295), (65, 107703), (69, 107733), (72, 107757), (73, 107760), (81, 107820), (84, 107862), (91, 107922), (92, 107934), (98, 107973), (100, 107991), (101, 107997), (102, 108021), (108, 108057), (109, 108066), (112, 108081),

Gene: Guwapp_200 Start: 107810, Stop: 108883, Start Num: 13

Candidate Starts for Guwapp_200:

(9, 107783), (Start: 13 @107810 has 177 MA's), (18, 107843), (22, 107876), (30, 107966), (31, 107975), (35, 108071), (37, 108092), (65, 108500), (69, 108530), (72, 108554), (73, 108557), (81, 108617), (84, 108659), (91, 108719), (92, 108731), (98, 108770), (100, 108788), (101, 108794), (102, 108818), (108, 108854), (109, 108863), (112, 108878),

Gene: Halldule_198 Start: 108195, Stop: 109268, Start Num: 13

Candidate Starts for Halldule_198:

(9, 108168), (Start: 13 @108195 has 177 MA's), (18, 108228), (22, 108261), (30, 108351), (31, 108360), (35, 108456), (37, 108477), (65, 108885), (69, 108915), (72, 108939), (73, 108942), (81, 109002), (84, 109044), (91, 109104), (92, 109116), (98, 109155), (100, 109173), (101, 109179), (102, 109203), (108, 109239), (109, 109248), (112, 109263),

Gene: HyRo_193 Start: 109319, Stop: 110392, Start Num: 13

Candidate Starts for HyRo_193:

(9, 109292), (Start: 13 @109319 has 177 MA's), (18, 109352), (22, 109385), (30, 109475), (31, 109484), (35, 109580), (37, 109601), (65, 110009), (69, 110039), (72, 110063), (73, 110066), (81, 110126), (84, 110168), (91, 110228), (92, 110240), (98, 110279), (100, 110297), (101, 110303), (102, 110327), (108, 110363), (109, 110372), (112, 110387),

Gene: I3_215 Start: 112055, Stop: 113128, Start Num: 13

Candidate Starts for I3_215:

(9, 112028), (Start: 13 @112055 has 177 MA's), (18, 112088), (22, 112121), (30, 112211), (31, 112220), (35, 112316), (37, 112337), (65, 112745), (69, 112775), (72, 112799), (73, 112802), (81, 112862), (84, 112904), (91, 112964), (92, 112976), (98, 113015), (100, 113033), (101, 113039), (102, 113063), (108, 113099), (109, 113108), (112, 113123),

Gene: IkeLoa_197 Start: 108717, Stop: 109790, Start Num: 13

Candidate Starts for IkeLoa_197:

(9, 108690), (Start: 13 @108717 has 177 MA's), (18, 108750), (22, 108783), (30, 108873), (31, 108882), (35, 108978), (37, 108999), (65, 109407), (69, 109437), (72, 109461), (73, 109464), (81, 109524), (84, 109566), (91, 109626), (92, 109638), (98, 109677), (100, 109695), (101, 109701), (102, 109725), (108, 109761), (109, 109770), (112, 109785),

Gene: InigoMontoya_208 Start: 109729, Stop: 110802, Start Num: 13

Candidate Starts for InigoMontoya_208:

(9, 109702), (Start: 13 @109729 has 177 MA's), (18, 109762), (22, 109795), (30, 109885), (31, 109894), (35, 109990), (37, 110011), (65, 110419), (69, 110449), (72, 110473), (73, 110476), (81, 110536), (84, 110578), (91, 110638), (92, 110650), (98, 110689), (100, 110707), (101, 110713), (102, 110737), (108, 110773), (109, 110782), (112, 110797),

Gene: InterFolia_208 Start: 111427, Stop: 112500, Start Num: 13

Candidate Starts for InterFolia_208:

(9, 111400), (Start: 13 @111427 has 177 MA's), (18, 111460), (22, 111493), (30, 111583), (31, 111592), (35, 111688), (37, 111709), (65, 112117), (69, 112147), (72, 112171), (73, 112174), (81, 112234), (84, 112276), (91, 112336), (92, 112348), (98, 112387), (100, 112405), (101, 112411), (102, 112435), (108, 112471), (109, 112480), (112, 112495),

Gene: Iota_200 Start: 109414, Stop: 110487, Start Num: 13

Candidate Starts for Iota_200:

(9, 109387), (Start: 13 @109414 has 177 MA's), (18, 109447), (22, 109480), (30, 109570), (31, 109579), (35, 109675), (37, 109696), (65, 110104), (69, 110134), (72, 110158), (73, 110161), (81, 110221), (84, 110263), (91, 110323), (92, 110335), (98, 110374), (100, 110392), (101, 110398), (102, 110422), (108, 110458), (109, 110467), (112, 110482),

Gene: Issimir_198 Start: 109367, Stop: 110440, Start Num: 13

Candidate Starts for Issimir_198:

(9, 109340), (Start: 13 @109367 has 177 MA's), (18, 109400), (22, 109433), (30, 109523), (31, 109532), (35, 109628), (37, 109649), (65, 110057), (69, 110087), (72, 110111), (73, 110114), (81, 110174), (84, 110216), (91, 110276), (92, 110288), (98, 110327), (100, 110345), (101, 110351), (102, 110375), (108, 110411), (109, 110420), (112, 110435),

Gene: Izajani_203 Start: 110236, Stop: 111309, Start Num: 13

Candidate Starts for Izajani_203:

(9, 110209), (Start: 13 @110236 has 177 MA's), (18, 110269), (22, 110302), (30, 110392), (31, 110401), (35, 110497), (37, 110518), (65, 110926), (69, 110956), (72, 110980), (73, 110983), (81, 111043), (84, 111085), (91, 111145), (92, 111157), (98, 111196), (100, 111214), (101, 111220), (102, 111244), (108, 111280), (109, 111289), (112, 111304),

Gene: JPickles_201 Start: 107714, Stop: 108787, Start Num: 13

Candidate Starts for JPickles_201:

(9, 107687), (Start: 13 @107714 has 177 MA's), (18, 107747), (22, 107780), (30, 107870), (31, 107879), (35, 107975), (37, 107996), (65, 108404), (69, 108434), (72, 108458), (73, 108461), (81, 108521), (84, 108563), (91, 108623), (92, 108635), (98, 108674), (100, 108692), (101, 108698), (102, 108722), (108, 108758), (109, 108767), (112, 108782),

Gene: Janiyra_208 Start: 109954, Stop: 111027, Start Num: 13

Candidate Starts for Janiyra_208:

(9, 109927), (Start: 13 @109954 has 177 MA's), (18, 109987), (22, 110020), (30, 110110), (31, 110119), (35, 110215), (37, 110236), (65, 110644), (69, 110674), (72, 110698), (73, 110701), (81, 110761), (84, 110803), (91, 110863), (92, 110875), (98, 110914), (100, 110932), (101, 110938), (102, 110962), (108, 110998), (109, 111007), (112, 111022),

Gene: JayJay_207 Start: 110651, Stop: 111724, Start Num: 13

Candidate Starts for JayJay_207:

(9, 110624), (Start: 13 @110651 has 177 MA's), (18, 110684), (22, 110717), (30, 110807), (31, 110816), (35, 110912), (37, 110933), (65, 111341), (69, 111371), (72, 111395), (73, 111398), (81, 111458), (84, 111500), (91, 111560), (92, 111572), (98, 111611), (100, 111629), (101, 111635), (102, 111659), (108, 111695), (109, 111704), (112, 111719),

Gene: Jaygup_201 Start: 108775, Stop: 109848, Start Num: 13

Candidate Starts for Jaygup_201:

(9, 108748), (Start: 13 @108775 has 177 MA's), (18, 108808), (22, 108841), (30, 108931), (31, 108940), (35, 109036), (37, 109057), (65, 109465), (69, 109495), (72, 109519), (73, 109522), (81, 109582), (84, 109624), (91, 109684), (92, 109696), (98, 109735), (100, 109753), (101, 109759), (102, 109783), (108, 109819), (109, 109828), (112, 109843),

Gene: JeanGrey_91 Start: 72203, Stop: 73294, Start Num: 13

Candidate Starts for JeanGrey_91:

(11, 72197), (Start: 13 @72203 has 177 MA's), (20, 72257), (29, 72359), (32, 72416), (34, 72434), (37, 72488), (42, 72572), (47, 72623), (60, 72806), (67, 72917), (75, 72965), (88, 73097), (101, 73199),

Gene: Jedediah_205 Start: 109828, Stop: 110901, Start Num: 13

Candidate Starts for Jedediah_205:

(9, 109801), (Start: 13 @109828 has 177 MA's), (18, 109861), (22, 109894), (30, 109984), (31, 109993), (35, 110089), (37, 110110), (65, 110518), (69, 110548), (72, 110572), (73, 110575), (81, 110635), (84, 110677), (91, 110737), (92, 110749), (98, 110788), (100, 110806), (101, 110812), (102, 110836), (108, 110872), (109, 110881), (112, 110896),

Gene: Jemmno_204 Start: 108657, Stop: 109730, Start Num: 13

Candidate Starts for Jemmno_204:

(9, 108630), (Start: 13 @108657 has 177 MA's), (18, 108690), (22, 108723), (30, 108813), (31, 108822), (35, 108918), (37, 108939), (65, 109347), (69, 109377), (72, 109401), (73, 109404), (81, 109464), (84, 109506), (91, 109566), (92, 109578), (98, 109617), (100, 109635), (101, 109641), (102, 109665), (108, 109701), (109, 109710), (112, 109725),

Gene: Jessibeth14_205 Start: 110845, Stop: 111918, Start Num: 13

Candidate Starts for Jessibeth14_205:

(9, 110818), (Start: 13 @110845 has 177 MA's), (18, 110878), (22, 110911), (30, 111001), (31, 111010), (35, 111106), (37, 111127), (65, 111535), (69, 111565), (72, 111589), (73, 111592), (81, 111652), (84, 111694), (91, 111754), (92, 111766), (98, 111805), (100, 111823), (101, 111829), (102,

111853), (108, 111889), (109, 111898), (112, 111913),

Gene: Jezreel_202 Start: 109914, Stop: 110987, Start Num: 13

Candidate Starts for Jezreel_202:

(9, 109887), (Start: 13 @109914 has 177 MA's), (18, 109947), (22, 109980), (30, 110070), (31, 110079), (35, 110175), (37, 110196), (65, 110604), (69, 110634), (72, 110658), (73, 110661), (81, 110721), (84, 110763), (91, 110823), (92, 110835), (98, 110874), (100, 110892), (101, 110898), (102, 110922), (108, 110958), (109, 110967), (112, 110982),

Gene: JigglyPuff_212 Start: 112225, Stop: 113298, Start Num: 13

Candidate Starts for JigglyPuff_212:

(9, 112198), (Start: 13 @112225 has 177 MA's), (18, 112258), (22, 112291), (30, 112381), (31, 112390), (35, 112486), (37, 112507), (65, 112915), (69, 112945), (72, 112969), (73, 112972), (81, 113032), (84, 113074), (91, 113134), (92, 113146), (98, 113185), (100, 113203), (101, 113209), (102, 113233), (108, 113269), (109, 113278), (112, 113293),

Gene: JulietS_198 Start: 106946, Stop: 108019, Start Num: 13

Candidate Starts for JulietS_198:

(9, 106919), (Start: 13 @106946 has 177 MA's), (18, 106979), (22, 107012), (30, 107102), (31, 107111), (35, 107207), (37, 107228), (65, 107636), (69, 107666), (72, 107690), (73, 107693), (81, 107753), (84, 107795), (91, 107855), (92, 107867), (98, 107906), (100, 107924), (101, 107930), (102, 107954), (108, 107990), (109, 107999), (112, 108014),

Gene: JustHall_199 Start: 108861, Stop: 109934, Start Num: 13

Candidate Starts for JustHall_199:

(9, 108834), (Start: 13 @108861 has 177 MA's), (18, 108894), (22, 108927), (30, 109017), (31, 109026), (35, 109122), (37, 109143), (65, 109551), (69, 109581), (72, 109605), (73, 109608), (81, 109668), (84, 109710), (91, 109770), (92, 109782), (98, 109821), (100, 109839), (101, 109845), (102, 109869), (108, 109905), (109, 109914), (112, 109929),

Gene: Kamryn_204 Start: 110491, Stop: 111564, Start Num: 13

Candidate Starts for Kamryn_204:

(9, 110464), (Start: 13 @110491 has 177 MA's), (18, 110524), (22, 110557), (30, 110647), (31, 110656), (35, 110752), (37, 110773), (65, 111181), (69, 111211), (72, 111235), (73, 111238), (81, 111298), (84, 111340), (91, 111400), (92, 111412), (98, 111451), (100, 111469), (101, 111475), (102, 111499), (108, 111535), (109, 111544), (112, 111559),

Gene: Kboogie_209 Start: 109519, Stop: 110592, Start Num: 13

Candidate Starts for Kboogie_209:

(9, 109492), (Start: 13 @109519 has 177 MA's), (18, 109552), (22, 109585), (30, 109675), (31, 109684), (35, 109780), (37, 109801), (65, 110209), (69, 110239), (72, 110263), (73, 110266), (81, 110326), (84, 110368), (91, 110428), (92, 110440), (98, 110479), (100, 110497), (101, 110503), (102, 110527), (108, 110563), (109, 110572), (112, 110587),

Gene: Khaleesi_204 Start: 110312, Stop: 111385, Start Num: 13

Candidate Starts for Khaleesi_204:

(9, 110285), (Start: 13 @110312 has 177 MA's), (18, 110345), (22, 110378), (30, 110468), (31, 110477), (35, 110573), (37, 110594), (65, 111002), (69, 111032), (72, 111056), (73, 111059), (81, 111119), (84, 111161), (91, 111221), (92, 111233), (98, 111272), (100, 111290), (101, 111296), (102, 111320), (108, 111356), (109, 111365), (112, 111380),

Gene: Koguma_204 Start: 109172, Stop: 110245, Start Num: 13

Candidate Starts for Koguma_204:

(9, 109145), (Start: 13 @109172 has 177 MA's), (18, 109205), (22, 109238), (30, 109328), (31, 109337), (35, 109433), (37, 109454), (65, 109862), (69, 109892), (72, 109916), (73, 109919), (81, 109979), (84, 110021), (91, 110081), (92, 110093), (98, 110132), (100, 110150), (101, 110156), (102, 110180), (108, 110216), (109, 110225), (112, 110240),

Gene: LRRHood_198 Start: 109517, Stop: 110590, Start Num: 13

Candidate Starts for LRRHood_198:

(9, 109490), (Start: 13 @109517 has 177 MA's), (18, 109550), (22, 109583), (30, 109673), (31, 109682), (35, 109778), (37, 109799), (65, 110207), (69, 110237), (72, 110261), (73, 110264), (81, 110324), (84, 110366), (91, 110426), (92, 110438), (98, 110477), (100, 110495), (101, 110501), (102, 110525), (108, 110561), (109, 110570), (112, 110585),

Gene: Latch_205 Start: 109065, Stop: 110138, Start Num: 13

Candidate Starts for Latch_205:

(9, 109038), (Start: 13 @109065 has 177 MA's), (18, 109098), (22, 109131), (30, 109221), (31, 109230), (35, 109326), (37, 109347), (65, 109755), (69, 109785), (72, 109809), (73, 109812), (81, 109872), (84, 109914), (91, 109974), (92, 109986), (98, 110025), (100, 110043), (101, 110049), (102, 110073), (108, 110109), (109, 110118), (112, 110133),

Gene: Lee7_205 Start: 111692, Stop: 112765, Start Num: 13

Candidate Starts for Lee7_205:

(9, 111665), (Start: 13 @111692 has 177 MA's), (18, 111725), (22, 111758), (30, 111848), (31, 111857), (35, 111953), (37, 111974), (65, 112382), (69, 112412), (72, 112436), (73, 112439), (81, 112499), (84, 112541), (91, 112601), (92, 112613), (98, 112652), (100, 112670), (101, 112676), (102, 112700), (108, 112736), (109, 112745), (112, 112760),

Gene: Lethe_207 Start: 110955, Stop: 112028, Start Num: 13

Candidate Starts for Lethe_207:

(9, 110928), (Start: 13 @110955 has 177 MA's), (18, 110988), (22, 111021), (30, 111111), (31, 111120), (35, 111216), (37, 111237), (65, 111645), (69, 111675), (72, 111699), (73, 111702), (81, 111762), (84, 111804), (91, 111864), (92, 111876), (98, 111915), (100, 111933), (101, 111939), (102, 111963), (108, 111999), (109, 112008), (112, 112023),

Gene: LifeSavor_204 Start: 109590, Stop: 110663, Start Num: 13

Candidate Starts for LifeSavor_204:

(9, 109563), (Start: 13 @109590 has 177 MA's), (18, 109623), (22, 109656), (30, 109746), (31, 109755), (35, 109851), (37, 109872), (65, 110280), (69, 110310), (72, 110334), (73, 110337), (81, 110397), (84, 110439), (91, 110499), (92, 110511), (98, 110550), (100, 110568), (101, 110574), (102, 110598), (108, 110634), (109, 110643), (112, 110658),

Gene: LinStu_204 Start: 109804, Stop: 110877, Start Num: 13

Candidate Starts for LinStu_204:

(9, 109777), (Start: 13 @109804 has 177 MA's), (18, 109837), (22, 109870), (30, 109960), (31, 109969), (35, 110065), (37, 110086), (65, 110494), (69, 110524), (72, 110548), (73, 110551), (81, 110611), (84, 110653), (91, 110713), (92, 110725), (98, 110764), (100, 110782), (101, 110788), (102, 110812), (108, 110848), (109, 110857), (112, 110872),

Gene: Littleton_208 Start: 110302, Stop: 111375, Start Num: 13

Candidate Starts for Littleton_208:

(9, 110275), (Start: 13 @110302 has 177 MA's), (18, 110335), (22, 110368), (30, 110458), (31, 110467), (35, 110563), (37, 110584), (65, 110992), (69, 111022), (72, 111046), (73, 111049), (81, 111109), (84, 111151), (91, 111211), (92, 111223), (98, 111262), (100, 111280), (101, 111286), (102, 111310), (108, 111346), (109, 111355), (112, 111370),

Gene: Loanshark_202 Start: 109627, Stop: 110700, Start Num: 13

Candidate Starts for Loanshark_202:

(9, 109600), (Start: 13 @109627 has 177 MA's), (18, 109660), (22, 109693), (30, 109783), (31, 109792), (35, 109888), (37, 109909), (65, 110317), (69, 110347), (72, 110371), (73, 110374), (81, 110434), (84, 110476), (91, 110536), (92, 110548), (98, 110587), (100, 110605), (101, 110611), (102, 110635), (108, 110671), (109, 110680), (112, 110695),

Gene: LolaVinca_203 Start: 110857, Stop: 111930, Start Num: 13

Candidate Starts for LolaVinca_203:

(9, 110830), (Start: 13 @110857 has 177 MA's), (18, 110890), (22, 110923), (30, 111013), (31, 111022), (35, 111118), (37, 111139), (65, 111547), (69, 111577), (72, 111601), (73, 111604), (81, 111664), (84, 111706), (91, 111766), (92, 111778), (98, 111817), (100, 111835), (101, 111841), (102, 111865), (108, 111901), (109, 111910), (112, 111925),

Gene: LordLeafolot_207 Start: 110469, Stop: 111542, Start Num: 13

Candidate Starts for LordLeafolot_207:

(9, 110442), (Start: 13 @110469 has 177 MA's), (18, 110502), (22, 110535), (30, 110625), (31, 110634), (35, 110730), (37, 110751), (65, 111159), (69, 111189), (72, 111213), (73, 111216), (81, 111276), (84, 111318), (91, 111378), (92, 111390), (98, 111429), (100, 111447), (101, 111453), (102, 111477), (108, 111513), (109, 111522), (112, 111537),

Gene: Lukilu_196 Start: 110527, Stop: 111600, Start Num: 13

Candidate Starts for Lukilu_196:

(9, 110500), (Start: 13 @110527 has 177 MA's), (18, 110560), (22, 110593), (30, 110683), (31, 110692), (35, 110788), (37, 110809), (65, 111217), (69, 111247), (72, 111271), (73, 111274), (81, 111334), (84, 111376), (91, 111436), (92, 111448), (98, 111487), (100, 111505), (101, 111511), (102, 111535), (108, 111571), (109, 111580), (112, 111595),

Gene: Maby2021_205 Start: 110756, Stop: 111829, Start Num: 13

Candidate Starts for Maby2021_205:

(9, 110729), (Start: 13 @110756 has 177 MA's), (18, 110789), (22, 110822), (30, 110912), (31, 110921), (35, 111017), (37, 111038), (65, 111446), (69, 111476), (72, 111500), (73, 111503), (81, 111563), (84, 111605), (91, 111665), (92, 111677), (98, 111716), (100, 111734), (101, 111740), (102, 111764), (108, 111800), (109, 111809), (112, 111824),

Gene: Mangeria_206 Start: 110858, Stop: 111931, Start Num: 13

Candidate Starts for Mangeria_206:

(9, 110831), (Start: 13 @110858 has 177 MA's), (18, 110891), (22, 110924), (30, 111014), (31, 111023), (35, 111119), (37, 111140), (65, 111548), (69, 111578), (72, 111602), (73, 111605), (81, 111665), (84, 111707), (91, 111767), (92, 111779), (98, 111818), (100, 111836), (101, 111842), (102, 111866), (108, 111902), (109, 111911), (112, 111926),

Gene: Matsumoto_204 Start: 109507, Stop: 110580, Start Num: 13

Candidate Starts for Matsumoto_204:

(9, 109480), (Start: 13 @109507 has 177 MA's), (18, 109540), (22, 109573), (30, 109663), (31, 109672), (35, 109768), (37, 109789), (65, 110197), (69, 110227), (72, 110251), (73, 110254), (81, 110314), (84, 110356), (91, 110416), (92, 110428), (98, 110467), (100, 110485), (101, 110491), (102, 110515), (108, 110551), (109, 110560), (112, 110575),

Gene: McGee_204 Start: 108701, Stop: 109774, Start Num: 13

Candidate Starts for McGee_204:

(9, 108674), (Start: 13 @108701 has 177 MA's), (18, 108734), (22, 108767), (30, 108857), (31, 108866), (35, 108962), (37, 108983), (65, 109391), (69, 109421), (72, 109445), (73, 109448), (81, 109508), (84, 109550), (91, 109610), (92, 109622), (98, 109661), (100, 109679), (101, 109685), (102, 109709), (108, 109745), (109, 109754), (112, 109769),

Gene: McWolfish_202 Start: 109523, Stop: 110596, Start Num: 13

Candidate Starts for McWolfish_202:

(9, 109496), (Start: 13 @109523 has 177 MA's), (18, 109556), (22, 109589), (30, 109679), (31, 109688), (35, 109784), (37, 109805), (65, 110213), (69, 110243), (72, 110267), (73, 110270), (81, 110330), (84, 110372), (91, 110432), (92, 110444), (98, 110483), (100, 110501), (101, 110507), (102, 110531), (108, 110567), (109, 110576), (112, 110591),

Gene: Megamind_202 Start: 109814, Stop: 110887, Start Num: 13

Candidate Starts for Megamind_202:

(9, 109787), (Start: 13 @109814 has 177 MA's), (18, 109847), (22, 109880), (30, 109970), (31, 109979), (35, 110075), (37, 110096), (65, 110504), (69, 110534), (72, 110558), (73, 110561), (81, 110621), (84, 110663), (91, 110723), (92, 110735), (98, 110774), (100, 110792), (101, 110798), (102, 110822), (108, 110858), (109, 110867), (112, 110882),

Gene: Melpomini_200 Start: 108599, Stop: 109672, Start Num: 13

Candidate Starts for Melpomini_200:

(9, 108572), (Start: 13 @108599 has 177 MA's), (18, 108632), (22, 108665), (30, 108755), (31, 108764), (35, 108860), (37, 108881), (65, 109289), (69, 109319), (72, 109343), (73, 109346), (81, 109406), (84, 109448), (91, 109508), (92, 109520), (98, 109559), (100, 109577), (101, 109583), (102, 109607), (108, 109643), (109, 109652), (112, 109667),

Gene: MikeLiesIn_207 Start: 110950, Stop: 112023, Start Num: 13

Candidate Starts for MikeLiesIn_207:

(9, 110923), (Start: 13 @110950 has 177 MA's), (18, 110983), (22, 111016), (30, 111106), (31, 111115), (35, 111211), (37, 111232), (65, 111640), (69, 111670), (72, 111694), (73, 111697), (81, 111757), (84, 111799), (91, 111859), (92, 111871), (98, 111910), (100, 111928), (101, 111934), (102, 111958), (108, 111994), (109, 112003), (112, 112018),

Gene: Mikro_201 Start: 111499, Stop: 112572, Start Num: 13

Candidate Starts for Mikro_201:

(9, 111472), (Start: 13 @111499 has 177 MA's), (18, 111532), (22, 111565), (30, 111655), (31, 111664), (35, 111760), (37, 111781), (65, 112189), (69, 112219), (72, 112243), (73, 112246), (81, 112306), (84, 112348), (91, 112408), (92, 112420), (98, 112459), (100, 112477), (101, 112483), (102, 112507), (108, 112543), (109, 112552), (112, 112567),

Gene: MoMoMixon_203 Start: 109989, Stop: 111062, Start Num: 13

Candidate Starts for MoMoMixon_203:

(9, 109962), (Start: 13 @109989 has 177 MA's), (18, 110022), (22, 110055), (30, 110145), (31, 110154), (35, 110250), (37, 110271), (65, 110679), (69, 110709), (72, 110733), (73, 110736), (81, 110796), (84, 110838), (91, 110898), (92, 110910), (98, 110949), (100, 110967), (101, 110973), (102, 110997), (108, 111033), (109, 111042), (112, 111057),

Gene: Momo_206 Start: 109065, Stop: 110138, Start Num: 13

Candidate Starts for Momo_206:

(9, 109038), (Start: 13 @109065 has 177 MA's), (18, 109098), (22, 109131), (30, 109221), (31, 109230), (35, 109326), (37, 109347), (65, 109755), (69, 109785), (72, 109809), (73, 109812), (81, 109872), (84, 109914), (91, 109974), (92, 109986), (98, 110025), (100, 110043), (101, 110049), (102, 110073), (108, 110109), (109, 110118), (112, 110133),

Gene: Morizzled23_202 Start: 108432, Stop: 109505, Start Num: 13

Candidate Starts for Morizzled23_202:

(9, 108405), (Start: 13 @108432 has 177 MA's), (18, 108465), (22, 108498), (30, 108588), (31, 108597), (35, 108693), (37, 108714), (65, 109122), (69, 109152), (72, 109176), (73, 109179), (81, 109239), (84, 109281), (91, 109341), (92, 109353), (98, 109392), (100, 109410), (101, 109416), (102, 109440), (108, 109476), (109, 109485), (112, 109500),

Gene: Myrna_188 Start: 106597, Stop: 107742, Start Num: 12

Candidate Starts for Myrna_188:

(Start: 12 @106597 has 2 MA's), (17, 106621), (26, 106735), (30, 106759), (31, 106768), (35, 106885), (36, 106900), (37, 106906), (38, 106936), (42, 106990), (45, 107014), (48, 107047), (53, 107107), (58, 107209), (62, 107263), (63, 107272), (71, 107353), (88, 107491), (97, 107566), (114, 107710),

Gene: Naija_206 Start: 109768, Stop: 110841, Start Num: 13

Candidate Starts for Naija_206:

(9, 109741), (Start: 13 @109768 has 177 MA's), (18, 109801), (22, 109834), (30, 109924), (31, 109933), (35, 110029), (37, 110050), (65, 110458), (69, 110488), (72, 110512), (73, 110515), (81, 110575), (84, 110617), (91, 110677), (92, 110689), (98, 110728), (100, 110746), (101, 110752), (102, 110776), (108, 110812), (109, 110821), (112, 110836),

Gene: Napoleon13_202 Start: 108796, Stop: 109869, Start Num: 13

Candidate Starts for Napoleon13_202:

(9, 108769), (Start: 13 @108796 has 177 MA's), (18, 108829), (22, 108862), (30, 108952), (31, 108961), (35, 109057), (37, 109078), (65, 109486), (69, 109516), (72, 109540), (73, 109543), (81, 109603), (84, 109645), (91, 109705), (92, 109717), (98, 109756), (100, 109774), (101, 109780), (102, 109804), (108, 109840), (109, 109849), (112, 109864),

Gene: Nappy_206 Start: 111462, Stop: 112535, Start Num: 13

Candidate Starts for Nappy_206:

(9, 111435), (Start: 13 @111462 has 177 MA's), (18, 111495), (22, 111528), (30, 111618), (31, 111627), (35, 111723), (37, 111744), (65, 112152), (69, 112182), (72, 112206), (73, 112209), (81, 112269), (84, 112311), (91, 112371), (92, 112383), (98, 112422), (100, 112440), (101, 112446), (102, 112470), (108, 112506), (109, 112515), (112, 112530),

Gene: Naval22_210 Start: 111545, Stop: 112618, Start Num: 13

Candidate Starts for Naval22_210:

(9, 111518), (Start: 13 @111545 has 177 MA's), (18, 111578), (22, 111611), (30, 111701), (31, 111710), (35, 111806), (37, 111827), (65, 112235), (69, 112265), (72, 112289), (73, 112292), (81, 112352), (84, 112394), (91, 112454), (92, 112466), (98, 112505), (100, 112523), (101, 112529), (102, 112553), (108, 112589), (109, 112598), (112, 112613),

Gene: NedWong_204 Start: 110201, Stop: 111274, Start Num: 13

Candidate Starts for NedWong_204:

(9, 110174), (Start: 13 @110201 has 177 MA's), (18, 110234), (22, 110267), (30, 110357), (31, 110366), (35, 110462), (37, 110483), (65, 110891), (69, 110921), (72, 110945), (73, 110948), (81, 111008), (84, 111050), (91, 111110), (92, 111122), (98, 111161), (100, 111179), (101, 111185), (102, 111209), (108, 111245), (109, 111254), (112, 111269),

Gene: Ngannou_202 Start: 108047, Stop: 109120, Start Num: 13

Candidate Starts for Ngannou_202:

(9, 108020), (Start: 13 @108047 has 177 MA's), (18, 108080), (22, 108113), (30, 108203), (31, 108212), (35, 108308), (37, 108329), (65, 108737), (69, 108767), (72, 108791), (73, 108794), (81,

108854), (84, 108896), (91, 108956), (92, 108968), (98, 109007), (100, 109025), (101, 109031), (102, 109055), (108, 109091), (109, 109100), (112, 109115),

Gene: Nidhogg_206 Start: 110594, Stop: 111667, Start Num: 13

Candidate Starts for Nidhogg_206:

(9, 110567), (Start: 13 @110594 has 177 MA's), (18, 110627), (22, 110660), (30, 110750), (31, 110759), (35, 110855), (37, 110876), (65, 111284), (69, 111314), (72, 111338), (73, 111341), (81, 111401), (84, 111443), (91, 111503), (92, 111515), (98, 111554), (100, 111572), (101, 111578), (102, 111602), (108, 111638), (109, 111647), (112, 111662),

Gene: NoodleTree_211 Start: 110501, Stop: 111574, Start Num: 13

Candidate Starts for NoodleTree_211:

(9, 110474), (Start: 13 @110501 has 177 MA's), (18, 110534), (22, 110567), (30, 110657), (31, 110666), (35, 110762), (37, 110783), (65, 111191), (69, 111221), (72, 111245), (73, 111248), (81, 111308), (84, 111350), (91, 111410), (92, 111422), (98, 111461), (100, 111479), (101, 111485), (102, 111509), (108, 111545), (109, 111554), (112, 111569),

Gene: Norm_205 Start: 110503, Stop: 111576, Start Num: 13

Candidate Starts for Norm_205:

(9, 110476), (Start: 13 @110503 has 177 MA's), (18, 110536), (22, 110569), (30, 110659), (31, 110668), (35, 110764), (37, 110785), (65, 111193), (69, 111223), (72, 111247), (73, 111250), (81, 111310), (84, 111352), (91, 111412), (92, 111424), (98, 111463), (100, 111481), (101, 111487), (102, 111511), (108, 111547), (109, 111556), (112, 111571),

Gene: NuevoMundo_208 Start: 112055, Stop: 113128, Start Num: 13

Candidate Starts for NuevoMundo_208:

(9, 112028), (Start: 13 @112055 has 177 MA's), (18, 112088), (22, 112121), (30, 112211), (31, 112220), (35, 112316), (37, 112337), (65, 112745), (69, 112775), (72, 112799), (73, 112802), (81, 112862), (84, 112904), (91, 112964), (92, 112976), (98, 113015), (100, 113033), (101, 113039), (102, 113063), (108, 113099), (109, 113108), (112, 113123),

Gene: ParkTD_204 Start: 110065, Stop: 111138, Start Num: 13

Candidate Starts for ParkTD_204:

(9, 110038), (Start: 13 @110065 has 177 MA's), (18, 110098), (22, 110131), (30, 110221), (31, 110230), (35, 110326), (37, 110347), (65, 110755), (69, 110785), (72, 110809), (73, 110812), (81, 110872), (84, 110914), (91, 110974), (92, 110986), (98, 111025), (100, 111043), (101, 111049), (102, 111073), (108, 111109), (109, 111118), (112, 111133),

Gene: Patter_206 Start: 109079, Stop: 110152, Start Num: 13

Candidate Starts for Patter_206:

(9, 109052), (Start: 13 @109079 has 177 MA's), (18, 109112), (22, 109145), (30, 109235), (31, 109244), (35, 109340), (37, 109361), (65, 109769), (69, 109799), (72, 109823), (73, 109826), (81, 109886), (84, 109928), (91, 109988), (92, 110000), (98, 110039), (100, 110057), (101, 110063), (102, 110087), (108, 110123), (109, 110132), (112, 110147),

Gene: Phabba_199 Start: 106502, Stop: 107647, Start Num: 12

Candidate Starts for Phabba_199:

(8, 106463), (Start: 12 @106502 has 2 MA's), (17, 106526), (26, 106640), (31, 106673), (35, 106790), (36, 106805), (37, 106811), (38, 106841), (42, 106895), (43, 106907), (45, 106919), (48, 106952), (53, 107012), (58, 107114), (62, 107168), (63, 107177), (71, 107258), (88, 107396), (97, 107471), (113, 107591),

Gene: Phlegm_209 Start: 109768, Stop: 110841, Start Num: 13

Candidate Starts for Phlegm_209:

(9, 109741), (Start: 13 @109768 has 177 MA's), (18, 109801), (22, 109834), (30, 109924), (31, 109933), (35, 110029), (37, 110050), (65, 110458), (69, 110488), (72, 110512), (73, 110515), (81, 110575), (84, 110617), (91, 110677), (92, 110689), (98, 110728), (100, 110746), (101, 110752), (102, 110776), (108, 110812), (109, 110821), (112, 110836),

Gene: Phox_206 Start: 110723, Stop: 111796, Start Num: 13

Candidate Starts for Phox_206:

(9, 110696), (Start: 13 @110723 has 177 MA's), (18, 110756), (22, 110789), (30, 110879), (31, 110888), (35, 110984), (37, 111005), (65, 111413), (69, 111443), (72, 111467), (73, 111470), (81, 111530), (84, 111572), (91, 111632), (92, 111644), (98, 111683), (100, 111701), (101, 111707), (102, 111731), (108, 111767), (109, 111776), (112, 111791),

Gene: Phrappuccino_115 Start: 83314, Stop: 84369, Start Num: 14

Candidate Starts for Phrappuccino_115:

(7, 83179), (Start: 14 @83314 has 2 MA's), (21, 83374), (28, 83455), (52, 83776), (55, 83863), (64, 83980), (74, 84043), (75, 84055), (76, 84061), (78, 84073), (81, 84097), (85, 84142), (87, 84166), (95, 84235), (97, 84247), (98, 84250), (99, 84253), (103, 84301), (105, 84310),

Gene: Phusco_203 Start: 108600, Stop: 109673, Start Num: 13

Candidate Starts for Phusco_203:

(9, 108573), (Start: 13 @108600 has 177 MA's), (18, 108633), (22, 108666), (30, 108756), (31, 108765), (35, 108861), (37, 108882), (65, 109290), (69, 109320), (72, 109344), (73, 109347), (81, 109407), (84, 109449), (91, 109509), (92, 109521), (98, 109560), (100, 109578), (101, 109584), (102, 109608), (108, 109644), (109, 109653), (112, 109668),

Gene: Pier_206 Start: 111597, Stop: 112670, Start Num: 13

Candidate Starts for Pier_206:

(9, 111570), (Start: 13 @111597 has 177 MA's), (18, 111630), (22, 111663), (30, 111753), (31, 111762), (35, 111858), (37, 111879), (65, 112287), (69, 112317), (72, 112341), (73, 112344), (81, 112404), (84, 112446), (91, 112506), (92, 112518), (98, 112557), (100, 112575), (101, 112581), (102, 112605), (108, 112641), (109, 112650), (112, 112665),

Gene: Pinkcreek_189 Start: 108976, Stop: 110049, Start Num: 13

Candidate Starts for Pinkcreek_189:

(9, 108949), (Start: 13 @108976 has 177 MA's), (18, 109009), (22, 109042), (30, 109132), (31, 109141), (35, 109237), (37, 109258), (65, 109666), (69, 109696), (72, 109720), (73, 109723), (81, 109783), (84, 109825), (91, 109885), (92, 109897), (98, 109936), (100, 109954), (101, 109960), (102, 109984), (108, 110020), (109, 110029), (112, 110044),

Gene: Pio_213 Start: 112792, Stop: 113865, Start Num: 13

Candidate Starts for Pio_213:

(9, 112765), (Start: 13 @112792 has 177 MA's), (18, 112825), (22, 112858), (30, 112948), (31, 112957), (35, 113053), (37, 113074), (65, 113482), (69, 113512), (72, 113536), (73, 113539), (81, 113599), (84, 113641), (91, 113701), (92, 113713), (98, 113752), (100, 113770), (101, 113776), (102, 113800), (108, 113836), (109, 113845), (112, 113860),

Gene: Pivoine_206 Start: 109768, Stop: 110841, Start Num: 13

Candidate Starts for Pivoine_206:

(9, 109741), (Start: 13 @109768 has 177 MA's), (18, 109801), (22, 109834), (30, 109924), (31, 109933), (35, 110029), (37, 110050), (65, 110458), (69, 110488), (72, 110512), (73, 110515), (81, 110575), (84, 110617), (91, 110677), (92, 110689), (98, 110728), (100, 110746), (101, 110752), (102, 110776), (108, 110812), (109, 110821), (112, 110836),

Gene: Pleione_209 Start: 110543, Stop: 111616, Start Num: 13

Candidate Starts for Pleione_209:

(9, 110516), (Start: 13 @110543 has 177 MA's), (18, 110576), (22, 110609), (30, 110699), (31, 110708), (35, 110804), (37, 110825), (65, 111233), (69, 111263), (72, 111287), (73, 111290), (81, 111350), (84, 111392), (91, 111452), (92, 111464), (98, 111503), (100, 111521), (101, 111527), (102, 111551), (108, 111587), (109, 111596), (112, 111611),

Gene: Primadonna_200 Start: 109429, Stop: 110502, Start Num: 13

Candidate Starts for Primadonna_200:

(9, 109402), (Start: 13 @109429 has 177 MA's), (18, 109462), (22, 109495), (30, 109585), (31, 109594), (35, 109690), (37, 109711), (65, 110119), (69, 110149), (72, 110173), (73, 110176), (81, 110236), (84, 110278), (91, 110338), (92, 110350), (98, 110389), (100, 110407), (101, 110413), (102, 110437), (108, 110473), (109, 110482), (112, 110497),

Gene: Pupper_148 Start: 103120, Stop: 104235, Start Num: 13

Candidate Starts for Pupper_148:

(Start: 13 @103120 has 177 MA's), (18, 103162), (23, 103204), (25, 103240), (31, 103297), (33, 103354), (36, 103408), (37, 103414), (46, 103528), (49, 103585), (50, 103600), (52, 103621), (59, 103756), (75, 103903), (76, 103909), (80, 103945), (88, 104023), (97, 104095), (107, 104173), (110, 104197),

Gene: PurduePete_205 Start: 110771, Stop: 111844, Start Num: 13

Candidate Starts for PurduePete_205:

(9, 110744), (Start: 13 @110771 has 177 MA's), (18, 110804), (22, 110837), (30, 110927), (31, 110936), (35, 111032), (37, 111053), (65, 111461), (69, 111491), (72, 111515), (73, 111518), (81, 111578), (84, 111620), (91, 111680), (92, 111692), (98, 111731), (100, 111749), (101, 111755), (102, 111779), (108, 111815), (109, 111824), (112, 111839),

Gene: QBert_197 Start: 109124, Stop: 110197, Start Num: 13

Candidate Starts for QBert_197:

(9, 109097), (Start: 13 @109124 has 177 MA's), (18, 109157), (22, 109190), (30, 109280), (31, 109289), (35, 109385), (37, 109406), (65, 109814), (69, 109844), (72, 109868), (73, 109871), (81, 109931), (84, 109973), (91, 110033), (92, 110045), (98, 110084), (100, 110102), (101, 110108), (102, 110132), (108, 110168), (109, 110177), (112, 110192),

Gene: Quasimodo_207 Start: 110394, Stop: 111467, Start Num: 13

Candidate Starts for Quasimodo_207:

(9, 110367), (Start: 13 @110394 has 177 MA's), (18, 110427), (22, 110460), (30, 110550), (31, 110559), (35, 110655), (37, 110676), (65, 111084), (69, 111114), (72, 111138), (73, 111141), (81, 111201), (84, 111243), (91, 111303), (92, 111315), (98, 111354), (100, 111372), (101, 111378), (102, 111402), (108, 111438), (109, 111447), (112, 111462),

Gene: Rabinovish_198 Start: 110669, Stop: 111742, Start Num: 13

Candidate Starts for Rabinovish_198:

(9, 110642), (Start: 13 @110669 has 177 MA's), (18, 110702), (22, 110735), (30, 110825), (31, 110834), (35, 110930), (37, 110951), (65, 111359), (69, 111389), (72, 111413), (73, 111416), (81, 111476), (84, 111518), (91, 111578), (92, 111590), (98, 111629), (100, 111647), (101, 111653), (102, 111677), (108, 111713), (109, 111722), (112, 111737),

Gene: Rahel_206 Start: 109503, Stop: 110576, Start Num: 13

Candidate Starts for Rahel_206:

(9, 109476), (Start: 13 @109503 has 177 MA's), (18, 109536), (22, 109569), (30, 109659), (31, 109668), (35, 109764), (37, 109785), (65, 110193), (69, 110223), (72, 110247), (73, 110250), (81, 110310), (84, 110352), (91, 110412), (92, 110424), (98, 110463), (100, 110481), (101, 110487), (102, 110511), (108, 110547), (109, 110556), (112, 110571),

Gene: RedWattleHog_75 Start: 68343, Stop: 69437, Start Num: 16

Candidate Starts for RedWattleHog_75:

(Start: 16 @68343 has 2 MA's), (19, 68388), (23, 68427), (31, 68502), (37, 68619), (50, 68772), (56, 68895), (73, 69090), (75, 69105), (86, 69210), (87, 69216), (96, 69288), (98, 69300), (101, 69324), (103, 69348), (104, 69351), (106, 69360), (111, 69405),

Gene: Rizal_197 Start: 108021, Stop: 109094, Start Num: 13

Candidate Starts for Rizal_197:

(9, 107994), (Start: 13 @108021 has 177 MA's), (18, 108054), (22, 108087), (30, 108177), (31, 108186), (35, 108282), (37, 108303), (65, 108711), (69, 108741), (72, 108765), (73, 108768), (81, 108828), (84, 108870), (91, 108930), (92, 108942), (98, 108981), (100, 108999), (101, 109005), (102, 109029), (108, 109065), (109, 109074), (112, 109089),

Gene: RoMag_200 Start: 109814, Stop: 110887, Start Num: 13

Candidate Starts for RoMag_200:

(9, 109787), (Start: 13 @109814 has 177 MA's), (18, 109847), (22, 109880), (30, 109970), (31, 109979), (35, 110075), (37, 110096), (65, 110504), (69, 110534), (72, 110558), (73, 110561), (81, 110621), (84, 110663), (91, 110723), (92, 110735), (98, 110774), (100, 110792), (101, 110798), (102, 110822), (108, 110858), (109, 110867), (112, 110882),

Gene: Ronan_201 Start: 108206, Stop: 109279, Start Num: 13

Candidate Starts for Ronan_201:

(9, 108179), (Start: 13 @108206 has 177 MA's), (18, 108239), (22, 108272), (30, 108362), (31, 108371), (35, 108467), (37, 108488), (65, 108896), (69, 108926), (72, 108950), (73, 108953), (81, 109013), (84, 109055), (91, 109115), (92, 109127), (98, 109166), (100, 109184), (101, 109190), (102, 109214), (108, 109250), (109, 109259), (112, 109274),

Gene: Roots515_207 Start: 111322, Stop: 112395, Start Num: 13

Candidate Starts for Roots515_207:

(9, 111295), (Start: 13 @111322 has 177 MA's), (18, 111355), (22, 111388), (30, 111478), (31, 111487), (35, 111583), (37, 111604), (65, 112012), (69, 112042), (72, 112066), (73, 112069), (81, 112129), (84, 112171), (91, 112231), (92, 112243), (98, 112282), (100, 112300), (101, 112306), (102, 112330), (108, 112366), (109, 112375), (112, 112390),

Gene: SCentae_147 Start: 103271, Stop: 104386, Start Num: 13

Candidate Starts for SCentae_147:

(5, 103007), (6, 103127), (Start: 13 @103271 has 177 MA's), (18, 103313), (25, 103391), (31, 103448), (33, 103505), (36, 103559), (37, 103565), (44, 103667), (46, 103679), (49, 103736), (50, 103751), (52, 103772), (59, 103907), (75, 104054), (76, 104060), (80, 104096), (88, 104174), (97, 104246), (107, 104324), (110, 104348),

Gene: SVoro_202 Start: 110115, Stop: 111188, Start Num: 13

Candidate Starts for SVoro_202:

(9, 110088), (Start: 13 @110115 has 177 MA's), (18, 110148), (22, 110181), (30, 110271), (31, 110280), (35, 110376), (37, 110397), (65, 110805), (69, 110835), (72, 110859), (73, 110862), (81, 110922), (84, 110964), (91, 111024), (92, 111036), (98, 111075), (100, 111093), (101, 111099), (102, 111123), (108, 111159), (109, 111168), (112, 111183),

Gene: Salacia_205 Start: 109906, Stop: 110979, Start Num: 13

Candidate Starts for Salacia_205:

(9, 109879), (Start: 13 @109906 has 177 MA's), (18, 109939), (22, 109972), (30, 110062), (31, 110071), (35, 110167), (37, 110188), (65, 110596), (69, 110626), (72, 110650), (73, 110653), (81, 110713), (84, 110755), (91, 110815), (92, 110827), (98, 110866), (100, 110884), (101, 110890), (102, 110914), (108, 110950), (109, 110959), (112, 110974),

Gene: Sauce_201 Start: 108720, Stop: 109793, Start Num: 13

Candidate Starts for Sauce_201:

(9, 108693), (Start: 13 @108720 has 177 MA's), (18, 108753), (22, 108786), (30, 108876), (31, 108885), (35, 108981), (37, 109002), (65, 109410), (69, 109440), (72, 109464), (73, 109467), (81, 109527), (84, 109569), (91, 109629), (92, 109641), (98, 109680), (100, 109698), (101, 109704), (102, 109728), (108, 109764), (109, 109773), (112, 109788),

Gene: ScoobyDoobyDoo_186 Start: 103679, Stop: 104788, Start Num: 13

Candidate Starts for ScoobyDoobyDoo_186:

(Start: 13 @103679 has 177 MA's), (17, 103700), (27, 103820), (35, 103964), (36, 103979), (38, 104015), (40, 104036), (41, 104060), (50, 104147), (58, 104285), (60, 104306), (66, 104402), (83, 104546), (88, 104585),

Gene: ScottMcG_198 Start: 108527, Stop: 109600, Start Num: 13

Candidate Starts for ScottMcG_198:

(9, 108500), (Start: 13 @108527 has 177 MA's), (18, 108560), (22, 108593), (30, 108683), (31, 108692), (35, 108788), (37, 108809), (65, 109217), (69, 109247), (72, 109271), (73, 109274), (81, 109334), (84, 109376), (91, 109436), (92, 109448), (98, 109487), (100, 109505), (101, 109511), (102, 109535), (108, 109571), (109, 109580), (112, 109595),

Gene: Sebata_206 Start: 111229, Stop: 112302, Start Num: 13

Candidate Starts for Sebata_206:

(9, 111202), (Start: 13 @111229 has 177 MA's), (18, 111262), (22, 111295), (30, 111385), (31, 111394), (35, 111490), (37, 111511), (65, 111919), (69, 111949), (72, 111973), (73, 111976), (81, 112036), (84, 112078), (91, 112138), (92, 112150), (98, 112189), (100, 112207), (101, 112213), (102, 112237), (108, 112273), (109, 112282), (112, 112297),

Gene: Settecandela_115 Start: 83314, Stop: 84369, Start Num: 14

Candidate Starts for Settecandela_115:

(7, 83179), (Start: 14 @83314 has 2 MA's), (21, 83374), (28, 83455), (52, 83776), (55, 83863), (64, 83980), (74, 84043), (75, 84055), (76, 84061), (78, 84073), (81, 84097), (85, 84142), (87, 84166), (95, 84235), (97, 84247), (98, 84250), (99, 84253), (103, 84301), (105, 84310),

Gene: Shaqnato_196 Start: 108937, Stop: 110010, Start Num: 13

Candidate Starts for Shaqnato_196:

(9, 108910), (Start: 13 @108937 has 177 MA's), (18, 108970), (22, 109003), (30, 109093), (31, 109102), (35, 109198), (37, 109219), (65, 109627), (69, 109657), (72, 109681), (73, 109684), (81, 109744), (84, 109786), (91, 109846), (92, 109858), (98, 109897), (100, 109915), (101, 109921), (102, 109945), (108, 109981), (109, 109990), (112, 110005),

Gene: Shelob_206 Start: 111677, Stop: 112750, Start Num: 13

Candidate Starts for Shelob_206:

(9, 111650), (Start: 13 @111677 has 177 MA's), (18, 111710), (22, 111743), (30, 111833), (31, 111842), (35, 111938), (37, 111959), (65, 112367), (69, 112397), (72, 112421), (73, 112424), (81, 112484), (84, 112526), (91, 112586), (92, 112598), (98, 112637), (100, 112655), (101, 112661), (102, 112685), (108, 112721), (109, 112730), (112, 112745),

Gene: ShiaLabeouf_202 Start: 108711, Stop: 109784, Start Num: 13

Candidate Starts for ShiaLabeouf_202:

(9, 108684), (Start: 13 @108711 has 177 MA's), (18, 108744), (22, 108777), (30, 108867), (31, 108876), (35, 108972), (37, 108993), (65, 109401), (69, 109431), (72, 109455), (73, 109458), (81, 109518), (84, 109560), (91, 109620), (92, 109632), (98, 109671), (100, 109689), (101, 109695), (102, 109719), (108, 109755), (109, 109764), (112, 109779),

Gene: Shifa_182 Start: 109288, Stop: 110361, Start Num: 13

Candidate Starts for Shifa_182:

(9, 109261), (Start: 13 @109288 has 177 MA's), (18, 109321), (22, 109354), (30, 109444), (31, 109453), (35, 109549), (37, 109570), (65, 109978), (69, 110008), (72, 110032), (73, 110035), (81, 110095), (84, 110137), (91, 110197), (92, 110209), (98, 110248), (100, 110266), (101, 110272), (102, 110296), (108, 110332), (109, 110341), (112, 110356),

Gene: Shnickers_203 Start: 108775, Stop: 109848, Start Num: 13

Candidate Starts for Shnickers_203:

(9, 108748), (Start: 13 @108775 has 177 MA's), (18, 108808), (22, 108841), (30, 108931), (31, 108940), (35, 109036), (37, 109057), (65, 109465), (69, 109495), (72, 109519), (73, 109522), (81, 109582), (84, 109624), (91, 109684), (92, 109696), (98, 109735), (100, 109753), (101, 109759), (102, 109783), (108, 109819), (109, 109828), (112, 109843),

Gene: Shrimp_207 Start: 110832, Stop: 111905, Start Num: 13

Candidate Starts for Shrimp_207:

(9, 110805), (Start: 13 @110832 has 177 MA's), (18, 110865), (22, 110898), (30, 110988), (31, 110997), (35, 111093), (37, 111114), (65, 111522), (69, 111552), (72, 111576), (73, 111579), (81, 111639), (84, 111681), (91, 111741), (92, 111753), (98, 111792), (100, 111810), (101, 111816), (102, 111840), (108, 111876), (109, 111885), (112, 111900),

Gene: SilverDipper_209 Start: 110324, Stop: 111397, Start Num: 13

Candidate Starts for SilverDipper_209:

(9, 110297), (Start: 13 @110324 has 177 MA's), (18, 110357), (22, 110390), (30, 110480), (31, 110489), (35, 110585), (37, 110606), (65, 111014), (69, 111044), (72, 111068), (73, 111071), (81, 111131), (84, 111173), (91, 111233), (92, 111245), (98, 111284), (100, 111302), (101, 111308), (102, 111332), (108, 111368), (109, 111377), (112, 111392),

Gene: Skog_208 Start: 132502, Stop: 133617, Start Num: 13

Candidate Starts for Skog_208:

(1, 131149), (2, 131212), (3, 131368), (4, 131917), (6, 132355), (Start: 13 @132502 has 177 MA's), (18, 132544), (31, 132679), (36, 132790), (37, 132796), (46, 132910), (49, 132967), (50, 132982), (52, 133003), (71, 133264), (75, 133285), (76, 133291), (80, 133327), (81, 133330), (84, 133372), (88, 133405), (90, 133429), (94, 133456), (98, 133480), (106, 133543), (107, 133555),

Gene: SmallFry_205 Start: 108869, Stop: 109942, Start Num: 13

Candidate Starts for SmallFry_205:

(9, 108842), (Start: 13 @108869 has 177 MA's), (18, 108902), (22, 108935), (30, 109025), (31, 109034), (35, 109130), (37, 109151), (65, 109559), (69, 109589), (72, 109613), (73, 109616), (81, 109676), (84, 109718), (91, 109778), (92, 109790), (98, 109829), (100, 109847), (101, 109853), (102, 109877), (108, 109913), (109, 109922), (112, 109937),

Gene: Spec_200 Start: 109060, Stop: 110133, Start Num: 13

Candidate Starts for Spec_200:

(9, 109033), (Start: 13 @109060 has 177 MA's), (18, 109093), (22, 109126), (30, 109216), (31, 109225), (35, 109321), (37, 109342), (65, 109750), (69, 109780), (72, 109804), (73, 109807), (81, 109867), (84, 109909), (91, 109969), (92, 109981), (98, 110020), (100, 110038), (101, 110044), (102, 110068), (108, 110104), (109, 110113), (112, 110128),

Gene: Specks_209 Start: 111176, Stop: 112249, Start Num: 13

Candidate Starts for Specks_209:

(9, 111149), (Start: 13 @111176 has 177 MA's), (18, 111209), (22, 111242), (30, 111332), (31, 111341), (35, 111437), (37, 111458), (65, 111866), (69, 111896), (72, 111920), (73, 111923), (81, 111983), (84, 112025), (91, 112085), (92, 112097), (98, 112136), (100, 112154), (101, 112160), (102, 112184), (108, 112220), (109, 112229), (112, 112244),

Gene: Sprinklers_203 Start: 109427, Stop: 110500, Start Num: 13

Candidate Starts for Sprinklers_203:

(9, 109400), (Start: 13 @109427 has 177 MA's), (18, 109460), (22, 109493), (30, 109583), (31, 109592), (35, 109688), (37, 109709), (65, 110117), (69, 110147), (72, 110171), (73, 110174), (81, 110234), (84, 110276), (91, 110336), (92, 110348), (98, 110387), (100, 110405), (101, 110411), (102, 110435), (108, 110471), (109, 110480), (112, 110495),

Gene: Spud_199 Start: 109139, Stop: 110212, Start Num: 13

Candidate Starts for Spud_199:

(9, 109112), (Start: 13 @109139 has 177 MA's), (18, 109172), (22, 109205), (30, 109295), (31, 109304), (35, 109400), (37, 109421), (65, 109829), (69, 109859), (72, 109883), (73, 109886), (81, 109946), (84, 109988), (91, 110048), (92, 110060), (98, 110099), (100, 110117), (101, 110123), (102, 110147), (108, 110183), (109, 110192), (112, 110207),

Gene: SrishMeg2525_202 Start: 110303, Stop: 111376, Start Num: 13

Candidate Starts for SrishMeg2525_202:

(9, 110276), (Start: 13 @110303 has 177 MA's), (18, 110336), (22, 110369), (30, 110459), (31, 110468), (35, 110564), (37, 110585), (65, 110993), (69, 111023), (72, 111047), (73, 111050), (81, 111110), (84, 111152), (91, 111212), (92, 111224), (98, 111263), (100, 111281), (101, 111287), (102, 111311), (108, 111347), (109, 111356), (112, 111371),

Gene: StephanieG_201 Start: 110334, Stop: 111407, Start Num: 13

Candidate Starts for StephanieG_201:

(9, 110307), (Start: 13 @110334 has 177 MA's), (18, 110367), (22, 110400), (30, 110490), (31, 110499), (35, 110595), (37, 110616), (65, 111024), (69, 111054), (72, 111078), (73, 111081), (81, 111141), (84, 111183), (91, 111243), (92, 111255), (98, 111294), (100, 111312), (101, 111318), (102, 111342), (108, 111378), (109, 111387), (112, 111402),

Gene: Stormageddon_72 Start: 68324, Stop: 69418, Start Num: 16

Candidate Starts for Stormageddon_72:

(Start: 16 @68324 has 2 MA's), (19, 68369), (23, 68408), (31, 68483), (37, 68600), (50, 68753), (56, 68876), (73, 69071), (75, 69086), (86, 69191), (87, 69197), (96, 69269), (98, 69281), (101, 69305), (103, 69329), (104, 69332), (106, 69341), (111, 69386),

Gene: Stubby_189 Start: 109179, Stop: 110252, Start Num: 13

Candidate Starts for Stubby_189:

(9, 109152), (Start: 13 @109179 has 177 MA's), (18, 109212), (22, 109245), (30, 109335), (31, 109344), (35, 109440), (37, 109461), (65, 109869), (69, 109899), (72, 109923), (73, 109926), (81, 109986), (84, 110028), (91, 110088), (92, 110100), (98, 110139), (100, 110157), (101, 110163), (102, 110187), (108, 110223), (109, 110232), (112, 110247),

Gene: StubbySaigey_210 Start: 109858, Stop: 110931, Start Num: 13

Candidate Starts for StubbySaigey_210:

(9, 109831), (Start: 13 @109858 has 177 MA's), (18, 109891), (22, 109924), (30, 110014), (31, 110023), (35, 110119), (37, 110140), (65, 110548), (69, 110578), (72, 110602), (73, 110605), (81, 110665), (84, 110707), (91, 110767), (92, 110779), (98, 110818), (100, 110836), (101, 110842), (102, 110866), (108, 110902), (109, 110911), (112, 110926),

Gene: Tainan_206 Start: 110196, Stop: 111269, Start Num: 13

Candidate Starts for Tainan_206:

(9, 110169), (Start: 13 @110196 has 177 MA's), (18, 110229), (22, 110262), (30, 110352), (31, 110361), (35, 110457), (37, 110478), (65, 110886), (69, 110916), (72, 110940), (73, 110943), (81, 111003), (84, 111045), (91, 111105), (92, 111117), (98, 111156), (100, 111174), (101, 111180), (102, 111204), (108, 111240), (109, 111249), (112, 111264),

Gene: Teardrop_202 Start: 108371, Stop: 109444, Start Num: 13

Candidate Starts for Teardrop_202:

(9, 108344), (Start: 13 @108371 has 177 MA's), (18, 108404), (22, 108437), (30, 108527), (31, 108536), (35, 108632), (37, 108653), (65, 109061), (69, 109091), (72, 109115), (73, 109118), (81, 109178), (84, 109220), (91, 109280), (92, 109292), (98, 109331), (100, 109349), (101, 109355), (102, 109379), (108, 109415), (109, 109424), (112, 109439),

Gene: TinyTim_203 Start: 109152, Stop: 110225, Start Num: 13

Candidate Starts for TinyTim_203:

(9, 109125), (Start: 13 @109152 has 177 MA's), (18, 109185), (22, 109218), (30, 109308), (31, 109317), (35, 109413), (37, 109434), (65, 109842), (69, 109872), (72, 109896), (73, 109899), (81, 109959), (84, 110001), (91, 110061), (92, 110073), (98, 110112), (100, 110130), (101, 110136), (102, 110160), (108, 110196), (109, 110205), (112, 110220),

Gene: Tonenili_226 Start: 115973, Stop: 117046, Start Num: 13

Candidate Starts for Tonenili_226:

(6, 115823), (Start: 13 @115973 has 177 MA's), (18, 116006), (22, 116039), (24, 116066), (35, 116234), (37, 116255), (65, 116663), (72, 116717), (73, 116720), (81, 116780), (84, 116822), (91, 116882), (98, 116933), (100, 116951), (101, 116957), (102, 116981), (103, 116984), (108, 117017), (109, 117026), (112, 117041),

Gene: Tortoise16_203 Start: 109614, Stop: 110687, Start Num: 13

Candidate Starts for Tortoise16_203:

(9, 109587), (Start: 13 @109614 has 177 MA's), (18, 109647), (22, 109680), (30, 109770), (31, 109779), (35, 109875), (37, 109896), (65, 110304), (69, 110334), (72, 110358), (73, 110361), (81, 110421), (84, 110463), (91, 110523), (92, 110535), (98, 110574), (100, 110592), (101, 110598), (102, 110622), (108, 110658), (109, 110667), (112, 110682),

Gene: Trinitium_201 Start: 108899, Stop: 109972, Start Num: 13

Candidate Starts for Trinitium_201:

(9, 108872), (Start: 13 @108899 has 177 MA's), (18, 108932), (22, 108965), (30, 109055), (31, 109064), (35, 109160), (37, 109181), (65, 109589), (69, 109619), (72, 109643), (73, 109646), (81, 109706), (84, 109748), (91, 109808), (92, 109820), (98, 109859), (100, 109877), (101, 109883), (102, 109907), (108, 109943), (109, 109952), (112, 109967),

Gene: Turret_198 Start: 108481, Stop: 109554, Start Num: 13

Candidate Starts for Turret_198:

(9, 108454), (Start: 13 @108481 has 177 MA's), (18, 108514), (22, 108547), (30, 108637), (31, 108646), (35, 108742), (37, 108763), (65, 109171), (69, 109201), (72, 109225), (73, 109228), (81,

109288), (84, 109330), (91, 109390), (92, 109402), (98, 109441), (100, 109459), (101, 109465), (102, 109489), (108, 109525), (109, 109534), (112, 109549),

Gene: Tyke_203 Start: 110981, Stop: 112054, Start Num: 13

Candidate Starts for Tyke_203:

(9, 110954), (Start: 13 @110981 has 177 MA's), (18, 111014), (22, 111047), (30, 111137), (31, 111146), (35, 111242), (37, 111263), (65, 111671), (69, 111701), (72, 111725), (73, 111728), (81, 111788), (84, 111830), (91, 111890), (92, 111902), (98, 111941), (100, 111959), (101, 111965), (102, 111989), (108, 112025), (109, 112034), (112, 112049),

Gene: ValleyTerrace_206 Start: 109065, Stop: 110138, Start Num: 13

Candidate Starts for ValleyTerrace_206:

(9, 109038), (Start: 13 @109065 has 177 MA's), (18, 109098), (22, 109131), (30, 109221), (31, 109230), (35, 109326), (37, 109347), (65, 109755), (69, 109785), (72, 109809), (73, 109812), (81, 109872), (84, 109914), (91, 109974), (92, 109986), (98, 110025), (100, 110043), (101, 110049), (102, 110073), (108, 110109), (109, 110118), (112, 110133),

Gene: Wally_203 Start: 109049, Stop: 110122, Start Num: 13

Candidate Starts for Wally_203:

(9, 109022), (Start: 13 @109049 has 177 MA's), (18, 109082), (22, 109115), (30, 109205), (31, 109214), (35, 109310), (37, 109331), (65, 109739), (69, 109769), (72, 109793), (73, 109796), (81, 109856), (84, 109898), (91, 109958), (92, 109970), (98, 110009), (100, 110027), (101, 110033), (102, 110057), (108, 110093), (109, 110102), (112, 110117),

Gene: Willis_206 Start: 109963, Stop: 111036, Start Num: 13

Candidate Starts for Willis_206:

(9, 109936), (Start: 13 @109963 has 177 MA's), (18, 109996), (22, 110029), (30, 110119), (31, 110128), (35, 110224), (37, 110245), (65, 110653), (69, 110683), (72, 110707), (73, 110710), (81, 110770), (84, 110812), (91, 110872), (92, 110884), (98, 110923), (100, 110941), (101, 110947), (102, 110971), (108, 111007), (109, 111016), (112, 111031),

Gene: Yassified_202 Start: 109404, Stop: 110477, Start Num: 13

Candidate Starts for Yassified_202:

(9, 109377), (Start: 13 @109404 has 177 MA's), (18, 109437), (22, 109470), (30, 109560), (31, 109569), (35, 109665), (37, 109686), (65, 110094), (69, 110124), (72, 110148), (73, 110151), (81, 110211), (84, 110253), (91, 110313), (92, 110325), (98, 110364), (100, 110382), (101, 110388), (102, 110412), (108, 110448), (109, 110457), (112, 110472),

Gene: YemiJoy2021_206 Start: 110719, Stop: 111792, Start Num: 13

Candidate Starts for YemiJoy2021_206:

(9, 110692), (Start: 13 @110719 has 177 MA's), (18, 110752), (22, 110785), (30, 110875), (31, 110884), (35, 110980), (37, 111001), (65, 111409), (69, 111439), (72, 111463), (73, 111466), (81, 111526), (84, 111568), (91, 111628), (92, 111640), (98, 111679), (100, 111697), (101, 111703), (102, 111727), (108, 111763), (109, 111772), (112, 111787),

Gene: YoungMoneyMata_203 Start: 109261, Stop: 110334, Start Num: 13

Candidate Starts for YoungMoneyMata_203:

(9, 109234), (Start: 13 @109261 has 177 MA's), (18, 109294), (22, 109327), (30, 109417), (31, 109426), (35, 109522), (37, 109543), (65, 109951), (69, 109981), (72, 110005), (73, 110008), (81, 110068), (84, 110110), (91, 110170), (92, 110182), (98, 110221), (100, 110239), (101, 110245), (102, 110269), (108, 110305), (109, 110314), (112, 110329),

Gene: Yucca_205 Start: 110711, Stop: 111784, Start Num: 13

Candidate Starts for Yucca_205:

(9, 110684), (Start: 13 @110711 has 177 MA's), (18, 110744), (22, 110777), (30, 110867), (31, 110876), (35, 110972), (37, 110993), (65, 111401), (69, 111431), (72, 111455), (73, 111458), (81, 111518), (84, 111560), (91, 111620), (92, 111632), (98, 111671), (100, 111689), (101, 111695), (102, 111719), (108, 111755), (109, 111764), (112, 111779),

Gene: Zalkecks_204 Start: 109792, Stop: 110865, Start Num: 13

Candidate Starts for Zalkecks_204:

(9, 109765), (Start: 13 @109792 has 177 MA's), (18, 109825), (22, 109858), (30, 109948), (31, 109957), (35, 110053), (37, 110074), (65, 110482), (69, 110512), (72, 110536), (73, 110539), (81, 110599), (84, 110641), (91, 110701), (92, 110713), (98, 110752), (100, 110770), (101, 110776), (102, 110800), (108, 110836), (109, 110845), (112, 110860),

Gene: Zeenon_207 Start: 110363, Stop: 111436, Start Num: 13

Candidate Starts for Zeenon_207:

(9, 110336), (Start: 13 @110363 has 177 MA's), (18, 110396), (22, 110429), (30, 110519), (31, 110528), (35, 110624), (37, 110645), (65, 111053), (69, 111083), (72, 111107), (73, 111110), (81, 111170), (84, 111212), (91, 111272), (92, 111284), (98, 111323), (100, 111341), (101, 111347), (102, 111371), (108, 111407), (109, 111416), (112, 111431),

Gene: ZygoTaiga_202 Start: 110983, Stop: 112056, Start Num: 13

Candidate Starts for ZygoTaiga_202:

(9, 110956), (Start: 13 @110983 has 177 MA's), (18, 111016), (22, 111049), (30, 111139), (31, 111148), (35, 111244), (37, 111265), (65, 111673), (69, 111703), (72, 111727), (73, 111730), (81, 111790), (84, 111832), (91, 111892), (92, 111904), (98, 111943), (100, 111961), (101, 111967), (102, 111991), (108, 112027), (109, 112036), (112, 112051),