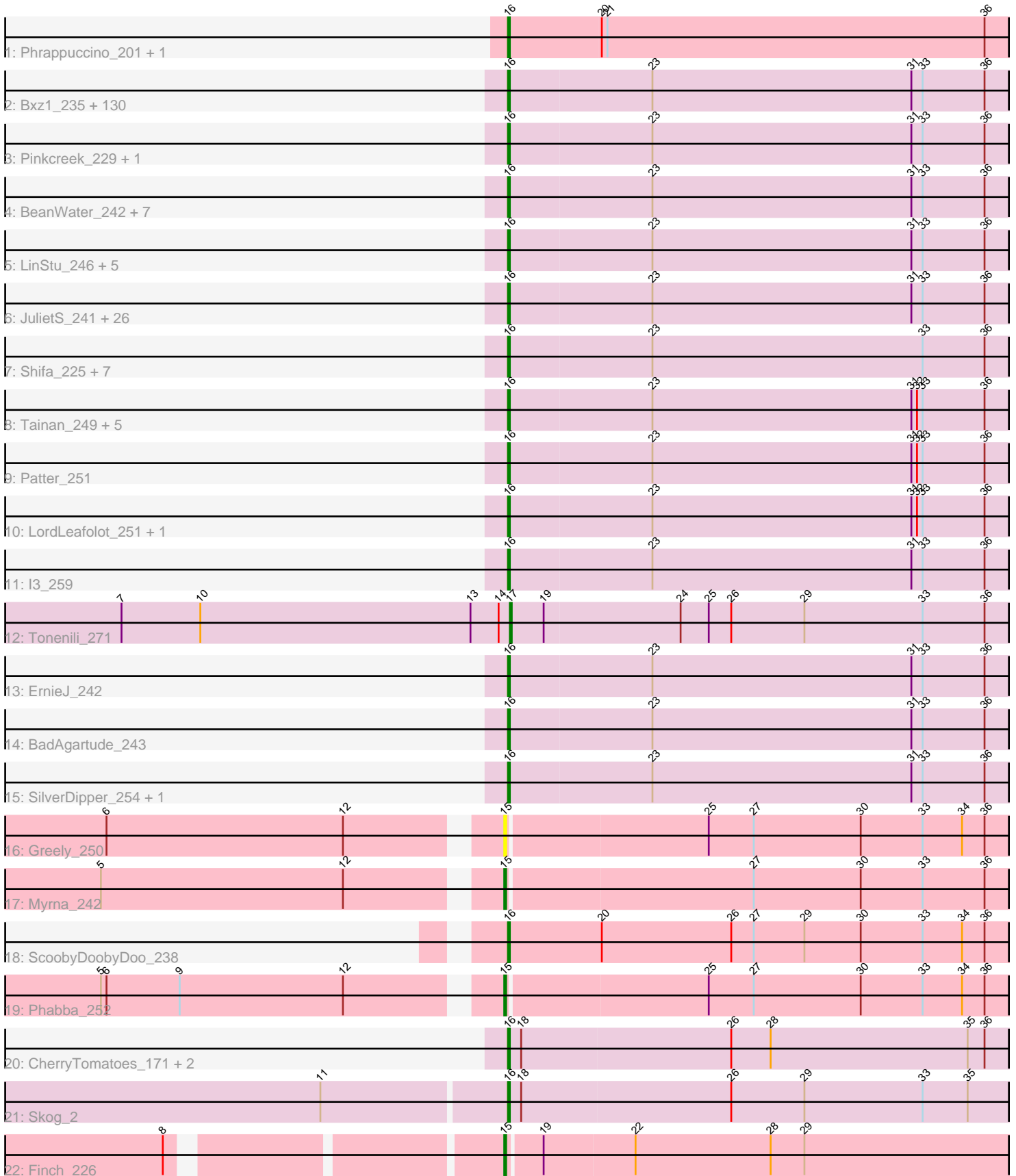


Zoomed Pham 215842



Note: Tracks are now grouped by subcluster and scaled. Switching in subcluster is indicated by changes in track color. Track scale is now set by default to display the region 30 bp upstream of start 1 to 30 bp downstream of the last possible start. If this default region is judged to be packed too tightly with annotated starts, the track will be further scaled to only show that region of the ORF with annotated starts. This action will be indicated by adding "Zoomed" to the title. For starts, yellow indicates the location of called starts comprised solely of Glimmer/GeneMark auto-annotations, green indicates the location of called starts with at least 1 manual gene annotation.

Pham 215842 Report

This analysis was run 02/22/25 on database version 588.

Pham number 215842 has 208 members, 26 are drafts.

Phages represented in each track:

- Track 1 : Phrappuccino_201, Settecandela_226
- Track 2 : Bxz1_235, ValleyTerrace_250, JPickles_246, Ghost_249, Koguma_248, Gamgam_251, YemiJoy2021_250, Izajani_245, Pier_248, Pivoine_250, Asterius_249, DTDevon_250, IkeLoa_243, Demodog_255, Darko_248, Daffodil_255, ShiaLabeouf_247, Blackbrain_247, Basquiat_246, Maby2021_249, Breeniome_249, Grungle_231, Melpomini_244, Loanshark_246, Naija_250, Adlitam_249, Roots515_252, EmToTheThree_249, Dietrick_238, EasyJones_250, Latch_249, Erdmann_250, Catera_238, Ablatia_246, Shelob_250, Sauce_246, PurduePete_249, Burrough_250, Halldule_241, Quasimodo_252, RoMag_244, Kboogie_253, NedWong_248, Littleton_253, Phusco_248, Iota_246, Pio_256, ArcherS7_250, Atlantean_249, Ading_251, Shrimp_251, Audrick_252, Jaygup_246, Amataga_250, Delylah_251, DrPhinkDaddy_246, Shnickers_248, Belieber_241, Ewok_248, Chergie21_246, Capablanca_254, Trinitium_245, ZygoTaiga_245, Nappy_248, Tortoise16_247, Kamryn_248, ChickenPhender_245, MikeLiesIn_250, YoungMoneyMata_249, Megamind_246, ParkTD_248, Zeenon_250, Phlegm_254, Gizmo_254, Napoleon13_246, Derek_245, Domi_243, SmallFry_250, Jedediah_251, Astraea_244, Bipolarisk_247, Jemmno_249, Concombre_254, Ngannou_244, Momo_251, Fludd_249, Pleione_253, Norm_249, JustHall_243, Ava3_246, McGee_250, BackyardAgain_244, Rabinovish_242, Essence_247, Rahel_251, BananaFence_246, Gabriel_252, FoxtrotP1_247, Janiyra_252, Morizzled23_246, Cactojaque_243, Fongie_249, Chomp_248, Mangeria_249, Zalkecks_248, InigoMontoya_253, Tyke_246, FudgeTart_244, NuevoMundo_251, ScottMcG_241, StubbySaigey_255, Delilah_247, Rizal_238, Drazdys_246, Caravan_239, GlutenPhree_248, Turret_240, Matsumoto_247, Dandelion_255, LifeSavor_250, SrishMeg2525_246, Wally_247, Spud_241, EmmaElysia_254, Bangla1971_250, Teardrop_247, Babyland_252, StephanieG_243, ChaylaJr_248, Willis_250, Primadonna_243
- Track 3 : Pinkcreek_229, Alice_235
- Track 4 : BeanWater_242, Blackdragon_244, Spec_243, QBert_241, Cali_239, Sprinklers_247, DirtMonster_238, CharlieB_244
- Track 5 : LinStu_246, Stubby_232, Yassified_245, ET08_235, Ronan_245, Flabslab_243
- Track 6 : JulietS_241, LRRHood_241, Mikro_243, BigCity_257, Issimir_242, Jessibeth14_249, TinyTim_247, Jezreel_245, JigglyPuff_255, MoMoMixon_245, Grasshills_256, Yucca_249, EggyFarm_257, Bread_245, Nidhogg_250, Bonray_251, McWolfish_246, Shaqnato_240, Specks_253, Salacia_250, Lee7_248, Phox_250, Khaleesi_248, NoodleTree_245, Naval22_254, Lukilu_238, SVoro_245

- Track 7 : Shifa_225, JayJay_249, Blubba_236, Colt_239, DeejaClivia_236, Sebata_249, Cane17_238, HyRo_234
- Track 8 : Tainan_249, LolaVinca_245, Lethe_250, InterFolia_251, Bigswole_254, FrayBell_252
- Track 9 : Patter_251
- Track 10 : LordLeafolot_251, Guwapp_245
- Track 11 : I3_259
- Track 12 : Tonenili_271
- Track 13 : ErnieJ_242
- Track 14 : BadAgartude_243
- Track 15 : SilverDipper_254, CindyLou_250
- Track 16 : Greely_250
- Track 17 : Myrna_242
- Track 18 : ScoobyDoobyDoo_238
- Track 19 : Phabba_252
- Track 20 : CherryTomatoes_171, Pupper_170, SCentae_169
- Track 21 : Skog_2
- Track 22 : Finch_226

Summary of Final Annotations (See graph section above for start numbers):

The start number called the most often in the published annotations is 16, it was called in 178 of the 182 non-draft genes in the pham.

Genes that call this "Most Annotated" start:

- Ablatia_246, Ading_251, Adlitam_249, Alice_235, Amataga_250, ArcherS7_250, Asterius_249, Astraea_244, Atlantean_249, Audrick_252, Ava3_246, Babyland_252, BackyardAgain_244, BadAgartude_243, BananaFence_246, Bangla1971_250, Basquiat_246, BeanWater_242, Belieber_241, BigCity_257, Bigswole_254, Bipolarisk_247, Blackbrain_247, Blackdragon_244, Blubba_236, Bonray_251, Bread_245, Breeniome_249, Burrough_250, Bxz1_235, Cactojaque_243, Cali_239, Cane17_238, Capablanca_254, Caravan_239, Catera_238, Charge21_246, CharlieB_244, ChaylaJr_248, CherryTomatoes_171, ChickenPhender_245, Chomp_248, CindyLou_250, Colt_239, Concombre_254, DTDevon_250, Daffodil_255, Dandelion_255, Darko_248, DeejaClivia_236, Delilah_247, Delylah_251, Demodog_255, Derek_245, Dietrick_238, DirtMonster_238, Domi_243, DrPhinkDaddy_246, Drazdys_246, ET08_235, EasyJones_250, EggyFarm_257, EmToTheThree_249, EmmaElysia_254, Erdmann_250, ErnieJ_242, Essence_247, Ewok_248, Flabslab_243, Fludd_249, Fongie_249, FoxtrotP1_247, FrayBell_252, FudgeTart_244, Gabriel_252, Gamgam_251, Ghost_249, Gizmo_254, GlutenPhree_248, Grasshills_256, Grungle_231, Guwapp_245, Halldule_241, HyRo_234, I3_259, IkeLoa_243, InigoMontoya_253, InterFolia_251, Iota_246, Issimir_242, Izajani_245, JPickles_246, Janiyra_252, JayJay_249, Jaygup_246, Jedediah_251, Jemmno_249, Jessibeth14_249, Jezreel_245, JigglyPuff_255, JulietS_241, JustHall_243, Kamryn_248, Kboogie_253, Khaleesi_248, Koguma_248, LRRHood_241, Latch_249, Lee7_248, Lethe_250, LifeSavor_250, LinStu_246, Littleton_253, Loanshark_246, LolaVinca_245, LordLeafolot_251, Lukilu_238, Maby2021_249, Mangeria_249, Matsumoto_247, McGee_250, McWolfish_246, Megamind_246, Melpomini_244, MikeLiesIn_250, Mikro_243, MoMoMixon_245, Momo_251, Morizzled23_246, Naija_250, Napoleon13_246, Nappy_248,

Naval22_254, NedWong_248, Ngannou_244, Nidhogg_250, NoodleTree_245, Norm_249, NuevoMundo_251, ParkTD_248, Patter_251, Phlegm_254, Phox_250, Phrappuccino_201, Phusco_248, Pier_248, Pinkcreek_229, Pio_256, Pivoine_250, Pleione_253, Primadonna_243, Pupper_170, PurduePete_249, QBert_241, Quasimodo_252, Rabinovish_242, Rahel_251, Rizal_238, RoMag_244, Ronan_245, Roots515_252, SCentae_169, SVoro_245, Salacia_250, Sauce_246, ScoobyDoobyDoo_238, ScottMcG_241, Sebata_249, Settecandela_226, Shaqnato_240, Shelob_250, ShiaLabeouf_247, Shifa_225, Shnickers_248, Shrimp_251, SilverDipper_254, Skog_2, SmallFry_250, Spec_243, Specks_253, Sprinklers_247, Spud_241, SrishMeg2525_246, StephanieG_243, StubbySaigey_255, Stubby_232, Tainan_249, Teardrop_247, TinyTim_247, Tortoise16_247, Trinitium_245, Turret_240, Tyke_246, ValleyTerrace_250, Wally_247, Willis_250, Yassified_245, YemiJoy2021_250, YoungMoneyMata_249, Yucca_249, Zalkecks_248, Zeenon_250, ZygoTaiga_245,

Genes that have the "Most Annotated" start but do not call it:

-

Genes that do not have the "Most Annotated" start:

- Finch_226, Greely_250, Myrna_242, Phabba_252, Tonenili_271,

Summary by start number:

Start 15:

- Found in 4 of 208 (1.9%) of genes in pham
- Manual Annotations of this start: 3 of 182
- Called 100.0% of time when present
- Phage (with cluster) where this start called: Finch_226 (singleton), Greely_250 (C2), Myrna_242 (C2), Phabba_252 (C2),

Start 16:

- Found in 203 of 208 (97.6%) of genes in pham
- Manual Annotations of this start: 178 of 182
- Called 100.0% of time when present
- Phage (with cluster) where this start called: Ablatia_246 (C1), Ading_251 (C1), Adlitam_249 (C1), Alice_235 (C1), Amataga_250 (C1), ArcherS7_250 (C1), Asterius_249 (C1), Astraea_244 (C1), Atlantean_249 (C1), Audrick_252 (C1), Ava3_246 (C1), Babyland_252 (C1), BackyardAgain_244 (C1), BadAgartude_243 (C1), BananaFence_246 (C1), Bangla1971_250 (C1), Basquiat_246 (C1), BeanWater_242 (C1), Belieber_241 (C1), BigCity_257 (C1), Bigswole_254 (C1), Bipolarisk_247 (C1), Blackbrain_247 (C1), Blackdragon_244 (C1), Blubba_236 (C1), Bonray_251 (C1), Bread_245 (C1), Breeniome_249 (C1), Burrough_250 (C1), Bxz1_235 (C1), Cactojaque_243 (C1), Cali_239 (C1), Cane17_238 (C1), Capablanca_254 (C1), Caravan_239 (C1), Catera_238 (C1), Chargie21_246 (C1), CharlieB_244 (C1), ChaylaJr_248 (C1), CherryTomatoes_171 (DO), ChickenPhender_245 (C1), Chomp_248 (C1), CindyLou_250 (C1), Colt_239 (C1), Concombre_254 (C1), DTDevon_250 (C1), Daffodil_255 (C1), Dandelion_255 (C1), Darko_248 (C1), DeejaClivia_236 (C1), Delilah_247 (C1), Delylah_251 (C1), Demodog_255 (C1), Derek_245 (C1), Dietrick_238 (C1), DirtMonster_238 (C1), Domi_243 (C1), DrPhinkDaddy_246 (C1), Drazdys_246 (C1), ET08_235 (C1), EasyJones_250 (C1), EggFarm_257 (C1), EmToTheThree_249 (C1), EmmaElysia_254 (C1), Erdmann_250 (C1), ErnieJ_242 (C1), Essence_247 (C1), Ewok_248 (C1), Flabslab_243 (C1), Fludd_249 (C1), Fongie_249 (C1),

FoxtrotP1_247 (C1), FrayBell_252 (C1), FudgeTart_244 (C1), Gabriel_252 (C1), Gamgam_251 (C1), Ghost_249 (C1), Gizmo_254 (C1), GlutenPhree_248 (C1), Grasshills_256 (C1), Grungle_231 (C1), Guwapp_245 (C1), Halldule_241 (C1), HyRo_234 (C1), I3_259 (C1), IkeLoa_243 (C1), InigoMontoya_253 (C1), InterFolia_251 (C1), Iota_246 (C1), Issimir_242 (C1), Izajani_245 (C1), JPickles_246 (C1), Janiyra_252 (C1), JayJay_249 (C1), Jaygup_246 (C1), Jedediah_251 (C1), Jemmno_249 (C1), Jessibeth14_249 (C1), Jezreel_245 (C1), JigglyPuff_255 (C1), JulietS_241 (C1), JustHall_243 (C1), Kamryn_248 (C1), Kboogie_253 (C1), Khaleesi_248 (C1), Koguma_248 (C1), LRRHood_241 (C1), Latch_249 (C1), Lee7_248 (C1), Lethe_250 (C1), LifeSavor_250 (C1), LinStu_246 (C1), Littleton_253 (C1), Loanshark_246 (C1), LolaVinca_245 (C1), LordLeafolot_251 (C1), Lukilu_238 (C1), Maby2021_249 (C1), Mangeria_249 (C1), Matsumoto_247 (C1), McGee_250 (C1), McWolfish_246 (C1), Megamind_246 (C1), Melpomini_244 (C1), MikeLiesIn_250 (C1), Mikro_243 (C1), MoMoMixon_245 (C1), Momo_251 (C1), Morizzled23_246 (C1), Naija_250 (C1), Napoleon13_246 (C1), Nappy_248 (C1), Naval22_254 (C1), NedWong_248 (C1), Ngannou_244 (C1), Nidhogg_250 (C1), NoodleTree_245 (C1), Norm_249 (C1), NuevoMundo_251 (C1), ParkTD_248 (C1), Patter_251 (C1), Phlegm_254 (C1), Phox_250 (C1), Phrappuccino_201 (AA), Phusco_248 (C1), Pier_248 (C1), Pinkcreek_229 (C1), Pio_256 (C1), Pivoine_250 (C1), Pleione_253 (C1), Primadonna_243 (C1), Pupper_170 (DO), PurduePete_249 (C1), QBert_241 (C1), Quasimodo_252 (C1), Rabinovich_242 (C1), Rahel_251 (C1), Rizal_238 (C1), RoMag_244 (C1), Ronan_245 (C1), Roots515_252 (C1), SCentae_169 (DO), SVoro_245 (C1), Salacia_250 (C1), Sauce_246 (C1), ScoobyDoobyDoo_238 (C2), ScottMcG_241 (C1), Sebata_249 (C1), Settecandela_226 (AA), Shaqnato_240 (C1), Shelob_250 (C1), ShiaLabeouf_247 (C1), Shifa_225 (C1), Shnickers_248 (C1), Shrimp_251 (C1), SilverDipper_254 (C1), Skog_2 (DO), SmallFry_250 (C1), Spec_243 (C1), Specks_253 (C1), Sprinklers_247 (C1), Spud_241 (C1), SrishMeg2525_246 (C1), StephanieG_243 (C1), StubbySaigey_255 (C1), Stubby_232 (C1), Tainan_249 (C1), Teardrop_247 (C1), TinyTim_247 (C1), Tortoise16_247 (C1), Trinitium_245 (C1), Turret_240 (C1), Tyke_246 (C1), ValleyTerrace_250 (C1), Wally_247 (C1), Willis_250 (C1), Yassified_245 (C1), YemiJoy2021_250 (C1), YoungMoneyMata_249 (C1), Yucca_249 (C1), Zalkecks_248 (C1), Zeenon_250 (C1), ZygoTaiga_245 (C1),

Start 17:

- Found in 1 of 208 (0.5%) of genes in pham
- Manual Annotations of this start: 1 of 182
- Called 100.0% of time when present
- Phage (with cluster) where this start called: Tonenili_271 (C1),

Summary by clusters:

There are 5 clusters represented in this pham: AA, DO, C1, singleton, C2,

Info for manual annotations of cluster AA:

- Start number 16 was manually annotated 2 times for cluster AA.

Info for manual annotations of cluster C1:

- Start number 16 was manually annotated 171 times for cluster C1.
- Start number 17 was manually annotated 1 time for cluster C1.

Info for manual annotations of cluster C2:

- Start number 15 was manually annotated 2 times for cluster C2.

- Start number 16 was manually annotated 1 time for cluster C2.

Info for manual annotations of cluster DO:

- Start number 16 was manually annotated 4 times for cluster DO.

Gene Information:

Gene: Ablatia_246 Start: 141129, Stop: 141884, Start Num: 16

Candidate Starts for Ablatia_246:

(Start: 16 @141129 has 178 MA's), (23, 141204), (31, 141342), (33, 141348), (36, 141381), (37, 141408), (38, 141423), (40, 141444), (50, 141558), (55, 141579), (56, 141588), (57, 141603), (58, 141606), (65, 141702), (75, 141792), (81, 141864), (82, 141867),

Gene: Ading_251 Start: 143562, Stop: 144317, Start Num: 16

Candidate Starts for Ading_251:

(Start: 16 @143562 has 178 MA's), (23, 143637), (31, 143775), (33, 143781), (36, 143814), (37, 143841), (38, 143856), (40, 143877), (50, 143991), (55, 144012), (56, 144021), (57, 144036), (58, 144039), (65, 144135), (75, 144225), (81, 144297), (82, 144300),

Gene: Adlitam_249 Start: 142166, Stop: 142921, Start Num: 16

Candidate Starts for Adlitam_249:

(Start: 16 @142166 has 178 MA's), (23, 142241), (31, 142379), (33, 142385), (36, 142418), (37, 142445), (38, 142460), (40, 142481), (50, 142595), (55, 142616), (56, 142625), (57, 142640), (58, 142643), (65, 142739), (75, 142829), (81, 142901), (82, 142904),

Gene: Alice_235 Start: 139213, Stop: 139968, Start Num: 16

Candidate Starts for Alice_235:

(Start: 16 @139213 has 178 MA's), (23, 139288), (31, 139426), (33, 139432), (36, 139465), (37, 139492), (38, 139507), (40, 139528), (55, 139663), (56, 139672), (57, 139687), (58, 139690), (65, 139786), (75, 139876), (82, 139951),

Gene: Amataga_250 Start: 141165, Stop: 141920, Start Num: 16

Candidate Starts for Amataga_250:

(Start: 16 @141165 has 178 MA's), (23, 141240), (31, 141378), (33, 141384), (36, 141417), (37, 141444), (38, 141459), (40, 141480), (50, 141594), (55, 141615), (56, 141624), (57, 141639), (58, 141642), (65, 141738), (75, 141828), (81, 141900), (82, 141903),

Gene: ArcherS7_250 Start: 142910, Stop: 143665, Start Num: 16

Candidate Starts for ArcherS7_250:

(Start: 16 @142910 has 178 MA's), (23, 142985), (31, 143123), (33, 143129), (36, 143162), (37, 143189), (38, 143204), (40, 143225), (50, 143339), (55, 143360), (56, 143369), (57, 143384), (58, 143387), (65, 143483), (75, 143573), (81, 143645), (82, 143648),

Gene: Asterius_249 Start: 141574, Stop: 142329, Start Num: 16

Candidate Starts for Asterius_249:

(Start: 16 @141574 has 178 MA's), (23, 141649), (31, 141787), (33, 141793), (36, 141826), (37, 141853), (38, 141868), (40, 141889), (50, 142003), (55, 142024), (56, 142033), (57, 142048), (58, 142051), (65, 142147), (75, 142237), (81, 142309), (82, 142312),

Gene: Astraea_244 Start: 140769, Stop: 141524, Start Num: 16

Candidate Starts for Astraea_244:

(Start: 16 @140769 has 178 MA's), (23, 140844), (31, 140982), (33, 140988), (36, 141021), (37, 141048), (38, 141063), (40, 141084), (50, 141198), (55, 141219), (56, 141228), (57, 141243), (58, 141246), (65, 141342), (75, 141432), (81, 141504), (82, 141507),

Gene: Atlantean_249 Start: 141165, Stop: 141920, Start Num: 16

Candidate Starts for Atlantean_249:

(Start: 16 @141165 has 178 MA's), (23, 141240), (31, 141378), (33, 141384), (36, 141417), (37, 141444), (38, 141459), (40, 141480), (50, 141594), (55, 141615), (56, 141624), (57, 141639), (58, 141642), (65, 141738), (75, 141828), (81, 141900), (82, 141903),

Gene: Audrick_252 Start: 141055, Stop: 141810, Start Num: 16

Candidate Starts for Audrick_252:

(Start: 16 @141055 has 178 MA's), (23, 141130), (31, 141268), (33, 141274), (36, 141307), (37, 141334), (38, 141349), (40, 141370), (50, 141484), (55, 141505), (56, 141514), (57, 141529), (58, 141532), (65, 141628), (75, 141718), (81, 141790), (82, 141793),

Gene: Ava3_246 Start: 141625, Stop: 142380, Start Num: 16

Candidate Starts for Ava3_246:

(Start: 16 @141625 has 178 MA's), (23, 141700), (31, 141838), (33, 141844), (36, 141877), (37, 141904), (38, 141919), (40, 141940), (50, 142054), (55, 142075), (56, 142084), (57, 142099), (58, 142102), (65, 142198), (75, 142288), (81, 142360), (82, 142363),

Gene: Babyland_252 Start: 141942, Stop: 142697, Start Num: 16

Candidate Starts for Babyland_252:

(Start: 16 @141942 has 178 MA's), (23, 142017), (31, 142155), (33, 142161), (36, 142194), (37, 142221), (38, 142236), (40, 142257), (50, 142371), (55, 142392), (56, 142401), (57, 142416), (58, 142419), (65, 142515), (75, 142605), (81, 142677), (82, 142680),

Gene: BackyardAgain_244 Start: 139315, Stop: 140070, Start Num: 16

Candidate Starts for BackyardAgain_244:

(Start: 16 @139315 has 178 MA's), (23, 139390), (31, 139528), (33, 139534), (36, 139567), (37, 139594), (38, 139609), (40, 139630), (50, 139744), (55, 139765), (56, 139774), (57, 139789), (58, 139792), (65, 139888), (75, 139978), (81, 140050), (82, 140053),

Gene: BadAgartude_243 Start: 141227, Stop: 141982, Start Num: 16

Candidate Starts for BadAgartude_243:

(Start: 16 @141227 has 178 MA's), (23, 141302), (31, 141440), (33, 141446), (36, 141479), (37, 141506), (38, 141521), (40, 141542), (41, 141545), (55, 141677), (56, 141686), (57, 141701), (58, 141704), (62, 141764), (65, 141800), (75, 141890), (81, 141962), (82, 141965),

Gene: BananaFence_246 Start: 141398, Stop: 142153, Start Num: 16

Candidate Starts for BananaFence_246:

(Start: 16 @141398 has 178 MA's), (23, 141473), (31, 141611), (33, 141617), (36, 141650), (37, 141677), (38, 141692), (40, 141713), (50, 141827), (55, 141848), (56, 141857), (57, 141872), (58, 141875), (65, 141971), (75, 142061), (81, 142133), (82, 142136),

Gene: Bangla1971_250 Start: 141874, Stop: 142629, Start Num: 16

Candidate Starts for Bangla1971_250:

(Start: 16 @141874 has 178 MA's), (23, 141949), (31, 142087), (33, 142093), (36, 142126), (37, 142153), (38, 142168), (40, 142189), (50, 142303), (55, 142324), (56, 142333), (57, 142348), (58, 142351), (65, 142447), (75, 142537), (81, 142609), (82, 142612),

Gene: Basquiat_246 Start: 139684, Stop: 140439, Start Num: 16

Candidate Starts for Basquiat_246:

(Start: 16 @139684 has 178 MA's), (23, 139759), (31, 139897), (33, 139903), (36, 139936), (37, 139963), (38, 139978), (40, 139999), (50, 140113), (55, 140134), (56, 140143), (57, 140158), (58, 140161), (65, 140257), (75, 140347), (81, 140419), (82, 140422),

Gene: BeanWater_242 Start: 141010, Stop: 141765, Start Num: 16

Candidate Starts for BeanWater_242:

(Start: 16 @141010 has 178 MA's), (23, 141085), (31, 141223), (33, 141229), (36, 141262), (37, 141289), (38, 141304), (40, 141325), (55, 141460), (56, 141469), (57, 141484), (58, 141487), (62, 141547), (65, 141583), (75, 141673), (81, 141745), (82, 141748),

Gene: Belieber_241 Start: 139811, Stop: 140566, Start Num: 16

Candidate Starts for Belieber_241:

(Start: 16 @139811 has 178 MA's), (23, 139886), (31, 140024), (33, 140030), (36, 140063), (37, 140090), (38, 140105), (40, 140126), (50, 140240), (55, 140261), (56, 140270), (57, 140285), (58, 140288), (65, 140384), (75, 140474), (81, 140546), (82, 140549),

Gene: BigCity_257 Start: 143765, Stop: 144520, Start Num: 16

Candidate Starts for BigCity_257:

(Start: 16 @143765 has 178 MA's), (23, 143840), (31, 143978), (33, 143984), (36, 144017), (37, 144044), (38, 144059), (40, 144080), (47, 144170), (50, 144194), (55, 144215), (56, 144224), (57, 144239), (58, 144242), (65, 144338), (75, 144428), (81, 144500), (82, 144503),

Gene: Bigswole_254 Start: 143676, Stop: 144431, Start Num: 16

Candidate Starts for Bigswole_254:

(Start: 16 @143676 has 178 MA's), (23, 143751), (31, 143889), (32, 143892), (33, 143895), (36, 143928), (37, 143955), (38, 143970), (40, 143991), (47, 144081), (55, 144126), (56, 144135), (57, 144150), (58, 144153), (65, 144249), (75, 144339), (81, 144411), (82, 144414),

Gene: Bipolarisk_247 Start: 141893, Stop: 142648, Start Num: 16

Candidate Starts for Bipolarisk_247:

(Start: 16 @141893 has 178 MA's), (23, 141968), (31, 142106), (33, 142112), (36, 142145), (37, 142172), (38, 142187), (40, 142208), (50, 142322), (55, 142343), (56, 142352), (57, 142367), (58, 142370), (65, 142466), (75, 142556), (81, 142628), (82, 142631),

Gene: Blackbrain_247 Start: 141461, Stop: 142216, Start Num: 16

Candidate Starts for Blackbrain_247:

(Start: 16 @141461 has 178 MA's), (23, 141536), (31, 141674), (33, 141680), (36, 141713), (37, 141740), (38, 141755), (40, 141776), (50, 141890), (55, 141911), (56, 141920), (57, 141935), (58, 141938), (65, 142034), (75, 142124), (81, 142196), (82, 142199),

Gene: Blackdragon_244 Start: 141458, Stop: 142213, Start Num: 16

Candidate Starts for Blackdragon_244:

(Start: 16 @141458 has 178 MA's), (23, 141533), (31, 141671), (33, 141677), (36, 141710), (37, 141737), (38, 141752), (40, 141773), (55, 141908), (56, 141917), (57, 141932), (58, 141935), (62, 141995), (65, 142031), (75, 142121), (81, 142193), (82, 142196),

Gene: Blubba_236 Start: 144637, Stop: 145392, Start Num: 16

Candidate Starts for Blubba_236:

(Start: 16 @144637 has 178 MA's), (23, 144712), (33, 144856), (36, 144889), (37, 144916), (38, 144931), (40, 144952), (55, 145087), (56, 145096), (57, 145111), (58, 145114), (62, 145174), (65, 145210), (75, 145300), (82, 145375),

Gene: Bonray_251 Start: 143261, Stop: 144016, Start Num: 16

Candidate Starts for Bonray_251:

(Start: 16 @143261 has 178 MA's), (23, 143336), (31, 143474), (33, 143480), (36, 143513), (37, 143540), (38, 143555), (40, 143576), (47, 143666), (50, 143690), (55, 143711), (56, 143720), (57, 143735), (58, 143738), (65, 143834), (75, 143924), (81, 143996), (82, 143999),

Gene: Bread_245 Start: 141228, Stop: 141983, Start Num: 16

Candidate Starts for Bread_245:

(Start: 16 @141228 has 178 MA's), (23, 141303), (31, 141441), (33, 141447), (36, 141480), (37, 141507), (38, 141522), (40, 141543), (47, 141633), (50, 141657), (55, 141678), (56, 141687), (57, 141702), (58, 141705), (65, 141801), (75, 141891), (81, 141963), (82, 141966),

Gene: Breeniome_249 Start: 140665, Stop: 141420, Start Num: 16

Candidate Starts for Breeniome_249:

(Start: 16 @140665 has 178 MA's), (23, 140740), (31, 140878), (33, 140884), (36, 140917), (37, 140944), (38, 140959), (40, 140980), (50, 141094), (55, 141115), (56, 141124), (57, 141139), (58, 141142), (65, 141238), (75, 141328), (81, 141400), (82, 141403),

Gene: Burrough_250 Start: 143038, Stop: 143793, Start Num: 16

Candidate Starts for Burrough_250:

(Start: 16 @143038 has 178 MA's), (23, 143113), (31, 143251), (33, 143257), (36, 143290), (37, 143317), (38, 143332), (40, 143353), (50, 143467), (55, 143488), (56, 143497), (57, 143512), (58, 143515), (65, 143611), (75, 143701), (81, 143773), (82, 143776),

Gene: Bxz1_235 Start: 143242, Stop: 143997, Start Num: 16

Candidate Starts for Bxz1_235:

(Start: 16 @143242 has 178 MA's), (23, 143317), (31, 143455), (33, 143461), (36, 143494), (37, 143521), (38, 143536), (40, 143557), (50, 143671), (55, 143692), (56, 143701), (57, 143716), (58, 143719), (65, 143815), (75, 143905), (81, 143977), (82, 143980),

Gene: Cactojaque_243 Start: 140407, Stop: 141162, Start Num: 16

Candidate Starts for Cactojaque_243:

(Start: 16 @140407 has 178 MA's), (23, 140482), (31, 140620), (33, 140626), (36, 140659), (37, 140686), (38, 140701), (40, 140722), (50, 140836), (55, 140857), (56, 140866), (57, 140881), (58, 140884), (65, 140980), (75, 141070), (81, 141142), (82, 141145),

Gene: Cali_239 Start: 141635, Stop: 142390, Start Num: 16

Candidate Starts for Cali_239:

(Start: 16 @141635 has 178 MA's), (23, 141710), (31, 141848), (33, 141854), (36, 141887), (37, 141914), (38, 141929), (40, 141950), (55, 142085), (56, 142094), (57, 142109), (58, 142112), (62, 142172), (65, 142208), (75, 142298), (81, 142370), (82, 142373),

Gene: Cane17_238 Start: 145046, Stop: 145801, Start Num: 16

Candidate Starts for Cane17_238:

(Start: 16 @145046 has 178 MA's), (23, 145121), (33, 145265), (36, 145298), (37, 145325), (38, 145340), (40, 145361), (55, 145496), (56, 145505), (57, 145520), (58, 145523), (62, 145583), (65, 145619), (75, 145709), (82, 145784),

Gene: Capablanca_254 Start: 143889, Stop: 144644, Start Num: 16

Candidate Starts for Capablanca_254:

(Start: 16 @143889 has 178 MA's), (23, 143964), (31, 144102), (33, 144108), (36, 144141), (37, 144168), (38, 144183), (40, 144204), (50, 144318), (55, 144339), (56, 144348), (57, 144363), (58, 144366), (65, 144462), (75, 144552), (81, 144624), (82, 144627),

Gene: Caravan_239 Start: 141939, Stop: 142694, Start Num: 16

Candidate Starts for Caravan_239:

(Start: 16 @141939 has 178 MA's), (23, 142014), (31, 142152), (33, 142158), (36, 142191), (37, 142218), (38, 142233), (40, 142254), (50, 142368), (55, 142389), (56, 142398), (57, 142413), (58, 142416), (65, 142512), (75, 142602), (81, 142674), (82, 142677),

Gene: Catera_238 Start: 140378, Stop: 141133, Start Num: 16

Candidate Starts for Catera_238:

(Start: 16 @140378 has 178 MA's), (23, 140453), (31, 140591), (33, 140597), (36, 140630), (37, 140657), (38, 140672), (40, 140693), (50, 140807), (55, 140828), (56, 140837), (57, 140852), (58, 140855), (65, 140951), (75, 141041), (81, 141113), (82, 141116),

Gene: Chargie21_246 Start: 139684, Stop: 140439, Start Num: 16

Candidate Starts for Chargie21_246:

(Start: 16 @139684 has 178 MA's), (23, 139759), (31, 139897), (33, 139903), (36, 139936), (37, 139963), (38, 139978), (40, 139999), (50, 140113), (55, 140134), (56, 140143), (57, 140158), (58, 140161), (65, 140257), (75, 140347), (81, 140419), (82, 140422),

Gene: CharlieB_244 Start: 141401, Stop: 142156, Start Num: 16

Candidate Starts for CharlieB_244:

(Start: 16 @141401 has 178 MA's), (23, 141476), (31, 141614), (33, 141620), (36, 141653), (37, 141680), (38, 141695), (40, 141716), (55, 141851), (56, 141860), (57, 141875), (58, 141878), (62, 141938), (65, 141974), (75, 142064), (81, 142136), (82, 142139),

Gene: ChaylaJr_248 Start: 141075, Stop: 141830, Start Num: 16

Candidate Starts for ChaylaJr_248:

(Start: 16 @141075 has 178 MA's), (23, 141150), (31, 141288), (33, 141294), (36, 141327), (37, 141354), (38, 141369), (40, 141390), (50, 141504), (55, 141525), (56, 141534), (57, 141549), (58, 141552), (65, 141648), (75, 141738), (81, 141810), (82, 141813),

Gene: CherryTomatoes_171 Start: 123955, Stop: 124713, Start Num: 16

Candidate Starts for CherryTomatoes_171:

(Start: 16 @123955 has 178 MA's), (18, 123961), (26, 124072), (28, 124093), (35, 124198), (36, 124207), (40, 124270), (41, 124273), (42, 124303), (46, 124336), (48, 124366), (52, 124390), (53, 124393), (54, 124396), (60, 124441), (63, 124498), (66, 124537), (67, 124546), (68, 124564), (81, 124693),

Gene: ChickenPhender_245 Start: 139831, Stop: 140586, Start Num: 16

Candidate Starts for ChickenPhender_245:

(Start: 16 @139831 has 178 MA's), (23, 139906), (31, 140044), (33, 140050), (36, 140083), (37, 140110), (38, 140125), (40, 140146), (50, 140260), (55, 140281), (56, 140290), (57, 140305), (58, 140308), (65, 140404), (75, 140494), (81, 140566), (82, 140569),

Gene: Chomp_248 Start: 143267, Stop: 144022, Start Num: 16

Candidate Starts for Chomp_248:

(Start: 16 @143267 has 178 MA's), (23, 143342), (31, 143480), (33, 143486), (36, 143519), (37, 143546), (38, 143561), (40, 143582), (50, 143696), (55, 143717), (56, 143726), (57, 143741), (58, 143744), (65, 143840), (75, 143930), (81, 144002), (82, 144005),

Gene: CindyLou_250 Start: 143527, Stop: 144282, Start Num: 16

Candidate Starts for CindyLou_250:

(Start: 16 @143527 has 178 MA's), (23, 143602), (31, 143740), (33, 143746), (36, 143779), (37, 143806), (38, 143821), (40, 143842), (55, 143977), (56, 143986), (57, 144001), (58, 144004), (65, 144100), (75, 144190), (81, 144262), (82, 144265),

Gene: Colt_239 Start: 144238, Stop: 144993, Start Num: 16

Candidate Starts for Colt_239:

(Start: 16 @144238 has 178 MA's), (23, 144313), (33, 144457), (36, 144490), (37, 144517), (38, 144532), (40, 144553), (55, 144688), (56, 144697), (57, 144712), (58, 144715), (62, 144775), (65, 144811), (75, 144901), (82, 144976),

Gene: Concombres_254 Start: 143423, Stop: 144178, Start Num: 16

Candidate Starts for Concombres_254:

(Start: 16 @143423 has 178 MA's), (23, 143498), (31, 143636), (33, 143642), (36, 143675), (37, 143702), (38, 143717), (40, 143738), (50, 143852), (55, 143873), (56, 143882), (57, 143897), (58, 143900), (65, 143996), (75, 144086), (81, 144158), (82, 144161),

Gene: DTDevon_250 Start: 143906, Stop: 144661, Start Num: 16

Candidate Starts for DTDevon_250:

(Start: 16 @143906 has 178 MA's), (23, 143981), (31, 144119), (33, 144125), (36, 144158), (37, 144185), (38, 144200), (40, 144221), (50, 144335), (55, 144356), (56, 144365), (57, 144380), (58, 144383), (65, 144479), (75, 144569), (81, 144641), (82, 144644),

Gene: Daffodil_255 Start: 142193, Stop: 142948, Start Num: 16

Candidate Starts for Daffodil_255:

(Start: 16 @142193 has 178 MA's), (23, 142268), (31, 142406), (33, 142412), (36, 142445), (37, 142472), (38, 142487), (40, 142508), (50, 142622), (55, 142643), (56, 142652), (57, 142667), (58, 142670), (65, 142766), (75, 142856), (81, 142928), (82, 142931),

Gene: Dandelion_255 Start: 144727, Stop: 145482, Start Num: 16

Candidate Starts for Dandelion_255:

(Start: 16 @144727 has 178 MA's), (23, 144802), (31, 144940), (33, 144946), (36, 144979), (37, 145006), (38, 145021), (40, 145042), (50, 145156), (55, 145177), (56, 145186), (57, 145201), (58, 145204), (65, 145300), (75, 145390), (81, 145462), (82, 145465),

Gene: Darko_248 Start: 141402, Stop: 142157, Start Num: 16

Candidate Starts for Darko_248:

(Start: 16 @141402 has 178 MA's), (23, 141477), (31, 141615), (33, 141621), (36, 141654), (37, 141681), (38, 141696), (40, 141717), (50, 141831), (55, 141852), (56, 141861), (57, 141876), (58, 141879), (65, 141975), (75, 142065), (81, 142137), (82, 142140),

Gene: DeejaClivia_236 Start: 139594, Stop: 140349, Start Num: 16

Candidate Starts for DeejaClivia_236:

(Start: 16 @139594 has 178 MA's), (23, 139669), (33, 139813), (36, 139846), (37, 139873), (38, 139888), (40, 139909), (55, 140044), (56, 140053), (57, 140068), (58, 140071), (62, 140131), (65, 140167), (75, 140257), (82, 140332),

Gene: Delilah_247 Start: 142286, Stop: 143041, Start Num: 16

Candidate Starts for Delilah_247:

(Start: 16 @142286 has 178 MA's), (23, 142361), (31, 142499), (33, 142505), (36, 142538), (37, 142565), (38, 142580), (40, 142601), (50, 142715), (55, 142736), (56, 142745), (57, 142760), (58, 142763), (65, 142859), (75, 142949), (81, 143021), (82, 143024),

Gene: Delylah_251 Start: 142563, Stop: 143318, Start Num: 16

Candidate Starts for Delylah_251:

(Start: 16 @142563 has 178 MA's), (23, 142638), (31, 142776), (33, 142782), (36, 142815), (37, 142842), (38, 142857), (40, 142878), (50, 142992), (55, 143013), (56, 143022), (57, 143037), (58, 143040), (65, 143136), (75, 143226), (81, 143298), (82, 143301),

Gene: Demodog_255 Start: 143433, Stop: 144188, Start Num: 16

Candidate Starts for Demodog_255:

(Start: 16 @143433 has 178 MA's), (23, 143508), (31, 143646), (33, 143652), (36, 143685), (37, 143712), (38, 143727), (40, 143748), (50, 143862), (55, 143883), (56, 143892), (57, 143907), (58, 143910), (65, 144006), (75, 144096), (81, 144168), (82, 144171),

Gene: Derek_245 Start: 142544, Stop: 143299, Start Num: 16

Candidate Starts for Derek_245:

(Start: 16 @142544 has 178 MA's), (23, 142619), (31, 142757), (33, 142763), (36, 142796), (37, 142823), (38, 142838), (40, 142859), (50, 142973), (55, 142994), (56, 143003), (57, 143018), (58, 143021), (65, 143117), (75, 143207), (81, 143279), (82, 143282),

Gene: Dietrick_238 Start: 140407, Stop: 141162, Start Num: 16

Candidate Starts for Dietrick_238:

(Start: 16 @140407 has 178 MA's), (23, 140482), (31, 140620), (33, 140626), (36, 140659), (37, 140686), (38, 140701), (40, 140722), (50, 140836), (55, 140857), (56, 140866), (57, 140881), (58, 140884), (65, 140980), (75, 141070), (81, 141142), (82, 141145),

Gene: DirtMonster_238 Start: 141139, Stop: 141894, Start Num: 16

Candidate Starts for DirtMonster_238:

(Start: 16 @141139 has 178 MA's), (23, 141214), (31, 141352), (33, 141358), (36, 141391), (37, 141418), (38, 141433), (40, 141454), (55, 141589), (56, 141598), (57, 141613), (58, 141616), (62, 141676), (65, 141712), (75, 141802), (81, 141874), (82, 141877),

Gene: Domi_243 Start: 141746, Stop: 142501, Start Num: 16

Candidate Starts for Domi_243:

(Start: 16 @141746 has 178 MA's), (23, 141821), (31, 141959), (33, 141965), (36, 141998), (37, 142025), (38, 142040), (40, 142061), (50, 142175), (55, 142196), (56, 142205), (57, 142220), (58, 142223), (65, 142319), (75, 142409), (81, 142481), (82, 142484),

Gene: DrPhinkDaddy_246 Start: 142971, Stop: 143726, Start Num: 16

Candidate Starts for DrPhinkDaddy_246:

(Start: 16 @142971 has 178 MA's), (23, 143046), (31, 143184), (33, 143190), (36, 143223), (37, 143250), (38, 143265), (40, 143286), (50, 143400), (55, 143421), (56, 143430), (57, 143445), (58, 143448), (65, 143544), (75, 143634), (81, 143706), (82, 143709),

Gene: Drazdys_246 Start: 142551, Stop: 143306, Start Num: 16

Candidate Starts for Drazdys_246:

(Start: 16 @142551 has 178 MA's), (23, 142626), (31, 142764), (33, 142770), (36, 142803), (37, 142830), (38, 142845), (40, 142866), (50, 142980), (55, 143001), (56, 143010), (57, 143025), (58, 143028), (65, 143124), (75, 143214), (81, 143286), (82, 143289),

Gene: ET08_235 Start: 140846, Stop: 141601, Start Num: 16

Candidate Starts for ET08_235:

(Start: 16 @140846 has 178 MA's), (23, 140921), (31, 141059), (33, 141065), (36, 141098), (37, 141125), (38, 141140), (40, 141161), (41, 141164), (55, 141296), (56, 141305), (57, 141320), (58, 141323), (62, 141383), (65, 141419), (75, 141509), (82, 141584),

Gene: EasyJones_250 Start: 140927, Stop: 141682, Start Num: 16

Candidate Starts for EasyJones_250:

(Start: 16 @140927 has 178 MA's), (23, 141002), (31, 141140), (33, 141146), (36, 141179), (37, 141206), (38, 141221), (40, 141242), (50, 141356), (55, 141377), (56, 141386), (57, 141401), (58, 141404), (65, 141500), (75, 141590), (81, 141662), (82, 141665),

Gene: EggyFarm_257 Start: 143766, Stop: 144521, Start Num: 16

Candidate Starts for EggyFarm_257:

(Start: 16 @143766 has 178 MA's), (23, 143841), (31, 143979), (33, 143985), (36, 144018), (37, 144045), (38, 144060), (40, 144081), (47, 144171), (50, 144195), (55, 144216), (56, 144225), (57, 144240), (58, 144243), (65, 144339), (75, 144429), (81, 144501), (82, 144504),

Gene: EmToTheThree_249 Start: 142310, Stop: 143065, Start Num: 16

Candidate Starts for EmToTheThree_249:

(Start: 16 @142310 has 178 MA's), (23, 142385), (31, 142523), (33, 142529), (36, 142562), (37, 142589), (38, 142604), (40, 142625), (50, 142739), (55, 142760), (56, 142769), (57, 142784), (58, 142787), (65, 142883), (75, 142973), (81, 143045), (82, 143048),

Gene: EmmaElysia_254 Start: 143422, Stop: 144177, Start Num: 16

Candidate Starts for EmmaElysia_254:

(Start: 16 @143422 has 178 MA's), (23, 143497), (31, 143635), (33, 143641), (36, 143674), (37, 143701), (38, 143716), (40, 143737), (50, 143851), (55, 143872), (56, 143881), (57, 143896), (58, 143899), (65, 143995), (75, 144085), (81, 144157), (82, 144160),

Gene: Erdmann_250 Start: 142278, Stop: 143033, Start Num: 16

Candidate Starts for Erdmann_250:

(Start: 16 @142278 has 178 MA's), (23, 142353), (31, 142491), (33, 142497), (36, 142530), (37, 142557), (38, 142572), (40, 142593), (50, 142707), (55, 142728), (56, 142737), (57, 142752), (58, 142755), (65, 142851), (75, 142941), (81, 143013), (82, 143016),

Gene: ErnieJ_242 Start: 139106, Stop: 139861, Start Num: 16

Candidate Starts for ErnieJ_242:

(Start: 16 @139106 has 178 MA's), (23, 139181), (31, 139319), (33, 139325), (36, 139358), (37, 139385), (38, 139400), (40, 139421), (41, 139424), (50, 139535), (55, 139556), (56, 139565), (57, 139580), (58, 139583), (62, 139643), (65, 139679), (75, 139769), (81, 139841), (82, 139844),

Gene: Essence_247 Start: 141763, Stop: 142518, Start Num: 16

Candidate Starts for Essence_247:

(Start: 16 @141763 has 178 MA's), (23, 141838), (31, 141976), (33, 141982), (36, 142015), (37, 142042), (38, 142057), (40, 142078), (50, 142192), (55, 142213), (56, 142222), (57, 142237), (58, 142240), (65, 142336), (75, 142426), (81, 142498), (82, 142501),

Gene: Ewok_248 Start: 142221, Stop: 142976, Start Num: 16

Candidate Starts for Ewok_248:

(Start: 16 @142221 has 178 MA's), (23, 142296), (31, 142434), (33, 142440), (36, 142473), (37, 142500), (38, 142515), (40, 142536), (50, 142650), (55, 142671), (56, 142680), (57, 142695), (58, 142698), (65, 142794), (75, 142884), (81, 142956), (82, 142959),

Gene: Finch_226 Start: 134742, Stop: 135479, Start Num: 15

Candidate Starts for Finch_226:

(1, 134355), (3, 134418), (8, 134583), (Start: 15 @134742 has 3 MA's), (19, 134760), (22, 134808), (28, 134880), (29, 134898), (37, 135021), (43, 135105), (46, 135129), (49, 135168), (51, 135177), (59, 135228), (60, 135234), (65, 135306), (72, 135366), (73, 135369), (74, 135375), (75, 135381), (77,

135423), (80, 135450), (82, 135459),

Gene: Flabslab_243 Start: 138671, Stop: 139426, Start Num: 16

Candidate Starts for Flabslab_243:

(Start: 16 @138671 has 178 MA's), (23, 138746), (31, 138884), (33, 138890), (36, 138923), (37, 138950), (38, 138965), (40, 138986), (41, 138989), (55, 139121), (56, 139130), (57, 139145), (58, 139148), (62, 139208), (65, 139244), (75, 139334), (82, 139409),

Gene: Fludd_249 Start: 140639, Stop: 141394, Start Num: 16

Candidate Starts for Fludd_249:

(Start: 16 @140639 has 178 MA's), (23, 140714), (31, 140852), (33, 140858), (36, 140891), (37, 140918), (38, 140933), (40, 140954), (50, 141068), (55, 141089), (56, 141098), (57, 141113), (58, 141116), (65, 141212), (75, 141302), (81, 141374), (82, 141377),

Gene: Fongie_249 Start: 142219, Stop: 142974, Start Num: 16

Candidate Starts for Fongie_249:

(Start: 16 @142219 has 178 MA's), (23, 142294), (31, 142432), (33, 142438), (36, 142471), (37, 142498), (38, 142513), (40, 142534), (50, 142648), (55, 142669), (56, 142678), (57, 142693), (58, 142696), (65, 142792), (75, 142882), (81, 142954), (82, 142957),

Gene: FoxtrotP1_247 Start: 142864, Stop: 143619, Start Num: 16

Candidate Starts for FoxtrotP1_247:

(Start: 16 @142864 has 178 MA's), (23, 142939), (31, 143077), (33, 143083), (36, 143116), (37, 143143), (38, 143158), (40, 143179), (50, 143293), (55, 143314), (56, 143323), (57, 143338), (58, 143341), (65, 143437), (75, 143527), (81, 143599), (82, 143602),

Gene: FrayBell_252 Start: 140770, Stop: 141525, Start Num: 16

Candidate Starts for FrayBell_252:

(Start: 16 @140770 has 178 MA's), (23, 140845), (31, 140983), (32, 140986), (33, 140989), (36, 141022), (37, 141049), (38, 141064), (40, 141085), (47, 141175), (55, 141220), (56, 141229), (57, 141244), (58, 141247), (65, 141343), (75, 141433), (81, 141505), (82, 141508),

Gene: FudgeTart_244 Start: 141368, Stop: 142123, Start Num: 16

Candidate Starts for FudgeTart_244:

(Start: 16 @141368 has 178 MA's), (23, 141443), (31, 141581), (33, 141587), (36, 141620), (37, 141647), (38, 141662), (40, 141683), (50, 141797), (55, 141818), (56, 141827), (57, 141842), (58, 141845), (65, 141941), (75, 142031), (81, 142103), (82, 142106),

Gene: Gabriel_252 Start: 140798, Stop: 141553, Start Num: 16

Candidate Starts for Gabriel_252:

(Start: 16 @140798 has 178 MA's), (23, 140873), (31, 141011), (33, 141017), (36, 141050), (37, 141077), (38, 141092), (40, 141113), (50, 141227), (55, 141248), (56, 141257), (57, 141272), (58, 141275), (65, 141371), (75, 141461), (81, 141533), (82, 141536),

Gene: Gamgam_251 Start: 141155, Stop: 141910, Start Num: 16

Candidate Starts for Gamgam_251:

(Start: 16 @141155 has 178 MA's), (23, 141230), (31, 141368), (33, 141374), (36, 141407), (37, 141434), (38, 141449), (40, 141470), (50, 141584), (55, 141605), (56, 141614), (57, 141629), (58, 141632), (65, 141728), (75, 141818), (81, 141890), (82, 141893),

Gene: Ghost_249 Start: 141779, Stop: 142534, Start Num: 16

Candidate Starts for Ghost_249:

(Start: 16 @141779 has 178 MA's), (23, 141854), (31, 141992), (33, 141998), (36, 142031), (37, 142058), (38, 142073), (40, 142094), (50, 142208), (55, 142229), (56, 142238), (57, 142253), (58, 142256), (65, 142352), (75, 142442), (81, 142514), (82, 142517),

Gene: Gizmo_254 Start: 144195, Stop: 144950, Start Num: 16

Candidate Starts for Gizmo_254:

(Start: 16 @144195 has 178 MA's), (23, 144270), (31, 144408), (33, 144414), (36, 144447), (37, 144474), (38, 144489), (40, 144510), (50, 144624), (55, 144645), (56, 144654), (57, 144669), (58, 144672), (65, 144768), (75, 144858), (81, 144930), (82, 144933),

Gene: GlutenPhree_248 Start: 141166, Stop: 141921, Start Num: 16

Candidate Starts for GlutenPhree_248:

(Start: 16 @141166 has 178 MA's), (23, 141241), (31, 141379), (33, 141385), (36, 141418), (37, 141445), (38, 141460), (40, 141481), (50, 141595), (55, 141616), (56, 141625), (57, 141640), (58, 141643), (65, 141739), (75, 141829), (81, 141901), (82, 141904),

Gene: Grasshills_256 Start: 143765, Stop: 144520, Start Num: 16

Candidate Starts for Grasshills_256:

(Start: 16 @143765 has 178 MA's), (23, 143840), (31, 143978), (33, 143984), (36, 144017), (37, 144044), (38, 144059), (40, 144080), (47, 144170), (50, 144194), (55, 144215), (56, 144224), (57, 144239), (58, 144242), (65, 144338), (75, 144428), (81, 144500), (82, 144503),

Gene: Greely_250 Start: 144483, Stop: 145214, Start Num: 15

Candidate Starts for Greely_250:

(2, 144090), (6, 144285), (12, 144411), (Start: 15 @144483 has 3 MA's), (25, 144588), (27, 144612), (30, 144669), (33, 144702), (34, 144723), (36, 144735), (39, 144783), (40, 144798), (52, 144918), (65, 145053), (71, 145089), (78, 145164),

Gene: Grungle_231 Start: 139044, Stop: 139799, Start Num: 16

Candidate Starts for Grungle_231:

(Start: 16 @139044 has 178 MA's), (23, 139119), (31, 139257), (33, 139263), (36, 139296), (37, 139323), (38, 139338), (40, 139359), (50, 139473), (55, 139494), (56, 139503), (57, 139518), (58, 139521), (65, 139617), (75, 139707), (81, 139779), (82, 139782),

Gene: Guwapp_245 Start: 140613, Stop: 141368, Start Num: 16

Candidate Starts for Guwapp_245:

(Start: 16 @140613 has 178 MA's), (23, 140688), (31, 140826), (32, 140829), (33, 140832), (36, 140865), (37, 140892), (38, 140907), (40, 140928), (47, 141018), (50, 141042), (55, 141063), (56, 141072), (57, 141087), (58, 141090), (65, 141186), (75, 141276), (81, 141348), (82, 141351),

Gene: Halldule_241 Start: 140226, Stop: 140981, Start Num: 16

Candidate Starts for Halldule_241:

(Start: 16 @140226 has 178 MA's), (23, 140301), (31, 140439), (33, 140445), (36, 140478), (37, 140505), (38, 140520), (40, 140541), (50, 140655), (55, 140676), (56, 140685), (57, 140700), (58, 140703), (65, 140799), (75, 140889), (81, 140961), (82, 140964),

Gene: HyRo_234 Start: 141130, Stop: 141885, Start Num: 16

Candidate Starts for HyRo_234:

(Start: 16 @141130 has 178 MA's), (23, 141205), (33, 141349), (36, 141382), (37, 141409), (38, 141424), (40, 141445), (55, 141580), (56, 141589), (57, 141604), (58, 141607), (62, 141667), (65, 141703), (75, 141793), (82, 141868),

Gene: I3_259 Start: 142921, Stop: 143676, Start Num: 16

Candidate Starts for I3_259:

(Start: 16 @142921 has 178 MA's), (23, 142996), (31, 143134), (33, 143140), (36, 143173), (37, 143200), (38, 143215), (40, 143236), (47, 143326), (50, 143350), (55, 143371), (56, 143380), (57, 143395), (58, 143398), (62, 143458), (65, 143494), (75, 143584), (81, 143656), (82, 143659),

Gene: IkeLoa_243 Start: 141511, Stop: 142266, Start Num: 16

Candidate Starts for IkeLoa_243:

(Start: 16 @141511 has 178 MA's), (23, 141586), (31, 141724), (33, 141730), (36, 141763), (37, 141790), (38, 141805), (40, 141826), (50, 141940), (55, 141961), (56, 141970), (57, 141985), (58, 141988), (65, 142084), (75, 142174), (81, 142246), (82, 142249),

Gene: InigoMontoya_253 Start: 141829, Stop: 142584, Start Num: 16

Candidate Starts for InigoMontoya_253:

(Start: 16 @141829 has 178 MA's), (23, 141904), (31, 142042), (33, 142048), (36, 142081), (37, 142108), (38, 142123), (40, 142144), (50, 142258), (55, 142279), (56, 142288), (57, 142303), (58, 142306), (65, 142402), (75, 142492), (81, 142564), (82, 142567),

Gene: InterFolia_251 Start: 142575, Stop: 143330, Start Num: 16

Candidate Starts for InterFolia_251:

(Start: 16 @142575 has 178 MA's), (23, 142650), (31, 142788), (32, 142791), (33, 142794), (36, 142827), (37, 142854), (38, 142869), (40, 142890), (47, 142980), (55, 143025), (56, 143034), (57, 143049), (58, 143052), (65, 143148), (75, 143238), (81, 143310), (82, 143313),

Gene: Iota_246 Start: 141541, Stop: 142296, Start Num: 16

Candidate Starts for Iota_246:

(Start: 16 @141541 has 178 MA's), (23, 141616), (31, 141754), (33, 141760), (36, 141793), (37, 141820), (38, 141835), (40, 141856), (50, 141970), (55, 141991), (56, 142000), (57, 142015), (58, 142018), (65, 142114), (75, 142204), (81, 142276), (82, 142279),

Gene: Issimir_242 Start: 141467, Stop: 142222, Start Num: 16

Candidate Starts for Issimir_242:

(Start: 16 @141467 has 178 MA's), (23, 141542), (31, 141680), (33, 141686), (36, 141719), (37, 141746), (38, 141761), (40, 141782), (47, 141872), (50, 141896), (55, 141917), (56, 141926), (57, 141941), (58, 141944), (65, 142040), (75, 142130), (81, 142202), (82, 142205),

Gene: Izajani_245 Start: 142361, Stop: 143116, Start Num: 16

Candidate Starts for Izajani_245:

(Start: 16 @142361 has 178 MA's), (23, 142436), (31, 142574), (33, 142580), (36, 142613), (37, 142640), (38, 142655), (40, 142676), (50, 142790), (55, 142811), (56, 142820), (57, 142835), (58, 142838), (65, 142934), (75, 143024), (81, 143096), (82, 143099),

Gene: JPickles_246 Start: 140517, Stop: 141272, Start Num: 16

Candidate Starts for JPickles_246:

(Start: 16 @140517 has 178 MA's), (23, 140592), (31, 140730), (33, 140736), (36, 140769), (37, 140796), (38, 140811), (40, 140832), (50, 140946), (55, 140967), (56, 140976), (57, 140991), (58, 140994), (65, 141090), (75, 141180), (81, 141252), (82, 141255),

Gene: Janiyra_252 Start: 142054, Stop: 142809, Start Num: 16

Candidate Starts for Janiyra_252:

(Start: 16 @142054 has 178 MA's), (23, 142129), (31, 142267), (33, 142273), (36, 142306), (37, 142333), (38, 142348), (40, 142369), (50, 142483), (55, 142504), (56, 142513), (57, 142528), (58, 142531), (65, 142627), (75, 142717), (81, 142789), (82, 142792),

Gene: JayJay_249 Start: 141302, Stop: 142057, Start Num: 16

Candidate Starts for JayJay_249:

(Start: 16 @141302 has 178 MA's), (23, 141377), (33, 141521), (36, 141554), (37, 141581), (38, 141596), (40, 141617), (55, 141752), (56, 141761), (57, 141776), (58, 141779), (62, 141839), (65, 141875), (75, 141965), (82, 142040),

Gene: Jaygup_246 Start: 141688, Stop: 142443, Start Num: 16

Candidate Starts for Jaygup_246:

(Start: 16 @141688 has 178 MA's), (23, 141763), (31, 141901), (33, 141907), (36, 141940), (37, 141967), (38, 141982), (40, 142003), (50, 142117), (55, 142138), (56, 142147), (57, 142162), (58, 142165), (65, 142261), (75, 142351), (81, 142423), (82, 142426),

Gene: Jedediah_251 Start: 142741, Stop: 143496, Start Num: 16

Candidate Starts for Jedediah_251:

(Start: 16 @142741 has 178 MA's), (23, 142816), (31, 142954), (33, 142960), (36, 142993), (37, 143020), (38, 143035), (40, 143056), (50, 143170), (55, 143191), (56, 143200), (57, 143215), (58, 143218), (65, 143314), (75, 143404), (81, 143476), (82, 143479),

Gene: Jemmno_249 Start: 141460, Stop: 142215, Start Num: 16

Candidate Starts for Jemmno_249:

(Start: 16 @141460 has 178 MA's), (23, 141535), (31, 141673), (33, 141679), (36, 141712), (37, 141739), (38, 141754), (40, 141775), (50, 141889), (55, 141910), (56, 141919), (57, 141934), (58, 141937), (65, 142033), (75, 142123), (81, 142195), (82, 142198),

Gene: Jessibeth14_249 Start: 142936, Stop: 143691, Start Num: 16

Candidate Starts for Jessibeth14_249:

(Start: 16 @142936 has 178 MA's), (23, 143011), (31, 143149), (33, 143155), (36, 143188), (37, 143215), (38, 143230), (40, 143251), (47, 143341), (50, 143365), (55, 143386), (56, 143395), (57, 143410), (58, 143413), (65, 143509), (75, 143599), (81, 143671), (82, 143674),

Gene: Jezreel_245 Start: 142005, Stop: 142760, Start Num: 16

Candidate Starts for Jezreel_245:

(Start: 16 @142005 has 178 MA's), (23, 142080), (31, 142218), (33, 142224), (36, 142257), (37, 142284), (38, 142299), (40, 142320), (47, 142410), (50, 142434), (55, 142455), (56, 142464), (57, 142479), (58, 142482), (65, 142578), (75, 142668), (81, 142740), (82, 142743),

Gene: JigglyPuff_255 Start: 143431, Stop: 144186, Start Num: 16

Candidate Starts for JigglyPuff_255:

(Start: 16 @143431 has 178 MA's), (23, 143506), (31, 143644), (33, 143650), (36, 143683), (37, 143710), (38, 143725), (40, 143746), (47, 143836), (50, 143860), (55, 143881), (56, 143890), (57, 143905), (58, 143908), (65, 144004), (75, 144094), (81, 144166), (82, 144169),

Gene: JulietS_241 Start: 139040, Stop: 139795, Start Num: 16

Candidate Starts for JulietS_241:

(Start: 16 @139040 has 178 MA's), (23, 139115), (31, 139253), (33, 139259), (36, 139292), (37, 139319), (38, 139334), (40, 139355), (47, 139445), (50, 139469), (55, 139490), (56, 139499), (57, 139514), (58, 139517), (65, 139613), (75, 139703), (81, 139775), (82, 139778),

Gene: JustHall_243 Start: 140990, Stop: 141745, Start Num: 16

Candidate Starts for JustHall_243:

(Start: 16 @140990 has 178 MA's), (23, 141065), (31, 141203), (33, 141209), (36, 141242), (37, 141269), (38, 141284), (40, 141305), (50, 141419), (55, 141440), (56, 141449), (57, 141464), (58, 141467), (65, 141563), (75, 141653), (81, 141725), (82, 141728),

Gene: Kamryn_248 Start: 142580, Stop: 143335, Start Num: 16

Candidate Starts for Kamryn_248:

(Start: 16 @142580 has 178 MA's), (23, 142655), (31, 142793), (33, 142799), (36, 142832), (37, 142859), (38, 142874), (40, 142895), (50, 143009), (55, 143030), (56, 143039), (57, 143054), (58, 143057), (65, 143153), (75, 143243), (81, 143315), (82, 143318),

Gene: Kboogie_253 Start: 141619, Stop: 142374, Start Num: 16

Candidate Starts for Kboogie_253:

(Start: 16 @141619 has 178 MA's), (23, 141694), (31, 141832), (33, 141838), (36, 141871), (37, 141898), (38, 141913), (40, 141934), (50, 142048), (55, 142069), (56, 142078), (57, 142093), (58, 142096), (65, 142192), (75, 142282), (81, 142354), (82, 142357),

Gene: Khaleesi_248 Start: 142403, Stop: 143158, Start Num: 16

Candidate Starts for Khaleesi_248:

(Start: 16 @142403 has 178 MA's), (23, 142478), (31, 142616), (33, 142622), (36, 142655), (37, 142682), (38, 142697), (40, 142718), (47, 142808), (50, 142832), (55, 142853), (56, 142862), (57, 142877), (58, 142880), (65, 142976), (75, 143066), (81, 143138), (82, 143141),

Gene: Koguma_248 Start: 141202, Stop: 141957, Start Num: 16

Candidate Starts for Koguma_248:

(Start: 16 @141202 has 178 MA's), (23, 141277), (31, 141415), (33, 141421), (36, 141454), (37, 141481), (38, 141496), (40, 141517), (50, 141631), (55, 141652), (56, 141661), (57, 141676), (58, 141679), (65, 141775), (75, 141865), (81, 141937), (82, 141940),

Gene: LRRHood_241 Start: 140612, Stop: 141367, Start Num: 16

Candidate Starts for LRRHood_241:

(Start: 16 @140612 has 178 MA's), (23, 140687), (31, 140825), (33, 140831), (36, 140864), (37, 140891), (38, 140906), (40, 140927), (47, 141017), (50, 141041), (55, 141062), (56, 141071), (57, 141086), (58, 141089), (65, 141185), (75, 141275), (81, 141347), (82, 141350),

Gene: Latch_249 Start: 141165, Stop: 141920, Start Num: 16

Candidate Starts for Latch_249:

(Start: 16 @141165 has 178 MA's), (23, 141240), (31, 141378), (33, 141384), (36, 141417), (37, 141444), (38, 141459), (40, 141480), (50, 141594), (55, 141615), (56, 141624), (57, 141639), (58, 141642), (65, 141738), (75, 141828), (81, 141900), (82, 141903),

Gene: Lee7_248 Start: 143817, Stop: 144572, Start Num: 16

Candidate Starts for Lee7_248:

(Start: 16 @143817 has 178 MA's), (23, 143892), (31, 144030), (33, 144036), (36, 144069), (37, 144096), (38, 144111), (40, 144132), (47, 144222), (50, 144246), (55, 144267), (56, 144276), (57, 144291), (58, 144294), (65, 144390), (75, 144480), (81, 144552), (82, 144555),

Gene: Lethe_250 Start: 142987, Stop: 143742, Start Num: 16

Candidate Starts for Lethe_250:

(Start: 16 @142987 has 178 MA's), (23, 143062), (31, 143200), (32, 143203), (33, 143206), (36, 143239), (37, 143266), (38, 143281), (40, 143302), (47, 143392), (55, 143437), (56, 143446), (57, 143461), (58, 143464), (65, 143560), (75, 143650), (81, 143722), (82, 143725),

Gene: LifeSavor_250 Start: 142393, Stop: 143148, Start Num: 16

Candidate Starts for LifeSavor_250:

(Start: 16 @142393 has 178 MA's), (23, 142468), (31, 142606), (33, 142612), (36, 142645), (37, 142672), (38, 142687), (40, 142708), (50, 142822), (55, 142843), (56, 142852), (57, 142867), (58,

142870), (65, 142966), (75, 143056), (81, 143128), (82, 143131),

Gene: LinStu_246 Start: 140465, Stop: 141220, Start Num: 16

Candidate Starts for LinStu_246:

(Start: 16 @140465 has 178 MA's), (23, 140540), (31, 140678), (33, 140684), (36, 140717), (37, 140744), (38, 140759), (40, 140780), (41, 140783), (55, 140915), (56, 140924), (57, 140939), (58, 140942), (62, 141002), (65, 141038), (75, 141128), (82, 141203),

Gene: Littleton_253 Start: 142402, Stop: 143157, Start Num: 16

Candidate Starts for Littleton_253:

(Start: 16 @142402 has 178 MA's), (23, 142477), (31, 142615), (33, 142621), (36, 142654), (37, 142681), (38, 142696), (40, 142717), (50, 142831), (55, 142852), (56, 142861), (57, 142876), (58, 142879), (65, 142975), (75, 143065), (81, 143137), (82, 143140),

Gene: Loanshark_246 Start: 141752, Stop: 142507, Start Num: 16

Candidate Starts for Loanshark_246:

(Start: 16 @141752 has 178 MA's), (23, 141827), (31, 141965), (33, 141971), (36, 142004), (37, 142031), (38, 142046), (40, 142067), (50, 142181), (55, 142202), (56, 142211), (57, 142226), (58, 142229), (65, 142325), (75, 142415), (81, 142487), (82, 142490),

Gene: LolaVinca_245 Start: 142005, Stop: 142760, Start Num: 16

Candidate Starts for LolaVinca_245:

(Start: 16 @142005 has 178 MA's), (23, 142080), (31, 142218), (32, 142221), (33, 142224), (36, 142257), (37, 142284), (38, 142299), (40, 142320), (47, 142410), (55, 142455), (56, 142464), (57, 142479), (58, 142482), (65, 142578), (75, 142668), (81, 142740), (82, 142743),

Gene: LordLeafolot_251 Start: 141618, Stop: 142373, Start Num: 16

Candidate Starts for LordLeafolot_251:

(Start: 16 @141618 has 178 MA's), (23, 141693), (31, 141831), (32, 141834), (33, 141837), (36, 141870), (37, 141897), (38, 141912), (40, 141933), (47, 142023), (50, 142047), (55, 142068), (56, 142077), (57, 142092), (58, 142095), (65, 142191), (75, 142281), (81, 142353), (82, 142356),

Gene: Lukilu_238 Start: 142621, Stop: 143376, Start Num: 16

Candidate Starts for Lukilu_238:

(Start: 16 @142621 has 178 MA's), (23, 142696), (31, 142834), (33, 142840), (36, 142873), (37, 142900), (38, 142915), (40, 142936), (47, 143026), (50, 143050), (55, 143071), (56, 143080), (57, 143095), (58, 143098), (65, 143194), (75, 143284), (81, 143356), (82, 143359),

Gene: Maby2021_249 Start: 142856, Stop: 143611, Start Num: 16

Candidate Starts for Maby2021_249:

(Start: 16 @142856 has 178 MA's), (23, 142931), (31, 143069), (33, 143075), (36, 143108), (37, 143135), (38, 143150), (40, 143171), (50, 143285), (55, 143306), (56, 143315), (57, 143330), (58, 143333), (65, 143429), (75, 143519), (81, 143591), (82, 143594),

Gene: Mangeria_249 Start: 142516, Stop: 143271, Start Num: 16

Candidate Starts for Mangeria_249:

(Start: 16 @142516 has 178 MA's), (23, 142591), (31, 142729), (33, 142735), (36, 142768), (37, 142795), (38, 142810), (40, 142831), (50, 142945), (55, 142966), (56, 142975), (57, 142990), (58, 142993), (65, 143089), (75, 143179), (81, 143251), (82, 143254),

Gene: Matsumoto_247 Start: 141607, Stop: 142362, Start Num: 16

Candidate Starts for Matsumoto_247:

(Start: 16 @141607 has 178 MA's), (23, 141682), (31, 141820), (33, 141826), (36, 141859), (37, 141886), (38, 141901), (40, 141922), (50, 142036), (55, 142057), (56, 142066), (57, 142081), (58, 142084), (65, 142180), (75, 142270), (81, 142342), (82, 142345),

Gene: McGee_250 Start: 141504, Stop: 142259, Start Num: 16

Candidate Starts for McGee_250:

(Start: 16 @141504 has 178 MA's), (23, 141579), (31, 141717), (33, 141723), (36, 141756), (37, 141783), (38, 141798), (40, 141819), (50, 141933), (55, 141954), (56, 141963), (57, 141978), (58, 141981), (65, 142077), (75, 142167), (81, 142239), (82, 142242),

Gene: McWolfish_246 Start: 141614, Stop: 142369, Start Num: 16

Candidate Starts for McWolfish_246:

(Start: 16 @141614 has 178 MA's), (23, 141689), (31, 141827), (33, 141833), (36, 141866), (37, 141893), (38, 141908), (40, 141929), (47, 142019), (50, 142043), (55, 142064), (56, 142073), (57, 142088), (58, 142091), (65, 142187), (75, 142277), (81, 142349), (82, 142352),

Gene: Megamind_246 Start: 141939, Stop: 142694, Start Num: 16

Candidate Starts for Megamind_246:

(Start: 16 @141939 has 178 MA's), (23, 142014), (31, 142152), (33, 142158), (36, 142191), (37, 142218), (38, 142233), (40, 142254), (50, 142368), (55, 142389), (56, 142398), (57, 142413), (58, 142416), (65, 142512), (75, 142602), (81, 142674), (82, 142677),

Gene: Melpomini_244 Start: 140699, Stop: 141454, Start Num: 16

Candidate Starts for Melpomini_244:

(Start: 16 @140699 has 178 MA's), (23, 140774), (31, 140912), (33, 140918), (36, 140951), (37, 140978), (38, 140993), (40, 141014), (50, 141128), (55, 141149), (56, 141158), (57, 141173), (58, 141176), (65, 141272), (75, 141362), (81, 141434), (82, 141437),

Gene: MikeLiesIn_250 Start: 143075, Stop: 143830, Start Num: 16

Candidate Starts for MikeLiesIn_250:

(Start: 16 @143075 has 178 MA's), (23, 143150), (31, 143288), (33, 143294), (36, 143327), (37, 143354), (38, 143369), (40, 143390), (50, 143504), (55, 143525), (56, 143534), (57, 143549), (58, 143552), (65, 143648), (75, 143738), (81, 143810), (82, 143813),

Gene: Mikro_243 Start: 143518, Stop: 144273, Start Num: 16

Candidate Starts for Mikro_243:

(Start: 16 @143518 has 178 MA's), (23, 143593), (31, 143731), (33, 143737), (36, 143770), (37, 143797), (38, 143812), (40, 143833), (47, 143923), (50, 143947), (55, 143968), (56, 143977), (57, 143992), (58, 143995), (65, 144091), (75, 144181), (81, 144253), (82, 144256),

Gene: MoMoMixon_245 Start: 142034, Stop: 142789, Start Num: 16

Candidate Starts for MoMoMixon_245:

(Start: 16 @142034 has 178 MA's), (23, 142109), (31, 142247), (33, 142253), (36, 142286), (37, 142313), (38, 142328), (40, 142349), (47, 142439), (50, 142463), (55, 142484), (56, 142493), (57, 142508), (58, 142511), (65, 142607), (75, 142697), (81, 142769), (82, 142772),

Gene: Momo_251 Start: 141165, Stop: 141920, Start Num: 16

Candidate Starts for Momo_251:

(Start: 16 @141165 has 178 MA's), (23, 141240), (31, 141378), (33, 141384), (36, 141417), (37, 141444), (38, 141459), (40, 141480), (50, 141594), (55, 141615), (56, 141624), (57, 141639), (58, 141642), (65, 141738), (75, 141828), (81, 141900), (82, 141903),

Gene: Morizzled23_246 Start: 140532, Stop: 141287, Start Num: 16

Candidate Starts for Morizzled23_246:

(Start: 16 @140532 has 178 MA's), (23, 140607), (31, 140745), (33, 140751), (36, 140784), (37, 140811), (38, 140826), (40, 140847), (50, 140961), (55, 140982), (56, 140991), (57, 141006), (58, 141009), (65, 141105), (75, 141195), (81, 141267), (82, 141270),

Gene: Myrna_242 Start: 144467, Stop: 145198, Start Num: 15

Candidate Starts for Myrna_242:

(2, 144074), (5, 144266), (12, 144395), (Start: 15 @144467 has 3 MA's), (27, 144596), (30, 144653), (33, 144686), (36, 144719), (37, 144746), (39, 144767), (40, 144782), (44, 144833), (47, 144869), (48, 144878), (49, 144887), (51, 144896), (52, 144902), (59, 144947), (65, 145037), (78, 145148), (81, 145178),

Gene: Naija_250 Start: 141868, Stop: 142623, Start Num: 16

Candidate Starts for Naija_250:

(Start: 16 @141868 has 178 MA's), (23, 141943), (31, 142081), (33, 142087), (36, 142120), (37, 142147), (38, 142162), (40, 142183), (50, 142297), (55, 142318), (56, 142327), (57, 142342), (58, 142345), (65, 142441), (75, 142531), (81, 142603), (82, 142606),

Gene: Napoleon13_246 Start: 140897, Stop: 141652, Start Num: 16

Candidate Starts for Napoleon13_246:

(Start: 16 @140897 has 178 MA's), (23, 140972), (31, 141110), (33, 141116), (36, 141149), (37, 141176), (38, 141191), (40, 141212), (50, 141326), (55, 141347), (56, 141356), (57, 141371), (58, 141374), (65, 141470), (75, 141560), (81, 141632), (82, 141635),

Gene: Nappy_248 Start: 142974, Stop: 143729, Start Num: 16

Candidate Starts for Nappy_248:

(Start: 16 @142974 has 178 MA's), (23, 143049), (31, 143187), (33, 143193), (36, 143226), (37, 143253), (38, 143268), (40, 143289), (50, 143403), (55, 143424), (56, 143433), (57, 143448), (58, 143451), (65, 143547), (75, 143637), (81, 143709), (82, 143712),

Gene: Naval22_254 Start: 143648, Stop: 144403, Start Num: 16

Candidate Starts for Naval22_254:

(Start: 16 @143648 has 178 MA's), (23, 143723), (31, 143861), (33, 143867), (36, 143900), (37, 143927), (38, 143942), (40, 143963), (47, 144053), (50, 144077), (55, 144098), (56, 144107), (57, 144122), (58, 144125), (65, 144221), (75, 144311), (81, 144383), (82, 144386),

Gene: NedWong_248 Start: 142326, Stop: 143081, Start Num: 16

Candidate Starts for NedWong_248:

(Start: 16 @142326 has 178 MA's), (23, 142401), (31, 142539), (33, 142545), (36, 142578), (37, 142605), (38, 142620), (40, 142641), (50, 142755), (55, 142776), (56, 142785), (57, 142800), (58, 142803), (65, 142899), (75, 142989), (81, 143061), (82, 143064),

Gene: Ngannou_244 Start: 140850, Stop: 141605, Start Num: 16

Candidate Starts for Ngannou_244:

(Start: 16 @140850 has 178 MA's), (23, 140925), (31, 141063), (33, 141069), (36, 141102), (37, 141129), (38, 141144), (40, 141165), (50, 141279), (55, 141300), (56, 141309), (57, 141324), (58, 141327), (65, 141423), (75, 141513), (81, 141585), (82, 141588),

Gene: Nidhogg_250 Start: 142694, Stop: 143449, Start Num: 16

Candidate Starts for Nidhogg_250:

(Start: 16 @142694 has 178 MA's), (23, 142769), (31, 142907), (33, 142913), (36, 142946), (37, 142973), (38, 142988), (40, 143009), (47, 143099), (50, 143123), (55, 143144), (56, 143153), (57, 143168), (58, 143171), (65, 143267), (75, 143357), (81, 143429), (82, 143432),

Gene: NoodleTree_245 Start: 137445, Stop: 138200, Start Num: 16

Candidate Starts for NoodleTree_245:

(Start: 16 @137445 has 178 MA's), (23, 137520), (31, 137658), (33, 137664), (36, 137697), (37, 137724), (38, 137739), (40, 137760), (47, 137850), (50, 137874), (55, 137895), (56, 137904), (57, 137919), (58, 137922), (65, 138018), (75, 138108), (81, 138180), (82, 138183),

Gene: Norm_249 Start: 142595, Stop: 143350, Start Num: 16

Candidate Starts for Norm_249:

(Start: 16 @142595 has 178 MA's), (23, 142670), (31, 142808), (33, 142814), (36, 142847), (37, 142874), (38, 142889), (40, 142910), (50, 143024), (55, 143045), (56, 143054), (57, 143069), (58, 143072), (65, 143168), (75, 143258), (81, 143330), (82, 143333),

Gene: NuevoMundo_251 Start: 143081, Stop: 143836, Start Num: 16

Candidate Starts for NuevoMundo_251:

(Start: 16 @143081 has 178 MA's), (23, 143156), (31, 143294), (33, 143300), (36, 143333), (37, 143360), (38, 143375), (40, 143396), (50, 143510), (55, 143531), (56, 143540), (57, 143555), (58, 143558), (65, 143654), (75, 143744), (81, 143816), (82, 143819),

Gene: ParkTD_248 Start: 142165, Stop: 142920, Start Num: 16

Candidate Starts for ParkTD_248:

(Start: 16 @142165 has 178 MA's), (23, 142240), (31, 142378), (33, 142384), (36, 142417), (37, 142444), (38, 142459), (40, 142480), (50, 142594), (55, 142615), (56, 142624), (57, 142639), (58, 142642), (65, 142738), (75, 142828), (81, 142900), (82, 142903),

Gene: Patter_251 Start: 141825, Stop: 142580, Start Num: 16

Candidate Starts for Patter_251:

(Start: 16 @141825 has 178 MA's), (23, 141900), (31, 142038), (32, 142041), (33, 142044), (36, 142077), (37, 142104), (38, 142119), (40, 142140), (55, 142275), (56, 142284), (57, 142299), (58, 142302), (65, 142398), (75, 142488), (81, 142560), (82, 142563),

Gene: Phabba_252 Start: 143853, Stop: 144581, Start Num: 15

Candidate Starts for Phabba_252:

(2, 143460), (5, 143652), (6, 143655), (9, 143694), (12, 143781), (Start: 15 @143853 has 3 MA's), (25, 143958), (27, 143982), (30, 144039), (33, 144072), (34, 144093), (36, 144105), (37, 144129), (39, 144150), (40, 144165), (47, 144252), (48, 144261), (52, 144285), (65, 144420),

Gene: Phlegm_254 Start: 142571, Stop: 143326, Start Num: 16

Candidate Starts for Phlegm_254:

(Start: 16 @142571 has 178 MA's), (23, 142646), (31, 142784), (33, 142790), (36, 142823), (37, 142850), (38, 142865), (40, 142886), (50, 143000), (55, 143021), (56, 143030), (57, 143045), (58, 143048), (65, 143144), (75, 143234), (81, 143306), (82, 143309),

Gene: Phox_250 Start: 141820, Stop: 142575, Start Num: 16

Candidate Starts for Phox_250:

(Start: 16 @141820 has 178 MA's), (23, 141895), (31, 142033), (33, 142039), (36, 142072), (37, 142099), (38, 142114), (40, 142135), (47, 142225), (50, 142249), (55, 142270), (56, 142279), (57, 142294), (58, 142297), (65, 142393), (75, 142483), (81, 142555), (82, 142558),

Gene: Phrappuccino_201 Start: 135538, Stop: 136299, Start Num: 16

Candidate Starts for Phrappuccino_201:

(Start: 16 @135538 has 178 MA's), (20, 135586), (21, 135589), (36, 135790), (38, 135832), (40, 135853), (41, 135856), (51, 135967), (64, 136093), (66, 136120), (69, 136147), (70, 136159), (75,

136201), (82, 136282), (83, 136288), (84, 136294),

Gene: Phusco_248 Start: 141403, Stop: 142158, Start Num: 16

Candidate Starts for Phusco_248:

(Start: 16 @141403 has 178 MA's), (23, 141478), (31, 141616), (33, 141622), (36, 141655), (37, 141682), (38, 141697), (40, 141718), (50, 141832), (55, 141853), (56, 141862), (57, 141877), (58, 141880), (65, 141976), (75, 142066), (81, 142138), (82, 142141),

Gene: Pier_248 Start: 142696, Stop: 143451, Start Num: 16

Candidate Starts for Pier_248:

(Start: 16 @142696 has 178 MA's), (23, 142771), (31, 142909), (33, 142915), (36, 142948), (37, 142975), (38, 142990), (40, 143011), (50, 143125), (55, 143146), (56, 143155), (57, 143170), (58, 143173), (65, 143269), (75, 143359), (81, 143431), (82, 143434),

Gene: Pinkcreek_229 Start: 138993, Stop: 139748, Start Num: 16

Candidate Starts for Pinkcreek_229:

(Start: 16 @138993 has 178 MA's), (23, 139068), (31, 139206), (33, 139212), (36, 139245), (37, 139272), (38, 139287), (40, 139308), (55, 139443), (56, 139452), (57, 139467), (58, 139470), (65, 139566), (75, 139656), (82, 139731),

Gene: Pio_256 Start: 143899, Stop: 144654, Start Num: 16

Candidate Starts for Pio_256:

(Start: 16 @143899 has 178 MA's), (23, 143974), (31, 144112), (33, 144118), (36, 144151), (37, 144178), (38, 144193), (40, 144214), (50, 144328), (55, 144349), (56, 144358), (57, 144373), (58, 144376), (65, 144472), (75, 144562), (81, 144634), (82, 144637),

Gene: Pivoine_250 Start: 141868, Stop: 142623, Start Num: 16

Candidate Starts for Pivoine_250:

(Start: 16 @141868 has 178 MA's), (23, 141943), (31, 142081), (33, 142087), (36, 142120), (37, 142147), (38, 142162), (40, 142183), (50, 142297), (55, 142318), (56, 142327), (57, 142342), (58, 142345), (65, 142441), (75, 142531), (81, 142603), (82, 142606),

Gene: Pleione_253 Start: 142631, Stop: 143386, Start Num: 16

Candidate Starts for Pleione_253:

(Start: 16 @142631 has 178 MA's), (23, 142706), (31, 142844), (33, 142850), (36, 142883), (37, 142910), (38, 142925), (40, 142946), (50, 143060), (55, 143081), (56, 143090), (57, 143105), (58, 143108), (65, 143204), (75, 143294), (81, 143366), (82, 143369),

Gene: Primadonna_243 Start: 141531, Stop: 142286, Start Num: 16

Candidate Starts for Primadonna_243:

(Start: 16 @141531 has 178 MA's), (23, 141606), (31, 141744), (33, 141750), (36, 141783), (37, 141810), (38, 141825), (40, 141846), (50, 141960), (55, 141981), (56, 141990), (57, 142005), (58, 142008), (65, 142104), (75, 142194), (81, 142266), (82, 142269),

Gene: Pupper_170 Start: 124197, Stop: 124955, Start Num: 16

Candidate Starts for Pupper_170:

(Start: 16 @124197 has 178 MA's), (18, 124203), (26, 124314), (28, 124335), (35, 124440), (36, 124449), (40, 124512), (41, 124515), (42, 124545), (46, 124578), (48, 124608), (52, 124632), (53, 124635), (54, 124638), (60, 124683), (63, 124740), (66, 124779), (67, 124788), (68, 124806), (81, 124935),

Gene: PurduePete_249 Start: 142896, Stop: 143651, Start Num: 16

Candidate Starts for PurduePete_249:

(Start: 16 @142896 has 178 MA's), (23, 142971), (31, 143109), (33, 143115), (36, 143148), (37, 143175), (38, 143190), (40, 143211), (50, 143325), (55, 143346), (56, 143355), (57, 143370), (58, 143373), (65, 143469), (75, 143559), (81, 143631), (82, 143634),

Gene: QBert_241 Start: 140218, Stop: 140973, Start Num: 16

Candidate Starts for QBert_241:

(Start: 16 @140218 has 178 MA's), (23, 140293), (31, 140431), (33, 140437), (36, 140470), (37, 140497), (38, 140512), (40, 140533), (55, 140668), (56, 140677), (57, 140692), (58, 140695), (62, 140755), (65, 140791), (75, 140881), (81, 140953), (82, 140956),

Gene: Quasimodo_252 Start: 142204, Stop: 142959, Start Num: 16

Candidate Starts for Quasimodo_252:

(Start: 16 @142204 has 178 MA's), (23, 142279), (31, 142417), (33, 142423), (36, 142456), (37, 142483), (38, 142498), (40, 142519), (50, 142633), (55, 142654), (56, 142663), (57, 142678), (58, 142681), (65, 142777), (75, 142867), (81, 142939), (82, 142942),

Gene: Rabinovish_242 Start: 140708, Stop: 141463, Start Num: 16

Candidate Starts for Rabinovish_242:

(Start: 16 @140708 has 178 MA's), (23, 140783), (31, 140921), (33, 140927), (36, 140960), (37, 140987), (38, 141002), (40, 141023), (50, 141137), (55, 141158), (56, 141167), (57, 141182), (58, 141185), (65, 141281), (75, 141371), (81, 141443), (82, 141446),

Gene: Rahel_251 Start: 142306, Stop: 143061, Start Num: 16

Candidate Starts for Rahel_251:

(Start: 16 @142306 has 178 MA's), (23, 142381), (31, 142519), (33, 142525), (36, 142558), (37, 142585), (38, 142600), (40, 142621), (50, 142735), (55, 142756), (56, 142765), (57, 142780), (58, 142783), (65, 142879), (75, 142969), (81, 143041), (82, 143044),

Gene: Rizal_238 Start: 140121, Stop: 140876, Start Num: 16

Candidate Starts for Rizal_238:

(Start: 16 @140121 has 178 MA's), (23, 140196), (31, 140334), (33, 140340), (36, 140373), (37, 140400), (38, 140415), (40, 140436), (50, 140550), (55, 140571), (56, 140580), (57, 140595), (58, 140598), (65, 140694), (75, 140784), (81, 140856), (82, 140859),

Gene: RoMag_244 Start: 141902, Stop: 142657, Start Num: 16

Candidate Starts for RoMag_244:

(Start: 16 @141902 has 178 MA's), (23, 141977), (31, 142115), (33, 142121), (36, 142154), (37, 142181), (38, 142196), (40, 142217), (50, 142331), (55, 142352), (56, 142361), (57, 142376), (58, 142379), (65, 142475), (75, 142565), (81, 142637), (82, 142640),

Gene: Ronan_245 Start: 140254, Stop: 141009, Start Num: 16

Candidate Starts for Ronan_245:

(Start: 16 @140254 has 178 MA's), (23, 140329), (31, 140467), (33, 140473), (36, 140506), (37, 140533), (38, 140548), (40, 140569), (41, 140572), (55, 140704), (56, 140713), (57, 140728), (58, 140731), (62, 140791), (65, 140827), (75, 140917), (82, 140992),

Gene: Roots515_252 Start: 143447, Stop: 144202, Start Num: 16

Candidate Starts for Roots515_252:

(Start: 16 @143447 has 178 MA's), (23, 143522), (31, 143660), (33, 143666), (36, 143699), (37, 143726), (38, 143741), (40, 143762), (50, 143876), (55, 143897), (56, 143906), (57, 143921), (58, 143924), (65, 144020), (75, 144110), (81, 144182), (82, 144185),

Gene: SCentae_169 Start: 124390, Stop: 125148, Start Num: 16

Candidate Starts for SCentae_169:

(Start: 16 @124390 has 178 MA's), (18, 124396), (26, 124507), (28, 124528), (35, 124633), (36, 124642), (40, 124705), (41, 124708), (42, 124738), (46, 124771), (48, 124801), (52, 124825), (53, 124828), (54, 124831), (60, 124876), (63, 124933), (66, 124972), (67, 124981), (68, 124999), (81, 125128),

Gene: SVoro_245 Start: 142204, Stop: 142959, Start Num: 16

Candidate Starts for SVoro_245:

(Start: 16 @142204 has 178 MA's), (23, 142279), (31, 142417), (33, 142423), (36, 142456), (37, 142483), (38, 142498), (40, 142519), (47, 142609), (50, 142633), (55, 142654), (56, 142663), (57, 142678), (58, 142681), (65, 142777), (75, 142867), (81, 142939), (82, 142942),

Gene: Salacia_250 Start: 143322, Stop: 144077, Start Num: 16

Candidate Starts for Salacia_250:

(Start: 16 @143322 has 178 MA's), (23, 143397), (31, 143535), (33, 143541), (36, 143574), (37, 143601), (38, 143616), (40, 143637), (47, 143727), (50, 143751), (55, 143772), (56, 143781), (57, 143796), (58, 143799), (65, 143895), (75, 143985), (81, 144057), (82, 144060),

Gene: Sauce_246 Start: 141630, Stop: 142385, Start Num: 16

Candidate Starts for Sauce_246:

(Start: 16 @141630 has 178 MA's), (23, 141705), (31, 141843), (33, 141849), (36, 141882), (37, 141909), (38, 141924), (40, 141945), (50, 142059), (55, 142080), (56, 142089), (57, 142104), (58, 142107), (65, 142203), (75, 142293), (81, 142365), (82, 142368),

Gene: ScoobyDoobyDoo_238 Start: 140853, Stop: 141596, Start Num: 16

Candidate Starts for ScoobyDoobyDoo_238:

(Start: 16 @140853 has 178 MA's), (20, 140901), (26, 140970), (27, 140982), (29, 141009), (30, 141039), (33, 141072), (34, 141093), (36, 141105), (37, 141132), (45, 141222), (48, 141264), (61, 141381), (65, 141423), (66, 141432), (67, 141441), (76, 141531), (78, 141546), (80, 141570), (81, 141576),

Gene: ScottMcG_241 Start: 140831, Stop: 141586, Start Num: 16

Candidate Starts for ScottMcG_241:

(Start: 16 @140831 has 178 MA's), (23, 140906), (31, 141044), (33, 141050), (36, 141083), (37, 141110), (38, 141125), (40, 141146), (50, 141260), (55, 141281), (56, 141290), (57, 141305), (58, 141308), (65, 141404), (75, 141494), (81, 141566), (82, 141569),

Gene: Sebata_249 Start: 142490, Stop: 143245, Start Num: 16

Candidate Starts for Sebata_249:

(Start: 16 @142490 has 178 MA's), (23, 142565), (33, 142709), (36, 142742), (37, 142769), (38, 142784), (40, 142805), (55, 142940), (56, 142949), (57, 142964), (58, 142967), (62, 143027), (65, 143063), (75, 143153), (82, 143228),

Gene: Settecandela_226 Start: 144385, Stop: 145146, Start Num: 16

Candidate Starts for Settecandela_226:

(Start: 16 @144385 has 178 MA's), (20, 144433), (21, 144436), (36, 144637), (38, 144679), (40, 144700), (41, 144703), (51, 144814), (64, 144940), (66, 144967), (69, 144994), (70, 145006), (75, 145048), (82, 145129), (83, 145135), (84, 145141),

Gene: Shaqnato_240 Start: 141039, Stop: 141794, Start Num: 16

Candidate Starts for Shaqnato_240:

(Start: 16 @141039 has 178 MA's), (23, 141114), (31, 141252), (33, 141258), (36, 141291), (37, 141318), (38, 141333), (40, 141354), (47, 141444), (50, 141468), (55, 141489), (56, 141498), (57,

141513), (58, 141516), (65, 141612), (75, 141702), (81, 141774), (82, 141777),

Gene: Shelob_250 Start: 143765, Stop: 144520, Start Num: 16

Candidate Starts for Shelob_250:

(Start: 16 @143765 has 178 MA's), (23, 143840), (31, 143978), (33, 143984), (36, 144017), (37, 144044), (38, 144059), (40, 144080), (50, 144194), (55, 144215), (56, 144224), (57, 144239), (58, 144242), (65, 144338), (75, 144428), (81, 144500), (82, 144503),

Gene: ShiaLabeouf_247 Start: 141624, Stop: 142379, Start Num: 16

Candidate Starts for ShiaLabeouf_247:

(Start: 16 @141624 has 178 MA's), (23, 141699), (31, 141837), (33, 141843), (36, 141876), (37, 141903), (38, 141918), (40, 141939), (50, 142053), (55, 142074), (56, 142083), (57, 142098), (58, 142101), (65, 142197), (75, 142287), (81, 142359), (82, 142362),

Gene: Shifa_225 Start: 141098, Stop: 141853, Start Num: 16

Candidate Starts for Shifa_225:

(Start: 16 @141098 has 178 MA's), (23, 141173), (33, 141317), (36, 141350), (37, 141377), (38, 141392), (40, 141413), (55, 141548), (56, 141557), (57, 141572), (58, 141575), (62, 141635), (65, 141671), (75, 141761), (82, 141836),

Gene: Shnickers_248 Start: 141688, Stop: 142443, Start Num: 16

Candidate Starts for Shnickers_248:

(Start: 16 @141688 has 178 MA's), (23, 141763), (31, 141901), (33, 141907), (36, 141940), (37, 141967), (38, 141982), (40, 142003), (50, 142117), (55, 142138), (56, 142147), (57, 142162), (58, 142165), (65, 142261), (75, 142351), (81, 142423), (82, 142426),

Gene: Shrimp_251 Start: 142933, Stop: 143688, Start Num: 16

Candidate Starts for Shrimp_251:

(Start: 16 @142933 has 178 MA's), (23, 143008), (31, 143146), (33, 143152), (36, 143185), (37, 143212), (38, 143227), (40, 143248), (50, 143362), (55, 143383), (56, 143392), (57, 143407), (58, 143410), (65, 143506), (75, 143596), (81, 143668), (82, 143671),

Gene: SilverDipper_254 Start: 142424, Stop: 143179, Start Num: 16

Candidate Starts for SilverDipper_254:

(Start: 16 @142424 has 178 MA's), (23, 142499), (31, 142637), (33, 142643), (36, 142676), (37, 142703), (38, 142718), (40, 142739), (55, 142874), (56, 142883), (57, 142898), (58, 142901), (65, 142997), (75, 143087), (81, 143159), (82, 143162),

Gene: Skog_2 Start: 768, Stop: 1526, Start Num: 16

Candidate Starts for Skog_2:

(11, 672), (Start: 16 @768 has 178 MA's), (18, 774), (26, 885), (29, 924), (33, 987), (35, 1011), (39, 1068), (52, 1203), (55, 1215), (60, 1254), (63, 1311), (66, 1350), (67, 1359), (68, 1377), (79, 1485),

Gene: SmallFry_250 Start: 141782, Stop: 142537, Start Num: 16

Candidate Starts for SmallFry_250:

(Start: 16 @141782 has 178 MA's), (23, 141857), (31, 141995), (33, 142001), (36, 142034), (37, 142061), (38, 142076), (40, 142097), (50, 142211), (55, 142232), (56, 142241), (57, 142256), (58, 142259), (65, 142355), (75, 142445), (81, 142517), (82, 142520),

Gene: Spec_243 Start: 141794, Stop: 142549, Start Num: 16

Candidate Starts for Spec_243:

(Start: 16 @141794 has 178 MA's), (23, 141869), (31, 142007), (33, 142013), (36, 142046), (37, 142073), (38, 142088), (40, 142109), (55, 142244), (56, 142253), (57, 142268), (58, 142271), (62,

142331), (65, 142367), (75, 142457), (81, 142529), (82, 142532),

Gene: Specks_253 Start: 142273, Stop: 143028, Start Num: 16

Candidate Starts for Specks_253:

(Start: 16 @142273 has 178 MA's), (23, 142348), (31, 142486), (33, 142492), (36, 142525), (37, 142552), (38, 142567), (40, 142588), (47, 142678), (50, 142702), (55, 142723), (56, 142732), (57, 142747), (58, 142750), (65, 142846), (75, 142936), (81, 143008), (82, 143011),

Gene: Sprinklers_247 Start: 141490, Stop: 142245, Start Num: 16

Candidate Starts for Sprinklers_247:

(Start: 16 @141490 has 178 MA's), (23, 141565), (31, 141703), (33, 141709), (36, 141742), (37, 141769), (38, 141784), (40, 141805), (55, 141940), (56, 141949), (57, 141964), (58, 141967), (62, 142027), (65, 142063), (75, 142153), (81, 142225), (82, 142228),

Gene: Spud_241 Start: 141239, Stop: 141994, Start Num: 16

Candidate Starts for Spud_241:

(Start: 16 @141239 has 178 MA's), (23, 141314), (31, 141452), (33, 141458), (36, 141491), (37, 141518), (38, 141533), (40, 141554), (50, 141668), (55, 141689), (56, 141698), (57, 141713), (58, 141716), (65, 141812), (75, 141902), (81, 141974), (82, 141977),

Gene: SrishMeg2525_246 Start: 142428, Stop: 143183, Start Num: 16

Candidate Starts for SrishMeg2525_246:

(Start: 16 @142428 has 178 MA's), (23, 142503), (31, 142641), (33, 142647), (36, 142680), (37, 142707), (38, 142722), (40, 142743), (50, 142857), (55, 142878), (56, 142887), (57, 142902), (58, 142905), (65, 143001), (75, 143091), (81, 143163), (82, 143166),

Gene: StephanieG_243 Start: 142425, Stop: 143180, Start Num: 16

Candidate Starts for StephanieG_243:

(Start: 16 @142425 has 178 MA's), (23, 142500), (31, 142638), (33, 142644), (36, 142677), (37, 142704), (38, 142719), (40, 142740), (50, 142854), (55, 142875), (56, 142884), (57, 142899), (58, 142902), (65, 142998), (75, 143088), (81, 143160), (82, 143163),

Gene: Stubby_232 Start: 139181, Stop: 139936, Start Num: 16

Candidate Starts for Stubby_232:

(Start: 16 @139181 has 178 MA's), (23, 139256), (31, 139394), (33, 139400), (36, 139433), (37, 139460), (38, 139475), (40, 139496), (41, 139499), (55, 139631), (56, 139640), (57, 139655), (58, 139658), (62, 139718), (65, 139754), (75, 139844), (82, 139919),

Gene: StubbySaigey_255 Start: 141958, Stop: 142713, Start Num: 16

Candidate Starts for StubbySaigey_255:

(Start: 16 @141958 has 178 MA's), (23, 142033), (31, 142171), (33, 142177), (36, 142210), (37, 142237), (38, 142252), (40, 142273), (50, 142387), (55, 142408), (56, 142417), (57, 142432), (58, 142435), (65, 142531), (75, 142621), (81, 142693), (82, 142696),

Gene: Tainan_249 Start: 141345, Stop: 142100, Start Num: 16

Candidate Starts for Tainan_249:

(Start: 16 @141345 has 178 MA's), (23, 141420), (31, 141558), (32, 141561), (33, 141564), (36, 141597), (37, 141624), (38, 141639), (40, 141660), (47, 141750), (55, 141795), (56, 141804), (57, 141819), (58, 141822), (65, 141918), (75, 142008), (81, 142080), (82, 142083),

Gene: Teardrop_247 Start: 141285, Stop: 142040, Start Num: 16

Candidate Starts for Teardrop_247:

(Start: 16 @141285 has 178 MA's), (23, 141360), (31, 141498), (33, 141504), (36, 141537), (37, 141564), (38, 141579), (40, 141600), (50, 141714), (55, 141735), (56, 141744), (57, 141759), (58, 141762), (65, 141858), (75, 141948), (81, 142020), (82, 142023),

Gene: TinyTim_247 Start: 141252, Stop: 142007, Start Num: 16

Candidate Starts for TinyTim_247:

(Start: 16 @141252 has 178 MA's), (23, 141327), (31, 141465), (33, 141471), (36, 141504), (37, 141531), (38, 141546), (40, 141567), (47, 141657), (50, 141681), (55, 141702), (56, 141711), (57, 141726), (58, 141729), (65, 141825), (75, 141915), (81, 141987), (82, 141990),

Gene: Tonenili_271 Start: 147041, Stop: 147796, Start Num: 17

Candidate Starts for Tonenili_271:

(4, 146738), (7, 146834), (10, 146876), (13, 147020), (14, 147035), (Start: 17 @147041 has 1 MA's), (19, 147059), (24, 147131), (25, 147146), (26, 147158), (29, 147197), (33, 147260), (36, 147293), (37, 147320), (39, 147341), (40, 147356), (47, 147446), (55, 147491), (56, 147500), (57, 147515), (58, 147518), (65, 147614), (75, 147704),

Gene: Tortoise16_247 Start: 141714, Stop: 142469, Start Num: 16

Candidate Starts for Tortoise16_247:

(Start: 16 @141714 has 178 MA's), (23, 141789), (31, 141927), (33, 141933), (36, 141966), (37, 141993), (38, 142008), (40, 142029), (50, 142143), (55, 142164), (56, 142173), (57, 142188), (58, 142191), (65, 142287), (75, 142377), (81, 142449), (82, 142452),

Gene: Trinitium_245 Start: 140006, Stop: 140761, Start Num: 16

Candidate Starts for Trinitium_245:

(Start: 16 @140006 has 178 MA's), (23, 140081), (31, 140219), (33, 140225), (36, 140258), (37, 140285), (38, 140300), (40, 140321), (50, 140435), (55, 140456), (56, 140465), (57, 140480), (58, 140483), (65, 140579), (75, 140669), (81, 140741), (82, 140744),

Gene: Turret_240 Start: 139588, Stop: 140343, Start Num: 16

Candidate Starts for Turret_240:

(Start: 16 @139588 has 178 MA's), (23, 139663), (31, 139801), (33, 139807), (36, 139840), (37, 139867), (38, 139882), (40, 139903), (50, 140017), (55, 140038), (56, 140047), (57, 140062), (58, 140065), (65, 140161), (75, 140251), (81, 140323), (82, 140326),

Gene: Tyke_246 Start: 143837, Stop: 144592, Start Num: 16

Candidate Starts for Tyke_246:

(Start: 16 @143837 has 178 MA's), (23, 143912), (31, 144050), (33, 144056), (36, 144089), (37, 144116), (38, 144131), (40, 144152), (50, 144266), (55, 144287), (56, 144296), (57, 144311), (58, 144314), (65, 144410), (75, 144500), (81, 144572), (82, 144575),

Gene: ValleyTerrace_250 Start: 141165, Stop: 141920, Start Num: 16

Candidate Starts for ValleyTerrace_250:

(Start: 16 @141165 has 178 MA's), (23, 141240), (31, 141378), (33, 141384), (36, 141417), (37, 141444), (38, 141459), (40, 141480), (50, 141594), (55, 141615), (56, 141624), (57, 141639), (58, 141642), (65, 141738), (75, 141828), (81, 141900), (82, 141903),

Gene: Wally_247 Start: 141149, Stop: 141904, Start Num: 16

Candidate Starts for Wally_247:

(Start: 16 @141149 has 178 MA's), (23, 141224), (31, 141362), (33, 141368), (36, 141401), (37, 141428), (38, 141443), (40, 141464), (50, 141578), (55, 141599), (56, 141608), (57, 141623), (58, 141626), (65, 141722), (75, 141812), (81, 141884), (82, 141887),

Gene: Willis_250 Start: 142088, Stop: 142843, Start Num: 16

Candidate Starts for Willis_250:

(Start: 16 @142088 has 178 MA's), (23, 142163), (31, 142301), (33, 142307), (36, 142340), (37, 142367), (38, 142382), (40, 142403), (50, 142517), (55, 142538), (56, 142547), (57, 142562), (58, 142565), (65, 142661), (75, 142751), (81, 142823), (82, 142826),

Gene: Yassified_245 Start: 141255, Stop: 142010, Start Num: 16

Candidate Starts for Yassified_245:

(Start: 16 @141255 has 178 MA's), (23, 141330), (31, 141468), (33, 141474), (36, 141507), (37, 141534), (38, 141549), (40, 141570), (41, 141573), (55, 141705), (56, 141714), (57, 141729), (58, 141732), (62, 141792), (65, 141828), (75, 141918), (82, 141993),

Gene: YemiJoy2021_250 Start: 142819, Stop: 143574, Start Num: 16

Candidate Starts for YemiJoy2021_250:

(Start: 16 @142819 has 178 MA's), (23, 142894), (31, 143032), (33, 143038), (36, 143071), (37, 143098), (38, 143113), (40, 143134), (50, 143248), (55, 143269), (56, 143278), (57, 143293), (58, 143296), (65, 143392), (75, 143482), (81, 143554), (82, 143557),

Gene: YoungMoneyMata_249 Start: 142280, Stop: 143035, Start Num: 16

Candidate Starts for YoungMoneyMata_249:

(Start: 16 @142280 has 178 MA's), (23, 142355), (31, 142493), (33, 142499), (36, 142532), (37, 142559), (38, 142574), (40, 142595), (50, 142709), (55, 142730), (56, 142739), (57, 142754), (58, 142757), (65, 142853), (75, 142943), (81, 143015), (82, 143018),

Gene: Yucca_249 Start: 142811, Stop: 143566, Start Num: 16

Candidate Starts for Yucca_249:

(Start: 16 @142811 has 178 MA's), (23, 142886), (31, 143024), (33, 143030), (36, 143063), (37, 143090), (38, 143105), (40, 143126), (47, 143216), (50, 143240), (55, 143261), (56, 143270), (57, 143285), (58, 143288), (65, 143384), (75, 143474), (81, 143546), (82, 143549),

Gene: Zalkecks_248 Start: 141917, Stop: 142672, Start Num: 16

Candidate Starts for Zalkecks_248:

(Start: 16 @141917 has 178 MA's), (23, 141992), (31, 142130), (33, 142136), (36, 142169), (37, 142196), (38, 142211), (40, 142232), (50, 142346), (55, 142367), (56, 142376), (57, 142391), (58, 142394), (65, 142490), (75, 142580), (81, 142652), (82, 142655),

Gene: Zeenon_250 Start: 142451, Stop: 143206, Start Num: 16

Candidate Starts for Zeenon_250:

(Start: 16 @142451 has 178 MA's), (23, 142526), (31, 142664), (33, 142670), (36, 142703), (37, 142730), (38, 142745), (40, 142766), (50, 142880), (55, 142901), (56, 142910), (57, 142925), (58, 142928), (65, 143024), (75, 143114), (81, 143186), (82, 143189),

Gene: ZygoTaiga_245 Start: 143108, Stop: 143863, Start Num: 16

Candidate Starts for ZygoTaiga_245:

(Start: 16 @143108 has 178 MA's), (23, 143183), (31, 143321), (33, 143327), (36, 143360), (37, 143387), (38, 143402), (40, 143423), (50, 143537), (55, 143558), (56, 143567), (57, 143582), (58, 143585), (65, 143681), (75, 143771), (81, 143843), (82, 143846),