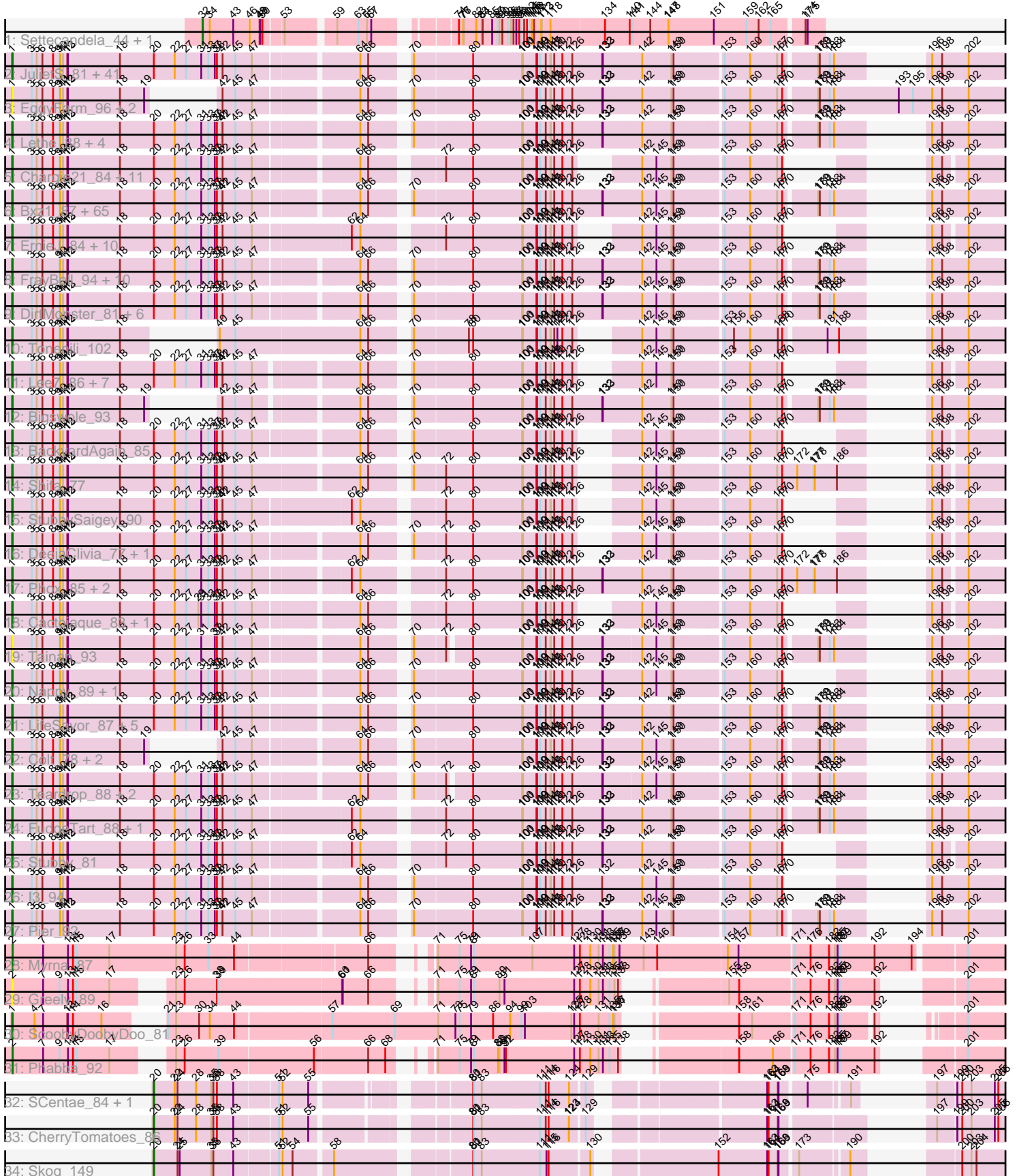


Pham 215844



Note: Tracks are now grouped by subcluster and scaled. Switching in subcluster is indicated by changes in track color. Track scale is now set by default to display the region 30 bp upstream of start 1 to 30 bp downstream of the last possible start. If this default region is judged to be packed too tightly with annotated starts, the track will be further scaled to only show that region of the ORF with annotated starts. This action will be indicated by adding "Zoomed" to the title. For starts, yellow indicates the location of called starts comprised solely of Glimmer/GeneMark auto-annotations, green indicates the location of called starts with at least 1 manual gene annotation.

Pham 215844 Report

This analysis was run 02/22/25 on database version 588.

Pham number 215844 has 207 members, 26 are drafts.

Phages represented in each track:

- Track 1 : Settecandela_44, Phrappuccino_44
- Track 2 : JulietS_81, Spec_83, Bangla1971_89, Rahel_87, Ronan_81, Tyke_90, DTDevon_89, Cali_83, Jemmno_88, EmToTheThree_91, Blackdragon_82, QBert_82, LinStu_88, JigglyPuff_94, BeanWater_80, Derek_88, Iota_82, Mangeria_88, Phusco_88, Jedediah_91, EmmaElysia_87, JayJay_94, Tortoise16_86, LRRHood_82, Grungle_75, Koguma_84, Drazdys_88, Sprinklers_83, Littleton_88, Breeniome_88, Halldule_81, SmallFry_88, Gabriel_90, Astraea_86, ET08_77, CharlieB_83, Primadonna_82, Shaqnato_80, Sebata_89, Sauce_88, Salacia_92, Chomp_87
- Track 3 : EggyFarm_96, Grasshills_95, BigCity_96
- Track 4 : Letha_88, Ading_88, Loanshark_88, Guwapp_87, Issimir_87
- Track 5 : Chargie21_84, Fludd_88, Flabslab_83, Basquiat_84, Janiyr_90, Quasimodo_88, ChaylaJr_83, Trinitium_84, Turret_83, ChickenPhender_84, Kboogie_91, EasyJones_91
- Track 6 : Bxz1_87, Babyland_88, Shrimp_88, Khaleesi_87, PurduePete_88, Ngannou_84, YoungMoneyMata_88, Nidhogg_89, Amataga_88, MikeLiesIn_89, Essence_85, CindyLou_89, Napoleon13_84, Naija_87, ParkTD_89, Ghost_87, TinyTim_88, Naval22_93, Kamryn_88, ValleyTerrace_88, Audrick_90, SilverDipper_89, Pleione_91, JPickles_86, Momo_87, Willis_89, NedWong_89, Belieber_82, InigoMontoya_89, DrPhinkDaddy_87, Asterius_91, Bipolarisk_87, Jessibeth14_87, Pio_92, Pivoine_87, Norm_89, Izajani_88, Caravan_83, SVoro_86, Delylah_91, Erdmann_89, Latch_88, Capablanca_90, McWolfish_86, Gamgam_88, NoodleTree_96, Megamind_87, Maby2021_88, Wally_87, YemiJoy2021_89, Shelob_90, Bread_88, Patter_88, Delilah_88, LordLeafolot_93, Rizal_86, Burrough_88, GlutenPhree_86, ZygoTaiga_87, NuevoMundo_94, Roots515_87, Atlantean_87, Zalkecks_89, Daffodil_93, Phlegm_90, McGee_89
- Track 7 : ErnieJ_84, ScottMcG_85, Catera_87, Ablatia_84, Melpomini_82, Spud_88, Rabinovish_85, JustHall_84, Dietrick_80, Morizzled23_88, MoMoMixon_89
- Track 8 : FrayBell_94, BananaFence_87, Domi_82, RoMag_83, BadAgartude_85, IkeLoa_82, StephanieG_87, Bonray_88, Darko_88, Mikro_86, Jezreel_86
- Track 9 : DirtMonster_81, Concombre_95, ArcherS7_87, Yucca_88, FoxtrotP1_88, Demodog_95, InterFolia_97
- Track 10 : Tonenili_102
- Track 11 : Lee7_86, Ewok_89, Gizmo_92, SrishMeg2525_87, Lukilu_79, Fongie_86, Zeenon_90, Ava3_89
- Track 12 : Bigswole_93
- Track 13 : BackyardAgain_85

- Track 14 : Shifa_77
- Track 15 : StubbySaigey_90
- Track 16 : DeejaClivia_77, HyRo_80
- Track 17 : Phox_85, Pinkcreek_79, Alice_81
- Track 18 : Cactojaque_83, Blackbrain_83
- Track 19 : Tainan_93
- Track 20 : Nappy_89, Yassified_84
- Track 21 : LifeSavor_87, Jaygup_88, ShiaLabeouf_88, Adlitam_88, Matsumoto_86, Shnickers_88
- Track 22 : Colt_78, Blubba_77, Cane17_76
- Track 23 : Teardrop_88, Specks_94, LolaVinca_90
- Track 24 : FudgeTart_88, Dandelion_95
- Track 25 : Stubby_81
- Track 26 : I3_94
- Track 27 : Pier_92
- Track 28 : Myrna_87
- Track 29 : Greely_89
- Track 30 : ScoobyDoobyDoo_81
- Track 31 : Phabba_92
- Track 32 : SCentae_84, Pupper_86
- Track 33 : CherryTomatoes_86
- Track 34 : Skog_149

Summary of Final Annotations (See graph section above for start numbers):

The start number called the most often in the published annotations is 1, it was called in 173 of the 181 non-draft genes in the pham.

Genes that call this "Most Annotated" start:

- Ablatia_84, Ading_88, Adlitam_88, Alice_81, Amataga_88, ArcherS7_87, Asterius_91, Astraea_86, Atlantean_87, Audrick_90, Ava3_89, Babyland_88, BackyardAgain_85, BadAgartude_85, BananaFence_87, Bangla1971_89, Basquiat_84, BeanWater_80, Belieber_82, BigCity_96, Bigswole_93, Bipolarisk_87, Blackbrain_83, Blackdragon_82, Blubba_77, Bonray_88, Bread_88, Breeniome_88, Burrough_88, Bxz1_87, Cactojaque_83, Cali_83, Cane17_76, Capablanca_90, Caravan_83, Catera_87, Chargie21_84, CharlieB_83, ChaylaJr_83, ChickenPhender_84, Chomp_87, CindyLou_89, Colt_78, Concombre_95, DTDevon_89, Daffodil_93, Dandelion_95, Darko_88, DeejaClivia_77, Delilah_88, Delylah_91, Demodog_95, Derek_88, Dietrick_80, DirtMonster_81, Domi_82, DrPhinkDaddy_87, Drazdys_88, ET08_77, EasyJones_91, EggyFarm_96, EmToTheThree_91, EmmaElysia_87, Erdmann_89, ErnieJ_84, Essence_85, Ewok_89, Flabslab_83, Fludd_88, Fongie_86, FoxtrotP1_88, FrayBell_94, FudgeTart_88, Gabriel_90, Gamgam_88, Ghost_87, Gizmo_92, GlutenPhree_86, Grasshills_95, Grungle_75, Guwapp_87, Halldule_81, HyRo_80, I3_94, IkeLoa_82, InigoMontoya_89, InterFolia_97, Iota_82, Issimir_87, Izajani_88, JPickles_86, Janiyra_90, JayJay_94, Jaygup_88, Jedediah_91, Jemmno_88, Jessibeth14_87, Jezreel_86, JigglyPuff_94, JulietS_81, JustHall_84, Kamryn_88, Kboogie_91, Khaleesi_87, Koguma_84, LRRHood_82, Latch_88, Lee7_86, Lethe_88, LifeSavor_87, LinStu_88, Littleton_88, Loanshark_88, LolaVinca_90, LordLeafolot_93, Lukilu_79, Maby2021_88, Mangeria_88, Matsumoto_86,

McGee_89, McWolfish_86, Megamind_87, Melpomini_82, MikeLiesIn_89, Mikro_86, MoMoMixon_89, Momo_87, Morizzled23_88, Naija_87, Napoleon13_84, Nappy_89, Naval22_93, NedWong_89, Ngannou_84, Nidhogg_89, NoodleTree_96, Norm_89, NuevoMundo_94, ParkTD_89, Patter_88, Phlegm_90, Phox_85, Phusco_88, Pier_92, Pinkcreek_79, Pio_92, Pivoine_87, Pleione_91, Primadonna_82, PurduePete_88, QBert_82, Quasimodo_88, Rabinovish_85, Rahel_87, Rizal_86, RoMag_83, Ronan_81, Roots515_87, SVoro_86, Salacia_92, Sauce_88, ScoobyDoobyDoo_81, ScottMcG_85, Sebata_89, Shaqnato_80, Shelob_90, ShiaLabeouf_88, Shifa_77, Shnickers_88, Shrimp_88, SilverDipper_89, SmallFry_88, Spec_83, Specks_94, Sprinklers_83, Spud_88, SrishMeg2525_87, StephanieG_87, StubbySaigey_90, Stubby_81, Tainan_93, Teardrop_88, TinyTim_88, Tonenili_102, Tortoise16_86, Trinitium_84, Turret_83, Tyke_90, ValleyTerrace_88, Wally_87, Willis_89, Yassified_84, YemiJoy2021_89, YoungMoneyMata_88, Yucca_88, Zalkecks_89, Zeenon_90, ZygoTaiga_87,

Genes that have the "Most Annotated" start but do not call it:

-

Genes that do not have the "Most Annotated" start:

- CherryTomatoes_86, Greely_89, Myrna_87, Phabba_92, Phrappuccino_44, Pupper_86, SCentae_84, Settecandela_44, Skog_149,

Summary by start number:

Start 1:

- Found in 198 of 207 (95.7%) of genes in pham
- Manual Annotations of this start: 173 of 181
- Called 100.0% of time when present
- Phage (with cluster) where this start called: Ablatia_84 (C1), Ading_88 (C1), Adlitam_88 (C1), Alice_81 (C1), Amataga_88 (C1), ArcherS7_87 (C1), Asterius_91 (C1), Astraea_86 (C1), Atlantean_87 (C1), Audrick_90 (C1), Ava3_89 (C1), Babyland_88 (C1), BackyardAgain_85 (C1), BadAgartude_85 (C1), BananaFence_87 (C1), Bangla1971_89 (C1), Basquiat_84 (C1), BeanWater_80 (C1), Belieber_82 (C1), BigCity_96 (C1), Bigswole_93 (C1), Bipolarisk_87 (C1), Blackbrain_83 (C1), Blackdragon_82 (C1), Blubba_77 (C1), Bonray_88 (C1), Bread_88 (C1), Breeniome_88 (C1), Burrough_88 (C1), Bxz1_87 (C1), Cactojaque_83 (C1), Cali_83 (C1), Cane17_76 (C1), Capablanca_90 (C1), Caravan_83 (C1), Catera_87 (C1), Chargie21_84 (C1), CharlieB_83 (C1), ChaylaJr_83 (C1), ChickenPhender_84 (C1), Chomp_87 (C1), CindyLou_89 (C1), Colt_78 (C1), Concombre_95 (C1), DTDevon_89 (C1), Daffodil_93 (C1), Dandelion_95 (C1), Darko_88 (C1), DeejaClivia_77 (C1), Delilah_88 (C1), Delylah_91 (C1), Demodog_95 (C1), Derek_88 (C1), Dietrick_80 (C1), DirtMonster_81 (C1), Domi_82 (C1), DrPhinkDaddy_87 (C1), Drazdys_88 (C1), ET08_77 (C1), EasyJones_91 (C1), EggyFarm_96 (C1), EmToTheThree_91 (C1), EmmaElysia_87 (C1), Erdmann_89 (C1), ErnieJ_84 (C1), Essence_85 (C1), Ewok_89 (C1), Flabslab_83 (C1), Fludd_88 (C1), Fongie_86 (C1), FoxtrotP1_88 (C1), FrayBell_94 (C1), FudgeTart_88 (C1), Gabriel_90 (C1), Gamgam_88 (C1), Ghost_87 (C1), Gizmo_92 (C1), GlutenPhree_86 (C1), Grasshills_95 (C1), Grungle_75 (C1), Guwapp_87 (C1), Halldule_81 (C1), HyRo_80 (C1), I3_94 (C1), IkeLoa_82 (C1), InigoMontoya_89 (C1), InterFolia_97 (C1), Iota_82 (C1), Issimir_87 (C1), Izajani_88 (C1), JPickles_86 (C1), Janiyra_90 (C1), JayJay_94 (C1), Jaygup_88 (C1), Jedediah_91 (C1), Jemmno_88 (C1), Jessibeth14_87 (C1), Jezreel_86 (C1), JigglyPuff_94 (C1), JulietS_81 (C1), JustHall_84 (C1), Kamryn_88 (C1), Kboogie_91 (C1), Khaleesi_87 (C1), Koguma_84 (C1), LRRHood_82 (C1), Latch_88 (C1),

Lee7_86 (C1), Lethe_88 (C1), LifeSavor_87 (C1), LinStu_88 (C1), Littleton_88 (C1), Loanshark_88 (C1), LolaVinca_90 (C1), LordLeafot_93 (C1), Lukilu_79 (C1), Maby2021_88 (C1), Mangeria_88 (C1), Matsumoto_86 (C1), McGee_89 (C1), McWolfish_86 (C1), Megamind_87 (C1), Melpomini_82 (C1), MikeLiesIn_89 (C1), Mikro_86 (C1), MoMoMixon_89 (C1), Momo_87 (C1), Morizzled23_88 (C1), Naija_87 (C1), Napoleon13_84 (C1), Nappy_89 (C1), Naval22_93 (C1), NedWong_89 (C1), Ngannou_84 (C1), Nidhogg_89 (C1), NoodleTree_96 (C1), Norm_89 (C1), NuevoMundo_94 (C1), ParkTD_89 (C1), Patter_88 (C1), Phlegm_90 (C1), Phox_85 (C1), Phusco_88 (C1), Pier_92 (C1), Pinkcreek_79 (C1), Pio_92 (C1), Pivoine_87 (C1), Pleione_91 (C1), Primadonna_82 (C1), PurduePete_88 (C1), QBert_82 (C1), Quasimodo_88 (C1), Rabinovish_85 (C1), Rahel_87 (C1), Rizal_86 (C1), RoMag_83 (C1), Ronan_81 (C1), Roots515_87 (C1), SVoro_86 (C1), Salacia_92 (C1), Sauce_88 (C1), ScoobyDoobyDoo_81 (C2), ScottMcG_85 (C1), Sebata_89 (C1), Shaqnato_80 (C1), Shelob_90 (C1), ShiaLabeouf_88 (C1), Shifa_77 (C1), Shnickers_88 (C1), Shrimp_88 (C1), SilverDipper_89 (C1), SmallFry_88 (C1), Spec_83 (C1), Specks_94 (C1), Sprinklers_83 (C1), Spud_88 (C1), SrishMeg2525_87 (C1), StephanieG_87 (C1), StubbySaigey_90 (C1), Stubby_81 (C1), Tainan_93 (C1), Teardrop_88 (C1), TinyTim_88 (C1), Tonenili_102 (C1), Tortoise16_86 (C1), Trinitium_84 (C1), Turret_83 (C1), Tyke_90 (C1), ValleyTerrace_88 (C1), Wally_87 (C1), Willis_89 (C1), Yassified_84 (C1), YemiJoy2021_89 (C1), YoungMoneyMata_88 (C1), Yucca_88 (C1), Zalkecks_89 (C1), Zeenon_90 (C1), ZygoTaiga_87 (C1),

Start 2:

- Found in 3 of 207 (1.4%) of genes in pham
- Manual Annotations of this start: 2 of 181
- Called 100.0% of time when present
- Phage (with cluster) where this start called: Greely_89 (C2), Myrna_87 (C2), Phabba_92 (C2),

Start 20:

- Found in 193 of 207 (93.2%) of genes in pham
- Manual Annotations of this start: 4 of 181
- Called 2.1% of time when present
- Phage (with cluster) where this start called: CherryTomatoes_86 (DO), Pupper_86 (DO), SCentae_84 (DO), Skog_149 (DO),

Start 32:

- Found in 2 of 207 (1.0%) of genes in pham
- Manual Annotations of this start: 2 of 181
- Called 100.0% of time when present
- Phage (with cluster) where this start called: Phrappuccino_44 (AA), Settecandela_44 (AA),

Summary by clusters:

There are 4 clusters represented in this pham: AA, DO, C1, C2,

Info for manual annotations of cluster AA:

- Start number 32 was manually annotated 2 times for cluster AA.

Info for manual annotations of cluster C1:

- Start number 1 was manually annotated 172 times for cluster C1.

Info for manual annotations of cluster C2:

- Start number 1 was manually annotated 1 time for cluster C2.
- Start number 2 was manually annotated 2 times for cluster C2.

Info for manual annotations of cluster DO:

- Start number 20 was manually annotated 4 times for cluster DO.

Gene Information:

Gene: Ablatia_84 Start: 30993, Stop: 34355, Start Num: 1

Candidate Starts for Ablatia_84:

(Start: 1 @30993 has 173 MA's), (3, 31074), (5, 31095), (6, 31119), (8, 31164), (9, 31191), (10, 31194), (11, 31206), (12, 31224), (13, 31227), (18, 31446), (Start: 20 @31584 has 4 MA's), (22, 31671), (27, 31719), (31, 31782), (33, 31812), (37, 31839), (38, 31848), (42, 31869), (45, 31923), (47, 31989), (62, 32367), (64, 32403), (72, 32679), (80, 32790), (100, 32994), (101, 32997), (109, 33054), (110, 33057), (111, 33069), (114, 33093), (117, 33111), (119, 33114), (120, 33126), (122, 33159), (126, 33201), (142, 33342), (145, 33396), (149, 33459), (150, 33468), (153, 33642), (160, 33747), (167, 33858), (170, 33879), (196, 34014), (198, 34056), (202, 34140),

Gene: Ading_88 Start: 31088, Stop: 34798, Start Num: 1

Candidate Starts for Ading_88:

(Start: 1 @31088 has 173 MA's), (3, 31169), (5, 31190), (6, 31214), (8, 31259), (9, 31286), (10, 31289), (11, 31301), (12, 31319), (13, 31322), (18, 31541), (Start: 20 @31679 has 4 MA's), (22, 31766), (27, 31814), (31, 31877), (33, 31907), (37, 31934), (38, 31943), (41, 31961), (42, 31964), (45, 32018), (47, 32084), (64, 32477), (66, 32510), (70, 32630), (80, 32861), (100, 33065), (101, 33068), (109, 33125), (110, 33128), (111, 33140), (114, 33164), (117, 33182), (119, 33185), (120, 33197), (122, 33230), (126, 33272), (132, 33398), (133, 33401), (142, 33566), (149, 33683), (150, 33692), (153, 33866), (160, 33971), (167, 34082), (170, 34103), (179, 34226), (180, 34232), (183, 34274), (184, 34292), (196, 34436), (198, 34478), (202, 34583),

Gene: Adlitam_88 Start: 31105, Stop: 34815, Start Num: 1

Candidate Starts for Adlitam_88:

(Start: 1 @31105 has 173 MA's), (3, 31186), (5, 31207), (6, 31231), (9, 31303), (10, 31306), (11, 31318), (12, 31336), (13, 31339), (18, 31558), (Start: 20 @31696 has 4 MA's), (22, 31783), (27, 31831), (31, 31894), (33, 31924), (37, 31951), (38, 31960), (42, 31981), (45, 32035), (47, 32101), (64, 32494), (66, 32527), (70, 32647), (80, 32878), (100, 33082), (101, 33085), (109, 33142), (110, 33145), (111, 33157), (114, 33181), (117, 33199), (119, 33202), (120, 33214), (122, 33247), (126, 33289), (132, 33415), (133, 33418), (142, 33583), (149, 33700), (150, 33709), (153, 33883), (160, 33988), (167, 34099), (170, 34120), (179, 34243), (180, 34249), (183, 34291), (184, 34309), (196, 34453), (198, 34495), (202, 34600),

Gene: Alice_81 Start: 29790, Stop: 33500, Start Num: 1

Candidate Starts for Alice_81:

(Start: 1 @29790 has 173 MA's), (3, 29871), (5, 29892), (6, 29916), (8, 29961), (9, 29988), (10, 29991), (11, 30003), (12, 30021), (13, 30024), (18, 30243), (Start: 20 @30381 has 4 MA's), (22, 30468), (27, 30516), (31, 30579), (33, 30609), (37, 30636), (38, 30645), (42, 30666), (45, 30720), (47, 30786), (62, 31134), (64, 31170), (72, 31446), (80, 31557), (100, 31761), (101, 31764), (109, 31821), (110, 31824), (111, 31836), (114, 31860), (117, 31878), (119, 31881), (120, 31893), (122, 31926), (126, 31968), (132, 32094), (133, 32097), (142, 32262), (149, 32379), (150, 32388), (153, 32562), (160, 32667), (167, 32778), (170, 32799), (172, 32862), (177, 32928), (178, 32934), (186, 33027), (196, 33159), (198, 33201), (202, 33285),

Gene: Amataga_88 Start: 31151, Stop: 34864, Start Num: 1

Candidate Starts for Amataga_88:

(Start: 1 @31151 has 173 MA's), (3, 31232), (5, 31253), (6, 31277), (8, 31322), (9, 31349), (10, 31352), (11, 31364), (12, 31382), (13, 31385), (18, 31604), (Start: 20 @31742 has 4 MA's), (22, 31829), (27, 31877), (31, 31940), (33, 31970), (37, 31997), (38, 32006), (41, 32024), (42, 32027), (45, 32081), (47, 32147), (64, 32540), (66, 32573), (70, 32693), (80, 32927), (100, 33131), (101, 33134), (109, 33191), (110, 33194), (111, 33206), (114, 33230), (117, 33248), (119, 33251), (120, 33263), (122, 33296), (126, 33338), (132, 33464), (133, 33467), (142, 33632), (145, 33686), (149, 33749), (150, 33758), (153, 33932), (160, 34037), (167, 34148), (170, 34169), (179, 34292), (180, 34298), (183, 34340), (184, 34358), (196, 34502), (198, 34544), (202, 34649),

Gene: ArcherS7_87 Start: 31472, Stop: 35182, Start Num: 1

Candidate Starts for ArcherS7_87:

(Start: 1 @31472 has 173 MA's), (3, 31553), (5, 31574), (6, 31598), (8, 31643), (9, 31670), (10, 31673), (11, 31685), (12, 31703), (13, 31706), (18, 31925), (Start: 20 @32063 has 4 MA's), (22, 32150), (27, 32198), (31, 32261), (33, 32291), (37, 32318), (38, 32327), (42, 32348), (45, 32402), (47, 32468), (64, 32861), (66, 32894), (70, 33014), (80, 33245), (100, 33449), (101, 33452), (109, 33509), (110, 33512), (111, 33524), (114, 33548), (117, 33566), (119, 33569), (120, 33581), (122, 33614), (126, 33656), (132, 33782), (133, 33785), (142, 33950), (145, 34004), (149, 34067), (150, 34076), (153, 34250), (160, 34355), (167, 34466), (170, 34487), (179, 34610), (180, 34616), (183, 34658), (184, 34676), (196, 34820), (198, 34862), (202, 34967),

Gene: Asterius_91 Start: 31454, Stop: 35167, Start Num: 1

Candidate Starts for Asterius_91:

(Start: 1 @31454 has 173 MA's), (3, 31535), (5, 31556), (6, 31580), (8, 31625), (9, 31652), (10, 31655), (11, 31667), (12, 31685), (13, 31688), (18, 31907), (Start: 20 @32045 has 4 MA's), (22, 32132), (27, 32180), (31, 32243), (33, 32273), (37, 32300), (38, 32309), (41, 32327), (42, 32330), (45, 32384), (47, 32450), (64, 32843), (66, 32876), (70, 32996), (80, 33230), (100, 33434), (101, 33437), (109, 33494), (110, 33497), (111, 33509), (114, 33533), (117, 33551), (119, 33554), (120, 33566), (122, 33599), (126, 33641), (132, 33767), (133, 33770), (142, 33935), (145, 33989), (149, 34052), (150, 34061), (153, 34235), (160, 34340), (167, 34451), (170, 34472), (179, 34595), (180, 34601), (183, 34643), (184, 34661), (196, 34805), (198, 34847), (202, 34952),

Gene: Astraea_86 Start: 31333, Stop: 35043, Start Num: 1

Candidate Starts for Astraea_86:

(Start: 1 @31333 has 173 MA's), (3, 31414), (5, 31435), (6, 31459), (8, 31504), (9, 31531), (10, 31534), (11, 31546), (12, 31564), (13, 31567), (18, 31786), (Start: 20 @31924 has 4 MA's), (22, 32011), (27, 32059), (31, 32122), (33, 32152), (37, 32179), (38, 32188), (42, 32209), (45, 32263), (47, 32329), (64, 32722), (66, 32755), (70, 32875), (80, 33106), (100, 33310), (101, 33313), (109, 33370), (110, 33373), (111, 33385), (114, 33409), (117, 33427), (119, 33430), (120, 33442), (122, 33475), (126, 33517), (132, 33643), (133, 33646), (142, 33811), (149, 33928), (150, 33937), (153, 34111), (160, 34216), (167, 34327), (170, 34348), (179, 34471), (180, 34477), (183, 34519), (184, 34537), (196, 34681), (198, 34723), (202, 34828),

Gene: Atlantean_87 Start: 31151, Stop: 34864, Start Num: 1

Candidate Starts for Atlantean_87:

(Start: 1 @31151 has 173 MA's), (3, 31232), (5, 31253), (6, 31277), (8, 31322), (9, 31349), (10, 31352), (11, 31364), (12, 31382), (13, 31385), (18, 31604), (Start: 20 @31742 has 4 MA's), (22, 31829), (27, 31877), (31, 31940), (33, 31970), (37, 31997), (38, 32006), (41, 32024), (42, 32027), (45, 32081), (47, 32147), (64, 32540), (66, 32573), (70, 32693), (80, 32927), (100, 33131), (101, 33134), (109, 33191), (110, 33194), (111, 33206), (114, 33230), (117, 33248), (119, 33251), (120, 33263), (122, 33296), (126, 33338), (132, 33464), (133, 33467), (142, 33632), (145, 33686), (149, 33749), (150, 33758),

(153, 33932), (160, 34037), (167, 34148), (170, 34169), (179, 34292), (180, 34298), (183, 34340), (184, 34358), (196, 34502), (198, 34544), (202, 34649),

Gene: Audrick_90 Start: 31130, Stop: 34843, Start Num: 1

Candidate Starts for Audrick_90:

(Start: 1 @31130 has 173 MA's), (3, 31211), (5, 31232), (6, 31256), (8, 31301), (9, 31328), (10, 31331), (11, 31343), (12, 31361), (13, 31364), (18, 31583), (Start: 20 @31721 has 4 MA's), (22, 31808), (27, 31856), (31, 31919), (33, 31949), (37, 31976), (38, 31985), (41, 32003), (42, 32006), (45, 32060), (47, 32126), (64, 32519), (66, 32552), (70, 32672), (80, 32906), (100, 33110), (101, 33113), (109, 33170), (110, 33173), (111, 33185), (114, 33209), (117, 33227), (119, 33230), (120, 33242), (122, 33275), (126, 33317), (132, 33443), (133, 33446), (142, 33611), (145, 33665), (149, 33728), (150, 33737), (153, 33911), (160, 34016), (167, 34127), (170, 34148), (179, 34271), (180, 34277), (183, 34319), (184, 34337), (196, 34481), (198, 34523), (202, 34628),

Gene: Ava3_89 Start: 32205, Stop: 35540, Start Num: 1

Candidate Starts for Ava3_89:

(Start: 1 @32205 has 173 MA's), (3, 32286), (5, 32307), (6, 32331), (8, 32376), (9, 32403), (10, 32406), (11, 32418), (12, 32436), (13, 32439), (18, 32658), (Start: 20 @32796 has 4 MA's), (22, 32883), (27, 32931), (31, 32994), (33, 33024), (37, 33051), (38, 33060), (41, 33078), (42, 33081), (45, 33135), (47, 33201), (64, 33594), (66, 33627), (70, 33747), (80, 33978), (100, 34182), (101, 34185), (109, 34242), (110, 34245), (111, 34257), (114, 34281), (117, 34299), (119, 34302), (120, 34314), (122, 34347), (126, 34389), (142, 34530), (145, 34584), (149, 34644), (150, 34653), (153, 34827), (160, 34932), (167, 35043), (170, 35064), (196, 35199), (198, 35241), (202, 35325),

Gene: Babyland_88 Start: 30590, Stop: 34303, Start Num: 1

Candidate Starts for Babyland_88:

(Start: 1 @30590 has 173 MA's), (3, 30671), (5, 30692), (6, 30716), (8, 30761), (9, 30788), (10, 30791), (11, 30803), (12, 30821), (13, 30824), (18, 31043), (Start: 20 @31181 has 4 MA's), (22, 31268), (27, 31316), (31, 31379), (33, 31409), (37, 31436), (38, 31445), (41, 31463), (42, 31466), (45, 31520), (47, 31586), (64, 31979), (66, 32012), (70, 32132), (80, 32366), (100, 32570), (101, 32573), (109, 32630), (110, 32633), (111, 32645), (114, 32669), (117, 32687), (119, 32690), (120, 32702), (122, 32735), (126, 32777), (132, 32903), (133, 32906), (142, 33071), (145, 33125), (149, 33188), (150, 33197), (153, 33371), (160, 33476), (167, 33587), (170, 33608), (179, 33731), (180, 33737), (183, 33779), (184, 33797), (196, 33941), (198, 33983), (202, 34088),

Gene: BackyardAgain_85 Start: 31040, Stop: 34378, Start Num: 1

Candidate Starts for BackyardAgain_85:

(Start: 1 @31040 has 173 MA's), (3, 31121), (5, 31142), (6, 31166), (8, 31211), (9, 31238), (10, 31241), (11, 31253), (12, 31271), (13, 31274), (18, 31493), (Start: 20 @31631 has 4 MA's), (22, 31718), (27, 31766), (31, 31829), (33, 31859), (37, 31886), (38, 31895), (42, 31916), (45, 31970), (47, 32036), (64, 32429), (66, 32462), (70, 32582), (80, 32813), (100, 33017), (101, 33020), (109, 33077), (110, 33080), (111, 33092), (114, 33116), (117, 33134), (119, 33137), (120, 33149), (122, 33182), (126, 33224), (142, 33365), (145, 33419), (149, 33482), (150, 33491), (153, 33665), (160, 33770), (167, 33881), (170, 33902), (196, 34037), (198, 34079), (202, 34163),

Gene: BadAgartude_85 Start: 32206, Stop: 35919, Start Num: 1

Candidate Starts for BadAgartude_85:

(Start: 1 @32206 has 173 MA's), (3, 32287), (5, 32308), (6, 32332), (9, 32404), (10, 32407), (11, 32419), (12, 32437), (13, 32440), (18, 32659), (Start: 20 @32797 has 4 MA's), (22, 32884), (27, 32932), (31, 32995), (33, 33025), (37, 33052), (38, 33061), (42, 33082), (45, 33136), (47, 33202), (64, 33595), (66, 33628), (70, 33748), (80, 33982), (100, 34186), (101, 34189), (109, 34246), (110, 34249), (111, 34261), (114, 34285), (117, 34303), (119, 34306), (120, 34318), (122, 34351), (126, 34393), (132, 34519), (133, 34522), (142, 34687), (145, 34741), (149, 34804), (150, 34813), (153, 34987),

(160, 35092), (167, 35203), (170, 35224), (179, 35347), (180, 35353), (183, 35395), (184, 35413),
(196, 35557), (198, 35599), (202, 35704),

Gene: BananaFence_87 Start: 31688, Stop: 35401, Start Num: 1

Candidate Starts for BananaFence_87:

(Start: 1 @31688 has 173 MA's), (3, 31769), (5, 31790), (6, 31814), (9, 31886), (10, 31889), (11, 31901), (12, 31919), (13, 31922), (18, 32141), (Start: 20 @32279 has 4 MA's), (22, 32366), (27, 32414), (31, 32477), (33, 32507), (37, 32534), (38, 32543), (42, 32564), (45, 32618), (47, 32684), (64, 33077), (66, 33110), (70, 33230), (80, 33464), (100, 33668), (101, 33671), (109, 33728), (110, 33731), (111, 33743), (114, 33767), (117, 33785), (119, 33788), (120, 33800), (122, 33833), (126, 33875), (132, 34001), (133, 34004), (142, 34169), (145, 34223), (149, 34286), (150, 34295), (153, 34469), (160, 34574), (167, 34685), (170, 34706), (179, 34829), (180, 34835), (183, 34877), (184, 34895), (196, 35039), (198, 35081), (202, 35186),

Gene: Bangla1971_89 Start: 31602, Stop: 35312, Start Num: 1

Candidate Starts for Bangla1971_89:

(Start: 1 @31602 has 173 MA's), (3, 31683), (5, 31704), (6, 31728), (8, 31773), (9, 31800), (10, 31803), (11, 31815), (12, 31833), (13, 31836), (18, 32055), (Start: 20 @32193 has 4 MA's), (22, 32280), (27, 32328), (31, 32391), (33, 32421), (37, 32448), (38, 32457), (42, 32478), (45, 32532), (47, 32598), (64, 32991), (66, 33024), (70, 33144), (80, 33375), (100, 33579), (101, 33582), (109, 33639), (110, 33642), (111, 33654), (114, 33678), (117, 33696), (119, 33699), (120, 33711), (122, 33744), (126, 33786), (132, 33912), (133, 33915), (142, 34080), (149, 34197), (150, 34206), (153, 34380), (160, 34485), (167, 34596), (170, 34617), (179, 34740), (180, 34746), (183, 34788), (184, 34806), (196, 34950), (198, 34992), (202, 35097),

Gene: Basquiat_84 Start: 30538, Stop: 33879, Start Num: 1

Candidate Starts for Basquiat_84:

(Start: 1 @30538 has 173 MA's), (3, 30619), (5, 30640), (6, 30664), (8, 30709), (9, 30736), (10, 30739), (11, 30751), (12, 30769), (13, 30772), (18, 30991), (Start: 20 @31129 has 4 MA's), (22, 31216), (27, 31264), (31, 31327), (33, 31357), (37, 31384), (38, 31393), (42, 31414), (45, 31468), (47, 31534), (64, 31927), (66, 31960), (72, 32206), (80, 32317), (100, 32521), (101, 32524), (109, 32581), (110, 32584), (111, 32596), (114, 32620), (117, 32638), (119, 32641), (120, 32653), (122, 32686), (126, 32728), (142, 32869), (145, 32923), (149, 32983), (150, 32992), (153, 33166), (160, 33271), (167, 33382), (170, 33403), (196, 33538), (198, 33580), (202, 33664),

Gene: BeanWater_80 Start: 30742, Stop: 34452, Start Num: 1

Candidate Starts for BeanWater_80:

(Start: 1 @30742 has 173 MA's), (3, 30823), (5, 30844), (6, 30868), (8, 30913), (9, 30940), (10, 30943), (11, 30955), (12, 30973), (13, 30976), (18, 31195), (Start: 20 @31333 has 4 MA's), (22, 31420), (27, 31468), (31, 31531), (33, 31561), (37, 31588), (38, 31597), (42, 31618), (45, 31672), (47, 31738), (64, 32131), (66, 32164), (70, 32284), (80, 32515), (100, 32719), (101, 32722), (109, 32779), (110, 32782), (111, 32794), (114, 32818), (117, 32836), (119, 32839), (120, 32851), (122, 32884), (126, 32926), (132, 33052), (133, 33055), (142, 33220), (149, 33337), (150, 33346), (153, 33520), (160, 33625), (167, 33736), (170, 33757), (179, 33880), (180, 33886), (183, 33928), (184, 33946), (196, 34090), (198, 34132), (202, 34237),

Gene: Belieber_82 Start: 30503, Stop: 34216, Start Num: 1

Candidate Starts for Belieber_82:

(Start: 1 @30503 has 173 MA's), (3, 30584), (5, 30605), (6, 30629), (8, 30674), (9, 30701), (10, 30704), (11, 30716), (12, 30734), (13, 30737), (18, 30956), (Start: 20 @31094 has 4 MA's), (22, 31181), (27, 31229), (31, 31292), (33, 31322), (37, 31349), (38, 31358), (41, 31376), (42, 31379), (45, 31433), (47, 31499), (64, 31892), (66, 31925), (70, 32045), (80, 32279), (100, 32483), (101, 32486), (109, 32543), (110, 32546), (111, 32558), (114, 32582), (117, 32600), (119, 32603), (120, 32615), (122, 32648),

(126, 32690), (132, 32816), (133, 32819), (142, 32984), (145, 33038), (149, 33101), (150, 33110), (153, 33284), (160, 33389), (167, 33500), (170, 33521), (179, 33644), (180, 33650), (183, 33692), (184, 33710), (196, 33854), (198, 33896), (202, 34001),

Gene: BigCity_96 Start: 34232, Stop: 37912, Start Num: 1

Candidate Starts for BigCity_96:

(Start: 1 @34232 has 173 MA's), (3, 34313), (5, 34334), (6, 34358), (8, 34403), (9, 34430), (10, 34433), (11, 34445), (12, 34463), (13, 34466), (18, 34685), (19, 34787), (42, 34820), (45, 34874), (47, 34940), (64, 35333), (66, 35366), (70, 35486), (80, 35717), (100, 35921), (101, 35924), (109, 35981), (110, 35984), (111, 35996), (114, 36020), (117, 36038), (119, 36041), (120, 36053), (122, 36086), (126, 36128), (132, 36254), (133, 36257), (142, 36422), (149, 36539), (150, 36548), (153, 36722), (160, 36827), (167, 36938), (170, 36959), (179, 37082), (180, 37088), (183, 37130), (184, 37148), (193, 37409), (195, 37469), (196, 37550), (198, 37592), (202, 37697),

Gene: Bigswole_93 Start: 34874, Stop: 38281, Start Num: 1

Candidate Starts for Bigswole_93:

(Start: 1 @34874 has 173 MA's), (3, 34955), (5, 34976), (6, 35000), (8, 35045), (9, 35072), (10, 35075), (11, 35087), (12, 35105), (13, 35108), (18, 35327), (19, 35429), (42, 35462), (45, 35516), (47, 35582), (64, 35960), (66, 35993), (70, 36113), (80, 36344), (100, 36548), (101, 36551), (109, 36608), (110, 36611), (111, 36623), (114, 36647), (117, 36665), (119, 36668), (120, 36680), (122, 36713), (126, 36755), (132, 36881), (133, 36884), (142, 37049), (149, 37166), (150, 37175), (153, 37349), (160, 37454), (167, 37565), (170, 37586), (179, 37709), (180, 37715), (183, 37757), (184, 37775), (196, 37919), (198, 37961), (202, 38066),

Gene: Bipolarisk_87 Start: 31857, Stop: 35570, Start Num: 1

Candidate Starts for Bipolarisk_87:

(Start: 1 @31857 has 173 MA's), (3, 31938), (5, 31959), (6, 31983), (8, 32028), (9, 32055), (10, 32058), (11, 32070), (12, 32088), (13, 32091), (18, 32310), (Start: 20 @32448 has 4 MA's), (22, 32535), (27, 32583), (31, 32646), (33, 32676), (37, 32703), (38, 32712), (41, 32730), (42, 32733), (45, 32787), (47, 32853), (64, 33246), (66, 33279), (70, 33399), (80, 33633), (100, 33837), (101, 33840), (109, 33897), (110, 33900), (111, 33912), (114, 33936), (117, 33954), (119, 33957), (120, 33969), (122, 34002), (126, 34044), (132, 34170), (133, 34173), (142, 34338), (145, 34392), (149, 34455), (150, 34464), (153, 34638), (160, 34743), (167, 34854), (170, 34875), (179, 34998), (180, 35004), (183, 35046), (184, 35064), (196, 35208), (198, 35250), (202, 35355),

Gene: Blackbrain_83 Start: 30355, Stop: 33696, Start Num: 1

Candidate Starts for Blackbrain_83:

(Start: 1 @30355 has 173 MA's), (3, 30436), (5, 30457), (6, 30481), (8, 30526), (9, 30553), (10, 30556), (11, 30568), (12, 30586), (13, 30589), (18, 30808), (Start: 20 @30946 has 4 MA's), (22, 31033), (27, 31081), (29, 31132), (31, 31144), (33, 31174), (37, 31201), (38, 31210), (42, 31231), (45, 31285), (47, 31351), (64, 31744), (66, 31777), (72, 32023), (80, 32134), (100, 32338), (101, 32341), (109, 32398), (110, 32401), (111, 32413), (114, 32437), (117, 32455), (119, 32458), (120, 32470), (122, 32503), (126, 32545), (142, 32686), (145, 32740), (149, 32800), (150, 32809), (153, 32983), (160, 33088), (167, 33199), (170, 33220), (196, 33355), (198, 33397), (202, 33481),

Gene: Blackdragon_82 Start: 30678, Stop: 34388, Start Num: 1

Candidate Starts for Blackdragon_82:

(Start: 1 @30678 has 173 MA's), (3, 30759), (5, 30780), (6, 30804), (8, 30849), (9, 30876), (10, 30879), (11, 30891), (12, 30909), (13, 30912), (18, 31131), (Start: 20 @31269 has 4 MA's), (22, 31356), (27, 31404), (31, 31467), (33, 31497), (37, 31524), (38, 31533), (42, 31554), (45, 31608), (47, 31674), (64, 32067), (66, 32100), (70, 32220), (80, 32451), (100, 32655), (101, 32658), (109, 32715), (110, 32718), (111, 32730), (114, 32754), (117, 32772), (119, 32775), (120, 32787), (122, 32820), (126, 32862), (132, 32988), (133, 32991), (142, 33156), (149, 33273), (150, 33282), (153, 33456), (160, 33561),

(167, 33672), (170, 33693), (179, 33816), (180, 33822), (183, 33864), (184, 33882), (196, 34026),
(198, 34068), (202, 34173),

Gene: Blubba_77 Start: 28963, Stop: 32385, Start Num: 1

Candidate Starts for Blubba_77:

(Start: 1 @28963 has 173 MA's), (3, 29044), (5, 29065), (6, 29089), (8, 29134), (9, 29161), (10, 29164),
(11, 29176), (12, 29194), (13, 29197), (18, 29416), (19, 29518), (42, 29551), (45, 29605), (47, 29671),
(64, 30064), (66, 30097), (70, 30217), (80, 30448), (100, 30652), (101, 30655), (109, 30712), (110,
30715), (111, 30727), (114, 30751), (117, 30769), (119, 30772), (120, 30784), (122, 30817), (126,
30859), (132, 30985), (133, 30988), (142, 31153), (145, 31207), (149, 31270), (150, 31279), (153,
31453), (160, 31558), (167, 31669), (170, 31690), (179, 31813), (180, 31819), (183, 31861), (184,
31879), (196, 32023), (198, 32065), (202, 32170),

Gene: Bonray_88 Start: 32250, Stop: 35963, Start Num: 1

Candidate Starts for Bonray_88:

(Start: 1 @32250 has 173 MA's), (3, 32331), (5, 32352), (6, 32376), (9, 32448), (10, 32451), (11,
32463), (12, 32481), (13, 32484), (18, 32703), (Start: 20 @32841 has 4 MA's), (22, 32928), (27,
32976), (31, 33039), (33, 33069), (37, 33096), (38, 33105), (42, 33126), (45, 33180), (47, 33246), (64,
33639), (66, 33672), (70, 33792), (80, 34026), (100, 34230), (101, 34233), (109, 34290), (110, 34293),
(111, 34305), (114, 34329), (117, 34347), (119, 34350), (120, 34362), (122, 34395), (126, 34437),
(132, 34563), (133, 34566), (142, 34731), (145, 34785), (149, 34848), (150, 34857), (153, 35031),
(160, 35136), (167, 35247), (170, 35268), (179, 35391), (180, 35397), (183, 35439), (184, 35457),
(196, 35601), (198, 35643), (202, 35748),

Gene: Bread_88 Start: 31749, Stop: 35462, Start Num: 1

Candidate Starts for Bread_88:

(Start: 1 @31749 has 173 MA's), (3, 31830), (5, 31851), (6, 31875), (8, 31920), (9, 31947), (10, 31950),
(11, 31962), (12, 31980), (13, 31983), (18, 32202), (Start: 20 @32340 has 4 MA's), (22, 32427), (27,
32475), (31, 32538), (33, 32568), (37, 32595), (38, 32604), (41, 32622), (42, 32625), (45, 32679), (47,
32745), (64, 33138), (66, 33171), (70, 33291), (80, 33525), (100, 33729), (101, 33732), (109, 33789),
(110, 33792), (111, 33804), (114, 33828), (117, 33846), (119, 33849), (120, 33861), (122, 33894),
(126, 33936), (132, 34062), (133, 34065), (142, 34230), (145, 34284), (149, 34347), (150, 34356),
(153, 34530), (160, 34635), (167, 34746), (170, 34767), (179, 34890), (180, 34896), (183, 34938),
(184, 34956), (196, 35100), (198, 35142), (202, 35247),

Gene: Breeniome_88 Start: 30975, Stop: 34685, Start Num: 1

Candidate Starts for Breeniome_88:

(Start: 1 @30975 has 173 MA's), (3, 31056), (5, 31077), (6, 31101), (8, 31146), (9, 31173), (10, 31176),
(11, 31188), (12, 31206), (13, 31209), (18, 31428), (Start: 20 @31566 has 4 MA's), (22, 31653), (27,
31701), (31, 31764), (33, 31794), (37, 31821), (38, 31830), (42, 31851), (45, 31905), (47, 31971), (64,
32364), (66, 32397), (70, 32517), (80, 32748), (100, 32952), (101, 32955), (109, 33012), (110, 33015),
(111, 33027), (114, 33051), (117, 33069), (119, 33072), (120, 33084), (122, 33117), (126, 33159),
(132, 33285), (133, 33288), (142, 33453), (149, 33570), (150, 33579), (153, 33753), (160, 33858),
(167, 33969), (170, 33990), (179, 34113), (180, 34119), (183, 34161), (184, 34179), (196, 34323),
(198, 34365), (202, 34470),

Gene: Burrough_88 Start: 32406, Stop: 36119, Start Num: 1

Candidate Starts for Burrough_88:

(Start: 1 @32406 has 173 MA's), (3, 32487), (5, 32508), (6, 32532), (8, 32577), (9, 32604), (10, 32607),
(11, 32619), (12, 32637), (13, 32640), (18, 32859), (Start: 20 @32997 has 4 MA's), (22, 33084), (27,
33132), (31, 33195), (33, 33225), (37, 33252), (38, 33261), (41, 33279), (42, 33282), (45, 33336), (47,
33402), (64, 33795), (66, 33828), (70, 33948), (80, 34182), (100, 34386), (101, 34389), (109, 34446),
(110, 34449), (111, 34461), (114, 34485), (117, 34503), (119, 34506), (120, 34518), (122, 34551),

(126, 34593), (132, 34719), (133, 34722), (142, 34887), (145, 34941), (149, 35004), (150, 35013), (153, 35187), (160, 35292), (167, 35403), (170, 35424), (179, 35547), (180, 35553), (183, 35595), (184, 35613), (196, 35757), (198, 35799), (202, 35904),

Gene: Bxz1_87 Start: 33457, Stop: 37170, Start Num: 1

Candidate Starts for Bxz1_87:

(Start: 1 @33457 has 173 MA's), (3, 33538), (5, 33559), (6, 33583), (8, 33628), (9, 33655), (10, 33658), (11, 33670), (12, 33688), (13, 33691), (18, 33910), (Start: 20 @34048 has 4 MA's), (22, 34135), (27, 34183), (31, 34246), (33, 34276), (37, 34303), (38, 34312), (41, 34330), (42, 34333), (45, 34387), (47, 34453), (64, 34846), (66, 34879), (70, 34999), (80, 35233), (100, 35437), (101, 35440), (109, 35497), (110, 35500), (111, 35512), (114, 35536), (117, 35554), (119, 35557), (120, 35569), (122, 35602), (126, 35644), (132, 35770), (133, 35773), (142, 35938), (145, 35992), (149, 36055), (150, 36064), (153, 36238), (160, 36343), (167, 36454), (170, 36475), (179, 36598), (180, 36604), (183, 36646), (184, 36664), (196, 36808), (198, 36850), (202, 36955),

Gene: Cactojaque_83 Start: 30462, Stop: 33803, Start Num: 1

Candidate Starts for Cactojaque_83:

(Start: 1 @30462 has 173 MA's), (3, 30543), (5, 30564), (6, 30588), (8, 30633), (9, 30660), (10, 30663), (11, 30675), (12, 30693), (13, 30696), (18, 30915), (Start: 20 @31053 has 4 MA's), (22, 31140), (27, 31188), (29, 31239), (31, 31251), (33, 31281), (37, 31308), (38, 31317), (42, 31338), (45, 31392), (47, 31458), (64, 31851), (66, 31884), (72, 32130), (80, 32241), (100, 32445), (101, 32448), (109, 32505), (110, 32508), (111, 32520), (114, 32544), (117, 32562), (119, 32565), (120, 32577), (122, 32610), (126, 32652), (142, 32793), (145, 32847), (149, 32907), (150, 32916), (153, 33090), (160, 33195), (167, 33306), (170, 33327), (196, 33462), (198, 33504), (202, 33588),

Gene: Cali_83 Start: 31979, Stop: 35692, Start Num: 1

Candidate Starts for Cali_83:

(Start: 1 @31979 has 173 MA's), (3, 32060), (5, 32081), (6, 32105), (8, 32150), (9, 32177), (10, 32180), (11, 32192), (12, 32210), (13, 32213), (18, 32432), (Start: 20 @32570 has 4 MA's), (22, 32657), (27, 32705), (31, 32768), (33, 32798), (37, 32825), (38, 32834), (42, 32855), (45, 32909), (47, 32975), (64, 33368), (66, 33401), (70, 33521), (80, 33755), (100, 33959), (101, 33962), (109, 34019), (110, 34022), (111, 34034), (114, 34058), (117, 34076), (119, 34079), (120, 34091), (122, 34124), (126, 34166), (132, 34292), (133, 34295), (142, 34460), (149, 34577), (150, 34586), (153, 34760), (160, 34865), (167, 34976), (170, 34997), (179, 35120), (180, 35126), (183, 35168), (184, 35186), (196, 35330), (198, 35372), (202, 35477),

Gene: Cane17_76 Start: 28573, Stop: 31995, Start Num: 1

Candidate Starts for Cane17_76:

(Start: 1 @28573 has 173 MA's), (3, 28654), (5, 28675), (6, 28699), (8, 28744), (9, 28771), (10, 28774), (11, 28786), (12, 28804), (13, 28807), (18, 29026), (19, 29128), (42, 29161), (45, 29215), (47, 29281), (64, 29674), (66, 29707), (70, 29827), (80, 30058), (100, 30262), (101, 30265), (109, 30322), (110, 30325), (111, 30337), (114, 30361), (117, 30379), (119, 30382), (120, 30394), (122, 30427), (126, 30469), (132, 30595), (133, 30598), (142, 30763), (145, 30817), (149, 30880), (150, 30889), (153, 31063), (160, 31168), (167, 31279), (170, 31300), (179, 31423), (180, 31429), (183, 31471), (184, 31489), (196, 31633), (198, 31675), (202, 31780),

Gene: Capablanca_90 Start: 32276, Stop: 35989, Start Num: 1

Candidate Starts for Capablanca_90:

(Start: 1 @32276 has 173 MA's), (3, 32357), (5, 32378), (6, 32402), (8, 32447), (9, 32474), (10, 32477), (11, 32489), (12, 32507), (13, 32510), (18, 32729), (Start: 20 @32867 has 4 MA's), (22, 32954), (27, 33002), (31, 33065), (33, 33095), (37, 33122), (38, 33131), (41, 33149), (42, 33152), (45, 33206), (47, 33272), (64, 33665), (66, 33698), (70, 33818), (80, 34052), (100, 34256), (101, 34259), (109, 34316), (110, 34319), (111, 34331), (114, 34355), (117, 34373), (119, 34376), (120, 34388), (122, 34421),

(126, 34463), (132, 34589), (133, 34592), (142, 34757), (145, 34811), (149, 34874), (150, 34883), (153, 35057), (160, 35162), (167, 35273), (170, 35294), (179, 35417), (180, 35423), (183, 35465), (184, 35483), (196, 35627), (198, 35669), (202, 35774),

Gene: Caravan_83 Start: 31801, Stop: 35514, Start Num: 1

Candidate Starts for Caravan_83:

(Start: 1 @31801 has 173 MA's), (3, 31882), (5, 31903), (6, 31927), (8, 31972), (9, 31999), (10, 32002), (11, 32014), (12, 32032), (13, 32035), (18, 32254), (Start: 20 @32392 has 4 MA's), (22, 32479), (27, 32527), (31, 32590), (33, 32620), (37, 32647), (38, 32656), (41, 32674), (42, 32677), (45, 32731), (47, 32797), (64, 33190), (66, 33223), (70, 33343), (80, 33577), (100, 33781), (101, 33784), (109, 33841), (110, 33844), (111, 33856), (114, 33880), (117, 33898), (119, 33901), (120, 33913), (122, 33946), (126, 33988), (132, 34114), (133, 34117), (142, 34282), (145, 34336), (149, 34399), (150, 34408), (153, 34582), (160, 34687), (167, 34798), (170, 34819), (179, 34942), (180, 34948), (183, 34990), (184, 35008), (196, 35152), (198, 35194), (202, 35299),

Gene: Catera_87 Start: 30602, Stop: 33964, Start Num: 1

Candidate Starts for Catera_87:

(Start: 1 @30602 has 173 MA's), (3, 30683), (5, 30704), (6, 30728), (8, 30773), (9, 30800), (10, 30803), (11, 30815), (12, 30833), (13, 30836), (18, 31055), (Start: 20 @31193 has 4 MA's), (22, 31280), (27, 31328), (31, 31391), (33, 31421), (37, 31448), (38, 31457), (42, 31478), (45, 31532), (47, 31598), (62, 31976), (64, 32012), (72, 32288), (80, 32399), (100, 32603), (101, 32606), (109, 32663), (110, 32666), (111, 32678), (114, 32702), (117, 32720), (119, 32723), (120, 32735), (122, 32768), (126, 32810), (142, 32951), (145, 33005), (149, 33068), (150, 33077), (153, 33251), (160, 33356), (167, 33467), (170, 33488), (196, 33623), (198, 33665), (202, 33749),

Gene: Chargie21_84 Start: 30538, Stop: 33879, Start Num: 1

Candidate Starts for Chargie21_84:

(Start: 1 @30538 has 173 MA's), (3, 30619), (5, 30640), (6, 30664), (8, 30709), (9, 30736), (10, 30739), (11, 30751), (12, 30769), (13, 30772), (18, 30991), (Start: 20 @31129 has 4 MA's), (22, 31216), (27, 31264), (31, 31327), (33, 31357), (37, 31384), (38, 31393), (42, 31414), (45, 31468), (47, 31534), (64, 31927), (66, 31960), (72, 32206), (80, 32317), (100, 32521), (101, 32524), (109, 32581), (110, 32584), (111, 32596), (114, 32620), (117, 32638), (119, 32641), (120, 32653), (122, 32686), (126, 32728), (142, 32869), (145, 32923), (149, 32983), (150, 32992), (153, 33166), (160, 33271), (167, 33382), (170, 33403), (196, 33538), (198, 33580), (202, 33664),

Gene: CharlieB_83 Start: 29977, Stop: 33690, Start Num: 1

Candidate Starts for CharlieB_83:

(Start: 1 @29977 has 173 MA's), (3, 30058), (5, 30079), (6, 30103), (8, 30148), (9, 30175), (10, 30178), (11, 30190), (12, 30208), (13, 30211), (18, 30430), (Start: 20 @30568 has 4 MA's), (22, 30655), (27, 30703), (31, 30766), (33, 30796), (37, 30823), (38, 30832), (42, 30853), (45, 30907), (47, 30973), (64, 31366), (66, 31399), (70, 31519), (80, 31753), (100, 31957), (101, 31960), (109, 32017), (110, 32020), (111, 32032), (114, 32056), (117, 32074), (119, 32077), (120, 32089), (122, 32122), (126, 32164), (132, 32290), (133, 32293), (142, 32458), (149, 32575), (150, 32584), (153, 32758), (160, 32863), (167, 32974), (170, 32995), (179, 33118), (180, 33124), (183, 33166), (184, 33184), (196, 33328), (198, 33370), (202, 33475),

Gene: ChaylaJr_83 Start: 30253, Stop: 33594, Start Num: 1

Candidate Starts for ChaylaJr_83:

(Start: 1 @30253 has 173 MA's), (3, 30334), (5, 30355), (6, 30379), (8, 30424), (9, 30451), (10, 30454), (11, 30466), (12, 30484), (13, 30487), (18, 30706), (Start: 20 @30844 has 4 MA's), (22, 30931), (27, 30979), (31, 31042), (33, 31072), (37, 31099), (38, 31108), (42, 31129), (45, 31183), (47, 31249), (64, 31642), (66, 31675), (72, 31921), (80, 32032), (100, 32236), (101, 32239), (109, 32296), (110, 32299), (111, 32311), (114, 32335), (117, 32353), (119, 32356), (120, 32368), (122, 32401), (126, 32443),

(142, 32584), (145, 32638), (149, 32698), (150, 32707), (153, 32881), (160, 32986), (167, 33097), (170, 33118), (196, 33253), (198, 33295), (202, 33379),

Gene: CherryTomatoes_86 Start: 33329, Stop: 36184, Start Num: 20

Candidate Starts for CherryTomatoes_86:

(Start: 20 @33329 has 4 MA's), (22, 33410), (24, 33422), (28, 33500), (35, 33563), (36, 33572), (38, 33584), (43, 33647), (51, 33806), (52, 33812), (55, 33917), (80, 34412), (81, 34415), (83, 34448), (111, 34685), (114, 34709), (116, 34721), (123, 34802), (124, 34805), (129, 34856), (163, 35447), (164, 35453), (168, 35492), (169, 35495), (197, 35858), (199, 35927), (200, 35948), (203, 35987), (205, 36083), (206, 36098),

Gene: ChickenPhender_84 Start: 30586, Stop: 33927, Start Num: 1

Candidate Starts for ChickenPhender_84:

(Start: 1 @30586 has 173 MA's), (3, 30667), (5, 30688), (6, 30712), (8, 30757), (9, 30784), (10, 30787), (11, 30799), (12, 30817), (13, 30820), (18, 31039), (Start: 20 @31177 has 4 MA's), (22, 31264), (27, 31312), (31, 31375), (33, 31405), (37, 31432), (38, 31441), (42, 31462), (45, 31516), (47, 31582), (64, 31975), (66, 32008), (72, 32254), (80, 32365), (100, 32569), (101, 32572), (109, 32629), (110, 32632), (111, 32644), (114, 32668), (117, 32686), (119, 32689), (120, 32701), (122, 32734), (126, 32776), (142, 32917), (145, 32971), (149, 33031), (150, 33040), (153, 33214), (160, 33319), (167, 33430), (170, 33451), (196, 33586), (198, 33628), (202, 33712),

Gene: Chomp_87 Start: 31638, Stop: 35348, Start Num: 1

Candidate Starts for Chomp_87:

(Start: 1 @31638 has 173 MA's), (3, 31719), (5, 31740), (6, 31764), (8, 31809), (9, 31836), (10, 31839), (11, 31851), (12, 31869), (13, 31872), (18, 32091), (Start: 20 @32229 has 4 MA's), (22, 32316), (27, 32364), (31, 32427), (33, 32457), (37, 32484), (38, 32493), (42, 32514), (45, 32568), (47, 32634), (64, 33027), (66, 33060), (70, 33180), (80, 33411), (100, 33615), (101, 33618), (109, 33675), (110, 33678), (111, 33690), (114, 33714), (117, 33732), (119, 33735), (120, 33747), (122, 33780), (126, 33822), (132, 33948), (133, 33951), (142, 34116), (149, 34233), (150, 34242), (153, 34416), (160, 34521), (167, 34632), (170, 34653), (179, 34776), (180, 34782), (183, 34824), (184, 34842), (196, 34986), (198, 35028), (202, 35133),

Gene: CindyLou_89 Start: 31676, Stop: 35389, Start Num: 1

Candidate Starts for CindyLou_89:

(Start: 1 @31676 has 173 MA's), (3, 31757), (5, 31778), (6, 31802), (8, 31847), (9, 31874), (10, 31877), (11, 31889), (12, 31907), (13, 31910), (18, 32129), (Start: 20 @32267 has 4 MA's), (22, 32354), (27, 32402), (31, 32465), (33, 32495), (37, 32522), (38, 32531), (41, 32549), (42, 32552), (45, 32606), (47, 32672), (64, 33065), (66, 33098), (70, 33218), (80, 33452), (100, 33656), (101, 33659), (109, 33716), (110, 33719), (111, 33731), (114, 33755), (117, 33773), (119, 33776), (120, 33788), (122, 33821), (126, 33863), (132, 33989), (133, 33992), (142, 34157), (145, 34211), (149, 34274), (150, 34283), (153, 34457), (160, 34562), (167, 34673), (170, 34694), (179, 34817), (180, 34823), (183, 34865), (184, 34883), (196, 35027), (198, 35069), (202, 35174),

Gene: Colt_78 Start: 29635, Stop: 33057, Start Num: 1

Candidate Starts for Colt_78:

(Start: 1 @29635 has 173 MA's), (3, 29716), (5, 29737), (6, 29761), (8, 29806), (9, 29833), (10, 29836), (11, 29848), (12, 29866), (13, 29869), (18, 30088), (19, 30190), (42, 30223), (45, 30277), (47, 30343), (64, 30736), (66, 30769), (70, 30889), (80, 31120), (100, 31324), (101, 31327), (109, 31384), (110, 31387), (111, 31399), (114, 31423), (117, 31441), (119, 31444), (120, 31456), (122, 31489), (126, 31531), (132, 31657), (133, 31660), (142, 31825), (145, 31879), (149, 31942), (150, 31951), (153, 32125), (160, 32230), (167, 32341), (170, 32362), (179, 32485), (180, 32491), (183, 32533), (184, 32551), (196, 32695), (198, 32737), (202, 32842),

Gene: Concombre_95 Start: 34395, Stop: 38105, Start Num: 1

Candidate Starts for Concombre_95:

(Start: 1 @34395 has 173 MA's), (3, 34476), (5, 34497), (6, 34521), (8, 34566), (9, 34593), (10, 34596), (11, 34608), (12, 34626), (13, 34629), (18, 34848), (Start: 20 @34986 has 4 MA's), (22, 35073), (27, 35121), (31, 35184), (33, 35214), (37, 35241), (38, 35250), (42, 35271), (45, 35325), (47, 35391), (64, 35784), (66, 35817), (70, 35937), (80, 36168), (100, 36372), (101, 36375), (109, 36432), (110, 36435), (111, 36447), (114, 36471), (117, 36489), (119, 36492), (120, 36504), (122, 36537), (126, 36579), (132, 36705), (133, 36708), (142, 36873), (145, 36927), (149, 36990), (150, 36999), (153, 37173), (160, 37278), (167, 37389), (170, 37410), (179, 37533), (180, 37539), (183, 37581), (184, 37599), (196, 37743), (198, 37785), (202, 37890),

Gene: DTDevon_89 Start: 32315, Stop: 36025, Start Num: 1

Candidate Starts for DTDevon_89:

(Start: 1 @32315 has 173 MA's), (3, 32396), (5, 32417), (6, 32441), (8, 32486), (9, 32513), (10, 32516), (11, 32528), (12, 32546), (13, 32549), (18, 32768), (Start: 20 @32906 has 4 MA's), (22, 32993), (27, 33041), (31, 33104), (33, 33134), (37, 33161), (38, 33170), (42, 33191), (45, 33245), (47, 33311), (64, 33704), (66, 33737), (70, 33857), (80, 34088), (100, 34292), (101, 34295), (109, 34352), (110, 34355), (111, 34367), (114, 34391), (117, 34409), (119, 34412), (120, 34424), (122, 34457), (126, 34499), (132, 34625), (133, 34628), (142, 34793), (149, 34910), (150, 34919), (153, 35093), (160, 35198), (167, 35309), (170, 35330), (179, 35453), (180, 35459), (183, 35501), (184, 35519), (196, 35663), (198, 35705), (202, 35810),

Gene: Daffodil_93 Start: 32145, Stop: 35858, Start Num: 1

Candidate Starts for Daffodil_93:

(Start: 1 @32145 has 173 MA's), (3, 32226), (5, 32247), (6, 32271), (8, 32316), (9, 32343), (10, 32346), (11, 32358), (12, 32376), (13, 32379), (18, 32598), (Start: 20 @32736 has 4 MA's), (22, 32823), (27, 32871), (31, 32934), (33, 32964), (37, 32991), (38, 33000), (41, 33018), (42, 33021), (45, 33075), (47, 33141), (64, 33534), (66, 33567), (70, 33687), (80, 33921), (100, 34125), (101, 34128), (109, 34185), (110, 34188), (111, 34200), (114, 34224), (117, 34242), (119, 34245), (120, 34257), (122, 34290), (126, 34332), (132, 34458), (133, 34461), (142, 34626), (145, 34680), (149, 34743), (150, 34752), (153, 34926), (160, 35031), (167, 35142), (170, 35163), (179, 35286), (180, 35292), (183, 35334), (184, 35352), (196, 35496), (198, 35538), (202, 35643),

Gene: Dandelion_95 Start: 34817, Stop: 38551, Start Num: 1

Candidate Starts for Dandelion_95:

(Start: 1 @34817 has 173 MA's), (3, 34898), (5, 34919), (6, 34943), (8, 34988), (9, 35015), (10, 35018), (11, 35030), (12, 35048), (13, 35051), (18, 35270), (Start: 20 @35408 has 4 MA's), (22, 35495), (27, 35543), (31, 35606), (33, 35636), (37, 35663), (38, 35672), (42, 35693), (45, 35747), (47, 35813), (62, 36191), (64, 36227), (72, 36503), (80, 36614), (100, 36818), (101, 36821), (109, 36878), (110, 36881), (111, 36893), (114, 36917), (117, 36935), (119, 36938), (120, 36950), (122, 36983), (126, 37025), (132, 37151), (133, 37154), (142, 37319), (149, 37436), (150, 37445), (153, 37619), (160, 37724), (167, 37835), (170, 37856), (179, 37979), (180, 37985), (183, 38027), (184, 38045), (196, 38189), (198, 38231), (202, 38336),

Gene: Darko_88 Start: 32076, Stop: 35789, Start Num: 1

Candidate Starts for Darko_88:

(Start: 1 @32076 has 173 MA's), (3, 32157), (5, 32178), (6, 32202), (9, 32274), (10, 32277), (11, 32289), (12, 32307), (13, 32310), (18, 32529), (Start: 20 @32667 has 4 MA's), (22, 32754), (27, 32802), (31, 32865), (33, 32895), (37, 32922), (38, 32931), (42, 32952), (45, 33006), (47, 33072), (64, 33465), (66, 33498), (70, 33618), (80, 33852), (100, 34056), (101, 34059), (109, 34116), (110, 34119), (111, 34131), (114, 34155), (117, 34173), (119, 34176), (120, 34188), (122, 34221), (126, 34263), (132, 34389), (133, 34392), (142, 34557), (145, 34611), (149, 34674), (150, 34683), (153, 34857), (160, 34962), (167, 35073), (170, 35094), (179, 35217), (180, 35223), (183, 35265), (184, 35283),

(196, 35427), (198, 35469), (202, 35574),

Gene: DeejaClivia_77 Start: 28393, Stop: 31731, Start Num: 1

Candidate Starts for DeejaClivia_77:

(Start: 1 @28393 has 173 MA's), (3, 28474), (5, 28495), (6, 28519), (8, 28564), (9, 28591), (10, 28594), (11, 28606), (12, 28624), (13, 28627), (18, 28846), (Start: 20 @28984 has 4 MA's), (22, 29071), (27, 29119), (31, 29182), (33, 29212), (37, 29239), (38, 29248), (41, 29266), (42, 29269), (45, 29323), (47, 29389), (64, 29782), (66, 29815), (70, 29935), (72, 30058), (80, 30169), (100, 30373), (101, 30376), (109, 30433), (110, 30436), (111, 30448), (114, 30472), (117, 30490), (119, 30493), (120, 30505), (122, 30538), (126, 30580), (142, 30721), (145, 30775), (149, 30835), (150, 30844), (153, 31018), (160, 31123), (167, 31234), (170, 31255), (196, 31390), (198, 31432), (202, 31516),

Gene: Delilah_88 Start: 32146, Stop: 35859, Start Num: 1

Candidate Starts for Delilah_88:

(Start: 1 @32146 has 173 MA's), (3, 32227), (5, 32248), (6, 32272), (8, 32317), (9, 32344), (10, 32347), (11, 32359), (12, 32377), (13, 32380), (18, 32599), (Start: 20 @32737 has 4 MA's), (22, 32824), (27, 32872), (31, 32935), (33, 32965), (37, 32992), (38, 33001), (41, 33019), (42, 33022), (45, 33076), (47, 33142), (64, 33535), (66, 33568), (70, 33688), (80, 33922), (100, 34126), (101, 34129), (109, 34186), (110, 34189), (111, 34201), (114, 34225), (117, 34243), (119, 34246), (120, 34258), (122, 34291), (126, 34333), (132, 34459), (133, 34462), (142, 34627), (145, 34681), (149, 34744), (150, 34753), (153, 34927), (160, 35032), (167, 35143), (170, 35164), (179, 35287), (180, 35293), (183, 35335), (184, 35353), (196, 35497), (198, 35539), (202, 35644),

Gene: Delylah_91 Start: 31939, Stop: 35652, Start Num: 1

Candidate Starts for Delylah_91:

(Start: 1 @31939 has 173 MA's), (3, 32020), (5, 32041), (6, 32065), (8, 32110), (9, 32137), (10, 32140), (11, 32152), (12, 32170), (13, 32173), (18, 32392), (Start: 20 @32530 has 4 MA's), (22, 32617), (27, 32665), (31, 32728), (33, 32758), (37, 32785), (38, 32794), (41, 32812), (42, 32815), (45, 32869), (47, 32935), (64, 33328), (66, 33361), (70, 33481), (80, 33715), (100, 33919), (101, 33922), (109, 33979), (110, 33982), (111, 33994), (114, 34018), (117, 34036), (119, 34039), (120, 34051), (122, 34084), (126, 34126), (132, 34252), (133, 34255), (142, 34420), (145, 34474), (149, 34537), (150, 34546), (153, 34720), (160, 34825), (167, 34936), (170, 34957), (179, 35080), (180, 35086), (183, 35128), (184, 35146), (196, 35290), (198, 35332), (202, 35437),

Gene: Demodog_95 Start: 34395, Stop: 38105, Start Num: 1

Candidate Starts for Demodog_95:

(Start: 1 @34395 has 173 MA's), (3, 34476), (5, 34497), (6, 34521), (8, 34566), (9, 34593), (10, 34596), (11, 34608), (12, 34626), (13, 34629), (18, 34848), (Start: 20 @34986 has 4 MA's), (22, 35073), (27, 35121), (31, 35184), (33, 35214), (37, 35241), (38, 35250), (42, 35271), (45, 35325), (47, 35391), (64, 35784), (66, 35817), (70, 35937), (80, 36168), (100, 36372), (101, 36375), (109, 36432), (110, 36435), (111, 36447), (114, 36471), (117, 36489), (119, 36492), (120, 36504), (122, 36537), (126, 36579), (132, 36705), (133, 36708), (142, 36873), (145, 36927), (149, 36990), (150, 36999), (153, 37173), (160, 37278), (167, 37389), (170, 37410), (179, 37533), (180, 37539), (183, 37581), (184, 37599), (196, 37743), (198, 37785), (202, 37890),

Gene: Derek_88 Start: 31440, Stop: 35150, Start Num: 1

Candidate Starts for Derek_88:

(Start: 1 @31440 has 173 MA's), (3, 31521), (5, 31542), (6, 31566), (8, 31611), (9, 31638), (10, 31641), (11, 31653), (12, 31671), (13, 31674), (18, 31893), (Start: 20 @32031 has 4 MA's), (22, 32118), (27, 32166), (31, 32229), (33, 32259), (37, 32286), (38, 32295), (42, 32316), (45, 32370), (47, 32436), (64, 32829), (66, 32862), (70, 32982), (80, 33213), (100, 33417), (101, 33420), (109, 33477), (110, 33480), (111, 33492), (114, 33516), (117, 33534), (119, 33537), (120, 33549), (122, 33582), (126, 33624), (132, 33750), (133, 33753), (142, 33918), (149, 34035), (150, 34044), (153, 34218), (160, 34323),

(167, 34434), (170, 34455), (179, 34578), (180, 34584), (183, 34626), (184, 34644), (196, 34788),
(198, 34830), (202, 34935),

Gene: Dietrick_80 Start: 30264, Stop: 33626, Start Num: 1

Candidate Starts for Dietrick_80:

(Start: 1 @30264 has 173 MA's), (3, 30345), (5, 30366), (6, 30390), (8, 30435), (9, 30462), (10, 30465),
(11, 30477), (12, 30495), (13, 30498), (18, 30717), (Start: 20 @30855 has 4 MA's), (22, 30942), (27,
30990), (31, 31053), (33, 31083), (37, 31110), (38, 31119), (42, 31140), (45, 31194), (47, 31260), (62,
31638), (64, 31674), (72, 31950), (80, 32061), (100, 32265), (101, 32268), (109, 32325), (110, 32328),
(111, 32340), (114, 32364), (117, 32382), (119, 32385), (120, 32397), (122, 32430), (126, 32472),
(142, 32613), (145, 32667), (149, 32730), (150, 32739), (153, 32913), (160, 33018), (167, 33129),
(170, 33150), (196, 33285), (198, 33327), (202, 33411),

Gene: DirtMonster_81 Start: 30741, Stop: 34451, Start Num: 1

Candidate Starts for DirtMonster_81:

(Start: 1 @30741 has 173 MA's), (3, 30822), (5, 30843), (6, 30867), (8, 30912), (9, 30939), (10, 30942),
(11, 30954), (12, 30972), (13, 30975), (18, 31194), (Start: 20 @31332 has 4 MA's), (22, 31419), (27,
31467), (31, 31530), (33, 31560), (37, 31587), (38, 31596), (42, 31617), (45, 31671), (47, 31737), (64,
32130), (66, 32163), (70, 32283), (80, 32514), (100, 32718), (101, 32721), (109, 32778), (110, 32781),
(111, 32793), (114, 32817), (117, 32835), (119, 32838), (120, 32850), (122, 32883), (126, 32925),
(132, 33051), (133, 33054), (142, 33219), (145, 33273), (149, 33336), (150, 33345), (153, 33519),
(160, 33624), (167, 33735), (170, 33756), (179, 33879), (180, 33885), (183, 33927), (184, 33945),
(196, 34089), (198, 34131), (202, 34236),

Gene: Domi_82 Start: 31470, Stop: 35183, Start Num: 1

Candidate Starts for Domi_82:

(Start: 1 @31470 has 173 MA's), (3, 31551), (5, 31572), (6, 31596), (9, 31668), (10, 31671), (11,
31683), (12, 31701), (13, 31704), (18, 31923), (Start: 20 @32061 has 4 MA's), (22, 32148), (27,
32196), (31, 32259), (33, 32289), (37, 32316), (38, 32325), (42, 32346), (45, 32400), (47, 32466), (64,
32859), (66, 32892), (70, 33012), (80, 33246), (100, 33450), (101, 33453), (109, 33510), (110, 33513),
(111, 33525), (114, 33549), (117, 33567), (119, 33570), (120, 33582), (122, 33615), (126, 33657),
(132, 33783), (133, 33786), (142, 33951), (145, 34005), (149, 34068), (150, 34077), (153, 34251),
(160, 34356), (167, 34467), (170, 34488), (179, 34611), (180, 34617), (183, 34659), (184, 34677),
(196, 34821), (198, 34863), (202, 34968),

Gene: DrPhinkDaddy_87 Start: 32201, Stop: 35914, Start Num: 1

Candidate Starts for DrPhinkDaddy_87:

(Start: 1 @32201 has 173 MA's), (3, 32282), (5, 32303), (6, 32327), (8, 32372), (9, 32399), (10, 32402),
(11, 32414), (12, 32432), (13, 32435), (18, 32654), (Start: 20 @32792 has 4 MA's), (22, 32879), (27,
32927), (31, 32990), (33, 33020), (37, 33047), (38, 33056), (41, 33074), (42, 33077), (45, 33131), (47,
33197), (64, 33590), (66, 33623), (70, 33743), (80, 33977), (100, 34181), (101, 34184), (109, 34241),
(110, 34244), (111, 34256), (114, 34280), (117, 34298), (119, 34301), (120, 34313), (122, 34346),
(126, 34388), (132, 34514), (133, 34517), (142, 34682), (145, 34736), (149, 34799), (150, 34808),
(153, 34982), (160, 35087), (167, 35198), (170, 35219), (179, 35342), (180, 35348), (183, 35390),
(184, 35408), (196, 35552), (198, 35594), (202, 35699),

Gene: Drazdys_88 Start: 31946, Stop: 35656, Start Num: 1

Candidate Starts for Drazdys_88:

(Start: 1 @31946 has 173 MA's), (3, 32027), (5, 32048), (6, 32072), (8, 32117), (9, 32144), (10, 32147),
(11, 32159), (12, 32177), (13, 32180), (18, 32399), (Start: 20 @32537 has 4 MA's), (22, 32624), (27,
32672), (31, 32735), (33, 32765), (37, 32792), (38, 32801), (42, 32822), (45, 32876), (47, 32942), (64,
33335), (66, 33368), (70, 33488), (80, 33719), (100, 33923), (101, 33926), (109, 33983), (110, 33986),
(111, 33998), (114, 34022), (117, 34040), (119, 34043), (120, 34055), (122, 34088), (126, 34130),

(132, 34256), (133, 34259), (142, 34424), (149, 34541), (150, 34550), (153, 34724), (160, 34829), (167, 34940), (170, 34961), (179, 35084), (180, 35090), (183, 35132), (184, 35150), (196, 35294), (198, 35336), (202, 35441),

Gene: ET08_77 Start: 29845, Stop: 33558, Start Num: 1

Candidate Starts for ET08_77:

(Start: 1 @29845 has 173 MA's), (3, 29926), (5, 29947), (6, 29971), (8, 30016), (9, 30043), (10, 30046), (11, 30058), (12, 30076), (13, 30079), (18, 30298), (Start: 20 @30436 has 4 MA's), (22, 30523), (27, 30571), (31, 30634), (33, 30664), (37, 30691), (38, 30700), (42, 30721), (45, 30775), (47, 30841), (64, 31234), (66, 31267), (70, 31387), (80, 31621), (100, 31825), (101, 31828), (109, 31885), (110, 31888), (111, 31900), (114, 31924), (117, 31942), (119, 31945), (120, 31957), (122, 31990), (126, 32032), (132, 32158), (133, 32161), (142, 32326), (149, 32443), (150, 32452), (153, 32626), (160, 32731), (167, 32842), (170, 32863), (179, 32986), (180, 32992), (183, 33034), (184, 33052), (196, 33196), (198, 33238), (202, 33343),

Gene: EasyJones_91 Start: 31645, Stop: 34986, Start Num: 1

Candidate Starts for EasyJones_91:

(Start: 1 @31645 has 173 MA's), (3, 31726), (5, 31747), (6, 31771), (8, 31816), (9, 31843), (10, 31846), (11, 31858), (12, 31876), (13, 31879), (18, 32098), (Start: 20 @32236 has 4 MA's), (22, 32323), (27, 32371), (31, 32434), (33, 32464), (37, 32491), (38, 32500), (42, 32521), (45, 32575), (47, 32641), (64, 33034), (66, 33067), (72, 33313), (80, 33424), (100, 33628), (101, 33631), (109, 33688), (110, 33691), (111, 33703), (114, 33727), (117, 33745), (119, 33748), (120, 33760), (122, 33793), (126, 33835), (142, 33976), (145, 34030), (149, 34090), (150, 34099), (153, 34273), (160, 34378), (167, 34489), (170, 34510), (196, 34645), (198, 34687), (202, 34771),

Gene: EggyFarm_96 Start: 34232, Stop: 37912, Start Num: 1

Candidate Starts for EggyFarm_96:

(Start: 1 @34232 has 173 MA's), (3, 34313), (5, 34334), (6, 34358), (8, 34403), (9, 34430), (10, 34433), (11, 34445), (12, 34463), (13, 34466), (18, 34685), (19, 34787), (42, 34820), (45, 34874), (47, 34940), (64, 35333), (66, 35366), (70, 35486), (80, 35717), (100, 35921), (101, 35924), (109, 35981), (110, 35984), (111, 35996), (114, 36020), (117, 36038), (119, 36041), (120, 36053), (122, 36086), (126, 36128), (132, 36254), (133, 36257), (142, 36422), (149, 36539), (150, 36548), (153, 36722), (160, 36827), (167, 36938), (170, 36959), (179, 37082), (180, 37088), (183, 37130), (184, 37148), (193, 37409), (195, 37469), (196, 37550), (198, 37592), (202, 37697),

Gene: EmToTheThree_91 Start: 33618, Stop: 37310, Start Num: 1

Candidate Starts for EmToTheThree_91:

(Start: 1 @33618 has 173 MA's), (3, 33699), (5, 33720), (6, 33744), (8, 33789), (9, 33816), (10, 33819), (11, 33831), (12, 33849), (13, 33852), (18, 34071), (Start: 20 @34209 has 4 MA's), (22, 34296), (27, 34344), (31, 34407), (33, 34437), (37, 34464), (38, 34473), (42, 34494), (45, 34548), (47, 34614), (64, 35007), (66, 35040), (70, 35160), (80, 35394), (100, 35598), (101, 35601), (109, 35658), (110, 35661), (111, 35673), (114, 35697), (117, 35715), (119, 35718), (120, 35730), (122, 35763), (126, 35805), (132, 35931), (133, 35934), (142, 36099), (149, 36216), (150, 36225), (153, 36399), (160, 36504), (167, 36615), (170, 36636), (179, 36759), (180, 36765), (183, 36807), (184, 36825), (196, 36969), (198, 37011), (202, 37095),

Gene: EmmaElysia_87 Start: 30721, Stop: 34431, Start Num: 1

Candidate Starts for EmmaElysia_87:

(Start: 1 @30721 has 173 MA's), (3, 30802), (5, 30823), (6, 30847), (8, 30892), (9, 30919), (10, 30922), (11, 30934), (12, 30952), (13, 30955), (18, 31174), (Start: 20 @31312 has 4 MA's), (22, 31399), (27, 31447), (31, 31510), (33, 31540), (37, 31567), (38, 31576), (42, 31597), (45, 31651), (47, 31717), (64, 32110), (66, 32143), (70, 32263), (80, 32494), (100, 32698), (101, 32701), (109, 32758), (110, 32761), (111, 32773), (114, 32797), (117, 32815), (119, 32818), (120, 32830), (122, 32863), (126, 32905),

(132, 33031), (133, 33034), (142, 33199), (149, 33316), (150, 33325), (153, 33499), (160, 33604), (167, 33715), (170, 33736), (179, 33859), (180, 33865), (183, 33907), (184, 33925), (196, 34069), (198, 34111), (202, 34216),

Gene: Erdmann_89 Start: 32146, Stop: 35859, Start Num: 1

Candidate Starts for Erdmann_89:

(Start: 1 @32146 has 173 MA's), (3, 32227), (5, 32248), (6, 32272), (8, 32317), (9, 32344), (10, 32347), (11, 32359), (12, 32377), (13, 32380), (18, 32599), (Start: 20 @32737 has 4 MA's), (22, 32824), (27, 32872), (31, 32935), (33, 32965), (37, 32992), (38, 33001), (41, 33019), (42, 33022), (45, 33076), (47, 33142), (64, 33535), (66, 33568), (70, 33688), (80, 33922), (100, 34126), (101, 34129), (109, 34186), (110, 34189), (111, 34201), (114, 34225), (117, 34243), (119, 34246), (120, 34258), (122, 34291), (126, 34333), (132, 34459), (133, 34462), (142, 34627), (145, 34681), (149, 34744), (150, 34753), (153, 34927), (160, 35032), (167, 35143), (170, 35164), (179, 35287), (180, 35293), (183, 35335), (184, 35353), (196, 35497), (198, 35539), (202, 35644),

Gene: ErnieJ_84 Start: 30542, Stop: 33904, Start Num: 1

Candidate Starts for ErnieJ_84:

(Start: 1 @30542 has 173 MA's), (3, 30623), (5, 30644), (6, 30668), (8, 30713), (9, 30740), (10, 30743), (11, 30755), (12, 30773), (13, 30776), (18, 30995), (Start: 20 @31133 has 4 MA's), (22, 31220), (27, 31268), (31, 31331), (33, 31361), (37, 31388), (38, 31397), (42, 31418), (45, 31472), (47, 31538), (62, 31916), (64, 31952), (72, 32228), (80, 32339), (100, 32543), (101, 32546), (109, 32603), (110, 32606), (111, 32618), (114, 32642), (117, 32660), (119, 32663), (120, 32675), (122, 32708), (126, 32750), (142, 32891), (145, 32945), (149, 33008), (150, 33017), (153, 33191), (160, 33296), (167, 33407), (170, 33428), (196, 33563), (198, 33605), (202, 33689),

Gene: Essence_85 Start: 30901, Stop: 34614, Start Num: 1

Candidate Starts for Essence_85:

(Start: 1 @30901 has 173 MA's), (3, 30982), (5, 31003), (6, 31027), (8, 31072), (9, 31099), (10, 31102), (11, 31114), (12, 31132), (13, 31135), (18, 31354), (Start: 20 @31492 has 4 MA's), (22, 31579), (27, 31627), (31, 31690), (33, 31720), (37, 31747), (38, 31756), (41, 31774), (42, 31777), (45, 31831), (47, 31897), (64, 32290), (66, 32323), (70, 32443), (80, 32677), (100, 32881), (101, 32884), (109, 32941), (110, 32944), (111, 32956), (114, 32980), (117, 32998), (119, 33001), (120, 33013), (122, 33046), (126, 33088), (132, 33214), (133, 33217), (142, 33382), (145, 33436), (149, 33499), (150, 33508), (153, 33682), (160, 33787), (167, 33898), (170, 33919), (179, 34042), (180, 34048), (183, 34090), (184, 34108), (196, 34252), (198, 34294), (202, 34399),

Gene: Ewok_89 Start: 32148, Stop: 35486, Start Num: 1

Candidate Starts for Ewok_89:

(Start: 1 @32148 has 173 MA's), (3, 32229), (5, 32250), (6, 32274), (8, 32319), (9, 32346), (10, 32349), (11, 32361), (12, 32379), (13, 32382), (18, 32601), (Start: 20 @32739 has 4 MA's), (22, 32826), (27, 32874), (31, 32937), (33, 32967), (37, 32994), (38, 33003), (41, 33021), (42, 33024), (45, 33078), (47, 33144), (64, 33537), (66, 33570), (70, 33690), (80, 33921), (100, 34125), (101, 34128), (109, 34185), (110, 34188), (111, 34200), (114, 34224), (117, 34242), (119, 34245), (120, 34257), (122, 34290), (126, 34332), (142, 34473), (145, 34527), (149, 34590), (150, 34599), (153, 34773), (160, 34878), (167, 34989), (170, 35010), (196, 35145), (198, 35187), (202, 35271),

Gene: Flabslab_83 Start: 30323, Stop: 33664, Start Num: 1

Candidate Starts for Flabslab_83:

(Start: 1 @30323 has 173 MA's), (3, 30404), (5, 30425), (6, 30449), (8, 30494), (9, 30521), (10, 30524), (11, 30536), (12, 30554), (13, 30557), (18, 30776), (Start: 20 @30914 has 4 MA's), (22, 31001), (27, 31049), (31, 31112), (33, 31142), (37, 31169), (38, 31178), (42, 31199), (45, 31253), (47, 31319), (64, 31712), (66, 31745), (72, 31991), (80, 32102), (100, 32306), (101, 32309), (109, 32366), (110, 32369), (111, 32381), (114, 32405), (117, 32423), (119, 32426), (120, 32438), (122, 32471), (126, 32513),

(142, 32654), (145, 32708), (149, 32768), (150, 32777), (153, 32951), (160, 33056), (167, 33167),
(170, 33188), (196, 33323), (198, 33365), (202, 33449),

Gene: Fludd_88 Start: 30985, Stop: 34326, Start Num: 1

Candidate Starts for Fludd_88:

(Start: 1 @30985 has 173 MA's), (3, 31066), (5, 31087), (6, 31111), (8, 31156), (9, 31183), (10, 31186),
(11, 31198), (12, 31216), (13, 31219), (18, 31438), (Start: 20 @31576 has 4 MA's), (22, 31663), (27,
31711), (31, 31774), (33, 31804), (37, 31831), (38, 31840), (42, 31861), (45, 31915), (47, 31981), (64,
32374), (66, 32407), (72, 32653), (80, 32764), (100, 32968), (101, 32971), (109, 33028), (110, 33031),
(111, 33043), (114, 33067), (117, 33085), (119, 33088), (120, 33100), (122, 33133), (126, 33175),
(142, 33316), (145, 33370), (149, 33430), (150, 33439), (153, 33613), (160, 33718), (167, 33829),
(170, 33850), (196, 33985), (198, 34027), (202, 34111),

Gene: Fongie_86 Start: 32361, Stop: 35699, Start Num: 1

Candidate Starts for Fongie_86:

(Start: 1 @32361 has 173 MA's), (3, 32442), (5, 32463), (6, 32487), (8, 32532), (9, 32559), (10, 32562),
(11, 32574), (12, 32592), (13, 32595), (18, 32814), (Start: 20 @32952 has 4 MA's), (22, 33039), (27,
33087), (31, 33150), (33, 33180), (37, 33207), (38, 33216), (41, 33234), (42, 33237), (45, 33291), (47,
33357), (64, 33750), (66, 33783), (70, 33903), (80, 34134), (100, 34338), (101, 34341), (109, 34398),
(110, 34401), (111, 34413), (114, 34437), (117, 34455), (119, 34458), (120, 34470), (122, 34503),
(126, 34545), (142, 34686), (145, 34740), (149, 34803), (150, 34812), (153, 34986), (160, 35091),
(167, 35202), (170, 35223), (196, 35358), (198, 35400), (202, 35484),

Gene: FoxtrotP1_88 Start: 32548, Stop: 36258, Start Num: 1

Candidate Starts for FoxtrotP1_88:

(Start: 1 @32548 has 173 MA's), (3, 32629), (5, 32650), (6, 32674), (8, 32719), (9, 32746), (10, 32749),
(11, 32761), (12, 32779), (13, 32782), (18, 33001), (Start: 20 @33139 has 4 MA's), (22, 33226), (27,
33274), (31, 33337), (33, 33367), (37, 33394), (38, 33403), (42, 33424), (45, 33478), (47, 33544), (64,
33937), (66, 33970), (70, 34090), (80, 34321), (100, 34525), (101, 34528), (109, 34585), (110, 34588),
(111, 34600), (114, 34624), (117, 34642), (119, 34645), (120, 34657), (122, 34690), (126, 34732),
(132, 34858), (133, 34861), (142, 35026), (145, 35080), (149, 35143), (150, 35152), (153, 35326),
(160, 35431), (167, 35542), (170, 35563), (179, 35686), (180, 35692), (183, 35734), (184, 35752),
(196, 35896), (198, 35938), (202, 36043),

Gene: FrayBell_94 Start: 33591, Stop: 37304, Start Num: 1

Candidate Starts for FrayBell_94:

(Start: 1 @33591 has 173 MA's), (3, 33672), (5, 33693), (6, 33717), (9, 33789), (10, 33792), (11,
33804), (12, 33822), (13, 33825), (18, 34044), (Start: 20 @34182 has 4 MA's), (22, 34269), (27,
34317), (31, 34380), (33, 34410), (37, 34437), (38, 34446), (42, 34467), (45, 34521), (47, 34587), (64,
34980), (66, 35013), (70, 35133), (80, 35367), (100, 35571), (101, 35574), (109, 35631), (110, 35634),
(111, 35646), (114, 35670), (117, 35688), (119, 35691), (120, 35703), (122, 35736), (126, 35778),
(132, 35904), (133, 35907), (142, 36072), (145, 36126), (149, 36189), (150, 36198), (153, 36372),
(160, 36477), (167, 36588), (170, 36609), (179, 36732), (180, 36738), (183, 36780), (184, 36798),
(196, 36942), (198, 36984), (202, 37089),

Gene: FudgeTart_88 Start: 31314, Stop: 35048, Start Num: 1

Candidate Starts for FudgeTart_88:

(Start: 1 @31314 has 173 MA's), (3, 31395), (5, 31416), (6, 31440), (8, 31485), (9, 31512), (10, 31515),
(11, 31527), (12, 31545), (13, 31548), (18, 31767), (Start: 20 @31905 has 4 MA's), (22, 31992), (27,
32040), (31, 32103), (33, 32133), (37, 32160), (38, 32169), (42, 32190), (45, 32244), (47, 32310), (62,
32688), (64, 32724), (72, 33000), (80, 33111), (100, 33315), (101, 33318), (109, 33375), (110, 33378),
(111, 33390), (114, 33414), (117, 33432), (119, 33435), (120, 33447), (122, 33480), (126, 33522),
(132, 33648), (133, 33651), (142, 33816), (149, 33933), (150, 33942), (153, 34116), (160, 34221),

(167, 34332), (170, 34353), (179, 34476), (180, 34482), (183, 34524), (184, 34542), (196, 34686),
(198, 34728), (202, 34833),

Gene: Gabriel_90 Start: 31384, Stop: 35094, Start Num: 1

Candidate Starts for Gabriel_90:

(Start: 1 @31384 has 173 MA's), (3, 31465), (5, 31486), (6, 31510), (8, 31555), (9, 31582), (10, 31585),
(11, 31597), (12, 31615), (13, 31618), (18, 31837), (Start: 20 @31975 has 4 MA's), (22, 32062), (27,
32110), (31, 32173), (33, 32203), (37, 32230), (38, 32239), (42, 32260), (45, 32314), (47, 32380), (64,
32773), (66, 32806), (70, 32926), (80, 33157), (100, 33361), (101, 33364), (109, 33421), (110, 33424),
(111, 33436), (114, 33460), (117, 33478), (119, 33481), (120, 33493), (122, 33526), (126, 33568),
(132, 33694), (133, 33697), (142, 33862), (149, 33979), (150, 33988), (153, 34162), (160, 34267),
(167, 34378), (170, 34399), (179, 34522), (180, 34528), (183, 34570), (184, 34588), (196, 34732),
(198, 34774), (202, 34879),

Gene: Gamgam_88 Start: 31151, Stop: 34864, Start Num: 1

Candidate Starts for Gamgam_88:

(Start: 1 @31151 has 173 MA's), (3, 31232), (5, 31253), (6, 31277), (8, 31322), (9, 31349), (10, 31352),
(11, 31364), (12, 31382), (13, 31385), (18, 31604), (Start: 20 @31742 has 4 MA's), (22, 31829), (27,
31877), (31, 31940), (33, 31970), (37, 31997), (38, 32006), (41, 32024), (42, 32027), (45, 32081), (47,
32147), (64, 32540), (66, 32573), (70, 32693), (80, 32927), (100, 33131), (101, 33134), (109, 33191),
(110, 33194), (111, 33206), (114, 33230), (117, 33248), (119, 33251), (120, 33263), (122, 33296),
(126, 33338), (132, 33464), (133, 33467), (142, 33632), (145, 33686), (149, 33749), (150, 33758),
(153, 33932), (160, 34037), (167, 34148), (170, 34169), (179, 34292), (180, 34298), (183, 34340),
(184, 34358), (196, 34502), (198, 34544), (202, 34649),

Gene: Ghost_87 Start: 31151, Stop: 34864, Start Num: 1

Candidate Starts for Ghost_87:

(Start: 1 @31151 has 173 MA's), (3, 31232), (5, 31253), (6, 31277), (8, 31322), (9, 31349), (10, 31352),
(11, 31364), (12, 31382), (13, 31385), (18, 31604), (Start: 20 @31742 has 4 MA's), (22, 31829), (27,
31877), (31, 31940), (33, 31970), (37, 31997), (38, 32006), (41, 32024), (42, 32027), (45, 32081), (47,
32147), (64, 32540), (66, 32573), (70, 32693), (80, 32927), (100, 33131), (101, 33134), (109, 33191),
(110, 33194), (111, 33206), (114, 33230), (117, 33248), (119, 33251), (120, 33263), (122, 33296),
(126, 33338), (132, 33464), (133, 33467), (142, 33632), (145, 33686), (149, 33749), (150, 33758),
(153, 33932), (160, 34037), (167, 34148), (170, 34169), (179, 34292), (180, 34298), (183, 34340),
(184, 34358), (196, 34502), (198, 34544), (202, 34649),

Gene: Gizmo_92 Start: 31829, Stop: 35167, Start Num: 1

Candidate Starts for Gizmo_92:

(Start: 1 @31829 has 173 MA's), (3, 31910), (5, 31931), (6, 31955), (8, 32000), (9, 32027), (10, 32030),
(11, 32042), (12, 32060), (13, 32063), (18, 32282), (Start: 20 @32420 has 4 MA's), (22, 32507), (27,
32555), (31, 32618), (33, 32648), (37, 32675), (38, 32684), (41, 32702), (42, 32705), (45, 32759), (47,
32825), (64, 33218), (66, 33251), (70, 33371), (80, 33602), (100, 33806), (101, 33809), (109, 33866),
(110, 33869), (111, 33881), (114, 33905), (117, 33923), (119, 33926), (120, 33938), (122, 33971),
(126, 34013), (142, 34154), (145, 34208), (149, 34271), (150, 34280), (153, 34454), (160, 34559),
(167, 34670), (170, 34691), (196, 34826), (198, 34868), (202, 34952),

Gene: GlutenPhree_86 Start: 31151, Stop: 34864, Start Num: 1

Candidate Starts for GlutenPhree_86:

(Start: 1 @31151 has 173 MA's), (3, 31232), (5, 31253), (6, 31277), (8, 31322), (9, 31349), (10, 31352),
(11, 31364), (12, 31382), (13, 31385), (18, 31604), (Start: 20 @31742 has 4 MA's), (22, 31829), (27,
31877), (31, 31940), (33, 31970), (37, 31997), (38, 32006), (41, 32024), (42, 32027), (45, 32081), (47,
32147), (64, 32540), (66, 32573), (70, 32693), (80, 32927), (100, 33131), (101, 33134), (109, 33191),
(110, 33194), (111, 33206), (114, 33230), (117, 33248), (119, 33251), (120, 33263), (122, 33296),

(126, 33338), (132, 33464), (133, 33467), (142, 33632), (145, 33686), (149, 33749), (150, 33758), (153, 33932), (160, 34037), (167, 34148), (170, 34169), (179, 34292), (180, 34298), (183, 34340), (184, 34358), (196, 34502), (198, 34544), (202, 34649),

Gene: Grasshills_95 Start: 34232, Stop: 37912, Start Num: 1

Candidate Starts for Grasshills_95:

(Start: 1 @34232 has 173 MA's), (3, 34313), (5, 34334), (6, 34358), (8, 34403), (9, 34430), (10, 34433), (11, 34445), (12, 34463), (13, 34466), (18, 34685), (19, 34787), (42, 34820), (45, 34874), (47, 34940), (64, 35333), (66, 35366), (70, 35486), (80, 35717), (100, 35921), (101, 35924), (109, 35981), (110, 35984), (111, 35996), (114, 36020), (117, 36038), (119, 36041), (120, 36053), (122, 36086), (126, 36128), (132, 36254), (133, 36257), (142, 36422), (149, 36539), (150, 36548), (153, 36722), (160, 36827), (167, 36938), (170, 36959), (179, 37082), (180, 37088), (183, 37130), (184, 37148), (193, 37409), (195, 37469), (196, 37550), (198, 37592), (202, 37697),

Gene: Greely_89 Start: 33330, Stop: 36788, Start Num: 2

Candidate Starts for Greely_89:

(Start: 2 @33330 has 2 MA's), (7, 33459), (9, 33528), (13, 33564), (14, 33585), (15, 33600), (17, 33735), (23, 33882), (26, 33918), (38, 34053), (39, 34059), (60, 34560), (61, 34563), (66, 34659), (71, 34791), (75, 34881), (79, 34929), (81, 34941), (89, 35049), (91, 35070), (127, 35340), (128, 35364), (130, 35403), (131, 35430), (133, 35448), (135, 35472), (137, 35493), (138, 35508), (155, 35805), (158, 35844), (171, 36060), (176, 36126), (182, 36204), (185, 36228), (187, 36240), (189, 36246), (192, 36390), (201, 36582),

Gene: Grungle_75 Start: 28529, Stop: 32242, Start Num: 1

Candidate Starts for Grungle_75:

(Start: 1 @28529 has 173 MA's), (3, 28610), (5, 28631), (6, 28655), (8, 28700), (9, 28727), (10, 28730), (11, 28742), (12, 28760), (13, 28763), (18, 28982), (Start: 20 @29120 has 4 MA's), (22, 29207), (27, 29255), (31, 29318), (33, 29348), (37, 29375), (38, 29384), (42, 29405), (45, 29459), (47, 29525), (64, 29918), (66, 29951), (70, 30071), (80, 30305), (100, 30509), (101, 30512), (109, 30569), (110, 30572), (111, 30584), (114, 30608), (117, 30626), (119, 30629), (120, 30641), (122, 30674), (126, 30716), (132, 30842), (133, 30845), (142, 31010), (149, 31127), (150, 31136), (153, 31310), (160, 31415), (167, 31526), (170, 31547), (179, 31670), (180, 31676), (183, 31718), (184, 31736), (196, 31880), (198, 31922), (202, 32027),

Gene: Guwapp_87 Start: 31246, Stop: 34959, Start Num: 1

Candidate Starts for Guwapp_87:

(Start: 1 @31246 has 173 MA's), (3, 31327), (5, 31348), (6, 31372), (8, 31417), (9, 31444), (10, 31447), (11, 31459), (12, 31477), (13, 31480), (18, 31699), (Start: 20 @31837 has 4 MA's), (22, 31924), (27, 31972), (31, 32035), (33, 32065), (37, 32092), (38, 32101), (41, 32119), (42, 32122), (45, 32176), (47, 32242), (64, 32635), (66, 32668), (70, 32788), (80, 33022), (100, 33226), (101, 33229), (109, 33286), (110, 33289), (111, 33301), (114, 33325), (117, 33343), (119, 33346), (120, 33358), (122, 33391), (126, 33433), (132, 33559), (133, 33562), (142, 33727), (149, 33844), (150, 33853), (153, 34027), (160, 34132), (167, 34243), (170, 34264), (179, 34387), (180, 34393), (183, 34435), (184, 34453), (196, 34597), (198, 34639), (202, 34744),

Gene: Halldule_81 Start: 29559, Stop: 33272, Start Num: 1

Candidate Starts for Halldule_81:

(Start: 1 @29559 has 173 MA's), (3, 29640), (5, 29661), (6, 29685), (8, 29730), (9, 29757), (10, 29760), (11, 29772), (12, 29790), (13, 29793), (18, 30012), (Start: 20 @30150 has 4 MA's), (22, 30237), (27, 30285), (31, 30348), (33, 30378), (37, 30405), (38, 30414), (42, 30435), (45, 30489), (47, 30555), (64, 30948), (66, 30981), (70, 31101), (80, 31335), (100, 31539), (101, 31542), (109, 31599), (110, 31602), (111, 31614), (114, 31638), (117, 31656), (119, 31659), (120, 31671), (122, 31704), (126, 31746), (132, 31872), (133, 31875), (142, 32040), (149, 32157), (150, 32166), (153, 32340), (160, 32445),

(167, 32556), (170, 32577), (179, 32700), (180, 32706), (183, 32748), (184, 32766), (196, 32910), (198, 32952), (202, 33057),

Gene: HyRo_80 Start: 30714, Stop: 34055, Start Num: 1

Candidate Starts for HyRo_80:

(Start: 1 @30714 has 173 MA's), (3, 30795), (5, 30816), (6, 30840), (8, 30885), (9, 30912), (10, 30915), (11, 30927), (12, 30945), (13, 30948), (18, 31167), (Start: 20 @31305 has 4 MA's), (22, 31392), (27, 31440), (31, 31503), (33, 31533), (37, 31560), (38, 31569), (41, 31587), (42, 31590), (45, 31644), (47, 31710), (64, 32103), (66, 32136), (70, 32256), (72, 32379), (80, 32490), (100, 32694), (101, 32697), (109, 32754), (110, 32757), (111, 32769), (114, 32793), (117, 32811), (119, 32814), (120, 32826), (122, 32859), (126, 32901), (142, 33042), (145, 33096), (149, 33159), (150, 33168), (153, 33342), (160, 33447), (167, 33558), (170, 33579), (196, 33714), (198, 33756), (202, 33840),

Gene: I3_94 Start: 32313, Stop: 35822, Start Num: 1

Candidate Starts for I3_94:

(Start: 1 @32313 has 173 MA's), (3, 32394), (5, 32415), (6, 32439), (9, 32511), (10, 32514), (11, 32526), (12, 32544), (13, 32547), (18, 32766), (Start: 20 @32904 has 4 MA's), (22, 32991), (27, 33039), (31, 33102), (33, 33132), (37, 33159), (38, 33168), (42, 33189), (45, 33243), (47, 33309), (64, 33702), (66, 33735), (70, 33855), (80, 34086), (100, 34290), (101, 34293), (109, 34350), (110, 34353), (111, 34365), (114, 34389), (117, 34407), (119, 34410), (120, 34422), (122, 34455), (126, 34497), (132, 34623), (142, 34791), (145, 34845), (149, 34905), (150, 34914), (153, 35088), (160, 35193), (167, 35304), (170, 35325), (196, 35460), (198, 35502), (202, 35607),

Gene: IkeLoa_82 Start: 30507, Stop: 34220, Start Num: 1

Candidate Starts for IkeLoa_82:

(Start: 1 @30507 has 173 MA's), (3, 30588), (5, 30609), (6, 30633), (9, 30705), (10, 30708), (11, 30720), (12, 30738), (13, 30741), (18, 30960), (Start: 20 @31098 has 4 MA's), (22, 31185), (27, 31233), (31, 31296), (33, 31326), (37, 31353), (38, 31362), (42, 31383), (45, 31437), (47, 31503), (64, 31896), (66, 31929), (70, 32049), (80, 32283), (100, 32487), (101, 32490), (109, 32547), (110, 32550), (111, 32562), (114, 32586), (117, 32604), (119, 32607), (120, 32619), (122, 32652), (126, 32694), (132, 32820), (133, 32823), (142, 32988), (145, 33042), (149, 33105), (150, 33114), (153, 33288), (160, 33393), (167, 33504), (170, 33525), (179, 33648), (180, 33654), (183, 33696), (184, 33714), (196, 33858), (198, 33900), (202, 34005),

Gene: InigoMontoya_89 Start: 31112, Stop: 34825, Start Num: 1

Candidate Starts for InigoMontoya_89:

(Start: 1 @31112 has 173 MA's), (3, 31193), (5, 31214), (6, 31238), (8, 31283), (9, 31310), (10, 31313), (11, 31325), (12, 31343), (13, 31346), (18, 31565), (Start: 20 @31703 has 4 MA's), (22, 31790), (27, 31838), (31, 31901), (33, 31931), (37, 31958), (38, 31967), (41, 31985), (42, 31988), (45, 32042), (47, 32108), (64, 32501), (66, 32534), (70, 32654), (80, 32888), (100, 33092), (101, 33095), (109, 33152), (110, 33155), (111, 33167), (114, 33191), (117, 33209), (119, 33212), (120, 33224), (122, 33257), (126, 33299), (132, 33425), (133, 33428), (142, 33593), (145, 33647), (149, 33710), (150, 33719), (153, 33893), (160, 33998), (167, 34109), (170, 34130), (179, 34253), (180, 34259), (183, 34301), (184, 34319), (196, 34463), (198, 34505), (202, 34610),

Gene: InterFolia_97 Start: 34554, Stop: 38246, Start Num: 1

Candidate Starts for InterFolia_97:

(Start: 1 @34554 has 173 MA's), (3, 34635), (5, 34656), (6, 34680), (8, 34725), (9, 34752), (10, 34755), (11, 34767), (12, 34785), (13, 34788), (18, 35007), (Start: 20 @35145 has 4 MA's), (22, 35232), (27, 35280), (31, 35343), (33, 35373), (37, 35400), (38, 35409), (42, 35430), (45, 35484), (47, 35550), (64, 35943), (66, 35976), (70, 36096), (80, 36327), (100, 36531), (101, 36534), (109, 36591), (110, 36594), (111, 36606), (114, 36630), (117, 36648), (119, 36651), (120, 36663), (122, 36696), (126, 36738), (132, 36864), (133, 36867), (142, 37014), (145, 37068), (149, 37131), (150, 37140), (153, 37314),

(160, 37419), (167, 37530), (170, 37551), (179, 37674), (180, 37680), (183, 37722), (184, 37740),
(196, 37884), (198, 37926), (202, 38031),

Gene: Iota_82 Start: 30888, Stop: 34601, Start Num: 1

Candidate Starts for Iota_82:

(Start: 1 @30888 has 173 MA's), (3, 30969), (5, 30990), (6, 31014), (8, 31059), (9, 31086), (10, 31089),
(11, 31101), (12, 31119), (13, 31122), (18, 31341), (Start: 20 @31479 has 4 MA's), (22, 31566), (27,
31614), (31, 31677), (33, 31707), (37, 31734), (38, 31743), (42, 31764), (45, 31818), (47, 31884), (64,
32277), (66, 32310), (70, 32430), (80, 32664), (100, 32868), (101, 32871), (109, 32928), (110, 32931),
(111, 32943), (114, 32967), (117, 32985), (119, 32988), (120, 33000), (122, 33033), (126, 33075),
(132, 33201), (133, 33204), (142, 33369), (149, 33486), (150, 33495), (153, 33669), (160, 33774),
(167, 33885), (170, 33906), (179, 34029), (180, 34035), (183, 34077), (184, 34095), (196, 34239),
(198, 34281), (202, 34386),

Gene: Issimir_87 Start: 32089, Stop: 35802, Start Num: 1

Candidate Starts for Issimir_87:

(Start: 1 @32089 has 173 MA's), (3, 32170), (5, 32191), (6, 32215), (8, 32260), (9, 32287), (10, 32290),
(11, 32302), (12, 32320), (13, 32323), (18, 32542), (Start: 20 @32680 has 4 MA's), (22, 32767), (27,
32815), (31, 32878), (33, 32908), (37, 32935), (38, 32944), (41, 32962), (42, 32965), (45, 33019), (47,
33085), (64, 33478), (66, 33511), (70, 33631), (80, 33865), (100, 34069), (101, 34072), (109, 34129),
(110, 34132), (111, 34144), (114, 34168), (117, 34186), (119, 34189), (120, 34201), (122, 34234),
(126, 34276), (132, 34402), (133, 34405), (142, 34570), (149, 34687), (150, 34696), (153, 34870),
(160, 34975), (167, 35086), (170, 35107), (179, 35230), (180, 35236), (183, 35278), (184, 35296),
(196, 35440), (198, 35482), (202, 35587),

Gene: Izajani_88 Start: 32162, Stop: 35875, Start Num: 1

Candidate Starts for Izajani_88:

(Start: 1 @32162 has 173 MA's), (3, 32243), (5, 32264), (6, 32288), (8, 32333), (9, 32360), (10, 32363),
(11, 32375), (12, 32393), (13, 32396), (18, 32615), (Start: 20 @32753 has 4 MA's), (22, 32840), (27,
32888), (31, 32951), (33, 32981), (37, 33008), (38, 33017), (41, 33035), (42, 33038), (45, 33092), (47,
33158), (64, 33551), (66, 33584), (70, 33704), (80, 33938), (100, 34142), (101, 34145), (109, 34202),
(110, 34205), (111, 34217), (114, 34241), (117, 34259), (119, 34262), (120, 34274), (122, 34307),
(126, 34349), (132, 34475), (133, 34478), (142, 34643), (145, 34697), (149, 34760), (150, 34769),
(153, 34943), (160, 35048), (167, 35159), (170, 35180), (179, 35303), (180, 35309), (183, 35351),
(184, 35369), (196, 35513), (198, 35555), (202, 35660),

Gene: JPickles_86 Start: 29578, Stop: 33291, Start Num: 1

Candidate Starts for JPickles_86:

(Start: 1 @29578 has 173 MA's), (3, 29659), (5, 29680), (6, 29704), (8, 29749), (9, 29776), (10, 29779),
(11, 29791), (12, 29809), (13, 29812), (18, 30031), (Start: 20 @30169 has 4 MA's), (22, 30256), (27,
30304), (31, 30367), (33, 30397), (37, 30424), (38, 30433), (41, 30451), (42, 30454), (45, 30508), (47,
30574), (64, 30967), (66, 31000), (70, 31120), (80, 31354), (100, 31558), (101, 31561), (109, 31618),
(110, 31621), (111, 31633), (114, 31657), (117, 31675), (119, 31678), (120, 31690), (122, 31723),
(126, 31765), (132, 31891), (133, 31894), (142, 32059), (145, 32113), (149, 32176), (150, 32185),
(153, 32359), (160, 32464), (167, 32575), (170, 32596), (179, 32719), (180, 32725), (183, 32767),
(184, 32785), (196, 32929), (198, 32971), (202, 33076),

Gene: Janiyra_90 Start: 31815, Stop: 35156, Start Num: 1

Candidate Starts for Janiyra_90:

(Start: 1 @31815 has 173 MA's), (3, 31896), (5, 31917), (6, 31941), (8, 31986), (9, 32013), (10, 32016),
(11, 32028), (12, 32046), (13, 32049), (18, 32268), (Start: 20 @32406 has 4 MA's), (22, 32493), (27,
32541), (31, 32604), (33, 32634), (37, 32661), (38, 32670), (42, 32691), (45, 32745), (47, 32811), (64,
33204), (66, 33237), (72, 33483), (80, 33594), (100, 33798), (101, 33801), (109, 33858), (110, 33861),

(111, 33873), (114, 33897), (117, 33915), (119, 33918), (120, 33930), (122, 33963), (126, 34005), (142, 34146), (145, 34200), (149, 34260), (150, 34269), (153, 34443), (160, 34548), (167, 34659), (170, 34680), (196, 34815), (198, 34857), (202, 34941),

Gene: JayJay_94 Start: 32642, Stop: 36355, Start Num: 1

Candidate Starts for JayJay_94:

(Start: 1 @32642 has 173 MA's), (3, 32723), (5, 32744), (6, 32768), (8, 32813), (9, 32840), (10, 32843), (11, 32855), (12, 32873), (13, 32876), (18, 33095), (Start: 20 @33233 has 4 MA's), (22, 33320), (27, 33368), (31, 33431), (33, 33461), (37, 33488), (38, 33497), (42, 33518), (45, 33572), (47, 33638), (64, 34031), (66, 34064), (70, 34184), (80, 34418), (100, 34622), (101, 34625), (109, 34682), (110, 34685), (111, 34697), (114, 34721), (117, 34739), (119, 34742), (120, 34754), (122, 34787), (126, 34829), (132, 34955), (133, 34958), (142, 35123), (149, 35240), (150, 35249), (153, 35423), (160, 35528), (167, 35639), (170, 35660), (179, 35783), (180, 35789), (183, 35831), (184, 35849), (196, 35993), (198, 36035), (202, 36140),

Gene: Jaygup_88 Start: 31106, Stop: 34816, Start Num: 1

Candidate Starts for Jaygup_88:

(Start: 1 @31106 has 173 MA's), (3, 31187), (5, 31208), (6, 31232), (9, 31304), (10, 31307), (11, 31319), (12, 31337), (13, 31340), (18, 31559), (Start: 20 @31697 has 4 MA's), (22, 31784), (27, 31832), (31, 31895), (33, 31925), (37, 31952), (38, 31961), (42, 31982), (45, 32036), (47, 32102), (64, 32495), (66, 32528), (70, 32648), (80, 32879), (100, 33083), (101, 33086), (109, 33143), (110, 33146), (111, 33158), (114, 33182), (117, 33200), (119, 33203), (120, 33215), (122, 33248), (126, 33290), (132, 33416), (133, 33419), (142, 33584), (149, 33701), (150, 33710), (153, 33884), (160, 33989), (167, 34100), (170, 34121), (179, 34244), (180, 34250), (183, 34292), (184, 34310), (196, 34454), (198, 34496), (202, 34601),

Gene: Jedediah_91 Start: 31606, Stop: 35316, Start Num: 1

Candidate Starts for Jedediah_91:

(Start: 1 @31606 has 173 MA's), (3, 31687), (5, 31708), (6, 31732), (8, 31777), (9, 31804), (10, 31807), (11, 31819), (12, 31837), (13, 31840), (18, 32059), (Start: 20 @32197 has 4 MA's), (22, 32284), (27, 32332), (31, 32395), (33, 32425), (37, 32452), (38, 32461), (42, 32482), (45, 32536), (47, 32602), (64, 32995), (66, 33028), (70, 33148), (80, 33379), (100, 33583), (101, 33586), (109, 33643), (110, 33646), (111, 33658), (114, 33682), (117, 33700), (119, 33703), (120, 33715), (122, 33748), (126, 33790), (132, 33916), (133, 33919), (142, 34084), (149, 34201), (150, 34210), (153, 34384), (160, 34489), (167, 34600), (170, 34621), (179, 34744), (180, 34750), (183, 34792), (184, 34810), (196, 34954), (198, 34996), (202, 35101),

Gene: Jemmno_88 Start: 31056, Stop: 34766, Start Num: 1

Candidate Starts for Jemmno_88:

(Start: 1 @31056 has 173 MA's), (3, 31137), (5, 31158), (6, 31182), (8, 31227), (9, 31254), (10, 31257), (11, 31269), (12, 31287), (13, 31290), (18, 31509), (Start: 20 @31647 has 4 MA's), (22, 31734), (27, 31782), (31, 31845), (33, 31875), (37, 31902), (38, 31911), (42, 31932), (45, 31986), (47, 32052), (64, 32445), (66, 32478), (70, 32598), (80, 32829), (100, 33033), (101, 33036), (109, 33093), (110, 33096), (111, 33108), (114, 33132), (117, 33150), (119, 33153), (120, 33165), (122, 33198), (126, 33240), (132, 33366), (133, 33369), (142, 33534), (149, 33651), (150, 33660), (153, 33834), (160, 33939), (167, 34050), (170, 34071), (179, 34194), (180, 34200), (183, 34242), (184, 34260), (196, 34404), (198, 34446), (202, 34551),

Gene: Jessibeth14_87 Start: 31931, Stop: 35644, Start Num: 1

Candidate Starts for Jessibeth14_87:

(Start: 1 @31931 has 173 MA's), (3, 32012), (5, 32033), (6, 32057), (8, 32102), (9, 32129), (10, 32132), (11, 32144), (12, 32162), (13, 32165), (18, 32384), (Start: 20 @32522 has 4 MA's), (22, 32609), (27, 32657), (31, 32720), (33, 32750), (37, 32777), (38, 32786), (41, 32804), (42, 32807), (45, 32861), (47,

32927), (64, 33320), (66, 33353), (70, 33473), (80, 33707), (100, 33911), (101, 33914), (109, 33971), (110, 33974), (111, 33986), (114, 34010), (117, 34028), (119, 34031), (120, 34043), (122, 34076), (126, 34118), (132, 34244), (133, 34247), (142, 34412), (145, 34466), (149, 34529), (150, 34538), (153, 34712), (160, 34817), (167, 34928), (170, 34949), (179, 35072), (180, 35078), (183, 35120), (184, 35138), (196, 35282), (198, 35324), (202, 35429),

Gene: Jezreel_86 Start: 31841, Stop: 35554, Start Num: 1

Candidate Starts for Jezreel_86:

(Start: 1 @31841 has 173 MA's), (3, 31922), (5, 31943), (6, 31967), (9, 32039), (10, 32042), (11, 32054), (12, 32072), (13, 32075), (18, 32294), (Start: 20 @32432 has 4 MA's), (22, 32519), (27, 32567), (31, 32630), (33, 32660), (37, 32687), (38, 32696), (42, 32717), (45, 32771), (47, 32837), (64, 33230), (66, 33263), (70, 33383), (80, 33617), (100, 33821), (101, 33824), (109, 33881), (110, 33884), (111, 33896), (114, 33920), (117, 33938), (119, 33941), (120, 33953), (122, 33986), (126, 34028), (132, 34154), (133, 34157), (142, 34322), (145, 34376), (149, 34439), (150, 34448), (153, 34622), (160, 34727), (167, 34838), (170, 34859), (179, 34982), (180, 34988), (183, 35030), (184, 35048), (196, 35192), (198, 35234), (202, 35339),

Gene: JigglyPuff_94 Start: 33726, Stop: 37418, Start Num: 1

Candidate Starts for JigglyPuff_94:

(Start: 1 @33726 has 173 MA's), (3, 33807), (5, 33828), (6, 33852), (8, 33897), (9, 33924), (10, 33927), (11, 33939), (12, 33957), (13, 33960), (18, 34179), (Start: 20 @34317 has 4 MA's), (22, 34404), (27, 34452), (31, 34515), (33, 34545), (37, 34572), (38, 34581), (42, 34602), (45, 34656), (47, 34722), (64, 35115), (66, 35148), (70, 35268), (80, 35499), (100, 35703), (101, 35706), (109, 35763), (110, 35766), (111, 35778), (114, 35802), (117, 35820), (119, 35823), (120, 35835), (122, 35868), (126, 35910), (132, 36036), (133, 36039), (142, 36186), (149, 36303), (150, 36312), (153, 36486), (160, 36591), (167, 36702), (170, 36723), (179, 36846), (180, 36852), (183, 36894), (184, 36912), (196, 37056), (198, 37098), (202, 37203),

Gene: JulietS_81 Start: 29410, Stop: 33123, Start Num: 1

Candidate Starts for JulietS_81:

(Start: 1 @29410 has 173 MA's), (3, 29491), (5, 29512), (6, 29536), (8, 29581), (9, 29608), (10, 29611), (11, 29623), (12, 29641), (13, 29644), (18, 29863), (Start: 20 @30001 has 4 MA's), (22, 30088), (27, 30136), (31, 30199), (33, 30229), (37, 30256), (38, 30265), (42, 30286), (45, 30340), (47, 30406), (64, 30799), (66, 30832), (70, 30952), (80, 31186), (100, 31390), (101, 31393), (109, 31450), (110, 31453), (111, 31465), (114, 31489), (117, 31507), (119, 31510), (120, 31522), (122, 31555), (126, 31597), (132, 31723), (133, 31726), (142, 31891), (149, 32008), (150, 32017), (153, 32191), (160, 32296), (167, 32407), (170, 32428), (179, 32551), (180, 32557), (183, 32599), (184, 32617), (196, 32761), (198, 32803), (202, 32908),

Gene: JustHall_84 Start: 31428, Stop: 34790, Start Num: 1

Candidate Starts for JustHall_84:

(Start: 1 @31428 has 173 MA's), (3, 31509), (5, 31530), (6, 31554), (8, 31599), (9, 31626), (10, 31629), (11, 31641), (12, 31659), (13, 31662), (18, 31881), (Start: 20 @32019 has 4 MA's), (22, 32106), (27, 32154), (31, 32217), (33, 32247), (37, 32274), (38, 32283), (42, 32304), (45, 32358), (47, 32424), (62, 32802), (64, 32838), (72, 33114), (80, 33225), (100, 33429), (101, 33432), (109, 33489), (110, 33492), (111, 33504), (114, 33528), (117, 33546), (119, 33549), (120, 33561), (122, 33594), (126, 33636), (142, 33777), (145, 33831), (149, 33894), (150, 33903), (153, 34077), (160, 34182), (167, 34293), (170, 34314), (196, 34449), (198, 34491), (202, 34575),

Gene: Kamryn_88 Start: 32670, Stop: 36383, Start Num: 1

Candidate Starts for Kamryn_88:

(Start: 1 @32670 has 173 MA's), (3, 32751), (5, 32772), (6, 32796), (8, 32841), (9, 32868), (10, 32871), (11, 32883), (12, 32901), (13, 32904), (18, 33123), (Start: 20 @33261 has 4 MA's), (22, 33348), (27,

33396), (31, 33459), (33, 33489), (37, 33516), (38, 33525), (41, 33543), (42, 33546), (45, 33600), (47, 33666), (64, 34059), (66, 34092), (70, 34212), (80, 34446), (100, 34650), (101, 34653), (109, 34710), (110, 34713), (111, 34725), (114, 34749), (117, 34767), (119, 34770), (120, 34782), (122, 34815), (126, 34857), (132, 34983), (133, 34986), (142, 35151), (145, 35205), (149, 35268), (150, 35277), (153, 35451), (160, 35556), (167, 35667), (170, 35688), (179, 35811), (180, 35817), (183, 35859), (184, 35877), (196, 36021), (198, 36063), (202, 36168),

Gene: Kboogie_91 Start: 31097, Stop: 34438, Start Num: 1

Candidate Starts for Kboogie_91:

(Start: 1 @31097 has 173 MA's), (3, 31178), (5, 31199), (6, 31223), (8, 31268), (9, 31295), (10, 31298), (11, 31310), (12, 31328), (13, 31331), (18, 31550), (Start: 20 @31688 has 4 MA's), (22, 31775), (27, 31823), (31, 31886), (33, 31916), (37, 31943), (38, 31952), (42, 31973), (45, 32027), (47, 32093), (64, 32486), (66, 32519), (72, 32765), (80, 32876), (100, 33080), (101, 33083), (109, 33140), (110, 33143), (111, 33155), (114, 33179), (117, 33197), (119, 33200), (120, 33212), (122, 33245), (126, 33287), (142, 33428), (145, 33482), (149, 33542), (150, 33551), (153, 33725), (160, 33830), (167, 33941), (170, 33962), (196, 34097), (198, 34139), (202, 34223),

Gene: Khaleesi_87 Start: 31893, Stop: 35606, Start Num: 1

Candidate Starts for Khaleesi_87:

(Start: 1 @31893 has 173 MA's), (3, 31974), (5, 31995), (6, 32019), (8, 32064), (9, 32091), (10, 32094), (11, 32106), (12, 32124), (13, 32127), (18, 32346), (Start: 20 @32484 has 4 MA's), (22, 32571), (27, 32619), (31, 32682), (33, 32712), (37, 32739), (38, 32748), (41, 32766), (42, 32769), (45, 32823), (47, 32889), (64, 33282), (66, 33315), (70, 33435), (80, 33669), (100, 33873), (101, 33876), (109, 33933), (110, 33936), (111, 33948), (114, 33972), (117, 33990), (119, 33993), (120, 34005), (122, 34038), (126, 34080), (132, 34206), (133, 34209), (142, 34374), (145, 34428), (149, 34491), (150, 34500), (153, 34674), (160, 34779), (167, 34890), (170, 34911), (179, 35034), (180, 35040), (183, 35082), (184, 35100), (196, 35244), (198, 35286), (202, 35391),

Gene: Koguma_84 Start: 29630, Stop: 33343, Start Num: 1

Candidate Starts for Koguma_84:

(Start: 1 @29630 has 173 MA's), (3, 29711), (5, 29732), (6, 29756), (8, 29801), (9, 29828), (10, 29831), (11, 29843), (12, 29861), (13, 29864), (18, 30083), (Start: 20 @30221 has 4 MA's), (22, 30308), (27, 30356), (31, 30419), (33, 30449), (37, 30476), (38, 30485), (42, 30506), (45, 30560), (47, 30626), (64, 31019), (66, 31052), (70, 31172), (80, 31406), (100, 31610), (101, 31613), (109, 31670), (110, 31673), (111, 31685), (114, 31709), (117, 31727), (119, 31730), (120, 31742), (122, 31775), (126, 31817), (132, 31943), (133, 31946), (142, 32111), (149, 32228), (150, 32237), (153, 32411), (160, 32516), (167, 32627), (170, 32648), (179, 32771), (180, 32777), (183, 32819), (184, 32837), (196, 32981), (198, 33023), (202, 33128),

Gene: LRRHood_82 Start: 31449, Stop: 35162, Start Num: 1

Candidate Starts for LRRHood_82:

(Start: 1 @31449 has 173 MA's), (3, 31530), (5, 31551), (6, 31575), (8, 31620), (9, 31647), (10, 31650), (11, 31662), (12, 31680), (13, 31683), (18, 31902), (Start: 20 @32040 has 4 MA's), (22, 32127), (27, 32175), (31, 32238), (33, 32268), (37, 32295), (38, 32304), (42, 32325), (45, 32379), (47, 32445), (64, 32838), (66, 32871), (70, 32991), (80, 33225), (100, 33429), (101, 33432), (109, 33489), (110, 33492), (111, 33504), (114, 33528), (117, 33546), (119, 33549), (120, 33561), (122, 33594), (126, 33636), (132, 33762), (133, 33765), (142, 33930), (149, 34047), (150, 34056), (153, 34230), (160, 34335), (167, 34446), (170, 34467), (179, 34590), (180, 34596), (183, 34638), (184, 34656), (196, 34800), (198, 34842), (202, 34947),

Gene: Latch_88 Start: 31151, Stop: 34864, Start Num: 1

Candidate Starts for Latch_88:

(Start: 1 @31151 has 173 MA's), (3, 31232), (5, 31253), (6, 31277), (8, 31322), (9, 31349), (10, 31352), (11, 31364), (12, 31382), (13, 31385), (18, 31604), (Start: 20 @31742 has 4 MA's), (22, 31829), (27, 31877), (31, 31940), (33, 31970), (37, 31997), (38, 32006), (41, 32024), (42, 32027), (45, 32081), (47, 32147), (64, 32540), (66, 32573), (70, 32693), (80, 32927), (100, 33131), (101, 33134), (109, 33191), (110, 33194), (111, 33206), (114, 33230), (117, 33248), (119, 33251), (120, 33263), (122, 33296), (126, 33338), (132, 33464), (133, 33467), (142, 33632), (145, 33686), (149, 33749), (150, 33758), (153, 33932), (160, 34037), (167, 34148), (170, 34169), (179, 34292), (180, 34298), (183, 34340), (184, 34358), (196, 34502), (198, 34544), (202, 34649),

Gene: Lee7_86 Start: 32146, Stop: 35469, Start Num: 1

Candidate Starts for Lee7_86:

(Start: 1 @32146 has 173 MA's), (3, 32227), (5, 32248), (6, 32272), (8, 32317), (9, 32344), (10, 32347), (11, 32359), (12, 32377), (13, 32380), (18, 32599), (Start: 20 @32737 has 4 MA's), (22, 32824), (27, 32872), (31, 32935), (33, 32965), (37, 32992), (38, 33001), (41, 33019), (42, 33022), (45, 33076), (47, 33142), (64, 33520), (66, 33553), (70, 33673), (80, 33904), (100, 34108), (101, 34111), (109, 34168), (110, 34171), (111, 34183), (114, 34207), (117, 34225), (119, 34228), (120, 34240), (122, 34273), (126, 34315), (142, 34456), (145, 34510), (149, 34573), (150, 34582), (153, 34756), (160, 34861), (167, 34972), (170, 34993), (196, 35128), (198, 35170), (202, 35254),

Gene: Lethe_88 Start: 32341, Stop: 36054, Start Num: 1

Candidate Starts for Lethe_88:

(Start: 1 @32341 has 173 MA's), (3, 32422), (5, 32443), (6, 32467), (8, 32512), (9, 32539), (10, 32542), (11, 32554), (12, 32572), (13, 32575), (18, 32794), (Start: 20 @32932 has 4 MA's), (22, 33019), (27, 33067), (31, 33130), (33, 33160), (37, 33187), (38, 33196), (41, 33214), (42, 33217), (45, 33271), (47, 33337), (64, 33730), (66, 33763), (70, 33883), (80, 34117), (100, 34321), (101, 34324), (109, 34381), (110, 34384), (111, 34396), (114, 34420), (117, 34438), (119, 34441), (120, 34453), (122, 34486), (126, 34528), (132, 34654), (133, 34657), (142, 34822), (149, 34939), (150, 34948), (153, 35122), (160, 35227), (167, 35338), (170, 35359), (179, 35482), (180, 35488), (183, 35530), (184, 35548), (196, 35692), (198, 35734), (202, 35839),

Gene: LifeSavor_87 Start: 30871, Stop: 34581, Start Num: 1

Candidate Starts for LifeSavor_87:

(Start: 1 @30871 has 173 MA's), (3, 30952), (5, 30973), (6, 30997), (9, 31069), (10, 31072), (11, 31084), (12, 31102), (13, 31105), (18, 31324), (Start: 20 @31462 has 4 MA's), (22, 31549), (27, 31597), (31, 31660), (33, 31690), (37, 31717), (38, 31726), (42, 31747), (45, 31801), (47, 31867), (64, 32260), (66, 32293), (70, 32413), (80, 32644), (100, 32848), (101, 32851), (109, 32908), (110, 32911), (111, 32923), (114, 32947), (117, 32965), (119, 32968), (120, 32980), (122, 33013), (126, 33055), (132, 33181), (133, 33184), (142, 33349), (149, 33466), (150, 33475), (153, 33649), (160, 33754), (167, 33865), (170, 33886), (179, 34009), (180, 34015), (183, 34057), (184, 34075), (196, 34219), (198, 34261), (202, 34366),

Gene: LinStu_88 Start: 32513, Stop: 36226, Start Num: 1

Candidate Starts for LinStu_88:

(Start: 1 @32513 has 173 MA's), (3, 32594), (5, 32615), (6, 32639), (8, 32684), (9, 32711), (10, 32714), (11, 32726), (12, 32744), (13, 32747), (18, 32966), (Start: 20 @33104 has 4 MA's), (22, 33191), (27, 33239), (31, 33302), (33, 33332), (37, 33359), (38, 33368), (42, 33389), (45, 33443), (47, 33509), (64, 33902), (66, 33935), (70, 34055), (80, 34289), (100, 34493), (101, 34496), (109, 34553), (110, 34556), (111, 34568), (114, 34592), (117, 34610), (119, 34613), (120, 34625), (122, 34658), (126, 34700), (132, 34826), (133, 34829), (142, 34994), (149, 35111), (150, 35120), (153, 35294), (160, 35399), (167, 35510), (170, 35531), (179, 35654), (180, 35660), (183, 35702), (184, 35720), (196, 35864), (198, 35906), (202, 36011),

Gene: Littleton_88 Start: 31109, Stop: 34819, Start Num: 1

Candidate Starts for Littleton_88:

(Start: 1 @31109 has 173 MA's), (3, 31190), (5, 31211), (6, 31235), (8, 31280), (9, 31307), (10, 31310), (11, 31322), (12, 31340), (13, 31343), (18, 31562), (Start: 20 @31700 has 4 MA's), (22, 31787), (27, 31835), (31, 31898), (33, 31928), (37, 31955), (38, 31964), (42, 31985), (45, 32039), (47, 32105), (64, 32498), (66, 32531), (70, 32651), (80, 32882), (100, 33086), (101, 33089), (109, 33146), (110, 33149), (111, 33161), (114, 33185), (117, 33203), (119, 33206), (120, 33218), (122, 33251), (126, 33293), (132, 33419), (133, 33422), (142, 33587), (149, 33704), (150, 33713), (153, 33887), (160, 33992), (167, 34103), (170, 34124), (179, 34247), (180, 34253), (183, 34295), (184, 34313), (196, 34457), (198, 34499), (202, 34604),

Gene: Loanshark_88 Start: 32146, Stop: 35859, Start Num: 1

Candidate Starts for Loanshark_88:

(Start: 1 @32146 has 173 MA's), (3, 32227), (5, 32248), (6, 32272), (8, 32317), (9, 32344), (10, 32347), (11, 32359), (12, 32377), (13, 32380), (18, 32599), (Start: 20 @32737 has 4 MA's), (22, 32824), (27, 32872), (31, 32935), (33, 32965), (37, 32992), (38, 33001), (41, 33019), (42, 33022), (45, 33076), (47, 33142), (64, 33535), (66, 33568), (70, 33688), (80, 33922), (100, 34126), (101, 34129), (109, 34186), (110, 34189), (111, 34201), (114, 34225), (117, 34243), (119, 34246), (120, 34258), (122, 34291), (126, 34333), (132, 34459), (133, 34462), (142, 34627), (149, 34744), (150, 34753), (153, 34927), (160, 35032), (167, 35143), (170, 35164), (179, 35287), (180, 35293), (183, 35335), (184, 35353), (196, 35497), (198, 35539), (202, 35644),

Gene: LolaVinca_90 Start: 33306, Stop: 36965, Start Num: 1

Candidate Starts for LolaVinca_90:

(Start: 1 @33306 has 173 MA's), (3, 33387), (5, 33408), (6, 33432), (8, 33477), (9, 33504), (10, 33507), (11, 33519), (12, 33537), (13, 33540), (18, 33759), (Start: 20 @33897 has 4 MA's), (22, 33984), (27, 34032), (31, 34095), (33, 34125), (37, 34152), (38, 34161), (41, 34179), (42, 34182), (45, 34236), (47, 34302), (64, 34695), (66, 34728), (70, 34848), (72, 34962), (80, 35046), (100, 35250), (101, 35253), (109, 35310), (110, 35313), (111, 35325), (114, 35349), (117, 35367), (119, 35370), (120, 35382), (122, 35415), (126, 35457), (132, 35583), (133, 35586), (142, 35733), (145, 35787), (149, 35850), (150, 35859), (153, 36033), (160, 36138), (167, 36249), (170, 36270), (179, 36393), (180, 36399), (183, 36441), (184, 36459), (196, 36603), (198, 36645), (202, 36750),

Gene: LordLeafolot_93 Start: 34239, Stop: 37952, Start Num: 1

Candidate Starts for LordLeafolot_93:

(Start: 1 @34239 has 173 MA's), (3, 34320), (5, 34341), (6, 34365), (8, 34410), (9, 34437), (10, 34440), (11, 34452), (12, 34470), (13, 34473), (18, 34692), (Start: 20 @34830 has 4 MA's), (22, 34917), (27, 34965), (31, 35028), (33, 35058), (37, 35085), (38, 35094), (41, 35112), (42, 35115), (45, 35169), (47, 35235), (64, 35628), (66, 35661), (70, 35781), (80, 36015), (100, 36219), (101, 36222), (109, 36279), (110, 36282), (111, 36294), (114, 36318), (117, 36336), (119, 36339), (120, 36351), (122, 36384), (126, 36426), (132, 36552), (133, 36555), (142, 36720), (145, 36774), (149, 36837), (150, 36846), (153, 37020), (160, 37125), (167, 37236), (170, 37257), (179, 37380), (180, 37386), (183, 37428), (184, 37446), (196, 37590), (198, 37632), (202, 37737),

Gene: Lukilu_79 Start: 31361, Stop: 34699, Start Num: 1

Candidate Starts for Lukilu_79:

(Start: 1 @31361 has 173 MA's), (3, 31442), (5, 31463), (6, 31487), (8, 31532), (9, 31559), (10, 31562), (11, 31574), (12, 31592), (13, 31595), (18, 31814), (Start: 20 @31952 has 4 MA's), (22, 32039), (27, 32087), (31, 32150), (33, 32180), (37, 32207), (38, 32216), (41, 32234), (42, 32237), (45, 32291), (47, 32357), (64, 32750), (66, 32783), (70, 32903), (80, 33134), (100, 33338), (101, 33341), (109, 33398), (110, 33401), (111, 33413), (114, 33437), (117, 33455), (119, 33458), (120, 33470), (122, 33503), (126, 33545), (142, 33686), (145, 33740), (149, 33803), (150, 33812), (153, 33986), (160, 34091), (167, 34202), (170, 34223), (196, 34358), (198, 34400), (202, 34484),

Gene: Maby2021_88 Start: 31827, Stop: 35540, Start Num: 1

Candidate Starts for Maby2021_88:

(Start: 1 @31827 has 173 MA's), (3, 31908), (5, 31929), (6, 31953), (8, 31998), (9, 32025), (10, 32028), (11, 32040), (12, 32058), (13, 32061), (18, 32280), (Start: 20 @32418 has 4 MA's), (22, 32505), (27, 32553), (31, 32616), (33, 32646), (37, 32673), (38, 32682), (41, 32700), (42, 32703), (45, 32757), (47, 32823), (64, 33216), (66, 33249), (70, 33369), (80, 33603), (100, 33807), (101, 33810), (109, 33867), (110, 33870), (111, 33882), (114, 33906), (117, 33924), (119, 33927), (120, 33939), (122, 33972), (126, 34014), (132, 34140), (133, 34143), (142, 34308), (145, 34362), (149, 34425), (150, 34434), (153, 34608), (160, 34713), (167, 34824), (170, 34845), (179, 34968), (180, 34974), (183, 35016), (184, 35034), (196, 35178), (198, 35220), (202, 35325),

Gene: Mangeria_88 Start: 32105, Stop: 35821, Start Num: 1

Candidate Starts for Mangeria_88:

(Start: 1 @32105 has 173 MA's), (3, 32186), (5, 32207), (6, 32231), (8, 32276), (9, 32303), (10, 32306), (11, 32318), (12, 32336), (13, 32339), (18, 32558), (Start: 20 @32696 has 4 MA's), (22, 32783), (27, 32831), (31, 32894), (33, 32924), (37, 32951), (38, 32960), (42, 32981), (45, 33035), (47, 33101), (64, 33494), (66, 33527), (70, 33647), (80, 33878), (100, 34082), (101, 34085), (109, 34142), (110, 34145), (111, 34157), (114, 34181), (117, 34199), (119, 34202), (120, 34214), (122, 34247), (126, 34289), (132, 34415), (133, 34418), (142, 34583), (149, 34700), (150, 34709), (153, 34883), (160, 34988), (167, 35099), (170, 35120), (179, 35243), (180, 35249), (183, 35291), (184, 35309), (196, 35453), (198, 35495), (202, 35606),

Gene: Matsumoto_86 Start: 31070, Stop: 34780, Start Num: 1

Candidate Starts for Matsumoto_86:

(Start: 1 @31070 has 173 MA's), (3, 31151), (5, 31172), (6, 31196), (9, 31268), (10, 31271), (11, 31283), (12, 31301), (13, 31304), (18, 31523), (Start: 20 @31661 has 4 MA's), (22, 31748), (27, 31796), (31, 31859), (33, 31889), (37, 31916), (38, 31925), (42, 31946), (45, 32000), (47, 32066), (64, 32459), (66, 32492), (70, 32612), (80, 32843), (100, 33047), (101, 33050), (109, 33107), (110, 33110), (111, 33122), (114, 33146), (117, 33164), (119, 33167), (120, 33179), (122, 33212), (126, 33254), (132, 33380), (133, 33383), (142, 33548), (149, 33665), (150, 33674), (153, 33848), (160, 33953), (167, 34064), (170, 34085), (179, 34208), (180, 34214), (183, 34256), (184, 34274), (196, 34418), (198, 34460), (202, 34565),

Gene: McGee_89 Start: 30335, Stop: 34048, Start Num: 1

Candidate Starts for McGee_89:

(Start: 1 @30335 has 173 MA's), (3, 30416), (5, 30437), (6, 30461), (8, 30506), (9, 30533), (10, 30536), (11, 30548), (12, 30566), (13, 30569), (18, 30788), (Start: 20 @30926 has 4 MA's), (22, 31013), (27, 31061), (31, 31124), (33, 31154), (37, 31181), (38, 31190), (41, 31208), (42, 31211), (45, 31265), (47, 31331), (64, 31724), (66, 31757), (70, 31877), (80, 32111), (100, 32315), (101, 32318), (109, 32375), (110, 32378), (111, 32390), (114, 32414), (117, 32432), (119, 32435), (120, 32447), (122, 32480), (126, 32522), (132, 32648), (133, 32651), (142, 32816), (145, 32870), (149, 32933), (150, 32942), (153, 33116), (160, 33221), (167, 33332), (170, 33353), (179, 33476), (180, 33482), (183, 33524), (184, 33542), (196, 33686), (198, 33728), (202, 33833),

Gene: McWolfish_86 Start: 31574, Stop: 35287, Start Num: 1

Candidate Starts for McWolfish_86:

(Start: 1 @31574 has 173 MA's), (3, 31655), (5, 31676), (6, 31700), (8, 31745), (9, 31772), (10, 31775), (11, 31787), (12, 31805), (13, 31808), (18, 32027), (Start: 20 @32165 has 4 MA's), (22, 32252), (27, 32300), (31, 32363), (33, 32393), (37, 32420), (38, 32429), (41, 32447), (42, 32450), (45, 32504), (47, 32570), (64, 32963), (66, 32996), (70, 33116), (80, 33350), (100, 33554), (101, 33557), (109, 33614), (110, 33617), (111, 33629), (114, 33653), (117, 33671), (119, 33674), (120, 33686), (122, 33719), (126, 33761), (132, 33887), (133, 33890), (142, 34055), (145, 34109), (149, 34172), (150, 34181), (153, 34355), (160, 34460), (167, 34571), (170, 34592), (179, 34715), (180, 34721), (183, 34763),

(184, 34781), (196, 34925), (198, 34967), (202, 35072),

Gene: Megamind_87 Start: 31812, Stop: 35525, Start Num: 1

Candidate Starts for Megamind_87:

(Start: 1 @31812 has 173 MA's), (3, 31893), (5, 31914), (6, 31938), (8, 31983), (9, 32010), (10, 32013), (11, 32025), (12, 32043), (13, 32046), (18, 32265), (Start: 20 @32403 has 4 MA's), (22, 32490), (27, 32538), (31, 32601), (33, 32631), (37, 32658), (38, 32667), (41, 32685), (42, 32688), (45, 32742), (47, 32808), (64, 33201), (66, 33234), (70, 33354), (80, 33588), (100, 33792), (101, 33795), (109, 33852), (110, 33855), (111, 33867), (114, 33891), (117, 33909), (119, 33912), (120, 33924), (122, 33957), (126, 33999), (132, 34125), (133, 34128), (142, 34293), (145, 34347), (149, 34410), (150, 34419), (153, 34593), (160, 34698), (167, 34809), (170, 34830), (179, 34953), (180, 34959), (183, 35001), (184, 35019), (196, 35163), (198, 35205), (202, 35310),

Gene: Melpomini_82 Start: 29705, Stop: 33067, Start Num: 1

Candidate Starts for Melpomini_82:

(Start: 1 @29705 has 173 MA's), (3, 29786), (5, 29807), (6, 29831), (8, 29876), (9, 29903), (10, 29906), (11, 29918), (12, 29936), (13, 29939), (18, 30158), (Start: 20 @30296 has 4 MA's), (22, 30383), (27, 30431), (31, 30494), (33, 30524), (37, 30551), (38, 30560), (42, 30581), (45, 30635), (47, 30701), (62, 31079), (64, 31115), (72, 31391), (80, 31502), (100, 31706), (101, 31709), (109, 31766), (110, 31769), (111, 31781), (114, 31805), (117, 31823), (119, 31826), (120, 31838), (122, 31871), (126, 31913), (142, 32054), (145, 32108), (149, 32171), (150, 32180), (153, 32354), (160, 32459), (167, 32570), (170, 32591), (196, 32726), (198, 32768), (202, 32852),

Gene: MikeLiesIn_89 Start: 32159, Stop: 35872, Start Num: 1

Candidate Starts for MikeLiesIn_89:

(Start: 1 @32159 has 173 MA's), (3, 32240), (5, 32261), (6, 32285), (8, 32330), (9, 32357), (10, 32360), (11, 32372), (12, 32390), (13, 32393), (18, 32612), (Start: 20 @32750 has 4 MA's), (22, 32837), (27, 32885), (31, 32948), (33, 32978), (37, 33005), (38, 33014), (41, 33032), (42, 33035), (45, 33089), (47, 33155), (64, 33548), (66, 33581), (70, 33701), (80, 33935), (100, 34139), (101, 34142), (109, 34199), (110, 34202), (111, 34214), (114, 34238), (117, 34256), (119, 34259), (120, 34271), (122, 34304), (126, 34346), (132, 34472), (133, 34475), (142, 34640), (145, 34694), (149, 34757), (150, 34766), (153, 34940), (160, 35045), (167, 35156), (170, 35177), (179, 35300), (180, 35306), (183, 35348), (184, 35366), (196, 35510), (198, 35552), (202, 35657),

Gene: Mikro_86 Start: 33066, Stop: 36779, Start Num: 1

Candidate Starts for Mikro_86:

(Start: 1 @33066 has 173 MA's), (3, 33147), (5, 33168), (6, 33192), (9, 33264), (10, 33267), (11, 33279), (12, 33297), (13, 33300), (18, 33519), (Start: 20 @33657 has 4 MA's), (22, 33744), (27, 33792), (31, 33855), (33, 33885), (37, 33912), (38, 33921), (42, 33942), (45, 33996), (47, 34062), (64, 34455), (66, 34488), (70, 34608), (80, 34842), (100, 35046), (101, 35049), (109, 35106), (110, 35109), (111, 35121), (114, 35145), (117, 35163), (119, 35166), (120, 35178), (122, 35211), (126, 35253), (132, 35379), (133, 35382), (142, 35547), (145, 35601), (149, 35664), (150, 35673), (153, 35847), (160, 35952), (167, 36063), (170, 36084), (179, 36207), (180, 36213), (183, 36255), (184, 36273), (196, 36417), (198, 36459), (202, 36564),

Gene: MoMoMixon_89 Start: 32259, Stop: 35618, Start Num: 1

Candidate Starts for MoMoMixon_89:

(Start: 1 @32259 has 173 MA's), (3, 32340), (5, 32361), (6, 32385), (8, 32430), (9, 32457), (10, 32460), (11, 32472), (12, 32490), (13, 32493), (18, 32712), (Start: 20 @32850 has 4 MA's), (22, 32937), (27, 32985), (31, 33048), (33, 33078), (37, 33105), (38, 33114), (42, 33135), (45, 33189), (47, 33255), (62, 33633), (64, 33669), (72, 33945), (80, 34056), (100, 34260), (101, 34263), (109, 34320), (110, 34323), (111, 34335), (114, 34359), (117, 34377), (119, 34380), (120, 34392), (122, 34425), (126, 34467), (142, 34608), (145, 34662), (149, 34722), (150, 34731), (153, 34905), (160, 35010), (167, 35121),

(170, 35142), (196, 35277), (198, 35319), (202, 35403),

Gene: Momo_87 Start: 31151, Stop: 34864, Start Num: 1

Candidate Starts for Momo_87:

(Start: 1 @31151 has 173 MA's), (3, 31232), (5, 31253), (6, 31277), (8, 31322), (9, 31349), (10, 31352), (11, 31364), (12, 31382), (13, 31385), (18, 31604), (Start: 20 @31742 has 4 MA's), (22, 31829), (27, 31877), (31, 31940), (33, 31970), (37, 31997), (38, 32006), (41, 32024), (42, 32027), (45, 32081), (47, 32147), (64, 32540), (66, 32573), (70, 32693), (80, 32927), (100, 33131), (101, 33134), (109, 33191), (110, 33194), (111, 33206), (114, 33230), (117, 33248), (119, 33251), (120, 33263), (122, 33296), (126, 33338), (132, 33464), (133, 33467), (142, 33632), (145, 33686), (149, 33749), (150, 33758), (153, 33932), (160, 34037), (167, 34148), (170, 34169), (179, 34292), (180, 34298), (183, 34340), (184, 34358), (196, 34502), (198, 34544), (202, 34649),

Gene: Morizzled23_88 Start: 31225, Stop: 34587, Start Num: 1

Candidate Starts for Morizzled23_88:

(Start: 1 @31225 has 173 MA's), (3, 31306), (5, 31327), (6, 31351), (8, 31396), (9, 31423), (10, 31426), (11, 31438), (12, 31456), (13, 31459), (18, 31678), (Start: 20 @31816 has 4 MA's), (22, 31903), (27, 31951), (31, 32014), (33, 32044), (37, 32071), (38, 32080), (42, 32101), (45, 32155), (47, 32221), (62, 32599), (64, 32635), (72, 32911), (80, 33022), (100, 33226), (101, 33229), (109, 33286), (110, 33289), (111, 33301), (114, 33325), (117, 33343), (119, 33346), (120, 33358), (122, 33391), (126, 33433), (142, 33574), (145, 33628), (149, 33691), (150, 33700), (153, 33874), (160, 33979), (167, 34090), (170, 34111), (196, 34246), (198, 34288), (202, 34372),

Gene: Myrna_87 Start: 33661, Stop: 37551, Start Num: 2

Candidate Starts for Myrna_87:

(Start: 2 @33661 has 2 MA's), (7, 33790), (13, 33895), (14, 33916), (15, 33931), (17, 34063), (23, 34345), (26, 34381), (33, 34480), (44, 34585), (66, 35089), (71, 35221), (75, 35311), (79, 35359), (81, 35371), (107, 35614), (127, 35785), (128, 35809), (130, 35848), (131, 35875), (133, 35893), (135, 35917), (136, 35932), (137, 35938), (139, 35959), (143, 36061), (146, 36118), (154, 36403), (157, 36448), (171, 36667), (176, 36733), (182, 36811), (185, 36835), (187, 36847), (189, 36853), (192, 36997), (194, 37153), (201, 37342),

Gene: Naija_87 Start: 31151, Stop: 34864, Start Num: 1

Candidate Starts for Naija_87:

(Start: 1 @31151 has 173 MA's), (3, 31232), (5, 31253), (6, 31277), (8, 31322), (9, 31349), (10, 31352), (11, 31364), (12, 31382), (13, 31385), (18, 31604), (Start: 20 @31742 has 4 MA's), (22, 31829), (27, 31877), (31, 31940), (33, 31970), (37, 31997), (38, 32006), (41, 32024), (42, 32027), (45, 32081), (47, 32147), (64, 32540), (66, 32573), (70, 32693), (80, 32927), (100, 33131), (101, 33134), (109, 33191), (110, 33194), (111, 33206), (114, 33230), (117, 33248), (119, 33251), (120, 33263), (122, 33296), (126, 33338), (132, 33464), (133, 33467), (142, 33632), (145, 33686), (149, 33749), (150, 33758), (153, 33932), (160, 34037), (167, 34148), (170, 34169), (179, 34292), (180, 34298), (183, 34340), (184, 34358), (196, 34502), (198, 34544), (202, 34649),

Gene: Napoleon13_84 Start: 29954, Stop: 33667, Start Num: 1

Candidate Starts for Napoleon13_84:

(Start: 1 @29954 has 173 MA's), (3, 30035), (5, 30056), (6, 30080), (8, 30125), (9, 30152), (10, 30155), (11, 30167), (12, 30185), (13, 30188), (18, 30407), (Start: 20 @30545 has 4 MA's), (22, 30632), (27, 30680), (31, 30743), (33, 30773), (37, 30800), (38, 30809), (41, 30827), (42, 30830), (45, 30884), (47, 30950), (64, 31343), (66, 31376), (70, 31496), (80, 31730), (100, 31934), (101, 31937), (109, 31994), (110, 31997), (111, 32009), (114, 32033), (117, 32051), (119, 32054), (120, 32066), (122, 32099), (126, 32141), (132, 32267), (133, 32270), (142, 32435), (145, 32489), (149, 32552), (150, 32561), (153, 32735), (160, 32840), (167, 32951), (170, 32972), (179, 33095), (180, 33101), (183, 33143), (184, 33161), (196, 33305), (198, 33347), (202, 33452),

Gene: Nappy_89 Start: 32448, Stop: 35960, Start Num: 1

Candidate Starts for Nappy_89:

(Start: 1 @32448 has 173 MA's), (3, 32529), (5, 32550), (6, 32574), (8, 32619), (9, 32646), (10, 32649), (11, 32661), (12, 32679), (13, 32682), (18, 32901), (Start: 20 @33039 has 4 MA's), (22, 33126), (27, 33174), (31, 33237), (33, 33267), (37, 33294), (38, 33303), (42, 33324), (45, 33378), (47, 33444), (64, 33837), (66, 33870), (70, 33990), (80, 34221), (100, 34425), (101, 34428), (109, 34485), (110, 34488), (111, 34500), (114, 34524), (117, 34542), (119, 34545), (120, 34557), (122, 34590), (126, 34632), (132, 34758), (133, 34761), (142, 34926), (145, 34980), (149, 35043), (150, 35052), (153, 35226), (160, 35331), (167, 35442), (170, 35463), (196, 35598), (198, 35640), (202, 35745),

Gene: Naval22_93 Start: 33750, Stop: 37463, Start Num: 1

Candidate Starts for Naval22_93:

(Start: 1 @33750 has 173 MA's), (3, 33831), (5, 33852), (6, 33876), (8, 33921), (9, 33948), (10, 33951), (11, 33963), (12, 33981), (13, 33984), (18, 34203), (Start: 20 @34341 has 4 MA's), (22, 34428), (27, 34476), (31, 34539), (33, 34569), (37, 34596), (38, 34605), (41, 34623), (42, 34626), (45, 34680), (47, 34746), (64, 35139), (66, 35172), (70, 35292), (80, 35526), (100, 35730), (101, 35733), (109, 35790), (110, 35793), (111, 35805), (114, 35829), (117, 35847), (119, 35850), (120, 35862), (122, 35895), (126, 35937), (132, 36063), (133, 36066), (142, 36231), (145, 36285), (149, 36348), (150, 36357), (153, 36531), (160, 36636), (167, 36747), (170, 36768), (179, 36891), (180, 36897), (183, 36939), (184, 36957), (196, 37101), (198, 37143), (202, 37248),

Gene: NedWong_89 Start: 32146, Stop: 35859, Start Num: 1

Candidate Starts for NedWong_89:

(Start: 1 @32146 has 173 MA's), (3, 32227), (5, 32248), (6, 32272), (8, 32317), (9, 32344), (10, 32347), (11, 32359), (12, 32377), (13, 32380), (18, 32599), (Start: 20 @32737 has 4 MA's), (22, 32824), (27, 32872), (31, 32935), (33, 32965), (37, 32992), (38, 33001), (41, 33019), (42, 33022), (45, 33076), (47, 33142), (64, 33535), (66, 33568), (70, 33688), (80, 33922), (100, 34126), (101, 34129), (109, 34186), (110, 34189), (111, 34201), (114, 34225), (117, 34243), (119, 34246), (120, 34258), (122, 34291), (126, 34333), (132, 34459), (133, 34462), (142, 34627), (145, 34681), (149, 34744), (150, 34753), (153, 34927), (160, 35032), (167, 35143), (170, 35164), (179, 35287), (180, 35293), (183, 35335), (184, 35353), (196, 35497), (198, 35539), (202, 35644),

Gene: Ngannou_84 Start: 30133, Stop: 33846, Start Num: 1

Candidate Starts for Ngannou_84:

(Start: 1 @30133 has 173 MA's), (3, 30214), (5, 30235), (6, 30259), (8, 30304), (9, 30331), (10, 30334), (11, 30346), (12, 30364), (13, 30367), (18, 30586), (Start: 20 @30724 has 4 MA's), (22, 30811), (27, 30859), (31, 30922), (33, 30952), (37, 30979), (38, 30988), (41, 31006), (42, 31009), (45, 31063), (47, 31129), (64, 31522), (66, 31555), (70, 31675), (80, 31909), (100, 32113), (101, 32116), (109, 32173), (110, 32176), (111, 32188), (114, 32212), (117, 32230), (119, 32233), (120, 32245), (122, 32278), (126, 32320), (132, 32446), (133, 32449), (142, 32614), (145, 32668), (149, 32731), (150, 32740), (153, 32914), (160, 33019), (167, 33130), (170, 33151), (179, 33274), (180, 33280), (183, 33322), (184, 33340), (196, 33484), (198, 33526), (202, 33631),

Gene: Nidhogg_89 Start: 32000, Stop: 35713, Start Num: 1

Candidate Starts for Nidhogg_89:

(Start: 1 @32000 has 173 MA's), (3, 32081), (5, 32102), (6, 32126), (8, 32171), (9, 32198), (10, 32201), (11, 32213), (12, 32231), (13, 32234), (18, 32453), (Start: 20 @32591 has 4 MA's), (22, 32678), (27, 32726), (31, 32789), (33, 32819), (37, 32846), (38, 32855), (41, 32873), (42, 32876), (45, 32930), (47, 32996), (64, 33389), (66, 33422), (70, 33542), (80, 33776), (100, 33980), (101, 33983), (109, 34040), (110, 34043), (111, 34055), (114, 34079), (117, 34097), (119, 34100), (120, 34112), (122, 34145), (126, 34187), (132, 34313), (133, 34316), (142, 34481), (145, 34535), (149, 34598), (150, 34607), (153, 34781), (160, 34886), (167, 34997), (170, 35018), (179, 35141), (180, 35147), (183, 35189),

(184, 35207), (196, 35351), (198, 35393), (202, 35498),

Gene: NoodleTree_96 Start: 33177, Stop: 36890, Start Num: 1

Candidate Starts for NoodleTree_96:

(Start: 1 @33177 has 173 MA's), (3, 33258), (5, 33279), (6, 33303), (8, 33348), (9, 33375), (10, 33378), (11, 33390), (12, 33408), (13, 33411), (18, 33630), (Start: 20 @33768 has 4 MA's), (22, 33855), (27, 33903), (31, 33966), (33, 33996), (37, 34023), (38, 34032), (41, 34050), (42, 34053), (45, 34107), (47, 34173), (64, 34566), (66, 34599), (70, 34719), (80, 34953), (100, 35157), (101, 35160), (109, 35217), (110, 35220), (111, 35232), (114, 35256), (117, 35274), (119, 35277), (120, 35289), (122, 35322), (126, 35364), (132, 35490), (133, 35493), (142, 35658), (145, 35712), (149, 35775), (150, 35784), (153, 35958), (160, 36063), (167, 36174), (170, 36195), (179, 36318), (180, 36324), (183, 36366), (184, 36384), (196, 36528), (198, 36570), (202, 36675),

Gene: Norm_89 Start: 32148, Stop: 35861, Start Num: 1

Candidate Starts for Norm_89:

(Start: 1 @32148 has 173 MA's), (3, 32229), (5, 32250), (6, 32274), (8, 32319), (9, 32346), (10, 32349), (11, 32361), (12, 32379), (13, 32382), (18, 32601), (Start: 20 @32739 has 4 MA's), (22, 32826), (27, 32874), (31, 32937), (33, 32967), (37, 32994), (38, 33003), (41, 33021), (42, 33024), (45, 33078), (47, 33144), (64, 33537), (66, 33570), (70, 33690), (80, 33924), (100, 34128), (101, 34131), (109, 34188), (110, 34191), (111, 34203), (114, 34227), (117, 34245), (119, 34248), (120, 34260), (122, 34293), (126, 34335), (132, 34461), (133, 34464), (142, 34629), (145, 34683), (149, 34746), (150, 34755), (153, 34929), (160, 35034), (167, 35145), (170, 35166), (179, 35289), (180, 35295), (183, 35337), (184, 35355), (196, 35499), (198, 35541), (202, 35646),

Gene: NuevoMundo_94 Start: 34107, Stop: 37820, Start Num: 1

Candidate Starts for NuevoMundo_94:

(Start: 1 @34107 has 173 MA's), (3, 34188), (5, 34209), (6, 34233), (8, 34278), (9, 34305), (10, 34308), (11, 34320), (12, 34338), (13, 34341), (18, 34560), (Start: 20 @34698 has 4 MA's), (22, 34785), (27, 34833), (31, 34896), (33, 34926), (37, 34953), (38, 34962), (41, 34980), (42, 34983), (45, 35037), (47, 35103), (64, 35496), (66, 35529), (70, 35649), (80, 35883), (100, 36087), (101, 36090), (109, 36147), (110, 36150), (111, 36162), (114, 36186), (117, 36204), (119, 36207), (120, 36219), (122, 36252), (126, 36294), (132, 36420), (133, 36423), (142, 36588), (145, 36642), (149, 36705), (150, 36714), (153, 36888), (160, 36993), (167, 37104), (170, 37125), (179, 37248), (180, 37254), (183, 37296), (184, 37314), (196, 37458), (198, 37500), (202, 37605),

Gene: ParkTD_89 Start: 32142, Stop: 35855, Start Num: 1

Candidate Starts for ParkTD_89:

(Start: 1 @32142 has 173 MA's), (3, 32223), (5, 32244), (6, 32268), (8, 32313), (9, 32340), (10, 32343), (11, 32355), (12, 32373), (13, 32376), (18, 32595), (Start: 20 @32733 has 4 MA's), (22, 32820), (27, 32868), (31, 32931), (33, 32961), (37, 32988), (38, 32997), (41, 33015), (42, 33018), (45, 33072), (47, 33138), (64, 33531), (66, 33564), (70, 33684), (80, 33918), (100, 34122), (101, 34125), (109, 34182), (110, 34185), (111, 34197), (114, 34221), (117, 34239), (119, 34242), (120, 34254), (122, 34287), (126, 34329), (132, 34455), (133, 34458), (142, 34623), (145, 34677), (149, 34740), (150, 34749), (153, 34923), (160, 35028), (167, 35139), (170, 35160), (179, 35283), (180, 35289), (183, 35331), (184, 35349), (196, 35493), (198, 35535), (202, 35640),

Gene: Patter_88 Start: 31168, Stop: 34881, Start Num: 1

Candidate Starts for Patter_88:

(Start: 1 @31168 has 173 MA's), (3, 31249), (5, 31270), (6, 31294), (8, 31339), (9, 31366), (10, 31369), (11, 31381), (12, 31399), (13, 31402), (18, 31621), (Start: 20 @31759 has 4 MA's), (22, 31846), (27, 31894), (31, 31957), (33, 31987), (37, 32014), (38, 32023), (41, 32041), (42, 32044), (45, 32098), (47, 32164), (64, 32557), (66, 32590), (70, 32710), (80, 32944), (100, 33148), (101, 33151), (109, 33208), (110, 33211), (111, 33223), (114, 33247), (117, 33265), (119, 33268), (120, 33280), (122, 33313),

(126, 33355), (132, 33481), (133, 33484), (142, 33649), (145, 33703), (149, 33766), (150, 33775), (153, 33949), (160, 34054), (167, 34165), (170, 34186), (179, 34309), (180, 34315), (183, 34357), (184, 34375), (196, 34519), (198, 34561), (202, 34666),

Gene: Phabba_92 Start: 33179, Stop: 36631, Start Num: 2

Candidate Starts for Phabba_92:

(Start: 2 @33179 has 2 MA's), (7, 33308), (9, 33377), (13, 33413), (14, 33434), (15, 33449), (17, 33584), (23, 33731), (26, 33767), (39, 33908), (56, 34295), (66, 34499), (68, 34571), (71, 34631), (75, 34721), (79, 34769), (81, 34781), (88, 34883), (89, 34889), (91, 34910), (92, 34916), (127, 35183), (128, 35207), (130, 35246), (131, 35273), (133, 35291), (135, 35315), (138, 35351), (158, 35687), (166, 35825), (171, 35903), (176, 35969), (182, 36047), (185, 36071), (187, 36083), (189, 36089), (192, 36233), (201, 36425),

Gene: Phlegm_90 Start: 31151, Stop: 34864, Start Num: 1

Candidate Starts for Phlegm_90:

(Start: 1 @31151 has 173 MA's), (3, 31232), (5, 31253), (6, 31277), (8, 31322), (9, 31349), (10, 31352), (11, 31364), (12, 31382), (13, 31385), (18, 31604), (Start: 20 @31742 has 4 MA's), (22, 31829), (27, 31877), (31, 31940), (33, 31970), (37, 31997), (38, 32006), (41, 32024), (42, 32027), (45, 32081), (47, 32147), (64, 32540), (66, 32573), (70, 32693), (80, 32927), (100, 33131), (101, 33134), (109, 33191), (110, 33194), (111, 33206), (114, 33230), (117, 33248), (119, 33251), (120, 33263), (122, 33296), (126, 33338), (132, 33464), (133, 33467), (142, 33632), (145, 33686), (149, 33749), (150, 33758), (153, 33932), (160, 34037), (167, 34148), (170, 34169), (179, 34292), (180, 34298), (183, 34340), (184, 34358), (196, 34502), (198, 34544), (202, 34649),

Gene: Phox_85 Start: 32036, Stop: 35746, Start Num: 1

Candidate Starts for Phox_85:

(Start: 1 @32036 has 173 MA's), (3, 32117), (5, 32138), (6, 32162), (8, 32207), (9, 32234), (10, 32237), (11, 32249), (12, 32267), (13, 32270), (18, 32489), (Start: 20 @32627 has 4 MA's), (22, 32714), (27, 32762), (31, 32825), (33, 32855), (37, 32882), (38, 32891), (42, 32912), (45, 32966), (47, 33032), (62, 33380), (64, 33416), (72, 33692), (80, 33803), (100, 34007), (101, 34010), (109, 34067), (110, 34070), (111, 34082), (114, 34106), (117, 34124), (119, 34127), (120, 34139), (122, 34172), (126, 34214), (132, 34340), (133, 34343), (142, 34508), (149, 34625), (150, 34634), (153, 34808), (160, 34913), (167, 35024), (170, 35045), (172, 35108), (177, 35174), (178, 35180), (186, 35273), (196, 35405), (198, 35447), (202, 35531),

Gene: Phrappuccino_44 Start: 23839, Stop: 26178, Start Num: 32

Candidate Starts for Phrappuccino_44:

(Start: 32 @23839 has 2 MA's), (34, 23869), (43, 23968), (46, 24025), (48, 24067), (49, 24070), (50, 24079), (53, 24151), (59, 24334), (63, 24418), (65, 24454), (67, 24472), (74, 24724), (76, 24742), (77, 24745), (82, 24793), (83, 24814), (84, 24817), (85, 24856), (87, 24877), (89, 24886), (90, 24898), (93, 24919), (95, 24931), (96, 24940), (97, 24952), (98, 24964), (99, 24973), (102, 24985), (104, 24997), (105, 25006), (106, 25018), (108, 25027), (112, 25054), (113, 25057), (118, 25090), (134, 25309), (140, 25408), (141, 25423), (144, 25492), (147, 25561), (148, 25564), (151, 25747), (159, 25876), (162, 25927), (165, 25978), (174, 26098), (175, 26107),

Gene: Phusco_88 Start: 31919, Stop: 35629, Start Num: 1

Candidate Starts for Phusco_88:

(Start: 1 @31919 has 173 MA's), (3, 32000), (5, 32021), (6, 32045), (8, 32090), (9, 32117), (10, 32120), (11, 32132), (12, 32150), (13, 32153), (18, 32372), (Start: 20 @32510 has 4 MA's), (22, 32597), (27, 32645), (31, 32708), (33, 32738), (37, 32765), (38, 32774), (42, 32795), (45, 32849), (47, 32915), (64, 33308), (66, 33341), (70, 33461), (80, 33692), (100, 33896), (101, 33899), (109, 33956), (110, 33959), (111, 33971), (114, 33995), (117, 34013), (119, 34016), (120, 34028), (122, 34061), (126, 34103), (132, 34229), (133, 34232), (142, 34397), (149, 34514), (150, 34523), (153, 34697), (160, 34802),

(167, 34913), (170, 34934), (179, 35057), (180, 35063), (183, 35105), (184, 35123), (196, 35267),
(198, 35309), (202, 35414),

Gene: Pier_92 Start: 32339, Stop: 36052, Start Num: 1

Candidate Starts for Pier_92:

(Start: 1 @32339 has 173 MA's), (3, 32420), (5, 32441), (6, 32465), (9, 32537), (10, 32540), (11, 32552), (12, 32570), (13, 32573), (18, 32792), (Start: 20 @32930 has 4 MA's), (22, 33017), (27, 33065), (31, 33128), (33, 33158), (37, 33185), (38, 33194), (41, 33212), (42, 33215), (45, 33269), (47, 33335), (64, 33728), (66, 33761), (70, 33881), (80, 34115), (100, 34319), (101, 34322), (109, 34379), (110, 34382), (111, 34394), (114, 34418), (117, 34436), (119, 34439), (120, 34451), (122, 34484), (126, 34526), (132, 34652), (133, 34655), (142, 34820), (145, 34874), (149, 34937), (150, 34946), (153, 35120), (160, 35225), (167, 35336), (170, 35357), (179, 35480), (180, 35486), (183, 35528), (184, 35546), (196, 35690), (198, 35732), (202, 35837),

Gene: Pinkcreek_79 Start: 29119, Stop: 32829, Start Num: 1

Candidate Starts for Pinkcreek_79:

(Start: 1 @29119 has 173 MA's), (3, 29200), (5, 29221), (6, 29245), (8, 29290), (9, 29317), (10, 29320), (11, 29332), (12, 29350), (13, 29353), (18, 29572), (Start: 20 @29710 has 4 MA's), (22, 29797), (27, 29845), (31, 29908), (33, 29938), (37, 29965), (38, 29974), (42, 29995), (45, 30049), (47, 30115), (62, 30463), (64, 30499), (72, 30775), (80, 30886), (100, 31090), (101, 31093), (109, 31150), (110, 31153), (111, 31165), (114, 31189), (117, 31207), (119, 31210), (120, 31222), (122, 31255), (126, 31297), (132, 31423), (133, 31426), (142, 31591), (149, 31708), (150, 31717), (153, 31891), (160, 31996), (167, 32107), (170, 32128), (172, 32191), (177, 32257), (178, 32263), (186, 32356), (196, 32488), (198, 32530), (202, 32614),

Gene: Pio_92 Start: 33075, Stop: 36788, Start Num: 1

Candidate Starts for Pio_92:

(Start: 1 @33075 has 173 MA's), (3, 33156), (5, 33177), (6, 33201), (8, 33246), (9, 33273), (10, 33276), (11, 33288), (12, 33306), (13, 33309), (18, 33528), (Start: 20 @33666 has 4 MA's), (22, 33753), (27, 33801), (31, 33864), (33, 33894), (37, 33921), (38, 33930), (41, 33948), (42, 33951), (45, 34005), (47, 34071), (64, 34464), (66, 34497), (70, 34617), (80, 34851), (100, 35055), (101, 35058), (109, 35115), (110, 35118), (111, 35130), (114, 35154), (117, 35172), (119, 35175), (120, 35187), (122, 35220), (126, 35262), (132, 35388), (133, 35391), (142, 35556), (145, 35610), (149, 35673), (150, 35682), (153, 35856), (160, 35961), (167, 36072), (170, 36093), (179, 36216), (180, 36222), (183, 36264), (184, 36282), (196, 36426), (198, 36468), (202, 36573),

Gene: Pivoine_87 Start: 31151, Stop: 34864, Start Num: 1

Candidate Starts for Pivoine_87:

(Start: 1 @31151 has 173 MA's), (3, 31232), (5, 31253), (6, 31277), (8, 31322), (9, 31349), (10, 31352), (11, 31364), (12, 31382), (13, 31385), (18, 31604), (Start: 20 @31742 has 4 MA's), (22, 31829), (27, 31877), (31, 31940), (33, 31970), (37, 31997), (38, 32006), (41, 32024), (42, 32027), (45, 32081), (47, 32147), (64, 32540), (66, 32573), (70, 32693), (80, 32927), (100, 33131), (101, 33134), (109, 33191), (110, 33194), (111, 33206), (114, 33230), (117, 33248), (119, 33251), (120, 33263), (122, 33296), (126, 33338), (132, 33464), (133, 33467), (142, 33632), (145, 33686), (149, 33749), (150, 33758), (153, 33932), (160, 34037), (167, 34148), (170, 34169), (179, 34292), (180, 34298), (183, 34340), (184, 34358), (196, 34502), (198, 34544), (202, 34649),

Gene: Pleione_91 Start: 32145, Stop: 35858, Start Num: 1

Candidate Starts for Pleione_91:

(Start: 1 @32145 has 173 MA's), (3, 32226), (5, 32247), (6, 32271), (8, 32316), (9, 32343), (10, 32346), (11, 32358), (12, 32376), (13, 32379), (18, 32598), (Start: 20 @32736 has 4 MA's), (22, 32823), (27, 32871), (31, 32934), (33, 32964), (37, 32991), (38, 33000), (41, 33018), (42, 33021), (45, 33075), (47, 33141), (64, 33534), (66, 33567), (70, 33687), (80, 33921), (100, 34125), (101, 34128), (109, 34185),

(110, 34188), (111, 34200), (114, 34224), (117, 34242), (119, 34245), (120, 34257), (122, 34290), (126, 34332), (132, 34458), (133, 34461), (142, 34626), (145, 34680), (149, 34743), (150, 34752), (153, 34926), (160, 35031), (167, 35142), (170, 35163), (179, 35286), (180, 35292), (183, 35334), (184, 35352), (196, 35496), (198, 35538), (202, 35643),

Gene: Primadonna_82 Start: 31040, Stop: 34750, Start Num: 1

Candidate Starts for Primadonna_82:

(Start: 1 @31040 has 173 MA's), (3, 31121), (5, 31142), (6, 31166), (8, 31211), (9, 31238), (10, 31241), (11, 31253), (12, 31271), (13, 31274), (18, 31493), (Start: 20 @31631 has 4 MA's), (22, 31718), (27, 31766), (31, 31829), (33, 31859), (37, 31886), (38, 31895), (42, 31916), (45, 31970), (47, 32036), (64, 32429), (66, 32462), (70, 32582), (80, 32813), (100, 33017), (101, 33020), (109, 33077), (110, 33080), (111, 33092), (114, 33116), (117, 33134), (119, 33137), (120, 33149), (122, 33182), (126, 33224), (132, 33350), (133, 33353), (142, 33518), (149, 33635), (150, 33644), (153, 33818), (160, 33923), (167, 34034), (170, 34055), (179, 34178), (180, 34184), (183, 34226), (184, 34244), (196, 34388), (198, 34430), (202, 34535),

Gene: Pupper_86 Start: 33513, Stop: 36311, Start Num: 20

Candidate Starts for Pupper_86:

(Start: 20 @33513 has 4 MA's), (22, 33594), (24, 33606), (28, 33684), (35, 33747), (36, 33756), (38, 33768), (43, 33831), (51, 33990), (52, 33996), (55, 34101), (80, 34590), (81, 34593), (83, 34626), (111, 34863), (114, 34887), (116, 34899), (124, 34983), (129, 35034), (163, 35625), (164, 35631), (168, 35670), (169, 35673), (175, 35769), (191, 35913), (197, 35985), (199, 36054), (200, 36075), (203, 36114), (205, 36210), (206, 36225),

Gene: PurduePete_88 Start: 32190, Stop: 35903, Start Num: 1

Candidate Starts for PurduePete_88:

(Start: 1 @32190 has 173 MA's), (3, 32271), (5, 32292), (6, 32316), (8, 32361), (9, 32388), (10, 32391), (11, 32403), (12, 32421), (13, 32424), (18, 32643), (Start: 20 @32781 has 4 MA's), (22, 32868), (27, 32916), (31, 32979), (33, 33009), (37, 33036), (38, 33045), (41, 33063), (42, 33066), (45, 33120), (47, 33186), (64, 33579), (66, 33612), (70, 33732), (80, 33966), (100, 34170), (101, 34173), (109, 34230), (110, 34233), (111, 34245), (114, 34269), (117, 34287), (119, 34290), (120, 34302), (122, 34335), (126, 34377), (132, 34503), (133, 34506), (142, 34671), (145, 34725), (149, 34788), (150, 34797), (153, 34971), (160, 35076), (167, 35187), (170, 35208), (179, 35331), (180, 35337), (183, 35379), (184, 35397), (196, 35541), (198, 35583), (202, 35688),

Gene: QBert_82 Start: 31642, Stop: 35355, Start Num: 1

Candidate Starts for QBert_82:

(Start: 1 @31642 has 173 MA's), (3, 31723), (5, 31744), (6, 31768), (8, 31813), (9, 31840), (10, 31843), (11, 31855), (12, 31873), (13, 31876), (18, 32095), (Start: 20 @32233 has 4 MA's), (22, 32320), (27, 32368), (31, 32431), (33, 32461), (37, 32488), (38, 32497), (42, 32518), (45, 32572), (47, 32638), (64, 33031), (66, 33064), (70, 33184), (80, 33418), (100, 33622), (101, 33625), (109, 33682), (110, 33685), (111, 33697), (114, 33721), (117, 33739), (119, 33742), (120, 33754), (122, 33787), (126, 33829), (132, 33955), (133, 33958), (142, 34123), (149, 34240), (150, 34249), (153, 34423), (160, 34528), (167, 34639), (170, 34660), (179, 34783), (180, 34789), (183, 34831), (184, 34849), (196, 34993), (198, 35035), (202, 35140),

Gene: Quasimodo_88 Start: 32074, Stop: 35415, Start Num: 1

Candidate Starts for Quasimodo_88:

(Start: 1 @32074 has 173 MA's), (3, 32155), (5, 32176), (6, 32200), (8, 32245), (9, 32272), (10, 32275), (11, 32287), (12, 32305), (13, 32308), (18, 32527), (Start: 20 @32665 has 4 MA's), (22, 32752), (27, 32800), (31, 32863), (33, 32893), (37, 32920), (38, 32929), (42, 32950), (45, 33004), (47, 33070), (64, 33463), (66, 33496), (72, 33742), (80, 33853), (100, 34057), (101, 34060), (109, 34117), (110, 34120), (111, 34132), (114, 34156), (117, 34174), (119, 34177), (120, 34189), (122, 34222), (126, 34264),

(142, 34405), (145, 34459), (149, 34519), (150, 34528), (153, 34702), (160, 34807), (167, 34918),
(170, 34939), (196, 35074), (198, 35116), (202, 35200),

Gene: Rabinovish_85 Start: 32386, Stop: 35718, Start Num: 1

Candidate Starts for Rabinovish_85:

(Start: 1 @32386 has 173 MA's), (3, 32467), (5, 32488), (6, 32512), (8, 32557), (9, 32584), (10, 32587),
(11, 32599), (12, 32617), (13, 32620), (18, 32839), (Start: 20 @32977 has 4 MA's), (22, 33064), (27,
33112), (31, 33175), (33, 33205), (37, 33232), (38, 33241), (42, 33262), (45, 33316), (47, 33382), (62,
33730), (64, 33766), (72, 34042), (80, 34153), (100, 34357), (101, 34360), (109, 34417), (110, 34420),
(111, 34432), (114, 34456), (117, 34474), (119, 34477), (120, 34489), (122, 34522), (126, 34564),
(142, 34705), (145, 34759), (149, 34822), (150, 34831), (153, 35005), (160, 35110), (167, 35221),
(170, 35242), (196, 35377), (198, 35419), (202, 35503),

Gene: Rahel_87 Start: 30707, Stop: 34417, Start Num: 1

Candidate Starts for Rahel_87:

(Start: 1 @30707 has 173 MA's), (3, 30788), (5, 30809), (6, 30833), (8, 30878), (9, 30905), (10, 30908),
(11, 30920), (12, 30938), (13, 30941), (18, 31160), (Start: 20 @31298 has 4 MA's), (22, 31385), (27,
31433), (31, 31496), (33, 31526), (37, 31553), (38, 31562), (42, 31583), (45, 31637), (47, 31703), (64,
32096), (66, 32129), (70, 32249), (80, 32480), (100, 32684), (101, 32687), (109, 32744), (110, 32747),
(111, 32759), (114, 32783), (117, 32801), (119, 32804), (120, 32816), (122, 32849), (126, 32891),
(132, 33017), (133, 33020), (142, 33185), (149, 33302), (150, 33311), (153, 33485), (160, 33590),
(167, 33701), (170, 33722), (179, 33845), (180, 33851), (183, 33893), (184, 33911), (196, 34055),
(198, 34097), (202, 34202),

Gene: Rizal_86 Start: 31063, Stop: 34776, Start Num: 1

Candidate Starts for Rizal_86:

(Start: 1 @31063 has 173 MA's), (3, 31144), (5, 31165), (6, 31189), (8, 31234), (9, 31261), (10, 31264),
(11, 31276), (12, 31294), (13, 31297), (18, 31516), (Start: 20 @31654 has 4 MA's), (22, 31741), (27,
31789), (31, 31852), (33, 31882), (37, 31909), (38, 31918), (41, 31936), (42, 31939), (45, 31993), (47,
32059), (64, 32452), (66, 32485), (70, 32605), (80, 32839), (100, 33043), (101, 33046), (109, 33103),
(110, 33106), (111, 33118), (114, 33142), (117, 33160), (119, 33163), (120, 33175), (122, 33208),
(126, 33250), (132, 33376), (133, 33379), (142, 33544), (145, 33598), (149, 33661), (150, 33670),
(153, 33844), (160, 33949), (167, 34060), (170, 34081), (179, 34204), (180, 34210), (183, 34252),
(184, 34270), (196, 34414), (198, 34456), (202, 34561),

Gene: RoMag_83 Start: 31501, Stop: 35214, Start Num: 1

Candidate Starts for RoMag_83:

(Start: 1 @31501 has 173 MA's), (3, 31582), (5, 31603), (6, 31627), (9, 31699), (10, 31702), (11,
31714), (12, 31732), (13, 31735), (18, 31954), (Start: 20 @32092 has 4 MA's), (22, 32179), (27,
32227), (31, 32290), (33, 32320), (37, 32347), (38, 32356), (42, 32377), (45, 32431), (47, 32497), (64,
32890), (66, 32923), (70, 33043), (80, 33277), (100, 33481), (101, 33484), (109, 33541), (110, 33544),
(111, 33556), (114, 33580), (117, 33598), (119, 33601), (120, 33613), (122, 33646), (126, 33688),
(132, 33814), (133, 33817), (142, 33982), (145, 34036), (149, 34099), (150, 34108), (153, 34282),
(160, 34387), (167, 34498), (170, 34519), (179, 34642), (180, 34648), (183, 34690), (184, 34708),
(196, 34852), (198, 34894), (202, 34999),

Gene: Ronan_81 Start: 28948, Stop: 32661, Start Num: 1

Candidate Starts for Ronan_81:

(Start: 1 @28948 has 173 MA's), (3, 29029), (5, 29050), (6, 29074), (8, 29119), (9, 29146), (10, 29149),
(11, 29161), (12, 29179), (13, 29182), (18, 29401), (Start: 20 @29539 has 4 MA's), (22, 29626), (27,
29674), (31, 29737), (33, 29767), (37, 29794), (38, 29803), (42, 29824), (45, 29878), (47, 29944), (64,
30337), (66, 30370), (70, 30490), (80, 30724), (100, 30928), (101, 30931), (109, 30988), (110, 30991),
(111, 31003), (114, 31027), (117, 31045), (119, 31048), (120, 31060), (122, 31093), (126, 31135),

(132, 31261), (133, 31264), (142, 31429), (149, 31546), (150, 31555), (153, 31729), (160, 31834), (167, 31945), (170, 31966), (179, 32089), (180, 32095), (183, 32137), (184, 32155), (196, 32299), (198, 32341), (202, 32446),

Gene: Roots515_87 Start: 31568, Stop: 35281, Start Num: 1

Candidate Starts for Roots515_87:

(Start: 1 @31568 has 173 MA's), (3, 31649), (5, 31670), (6, 31694), (8, 31739), (9, 31766), (10, 31769), (11, 31781), (12, 31799), (13, 31802), (18, 32021), (Start: 20 @32159 has 4 MA's), (22, 32246), (27, 32294), (31, 32357), (33, 32387), (37, 32414), (38, 32423), (41, 32441), (42, 32444), (45, 32498), (47, 32564), (64, 32957), (66, 32990), (70, 33110), (80, 33344), (100, 33548), (101, 33551), (109, 33608), (110, 33611), (111, 33623), (114, 33647), (117, 33665), (119, 33668), (120, 33680), (122, 33713), (126, 33755), (132, 33881), (133, 33884), (142, 34049), (145, 34103), (149, 34166), (150, 34175), (153, 34349), (160, 34454), (167, 34565), (170, 34586), (179, 34709), (180, 34715), (183, 34757), (184, 34775), (196, 34919), (198, 34961), (202, 35066),

Gene: SCentae_84 Start: 33187, Stop: 35985, Start Num: 20

Candidate Starts for SCentae_84:

(Start: 20 @33187 has 4 MA's), (22, 33268), (24, 33280), (28, 33358), (35, 33421), (36, 33430), (38, 33442), (43, 33505), (51, 33664), (52, 33670), (55, 33775), (80, 34264), (81, 34267), (83, 34300), (111, 34537), (114, 34561), (116, 34573), (124, 34657), (129, 34708), (163, 35299), (164, 35305), (168, 35344), (169, 35347), (175, 35443), (191, 35587), (197, 35659), (199, 35728), (200, 35749), (203, 35788), (205, 35884), (206, 35899),

Gene: SVoro_86 Start: 32140, Stop: 35853, Start Num: 1

Candidate Starts for SVoro_86:

(Start: 1 @32140 has 173 MA's), (3, 32221), (5, 32242), (6, 32266), (8, 32311), (9, 32338), (10, 32341), (11, 32353), (12, 32371), (13, 32374), (18, 32593), (Start: 20 @32731 has 4 MA's), (22, 32818), (27, 32866), (31, 32929), (33, 32959), (37, 32986), (38, 32995), (41, 33013), (42, 33016), (45, 33070), (47, 33136), (64, 33529), (66, 33562), (70, 33682), (80, 33916), (100, 34120), (101, 34123), (109, 34180), (110, 34183), (111, 34195), (114, 34219), (117, 34237), (119, 34240), (120, 34252), (122, 34285), (126, 34327), (132, 34453), (133, 34456), (142, 34621), (145, 34675), (149, 34738), (150, 34747), (153, 34921), (160, 35026), (167, 35137), (170, 35158), (179, 35281), (180, 35287), (183, 35329), (184, 35347), (196, 35491), (198, 35533), (202, 35638),

Gene: Salacia_92 Start: 32263, Stop: 35973, Start Num: 1

Candidate Starts for Salacia_92:

(Start: 1 @32263 has 173 MA's), (3, 32344), (5, 32365), (6, 32389), (8, 32434), (9, 32461), (10, 32464), (11, 32476), (12, 32494), (13, 32497), (18, 32716), (Start: 20 @32854 has 4 MA's), (22, 32941), (27, 32989), (31, 33052), (33, 33082), (37, 33109), (38, 33118), (42, 33139), (45, 33193), (47, 33259), (64, 33652), (66, 33685), (70, 33805), (80, 34036), (100, 34240), (101, 34243), (109, 34300), (110, 34303), (111, 34315), (114, 34339), (117, 34357), (119, 34360), (120, 34372), (122, 34405), (126, 34447), (132, 34573), (133, 34576), (142, 34741), (149, 34858), (150, 34867), (153, 35041), (160, 35146), (167, 35257), (170, 35278), (179, 35401), (180, 35407), (183, 35449), (184, 35467), (196, 35611), (198, 35653), (202, 35758),

Gene: Sauce_88 Start: 30996, Stop: 34709, Start Num: 1

Candidate Starts for Sauce_88:

(Start: 1 @30996 has 173 MA's), (3, 31077), (5, 31098), (6, 31122), (8, 31167), (9, 31194), (10, 31197), (11, 31209), (12, 31227), (13, 31230), (18, 31449), (Start: 20 @31587 has 4 MA's), (22, 31674), (27, 31722), (31, 31785), (33, 31815), (37, 31842), (38, 31851), (42, 31872), (45, 31926), (47, 31992), (64, 32385), (66, 32418), (70, 32538), (80, 32772), (100, 32976), (101, 32979), (109, 33036), (110, 33039), (111, 33051), (114, 33075), (117, 33093), (119, 33096), (120, 33108), (122, 33141), (126, 33183), (132, 33309), (133, 33312), (142, 33477), (149, 33594), (150, 33603), (153, 33777), (160, 33882),

(167, 33993), (170, 34014), (179, 34137), (180, 34143), (183, 34185), (184, 34203), (196, 34347), (198, 34389), (202, 34494),

Gene: ScoobyDoobyDoo_81 Start: 30092, Stop: 33598, Start Num: 1

Candidate Starts for ScoobyDoobyDoo_81:

(Start: 1 @30092 has 173 MA's), (4, 30185), (7, 30221), (12, 30323), (13, 30326), (14, 30347), (16, 30461), (21, 30587), (23, 30620), (30, 30716), (34, 30761), (44, 30860), (57, 31235), (69, 31484), (71, 31667), (73, 31739), (75, 31757), (79, 31805), (86, 31898), (94, 31970), (99, 32015), (103, 32030), (125, 32210), (127, 32222), (128, 32246), (131, 32312), (135, 32354), (136, 32369), (137, 32375), (158, 32738), (161, 32789), (171, 32954), (176, 33020), (182, 33098), (185, 33122), (187, 33134), (189, 33140), (192, 33254), (201, 33389),

Gene: ScottMcG_85 Start: 31500, Stop: 34862, Start Num: 1

Candidate Starts for ScottMcG_85:

(Start: 1 @31500 has 173 MA's), (3, 31581), (5, 31602), (6, 31626), (8, 31671), (9, 31698), (10, 31701), (11, 31713), (12, 31731), (13, 31734), (18, 31953), (Start: 20 @32091 has 4 MA's), (22, 32178), (27, 32226), (31, 32289), (33, 32319), (37, 32346), (38, 32355), (42, 32376), (45, 32430), (47, 32496), (62, 32874), (64, 32910), (72, 33186), (80, 33297), (100, 33501), (101, 33504), (109, 33561), (110, 33564), (111, 33576), (114, 33600), (117, 33618), (119, 33621), (120, 33633), (122, 33666), (126, 33708), (142, 33849), (145, 33903), (149, 33966), (150, 33975), (153, 34149), (160, 34254), (167, 34365), (170, 34386), (196, 34521), (198, 34563), (202, 34647),

Gene: Sebata_89 Start: 32632, Stop: 36345, Start Num: 1

Candidate Starts for Sebata_89:

(Start: 1 @32632 has 173 MA's), (3, 32713), (5, 32734), (6, 32758), (8, 32803), (9, 32830), (10, 32833), (11, 32845), (12, 32863), (13, 32866), (18, 33085), (Start: 20 @33223 has 4 MA's), (22, 33310), (27, 33358), (31, 33421), (33, 33451), (37, 33478), (38, 33487), (42, 33508), (45, 33562), (47, 33628), (64, 34021), (66, 34054), (70, 34174), (80, 34408), (100, 34612), (101, 34615), (109, 34672), (110, 34675), (111, 34687), (114, 34711), (117, 34729), (119, 34732), (120, 34744), (122, 34777), (126, 34819), (132, 34945), (133, 34948), (142, 35113), (149, 35230), (150, 35239), (153, 35413), (160, 35518), (167, 35629), (170, 35650), (179, 35773), (180, 35779), (183, 35821), (184, 35839), (196, 35983), (198, 36025), (202, 36130),

Gene: Settecandela_44 Start: 23839, Stop: 26178, Start Num: 32

Candidate Starts for Settecandela_44:

(Start: 32 @23839 has 2 MA's), (34, 23869), (43, 23968), (46, 24025), (48, 24067), (49, 24070), (50, 24079), (53, 24151), (59, 24334), (63, 24418), (65, 24454), (67, 24472), (74, 24724), (76, 24742), (77, 24745), (82, 24793), (83, 24814), (84, 24817), (85, 24856), (87, 24877), (89, 24886), (90, 24898), (93, 24919), (95, 24931), (96, 24940), (97, 24952), (98, 24964), (99, 24973), (102, 24985), (104, 24997), (105, 25006), (106, 25018), (108, 25027), (112, 25054), (113, 25057), (118, 25090), (134, 25309), (140, 25408), (141, 25423), (144, 25492), (147, 25561), (148, 25564), (151, 25747), (159, 25876), (162, 25927), (165, 25978), (174, 26098), (175, 26107),

Gene: Shaqnato_80 Start: 29871, Stop: 33584, Start Num: 1

Candidate Starts for Shaqnato_80:

(Start: 1 @29871 has 173 MA's), (3, 29952), (5, 29973), (6, 29997), (8, 30042), (9, 30069), (10, 30072), (11, 30084), (12, 30102), (13, 30105), (18, 30324), (Start: 20 @30462 has 4 MA's), (22, 30549), (27, 30597), (31, 30660), (33, 30690), (37, 30717), (38, 30726), (42, 30747), (45, 30801), (47, 30867), (64, 31260), (66, 31293), (70, 31413), (80, 31647), (100, 31851), (101, 31854), (109, 31911), (110, 31914), (111, 31926), (114, 31950), (117, 31968), (119, 31971), (120, 31983), (122, 32016), (126, 32058), (132, 32184), (133, 32187), (142, 32352), (149, 32469), (150, 32478), (153, 32652), (160, 32757), (167, 32868), (170, 32889), (179, 33012), (180, 33018), (183, 33060), (184, 33078), (196, 33222), (198, 33264), (202, 33369),

Gene: Shelob_90 Start: 33138, Stop: 36851, Start Num: 1

Candidate Starts for Shelob_90:

(Start: 1 @33138 has 173 MA's), (3, 33219), (5, 33240), (6, 33264), (8, 33309), (9, 33336), (10, 33339), (11, 33351), (12, 33369), (13, 33372), (18, 33591), (Start: 20 @33729 has 4 MA's), (22, 33816), (27, 33864), (31, 33927), (33, 33957), (37, 33984), (38, 33993), (41, 34011), (42, 34014), (45, 34068), (47, 34134), (64, 34527), (66, 34560), (70, 34680), (80, 34914), (100, 35118), (101, 35121), (109, 35178), (110, 35181), (111, 35193), (114, 35217), (117, 35235), (119, 35238), (120, 35250), (122, 35283), (126, 35325), (132, 35451), (133, 35454), (142, 35619), (145, 35673), (149, 35736), (150, 35745), (153, 35919), (160, 36024), (167, 36135), (170, 36156), (179, 36279), (180, 36285), (183, 36327), (184, 36345), (196, 36489), (198, 36531), (202, 36636),

Gene: ShiaLabeouf_88 Start: 31546, Stop: 35256, Start Num: 1

Candidate Starts for ShiaLabeouf_88:

(Start: 1 @31546 has 173 MA's), (3, 31627), (5, 31648), (6, 31672), (9, 31744), (10, 31747), (11, 31759), (12, 31777), (13, 31780), (18, 31999), (Start: 20 @32137 has 4 MA's), (22, 32224), (27, 32272), (31, 32335), (33, 32365), (37, 32392), (38, 32401), (42, 32422), (45, 32476), (47, 32542), (64, 32935), (66, 32968), (70, 33088), (80, 33319), (100, 33523), (101, 33526), (109, 33583), (110, 33586), (111, 33598), (114, 33622), (117, 33640), (119, 33643), (120, 33655), (122, 33688), (126, 33730), (132, 33856), (133, 33859), (142, 34024), (149, 34141), (150, 34150), (153, 34324), (160, 34429), (167, 34540), (170, 34561), (179, 34684), (180, 34690), (183, 34732), (184, 34750), (196, 34894), (198, 34936), (202, 35041),

Gene: Shifa_77 Start: 29738, Stop: 33316, Start Num: 1

Candidate Starts for Shifa_77:

(Start: 1 @29738 has 173 MA's), (3, 29819), (5, 29840), (6, 29864), (8, 29909), (9, 29936), (10, 29939), (11, 29951), (12, 29969), (13, 29972), (18, 30191), (Start: 20 @30329 has 4 MA's), (22, 30416), (27, 30464), (31, 30527), (33, 30557), (37, 30584), (38, 30593), (41, 30611), (42, 30614), (45, 30668), (47, 30734), (64, 31142), (66, 31175), (70, 31295), (72, 31418), (80, 31529), (100, 31733), (101, 31736), (109, 31793), (110, 31796), (111, 31808), (114, 31832), (117, 31850), (119, 31853), (120, 31865), (122, 31898), (126, 31940), (142, 32081), (145, 32135), (149, 32195), (150, 32204), (153, 32378), (160, 32483), (167, 32594), (170, 32615), (172, 32678), (177, 32744), (178, 32750), (186, 32843), (196, 32975), (198, 33017), (202, 33101),

Gene: Shnickers_88 Start: 31106, Stop: 34816, Start Num: 1

Candidate Starts for Shnickers_88:

(Start: 1 @31106 has 173 MA's), (3, 31187), (5, 31208), (6, 31232), (9, 31304), (10, 31307), (11, 31319), (12, 31337), (13, 31340), (18, 31559), (Start: 20 @31697 has 4 MA's), (22, 31784), (27, 31832), (31, 31895), (33, 31925), (37, 31952), (38, 31961), (42, 31982), (45, 32036), (47, 32102), (64, 32495), (66, 32528), (70, 32648), (80, 32879), (100, 33083), (101, 33086), (109, 33143), (110, 33146), (111, 33158), (114, 33182), (117, 33200), (119, 33203), (120, 33215), (122, 33248), (126, 33290), (132, 33416), (133, 33419), (142, 33584), (149, 33701), (150, 33710), (153, 33884), (160, 33989), (167, 34100), (170, 34121), (179, 34244), (180, 34250), (183, 34292), (184, 34310), (196, 34454), (198, 34496), (202, 34601),

Gene: Shrimp_88 Start: 32150, Stop: 35863, Start Num: 1

Candidate Starts for Shrimp_88:

(Start: 1 @32150 has 173 MA's), (3, 32231), (5, 32252), (6, 32276), (8, 32321), (9, 32348), (10, 32351), (11, 32363), (12, 32381), (13, 32384), (18, 32603), (Start: 20 @32741 has 4 MA's), (22, 32828), (27, 32876), (31, 32939), (33, 32969), (37, 32996), (38, 33005), (41, 33023), (42, 33026), (45, 33080), (47, 33146), (64, 33539), (66, 33572), (70, 33692), (80, 33926), (100, 34130), (101, 34133), (109, 34190), (110, 34193), (111, 34205), (114, 34229), (117, 34247), (119, 34250), (120, 34262), (122, 34295), (126, 34337), (132, 34463), (133, 34466), (142, 34631), (145, 34685), (149, 34748), (150, 34757),

(153, 34931), (160, 35036), (167, 35147), (170, 35168), (179, 35291), (180, 35297), (183, 35339), (184, 35357), (196, 35501), (198, 35543), (202, 35648),

Gene: SilverDipper_89 Start: 31151, Stop: 34864, Start Num: 1

Candidate Starts for SilverDipper_89:

(Start: 1 @31151 has 173 MA's), (3, 31232), (5, 31253), (6, 31277), (8, 31322), (9, 31349), (10, 31352), (11, 31364), (12, 31382), (13, 31385), (18, 31604), (Start: 20 @31742 has 4 MA's), (22, 31829), (27, 31877), (31, 31940), (33, 31970), (37, 31997), (38, 32006), (41, 32024), (42, 32027), (45, 32081), (47, 32147), (64, 32540), (66, 32573), (70, 32693), (80, 32927), (100, 33131), (101, 33134), (109, 33191), (110, 33194), (111, 33206), (114, 33230), (117, 33248), (119, 33251), (120, 33263), (122, 33296), (126, 33338), (132, 33464), (133, 33467), (142, 33632), (145, 33686), (149, 33749), (150, 33758), (153, 33932), (160, 34037), (167, 34148), (170, 34169), (179, 34292), (180, 34298), (183, 34340), (184, 34358), (196, 34502), (198, 34544), (202, 34649),

Gene: Skog_149 Start: 63157, Stop: 66045, Start Num: 20

Candidate Starts for Skog_149:

(Start: 20 @63157 has 4 MA's), (24, 63250), (25, 63259), (35, 63391), (36, 63400), (43, 63478), (51, 63637), (52, 63643), (54, 63685), (58, 63820), (80, 64282), (81, 64285), (83, 64318), (111, 64552), (115, 64579), (116, 64588), (130, 64735), (152, 65134), (163, 65329), (164, 65335), (168, 65374), (169, 65377), (173, 65440), (190, 65617), (200, 65809), (203, 65848), (204, 65869),

Gene: SmallFry_88 Start: 31105, Stop: 34815, Start Num: 1

Candidate Starts for SmallFry_88:

(Start: 1 @31105 has 173 MA's), (3, 31186), (5, 31207), (6, 31231), (8, 31276), (9, 31303), (10, 31306), (11, 31318), (12, 31336), (13, 31339), (18, 31558), (Start: 20 @31696 has 4 MA's), (22, 31783), (27, 31831), (31, 31894), (33, 31924), (37, 31951), (38, 31960), (42, 31981), (45, 32035), (47, 32101), (64, 32494), (66, 32527), (70, 32647), (80, 32878), (100, 33082), (101, 33085), (109, 33142), (110, 33145), (111, 33157), (114, 33181), (117, 33199), (119, 33202), (120, 33214), (122, 33247), (126, 33289), (132, 33415), (133, 33418), (142, 33583), (149, 33700), (150, 33709), (153, 33883), (160, 33988), (167, 34099), (170, 34120), (179, 34243), (180, 34249), (183, 34291), (184, 34309), (196, 34453), (198, 34495), (202, 34600),

Gene: Spec_83 Start: 30871, Stop: 34581, Start Num: 1

Candidate Starts for Spec_83:

(Start: 1 @30871 has 173 MA's), (3, 30952), (5, 30973), (6, 30997), (8, 31042), (9, 31069), (10, 31072), (11, 31084), (12, 31102), (13, 31105), (18, 31324), (Start: 20 @31462 has 4 MA's), (22, 31549), (27, 31597), (31, 31660), (33, 31690), (37, 31717), (38, 31726), (42, 31747), (45, 31801), (47, 31867), (64, 32260), (66, 32293), (70, 32413), (80, 32644), (100, 32848), (101, 32851), (109, 32908), (110, 32911), (111, 32923), (114, 32947), (117, 32965), (119, 32968), (120, 32980), (122, 33013), (126, 33055), (132, 33181), (133, 33184), (142, 33349), (149, 33466), (150, 33475), (153, 33649), (160, 33754), (167, 33865), (170, 33886), (179, 34009), (180, 34015), (183, 34057), (184, 34075), (196, 34219), (198, 34261), (202, 34366),

Gene: Specks_94 Start: 33940, Stop: 37599, Start Num: 1

Candidate Starts for Specks_94:

(Start: 1 @33940 has 173 MA's), (3, 34021), (5, 34042), (6, 34066), (8, 34111), (9, 34138), (10, 34141), (11, 34153), (12, 34171), (13, 34174), (18, 34393), (Start: 20 @34531 has 4 MA's), (22, 34618), (27, 34666), (31, 34729), (33, 34759), (37, 34786), (38, 34795), (41, 34813), (42, 34816), (45, 34870), (47, 34936), (64, 35329), (66, 35362), (70, 35482), (72, 35596), (80, 35680), (100, 35884), (101, 35887), (109, 35944), (110, 35947), (111, 35959), (114, 35983), (117, 36001), (119, 36004), (120, 36016), (122, 36049), (126, 36091), (132, 36217), (133, 36220), (142, 36367), (145, 36421), (149, 36484), (150, 36493), (153, 36667), (160, 36772), (167, 36883), (170, 36904), (179, 37027), (180, 37033), (183, 37075), (184, 37093), (196, 37237), (198, 37279), (202, 37384),

Gene: Sprinklers_83 Start: 30368, Stop: 34081, Start Num: 1

Candidate Starts for Sprinklers_83:

(Start: 1 @30368 has 173 MA's), (3, 30449), (5, 30470), (6, 30494), (8, 30539), (9, 30566), (10, 30569), (11, 30581), (12, 30599), (13, 30602), (18, 30821), (Start: 20 @30959 has 4 MA's), (22, 31046), (27, 31094), (31, 31157), (33, 31187), (37, 31214), (38, 31223), (42, 31244), (45, 31298), (47, 31364), (64, 31757), (66, 31790), (70, 31910), (80, 32144), (100, 32348), (101, 32351), (109, 32408), (110, 32411), (111, 32423), (114, 32447), (117, 32465), (119, 32468), (120, 32480), (122, 32513), (126, 32555), (132, 32681), (133, 32684), (142, 32849), (149, 32966), (150, 32975), (153, 33149), (160, 33254), (167, 33365), (170, 33386), (179, 33509), (180, 33515), (183, 33557), (184, 33575), (196, 33719), (198, 33761), (202, 33866),

Gene: Spud_88 Start: 32461, Stop: 35823, Start Num: 1

Candidate Starts for Spud_88:

(Start: 1 @32461 has 173 MA's), (3, 32542), (5, 32563), (6, 32587), (8, 32632), (9, 32659), (10, 32662), (11, 32674), (12, 32692), (13, 32695), (18, 32914), (Start: 20 @33052 has 4 MA's), (22, 33139), (27, 33187), (31, 33250), (33, 33280), (37, 33307), (38, 33316), (42, 33337), (45, 33391), (47, 33457), (62, 33835), (64, 33871), (72, 34147), (80, 34258), (100, 34462), (101, 34465), (109, 34522), (110, 34525), (111, 34537), (114, 34561), (117, 34579), (119, 34582), (120, 34594), (122, 34627), (126, 34669), (142, 34810), (145, 34864), (149, 34927), (150, 34936), (153, 35110), (160, 35215), (167, 35326), (170, 35347), (196, 35482), (198, 35524), (202, 35608),

Gene: SrishMeg2525_87 Start: 31857, Stop: 35195, Start Num: 1

Candidate Starts for SrishMeg2525_87:

(Start: 1 @31857 has 173 MA's), (3, 31938), (5, 31959), (6, 31983), (8, 32028), (9, 32055), (10, 32058), (11, 32070), (12, 32088), (13, 32091), (18, 32310), (Start: 20 @32448 has 4 MA's), (22, 32535), (27, 32583), (31, 32646), (33, 32676), (37, 32703), (38, 32712), (41, 32730), (42, 32733), (45, 32787), (47, 32853), (64, 33246), (66, 33279), (70, 33399), (80, 33630), (100, 33834), (101, 33837), (109, 33894), (110, 33897), (111, 33909), (114, 33933), (117, 33951), (119, 33954), (120, 33966), (122, 33999), (126, 34041), (142, 34182), (145, 34236), (149, 34299), (150, 34308), (153, 34482), (160, 34587), (167, 34698), (170, 34719), (196, 34854), (198, 34896), (202, 34980),

Gene: StephanieG_87 Start: 32958, Stop: 36671, Start Num: 1

Candidate Starts for StephanieG_87:

(Start: 1 @32958 has 173 MA's), (3, 33039), (5, 33060), (6, 33084), (9, 33156), (10, 33159), (11, 33171), (12, 33189), (13, 33192), (18, 33411), (Start: 20 @33549 has 4 MA's), (22, 33636), (27, 33684), (31, 33747), (33, 33777), (37, 33804), (38, 33813), (42, 33834), (45, 33888), (47, 33954), (64, 34347), (66, 34380), (70, 34500), (80, 34734), (100, 34938), (101, 34941), (109, 34998), (110, 35001), (111, 35013), (114, 35037), (117, 35055), (119, 35058), (120, 35070), (122, 35103), (126, 35145), (132, 35271), (133, 35274), (142, 35439), (145, 35493), (149, 35556), (150, 35565), (153, 35739), (160, 35844), (167, 35955), (170, 35976), (179, 36099), (180, 36105), (183, 36147), (184, 36165), (196, 36309), (198, 36351), (202, 36456),

Gene: Stubby_81 Start: 30428, Stop: 33913, Start Num: 1

Candidate Starts for Stubby_81:

(Start: 1 @30428 has 173 MA's), (3, 30509), (5, 30530), (6, 30554), (8, 30599), (9, 30626), (10, 30629), (11, 30641), (12, 30659), (13, 30662), (18, 30881), (Start: 20 @31019 has 4 MA's), (22, 31106), (27, 31154), (31, 31217), (33, 31247), (37, 31274), (38, 31283), (42, 31304), (45, 31358), (47, 31424), (62, 31772), (64, 31808), (72, 32084), (80, 32195), (100, 32399), (101, 32402), (109, 32459), (110, 32462), (111, 32474), (114, 32498), (117, 32516), (119, 32519), (120, 32531), (122, 32564), (126, 32606), (132, 32732), (133, 32735), (142, 32900), (149, 33017), (150, 33026), (153, 33200), (160, 33305), (167, 33416), (170, 33437), (196, 33572), (198, 33614), (202, 33698),

Gene: StubbySaigey_90 Start: 30786, Stop: 34148, Start Num: 1

Candidate Starts for StubbySaigey_90:

(Start: 1 @30786 has 173 MA's), (3, 30867), (5, 30888), (6, 30912), (8, 30957), (9, 30984), (10, 30987), (11, 30999), (12, 31017), (13, 31020), (18, 31239), (Start: 20 @31377 has 4 MA's), (22, 31464), (27, 31512), (31, 31575), (33, 31605), (37, 31632), (38, 31641), (41, 31659), (42, 31662), (45, 31716), (47, 31782), (62, 32160), (64, 32196), (72, 32472), (80, 32583), (100, 32787), (101, 32790), (109, 32847), (110, 32850), (111, 32862), (114, 32886), (117, 32904), (119, 32907), (120, 32919), (122, 32952), (126, 32994), (142, 33135), (145, 33189), (149, 33252), (150, 33261), (153, 33435), (160, 33540), (167, 33651), (170, 33672), (196, 33807), (198, 33849), (202, 33933),

Gene: Tainan_93 Start: 33590, Stop: 37249, Start Num: 1

Candidate Starts for Tainan_93:

(Start: 1 @33590 has 173 MA's), (3, 33671), (5, 33692), (6, 33716), (9, 33788), (10, 33791), (11, 33803), (12, 33821), (13, 33824), (18, 34043), (Start: 20 @34181 has 4 MA's), (22, 34268), (27, 34316), (31, 34379), (37, 34436), (38, 34445), (42, 34466), (45, 34520), (47, 34586), (64, 34979), (66, 35012), (70, 35132), (72, 35246), (80, 35330), (100, 35534), (101, 35537), (109, 35594), (110, 35597), (111, 35609), (114, 35633), (117, 35651), (119, 35654), (120, 35666), (122, 35699), (126, 35741), (132, 35867), (133, 35870), (142, 36017), (145, 36071), (149, 36134), (150, 36143), (153, 36317), (160, 36422), (167, 36533), (170, 36554), (179, 36677), (180, 36683), (183, 36725), (184, 36743), (196, 36887), (198, 36929), (202, 37034),

Gene: Teardrop_88 Start: 31264, Stop: 34923, Start Num: 1

Candidate Starts for Teardrop_88:

(Start: 1 @31264 has 173 MA's), (3, 31345), (5, 31366), (6, 31390), (8, 31435), (9, 31462), (10, 31465), (11, 31477), (12, 31495), (13, 31498), (18, 31717), (Start: 20 @31855 has 4 MA's), (22, 31942), (27, 31990), (31, 32053), (33, 32083), (37, 32110), (38, 32119), (41, 32137), (42, 32140), (45, 32194), (47, 32260), (64, 32653), (66, 32686), (70, 32806), (72, 32920), (80, 33004), (100, 33208), (101, 33211), (109, 33268), (110, 33271), (111, 33283), (114, 33307), (117, 33325), (119, 33328), (120, 33340), (122, 33373), (126, 33415), (132, 33541), (133, 33544), (142, 33691), (145, 33745), (149, 33808), (150, 33817), (153, 33991), (160, 34096), (167, 34207), (170, 34228), (179, 34351), (180, 34357), (183, 34399), (184, 34417), (196, 34561), (198, 34603), (202, 34708),

Gene: TinyTim_88 Start: 32146, Stop: 35859, Start Num: 1

Candidate Starts for TinyTim_88:

(Start: 1 @32146 has 173 MA's), (3, 32227), (5, 32248), (6, 32272), (8, 32317), (9, 32344), (10, 32347), (11, 32359), (12, 32377), (13, 32380), (18, 32599), (Start: 20 @32737 has 4 MA's), (22, 32824), (27, 32872), (31, 32935), (33, 32965), (37, 32992), (38, 33001), (41, 33019), (42, 33022), (45, 33076), (47, 33142), (64, 33535), (66, 33568), (70, 33688), (80, 33922), (100, 34126), (101, 34129), (109, 34186), (110, 34189), (111, 34201), (114, 34225), (117, 34243), (119, 34246), (120, 34258), (122, 34291), (126, 34333), (132, 34459), (133, 34462), (142, 34627), (145, 34681), (149, 34744), (150, 34753), (153, 34927), (160, 35032), (167, 35143), (170, 35164), (179, 35287), (180, 35293), (183, 35335), (184, 35353), (196, 35497), (198, 35539), (202, 35644),

Gene: Tonenili_102 Start: 36564, Stop: 39851, Start Num: 1

Candidate Starts for Tonenili_102:

(Start: 1 @36564 has 173 MA's), (3, 36645), (5, 36666), (6, 36690), (8, 36735), (9, 36762), (10, 36765), (11, 36777), (12, 36795), (13, 36798), (18, 37014), (40, 37140), (45, 37203), (64, 37701), (66, 37734), (70, 37854), (78, 38067), (80, 38085), (100, 38289), (101, 38292), (109, 38349), (110, 38352), (111, 38364), (114, 38388), (117, 38406), (119, 38409), (120, 38421), (121, 38433), (122, 38454), (126, 38496), (142, 38637), (145, 38691), (149, 38751), (150, 38760), (153, 38934), (156, 38973), (160, 39039), (168, 39153), (170, 39171), (181, 39324), (188, 39363), (196, 39489), (198, 39531), (202, 39636),

Gene: Tortoise16_86 Start: 32007, Stop: 35717, Start Num: 1

Candidate Starts for Tortoise16_86:

(Start: 1 @32007 has 173 MA's), (3, 32088), (5, 32109), (6, 32133), (8, 32178), (9, 32205), (10, 32208), (11, 32220), (12, 32238), (13, 32241), (18, 32460), (Start: 20 @32598 has 4 MA's), (22, 32685), (27, 32733), (31, 32796), (33, 32826), (37, 32853), (38, 32862), (42, 32883), (45, 32937), (47, 33003), (64, 33396), (66, 33429), (70, 33549), (80, 33780), (100, 33984), (101, 33987), (109, 34044), (110, 34047), (111, 34059), (114, 34083), (117, 34101), (119, 34104), (120, 34116), (122, 34149), (126, 34191), (132, 34317), (133, 34320), (142, 34485), (149, 34602), (150, 34611), (153, 34785), (160, 34890), (167, 35001), (170, 35022), (179, 35145), (180, 35151), (183, 35193), (184, 35211), (196, 35355), (198, 35397), (202, 35502),

Gene: Trinitium_84 Start: 30571, Stop: 33912, Start Num: 1

Candidate Starts for Trinitium_84:

(Start: 1 @30571 has 173 MA's), (3, 30652), (5, 30673), (6, 30697), (8, 30742), (9, 30769), (10, 30772), (11, 30784), (12, 30802), (13, 30805), (18, 31024), (Start: 20 @31162 has 4 MA's), (22, 31249), (27, 31297), (31, 31360), (33, 31390), (37, 31417), (38, 31426), (42, 31447), (45, 31501), (47, 31567), (64, 31960), (66, 31993), (72, 32239), (80, 32350), (100, 32554), (101, 32557), (109, 32614), (110, 32617), (111, 32629), (114, 32653), (117, 32671), (119, 32674), (120, 32686), (122, 32719), (126, 32761), (142, 32902), (145, 32956), (149, 33016), (150, 33025), (153, 33199), (160, 33304), (167, 33415), (170, 33436), (196, 33571), (198, 33613), (202, 33697),

Gene: Turret_83 Start: 30237, Stop: 33578, Start Num: 1

Candidate Starts for Turret_83:

(Start: 1 @30237 has 173 MA's), (3, 30318), (5, 30339), (6, 30363), (8, 30408), (9, 30435), (10, 30438), (11, 30450), (12, 30468), (13, 30471), (18, 30690), (Start: 20 @30828 has 4 MA's), (22, 30915), (27, 30963), (31, 31026), (33, 31056), (37, 31083), (38, 31092), (42, 31113), (45, 31167), (47, 31233), (64, 31626), (66, 31659), (72, 31905), (80, 32016), (100, 32220), (101, 32223), (109, 32280), (110, 32283), (111, 32295), (114, 32319), (117, 32337), (119, 32340), (120, 32352), (122, 32385), (126, 32427), (142, 32568), (145, 32622), (149, 32682), (150, 32691), (153, 32865), (160, 32970), (167, 33081), (170, 33102), (196, 33237), (198, 33279), (202, 33363),

Gene: Tyke_90 Start: 32911, Stop: 36621, Start Num: 1

Candidate Starts for Tyke_90:

(Start: 1 @32911 has 173 MA's), (3, 32992), (5, 33013), (6, 33037), (8, 33082), (9, 33109), (10, 33112), (11, 33124), (12, 33142), (13, 33145), (18, 33364), (Start: 20 @33502 has 4 MA's), (22, 33589), (27, 33637), (31, 33700), (33, 33730), (37, 33757), (38, 33766), (42, 33787), (45, 33841), (47, 33907), (64, 34300), (66, 34333), (70, 34453), (80, 34684), (100, 34888), (101, 34891), (109, 34948), (110, 34951), (111, 34963), (114, 34987), (117, 35005), (119, 35008), (120, 35020), (122, 35053), (126, 35095), (132, 35221), (133, 35224), (142, 35389), (149, 35506), (150, 35515), (153, 35689), (160, 35794), (167, 35905), (170, 35926), (179, 36049), (180, 36055), (183, 36097), (184, 36115), (196, 36259), (198, 36301), (202, 36406),

Gene: ValleyTerrace_88 Start: 31151, Stop: 34864, Start Num: 1

Candidate Starts for ValleyTerrace_88:

(Start: 1 @31151 has 173 MA's), (3, 31232), (5, 31253), (6, 31277), (8, 31322), (9, 31349), (10, 31352), (11, 31364), (12, 31382), (13, 31385), (18, 31604), (Start: 20 @31742 has 4 MA's), (22, 31829), (27, 31877), (31, 31940), (33, 31970), (37, 31997), (38, 32006), (41, 32024), (42, 32027), (45, 32081), (47, 32147), (64, 32540), (66, 32573), (70, 32693), (80, 32927), (100, 33131), (101, 33134), (109, 33191), (110, 33194), (111, 33206), (114, 33230), (117, 33248), (119, 33251), (120, 33263), (122, 33296), (126, 33338), (132, 33464), (133, 33467), (142, 33632), (145, 33686), (149, 33749), (150, 33758), (153, 33932), (160, 34037), (167, 34148), (170, 34169), (179, 34292), (180, 34298), (183, 34340), (184, 34358), (196, 34502), (198, 34544), (202, 34649),

Gene: Wally_87 Start: 30701, Stop: 34414, Start Num: 1

Candidate Starts for Wally_87:

(Start: 1 @30701 has 173 MA's), (3, 30782), (5, 30803), (6, 30827), (8, 30872), (9, 30899), (10, 30902), (11, 30914), (12, 30932), (13, 30935), (18, 31154), (Start: 20 @31292 has 4 MA's), (22, 31379), (27, 31427), (31, 31490), (33, 31520), (37, 31547), (38, 31556), (41, 31574), (42, 31577), (45, 31631), (47, 31697), (64, 32090), (66, 32123), (70, 32243), (80, 32477), (100, 32681), (101, 32684), (109, 32741), (110, 32744), (111, 32756), (114, 32780), (117, 32798), (119, 32801), (120, 32813), (122, 32846), (126, 32888), (132, 33014), (133, 33017), (142, 33182), (145, 33236), (149, 33299), (150, 33308), (153, 33482), (160, 33587), (167, 33698), (170, 33719), (179, 33842), (180, 33848), (183, 33890), (184, 33908), (196, 34052), (198, 34094), (202, 34199),

Gene: Willis_89 Start: 32041, Stop: 35754, Start Num: 1

Candidate Starts for Willis_89:

(Start: 1 @32041 has 173 MA's), (3, 32122), (5, 32143), (6, 32167), (8, 32212), (9, 32239), (10, 32242), (11, 32254), (12, 32272), (13, 32275), (18, 32494), (Start: 20 @32632 has 4 MA's), (22, 32719), (27, 32767), (31, 32830), (33, 32860), (37, 32887), (38, 32896), (41, 32914), (42, 32917), (45, 32971), (47, 33037), (64, 33430), (66, 33463), (70, 33583), (80, 33817), (100, 34021), (101, 34024), (109, 34081), (110, 34084), (111, 34096), (114, 34120), (117, 34138), (119, 34141), (120, 34153), (122, 34186), (126, 34228), (132, 34354), (133, 34357), (142, 34522), (145, 34576), (149, 34639), (150, 34648), (153, 34822), (160, 34927), (167, 35038), (170, 35059), (179, 35182), (180, 35188), (183, 35230), (184, 35248), (196, 35392), (198, 35434), (202, 35539),

Gene: Yassified_84 Start: 30651, Stop: 34145, Start Num: 1

Candidate Starts for Yassified_84:

(Start: 1 @30651 has 173 MA's), (3, 30732), (5, 30753), (6, 30777), (8, 30822), (9, 30849), (10, 30852), (11, 30864), (12, 30882), (13, 30885), (18, 31104), (Start: 20 @31242 has 4 MA's), (22, 31329), (27, 31377), (31, 31440), (33, 31470), (37, 31497), (38, 31506), (42, 31527), (45, 31581), (47, 31647), (64, 32040), (66, 32073), (70, 32193), (80, 32427), (100, 32631), (101, 32634), (109, 32691), (110, 32694), (111, 32706), (114, 32730), (117, 32748), (119, 32751), (120, 32763), (122, 32796), (126, 32838), (132, 32964), (133, 32967), (142, 33132), (145, 33186), (149, 33249), (150, 33258), (153, 33432), (160, 33537), (167, 33648), (170, 33669), (196, 33804), (198, 33846), (202, 33930),

Gene: YemiJoy2021_89 Start: 32143, Stop: 35856, Start Num: 1

Candidate Starts for YemiJoy2021_89:

(Start: 1 @32143 has 173 MA's), (3, 32224), (5, 32245), (6, 32269), (8, 32314), (9, 32341), (10, 32344), (11, 32356), (12, 32374), (13, 32377), (18, 32596), (Start: 20 @32734 has 4 MA's), (22, 32821), (27, 32869), (31, 32932), (33, 32962), (37, 32989), (38, 32998), (41, 33016), (42, 33019), (45, 33073), (47, 33139), (64, 33532), (66, 33565), (70, 33685), (80, 33919), (100, 34123), (101, 34126), (109, 34183), (110, 34186), (111, 34198), (114, 34222), (117, 34240), (119, 34243), (120, 34255), (122, 34288), (126, 34330), (132, 34456), (133, 34459), (142, 34624), (145, 34678), (149, 34741), (150, 34750), (153, 34924), (160, 35029), (167, 35140), (170, 35161), (179, 35284), (180, 35290), (183, 35332), (184, 35350), (196, 35494), (198, 35536), (202, 35641),

Gene: YoungMoneyMata_88 Start: 30902, Stop: 34615, Start Num: 1

Candidate Starts for YoungMoneyMata_88:

(Start: 1 @30902 has 173 MA's), (3, 30983), (5, 31004), (6, 31028), (8, 31073), (9, 31100), (10, 31103), (11, 31115), (12, 31133), (13, 31136), (18, 31355), (Start: 20 @31493 has 4 MA's), (22, 31580), (27, 31628), (31, 31691), (33, 31721), (37, 31748), (38, 31757), (41, 31775), (42, 31778), (45, 31832), (47, 31898), (64, 32291), (66, 32324), (70, 32444), (80, 32678), (100, 32882), (101, 32885), (109, 32942), (110, 32945), (111, 32957), (114, 32981), (117, 32999), (119, 33002), (120, 33014), (122, 33047), (126, 33089), (132, 33215), (133, 33218), (142, 33383), (145, 33437), (149, 33500), (150, 33509), (153, 33683), (160, 33788), (167, 33899), (170, 33920), (179, 34043), (180, 34049), (183, 34091), (184, 34109), (196, 34253), (198, 34295), (202, 34400),

Gene: Yucca_88 Start: 32068, Stop: 35778, Start Num: 1

Candidate Starts for Yucca_88:

(Start: 1 @32068 has 173 MA's), (3, 32149), (5, 32170), (6, 32194), (8, 32239), (9, 32266), (10, 32269), (11, 32281), (12, 32299), (13, 32302), (18, 32521), (Start: 20 @32659 has 4 MA's), (22, 32746), (27, 32794), (31, 32857), (33, 32887), (37, 32914), (38, 32923), (42, 32944), (45, 32998), (47, 33064), (64, 33457), (66, 33490), (70, 33610), (80, 33841), (100, 34045), (101, 34048), (109, 34105), (110, 34108), (111, 34120), (114, 34144), (117, 34162), (119, 34165), (120, 34177), (122, 34210), (126, 34252), (132, 34378), (133, 34381), (142, 34546), (145, 34600), (149, 34663), (150, 34672), (153, 34846), (160, 34951), (167, 35062), (170, 35083), (179, 35206), (180, 35212), (183, 35254), (184, 35272), (196, 35416), (198, 35458), (202, 35563),

Gene: Zalkecks_89 Start: 31831, Stop: 35544, Start Num: 1

Candidate Starts for Zalkecks_89:

(Start: 1 @31831 has 173 MA's), (3, 31912), (5, 31933), (6, 31957), (8, 32002), (9, 32029), (10, 32032), (11, 32044), (12, 32062), (13, 32065), (18, 32284), (Start: 20 @32422 has 4 MA's), (22, 32509), (27, 32557), (31, 32620), (33, 32650), (37, 32677), (38, 32686), (41, 32704), (42, 32707), (45, 32761), (47, 32827), (64, 33220), (66, 33253), (70, 33373), (80, 33607), (100, 33811), (101, 33814), (109, 33871), (110, 33874), (111, 33886), (114, 33910), (117, 33928), (119, 33931), (120, 33943), (122, 33976), (126, 34018), (132, 34144), (133, 34147), (142, 34312), (145, 34366), (149, 34429), (150, 34438), (153, 34612), (160, 34717), (167, 34828), (170, 34849), (179, 34972), (180, 34978), (183, 35020), (184, 35038), (196, 35182), (198, 35224), (202, 35329),

Gene: Zeenon_90 Start: 32133, Stop: 35471, Start Num: 1

Candidate Starts for Zeenon_90:

(Start: 1 @32133 has 173 MA's), (3, 32214), (5, 32235), (6, 32259), (8, 32304), (9, 32331), (10, 32334), (11, 32346), (12, 32364), (13, 32367), (18, 32586), (Start: 20 @32724 has 4 MA's), (22, 32811), (27, 32859), (31, 32922), (33, 32952), (37, 32979), (38, 32988), (41, 33006), (42, 33009), (45, 33063), (47, 33129), (64, 33522), (66, 33555), (70, 33675), (80, 33906), (100, 34110), (101, 34113), (109, 34170), (110, 34173), (111, 34185), (114, 34209), (117, 34227), (119, 34230), (120, 34242), (122, 34275), (126, 34317), (142, 34458), (145, 34512), (149, 34575), (150, 34584), (153, 34758), (160, 34863), (167, 34974), (170, 34995), (196, 35130), (198, 35172), (202, 35256),

Gene: ZygoTaiga_87 Start: 32147, Stop: 35860, Start Num: 1

Candidate Starts for ZygoTaiga_87:

(Start: 1 @32147 has 173 MA's), (3, 32228), (5, 32249), (6, 32273), (8, 32318), (9, 32345), (10, 32348), (11, 32360), (12, 32378), (13, 32381), (18, 32600), (Start: 20 @32738 has 4 MA's), (22, 32825), (27, 32873), (31, 32936), (33, 32966), (37, 32993), (38, 33002), (41, 33020), (42, 33023), (45, 33077), (47, 33143), (64, 33536), (66, 33569), (70, 33689), (80, 33923), (100, 34127), (101, 34130), (109, 34187), (110, 34190), (111, 34202), (114, 34226), (117, 34244), (119, 34247), (120, 34259), (122, 34292), (126, 34334), (132, 34460), (133, 34463), (142, 34628), (145, 34682), (149, 34745), (150, 34754), (153, 34928), (160, 35033), (167, 35144), (170, 35165), (179, 35288), (180, 35294), (183, 35336), (184, 35354), (196, 35498), (198, 35540), (202, 35645),