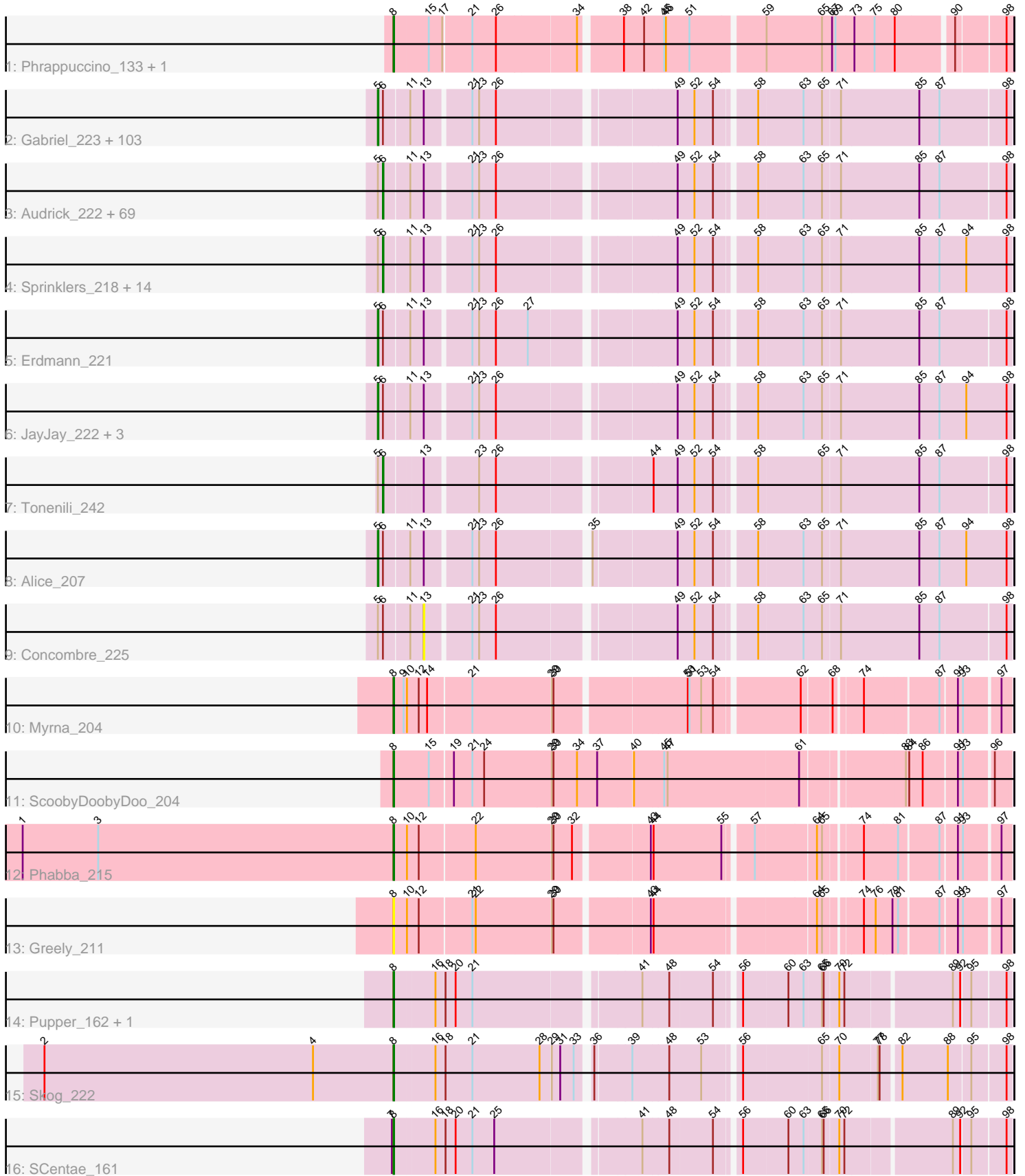


Pham 215847



Note: Tracks are now grouped by subcluster and scaled. Switching in subcluster is indicated by changes in track color. Track scale is now set by default to display the region 30 bp upstream of start 1 to 30 bp downstream of the last possible start. If this default region is judged to be packed too tightly with annotated starts, the track will be further scaled to only show that region of the ORF with annotated starts. This action will be indicated by adding "Zoomed" to the title. For starts, yellow indicates the location of called starts comprised solely of Glimmer/GeneMark auto-annotations, green indicates the location of called starts with at least 1 manual gene annotation.

Pham 215847 Report

This analysis was run 02/22/25 on database version 588.

Pham number 215847 has 207 members, 26 are drafts.

Phages represented in each track:

- Track 1 : Phrappuccino_133, Settecandela_133
- Track 2 : Gabriel_223, LRRHood_213, Drazdys_218, SrishMeg2525_217, Loanshark_217, Ghost_220, Nidhogg_221, Nappy_221, JPickles_216, Bipolarisk_218, Iota_215, ValleyTerrace_221, Catera_212, ChaylaJr_218, ErnieJ_213, Naija_221, Delylah_222, Spud_214, BadAgartude_214, CindyLou_221, Ewok_219, Pivoine_221, Gamgam_221, Patter_221, Kboogie_224, Roots515_222, Blackdragon_215, QBert_212, Megamind_217, DirtMonster_213, Mangeria_221, Yassified_217, Gizmo_226, Burrough_222, Shelob_221, Melpomini_215, Delilah_218, EasyJones_223, Phlegm_224, Pinkcreek_204, Capablanca_225, ZygoTaiga_217, LolaVinca_218, Latch_220, McGee_219, Maby2021_220, Amataga_221, Rizal_212, Jedediah_220, ChickenPhender_216, Shnickers_218, Cane17_211, Cali_213, RoMag_215, Pier_221, StephanieG_216, YemiJoy2021_221, LifeSavor_219, Ronan_216, Phusco_218, SmallFry_220, Atlantean_220, Specks_224, Basquiat_217, Bread_215, Shrimp_222, Ngannou_217, Rahel_221, Zeenon_222, Trinitium_216, MikeLiesIn_222, Sauce_216, Blubba_209, Asterius_222, FrayBell_223, Blackbrain_217, Bxz1_210, Teardrop_217, Tortoise16_218, Jemmno_219, Janiyra_223, Turret_213, NoodleTree_226, PurduePete_220, Ading_221, Wally_218, Zalkecks_219, Tyke_218, Pio_228, Adlitam_219, Norm_220, StubbySaigey_225, BananaFence_217, Yucca_220, InigoMontoya_223, Domi_214, NedWong_219, Darko_219, LinStu_219, Daffodil_225, TinyTim_218, FudgeTart_215, ShiaLabeouf_217, Littleton_223
- Track 3 : Audrick_222, Ablatia_218, Essence_217, I3_230, SVoro_217, GlutenPhree_220, Naval22_225, DTDevon_222, SilverDipper_224, Colt_211, CharlieB_214, Grasshills_228, Koguma_219, Jezreel_217, ScottMcG_214, Dietrick_209, Ava3_219, BeanWater_212, Lethe_222, Breeniome_219, Bigswole_225, Issimir_213, Quasimodo_222, Spec_215, Izajani_218, Momo_221, Grungle_204, IkeLoa_212, Lukilu_211, ArcherS7_220, Willis_221, Derek_217, Astraea_214, Fludd_220, Jaygup_216, ET08_208, Napoleon13_217, YoungMoneyMata_219, DrPhinkDaddy_217, Pleione_224, Chargie21_217, Demodog_226, Chomp_220, ParkTD_219, Bangla1971_220, Phox_221, Primadonna_215, JulietS_213, Morizzled23_217, Salacia_220, LordLeafolot_222, Dandelion_228, EmmaElysia_224, EggyFarm_229, Lee7_220, Belieber_213, Babyland_223, Mikro_216, NuevoMundo_223, Guwapp_215, Kamryn_219, Haldule_213, JigglyPuff_227, Fongie_221, Matsumoto_219, InterFolia_223, Cactojaque_215, Tainan_221, FoxtrotP1_218, BigCity_229
- Track 4 : Sprinklers_218, Khaleesi_219, Caravan_211, Jessibeth14_220, Sebata_221, BackyardAgain_216, JustHall_214, Shaqnato_211, Bonray_222,

Flabslab_215, MoMoMixon_218, Stubby_204, HyRo_208, McWolfish_217, EmToTheThree_220

- Track 5 : Erdmann_221
- Track 6 : JayJay_222, Rabinovish_213, Shifa_197, DeejaClivia_208
- Track 7 : Tonenili_242
- Track 8 : Alice_207
- Track 9 : Concombre_225
- Track 10 : Myrna_204
- Track 11 : ScoobyDoobyDoo_204
- Track 12 : Phabba_215
- Track 13 : Greely_211
- Track 14 : Pupper_162, CherryTomatoes_163
- Track 15 : Skog_222
- Track 16 : SCentae_161

Summary of Final Annotations (See graph section above for start numbers):

The start number called the most often in the published annotations is 5, it was called in 107 of the 181 non-draft genes in the pham.

Genes that call this "Most Annotated" start:

- Ading_221, Adlitam_219, Alice_207, Amataga_221, Asterius_222, Atlantean_220, BadAgartude_214, BananaFence_217, Basquiat_217, Bipolarisk_218, Blackbrain_217, Blackdragon_215, Blubba_209, Bread_215, Burrough_222, Bxz1_210, Cali_213, Cane17_211, Capablanca_225, Catera_212, ChaylaJr_218, ChickenPhender_216, CindyLou_221, Daffodil_225, Darko_219, DeejaClivia_208, Delilah_218, Delylah_222, DirtMonster_213, Domi_214, Drazdys_218, EasyJones_223, Erdmann_221, ErnieJ_213, Ewok_219, FrayBell_223, FudgeTart_215, Gabriel_223, Gamgam_221, Ghost_220, Gizmo_226, InigoMontoya_223, Iota_215, JPickles_216, Janiyra_223, JayJay_222, Jedediah_220, Jemmno_219, Kboogie_224, LRRHood_213, Latch_220, LifeSavor_219, LinStu_219, Littleton_223, Loanshark_217, LolaVinca_218, Maby2021_220, Mangeria_221, McGee_219, Megamind_217, Melpomini_215, MikeLiesIn_222, Naija_221, Nappy_221, NedWong_219, Ngannou_217, Nidhogg_221, NoodleTree_226, Norm_220, Patter_221, Phlegm_224, Phusco_218, Pier_221, Pinkcreek_204, Pio_228, Pivoine_221, PurduePete_220, QBert_212, Rabinovish_213, Rahel_221, Rizal_212, RoMag_215, Ronan_216, Roots515_222, Sauce_216, Shelob_221, ShiaLabeouf_217, Shifa_197, Shnickers_218, Shrimp_222, SmallFry_220, Specks_224, Spud_214, SrishMeg2525_217, StephanieG_216, StubbySaigey_225, Teardrop_217, TinyTim_218, Tortoise16_218, Trinitium_216, Turret_213, Tyke_218, ValleyTerrace_221, Wally_218, Yassified_217, YemiJoy2021_221, Yucca_220, Zalkecks_219, Zeenon_222, ZygoTaiga_217,

Genes that have the "Most Annotated" start but do not call it:

- Ablatia_218, ArcherS7_220, Astraea_214, Audrick_222, Ava3_219, Babyland_223, BackyardAgain_216, Bangla1971_220, BeanWater_212, Belieber_213, BigCity_229, Bigswole_225, Bonray_222, Breeniome_219, Cactojaque_215, Caravan_211, Chargie21_217, CharlieB_214, Chomp_220, Colt_211, Concombre_225, DTDevon_222, Dandelion_228, Demodog_226, Derek_217, Dietrick_209, DrPhinkDaddy_217, ET08_208, EggyFarm_229, EmToTheThree_220,

EmmaElysia_224, Essence_217, Flabslab_215, Fludd_220, Fongie_221, FoxtrotP1_218, GlutenPhree_220, Grasshills_228, Grungle_204, Guwapp_215, Halldule_213, HyRo_208, I3_230, IkeLoa_212, InterFolia_223, Issimir_213, Izajani_218, Jaygup_216, Jessibeth14_220, Jezreel_217, JigglyPuff_227, JulietS_213, JustHall_214, Kamryn_219, Khaleesi_219, Koguma_219, Lee7_220, Lethe_222, LordLeafolot_222, Lukilu_211, Matsumoto_219, McWolfish_217, Mikro_216, MoMoMixon_218, Momo_221, Morizzled23_217, Napoleon13_217, Naval22_225, NuevoMundo_223, ParkTD_219, Phox_221, Pleione_224, Primadonna_215, Quasimodo_222, SVoro_217, Salacia_220, ScottMcG_214, Sebata_221, Shaqnato_211, SilverDipper_224, Spec_215, Sprinklers_218, Stubby_204, Tainan_221, Tonenili_242, Willis_221, YoungMoneyMata_219,

Genes that do not have the "Most Annotated" start:

• CherryTomatoes_163, Greely_211, Myrna_204, Phabba_215, Phrappuccino_133, Pupper_162, SCentae_161, ScoobyDoobyDoo_204, Settecandela_133, Skog_222,

Summary by start number:

Start 5:

- Found in 197 of 207 (95.2%) of genes in pham
- Manual Annotations of this start: 107 of 181
- Called 55.8% of time when present
- Phage (with cluster) where this start called: Ading_221 (C1), Adlitam_219 (C1), Alice_207 (C1), Amataga_221 (C1), Asterius_222 (C1), Atlantean_220 (C1), BadAgartude_214 (C1), BananaFence_217 (C1), Basquiat_217 (C1), Bipolarisk_218 (C1), Blackbrain_217 (C1), Blackdragon_215 (C1), Blubba_209 (C1), Bread_215 (C1), Burrough_222 (C1), Bxz1_210 (C1), Cali_213 (C1), Cane17_211 (C1), Capablanca_225 (C1), Catera_212 (C1), ChaylaJr_218 (C1), ChickenPhender_216 (C1), CindyLou_221 (C1), Daffodil_225 (C1), Darko_219 (C1), DeejaClivia_208 (C1), Delilah_218 (C1), Delylah_222 (C1), DirtMonster_213 (C1), Domi_214 (C1), Drazdys_218 (C1), EasyJones_223 (C1), Erdmann_221 (C1), ErnieJ_213 (C1), Ewok_219 (C1), FrayBell_223 (C1), FudgeTart_215 (C1), Gabriel_223 (C1), Gamgam_221 (C1), Ghost_220 (C1), Gizmo_226 (C1), InigoMontoya_223 (C1), Iota_215 (C1), JPickles_216 (C1), Janiyra_223 (C1), JayJay_222 (C1), Jediah_220 (C1), Jemmno_219 (C1), Kboogie_224 (C1), LRRHood_213 (C1), Latch_220 (C1), LifeSavor_219 (C1), LinStu_219 (C1), Littleton_223 (C1), Loanshark_217 (C1), LolaVinca_218 (C1), Maby2021_220 (C1), Mangeria_221 (C1), McGee_219 (C1), Megamind_217 (C1), Melpomini_215 (C1), MikeLiesIn_222 (C1), Naija_221 (C1), Nappy_221 (C1), NedWong_219 (C1), Ngannou_217 (C1), Nidhogg_221 (C1), NoodleTree_226 (C1), Norm_220 (C1), Patter_221 (C1), Phlegm_224 (C1), Phusco_218 (C1), Pier_221 (C1), Pinkcreek_204 (C1), Pio_228 (C1), Pivoine_221 (C1), PurduePete_220 (C1), QBert_212 (C1), Rabinovish_213 (C1), Rahel_221 (C1), Rizal_212 (C1), RoMag_215 (C1), Ronan_216 (C1), Roots515_222 (C1), Sauce_216 (C1), Shelob_221 (C1), ShiaLabeouf_217 (C1), Shifa_197 (C1), Shnickers_218 (C1), Shrimp_222 (C1), SmallFry_220 (C1), Specks_224 (C1), Spud_214 (C1), SrishMeg2525_217 (C1), StephanieG_216 (C1), StubbySaigey_225 (C1), Teardrop_217 (C1), TinyTim_218 (C1), Tortoise16_218 (C1), Trinitium_216 (C1), Turret_213 (C1), Tyke_218 (C1), ValleyTerrace_221 (C1), Wally_218 (C1), Yassified_217 (C1), YemiJoy2021_221 (C1), Yucca_220 (C1), Zalkecks_219 (C1), Zeenon_222 (C1), ZygoTaiga_217 (C1),

Start 6:

- Found in 197 of 207 (95.2%) of genes in pham

- Manual Annotations of this start: 65 of 181
- Called 43.7% of time when present
- Phage (with cluster) where this start called: Ablatia_218 (C1), ArcherS7_220 (C1), Astraea_214 (C1), Audrick_222 (C1), Ava3_219 (C1), Babyland_223 (C1), BackyardAgain_216 (C1), Bangla1971_220 (C1), BeanWater_212 (C1), Belieber_213 (C1), BigCity_229 (C1), Bigswole_225 (C1), Bonray_222 (C1), Breeniome_219 (C1), Cactojaque_215 (C1), Caravan_211 (C1), Chargie21_217 (C1), CharlieB_214 (C1), Chomp_220 (C1), Colt_211 (C1), DTDevon_222 (C1), Dandelion_228 (C1), Demodog_226 (C1), Derek_217 (C1), Dietrick_209 (C1), DrPhinkDaddy_217 (C1), ET08_208 (C1), EggyFarm_229 (C1), EmToTheThree_220 (C1), EmmaElysia_224 (C1), Essence_217 (C1), Flabslab_215 (C1), Fludd_220 (C1), Fongie_221 (C1), FoxtrotP1_218 (C1), GlutenPhree_220 (C1), Grasshills_228 (C1), Grungle_204 (C1), Guwapp_215 (C1), Halldule_213 (C1), HyRo_208 (C1), I3_230 (C1), IkeLoa_212 (C1), InterFolia_223 (C1), Issimir_213 (C1), Izajani_218 (C1), Jaygup_216 (C1), Jessibeth14_220 (C1), Jezreel_217 (C1), JigglyPuff_227 (C1), JulietS_213 (C1), JustHall_214 (C1), Kamryn_219 (C1), Khaleesi_219 (C1), Koguma_219 (C1), Lee7_220 (C1), Lethe_222 (C1), LordLeafolot_222 (C1), Lukilu_211 (C1), Matsumoto_219 (C1), McWolfish_217 (C1), Mikro_216 (C1), MoMoMixon_218 (C1), Momo_221 (C1), Morizzled23_217 (C1), Napoleon13_217 (C1), Naval22_225 (C1), NuevoMundo_223 (C1), ParkTD_219 (C1), Phox_221 (C1), Pleione_224 (C1), Primadonna_215 (C1), Quasimodo_222 (C1), SVoro_217 (C1), Salacia_220 (C1), ScottMcG_214 (C1), Sebata_221 (C1), Shaqnato_211 (C1), SilverDipper_224 (C1), Spec_215 (C1), Sprinklers_218 (C1), Stubby_204 (C1), Tainan_221 (C1), Tonenili_242 (C1), Willis_221 (C1), YoungMoneyMata_219 (C1),

Start 8:

- Found in 10 of 207 (4.8%) of genes in pham
- Manual Annotations of this start: 9 of 181
- Called 100.0% of time when present
- Phage (with cluster) where this start called: CherryTomatoes_163 (DO), Greely_211 (C2), Myrna_204 (C2), Phabba_215 (C2), Phrappuccino_133 (AA), Pupper_162 (DO), SCentae_161 (DO), ScoobyDoobyDoo_204 (C2), Settecandela_133 (AA), Skog_222 (DO),

Start 13:

- Found in 197 of 207 (95.2%) of genes in pham
- No Manual Annotations of this start.
- Called 0.5% of time when present
- Phage (with cluster) where this start called: Concombre_225 (C1),

Summary by clusters:

There are 4 clusters represented in this pham: AA, C2, C1, DO,

Info for manual annotations of cluster AA:

- Start number 8 was manually annotated 2 times for cluster AA.

Info for manual annotations of cluster C1:

- Start number 5 was manually annotated 107 times for cluster C1.
- Start number 6 was manually annotated 65 times for cluster C1.

Info for manual annotations of cluster C2:

- Start number 8 was manually annotated 3 times for cluster C2.

Info for manual annotations of cluster DO:

•Start number 8 was manually annotated 4 times for cluster DO.

Gene Information:

Gene: Ablatia_218 Start: 122705, Stop: 123721, Start Num: 6

Candidate Starts for Ablatia_218:

(Start: 5 @122696 has 107 MA's), (Start: 6 @122705 has 65 MA's), (11, 122744), (13, 122765), (21, 122840), (23, 122852), (26, 122882), (49, 123164), (52, 123194), (54, 123227), (58, 123290), (63, 123368), (65, 123401), (71, 123431), (85, 123566), (87, 123602), (98, 123716),

Gene: Ading_221 Start: 124316, Stop: 125341, Start Num: 5

Candidate Starts for Ading_221:

(Start: 5 @124316 has 107 MA's), (Start: 6 @124325 has 65 MA's), (11, 124364), (13, 124385), (21, 124460), (23, 124472), (26, 124502), (49, 124784), (52, 124814), (54, 124847), (58, 124910), (63, 124988), (65, 125021), (71, 125051), (85, 125186), (87, 125222), (98, 125336),

Gene: Adlitam_219 Start: 122920, Stop: 123945, Start Num: 5

Candidate Starts for Adlitam_219:

(Start: 5 @122920 has 107 MA's), (Start: 6 @122929 has 65 MA's), (11, 122968), (13, 122989), (21, 123064), (23, 123076), (26, 123106), (49, 123388), (52, 123418), (54, 123451), (58, 123514), (63, 123592), (65, 123625), (71, 123655), (85, 123790), (87, 123826), (98, 123940),

Gene: Alice_207 Start: 121883, Stop: 122914, Start Num: 5

Candidate Starts for Alice_207:

(Start: 5 @121883 has 107 MA's), (Start: 6 @121892 has 65 MA's), (11, 121931), (13, 121952), (21, 122027), (23, 122039), (26, 122069), (35, 122219), (49, 122351), (52, 122381), (54, 122414), (58, 122477), (63, 122555), (65, 122588), (71, 122618), (85, 122753), (87, 122789), (94, 122837), (98, 122909),

Gene: Amataga_221 Start: 122732, Stop: 123757, Start Num: 5

Candidate Starts for Amataga_221:

(Start: 5 @122732 has 107 MA's), (Start: 6 @122741 has 65 MA's), (11, 122780), (13, 122801), (21, 122876), (23, 122888), (26, 122918), (49, 123200), (52, 123230), (54, 123263), (58, 123326), (63, 123404), (65, 123437), (71, 123467), (85, 123602), (87, 123638), (98, 123752),

Gene: ArcherS7_220 Start: 123783, Stop: 124799, Start Num: 6

Candidate Starts for ArcherS7_220:

(Start: 5 @123774 has 107 MA's), (Start: 6 @123783 has 65 MA's), (11, 123822), (13, 123843), (21, 123918), (23, 123930), (26, 123960), (49, 124242), (52, 124272), (54, 124305), (58, 124368), (63, 124446), (65, 124479), (71, 124509), (85, 124644), (87, 124680), (98, 124794),

Gene: Asterius_222 Start: 123141, Stop: 124166, Start Num: 5

Candidate Starts for Asterius_222:

(Start: 5 @123141 has 107 MA's), (Start: 6 @123150 has 65 MA's), (11, 123189), (13, 123210), (21, 123285), (23, 123297), (26, 123327), (49, 123609), (52, 123639), (54, 123672), (58, 123735), (63, 123813), (65, 123846), (71, 123876), (85, 124011), (87, 124047), (98, 124161),

Gene: Astraea_214 Start: 122345, Stop: 123361, Start Num: 6

Candidate Starts for Astraea_214:

(Start: 5 @122336 has 107 MA's), (Start: 6 @122345 has 65 MA's), (11, 122384), (13, 122405), (21, 122480), (23, 122492), (26, 122522), (49, 122804), (52, 122834), (54, 122867), (58, 122930), (63, 123008), (65, 123041), (71, 123071), (85, 123206), (87, 123242), (98, 123356),

Gene: Atlantean_220 Start: 122732, Stop: 123757, Start Num: 5

Candidate Starts for Atlantean_220:

(Start: 5 @122732 has 107 MA's), (Start: 6 @122741 has 65 MA's), (11, 122780), (13, 122801), (21, 122876), (23, 122888), (26, 122918), (49, 123200), (52, 123230), (54, 123263), (58, 123326), (63, 123404), (65, 123437), (71, 123467), (85, 123602), (87, 123638), (98, 123752),

Gene: Audrick_222 Start: 122631, Stop: 123647, Start Num: 6

Candidate Starts for Audrick_222:

(Start: 5 @122622 has 107 MA's), (Start: 6 @122631 has 65 MA's), (11, 122670), (13, 122691), (21, 122766), (23, 122778), (26, 122808), (49, 123090), (52, 123120), (54, 123153), (58, 123216), (63, 123294), (65, 123327), (71, 123357), (85, 123492), (87, 123528), (98, 123642),

Gene: Ava3_219 Start: 123163, Stop: 124179, Start Num: 6

Candidate Starts for Ava3_219:

(Start: 5 @123154 has 107 MA's), (Start: 6 @123163 has 65 MA's), (11, 123202), (13, 123223), (21, 123298), (23, 123310), (26, 123340), (49, 123622), (52, 123652), (54, 123685), (58, 123748), (63, 123826), (65, 123859), (71, 123889), (85, 124024), (87, 124060), (98, 124174),

Gene: Babyland_223 Start: 123518, Stop: 124534, Start Num: 6

Candidate Starts for Babyland_223:

(Start: 5 @123509 has 107 MA's), (Start: 6 @123518 has 65 MA's), (11, 123557), (13, 123578), (21, 123653), (23, 123665), (26, 123695), (49, 123977), (52, 124007), (54, 124040), (58, 124103), (63, 124181), (65, 124214), (71, 124244), (85, 124379), (87, 124415), (98, 124529),

Gene: BackyardAgain_216 Start: 120694, Stop: 121716, Start Num: 6

Candidate Starts for BackyardAgain_216:

(Start: 5 @120685 has 107 MA's), (Start: 6 @120694 has 65 MA's), (11, 120733), (13, 120754), (21, 120829), (23, 120841), (26, 120871), (49, 121153), (52, 121183), (54, 121216), (58, 121279), (63, 121357), (65, 121390), (71, 121420), (85, 121555), (87, 121591), (94, 121639), (98, 121711),

Gene: BadAgartude_214 Start: 122822, Stop: 123847, Start Num: 5

Candidate Starts for BadAgartude_214:

(Start: 5 @122822 has 107 MA's), (Start: 6 @122831 has 65 MA's), (11, 122870), (13, 122891), (21, 122966), (23, 122978), (26, 123008), (49, 123290), (52, 123320), (54, 123353), (58, 123416), (63, 123494), (65, 123527), (71, 123557), (85, 123692), (87, 123728), (98, 123842),

Gene: BananaFence_217 Start: 122965, Stop: 123990, Start Num: 5

Candidate Starts for BananaFence_217:

(Start: 5 @122965 has 107 MA's), (Start: 6 @122974 has 65 MA's), (11, 123013), (13, 123034), (21, 123109), (23, 123121), (26, 123151), (49, 123433), (52, 123463), (54, 123496), (58, 123559), (63, 123637), (65, 123670), (71, 123700), (85, 123835), (87, 123871), (98, 123985),

Gene: Bangla1971_220 Start: 122747, Stop: 123763, Start Num: 6

Candidate Starts for Bangla1971_220:

(Start: 5 @122738 has 107 MA's), (Start: 6 @122747 has 65 MA's), (11, 122786), (13, 122807), (21, 122882), (23, 122894), (26, 122924), (49, 123206), (52, 123236), (54, 123269), (58, 123332), (63, 123410), (65, 123443), (71, 123473), (85, 123608), (87, 123644), (98, 123758),

Gene: Basquiat_217 Start: 121251, Stop: 122276, Start Num: 5

Candidate Starts for Basquiat_217:

(Start: 5 @121251 has 107 MA's), (Start: 6 @121260 has 65 MA's), (11, 121299), (13, 121320), (21, 121395), (23, 121407), (26, 121437), (49, 121719), (52, 121749), (54, 121782), (58, 121845), (63, 121923), (65, 121956), (71, 121986), (85, 122121), (87, 122157), (98, 122271),

Gene: BeanWater_212 Start: 121774, Stop: 122790, Start Num: 6

Candidate Starts for BeanWater_212:

(Start: 5 @121765 has 107 MA's), (Start: 6 @121774 has 65 MA's), (11, 121813), (13, 121834), (21, 121909), (23, 121921), (26, 121951), (49, 122233), (52, 122263), (54, 122296), (58, 122359), (63, 122437), (65, 122470), (71, 122500), (85, 122635), (87, 122671), (98, 122785),

Gene: Belieber_213 Start: 120574, Stop: 121590, Start Num: 6

Candidate Starts for Belieber_213:

(Start: 5 @120565 has 107 MA's), (Start: 6 @120574 has 65 MA's), (11, 120613), (13, 120634), (21, 120709), (23, 120721), (26, 120751), (49, 121033), (52, 121063), (54, 121096), (58, 121159), (63, 121237), (65, 121270), (71, 121300), (85, 121435), (87, 121471), (98, 121585),

Gene: BigCity_229 Start: 125345, Stop: 126361, Start Num: 6

Candidate Starts for BigCity_229:

(Start: 5 @125336 has 107 MA's), (Start: 6 @125345 has 65 MA's), (11, 125384), (13, 125405), (21, 125480), (23, 125492), (26, 125522), (49, 125804), (52, 125834), (54, 125867), (58, 125930), (63, 126008), (65, 126041), (71, 126071), (85, 126206), (87, 126242), (98, 126356),

Gene: Bigswole_225 Start: 125199, Stop: 126215, Start Num: 6

Candidate Starts for Bigswole_225:

(Start: 5 @125190 has 107 MA's), (Start: 6 @125199 has 65 MA's), (11, 125238), (13, 125259), (21, 125334), (23, 125346), (26, 125376), (49, 125658), (52, 125688), (54, 125721), (58, 125784), (63, 125862), (65, 125895), (71, 125925), (85, 126060), (87, 126096), (98, 126210),

Gene: Bipolarisk_218 Start: 123423, Stop: 124448, Start Num: 5

Candidate Starts for Bipolarisk_218:

(Start: 5 @123423 has 107 MA's), (Start: 6 @123432 has 65 MA's), (11, 123471), (13, 123492), (21, 123567), (23, 123579), (26, 123609), (49, 123891), (52, 123921), (54, 123954), (58, 124017), (63, 124095), (65, 124128), (71, 124158), (85, 124293), (87, 124329), (98, 124443),

Gene: Blackbrain_217 Start: 122324, Stop: 123349, Start Num: 5

Candidate Starts for Blackbrain_217:

(Start: 5 @122324 has 107 MA's), (Start: 6 @122333 has 65 MA's), (11, 122372), (13, 122393), (21, 122468), (23, 122480), (26, 122510), (49, 122792), (52, 122822), (54, 122855), (58, 122918), (63, 122996), (65, 123029), (71, 123059), (85, 123194), (87, 123230), (98, 123344),

Gene: Blackdragon_215 Start: 123056, Stop: 124081, Start Num: 5

Candidate Starts for Blackdragon_215:

(Start: 5 @123056 has 107 MA's), (Start: 6 @123065 has 65 MA's), (11, 123104), (13, 123125), (21, 123200), (23, 123212), (26, 123242), (49, 123524), (52, 123554), (54, 123587), (58, 123650), (63, 123728), (65, 123761), (71, 123791), (85, 123926), (87, 123962), (98, 124076),

Gene: Blubba_209 Start: 126405, Stop: 127430, Start Num: 5

Candidate Starts for Blubba_209:

(Start: 5 @126405 has 107 MA's), (Start: 6 @126414 has 65 MA's), (11, 126453), (13, 126474), (21, 126549), (23, 126561), (26, 126591), (49, 126873), (52, 126903), (54, 126936), (58, 126999), (63, 127077), (65, 127110), (71, 127140), (85, 127275), (87, 127311), (98, 127425),

Gene: Bonray_222 Start: 124834, Stop: 125856, Start Num: 6

Candidate Starts for Bonray_222:

(Start: 5 @124825 has 107 MA's), (Start: 6 @124834 has 65 MA's), (11, 124873), (13, 124894), (21, 124969), (23, 124981), (26, 125011), (49, 125293), (52, 125323), (54, 125356), (58, 125419), (63, 125497), (65, 125530), (71, 125560), (85, 125695), (87, 125731), (94, 125779), (98, 125851),

Gene: Bread_215 Start: 122835, Stop: 123860, Start Num: 5

Candidate Starts for Bread_215:

(Start: 5 @122835 has 107 MA's), (Start: 6 @122844 has 65 MA's), (11, 122883), (13, 122904), (21, 122979), (23, 122991), (26, 123021), (49, 123303), (52, 123333), (54, 123366), (58, 123429), (63, 123507), (65, 123540), (71, 123570), (85, 123705), (87, 123741), (98, 123855),

Gene: Breeniome_219 Start: 122298, Stop: 123314, Start Num: 6

Candidate Starts for Breeniome_219:

(Start: 5 @122289 has 107 MA's), (Start: 6 @122298 has 65 MA's), (11, 122337), (13, 122358), (21, 122433), (23, 122445), (26, 122475), (49, 122757), (52, 122787), (54, 122820), (58, 122883), (63, 122961), (65, 122994), (71, 123024), (85, 123159), (87, 123195), (98, 123309),

Gene: Burrough_222 Start: 124605, Stop: 125630, Start Num: 5

Candidate Starts for Burrough_222:

(Start: 5 @124605 has 107 MA's), (Start: 6 @124614 has 65 MA's), (11, 124653), (13, 124674), (21, 124749), (23, 124761), (26, 124791), (49, 125073), (52, 125103), (54, 125136), (58, 125199), (63, 125277), (65, 125310), (71, 125340), (85, 125475), (87, 125511), (98, 125625),

Gene: Bxz1_210 Start: 124811, Stop: 125836, Start Num: 5

Candidate Starts for Bxz1_210:

(Start: 5 @124811 has 107 MA's), (Start: 6 @124820 has 65 MA's), (11, 124859), (13, 124880), (21, 124955), (23, 124967), (26, 124997), (49, 125279), (52, 125309), (54, 125342), (58, 125405), (63, 125483), (65, 125516), (71, 125546), (85, 125681), (87, 125717), (98, 125831),

Gene: Cactojaque_215 Start: 121280, Stop: 122296, Start Num: 6

Candidate Starts for Cactojaque_215:

(Start: 5 @121271 has 107 MA's), (Start: 6 @121280 has 65 MA's), (11, 121319), (13, 121340), (21, 121415), (23, 121427), (26, 121457), (49, 121739), (52, 121769), (54, 121802), (58, 121865), (63, 121943), (65, 121976), (71, 122006), (85, 122141), (87, 122177), (98, 122291),

Gene: Cali_213 Start: 123206, Stop: 124231, Start Num: 5

Candidate Starts for Cali_213:

(Start: 5 @123206 has 107 MA's), (Start: 6 @123215 has 65 MA's), (11, 123254), (13, 123275), (21, 123350), (23, 123362), (26, 123392), (49, 123674), (52, 123704), (54, 123737), (58, 123800), (63, 123878), (65, 123911), (71, 123941), (85, 124076), (87, 124112), (98, 124226),

Gene: Cane17_211 Start: 126814, Stop: 127839, Start Num: 5

Candidate Starts for Cane17_211:

(Start: 5 @126814 has 107 MA's), (Start: 6 @126823 has 65 MA's), (11, 126862), (13, 126883), (21, 126958), (23, 126970), (26, 127000), (49, 127282), (52, 127312), (54, 127345), (58, 127408), (63, 127486), (65, 127519), (71, 127549), (85, 127684), (87, 127720), (98, 127834),

Gene: Capablanca_225 Start: 125420, Stop: 126445, Start Num: 5

Candidate Starts for Capablanca_225:

(Start: 5 @125420 has 107 MA's), (Start: 6 @125429 has 65 MA's), (11, 125468), (13, 125489), (21, 125564), (23, 125576), (26, 125606), (49, 125888), (52, 125918), (54, 125951), (58, 126014), (63, 126092), (65, 126125), (71, 126155), (85, 126290), (87, 126326), (98, 126440),

Gene: Caravan_211 Start: 123549, Stop: 124571, Start Num: 6

Candidate Starts for Caravan_211:

(Start: 5 @123540 has 107 MA's), (Start: 6 @123549 has 65 MA's), (11, 123588), (13, 123609), (21, 123684), (23, 123696), (26, 123726), (49, 124008), (52, 124038), (54, 124071), (58, 124134), (63, 124212), (65, 124245), (71, 124275), (85, 124410), (87, 124446), (94, 124494), (98, 124566),

Gene: Catera_212 Start: 121945, Stop: 122970, Start Num: 5

Candidate Starts for Catera_212:

(Start: 5 @121945 has 107 MA's), (Start: 6 @121954 has 65 MA's), (11, 121993), (13, 122014), (21, 122089), (23, 122101), (26, 122131), (49, 122413), (52, 122443), (54, 122476), (58, 122539), (63, 122617), (65, 122650), (71, 122680), (85, 122815), (87, 122851), (98, 122965),

Gene: Chargie21_217 Start: 121260, Stop: 122276, Start Num: 6

Candidate Starts for Chargie21_217:

(Start: 5 @121251 has 107 MA's), (Start: 6 @121260 has 65 MA's), (11, 121299), (13, 121320), (21, 121395), (23, 121407), (26, 121437), (49, 121719), (52, 121749), (54, 121782), (58, 121845), (63, 121923), (65, 121956), (71, 121986), (85, 122121), (87, 122157), (98, 122271),

Gene: CharlieB_214 Start: 122969, Stop: 123985, Start Num: 6

Candidate Starts for CharlieB_214:

(Start: 5 @122960 has 107 MA's), (Start: 6 @122969 has 65 MA's), (11, 123008), (13, 123029), (21, 123104), (23, 123116), (26, 123146), (49, 123428), (52, 123458), (54, 123491), (58, 123554), (63, 123632), (65, 123665), (71, 123695), (85, 123830), (87, 123866), (98, 123980),

Gene: ChaylaJr_218 Start: 121939, Stop: 122964, Start Num: 5

Candidate Starts for ChaylaJr_218:

(Start: 5 @121939 has 107 MA's), (Start: 6 @121948 has 65 MA's), (11, 121987), (13, 122008), (21, 122083), (23, 122095), (26, 122125), (49, 122407), (52, 122437), (54, 122470), (58, 122533), (63, 122611), (65, 122644), (71, 122674), (85, 122809), (87, 122845), (98, 122959),

Gene: CherryTomatoes_163 Start: 114662, Stop: 115654, Start Num: 8

Candidate Starts for CherryTomatoes_163:

(Start: 8 @114662 has 9 MA's), (16, 114731), (18, 114746), (20, 114764), (21, 114794), (41, 115061), (48, 115106), (54, 115181), (56, 115217), (60, 115295), (63, 115322), (65, 115352), (66, 115355), (70, 115379), (72, 115388), (89, 115562), (92, 115574), (95, 115589), (98, 115646),

Gene: ChickenPhender_216 Start: 121398, Stop: 122423, Start Num: 5

Candidate Starts for ChickenPhender_216:

(Start: 5 @121398 has 107 MA's), (Start: 6 @121407 has 65 MA's), (11, 121446), (13, 121467), (21, 121542), (23, 121554), (26, 121584), (49, 121866), (52, 121896), (54, 121929), (58, 121992), (63, 122070), (65, 122103), (71, 122133), (85, 122268), (87, 122304), (98, 122418),

Gene: Chomp_220 Start: 124030, Stop: 125046, Start Num: 6

Candidate Starts for Chomp_220:

(Start: 5 @124021 has 107 MA's), (Start: 6 @124030 has 65 MA's), (11, 124069), (13, 124090), (21, 124165), (23, 124177), (26, 124207), (49, 124489), (52, 124519), (54, 124552), (58, 124615), (63, 124693), (65, 124726), (71, 124756), (85, 124891), (87, 124927), (98, 125041),

Gene: CindyLou_221 Start: 124281, Stop: 125306, Start Num: 5

Candidate Starts for CindyLou_221:

(Start: 5 @124281 has 107 MA's), (Start: 6 @124290 has 65 MA's), (11, 124329), (13, 124350), (21, 124425), (23, 124437), (26, 124467), (49, 124749), (52, 124779), (54, 124812), (58, 124875), (63,

124953), (65, 124986), (71, 125016), (85, 125151), (87, 125187), (98, 125301),

Gene: Colt_211 Start: 126054, Stop: 127070, Start Num: 6

Candidate Starts for Colt_211:

(Start: 5 @126045 has 107 MA's), (Start: 6 @126054 has 65 MA's), (11, 126093), (13, 126114), (21, 126189), (23, 126201), (26, 126231), (49, 126513), (52, 126543), (54, 126576), (58, 126639), (63, 126717), (65, 126750), (71, 126780), (85, 126915), (87, 126951), (98, 127065),

Gene: Concombre_225 Start: 124948, Stop: 125904, Start Num: 13

Candidate Starts for Concombre_225:

(Start: 5 @124879 has 107 MA's), (Start: 6 @124888 has 65 MA's), (11, 124927), (13, 124948), (21, 125023), (23, 125035), (26, 125065), (49, 125347), (52, 125377), (54, 125410), (58, 125473), (63, 125551), (65, 125584), (71, 125614), (85, 125749), (87, 125785), (98, 125899),

Gene: DTDevon_222 Start: 124779, Stop: 125795, Start Num: 6

Candidate Starts for DTDevon_222:

(Start: 5 @124770 has 107 MA's), (Start: 6 @124779 has 65 MA's), (11, 124818), (13, 124839), (21, 124914), (23, 124926), (26, 124956), (49, 125238), (52, 125268), (54, 125301), (58, 125364), (63, 125442), (65, 125475), (71, 125505), (85, 125640), (87, 125676), (98, 125790),

Gene: Daffodil_225 Start: 123723, Stop: 124748, Start Num: 5

Candidate Starts for Daffodil_225:

(Start: 5 @123723 has 107 MA's), (Start: 6 @123732 has 65 MA's), (11, 123771), (13, 123792), (21, 123867), (23, 123879), (26, 123909), (49, 124191), (52, 124221), (54, 124254), (58, 124317), (63, 124395), (65, 124428), (71, 124458), (85, 124593), (87, 124629), (98, 124743),

Gene: Dandelion_228 Start: 126372, Stop: 127388, Start Num: 6

Candidate Starts for Dandelion_228:

(Start: 5 @126363 has 107 MA's), (Start: 6 @126372 has 65 MA's), (11, 126411), (13, 126432), (21, 126507), (23, 126519), (26, 126549), (49, 126831), (52, 126861), (54, 126894), (58, 126957), (63, 127035), (65, 127068), (71, 127098), (85, 127233), (87, 127269), (98, 127383),

Gene: Darko_219 Start: 122969, Stop: 123994, Start Num: 5

Candidate Starts for Darko_219:

(Start: 5 @122969 has 107 MA's), (Start: 6 @122978 has 65 MA's), (11, 123017), (13, 123038), (21, 123113), (23, 123125), (26, 123155), (49, 123437), (52, 123467), (54, 123500), (58, 123563), (63, 123641), (65, 123674), (71, 123704), (85, 123839), (87, 123875), (98, 123989),

Gene: DeejaClivia_208 Start: 121099, Stop: 122130, Start Num: 5

Candidate Starts for DeejaClivia_208:

(Start: 5 @121099 has 107 MA's), (Start: 6 @121108 has 65 MA's), (11, 121147), (13, 121168), (21, 121243), (23, 121255), (26, 121285), (49, 121567), (52, 121597), (54, 121630), (58, 121693), (63, 121771), (65, 121804), (71, 121834), (85, 121969), (87, 122005), (94, 122053), (98, 122125),

Gene: Delilah_218 Start: 123853, Stop: 124878, Start Num: 5

Candidate Starts for Delilah_218:

(Start: 5 @123853 has 107 MA's), (Start: 6 @123862 has 65 MA's), (11, 123901), (13, 123922), (21, 123997), (23, 124009), (26, 124039), (49, 124321), (52, 124351), (54, 124384), (58, 124447), (63, 124525), (65, 124558), (71, 124588), (85, 124723), (87, 124759), (98, 124873),

Gene: Delylah_222 Start: 124130, Stop: 125155, Start Num: 5

Candidate Starts for Delylah_222:

(Start: 5 @124130 has 107 MA's), (Start: 6 @124139 has 65 MA's), (11, 124178), (13, 124199), (21, 124274), (23, 124286), (26, 124316), (49, 124598), (52, 124628), (54, 124661), (58, 124724), (63, 124802), (65, 124835), (71, 124865), (85, 125000), (87, 125036), (98, 125150),

Gene: Demodog_226 Start: 124898, Stop: 125914, Start Num: 6

Candidate Starts for Demodog_226:

(Start: 5 @124889 has 107 MA's), (Start: 6 @124898 has 65 MA's), (11, 124937), (13, 124958), (21, 125033), (23, 125045), (26, 125075), (49, 125357), (52, 125387), (54, 125420), (58, 125483), (63, 125561), (65, 125594), (71, 125624), (85, 125759), (87, 125795), (98, 125909),

Gene: Derek_217 Start: 123307, Stop: 124323, Start Num: 6

Candidate Starts for Derek_217:

(Start: 5 @123298 has 107 MA's), (Start: 6 @123307 has 65 MA's), (11, 123346), (13, 123367), (21, 123442), (23, 123454), (26, 123484), (49, 123766), (52, 123796), (54, 123829), (58, 123892), (63, 123970), (65, 124003), (71, 124033), (85, 124168), (87, 124204), (98, 124318),

Gene: Dietrick_209 Start: 121983, Stop: 122999, Start Num: 6

Candidate Starts for Dietrick_209:

(Start: 5 @121974 has 107 MA's), (Start: 6 @121983 has 65 MA's), (11, 122022), (13, 122043), (21, 122118), (23, 122130), (26, 122160), (49, 122442), (52, 122472), (54, 122505), (58, 122568), (63, 122646), (65, 122679), (71, 122709), (85, 122844), (87, 122880), (98, 122994),

Gene: DirtMonster_213 Start: 123202, Stop: 124227, Start Num: 5

Candidate Starts for DirtMonster_213:

(Start: 5 @123202 has 107 MA's), (Start: 6 @123211 has 65 MA's), (11, 123250), (13, 123271), (21, 123346), (23, 123358), (26, 123388), (49, 123670), (52, 123700), (54, 123733), (58, 123796), (63, 123874), (65, 123907), (71, 123937), (85, 124072), (87, 124108), (98, 124222),

Gene: Domi_214 Start: 123313, Stop: 124338, Start Num: 5

Candidate Starts for Domi_214:

(Start: 5 @123313 has 107 MA's), (Start: 6 @123322 has 65 MA's), (11, 123361), (13, 123382), (21, 123457), (23, 123469), (26, 123499), (49, 123781), (52, 123811), (54, 123844), (58, 123907), (63, 123985), (65, 124018), (71, 124048), (85, 124183), (87, 124219), (98, 124333),

Gene: DrPhinkDaddy_217 Start: 124510, Stop: 125526, Start Num: 6

Candidate Starts for DrPhinkDaddy_217:

(Start: 5 @124501 has 107 MA's), (Start: 6 @124510 has 65 MA's), (11, 124549), (13, 124570), (21, 124645), (23, 124657), (26, 124687), (49, 124969), (52, 124999), (54, 125032), (58, 125095), (63, 125173), (65, 125206), (71, 125236), (85, 125371), (87, 125407), (98, 125521),

Gene: Drazdys_218 Start: 123415, Stop: 124440, Start Num: 5

Candidate Starts for Drazdys_218:

(Start: 5 @123415 has 107 MA's), (Start: 6 @123424 has 65 MA's), (11, 123463), (13, 123484), (21, 123559), (23, 123571), (26, 123601), (49, 123883), (52, 123913), (54, 123946), (58, 124009), (63, 124087), (65, 124120), (71, 124150), (85, 124285), (87, 124321), (98, 124435),

Gene: ET08_208 Start: 123003, Stop: 124019, Start Num: 6

Candidate Starts for ET08_208:

(Start: 5 @122994 has 107 MA's), (Start: 6 @123003 has 65 MA's), (11, 123042), (13, 123063), (21, 123138), (23, 123150), (26, 123180), (49, 123462), (52, 123492), (54, 123525), (58, 123588), (63, 123666), (65, 123699), (71, 123729), (85, 123864), (87, 123900), (98, 124014),

Gene: EasyJones_223 Start: 122494, Stop: 123519, Start Num: 5

Candidate Starts for EasyJones_223:

(Start: 5 @122494 has 107 MA's), (Start: 6 @122503 has 65 MA's), (11, 122542), (13, 122563), (21, 122638), (23, 122650), (26, 122680), (49, 122962), (52, 122992), (54, 123025), (58, 123088), (63, 123166), (65, 123199), (71, 123229), (85, 123364), (87, 123400), (98, 123514),

Gene: EggyFarm_229 Start: 125346, Stop: 126362, Start Num: 6

Candidate Starts for EggyFarm_229:

(Start: 5 @125337 has 107 MA's), (Start: 6 @125346 has 65 MA's), (11, 125385), (13, 125406), (21, 125481), (23, 125493), (26, 125523), (49, 125805), (52, 125835), (54, 125868), (58, 125931), (63, 126009), (65, 126042), (71, 126072), (85, 126207), (87, 126243), (98, 126357),

Gene: EmToTheThree_220 Start: 123883, Stop: 124905, Start Num: 6

Candidate Starts for EmToTheThree_220:

(Start: 5 @123874 has 107 MA's), (Start: 6 @123883 has 65 MA's), (11, 123922), (13, 123943), (21, 124018), (23, 124030), (26, 124060), (49, 124342), (52, 124372), (54, 124405), (58, 124468), (63, 124546), (65, 124579), (71, 124609), (85, 124744), (87, 124780), (94, 124828), (98, 124900),

Gene: EmmaElysia_224 Start: 124186, Stop: 125202, Start Num: 6

Candidate Starts for EmmaElysia_224:

(Start: 5 @124177 has 107 MA's), (Start: 6 @124186 has 65 MA's), (11, 124225), (13, 124246), (21, 124321), (23, 124333), (26, 124363), (49, 124645), (52, 124675), (54, 124708), (58, 124771), (63, 124849), (65, 124882), (71, 124912), (85, 125047), (87, 125083), (98, 125197),

Gene: Erdmann_221 Start: 123845, Stop: 124870, Start Num: 5

Candidate Starts for Erdmann_221:

(Start: 5 @123845 has 107 MA's), (Start: 6 @123854 has 65 MA's), (11, 123893), (13, 123914), (21, 123989), (23, 124001), (26, 124031), (27, 124088), (49, 124313), (52, 124343), (54, 124376), (58, 124439), (63, 124517), (65, 124550), (71, 124580), (85, 124715), (87, 124751), (98, 124865),

Gene: ErnieJ_213 Start: 120673, Stop: 121698, Start Num: 5

Candidate Starts for ErnieJ_213:

(Start: 5 @120673 has 107 MA's), (Start: 6 @120682 has 65 MA's), (11, 120721), (13, 120742), (21, 120817), (23, 120829), (26, 120859), (49, 121141), (52, 121171), (54, 121204), (58, 121267), (63, 121345), (65, 121378), (71, 121408), (85, 121543), (87, 121579), (98, 121693),

Gene: Essence_217 Start: 122636, Stop: 123652, Start Num: 6

Candidate Starts for Essence_217:

(Start: 5 @122627 has 107 MA's), (Start: 6 @122636 has 65 MA's), (11, 122675), (13, 122696), (21, 122771), (23, 122783), (26, 122813), (49, 123095), (52, 123125), (54, 123158), (58, 123221), (63, 123299), (65, 123332), (71, 123362), (85, 123497), (87, 123533), (98, 123647),

Gene: Ewok_219 Start: 123751, Stop: 124776, Start Num: 5

Candidate Starts for Ewok_219:

(Start: 5 @123751 has 107 MA's), (Start: 6 @123760 has 65 MA's), (11, 123799), (13, 123820), (21, 123895), (23, 123907), (26, 123937), (49, 124219), (52, 124249), (54, 124282), (58, 124345), (63, 124423), (65, 124456), (71, 124486), (85, 124621), (87, 124657), (98, 124771),

Gene: Flabslab_215 Start: 120812, Stop: 121834, Start Num: 6

Candidate Starts for Flabslab_215:

(Start: 5 @120803 has 107 MA's), (Start: 6 @120812 has 65 MA's), (11, 120851), (13, 120872), (21, 120947), (23, 120959), (26, 120989), (49, 121271), (52, 121301), (54, 121334), (58, 121397), (63, 121475), (65, 121508), (71, 121538), (85, 121673), (87, 121709), (94, 121757), (98, 121829),

Gene: Fludd_220 Start: 122215, Stop: 123231, Start Num: 6

Candidate Starts for Fludd_220:

(Start: 5 @122206 has 107 MA's), (Start: 6 @122215 has 65 MA's), (11, 122254), (13, 122275), (21, 122350), (23, 122362), (26, 122392), (49, 122674), (52, 122704), (54, 122737), (58, 122800), (63, 122878), (65, 122911), (71, 122941), (85, 123076), (87, 123112), (98, 123226),

Gene: Fongie_221 Start: 123795, Stop: 124811, Start Num: 6

Candidate Starts for Fongie_221:

(Start: 5 @123786 has 107 MA's), (Start: 6 @123795 has 65 MA's), (11, 123834), (13, 123855), (21, 123930), (23, 123942), (26, 123972), (49, 124254), (52, 124284), (54, 124317), (58, 124380), (63, 124458), (65, 124491), (71, 124521), (85, 124656), (87, 124692), (98, 124806),

Gene: FoxtrotP1_218 Start: 124440, Stop: 125456, Start Num: 6

Candidate Starts for FoxtrotP1_218:

(Start: 5 @124431 has 107 MA's), (Start: 6 @124440 has 65 MA's), (11, 124479), (13, 124500), (21, 124575), (23, 124587), (26, 124617), (49, 124899), (52, 124929), (54, 124962), (58, 125025), (63, 125103), (65, 125136), (71, 125166), (85, 125301), (87, 125337), (98, 125451),

Gene: FrayBell_223 Start: 122284, Stop: 123309, Start Num: 5

Candidate Starts for FrayBell_223:

(Start: 5 @122284 has 107 MA's), (Start: 6 @122293 has 65 MA's), (11, 122332), (13, 122353), (21, 122428), (23, 122440), (26, 122470), (49, 122752), (52, 122782), (54, 122815), (58, 122878), (63, 122956), (65, 122989), (71, 123019), (85, 123154), (87, 123190), (98, 123304),

Gene: FudgeTart_215 Start: 122898, Stop: 123923, Start Num: 5

Candidate Starts for FudgeTart_215:

(Start: 5 @122898 has 107 MA's), (Start: 6 @122907 has 65 MA's), (11, 122946), (13, 122967), (21, 123042), (23, 123054), (26, 123084), (49, 123366), (52, 123396), (54, 123429), (58, 123492), (63, 123570), (65, 123603), (71, 123633), (85, 123768), (87, 123804), (98, 123918),

Gene: Gabriel_223 Start: 122365, Stop: 123390, Start Num: 5

Candidate Starts for Gabriel_223:

(Start: 5 @122365 has 107 MA's), (Start: 6 @122374 has 65 MA's), (11, 122413), (13, 122434), (21, 122509), (23, 122521), (26, 122551), (49, 122833), (52, 122863), (54, 122896), (58, 122959), (63, 123037), (65, 123070), (71, 123100), (85, 123235), (87, 123271), (98, 123385),

Gene: Gamgam_221 Start: 122722, Stop: 123747, Start Num: 5

Candidate Starts for Gamgam_221:

(Start: 5 @122722 has 107 MA's), (Start: 6 @122731 has 65 MA's), (11, 122770), (13, 122791), (21, 122866), (23, 122878), (26, 122908), (49, 123190), (52, 123220), (54, 123253), (58, 123316), (63, 123394), (65, 123427), (71, 123457), (85, 123592), (87, 123628), (98, 123742),

Gene: Ghost_220 Start: 122643, Stop: 123668, Start Num: 5

Candidate Starts for Ghost_220:

(Start: 5 @122643 has 107 MA's), (Start: 6 @122652 has 65 MA's), (11, 122691), (13, 122712), (21, 122787), (23, 122799), (26, 122829), (49, 123111), (52, 123141), (54, 123174), (58, 123237), (63, 123315), (65, 123348), (71, 123378), (85, 123513), (87, 123549), (98, 123663),

Gene: Gizmo_226 Start: 125761, Stop: 126786, Start Num: 5

Candidate Starts for Gizmo_226:

(Start: 5 @125761 has 107 MA's), (Start: 6 @125770 has 65 MA's), (11, 125809), (13, 125830), (21, 125905), (23, 125917), (26, 125947), (49, 126229), (52, 126259), (54, 126292), (58, 126355), (63, 126433), (65, 126466), (71, 126496), (85, 126631), (87, 126667), (98, 126781),

Gene: GlutenPhree_220 Start: 122742, Stop: 123758, Start Num: 6

Candidate Starts for GlutenPhree_220:

(Start: 5 @122733 has 107 MA's), (Start: 6 @122742 has 65 MA's), (11, 122781), (13, 122802), (21, 122877), (23, 122889), (26, 122919), (49, 123201), (52, 123231), (54, 123264), (58, 123327), (63, 123405), (65, 123438), (71, 123468), (85, 123603), (87, 123639), (98, 123753),

Gene: Grasshills_228 Start: 125345, Stop: 126361, Start Num: 6

Candidate Starts for Grasshills_228:

(Start: 5 @125336 has 107 MA's), (Start: 6 @125345 has 65 MA's), (11, 125384), (13, 125405), (21, 125480), (23, 125492), (26, 125522), (49, 125804), (52, 125834), (54, 125867), (58, 125930), (63, 126008), (65, 126041), (71, 126071), (85, 126206), (87, 126242), (98, 126356),

Gene: Greely_211 Start: 119945, Stop: 120928, Start Num: 8

Candidate Starts for Greely_211:

(Start: 8 @119945 has 9 MA's), (10, 119969), (12, 119990), (21, 120080), (22, 120086), (29, 120215), (30, 120218), (43, 120368), (44, 120371), (64, 120635), (65, 120644), (74, 120701), (76, 120722), (79, 120749), (81, 120755), (87, 120821), (91, 120848), (93, 120857), (97, 120914),

Gene: Grungle_204 Start: 120677, Stop: 121693, Start Num: 6

Candidate Starts for Grungle_204:

(Start: 5 @120668 has 107 MA's), (Start: 6 @120677 has 65 MA's), (11, 120716), (13, 120737), (21, 120812), (23, 120824), (26, 120854), (49, 121136), (52, 121166), (54, 121199), (58, 121262), (63, 121340), (65, 121373), (71, 121403), (85, 121538), (87, 121574), (98, 121688),

Gene: Guwapp_215 Start: 121486, Stop: 122502, Start Num: 6

Candidate Starts for Guwapp_215:

(Start: 5 @121477 has 107 MA's), (Start: 6 @121486 has 65 MA's), (11, 121525), (13, 121546), (21, 121621), (23, 121633), (26, 121663), (49, 121945), (52, 121975), (54, 122008), (58, 122071), (63, 122149), (65, 122182), (71, 122212), (85, 122347), (87, 122383), (98, 122497),

Gene: Halldule_213 Start: 121859, Stop: 122875, Start Num: 6

Candidate Starts for Halldule_213:

(Start: 5 @121850 has 107 MA's), (Start: 6 @121859 has 65 MA's), (11, 121898), (13, 121919), (21, 121994), (23, 122006), (26, 122036), (49, 122318), (52, 122348), (54, 122381), (58, 122444), (63, 122522), (65, 122555), (71, 122585), (85, 122720), (87, 122756), (98, 122870),

Gene: HyRo_208 Start: 121990, Stop: 123012, Start Num: 6

Candidate Starts for HyRo_208:

(Start: 5 @121981 has 107 MA's), (Start: 6 @121990 has 65 MA's), (11, 122029), (13, 122050), (21, 122125), (23, 122137), (26, 122167), (49, 122449), (52, 122479), (54, 122512), (58, 122575), (63, 122653), (65, 122686), (71, 122716), (85, 122851), (87, 122887), (94, 122935), (98, 123007),

Gene: I3_230 Start: 124435, Stop: 125451, Start Num: 6

Candidate Starts for I3_230:

(Start: 5 @124426 has 107 MA's), (Start: 6 @124435 has 65 MA's), (11, 124474), (13, 124495), (21, 124570), (23, 124582), (26, 124612), (49, 124894), (52, 124924), (54, 124957), (58, 125020), (63, 125098), (65, 125131), (71, 125161), (85, 125296), (87, 125332), (98, 125446),

Gene: IkeLoa_212 Start: 122384, Stop: 123400, Start Num: 6

Candidate Starts for IkeLoa_212:

(Start: 5 @122375 has 107 MA's), (Start: 6 @122384 has 65 MA's), (11, 122423), (13, 122444), (21, 122519), (23, 122531), (26, 122561), (49, 122843), (52, 122873), (54, 122906), (58, 122969), (63,

123047), (65, 123080), (71, 123110), (85, 123245), (87, 123281), (98, 123395),

Gene: InigoMontoya_223 Start: 123396, Stop: 124421, Start Num: 5

Candidate Starts for InigoMontoya_223:

(Start: 5 @123396 has 107 MA's), (Start: 6 @123405 has 65 MA's), (11, 123444), (13, 123465), (21, 123540), (23, 123552), (26, 123582), (49, 123864), (52, 123894), (54, 123927), (58, 123990), (63, 124068), (65, 124101), (71, 124131), (85, 124266), (87, 124302), (98, 124416),

Gene: InterFolia_223 Start: 124098, Stop: 125114, Start Num: 6

Candidate Starts for InterFolia_223:

(Start: 5 @124089 has 107 MA's), (Start: 6 @124098 has 65 MA's), (11, 124137), (13, 124158), (21, 124233), (23, 124245), (26, 124275), (49, 124557), (52, 124587), (54, 124620), (58, 124683), (63, 124761), (65, 124794), (71, 124824), (85, 124959), (87, 124995), (98, 125109),

Gene: Iota_215 Start: 123069, Stop: 124094, Start Num: 5

Candidate Starts for Iota_215:

(Start: 5 @123069 has 107 MA's), (Start: 6 @123078 has 65 MA's), (11, 123117), (13, 123138), (21, 123213), (23, 123225), (26, 123255), (49, 123537), (52, 123567), (54, 123600), (58, 123663), (63, 123741), (65, 123774), (71, 123804), (85, 123939), (87, 123975), (98, 124089),

Gene: Issimir_213 Start: 123043, Stop: 124059, Start Num: 6

Candidate Starts for Issimir_213:

(Start: 5 @123034 has 107 MA's), (Start: 6 @123043 has 65 MA's), (11, 123082), (13, 123103), (21, 123178), (23, 123190), (26, 123220), (49, 123502), (52, 123532), (54, 123565), (58, 123628), (63, 123706), (65, 123739), (71, 123769), (85, 123904), (87, 123940), (98, 124054),

Gene: Izajani_218 Start: 123900, Stop: 124916, Start Num: 6

Candidate Starts for Izajani_218:

(Start: 5 @123891 has 107 MA's), (Start: 6 @123900 has 65 MA's), (11, 123939), (13, 123960), (21, 124035), (23, 124047), (26, 124077), (49, 124359), (52, 124389), (54, 124422), (58, 124485), (63, 124563), (65, 124596), (71, 124626), (85, 124761), (87, 124797), (98, 124911),

Gene: JPickles_216 Start: 121381, Stop: 122406, Start Num: 5

Candidate Starts for JPickles_216:

(Start: 5 @121381 has 107 MA's), (Start: 6 @121390 has 65 MA's), (11, 121429), (13, 121450), (21, 121525), (23, 121537), (26, 121567), (49, 121849), (52, 121879), (54, 121912), (58, 121975), (63, 122053), (65, 122086), (71, 122116), (85, 122251), (87, 122287), (98, 122401),

Gene: Janiyra_223 Start: 123621, Stop: 124646, Start Num: 5

Candidate Starts for Janiyra_223:

(Start: 5 @123621 has 107 MA's), (Start: 6 @123630 has 65 MA's), (11, 123669), (13, 123690), (21, 123765), (23, 123777), (26, 123807), (49, 124089), (52, 124119), (54, 124152), (58, 124215), (63, 124293), (65, 124326), (71, 124356), (85, 124491), (87, 124527), (98, 124641),

Gene: JayJay_222 Start: 123313, Stop: 124344, Start Num: 5

Candidate Starts for JayJay_222:

(Start: 5 @123313 has 107 MA's), (Start: 6 @123322 has 65 MA's), (11, 123361), (13, 123382), (21, 123457), (23, 123469), (26, 123499), (49, 123781), (52, 123811), (54, 123844), (58, 123907), (63, 123985), (65, 124018), (71, 124048), (85, 124183), (87, 124219), (94, 124267), (98, 124339),

Gene: Jaygup_216 Start: 122451, Stop: 123467, Start Num: 6

Candidate Starts for Jaygup_216:

(Start: 5 @122442 has 107 MA's), (Start: 6 @122451 has 65 MA's), (11, 122490), (13, 122511), (21, 122586), (23, 122598), (26, 122628), (49, 122910), (52, 122940), (54, 122973), (58, 123036), (63, 123114), (65, 123147), (71, 123177), (85, 123312), (87, 123348), (98, 123462),

Gene: Jedediah_220 Start: 123495, Stop: 124520, Start Num: 5

Candidate Starts for Jedediah_220:

(Start: 5 @123495 has 107 MA's), (Start: 6 @123504 has 65 MA's), (11, 123543), (13, 123564), (21, 123639), (23, 123651), (26, 123681), (49, 123963), (52, 123993), (54, 124026), (58, 124089), (63, 124167), (65, 124200), (71, 124230), (85, 124365), (87, 124401), (98, 124515),

Gene: Jemmno_219 Start: 122324, Stop: 123349, Start Num: 5

Candidate Starts for Jemmno_219:

(Start: 5 @122324 has 107 MA's), (Start: 6 @122333 has 65 MA's), (11, 122372), (13, 122393), (21, 122468), (23, 122480), (26, 122510), (49, 122792), (52, 122822), (54, 122855), (58, 122918), (63, 122996), (65, 123029), (71, 123059), (85, 123194), (87, 123230), (98, 123344),

Gene: Jessibeth14_220 Start: 124509, Stop: 125531, Start Num: 6

Candidate Starts for Jessibeth14_220:

(Start: 5 @124500 has 107 MA's), (Start: 6 @124509 has 65 MA's), (11, 124548), (13, 124569), (21, 124644), (23, 124656), (26, 124686), (49, 124968), (52, 124998), (54, 125031), (58, 125094), (63, 125172), (65, 125205), (71, 125235), (85, 125370), (87, 125406), (94, 125454), (98, 125526),

Gene: Jezreel_217 Start: 123579, Stop: 124595, Start Num: 6

Candidate Starts for Jezreel_217:

(Start: 5 @123570 has 107 MA's), (Start: 6 @123579 has 65 MA's), (11, 123618), (13, 123639), (21, 123714), (23, 123726), (26, 123756), (49, 124038), (52, 124068), (54, 124101), (58, 124164), (63, 124242), (65, 124275), (71, 124305), (85, 124440), (87, 124476), (98, 124590),

Gene: JigglyPuff_227 Start: 124896, Stop: 125912, Start Num: 6

Candidate Starts for JigglyPuff_227:

(Start: 5 @124887 has 107 MA's), (Start: 6 @124896 has 65 MA's), (11, 124935), (13, 124956), (21, 125031), (23, 125043), (26, 125073), (49, 125355), (52, 125385), (54, 125418), (58, 125481), (63, 125559), (65, 125592), (71, 125622), (85, 125757), (87, 125793), (98, 125907),

Gene: JulietS_213 Start: 120619, Stop: 121635, Start Num: 6

Candidate Starts for JulietS_213:

(Start: 5 @120610 has 107 MA's), (Start: 6 @120619 has 65 MA's), (11, 120658), (13, 120679), (21, 120754), (23, 120766), (26, 120796), (49, 121078), (52, 121108), (54, 121141), (58, 121204), (63, 121282), (65, 121315), (71, 121345), (85, 121480), (87, 121516), (98, 121630),

Gene: JustHall_214 Start: 122525, Stop: 123547, Start Num: 6

Candidate Starts for JustHall_214:

(Start: 5 @122516 has 107 MA's), (Start: 6 @122525 has 65 MA's), (11, 122564), (13, 122585), (21, 122660), (23, 122672), (26, 122702), (49, 122984), (52, 123014), (54, 123047), (58, 123110), (63, 123188), (65, 123221), (71, 123251), (85, 123386), (87, 123422), (94, 123470), (98, 123542),

Gene: Kamryn_219 Start: 124155, Stop: 125171, Start Num: 6

Candidate Starts for Kamryn_219:

(Start: 5 @124146 has 107 MA's), (Start: 6 @124155 has 65 MA's), (11, 124194), (13, 124215), (21, 124290), (23, 124302), (26, 124332), (49, 124614), (52, 124644), (54, 124677), (58, 124740), (63, 124818), (65, 124851), (71, 124881), (85, 125016), (87, 125052), (98, 125166),

Gene: Kboogie_224 Start: 123186, Stop: 124211, Start Num: 5

Candidate Starts for Kboogie_224:

(Start: 5 @123186 has 107 MA's), (Start: 6 @123195 has 65 MA's), (11, 123234), (13, 123255), (21, 123330), (23, 123342), (26, 123372), (49, 123654), (52, 123684), (54, 123717), (58, 123780), (63, 123858), (65, 123891), (71, 123921), (85, 124056), (87, 124092), (98, 124206),

Gene: Khaleesi_219 Start: 123976, Stop: 124998, Start Num: 6

Candidate Starts for Khaleesi_219:

(Start: 5 @123967 has 107 MA's), (Start: 6 @123976 has 65 MA's), (11, 124015), (13, 124036), (21, 124111), (23, 124123), (26, 124153), (49, 124435), (52, 124465), (54, 124498), (58, 124561), (63, 124639), (65, 124672), (71, 124702), (85, 124837), (87, 124873), (94, 124921), (98, 124993),

Gene: Koguma_219 Start: 122836, Stop: 123852, Start Num: 6

Candidate Starts for Koguma_219:

(Start: 5 @122827 has 107 MA's), (Start: 6 @122836 has 65 MA's), (11, 122875), (13, 122896), (21, 122971), (23, 122983), (26, 123013), (49, 123295), (52, 123325), (54, 123358), (58, 123421), (63, 123499), (65, 123532), (71, 123562), (85, 123697), (87, 123733), (98, 123847),

Gene: LRRHood_213 Start: 122179, Stop: 123204, Start Num: 5

Candidate Starts for LRRHood_213:

(Start: 5 @122179 has 107 MA's), (Start: 6 @122188 has 65 MA's), (11, 122227), (13, 122248), (21, 122323), (23, 122335), (26, 122365), (49, 122647), (52, 122677), (54, 122710), (58, 122773), (63, 122851), (65, 122884), (71, 122914), (85, 123049), (87, 123085), (98, 123199),

Gene: Latch_220 Start: 122732, Stop: 123757, Start Num: 5

Candidate Starts for Latch_220:

(Start: 5 @122732 has 107 MA's), (Start: 6 @122741 has 65 MA's), (11, 122780), (13, 122801), (21, 122876), (23, 122888), (26, 122918), (49, 123200), (52, 123230), (54, 123263), (58, 123326), (63, 123404), (65, 123437), (71, 123467), (85, 123602), (87, 123638), (98, 123752),

Gene: Lee7_220 Start: 125356, Stop: 126372, Start Num: 6

Candidate Starts for Lee7_220:

(Start: 5 @125347 has 107 MA's), (Start: 6 @125356 has 65 MA's), (11, 125395), (13, 125416), (21, 125491), (23, 125503), (26, 125533), (49, 125815), (52, 125845), (54, 125878), (58, 125941), (63, 126019), (65, 126052), (71, 126082), (85, 126217), (87, 126253), (98, 126367),

Gene: Lethe_222 Start: 124631, Stop: 125647, Start Num: 6

Candidate Starts for Lethe_222:

(Start: 5 @124622 has 107 MA's), (Start: 6 @124631 has 65 MA's), (11, 124670), (13, 124691), (21, 124766), (23, 124778), (26, 124808), (49, 125090), (52, 125120), (54, 125153), (58, 125216), (63, 125294), (65, 125327), (71, 125357), (85, 125492), (87, 125528), (98, 125642),

Gene: LifeSavor_219 Start: 123257, Stop: 124282, Start Num: 5

Candidate Starts for LifeSavor_219:

(Start: 5 @123257 has 107 MA's), (Start: 6 @123266 has 65 MA's), (11, 123305), (13, 123326), (21, 123401), (23, 123413), (26, 123443), (49, 123725), (52, 123755), (54, 123788), (58, 123851), (63, 123929), (65, 123962), (71, 123992), (85, 124127), (87, 124163), (98, 124277),

Gene: LinStu_219 Start: 122466, Stop: 123491, Start Num: 5

Candidate Starts for LinStu_219:

(Start: 5 @122466 has 107 MA's), (Start: 6 @122475 has 65 MA's), (11, 122514), (13, 122535), (21, 122610), (23, 122622), (26, 122652), (49, 122934), (52, 122964), (54, 122997), (58, 123060), (63, 123138), (65, 123171), (71, 123201), (85, 123336), (87, 123372), (98, 123486),

Gene: Littleton_223 Start: 123969, Stop: 124994, Start Num: 5

Candidate Starts for Littleton_223:

(Start: 5 @123969 has 107 MA's), (Start: 6 @123978 has 65 MA's), (11, 124017), (13, 124038), (21, 124113), (23, 124125), (26, 124155), (49, 124437), (52, 124467), (54, 124500), (58, 124563), (63, 124641), (65, 124674), (71, 124704), (85, 124839), (87, 124875), (98, 124989),

Gene: Loanshark_217 Start: 123282, Stop: 124307, Start Num: 5

Candidate Starts for Loanshark_217:

(Start: 5 @123282 has 107 MA's), (Start: 6 @123291 has 65 MA's), (11, 123330), (13, 123351), (21, 123426), (23, 123438), (26, 123468), (49, 123750), (52, 123780), (54, 123813), (58, 123876), (63, 123954), (65, 123987), (71, 124017), (85, 124152), (87, 124188), (98, 124302),

Gene: LolaVinca_218 Start: 123519, Stop: 124544, Start Num: 5

Candidate Starts for LolaVinca_218:

(Start: 5 @123519 has 107 MA's), (Start: 6 @123528 has 65 MA's), (11, 123567), (13, 123588), (21, 123663), (23, 123675), (26, 123705), (49, 123987), (52, 124017), (54, 124050), (58, 124113), (63, 124191), (65, 124224), (71, 124254), (85, 124389), (87, 124425), (98, 124539),

Gene: LordLeafolot_222 Start: 123141, Stop: 124157, Start Num: 6

Candidate Starts for LordLeafolot_222:

(Start: 5 @123132 has 107 MA's), (Start: 6 @123141 has 65 MA's), (11, 123180), (13, 123201), (21, 123276), (23, 123288), (26, 123318), (49, 123600), (52, 123630), (54, 123663), (58, 123726), (63, 123804), (65, 123837), (71, 123867), (85, 124002), (87, 124038), (98, 124152),

Gene: Lukilu_211 Start: 124191, Stop: 125207, Start Num: 6

Candidate Starts for Lukilu_211:

(Start: 5 @124182 has 107 MA's), (Start: 6 @124191 has 65 MA's), (11, 124230), (13, 124251), (21, 124326), (23, 124338), (26, 124368), (49, 124650), (52, 124680), (54, 124713), (58, 124776), (63, 124854), (65, 124887), (71, 124917), (85, 125052), (87, 125088), (98, 125202),

Gene: Maby2021_220 Start: 124423, Stop: 125448, Start Num: 5

Candidate Starts for Maby2021_220:

(Start: 5 @124423 has 107 MA's), (Start: 6 @124432 has 65 MA's), (11, 124471), (13, 124492), (21, 124567), (23, 124579), (26, 124609), (49, 124891), (52, 124921), (54, 124954), (58, 125017), (63, 125095), (65, 125128), (71, 125158), (85, 125293), (87, 125329), (98, 125443),

Gene: Mangeria_221 Start: 124525, Stop: 125550, Start Num: 5

Candidate Starts for Mangeria_221:

(Start: 5 @124525 has 107 MA's), (Start: 6 @124534 has 65 MA's), (11, 124573), (13, 124594), (21, 124669), (23, 124681), (26, 124711), (49, 124993), (52, 125023), (54, 125056), (58, 125119), (63, 125197), (65, 125230), (71, 125260), (85, 125395), (87, 125431), (98, 125545),

Gene: Matsumoto_219 Start: 123183, Stop: 124199, Start Num: 6

Candidate Starts for Matsumoto_219:

(Start: 5 @123174 has 107 MA's), (Start: 6 @123183 has 65 MA's), (11, 123222), (13, 123243), (21, 123318), (23, 123330), (26, 123360), (49, 123642), (52, 123672), (54, 123705), (58, 123768), (63, 123846), (65, 123879), (71, 123909), (85, 124044), (87, 124080), (98, 124194),

Gene: McGee_219 Start: 122368, Stop: 123393, Start Num: 5

Candidate Starts for McGee_219:

(Start: 5 @122368 has 107 MA's), (Start: 6 @122377 has 65 MA's), (11, 122416), (13, 122437), (21, 122512), (23, 122524), (26, 122554), (49, 122836), (52, 122866), (54, 122899), (58, 122962), (63, 123040), (65, 123073), (71, 123103), (85, 123238), (87, 123274), (98, 123388),

Gene: McWolfish_217 Start: 123187, Stop: 124209, Start Num: 6

Candidate Starts for McWolfish_217:

(Start: 5 @123178 has 107 MA's), (Start: 6 @123187 has 65 MA's), (11, 123226), (13, 123247), (21, 123322), (23, 123334), (26, 123364), (49, 123646), (52, 123676), (54, 123709), (58, 123772), (63, 123850), (65, 123883), (71, 123913), (85, 124048), (87, 124084), (94, 124132), (98, 124204),

Gene: Megamind_217 Start: 123469, Stop: 124494, Start Num: 5

Candidate Starts for Megamind_217:

(Start: 5 @123469 has 107 MA's), (Start: 6 @123478 has 65 MA's), (11, 123517), (13, 123538), (21, 123613), (23, 123625), (26, 123655), (49, 123937), (52, 123967), (54, 124000), (58, 124063), (63, 124141), (65, 124174), (71, 124204), (85, 124339), (87, 124375), (98, 124489),

Gene: Melpomini_215 Start: 122266, Stop: 123291, Start Num: 5

Candidate Starts for Melpomini_215:

(Start: 5 @122266 has 107 MA's), (Start: 6 @122275 has 65 MA's), (11, 122314), (13, 122335), (21, 122410), (23, 122422), (26, 122452), (49, 122734), (52, 122764), (54, 122797), (58, 122860), (63, 122938), (65, 122971), (71, 123001), (85, 123136), (87, 123172), (98, 123286),

Gene: MikeLiesIn_222 Start: 124605, Stop: 125630, Start Num: 5

Candidate Starts for MikeLiesIn_222:

(Start: 5 @124605 has 107 MA's), (Start: 6 @124614 has 65 MA's), (11, 124653), (13, 124674), (21, 124749), (23, 124761), (26, 124791), (49, 125073), (52, 125103), (54, 125136), (58, 125199), (63, 125277), (65, 125310), (71, 125340), (85, 125475), (87, 125511), (98, 125625),

Gene: Mikro_216 Start: 125163, Stop: 126179, Start Num: 6

Candidate Starts for Mikro_216:

(Start: 5 @125154 has 107 MA's), (Start: 6 @125163 has 65 MA's), (11, 125202), (13, 125223), (21, 125298), (23, 125310), (26, 125340), (49, 125622), (52, 125652), (54, 125685), (58, 125748), (63, 125826), (65, 125859), (71, 125889), (85, 126024), (87, 126060), (98, 126174),

Gene: MoMoMixon_218 Start: 123653, Stop: 124675, Start Num: 6

Candidate Starts for MoMoMixon_218:

(Start: 5 @123644 has 107 MA's), (Start: 6 @123653 has 65 MA's), (11, 123692), (13, 123713), (21, 123788), (23, 123800), (26, 123830), (49, 124112), (52, 124142), (54, 124175), (58, 124238), (63, 124316), (65, 124349), (71, 124379), (85, 124514), (87, 124550), (94, 124598), (98, 124670),

Gene: Momo_221 Start: 122741, Stop: 123757, Start Num: 6

Candidate Starts for Momo_221:

(Start: 5 @122732 has 107 MA's), (Start: 6 @122741 has 65 MA's), (11, 122780), (13, 122801), (21, 122876), (23, 122888), (26, 122918), (49, 123200), (52, 123230), (54, 123263), (58, 123326), (63, 123404), (65, 123437), (71, 123467), (85, 123602), (87, 123638), (98, 123752),

Gene: Morizzled23_217 Start: 122108, Stop: 123124, Start Num: 6

Candidate Starts for Morizzled23_217:

(Start: 5 @122099 has 107 MA's), (Start: 6 @122108 has 65 MA's), (11, 122147), (13, 122168), (21, 122243), (23, 122255), (26, 122285), (49, 122567), (52, 122597), (54, 122630), (58, 122693), (63, 122771), (65, 122804), (71, 122834), (85, 122969), (87, 123005), (98, 123119),

Gene: Myrna_204 Start: 119318, Stop: 120304, Start Num: 8

Candidate Starts for Myrna_204:

(Start: 8 @119318 has 9 MA's), (9, 119336), (10, 119342), (12, 119363), (14, 119378), (21, 119453), (29, 119588), (30, 119591), (50, 119804), (51, 119807), (53, 119828), (54, 119849), (62, 119987), (68,

120035), (74, 120077), (87, 120197), (91, 120224), (93, 120233), (97, 120290),

Gene: Naija_221 Start: 123435, Stop: 124460, Start Num: 5

Candidate Starts for Naija_221:

(Start: 5 @123435 has 107 MA's), (Start: 6 @123444 has 65 MA's), (11, 123483), (13, 123504), (21, 123579), (23, 123591), (26, 123621), (49, 123903), (52, 123933), (54, 123966), (58, 124029), (63, 124107), (65, 124140), (71, 124170), (85, 124305), (87, 124341), (98, 124455),

Gene: Napoleon13_217 Start: 122472, Stop: 123488, Start Num: 6

Candidate Starts for Napoleon13_217:

(Start: 5 @122463 has 107 MA's), (Start: 6 @122472 has 65 MA's), (11, 122511), (13, 122532), (21, 122607), (23, 122619), (26, 122649), (49, 122931), (52, 122961), (54, 122994), (58, 123057), (63, 123135), (65, 123168), (71, 123198), (85, 123333), (87, 123369), (98, 123483),

Gene: Nappy_221 Start: 124124, Stop: 125149, Start Num: 5

Candidate Starts for Nappy_221:

(Start: 5 @124124 has 107 MA's), (Start: 6 @124133 has 65 MA's), (11, 124172), (13, 124193), (21, 124268), (23, 124280), (26, 124310), (49, 124592), (52, 124622), (54, 124655), (58, 124718), (63, 124796), (65, 124829), (71, 124859), (85, 124994), (87, 125030), (98, 125144),

Gene: Naval22_225 Start: 125221, Stop: 126237, Start Num: 6

Candidate Starts for Naval22_225:

(Start: 5 @125212 has 107 MA's), (Start: 6 @125221 has 65 MA's), (11, 125260), (13, 125281), (21, 125356), (23, 125368), (26, 125398), (49, 125680), (52, 125710), (54, 125743), (58, 125806), (63, 125884), (65, 125917), (71, 125947), (85, 126082), (87, 126118), (98, 126232),

Gene: NedWong_219 Start: 123856, Stop: 124881, Start Num: 5

Candidate Starts for NedWong_219:

(Start: 5 @123856 has 107 MA's), (Start: 6 @123865 has 65 MA's), (11, 123904), (13, 123925), (21, 124000), (23, 124012), (26, 124042), (49, 124324), (52, 124354), (54, 124387), (58, 124450), (63, 124528), (65, 124561), (71, 124591), (85, 124726), (87, 124762), (98, 124876),

Gene: Ngannou_217 Start: 121714, Stop: 122739, Start Num: 5

Candidate Starts for Ngannou_217:

(Start: 5 @121714 has 107 MA's), (Start: 6 @121723 has 65 MA's), (11, 121762), (13, 121783), (21, 121858), (23, 121870), (26, 121900), (49, 122182), (52, 122212), (54, 122245), (58, 122308), (63, 122386), (65, 122419), (71, 122449), (85, 122584), (87, 122620), (98, 122734),

Gene: Nidhogg_221 Start: 124261, Stop: 125286, Start Num: 5

Candidate Starts for Nidhogg_221:

(Start: 5 @124261 has 107 MA's), (Start: 6 @124270 has 65 MA's), (11, 124309), (13, 124330), (21, 124405), (23, 124417), (26, 124447), (49, 124729), (52, 124759), (54, 124792), (58, 124855), (63, 124933), (65, 124966), (71, 124996), (85, 125131), (87, 125167), (98, 125281),

Gene: NoodleTree_226 Start: 124156, Stop: 125181, Start Num: 5

Candidate Starts for NoodleTree_226:

(Start: 5 @124156 has 107 MA's), (Start: 6 @124165 has 65 MA's), (11, 124204), (13, 124225), (21, 124300), (23, 124312), (26, 124342), (49, 124624), (52, 124654), (54, 124687), (58, 124750), (63, 124828), (65, 124861), (71, 124891), (85, 125026), (87, 125062), (98, 125176),

Gene: Norm_220 Start: 124161, Stop: 125186, Start Num: 5

Candidate Starts for Norm_220:

(Start: 5 @124161 has 107 MA's), (Start: 6 @124170 has 65 MA's), (11, 124209), (13, 124230), (21, 124305), (23, 124317), (26, 124347), (49, 124629), (52, 124659), (54, 124692), (58, 124755), (63, 124833), (65, 124866), (71, 124896), (85, 125031), (87, 125067), (98, 125181),

Gene: NuevoMundo_223 Start: 124726, Stop: 125742, Start Num: 6

Candidate Starts for NuevoMundo_223:

(Start: 5 @124717 has 107 MA's), (Start: 6 @124726 has 65 MA's), (11, 124765), (13, 124786), (21, 124861), (23, 124873), (26, 124903), (49, 125185), (52, 125215), (54, 125248), (58, 125311), (63, 125389), (65, 125422), (71, 125452), (85, 125587), (87, 125623), (98, 125737),

Gene: ParkTD_219 Start: 123741, Stop: 124757, Start Num: 6

Candidate Starts for ParkTD_219:

(Start: 5 @123732 has 107 MA's), (Start: 6 @123741 has 65 MA's), (11, 123780), (13, 123801), (21, 123876), (23, 123888), (26, 123918), (49, 124200), (52, 124230), (54, 124263), (58, 124326), (63, 124404), (65, 124437), (71, 124467), (85, 124602), (87, 124638), (98, 124752),

Gene: Patter_221 Start: 122746, Stop: 123771, Start Num: 5

Candidate Starts for Patter_221:

(Start: 5 @122746 has 107 MA's), (Start: 6 @122755 has 65 MA's), (11, 122794), (13, 122815), (21, 122890), (23, 122902), (26, 122932), (49, 123214), (52, 123244), (54, 123277), (58, 123340), (63, 123418), (65, 123451), (71, 123481), (85, 123616), (87, 123652), (98, 123766),

Gene: Phabba_215 Start: 119296, Stop: 120279, Start Num: 8

Candidate Starts for Phabba_215:

(1, 118633), (3, 118768), (Start: 8 @119296 has 9 MA's), (10, 119320), (12, 119341), (22, 119437), (29, 119566), (30, 119569), (32, 119602), (43, 119719), (44, 119722), (55, 119842), (57, 119884), (64, 119986), (65, 119995), (74, 120052), (81, 120106), (87, 120172), (91, 120199), (93, 120208), (97, 120265),

Gene: Phlegm_224 Start: 123435, Stop: 124460, Start Num: 5

Candidate Starts for Phlegm_224:

(Start: 5 @123435 has 107 MA's), (Start: 6 @123444 has 65 MA's), (11, 123483), (13, 123504), (21, 123579), (23, 123591), (26, 123621), (49, 123903), (52, 123933), (54, 123966), (58, 124029), (63, 124107), (65, 124140), (71, 124170), (85, 124305), (87, 124341), (98, 124455),

Gene: Phox_221 Start: 123394, Stop: 124410, Start Num: 6

Candidate Starts for Phox_221:

(Start: 5 @123385 has 107 MA's), (Start: 6 @123394 has 65 MA's), (11, 123433), (13, 123454), (21, 123529), (23, 123541), (26, 123571), (49, 123853), (52, 123883), (54, 123916), (58, 123979), (63, 124057), (65, 124090), (71, 124120), (85, 124255), (87, 124291), (98, 124405),

Gene: Phrappuccino_133 Start: 95976, Stop: 97007, Start Num: 8

Candidate Starts for Phrappuccino_133:

(Start: 8 @95976 has 9 MA's), (15, 96036), (17, 96060), (21, 96108), (26, 96150), (34, 96288), (38, 96354), (42, 96390), (45, 96426), (46, 96429), (51, 96471), (59, 96594), (65, 96693), (67, 96711), (69, 96717), (73, 96750), (75, 96786), (80, 96822), (90, 96915), (98, 96996),

Gene: Phusco_218 Start: 122267, Stop: 123292, Start Num: 5

Candidate Starts for Phusco_218:

(Start: 5 @122267 has 107 MA's), (Start: 6 @122276 has 65 MA's), (11, 122315), (13, 122336), (21, 122411), (23, 122423), (26, 122453), (49, 122735), (52, 122765), (54, 122798), (58, 122861), (63, 122939), (65, 122972), (71, 123002), (85, 123137), (87, 123173), (98, 123287),

Gene: Pier_221 Start: 124262, Stop: 125287, Start Num: 5

Candidate Starts for Pier_221:

(Start: 5 @124262 has 107 MA's), (Start: 6 @124271 has 65 MA's), (11, 124310), (13, 124331), (21, 124406), (23, 124418), (26, 124448), (49, 124730), (52, 124760), (54, 124793), (58, 124856), (63, 124934), (65, 124967), (71, 124997), (85, 125132), (87, 125168), (98, 125282),

Gene: Pinkcreek_204 Start: 121638, Stop: 122663, Start Num: 5

Candidate Starts for Pinkcreek_204:

(Start: 5 @121638 has 107 MA's), (Start: 6 @121647 has 65 MA's), (11, 121686), (13, 121707), (21, 121782), (23, 121794), (26, 121824), (49, 122106), (52, 122136), (54, 122169), (58, 122232), (63, 122310), (65, 122343), (71, 122373), (85, 122508), (87, 122544), (98, 122658),

Gene: Pio_228 Start: 125466, Stop: 126491, Start Num: 5

Candidate Starts for Pio_228:

(Start: 5 @125466 has 107 MA's), (Start: 6 @125475 has 65 MA's), (11, 125514), (13, 125535), (21, 125610), (23, 125622), (26, 125652), (49, 125934), (52, 125964), (54, 125997), (58, 126060), (63, 126138), (65, 126171), (71, 126201), (85, 126336), (87, 126372), (98, 126486),

Gene: Pivoine_221 Start: 123435, Stop: 124460, Start Num: 5

Candidate Starts for Pivoine_221:

(Start: 5 @123435 has 107 MA's), (Start: 6 @123444 has 65 MA's), (11, 123483), (13, 123504), (21, 123579), (23, 123591), (26, 123621), (49, 123903), (52, 123933), (54, 123966), (58, 124029), (63, 124107), (65, 124140), (71, 124170), (85, 124305), (87, 124341), (98, 124455),

Gene: Pleione_224 Start: 124207, Stop: 125223, Start Num: 6

Candidate Starts for Pleione_224:

(Start: 5 @124198 has 107 MA's), (Start: 6 @124207 has 65 MA's), (11, 124246), (13, 124267), (21, 124342), (23, 124354), (26, 124384), (49, 124666), (52, 124696), (54, 124729), (58, 124792), (63, 124870), (65, 124903), (71, 124933), (85, 125068), (87, 125104), (98, 125218),

Gene: Primadonna_215 Start: 123105, Stop: 124121, Start Num: 6

Candidate Starts for Primadonna_215:

(Start: 5 @123096 has 107 MA's), (Start: 6 @123105 has 65 MA's), (11, 123144), (13, 123165), (21, 123240), (23, 123252), (26, 123282), (49, 123564), (52, 123594), (54, 123627), (58, 123690), (63, 123768), (65, 123801), (71, 123831), (85, 123966), (87, 124002), (98, 124116),

Gene: Pupper_162 Start: 114902, Stop: 115894, Start Num: 8

Candidate Starts for Pupper_162:

(Start: 8 @114902 has 9 MA's), (16, 114971), (18, 114986), (20, 115004), (21, 115034), (41, 115301), (48, 115346), (54, 115421), (56, 115457), (60, 115535), (63, 115562), (65, 115592), (66, 115595), (70, 115619), (72, 115628), (89, 115802), (92, 115814), (95, 115829), (98, 115886),

Gene: PurduePete_220 Start: 124426, Stop: 125451, Start Num: 5

Candidate Starts for PurduePete_220:

(Start: 5 @124426 has 107 MA's), (Start: 6 @124435 has 65 MA's), (11, 124474), (13, 124495), (21, 124570), (23, 124582), (26, 124612), (49, 124894), (52, 124924), (54, 124957), (58, 125020), (63, 125098), (65, 125131), (71, 125161), (85, 125296), (87, 125332), (98, 125446),

Gene: QBert_212 Start: 121786, Stop: 122811, Start Num: 5

Candidate Starts for QBert_212:

(Start: 5 @121786 has 107 MA's), (Start: 6 @121795 has 65 MA's), (11, 121834), (13, 121855), (21, 121930), (23, 121942), (26, 121972), (49, 122254), (52, 122284), (54, 122317), (58, 122380), (63, 122458), (65, 122491), (71, 122521), (85, 122656), (87, 122692), (98, 122806),

Gene: Quasimodo_222 Start: 123077, Stop: 124093, Start Num: 6

Candidate Starts for Quasimodo_222:

(Start: 5 @123068 has 107 MA's), (Start: 6 @123077 has 65 MA's), (11, 123116), (13, 123137), (21, 123212), (23, 123224), (26, 123254), (49, 123536), (52, 123566), (54, 123599), (58, 123662), (63, 123740), (65, 123773), (71, 123803), (85, 123938), (87, 123974), (98, 124088),

Gene: Rabinovish_213 Start: 123331, Stop: 124362, Start Num: 5

Candidate Starts for Rabinovish_213:

(Start: 5 @123331 has 107 MA's), (Start: 6 @123340 has 65 MA's), (11, 123379), (13, 123400), (21, 123475), (23, 123487), (26, 123517), (49, 123799), (52, 123829), (54, 123862), (58, 123925), (63, 124003), (65, 124036), (71, 124066), (85, 124201), (87, 124237), (94, 124285), (98, 124357),

Gene: Rahel_221 Start: 123170, Stop: 124195, Start Num: 5

Candidate Starts for Rahel_221:

(Start: 5 @123170 has 107 MA's), (Start: 6 @123179 has 65 MA's), (11, 123218), (13, 123239), (21, 123314), (23, 123326), (26, 123356), (49, 123638), (52, 123668), (54, 123701), (58, 123764), (63, 123842), (65, 123875), (71, 123905), (85, 124040), (87, 124076), (98, 124190),

Gene: Rizal_212 Start: 121688, Stop: 122713, Start Num: 5

Candidate Starts for Rizal_212:

(Start: 5 @121688 has 107 MA's), (Start: 6 @121697 has 65 MA's), (11, 121736), (13, 121757), (21, 121832), (23, 121844), (26, 121874), (49, 122156), (52, 122186), (54, 122219), (58, 122282), (63, 122360), (65, 122393), (71, 122423), (85, 122558), (87, 122594), (98, 122708),

Gene: RoMag_215 Start: 123469, Stop: 124494, Start Num: 5

Candidate Starts for RoMag_215:

(Start: 5 @123469 has 107 MA's), (Start: 6 @123478 has 65 MA's), (11, 123517), (13, 123538), (21, 123613), (23, 123625), (26, 123655), (49, 123937), (52, 123967), (54, 124000), (58, 124063), (63, 124141), (65, 124174), (71, 124204), (85, 124339), (87, 124375), (98, 124489),

Gene: Ronan_216 Start: 121861, Stop: 122886, Start Num: 5

Candidate Starts for Ronan_216:

(Start: 5 @121861 has 107 MA's), (Start: 6 @121870 has 65 MA's), (11, 121909), (13, 121930), (21, 122005), (23, 122017), (26, 122047), (49, 122329), (52, 122359), (54, 122392), (58, 122455), (63, 122533), (65, 122566), (71, 122596), (85, 122731), (87, 122767), (98, 122881),

Gene: Roots515_222 Start: 124977, Stop: 126002, Start Num: 5

Candidate Starts for Roots515_222:

(Start: 5 @124977 has 107 MA's), (Start: 6 @124986 has 65 MA's), (11, 125025), (13, 125046), (21, 125121), (23, 125133), (26, 125163), (49, 125445), (52, 125475), (54, 125508), (58, 125571), (63, 125649), (65, 125682), (71, 125712), (85, 125847), (87, 125883), (98, 125997),

Gene: SCentae_161 Start: 115056, Stop: 116048, Start Num: 8

Candidate Starts for SCentae_161:

(7, 115053), (Start: 8 @115056 has 9 MA's), (16, 115125), (18, 115140), (20, 115158), (21, 115188), (25, 115227), (41, 115455), (48, 115500), (54, 115575), (56, 115611), (60, 115689), (63, 115716), (65, 115746), (66, 115749), (70, 115773), (72, 115782), (89, 115956), (92, 115968), (95, 115983), (98, 116040),

Gene: SVoro_217 Start: 123780, Stop: 124796, Start Num: 6

Candidate Starts for SVoro_217:

(Start: 5 @123771 has 107 MA's), (Start: 6 @123780 has 65 MA's), (11, 123819), (13, 123840), (21, 123915), (23, 123927), (26, 123957), (49, 124239), (52, 124269), (54, 124302), (58, 124365), (63, 124443), (65, 124476), (71, 124506), (85, 124641), (87, 124677), (98, 124791),

Gene: Salacia_220 Start: 123582, Stop: 124598, Start Num: 6

Candidate Starts for Salacia_220:

(Start: 5 @123573 has 107 MA's), (Start: 6 @123582 has 65 MA's), (11, 123621), (13, 123642), (21, 123717), (23, 123729), (26, 123759), (49, 124041), (52, 124071), (54, 124104), (58, 124167), (63, 124245), (65, 124278), (71, 124308), (85, 124443), (87, 124479), (98, 124593),

Gene: Sauce_216 Start: 122384, Stop: 123409, Start Num: 5

Candidate Starts for Sauce_216:

(Start: 5 @122384 has 107 MA's), (Start: 6 @122393 has 65 MA's), (11, 122432), (13, 122453), (21, 122528), (23, 122540), (26, 122570), (49, 122852), (52, 122882), (54, 122915), (58, 122978), (63, 123056), (65, 123089), (71, 123119), (85, 123254), (87, 123290), (98, 123404),

Gene: ScoobyDoobyDoo_204 Start: 117614, Stop: 118645, Start Num: 8

Candidate Starts for ScoobyDoobyDoo_204:

(Start: 8 @117614 has 9 MA's), (15, 117677), (19, 117716), (21, 117749), (24, 117770), (29, 117887), (30, 117890), (34, 117932), (37, 117968), (40, 118028), (45, 118076), (47, 118082), (61, 118310), (83, 118475), (84, 118481), (86, 118505), (91, 118562), (93, 118571), (96, 118619),

Gene: ScottMcG_214 Start: 122475, Stop: 123491, Start Num: 6

Candidate Starts for ScottMcG_214:

(Start: 5 @122466 has 107 MA's), (Start: 6 @122475 has 65 MA's), (11, 122514), (13, 122535), (21, 122610), (23, 122622), (26, 122652), (49, 122934), (52, 122964), (54, 122997), (58, 123060), (63, 123138), (65, 123171), (71, 123201), (85, 123336), (87, 123372), (98, 123486),

Gene: Sebata_221 Start: 123900, Stop: 124922, Start Num: 6

Candidate Starts for Sebata_221:

(Start: 5 @123891 has 107 MA's), (Start: 6 @123900 has 65 MA's), (11, 123939), (13, 123960), (21, 124035), (23, 124047), (26, 124077), (49, 124359), (52, 124389), (54, 124422), (58, 124485), (63, 124563), (65, 124596), (71, 124626), (85, 124761), (87, 124797), (94, 124845), (98, 124917),

Gene: Settecandela_133 Start: 95976, Stop: 97007, Start Num: 8

Candidate Starts for Settecandela_133:

(Start: 8 @95976 has 9 MA's), (15, 96036), (17, 96060), (21, 96108), (26, 96150), (34, 96288), (38, 96354), (42, 96390), (45, 96426), (46, 96429), (51, 96471), (59, 96594), (65, 96693), (67, 96711), (69, 96717), (73, 96750), (75, 96786), (80, 96822), (90, 96915), (98, 96996),

Gene: Shaqnato_211 Start: 122601, Stop: 123623, Start Num: 6

Candidate Starts for Shaqnato_211:

(Start: 5 @122592 has 107 MA's), (Start: 6 @122601 has 65 MA's), (11, 122640), (13, 122661), (21, 122736), (23, 122748), (26, 122778), (49, 123060), (52, 123090), (54, 123123), (58, 123186), (63, 123264), (65, 123297), (71, 123327), (85, 123462), (87, 123498), (94, 123546), (98, 123618),

Gene: Shelob_221 Start: 125332, Stop: 126357, Start Num: 5

Candidate Starts for Shelob_221:

(Start: 5 @125332 has 107 MA's), (Start: 6 @125341 has 65 MA's), (11, 125380), (13, 125401), (21, 125476), (23, 125488), (26, 125518), (49, 125800), (52, 125830), (54, 125863), (58, 125926), (63, 126004), (65, 126037), (71, 126067), (85, 126202), (87, 126238), (98, 126352),

Gene: ShiaLabeouf_217 Start: 122378, Stop: 123403, Start Num: 5

Candidate Starts for ShiaLabeouf_217:

(Start: 5 @122378 has 107 MA's), (Start: 6 @122387 has 65 MA's), (11, 122426), (13, 122447), (21, 122522), (23, 122534), (26, 122564), (49, 122846), (52, 122876), (54, 122909), (58, 122972), (63, 123050), (65, 123083), (71, 123113), (85, 123248), (87, 123284), (98, 123398),

Gene: Shifa_197 Start: 121950, Stop: 122981, Start Num: 5

Candidate Starts for Shifa_197:

(Start: 5 @121950 has 107 MA's), (Start: 6 @121959 has 65 MA's), (11, 121998), (13, 122019), (21, 122094), (23, 122106), (26, 122136), (49, 122418), (52, 122448), (54, 122481), (58, 122544), (63, 122622), (65, 122655), (71, 122685), (85, 122820), (87, 122856), (94, 122904), (98, 122976),

Gene: Shnickers_218 Start: 122442, Stop: 123467, Start Num: 5

Candidate Starts for Shnickers_218:

(Start: 5 @122442 has 107 MA's), (Start: 6 @122451 has 65 MA's), (11, 122490), (13, 122511), (21, 122586), (23, 122598), (26, 122628), (49, 122910), (52, 122940), (54, 122973), (58, 123036), (63, 123114), (65, 123147), (71, 123177), (85, 123312), (87, 123348), (98, 123462),

Gene: Shrimp_222 Start: 124499, Stop: 125524, Start Num: 5

Candidate Starts for Shrimp_222:

(Start: 5 @124499 has 107 MA's), (Start: 6 @124508 has 65 MA's), (11, 124547), (13, 124568), (21, 124643), (23, 124655), (26, 124685), (49, 124967), (52, 124997), (54, 125030), (58, 125093), (63, 125171), (65, 125204), (71, 125234), (85, 125369), (87, 125405), (98, 125519),

Gene: SilverDipper_224 Start: 124000, Stop: 125016, Start Num: 6

Candidate Starts for SilverDipper_224:

(Start: 5 @123991 has 107 MA's), (Start: 6 @124000 has 65 MA's), (11, 124039), (13, 124060), (21, 124135), (23, 124147), (26, 124177), (49, 124459), (52, 124489), (54, 124522), (58, 124585), (63, 124663), (65, 124696), (71, 124726), (85, 124861), (87, 124897), (98, 125011),

Gene: Skog_222 Start: 144522, Stop: 145520, Start Num: 8

Candidate Starts for Skog_222:

(2, 143898), (4, 144378), (Start: 8 @144522 has 9 MA's), (16, 144591), (18, 144609), (21, 144657), (28, 144774), (29, 144792), (31, 144807), (33, 144831), (36, 144849), (39, 144909), (48, 144969), (53, 145026), (56, 145083), (65, 145218), (70, 145245), (77, 145308), (78, 145311), (82, 145341), (88, 145419), (95, 145455), (98, 145512),

Gene: SmallFry_220 Start: 122536, Stop: 123561, Start Num: 5

Candidate Starts for SmallFry_220:

(Start: 5 @122536 has 107 MA's), (Start: 6 @122545 has 65 MA's), (11, 122584), (13, 122605), (21, 122680), (23, 122692), (26, 122722), (49, 123004), (52, 123034), (54, 123067), (58, 123130), (63, 123208), (65, 123241), (71, 123271), (85, 123406), (87, 123442), (98, 123556),

Gene: Spec_215 Start: 122724, Stop: 123740, Start Num: 6

Candidate Starts for Spec_215:

(Start: 5 @122715 has 107 MA's), (Start: 6 @122724 has 65 MA's), (11, 122763), (13, 122784), (21, 122859), (23, 122871), (26, 122901), (49, 123183), (52, 123213), (54, 123246), (58, 123309), (63, 123387), (65, 123420), (71, 123450), (85, 123585), (87, 123621), (98, 123735),

Gene: Specks_224 Start: 123840, Stop: 124865, Start Num: 5

Candidate Starts for Specks_224:

(Start: 5 @123840 has 107 MA's), (Start: 6 @123849 has 65 MA's), (11, 123888), (13, 123909), (21, 123984), (23, 123996), (26, 124026), (49, 124308), (52, 124338), (54, 124371), (58, 124434), (63, 124512), (65, 124545), (71, 124575), (85, 124710), (87, 124746), (98, 124860),

Gene: Sprinklers_218 Start: 123091, Stop: 124113, Start Num: 6

Candidate Starts for Sprinklers_218:

(Start: 5 @123082 has 107 MA's), (Start: 6 @123091 has 65 MA's), (11, 123130), (13, 123151), (21, 123226), (23, 123238), (26, 123268), (49, 123550), (52, 123580), (54, 123613), (58, 123676), (63, 123754), (65, 123787), (71, 123817), (85, 123952), (87, 123988), (94, 124036), (98, 124108),

Gene: Spud_214 Start: 122806, Stop: 123831, Start Num: 5

Candidate Starts for Spud_214:

(Start: 5 @122806 has 107 MA's), (Start: 6 @122815 has 65 MA's), (11, 122854), (13, 122875), (21, 122950), (23, 122962), (26, 122992), (49, 123274), (52, 123304), (54, 123337), (58, 123400), (63, 123478), (65, 123511), (71, 123541), (85, 123676), (87, 123712), (98, 123826),

Gene: SrishMeg2525_217 Start: 123958, Stop: 124983, Start Num: 5

Candidate Starts for SrishMeg2525_217:

(Start: 5 @123958 has 107 MA's), (Start: 6 @123967 has 65 MA's), (11, 124006), (13, 124027), (21, 124102), (23, 124114), (26, 124144), (49, 124426), (52, 124456), (54, 124489), (58, 124552), (63, 124630), (65, 124663), (71, 124693), (85, 124828), (87, 124864), (98, 124978),

Gene: StephanieG_216 Start: 123992, Stop: 125017, Start Num: 5

Candidate Starts for StephanieG_216:

(Start: 5 @123992 has 107 MA's), (Start: 6 @124001 has 65 MA's), (11, 124040), (13, 124061), (21, 124136), (23, 124148), (26, 124178), (49, 124460), (52, 124490), (54, 124523), (58, 124586), (63, 124664), (65, 124697), (71, 124727), (85, 124862), (87, 124898), (98, 125012),

Gene: Stubby_204 Start: 121850, Stop: 122872, Start Num: 6

Candidate Starts for Stubby_204:

(Start: 5 @121841 has 107 MA's), (Start: 6 @121850 has 65 MA's), (11, 121889), (13, 121910), (21, 121985), (23, 121997), (26, 122027), (49, 122309), (52, 122339), (54, 122372), (58, 122435), (63, 122513), (65, 122546), (71, 122576), (85, 122711), (87, 122747), (94, 122795), (98, 122867),

Gene: StubbySaigey_225 Start: 123525, Stop: 124550, Start Num: 5

Candidate Starts for StubbySaigey_225:

(Start: 5 @123525 has 107 MA's), (Start: 6 @123534 has 65 MA's), (11, 123573), (13, 123594), (21, 123669), (23, 123681), (26, 123711), (49, 123993), (52, 124023), (54, 124056), (58, 124119), (63, 124197), (65, 124230), (71, 124260), (85, 124395), (87, 124431), (98, 124545),

Gene: Tainan_221 Start: 122868, Stop: 123884, Start Num: 6

Candidate Starts for Tainan_221:

(Start: 5 @122859 has 107 MA's), (Start: 6 @122868 has 65 MA's), (11, 122907), (13, 122928), (21, 123003), (23, 123015), (26, 123045), (49, 123327), (52, 123357), (54, 123390), (58, 123453), (63, 123531), (65, 123564), (71, 123594), (85, 123729), (87, 123765), (98, 123879),

Gene: Teardrop_217 Start: 122038, Stop: 123063, Start Num: 5

Candidate Starts for Teardrop_217:

(Start: 5 @122038 has 107 MA's), (Start: 6 @122047 has 65 MA's), (11, 122086), (13, 122107), (21, 122182), (23, 122194), (26, 122224), (49, 122506), (52, 122536), (54, 122569), (58, 122632), (63, 122710), (65, 122743), (71, 122773), (85, 122908), (87, 122944), (98, 123058),

Gene: TinyTim_218 Start: 122819, Stop: 123844, Start Num: 5

Candidate Starts for TinyTim_218:

(Start: 5 @122819 has 107 MA's), (Start: 6 @122828 has 65 MA's), (11, 122867), (13, 122888), (21, 122963), (23, 122975), (26, 123005), (49, 123287), (52, 123317), (54, 123350), (58, 123413), (63,

123491), (65, 123524), (71, 123554), (85, 123689), (87, 123725), (98, 123839),

Gene: Tonenili_242 Start: 128649, Stop: 129665, Start Num: 6

Candidate Starts for Tonenili_242:

(Start: 5 @128640 has 107 MA's), (Start: 6 @128649 has 65 MA's), (13, 128709), (23, 128796), (26, 128826), (44, 129066), (49, 129108), (52, 129138), (54, 129171), (58, 129234), (65, 129345), (71, 129375), (85, 129510), (87, 129546), (98, 129660),

Gene: Tortoise16_218 Start: 123281, Stop: 124306, Start Num: 5

Candidate Starts for Tortoise16_218:

(Start: 5 @123281 has 107 MA's), (Start: 6 @123290 has 65 MA's), (11, 123329), (13, 123350), (21, 123425), (23, 123437), (26, 123467), (49, 123749), (52, 123779), (54, 123812), (58, 123875), (63, 123953), (65, 123986), (71, 124016), (85, 124151), (87, 124187), (98, 124301),

Gene: Trinitium_216 Start: 121573, Stop: 122598, Start Num: 5

Candidate Starts for Trinitium_216:

(Start: 5 @121573 has 107 MA's), (Start: 6 @121582 has 65 MA's), (11, 121621), (13, 121642), (21, 121717), (23, 121729), (26, 121759), (49, 122041), (52, 122071), (54, 122104), (58, 122167), (63, 122245), (65, 122278), (71, 122308), (85, 122443), (87, 122479), (98, 122593),

Gene: Turret_213 Start: 121155, Stop: 122180, Start Num: 5

Candidate Starts for Turret_213:

(Start: 5 @121155 has 107 MA's), (Start: 6 @121164 has 65 MA's), (11, 121203), (13, 121224), (21, 121299), (23, 121311), (26, 121341), (49, 121623), (52, 121653), (54, 121686), (58, 121749), (63, 121827), (65, 121860), (71, 121890), (85, 122025), (87, 122061), (98, 122175),

Gene: Tyke_218 Start: 124648, Stop: 125673, Start Num: 5

Candidate Starts for Tyke_218:

(Start: 5 @124648 has 107 MA's), (Start: 6 @124657 has 65 MA's), (11, 124696), (13, 124717), (21, 124792), (23, 124804), (26, 124834), (49, 125116), (52, 125146), (54, 125179), (58, 125242), (63, 125320), (65, 125353), (71, 125383), (85, 125518), (87, 125554), (98, 125668),

Gene: ValleyTerrace_221 Start: 122732, Stop: 123757, Start Num: 5

Candidate Starts for ValleyTerrace_221:

(Start: 5 @122732 has 107 MA's), (Start: 6 @122741 has 65 MA's), (11, 122780), (13, 122801), (21, 122876), (23, 122888), (26, 122918), (49, 123200), (52, 123230), (54, 123263), (58, 123326), (63, 123404), (65, 123437), (71, 123467), (85, 123602), (87, 123638), (98, 123752),

Gene: Wally_218 Start: 122716, Stop: 123741, Start Num: 5

Candidate Starts for Wally_218:

(Start: 5 @122716 has 107 MA's), (Start: 6 @122725 has 65 MA's), (11, 122764), (13, 122785), (21, 122860), (23, 122872), (26, 122902), (49, 123184), (52, 123214), (54, 123247), (58, 123310), (63, 123388), (65, 123421), (71, 123451), (85, 123586), (87, 123622), (98, 123736),

Gene: Willis_221 Start: 123627, Stop: 124643, Start Num: 6

Candidate Starts for Willis_221:

(Start: 5 @123618 has 107 MA's), (Start: 6 @123627 has 65 MA's), (11, 123666), (13, 123687), (21, 123762), (23, 123774), (26, 123804), (49, 124086), (52, 124116), (54, 124149), (58, 124212), (63, 124290), (65, 124323), (71, 124353), (85, 124488), (87, 124524), (98, 124638),

Gene: Yassified_217 Start: 123068, Stop: 124093, Start Num: 5

Candidate Starts for Yassified_217:

(Start: 5 @123068 has 107 MA's), (Start: 6 @123077 has 65 MA's), (11, 123116), (13, 123137), (21, 123212), (23, 123224), (26, 123254), (49, 123536), (52, 123566), (54, 123599), (58, 123662), (63, 123740), (65, 123773), (71, 123803), (85, 123938), (87, 123974), (98, 124088),

Gene: YemiJoy2021_221 Start: 124386, Stop: 125411, Start Num: 5

Candidate Starts for YemiJoy2021_221:

(Start: 5 @124386 has 107 MA's), (Start: 6 @124395 has 65 MA's), (11, 124434), (13, 124455), (21, 124530), (23, 124542), (26, 124572), (49, 124854), (52, 124884), (54, 124917), (58, 124980), (63, 125058), (65, 125091), (71, 125121), (85, 125256), (87, 125292), (98, 125406),

Gene: YoungMoneyMata_219 Start: 123209, Stop: 124225, Start Num: 6

Candidate Starts for YoungMoneyMata_219:

(Start: 5 @123200 has 107 MA's), (Start: 6 @123209 has 65 MA's), (11, 123248), (13, 123269), (21, 123344), (23, 123356), (26, 123386), (49, 123668), (52, 123698), (54, 123731), (58, 123794), (63, 123872), (65, 123905), (71, 123935), (85, 124070), (87, 124106), (98, 124220),

Gene: Yucca_220 Start: 124378, Stop: 125403, Start Num: 5

Candidate Starts for Yucca_220:

(Start: 5 @124378 has 107 MA's), (Start: 6 @124387 has 65 MA's), (11, 124426), (13, 124447), (21, 124522), (23, 124534), (26, 124564), (49, 124846), (52, 124876), (54, 124909), (58, 124972), (63, 125050), (65, 125083), (71, 125113), (85, 125248), (87, 125284), (98, 125398),

Gene: Zalkecks_219 Start: 123447, Stop: 124472, Start Num: 5

Candidate Starts for Zalkecks_219:

(Start: 5 @123447 has 107 MA's), (Start: 6 @123456 has 65 MA's), (11, 123495), (13, 123516), (21, 123591), (23, 123603), (26, 123633), (49, 123915), (52, 123945), (54, 123978), (58, 124041), (63, 124119), (65, 124152), (71, 124182), (85, 124317), (87, 124353), (98, 124467),

Gene: Zeenon_222 Start: 124018, Stop: 125043, Start Num: 5

Candidate Starts for Zeenon_222:

(Start: 5 @124018 has 107 MA's), (Start: 6 @124027 has 65 MA's), (11, 124066), (13, 124087), (21, 124162), (23, 124174), (26, 124204), (49, 124486), (52, 124516), (54, 124549), (58, 124612), (63, 124690), (65, 124723), (71, 124753), (85, 124888), (87, 124924), (98, 125038),

Gene: ZygoTaiga_217 Start: 124638, Stop: 125663, Start Num: 5

Candidate Starts for ZygoTaiga_217:

(Start: 5 @124638 has 107 MA's), (Start: 6 @124647 has 65 MA's), (11, 124686), (13, 124707), (21, 124782), (23, 124794), (26, 124824), (49, 125106), (52, 125136), (54, 125169), (58, 125232), (63, 125310), (65, 125343), (71, 125373), (85, 125508), (87, 125544), (98, 125658),