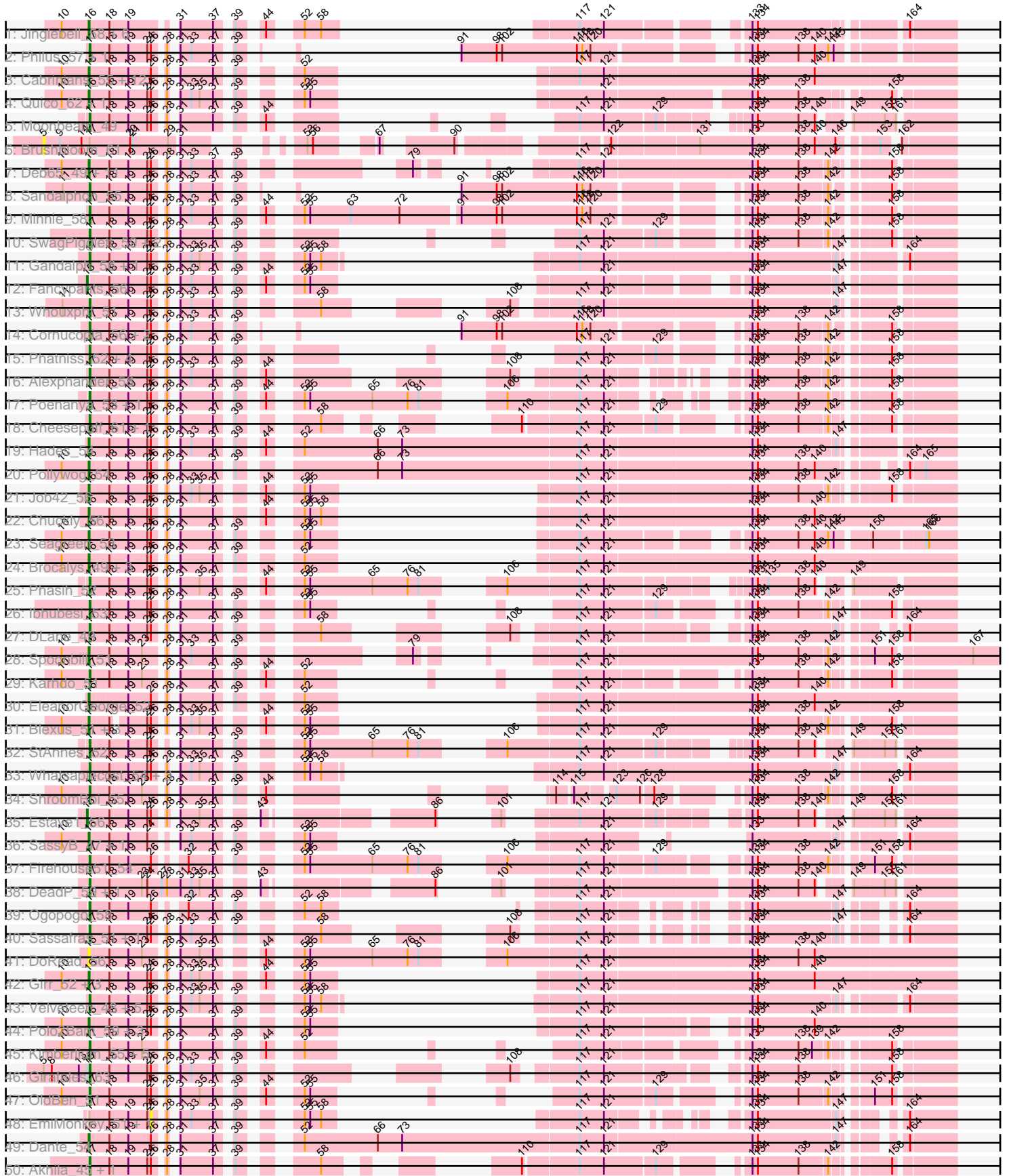
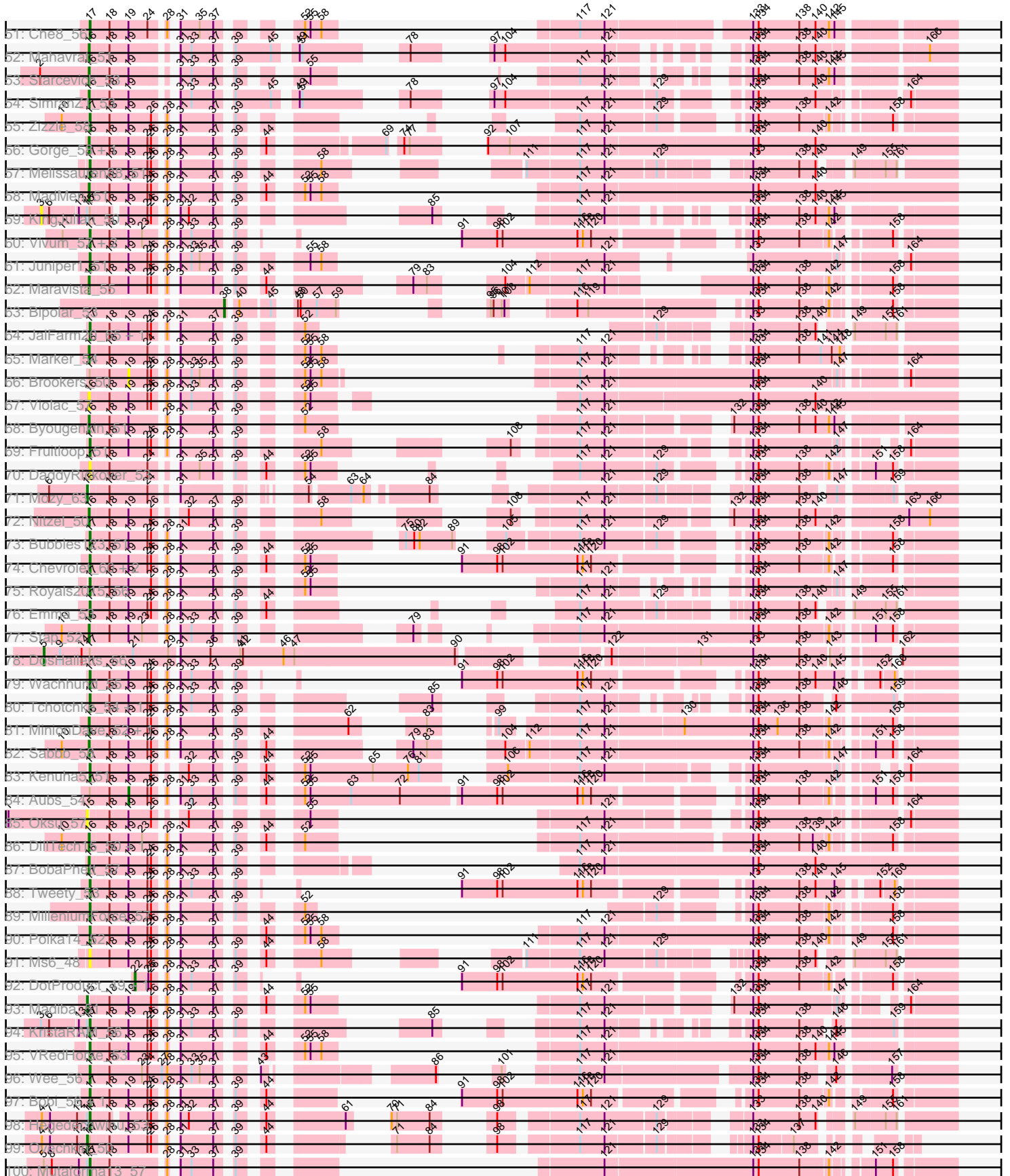
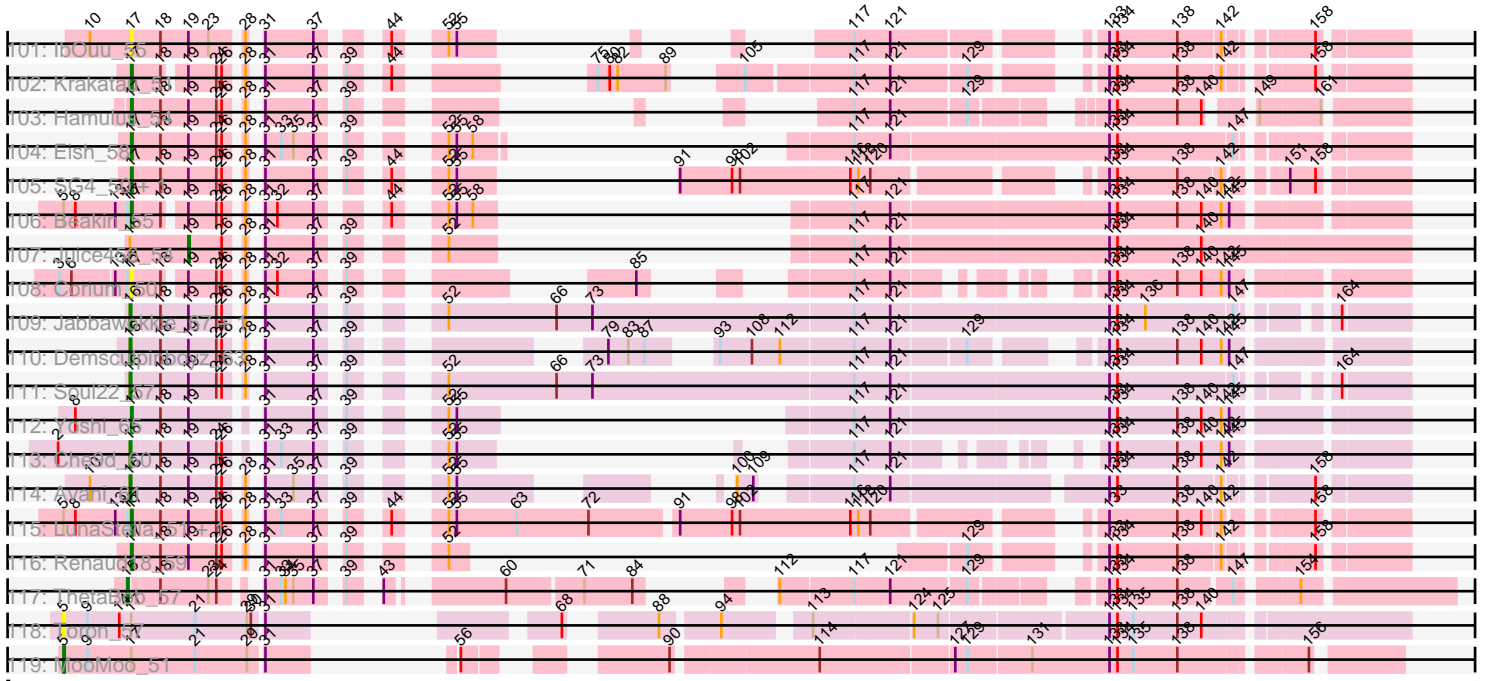


Pham 215851





Pham 215851



Note: Tracks are now grouped by subcluster and scaled. Switching in subcluster is indicated by changes in track color. Track scale is now set by default to display the region 30 bp upstream of start 1 to 30 bp downstream of the last possible start. If this default region is judged to be packed too tightly with annotated starts, the track will be further scaled to only show that region of the ORF with annotated starts. This action will be indicated by adding "Zoomed" to the title. For starts, yellow indicates the location of called starts comprised solely of Glimmer/GeneMark auto-annotations, green indicates the location of called starts with at least 1 manual gene annotation.

Pham 215851 Report

This analysis was run 02/22/25 on database version 588.

Pham number 215851 has 205 members, 20 are drafts.

Phages represented in each track:

- Track 1 : Jinglebell_58, Ochi17_56, Llama_58, Modragons_57, Seabastian_58, AlpineSix_58, OfUltron_58
- Track 2 : Philus_57, DRBy19_57
- Track 3 : Cabrinians_55, Burwell21_52, Jarcob_54, Martik_54, Lizziana_60, Koella_48, ShowerHandel_57, NormanBulbieJr_54, ShiLan_53, Crumble_49, FreddyB_55, Priscilla_54, Yorick_53
- Track 4 : Quico_62, Florinda_65
- Track 5 : Moonbeam_49
- Track 6 : Brushbloom_61
- Track 7 : Deb65_49, Nimbo_48, Leperchaun_46, PHappiness_49, RitaG_49, Scottish_52, Geralt_49, Daenerys_48, JoeyJr_49, Pacc40_48, Empress_52, KingMidas_53
- Track 8 : Sandalphon_55
- Track 9 : Minnie_58
- Track 10 : SwagPigglett_59, LilMoolah_52, Nivrat_50
- Track 11 : Gandolph_56, Mova_54
- Track 12 : Fancypants_56
- Track 13 : Whouxphf_51
- Track 14 : Cornucopia_56, Ardmore_45, OwlsT2W_54
- Track 15 : Phatniss_52, Llij_50, Drago_52, DirtMcgirt_53, UncleRicky_53
- Track 16 : Alexphander_58
- Track 17 : Poenanya_53, Doomphist_53
- Track 18 : Cheesepuff_61, Cornie_48
- Track 19 : Hades_54
- Track 20 : Pollywog_54
- Track 21 : Job42_56
- Track 22 : Chuckly_56
- Track 23 : Seagreen_53
- Track 24 : Brocalys_49, Clifton_49, LastJedi_48, Pippy_52
- Track 25 : Phasih_52
- Track 26 : Ibhubesi_53
- Track 27 : DLane_49
- Track 28 : Spoonbill_51
- Track 29 : Karhdo_51
- Track 30 : EleanorGeorge_52
- Track 31 : Blexus_51, Kersh_55, Tootsieroll_55, Ramsey_54
- Track 32 : StAnnes_52

- Track 33 : Whatsapiecost_54, Rockne_54, PMC_50, Boomer_58
- Track 34 : ShroomBoi_55
- Track 35 : Estave1_56
- Track 36 : SassyB_47, PopTart_47
- Track 37 : Firehouse51_54
- Track 38 : DeadP_59, Taj_57
- Track 39 : Ogopogo_58
- Track 40 : Sassafras_51, Inventum_48
- Track 41 : DoRead_56
- Track 42 : Girr_52, Leozinho_53, Ruby_50, MisterCuddles_52
- Track 43 : Velveteen_48, Kingsley_50, BigPhil_49, Coco12_52, Sarma624_51, Cerasum_49
- Track 44 : Polo2Bam_59, NewHope4_58, LunaBlu_56, Galactic_53
- Track 45 : Kimberlium_55, QuickMath_54, SiSi_51, Mantra_49, MulchExplorer_59, Plumbus_55
- Track 46 : Girafales_63
- Track 47 : OldBen_51
- Track 48 : EmiMonkey_51, PhlipPhlop_51
- Track 49 : Dante_54
- Track 50 : Akhila_45, MilanaBonita_44
- Track 51 : Che8_56
- Track 52 : Mahavrat_51
- Track 53 : Starcevich_53
- Track 54 : SimranZ1_53
- Track 55 : Zizzle_58
- Track 56 : Gorge_58, Saal_56
- Track 57 : Melissauren88_51
- Track 58 : MadMen_51
- Track 59 : KingJulian_50
- Track 60 : Vivum_57, Radiance_53, BodEinwohner17_54
- Track 61 : Juniper1_51
- Track 62 : Maravista_55
- Track 63 : Bipolar_53
- Track 64 : JalFarm20_65, Flathead_53
- Track 65 : Marker_54
- Track 66 : Brookers_50
- Track 67 : Violac_57
- Track 68 : Byougenkin_51
- Track 69 : Fruitloop_51
- Track 70 : DaddyRickover_53
- Track 71 : Mozy_63
- Track 72 : Nitzel_50
- Track 73 : Bubbles123_51
- Track 74 : Chevrolet_60, ArcusAngelus_57, Lorde_54
- Track 75 : Royals2015_56
- Track 76 : Emma_53
- Track 77 : Stap_52
- Track 78 : DosHalletts_56
- Track 79 : Wachhund_55
- Track 80 : Tchotchke_54, Spikelee_60
- Track 81 : MinionDave_52, CaptainTrips_50
- Track 82 : Sabbb_58
- Track 83 : Kenuha5_51

- Track 84 : Aubs_54
- Track 85 : Oksu_57
- Track 86 : DillTech15_50, Fastidio_53
- Track 87 : BobaPhett_57
- Track 88 : Tweety_53
- Track 89 : MilleniumForce_57
- Track 90 : Polka14_52
- Track 91 : Ms6_48
- Track 92 : DotProduct_49, GigiOuiOui_50
- Track 93 : Madiba_51
- Track 94 : KristaRAM_56
- Track 95 : VRedHorse_53
- Track 96 : Wee_56
- Track 97 : Bobi_56, Harley_55
- Track 98 : Hegedechwinu_53
- Track 99 : Ovechkin_50
- Track 100 : Mutaforma13_57
- Track 101 : IbOuu_55
- Track 102 : Krakatau_51
- Track 103 : Hamulus_54
- Track 104 : Eish_58
- Track 105 : SG4_50, Enby_54
- Track 106 : Beakin_55
- Track 107 : Juice456_54
- Track 108 : Corium_50
- Track 109 : Jabbawokkie_67, Zapner_66
- Track 110 : Demsculpinboyz_63
- Track 111 : Soul22_57
- Track 112 : Yoshi_65
- Track 113 : Che9d_60
- Track 114 : Avani_61
- Track 115 : LunaStella_51, TChen_53
- Track 116 : Renaud18_59
- Track 117 : ThetaBob_57
- Track 118 : Toron_57
- Track 119 : MooMoo_51

Summary of Final Annotations (See graph section above for start numbers):

The start number called the most often in the published annotations is 17, it was called in 91 of the 185 non-draft genes in the pham.

Genes that call this "Most Annotated" start:

• Akhila_45, Alexphander_58, ArcusAngelus_57, Ardmore_45, Beakin_55, BigPhil_49, Bobi_56, BodEinwohner17_54, Boomer_58, Bubbles123_51, Cerasum_49, Che8_56, CheesePuff_61, Chevrolet_60, Coco12_52, Corium_50, Cornie_48, Cornucopia_56, DLane_49, DRBy19_57, DaddyRickover_53, DeadP_59, DirtMcGirt_53, Doomphist_53, Drago_52, Eish_58, Emma_53, Enby_54, Firehouse51_54, Flathead_53, Fruitloop_51, Gandolph_56, Girafales_63, Hamulus_54, Harley_55, Hegedechwinu_53, IbOuu_55, Ihubesi_53, Inventum_48,

JalFarm20_65, Juniper1_51, Karhdo_51, Kenuha5_51, Kimberlium_55, Kingsley_50, Krakatau_51, KristaRAM_56, LilMoolah_52, Llij_50, Lorde_54, LunaStella_51, Mantra_49, Melissauren88_51, MilanaBonita_44, MilleniumForce_57, Minnie_58, Moonbeam_49, Mova_54, Ms6_48, MulchExplorer_59, Mutaforma13_57, Nivrat_50, Ogopogo_58, OldBen_51, OwlsT2W_54, PMC_50, Phasih_52, Phatniss_52, Philus_57, Plumbus_55, Poenanya_53, Polka14_52, QuickMath_54, Radiance_53, Renaud18_59, Rockne_54, Royals2015_56, SG4_50, Sandalphon_55, Sarma624_51, Sassafras_51, ShroomBoi_55, SiSi_51, Spikelee_60, StAnnes_52, SwagPiggett_59, TChen_53, Taj_57, Tchotchke_54, Tweety_53, UncleRicky_53, VRedHorse_53, Velveteen_48, Vivum_57, Wachhund_55, Wee_56, Whatsapiecost_54, Whouxphf_51, Yoshi_65, Zizzle_58,

Genes that have the "Most Annotated" start but do not call it:

- Aubs_54, Brookers_50, Brushbloom_61, DosHalletts_56, EmiMonkey_51, KingJulian_50, MooMoo_51, Ovechkin_50, PhlipPhlop_51, Toron_57,

Genes that do not have the "Most Annotated" start:

- AlpineSix_58, Avani_61, Bipolar_53, Blexus_51, BobaPhett_57, Brocalys_49, Burwell21_52, Byougenkin_51, Cabrinians_55, CaptainTrips_50, Che9d_60, Chuckly_56, Clifton_49, Crumble_49, Daenerys_48, Dante_54, Deb65_49, Demsculpinboyz_63, DillTech15_50, DoRead_56, DotProduct_49, EleanorGeorge_52, Empress_52, Estave1_56, Fancypants_56, Fastidio_53, Florinda_65, FreddyB_55, Galactic_53, Geralt_49, GigiOuiOui_50, Girr_52, Gorge_58, Hades_54, Jabbawokkie_67, Jarcob_54, Jinglebell_58, Job42_56, JoeyJr_49, Juice456_54, Kersh_55, KingMidas_53, Koella_48, LastJedi_48, Leozinho_53, Leperchaun_46, Lizziana_60, Llama_58, LunaBlu_56, MadMen_51, Madiba_51, Mahavrat_51, Maravista_55, Marker_54, Martik_54, MinionDave_52, MisterCuddles_52, Modragons_57, Mozy_63, NewHope4_58, Nimbo_48, Nitzel_50, NormanBulbieJr_54, Ochi17_56, OfUltron_58, Oksu_57, PHappiness_49, Pacc40_48, Pippy_52, Pollywog_54, Polo2Bam_59, PopTart_47, Priscilla_54, Quico_62, Ramsey_54, RitaG_49, Ruby_50, Saal_56, Sabbb_58, SassyB_47, Scottish_52, Seabastian_58, Seagreen_53, ShiLan_53, ShowerHandel_57, SimranZ1_53, Soul22_57, Spoonbill_51, Stap_52, Starceвич_53, ThetaBob_57, Tootsieroll_55, Violac_57, Yorick_53, Zapner_66,

Summary by start number:

Start 3:

- Found in 3 of 205 (1.5%) of genes in pham
- No Manual Annotations of this start.
- Called 33.3% of time when present
- Phage (with cluster) where this start called: KingJulian_50 (F1),

Start 5:

- Found in 9 of 205 (4.4%) of genes in pham
- Manual Annotations of this start: 2 of 185
- Called 44.4% of time when present
- Phage (with cluster) where this start called: Brushbloom_61 (F1), DosHalletts_56 (F1), MooMoo_51 (singleton), Toron_57 (F6),

Start 15:

- Found in 16 of 205 (7.8%) of genes in pham
- Manual Annotations of this start: 6 of 185

- Called 43.8% of time when present
- Phage (with cluster) where this start called: Estave1_56 (F1), Fancypants_56 (F1), Madiba_51 (F1), Mozy_63 (F1), Oksu_57 (F1), Ovechkin_50 (F1), ThetaBob_57 (F4),

Start 16:

- Found in 86 of 205 (42.0%) of genes in pham
- Manual Annotations of this start: 81 of 185
- Called 98.8% of time when present
- Phage (with cluster) where this start called: AlpineSix_58 (F1), Avani_61 (F2), Blexus_51 (F1), BobaPhett_57 (F1), Brocalys_49 (F1), Burwell21_52 (F1), Byougenkin_51 (F1), Cabrinians_55 (F1), CaptainTrips_50 (F1), Che9d_60 (F2), Chuckly_56 (F1), Clifton_49 (F1), Crumble_49 (F1), Daenerys_48 (F1), Dante_54 (F1), Deb65_49 (F1), Demsculpinboyz_63 (F2), DillTech15_50 (F1), DoRead_56 (F1), EleanorGeorge_52 (F1), Empress_52 (F1), Fastidio_53 (F1), Florinda_65 (F1), FreddyB_55 (F1), Galactic_53 (F1), Geralt_49 (F1), Girr_52 (F1), Gorge_58 (F1), Hades_54 (F1), Jabbawokkie_67 (F2), Jarcob_54 (F1), Jinglebell_58 (F1), Job42_56 (F1), JoeyJr_49 (F1), Kersh_55 (F1), KingMidas_53 (F1), Koella_48 (F1), LastJedi_48 (F1), Leozinho_53 (F1), Leperchaun_46 (F1), Lizziana_60 (F1), Llama_58 (F1), LunaBlu_56 (F1), MadMen_51 (F1), Mahavrat_51 (F1), Maravista_55 (F1), Marker_54 (F1), Martik_54 (F1), MinionDave_52 (F1), MisterCuddles_52 (F1), Modragons_57 (F1), NewHope4_58 (F1), Nimbo_48 (F1), Nitzel_50 (F1), NormanBulbieJr_54 (F1), Ochi17_56 (F1), OfUltron_58 (F1), PHappiness_49 (F1), Pacc40_48 (F1), Pippy_52 (F1), Pollywog_54 (F1), Polo2Bam_59 (F1), PopTart_47 (F1), Priscilla_54 (F1), Quico_62 (F1), Ramsey_54 (F1), RitaG_49 (F1), Ruby_50 (F1), Saal_56 (F1), Sabbb_58 (F1), SassyB_47 (F1), Scottish_52 (F1), Seabastian_58 (F1), Seagreen_53 (F1), ShiLan_53 (F1), ShowerHandel_57 (F1), SimranZ1_53 (F1), Soul22_57 (F2), Spoonbill_51 (F1), Stap_52 (F1), Starceovich_53 (F1), Tootsieroll_55 (F1), Violac_57 (F1), Yorick_53 (F1), Zapner_66 (F2),

Start 17:

- Found in 110 of 205 (53.7%) of genes in pham
- Manual Annotations of this start: 91 of 185
- Called 90.9% of time when present
- Phage (with cluster) where this start called: Akhila_45 (F1), Alexphander_58 (F1), ArcusAngelus_57 (F1), Ardmore_45 (F1), Beakin_55 (F1), BigPhil_49 (F1), Bobi_56 (F1), BodEinwohner17_54 (F1), Boomer_58 (F1), Bubbles123_51 (F1), Cerasum_49 (F1), Che8_56 (F1), CheesePuff_61 (F1), Chevrolet_60 (F1), Coco12_52 (F1), Corium_50 (F1), Cornie_48 (F5), Cornucopia_56 (F1), DLane_49 (F1), DRBy19_57 (F1), DaddyRickover_53 (F1), DeadP_59 (F1), DirtMcGirt_53 (F1), Doomphist_53 (F1), Drago_52 (F1), Eish_58 (F1), Emma_53 (F1), Enby_54 (F1), Firehouse51_54 (F1), Flathead_53 (F1), Fruitloop_51 (F1), Gandolph_56 (F1), Girafales_63 (F1), Hamulus_54 (F1), Harley_55 (F1), Hegedechwinu_53 (F1), IbOuu_55 (F1), Ibhubesi_53 (F1), Inventum_48 (F1), JalFarm20_65 (F1), Juniper1_51 (F1), Karhdo_51 (F1), Kenuha5_51 (F1), Kimberlium_55 (F1), Kingsley_50 (F1), Krakatau_51 (F1), KristaRAM_56 (F1), LilMoolah_52 (F1), Llij_50 (F1), Lorde_54 (F1), LunaStella_51 (F4), Mantra_49 (F1), Melissauren88_51 (F1), MilanaBonita_44 (F1), MilleniumForce_57 (F1), Minnie_58 (F1), Moonbeam_49 (F1), Mova_54 (F1), Ms6_48 (F1), MulchExplorer_59 (F1), Mutaforma13_57 (F1), Nivrat_50 (F1), OgoPogo_58 (F1), OldBen_51 (F1), OwlsT2W_54 (F1), PMC_50 (F1), Phasih_52 (F1), Phatniss_52 (F1), Philus_57 (F1), Plumbus_55 (F1), Poenanya_53 (F1), Polka14_52 (F1), QuickMath_54 (F1), Radiance_53 (F1), Renaud18_59 (F4), Rockne_54 (F1), Royals2015_56 (F1), SG4_50 (F1), Sandalphon_55 (F1), Sarma624_51 (F1), Sassafras_51 (F1), ShroomBoi_55 (F1), SiSi_51 (F1),

Spikelee_60 (F1), StAnnes_52 (F1), SwagPiggett_59 (F1), TChen_53 (F4), Taj_57 (F1), Tchotchke_54 (F1), Tweety_53 (F1), UncleRicky_53 (F1), VRedHorse_53 (F1), Velveteen_48 (F1), Vivum_57 (F1), Wachhund_55 (F1), Wee_56 (F1), Whatsapiecost_54 (F1), Whouxphf_51 (F1), Yoshi_65 (F2), Zizzle_58 (F1),

Start 19:

- Found in 187 of 205 (91.2%) of genes in pham
- Manual Annotations of this start: 2 of 185
- Called 1.6% of time when present
- Phage (with cluster) where this start called: Aubs_54 (F1), Brookers_50 (F1), Juice456_54 (F1),

Start 22:

- Found in 2 of 205 (1.0%) of genes in pham
- Manual Annotations of this start: 2 of 185
- Called 100.0% of time when present
- Phage (with cluster) where this start called: DotProduct_49 (F1), GigiOuiOui_50 (F1),

Start 26:

- Found in 160 of 205 (78.0%) of genes in pham
- No Manual Annotations of this start.
- Called 1.2% of time when present
- Phage (with cluster) where this start called: EmiMonkey_51 (F1), PhilipPhlop_51 (F1),

Start 38:

- Found in 1 of 205 (0.5%) of genes in pham
- Manual Annotations of this start: 1 of 185
- Called 100.0% of time when present
- Phage (with cluster) where this start called: Bipolar_53 (F1),

Summary by clusters:

There are 6 clusters represented in this pham: F1, F2, F4, F5, F6, singleton,

Info for manual annotations of cluster F1:

- Start number 5 was manually annotated 1 time for cluster F1.
- Start number 15 was manually annotated 5 times for cluster F1.
- Start number 16 was manually annotated 75 times for cluster F1.
- Start number 17 was manually annotated 86 times for cluster F1.
- Start number 19 was manually annotated 2 times for cluster F1.
- Start number 22 was manually annotated 2 times for cluster F1.
- Start number 38 was manually annotated 1 time for cluster F1.

Info for manual annotations of cluster F2:

- Start number 16 was manually annotated 6 times for cluster F2.
- Start number 17 was manually annotated 1 time for cluster F2.

Info for manual annotations of cluster F4:

- Start number 15 was manually annotated 1 time for cluster F4.
- Start number 17 was manually annotated 3 times for cluster F4.

Info for manual annotations of cluster F5:

- Start number 17 was manually annotated 1 time for cluster F5.

Gene Information:

Gene: Akhila_45 Start: 33238, Stop: 33918, Start Num: 17

Candidate Starts for Akhila_45:

(Start: 17 @33238 has 91 MA's), (18, 33256), (Start: 19 @33277 has 2 MA's), (24, 33298), (26, 33301), (28, 33310), (31, 33313), (37, 33349), (39, 33361), (58, 33418), (110, 33526), (117, 33580), (121, 33607), (129, 33661), (133, 33730), (134, 33736), (138, 33781), (142, 33811), (158, 33859),

Gene: Alexphander_58 Start: 38096, Stop: 38746, Start Num: 17

Candidate Starts for Alexphander_58:

(Start: 17 @38096 has 91 MA's), (18, 38114), (Start: 19 @38135 has 2 MA's), (24, 38156), (26, 38159), (28, 38168), (31, 38171), (33, 38183), (37, 38207), (39, 38219), (44, 38237), (108, 38384), (117, 38438), (121, 38465), (133, 38558), (134, 38564), (138, 38609), (142, 38639), (158, 38687),

Gene: AlpineSix_58 Start: 39417, Stop: 40004, Start Num: 16

Candidate Starts for AlpineSix_58:

(10, 39387), (Start: 16 @39417 has 81 MA's), (18, 39435), (Start: 19 @39456 has 2 MA's), (31, 39492), (37, 39528), (39, 39540), (44, 39558), (52, 39579), (58, 39597), (117, 39663), (121, 39690), (133, 39813), (134, 39819), (164, 39957),

Gene: ArcusAngelus_57 Start: 38680, Stop: 39342, Start Num: 17

Candidate Starts for ArcusAngelus_57:

(Start: 17 @38680 has 91 MA's), (18, 38698), (Start: 19 @38719 has 2 MA's), (24, 38740), (26, 38743), (28, 38752), (31, 38755), (37, 38791), (39, 38803), (44, 38821), (52, 38842), (55, 38848), (91, 38878), (98, 38917), (102, 38923), (116, 39004), (118, 39010), (120, 39019), (133, 39154), (134, 39160), (138, 39205), (142, 39235), (158, 39283),

Gene: Ardmore_45 Start: 35444, Stop: 36049, Start Num: 17

Candidate Starts for Ardmore_45:

(Start: 17 @35444 has 91 MA's), (18, 35462), (Start: 19 @35483 has 2 MA's), (24, 35504), (26, 35507), (28, 35516), (31, 35519), (33, 35531), (37, 35555), (39, 35567), (91, 35585), (98, 35624), (102, 35630), (116, 35711), (118, 35717), (120, 35726), (133, 35861), (134, 35867), (138, 35912), (142, 35942), (158, 35990),

Gene: Aubs_54 Start: 37500, Stop: 38252, Start Num: 19

Candidate Starts for Aubs_54:

(Start: 17 @37461 has 91 MA's), (18, 37479), (Start: 19 @37500 has 2 MA's), (24, 37521), (26, 37524), (28, 37533), (31, 37536), (33, 37548), (37, 37572), (39, 37584), (44, 37602), (52, 37623), (55, 37629), (63, 37674), (72, 37728), (91, 37788), (98, 37827), (102, 37833), (116, 37914), (118, 37920), (120, 37929), (133, 38064), (134, 38070), (138, 38115), (142, 38145), (151, 38175), (158, 38193),

Gene: Avani_61 Start: 37581, Stop: 38282, Start Num: 16

Candidate Starts for Avani_61:

(10, 37551), (Start: 16 @37581 has 81 MA's), (18, 37599), (Start: 19 @37620 has 2 MA's), (24, 37641), (26, 37644), (28, 37653), (31, 37656), (35, 37677), (37, 37692), (39, 37704), (52, 37743), (55, 37749), (100, 37860), (109, 37872), (117, 37920), (121, 37947), (133, 38094), (134, 38100), (138, 38145), (142, 38175), (158, 38223),

Gene: Beakin_55 Start: 37066, Stop: 37683, Start Num: 17

Candidate Starts for Beakin_55:

(Start: 5 @37015 has 2 MA's), (8, 37024), (13, 37054), (Start: 15 @37063 has 6 MA's), (Start: 17 @37066 has 91 MA's), (18, 37084), (Start: 19 @37096 has 2 MA's), (24, 37117), (26, 37120), (28, 37129), (31, 37132), (32, 37141), (37, 37168), (44, 37198), (52, 37219), (55, 37225), (58, 37237), (117, 37297), (121, 37324), (133, 37483), (134, 37489), (138, 37534), (140, 37552), (142, 37567), (145, 37573),

Gene: BigPhil_49 Start: 33538, Stop: 34161, Start Num: 17

Candidate Starts for BigPhil_49:

(Start: 17 @33538 has 91 MA's), (18, 33556), (Start: 19 @33577 has 2 MA's), (24, 33598), (26, 33601), (28, 33610), (31, 33613), (33, 33625), (35, 33634), (37, 33649), (39, 33661), (52, 33700), (55, 33706), (58, 33718), (117, 33784), (121, 33811), (133, 33970), (134, 33976), (147, 34060), (164, 34114),

Gene: Bipolar_53 Start: 37987, Stop: 38499, Start Num: 38

Candidate Starts for Bipolar_53:

(Start: 38 @37987 has 1 MA's), (40, 37996), (45, 38026), (48, 38035), (50, 38038), (57, 38056), (59, 38077), (95, 38098), (96, 38101), (101, 38110), (103, 38113), (116, 38149), (119, 38161), (133, 38311), (134, 38317), (138, 38362), (142, 38392), (158, 38440),

Gene: Blexus_51 Start: 37239, Stop: 37844, Start Num: 16

Candidate Starts for Blexus_51:

(10, 37209), (Start: 16 @37239 has 81 MA's), (18, 37257), (Start: 19 @37269 has 2 MA's), (24, 37290), (26, 37293), (28, 37302), (31, 37305), (33, 37317), (35, 37326), (37, 37341), (44, 37371), (52, 37392), (55, 37398), (117, 37470), (121, 37497), (133, 37656), (134, 37662), (138, 37707), (142, 37737), (158, 37785),

Gene: BobaPhett_57 Start: 40029, Stop: 40682, Start Num: 16

Candidate Starts for BobaPhett_57:

(Start: 16 @40029 has 81 MA's), (18, 40047), (Start: 19 @40068 has 2 MA's), (24, 40089), (26, 40092), (28, 40101), (31, 40104), (37, 40140), (39, 40152), (117, 40275), (121, 40302), (133, 40461), (134, 40467), (140, 40530),

Gene: Bobi_56 Start: 38447, Stop: 39109, Start Num: 17

Candidate Starts for Bobi_56:

(Start: 17 @38447 has 91 MA's), (18, 38465), (Start: 19 @38486 has 2 MA's), (24, 38507), (26, 38510), (28, 38519), (31, 38522), (37, 38558), (39, 38570), (44, 38588), (91, 38645), (98, 38684), (102, 38690), (116, 38771), (118, 38777), (120, 38786), (133, 38921), (134, 38927), (138, 38972), (142, 39002), (158, 39050),

Gene: BodEinwohner17_54 Start: 37181, Stop: 37786, Start Num: 17

Candidate Starts for BodEinwohner17_54:

(11, 37151), (Start: 17 @37181 has 91 MA's), (18, 37199), (Start: 19 @37220 has 2 MA's), (23, 37235), (28, 37253), (31, 37256), (33, 37268), (37, 37292), (39, 37304), (91, 37322), (98, 37361), (102, 37367), (116, 37448), (118, 37454), (120, 37463), (133, 37598), (134, 37604), (138, 37649), (142, 37679), (158, 37727),

Gene: Boomer_58 Start: 39232, Stop: 39855, Start Num: 17

Candidate Starts for Boomer_58:

(Start: 17 @39232 has 91 MA's), (18, 39250), (Start: 19 @39271 has 2 MA's), (24, 39292), (26, 39295), (28, 39304), (31, 39307), (33, 39319), (35, 39328), (37, 39343), (39, 39355), (52, 39394), (55, 39400), (58, 39412), (117, 39478), (121, 39505), (133, 39664), (134, 39670), (147, 39754), (164, 39808),

Gene: Brocalys_49 Start: 34514, Stop: 35161, Start Num: 16

Candidate Starts for Brocalys_49:

(10, 34484), (Start: 16 @34514 has 81 MA's), (18, 34532), (Start: 19 @34553 has 2 MA's), (24, 34574), (26, 34577), (28, 34586), (31, 34589), (37, 34625), (39, 34637), (52, 34676), (117, 34754), (121, 34781), (133, 34940), (134, 34946), (140, 35009),

Gene: Brookers_50 Start: 36528, Stop: 37112, Start Num: 19

Candidate Starts for Brookers_50:

(Start: 17 @36489 has 91 MA's), (18, 36507), (Start: 19 @36528 has 2 MA's), (24, 36549), (26, 36552), (28, 36561), (31, 36564), (33, 36576), (35, 36585), (37, 36600), (39, 36612), (52, 36651), (55, 36657), (58, 36669), (117, 36735), (121, 36762), (133, 36921), (134, 36927), (147, 37011), (164, 37065),

Gene: Brushbloom_61 Start: 38072, Stop: 38854, Start Num: 5

Candidate Starts for Brushbloom_61:

(Start: 5 @38072 has 2 MA's), (9, 38090), (14, 38114), (Start: 17 @38123 has 91 MA's), (20, 38168), (21, 38171), (29, 38210), (31, 38219), (53, 38285), (56, 38291), (67, 38336), (90, 38393), (122, 38522), (131, 38609), (133, 38666), (138, 38717), (140, 38735), (146, 38756), (153, 38786), (162, 38798),

Gene: Bubbles123_51 Start: 37879, Stop: 38607, Start Num: 17

Candidate Starts for Bubbles123_51:

(Start: 17 @37879 has 91 MA's), (18, 37897), (Start: 19 @37918 has 2 MA's), (24, 37939), (26, 37942), (28, 37951), (31, 37954), (37, 37990), (39, 38002), (75, 38122), (80, 38131), (82, 38137), (89, 38173), (105, 38197), (117, 38269), (121, 38296), (129, 38350), (133, 38419), (134, 38425), (138, 38470), (142, 38500), (158, 38548),

Gene: Burwell21_52 Start: 37612, Stop: 38259, Start Num: 16

Candidate Starts for Burwell21_52:

(10, 37582), (Start: 16 @37612 has 81 MA's), (18, 37630), (Start: 19 @37651 has 2 MA's), (26, 37675), (28, 37684), (31, 37687), (37, 37723), (39, 37735), (52, 37774), (117, 37852), (121, 37879), (133, 38038), (134, 38044), (140, 38107),

Gene: Byougenkin_51 Start: 37130, Stop: 37723, Start Num: 16

Candidate Starts for Byougenkin_51:

(Start: 16 @37130 has 81 MA's), (18, 37148), (Start: 19 @37169 has 2 MA's), (28, 37202), (31, 37205), (37, 37241), (39, 37253), (52, 37292), (117, 37370), (121, 37397), (132, 37502), (133, 37523), (134, 37529), (138, 37574), (140, 37592), (142, 37607), (145, 37613),

Gene: Cabrinians_55 Start: 37690, Stop: 38337, Start Num: 16

Candidate Starts for Cabrinians_55:

(10, 37660), (Start: 16 @37690 has 81 MA's), (18, 37708), (Start: 19 @37729 has 2 MA's), (26, 37753), (28, 37762), (31, 37765), (37, 37801), (39, 37813), (52, 37852), (117, 37930), (121, 37957), (133, 38116), (134, 38122), (140, 38185),

Gene: CaptainTrips_50 Start: 36293, Stop: 37006, Start Num: 16

Candidate Starts for CaptainTrips_50:

(Start: 16 @36293 has 81 MA's), (18, 36311), (Start: 19 @36332 has 2 MA's), (24, 36353), (26, 36356), (28, 36365), (31, 36368), (37, 36404), (39, 36416), (62, 36503), (83, 36539), (99, 36563), (117, 36635), (121, 36662), (130, 36743), (133, 36818), (134, 36824), (136, 36845), (138, 36869), (142, 36899), (158, 36947),

Gene: Cerasum_49 Start: 33556, Stop: 34179, Start Num: 17

Candidate Starts for Cerasum_49:

(Start: 17 @33556 has 91 MA's), (18, 33574), (Start: 19 @33595 has 2 MA's), (24, 33616), (26, 33619), (28, 33628), (31, 33631), (33, 33643), (35, 33652), (37, 33667), (39, 33679), (52, 33718), (55, 33724), (58, 33736), (117, 33802), (121, 33829), (133, 33988), (134, 33994), (147, 34078), (164, 34132),

Gene: Che8_56 Start: 38547, Stop: 39161, Start Num: 17

Candidate Starts for Che8_56:

(Start: 17 @38547 has 91 MA's), (18, 38565), (Start: 19 @38586 has 2 MA's), (24, 38607), (28, 38619), (31, 38622), (35, 38643), (37, 38658), (52, 38709), (55, 38715), (58, 38727), (117, 38787), (121, 38814), (133, 38961), (134, 38967), (138, 39012), (140, 39030), (142, 39045), (145, 39051),

Gene: Che9d_60 Start: 37007, Stop: 37564, Start Num: 16

Candidate Starts for Che9d_60:

(2, 36953), (Start: 16 @37007 has 81 MA's), (18, 37025), (Start: 19 @37046 has 2 MA's), (24, 37067), (26, 37070), (31, 37082), (33, 37094), (37, 37118), (39, 37130), (52, 37169), (55, 37175), (117, 37253), (121, 37280), (133, 37364), (134, 37370), (138, 37415), (140, 37433), (142, 37448), (145, 37454),

Gene: Cheesepuff_61 Start: 39214, Stop: 39894, Start Num: 17

Candidate Starts for Cheesepuff_61:

(Start: 17 @39214 has 91 MA's), (18, 39232), (Start: 19 @39253 has 2 MA's), (24, 39274), (26, 39277), (28, 39286), (31, 39289), (37, 39325), (39, 39337), (58, 39394), (110, 39502), (117, 39556), (121, 39583), (129, 39637), (133, 39706), (134, 39712), (138, 39757), (142, 39787), (158, 39835),

Gene: Chevrolet_60 Start: 38681, Stop: 39343, Start Num: 17

Candidate Starts for Chevrolet_60:

(Start: 17 @38681 has 91 MA's), (18, 38699), (Start: 19 @38720 has 2 MA's), (24, 38741), (26, 38744), (28, 38753), (31, 38756), (37, 38792), (39, 38804), (44, 38822), (52, 38843), (55, 38849), (91, 38879), (98, 38918), (102, 38924), (116, 39005), (118, 39011), (120, 39020), (133, 39155), (134, 39161), (138, 39206), (142, 39236), (158, 39284),

Gene: Chuckly_56 Start: 38038, Stop: 38685, Start Num: 16

Candidate Starts for Chuckly_56:

(Start: 16 @38038 has 81 MA's), (18, 38056), (Start: 19 @38077 has 2 MA's), (24, 38098), (26, 38101), (28, 38110), (31, 38113), (37, 38149), (44, 38179), (52, 38200), (55, 38206), (58, 38218), (117, 38278), (121, 38305), (133, 38464), (134, 38470), (140, 38533),

Gene: Clifton_49 Start: 34865, Stop: 35512, Start Num: 16

Candidate Starts for Clifton_49:

(10, 34835), (Start: 16 @34865 has 81 MA's), (18, 34883), (Start: 19 @34904 has 2 MA's), (24, 34925), (26, 34928), (28, 34937), (31, 34940), (37, 34976), (39, 34988), (52, 35027), (117, 35105), (121, 35132), (133, 35291), (134, 35297), (140, 35360),

Gene: Coco12_52 Start: 37613, Stop: 38236, Start Num: 17

Candidate Starts for Coco12_52:

(Start: 17 @37613 has 91 MA's), (18, 37631), (Start: 19 @37652 has 2 MA's), (24, 37673), (26, 37676), (28, 37685), (31, 37688), (33, 37700), (35, 37709), (37, 37724), (39, 37736), (52, 37775), (55, 37781), (58, 37793), (117, 37859), (121, 37886), (133, 38045), (134, 38051), (147, 38135), (164, 38189),

Gene: Corium_50 Start: 36569, Stop: 37195, Start Num: 17

Candidate Starts for Corium_50:

(3, 36518), (6, 36527), (13, 36557), (Start: 15 @36566 has 6 MA's), (Start: 17 @36569 has 91 MA's), (18, 36587), (Start: 19 @36599 has 2 MA's), (24, 36620), (26, 36623), (28, 36632), (31, 36635), (32, 36644), (37, 36671), (39, 36683), (85, 36803), (117, 36875), (121, 36902), (133, 36995), (134, 37001), (138, 37046), (140, 37064), (142, 37079), (145, 37085),

Gene: Cornie_48 Start: 35673, Stop: 36353, Start Num: 17

Candidate Starts for Cornie_48:

(Start: 17 @35673 has 91 MA's), (18, 35691), (Start: 19 @35712 has 2 MA's), (24, 35733), (26, 35736), (28, 35745), (31, 35748), (37, 35784), (39, 35796), (58, 35853), (110, 35961), (117, 36015), (121, 36042), (129, 36096), (133, 36165), (134, 36171), (138, 36216), (142, 36246), (158, 36294),

Gene: Cornucopia_56 Start: 38383, Stop: 38988, Start Num: 17

Candidate Starts for Cornucopia_56:

(Start: 17 @38383 has 91 MA's), (18, 38401), (Start: 19 @38422 has 2 MA's), (24, 38443), (26, 38446), (28, 38455), (31, 38458), (33, 38470), (37, 38494), (39, 38506), (91, 38524), (98, 38563), (102, 38569), (116, 38650), (118, 38656), (120, 38665), (133, 38800), (134, 38806), (138, 38851), (142, 38881), (158, 38929),

Gene: Crumble_49 Start: 33626, Stop: 34273, Start Num: 16

Candidate Starts for Crumble_49:

(10, 33596), (Start: 16 @33626 has 81 MA's), (18, 33644), (Start: 19 @33665 has 2 MA's), (26, 33689), (28, 33698), (31, 33701), (37, 33737), (39, 33749), (52, 33788), (117, 33866), (121, 33893), (133, 34052), (134, 34058), (140, 34121),

Gene: DLane_49 Start: 36378, Stop: 37049, Start Num: 17

Candidate Starts for DLane_49:

(Start: 17 @36378 has 91 MA's), (18, 36396), (Start: 19 @36417 has 2 MA's), (24, 36438), (26, 36441), (28, 36450), (31, 36453), (37, 36489), (39, 36501), (58, 36558), (108, 36666), (117, 36720), (121, 36747), (133, 36870), (134, 36876), (147, 36960), (164, 37002),

Gene: DRBy19_57 Start: 38817, Stop: 39434, Start Num: 17

Candidate Starts for DRBy19_57:

(Start: 17 @38817 has 91 MA's), (18, 38835), (Start: 19 @38856 has 2 MA's), (24, 38877), (26, 38880), (28, 38889), (31, 38892), (33, 38904), (37, 38928), (39, 38940), (91, 38958), (98, 38997), (102, 39003), (116, 39084), (118, 39090), (120, 39099), (133, 39234), (134, 39240), (138, 39285), (140, 39303), (142, 39318), (145, 39324),

Gene: DaddyRickover_53 Start: 37900, Stop: 38478, Start Num: 17

Candidate Starts for DaddyRickover_53:

(Start: 17 @37900 has 91 MA's), (18, 37918), (24, 37960), (31, 37975), (35, 37996), (37, 38011), (39, 38023), (44, 38041), (52, 38062), (55, 38068), (117, 38140), (121, 38167), (129, 38221), (133, 38290), (134, 38296), (138, 38341), (142, 38371), (151, 38401), (158, 38419),

Gene: Daenerys_48 Start: 35908, Stop: 36597, Start Num: 16

Candidate Starts for Daenerys_48:

(10, 35878), (Start: 16 @35908 has 81 MA's), (18, 35926), (Start: 19 @35947 has 2 MA's), (24, 35968), (26, 35971), (28, 35980), (31, 35983), (33, 35995), (37, 36019), (39, 36031), (79, 36151), (117, 36223), (121, 36250), (133, 36409), (134, 36415), (138, 36460), (142, 36490), (158, 36538),

Gene: Dante_54 Start: 37263, Stop: 38090, Start Num: 16

Candidate Starts for Dante_54:

(Start: 16 @37263 has 81 MA's), (18, 37281), (Start: 19 @37302 has 2 MA's), (26, 37326), (28, 37335), (31, 37338), (37, 37374), (39, 37386), (52, 37425), (66, 37506), (73, 37533), (117, 37725), (121, 37752), (133, 37911), (134, 37917), (147, 38001), (164, 38043),

Gene: DeadP_59 Start: 39156, Stop: 39872, Start Num: 17

Candidate Starts for DeadP_59:

(Start: 17 @39156 has 91 MA's), (18, 39174), (23, 39210), (24, 39216), (27, 39231), (28, 39237), (31, 39252), (33, 39264), (35, 39273), (37, 39288), (43, 39312), (86, 39450), (101, 39462), (117, 39510), (121, 39537), (133, 39684), (134, 39690), (138, 39735), (140, 39753), (149, 39774), (155, 39804), (161, 39816),

Gene: Deb65_49 Start: 35877, Stop: 36566, Start Num: 16

Candidate Starts for Deb65_49:

(10, 35847), (Start: 16 @35877 has 81 MA's), (18, 35895), (Start: 19 @35916 has 2 MA's), (24, 35937), (26, 35940), (28, 35949), (31, 35952), (33, 35964), (37, 35988), (39, 36000), (79, 36120), (117, 36192), (121, 36219), (133, 36378), (134, 36384), (138, 36429), (142, 36459), (158, 36507),

Gene: Demsculpinboyz_63 Start: 37137, Stop: 37874, Start Num: 16

Candidate Starts for Demsculpinboyz_63:

(Start: 16 @37137 has 81 MA's), (18, 37155), (Start: 19 @37176 has 2 MA's), (24, 37197), (26, 37200), (28, 37209), (31, 37212), (37, 37248), (39, 37260), (79, 37380), (83, 37395), (87, 37407), (93, 37431), (108, 37455), (112, 37476), (117, 37527), (121, 37554), (129, 37605), (133, 37674), (134, 37680), (138, 37725), (140, 37743), (142, 37758), (145, 37764),

Gene: DillTech15_50 Start: 36028, Stop: 36630, Start Num: 16

Candidate Starts for DillTech15_50:

(10, 35998), (Start: 16 @36028 has 81 MA's), (18, 36046), (Start: 19 @36067 has 2 MA's), (23, 36082), (28, 36100), (31, 36103), (37, 36139), (39, 36151), (44, 36169), (52, 36190), (117, 36268), (121, 36295), (133, 36442), (134, 36448), (138, 36493), (139, 36508), (142, 36523), (158, 36571),

Gene: DirtMcgirt_53 Start: 36388, Stop: 36972, Start Num: 17

Candidate Starts for DirtMcgirt_53:

(Start: 17 @36388 has 91 MA's), (18, 36406), (Start: 19 @36427 has 2 MA's), (24, 36448), (26, 36451), (28, 36460), (31, 36463), (37, 36499), (39, 36511), (117, 36634), (121, 36661), (129, 36715), (133, 36784), (134, 36790), (138, 36835), (142, 36865), (158, 36913),

Gene: DoRead_56 Start: 36444, Stop: 37262, Start Num: 16

Candidate Starts for DoRead_56:

(Start: 16 @36444 has 81 MA's), (18, 36462), (Start: 19 @36483 has 2 MA's), (23, 36498), (28, 36516), (31, 36519), (35, 36540), (37, 36555), (44, 36585), (52, 36606), (55, 36612), (65, 36681), (76, 36720), (81, 36732), (106, 36780), (117, 36855), (121, 36882), (133, 37041), (134, 37047), (138, 37092), (140, 37110),

Gene: Doomphist_53 Start: 38418, Stop: 39137, Start Num: 17

Candidate Starts for Doomphist_53:

(Start: 17 @38418 has 91 MA's), (18, 38436), (Start: 19 @38457 has 2 MA's), (24, 38478), (26, 38481), (28, 38490), (31, 38493), (37, 38529), (39, 38541), (44, 38559), (52, 38580), (55, 38586), (65, 38655), (76, 38694), (81, 38706), (106, 38754), (117, 38829), (121, 38856), (133, 38949), (134, 38955), (138, 39000), (142, 39030), (158, 39078),

Gene: DosHalletts_56 Start: 38883, Stop: 39794, Start Num: 5

Candidate Starts for DosHalletts_56:

(Start: 5 @38883 has 2 MA's), (9, 38901), (14, 38925), (Start: 17 @38934 has 91 MA's), (21, 38982), (29, 39021), (31, 39030), (36, 39063), (41, 39096), (42, 39099), (46, 39144), (47, 39156), (90, 39333), (122, 39462), (131, 39549), (133, 39606), (138, 39657), (143, 39687), (162, 39735),

Gene: DotProduct_49 Start: 36494, Stop: 37054, Start Num: 22

Candidate Starts for DotProduct_49:

(Start: 22 @36494 has 2 MA's), (25, 36509), (26, 36512), (28, 36521), (31, 36524), (33, 36536), (37, 36560), (39, 36572), (91, 36590), (98, 36629), (102, 36635), (116, 36716), (118, 36722), (120, 36731), (133, 36866), (134, 36872), (138, 36917), (142, 36947), (158, 36995),

Gene: Drago_52 Start: 36391, Stop: 36975, Start Num: 17

Candidate Starts for Drago_52:

(Start: 17 @36391 has 91 MA's), (18, 36409), (Start: 19 @36430 has 2 MA's), (24, 36451), (26, 36454), (28, 36463), (31, 36466), (37, 36502), (39, 36514), (117, 36637), (121, 36664), (129, 36718), (133, 36787), (134, 36793), (138, 36838), (142, 36868), (158, 36916),

Gene: Eish_58 Start: 38625, Stop: 39248, Start Num: 17

Candidate Starts for Eish_58:

(Start: 17 @38625 has 91 MA's), (18, 38643), (Start: 19 @38664 has 2 MA's), (24, 38685), (26, 38688), (28, 38697), (31, 38700), (33, 38712), (35, 38721), (37, 38736), (39, 38748), (52, 38787), (55, 38793), (58, 38805), (117, 38871), (121, 38898), (133, 39057), (134, 39063), (147, 39147),

Gene: EleanorGeorge_52 Start: 36852, Stop: 37499, Start Num: 16

Candidate Starts for EleanorGeorge_52:

(Start: 16 @36852 has 81 MA's), (Start: 19 @36891 has 2 MA's), (26, 36915), (28, 36924), (31, 36927), (37, 36963), (39, 36975), (52, 37014), (117, 37092), (121, 37119), (133, 37278), (134, 37284), (140, 37347),

Gene: EmiMonkey_51 Start: 38692, Stop: 39168, Start Num: 26

Candidate Starts for EmiMonkey_51:

(Start: 17 @38629 has 91 MA's), (18, 38647), (Start: 19 @38668 has 2 MA's), (24, 38689), (26, 38692), (28, 38701), (31, 38704), (33, 38716), (37, 38740), (39, 38752), (52, 38791), (55, 38797), (58, 38809), (117, 38869), (121, 38896), (133, 38989), (134, 38995), (147, 39079), (164, 39121),

Gene: Emma_53 Start: 36635, Stop: 37219, Start Num: 17

Candidate Starts for Emma_53:

(Start: 17 @36635 has 91 MA's), (18, 36653), (Start: 19 @36674 has 2 MA's), (24, 36695), (26, 36698), (28, 36707), (31, 36710), (37, 36746), (39, 36758), (44, 36776), (117, 36881), (121, 36908), (129, 36962), (133, 37031), (134, 37037), (138, 37082), (140, 37100), (149, 37121), (155, 37151), (161, 37163),

Gene: Empress_52 Start: 37322, Stop: 38011, Start Num: 16

Candidate Starts for Empress_52:

(10, 37292), (Start: 16 @37322 has 81 MA's), (18, 37340), (Start: 19 @37361 has 2 MA's), (24, 37382), (26, 37385), (28, 37394), (31, 37397), (33, 37409), (37, 37433), (39, 37445), (79, 37565), (117, 37637), (121, 37664), (133, 37823), (134, 37829), (138, 37874), (142, 37904), (158, 37952),

Gene: Enby_54 Start: 35779, Stop: 36441, Start Num: 17

Candidate Starts for Enby_54:

(Start: 17 @35779 has 91 MA's), (18, 35797), (Start: 19 @35818 has 2 MA's), (24, 35839), (26, 35842), (28, 35851), (31, 35854), (37, 35890), (39, 35902), (44, 35920), (52, 35941), (55, 35947), (91, 35977), (98, 36016), (102, 36022), (116, 36103), (118, 36109), (120, 36118), (133, 36253), (134, 36259), (138, 36304), (142, 36334), (151, 36364), (158, 36382),

Gene: Estave1_56 Start: 37990, Stop: 38661, Start Num: 15

Candidate Starts for Estave1_56:

(Start: 15 @37990 has 6 MA's), (18, 38008), (Start: 19 @38029 has 2 MA's), (24, 38050), (26, 38053), (28, 38062), (31, 38065), (35, 38086), (37, 38101), (43, 38125), (86, 38263), (101, 38275), (117, 38323), (121, 38350), (129, 38404), (133, 38473), (134, 38479), (138, 38524), (140, 38542), (149,

38563), (155, 38593), (161, 38605),

Gene: Fancypants_56 Start: 38391, Stop: 38969, Start Num: 15

Candidate Starts for Fancypants_56:

(Start: 15 @38391 has 6 MA's), (18, 38409), (Start: 19 @38430 has 2 MA's), (24, 38451), (26, 38454), (28, 38463), (31, 38466), (33, 38478), (37, 38502), (39, 38514), (44, 38532), (52, 38553), (55, 38559), (121, 38658), (133, 38778), (134, 38784), (147, 38868),

Gene: Fastidio_53 Start: 36175, Stop: 36777, Start Num: 16

Candidate Starts for Fastidio_53:

(10, 36145), (Start: 16 @36175 has 81 MA's), (18, 36193), (Start: 19 @36214 has 2 MA's), (23, 36229), (28, 36247), (31, 36250), (37, 36286), (39, 36298), (44, 36316), (52, 36337), (117, 36415), (121, 36442), (133, 36589), (134, 36595), (138, 36640), (139, 36655), (142, 36670), (158, 36718),

Gene: Firehouse51_54 Start: 40200, Stop: 40946, Start Num: 17

Candidate Starts for Firehouse51_54:

(Start: 17 @40200 has 91 MA's), (18, 40218), (Start: 19 @40239 has 2 MA's), (26, 40263), (32, 40284), (37, 40311), (39, 40323), (52, 40362), (55, 40368), (65, 40437), (76, 40476), (81, 40488), (106, 40536), (117, 40611), (121, 40638), (129, 40689), (133, 40758), (134, 40764), (138, 40809), (142, 40839), (151, 40869), (158, 40887),

Gene: Flathead_53 Start: 37749, Stop: 38234, Start Num: 17

Candidate Starts for Flathead_53:

(Start: 17 @37749 has 91 MA's), (18, 37767), (Start: 19 @37788 has 2 MA's), (24, 37809), (26, 37812), (28, 37821), (31, 37824), (37, 37860), (39, 37872), (52, 37911), (129, 37974), (133, 38046), (138, 38097), (140, 38115), (149, 38136), (155, 38166), (161, 38178),

Gene: Florinda_65 Start: 39887, Stop: 40492, Start Num: 16

Candidate Starts for Florinda_65:

(10, 39857), (Start: 16 @39887 has 81 MA's), (18, 39905), (Start: 19 @39926 has 2 MA's), (24, 39947), (26, 39950), (28, 39959), (31, 39962), (33, 39974), (35, 39983), (37, 39998), (39, 40010), (52, 40049), (55, 40055), (121, 40154), (133, 40301), (134, 40307), (138, 40352), (158, 40433),

Gene: FreddyB_55 Start: 36538, Stop: 37185, Start Num: 16

Candidate Starts for FreddyB_55:

(10, 36508), (Start: 16 @36538 has 81 MA's), (18, 36556), (Start: 19 @36577 has 2 MA's), (26, 36601), (28, 36610), (31, 36613), (37, 36649), (39, 36661), (52, 36700), (117, 36778), (121, 36805), (133, 36964), (134, 36970), (140, 37033),

Gene: Fruitloop_51 Start: 37994, Stop: 38665, Start Num: 17

Candidate Starts for Fruitloop_51:

(Start: 17 @37994 has 91 MA's), (18, 38012), (Start: 19 @38033 has 2 MA's), (24, 38054), (26, 38057), (28, 38066), (31, 38069), (37, 38105), (39, 38117), (58, 38174), (108, 38282), (117, 38336), (121, 38363), (133, 38486), (134, 38492), (147, 38576), (164, 38618),

Gene: Galactic_53 Start: 37613, Stop: 38224, Start Num: 16

Candidate Starts for Galactic_53:

(10, 37583), (Start: 16 @37613 has 81 MA's), (18, 37631), (Start: 19 @37652 has 2 MA's), (24, 37673), (26, 37676), (28, 37685), (31, 37688), (37, 37724), (39, 37736), (52, 37775), (55, 37781), (117, 37853), (121, 37880), (133, 38003), (134, 38009), (140, 38072),

Gene: Gandolph_56 Start: 37657, Stop: 38280, Start Num: 17

Candidate Starts for Gandolph_56:

(Start: 17 @37657 has 91 MA's), (18, 37675), (Start: 19 @37696 has 2 MA's), (24, 37717), (26, 37720), (28, 37729), (31, 37732), (33, 37744), (35, 37753), (37, 37768), (39, 37780), (52, 37819), (55, 37825), (58, 37837), (117, 37903), (121, 37930), (133, 38089), (134, 38095), (147, 38179), (164, 38233),

Gene: Geralt_49 Start: 35876, Stop: 36565, Start Num: 16

Candidate Starts for Geralt_49:

(10, 35846), (Start: 16 @35876 has 81 MA's), (18, 35894), (Start: 19 @35915 has 2 MA's), (24, 35936), (26, 35939), (28, 35948), (31, 35951), (33, 35963), (37, 35987), (39, 35999), (79, 36119), (117, 36191), (121, 36218), (133, 36377), (134, 36383), (138, 36428), (142, 36458), (158, 36506),

Gene: GigiOuiOui_50 Start: 36639, Stop: 37199, Start Num: 22

Candidate Starts for GigiOuiOui_50:

(Start: 22 @36639 has 2 MA's), (25, 36654), (26, 36657), (28, 36666), (31, 36669), (33, 36681), (37, 36705), (39, 36717), (91, 36735), (98, 36774), (102, 36780), (116, 36861), (118, 36867), (120, 36876), (133, 37011), (134, 37017), (138, 37062), (142, 37092), (158, 37140),

Gene: Girafales_63 Start: 39600, Stop: 40283, Start Num: 17

Candidate Starts for Girafales_63:

(Start: 5 @39549 has 2 MA's), (8, 39558), (13, 39588), (Start: 15 @39597 has 6 MA's), (Start: 17 @39600 has 91 MA's), (18, 39618), (Start: 19 @39639 has 2 MA's), (24, 39660), (26, 39663), (28, 39672), (31, 39675), (33, 39687), (37, 39711), (39, 39723), (108, 39888), (117, 39942), (121, 39969), (133, 40092), (134, 40098), (138, 40143), (158, 40224),

Gene: Girr_52 Start: 37416, Stop: 38063, Start Num: 16

Candidate Starts for Girr_52:

(10, 37386), (Start: 16 @37416 has 81 MA's), (18, 37434), (Start: 19 @37455 has 2 MA's), (24, 37476), (26, 37479), (28, 37488), (31, 37491), (33, 37503), (35, 37512), (37, 37527), (44, 37557), (52, 37578), (55, 37584), (117, 37656), (121, 37683), (133, 37842), (134, 37848), (140, 37911),

Gene: Gorge_58 Start: 38905, Stop: 39702, Start Num: 16

Candidate Starts for Gorge_58:

(Start: 16 @38905 has 81 MA's), (18, 38923), (Start: 19 @38944 has 2 MA's), (24, 38965), (26, 38968), (28, 38977), (31, 38980), (37, 39016), (39, 39028), (44, 39046), (69, 39148), (74, 39157), (77, 39163), (92, 39199), (107, 39223), (117, 39295), (121, 39322), (133, 39481), (134, 39487), (140, 39550),

Gene: Hades_54 Start: 37504, Stop: 38343, Start Num: 16

Candidate Starts for Hades_54:

(Start: 16 @37504 has 81 MA's), (18, 37522), (Start: 19 @37543 has 2 MA's), (24, 37564), (26, 37567), (28, 37576), (31, 37579), (33, 37591), (37, 37615), (39, 37627), (44, 37645), (52, 37666), (66, 37747), (73, 37774), (117, 37966), (121, 37993), (133, 38152), (134, 38158), (147, 38242),

Gene: Hamulus_54 Start: 38023, Stop: 38607, Start Num: 17

Candidate Starts for Hamulus_54:

(Start: 17 @38023 has 91 MA's), (18, 38041), (Start: 19 @38062 has 2 MA's), (24, 38083), (26, 38086), (28, 38095), (31, 38098), (37, 38134), (39, 38146), (117, 38269), (121, 38296), (129, 38350), (133, 38419), (134, 38425), (138, 38470), (140, 38488), (149, 38509), (161, 38551),

Gene: Harley_55 Start: 37379, Stop: 38041, Start Num: 17

Candidate Starts for Harley_55:

(Start: 17 @37379 has 91 MA's), (18, 37397), (Start: 19 @37418 has 2 MA's), (24, 37439), (26, 37442), (28, 37451), (31, 37454), (37, 37490), (39, 37502), (44, 37520), (91, 37577), (98, 37616), (102, 37622), (116, 37703), (118, 37709), (120, 37718), (133, 37853), (134, 37859), (138, 37904), (142, 37934), (158, 37982),

Gene: Hegedechwinu_53 Start: 35958, Stop: 36644, Start Num: 17

Candidate Starts for Hegedechwinu_53:

(4, 35907), (7, 35916), (12, 35946), (Start: 15 @35955 has 6 MA's), (Start: 17 @35958 has 91 MA's), (18, 35976), (Start: 19 @35988 has 2 MA's), (24, 36009), (26, 36012), (28, 36021), (31, 36024), (32, 36033), (37, 36060), (39, 36072), (44, 36090), (61, 36156), (70, 36165), (71, 36171), (84, 36207), (98, 36231), (117, 36303), (121, 36330), (129, 36384), (133, 36456), (138, 36507), (140, 36525), (149, 36546), (155, 36576), (161, 36588),

Gene: lbOuu_55 Start: 38158, Stop: 38736, Start Num: 17

Candidate Starts for lbOuu_55:

(10, 38128), (Start: 17 @38158 has 91 MA's), (18, 38176), (Start: 19 @38197 has 2 MA's), (23, 38212), (28, 38230), (31, 38233), (37, 38269), (44, 38299), (52, 38320), (55, 38326), (117, 38398), (121, 38425), (133, 38548), (134, 38554), (138, 38599), (142, 38629), (158, 38677),

Gene: lbhubesi_53 Start: 36972, Stop: 37550, Start Num: 17

Candidate Starts for lbhubesi_53:

(Start: 17 @36972 has 91 MA's), (18, 36990), (Start: 19 @37011 has 2 MA's), (24, 37032), (26, 37035), (28, 37044), (31, 37047), (37, 37083), (39, 37095), (52, 37134), (55, 37140), (117, 37212), (121, 37239), (129, 37293), (133, 37362), (134, 37368), (138, 37413), (142, 37443), (158, 37491),

Gene: Inventum_48 Start: 36392, Stop: 37033, Start Num: 17

Candidate Starts for Inventum_48:

(Start: 17 @36392 has 91 MA's), (18, 36410), (24, 36452), (26, 36455), (28, 36464), (31, 36467), (33, 36479), (37, 36503), (39, 36515), (58, 36572), (108, 36680), (117, 36734), (121, 36761), (133, 36854), (134, 36860), (147, 36944), (164, 36986),

Gene: Jabbawokkie_67 Start: 38459, Stop: 39289, Start Num: 16

Candidate Starts for Jabbawokkie_67:

(Start: 16 @38459 has 81 MA's), (18, 38477), (Start: 19 @38498 has 2 MA's), (24, 38519), (26, 38522), (28, 38531), (31, 38534), (37, 38570), (39, 38582), (52, 38621), (66, 38702), (73, 38729), (117, 38921), (121, 38948), (133, 39107), (134, 39113), (136, 39134), (147, 39197), (164, 39242),

Gene: JalFarm20_65 Start: 40779, Stop: 41264, Start Num: 17

Candidate Starts for JalFarm20_65:

(Start: 17 @40779 has 91 MA's), (18, 40797), (Start: 19 @40818 has 2 MA's), (24, 40839), (26, 40842), (28, 40851), (31, 40854), (37, 40890), (39, 40902), (52, 40941), (129, 41004), (133, 41076), (138, 41127), (140, 41145), (149, 41166), (155, 41196), (161, 41208),

Gene: Jacob_54 Start: 37658, Stop: 38305, Start Num: 16

Candidate Starts for Jacob_54:

(10, 37628), (Start: 16 @37658 has 81 MA's), (18, 37676), (Start: 19 @37697 has 2 MA's), (26, 37721), (28, 37730), (31, 37733), (37, 37769), (39, 37781), (52, 37820), (117, 37898), (121, 37925), (133, 38084), (134, 38090), (140, 38153),

Gene: Jinglebell_58 Start: 39416, Stop: 40003, Start Num: 16

Candidate Starts for Jinglebell_58:

(10, 39386), (Start: 16 @39416 has 81 MA's), (18, 39434), (Start: 19 @39455 has 2 MA's), (31, 39491), (37, 39527), (39, 39539), (44, 39557), (52, 39578), (58, 39596), (117, 39662), (121, 39689), (133, 39812), (134, 39818), (164, 39956),

Gene: Job42_56 Start: 39633, Stop: 40247, Start Num: 16

Candidate Starts for Job42_56:

(Start: 16 @39633 has 81 MA's), (18, 39651), (Start: 19 @39672 has 2 MA's), (24, 39693), (26, 39696), (28, 39705), (31, 39708), (33, 39720), (35, 39729), (37, 39744), (44, 39774), (52, 39795), (55, 39801), (117, 39873), (121, 39900), (133, 40059), (134, 40065), (138, 40110), (142, 40140), (158, 40188),

Gene: JoeyJr_49 Start: 36076, Stop: 36765, Start Num: 16

Candidate Starts for JoeyJr_49:

(10, 36046), (Start: 16 @36076 has 81 MA's), (18, 36094), (Start: 19 @36115 has 2 MA's), (24, 36136), (26, 36139), (28, 36148), (31, 36151), (33, 36163), (37, 36187), (39, 36199), (79, 36319), (117, 36391), (121, 36418), (133, 36577), (134, 36583), (138, 36628), (142, 36658), (158, 36706),

Gene: Juice456_54 Start: 38793, Stop: 39401, Start Num: 19

Candidate Starts for Juice456_54:

(Start: 16 @38754 has 81 MA's), (Start: 19 @38793 has 2 MA's), (26, 38817), (28, 38826), (31, 38829), (37, 38865), (39, 38877), (52, 38916), (117, 38994), (121, 39021), (133, 39180), (134, 39186), (140, 39249),

Gene: Juniper1_51 Start: 36864, Stop: 37370, Start Num: 17

Candidate Starts for Juniper1_51:

(Start: 17 @36864 has 91 MA's), (18, 36882), (Start: 19 @36903 has 2 MA's), (24, 36924), (26, 36927), (28, 36936), (31, 36939), (33, 36951), (35, 36960), (37, 36975), (39, 36987), (55, 37032), (58, 37044), (121, 37131), (133, 37179), (147, 37269), (164, 37323),

Gene: Karhdo_51 Start: 37236, Stop: 37814, Start Num: 17

Candidate Starts for Karhdo_51:

(10, 37206), (Start: 17 @37236 has 91 MA's), (18, 37254), (Start: 19 @37275 has 2 MA's), (23, 37290), (28, 37308), (31, 37311), (37, 37347), (39, 37359), (44, 37377), (52, 37398), (117, 37476), (121, 37503), (133, 37626), (138, 37677), (142, 37707), (158, 37755),

Gene: Kenuha5_51 Start: 36362, Stop: 37102, Start Num: 17

Candidate Starts for Kenuha5_51:

(Start: 17 @36362 has 91 MA's), (18, 36380), (Start: 19 @36401 has 2 MA's), (26, 36425), (32, 36446), (37, 36473), (39, 36485), (44, 36503), (52, 36524), (55, 36530), (65, 36599), (76, 36638), (81, 36650), (106, 36698), (117, 36773), (121, 36800), (133, 36923), (134, 36929), (147, 37013), (164, 37055),

Gene: Kersh_55 Start: 39189, Stop: 39803, Start Num: 16

Candidate Starts for Kersh_55:

(10, 39159), (Start: 16 @39189 has 81 MA's), (18, 39207), (Start: 19 @39228 has 2 MA's), (24, 39249), (26, 39252), (28, 39261), (31, 39264), (33, 39276), (35, 39285), (37, 39300), (44, 39330), (52, 39351), (55, 39357), (117, 39429), (121, 39456), (133, 39615), (134, 39621), (138, 39666), (142, 39696), (158, 39744),

Gene: Kimberlium_55 Start: 39048, Stop: 39626, Start Num: 17

Candidate Starts for Kimberlium_55:

(10, 39018), (Start: 17 @39048 has 91 MA's), (18, 39066), (Start: 19 @39087 has 2 MA's), (23, 39102), (28, 39120), (31, 39123), (37, 39159), (39, 39171), (44, 39189), (52, 39210), (117, 39288), (121, 39315), (133, 39438), (138, 39489), (139, 39504), (142, 39519), (158, 39567),

Gene: KingJulian_50 Start: 36518, Stop: 37195, Start Num: 3

Candidate Starts for KingJulian_50:

(3, 36518), (6, 36527), (13, 36557), (Start: 15 @36566 has 6 MA's), (Start: 17 @36569 has 91 MA's), (18, 36587), (Start: 19 @36599 has 2 MA's), (24, 36620), (26, 36623), (28, 36632), (31, 36635), (32, 36644), (37, 36671), (39, 36683), (85, 36803), (117, 36875), (121, 36902), (133, 36995), (134, 37001), (138, 37046), (140, 37064), (142, 37079), (145, 37085),

Gene: KingMidas_53 Start: 37738, Stop: 38427, Start Num: 16

Candidate Starts for KingMidas_53:

(10, 37708), (Start: 16 @37738 has 81 MA's), (18, 37756), (Start: 19 @37777 has 2 MA's), (24, 37798), (26, 37801), (28, 37810), (31, 37813), (33, 37825), (37, 37849), (39, 37861), (79, 37981), (117, 38053), (121, 38080), (133, 38239), (134, 38245), (138, 38290), (142, 38320), (158, 38368),

Gene: Kingsley_50 Start: 36346, Stop: 36969, Start Num: 17

Candidate Starts for Kingsley_50:

(Start: 17 @36346 has 91 MA's), (18, 36364), (Start: 19 @36385 has 2 MA's), (24, 36406), (26, 36409), (28, 36418), (31, 36421), (33, 36433), (35, 36442), (37, 36457), (39, 36469), (52, 36508), (55, 36514), (58, 36526), (117, 36592), (121, 36619), (133, 36778), (134, 36784), (147, 36868), (164, 36922),

Gene: Koella_48 Start: 33588, Stop: 34235, Start Num: 16

Candidate Starts for Koella_48:

(10, 33558), (Start: 16 @33588 has 81 MA's), (18, 33606), (Start: 19 @33627 has 2 MA's), (26, 33651), (28, 33660), (31, 33663), (37, 33699), (39, 33711), (52, 33750), (117, 33828), (121, 33855), (133, 34014), (134, 34020), (140, 34083),

Gene: Krakatau_51 Start: 37074, Stop: 37757, Start Num: 17

Candidate Starts for Krakatau_51:

(Start: 17 @37074 has 91 MA's), (18, 37092), (Start: 19 @37104 has 2 MA's), (24, 37125), (26, 37128), (28, 37137), (31, 37140), (37, 37176), (39, 37188), (44, 37206), (75, 37272), (80, 37281), (82, 37287), (89, 37323), (105, 37347), (117, 37419), (121, 37446), (129, 37500), (133, 37569), (134, 37575), (138, 37620), (142, 37650), (158, 37698),

Gene: KristaRAM_56 Start: 39407, Stop: 40030, Start Num: 17

Candidate Starts for KristaRAM_56:

(3, 39356), (6, 39365), (13, 39395), (Start: 15 @39404 has 6 MA's), (Start: 17 @39407 has 91 MA's), (18, 39425), (Start: 19 @39446 has 2 MA's), (24, 39467), (26, 39470), (28, 39479), (31, 39482), (33, 39494), (37, 39518), (39, 39530), (85, 39650), (117, 39722), (121, 39749), (133, 39842), (134, 39848), (138, 39893), (146, 39923), (159, 39971),

Gene: LastJedi_48 Start: 34908, Stop: 35555, Start Num: 16

Candidate Starts for LastJedi_48:

(10, 34878), (Start: 16 @34908 has 81 MA's), (18, 34926), (Start: 19 @34947 has 2 MA's), (24, 34968), (26, 34971), (28, 34980), (31, 34983), (37, 35019), (39, 35031), (52, 35070), (117, 35148), (121, 35175), (133, 35334), (134, 35340), (140, 35403),

Gene: Leozinho_53 Start: 36989, Stop: 37636, Start Num: 16

Candidate Starts for Leozinho_53:

(10, 36959), (Start: 16 @36989 has 81 MA's), (18, 37007), (Start: 19 @37028 has 2 MA's), (24, 37049), (26, 37052), (28, 37061), (31, 37064), (33, 37076), (35, 37085), (37, 37100), (44, 37130), (52, 37151), (55, 37157), (117, 37229), (121, 37256), (133, 37415), (134, 37421), (140, 37484),

Gene: Leperchaun_46 Start: 35306, Stop: 35995, Start Num: 16

Candidate Starts for Leperchaun_46:

(10, 35276), (Start: 16 @35306 has 81 MA's), (18, 35324), (Start: 19 @35345 has 2 MA's), (24, 35366), (26, 35369), (28, 35378), (31, 35381), (33, 35393), (37, 35417), (39, 35429), (79, 35549), (117, 35621), (121, 35648), (133, 35807), (134, 35813), (138, 35858), (142, 35888), (158, 35936),

Gene: LilMoolah_52 Start: 37168, Stop: 37752, Start Num: 17

Candidate Starts for LilMoolah_52:

(Start: 17 @37168 has 91 MA's), (18, 37186), (Start: 19 @37207 has 2 MA's), (24, 37228), (26, 37231), (28, 37240), (31, 37243), (37, 37279), (39, 37291), (117, 37414), (121, 37441), (129, 37495), (133, 37564), (134, 37570), (138, 37615), (142, 37645), (158, 37693),

Gene: Lizziana_60 Start: 38661, Stop: 39308, Start Num: 16

Candidate Starts for Lizziana_60:

(10, 38631), (Start: 16 @38661 has 81 MA's), (18, 38679), (Start: 19 @38700 has 2 MA's), (26, 38724), (28, 38733), (31, 38736), (37, 38772), (39, 38784), (52, 38823), (117, 38901), (121, 38928), (133, 39087), (134, 39093), (140, 39156),

Gene: Llama_58 Start: 39414, Stop: 40001, Start Num: 16

Candidate Starts for Llama_58:

(10, 39384), (Start: 16 @39414 has 81 MA's), (18, 39432), (Start: 19 @39453 has 2 MA's), (31, 39489), (37, 39525), (39, 39537), (44, 39555), (52, 39576), (58, 39594), (117, 39660), (121, 39687), (133, 39810), (134, 39816), (164, 39954),

Gene: Llij_50 Start: 36545, Stop: 37129, Start Num: 17

Candidate Starts for Llij_50:

(Start: 17 @36545 has 91 MA's), (18, 36563), (Start: 19 @36584 has 2 MA's), (24, 36605), (26, 36608), (28, 36617), (31, 36620), (37, 36656), (39, 36668), (117, 36791), (121, 36818), (129, 36872), (133, 36941), (134, 36947), (138, 36992), (142, 37022), (158, 37070),

Gene: Lorde_54 Start: 35754, Stop: 36416, Start Num: 17

Candidate Starts for Lorde_54:

(Start: 17 @35754 has 91 MA's), (18, 35772), (Start: 19 @35793 has 2 MA's), (24, 35814), (26, 35817), (28, 35826), (31, 35829), (37, 35865), (39, 35877), (44, 35895), (52, 35916), (55, 35922), (91, 35952), (98, 35991), (102, 35997), (116, 36078), (118, 36084), (120, 36093), (133, 36228), (134, 36234), (138, 36279), (142, 36309), (158, 36357),

Gene: LunaBlu_56 Start: 38272, Stop: 38883, Start Num: 16

Candidate Starts for LunaBlu_56:

(10, 38242), (Start: 16 @38272 has 81 MA's), (18, 38290), (Start: 19 @38311 has 2 MA's), (24, 38332), (26, 38335), (28, 38344), (31, 38347), (37, 38383), (39, 38395), (52, 38434), (55, 38440), (117, 38512), (121, 38539), (133, 38662), (134, 38668), (140, 38731),

Gene: LunaStella_51 Start: 35924, Stop: 36715, Start Num: 17

Candidate Starts for LunaStella_51:

(Start: 5 @35873 has 2 MA's), (8, 35882), (13, 35912), (Start: 15 @35921 has 6 MA's), (Start: 17 @35924 has 91 MA's), (18, 35942), (Start: 19 @35963 has 2 MA's), (24, 35984), (26, 35987), (28, 35996), (31, 35999), (33, 36011), (37, 36035), (39, 36047), (44, 36065), (52, 36086), (55, 36092), (63, 36137), (72, 36191), (91, 36251), (98, 36290), (102, 36296), (116, 36377), (118, 36383), (120, 36392), (133, 36527), (138, 36578), (140, 36596), (142, 36608), (158, 36656),

Gene: MadMen_51 Start: 37141, Stop: 37788, Start Num: 16

Candidate Starts for MadMen_51:

(Start: 16 @37141 has 81 MA's), (18, 37159), (Start: 19 @37180 has 2 MA's), (24, 37201), (26, 37204), (28, 37213), (31, 37216), (37, 37252), (39, 37264), (44, 37282), (52, 37303), (55, 37309), (58, 37321), (117, 37381), (121, 37408), (133, 37567), (134, 37573), (140, 37636),

Gene: Madiba_51 Start: 35891, Stop: 36466, Start Num: 15

Candidate Starts for Madiba_51:

(Start: 15 @35891 has 6 MA's), (18, 35909), (Start: 19 @35930 has 2 MA's), (26, 35954), (28, 35963), (31, 35966), (37, 36002), (44, 36032), (52, 36053), (55, 36059), (117, 36131), (121, 36158), (132,

36266), (133, 36287), (134, 36293), (147, 36377), (164, 36419),

Gene: Mahavrat_51 Start: 36698, Stop: 37408, Start Num: 16

Candidate Starts for Mahavrat_51:

(Start: 16 @36698 has 81 MA's), (18, 36716), (Start: 19 @36737 has 2 MA's), (31, 36773), (33, 36785), (37, 36809), (39, 36821), (45, 36860), (49, 36878), (51, 36881), (78, 36959), (97, 36998), (104, 37010), (121, 37115), (133, 37208), (134, 37214), (138, 37259), (140, 37277), (166, 37379),

Gene: Mantra_49 Start: 36324, Stop: 36902, Start Num: 17

Candidate Starts for Mantra_49:

(10, 36294), (Start: 17 @36324 has 91 MA's), (18, 36342), (Start: 19 @36363 has 2 MA's), (23, 36378), (28, 36396), (31, 36399), (37, 36435), (39, 36447), (44, 36465), (52, 36486), (117, 36564), (121, 36591), (133, 36714), (138, 36765), (139, 36780), (142, 36795), (158, 36843),

Gene: Maravista_55 Start: 39079, Stop: 39756, Start Num: 16

Candidate Starts for Maravista_55:

(Start: 16 @39079 has 81 MA's), (18, 39097), (Start: 19 @39118 has 2 MA's), (24, 39139), (26, 39142), (28, 39151), (31, 39154), (37, 39190), (39, 39202), (44, 39220), (79, 39322), (83, 39337), (104, 39373), (112, 39397), (117, 39448), (121, 39475), (133, 39568), (134, 39574), (138, 39619), (142, 39649), (158, 39697),

Gene: Marker_54 Start: 37382, Stop: 37948, Start Num: 16

Candidate Starts for Marker_54:

(Start: 16 @37382 has 81 MA's), (18, 37400), (24, 37442), (31, 37457), (37, 37493), (39, 37505), (52, 37544), (55, 37550), (58, 37562), (117, 37628), (121, 37655), (133, 37748), (134, 37754), (138, 37799), (141, 37823), (144, 37835), (148, 37844),

Gene: Martik_54 Start: 37614, Stop: 38261, Start Num: 16

Candidate Starts for Martik_54:

(10, 37584), (Start: 16 @37614 has 81 MA's), (18, 37632), (Start: 19 @37653 has 2 MA's), (26, 37677), (28, 37686), (31, 37689), (37, 37725), (39, 37737), (52, 37776), (117, 37854), (121, 37881), (133, 38040), (134, 38046), (140, 38109),

Gene: Melissauren88_51 Start: 36531, Stop: 37214, Start Num: 17

Candidate Starts for Melissauren88_51:

(Start: 17 @36531 has 91 MA's), (18, 36549), (Start: 19 @36570 has 2 MA's), (24, 36591), (26, 36594), (28, 36603), (31, 36606), (37, 36642), (39, 36654), (58, 36711), (111, 36819), (117, 36873), (121, 36900), (129, 36954), (133, 37026), (138, 37077), (140, 37095), (149, 37116), (155, 37146), (161, 37158),

Gene: MilanaBonita_44 Start: 33238, Stop: 33918, Start Num: 17

Candidate Starts for MilanaBonita_44:

(Start: 17 @33238 has 91 MA's), (18, 33256), (Start: 19 @33277 has 2 MA's), (24, 33298), (26, 33301), (28, 33310), (31, 33313), (37, 33349), (39, 33361), (58, 33418), (110, 33526), (117, 33580), (121, 33607), (129, 33661), (133, 33730), (134, 33736), (138, 33781), (142, 33811), (158, 33859),

Gene: MilleniumForce_57 Start: 39630, Stop: 40112, Start Num: 17

Candidate Starts for MilleniumForce_57:

(Start: 17 @39630 has 91 MA's), (18, 39648), (Start: 19 @39669 has 2 MA's), (24, 39690), (26, 39693), (28, 39702), (31, 39705), (37, 39741), (39, 39753), (52, 39792), (129, 39855), (133, 39924), (134, 39930), (138, 39975), (142, 40005), (158, 40053),

Gene: MinionDave_52 Start: 37068, Stop: 37781, Start Num: 16

Candidate Starts for MinionDave_52:

(Start: 16 @37068 has 81 MA's), (18, 37086), (Start: 19 @37107 has 2 MA's), (24, 37128), (26, 37131), (28, 37140), (31, 37143), (37, 37179), (39, 37191), (62, 37278), (83, 37314), (99, 37338), (117, 37410), (121, 37437), (130, 37518), (133, 37593), (134, 37599), (136, 37620), (138, 37644), (142, 37674), (158, 37722),

Gene: Minnie_58 Start: 39392, Stop: 40183, Start Num: 17

Candidate Starts for Minnie_58:

(Start: 17 @39392 has 91 MA's), (18, 39410), (Start: 19 @39431 has 2 MA's), (24, 39452), (26, 39455), (28, 39464), (31, 39467), (33, 39479), (37, 39503), (39, 39515), (44, 39533), (52, 39554), (55, 39560), (63, 39605), (72, 39659), (91, 39719), (98, 39758), (102, 39764), (116, 39845), (118, 39851), (120, 39860), (133, 39995), (134, 40001), (138, 40046), (142, 40076), (158, 40124),

Gene: MisterCuddles_52 Start: 37416, Stop: 38063, Start Num: 16

Candidate Starts for MisterCuddles_52:

(10, 37386), (Start: 16 @37416 has 81 MA's), (18, 37434), (Start: 19 @37455 has 2 MA's), (24, 37476), (26, 37479), (28, 37488), (31, 37491), (33, 37503), (35, 37512), (37, 37527), (44, 37557), (52, 37578), (55, 37584), (117, 37656), (121, 37683), (133, 37842), (134, 37848), (140, 37911),

Gene: Modragons_57 Start: 39260, Stop: 39847, Start Num: 16

Candidate Starts for Modragons_57:

(10, 39230), (Start: 16 @39260 has 81 MA's), (18, 39278), (Start: 19 @39299 has 2 MA's), (31, 39335), (37, 39371), (39, 39383), (44, 39401), (52, 39422), (58, 39440), (117, 39506), (121, 39533), (133, 39656), (134, 39662), (164, 39800),

Gene: MooMoo_51 Start: 36852, Stop: 37634, Start Num: 5

Candidate Starts for MooMoo_51:

(Start: 5 @36852 has 2 MA's), (9, 36870), (Start: 17 @36903 has 91 MA's), (21, 36951), (29, 36990), (31, 36999), (56, 37038), (90, 37140), (114, 37239), (127, 37332), (129, 37341), (131, 37386), (133, 37443), (134, 37449), (135, 37461), (138, 37494), (156, 37578),

Gene: Moonbeam_49 Start: 36588, Stop: 37172, Start Num: 17

Candidate Starts for Moonbeam_49:

(Start: 17 @36588 has 91 MA's), (18, 36606), (Start: 19 @36627 has 2 MA's), (24, 36648), (26, 36651), (28, 36660), (31, 36663), (37, 36699), (39, 36711), (44, 36729), (117, 36834), (121, 36861), (129, 36915), (133, 36984), (134, 36990), (138, 37035), (140, 37053), (149, 37074), (155, 37104), (161, 37116),

Gene: Mova_54 Start: 36914, Stop: 37537, Start Num: 17

Candidate Starts for Mova_54:

(Start: 17 @36914 has 91 MA's), (18, 36932), (Start: 19 @36953 has 2 MA's), (24, 36974), (26, 36977), (28, 36986), (31, 36989), (33, 37001), (35, 37010), (37, 37025), (39, 37037), (52, 37076), (55, 37082), (58, 37094), (117, 37160), (121, 37187), (133, 37346), (134, 37352), (147, 37436), (164, 37490),

Gene: Mozy_63 Start: 40170, Stop: 40844, Start Num: 15

Candidate Starts for Mozy_63:

(6, 40128), (Start: 15 @40170 has 6 MA's), (18, 40188), (24, 40230), (31, 40245), (54, 40320), (63, 40359), (64, 40371), (84, 40428), (121, 40533), (129, 40584), (133, 40656), (134, 40662), (138, 40707), (147, 40737), (159, 40785),

Gene: Ms6_48 Start: 32289, Stop: 32969, Start Num: 17

Candidate Starts for Ms6_48:

(Start: 17 @32289 has 91 MA's), (18, 32307), (Start: 19 @32328 has 2 MA's), (24, 32349), (26, 32352), (28, 32361), (31, 32364), (37, 32400), (39, 32412), (44, 32430), (58, 32469), (111, 32577), (117, 32631), (121, 32658), (129, 32712), (133, 32781), (134, 32787), (138, 32832), (140, 32850), (149, 32871), (155, 32901), (161, 32913),

Gene: MulchExplorer_59 Start: 39047, Stop: 39625, Start Num: 17

Candidate Starts for MulchExplorer_59:

(10, 39017), (Start: 17 @39047 has 91 MA's), (18, 39065), (Start: 19 @39086 has 2 MA's), (23, 39101), (28, 39119), (31, 39122), (37, 39158), (39, 39170), (44, 39188), (52, 39209), (117, 39287), (121, 39314), (133, 39437), (138, 39488), (139, 39503), (142, 39518), (158, 39566),

Gene: Mutaforma13_57 Start: 39642, Stop: 40256, Start Num: 17

Candidate Starts for Mutaforma13_57:

(Start: 5 @39591 has 2 MA's), (8, 39600), (13, 39630), (Start: 15 @39639 has 6 MA's), (Start: 17 @39642 has 91 MA's), (18, 39660), (28, 39714), (31, 39717), (33, 39729), (37, 39753), (39, 39765), (121, 39909), (133, 40068), (134, 40074), (138, 40119), (142, 40149), (151, 40179), (158, 40197),

Gene: NewHope4_58 Start: 37643, Stop: 38254, Start Num: 16

Candidate Starts for NewHope4_58:

(10, 37613), (Start: 16 @37643 has 81 MA's), (18, 37661), (Start: 19 @37682 has 2 MA's), (24, 37703), (26, 37706), (28, 37715), (31, 37718), (37, 37754), (39, 37766), (52, 37805), (55, 37811), (117, 37883), (121, 37910), (133, 38033), (134, 38039), (140, 38102),

Gene: Nimbo_48 Start: 35879, Stop: 36568, Start Num: 16

Candidate Starts for Nimbo_48:

(10, 35849), (Start: 16 @35879 has 81 MA's), (18, 35897), (Start: 19 @35918 has 2 MA's), (24, 35939), (26, 35942), (28, 35951), (31, 35954), (33, 35966), (37, 35990), (39, 36002), (79, 36122), (117, 36194), (121, 36221), (133, 36380), (134, 36386), (138, 36431), (142, 36461), (158, 36509),

Gene: Nitzel_50 Start: 36307, Stop: 37011, Start Num: 16

Candidate Starts for Nitzel_50:

(Start: 16 @36307 has 81 MA's), (18, 36325), (Start: 19 @36346 has 2 MA's), (26, 36370), (32, 36391), (37, 36418), (39, 36430), (58, 36487), (108, 36595), (117, 36649), (121, 36676), (132, 36784), (133, 36805), (134, 36811), (138, 36856), (140, 36874), (163, 36961), (166, 36982),

Gene: Nivrat_50 Start: 37041, Stop: 37625, Start Num: 17

Candidate Starts for Nivrat_50:

(Start: 17 @37041 has 91 MA's), (18, 37059), (Start: 19 @37080 has 2 MA's), (24, 37101), (26, 37104), (28, 37113), (31, 37116), (37, 37152), (39, 37164), (117, 37287), (121, 37314), (129, 37368), (133, 37437), (134, 37443), (138, 37488), (142, 37518), (158, 37566),

Gene: NormanBulbieJr_54 Start: 37601, Stop: 38248, Start Num: 16

Candidate Starts for NormanBulbieJr_54:

(10, 37571), (Start: 16 @37601 has 81 MA's), (18, 37619), (Start: 19 @37640 has 2 MA's), (26, 37664), (28, 37673), (31, 37676), (37, 37712), (39, 37724), (52, 37763), (117, 37841), (121, 37868), (133, 38027), (134, 38033), (140, 38096),

Gene: Ochi17_56 Start: 38867, Stop: 39454, Start Num: 16

Candidate Starts for Ochi17_56:

(10, 38837), (Start: 16 @38867 has 81 MA's), (18, 38885), (Start: 19 @38906 has 2 MA's), (31, 38942), (37, 38978), (39, 38990), (44, 39008), (52, 39029), (58, 39047), (117, 39113), (121, 39140), (133, 39263), (134, 39269), (164, 39407),

Gene: OfUltron_58 Start: 39416, Stop: 40003, Start Num: 16

Candidate Starts for OfUltron_58:

(10, 39386), (Start: 16 @39416 has 81 MA's), (18, 39434), (Start: 19 @39455 has 2 MA's), (31, 39491), (37, 39527), (39, 39539), (44, 39557), (52, 39578), (58, 39596), (117, 39662), (121, 39689), (133, 39812), (134, 39818), (164, 39956),

Gene: Ogotogo_58 Start: 38167, Stop: 38712, Start Num: 17

Candidate Starts for Ogotogo_58:

(Start: 17 @38167 has 91 MA's), (18, 38185), (Start: 19 @38206 has 2 MA's), (26, 38230), (32, 38251), (37, 38278), (39, 38290), (52, 38329), (58, 38347), (117, 38413), (121, 38440), (133, 38533), (134, 38539), (147, 38623), (164, 38665),

Gene: Oksu_57 Start: 39625, Stop: 40206, Start Num: 15

Candidate Starts for Oksu_57:

(1, 39538), (Start: 15 @39625 has 6 MA's), (18, 39643), (Start: 19 @39664 has 2 MA's), (26, 39688), (32, 39709), (37, 39736), (55, 39793), (121, 39892), (133, 40015), (134, 40021), (164, 40159),

Gene: OldBen_51 Start: 37594, Stop: 38172, Start Num: 17

Candidate Starts for OldBen_51:

(10, 37564), (Start: 17 @37594 has 91 MA's), (18, 37612), (24, 37654), (26, 37657), (28, 37666), (31, 37669), (35, 37690), (37, 37705), (39, 37717), (44, 37735), (52, 37756), (55, 37762), (117, 37834), (121, 37861), (129, 37915), (133, 37984), (134, 37990), (138, 38035), (142, 38065), (151, 38095), (158, 38113),

Gene: Ovechkin_50 Start: 36858, Stop: 37478, Start Num: 15

Candidate Starts for Ovechkin_50:

(4, 36810), (7, 36819), (12, 36849), (Start: 15 @36858 has 6 MA's), (Start: 17 @36861 has 91 MA's), (18, 36879), (Start: 19 @36900 has 2 MA's), (24, 36921), (26, 36924), (28, 36933), (31, 36936), (37, 36972), (39, 36984), (44, 37002), (71, 37071), (84, 37107), (98, 37131), (117, 37203), (121, 37230), (129, 37281), (133, 37350), (134, 37356), (137, 37392),

Gene: OwlsT2W_54 Start: 37885, Stop: 38490, Start Num: 17

Candidate Starts for OwlsT2W_54:

(Start: 17 @37885 has 91 MA's), (18, 37903), (Start: 19 @37924 has 2 MA's), (24, 37945), (26, 37948), (28, 37957), (31, 37960), (33, 37972), (37, 37996), (39, 38008), (91, 38026), (98, 38065), (102, 38071), (116, 38152), (118, 38158), (120, 38167), (133, 38302), (134, 38308), (138, 38353), (142, 38383), (158, 38431),

Gene: PHappiness_49 Start: 35852, Stop: 36541, Start Num: 16

Candidate Starts for PHappiness_49:

(10, 35822), (Start: 16 @35852 has 81 MA's), (18, 35870), (Start: 19 @35891 has 2 MA's), (24, 35912), (26, 35915), (28, 35924), (31, 35927), (33, 35939), (37, 35963), (39, 35975), (79, 36095), (117, 36167), (121, 36194), (133, 36353), (134, 36359), (138, 36404), (142, 36434), (158, 36482),

Gene: PMC_50 Start: 37468, Stop: 38091, Start Num: 17

Candidate Starts for PMC_50:

(Start: 17 @37468 has 91 MA's), (18, 37486), (Start: 19 @37507 has 2 MA's), (24, 37528), (26, 37531), (28, 37540), (31, 37543), (33, 37555), (35, 37564), (37, 37579), (39, 37591), (52, 37630), (55, 37636), (58, 37648), (117, 37714), (121, 37741), (133, 37900), (134, 37906), (147, 37990), (164, 38044),

Gene: Pacc40_48 Start: 35926, Stop: 36615, Start Num: 16

Candidate Starts for Pacc40_48:

(10, 35896), (Start: 16 @35926 has 81 MA's), (18, 35944), (Start: 19 @35965 has 2 MA's), (24, 35986), (26, 35989), (28, 35998), (31, 36001), (33, 36013), (37, 36037), (39, 36049), (79, 36169), (117, 36241), (121, 36268), (133, 36427), (134, 36433), (138, 36478), (142, 36508), (158, 36556),

Gene: Phasih_52 Start: 37932, Stop: 38681, Start Num: 17

Candidate Starts for Phasih_52:

(Start: 17 @37932 has 91 MA's), (18, 37950), (Start: 19 @37971 has 2 MA's), (24, 37992), (26, 37995), (28, 38004), (31, 38007), (35, 38028), (37, 38043), (44, 38073), (52, 38094), (55, 38100), (65, 38169), (76, 38208), (81, 38220), (106, 38268), (117, 38343), (121, 38370), (133, 38493), (134, 38499), (135, 38511), (138, 38544), (140, 38562), (149, 38583),

Gene: Phatniss_52 Start: 37640, Stop: 38224, Start Num: 17

Candidate Starts for Phatniss_52:

(Start: 17 @37640 has 91 MA's), (18, 37658), (Start: 19 @37679 has 2 MA's), (24, 37700), (26, 37703), (28, 37712), (31, 37715), (37, 37751), (39, 37763), (117, 37886), (121, 37913), (129, 37967), (133, 38036), (134, 38042), (138, 38087), (142, 38117), (158, 38165),

Gene: Philus_57 Start: 38793, Stop: 39410, Start Num: 17

Candidate Starts for Philus_57:

(Start: 17 @38793 has 91 MA's), (18, 38811), (Start: 19 @38832 has 2 MA's), (24, 38853), (26, 38856), (28, 38865), (31, 38868), (33, 38880), (37, 38904), (39, 38916), (91, 38934), (98, 38973), (102, 38979), (116, 39060), (118, 39066), (120, 39075), (133, 39210), (134, 39216), (138, 39261), (140, 39279), (142, 39294), (145, 39300),

Gene: PhlipPhlop_51 Start: 38692, Stop: 39168, Start Num: 26

Candidate Starts for PhlipPhlop_51:

(Start: 17 @38629 has 91 MA's), (18, 38647), (Start: 19 @38668 has 2 MA's), (24, 38689), (26, 38692), (28, 38701), (31, 38704), (33, 38716), (37, 38740), (39, 38752), (52, 38791), (55, 38797), (58, 38809), (117, 38869), (121, 38896), (133, 38989), (134, 38995), (147, 39079), (164, 39121),

Gene: Pippy_52 Start: 36472, Stop: 37119, Start Num: 16

Candidate Starts for Pippy_52:

(10, 36442), (Start: 16 @36472 has 81 MA's), (18, 36490), (Start: 19 @36511 has 2 MA's), (24, 36532), (26, 36535), (28, 36544), (31, 36547), (37, 36583), (39, 36595), (52, 36634), (117, 36712), (121, 36739), (133, 36898), (134, 36904), (140, 36967),

Gene: Plumbus_55 Start: 37701, Stop: 38279, Start Num: 17

Candidate Starts for Plumbus_55:

(10, 37671), (Start: 17 @37701 has 91 MA's), (18, 37719), (Start: 19 @37740 has 2 MA's), (23, 37755), (28, 37773), (31, 37776), (37, 37812), (39, 37824), (44, 37842), (52, 37863), (117, 37941), (121, 37968), (133, 38091), (138, 38142), (139, 38157), (142, 38172), (158, 38220),

Gene: Poenanya_53 Start: 38418, Stop: 39137, Start Num: 17

Candidate Starts for Poenanya_53:

(Start: 17 @38418 has 91 MA's), (18, 38436), (Start: 19 @38457 has 2 MA's), (24, 38478), (26, 38481), (28, 38490), (31, 38493), (37, 38529), (39, 38541), (44, 38559), (52, 38580), (55, 38586), (65, 38655), (76, 38694), (81, 38706), (106, 38754), (117, 38829), (121, 38856), (133, 38949), (134, 38955), (138, 39000), (142, 39030), (158, 39078),

Gene: Polka14_52 Start: 37024, Stop: 37638, Start Num: 17

Candidate Starts for Polka14_52:

(Start: 17 @37024 has 91 MA's), (18, 37042), (Start: 19 @37063 has 2 MA's), (24, 37084), (26, 37087), (28, 37096), (31, 37099), (37, 37135), (44, 37165), (52, 37186), (55, 37192), (58, 37204), (117, 37264),

(121, 37291), (133, 37450), (134, 37456), (138, 37501), (142, 37531), (158, 37579),

Gene: Pollywog_54 Start: 38085, Stop: 38915, Start Num: 16

Candidate Starts for Pollywog_54:

(10, 38055), (Start: 16 @38085 has 81 MA's), (18, 38103), (Start: 19 @38124 has 2 MA's), (24, 38145), (26, 38148), (28, 38157), (31, 38160), (37, 38196), (39, 38208), (66, 38328), (73, 38355), (117, 38547), (121, 38574), (133, 38733), (134, 38739), (138, 38784), (140, 38802), (164, 38868), (165, 38883),

Gene: Polo2Bam_59 Start: 37497, Stop: 38108, Start Num: 16

Candidate Starts for Polo2Bam_59:

(10, 37467), (Start: 16 @37497 has 81 MA's), (18, 37515), (Start: 19 @37536 has 2 MA's), (24, 37557), (26, 37560), (28, 37569), (31, 37572), (37, 37608), (39, 37620), (52, 37659), (55, 37665), (117, 37737), (121, 37764), (133, 37887), (134, 37893), (140, 37956),

Gene: PopTart_47 Start: 36238, Stop: 36744, Start Num: 16

Candidate Starts for PopTart_47:

(10, 36208), (Start: 16 @36238 has 81 MA's), (18, 36256), (Start: 19 @36277 has 2 MA's), (24, 36298), (31, 36313), (33, 36325), (37, 36349), (39, 36361), (52, 36400), (55, 36406), (121, 36505), (133, 36553), (147, 36643), (164, 36697),

Gene: Priscilla_54 Start: 37700, Stop: 38347, Start Num: 16

Candidate Starts for Priscilla_54:

(10, 37670), (Start: 16 @37700 has 81 MA's), (18, 37718), (Start: 19 @37739 has 2 MA's), (26, 37763), (28, 37772), (31, 37775), (37, 37811), (39, 37823), (52, 37862), (117, 37940), (121, 37967), (133, 38126), (134, 38132), (140, 38195),

Gene: QuickMath_54 Start: 39271, Stop: 39849, Start Num: 17

Candidate Starts for QuickMath_54:

(10, 39241), (Start: 17 @39271 has 91 MA's), (18, 39289), (Start: 19 @39310 has 2 MA's), (23, 39325), (28, 39343), (31, 39346), (37, 39382), (39, 39394), (44, 39412), (52, 39433), (117, 39511), (121, 39538), (133, 39661), (138, 39712), (139, 39727), (142, 39742), (158, 39790),

Gene: Quico_62 Start: 39707, Stop: 40312, Start Num: 16

Candidate Starts for Quico_62:

(10, 39677), (Start: 16 @39707 has 81 MA's), (18, 39725), (Start: 19 @39746 has 2 MA's), (24, 39767), (26, 39770), (28, 39779), (31, 39782), (33, 39794), (35, 39803), (37, 39818), (39, 39830), (52, 39869), (55, 39875), (121, 39974), (133, 40121), (134, 40127), (138, 40172), (158, 40253),

Gene: Radiance_53 Start: 37766, Stop: 38371, Start Num: 17

Candidate Starts for Radiance_53:

(11, 37736), (Start: 17 @37766 has 91 MA's), (18, 37784), (Start: 19 @37805 has 2 MA's), (23, 37820), (28, 37838), (31, 37841), (33, 37853), (37, 37877), (39, 37889), (91, 37907), (98, 37946), (102, 37952), (116, 38033), (118, 38039), (120, 38048), (133, 38183), (134, 38189), (138, 38234), (142, 38264), (158, 38312),

Gene: Ramsey_54 Start: 38423, Stop: 39037, Start Num: 16

Candidate Starts for Ramsey_54:

(10, 38393), (Start: 16 @38423 has 81 MA's), (18, 38441), (Start: 19 @38462 has 2 MA's), (24, 38483), (26, 38486), (28, 38495), (31, 38498), (33, 38510), (35, 38519), (37, 38534), (44, 38564), (52, 38585), (55, 38591), (117, 38663), (121, 38690), (133, 38849), (134, 38855), (138, 38900), (142, 38930), (158, 38978),

Gene: Renaud18_59 Start: 38442, Stop: 38924, Start Num: 17

Candidate Starts for Renaud18_59:

(Start: 17 @38442 has 91 MA's), (18, 38460), (Start: 19 @38481 has 2 MA's), (24, 38502), (26, 38505), (28, 38514), (31, 38517), (37, 38553), (39, 38565), (52, 38604), (129, 38667), (133, 38736), (134, 38742), (138, 38787), (142, 38817), (158, 38865),

Gene: RitaG_49 Start: 36197, Stop: 36886, Start Num: 16

Candidate Starts for RitaG_49:

(10, 36167), (Start: 16 @36197 has 81 MA's), (18, 36215), (Start: 19 @36236 has 2 MA's), (24, 36257), (26, 36260), (28, 36269), (31, 36272), (33, 36284), (37, 36308), (39, 36320), (79, 36440), (117, 36512), (121, 36539), (133, 36698), (134, 36704), (138, 36749), (142, 36779), (158, 36827),

Gene: Rockne_54 Start: 37468, Stop: 38091, Start Num: 17

Candidate Starts for Rockne_54:

(Start: 17 @37468 has 91 MA's), (18, 37486), (Start: 19 @37507 has 2 MA's), (24, 37528), (26, 37531), (28, 37540), (31, 37543), (33, 37555), (35, 37564), (37, 37579), (39, 37591), (52, 37630), (55, 37636), (58, 37648), (117, 37714), (121, 37741), (133, 37900), (134, 37906), (147, 37990), (164, 38044),

Gene: Royals2015_56 Start: 37542, Stop: 38093, Start Num: 17

Candidate Starts for Royals2015_56:

(Start: 17 @37542 has 91 MA's), (18, 37560), (Start: 19 @37581 has 2 MA's), (26, 37605), (28, 37614), (31, 37617), (37, 37653), (39, 37665), (52, 37704), (55, 37710), (117, 37782), (121, 37809), (133, 37902), (134, 37908), (147, 37992),

Gene: Ruby_50 Start: 37417, Stop: 38064, Start Num: 16

Candidate Starts for Ruby_50:

(10, 37387), (Start: 16 @37417 has 81 MA's), (18, 37435), (Start: 19 @37456 has 2 MA's), (24, 37477), (26, 37480), (28, 37489), (31, 37492), (33, 37504), (35, 37513), (37, 37528), (44, 37558), (52, 37579), (55, 37585), (117, 37657), (121, 37684), (133, 37843), (134, 37849), (140, 37912),

Gene: SG4_50 Start: 36264, Stop: 36926, Start Num: 17

Candidate Starts for SG4_50:

(Start: 17 @36264 has 91 MA's), (18, 36282), (Start: 19 @36303 has 2 MA's), (24, 36324), (26, 36327), (28, 36336), (31, 36339), (37, 36375), (39, 36387), (44, 36405), (52, 36426), (55, 36432), (91, 36462), (98, 36501), (102, 36507), (116, 36588), (118, 36594), (120, 36603), (133, 36738), (134, 36744), (138, 36789), (142, 36819), (151, 36849), (158, 36867),

Gene: Saal_56 Start: 38724, Stop: 39521, Start Num: 16

Candidate Starts for Saal_56:

(Start: 16 @38724 has 81 MA's), (18, 38742), (Start: 19 @38763 has 2 MA's), (24, 38784), (26, 38787), (28, 38796), (31, 38799), (37, 38835), (39, 38847), (44, 38865), (69, 38967), (74, 38976), (77, 38982), (92, 39018), (107, 39042), (117, 39114), (121, 39141), (133, 39300), (134, 39306), (140, 39369),

Gene: Sabbb_58 Start: 38465, Stop: 39208, Start Num: 16

Candidate Starts for Sabbb_58:

(10, 38435), (Start: 16 @38465 has 81 MA's), (18, 38483), (Start: 19 @38504 has 2 MA's), (24, 38525), (26, 38528), (28, 38537), (31, 38540), (37, 38576), (39, 38588), (44, 38606), (79, 38708), (83, 38723), (104, 38759), (112, 38783), (117, 38834), (121, 38861), (133, 39020), (134, 39026), (138, 39071), (142, 39101), (151, 39131), (158, 39149),

Gene: Sandalphon_55 Start: 38373, Stop: 38978, Start Num: 17

Candidate Starts for Sandalphon_55:

(11, 38343), (Start: 17 @38373 has 91 MA's), (18, 38391), (Start: 19 @38412 has 2 MA's), (24, 38433), (26, 38436), (28, 38445), (31, 38448), (33, 38460), (37, 38484), (39, 38496), (91, 38514), (98, 38553),

(102, 38559), (116, 38640), (118, 38646), (120, 38655), (133, 38790), (134, 38796), (138, 38841), (142, 38871), (158, 38919),

Gene: Sarma624_51 Start: 33538, Stop: 34161, Start Num: 17

Candidate Starts for Sarma624_51:

(Start: 17 @33538 has 91 MA's), (18, 33556), (Start: 19 @33577 has 2 MA's), (24, 33598), (26, 33601), (28, 33610), (31, 33613), (33, 33625), (35, 33634), (37, 33649), (39, 33661), (52, 33700), (55, 33706), (58, 33718), (117, 33784), (121, 33811), (133, 33970), (134, 33976), (147, 34060), (164, 34114),

Gene: Sassafras_51 Start: 36391, Stop: 37032, Start Num: 17

Candidate Starts for Sassafras_51:

(Start: 17 @36391 has 91 MA's), (18, 36409), (24, 36451), (26, 36454), (28, 36463), (31, 36466), (33, 36478), (37, 36502), (39, 36514), (58, 36571), (108, 36679), (117, 36733), (121, 36760), (133, 36853), (134, 36859), (147, 36943), (164, 36985),

Gene: SassyB_47 Start: 36238, Stop: 36744, Start Num: 16

Candidate Starts for SassyB_47:

(10, 36208), (Start: 16 @36238 has 81 MA's), (18, 36256), (Start: 19 @36277 has 2 MA's), (24, 36298), (31, 36313), (33, 36325), (37, 36349), (39, 36361), (52, 36400), (55, 36406), (121, 36505), (133, 36553), (147, 36643), (164, 36697),

Gene: Scottish_52 Start: 37209, Stop: 37898, Start Num: 16

Candidate Starts for Scottish_52:

(10, 37179), (Start: 16 @37209 has 81 MA's), (18, 37227), (Start: 19 @37248 has 2 MA's), (24, 37269), (26, 37272), (28, 37281), (31, 37284), (33, 37296), (37, 37320), (39, 37332), (79, 37452), (117, 37524), (121, 37551), (133, 37710), (134, 37716), (138, 37761), (142, 37791), (158, 37839),

Gene: Seabastian_58 Start: 39417, Stop: 40004, Start Num: 16

Candidate Starts for Seabastian_58:

(10, 39387), (Start: 16 @39417 has 81 MA's), (18, 39435), (Start: 19 @39456 has 2 MA's), (31, 39492), (37, 39528), (39, 39540), (44, 39558), (52, 39579), (58, 39597), (117, 39663), (121, 39690), (133, 39813), (134, 39819), (164, 39957),

Gene: Seagreen_53 Start: 36966, Stop: 37559, Start Num: 16

Candidate Starts for Seagreen_53:

(10, 36936), (Start: 16 @36966 has 81 MA's), (18, 36984), (Start: 19 @37005 has 2 MA's), (24, 37026), (26, 37029), (28, 37038), (31, 37041), (37, 37077), (39, 37089), (52, 37128), (55, 37134), (117, 37206), (121, 37233), (133, 37356), (134, 37362), (138, 37407), (140, 37425), (142, 37440), (145, 37446), (150, 37476), (165, 37527), (166, 37530),

Gene: ShiLan_53 Start: 37647, Stop: 38294, Start Num: 16

Candidate Starts for ShiLan_53:

(10, 37617), (Start: 16 @37647 has 81 MA's), (18, 37665), (Start: 19 @37686 has 2 MA's), (26, 37710), (28, 37719), (31, 37722), (37, 37758), (39, 37770), (52, 37809), (117, 37887), (121, 37914), (133, 38073), (134, 38079), (140, 38142),

Gene: ShowerHandel_57 Start: 37614, Stop: 38261, Start Num: 16

Candidate Starts for ShowerHandel_57:

(10, 37584), (Start: 16 @37614 has 81 MA's), (18, 37632), (Start: 19 @37653 has 2 MA's), (26, 37677), (28, 37686), (31, 37689), (37, 37725), (39, 37737), (52, 37776), (117, 37854), (121, 37881), (133, 38040), (134, 38046), (140, 38109),

Gene: ShroomBoi_55 Start: 37834, Stop: 38421, Start Num: 17

Candidate Starts for ShroomBoi_55:

(10, 37804), (Start: 17 @37834 has 91 MA's), (18, 37852), (Start: 19 @37873 has 2 MA's), (23, 37888), (28, 37906), (31, 37909), (37, 37945), (39, 37957), (44, 37975), (114, 38077), (115, 38092), (123, 38128), (126, 38152), (128, 38164), (133, 38233), (134, 38239), (138, 38284), (142, 38314), (158, 38362),

Gene: SiSi_51 Start: 36788, Stop: 37366, Start Num: 17

Candidate Starts for SiSi_51:

(10, 36758), (Start: 17 @36788 has 91 MA's), (18, 36806), (Start: 19 @36827 has 2 MA's), (23, 36842), (28, 36860), (31, 36863), (37, 36899), (39, 36911), (44, 36929), (52, 36950), (117, 37028), (121, 37055), (133, 37178), (138, 37229), (139, 37244), (142, 37259), (158, 37307),

Gene: SimranZ1_53 Start: 36878, Stop: 37609, Start Num: 16

Candidate Starts for SimranZ1_53:

(Start: 16 @36878 has 81 MA's), (18, 36896), (Start: 19 @36917 has 2 MA's), (31, 36953), (33, 36965), (37, 36989), (39, 37001), (45, 37040), (49, 37058), (51, 37061), (78, 37139), (97, 37178), (104, 37190), (121, 37295), (129, 37349), (133, 37418), (134, 37424), (140, 37487), (164, 37562),

Gene: Soul22_57 Start: 37584, Stop: 38414, Start Num: 16

Candidate Starts for Soul22_57:

(Start: 16 @37584 has 81 MA's), (18, 37602), (Start: 19 @37623 has 2 MA's), (24, 37644), (26, 37647), (28, 37656), (31, 37659), (37, 37695), (39, 37707), (52, 37746), (66, 37827), (73, 37854), (117, 38046), (121, 38073), (133, 38232), (134, 38238), (147, 38322), (164, 38367),

Gene: Spikelee_60 Start: 39125, Stop: 39748, Start Num: 17

Candidate Starts for Spikelee_60:

(Start: 17 @39125 has 91 MA's), (18, 39143), (Start: 19 @39164 has 2 MA's), (24, 39185), (26, 39188), (28, 39197), (31, 39200), (33, 39212), (37, 39236), (39, 39248), (85, 39368), (117, 39440), (121, 39467), (133, 39560), (134, 39566), (138, 39611), (146, 39641), (159, 39689),

Gene: Spoonbill_51 Start: 36151, Stop: 36924, Start Num: 16

Candidate Starts for Spoonbill_51:

(10, 36121), (Start: 16 @36151 has 81 MA's), (18, 36169), (Start: 19 @36190 has 2 MA's), (23, 36205), (28, 36223), (31, 36226), (33, 36238), (37, 36262), (39, 36274), (79, 36394), (117, 36466), (121, 36493), (133, 36652), (134, 36658), (138, 36703), (142, 36733), (151, 36763), (158, 36781), (167, 36859),

Gene: StAnnes_52 Start: 37618, Stop: 38367, Start Num: 17

Candidate Starts for StAnnes_52:

(Start: 17 @37618 has 91 MA's), (18, 37636), (Start: 19 @37657 has 2 MA's), (24, 37678), (26, 37681), (31, 37693), (37, 37729), (39, 37741), (52, 37780), (55, 37786), (65, 37855), (76, 37894), (81, 37906), (106, 37954), (117, 38029), (121, 38056), (129, 38110), (133, 38179), (134, 38185), (138, 38230), (140, 38248), (149, 38269), (155, 38299), (161, 38311),

Gene: Stap_52 Start: 36952, Stop: 37641, Start Num: 16

Candidate Starts for Stap_52:

(10, 36922), (Start: 16 @36952 has 81 MA's), (18, 36970), (Start: 19 @36991 has 2 MA's), (23, 37006), (28, 37024), (31, 37027), (33, 37039), (37, 37063), (39, 37075), (79, 37195), (117, 37267), (121, 37294), (133, 37453), (134, 37459), (138, 37504), (142, 37534), (151, 37564), (158, 37582),

Gene: Starcevich_53 Start: 37660, Stop: 38220, Start Num: 16

Candidate Starts for Starcevich_53:

(2, 37606), (Start: 16 @37660 has 81 MA's), (18, 37678), (Start: 19 @37699 has 2 MA's), (31, 37735), (33, 37747), (37, 37771), (39, 37783), (55, 37828), (117, 37900), (121, 37927), (133, 38020), (134, 38026), (138, 38071), (140, 38089), (142, 38104), (145, 38110),

Gene: SwagPigglett_59 Start: 39987, Stop: 40571, Start Num: 17

Candidate Starts for SwagPigglett_59:

(Start: 17 @39987 has 91 MA's), (18, 40005), (Start: 19 @40026 has 2 MA's), (24, 40047), (26, 40050), (28, 40059), (31, 40062), (37, 40098), (39, 40110), (117, 40233), (121, 40260), (129, 40314), (133, 40383), (134, 40389), (138, 40434), (142, 40464), (158, 40512),

Gene: TChen_53 Start: 37875, Stop: 38666, Start Num: 17

Candidate Starts for TChen_53:

(Start: 5 @37824 has 2 MA's), (8, 37833), (13, 37863), (Start: 15 @37872 has 6 MA's), (Start: 17 @37875 has 91 MA's), (18, 37893), (Start: 19 @37914 has 2 MA's), (24, 37935), (26, 37938), (28, 37947), (31, 37950), (33, 37962), (37, 37986), (39, 37998), (44, 38016), (52, 38037), (55, 38043), (63, 38088), (72, 38142), (91, 38202), (98, 38241), (102, 38247), (116, 38328), (118, 38334), (120, 38343), (133, 38478), (138, 38529), (140, 38547), (142, 38559), (158, 38607),

Gene: Taj_57 Start: 38366, Stop: 39082, Start Num: 17

Candidate Starts for Taj_57:

(Start: 17 @38366 has 91 MA's), (18, 38384), (23, 38420), (24, 38426), (27, 38441), (28, 38447), (31, 38462), (33, 38474), (35, 38483), (37, 38498), (43, 38522), (86, 38660), (101, 38672), (117, 38720), (121, 38747), (133, 38894), (134, 38900), (138, 38945), (140, 38963), (149, 38984), (155, 39014), (161, 39026),

Gene: Tchotchke_54 Start: 36839, Stop: 37462, Start Num: 17

Candidate Starts for Tchotchke_54:

(Start: 17 @36839 has 91 MA's), (18, 36857), (Start: 19 @36878 has 2 MA's), (24, 36899), (26, 36902), (28, 36911), (31, 36914), (33, 36926), (37, 36950), (39, 36962), (85, 37082), (117, 37154), (121, 37181), (133, 37274), (134, 37280), (138, 37325), (146, 37355), (159, 37403),

Gene: ThetaBob_57 Start: 37869, Stop: 38615, Start Num: 15

Candidate Starts for ThetaBob_57:

(Start: 15 @37869 has 6 MA's), (18, 37887), (23, 37923), (24, 37929), (31, 37944), (33, 37956), (34, 37959), (35, 37965), (37, 37980), (39, 37992), (43, 38004), (60, 38067), (71, 38121), (84, 38157), (112, 38181), (117, 38232), (121, 38259), (129, 38313), (133, 38382), (134, 38388), (138, 38433), (147, 38469), (154, 38508),

Gene: Tootsieroll_55 Start: 36978, Stop: 37592, Start Num: 16

Candidate Starts for Tootsieroll_55:

(10, 36948), (Start: 16 @36978 has 81 MA's), (18, 36996), (Start: 19 @37017 has 2 MA's), (24, 37038), (26, 37041), (28, 37050), (31, 37053), (33, 37065), (35, 37074), (37, 37089), (44, 37119), (52, 37140), (55, 37146), (117, 37218), (121, 37245), (133, 37404), (134, 37410), (138, 37455), (142, 37485), (158, 37533),

Gene: Toron_57 Start: 39017, Stop: 39823, Start Num: 5

Candidate Starts for Toron_57:

(Start: 5 @39017 has 2 MA's), (9, 39035), (14, 39059), (Start: 17 @39068 has 91 MA's), (21, 39116), (29, 39155), (30, 39158), (31, 39164), (68, 39272), (88, 39320), (94, 39359), (113, 39413), (124, 39482), (125, 39500), (133, 39617), (134, 39623), (135, 39635), (138, 39668), (140, 39686),

Gene: Tweety_53 Start: 38001, Stop: 38609, Start Num: 17

Candidate Starts for Tweety_53:

(Start: 17 @38001 has 91 MA's), (18, 38019), (Start: 19 @38040 has 2 MA's), (24, 38061), (26, 38064), (28, 38073), (31, 38076), (33, 38088), (37, 38112), (39, 38124), (91, 38142), (98, 38181), (102, 38187), (116, 38268), (118, 38274), (120, 38283), (133, 38421), (138, 38472), (140, 38490), (145, 38511), (152, 38541), (160, 38553),

Gene: UncleRicky_53 Start: 37888, Stop: 38472, Start Num: 17

Candidate Starts for UncleRicky_53:

(Start: 17 @37888 has 91 MA's), (18, 37906), (Start: 19 @37927 has 2 MA's), (24, 37948), (26, 37951), (28, 37960), (31, 37963), (37, 37999), (39, 38011), (117, 38134), (121, 38161), (129, 38215), (133, 38284), (134, 38290), (138, 38335), (142, 38365), (158, 38413),

Gene: VRedHorse_53 Start: 36755, Stop: 37381, Start Num: 17

Candidate Starts for VRedHorse_53:

(Start: 17 @36755 has 91 MA's), (18, 36773), (Start: 19 @36794 has 2 MA's), (24, 36815), (26, 36818), (28, 36827), (31, 36830), (37, 36866), (44, 36896), (52, 36917), (55, 36923), (58, 36935), (117, 36995), (121, 37022), (133, 37181), (134, 37187), (138, 37232), (140, 37250), (142, 37265), (145, 37271),

Gene: Velveteen_48 Start: 33538, Stop: 34161, Start Num: 17

Candidate Starts for Velveteen_48:

(Start: 17 @33538 has 91 MA's), (18, 33556), (Start: 19 @33577 has 2 MA's), (24, 33598), (26, 33601), (28, 33610), (31, 33613), (33, 33625), (35, 33634), (37, 33649), (39, 33661), (52, 33700), (55, 33706), (58, 33718), (117, 33784), (121, 33811), (133, 33970), (134, 33976), (147, 34060), (164, 34114),

Gene: Violac_57 Start: 39000, Stop: 39644, Start Num: 16

Candidate Starts for Violac_57:

(Start: 16 @39000 has 81 MA's), (18, 39018), (Start: 19 @39039 has 2 MA's), (24, 39060), (26, 39063), (28, 39072), (31, 39075), (33, 39087), (37, 39111), (39, 39123), (52, 39162), (55, 39168), (117, 39240), (121, 39267), (133, 39423), (134, 39429), (140, 39492),

Gene: Vivum_57 Start: 37973, Stop: 38578, Start Num: 17

Candidate Starts for Vivum_57:

(11, 37943), (Start: 17 @37973 has 91 MA's), (18, 37991), (Start: 19 @38012 has 2 MA's), (23, 38027), (28, 38045), (31, 38048), (33, 38060), (37, 38084), (39, 38096), (91, 38114), (98, 38153), (102, 38159), (116, 38240), (118, 38246), (120, 38255), (133, 38390), (134, 38396), (138, 38441), (142, 38471), (158, 38519),

Gene: Wachhund_55 Start: 37144, Stop: 37749, Start Num: 17

Candidate Starts for Wachhund_55:

(Start: 17 @37144 has 91 MA's), (18, 37162), (Start: 19 @37183 has 2 MA's), (24, 37204), (26, 37207), (28, 37216), (31, 37219), (33, 37231), (37, 37255), (39, 37267), (91, 37285), (98, 37324), (102, 37330), (116, 37411), (118, 37417), (120, 37426), (133, 37561), (134, 37567), (138, 37612), (140, 37630), (145, 37651), (152, 37681), (160, 37693),

Gene: Wee_56 Start: 38638, Stop: 39354, Start Num: 17

Candidate Starts for Wee_56:

(Start: 17 @38638 has 91 MA's), (18, 38656), (23, 38692), (24, 38698), (27, 38713), (28, 38719), (31, 38734), (33, 38746), (35, 38755), (37, 38770), (43, 38794), (86, 38932), (101, 38944), (117, 38992), (121, 39019), (133, 39166), (134, 39172), (138, 39217), (146, 39247), (157, 39295),

Gene: Whatsapiecost_54 Start: 36928, Stop: 37551, Start Num: 17

Candidate Starts for Whatsapiecost_54:

(Start: 17 @36928 has 91 MA's), (18, 36946), (Start: 19 @36967 has 2 MA's), (24, 36988), (26, 36991), (28, 37000), (31, 37003), (33, 37015), (35, 37024), (37, 37039), (39, 37051), (52, 37090), (55, 37096),

(58, 37108), (117, 37174), (121, 37201), (133, 37360), (134, 37366), (147, 37450), (164, 37504),

Gene: Whouxphf_51 Start: 37452, Stop: 38171, Start Num: 17

Candidate Starts for Whouxphf_51:

(11, 37422), (Start: 17 @37452 has 91 MA's), (18, 37470), (Start: 19 @37491 has 2 MA's), (24, 37512), (26, 37515), (28, 37524), (31, 37527), (33, 37539), (37, 37563), (39, 37575), (58, 37632), (108, 37740), (117, 37794), (121, 37821), (133, 37980), (134, 37986), (147, 38070),

Gene: Yorick_53 Start: 37988, Stop: 38635, Start Num: 16

Candidate Starts for Yorick_53:

(10, 37958), (Start: 16 @37988 has 81 MA's), (18, 38006), (Start: 19 @38027 has 2 MA's), (26, 38051), (28, 38060), (31, 38063), (37, 38099), (39, 38111), (52, 38150), (117, 38228), (121, 38255), (133, 38414), (134, 38420), (140, 38483),

Gene: Yoshi_65 Start: 38992, Stop: 39624, Start Num: 17

Candidate Starts for Yoshi_65:

(8, 38950), (Start: 17 @38992 has 91 MA's), (18, 39010), (Start: 19 @39031 has 2 MA's), (31, 39067), (37, 39103), (39, 39115), (52, 39154), (55, 39160), (117, 39238), (121, 39265), (133, 39424), (134, 39430), (138, 39475), (140, 39493), (142, 39508), (145, 39514),

Gene: Zapner_66 Start: 38460, Stop: 39290, Start Num: 16

Candidate Starts for Zapner_66:

(Start: 16 @38460 has 81 MA's), (18, 38478), (Start: 19 @38499 has 2 MA's), (24, 38520), (26, 38523), (28, 38532), (31, 38535), (37, 38571), (39, 38583), (52, 38622), (66, 38703), (73, 38730), (117, 38922), (121, 38949), (133, 39108), (134, 39114), (136, 39135), (147, 39198), (164, 39243),

Gene: Zizzle_58 Start: 39306, Stop: 39890, Start Num: 17

Candidate Starts for Zizzle_58:

(10, 39276), (Start: 17 @39306 has 91 MA's), (18, 39324), (Start: 19 @39345 has 2 MA's), (26, 39369), (28, 39378), (31, 39381), (37, 39417), (39, 39429), (117, 39552), (121, 39579), (129, 39633), (133, 39702), (134, 39708), (138, 39753), (142, 39783), (158, 39831),