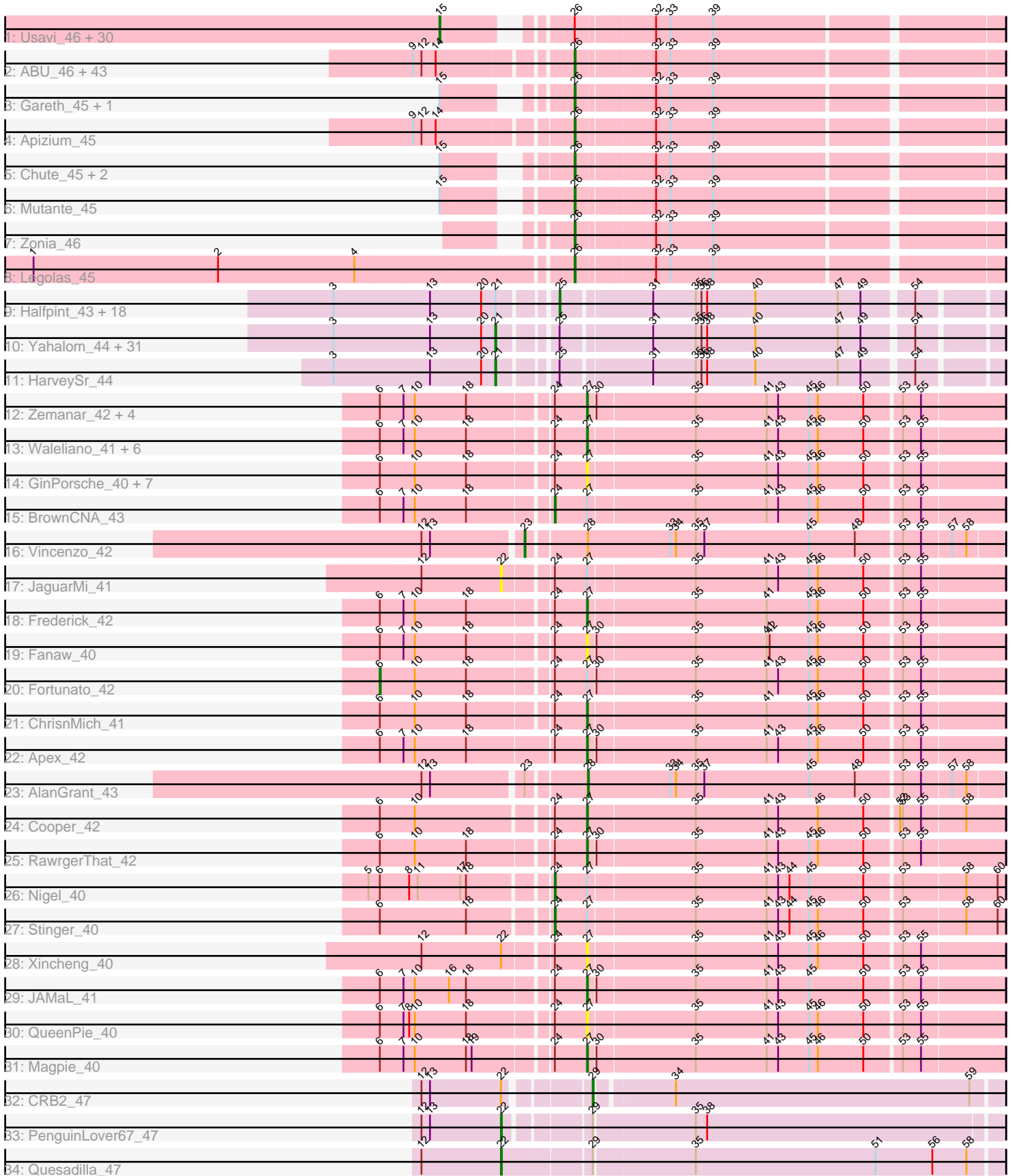


Pham 215885



Note: Tracks are now grouped by subcluster and scaled. Switching in subcluster is indicated by changes in track color. Track scale is now set by default to display the region 30 bp upstream of start 1 to 30 bp downstream of the last possible start. If this default region is judged to be packed too tightly with annotated starts, the track will be further scaled to only show that region of the ORF with annotated starts. This action will be indicated by adding "Zoomed" to the title. For starts, yellow indicates the location of called starts comprised solely of Glimmer/GeneMark auto-annotations, green indicates the location of called starts with at least 1 manual gene annotation.

Pham 215885 Report

This analysis was run 02/22/25 on database version 588.

Pham number 215885 has 176 members, 28 are drafts.

Phages represented in each track:

- Track 1 : Usavi_46, Mosaic_45, Chaelin_46, TooFast2Furius_48, Gwilliam_46, Suffolk_46, DonSancho_45, Roy17_46, Windsor_45, Lopsy_45, Eremos_46, UncleHowie_46, Eugenia_46, Lulumae_45, Coletti_45, Prickles_46, Keitherie_46, Chipette_47, Colbert_46, Daka_47, Cornobble_45, Aelin_45, Chunky_46, Virgeve_45, SirBeauregard_46, Harvey_46, Robyn_45, Manad_45, Antonia_45, Basato_47, Tooj_46
- Track 2 : ABU_46, PhrodoBaggins_45, Badfish_46, ThreeOh3D2_46, HighStump_45, LasagnaCat_46, PG1_46, Morty_46, IntiyazSitra_45, Ashraf_45, Nacho_0046, RedMaple_45, Fang_46, Katniss_46, Mulan_45, Orion_46, Scoot17C_46, Trypo_46, Emiris_46, Megatron_46, CampRoach_46, Swish_46, Craff_46, IsaacEli_46, ElvisPhasley_47, PhatCats2014_46, MelsMeow_45, Inchworm_46, Maskar_45, FluffyNinja_46, Chah_47, Yoshand_46, BlackStallion_46, Fringe_46, Kikipoo_46, Pherdinand_46, JacAttac_46, Phamished_46, Sigman_46, Durga_46, Andre_46, Adriana_46, OSmaximus_46, DuchessDung_44
- Track 3 : Gareth_45, Soile_46
- Track 4 : Apizium_45
- Track 5 : Chute_45, Dati_46, JDog_45
- Track 6 : Mutante_45
- Track 7 : Zonia_46
- Track 8 : Legolas_45
- Track 9 : Halfpint_43, Phayeta_45, Chandler_44, SwainyDoc_44, Chalmers_44, Casbah_43, Glubnar_44, Phaerdrus_42, Jackstina_41, Marlia_44, Shenandoah_44, Ben11_43, TinyTerror_44, Olivio_43, Tydolla_44, SlippinJimmy_44, Chentzyk_44, Audrey_44, Morty007_44
- Track 10 : Yahalom_44, Nozo_44, MmasiCarm_44, Mortcellus_43, Briakila_45, Abinghost_44, Daisy_44, Gadget_45, Deenasa_44, Kamiyu_44, Rita1961_44, Neos5_44, Obutu_44, OrangeOswald_44, Athena_45, Gervas_44, Philly_43, Devonte_44, Phlyer_44, Yinz_44, ChaChing_44, Compostia_45, LestyG_44, RomaT_44, Marley1013_44, Corofin_44, Heathcliff_44, GlenHope_45, SynergyX_44, RagingRooster_44, Baloo_44, Kronus_43
- Track 11 : HarveySr_44
- Track 12 : Zemanar_42, Austelle_42, Prince_41, Lolalove_41, VioletZ_42
- Track 13 : Waleliano_41, Hydro_41, Hangman_41, Mudslide_41, Mithril_41, Heath_40, BobbyK_42
- Track 14 : GinPorsche_40, Ahwei_40, Hally898_40, Antihero_40, Nanao_40, Lambano_40, Poster_40, Epah_40
- Track 15 : BrownCNA_43

- Track 16 : Vincenzo_42
- Track 17 : JaguarMi_41
- Track 18 : Frederick_42
- Track 19 : Fanaw_40
- Track 20 : Fortunato_42
- Track 21 : ChrisnMich_41
- Track 22 : Apex_42
- Track 23 : AlanGrant_43
- Track 24 : Cooper_42
- Track 25 : RawrgerThat_42
- Track 26 : Nigel_40
- Track 27 : Stinger_40
- Track 28 : Xincheng_40
- Track 29 : JAMaL_41
- Track 30 : QueenPie_40
- Track 31 : Magpie_40
- Track 32 : CRB2_47
- Track 33 : PenguinLover67_47
- Track 34 : Quesadilla_47

Summary of Final Annotations (See graph section above for start numbers):

The start number called the most often in the published annotations is 26, it was called in 51 of the 148 non-draft genes in the pham.

Genes that call this "Most Annotated" start:

- ABU_46, Adriana_46, Andre_46, Apizium_45, Ashraf_45, Badfish_46, BlackStallion_46, CampRoach_46, Chah_47, Chute_45, Craff_46, Dati_46, DuchessDung_44, Durga_46, ElvisPhasley_47, Emiris_46, Fang_46, FluffyNinja_46, Fringe_46, Gareth_45, HighStump_45, ImtiyazSitla_45, Inchworm_46, IsaacEli_46, JDog_45, JacAttac_46, Katniss_46, Kikipoo_46, LasagnaCat_46, Legolas_45, Maskar_45, Megatron_46, MelsMeow_45, Morty_46, Mulan_45, Mutante_45, Nacho_0046, OSmaximus_46, Orion_46, PG1_46, Phamished_46, PhatCats2014_46, Pherdinand_46, PhrodoBaggins_45, RedMaple_45, Scoot17C_46, Sigman_46, Soile_46, Swish_46, ThreeOh3D2_46, Trypo_46, Yoshand_46, Zonia_46,

Genes that have the "Most Annotated" start but do not call it:

- Aelin_45, Antonia_45, Basato_47, Chaelin_46, Chipette_47, Chunky_46, Colbert_46, Coletti_45, Cornobble_45, Daka_47, DonSanchon_45, Eremos_46, Eugenia_46, Gwilliam_46, Harvey_46, Keitherie_46, Lopsy_45, Lulumae_45, Manad_45, Mosaic_45, Prickles_46, Robyn_45, Roy17_46, SirBeauregard_46, Suffolk_46, TooFast2Furius_48, Tooj_46, UncleHowie_46, Usavi_46, Virgeve_45, Windsor_45,

Genes that do not have the "Most Annotated" start:

- Abinghost_44, Ahwei_40, AlanGrant_43, Antihero_40, Apex_42, Athena_45, Audrey_44, Austelle_42, Baloo_44, Ben11_43, BobbyK_42, Briakila_45, BrownCNA_43, CRB2_47, Casbah_43, ChaChing_44, Chalmers_44, Chandler_44, Chentzyk_44, ChrisnMich_41, Compostia_45, Cooper_42, Corofin_44, Daisy_44,

Deenasa_44, Devonte_44, Epah_40, Fanaw_40, Fortunato_42, Frederick_42, Gadget_45, Gervas_44, GinPorsche_40, GlenHope_45, Glubnar_44, Halfpint_43, Hally898_40, Hangman_41, HarveySr_44, Heath_40, Heathcliff_44, Hydro_41, JAMaL_41, Jackstina_41, JaguarMi_41, Kamiyu_44, Kronus_43, Lambano_40, LestyG_44, Lolalove_41, Magpie_40, Marley1013_44, Marlia_44, Mithril_41, MmasiCarm_44, Mortcellus_43, Morty007_44, Mudslide_41, Nanao_40, Neos5_44, Nigel_40, Nozo_44, Obutu_44, Olivio_43, OrangeOswald_44, PenguinLover67_47, Phaedrus_42, Phayeta_45, Philly_43, Phlyer_44, Poster_40, Prince_41, QueenPie_40, Quesadilla_47, RagingRooster_44, RawrgerThat_42, Rita1961_44, RomaT_44, Shenandoah_44, SlippinJimmy_44, Stinger_40, SwainyDoc_44, SynergyX_44, TinyTerror_44, Tydolla_44, Vincenzo_42, VioletZ_42, Waleliano_41, Xincheng_40, Yahalom_44, Yinz_44, Zemanar_42,

Summary by start number:

Start 6:

- Found in 33 of 176 (18.8%) of genes in pham
- Manual Annotations of this start: 1 of 148
- Called 3.0% of time when present
- Phage (with cluster) where this start called: Fortunato_42 (B4),

Start 15:

- Found in 37 of 176 (21.0%) of genes in pham
- Manual Annotations of this start: 27 of 148
- Called 83.8% of time when present
- Phage (with cluster) where this start called: Aelin_45 (B1), Antonia_45 (B1), Basato_47 (B1), Chaelin_46 (B1), Chipette_47 (B1), Chunky_46 (B1), Colbert_46 (B1), Coletti_45 (B1), Cornobble_45 (B1), Daka_47 (B1), DonSanchon_45 (B1), Eremos_46 (B1), Eugenia_46 (B1), Gwilliam_46 (B1), Harvey_46 (B1), Keitherie_46 (B1), Lopsy_45 (B1), Lulumae_45 (B1), Manad_45 (B1), Mosaic_45 (B1), Prickles_46 (B1), Robyn_45 (B1), Roy17_46 (B1), SirBeauregard_46 (B1), Suffolk_46 (B1), TooFast2Furius_48 (B1), Tooj_46 (B1), UncleHowie_46 (B1), Usavi_46 (B1), Virgeve_45 (B1), Windsor_45 (B1),

Start 21:

- Found in 52 of 176 (29.5%) of genes in pham
- Manual Annotations of this start: 33 of 148
- Called 63.5% of time when present
- Phage (with cluster) where this start called: Abinghost_44 (B3), Athena_45 (B3), Baloo_44 (B3), Briakila_45 (B3), ChaChing_44 (B3), Compostia_45 (B3), Corofin_44 (B3), Daisy_44 (B3), Deenasa_44 (B3), Devonte_44 (B3), Gadget_45 (B3), Gervas_44 (B3), GlenHope_45 (B3), HarveySr_44 (B3), Heathcliff_44 (B3), Kamiyu_44 (B3), Kronus_43 (B3), LestyG_44 (B3), Marley1013_44 (B3), MmasiCarm_44 (B3), Mortcellus_43 (B3), Neos5_44 (B3), Nozo_44 (B3), Obutu_44 (B3), OrangeOswald_44 (B3), Philly_43 (B3), Phlyer_44 (B3), RagingRooster_44 (B3), Rita1961_44 (B3), RomaT_44 (B3), SynergyX_44 (B3), Yahalom_44 (B3), Yinz_44 (B3),

Start 22:

- Found in 5 of 176 (2.8%) of genes in pham
- Manual Annotations of this start: 2 of 148
- Called 60.0% of time when present

- Phage (with cluster) where this start called: JaguarMi_41 (B4), PenguinLover67_47 (B9), Quesadilla_47 (B9),

Start 23:

- Found in 2 of 176 (1.1%) of genes in pham
- Manual Annotations of this start: 1 of 148
- Called 50.0% of time when present
- Phage (with cluster) where this start called: Vincenzo_42 (B4),

Start 24:

- Found in 35 of 176 (19.9%) of genes in pham
- Manual Annotations of this start: 3 of 148
- Called 8.6% of time when present
- Phage (with cluster) where this start called: BrownCNA_43 (B4), Nigel_40 (B4), Stinger_40 (B4),

Start 25:

- Found in 52 of 176 (29.5%) of genes in pham
- Manual Annotations of this start: 9 of 148
- Called 36.5% of time when present
- Phage (with cluster) where this start called: Audrey_44 (B3), Ben11_43 (B3), Casbah_43 (B3), Chalmers_44 (B3), Chandler_44 (B3), Chentzyk_44 (B3), Glubnar_44 (B3), Halfpint_43 (B3), Jackstina_41 (B3), Marlia_44 (B3), Morty007_44 (B3), Olivio_43 (B3), Phaedrus_42 (B3), Phayeta_45 (B3), Shenandoah_44 (B3), SlippinJimmy_44 (B3), SwainyDoc_44 (B3), TinyTerror_44 (B3), Tydolla_44 (B3),

Start 26:

- Found in 84 of 176 (47.7%) of genes in pham
- Manual Annotations of this start: 51 of 148
- Called 63.1% of time when present
- Phage (with cluster) where this start called: ABU_46 (B1), Adriana_46 (B1), Andre_46 (B1), Apizium_45 (B1), Ashraf_45 (B1), Badfish_46 (B1), BlackStallion_46 (B1), CampRoach_46 (B1), Chah_47 (B1), Chute_45 (B1), Craff_46 (B1), Dati_46 (B1), DuchessDung_44 (B1), Durga_46 (B1), ElvisPhasley_47 (B1), Emiris_46 (B1), Fang_46 (B1), FluffyNinja_46 (B1), Fringe_46 (B1), Gareth_45 (B1), HighStump_45 (B1), ImtiyazSitla_45 (B1), Inchworm_46 (B1), IsaacEli_46 (B1), JDog_45 (B1), JacAttac_46 (B1), Katniss_46 (B1), Kikipoo_46 (B1), LasagnaCat_46 (B1), Legolas_45 (B1), Maskar_45 (B1), Megatron_46 (B1), MelsMeow_45 (B1), Morty_46 (B1), Mulan_45 (B1), Mutante_45 (B1), Nacho_0046 (B1), OSmaximus_46 (B1), Orion_46 (B1), PG1_46 (B1), Phamished_46 (B1), PhatCats2014_46 (B1), Pherdinand_46 (B1), PhrodoBaggins_45 (B1), RedMaple_45 (B1), Scoot17C_46 (B1), Sigman_46 (B1), Soile_46 (B1), Swish_46 (B1), ThreeOh3D2_46 (B1), Trypo_46 (B1), Yoshand_46 (B1), Zonia_46 (B1),

Start 27:

- Found in 35 of 176 (19.9%) of genes in pham
- Manual Annotations of this start: 19 of 148
- Called 85.7% of time when present
- Phage (with cluster) where this start called: Ahwei_40 (B4), Antihero_40 (B4), Apex_42 (B4), Austelle_42 (B4), BobbyK_42 (B4), ChrisnMich_41 (B4), Cooper_42 (B4), Epah_40 (B4), Fanaw_40 (B4), Frederick_42 (B4), GinPorsche_40 (B4), Hally898_40 (B4), Hangman_41 (B4), Heath_40 (B4), Hydro_41 (B4), JAMaL_41 (B4), Lambano_40 (B4), Lolalove_41 (B4), Magpie_40 (B4), Mithril_41 (B4),

Mudslide_41 (B4), Nanao_40 (B4), Poster_40 (B4), Prince_41 (B4), QueenPie_40 (B4), RawrgerThat_42 (B4), VioletZ_42 (B4), Waleliano_41 (B4), Xincheng_40 (B4), Zemanar_42 (B4),

Start 28:

- Found in 2 of 176 (1.1%) of genes in pham
- Manual Annotations of this start: 1 of 148
- Called 50.0% of time when present
- Phage (with cluster) where this start called: AlanGrant_43 (B4),

Start 29:

- Found in 3 of 176 (1.7%) of genes in pham
- Manual Annotations of this start: 1 of 148
- Called 33.3% of time when present
- Phage (with cluster) where this start called: CRB2_47 (B9),

Summary by clusters:

There are 4 clusters represented in this pham: B4, B9, B1, B3,

Info for manual annotations of cluster B1:

- Start number 15 was manually annotated 27 times for cluster B1.
- Start number 26 was manually annotated 51 times for cluster B1.

Info for manual annotations of cluster B3:

- Start number 21 was manually annotated 33 times for cluster B3.
- Start number 25 was manually annotated 9 times for cluster B3.

Info for manual annotations of cluster B4:

- Start number 6 was manually annotated 1 time for cluster B4.
- Start number 23 was manually annotated 1 time for cluster B4.
- Start number 24 was manually annotated 3 times for cluster B4.
- Start number 27 was manually annotated 19 times for cluster B4.
- Start number 28 was manually annotated 1 time for cluster B4.

Info for manual annotations of cluster B9:

- Start number 22 was manually annotated 2 times for cluster B9.
- Start number 29 was manually annotated 1 time for cluster B9.

Gene Information:

Gene: ABU_46 Start: 39612, Stop: 39187, Start Num: 26

Candidate Starts for ABU_46:

(9, 39762), (12, 39753), (14, 39738), (Start: 26 @39612 has 51 MA's), (32, 39534), (33, 39519), (39, 39474),

Gene: Abinghost_44 Start: 39509, Stop: 39024, Start Num: 21

Candidate Starts for Abinghost_44:

(3, 39680), (13, 39578), (20, 39524), (Start: 21 @39509 has 33 MA's), (Start: 25 @39461 has 9 MA's), (31, 39371), (35, 39326), (36, 39320), (38, 39314), (40, 39263), (47, 39176), (49, 39152), (54, 39104),

Gene: Adriana_46 Start: 39610, Stop: 39185, Start Num: 26

Candidate Starts for Adriana_46:

(9, 39760), (12, 39751), (14, 39736), (Start: 26 @39610 has 51 MA's), (32, 39532), (33, 39517), (39, 39472),

Gene: Aelin_45 Start: 39278, Stop: 38751, Start Num: 15

Candidate Starts for Aelin_45:

(Start: 15 @39278 has 27 MA's), (Start: 26 @39176 has 51 MA's), (32, 39098), (33, 39083), (39, 39038),

Gene: Ahwei_40 Start: 38593, Stop: 38168, Start Num: 27

Candidate Starts for Ahwei_40:

(Start: 6 @38797 has 1 MA's), (10, 38761), (18, 38707), (Start: 24 @38626 has 3 MA's), (Start: 27 @38593 has 19 MA's), (35, 38485), (41, 38410), (43, 38398), (45, 38365), (46, 38356), (50, 38308), (53, 38272), (55, 38254),

Gene: AlanGrant_43 Start: 40379, Stop: 39954, Start Num: 28

Candidate Starts for AlanGrant_43:

(12, 40535), (13, 40526), (Start: 23 @40436 has 1 MA's), (Start: 28 @40379 has 1 MA's), (33, 40292), (34, 40286), (35, 40265), (37, 40256), (45, 40145), (48, 40097), (53, 40052), (55, 40034), (57, 40004), (58, 39989),

Gene: Andre_46 Start: 39604, Stop: 39179, Start Num: 26

Candidate Starts for Andre_46:

(9, 39754), (12, 39745), (14, 39730), (Start: 26 @39604 has 51 MA's), (32, 39526), (33, 39511), (39, 39466),

Gene: Antihero_40 Start: 38593, Stop: 38168, Start Num: 27

Candidate Starts for Antihero_40:

(Start: 6 @38797 has 1 MA's), (10, 38761), (18, 38707), (Start: 24 @38626 has 3 MA's), (Start: 27 @38593 has 19 MA's), (35, 38485), (41, 38410), (43, 38398), (45, 38365), (46, 38356), (50, 38308), (53, 38272), (55, 38254),

Gene: Antonia_45 Start: 39278, Stop: 38751, Start Num: 15

Candidate Starts for Antonia_45:

(Start: 15 @39278 has 27 MA's), (Start: 26 @39176 has 51 MA's), (32, 39098), (33, 39083), (39, 39038),

Gene: Apex_42 Start: 39799, Stop: 39374, Start Num: 27

Candidate Starts for Apex_42:

(Start: 6 @40009 has 1 MA's), (7, 39985), (10, 39973), (18, 39919), (Start: 24 @39832 has 3 MA's), (Start: 27 @39799 has 19 MA's), (30, 39793), (35, 39691), (41, 39616), (43, 39604), (45, 39571), (46, 39562), (50, 39514), (53, 39478), (55, 39460),

Gene: Apizium_45 Start: 39365, Stop: 38940, Start Num: 26

Candidate Starts for Apizium_45:

(9, 39518), (12, 39509), (14, 39494), (Start: 26 @39365 has 51 MA's), (32, 39287), (33, 39272), (39, 39227),

Gene: Ashraf_45 Start: 39169, Stop: 38744, Start Num: 26

Candidate Starts for Ashraf_45:

(9, 39319), (12, 39310), (14, 39295), (Start: 26 @39169 has 51 MA's), (32, 39091), (33, 39076), (39, 39031),

Gene: Athena_45 Start: 40260, Stop: 39775, Start Num: 21

Candidate Starts for Athena_45:

(3, 40431), (13, 40329), (20, 40275), (Start: 21 @40260 has 33 MA's), (Start: 25 @40212 has 9 MA's), (31, 40122), (35, 40077), (36, 40071), (38, 40065), (40, 40014), (47, 39927), (49, 39903), (54, 39855),

Gene: Audrey_44 Start: 39461, Stop: 39024, Start Num: 25

Candidate Starts for Audrey_44:

(3, 39680), (13, 39578), (20, 39524), (Start: 21 @39509 has 33 MA's), (Start: 25 @39461 has 9 MA's), (31, 39371), (35, 39326), (36, 39320), (38, 39314), (40, 39263), (47, 39176), (49, 39152), (54, 39104),

Gene: Austelle_42 Start: 40255, Stop: 39830, Start Num: 27

Candidate Starts for Austelle_42:

(Start: 6 @40459 has 1 MA's), (7, 40435), (10, 40423), (18, 40369), (Start: 24 @40288 has 3 MA's), (Start: 27 @40255 has 19 MA's), (30, 40249), (35, 40147), (41, 40072), (43, 40060), (45, 40027), (46, 40018), (50, 39970), (53, 39934), (55, 39916),

Gene: Badfish_46 Start: 39635, Stop: 39210, Start Num: 26

Candidate Starts for Badfish_46:

(9, 39785), (12, 39776), (14, 39761), (Start: 26 @39635 has 51 MA's), (32, 39557), (33, 39542), (39, 39497),

Gene: Baloo_44 Start: 39512, Stop: 39027, Start Num: 21

Candidate Starts for Baloo_44:

(3, 39683), (13, 39581), (20, 39527), (Start: 21 @39512 has 33 MA's), (Start: 25 @39464 has 9 MA's), (31, 39374), (35, 39329), (36, 39323), (38, 39317), (40, 39266), (47, 39179), (49, 39155), (54, 39107),

Gene: Basato_47 Start: 39988, Stop: 39464, Start Num: 15

Candidate Starts for Basato_47:

(Start: 15 @39988 has 27 MA's), (Start: 26 @39889 has 51 MA's), (32, 39811), (33, 39796), (39, 39751),

Gene: Ben11_43 Start: 39283, Stop: 38846, Start Num: 25

Candidate Starts for Ben11_43:

(3, 39502), (13, 39400), (20, 39346), (Start: 21 @39331 has 33 MA's), (Start: 25 @39283 has 9 MA's), (31, 39193), (35, 39148), (36, 39142), (38, 39136), (40, 39085), (47, 38998), (49, 38974), (54, 38926),

Gene: BlackStallion_46 Start: 39621, Stop: 39196, Start Num: 26

Candidate Starts for BlackStallion_46:

(9, 39771), (12, 39762), (14, 39747), (Start: 26 @39621 has 51 MA's), (32, 39543), (33, 39528), (39, 39483),

Gene: BobbyK_42 Start: 39624, Stop: 39199, Start Num: 27

Candidate Starts for BobbyK_42:

(Start: 6 @39828 has 1 MA's), (7, 39804), (10, 39792), (18, 39738), (Start: 24 @39657 has 3 MA's), (Start: 27 @39624 has 19 MA's), (35, 39516), (41, 39441), (43, 39429), (45, 39396), (46, 39387), (50, 39339), (53, 39303), (55, 39285),

Gene: Briakila_45 Start: 40279, Stop: 39794, Start Num: 21

Candidate Starts for Briakila_45:

(3, 40450), (13, 40348), (20, 40294), (Start: 21 @40279 has 33 MA's), (Start: 25 @40231 has 9 MA's), (31, 40141), (35, 40096), (36, 40090), (38, 40084), (40, 40033), (47, 39946), (49, 39922), (54, 39874),

Gene: BrownCNA_43 Start: 39918, Stop: 39460, Start Num: 24

Candidate Starts for BrownCNA_43:

(Start: 6 @40089 has 1 MA's), (7, 40065), (10, 40053), (18, 39999), (Start: 24 @39918 has 3 MA's), (Start: 27 @39885 has 19 MA's), (35, 39777), (41, 39702), (43, 39690), (45, 39657), (46, 39648), (50, 39600), (53, 39564), (55, 39546),

Gene: CRB2_47 Start: 42140, Stop: 41727, Start Num: 29

Candidate Starts for CRB2_47:

(12, 42299), (13, 42290), (Start: 22 @42215 has 2 MA's), (Start: 29 @42140 has 1 MA's), (34, 42065), (59, 41756),

Gene: CampRoach_46 Start: 39607, Stop: 39182, Start Num: 26

Candidate Starts for CampRoach_46:

(9, 39757), (12, 39748), (14, 39733), (Start: 26 @39607 has 51 MA's), (32, 39529), (33, 39514), (39, 39469),

Gene: Casbah_43 Start: 39313, Stop: 38876, Start Num: 25

Candidate Starts for Casbah_43:

(3, 39532), (13, 39430), (20, 39376), (Start: 21 @39361 has 33 MA's), (Start: 25 @39313 has 9 MA's), (31, 39223), (35, 39178), (36, 39172), (38, 39166), (40, 39115), (47, 39028), (49, 39004), (54, 38956),

Gene: ChaChing_44 Start: 39524, Stop: 39039, Start Num: 21

Candidate Starts for ChaChing_44:

(3, 39695), (13, 39593), (20, 39539), (Start: 21 @39524 has 33 MA's), (Start: 25 @39476 has 9 MA's), (31, 39386), (35, 39341), (36, 39335), (38, 39329), (40, 39278), (47, 39191), (49, 39167), (54, 39119),

Gene: Chaelin_46 Start: 39416, Stop: 38889, Start Num: 15

Candidate Starts for Chaelin_46:

(Start: 15 @39416 has 27 MA's), (Start: 26 @39314 has 51 MA's), (32, 39236), (33, 39221), (39, 39176),

Gene: Chah_47 Start: 39634, Stop: 39209, Start Num: 26

Candidate Starts for Chah_47:

(9, 39784), (12, 39775), (14, 39760), (Start: 26 @39634 has 51 MA's), (32, 39556), (33, 39541), (39, 39496),

Gene: Chalmers_44 Start: 40268, Stop: 39831, Start Num: 25

Candidate Starts for Chalmers_44:

(3, 40487), (13, 40385), (20, 40331), (Start: 21 @40316 has 33 MA's), (Start: 25 @40268 has 9 MA's), (31, 40178), (35, 40133), (36, 40127), (38, 40121), (40, 40070), (47, 39983), (49, 39959), (54, 39911),

Gene: Chandler_44 Start: 40244, Stop: 39807, Start Num: 25

Candidate Starts for Chandler_44:

(3, 40463), (13, 40361), (20, 40307), (Start: 21 @40292 has 33 MA's), (Start: 25 @40244 has 9 MA's), (31, 40154), (35, 40109), (36, 40103), (38, 40097), (40, 40046), (47, 39959), (49, 39935), (54, 39887),

Gene: Chentzyk_44 Start: 39825, Stop: 39388, Start Num: 25

Candidate Starts for Chentzyk_44:

(3, 40044), (13, 39942), (20, 39888), (Start: 21 @39873 has 33 MA's), (Start: 25 @39825 has 9 MA's), (31, 39735), (35, 39690), (36, 39684), (38, 39678), (40, 39627), (47, 39540), (49, 39516), (54, 39468),

Gene: Chipette_47 Start: 39931, Stop: 39407, Start Num: 15

Candidate Starts for Chipette_47:

(Start: 15 @39931 has 27 MA's), (Start: 26 @39832 has 51 MA's), (32, 39754), (33, 39739), (39, 39694),

Gene: ChrisnMich_41 Start: 38585, Stop: 38160, Start Num: 27

Candidate Starts for ChrisnMich_41:

(Start: 6 @38789 has 1 MA's), (10, 38753), (18, 38699), (Start: 24 @38618 has 3 MA's), (Start: 27 @38585 has 19 MA's), (35, 38477), (41, 38402), (45, 38357), (46, 38348), (50, 38300), (53, 38264), (55, 38246),

Gene: Chunky_46 Start: 39724, Stop: 39200, Start Num: 15

Candidate Starts for Chunky_46:

(Start: 15 @39724 has 27 MA's), (Start: 26 @39625 has 51 MA's), (32, 39547), (33, 39532), (39, 39487),

Gene: Chute_45 Start: 39663, Stop: 39238, Start Num: 26

Candidate Starts for Chute_45:

(Start: 15 @39765 has 27 MA's), (Start: 26 @39663 has 51 MA's), (32, 39585), (33, 39570), (39, 39525),

Gene: Colbert_46 Start: 39777, Stop: 39253, Start Num: 15

Candidate Starts for Colbert_46:

(Start: 15 @39777 has 27 MA's), (Start: 26 @39678 has 51 MA's), (32, 39600), (33, 39585), (39, 39540),

Gene: Coletti_45 Start: 39765, Stop: 39238, Start Num: 15

Candidate Starts for Coletti_45:

(Start: 15 @39765 has 27 MA's), (Start: 26 @39663 has 51 MA's), (32, 39585), (33, 39570), (39, 39525),

Gene: Compostia_45 Start: 39940, Stop: 39455, Start Num: 21

Candidate Starts for Compostia_45:

(3, 40111), (13, 40009), (20, 39955), (Start: 21 @39940 has 33 MA's), (Start: 25 @39892 has 9 MA's), (31, 39802), (35, 39757), (36, 39751), (38, 39745), (40, 39694), (47, 39607), (49, 39583), (54, 39535),

Gene: Cooper_42 Start: 38807, Stop: 38379, Start Num: 27

Candidate Starts for Cooper_42:

(Start: 6 @39008 has 1 MA's), (10, 38972), (Start: 24 @38840 has 3 MA's), (Start: 27 @38807 has 19 MA's), (35, 38696), (41, 38621), (43, 38609), (46, 38567), (50, 38519), (52, 38486), (53, 38483), (55, 38465), (58, 38420),

Gene: Cornobble_45 Start: 39279, Stop: 38752, Start Num: 15

Candidate Starts for Cornobble_45:

(Start: 15 @39279 has 27 MA's), (Start: 26 @39177 has 51 MA's), (32, 39099), (33, 39084), (39, 39039),

Gene: Corofin_44 Start: 39535, Stop: 39050, Start Num: 21

Candidate Starts for Corofin_44:

(3, 39706), (13, 39604), (20, 39550), (Start: 21 @39535 has 33 MA's), (Start: 25 @39487 has 9 MA's), (31, 39397), (35, 39352), (36, 39346), (38, 39340), (40, 39289), (47, 39202), (49, 39178), (54, 39130),

Gene: Craff_46 Start: 39620, Stop: 39195, Start Num: 26

Candidate Starts for Craff_46:

(9, 39770), (12, 39761), (14, 39746), (Start: 26 @39620 has 51 MA's), (32, 39542), (33, 39527), (39, 39482),

Gene: Daisy_44 Start: 39536, Stop: 39051, Start Num: 21

Candidate Starts for Daisy_44:

(3, 39707), (13, 39605), (20, 39551), (Start: 21 @39536 has 33 MA's), (Start: 25 @39488 has 9 MA's), (31, 39398), (35, 39353), (36, 39347), (38, 39341), (40, 39290), (47, 39203), (49, 39179), (54, 39131),

Gene: Daka_47 Start: 39714, Stop: 39190, Start Num: 15

Candidate Starts for Daka_47:

(Start: 15 @39714 has 27 MA's), (Start: 26 @39615 has 51 MA's), (32, 39537), (33, 39522), (39, 39477),

Gene: Dati_46 Start: 39336, Stop: 38911, Start Num: 26

Candidate Starts for Dati_46:

(Start: 15 @39438 has 27 MA's), (Start: 26 @39336 has 51 MA's), (32, 39258), (33, 39243), (39, 39198),

Gene: Deenasa_44 Start: 40271, Stop: 39786, Start Num: 21

Candidate Starts for Deenasa_44:

(3, 40442), (13, 40340), (20, 40286), (Start: 21 @40271 has 33 MA's), (Start: 25 @40223 has 9 MA's), (31, 40133), (35, 40088), (36, 40082), (38, 40076), (40, 40025), (47, 39938), (49, 39914), (54, 39866),

Gene: Devonte_44 Start: 39500, Stop: 39015, Start Num: 21

Candidate Starts for Devonte_44:

(3, 39671), (13, 39569), (20, 39515), (Start: 21 @39500 has 33 MA's), (Start: 25 @39452 has 9 MA's), (31, 39362), (35, 39317), (36, 39311), (38, 39305), (40, 39254), (47, 39167), (49, 39143), (54, 39095),

Gene: DonSanchon_45 Start: 39417, Stop: 38890, Start Num: 15

Candidate Starts for DonSanchon_45:

(Start: 15 @39417 has 27 MA's), (Start: 26 @39315 has 51 MA's), (32, 39237), (33, 39222), (39, 39177),

Gene: DuchessDung_44 Start: 38469, Stop: 38044, Start Num: 26

Candidate Starts for DuchessDung_44:

(9, 38619), (12, 38610), (14, 38595), (Start: 26 @38469 has 51 MA's), (32, 38391), (33, 38376), (39, 38331),

Gene: Durga_46 Start: 39635, Stop: 39210, Start Num: 26

Candidate Starts for Durga_46:

(9, 39785), (12, 39776), (14, 39761), (Start: 26 @39635 has 51 MA's), (32, 39557), (33, 39542), (39, 39497),

Gene: ElvisPhasley_47 Start: 39657, Stop: 39232, Start Num: 26

Candidate Starts for ElvisPhasley_47:

(9, 39807), (12, 39798), (14, 39783), (Start: 26 @39657 has 51 MA's), (32, 39579), (33, 39564), (39, 39519),

Gene: Emiris_46 Start: 39603, Stop: 39178, Start Num: 26

Candidate Starts for Emiris_46:

(9, 39753), (12, 39744), (14, 39729), (Start: 26 @39603 has 51 MA's), (32, 39525), (33, 39510), (39, 39465),

Gene: Epah_40 Start: 38593, Stop: 38168, Start Num: 27

Candidate Starts for Epah_40:

(Start: 6 @38797 has 1 MA's), (10, 38761), (18, 38707), (Start: 24 @38626 has 3 MA's), (Start: 27 @38593 has 19 MA's), (35, 38485), (41, 38410), (43, 38398), (45, 38365), (46, 38356), (50, 38308), (53, 38272), (55, 38254),

Gene: Eremos_46 Start: 39713, Stop: 39189, Start Num: 15

Candidate Starts for Eremos_46:

(Start: 15 @39713 has 27 MA's), (Start: 26 @39614 has 51 MA's), (32, 39536), (33, 39521), (39, 39476),

Gene: Eugenia_46 Start: 39723, Stop: 39199, Start Num: 15

Candidate Starts for Eugenia_46:

(Start: 15 @39723 has 27 MA's), (Start: 26 @39624 has 51 MA's), (32, 39546), (33, 39531), (39, 39486),

Gene: Fanaw_40 Start: 39290, Stop: 38865, Start Num: 27

Candidate Starts for Fanaw_40:

(Start: 6 @39494 has 1 MA's), (7, 39470), (10, 39458), (18, 39404), (Start: 24 @39323 has 3 MA's), (Start: 27 @39290 has 19 MA's), (30, 39284), (35, 39182), (41, 39107), (42, 39104), (45, 39062), (46, 39053), (50, 39005), (53, 38969), (55, 38951),

Gene: Fang_46 Start: 39628, Stop: 39203, Start Num: 26

Candidate Starts for Fang_46:

(9, 39778), (12, 39769), (14, 39754), (Start: 26 @39628 has 51 MA's), (32, 39550), (33, 39535), (39, 39490),

Gene: FluffyNinja_46 Start: 39621, Stop: 39196, Start Num: 26

Candidate Starts for FluffyNinja_46:

(9, 39771), (12, 39762), (14, 39747), (Start: 26 @39621 has 51 MA's), (32, 39543), (33, 39528), (39, 39483),

Gene: Fortunato_42 Start: 39822, Stop: 39193, Start Num: 6

Candidate Starts for Fortunato_42:

(Start: 6 @39822 has 1 MA's), (10, 39786), (18, 39732), (Start: 24 @39651 has 3 MA's), (Start: 27 @39618 has 19 MA's), (30, 39612), (35, 39510), (41, 39435), (43, 39423), (45, 39390), (46, 39381), (50, 39333), (53, 39297), (55, 39279),

Gene: Frederick_42 Start: 39624, Stop: 39199, Start Num: 27

Candidate Starts for Frederick_42:

(Start: 6 @39828 has 1 MA's), (7, 39804), (10, 39792), (18, 39738), (Start: 24 @39657 has 3 MA's), (Start: 27 @39624 has 19 MA's), (35, 39516), (41, 39441), (45, 39396), (46, 39387), (50, 39339), (53, 39303), (55, 39285),

Gene: Fringe_46 Start: 39604, Stop: 39179, Start Num: 26

Candidate Starts for Fringe_46:

(9, 39754), (12, 39745), (14, 39730), (Start: 26 @39604 has 51 MA's), (32, 39526), (33, 39511), (39, 39466),

Gene: Gadget_45 Start: 39523, Stop: 39038, Start Num: 21

Candidate Starts for Gadget_45:

(3, 39694), (13, 39592), (20, 39538), (Start: 21 @39523 has 33 MA's), (Start: 25 @39475 has 9 MA's), (31, 39385), (35, 39340), (36, 39334), (38, 39328), (40, 39277), (47, 39190), (49, 39166), (54, 39118),

Gene: Gareth_45 Start: 39320, Stop: 38895, Start Num: 26

Candidate Starts for Gareth_45:

(Start: 15 @39419 has 27 MA's), (Start: 26 @39320 has 51 MA's), (32, 39242), (33, 39227), (39, 39182),

Gene: Gervas_44 Start: 39490, Stop: 39005, Start Num: 21

Candidate Starts for Gervas_44:

(3, 39661), (13, 39559), (20, 39505), (Start: 21 @39490 has 33 MA's), (Start: 25 @39442 has 9 MA's), (31, 39352), (35, 39307), (36, 39301), (38, 39295), (40, 39244), (47, 39157), (49, 39133), (54, 39085),

Gene: GinPorsche_40 Start: 38593, Stop: 38168, Start Num: 27

Candidate Starts for GinPorsche_40:

(Start: 6 @38797 has 1 MA's), (10, 38761), (18, 38707), (Start: 24 @38626 has 3 MA's), (Start: 27 @38593 has 19 MA's), (35, 38485), (41, 38410), (43, 38398), (45, 38365), (46, 38356), (50, 38308), (53, 38272), (55, 38254),

Gene: GlenHope_45 Start: 39503, Stop: 39018, Start Num: 21

Candidate Starts for GlenHope_45:

(3, 39674), (13, 39572), (20, 39518), (Start: 21 @39503 has 33 MA's), (Start: 25 @39455 has 9 MA's), (31, 39365), (35, 39320), (36, 39314), (38, 39308), (40, 39257), (47, 39170), (49, 39146), (54, 39098),

Gene: Glubnar_44 Start: 39454, Stop: 39017, Start Num: 25

Candidate Starts for Glubnar_44:

(3, 39673), (13, 39571), (20, 39517), (Start: 21 @39502 has 33 MA's), (Start: 25 @39454 has 9 MA's), (31, 39364), (35, 39319), (36, 39313), (38, 39307), (40, 39256), (47, 39169), (49, 39145), (54, 39097),

Gene: Gwilliam_46 Start: 39717, Stop: 39193, Start Num: 15

Candidate Starts for Gwilliam_46:

(Start: 15 @39717 has 27 MA's), (Start: 26 @39618 has 51 MA's), (32, 39540), (33, 39525), (39, 39480),

Gene: Halfpint_43 Start: 39281, Stop: 38844, Start Num: 25

Candidate Starts for Halfpint_43:

(3, 39500), (13, 39398), (20, 39344), (Start: 21 @39329 has 33 MA's), (Start: 25 @39281 has 9 MA's), (31, 39191), (35, 39146), (36, 39140), (38, 39134), (40, 39083), (47, 38996), (49, 38972), (54, 38924),

Gene: Hally898_40 Start: 38605, Stop: 38180, Start Num: 27

Candidate Starts for Hally898_40:

(Start: 6 @38809 has 1 MA's), (10, 38773), (18, 38719), (Start: 24 @38638 has 3 MA's), (Start: 27 @38605 has 19 MA's), (35, 38497), (41, 38422), (43, 38410), (45, 38377), (46, 38368), (50, 38320), (53, 38284), (55, 38266),

Gene: Hangman_41 Start: 39616, Stop: 39191, Start Num: 27

Candidate Starts for Hangman_41:

(Start: 6 @39820 has 1 MA's), (7, 39796), (10, 39784), (18, 39730), (Start: 24 @39649 has 3 MA's), (Start: 27 @39616 has 19 MA's), (35, 39508), (41, 39433), (43, 39421), (45, 39388), (46, 39379), (50, 39331), (53, 39295), (55, 39277),

Gene: Harvey_46 Start: 39735, Stop: 39208, Start Num: 15

Candidate Starts for Harvey_46:

(Start: 15 @39735 has 27 MA's), (Start: 26 @39633 has 51 MA's), (32, 39555), (33, 39540), (39, 39495),

Gene: HarveySr_44 Start: 39496, Stop: 39011, Start Num: 21

Candidate Starts for HarveySr_44:

(3, 39667), (13, 39565), (20, 39511), (Start: 21 @39496 has 33 MA's), (Start: 25 @39448 has 9 MA's), (31, 39358), (35, 39313), (36, 39307), (38, 39301), (40, 39250), (47, 39163), (49, 39139), (54, 39091),

Gene: Heath_40 Start: 39223, Stop: 38798, Start Num: 27

Candidate Starts for Heath_40:

(Start: 6 @39427 has 1 MA's), (7, 39403), (10, 39391), (18, 39337), (Start: 24 @39256 has 3 MA's), (Start: 27 @39223 has 19 MA's), (35, 39115), (41, 39040), (43, 39028), (45, 38995), (46, 38986), (50, 38938), (53, 38902), (55, 38884),

Gene: Heathcliff_44 Start: 39474, Stop: 38989, Start Num: 21

Candidate Starts for Heathcliff_44:

(3, 39645), (13, 39543), (20, 39489), (Start: 21 @39474 has 33 MA's), (Start: 25 @39426 has 9 MA's), (31, 39336), (35, 39291), (36, 39285), (38, 39279), (40, 39228), (47, 39141), (49, 39117), (54, 39069),

Gene: HighStump_45 Start: 39321, Stop: 38896, Start Num: 26

Candidate Starts for HighStump_45:

(9, 39471), (12, 39462), (14, 39447), (Start: 26 @39321 has 51 MA's), (32, 39243), (33, 39228), (39, 39183),

Gene: Hydro_41 Start: 39633, Stop: 39208, Start Num: 27

Candidate Starts for Hydro_41:

(Start: 6 @39837 has 1 MA's), (7, 39813), (10, 39801), (18, 39747), (Start: 24 @39666 has 3 MA's), (Start: 27 @39633 has 19 MA's), (35, 39525), (41, 39450), (43, 39438), (45, 39405), (46, 39396), (50, 39348), (53, 39312), (55, 39294),

Gene: ImtiyazSitla_45 Start: 39169, Stop: 38744, Start Num: 26

Candidate Starts for ImtiyazSitla_45:

(9, 39319), (12, 39310), (14, 39295), (Start: 26 @39169 has 51 MA's), (32, 39091), (33, 39076), (39, 39031),

Gene: Inchworm_46 Start: 39607, Stop: 39182, Start Num: 26

Candidate Starts for Inchworm_46:

(9, 39757), (12, 39748), (14, 39733), (Start: 26 @39607 has 51 MA's), (32, 39529), (33, 39514), (39, 39469),

Gene: IsaacEli_46 Start: 39625, Stop: 39200, Start Num: 26

Candidate Starts for IsaacEli_46:

(9, 39775), (12, 39766), (14, 39751), (Start: 26 @39625 has 51 MA's), (32, 39547), (33, 39532), (39, 39487),

Gene: JAMaL_41 Start: 39804, Stop: 39379, Start Num: 27

Candidate Starts for JAMaL_41:

(Start: 6 @40008 has 1 MA's), (7, 39984), (10, 39972), (16, 39936), (18, 39918), (Start: 24 @39837 has 3 MA's), (Start: 27 @39804 has 19 MA's), (30, 39798), (35, 39696), (41, 39621), (43, 39609), (45, 39576), (50, 39519), (53, 39483), (55, 39465),

Gene: JDog_45 Start: 39338, Stop: 38913, Start Num: 26

Candidate Starts for JDog_45:

(Start: 15 @39440 has 27 MA's), (Start: 26 @39338 has 51 MA's), (32, 39260), (33, 39245), (39, 39200),

Gene: JacAttac_46 Start: 39607, Stop: 39182, Start Num: 26

Candidate Starts for JacAttac_46:

(9, 39757), (12, 39748), (14, 39733), (Start: 26 @39607 has 51 MA's), (32, 39529), (33, 39514), (39, 39469),

Gene: Jackstina_41 Start: 39385, Stop: 38948, Start Num: 25

Candidate Starts for Jackstina_41:

(3, 39604), (13, 39502), (20, 39448), (Start: 21 @39433 has 33 MA's), (Start: 25 @39385 has 9 MA's), (31, 39295), (35, 39250), (36, 39244), (38, 39238), (40, 39187), (47, 39100), (49, 39076), (54, 39028),

Gene: JaguarMi_41 Start: 39177, Stop: 38674, Start Num: 22

Candidate Starts for JaguarMi_41:

(12, 39261), (Start: 22 @39177 has 2 MA's), (Start: 24 @39132 has 3 MA's), (Start: 27 @39099 has 19 MA's), (35, 38991), (41, 38916), (43, 38904), (45, 38871), (46, 38862), (50, 38814), (53, 38778), (55, 38760),

Gene: Kamiyu_44 Start: 39482, Stop: 38997, Start Num: 21

Candidate Starts for Kamiyu_44:

(3, 39653), (13, 39551), (20, 39497), (Start: 21 @39482 has 33 MA's), (Start: 25 @39434 has 9 MA's), (31, 39344), (35, 39299), (36, 39293), (38, 39287), (40, 39236), (47, 39149), (49, 39125), (54, 39077),

Gene: Katniss_46 Start: 39634, Stop: 39209, Start Num: 26

Candidate Starts for Katniss_46:

(9, 39784), (12, 39775), (14, 39760), (Start: 26 @39634 has 51 MA's), (32, 39556), (33, 39541), (39, 39496),

Gene: Keitherie_46 Start: 39774, Stop: 39247, Start Num: 15

Candidate Starts for Keitherie_46:

(Start: 15 @39774 has 27 MA's), (Start: 26 @39672 has 51 MA's), (32, 39594), (33, 39579), (39, 39534),

Gene: Kikipoo_46 Start: 39625, Stop: 39200, Start Num: 26

Candidate Starts for Kikipoo_46:

(9, 39775), (12, 39766), (14, 39751), (Start: 26 @39625 has 51 MA's), (32, 39547), (33, 39532), (39, 39487),

Gene: Kronus_43 Start: 40092, Stop: 39607, Start Num: 21

Candidate Starts for Kronus_43:

(3, 40263), (13, 40161), (20, 40107), (Start: 21 @40092 has 33 MA's), (Start: 25 @40044 has 9 MA's), (31, 39954), (35, 39909), (36, 39903), (38, 39897), (40, 39846), (47, 39759), (49, 39735), (54, 39687),

Gene: Lambano_40 Start: 38605, Stop: 38180, Start Num: 27

Candidate Starts for Lambano_40:

(Start: 6 @38809 has 1 MA's), (10, 38773), (18, 38719), (Start: 24 @38638 has 3 MA's), (Start: 27 @38605 has 19 MA's), (35, 38497), (41, 38422), (43, 38410), (45, 38377), (46, 38368), (50, 38320), (53, 38284), (55, 38266),

Gene: LasagnaCat_46 Start: 39619, Stop: 39194, Start Num: 26

Candidate Starts for LasagnaCat_46:

(9, 39769), (12, 39760), (14, 39745), (Start: 26 @39619 has 51 MA's), (32, 39541), (33, 39526), (39, 39481),

Gene: Legolas_45 Start: 39333, Stop: 38908, Start Num: 26

Candidate Starts for Legolas_45:

(1, 39888), (2, 39693), (4, 39549), (Start: 26 @39333 has 51 MA's), (32, 39255), (33, 39240), (39, 39195),

Gene: LestyG_44 Start: 39513, Stop: 39028, Start Num: 21

Candidate Starts for LestyG_44:

(3, 39684), (13, 39582), (20, 39528), (Start: 21 @39513 has 33 MA's), (Start: 25 @39465 has 9 MA's), (31, 39375), (35, 39330), (36, 39324), (38, 39318), (40, 39267), (47, 39180), (49, 39156), (54, 39108),

Gene: Lolalove_41 Start: 39630, Stop: 39205, Start Num: 27

Candidate Starts for Lolalove_41:

(Start: 6 @39834 has 1 MA's), (7, 39810), (10, 39798), (18, 39744), (Start: 24 @39663 has 3 MA's), (Start: 27 @39630 has 19 MA's), (30, 39624), (35, 39522), (41, 39447), (43, 39435), (45, 39402), (46, 39393), (50, 39345), (53, 39309), (55, 39291),

Gene: Lopsy_45 Start: 39277, Stop: 38750, Start Num: 15

Candidate Starts for Lopsy_45:

(Start: 15 @39277 has 27 MA's), (Start: 26 @39175 has 51 MA's), (32, 39097), (33, 39082), (39, 39037),

Gene: Lulumae_45 Start: 39416, Stop: 38892, Start Num: 15

Candidate Starts for Lulumae_45:

(Start: 15 @39416 has 27 MA's), (Start: 26 @39317 has 51 MA's), (32, 39239), (33, 39224), (39, 39179),

Gene: Magpie_40 Start: 39466, Stop: 39041, Start Num: 27

Candidate Starts for Magpie_40:

(Start: 6 @39670 has 1 MA's), (7, 39646), (10, 39634), (18, 39580), (19, 39574), (Start: 24 @39499 has 3 MA's), (Start: 27 @39466 has 19 MA's), (30, 39460), (35, 39358), (41, 39283), (43, 39271), (45, 39238), (46, 39229), (50, 39181), (53, 39145), (55, 39127),

Gene: Manad_45 Start: 39276, Stop: 38749, Start Num: 15

Candidate Starts for Manad_45:

(Start: 15 @39276 has 27 MA's), (Start: 26 @39174 has 51 MA's), (32, 39096), (33, 39081), (39, 39036),

Gene: Marley1013_44 Start: 40291, Stop: 39806, Start Num: 21

Candidate Starts for Marley1013_44:

(3, 40462), (13, 40360), (20, 40306), (Start: 21 @40291 has 33 MA's), (Start: 25 @40243 has 9 MA's), (31, 40153), (35, 40108), (36, 40102), (38, 40096), (40, 40045), (47, 39958), (49, 39934), (54, 39886),

Gene: Marlia_44 Start: 39446, Stop: 39009, Start Num: 25

Candidate Starts for Marlia_44:

(3, 39665), (13, 39563), (20, 39509), (Start: 21 @39494 has 33 MA's), (Start: 25 @39446 has 9 MA's), (31, 39356), (35, 39311), (36, 39305), (38, 39299), (40, 39248), (47, 39161), (49, 39137), (54, 39089),

Gene: Maskar_45 Start: 39169, Stop: 38744, Start Num: 26

Candidate Starts for Maskar_45:

(9, 39319), (12, 39310), (14, 39295), (Start: 26 @39169 has 51 MA's), (32, 39091), (33, 39076), (39, 39031),

Gene: Megatron_46 Start: 39616, Stop: 39191, Start Num: 26

Candidate Starts for Megatron_46:

(9, 39766), (12, 39757), (14, 39742), (Start: 26 @39616 has 51 MA's), (32, 39538), (33, 39523), (39, 39478),

Gene: MelsMeow_45 Start: 39219, Stop: 38794, Start Num: 26

Candidate Starts for MelsMeow_45:

(9, 39369), (12, 39360), (14, 39345), (Start: 26 @39219 has 51 MA's), (32, 39141), (33, 39126), (39, 39081),

Gene: Mithril_41 Start: 39634, Stop: 39209, Start Num: 27

Candidate Starts for Mithril_41:

(Start: 6 @39838 has 1 MA's), (7, 39814), (10, 39802), (18, 39748), (Start: 24 @39667 has 3 MA's), (Start: 27 @39634 has 19 MA's), (35, 39526), (41, 39451), (43, 39439), (45, 39406), (46, 39397), (50, 39349), (53, 39313), (55, 39295),

Gene: MmasiCarm_44 Start: 39495, Stop: 39010, Start Num: 21

Candidate Starts for MmasiCarm_44:

(3, 39666), (13, 39564), (20, 39510), (Start: 21 @39495 has 33 MA's), (Start: 25 @39447 has 9 MA's), (31, 39357), (35, 39312), (36, 39306), (38, 39300), (40, 39249), (47, 39162), (49, 39138), (54, 39090),

Gene: Mortcellus_43 Start: 40147, Stop: 39662, Start Num: 21

Candidate Starts for Mortcellus_43:

(3, 40318), (13, 40216), (20, 40162), (Start: 21 @40147 has 33 MA's), (Start: 25 @40099 has 9 MA's), (31, 40009), (35, 39964), (36, 39958), (38, 39952), (40, 39901), (47, 39814), (49, 39790), (54, 39742),

Gene: Morty_46 Start: 39625, Stop: 39200, Start Num: 26

Candidate Starts for Morty_46:

(9, 39775), (12, 39766), (14, 39751), (Start: 26 @39625 has 51 MA's), (32, 39547), (33, 39532), (39, 39487),

Gene: Morty007_44 Start: 40243, Stop: 39806, Start Num: 25

Candidate Starts for Morty007_44:

(3, 40462), (13, 40360), (20, 40306), (Start: 21 @40291 has 33 MA's), (Start: 25 @40243 has 9 MA's), (31, 40153), (35, 40108), (36, 40102), (38, 40096), (40, 40045), (47, 39958), (49, 39934), (54, 39886),

Gene: Mosaic_45 Start: 39417, Stop: 38905, Start Num: 15

Candidate Starts for Mosaic_45:

(Start: 15 @39417 has 27 MA's), (Start: 26 @39318 has 51 MA's), (32, 39252), (33, 39237), (39, 39192),

Gene: Mudslide_41 Start: 39866, Stop: 39441, Start Num: 27

Candidate Starts for Mudslide_41:

(Start: 6 @40070 has 1 MA's), (7, 40046), (10, 40034), (18, 39980), (Start: 24 @39899 has 3 MA's), (Start: 27 @39866 has 19 MA's), (35, 39758), (41, 39683), (43, 39671), (45, 39638), (46, 39629), (50, 39581), (53, 39545), (55, 39527),

Gene: Mulan_45 Start: 39342, Stop: 38917, Start Num: 26

Candidate Starts for Mulan_45:

(9, 39492), (12, 39483), (14, 39468), (Start: 26 @39342 has 51 MA's), (32, 39264), (33, 39249), (39, 39204),

Gene: Mutante_45 Start: 39324, Stop: 38899, Start Num: 26

Candidate Starts for Mutante_45:

(Start: 15 @39429 has 27 MA's), (Start: 26 @39324 has 51 MA's), (32, 39246), (33, 39231), (39, 39186),

Gene: Nacho_0046 Start: 39619, Stop: 39194, Start Num: 26

Candidate Starts for Nacho_0046:

(9, 39769), (12, 39760), (14, 39745), (Start: 26 @39619 has 51 MA's), (32, 39541), (33, 39526), (39, 39481),

Gene: Nanao_40 Start: 38592, Stop: 38167, Start Num: 27

Candidate Starts for Nanao_40:

(Start: 6 @38796 has 1 MA's), (10, 38760), (18, 38706), (Start: 24 @38625 has 3 MA's), (Start: 27 @38592 has 19 MA's), (35, 38484), (41, 38409), (43, 38397), (45, 38364), (46, 38355), (50, 38307), (53, 38271), (55, 38253),

Gene: Neos5_44 Start: 40306, Stop: 39821, Start Num: 21

Candidate Starts for Neos5_44:

(3, 40477), (13, 40375), (20, 40321), (Start: 21 @40306 has 33 MA's), (Start: 25 @40258 has 9 MA's), (31, 40168), (35, 40123), (36, 40117), (38, 40111), (40, 40060), (47, 39973), (49, 39949), (54, 39901),

Gene: Nigel_40 Start: 38541, Stop: 38083, Start Num: 24

Candidate Starts for Nigel_40:

(5, 38721), (Start: 6 @38709 has 1 MA's), (8, 38679), (11, 38670), (17, 38625), (18, 38619), (Start: 24 @38541 has 3 MA's), (Start: 27 @38508 has 19 MA's), (35, 38400), (41, 38325), (43, 38313), (44, 38301), (45, 38280), (50, 38223), (53, 38187), (58, 38124), (60, 38091),

Gene: Nozo_44 Start: 40271, Stop: 39786, Start Num: 21

Candidate Starts for Nozo_44:

(3, 40442), (13, 40340), (20, 40286), (Start: 21 @40271 has 33 MA's), (Start: 25 @40223 has 9 MA's), (31, 40133), (35, 40088), (36, 40082), (38, 40076), (40, 40025), (47, 39938), (49, 39914), (54, 39866),

Gene: OSmaximus_46 Start: 39658, Stop: 39233, Start Num: 26

Candidate Starts for OSmaximus_46:

(9, 39808), (12, 39799), (14, 39784), (Start: 26 @39658 has 51 MA's), (32, 39580), (33, 39565), (39, 39520),

Gene: Obutu_44 Start: 39495, Stop: 39010, Start Num: 21

Candidate Starts for Obutu_44:

(3, 39666), (13, 39564), (20, 39510), (Start: 21 @39495 has 33 MA's), (Start: 25 @39447 has 9 MA's), (31, 39357), (35, 39312), (36, 39306), (38, 39300), (40, 39249), (47, 39162), (49, 39138), (54, 39090),

Gene: Olivio_43 Start: 39316, Stop: 38879, Start Num: 25

Candidate Starts for Olivio_43:

(3, 39535), (13, 39433), (20, 39379), (Start: 21 @39364 has 33 MA's), (Start: 25 @39316 has 9 MA's), (31, 39226), (35, 39181), (36, 39175), (38, 39169), (40, 39118), (47, 39031), (49, 39007), (54, 38959),

Gene: OrangeOswald_44 Start: 39512, Stop: 39027, Start Num: 21

Candidate Starts for OrangeOswald_44:

(3, 39683), (13, 39581), (20, 39527), (Start: 21 @39512 has 33 MA's), (Start: 25 @39464 has 9 MA's), (31, 39374), (35, 39329), (36, 39323), (38, 39317), (40, 39266), (47, 39179), (49, 39155), (54, 39107),

Gene: Orion_46 Start: 39614, Stop: 39189, Start Num: 26

Candidate Starts for Orion_46:

(9, 39764), (12, 39755), (14, 39740), (Start: 26 @39614 has 51 MA's), (32, 39536), (33, 39521), (39, 39476),

Gene: PG1_46 Start: 39627, Stop: 39202, Start Num: 26

Candidate Starts for PG1_46:

(9, 39777), (12, 39768), (14, 39753), (Start: 26 @39627 has 51 MA's), (32, 39549), (33, 39534), (39, 39489),

Gene: PenguinLover67_47 Start: 41507, Stop: 41013, Start Num: 22

Candidate Starts for PenguinLover67_47:

(12, 41591), (13, 41582), (Start: 22 @41507 has 2 MA's), (Start: 29 @41429 has 1 MA's), (35, 41327), (38, 41315),

Gene: Phaedrus_42 Start: 39384, Stop: 38947, Start Num: 25

Candidate Starts for Phaedrus_42:

(3, 39603), (13, 39501), (20, 39447), (Start: 21 @39432 has 33 MA's), (Start: 25 @39384 has 9 MA's), (31, 39294), (35, 39249), (36, 39243), (38, 39237), (40, 39186), (47, 39099), (49, 39075), (54, 39027),

Gene: Phamished_46 Start: 39622, Stop: 39197, Start Num: 26

Candidate Starts for Phamished_46:

(9, 39772), (12, 39763), (14, 39748), (Start: 26 @39622 has 51 MA's), (32, 39544), (33, 39529), (39, 39484),

Gene: PhatCats2014_46 Start: 39631, Stop: 39206, Start Num: 26

Candidate Starts for PhatCats2014_46:

(9, 39781), (12, 39772), (14, 39757), (Start: 26 @39631 has 51 MA's), (32, 39553), (33, 39538), (39, 39493),

Gene: Phayeta_45 Start: 39329, Stop: 38892, Start Num: 25

Candidate Starts for Phayeta_45:

(3, 39548), (13, 39446), (20, 39392), (Start: 21 @39377 has 33 MA's), (Start: 25 @39329 has 9 MA's), (31, 39239), (35, 39194), (36, 39188), (38, 39182), (40, 39131), (47, 39044), (49, 39020), (54, 38972),

Gene: Pherdinand_46 Start: 39622, Stop: 39197, Start Num: 26

Candidate Starts for Pherdinand_46:

(9, 39772), (12, 39763), (14, 39748), (Start: 26 @39622 has 51 MA's), (32, 39544), (33, 39529), (39, 39484),

Gene: Philly_43 Start: 39363, Stop: 38878, Start Num: 21

Candidate Starts for Philly_43:

(3, 39534), (13, 39432), (20, 39378), (Start: 21 @39363 has 33 MA's), (Start: 25 @39315 has 9 MA's), (31, 39225), (35, 39180), (36, 39174), (38, 39168), (40, 39117), (47, 39030), (49, 39006), (54, 38958),

Gene: Phlyer_44 Start: 40251, Stop: 39766, Start Num: 21

Candidate Starts for Phlyer_44:

(3, 40422), (13, 40320), (20, 40266), (Start: 21 @40251 has 33 MA's), (Start: 25 @40203 has 9 MA's), (31, 40113), (35, 40068), (36, 40062), (38, 40056), (40, 40005), (47, 39918), (49, 39894), (54, 39846),

Gene: PhrodoBaggins_45 Start: 39610, Stop: 39185, Start Num: 26

Candidate Starts for PhrodoBaggins_45:

(9, 39760), (12, 39751), (14, 39736), (Start: 26 @39610 has 51 MA's), (32, 39532), (33, 39517), (39, 39472),

Gene: Poster_40 Start: 38593, Stop: 38168, Start Num: 27

Candidate Starts for Poster_40:

(Start: 6 @38797 has 1 MA's), (10, 38761), (18, 38707), (Start: 24 @38626 has 3 MA's), (Start: 27 @38593 has 19 MA's), (35, 38485), (41, 38410), (43, 38398), (45, 38365), (46, 38356), (50, 38308), (53, 38272), (55, 38254),

Gene: Prickles_46 Start: 39710, Stop: 39186, Start Num: 15

Candidate Starts for Prickles_46:

(Start: 15 @39710 has 27 MA's), (Start: 26 @39611 has 51 MA's), (32, 39533), (33, 39518), (39, 39473),

Gene: Prince_41 Start: 39776, Stop: 39351, Start Num: 27

Candidate Starts for Prince_41:

(Start: 6 @39980 has 1 MA's), (7, 39956), (10, 39944), (18, 39890), (Start: 24 @39809 has 3 MA's), (Start: 27 @39776 has 19 MA's), (30, 39770), (35, 39668), (41, 39593), (43, 39581), (45, 39548), (46, 39539), (50, 39491), (53, 39455), (55, 39437),

Gene: QueenPie_40 Start: 39717, Stop: 39292, Start Num: 27

Candidate Starts for QueenPie_40:

(Start: 6 @39921 has 1 MA's), (7, 39897), (8, 39891), (10, 39885), (18, 39831), (Start: 24 @39750 has 3 MA's), (Start: 27 @39717 has 19 MA's), (35, 39609), (41, 39534), (43, 39522), (45, 39489), (46, 39480), (50, 39432), (53, 39396), (55, 39378),

Gene: Quesadilla_47 Start: 41493, Stop: 40987, Start Num: 22

Candidate Starts for Quesadilla_47:

(12, 41577), (Start: 22 @41493 has 2 MA's), (Start: 29 @41406 has 1 MA's), (35, 41304), (51, 41115), (56, 41055), (58, 41019),

Gene: RagingRooster_44 Start: 39513, Stop: 39028, Start Num: 21

Candidate Starts for RagingRooster_44:

(3, 39684), (13, 39582), (20, 39528), (Start: 21 @39513 has 33 MA's), (Start: 25 @39465 has 9 MA's), (31, 39375), (35, 39330), (36, 39324), (38, 39318), (40, 39267), (47, 39180), (49, 39156), (54, 39108),

Gene: RawrgerThat_42 Start: 39621, Stop: 39196, Start Num: 27

Candidate Starts for RawrgerThat_42:

(Start: 6 @39825 has 1 MA's), (10, 39789), (18, 39735), (Start: 24 @39654 has 3 MA's), (Start: 27 @39621 has 19 MA's), (30, 39615), (35, 39513), (41, 39438), (43, 39426), (45, 39393), (46, 39384), (50, 39336), (53, 39300), (55, 39282),

Gene: RedMaple_45 Start: 39624, Stop: 39199, Start Num: 26

Candidate Starts for RedMaple_45:

(9, 39774), (12, 39765), (14, 39750), (Start: 26 @39624 has 51 MA's), (32, 39546), (33, 39531), (39, 39486),

Gene: Rita1961_44 Start: 39496, Stop: 39011, Start Num: 21

Candidate Starts for Rita1961_44:

(3, 39667), (13, 39565), (20, 39511), (Start: 21 @39496 has 33 MA's), (Start: 25 @39448 has 9 MA's), (31, 39358), (35, 39313), (36, 39307), (38, 39301), (40, 39250), (47, 39163), (49, 39139), (54, 39091),

Gene: Robyn_45 Start: 39290, Stop: 38763, Start Num: 15

Candidate Starts for Robyn_45:

(Start: 15 @39290 has 27 MA's), (Start: 26 @39188 has 51 MA's), (32, 39110), (33, 39095), (39, 39050),

Gene: RomaT_44 Start: 40286, Stop: 39801, Start Num: 21

Candidate Starts for RomaT_44:

(3, 40457), (13, 40355), (20, 40301), (Start: 21 @40286 has 33 MA's), (Start: 25 @40238 has 9 MA's), (31, 40148), (35, 40103), (36, 40097), (38, 40091), (40, 40040), (47, 39953), (49, 39929), (54, 39881),

Gene: Roy17_46 Start: 39416, Stop: 38892, Start Num: 15

Candidate Starts for Roy17_46:

(Start: 15 @39416 has 27 MA's), (Start: 26 @39317 has 51 MA's), (32, 39239), (33, 39224), (39, 39179),

Gene: Scoot17C_46 Start: 39616, Stop: 39191, Start Num: 26

Candidate Starts for Scoot17C_46:

(9, 39766), (12, 39757), (14, 39742), (Start: 26 @39616 has 51 MA's), (32, 39538), (33, 39523), (39, 39478),

Gene: Shenandoah_44 Start: 39437, Stop: 39000, Start Num: 25

Candidate Starts for Shenandoah_44:

(3, 39656), (13, 39554), (20, 39500), (Start: 21 @39485 has 33 MA's), (Start: 25 @39437 has 9 MA's), (31, 39347), (35, 39302), (36, 39296), (38, 39290), (40, 39239), (47, 39152), (49, 39128), (54, 39080),

Gene: Sigman_46 Start: 39607, Stop: 39182, Start Num: 26

Candidate Starts for Sigman_46:

(9, 39757), (12, 39748), (14, 39733), (Start: 26 @39607 has 51 MA's), (32, 39529), (33, 39514), (39, 39469),

Gene: SirBeauregard_46 Start: 39416, Stop: 38889, Start Num: 15

Candidate Starts for SirBeauregard_46:

(Start: 15 @39416 has 27 MA's), (Start: 26 @39314 has 51 MA's), (32, 39236), (33, 39221), (39, 39176),

Gene: SlippinJimmy_44 Start: 40230, Stop: 39793, Start Num: 25

Candidate Starts for SlippinJimmy_44:

(3, 40449), (13, 40347), (20, 40293), (Start: 21 @40278 has 33 MA's), (Start: 25 @40230 has 9 MA's), (31, 40140), (35, 40095), (36, 40089), (38, 40083), (40, 40032), (47, 39945), (49, 39921), (54, 39873),

Gene: Soile_46 Start: 39334, Stop: 38909, Start Num: 26

Candidate Starts for Soile_46:

(Start: 15 @39433 has 27 MA's), (Start: 26 @39334 has 51 MA's), (32, 39256), (33, 39241), (39, 39196),

Gene: Stinger_40 Start: 38231, Stop: 37773, Start Num: 24

Candidate Starts for Stinger_40:

(Start: 6 @38399 has 1 MA's), (18, 38309), (Start: 24 @38231 has 3 MA's), (Start: 27 @38198 has 19 MA's), (35, 38090), (41, 38015), (43, 38003), (44, 37991), (45, 37970), (46, 37961), (50, 37913), (53, 37877), (58, 37814), (60, 37781),

Gene: Suffolk_46 Start: 39721, Stop: 39197, Start Num: 15

Candidate Starts for Suffolk_46:

(Start: 15 @39721 has 27 MA's), (Start: 26 @39622 has 51 MA's), (32, 39544), (33, 39529), (39, 39484),

Gene: SwainyDoc_44 Start: 39459, Stop: 39022, Start Num: 25

Candidate Starts for SwainyDoc_44:

(3, 39678), (13, 39576), (20, 39522), (Start: 21 @39507 has 33 MA's), (Start: 25 @39459 has 9 MA's), (31, 39369), (35, 39324), (36, 39318), (38, 39312), (40, 39261), (47, 39174), (49, 39150), (54, 39102),

Gene: Swish_46 Start: 39608, Stop: 39183, Start Num: 26

Candidate Starts for Swish_46:

(9, 39758), (12, 39749), (14, 39734), (Start: 26 @39608 has 51 MA's), (32, 39530), (33, 39515), (39, 39470),

Gene: SynergyX_44 Start: 39513, Stop: 39028, Start Num: 21

Candidate Starts for SynergyX_44:

(3, 39684), (13, 39582), (20, 39528), (Start: 21 @39513 has 33 MA's), (Start: 25 @39465 has 9 MA's), (31, 39375), (35, 39330), (36, 39324), (38, 39318), (40, 39267), (47, 39180), (49, 39156), (54, 39108),

Gene: ThreeOh3D2_46 Start: 39622, Stop: 39197, Start Num: 26

Candidate Starts for ThreeOh3D2_46:

(9, 39772), (12, 39763), (14, 39748), (Start: 26 @39622 has 51 MA's), (32, 39544), (33, 39529), (39, 39484),

Gene: TinyTerror_44 Start: 39450, Stop: 39013, Start Num: 25

Candidate Starts for TinyTerror_44:

(3, 39669), (13, 39567), (20, 39513), (Start: 21 @39498 has 33 MA's), (Start: 25 @39450 has 9 MA's), (31, 39360), (35, 39315), (36, 39309), (38, 39303), (40, 39252), (47, 39165), (49, 39141), (54, 39093),

Gene: TooFast2Furius_48 Start: 39956, Stop: 39429, Start Num: 15

Candidate Starts for TooFast2Furius_48:

(Start: 15 @39956 has 27 MA's), (Start: 26 @39854 has 51 MA's), (32, 39776), (33, 39761), (39, 39716),

Gene: Tooj_46 Start: 39781, Stop: 39257, Start Num: 15

Candidate Starts for Tooj_46:

(Start: 15 @39781 has 27 MA's), (Start: 26 @39682 has 51 MA's), (32, 39604), (33, 39589), (39, 39544),

Gene: Trypo_46 Start: 39618, Stop: 39193, Start Num: 26

Candidate Starts for Trypo_46:

(9, 39768), (12, 39759), (14, 39744), (Start: 26 @39618 has 51 MA's), (32, 39540), (33, 39525), (39, 39480),

Gene: Tydolla_44 Start: 40199, Stop: 39762, Start Num: 25

Candidate Starts for Tydolla_44:

(3, 40418), (13, 40316), (20, 40262), (Start: 21 @40247 has 33 MA's), (Start: 25 @40199 has 9 MA's), (31, 40109), (35, 40064), (36, 40058), (38, 40052), (40, 40001), (47, 39914), (49, 39890), (54, 39842),

Gene: UncleHowie_46 Start: 39423, Stop: 38896, Start Num: 15

Candidate Starts for UncleHowie_46:

(Start: 15 @39423 has 27 MA's), (Start: 26 @39321 has 51 MA's), (32, 39243), (33, 39228), (39, 39183),

Gene: Usavi_46 Start: 39721, Stop: 39197, Start Num: 15

Candidate Starts for Usavi_46:

(Start: 15 @39721 has 27 MA's), (Start: 26 @39622 has 51 MA's), (32, 39544), (33, 39529), (39, 39484),

Gene: Vincenzo_42 Start: 40436, Stop: 39954, Start Num: 23

Candidate Starts for Vincenzo_42:

(12, 40535), (13, 40526), (Start: 23 @40436 has 1 MA's), (Start: 28 @40379 has 1 MA's), (33, 40292), (34, 40286), (35, 40265), (37, 40256), (45, 40145), (48, 40097), (53, 40052), (55, 40034), (57, 40004), (58, 39989),

Gene: VioletZ_42 Start: 39692, Stop: 39267, Start Num: 27

Candidate Starts for VioletZ_42:

(Start: 6 @39896 has 1 MA's), (7, 39872), (10, 39860), (18, 39806), (Start: 24 @39725 has 3 MA's), (Start: 27 @39692 has 19 MA's), (30, 39686), (35, 39584), (41, 39509), (43, 39497), (45, 39464), (46, 39455), (50, 39407), (53, 39371), (55, 39353),

Gene: Virgeve_45 Start: 39491, Stop: 38964, Start Num: 15

Candidate Starts for Virgeve_45:

(Start: 15 @39491 has 27 MA's), (Start: 26 @39389 has 51 MA's), (32, 39311), (33, 39296), (39, 39251),

Gene: Waleliano_41 Start: 39619, Stop: 39194, Start Num: 27

Candidate Starts for Waleliano_41:

(Start: 6 @39823 has 1 MA's), (7, 39799), (10, 39787), (18, 39733), (Start: 24 @39652 has 3 MA's), (Start: 27 @39619 has 19 MA's), (35, 39511), (41, 39436), (43, 39424), (45, 39391), (46, 39382), (50, 39334), (53, 39298), (55, 39280),

Gene: Windsor_45 Start: 39420, Stop: 38893, Start Num: 15

Candidate Starts for Windsor_45:

(Start: 15 @39420 has 27 MA's), (Start: 26 @39318 has 51 MA's), (32, 39240), (33, 39225), (39, 39180),

Gene: Xincheng_40 Start: 39075, Stop: 38650, Start Num: 27

Candidate Starts for Xincheng_40:

(12, 39237), (Start: 22 @39153 has 2 MA's), (Start: 24 @39108 has 3 MA's), (Start: 27 @39075 has 19 MA's), (35, 38967), (41, 38892), (43, 38880), (45, 38847), (46, 38838), (50, 38790), (53, 38754), (55, 38736),

Gene: Yahalom_44 Start: 39523, Stop: 39038, Start Num: 21

Candidate Starts for Yahalom_44:

(3, 39694), (13, 39592), (20, 39538), (Start: 21 @39523 has 33 MA's), (Start: 25 @39475 has 9 MA's), (31, 39385), (35, 39340), (36, 39334), (38, 39328), (40, 39277), (47, 39190), (49, 39166), (54, 39118),

Gene: Yinz_44 Start: 39549, Stop: 39064, Start Num: 21

Candidate Starts for Yinz_44:

(3, 39720), (13, 39618), (20, 39564), (Start: 21 @39549 has 33 MA's), (Start: 25 @39501 has 9 MA's), (31, 39411), (35, 39366), (36, 39360), (38, 39354), (40, 39303), (47, 39216), (49, 39192), (54, 39144),

Gene: Yoshand_46 Start: 39621, Stop: 39196, Start Num: 26

Candidate Starts for Yoshand_46:

(9, 39771), (12, 39762), (14, 39747), (Start: 26 @39621 has 51 MA's), (32, 39543), (33, 39528), (39, 39483),

Gene: Zemanar_42 Start: 39622, Stop: 39197, Start Num: 27

Candidate Starts for Zemanar_42:

(Start: 6 @39826 has 1 MA's), (7, 39802), (10, 39790), (18, 39736), (Start: 24 @39655 has 3 MA's),
(Start: 27 @39622 has 19 MA's), (30, 39616), (35, 39514), (41, 39439), (43, 39427), (45, 39394), (46,
39385), (50, 39337), (53, 39301), (55, 39283),

Gene: Zonia_46 Start: 39635, Stop: 39210, Start Num: 26

Candidate Starts for Zonia_46:

(Start: 26 @39635 has 51 MA's), (32, 39557), (33, 39542), (39, 39497),