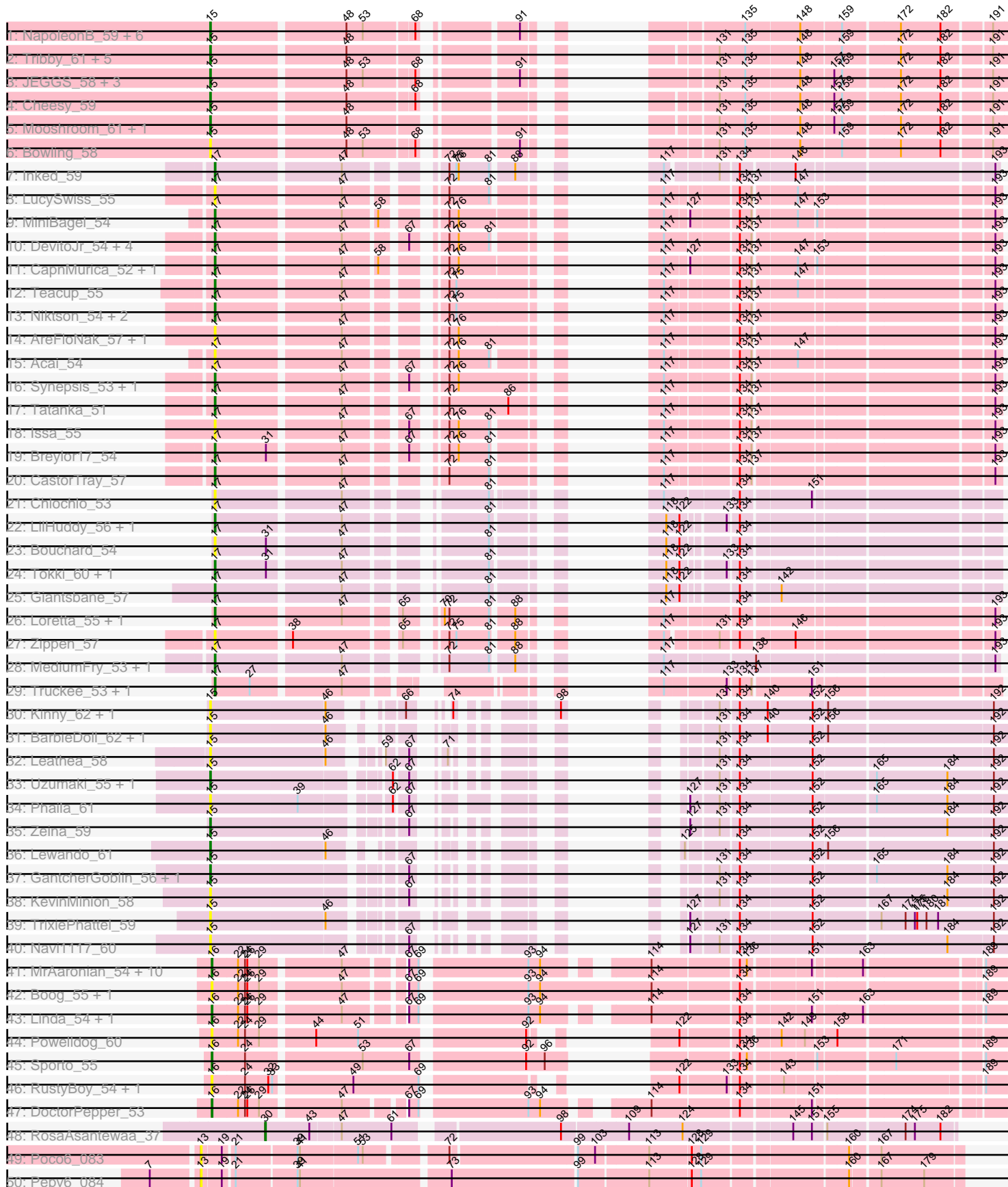
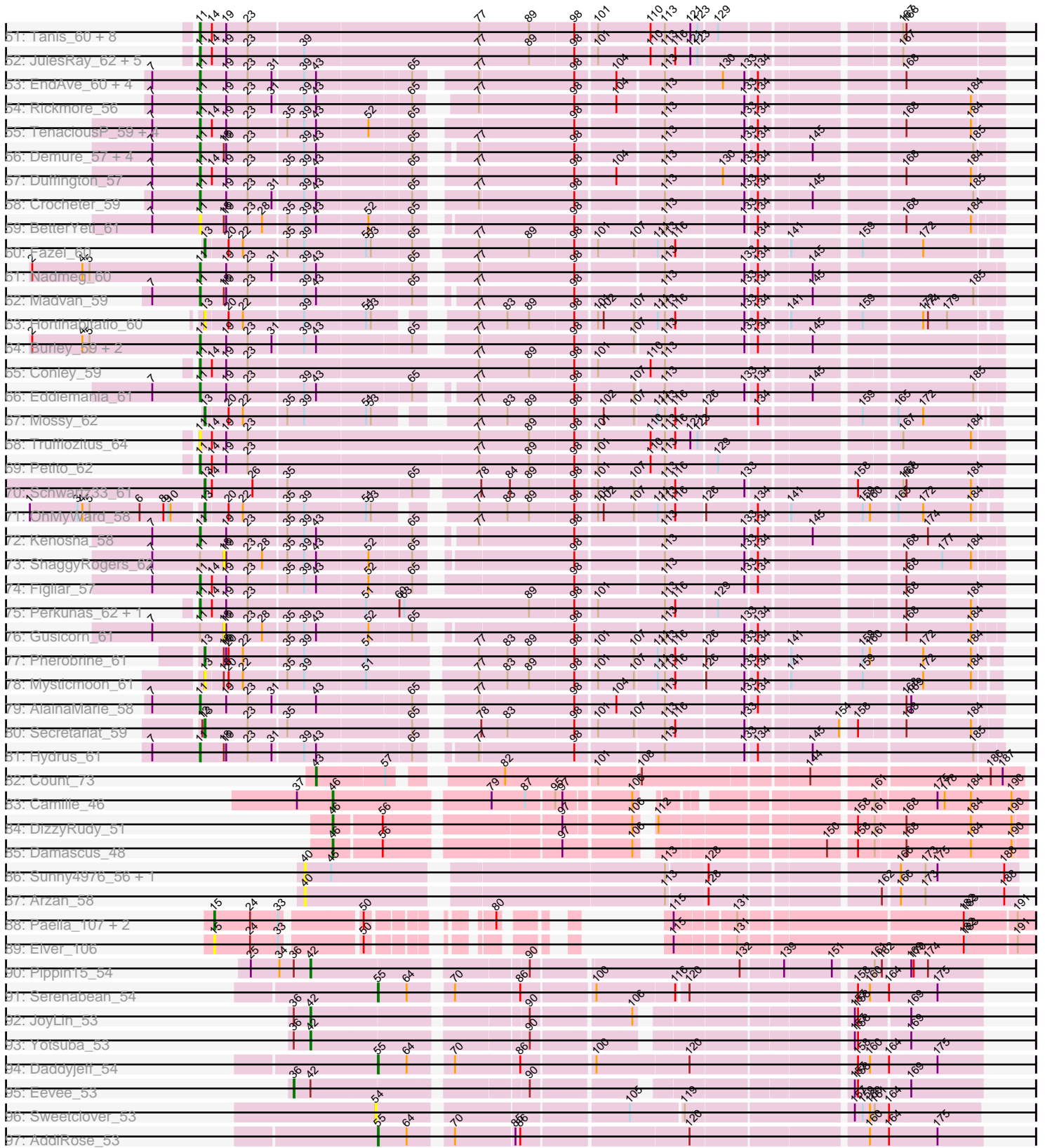


Pham 215887



Pham 215887



Note: Tracks are now grouped by subcluster and scaled. Switching in subcluster is indicated by changes in track color. Track scale is now set by default to display the region 30 bp upstream of start 1 to 30 bp downstream of the last possible start. If this default region is judged to be packed too tightly with annotated starts, the track will be further scaled to only show that region of the ORF with annotated starts. This action will be indicated by adding "Zoomed" to the title. For starts, yellow indicates the location of called starts comprised solely of Glimmer/GeneMark auto-annotations, green indicates the location of called starts with at least 1 manual gene annotation.

Pham 215887 Report

This analysis was run 02/22/25 on database version 588.

Pham number 215887 has 174 members, 49 are drafts.

Phages represented in each track:

- Track 1 : NapoleonB_59, KeaneyLin_58, GoCrazy_58, Hankly_58, Benllo_60, Circum_61, Dynamite_59
- Track 2 : Tribby_61, Arcadia_59, Correa_56, Elsa_59, Xenomorph_56, Nason_59
- Track 3 : JEGGS_58, BenitoAntonio_59, Heisenberger_58, Mudcat_56
- Track 4 : Cheesy_59
- Track 5 : Mooshroom_61, Kardesai_60
- Track 6 : Bowling_58
- Track 7 : Inked_59
- Track 8 : LucySwiss_55
- Track 9 : MiniBagel_54
- Track 10 : DevitoJr_54, Trustiboi_54, Gordon_52, Nightmare_56, ScienceWizSam_55
- Track 11 : CapnMurica_52, Tenno_55
- Track 12 : Teacup_55
- Track 13 : Niktson_54, ElephantMan_54, Brunswick_55
- Track 14 : AreFloNak_57, Nivinsha_56
- Track 15 : Acai_54
- Track 16 : Synopsis_53, Darby_53
- Track 17 : Tatanka_51
- Track 18 : Issa_55
- Track 19 : Breylor17_54
- Track 20 : CastorTray_57
- Track 21 : Chlochlo_53
- Track 22 : LilHuddy_56, Shepard_57
- Track 23 : Bouchard_54
- Track 24 : Tokki_60, Phaby_57
- Track 25 : Giantsbane_57
- Track 26 : Loretta_55, Ingrid_58
- Track 27 : Zippen_57
- Track 28 : MediumFry_53, Caterpillar_52
- Track 29 : Truckee_53, Makai_55
- Track 30 : Kinny_62, Renaldo_64
- Track 31 : BarbieDoll_62, Biscute_61
- Track 32 : Leathea_58
- Track 33 : Uzumaki_55, Argan_56
- Track 34 : Phaila_61
- Track 35 : Zeina_59

- Track 36 : Lewando_61
- Track 37 : GantcherGoblin_56, Tenney120_61
- Track 38 : KevinMinion_58
- Track 39 : TrixiePhattel_59
- Track 40 : Navi1117_60
- Track 41 : MrAaronian_54, Egad_54, Stayer_54, BronxBay_54, Raunak_57, Djungelskog_53, Sloopypjoe_54, Shiba_53, StarLord_54, Michelle_54, ProfFrink_54
- Track 42 : Boog_55, HerbBucket_54
- Track 43 : Linda_54, Salk_54
- Track 44 : PowellDog_60
- Track 45 : Sporto_55
- Track 46 : RustyBoy_54, Natasha_54
- Track 47 : DoctorPepper_53
- Track 48 : RosaAsantewaa_37
- Track 49 : POCO6_083
- Track 50 : Pepy6_084
- Track 51 : Tanis_60, Cappybara_60, Gravy_59, Odesza_59, Roney_60, NoPickles_59, Magel_61, Gill_60, Kerry_59
- Track 52 : JulesRay_62, Avazak_61, FortCran_60, Captrips_59, Artorias_60, Dancer_61
- Track 53 : EndAve_60, Chikenjars_57, Citrus_59, BluerMoon_60, Nithya_59
- Track 54 : Rickmore_56
- Track 55 : TenaciousP_59, OlgasClover_60, MajinBuu_60, Aflac_58, Jodelie19_58
- Track 56 : Demure_57, Untouchable_61, Zeph_61, Phepper_60, Arataki_56
- Track 57 : Duffington_57
- Track 58 : Crocheter_59
- Track 59 : BetterYeti_61
- Track 60 : Fazel_60
- Track 61 : Nadmeg_60
- Track 62 : Madvan_59
- Track 63 : Hortihabitatio_60
- Track 64 : Burley_59, Runhaar_59, Vardy_58
- Track 65 : Conley_59
- Track 66 : Eddiemania_61
- Track 67 : Mossy_62
- Track 68 : Trufflozitus_64
- Track 69 : Petite_62
- Track 70 : Schwartz33_61
- Track 71 : OhMyWard_58
- Track 72 : Kenosha_58
- Track 73 : ShaggyRogers_62
- Track 74 : Figliar_57
- Track 75 : Perkunas_62, Talon44_63
- Track 76 : Gusicorn_61
- Track 77 : Pherobrine_61
- Track 78 : Mysticmoon_61
- Track 79 : AlainaMarie_58
- Track 80 : Secretariat_59
- Track 81 : Hydrus_61
- Track 82 : Count_73
- Track 83 : Camille_46
- Track 84 : DizzyRudy_51
- Track 85 : Damascus_48

- Track 86 : Sunny4976_56, Jazzy4900_57
- Track 87 : Arzan_58
- Track 88 : Paella_107, Qui_107, Gandionco_104
- Track 89 : Elver_106
- Track 90 : Pippin15_54
- Track 91 : Serenabean_54
- Track 92 : JoyLin_53
- Track 93 : Yotsuba_53
- Track 94 : Daddyjeff_54
- Track 95 : Eevee_53
- Track 96 : Sweetclover_53
- Track 97 : AddiRose_53

Summary of Final Annotations (See graph section above for start numbers):

The start number called the most often in the published annotations is 11, it was called in 38 of the 125 non-draft genes in the pham.

Genes that call this "Most Annotated" start:

- Aflac_58, AlainaMarie_58, Arataki_56, Artorias_60, Avazak_61, BetterYeti_61, BluerMoon_60, Burley_59, Captrips_59, Copybara_60, Chikenjars_57, Citrus_59, Conley_59, Crocheter_59, Dancer_61, Demure_57, Duffington_57, Eddiemania_61, EndAve_60, Figliar_57, FortCran_60, Gill_60, Gravy_59, Hydrus_61, Jodelie19_58, JulesRay_62, Kenosha_58, Kerry_59, Madvan_59, Magel_61, MajinBuu_60, Nadmeg_60, Nithya_59, NoPickles_59, Odesza_59, OlgasClover_60, Perkunas_62, Petite_62, Phepper_60, Rickmore_56, Roney_60, Runhaar_59, Talon44_63, Tanis_60, TenaciousP_59, Trufflozitus_64, Untouchable_61, Vardy_58, Zeph_61,

Genes that have the "Most Annotated" start but do not call it:

- Gusicorn_61, ShaggyRogers_62,

Genes that do not have the "Most Annotated" start:

- Acai_54, AddiRose_53, Arcadia_59, AreFloNak_57, Argan_56, Arzan_58, BarbieDoll_62, BenitoAntonio_59, Benllo_60, Biscute_61, Boog_55, Bouchard_54, Bowling_58, Breylor17_54, BronxBay_54, Brunswick_55, Camille_46, CapnMurica_52, CastorTray_57, Caterpillar_52, Cheesy_59, Chlochlo_53, Circum_61, Correa_56, Count_73, Daddyjeff_54, Damascus_48, Darby_53, DevitoJr_54, DizzyRudy_51, Djungelskog_53, DoctorPepper_53, Dynamite_59, Eevee_53, Egad_54, ElephantMan_54, Elsa_59, Elver_106, Fazel_60, Gandionco_104, GantcherGoblin_56, Giantsbane_57, GoCrazy_58, Gordon_52, Hankly_58, Heisenberger_58, HerbBucket_54, Hortihabitatio_60, Ingrid_58, Inked_59, Issa_55, JEGGS_58, Jazzy4900_57, JoyLin_53, Kardesai_60, KeaneyLin_58, KevinMinion_58, Kinny_62, Leathea_58, Lewando_61, LilHuddy_56, Linda_54, Loretta_55, LucySwiss_55, Makai_55, MediumFry_53, Michelle_54, MiniBagel_54, Mooshroom_61, Mossy_62, MrAaronian_54, Mudcat_56, Mysticmoon_61, NapoleonB_59, Nason_59, Natasha_54, Navi1117_60, Nightmare_56, Niktson_54, Nivinsha_56, OhMyWard_58, Paella_107, Pepy6_084, Phaby_57, Phaila_61, Pherobrine_61, Pippin15_54, Poco6_083, Powelldog_60, ProfFrink_54, Qui_107, Raunak_57, Renaldo_64, RosaAsantewaa_37, RustyBoy_54, Salk_54, Schwartz33_61, ScienceWizSam_55, Secretariat_59, Serenabean_54,

Shepard_57, Shiba_53, Sloopyjoe_54, Sporto_55, StarLord_54, Stayer_54, Sunny4976_56, Sweetclover_53, Synepsis_53, Tatanka_51, Teacup_55, Tenney120_61, Tenno_55, Tokki_60, Tribby_61, TrixiePhattel_59, Truckee_53, Trustiboi_54, Uzumaki_55, Xenomorph_56, Yotsuba_53, Zeina_59, Zippen_57,

Summary by start number:

Start 11:

- Found in 51 of 174 (29.3%) of genes in pham
- Manual Annotations of this start: 38 of 125
- Called 96.1% of time when present
- Phage (with cluster) where this start called: Aflac_58 (DJ), AlainaMarie_58 (DJ), Arataki_56 (DJ), Artorias_60 (DJ), Avazak_61 (DJ), BetterYeti_61 (DJ), BluerMoon_60 (DJ), Burley_59 (DJ), Captrips_59 (DJ), Capybara_60 (DJ), Chikenjars_57 (DJ), Citrus_59 (DJ), Conley_59 (DJ), Crocheter_59 (DJ), Dancer_61 (DJ), Demure_57 (DJ), Duffington_57 (DJ), Eddiemania_61 (DJ), EndAve_60 (DJ), Figliar_57 (DJ), FortCran_60 (DJ), Gill_60 (DJ), Gravy_59 (DJ), Hydrus_61 (DJ), Jodelie19_58 (DJ), JulesRay_62 (DJ), Kenosha_58 (DJ), Kerry_59 (DJ), Madvan_59 (DJ), Magel_61 (DJ), MajinBuu_60 (DJ), Nadmeg_60 (DJ), Nithya_59 (DJ), NoPickles_59 (DJ), Odesza_59 (DJ), OlgasClover_60 (DJ), Perkunas_62 (DJ), Petite_62 (DJ), Phepper_60 (DJ), Rickmore_56 (DJ), Roney_60 (DJ), Runhaar_59 (DJ), Talon44_63 (DJ), Tanis_60 (DJ), TenaciousP_59 (DJ), Trufflozitus_64 (DJ), Untouchable_61 (DJ), Vardy_58 (DJ), Zeph_61 (DJ),

Start 13:

- Found in 10 of 174 (5.7%) of genes in pham
- Manual Annotations of this start: 6 of 125
- Called 100.0% of time when present
- Phage (with cluster) where this start called: Fazel_60 (DJ), Hortihabitatio_60 (DJ), Mossy_62 (DJ), Mysticmoon_61 (DJ), OhMyWard_58 (DJ), Pepy6_084 (CC), Pherobrine_61 (DJ), POCO6_083 (CC), Schwartz33_61 (DJ), Secretariat_59 (DJ),

Start 15:

- Found in 40 of 174 (23.0%) of genes in pham
- Manual Annotations of this start: 26 of 125
- Called 100.0% of time when present
- Phage (with cluster) where this start called: Arcadia_59 (AM), Argan_56 (AU6), BarbieDoll_62 (AU6), BenitoAntonio_59 (AM), Benllo_60 (AM), Biscute_61 (AU6), Bowling_58 (AM), Cheesy_59 (AM), Circum_61 (AM), Correa_56 (AM), Dynamite_59 (AM), Elsa_59 (AM), Elver_106 (FK), Gandionco_104 (FK), GantcherGoblin_56 (AU6), GoCrazy_58 (AM), Hankly_58 (AM), Heisenberger_58 (AM), JEGGS_58 (AM), Kardesai_60 (AM), KeaneyLin_58 (AM), KevinMinion_58 (AU6), Kinny_62 (AU6), Leatheas_58 (AU6), Lewando_61 (AU6), Mooshroom_61 (AM), Mudcat_56 (AM), NapoleonB_59 (AM), Nason_59 (AM), Navi1117_60 (AU6), Paella_107 (FK), Phaila_61 (AU6), Qui_107 (FK), Renaldo_64 (AU6), Tenney120_61 (AU6), Tribby_61 (AM), TrixiePhattel_59 (AU6), Uzumaki_55 (AU6), Xenomorph_56 (AM), Zeina_59 (AU6),

Start 16:

- Found in 20 of 174 (11.5%) of genes in pham
- Manual Annotations of this start: 14 of 125
- Called 100.0% of time when present

- Phage (with cluster) where this start called: Boog_55 (AW), BronxBay_54 (AW), Djungelskog_53 (AW), DoctorPepper_53 (AW), Egad_54 (AW), HerbBucket_54 (AW), Linda_54 (AW), Michelle_54 (AW), MrAaronian_54 (AW), Natasha_54 (AW), PowellDog_60 (AW), ProfFrink_54 (AW), Raunak_57 (AW), RustyBoy_54 (AW), Salk_54 (AW), Shiba_53 (AW), Sloopyjoe_54 (AW), Sporto_55 (AW), StarLord_54 (AW), Stayer_54 (AW),

Start 17:

- Found in 37 of 174 (21.3%) of genes in pham
- Manual Annotations of this start: 29 of 125
- Called 100.0% of time when present
- Phage (with cluster) where this start called: Acai_54 (AU1), AreFloNak_57 (AU1), Bouchard_54 (AU2), Breylor17_54 (AU1), Brunswick_55 (AU1), CapnMurica_52 (AU1), CastorTray_57 (AU1), Caterpillar_52 (AU4), Chlochlo_53 (AU2), Darby_53 (AU1), DevitoJr_54 (AU1), ElephantMan_54 (AU1), Giantsbane_57 (AU2), Gordon_52 (AU1), Ingrid_58 (AU3), Inked_59 (AU), Issa_55 (AU1), LilHuddy_56 (AU2), Loretta_55 (AU3), LucySwiss_55 (AU1), Makai_55 (AU5), MediumFry_53 (AU4), MiniBagel_54 (AU1), Nightmare_56 (AU1), Niktson_54 (AU1), Nivinsha_56 (AU1), Phaby_57 (AU2), ScienceWizSam_55 (AU1), Shepard_57 (AU2), Synopsis_53 (AU1), Tatanka_51 (AU1), Teacup_55 (AU1), Tenno_55 (AU1), Tokki_60 (AU2), Truckee_53 (AU5), Trustiboi_54 (AU1), Zippen_57 (AU3),

Start 18:

- Found in 12 of 174 (6.9%) of genes in pham
- No Manual Annotations of this start.
- Called 16.7% of time when present
- Phage (with cluster) where this start called: Gusicorn_61 (DJ), ShaggyRogers_62 (DJ),

Start 30:

- Found in 1 of 174 (0.6%) of genes in pham
- Manual Annotations of this start: 1 of 125
- Called 100.0% of time when present
- Phage (with cluster) where this start called: RosaAsantewaa_37 (BI2),

Start 36:

- Found in 4 of 174 (2.3%) of genes in pham
- Manual Annotations of this start: 1 of 125
- Called 25.0% of time when present
- Phage (with cluster) where this start called: Eevee_53 (JA),

Start 40:

- Found in 3 of 174 (1.7%) of genes in pham
- No Manual Annotations of this start.
- Called 100.0% of time when present
- Phage (with cluster) where this start called: Arzan_58 (FI), Jazzy4900_57 (FI), Sunny4976_56 (FI),

Start 42:

- Found in 4 of 174 (2.3%) of genes in pham
- Manual Annotations of this start: 3 of 125
- Called 75.0% of time when present

- Phage (with cluster) where this start called: JoyLin_53 (JA), Pippin15_54 (JA), Yotsuba_53 (JA),

Start 43:

- Found in 33 of 174 (19.0%) of genes in pham
- Manual Annotations of this start: 1 of 125
- Called 3.0% of time when present
- Phage (with cluster) where this start called: Count_73 (EL),

Start 46:

- Found in 10 of 174 (5.7%) of genes in pham
- Manual Annotations of this start: 3 of 125
- Called 30.0% of time when present
- Phage (with cluster) where this start called: Camille_46 (EL), Damascus_48 (EL), DizzyRudy_51 (EL),

Start 54:

- Found in 1 of 174 (0.6%) of genes in pham
- No Manual Annotations of this start.
- Called 100.0% of time when present
- Phage (with cluster) where this start called: Sweetclover_53 (JA),

Start 55:

- Found in 3 of 174 (1.7%) of genes in pham
- Manual Annotations of this start: 3 of 125
- Called 100.0% of time when present
- Phage (with cluster) where this start called: AddiRose_53 (JA), Daddyjeff_54 (JA), Serenabean_54 (JA),

Summary by clusters:

There are 16 clusters represented in this pham: EL, DJ, AU5, CC, AM, AU1, AU3, AU2, AU, AU4, AW, AU6, FI, FK, BI2, JA,

Info for manual annotations of cluster AM:

- Start number 15 was manually annotated 19 times for cluster AM.

Info for manual annotations of cluster AU:

- Start number 17 was manually annotated 1 time for cluster AU.

Info for manual annotations of cluster AU1:

- Start number 17 was manually annotated 17 times for cluster AU1.

Info for manual annotations of cluster AU2:

- Start number 17 was manually annotated 5 times for cluster AU2.

Info for manual annotations of cluster AU3:

- Start number 17 was manually annotated 2 times for cluster AU3.

Info for manual annotations of cluster AU4:

- Start number 17 was manually annotated 2 times for cluster AU4.

Info for manual annotations of cluster AU5:

- Start number 17 was manually annotated 2 times for cluster AU5.

Info for manual annotations of cluster AU6:

- Start number 15 was manually annotated 5 times for cluster AU6.

Info for manual annotations of cluster AW:

- Start number 16 was manually annotated 14 times for cluster AW.

Info for manual annotations of cluster BI2:

- Start number 30 was manually annotated 1 time for cluster BI2.

Info for manual annotations of cluster DJ:

- Start number 11 was manually annotated 38 times for cluster DJ.
- Start number 13 was manually annotated 6 times for cluster DJ.

Info for manual annotations of cluster EL:

- Start number 43 was manually annotated 1 time for cluster EL.
- Start number 46 was manually annotated 3 times for cluster EL.

Info for manual annotations of cluster FK:

- Start number 15 was manually annotated 2 times for cluster FK.

Info for manual annotations of cluster JA:

- Start number 36 was manually annotated 1 time for cluster JA.
- Start number 42 was manually annotated 3 times for cluster JA.
- Start number 55 was manually annotated 3 times for cluster JA.

Gene Information:

Gene: Acai_54 Start: 37297, Stop: 38052, Start Num: 17

Candidate Starts for Acai_54:

(Start: 17 @37297 has 29 MA's), (47, 37447), (72, 37537), (76, 37549), (81, 37588), (117, 37669), (134, 37750), (137, 37765), (147, 37816), (193, 38044),

Gene: AddiRose_53 Start: 34578, Stop: 35276, Start Num: 55

Candidate Starts for AddiRose_53:

(Start: 55 @34578 has 3 MA's), (64, 34614), (70, 34656), (85, 34728), (86, 34734), (120, 34932), (160, 35136), (164, 35160), (175, 35220),

Gene: Aflac_58 Start: 40402, Stop: 41313, Start Num: 11

Candidate Starts for Aflac_58:

(7, 40342), (Start: 11 @40402 has 38 MA's), (14, 40417), (19, 40435), (23, 40462), (35, 40507), (39, 40528), (Start: 43 @40543 has 1 MA's), (52, 40606), (65, 40654), (98, 40831), (113, 40930), (133, 41023), (134, 41035), (168, 41194), (184, 41275),

Gene: AlainaMarie_58 Start: 40386, Stop: 41294, Start Num: 11

Candidate Starts for AlainaMarie_58:

(7, 40326), (Start: 11 @40386 has 38 MA's), (19, 40419), (23, 40446), (31, 40476), (Start: 43 @40527 has 1 MA's), (65, 40638), (77, 40698), (98, 40815), (104, 40860), (113, 40914), (133, 41007), (134,

41019), (168, 41178), (169, 41184),

Gene: Arataki_56 Start: 40076, Stop: 40975, Start Num: 11

Candidate Starts for Arataki_56:

(7, 40016), (Start: 11 @40076 has 38 MA's), (18, 40106), (19, 40109), (23, 40136), (39, 40202), (Start: 43 @40217 has 1 MA's), (65, 40328), (77, 40379), (98, 40496), (113, 40595), (133, 40688), (134, 40700), (145, 40760), (185, 40943),

Gene: Arcadia_59 Start: 35986, Stop: 36783, Start Num: 15

Candidate Starts for Arcadia_59:

(Start: 15 @35986 has 26 MA's), (48, 36148), (131, 36439), (135, 36472), (148, 36538), (159, 36586), (172, 36655), (182, 36706), (191, 36763),

Gene: AreFloNak_57 Start: 37264, Stop: 38031, Start Num: 17

Candidate Starts for AreFloNak_57:

(Start: 17 @37264 has 29 MA's), (47, 37414), (72, 37504), (76, 37516), (117, 37645), (134, 37729), (137, 37744), (193, 38023),

Gene: Argan_56 Start: 35931, Stop: 36647, Start Num: 15

Candidate Starts for Argan_56:

(Start: 15 @35931 has 26 MA's), (62, 36135), (67, 36150), (131, 36303), (134, 36324), (152, 36411), (165, 36483), (184, 36573), (192, 36630),

Gene: Artorias_60 Start: 40583, Stop: 41527, Start Num: 11

Candidate Starts for Artorias_60:

(Start: 11 @40583 has 38 MA's), (14, 40598), (19, 40616), (23, 40643), (39, 40709), (77, 40925), (89, 40988), (98, 41042), (101, 41066), (110, 41129), (113, 41147), (116, 41159), (121, 41177), (123, 41186), (167, 41405),

Gene: Arzan_58 Start: 36809, Stop: 37624, Start Num: 40

Candidate Starts for Arzan_58:

(40, 36809), (113, 37223), (128, 37271), (162, 37463), (166, 37481), (173, 37511), (188, 37607),

Gene: Avazak_61 Start: 40910, Stop: 41854, Start Num: 11

Candidate Starts for Avazak_61:

(Start: 11 @40910 has 38 MA's), (14, 40925), (19, 40943), (23, 40970), (39, 41036), (77, 41252), (89, 41315), (98, 41369), (101, 41393), (110, 41456), (113, 41474), (116, 41486), (121, 41504), (123, 41513), (167, 41732),

Gene: BarbieDoll_62 Start: 37638, Stop: 38342, Start Num: 15

Candidate Starts for BarbieDoll_62:

(Start: 15 @37638 has 26 MA's), (Start: 46 @37782 has 3 MA's), (131, 37998), (134, 38019), (140, 38052), (152, 38106), (156, 38121), (192, 38325),

Gene: BenitoAntonio_59 Start: 35510, Stop: 36310, Start Num: 15

Candidate Starts for BenitoAntonio_59:

(Start: 15 @35510 has 26 MA's), (48, 35672), (53, 35693), (68, 35753), (91, 35852), (131, 35966), (135, 35999), (148, 36065), (157, 36104), (159, 36113), (172, 36182), (182, 36233), (191, 36290),

Gene: Benllo_60 Start: 36188, Stop: 36988, Start Num: 15

Candidate Starts for Benllo_60:

(Start: 15 @36188 has 26 MA's), (48, 36350), (53, 36371), (68, 36431), (91, 36530), (135, 36677), (148, 36743), (159, 36791), (172, 36860), (182, 36911), (191, 36968),

Gene: BetterYeti_61 Start: 40478, Stop: 41377, Start Num: 11

Candidate Starts for BetterYeti_61:

(7, 40418), (Start: 11 @40478 has 38 MA's), (18, 40508), (19, 40511), (23, 40538), (28, 40556), (35, 40583), (39, 40604), (Start: 43 @40619 has 1 MA's), (52, 40682), (65, 40730), (98, 40901), (113, 41000), (133, 41093), (134, 41105), (168, 41264), (184, 41345),

Gene: Biscute_61 Start: 37290, Stop: 37994, Start Num: 15

Candidate Starts for Biscute_61:

(Start: 15 @37290 has 26 MA's), (Start: 46 @37434 has 3 MA's), (131, 37650), (134, 37671), (140, 37704), (152, 37758), (156, 37773), (192, 37977),

Gene: BluerMoon_60 Start: 40431, Stop: 41342, Start Num: 11

Candidate Starts for BluerMoon_60:

(7, 40371), (Start: 11 @40431 has 38 MA's), (19, 40464), (23, 40491), (31, 40521), (39, 40557), (Start: 43 @40572 has 1 MA's), (65, 40683), (77, 40743), (98, 40860), (104, 40905), (113, 40959), (130, 41025), (133, 41052), (134, 41064), (168, 41223),

Gene: Boog_55 Start: 34696, Stop: 35613, Start Num: 16

Candidate Starts for Boog_55:

(Start: 16 @34696 has 14 MA's), (22, 34729), (24, 34738), (26, 34741), (29, 34756), (47, 34849), (67, 34912), (69, 34924), (93, 35047), (94, 35062), (114, 35206), (134, 35311), (189, 35587),

Gene: Bouchard_54 Start: 37255, Stop: 38007, Start Num: 17

Candidate Starts for Bouchard_54:

(Start: 17 @37255 has 29 MA's), (31, 37321), (47, 37405), (81, 37546), (118, 37633), (122, 37648), (134, 37705),

Gene: Bowling_58 Start: 35826, Stop: 36626, Start Num: 15

Candidate Starts for Bowling_58:

(Start: 15 @35826 has 26 MA's), (48, 35988), (53, 36009), (68, 36069), (91, 36168), (131, 36282), (135, 36315), (148, 36381), (159, 36429), (172, 36498), (182, 36549), (191, 36606),

Gene: Breylor17_54 Start: 37846, Stop: 38604, Start Num: 17

Candidate Starts for Breylor17_54:

(Start: 17 @37846 has 29 MA's), (31, 37912), (47, 37996), (67, 38059), (72, 38086), (76, 38098), (81, 38137), (117, 38218), (134, 38302), (137, 38317), (193, 38596),

Gene: BronxBay_54 Start: 34994, Stop: 35869, Start Num: 16

Candidate Starts for BronxBay_54:

(Start: 16 @34994 has 14 MA's), (22, 35027), (24, 35036), (26, 35039), (29, 35054), (47, 35147), (67, 35210), (69, 35222), (93, 35345), (94, 35360), (114, 35462), (134, 35567), (136, 35576), (151, 35648), (163, 35705), (189, 35843),

Gene: Brunswick_55 Start: 37137, Stop: 37901, Start Num: 17

Candidate Starts for Brunswick_55:

(Start: 17 @37137 has 29 MA's), (47, 37287), (72, 37377), (75, 37386), (117, 37518), (134, 37599), (137, 37614), (193, 37893),

Gene: Burley_59 Start: 40165, Stop: 41073, Start Num: 11

Candidate Starts for Burley_59:

(2, 39955), (4, 40018), (5, 40027), (Start: 11 @40165 has 38 MA's), (19, 40198), (23, 40225), (31, 40255), (39, 40291), (Start: 43 @40306 has 1 MA's), (65, 40417), (77, 40477), (98, 40594), (107,

40660), (113, 40693), (133, 40786), (134, 40798), (145, 40858),

Gene: Camille_46 Start: 32245, Stop: 32997, Start Num: 46

Candidate Starts for Camille_46:

(37, 32200), (Start: 46 @32245 has 3 MA's), (79, 32425), (87, 32467), (95, 32500), (97, 32509), (106, 32584), (161, 32812), (175, 32884), (178, 32893), (184, 32926), (190, 32977),

Gene: CapnMurica_52 Start: 38039, Stop: 38800, Start Num: 17

Candidate Starts for CapnMurica_52:

(Start: 17 @38039 has 29 MA's), (47, 38189), (58, 38228), (72, 38279), (76, 38291), (117, 38417), (127, 38444), (134, 38498), (137, 38513), (147, 38564), (153, 38585), (193, 38792),

Gene: Captrips_59 Start: 40058, Stop: 41002, Start Num: 11

Candidate Starts for Captrips_59:

(Start: 11 @40058 has 38 MA's), (14, 40073), (19, 40091), (23, 40118), (39, 40184), (77, 40400), (89, 40463), (98, 40517), (101, 40541), (110, 40604), (113, 40622), (116, 40634), (121, 40652), (123, 40661), (167, 40880),

Gene: Capybara_60 Start: 40389, Stop: 41333, Start Num: 11

Candidate Starts for Capybara_60:

(Start: 11 @40389 has 38 MA's), (14, 40404), (19, 40422), (23, 40449), (77, 40731), (89, 40794), (98, 40848), (101, 40872), (110, 40935), (113, 40953), (121, 40983), (123, 40992), (129, 41013), (167, 41211), (168, 41214),

Gene: CastorTray_57 Start: 37910, Stop: 38665, Start Num: 17

Candidate Starts for CastorTray_57:

(Start: 17 @37910 has 29 MA's), (47, 38060), (72, 38150), (81, 38201), (117, 38282), (134, 38363), (137, 38378), (193, 38657),

Gene: Caterpillar_52 Start: 36399, Stop: 37157, Start Num: 17

Candidate Starts for Caterpillar_52:

(Start: 17 @36399 has 29 MA's), (47, 36549), (72, 36639), (81, 36690), (88, 36714), (117, 36771), (138, 36873), (193, 37152),

Gene: Cheesy_59 Start: 35695, Stop: 36489, Start Num: 15

Candidate Starts for Cheesy_59:

(Start: 15 @35695 has 26 MA's), (48, 35857), (68, 35938), (131, 36145), (135, 36178), (148, 36244), (157, 36283), (159, 36292), (172, 36361), (182, 36412), (191, 36469),

Gene: Chikenjars_57 Start: 40399, Stop: 41310, Start Num: 11

Candidate Starts for Chikenjars_57:

(7, 40339), (Start: 11 @40399 has 38 MA's), (19, 40432), (23, 40459), (31, 40489), (39, 40525), (Start: 43 @40540 has 1 MA's), (65, 40651), (77, 40711), (98, 40828), (104, 40873), (113, 40927), (130, 40993), (133, 41020), (134, 41032), (168, 41191),

Gene: Chlochlo_53 Start: 36999, Stop: 37757, Start Num: 17

Candidate Starts for Chlochlo_53:

(Start: 17 @36999 has 29 MA's), (47, 37149), (81, 37290), (117, 37371), (134, 37455), (151, 37539),

Gene: Circum_61 Start: 36379, Stop: 37179, Start Num: 15

Candidate Starts for Circum_61:

(Start: 15 @36379 has 26 MA's), (48, 36541), (53, 36562), (68, 36622), (91, 36721), (135, 36868), (148, 36934), (159, 36982), (172, 37051), (182, 37102), (191, 37159),

Gene: Citrus_59 Start: 40676, Stop: 41584, Start Num: 11

Candidate Starts for Citrus_59:

(7, 40616), (Start: 11 @40676 has 38 MA's), (19, 40709), (23, 40736), (31, 40766), (39, 40802), (Start: 43 @40817 has 1 MA's), (65, 40928), (77, 40988), (98, 41105), (104, 41150), (113, 41204), (130, 41270), (133, 41297), (134, 41309), (168, 41468),

Gene: Conley_59 Start: 41139, Stop: 42083, Start Num: 11

Candidate Starts for Conley_59:

(Start: 11 @41139 has 38 MA's), (14, 41154), (19, 41172), (23, 41199), (77, 41481), (89, 41544), (98, 41598), (101, 41622), (110, 41685), (113, 41703),

Gene: Correa_56 Start: 34853, Stop: 35650, Start Num: 15

Candidate Starts for Correa_56:

(Start: 15 @34853 has 26 MA's), (48, 35015), (131, 35306), (135, 35339), (148, 35405), (159, 35453), (172, 35522), (182, 35573), (191, 35630),

Gene: Count_73 Start: 48676, Stop: 49458, Start Num: 43

Candidate Starts for Count_73:

(Start: 43 @48676 has 1 MA's), (57, 48757), (82, 48862), (101, 48973), (108, 49021), (144, 49213), (186, 49417), (187, 49432),

Gene: Crocheter_59 Start: 40562, Stop: 41470, Start Num: 11

Candidate Starts for Crocheter_59:

(7, 40502), (Start: 11 @40562 has 38 MA's), (19, 40595), (23, 40622), (31, 40652), (39, 40688), (Start: 43 @40703 has 1 MA's), (65, 40814), (77, 40874), (98, 40991), (113, 41090), (133, 41183), (134, 41195), (145, 41255), (185, 41438),

Gene: Daddyjeff_54 Start: 34798, Stop: 35496, Start Num: 55

Candidate Starts for Daddyjeff_54:

(Start: 55 @34798 has 3 MA's), (64, 34834), (70, 34876), (86, 34954), (100, 35038), (120, 35152), (158, 35341), (160, 35356), (164, 35380), (175, 35440),

Gene: Damascus_48 Start: 33623, Stop: 34393, Start Num: 46

Candidate Starts for Damascus_48:

(Start: 46 @33623 has 3 MA's), (56, 33680), (97, 33878), (106, 33959), (150, 34160), (158, 34187), (161, 34208), (168, 34244), (184, 34325), (190, 34376),

Gene: Dancer_61 Start: 40318, Stop: 41262, Start Num: 11

Candidate Starts for Dancer_61:

(Start: 11 @40318 has 38 MA's), (14, 40333), (19, 40351), (23, 40378), (39, 40444), (77, 40660), (89, 40723), (98, 40777), (101, 40801), (110, 40864), (113, 40882), (116, 40894), (121, 40912), (123, 40921), (167, 41140),

Gene: Darby_53 Start: 37084, Stop: 37848, Start Num: 17

Candidate Starts for Darby_53:

(Start: 17 @37084 has 29 MA's), (47, 37234), (67, 37297), (72, 37324), (76, 37336), (117, 37462), (134, 37546), (137, 37561), (193, 37840),

Gene: Demure_57 Start: 40076, Stop: 40975, Start Num: 11

Candidate Starts for Demure_57:

(7, 40016), (Start: 11 @40076 has 38 MA's), (18, 40106), (19, 40109), (23, 40136), (39, 40202), (Start: 43 @40217 has 1 MA's), (65, 40328), (77, 40379), (98, 40496), (113, 40595), (133, 40688), (134,

40700), (145, 40760), (185, 40943),

Gene: DevitoJr_54 Start: 37476, Stop: 38234, Start Num: 17

Candidate Starts for DevitoJr_54:

(Start: 17 @37476 has 29 MA's), (47, 37626), (67, 37689), (72, 37716), (76, 37728), (81, 37767), (117, 37848), (134, 37932), (137, 37947), (193, 38226),

Gene: DizzyRudy_51 Start: 33510, Stop: 34280, Start Num: 46

Candidate Starts for DizzyRudy_51:

(Start: 46 @33510 has 3 MA's), (56, 33567), (97, 33765), (106, 33843), (112, 33855), (158, 34074), (161, 34095), (168, 34131), (184, 34212), (190, 34263),

Gene: Djungelskog_53 Start: 34993, Stop: 35868, Start Num: 16

Candidate Starts for Djungelskog_53:

(Start: 16 @34993 has 14 MA's), (22, 35026), (24, 35035), (26, 35038), (29, 35053), (47, 35146), (67, 35209), (69, 35221), (93, 35344), (94, 35359), (114, 35461), (134, 35566), (136, 35575), (151, 35647), (163, 35704), (189, 35842),

Gene: DoctorPepper_53 Start: 34698, Stop: 35573, Start Num: 16

Candidate Starts for DoctorPepper_53:

(Start: 16 @34698 has 14 MA's), (22, 34731), (24, 34740), (26, 34743), (29, 34758), (47, 34851), (67, 34914), (69, 34926), (93, 35049), (94, 35064), (114, 35166), (134, 35271), (151, 35352),

Gene: Duffington_57 Start: 40095, Stop: 41006, Start Num: 11

Candidate Starts for Duffington_57:

(7, 40035), (Start: 11 @40095 has 38 MA's), (14, 40110), (19, 40128), (23, 40155), (35, 40200), (39, 40221), (Start: 43 @40236 has 1 MA's), (65, 40347), (77, 40407), (98, 40524), (104, 40569), (113, 40623), (130, 40689), (133, 40716), (134, 40728), (168, 40887), (184, 40968),

Gene: Dynamite_59 Start: 35903, Stop: 36703, Start Num: 15

Candidate Starts for Dynamite_59:

(Start: 15 @35903 has 26 MA's), (48, 36065), (53, 36086), (68, 36146), (91, 36245), (135, 36392), (148, 36458), (159, 36506), (172, 36575), (182, 36626), (191, 36683),

Gene: Eddiemania_61 Start: 41307, Stop: 42206, Start Num: 11

Candidate Starts for Eddiemania_61:

(7, 41247), (Start: 11 @41307 has 38 MA's), (19, 41340), (23, 41367), (39, 41433), (Start: 43 @41448 has 1 MA's), (65, 41559), (77, 41610), (98, 41727), (107, 41793), (113, 41826), (133, 41919), (134, 41931), (145, 41991), (185, 42174),

Gene: Eevee_53 Start: 37769, Stop: 38530, Start Num: 36

Candidate Starts for Eevee_53:

(Start: 36 @37769 has 1 MA's), (Start: 42 @37790 has 3 MA's), (90, 38033), (157, 38378), (158, 38381), (169, 38441),

Gene: Egad_54 Start: 34995, Stop: 35870, Start Num: 16

Candidate Starts for Egad_54:

(Start: 16 @34995 has 14 MA's), (22, 35028), (24, 35037), (26, 35040), (29, 35055), (47, 35148), (67, 35211), (69, 35223), (93, 35346), (94, 35361), (114, 35463), (134, 35568), (136, 35577), (151, 35649), (163, 35706), (189, 35844),

Gene: ElephantMan_54 Start: 37760, Stop: 38524, Start Num: 17

Candidate Starts for ElephantMan_54:

(Start: 17 @37760 has 29 MA's), (47, 37910), (72, 38000), (75, 38009), (117, 38141), (134, 38222), (137, 38237), (193, 38516),

Gene: Elsa_59 Start: 35986, Stop: 36783, Start Num: 15

Candidate Starts for Elsa_59:

(Start: 15 @35986 has 26 MA's), (48, 36148), (131, 36439), (135, 36472), (148, 36538), (159, 36586), (172, 36655), (182, 36706), (191, 36763),

Gene: Elver_106 Start: 57707, Stop: 58456, Start Num: 15

Candidate Starts for Elver_106:

(Start: 15 @57707 has 26 MA's), (24, 57752), (33, 57785), (50, 57872), (115, 58043), (131, 58109), (182, 58373), (183, 58376), (191, 58436),

Gene: EndAve_60 Start: 40567, Stop: 41478, Start Num: 11

Candidate Starts for EndAve_60:

(7, 40507), (Start: 11 @40567 has 38 MA's), (19, 40600), (23, 40627), (31, 40657), (39, 40693), (Start: 43 @40708 has 1 MA's), (65, 40819), (77, 40879), (98, 40996), (104, 41041), (113, 41095), (130, 41161), (133, 41188), (134, 41200), (168, 41359),

Gene: Fazel_60 Start: 40348, Stop: 41253, Start Num: 13

Candidate Starts for Fazel_60:

(Start: 13 @40348 has 6 MA's), (20, 40375), (22, 40393), (35, 40444), (39, 40465), (51, 40540), (53, 40546), (65, 40594), (77, 40660), (89, 40723), (98, 40777), (101, 40801), (107, 40843), (111, 40870), (113, 40879), (116, 40891), (134, 40984), (141, 41017), (159, 41095), (172, 41164),

Gene: Figliar_57 Start: 40470, Stop: 41381, Start Num: 11

Candidate Starts for Figliar_57:

(7, 40410), (Start: 11 @40470 has 38 MA's), (14, 40485), (19, 40503), (23, 40530), (35, 40575), (39, 40596), (Start: 43 @40611 has 1 MA's), (52, 40674), (65, 40722), (98, 40899), (113, 40998), (133, 41091), (134, 41103), (168, 41262),

Gene: FortCran_60 Start: 40583, Stop: 41527, Start Num: 11

Candidate Starts for FortCran_60:

(Start: 11 @40583 has 38 MA's), (14, 40598), (19, 40616), (23, 40643), (39, 40709), (77, 40925), (89, 40988), (98, 41042), (101, 41066), (110, 41129), (113, 41147), (116, 41159), (121, 41177), (123, 41186), (167, 41405),

Gene: Gandionco_104 Start: 56521, Stop: 57270, Start Num: 15

Candidate Starts for Gandionco_104:

(Start: 15 @56521 has 26 MA's), (24, 56566), (33, 56599), (50, 56686), (80, 56788), (115, 56857), (131, 56923), (182, 57187), (183, 57190), (191, 57250),

Gene: GantcherGoblin_56 Start: 36006, Stop: 36722, Start Num: 15

Candidate Starts for GantcherGoblin_56:

(Start: 15 @36006 has 26 MA's), (67, 36225), (131, 36378), (134, 36399), (152, 36486), (165, 36558), (184, 36648), (192, 36705),

Gene: Giantsbane_57 Start: 36358, Stop: 37107, Start Num: 17

Candidate Starts for Giantsbane_57:

(Start: 17 @36358 has 29 MA's), (47, 36508), (81, 36649), (118, 36733), (122, 36748), (134, 36805), (142, 36850),

Gene: Gill_60 Start: 40406, Stop: 41350, Start Num: 11

Candidate Starts for Gill_60:

(Start: 11 @40406 has 38 MA's), (14, 40421), (19, 40439), (23, 40466), (77, 40748), (89, 40811), (98, 40865), (101, 40889), (110, 40952), (113, 40970), (121, 41000), (123, 41009), (129, 41030), (167, 41228), (168, 41231),

Gene: GoCrazy_58 Start: 35844, Stop: 36644, Start Num: 15

Candidate Starts for GoCrazy_58:

(Start: 15 @35844 has 26 MA's), (48, 36006), (53, 36027), (68, 36087), (91, 36186), (135, 36333), (148, 36399), (159, 36447), (172, 36516), (182, 36567), (191, 36624),

Gene: Gordon_52 Start: 37901, Stop: 38656, Start Num: 17

Candidate Starts for Gordon_52:

(Start: 17 @37901 has 29 MA's), (47, 38051), (67, 38114), (72, 38141), (76, 38153), (81, 38192), (117, 38273), (134, 38357), (137, 38372), (193, 38651),

Gene: Gravy_59 Start: 40079, Stop: 41023, Start Num: 11

Candidate Starts for Gravy_59:

(Start: 11 @40079 has 38 MA's), (14, 40094), (19, 40112), (23, 40139), (77, 40421), (89, 40484), (98, 40538), (101, 40562), (110, 40625), (113, 40643), (121, 40673), (123, 40682), (129, 40703), (167, 40901), (168, 40904),

Gene: Gusicorn_61 Start: 40509, Stop: 41378, Start Num: 18

Candidate Starts for Gusicorn_61:

(7, 40419), (Start: 11 @40479 has 38 MA's), (18, 40509), (19, 40512), (23, 40539), (28, 40557), (35, 40584), (39, 40605), (Start: 43 @40620 has 1 MA's), (52, 40683), (65, 40731), (98, 40902), (113, 41001), (133, 41094), (134, 41106), (168, 41265), (184, 41346),

Gene: Hankly_58 Start: 35118, Stop: 35918, Start Num: 15

Candidate Starts for Hankly_58:

(Start: 15 @35118 has 26 MA's), (48, 35280), (53, 35301), (68, 35361), (91, 35460), (135, 35607), (148, 35673), (159, 35721), (172, 35790), (182, 35841), (191, 35898),

Gene: Heisenberger_58 Start: 35412, Stop: 36188, Start Num: 15

Candidate Starts for Heisenberger_58:

(Start: 15 @35412 has 26 MA's), (48, 35574), (53, 35595), (68, 35655), (91, 35730), (131, 35844), (135, 35877), (148, 35943), (157, 35982), (159, 35991), (172, 36060), (182, 36111), (191, 36168),

Gene: HerbBucket_54 Start: 34693, Stop: 35610, Start Num: 16

Candidate Starts for HerbBucket_54:

(Start: 16 @34693 has 14 MA's), (22, 34726), (24, 34735), (26, 34738), (29, 34753), (47, 34846), (67, 34909), (69, 34921), (93, 35044), (94, 35059), (114, 35203), (134, 35308), (189, 35584),

Gene: Hortihabitatio_60 Start: 41174, Stop: 42058, Start Num: 13

Candidate Starts for Hortihabitatio_60:

(Start: 13 @41174 has 6 MA's), (20, 41201), (22, 41219), (39, 41291), (51, 41366), (53, 41372), (77, 41465), (83, 41501), (89, 41528), (98, 41582), (101, 41606), (102, 41612), (107, 41648), (111, 41675), (113, 41684), (116, 41696), (133, 41777), (134, 41789), (141, 41822), (159, 41900), (172, 41969), (174, 41975), (179, 41999),

Gene: Hydrus_61 Start: 41331, Stop: 42233, Start Num: 11

Candidate Starts for Hydrus_61:

(7, 41271), (Start: 11 @41331 has 38 MA's), (18, 41361), (19, 41364), (23, 41391), (31, 41421), (39, 41457), (Start: 43 @41472 has 1 MA's), (65, 41583), (77, 41637), (98, 41754), (113, 41853), (133,

41946), (134, 41958), (145, 42018), (185, 42201),

Gene: Ingrid_58 Start: 37183, Stop: 37938, Start Num: 17

Candidate Starts for Ingrid_58:

(Start: 17 @37183 has 29 MA's), (47, 37333), (65, 37390), (70, 37417), (72, 37423), (81, 37474), (88, 37498), (117, 37555), (134, 37639), (193, 37933),

Gene: Inked_59 Start: 38306, Stop: 39055, Start Num: 17

Candidate Starts for Inked_59:

(Start: 17 @38306 has 29 MA's), (47, 38456), (72, 38546), (75, 38555), (76, 38558), (81, 38597), (88, 38621), (117, 38678), (131, 38735), (134, 38756), (146, 38819), (193, 39050),

Gene: Issa_55 Start: 37136, Stop: 37894, Start Num: 17

Candidate Starts for Issa_55:

(Start: 17 @37136 has 29 MA's), (47, 37286), (67, 37349), (72, 37376), (76, 37388), (81, 37427), (117, 37508), (134, 37592), (137, 37607), (193, 37886),

Gene: JEGGS_58 Start: 35467, Stop: 36267, Start Num: 15

Candidate Starts for JEGGS_58:

(Start: 15 @35467 has 26 MA's), (48, 35629), (53, 35650), (68, 35710), (91, 35809), (131, 35923), (135, 35956), (148, 36022), (157, 36061), (159, 36070), (172, 36139), (182, 36190), (191, 36247),

Gene: Jazzy4900_57 Start: 37585, Stop: 38403, Start Num: 40

Candidate Starts for Jazzy4900_57:

(40, 37585), (45, 37618), (113, 37999), (128, 38047), (166, 38257), (173, 38287), (175, 38302), (188, 38386),

Gene: Jodelie19_58 Start: 41874, Stop: 42785, Start Num: 11

Candidate Starts for Jodelie19_58:

(7, 41814), (Start: 11 @41874 has 38 MA's), (14, 41889), (19, 41907), (23, 41934), (35, 41979), (39, 42000), (Start: 43 @42015 has 1 MA's), (52, 42078), (65, 42126), (98, 42303), (113, 42402), (133, 42495), (134, 42507), (168, 42666), (184, 42747),

Gene: JoyLin_53 Start: 37910, Stop: 38650, Start Num: 42

Candidate Starts for JoyLin_53:

(Start: 36 @37889 has 1 MA's), (Start: 42 @37910 has 3 MA's), (90, 38153), (106, 38267), (157, 38498), (158, 38501), (169, 38561),

Gene: JulesRay_62 Start: 40579, Stop: 41523, Start Num: 11

Candidate Starts for JulesRay_62:

(Start: 11 @40579 has 38 MA's), (14, 40594), (19, 40612), (23, 40639), (39, 40705), (77, 40921), (89, 40984), (98, 41038), (101, 41062), (110, 41125), (113, 41143), (116, 41155), (121, 41173), (123, 41182), (167, 41401),

Gene: Kardesai_60 Start: 36088, Stop: 36885, Start Num: 15

Candidate Starts for Kardesai_60:

(Start: 15 @36088 has 26 MA's), (48, 36250), (131, 36541), (135, 36574), (148, 36640), (157, 36679), (159, 36688), (172, 36757), (182, 36808), (191, 36865),

Gene: KeaneyLin_58 Start: 35844, Stop: 36644, Start Num: 15

Candidate Starts for KeaneyLin_58:

(Start: 15 @35844 has 26 MA's), (48, 36006), (53, 36027), (68, 36087), (91, 36186), (135, 36333), (148, 36399), (159, 36447), (172, 36516), (182, 36567), (191, 36624),

Gene: Kenosha_58 Start: 40793, Stop: 41692, Start Num: 11

Candidate Starts for Kenosha_58:

(7, 40733), (Start: 11 @40793 has 38 MA's), (19, 40826), (23, 40853), (35, 40898), (39, 40919), (Start: 43 @40934 has 1 MA's), (65, 41045), (77, 41096), (98, 41213), (113, 41312), (133, 41405), (134, 41417), (145, 41477), (174, 41603),

Gene: Kerry_59 Start: 40079, Stop: 41023, Start Num: 11

Candidate Starts for Kerry_59:

(Start: 11 @40079 has 38 MA's), (14, 40094), (19, 40112), (23, 40139), (77, 40421), (89, 40484), (98, 40538), (101, 40562), (110, 40625), (113, 40643), (121, 40673), (123, 40682), (129, 40703), (167, 40901), (168, 40904),

Gene: KevinMinion_58 Start: 36882, Stop: 37598, Start Num: 15

Candidate Starts for KevinMinion_58:

(Start: 15 @36882 has 26 MA's), (67, 37101), (131, 37254), (134, 37275), (152, 37362), (184, 37524), (192, 37581),

Gene: Kinny_62 Start: 38133, Stop: 38822, Start Num: 15

Candidate Starts for Kinny_62:

(Start: 15 @38133 has 26 MA's), (Start: 46 @38277 has 3 MA's), (66, 38328), (74, 38346), (98, 38415), (131, 38478), (134, 38499), (140, 38532), (152, 38586), (156, 38601), (192, 38805),

Gene: Leathea_58 Start: 35757, Stop: 36464, Start Num: 15

Candidate Starts for Leathea_58:

(Start: 15 @35757 has 26 MA's), (Start: 46 @35901 has 3 MA's), (59, 35943), (67, 35967), (71, 35985), (131, 36120), (134, 36141), (152, 36228), (192, 36447),

Gene: Lewando_61 Start: 37710, Stop: 38414, Start Num: 15

Candidate Starts for Lewando_61:

(Start: 15 @37710 has 26 MA's), (Start: 46 @37854 has 3 MA's), (125, 38034), (134, 38091), (152, 38178), (156, 38193), (192, 38397),

Gene: LilHuddy_56 Start: 37293, Stop: 38045, Start Num: 17

Candidate Starts for LilHuddy_56:

(Start: 17 @37293 has 29 MA's), (47, 37443), (81, 37584), (118, 37671), (122, 37686), (133, 37731), (134, 37743),

Gene: Linda_54 Start: 34991, Stop: 35866, Start Num: 16

Candidate Starts for Linda_54:

(Start: 16 @34991 has 14 MA's), (22, 35024), (24, 35033), (26, 35036), (29, 35051), (47, 35144), (67, 35207), (69, 35219), (93, 35342), (94, 35357), (114, 35459), (134, 35564), (151, 35645), (163, 35702), (189, 35840),

Gene: Loretta_55 Start: 37183, Stop: 37938, Start Num: 17

Candidate Starts for Loretta_55:

(Start: 17 @37183 has 29 MA's), (47, 37333), (65, 37390), (70, 37417), (72, 37423), (81, 37474), (88, 37498), (117, 37555), (134, 37639), (193, 37933),

Gene: LucySwiss_55 Start: 36929, Stop: 37684, Start Num: 17

Candidate Starts for LucySwiss_55:

(Start: 17 @36929 has 29 MA's), (47, 37079), (72, 37169), (81, 37220), (117, 37301), (134, 37382), (137, 37397), (147, 37448), (193, 37676),

Gene: Madvan_59 Start: 40202, Stop: 41101, Start Num: 11

Candidate Starts for Madvan_59:

(7, 40142), (Start: 11 @40202 has 38 MA's), (18, 40232), (19, 40235), (23, 40262), (39, 40328), (Start: 43 @40343 has 1 MA's), (65, 40454), (77, 40505), (98, 40622), (113, 40721), (133, 40814), (134, 40826), (145, 40886), (185, 41069),

Gene: Magel_61 Start: 40322, Stop: 41266, Start Num: 11

Candidate Starts for Magel_61:

(Start: 11 @40322 has 38 MA's), (14, 40337), (19, 40355), (23, 40382), (77, 40664), (89, 40727), (98, 40781), (101, 40805), (110, 40868), (113, 40886), (121, 40916), (123, 40925), (129, 40946), (167, 41144), (168, 41147),

Gene: MajinBuu_60 Start: 40852, Stop: 41763, Start Num: 11

Candidate Starts for MajinBuu_60:

(7, 40792), (Start: 11 @40852 has 38 MA's), (14, 40867), (19, 40885), (23, 40912), (35, 40957), (39, 40978), (Start: 43 @40993 has 1 MA's), (52, 41056), (65, 41104), (98, 41281), (113, 41380), (133, 41473), (134, 41485), (168, 41644), (184, 41725),

Gene: Makai_55 Start: 37391, Stop: 38140, Start Num: 17

Candidate Starts for Makai_55:

(Start: 17 @37391 has 29 MA's), (27, 37436), (47, 37541), (117, 37751), (133, 37826), (134, 37838), (137, 37853), (151, 37922),

Gene: MediumFry_53 Start: 36688, Stop: 37446, Start Num: 17

Candidate Starts for MediumFry_53:

(Start: 17 @36688 has 29 MA's), (47, 36838), (72, 36928), (81, 36979), (88, 37003), (117, 37060), (138, 37162), (193, 37441),

Gene: Michelle_54 Start: 34993, Stop: 35868, Start Num: 16

Candidate Starts for Michelle_54:

(Start: 16 @34993 has 14 MA's), (22, 35026), (24, 35035), (26, 35038), (29, 35053), (47, 35146), (67, 35209), (69, 35221), (93, 35344), (94, 35359), (114, 35461), (134, 35566), (136, 35575), (151, 35647), (163, 35704), (189, 35842),

Gene: MiniBagel_54 Start: 38021, Stop: 38782, Start Num: 17

Candidate Starts for MiniBagel_54:

(Start: 17 @38021 has 29 MA's), (47, 38171), (58, 38210), (72, 38261), (76, 38273), (117, 38399), (127, 38426), (134, 38480), (137, 38495), (147, 38546), (153, 38567), (193, 38774),

Gene: Mooshroom_61 Start: 36088, Stop: 36885, Start Num: 15

Candidate Starts for Mooshroom_61:

(Start: 15 @36088 has 26 MA's), (48, 36250), (131, 36541), (135, 36574), (148, 36640), (157, 36679), (159, 36688), (172, 36757), (182, 36808), (191, 36865),

Gene: Mossy_62 Start: 42220, Stop: 43098, Start Num: 13

Candidate Starts for Mossy_62:

(Start: 13 @42220 has 6 MA's), (20, 42247), (22, 42265), (35, 42316), (39, 42337), (51, 42412), (53, 42418), (77, 42511), (83, 42547), (89, 42574), (98, 42628), (102, 42658), (107, 42694), (111, 42721), (113, 42730), (116, 42742), (126, 42775), (134, 42835), (159, 42946), (165, 42985), (172, 43015),

Gene: MrAaronian_54 Start: 34993, Stop: 35868, Start Num: 16

Candidate Starts for MrAaronian_54:

(Start: 16 @34993 has 14 MA's), (22, 35026), (24, 35035), (26, 35038), (29, 35053), (47, 35146), (67, 35209), (69, 35221), (93, 35344), (94, 35359), (114, 35461), (134, 35566), (136, 35575), (151, 35647), (163, 35704), (189, 35842),

Gene: Mudcat_56 Start: 36825, Stop: 37625, Start Num: 15

Candidate Starts for Mudcat_56:

(Start: 15 @36825 has 26 MA's), (48, 36987), (53, 37008), (68, 37068), (91, 37167), (131, 37281), (135, 37314), (148, 37380), (157, 37419), (159, 37428), (172, 37497), (182, 37548), (191, 37605),

Gene: Mysticmoon_61 Start: 41647, Stop: 42552, Start Num: 13

Candidate Starts for Mysticmoon_61:

(Start: 13 @41647 has 6 MA's), (18, 41668), (20, 41674), (22, 41692), (35, 41743), (39, 41764), (51, 41839), (77, 41959), (83, 41995), (89, 42022), (98, 42076), (101, 42100), (107, 42142), (111, 42169), (113, 42178), (116, 42190), (126, 42223), (133, 42271), (134, 42283), (141, 42316), (159, 42394), (172, 42463), (184, 42523),

Gene: Nadmeg_60 Start: 41448, Stop: 42356, Start Num: 11

Candidate Starts for Nadmeg_60:

(2, 41238), (4, 41301), (5, 41310), (Start: 11 @41448 has 38 MA's), (19, 41481), (23, 41508), (31, 41538), (39, 41574), (Start: 43 @41589 has 1 MA's), (65, 41700), (77, 41760), (98, 41877), (113, 41976), (133, 42069), (134, 42081), (145, 42141),

Gene: NapoleonB_59 Start: 35903, Stop: 36703, Start Num: 15

Candidate Starts for NapoleonB_59:

(Start: 15 @35903 has 26 MA's), (48, 36065), (53, 36086), (68, 36146), (91, 36245), (135, 36392), (148, 36458), (159, 36506), (172, 36575), (182, 36626), (191, 36683),

Gene: Nason_59 Start: 35986, Stop: 36783, Start Num: 15

Candidate Starts for Nason_59:

(Start: 15 @35986 has 26 MA's), (48, 36148), (131, 36439), (135, 36472), (148, 36538), (159, 36586), (172, 36655), (182, 36706), (191, 36763),

Gene: Natasha_54 Start: 34823, Stop: 35617, Start Num: 16

Candidate Starts for Natasha_54:

(Start: 16 @34823 has 14 MA's), (24, 34865), (32, 34895), (33, 34898), (49, 34991), (69, 35075), (122, 35249), (133, 35306), (134, 35318), (143, 35366), (189, 35591),

Gene: Navi1117_60 Start: 36699, Stop: 37415, Start Num: 15

Candidate Starts for Navi1117_60:

(Start: 15 @36699 has 26 MA's), (67, 36918), (127, 37038), (131, 37071), (134, 37092), (152, 37179), (184, 37341), (192, 37398),

Gene: Nightmare_56 Start: 38318, Stop: 39076, Start Num: 17

Candidate Starts for Nightmare_56:

(Start: 17 @38318 has 29 MA's), (47, 38468), (67, 38531), (72, 38558), (76, 38570), (81, 38609), (117, 38690), (134, 38774), (137, 38789), (193, 39068),

Gene: Niktson_54 Start: 37760, Stop: 38524, Start Num: 17

Candidate Starts for Niktson_54:

(Start: 17 @37760 has 29 MA's), (47, 37910), (72, 38000), (75, 38009), (117, 38141), (134, 38222), (137, 38237), (193, 38516),

Gene: Nithya_59 Start: 40310, Stop: 41221, Start Num: 11

Candidate Starts for Nithya_59:

(7, 40250), (Start: 11 @40310 has 38 MA's), (19, 40343), (23, 40370), (31, 40400), (39, 40436), (Start: 43 @40451 has 1 MA's), (65, 40562), (77, 40622), (98, 40739), (104, 40784), (113, 40838), (130, 40904), (133, 40931), (134, 40943), (168, 41102),

Gene: Nivinsha_56 Start: 37264, Stop: 38031, Start Num: 17

Candidate Starts for Nivinsha_56:

(Start: 17 @37264 has 29 MA's), (47, 37414), (72, 37504), (76, 37516), (117, 37645), (134, 37729), (137, 37744), (193, 38023),

Gene: NoPickles_59 Start: 39744, Stop: 40688, Start Num: 11

Candidate Starts for NoPickles_59:

(Start: 11 @39744 has 38 MA's), (14, 39759), (19, 39777), (23, 39804), (77, 40086), (89, 40149), (98, 40203), (101, 40227), (110, 40290), (113, 40308), (121, 40338), (123, 40347), (129, 40368), (167, 40566), (168, 40569),

Gene: Odesza_59 Start: 40266, Stop: 41210, Start Num: 11

Candidate Starts for Odesza_59:

(Start: 11 @40266 has 38 MA's), (14, 40281), (19, 40299), (23, 40326), (77, 40608), (89, 40671), (98, 40725), (101, 40749), (110, 40812), (113, 40830), (121, 40860), (123, 40869), (129, 40890), (167, 41088), (168, 41091),

Gene: OhMyWard_58 Start: 41973, Stop: 42857, Start Num: 13

Candidate Starts for OhMyWard_58:

(1, 41763), (3, 41823), (4, 41829), (5, 41838), (6, 41901), (8, 41931), (9, 41937), (10, 41940), (Start: 13 @41973 has 6 MA's), (20, 42000), (22, 42018), (35, 42069), (39, 42090), (51, 42165), (53, 42171), (77, 42264), (83, 42300), (89, 42327), (98, 42381), (101, 42405), (102, 42411), (107, 42447), (111, 42474), (113, 42483), (116, 42495), (126, 42528), (134, 42588), (141, 42621), (159, 42699), (160, 42708), (165, 42738), (172, 42768), (184, 42828),

Gene: OlgasClover_60 Start: 41455, Stop: 42366, Start Num: 11

Candidate Starts for OlgasClover_60:

(7, 41395), (Start: 11 @41455 has 38 MA's), (14, 41470), (19, 41488), (23, 41515), (35, 41560), (39, 41581), (Start: 43 @41596 has 1 MA's), (52, 41659), (65, 41707), (98, 41884), (113, 41983), (133, 42076), (134, 42088), (168, 42247), (184, 42328),

Gene: Paella_107 Start: 58297, Stop: 59046, Start Num: 15

Candidate Starts for Paella_107:

(Start: 15 @58297 has 26 MA's), (24, 58342), (33, 58375), (50, 58462), (80, 58564), (115, 58633), (131, 58699), (182, 58963), (183, 58966), (191, 59026),

Gene: Pepy6_084 Start: 50892, Stop: 51794, Start Num: 13

Candidate Starts for Pepy6_084:

(7, 50835), (Start: 13 @50892 has 6 MA's), (19, 50916), (21, 50928), (39, 51003), (41, 51006), (73, 51186), (99, 51342), (113, 51426), (128, 51477), (129, 51489), (160, 51660), (167, 51693), (179, 51747),

Gene: Perkunas_62 Start: 40655, Stop: 41599, Start Num: 11

Candidate Starts for Perkunas_62:

(Start: 11 @40655 has 38 MA's), (14, 40670), (19, 40688), (23, 40715), (51, 40856), (60, 40898), (63, 40904), (89, 41060), (98, 41114), (101, 41138), (113, 41219), (116, 41231), (129, 41279), (168, 41480), (184, 41561),

Gene: Petito_62 Start: 41813, Stop: 42754, Start Num: 11

Candidate Starts for Petito_62:

(Start: 11 @41813 has 38 MA's), (14, 41828), (19, 41846), (23, 41873), (77, 42152), (89, 42215), (98, 42269), (101, 42293), (110, 42356), (113, 42374), (129, 42434),

Gene: Phaby_57 Start: 37911, Stop: 38663, Start Num: 17

Candidate Starts for Phaby_57:

(Start: 17 @37911 has 29 MA's), (31, 37977), (47, 38061), (81, 38202), (118, 38289), (122, 38304), (133, 38349), (134, 38361),

Gene: Phaila_61 Start: 36120, Stop: 36854, Start Num: 15

Candidate Starts for Phaila_61:

(Start: 15 @36120 has 26 MA's), (39, 36231), (62, 36327), (67, 36342), (127, 36477), (131, 36510), (134, 36531), (152, 36618), (165, 36690), (184, 36780), (192, 36837),

Gene: Phepper_60 Start: 40462, Stop: 41361, Start Num: 11

Candidate Starts for Phepper_60:

(7, 40402), (Start: 11 @40462 has 38 MA's), (18, 40492), (19, 40495), (23, 40522), (39, 40588), (Start: 43 @40603 has 1 MA's), (65, 40714), (77, 40765), (98, 40882), (113, 40981), (133, 41074), (134, 41086), (145, 41146), (185, 41329),

Gene: Pherobrine_61 Start: 42057, Stop: 42962, Start Num: 13

Candidate Starts for Pherobrine_61:

(Start: 13 @42057 has 6 MA's), (18, 42078), (19, 42081), (20, 42084), (22, 42102), (35, 42153), (39, 42174), (51, 42249), (77, 42369), (83, 42405), (89, 42432), (98, 42486), (101, 42510), (107, 42552), (111, 42579), (113, 42588), (116, 42600), (126, 42633), (133, 42681), (134, 42693), (141, 42726), (159, 42804), (160, 42813), (172, 42873), (184, 42933),

Gene: Pippin15_54 Start: 34805, Stop: 35566, Start Num: 42

Candidate Starts for Pippin15_54:

(25, 34730), (34, 34766), (Start: 36 @34784 has 1 MA's), (Start: 42 @34805 has 3 MA's), (90, 35048), (132, 35291), (139, 35339), (151, 35396), (161, 35438), (162, 35447), (169, 35477), (170, 35480), (174, 35498),

Gene: Poco6_083 Start: 52419, Stop: 53303, Start Num: 13

Candidate Starts for Poco6_083:

(Start: 13 @52419 has 6 MA's), (19, 52443), (21, 52455), (39, 52530), (41, 52533), (51, 52605), (53, 52611), (72, 52701), (99, 52851), (103, 52872), (113, 52935), (128, 52986), (129, 52998), (160, 53169), (167, 53202),

Gene: Powelldog_60 Start: 36214, Stop: 37014, Start Num: 16

Candidate Starts for Powelldog_60:

(Start: 16 @36214 has 14 MA's), (22, 36247), (24, 36256), (29, 36274), (44, 36334), (51, 36388), (92, 36586), (122, 36643), (134, 36712), (142, 36757), (149, 36784), (158, 36817),

Gene: ProfFrink_54 Start: 34994, Stop: 35869, Start Num: 16

Candidate Starts for ProfFrink_54:

(Start: 16 @34994 has 14 MA's), (22, 35027), (24, 35036), (26, 35039), (29, 35054), (47, 35147), (67, 35210), (69, 35222), (93, 35345), (94, 35360), (114, 35462), (134, 35567), (136, 35576), (151, 35648), (163, 35705), (189, 35843),

Gene: Qui_107 Start: 58297, Stop: 59046, Start Num: 15

Candidate Starts for Qui_107:

(Start: 15 @58297 has 26 MA's), (24, 58342), (33, 58375), (50, 58462), (80, 58564), (115, 58633), (131, 58699), (182, 58963), (183, 58966), (191, 59026),

Gene: Raunak_57 Start: 34691, Stop: 35566, Start Num: 16

Candidate Starts for Raunak_57:

(Start: 16 @34691 has 14 MA's), (22, 34724), (24, 34733), (26, 34736), (29, 34751), (47, 34844), (67, 34907), (69, 34919), (93, 35042), (94, 35057), (114, 35159), (134, 35264), (136, 35273), (151, 35345), (163, 35402), (189, 35540),

Gene: Renaldo_64 Start: 37949, Stop: 38638, Start Num: 15

Candidate Starts for Renaldo_64:

(Start: 15 @37949 has 26 MA's), (Start: 46 @38093 has 3 MA's), (66, 38144), (74, 38162), (98, 38231), (131, 38294), (134, 38315), (140, 38348), (152, 38402), (156, 38417), (192, 38621),

Gene: Rickmore_56 Start: 38811, Stop: 39713, Start Num: 11

Candidate Starts for Rickmore_56:

(7, 38751), (Start: 11 @38811 has 38 MA's), (19, 38844), (23, 38871), (31, 38901), (39, 38937), (Start: 43 @38952 has 1 MA's), (65, 39063), (77, 39114), (98, 39231), (104, 39276), (113, 39330), (133, 39423), (134, 39435), (184, 39675),

Gene: Roney_60 Start: 40432, Stop: 41376, Start Num: 11

Candidate Starts for Roney_60:

(Start: 11 @40432 has 38 MA's), (14, 40447), (19, 40465), (23, 40492), (77, 40774), (89, 40837), (98, 40891), (101, 40915), (110, 40978), (113, 40996), (121, 41026), (123, 41035), (129, 41056), (167, 41254), (168, 41257),

Gene: RosaAsantewaa_37 Start: 28089, Stop: 28907, Start Num: 30

Candidate Starts for RosaAsantewaa_37:

(Start: 30 @28089 has 1 MA's), (Start: 43 @28146 has 1 MA's), (47, 28182), (61, 28245), (98, 28434), (109, 28515), (124, 28584), (145, 28713), (151, 28737), (155, 28752), (174, 28845), (175, 28857), (182, 28890),

Gene: Runhaar_59 Start: 40264, Stop: 41172, Start Num: 11

Candidate Starts for Runhaar_59:

(2, 40054), (4, 40117), (5, 40126), (Start: 11 @40264 has 38 MA's), (19, 40297), (23, 40324), (31, 40354), (39, 40390), (Start: 43 @40405 has 1 MA's), (65, 40516), (77, 40576), (98, 40693), (107, 40759), (113, 40792), (133, 40885), (134, 40897), (145, 40957),

Gene: RustyBoy_54 Start: 34804, Stop: 35598, Start Num: 16

Candidate Starts for RustyBoy_54:

(Start: 16 @34804 has 14 MA's), (24, 34846), (32, 34876), (33, 34879), (49, 34972), (69, 35056), (122, 35230), (133, 35287), (134, 35299), (143, 35347), (189, 35572),

Gene: Salk_54 Start: 34991, Stop: 35866, Start Num: 16

Candidate Starts for Salk_54:

(Start: 16 @34991 has 14 MA's), (22, 35024), (24, 35033), (26, 35036), (29, 35051), (47, 35144), (67, 35207), (69, 35219), (93, 35342), (94, 35357), (114, 35459), (134, 35564), (151, 35645), (163, 35702), (189, 35840),

Gene: Schwartz33_61 Start: 40690, Stop: 41598, Start Num: 13

Candidate Starts for Schwartz33_61:

(Start: 13 @40690 has 6 MA's), (14, 40699), (26, 40750), (35, 40789), (65, 40939), (78, 41008), (84, 41044), (89, 41068), (98, 41122), (101, 41146), (107, 41188), (113, 41224), (116, 41236), (133,

41317), (158, 41434), (167, 41482), (168, 41485), (184, 41566),

Gene: ScienceWizSam_55 Start: 37372, Stop: 38130, Start Num: 17

Candidate Starts for ScienceWizSam_55:

(Start: 17 @37372 has 29 MA's), (47, 37522), (67, 37585), (72, 37612), (76, 37624), (81, 37663), (117, 37744), (134, 37828), (137, 37843), (193, 38122),

Gene: Secretariat_59 Start: 39647, Stop: 40552, Start Num: 13

Candidate Starts for Secretariat_59:

(12, 39644), (Start: 13 @39647 has 6 MA's), (23, 39701), (35, 39746), (65, 39896), (78, 39962), (83, 39995), (98, 40076), (101, 40100), (107, 40142), (113, 40178), (116, 40190), (133, 40271), (154, 40376), (158, 40388), (168, 40439), (184, 40520),

Gene: Serenabeen_54 Start: 34832, Stop: 35524, Start Num: 55

Candidate Starts for Serenabeen_54:

(Start: 55 @34832 has 3 MA's), (64, 34868), (70, 34910), (86, 34988), (100, 35072), (116, 35168), (120, 35180), (158, 35369), (160, 35384), (164, 35408), (175, 35468),

Gene: ShaggyRogers_62 Start: 40245, Stop: 41114, Start Num: 18

Candidate Starts for ShaggyRogers_62:

(7, 40155), (Start: 11 @40215 has 38 MA's), (18, 40245), (19, 40248), (23, 40275), (28, 40293), (35, 40320), (39, 40341), (Start: 43 @40356 has 1 MA's), (52, 40419), (65, 40467), (98, 40638), (113, 40737), (133, 40830), (134, 40842), (168, 41001), (177, 41046), (184, 41082),

Gene: Shepard_57 Start: 37134, Stop: 37886, Start Num: 17

Candidate Starts for Shepard_57:

(Start: 17 @37134 has 29 MA's), (47, 37284), (81, 37425), (118, 37512), (122, 37527), (133, 37572), (134, 37584),

Gene: Shiba_53 Start: 34691, Stop: 35566, Start Num: 16

Candidate Starts for Shiba_53:

(Start: 16 @34691 has 14 MA's), (22, 34724), (24, 34733), (26, 34736), (29, 34751), (47, 34844), (67, 34907), (69, 34919), (93, 35042), (94, 35057), (114, 35159), (134, 35264), (136, 35273), (151, 35345), (163, 35402), (189, 35540),

Gene: Sloopyjoe_54 Start: 34995, Stop: 35870, Start Num: 16

Candidate Starts for Sloopyjoe_54:

(Start: 16 @34995 has 14 MA's), (22, 35028), (24, 35037), (26, 35040), (29, 35055), (47, 35148), (67, 35211), (69, 35223), (93, 35346), (94, 35361), (114, 35463), (134, 35568), (136, 35577), (151, 35649), (163, 35706), (189, 35844),

Gene: Sporto_55 Start: 36496, Stop: 37332, Start Num: 16

Candidate Starts for Sporto_55:

(Start: 16 @36496 has 14 MA's), (24, 36538), (53, 36676), (67, 36736), (92, 36868), (96, 36892), (134, 37027), (136, 37036), (153, 37111), (171, 37201), (189, 37306),

Gene: StarLord_54 Start: 34994, Stop: 35869, Start Num: 16

Candidate Starts for StarLord_54:

(Start: 16 @34994 has 14 MA's), (22, 35027), (24, 35036), (26, 35039), (29, 35054), (47, 35147), (67, 35210), (69, 35222), (93, 35345), (94, 35360), (114, 35462), (134, 35567), (136, 35576), (151, 35648), (163, 35705), (189, 35843),

Gene: Stayer_54 Start: 34991, Stop: 35866, Start Num: 16

Candidate Starts for Stayer_54:

(Start: 16 @34991 has 14 MA's), (22, 35024), (24, 35033), (26, 35036), (29, 35051), (47, 35144), (67, 35207), (69, 35219), (93, 35342), (94, 35357), (114, 35459), (134, 35564), (136, 35573), (151, 35645), (163, 35702), (189, 35840),

Gene: Sunny4976_56 Start: 37585, Stop: 38403, Start Num: 40

Candidate Starts for Sunny4976_56:

(40, 37585), (45, 37618), (113, 37999), (128, 38047), (166, 38257), (173, 38287), (175, 38302), (188, 38386),

Gene: Sweetclover_53 Start: 33842, Stop: 34537, Start Num: 54

Candidate Starts for Sweetclover_53:

(54, 33842), (105, 34124), (119, 34187), (157, 34382), (159, 34391), (160, 34400), (161, 34406), (164, 34424),

Gene: Synopsis_53 Start: 37431, Stop: 38198, Start Num: 17

Candidate Starts for Synopsis_53:

(Start: 17 @37431 has 29 MA's), (47, 37581), (67, 37644), (72, 37671), (76, 37683), (117, 37812), (134, 37896), (137, 37911), (193, 38190),

Gene: Talon44_63 Start: 40689, Stop: 41633, Start Num: 11

Candidate Starts for Talon44_63:

(Start: 11 @40689 has 38 MA's), (14, 40704), (19, 40722), (23, 40749), (51, 40890), (60, 40932), (63, 40938), (89, 41094), (98, 41148), (101, 41172), (113, 41253), (116, 41265), (129, 41313), (168, 41514), (184, 41595),

Gene: Tanis_60 Start: 40252, Stop: 41196, Start Num: 11

Candidate Starts for Tanis_60:

(Start: 11 @40252 has 38 MA's), (14, 40267), (19, 40285), (23, 40312), (77, 40594), (89, 40657), (98, 40711), (101, 40735), (110, 40798), (113, 40816), (121, 40846), (123, 40855), (129, 40876), (167, 41074), (168, 41077),

Gene: Tatanka_51 Start: 37563, Stop: 38327, Start Num: 17

Candidate Starts for Tatanka_51:

(Start: 17 @37563 has 29 MA's), (47, 37713), (72, 37803), (86, 37878), (117, 37944), (134, 38025), (137, 38040), (193, 38319),

Gene: Teacup_55 Start: 37789, Stop: 38553, Start Num: 17

Candidate Starts for Teacup_55:

(Start: 17 @37789 has 29 MA's), (47, 37939), (72, 38029), (75, 38038), (117, 38170), (134, 38251), (137, 38266), (147, 38317), (193, 38545),

Gene: TenaciousP_59 Start: 41836, Stop: 42747, Start Num: 11

Candidate Starts for TenaciousP_59:

(7, 41776), (Start: 11 @41836 has 38 MA's), (14, 41851), (19, 41869), (23, 41896), (35, 41941), (39, 41962), (Start: 43 @41977 has 1 MA's), (52, 42040), (65, 42088), (98, 42265), (113, 42364), (133, 42457), (134, 42469), (168, 42628), (184, 42709),

Gene: Tenney120_61 Start: 36666, Stop: 37382, Start Num: 15

Candidate Starts for Tenney120_61:

(Start: 15 @36666 has 26 MA's), (67, 36885), (131, 37038), (134, 37059), (152, 37146), (165, 37218), (184, 37308), (192, 37365),

Gene: Tenno_55 Start: 38094, Stop: 38855, Start Num: 17

Candidate Starts for Tenno_55:

(Start: 17 @38094 has 29 MA's), (47, 38244), (58, 38283), (72, 38334), (76, 38346), (117, 38472), (127, 38499), (134, 38553), (137, 38568), (147, 38619), (153, 38640), (193, 38847),

Gene: Tokki_60 Start: 37524, Stop: 38276, Start Num: 17

Candidate Starts for Tokki_60:

(Start: 17 @37524 has 29 MA's), (31, 37590), (47, 37674), (81, 37815), (118, 37902), (122, 37917), (133, 37962), (134, 37974),

Gene: Tribby_61 Start: 36239, Stop: 37036, Start Num: 15

Candidate Starts for Tribby_61:

(Start: 15 @36239 has 26 MA's), (48, 36401), (131, 36692), (135, 36725), (148, 36791), (159, 36839), (172, 36908), (182, 36959), (191, 37016),

Gene: TrixiePhattel_59 Start: 36099, Stop: 36839, Start Num: 15

Candidate Starts for TrixiePhattel_59:

(Start: 15 @36099 has 26 MA's), (Start: 46 @36243 has 3 MA's), (127, 36459), (134, 36513), (152, 36600), (167, 36678), (174, 36708), (175, 36720), (176, 36723), (180, 36735), (181, 36750), (192, 36822),

Gene: Truckee_53 Start: 37181, Stop: 37930, Start Num: 17

Candidate Starts for Truckee_53:

(Start: 17 @37181 has 29 MA's), (27, 37226), (47, 37331), (117, 37541), (133, 37616), (134, 37628), (137, 37643), (151, 37712),

Gene: Trufflozitus_64 Start: 40934, Stop: 41878, Start Num: 11

Candidate Starts for Trufflozitus_64:

(Start: 11 @40934 has 38 MA's), (14, 40949), (19, 40967), (23, 40994), (77, 41276), (89, 41339), (98, 41393), (101, 41417), (110, 41480), (113, 41498), (116, 41510), (121, 41528), (123, 41537), (167, 41756), (184, 41840),

Gene: Trustiboi_54 Start: 37632, Stop: 38390, Start Num: 17

Candidate Starts for Trustiboi_54:

(Start: 17 @37632 has 29 MA's), (47, 37782), (67, 37845), (72, 37872), (76, 37884), (81, 37923), (117, 38004), (134, 38088), (137, 38103), (193, 38382),

Gene: Untouchable_61 Start: 41375, Stop: 42274, Start Num: 11

Candidate Starts for Untouchable_61:

(7, 41315), (Start: 11 @41375 has 38 MA's), (18, 41405), (19, 41408), (23, 41435), (39, 41501), (Start: 43 @41516 has 1 MA's), (65, 41627), (77, 41678), (98, 41795), (113, 41894), (133, 41987), (134, 41999), (145, 42059), (185, 42242),

Gene: Uzumaki_55 Start: 36107, Stop: 36823, Start Num: 15

Candidate Starts for Uzumaki_55:

(Start: 15 @36107 has 26 MA's), (62, 36311), (67, 36326), (131, 36479), (134, 36500), (152, 36587), (165, 36659), (184, 36749), (192, 36806),

Gene: Vardy_58 Start: 40154, Stop: 41062, Start Num: 11

Candidate Starts for Vardy_58:

(2, 39944), (4, 40007), (5, 40016), (Start: 11 @40154 has 38 MA's), (19, 40187), (23, 40214), (31, 40244), (39, 40280), (Start: 43 @40295 has 1 MA's), (65, 40406), (77, 40466), (98, 40583), (107, 40649), (113, 40682), (133, 40775), (134, 40787), (145, 40847),

Gene: Xenomorph_56 Start: 35657, Stop: 36454, Start Num: 15

Candidate Starts for Xenomorph_56:

(Start: 15 @35657 has 26 MA's), (48, 35819), (131, 36110), (135, 36143), (148, 36209), (159, 36257), (172, 36326), (182, 36377), (191, 36434),

Gene: Yotsuba_53 Start: 37928, Stop: 38668, Start Num: 42

Candidate Starts for Yotsuba_53:

(Start: 36 @37907 has 1 MA's), (Start: 42 @37928 has 3 MA's), (90, 38171), (157, 38516), (158, 38519), (169, 38579),

Gene: Zeina_59 Start: 36674, Stop: 37390, Start Num: 15

Candidate Starts for Zeina_59:

(Start: 15 @36674 has 26 MA's), (67, 36893), (127, 37013), (131, 37046), (134, 37067), (152, 37154), (184, 37316), (192, 37373),

Gene: Zeph_61 Start: 41301, Stop: 42200, Start Num: 11

Candidate Starts for Zeph_61:

(7, 41241), (Start: 11 @41301 has 38 MA's), (18, 41331), (19, 41334), (23, 41361), (39, 41427), (Start: 43 @41442 has 1 MA's), (65, 41553), (77, 41604), (98, 41721), (113, 41820), (133, 41913), (134, 41925), (145, 41985), (185, 42168),

Gene: Zippen_57 Start: 38006, Stop: 38755, Start Num: 17

Candidate Starts for Zippen_57:

(Start: 17 @38006 has 29 MA's), (38, 38093), (65, 38213), (72, 38246), (75, 38255), (81, 38297), (88, 38321), (117, 38378), (131, 38435), (134, 38456), (146, 38519), (193, 38750),