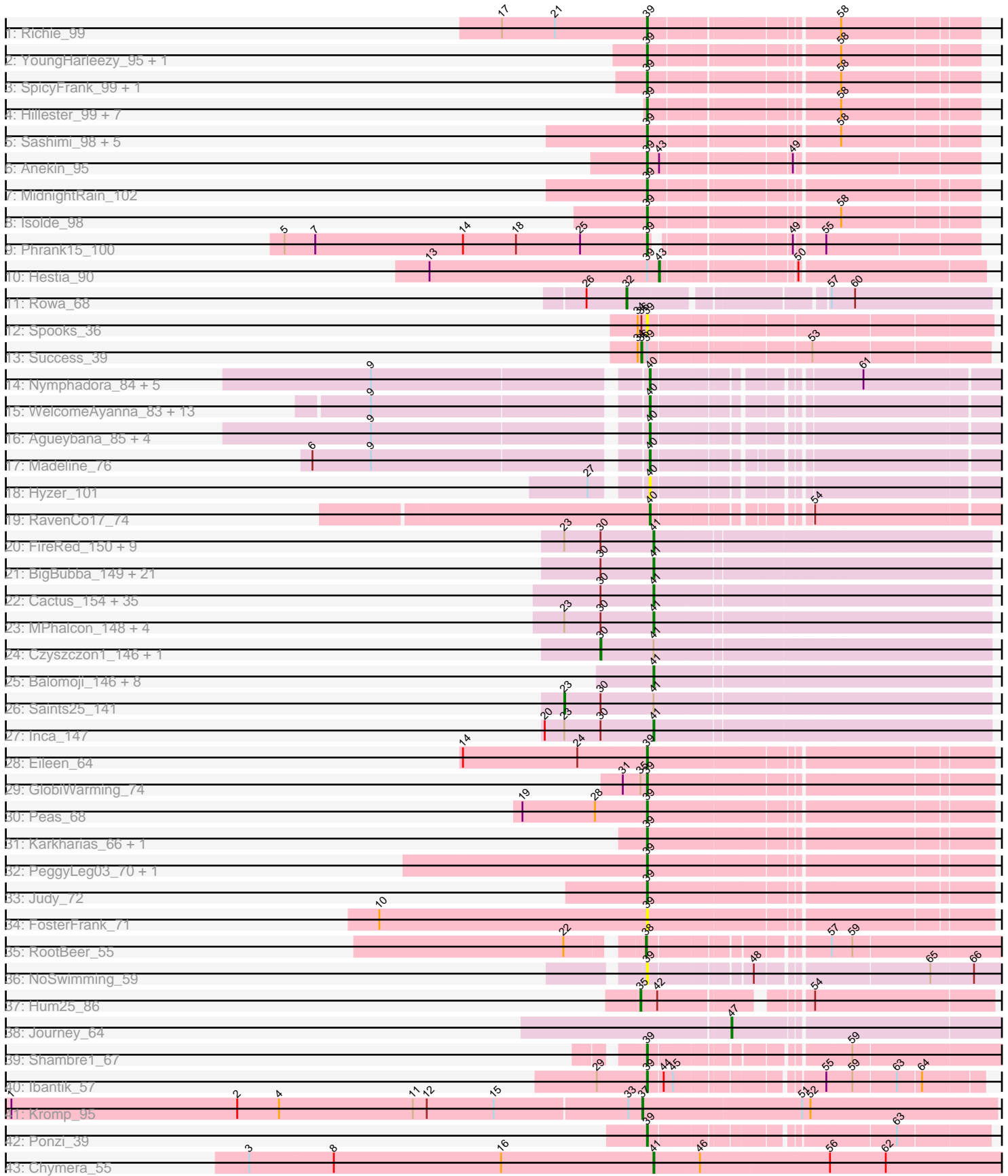


Pham 215899



Note: Tracks are now grouped by subcluster and scaled. Switching in subcluster is indicated by changes in track color. Track scale is now set by default to display the region 30 bp upstream of start 1 to 30 bp downstream of the last possible start. If this default region is judged to be packed too tightly with annotated starts, the track will be further scaled to only show that region of the ORF with annotated starts. This action will be indicated by adding "Zoomed" to the title. For starts, yellow indicates the location of called starts comprised solely of Glimmer/GeneMark auto-annotations, green indicates the location of called starts with at least 1 manual gene annotation.

Pham 215899 Report

This analysis was run 02/22/25 on database version 588.

Pham number 215899 has 159 members, 13 are drafts.

Phages represented in each track:

- Track 1 : Richie_99
- Track 2 : YoungHarleezy_95, Raphaella_96
- Track 3 : SpicyFrank_99, Seahorse_101
- Track 4 : Hillester_99, Auxilium_93, MaterMagnus_96, BillyTP_96, EvePickles_96, BenchScraper_96, RadFad_100, Tiff81_90
- Track 5 : Sashimi_98, CookieBear_94, Globfish_94, Lawnathon_98, Faja_96, BlueShadow_100
- Track 6 : Anekin_95
- Track 7 : MidnightRain_102
- Track 8 : Isolde_98
- Track 9 : Phrank15_100
- Track 10 : Hestia_90
- Track 11 : Rowa_68
- Track 12 : Spooks_36
- Track 13 : Success_39
- Track 14 : Nymphadora_84, TimTam_84, Bosnia_82, BatStarr_83, Eviarto_84, Herod_84
- Track 15 : WelcomeAyanna_83, Trumpet_79, Zameen_79, Maridalia_83, Antonio_78, Tayonia_79, Manasvini_81, Kita_80, ThankyouJordi_83, Susceptit_79, Polly_76, Neobush_81, Bunnybear_78, Eudoria_79
- Track 16 : Agueybana_85, Zirinka_79, AlumE_82, BoyNamedSue_82, Bialota_79
- Track 17 : Madeline_76
- Track 18 : Hyzer_101
- Track 19 : RavenCo17_74
- Track 20 : FireRed_150, Thresher_148, Palpatine_143, Highbury_141, Nala_149, PhatBacter_150, Command613_149, Manda_149, BaboJay_146, Ukulele_143
- Track 21 : BigBubba_149, ShereKhan_145, Myrale_146, OrionPax_144, Miniwave_140, NoSleep_145, Teaspoon_130, Phrux_143, MadamMonkfish_148, Nimrod_145, Murphy_148, JeTaime_144, Stark_143, Emmina_148, TBrady12_151, Paperbeatsrock_144, ShamWow_145, Cookies_148, Phaja_151, Tarkin_144, DoctorDiddles_145, Buck_148
- Track 22 : Cactus_154, Sotrice96_151, BadStone_145, SophKB_144, Icee_146, Rimmer_145, Elite2014_146, Goldilocks_152, Youngblood_150, Tuco_150, AmericanBeauty_149, HufflyPuff_148, IHOP_151, Willez_144, Kanye_142, Kimchi_151, Holt_152, Contagion_142, Bench_149, Lilpickle_146, RiverMonster_146, Wiggin_149, StolenFromERC_148, Adnama_150, Gage_137, Dumbo_149, ChosenOne_147, Stank_150, Phaux_147, Argent26_150,

- Maxxinista_148, GoldenSpark_150, Quallification_146, ABCat_145, Gemini_151, Easy2Say_148
- Track 23 : MPhalcon_148, Policronamos_145, MISSy_147, Hopey_144, Murica_149
 - Track 24 : Czyszczon1_146, Marshmallow_149
 - Track 25 : Balomoji_146, Glexan_150, Traaww1_144, Pat3_147, Harella_153, Flypotenuse_142, Barbarian_146, Hoonter_148, Asriel_144
 - Track 26 : Saints25_141
 - Track 27 : Inca_147
 - Track 28 : Eileen_64
 - Track 29 : GlobiWarming_74
 - Track 30 : Peas_68
 - Track 31 : Karkharias_66, Bridgette_71
 - Track 32 : PeggyLeg03_70, ChuckDuck_69
 - Track 33 : Judy_72
 - Track 34 : FosterFrank_71
 - Track 35 : RootBeer_55
 - Track 36 : NoSwimming_59
 - Track 37 : Hum25_86
 - Track 38 : Journey_64
 - Track 39 : Shambre1_67
 - Track 40 : Ibantik_57
 - Track 41 : Kromp_95
 - Track 42 : Ponzi_39
 - Track 43 : Chymera_55

Summary of Final Annotations (See graph section above for start numbers):

The start number called the most often in the published annotations is 41, it was called in 84 of the 146 non-draft genes in the pham.

Genes that call this "Most Annotated" start:

- ABCat_145, Adnama_150, AmericanBeauty_149, Argent26_150, Asriel_144, BaboJay_146, BadStone_145, Balomoji_146, Barbarian_146, Bench_149, BigBubba_149, Buck_148, Cactus_154, ChosenOne_147, Chymera_55, Command613_149, Contagion_142, Cookies_148, DoctorDiddles_145, Dumbo_149, Easy2Say_148, Elite2014_146, Emmina_148, FireRed_150, Flypotenuse_142, Gage_137, Gemini_151, Glexan_150, GoldenSpark_150, Goldilocks_152, Harella_153, Highbury_141, Holt_152, Hoonter_148, Hopey_144, HufflyPuff_148, IHOP_151, Icee_146, Inca_147, JeTaime_144, Kanye_142, Kimchi_151, Lilpickle_146, MISSy_147, MPhalcon_148, MadamMonkfish_148, Manda_149, Maxxinista_148, Miniwave_140, Murica_149, Murphy_148, Myrale_146, Nala_149, Nimrod_145, NoSleep_145, OrionPax_144, Palpatine_143, Paperbeatsrock_144, Pat3_147, Phaja_151, PhatBacter_150, Phaux_147, Phrux_143, Policronamos_145, Quallification_146, Rimmer_145, RiverMonster_146, ShamWow_145, ShereKhan_145, SophKB_144, Sotrice96_151, Stank_150, Stark_143, StolenFromERC_148, TBrady12_151, Tarkin_144, Teaspoon_130, Thresher_148, Traaww1_144, Tuco_150, Ukulele_143, Wiggin_149, Willez_144, Youngblood_150,

Genes that have the "Most Annotated" start but do not call it:

- Czyszczon1_146, Marshmallow_149, Saints25_141,

Genes that do not have the "Most Annotated" start:

- Agueybana_85, AlumE_82, Anekin_95, Antonio_78, Auxilium_93, BatStarr_83, BenchScraper_96, Bialota_79, BillyTP_96, BlueShadow_100, Bosnia_82, BoyNamedSue_82, Bridgette_71, Bunnybear_78, ChuckDuck_69, CookieBear_94, Eileen_64, Eudoria_79, EvePickles_96, Eviarto_84, Faja_96, FosterFrank_71, Globfish_94, GlobiWarming_74, Herod_84, Hestia_90, Hillester_99, Hum25_86, Hyzer_101, Ibantik_57, Isolde_98, Journey_64, Judy_72, Karkharias_66, Kita_80, Kromp_95, Lawnathon_98, Madeline_76, Manasvini_81, Maridalia_83, MaterMagnus_96, MidnightRain_102, Neobush_81, NoSwimming_59, Nymphadora_84, Peas_68, PeggyLeg03_70, Phrank15_100, Polly_76, Ponzi_39, RadFad_100, Raphaella_96, RavenCo17_74, Richie_99, RootBeer_55, Rowa_68, Sashimi_98, Seahorse_101, Shambre1_67, SpicyFrank_99, Spooks_36, Success_39, Suscepit_79, Tayonia_79, ThankyouJordi_83, Tiff81_90, TimTam_84, Trumpet_79, WelcomeAyanna_83, YoungHarleezy_95, Zameen_79, Zirinka_79,

Summary by start number:

Start 23:

- Found in 17 of 159 (10.7%) of genes in pham
- Manual Annotations of this start: 1 of 146
- Called 5.9% of time when present
- Phage (with cluster) where this start called: Saints25_141 (E),

Start 30:

- Found in 77 of 159 (48.4%) of genes in pham
- Manual Annotations of this start: 2 of 146
- Called 2.6% of time when present
- Phage (with cluster) where this start called: Czyszczone1_146 (E), Marshmallow_149 (E),

Start 32:

- Found in 1 of 159 (0.6%) of genes in pham
- Manual Annotations of this start: 1 of 146
- Called 100.0% of time when present
- Phage (with cluster) where this start called: Rowa_68 (BL),

Start 35:

- Found in 2 of 159 (1.3%) of genes in pham
- Manual Annotations of this start: 1 of 146
- Called 50.0% of time when present
- Phage (with cluster) where this start called: Hum25_86 (FQ),

Start 36:

- Found in 2 of 159 (1.3%) of genes in pham
- Manual Annotations of this start: 1 of 146
- Called 50.0% of time when present
- Phage (with cluster) where this start called: Success_39 (BT),

Start 37:

- Found in 1 of 159 (0.6%) of genes in pham
- Manual Annotations of this start: 1 of 146
- Called 100.0% of time when present

- Phage (with cluster) where this start called: Kromp_95 (singleton),

Start 38:

- Found in 1 of 159 (0.6%) of genes in pham
- Manual Annotations of this start: 1 of 146
- Called 100.0% of time when present
- Phage (with cluster) where this start called: RootBeer_55 (FA),

Start 39:

- Found in 39 of 159 (24.5%) of genes in pham
- Manual Annotations of this start: 25 of 146
- Called 94.9% of time when present
- Phage (with cluster) where this start called: Anekin_95 (AY), Auxilium_93 (AY), BenchScraper_96 (AY), BillyTP_96 (AY), BlueShadow_100 (AY), Bridgette_71 (FA), ChuckDuck_69 (FA), CookieBear_94 (AY), Eileen_64 (FA), EvePickles_96 (AY), Faja_96 (AY), FosterFrank_71 (FA), Globfish_94 (AY), GlobiWarming_74 (FA), Hillester_99 (AY), Ibantik_57 (singleton), Isolde_98 (AY), Judy_72 (FA), Karkharias_66 (FA), Lawnathon_98 (AY), MaterMagnus_96 (AY), MidnightRain_102 (AY), NoSwimming_59 (FO), Peas_68 (FA), PeggyLeg03_70 (FA), Phrank15_100 (AY), Ponzi_39 (singleton), RadFad_100 (AY), Raphaella_96 (AY), Richie_99 (AY), Sashimi_98 (AY), Seahorse_101 (AY), Shambre1_67 (singleton), SpicyFrank_99 (AY), Spooks_36 (BT), Tiff81_90 (AY), YoungHarleezy_95 (AY),

Start 40:

- Found in 28 of 159 (17.6%) of genes in pham
- Manual Annotations of this start: 27 of 146
- Called 100.0% of time when present
- Phage (with cluster) where this start called: Agueybana_85 (CZ1), AlumE_82 (CZ1), Antonio_78 (CZ1), BatStarr_83 (CZ1), Bialota_79 (CZ1), Bosnia_82 (CZ1), BoyNamedSue_82 (CZ1), Bunnybear_78 (CZ), Eudoria_79 (CZ1), Eviarto_84 (CZ1), Herod_84 (CZ1), Hyzer_101 (CZ1), Kita_80 (CZ1), Madeline_76 (CZ1), Manasvini_81 (CZ1), Maridalia_83 (CZ1), Neobush_81 (CZ1), Nymphadora_84 (CZ1), Polly_76 (CZ1), RavenCo17_74 (CZ8), Suscepit_79 (CZ1), Tayonia_79 (CZ1), ThankyouJordi_83 (CZ1), TimTam_84 (CZ1), Trumpet_79 (CZ1), WelcomeAyanna_83 (CZ1), Zameen_79 (CZ1), Zirinka_79 (CZ1),

Start 41:

- Found in 87 of 159 (54.7%) of genes in pham
- Manual Annotations of this start: 84 of 146
- Called 96.6% of time when present
- Phage (with cluster) where this start called: ABCat_145 (E), Adnama_150 (E), AmericanBeauty_149 (E), Argent26_150 (E), Asriel_144 (E), BaboJay_146 (E), BadStone_145 (E), Balomoji_146 (E), Barbarian_146 (E), Bench_149 (E), BigBubba_149 (E), Buck_148 (E), Cactus_154 (E), ChosenOne_147 (E), Chymera_55 (singleton), Command613_149 (E), Contagion_142 (E), Cookies_148 (E), DoctorDiddles_145 (E), Dumbo_149 (E), Easy2Say_148 (E), Elite2014_146 (E), Emmina_148 (E), FireRed_150 (E), Flypotenuse_142 (E), Gage_137 (E), Gemini_151 (E), Glexan_150 (E), GoldenSpark_150 (E), Goldilocks_152 (E), Harella_153 (E), Highbury_141 (E), Holt_152 (E), Hoonter_148 (E), Hopey_144 (E), HufflyPuff_148 (E), IHOP_151 (E), Icee_146 (E), Inca_147 (E), JeTaime_144 (E), Kanye_142 (E), Kimchi_151 (E), Lilpickle_146 (E), MISSy_147 (E), MPhalcon_148 (E), MadamMonkfish_148 (E), Manda_149 (E), Maxxinista_148 (E), Miniwave_140 (E), Murica_149 (E), Murphy_148 (E), Myrale_146 (E), Nala_149 (E), Nimrod_145 (E),

NoSleep_145 (E), OrionPax_144 (E), Palpatine_143 (E), Paperbeatsrock_144 (E), Pat3_147 (E), Phaja_151 (E), PhatBacter_150 (E), Phaux_147 (E), Phrux_143 (E), Policronamos_145 (E), Qualification_146 (E), Rimmer_145 (E), RiverMonster_146 (E), ShamWow_145 (E), ShereKhan_145 (E), SophKB_144 (E), Sotrice96_151 (E), Stank_150 (E), Stark_143 (E), StolenFromERC_148 (E), TBrady12_151 (E), Tarkin_144 (E), Teaspoon_130 (E), Thresher_148 (E), Traaww1_144 (E), Tuco_150 (E), Ukulele_143 (E), Wiggin_149 (E), Willez_144 (E), Youngblood_150 (E),

Start 43:

- Found in 2 of 159 (1.3%) of genes in pham
- Manual Annotations of this start: 1 of 146
- Called 50.0% of time when present
- Phage (with cluster) where this start called: Hestia_90 (AY),

Start 47:

- Found in 1 of 159 (0.6%) of genes in pham
- Manual Annotations of this start: 1 of 146
- Called 100.0% of time when present
- Phage (with cluster) where this start called: Journey_64 (N),

Summary by clusters:

There are 12 clusters represented in this pham: FQ, singleton, E, CZ, BL, CZ1, CZ8, N, BT, FA, AY, FO,

Info for manual annotations of cluster AY:

- Start number 39 was manually annotated 14 times for cluster AY.
- Start number 43 was manually annotated 1 time for cluster AY.

Info for manual annotations of cluster BL:

- Start number 32 was manually annotated 1 time for cluster BL.

Info for manual annotations of cluster BT:

- Start number 36 was manually annotated 1 time for cluster BT.

Info for manual annotations of cluster CZ:

- Start number 40 was manually annotated 1 time for cluster CZ.

Info for manual annotations of cluster CZ1:

- Start number 40 was manually annotated 25 times for cluster CZ1.

Info for manual annotations of cluster CZ8:

- Start number 40 was manually annotated 1 time for cluster CZ8.

Info for manual annotations of cluster E:

- Start number 23 was manually annotated 1 time for cluster E.
- Start number 30 was manually annotated 2 times for cluster E.
- Start number 41 was manually annotated 83 times for cluster E.

Info for manual annotations of cluster FA:

- Start number 38 was manually annotated 1 time for cluster FA.
- Start number 39 was manually annotated 8 times for cluster FA.

Info for manual annotations of cluster FQ:

•Start number 35 was manually annotated 1 time for cluster FQ.

Info for manual annotations of cluster N:

•Start number 47 was manually annotated 1 time for cluster N.

Gene Information:

Gene: ABCat_145 Start: 75550, Stop: 75897, Start Num: 41

Candidate Starts for ABCat_145:

(Start: 30 @75493 has 2 MA's), (Start: 41 @75550 has 84 MA's),

Gene: Adnama_150 Start: 74627, Stop: 74974, Start Num: 41

Candidate Starts for Adnama_150:

(Start: 30 @74570 has 2 MA's), (Start: 41 @74627 has 84 MA's),

Gene: Agueybana_85 Start: 52421, Stop: 52756, Start Num: 40

Candidate Starts for Agueybana_85:

(9, 52148), (Start: 40 @52421 has 27 MA's),

Gene: AlumE_82 Start: 52312, Stop: 52647, Start Num: 40

Candidate Starts for AlumE_82:

(9, 52039), (Start: 40 @52312 has 27 MA's),

Gene: AmericanBeauty_149 Start: 74669, Stop: 75016, Start Num: 41

Candidate Starts for AmericanBeauty_149:

(Start: 30 @74612 has 2 MA's), (Start: 41 @74669 has 84 MA's),

Gene: Anekin_95 Start: 52237, Stop: 52560, Start Num: 39

Candidate Starts for Anekin_95:

(Start: 39 @52237 has 25 MA's), (Start: 43 @52249 has 1 MA's), (49, 52375),

Gene: Antonio_78 Start: 49950, Stop: 50285, Start Num: 40

Candidate Starts for Antonio_78:

(9, 49677), (Start: 40 @49950 has 27 MA's),

Gene: Argent26_150 Start: 74551, Stop: 74898, Start Num: 41

Candidate Starts for Argent26_150:

(Start: 30 @74494 has 2 MA's), (Start: 41 @74551 has 84 MA's),

Gene: Asriel_144 Start: 74013, Stop: 74360, Start Num: 41

Candidate Starts for Asriel_144:

(Start: 41 @74013 has 84 MA's),

Gene: Auxilium_93 Start: 49043, Stop: 49363, Start Num: 39

Candidate Starts for Auxilium_93:

(Start: 39 @49043 has 25 MA's), (58, 49223),

Gene: BaboJay_146 Start: 75796, Stop: 76143, Start Num: 41

Candidate Starts for BaboJay_146:

(Start: 23 @75700 has 1 MA's), (Start: 30 @75739 has 2 MA's), (Start: 41 @75796 has 84 MA's),

Gene: BadStone_145 Start: 75098, Stop: 75445, Start Num: 41

Candidate Starts for BadStone_145:

(Start: 30 @75041 has 2 MA's), (Start: 41 @75098 has 84 MA's),

Gene: Balomoji_146 Start: 75838, Stop: 76185, Start Num: 41

Candidate Starts for Balomoji_146:

(Start: 41 @75838 has 84 MA's),

Gene: Barbarian_146 Start: 74013, Stop: 74360, Start Num: 41

Candidate Starts for Barbarian_146:

(Start: 41 @74013 has 84 MA's),

Gene: BatStarr_83 Start: 53046, Stop: 53381, Start Num: 40

Candidate Starts for BatStarr_83:

(9, 52773), (Start: 40 @53046 has 27 MA's), (61, 53232),

Gene: Bench_149 Start: 75511, Stop: 75858, Start Num: 41

Candidate Starts for Bench_149:

(Start: 30 @75454 has 2 MA's), (Start: 41 @75511 has 84 MA's),

Gene: BenchScraper_96 Start: 50794, Stop: 51114, Start Num: 39

Candidate Starts for BenchScraper_96:

(Start: 39 @50794 has 25 MA's), (58, 50974),

Gene: Bialota_79 Start: 51706, Stop: 52038, Start Num: 40

Candidate Starts for Bialota_79:

(9, 51433), (Start: 40 @51706 has 27 MA's),

Gene: BigBubba_149 Start: 74425, Stop: 74772, Start Num: 41

Candidate Starts for BigBubba_149:

(Start: 30 @74368 has 2 MA's), (Start: 41 @74425 has 84 MA's),

Gene: BillyTP_96 Start: 52593, Stop: 52919, Start Num: 39

Candidate Starts for BillyTP_96:

(Start: 39 @52593 has 25 MA's), (58, 52773),

Gene: BlueShadow_100 Start: 52029, Stop: 52349, Start Num: 39

Candidate Starts for BlueShadow_100:

(Start: 39 @52029 has 25 MA's), (58, 52209),

Gene: Bosnia_82 Start: 54160, Stop: 54495, Start Num: 40

Candidate Starts for Bosnia_82:

(9, 53887), (Start: 40 @54160 has 27 MA's), (61, 54346),

Gene: BoyNamedSue_82 Start: 52312, Stop: 52647, Start Num: 40

Candidate Starts for BoyNamedSue_82:

(9, 52039), (Start: 40 @52312 has 27 MA's),

Gene: Bridgette_71 Start: 42699, Stop: 43043, Start Num: 39

Candidate Starts for Bridgette_71:

(Start: 39 @42699 has 25 MA's),

Gene: Buck_148 Start: 76107, Stop: 76454, Start Num: 41
Candidate Starts for Buck_148:
(Start: 30 @76050 has 2 MA's), (Start: 41 @76107 has 84 MA's),

Gene: Bunnybear_78 Start: 50882, Stop: 51217, Start Num: 40
Candidate Starts for Bunnybear_78:
(9, 50609), (Start: 40 @50882 has 27 MA's),

Gene: Cactus_154 Start: 75022, Stop: 75369, Start Num: 41
Candidate Starts for Cactus_154:
(Start: 30 @74965 has 2 MA's), (Start: 41 @75022 has 84 MA's),

Gene: ChosenOne_147 Start: 74389, Stop: 74736, Start Num: 41
Candidate Starts for ChosenOne_147:
(Start: 30 @74332 has 2 MA's), (Start: 41 @74389 has 84 MA's),

Gene: ChuckDuck_69 Start: 42418, Stop: 42762, Start Num: 39
Candidate Starts for ChuckDuck_69:
(Start: 39 @42418 has 25 MA's),

Gene: Chymera_55 Start: 34305, Stop: 34673, Start Num: 41
Candidate Starts for Chymera_55:
(3, 33873), (8, 33963), (16, 34143), (Start: 41 @34305 has 84 MA's), (46, 34353), (56, 34488), (62, 34548),

Gene: Command613_149 Start: 75444, Stop: 75791, Start Num: 41
Candidate Starts for Command613_149:
(Start: 23 @75348 has 1 MA's), (Start: 30 @75387 has 2 MA's), (Start: 41 @75444 has 84 MA's),

Gene: Contagion_142 Start: 73952, Stop: 74299, Start Num: 41
Candidate Starts for Contagion_142:
(Start: 30 @73895 has 2 MA's), (Start: 41 @73952 has 84 MA's),

Gene: CookieBear_94 Start: 51777, Stop: 52097, Start Num: 39
Candidate Starts for CookieBear_94:
(Start: 39 @51777 has 25 MA's), (58, 51957),

Gene: Cookies_148 Start: 75759, Stop: 76106, Start Num: 41
Candidate Starts for Cookies_148:
(Start: 30 @75702 has 2 MA's), (Start: 41 @75759 has 84 MA's),

Gene: Czyszczone1_146 Start: 74437, Stop: 74841, Start Num: 30
Candidate Starts for Czyszczone1_146:
(Start: 30 @74437 has 2 MA's), (Start: 41 @74494 has 84 MA's),

Gene: DoctorDiddles_145 Start: 74489, Stop: 74836, Start Num: 41
Candidate Starts for DoctorDiddles_145:
(Start: 30 @74432 has 2 MA's), (Start: 41 @74489 has 84 MA's),

Gene: Dumbo_149 Start: 75155, Stop: 75502, Start Num: 41
Candidate Starts for Dumbo_149:
(Start: 30 @75098 has 2 MA's), (Start: 41 @75155 has 84 MA's),

Gene: Easy2Say_148 Start: 75017, Stop: 75364, Start Num: 41
Candidate Starts for Easy2Say_148:
(Start: 30 @74960 has 2 MA's), (Start: 41 @75017 has 84 MA's),

Gene: Eileen_64 Start: 40750, Stop: 41094, Start Num: 39
Candidate Starts for Eileen_64:
(14, 40555), (24, 40678), (Start: 39 @40750 has 25 MA's),

Gene: Elite2014_146 Start: 74388, Stop: 74735, Start Num: 41
Candidate Starts for Elite2014_146:
(Start: 30 @74331 has 2 MA's), (Start: 41 @74388 has 84 MA's),

Gene: Emmina_148 Start: 74714, Stop: 75061, Start Num: 41
Candidate Starts for Emmina_148:
(Start: 30 @74657 has 2 MA's), (Start: 41 @74714 has 84 MA's),

Gene: Eudoria_79 Start: 49950, Stop: 50285, Start Num: 40
Candidate Starts for Eudoria_79:
(9, 49677), (Start: 40 @49950 has 27 MA's),

Gene: EvePickles_96 Start: 52994, Stop: 53314, Start Num: 39
Candidate Starts for EvePickles_96:
(Start: 39 @52994 has 25 MA's), (58, 53174),

Gene: Eviarto_84 Start: 53021, Stop: 53356, Start Num: 40
Candidate Starts for Eviarto_84:
(9, 52748), (Start: 40 @53021 has 27 MA's), (61, 53207),

Gene: Faja_96 Start: 52066, Stop: 52386, Start Num: 39
Candidate Starts for Faja_96:
(Start: 39 @52066 has 25 MA's), (58, 52246),

Gene: FireRed_150 Start: 75636, Stop: 75983, Start Num: 41
Candidate Starts for FireRed_150:
(Start: 23 @75540 has 1 MA's), (Start: 30 @75579 has 2 MA's), (Start: 41 @75636 has 84 MA's),

Gene: Flypotenuse_142 Start: 74667, Stop: 75014, Start Num: 41
Candidate Starts for Flypotenuse_142:
(Start: 41 @74667 has 84 MA's),

Gene: FosterFrank_71 Start: 42119, Stop: 42463, Start Num: 39
Candidate Starts for FosterFrank_71:
(10, 41831), (Start: 39 @42119 has 25 MA's),

Gene: Gage_137 Start: 71069, Stop: 71416, Start Num: 41
Candidate Starts for Gage_137:
(Start: 30 @71012 has 2 MA's), (Start: 41 @71069 has 84 MA's),

Gene: Gemini_151 Start: 75068, Stop: 75415, Start Num: 41
Candidate Starts for Gemini_151:
(Start: 30 @75011 has 2 MA's), (Start: 41 @75068 has 84 MA's),

Gene: Glexan_150 Start: 75917, Stop: 76264, Start Num: 41
Candidate Starts for Glexan_150:
(Start: 41 @75917 has 84 MA's),

Gene: Globfish_94 Start: 50972, Stop: 51292, Start Num: 39
Candidate Starts for Globfish_94:
(Start: 39 @50972 has 25 MA's), (58, 51152),

Gene: GlobiWarming_74 Start: 42547, Stop: 42891, Start Num: 39
Candidate Starts for GlobiWarming_74:
(31, 42526), (Start: 35 @42541 has 1 MA's), (Start: 39 @42547 has 25 MA's),

Gene: GoldenSpark_150 Start: 74551, Stop: 74898, Start Num: 41
Candidate Starts for GoldenSpark_150:
(Start: 30 @74494 has 2 MA's), (Start: 41 @74551 has 84 MA's),

Gene: Goldilocks_152 Start: 75147, Stop: 75494, Start Num: 41
Candidate Starts for Goldilocks_152:
(Start: 30 @75090 has 2 MA's), (Start: 41 @75147 has 84 MA's),

Gene: Harella_153 Start: 76278, Stop: 76625, Start Num: 41
Candidate Starts for Harella_153:
(Start: 41 @76278 has 84 MA's),

Gene: Herod_84 Start: 53440, Stop: 53775, Start Num: 40
Candidate Starts for Herod_84:
(9, 53167), (Start: 40 @53440 has 27 MA's), (61, 53626),

Gene: Hestia_90 Start: 50238, Stop: 50558, Start Num: 43
Candidate Starts for Hestia_90:
(13, 49992), (Start: 39 @50226 has 25 MA's), (Start: 43 @50238 has 1 MA's), (50, 50367),

Gene: Highbury_141 Start: 72834, Stop: 73181, Start Num: 41
Candidate Starts for Highbury_141:
(Start: 23 @72738 has 1 MA's), (Start: 30 @72777 has 2 MA's), (Start: 41 @72834 has 84 MA's),

Gene: Hillester_99 Start: 52313, Stop: 52633, Start Num: 39
Candidate Starts for Hillester_99:
(Start: 39 @52313 has 25 MA's), (58, 52493),

Gene: Holt_152 Start: 75334, Stop: 75681, Start Num: 41
Candidate Starts for Holt_152:
(Start: 30 @75277 has 2 MA's), (Start: 41 @75334 has 84 MA's),

Gene: Hoonter_148 Start: 74686, Stop: 75033, Start Num: 41
Candidate Starts for Hoonter_148:
(Start: 41 @74686 has 84 MA's),

Gene: Hopecy_144 Start: 75005, Stop: 75352, Start Num: 41
Candidate Starts for Hopecy_144:
(Start: 23 @74909 has 1 MA's), (Start: 30 @74948 has 2 MA's), (Start: 41 @75005 has 84 MA's),

Gene: HuffyPuff_148 Start: 75742, Stop: 76089, Start Num: 41

Candidate Starts for HufflyPuff_148:

(Start: 30 @75685 has 2 MA's), (Start: 41 @75742 has 84 MA's),

Gene: Hum25_86 Start: 42285, Stop: 42626, Start Num: 35

Candidate Starts for Hum25_86:

(Start: 35 @42285 has 1 MA's), (42, 42303), (54, 42438),

Gene: Hyzer_101 Start: 60183, Stop: 60518, Start Num: 40

Candidate Starts for Hyzer_101:

(27, 60138), (Start: 40 @60183 has 27 MA's),

Gene: IHOP_151 Start: 75087, Stop: 75434, Start Num: 41

Candidate Starts for IHOP_151:

(Start: 30 @75030 has 2 MA's), (Start: 41 @75087 has 84 MA's),

Gene: lbantik_57 Start: 25161, Stop: 25478, Start Num: 39

Candidate Starts for lbantik_57:

(29, 25107), (Start: 39 @25161 has 25 MA's), (44, 25176), (45, 25185), (55, 25320), (59, 25347), (63, 25392), (64, 25416),

Gene: lcee_146 Start: 73588, Stop: 73935, Start Num: 41

Candidate Starts for lcee_146:

(Start: 30 @73531 has 2 MA's), (Start: 41 @73588 has 84 MA's),

Gene: Inca_147 Start: 73489, Stop: 73836, Start Num: 41

Candidate Starts for Inca_147:

(20, 73372), (Start: 23 @73393 has 1 MA's), (Start: 30 @73432 has 2 MA's), (Start: 41 @73489 has 84 MA's),

Gene: Isolde_98 Start: 52809, Stop: 53129, Start Num: 39

Candidate Starts for Isolde_98:

(Start: 39 @52809 has 25 MA's), (58, 52989),

Gene: JeTaime_144 Start: 74518, Stop: 74865, Start Num: 41

Candidate Starts for JeTaime_144:

(Start: 30 @74461 has 2 MA's), (Start: 41 @74518 has 84 MA's),

Gene: Journey_64 Start: 41500, Stop: 41799, Start Num: 47

Candidate Starts for Journey_64:

(Start: 47 @41500 has 1 MA's),

Gene: Judy_72 Start: 43025, Stop: 43369, Start Num: 39

Candidate Starts for Judy_72:

(Start: 39 @43025 has 25 MA's),

Gene: Kanye_142 Start: 74872, Stop: 75219, Start Num: 41

Candidate Starts for Kanye_142:

(Start: 30 @74815 has 2 MA's), (Start: 41 @74872 has 84 MA's),

Gene: Karkharias_66 Start: 42195, Stop: 42539, Start Num: 39

Candidate Starts for Karkharias_66:

(Start: 39 @42195 has 25 MA's),

Gene: Kimchi_151 Start: 75248, Stop: 75595, Start Num: 41

Candidate Starts for Kimchi_151:

(Start: 30 @75191 has 2 MA's), (Start: 41 @75248 has 84 MA's),

Gene: Kita_80 Start: 49959, Stop: 50294, Start Num: 40

Candidate Starts for Kita_80:

(9, 49686), (Start: 40 @49959 has 27 MA's),

Gene: Kromp_95 Start: 57607, Stop: 57981, Start Num: 37

Candidate Starts for Kromp_95:

(1, 56935), (2, 57178), (4, 57223), (11, 57367), (12, 57382), (15, 57454), (33, 57592), (Start: 37 @57607 has 1 MA's), (51, 57775), (52, 57784),

Gene: Lawnathon_98 Start: 52639, Stop: 52959, Start Num: 39

Candidate Starts for Lawnathon_98:

(Start: 39 @52639 has 25 MA's), (58, 52819),

Gene: Lilpickle_146 Start: 74388, Stop: 74735, Start Num: 41

Candidate Starts for Lilpickle_146:

(Start: 30 @74331 has 2 MA's), (Start: 41 @74388 has 84 MA's),

Gene: MISSy_147 Start: 75227, Stop: 75574, Start Num: 41

Candidate Starts for MISSy_147:

(Start: 23 @75131 has 1 MA's), (Start: 30 @75170 has 2 MA's), (Start: 41 @75227 has 84 MA's),

Gene: MPhalcon_148 Start: 75024, Stop: 75371, Start Num: 41

Candidate Starts for MPhalcon_148:

(Start: 23 @74928 has 1 MA's), (Start: 30 @74967 has 2 MA's), (Start: 41 @75024 has 84 MA's),

Gene: MadamMonkfish_148 Start: 74973, Stop: 75320, Start Num: 41

Candidate Starts for MadamMonkfish_148:

(Start: 30 @74916 has 2 MA's), (Start: 41 @74973 has 84 MA's),

Gene: Madeline_76 Start: 51284, Stop: 51616, Start Num: 40

Candidate Starts for Madeline_76:

(6, 50948), (9, 51011), (Start: 40 @51284 has 27 MA's),

Gene: Manasvini_81 Start: 49974, Stop: 50309, Start Num: 40

Candidate Starts for Manasvini_81:

(9, 49701), (Start: 40 @49974 has 27 MA's),

Gene: Manda_149 Start: 75442, Stop: 75789, Start Num: 41

Candidate Starts for Manda_149:

(Start: 23 @75346 has 1 MA's), (Start: 30 @75385 has 2 MA's), (Start: 41 @75442 has 84 MA's),

Gene: Maridalia_83 Start: 51242, Stop: 51577, Start Num: 40

Candidate Starts for Maridalia_83:

(9, 50969), (Start: 40 @51242 has 27 MA's),

Gene: Marshmallow_149 Start: 76102, Stop: 76506, Start Num: 30

Candidate Starts for Marshmallow_149:

(Start: 30 @76102 has 2 MA's), (Start: 41 @76159 has 84 MA's),

Gene: MaterMagnus_96 Start: 52654, Stop: 52974, Start Num: 39
Candidate Starts for MaterMagnus_96:
(Start: 39 @52654 has 25 MA's), (58, 52834),

Gene: Maxxinista_148 Start: 74634, Stop: 74981, Start Num: 41
Candidate Starts for Maxxinista_148:
(Start: 30 @74577 has 2 MA's), (Start: 41 @74634 has 84 MA's),

Gene: MidnightRain_102 Start: 53249, Stop: 53569, Start Num: 39
Candidate Starts for MidnightRain_102:
(Start: 39 @53249 has 25 MA's),

Gene: Miniwave_140 Start: 74380, Stop: 74727, Start Num: 41
Candidate Starts for Miniwave_140:
(Start: 30 @74323 has 2 MA's), (Start: 41 @74380 has 84 MA's),

Gene: Murica_149 Start: 76472, Stop: 76819, Start Num: 41
Candidate Starts for Murica_149:
(Start: 23 @76376 has 1 MA's), (Start: 30 @76415 has 2 MA's), (Start: 41 @76472 has 84 MA's),

Gene: Murphy_148 Start: 75598, Stop: 75945, Start Num: 41
Candidate Starts for Murphy_148:
(Start: 30 @75541 has 2 MA's), (Start: 41 @75598 has 84 MA's),

Gene: Myrale_146 Start: 75838, Stop: 76185, Start Num: 41
Candidate Starts for Myrale_146:
(Start: 30 @75781 has 2 MA's), (Start: 41 @75838 has 84 MA's),

Gene: Nala_149 Start: 75313, Stop: 75660, Start Num: 41
Candidate Starts for Nala_149:
(Start: 23 @75217 has 1 MA's), (Start: 30 @75256 has 2 MA's), (Start: 41 @75313 has 84 MA's),

Gene: Neobush_81 Start: 50518, Stop: 50853, Start Num: 40
Candidate Starts for Neobush_81:
(9, 50245), (Start: 40 @50518 has 27 MA's),

Gene: Nimrod_145 Start: 75854, Stop: 76201, Start Num: 41
Candidate Starts for Nimrod_145:
(Start: 30 @75797 has 2 MA's), (Start: 41 @75854 has 84 MA's),

Gene: NoSleep_145 Start: 74074, Stop: 74421, Start Num: 41
Candidate Starts for NoSleep_145:
(Start: 30 @74017 has 2 MA's), (Start: 41 @74074 has 84 MA's),

Gene: NoSwimming_59 Start: 40976, Stop: 41329, Start Num: 39
Candidate Starts for NoSwimming_59:
(Start: 39 @40976 has 25 MA's), (48, 41072), (65, 41240), (66, 41285),

Gene: Nymphadora_84 Start: 53045, Stop: 53380, Start Num: 40
Candidate Starts for Nymphadora_84:
(9, 52772), (Start: 40 @53045 has 27 MA's), (61, 53231),

Gene: OrionPax_144 Start: 74532, Stop: 74879, Start Num: 41

Candidate Starts for OrionPax_144:

(Start: 30 @74475 has 2 MA's), (Start: 41 @74532 has 84 MA's),

Gene: Palpatine_143 Start: 75228, Stop: 75575, Start Num: 41

Candidate Starts for Palpatine_143:

(Start: 23 @75132 has 1 MA's), (Start: 30 @75171 has 2 MA's), (Start: 41 @75228 has 84 MA's),

Gene: Paperbeatsrock_144 Start: 75058, Stop: 75405, Start Num: 41

Candidate Starts for Paperbeatsrock_144:

(Start: 30 @75001 has 2 MA's), (Start: 41 @75058 has 84 MA's),

Gene: Pat3_147 Start: 75094, Stop: 75441, Start Num: 41

Candidate Starts for Pat3_147:

(Start: 41 @75094 has 84 MA's),

Gene: Peas_68 Start: 43688, Stop: 44032, Start Num: 39

Candidate Starts for Peas_68:

(19, 43556), (28, 43634), (Start: 39 @43688 has 25 MA's),

Gene: PeggyLeg03_70 Start: 42854, Stop: 43198, Start Num: 39

Candidate Starts for PeggyLeg03_70:

(Start: 39 @42854 has 25 MA's),

Gene: Phaja_151 Start: 75104, Stop: 75451, Start Num: 41

Candidate Starts for Phaja_151:

(Start: 30 @75047 has 2 MA's), (Start: 41 @75104 has 84 MA's),

Gene: PhatBacter_150 Start: 75636, Stop: 75983, Start Num: 41

Candidate Starts for PhatBacter_150:

(Start: 23 @75540 has 1 MA's), (Start: 30 @75579 has 2 MA's), (Start: 41 @75636 has 84 MA's),

Gene: Phaux_147 Start: 75898, Stop: 76245, Start Num: 41

Candidate Starts for Phaux_147:

(Start: 30 @75841 has 2 MA's), (Start: 41 @75898 has 84 MA's),

Gene: Phrank15_100 Start: 52150, Stop: 52461, Start Num: 39

Candidate Starts for Phrank15_100:

(5, 51760), (7, 51793), (14, 51952), (18, 52009), (25, 52078), (Start: 39 @52150 has 25 MA's), (49, 52276), (55, 52303),

Gene: Phrux_143 Start: 74130, Stop: 74477, Start Num: 41

Candidate Starts for Phrux_143:

(Start: 30 @74073 has 2 MA's), (Start: 41 @74130 has 84 MA's),

Gene: Policronamos_145 Start: 75313, Stop: 75660, Start Num: 41

Candidate Starts for Policronamos_145:

(Start: 23 @75217 has 1 MA's), (Start: 30 @75256 has 2 MA's), (Start: 41 @75313 has 84 MA's),

Gene: Polly_76 Start: 49393, Stop: 49728, Start Num: 40

Candidate Starts for Polly_76:

(9, 49120), (Start: 40 @49393 has 27 MA's),

Gene: Ponzi_39 Start: 21753, Stop: 22079, Start Num: 39

Candidate Starts for Ponzi_39:
(Start: 39 @21753 has 25 MA's), (63, 21984),

Gene: Quallification_146 Start: 75327, Stop: 75674, Start Num: 41
Candidate Starts for Quallification_146:
(Start: 30 @75270 has 2 MA's), (Start: 41 @75327 has 84 MA's),

Gene: RadFad_100 Start: 52313, Stop: 52633, Start Num: 39
Candidate Starts for RadFad_100:
(Start: 39 @52313 has 25 MA's), (58, 52493),

Gene: Raphaella_96 Start: 51282, Stop: 51608, Start Num: 39
Candidate Starts for Raphaella_96:
(Start: 39 @51282 has 25 MA's), (58, 51462),

Gene: RavenCo17_74 Start: 49279, Stop: 49611, Start Num: 40
Candidate Starts for RavenCo17_74:
(Start: 40 @49279 has 27 MA's), (54, 49411),

Gene: Richie_99 Start: 53442, Stop: 53762, Start Num: 39
Candidate Starts for Richie_99:
(17, 53286), (21, 53343), (Start: 39 @53442 has 25 MA's), (58, 53622),

Gene: Rimmer_145 Start: 75079, Stop: 75426, Start Num: 41
Candidate Starts for Rimmer_145:
(Start: 30 @75022 has 2 MA's), (Start: 41 @75079 has 84 MA's),

Gene: RiverMonster_146 Start: 74984, Stop: 75331, Start Num: 41
Candidate Starts for RiverMonster_146:
(Start: 30 @74927 has 2 MA's), (Start: 41 @74984 has 84 MA's),

Gene: RootBeer_55 Start: 38956, Stop: 39309, Start Num: 38
Candidate Starts for RootBeer_55:
(22, 38890), (Start: 38 @38956 has 1 MA's), (57, 39118), (59, 39139),

Gene: Rowa_68 Start: 42116, Stop: 42472, Start Num: 32
Candidate Starts for Rowa_68:
(26, 42074), (Start: 32 @42116 has 1 MA's), (57, 42302), (60, 42326),

Gene: Saints25_141 Start: 72738, Stop: 73181, Start Num: 23
Candidate Starts for Saints25_141:
(Start: 23 @72738 has 1 MA's), (Start: 30 @72777 has 2 MA's), (Start: 41 @72834 has 84 MA's),

Gene: Sashimi_98 Start: 51797, Stop: 52117, Start Num: 39
Candidate Starts for Sashimi_98:
(Start: 39 @51797 has 25 MA's), (58, 51977),

Gene: Seahorse_101 Start: 56066, Stop: 56386, Start Num: 39
Candidate Starts for Seahorse_101:
(Start: 39 @56066 has 25 MA's), (58, 56246),

Gene: ShamWow_145 Start: 75352, Stop: 75699, Start Num: 41
Candidate Starts for ShamWow_145:

(Start: 30 @75295 has 2 MA's), (Start: 41 @75352 has 84 MA's),

Gene: Shambre1_67 Start: 41812, Stop: 42165, Start Num: 39

Candidate Starts for Shambre1_67:

(Start: 39 @41812 has 25 MA's), (59, 41995),

Gene: ShereKhan_145 Start: 75552, Stop: 75899, Start Num: 41

Candidate Starts for ShereKhan_145:

(Start: 30 @75495 has 2 MA's), (Start: 41 @75552 has 84 MA's),

Gene: SophKB_144 Start: 75004, Stop: 75351, Start Num: 41

Candidate Starts for SophKB_144:

(Start: 30 @74947 has 2 MA's), (Start: 41 @75004 has 84 MA's),

Gene: Sotrice96_151 Start: 75718, Stop: 76065, Start Num: 41

Candidate Starts for Sotrice96_151:

(Start: 30 @75661 has 2 MA's), (Start: 41 @75718 has 84 MA's),

Gene: SpicyFrank_99 Start: 51851, Stop: 52171, Start Num: 39

Candidate Starts for SpicyFrank_99:

(Start: 39 @51851 has 25 MA's), (58, 52031),

Gene: Spooks_36 Start: 24524, Stop: 24868, Start Num: 39

Candidate Starts for Spooks_36:

(34, 24515), (Start: 36 @24518 has 1 MA's), (Start: 39 @24524 has 25 MA's),

Gene: Stank_150 Start: 75344, Stop: 75691, Start Num: 41

Candidate Starts for Stank_150:

(Start: 30 @75287 has 2 MA's), (Start: 41 @75344 has 84 MA's),

Gene: Stark_143 Start: 74150, Stop: 74497, Start Num: 41

Candidate Starts for Stark_143:

(Start: 30 @74093 has 2 MA's), (Start: 41 @74150 has 84 MA's),

Gene: StolenFromERC_148 Start: 74689, Stop: 75036, Start Num: 41

Candidate Starts for StolenFromERC_148:

(Start: 30 @74632 has 2 MA's), (Start: 41 @74689 has 84 MA's),

Gene: Success_39 Start: 23746, Stop: 24093, Start Num: 36

Candidate Starts for Success_39:

(34, 23743), (Start: 36 @23746 has 1 MA's), (Start: 39 @23752 has 25 MA's), (53, 23911),

Gene: Suscepit_79 Start: 49951, Stop: 50286, Start Num: 40

Candidate Starts for Suscepit_79:

(9, 49678), (Start: 40 @49951 has 27 MA's),

Gene: TBrady12_151 Start: 74778, Stop: 75125, Start Num: 41

Candidate Starts for TBrady12_151:

(Start: 30 @74721 has 2 MA's), (Start: 41 @74778 has 84 MA's),

Gene: Tarkin_144 Start: 75417, Stop: 75764, Start Num: 41

Candidate Starts for Tarkin_144:

(Start: 30 @75360 has 2 MA's), (Start: 41 @75417 has 84 MA's),

Gene: Tayonia_79 Start: 49950, Stop: 50285, Start Num: 40

Candidate Starts for Tayonia_79:

(9, 49677), (Start: 40 @49950 has 27 MA's),

Gene: Teaspoon_130 Start: 70361, Stop: 70708, Start Num: 41

Candidate Starts for Teaspoon_130:

(Start: 30 @70304 has 2 MA's), (Start: 41 @70361 has 84 MA's),

Gene: ThankyouJordi_83 Start: 53067, Stop: 53414, Start Num: 40

Candidate Starts for ThankyouJordi_83:

(9, 52794), (Start: 40 @53067 has 27 MA's),

Gene: Thresher_148 Start: 75611, Stop: 75958, Start Num: 41

Candidate Starts for Thresher_148:

(Start: 23 @75515 has 1 MA's), (Start: 30 @75554 has 2 MA's), (Start: 41 @75611 has 84 MA's),

Gene: Tiff81_90 Start: 50115, Stop: 50435, Start Num: 39

Candidate Starts for Tiff81_90:

(Start: 39 @50115 has 25 MA's), (58, 50295),

Gene: TimTam_84 Start: 53045, Stop: 53380, Start Num: 40

Candidate Starts for TimTam_84:

(9, 52772), (Start: 40 @53045 has 27 MA's), (61, 53231),

Gene: Traaww1_144 Start: 74842, Stop: 75189, Start Num: 41

Candidate Starts for Traaww1_144:

(Start: 41 @74842 has 84 MA's),

Gene: Trumpet_79 Start: 49951, Stop: 50286, Start Num: 40

Candidate Starts for Trumpet_79:

(9, 49678), (Start: 40 @49951 has 27 MA's),

Gene: Tuco_150 Start: 76363, Stop: 76710, Start Num: 41

Candidate Starts for Tuco_150:

(Start: 30 @76306 has 2 MA's), (Start: 41 @76363 has 84 MA's),

Gene: Ukulele_143 Start: 74533, Stop: 74880, Start Num: 41

Candidate Starts for Ukulele_143:

(Start: 23 @74437 has 1 MA's), (Start: 30 @74476 has 2 MA's), (Start: 41 @74533 has 84 MA's),

Gene: WelcomeAyanna_83 Start: 53214, Stop: 53561, Start Num: 40

Candidate Starts for WelcomeAyanna_83:

(9, 52941), (Start: 40 @53214 has 27 MA's),

Gene: Wiggin_149 Start: 74322, Stop: 74669, Start Num: 41

Candidate Starts for Wiggin_149:

(Start: 30 @74265 has 2 MA's), (Start: 41 @74322 has 84 MA's),

Gene: Willez_144 Start: 73995, Stop: 74342, Start Num: 41

Candidate Starts for Willez_144:

(Start: 30 @73938 has 2 MA's), (Start: 41 @73995 has 84 MA's),

Gene: YoungHarleezy_95 Start: 52603, Stop: 52923, Start Num: 39
Candidate Starts for YoungHarleezy_95:
(Start: 39 @52603 has 25 MA's), (58, 52783),

Gene: Youngblood_150 Start: 75315, Stop: 75662, Start Num: 41
Candidate Starts for Youngblood_150:
(Start: 30 @75258 has 2 MA's), (Start: 41 @75315 has 84 MA's),

Gene: Zameen_79 Start: 49950, Stop: 50285, Start Num: 40
Candidate Starts for Zameen_79:
(9, 49677), (Start: 40 @49950 has 27 MA's),

Gene: Zirinka_79 Start: 51694, Stop: 52026, Start Num: 40
Candidate Starts for Zirinka_79:
(9, 51421), (Start: 40 @51694 has 27 MA's),