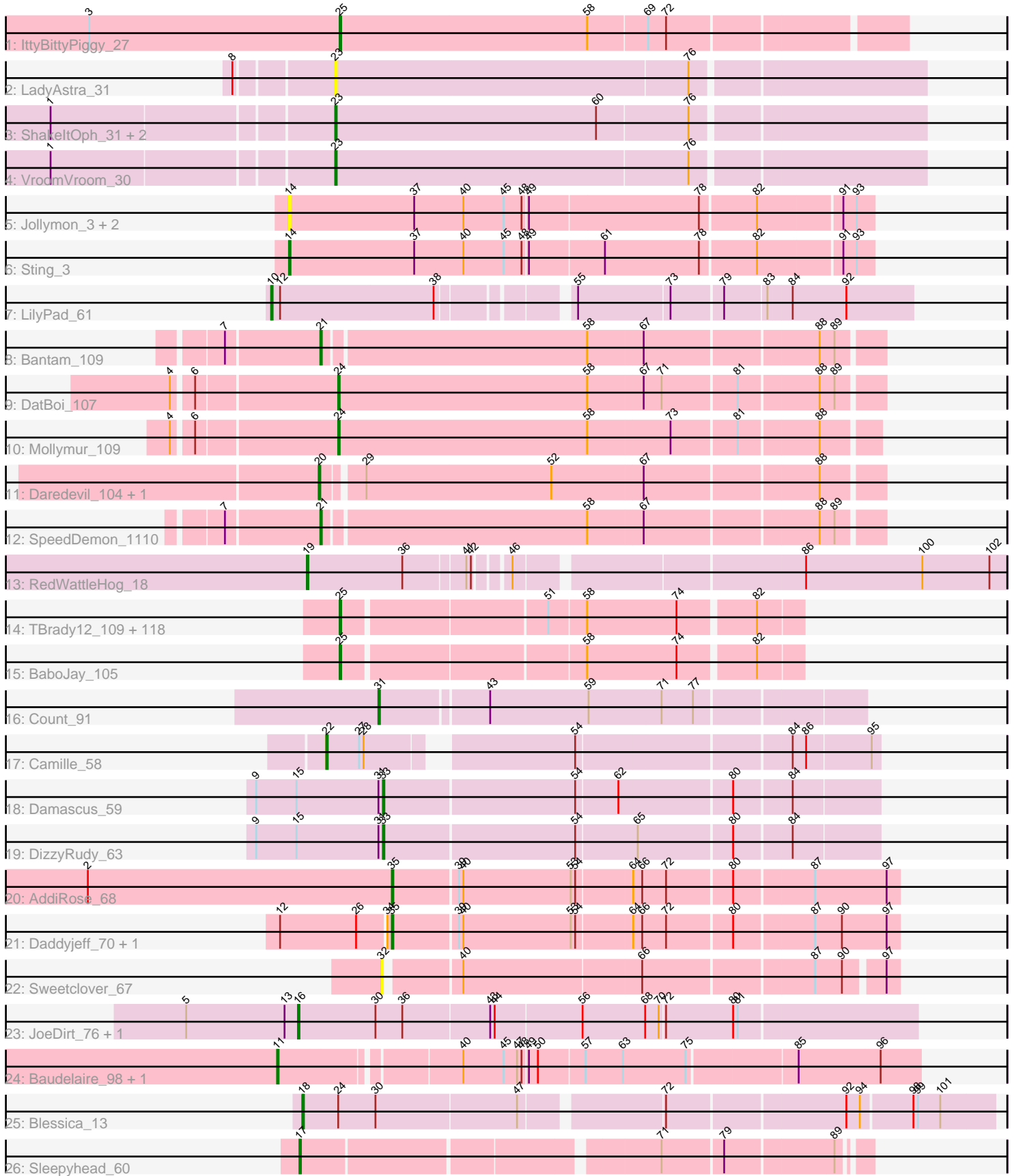


Pham 215909



Note: Tracks are now grouped by subcluster and scaled. Switching in subcluster is indicated by changes in track color. Track scale is now set by default to display the region 30 bp upstream of start 1 to 30 bp downstream of the last possible start. If this default region is judged to be packed too tightly with annotated starts, the track will be further scaled to only show that region of the ORF with annotated starts. This action will be indicated by adding "Zoomed" to the title. For starts, yellow indicates the location of called starts comprised solely of Glimmer/GeneMark auto-annotations, green indicates the location of called starts with at least 1 manual gene annotation.

Pham 215909 Report

This analysis was run 02/22/25 on database version 588.

Pham number 215909 has 152 members, 8 are drafts.

Phages represented in each track:

- Track 1 : IttyBittyPiggy_27
- Track 2 : LadyAstra_31
- Track 3 : ShakeltOph_31, JasmineDragon_30, MiniMommy_31
- Track 4 : VroomVroom_30
- Track 5 : Jollymon_3, ColdSoup_3, Amo99_3
- Track 6 : Sting_3
- Track 7 : LilyPad_61
- Track 8 : Bantam_109
- Track 9 : DatBoi_107
- Track 10 : Mollymur_109
- Track 11 : Daredevil_104, Towmatter_106
- Track 12 : SpeedDemon_1110
- Track 13 : RedWattleHog_18
- Track 14 : TBrady12_109, Lilizi_106, StellaBean_105, Glexan_105, Bench_108, JeTaimé_104, Lilpickle_105, Nimrod_106, Hopey_106, Murphy_105, Paperbeatsrock_105, DrDrey_106, Stark_106, Nala_108, Moldemort_108, ShamWow_106, Kimchi_110, Emmina_106, Traaww1_102, RiverMonster_105, Contagion_102, Adnama_110, Pumpkin_107, Cjw1_106, Pat3_103, Misfit_107, Teaspoon_106, Inca_103, Henry_103, Murica_109, Phaja_104, Cookies_103, Kanye_103, HanKaySha_106, StolenFromERC_108, Bruin_103, Bask21_106, PhatBacter_109, Buck_107, Elite2014_105, Manda_107, GoldenSpark_110, Argent26_110, Phaux_108, ChosenOne_106, Miniwave_101, Harella_106, Kostya_106, NelitzaMV_103, Dumbo_105, Mindy_105, Gage_108, CrystalP_105, ChotaBhai_106, Wiggin_108, Tarkin_105, Ukulele_100, Barbarian_105, DoctorDiddles_105, xkcd_109, Gator_104, Hoonter_109, Easy2Say_106, TeardropMSU_102, Flypotenuse_102, ABCat_103, Saints25_102, FireRed_109, Lilac_107, Thresher_107, YassJohnny_103, Maxxinista_107, Sassay_101, Cactus_110, Sotrice96_107, Gemini_111, Goldilocks_109, SirDuracell_106, SophKB_104, Dusk_103, Icee_107, Balomoji_106, BadStone_103, Asriel_104, Youngblood_109, Tuco_107, Rimmer_104, Terminus_109, Phrux_102, Pharsalus_103, Elph10_105, HufflyPuff_108, Command613_108, Highbury_102, Czyszczon1_106, Filch_107, ShereKhan_104, Willez_101, MISSy_107, BigBubba_106, Goku_105, Mosby_102, Stank_108, Myrale_106, Marshmallow_103, MadamMonkfish_105, Eureka_105, OrionPax_104, 244_106, NoSleep_106, GooberAzure_109, MPhalcon_107, Toto_104, Porky_104, Tomaszewski_101, Rakim_107, Holt_111, Simpliphy_104, IHOP_104
- Track 15 : BaboJay_105

- Track 16 : Count_91
- Track 17 : Camille_58
- Track 18 : Damascus_59
- Track 19 : DizzyRudy_63
- Track 20 : AddiRose_68
- Track 21 : Daddyjeff_70, Serenabean_69
- Track 22 : Sweetclover_67
- Track 23 : JoeDirt_76, OhShagHennessey_74
- Track 24 : Baudelaire_98, Aegeus_98
- Track 25 : Blessica_13
- Track 26 : Sleepyhead_60

Summary of Final Annotations (See graph section above for start numbers):

The start number called the most often in the published annotations is 25, it was called in 121 of the 144 non-draft genes in the pham.

Genes that call this "Most Annotated" start:

- 244_106, ABCat_103, Adnama_110, Argent26_110, Asriel_104, BaboJay_105, BadStone_103, Balomoji_106, Barbarian_105, Bask21_106, Bench_108, BigBubba_106, Bruin_103, Buck_107, Cactus_110, ChosenOne_106, ChotaBhai_106, Cjw1_106, Command613_108, Contagion_102, Cookies_103, CrystalP_105, Czystoczon1_106, DoctorDiddles_105, DrDrey_106, Dumbo_105, Dusk_103, Easy2Say_106, Elite2014_105, Elph10_105, Emmina_106, Eureka_105, Filch_107, FireRed_109, Flypotenuse_102, Gage_108, Gator_104, Gemini_111, Glexan_105, Goku_105, GoldenSpark_110, Goldilocks_109, GooberAzure_109, HanKaySha_106, Harella_106, Henry_103, Highbury_102, Holt_111, Hoonter_109, Hopey_106, HuffyPuff_108, IHOP_104, Icee_107, Inca_103, IttyBittyPiggy_27, JeTaime_104, Kanye_103, Kimchi_110, Kostya_106, Lilac_107, Lilizi_106, Lilpickle_105, MISSy_107, MPhalcon_107, MadamMonkfish_105, Manda_107, Marshmallow_103, Maxxinista_107, Mindy_105, Miniwave_101, Misfit_107, Moldemort_108, Mosby_102, Murica_109, Murphy_105, Myrale_106, Nala_108, NelitzaMV_103, Nimrod_106, NoSleep_106, OrionPax_104, Paperbeatsrock_105, Pat3_103, Phaja_104, Pharsalus_103, PhatBacter_109, Phaux_108, Phrux_102, Porky_104, Pumpkin_107, Rakim_107, Rimmer_104, RiverMonster_105, Saints25_102, Sassay_101, ShamWow_106, ShereKhan_104, Simpliphy_104, SirDuracell_106, SophKB_104, Sotrice96_107, Stank_108, Stark_106, StellaBean_105, StolenFromERC_108, TBrady12_109, Tarkin_105, TeardropMSU_102, Teaspoon_106, Terminus_109, Thresher_107, Tomaszewski_101, Toto_104, Traaww1_102, Tuco_107, Ukulele_100, Wiggin_108, Willez_101, YassJohnny_103, Youngblood_109, xkcd_109,

Genes that have the "Most Annotated" start but do not call it:

-

Genes that do not have the "Most Annotated" start:

- AddiRose_68, Aegeus_98, Amo99_3, Bantam_109, Baudelaire_98, Blessica_13, Camille_58, ColdSoup_3, Count_91, Daddyjeff_70, Damascus_59, Daredevil_104, DatBoi_107, DizzyRudy_63, JasmineDragon_30, JoeDirt_76, Jollymon_3, LadyAstra_31, LilyPad_61, MiniMommy_31, Mollymur_109, OhShagHennessey_74,

RedWattleHog_18, Serenabean_69, ShakeltOph_31, Sleepyhead_60,
SpeedDemon_1110, Sting_3, Sweetclover_67, Towmatter_106, VroomVroom_30,

Summary by start number:

Start 10:

- Found in 1 of 152 (0.7%) of genes in pham
- Manual Annotations of this start: 1 of 144
- Called 100.0% of time when present
- Phage (with cluster) where this start called: LilyPad_61 (DG1),

Start 11:

- Found in 2 of 152 (1.3%) of genes in pham
- Manual Annotations of this start: 2 of 144
- Called 100.0% of time when present
- Phage (with cluster) where this start called: Aegeus_98 (L5), Baudelaire_98 (L5),

Start 14:

- Found in 4 of 152 (2.6%) of genes in pham
- Manual Annotations of this start: 1 of 144
- Called 100.0% of time when present
- Phage (with cluster) where this start called: Amo99_3 (CP), ColdSoup_3 (CP), Jollymon_3 (CP), Sting_3 (CP),

Start 16:

- Found in 2 of 152 (1.3%) of genes in pham
- Manual Annotations of this start: 2 of 144
- Called 100.0% of time when present
- Phage (with cluster) where this start called: JoeDirt_76 (L1), OhShagHennessy_74 (L1),

Start 17:

- Found in 1 of 152 (0.7%) of genes in pham
- Manual Annotations of this start: 1 of 144
- Called 100.0% of time when present
- Phage (with cluster) where this start called: Sleepyhead_60 (singleton),

Start 18:

- Found in 1 of 152 (0.7%) of genes in pham
- Manual Annotations of this start: 1 of 144
- Called 100.0% of time when present
- Phage (with cluster) where this start called: Blessica_13 (O),

Start 19:

- Found in 1 of 152 (0.7%) of genes in pham
- Manual Annotations of this start: 1 of 144
- Called 100.0% of time when present
- Phage (with cluster) where this start called: RedWattleHog_18 (DX),

Start 20:

- Found in 2 of 152 (1.3%) of genes in pham
- Manual Annotations of this start: 1 of 144
- Called 100.0% of time when present

- Phage (with cluster) where this start called: Daredevil_104 (DL), Towmatter_106 (DL),

Start 21:

- Found in 2 of 152 (1.3%) of genes in pham
- Manual Annotations of this start: 2 of 144
- Called 100.0% of time when present
- Phage (with cluster) where this start called: Bantam_109 (DL), SpeedDemon_1110 (DL),

Start 22:

- Found in 1 of 152 (0.7%) of genes in pham
- Manual Annotations of this start: 1 of 144
- Called 100.0% of time when present
- Phage (with cluster) where this start called: Camille_58 (EL),

Start 23:

- Found in 5 of 152 (3.3%) of genes in pham
- Manual Annotations of this start: 2 of 144
- Called 100.0% of time when present
- Phage (with cluster) where this start called: JasmineDragon_30 (AZ4), LadyAstra_31 (AZ4), MiniMommy_31 (AZ4), ShakeltOph_31 (AZ4), VroomVroom_30 (AZ4),

Start 24:

- Found in 3 of 152 (2.0%) of genes in pham
- Manual Annotations of this start: 2 of 144
- Called 66.7% of time when present
- Phage (with cluster) where this start called: DatBoi_107 (DL), Mollymur_109 (DL),

Start 25:

- Found in 121 of 152 (79.6%) of genes in pham
- Manual Annotations of this start: 121 of 144
- Called 100.0% of time when present
- Phage (with cluster) where this start called: 244_106 (E), ABCat_103 (E), Adnama_110 (E), Argent26_110 (E), Asriel_104 (E), BaboJay_105 (E), BadStone_103 (E), Balomoji_106 (E), Barbarian_105 (E), Bask21_106 (E), Bench_108 (E), BigBubba_106 (E), Bruin_103 (E), Buck_107 (E), Cactus_110 (E), ChosenOne_106 (E), ChotaBhai_106 (E), Cjw1_106 (E), Command613_108 (E), Contagion_102 (E), Cookies_103 (E), CrystalP_105 (E), Czyszczonek_106 (E), DoctorDiddles_105 (E), DrDrey_106 (E), Dumbo_105 (E), Dusk_103 (E), Easy2Say_106 (E), Elite2014_105 (E), Elph10_105 (E), Emmina_106 (E), Eureka_105 (E), Filch_107 (E), FireRed_109 (E), Flypotenuse_102 (E), Gage_108 (E), Gator_104 (E), Gemini_111 (E), Glexan_105 (E), Goku_105 (E), GoldenSpark_110 (E), Goldilocks_109 (E), GooberAzure_109 (E), HanKaySha_106 (E), Harella_106 (E), Henry_103 (E), Highbury_102 (E), Holt_111 (E), Hoonter_109 (E), Hopey_106 (E), HufflyPuff_108 (E), IHOP_104 (E), Icee_107 (E), Inca_103 (E), IttyBittyPiggy_27 (AZ1), JeTaimie_104 (E), Kanye_103 (E), Kimchi_110 (E), Kostya_106 (E), Lilac_107 (E), Lilizi_106 (E), Lilpickle_105 (E), MISSy_107 (E), MPhalcon_107 (E), MadamMonkfish_105 (E), Manda_107 (E), Marshmallow_103 (E), Maxxinista_107 (E), Mindy_105 (E), Miniwave_101 (E), Misfit_107 (E), Moldemort_108 (E), Mosby_102 (E), Murica_109 (E), Murphy_105 (E), Myrale_106 (E), Nala_108 (E), NelitzaMV_103 (E), Nimrod_106 (E), NoSleep_106 (E),

OrionPax_104 (E), Paperbeatsrock_105 (E), Pat3_103 (E), Phaja_104 (E), Pharsalus_103 (E), PhatBacter_109 (E), Phaux_108 (E), Phrux_102 (E), Porky_104 (E), Pumpkin_107 (E), Rakim_107 (E), Rimmer_104 (E), RiverMonster_105 (E), Saints25_102 (E), Sassay_101 (E), ShamWow_106 (E), ShereKhan_104 (E), Simpliphy_104 (E), SirDuracell_106 (E), SophKB_104 (E), Sotrice96_107 (E), Stank_108 (E), Stark_106 (E), StellaBean_105 (E), StolenFromERC_108 (E), TBrady12_109 (E), Tarkin_105 (E), TeardropMSU_102 (E), Teaspoon_106 (E), Terminus_109 (E), Thresher_107 (E), Tomaszewski_101 (E), Toto_104 (E), Traaww1_102 (E), Tuco_107 (E), Ukulele_100 (E), Wiggin_108 (E), Willez_101 (E), YassJohnny_103 (E), Youngblood_109 (E), xkcd_109 (E),

Start 31:

- Found in 3 of 152 (2.0%) of genes in pham
- Manual Annotations of this start: 1 of 144
- Called 33.3% of time when present
- Phage (with cluster) where this start called: Count_91 (EL),

Start 32:

- Found in 1 of 152 (0.7%) of genes in pham
- No Manual Annotations of this start.
- Called 100.0% of time when present
- Phage (with cluster) where this start called: Sweetclover_67 (JA),

Start 33:

- Found in 2 of 152 (1.3%) of genes in pham
- Manual Annotations of this start: 2 of 144
- Called 100.0% of time when present
- Phage (with cluster) where this start called: Damascus_59 (EL), DizzyRudy_63 (EL),

Start 35:

- Found in 3 of 152 (2.0%) of genes in pham
- Manual Annotations of this start: 3 of 144
- Called 100.0% of time when present
- Phage (with cluster) where this start called: AddiRose_68 (JA), Daddyjeff_70 (JA), Serenabean_69 (JA),

Summary by clusters:

There are 13 clusters represented in this pham: EL, singleton, E, DL, O, L5, DX, L1, AZ1, DG1, CP, AZ4, JA,

Info for manual annotations of cluster AZ1:

- Start number 25 was manually annotated 1 time for cluster AZ1.

Info for manual annotations of cluster AZ4:

- Start number 23 was manually annotated 2 times for cluster AZ4.

Info for manual annotations of cluster CP:

- Start number 14 was manually annotated 1 time for cluster CP.

Info for manual annotations of cluster DG1:

- Start number 10 was manually annotated 1 time for cluster DG1.

Info for manual annotations of cluster DL:

- Start number 20 was manually annotated 1 time for cluster DL.
- Start number 21 was manually annotated 2 times for cluster DL.
- Start number 24 was manually annotated 2 times for cluster DL.

Info for manual annotations of cluster DX:

- Start number 19 was manually annotated 1 time for cluster DX.

Info for manual annotations of cluster E:

- Start number 25 was manually annotated 120 times for cluster E.

Info for manual annotations of cluster EL:

- Start number 22 was manually annotated 1 time for cluster EL.
- Start number 31 was manually annotated 1 time for cluster EL.
- Start number 33 was manually annotated 2 times for cluster EL.

Info for manual annotations of cluster JA:

- Start number 35 was manually annotated 3 times for cluster JA.

Info for manual annotations of cluster L1:

- Start number 16 was manually annotated 2 times for cluster L1.

Info for manual annotations of cluster L5:

- Start number 11 was manually annotated 2 times for cluster L5.

Info for manual annotations of cluster O:

- Start number 18 was manually annotated 1 time for cluster O.

Gene Information:

Gene: 244_106 Start: 61588, Stop: 61878, Start Num: 25

Candidate Starts for 244_106:

(Start: 25 @61588 has 121 MA's), (51, 61717), (58, 61741), (74, 61801), (82, 61849),

Gene: ABCat_103 Start: 62792, Stop: 63082, Start Num: 25

Candidate Starts for ABCat_103:

(Start: 25 @62792 has 121 MA's), (51, 62921), (58, 62945), (74, 63005), (82, 63053),

Gene: AddiRose_68 Start: 43648, Stop: 43974, Start Num: 35

Candidate Starts for AddiRose_68:

(2, 43444), (Start: 35 @43648 has 3 MA's), (39, 43690), (40, 43693), (53, 43765), (54, 43768), (64, 43804), (66, 43810), (72, 43825), (80, 43867), (87, 43918), (97, 43966),

Gene: Adnama_110 Start: 62081, Stop: 62371, Start Num: 25

Candidate Starts for Adnama_110:

(Start: 25 @62081 has 121 MA's), (51, 62210), (58, 62234), (74, 62294), (82, 62342),

Gene: Aegeus_98 Start: 59877, Stop: 60281, Start Num: 11

Candidate Starts for Aegeus_98:

(Start: 11 @59877 has 2 MA's), (40, 59988), (45, 60015), (47, 60024), (48, 60027), (49, 60030), (50, 60036), (57, 60066), (63, 60090), (75, 60132), (85, 60201), (96, 60255),

Gene: Amo99_3 Start: 2875, Stop: 3255, Start Num: 14

Candidate Starts for Amo99_3:

(Start: 14 @2875 has 1 MA's), (37, 2959), (40, 2992), (45, 3019), (48, 3031), (49, 3034), (78, 3145), (82, 3181), (91, 3235), (93, 3244),

Gene: Argent26_110 Start: 62005, Stop: 62295, Start Num: 25

Candidate Starts for Argent26_110:

(Start: 25 @62005 has 121 MA's), (51, 62134), (58, 62158), (74, 62218), (82, 62266),

Gene: Asriel_104 Start: 60418, Stop: 60708, Start Num: 25

Candidate Starts for Asriel_104:

(Start: 25 @60418 has 121 MA's), (51, 60547), (58, 60571), (74, 60631), (82, 60679),

Gene: BaboJay_105 Start: 62761, Stop: 63051, Start Num: 25

Candidate Starts for BaboJay_105:

(Start: 25 @62761 has 121 MA's), (58, 62914), (74, 62974), (82, 63022),

Gene: BadStone_103 Start: 62340, Stop: 62630, Start Num: 25

Candidate Starts for BadStone_103:

(Start: 25 @62340 has 121 MA's), (51, 62469), (58, 62493), (74, 62553), (82, 62601),

Gene: Balomoji_106 Start: 62201, Stop: 62491, Start Num: 25

Candidate Starts for Balomoji_106:

(Start: 25 @62201 has 121 MA's), (51, 62330), (58, 62354), (74, 62414), (82, 62462),

Gene: Bantam_109 Start: 70339, Stop: 70695, Start Num: 21

Candidate Starts for Bantam_109:

(7, 70279), (Start: 21 @70339 has 2 MA's), (58, 70510), (67, 70546), (88, 70657), (89, 70666),

Gene: Barbarian_105 Start: 60418, Stop: 60708, Start Num: 25

Candidate Starts for Barbarian_105:

(Start: 25 @60418 has 121 MA's), (51, 60547), (58, 60571), (74, 60631), (82, 60679),

Gene: Bask21_106 Start: 61036, Stop: 61323, Start Num: 25

Candidate Starts for Bask21_106:

(Start: 25 @61036 has 121 MA's), (51, 61165), (58, 61189), (74, 61249), (82, 61297),

Gene: Baudelaire_98 Start: 59877, Stop: 60281, Start Num: 11

Candidate Starts for Baudelaire_98:

(Start: 11 @59877 has 2 MA's), (40, 59988), (45, 60015), (47, 60024), (48, 60027), (49, 60030), (50, 60036), (57, 60066), (63, 60090), (75, 60132), (85, 60201), (96, 60255),

Gene: Bench_108 Start: 62762, Stop: 63052, Start Num: 25

Candidate Starts for Bench_108:

(Start: 25 @62762 has 121 MA's), (51, 62891), (58, 62915), (74, 62975), (82, 63023),

Gene: BigBubba_106 Start: 61114, Stop: 61404, Start Num: 25

Candidate Starts for BigBubba_106:

(Start: 25 @61114 has 121 MA's), (51, 61243), (58, 61267), (74, 61327), (82, 61375),

Gene: Blessica_13 Start: 5453, Stop: 5890, Start Num: 18

Candidate Starts for Blessica_13:

(Start: 18 @5453 has 1 MA's), (Start: 24 @5477 has 2 MA's), (30, 5501), (47, 5594), (72, 5681), (92, 5795), (94, 5804), (98, 5837), (99, 5840), (101, 5855),

Gene: Bruin_103 Start: 61446, Stop: 61736, Start Num: 25

Candidate Starts for Bruin_103:

(Start: 25 @61446 has 121 MA's), (51, 61575), (58, 61599), (74, 61659), (82, 61707),

Gene: Buck_107 Start: 63262, Stop: 63552, Start Num: 25

Candidate Starts for Buck_107:

(Start: 25 @63262 has 121 MA's), (51, 63391), (58, 63415), (74, 63475), (82, 63523),

Gene: Cactus_110 Start: 61700, Stop: 61990, Start Num: 25

Candidate Starts for Cactus_110:

(Start: 25 @61700 has 121 MA's), (51, 61829), (58, 61853), (74, 61913), (82, 61961),

Gene: Camille_58 Start: 41232, Stop: 41567, Start Num: 22

Candidate Starts for Camille_58:

(Start: 22 @41232 has 1 MA's), (27, 41253), (28, 41256), (54, 41376), (84, 41511), (86, 41520), (95, 41562),

Gene: ChosenOne_106 Start: 61646, Stop: 61936, Start Num: 25

Candidate Starts for ChosenOne_106:

(Start: 25 @61646 has 121 MA's), (51, 61775), (58, 61799), (74, 61859), (82, 61907),

Gene: ChotaBhai_106 Start: 62098, Stop: 62385, Start Num: 25

Candidate Starts for ChotaBhai_106:

(Start: 25 @62098 has 121 MA's), (51, 62227), (58, 62251), (74, 62311), (82, 62359),

Gene: Cjw1_106 Start: 63455, Stop: 63745, Start Num: 25

Candidate Starts for Cjw1_106:

(Start: 25 @63455 has 121 MA's), (51, 63584), (58, 63608), (74, 63668), (82, 63716),

Gene: ColdSoup_3 Start: 2875, Stop: 3255, Start Num: 14

Candidate Starts for ColdSoup_3:

(Start: 14 @2875 has 1 MA's), (37, 2959), (40, 2992), (45, 3019), (48, 3031), (49, 3034), (78, 3145), (82, 3181), (91, 3235), (93, 3244),

Gene: Command613_108 Start: 62194, Stop: 62484, Start Num: 25

Candidate Starts for Command613_108:

(Start: 25 @62194 has 121 MA's), (51, 62323), (58, 62347), (74, 62407), (82, 62455),

Gene: Contagion_102 Start: 61808, Stop: 62098, Start Num: 25

Candidate Starts for Contagion_102:

(Start: 25 @61808 has 121 MA's), (51, 61937), (58, 61961), (74, 62021), (82, 62069),

Gene: Cookies_103 Start: 61964, Stop: 62251, Start Num: 25

Candidate Starts for Cookies_103:

(Start: 25 @61964 has 121 MA's), (51, 62093), (58, 62117), (74, 62177), (82, 62225),

Gene: Count_91 Start: 59562, Stop: 59873, Start Num: 31

Candidate Starts for Count_91:

(Start: 31 @59562 has 1 MA's), (43, 59631), (59, 59697), (71, 59745), (77, 59766),

Gene: CrystalP_105 Start: 62698, Stop: 62988, Start Num: 25
Candidate Starts for CrystalP_105:
(Start: 25 @62698 has 121 MA's), (51, 62827), (58, 62851), (74, 62911), (82, 62959),

Gene: Czyszczone1_106 Start: 61801, Stop: 62091, Start Num: 25
Candidate Starts for Czyszczone1_106:
(Start: 25 @61801 has 121 MA's), (51, 61930), (58, 61954), (74, 62014), (82, 62062),

Gene: Daddyjeff_70 Start: 44061, Stop: 44387, Start Num: 35
Candidate Starts for Daddyjeff_70:
(12, 43989), (26, 44040), (34, 44058), (Start: 35 @44061 has 3 MA's), (39, 44103), (40, 44106), (53, 44178), (54, 44181), (64, 44217), (66, 44223), (72, 44238), (80, 44280), (87, 44331), (90, 44349), (97, 44379),

Gene: Damascus_59 Start: 42669, Stop: 42986, Start Num: 33
Candidate Starts for Damascus_59:
(9, 42585), (15, 42612), (Start: 31 @42666 has 1 MA's), (Start: 33 @42669 has 2 MA's), (54, 42795), (62, 42822), (80, 42894), (84, 42930),

Gene: Daredevil_104 Start: 67182, Stop: 67538, Start Num: 20
Candidate Starts for Daredevil_104:
(Start: 20 @67182 has 1 MA's), (29, 67206), (52, 67329), (67, 67389), (88, 67500),

Gene: DatBoi_107 Start: 69816, Stop: 70166, Start Num: 24
Candidate Starts for DatBoi_107:
(4, 69714), (6, 69726), (Start: 24 @69816 has 2 MA's), (58, 69981), (67, 70017), (71, 70029), (81, 70077), (88, 70128), (89, 70137),

Gene: DizzyRudy_63 Start: 42556, Stop: 42873, Start Num: 33
Candidate Starts for DizzyRudy_63:
(9, 42472), (15, 42499), (Start: 31 @42553 has 1 MA's), (Start: 33 @42556 has 2 MA's), (54, 42682), (65, 42721), (80, 42781), (84, 42817),

Gene: DoctorDiddles_105 Start: 61466, Stop: 61753, Start Num: 25
Candidate Starts for DoctorDiddles_105:
(Start: 25 @61466 has 121 MA's), (51, 61595), (58, 61619), (74, 61679), (82, 61727),

Gene: DrDrey_106 Start: 63478, Stop: 63768, Start Num: 25
Candidate Starts for DrDrey_106:
(Start: 25 @63478 has 121 MA's), (51, 63607), (58, 63631), (74, 63691), (82, 63739),

Gene: Dumbo_105 Start: 61838, Stop: 62128, Start Num: 25
Candidate Starts for Dumbo_105:
(Start: 25 @61838 has 121 MA's), (51, 61967), (58, 61991), (74, 62051), (82, 62099),

Gene: Dusk_103 Start: 62000, Stop: 62290, Start Num: 25
Candidate Starts for Dusk_103:
(Start: 25 @62000 has 121 MA's), (51, 62129), (58, 62153), (74, 62213), (82, 62261),

Gene: Easy2Say_106 Start: 62472, Stop: 62762, Start Num: 25
Candidate Starts for Easy2Say_106:
(Start: 25 @62472 has 121 MA's), (51, 62601), (58, 62625), (74, 62685), (82, 62733),

Gene: Elite2014_105 Start: 61645, Stop: 61935, Start Num: 25
Candidate Starts for Elite2014_105:
(Start: 25 @61645 has 121 MA's), (51, 61774), (58, 61798), (74, 61858), (82, 61906),

Gene: Elph10_105 Start: 61484, Stop: 61774, Start Num: 25
Candidate Starts for Elph10_105:
(Start: 25 @61484 has 121 MA's), (51, 61613), (58, 61637), (74, 61697), (82, 61745),

Gene: Emmina_106 Start: 61423, Stop: 61713, Start Num: 25
Candidate Starts for Emmina_106:
(Start: 25 @61423 has 121 MA's), (51, 61552), (58, 61576), (74, 61636), (82, 61684),

Gene: Eureka_105 Start: 62611, Stop: 62901, Start Num: 25
Candidate Starts for Eureka_105:
(Start: 25 @62611 has 121 MA's), (51, 62740), (58, 62764), (74, 62824), (82, 62872),

Gene: Filch_107 Start: 61797, Stop: 62087, Start Num: 25
Candidate Starts for Filch_107:
(Start: 25 @61797 has 121 MA's), (51, 61926), (58, 61950), (74, 62010), (82, 62058),

Gene: FireRed_109 Start: 62887, Stop: 63177, Start Num: 25
Candidate Starts for FireRed_109:
(Start: 25 @62887 has 121 MA's), (51, 63016), (58, 63040), (74, 63100), (82, 63148),

Gene: Flypotenuse_102 Start: 61072, Stop: 61362, Start Num: 25
Candidate Starts for Flypotenuse_102:
(Start: 25 @61072 has 121 MA's), (51, 61201), (58, 61225), (74, 61285), (82, 61333),

Gene: Gage_108 Start: 62143, Stop: 62433, Start Num: 25
Candidate Starts for Gage_108:
(Start: 25 @62143 has 121 MA's), (51, 62272), (58, 62296), (74, 62356), (82, 62404),

Gene: Gator_104 Start: 61931, Stop: 62218, Start Num: 25
Candidate Starts for Gator_104:
(Start: 25 @61931 has 121 MA's), (51, 62060), (58, 62084), (74, 62144), (82, 62192),

Gene: Gemini_111 Start: 62522, Stop: 62812, Start Num: 25
Candidate Starts for Gemini_111:
(Start: 25 @62522 has 121 MA's), (51, 62651), (58, 62675), (74, 62735), (82, 62783),

Gene: Glexan_105 Start: 62202, Stop: 62492, Start Num: 25
Candidate Starts for Glexan_105:
(Start: 25 @62202 has 121 MA's), (51, 62331), (58, 62355), (74, 62415), (82, 62463),

Gene: Goku_105 Start: 62340, Stop: 62630, Start Num: 25
Candidate Starts for Goku_105:
(Start: 25 @62340 has 121 MA's), (51, 62469), (58, 62493), (74, 62553), (82, 62601),

Gene: GoldenSpark_110 Start: 62005, Stop: 62295, Start Num: 25
Candidate Starts for GoldenSpark_110:
(Start: 25 @62005 has 121 MA's), (51, 62134), (58, 62158), (74, 62218), (82, 62266),

Gene: Goldilocks_109 Start: 61901, Stop: 62191, Start Num: 25

Candidate Starts for Goldilocks_109:
(Start: 25 @61901 has 121 MA's), (51, 62030), (58, 62054), (74, 62114), (82, 62162),

Gene: GooberAzure_109 Start: 62005, Stop: 62295, Start Num: 25
Candidate Starts for GooberAzure_109:
(Start: 25 @62005 has 121 MA's), (51, 62134), (58, 62158), (74, 62218), (82, 62266),

Gene: HanKaySha_106 Start: 62193, Stop: 62483, Start Num: 25
Candidate Starts for HanKaySha_106:
(Start: 25 @62193 has 121 MA's), (51, 62322), (58, 62346), (74, 62406), (82, 62454),

Gene: Harella_106 Start: 62718, Stop: 63008, Start Num: 25
Candidate Starts for Harella_106:
(Start: 25 @62718 has 121 MA's), (51, 62847), (58, 62871), (74, 62931), (82, 62979),

Gene: Henry_103 Start: 62003, Stop: 62293, Start Num: 25
Candidate Starts for Henry_103:
(Start: 25 @62003 has 121 MA's), (51, 62132), (58, 62156), (74, 62216), (82, 62264),

Gene: Highbury_102 Start: 60350, Stop: 60640, Start Num: 25
Candidate Starts for Highbury_102:
(Start: 25 @60350 has 121 MA's), (51, 60479), (58, 60503), (74, 60563), (82, 60611),

Gene: Holt_111 Start: 62419, Stop: 62709, Start Num: 25
Candidate Starts for Holt_111:
(Start: 25 @62419 has 121 MA's), (51, 62548), (58, 62572), (74, 62632), (82, 62680),

Gene: Hoonter_109 Start: 62498, Stop: 62788, Start Num: 25
Candidate Starts for Hoonter_109:
(Start: 25 @62498 has 121 MA's), (51, 62627), (58, 62651), (74, 62711), (82, 62759),

Gene: Hokey_106 Start: 62804, Stop: 63094, Start Num: 25
Candidate Starts for Hokey_106:
(Start: 25 @62804 has 121 MA's), (51, 62933), (58, 62957), (74, 63017), (82, 63065),

Gene: HufflyPuff_108 Start: 63113, Stop: 63403, Start Num: 25
Candidate Starts for HufflyPuff_108:
(Start: 25 @63113 has 121 MA's), (51, 63242), (58, 63266), (74, 63326), (82, 63374),

Gene: IHOP_104 Start: 61721, Stop: 62011, Start Num: 25
Candidate Starts for IHOP_104:
(Start: 25 @61721 has 121 MA's), (51, 61850), (58, 61874), (74, 61934), (82, 61982),

Gene: Icee_107 Start: 61529, Stop: 61819, Start Num: 25
Candidate Starts for Icee_107:
(Start: 25 @61529 has 121 MA's), (51, 61658), (58, 61682), (74, 61742), (82, 61790),

Gene: Inca_103 Start: 60210, Stop: 60500, Start Num: 25
Candidate Starts for Inca_103:
(Start: 25 @60210 has 121 MA's), (51, 60339), (58, 60363), (74, 60423), (82, 60471),

Gene: IttyBittyPiggy_27 Start: 22317, Stop: 22682, Start Num: 25
Candidate Starts for IttyBittyPiggy_27:

(3, 22149), (Start: 25 @22317 has 121 MA's), (58, 22482), (69, 22521), (72, 22533),

Gene: JasmineDragon_30 Start: 22617, Stop: 23000, Start Num: 23

Candidate Starts for JasmineDragon_30:

(1, 22437), (Start: 23 @22617 has 2 MA's), (60, 22791), (76, 22851),

Gene: JeTaime_104 Start: 61629, Stop: 61919, Start Num: 25

Candidate Starts for JeTaime_104:

(Start: 25 @61629 has 121 MA's), (51, 61758), (58, 61782), (74, 61842), (82, 61890),

Gene: JoeDirt_76 Start: 51825, Stop: 52229, Start Num: 16

Candidate Starts for JoeDirt_76:

(5, 51750), (13, 51816), (Start: 16 @51825 has 2 MA's), (30, 51876), (36, 51894), (43, 51951), (44, 51954), (56, 52011), (68, 52053), (70, 52062), (72, 52065), (80, 52110), (81, 52113),

Gene: Jollymon_3 Start: 2875, Stop: 3255, Start Num: 14

Candidate Starts for Jollymon_3:

(Start: 14 @2875 has 1 MA's), (37, 2959), (40, 2992), (45, 3019), (48, 3031), (49, 3034), (78, 3145), (82, 3181), (91, 3235), (93, 3244),

Gene: Kanye_103 Start: 62254, Stop: 62544, Start Num: 25

Candidate Starts for Kanye_103:

(Start: 25 @62254 has 121 MA's), (51, 62383), (58, 62407), (74, 62467), (82, 62515),

Gene: Kimchi_110 Start: 62146, Stop: 62436, Start Num: 25

Candidate Starts for Kimchi_110:

(Start: 25 @62146 has 121 MA's), (51, 62275), (58, 62299), (74, 62359), (82, 62407),

Gene: Kostya_106 Start: 61823, Stop: 62113, Start Num: 25

Candidate Starts for Kostya_106:

(Start: 25 @61823 has 121 MA's), (51, 61952), (58, 61976), (74, 62036), (82, 62084),

Gene: LadyAstra_31 Start: 22651, Stop: 23034, Start Num: 23

Candidate Starts for LadyAstra_31:

(8, 22591), (Start: 23 @22651 has 2 MA's), (76, 22885),

Gene: Lilac_107 Start: 62947, Stop: 63237, Start Num: 25

Candidate Starts for Lilac_107:

(Start: 25 @62947 has 121 MA's), (51, 63076), (58, 63100), (74, 63160), (82, 63208),

Gene: Lilizi_106 Start: 62233, Stop: 62523, Start Num: 25

Candidate Starts for Lilizi_106:

(Start: 25 @62233 has 121 MA's), (51, 62362), (58, 62386), (74, 62446), (82, 62494),

Gene: Lilpickle_105 Start: 61645, Stop: 61935, Start Num: 25

Candidate Starts for Lilpickle_105:

(Start: 25 @61645 has 121 MA's), (51, 61774), (58, 61798), (74, 61858), (82, 61906),

Gene: LilyPad_61 Start: 44847, Stop: 45245, Start Num: 10

Candidate Starts for LilyPad_61:

(Start: 10 @44847 has 1 MA's), (12, 44853), (38, 44955), (55, 45030), (73, 45090), (79, 45123), (83, 45150), (84, 45165), (92, 45201),

Gene: MISSy_107 Start: 62930, Stop: 63220, Start Num: 25
Candidate Starts for MISSy_107:
(Start: 25 @62930 has 121 MA's), (51, 63059), (58, 63083), (74, 63143), (82, 63191),

Gene: MPhalcon_107 Start: 62348, Stop: 62638, Start Num: 25
Candidate Starts for MPhalcon_107:
(Start: 25 @62348 has 121 MA's), (51, 62477), (58, 62501), (74, 62561), (82, 62609),

Gene: MadamMonkfish_105 Start: 61655, Stop: 61945, Start Num: 25
Candidate Starts for MadamMonkfish_105:
(Start: 25 @61655 has 121 MA's), (51, 61784), (58, 61808), (74, 61868), (82, 61916),

Gene: Manda_107 Start: 62385, Stop: 62675, Start Num: 25
Candidate Starts for Manda_107:
(Start: 25 @62385 has 121 MA's), (51, 62514), (58, 62538), (74, 62598), (82, 62646),

Gene: Marshmallow_103 Start: 62343, Stop: 62633, Start Num: 25
Candidate Starts for Marshmallow_103:
(Start: 25 @62343 has 121 MA's), (51, 62472), (58, 62496), (74, 62556), (82, 62604),

Gene: Maxxinista_107 Start: 62132, Stop: 62422, Start Num: 25
Candidate Starts for Maxxinista_107:
(Start: 25 @62132 has 121 MA's), (51, 62261), (58, 62285), (74, 62345), (82, 62393),

Gene: Mindy_105 Start: 61664, Stop: 61954, Start Num: 25
Candidate Starts for Mindy_105:
(Start: 25 @61664 has 121 MA's), (51, 61793), (58, 61817), (74, 61877), (82, 61925),

Gene: MiniMommy_31 Start: 22618, Stop: 23001, Start Num: 23
Candidate Starts for MiniMommy_31:
(1, 22438), (Start: 23 @22618 has 2 MA's), (60, 22792), (76, 22852),

Gene: Miniwave_101 Start: 61841, Stop: 62131, Start Num: 25
Candidate Starts for Miniwave_101:
(Start: 25 @61841 has 121 MA's), (51, 61970), (58, 61994), (74, 62054), (82, 62102),

Gene: Misfit_107 Start: 63444, Stop: 63734, Start Num: 25
Candidate Starts for Misfit_107:
(Start: 25 @63444 has 121 MA's), (51, 63573), (58, 63597), (74, 63657), (82, 63705),

Gene: Moldemort_108 Start: 62113, Stop: 62403, Start Num: 25
Candidate Starts for Moldemort_108:
(Start: 25 @62113 has 121 MA's), (51, 62242), (58, 62266), (74, 62326), (82, 62374),

Gene: Mollymur_109 Start: 70923, Stop: 71270, Start Num: 24
Candidate Starts for Mollymur_109:
(4, 70821), (6, 70833), (Start: 24 @70923 has 2 MA's), (58, 71088), (73, 71142), (81, 71184), (88, 71235),

Gene: Mosby_102 Start: 61808, Stop: 62098, Start Num: 25
Candidate Starts for Mosby_102:
(Start: 25 @61808 has 121 MA's), (51, 61937), (58, 61961), (74, 62021), (82, 62069),

Gene: Murica_109 Start: 64147, Stop: 64437, Start Num: 25
Candidate Starts for Murica_109:
(Start: 25 @64147 has 121 MA's), (51, 64276), (58, 64300), (74, 64360), (82, 64408),

Gene: Murphy_105 Start: 62505, Stop: 62795, Start Num: 25
Candidate Starts for Murphy_105:
(Start: 25 @62505 has 121 MA's), (51, 62634), (58, 62658), (74, 62718), (82, 62766),

Gene: Myrale_106 Start: 62482, Stop: 62772, Start Num: 25
Candidate Starts for Myrale_106:
(Start: 25 @62482 has 121 MA's), (51, 62611), (58, 62635), (74, 62695), (82, 62743),

Gene: Nala_108 Start: 62857, Stop: 63147, Start Num: 25
Candidate Starts for Nala_108:
(Start: 25 @62857 has 121 MA's), (51, 62986), (58, 63010), (74, 63070), (82, 63118),

Gene: NelitzaMV_103 Start: 60830, Stop: 61120, Start Num: 25
Candidate Starts for NelitzaMV_103:
(Start: 25 @60830 has 121 MA's), (51, 60959), (58, 60983), (74, 61043), (82, 61091),

Gene: Nimrod_106 Start: 62491, Stop: 62781, Start Num: 25
Candidate Starts for Nimrod_106:
(Start: 25 @62491 has 121 MA's), (51, 62620), (58, 62644), (74, 62704), (82, 62752),

Gene: NoSleep_106 Start: 61665, Stop: 61955, Start Num: 25
Candidate Starts for NoSleep_106:
(Start: 25 @61665 has 121 MA's), (51, 61794), (58, 61818), (74, 61878), (82, 61926),

Gene: OhShagHennessy_74 Start: 50528, Stop: 50932, Start Num: 16
Candidate Starts for OhShagHennessy_74:
(5, 50453), (13, 50519), (Start: 16 @50528 has 2 MA's), (30, 50579), (36, 50597), (43, 50654), (44, 50657), (56, 50714), (68, 50756), (70, 50765), (72, 50768), (80, 50813), (81, 50816),

Gene: OrionPax_104 Start: 61738, Stop: 62028, Start Num: 25
Candidate Starts for OrionPax_104:
(Start: 25 @61738 has 121 MA's), (51, 61867), (58, 61891), (74, 61951), (82, 61999),

Gene: Paperbeatsrock_105 Start: 62519, Stop: 62809, Start Num: 25
Candidate Starts for Paperbeatsrock_105:
(Start: 25 @62519 has 121 MA's), (51, 62648), (58, 62672), (74, 62732), (82, 62780),

Gene: Pat3_103 Start: 61036, Stop: 61323, Start Num: 25
Candidate Starts for Pat3_103:
(Start: 25 @61036 has 121 MA's), (51, 61165), (58, 61189), (74, 61249), (82, 61297),

Gene: Phaja_104 Start: 61723, Stop: 62013, Start Num: 25
Candidate Starts for Phaja_104:
(Start: 25 @61723 has 121 MA's), (51, 61852), (58, 61876), (74, 61936), (82, 61984),

Gene: Pharsalus_103 Start: 62218, Stop: 62508, Start Num: 25
Candidate Starts for Pharsalus_103:
(Start: 25 @62218 has 121 MA's), (51, 62347), (58, 62371), (74, 62431), (82, 62479),

Gene: PhatBacter_109 Start: 62887, Stop: 63177, Start Num: 25
Candidate Starts for PhatBacter_109:
(Start: 25 @62887 has 121 MA's), (51, 63016), (58, 63040), (74, 63100), (82, 63148),

Gene: Phaux_108 Start: 63447, Stop: 63737, Start Num: 25
Candidate Starts for Phaux_108:
(Start: 25 @63447 has 121 MA's), (51, 63576), (58, 63600), (74, 63660), (82, 63708),

Gene: Phrux_102 Start: 61525, Stop: 61815, Start Num: 25
Candidate Starts for Phrux_102:
(Start: 25 @61525 has 121 MA's), (51, 61654), (58, 61678), (74, 61738), (82, 61786),

Gene: Porky_104 Start: 61269, Stop: 61559, Start Num: 25
Candidate Starts for Porky_104:
(Start: 25 @61269 has 121 MA's), (51, 61398), (58, 61422), (74, 61482), (82, 61530),

Gene: Pumpkin_107 Start: 61865, Stop: 62155, Start Num: 25
Candidate Starts for Pumpkin_107:
(Start: 25 @61865 has 121 MA's), (51, 61994), (58, 62018), (74, 62078), (82, 62126),

Gene: Rakim_107 Start: 61934, Stop: 62221, Start Num: 25
Candidate Starts for Rakim_107:
(Start: 25 @61934 has 121 MA's), (51, 62063), (58, 62087), (74, 62147), (82, 62195),

Gene: RedWattleHog_18 Start: 21845, Stop: 22282, Start Num: 19
Candidate Starts for RedWattleHog_18:
(Start: 19 @21845 has 1 MA's), (36, 21908), (41, 21947), (42, 21950), (46, 21968), (86, 22148), (100, 22226), (102, 22271),

Gene: Rimmer_104 Start: 62324, Stop: 62614, Start Num: 25
Candidate Starts for Rimmer_104:
(Start: 25 @62324 has 121 MA's), (51, 62453), (58, 62477), (74, 62537), (82, 62585),

Gene: RiverMonster_105 Start: 62420, Stop: 62710, Start Num: 25
Candidate Starts for RiverMonster_105:
(Start: 25 @62420 has 121 MA's), (51, 62549), (58, 62573), (74, 62633), (82, 62681),

Gene: Saints25_102 Start: 60350, Stop: 60640, Start Num: 25
Candidate Starts for Saints25_102:
(Start: 25 @60350 has 121 MA's), (51, 60479), (58, 60503), (74, 60563), (82, 60611),

Gene: Sassay_101 Start: 60770, Stop: 61060, Start Num: 25
Candidate Starts for Sassay_101:
(Start: 25 @60770 has 121 MA's), (51, 60899), (58, 60923), (74, 60983), (82, 61031),

Gene: Serenabean_69 Start: 43953, Stop: 44279, Start Num: 35
Candidate Starts for Serenabean_69:
(12, 43881), (26, 43932), (34, 43950), (Start: 35 @43953 has 3 MA's), (39, 43995), (40, 43998), (53, 44070), (54, 44073), (64, 44109), (66, 44115), (72, 44130), (80, 44172), (87, 44223), (90, 44241), (97, 44271),

Gene: ShakeltOph_31 Start: 22617, Stop: 23000, Start Num: 23
Candidate Starts for ShakeltOph_31:

(1, 22437), (Start: 23 @22617 has 2 MA's), (60, 22791), (76, 22851),

Gene: ShamWow_106 Start: 62698, Stop: 62988, Start Num: 25

Candidate Starts for ShamWow_106:

(Start: 25 @62698 has 121 MA's), (51, 62827), (58, 62851), (74, 62911), (82, 62959),

Gene: ShereKhan_104 Start: 63179, Stop: 63469, Start Num: 25

Candidate Starts for ShereKhan_104:

(Start: 25 @63179 has 121 MA's), (51, 63308), (58, 63332), (74, 63392), (82, 63440),

Gene: Simpliphy_104 Start: 61991, Stop: 62281, Start Num: 25

Candidate Starts for Simpliphy_104:

(Start: 25 @61991 has 121 MA's), (51, 62120), (58, 62144), (74, 62204), (82, 62252),

Gene: SirDuracell_106 Start: 61536, Stop: 61823, Start Num: 25

Candidate Starts for SirDuracell_106:

(Start: 25 @61536 has 121 MA's), (51, 61665), (58, 61689), (74, 61749), (82, 61797),

Gene: Sleepyhead_60 Start: 39674, Stop: 40021, Start Num: 17

Candidate Starts for Sleepyhead_60:

(Start: 17 @39674 has 1 MA's), (71, 39896), (79, 39935), (89, 40004),

Gene: SophKB_104 Start: 61980, Stop: 62270, Start Num: 25

Candidate Starts for SophKB_104:

(Start: 25 @61980 has 121 MA's), (51, 62109), (58, 62133), (74, 62193), (82, 62241),

Gene: Sotrice96_107 Start: 62444, Stop: 62734, Start Num: 25

Candidate Starts for Sotrice96_107:

(Start: 25 @62444 has 121 MA's), (51, 62573), (58, 62597), (74, 62657), (82, 62705),

Gene: SpeedDemon_1110 Start: 72859, Stop: 73215, Start Num: 21

Candidate Starts for SpeedDemon_1110:

(7, 72799), (Start: 21 @72859 has 2 MA's), (58, 73030), (67, 73066), (88, 73177), (89, 73186),

Gene: Stank_108 Start: 62218, Stop: 62508, Start Num: 25

Candidate Starts for Stank_108:

(Start: 25 @62218 has 121 MA's), (51, 62347), (58, 62371), (74, 62431), (82, 62479),

Gene: Stark_106 Start: 62304, Stop: 62594, Start Num: 25

Candidate Starts for Stark_106:

(Start: 25 @62304 has 121 MA's), (51, 62433), (58, 62457), (74, 62517), (82, 62565),

Gene: StellaBean_105 Start: 62601, Stop: 62891, Start Num: 25

Candidate Starts for StellaBean_105:

(Start: 25 @62601 has 121 MA's), (51, 62730), (58, 62754), (74, 62814), (82, 62862),

Gene: Sting_3 Start: 2872, Stop: 3252, Start Num: 14

Candidate Starts for Sting_3:

(Start: 14 @2872 has 1 MA's), (37, 2956), (40, 2989), (45, 3016), (48, 3028), (49, 3031), (61, 3079),
(78, 3142), (82, 3178), (91, 3232), (93, 3241),

Gene: StolenFromERC_108 Start: 62143, Stop: 62433, Start Num: 25

Candidate Starts for StolenFromERC_108:

(Start: 25 @62143 has 121 MA's), (51, 62272), (58, 62296), (74, 62356), (82, 62404),

Gene: Sweetclover_67 Start: 43166, Stop: 43486, Start Num: 32

Candidate Starts for Sweetclover_67:

(32, 43166), (40, 43211), (66, 43328), (87, 43436), (90, 43454), (97, 43478),

Gene: TBrady12_109 Start: 61655, Stop: 61945, Start Num: 25

Candidate Starts for TBrady12_109:

(Start: 25 @61655 has 121 MA's), (51, 61784), (58, 61808), (74, 61868), (82, 61916),

Gene: Tarkin_105 Start: 63044, Stop: 63334, Start Num: 25

Candidate Starts for Tarkin_105:

(Start: 25 @63044 has 121 MA's), (51, 63173), (58, 63197), (74, 63257), (82, 63305),

Gene: TeardropMSU_102 Start: 61546, Stop: 61836, Start Num: 25

Candidate Starts for TeardropMSU_102:

(Start: 25 @61546 has 121 MA's), (51, 61675), (58, 61699), (74, 61759), (82, 61807),

Gene: Teaspoon_106 Start: 62203, Stop: 62493, Start Num: 25

Candidate Starts for Teaspoon_106:

(Start: 25 @62203 has 121 MA's), (51, 62332), (58, 62356), (74, 62416), (82, 62464),

Gene: Terminus_109 Start: 63444, Stop: 63734, Start Num: 25

Candidate Starts for Terminus_109:

(Start: 25 @63444 has 121 MA's), (51, 63573), (58, 63597), (74, 63657), (82, 63705),

Gene: Thresher_107 Start: 63084, Stop: 63374, Start Num: 25

Candidate Starts for Thresher_107:

(Start: 25 @63084 has 121 MA's), (51, 63213), (58, 63237), (74, 63297), (82, 63345),

Gene: Tomaszewski_101 Start: 61982, Stop: 62272, Start Num: 25

Candidate Starts for Tomaszewski_101:

(Start: 25 @61982 has 121 MA's), (51, 62111), (58, 62135), (74, 62195), (82, 62243),

Gene: Toto_104 Start: 62698, Stop: 62988, Start Num: 25

Candidate Starts for Toto_104:

(Start: 25 @62698 has 121 MA's), (51, 62827), (58, 62851), (74, 62911), (82, 62959),

Gene: Towmatter_106 Start: 67264, Stop: 67620, Start Num: 20

Candidate Starts for Towmatter_106:

(Start: 20 @67264 has 1 MA's), (29, 67288), (52, 67411), (67, 67471), (88, 67582),

Gene: Traaww1_102 Start: 61247, Stop: 61537, Start Num: 25

Candidate Starts for Traaww1_102:

(Start: 25 @61247 has 121 MA's), (51, 61376), (58, 61400), (74, 61460), (82, 61508),

Gene: Tuco_107 Start: 63605, Stop: 63895, Start Num: 25

Candidate Starts for Tuco_107:

(Start: 25 @63605 has 121 MA's), (51, 63734), (58, 63758), (74, 63818), (82, 63866),

Gene: Ukulele_100 Start: 61803, Stop: 62093, Start Num: 25

Candidate Starts for Ukulele_100:

(Start: 25 @61803 has 121 MA's), (51, 61932), (58, 61956), (74, 62016), (82, 62064),

Gene: VroomVroom_30 Start: 22712, Stop: 23095, Start Num: 23

Candidate Starts for VroomVroom_30:

(1, 22532), (Start: 23 @22712 has 2 MA's), (76, 22946),

Gene: Wiggin_108 Start: 61648, Stop: 61938, Start Num: 25

Candidate Starts for Wiggin_108:

(Start: 25 @61648 has 121 MA's), (51, 61777), (58, 61801), (74, 61861), (82, 61909),

Gene: Willez_101 Start: 60770, Stop: 61060, Start Num: 25

Candidate Starts for Willez_101:

(Start: 25 @60770 has 121 MA's), (51, 60899), (58, 60923), (74, 60983), (82, 61031),

Gene: YassJohnny_103 Start: 60791, Stop: 61081, Start Num: 25

Candidate Starts for YassJohnny_103:

(Start: 25 @60791 has 121 MA's), (51, 60920), (58, 60944), (74, 61004), (82, 61052),

Gene: Youngblood_109 Start: 62940, Stop: 63230, Start Num: 25

Candidate Starts for Youngblood_109:

(Start: 25 @62940 has 121 MA's), (51, 63069), (58, 63093), (74, 63153), (82, 63201),

Gene: xkcd_109 Start: 63125, Stop: 63415, Start Num: 25

Candidate Starts for xkcd_109:

(Start: 25 @63125 has 121 MA's), (51, 63254), (58, 63278), (74, 63338), (82, 63386),