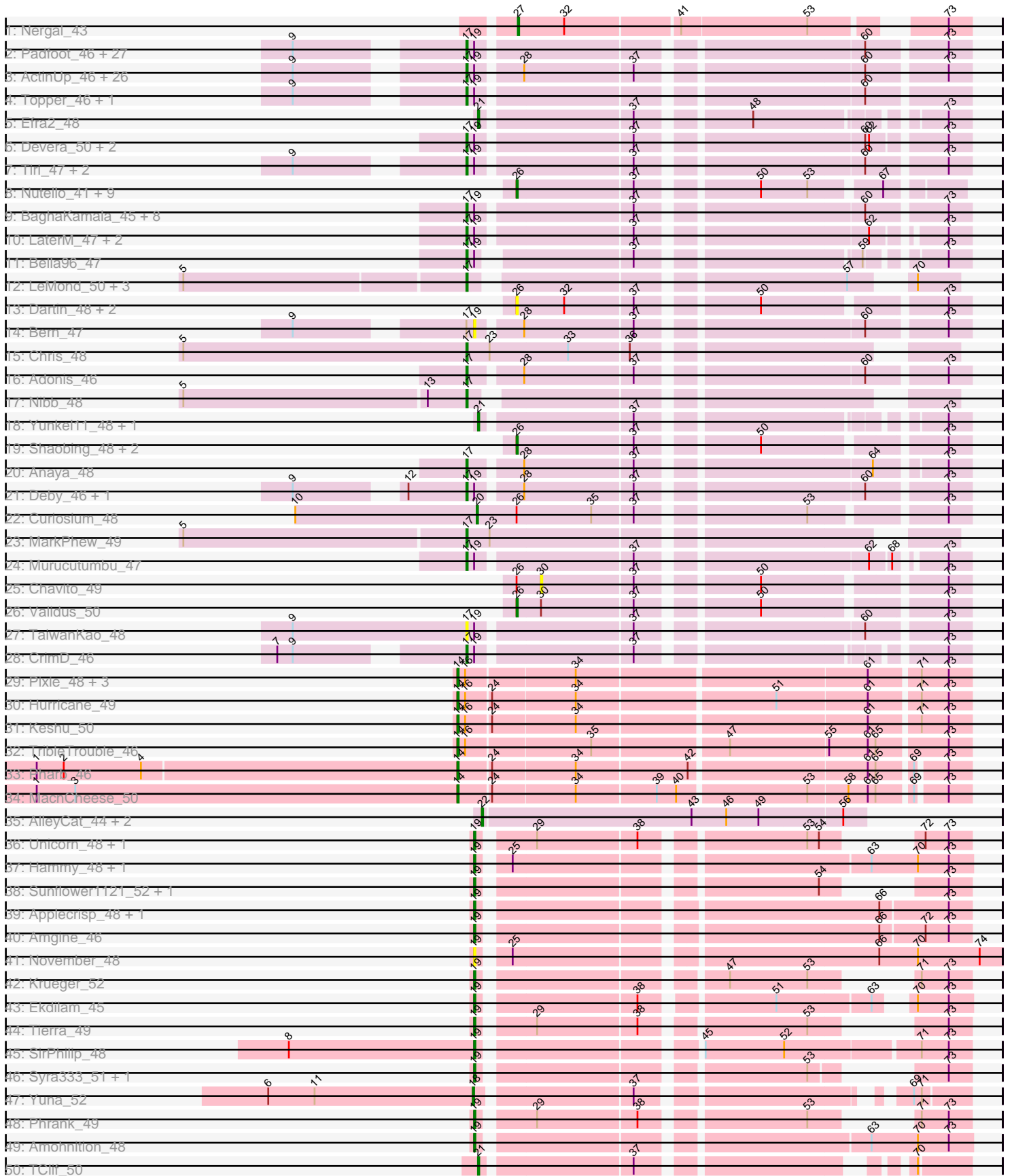
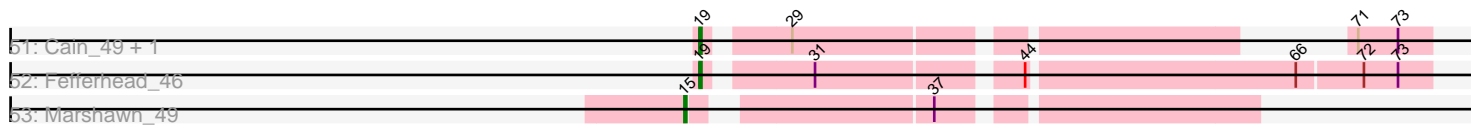


Pham 215915



Pham 215915



Below the diagram are several sets of horizontal lines for text entry, organized into a grid with dashed borders on the left and right sides.

Note: Tracks are now grouped by subcluster and scaled. Switching in subcluster is indicated by changes in track color. Track scale is now set by default to display the region 30 bp upstream of start 1 to 30 bp downstream of the last possible start. If this default region is judged to be packed too tightly with annotated starts, the track will be further scaled to only show that region of the ORF with annotated starts. This action will be indicated by adding "Zoomed" to the title. For starts, yellow indicates the location of called starts comprised solely of Glimmer/GeneMark auto-annotations, green indicates the location of called starts with at least 1 manual gene annotation.

Pham 215915 Report

This analysis was run 02/22/25 on database version 588.

Pham number 215915 has 150 members, 14 are drafts.

Phages represented in each track:

- Track 1 : Nergal_43
- Track 2 : Padfoot_46, Llorens_46, BEEST_46, Dalmuri_46, CaseJules_47, Jeckyll_46, Rosmarinus_46, CREW_46, Boiiii_46, Joy99_46, Asayake_46, Blizzard_46, BGlluviae_46, Adephagia_46, Homura_46, Inky_46, JAWS_46, Spock_46, Capricorn_46, Hyperbowlee_46, CallaLilly_48, ShiaSurprise_47, Durfee_46, Piatt_46, Belladonna_46, Jarvi_46, Twitch_46, Peel_46
- Track 3 : ActinUp_46, Jayhawk_47, Ramen_46, BarrelRoll_46, AlishaPH_46, Geraldini_48, TruffulaTree_46, Apocalypse_49, CheetoDust_45, Zabiza_41, Atiba_46, Veliki_46, Beezoo_48, Rapunzel97_46, Zavala_47, Angelica_46, Mynx_47, Pokerus_45, HedwigODU_46, MeaningOfLife_47, Ganymede_47, QuincyRose_45, YoureAdopted_45, Padpat_47, Tachez_46, Emerson_47, Slimphazie_46
- Track 4 : Topper_46, Lunahalos_46
- Track 5 : Efra2_48
- Track 6 : Devera_50, Illumine_49, Dole_49
- Track 7 : Tiri_47, MacKat_41, Clipper_50
- Track 8 : Nutello_41, Teejan_43, LilPharaoh_41, SgtBeansprout_41, Amelie_41, Torres_43, Binglebops_41, Nikao_44, Enkosi_43, Mdavu_42
- Track 9 : BaghaKamala_45, LindNT_45, Megsy_47, Urkel_47, TreyKay_47, Prithvi_47, SamuelLPlaqson_47, TiniBug_47, DrHayes_47
- Track 10 : LaterM_47, Ageofdapage_48, Stinson_47
- Track 11 : Bella96_47
- Track 12 : LeMond_50, Scarlett_50, KiSi_50, Oscar_50
- Track 13 : Dartin_48, McMater_48, Richo_48
- Track 14 : Bern_47
- Track 15 : Chris_48
- Track 16 : Adonis_46
- Track 17 : Nibb_48
- Track 18 : Yunkel11_48, Guanica15_48
- Track 19 : Shaobing_48, Niklas_48, Peanam_48
- Track 20 : Anaya_48
- Track 21 : Deby_46, Sulley_46
- Track 22 : Curiosium_48
- Track 23 : MarkPhew_49
- Track 24 : Murucutumbu_47
- Track 25 : Chavito_49
- Track 26 : Validus_50
- Track 27 : TaiwanKao_48

- Track 28 : CrimD_46
- Track 29 : Pixie_48, Lea83_50, ShedlockHolmes_49, TBond007_48
- Track 30 : Hurricane_49
- Track 31 : Keshu_50
- Track 32 : TribbleTrouble_46
- Track 33 : Pharb_46
- Track 34 : MacnCheese_50
- Track 35 : AlleyCat_44, Larva_44, Dadosky_44
- Track 36 : Unicorn_48, PhelpsODU_48
- Track 37 : Hammy_48, DarthP_48
- Track 38 : Sunflower1121_52, Shadow1_51
- Track 39 : Applecrisp_48, Ellie_44
- Track 40 : Amgine_46
- Track 41 : November_48
- Track 42 : Krueger_52
- Track 43 : Ekdilam_45
- Track 44 : Tierra_49
- Track 45 : SirPhilip_48
- Track 46 : Syra333_51, Ximenita_52
- Track 47 : Yuna_52
- Track 48 : Phrank_49
- Track 49 : Amohnition_48
- Track 50 : TClif_50
- Track 51 : Cain_49, Bryler_49
- Track 52 : Fefferhead_46
- Track 53 : Marshawn_49

Summary of Final Annotations (See graph section above for start numbers):

The start number called the most often in the published annotations is 17, it was called in 86 of the 136 non-draft genes in the pham.

Genes that call this "Most Annotated" start:

• ActinUp_46, Adephagia_46, Adonis_46, Ageofdapage_48, AlishaPH_46, Anaya_48, Angelica_46, Apocalypse_49, Asayake_46, Atiba_46, BEEST_46, BGIlluviae_46, BaghaKamala_45, BarrelRoll_46, Beezoo_48, Bella96_47, Belladonna_46, Blizzard_46, Boiiii_46, CREW_46, CallaLilly_48, Capricorn_46, CaseJules_47, CheetoDust_45, Chris_48, Clipper_50, CrimD_46, Dalmuri_46, Deby_46, Devera_50, Dole_49, DrHayes_47, Durfee_46, Emerson_47, Ganymede_47, Geraldini_48, HedwigODU_46, Homura_46, Hyperbowlee_46, Illumine_49, Inky_46, JAWS_46, Jarvi_46, Jayhawk_47, Jeckyll_46, Joy99_46, KiSi_50, LaterM_47, LeMond_50, LindNT_45, Llorens_46, Lunahalos_46, MacKat_41, MarkPhew_49, MeaningOfLife_47, Megsy_47, Murucutumbu_47, Mynx_47, Nibb_48, Oscar_50, Padfoot_46, Padpat_47, Peel_46, Piatt_46, Pokerus_45, Prithvi_47, QuincyRose_45, Ramen_46, Rapunzel97_46, Rosmarinus_46, SamuelLPlaqson_47, Scarlett_50, ShiaSurprise_47, Slimphazie_46, Spock_46, Stinson_47, Sulley_46, Tachez_46, TaiwanKao_48, TiniBug_47, Tiri_47, Topper_46, TreyKay_47, TruffulaTree_46, Twitch_46, Urkel_47, Veliki_46, YoureAdopted_45, Zabiza_41, Zavala_47,

Genes that have the "Most Annotated" start but do not call it:

- Bern_47,

Genes that do not have the "Most Annotated" start:

- AlleyCat_44, Amelie_41, Amgine_46, Amohnition_48, Applecrisp_48, Binglebops_41, Bryler_49, Cain_49, Chavito_49, Curiosium_48, Dadosky_44, DarthP_48, Dartin_48, Efra2_48, Ekdilam_45, Ellie_44, Enkosi_43, Fefferhead_46, Guanica15_48, Hammy_48, Hurricane_49, Keshu_50, Krueger_52, Larva_44, Lea83_50, LilPharaoh_41, MacnCheese_50, Marshawn_49, McMater_48, Mdavu_42, Nergal_43, Nikao_44, Niklas_48, November_48, Nutello_41, Peanam_48, Pharb_46, PhelpsODU_48, Phrank_49, Pixie_48, Richo_48, SgtBeansprout_41, Shadow1_51, Shaobing_48, ShedlockHolmes_49, SirPhilip_48, Sunflower1121_52, Syra333_51, TBond007_48, TClif_50, Teejan_43, Tierra_49, Torres_43, TripleTrouble_46, Unicorn_48, Validus_50, Ximenita_52, Yuna_52, Yunkel11_48,

Summary by start number:

Start 14:

- Found in 9 of 150 (6.0%) of genes in pham
- Manual Annotations of this start: 8 of 136
- Called 100.0% of time when present
- Phage (with cluster) where this start called: Hurricane_49 (K3), Keshu_50 (K3), Lea83_50 (K3), MacnCheese_50 (K3), Pharb_46 (K3), Pixie_48 (K3), ShedlockHolmes_49 (K3), TBond007_48 (K3), TripleTrouble_46 (K3),

Start 15:

- Found in 1 of 150 (0.7%) of genes in pham
- Manual Annotations of this start: 1 of 136
- Called 100.0% of time when present
- Phage (with cluster) where this start called: Marshawn_49 (K6),

Start 17:

- Found in 91 of 150 (60.7%) of genes in pham
- Manual Annotations of this start: 86 of 136
- Called 98.9% of time when present
- Phage (with cluster) where this start called: ActinUp_46 (K1), Adephegia_46 (K1), Adonis_46 (K1), Ageofdapage_48 (K1), AlishaPH_46 (K1), Anaya_48 (K1), Angelica_46 (K1), Apocalypse_49 (K1), Asayake_46 (K1), Atiba_46 (K1), BEEST_46 (K1), BGIluviae_46 (K1), BaghaKamala_45 (K1), BarrelRoll_46 (K1), Beezoo_48 (K1), Bella96_47 (K1), Belladonna_46 (K1), Blizzard_46 (K1), Boiiii_46 (K1), CREW_46 (K1), CallaLilly_48 (K1), Capricorn_46 (K1), CaseJules_47 (K1), CheetoDust_45 (K1), Chris_48 (K1), Clipper_50 (K1), CrimD_46 (K1), Dalmuri_46 (K1), Deby_46 (K1), Devera_50 (K1), Dole_49 (K1), DrHayes_47 (K1), Durfee_46 (K1), Emerson_47 (K1), Ganymede_47 (K1), Geraldini_48 (K1), HedwigODU_46 (K1), Homura_46 (K1), Hyperbowlee_46 (K1), Illumine_49 (K1), Inky_46 (K1), JAWS_46 (K1), Jarvi_46 (K1), Jayhawk_47 (K1), Jeckyll_46 (K1), Joy99_46 (K1), KiSi_50 (K1), LaterM_47 (K1), LeMond_50 (K1), LindNT_45 (K1), Llorens_46 (K1), Lunahalos_46 (K1), MacKat_41 (K1), MarkPheW_49 (K1), MeaningOfLife_47 (K1), Megsy_47 (K1), Murucutumbu_47 (K1), Mynx_47 (K1), Nibb_48 (K1), Oscar_50 (K1), Padfoot_46 (K1), Padpat_47 (K1), Peel_46 (K1), Piatt_46 (K1), Pokerus_45 (K1), Prithvi_47 (K1), QuincyRose_45 (K1), Ramen_46 (K1), Rapunzel97_46 (K1), Rosmarinus_46 (K1), SamuelLPlaqson_47 (K1), Scarlett_50 (K1), ShiaSurprise_47 (K1), Slimphazie_46 (K1), Spock_46 (K1), Stinson_47 (K1), Sulley_46 (K1), Tachez_46 (K1), TaiwanKao_48 (K1), TiniBug_47 (K1), Tiri_47 (K1), Topper_46 (K1), TreyKay_47 (K1), TruffulaTree_46 (K1),

Twitch_46 (K1), Urkel_47 (K1), Veliki_46 (K1), YoureAdopted_45 (K1), Zabiza_41 (K1), Zavala_47 (K1),

Start 18:

- Found in 1 of 150 (0.7%) of genes in pham
- Manual Annotations of this start: 1 of 136
- Called 100.0% of time when present
- Phage (with cluster) where this start called: Yuna_52 (K6),

Start 19:

- Found in 103 of 150 (68.7%) of genes in pham
- Manual Annotations of this start: 19 of 136
- Called 21.4% of time when present
- Phage (with cluster) where this start called: Amgine_46 (K6), Amohnition_48 (K6), Applecrisp_48 (K6), Bern_47 (K1), Bryler_49 (K6), Cain_49 (K6), DarthP_48 (K6), Ekdilam_45 (K6), Ellie_44 (K6), Fefferhead_46 (K6), Hammy_48 (K6), Krueger_52 (K6), November_48 (K6), PhelpsODU_48 (K6), Phrank_49 (K6), Shadow1_51 (K6), SirPhilip_48 (K6), Sunflower1121_52 (K6), Syra333_51 (K6), Tierra_49 (K6), Unicorn_48 (K6), Ximenita_52 (K6),

Start 20:

- Found in 1 of 150 (0.7%) of genes in pham
- Manual Annotations of this start: 1 of 136
- Called 100.0% of time when present
- Phage (with cluster) where this start called: Curiosium_48 (K1),

Start 21:

- Found in 4 of 150 (2.7%) of genes in pham
- Manual Annotations of this start: 4 of 136
- Called 100.0% of time when present
- Phage (with cluster) where this start called: Efra2_48 (K1), Guanica15_48 (K1), TClif_50 (K6), Yunkel11_48 (K1),

Start 22:

- Found in 3 of 150 (2.0%) of genes in pham
- Manual Annotations of this start: 3 of 136
- Called 100.0% of time when present
- Phage (with cluster) where this start called: AlleyCat_44 (K5), Dadosky_44 (K5), Larva_44 (K5),

Start 26:

- Found in 19 of 150 (12.7%) of genes in pham
- Manual Annotations of this start: 12 of 136
- Called 89.5% of time when present
- Phage (with cluster) where this start called: Amelie_41 (K1), Binglebops_41 (K1), Dartin_48 (K1), Enkosi_43 (K1), LilPharaoh_41 (K1), McMater_48 (K1), Mdavu_42 (K1), Nikao_44 (K1), Niklas_48 (K1), Nutello_41 (K1), Peanam_48 (K1), Richo_48 (K1), SgtBeansprout_41 (K1), Shaobing_48 (K1), Teejan_43 (K1), Torres_43 (K1), Validus_50 (K1),

Start 27:

- Found in 1 of 150 (0.7%) of genes in pham
- Manual Annotations of this start: 1 of 136

- Called 100.0% of time when present
- Phage (with cluster) where this start called: Nergal_43 (AG),

Start 30:

- Found in 2 of 150 (1.3%) of genes in pham
- No Manual Annotations of this start.
- Called 50.0% of time when present
- Phage (with cluster) where this start called: Chavito_49 (K1),

Summary by clusters:

There are 5 clusters represented in this pham: K3, K1, AG, K6, K5,

Info for manual annotations of cluster AG:

- Start number 27 was manually annotated 1 time for cluster AG.

Info for manual annotations of cluster K1:

- Start number 17 was manually annotated 86 times for cluster K1.
- Start number 20 was manually annotated 1 time for cluster K1.
- Start number 21 was manually annotated 3 times for cluster K1.
- Start number 26 was manually annotated 12 times for cluster K1.

Info for manual annotations of cluster K3:

- Start number 14 was manually annotated 8 times for cluster K3.

Info for manual annotations of cluster K5:

- Start number 22 was manually annotated 3 times for cluster K5.

Info for manual annotations of cluster K6:

- Start number 15 was manually annotated 1 time for cluster K6.
- Start number 18 was manually annotated 1 time for cluster K6.
- Start number 19 was manually annotated 19 times for cluster K6.
- Start number 21 was manually annotated 1 time for cluster K6.

Gene Information:

Gene: ActinUp_46 Start: 35666, Stop: 36016, Start Num: 17

Candidate Starts for ActinUp_46:

(9, 35555), (Start: 17 @35666 has 86 MA's), (Start: 19 @35672 has 19 MA's), (28, 35702), (37, 35783), (60, 35942), (73, 35999),

Gene: Adephagia_46 Start: 35663, Stop: 36013, Start Num: 17

Candidate Starts for Adephagia_46:

(9, 35552), (Start: 17 @35663 has 86 MA's), (Start: 19 @35669 has 19 MA's), (60, 35939), (73, 35996),

Gene: Adonis_46 Start: 35961, Stop: 36311, Start Num: 17

Candidate Starts for Adonis_46:

(Start: 17 @35961 has 86 MA's), (28, 35997), (37, 36078), (60, 36237), (73, 36294),

Gene: Ageofdapage_48 Start: 36661, Stop: 37002, Start Num: 17

Candidate Starts for Ageofdapage_48:

(Start: 17 @36661 has 86 MA's), (Start: 19 @36667 has 19 MA's), (37, 36778), (62, 36940), (73, 36985),

Gene: AlishaPH_46 Start: 35936, Stop: 36286, Start Num: 17

Candidate Starts for AlishaPH_46:

(9, 35825), (Start: 17 @35936 has 86 MA's), (Start: 19 @35942 has 19 MA's), (28, 35972), (37, 36053), (60, 36212), (73, 36269),

Gene: AlleyCat_44 Start: 34871, Stop: 35161, Start Num: 22

Candidate Starts for AlleyCat_44:

(Start: 22 @34871 has 3 MA's), (43, 35030), (46, 35057), (49, 35081), (56, 35144),

Gene: Amelie_41 Start: 35256, Stop: 35561, Start Num: 26

Candidate Starts for Amelie_41:

(Start: 26 @35256 has 12 MA's), (37, 35343), (50, 35424), (53, 35460), (67, 35508),

Gene: Amgine_46 Start: 36691, Stop: 37038, Start Num: 19

Candidate Starts for Amgine_46:

(Start: 19 @36691 has 19 MA's), (66, 36970), (72, 37003), (73, 37021),

Gene: Amohndition_48 Start: 36704, Stop: 37051, Start Num: 19

Candidate Starts for Amohndition_48:

(Start: 19 @36704 has 19 MA's), (63, 36974), (70, 37010), (73, 37034),

Gene: Anaya_48 Start: 36273, Stop: 36620, Start Num: 17

Candidate Starts for Anaya_48:

(Start: 17 @36273 has 86 MA's), (28, 36309), (37, 36390), (64, 36555), (73, 36603),

Gene: Angelica_46 Start: 35893, Stop: 36243, Start Num: 17

Candidate Starts for Angelica_46:

(9, 35782), (Start: 17 @35893 has 86 MA's), (Start: 19 @35899 has 19 MA's), (28, 35929), (37, 36010), (60, 36169), (73, 36226),

Gene: Apocalypse_49 Start: 36678, Stop: 37022, Start Num: 17

Candidate Starts for Apocalypse_49:

(9, 36567), (Start: 17 @36678 has 86 MA's), (Start: 19 @36684 has 19 MA's), (28, 36714), (37, 36795), (60, 36954), (73, 37005),

Gene: Applecrisp_48 Start: 36187, Stop: 36534, Start Num: 19

Candidate Starts for Applecrisp_48:

(Start: 19 @36187 has 19 MA's), (66, 36466), (73, 36517),

Gene: Asayake_46 Start: 35978, Stop: 36328, Start Num: 17

Candidate Starts for Asayake_46:

(9, 35867), (Start: 17 @35978 has 86 MA's), (Start: 19 @35984 has 19 MA's), (60, 36254), (73, 36311),

Gene: Atiba_46 Start: 35626, Stop: 35976, Start Num: 17

Candidate Starts for Atiba_46:

(9, 35515), (Start: 17 @35626 has 86 MA's), (Start: 19 @35632 has 19 MA's), (28, 35662), (37, 35743), (60, 35902), (73, 35959),

Gene: BEEST_46 Start: 35978, Stop: 36328, Start Num: 17

Candidate Starts for BEEST_46:

(9, 35867), (Start: 17 @35978 has 86 MA's), (Start: 19 @35984 has 19 MA's), (60, 36254), (73, 36311),

Gene: BGlluviae_46 Start: 35781, Stop: 36131, Start Num: 17

Candidate Starts for BGlluviae_46:

(9, 35670), (Start: 17 @35781 has 86 MA's), (Start: 19 @35787 has 19 MA's), (60, 36057), (73, 36114),

Gene: BaghaKamala_45 Start: 35101, Stop: 35451, Start Num: 17

Candidate Starts for BaghaKamala_45:

(Start: 17 @35101 has 86 MA's), (Start: 19 @35107 has 19 MA's), (37, 35218), (60, 35377), (73, 35434),

Gene: BarrelRoll_46 Start: 35649, Stop: 35999, Start Num: 17

Candidate Starts for BarrelRoll_46:

(9, 35538), (Start: 17 @35649 has 86 MA's), (Start: 19 @35655 has 19 MA's), (28, 35685), (37, 35766), (60, 35925), (73, 35982),

Gene: Beezoo_48 Start: 36624, Stop: 36974, Start Num: 17

Candidate Starts for Beezoo_48:

(9, 36513), (Start: 17 @36624 has 86 MA's), (Start: 19 @36630 has 19 MA's), (28, 36660), (37, 36741), (60, 36900), (73, 36957),

Gene: Bella96_47 Start: 36515, Stop: 36841, Start Num: 17

Candidate Starts for Bella96_47:

(Start: 17 @36515 has 86 MA's), (Start: 19 @36521 has 19 MA's), (37, 36623), (59, 36776), (73, 36824),

Gene: Belladonna_46 Start: 35781, Stop: 36131, Start Num: 17

Candidate Starts for Belladonna_46:

(9, 35670), (Start: 17 @35781 has 86 MA's), (Start: 19 @35787 has 19 MA's), (60, 36057), (73, 36114),

Gene: Bern_47 Start: 34702, Stop: 35046, Start Num: 19

Candidate Starts for Bern_47:

(9, 34585), (Start: 17 @34696 has 86 MA's), (Start: 19 @34702 has 19 MA's), (28, 34732), (37, 34813), (60, 34972), (73, 35029),

Gene: Biglebops_41 Start: 35256, Stop: 35561, Start Num: 26

Candidate Starts for Biglebops_41:

(Start: 26 @35256 has 12 MA's), (37, 35343), (50, 35424), (53, 35460), (67, 35508),

Gene: Blizzard_46 Start: 35978, Stop: 36328, Start Num: 17

Candidate Starts for Blizzard_46:

(9, 35867), (Start: 17 @35978 has 86 MA's), (Start: 19 @35984 has 19 MA's), (60, 36254), (73, 36311),

Gene: Boiiii_46 Start: 35980, Stop: 36330, Start Num: 17

Candidate Starts for Boiiii_46:

(9, 35869), (Start: 17 @35980 has 86 MA's), (Start: 19 @35986 has 19 MA's), (60, 36256), (73, 36313),

Gene: Bryler_49 Start: 35565, Stop: 35858, Start Num: 19

Candidate Starts for Bryler_49:

(Start: 19 @35565 has 19 MA's), (29, 35601), (71, 35820), (73, 35841),

Gene: CREW_46 Start: 35781, Stop: 36131, Start Num: 17

Candidate Starts for CREW_46:

(9, 35670), (Start: 17 @35781 has 86 MA's), (Start: 19 @35787 has 19 MA's), (60, 36057), (73, 36114),

Gene: Cain_49 Start: 35553, Stop: 35846, Start Num: 19

Candidate Starts for Cain_49:

(Start: 19 @35553 has 19 MA's), (29, 35589), (71, 35808), (73, 35829),

Gene: CallaLilly_48 Start: 35704, Stop: 36054, Start Num: 17

Candidate Starts for CallaLilly_48:

(9, 35593), (Start: 17 @35704 has 86 MA's), (Start: 19 @35710 has 19 MA's), (60, 35980), (73, 36037),

Gene: Capricorn_46 Start: 35781, Stop: 36131, Start Num: 17

Candidate Starts for Capricorn_46:

(9, 35670), (Start: 17 @35781 has 86 MA's), (Start: 19 @35787 has 19 MA's), (60, 36057), (73, 36114),

Gene: CaseJules_47 Start: 35978, Stop: 36328, Start Num: 17

Candidate Starts for CaseJules_47:

(9, 35867), (Start: 17 @35978 has 86 MA's), (Start: 19 @35984 has 19 MA's), (60, 36254), (73, 36311),

Gene: Chavito_49 Start: 37057, Stop: 37350, Start Num: 30

Candidate Starts for Chavito_49:

(Start: 26 @37039 has 12 MA's), (30, 37057), (37, 37126), (50, 37207), (73, 37333),

Gene: CheetoDust_45 Start: 35150, Stop: 35500, Start Num: 17

Candidate Starts for CheetoDust_45:

(9, 35039), (Start: 17 @35150 has 86 MA's), (Start: 19 @35156 has 19 MA's), (28, 35186), (37, 35267), (60, 35426), (73, 35483),

Gene: Chris_48 Start: 36479, Stop: 36811, Start Num: 17

Candidate Starts for Chris_48:

(5, 36260), (Start: 17 @36479 has 86 MA's), (23, 36497), (33, 36557), (36, 36602),

Gene: Clipper_50 Start: 36297, Stop: 36647, Start Num: 17

Candidate Starts for Clipper_50:

(9, 36186), (Start: 17 @36297 has 86 MA's), (Start: 19 @36303 has 19 MA's), (37, 36414), (60, 36573), (73, 36630),

Gene: CrimD_46 Start: 35904, Stop: 36242, Start Num: 17

Candidate Starts for CrimD_46:

(7, 35781), (9, 35793), (Start: 17 @35904 has 86 MA's), (Start: 19 @35910 has 19 MA's), (37, 36021), (73, 36225),

Gene: Curiosium_48 Start: 34631, Stop: 34975, Start Num: 20

Candidate Starts for Curiosium_48:

(10, 34490), (Start: 20 @34631 has 1 MA's), (Start: 26 @34661 has 12 MA's), (35, 34718), (37, 34748), (53, 34865), (73, 34958),

Gene: Dadosky_44 Start: 34873, Stop: 35163, Start Num: 22

Candidate Starts for Dadosky_44:

(Start: 22 @34873 has 3 MA's), (43, 35032), (46, 35059), (49, 35083), (56, 35146),

Gene: Dalmuri_46 Start: 35781, Stop: 36131, Start Num: 17

Candidate Starts for Dalmuri_46:

(9, 35670), (Start: 17 @35781 has 86 MA's), (Start: 19 @35787 has 19 MA's), (60, 36057), (73, 36114),

Gene: DarthP_48 Start: 36588, Stop: 36935, Start Num: 19

Candidate Starts for DarthP_48:

(Start: 19 @36588 has 19 MA's), (25, 36606), (63, 36858), (70, 36894), (73, 36918),

Gene: Dartin_48 Start: 36377, Stop: 36688, Start Num: 26

Candidate Starts for Dartin_48:

(Start: 26 @36377 has 12 MA's), (32, 36413), (37, 36464), (50, 36545), (73, 36671),

Gene: Deby_46 Start: 35909, Stop: 36259, Start Num: 17

Candidate Starts for Deby_46:

(9, 35798), (12, 35864), (Start: 17 @35909 has 86 MA's), (Start: 19 @35915 has 19 MA's), (28, 35945), (37, 36026), (60, 36185), (73, 36242),

Gene: Devera_50 Start: 36442, Stop: 36789, Start Num: 17

Candidate Starts for Devera_50:

(Start: 17 @36442 has 86 MA's), (Start: 19 @36448 has 19 MA's), (37, 36559), (60, 36718), (62, 36721), (73, 36772),

Gene: Dole_49 Start: 36444, Stop: 36791, Start Num: 17

Candidate Starts for Dole_49:

(Start: 17 @36444 has 86 MA's), (Start: 19 @36450 has 19 MA's), (37, 36561), (60, 36720), (62, 36723), (73, 36774),

Gene: DrHayes_47 Start: 36560, Stop: 36904, Start Num: 17

Candidate Starts for DrHayes_47:

(Start: 17 @36560 has 86 MA's), (Start: 19 @36566 has 19 MA's), (37, 36677), (60, 36836), (73, 36887),

Gene: Durfee_46 Start: 35978, Stop: 36328, Start Num: 17

Candidate Starts for Durfee_46:

(9, 35867), (Start: 17 @35978 has 86 MA's), (Start: 19 @35984 has 19 MA's), (60, 36254), (73, 36311),

Gene: Efra2_48 Start: 35532, Stop: 35858, Start Num: 21

Candidate Starts for Efra2_48:

(Start: 21 @35532 has 4 MA's), (37, 35640), (48, 35715), (73, 35841),

Gene: Ekdilam_45 Start: 36153, Stop: 36479, Start Num: 19

Candidate Starts for Ekdilam_45:

(Start: 19 @36153 has 19 MA's), (38, 36264), (51, 36354), (63, 36423), (70, 36438), (73, 36462),

Gene: Ellie_44 Start: 35879, Stop: 36226, Start Num: 19

Candidate Starts for Ellie_44:

(Start: 19 @35879 has 19 MA's), (66, 36158), (73, 36209),

Gene: Emerson_47 Start: 35657, Stop: 36007, Start Num: 17

Candidate Starts for Emerson_47:

(9, 35546), (Start: 17 @35657 has 86 MA's), (Start: 19 @35663 has 19 MA's), (28, 35693), (37, 35774), (60, 35933), (73, 35990),

Gene: Enkosi_43 Start: 37869, Stop: 38174, Start Num: 26

Candidate Starts for Enkosi_43:

(Start: 26 @37869 has 12 MA's), (37, 37956), (50, 38037), (53, 38073), (67, 38121),

Gene: Fefferhead_46 Start: 35830, Stop: 36177, Start Num: 19

Candidate Starts for Fefferhead_46:

(Start: 19 @35830 has 19 MA's), (31, 35878), (44, 35974), (66, 36109), (72, 36142), (73, 36160),

Gene: Ganymede_47 Start: 36096, Stop: 36446, Start Num: 17

Candidate Starts for Ganymede_47:

(9, 35985), (Start: 17 @36096 has 86 MA's), (Start: 19 @36102 has 19 MA's), (28, 36132), (37, 36213), (60, 36372), (73, 36429),

Gene: Geraldini_48 Start: 36713, Stop: 37063, Start Num: 17

Candidate Starts for Geraldini_48:

(9, 36602), (Start: 17 @36713 has 86 MA's), (Start: 19 @36719 has 19 MA's), (28, 36749), (37, 36830), (60, 36989), (73, 37046),

Gene: Guanica15_48 Start: 35489, Stop: 35815, Start Num: 21

Candidate Starts for Guanica15_48:

(Start: 21 @35489 has 4 MA's), (37, 35597), (73, 35798),

Gene: Hammy_48 Start: 36576, Stop: 36923, Start Num: 19

Candidate Starts for Hammy_48:

(Start: 19 @36576 has 19 MA's), (25, 36594), (63, 36846), (70, 36882), (73, 36906),

Gene: HedwigODU_46 Start: 35666, Stop: 36016, Start Num: 17

Candidate Starts for HedwigODU_46:

(9, 35555), (Start: 17 @35666 has 86 MA's), (Start: 19 @35672 has 19 MA's), (28, 35702), (37, 35783), (60, 35942), (73, 35999),

Gene: Homura_46 Start: 35781, Stop: 36131, Start Num: 17

Candidate Starts for Homura_46:

(9, 35670), (Start: 17 @35781 has 86 MA's), (Start: 19 @35787 has 19 MA's), (60, 36057), (73, 36114),

Gene: Hurricane_49 Start: 36312, Stop: 36689, Start Num: 14

Candidate Starts for Hurricane_49:

(Start: 14 @36312 has 8 MA's), (16, 36318), (24, 36336), (34, 36399), (51, 36546), (61, 36615), (71, 36651), (73, 36672),

Gene: Hyperbowlee_46 Start: 35978, Stop: 36328, Start Num: 17

Candidate Starts for Hyperbowlee_46:

(9, 35867), (Start: 17 @35978 has 86 MA's), (Start: 19 @35984 has 19 MA's), (60, 36254), (73, 36311),

Gene: Illumine_49 Start: 36444, Stop: 36791, Start Num: 17

Candidate Starts for Illumine_49:

(Start: 17 @36444 has 86 MA's), (Start: 19 @36450 has 19 MA's), (37, 36561), (60, 36720), (62, 36723), (73, 36774),

Gene: Inky_46 Start: 35781, Stop: 36131, Start Num: 17

Candidate Starts for Inky_46:

(9, 35670), (Start: 17 @35781 has 86 MA's), (Start: 19 @35787 has 19 MA's), (60, 36057), (73, 36114),

Gene: JAWS_46 Start: 35655, Stop: 36005, Start Num: 17

Candidate Starts for JAWS_46:

(9, 35544), (Start: 17 @35655 has 86 MA's), (Start: 19 @35661 has 19 MA's), (60, 35931), (73, 35988),

Gene: Jarvi_46 Start: 35781, Stop: 36131, Start Num: 17

Candidate Starts for Jarvi_46:

(9, 35670), (Start: 17 @35781 has 86 MA's), (Start: 19 @35787 has 19 MA's), (60, 36057), (73, 36114),

Gene: Jayhawk_47 Start: 35664, Stop: 36014, Start Num: 17

Candidate Starts for Jayhawk_47:

(9, 35553), (Start: 17 @35664 has 86 MA's), (Start: 19 @35670 has 19 MA's), (28, 35700), (37, 35781), (60, 35940), (73, 35997),

Gene: Jeckyll_46 Start: 35781, Stop: 36131, Start Num: 17

Candidate Starts for Jeckyll_46:

(9, 35670), (Start: 17 @35781 has 86 MA's), (Start: 19 @35787 has 19 MA's), (60, 36057), (73, 36114),

Gene: Joy99_46 Start: 35710, Stop: 36060, Start Num: 17

Candidate Starts for Joy99_46:

(9, 35599), (Start: 17 @35710 has 86 MA's), (Start: 19 @35716 has 19 MA's), (60, 35986), (73, 36043),

Gene: Keshu_50 Start: 36370, Stop: 36747, Start Num: 14

Candidate Starts for Keshu_50:

(Start: 14 @36370 has 8 MA's), (16, 36376), (24, 36394), (34, 36457), (61, 36673), (71, 36709), (73, 36730),

Gene: KiSi_50 Start: 36878, Stop: 37192, Start Num: 17

Candidate Starts for KiSi_50:

(5, 36665), (Start: 17 @36878 has 86 MA's), (57, 37133), (70, 37160),

Gene: Krueger_52 Start: 36559, Stop: 36852, Start Num: 19

Candidate Starts for Krueger_52:

(Start: 19 @36559 has 19 MA's), (47, 36724), (53, 36784), (71, 36814), (73, 36835),

Gene: Larva_44 Start: 34740, Stop: 35030, Start Num: 22

Candidate Starts for Larva_44:

(Start: 22 @34740 has 3 MA's), (43, 34899), (46, 34926), (49, 34950), (56, 35013),

Gene: LaterM_47 Start: 36558, Stop: 36899, Start Num: 17

Candidate Starts for LaterM_47:

(Start: 17 @36558 has 86 MA's), (Start: 19 @36564 has 19 MA's), (37, 36675), (62, 36837), (73, 36882),

Gene: LeMond_50 Start: 36862, Stop: 37176, Start Num: 17

Candidate Starts for LeMond_50:

(5, 36649), (Start: 17 @36862 has 86 MA's), (57, 37117), (70, 37144),

Gene: Lea83_50 Start: 36344, Stop: 36721, Start Num: 14

Candidate Starts for Lea83_50:

(Start: 14 @36344 has 8 MA's), (16, 36350), (34, 36431), (61, 36647), (71, 36683), (73, 36704),

Gene: LilPharaoh_41 Start: 34984, Stop: 35289, Start Num: 26

Candidate Starts for LilPharaoh_41:

(Start: 26 @34984 has 12 MA's), (37, 35071), (50, 35152), (53, 35188), (67, 35236),

Gene: LindNT_45 Start: 35871, Stop: 36221, Start Num: 17

Candidate Starts for LindNT_45:

(Start: 17 @35871 has 86 MA's), (Start: 19 @35877 has 19 MA's), (37, 35988), (60, 36147), (73, 36204),

Gene: Llorens_46 Start: 35781, Stop: 36131, Start Num: 17

Candidate Starts for Llorens_46:

(9, 35670), (Start: 17 @35781 has 86 MA's), (Start: 19 @35787 has 19 MA's), (60, 36057), (73, 36114),

Gene: Lunahalos_46 Start: 35781, Stop: 36131, Start Num: 17

Candidate Starts for Lunahalos_46:

(9, 35670), (Start: 17 @35781 has 86 MA's), (Start: 19 @35787 has 19 MA's), (60, 36057),

Gene: MacKat_41 Start: 31181, Stop: 31531, Start Num: 17

Candidate Starts for MacKat_41:

(9, 31070), (Start: 17 @31181 has 86 MA's), (Start: 19 @31187 has 19 MA's), (37, 31298), (60, 31457), (73, 31514),

Gene: MacnCheese_50 Start: 37267, Stop: 37638, Start Num: 14

Candidate Starts for MacnCheese_50:

(1, 36940), (3, 36970), (Start: 14 @37267 has 8 MA's), (24, 37291), (34, 37354), (39, 37414), (40, 37429), (53, 37525), (58, 37555), (61, 37570), (65, 37576), (69, 37600), (73, 37621),

Gene: MarkPhew_49 Start: 36307, Stop: 36639, Start Num: 17

Candidate Starts for MarkPhew_49:

(5, 36091), (Start: 17 @36307 has 86 MA's), (23, 36325),

Gene: Marshawn_49 Start: 36704, Stop: 36964, Start Num: 15

Candidate Starts for Marshawn_49:

(Start: 15 @36704 has 1 MA's), (37, 36812),

Gene: McMater_48 Start: 36377, Stop: 36688, Start Num: 26

Candidate Starts for McMater_48:

(Start: 26 @36377 has 12 MA's), (32, 36413), (37, 36464), (50, 36545), (73, 36671),

Gene: Mdavu_42 Start: 35245, Stop: 35550, Start Num: 26

Candidate Starts for Mdavu_42:

(Start: 26 @35245 has 12 MA's), (37, 35332), (50, 35413), (53, 35449), (67, 35497),

Gene: MeaningOfLife_47 Start: 36590, Stop: 36940, Start Num: 17

Candidate Starts for MeaningOfLife_47:

(9, 36479), (Start: 17 @36590 has 86 MA's), (Start: 19 @36596 has 19 MA's), (28, 36626), (37, 36707), (60, 36866), (73, 36923),

Gene: Megsy_47 Start: 35930, Stop: 36280, Start Num: 17

Candidate Starts for Megsy_47:

(Start: 17 @35930 has 86 MA's), (Start: 19 @35936 has 19 MA's), (37, 36047), (60, 36206), (73, 36263),

Gene: Murucutumbu_47 Start: 36651, Stop: 36992, Start Num: 17

Candidate Starts for Murucutumbu_47:

(Start: 17 @36651 has 86 MA's), (Start: 19 @36657 has 19 MA's), (37, 36768), (62, 36930), (68, 36945), (73, 36975),

Gene: Mynx_47 Start: 35982, Stop: 36332, Start Num: 17

Candidate Starts for Mynx_47:

(9, 35871), (Start: 17 @35982 has 86 MA's), (Start: 19 @35988 has 19 MA's), (28, 36018), (37, 36099), (60, 36258), (73, 36315),

Gene: Nergal_43 Start: 34330, Stop: 34641, Start Num: 27

Candidate Starts for Nergal_43:

(Start: 27 @34330 has 1 MA's), (32, 34366), (41, 34450), (53, 34546), (73, 34624),

Gene: Nibb_48 Start: 36019, Stop: 36333, Start Num: 17

Candidate Starts for Nibb_48:

(5, 35803), (13, 35989), (Start: 17 @36019 has 86 MA's),

Gene: Nikao_44 Start: 37869, Stop: 38174, Start Num: 26

Candidate Starts for Nikao_44:

(Start: 26 @37869 has 12 MA's), (37, 37956), (50, 38037), (53, 38073), (67, 38121),

Gene: Niklas_48 Start: 36438, Stop: 36749, Start Num: 26

Candidate Starts for Niklas_48:

(Start: 26 @36438 has 12 MA's), (37, 36525), (50, 36606), (73, 36732),

Gene: November_48 Start: 36312, Stop: 36686, Start Num: 19

Candidate Starts for November_48:

(Start: 19 @36312 has 19 MA's), (25, 36330), (66, 36591), (70, 36621), (74, 36669),

Gene: Nutello_41 Start: 35256, Stop: 35561, Start Num: 26

Candidate Starts for Nutello_41:

(Start: 26 @35256 has 12 MA's), (37, 35343), (50, 35424), (53, 35460), (67, 35508),

Gene: Oscar_50 Start: 36764, Stop: 37078, Start Num: 17

Candidate Starts for Oscar_50:

(5, 36551), (Start: 17 @36764 has 86 MA's), (57, 37019), (70, 37046),

Gene: Padfoot_46 Start: 35978, Stop: 36328, Start Num: 17

Candidate Starts for Padfoot_46:

(9, 35867), (Start: 17 @35978 has 86 MA's), (Start: 19 @35984 has 19 MA's), (60, 36254), (73, 36311),

Gene: Padpat_47 Start: 35657, Stop: 36007, Start Num: 17

Candidate Starts for Padpat_47:

(9, 35546), (Start: 17 @35657 has 86 MA's), (Start: 19 @35663 has 19 MA's), (28, 35693), (37, 35774), (60, 35933), (73, 35990),

Gene: Peanam_48 Start: 36396, Stop: 36707, Start Num: 26

Candidate Starts for Peanam_48:

(Start: 26 @36396 has 12 MA's), (37, 36483), (50, 36564), (73, 36690),

Gene: Peel_46 Start: 35783, Stop: 36133, Start Num: 17

Candidate Starts for Peel_46:

(9, 35672), (Start: 17 @35783 has 86 MA's), (Start: 19 @35789 has 19 MA's), (60, 36059), (73, 36116),

Gene: Pharb_46 Start: 35070, Stop: 35441, Start Num: 14

Candidate Starts for Pharb_46:

(1, 34746), (2, 34767), (4, 34827), (Start: 14 @35070 has 8 MA's), (24, 35094), (34, 35157), (42, 35241), (61, 35373), (65, 35379), (69, 35403), (73, 35424),

Gene: PhelpsODU_48 Start: 35586, Stop: 35879, Start Num: 19

Candidate Starts for PhelpsODU_48:

(Start: 19 @35586 has 19 MA's), (29, 35622), (38, 35697), (53, 35811), (54, 35820), (72, 35844), (73, 35862),

Gene: Phrank_49 Start: 35543, Stop: 35836, Start Num: 19

Candidate Starts for Phrank_49:

(Start: 19 @35543 has 19 MA's), (29, 35579), (38, 35654), (53, 35768), (71, 35798), (73, 35819),

Gene: Piatt_46 Start: 35978, Stop: 36328, Start Num: 17

Candidate Starts for Piatt_46:

(9, 35867), (Start: 17 @35978 has 86 MA's), (Start: 19 @35984 has 19 MA's), (60, 36254), (73, 36311),

Gene: Pixie_48 Start: 35823, Stop: 36200, Start Num: 14

Candidate Starts for Pixie_48:

(Start: 14 @35823 has 8 MA's), (16, 35829), (34, 35910), (61, 36126), (71, 36162), (73, 36183),

Gene: Pokerus_45 Start: 35704, Stop: 36054, Start Num: 17

Candidate Starts for Pokerus_45:

(9, 35593), (Start: 17 @35704 has 86 MA's), (Start: 19 @35710 has 19 MA's), (28, 35740), (37, 35821), (60, 35980), (73, 36037),

Gene: Prithvi_47 Start: 35871, Stop: 36221, Start Num: 17

Candidate Starts for Prithvi_47:

(Start: 17 @35871 has 86 MA's), (Start: 19 @35877 has 19 MA's), (37, 35988), (60, 36147), (73, 36204),

Gene: QuincyRose_45 Start: 36096, Stop: 36446, Start Num: 17

Candidate Starts for QuincyRose_45:

(9, 35985), (Start: 17 @36096 has 86 MA's), (Start: 19 @36102 has 19 MA's), (28, 36132), (37, 36213), (60, 36372), (73, 36429),

Gene: Ramen_46 Start: 35668, Stop: 36018, Start Num: 17

Candidate Starts for Ramen_46:

(9, 35557), (Start: 17 @35668 has 86 MA's), (Start: 19 @35674 has 19 MA's), (28, 35704), (37, 35785), (60, 35944), (73, 36001),

Gene: Rapunzel97_46 Start: 35664, Stop: 36014, Start Num: 17

Candidate Starts for Rapunzel97_46:

(9, 35553), (Start: 17 @35664 has 86 MA's), (Start: 19 @35670 has 19 MA's), (28, 35700), (37, 35781), (60, 35940), (73, 35997),

Gene: Richo_48 Start: 36377, Stop: 36688, Start Num: 26

Candidate Starts for Richo_48:

(Start: 26 @36377 has 12 MA's), (32, 36413), (37, 36464), (50, 36545), (73, 36671),

Gene: Rosmarinus_46 Start: 35769, Stop: 36119, Start Num: 17

Candidate Starts for Rosmarinus_46:

(9, 35658), (Start: 17 @35769 has 86 MA's), (Start: 19 @35775 has 19 MA's), (60, 36045), (73, 36102),

Gene: SamuelLPlaqson_47 Start: 36560, Stop: 36904, Start Num: 17
Candidate Starts for SamuelLPlaqson_47:
(Start: 17 @36560 has 86 MA's), (Start: 19 @36566 has 19 MA's), (37, 36677), (60, 36836), (73, 36887),

Gene: Scarlett_50 Start: 36756, Stop: 37070, Start Num: 17
Candidate Starts for Scarlett_50:
(5, 36543), (Start: 17 @36756 has 86 MA's), (57, 37011), (70, 37038),

Gene: SgtBeansprout_41 Start: 35256, Stop: 35561, Start Num: 26
Candidate Starts for SgtBeansprout_41:
(Start: 26 @35256 has 12 MA's), (37, 35343), (50, 35424), (53, 35460), (67, 35508),

Gene: Shadow1_51 Start: 36704, Stop: 36997, Start Num: 19
Candidate Starts for Shadow1_51:
(Start: 19 @36704 has 19 MA's), (54, 36938), (73, 36980),

Gene: Shaobing_48 Start: 36413, Stop: 36724, Start Num: 26
Candidate Starts for Shaobing_48:
(Start: 26 @36413 has 12 MA's), (37, 36500), (50, 36581), (73, 36707),

Gene: ShedlockHolmes_49 Start: 36348, Stop: 36725, Start Num: 14
Candidate Starts for ShedlockHolmes_49:
(Start: 14 @36348 has 8 MA's), (16, 36354), (34, 36435), (61, 36651), (71, 36687), (73, 36708),

Gene: ShiaSurprise_47 Start: 35978, Stop: 36328, Start Num: 17
Candidate Starts for ShiaSurprise_47:
(9, 35867), (Start: 17 @35978 has 86 MA's), (Start: 19 @35984 has 19 MA's), (60, 36254), (73, 36311),

Gene: SirPhilip_48 Start: 36922, Stop: 37266, Start Num: 19
Candidate Starts for SirPhilip_48:
(8, 36778), (Start: 19 @36922 has 19 MA's), (45, 37069), (52, 37129), (71, 37228), (73, 37249),

Gene: Slimphazie_46 Start: 35664, Stop: 36014, Start Num: 17
Candidate Starts for Slimphazie_46:
(9, 35553), (Start: 17 @35664 has 86 MA's), (Start: 19 @35670 has 19 MA's), (28, 35700), (37, 35781), (60, 35940), (73, 35997),

Gene: Spock_46 Start: 35782, Stop: 36132, Start Num: 17
Candidate Starts for Spock_46:
(9, 35671), (Start: 17 @35782 has 86 MA's), (Start: 19 @35788 has 19 MA's), (60, 36058), (73, 36115),

Gene: Stinson_47 Start: 36171, Stop: 36512, Start Num: 17
Candidate Starts for Stinson_47:
(Start: 17 @36171 has 86 MA's), (Start: 19 @36177 has 19 MA's), (37, 36288), (62, 36450), (73, 36495),

Gene: Sulley_46 Start: 35908, Stop: 36258, Start Num: 17
Candidate Starts for Sulley_46:
(9, 35797), (12, 35863), (Start: 17 @35908 has 86 MA's), (Start: 19 @35914 has 19 MA's), (28, 35944), (37, 36025), (60, 36184), (73, 36241),

Gene: Sunflower1121_52 Start: 36805, Stop: 37098, Start Num: 19

Candidate Starts for Sunflower1121_52:
(Start: 19 @36805 has 19 MA's), (54, 37039), (73, 37081),

Gene: Syra333_51 Start: 36472, Stop: 36762, Start Num: 19
Candidate Starts for Syra333_51:
(Start: 19 @36472 has 19 MA's), (53, 36697), (73, 36745),

Gene: TBond007_48 Start: 35822, Stop: 36199, Start Num: 14
Candidate Starts for TBond007_48:
(Start: 14 @35822 has 8 MA's), (16, 35828), (34, 35909), (61, 36125), (71, 36161), (73, 36182),

Gene: TClif_50 Start: 36845, Stop: 37159, Start Num: 21
Candidate Starts for TClif_50:
(Start: 21 @36845 has 4 MA's), (37, 36953), (70, 37121),

Gene: Tachez_46 Start: 35626, Stop: 35976, Start Num: 17
Candidate Starts for Tachez_46:
(9, 35515), (Start: 17 @35626 has 86 MA's), (Start: 19 @35632 has 19 MA's), (28, 35662), (37, 35743),
(60, 35902), (73, 35959),

Gene: TaiwanKao_48 Start: 35927, Stop: 36277, Start Num: 17
Candidate Starts for TaiwanKao_48:
(9, 35792), (Start: 17 @35927 has 86 MA's), (Start: 19 @35933 has 19 MA's), (37, 36044), (60, 36203),
(73, 36260),

Gene: Teejan_43 Start: 37869, Stop: 38174, Start Num: 26
Candidate Starts for Teejan_43:
(Start: 26 @37869 has 12 MA's), (37, 37956), (50, 38037), (53, 38073), (67, 38121),

Gene: Tierra_49 Start: 36354, Stop: 36647, Start Num: 19
Candidate Starts for Tierra_49:
(Start: 19 @36354 has 19 MA's), (29, 36390), (38, 36465), (53, 36579), (73, 36630),

Gene: TiniBug_47 Start: 36556, Stop: 36900, Start Num: 17
Candidate Starts for TiniBug_47:
(Start: 17 @36556 has 86 MA's), (Start: 19 @36562 has 19 MA's), (37, 36673), (60, 36832), (73,
36883),

Gene: Tiri_47 Start: 35956, Stop: 36306, Start Num: 17
Candidate Starts for Tiri_47:
(9, 35845), (Start: 17 @35956 has 86 MA's), (Start: 19 @35962 has 19 MA's), (37, 36073), (60, 36232),
(73, 36289),

Gene: Topper_46 Start: 35781, Stop: 36131, Start Num: 17
Candidate Starts for Topper_46:
(9, 35670), (Start: 17 @35781 has 86 MA's), (Start: 19 @35787 has 19 MA's), (60, 36057),

Gene: Torres_43 Start: 37870, Stop: 38175, Start Num: 26
Candidate Starts for Torres_43:
(Start: 26 @37870 has 12 MA's), (37, 37957), (50, 38038), (53, 38074), (67, 38122),

Gene: TreyKay_47 Start: 35871, Stop: 36221, Start Num: 17
Candidate Starts for TreyKay_47:

(Start: 17 @35871 has 86 MA's), (Start: 19 @35877 has 19 MA's), (37, 35988), (60, 36147), (73, 36204),

Gene: TribelTrouble_46 Start: 35713, Stop: 36090, Start Num: 14

Candidate Starts for TribelTrouble_46:

(Start: 14 @35713 has 8 MA's), (16, 35719), (35, 35812), (47, 35911), (55, 35986), (61, 36016), (65, 36022), (73, 36073),

Gene: TruffulaTree_46 Start: 35660, Stop: 36010, Start Num: 17

Candidate Starts for TruffulaTree_46:

(9, 35549), (Start: 17 @35660 has 86 MA's), (Start: 19 @35666 has 19 MA's), (28, 35696), (37, 35777), (60, 35936), (73, 35993),

Gene: Twitch_46 Start: 35783, Stop: 36133, Start Num: 17

Candidate Starts for Twitch_46:

(9, 35672), (Start: 17 @35783 has 86 MA's), (Start: 19 @35789 has 19 MA's), (60, 36059), (73, 36116),

Gene: Unicorn_48 Start: 35586, Stop: 35879, Start Num: 19

Candidate Starts for Unicorn_48:

(Start: 19 @35586 has 19 MA's), (29, 35622), (38, 35697), (53, 35811), (54, 35820), (72, 35844), (73, 35862),

Gene: Urkel_47 Start: 36560, Stop: 36904, Start Num: 17

Candidate Starts for Urkel_47:

(Start: 17 @36560 has 86 MA's), (Start: 19 @36566 has 19 MA's), (37, 36677), (60, 36836), (73, 36887),

Gene: Validus_50 Start: 36462, Stop: 36773, Start Num: 26

Candidate Starts for Validus_50:

(Start: 26 @36462 has 12 MA's), (30, 36480), (37, 36549), (50, 36630), (73, 36756),

Gene: Veliki_46 Start: 35700, Stop: 36050, Start Num: 17

Candidate Starts for Veliki_46:

(9, 35589), (Start: 17 @35700 has 86 MA's), (Start: 19 @35706 has 19 MA's), (28, 35736), (37, 35817), (60, 35976), (73, 36033),

Gene: Ximenita_52 Start: 36658, Stop: 36951, Start Num: 19

Candidate Starts for Ximenita_52:

(Start: 19 @36658 has 19 MA's), (53, 36883), (73, 36934),

Gene: YoureAdopted_45 Start: 35865, Stop: 36215, Start Num: 17

Candidate Starts for YoureAdopted_45:

(9, 35754), (Start: 17 @35865 has 86 MA's), (Start: 19 @35871 has 19 MA's), (28, 35901), (37, 35982), (60, 36141), (73, 36198),

Gene: Yuna_52 Start: 37415, Stop: 37738, Start Num: 18

Candidate Starts for Yuna_52:

(6, 37256), (11, 37292), (Start: 18 @37415 has 1 MA's), (37, 37526), (69, 37697), (71, 37703),

Gene: Yunkel11_48 Start: 35488, Stop: 35814, Start Num: 21

Candidate Starts for Yunkel11_48:

(Start: 21 @35488 has 4 MA's), (37, 35596), (73, 35797),

Gene: Zabiza_41 Start: 31971, Stop: 32321, Start Num: 17

Candidate Starts for Zabiza_41:

(9, 31860), (Start: 17 @31971 has 86 MA's), (Start: 19 @31977 has 19 MA's), (28, 32007), (37, 32088), (60, 32247), (73, 32304),

Gene: Zavala_47 Start: 35942, Stop: 36292, Start Num: 17

Candidate Starts for Zavala_47:

(9, 35831), (Start: 17 @35942 has 86 MA's), (Start: 19 @35948 has 19 MA's), (28, 35978), (37, 36059), (60, 36218), (73, 36275),