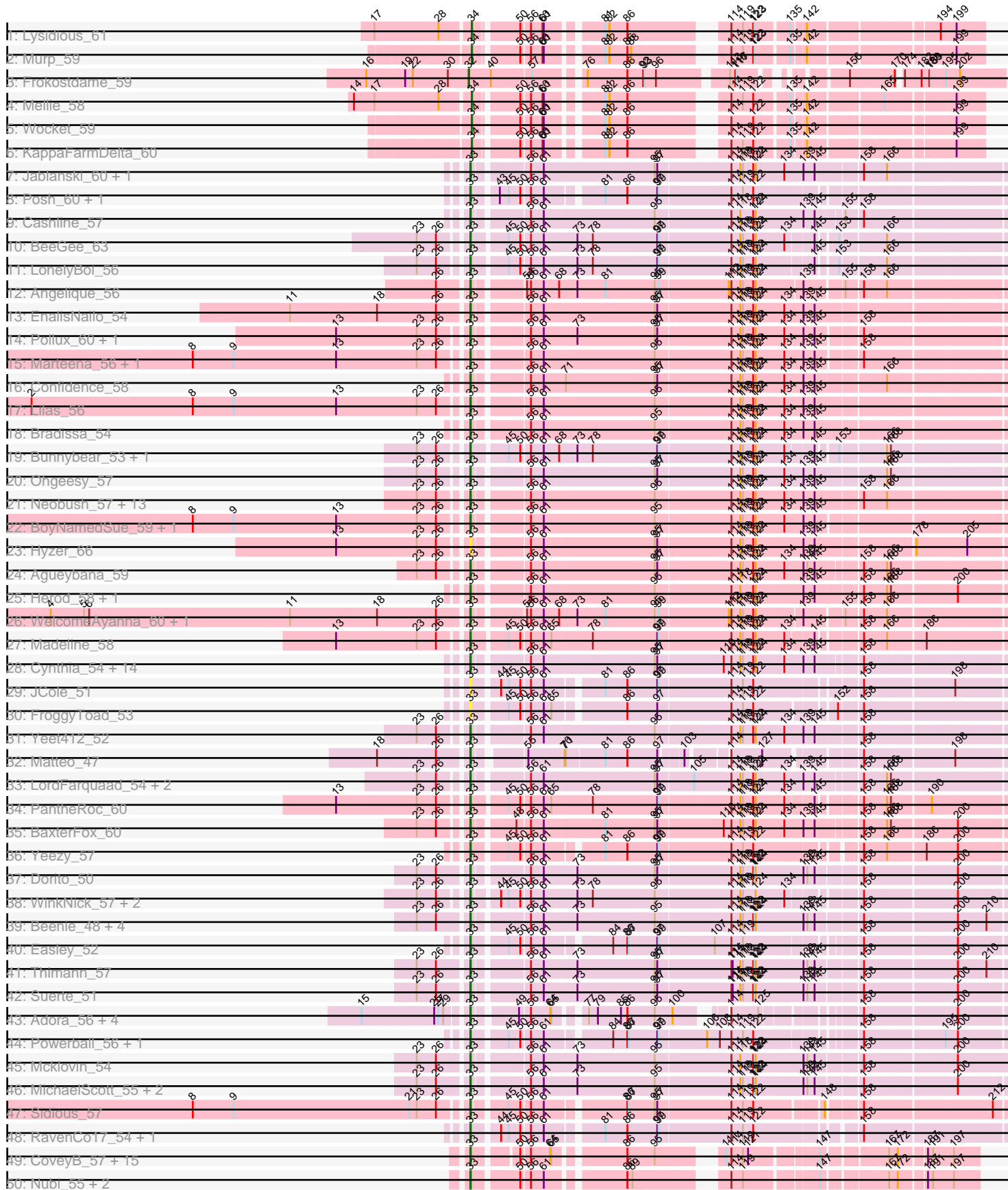
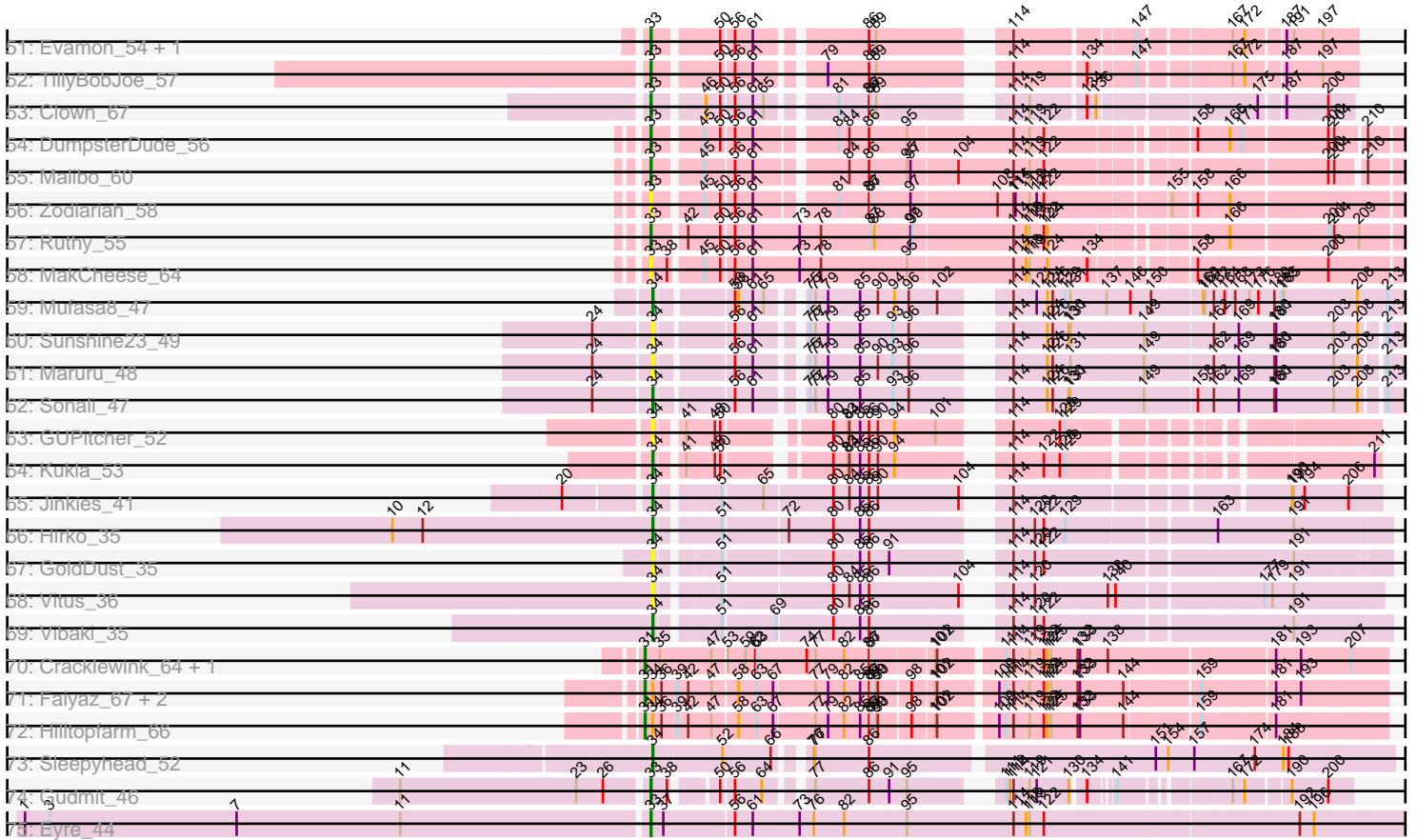


Pham 215922



Pham 215922



Note: Tracks are now grouped by subcluster and scaled. Switching in subcluster is indicated by changes in track color. Track scale is now set by default to display the region 30 bp upstream of start 1 to 30 bp downstream of the last possible start. If this default region is judged to be packed too tightly with annotated starts, the track will be further scaled to only show that region of the ORF with annotated starts. This action will be indicated by adding "Zoomed" to the title. For starts, yellow indicates the location of called starts comprised solely of Glimmer/GeneMark auto-annotations, green indicates the location of called starts with at least 1 manual gene annotation.

Pham 215922 Report

This analysis was run 02/22/25 on database version 588.

Pham number 215922 has 147 members, 19 are drafts.

Phages represented in each track:

- Track 1 : Lysidious_61
- Track 2 : Murp_59
- Track 3 : Frokostdame_59
- Track 4 : Mellie_58
- Track 5 : Wocket_59
- Track 6 : KappaFarmDelta_60
- Track 7 : Jablanski_60, Pytheas_60
- Track 8 : Posh_60, Wrigley_62
- Track 9 : Cashline_57
- Track 10 : BeeGee_63
- Track 11 : LonelyBoi_56
- Track 12 : Angelique_56
- Track 13 : EnalisNailo_54
- Track 14 : Pollux_60, Floral_58
- Track 15 : Marteena_56, EMsquaredA_57
- Track 16 : Confidence_58
- Track 17 : Lilas_56
- Track 18 : Bradissa_54
- Track 19 : Bunnybear_53, Maridalia_61
- Track 20 : Ohgeesy_57
- Track 21 : Neobush_57, Antonio_57, Kita_58, Manasvini_58, Trumpet_57, Pickett_50, Polly_54, Eudoria_57, Bialota_55, EdnaMode_51, Tayonia_57, Zirinka_54, Zameen_57, Suscepit_57
- Track 22 : BoyNamedSue_59, AlumE_59
- Track 23 : Hyzer_66
- Track 24 : Agueybana_59
- Track 25 : Herod_58, Hugley_56
- Track 26 : WelcomeAyanna_60, ThankyouJordi_60
- Track 27 : Madeline_58
- Track 28 : Cynthia_54, Ebert_58, Sahara_53, Bjanes7_51, Savage_54, Nettuno_50, Lamberg_50, GemG_54, Gizermo_54, Mocha12_54, Whiteclaw_54, Clap_54, Haley23_54, TuertoX_54, Sproutie_54
- Track 29 : JCole_51
- Track 30 : FroggyToad_53
- Track 31 : Yeet412_52
- Track 32 : Matteo_47
- Track 33 : LordFarquaad_54, Attis_52, SoilAssassin_52

- Track 34 : PantheRoc_60
- Track 35 : BaxterFox_60
- Track 36 : Yeezy_57
- Track 37 : Dorito_50
- Track 38 : WinkNick_57, Dolores_56, Sekhmet_56
- Track 39 : Beenie_48, Samman98_55, DobbysSock_47, Invecetra_56, Clark_54
- Track 40 : Easley_52
- Track 41 : Thimann_57
- Track 42 : Suerte_51
- Track 43 : Adora_56, Shlim410_57, Howe_59, Hortense_59, Twinkle_58
- Track 44 : Powerball_56, PhriskyACE_55
- Track 45 : Mcklovin_54
- Track 46 : MichaelScott_55, Annalisa_55, Oregano_58
- Track 47 : Sidious_57
- Track 48 : RavenCo17_54, Bosnia_55
- Track 49 : CoveyB_57, Valary_57, CherryCola_58, Wizard_54, KimmyK_56, RogerDodger_58, Halo3_55, Egi03_57, Barb_57, PullumCavea_54, ClamChowder_57, Fugax_58, PinkCoffee_57, VanDeWege_58, Gezellig_57, Phlop_54
- Track 50 : Nubi_55, Togo_54, SmokingBunny_55
- Track 51 : Evamon_54, Salvador_54
- Track 52 : TillyBobJoe_57
- Track 53 : Clown_67
- Track 54 : DumpsterDude_56
- Track 55 : Malibo_60
- Track 56 : Zodiariah_58
- Track 57 : Ruthy_55
- Track 58 : MakCheese_64
- Track 59 : Mufasa8_47
- Track 60 : Sunshine23_49
- Track 61 : Maruru_48
- Track 62 : Sonali_47
- Track 63 : GUPitcher_52
- Track 64 : Kukla_53
- Track 65 : Jinkies_41
- Track 66 : Hirko_35
- Track 67 : GoldDust_35
- Track 68 : Vitus_36
- Track 69 : Vibaki_35
- Track 70 : Cracklewink_64, Bipper_65
- Track 71 : Faiyaz_67, Typha_66, AuntGwenStacy_67
- Track 72 : Hilltopfarm_66
- Track 73 : Sleepyhead_52
- Track 74 : Gudmit_46
- Track 75 : Eyre_44

Summary of Final Annotations (See graph section above for start numbers):

The start number called the most often in the published annotations is 33, it was called in 111 of the 128 non-draft genes in the pham.

Genes that call this "Most Annotated" start:

- Adora_56, Agueybana_59, AlumE_59, Angelique_56, Annalisa_55, Antonio_57, Attis_52, Barb_57, BaxterFox_60, BeeGee_63, Beenie_48, Bialota_55, Bjaner7_51, Bosnia_55, BoyNamedSue_59, Bradissa_54, Bunnybear_53, Cashline_57, CherryCola_58, ClamChowder_57, Clap_54, Clark_54, Clown_67, Confidence_58, CoveyB_57, Cynthia_54, DobbysSock_47, Dolores_56, Dorito_50, DumpsterDude_56, EMSquaredA_57, Easley_52, Ebert_58, EdnaMode_51, Egi03_57, EnalisNailo_54, Eudoria_57, Evamon_54, Eyre_44, Floral_58, FroggyToad_53, Fugax_58, GemG_54, Gezellig_57, Gizermo_54, Gudmit_46, Haley23_54, Halo3_55, Herod_58, Hortense_59, Howe_59, Hugley_56, Hyzer_66, Invectra_56, JCole_51, Jablanski_60, KimmyK_56, Kita_58, Lamberg_50, Lilas_56, LonelyBoi_56, LordFarquaad_54, Madeline_58, MakCheese_64, Malibo_60, Manasvini_58, Maridalia_61, Marteena_56, Matteo_47, Mcklovin_54, MichaelScott_55, Mocha12_54, Neobush_57, Nettuno_50, Nubi_55, Ohgeesy_57, Oregano_58, PantheRoc_60, Phlop_54, PhriskyACE_55, Pickett_50, PinkCoffee_57, Pollux_60, Polly_54, Posh_60, Powerball_56, PullumCavea_54, Pytheas_60, RavenCo17_54, RogerDodger_58, Ruthy_55, Sahara_53, Salvador_54, Samman98_55, Savage_54, Sekhmet_56, Shlim410_57, Sidious_57, SmokingBunny_55, SoilAssassin_52, Sproutie_54, Suerte_51, Suscepit_57, Tayonia_57, ThankyouJordi_60, Thimann_57, TillyBobJoe_57, Togo_54, Trumpet_57, TuertoX_54, Twinkle_58, Valary_57, VanDeWege_58, WelcomeAyanna_60, Whiteclaw_54, WinkNick_57, Wizard_54, Wrigley_62, Yeet412_52, Yeezy_57, Zameen_57, Zirinka_54, Zodiariah_58,

Genes that have the "Most Annotated" start but do not call it:

-

Genes that do not have the "Most Annotated" start:

- AuntGwenStacy_67, Bipper_65, Cracklewink_64, Faiyaz_67, Frokostdame_59, GUPitcher_52, GoldDust_35, Hilltopfarm_66, Hirko_35, Jinkies_41, KappaFarmDelta_60, Kukla_53, Lysidious_61, Maruru_48, Mellie_58, Mufasa8_47, Murp_59, Sleepyhead_52, Sonali_47, Sunshine23_49, Typha_66, Vibaki_35, Vitus_36, Wocket_59,

Summary by start number:

Start 31:

- Found in 6 of 147 (4.1%) of genes in pham
- Manual Annotations of this start: 4 of 128
- Called 100.0% of time when present
- Phage (with cluster) where this start called: AuntGwenStacy_67 (Y), Bipper_65 (Y), Cracklewink_64 (Y), Faiyaz_67 (Y), Hilltopfarm_66 (Y), Typha_66 (Y),

Start 32:

- Found in 1 of 147 (0.7%) of genes in pham
- Manual Annotations of this start: 1 of 128
- Called 100.0% of time when present
- Phage (with cluster) where this start called: Frokostdame_59 (CV),

Start 33:

- Found in 123 of 147 (83.7%) of genes in pham
- Manual Annotations of this start: 111 of 128

- Called 100.0% of time when present
- Phage (with cluster) where this start called: Adora_56 (CZ4), Agueybana_59 (CZ1), AlumE_59 (CZ1), Angelique_56 (CY1), Annalisa_55 (CZ4), Antonio_57 (CZ1), Attis_52 (CZ2), Barb_57 (DC1), BaxterFox_60 (CZ3), BeeGee_63 (CY), Beenie_48 (CZ4), Bialota_55 (CZ1), Bjaner_51 (CZ2), Bosnia_55 (CZ1), BoyNamedSue_59 (CZ1), Bradissa_54 (CY1), Bunnybear_53 (CZ), Cashline_57 (CY), CherryCola_58 (DC1), ClamChowder_57 (DC1), Clap_54 (CZ2), Clark_54 (CZ4), Clown_67 (DC2), Confidence_58 (CY1), CoveyB_57 (DC1), Cynthia_54 (CZ2), DobbysSock_47 (CZ4), Dolores_56 (CZ4), Dorito_50 (CZ4), DumpsterDude_56 (DW), EMSquaredA_57 (CY1), Easley_52 (CZ4), Ebert_58 (CZ2), EdnaMode_51 (CZ2), Egi03_57 (DC1), EnalisNailo_54 (CY1), Eudoria_57 (CZ1), Evamon_54 (DC1), Eyre_44 (singleton), Floral_58 (CY1), FroggyToad_53 (CZ2), Fugax_58 (DC1), GemG_54 (CZ2), Gezellig_57 (DC1), Gizermo_54 (CZ2), Gudmit_46 (singleton), Haley23_54 (CZ2), Halo3_55 (DC1), Herod_58 (CZ1), Hortense_59 (CZ4), Howe_59 (CZ4), Hugley_56 (CZ1), Hyzer_66 (CZ1), Invectra_56 (CZ4), JCole_51 (CZ2), Jablanski_60 (CY), KimmyK_56 (DC1), Kita_58 (CZ1), Lamberg_50 (CZ2), Lilas_56 (CY1), LonelyBoi_56 (CY), LordFarquaad_54 (CZ2), Madeline_58 (CZ1), MakCheese_64 (DW), Malibo_60 (DW), Manasvini_58 (CZ1), Maridalia_61 (CZ1), Marteena_56 (CY1), Matteo_47 (CZ2), Mcklovin_54 (CZ4), MichaelScott_55 (CZ4), Mocha12_54 (CZ2), Neobush_57 (CZ1), Nettuno_50 (CZ2), Nubi_55 (DC1), Ohgeesy_57 (CZ), Oregano_58 (CZ4), PantheRoc_60 (CZ3), Phlop_54 (DC1), PhriskyACE_55 (CZ4), Pickett_50 (CZ2), PinkCoffee_57 (DC1), Pollux_60 (CY1), Polly_54 (CZ1), Posh_60 (CY), Powerball_56 (CZ4), PullumCavea_54 (DC1), Pytheas_60 (CY), RavenCo17_54 (CZ8), RogerDodger_58 (DC1), Ruthy_55 (DW), Sahara_53 (CZ2), Salvador_54 (DC1), Samman98_55 (CZ4), Savage_54 (CZ2), Sekhmet_56 (CZ4), Shlim410_57 (CZ4), Sidious_57 (CZ7), SmokingBunny_55 (DC1), SoilAssassin_52 (CZ2), Sproutie_54 (CZ2), Suerte_51 (CZ4), Suscepit_57 (CZ1), Tayonia_57 (CZ1), ThankyouJordi_60 (CZ1), Thimann_57 (CZ4), TillyBobJoe_57 (DC1), Togo_54 (DC1), Trumpet_57 (CZ1), TuertoX_54 (CZ2), Twinkle_58 (CZ4), Valary_57 (DC1), VanDeWege_58 (DC1), WelcomeAyanna_60 (CZ1), Whiteclaw_54 (CZ2), WinkNick_57 (CZ4), Wizard_54 (DC1), Wrigley_62 (CY), Yeet412_52 (CZ2), Yeezy_57 (CZ3), Zameen_57 (CZ1), Zirinka_54 (CZ1), Zodiariah_58 (DW),

Start 34:

- Found in 21 of 147 (14.3%) of genes in pham
- Manual Annotations of this start: 12 of 128
- Called 81.0% of time when present
- Phage (with cluster) where this start called: GUPitcher_52 (FJ), GoldDust_35 (FL), Hirko_35 (FL), Jinkies_41 (FL), KappaFarmDelta_60 (CV), Kukla_53 (FJ), Lysidious_61 (CV), Maruru_48 (FG), Mellie_58 (CV), Mufasa8_47 (FG), Murp_59 (CV), Sleepyhead_52 (singleton), Sonali_47 (FG), Sunshine23_49 (FG), Vibaki_35 (FL), Vitus_36 (FL), Wocket_59 (CV),

Summary by clusters:

There are 18 clusters represented in this pham: CY1, CZ2, CZ3, CZ1, singleton, CZ4, CZ7, DC2, CZ, CY, CZ8, FG, Y, DW, FJ, FL, CV, DC1,

Info for manual annotations of cluster CV:

- Start number 32 was manually annotated 1 time for cluster CV.
- Start number 34 was manually annotated 5 times for cluster CV.

Info for manual annotations of cluster CY:

- Start number 33 was manually annotated 7 times for cluster CY.

Info for manual annotations of cluster CY1:

- Start number 33 was manually annotated 9 times for cluster CY1.

Info for manual annotations of cluster CZ:

- Start number 33 was manually annotated 2 times for cluster CZ.

Info for manual annotations of cluster CZ1:

- Start number 33 was manually annotated 21 times for cluster CZ1.

Info for manual annotations of cluster CZ2:

- Start number 33 was manually annotated 22 times for cluster CZ2.

Info for manual annotations of cluster CZ3:

- Start number 33 was manually annotated 3 times for cluster CZ3.

Info for manual annotations of cluster CZ4:

- Start number 33 was manually annotated 21 times for cluster CZ4.

Info for manual annotations of cluster CZ7:

- Start number 33 was manually annotated 1 time for cluster CZ7.

Info for manual annotations of cluster CZ8:

- Start number 33 was manually annotated 1 time for cluster CZ8.

Info for manual annotations of cluster DC1:

- Start number 33 was manually annotated 18 times for cluster DC1.

Info for manual annotations of cluster DC2:

- Start number 33 was manually annotated 1 time for cluster DC2.

Info for manual annotations of cluster DW:

- Start number 33 was manually annotated 3 times for cluster DW.

Info for manual annotations of cluster FG:

- Start number 34 was manually annotated 2 times for cluster FG.

Info for manual annotations of cluster FJ:

- Start number 34 was manually annotated 1 time for cluster FJ.

Info for manual annotations of cluster FL:

- Start number 34 was manually annotated 3 times for cluster FL.

Info for manual annotations of cluster Y:

- Start number 31 was manually annotated 4 times for cluster Y.

Gene Information:

Gene: Adora_56 Start: 40644, Stop: 41663, Start Num: 33

Candidate Starts for Adora_56:

(15, 40416), (25, 40581), (27, 40590), (29, 40602), (Start: 33 @40644 has 111 MA's), (49, 40728), (56, 40749), (64, 40794), (65, 40797), (77, 40845), (79, 40866), (85, 40920), (86, 40935), (95, 40998), (100, 41037), (114, 41118), (125, 41181), (158, 41343), (200, 41538),

Gene: Agueybana_59 Start: 41420, Stop: 42568, Start Num: 33

Candidate Starts for Agueybana_59:

(23, 41321), (26, 41366), (Start: 33 @41420 has 111 MA's), (56, 41528), (61, 41558), (95, 41813), (97, 41819), (114, 41987), (118, 42008), (119, 42014), (122, 42038), (124, 42044), (134, 42107), (139, 42143), (143, 42152), (145, 42164), (158, 42245), (166, 42293), (168, 42302),

Gene: AlumE_59 Start: 41196, Stop: 42341, Start Num: 33

Candidate Starts for AlumE_59:

(8, 40575), (9, 40671), (13, 40911), (23, 41097), (26, 41142), (Start: 33 @41196 has 111 MA's), (56, 41304), (61, 41334), (95, 41589), (114, 41763), (118, 41784), (119, 41790), (122, 41814), (124, 41820), (134, 41883), (139, 41919), (145, 41940),

Gene: Angelique_56 Start: 41358, Stop: 42494, Start Num: 33

Candidate Starts for Angelique_56:

(26, 41292), (Start: 33 @41358 has 111 MA's), (54, 41460), (56, 41469), (61, 41499), (68, 41535), (73, 41574), (81, 41640), (95, 41754), (99, 41763), (112, 41922), (114, 41928), (118, 41949), (119, 41955), (122, 41979), (124, 41985), (139, 42078), (155, 42150), (158, 42177), (166, 42225),

Gene: Annalisa_55 Start: 37523, Stop: 38671, Start Num: 33

Candidate Starts for Annalisa_55:

(23, 37412), (26, 37457), (Start: 33 @37523 has 111 MA's), (56, 37631), (61, 37661), (73, 37736), (95, 37916), (114, 38090), (118, 38111), (119, 38117), (122, 38141), (123, 38144), (124, 38147), (139, 38249), (143, 38258), (145, 38270), (158, 38351), (200, 38546),

Gene: Antonio_57 Start: 39712, Stop: 40860, Start Num: 33

Candidate Starts for Antonio_57:

(23, 39613), (26, 39658), (Start: 33 @39712 has 111 MA's), (56, 39823), (61, 39853), (95, 40108), (114, 40282), (118, 40303), (119, 40309), (122, 40333), (124, 40339), (134, 40402), (139, 40438), (145, 40459), (158, 40543), (166, 40591),

Gene: Attis_52 Start: 36845, Stop: 37990, Start Num: 33

Candidate Starts for Attis_52:

(23, 36746), (26, 36791), (Start: 33 @36845 has 111 MA's), (56, 36953), (61, 36983), (95, 37238), (97, 37244), (105, 37325), (114, 37412), (118, 37433), (119, 37439), (122, 37463), (124, 37469), (134, 37532), (139, 37568), (145, 37589), (158, 37670), (166, 37718), (168, 37727),

Gene: AuntGwenStacy_67 Start: 46458, Stop: 47585, Start Num: 31

Candidate Starts for AuntGwenStacy_67:

(Start: 31 @46458 has 4 MA's), (Start: 34 @46470 has 12 MA's), (36, 46485), (39, 46509), (42, 46527), (47, 46563), (58, 46602), (63, 46632), (67, 46659), (77, 46722), (79, 46743), (82, 46770), (85, 46797), (86, 46812), (87, 46815), (89, 46824), (90, 46827), (98, 46875), (101, 46905), (102, 46908), (109, 46995), (111, 47007), (114, 47019), (119, 47046), (122, 47070), (124, 47076), (125, 47082), (132, 47124), (133, 47127), (144, 47190), (159, 47301), (181, 47412), (193, 47454),

Gene: Barb_57 Start: 42048, Stop: 42986, Start Num: 33

Candidate Starts for Barb_57:

(Start: 33 @42048 has 111 MA's), (50, 42129), (56, 42147), (64, 42192), (65, 42195), (86, 42333), (95, 42396), (111, 42504), (114, 42516), (119, 42543), (121, 42555), (147, 42687), (167, 42807), (172, 42825), (187, 42876), (191, 42888), (197, 42933),

Gene: BaxterFox_60 Start: 41905, Stop: 43053, Start Num: 33

Candidate Starts for BaxterFox_60:

(23, 41806), (26, 41851), (Start: 33 @41905 has 111 MA's), (48, 41986), (56, 42013), (61, 42043), (81, 42184), (95, 42298), (97, 42304), (110, 42454), (114, 42472), (118, 42493), (119, 42499), (122, 42523), (124, 42529), (134, 42592), (139, 42628), (145, 42649), (158, 42730), (166, 42778), (168, 42787), (200, 42925),

Gene: BeeGee_63 Start: 41627, Stop: 42757, Start Num: 33

Candidate Starts for BeeGee_63:

(23, 41528), (26, 41573), (Start: 33 @41627 has 111 MA's), (45, 41702), (50, 41729), (56, 41747), (61, 41777), (73, 41852), (78, 41888), (97, 42038), (99, 42041), (114, 42206), (118, 42227), (119, 42233), (122, 42257), (124, 42263), (134, 42323), (145, 42371), (153, 42407), (166, 42488),

Gene: Beenie_48 Start: 37101, Stop: 38252, Start Num: 33

Candidate Starts for Beenie_48:

(23, 36990), (26, 37035), (Start: 33 @37101 has 111 MA's), (56, 37209), (61, 37239), (73, 37314), (95, 37494), (114, 37668), (118, 37689), (119, 37695), (122, 37719), (123, 37722), (124, 37725), (139, 37827), (143, 37836), (145, 37848), (158, 37929), (200, 38124), (210, 38184),

Gene: Bialota_55 Start: 40344, Stop: 41492, Start Num: 33

Candidate Starts for Bialota_55:

(23, 40245), (26, 40290), (Start: 33 @40344 has 111 MA's), (56, 40455), (61, 40485), (95, 40740), (114, 40914), (118, 40935), (119, 40941), (122, 40965), (124, 40971), (134, 41034), (139, 41070), (145, 41091), (158, 41175), (166, 41223),

Gene: Bipper_65 Start: 45903, Stop: 47054, Start Num: 31

Candidate Starts for Bipper_65:

(Start: 31 @45903 has 4 MA's), (35, 45927), (47, 46008), (53, 46029), (59, 46059), (62, 46074), (63, 46077), (74, 46161), (77, 46176), (82, 46224), (86, 46266), (87, 46269), (101, 46362), (102, 46365), (111, 46464), (114, 46476), (119, 46503), (122, 46527), (124, 46533), (125, 46539), (132, 46581), (133, 46584), (138, 46626), (181, 46878), (193, 46920), (207, 46995),

Gene: Bjaner7_51 Start: 35732, Stop: 36880, Start Num: 33

Candidate Starts for Bjaner7_51:

(Start: 33 @35732 has 111 MA's), (56, 35840), (61, 35870), (95, 36125), (97, 36131), (110, 36281), (114, 36299), (118, 36320), (119, 36326), (122, 36350), (124, 36356), (134, 36419), (139, 36455), (145, 36476), (158, 36557),

Gene: Bosnia_55 Start: 41752, Stop: 42846, Start Num: 33

Candidate Starts for Bosnia_55:

(Start: 33 @41752 has 111 MA's), (44, 41803), (45, 41821), (50, 41848), (56, 41866), (61, 41896), (81, 42001), (86, 42052), (97, 42121), (99, 42124), (114, 42289), (119, 42316), (122, 42340), (158, 42523),

Gene: BoyNamedSue_59 Start: 41196, Stop: 42341, Start Num: 33

Candidate Starts for BoyNamedSue_59:

(8, 40575), (9, 40671), (13, 40911), (23, 41097), (26, 41142), (Start: 33 @41196 has 111 MA's), (56, 41304), (61, 41334), (95, 41589), (114, 41763), (118, 41784), (119, 41790), (122, 41814), (124, 41820), (134, 41883), (139, 41919), (145, 41940),

Gene: Bradissa_54 Start: 40795, Stop: 41940, Start Num: 33

Candidate Starts for Bradissa_54:

(Start: 33 @40795 has 111 MA's), (56, 40903), (61, 40933), (95, 41188), (114, 41362), (118, 41383), (119, 41389), (122, 41413), (124, 41419), (134, 41482), (139, 41518), (145, 41539),

Gene: Bunnybear_53 Start: 39210, Stop: 40340, Start Num: 33

Candidate Starts for Bunnybear_53:

(23, 39111), (26, 39156), (Start: 33 @39210 has 111 MA's), (45, 39285), (50, 39312), (56, 39330), (61, 39360), (68, 39396), (73, 39435), (78, 39471), (97, 39621), (99, 39624), (114, 39789), (118, 39810), (119, 39816), (122, 39840), (124, 39846), (134, 39906), (145, 39954), (153, 39990), (166, 40071), (168, 40080),

Gene: Cashline_57 Start: 41477, Stop: 42622, Start Num: 33

Candidate Starts for Cashline_57:

(Start: 33 @41477 has 111 MA's), (56, 41585), (61, 41615), (95, 41870), (114, 42044), (118, 42065), (122, 42095), (124, 42101), (139, 42200), (145, 42221), (155, 42275), (158, 42302),

Gene: CherryCola_58 Start: 42681, Stop: 43619, Start Num: 33

Candidate Starts for CherryCola_58:

(Start: 33 @42681 has 111 MA's), (50, 42762), (56, 42780), (64, 42825), (65, 42828), (86, 42966), (95, 43029), (111, 43137), (114, 43149), (119, 43176), (121, 43188), (147, 43320), (167, 43440), (172, 43458), (187, 43509), (191, 43521), (197, 43566),

Gene: ClamChowder_57 Start: 42048, Stop: 42986, Start Num: 33

Candidate Starts for ClamChowder_57:

(Start: 33 @42048 has 111 MA's), (50, 42129), (56, 42147), (64, 42192), (65, 42195), (86, 42333), (95, 42396), (111, 42504), (114, 42516), (119, 42543), (121, 42555), (147, 42687), (167, 42807), (172, 42825), (187, 42876), (191, 42888), (197, 42933),

Gene: Clap_54 Start: 35911, Stop: 37059, Start Num: 33

Candidate Starts for Clap_54:

(Start: 33 @35911 has 111 MA's), (56, 36019), (61, 36049), (95, 36304), (97, 36310), (110, 36460), (114, 36478), (118, 36499), (119, 36505), (122, 36529), (124, 36535), (134, 36598), (139, 36634), (145, 36655), (158, 36736),

Gene: Clark_54 Start: 36918, Stop: 38069, Start Num: 33

Candidate Starts for Clark_54:

(23, 36807), (26, 36852), (Start: 33 @36918 has 111 MA's), (56, 37026), (61, 37056), (73, 37131), (95, 37311), (114, 37485), (118, 37506), (119, 37512), (122, 37536), (123, 37539), (124, 37542), (139, 37644), (143, 37653), (145, 37665), (158, 37746), (200, 37941), (210, 38001),

Gene: Clown_67 Start: 46683, Stop: 47642, Start Num: 33

Candidate Starts for Clown_67:

(Start: 33 @46683 has 111 MA's), (46, 46755), (50, 46779), (56, 46797), (61, 46827), (65, 46845), (81, 46932), (86, 46983), (87, 46986), (89, 46995), (114, 47166), (119, 47193), (134, 47274), (136, 47286), (175, 47508), (187, 47541), (200, 47607),

Gene: Confidence_58 Start: 39325, Stop: 40473, Start Num: 33

Candidate Starts for Confidence_58:

(Start: 33 @39325 has 111 MA's), (56, 39433), (61, 39463), (71, 39511), (95, 39718), (97, 39724), (114, 39892), (118, 39913), (119, 39919), (122, 39943), (124, 39949), (134, 40012), (139, 40048), (145, 40069), (166, 40201),

Gene: CoveyB_57 Start: 41726, Stop: 42664, Start Num: 33

Candidate Starts for CoveyB_57:

(Start: 33 @41726 has 111 MA's), (50, 41807), (56, 41825), (64, 41870), (65, 41873), (86, 42011), (95, 42074), (111, 42182), (114, 42194), (119, 42221), (121, 42233), (147, 42365), (167, 42485), (172, 42503), (187, 42554), (191, 42566), (197, 42611),

Gene: Cracklewink_64 Start: 44937, Stop: 46088, Start Num: 31

Candidate Starts for Cracklewink_64:

(Start: 31 @44937 has 4 MA's), (35, 44961), (47, 45042), (53, 45063), (59, 45093), (62, 45108), (63, 45111), (74, 45195), (77, 45210), (82, 45258), (86, 45300), (87, 45303), (101, 45396), (102, 45399), (111, 45498), (114, 45510), (119, 45537), (122, 45561), (124, 45567), (125, 45573), (132, 45615), (133, 45618), (138, 45660), (181, 45912), (193, 45954), (207, 46029),

Gene: Cynthia_54 Start: 35909, Stop: 37057, Start Num: 33

Candidate Starts for Cynthia_54:

(Start: 33 @35909 has 111 MA's), (56, 36017), (61, 36047), (95, 36302), (97, 36308), (110, 36458), (114, 36476), (118, 36497), (119, 36503), (122, 36527), (124, 36533), (134, 36596), (139, 36632), (145, 36653), (158, 36734),

Gene: DobbysSock_47 Start: 35760, Stop: 36911, Start Num: 33

Candidate Starts for DobbysSock_47:

(23, 35649), (26, 35694), (Start: 33 @35760 has 111 MA's), (56, 35868), (61, 35898), (73, 35973), (95, 36153), (114, 36327), (118, 36348), (119, 36354), (122, 36378), (123, 36381), (124, 36384), (139, 36486), (143, 36495), (145, 36507), (158, 36588), (200, 36783), (210, 36843),

Gene: Dolores_56 Start: 37680, Stop: 38807, Start Num: 33

Candidate Starts for Dolores_56:

(23, 37581), (26, 37626), (Start: 33 @37680 has 111 MA's), (44, 37731), (45, 37749), (50, 37776), (56, 37794), (61, 37824), (73, 37899), (78, 37935), (95, 38079), (114, 38253), (118, 38274), (119, 38280), (124, 38310), (134, 38373), (158, 38487), (200, 38682),

Gene: Dorito_50 Start: 35405, Stop: 36556, Start Num: 33

Candidate Starts for Dorito_50:

(23, 35294), (26, 35339), (Start: 33 @35405 has 111 MA's), (56, 35513), (61, 35543), (73, 35618), (95, 35798), (97, 35804), (114, 35972), (118, 35993), (119, 35999), (122, 36023), (123, 36026), (124, 36029), (139, 36131), (143, 36140), (145, 36152), (158, 36233), (200, 36428),

Gene: DumpsterDude_56 Start: 42953, Stop: 44038, Start Num: 33

Candidate Starts for DumpsterDude_56:

(Start: 33 @42953 has 111 MA's), (45, 43025), (50, 43052), (56, 43070), (61, 43100), (81, 43205), (84, 43223), (86, 43256), (95, 43319), (114, 43493), (119, 43520), (122, 43544), (158, 43727), (166, 43775), (171, 43793), (200, 43922), (204, 43931), (210, 43970),

Gene: EMSquaredA_57 Start: 40371, Stop: 41510, Start Num: 33

Candidate Starts for EMSquaredA_57:

(8, 39750), (9, 39846), (13, 40086), (23, 40272), (26, 40317), (Start: 33 @40371 has 111 MA's), (56, 40479), (61, 40509), (95, 40764), (114, 40938), (118, 40959), (119, 40965), (122, 40989), (124, 40995), (134, 41058), (139, 41094), (145, 41115), (158, 41193),

Gene: Easley_52 Start: 36887, Stop: 37981, Start Num: 33

Candidate Starts for Easley_52:

(Start: 33 @36887 has 111 MA's), (45, 36956), (50, 36983), (56, 37001), (61, 37031), (84, 37154), (86, 37187), (87, 37190), (97, 37256), (99, 37259), (107, 37385), (114, 37424), (119, 37451), (158, 37658), (200, 37853),

Gene: Ebert_58 Start: 36343, Stop: 37491, Start Num: 33

Candidate Starts for Ebert_58:

(Start: 33 @36343 has 111 MA's), (56, 36451), (61, 36481), (95, 36736), (97, 36742), (110, 36892), (114, 36910), (118, 36931), (119, 36937), (122, 36961), (124, 36967), (134, 37030), (139, 37066), (145, 37087), (158, 37168),

Gene: EdnaMode_51 Start: 35533, Stop: 36681, Start Num: 33

Candidate Starts for EdnaMode_51:

(23, 35434), (26, 35479), (Start: 33 @35533 has 111 MA's), (56, 35644), (61, 35674), (95, 35929), (114, 36103), (118, 36124), (119, 36130), (122, 36154), (124, 36160), (134, 36223), (139, 36259), (145, 36280), (158, 36364), (166, 36412),

Gene: Egi03_57 Start: 41529, Stop: 42467, Start Num: 33

Candidate Starts for Egi03_57:

(Start: 33 @41529 has 111 MA's), (50, 41610), (56, 41628), (64, 41673), (65, 41676), (86, 41814), (95, 41877), (111, 41985), (114, 41997), (119, 42024), (121, 42036), (147, 42168), (167, 42288), (172, 42306), (187, 42357), (191, 42369), (197, 42414),

Gene: EnalisNailo_54 Start: 40338, Stop: 41486, Start Num: 33

Candidate Starts for EnalisNailo_54:

(11, 39933), (18, 40137), (26, 40272), (Start: 33 @40338 has 111 MA's), (56, 40449), (61, 40479), (95, 40734), (97, 40740), (114, 40908), (118, 40929), (119, 40935), (122, 40959), (124, 40965), (134, 41028), (139, 41064), (145, 41085),

Gene: Eudoria_57 Start: 39712, Stop: 40860, Start Num: 33

Candidate Starts for Eudoria_57:

(23, 39613), (26, 39658), (Start: 33 @39712 has 111 MA's), (56, 39823), (61, 39853), (95, 40108), (114, 40282), (118, 40303), (119, 40309), (122, 40333), (124, 40339), (134, 40402), (139, 40438), (145, 40459), (158, 40543), (166, 40591),

Gene: Evamon_54 Start: 41774, Stop: 42724, Start Num: 33

Candidate Starts for Evamon_54:

(Start: 33 @41774 has 111 MA's), (50, 41867), (56, 41885), (61, 41915), (86, 42071), (89, 42083), (114, 42254), (147, 42425), (167, 42545), (172, 42563), (187, 42614), (191, 42626), (197, 42671),

Gene: Eyre_44 Start: 30889, Stop: 32133, Start Num: 33

Candidate Starts for Eyre_44:

(1, 29851), (3, 29893), (7, 30208), (11, 30484), (Start: 33 @30889 has 111 MA's), (37, 30910), (56, 31024), (61, 31054), (73, 31129), (76, 31153), (82, 31204), (95, 31309), (114, 31486), (118, 31507), (119, 31513), (122, 31537), (192, 31939), (196, 31963),

Gene: Faiyaz_67 Start: 46461, Stop: 47591, Start Num: 31

Candidate Starts for Faiyaz_67:

(Start: 31 @46461 has 4 MA's), (Start: 34 @46473 has 12 MA's), (36, 46488), (39, 46515), (42, 46533), (47, 46569), (58, 46608), (63, 46638), (67, 46665), (77, 46728), (79, 46749), (82, 46776), (85, 46803), (86, 46818), (87, 46821), (89, 46830), (90, 46833), (98, 46881), (101, 46911), (102, 46914), (109, 47001), (111, 47013), (114, 47025), (119, 47052), (122, 47076), (124, 47082), (125, 47088), (132, 47130), (133, 47133), (144, 47196), (159, 47307), (181, 47418), (193, 47460),

Gene: Floral_58 Start: 42256, Stop: 43395, Start Num: 33

Candidate Starts for Floral_58:

(13, 41971), (23, 42157), (26, 42202), (Start: 33 @42256 has 111 MA's), (56, 42364), (61, 42394), (73, 42469), (95, 42649), (97, 42655), (114, 42823), (118, 42844), (119, 42850), (122, 42874), (124,

42880), (134, 42943), (139, 42979), (145, 43000), (158, 43078),

Gene: FroggyToad_53 Start: 36278, Stop: 37378, Start Num: 33

Candidate Starts for FroggyToad_53:

(Start: 33 @36278 has 111 MA's), (45, 36350), (50, 36377), (56, 36395), (61, 36425), (65, 36443), (86, 36581), (97, 36650), (114, 36818), (119, 36845), (122, 36869), (152, 37019), (158, 37055),

Gene: Frokostdame_59 Start: 39496, Stop: 40542, Start Num: 32

Candidate Starts for Frokostdame_59:

(16, 39265), (19, 39352), (22, 39370), (30, 39451), (Start: 32 @39496 has 1 MA's), (40, 39544), (57, 39631), (76, 39721), (86, 39814), (92, 39850), (93, 39853), (96, 39880), (113, 40024), (116, 40036), (117, 40039), (156, 40207), (170, 40306), (174, 40312), (182, 40351), (188, 40369), (189, 40372), (195, 40408), (202, 40441),

Gene: Fugax_58 Start: 42040, Stop: 42978, Start Num: 33

Candidate Starts for Fugax_58:

(Start: 33 @42040 has 111 MA's), (50, 42121), (56, 42139), (64, 42184), (65, 42187), (86, 42325), (95, 42388), (111, 42496), (114, 42508), (119, 42535), (121, 42547), (147, 42679), (167, 42799), (172, 42817), (187, 42868), (191, 42880), (197, 42925),

Gene: GUPitcher_52 Start: 34446, Stop: 35414, Start Num: 34

Candidate Starts for GUPitcher_52:

(Start: 34 @34446 has 12 MA's), (41, 34479), (48, 34524), (50, 34533), (80, 34677), (83, 34701), (84, 34704), (85, 34722), (86, 34737), (90, 34752), (94, 34779), (101, 34845), (114, 34920), (128, 34998), (129, 35007),

Gene: GemG_54 Start: 35915, Stop: 37063, Start Num: 33

Candidate Starts for GemG_54:

(Start: 33 @35915 has 111 MA's), (56, 36023), (61, 36053), (95, 36308), (97, 36314), (110, 36464), (114, 36482), (118, 36503), (119, 36509), (122, 36533), (124, 36539), (134, 36602), (139, 36638), (145, 36659), (158, 36740),

Gene: Gezellig_57 Start: 41879, Stop: 42817, Start Num: 33

Candidate Starts for Gezellig_57:

(Start: 33 @41879 has 111 MA's), (50, 41960), (56, 41978), (64, 42023), (65, 42026), (86, 42164), (95, 42227), (111, 42335), (114, 42347), (119, 42374), (121, 42386), (147, 42518), (167, 42638), (172, 42656), (187, 42707), (191, 42719), (197, 42764),

Gene: Gizermo_54 Start: 35911, Stop: 37059, Start Num: 33

Candidate Starts for Gizermo_54:

(Start: 33 @35911 has 111 MA's), (56, 36019), (61, 36049), (95, 36304), (97, 36310), (110, 36460), (114, 36478), (118, 36499), (119, 36505), (122, 36529), (124, 36535), (134, 36598), (139, 36634), (145, 36655), (158, 36736),

Gene: GoldDust_35 Start: 31181, Stop: 32251, Start Num: 34

Candidate Starts for GoldDust_35:

(Start: 34 @31181 has 12 MA's), (51, 31256), (80, 31430), (85, 31475), (86, 31490), (91, 31523), (114, 31673), (120, 31709), (122, 31724), (191, 32099),

Gene: Gudmit_46 Start: 30435, Stop: 31343, Start Num: 33

Candidate Starts for Gudmit_46:

(11, 30033), (23, 30327), (26, 30372), (Start: 33 @30435 has 111 MA's), (38, 30453), (50, 30513), (56, 30531), (64, 30576), (77, 30627), (86, 30717), (91, 30750), (95, 30780), (111, 30888), (112, 30894),

(114, 30900), (119, 30927), (121, 30939), (130, 30990), (134, 31008), (141, 31035), (167, 31173), (172, 31191), (190, 31251), (200, 31308),

Gene: Haley23_54 Start: 35911, Stop: 37059, Start Num: 33

Candidate Starts for Haley23_54:

(Start: 33 @35911 has 111 MA's), (56, 36019), (61, 36049), (95, 36304), (97, 36310), (110, 36460), (114, 36478), (118, 36499), (119, 36505), (122, 36529), (124, 36535), (134, 36598), (139, 36634), (145, 36655), (158, 36736),

Gene: Halo3_55 Start: 42464, Stop: 43402, Start Num: 33

Candidate Starts for Halo3_55:

(Start: 33 @42464 has 111 MA's), (50, 42545), (56, 42563), (64, 42608), (65, 42611), (86, 42749), (95, 42812), (111, 42920), (114, 42932), (119, 42959), (121, 42971), (147, 43103), (167, 43223), (172, 43241), (187, 43292), (191, 43304), (197, 43349),

Gene: Herod_58 Start: 42170, Stop: 43321, Start Num: 33

Candidate Starts for Herod_58:

(Start: 33 @42170 has 111 MA's), (56, 42278), (61, 42308), (95, 42563), (114, 42737), (118, 42758), (122, 42788), (124, 42794), (139, 42893), (145, 42914), (158, 42998), (166, 43046), (168, 43055), (200, 43193),

Gene: Hilltopfarm_66 Start: 46161, Stop: 47291, Start Num: 31

Candidate Starts for Hilltopfarm_66:

(Start: 31 @46161 has 4 MA's), (Start: 34 @46173 has 12 MA's), (36, 46188), (39, 46215), (42, 46233), (47, 46269), (58, 46308), (63, 46338), (67, 46365), (77, 46428), (79, 46449), (82, 46476), (85, 46503), (86, 46518), (87, 46521), (89, 46530), (90, 46533), (98, 46581), (101, 46611), (102, 46614), (109, 46701), (111, 46713), (114, 46725), (119, 46752), (122, 46776), (124, 46782), (125, 46788), (132, 46830), (133, 46833), (144, 46899), (159, 47010), (181, 47121),

Gene: Hirko_35 Start: 30939, Stop: 32009, Start Num: 34

Candidate Starts for Hirko_35:

(10, 30504), (12, 30555), (Start: 34 @30939 has 12 MA's), (51, 31017), (72, 31116), (80, 31191), (85, 31236), (86, 31251), (114, 31434), (120, 31470), (122, 31485), (129, 31521), (163, 31740), (191, 31860),

Gene: Hortense_59 Start: 41999, Stop: 43018, Start Num: 33

Candidate Starts for Hortense_59:

(15, 41771), (25, 41936), (27, 41945), (29, 41957), (Start: 33 @41999 has 111 MA's), (49, 42083), (56, 42104), (64, 42149), (65, 42152), (77, 42200), (79, 42221), (85, 42275), (86, 42290), (95, 42353), (100, 42392), (114, 42473), (125, 42536), (158, 42698), (200, 42893),

Gene: Howe_59 Start: 41999, Stop: 43018, Start Num: 33

Candidate Starts for Howe_59:

(15, 41771), (25, 41936), (27, 41945), (29, 41957), (Start: 33 @41999 has 111 MA's), (49, 42083), (56, 42104), (64, 42149), (65, 42152), (77, 42200), (79, 42221), (85, 42275), (86, 42290), (95, 42353), (100, 42392), (114, 42473), (125, 42536), (158, 42698), (200, 42893),

Gene: Hugley_56 Start: 42150, Stop: 43301, Start Num: 33

Candidate Starts for Hugley_56:

(Start: 33 @42150 has 111 MA's), (56, 42258), (61, 42288), (95, 42543), (114, 42717), (118, 42738), (122, 42768), (124, 42774), (139, 42873), (145, 42894), (158, 42978), (166, 43026), (168, 43035), (200, 43173),

Gene: Hyzer_66 Start: 44114, Stop: 45265, Start Num: 33

Candidate Starts for Hyzer_66:

(13, 43829), (23, 44015), (26, 44060), (Start: 33 @44114 has 111 MA's), (56, 44222), (61, 44252), (95, 44507), (97, 44513), (114, 44681), (118, 44702), (119, 44708), (122, 44732), (124, 44738), (139, 44837), (145, 44858), (178, 45044), (205, 45155),

Gene: Invectra_56 Start: 38492, Stop: 39643, Start Num: 33

Candidate Starts for Invectra_56:

(23, 38381), (26, 38426), (Start: 33 @38492 has 111 MA's), (56, 38600), (61, 38630), (73, 38705), (95, 38885), (114, 39059), (118, 39080), (119, 39086), (122, 39110), (123, 39113), (124, 39116), (139, 39218), (143, 39227), (145, 39239), (158, 39320), (200, 39515), (210, 39575),

Gene: JCole_51 Start: 34606, Stop: 35700, Start Num: 33

Candidate Starts for JCole_51:

(Start: 33 @34606 has 111 MA's), (44, 34657), (45, 34675), (50, 34702), (56, 34720), (61, 34750), (81, 34855), (86, 34906), (97, 34975), (99, 34978), (114, 35143), (119, 35170), (122, 35194), (158, 35383), (198, 35572),

Gene: Jablanski_60 Start: 43190, Stop: 44338, Start Num: 33

Candidate Starts for Jablanski_60:

(Start: 33 @43190 has 111 MA's), (56, 43298), (61, 43328), (95, 43583), (97, 43589), (114, 43757), (118, 43778), (119, 43784), (122, 43808), (124, 43814), (134, 43877), (139, 43913), (145, 43934), (158, 44018), (166, 44066),

Gene: Jinkies_41 Start: 32040, Stop: 33080, Start Num: 34

Candidate Starts for Jinkies_41:

(20, 31914), (Start: 34 @32040 has 12 MA's), (51, 32124), (65, 32187), (80, 32298), (84, 32325), (85, 32343), (86, 32358), (90, 32373), (104, 32505), (114, 32541), (190, 32940), (191, 32943), (194, 32961), (206, 33030),

Gene: KappaFarmDelta_60 Start: 38335, Stop: 39300, Start Num: 34

Candidate Starts for KappaFarmDelta_60:

(Start: 34 @38335 has 12 MA's), (50, 38422), (56, 38440), (60, 38467), (61, 38470), (81, 38575), (82, 38584), (86, 38626), (114, 38809), (119, 38836), (122, 38860), (135, 38926), (142, 38953), (199, 39238),

Gene: KimmyK_56 Start: 42482, Stop: 43420, Start Num: 33

Candidate Starts for KimmyK_56:

(Start: 33 @42482 has 111 MA's), (50, 42563), (56, 42581), (64, 42626), (65, 42629), (86, 42767), (95, 42830), (111, 42938), (114, 42950), (119, 42977), (121, 42989), (147, 43121), (167, 43241), (172, 43259), (187, 43310), (191, 43322), (197, 43367),

Gene: Kita_58 Start: 39721, Stop: 40869, Start Num: 33

Candidate Starts for Kita_58:

(23, 39622), (26, 39667), (Start: 33 @39721 has 111 MA's), (56, 39832), (61, 39862), (95, 40117), (114, 40291), (118, 40312), (119, 40318), (122, 40342), (124, 40348), (134, 40411), (139, 40447), (145, 40468), (158, 40552), (166, 40600),

Gene: Kukla_53 Start: 33677, Stop: 34645, Start Num: 34

Candidate Starts for Kukla_53:

(Start: 34 @33677 has 12 MA's), (41, 33710), (48, 33755), (50, 33764), (80, 33908), (83, 33932), (84, 33935), (85, 33953), (86, 33968), (90, 33983), (94, 34010), (114, 34151), (122, 34202), (128, 34229), (129, 34238), (211, 34634),

Gene: Lamberg_50 Start: 34420, Stop: 35568, Start Num: 33

Candidate Starts for Lamberg_50:

(Start: 33 @34420 has 111 MA's), (56, 34528), (61, 34558), (95, 34813), (97, 34819), (110, 34969), (114, 34987), (118, 35008), (119, 35014), (122, 35038), (124, 35044), (134, 35107), (139, 35143), (145, 35164), (158, 35245),

Gene: Lilas_56 Start: 42094, Stop: 43239, Start Num: 33

Candidate Starts for Lilas_56:

(2, 41095), (8, 41473), (9, 41569), (13, 41809), (23, 41995), (26, 42040), (Start: 33 @42094 has 111 MA's), (56, 42202), (61, 42232), (95, 42487), (114, 42661), (118, 42682), (119, 42688), (122, 42712), (124, 42718), (134, 42781), (139, 42817), (145, 42838),

Gene: LonelyBoi_56 Start: 42240, Stop: 43370, Start Num: 33

Candidate Starts for LonelyBoi_56:

(23, 42141), (26, 42186), (Start: 33 @42240 has 111 MA's), (45, 42315), (50, 42342), (56, 42360), (61, 42390), (73, 42465), (78, 42501), (97, 42651), (99, 42654), (114, 42819), (118, 42840), (119, 42846), (122, 42870), (124, 42876), (145, 42984), (153, 43020), (166, 43101),

Gene: LordFarquaad_54 Start: 36826, Stop: 37971, Start Num: 33

Candidate Starts for LordFarquaad_54:

(23, 36727), (26, 36772), (Start: 33 @36826 has 111 MA's), (56, 36934), (61, 36964), (95, 37219), (97, 37225), (105, 37306), (114, 37393), (118, 37414), (119, 37420), (122, 37444), (124, 37450), (134, 37513), (139, 37549), (145, 37570), (158, 37651), (166, 37699), (168, 37708),

Gene: Lysidious_61 Start: 40833, Stop: 41798, Start Num: 34

Candidate Starts for Lysidious_61:

(17, 40620), (28, 40770), (Start: 34 @40833 has 12 MA's), (50, 40920), (56, 40938), (60, 40965), (61, 40968), (81, 41073), (82, 41082), (86, 41124), (114, 41307), (119, 41334), (122, 41358), (123, 41361), (135, 41424), (142, 41451), (194, 41703), (199, 41736),

Gene: Madeline_58 Start: 41610, Stop: 42737, Start Num: 33

Candidate Starts for Madeline_58:

(13, 41325), (23, 41511), (26, 41556), (Start: 33 @41610 has 111 MA's), (45, 41685), (50, 41712), (56, 41730), (61, 41760), (65, 41778), (78, 41871), (97, 42021), (99, 42024), (114, 42189), (118, 42210), (119, 42216), (122, 42240), (124, 42246), (134, 42306), (145, 42354), (158, 42420), (166, 42468), (186, 42546),

Gene: MakCheese_64 Start: 42568, Stop: 43701, Start Num: 33

Candidate Starts for MakCheese_64:

(Start: 33 @42568 has 111 MA's), (38, 42592), (45, 42640), (50, 42667), (56, 42685), (61, 42715), (73, 42790), (78, 42826), (95, 42970), (114, 43144), (118, 43165), (119, 43171), (124, 43201), (134, 43264), (158, 43378), (200, 43573),

Gene: Malibo_60 Start: 41295, Stop: 42374, Start Num: 33

Candidate Starts for Malibo_60:

(Start: 33 @41295 has 111 MA's), (45, 41367), (56, 41412), (61, 41442), (84, 41565), (86, 41598), (95, 41661), (97, 41667), (104, 41742), (114, 41835), (119, 41862), (122, 41886), (200, 42264), (204, 42273), (210, 42306),

Gene: Manasvini_58 Start: 39736, Stop: 40884, Start Num: 33

Candidate Starts for Manasvini_58:

(23, 39637), (26, 39682), (Start: 33 @39736 has 111 MA's), (56, 39847), (61, 39877), (95, 40132), (114, 40306), (118, 40327), (119, 40333), (122, 40357), (124, 40363), (134, 40426), (139, 40462), (145, 40483), (158, 40567), (166, 40615),

Gene: Maridalia_61 Start: 40956, Stop: 42086, Start Num: 33

Candidate Starts for Maridalia_61:

(23, 40857), (26, 40902), (Start: 33 @40956 has 111 MA's), (45, 41031), (50, 41058), (56, 41076), (61, 41106), (68, 41142), (73, 41181), (78, 41217), (97, 41367), (99, 41370), (114, 41535), (118, 41556), (119, 41562), (122, 41586), (124, 41592), (134, 41652), (145, 41700), (153, 41736), (166, 41817), (168, 41826),

Gene: Marteena_56 Start: 40371, Stop: 41510, Start Num: 33

Candidate Starts for Marteena_56:

(8, 39750), (9, 39846), (13, 40086), (23, 40272), (26, 40317), (Start: 33 @40371 has 111 MA's), (56, 40479), (61, 40509), (95, 40764), (114, 40938), (118, 40959), (119, 40965), (122, 40989), (124, 40995), (134, 41058), (139, 41094), (145, 41115), (158, 41193),

Gene: Maruru_48 Start: 37039, Stop: 38160, Start Num: 34

Candidate Starts for Maruru_48:

(24, 36946), (Start: 34 @37039 has 12 MA's), (56, 37150), (61, 37180), (75, 37237), (77, 37246), (79, 37267), (85, 37321), (90, 37351), (93, 37375), (96, 37402), (114, 37522), (124, 37579), (126, 37588), (131, 37618), (149, 37738), (162, 37840), (169, 37882), (180, 37942), (181, 37945), (203, 38041), (208, 38080), (213, 38110),

Gene: Matteo_47 Start: 33447, Stop: 34499, Start Num: 33

Candidate Starts for Matteo_47:

(18, 33246), (26, 33381), (Start: 33 @33447 has 111 MA's), (55, 33543), (70, 33621), (71, 33624), (81, 33711), (86, 33762), (97, 33825), (103, 33870), (114, 33945), (127, 34017), (158, 34182), (198, 34371),

Gene: Mcklovin_54 Start: 42931, Stop: 44091, Start Num: 33

Candidate Starts for Mcklovin_54:

(23, 42820), (26, 42865), (Start: 33 @42931 has 111 MA's), (56, 43039), (61, 43069), (73, 43144), (95, 43324), (114, 43498), (118, 43519), (122, 43549), (123, 43552), (124, 43555), (139, 43657), (143, 43666), (145, 43678), (158, 43759), (200, 43954),

Gene: Mellie_58 Start: 38843, Stop: 39808, Start Num: 34

Candidate Starts for Mellie_58:

(14, 38582), (17, 38630), (28, 38780), (Start: 34 @38843 has 12 MA's), (50, 38930), (56, 38948), (60, 38975), (61, 38978), (81, 39083), (82, 39092), (86, 39134), (114, 39317), (119, 39344), (122, 39368), (135, 39434), (142, 39461), (165, 39605), (199, 39746),

Gene: MichaelScott_55 Start: 38395, Stop: 39543, Start Num: 33

Candidate Starts for MichaelScott_55:

(23, 38284), (26, 38329), (Start: 33 @38395 has 111 MA's), (56, 38503), (61, 38533), (73, 38608), (95, 38788), (114, 38962), (118, 38983), (119, 38989), (122, 39013), (123, 39016), (124, 39019), (139, 39121), (143, 39130), (145, 39142), (158, 39223), (200, 39418),

Gene: Mocha12_54 Start: 35911, Stop: 37059, Start Num: 33

Candidate Starts for Mocha12_54:

(Start: 33 @35911 has 111 MA's), (56, 36019), (61, 36049), (95, 36304), (97, 36310), (110, 36460), (114, 36478), (118, 36499), (119, 36505), (122, 36529), (124, 36535), (134, 36598), (139, 36634), (145, 36655), (158, 36736),

Gene: Mufasa8_47 Start: 35178, Stop: 36302, Start Num: 34

Candidate Starts for Mufasa8_47:

(Start: 34 @35178 has 12 MA's), (56, 35280), (58, 35286), (61, 35310), (65, 35328), (75, 35367), (77, 35376), (79, 35397), (85, 35451), (90, 35481), (94, 35508), (96, 35532), (102, 35580), (114, 35652), (121, 35691), (124, 35709), (126, 35718), (129, 35739), (131, 35748), (137, 35808), (146, 35847), (150, 35877), (160, 35955), (161, 35958), (162, 35973), (164, 35991), (168, 36003), (173, 36027), (176, 36042), (180, 36069), (183, 36081), (185, 36084), (208, 36207), (213, 36258),

Gene: Murp_59 Start: 41608, Stop: 42573, Start Num: 34

Candidate Starts for Murp_59:

(Start: 34 @41608 has 12 MA's), (50, 41695), (56, 41713), (60, 41740), (61, 41743), (81, 41848), (82, 41857), (86, 41899), (88, 41908), (114, 42082), (119, 42109), (122, 42133), (123, 42136), (135, 42199), (142, 42226), (199, 42511),

Gene: Neobush_57 Start: 39706, Stop: 40854, Start Num: 33

Candidate Starts for Neobush_57:

(23, 39607), (26, 39652), (Start: 33 @39706 has 111 MA's), (56, 39817), (61, 39847), (95, 40102), (114, 40276), (118, 40297), (119, 40303), (122, 40327), (124, 40333), (134, 40396), (139, 40432), (145, 40453), (158, 40537), (166, 40585),

Gene: Nettuno_50 Start: 34420, Stop: 35568, Start Num: 33

Candidate Starts for Nettuno_50:

(Start: 33 @34420 has 111 MA's), (56, 34528), (61, 34558), (95, 34813), (97, 34819), (110, 34969), (114, 34987), (118, 35008), (119, 35014), (122, 35038), (124, 35044), (134, 35107), (139, 35143), (145, 35164), (158, 35245),

Gene: Nubi_55 Start: 41879, Stop: 42829, Start Num: 33

Candidate Starts for Nubi_55:

(Start: 33 @41879 has 111 MA's), (50, 41972), (56, 41990), (61, 42020), (86, 42176), (89, 42188), (114, 42359), (119, 42386), (147, 42530), (167, 42650), (172, 42668), (187, 42719), (191, 42731), (197, 42776),

Gene: Ohgeesy_57 Start: 40387, Stop: 41541, Start Num: 33

Candidate Starts for Ohgeesy_57:

(23, 40288), (26, 40333), (Start: 33 @40387 has 111 MA's), (56, 40495), (61, 40525), (95, 40780), (97, 40786), (114, 40954), (118, 40975), (119, 40981), (122, 41005), (124, 41011), (134, 41074), (139, 41110), (145, 41131), (166, 41266), (168, 41275),

Gene: Oregano_58 Start: 38155, Stop: 39303, Start Num: 33

Candidate Starts for Oregano_58:

(23, 38044), (26, 38089), (Start: 33 @38155 has 111 MA's), (56, 38263), (61, 38293), (73, 38368), (95, 38548), (114, 38722), (118, 38743), (119, 38749), (122, 38773), (123, 38776), (124, 38779), (139, 38881), (143, 38890), (145, 38902), (158, 38983), (200, 39178),

Gene: PantheRoc_60 Start: 40974, Stop: 42104, Start Num: 33

Candidate Starts for PantheRoc_60:

(13, 40689), (23, 40875), (26, 40920), (Start: 33 @40974 has 111 MA's), (45, 41049), (50, 41076), (56, 41094), (61, 41124), (65, 41142), (78, 41235), (97, 41385), (99, 41388), (114, 41553), (118, 41574), (119, 41580), (122, 41604), (124, 41610), (134, 41670), (145, 41718), (158, 41784), (166, 41832), (168, 41841), (190, 41922),

Gene: Phlop_54 Start: 41954, Stop: 42892, Start Num: 33

Candidate Starts for Phlop_54:

(Start: 33 @41954 has 111 MA's), (50, 42035), (56, 42053), (64, 42098), (65, 42101), (86, 42239), (95, 42302), (111, 42410), (114, 42422), (119, 42449), (121, 42461), (147, 42593), (167, 42713), (172, 42731), (187, 42782), (191, 42794), (197, 42839),

Gene: PhriskyACE_55 Start: 38287, Stop: 39378, Start Num: 33

Candidate Starts for PhriskyACE_55:

(Start: 33 @38287 has 111 MA's), (45, 38356), (50, 38383), (56, 38401), (61, 38431), (84, 38554), (86, 38587), (87, 38590), (97, 38656), (99, 38659), (106, 38767), (108, 38797), (114, 38824), (119, 38851), (122, 38875), (158, 39058), (195, 39229), (200, 39253),

Gene: Pickett_50 Start: 34009, Stop: 35157, Start Num: 33

Candidate Starts for Pickett_50:

(23, 33910), (26, 33955), (Start: 33 @34009 has 111 MA's), (56, 34120), (61, 34150), (95, 34405), (114, 34579), (118, 34600), (119, 34606), (122, 34630), (124, 34636), (134, 34699), (139, 34735), (145, 34756), (158, 34840), (166, 34888),

Gene: PinkCoffee_57 Start: 42057, Stop: 42995, Start Num: 33

Candidate Starts for PinkCoffee_57:

(Start: 33 @42057 has 111 MA's), (50, 42138), (56, 42156), (64, 42201), (65, 42204), (86, 42342), (95, 42405), (111, 42513), (114, 42525), (119, 42552), (121, 42564), (147, 42696), (167, 42816), (172, 42834), (187, 42885), (191, 42897), (197, 42942),

Gene: Pollux_60 Start: 42256, Stop: 43395, Start Num: 33

Candidate Starts for Pollux_60:

(13, 41971), (23, 42157), (26, 42202), (Start: 33 @42256 has 111 MA's), (56, 42364), (61, 42394), (73, 42469), (95, 42649), (97, 42655), (114, 42823), (118, 42844), (119, 42850), (122, 42874), (124, 42880), (134, 42943), (139, 42979), (145, 43000), (158, 43078),

Gene: Polly_54 Start: 39155, Stop: 40303, Start Num: 33

Candidate Starts for Polly_54:

(23, 39056), (26, 39101), (Start: 33 @39155 has 111 MA's), (56, 39266), (61, 39296), (95, 39551), (114, 39725), (118, 39746), (119, 39752), (122, 39776), (124, 39782), (134, 39845), (139, 39881), (145, 39902), (158, 39986), (166, 40034),

Gene: Posh_60 Start: 42119, Stop: 43222, Start Num: 33

Candidate Starts for Posh_60:

(Start: 33 @42119 has 111 MA's), (43, 42170), (45, 42191), (50, 42218), (56, 42236), (61, 42266), (81, 42371), (86, 42422), (97, 42491), (99, 42494), (114, 42659), (119, 42686), (122, 42710),

Gene: Powerball_56 Start: 38413, Stop: 39507, Start Num: 33

Candidate Starts for Powerball_56:

(Start: 33 @38413 has 111 MA's), (45, 38482), (50, 38509), (56, 38527), (61, 38557), (84, 38680), (86, 38713), (87, 38716), (97, 38782), (99, 38785), (106, 38893), (108, 38923), (114, 38950), (119, 38977), (122, 39001), (158, 39184), (195, 39355), (200, 39379),

Gene: PullumCavea_54 Start: 41954, Stop: 42892, Start Num: 33

Candidate Starts for PullumCavea_54:

(Start: 33 @41954 has 111 MA's), (50, 42035), (56, 42053), (64, 42098), (65, 42101), (86, 42239), (95, 42302), (111, 42410), (114, 42422), (119, 42449), (121, 42461), (147, 42593), (167, 42713), (172, 42731), (187, 42782), (191, 42794), (197, 42839),

Gene: Pytheas_60 Start: 43189, Stop: 44337, Start Num: 33

Candidate Starts for Pytheas_60:

(Start: 33 @43189 has 111 MA's), (56, 43297), (61, 43327), (95, 43582), (97, 43588), (114, 43756), (118, 43777), (119, 43783), (122, 43807), (124, 43813), (134, 43876), (139, 43912), (145, 43933), (158, 44017), (166, 44065),

Gene: RavenCo17_54 Start: 39554, Stop: 40645, Start Num: 33

Candidate Starts for RavenCo17_54:

(Start: 33 @39554 has 111 MA's), (44, 39605), (45, 39623), (50, 39650), (56, 39668), (61, 39698), (81, 39803), (86, 39854), (97, 39923), (99, 39926), (114, 40091), (119, 40118), (122, 40142), (158, 40325),

Gene: RogerDodger_58 Start: 42076, Stop: 43014, Start Num: 33

Candidate Starts for RogerDodger_58:

(Start: 33 @42076 has 111 MA's), (50, 42157), (56, 42175), (64, 42220), (65, 42223), (86, 42361), (95, 42424), (111, 42532), (114, 42544), (119, 42571), (121, 42583), (147, 42715), (167, 42835), (172, 42853), (187, 42904), (191, 42916), (197, 42961),

Gene: Ruthy_55 Start: 40488, Stop: 41606, Start Num: 33

Candidate Starts for Ruthy_55:

(Start: 33 @40488 has 111 MA's), (42, 40533), (50, 40587), (56, 40605), (61, 40635), (73, 40710), (78, 40746), (87, 40830), (88, 40836), (97, 40896), (99, 40899), (114, 41064), (118, 41085), (119, 41091), (122, 41115), (124, 41121), (166, 41343), (201, 41490), (204, 41499), (209, 41538),

Gene: Sahara_53 Start: 35658, Stop: 36806, Start Num: 33

Candidate Starts for Sahara_53:

(Start: 33 @35658 has 111 MA's), (56, 35766), (61, 35796), (95, 36051), (97, 36057), (110, 36207), (114, 36225), (118, 36246), (119, 36252), (122, 36276), (124, 36282), (134, 36345), (139, 36381), (145, 36402), (158, 36483),

Gene: Salvador_54 Start: 41772, Stop: 42722, Start Num: 33

Candidate Starts for Salvador_54:

(Start: 33 @41772 has 111 MA's), (50, 41865), (56, 41883), (61, 41913), (86, 42069), (89, 42081), (114, 42252), (147, 42423), (167, 42543), (172, 42561), (187, 42612), (191, 42624), (197, 42669),

Gene: Samman98_55 Start: 37021, Stop: 38172, Start Num: 33

Candidate Starts for Samman98_55:

(23, 36910), (26, 36955), (Start: 33 @37021 has 111 MA's), (56, 37129), (61, 37159), (73, 37234), (95, 37414), (114, 37588), (118, 37609), (119, 37615), (122, 37639), (123, 37642), (124, 37645), (139, 37747), (143, 37756), (145, 37768), (158, 37849), (200, 38044), (210, 38104),

Gene: Savage_54 Start: 35911, Stop: 37059, Start Num: 33

Candidate Starts for Savage_54:

(Start: 33 @35911 has 111 MA's), (56, 36019), (61, 36049), (95, 36304), (97, 36310), (110, 36460), (114, 36478), (118, 36499), (119, 36505), (122, 36529), (124, 36535), (134, 36598), (139, 36634), (145, 36655), (158, 36736),

Gene: Sekhmet_56 Start: 38079, Stop: 39206, Start Num: 33

Candidate Starts for Sekhmet_56:

(23, 37980), (26, 38025), (Start: 33 @38079 has 111 MA's), (44, 38130), (45, 38148), (50, 38175), (56, 38193), (61, 38223), (73, 38298), (78, 38334), (95, 38478), (114, 38652), (118, 38673), (119, 38679), (124, 38709), (134, 38772), (158, 38886), (200, 39081),

Gene: Shlim410_57 Start: 41999, Stop: 43018, Start Num: 33

Candidate Starts for Shlim410_57:

(15, 41771), (25, 41936), (27, 41945), (29, 41957), (Start: 33 @41999 has 111 MA's), (49, 42083), (56, 42104), (64, 42149), (65, 42152), (77, 42200), (79, 42221), (85, 42275), (86, 42290), (95, 42353), (100, 42392), (114, 42473), (125, 42536), (158, 42698), (200, 42893),

Gene: Sidious_57 Start: 40481, Stop: 41569, Start Num: 33

Candidate Starts for Sidious_57:

(8, 39860), (9, 39956), (21, 40364), (23, 40382), (26, 40427), (Start: 33 @40481 has 111 MA's), (45, 40547), (50, 40574), (56, 40592), (61, 40622), (86, 40778), (87, 40781), (95, 40841), (97, 40847), (114, 41015), (119, 41042), (122, 41066), (148, 41198), (158, 41252), (212, 41522),

Gene: Sleepyhead_52 Start: 35211, Stop: 36374, Start Num: 34

Candidate Starts for Sleepyhead_52:

(Start: 34 @35211 has 12 MA's), (52, 35319), (66, 35400), (76, 35433), (77, 35436), (86, 35526), (151, 35979), (154, 36000), (157, 36042), (174, 36144), (184, 36192), (188, 36201),

Gene: SmokingBunny_55 Start: 41865, Stop: 42815, Start Num: 33

Candidate Starts for SmokingBunny_55:

(Start: 33 @41865 has 111 MA's), (50, 41958), (56, 41976), (61, 42006), (86, 42162), (89, 42174), (114, 42345), (119, 42372), (147, 42516), (167, 42636), (172, 42654), (187, 42705), (191, 42717), (197, 42762),

Gene: SoilAssassin_52 Start: 36844, Stop: 37989, Start Num: 33

Candidate Starts for SoilAssassin_52:

(23, 36745), (26, 36790), (Start: 33 @36844 has 111 MA's), (56, 36952), (61, 36982), (95, 37237), (97, 37243), (105, 37324), (114, 37411), (118, 37432), (119, 37438), (122, 37462), (124, 37468), (134, 37531), (139, 37567), (145, 37588), (158, 37669), (166, 37717), (168, 37726),

Gene: Sonali_47 Start: 37499, Stop: 38617, Start Num: 34

Candidate Starts for Sonali_47:

(24, 37409), (Start: 34 @37499 has 12 MA's), (56, 37613), (61, 37643), (75, 37700), (77, 37709), (79, 37730), (85, 37784), (93, 37838), (96, 37865), (114, 37985), (124, 38042), (126, 38051), (130, 38078), (131, 38081), (149, 38198), (158, 38276), (162, 38303), (169, 38342), (180, 38402), (181, 38405), (203, 38501), (208, 38540), (213, 38570),

Gene: Sproutie_54 Start: 35911, Stop: 37059, Start Num: 33

Candidate Starts for Sproutie_54:

(Start: 33 @35911 has 111 MA's), (56, 36019), (61, 36049), (95, 36304), (97, 36310), (110, 36460), (114, 36478), (118, 36499), (119, 36505), (122, 36529), (124, 36535), (134, 36598), (139, 36634), (145, 36655), (158, 36736),

Gene: Suerte_51 Start: 36995, Stop: 38143, Start Num: 33

Candidate Starts for Suerte_51:

(23, 36884), (26, 36929), (Start: 33 @36995 has 111 MA's), (56, 37103), (61, 37133), (73, 37208), (95, 37388), (97, 37394), (114, 37562), (115, 37565), (118, 37583), (119, 37589), (122, 37613), (123, 37616), (124, 37619), (139, 37721), (143, 37730), (145, 37742), (158, 37823), (200, 38018),

Gene: Sunshine23_49 Start: 37381, Stop: 38502, Start Num: 34

Candidate Starts for Sunshine23_49:

(24, 37288), (Start: 34 @37381 has 12 MA's), (56, 37495), (61, 37525), (75, 37582), (77, 37591), (79, 37612), (85, 37666), (93, 37720), (96, 37747), (114, 37867), (124, 37924), (126, 37933), (130, 37960), (131, 37963), (149, 38083), (162, 38188), (169, 38227), (180, 38287), (181, 38290), (203, 38386), (208, 38425), (213, 38455),

Gene: Suscepit_57 Start: 39713, Stop: 40861, Start Num: 33

Candidate Starts for Suscepit_57:

(23, 39614), (26, 39659), (Start: 33 @39713 has 111 MA's), (56, 39824), (61, 39854), (95, 40109), (114, 40283), (118, 40304), (119, 40310), (122, 40334), (124, 40340), (134, 40403), (139, 40439), (145, 40460), (158, 40544), (166, 40592),

Gene: Tayonia_57 Start: 39712, Stop: 40860, Start Num: 33

Candidate Starts for Tayonia_57:

(23, 39613), (26, 39658), (Start: 33 @39712 has 111 MA's), (56, 39823), (61, 39853), (95, 40108), (114, 40282), (118, 40303), (119, 40309), (122, 40333), (124, 40339), (134, 40402), (139, 40438), (145, 40459), (158, 40543), (166, 40591),

Gene: ThankyouJordi_60 Start: 42528, Stop: 43664, Start Num: 33

Candidate Starts for ThankyouJordi_60:

(4, 41562), (5, 41640), (6, 41652), (11, 42123), (18, 42327), (26, 42462), (Start: 33 @42528 has 111 MA's), (54, 42630), (56, 42639), (61, 42669), (68, 42705), (73, 42744), (81, 42810), (95, 42924), (99, 42933), (112, 43092), (114, 43098), (118, 43119), (119, 43125), (122, 43149), (124, 43155), (139, 43248), (155, 43320), (158, 43347), (166, 43395),

Gene: Thimann_57 Start: 38439, Stop: 39587, Start Num: 33

Candidate Starts for Thimann_57:

(23, 38328), (26, 38373), (Start: 33 @38439 has 111 MA's), (56, 38547), (61, 38577), (73, 38652), (95, 38832), (97, 38838), (114, 39006), (115, 39009), (118, 39027), (119, 39033), (122, 39057), (123, 39060), (124, 39063), (139, 39165), (143, 39174), (145, 39186), (158, 39267), (200, 39462), (210, 39522),

Gene: TillyBobJoe_57 Start: 43373, Stop: 44326, Start Num: 33

Candidate Starts for TillyBobJoe_57:

(Start: 33 @43373 has 111 MA's), (50, 43466), (56, 43484), (61, 43514), (79, 43601), (86, 43670), (89, 43682), (114, 43853), (134, 43961), (147, 44024), (167, 44147), (172, 44165), (187, 44216), (197, 44273),

Gene: Togo_54 Start: 41865, Stop: 42815, Start Num: 33

Candidate Starts for Togo_54:

(Start: 33 @41865 has 111 MA's), (50, 41958), (56, 41976), (61, 42006), (86, 42162), (89, 42174), (114, 42345), (119, 42372), (147, 42516), (167, 42636), (172, 42654), (187, 42705), (191, 42717), (197, 42762),

Gene: Trumpet_57 Start: 39713, Stop: 40861, Start Num: 33

Candidate Starts for Trumpet_57:

(23, 39614), (26, 39659), (Start: 33 @39713 has 111 MA's), (56, 39824), (61, 39854), (95, 40109), (114, 40283), (118, 40304), (119, 40310), (122, 40334), (124, 40340), (134, 40403), (139, 40439), (145, 40460), (158, 40544), (166, 40592),

Gene: TuertoX_54 Start: 35911, Stop: 37059, Start Num: 33

Candidate Starts for TuertoX_54:

(Start: 33 @35911 has 111 MA's), (56, 36019), (61, 36049), (95, 36304), (97, 36310), (110, 36460), (114, 36478), (118, 36499), (119, 36505), (122, 36529), (124, 36535), (134, 36598), (139, 36634), (145, 36655), (158, 36736),

Gene: Twinkle_58 Start: 43058, Stop: 44077, Start Num: 33

Candidate Starts for Twinkle_58:

(15, 42830), (25, 42995), (27, 43004), (29, 43016), (Start: 33 @43058 has 111 MA's), (49, 43142), (56, 43163), (64, 43208), (65, 43211), (77, 43259), (79, 43280), (85, 43334), (86, 43349), (95, 43412), (100, 43451), (114, 43532), (125, 43595), (158, 43757), (200, 43952),

Gene: Typha_66 Start: 46458, Stop: 47585, Start Num: 31

Candidate Starts for Typha_66:

(Start: 31 @46458 has 4 MA's), (Start: 34 @46470 has 12 MA's), (36, 46485), (39, 46509), (42, 46527), (47, 46563), (58, 46602), (63, 46632), (67, 46659), (77, 46722), (79, 46743), (82, 46770), (85, 46797), (86, 46812), (87, 46815), (89, 46824), (90, 46827), (98, 46875), (101, 46905), (102, 46908), (109, 46995), (111, 47007), (114, 47019), (119, 47046), (122, 47070), (124, 47076), (125, 47082), (132, 47124), (133, 47127), (144, 47190), (159, 47301), (181, 47412), (193, 47454),

Gene: Valary_57 Start: 42681, Stop: 43619, Start Num: 33

Candidate Starts for Valary_57:

(Start: 33 @42681 has 111 MA's), (50, 42762), (56, 42780), (64, 42825), (65, 42828), (86, 42966), (95, 43029), (111, 43137), (114, 43149), (119, 43176), (121, 43188), (147, 43320), (167, 43440), (172, 43458), (187, 43509), (191, 43521), (197, 43566),

Gene: VanDeWege_58 Start: 41973, Stop: 42911, Start Num: 33

Candidate Starts for VanDeWege_58:

(Start: 33 @41973 has 111 MA's), (50, 42054), (56, 42072), (64, 42117), (65, 42120), (86, 42258), (95, 42321), (111, 42429), (114, 42441), (119, 42468), (121, 42480), (147, 42612), (167, 42732), (172, 42750), (187, 42801), (191, 42813), (197, 42858),

Gene: Vibaki_35 Start: 31085, Stop: 32152, Start Num: 34

Candidate Starts for Vibaki_35:

(Start: 34 @31085 has 12 MA's), (51, 31157), (69, 31241), (80, 31331), (85, 31376), (86, 31391), (114, 31574), (120, 31610), (122, 31625), (191, 32000),

Gene: Vitus_36 Start: 29804, Stop: 30862, Start Num: 34

Candidate Starts for Vitus_36:

(Start: 34 @29804 has 12 MA's), (51, 29876), (80, 30050), (84, 30077), (85, 30095), (86, 30110), (104, 30257), (114, 30293), (120, 30329), (138, 30446), (140, 30455), (177, 30674), (179, 30686), (191, 30722),

Gene: WelcomeAyanna_60 Start: 42675, Stop: 43811, Start Num: 33

Candidate Starts for WelcomeAyanna_60:

(4, 41709), (5, 41787), (6, 41799), (11, 42270), (18, 42474), (26, 42609), (Start: 33 @42675 has 111 MA's), (54, 42777), (56, 42786), (61, 42816), (68, 42852), (73, 42891), (81, 42957), (95, 43071), (99, 43080), (112, 43239), (114, 43245), (118, 43266), (119, 43272), (122, 43296), (124, 43302), (139, 43395), (155, 43467), (158, 43494), (166, 43542),

Gene: Whiteclaw_54 Start: 35911, Stop: 37059, Start Num: 33

Candidate Starts for Whiteclaw_54:

(Start: 33 @35911 has 111 MA's), (56, 36019), (61, 36049), (95, 36304), (97, 36310), (110, 36460), (114, 36478), (118, 36499), (119, 36505), (122, 36529), (124, 36535), (134, 36598), (139, 36634), (145, 36655), (158, 36736),

Gene: WinkNick_57 Start: 37603, Stop: 38730, Start Num: 33

Candidate Starts for WinkNick_57:

(23, 37504), (26, 37549), (Start: 33 @37603 has 111 MA's), (44, 37654), (45, 37672), (50, 37699), (56, 37717), (61, 37747), (73, 37822), (78, 37858), (95, 38002), (114, 38176), (118, 38197), (119, 38203), (124, 38233), (134, 38296), (158, 38410), (200, 38605),

Gene: Wizard_54 Start: 41879, Stop: 42817, Start Num: 33

Candidate Starts for Wizard_54:

(Start: 33 @41879 has 111 MA's), (50, 41960), (56, 41978), (64, 42023), (65, 42026), (86, 42164), (95, 42227), (111, 42335), (114, 42347), (119, 42374), (121, 42386), (147, 42518), (167, 42638), (172, 42656), (187, 42707), (191, 42719), (197, 42764),

Gene: Wocket_59 Start: 38775, Stop: 39740, Start Num: 34

Candidate Starts for Wocket_59:

(Start: 34 @38775 has 12 MA's), (50, 38862), (56, 38880), (60, 38907), (61, 38910), (81, 39015), (82, 39024), (86, 39066), (114, 39249), (122, 39300), (135, 39366), (142, 39393), (199, 39678),

Gene: Wrigley_62 Start: 41702, Stop: 42805, Start Num: 33

Candidate Starts for Wrigley_62:

(Start: 33 @41702 has 111 MA's), (43, 41753), (45, 41774), (50, 41801), (56, 41819), (61, 41849), (81, 41954), (86, 42005), (97, 42074), (99, 42077), (114, 42242), (119, 42269), (122, 42293),

Gene: Yeet412_52 Start: 36845, Stop: 37999, Start Num: 33

Candidate Starts for Yeet412_52:

(23, 36746), (26, 36791), (Start: 33 @36845 has 111 MA's), (56, 36956), (61, 36986), (95, 37241), (114, 37415), (118, 37436), (119, 37442), (122, 37466), (124, 37472), (134, 37535), (139, 37571), (145, 37592), (158, 37676),

Gene: Yeezy_57 Start: 39122, Stop: 40219, Start Num: 33

Candidate Starts for Yeezy_57:

(Start: 33 @39122 has 111 MA's), (45, 39194), (50, 39221), (56, 39239), (61, 39269), (81, 39374), (86, 39425), (97, 39494), (99, 39497), (114, 39662), (119, 39689), (122, 39713), (158, 39896), (166, 39944), (186, 40022), (200, 40091),

Gene: Zameen_57 Start: 39712, Stop: 40860, Start Num: 33

Candidate Starts for Zameen_57:

(23, 39613), (26, 39658), (Start: 33 @39712 has 111 MA's), (56, 39823), (61, 39853), (95, 40108), (114, 40282), (118, 40303), (119, 40309), (122, 40333), (124, 40339), (134, 40402), (139, 40438), (145, 40459), (158, 40543), (166, 40591),

Gene: Zirinka_54 Start: 40332, Stop: 41480, Start Num: 33

Candidate Starts for Zirinka_54:

(23, 40233), (26, 40278), (Start: 33 @40332 has 111 MA's), (56, 40443), (61, 40473), (95, 40728), (114, 40902), (118, 40923), (119, 40929), (122, 40953), (124, 40959), (134, 41022), (139, 41058), (145, 41079), (158, 41163), (166, 41211),

Gene: Zodiariah_58 Start: 42307, Stop: 43419, Start Num: 33

Candidate Starts for Zodiariah_58:

(Start: 33 @42307 has 111 MA's), (45, 42376), (50, 42403), (56, 42421), (61, 42451), (81, 42556), (86, 42607), (87, 42610), (97, 42676), (108, 42817), (114, 42844), (115, 42847), (119, 42871), (121, 42883), (122, 42895), (155, 43069), (158, 43096), (166, 43144),