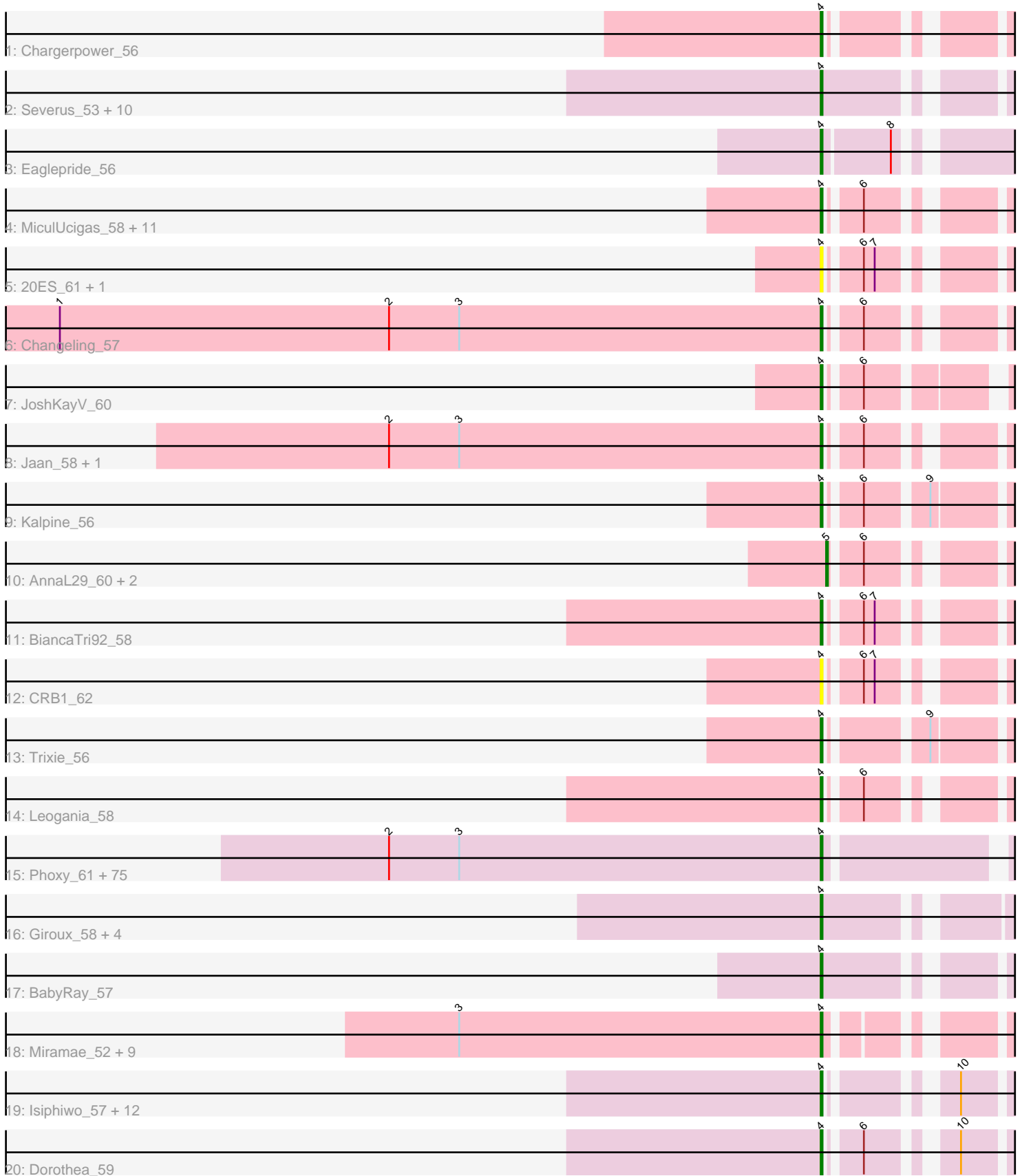


Pham 215926



Note: Tracks are now grouped by subcluster and scaled. Switching in subcluster is indicated by changes in track color. Track scale is now set by default to display the region 30 bp upstream of start 1 to 30 bp downstream of the last possible start. If this default region is judged to be packed too tightly with annotated starts, the track will be further scaled to only show that region of the ORF with annotated starts. This action will be indicated by adding "Zoomed" to the title. For starts, yellow indicates the location of called starts comprised solely of Glimmer/GeneMark auto-annotations, green indicates the location of called starts with at least 1 manual gene annotation.

Pham 215926 Report

This analysis was run 02/22/25 on database version 588.

Pham number 215926 has 145 members, 11 are drafts.

Phages represented in each track:

- Track 1 : Chargerpower_56
- Track 2 : Severus_53, KittenMittens_52, Drake94_53, Goose_55, OKCentral2016_54, Rebeuca_55, WalterMcMickey_53, PeaceMeal1_53, DaVinci_58, Trike_53, Twister_53
- Track 3 : Eaglepride_56
- Track 4 : MiculUcigas_58, WideWale_59, HarryHoudini_59, Updawg_59, Centaur_59, Piro94_58, NaSiaTalie_58, Drake55_60, ArcherNM_53, Flare16_58, Equemioh13_59, Baehexic_57
- Track 5 : 20ES_61, First_0060
- Track 6 : Changeling_57
- Track 7 : JoshKayV_60
- Track 8 : Jaan_58, Landor_58
- Track 9 : Kalpine_56
- Track 10 : AnnaL29_60, RedRock_60, Loser_60
- Track 11 : BiancaTri92_58
- Track 12 : CRB1_62
- Track 13 : Trixie_56
- Track 14 : Leogania_58
- Track 15 : Phoxy_61, Bigflo_61, Farber_61, Hercules11_61, Aglet_62, SoilDragon_61, ACFishhook_60, Spike509_61, Fernando_61, OlanP_60, P28Green_62, Calvinny_61, Sabia_61, GingkoMaracino_61, Grum1_61, AgronaGT15_60, Beauxregard13_61, Zetzy_60, Gemma_60, Reba_61, Dieselweasel_62, LugYA_64, Marius_62, SoYo_61, Watson_61, Taurus_62, MadMarie_61, Snickers_61, Soshari_63, Groupthink_62, LBerry_62, DaHudson_61, TinyPebbles_60, Pawn_61, Heliosoles_60, Grub_61, StepMih_61, BreSam8_61, GtownJaz_61, MoneyMay_61, KADY_61, Penny1_62, PGHhamlin_63, Phranny_62, Manu_61, Grif_61, HashRod_62, HaveUMetTed_62, MuchMore_64, Colbster_61, PhishRPhriends_59, Anubis_64, Malinsilva_63, Rummer_60, Stagni_61, Louie6_60, Wooldri_63, PurpleHaze_61, EpicPhail_62, PotatoSplit_63, LarryKay_61, JenCasNa_62, AugsMagnumOpus_64, Sabinator_60, Misomonster_62, Kalb97_62, Kalnoky_62, Mainiac_61, JeppNRM_62, MarQuardt_61, Lowa_61, Phoebe_62, Daishi_60, Ollie_61, Pembroke_61, Cullens_61
- Track 16 : Giroux_58, Bugatti_58, TNguyen7_58, SaturnRing_58, BlueBird_59
- Track 17 : BabyRay_57
- Track 18 : Miramae_52, Cerulean_55, AvatarAhPeg_52, LHTSCC_56, Obama12_55, Arturo_53, Happiness_53, Mundrea_53, Kratark_54, ChampagnePapi_56

- Track 19 : Isiphiwo_57, SmellyB_59, SuperAwesome_59, McFly_59, Priamo_61, Cookiedough_59, Kipper29_59, Kazan_60, JewelBug_60, Neeharika16_58, Newrala_59, VohminGhazi_59, Hoot_54
- Track 20 : Dorothea_59

Summary of Final Annotations (See graph section above for start numbers):

The start number called the most often in the published annotations is 4, it was called in 131 of the 134 non-draft genes in the pham.

Genes that call this "Most Annotated" start:

- 20ES_61, ACFishhook_60, Aglet_62, AgronaGT15_60, Anubis_64, ArcherNM_53, Arturo_53, AugsMagnumOpus_64, AvatarAhPeg_52, BabyRay_57, Baehexic_57, Beauxregard13_61, BiancaTri92_58, Bigflo_61, BlueBird_59, BreSam8_61, Bugatti_58, CRB1_62, Calvinny_61, Centaur_59, Cerulean_55, ChampagnePapi_56, Changeling_57, Chargerpower_56, Colbster_61, Cookiedough_59, Cullens_61, DaHudson_61, DaVinci_58, Daishi_60, Dieselweasel_62, Dorothea_59, Drake55_60, Drake94_53, Eaglepride_56, EpicPhail_62, Equemioh13_59, Farber_61, Fernando_61, First_0060, Flare16_58, Gemma_60, GingkoMaracino_61, Giroux_58, Goose_55, Grif_61, Groupthink_62, Grub_61, Grum1_61, GtownJaz_61, Happiness_53, HarryHoudini_59, HashRod_62, HaveUMetTed_62, Heliosoles_60, Hercules11_61, Hoot_54, Isiphiwo_57, Jaan_58, JenCasNa_62, JeppNRM_62, JewelBug_60, JoshKayV_60, KADY_61, Kalb97_62, Kalnoky_62, Kalpine_56, Kazan_60, Kipper29_59, KittenMittens_52, Kratak_54, LBerry_62, LHTSCC_56, Landor_58, LarryKay_61, Leogania_58, Louie6_60, Lowa_61, LugYA_64, MadMarie_61, Mainiac_61, Malinsilva_63, Manu_61, MarQuardt_61, Marius_62, McFly_59, MiculUcigas_58, Miramae_52, Misomonster_62, MoneyMay_61, MuchMore_64, Mundrea_53, NaSiaTalie_58, Neeharika16_58, Newrala_59, OKCentral2016_54, Obama12_55, OlanP_60, Ollie_61, P28Green_62, PGHhamlin_63, Pawn_61, PeaceMeal1_53, Pembroke_61, Penny1_62, PhishRPhriends_59, Phoebe_62, Phoxy_61, Phranny_62, Piro94_58, PotatoSplit_63, Priamo_61, PurpleHaze_61, Reba_61, Rebeuca_55, Rummer_60, Sabia_61, Sabinator_60, SaturnRing_58, Severus_53, SmellyB_59, Snickers_61, SoYo_61, SoilDragon_61, Soshari_63, Spike509_61, Stagni_61, StepMih_61, SuperAwesome_59, TNguyen7_58, Taurus_62, TinyPebbles_60, Trike_53, Trixie_56, Twister_53, Updawg_59, VohminGhazi_59, WalterMcMickey_53, Watson_61, WideWale_59, Wooldri_63, Zetzy_60,

Genes that have the "Most Annotated" start but do not call it:

-

Genes that do not have the "Most Annotated" start:

- AnnaL29_60, Loser_60, RedRock_60,

Summary by start number:

Start 4:

- Found in 142 of 145 (97.9%) of genes in pham
- Manual Annotations of this start: 131 of 134
- Called 100.0% of time when present

- Phage (with cluster) where this start called: 20ES_61 (A2), ACFishhook_60 (A3), Aglet_62 (A3), AgronaGT15_60 (A3), Anubis_64 (A3), ArcherNM_53 (A2), Arturo_53 (A4), AugsMagnumOpus_64 (A3), AvatarAhPeg_52 (A4), BabyRay_57 (A3), Baehexic_57 (A2), Beauxregard13_61 (A3), BiancaTri92_58 (A2), Bigflo_61 (A3), BlueBird_59 (A3), BreSam8_61 (A3), Bugatti_58 (A3), CRB1_62 (A2), Calvinny_61 (A3), Centaur_59 (A2), Cerulean_55 (A4), ChampagnePapi_56 (A4), Changeling_57 (A2), Chargerpower_56 (A), Colbster_61 (A3), Cookiedough_59 (A6), Cullens_61 (A3), DaHudson_61 (A3), DaVinci_58 (A6), Daishi_60 (A3), Dieselweasel_62 (A3), Dorothea_59 (A6), Drake55_60 (A2), Drake94_53 (A10), Eaglepride_56 (A10), EpicPhail_62 (A3), Equemioh13_59 (A2), Farber_61 (A3), Fernando_61 (A3), First_0060 (A2), Flare16_58 (A2), Gemma_60 (A3), GingkoMaracino_61 (A3), Giroux_58 (A3), Goose_55 (A10), Grif_61 (A3), Groupthink_62 (A3), Grub_61 (A3), Grum1_61 (A3), GtownJaz_61 (A3), Happiness_53 (A4), HarryHoudini_59 (A2), HashRod_62 (A3), HaveUMetTed_62 (A3), Heliosoles_60 (A3), Hercules11_61 (A3), Hoot_54 (A6), Isiphiwo_57 (A6), Jaan_58 (A2), JenCasNa_62 (A3), JeppNRM_62 (A3), JewelBug_60 (A6), JoshKayV_60 (A2), KADY_61 (A3), Kalb97_62 (A3), Kalnoky_62 (A3), Kalpine_56 (A2), Kazan_60 (A6), Kipper29_59 (A6), KittenMittens_52 (A10), Kratark_54 (A4), LBerry_62 (A3), LHTSCC_56 (A4), Landor_58 (A2), LarryKay_61 (A3), Leogania_58 (A2), Louie6_60 (A3), Iowa_61 (A3), LugYA_64 (A3), MadMarie_61 (A3), Mainiac_61 (A3), Malinsilva_63 (A3), Manu_61 (A3), MarQuardt_61 (A3), Marius_62 (A3), McFly_59 (A6), MiculUcigas_58 (A2), Miramae_52 (A4), Misomonster_62 (A3), MoneyMay_61 (A3), MuchMore_64 (A3), Mundrea_53 (A4), NaSiaTalie_58 (A2), Neeharika16_58 (A6), Newrala_59 (A6), OKCentral2016_54 (A10), Obama12_55 (A4), OlanP_60 (A3), Ollie_61 (A3), P28Green_62 (A3), PGHhamlin_63 (A3), Pawn_61 (A3), PeaceMeal1_53 (A10), Pembroke_61 (A3), Penny1_62 (A3), PhishRPhriends_59 (A3), Phoebe_62 (A3), Phoxy_61 (A3), Phranny_62 (A3), Piro94_58 (A2), PotatoSplit_63 (A3), Priamo_61 (A6), PurpleHaze_61 (A3), Reba_61 (A3), Rebeuca_55 (A10), Rummer_60 (A3), Sabia_61 (A3), Sabinator_60 (A3), SaturnRing_58 (A3), Severus_53 (A10), SmellyB_59 (A6), Snickers_61 (A3), SoYo_61 (A3), SoilDragon_61 (A3), Soshari_63 (A3), Spike509_61 (A3), Stagni_61 (A3), StepMih_61 (A3), SuperAwesome_59 (A6), TNguyen7_58 (A3), Taurus_62 (A3), TinyPebbles_60 (A3), Trike_53 (A10), Trixie_56 (A2), Twister_53 (A10), Updawg_59 (A2), VohminGhazi_59 (A6), WalterMcMickey_53 (A10), Watson_61 (A3), WideWale_59 (A2), Wooldri_63 (A3), Zetzy_60 (A3),

Start 5:

- Found in 3 of 145 (2.1%) of genes in pham
- Manual Annotations of this start: 3 of 134
- Called 100.0% of time when present
- Phage (with cluster) where this start called: AnnaL29_60 (A2), Loser_60 (A2), RedRock_60 (A2),

Summary by clusters:

There are 6 clusters represented in this pham: A, A10, A3, A2, A4, A6,

Info for manual annotations of cluster A:

- Start number 4 was manually annotated 1 time for cluster A.

Info for manual annotations of cluster A10:

- Start number 4 was manually annotated 11 times for cluster A10.

Info for manual annotations of cluster A2:

- Start number 4 was manually annotated 20 times for cluster A2.
- Start number 5 was manually annotated 3 times for cluster A2.

Info for manual annotations of cluster A3:

- Start number 4 was manually annotated 74 times for cluster A3.

Info for manual annotations of cluster A4:

- Start number 4 was manually annotated 10 times for cluster A4.

Info for manual annotations of cluster A6:

- Start number 4 was manually annotated 15 times for cluster A6.

Gene Information:

Gene: 20ES_61 Start: 38721, Stop: 38644, Start Num: 4

Candidate Starts for 20ES_61:

(Start: 4 @38721 has 131 MA's), (6, 38706), (7, 38700),

Gene: ACFishhook_60 Start: 38200, Stop: 38108, Start Num: 4

Candidate Starts for ACFishhook_60:

(2, 38440), (3, 38401), (Start: 4 @38200 has 131 MA's),

Gene: Aglet_62 Start: 38243, Stop: 38151, Start Num: 4

Candidate Starts for Aglet_62:

(2, 38483), (3, 38444), (Start: 4 @38243 has 131 MA's),

Gene: AgronaGT15_60 Start: 38091, Stop: 37999, Start Num: 4

Candidate Starts for AgronaGT15_60:

(2, 38331), (3, 38292), (Start: 4 @38091 has 131 MA's),

Gene: AnnaL29_60 Start: 39131, Stop: 39054, Start Num: 5

Candidate Starts for AnnaL29_60:

(Start: 5 @39131 has 3 MA's), (6, 39116),

Gene: Anubis_64 Start: 38129, Stop: 38037, Start Num: 4

Candidate Starts for Anubis_64:

(2, 38369), (3, 38330), (Start: 4 @38129 has 131 MA's),

Gene: ArcherNM_53 Start: 38135, Stop: 38058, Start Num: 4

Candidate Starts for ArcherNM_53:

(Start: 4 @38135 has 131 MA's), (6, 38120),

Gene: Arturo_53 Start: 37722, Stop: 37645, Start Num: 4

Candidate Starts for Arturo_53:

(3, 37923), (Start: 4 @37722 has 131 MA's),

Gene: AugsMagnumOpus_64 Start: 38234, Stop: 38142, Start Num: 4

Candidate Starts for AugsMagnumOpus_64:

(2, 38474), (3, 38435), (Start: 4 @38234 has 131 MA's),

Gene: AvatarAhPeg_52 Start: 37235, Stop: 37158, Start Num: 4

Candidate Starts for AvatarAhPeg_52:
(3, 37436), (Start: 4 @37235 has 131 MA's),

Gene: BabyRay_57 Start: 37849, Stop: 37763, Start Num: 4
Candidate Starts for BabyRay_57:
(Start: 4 @37849 has 131 MA's),

Gene: Baehexic_57 Start: 38247, Stop: 38170, Start Num: 4
Candidate Starts for Baehexic_57:
(Start: 4 @38247 has 131 MA's), (6, 38232),

Gene: Beauxregard13_61 Start: 38246, Stop: 38154, Start Num: 4
Candidate Starts for Beauxregard13_61:
(2, 38486), (3, 38447), (Start: 4 @38246 has 131 MA's),

Gene: BiancaTri92_58 Start: 38840, Stop: 38763, Start Num: 4
Candidate Starts for BiancaTri92_58:
(Start: 4 @38840 has 131 MA's), (6, 38825), (7, 38819),

Gene: Bigflo_61 Start: 38242, Stop: 38150, Start Num: 4
Candidate Starts for Bigflo_61:
(2, 38482), (3, 38443), (Start: 4 @38242 has 131 MA's),

Gene: BlueBird_59 Start: 37893, Stop: 37804, Start Num: 4
Candidate Starts for BlueBird_59:
(Start: 4 @37893 has 131 MA's),

Gene: BreSam8_61 Start: 38236, Stop: 38144, Start Num: 4
Candidate Starts for BreSam8_61:
(2, 38476), (3, 38437), (Start: 4 @38236 has 131 MA's),

Gene: Bugatti_58 Start: 37893, Stop: 37804, Start Num: 4
Candidate Starts for Bugatti_58:
(Start: 4 @37893 has 131 MA's),

Gene: CRB1_62 Start: 39238, Stop: 39161, Start Num: 4
Candidate Starts for CRB1_62:
(Start: 4 @39238 has 131 MA's), (6, 39223), (7, 39217),

Gene: Calvinny_61 Start: 38128, Stop: 38036, Start Num: 4
Candidate Starts for Calvinny_61:
(2, 38368), (3, 38329), (Start: 4 @38128 has 131 MA's),

Gene: Centaur_59 Start: 38461, Stop: 38384, Start Num: 4
Candidate Starts for Centaur_59:
(Start: 4 @38461 has 131 MA's), (6, 38446),

Gene: Cerulean_55 Start: 37887, Stop: 37810, Start Num: 4
Candidate Starts for Cerulean_55:
(3, 38088), (Start: 4 @37887 has 131 MA's),

Gene: ChampagnePapi_56 Start: 37886, Stop: 37809, Start Num: 4
Candidate Starts for ChampagnePapi_56:

(3, 38087), (Start: 4 @37886 has 131 MA's),

Gene: Changeling_57 Start: 38877, Stop: 38800, Start Num: 4

Candidate Starts for Changeling_57:

(1, 39300), (2, 39117), (3, 39078), (Start: 4 @38877 has 131 MA's), (6, 38862),

Gene: Chargerpower_56 Start: 36935, Stop: 36858, Start Num: 4

Candidate Starts for Chargerpower_56:

(Start: 4 @36935 has 131 MA's),

Gene: Colbster_61 Start: 38246, Stop: 38154, Start Num: 4

Candidate Starts for Colbster_61:

(2, 38486), (3, 38447), (Start: 4 @38246 has 131 MA's),

Gene: Cookiedough_59 Start: 37101, Stop: 37021, Start Num: 4

Candidate Starts for Cookiedough_59:

(Start: 4 @37101 has 131 MA's), (10, 37050),

Gene: Cullens_61 Start: 38242, Stop: 38150, Start Num: 4

Candidate Starts for Cullens_61:

(2, 38482), (3, 38443), (Start: 4 @38242 has 131 MA's),

Gene: DaHudson_61 Start: 38235, Stop: 38143, Start Num: 4

Candidate Starts for DaHudson_61:

(2, 38475), (3, 38436), (Start: 4 @38235 has 131 MA's),

Gene: DaVinci_58 Start: 36527, Stop: 36447, Start Num: 4

Candidate Starts for DaVinci_58:

(Start: 4 @36527 has 131 MA's),

Gene: Daishi_60 Start: 37111, Stop: 37019, Start Num: 4

Candidate Starts for Daishi_60:

(2, 37351), (3, 37312), (Start: 4 @37111 has 131 MA's),

Gene: Dieselweasel_62 Start: 38245, Stop: 38153, Start Num: 4

Candidate Starts for Dieselweasel_62:

(2, 38485), (3, 38446), (Start: 4 @38245 has 131 MA's),

Gene: Dorothea_59 Start: 37096, Stop: 37016, Start Num: 4

Candidate Starts for Dorothea_59:

(Start: 4 @37096 has 131 MA's), (6, 37081), (10, 37045),

Gene: Drake55_60 Start: 38543, Stop: 38466, Start Num: 4

Candidate Starts for Drake55_60:

(Start: 4 @38543 has 131 MA's), (6, 38528),

Gene: Drake94_53 Start: 36610, Stop: 36524, Start Num: 4

Candidate Starts for Drake94_53:

(Start: 4 @36610 has 131 MA's),

Gene: Eaglepride_56 Start: 37562, Stop: 37473, Start Num: 4

Candidate Starts for Eaglepride_56:

(Start: 4 @37562 has 131 MA's), (8, 37526),

Gene: EpicPhail_62 Start: 38246, Stop: 38154, Start Num: 4
Candidate Starts for EpicPhail_62:
(2, 38486), (3, 38447), (Start: 4 @38246 has 131 MA's),

Gene: Equemioh13_59 Start: 38366, Stop: 38289, Start Num: 4
Candidate Starts for Equemioh13_59:
(Start: 4 @38366 has 131 MA's), (6, 38351),

Gene: Farber_61 Start: 38232, Stop: 38140, Start Num: 4
Candidate Starts for Farber_61:
(2, 38472), (3, 38433), (Start: 4 @38232 has 131 MA's),

Gene: Fernando_61 Start: 38242, Stop: 38150, Start Num: 4
Candidate Starts for Fernando_61:
(2, 38482), (3, 38443), (Start: 4 @38242 has 131 MA's),

Gene: First_0060 Start: 38621, Stop: 38544, Start Num: 4
Candidate Starts for First_0060:
(Start: 4 @38621 has 131 MA's), (6, 38606), (7, 38600),

Gene: Flare16_58 Start: 38122, Stop: 38045, Start Num: 4
Candidate Starts for Flare16_58:
(Start: 4 @38122 has 131 MA's), (6, 38107),

Gene: Gemma_60 Start: 38124, Stop: 38032, Start Num: 4
Candidate Starts for Gemma_60:
(2, 38364), (3, 38325), (Start: 4 @38124 has 131 MA's),

Gene: GingkoMaracino_61 Start: 38128, Stop: 38036, Start Num: 4
Candidate Starts for GingkoMaracino_61:
(2, 38368), (3, 38329), (Start: 4 @38128 has 131 MA's),

Gene: Giroux_58 Start: 37892, Stop: 37803, Start Num: 4
Candidate Starts for Giroux_58:
(Start: 4 @37892 has 131 MA's),

Gene: Goose_55 Start: 37188, Stop: 37105, Start Num: 4
Candidate Starts for Goose_55:
(Start: 4 @37188 has 131 MA's),

Gene: Grif_61 Start: 38317, Stop: 38225, Start Num: 4
Candidate Starts for Grif_61:
(2, 38557), (3, 38518), (Start: 4 @38317 has 131 MA's),

Gene: Groupthink_62 Start: 38128, Stop: 38036, Start Num: 4
Candidate Starts for Groupthink_62:
(2, 38368), (3, 38329), (Start: 4 @38128 has 131 MA's),

Gene: Grub_61 Start: 38234, Stop: 38142, Start Num: 4
Candidate Starts for Grub_61:
(2, 38474), (3, 38435), (Start: 4 @38234 has 131 MA's),

Gene: Grum1_61 Start: 38242, Stop: 38150, Start Num: 4
Candidate Starts for Grum1_61:
(2, 38482), (3, 38443), (Start: 4 @38242 has 131 MA's),

Gene: GtownJaz_61 Start: 38244, Stop: 38152, Start Num: 4
Candidate Starts for GtownJaz_61:
(2, 38484), (3, 38445), (Start: 4 @38244 has 131 MA's),

Gene: Happiness_53 Start: 37469, Stop: 37392, Start Num: 4
Candidate Starts for Happiness_53:
(3, 37670), (Start: 4 @37469 has 131 MA's),

Gene: HarryHoudini_59 Start: 38552, Stop: 38475, Start Num: 4
Candidate Starts for HarryHoudini_59:
(Start: 4 @38552 has 131 MA's), (6, 38537),

Gene: HashRod_62 Start: 38270, Stop: 38178, Start Num: 4
Candidate Starts for HashRod_62:
(2, 38510), (3, 38471), (Start: 4 @38270 has 131 MA's),

Gene: HaveUMetTed_62 Start: 38113, Stop: 38021, Start Num: 4
Candidate Starts for HaveUMetTed_62:
(2, 38353), (3, 38314), (Start: 4 @38113 has 131 MA's),

Gene: Heliosoles_60 Start: 38131, Stop: 38039, Start Num: 4
Candidate Starts for Heliosoles_60:
(2, 38371), (3, 38332), (Start: 4 @38131 has 131 MA's),

Gene: Hercules11_61 Start: 38251, Stop: 38159, Start Num: 4
Candidate Starts for Hercules11_61:
(2, 38491), (3, 38452), (Start: 4 @38251 has 131 MA's),

Gene: Hoot_54 Start: 34937, Stop: 34857, Start Num: 4
Candidate Starts for Hoot_54:
(Start: 4 @34937 has 131 MA's), (10, 34886),

Gene: Isiphiwo_57 Start: 36653, Stop: 36573, Start Num: 4
Candidate Starts for Isiphiwo_57:
(Start: 4 @36653 has 131 MA's), (10, 36602),

Gene: Jaan_58 Start: 39427, Stop: 39350, Start Num: 4
Candidate Starts for Jaan_58:
(2, 39667), (3, 39628), (Start: 4 @39427 has 131 MA's), (6, 39412),

Gene: JenCasNa_62 Start: 38242, Stop: 38150, Start Num: 4
Candidate Starts for JenCasNa_62:
(2, 38482), (3, 38443), (Start: 4 @38242 has 131 MA's),

Gene: JeppNRM_62 Start: 38129, Stop: 38037, Start Num: 4
Candidate Starts for JeppNRM_62:
(2, 38369), (3, 38330), (Start: 4 @38129 has 131 MA's),

Gene: JewelBug_60 Start: 37292, Stop: 37212, Start Num: 4

Candidate Starts for JewelBug_60:
(Start: 4 @37292 has 131 MA's), (10, 37241),

Gene: JoshKayV_60 Start: 38905, Stop: 38825, Start Num: 4
Candidate Starts for JoshKayV_60:
(Start: 4 @38905 has 131 MA's), (6, 38890),

Gene: KADY_61 Start: 38270, Stop: 38178, Start Num: 4
Candidate Starts for KADY_61:
(2, 38510), (3, 38471), (Start: 4 @38270 has 131 MA's),

Gene: Kalb97_62 Start: 38127, Stop: 38035, Start Num: 4
Candidate Starts for Kalb97_62:
(2, 38367), (3, 38328), (Start: 4 @38127 has 131 MA's),

Gene: Kalnoky_62 Start: 38125, Stop: 38033, Start Num: 4
Candidate Starts for Kalnoky_62:
(2, 38365), (3, 38326), (Start: 4 @38125 has 131 MA's),

Gene: Kalpine_56 Start: 38466, Stop: 38380, Start Num: 4
Candidate Starts for Kalpine_56:
(Start: 4 @38466 has 131 MA's), (6, 38451), (9, 38421),

Gene: Kazan_60 Start: 37092, Stop: 37012, Start Num: 4
Candidate Starts for Kazan_60:
(Start: 4 @37092 has 131 MA's), (10, 37041),

Gene: Kipper29_59 Start: 37105, Stop: 37025, Start Num: 4
Candidate Starts for Kipper29_59:
(Start: 4 @37105 has 131 MA's), (10, 37054),

Gene: KittenMittens_52 Start: 36618, Stop: 36532, Start Num: 4
Candidate Starts for KittenMittens_52:
(Start: 4 @36618 has 131 MA's),

Gene: Kratark_54 Start: 37605, Stop: 37528, Start Num: 4
Candidate Starts for Kratark_54:
(3, 37806), (Start: 4 @37605 has 131 MA's),

Gene: LBerry_62 Start: 38246, Stop: 38154, Start Num: 4
Candidate Starts for LBerry_62:
(2, 38486), (3, 38447), (Start: 4 @38246 has 131 MA's),

Gene: LHTSCC_56 Start: 37886, Stop: 37809, Start Num: 4
Candidate Starts for LHTSCC_56:
(3, 38087), (Start: 4 @37886 has 131 MA's),

Gene: Landor_58 Start: 39345, Stop: 39268, Start Num: 4
Candidate Starts for Landor_58:
(2, 39585), (3, 39546), (Start: 4 @39345 has 131 MA's), (6, 39330),

Gene: LarryKay_61 Start: 38272, Stop: 38180, Start Num: 4
Candidate Starts for LarryKay_61:

(2, 38512), (3, 38473), (Start: 4 @38272 has 131 MA's),

Gene: Leogania_58 Start: 39218, Stop: 39141, Start Num: 4
Candidate Starts for Leogania_58:
(Start: 4 @39218 has 131 MA's), (6, 39203),

Gene: Loser_60 Start: 39078, Stop: 39001, Start Num: 5
Candidate Starts for Loser_60:
(Start: 5 @39078 has 3 MA's), (6, 39063),

Gene: Louie6_60 Start: 38271, Stop: 38179, Start Num: 4
Candidate Starts for Louie6_60:
(2, 38511), (3, 38472), (Start: 4 @38271 has 131 MA's),

Gene: Lowa_61 Start: 38234, Stop: 38142, Start Num: 4
Candidate Starts for Lowa_61:
(2, 38474), (3, 38435), (Start: 4 @38234 has 131 MA's),

Gene: LugYA_64 Start: 38243, Stop: 38151, Start Num: 4
Candidate Starts for LugYA_64:
(2, 38483), (3, 38444), (Start: 4 @38243 has 131 MA's),

Gene: MadMarie_61 Start: 38244, Stop: 38152, Start Num: 4
Candidate Starts for MadMarie_61:
(2, 38484), (3, 38445), (Start: 4 @38244 has 131 MA's),

Gene: Mainiac_61 Start: 38236, Stop: 38144, Start Num: 4
Candidate Starts for Mainiac_61:
(2, 38476), (3, 38437), (Start: 4 @38236 has 131 MA's),

Gene: Malinsilva_63 Start: 38234, Stop: 38142, Start Num: 4
Candidate Starts for Malinsilva_63:
(2, 38474), (3, 38435), (Start: 4 @38234 has 131 MA's),

Gene: Manu_61 Start: 38128, Stop: 38036, Start Num: 4
Candidate Starts for Manu_61:
(2, 38368), (3, 38329), (Start: 4 @38128 has 131 MA's),

Gene: MarQuardt_61 Start: 38244, Stop: 38152, Start Num: 4
Candidate Starts for MarQuardt_61:
(2, 38484), (3, 38445), (Start: 4 @38244 has 131 MA's),

Gene: Marius_62 Start: 38125, Stop: 38033, Start Num: 4
Candidate Starts for Marius_62:
(2, 38365), (3, 38326), (Start: 4 @38125 has 131 MA's),

Gene: McFly_59 Start: 37086, Stop: 37006, Start Num: 4
Candidate Starts for McFly_59:
(Start: 4 @37086 has 131 MA's), (10, 37035),

Gene: MiculUcigas_58 Start: 38025, Stop: 37948, Start Num: 4
Candidate Starts for MiculUcigas_58:
(Start: 4 @38025 has 131 MA's), (6, 38010),

Gene: Miramae_52 Start: 36897, Stop: 36820, Start Num: 4
Candidate Starts for Miramae_52:
(3, 37098), (Start: 4 @36897 has 131 MA's),

Gene: Misomonster_62 Start: 38269, Stop: 38177, Start Num: 4
Candidate Starts for Misomonster_62:
(2, 38509), (3, 38470), (Start: 4 @38269 has 131 MA's),

Gene: MoneyMay_61 Start: 38242, Stop: 38150, Start Num: 4
Candidate Starts for MoneyMay_61:
(2, 38482), (3, 38443), (Start: 4 @38242 has 131 MA's),

Gene: MuchMore_64 Start: 38234, Stop: 38142, Start Num: 4
Candidate Starts for MuchMore_64:
(2, 38474), (3, 38435), (Start: 4 @38234 has 131 MA's),

Gene: Mundrea_53 Start: 37449, Stop: 37372, Start Num: 4
Candidate Starts for Mundrea_53:
(3, 37650), (Start: 4 @37449 has 131 MA's),

Gene: NaSiaTalie_58 Start: 38119, Stop: 38042, Start Num: 4
Candidate Starts for NaSiaTalie_58:
(Start: 4 @38119 has 131 MA's), (6, 38104),

Gene: Neeharika16_58 Start: 36546, Stop: 36466, Start Num: 4
Candidate Starts for Neeharika16_58:
(Start: 4 @36546 has 131 MA's), (10, 36495),

Gene: Newrala_59 Start: 37088, Stop: 37008, Start Num: 4
Candidate Starts for Newrala_59:
(Start: 4 @37088 has 131 MA's), (10, 37037),

Gene: OKCentral2016_54 Start: 37091, Stop: 37008, Start Num: 4
Candidate Starts for OKCentral2016_54:
(Start: 4 @37091 has 131 MA's),

Gene: Obama12_55 Start: 37870, Stop: 37793, Start Num: 4
Candidate Starts for Obama12_55:
(3, 38071), (Start: 4 @37870 has 131 MA's),

Gene: OlanP_60 Start: 38301, Stop: 38209, Start Num: 4
Candidate Starts for OlanP_60:
(2, 38541), (3, 38502), (Start: 4 @38301 has 131 MA's),

Gene: Ollie_61 Start: 38113, Stop: 38021, Start Num: 4
Candidate Starts for Ollie_61:
(2, 38353), (3, 38314), (Start: 4 @38113 has 131 MA's),

Gene: P28Green_62 Start: 38245, Stop: 38153, Start Num: 4
Candidate Starts for P28Green_62:
(2, 38485), (3, 38446), (Start: 4 @38245 has 131 MA's),

Gene: PGHhamlin_63 Start: 38234, Stop: 38142, Start Num: 4
Candidate Starts for PGHhamlin_63:
(2, 38474), (3, 38435), (Start: 4 @38234 has 131 MA's),

Gene: Pawn_61 Start: 38132, Stop: 38040, Start Num: 4
Candidate Starts for Pawn_61:
(2, 38372), (3, 38333), (Start: 4 @38132 has 131 MA's),

Gene: PeaceMeal1_53 Start: 36619, Stop: 36533, Start Num: 4
Candidate Starts for PeaceMeal1_53:
(Start: 4 @36619 has 131 MA's),

Gene: Pembroke_61 Start: 38243, Stop: 38151, Start Num: 4
Candidate Starts for Pembroke_61:
(2, 38483), (3, 38444), (Start: 4 @38243 has 131 MA's),

Gene: Penny1_62 Start: 38246, Stop: 38154, Start Num: 4
Candidate Starts for Penny1_62:
(2, 38486), (3, 38447), (Start: 4 @38246 has 131 MA's),

Gene: PhishRPhriends_59 Start: 37309, Stop: 37217, Start Num: 4
Candidate Starts for PhishRPhriends_59:
(2, 37549), (3, 37510), (Start: 4 @37309 has 131 MA's),

Gene: Phoebe_62 Start: 38235, Stop: 38143, Start Num: 4
Candidate Starts for Phoebe_62:
(2, 38475), (3, 38436), (Start: 4 @38235 has 131 MA's),

Gene: Phoxy_61 Start: 38267, Stop: 38175, Start Num: 4
Candidate Starts for Phoxy_61:
(2, 38507), (3, 38468), (Start: 4 @38267 has 131 MA's),

Gene: Phranny_62 Start: 38114, Stop: 38022, Start Num: 4
Candidate Starts for Phranny_62:
(2, 38354), (3, 38315), (Start: 4 @38114 has 131 MA's),

Gene: Piro94_58 Start: 38469, Stop: 38392, Start Num: 4
Candidate Starts for Piro94_58:
(Start: 4 @38469 has 131 MA's), (6, 38454),

Gene: PotatoSplit_63 Start: 38246, Stop: 38154, Start Num: 4
Candidate Starts for PotatoSplit_63:
(2, 38486), (3, 38447), (Start: 4 @38246 has 131 MA's),

Gene: Priamo_61 Start: 36839, Stop: 36759, Start Num: 4
Candidate Starts for Priamo_61:
(Start: 4 @36839 has 131 MA's), (10, 36788),

Gene: PurpleHaze_61 Start: 38127, Stop: 38035, Start Num: 4
Candidate Starts for PurpleHaze_61:
(2, 38367), (3, 38328), (Start: 4 @38127 has 131 MA's),

Gene: Reba_61 Start: 37787, Stop: 37695, Start Num: 4

Candidate Starts for Reba_61:
(2, 38027), (3, 37988), (Start: 4 @37787 has 131 MA's),

Gene: Rebeuca_55 Start: 37764, Stop: 37681, Start Num: 4
Candidate Starts for Rebeuca_55:
(Start: 4 @37764 has 131 MA's),

Gene: RedRock_60 Start: 39311, Stop: 39234, Start Num: 5
Candidate Starts for RedRock_60:
(Start: 5 @39311 has 3 MA's), (6, 39296),

Gene: Rummer_60 Start: 38270, Stop: 38178, Start Num: 4
Candidate Starts for Rummer_60:
(2, 38510), (3, 38471), (Start: 4 @38270 has 131 MA's),

Gene: Sabia_61 Start: 38251, Stop: 38159, Start Num: 4
Candidate Starts for Sabia_61:
(2, 38491), (3, 38452), (Start: 4 @38251 has 131 MA's),

Gene: Sabinator_60 Start: 38241, Stop: 38149, Start Num: 4
Candidate Starts for Sabinator_60:
(2, 38481), (3, 38442), (Start: 4 @38241 has 131 MA's),

Gene: SaturnRing_58 Start: 37893, Stop: 37804, Start Num: 4
Candidate Starts for SaturnRing_58:
(Start: 4 @37893 has 131 MA's),

Gene: Severus_53 Start: 36617, Stop: 36531, Start Num: 4
Candidate Starts for Severus_53:
(Start: 4 @36617 has 131 MA's),

Gene: SmellyB_59 Start: 37086, Stop: 37006, Start Num: 4
Candidate Starts for SmellyB_59:
(Start: 4 @37086 has 131 MA's), (10, 37035),

Gene: Snickers_61 Start: 38216, Stop: 38124, Start Num: 4
Candidate Starts for Snickers_61:
(2, 38456), (3, 38417), (Start: 4 @38216 has 131 MA's),

Gene: SoYo_61 Start: 38154, Stop: 38062, Start Num: 4
Candidate Starts for SoYo_61:
(2, 38394), (3, 38355), (Start: 4 @38154 has 131 MA's),

Gene: SoilDragon_61 Start: 37690, Stop: 37598, Start Num: 4
Candidate Starts for SoilDragon_61:
(2, 37930), (3, 37891), (Start: 4 @37690 has 131 MA's),

Gene: Soshari_63 Start: 38266, Stop: 38174, Start Num: 4
Candidate Starts for Soshari_63:
(2, 38506), (3, 38467), (Start: 4 @38266 has 131 MA's),

Gene: Spike509_61 Start: 38267, Stop: 38175, Start Num: 4
Candidate Starts for Spike509_61:

(2, 38507), (3, 38468), (Start: 4 @38267 has 131 MA's),

Gene: Stagni_61 Start: 38245, Stop: 38153, Start Num: 4

Candidate Starts for Stagni_61:

(2, 38485), (3, 38446), (Start: 4 @38245 has 131 MA's),

Gene: StepMih_61 Start: 38236, Stop: 38144, Start Num: 4

Candidate Starts for StepMih_61:

(2, 38476), (3, 38437), (Start: 4 @38236 has 131 MA's),

Gene: SuperAwesome_59 Start: 37091, Stop: 37011, Start Num: 4

Candidate Starts for SuperAwesome_59:

(Start: 4 @37091 has 131 MA's), (10, 37040),

Gene: TNguyen7_58 Start: 37859, Stop: 37770, Start Num: 4

Candidate Starts for TNguyen7_58:

(Start: 4 @37859 has 131 MA's),

Gene: Taurus_62 Start: 38242, Stop: 38150, Start Num: 4

Candidate Starts for Taurus_62:

(2, 38482), (3, 38443), (Start: 4 @38242 has 131 MA's),

Gene: TinyPebbles_60 Start: 38272, Stop: 38180, Start Num: 4

Candidate Starts for TinyPebbles_60:

(2, 38512), (3, 38473), (Start: 4 @38272 has 131 MA's),

Gene: Trike_53 Start: 36623, Stop: 36540, Start Num: 4

Candidate Starts for Trike_53:

(Start: 4 @36623 has 131 MA's),

Gene: Trixie_56 Start: 38334, Stop: 38248, Start Num: 4

Candidate Starts for Trixie_56:

(Start: 4 @38334 has 131 MA's), (9, 38289),

Gene: Twister_53 Start: 37325, Stop: 37242, Start Num: 4

Candidate Starts for Twister_53:

(Start: 4 @37325 has 131 MA's),

Gene: Updawg_59 Start: 38366, Stop: 38289, Start Num: 4

Candidate Starts for Updawg_59:

(Start: 4 @38366 has 131 MA's), (6, 38351),

Gene: VohminGhazi_59 Start: 37087, Stop: 37007, Start Num: 4

Candidate Starts for VohminGhazi_59:

(Start: 4 @37087 has 131 MA's), (10, 37036),

Gene: WalterMcMickey_53 Start: 37325, Stop: 37242, Start Num: 4

Candidate Starts for WalterMcMickey_53:

(Start: 4 @37325 has 131 MA's),

Gene: Watson_61 Start: 38234, Stop: 38142, Start Num: 4

Candidate Starts for Watson_61:

(2, 38474), (3, 38435), (Start: 4 @38234 has 131 MA's),

Gene: WideWale_59 Start: 38366, Stop: 38289, Start Num: 4
Candidate Starts for WideWale_59:
(Start: 4 @38366 has 131 MA's), (6, 38351),

Gene: Wooldri_63 Start: 38154, Stop: 38062, Start Num: 4
Candidate Starts for Wooldri_63:
(2, 38394), (3, 38355), (Start: 4 @38154 has 131 MA's),

Gene: Zetzy_60 Start: 37805, Stop: 37713, Start Num: 4
Candidate Starts for Zetzy_60:
(2, 38045), (3, 38006), (Start: 4 @37805 has 131 MA's),