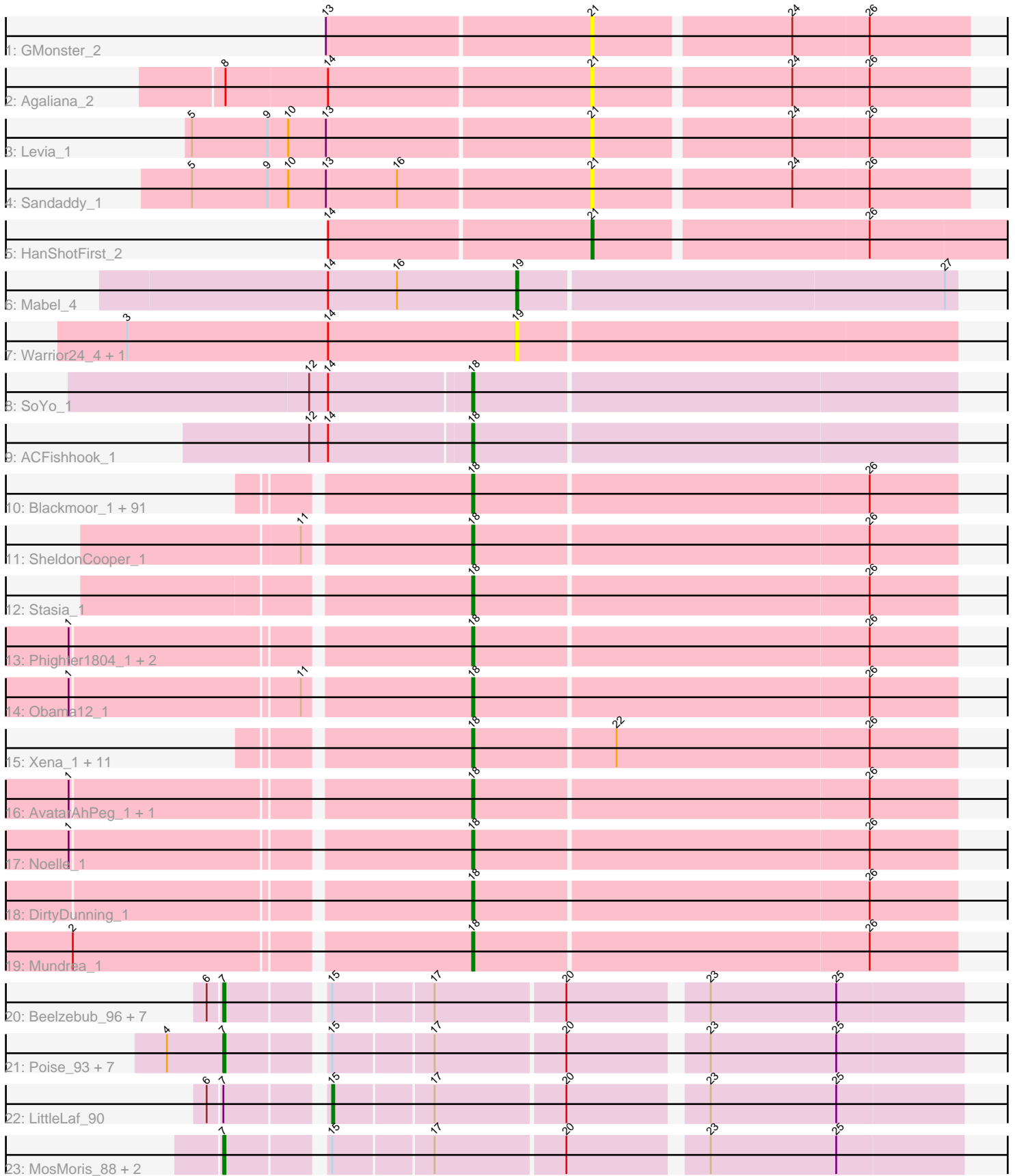


Pham 215927



Note: Tracks are now grouped by subcluster and scaled. Switching in subcluster is indicated by changes in track color. Track scale is now set by default to display the region 30 bp upstream of start 1 to 30 bp downstream of the last possible start. If this default region is judged to be packed too tightly with annotated starts, the track will be further scaled to only show that region of the ORF with annotated starts. This action will be indicated by adding "Zoomed" to the title. For starts, yellow indicates the location of called starts comprised solely of Glimmer/GeneMark auto-annotations, green indicates the location of called starts with at least 1 manual gene annotation.

Pham 215927 Report

This analysis was run 02/22/25 on database version 588.

Pham number 215927 has 145 members, 9 are drafts.

Phages represented in each track:

- Track 1 : GMonster_2
- Track 2 : Agaliana_2
- Track 3 : Levia_1
- Track 4 : Sandaddy_1
- Track 5 : HanShotFirst_2
- Track 6 : Mabel_4
- Track 7 : Warrior24_4, Oofda_4
- Track 8 : SoYo_1
- Track 9 : ACFishhook_1
- Track 10 : Blackmoor_1, Kremtemulon_1, ICleared_1, Avle17_1, Taquarus_1, Cocoaberry_1, Holli_1, LittleGuy_1, Pipcraft_1, Polymorphads_1, Kamy_1, Palestino_1, Medusa_1, Wizard007_1, Melvin_1, Annyong_1, Lunsford_1, Houdini22_1, Lorenzo_1, Phontbonne_1, Koreni_1, Iracema64_1, Nemo27_1, TroyPia_1, Ohfah_1, Funston_1, Shygu2_1, BubbleTrouble_1, Broseidon_1, OKaNui_1, Sabertooth_1, Millski_1, Citius_1, Jaykayelowell_1, Clarenza_1, KFPoly_1, JetBlade_1, CentreCat_1, Lemur_1, Cintron_1, Romney_1, Eapen_1, Nebs_1, NotAPhaseMom_1, Arturo_86, Iceman_1, Florean_1, Kyee_1, Maxo_1, Connomayer_1, Kratak_1, Ruin_1, Nyxis_1, Skipitt_1, Bartimeaus_1, Relief_1, Eris_1, Sparxx_1, Alberto7_1, Chaph_1, JoongJeon_1, Flux_1, Spino_1, TygerBlood_1, Roosevelt_1, TinaFeyge_1, Eros_1, Gadost_1, Albee_1, Eurydice_1, Thanksgivukkah_1, Bombshell_1, NorthStar_1, LittleB_1, Scamp_1, BellusTerra_1, Morrow_1, Baby16_1, Mazhar510_1, Happiness_1, Deano_1, YoSam321_1, Wilbur_1, Dhanush_1, Wander_1, Camperdownii_1, Abdiel_1, PeterPeter_1, Bruiser_1, Phacado_1, Kingmustik0402_1, Druantia_1
- Track 11 : SheldonCooper_1
- Track 12 : Stasia_1
- Track 13 : Phighter1804_1, Pumbaa_1, LochMonster_1
- Track 14 : Obama12_1
- Track 15 : Xena_1, Badger_1, Datway_1, PetiteSangsue_1, Cici_1, Morpher26_1, Wile_1, Katalie136_1, Achebe_1, Perplexer_1, AbbysRanger_1, Bumblebee11_1
- Track 16 : AvatarAhPeg_1, Miramae_1
- Track 17 : Noelle_1
- Track 18 : DirtyDunning_1
- Track 19 : Mundrea_1
- Track 20 : Beelzebub_96, Corazon_87, Marvin_86, Lilbit_90, FeliMaine_92, Clarkson_93, Huphlepuuff_94, Pringar_88

- Track 21 : Poise_93, Raela_94, RedRaider77_92, Tesla_88, Caprice_85, Blackbeetle_93, JoieB_93, VasuNzinga_90
- Track 22 : LittleLaf_90
- Track 23 : MosMoris_88, Gattaca_91, GoongGoong_90

Summary of Final Annotations (See graph section above for start numbers):

The start number called the most often in the published annotations is 18, it was called in 117 of the 136 non-draft genes in the pham.

Genes that call this "Most Annotated" start:

- ACFishhook_1, AbbysRanger_1, Abdiel_1, Achebe_1, Albee_1, Alberto7_1, Annyong_1, Arturo_86, AvatarAhPeg_1, Avle17_1, Baby16_1, Badger_1, Bartimeaus_1, BellusTerra_1, Blackmoor_1, Bombshell_1, Broseidon_1, Bruiser_1, BubbleTrouble_1, Bumblebee11_1, Camperdownii_1, CentreCat_1, Chaph_1, Cici_1, Cintron_1, Citius_1, Clarenza_1, Cocoaberry_1, Connomayer_1, Datway_1, Deano_1, Dhanush_1, DirtyDunning_1, Druantia_1, Eapen_1, Eris_1, Eros_1, Eurydice_1, Floean_1, Flux_1, Funston_1, Gadost_1, Happiness_1, Holli_1, Houdini22_1, ICleared_1, Iceman_1, Iracema64_1, Jaykayelowell_1, JetBlade_1, JoongJeon_1, KFPoly_1, Kampy_1, Katalie136_1, Kingmustik0402_1, Koreni_1, Kratak_1, Kremtemulon_1, Kyee_1, Lemur_1, LittleB_1, LittleGuy_1, LochMonster_1, Lorenzo_1, Lunsford_1, Maxo_1, Mazhar510_1, Medusa_1, Melvin_1, Millski_1, Miramae_1, Morpher26_1, Morrow_1, Mundrea_1, Nebs_1, Nemo27_1, Noelle_1, NorthStar_1, NotAPhaseMom_1, Nyxis_1, OKaNui_1, Obama12_1, Ohfah_1, Palestino_1, Perplexer_1, PeterPeter_1, PetiteSangsue_1, Phacado_1, Phighter1804_1, Phontbonne_1, Pipcraft_1, Polymorphads_1, Pumbaa_1, Relief_1, Romney_1, Roosevelt_1, Ruin_1, Sabertooth_1, Scamp_1, SheldonCooper_1, Shygu2_1, Skipitt_1, SoYo_1, Sparxx_1, Spino_1, Stasia_1, Taquarus_1, Thanksgivukkah_1, TinaFeyge_1, TroyPia_1, TygerBlood_1, Wander_1, Wilbur_1, Wile_1, Wizard007_1, Xena_1, YoSam321_1,

Genes that have the "Most Annotated" start but do not call it:

-

Genes that do not have the "Most Annotated" start:

- Agaliana_2, Beelzebub_96, Blackbeetle_93, Caprice_85, Clarkson_93, Corazon_87, FeliMaine_92, GMonster_2, Gattaca_91, GoongGoong_90, HanShotFirst_2, Huphlepuuff_94, JoieB_93, Levia_1, Lilbit_90, LittleLaf_90, Mabel_4, Marvin_86, MosMoris_88, Oofda_4, Poise_93, Pringar_88, Raela_94, RedRaider77_92, Sandaddy_1, Tesla_88, VasuNzinga_90, Warrior24_4,

Summary by start number:

Start 7:

- Found in 20 of 145 (13.8%) of genes in pham
- Manual Annotations of this start: 16 of 136
- Called 95.0% of time when present
- Phage (with cluster) where this start called: Beelzebub_96 (S), Blackbeetle_93 (S), Caprice_85 (S), Clarkson_93 (S), Corazon_87 (S), FeliMaine_92 (S), Gattaca_91 (S), GoongGoong_90 (S), Huphlepuuff_94 (S), JoieB_93 (S), Lilbit_90 (S), Marvin_86 (S),

MosMoris_88 (S), Poise_93 (S), Pringar_88 (S), Raela_94 (S), RedRaider77_92 (S), Tesla_88 (S), VasuNzinga_90 (S),

Start 15:

- Found in 20 of 145 (13.8%) of genes in pham
- Manual Annotations of this start: 1 of 136
- Called 5.0% of time when present
- Phage (with cluster) where this start called: LittleLaf_90 (S),

Start 18:

- Found in 117 of 145 (80.7%) of genes in pham
- Manual Annotations of this start: 117 of 136
- Called 100.0% of time when present
- Phage (with cluster) where this start called: ACFishhook_1 (A3), AbbysRanger_1 (A4), Abdiel_1 (A4), Achebe_1 (A4), Albee_1 (A4), Alberto7_1 (A4), Annyong_1 (A4), Arturo_86 (A4), AvatarAhPeg_1 (A4), Avle17_1 (A4), Baby16_1 (A4), Badger_1 (A4), Bartimeaus_1 (A4), BellusTerra_1 (A4), Blackmoor_1 (A4), Bombshell_1 (A4), Broseidon_1 (A4), Bruiser_1 (A4), BubbleTrouble_1 (A4), Bumblebee11_1 (A4), Camperdownii_1 (A4), CentreCat_1 (A4), Chaph_1 (A4), Cici_1 (A4), Cintron_1 (A4), Citius_1 (A4), Clarenza_1 (A4), Cocoaberry_1 (A4), Connomayer_1 (A4), Datway_1 (A4), Deano_1 (A4), Dhanush_1 (A4), DirtyDunning_1 (A4), Druantia_1 (A4), Eapen_1 (A4), Eris_1 (A4), Eros_1 (A4), Eurydice_1 (A4), Florean_1 (A4), Flux_1 (A4), Funston_1 (A4), Gadost_1 (A4), Happiness_1 (A4), Holli_1 (A4), Houdini22_1 (A4), ICleared_1 (A4), Iceman_1 (A4), Iracema64_1 (A4), Jaykayelowell_1 (A4), JetBlade_1 (A4), JoongJeon_1 (A4), KFPoly_1 (A4), Kampy_1 (A4), Katalie136_1 (A4), Kingmustik0402_1 (A4), Koreni_1 (A4), Kratark_1 (A4), Kremtemulon_1 (A4), Kyee_1 (A4), Lemur_1 (A4), LittleB_1 (A4), LittleGuy_1 (A4), LochMonster_1 (A4), Lorenzo_1 (A4), Lunsford_1 (A4), Maxo_1 (A4), Mazhar510_1 (A4), Medusa_1 (A4), Melvin_1 (A4), Millski_1 (A4), Miramae_1 (A4), Morpher26_1 (A4), Morrow_1 (A4), Mundrea_1 (A4), Nebs_1 (A4), Nemo27_1 (A4), Noelle_1 (A4), NorthStar_1 (A4), NotAPhaseMom_1 (A4), Nyxis_1 (A4), OKaNui_1 (A4), Obama12_1 (A4), Ohfah_1 (A4), Palestino_1 (A4), Perplexer_1 (A4), PeterPeter_1 (A4), PetiteSangsue_1 (A4), Phacado_1 (A4), Phighter1804_1 (A4), Phontbonne_1 (A4), Pipcraft_1 (A4), Polymorphads_1 (A4), Pumbaa_1 (A4), Relief_1 (A4), Romney_1 (A4), Roosevelt_1 (A4), Ruin_1 (A4), Sabertooth_1 (A4), Scamp_1 (A4), SheldonCooper_1 (A4), Shygu2_1 (A4), Skipitt_1 (A4), SoYo_1 (A3), Sparxx_1 (A4), Spino_1 (A4), Stasia_1 (A4), Taquarus_1 (A4), Thanksgivukkah_1 (A4), TinaFeyge_1 (A4), TroyPia_1 (A4), TygerBlood_1 (A4), Wander_1 (A4), Wilbur_1 (A4), Wile_1 (A4), Wizard007_1 (A4), Xena_1 (A4), YoSam321_1 (A4),

Start 19:

- Found in 3 of 145 (2.1%) of genes in pham
- Manual Annotations of this start: 1 of 136
- Called 100.0% of time when present
- Phage (with cluster) where this start called: Mabel_4 (A11), Oofda_4 (A15), Warrior24_4 (A15),

Start 21:

- Found in 5 of 145 (3.4%) of genes in pham
- Manual Annotations of this start: 1 of 136
- Called 100.0% of time when present
- Phage (with cluster) where this start called: Agaliana_2 (A1), GMonster_2 (A1), HanShotFirst_2 (A1), Levia_1 (A1), Sandaddy_1 (A1),

Summary by clusters:

There are 6 clusters represented in this pham: A15, A11, A3, A1, S, A4,

Info for manual annotations of cluster A1:

- Start number 21 was manually annotated 1 time for cluster A1.

Info for manual annotations of cluster A11:

- Start number 19 was manually annotated 1 time for cluster A11.

Info for manual annotations of cluster A3:

- Start number 18 was manually annotated 2 times for cluster A3.

Info for manual annotations of cluster A4:

- Start number 18 was manually annotated 115 times for cluster A4.

Info for manual annotations of cluster S:

- Start number 7 was manually annotated 16 times for cluster S.
- Start number 15 was manually annotated 1 time for cluster S.

Gene Information:

Gene: ACFishhook_1 Start: 596, Stop: 823, Start Num: 18

Candidate Starts for ACFishhook_1:

(12, 521), (14, 530), (Start: 18 @596 has 117 MA's),

Gene: AbbysRanger_1 Start: 542, Stop: 769, Start Num: 18

Candidate Starts for AbbysRanger_1:

(Start: 18 @542 has 117 MA's), (22, 608), (26, 728),

Gene: Abdiel_1 Start: 538, Stop: 765, Start Num: 18

Candidate Starts for Abdiel_1:

(Start: 18 @538 has 117 MA's), (26, 724),

Gene: Achebe_1 Start: 542, Stop: 769, Start Num: 18

Candidate Starts for Achebe_1:

(Start: 18 @542 has 117 MA's), (22, 608), (26, 728),

Gene: Agaliana_2 Start: 958, Stop: 1131, Start Num: 21

Candidate Starts for Agaliana_2:

(8, 787), (14, 835), (Start: 21 @958 has 1 MA's), (24, 1048), (26, 1084),

Gene: Albee_1 Start: 538, Stop: 765, Start Num: 18

Candidate Starts for Albee_1:

(Start: 18 @538 has 117 MA's), (26, 724),

Gene: Alberto7_1 Start: 538, Stop: 765, Start Num: 18

Candidate Starts for Alberto7_1:

(Start: 18 @538 has 117 MA's), (26, 724),

Gene: Annyong_1 Start: 538, Stop: 765, Start Num: 18
Candidate Starts for Annyong_1:
(Start: 18 @538 has 117 MA's), (26, 724),

Gene: Arturo_86 Start: 538, Stop: 765, Start Num: 18
Candidate Starts for Arturo_86:
(Start: 18 @538 has 117 MA's), (26, 724),

Gene: AvatarAhPeg_1 Start: 535, Stop: 762, Start Num: 18
Candidate Starts for AvatarAhPeg_1:
(1, 355), (Start: 18 @535 has 117 MA's), (26, 721),

Gene: Avle17_1 Start: 538, Stop: 765, Start Num: 18
Candidate Starts for Avle17_1:
(Start: 18 @538 has 117 MA's), (26, 724),

Gene: Baby16_1 Start: 538, Stop: 765, Start Num: 18
Candidate Starts for Baby16_1:
(Start: 18 @538 has 117 MA's), (26, 724),

Gene: Badger_1 Start: 543, Stop: 770, Start Num: 18
Candidate Starts for Badger_1:
(Start: 18 @543 has 117 MA's), (22, 609), (26, 729),

Gene: Bartimeaus_1 Start: 538, Stop: 765, Start Num: 18
Candidate Starts for Bartimeaus_1:
(Start: 18 @538 has 117 MA's), (26, 724),

Gene: Beelzebub_96 Start: 49193, Stop: 49519, Start Num: 7
Candidate Starts for Beelzebub_96:
(6, 49187), (Start: 7 @49193 has 16 MA's), (Start: 15 @49235 has 1 MA's), (17, 49280), (20, 49340),
(23, 49400), (25, 49460),

Gene: BellusTerra_1 Start: 538, Stop: 765, Start Num: 18
Candidate Starts for BellusTerra_1:
(Start: 18 @538 has 117 MA's), (26, 724),

Gene: Blackbeetle_93 Start: 48691, Stop: 49017, Start Num: 7
Candidate Starts for Blackbeetle_93:
(4, 48664), (Start: 7 @48691 has 16 MA's), (Start: 15 @48733 has 1 MA's), (17, 48778), (20, 48838),
(23, 48898), (25, 48958),

Gene: Blackmoor_1 Start: 538, Stop: 765, Start Num: 18
Candidate Starts for Blackmoor_1:
(Start: 18 @538 has 117 MA's), (26, 724),

Gene: Bombshell_1 Start: 538, Stop: 765, Start Num: 18
Candidate Starts for Bombshell_1:
(Start: 18 @538 has 117 MA's), (26, 724),

Gene: Broseidon_1 Start: 538, Stop: 765, Start Num: 18
Candidate Starts for Broseidon_1:

(Start: 18 @538 has 117 MA's), (26, 724),

Gene: Bruiser_1 Start: 538, Stop: 765, Start Num: 18

Candidate Starts for Bruiser_1:

(Start: 18 @538 has 117 MA's), (26, 724),

Gene: BubbleTrouble_1 Start: 538, Stop: 765, Start Num: 18

Candidate Starts for BubbleTrouble_1:

(Start: 18 @538 has 117 MA's), (26, 724),

Gene: Bumblebee11_1 Start: 542, Stop: 769, Start Num: 18

Candidate Starts for Bumblebee11_1:

(Start: 18 @542 has 117 MA's), (22, 608), (26, 728),

Gene: Camperdownii_1 Start: 538, Stop: 765, Start Num: 18

Candidate Starts for Camperdownii_1:

(Start: 18 @538 has 117 MA's), (26, 724),

Gene: Caprice_85 Start: 48629, Stop: 48955, Start Num: 7

Candidate Starts for Caprice_85:

(4, 48602), (Start: 7 @48629 has 16 MA's), (Start: 15 @48671 has 1 MA's), (17, 48716), (20, 48776), (23, 48836), (25, 48896),

Gene: CentreCat_1 Start: 538, Stop: 765, Start Num: 18

Candidate Starts for CentreCat_1:

(Start: 18 @538 has 117 MA's), (26, 724),

Gene: Chaph_1 Start: 538, Stop: 765, Start Num: 18

Candidate Starts for Chaph_1:

(Start: 18 @538 has 117 MA's), (26, 724),

Gene: Cici_1 Start: 542, Stop: 769, Start Num: 18

Candidate Starts for Cici_1:

(Start: 18 @542 has 117 MA's), (22, 608), (26, 728),

Gene: Cintron_1 Start: 538, Stop: 765, Start Num: 18

Candidate Starts for Cintron_1:

(Start: 18 @538 has 117 MA's), (26, 724),

Gene: Citius_1 Start: 538, Stop: 765, Start Num: 18

Candidate Starts for Citius_1:

(Start: 18 @538 has 117 MA's), (26, 724),

Gene: Clarenza_1 Start: 538, Stop: 765, Start Num: 18

Candidate Starts for Clarenza_1:

(Start: 18 @538 has 117 MA's), (26, 724),

Gene: Clarkson_93 Start: 48873, Stop: 49199, Start Num: 7

Candidate Starts for Clarkson_93:

(6, 48867), (Start: 7 @48873 has 16 MA's), (Start: 15 @48915 has 1 MA's), (17, 48960), (20, 49020), (23, 49080), (25, 49140),

Gene: Cocoaberry_1 Start: 538, Stop: 765, Start Num: 18

Candidate Starts for Cocoaberry_1:
(Start: 18 @538 has 117 MA's), (26, 724),

Gene: Connomayer_1 Start: 538, Stop: 765, Start Num: 18
Candidate Starts for Connomayer_1:
(Start: 18 @538 has 117 MA's), (26, 724),

Gene: Corazon_87 Start: 49067, Stop: 49393, Start Num: 7
Candidate Starts for Corazon_87:
(6, 49061), (Start: 7 @49067 has 16 MA's), (Start: 15 @49109 has 1 MA's), (17, 49154), (20, 49214),
(23, 49274), (25, 49334),

Gene: Datway_1 Start: 542, Stop: 769, Start Num: 18
Candidate Starts for Datway_1:
(Start: 18 @542 has 117 MA's), (22, 608), (26, 728),

Gene: Deano_1 Start: 538, Stop: 765, Start Num: 18
Candidate Starts for Deano_1:
(Start: 18 @538 has 117 MA's), (26, 724),

Gene: Dhanush_1 Start: 537, Stop: 764, Start Num: 18
Candidate Starts for Dhanush_1:
(Start: 18 @537 has 117 MA's), (26, 723),

Gene: DirtyDunning_1 Start: 536, Stop: 763, Start Num: 18
Candidate Starts for DirtyDunning_1:
(Start: 18 @536 has 117 MA's), (26, 722),

Gene: Druantia_1 Start: 539, Stop: 766, Start Num: 18
Candidate Starts for Druantia_1:
(Start: 18 @539 has 117 MA's), (26, 725),

Gene: Eapen_1 Start: 538, Stop: 765, Start Num: 18
Candidate Starts for Eapen_1:
(Start: 18 @538 has 117 MA's), (26, 724),

Gene: Eris_1 Start: 538, Stop: 765, Start Num: 18
Candidate Starts for Eris_1:
(Start: 18 @538 has 117 MA's), (26, 724),

Gene: Eros_1 Start: 538, Stop: 765, Start Num: 18
Candidate Starts for Eros_1:
(Start: 18 @538 has 117 MA's), (26, 724),

Gene: Eurydice_1 Start: 538, Stop: 765, Start Num: 18
Candidate Starts for Eurydice_1:
(Start: 18 @538 has 117 MA's), (26, 724),

Gene: FeliMaine_92 Start: 49115, Stop: 49441, Start Num: 7
Candidate Starts for FeliMaine_92:
(6, 49109), (Start: 7 @49115 has 16 MA's), (Start: 15 @49157 has 1 MA's), (17, 49202), (20, 49262),
(23, 49322), (25, 49382),

Gene: Florean_1 Start: 538, Stop: 765, Start Num: 18
Candidate Starts for Florean_1:
(Start: 18 @538 has 117 MA's), (26, 724),

Gene: Flux_1 Start: 538, Stop: 765, Start Num: 18
Candidate Starts for Flux_1:
(Start: 18 @538 has 117 MA's), (26, 724),

Gene: Funston_1 Start: 538, Stop: 765, Start Num: 18
Candidate Starts for Funston_1:
(Start: 18 @538 has 117 MA's), (26, 724),

Gene: GMonster_2 Start: 871, Stop: 1044, Start Num: 21
Candidate Starts for GMonster_2:
(13, 748), (Start: 21 @871 has 1 MA's), (24, 961), (26, 997),

Gene: Gadost_1 Start: 538, Stop: 765, Start Num: 18
Candidate Starts for Gadost_1:
(Start: 18 @538 has 117 MA's), (26, 724),

Gene: Gattaca_91 Start: 49103, Stop: 49429, Start Num: 7
Candidate Starts for Gattaca_91:
(Start: 7 @49103 has 16 MA's), (Start: 15 @49145 has 1 MA's), (17, 49190), (20, 49250), (23, 49310),
(25, 49370),

Gene: GoongGoong_90 Start: 48909, Stop: 49235, Start Num: 7
Candidate Starts for GoongGoong_90:
(Start: 7 @48909 has 16 MA's), (Start: 15 @48951 has 1 MA's), (17, 48996), (20, 49056), (23, 49116),
(25, 49176),

Gene: HanShotFirst_2 Start: 873, Stop: 1067, Start Num: 21
Candidate Starts for HanShotFirst_2:
(14, 750), (Start: 21 @873 has 1 MA's), (26, 999),

Gene: Happiness_1 Start: 537, Stop: 764, Start Num: 18
Candidate Starts for Happiness_1:
(Start: 18 @537 has 117 MA's), (26, 723),

Gene: Holli_1 Start: 538, Stop: 765, Start Num: 18
Candidate Starts for Holli_1:
(Start: 18 @538 has 117 MA's), (26, 724),

Gene: Houdini22_1 Start: 538, Stop: 765, Start Num: 18
Candidate Starts for Houdini22_1:
(Start: 18 @538 has 117 MA's), (26, 724),

Gene: Huphlebuff_94 Start: 48678, Stop: 49004, Start Num: 7
Candidate Starts for Huphlebuff_94:
(6, 48672), (Start: 7 @48678 has 16 MA's), (Start: 15 @48720 has 1 MA's), (17, 48765), (20, 48825),
(23, 48885), (25, 48945),

Gene: ICleared_1 Start: 538, Stop: 765, Start Num: 18
Candidate Starts for ICleared_1:

(Start: 18 @538 has 117 MA's), (26, 724),

Gene: Iceman_1 Start: 538, Stop: 765, Start Num: 18

Candidate Starts for Iceman_1:

(Start: 18 @538 has 117 MA's), (26, 724),

Gene: Iracema64_1 Start: 538, Stop: 765, Start Num: 18

Candidate Starts for Iracema64_1:

(Start: 18 @538 has 117 MA's), (26, 724),

Gene: Jaykayelowell_1 Start: 538, Stop: 765, Start Num: 18

Candidate Starts for Jaykayelowell_1:

(Start: 18 @538 has 117 MA's), (26, 724),

Gene: JetBlade_1 Start: 538, Stop: 765, Start Num: 18

Candidate Starts for JetBlade_1:

(Start: 18 @538 has 117 MA's), (26, 724),

Gene: JoieB_93 Start: 49278, Stop: 49604, Start Num: 7

Candidate Starts for JoieB_93:

(4, 49251), (Start: 7 @49278 has 16 MA's), (Start: 15 @49320 has 1 MA's), (17, 49365), (20, 49425), (23, 49485), (25, 49545),

Gene: JoongJeon_1 Start: 538, Stop: 765, Start Num: 18

Candidate Starts for JoongJeon_1:

(Start: 18 @538 has 117 MA's), (26, 724),

Gene: KFPoly_1 Start: 538, Stop: 765, Start Num: 18

Candidate Starts for KFPoly_1:

(Start: 18 @538 has 117 MA's), (26, 724),

Gene: Kamy_1 Start: 538, Stop: 765, Start Num: 18

Candidate Starts for Kamy_1:

(Start: 18 @538 has 117 MA's), (26, 724),

Gene: Katalie136_1 Start: 542, Stop: 769, Start Num: 18

Candidate Starts for Katalie136_1:

(Start: 18 @542 has 117 MA's), (22, 608), (26, 728),

Gene: Kingmustik0402_1 Start: 538, Stop: 765, Start Num: 18

Candidate Starts for Kingmustik0402_1:

(Start: 18 @538 has 117 MA's), (26, 724),

Gene: Koreni_1 Start: 538, Stop: 765, Start Num: 18

Candidate Starts for Koreni_1:

(Start: 18 @538 has 117 MA's), (26, 724),

Gene: Kratark_1 Start: 538, Stop: 765, Start Num: 18

Candidate Starts for Kratark_1:

(Start: 18 @538 has 117 MA's), (26, 724),

Gene: Kremtemulon_1 Start: 538, Stop: 765, Start Num: 18

Candidate Starts for Kremtemulon_1:

(Start: 18 @538 has 117 MA's), (26, 724),

Gene: Kyee_1 Start: 538, Stop: 765, Start Num: 18

Candidate Starts for Kyee_1:

(Start: 18 @538 has 117 MA's), (26, 724),

Gene: Lemur_1 Start: 538, Stop: 765, Start Num: 18

Candidate Starts for Lemur_1:

(Start: 18 @538 has 117 MA's), (26, 724),

Gene: Levia_1 Start: 722, Stop: 895, Start Num: 21

Candidate Starts for Levia_1:

(5, 536), (9, 572), (10, 581), (13, 599), (Start: 21 @722 has 1 MA's), (24, 812), (26, 848),

Gene: Lilbit_90 Start: 49238, Stop: 49564, Start Num: 7

Candidate Starts for Lilbit_90:

(6, 49232), (Start: 7 @49238 has 16 MA's), (Start: 15 @49280 has 1 MA's), (17, 49325), (20, 49385), (23, 49445), (25, 49505),

Gene: LittleB_1 Start: 538, Stop: 765, Start Num: 18

Candidate Starts for LittleB_1:

(Start: 18 @538 has 117 MA's), (26, 724),

Gene: LittleGuy_1 Start: 538, Stop: 765, Start Num: 18

Candidate Starts for LittleGuy_1:

(Start: 18 @538 has 117 MA's), (26, 724),

Gene: LittleLaf_90 Start: 49009, Stop: 49293, Start Num: 15

Candidate Starts for LittleLaf_90:

(6, 48961), (Start: 7 @48967 has 16 MA's), (Start: 15 @49009 has 1 MA's), (17, 49054), (20, 49114), (23, 49174), (25, 49234),

Gene: LochMonster_1 Start: 536, Stop: 763, Start Num: 18

Candidate Starts for LochMonster_1:

(1, 356), (Start: 18 @536 has 117 MA's), (26, 722),

Gene: Lorenzo_1 Start: 538, Stop: 765, Start Num: 18

Candidate Starts for Lorenzo_1:

(Start: 18 @538 has 117 MA's), (26, 724),

Gene: Lunsford_1 Start: 538, Stop: 765, Start Num: 18

Candidate Starts for Lunsford_1:

(Start: 18 @538 has 117 MA's), (26, 724),

Gene: Mabel_4 Start: 2458, Stop: 2664, Start Num: 19

Candidate Starts for Mabel_4:

(14, 2368), (16, 2401), (Start: 19 @2458 has 1 MA's), (27, 2659),

Gene: Marvin_86 Start: 48763, Stop: 49089, Start Num: 7

Candidate Starts for Marvin_86:

(6, 48757), (Start: 7 @48763 has 16 MA's), (Start: 15 @48805 has 1 MA's), (17, 48850), (20, 48910), (23, 48970), (25, 49030),

Gene: Maxo_1 Start: 538, Stop: 765, Start Num: 18
Candidate Starts for Maxo_1:
(Start: 18 @538 has 117 MA's), (26, 724),

Gene: Mazhar510_1 Start: 539, Stop: 766, Start Num: 18
Candidate Starts for Mazhar510_1:
(Start: 18 @539 has 117 MA's), (26, 725),

Gene: Medusa_1 Start: 538, Stop: 765, Start Num: 18
Candidate Starts for Medusa_1:
(Start: 18 @538 has 117 MA's), (26, 724),

Gene: Melvin_1 Start: 538, Stop: 765, Start Num: 18
Candidate Starts for Melvin_1:
(Start: 18 @538 has 117 MA's), (26, 724),

Gene: Millski_1 Start: 538, Stop: 765, Start Num: 18
Candidate Starts for Millski_1:
(Start: 18 @538 has 117 MA's), (26, 724),

Gene: Miramae_1 Start: 535, Stop: 762, Start Num: 18
Candidate Starts for Miramae_1:
(1, 355), (Start: 18 @535 has 117 MA's), (26, 721),

Gene: Morpher26_1 Start: 542, Stop: 769, Start Num: 18
Candidate Starts for Morpher26_1:
(Start: 18 @542 has 117 MA's), (22, 608), (26, 728),

Gene: Morrow_1 Start: 538, Stop: 765, Start Num: 18
Candidate Starts for Morrow_1:
(Start: 18 @538 has 117 MA's), (26, 724),

Gene: MosMoris_88 Start: 49109, Stop: 49435, Start Num: 7
Candidate Starts for MosMoris_88:
(Start: 7 @49109 has 16 MA's), (Start: 15 @49151 has 1 MA's), (17, 49196), (20, 49256), (23, 49316),
(25, 49376),

Gene: Mundrea_1 Start: 539, Stop: 766, Start Num: 18
Candidate Starts for Mundrea_1:
(2, 359), (Start: 18 @539 has 117 MA's), (26, 725),

Gene: Nebs_1 Start: 538, Stop: 765, Start Num: 18
Candidate Starts for Nebs_1:
(Start: 18 @538 has 117 MA's), (26, 724),

Gene: Nemo27_1 Start: 537, Stop: 764, Start Num: 18
Candidate Starts for Nemo27_1:
(Start: 18 @537 has 117 MA's), (26, 723),

Gene: Noelle_1 Start: 526, Stop: 753, Start Num: 18
Candidate Starts for Noelle_1:
(1, 346), (Start: 18 @526 has 117 MA's), (26, 712),

Gene: NorthStar_1 Start: 538, Stop: 765, Start Num: 18
Candidate Starts for NorthStar_1:
(Start: 18 @538 has 117 MA's), (26, 724),

Gene: NotAPhaseMom_1 Start: 538, Stop: 765, Start Num: 18
Candidate Starts for NotAPhaseMom_1:
(Start: 18 @538 has 117 MA's), (26, 724),

Gene: Nyxis_1 Start: 539, Stop: 766, Start Num: 18
Candidate Starts for Nyxis_1:
(Start: 18 @539 has 117 MA's), (26, 725),

Gene: OKaNui_1 Start: 537, Stop: 764, Start Num: 18
Candidate Starts for OKaNui_1:
(Start: 18 @537 has 117 MA's), (26, 723),

Gene: Obama12_1 Start: 537, Stop: 764, Start Num: 18
Candidate Starts for Obama12_1:
(1, 357), (11, 462), (Start: 18 @537 has 117 MA's), (26, 723),

Gene: Ohfah_1 Start: 538, Stop: 765, Start Num: 18
Candidate Starts for Ohfah_1:
(Start: 18 @538 has 117 MA's), (26, 724),

Gene: Oofda_4 Start: 2372, Stop: 2578, Start Num: 19
Candidate Starts for Oofda_4:
(3, 2186), (14, 2282), (Start: 19 @2372 has 1 MA's),

Gene: Palestino_1 Start: 538, Stop: 765, Start Num: 18
Candidate Starts for Palestino_1:
(Start: 18 @538 has 117 MA's), (26, 724),

Gene: Perplexer_1 Start: 542, Stop: 769, Start Num: 18
Candidate Starts for Perplexer_1:
(Start: 18 @542 has 117 MA's), (22, 608), (26, 728),

Gene: PeterPeter_1 Start: 538, Stop: 765, Start Num: 18
Candidate Starts for PeterPeter_1:
(Start: 18 @538 has 117 MA's), (26, 724),

Gene: PetiteSangsue_1 Start: 542, Stop: 769, Start Num: 18
Candidate Starts for PetiteSangsue_1:
(Start: 18 @542 has 117 MA's), (22, 608), (26, 728),

Gene: Phacado_1 Start: 537, Stop: 764, Start Num: 18
Candidate Starts for Phacado_1:
(Start: 18 @537 has 117 MA's), (26, 723),

Gene: Phighter1804_1 Start: 536, Stop: 763, Start Num: 18
Candidate Starts for Phighter1804_1:
(1, 356), (Start: 18 @536 has 117 MA's), (26, 722),

Gene: Phontbonne_1 Start: 536, Stop: 763, Start Num: 18

Candidate Starts for Phontbonne_1:
(Start: 18 @536 has 117 MA's), (26, 722),

Gene: Pipcraft_1 Start: 538, Stop: 765, Start Num: 18
Candidate Starts for Pipcraft_1:
(Start: 18 @538 has 117 MA's), (26, 724),

Gene: Poise_93 Start: 48691, Stop: 49017, Start Num: 7
Candidate Starts for Poise_93:
(4, 48664), (Start: 7 @48691 has 16 MA's), (Start: 15 @48733 has 1 MA's), (17, 48778), (20, 48838),
(23, 48898), (25, 48958),

Gene: Polymorphads_1 Start: 538, Stop: 765, Start Num: 18
Candidate Starts for Polymorphads_1:
(Start: 18 @538 has 117 MA's), (26, 724),

Gene: Pringar_88 Start: 48479, Stop: 48805, Start Num: 7
Candidate Starts for Pringar_88:
(6, 48473), (Start: 7 @48479 has 16 MA's), (Start: 15 @48521 has 1 MA's), (17, 48566), (20, 48626),
(23, 48686), (25, 48746),

Gene: Pumbaa_1 Start: 536, Stop: 763, Start Num: 18
Candidate Starts for Pumbaa_1:
(1, 356), (Start: 18 @536 has 117 MA's), (26, 722),

Gene: Raela_94 Start: 49242, Stop: 49568, Start Num: 7
Candidate Starts for Raela_94:
(4, 49215), (Start: 7 @49242 has 16 MA's), (Start: 15 @49284 has 1 MA's), (17, 49329), (20, 49389),
(23, 49449), (25, 49509),

Gene: RedRaider77_92 Start: 48636, Stop: 48962, Start Num: 7
Candidate Starts for RedRaider77_92:
(4, 48609), (Start: 7 @48636 has 16 MA's), (Start: 15 @48678 has 1 MA's), (17, 48723), (20, 48783),
(23, 48843), (25, 48903),

Gene: Relief_1 Start: 538, Stop: 765, Start Num: 18
Candidate Starts for Relief_1:
(Start: 18 @538 has 117 MA's), (26, 724),

Gene: Romney_1 Start: 538, Stop: 765, Start Num: 18
Candidate Starts for Romney_1:
(Start: 18 @538 has 117 MA's), (26, 724),

Gene: Roosevelt_1 Start: 538, Stop: 765, Start Num: 18
Candidate Starts for Roosevelt_1:
(Start: 18 @538 has 117 MA's), (26, 724),

Gene: Ruin_1 Start: 537, Stop: 764, Start Num: 18
Candidate Starts for Ruin_1:
(Start: 18 @537 has 117 MA's), (26, 723),

Gene: Sabertooth_1 Start: 538, Stop: 765, Start Num: 18
Candidate Starts for Sabertooth_1:

(Start: 18 @538 has 117 MA's), (26, 724),

Gene: Sandaddy_1 Start: 722, Stop: 895, Start Num: 21

Candidate Starts for Sandaddy_1:

(5, 536), (9, 572), (10, 581), (13, 599), (16, 632), (Start: 21 @722 has 1 MA's), (24, 812), (26, 848),

Gene: Scamp_1 Start: 538, Stop: 765, Start Num: 18

Candidate Starts for Scamp_1:

(Start: 18 @538 has 117 MA's), (26, 724),

Gene: SheldonCooper_1 Start: 536, Stop: 763, Start Num: 18

Candidate Starts for SheldonCooper_1:

(11, 461), (Start: 18 @536 has 117 MA's), (26, 722),

Gene: Shygu2_1 Start: 542, Stop: 769, Start Num: 18

Candidate Starts for Shygu2_1:

(Start: 18 @542 has 117 MA's), (26, 728),

Gene: Skipitt_1 Start: 538, Stop: 765, Start Num: 18

Candidate Starts for Skipitt_1:

(Start: 18 @538 has 117 MA's), (26, 724),

Gene: SoYo_1 Start: 592, Stop: 819, Start Num: 18

Candidate Starts for SoYo_1:

(12, 517), (14, 526), (Start: 18 @592 has 117 MA's),

Gene: Sparxx_1 Start: 538, Stop: 765, Start Num: 18

Candidate Starts for Sparxx_1:

(Start: 18 @538 has 117 MA's), (26, 724),

Gene: Spino_1 Start: 538, Stop: 765, Start Num: 18

Candidate Starts for Spino_1:

(Start: 18 @538 has 117 MA's), (26, 724),

Gene: Stasia_1 Start: 544, Stop: 771, Start Num: 18

Candidate Starts for Stasia_1:

(Start: 18 @544 has 117 MA's), (26, 730),

Gene: Taquarus_1 Start: 538, Stop: 765, Start Num: 18

Candidate Starts for Taquarus_1:

(Start: 18 @538 has 117 MA's), (26, 724),

Gene: Tesla_88 Start: 48485, Stop: 48811, Start Num: 7

Candidate Starts for Tesla_88:

(4, 48458), (Start: 7 @48485 has 16 MA's), (Start: 15 @48527 has 1 MA's), (17, 48572), (20, 48632), (23, 48692), (25, 48752),

Gene: Thanksgivukkah_1 Start: 539, Stop: 766, Start Num: 18

Candidate Starts for Thanksgivukkah_1:

(Start: 18 @539 has 117 MA's), (26, 725),

Gene: TinaFeyge_1 Start: 538, Stop: 765, Start Num: 18

Candidate Starts for TinaFeyge_1:

(Start: 18 @538 has 117 MA's), (26, 724),

Gene: TroyPia_1 Start: 538, Stop: 765, Start Num: 18

Candidate Starts for TroyPia_1:

(Start: 18 @538 has 117 MA's), (26, 724),

Gene: TygerBlood_1 Start: 540, Stop: 767, Start Num: 18

Candidate Starts for TygerBlood_1:

(Start: 18 @540 has 117 MA's), (26, 726),

Gene: VasuNzinga_90 Start: 48574, Stop: 48900, Start Num: 7

Candidate Starts for VasuNzinga_90:

(4, 48547), (Start: 7 @48574 has 16 MA's), (Start: 15 @48616 has 1 MA's), (17, 48661), (20, 48721), (23, 48781), (25, 48841),

Gene: Wander_1 Start: 538, Stop: 765, Start Num: 18

Candidate Starts for Wander_1:

(Start: 18 @538 has 117 MA's), (26, 724),

Gene: Warrior24_4 Start: 2372, Stop: 2578, Start Num: 19

Candidate Starts for Warrior24_4:

(3, 2186), (14, 2282), (Start: 19 @2372 has 1 MA's),

Gene: Wilbur_1 Start: 538, Stop: 765, Start Num: 18

Candidate Starts for Wilbur_1:

(Start: 18 @538 has 117 MA's), (26, 724),

Gene: Wile_1 Start: 543, Stop: 770, Start Num: 18

Candidate Starts for Wile_1:

(Start: 18 @543 has 117 MA's), (22, 609), (26, 729),

Gene: Wizard007_1 Start: 540, Stop: 767, Start Num: 18

Candidate Starts for Wizard007_1:

(Start: 18 @540 has 117 MA's), (26, 726),

Gene: Xena_1 Start: 542, Stop: 769, Start Num: 18

Candidate Starts for Xena_1:

(Start: 18 @542 has 117 MA's), (22, 608), (26, 728),

Gene: YoSam321_1 Start: 538, Stop: 765, Start Num: 18

Candidate Starts for YoSam321_1:

(Start: 18 @538 has 117 MA's), (26, 724),